

AN ANNOTATED CHECKLIST OF VASCULAR PLANTS
OF THE SOUTHERN ILLINOIS UNIVERSITY
PINE HILLS FIELD STATION AND ENVIRONS

ROBERT H. MOHLENBROCK AND JOHN W. VOIGT
Southern Illinois University, Carbondale

ABSTRACT. — A descriptive account of the Pine Hills Field Station and environs in Union County, Illinois is presented, followed by an annotated checklist of the vascular plants thus far found in the area. A total of 1005 species is included. This high total is a reflection of the diverse habitats found in the area.

In 1959, Southern Illinois University established a Field Station in an area popularly known as the Pine Hills, in northwestern Union County, Illinois. This area lies in

the extreme western section of the Shawnee National Forest. Swamps, unspoiled mixed deciduous forest, cold water springs of even temperature, clear-running rock-bottomed streams, steep-sided and shaded valleys, dry rocky uplands, acid cherty slopes of varied aspect, grassy openings or hill prairies, and limestone provide a wide habitat range.

Early collections from the Pine Hills area were made by Henry Al-

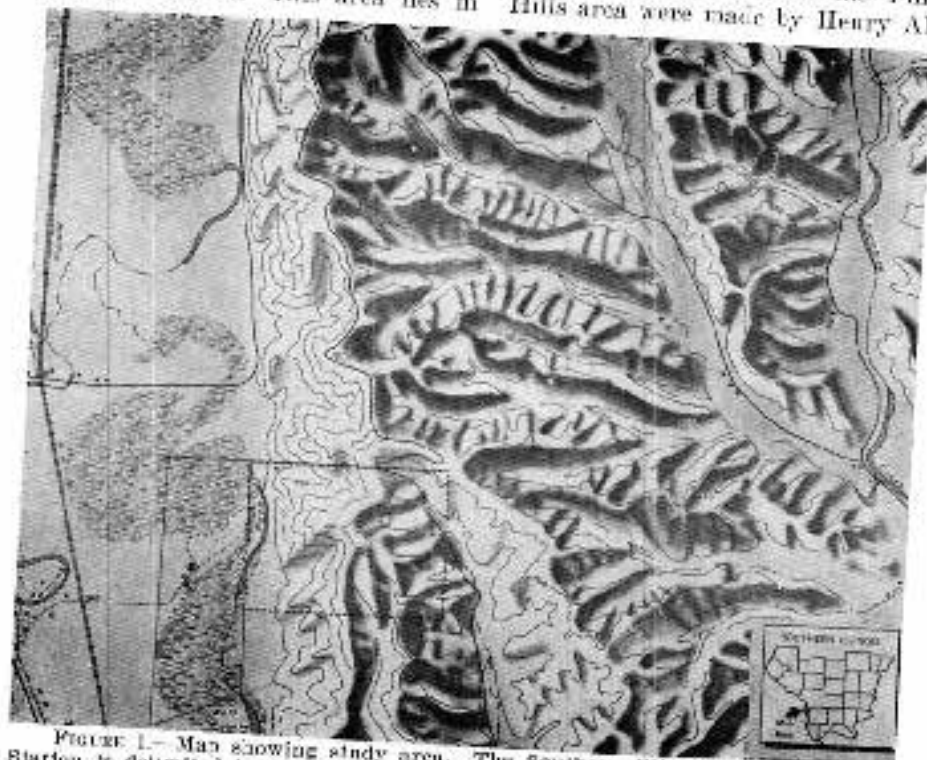


FIGURE 1.— Map showing study area. The Southern Illinois University Field Station is delimited by the dotted line. Prepared by Cartographic Office, Mississippi Valley Investigation, Dan Irwin, 1959. Source: U.S.G.S. Wolf Lake Quad.

len Gleason in the early 1900's. During the past decade and a half, the principal collections of vascular plants in the area were by the late Professor William C. Bailey and by Julius R. Swayne. The present authors and their students, long realizing the unusual floristic composition, interest, and overlapping vegetational patterns of the area, have made repeated trips there for study, and these efforts are incorporated in "A Flora of Southern Illinois". There has never been an exhaustive checklist prepared on the Pine Hills area.

Geographically situated between the Appalachians and the Ozarks, southern Illinois owes a natural relationship to both and thus becomes a giant link in nature's floristic gradient. A general reduction in size of individual plants and their numbers occurs in the spread of species to the west. A climatic gradient condition of moist to dry is the underlying cause. There lie to the west, to the north, or to the south, floral assemblies of different origin and nature.

From LaRue, situated at the east edge of the ancient floodplain of the Mississippi River, may be seen a towering limestone bluff capped with chert and supporting yellow pines (*Pinus echinata*). Below the bluff is a sizable swamp. Numerous springs issue from the base of the limestone bluffs and one large one flows under the road. Its waters are cold, as indicated by the abundance of water cress in the channel of its flow. The temperature of the water holds uniform through the summer. This spring is noted for its unique animal forms. Here may be found pygmy sunfish (*Elassoma zonatum*) no longer than 1.5 inches. Blind cave fish (*Chlogaster papilliferus*) occasionally are washed from their subterranean caverns. Beavers are active in this area and construct extensive dams to main-

tain a certain water level. The swamp is a haven for many forms of animal life.

Where Wolf Lake becomes narrower and shallower at its northern limit, Wolf Lake Swamp originates. The northern border of this swamp arbitrarily is set at the road which extends from Illinois Route 3 eastward to the base of the massive limestone bluffs known as the Pine Hills. These bluffs form the eastern limit of the swamp. To the west, a gradual rise in elevation is responsible for the dissipation of the swamp into a low woodland area.

In the constantly inundated area, the standing water varies from one inch or so at times of lowest water to about five feet in depth. Different groupings of plants are recognized with relation to the depth of water in the swamps. In areas which may become covered by five feet of water, buttonbush is most abundant. Trees are numerous, but only a small percentage of them is living. Among the trees present are black willow (*Salix nigra*), swamp cottonwood, and red maple. Occasional plants of pondweed and naiad are found. Growing as an epiphyte on bases of some of the trees is the water horshound (*Lycopus rubellus*).

In water that sometimes is two feet deep, large monocotyledonous perennials such as sweet flag, arrow-leaf, arrow-arum, and bur-reed (*Sparganium eurycarpum* and *S. angustatum*) are common. Trees are more abundant where the water is shallower. Pumpkin ash (*Fragaria tomentosa*), red maple, swamp cottonwood, water locust (*Glodisia aquatica*), and honey locust are rather common. Coarse sedges abound in this shallow water area. Numbered among these are *Carex lupuliformis*, *C. lurida*, *C. hystrixina*, *C. lupulina*, and *C. stipata*. Free-floaters present are sponge-plant (*Amnobiium spongia*), watermeal, species of duckweed (*Lemna trisulca* and *L. minor*), and mosquito fern (*Azolla mexicana*).

A distinct woodland community on low ground, in which the area is inundated for only a portion of each year, exists in the outer regions of the swamp. Tree composition is somewhat different from the swamp proper. Swamp cottonwood, red maple, and honey locust still occur, but in smaller numbers. With these are silver maple, pin oak (*Quercus palustris*), box elder (*Acer negundo*), and sweet gum (*Liquidambar styracif-*

lua) in appreciable numbers, while occasional plants of slippery elm (*Ulmus rubra*), basket oak (*Quercus michauxii*), and white oak (*Quercus alba*) occur. Only gray dogwood (*Cornus obliqua*) and Virginia willow (*Hea virginica*) are found in the shrub layer. The understory is sparsely populated, but a large variety of species occurs. Most abundant are pink St. John's-wort (*Triadenum walteri*), hydrolea (*Hydrolea affinis*), water parsnip (*Sium suave*) monkey-flower (*Mimulus alatus*), and bedstraw (*Galium obtusum*). *Gerardia* (*Gerardia tenuifolia*), butterwood (*Senecio glabellus*), swamp milkweed (*Asclepias perennis*), and enchanter's nightshade (*Circaea latifolia*) are less common. Rare species are skullcap (*Scutellaria nervosa*) and bishop's-weed (*Pellinium costatum*). All except butterwood flower during the summer and fall.

Near the base of a limestone bluff in T 11 S, R 3 W, section 18, is an area of deeper water. This is called Otter Pond. The borders are thickly populated with buttonbush and Virginia willow.

North of the road extending from Illinois Route 3 to the Pine Hills is the southern end of the LaRue Swamp. This swamp, also bounded to the east by limestone bluffs, is much more extensive than the Wolf Lake Swamp. It covers an area nearly two-and-three-fourths miles long and from one-eighth to one mile broad. It is fed by refreshing limpid springs which are at the base of the limestone bluffs. Colonies of heavers live in LaRue Swamp. The presence of their dams across the swamp results in the constant back-up of the water. In more quiet areas where the water seldom is in motion, stagnation frequently occurs. The animals of this swamp (termed the Pine Hills Swamp), particularly the fishes, have been discussed by Gunning and Lewis (1955).

As the spring water emerges it has a year around temperature between 56° and 58° F (Gunning and Lewis, 1955). In the rapidly flowing water at the springhead, only water-cress (*Nasturtium officinale*) thrives. In adjacent areas where there is moderate water movement resulting from the rapid currents of the spring's main channel, additional species occur. These, for the most part, are species which also inhabit the borders of streams in southern Illinois. Included here are ditch stone-crop (*Penthorum sedoides*), water plantain (*Alisma plantago-aquatica* var.

parviflorum), pink swamp milkweed (*Asclepias incarnata*), and mild water pepper, along with manna grass (*Glyceria septentrionalis*) and sedge (*Carex vulpinoidea*). In a zone from three to fifteen feet wide on either side of the spring's main channel is a unique community of plants. The area inhabited by these plants is inundated by one to six inches of water for most of each year. Unusually occurring species, many of which are found in no other place in the swamp, are in this zone. Among the rarer ones are bulrush (*Scirpus validus*), two grasses (*Puccinellia pallida* and *Glyceria arkansana*), and American feather-foil (*Hottonia inflata*). Cat-lail (*Typha latifolia*) is common at this site.

The constantly inundated regions of LaRue Swamp are similar to those of Wolf Lake Swamp except that more species exist in LaRue Swamp. Trees are common, with pumpkin ash clearly comprising 60 per cent of those present. In moderate numbers are red ash, red maple, swamp cottonwood, southern hackberry (*Celtis laevigata*), and water locust. In the most remote parts of the swamp are a few scattered trees of bald cypress (*Taxodium distichum*) and Drummond's red maple (*Acer drummondii*).

Shrubs are plentiful in the standing water. Buttonbush again is encountered most frequently, but thickets of water willow (*Decodon verticillatus*) and swamp rose (*Rosa palustris*) become established locally.

Herbaceous members of the standing water community are not frequent, but those that are present usually have vivid flowers. Yellow water crowfoot (*Ranunculus flabellaris*), water primrose (*Jussiaea decurrens*), water mustard (*Neobekia aquatica*), and American featherfoil are particularly attractive. In more shallow water are coarse monocotyledons. Some of these are *Carex lupulina*, *C. lupuliformis*, *C. retrosa*, *C. comosa*, *C. stipitata*, and *C. crux-corvi*. Growing as epiphytes on the bases of pumpkin ash and southern hackberry are clumps of the cypress-knee sedge (*Carex decomposita*). A few small unusual herbs such as bladderworts (*Utricularia vulgaris* and *U. gibba*) and red iris (*Iris fulva*) occur. In the stagnated areas, free-floaters abound, among which are mosquito fern, duckweeds, water-meal, and sponge-plant.

The partly inundated periphery of LaRue Swamp contains species which

occur in other open moist habitats in southern Illinois. Spring-flowering species include mouse-tail (*Myosurus minimus*) and Pennsylvania water cress (*Cardamine pennsylvanica*). Those which begin to flower in June are water dock, lizard's-tail, water parsnip, and bishop's weed.

The swamp gives way to a woodland community on low ground which is essentially like the low woodland community bordering the Wolf Lake Swamp. Dominant trees are red maple, honey locust, and swamp cottonwood, with silver maple, sweet gum, and pin oak present in considerable numbers. Swamp holly (*Ilex decidua*) is the most frequently encountered shrub. The understory has the same composition as the Wolf Lake Swamp lowland woods except that the pink St. John's-wort and hydrolea are not as common in the former.

The following lists show the association of plants in their ecological situations.

Woody Species of Constantly
Inundated Areas:

Acer drummondii
Acer rubrum
Celtis laevigata
Cephalanthus occidentalis
Decodon verticillatus
Fraxinus pennsylvanica
Fraxinus tomentosa
Gleditsia aquatica
Itea virginica
Populus heterophylla
Rosa palustris
Salix nigra
Taxodium distichum

Woody Species of Areas Inundated
only a Part of Each Year:

Acer rubrum
Celtis laevigata
Cephalanthus occidentalis
Fraxinus pennsylvanica
Gleditsia triacanthos
Itea virginica
Populus heterophylla
Rosa palustris
Salix nigra

Woody Species of Low Woodlands
Which May Never Grow in Water:

Acer negundo
Acer rubrum

Acer saccharinum
Betula nigra
Celtis laevigata
Cephalanthus occidentalis
Cornus obliqua
Fraxinus pennsylvanica
Gleditsia triacanthos
Ilex decidua
Itea virginica
Liquidambar styraciflua
Quercus alba
Quercus palustris
Quercus michauxii
Ulmus rubra

Herbaceous Species Which May
Be Free Floaters:

Azolla mexicana
Cabomba caroliniana
Lemna minor
Lemna perpusilla
Lemna valdiviana
Lemna trisulca
Lamnobium spongia
Najas flexilis
Potamogeton diversifolius
Spirodela polyrrhiza
Wolffia columbiana
Wolffia papulifera
Wolffiella floridana

Rooted Herbaceous Species Which
May Be Found in Constantly
Inundated Areas:

Acorus calamus
Alisma plantago-aquatica
var. *parviflorum*
Alopecurus aequalis
Asclepias perennis
Bidens polylepis
Brasenia schreberi
Carex comosa
Carex crus-corni
Carex frankii
Carex lupuliformis
Carex lupulina
Carex lurida
Carex retrorsa
Carex stipitata
Ceratophyllum demersum
Echinodorus cordifolius
Galium tinctorium
Glyceria arkansana
Hottonia inflata
Iris fulva
Jussiaea decurrens
Ludwigia palustris
Lycopus rubellus
Nasturtium officinale
Nelumbo lutea
Neobackia aquatica

Nuphar advena
Nymphaea odorata
Peltandra virginica
Pontederia cordata
Puccinellia pallida
Ranunculus flabellaris
Sagittaria latifolia
Scirpus validus
Sparganium androcladum
Sparganium eurycarpum
Utricularia gibba
Utricularia vulgaris

Herbs in Partly Inundated Areas,
 No Canopy:

Agrostis palustris
Asclepias perennis
Aster simplex
Aster vimineus
Cardamine pennsylvanica
Carex vulpinoidea
Commelina diffusa
Cyperus erythrorhizos
Cyperus ferrugineus
Cyperus aristatus
Epilobium coloratum
Fragrostis hypnoides
Eupatorium coelestinum
Glyceria striata
Heliotropium indicum
Hibiscus lasiocarpus
Ipomoea lacunosa
Leersia lenticularis
Leersia oryzoides
Lindernia dubia
Lobelia cardinalis
Lycopus americanus
Lycopus rubellus
Mentha spicata
Muhlenbergia frondosa
Muhlenbergia schreberi
Myosurus minimus
Panicum agrostoides
Paspalum fluitans
Paspalum geminum
Pluchea camphorata
Polygonum hydropiper
Polygonum hydropiperoides
Polygonum sagittatum
Ptilimnium costatum
Rumex verticillatus
Saururus cernuus
Scutellaria lateriflora
Sium suave

Herbs of the Low Woodland
 Community:

Aplos americanus
Asclepias perennis
Aster simplex
Aster vimineus

Bidens comosa
Bidens discoides
Bidens vulgata
Cardamine pennsylvanica
Circeia latifolia
Galium obtusum
Gerardia tenuifolia
Glyceria septentrionalis
Hydrolea affinis
Hypericum perforatum
Lycopus americanus
Lycopus rubellus
Lysimachia ciliata
Ptilimnium costatum
Scutellaria lateriflora
Scutellaria nervosa
Senecio glabellus
Sium suave
Stachys tenuifolia
Traudenum walteri

Continuing along the edge of the swamp, the road winds from low ground where stately beech trees (*Fagus grandifolia*), tulip trees (*Liriodendron tulipifera*), and maple (*Acer spp.*) prevail. Large sassafras (*Sassafras albidum*) and cucumber trees (*Magnolia acuminata*) mingle with them.

From the roadside in sandy areas of low ground may be seen tongues and patches of cleft phlox (*Phlox bifida*), carpets of mist flower (*Phacelia purshii*), and splatterings of purple delphinium (*Delphinium tricorne*). Buttercups (*Ranunculus spp.*), trilliums (*Trillium spp.*), and bloodroot (*Sanguinaria canadensis*) are numerous. Layers of red-bud (*Cercis canadensis*) and dogwood (*Cornus florida*) may be seen at the roadside under the canopy of taller trees.

On higher elevations are found communities of white oak (*Quercus alba*), black oak (*Q. velutina*), and red oak (*Q. rubra*) to the crests where dryness induced by greater exposure presents the post oak (*Quercus stellata*) and black-jack oak (*Q. marilandica*) communities. These tree segregates occur and re-occur where suitable habitats are found and there are many interminglings to form still other assemblages.

The greatest occurrence of yellow pine in southern Illinois is in Pine Hills, Union County. The pines are found from mid-slope to near the ridge-tops, becoming progressively more abundant near the top. The soil is a thin layer of rocks, reddish chert, underlain by massive limestone. Yellow pine and Buckley's hickory usually are the leading dominants. Other canopy species

include pignut hickory, white oak, black oak, red oak, black-jack oak, and shag-bark hickory.

An abundant shrub layer is dominated by high-bush blueberry (*Vaccinium vacillans*) and sparkleberry (*V. arboreum*). Other common shrubs are shining sumac (*Rhus copallina*), fragrant sumac (*R. aromatica*), New Jersey tea (*Ceanothus americanus*), and wild rose (*Rosa setigera*). Locally on these cherry west-facing slopes may be found scattered bushes of the pinxter flower (*Rhododendron* spp.).

The herbaceous layer here is composed predominantly of summer and fall-flowering species. Early spring-blooming species are plantain-leaved everlasting or pussy toes (*Antennaria plantaginifolia*), and four species of sedge (*Carex artitecta*, *C. emmonsii*, *C. physorhyncha*, and *C. umbellata*). This period is followed closely by blooming of cleft phlox and bird's-foot violet (*Viola pedata*). From mid-May until October, there is a rapid succession of goat's-rue (*Tephrosia virginiana*), bed-straw (*Galium circaezans*), shooting star (*Dodecatheon media*), milkweed (*Asclepias quadrifolia*), bee balm (*Monarda bradburiana*), poverty oat-grass (*Danthonia spicata*), pencil flower (*Stylosanthes biflora*), three-seeded mercury (*Acalypha gracilens*), and several species of sunflower and goldenrod. The latter is interesting, floristically, since two species (*Solidago strigosa* and *S. vootii*) are known only from this station in Illinois.

A few woody species are able to send roots into cracks and crevices of the limestone bluffs. These plants, because of the extreme environmental conditions to which they are subjected, are usually gnarled and stunted. Included in this group are dwarf hackberry (*Celtis nana*), red cedar (*Juniperus virginiana*), and blue ash (*Fraxinus quadrangulata*). Several vines cling to exposed bluff faces. Some of these are Virginia creeper (*Parthenocissus quinquefolia*), bur cucumber (*Sicyos angulatus*), and snailseed (*Cocculus carolina*).

A few herbaceous species occurring under such rigorous environmental conditions as imposed on a bluff face are cleft phlox, wild onion (*Allium strobilatum*), walking fern (*Camptosorus rhizophyllus*), black spleenwort (*Asplenium resiliens*), tiny lip-fern (*Cheilanthes fecii*), purple cliffbreak (*Pellaea atropurpurea*), and bulblet bladderfern

(*Cystopteris bulbifera*). Less common species of this habitat include shrubby bluet (*Houstonia nigricans*) and *Isonchus brachiatus*.

Along the road near the summit of the Pine Hills occurs Hill Prairie on Government Rock. This hill prairie occurs on exposed upper slopes of southwest and west-facing bluffs. The factors most influential in determining the vegetation of these slopes are the location and topography. Most hill prairies are directly exposed to hot afternoon sun and prevailing southwest summer winds. It is under these extreme dry conditions that the prairie thrives when surrounded by forest vegetation. Since hill prairies often occur on steep slopes, many are not easily accessible and, therefore, little disturbed.

Species composition of the hill prairie seems to be chiefly characteristic of the western plains and the Ozark plateau, although a number of plants have a southern origin. Since the territory is unglaciated, it is supposed that these prairies have a pre-glacial origin. The hill prairies show an array of herbs in their seasonal aspects. Outstanding among these are puccoon (*Lithospermum canescens*) and verbena (*Verbena canadensis*) of the spring aspect. The cone flower (*Echinacea pallida*) and purple (*Petalostemum purpureum*) and white prairie clover (*P. candidum*) are the outstanding herbs of the summer aspect. The autumnal sun is reflected in a burst of brilliant color. Boneset (*Ruhnia eupatorioides*), goldenrods (*Solidago* spp.), and asters hold forth until frost.

Among the dominant grasses it is little bluestem (*Andropogon scoparius*) which in its greater abundance (nearly 70 per cent of the composition) gives the hill prairie a western look. Next in rank is side-oats grama (*Bouteloua curtipendula*). It flowers during early summer and becomes more conspicuous with its oat-like spikelets displayed on one side of its flowering rachis at one-and-one-half to two feet high. Only a scattering of the taller grasses occurs on this upland site. Two species, big bluestem (*Andropogon gerardii*) and Indian grass (*Sorghastrum nutans*), are predominant.

Ashby and Kelting (1963) have presented a detailed account of the vegetation of the Pine Hills Field Station.

The State of Illinois is presently known to have over 2700 species of vascular plants. The southern twelve county area is known to have nearly 1600 species (Mohlenbrock and Voigt, 1959). Jackson County has the greatest list of vascular plants with nearly 1400 species. One of the richest concentrations of spe-

cies in a single area exists at Giant City State Park where 820 species are known on 1535 acres (Mohlenbrock, 1954).

The area covered by this annotated checklist is in the northwest township of Union County (Preston Township). It includes the area shown in Figure 1.

The annotated checklist which follows accounts for all vascular plants from the Pine Hills Field Station and environs for which herbarium specimens have been taken. A total of 1003 species distributed in 441 genera and 120 families is included. Brief mention concerning habitat and abundance is made for each species. An asterisk (*) preceding the species indicates a plant adventive to the area. The number following the collector's name is the collector's field number for that particular specimen.

Subphylum SPHENOPSISIDA Scott

EQUISETACEAE Michx.—Horsetail Family

Equisetum arvense L. Field Horsetail. Moist soil, occasional; *R. Mohlenbrock* 13929.

Equisetum hyemale L. Tall Scouring Rush. Wet ground and in swamps, common; *J. Voigt* s.n.

Subphylum PTEROPSISIDA Jeffrey

Class FILICINEAE Brongn.

OPHIOGLOSSACEAE Presl—Adder's-tongue Family

Botrychium obliquum Muhl. Grape Fern. Shaded woods, occasional; *R. Mohlenbrock* 12458.

Botrychium virginianum (L.) Sw. Rattlesnake Fern. Moist woods, common; *R. Mohlenbrock* 12688.

Ophioglossum vulgatum L. Adder's-tongue Fern. Low woods, rare; *W. Bailey* & *J. Swayne* 741.

POLYPODIACEAE R. Br.—Fern Family

Adiantum pedatum L. Maidenhair Fern. Rich woods, common; *R. Mohlenbrock* 12745.

Asplenium pinnatifidum Nutt. Pinnatifid Spleenwort. Bluffs, rare; *R. Hatcher* 23115.

Asplenium platyneuron (L.) Oakes. Ebony spleenwort. Woods, common; *J. Voigt* s.n.

Asplenium resiliens Kunze. Black Spleenwort. Limestone bluffs, occasional; *R. Hatcher* 23120.

Athyrium angustum (Willd.) Presl. Lady Fern. Moist woods, occasional; *R. Mohlenbrock* 12611.

Athyrium pycnocarpon (Spreng.) Tidestrom. Glade Fern. Deep woods, occasional; *R. Mohlenbrock*, 3597.

Athyrium thelypteroides (Michx.) Desv. Silvery Spleenwort. Deep woods, occasional; *R. Mohlenbrock* 12886.

Camplosorus rhizophyllus (L.) Link. Walking Fern. Woods, common; *R. Hatcher* 186.

Cheilanthes feci Moore. Baby Lip Fern. Limestone bluffs, occasional; *R. Hatcher* 231.

Cystopteris bulbifera (L.) Bernh. Bulblet Fern. Limestone ravines, occasional; *R. Mohlenbrock* 13120.

Cystopteris fragilis (L.) Bernh. Fragile Fern. Woods, common; *R. Mohlenbrock* 7297.

Dryopteris hexagonoptera (Michx.) C. Chr. Broad Beech Fern. Rich woods, occasional; *R. Mohlenbrock* 12414.

Dryopteris intermedia (Muhl.) A. Gray. Woods, rare; *K. Stewart s.n.*

Dryopteris marginalis (L.) A. Gray. Marginal Wood Fern. Woods, common. *R. Evers* 15449.

Dryopteris spinulosa (O. F. Muell.) Watt. Spinulose Wood Fern. Woods, rare; *K. Stewart s.n.*

Onoclea sensibilis L. Sensitive Fern. Low woods, occasional; *R. Mohlenbrock* 8887.

Pellaea atropurpurea (L.) Link. Purple Cliff Brake. Limestone cliffs, occasional; *M. Steagull* 28.

Polypodium polypodioides (L.) Watt. Resurrection Fern. Woods, rare; *R. Hatcher* 231.

Polypodium virginianum L. Common Polypody. Rocky woods, occasional; *R. Mohlenbrock* 12692.

Polystichum acrostichoides (Michx.) Schott. Christmas Fern. Woods, common; *R. Mohlenbrock* & *J. Voigt* 9966.

Pteridium latiusculum (Desv.) Hieron. Eastern Bracken. Open woods, occasional; *R. Mohlenbrock* 12711.

Woodsia obtusa (Spreng.) Torr. Cliff Fern. Dry woods, occasional; *R. Mohlenbrock* 12443.

SALVINIACEAE Reichenb.—Water Fern Family

Azolla mexicana Presl. Mosquito Fern. Swamps, occasional; *R. Hatcher* 23130.

Class GYMNOSPERMAE Lindley

Pinaceae Lindley—Pine Family

Pinus echinata Mill. Shortleaf Pine. Cherty woods, occasional; *G. Winterringer* 1692.

TAXODIACEAE Schimper—Bald Cypress Family

Taxodium distichum (L.) Rich. Bald Cypress. Deep swamps, occasional; *W. Stieglitz* 41.

CYPRESSACEAE Horan.—Cypress Family

Juniperus virginiana L. Red Cedar. Edge of bluffs, fields, common; *R. Evers* 15476.

Class ANGIOSPERMAE (Brongn.) A. Br.

Subclass MONOCOTYLEDONAE (Juss.) DC.

TYPHACEAE J. St. Hil.—Cat-tail Family

Typha latifolia L. Common Cat-tail. Wet soil, common; *J. Voigt s.n.*

SPARGANIACEAE J. G. Agardh—Bur-reed Family

Sparganium americanum Nutt. Swamps, rare; *W. Hardy* 17.

Sparganium angustifolium (Engelm.) Morong. Swamps, occasional; *W. Stieglitz* 44.

Sparganium chlorocarpum Rydb. Swamps, rare; *S. Abney* & *G. Dillard* 876.

Sparganium eurycarpum Engelm. Swamps, occasional; *W. Stieglitz* 26.

POTAMOGETONACEAE Engler—Pondweed Family

Potamogeton diversifolius Raf. Wolf Lake, occasional; *W. Bailey* & *J. Swayne* 1713.

ALISMACEAE DC.—Water Plantain Family

Alisma subcordatum Raf. Wet areas, common; *J. Voigt* 1189.

Echinodorus cordifolius (L.) Griseb. Swamps, occasional; *J. Voigt* 681.

Echinodorus rostratus (Nutt.) Engelm. Swamps, rare; *W. Stieglitz* 45.

Sagittaria latifolia Willd. Around lakes and swamps, common; *W. Bailey* & *J. Swayne* 1789.

Sagittaria rigida Pursh. Edge of swamps, rare; *J. Voigt s.n.*

HYDROCHARITACEAE Aschers.—Frog-bit Family

Limnobium spongia (Bosc) Steud. Sponge-plant. Swamps and lakes, occasional; *W. Stieglitz* 20.

GRAMINEAE JUSS.—Grass Family

- Agrostis alba* L. Red-top. Woods, common; *J. Voigt s.n.*
Agrostis hyemalis (Walt.) BSP. Tickle Grass. Woods and fields, common;
R. Mohlenbrock 12856.
Agrostis palustris Huds. Swamps, occasional; *R. Mohlenbrock 12973.*
Agrostis perennans (Walt.) Tuckerm. Woods, common; *J. Voigt 14936.*
Alopecurus asquatis Sobol. Wet soil, rare; *J. Voigt 1369.*
Alopecurus carolinianus Walt. Common Foxtail. Waste ground, common; *J. Voigt 2614.*
Andropogon gerardii Vitm. Big Blue Stem. Hill prairies, common; *J. Voigt 2619.*
Andropogon scoparius Michx. Little Blue Stem. Hill prairies, common; *J. Voigt 2618.*
Andropogon virginicus L. Broomsedge. Fields, common; *J. Voigt 2622.*
Aristida dichotoma Michx. Fields, common; *J. Voigt 2617.*
Aristida longespica Poir. Fields, common; *R. Mohlenbrock 13921.*
Aristida oligantha Michx. Three-awn. Fields, common; *R. Mohlenbrock 12459.*
Aristida ramosissima Engelm. Fields, occasional; *J. Voigt s.n.*
Arundinaria gigantea (Walt.) Muhl. Giant Cane. Low ground, common; *J. Voigt 759.*
Bouteloua curtipendula (Michx.) Torr. Side-oats Grama. Hill prairies, common; *J. Voigt 16636.*
Brachyelytrum erectum (Schreb.) Beauv. Woods, common; *R. Mohlenbrock 12639.*
Bromus ciliatus L. Woods, occasional; *J. Voigt 2307.*
**Bromus commutatus* Schrad. Waste ground, common; *J. Voigt s.n.*
**Bromus inermis* Leyss. Waste ground, occasional; *J. Voigt s.n.*
**Bromus japonicus* Thunb. Exposed ledges, common; *J. Ozment.*
Bromus purgans L. Woods, occasional; *R. Mohlenbrock 12746.*
**Bromus racemosus* L. Exposed ledges, common; *J. Ozment s.n.*
**Bromus secalinus* L. Waste ground, common; *J. Voigt 2917.*
**Bromus tectorum* L. Waste ground, common; *J. Voigt 1581.*
Cinna arundinacea L. Wood Reed Grass. Low woods, common; *J. Voigt 14077.*
**Dactylis glomerata* L. Waste ground, common; *R. Mohlenbrock 12612.*
Danthonia spicata (L.) Beauv. Poverty Oat Grass. Dry Woods, common; *J. Voigt 2215.*
Diarrhena americana Beauv. Moist woods, rare; *J. Voigt s.n.*
**Digitaria ischaemum* (Schreb.) Muhl. Crab-grass. Waste ground, occasional;
R. Mohlenbrock s.n.
**Digitaria sanguinalis* (L.) Scop. Crab-grass. Waste ground, common; *J. Voigt 2619.*
Echinochloa crusgalli (L.) Beauv. Barnyard Grass, Waste ground, common;
W. Stieglitz 7.
Echinochloa pungens (Poir.) Rydb. Moist ground, occasional; *R. Mohlenbrock s.n.*
Echinochloa walteri (Pursh) Heller. Edge of lakes and swamps, occasional;
J. Voigt 14958.
**Eleusine indica* (L.) Gaertn. Goose-grass. Waste ground, common; *J. Voigt s.n.*
Elymus villosus Muhl. Woods, common; *J. Voigt 763.*
Elymus canadensis L. Woods, common; *J. Voigt 2141*
Elymus virginicus L. Wild Rye. Woods, common; *W. Stieglitz 32.*
Eragrostis capillaris (L.) Nees. Exposed ledges, common; *J. Ozment s.n.*
**Eragrostis ciliariensis* (All.) Link. Waste ground, common; *J. Voigt 2512.*
Eragrostis frankii C. A. Mey. Sandy, moist soil, rare; *J. Voigt 2013.*
Eragrostis hypnoides (Lam.) BSP. Pony Grass. Wet soil, common; *W. Stieglitz 11.*
Eragrostis pectinacea (Michx.) Nees. Woods and roadsides, common; *R. Mohlenbrock 3576.*
**Eragrostis poaeoides* (L.) Beauv. Wet ground, occasional; *W. Bailey & J. Swan 3055.*
Eragrostis spectabilis (Pursh) Steud. Woods, common; *J. Voigt 3012.*
Erianthus alopecuroides (L.) Ell. Plume Grass. Edge of woods, rare; *R. Mohlenbrock 3926.*

- **Eriochloa contracta* Hitchc. Waste ground, rare; *J. Voigt* 8408.
- **Festuca elatior* L. Waste ground along roads, common; *J. Voigt* 669.
- Festuca obtusa* Biclcr. Woods, occasional; *J. Voigt* 1961.
- Festuca octoflora* Walt. Eight-Weeks Fescue. Dry areas, common; *J. Voigt s.n.*
- Festuca paradoxa* Desv. Woods, rare; R. Mohlenbrock & *J. Voigt* 9022.
- Glyceria arkansana* Fern. Swamps, rare; R. Hatcher 436.
- Glyceria septentrionalis* Hitchc. Wet woods, rare; W. Bailey & J. Swayne 1489.
- Glyceria striata* (Lam.) Hitchc. Low woods, common; *J. Voigt* 3420.
- **Hordeum jubatum* L. Barley. Waste ground, occasional; *J. Voigt* 685.
- **Hordeum pusillum* Nutt. Small Barley. Waste ground, common; *J. Voigt* 2944.
- Hystrix patula* Moench. Bottlebrush Grass. Woods, common; R. Mohlenbrock 10999.
- Koeleria cristata* (L.) Pers. Hill prairies, rare; *J. Voigt* 3600.
- Leersia lenticularis* Michx. Wet ground, occasional; R. Mohlenbrock 5419.
- Leersia oryzoides* (L.) Sw. Cut Grass. Low woods, common; W. Stieglitz 5.
- Leersia virginica* Willd. White Grass. Low woods, common; *J. Voigt* 13923.
- Leptochloa fascicularis* (Lam.) A. Gray. Along edge of swamp, rare; *J. Voigt s.n.*
- Leptochloa filiformis* (Lam.) Beauv. Along lakes, occasional; R. Mohlenbrock 12887.
- **Lolium multiflorum* Lam. Waste ground, common; R. Mohlenbrock 13121.
- **Lolium perenne* L. Perennial Rye Grass. Waste ground, common; W. Bailey & J. Swayne 2495.
- Melica mutica* Walt. Woods, rare; *J. Voigt* 692.
- Melica nitens* (Scribn.) Nutt. Woods, occasional; *J. Voigt* 1370.
- Muhlenbergia capillaris* (Lam.) Trin. Woods, rare; R. Evers 23414.
- Muhlenbergia cuspidata* (Torr.) Rydb. Exposed ledges, occasional; J. Oment.
- Muhlenbergia frondosa* (Poir.) Fern. Woods, rare; *J. Voigt* 14978.
- Muhlenbergia mexicana* (L.) Trin. Woods, rare; *J. Voigt* 3676.
- Muhlenbergia racemosa* (Michx.) BSP. Wet ground, occasional; *J. Voigt* 2717.
- Muhlenbergia schreberi* J. K. Gamel. Nimble Will. Woods, common; W. Bailey & J. Swayne 3041.
- Muhlenbergia sobolifera* (Muhl.) Trin. Woods, common; R. Mohlenbrock & J. Voigt 9969.
- Muhlenbergia sylvatica* Torr. Woods, occasional; R. Mohlenbrock 13886.
- Muhlenbergia tenuiflora* (Willd.) BSP. Rocky woods, occasional; R. Mohlenbrock 12413.
- Panicum agrostoides* Spreng. Wet ground, common; R. Mohlenbrock 12631.
- Panicum anceps* Michx. Moist soil, common; *J. Voigt* 14898.
- Panicum bosci* Poir. Woods, common; R. Mohlenbrock 12719.
- Panicum capillare* L. Witch Grass. Woods and roadsides, common; R. Mohlenbrock 12424.
- Panicum clandestinum* L. Doer-tongue Grass. Woods, occasional; R. Mohlenbrock s.n.
- Panicum commutatum* Schult. Woods, occasional; *J. Voigt* 2848.
- Panicum depauperatum* Muhl. Woods and fields, common; *J. Voigt* 2170.
- Panicum dichotomiflorum* Michx. Woods, common; W. Stieglitz 4.
- Panicum dichotomum* L. Dry woods, occasional; R. Mohlenbrock s.n.
- Panicum flexile* (Gatinger) Scribn. Woods, common; *J. Voigt* 14319.
- Panicum huachucae* Ashe. Open areas, common; R. Mohlenbrock 12972.
- Panicum lanuginosum* Ell. Woods, rare; *J. Voigt* 687.
- Panicum latifolium* L. Woods, occasional; R. Mohlenbrock 13922.
- Panicum leibergii* (Vasey) Scribn. Cherty slopes, rare; R. Mohlenbrock 12460.
- Panicum linearifolium* Scribn. Woods, occasional; K. Stewart 97.
- Panicum microcarpon* Muhl. Woods, common; *J. Voigt* 791.
- Panicum philadelphicum* Bernh. Woods, rare; R. Mohlenbrock 12690.
- Panicum polyanthes* Schult. Woods, occasional; R. Mohlenbrock 12747.
- Panicum scribnerianum* Nash. Woods, occasional; *J. Voigt* 12613.
- Panicum tennesseeense* Ashe. Moist ground, common; R. Mohlenbrock 9261.
- Panicum virgatum* L. Moist ground, common; *J. Voigt s.n.*
- Panicum zalapense* HBK. Woods and fields, common; *J. Voigt* 2888.
- Paspalum circulare* Nash. Wet ground, occasional; W. Stieglitz 9.
- Paspalum fluitans* (Ell.) Kunth. Around lake, rare; R. Mohlenbrock 14089.

- Paspalum geminum* Nash. Edge of swamps, occasional; *R. Mohlenbrock* 3863.
Paspalum pubescens Muhl. Woods, occasional; *R. Mohlenbrock* 2655.
Paspalum stramineum Nash. Woods and fields, occasional; *J. Voigt* 1812.
 **Phleum pratense* L. Timothy. Waste ground, occasional; *R. Mohlenbrock* 12613.
 **Poa annua* L. Annual Blue Grass. Waste ground, common; *R. Mohlenbrock* 12888.
Poa chapmaniana Scribn. Dry woods, rare; *R. Mohlenbrock* 13122.
 **Poa compressa* L. Canadian Blue Grass. Waste ground, common; *J. Voigt* 809.
Poa palustris L. Fowl Blue Grass. Moist soil, rare; *W. C. Ashby s.n.*
 **Poa pratensis* L. Kentucky Blue Grass. Waste ground and woods, common; *J. Voigt* 810.
Poa sylvestris A. Gray. Woods, occasional; *R. Mohlenbrock* 13885.
Puccinellia pallida (Torr.) Clausen. Swamps, rare; *W. Bailey & J. Swayne* 2485.
 **Secale cereale* L. Rye, Along levee, occasional; *R. Mohlenbrock s.n.*
 **Setaria faberi* Herrm. Giant Foxtail. Waste ground, common; *R. Mohlenbrock* 12412.
 **Setaria lutescens* (Weigel) F. T. Hubb. Yellow Foxtail. Waste ground, common; *R. Mohlenbrock* 12630.
Setaria viridis (L.) Beauv. Green Foxtail. Waste ground, common; *J. Voigt* 762.
Sorghastrum nutans (L.) Nash. Indian Grass. Hill prairies, occasional; *J. Voigt* 14806.
Sorghum halepense (L.) Pers. Johnson Grass. Waste ground, common; *J. Voigt* 3209.
Sphenopholis intermedia Rydb. Woods, rare; *J. Voigt* 797.
Sphenopholis nitida (Bieler) Scribn. Cherty slopes, rare; *R. Mohlenbrock* 12709.
Sphenopholis obtusata (Michx.) Scribn. Woods, occasional; *J. Voigt* 1164.
Triodia flava (L.) Smyth. Red-top. Fields and roadsides, common; *R. Mohlenbrock* 14076.
Tripsacum dactyloides L. Wild Corn. Moist soil, rare; *R. Mohlenbrock* 12441.
 **Triticum aestivum* L. Wheat. Waste ground, occasional; *J. Voigt* 229.
Uniola latifolia Michx. Sea Oats. Woods, common; *W. Stieglitz* 56.
 **Zea mays* L. Corn. Waste ground, occasional; *J. Voigt s.n.*

CYPERACEAE J. St. Chil.- Sedge Family

- Carex albolutescens* Schwein. Woods, rare; *R. Mohlenbrock* 12854.
Carex albursina Sheldon. Moist woods, occasional; *R. Mohlenbrock* 12971.
Carex ariflora Mack. Dry woods, common; *R. Mohlenbrock* 13923.
Carex blanda Dewey. Moist woods, common; *R. Mohlenbrock* 12461.
Carex brevior (Dewey) Mack. Open areas, occasional; *R. Mohlenbrock* 12691.
Carex bushii Mack. Wooded slopes, occasional; *R. Mohlenbrock* 12748.
Carex cephalophora Muhl. Woods and fields, common; *R. Mohlenbrock* 12768.
Carex comosa Boott. Wet ground or in water, common; *K. Stewart* 115.
Carex crinita Lam. Swamps, rare; *J. Voigt* 2279.
Carex cruceorvi Shuttlw. Low woods, occasional; *W. Bailey & J. Swayne* 2320.
Carex decomposita Muhl. On decayed vegetation in swamps; *W. Bailey & J. Swayne* 1499.
Carex emmonsii Dewey. Cherty slopes, rare; *R. Mohlenbrock & R. MacMahon* 19142.
Carex frankii Kunth. Wet ground, common; *W. Bailey & J. Swayne* 2782.
Carex glaucodea Tuckerm. Woods, common; *R. Mohlenbrock* 12614.
Carex graciliscens Steud. Woods, occasional; *R. Mohlenbrock* 12889.
Carex granularis Muhl. Wet soil, common; *R. Mohlenbrock* 13123.
Carex grayii Carey. Low woods, occasional; *R. Mohlenbrock* 13884.
Carex grisea Wahl. Woods, occasional; *R. Mohlenbrock* 12411.
Carex hirsutella Mack. Dry wooded slopes, occasional; *R. Mohlenbrock* 12629.
Carex hyalinolepis Steud. Low woods, common; *K. Stewart & R. Hatcher* 109.
Carex jamesii Schw. Rich woods, occasional; *J. Voigt* 806.
Carex laevivaginata (Kukenth.) Mack. Wet ground, rare; *J. Voigt* 1384.
Carex lanuginosa Michx. Swamps, occasional; *R. Mohlenbrock s.n.*
Carex lupuliformis Sartw. In swamps, occasional; *R. Mohlenbrock* 17417.
Carex lupulina Muhl. Low ground, common; *W. Stieglitz* 33.
Carex lurida Wahl. Wet situations, common; *J. Voigt* 1371.
Carex muhlenbergii Schk. Mostly dry woods, occasional; *R. Mohlenbrock s.n.*

- Carex muskingumensis* Schw. Low wet woods, occasional; *J. Voigt* 12708.
Carex oligocarpa Schk. Calcareous woods, rare; *R. Mohlenbrock* 16617.
Carex physorhyncha Liebmann. Cherty slopes, rare; *Mohlenbrock* 9927.
Carex retroflexa Muhl. Woods, common; *R. Mohlenbrock* 13440.
Carex retrosc. Schw. Swamps, rare; *J. Voigt s.n.*
Carex rosea Schk. Moist woods, common; *R. Mohlenbrock* 12853.
Carex scoparia Schk. Woods and along roads, occasional; *R. Mohlenbrock* 12970.
Carex shortiana Dewey. Wet ground, occasional; *J. Voigt* 8206.
Carex squarrosa L. Wet soil, common; *J. Voigt* 17369.
Carex stipata Muhl. Low ground, occasional; *R. Mohlenbrock* 15467.
Carex tribuloides Wahl. Open areas, occasional; *R. Mohlenbrock* 13924.
Carex typhina Michx. Wet areas, common; *R. Mohlenbrock* 13883.
Carex umbellata Schk. Dry rocky woods, occasional; *R. Mohlenbrock* 12410.
Carex vulpinoidea Michx. Wet soil, common; *R. Mohlenbrock* 12692.
Cyperus acuminatus Torr. & Hook. Edge of swamp, occasional; *R. Mohlenbrock* 13906.
Cyperus aristatus Rottb. "Scatters", *W. Bailey & J. Swayne* 2984.
Cyperus engelmannii Steud. Between Larue Swamp and gravel road, low ground, rare; *R. Mohlenbrock* 12506.
Cyperus erythrorhizos Muhl. Low ground in fields and near swamps, occasional; *W. Stieglitz* 42.
Cyperus esculentus L. Edges of fields, common; *R. Mohlenbrock* 13907.
Cyperus ferruginescens Boeck. Edge of LaRue Swamp; around Wolf Lake, common; *W. Hardy* 26.
Cyperus ovalaris (Michx.) Torr. In abandoned field, occasional; *R. Mohlenbrock* 13908.
Cyperus strigosus L. Moist soil, common; *W. O. Stieglitz* 46.
Eleocharis acicularis (L.) Roem & Schultes. Edge of lakes and swamps, common; *R. Mohlenbrock* 12555.
Eleocharis obtusa (Willd.) Schultes var. *obtusa*. Wet ground, common; *R. Hatcher s.n.*
Eleocharis obtusa (Willd.) Schultes var. *detonsa* (A. Gray) Drapalik & Mohlenbrock. Wet ground, rare; *R. Mohlenbrock* 12587.
Fimbristylis autumnalis (L.) Roem & Schultes. Edge of Wolf Lake, rare; *R. Mohlenbrock* 12562.
Scirpus atrovirens Willd. Near swamps, common; *R. Mohlenbrock s.n.*
Scirpus cyperinus (L.) Kunth. In shallow water or near swamps, occasional; *R. Mohlenbrock* 12571.
Scirpus lineatus Michx. Moist soil, occasional; *W. Hardy* 3.
Scirpus validus Vahl. In water, occasional; *W. Stieglitz* 24.

ARACEAE Necker.—Arum Family

- Acorus calamus* L. Sweetflag. Wolf Lake; edge of Wolf Lake Swamp, occasional; *R. Mohlenbrock* 13003.
Arisaema dracontium (L.) Schott. Green Dragon. Moist woods, common; *R. Mohlenbrock* 12872.
Arisaema triphyllum (L.) Schott. Jack-in-the-Pulpit. Woods, common; *R. Mohlenbrock* 12871.
Peltandra virginica (L.) Kunth. Wolf Lake, rare; *J. Swayne* 1141.

LEMNACEAE Dumort.—Duckweed Family

- Lemna minor* L. Duckweed. Floating in swamps, common; *R. Mohlenbrock* 12570.
Lemna perpusilla Torr. Duckweed. Floating in swamps, rare; *R. Mohlenbrock* 13003.
Lemna trisulca L. Duckweed. Floating in swamps, occasional; *W. Stieglitz* 15.
Lemna valdiviana Phil. Wolf Lake, rare, November 4, 1950, *J. Swayne s.n.*
Spirodela polyrrhiza (L.) Schield. Floating in swamps and lakes, common; *R. Mohlenbrock* 13004.
Wolffia columbiana Karst. Larue Swamp, common; *R. Mohlenbrock* 12507.
Wolffia papulifera C. H. Thompson. Wolf Lake, rare; *J. Swayne* 1890.
Wolffella floridana (J. D. Sm.) C. H. Thompson. Lakes and swamps, occasional; *J. Swayne* 1163.

COMMELINACEAE Reichenb.—Spiderwort Family

Commelina communis L. Dayflower. Wet ground, common; R. Mohlenbrock 12561.

Commelina diffusa Burm. f. Wet ground, common; R. Mohlenbrock 13905.

Commelina virginica L. Wet ground in woods, occasional; R. Mohlenbrock 12508.

Tradescantia ohimensis Raf. Along road, occasional; R. Mohlenbrock 13001.

Tradescantia subaspera Ker-Gawler. Moist woods, common; R. Sands & D. Drapalik 436.

Tradescantia virginiana L. Moist ground, common; R. Mohlenbrock 12586.

PONTEDERIACEAE Dumort.—Pickerelweed Family

Heteranthera reniformis Ruiz & Pavon. Mud Plantain. Shallow water, very rare.

Pontederia cordata L. Pickerelweed. Wolf Lake, rare; J. Swayne 1143.

JUNCACEAE (Vent.) Dumort. Rush Family

Juncus acuminatus Michx. Wet ground, common; R. Mohlenbrock 12509.

Juncus canadensis J. Gay. Wet ground, occasional; R. Mohlenbrock 12588.

Juncus dudleyi Wieg. Fields, occasional; R. Mohlenbrock 12870.

Juncus effusus L. Shallow water and edges of swamps, common; W. Stieglitz 55.

Juncus interior Wieg. Along road, rare; R. Mohlenbrock 12663.

Juncus tenuis Willd. Fields and roadsides, common; R. Hatcher s.n.

Luzula bulbosa (Wood) Rydb. Wood Rush. Woods, occasional; R. Mohlenbrock 12592.

Luzula echinata (Small) Hermann. Dry woods, occasional; R. Mohlenbrock 12428.

Luzula multiflora (Retz.) Lejeune. Woods, common; R. Mohlenbrock 12664.

LILIACEAE Adans.—Lily Family

Allium canadense L. Wild Garlic. Roadsides and fields, common; R. Mohlenbrock 12660.

Allium cepa L. Onion. Escaped along roadside, found once.

Allium stellatum Ker. Hill prairies, limestone bluffs, occasional; R. Hatcher 706.

**Allium vineale* L. Field Garlic. Waste ground, common; J. Voigt 871.

**Asparagus officinalis* L. Asparagus. Waste ground, occasional; J. Voigt 946.

Camassia scilloides (Raf.) Cory. Wild Hyacinth. Limestone bluffs, occasional; W. Bailey & J. Swayne 362.

Erythronium albidum Nutt. White Dog's-tooth Violet. Moist woods, common; R. Mohlenbrock 12589.

Erythronium americanum Ker. Yellow Dog's-tooth Violet. Woods, occasional; R. E. Sands 18.

**Heimerocallis fulva* L. Day Lily. Along roads, occasional; J. Voigt 1009.

Lilium michiganense Farwell. Turk's-cap Lily. Woods, occasional; R. Mohlenbrock 12531.

Norhoscordum bivalve (L.) Britt. Dry woods, occasional; R. Mohlenbrock 957.

**Ornithogalum umbellatum* L. Star-of-Bethlehem. Along roads, occasional; R. Mohlenbrock 12563.

Polygonatum canaliculatum (Muhl.) Pursh. Solomon's Seal. Woods, common; R. Mohlenbrock s.n.

Smilacina racemosa (L.) Desf. False Solomon's Seal. Woods, common; R. Mohlenbrock 12556.

Smilax bona-nox L. Fringed Greenbrier. Exposed limestone bluffs, occasional; R. Mohlenbrock 13994.

Smilax glauca Walt. Sawbrier. Woods, common; W. Bailey & J. Swayne 2305.

Smilax hispida Muhl. Common Greenbrier. Woods, occasional; R. Mohlenbrock 12590.

Smilax lasioneura Hook. Woods, common; J. Voigt 1067.

Smilax pulverulenta Michx. Woods, occasional; R. Mohlenbrock 12560.

Smilax rotundifolia L. Woods, occasional; R. Mohlenbrock 12572.

Trillium gleasonii Fern. Mesic slopes and ledges, occasional; J. Ozment.

Trillium recurvatum Beck. Purple Trillium. Woods, common; J. Voigt 1424.

Trillium sessile L. Sessile Trillium. Moist woods, rare; R. Mohlenbrock 12661.

Trillium viride Beck. Green Trillium. Woods, rare; *H. Ahles & G. Winterringer* 7061.

Uvularia grandiflora Sm. Bellwort. Moist woods, occasional; *J. Voigt* 529.

Uvularia sessilifolia L. Rich woods, rare; *R. Mohlenbrock s.n.*

DIOSCOREACEAE Lindl.—Yam Family

Dioscorea quaternata (Walt.) J. F. Gmel. Woods, occasional; *R. Mohlenbrock* 12429.

Dioscorea villosa L. Woods, common; *R. Mohlenbrock* 13009.

AMARYLLIDACEAE Lindl.—Amaryllis Family

Agave virginica L. Dry bluff tops, occasional; *J. Ozment*.

Hypoxis hirsuta (L.) Corvillo. Woods, occasional; *R. Mohlenbrock* 12593.

**Narcissus pseudo-narcissus* L. Daffodil. Roadsides, occasional; *R. Mohlenbrock* 12869.

IRIDACEAE Lindley Iris Family

Iris cristata Ait. Wooded slope near Wolf Lake, May 15, 1932; *H. Pepoon & Barrett* 3578.

Iris fulva Ker. Red Iris. Swamps, occasional; *J. Voigt* 1378.

Iris shrevei Small. Blue Iris. Wet ground, common; *R. Mohlenbrock* 12557.

Sisyrinchium albidum Raf. Fields, common; *R. Mohlenbrock* 12558.

**Sisyrinchium angustifolium* Mill. Wet ground, common; *R. Mohlenbrock* 12999.

ORCHIDACEAE Lindl.—Orchard Family

Corallorhiza wisteriana Courad. Dry woods, rare; *R. Mohlenbrock s.n.*

Cypripedium parviflorum Salisb. Yellow Lady's-slipper. Rich woods, rare; *W. Crews s.n.*

Spiranthes ovalis Lindl. Woods, rare; *R. Mohlenbrock* 8982.

Subclass 2. DICOTYLEDONEAE (Juss.) DC.

Saururus Family

Saururus cernuus L. Lizard-tail. Wet ground, common; *R. Mohlenbrock* 8873.

SALICACEAE Lindl.—Willow Family

Populus deltoides Marsh. Cottonwood. Low ground, common; *R. Mohlenbrock* 12430.

Populus heterophylla L. Swamp Cottonwood. Edge of swamps, occasional; *R. Mohlenbrock* 12431.

Salix interior Rowlee. Sandbar Willow. Wolf Lake, occasional; *R. Mohlenbrock* 12594.

Salix nigra Marsh. Black Willow. Low ground, common; *R. Mohlenbrock* 12998.

JUGLANDACEAE Horan.—Walnut Family

Carya aquatica (Michx.) Nutt. Swamp, rare; *R. Mohlenbrock s.n.*

Carya cordiformis (Wangenh.) K. Koch. Woods, common; *R. Mohlenbrock* 12573.

Carya glabra (Mill.) Sweet. Usually dry woods, common; *R. Mohlenbrock* 12564.

Carya illinoensis (Wangenh.) K. Koch. Low ground, occasional; *R. Mohlenbrock* 12783.

Carya laciniosa (Michx.) Loud. Low ground, occasional; *R. Mohlenbrock* 12565.

Carya ovalis (Wangenh.) Sarg. Small-fruited Hickory. Woods, occasional; *R. Mohlenbrock* 13993.

Carya ovata (Mill.) K. Koch. Shagbark Hickory. Woods, common; *R. Mohlenbrock* 12559.

Carya texana Buckl. Black Hickory. Exposed bluffs, occasional; *R. Mohlenbrock* 12652.

Carya tomentosa (Poir) Nutt. Mockernut Hickory. Woods, common; *R. Mohlenbrock* 378.

Juglans cinerea L. Butternut. Woods, occasional; *R. Mohlenbrock* 12559.

Juglans nigra L. Woods, common; *R. Mohlenbrock* 13005.

BERULACEAE Agardh—Birch Family

Betula nigra L. River Birch. Low ground, occasional; *R. Mohlenbrock* 12432.

Carpinus caroliniana Walt. Blue Beech. Woods, common; *R. Mohlenbrock* 12566.

Corylus americana Walt. Hazelnut. Thickets, common; *J. Voigt* 463.
Ostrya virginiana (Mill.) K. Koch. Hop Hornbeam. Woods, common; *R. Mohlenbrock* 12569.

FAGACEAE A. Br.—Beech Family

Fagus grandifolia Ehrh. Beech. Moist woods, common; *R. Mohlenbrock* 12595.
Quercus alba L. White Oak. Woods, common; *R. Mohlenbrock* 12997.
Quercus bicolor Willd. Swamp White Oak. Low ground, occasional; *R. Mohlenbrock* 12567.
Quercus coccinea Muench. Scarlet Oak. Woods on cherty slopes, occasional; *R. Mohlenbrock* 12574.
Quercus falcata Michx. Spanish Oak. Woods, occasional; *R. Mohlenbrock* 12585.
Quercus imbricaria Michx. Shingle Oak. Usually low ground, common; *R. Mohlenbrock* 12658.
Quercus lyrata Walt. Overcup Oak. Low ground, rare; *R. Mohlenbrock* 12996.
Quercus macrocarpa Michx. Bur Oak. Lowland woods, occasional; *R. Mohlenbrock* 12568.
Quercus marilandica Muench. Black Jack Oak. Dry upland woods, common; *J. Voigt* 982.
Quercus michauxii Nutt. Basket Oak. Edge of swamps, occasional; *R. Mohlenbrock* 12575.
Quercus muhlenbergii Engelm. Yellow Chestnut Oak. Woods, common; *R. Mohlenbrock* 12584.
Quercus palustris Muench. Pin Oak. Low ground, common; *R. Mohlenbrock* 12533.
Quercus rubra L. Red Oak. Woods, common; *R. Mohlenbrock* 12576.
Quercus shumardii Buckl. Shumard Oak. Woods, occasional.
Quercus stellata Wang. Post Oak. Upland woods, common; *J. Voigt* 772.
Quercus velutina Lam. Black Oak. Woods, common; *J. Voigt* 1021.

ULMACEAE Mirbel—Elm Family

Celtis laevigata Willd. Sugarberry. Edge of swamps and lakes, common; *R. Mohlenbrock* 12995.
Celtis occidentalis L. Hackberry. Woods, occasional; *R. Mohlenbrock* 12583.
Celtis pumila Pursh. Dwarf Hackberry. Dry exposed bluffs, rare; *R. Mohlenbrock* 12724.
Ulmus alata Michx. Winged Elm. Dry upland woods, common; *J. Voigt* 427.
Ulmus americana L. American Elm. Woods, common; *J. Voigt* 1020.
Ulmus rubra Muhl. Slippery Elm. Woods, common; *J. Voigt* 980.

MORACEAE Lindl.—Mulberry Family

Morus rubra L. Red Mulberry. Woods, common; *R. Mohlenbrock* 12994.

URTICACEAE Reichenb.—Nettle Family

Boehmeria cylindrica (L.) Sw. False Nettle. Low woods, common; *J. Voigt s.n.*
Laportea canadensis (L.) Gaudich. Wood Nettle. Woods, common; *R. Mohlenbrock* 12657.
Parietaria pennsylvanica Muhl. Pellitory. Woods, common; *R. Mohlenbrock* 6
J. Voigt s.n.
Pilea opaca (Lunell) Rydb. Moist sink, base of cherty slope, rare; *R. Mohlenbrock* 9223.
Pilea pumila (L.) A. Gray. Clearweed. Wet ground, common; *W. Stieglitz* 29.

LORANTHACEAE O. Don—Mistletoe Family

Phoradendron flavescens (Pursh) Nutt. Mistletoe. In trees, rare; *R. Mohlenbrock s.n.*

ARISTOLOCHACEAE Juss.—Birthwort Family

Aristolochia serpentaria L. Virginia Snakeroot. Rich woods, occasional; *R. Mohlenbrock* 12577.
Asarum reflexum Bickn. Wild Ginger. Rich woods, common; *J. Voigt* 977.

POLYGONACEAE Horan.—Buckwheat Family

**Polygonum aviculare* L. Common Knotweed. Waste ground, common; *R. Mohlenbrock* 12578.
Polygonum coccineum Muhl. Edge of swamps, occasional; *R. Sands & D. Drapalik* 423.

Polygonum convolvulus L. Black Bindweed. Fields and woods, occasional; J. Voigt 1121.

Polygonum cristatum Engelm. & Gray. Talus slopes, occasional; J. Ozment.

Polygonum erectum L. Waste ground, rare; W. Bailey & J. Swayne 3051.

Polygonum fluitans A. Eaton. Swamps, rare; W. Stieglitz 35.

Polygonum hydropiper L. Water-pepper. Wet ground, occasional; W. Bailey & J. Swayne 3035.

Polygonum hydropiperoides Michx. Mild Water-pepper. Wet ground or in shallow water, common; W. Bailey & J. Swayne 3034.

Polygonum lapathifolium L. Moist soil, common; G. Fuller 248.

Polygonum longistylum Small. Talus slope, rare; J. Ozment.

Polygonum opelousanum Riddell. Swampy woods, rare; W. Stieglitz 27.

Polygonum pennsylvanicum L. Smartweed. Moist soil, common; J. Voigt 1072.

Polygonum persicaria L. Lady's Thumb. Waste ground, common; R. Mohlenbrock 12579.

Polygonum punctatum Ell. Water Smartweed. Wet ground, common; R. Mohlenbrock 12993.

Polygonum ramosissimum Michx. Bushy Knotweed. Edge of pond, rare; S. Abney & G. Dillard 192.

Polygonum sagittatum L. Edge of swamp, occasional; W. Bailey & J. Swayne 2488.

Polygonum scandens L. False Buckwheat. Woods, occasional; J. Voigt 1513.

Polygonum setaceum Baldw. Edge of swamps, occasional; W. Bailey & J. Swayne 2773.

Polygonum virginianum L. Virginia Knotweed. Woods, common; R. Mohlenbrock 12586.

Rumex acetosella L. Field Sorrel. Sour Dock. Fields, common; R. Mohlenbrock 919.

Rumex altissimus Wood. Pale Dock. Moist soil, common; R. Mohlenbrock 12992.

**Rumex crispus* L. Curly Dock. Waste ground, common; J. Voigt 1133.

Rumex verticillatus L. Swamp Dock. Wet ground, common; W. Stieglitz 10.

CHENOPODIACEAE Dumort.—Goosefoot Family

**Chenopodium album* L. Lamb's Quarter. Waste ground, common; R. Mohlenbrock 13902.

**Chenopodium ambrosioides* L. Mexican Tea. Waste ground, occasional; J. Voigt 922.

Chenopodium boscianum Moq. Woods, common; R. Mohlenbrock 4745.

Chenopodium hybridum L. Talus slope, occasional; J. Ozment.

Chenopodium standleyanum Aellen. Mesic slopes and ledges, occasional; J. Ozment.

AMARANTHACEAE J. St. Hil.—Amaranth Family

Acnida altissima (Riddell) Riddell. Tall Water-hemp. Wet ground, occasional; W. Bailey & J. Swayne 3228.

Acnida subnuda (S. Wats.) Standl. Along Hutchins Creek, rare; R. Mohlenbrock 12656.

Acnida tamariscina (Nutt.) Wood. Moist soil, occasional; R. Sands 208.

Amaranthus albus L. Tumbleweed. Waste ground, occasional; J. Voigt s.n.

**Amaranthus graecizans* L. Waste ground, occasional; J. Voigt s.n.

Amaranthus hybridus L. Green Amaranth. Waste ground, common; R. Sands 250.

Amaranthus retroflexus L. Rough Pigweed. Waste ground, common; R. Sands s.n.

**Amaranthus spinosus* L. Spiny Pigweed. Waste ground, common; R. Sands s.n.

**Froelichia gracilis* (Hook.) Moq. Waste ground, rare; R. Sands 245.

PHYTOLACCACEAE Lindl.—Pokeweed Family

Phytolacca americana L. Pokeweed. Woods and waste places, common; J. Voigt 884.

AIZOACEAE A. Br.—Carpetweed Family

**Mollugo verticillata* L. Carpetweed. Waste ground, common; J. Voigt 909.

ILECEBRACEAE Lindl.

Paronychia fastigiata (Raf.) Fern. Dry ledges, rare; *J. Orment*.

PORTULACACEAE Reichenb.—Purslane Family

Claytonia virginica L. Spring Beauty. Woods, common; *R. Mohlenbrock 12991*.
**Portulaca oleracea* L. Purslane. Waste ground, common; *R. Mohlenbrock 13991*.

CARYOPHYLLACEAE Reichenb. Pink Family

- **Agrostemma githago* L. Corn Cockle. Fields, common; *J. Voigt 1222*.
**Cerastium brachypodium* (Engelm.) B. L. Robins. Waste ground, occasional; *W. Bailey & J. Swayne 2987*.
Cerastium nutans Raf. Nodding Mouse-ear Chickweed. Moist ground, common; *R. Mohlenbrock 12581*.
**Cerastium viscosum* L. Waste ground, common; *J. Voigt 1221*.
**Cerastium vulgatum* L. Common Mouse-ear Chickweed. Waste ground, common; *R. Mohlenbrock 12555*.
Dianthus armeria L. Depford Pink. Waste ground, occasional; *J. Voigt 1137*.
Silene antirrhina L. Sleepy Catchfly. Fields, common; *R. Mohlenbrock 12723*.
Silene stellata (L.) Ait. f. Starry Champion. Woods, common; *R. Mohlenbrock 12996*.
**Stellaria media* (L.) Vill. Common Chickweed. Waste ground, common; *J. Voigt 1301*.

MAGNOLIACEAE J. St. Hil.—Magnolia Family

- Liriodendron tulipifera* L. Tulip Tree. Woods, common; *R. Mohlenbrock 12433*.
Magnolia acuminata L. Cucumber Tree. Moist woods, occasional; *R. Evers 15497*.

ANNONACEAE R. Br.—Custard-apple Family

Asimina triloba (L.) Dunal. Pawpaw. Woods, common; *J. Voigt 1043*.

RANUNCULACEAE JUSS.—Buttercup Family

- Actaea alba* (L.) Mill. Doll's Eyes. Moist woods, occasional; *J. Voigt 1280*.
Anemone virginiana L. Tall Anemone. Woods, common; *R. Mohlenbrock 12654*.
Anemone thalictroides (L.) Spach. Woods, common; *R. Mohlenbrock 12596*.
Aquilegia canadensis L. Wild Columbine. Woods and limestone crevices, common; *R. Mohlenbrock 12665*.
Clematis virginiana L. Virgin's Bower. Moist ground, occasional; *G. Fuller 230*.
Delphinium tricornis Michx. Dwarf Larkspur. Rich woods, common; *J. Voigt 1425*. The white-flowering form occurs occasionally.
Isopyrum biternatum (Raf.) Torr. & Gray. False Rue Anemone. Moist woods, common; *R. Mohlenbrock 12989*.
Myosurus minimus L. Mousetail. Waste ground, common; *R. Mohlenbrock 12582*.
Ranunculus abortivus L. Small-flowered Buttercup. Moist soil, common; *R. Mohlenbrock 12597*.
Ranunculus fascicularis Muhl. Tufted Buttercup. Woods, common; *R. Mohlenbrock s.n.*
Ranunculus flabellaris Raf. Swamps and lakes, occasional; *R. Sands 522*.
Ranunculus hispidus Michx. Bristly Buttercup. Woods, common; *R. Mohlenbrock 1876*.
Ranunculus laxicaulis (Torr. & Gray) Darby. Edge of swamps and lakes, occasional; *R. Mohlenbrock 12653*.
Ranunculus micranthus Nutt. Woods, occasional; *R. Mohlenbrock 12598*.
Ranunculus pusillus Poir. Wet ground, rare; *R. Mohlenbrock 12868*.
Ranunculus recurvatus Poir. Moist woods, occasional; *R. Mohlenbrock 12988*.
**Ranunculus sardous* Crantz. Low fields, common; *J. Voigt 1330*.
Ranunculus septentrionalis Poir. Marsh Buttercup. Wet ground, common; *J. Voigt 464*.
Thalictrum dioicum L. Meadow-rue. Rich woods, rare; *J. Orment*.

CABOMBACEAE A. Gray—Watershield Family

- Brasenia schreberi* Gmel. Watershield. Swamps, rare; *W. Bailey & J. Swayne 2554*.
Cabomba caroliniana A. Gray. Wolf Lake, occasional; *W. Bailey & J. Swayne 2555*.

NELUMBONACEAE Lindl.—Lotus Family

Nelumbo lutea (Willd.) Pers. American Lotus. Swamps and lakes, common; W. Stieglitz 47.

NYMPHAEACEAE DC.—Waterlily Family

Nuphar advena (Ait.) Yellow Pond-lily. Swamps and ponds, common; W. Stieglitz 23.

Nymphaea odorata Ait. Fragrant Waterlily. Swamps, rare; R. Mohlenbrock 12599.

CERATOPHYLLACEAE A. Gray—Hornwort Family

Ceratophyllum demersum L. Hornwort. Swamps and lakes, occasional; W. Stieglitz 18.

HERBERIDACEAE Torr. & Gray—Barberry Family

Caulophyllum thalictroides (L.) Michx. Blue Cohosh. Woods, occasional; R. Mohlenbrock 1243a.

Podophyllum peltatum L. Mayapple. Woods, common; R. Mohlenbrock 12867.

MENISPERMACEAE DC.—Moonseed Family

Calyccarpum lyonii (Pursh) Nutt. Cupseed, Rich woods, rare; R. Mohlenbrock 12600.

Cocculus carolinus (L.) DC. Carolina Snailseed. Edge of rich woods, occasional; Jeffrey s.n.

Menispermum canadense L. Moonseed. Woods, common; R. Mohlenbrock 12725.

LACRACEAE—Laurel Family

Lindera benzoin (L.) Blume. Spice-bush. Mesic slopes and ledges, occasional; J. Ozment.

Sassafras albidum (Nutt.) Nees. Sassafras. Rocky slopes and ledges, occasional; J. Ozment.

PAPAVERACEAE B. Juss.—Poppy Family

Sanguinaria canadensis L. Bloodroot. Woods, common; J. Voigt 465.

Stylophorum diphyllum (Michx.) Nutt. Cleandine Poppy. Rich woods, occasional; R. Mohlenbrock 905.

FUMARIACEAE DC.—Fumitory Family

Corydalis flavula (Raf.) DC. Pale Corydalis. Low ground, common; R. Sands 17.

Dicentra canadensis (Goldie) Walp. Squirrel Corn. Rich woods, rare; R. Mohlenbrock s.n.

Dicentra cucullaria (L.) Bernh. Dutchman's Breeches. Woods, common; R. Mohlenbrock s.n.

CRUCIFERAE Juss.—Mustard Family

**Arabidopsis thaliana* (L.) Heynh. Mouse-ear Cress. Waste ground, common; J. Voigt 1537.

Arabis laevigata (Muhl.) Poir. Smooth Rockcress. Woods, common; W. Bailey & J. Swayne 2685.

Arabis virginica (L.) Poir. Waste ground, common; R. Mohlenbrock 12650.

**Armoracia rusticana* (Lam.) Gaertn. Horseradish. Waste ground, rare; J. Voigt 1737.

**Barbarea vulgaris* R. Br. Yellow Rocket. Waste ground, common; R. Mohlenbrock 12427.

**Brassica juncea* (L.) Cosson. Indian Mustard. Waste ground, occasional; R. Mohlenbrock 12726.

**Brassica kaber* (DC.) L. C. Wheeler. Field Mustard. Waste ground, common; R. Mohlenbrock 12543.

**Brassica nigra* (L.) Koch. Exposed ledge, rare; J. Ozment.

**Capsella bursa-pastoris* (L.) Medic. Shepherd's Purse. Waste ground, common; R. Mohlenbrock s.n.

Cardamine arenicola Britt. Small Bittercress. Moist soil, common; W. Bailey & J. Swayne 1890.

Cardamine bulbosa (Schreb.) BSP. Bulbous Bittercress. Low woods, common; W. Bailey & J. Swayne 342.

- Cardamine pennsylvanica* Muhl. Wet soil, common; *W. Bailey & J. Swayne* 2082.
Dentaria laciniata Muhl. Toothwort. Woods, common; *J. Voigt* 1430.
Descurainia brachycarpa (Richards.) O. E. Schulz. Tansy Mustard. Along roads, common; *W. Bailey & J. Swayne* 2081.
Draba brachycarpa Nutt. Waste ground, common; *R. Mohlenbrock* 12666.
Iodanthus pinnatifidus (Michx.) Steud. Rich woods, rare; *J. Adams s.n.*
Lepidium campestre (L.) R.Br. Field Peppergrass. Waste ground, occasional; *R. Mohlenbrock* 12691.
Lepidium virginicum L. Common Peppergrass. Waste ground, common; *R. Mohlenbrock* 12727.
Nasturtium officinale R.Br. Watercress. Standing water, occasional; *W. Stieglitz* 31.
Neohbeckia aquatica (A. Eaton) Greene. Swamps, occasional; *W. Bailey & J. Swayne* 2302.
Korippa islandica (Oeder) Borbas. Marsh Yellow Cress. Wet ground, common; *R. Mohlenbrock* 12667.
Korippa sessiliflora (Nutt.) Hitchc. Wet ground, common; *W. Bailey & J. Swayne* 918.
 **Sisymbrium officinale* (L.) Scop. Hedge Mustard. Waste ground, common; *J. Voigt* 1666.
 **Thlaspi arvense* L. Field Pennygrass. Waste ground, common; *W. Bailey & J. Swayne* 367.

CRASSULACEAE DC.—Stonecrop Family

- Penthorum sedoides* L. Ditch Stonecrop. Wet ground, common; *R. Mohlenbrock* 12651.

SAXIFRAGACEAE DC.—Saxifrage Family

- Heuchera hirsuticaulis* (Wheelock) Rydb. Alumroot. Rocky woods, common; *R. Mohlenbrock* 13900.

ESCALONIACEAE Dumort.—Escallonia Family

- Itea virginica* L. Virginia Willow. Swamps, rare; *W. Bailey & J. Swayne* 3046.

HYDRANGEACEAE Dumort.—Hydrangea Family

- Hydrangea arborescens* L. Wild Hydrangea. Woods, common; *R. Mohlenbrock* 12987.

GROSSULARIACEAE Dumort.—Gooseberry Family

- Ribes cynosbati* L. Pasture Gooseberry. Woods, occasional; *W. Bailey & J. Swayne s.n.*

HAMAMELIDACEAE Lindl.—Witch-hazel Family

- Liquidambar styraciflua* L. Sweet Gum. Low ground, common; *R. Mohlenbrock* 12722.

PLATANACEAE Lindl.—Plane-tree Family

- Platanus occidentalis* L. Sycamore. Low ground, common; *R. Mohlenbrock* 12856.

ROSACEAE B. Juss.—Rose Family

- Agrimonia parviflora* Ait. Moist ground, common; *J. Voigt* 1479.
Agrimonia pubescens Wallr. Woods, common; *J. Voigt* 1399.
Agrimonia rostellata Wallr. Woods, occasional; *R. Mohlenbrock* 12986.
Amelanchier borealis (Michx. f.) Fern. Shadbush. Woods, occasional; *R. Mohlenbrock* 12656.
Arunco dioicus (Walt.) Fern. Goat's-beard. Woods, occasional; *R. Mohlenbrock* 12559.
Crataegus crusgalli L. Cock-spur Thorn. Woods, common; *R. Mohlenbrock* 2169.
Crataegus mollis (Torr. & Gray) Scheele. Red Haw. Woods, occasional; *W. Bailey & J. Swayne* 2089.
Crataegus pruinosa (Wendl.) K. Koch. Woods, common; *R. Mohlenbrock* 12985.
Crataegus viridis L. Wet ground, occasional; *R. Mohlenbrock* 12558.
Fragaria virginiana Duch. Wild Strawberry. Waste ground, occasional; *J. Voigt s.n.*
Geum canadense Jacq. White Avena. Woods, common; *J. Voigt* 1630.

- Geum vernum* (Raf.) Torr & Gray. Spring Avens. Woods, common; *R. Mohlenbrock* 12436.
- Malus coronaria* (L.) Mill. Wild Sweet Crab-apple. Woods, occasional; *J. Voigt* 1700.
- Malus ioensis* (Wood) Britt. Iowa Crab-apple. Woods, edges of hill prairies, common; *R. Mohlenbrock* 12668.
- Potentilla monspeliensis* L. Rough Cinquefoil. Wet ground, occasional; *R. Mohlenbrock* 12669.
- **Potentilla recta* L. Along roads, occasional; *R. Mohlenbrock* 12728.
- Potentilla simplex* Michx. Common Cinquefoil. Woods, roadsides, common; *R. Mohlenbrock* 902.
- Prunus americana* Marsh. Wild Plum. Edges of woods, occasional; *R. Mohlenbrock* 12984.
- Prunus hortulana* Bailey. Wild Goose Plum. Woods, common; *R. Mohlenbrock* 2613.
- Prunus lanata* (Sudw.) Mack. & Bush. Woods, occasional; *R. Mohlenbrock* 12692.
- Prunus mexicana* Wats. Cherty slopes, limestone woods, occasional; *K. Stewart*.
- Prunus serotina* Ehrh. Wild Black Cherry. Woods, common; *J. Voigt* 1701.
- **Pyrus communis* L. Pear. Along roads, occasional; *R. Mohlenbrock* 12983.
- Rosa carolina* L. Pasture Rose. Woods, along roads, common; *W. Bailey & J. Swayne* 2427.
- **Rosa multiflora* Thumb. Multiflora Rose. Along roads, occasional; *R. Mohlenbrock* s.n.
- Rosa palustris* Marsh. Swamp Rose. Swamps, occasional; *W. Bailey & J. Swayne* 1487.
- Rosa setigera* Michx. Climbing Rose. Woods, fields, common; *R. Mohlenbrock* 12649.
- Rubus allegheniensis* Porter. Woods, along roads, common; *R. Mohlenbrock* 12982.
- Rubus flagellaris* Willd. Dewberry. Fields, common; *J. Bailey & J. Swayne* 2083.
- Rubus occidentalis* L. Black Raspberry. Woods, common; *J. Voigt* 1704.
- Rubus ostryifolius* Rydb. High-bush Blackberry. Woods, fields, occasional; *R. Mohlenbrock* s.n.
- Rubus pennsylvanicus* Poir. Woods, fields, occasional; *R. Mohlenbrock* 13437.
- Rubus triobis* Michx. Southern Dewberry. Fields, occasional; *R. Mohlenbrock* 12865.

LEGUMINOSAE P. F. Gmel.—Pea Family

- Amphicarpa bracteata* (L.) Fern. Hog Peanut. Woods, common; *R. Mohlenbrock* 12874.
- Apios americana* Medic. Woods, occasional; *J. Voigt* 1703.
- Apios priceana* B. L. Robins. Wolf Lake, very rare; September 8, 1941, G. D. Fuller 664.
- Cassia fasciculata* Michx. Partridge Pea. Woods, fields, common; *J. Voigt* 1775.
- Cassia hebecarpa* Fern. Along roads, occasional; *R. Mohlenbrock* 12648.
- Cassia nicklausii* L. Woods, fields, occasional; *R. Mohlenbrock* 12670.
- Cassia marilandica* L. Rich soil along roads, occasional; *R. Sands & D. Drapalik* 422.
- Cercis canadensis* L. Red Bud. Woods, common; *J. Voigt* 1426.
- Crotalaria sagittalis* L. Rattle-box. Dry woods, occasional; *R. Mohlenbrock* s.n.
- Datea alopecuroides* Willd. Wet waste ground, rare; *R. Mohlenbrock* 12674.
- Desmanthus illinoensis* (Michx.) MacM. Usually low ground, common; *R. Mohlenbrock* 12438.
- Desmodium canadense* (L.) DC. Hill prairie, occasional; *J. Voigt* 1762.
- Desmodium canadense* (L.) DC. Woods, common; *R. Mohlenbrock* 12729.
- Desmodium citiare* (Muhl.) DC. Woods, common; *J. Voigt* 1546.
- Desmodium cuspidatum* (Muhl.) Loud. Woods, occasional; *R. Mohlenbrock* 12646.
- Desmodium glabellum* (Michx.) DC. Cherty slopes, occasional; *R. Mohlenbrock* 12557.
- Desmodium glutinosum* (Muhl.) Wood. Moist woods, common; *R. Mohlenbrock* 13006.

- Desmodium illinoense* A. Gray. Hill prairie, common; *J. Voigt* 1591.
- Desmodium laevigatum* (Nutt.) DC. Woods, rare; *R. Mohlenbrock* 12875.
- Desmodium nudiflorum* (L.) DC. Woods, common; *R. Mohlenbrock* 12672.
- Desmodium nuttallii* (Schindl.) Schubert. Dry woods, occasional; *R. Mohlenbrock* 13007.
- Desmodium paniculatum* (L.) DC. Woods, common; *R. Mohlenbrock* 12439.
- Desmodium pauciflorum* (Nutt.) DC. Woods, occasional; *R. Mohlenbrock* 12730.
- Desmodium rigidum* (Ell.) DC. Dry slopes and ledges, occasional; *J. Ozment*.
- Desmodium rotundifolium* DC. Woods, occasional; *R. Mohlenbrock* 12556.
- Desmodium sessilifolium* (Torr.) Torr. & Gray. Woods, occasional; *W. Stieglitz* 52.
- Galactia volubilis* (L.) Britt. Milk Pea. Dry woods, rare; *R. Mohlenbrock* 12555.
- Gleditsia aquatica* Marsh. Water Locust. swamps, occasional; *W. Stieglitz* 25.
- Gleditsia triacanthos* L. Honey Locust. Woods and swamps, common; *R. Mohlenbrock* 12646.
- Gymnocladus dioica* (L.) K. Koch. Kentucky Coffee Tree. Woods, occasional; *R. Mohlenbrock* 13008.
- Lespedeza bicolor* L. Along levee road; *R. Mohlenbrock* s.n.
- Lespedeza capitata* Michx. Hill prairie, rare; *R. Mohlenbrock* 13909.
- **Lespedeza cuneata* (Dum.-Cours.) G. Don. Waste ground, occasional; *R. Mohlenbrock* s.n.
- Lespedeza hirta* (L.) Hornem. Cherty slopes, occasional; *R. Mohlenbrock* 12731.
- Lespedeza intermedia* (S. Wats.) Britt. Cherty slopes, occasional; *R. Mohlenbrock* 12732.
- Lespedeza procumbens* Michx. Trailing Bush Clover. Woods, common; *R. Mohlenbrock* 12440.
- **Lespedeza stipulacea* Maxim. Korean Lespedeza. Along roads, occasional; *R. Mohlenbrock* 12645.
- **Lespedeza striata* (Thunb.) Hook. & Arn. Japanese Lespedeza. Along fields and roads, common; *R. Mohlenbrock* 12554.
- Lespedeza stuevei* Nutt. Woods, occasional; *W. Bailey & J. Voigt* 9967.
- Lespedeza violacea* (L.) Pers. Dry woods, occasional; *W. Bailey & J. Swayne* 2970.
- Lespedeza virginica* (L.) Britt. Cherty slopes, common; *G. Fuller* 269.
- **Medicago lupulina* L. Black Medic. Waste ground, common; *R. Mohlenbrock* 12441.
- **Medicago sativa* L. Alfalfa. Fields and roadsides, common; *R. Mohlenbrock* 12644.
- **Melilotus alba* L. White Sweet Clover. Waste ground, common; *R. Mohlenbrock* 12426.
- Melilotus officinalis* (L.) Lam. Yellow Sweet Clover. Waste ground, common; *R. Mohlenbrock* 12425.
- Petalostemum candidum* (Willd.) Michx. White Prairie Clover. Hill prairie, occasional; *R. Mohlenbrock* 12674.
- Petalostemum purpureum* (Vent.) Rydb. Purple Prairie Clover. Hill prairie, occasional; *R. Mohlenbrock & J. Voigt* s.n.
- Phaseolus polystachyus* (L.) BSP. Wild Kidney Bean. Edge of hill prairie, occasional; *R. Mohlenbrock* 12733.
- Psoralea psoraloides* (Walt.) Cory. Dry woods, common; *R. Mohlenbrock* 12442.
- **Robinia pseudoacacia* L. Black Locust. Along roads, common; *R. Mohlenbrock* 12553.
- Strophostyles helvola* (L.) Britt. Dry woods, common; *R. Mohlenbrock* 12876.
- Strophostyles leiosperma* (Torr. & Gray) Piper. Woods, occasional; *R. Mohlenbrock* 13910.
- Strophostyles umbellata* (Muhl.) Britt. Woods, occasional; *R. Mohlenbrock* 12443.
- Stylosanthes biflora* (L.) Taub. Dry woods, common; *J. Voigt* 684.
- Tephrosia virginiana* (L.) Pers. Dry woods, common; *J. Voigt* 686.
- Trifolium arvense* L. Rabbit-foot Clover. Fields and roadsides, common; *J. Voigt* 1682.

**Trifolium dubium* Sibth. Little Hop Clover. Waste ground, common; *J. Voigt* 1537.

Trifolium hybridum L. Alsike Clover. Waste ground, common; *J. Voigt* 1883.

Trifolium pratense L. Red Clover. Waste ground, common; *J. Voigt* 1802.

**Trifolium procumbens* L. Low Hop Clover. Waste ground, common; *R. Mohlenbrock* 12734.

**Trifolium repens* L. White Clover. Waste ground, common; *J. Voigt* 1130.

**Vicia angustifolia* Reich. Common Vetch. Waste ground, occasional; *R. Mohlenbrock* 12675.

**Vicia cracca* L. Tufted Vetch. Along roads, rare; *J. Voigt* 1222.

**Vicia villosa* Roth. Winter Vetch. Waste ground, common; *J. Voigt* 1461.

GERANIACEAE J. St. Hil.—Geranium Family

Geranium carolinianum L. Cranesbill. Waste ground, common; *R. Mohlenbrock* 12444.

Geranium maculatum L. Wild Geranium. Woods, common; *J. Voigt* 1385.

OXALIDACEAE Lindley—Wood Sorrel Family

Oxalis cymosa Small. Common Wood Sorrel. Waste ground, common; *R. Mohlenbrock* 12676.

Oxalis stricta L. Upright Wood Sorrel. Waste ground, common; *J. Voigt* 621.

Oxalis violacea L. Violet Wood Sorrel. Woods and cherty slopes, common; *R. Mohlenbrock* 13911.

LINACEAE Dumort.—Flax Family

Linum sulcatum Riddell. Dry woods, occasional; *R. Mohlenbrock* 13009.

Linum virginianum L. Dry woods, rare; *R. Mohlenbrock* 12735.

BALSAMINACEAE Dumort.—Balsam Family

Impatiens biflora Walt. Moist soil, common; *W. Stieglitz* 39.

Impatiens pallida Nutt. Pale Touch-me-not. Moist ground, occasional; *R. Mohlenbrock* 12445.

ZYGOPHYLLACEAE Horan.—Caltrop Family

**Tribulus terrestris* L. Puncture-weed. Waste ground, rare; *W. Weber* s.n.

POLYGALACEAE Reichenb.—Milkwort Family

Polygala sanguinea L. Woods, occasional; *J. Voigt* 1511.

EUPHORBIACEAE J. St. Hil.—Spurge Family

Acalypha gracilens A. Gray. Numerous habitats, common; *R. Mohlenbrock* 12552.

Acalypha ostryaefolia Riddell. Edge of swamp, occasional; *J. Voigt* 1508.

Acalypha rhomboidea Raf. Numerous habitats, common; *R. Mohlenbrock* 12677.

Acalypha virginica L. Three-seeded Mercury. Numerous habitats, common; *J. Voigt* s.n.

Chamaesyce hamistrata (Engelm.) Small. Edge of swamps, common; *R. Mohlenbrock* 12736.

Chamaesyce maculata (L.) Small. Nodding Spurge. Waste ground, common; *W. Bailey & J. Swayne* 3043.

Chamaesyce serpens (HBK.) Small. Around Wolf Lake, rare; *R. Mohlenbrock* 12877.

Chamaesyce supina (Raf.) Moldenke. Mild Spurge. Waste ground, common; *R. Mohlenbrock* 12645.

Croton capitatus Michx. Sandy soil, occasional; *J. Voigt* 1526.

**Croton glandulosus* L. Sand Croton. Sandy soil, occasional; *J. Voigt* 5762.

Croton monanthogynus Michx. Along roads, occasional; *R. Mohlenbrock* 13110.

Crotonopsis elliptica Willd. Open woods and bluffs, occasional; *R. Mohlenbrock* 10211.

Euphorbia corollata L. Flowering Spurge. A variety of habitats, common; *J. Voigt* s.n.

Euphorbia obtusata Pursh. Base of limestone bluffs, rare; *R. Mohlenbrock* 2417.

**Poinsettia dentata* (Michx.) Small. Roadsides and fields, common; *R. Mohlenbrock* 12678.

Poinsettia heterophylla (L.) Klotzsch & Garcke. Talus slope, rare; *J. Ozment*.

CELASTRACEAE Lindley—Staff-trec Family

Celastrus scandens L. Bittersweet. Woods, common; *R. Mohlenbrock* 12737.
Euonymus atropurpureus Jacq. Wahoo. Moist woods, occasional; *J. Voigt* 1152.

AQUIFOLIACEAE (DC.) Rich.—Holly Family

Ilex decidua Walt. Swamp Holly. Edges of lakes and swamps, common; *W. Bailey & J. Swayne* 1023.
Ilex verticillata (L.) A. Gray. Winterberry. LaRue Swamp, rare.

ANACARDIACEAE Lindley—Sumac Family

Rhus aromatica Ait. Fragrant Sumac. Dry, wooded slopes, common; *W. Bailey & J. Swayne* 245.
Rhus copallina L. Shining Sumac. Fields, along roads, in woods, common; *R. Mohlenbrock* 12446.
Rhus glabra L. Smooth Sumac. Fields, along roads in woods; common; *W. Bailey & J. Swayne* 1481.
Rhus radicans L. Poison Ivy. In a number of habitats, common.

STAPHYLACEAE (DC.) Lindley—Bladdernut Family

Staphylea trifolia L. Bladdernut. Moist, often calcareous, woods, common; *J. Voigt* 1407.

ACERACEAE J. St. Hil.—Maple Family

Acer drummondii Hooker & Arnott. Swamp Red Maple. Swamps, occasional; *J. Voigt & J. Swayne* 1149.
Acer negundo L. Box Elder. Moist soil, common; *W. Bailey & J. Swayne* 339.
Acer rubrum L. Red Maple. Moist or dry woods, common; *W. Bailey & J. Swayne* 2487.
Acer saccharinum L. Silver Maple. Low, wet ground; common; *R. Mohlenbrock* 13912.
Acer saccharum Marsh. Sugar Maple. Shaded woods, common; *R. Mohlenbrock* 13899.
Acer floridanum (Chapm.) Pax. Southern Sugar Maple. Edge of swamps, rare; *W. Bailey & J. Swayne* 2771.

HIPPOCASTANACEAE Torr. & Gray—Horse-chestnut Family

Aesculus glabra Willd. Ohio Buckeye. Calcareous woods, occasional.

RHAMNACEAE (R. Br.) Horn.—Buckthorn Family

Oeanothus americanus L. New Jersey Tea. Woods, common; *R. Mohlenbrock* 12447.

VITACEAE Lindley—Grape Family

Ampelopsis arborea (L.) Koehne. Pepper-vine. Edge of lakes and swamps, occasional; *R. Mohlenbrock* 12721.
Ampelopsis cordata Michx. Raccoon Grape. Swampy borders, common; *W. Bailey & J. Swayne* 12721.
Parthenocissus quinquefolia (L.) Planch. Virginia Creeper. Woods, common; *R. Mohlenbrock* 12878.
Vitis aestivalis Michx. Summer Grape. Woods, common; *R. Mohlenbrock* 12642.
Vitis cinerea Engelm. Winter Grape. Woods, common; *R. Mohlenbrock* 12641.
Vitis riparia Michx. Riverbank Grape. Low, wet ground, common; *J. Voigt* 1971.
Vitis vulpina L. Frost Grape. Woods, common; *R. Mohlenbrock* 12448.

TILIACEAE Juss.—Linden Family

Tilia americana L. Basswood. Woods, occasional; *R. Mohlenbrock* 13111.

MALVACEAE Necker—Mallow Family

Abutilon theophrasti Medic. Velvet-leaf. Waste ground, common; *R. Mohlenbrock* 12449.
Hibiscus lasiocarpus Cav. Low, wet ground, common; *W. Stieglitz* 1.
Hibiscus militaris Cav. Swampy ground, occasional; *R. Mohlenbrock* 13898.
Sida spinosa L. Waste ground, common; *W. Stieglitz* 65.

HYPERICACEAE Lindley—St. John's-wort Family

Ascyrum multicaule Michx. St. Andrew's Cross. Woods, occasional; *R. Mohlenbrock* 12424.

Hypericum drummondii (Grey. & Hook.) Torr. & Gray. Dry woods and fields, occasional; *R. Mohlenbrock* 12679.

Hypericum gentianoides (L.) BSP. Dry soil, usually on bluffs, occasional; *J. Voigt* 3162.

Hypericum mutilum L. Dwarf St. John's-wort. Along streams and lakes, common; *R. Mohlenbrock* 12693.

Hypericum perforatum L. Common St. John's-wort. Open ground, common; *J. Voigt* 733.

Hypericum prolificum L. Shrubby St. John's-wort. Along Hutchins Creek, occasional; *R. Mohlenbrock* 13897.

Hypericum punctatum Lam. Spotted St. John's-wort. Along roads and in woods, common; *J. Voigt* 3069.

Hypericum sphaerocarpon Michx. Woods, occasional; *J. Voigt s.n.*

Triadenum walteri (Gmel.) Gleason. Around lakes, rare; *W. Stieglitz* 13.

CISTACEAE Moran. Rockrose Family

Lechea tenuifolia Michx. Sandy soil, common; *R. Mohlenbrock* 12423.

VIOLACEAE DC. Violet Family

Hybanthus concolor (Forst.) Spreng. Green Violet. Moist woods, common; *J. Voigt* 1418.

Viola eriocarpa Schw. Common Yellow Violet. Woods, common; *R. Sands* 20.

Viola falcata Greene. Woods, common; *R. Mohlenbrock* 13112.

Viola missouriensis Greene. Woods, occasional; *R. Mohlenbrock* 11517.

Viola papilionacea Pursh. Butterfly Violet. Woods, common; *J. Voigt* 2612.

Viola pedata L. Bird-foot Violet. Cherty woods, occasional; *R. Mohlenbrock* 13896.

Viola rafinesquii Greene. Johnny-jump-up. In many habitats, common; *R. Mohlenbrock* 12720.

Viola sagittata Ait. Arrow-leaved Violet. Cherty slopes, rare; *R. Mohlenbrock* 15772.

Viola sororia Willd. Woolly Blue Violet. Woods, common; *J. Voigt* 2131.

Viola striata Ait. White Violet. Moist woods, common; *J. Voigt* 1377.

LYTHRACEAE Lindl.—Loosestrife Family

Ammannia coccinea Rottb. Along lakes and swamps, occasional; *R. Mohlenbrock* 12689.

Cuphea petiolata (L.) Koehne. Waxweed. Moist or dry open soil, occasional; *J. Voigt* 2924.

Decodon verticillatus (L.) Ell. Swamp Loosestrife. In swamps, occasional; *W. Stieglitz* 52.

Lythrum alatum Pursh. Loosestrife. Moist soil, common; *J. Voigt* 1987.

Pephus diantha Nutt. Water Purslane. In swamps, rare.

Rotala ramosior (L.) Koehne. Edge of LaRue Swamp, occasional; *R. Mohlenbrock* 13895.

PASSIFLORACEAE Dumort. Passion-flower Family

Passiflora lutea L. Passion-flower. Rather dry woods, occasional; *R. Mohlenbrock* 12422.

CACTACEAE Lindley—Cactus Family

Opuntia rafinesquii Engelm. Prickly-pear. Sandy soil above Hutchins Creek, occasional; *R. Mohlenbrock* 12640.

CUCURBITACEAE B. Juss.—Gourd Family

Sicyos angulatus L. Bur. Cucumber. Below limestone bluffs, occasional; *R. Mohlenbrock* 12719.

ONAGRACEAE Dumort.—Evening Primrose Family

Circaea latifolia Hill. Enchanter's Nightshade. Low ground in woods, common; *J. Voigt* 3002.

Epilobium coloratum Muhl. Willow Herb. Moist ground, common; *W. Stieglitz* 6.

- Jussiaea decurrens* (Walt. DC.) In swamps, rare; *W. Bailey & J. Swayne 14810*.
Jussiaea diffusa Forskal. Primrose Willow. In lakes and swamps, common; *J. Voigt 761*.
Ludwigia alternifolia L. Seedbox. Wet ground, common; *W. Stieglitz 53*.
Ludwigia palustris (L.) Ell. Edge of swamps, occasional; *W. Stieglitz 38*.
Oenothera biennis L. Common Evening Primrose. Numerous habitats, common; *R. Mohlenbrock 12551*.
Oenothera laciniata Mill. Waste ground, common; *R. Mohlenbrock 12864*.
Oenothera linifolia Nutt. Thread-leaved Sundrops. Dry soil on bluffs, rare; *W. Bailey & J. Swayne 2419*.
 **Oenothera speciosa* Nutt. White Evening Primrose. Waste ground, occasional; *R. Mohlenbrock 12981*.
 **Oenothera strigosa* (Rydb.) Mack & Bush. Waste ground, rare; *R. Mohlenbrock 13913*.

HALORAGACEAE Horan.—Water Milfoil Family

- Proserpinaca palustris* L. In swamps, rare; *R. Mohlenbrock 12451*.

CALLITRICHACEAE Lindley—Water Starwort Family

- Callitriche heterophylla* Pursh. In stagnant water, occasional; *R. Mohlenbrock 12681*.
Callitriche palustris L. Swamps, rare; *R. Mohlenbrock 2714*.
Callitriche terrestris Raf. Moist ground, common; *R. Mohlenbrock 12738*.

CORNACEAE Link—Dogwood Family

- Cornus drummondii* C. A. Mey. Rough-leaved Dogwood. Edges of woods, common; *J. Voigt 1160*.
Cornus florida L. Flowering Dogwood. Woods, common; *W. Bailey & J. Swayne 345*.
Cornus foemina Mill. Swampy woods, occasional; *R. Mohlenbrock 12604*.
Cornus obliqua Raf. Pale Dogwood. Low woods, occasional; *W. Bailey & J. Swayne 2204*.
Cornus racemosa Lam. Gray Dogwood. Woods, common; *W. Bailey & J. Swayne 2383*.
Nyssa sylvatica Marsh. Sour Gum. Woods, common; *R. Mohlenbrock 12870*.

ARALIACEAE Vent.—Ginseng Family

- Aralia racemosa* L. American Spikenard. Moist woods, occasional; *R. Mohlenbrock 13113*.
Aralia spinosa L. Hercules' Club. Woods, occasional; *R. Mohlenbrock 13894*.
Panax quinquefolius L. Ginseng. Woods, occasional; *E. Stadelbacher s.n.*

UMBELLIFERAE Scop.—Carrot Family

- **Anethum graveolens* L. Dill. Waste ground; *R. Mohlenbrock 12421*.
Chaerophyllum procumbens (L.) Chervil. Waste ground, common; *R. Mohlenbrock 12639*.
Chaerophyllum tainturieri Hook. Hairy Chervil. Waste ground, common; *R. Mohlenbrock 12718*.
Cicula maculata L. Water Hemlock. Around swamps, occasional; *W. Stieglitz 49*.
Cryptotaenia canadensis (L.) DC. Honewort. Woods, common; *R. Mohlenbrock 12550*.
 **Daucus carota* L. Wild Carrot. Waste ground, common; *J. Voigt 2672*.
Erigenia bulbosa (Michx.) Nutt. Harbinger-of-spring. Deep woods, occasional; *R. Mohlenbrock 12863*.
Osmorhiza claytonii (Michx.) Clarke. Sweet Cicely. Woods, common; *R. Mohlenbrock 12980*.
Osmorhiza longistylis (Torr.) DC. Sweet Cicely. Woods, occasional; *J. Voigt 3013*.
Pastinaca sativa L. Parsnip. Waste ground, occasional; *R. Mohlenbrock 13914*.
Polytaenia nuttallii DC. Prairie Parsley. Hill prairie, rare; *J. Voigt 2916*.
Ptilimnium costatum (Ell.) Raf. Edges of swamps, rare; *R. Mohlenbrock 12452*.
Sanicula canadensis L. Short-styled Snakeroot. Woods, common; *J. Voigt 2221*.
Sanicula gregaria Bickn. Common Snakeroot. Woods, common; *J. Voigt 2220*.

Sium suave Walt. Water Parsnip. Around swamps, occasional; *R. Mohlenbrock* 12682.

Taenidia integerrima (L.) Drude. Along road, rare; *J. Voigt* 1356.

Thaspium trifoliatum (L.) A. Gray. Meadow Parsnip. Woods, common; *R. Mohlenbrock* 12733. The purple-flowered form also occurs occasionally.

**Torilis japonica* (Houtt.) DC. Hedge Parsley. Waste ground, occasional; *R. Mohlenbrock* 12739.

ERICACEAE DC.—Heath Family

Monotropa uniflora L. Indian Pipe. Deep woods, occasional; *W. Bailey & J. Swayne* 1838. Pink plants sometimes occur.

Rhododendron roseum (Loisel.) Rehd. Cherty slopes, rare; *W. Bailey & J. Swayne* 34.

Vaccinium arboreum Marsh. Farkleberry. Dry, cherty woods, common; *J. Voigt* 1357.

Vaccinium vacillans Torr. Hill Blueberry. Dry, Cherty woods, common; *R. Mohlenbrock* 12605.

EBENACEAE Vent.—Ebony Family

Diospyros virginiana L. Persimmon. Woods, common; *W. Bailey & J. Swayne* 420.

PRIMULACEAE Vent.—Primrose Family

Androsace occidentalis Pursh. On limestone bluffs, rare.

Dodecatheon meadia L. Shooting Star. Dry woods, common; *J. Voigt* 1410.

Lysimachia ciliata L. Fringed Loosestrife. Wet ground, common; *J. Voigt* 1168.

Lysimachia lanceolata Walt. Woods, common; *R. Mohlenbrock* 12880.

Lysimachia nummularia L. Moneywort. Around Wolf Lake, occasional; *W. Bailey & J. Swayne* 2481.

Samolus parviflorus Raf. Brookweed. Damp ground, occasional; *J. Voigt* 1713.

OLEACEAE Lindley—Olive Family

Forestiera acuminata (Michx.) Poir. Wet ground, occasional; *R. Mohlenbrock* 13114.

Fraxinus americana L. White Ash. Woods, common; *G. Gunning s.n.*

Fraxinus lanceolata Borkh. Green Ash. Shaded woods, common; *R. Mohlenbrock* 13893.

Fraxinus pennsylvanica Marsh. Red Ash. In swamps, occasional; *R. Mohlenbrock* 12420.

Fraxinus quadrangulata Michx. Blue Ash. Limestone cliffs, rare; *R. Mohlenbrock* 11986.

Fraxinus tomentosa Michx. Pumpkin Ash. In deep swamps, rare; *R. Mohlenbrock* 12638.

LOGANIACEAE Dumort.—Logania Family

Spigelia marilandica L. Indian Pink. Woods, occasional; *J. Voigt* 1919.

GENTIANACEAE Dumort.—Gentian Family

Sabatia angularis (L.) Pursh. Moist soil, occasional; *R. Mohlenbrock* 12449.

APOCYNACEAE Lindley—Dogbane Family

Amsonia tabernaemontana Walt. Around swamps and lakes, occasional; *J. Voigt* 2320.

Apocynum androsaemifolium L. Spreading Dogbane. Woods, common; *R. Mohlenbrock* 12862.

Apocynum cannabinum L. Hemp Dogbane. Fields and woods, common; *R. Mohlenbrock* 12979.

Apocynum pubescens R.Br. Velvet Dogbane. Fields, common; *J. Voigt s.n.*

Apocynum sibiricum Jacq. Dogbane. Fields, occasional; *J. Voigt s.n.*

Trachelospermum difforme (Walt.) A. Gray. Around swamps, rare; *R. Mohlenbrock s.n.*

ASCLEPIADACEAE Lindley—Dogbane Family

Acerates lanuginosa (Nutt.) Dec. Edge of hill prairie, rare; *R. Mohlenbrock* 13915.

Acerates viridiflora (Raf.) Eaton. Hill prairie, rare; *R. Mohlenbrock* 12453.

Ampelamus albidus (Nutt.) Britt. Bluevine. Woods, common; *J. Voigt* 3410.

- Asclepias exaltata* L. Poke Milkweed. Moist woods, rare; *R. Mohlenbrock s.n.*
Asclepias incarnata L. Swamp Milkweed. Wet ground, common; *R. Mohlenbrock 12683.*
Asclepias perennis Walt. Wet woods, occasional; *W. Bailey & J. Swayne 2702.*
Asclepias purpurascens L. Purple Milkweed. Along roads, rare; *R. Mohlenbrock 12740.*
Asclepias quadrifolia Jacq. Dry, cherty woods, occasional; *R. Mohlenbrock 12606.*
Asclepias syriaca L. Common Milkweed. Fields and roadsides, common; *R. Mohlenbrock 12884.*
Asclepias tuberosa L. Butterfly Weed. Hill prairies and woods, common; *W. Bailey & J. Swayne 1479.*
Asclepias verticillata L. Horsetail Milkweed. Dry woods, occasional; *R. Mohlenbrock 13115.*
Gonolobus gonocarpus (Walt.) Perry. Climbing Milkweed. Woods, rare; *W. Steiglitz 67.*

CONVOLVULACEAE VENT.—Morning-glory Family

- Convolvulus americanus* (Sims) Greene. Fields, common; *W. Bailey 571.*
Convolvulus arvensis L. Field Bindweed. Fields, common; *R. Mohlenbrock 14677.*
Cuscuta compacta Juss. Edge of swamps, common; *W. Bailey & J. Swayne 3058.*
Cuscuta cuspidata Engelm. Woods and roadsides, common; *J. Voigt 2828.*
Cuscuta gronovii Willd. Woods, occasional; *R. Mohlenbrock 13892.*
Cuscuta pentagona Engelm. Woods, rare.
Cuscuta polygonorum Engelm. Edge of swamp, occasional; *J. Voigt 1875.*
**Ipomoea hederacea* Jacq. Ivy-leaved Morning-glory. Fields, common; *R. Mohlenbrock 12449.*
Ipomoea lacunosa L. Small-flowered Morning-glory. Edge of swamps and lakes, common; *R. Mohlenbrock 15029.*
Ipomoea pandurata (L.) Meyer. Wild Sweet Potato. Fields and along roads, common; *R. Mohlenbrock 12637.*
**Ipomoea purpurea* (L.) Roth. Common Morning-glory. Fields, common; *W. Bailey & J. Swayne 3043.*
Quamoclit coccinea (L.) Moench. Red Morning-glory. Along a road, rare; *W. Bailey & J. Swayne 1831.*

POLEMONIACEAE JUSS. Phlox Family

- Phlox bifida* Beck. Cleft Phlox. Woods and cliffs, common; *R. Sands 19.*
Phlox divaricata L. Blue Phlox. Woods, common; *R. Sands 16.*
Phlox glaberrima L. Smooth Phlox. Open woods, occasional; *J. Voigt 1048.*
Phlox paniculata L. Garden Phlox. Moist soil, occasional; *J. Voigt 2404.*
Phlox pilosa L. Downy Phlox. Woods, common; *R. Mohlenbrock 12716.*
Polemonium reptans L. Jacob's-ladder. Moist woods, common; *J. Voigt 2569.*

HYDROPHYLLACEAE Lindley—Waterleaf Family

- Hydrolea affinis* A. Gray. Edges of swamps and lakes, occasional; *W. Bailey & J. Swayne 1469.*
Hydrophyllum appendiculatum Michx. Moist woods, common; *R. Mohlenbrock 12448.*
Hydrophyllum virginianum L. Waterleaf. Moist woods, common; *R. Mohlenbrock 12861.*
Phacelia bipinnatifida Michx. Moist woods, common; *R. Mohlenbrock 12978.*
Phacelia purshii Buckley. Low woods, common; *J. Voigt 1659.*
Phacelia ranunculacea (Nutt.) Constance. Low woods, occasional; *J. Voigt 1411.*

BORAGINACEAE Lindley—Borage Family

- *Cynoglossum officinale* L. Common Hound's-tongue. Fields, occasional; *R. Mohlenbrock 13916.*
Cynoglossum virginianum L. Wild Comfrey. Woods, occasional; *R. Mohlenbrock 12454.*
Hackelia virginiana (L.) I. M. Johnston. Stickseed. Woods, common; *R. Mohlenbrock 12684.*

**Heliotropium indicum* L. Heliotrope. Moist waste ground, occasional; *R. Mohlenbrock 12747*.

**Lithospermum arvense* L. Field Gromwell. Waste ground, common; *R. Mohlenbrock 7164*.

Lithospermum canescens (Michx.) Lehm. Hoary Gromwell. Bluffs, rare; *R. Mohlenbrock 12697*.

Lithospermum latifolium Michx. American Gromwell. Dry woods, occasional; *J. Voigt 3111*.

Mertensia virginica (L.) Pers. Bluebells. Woods, occasional; *J. Voigt & W. Welch 526*.

Myosotis macrosperma Engelm. Forget-me-not. Woods, occasional; *R. Mohlenbrock 13116*.

Myosotis verne Nutt. Woods and fields, common; *R. Mohlenbrock 12882*.

VERBENACEAE JUSS.—Vervain Family

Phryma leptostachya L. Lopseed. Moist woods, occasional; *R. Mohlenbrock 13891*.

Phyla lanceolata (Michx.) Greene. Frog-fruit. Low areas, common; *J. Voigt 682*.

Verbena bracteata Lag. & Rodr. Waste ground, common; *J. Voigt 1870*.

Verbena canadensis (L.) Britt. Woods, occasional; *J. Voigt s.n.*

Verbena hastata L. Blue Vervain. Woods and along roads, common; *R. Mohlenbrock 12418*.

Verbena simplex Lehm. Narrow-leaved Vervain. Open ground, common; *R. Mohlenbrock 12636*.

Verbena stricta Vent. Hoary Vervain. Open ground, common; *J. Voigt s.n.*

Verbena urticifolia L. White Vervain. Woods and along roads, common; *W. Stieglitz*.

LABIATAE B. JUSS.—Mint Family

Agastache nepetoides (L.) Kuntze. Open woods, occasional; *J. Voigt 2727*.

Blephilia ciliata (L.) Benth. Wood Mint. Woods, common; *R. Mohlenbrock 12715*.

Blephilia hirsuta (Pursh) Benth. Woods, occasional; *J. Voigt 3002*.

Collinsonia canadensis L. Richweed. Moist woods, rare; *R. Mohlenbrock 12447*.

Cunila origanoides (L.) Britt. Stone Mint. Wooded ridges, common; *G. Fuller 258*.

**Glecoma heterophylla* Waldst. & Kit. Small Ground Ivy. Moist waste ground, occasional; *R. Mohlenbrock 12860*.

Ledeoma pulegioides (L.) Pers. American Pennyroyal. Dry woods, occasional; *R. Mohlenbrock 12977*.

Isanthus brachiatus (J.) BSP. False Pennyroyal. On bluffs and in dry woods, occasional; *R. Mohlenbrock 13917*.

**Lamium amplicaula* L. Henbit. Waste ground, common; *R. Mohlenbrock 115.9*.

**Lamium purpureum* L. Purple Dead Nettle. Waste ground, occasional; *R. Mohlenbrock 12455*.

**Leonorus cardiaca* L. Talus slopes and low ledges, rare; *J. Ozment*.

Lycopus americanus Muhl. Wet ground, common; *R. Mohlenbrock 12685*.

Lycopus rubellus Moench. Water Horehound. Wet ground or in water, common; *W. Stieglitz 19*.

Lycopus virginicus L. Wet ground, common; *J. Voigt 2431*.

**Marrubium vulgare* L. Common Horehound. Waste ground, rare; *collector unknown*.

**Mentha arvensis* L. Field Mint. Waste ground; *W. Stieglitz 14*.

Mentha canadensis L. Wild Mint. Moist soil, occasional; *R. Mohlenbrock 12742*.

**Mentha piperita* L. Peppermint. Waste ground, rare; *R. Mohlenbrock s.n.*

**Mentha spicata* L. Spearmint. Waste ground, rare; *R. Mohlenbrock s.n.*

Monarda bradburiana Bock. Bee Balm. Dry woods, common; *W. Bailey & J. Swayne 2240*.

Monarda fistulosa L. Wild Bergamot. Woods, common; *R. Mohlenbrock 12608*.

**Nepeta cataria* L. Catnip. Waste ground, occasional; *R. Mohlenbrock s.n.*

**Perilla frutescens* (L.) Britt. Beef-steak Plant. Moist, waste ground; common; *J. Voigt 4171*.

Physostegia virginiana (L.) Benth. Moist soil, occasional; *G. Fuller 243*.

Prunella vulgaris L. Self-heal. Waste ground, common; *R. Mohlenbrock 12803*.

- Pycnanthemum flexuosum* (Walt.) BSP. Mountain Mint. Dry woods, common; R. Mohlenbrock 13117.
- Pycnanthemum incanum* (L.) Michx. Dry soil, rare; J. Voigt s.n.
- Pycnanthemum pycnanthemoides* (Leavenw.) Fern. Dry woods and along roads, occasional; R. Mohlenbrock 13890.
- Salvia lyrata* L. Cancer-weed. Rocky woods, rare; J. Voigt 2114.
- Scutellaria elliptica* Muhl. Hairy Skullcap. Woods, rare; R. Mohlenbrock 12417.
- Scutellaria incana* Biehler. Downy Skullcap. Woods, occasional; J. Voigt 1490.
- Scutellaria lateriflora* L. Moist soil, common; W. Bailey & J. Swayne 2774.
- Scutellaria nervosa* Pursh. Low, wet woods, rare; W. Bailey & J. Swayne 2303.
- Scutellaria ovata* Hill. Heart-leaved Skullcap. Woods, occasional; R. Mohlenbrock 294.
- Scutellaria parvula* Michx. Rocky woods, rare; J. Voigt 2716.
- Stachys tenuifolia* Willd. Hedge Nettle. Wet soil, occasional; R. Mohlenbrock 13889.
- Teucrium canadense* L. Wood Sage. Moist ground, common; R. Mohlenbrock 12416.

SOLANACEAE Pers.—Potato Family

- Datura stramonium* L. Jimson-weed. Waste ground, common; R. Mohlenbrock 12655.
- Physalis heterophylla* Nees. Edge of fields, common; J. Voigt s.n.
- Physalis lanceolata* Michx. Dry waste ground, rare; R. Mohlenbrock & J. Voigt 9965.
- Physalis pruinosa* L. Moist soil, occasional; C. Bollwinkel s.n.
- Physalis pubescens* L. Waste ground, occasional; R. Mohlenbrock 12714.
- Physalis subglabrata* Mack. & Bush. Smooth Ground Cherry. Waste ground, common; R. Mohlenbrock 12446.
- Physalis virginiana* Mill. Ground Cherry. Waste ground, common; J. Voigt s.n.
- Solanum carolinense* L. Horse Nettle. Waste ground, common; R. Mohlenbrock 12976.
- Solanum nigrum* L. Black Nightshade. Moist waste ground, common; J. Voigt 3121.

SCROPHULARIACEAE Lindley—Figwort Family

- Aureolaria flava* (L.) Farwell. False Foxglove. Open woods, occasional; R. Mohlenbrock 12634.
- Bacopa rotundifolia* (Michx.) Wettst. Edge of lakes, rare; J. Voigt 2199.
- Dasistoma macrophylla* (Nutt.) Raf. Mullein Foxglove. Dry woods, occasional; R. Mohlenbrock 583.
- Gerardia tenuifolia* Vahl. Rather moist soil, common; R. Mohlenbrock 13918.
- Gratiola neglecta* Torr. Moist soil, common; R. Mohlenbrock 12456.
- Gratiola virginiana* L. Edge of swamp, rare; J. Voigt s.n.
- Leucospora multifida* (Michx.) Nutt. Along Hutchins Creek, occasional; J. Voigt 2629.
- Lindernia anagallidea* (Michx.) Pennell. Moist ground, occasional; J. Voigt s.n.
- Lindernia dubia* (L.) Pennell. Wet soil, common; R. Mohlenbrock 12718.
- Mimulus alatus* Ait. Monkey Flower. Wet soil, common; G. Fuller 233.
- Mimulus ringens* L. Around swamps, rare; R. Mohlenbrock 12445.
- Penstemon altiviorum* Pennell. Edge of wet woods, rare; R. Mohlenbrock s.n.
- Penstemon calycosus* Small. Rich soil, rare; R. Mohlenbrock 12858.
- Penstemon digitalis* Nutt. Foxglove Penstemon. Woods, common; R. Mohlenbrock 12975.
- Penstemon hirsutus* (L.) Willd. Talus at base of limestone bluffs, rare; W. Bailey & J. Swayne 2314.
- Penstemon pallidus* Small woods, common; R. Mohlenbrock 12686.
- Penstemon tubaeformis* Nutt. Along roads, rare; W. Bailey & J. Swayne 2315.
- Scrophularia marilandica* L. Figwort. Woods, occasional; R. Mohlenbrock 12743.
- **Verbascum blattaria* L. Moth Mullein. Waste ground, occasional; J. Voigt 1119.
- **Verbascum thapsus* L. Common Mullein. Waste ground, common; R. Mohlenbrock 12699.
- **Veronica arvensis* L. Speedwell. Waste ground, common; R. Mohlenbrock 12884.

Veronica peregrina L. Waste ground, common; *R. Mohlenbrock* 13118.

Veronicastrum virginicum (L.) Farwell. Culver-root. Woods, occasional; *J. Voigt* 1494.

ACANTHACEAE J. St. Hil.—Acanthus Family

Dianthera americana L. Water Willow. In Hutchins Creek, rare; *J. Voigt* 2215.

Ruellia humilis Nutt. Hairy Ruellia. Woods, common; *R. Mohlenbrock* 13888.

Ruellia pedunculata Torr. Stalked Ruellia. Dry woods, occasional; *J. Voigt* 2008.

Ruellia strepens L. Smooth Ruellia. Rich soil in woods, occasional; *R. Mohlenbrock* 8879.

LENTIBULARIACEAE Lindley—Bladderwort Family

Utricularia gibba L. Shallow swamp water, rare; *J. Voigt* 2211.

Utricularia vulgaris L. Shallow swamp water, occasional; *J. Voigt* 2212.

OROBANCHACEAE Lindl.—Broomrape Family

Epitagus virginiana (L.) Barton. Beech Drops. On beech roots, common; *R. Mohlenbrock* 12415.

Orobanche uniflora L. Open woods, occasional; *M. Pulliam* 1.

BIGNONIACEAE PETS.—Bignonia Family

Campsis radicans (L.) Seem. Trumpet Creeper. Woods and fields, common; *R. Mohlenbrock* 12633.

PLANTAGINACEAE Lindley—Plantain Family

Plantago aristata Michx. Bracted Plantain. Fields, common; *R. Mohlenbrock* 12712.

**Plantago lanceolata* L. Buckhorn Plantain. Waste ground, common; *J. Voigt* 2601.

Plantago pusilla Nutt. Waste ground, common; *R. Mohlenbrock* 12444.

Plantago rugelii Dec. Common Plantain. Waste ground; *R. Mohlenbrock* 11651.

Plantago virginica L. Waste ground, common; *R. Mohlenbrock* 12857.

RUBIACEAE B. JUSS.—Madder Family

Cephalanthus occidentalis L. Buttonbush. In water, common; *W. Stieglitz* 21.

Diodia teres Walt. Rough Buttonweed. Fields, common; *R. Mohlenbrock* 162.

Diodia virginiana L. Buttonweed. Edge of swamp, rare; *J. Voigt* s.n.

Galium aparine L. Goosegrass. Woods, common; *R. Mohlenbrock* 12974.

Galium circaezans Michx. Wild Licorice. Woods, common; *R. Mohlenbrock* s.n.

Galium concinnum Torr. & Gray. Dry woods, common; *R. Mohlenbrock* 13919.

Galium obtusum Bigel. Moist ground, common; *W. Bailey & J. Swayne* 2304.

Galium pilosum Ait. Woods, occasional; *R. Mohlenbrock* 12457.

Galium tinctorium L. On decayed vegetation in swamps, rare; *W. Stieglitz* 2.

Galium triflorum Michx. Sweet-scented Bedstraw. Low woods, common; *J. Voigt* 2826.

Houstonia lanceolata (Poir.) Britt. Hill prairies, occasional; *J. Voigt* 636.

Houstonia nigricans (Lam.) Fern. Limestone ledges, rare; *R. Mohlenbrock* 15037.

Houstonia pusilla Schoepf. Blinets. Woods and bluffs, common; *R. Mohlenbrock* 12687.

Houstonia tenuifolia Nutt. Rocky woods, occasional; *R. Mohlenbrock* 12744.

Spermacoce glabra Michx. Smooth Buttonweed. Wet soil, common; *R. Mohlenbrock* s.n.

CAPRIFOLIACEAE Vent.—Honeysuckle Family

**Lonicera japonica* Thumb. Japanese Honeysuckle. Disturbed areas, common; *R. Mohlenbrock* 12610.

Sambucus canadensis L. Elderberry. Numerous situations, common; *R. Mohlenbrock* 12885.

Symphoricarpos orbiculatus Moench. Coralberry. Edge of woods, common; *J. Voigt* s.n.

Triosteum angustifolium L. Horse Gentian. Rich soil, rare; *R. Mohlenbrock* 13119.

Viburnum prunifolium L. Black Haw. Woods, occasional; *R. Mohlenbrock* 12707.

- Viburnum recognitum* Fern. Woods, occasional; *R. Mohlenbrock* 12628.
Viburnum rufidulum Raf. Southern Black Haw. Woods, occasional; *R. Mohlenbrock* 12439.

CAMPANULACEAE Juss.—Bellflower Family

- Campanula americana* L. Bellflower. Woods, common; *R. Mohlenbrock* 12852.
Triodanis biflora (R. & P.) Greene. Exposed ledges, rare; *J. Ozment*.
Triodanis perfoliata (L.) Nieuwl. Dry soil and waste ground, common; *R. Mohlenbrock* 12969.

LOBELIACEAE Juss.—Lobelia Family

- Lobelia cardinalis* L. Cardinal Flower. Wet soil, occasional; *R. Mohlenbrock* 12462.
Lobelia inflata L. Indian Tobacco. Woods and fields, common; *R. Mohlenbrock* 12749.
Lobelia leptostachys A. DC. Cherty slopes, rare; *R. Mohlenbrock* 12615.
Lobelia puberula Michx. Downy Lobelia. Wet ground, occasional; *R. Mohlenbrock* 12890.
Lobelia siphilitica L. Blue Cardinal Flower. Wet soil, occasional; *J. Voigt s.n.*
Lobelia spicata Lam. Cherty slopes, rare; *R. Mohlenbrock s.n.*

VALERIANACEAE Batsch—Valerian Family

- Valerianella radiata* (L.) Dufr. Wet areas, common; *R. Mohlenbrock* 13124.

COMPOSITAE P. F. Gmel.—Sunflower Family

- **Achillea millefolium* L. Yarrow. Waste ground, common; *R. Mohlenbrock* 13882.
Ambrosia artemisiifolia L. Common Ragweed. Waste ground; common; *R. Mohlenbrock* 12469.
Ambrosia bidentata Michx. Western Ragweed. Fields, occasional; *R. Mohlenbrock* 12627.
Ambrosia trifida L. Giant Ragweed. Waste ground, common; *R. Mohlenbrock* 12706.
Antennaria fallax Greene. Dry woods, occasional; *J. Voigt s.n.*
Antennaria plantaginifolia (L.) Hook. Pussy-toes. Dry woods and cherty slopes, common; *R. Mohlenbrock* 11585.
**Anthemis cotula* L. Dog Fennel. Waste ground, occasional; *R. Mohlenbrock* 12463.
**Arctium minus* (Hill) Bernh. Common Burdock. Waste ground, rare; *W. Bailey & J. Swayne* 2699.
**Ariemisia annua* L. Annual Wormwood. Moist, waste ground, rare; *R. Mohlenbrock* 12891.
Aster anomalous Engelm. Rocky woods, occasional; *R. Mohlenbrock* 15156.
Aster drummondii Lindl. Dry woods, occasional; *J. Voigt* 3191.
Aster exiguus (Fern.) Rydb. Dry soil, occasional; *W. Bailey & J. Swayne* 3191.
Aster laevis L. Smooth Aster. Along Hutchins Creek, rare; *J. Voigt* 2612.
Aster lateriflorus (L.) Britt. Moist soil, occasional; *W. Stieglitz* 12.
Aster oblongifolius Nutt. Woods near edges of bluffs, occasional; *W. Bailey & J. Swayne* 231.
Aster ontarionis Wieg. Wet ground, common; *R. Mohlenbrock s.n.*
Aster patens Ait. Dry woods, common; *J. Voigt* 3188.
Aster pilosus Willd. Open areas, common; *R. Mohlenbrock* 13125.
Aster praealtus Poir. Wet ground, occasional; *R. Mohlenbrock* 12750.
Aster salicifolius Lam. Wet ground, occasional; *W. Stieglitz* 62.
Aster sagittifolius Wedem. Woods, common; *W. Bailey & J. Swayne* 233.
Aster shortii Lindl. Dry woods, occasional; *W. Bailey & J. Swayne* 232.
Aster simplex Willd. Moist areas, common; *W. Bailey & J. Swayne* 3214.
Aster turbinellus Lindl. Rocky woods, occasional; *J. Voigt* 3192.
Aster vinaceus Lam. Fields, occasional; *W. Bailey & J. Swayne* 1792.
Bidens aristosa (Michx.) Britt. Moist ground, common; *R. Mohlenbrock* 12616.
Var. *ritcheyi* Fern. also occurs in the area.
Bidens bipinnata L. Spanish Needles. Fields and woods, common; *R. Mohlenbrock* 12438.
Bidens cernua L. Begger Ticks. Wet ground, occasional; *R. Mohlenbrock* 12693.
Bidens comosa (A. Gray) Wieg. Wet soil, common; *W. Bailey & J. Swayne* 3243.

- Bidens connata* Muhl. Swamp Beggar Ticks. Wet ground, occasional; *W. Bailey & J. Swayne* 3037.
- Bidens discoidea* (Torr. & Gray) Britt. Wet ground, occasional; *W. Bailey & J. Swayne* 1782.
- Bidens frondosa* L. Fields, common; *W. Steiglitz* 54.
- Bidens polylepis* Blake. Wet ground, rare; *W. Bailey & J. Swayne* 1694.
- Bidens vulgata* Greene. Tall Beggar Ticks. Fields, occasional; *R. Mohlenbrock* 12968.
- Boltonia asteroides* (L.) L'Her. Moist areas, occasional; *J. Voigt s.n.*
- Cacalia atriplicifolia* L. Indian Plantain. Dry woods, occasional; *R. Mohlenbrock* 290.
- Cacalia muhlenbergii* (Schultz-Bip.) Fern. Woods, occasional; *R. Mohlenbrock* 13925.
- **Centaurea cyanus* L. Bachelor's Buttons. *W. Bailey & J. Swayne* 1490.
- **Chrysanthemum leucanthemum* L. Ox-eye Daisy. Fields, common; *R. Mohlenbrock* 12851.
- Cichorium intybus* L. Chicory. Along levee road, occasional; *R. Mohlenbrock s.n.*
- Cirsium altissimum* (L.) Spreng. Tall Thistle. Woods, occasional; *R. Mohlenbrock* 14921.
- Cirsium discolor* (Muhl.) Spreng. Field Thistle. Rich soil, occasional; *R. Mohlenbrock* 12751.
- **Cirsium vulgare* (Savi) Airy-Shaw. Bull Thistle. Fields, common; *R. Mohlenbrock* 12437.
- Coreopsis tripteris* L. Tall Tickweed. Woods, occasional; *R. Mohlenbrock* 12892.
- Echinacea pallida* Nutt. Hill prairie, rare; *R. Mohlenbrock & J. Voigt* 8359.
- Echipta alba* (L.) Hassk. Wet ground, common; *W. Steiglitz* 48.
- Elephantopus carolinianus* Willd. Elephant's-foot. Woods, occasional; *R. Mohlenbrock* 12626.
- Erechtites hieracifolia* (L.) Raf. Fireweed. Fields and moist open areas, occasional; *R. Mohlenbrock* 13881.
- Erigeron annuus* (L.) Pers. Whitetop. Woods and fields, common; *W. Bailey & J. Swayne* 419.
- Erigeron canadensis* L. Muletail. Waste ground, common; *R. Mohlenbrock* 12617.
- Erigeron divaricatus* Michx. Dry soil, occasional; *R. Mohlenbrock* 12618.
- Erigeron philadelphicus* L. Fleabane. Woods and fields, common; *R. Mohlenbrock* 12408.
- Erigeron pulchellus* Michx. Woods, occasional; *R. Mohlenbrock* 13126.
- Erigeron strigosus* Muhl. Daisy Fleabane. Woods and fields, common; *W. Bailey & J. Swayne* 1488.
- Eupatorium altissimum* L. Honeyweed. Moist woods, common; *W. Bailey & J. Swayne* 893.
- Eupatorium coelestinum* L. Moist-flower. Wet ground, common; *W. Bailey & J. Swayne* 1795.
- Eupatorium perfoliatum* L. Boneset. Wet ground, common; *R. Mohlenbrock* 12464.
- Eupatorium purpureum* L. Joe-pye Weed. Woods, common; *R. Mohlenbrock* 12407.
- Eupatorium rugosum* Houtt. White Snakeroot. Woods, common; *R. Mohlenbrock* 12967.
- Eupatorium serotinum* Michx. Late Boneset. Moist ground, common; *J. Voigt* 3102.
- Eupatorium sessilifolium* L. Upland Boneset. Woods, occasional; *W. Bailey & J. Swayne* 885.
- Gnaphalium obtusifolium* L. Sweet Everlasting. Woods and fields, common; *J. Voigt* 5925.
- Gnaphalium purpureum* L. Cudweed. Fields, occasional; *J. Voigt s.n.*
- Helenium autumnale* L. Succeweed. Wet ground, common; *J. Voigt* 2913.
- Helenium nudiflorum* Nutt. Fields, occasional; *R. Mohlenbrock* 12694.
- Helenium tenuifolium* Nutt. Bitterweed. Dry waste ground, occasional; *R. Mohlenbrock* 12625.
- Helianthus decapetalus* L. Dry woods, occasional; *R. Mohlenbrock s.n.*

- Helianthus divaricatus* L. Dry woods, common; *W. Bailey & J. Swayne* 27054.
Helianthus grosseserratus Martens. Fields and along roads, common; *R. Mohlenbrock* 12705.
Helianthus hirsutus Raf. Fields, occasional; *R. Mohlenbrock* 12850.
Helianthus microcephalus Torr. & Gray. Dry woods, occasional; *R. Mohlenbrock* 13880.
Helianthus mollis Lam. Hill prairies, occasional; *J. Voigt* 3171.
Helianthus strumosus L. Woods and fields, common; *R. Mohlenbrock* 12966.
Heliopsis helianthoides (L.) Sweet. Ox-eye. Dry woods, occasional; *R. Mohlenbrock* 13926.
Hieracium gronovii L. Dry woods, common; *R. Mohlenbrock* 12695.
Iva ciliata Willd. Marsh Elder. Waste ground, occasional; *W. Bailey & J. Swayne* 2986.
Krigia biflora (Walt.) Blake. False Dandelion. Dry woods, occasional; *R. Mohlenbrock* 148.
Krigia dandelion (L.) Nutt. Dry woods, occasional; *R. Mohlenbrock* 12849.
Krigia oppositifolia Raf. Moist soil, occasional; *R. Mohlenbrock* 12704.
Krigia virginica (L.) Willd. Dry woods and fields, occasional; *W. Bailey & J. Swayne* 3229.
Kuhnia eupatorioides L. False Boneset. Hill prairies, occasional; *J. Voigt* 4446.
Lactuca canadensis L. Wild Lettuce. Woods and fields, common; *R. Mohlenbrock* 12436.
Lactuca floridana (L.) Gaertn. Dry woods, occasional; *R. Mohlenbrock* 13927.
**Lactuca scariola* L. Prickly Lettuce. Waste ground, occasional; *J. Voigt s.n.*
Liatris aspera Michx. Woods, occasional; *R. Mohlenbrock* 12465.
Liatris cylindracea Michx. Hill prairies, rare; *R. Mohlenbrock s.n.*
Liatris scabra (Greene) K. Schum. Rock slopes, occasional. The type specimen was collected in the Pine Hills by F. S. Earle on September 23, 1890.
Liatris squarrosa (L.) Willd. Dry soil, rare; *J. Voigt* 3190.
Pluchea camphorata (L.) DC. Marsh Fleabane. Swampy ground, occasional; *W. Bailey & J. Swayne* 1832.
Polymnia canadensis L. Leafcup. Woods, occasional; *W. Bailey & J. Swayne* 755.
Polymnia uvedalia L. Bearsfoot. Woods, occasional; *W. Bailey & J. Swayne* 1793.
Prenanthes albissima L. Dry woods, occasional; *R. Mohlenbrock* 12752.
Pyrrhopappus carolinianus (Walt.) DC. False Dandelion. Fields, common; *R. Mohlenbrock* 12893.
Rudbeckia bicolor Nutt. Cherty slopes, rare; *R. Mohlenbrock* 14722.
Rudbeckia hirta L. Black-eyed Susan. Fields and woods, common; *W. Bailey & J. Swayne* 2437.
Rudbeckia triloba L. Brown-eyed Susan. Woods, occasional; *W. Bailey & J. Swayne* 2768.
Senecio aureus L. Golden Ragwort. Wet ground, occasional; *R. Mohlenbrock* 13127.
Senecio glabellus Poir. Butterweed. Wet ground, common; *W. Bailey & J. Swayne* 358.
Silphium integrifolium Michx. Rosinweed. Hill prairies, occasional; *J. Voigt* 2924.
Silphium perfoliatum L. Cup-plant. Rich open soil, occasional; *R. Mohlenbrock* 13879.
Solidago altissima L. Tall Goldenrod. Woods and fields, common; *R. Mohlenbrock* 12406.
Solidago boottii Hook. Cherty slopes, rare; *R. Mohlenbrock* 12965.
Solidago buckleyi Torr. & Gray. Rocky woods, occasional; *W. Bailey & J. Swayne* 867.
Solidago caesia L. Moist woods, common; *W. Bailey & D. Hankla* 633.
Solidago canadensis L. Fields, common; *R. Mohlenbrock s.n.*
Solidago drummondii Torr. & Gray. Limestone cliffs, occasional; *W. Bailey & J. Swayne* 3061.
Solidago gigantea Ait. Late Goldenrod. Wet ground, occasional; *R. Mohlenbrock* 12624.
Solidago glaberrima Martens. Hill prairies, rare; *J. Voigt* 2624.

- Solidago juncea* Ait. Early Goldenrod. Fields and woods, common; R. Mohlenbrock 12703.
- Solidago latifolia* L. Broad-leaved Goldenrod. Moist woods, occasional; R. Mohlenbrock 12435.
- Solidago nemoralis* Ait. Field Goldenrod. Fields and woods, common; W. Bailey & J. Swayne 3187.
- Solidago radula* Nutt. Rocky woods, rare; R. Mohlenbrock 12848.
- Solidago rigida* L. Rigid Goldenrod. Hill prairies, occasional; J. Voigt 3202.
- Solidago speciosa* Nutt. Goldenrod. Woods, occasional; R. Mohlenbrock s.n.
- Solidago strigosa* Small. Ozark Goldenrod. Cherty slopes, rare; R. Mohlenbrock s.n.
- Solidago ulmifolia* Muhl. Elm-leaved Goldenrod. Woods, common; W. Bailey & J. Swayne 886.
- **Sonchus asper* (L.) Hill. Spring Sow Thistle. Waste ground, occasional; J. Voigt s.n.
- **Taraxacum officinale* Wiggers. Common Dandelion. Waste ground, common; R. Mohlenbrock 14928.
- Verbesina alternifolia* (L.) Britt. Yellow Ironweed. Rich soil, occasional; R. Mohlenbrock 12466.
- Verbesina helianthoides* Michx. Crownbeard. Woods, occasional; R. Mohlenbrock 12696.
- Vernonia altissima* Nutt. Ironweed. Woods and fields, common; R. Mohlenbrock 14799.
- Vernonia fasciculata* Michx. Wet soil, occasional; R. Mohlenbrock 12753.
- Vernonia missurica* Raf. Fields and Woods, common; W. Bailey & J. Swayne 2703.
- Xanthium chinense* Mill. Cocklebur. Moist waste ground, occasional; R. Mohlenbrock 12619.
- Xanthium commune* Britt. Cocklebur. Moist waste ground, common; W. Stieglitz 34.

ACKNOWLEDGMENTS

This paper is a contribution from the Pine Hill Field Station and the Department of Botany, Southern Illinois University.

ERRATA

Delete *Acerates lanuginosa* (Nutt.) Dec. and *Rhododendron roseum* (Loisel.) Rehd.

Add *Rhododendron periclymenoides* (Michx.) Shinnars, cherty slopes, rare, Richardson 3, 7; *Rhododendron prinophyllum* (Small) Millais, cherty slopes, Bailey & Swayne 1291; *Potamogeton foliosus* Raf., in water, rare, R. Evers 38626; *Potamogeton pusillus*, in water, R. Mohlenbrock s.n.

LITERATURE CITED

- ASHLEY, W. C. and R. W. KELTNER. 1963. Vegetation of the Pine Hills Field Station in Southwestern Illinois. Trans. Illinois Acad. Sci. 56 (4): 188-201.
- GRUNING, G., and W. M. LEWIS. 1955. The fish population of a springfed swamp in the Mississippi bottoms of southern Illinois. Ecology 36: 552-558.
- MOHLENBROCK, R. H. 1954. Flowering plants and ferns of Giant City State Park. 16 pp. Department of Conservation and the Illinois State Museum.
- MOHLENBROCK, R. H., and J. W. VOIGT. 1959. A flora of Southern Illinois. Southern Illinois University Press.
- Manuscript received March 11, 1965.