



Northwest Grain Growers

Fall 2022 Seed Newsletter

Manager's State of the Cooperative

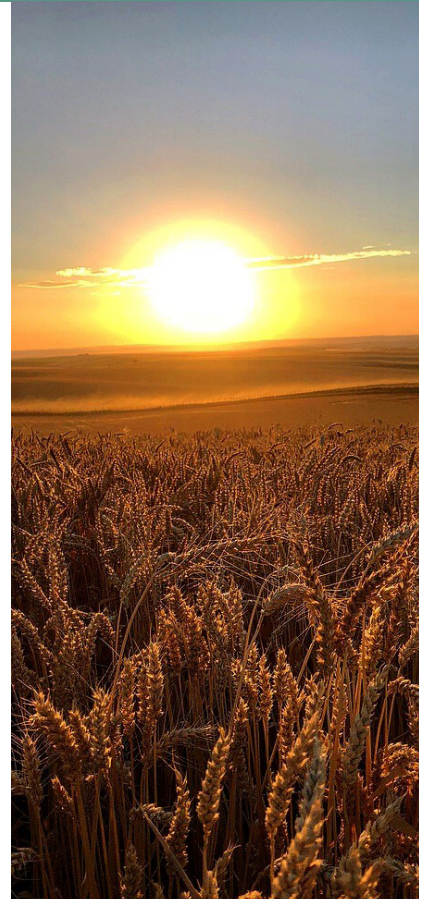
The calendar tells me it is September, but the late harvest has me discombobulated and I have had trouble focusing on the upcoming seed season. The 2022 wheat harvest stands in stark contrast to the 2021 crop year. We have handled almost twice the volume of last year and the quality has been outstanding with better test weights, lower dockage and most importantly lower proteins. What a difference a year makes!

Capital Project Updates – The Board of Directors continues to reinvest in your assets and infrastructure. This past year the Board approved spending over \$4 million dollars in capital expenditures which included adding secondary scales at our busiest harvest locations, remodeling the Walla Walla office and asphaltting two additional ground piles. They also approved several seed plant improvements including a new distributor and spouting at the Walla Walla plant, expanding the seed treat room at Dayton, a dust collection system at Lancaster and a new on-demand treating system at Garfield. These changes were all made to continuously improve our products and service to you the member.

Seed Update – In this year's newsletter you will find information on the new CoAxiom wheat release, seed and treatment prices, treatments options, color coding and a market update. The quality of seed portends to be very good with the excellent growing conditions this spring. I hope you find this information enlightening and if you have any questions, the seed department is ready to take your calls.

Best Regards,

Chris Peha
CEO



Did you know?

NWGG offers direct deposit for grain settlements now.

You can pay your bills online via the My eAgVantage portal on our homepage.

Our smartphone app allows you to make grain sale offers, check your balances, see prices, and much more.

Call an office for help or more information.

Color Coding

All four NWGG locations will be color coding outgoing seed on-demand bringing yet another layer of quality and control to your planting in 2023 (Garfield in spring 2023, all others fall 2022):

Below is an easy guide to our color schemes:



Red-Soft White Winter



Blue-Hard Red Winter



Orange-Winter Club



Yellow-CoAxiums



Green-Clearfields

Pacific Northwest CoAxium Releases

Limagrain Cereal Seeds released through GMG several varieties of CoAxium soft white and hard red winter wheat that were bred specifically for this region. Northwest Grain Growers is a partner in GMG and has full access to the early release of these varieties.

The CoAxium wheat production system was initiated to develop a herbicide tolerant trait in wheat to control tough annual grassy weeds. If you are concerned that cheatgrass, cereal rye or goat grass is limiting your yield and running up your cost of production then you should consider using the CoAxium system. In the CoAxium research plots there was heavy cheat grass pressure and, in some cases, greater than 40% yield difference between the CoAxium treated wheat and the unsprayed check. Many farmers in this region were expecting an above average crop this year, however, they ended up cutting closer to an average crop if they had limited cheatgrass control.

NWGG will carrying two HRW CoAxium varieties and several blends of CoAxium SWW. Through our research in multiple plots over the last couple of years the blends have competed very well against both Magic and Hulk during their competitive field checks.

*We strongly encourage all of our patrons to
RESERVE YOUR SEED EARLY
to make sure you're able to get the varieties you want!
Call our Seed Department today!*

Variety Highlights

You can find the variety testing results on our website at www.nwgrgr.com

LCS Hulk - Medium/late maturing and medium in stature soft white wheat. Broadly adapted to most wheat production regions in the Pacific Northwest. It has very good straw strength and very good winter hardiness. Susceptible to Septoria and strawbreaker foot rot, but tolerant to stripe rust, crown rot and C-stripe. Has high test weight and good on falling numbers. Overall, a very well-rounded variety.

VI Voodoo CL+ (Artdeco X Magic) - Next generation 2 gene IMI Clearfield plus soft white wheat. Very similar plant physiological traits to UI Magic CL+ in maturity and plant stature. Higher yielding in high rainfall areas but is broadly adapted to most wheat production systems in the Pacific Northwest, western and southern Idaho. Unlike UI Magic CL+, this variety shows much a higher tolerance to stripe rust and crown rot. Susceptible to strawbreaker foot rot.
Top yielding Clearfield in Walla Walla 3-year average
Top yielding Clearfield in Dusty 3-year average

LCS Eclipse AX - New hard red winter CoAxium wheat. Early maturing and medium/tall stature. With LCS Rocket and Midwest donor genetics in its background, this variety will have a great yield bump compared to previous HRW AX options. Can be lower on protein levels, it will need additional fertilizer to reach desired levels. Pacific Northwest adapted. Good straw strength and has stripe rust tolerance. Tolerance to Aggressor herbicide.

LCS Mani AX/Dagger & LCS Sol AX/Dagger AX - Both these soft white wheat blends are very similar in their agronomics and their overall yield potential. They both carry good yield potential. Dagger AX is bringing good yield potential to the table also adding standability to the blends. Mani AX and Sol AX carry better rust resistance and very good spring green up. These blends were designed to compete with the potential of Magic CL+ and so far, are living up to that expectation.

Piranha CL+ - Next generation 2 gene IMI Clearfield soft white wheat. Medium/late maturity with tall plant height. Shows very good winter hardiness, broadly adapted and is expected to perform well in low rainfall zones. Shows resistance to stripe rust, foot rot, and tolerance to snow mold.

Seed Protectants

As farming in the PNW has moved toward minimum tillage or no-till we have reduced soil erosion and time in the tractor seat and traded it for increased disease, insect, and weed pressures. In 2016NWGG added additional research plots on seedling protection and stand establishment products and has since increased our efforts in research working with local universities. We have seen some success by mixing different chemistries and rates to target individual diseases and insects to be more effective and help control costs for each grower's individual situation.

The past several years NWGG has worked with Kristina Hagerty at OSU to study dry land fusarium in an effort combat the increasing pressure of fusarium. Data is showing that multiple modes of action are better than a single mode and higher rates of some products add more protection for potentially longer periods of time. In NWGG's seed protectant trials the two-year average shows the addition of TBZ (thiabendazole) or Evergol Energy improved protection over just a base fungicide package.

When it comes to green bridge, at WSU, Dr. Cooks research has found that you should wait two weeks after the grassy weeds are completely dead and brown before you seed allowing Rhizoctonia to dissipate. Since waiting is not common practice, a second mode of action or increased rates can help provide additional protection.

Insects are a potential challenge through the fall, winter, and into the spring. Aphids could be around until the end of November. Last year in the Walla Walla valley we had an Armyworm outbreak that ate large fields to bare dirt and wireworms just never go away. Choosing the right insecticide or insecticides for your conditions or risks is very important!

NWGG's four locations with on-demand seed treatment capabilities can help you target your individual challenges and concerns this fall for stand establishment and seedling protection. Your crop potential starts with stand establishment!

Variety Highlights Continued

LCS Helix AX - HRW CoAxiom with Central Plains genetics. Very early maturing, earlier than LCS Artdeco by 5-10 days and medium/short stature. Adapted to intermediate rainfall zones. Has moderate yield, high-test weight and high protein. Tolerant to the Agressor herbicide.

LCS Jet - Medium/early maturing and medium in stature. The most widely grown HRW in the Pacific Northwest. Broadly adapted and performs well in low, intermediate, and high rainfall environments. Very good straw strength, winter hardiness and high yield potentials. Moderate tolerance to stripe rust, strawbreaker foot rot, crown rot, and C-stripe.

SY Assure - Early maturing that is medium in height. Good adaptation in low to moderate rainfall regions, has potential to yield high in those regions. 528 in the background and has high test weight. Has good straw strength and shows resistance to stripe rust.

AP Iliad - Medium/early maturing and medium height. Adapted for intermediate to high rainfall areas and irrigated. Good straw strength and has high yield potential in higher rainfall zones. Resistant to soil borne mosaic. Above average tolerance to stripe rust and physiological leaf spot.

LCS Blackjack (Roselyn X Bobtail) - Awn less variety that is medium in height and medium/late in maturity. Adapted for intermediate to high rainfall areas and performs competitively in low rainfall. Has excellent yield potential with excellent straw strength and good winter hardiness. Average test weights. Has an exceptional disease package, resistant to strawbreaker foot rot, stripe rust, Septoria, crown rot, and tolerant C-stripe.

LCS Drive - Early maturing, a day earlier than LCS ArtDeco. Short in stature. Very strong straw strength. Broadly adapted to the Pacific Northwest. Performs well in blends and irrigated areas. Resistant to stripe rust and tolerant to crown rot.

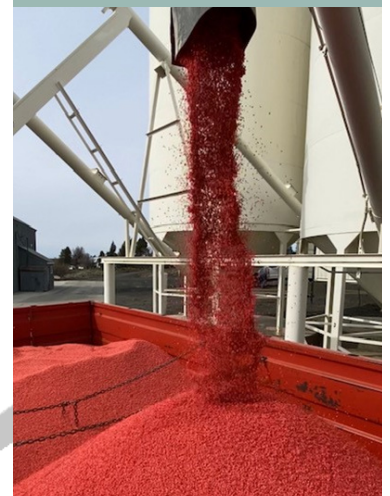
Seed Treatments

Albaugh: Blending difenoconazole, Rizolex, Thiabendazole, and Resonate, this seed treatment package gives you protection against fusarium, dwarf bunt, smut, pythium, rhizoctonia, and insecticide to help combat hessian fly, and aphids. This seed treatment package offers broad spectrum protection against insects, and soil-borne fungi. This package offers you protection for your crops at a competitive price.

VFT APX Hi-Rhize: With a combination of Trebuset, Vibrance, and Cruiser, this Hi-Rhize blend gives you protection against fusarium, powdery mildew, aphids, and hessian fly. This gives 6-8 weeks of protection for you seed to get up and out of the ground with a healthy start.

BASF Base: BASF is bringing to the table their seed treatment for cereals. This treatment has triticonazole for rhizoctonia protection, Reylenya for additional rhizoctonia and fusarium, and Metalaxyl for pythium.

Evergol Energy: Combining Prothiaconazole and Penflufen into this blend provides great fusarium and rhizoctonia protection as a base and an add-on

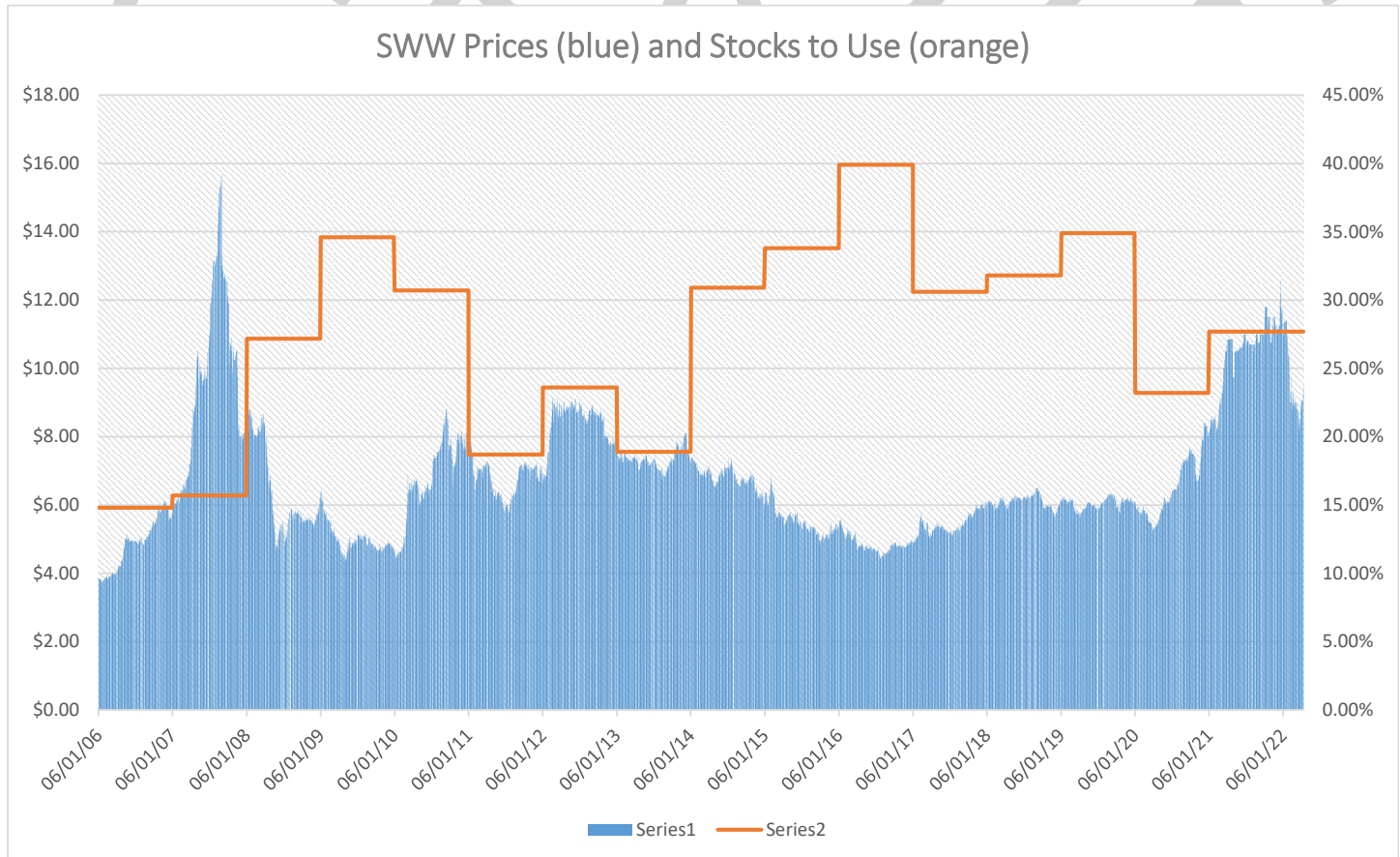


Market Talk

There's no easy way to explain grain markets in "normal" times, so you can imagine the difficulty when we try to boil down all of the current events, plus trying to forecast what might come next. Slightly easier than explaining all of the world woes is talking about our niche market here in the Pacific Northwest - Soft white wheat.

Local markets enjoyed a major price boon for SWW starting even before the poor 2021 crop was harvested, much of that price rise, as well as all know, predicated on our own poor crops, as well as those in Montana, North Dakota, and the breadth of Canada (amongst others). From August 11th, 2021 to June 29th, 2022 the cash price for SWW didn't fall below \$10.00 per bushel, despite the fact that most areas in the PNW had fully recovered from the extreme drought by that time. What happened next? Well, harvest happened, and not just an average one, but one of the largest crops ever for the area, and the biggest one for NWGG. So, we went from a record HIGH 2020 crop to a record LOW 2021 crop back to a record HIGH (maybe?) 2022. Incredible.

The most recent figures from the USDA says this year's white wheat (includes hard white, which makes up about 10% of the total) at 289 million bushels of production (2020 was 273, 2021 was 201) - A hefty amount of wheat to trade into markets that are highly unsure of themselves. We like to talk about the stocks-to-use ratio, which is an estimated percentage that shows how much grain will be left over at the end of the year where the lower, the number the "tighter" the stocks available would be:



As the graphic shows, in times of relatively higher stocks-to-use, price tends to stay depressed, but not always. We've seen higher prices in the last 15 months with a stocks-to-use over 20% than we had back in 2011 and 2013 (with lower stocks-to-use). Does more grain beget lower prices for the rest of 2022's crop?

What else should we be asking ourselves as we try to parse the next 10 months of grain marketing?:

- What will the US corn crop end up being, and how much wheat will need to be fed?
- Will US wheat prices continue to outpace the rest of the world (again) and scare off more buyers?
- Does increased competition from Canada and Australia harm our local markets later this year?
- Do forecasters have it right that another La Nina pattern will come for South America and harm their corn/soy production?
- Can the US\$ come down from its high place to give US grain exports a fighting change later this year?

All speculation aside, the NWGG Marketing Department wants to repeat the idea that "it's always wise to sell some when you're making money" and be a prudent marketer after a year of (hopefully) great yields and quality!



Meet your NWGG Seed Department

Walla Walla



Mike Klicker

305 W. Reese St.
Walla Walla, WA 99632
(509) 525-6510



Nate Davin

Dayton



Jacob Forsmann

206 N Guernsey St.
Dayton, WA 99325
(509) 382-2262

6453 Lancaster Rd.
St. John, WA 99171
(509) 648-3713

Lancaster



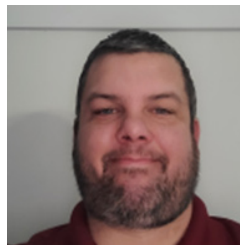
Royce Taylor

Garfield



Tami Southern

305 E. California St.
Garfield, WA 99130
(509) 635-0107



CJ Brown

Seed Treatments Cont.

Resonate/Gaucho: Insecticide for aphid control and wireworm protection

Lumivia: Wireworm and Armyworm control

Teraxxa: Wireworm control.

TMC Zinc: Zinc is critical for driving speed of emergence, establishing strong root health, and creating tiller counts – ultimately leading to improved hardiness and more uniform stands.

Step-Up: is a seed nutritional that is specifically designed to interact with and respond to the seed by supplementing the protein and amino acids released during the early stages of germination, providing a faster and more uniform emergence, resulting in higher yields.

Treat Safe: This is as an alternative to mineral oil. This product will help eliminate dust-off, improve flowability, and helps bind seed treatments to the seed.

Difenoconazole: Broad spectrum fungicide that targets fungi such as rhizoctonia, Septoria, and fusarium.

Thiabendazole (TBZ): Fungicide treatment used to boost fusarium protection

Apron/Anchor: Pythium protection

Stamina: Broad spectrum fungicide with added cold tolerance value for late seeded wheat