



Governo dos Açores



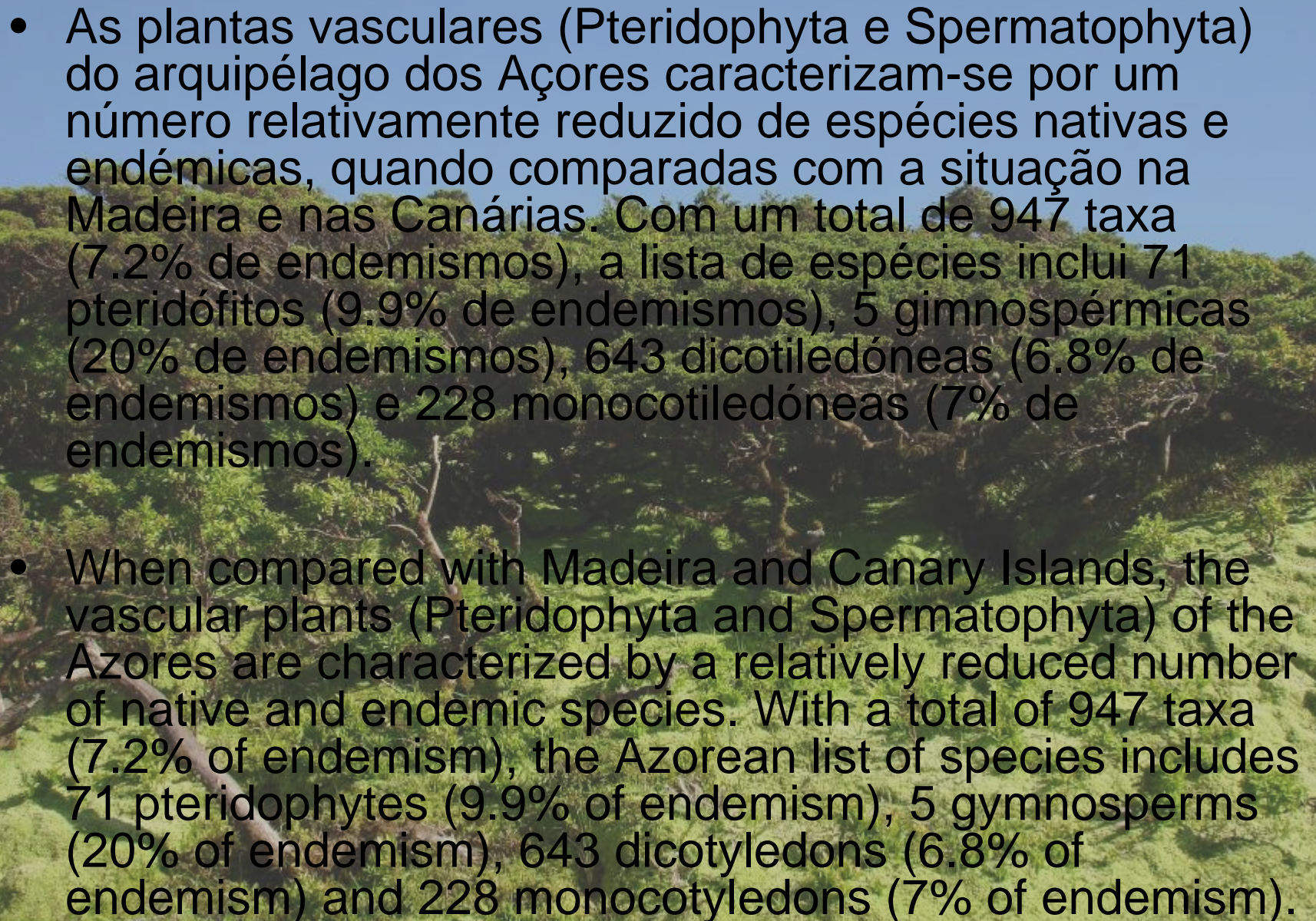
A preview of Images from the Azorean Endemic Vascular Plants – Part 2

By

Cátia Alves, Hanno Schaefer,
Luís Silva & Paulo A. V. Borges

How to cite / Como citar:

Alves, C., Schaefer, H., Silva L. & Borges, P.A.V. (2009). *A preview of images from the Azorean endemic vascular plants – part 2*. Univ. Azores, Angra do Heroísmo.

- 
- As plantas vasculares (Pteridophyta e Spermatophyta) do arquipélago dos Açores caracterizam-se por um número relativamente reduzido de espécies nativas e endémicas, quando comparadas com a situação na Madeira e nas Canárias. Com um total de 947 taxa (7.2% de endemismos), a lista de espécies inclui 71 pteridófitos (9.9% de endemismos), 5 gimnospérmicas (20% de endemismos), 643 dicotiledóneas (6.8% de endemismos) e 228 monocotiledóneas (7% de endemismos).
 - When compared with Madeira and Canary Islands, the vascular plants (Pteridophyta and Spermatophyta) of the Azores are characterized by a relatively reduced number of native and endemic species. With a total of 947 taxa (7.2% of endemism), the Azorean list of species includes 71 pteridophytes (9.9% of endemism), 5 gymnosperms (20% of endemism), 643 dicotyledons (6.8% of endemism) and 228 monocotyledons (7% of endemism).

Euphorbiaceae (*Euphorbia azorica*)



© Hanno Schäfer



© Luís Silva

© Luís Silva

Common name/Nome comum: *Erva-leiteira.*

Euphorbiaceae (*Euphorbia stygiana stygiana*)



© Hanno Schäfer

Common name/Nome comum: *Trovisco-macho*.

Euphorbiaceae (*Euphorbia stygiana* ssp. *santamariae*)



© Hanno Schäfer

Common name/Nome comum: *Trovisco-macho de Santa Maria.*

Fabaceae (*Lotus azoricus*)



© Hanno Schäfer



© Luís Silva



© Luís Silva



Oleaceae (*Picconia azorica*)



© Hanno Schäfer

Common name/Nome comum: *Pau-branco*.

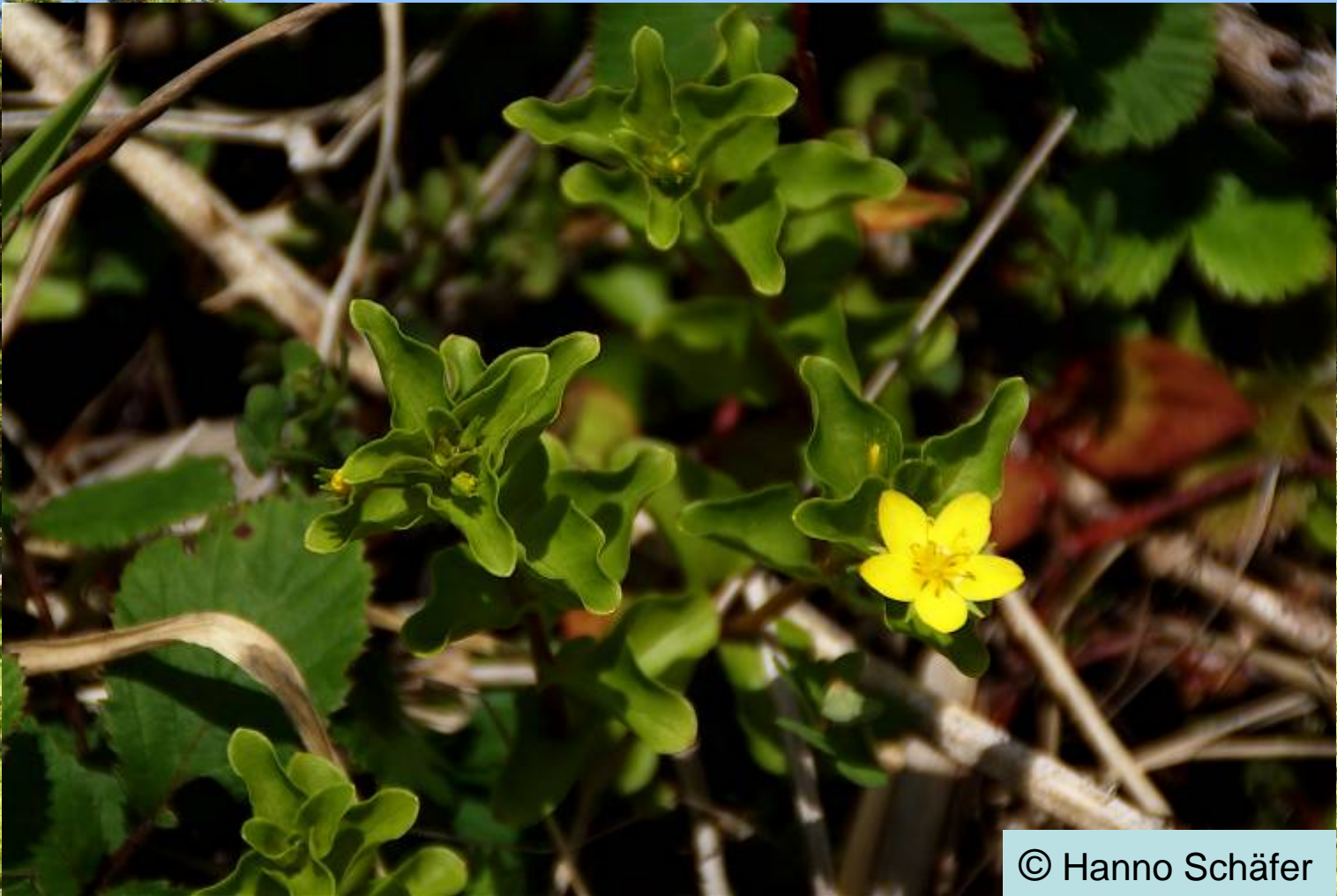
Polygonaceae (*Rumex azoricus*)



© Paulo Borges

Common name/Nome comum: *Labaça-crespa.*

Primulaceae (*Lysimachia azorica*)



© Hanno Schäfer

Rhamnaceae (*Frangula azorica*)



© Luís Silva

Common name/Nome comum: *Sanguinho*.

Rosaceae (*Prunus azorica*)



© Hanno Schäfer

Common name/Nome comum: *Ginja*, *Ginjeira-brava*, *Ginjeira-do-mato*.

Rosaceae (*Rubus hochstetterorum*)



© Hanno Schäfer



© Luís Silva

Common name/Nome comum: *Silvado-manso*, *Silva-mansa*.



© Luís Silva

Loranthaceae (*Arceuthobium azoricum*)



© Pedro Cardoso

Common name/Nome comum: *Espigos-de-cedro*.

Orobanchaceae (*Euphrasia azorica*)



© Luís Silva

Orobanchaceae (*Euphrasia grandiflora*)



© Rui Elias

Scrophulariales (*Veronica dabneyi*)



Hypericaceae (*Hypericum foliosum*)



© Luís Silva



© Luís Silva

Common name/Nome comum: *Furalha, Malfurada.*

Cyperaceae (*Carex vulcani*)



© Hanno Schäfer

Orchidaceae (*Platanthera azorica*)



© Hanno Schäfer

Common name/Nome comum: *Orquidia.*

Orchidaceae (*Platanthera micrantha*)



Common name/Nome comum: *Conchelo-do-mato.*

Poaceae (*Deschampsia foliosa*)



© Hanno Schäfer

Common name/Nome comum: *Feno*.

Poaceae (*Festuca francoi* = *F. jubata*)



© Alvaro Areias CA_FOC

Common name/Nome comum: *Brasel-do-mato.*

Poaceae (*Festuca petraea*)



© Luís Silva



© Luís Silva

Common name/Nome comum: *Bracel-da-rocha.*

Poaceae (*Gaudinia coarctata*)



© Hanno Schäfer

Poaceae (*Holcus rigidus*)



© Luís Silva



© Luís Silva

Common name/Nome comum: *Caniça, Erva-caniça.*

Poaceae (*Rostraria azorica*)



© Hanno Schäfer