

MORPHOLOGICAL AND PHYLOGENETIC CHARACTERIZATION OF PESTALOTIOPSIS IN RELATION TO HOST ASSOCIATION

KAMHAWY, M.A.M, MAGGIE E. M. HASSAN, SAHAR A. SHARKAWY AND NOHA F. EL-BADAWY

Plant Pathol. Res. Inst., ARC, Giza

(Manuscript received 4 August 2010)

Abstract

Cross-inoculation studies of fifteen *Pestalotiopsis* isolates collected from different hosts and locations revealed that the fungus is a non specific pathogen. Isolates were able to attack apple, avocado, date-palm, guava, mango and pomegranate causing leaf spot and fruit rot. Disease severity and disease symptoms varied according to plant species. Guava plants was the most susceptible host, all being attacked by tested isolates resulting in brown leaf spot followed by pomegranate, while date palm was least affected. Avocado isolate (P6) was more aggressive on all tested plants, while date palm isolate (P12) was weakest. Six primers were used to determine the degrees of similarity among the tested isolates through RAPD - PCR. Isolates from the same host were not phylogenetically close - related. A close phylogenetic relationship among isolates possessing similar morphological characters was observed.

Key words: *Pestalotiopsis*, host association, cross inoculation, morphological characters, DNA fingerprinting.

INTRODUCTION

Species of *Pestalotia* are common pathogens on a broad variety of plants found in the temperate and tropical regions of the world (Fail and Langenheim, 1990). Some species appear to grow primarily as saprophytes, whereas others are more aggressive and cause severe leaf blights, especially on trees (Arrhenius and Langenheim, 1986). Although there are few detailed investigations on the infection process of these fungi, it is apparent that they often exhibit latent infections and are more aggressive as pathogens in tissue that has been wounded (Fail and Langenheim, 1990). Uchida (2004) reported that *Pestalotia* is a wide spread plant pathogen in different parts of the world as well as in Egypt. It attacks a large number of fruit trees causing several diseases. *Pestalotia* infection does not kill the plant entirely but the biosynthetic capacity of the tree is undoubtedly reduced. Besides the above mentioned, *Pestalotia* has been observed on a number of hosts of great economic importance. No detailed account of the total amount of loss incurred has been estimated. Joshi (2005) reported that *Pestalotia* fungus attacks cashews and the symptoms can be observed as minute irregular necrotic patches of brick red colour at

the leaf margins which enlarged, turned grey-silver in colour and covered the major portion of the leaf lamina.

The use of various nucleic acid-based techniques for the detection and identification of microorganisms has dramatically increased in recent years and may provide highly specific tools for such purposes. Restriction fragment length polymorphisms (RFLPs), which are costly and time consuming, can be used; however, the random amplified polymorphic DNA (RAPD) is also a useful technique to evaluate taxonomic identity. The application of (RAPD) to produce isolate-specific DNA-fingerprints is especially promising (Welsh and McClelland, 1990 and Williams *et al.*, 1990). This technique has the advantage of that no DNA base sequence information of the organism is needed. The technical simplicity and speed of RAPD methodology is a principal advantage over other techniques (Gepts, 1993).

The aim of this work was to determine pathogenic capabilities, cross infectivity of Pestalotiopsis isolates and to uncover the genetic diversity among some isolates through the use of RAPD method.

MATERIALS AND METHODS

1-Sources of Pestalotiopsis isolates

Fifteen isolates of Pestalotiopsis fungus, obtained from six different hosts showing different symptoms and from various governorates of Egypt, were used in this study. These isolates were obtained from Research Department of Fruit and Woody Trees Disease, Plant Pathology Institute, A.R.C. Details of the obtained isolates are tabulated in Table(1).

Pathogenicity and Cross-inoculation studies of Pestalotiopsis isolates

Pathogenic capabilities on alternative hosts of Pestalotiopsis isolates were determined using excised, 20-30 cm long of twigs, apparently free from mechanical injury or diseases, were carefully chosen of the following plants, "Guava" (*Psidium guajava* L.), "Pomegranate"(*Punica granatum* L.), "Avocado"(*Persea americana* L.), "Mango"(*Mangifera indica* L.), and "Apple"(*Malus domestica* Borth). Seedlings, one years old originated from seeds, were used for "Date palm"(*Phoenix dactylifera* L.). Excised twigs were thoroughly washed with tap water, surface sterilized by 70% ethanol using atomizer and air dried. The base of excised twigs were put in conical flasks containing nutrient Hewitt's solution (Hewitt, 1952) covered with aluminum foil to prevent light.

Preparation of pathogen inocula

Inocula were prepared as previously described by Ker Chung and Hoch (1996). Spore suspension was strained through two layers of cheesecloth to remove mycelial clumps.

Conidiospore concentration was determined and adjusted with a haemocytometer to 10^6 spore / ml approximately then, excised twigs of different host plants and date palm seedling were rubbed gently with a hair brush and then sprayed using an atomizer to the point of run off. Inoculated plants were covered with large plastic bags to maintain high humidity for two days. Control plants were similarly treated with sterile distilled water. Five replicates plants were used for each treatment.

Table 1. Isolates of *Pestalotia* used in this study, their hosts, symptoms and sample origin.

Code No. of isolates	Hosts	Symptoms	governorate
<i>Pestalotiopsis psidii</i> (P1)	"Guava" (<i>Psidium guajava</i> L.)	Guava Leaf Spot	Menofia
<i>Pestalotiopsis psidii</i> (P2)	"Guava" (<i>Psidium guajava</i> L.)	Guava Canker	Beheira
<i>Pestalotiopsis psidii</i> (P3)	"Guava" (<i>Psidium guajava</i> L.)	Root Rot	Beheira
<i>Pestalotiopsis</i> sp. (P4)	"Pomegranate" (<i>Punica granatum</i> L.)	Leaf and Flower Spot	Asyut
<i>Pestalotiopsis</i> sp. (P5)	"Pomegranate" (<i>Punica granatum</i> L.)	Leaf and Flower Spot	Asyut
<i>Pestalotiopsis palmarum</i> (P6)	"Avocado" (<i>Persea americana</i> L.)	Leaf Spot and Fruit canker	Qalyubia
<i>Pestalotiopsis palmarum</i> (P7)	"Avocado" (<i>Persea Americana</i> L.)	Leaf Spot and Fruit canker	Qalyubia
<i>Pestalotiopsis mangiferae</i> (P8)	"Mango" (<i>Mangifera indica</i> L.)	Root Rot	Sharqia
<i>Pestalotiopsis mangiferae.</i> (P9)	"Mango" (<i>Mangifera indica</i> L.)	Root Rot	Beheira
<i>Pestalotiopsis mangiferae.</i> (P10)	"Mango" (<i>Mangifera indica</i> L.)	Leaf Spot	Gharbia
<i>Pestalotiopsis mangiferae.</i> (P11)	"Mango" (<i>Mangifera indica</i> L.)	Leaf Spot	Beheira
<i>Pestalotiopsis palmicola.</i> (P12)	"Date palm" (<i>Phoenix dactylifera</i> L.)	Leaf Spot and Blight	Giza
<i>Pestalotiopsis palmicola.</i> (P13)	"Date palm" (<i>Phoenix dactylifera</i> L.)	Leaf Spot and Blight	Giza
<i>Pestalotiopsis</i> sp. (P14)	"Apple" (<i>Malus domestica</i> Borth)	Root Rot	Menofia
<i>Pestalotiopsis</i> sp. (P15)	"Apple" (<i>Malus domestica</i> Borth)	Root Rot	Menofia

Disease assessment

Disease assessment was determined for each leaf according to the disease severity rating which include the size and frequency of the lesion / leaf. The following numerical rates were suggested for disease severity:

0= No symptoms.

1= Few scattered lesions covering about 1-25% of the leaf.

2= Spots covering about 26-50% of the leaf.

3= Spots coalescing and covering about 51-75% of the leaf.

4= Severe infection with coalescing and covering more than 75% of the leaf.

Disease severity was calculated according to the equation suggested by Townsend and Heuberger (1943) as follows: Disease severity (%) = $\sum (n \times r) \times 100 / 4N$. Whereas: (n) is the number of leaves in each numerical grade(r) and (N) is the total number of inoculated leaves multiplied by the maximum numerical grade.

Fruits inoculation

The same procedure was used to assess the capability of fungal isolates to attack detached fruits of tested plants. With exception of date palm fruits (not available at the time of study). Inoculation was performed by wounding the fruits with 600 mesh carborandum powder. Then, spore suspension of 10^5 spore/ml approximately was atomized onto fruits of tested hosts. Control fruit were similarly treated with sterile distilled water. Five replicates were used for each treatment. After inoculation, fruits packed into transparent plastic bag to serve as a moist chamber for 48 h at room temperature ($28 \pm 2^\circ\text{C}$) to ensure high humidity during the infection process. After 48 hour, the inoculated fruits were unpacked and left at room temperature with a daily check for symptoms development.

Variation among Pestalotiopsis isolates

The 15 single spore isolates were grown on PDA medium. Cultures were incubated at 24°C under continuous light, and cultural morphology was examined after 7 days. Colony color was defined according to Raynor (1970). Spore dimension was determined for 30 randomly selected conidia of each isolate in sterile distilled water. The isolates were characterized, initially, by comparing morphological and cultural characteristics (*i.e.*, size of conidia, length of apical and basal appendages).

Molecular characterization

Extraction of genomic DNA

DNA was extracted from 50 mg of mycellium using Qiagen Kit for DNA extraction. The extracted DNA was dissolved in 100 ul of elution buffer. The concentration and purity of the obtained DNA was determined by using "Gen quanta" system-Pharmacia Bio-tech. The purity of the DNA for all samples was 90-97% based on the 1.6 and 1.8 ratio. The DNA concentration was adjusted at 6 ng/ ul for all samples in TE buffer pH. 8.0.

Random amplified polymorphism DNA (RAPD) technique

RAPD amplification was generally carried out using six different random primers shown in Table (2). Each 25 ul reaction mixture contained 1 unit of *Taq* DNA polymerase, 0.2

mM each dNTP, 1x PCR buffer, 3mM MgCl₂, 10 pmol of primer and approximately 50 ng of template genomic DNA. PCR condition was as follows: initial denaturation at 95 °C for 5 min, followed by 45 cycles of denaturation at 95 °C for 1 min, annealing at 36 °C for 1 min and extension at 72°C for 2 min followed by a final extension cycle at 72°C for 10 min then held at 4°C. The amplified products were separated on 2% agarose gel at 75 constant volt, using 1X TBE buffer followed by staining with ethidium bromide solution (1ug/ ml), and the bands were visualized with UV transilluminator. All gels were scanned for band R_f using gel documentation system (AAB). The M.W. of bands were determined against DNA marker Ameresco (100 bp) K 800 and phenograms were based on unweighted pair-group method of arithmetic means (UPGMA).

Table 2. list of primers used in this study along with their sequences.

Primer code	Sequence (5' --> 3')
Primer 1	GGTGCGGGAA
Primer 2	GTTTCGCTCC_
Primer 3	GTAGACCCGT
Primer 4	AAGAGCCCGT
Primer 5	AACGCGCAAC
Primer 6	CCCGTCAGCA

RESULTS AND DISCUSSION

Pathogenicity and Cross infectivity of Pestalotiopsis isolates

The aim of this study is to determine the pathogenicity of Pestalotiopsis isolates from the six different hosts as well as to uncover possible cross pathogenicity. Results (Table 3 and Fig. 1) showed that the pathogen was able to attack apple, avocado, date-palm, guava, mango and pomegranate, however, disease severity and disease symptoms varied according to the plant species. Guava plants were the most susceptible host as all the tested isolate were able to infect causing leaf spots, however, with different degrees. Isolates were not necessarily more virulent to the hosts from which they were isolated. For example, isolates 4 and 5 from pomegranate and isolates 5 and 7 from avocado and isolates 8 and 9 from mango were highly pathogenic to guava. Isolates P1 – P7 were also more pathogenic than other isolates. It was also obvious that larger number of compatible reactions (high disease severity) in case of guava and pomegranate with Pestalotiopsis isolates compared with other host/pathogen combinations. Such a non-host specific property of the pathogen

provides a variety of sources for inoculum in nature. Such results are in agreement with those of Jeewon, *et al.* (2004) who reported that, although many species names of Pestalotiopsis (Pestalotia) refer to the host species from which they were recovered, some investigations have shown that Pestalotiopsis species are not highly host-specific. Pestalotiopsis species (Deuteromycetes, Melanoconiales) are common in both temperate and tropical ecosystems and frequently are associated with leaves of woody plants. Most Pestalotia species in the tropics have caused.

Table 3. Pathogenic capabilities and Cross - inoculation studies of Pestalotiopsis isolates.

Code No. of isolates	%disease severity 15 days after inoculation						
	Avocado	Apple	Date Palm	Guava	Mango	Pomegranate	Mean
P1	2.10	3.7	0.0	8.3	0.0	16.1	5.33
P2	3.92	4.2	0.0	17.0	0.0	17.4	7.09
P3	6.87	5.2	0.0	4.2	0.0	13.0	4.87
P4	2.5	2.0	3.3	14.3	2.7	20.0	6.07
P5	5.93	2.7	0.0	20.8	3.3	20.0	8.78
P6	5.0	1.7	4.0	26.4	5.0	15.0	9.51
P7	4.2	0.0	5.7	16.43	5.7	19.0	8.50
P8	3.7	3.0	0.0	21.0	4.0	3.0	5.78
P9	2.5	3.0	6.6	23.2	5.7	6.87	7.97
P10	6.6	3.0	0.9	2.4	1.1	10.0	5.65
P11	5.2	4.6	1.36	4.5	2.9	3.3	3.64
P12	0.0	3.3	7.18	3.0	1.8	0.0	4.69
P13	0.0	3.3	1.69	2.5	1.8	0.0	1.99
P14	2.10	6.9	0.0	2.9	0.0	2.9	2.46
P15	1.80	10.0	0.0	7.18	0.0	3.92	3.82
Mean	3.49	3.21	2.16	11.61	2.66	9.41	

L.S.D at 0.05 for: Isolates(I) = 0.39 P1,P2,P3:guava,P4,P5:pomegranate,
Hosts (H) = 0.25 P6,P7:avocado,P8,P9,P10,P11:mano,
I XH = 0.9 P12,P13:date palm ,P14,P15:apple

serious leaf blighting on trees, the fungus Pestalotiopsis (Pestalotia) is not host specific, and has been isolated from a wide variety of palms (Fail and Langenheim 1990). Wounds or plant damage of different causes often seems to be a prerequisite for infection and disease development (Elliott, 2006). The disease symptoms on the artificially infected apple leaves can be seen as faint brown spot surrounded by yellow halo. It is also clear from the same Fig (1,B) that the symptoms on apple fruit are faint brown like cavity turned to dark brown with age. *Pestalotia malicola* is known to attack several members of the Rosaceae, including apple and pear as well as other fruits (Ozoe *et al.*, 1967). It is also clear that Pestalotiopsis isolates can attack avocado leaves and fruits, the symptoms on leaves are seen as circular dark brown spots on both leaves and fruits that can coalesce with each other to cover more area of the fruit (Fig.1C and D).

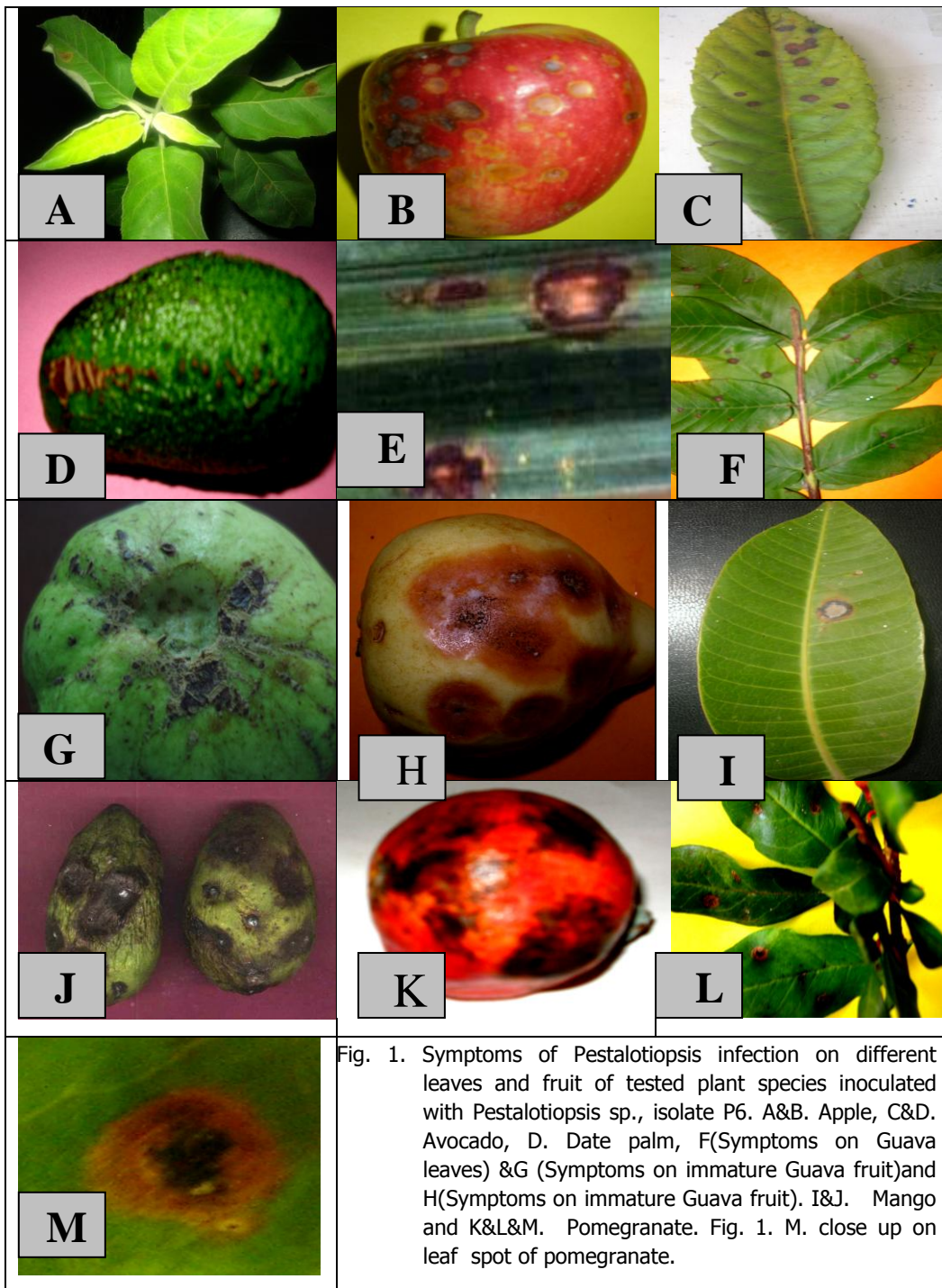


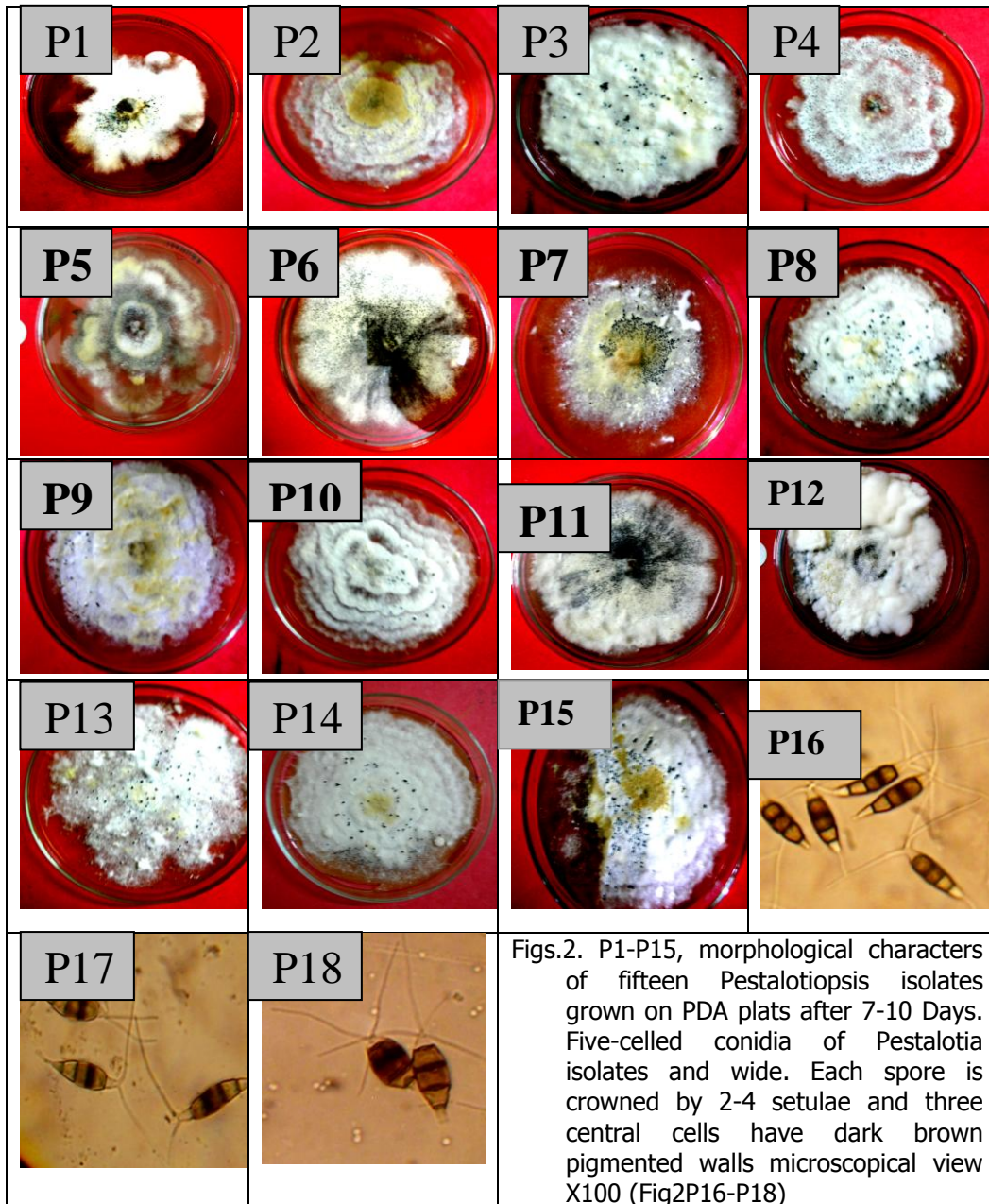
Fig. 1. Symptoms of *Pestalotiopsis* infection on different leaves and fruit of tested plant species inoculated with *Pestalotiopsis* sp., isolate P6. A&B. Apple, C&D. Avocado, D. Date palm, F(Symptoms on Guava leaves) &G (Symptoms on immature Guava fruit)&H(Symptoms on immature Guava fruit). I&J. Mango and K&L&M. Pomegranate. Fig. 1. M. close up on leaf spot of pomegranate.

The symptoms on date- palm are brown leaf spots being surrounded by a chlorotic halo with age with the center of the spots turning grey and fell out (Fig. 1.E). Disease symptoms on mango consisted of tiny circular, light grey colored spots and brown rot spot on fruit with acervuli on them and a rusty halo. Spots became larger, tended to coalesce and darken (Fig.1I&J), finally resulting fruit rot. These results are in

agreement with those reported by Ko, *et al.* (2007). Pomegranate infection (Fig. 1 K&L) can be seen as circular to somewhat angular dark reddish brown to almost black surrounded by a diffuse orange halo.

Culture Morphology

Morphological characteristics of typical cultures *Pestalotiopsis* isolates are shown in Figure (2) on PDA. Most of the isolates first developed grayish to white zonate colonies that later developed color and small, acervular conidiomata. Acervuli were black for all isolates examined. The color became darker as culture age increased. The 15 isolates of *Pestalotiopsis* could be separated into three main groups based on their color on PDA (Fig. 2). However, color groups did not separate into species (Lisa *et al.*, 2006). The first group, buff (top) and pale luteous (bottom), included guava isolates, P2, P5 pomegranate isolate, P6&7, P9 (mango) and P15 (apple). The second group, pale buff (top) and (bottom side), included isolates 1, 3, 8, 11, 12, 13 and 14, while the remaining isolates fell into the third category, with white mycelium. However, acervula production varied from abundant concerning the entire PDA plate (isolates 2, 3, 4, 6, 8, 11 and 13) to moderate in the center of the PDA plate (isolates 1, 7 and 15) and the remaining isolates reducing sparse very Acervuli formed after 10 days. The conidia were multi-cellular with usually three darkly pigmented center cells and clear pointed end cells. Conidia shape was ellipsoid or fusoid. A diagnostic feature is the two or more clear, whisker-like appendages arising from the end cell. On the basis of conidial morphology (Fig. 2 P16-P18), our isolates possessed five-celled conidia, of which apical and basal cells were hyaline, and the three median cells from light brown to dark brown or olive green (Fail and Langenheim, 1990). Measurements of conidia revealed few differences in size among isolates from the same host as well from different hosts. Spore measurements varied from 21.43 to 28.92 μm mean length and 4.64 to 8.71 μm mean width.



Basal appendages were hyaline, straight or slightly curved, and varied from 4.0 to 5.3 μm mean length. Number of apical appendages ranged from two to four, with three being the most common.

Table 4. Characteristics of conidia of Pestalotiopsis isolates.

Code No. of isolates	Size of Conidia (μm)		No. of Apical appendage	length. of Apical appendage (μm)	Basal appendage length (μm)
	L	W			
P1	26-32 x 6 – 8 Average (28.92 \pm 0.2 x 7.27 \pm 0.07)		2 - 3	19.0 \pm 0.5	4.3 \pm 0.3
P2	20 – 32 x 5.8 – 8 Average 27.36 \pm 0.4 x 6.69 \pm 0.07		2 - 3	17.8 \pm 0.7	4.0 \pm 0.3
P3	20 – 24 x 7.2 – 8 Average 21.86 \pm 0.13 x 7.74 \pm 0.03		2 - 3	18.3 \pm 0.7	4.5 \pm 0.2
P4	24 – 32 x 8 -12 Average 25.5 \pm 0.26 x 9.14 \pm 0.13		2 -3	13.3 \pm 0.4	2.9 \pm 0.2
P5	20 – 28 x 8 -12 Average 25.78 \pm 0..26 x 8.71 \pm 0.13		2 -4	16.3 \pm 0.4	2.9 \pm 0.2
P6	20 – 32 x 8-10 Average 26 \pm 0..4 x 8.14 \pm 0.07		2 -4	15.3 \pm 0.4	4.8 \pm 0.3
P7	20 – 32 x 8-10 Average 26 \pm 0..4 x 8.35 \pm 0.07		2 -4	19.3 \pm 0.4	5.0 \pm 0.3
P8	24 – 28 x 4 – 6 Average 24. 85 \pm 0.13 x 4.96 \pm 0.07		2 -4	20.3 \pm 0.4	4.0 \pm 0.3
P9	24 – 28 x 4 – 6 Average 24. 92 \pm 0.13 x 5.07 \pm 0.07		2-3	26.5 \pm 1.3	4.0 \pm 0.3
P10	24 – 28 x 5-6 Average 25.35 \pm 0.13 x 5.35 \pm 0.03		2 - 4	22.5 \pm 1.0	5.0 \pm 0.3
P11	24 – 32 x 5-7 Average 25.78 \pm 0.26 x 5.74 \pm 0.07		2 -4	21.3 \pm 0.6	4.8 \pm 0.3
P12	20– 26 x 8 Average 22.35 \pm 0.13 x 8		2 - 4	19.1 \pm 0.6	2.9 \pm 0.2
P13	20 – 26 x 8 Average 22.86 \pm 0.2 x 8		2 - 3	15.8 \pm 0.5	5.3 \pm 0.3
P14	20 – 24 x 4-6 Average 21.43 \pm 0.13 x 4.64 \pm 0.07		2 - 3	11.6 \pm 0.5	5.3 \pm 0.1
P15	20 – 24 x 4-6 Average 21.71 \pm 0.13 x 4.7 \pm 0.07		2 - 3	11.6 \pm 0.5	5.3 \pm 0.1

Each value is the mean \pm SE in measurements of conidia.

The appendages showed the most size variation, with mean lengths ranging from 11.6 to 26.5 μm (Table 4).

Genetic variations among the tested *Pestalotiopsis* isolates

Six different 10 mer primers were used to study the genetic variation among the fifteen isolates of *Pestalotiopsis* collected from different hosts and locations in Egypt. The RAPD profile of amplification products generated with primers is presented in Fig.4 (a-f). All the used primers revealed a high degree of similarities among the tested isolates.

The cluster of the isolates with primer 1 revealed that *Pestalotia* isolates can be grouped into a number of sub clusters. Isolate no.1 can be grouped with isolates no.2 & 3 with 96.91 % similarity, and these isolates from the same host and have the same number of apical appendage. In addition by using primers 3&6 isolate 4 and 5 were grouped together with 98% similarity, both isolates were isolated from pomegranate and have the same basal appendage length. By using primers 1,2,3,4 and 6, isolates 6 and 7 located in the same group with similarity ranged from 96.9 to 99.8, all of them isolated from avocado, they were more aggressive to all tested plants, they were located in the first group based on their color on PDA and they have the same number of apical appendage . Primers 3, 4, 5 and 6 divided isolates 8,9,10 & 11, which isolated from mango plants, into two groups. Isolate 8 was grouped with isolate 9 with 99% similarity, and they have the same basal appendage length. Meanwhile, isolate 10 was grouped with isolate 11 with similarity ranged from 90.9 with primer 4 to 98.8 with primer 3. All six primers presented isolates 12 & 13 from date-palm in the same group with similarity 99%. Primers 5 &6 located isolates 5 and 6 in one group with similarity ranged from 93.76 to 99.08, both of them isolated from apple plant, they have the same number of apical appendage and the same basal appendage length. The advent of DNA based molecular methods helped to study inter - and intra-specific variation in filamentous

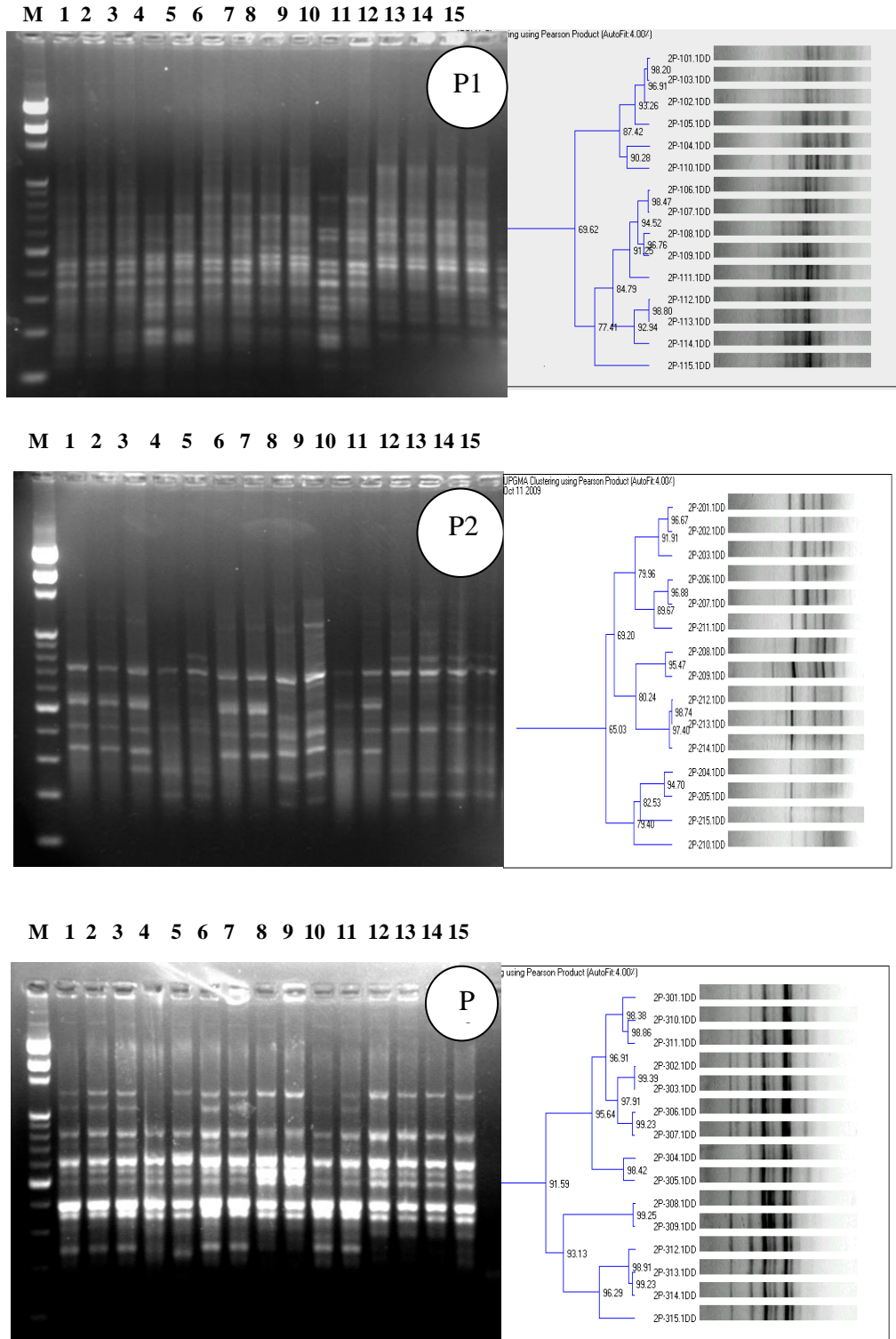


Fig. 4. DNA amplified banding patterns based on RAPD and UPGMA cluster analysis for Pestalotiopsis Isolates (1-15) using different primers (P1-P3). M: DNA marker (1000-50 bp).

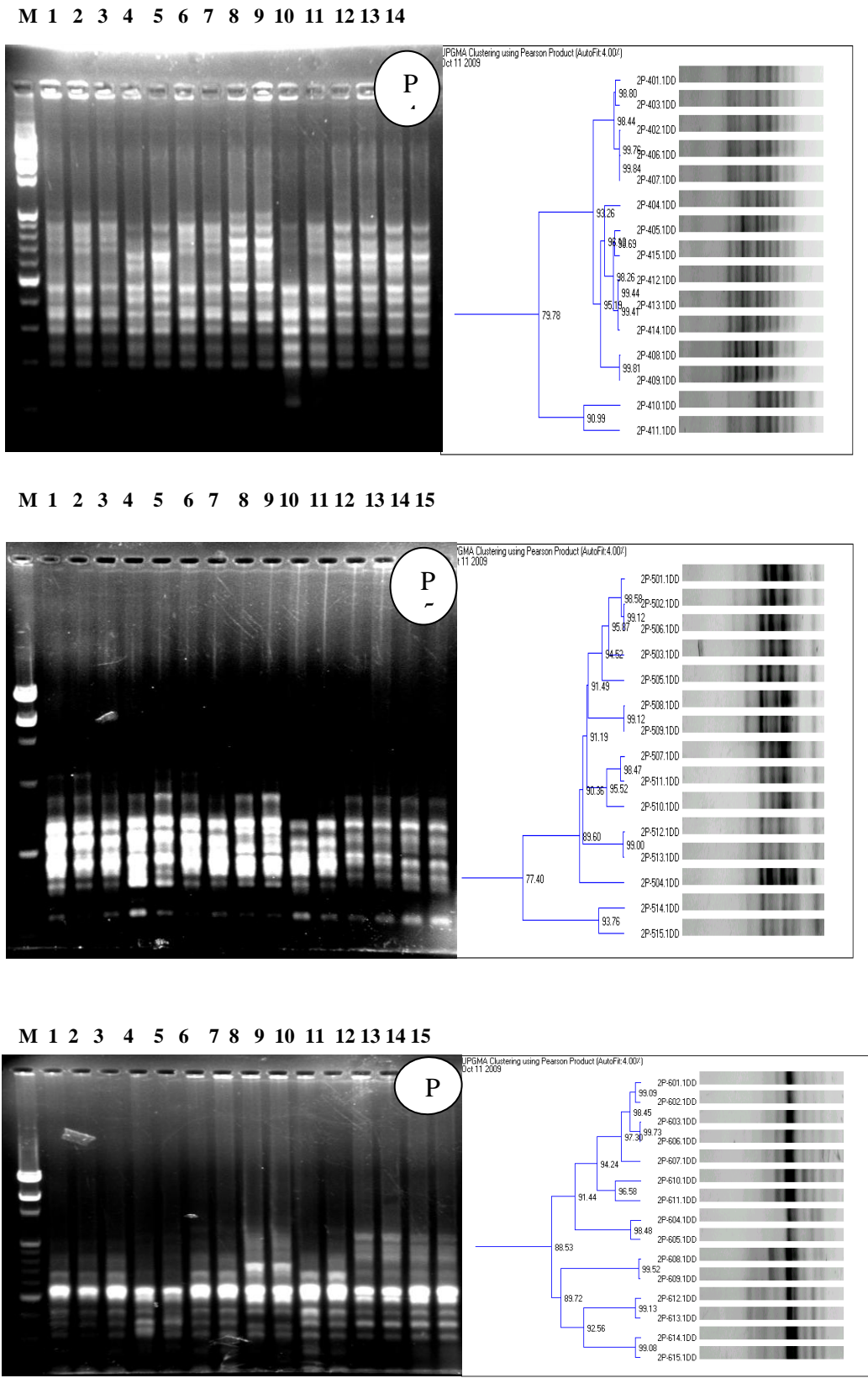


Fig. 4. DNA amplified banding patterns based on RAPD and UPGMA cluster analysis for Pestalotiopsis Isolates (1-15) using different primers (P4-P6). M: DNA marker (1000-50 bp).

fungi. In the present study, we have used RAPD-PCR method to study the genetic diversity among *Pestalotia* isolates. DNA pattern from morphologically similar and dissimilar taxa from the same and different hosts were analyzed in order to establish whether species nomenclature based on host association has any phylogenetic significance and provide new insights to the concept of host-based nomenclature in *Pestalotiopsis* species (Jeewon, *et al.*, 2004).

Phylogenies generated here indicated a close relationship among morphologically related species rather than association with host, and hence, results from this study have important implications for fungal biodiversity studies, given that naming of species based on host is not valid, the high number of species reported in literature may be an overestimate. Many taxa may be nonspecific. It has been shown in this study that several *Pestalotiopsis* species or multiple strains of the same species can occur on an individual host and this confirms previous findings by Suto and Kobayashi, (1993), Kim *et al.*,(1997) and Hopkins and Quilken,(2000).

REFERENCES

1. Arrhenius SP and JH. Langenheim. 1986. The neotropical distribution of *Pestalotia* on the leguminous tree genera *Hymenaea* and *Copaifera*. *Mycologia* 78: 673-676.
2. Elliott, M. L. 2006. *Pestalotiopsis (Pestalotia) Diseases of Palm*. Plant Pathology Department, Florida Cooperative Extension Service, IF AS, University of Florida (PP-217).
3. Fail, GL.and JH. Langenheim. 1990. Infection processes of *Pestalotia subcuticularis* on leaves of *Hymenaea courbaril*. *Phytopathology* 80: 1259-1265.
4. Gepts, P. 1993. The use of molecular and biochemical markers in crop evolution studies. pp. 51-94. In: (M.K. Hecht, ed.) *Evolutionary Biology*, Vol. 27. Plenum Press, New York.
5. Hewitt, EJ. 1952. Sand and water culture methods used in the study of plant nutrition,-Commonwealth Bureau Bot. Plantation Crops Tech. Commun. 22: 405-439.
6. Hopkins, K.E. and M.P. Mc Quilkin. 2000. Characteristics of *Pestalotiopsis* associated with hardy ornamental plants in the UK. *Eur. J. Plant Pathol.*, 106:77-85.
7. Jeewon, R., E.C.Y. Iiew, and K.D. Hyde. 2004. Phylogenetic evaluation of species nomenclature of *Pestalotiopsis* in relation to host association. *Fungal Diversity* 17: 39-55.
8. Joshi, M.S. 2005. Leaf blight of cashew incited by *Pestalotia heterocornis* Guba. *Ind. Phytopathology*, 58 (NO.2).

9. Lisa M. Keith, Maile E. Velasquez, and T. Zee. Francis. 2006. Identification and Characterization of *Pestalotiopsis* spp. Causing Scab Disease of Guava, *Psidium guajava*, in Hawaii. *Plant Dis.*, 90: 16-23.
13. KerChung, Kuo and H.C. Hoch. 1996. The parasitic relationship between *Phyllosticta ampelicda* and *Vitis vinifera*. *Mycologia*, 88: 626-634.
14. Kim, K.S., H.S. Choi, T.H. Lim, T.H. Chang, B.K. Chung, M. J. kim, and Y.S. Lee. 1997. Genetic diversity of leaf blight pathogen of sweet persimmon *Pestalotiopsis* species with random amplified polymorphic DNA (RAPD). *Korean J.of mycol.*, 13: 311-316.
15. Ko, Y., K.S. Yao, C.Y. Chen, and C.H. Lin. 2007. First report of gray leaf spot of mango (*Mangifira inddica*) caused by *Pestalotiopsis mangiferae* in Tiwan. *Plant Dis.* 91 (12):1684B.
16. Ozoe, S., T. Takuda, and R. Kawamoto. 1967. Studies on the ecology and control of the Pestalotia vine rot of grape. *Bulletin of the Shimane Agric. Exp. St.* 8: 1-122.
17. Uchida, J. Y. 2004. Pestalotiopsis diseases. Pages 27-28 in (M. L. Elliott, T. K. Broschat, J. Y. Uchida, and G. W Simone, eds.) *Diseases and Disorders of Ornamental Palms*. American Phytopathological Society, St. Paul, MN.
18. Raynor, R. W. 1970. A Mycological Colour Chart. Commonwealth Mycol. Inst., Kew, Surrey, England.
19. Suto, Y. and T. Kobayashi. 1993. Taxonomic studies on the species of *Pestalotiopsis*, parasitic on conifers in Japan. *Trans. Mycol. Soc., Japan*, 34: 323-344.
20. Townsend, G.R. and J.W. Heuberger. 1943. Method for estimating losses caused by diseases in fungicide experiments. *Plant Dis. Repr.*, 27: 340.
21. Welsh, 3. and M. McClelland. 1990. Fingerprinting genomes using PCR with arbitrary primers. *Nucleic Acid Res.*, 18: 7213-7218.
22. Williams, J. G. K., A. R. Kubelik, K. J. Livak, J. A. Rafaiski and S. V. Tingey. 1990. DNA polymorphisms amplified by arbitrary primers are useful as genetic markers. *Nucleic Acids Res.*, 18: 6531-6535.

الصفات المورفولوجية و التحليل العنقودي لأنماط ال الدنا لفطر بستالوشيوبيسيس و علاقتها بالعائل

محمود أحمد محمود قماوى ، ماجى السيد محمد حسن ، سحر شرقاوى عبدالله ،
نها فريد بدوى

معهد بحوث أمراض النباتات- مركز البحوث الزراعية- جيزة- مصر

أوضحت العدوى المتبادلة لعدد 15 عزلة بستالوشيوبيسيس و المتحصل عليها من عوائل و مواقع مختلفة ان فطر بستالوشيوبيسيس غير متخصص العائل حيث ان لديه القدرة على اصابة جميع العوائل المختبرة (التفاح و الافوكادو و نخيل البلح و الجوافة و المانجو و الرمان) مسببا تبقعات الأوراق و عفن الثمار . و قد اختلفت شدة المرض و كذلك الاعراض باختلاف الصنف النباتى . كانت نباتات الجوافة الاكثر قابلية للاصابة بجميع العزلات المختبرة مسببة بقع بنية على الأوراق يليها الرمان. بينما كان نخيل البلح الاقل قابلية للاصابة . و كانت باقى العوائل متوسطة الاصابة . كانت العزلة P6 المتحصل عليها من الافوكادو الاكثر شراسة عن باقى العزلات المختبرة فى حين كانت العزلة P 12 المتحصل عليها من نخيل البلح الاقل شراسة . استخدمت 6 بوادى للتعرف على درجة القرابة بين عزلات البستالوشيوبيسيس باستخدام PCR - RAPD. أوضحت الدراسة وجود علاقة بين عزلات البستالوشيا والصفات المورفولوجية وليس بين عزلات بستالوشيوبيسيس والعائل المعزولة منه.