

FAUNA AND FLORA RECORDS 2018

(for groups other than birds)

INTRODUCTION

The records reproduced here are compiled by the separate editors for each major group. The records are taken mainly from the LFS Logbook and are reproduced here in good faith. No attempt has been made to verify all of the records but unusual or particularly interesting records will have been checked with the originator.

KEITH HISCOCK

WHALES, DOLPHINS AND PORPOISES (CETACEANS)

Compiled by: Keith Hiscock

Cetacean species were most often seen from the island when looking out to sea and from vessels near to Lundy. The most frequently seen cetaceans were Harbour Porpoise and Short-beaked Common Dolphin. Both species were seen through the year with mostly two or three individuals on any one occasion. Favoured locations were the tide races off the south and north coasts. Both dolphins and porpoises were often accompanied by Gannets that were feeding on the fish shoals that the dolphins had also located. As with 2017, the number of days with sightings from the island of Harbour Porpoise exceeded those of Common Dolphin (respectively 33 in 2017 and 25 in 2018 and 14 in 2017 and 19 in 2018). The three sightings (on 20 Apr, 25 Jun and 1 Oct) of solitary most likely Minke whales are notable and this species is being seen with increasing frequency off south-west England.

MARINElife place a Wildlife Officer on the MV *Oldenburg* on trips to and from Lundy generally once a week from the end of March to September and they report cetacean and seals seen on passage (Carol Farmer-Wright and Rick Morris, pers. comm.). The records are not strictly 'at Lundy' but are relevant to report separately. There were 23 trips in 2018 and observations for cetaceans are summarised below:

Harbour Porpoise	35
Common Dolphin	75
Bottlenose Dolphin	16
Minke Whale	1

There were 12 records of 'Dolphin'.

Minke whale (*Balaenoptera acutorostrata*)

20 Apr – one in the Landing Bay mid-morning (Dean Jones & Chris Dee).

25 Jun – a whale – possibly a Minke off the south coast (M & L Prior).

1 Oct – a whale – possibly a Minke off Rat Island (Tim Davis).

Short-beaked Common Dolphin (*Delphinus delphis*)

Present around Lundy throughout the year although the first recorded observation in 2018 was on 29 Mar. Maximum numbers seen from the island on any one occasion were c. 20 off The Ugly on 23 Jun and off the south coast on 25 Jun (matching the maximum number seen in 2017 off the North Light on 11 Oct). Observed on: 29 March (one on approach to Landing Bay); 2 Jun (eight off Puffin Slope); 23 Jun (c. 20 off The Ugly); 25 Jun (c. 20 off south coast); 29 Jun (one or two small groups north of Shutter Rock); 11 Jul (@ 0918 six, @ 0946 five, @ 1034 15

NE of Castle Parade (the same group observed from the 'Shelley N' and estimated 30 including calves and another group further out); 25 Jul (12+ adults and calves feeding off Rat Island for 20-25 mins); 26 Jul (c. 12 seen from the *Oldenburg*); 4 Aug (two off SW Point); 12 Sep (two off Quarry Beach); 21 Sep (two off North Light); 24 Sep (eight off NE Point); 27 Sep (c. six off Rat Is.); 28 Sep (four off Battery Point); 29 Sep (six off the Landing Bay); 3 Oct (three off Rat Island); 19 Oct (15+ off The Rattles); 21 Oct (two off Benjamin's Chair); 30 Dec (two off Rat Island).

Thanks to observers: Chris Baillie, Ben Bengy, Chris & Karen Blackmore, Tim Davis, Chris Dee, Jane Harris, Karen Hobson, Andy Jayne, Dean Jones, Tim Jones, Chloë Lofthouse, B. Medland, Janet & John Miles, Robert Pell, M & L Prior, Alan & Sandra Smith.

Harbour Porpoise (*Phocoena phocoena*)

Present throughout the year. Observed on 24 Jan (one off N. End); 31 Jan (2-3 off S. Light); 22 Feb (Four off Sw Point); 23 Feb (eight off N. Light); 24 Mar (one feeding off SW Point); 25 Mar (two off SW Point); 29 Mar (one on the crossing to Lundy); 18 Apr (Four c. 4 miles from the island); 26 Apr (two from the *Oldenburg*); 27 Apr (two west of SW Point); 19 May (two off south end); 20 May (three off the SW end); 22 May (two on approach to Landing Bay, 14 west of Castle feeding actively); 26 May (two off N. end); 12 Jul (six off c. 300 m Castle Parade; two c. 500 m SE of SW Point); 13 Jul (one c. 500 m due south of Castle Parade); 15 Jul (one c. 800 m SW of SW Point at 1152 and two 500 m due south of Castle Parade at 1541); 16 Jul (two c. 600 m due south of Castle Parade and one at 1145, both sightings c. 600 m due south of Castle Parade); 21 Jul (Two); 14 Aug (three between Hen & Chickens); 17 Aug (at least eight off the North Light); 21 Sep (six + in a feeding frenzy off the North Light); 29 Sep (three off Rat Island and Lametry); 1 Oct (two off Rat Island); 2 Oct (one off North End and two off South Light); 3 Oct (Two off Rat Island); 15 Oct (two off North End); 14 Dec (two in the southern tide race). Thanks to observers: Chris Baillie, Rachel Birch; Chris & Karen Blackmore, Pete Exley, Dean Jones, Rachel Sylvia, Tony Taylor, Martin Thorne and Michael Williams.

SEALS

Compiled by: Keith Hiscock

Grey seal *Haliocoeris grypus*

The following records are from the logbook. A separate paper by Dean Jones describing the results of systematic surveys undertaken in 2018 appears on page 158. Grey seals are observed frequently and are considered always present. Those records which include counts or are of behavioural or injury observations or of pups are included here.

30 Jan – thirty-five seen including 25 on Gannets' Bay Beach of which one was melanistic (Tim Davis and Tim Jones).

17 Feb – twenty hauled-out on the Knoll Pins – photographs taken for the Cornwall Seal Group identification database (Michael Thorne).

21 Feb – adult seal eating a conger eel (*Conger conger*) that was over 2 m long off Pilots' Quay (Dean Jones and Zoë Barton).

26 Jul – nineteen on the rocky shore at Halfway Wall Bay (Tim Davis).

30 Jul – twenty on Mouse Island at low water and 13 at Halfway Wall Bay (Tim Davis).

9 Aug – sixty-one in the water along the east coast as far as the NE Point (Joshua Harris & Esther Fritzell-Armitage).

13 Aug – around 30 all along the east coast (Ali Sheppard).

15 Aug – twenty at Brazen Ward (Chis Breese).

9 Sep – seventy-nine between Millcombe and Gannets' Bay counted at low water (Nick Ward).
22 Oct – three injured bull seals between Brazen Ward and Mousehole & Trap (Dean Jones).

Common seal *Phoca vitulina*

11 Mar – one off the slipway (Landing Bay) (Alan Frank).

MARINE FISHES

Compiled by Keith Hiscock

Unusual or charismatic fish species may be reported, including by inspection of photographs, but those that are 'always present' are not generally recorded in the logbook. Some fish are noted from 'rockpool rambles' later. The number of Basking Shark *Cetorhinus maximus* sightings continues to be low and corresponds to a reduction in sightings since 2013 throughout south-west England. The absence of any reports of Sunfish *Mola mola* is notable.

Basking Shark *Cetorhinus maximus*

4 Aug – Three in Jenny's Cove (Bob Wells).

14 Dec – One about 50 m north of Rat Island (Dean Jones).

Mullet (most likely **Thicklip Grey Mullet** *Chelon labrosus*)

6 Jul – with shoal of bass off Rat Island (Dean Jones).

13 Jun – shoal under the jetty (Dean Jones).

European Seabass *Dicentrarchus labrax*

6 Jul – Shoal of c. six off Rat Island (Dean Jones).

Yarrell's Blenny *Chirolophis ascanii*

4 Aug – one on the MV Robert, in a pipe. A northern species. (Mike Deaton from a photograph by Tim Mountjoy.)

Incidental records of fish occur with observations of feeding behaviour: for instance, of Conger Eels and a Ballan Wrasse being eaten by seals (see the seals section) and of Great Northern Diver(s) catching a Long-spined Sea Scorpion *Taurulus bubalis*, then a Red Gurnard *Chelidonichthys lucernus*, then a Dab *Limanda limanda* (as well as a few Shore Crabs *Carcinus maenas*) off the jetty on 18 Feb (Martin Thorne).

MARINE INVERTEBRATES

Compiled by Keith Hiscock

For 2018, records of marine invertebrates have been separated into 'Gelatinous plankton' and 'Shore and seabed' so that, in future, and for shore and seabed species, we can feature only those records that are of unusual species, unusual abundances or of breeding and behaviour and not of commonly occurring species.

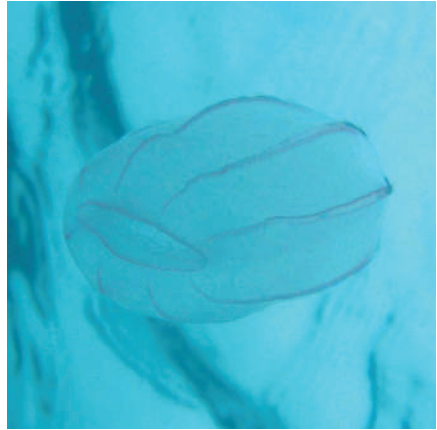
'GELATINOUS PLANKTON'

Planktonic invertebrate species that are gelatinous are described colloquially as 'jellyfish'. They include species from the Classes Hydrozoa and Scyphozoa in the Phylum Cnidaria and from the Phylum Ctenophora. Gelatinous plankton may be abundant at Lundy and some sting. The larger jellyfish are seen frequently but Dean Jones recognises and records many of the smaller

species and especially at times of snorkel safaris (so that their reporting does not necessarily identify the time of year or specific dates they are most abundant). However, many records are from late May and early June.



A Many-ribbed Jellyfish Aequorea forskalea in the Landing Bay. © Keith Hiscock



A Melon Comb Jelly Beroe cucumis in the Landing Bay. © Keith Hiscock

CNIDARIA: HYDROZOA

A siphonophore (string jelly) *Nanomia cara*

2 Jun – one string near to the jetty (Dean Jones).

13 Jun – two small strings near the jetty (Dean Jones).

Many-ribbed Jellyfish *Aequorea forskalea*

11 Jun – 12 in the Landing Bay (Dean Jones).

13 Jun – three in the Landing Bay (Dean Jones).

A hydrozoan *Cosmetira pilosella*

11 Jun – east side of Rat Island (Dean Jones).

13 Jun – Landing Bay (Dean Jones).

A hydrozoan *Neoturris* spp.

13 Jun – Landing Bay (Dean Jones).

A hydromedusa ?*Clytia hemisphaerica*

10 Sep – 100+ in the Landing Bay (Dean Jones).

CNIDARIA: SCYPHOZOA

Barrel Jellyfish *Rhizostoma octopus*

There were records of single individuals off the east coast on 30 Jan, 7 Mar, 20 Mar, 25 Mar, 13 Apr, 25 Apr, 6 May and 31 Dec. On 8 Apr, three were seen north of Quarry Bay and, on 9 Apr, four between Quarry Bay and Gull Rock. (D. Dowding, Louise and Steve Goodman, Dean Jones).

Blue Jellyfish *Cyanea lamarckii*

- 6 May – Landing Bay (Dean Jones).
- 10 June – about 10 in the Landing Bay (Dean Jones).
- 21 June – about 10 in the Landing Bay (Dean Jones).
- 24 June – about 12 in the Landing Bay (Alan & Sandra Rowland).
- 25 June – significant numbers in the Landing Bay (Dean Jones).

Moon Jellyfish *Aurelia aurita*

- 2 Jun – c. 70 large individuals near the jetty (Dean Jones).
- 11 Jun – c. 30 off Rat Island (Dean Jones).
- 13 Jun – c 50 individuals near the jetty (Dean Jones).
- 24 Jun – c 200 individuals near the jetty (Alan & Sandra Rowland).
- 25 Jun – thousands near the jetty (Dean Jones).

Compass Jellyfish *Chrysaora hysoscella*

- 6 May – Landing Bay (Dean Jones).
- 2 Jun – two small individuals near the jetty (Dean Jones).
- 11 Jun – c 15 individuals near the jetty (Dean Jones).
- 13 Jun – c 30 individuals near the jetty (Dean Jones).
- 24 Jun – c 20 individuals near the jetty (Alan & Sandra Rowland).
- 25 June – significant numbers in the Landing Bay (Dean Jones).
- 9 Aug – two large individuals in the Landing Bay (Dean Jones).

CTENOPHORA**Melon Comb Jelly *Beroe cucumis***

- 4 Jun – five in the Landing Bay (Dean Jones).
- 11 Jun – Landing Bay (Dean Jones).
- 13 Jun – countless individuals near the jetty (Dean Jones).
- 25 Jun – large numbers near the jetty (Dean Jones).

Northern Comb Jelly *Bolinopsis infundibulum*

- 13 Jun – Landing Bay (Dean Jones).

Sea Gooseberry *Pleurobrachia pileus*

- 6 May – Landing Bay (Dean Jones).
- 2 Jun – two in the Landing Bay (Dean Jones).
- 11 Jun – Landing Bay (Dean Jones).
- 13 Jun – Landing Bay (Dean Jones).

SEASHORE AND SEABED (INCLUDING FISH)

There were frequent 'rockpool rambles' and 'snorkel safaris' in Devil's Kitchen during the spring and summer and the range of animal species recorded commonly included: Breadcrumb Sponge *Halichondria panicea*; Beadlet Anemones *Actinia equina*; Strawberry Anemones *Actinia fragacea*; Snakelocks Anemones *Anemonia viridis*; Broad-clawed Porcelain Crabs *Porcellana longicornis*; Shore Crabs *Carcinus maenas*; Velvet Swimming Crabs *Necora puber*; Montagu's / Furrowed Crab *Xantho hydrophilus* (some females with eggs on 3 May); Edible Crabs *Cancer pagurus*; Purple Topshell *Gibbula umbilicalis*; Toothed Topshell *Phorcus lineatus*; Dogwhelk *Nucella lapillus*; Flat Periwinkle *Littorina 'obtusata'* (aggregate); Limpets *Patella vulgata*, *P. aspera* and *P. depressa*; Cushion Stars *Asterina gibbosa*; Brittle Stars

Ophiothrix fragilis and *Ophiocoma nigra*; Blue-rayed Limpet *Patella pellucida*; Sea Urchins *Psammechinus miliaris*; Star Sea Squirts *Botryllus schlosseri*, Shanny's *Liphophrys pholis*, Shore Clingfish *Lepadogaster lepadogaster* (eggs noted on 3 May and well developed eggs on 10 Sep), and Worm Pipefish *Nerophis lumbriciformis*. (Dean Jones, Rob Andrews & Michael Williams. Further records by Sarah, Chris and Isobel West.)

Less common but regularly recorded were Gem anemones *Aulactinia verrucosa*, Dahlia anemones *Urticina felina*, Sandalled Anemones *Actinothoe sphyrodeta*, Devonshire Cup Corals *Caryophyllia smithii*, Scarlet and Gold Star Corals *Balanophyllia regia*, Spiny Spider Crabs *Maja brachydactyla*, Spiny Starfish *Marthasterias glacialis* (including a record of one being eaten by a gull on 21 Jul), Lightbulb Seasquirts *Clavelina lepadiformis* (first record 28 May – a seasonal species).

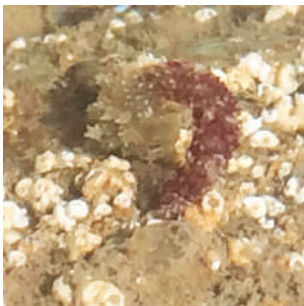
Several records have been reported from photographs and observations of snorkelers and divers. They include frequently observed species (Dahlia Anemone *Urticina felina*, Devonshire Cup-coral *Caryophyllia smithii*, Pink Sea-fan *Eunicella verrucosa*, Candy-striped Flatworm *Prostheceraeus vittatus* and a colonial seasquirt *Aplidium punctatum*). Species burrowing in the sediment of the Landing Bay were a Clock Face Anemone *Peachia cylindrica*, many siphons of Razor Clams *Ensis* sp. and the arm of burrowing brittle stars (Dean Jones). The observation of a Northern (Curled) octopus *Elothe cirrhosa* was significant as they are very rarely seen at Lundy but there were increased numbers reported in south-west England at least in 2018. Divers also observed a continued increase in numbers of Crawfish (Spiny Lobsters) seen around the island (Mike Deaton).

A lost lobster pot washed in by storms was recovered from below the jetty. Species recorded were: Snakelocks Anemone *Anemonia viridis*, European (Blue) Lobsters (x3) *Homarus gammarus*, Long-legged Spider Crab *Macropodia rostrata* (x1), Leach's Spider Crab *Inachus phylangium*, numerous Long-clawed Porcelain Crabs *Pisidia longicornis*, a Spotted Cowrie *Trivia monacha*, Thick-lipped Dogwhelks *Hinia incassata*, a branching seamount *Bugula* sp., encrusting seasquirts *Diplosoma* sp. and *Botryllus schlosseri*.

[The above are species recorded and are not a complete description of the major species present.]

Sightings on seashores and the shallow subtidal of unusual species or that indicate breeding times were:

CNIDARIA: HYDROZOA



The hydroid Candelabrum cocksii photographed under a boulder in Devil's Kitchen. © Dean Jones

A hydroid *Candelabrum cocksii*

02 May – present under a quartz boulder (Dean Jones). A particularly notable observation as the species has been recorded from only a few locations in south-west England. However, L.A. Harvey recorded it from kelp holdfasts (as *Myriothela cocksii*) from several shores at Lundy in the late 1940s.

CNIDARIA: ANTHOZOA

Scarlet and Gold Star coral *Balanophyllia regia*.

31 March – counts at the two monitoring sites on the lowest shore at Devil's Kitchen recorded c. 32 at the eastern site and c. 72 at the western site. In the lower midshore pool where slate had fallen away in the 2013/14 storms, c. 20 were seen (Keith Hiscock, Dean Jones & Siân Scott).

CRUSTACEA: CIRRIPIEDIA

Goose barnacle *Lepas pectinata*

14 Feb – One attached to *Ascophyllum nodosum* washed-up on strandline (Dean Jones).

MOLLUSCA: OPISTHOBRANCHIA

02 May – Grey Sea Slug *Aeolidea papillosa*. Two together and, nearby, an eggmass under boulders (Dean Jones).

01 Jun – Grey Sea Slug *Aeolidea papillosa*. Eggs (Dean Jones).

Four-striped polycera *Polycera quadrilineata*

29 May – Swarms on *Membranipora membranacea* encrusting kelp fronds (Mike Deaton from a photograph by Tim Mountjoy).

MOLLUSCA: OCTOPODOIDEA

Curled octopus *Eledone cirrhosa*

14 Jul – Brazen Ward (Mark Lavington).



Northern or Curled Octopus *Eledone cirrhosa* in shallow water at Brazen Ward on 14 July, © Mark Lavington



A young Crawfish (Spiny Lobster) *Palinurus elephas* in a gully south of the island. © Mike Deaton

CRUSTACEA: DECAPODA

Crawfish or spiny lobster *Palinurus elephas*

2 Jun – South-end gullies. Six small individuals found in one gully at depths between 20 and 28 metres (Mike Deaton).

MARINE ALGAE

Compiled by Keith Hiscock

'Rockpool rambles' and 'snorkel safaris' have been the main source of records in 2018.



Wireweed Sargassum muticum in a rockpool at Devil's Kitchen on 3 Jun.
© Keith Hiscock.



Harpoon Weed Asparagopsis armata showing the 'harpoons' that hook into other algae. © Keith Hiscock.

Non-native algae recorded were Wireweed *Sargassum muticum*, Harpoon Weed *Asparagopsis armata* and Hook Weed *Bonnemaisonia hamifera*. Both *S. muticum* and the gametophyte (harpoon) stage of *A. armata* seemed less abundant in 2018 than in some previous years at Lundy (Keith Hiscock). Both species are easily identified and records of abundance each year would be welcome.

Rocky shores on the north side of Rat Island were dominated by furoid algae (*Pelvetia canaliculata*, *Fucus spiralis*, *Ascophyllum nodosum*, *Fucus vesiculosus* and *F. serratus*) although they were generally sparse or patchy on the south side. There were areas of green algae *Enteromorpha* spp especially where there has been disturbance or freshwater runoff. The lower shore was populated by Thongweed *Himantalia elongata* and kelp *Laminaria digitata*. Rockpools were often rich in a wide variety of algae but there were no records in 2018. (Dean Jones, Rob Andrews & Michael Williams. Further records by Sarah, Chris and Isobel West.) Snorkel Safaris added a few species including Red Rags *Dilsea carnosa*, Sea Beech *Delesseria sanguinea* and Bushy Berry Wrack *Cystoseira baccata*.

The lost lobster pot mentioned above had *Membranoptera alata*, *Plocamium cartilaginium*, *Lomentaria articulata* and *Bonnemaisonia hamifera* attached (Dean Jones).

[The above are species recorded and are not a complete description of the major species present.]

FRESHWATER FISH

Compiled by Jenny George

Felix Gade in his book 'My Life on Lundy' mentioned that Martin Coles Harman introduced fish belonging to the Carp family (Family Cyprinidae), particularly Golden Orfe and Tench, to the Rocket Pole Pond, Quarry Pond and Pondsbury, during the early years of his tenure of the island (1929-54). There have been few monitoring studies of these introduced fish.

In 1977. Chris Baillie and Mick Rogers measured and aged 18 Crucian Carp from Quarry Pond that had been transferred there from Pondsbury when it dried up in 1976. The 18 Carp were returned to Pondsbury and, ten years later, Crucian Carp were observed there in 1986.

In 1981, a survey of Mirror Carp in Rocket Pole Pond was carried out and over 100 fish were counted. Descendants of these fish are regularly fed by visitors today.

In September 2006, the Quarterwall Pond dried up and Roger Fursdon transferred over 100 fish, mainly Rudd, to the Rocket Pole Pond.

The mature eel, *Anguilla anguilla*, that was found by Alan Rowland and the LFS Working Party during clearance of the Millcombe Pond in September 2017, was most likely the fish found dead on the Millcombe path by Dean Jones in May 2018.

Although there are records, mainly Golden Orfe, in the LFS Logbook over the years, much more data of these fish are required.

Golden Orfe *Leuciscus idus*

18 Feb – Quarry Pond (Martin Thorne).

13 May – 14 in Quarry Pond (David George).

4 Jun – 17 in Quarry Pond (Tim Jones).

Crucian Carp *Carassius carassius*

18 Feb – Quarry Pond (Martin Thorne).

Mirror Carp *Cyprinus carpio*

14 May – 10 + in Rocket Pole Pond (Jenny George).

Tench *Tinca tinca*

13 May – many small fish in Quarry Pond (David George).

INTRODUCED REPTILES

Compiled by Chris Dee

There are no native reptiles on Lundy but Slow-worms were first observed in the gardens in Millcombe in November 2010. They are believed to have been accidentally introduced in compost imported from the mainland.

Slow-worm *Anguis fragilis*

Most records have been from Millcombe, but one was reported from the camping field in 2016, and in St John's Valley in 2017. In addition to two records in Millcombe in April and May, the following demonstrate a further substantial expansion in range.

15 May – 1 adult near Tibbetts (Tim & Liz Smith).

25 Jun – 1 along track to The Castle (M. & L. Prior).

Numbers and distribution are probably under-recorded and members are encouraged to note all sightings in the LFS Logbook kept in the Marisco Tavern.

NATIVE LAND MAMMALS

Compiled by Chris Dee

Lundy has just one native terrestrial mammal.

Pygmy Shrew *Sorex minutus*

The Pygmy Shrew is widely distributed across the island, and can be found throughout the year. It is probably associated with most properties; this year it has been reported from Old Light Cottage, Old Light Lower, Quarters, the Marisco Tavern, Big St John's and The Castle. Away from human habitation there have been sightings at North Light, Gannet's Combe, Jenny's Cove, Barton Field, The Ugly, Millcombe, Rocket Pole and South-west Point. On 2 Mar one was seen on the surface of the lying snow on the West Side (Trevor Dobie, Kevin Williams, Keith Dobie).

BATS

Compiled by Chris Dee

Bats are occasionally observed on Lundy and are usually assumed to be one of the native pipistrelle species: Common Pipistrelle *Pipistrellus pipistrellus* or Soprano Pipistrelle *P. pygmaeus*. Such single sightings were reported this year from the Village (Tom Carr on 14 Apr), Upper Millcombe (Dean Jones on 29 Apr) and the South End (R. Yeo on 30 May), and three or four were seen at North Light on 29 Sep (Martin Thorne). A 'dark brown medium sized bat – bigger than a Pipistrelle' was reported flying over the Quarry Pond on 6 May (Steve O'Donnell). Droppings seen in the former copper mine below Benjamin's Chair in December were not examined closely, but were considered to be from a pipistrelle species and possibly a horseshoe bat species (L. Holmes). Droppings were also found adhering the walls of the Casbah in Millcombe, indicating a possible roost site (L. Holmes).

FERAL LAND MAMMALS

Compiled by Chris Dee

The populations of feral ungulates continue to be monitored and numbers controlled according to the terrestrial management plan.



Sika Deer Cervus nippon. © Richard Campey

Sika Deer *Cervus nippon*

A cull in February removed 10 animals and the stock count in April estimated a population of 93 individuals, but this total has not been broken down by age and sex (various observers per Dean Jones). A further cull in October reduced the population by four.

Other notable counts of over 20 individuals were:

4 Jul – 17 in the Brick Field and four further north (John Hutchinson)

11 Dec – 68 on the East Side; 50 in Quarter Wall Copse and 18 near Brazen Ward (J. Pawley)

18 Dec – 24 at Quarter Wall Copse (C. Lee)

Soay Sheep *Ovis aries*

The stock count in April estimated 202 individuals (various observers per Dean Jones), after a single animal was culled in February. No date is noted for the first lambs, but three dead lambs were reported on 19 Apr (Chris Dee). A further 62 individuals were removed by the cull in October.

Other notable counts were:

30 Jan – 142 (Tim Jones & Tim Davis).

6 Aug – 201 (Michael Williams).

25 Oct – 62 in Middle Park (P. Holt).

Goat *Capra aegagrus*

Goats are now actively discouraged south of Quarter Wall to reduce grazing pressure on Lundy Cabbage and the slow-growing woody vegetation in Millcombe. The stock count in April found 23 individuals (various observers per Dean Jones). The cull in October reduced the population by 11.

Other notable counts of over 20 individuals were:

6 Aug – 21 near The Devil's Slide (Michael Williams).

21 Oct – 29 on the West Side (Jane & Oliver Ronaldson).

11 Dec – 20+ at The Terrace (J. Pawley).

Rabbit *Oryctolagus cuniculus*

Rabbit numbers remain low as a result of disease (Rabbit Viral Haemorrhagic Disease or Myxomatosis), but are beginning to show some signs of recovery and no diseased animals were reported. Individuals were reported from widespread locations across the island, including young at the west end of Quarter Wall and near the Church. Evidence in the form of droppings was reported from Brazen Ward, near Goat Island and between the Castle and Rocket Pole. The largest count was of five in Barton Field on 23 May (Chloë Lofthouse).

FRESHWATER INVERTEBRATES

Compiled by Jenny George

Most of the invertebrates listed here are from the research and monitoring of Alan Rowland who has been studying the freshwater organisms in several of the smaller, often temporary, ponds on the island since 2010: e.g. Government House Pond, Kistvaen Pond, ponds at Long Roost and Middle Park. Also, Millcombe Pond which was cleared of much of its vegetation by the LFS Working Party in September 2017 and the associated St. John's Stream that flows into it.

An interesting find this year, by Alan Rowland, was the aquatic larva of the Brown China Mark moth, (*Elophila nymphaeata*) in the Quarter Wall Pond. Although adults have been found, e.g. in 2017, this is the first record of a larva. The larva lives in a case made of two oval parts of a leaf (often *Potamogeton*) where they remain throughout Autumn and Winter. An article describing the find is on page xx.

Common and scientific names follow the *Freshwater Biological Association Guides* and the comprehensive *Collins Guide to Freshwater Life* by R. Fitter & R. Manuel (1986) and the *FBA Guide to Freshwater Invertebrates* by Michael Dobson *et al.* (2012). All records are by Alan Rowland except where credited otherwise.

FLATWORMS (Platyhelminthes)

Phagocata vitta

01 Apr – eight in St John's Stream, Millcombe.

01 Apr – two in Millcombe Pond.

02 Apr – 29; 25 Sep – 122; 31 Dec – 31 in Government House Pond.

Polycelis nigra

01 Apr – one in Millcombe Pond.

20 Jun – two in Middle Park Pond.

Dalyellia viridis

31 Mar – 16 in Kistvaen Pond.

SEGMENTED WORMS (Oligochaeta)

Lumbriculus variegatus

1 Apr – one; 25 Jun – one in Millcombe Pond.

2 Apr – 58; 25 Sep – 22 in Government House Pond.

19 Jun – three in Kistvaen Pond.

20 Jun – one in Middle Park Pond.

23 Jun – 18 in Long Roost Pond.

LEECHES (Hirudinea)

Helobdella stagnalis

1 Apr – one; 25 Jun – eight in Millcombe Pond.

20 Jun – one in Middle Park Pond.

***Haemopsis sanguisuga* (Horse Leech)**

13 May – one in water-filled ruts near Quarter Wall Pond (David George).

POND SNAILS (Gastropoda)

***Potamopyrgus antipodarum* (Jenkin's Spire Shell)**

1 Apr – 40 in St John's Stream, Millcombe.

1 Apr – 15; 25 Jun – 245 in Millcombe Pond.

2 Apr – 101; 25 Sep – 53; 31 Dec – 10 in Government House Pond.

***Lymnaea peregra* (Wandering snail)**

25 Jun – four in Millcombe Pond.

Galba (Lymnaea) truncatula

2 Apr – one in Government House Pond.

MUSSELS (Bivalvia)

***Pisidium personatum* (Pea Mussel)**

2 Apr – 58; 25 Sep- 76; 31 Dec- 62 in Government House Pond.

SHELLED ARTHROPODS (Crustacea)

Ostracoda (Clam Shrimps)

31 Mar – one in Kistvaen Pond.

1 Apr – one in Millcombe Pond.

2 Apr – two in Government House Pond.

Family Daphniidae (Water Fleas)

31 Mar – one; 19 Jun; 23 Jun; 27 Sep; 31 Dec – abundant in Kistvaen Pond.

20 Jun – few in Middle Park Pond.

Cyclops sp. (Copepoda)

31 Mar – three; 19 Jun – three; 27 Sep – four females with egg sacs in Kistvaen Pond.
1 Apr – two females with egg sacs in Millcombe Pond.
20 Jun – three females with egg sacs in Middle Park Pond.

WATER SLATERS (Isopoda)

Proasellus meridianus

1 Apr – two; 25 Jun – two in Millcombe Pond.
2 Apr – four; 25 Sep – 29; 31 Dec – two in Government House Pond.
19 Jun – 210; 27 Sep – 40; 31 Dec – six in Kistvaen Pond.
20 Jun – one in Middle Park Pond.
30 Sep – 32 in Quarter Wall Pond.

INSECTS (Insecta)

EPHEMEROPTERA (Mayfly nymphs)

Family Baetidae

19 Jun – one; 27 Sep – one in Kistvaen Pond.

ODONATA (Damselfly nymphs)

A list of dragonflies and damselflies is included in the section on Terrestrial Invertebrates



*A damselfly nymph
Enallagma sp.
© John Clegg
(via Jenny George)*

***Enallagma cyathigerum* (Common Blue Damselfly)**

02 Jun – one at Quarter Wall pond (Tim Davis & Tim Jones).
30 Sep – 44 in Quarter Wall Pond.

HEMIPTERA (Water Bugs)

Family Gerridae (Pond Skaters)

25 Jun – four on Millcombe Pond.

Family Corixidae (Lesser Water Boatmen)

31 Mar – young nymph stage in Kistvaen Pond.
19 Jun – two adults in Kistvaen Pond.
20 Jun – 25 in Middle Park Pond.

Family Notonectidae (Greater Water Boatmen)



A Water Boatman,
Notonecta sp.
© John Clegg
(via Jenny George)

A Water Boatman *Notonecta marmorea viridis*

15 May – four large adults taking in air at surface in Quarter Wall Pond (Jenny George).

A Water Boatman *Notonecta sp.*

19 Jun – 28 in Kistvaen Pond.

20 Jun – 10 in Middle Park Pond.

LEPIDOPTERA (Moths)

Elophila (Nymphula) nymphaeata (Brown China Mark Moth)

30 Sep – two larvae in Quarter Wall Pond.

TRICHOPTERA (Caddis Flies)

Diplectrona felix (caseless caddis)

1 Apr – one larva in St John's Stream, Millcombe.

Notidobia ciliaris (cased caddis)

25 Sep – one larva in Government House Pond.

DIPTERA (True flies)

Tipulidae (Crane flies)

1 Apr – one larva in St. John's Stream, Millcombe.

27 Sep – one larva in Kistvaen Pond.

Phylidorea ferruginea

25 Sep – One larva in Government House Pond. (Reared to pupal and adult stage to confirm identification).

Chironomidae (Non-biting midge larvae)

1 Apr – 11 in St John's Stream, Millcombe.
1 Apr – four; 25 Jun – one in Millcombe Pond.
2 Apr – 11; 31 Dec – four in Government House Pond.
19 Jun – 10; 31 Dec – one in Kistvaen Pond.
20 Jun – three in Middle Park Pond.
23 Jun – 43 in Long Roost Pond (25 in cases).
30 Sep – three in Quarter Wall Pond.

Dixidae (Meniscus midges)

25 Sep – one larva in Government House Pond.

Psychodidae (Moth flies)

2 Apr – one larva in Government House Pond.

Culicidae (Mosquitos)

13 Jun – one larva in Long Roost Pond.

COLEOPTERA (Water Beetles)

Dytiscidae (Diving beetles)

31 Mar – four adults & 19 larvae; 19 Jun – two adults & seven larvae; 27 Sep – four adults & four larvae; 31 Dec – eight adults & 11 larvae in Kistvaen Pond.
23 Jun – one adult in Long Roost Pond.
30 Sep – eight adults & 11 larvae in Quarter Wall Pond.

TERRESTRIAL INVERTEBRATES

Compiled by Alan Rowland

This year there were no visiting specialists submitting species lists, but nevertheless there have been many and varied sightings throughout the months, with records in most months. A training course hosted by the Bumblebee Conservation Trust provided some new and expert sightings of Hymenoptera. Bird pellets supplied to Linda Losito and Rob Cowley provided some records that have been extracted from iRecord (<https://www.brc.ac.uk/irecord/>).

A note from Roger Key that our sightings of the rove beetle *Staphylinus erythropterus* are most definitely **NOT** *S. caesarus* – which is a Red Data Book Species with very restricted range.

The Lundy Warden continues to expand the range of species that he searches out and successfully identifies greatly adding to the number and species recorded within this section.

An asterisk * denotes a species new to Lundy, two asterisks ** a family species new to Lundy, three *** an ORDER new to Lundy all reported this year. Although not necessarily new to Lundy they are the first reported occurrences.



A horsehair worm
in Millcombe.
© Joan Britten.

HORSEHAIR WORMS (Nematomorpha)

26 Dec – one seen in Millcombe (Joan Britten/Siân Scott). ***

SNAILS AND SLUGS (Gastropoda)

Snails

Brown-lipped Snail *Cepaea nemoralis*

18 Jun – one in the Quarries (Alan & Sandra Rowland).

21 Jun – six outside Little St John's (Alan & Sandra Rowland).

Garden Snail *Helix aspersa*

19 Jun – two at the top of St John's Valley (Alan & Sandra Rowland).

21 Jun – one outside Little St John's (Alan & Sandra Rowland).

Slugs

European Black Slug *Arion ater* agg.

26 Sep – one seen in Punchbowl Valley (Alan & Sandra Rowland).

3 Sep – two seen north of Three Quarter Wall (anon.).

2 Oct – one near Tibbetts, one near the Hospital, three on Upper East Side Path (Alan & Sandra Rowland).

Leopard Slug *Limax maximus*

29 Aug – one near Smelly Gully (Alan Rowland).

2 Oct – two seen on Upper East Side Path on granite (Alan & Sandra Rowland).

SPIDERS, HARVESTMEN AND MITES (Arachnidae)

Purse-web Spider *Atypus affinis* **

8 Nov – one seen near Felix Gade's Hut (Steve and Elise O'Donnell).

Cellar Spider *Pholcus phalangoides*

3 Apr – one seen in Big St John's (Alan & Sandra Rowland).

26 Jun – one in Little St John's (Alan & Sandra Rowland).



A Crab Spider *Xysticus cristatus* on the Lower East Side Path. © Alan Rowland



A Cave Spider, *Meta menardi*, in Old Man's Cave. © Alan Rowland

Crab Spider *Xysticus cristatus*

16 Aug – one seen on Fleabane on Lower East Side Path (Alan & Sandra Rowland).

Zebra Spider *Salticus sceniscus*

30 Mar – one seen in Big St John's (Alan & Sandra Rowland).

Nursery Spider *Pisaura mirabilis* *

20 Jun – one seen (with egg case) Upper East Side Path (Dean Jones).

Cave Spider *Meta menardi*

4 Sep – one in Old Man's Cave (Alan & Sandra Rowland).

28 Sep – one in Old Man's Cave (Alan & Sandra Rowland).

Garden Spider *Araneus diadematus*

4 Sep – 20 along Upper East Side Path and Lower East Side Path (Alan & Sandra Rowland).

26 Sep – six near Rocket Pole (Alan & Sandra Rowland).

27 Sep – five in Millcombe (Alan & Sandra Rowland).

WOODLICE, CENTIPEDES AND MILLIPEDES (Diploda)

Common Striped Woodlouse *Philosca muscorum*

6 Mar – one seen in Millcombe (Dean Jones & Zoë Barton).

Southern Pill Woodlouse *Armadillidium depressum*

30 Mar – one seen in Big St John's (Alan Rowland).

18 Jun – two in Big St John's (Alan & Sandra Rowland).

Common Pill Woodlouse *Armadillidium vulgare*

30 Mar – one seen in Big St John's (Alan Rowland).

18 Jun – two in BSJ (Alan & Sandra Rowland).

BETLES (Coleoptera)

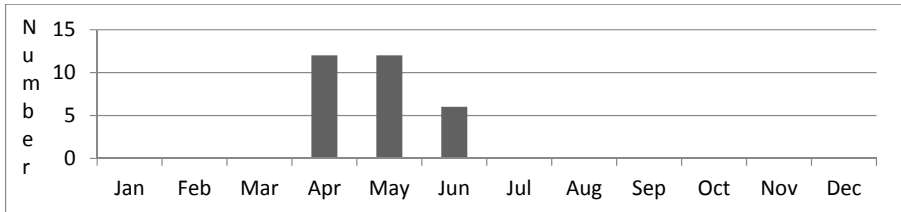
Whirligig Beetle *Gyrinidae* *

29 Jan – 12 seen in Ackland's Moor Pond (Tim Davis & Tim Jones).

22 Jun – hundreds, Ackland's Moor Pond (Alan & Sandra Rowland).

Green Tiger Beetle *Cicindela campestris*

This species was recorded between April and June when up to ten were seen at the same time. Locations were from the South End along both sides of the island up to as far north as Brazen Ward.



Thanks to observers: Tim Davis, Dean Jones, Tim Jones, John Martin *et al.*, Sarah, Chris and Isobel West.

A ground beetle *Poecilus versicolor*

29 Sep – one seen in Middle Park West Side (Alan & Sandra Rowland).

Parallel-sided Ground Beetle *Abax parallelipus*

16 Aug – one seen near Kistvaen Pond (Alan & Sandra Rowland).

4 Sep – one seen on Lower East Side Path between Millcombe and the Terrace (Alan Rowland).

27 Sep – one seen near Tent Field gate (Alan & Sandra Rowland).

28 Sep – one above the Battery (Alan & Sandra Rowland).

Shore Sexton Beetle *Necrodes littoralis* *

18 Jul – three in moth trap in the Village (Dean Jones).

A Burying beetle *Nicrophorus humator*

18 Jul – two in moth trap in the Village (Dean Jones).

A Burying beetle *Nicrophorus investigator*

28 Jun – two caught in moth trap in the Village (Dean Jones).

A Burying beetle *Nicrophorus vespilloides*

18 Jul – two in moth trap in the Village (Dean Jones).

25 Jul – two in moth trap in the Village (Dean Jones).

13 Aug – four in moth trap in The Casbah, Millcombe (Dean Jones).

20 Aug – two in moth trap in the Village (Dean Jones).

Devil's Coach-horse *Ocypus olens*

3 Sep – one seen at North End (Richard and Rebecca Taylor).



The Rove Beetle
Staphylinus erythropterus,
sometimes confused with
the much rarer S. caesarus.
© Alan Rowland

A Rove Beetle *Staphylinus erythropterus*

6 Jun – one near Quarry Pond (Roger Key).

20 Jun – one on Central Track (Alan & Sandra Rowland).

21 Jun – one at Gannets' Coombe (Alan & Sandra Rowland).

Minotaur beetle *Typhaeus typhoeus*

30 Jan – one seen West end of Three Quarter Wall (Tim Davis & Tim Jones).

12 Mar – one seen west side Quarter wall (Zoë Barton).

30 Sep – one Upper East Side Path near Tillage Field (Alan & Sandra Rowland).

2 Oct – one near Tibbetts (Alan & Sandra Rowland).

A Dung beetle *Geotrupes* sp.

21 Feb – one seen Middle Park (Danielle Richards).



A Dor Beetle, *Geotrupes stercorus*.

© Alan Rowland

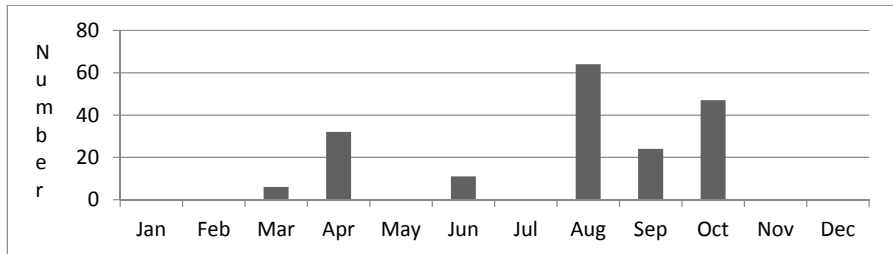


A Rosechafer *Cetonia aurata*.

© Alan Rowland

Dor beetle *Geotrupes stercorus*

This species has had a long season and records were made between March and October with a peak of 64 in August and lesser peaks in April and October.



Thanks to observers: Tony Barnes, Richard Campey, Tim Davis, Tim Jones, Alan & Sandra Rowland, Sarah, Chris and Isobel West.

Dor Beetle *Anoplotrupes stercorosus*

29 Sep – remains extracted from bird pellet found at Halfway Wall (Linda Losito).

A Scarab beetle *Aphodius (Acrossus) rufipes*

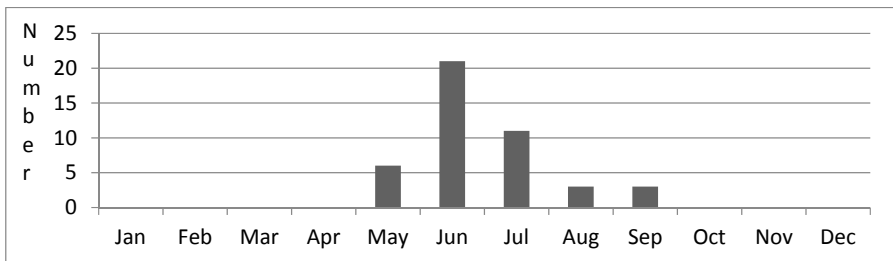
29 Sep – remains extracted from bird pellet found at Halfway Wall (Linda Losito).

A Dung Beetle *Aphodius fimetarius*

13 Mar – One on dung at the SW point – identified from *A. pedullus* by yellow flanks on pronotium. Dean Jones

Rosechafer *Cetonia aurata*

Roschafer were recorded between May and September, mainly single sightings but there were up to five sightings in May and four in July. They peaked in June with an aggregate total of 21 sightings.



Thanks to observers: Rob Andrew, Tim Davis, Tina & Ian Hartley, Dean Jones, Tim Jones, Richard & Rebecca Taylor, Tony & Ann Taylor, Michael Williams, Chris, Sarah and Isobel West.

A Clambid beetle *Calyptomerus dubius* **

18 Sep – one seen in Millcombe (Dean Jones).

A Click beetle *Isomia murine* *

6 Jun – common in Millcombe (Roger Key).

A Click beetle *Athous haemorrhoidalis*

31 May – one seen on South End (Alan Rowland).

6 Jun – very many in Millcombe (Roger Key).

18 Jun – two along Upper East Side Path (Alan & Sandra Rowland).

16 Aug – two seen on the Terrace, one near the Tavern, one seen near Benjamin's Chair (Alan & Sandra Rowland).

17 Aug – eight seen between Brazen Ward and Mousehole and Trap (Alan & Sandra Rowland).

A Click beetle *Agrypnus murinus*

6 Jun – one seen in Millcombe (Roger Key).

Common Red Soldier Beetle *Rhagonycha fulva*

27 Jun – three at South Light (Michael Williams).

28 Jun – one near Government House (Alan & Sandra Rowland).

Common Furniture Beetle *Anobium punctatum*

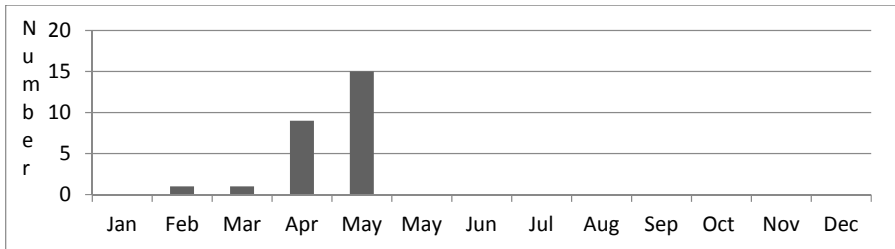
6 Jun – one seen Old Light Upper (Roger Key).

Sulphur Beetle *Cteniopus sulphureus*

18 Jul – seen on Thrift along Beach Road (Dean Jones).

Oil Beetle *Meloe* sp(p)

Species of this genus were recorded from as early as February up to May mainly in the southern end of the island with a mating pair seen in April and 12 Black Oil beetles *Meloe proscarabeus* on 05 May (Andrew Cleave).



Thanks to observers: Andrew Cleave, Dean Jones, Kathryn MacKinnon, Lynn Reynolds, Danielle Richards, Alan Rowland, Michael Williams, Siân Scott.

Black Oil Beetle *Meloe proscarabeus*

3 Apr – one seen between Castle and Benjamin's Chair (Lynn Reynolds).

A leaf beetle *Chrysolina banksi*

28 Sep – one above the Battery (Alan & Sandra Rowland).

Bloody-nosed Beetle *Timarcha tenebricosa*

2 Sep – one seen in Millcombe (Chris Minuala and Dean Jones).



The Heather beetle
Lochmaea suturalis.
© Mandy Dee

Heather beetle *Lochmaea suturalis*

18 Apr – several seen on the South West Point (Mandy Dee).

Lundy Cabbage Flea Beetle *Psylliodes luridipennis*

6 Jun – one seen in Millcombe (Roger Key).

26 Jun – six on Beach Road (Alan & Sandra Rowland).

A Flea beetle *Psylliodes napi*

6 Jun – three seen in Millcombe (Roger Key).

Lundy Cabbage Weevil *Ceutorhynchus pallipes*

25 May – numerous seen on Lundy Cabbage (Dean Jones).

3 Jun – one seen on Lundy Cabbage (John Martin, Rob Large, Janet Lister, Ruth Crundwell, Roger & Rosie Key).

6 Jun – 100s seen in on Lundy Cabbage in Millcombe and over 40 on one plant (Roger Key).

7-spot Ladybird *Coccinella septempunctata*

24 Jul – one seen in the Warden's Office (Dean Jones).

4 Sep – one in Millcombe pond area (Alan & Sandra Rowland).

A Wood-boring Weevil *Euophryum confine*

6 Jun – one seen Old Light Upper (Roger Key).

BUGS (Hemiptera)

Forest or Red-legged Shield Bug *Pentatoma rufipes*

13 Aug – one in moth trap in the Village (Dean Jones).

16 Aug – one seen by the back door of Millcombe (Alan & Sandra Rowland).

20 Aug – two in moth trap in the Village (Dean Jones).

Gorse Shieldbug *Piezodorus lituratus*

22 Jun – one seen in Gorse at the top of Millcombe Valley (Alan & Sandra Rowland).

4 Sep – one carapace in Garden Spider web – Top of Millcombe Valley (Alan & Sandra Rowland).

25 Sep – seven seen alongside Millcombe path (Alan & Sandra Rowland, Tim Davis, Tim Jones).

27 Sep – three in Millcombe (Alan & Sandra Rowland).

1 Oct – one below The Ugly (Alan & Sandra Rowland).

TRUE FLIES (Diptera)



A Crane Fly *Phylidorea ferruginea*: a species not previously reported from Lundy.
© Alan Rowland

A Crane Fly *Phylidorea ferruginea* *

25 Sep – one hatched from pupal case found at Government House Pond (Alan & Sandra Rowland).

A Crane Fly *Nephrotoma armatonius* **

4 Jul – one seen at Quarter Wall Copse (Dean Jones).



A Crane Fly *Tipula oloracea*
hatched from a pupal case from
the Kistvaen Pond.
© Alan Rowland

A Crane Fly *Tipula oloracea* *

27 Sep – one hatched from pupal case found at Kistvaen Pond (Alan & Sandra Rowland).

Black Fly *Simuliidae* sp. **

20 Jun – 100s Middle Park Pond (Alan & Sandra Rowland).

Marmalade Hover Fly *Episyrphus balteatus*

23 Jun – Three Quarter Wall West side (Alan & Sandra Rowland).

10 Jun – “Lots” seen in Millcombe ‘Secret Garden’ (Dean Jones).

A Hoverfly *Sphoerophonia scripta* **

4 Jul – one seen at Quarter Wall Copse (Dean Jones).

A Hover Fly *Eristalis petinax*

20 Jul – one seen on Upper East Side Path (Dean Jones).

A Hover Fly *Helophilus trivittatus*

12 Jun – one seen on Lametor (Dean Jones).

A Bumblebee mimic Hover Fly *Sericomyia superbiens* **

20 Jun – one seen Upper East Side Path (Dean Jones).

Blue Bottle Fly *Calliphora vomitoria calliphoridae* **

20 Jun – one seen on the Upper East Side Path (Dean Jones).

House Fly *Muscidae* sp.

18 Jul – one in moth trap in the Village infected with *Entomophthora* fungus (Dean Jones).

Yellow Dung Fly *Scathophaga stercoraria*

18 June – 50 on cattle dung in the Quarries (Alan & Sandra Rowland).

Giant Tachinid Fly *Tachina grossa*

- 4 Jul – one seen on the Terrace (Dean Jones).
25 Jul – one seen in Millcombe 'Secret Garden' (Dean Jones).
19 Aug – one seen in Tavern (Dean Jones).
3 Sep – one seen in the Village (Helen Applebee).

Celery Fly *Euleia heraclei* **

- 25 Oct – leaf mines seen on Alexanders on Lower East Side Path (Dean Jones).

Honeysuckle Leaf-miner *Chromatomyia aprilina* **

- 20 Sep – leaf mines seen on Honeysuckle on the Terrace (Dean Jones).

Sun Fly *Dryomyzidae* sp.*

- 28 Apr – one seen near Benjamin's Chair (Rob Andrew).

Bumblebee parasite *Physocephala rufipes*

- 20 Jun – one seen Upper East Side Path (Dean Jones).

BEES, WASPS AND ANTS (Hymenoptera)

A lot of these records came from the expert tutelage of Kathryn Mackinnon of the Bumblebee Conservation Trust who delivered a training package to the conservation team on 17th May. A report on this event is included elsewhere in this publication and not duplicated here.

Turnip Saw Fly *Athalia rosae* *

- 4 Jul – one seen on Upper East Side Path (Dean Jones).

Bracken Sawfly *Strongylogaster multifasciata* *

- 20 Jun – one seen Upper East Side Path (Dean Jones).

An Ichneumon wasp *Netelia* sp. *

- 9 Aug – 100s seen around the Tavern (Dean Jones).

An Ichneumon wasp *Enicospilus ramidulus* *

- 13 Aug – one seen in moth trap in the Village (Dean Jones).

An Ichneumon wasp *Heteropelma amictum* *

- 20 Jul – one seen on Upper East Side Path (Dean Jones).
22 Jul – one seen in Millcombe (Dean Jones).

Plasterer Bees *Colletes* sp.

- 15 Jun – 100s seen nectaring on Ling at the North End (Alan & Sandra Rowland).
16 Jun – fifty seen on Ling Lower East Side Path north of Quarter Wall Copse (Alan & Sandra Rowland).
13 Jul – one seen at Three Quarter Wall (Dean Jones).
15 Jul – 100s seen feeding on Bramble in Millcombe and Upper East Side Path (Dean Jones and Zoë Barton).
20 Jul – 100s seen all over the island on Bramble (Dean Jones).
15 Aug – 100s seen nectaring on Heather North East Point area (Alan & Sandra Rowland).

Garden Bumblebee *Bombus hortorum*

21 May – several seen in Millcombe (John & Joan Saul).

White-tailed Bumblebee *Bombus lucorum*

3 Apr – one seen near Quarry Cottages (Alan Rowland).

21 May – several seen in Millcombe (John & Joan Saul).

Common Carder Bee *Bombus pascuorum*

21 May – several seen in Millcombe (John & Joan Saul).

20 Jun – two around the Village, four outside Little St John's on White Clover (Alan & Sandra Rowland).

25 Jun – one in Millcombe (Alan & Sandra Rowland).

Buff-tailed Bumblebee *Bombus terrestris*

17 Feb – one seen on Upper East Side Path (Dean Jones).

3 Apr – one Upper East Side Path (Alan & Sandra Rowland).

16 Apr – three seen at Millcombe Pond (Michael Williams).

21 May – several seen in Millcombe (John & Joan Saul).

22 Jun – one at Jenny's Cove, one near Quarry Cottages (Alan & Sandra Rowland).

25 Jun – one at Barton's cottages, two in Millcombe (Alan & Sandra Rowland).

16 Aug – one seen on Lower East Side Path (Alan & Sandra Rowland).

27 Sep – three in Millcombe (Alan & Sandra Rowland).

Red-banded Sand Wasp *Ammophila sabulosa*

21 Jun – one at Gannets' Coombe (Alan & Sandra Rowland).

28 Jun – one on Lower East Side Path (Alan & Sandra Rowland).

Black Ant *Lassius niger*

22 Jun – 20 climbing Foxglove on Upper East Side Path (Alan & Sandra Rowland).

A Potter Wasp *Ancistroceus* sp.

22 Jul – two seen nesting on the Jetty (Dean Jones).

A Wasp (*Vespula* sp.)

23 Jul – nest found Jenny's Cove (Dean Jones).

German Wasp *Vespula germanica*

16 Aug – 12 counted leaving a nest on the Lower East Side Path near Quarter Wall Copse (Alan & Sandra Rowland).

4 Sep – 50 in and out of the nest Lower East Side Path near Quarter Wall Copse (Alan & Sandra Rowland).

4 Sep – one in Millcombe Pond area (Alan & Sandra Rowland).

30 Sep – active nest Wall at top of Millcombe Valley.

1 Oct – active nest Lower East Side Path near St Helen's Copse (Alan & Sandra Rowland).

2 Oct – queen seen outside the nest (Alan & Sandra Rowland).

Hornet *Vespa crabro* *

14 Oct – one seen in Village (Dean Jones).

NETWINGED INSECTS (Neuroptera)

Lacewing *Chrysopa* sp.

18 Jul – two in moth trap Village (Dean Jones).

DRAGONFLIES AND DAMSELFLIES (Odonata)

Compiled by Tim Davis

Five species were recorded during the year, between 2 Jun and 29 Sep. Damselflies were present at Pondsburry, Quarter Wall Pond, Quarry Pond, Rocket Pole Pond and in Punchbowl Valley.

DAMSELFLIES (Zygoptera)

Common Blue Damselfly *Enallagma cyathigerum*

There were records of occurrence on 21 days. The highest count was 346 adults made at Pondsburry on 24 Jul. Records of more than 10 were: 11 at Pondsburry on 21 Jun; 70 at Quarter Wall Pond on 10 Jul; 58 at Quarter Wall Pond on 15 Jul; 20 at Quarter Wall Pond on 24 Jul, and 40 at Pondsburry on 30 Aug.

Blue-tailed Damselfly *Ischnura elegans*



*Blue-tailed
Damselflies at
Quarter Wall Pond.
© Alan Rowland*

There were records of occurrence on 16 days. The highest count was 60 adults made at Pondsburry on 24 Jul. Records of more than 10 were: 25 at Quarter Wall Pond on 4 Jul; 33 at Quarter Wall Pond on 10 Jul.

DRAGONFLIES (Anisoptera)

Migrant Hawker *Aeshna mixta*

There were records of occurrence on 13 days between 25 Jul and 29 Sep, with three around Pondsburry on 13 Sep the only count higher than one.

Emperor Dragonfly *Anax imperator*



An Emperor Dragonfly ovipositing at Rocket Pole Pond.

© Martin Thorne

The Emperor Dragonfly was first recorded on Lundy in 1978, and in nine other years up to 2017 but without any evidence of breeding. This changed in 2018 when a female was photographed (by Martin Thorne) ovipositing at Rocket Pole Pond on 25 Aug (see colour plate): only the fifth species of Odonata known to have bred on the island to date (Davis, 2015). There were records of occurrence on seven days between 22 Jun and 30 Aug: all single individuals.

Common Darter *Sympetrum striolatum*

Common Darters were noted on four days between 16 Jun and 24 Jul, with a maximum of three, along the Lower East Side Path, on 28 Jun.

Thanks to observers: Zoë Barton, Sam Bosanquet, Tim Davis, Josh Evans, Eleanor & Jane Harris, Dean Jones, Tim Jones, Rob Preece, Alan Rowland, Rebecca & Richard Taylor, Tony Taylor and Martin Thorne.

Reference

Davis, T. 2015. Dragonflies on Lundy – a summary of occurrence during the LFS years. *LFS Annual Report* 65: 91-97.

CADDISFLIES (Trichoptera)

A Caddis Fly *Stenophylax permistus* ***

7 Jun – 12 in moth trap in Millcombe (Andrew Cleave).

A Caddis Fly *Plectonemia geniculata* ***

7 Jun – five in moth trap in Millcombe (Andrew Cleave).

GRASSHOPPERS AND CRICKETS (Orthoptera)

Great Green Bush Cricket *Tettigonia viridissima* *

18 Aug – one seen on the Oldenburg tied up at the Jetty (Alan & Sandra Rowland).

Speckled Bush Cricket *Leptophyes punctatissima*

20 Jun – one seen Upper East Side Path (Dean Jones).

Field Grasshopper *Chorthippus brunneus*

16 Aug – twelve seen along Lower East Side Path, one on the South Coast, one by Millcombe (Alan & Sandra Rowland).

1 Sep – one in Millcombe pond area (Alan & Sandra Rowland).

4 Sep – eight on Lower East Side Path (Millcombe to Terrace) (Alan & Sandra Rowland).

1 Sep – two seen at Benjamin’s Chair (Alan & Sandra Rowland).

1 Oct – one in Millcombe (Alan & Sandra Rowland).

Meadow Grasshopper *Chorthippus parallelus* *

16 Aug – one seen on Lower East Side Path (Alan & Sandra Rowland).

4 Sep – three on Lower East Side Path (Millcombe – Terrace) (Alan & Sandra Rowland).

Bristletail *Petrobius maritimus*

27 Jun – one in Little St John’s (Alan & Sandra Rowland).

28 Jun – one in the St Helen’s Church (Alan & Sandra Rowland).

14 Aug – three seen in Benson’s Cave (Alan & Sandra Rowland).

17 Aug – three seen on Three Quarter Wall (Alan & Sandra Rowland).

BUTTERFLIES AND MOTHS (Lepidoptera)

Compiled by Anthony John

BUTTERFLIES

The warm dry weather of summer 2018 resulted in more records of most common species on Lundy, when compared with 2017; only Red Admiral and Peacock were recorded on fewer days. Nineteen species of butterflies were recorded in 2018 (16 species were seen in 2017). Scarcer species reported included Orange-tip, Clouded Yellow, Speckled Wood, Gatekeeper, Comma, Holly Blue and Common Blue. However, there were no records of Wall.

Orange-tip *Anthocharis cardamines*

Four records: in May, six on 12th, two on 13th and one on 19th; one on 7 Aug (an unlikely date, observers unknown). The previous records, all of them in April, were in 1997, 2014 and 2017.

Large White *Pieris brassicae*

Recorded on 74 days (29 days in 2017) between 20 Apr and 3 Oct, with a max of 100 on 4 and 5 Jul.

Maximum count for each month (top) and number of days recorded (bottom)

Jan	Feb	Mar	Apr	May	Jun	Jul	Aug	Sep	Oct	Nov	Dec
			2	5	10	100	13	20	1		
			3	11	11	19	13	16	1		

Small White *Pieris rapae*

Recorded on 59 days (38 in 2017) between 13 May and 9 Oct, with a max of 20 on 24 Jul and 30 Aug.

Maximum count for each month (top) and number of days recorded (bottom)

Jan	Feb	Mar	Apr	May	Jun	Jul	Aug	Sep	Oct	Nov	Dec
				3	4	20	20	18	11		
				6	11	12	9	13	8		

Green-veined White *Pieris napi*

Recorded on 59 days (46 in 2017) between 18 Apr and 3 Oct, with a max of 23 on 31 May.

Maximum count for each month (top) and number of days recorded (bottom)

Jan	Feb	Mar	Apr	May	Jun	Jul	Aug	Sep	Oct	Nov	Dec
			3	23	7	6	2	2	1		
			9	20	11	6	6	5	2		

Clouded Yellow *Colias croceus*

Two records: singles on 11 Jun and 9 Oct.

Speckled Wood *Pararge aegeria*

Six records: one on 20 Apr; in autumn there were singles on 2, 23, 28, and 29 Sep and two on 27 Sep.

Small Heath *Coenonympha pamphilus*

Recorded on 67 days (50 in 2017) between 21 May and 29 Sep, with a max of 120 on 6 Jun.

Maximum count for each month (top) and number of days recorded (bottom)

Jan	Feb	Mar	Apr	May	Jun	Jul	Aug	Sep	Oct	Nov	Dec
				40	120	6	25	20			
				8	26	8	14	11			

Ringlet *Aphantopus hyperantus*

Recorded on 17 days (12 in 2017) between 16 Jun and 26 Jul, with a max of 37 on 6 Jul.

Maximum count for each month (top) and number of days recorded (bottom)

Jan	Feb	Mar	Apr	May	Jun	Jul	Aug	Sep	Oct	Nov	Dec
					6	37					
					4	13					

Meadow Brown *Maniola jurtina*

Recorded on 50 days (40 in 2017) between 6 Jun and 17 Aug, with a max of 426 on 4 Jul.

Maximum count for each month (top) and number of days recorded (bottom)

Jan	Feb	Mar	Apr	May	Jun	Jul	Aug	Sep	Oct	Nov	Dec
					391	426	10				
					22	19	9				

Gatekeeper *Pyronia tithonus*

There was one, possibly two records; three possibles on 13 Jun, and 25+ on 2 Jul.

Grayling *Hipparchia semele*

Ten records on 11 days between 20 Jun and 31 Jul, with a max of nine on 25 Jul.

Red Admiral *Vanessa atalanta*

Recorded on 109 days (112 in 2017) between 9 Apr and 21 Nov, with a max of 18 on 27 May and 4 Jun.

Maximum count for each month (top) and number of days recorded (bottom)

Jan	Feb	Mar	Apr	May	Jun	Jul	Aug	Sep	Oct	Nov	Dec
			1	18	18	13	11	13	12	3	
			1	6	21	17	16	22	21	5	

Painted Lady *Vanessa cardui*

Recorded on 67 days (47 in 2017) between 26 Apr and 9 Oct, with a max of 40 on 30 Aug.

Maximum count for each month (top) and number of days recorded (bottom)

Jan	Feb	Mar	Apr	May	Jun	Jul	Aug	Sep	Oct	Nov	Dec
			1	5	6	4	40	14	3		
			2	6	13	12	15	18	1		

Peacock *Inachis io*

Recorded on 11 days (20 in 2017) between 16 Mar and 10 Sep, with a max of two on 17 Jul.

Maximum count for each month (top) and number of days recorded (bottom)

Jan	Feb	Mar	Apr	May	Jun	Jul	Aug	Sep	Oct	Nov	Dec
		1	1	1	1	2	1	1			
		2	2	1	1	2	2	1			

Small Tortoiseshell *Aglais urticae*

Recorded on 39 days (24 in 2017) between 25 Mar and 15 Nov, with a max of 20 on 4 May.

Maximum count for each month (top) and number of days recorded (bottom)

Jan	Feb	Mar	Apr	May	Jun	Jul	Aug	Sep	Oct	Nov	Dec
		1	2	20	5	4	2	1	2	1	
		1	3	3	8	9	7	1	5	2	

Despite a better year on Lundy in 2018, results from Butterfly Conservation showed that the national population of the Small Tortoiseshell, once common and widespread, has collapsed by 75% since the 1970s.

Comma *Polygonia c-album*

There were singles on 29 Apr and 5 Sep.

Small Copper *Lycaena phlaeas*

Recorded on 50 days (19 in 2017) between 19 May and 30 Oct, with a max of seven on 20 Jul, 26 Sep and 9 Oct.

Maximum count for each month (top) and number of days recorded (bottom)

Jan	Feb	Mar	Apr	May	Jun	Jul	Aug	Sep	Oct	Nov	Dec
				1	6	7	5	7	7		
				2	6	9	5	14	14		

Holly Blue *Celastrina argiolus*

One record of one on 18 Apr.

Common Blue *Polyommatus icarus*

Recorded on 25 days (10 in 2017) between 28 May and 13 Sep, with a max of three on 15, 20 and 24 Jul.

Maximum count for each month (top) and number of days recorded (bottom)

Jan	Feb	Mar	Apr	May	Jun	Jul	Aug	Sep	Oct	Nov	Dec
				2	1	3	1	1			
				2	6	9	4	4			

Number of records (days) of scarce butterflies on Lundy 2009-2018

	2009	2010	2011	2012	2013	2014	2015	2016	2017	2018
Orange Tip	-	-	-	-	-	2	-	-	1	4
Clouded Yellow	1	-	5	-	5	3	2	-	-	2
Wall	1	2	1	-	-	-	1	-	-	-
Speckled Wood	2	1	-	-	-	1	1	-	1	6
Gatekeeper	10	3+	8	1	4	-	4	3	4	1 (2?)
Comma	1	-	-	-	-	-	-	-	-	2
Holly Blue	2	6	1	-	1	-	1	-	-	1
Common Blue	3+	6	2	-	-	-	1	2	10	25
Ringlet	2	3+	3	2	-	11	8	2	12	17
Peacock	9	4	3	2	1	15	16	6	20	11



Hummingbird Hawk-moth and Dark Sword-grass moths: migrants at Lundy in 2018.
Images © Helen Cole

As a result of greatly increased trapping effort, particularly by Dean Jones, at least 238 species of moths were recorded on Lundy during 2018, 86 species of 'micro' moths and 152 species of 'macro' moths (the latter include Common Swift, Thrift Clearwing and 6-spot & 5-spot Burnet moths). This compares with 125 species recorded in 2017. Seven species of migrant moths were recorded: Diamond-back Moth, Rusty-dot Pearl, Rush Veneer, Convolvulus Hawk-moth, Hummingbird Hawk-moth, Dark Sword-grass, and Silver Y.

A total of 28 light trap sessions were carried out in 2018, 24 with a Skinner trap and four with a Heath trap, in June (8), July (6), August (4), September (7), October (2), and December (1). Skinner traps were deployed at Paradise Row on ten occasions from 3 June to 31 August; at the Casbah in Millcombe on ten visits from 20 July to 30 December; and at Millcombe House on 5, 6 and 7 June. A Heath trap was operated at Brambles on 8, 9, 11 and 13 September and 18 October. Daytime searches for day-flying moths were done on an *ad hoc* basis.

Common and scientific names follow the *Checklist of the Lepidoptera of the British Isles* by D.J.L. Agassiz, S.D. Beavan & R.J. Heckford, published for the Royal Entomological Society in 2013. The numbers before the species names also follow this checklist. *A Provisional List of the Moths of Lundy, Devon*, compiled by S.D. Beavan and R.J. Heckford, was published in 2014 in the *British Journal of Entomology and Natural History* (Volume 27, pp45-62); this is abbreviated to 'B & H' in the list below.

Due to the large number of species recorded, and constraints on space, precise details of records of common moths – those that occur on Lundy in most years – are not given; they are listed at the end. The species listed in detail below are those which are scarce or have been infrequently recorded on Lundy, are migrants, or were found in large numbers.

The following is a list of all those observers who sent in records of moths in 2018:

Rob Andrew, Zoë Barton, Alison Bunning, P. Callaway, Tom Carr, Andrew Cleave, Helen Cole, Tim Davis & Tim Jones, Chris Dee, Josh Evans, Ash Garfoot, Richard Goodman, Ishbel Hayes, Val Hennelly, John Hutchison, Paul Holt, Dean Woodfin Jones, Mike Jones, Roger & Rosy Key et al., Peter Lambden, Chloë Lofthouse, Kathryn MacKinnon, Chris Manvala, David Price, Martin Roper, Alan & Sandra Rowland, John & Joan Saul, Sian Scott, Shelley Sherman, Frances Stuart, Tony & Ann Taylor, Richard & Rebecca Taylor, Emily Trapnell, Sue Waterfield, Denise Wawman, Michael Williams, Lucy Wood.

MICRO-MOTHS (52 species listed)

4.045 *Stigmella aurella*

20 Sep – numerous leaf mines on bramble in Millcombe (Dean Jones).

11.012 **Common Bagworm** *Psyche casta*

8 Jun – numerous larval cases on rocks at Pyramid Slope (Dean Jones).

12.027 **Case-bearing Clothes Moth** *Tinea pellionella* – not in B & H checklist

14 Jul – two at Pigs 4 (Dean Jones).

12.038 **Yellow-backed Clothes Moth** *Monopis obviella* – not in B & H checklist

25 Jun – one in Skinner Trap at Paradise Row (Dean Jones).

12.039 **Pale-backed Clothes Moth** *Monopis crocipitella* – not in B & H checklist

25 Jun – six in Skinner Trap at Paradise Row (Dean Jones).

12.048 **Fern Smut** *Psychoides filicivora* – not in B & H checklist

1 Jun – one in Millcombe Valley (Dean Jones).

15.010 *Caloptilia stigmatella*

20 Sep – numerous leaf mines on *Salix* on the Terrace (Dean Jones).

17.003 *Ypsolopha dentella* – last recorded in 1995

25 Jul – two in Skinner trap at the Casbah (Dean Jones).

13 Aug – two in Skinner trap at the Casbah (Dean Jones).

17.014 **Feathered Stem-moth** *Ochsenheimeria taurella* – not in B & H checklist

8 Jun – one on Pyramid Slope (Dean Jones).

18.001 **Diamond-back Moth** *Plutella xylostella* – a migrant

Recorded regularly from 26 May (five at the Battery) to the last one on 31 Dec at the 'Steps of Doom' (Dean Jones).

19.002 **Speckled Fanner** *Glyphipterix thrasonella* – not in B & H checklist

13 Jul – 20+ flying around *Juncus* spp at Quarter Wall in afternoon (Dean Jones).

19.007 *Glyphipterix simplicella* – last recorded in 1984

21 May – one or more recorded, site unspecified (John & Joan Saul).

31 May – one in Millcombe Valley (Dean Jones).

28.009 **White-shouldered House-moth** *Endrosis sarcitrella* – not in B & H checklist
Recorded on eight occasions from 31 Mar at Pigs Paradise (Dean Jones & Zoe Barton) to the last one on 18 Oct at Brambles Villa (Ishbel Hayes & Helen Cole).

28.012 **Small Dingy Tubic** *Borkhausenia fuscescens* – not in B & H checklist
16 Jul – one in Skinner Trap at Windy's Pig Pen, Paradise Row (Dean Jones).

32.030 *Agnopterix nervosa* – last recorded by G.B. Longstaff in 1907; reported in Palmer, M.G. (1946) *The fauna and flora of the Ilfracombe District of North Devon*.
18 Jul – one in Skinner trap at Paradise Row (Dean Jones).

32.039 *Depressaria daucella*
9 & 11 Sep – singles at 6W actinic Heath trap at Bramble Villas (David Price).

35.010 *Aproaerema anthyllideta* – not in B & H checklist
27 Jun – one in in Skinner Trap at Paradise Row (Dean Jones).

35.016 *Nothris congressariella* – B & H describe this as “Probably the most significant moth species that occurs on Lundy”; it feeds on balm-leaved figwort.
5 Jul – one in in Skinner Trap at Paradise Row (Dean Jones).
13 Aug – one in Skinner trap at the Casbah (Dean Jones).

37.106 *Coleophora paripenella* – last recorded in 1988
8 Jun – one on Pyramid Slope (Dean Jones).
5 Jul – one in Skinner trap at Paradise Row (Dean Jones).

38.025 *Elachista atricomella* – not in B & H checklist
6 Jun – one in Skinner trap at Paradise Row (Dean Jones).

40.015 **Little Mompha** *Mompha raschkiella* – not in B & H checklist
4 Sep – one in Skinner trap at the Casbah (Dean Jones).

41.002 *Blastobasis adustella* – not in B & H checklist
25 Jul – one in Skinner trap at the Casbah (Dean Jones).

(45.009 **Tansy Plume** *Gillmeria ochrodactyla*
27 Jun – one in Skinner Trap at Paradise Row (Dean Jones). However, Beavan & Heckford's 2014 checklist suggests that this is unlikely, since the food plant, Tansy, does not occur on Lundy).

45.028 **Wood Sage Plume** *Capperia britanniodactylus*
25 May – a caterpillar on wood sage in Millcombe (John & Joan Saul).

48.001 **Nettle Tap** *Anthophila fabriciana*
26 Sep – ‘hundreds’ on Lower East Side path (Dean Jones).

49.024 **Chequered Fruit-tree Tortrix** *Pandemis corylana* – last recorded in 1985
26 Aug – one in Skinner trap at Casbah (Dean Jones).

49.028 **Dark-barred Tortrix** *Syndemis musculana* – not in B & H checklist
8 Jun – one on Pyramid Slope (Dean Jones).

49.059 *Tortrix viridana* – last recorded in 1993
7 Jun – one in Skinner trap at Millcombe House (Andrew Cleave).

49.065 **Strawberry Tortrix** *Acleris comariana* – not in B & H checklist
10 Sep – two in Skinner trap at the Casbah (Dean Jones).

49.066 *Acleris laterana* – not in B & H checklist
8 Sep – one at 6W actinic Heath trap at Bramble Villas (David Price).



A Rhomboid Tortrix, Acleris rhombana, last recorded at Lundy in 1987.
© David Price

49.070 **Rhomboid Tortrix** *Acleris rhombana* – last recorded in 1987
13 Sep – one at 6W actinic Heath trap at Bramble Villas (David Price).

49.078 *Acleris aspersana* – last recorded by Longstaff; Palmer
4 Jul – one photographed on the Terrace (Dean Jones).

49.128 *Aethes rubigana* – last recorded in 1995
20 Jul – one in Skinner trap at the Casbah (Dean Jones).

49.157 *Hedya pruniana* – last recorded in 1988
31 May – two flushed near the Ugly (Dean Jones).

49.183 **Smokey-barred Marble** *Lobesia abscisana* – not in B & H checklist
14 Jul – one in Tavern toilets (Dean Jones).
15 Jul – one in Skinner Trap at Windy's Pig Pen, Paradise Row (Dean Jones).

49.185 **Shore Marble** *Lobesia littoralis*

3 Jun – one at Benjamin's Chair (Dean Jones).

8 Jun – abundant on Pyramid Slope (Dean Jones).

49.224 *Spilonota ocellana* – last recorded in 1990

5 Jul – one in Skinner trap in Paradise Row (Dean Jones).

49.305 *Rhyacionia buoliana* – last recorded in 1995

20 Jul – one in Skinner trap at the Casbah (Dean Jones).

49.367 *Pammene fasciana* – last recorded in 1990

27 Jun – one in Skinner trap in Paradise Row (Dean Jones).

62.015 *Delplanqueia dilutella* – not in B & H checklist

27 Jun – three in in Skinner Trap at Paradise Row (Dean Jones).

5 Jul – one in in Skinner Trap at Paradise Row (Dean Jones).

62.072 **Meal Moth** *Pyralis farinalis* – not in B & H checklist

18 Jul – one in Tavern toilets (Kathryn MacKinnon).

63.003 *Pyrausta cingulata* – last recorded in 1985

16 Jul – one at Pigs 4 (Dean Jones).

63.016 **Cinerosus Pearl** *Anania fuscali* – not in B & H checklist

31 May – one in Village (Dean Jones).

25 Jun – one in Skinner Trap at Paradise Row (Dean Jones).

5 Jul – one in Skinner Trap at Paradise Row (Dean Jones).

63.031 **Rusty-dot Pearl** *Udea ferrugalis* – a migrant

17 Jul – one at Millcombe House (Dean Jones).

63.034 *Udea prunalis* – last recorded in 1993

15 Jul – one in Skinner trap at Windy's Pig Pen, Paradise Row (Dean Jones)

20 Jul – one in Skinner trap at the Casbah (Dean Jones).

25 Jul – one in Skinner trap at the Casbah (Dean Jones).

63.052 **Rush Veneer** *Nomophila noctuella* – a migrant

9 Oct – one on Upper East Side path (Tim Davis, Tim Jones).

24 Oct – one below Castle (Paul Holt).

63.057 **Garden Pebble** *Evergestis forficalis* – not in B & H checklist

31 May – one in Tavern doorway (Dean Jones).

5 Jul – one in Skinner Trap at Paradise Row (Dean Jones).

21 Aug – one in Tavern toilets (Dean Jones).

63.066 *Scoparia pyralella*

31 May – one in Millcombe Valley (Dean Jones). Seven further moths were found in Skinner traps at Paradise Row or the Casbah between 5 Jul and 20 Aug (all Dean Jones).

63.073 *Eudonia truncicolella* – last recorded in 1993
 9 Sep – one on the Terrace (Dean Jones).

63.081 *Crambus pascuella* – last recorded in 1990
 10 Jun – one photographed at Northeast Point, near Gannet's Rock (Dean Jones).

63.114 **Brown China-mark** *Elophila nymphaeata* (for further details see article on p.xx)
 Up to five adults were seen on four dates between 19 and 29 Jun at Quarter Wall Pond and another in Sep at Quarry Pond (Alan & Sandra Rowland).
 7 Jun – two in Skinner trap at Millcombe House (Andrew Cleave).
 29 Aug – one at Brick Field Pond (Richard Taylor).
 30 Aug – two at Pondsburry (Richard & Rebecca Taylor).

63.117 **Ringed China-mark** *Paroponyx stratiotata*
 16 Jul – one near Bramble Villas (Sam Bosanquet).

Macro-moths (53 species listed)

52.016 **Thrift Clearwing** *Pryopterion muscaeformis*
 8 Jun – one at Pyramid Slope (Dean Jones).
 9 Jun – one at Southwest Point (P. Callaway).

54.008 **Six-spot Burnet** *Zygaena filipendulae*
 Recorded on 22 days between 2 Jun and 25 Jul, with a max of 272 on 4 Jul.

Maximum count for each month (top) and number of days recorded (bottom)

Jan	Feb	Mar	Apr	May	Jun	Jul	Aug	Sep	Oct	Nov	Dec
					100	272					
					15	7					

54.010 **Five-spot Burnet** *Zygaena trifolii*
 Recorded on 12 days between 20 Jun and 30 Jul, with a max of 100 on 4 Jul.

Maximum count for each month (top) and number of days recorded (bottom)

Jan	Feb	Mar	Apr	May	Jun	Jul	Aug	Sep	Oct	Nov	Dec
					6	100					
					3	9					

54.008/54.010 **Burnet moth** spp. *Zygaena* spp.
 31 May – c.30 caterpillars and c.150 chrysalis at Castle Parade (Dean Jones).
 4 Jun – 314 chrysalis west of Benjamin's Chair (Rebecca Taylor).

65.008 **Peach Blossom** *Thyatira batis* – not in B & H checklist
 25 Jun – one in in Skinner Trap at Paradise Row (Dean Jones).
 13 Aug – one in Skinner trap at the Casbah (Dean Jones).

66.008 **Fox Moth** caterpillars *Macrothylacia rubi*
 Recorded on 54 days between 30 Mar and 17 Nov, with a max of 71 on 6 Oct.

Maximum count for each month (top) and number of days recorded (bottom)

Jan	Feb	Mar	Apr	May	Jun	Jul	Aug	Sep	Oct	Nov	Dec
		1	1	1	1	-	6	17	71	1	
		1	1	2	2	-	10	19	16	3	

68.001 Emperor Moth *Saturnia pavonia*

Adults were recorded on six days in May – two on 4th, a female on 7th, at least five on 13th, singles on 17th, 20th and 21st, the last two being males; single caterpillars were seen at Dead Cow Point on 4 Jul, and on the main track between Quarter and Halfway walls on 23 and 31 Jul and 6 Aug.

69.004 Convolvulus Hawk-moth *Agrius convolvuli* – a migrant

11 Aug – one feeding on flowers at dusk at Paradise Row (Dean Jones, Zoe Barton).
 13 Aug – two feeding on flowers at dusk at Paradise Row, one flew past Tavern (Dean Jones, Zoe Barton).
 22 Aug – one in the Tavern (Ash Garfoot, Sian Scott).
 10 Sep – one in Skinner trap at the Casbah (Dean Jones).

69.010 Hummingbird Hawk-moth *Macroglossum stellatarum* – a migrant

Recorded on 35 days between 7 Jun and 24 Oct, with a max of three on 10 Jul and 29 Sep.

Maximum count for each month (top) and number of days recorded (bottom)

Jan	Feb	Mar	Apr	May	Jun	Jul	Aug	Sep	Oct	Nov	Dec
					2	3	2	3	2		
					1	9	5	15	5		

70.009 Satin Wave *Idaea subsericeata* – last recorded in 1968 (B & H)

10 Sep – one in Skinner trap at Casbah (Dean Jones).

70.040 Lead Belle *Scotopteryx mucronata* – not in B & H checklist

6 Jun – one flushed from bracken in Halfway Wall Bay (Dean Jones); one in Black Shed loos (Tim Jones, Tim Davis, Richard & Rebecca Taylor).

70.067 Streamer *Anticlea derivata* – not in B & H checklist

22 Apr – one in Black Shed loos (Zoë Barton).

70.074 July Highflier *Hydriomena furcata* – last recorded in 1995

18 Jul – one in Skinner trap at Paradise Row (Dean Jones).
 20 Jul – four in Skinner trap at the Casbah (Dean Jones).

70.098 Dark Marbled Carpet *Dysstroma citrata* – last recorded in 2010 (B & H)

27 Jun – one in Skinner Trap at Paradise Row (Dean Jones).

70.100 Green Carpet *Colostygia pectinataria* – last recorded in 2012 (B & H)

6 and 7 Jun – singles in Skinner trap at Millcombe House (Andrew Cleave).

70.106 Winter Moth *Operophtera brumata*

30 Dec – two in Skinner trap at Casbah (Dean Jones).

- 70.138 **Sandy Carpet** *Perizoma flavofasciata* – not in B & H checklist
 6 Jun – one in in Skinner trap at Millcombe House (Andrew Cleave).
 20 Jul – one in Skinner trap at Casbah (Dean Jones).
- 70.142 **V-pug** *Chloroclystis v-ata* – not in B & H checklist
 5 Jul – one in Skinner Trap at Paradise Row (Dean Jones).
 18 Jul – one in Skinner Trap at Paradise Row (Dean Jones).
- 70.144 **Green Pug** *Pasiphila rectangulata* – last recorded in 1995
 7 Jun – one in Skinner trap at Millcombe House (Andrew Cleave).
- 70.147 **Slender Pug** *Eupithecia tenuiata* – last recorded in 1995
 5 Jul – two in Skinner trap at Paradise Row (Dean Jones).
- 70.155 **Netted Pug** *Eupithecia venosata* – not in B & H checklist
 7 Jun – one in light trap in Millcombe Valley (Andrew Cleave).
- 70.172 **Thyme Pug** *Eupithecia distinctaria* – last recorded in 1993
 25 & 27 Jun – one in Skinner trap at Paradise Row (Dean Jones).
- 70.179 **Ling Pug** *Eupithecia absinthiata* ssp. *goossensiata*. This is the smaller, greyer version of **Wormwood Pug** *E. absinthiata* found on heathland or moorland.
 25 Jul – one in Skinner trap at the Casbah (Dean Jones).
- 70.187 **Tawny Speckled Pug** *Eupithecia icterata* – not in B & H checklist
 13 Aug – one in Skinner trap at Casbah (Dean Jones).
- 70.190 **Grey Pug** *Eupithecia subfuscata* – not in B & H checklist
 3 Jun – two in Skinner Trap at Paradise Row (Dean Jones).
- 70.200 **Yellow-barred Brindle** *Acasis viretata* – not in B & H checklist
 27 May – one at Bramble Villas (Tony & Ann Taylor, Richard & Rebecca Taylor).
- 70.243 **Swallow-tailed Moth** *Ourapteryx sambucaria*
 27 Jun – one in Skinner Trap at Paradise Row (Dean Jones).
 25 Jul – one in Skinner trap at Casbah (Dean Jones).
- 70.282 **Early Moth** *Theria primaria* – not in B & H checklist
 31 Dec – one in Tavern toilets (Dean Jones).
- 70.287 **Annulet** *Charissa obscurata* – last recorded in 1993
 9 Aug – one in the Tavern doorway (Dean Jones).
 13 Aug – three in Skinner trap at the Casbah (Dean Jones).
 25 Jul – one in Skinner trap at Casbah (Dean Jones).
 26 Aug – one in Skinner trap at Casbah (Dean Jones).
- 70.297 **Grass Emerald** *Pseudoterpna pruinata* – not in B & H checklist
 25 Jun – one in Skinner Trap at Paradise Row (Dean Jones).
 15 Jul – one in Skinner Trap at Windy's Pig Pen, Paradise Row (Dean Jones).

71.020 **Pale Prominent** *Pterostoma palpina* – last recorded in 1995 (B & H)
13 Aug – one in Skinner trap at Casbah (Dean Jones).

72.001 **Herald** *Scoliopteryx libatrix* – last recorded in 2010 (B & H)
16 Jul – one in Skinner Trap at Windy's Pig Pen, Paradise Row (Dean Jones).

72.002 **Straw Dot** *Rivula sericealis* – not in B & H checklist
27 Jun – one in Skinner Trap at Paradise Row (Dean Jones).
10 Sep – one in Skinner trap at Casbah (Dean Jones).

72.013 **Yellow-tail** *Euproctis similis* – last recorded in 1995
13 Jul – one in Tavern toilets (Zoë Barton, Emily Trapnell & Dean Jones).
15 Jul – one in Tavern doorway (Dean Jones).

72.035 **Rosy Footman** *Mittochrista miniata* – not in B & H checklist
23 Jul – one in Tavern toilets (Kathryn MacKinnon).
25 Jul – three in Skinner trap at Casbah (Dean Jones).

72.044 **Dingy Footman** *Eilema griseola* – not in B & H checklist
20 Jul – one in Skinner trap at the Casbah (Dean Jones).
25 Jul – one in Skinner trap at Casbah (Dean Jones).
20 Aug – one in Skinner trap at Casbah (Dean Jones).

73.015 **Silver Y** *Autographa gamma* – a migrant
Recorded on 66 days (21 in 2017) between 22 May and 19 Oct, with a max of 100 on 28 May.

Maximum count for each month (top) and number of days recorded (bottom)

Jan	Feb	Mar	Apr	May	Jun	Jul	Aug	Sep	Oct	Nov	Dec
				100	67	46	6	9	2		
				6	17	14	11	14	4		

73.047 **Coronet** *Craniophora ligustri* – not in B & H checklist
5 Jun – four in Skinner trap at Millcombe House (Andrew Cleave).
6 Jun – eight in Skinner trap at Millcombe House (Andrew Cleave).
7 Jun – 11 in Skinner trap at Millcombe House (Andrew Cleave).

73.061 **Anomalous** *Stilbia anomala* – last recorded in 1973
26 Aug – one in Skinner trap at the Casbah (Dean Jones).

73.062 **Copper Underwing** *Amphipyra pyramidea* – last recorded in 1995
13 Aug – one in Skinner trap at the Casbah (Dean Jones).
10 Sep – one in Skinner trap at the Casbah (Dean Jones).

73.162 **Dark Arches** *Apamea monoglypha*
16 Jul – max. 66 in Skinner trap at Windy's Pig Pen, Paradise Row (Dean Jones).

73.216 **Dun-bar** *Cosmia trapezina* – last recorded in 1990
20 Jul – 11 in Skinner trap at Casbah (Dean Jones).

- 73.267 **Bright-line Brown-eye** *Lacanobia oleracea*
5 Jul – max. 69 in Skinner trap at Paradise Row (Dean Jones).
- 73.278 **Barrett's Marbled Coronet** *Conisania andalusica* – Nationally Scarce B. Confined to the coasts of Devon & Cornwall, southwest Wales and southern Ireland.
5 Jun – one in Skinner trap at Millcombe House (Andrew Cleave).
6 Jun – two in Skinner trap at Paradise Row (Dean Jones); one in Skinner trap at Millcombe House (Andrew Cleave).
7 Jun – three in Skinner trap at Millcombe House (Andrew Cleave).
28 Jun – one in Skinner Trap at Paradise Row (Dean Jones).
- 73.290 **Brown-line Bright-eye** *Mythimna conigera* – not in B & H checklist
20 Jul – one in Skinner trap at the Casbah (Dean Jones).
- 73.300 **L-album Wainscot** *Mythimna l-album*
9 Sep – one at 6W actinic Heath trap at Bramble Villas (David Price).
10 Sep – one in Skinner trap at the Casbah (Dean Jones).
- 73.301 **Shoulder-striped Wainscot** *Mythimna comma*
27 and 28 Jun – singles in Skinner Trap at Paradise Row (Dean Jones).
5 Jul – two in Skinner Trap at Paradise Row (Dean Jones).
- 73.303 **Devonshire Wainscot** *Leucania putrescens* – last recorded in 1993
28 Jun – one in Skinner trap at Paradise Row (Dean Jones).
15 Jul – one in Skinner trap at Windy's Pig Pen, Paradise Row (Dean Jones).
18 Jul – one in Skinner trap at Paradise Row (Dean Jones).
- 73.324 **Crescent Dart** *Agrotis trux* – a coastal species
18 Jul – max. 49 in Skinner trap at Paradise Row (Dean Jones).
- 73.327 **Dark Sword-grass** *Agrotis ipsilon* – a migrant
A good year. A total of 11 moths, all light-trapped, on ten dates between 3 Jun and 18 Oct; there were two moths in Jun, five in Jul, two in Aug, one in Sep and one in Oct.
- 73.328 **Flame** *Axylia putris* – last recorded in 1992
7 Jun – two in Skinner trap at Millcombe House (Andrew Cleave).
27 Jun – one in Skinner trap at Paradise Row (Dean Jones).
- 73.343 **Broad-bordered Yellow Underwing** *Noctua fimbriata* – not in B & H checklist
18 Jul – one in Skinner Trap at Paradise Row (Dean Jones).
10 Sep – one in Skinner trap at Casbah (Dean Jones).
- 73.346 **Least Yellow Underwing** *Noctua interjecta* – last recorded in 1986
11 Sep – one at 6W actinic Heath trap at Bramble Villas (David Price).
- 74.003 **Short-cloaked Moth** *Nola cucullatella* – last recorded in 2012 (B & H)
5 Jul – one in Skinner Trap at Paradise Row (Dean Jones).

The following common moths, most of which have been recorded on Lundy in recent years, were also recorded in 2018; they are listed by the order in the Beavan & Heckford (2014) checklist:

Micro-moths:

Aspilapteryx tringipennella, *Phyllonorycter messaniella*, *Hofmannophila pseudospretella*, *Agonopterix heracliana*, *Depressaria radiella*, *Coleophora discordella*, *Elachista argentella*, *Alucita hexadactyla*, *Emmelina monodactyla*, *Epermenia chaerophyllella*, *Pandemis cerasana*, *Acleris rhombana*, *A. variegana*, *Hysterophora maculosana*, *Agapeta hamana*, *Cochylis atricapitana*, *Celypha lacunana*, *Bactra lancealana*, *Eucosma cana*, *Notocelia uddmanniana*, *Cydia ulicetana*, *Aphomia sociella*, *Pempelia palumbella*, *Phycitodes saxicola*, *Endotricha flammealis*, *Anania coronata*, *A. hortulata*, *U. olivalis*, *Pleuroptya ruralis*, *Scoparia ambigualis*, *S. pyralella*, *Eudonia lacustrata*, *E. angustea*, *E. mercurella*, *Chrysoteuchia culmella*, *C. perlella*, *Agriphila tristella*, *A. straminella*, *A. geniculea*.

Macro-moths:

Common Swift, Chinese Character, Buff Arches, Lackey, Oak Eggar, Single-dotted Wave, Small Fan-footed Wave, Riband Wave, Mullein Wave, Small Blood-vein, Blood-vein, July Belle, Garden Carpet, Red Twin-spot Carpet, Silver-ground Carpet, Yellow Shell, Common Carpet, May Highflier, Purple Bar, Common Marbled Carpet, Rivulet, Small Rivulet, Double-striped Pug, Foxglove Pug, Narrow-winged Pug, Lime-speck Pug, Common Pug, Mottled Pug, Magpie Moth, Brown Silver-line, Brimstone Moth, Early Thorn, Scalloped Hazel, Scalloped Oak, Peppered Moth, Willow Beauty, Mottled Beauty, Clouded Silver, Light Emerald, Brussels Lace, Common Emerald, Buff-tip, Snout, Pale Tussock, Buff Ermine, White Ermine, Ruby Tiger, Garden Tiger, Cream-spot Tiger, Common Footman, Scarce Footman, Hoary Footman, Fan-foot, Spectacle, Knot Grass, Marbled Green, Uncertain, Rustic, Treble Lines, Angle Shades, Small Angle Shades, Rosy Rustic, Flounced Rustic, Small Wainscot, Dusky Brocade, Common Rustic, Rosy Minor, Cloaked Minor, Marbled Minor, Rufous Minor, Middle-barred Minor, Yellow-line Quaker, Lunar Underwing, Brindled Ochre, Feathered Ranunculus, Common Quaker, Antler Moth, Broom Moth, Shears, Lychnis, Marbled Coronet, Double Line, Common Wainscot, Smoky Wainscot, Clay, Square-spot Dart, Heart & Dart, Turnip Moth, Flame Shoulder, Ingrailed Clay, Small Square-spot, True Lover's Knot, Large Yellow Underwing, Lesser Yellow Underwing, Lesser Broad-bordered Yellow Underwing, Setaceous Hebrew Character, Autumnal Rustic, Least Black Arches.

Reference

Beavan, S. D. & Heckford, R. J. (2014) A provisional list of the moths of Lundy, Devon. *British Journal of Entomology and Natural History*, 27 45-62.

FLORA

Compiled by Andrew Cleave

Nomenclature follows Stace, C. 2010 *New Flora of the British Isles*. 3rd edition. Cambridge University Press. See http://www.thewildflowersociety.com/wfs_list_of_all_plants/main_menu_2010.htm for Stace 3rd edition names.



White and Purple Common Vetch Vicia sativa.
© Ann Taylor



Knotted clover, Trifolium striatum, from the steps behind Millcombe House.
© Andrew Cleave

The first plant records for the year came early in January with a single **Red Campion** *Silene dioica* seen in flower at the top of Millcombe. **Primroses** *Primula vulgaris* were reported flowering in Quarter Wall Copse January 27th and **Snowdrops** *Galanthus nivalis* were seen on January 28th. Primroses were still flowering in late March and the first **Common Dog Violets** *Viola riviniana* were spotted on March 26th. **Sea Campion** *Silene uniflora* and **Lesser Celandine** *Ficaria verna* were found in flower on March 31st and the buds of **Thrift** *Armeria maritima* were showing some colour at the same time. In early April the first **Bluebells** *Endymion non-scripta* were seen in Millcombe and **Wild Thyme** *Thymus polytrichus* was beginning to flower along the east side path. Towards the end of the month **Tormentil** *Potentilla erecta*, **Round-leaved Crowfoot** *Ranunculus omiophyllus*, **Common Lousewort** *Pedicularis sylvatica*, **Sundew** *Drosera rotundifolia*, **Ox-eye Daisy** *Leucanthemum vulgare* and **Bird's-foot Trefoil** *Lotus corniculatus* were all in flower. The first **Lundy Cabbage** *Coincya wrightii* flowers were seen on May 5th on the Beach Road and **Kidney Vetch** *Anthyllis vulneraria* was seen above the Devil's Lime Kiln. Many more species were seen during the month, including **Common Vetch** *Vicia sativa*, **Rock Sea-spurrey** *Spergularia rupicola* and **Prickly Sow-thistle** *Sonchus asper*.

At the beginning of June records from the South Light compound included **Western Clover** *Trifolium occidentale*, (possibly a new record for Lundy) **English Stonecrop** *Sedum anglicum*, **Sea Carrot** *Daucus carota ssp gummifer*, **Sheep's-bit** *Jasione montana* and **Lesser Trefoil** *Trifolium dubium*. An **Eyebright** species, *Euphrasia officinalis agg* was also recorded here. 20 flowering spikes of **Greater Broomrape** *Orobanche rapum-genistae* were found on **Prostrate Broom** *Cytisus scoparius ssp maritimus* just above the tide line in Quarry Bay and a further 9 spikes were seen in the VC Quarry. **Allseed** *Radiola linoides* was seen close by and also in several spots along the west sidelands. **Knotted Clover** *Trifolium striatum* was found beside the steps just above Millcombe House and **Hare's-foot Clover** *T. arvense* appeared again on the tops of walls in the village area. On the quarry terrace, despite rather dry conditions, there were many flowering plants of **Heath Pearlwort** *Sagina subulata* and extensive patches of **Common Bird's-foot** *Ornithopus perpusillus*. The colony of **Heath Spotted-orchids**

Dactylorhiza maculata produced 99 flowering spikes near Pondsbury, with good displays seen on June 7th and 8th. **Bog Asphodel** *Narthecium ossifragum* and **Bog Pimpernel** *Lysimachia tenella* were both coming into flower close by at the same time. **Greater Skullcap** *Scutellaria galericulata* was found just above Gannet's Coombe and **Lesser Skullcap** *S. minor* was growing in a very dwarfed form near Quarter Wall Cottages. The diminutive **Chaffweed** *L. minima* appeared again in the margins of Kistvaen Pond. A good colony of **Common Centaury** *Centaureum erythraea* was in full bloom on the slopes above Lamentor and **Common Mallow** *Malva sylvestris* was reported as doing very well in several sites around the south of the island.



Flowering spikes of Heath Spotted-orchids
Dactylorhiza maculata near Pondsbury.
© Andrew Cleave

A number of species associated with disturbed ground, gardens, paths and gateways were recorded, mainly in the village area, including **Common Knotgrass** *Polygonum aviculare*, **Black Nightshade**, *Solanum nigrum* **Swinecress** *Coronopus didymus*, **Knotted Hedge-parsley** *Torilis nodosa*, **Hedge Bindweed** *Calystegia sepium* and **Pineapple Weed** *Matricaria discoidea*.

The maritime or waved heath on top of the island looked splendid in its full summer colour with good displays of **Western Gorse** *Ulex gallii*, **Bell Heather** *Erica cinerea*, **Ling** *Calluna vulgaris* and **Cross-leaved Heath** *E. tetralix*. As the summer season progressed **Golden-rod** *Solidago virgaurea* started to flower below the quarry terrace. A patch of **Marsh Violet** *Viola palustris* was discovered in flower in the Punch Bowl Valley in early October.

A small number of grasses, sedges and rushes were recorded, including **Greater Tussock-sedge** *Carex paniculata* in St John's Valley and Gannet's Coombe, **Sand Sedge** *Carex arenaria*, abundant on top of the island, **Floating Club-rush** *Eleogiton fluitans* in several ponds and wet flushes, and **Toad Rush** *Juncus bufonius* on tracks on top of the island.

Records continued during the autumn and winter months with many species still showing a few flowers late in December.

Ferns were well recorded with many records of **Small Adder's-tongue Fern** *Ophioglossum azoricum* from various sites, including Rocket Pole Pond and Middle Park. The very rare (for Lundy) **Wall Rue** *Asplenium ruta-muraria* was found in two locations and the main colony of **Rusty-back Fern** *Asplenium ceterach* continued to thrive near the Blue Bung. **Hay-scented Buckler Fern** *Dryopteris aemula*, unusually common on Lundy, was reported from many sites and there were also several records of **Royal Fern** *Osmunda regalis* growing from many rocky locations on the east side.

Thanks to the following observers for their contributions to the Log Book during the year:

Rob Andrew, Zoë Barton, Andrew Cleave, Mags Cousins, Tim Davis, Paul Holt, John Hutchinson, Dean Jones, Tim Jones, Rob Large, John Martin, Alan Rowland, Sandra Rowland, Siân Scott, Shelley Sherman, Frances Stuart, Ann Taylor, Tony Taylor, Michael Williams – and some anonymous or illegible contributors!

FUNGI

Compiled by Mandy Dee

Scientific nomenclature follows *Index Fungorum*, available at www.indexfungorum.org

English names follow the British Mycological Society checklist, available at www.britmycolsoc.org.uk/library/english-names

The hot summer of 2018 affected the growth of fungal fruiting bodies, with many species appearing much later in the autumn than usual. Despite this, a total of 181 species were recorded in 2018, an increase from the previous year, of which 43 were new to Lundy (marked in the text with an asterisk *). Two week-long recording trips by Mandy Dee and John Hedger in September and November provided the bulk of the records, but there were a few welcome records from other observers, including a species new to Lundy.

One of the species new to Lundy, a member of the parasol family, *Macrolepiota excoriata*, was found by Alan Rowland growing beside the path to The Battery, showing that large new toadstools can still be discovered for the first time. Mandy Dee found what may prove to be the first of many Orange Ping-pong Bat fungi – a tiny specimen on a dead twig in Millcombe. This is a newly invading fungus currently only recorded in the south west of the UK, but spreading rapidly, and is so bright and easy to identify that I am sure it will be recorded again. John Hedger undertook a survey of dung fungi, both on fresh dung and incubated dung, of different herbivores, and added 12 new species to our records.

The Grey Waxcap survey plus the yearly Airfield survey of waxcaps and other grassland fungi were conducted in November. There were three Fungus Forays for visitors, in September, October, and November, run by John Hedger and Mandy Dee, all of which were well attended, and plenty of interesting fungi were found.

All records are, unless otherwise stated, by Mandy Dee and John Hedger

GILL FUNGI

AGARICACEAE – MUSHROOMS

Field Mushroom and **Horse Mushroom** were recorded regularly throughout the autumn, and there were three records of the pink-staining **Tufted Wood Mushroom** from the varied habitats of the airfield, St Helen's Copse, and the grassy areas around Pondsby. ***Agaricus cupreobrunneus*** was recorded 5 times, all north of Quarter Wall, including one record from amongst the heather at the North End, a typical habitat for this fungus.

AGARICACEAE – PARASOLS

The **Parasol** is the most well-known of this group, and are so large that they are an iconic sight on Lundy. They were recorded throughout the autumn from 22 August in South West Field to the latest record on 8 Oct on the Upper East Side Path (Ali Sheppard). Two new smaller species from this group were recorded for the first time.

Lepiota oreadiformis*

26 Sep – First record, in short grass, Benjamin's Chair (Mandy Dee and John Hedger).

Macrolepiota excoriata*

28 Sep – First record, by the steps to the Battery (Alan Rowland).

Strophariaceae – Brownies

(There were no records this year of the common Peat Brownie or Sulphur Tuft.)

Hypholoma ericaeoides*

1 Oct – First record in grass amongst Creeping Willow in Punchbowl Valley (Mandy Dee and John Hedger).

Hypholoma ericaeum

26 Sep – Punchbowl Valley.

28 Sep – found on the LFS foray in rough grass near Quarter Wall.

8 Nov – in wet peat in Punchbowl Valley.

Pholiota tuberculosa

10 Nov – on dead rhododendron stump on Lower East Side path (John Hedger).

Dung Roundhead *Stropharia semiglobata*

Recorded throughout the autumn, but also one useful spring record.

20 April – Lin Black.

PHYSALACRIACEAE



Porcelain Fungus

Oudemansiella mucida.

© Philip Lymbery

Porcelain Fungus / Beech Tuft *Oudemansiella mucida*

30 Sep – on a living tree in Millcombe.

BOLBITIACEAE – FIELDCAPS AND CONECAPS

Yellow Fieldcap *Bolbitius titubans*

20 Apr – in grass in the Village.

22 Aug – in grass in Millcombe .

Common Conecap was found throughout the autumn in grassy areas in the south of the island, but there was also one April record from Pondsbury. **Dung Conecap** was found in September, October, and November, on the pony dung.

LYOPHYLLACEAE

Pink Domecap *Calocybe carnea*

8 Nov – on grass at Jenny's Cove.

TRICHOLOMATACEAE

Mealy Meadowcap *Porpoloma metapodium*

26 Sep – in short turf at the Old Hospital.

6 Nov – in short turf on the Airfield survey.

ENTOLOMATACEAE – PINKGILLS

September saw the usual records from short turf of **Indigo**, **Blue-edged** and **Papillate Pinkgill**, although the latter was also found in November at the Earthquake. **Silky Pinkgill** was found throughout the autumn, favouring slightly longer grass. **Lilac Pinkgill** was recorded from its usual spot at the eastern end of the Airfield in November. Two new species were recorded.

Star Pinkgill *Entoloma conferendum*

20 Apr – (Lin Black).

1 Oct – in grass with Creeping Willow at Punchbowl Valley.

Crow Pinkgill – *Entoloma corvinum*

26 Sep – in short turf near Rocket Pole.

Sepia Pinkgill – *Entoloma jubatum**

29 Sep – A first record, found amongst the heather at the North End (John Hedger).

Entoloma longistriatum

8 Nov – in short turf, by the west coast of Middle Park.

Entoloma politum

8 Nov – a second record (first seen on 2003) under creeping willow at the south end of Punchbowl Valley.

*Entoloma versatile**

29 Sep – A first record, found amongst the heather at the North End (John Hedger).

PSATHYRELLACEAE – INKCAPS AND BRITTLESTEMS

Pleated inkcap was recorded three times through the autumn.

Fairy Inkcap *Coprinellus disseminatus*

30 Sep – On dead wood in Millcombe.

Coprinellus heptemerus

28 Sep – found on pony dung on the LFS foray at Quarter Wall.

1 Dec – on pony dung at Punchbowl Valley.

Coprinopsis stercorea

5 Nov – on pony dung at Quarter Wall.

Pale Brittlestem *Psathyrella candolleana*

25 Sep – on leaf litter in Millcombe.

Red Edge Brittlestem *Psathyrella corrugis*

9 Nov – behind the gas store in Millcombe (John Hedger).

CORTINARIACEAE – WEBCAPS AND POISONPIES

Saffron Webcap *Cortinarius croceus*

6 Nov – in short turf on the Airfield survey.

Marsh Webcap *Cortinarius uliginosus*

1 Oct – grass with creeping willow at Punchbowl Valley.

Poisonpie *Hebeloma* cf. *crustuliniforme* was found at several locations around Punchbowl Valley and Quarter Wall at the end of September and into October.

Veiled Poisonpie *Hebeloma mesophaeum*

26 Sep – in grass with creeping willow, Punchbowl Valley.

MARASMIACEAE – RUSTGILLS, TOUGHSHANKS, PARACHUTES

Spectacular Rustgill *Gymnopilus junonius*

1 Oct – Quarries (Alan Rowland).

Russet Toughshank *Gymnopus dryophilus*

8 Nov – in short turf by the main track near Pondsbury.

10 Nov – under bracken on Lower East Side path (John Hedger).

Gymnopus impudicus

26 Sep – in grass with bracken at Ackland's Moor.

Fairy Ring Champignon *Marasmius oreades*

Found from August to November throughout the grassy areas of the island, with one record in April from South West Field.

Twig Parachute *Marasmius* (= *Marasmiellus*) *ramealis*

31 Jan – Second record, on a dead bramble stem in Millcombe (Dean Jones).

Butter Cap *Rhodocollybia butyracea*

10 Nov – under bracken on Lower East Side path (John Hedger).

HYMENOGASTRACEAE – BELLS, ALDERCAPS, MAGIC MUSHROOMS

Moss Bell *Galerina hypnorum*

10 Nov – in grass at Windy Corner (John Hedger).

Hairy Leg Bell *Galerina vittiformis*

10 Nov – in grass on the Lower East Side path (John Hedger).

Ochre Aldercap *Naucoria escharioides*

27 Sep – growing in numbers in its usual spot in the stream under the alders in Quarter Wall Copse.

Psilocybe coprophila

Extremely common on dung throughout the autumn, with one winter record on 25 February at Pondsbury (Mandy Dee).

Magic mushroom, Liberty Cap *Psilocybe semilanceata*

Found throughout the autumn months in grasslands in the south.

HYGROPHORACEAE – WAXCAPS

Originally all *Hygrocybe* sp., some of these have now been split into different genera.

Golden, Scarlet, Parrot, Snowy, and Spangle Waxcaps were prolific on short turf through October and November, with the latter being the earliest to appear on 25 September. **Heath Waxcap** had a very good year, and was present in large numbers throughout the autumn on the Airfield, with 120 specimens recorded on the Airfield survey, as well as in its more normal habitat amongst the bracken. **Meadow, Crimson, and Cedarwood Waxcaps** were also recorded several times, but did not make an appearance until November.

Grey Waxcap *Cuphophyllus lacmus*

8 Nov – 52 recorded on the annual survey, in the heather at the North End, near John o' Groat's House.

Meadow Waxcap *Cuphophyllus pratensis*

6 and 7 Nov – in short turf on the Airfield, found on the Airfield survey and LFS foray.

Orange Waxcap *Hygrocybe aurantiosplendens*

7 Nov – in short turf on the Airfield, found on the LFS foray.



*A Persistent Waxcap,
Hygrocybe autoconica.
© Mandy Dee*

Persistent Waxcap *Hygrocybe autoconica* syn *H. persistens*

26 Sep – in short turf at the Old Hospital.

18 Oct – in short turf at Quarter Wall Cottages, found on the LFS foray.

Goblet Waxcap *Hygrocybe cantharellus*

28 Sep – in rough grass past Quarter Wall, found on the LFS foray.

5 Nov – in short turf on the Airfield.

Butter Waxcap *Hygrocybe ceracea*

6 and 7 Nov – in short turf on the Airfield, found on the airfield survey and LFS foray.

8 Nov – in short turf at Jenny's Cove.

Blackening Waxcap *Hygrocybe conica*

7 Nov – in short turf on the Airfield, found on the LFS foray.

8 Nov – several in short turf beside the main track near Pondsburry, a regular site.

Vermillion Waxcap *Hygrocybe miniata*

26 Sep – in short turf at the Old Hospital.

Green Blackening Waxcap *Hygrocybe olivaceonigra*

6 Nov – in short turf on the Airfield survey.

Honey Waxcap *Hygrocybe reidii*

5 Nov – in short turf in Lighthouse Field.

6 Nov – in short turf during the Airfield survey.

Splendid Waxcap *Hygrocybe splendidissima*

7 Nov – in short turf on the Airfield, found on the LFS foray.

Snowy Waxcap variety *Hygrocybe virginea* var. *ochraceopallida*

5 Nov – in short turf on the Airfield.

Heath Navel *Lichenomphalia umbellifera*

Found growing on damp peat in April, September, and November.

HYDNANGIACEAE

Deceiver *Laccaria laccata*

30 Sep – on leaf litter in Millcombe.

RUSSULACEAE – MILKCAPS AND BRITTLEGILLS



Orange Milkcap
Lactarius aurantiacus.
© Mandy Dee

Orange Milkcap *Lactarius aurantiacus*

26 Sep – In short grass with creeping willow, Punchbowl Valley.
28 Sep – in rough grass past Quarter Wall, found on the LFS foray.

Lactarius lacunarum

1 Oct – in grass with creeping willow in Punchbowl Valley (Tim Jones).

Fleecy Milkcap *Lactarius vellereus*

A single specimen at its usual site on the west side of Punchbowl Valley in September, but also recorded at a second location in the centre of the valley in October and November.

Purple Brittlegill *Russula atropurpurea*

Present in numbers in both Millcombe and St Helen's Copse in late September.

Geranium Brittlegill *Russula fellea*

1 Oct – in grass with creeping willow in Punchbowl Valley.

Ochre Brittlegill *Russula ochroleuca*

Recorded throughout the autumn from late August, in Millcombe and St Helen's Copse.



Coral Brittlegill *Russula velenovskyi*.
© Mandy Dee

Coral Brittlegill *Russula velenovskyi*

Three records in late September and early October, in its regular sites at Punchbowl Valley and the Quarter Wall area, growing near creeping willow.

MYCENACEAE – BONNETS AND ORANGE PORECAP

Drab Bonnet *Mycena aetites* was found three times during the autumn on the airfield and in Punchbowl Valley. **Common Bonnet** was recorded twice in November in the woodland areas.

Brownedge Bonnet was widespread on turf in November. Three new species were recorded this year.

Frosty Bonnet *Mycena adscendens*

7 Nov – Second record, on dead twigs on south side of Millcombe.

Mycena corynephora*

9 Nov – a new record, found on dead wood in Lower Millcombe (John Hedger).

Ivory Bonnet *Mycena flavoalba*

28 Sep – in rough grass past Quarter Wall, found on the LFS foray.

8 Nov – in grass near the main track at Pondsburry.

Black Milking Bonnet *Mycena galopus* var. *nigra*

8 Nov – in grass at the North End.

Mycena pseudopicta*

8 Nov – a new record, in short turf in Middle Park (Mandy Dee and John Hedger).

Lilac Bonnet *Mycena pura*

26 Sep – in grass with Bracken on Ackland's Moor (Lynne Perrini).

Orange Porecap, Orange Ping-pong Bat *Favolaschia calocera** (see image on back cover).

30 Sep – first record on a dead twig in Millcombe (Mandy Dee and John Hedger).

PANAEOLACEAE – MOTTLEGILLS

Brown Haycap, Turf, Dewdrop, and Banded Mottlegills were all widespread on dung enriched grass throughout the autumn, with the first two also seen in April. **Petticoat Mottlegill** was found on the Airfield on both the October and November forays. **Egghead Mottlegill**, usually common, was only found once, on pony dung at Quarter Wall, on the September foray.

RICKENELLACEAE

Orange Moss Cap *Rickenella fibula*

8 Nov – on mossy soil next to the main track near Pondsburry.

Hygrophoropsidaceae

False Chanterelle had a very good year, and was prolific throughout the autumn in the central areas of the island.

Paxillaceae

Brown Rollrim *Paxillus involutus*

1 Oct – in grass with creeping willow, Punchbowl Valley.

SCHIZOPHYLLACEAE

Splitgill *Schizophyllum commune**

1 Mar – new record, on plastic-wrapped silage bales in the farm (Mandy Dee).

Subsequently found to be present throughout the autumn.

CLAVARIACEAE – PIPES, CORALS AND CLUBS

Yellow Club *Clavulinopsis helvola* was recorded in November at several sites.



Grey Coral *Clavulina cinerea*.
© Mandy Dee

Grey Coral *Clavulina cinerea**

27 Sep – recorded for the first time in leaf litter in Quarter Wall Copse (Mandy Dee and John Hedger).

Meadow Coral *Clavulinopsis corniculata*

6 Nov – in short turf by Bellevue Cottages.

Golden Spindles *Clavulinopsis fusiformis*

18 Oct – in short turf near Quarter Wall Pond.

AGARICACEAE – PUFFBALLS AND SCLERODERMATACEAE – EARTHBALLS

Meadow Puffball (*Lycoperdon pratense*) was recorded throughout the autumn, and there were three records each for **Brown Puffball** (*Bovista nigrescens*) and **Grey Puffball** (*B. plumbea*), all on the grassy areas across the whole of the southern half of the island.

Dusky Puffball *Lycoperdon nigrescens*

8 Nov – in grass with bracken on Ackland's Moor.

Grassland Puffball *Lycoperdon spadiceum*

7 Nov – in short turf on the Airfield. Found on the LFS foray.

Common Earthball *Scleroderma citrinum*

7 Nov – second record (not recorded since 1992) on ground under trees on the lower north side of Millcombe.

Scaly Earthball *Scleroderma verrucosum*

30 Sep – Millcombe.

BOLETACEAE – BOLETES



Cep Boletus edulis.
© John Hedger

Cep *Boletus edulis*

1 Oct – second record (first recorded officially in 2016) in grass with creeping willow, Punchbowl Valley.

Hortiboletus engelii syn. *Boletus declivatum*

1 Oct – in grass with creeping willow, Punchbowl Valley.

Xerocomellus cisalpinus

24 Sep – in leaf litter in Millcombe (Siân Cann).

BRACKETS AND CRUSTS, FOUND ON WOODY MATERIAL

Smoky Bracket was found throughout the autumn on dead wood in Millcombe. **Split Porecrust** and *Peniophora quercina* were both found in September in both Millcombe and St Helen's Copse. *Perenniporia ochroleuca* was present on the blackthorn in Millcombe, from August onwards. There were six new species.

*Athelia bombacina**

10 Nov – new record on old bracken stalks, Upper East Side (John Hedger).

*Athelia neuhoffii**

9 Nov – new record on dead wood in lower Millcombe (John Hedger).

*Botrybasidium candicans**

10 Nov – new record on rotten wood in Millcombe (John Hedger).

*Botrybasidium subcoronatum**

9 Nov – new record on a softwood pallet in upper St Johns. (John Hedger).

Brittle Cinder *Kretzschmaria deusta**

30 Sep – new record on dead beech in Millcombe (Mandy Dee and John Hedger).

Hyphoderma setigerum*

10 Nov – new record on rotten sycamore in St Helen's Copse (John Hedger).

Wrinkled Crust *Phlebia radiata*

27 Sep – on dead wood in St Helen's Copse.

Blueing Bracket *Postia subcaesia*

30 Sep – on dead turkey oak in Millcombe.

Hairy Curtain Crust *Stereum hirsutum*

27 Sep – on dead alder in Quarter Wall Copse.

Tomentella terrestris*

30 Sep – new record on dead wood in Millcombe (Mandy Dee and John Hedger).

Turkey Tail *Trametes versicolor*

7 Nov – on dead wood in Millcombe.

Trechispora farinacea

27 Sep – on dead wood in St Helen's Copse.

Waxy Crust *Vuilleminia comedens*

27 Sep – on dead wood in Quarter Wall Copse.

JELLY FUNGI, DISCS, AND OTHER FUNGI FOUND MOSTLY ON WOOD

Jelly Ear is present all year in both St Helen's Copse and Millcombe, growing on dead elder, but was only recorded once in each site this year, at the end of September.

King Alfred's Cakes, or **Cramp Balls**, are found exclusively on dead ash wood, and are present all year in Millcombe, with records this year in both April and November.

Coral Spot, **Candlesnuff Fungus**, and **Dead Moll's Fingers** were recorded throughout the autumn in St Helen's Copse and Millcombe, on dead branches.

Orbilina sarraziniana was found in Millcombe in September and Quarter Wall Copse in November.

Orange Peel Fungus *Aleuria aurantia**

5 Nov – a new record, on bare disturbed soil in front of St Helen's Church (Mandy Dee).

Lemon Disco *Bisporella citrina*

30 Sep – on dead wood in Millcombe.

Yellow Stagshorn *Calocera viscosa**

7 Nov – new record, on a rotted pine stump in Millcombe (Mandy Dee and John Hedger).

Common Jelly Spot *Dacrymyces stillatus*

7 Nov – on dead turkey oak in Millcombe.

Hypoxylon subticinense

10 Nov – on dead sycamore wood in St Helen's Copse (John Hedger).

Crystal Brain *Myxarium nucleatum*

7 Nov – on dead turkey oak twigs in Millcombe.

Pachyella sp.*

10 Nov – a new record, once id is conformed, on wet alder branches in Quarter Wall Copse (John Hedger).

Spadicoides atra*

9 Nov – new record on softwood pallet at the top of St Johns (John Hedger).

Yellow Brain *Tremella mesenterica*

26 Sep – on gorse at Rocket Pole.

Virgariella atra*

10 Nov – new record on rotten turkey oak in Millcombe.

RUSTS, SMUTS, SPOTS, AND OTHER FUNGI FOUND ON HERBACEOUS MATERIAL

Buerenia inundata*

9 Nov – new record, parasitic on water celery in the stream in Millcombe Gardens. (John Hedger).

Colletotrichum sp.*

5 Nov – new record, still awaiting id, on sheep's fescue by Quarter Wall Pond (John Hedger).

Diaporthe pardalota*

10 Nov – new record on dead honeysuckle stems on the Beach Road (John Hedger).

Choke *Epichloe typhina*

8 June – on Yorkshire fog (Dean Jones and Alan Rowland).

Gnomonia cerastis*

9 Nov – new record on dead sycamore twigs in lower Millcombe (John Hedger).

Jalapriya toruloides

9 Nov – on nettle stems in Millcombe Gardens (John Hedger).

Periconia hispidula

9 Nov – on nettle stems in Millcombe Gardens (John Hedger).

Plagiostoma inclinata

9 Nov – second record on dead sycamore leaf stalks on the Beach Road.

Crown Rust *Puccinia coronata*

17 Oct – on creeping soft grass in Punchbowl Valley (John Hedger).

Ground Ivy Rust *Puccinia glechomatis**

27 Sep – new record, on ground ivy in Quarter Wall Copse (John Hedger).

Violet Rust *Puccinia violae*

10 Nov – on dog violet on the Beach Road (John Hedger).

Ramularia rosea*

1 Oct – new record of this leaf spot on creeping willow in Punchbowl Valley (John Hedger).

Sycamore Tarspot *Rhytisma acerinum*

27 Sep – on sycamore leaves in St Helen's Copse.

Septoria hydrocotyles*

1 Oct – new record, on water pennywort in Pondsby (John Hedger).

Ulocladium consortiale*

30 Sep – new record for this fungus found on old bone in Millcombe (John Hedger).

TINY DUNG FUNGI

Ascozonus leveilleanus*

10 Nov – new record, on soay sheep dung at the North End (John Hedger).

Coprotus lacteus*

10 Nov – new record, on soay sheep dung at the North End (John Hedger).

Coprotus granuliformis*

10 Nov – new record, on soay sheep dung at the North End (John Hedger).

Cheilymenia fimicola*

10 Nov – new record, on sheep dung on Ackland's Moor (John Hedger).

Cowpat Gem, Dung Disco *Cheilymenia granulate*

3 Apr – on dung on Upper East Side Path (Alan Rowland).

28 Sep – found on the LFS foray, on cow dung at Quarter Wall.

Iodophanus carneus

10 Nov – on rabbit dung near the Earthquake (John Hedger).

Saccobolus versicolor*

10 Nov – new record, on soay sheep dung at the North End (John Hedger).

Sporormiella intermedia

10 Nov – on soay sheep dung at the North End (John Hedger).

Trichobolus sphaerosporus*

10 Nov – new record on deer dung at Quarter Wall (John Hedger).

FUNGI ON INCUBATED DUNG

All grown by John Hedger on dung incubated for 4 days and identified on 30 September.

*Ascobolus immersus** – on rabbit dung.

*Gilmaniella humicola** – on rabbit dung.

*Lasiobolus ciliatus** – on old sheep dung.

Hat Thrower *Pilobolus kleinii* – on fresh sheep dung.

*Podospora decipiens** – on old sheep dung.

Sordaria fimicola – on old sheep dung.

*Sporormiella grandispora** – on rabbit dung.

*Sporormiella lageniformis** – on rabbit dung.

SLIME MOULDS

Arcyria denudata

30 Sep – on dead wood in Millcombe.

Trichia affinis

7 Nov – on both turkey oak and sycamore in Millcombe.

Trichia persimilis

30 Sep – on dead wood in Millcombe.

9 Nov – on rotten ash in Lower Millcombe.

Cribraria aurantiaca

7 Nov – on well-rotted Corsican pine stump in Millcombe.