

Article

Checklist of Basidiomycota and New Records from the Azores Archipelago

Martin Souto ^{1,*}, Pedro Miguel Raposeiro ^{1,2} , Ana Balibrea ¹ and Vítor Gonçalves ^{1,2} 

¹ Biodiversity and Genetic Resources Research Centre (CIBIO), InBIO Laboratório Associado, BIOPOLIS Program in Genomics, Biodiversity and Land Planning, UNESCO Chair—Land within Sea: Biodiversity & Sustainability in Atlantic Islands, Universidade dos Açores, R. Mãe de Deus, 9500-321 Ponta Delgada, Açores, Portugal; pedro.mv.raposeiro@uac.pt (P.M.R.); abalibreaescobar@gmail.com (A.B.); vitor.mc.goncalves@uac.pt (V.G.)

² Faculdade de Ciências e Tecnologia, Universidade dos Açores, Rua da Mãe de Deus, 9500-321 Ponta Delgada, Açores, Portugal

* Correspondence: martin.souto@uac.pt

Abstract: This paper presents an annotated checklist of the Basidiomycota taxa (including lichenicolous fungi and the subdivision Pucciniomycotina) from the Azores archipelago and reviews the published records to account for their taxonomic status. The number of Basidiomycota species recorded in the Azores has increased considerably during the 20th century and now stands at 544 species. This study provides distribution data and includes changes in the nomenclature of the listed taxa. Sampling campaigns contributed to 116 new records of Basidiomycota for the Azores archipelago. In addition, there were new records for eight islands: 162 species found for the first time on São Miguel Island, 55 species new to Santa Maria Island, 33 species new to Flores Island, 15 species new to Terceira Island, 9 species new to Pico Island, 17 species new to São Jorge Island, 4 species new to Graciosa Island, and 2 species new to Corvo Island. The transformation of vegetation cover in the archipelago has been very drastic, and this is reflected in the presence of many foreign fungal species on the islands. From these data, we conclude that within Macaronesia, the diversity of Basidiomycota in the Azores is more similar to that in Madeira than in the Canary Islands.

Keywords: Agaricales; basidiomycetes; oceanic islands; fungi; Macaronesia; fungal diversity



Citation: Souto, M.; Raposeiro, P.M.; Balibrea, A.; Gonçalves, V. Checklist of Basidiomycota and New Records from the Azores Archipelago. *Diversity* **2024**, *16*, 170. <https://doi.org/10.3390/d16030170>

Academic Editor: Ipek Kurtboke

Received: 25 January 2024

Revised: 27 February 2024

Accepted: 28 February 2024

Published: 7 March 2024



Copyright: © 2024 by the authors. Licensee MDPI, Basel, Switzerland. This article is an open access article distributed under the terms and conditions of the Creative Commons Attribution (CC BY) license (<https://creativecommons.org/licenses/by/4.0/>).

1. Introduction

Basidiomycota is the second largest phylum of the kingdom Fungi, with ca. 41,000 species [1] that, together with the Ascomycota, constitute the subkingdom Dikarya. From an ecological perspective, Basidiomycota encompasses great diversity, from ectomycorrhizal mycobionts to pathogens and saprophytes, and they are key players in ecosystem functioning at multiple levels, including nutrient cycling, carbon cycling, and as a food source. Basidiomycota exhibits worldwide distribution, but previous studies point to a higher species richness in temperate regions, although tropical areas have received comparatively less attention [2].

Little is known about Basidiomycota diversity in oceanic islands, and the Azores, located in the North Atlantic Ocean between 36° and 43° north latitude, offers a unique opportunity to study this group of fungi, with its humid climate and dense and lush vegetation that in many parts of the different islands can still be considered pristine. Within Macaronesia, a biogeographic region that includes the Azores, Madeira, the Canary Islands, and the Cape Verde Islands, only the Canary Islands and Madeira have been the focus of interest for many mycologists [3,4], while the Azores and Cape Verde have been less studied. In the Azores, the most updated checklist cites 312 Basidiomycota members [5], of which approximately half belong to only two orders, Polyporales and Pucciniales.

The study of terrestrial fungi in the Azores archipelago dates back nearly two centuries to the investigations carried out by Drouet (1866). Drouet's visit to the archipelago in 1857 resulted in an extensive inventory of vascular plants, algae, mosses, and fungi. However, in the fungal section of Drouet's work, only 2 species of the genus *Peziza* (Ascomycota) were reported, along with 41 lichen species [6], without ever mentioning any taxa belonging to Basidiomycota. Subsequently, during the years 1872 to 1876, the H.M.S. Challenger expedition explored the Azores archipelago and contributed two additional fungal species to the knowledge of the region: *Bovista plumbea* Pers. and *Agaricus crenatus* Lasch [7]. Later, after reviewing the exsiccata of *Agaricus* in the Kew Gardens, Dennis et al. [8] eliminated it as having been unreliably identified and concluded that it was most likely a *Stropharia*. Another contribution to the funga of the Azores was made by Trelease, who visited the archipelago between 1894 and 1896. Trelease's botanical collection, titled "Botanical Observations on the Azores", included a list of 22 Basidiomycota species [9]. Among these species, only four can be classified as macromycetes, while the remainder comprised rust fungi.

In the first half of the 20th century, the few available studies were focused on Pucciniales, with a contribution of 12 taxa [10–12], and 7 taxa of Polyporaceae [13]. Almost half a century later, the mycologist R. Dennis visited the islands in 1975 to conduct a sampling campaign and compiled bibliographical information, resulting in the first comprehensive list of fungi for the archipelago, with 141 species of Basidiomycota [8].

The concern for plant pathologies produced several works on fungal pathogens in the Azores [10,14,15]. The first Uredinales checklist for Macaronesia summarised all the works on rust fungi [16], and the complete fungi records mentioned in those mycological studies were later compiled by Spooner & Butterfill [17]. Subsequently, from two collections made by the Kew Gardens (in April–May 1995 and October–November 1996), studies were carried out on Uredinales and Ustilaginales [18] as well as Heterobasidiomycetes [19] and Poroid fungi [20].

Since then, mycological contributions have been sporadic, except for the extensive work carried out on corticioid fungi s.l. [21–31]. The most recent compilation of Basidiomycota in the Azores, a list of 307 taxa, was published by Melo et al. [5] as part of a work on the terrestrial and marine biota of the Azores [32]. After that, Calonge & Mir-Pegueroles [33] reported 28 new species of basidiomycetes for the Azores, and the last work corresponds to the identification of 118 species on the island of Terceira [34].

Despite increased research efforts, especially in the last decade, knowledge of the diversity and distribution of macrofungi in the Azores Archipelago is not consistently organised. This study aims to address this gap by presenting an updated checklist of macrofungi found in the Azores. The checklist is based on a taxonomically revised compilation of previously documented species from preserved samples and new collections from various islands, including São Miguel, Terceira, Flores, Graciosa, Pico, São Jorge, and Santa Maria. The aim is to provide a more accurate representation of this group of fungi and to compare the results with other parts of Macaronesia.

2. Materials and Methods

2.1. Study Area

The Azores is an oceanic archipelago located in the Mid-Atlantic Ridge (Figure 1) that is composed of nine volcanic islands divided into three groups: the western group (Corvo and Flores), the central group (Faial, Pico, Graciosa, São Jorge, and Terceira) and the eastern group (São Miguel and Santa Maria). The climate of the Azores is temperate oceanic, with regular and abundant rainfall. Annual rainfall average ranges from 740 to 2400 mm [35,36], causing high relative humidity levels (up to 95% in the high-altitude native forests). The thermal variations are moderate throughout the year, with annual temperatures between 14 and 18 °C [37].

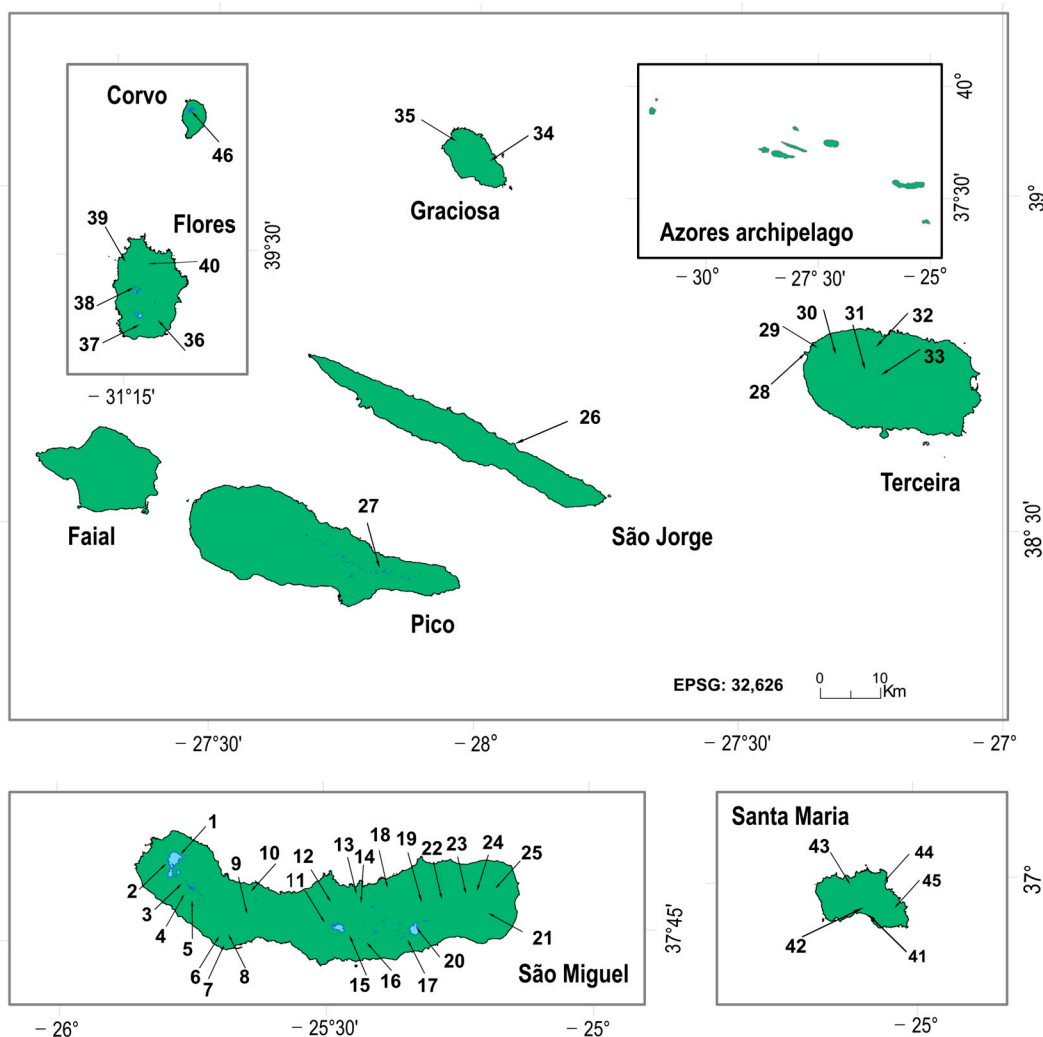


Figure 1. Location of the 45 sampling sites on the islands of the Azores archipelago.

Native laurissilva forest cover less than 10% of the total area, mostly at elevations > 800 m above sea level [38]. The dominant tree species in this endemic forest are *Juniperus brevifolia* (Seub.) Antoine, *Laurus azorica* (Seub.) Franco, and *Ilex perado* Aiton, with a closed canopy in which a great diversity of ferns and mosses are found (e.g., *Culcita macrocarpa* C. Presl, *Polytrichum juniperinum* Hedw., and *Sphagnum* spp.). Small patches of this laurissilva still occur at higher altitudes, where anthropogenic pressure is smaller, especially on the Terceira, Flores, and Pico islands.

According to historical sources, the archipelago was discovered and colonised by the Portuguese in the fifteenth century. Still, recent works point to a much earlier occupation (ca. 700 years before), probably by the Norse [39]. As populations settled on the islands, they forced extensive, long-term changes to the native vegetation composition and caused landscape destruction [39–41]. Throughout the centuries, the Azores have been drastically deforested to create space for agricultural fields, supply energy for people (charcoal), and facilitate and implement infrastructure and construction [42], leading to the destruction of more than 95% of the Azorean natural vegetation [43]. Due to the lack of wood and increasing soil erosion, *Cryptomeria japonica* (Thunb. ex L. f.) D. Don was introduced and now occupies about 22% of the area of the Azores (representing 60% of the forest plantation area), mainly at elevations > 400 m above sea level [38]. The other allochthonous trees that occupy most of the territory are *Pittosporum undulatum* Vent and *Ocotea foetens* (Aiton) Baill. formations. Small patches of *Eucalyptus*, *Pinus*, and *Acacia* spp. occasionally appear on different islands. All these changes have had an enormous influence on the current funga.

2.2. Sampling Sites

Sampling was conducted on eight islands (Figure 1 and Table S1 in Supplementary Materials). São Miguel island has been the most-studied island, as it is the largest, most populated, and has higher habitat heterogeneity. Twenty-five sites were sampled on this island (Loc. 1–25), encompassing a range of vegetation types. Low-impacted areas covered with native vegetation, such as Serra Devassa (Loc. 21), Planalto dos Graminhais (Loc. 22) and Pico da Vara (Loc. 24), were characterised by *Juniperus brevifolia* montane forests associated with open bush in mosaic with wet heathlands, with very rich flora including *Erica azorica* Hochst. ex Seub., *Calluna vulgaris* (L.) Hull, *Ilex perado*, *Vaccinium cylindraceum* Sm., *Myrsine africana* L., *Culcita macrocarpa* C. Presl, *Polytrichum juniperinum* Hedw., and *Sphagnum* spp. Sampling sites in semi-forested landscapes were characterised by allochthonous tree species, such as *Araucaria*, *Liriodendron*, *Magnolia*, *Camellia*, and *Platanus*, among others (Loc. 17, 20). Additionally, forest reserves containing economically valuable tree species and botanic gardens were also sampled (Loc. 5–Loc. 8). The remaining sites were distributed across lakeshores, pastures, and wooded areas, where *C. japonica* (Loc. 14) and *Pittosporum undulatum* (Loc. 12) were the predominant species.

Six sites were sampled on Terceira Island (Loc. 28–Loc. 33). The upper and central parts of the island were characterised by well-preserved native vegetation and abundant peatland areas, such as Lagoa da Serreta (Loc. 30) and Serra de Santa Barbara (Loc. 31). Within impacted areas, patches of *Eucalyptus globulus* Labill. (Mata da Serreta, Loc. 29), *Metrosideros excelsa* Sol. ex Gaertn. (Ponta do Queimado, Loc. 28) and *Pittosporum undulatum* (Biscoitos, Loc. 32) were sampled. On Flores Island, five sites with diverse habitats were selected (Loc. 36–Loc. 40), including the peatland area of Caldeira Branca (Loc. 38), the native vegetation patch at Morro Alto (Loc. 40), and the forests of *Pittosporum undulatum* in Fajã Grande (Loc. 37) and Lajes das Flores (Loc. 36). Another five sites on Santa Maria Island that differed in vegetation cover, such as the *Pinus pinaster* Aiton forest (Loc. 43), a mixed forest with a predominance of *Pittosporum undulatum* (Loc. 41 and Loc 42), and *C. japonica* patches (Loc. 44 and Loc. 45), were sampled. Occasional samples in São Jorge (Loc. 26), Pico (Loc. 27), Graciosa Island (Loc. 34 and Loc. 35) and Corvo Island (Loc. 46) were also collected.

2.3. Sampling Methods

Specimens were collected mainly during the two main fructification periods (autumn and spring) in 2008 and 2019–2023. Each specimen was carefully georeferenced and photographed in its natural habitat, capturing important characteristics such as colour, odour, texture, growth habit, and substrate type to facilitate accurate identification. The specimens were processed using the traditional techniques of specimen collecting, and collections were preserved by convective warm-air drying.

Preliminary identification of the specimens was conducted in the field, using general literature references such as Bon [44], Courtecuisse and Duhem [45], and, later, by consulting specific key works for each group in the laboratory. Voucher specimens were deposited in the Herbarium of the University of Azores “Rui Telles Palhinha” (AZB) and the personal herbarium of M. Souto.

Macromorphological characters were observed in fresh specimens, while microscopic structures were examined in preparations of small parts of the basidiomata in 5% KOH. To enhance the visualisation of hyaline structures, Congo red staining was applied. Pictures were taken with a Leica DFC495 camera (Leica Microsystems GmbH, Wetzlar, Germany) attached to a Leica DM2500 (Leica Microsystems GmbH, Wetzlar, Germany) light microscope and analysed using image analysis software (Leica Application Suite version 3.8.0).

2.4. Checklist

The checklist was compiled by incorporating information from various sources, including literature, herbarium specimens, and field samplings. It is important to note that lichenicolous fungi (Basidiolichens) have also been included in the checklist, with refer-

ences from Martinez [46], Berger & Aptroot [47], Aptroot et al. [48], Hafellner [49,50], van den Boom [51,52], Millanes et al. [53,54], and Diederich et al. [55].

The distribution is named according to the island from which each taxon was collected: SMG (São Miguel), TER (Terceira), FAI (Faial), PIC (Pico), FLO (Flores), COR (Corvo), STM (Santa Maria), GRA (Graciosa), SJG (Sao Jorge). Information such as specimen locality, island, date, collector (legitimavit), and habitat are included for newly collected material from field samplings. Distribution and references (Dist. & Ref.) for each species are listed chronologically by publication year and then by author. Species that are reported for the first time for the Macaronesia region are indicated by three asterisks ***, while those new to the Azores are marked with two asterisks **, and newly recorded taxa for a specific island are denoted by a single asterisk *.

The status and synonym of each species in the checklist follow the Index Fungorum databases (<http://www.indexfungorum.org>, accessed date 1 June 2023). Vascular plants and mosses were cross-checked according to <http://www.theplantlist.org> (accessed date 1 June 2023). To simplify the list, basionyms and synonyms have been excluded. Intraspecific taxa, such as varieties, were also not considered and were listed as binomial names. Basidiomycota classification follows Matheny et al. [56], He et al. [1] and Justo et al. [57] for Polyporales. The taxa are listed in alphabetical order by genus, species, and major taxonomic groups. The taxa with uncertain positions (incertae sedis) appear at the end of each taxon in the checklist.

Available digitised voucher specimens were consulted from different Herbaria (Table 1) through MyCoPortal online database (<https://www.mycportal.org>, accessed on 1 June 2023). Specimen names in the MyCoPortal linked to observation-based sources (e.g., MushroomObserver, iNaturalist) are difficult to verify because these data are not systematically associated with specimens and therefore cannot be scientifically validated, as, in most cases, only photographs are available. We have decided to include about 10 taxa that we believe can be reliably identified from photographs, such as *Laurobasidium lauri*, *Clathrus ruber*, and *Laetiporus sulphureus*.

Table 1. Herbaria consulted with samples from the Azores (herbarium codes follow the Index Herbariorum; <https://sweetgum.nybg.org/science/ih/> accessed on 1 June 2023).

Herbarium Code	Institution	Location
AZB	Universidade dos Açores, Rui Telles Palhinha	Portugal–Ponta Delgada, the Azores.
MA	Real Jardín Botánico	Spain–Madrid.
CUP	Cornell University, Plant Pathology Herbarium	U.S.A.–Ithaca, New York.
PUR	Purdue University, Arthur Fungarium	U.S.A.–West Lafayette, Indiana.
BPI	U.S. National Fungus Collections, USDA-ARS	U.S.A.–Beltsville, Maryland.
WSP	Washington State University	U.S.A.–Pullman, Washington.
UPS	Uppsala University, Museum of Evolution	Sweden–Uppsala.
GB	University of Gothenburg	Sweden–Gothenburg.
TAAM	Institute of Agricultural and Environmental Sciences	Estonia–Tartu.
TU-TU(M)	University of Tartu Natural History Museum	Estonia–Tartu.

Metulodontia nivea (P. Karst.) Parmasto was excluded from the checklist, as this taxon was cited by Melo et al. [5] for the Azores based on the literature, but the only previous reference for Macaronesia is found in Dennis et al. [8] for Madeira.

To compare the mycoflora of the different Macaronesian archipelagos, a bibliographical update of the different works on mycology for each group of islands has been carried out, with the current checklists as the starting point: for the Azores [5] and subsequent additions [22,24–31,33,34,46–50,52,53,55,58] the Canary Islands [3] and subsequent additions [22,31,54,55,59–104]; Madeira [4] and subsequent additions [26,54,55,92,105–118]; Cabo Verde [119] and subsequent additions [31,51,55,120–125].

3. Results

The presented checklist comprises 544 taxa of Basidiomycota, including lichenicolous fungi and the subphylum Pucciniomycotina. The total number of specimens collected was ca. 600, and more than 90% were determined at the species level. Consequently, an extensive array of taxa has been assembled, representing a substantial portion of the Basidiomycota orders (Figure 2). Our collections recorded, for the first time, 116 Basidiomycota species in the Azores, of which 33 taxa can be considered new for Macaronesia.



Figure 2. Basidiomycota diversity of the Azores archipelago: (a) *Eocronartium muscicola*; (b) *Roridomyces roridus*; (c) *Entoloma chalybeum*; (d) *Tremellodendropsis tuberosa*; (e) *Phylloporus rhodoxanthus*; (f) *Myxarium nucleatum*; (g) *Boletus reticulatus*; (h) *Leucocoprinus cepistipes*; (i) *Mutinus ravenelii*.

Among the islands, São Miguel exhibits the highest mycobiota diversity in the archipelago, with 321 species identified, including 162 previously undocumented species (see Figure 3), almost doubling the number of known Basidiomycota on this island. Terceira Island recorded 15 new species, increasing the number of taxa to 270. The number of Basidiomycota species in Flores also increased, with 33 new records, reaching 132 species. In Santa Maria, we added 55 new species to its mycobiota, resulting in a total of 70 species for the island. Occasional samplings conducted in Pico, São Jorge, Graciosa, and Corvo yielded 10, 17, 4, and 2 new records, respectively, for those islands. Consequently, the total number of mycobiota on each island increased to 99, 49, 44, and 9, respectively. On the other hand, Faial has not undergone recent field samplings and therefore maintains the number of taxa reported in the previous literature [5], with 104 Basidiomycota species already documented.

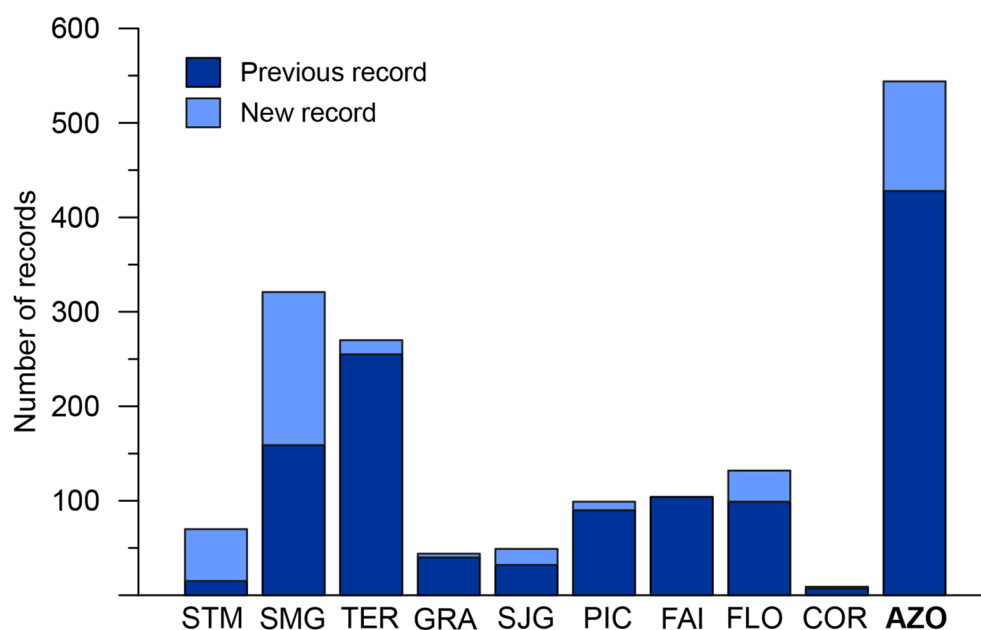


Figure 3. Number of previous and new records of Basidiomycota for each Azorean Island and archipelago. STM—Santa Maria Island; SMG—São Miguel Island; TER—Terceira Island; GRA—Graciosa Island; SJG—São Jorge Island; PIC—Pico Island; FAI—Faial Island; FLO—Flores Island; COR—Corvo Island; AZO—Azores archipelago.

Since 1874, when the first basidiomycetes were reported [7], there have been few, albeit continuous, studies. In 1975, the first exhaustive list of the fungi of the archipelago appeared, with 141 species of Basidiomycota [8]. Since then, mycological contributions have been sporadic, except for extensive work on the corticioid fungi [21–31]. The most recent work corresponds to the identification of 118 species on the island of Terceira [34] (Figure 4).

The review of all these data gives us an updated overview of the Basidiomycetes in Macaronesia. Table 2 summarises the number of species for each archipelago; to structure the data more comprehensively, we have not broken down the subphylum Pucciniomycotina, the subphylum Ustilaginomycotina to the class level, and the subphylum Agaricomycotina to the taxonomic class and order level (we have arranged the orders from the most species-rich to the least species-rich).

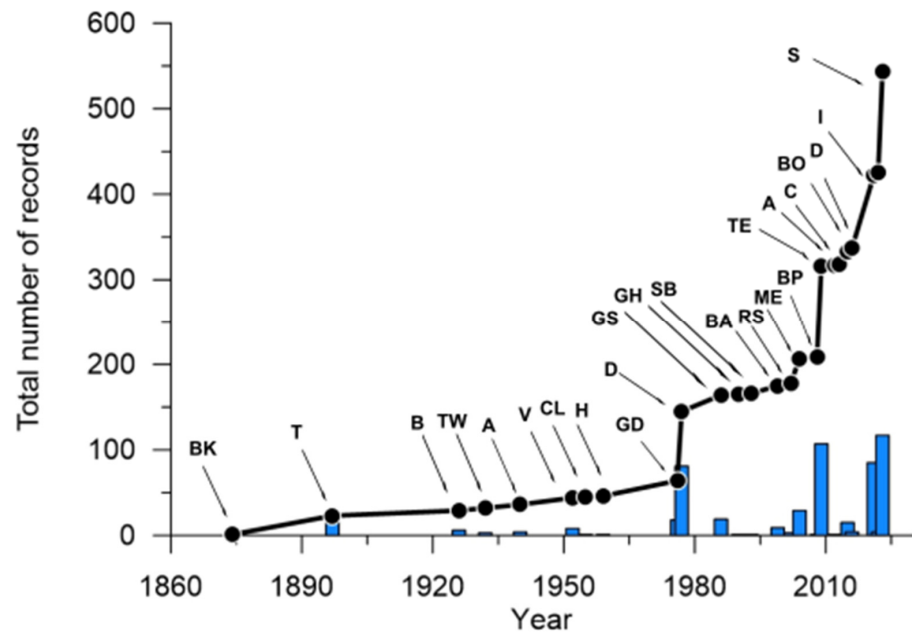


Figure 4. Evolution of knowledge. The total number (line) and new records (bars) of Basidiomycota species in the Azores archipelago from 1874 to 2023. References: Bk [7], T [9], B [10], TW [11], A [12], V [13], CL [126], H [127], GD [14], D [8] GS [16], GH [128], SB [18], BA [47], RS [19,20], ME [23], BP [48], TE [24], A [129], C [33], BO [52], I [34], D [55], and S (Souto et al.; this paper).

Table 2. Summary of the taxa in Macaronesia and the species number shared between each archipelago. Canary Islands (CA); Azores (AZ); Madeira (MA).

Taxa	CANARY ISLANDS	CA/AZ	AZORES	AZ/MA	MADEIRA	CA/MA	AZ/CA/MA	CABO VERDE
Subphylum:	100	47	86	55	92	56	38	28
Pucciniomycotina								
Class: Ustilaginomycetes	12		2		12	4		3
Class: Exobasidiomycetes	12	2	6	2	11	3	1	1
Class: Tremellomycetes	18	8	9	6	9	7	6	1
Class: Dacrymycetes	8	3	6	1	1	1	1	
Class: Agaricomycetes								
Agaricales	731	129	206	98	327	191	87	11
Polyporales	156	36	54	27	64	40	21	6
Russulales	108	25	43	23	50	32	16	
Boletales	53	17	22	17	40	30	14	4
Hymenochaetales	57	18	34	18	34	25	16	
Cantharellales	28	11	19	11	18	14	9	
Trechisporales	17	12	24	12	14	10	9	1
Thelephorales	25	1	1		7	3		
Atheliales	18	4	6	3	7	3	2	
Corticiales	13	3	6	1	3	3	1	
Phallales	10	3	4	3	6	4	3	
Gastrales	11	1	1		7	5		2
Gomphales	14	2	2	1	7	3	1	
Auriculariales	9	4	8	1	1	1	1	
Amylocorticiales	8	1	2	1	2			
Gloeophyllales	3	1	1					
Tremellodendropsidales	1	1	1	1	1	1	1	
Jaapiales			1					
Sebacinales	1							
Hysterangiales	2							
Total species	1415	329	544	281	713	436	227	57

Compilation of Basidiomycota taxa number in the different archipelagos of the Macaronesia region (the Azores, the Canary Islands, Madeira, and Cape Verde) from the bibliographic update showed a total number of 1877 Basidiomycota species. The Canary Islands was the archipelago with the highest number of recorded species (1415), followed by Madeira with 713 species, the Azores archipelago with 544, and Cape Verde with only 57 species recorded to date (Table 2 and Figure 5). The Sørensen–Dice Quotient of Similarity (QS) showed a certain degree of similarity between the different fungi of the archipelagos with higher diversity (the Canary Islands, Madeira, and the Azores) (Figure 5). The Basidiomycota community from the Azores and Madeira shared many species, as reflected by the higher QS value (Figure 5; QS = 0.45). Moreover, fungi similarity between Madeira and the Canary Islands produced a QS = 0.41, and the QS = 0.34 between the Canary Islands and Azores.

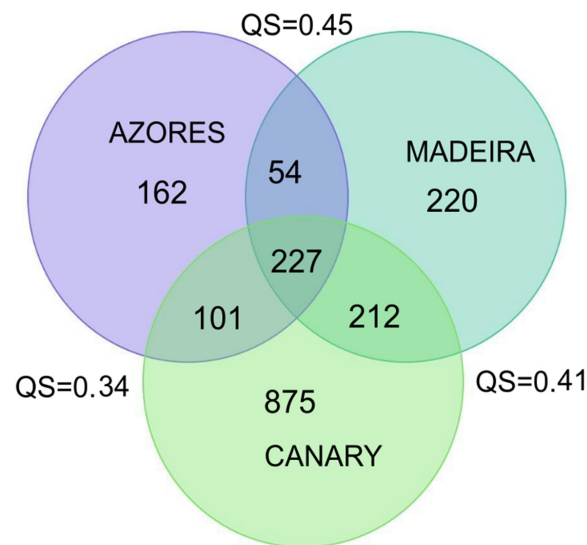


Figure 5. Venn diagram and Sørensen–Dice Quotient of Similarity (QS) showing Basidiomycota species diversity in the Macaronesia archipelagos.

The ecology of each species was determined from the general bibliography for each taxon and the latest updated checklists for each archipelago (Figure 6).

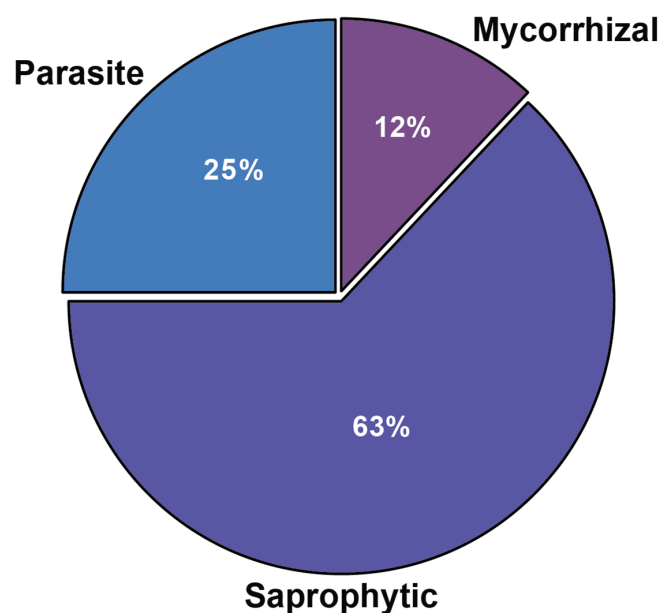


Figure 6. Relative species richness of Basidiomycota ecological groups in the Azores.

4. Discussion

Forests are the main habitat of many macrofungi; consequently, modifications in vegetation cover are associated with an inevitable change in fungal diversity. Several studies show that deforestation leads to changes in the composition of soil fungi and reduces fungal diversity [130,131], especially among Basidiomycota [132,133]. In the case of the Azores, the original forests (laurissilva) have disappeared in many areas over large parts of the islands. The discovery and human colonisation of the islands have invariably resulted in their widespread ecological transformation [39,134]; the original forests (laurissilva) have disappeared in many areas and have been replaced by pastures and wooded areas dominated by allochthonous tree species.

Most of the sampling sites in the Azores correspond to forest areas (*Cryptomeria* and *Pittosporum* plantations). The high environmental humidity and the great diversity of dead woody debris in different degrees of disturbance explain the abundance of saprophytic species (Figure 6; 63% of the total species recorded). Large numbers of saprobic fungi, especially from the order Polyporales and several families of the order Agaricales, were recorded on wood or twigs and leaf litter. *Mycena*, *Marasmius*, and *Marasmiellus* are genera ubiquitous in these forests.

Numerous saprophytic species new to science have been described from samples collected in the Azores, such as *Repetobasidium azoricum*, *Lagarobasidium calongei*, *Skeletocutis azorica*, and *Pseudotracheloma azoricum*. These possible endemisms are associated with native species and laurel forests. The drastic deforestation of these ecosystems has led to the disappearance of numerous species of flora, fauna, and funga. Little is known about this last kingdom, and its study would be one more reason to protect the native ecosystems of the Azores.

Many of these allochthonous forests are populated by a dense undergrowth of ferns. Although Pteridophyta species are not a common substrate for fungi [135], some genera such as *Athelopsis*, *Leptosporomyces*, *Luellia*, *Parvobasidium*, *Phebiella*, and *Tubulicium* have been found in the autochthonous *Culcita macrocarpa*, and *Woodwardia radicans* or in allochthonous species such as *Cyathea cooperi* (W. J. Hooker ex F. von Mueller) Domin [24]. Much of the island's native tree canopy has disappeared, but native ferns have regrown under the allochthonous forest species, creating a new hybrid habitat for many species of fungi.

Among the species that can be considered allochthonous, the helicosporous fungus *Hobsonia mirabilis* (Atractiellales, Phleogenaceae) has consistently been observed in multiple sampling locations across different islands, growing on the debris of various vascular plants, such as Pteridophytes or Monocotyledons (*Hedychium*), indicating its polyphagous nature. This species has been reported in tropical highlands, such as in the mountainous regions of Panama and Colombia [136], on *Musa* leaves in the Hawaiian Islands [137], on thistles in Japan, and in New Zealand [138]. In Macaronesia, it only appears in the Azores, and it is quite possible that its abundance is associated with the high dispersal of *Hedychium gardnerianum* throughout the archipelago. *Hedychium* is included in the list of the 100 most dangerous invasive alien species [139].

The drastic transformation of the islands from woodland to grassland has created the necessary conditions for the presence of numerous grassland saprophytic species such as *Bovista*, *Coprinellus*, *Leucocoprinus*, and *Parasola*. Many of these species are coprophilous and are associated with the strong presence of livestock in the archipelago. It is important to note the absence of mammals on the island before the arrival of man [39]. The large-scale expansion of these artificial grassland ecosystems associated with the strong development of the agricultural industry has favoured the dispersal of these species.

The second most diverse ecological fungal group in the Azores are the parasitic fungi, representing 25% of the total Basidiomycota species (Figure 6). A high number of lignicolous species, which initially act as parasites and subsequently complete their life cycle as saprophytes, has been observed. Among these are *Ganoderma* spp. and *Armillaria mellea* (Vahl) P. Kumm, which parasites many tree species. These parasitic fungi

are particularly abundant on various allochthonous trees such as *Pittosporum*, *Ocotea*, and *Cryptomeria*. One of the causes of their wide dispersion is very likely to be the fact that many tree species are not from the archipelago, and although they belong to climatic zones very similar to the Azores, they are not in their optimum state, which makes them prone to numerous parasites.

Among the parasitic fungi, a great variety of species of the class Pucciniomycetes (rust fungi) is present in the Azores, probably due to the import of raw materials of plant origin, mainly cereals. Rust fungi are less pathogenic in drier areas [140], but the high relative humidity in the Azores has made them a significant subject of investigation in the archipelago [10,14–16]. *Coleosporium* Lév. exhibits a parasitic aecial stage on needle pines (*Pinus* spp.), while the telial stage occurs on a wide range of angiosperm species [141]. Three species are reported from the Azores: *Coleosporium asterum* (Dietel) Syd. & P. Syd. [18], *Coleosporium senecionis* (Schumach.) Rabenh. [9], and *Coleosporium tussilaginis* (Pers.) Lév. The latter species is widespread throughout Macaronesia. It is worth noting that the latter two species are considered synonymous since most researchers have combined various European taxa into formae speciales (ff. spp.) of *Coleosporium tussilaginis* [141]. These *Coleosporium* species are also allochthonous to the Azores, as one of their hosts, *Pinus*, is an alien species. Nowadays, many rust fungi, such as *Puccinia hordei* or *P. striiformis*, associated with cereal crops such as wheat are no longer so common due to the almost complete disappearance of cereal cultivation in the archipelago [42]; *P. sorghi* is somewhat abundant in the numerous fodder maize plantations. Nevertheless, two new records for Macaronesia stand out from this work: *Puccinia cymbopogonis* Masee, associated with the proliferation of the allochthonous grass species *Cymbopogon citratus* (DC.) Stapf. from Malaysia and *Puccinia hydrocotyles* (Mont.) Cooke, which parasitises a small peatland-specific hydrophyte, *Hydrocotyle vulgaris* L.

Among the parasitic species, *Eocronartium muscicola* (Pers.) Fitzp. (Platyglloeales, Eocronartiaceae) stands out (Figure 2), which represents the first documented presence of this species in Macaronesia. It is a parasite known to infest moss species and is primarily distributed in the Northern Hemisphere. It was found in a native *Juniperus* forest on Terceira (Loc. 30), developing a clavate *Typhula*-like fruiting bodies on the moss *Eurhynchium praelongum*. It has also been found to occur in Chile, parasitising the same genus *Eurhynchium* [142].

Eleven species of the family Tremellaceae have been reported as parasitising lichens or other fungi from Macaronesia [92], of which eight occur in the Azores. The humid climate may be one of the factors responsible for the fructification of most of the species of this family. *Tremella laurisilvae* Kout, with a parasitic strategy on Biscogniauxia species, is a species new to science that was described from the evergreen laurel forests of the Canary Islands and Madeira [92] but has not yet been found in the Azores.

Diederich et al. [55] described a new genus of the lichenicolous fungi *Crittendenia* Diederich, Millanes, M. Westb., Etayo, J.C. Zamora & Wedin (Agaricostilbomycetes) from the Azores and the Canary Islands that comprise minute basidiomycetes of the synnemata type. This species was found in the Azores on the lichenes *Bacidina*, *Byssoloma*, and *Hypotrachyna* [55].

Mycorrhizal species account only for 12% of the total Basidiomycetes species in the Azores (Figure 6). Many of the ectomycorrhizal species observed in this archipelago are associated with introduced tree species, such as Boletaceae (*Quercus*, *Pinus*), *Cortinari*, *Amanita* (*Quercus*), or *Inocybe* (*Cryptomeria*, *Pittosporum*). It is possible that many species of ectomycorrhizal basidiomycetes may exhibit invasive tendencies or possess the potential to become invasive. According to Vellinga et al. [143], most introductions of ectomycorrhizal fungi worldwide are associated with pine and eucalyptus plantations. Large stands of *Amanita muscaria* (L.) Lam. and *Boletus reticulatus* Schaeff. have been seen under *Quercus palustris* Münchh. (Loc. 17, As Furnas, SMG) and it is known that these fungi establish associations with various tree genera in numerous regions worldwide [144,145]. *Lactarius quieticolor* Romagn., an edible fungus associated with pine forests (Loc. 1, Sete Cidades,

SMG), is becoming increasingly scarce in the Azores due to the decline of pine populations in recent decades [41]. However, our collections of *L. quieticolor* under *Cryptomeria* (Loc. 45, Santo Espírito, STM) suggest that this species is spreading within plantations of this Japanese conifer. The expansion of many of these mycorrhizal species will depend largely on the future spread of their host plants and their preference for new autochthonous species.

The introduction of agricultural species and adventitious vascular plants from different geographical origins constitute a major impact on the native flora of the Azores [146]. Many of these endemic plant communities have experienced regression or irretrievable alterations as a result [147]. In the Azores archipelago, approximately 70% of the vascular flora consists of non-indigenous plants (about 1000 taxa of vascular flora) [148]. Large areas are mainly occupied by *Hedychium gardnerianum* and the Caprifoliaceae *Hydrangea macrophylla* (Thunb.) Ser. In our field trips, we have observed a rapid expansion of two shrubs recently introduced in the Azores, one being the Asian *Leycesteria formosa* Wall. and one from Madeira's *Cletra arborea* Aiton. Their expansion in the future will again affect these delicate ecosystems.

The impact of introducing fungi into native fungal communities is not well known [149,150]. Many fungi are now considered invasive species in large parts of the world, such as the well-known case of *Favolaschia calocera* R. Heim, which was first described in Madagascar and which has been recorded in numerous regions around the world [151], or *Clathrus archeri* (Berk.) Dring., which has a wide global spread [152]. The extensive alteration of vegetation cover in the archipelago facilitates the potential entry and dispersal of allochthonous fungi, but knowledge of them in the Azores is very limited. *Favolaschia claudopus* (Singer) Q.Y. Zhang & Y.C. Dai found under *Ocotea foetens* (Loc. 16) is an example of this problem; this citation is the first for Macaronesia.

Knowing the origin of the many species suspected to be allochthonous would be valuable. Some studies have used molecular phylogeographical analysis, such as that of Coetzee et al. [153], which demonstrate the allochthonous origin of the forest pathogen *Armillaria mellea*. Future work in this field could provide interesting results, as the archipelago is isolated from the mainland and is located halfway between America and Europe. Although there are species whose origin is quite clear, it is difficult to determine the allochthonous character of other taxa. Such is the case for *Leucocoprinus birnbaumii* (Corda) Singer, widely collected in São Miguel, which is a species typically associated with artificially heated soils, such as greenhouses and pots [154,155], and widely distributed in the northern hemisphere and subtropical areas [155].

Macaronesia Mycoflora

Previous studies have highlighted the similarity between mycobiota of Madeira and the Canary Islands [4]; however, our results show a greater similarity between the Azores and Madeira Basidiomycota (Table 2 and Figure 5), which is probably related to the fact that the Azores and Madeira show the greatest similarity in their flora and climate. Higher Basidiomycota diversity in the Canary Islands (Figure 6) may be related to them having the largest surface area of 7447 km² compared with 2332 km² for the Azores and 828 km² for Madeira. It may also be associated with the relative proximity to the mainland and the higher number of mycological studies in this archipelago. From a flora diversity point of view, the Canary Islands have greater similarity with southwestern Morocco, especially in habitats characterised by open sclerophyll forests and coastal dunes dominated by shrubs [156]. These floristic similarities, bioclimatic diversity, and geographical proximity to the mainland may explain the higher fungal species richness. Coastal zones characterised by sclerophyll forests (*Juniperus* spp.) and cardonales–tabaibales (*Euphorbia* spp.) are arid and semi-arid environments of the inframediterranean, presenting a specific diversity of basidiomycetes adapted to these arid conditions, such as the xerophytic Agaricales group [73]. Such coastal arid ecosystems are absent in the Azores and Madeira. In addition to the laurel forest (common to the whole of Macaronesia), the Canary Islands have large areas of pine forest and woodland with Mediterranean characteristics and a higher number of endemic taxa (ca. 680), almost 40% of all its vascular flora [157]. Because of this, the

Canary Islands have numerous species of fungi that are endemic, ca. 20 taxa [3], as in the case of *Gloeodontia xerophila* Tellería, M. Dueñas, Rodríguez-Armas, Beltrán-Tej. & Melo, discovered on decomposing remains of *Euphorbia*.

The archipelago of Madeira comprises two islands: Madeira, the largest and with the highest elevation, and Porto Santo, which has a drier climate. Two more groups of small islets, the Desertas Islands and the Selvagens Islands, belong to the archipelago, the latter being located 280 km south of Madeira, closer to the Canary Islands. With 1204 vascular plants and 154 endemisms, Madeira has 13% of the endemisms [158]. All Basidiomycota of the Madeira archipelago have been collected on Madeira Island [4]. After the Canary Islands, Madeira Island has the highest number of mycological publications. From the eight Basidiomycota species described as new to science, seven were published by Torrend in the early 20th century [159–161] and have not been recorded since. It is necessary to consult these herbarium exsiccate to check the identification in a modern context.

The Azores have a slightly less diverse vascular flora than Madeira (1086 taxa/65 endemisms) [162]; however, the archipelago is made up of nine islands and, a priori, should harbour a greater number of fungal species. Of the 544 species catalogued for the Azores, 321 have been located on Sao Miguel (Figure 3), so it is necessary to reinforce sampling efforts on the rest of the islands. This heightened number of new records may be attributed to a sampling bias, as São Miguel is the largest and most extensively surveyed island, in contrast to the smaller islands of the Azores (e.g., Corvo has nine taxa). A similar situation is found in the archipelago of Madeira, which has numerous small islands with very few records, such as the Selvagens Islands, with three species; the Desertas Islands, four species; and Porto Santo, with eight species.

If we look at the number of species within the different orders (Table 2 and Figure 7), we can see that the biggest difference is in the Agaricales order. With 731 taxa, the Agaricales are the best-represented group of mycobiota in the Canary Islands (Table 2). If we compare many of the large orders of Basidiomycota with each other, we see less marked differences than in the case of Agaricales. This bias may be due to the extensive work done within the corticoid fungi s.l. in Macaronesia [21,23–29]. In addition, many rust fungi have long been described in a series of papers for the whole of Macaronesia [10,11,14–16]. In the case of the Azores, little attention has been paid to Agaricales, the largest order within basidiomycetes [1]. This lack of knowledge is evidenced by the fact that of the 116 new records for the Azores presented in this study, 86 are Agaricales, and 10 are Boletales. The largest contribution comes from the order Agaricales, where several families (Bolbitiaceae, Inocybaceae, Macrocytidiaceae, and Omphalotaceae) and within the order Boletales (Boletaceae, Diplocystaceae, Gyroporaceae, and Paxillaceae) are cited for the first time for the Azores.

Within Macaronesia, the archipelago of Cabo Verde has the most poorly studied mycoflora. Currently, the Basidiomycota catalogue of Cabo Verde is composed only of 57 species [31,119,121,122]. These islands are characterised by dry subtropical vegetation. The eastern islands (Boavista, Sal, and Maio) suffer long periods of drought together with a severe desertification process, presenting poor flora diversity. More than half of the species (27) belong to the class Pucciniomycetes [120]. Despite this, five species new to science have already been described: *Hydnophlebia gorgonea* Telleria, M. Dueñas & M.P. Martín, known from only two localities in São Vicente Island; *Hydnophlebia meloi* Telleria, M. Dueñas & M.P. Martín [31]; *Cyathus lignilantanae* R. Cruz & M.P. Martín, on Santiago Island [122]; and *Rhizopogon granuloflavus* M.P. Martín, M. Dueñas & Telleria [121]. Further south, the small archipelago of Sao Tomé and Príncipe has a basidiomycetes catalogue of 260 species [163], although this mycoflora is more tropical in character.

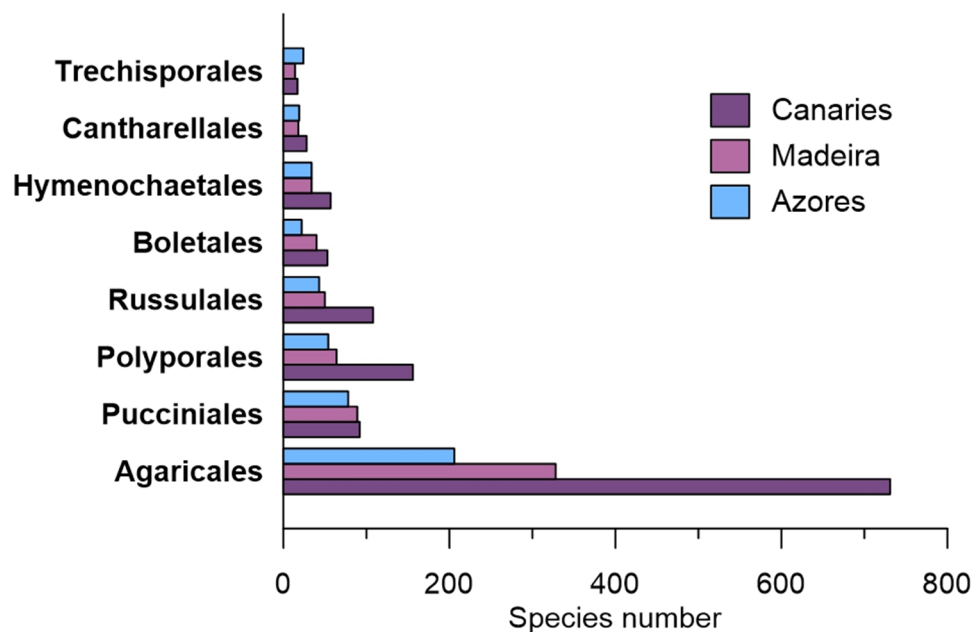


Figure 7. Diagram representing the species number of the main groups of Basidiomycota in Macaronesia.

The understanding and conservation of biodiversity are hampered by a lack of information on taxonomic groups. Knowledge is often biased due to different sampling and identification efforts for each group of organisms. A clear example can be seen in the Azores, where several groups, such as the Agaricales, need to be studied in more depth. We need to study the mycoflora of the Azores further to have a clearer picture of the fungal diversity in Macaronesia, especially of the few remaining pristine ecosystems.

This work represents the first part of a project that aims to study the mycobiota of the Azores, and we are currently working on the other major group, Ascomycota. More fieldwork is needed to understand the fungi's distribution and diversity, especially considering the great differences with other more-studied archipelagos such as the Canary Islands and Madeira. The checklist aims to serve as a baseline for more studies on the Azores. Still, this checklist is certainly incomplete, and additional future fieldwork will be necessary to complete the knowledge about this group of fungi.

5. Conclusions

This study represents the first comprehensive checklist of Basidiomycota fungi in the Azores archipelago. By compiling recent field sampling records and relevant literature, we have contributed 114 new taxa records for the archipelago, of which 33 are also new records for the Macaronesia region. The transformation of vegetation cover in the archipelago has been very drastic, and this is reflected in the presence of many foreign fungal species on the islands. While most new records were documented on the larger islands, increasing the sampling effort on the smaller and less explored islands is crucial to address the current knowledge gaps regarding the Basidiomycota group. These findings advance our understanding of global fungal diversity patterns. Furthermore, future studies should encompass the Ascomycota group to provide a more comprehensive understanding of fungal diversity and distribution in the Azores Islands.

-
 Checklist of Basidiomycota from the Azores
 Phylum: Basidiomycota
 Subphylum: Pucciniomycotina
 Class: Agaricostilbomycetes. Order: Agaricostilbales.
 Family: Crittendeniaceae
 - *Crittendenia bacidinae* Diederich, van den Boom & Millanes

Dist. & Ref.: PIC [55]

- *Crittendenia byssolomatis* Diederich, van den Boom & Millanes

Dist. & Ref.: GRA [55]

- *Crittendenia hypotrachynae* Diederich, Etayo, van den Boom & Millanes

Dist. & Ref.: TER [55]

- *Crittendenia kakouettae* Diederich, van den Boom & Millanes

Dist. & Ref.: STM [55]

-

Class: Atractiellomycetes. Order: Atractiellales. Family: incertae sedis

- * *Hobsonia mirabilis* (Peck) Linder

Spec.: Lagoa do Areeiro, SMG; 4 November 2019. M. Souto leg., on rotten raquis of *Sphaeropteris cooperi* (F. Muell.) R.M. Tryon; MSS-1702. Lagoa de Sao Bras, SMG; 5 November 2019. M. Souto leg., on remains of *Hedychium gardnerianum*. Lagoa das Furnas, SMG; 16 November 2019. M. Souto leg., on remains of *H. gardnerianum*; MSS-1726. Reserva Forestal do Pinhal da Paz, SMG; 21 January 2020. M. Souto leg., on remains of *Gunnera tinctoria* (Molina) Mirb.; MSS-1764. Lagoa do Congro, SMG; 16 December 2020. M. Souto leg. Lagoa da Lomba, FLO; 14 September 2021. M. Souto leg., on remains of *H. gardnerianum*; MSS-2209. Povoação, SMG; 29 September 2021. M. Souto leg., *Cryptomeria* wood; MSS-2253. São Lourenço, STM; 13 October 2021. A. Balibrea leg.; MSS-2318. Dist. & Ref.: TER [8,19], SMG, FLO [19].

-

Class: Cystobasidiomycetes. Order: Cystobasidiales.

Family: Cystobasidiaceae Gäum.

- *Occultifur internus* (L.S. Olive) Oberw.

Dist. & Ref.: FAI [19].

-

Class: Pucciniomycetes. Order: Platyglloeales.

Family: Eocronartiaceae Jülich

- *** *Eocronartium muscicola* (Pers.) Fitzp.

Spec.: Lagoa da Serreta, TER; 2 July 2020. M. Souto leg., on *Eurhynchium praelongum* (Hedw.) Warnst.; MSS-1875.

-

Order: Pucciniales.

Family: Coleosporiaceae Dietel

- *Coleosporium asterum* (Dietel) Syd. & P. Syd

Dist. & Ref.: GRA [18].

- *Coleosporium tussilaginis* (Pers.) Lév.

Dist. & Ref.: as *Coleosporium senecionis* (Schumach.) Rabenh. TER [9,34]; SMG, TER, FAI [8,16]; GRA [16].

-

Family: Melampsoraceae Dietel

- *Melampsora euphorbiae* (Ficinus & C. Schub.) Castagne

Dist. & Ref.: SMG [8,9,16]; PIC [11]; FAI [8,16]; TER, PIC [16]; STM (BPI 030389).

- *Melampsora hypericorum* (DC.) J. Schröt

Dist. & Ref.: COR, STM [9]; PIC [12,16]; SMG, COR [16].

- *Melampsora laricis-populina* Kleb.

Dist. & Ref.: FLO, GRA, SJG [18]; TER [34].

- *Melampsora populnea* (Pers.) P. Karst.

Dist. & Ref.: SMG, FLO, GRA [18]; TER [8,16,34]; STM (BPI 031182).

-

Family: Phakopsoraceae Cummins & Hirats. f.

- *Cerotelium fici* (Castagne) Arthur

Dist. & Ref.: as *Kuehneola fici* E.J. Butler., SMG [10,16], GRA [18].

-

Family: Phragmidiaceae Corda

- * *Kuehneola uredinis* (Link) Arthur

Spec.: Lagoa do Caldeirão, COR; 28 September 2022. M. Souto leg., Uredinospores on leaves of *Rubus ulmifolius*; MSS-2412. Faixao Grande, FLO; 26 September 2023. M. Souto leg., on leaves of *R. ulmifolius*; MSS-2395. Dist. & Ref.: FLO [18], SJG [16].

- *Phragmidium duchesneae* (Arthur) P. Syd. & Syd.

Spec.: Lagoa da Prata, SMG; 23 October 2020. M. Souto leg., Teliospores on *Duchesnea indica* (Jacks.) Focke leaves; MSS-1990. Sete Cidades, SMG; 12 April 2023. M. Souto leg., *D. indica* leaves; MSS-2457. Dist. & Ref.: as *Frommeëlla duchesneae* (Arthur) Yohem, Cummins & Gilb., TER, FAI [8]; SMG, PIC, TER, FAI [16]; FLO [18].

- *Phragmidium mucronatum* (Pers.) Schltdl.

Dist. & Ref.: as *Phragmidium subcorticium* (Schrank) G. Winter, SMG [10,16]; FLO [18].

- *Phragmidium potentillae* (Pers.) P. Karst.

Dist. & Ref.: as *Frommea obtusa* (F. Strauss) Arthur, TER, FAI [8,16]; SMG, PIC [16]; FLO [18].

- *Phragmidium tuberculatum* Jul. Müll.

Dist. & Ref.: TER [8,16].

- *Phragmidium violaceum* (Schultz) Brockm.

Spec.: Lagoa da Lomba, FLO; 14 September 2021. M. Souto leg., Uredinospores on leaves of *Rubus ulmifolius* Schott; MSS-2225. Dist. & Ref.: TER, COR [9,16] FLO [8,9]; PIC [11,16]; FAI [16]; SMG [8,16].

-

Family: Pucciniastraceae Gäum. ex Leppik

- *Naohidemyces vaccinii* (G. Winter) S. Sato, Katsuya & Y. Hirats. ex Vanderweyen & Fraiture

Dist. & Ref.: FAI, FLO [18].

- *Pucciniastrum guttatum* (J. Schröt.) Hyl., Jørst. & Nannf.

Dist. & Ref.: SMG [8,16].

- *Pucciniastrum potentillae* Körn.

Dist. & Ref.: Azores (BPI 145075) [164].

- *Hyalopsora adiantum-capilli-veneris* (DC.) Syd. & P. Syd.

Dist. & Ref.: SMG (BPI 041193) [12,16].

- *Milesina blechni* (Syd. & P. Syd.) Arthur ex Faull

Dist. & Ref.: TER [8,16].

- *Milesina kriegneriana* (Magnus) Magnus

Dist. & Ref.: TER [8,16].

-

Family: Pucciniaceae Chevall.

- *Peristemma pseudosphaeria* (Mont.) Jørst.

Dist. & Ref.: as *Miyagia pseudosphaeria* (Mont.) Jorst., SMG, TER, FAI [8,16]; COR, PIC [18]; STM, SJG [16].

- *Puccinia acetosae* (Schumach.) Körn.

Dist. & Ref.: SJG [18].

- *Puccinia antirrhini* Dietel & Holw.

Dist. & Ref.: FAI [18]; TER [8,16].

- *Puccinia arenariae* (Schumach.) J. Schröt.

Dist. & Ref.: TER [16].

- *Puccinia brachypodii* G.H. Otth

Dist. & Ref.: as *Puccinia brachypodii* var. *arrhenatheri* (Kleb.) Cumm. & Greene and as *Puccinia poae-nemoralis* Otth, SMG, TER [8,16].

- *Puccinia buxi* Sowerby

Dist. & Ref.: FLO, SJG, FAI [18]; SMG [8–10,16]; TER [16].

- *Puccinia calcitrapae* DC.

Dist. & Ref.: STM, GRA [16].

- *Puccinia cancellata* (Durieu & Mont.) Sacc. & Roum
Dist. & Ref.: TER [8,16].
- * *Puccinia caricina* DC.
Spec.: Planalto dos Graminhais, SMG; 6 December 2019. M. Souto leg., on *Carex* sp.; MSS-1742. Dist. & Ref.: FAI [8,16].
- *Puccinia chrysanthemi* Roze
Dist. & Ref.: SMG [16].
- *Puccinia coronata* Corda
Spec.: Lagoa do Peixinho, PIC; 23 June 2023. M. Souto leg., Aeciospores on leaves of *Frangula azorica* V. Grubow; MSS-2476. Dist. & Ref.: PIC [11]; SMG, TER, FAI [8]; SMG, TER, FAI, PIC, SJG [16].
- *** *Puccinia cymbopogonis* Masee
Spec.: Ponta Delgada, SMG; 2 November 2021. M. Souto leg., on leaves of *Cymbopogon citratus* (DC.) Stapf.; MSS-2328.
- *Puccinia difformis* Kunze
Dist. & Ref.: SMG, FAI [8,16]; STM [16].
- *Puccinia dioicae* Magnus
Dist. & Ref.: SMG, TER [16].
- *Puccinia epilobii* DC.
Dist. & Ref.: PIC [11,16].
- *Puccinia frankeniae* Link
Dist. & Ref.: SMG [12,16].
- *Puccinia graminis* Pers.
Dist. & Ref.: TER [8,16]; SMG [16].
- *Puccinia hieracii* (Röhl.) H. Mart.
Dist. & Ref.: SMG, TER, GRA [9,16]; SJG [9]; FAI [8,16]; FLO, PIC [18].
- *Puccinia hordei* G.H. Othth
Dist. & Ref.: as *Puccinia holcina* Erikss, SMG [9,16]; PIC, FLO [16].
- *** *Puccinia hydrocotyles* (Mont.) Cooke
Spec.: Caldeira Branca, FLO; 26 September 2022. M. Souto leg., Urediniospores on leaves of *Hydrocotyle vulgaris* L.; MSS-2396.
- *Puccinia iridis* Wallr.
Dist. & Ref.: GRA [18]; STM [16].
- ** *Puccinia lagenophorae* Cooke
Spec.: Lagoa do Peixinho, PIC; 24 March 2023. M. Souto leg., on *Senecio* sp.; MSS-2460.
- *Puccinia malvacearum* Bertero ex Mont.
Spec.: Lajes, FLO; 30 June 2022. M. Souto leg., Teliospores on leaves of *Malva sylvestris* L.; MSS-2366. Faja dos Cubres, SJG; 30 November 2023. M. Souto leg., Teliospores on leaves of *M. sylvestris*; MSS-2508. Dist. & Ref.: TER, FAI [9,16]; PIC [11,16]; SMG [8,16]; SJG [16]; FLO, COR [18].
- *Puccinia menthae* Pers.
Dist. & Ref.: FAI, STM [16]; SMG, SJG [18]; TER [8,16,34].
- *Puccinia obscura* J. Schröt.
Dist. & Ref.: SMG [12,16].
- *Puccinia oxalidis* Dietel & Ellis
Spec.: Ponta Delgada, SMG; 28 October 2021. M. Souto leg., Urediniospores on *Oxalis purpurea* L.; MSS-2327. Lagoa do Caldeirao Sur, SMG; 3 May 2023. M. Souto leg., on *Oxalis articulata* Savigny; MSS-2463. Dist. & Ref.: SMG, FAI [8,16]; SMG [16], PIC, FLO [18].
- *Puccinia pelargonii-zonalis* Doidge
Dist. & Ref.: SMG, TER [8,16]; STM, GRA [16], FAI, FLO, SJG [18].
- *Puccinia polygoni-amphibii* Pers.
Dist. & Ref.: FAI [18].
- * *Puccinia porri* (Sowerby) G. Winter

- Spec.: Ponta Delgada, SMG; 10 May 2023. M. Souto leg., Uredinospores on *Allium sativum* L.; MSS-2469. Dist. & Ref.: as *Puccinia allii* Castagne, FLO [9]; FAI, PIC, STM [16].
- *Puccinia purpurea* Cooke
Dist. & Ref.: FAI [18].
 - *Puccinia recondita* Roberge ex Desm.
Dist. & Ref.: as *Puccinia rubigo-vera* (DC.) G. Winter, FLO [9,16]; TER, FAI [16].
 - *Puccinia saniculae* Grev.
Dist. & Ref.: FAI [18]; STM [16].
 - *Puccinia scirpi* DC.
Dist. & Ref.: Azores, (BPI 101200) [126].
 - *Puccinia sorghi* Schwein.
Dist. & Ref.: SMG [10,16]; FLO, COR [9].
 - *Puccinia stenotaphri* (Syd. & P. Syd.) Cummins
Dist. & Ref.: GRA [18].
 - *Puccinia striiformis* Westend.
Dist. & Ref.: Azores [127].
 - *Puccinia tanacetii* DC.
Dist. & Ref.: TER [16].
 - *Puccinia thaliae* Dietel
Dist. & Ref.: SMG [58].
 - *Puccinia vincae* (DC.) Berk.
Dist. & Ref.: SMG [18], GRA [16].
 - *Uromyces anthyllidis* (Grev.) J. Schröt.
Dist. & Ref.: TER, FAI [8,16]; SMG, PIC [16]; GRA [18].
 - *Uromyces appendiculatus* (Pers.) Link
Dist. & Ref.: SMG [16].
 - *Uromyces beticola* (Belyynck) Boerema, Loer. & Hamers
Dist. & Ref.: as *Uromyces betae* (Pers.) Tul., SMG [10,16].
 - *Uromyces bidenticola* (Henn.) Arthur
Spec.: Ponta Delgada, SMG; 2 June 2021. M. Souto leg., on *Bidens* sp.; MSS-2158.
Dist. & Ref.: SMG [8,16].
 - *Uromyces dactylidis* G.H. Otth
Dist. & Ref.: as *Uromyces poae* Rabenh., SMG [12,16].
 - *Uromyces dianthi* (Pers.) Niessl
Dist. & Ref.: GRA, SJG (BPI 004145) [18].
 - *Uromyces ervi* (Wallr.) Westend.
Dist. & Ref.: PIC [16].
 - *Uromyces geranii* (DC.) G.H. Otth & Wartm.
Dist. & Ref.: SMG [8,9,16].
 - * *Uromyces junci* Tul.
Spec.: Caldeiras da Ribeira Grande, SMG; 28 September 2021. M. Souto, leg., Uredinospores on *Juncus* sp. stems; MSS-2248. Dist. & Ref.: FAI [18].
 - *Uromyces limonii* (DC.) Lév.
Dist. & Ref.: SMG [9,16].
 - *Uromyces ornithopodioides* Gonz. Frag.
Dist. & Ref.: TER [16].
 - *Uromyces rumicis* (Schumach.) G. Winter
Dist. & Ref.: SMG, FAI [8,16,18]; STM, GRA [16]; PIC, FLO, SJG [18]; TER [34].
 - *Uromyces setariae-italicae* Yoshino
Dist. & Ref.: SMG [16]; FAI, GRA, SJG [18].
 - *Uromyces striatus* J. Schröt.
Dist. & Ref.: COR [9,16]; TER [16].
 - *Uromyces transversalis* (Thüm.) G. Winter
Dist. & Ref.: SJG [18].

- *Uromyces trifolii-repentis* Liro
Dist. & Ref.: SMG, PIC [16]; SJG [18].
- *Uromyces viciae-fabae* (Pers.) J. Schröt.
Dist. & Ref.: PIC [18]; SMG, FAI, FLO, STM, SJG [16]; TER [8,16].
-
- Family: Tranzscheliaceae (Arthur) Aime & McTaggart
- *Tranzschelia discolor* (Fuckel) Tranzschel & M.A. Litv.
Dist. & Ref.: SMG [16]; GRA [18].
- *Tranzschelia pruni-spinosae* (Pers.) Dietel
Dist. & Ref.: SMG [10].
-
- Class: Ustilaginomycetes. Order: Ustilaginales.
- Family: Ustilaginaceae Tul. & C. Tul.
- *Anthracocystis pampara* (Speg.) Q.M. Wang, F.Y. Bai, Begerow & Boekhout
Dist. & Ref.: as *Sphacelotheca pamparum* (Speg.) G.P. Clinton, SJG [18].
- *Sporisorium reilianum* (J.G. Kühn) Langdon & Full.
Dist. & Ref.: as *Sphacelotheca reiliana* (Kühn) Clint., FLO [9].
-
- Class: Exobasidiomycetes. Order: Entylomatales.
- Family: Entylomataceae R. Bauer & Oberw.
- *Entyloma calendulae* (Oudem.) de Bary
Dist. & Ref.: TER [8].
-
- Order: Exobasidiales.
- Family: Exobasidiaceae J. Schröt.
- *Exobasidium camelliae* Shirai
Dist. & Ref.: SMG [129].
- ****Exobasidium rhododendri* (Fuckel) C.E. Cramer
Spec.: Ponta Delgada, SMG; 12 February 2021. M. Souto leg., on *Rhododendron* sp.; MSS-2133.
-
- Family: Laurobasidiaceae Pinruan, Sommai, Suetrong, Somrith. & E.B.G. Jones
- *Laurobasidium lauri* (Geyl.) Jülich
Dist. & Ref.: SMG [33]; GRA (<https://www.inaturalist.org/observations/177860326>,
accessed on 18 February 2024).
-
- Order: Geogefischeriales.
- Family: Geogefischeriaceae R. Bauer, Begerow & Oberw.
- *Jamesdicksonia brizae* (Unamuno & Cif.) Piątek & Vánky
Dist. & Ref.: as *Entyloma brizae* Unamuno & Cif., Azores (BPI 174621).
-
- Order: Tilletiales.
- Family: Tilletiaceae J. Schröt.
- *Tilletia sphaerococca* A.A. Fisch. Waldh.
Dist. & Ref.: SMG, FLO [9].
-
- Subphylum: Agaricomycotina
- Class: Tremellomycetes. Order: Filobasidiales.
- Family: Syzygosporaceae Jülich
- *Heterocephalacria bachmannii* (Diederich & M.S. Christ.) Millanes & Wedin
Dist. & Ref.: as *Syzygospora bachmannii* Diederich & M.S. Christ., SMG [47]; PIC,
FLO [165]; TER [52].
-
- Order: Tremellales.

Family: Tremellaceae Fr.

- *Biatoropsis usnearum* Räsänen

Dist. & Ref.: SMG (Aptroot & Berger, 2002), PIC [54].

- *Biatoropsis hafellneri* Millanes, Diederich, M. Westb. & Wedin

Dist. & Ref.: SMG, PIC [54].

- ** *Phaeotremella foliacea* (Pers.) Wedin, J.C. Zamora & Millanes

Spec.: On trunk of *Clethra arborea* Aiton parasitising *Stereum* sp. Malhada, SMG; 18 November 2013, M. Souto leg. Dist. & Ref.: SMG [33].

- * *Tremella coffeicola* (Berk.) P. Roberts

Spec.: As Furnas, SMG; 2 November 2020. M. Souto leg., on wood indet.; MSS-2016. Lagoa do Congro, SMG; 16 December 2020. M. Souto leg., on *Eucalyptus globulus*; MSS-2047. Reserva Forestal do Pinhal da Paz, SMG; 22 December 2020. M. Souto leg., on wood indet.; MSS-2074. Lagoa Funda, FLO; 18 September 2020. M. Souto leg., Erica wood; MSS-1894. Dist. & Ref.: TER, FAI, GRA, SJG [19]. The citation of *Tremella frondosa* for TER [8] was re-examined and re-evaluated by Roberts & Spooner [19] as *T. coffeicola*.

- *Tremella lobariacearum* Diederich & M.S. Christ.

Dist. & Ref.: JSG [47]; SMG [49,52]; TER [52,165].

- * *Tremella mesenterica* Retz.

Spec.: Caldeira Branca, FLO; 18 September 2020. M. Souto leg., on indet. wood; MSS-1893. Barreiros, STM; 13 October 2021; A. Balibrea leg., on indet. wood; MSS-2284. Lagoa Funda, FLO; 7 July 2023. M. Souto leg., on *Alnus glutinosa* (L.) Gaertn.; MSS-2474. Dist. & Ref.: TER, FAI, PIC, JSG [19].

- *Tremella parmeliarum* Diederich

Dist. & Ref.: TER [166]; SMG, JSG [48].

- *Tremella ramalinae* Diederich

Dist. & Ref.: SMG [52].

-

Class: Dacrymycetes. Order: Dacrymycetales.

Family: Dacrymycetaceae J. Schröt.

- * *Calocera cornea* (Batsch) Fr.

Spec.: Praia Formosa, STM; 13 October 2021; A. Balibrea leg., indet wood; MSS-2310.

Dist. & Ref.: TER [19].

- *Dacrymyces capitatus* Schwein.

Dist. & Ref.: TER [8].

- *Dacrymyces chrysospermus* Berk. & M.A. Curtis

Dist. & Ref.: FLO [19].

- *Dacrymyces minor* Peck

Dist. & Ref.: FLO, FAI, PIC [19].

- *Dacrymyces paraphysatus* L.S. Olive

Dist. & Ref.: TER [19].

- * *Dacrymyces stillatus* Nees

Spec.: Fenais da Luz, SMG; 31 May 2020. M. Souto leg., on decorticated wood of *Acacia melanoxylon*; MSS-1809. Mata da Serreta, TER; 2 July 2020. M. Souto leg., on *Eucalyptus globulus*; MSS-1834. Nordeste, SMG; 30 September 2021. M. Souto leg., anamorphic (arthrospores) on *Cryptomeria* wood; MSS-2259.

Dist. & Ref.: TER, FLO, PIC, GRA, SJG [18,19].

-

Class: Agaricomycetes. Subclass: Agaricomycetidae. Order: Agaricales.

Family: Agaricaceae Chevall.

- ** *Agaricus augustus* Fr.

Spec.: Sete Cidades, SMG; 9 September 2020. P. Raposeiro leg., under *Araucaria heterophylla* Salisb.; MSS-1943.

- * *Agaricus campestris* L.

Spec.: Ponta Delgada, SMG; 9 September 2020, 16 December 2020. P. Raposeiro leg., among grass; MSS-1923, MSS-1978. Ponta Delgada, SMG; 16 December 2020. M. Souto leg., among grass; MSS-1924. Sete Cidades, SMG; 29 September 2020. M. Souto leg., among grass; MSS-1952. Faja Grande, FLO; 18 September 2020, 29 September 2022. M. Souto leg.; MSS-1924, MSS-2414. Barreiro, STM; 13 October 2021. A. Balibrea leg., among grass; MSS-2285. Dist. & Ref.: TER [34].

- *Agaricus impudicus* (Rea) Pilát

Dist. & Ref.: TER [34].

- ** *Agaricus litoralis* (Wakef. & A. Pearson) Pilát

Spec.: Ponta Delgada, SMG; 16 December 2020. M. Souto leg., among grass; MSS-2038. Faja Grande, FLO; 18 September 2020. M. Souto leg.; MSS-1925.

- *Agaricus macrocarpus* F.H. Møller

Dist. & Ref.: FAI [8].

- * *Agaricus sylvicola* (Vittad.) Peck

Spec.: Praia Formosa, STM; 13 October 2021. A. Balibrea leg., among grass. Dist. & Ref.: TER [34].

- * *Agaricus sylvaticus* Schaeff.

Spec.: Sete Cidades, SMG; 9 September 2020. P. Raposeiro leg., under *Araucaria heterophylla*; MSS-1944. Dist. & Ref.: TER [8].

- *Chlorophyllum brunneum* (Farl. & Burt) Vellinga

Dist. & Ref.: TER [34].

- ** *Chlorophyllum rhacodes* (Vittad.) Vellinga

Spec.: Ponta Delgada, SMG; 2 October 2020. M. Souto leg., under *Pittosporum undulatum*.

- ** *Coprinus comatus* (O.F. Müll.) Pers.

Spec.: Lagoa Rasa, SMG; 4 February 2020. M. Souto leg.; MSS-1771.

- *Coprinus cineratus* Quél.

Dist. & Ref.: as *Coprinus cineratus* var. *nudisporus* Kühner, TER [8].

- *Coprinus velox* Godey

Dist. & Ref.: TER [8].

- *Echinoderma asperum* (Pers.) Bon

Dist. & Ref.: TER [34].

- *Lepiota cristata* (Bolton) P. Kumm.

Dist. & Ref.: TER [34].

- ** *Leucoagaricus barssii* (Zeller) Vellinga

Spec.: Parque Urbano, Ponta Delgada, SMG; 2 October 2020. M. Souto leg., under *Cupressus* sp.; MSS-1975.

- *Leucoagaricus cinerascens* (Quél.) Bon & Boiffard

Dist. & Ref.: TER [34].

- ** *Leucoagaricus melanotrichus* (Malençon & Bertault) Trimbach

Spec.: Lagoa da Serreta, TER; 2 July 2020. M. Souto leg., on rotten woods; MSS-1878. Lajes das Flores, FLO; 15 September 2021. M. Souto leg., on mosses; MSS-2216. Povoação, SMG; 29 September 2021. M. Souto leg., indet. wood; MSS-2252. Sete Cidades, SMG; 15 October 2022. M. Souto leg., indet. wood; MSS-2431.

- ** *Leucoagaricus leucothites* (Vittad.) Wasser

Spec.: Ponta Delgada, SMG; 2 November 2019. M. Souto leg., among grass; MSS-1684. As Furnas, SMG; 3 November 2019. M. Souto leg., among grass; MSS-1691. Barreiro, STM; 13 October 2021. A. Balibrea leg., among grass; MSS-2296. Vitoria, GRA; 25 July 2023. B. Lorente leg., on grass; MSS-2478.

- ** *Leucocoprinus birnbaumii* (Corda) Singer

Spec.: Ponta Delgada, SMG; 5 September 2021. P. Madeira leg., growing on *Epipremnum aureum* (Linden & André) G.S. Bunting, plant pot; MSS-2193.

- ** *Leucocoprinus brebissonii* (Godey) Locq.

Spec.: Among grass, Ponta Delgada, SMG; 25 September 2020. P. Raposeiro leg.; MSS-1935; Sete Cidades, SMG; 23 November 2020. M. Souto leg.; MSS-2033. Lajes das

Flores, FLO; 18 September 2020. M. Souto leg.; MSS-1896; loc. cit., 15 September 2021; MSS-2219.

- ** *Leucocoprinus cepistipes* (Sowerby) Pat.

Spec.: Ponta Delgada, SMG; 16 November 2019. M. Souto leg., on twigs and litter of *Hibiscus* sp.; MSS-1668. Ponta Delgada, SMG; 30 October 2020. M. Souto leg., among grass; MSS-1996. Barreiro, STM; 13 October 2021, 4 November 2022. A. Balibrea leg.; MSS-2287, MSS-2434. Dist. & Ref.: GRA (<https://www.inaturalist.org/observations/98482432>, accessed on 18 February 2024).

- * *Leucocoprinus straminellus* (Bagl.) Narducci & Caroti

Spec.: Ponta Delgada, SMG; 28 June 2021. B. Lorente leg., on potting compost; MSS-2174. Sao Lourenço, STM; 13 October 2021. A. Balibrea leg., among grass; MSS-2281. Dist. & Ref.: TER [34].

-

Family: Amanitaceae E.-J. Gilbert

- *Amanita gemmata* (Fr.) Bertil

Dist. & Ref.: TER [34].

- ** *Amanita mairei* Foley

Spec.: Sete Cidades, SMG; 29 November 2020. M. Souto leg., under *Pinus* sp.; MSS-1941.

- * *Amanita muscaria* (L.) Lam.

Spec.: Xardin da Lagoa das Furnas, SMG; 3 November 2019. M. Souto leg., under oaks planting (*Quercus palustris*). Dist. & Ref.: TER [34].

- * *Amanita pantherina* (DC.) Krombh.

Spec.: Xardin da Lagoa das Furnas, SMG; 3 November 2019. M. Souto leg., under oaks planting (*Quercus palustris*); MSS-1692. Parque Terra Nostra, As Furnas, SMG; 29 October 2019. M. Souto leg., under *Platanus x hispanica*. University Garden, Ponta Delgada, SMG; 2 November 2019. M. Souto leg., São Lourenço, STM; 13 October 2021. A. Balibrea leg.; MSS-2282. Dist. & Ref.: SMG [33].

- ** *Amanita phalloides* (Vaill. ex Fr.) Link

Spec.: University Garden, Ponta Delgada, SMG; 13 November 2019. P. Raposeiro leg., under *Quercus palustris*; MSS-1722; loc. cit., 13 May 2021; MSS-2141. Parque Terra Nostra, As Furnas, SMG; 29 October 2019. M. Souto leg.; MSS-1962. Reserva Forestal do Pinhal da Paz, SMG; 22 December 2020. M. Souto leg.; MSS-2276.

- ** *Amanita rubescens* Pers.

Spec.: Lagoa das Furnas, SMG; 3 November 2019. M. Souto leg., under *Eucalyptus robusta* Sm.; MSS-1698. Barreiro, STM; 13 October 2021. A. Balibrea leg.; MSS-2283.

- * *Amanita vaginata* (Bull.) Lam.

Spec.: Xardin da Lagoa das Furnas, SMG; 3 November 2019. M. Souto leg., under oaks planting (*Q. palustris*). Dist. & Ref.: TER [8].

- *Limacella furnacea* (Letell.) E.-J. Gilbert

Dist. & Ref.: TER [34].

-

Family: Bolbitiaceae Singer

- ** *Conocybe tenera* (Schaeff.) Fayod

Spec.: University Garden, SMG; 12 March 2020. M. Souto leg., among grass; MSS-1799. Sete Cidades, SMG; 28 June 2020, 29 September 2020. A. Balibrea leg., among grass; MSS-1830, MSS-1953. As Furnas, SMG; 30 September 2020. M. Souto leg., on grass; MSS-1965. Parque Urbano, SMG; 12 October 2020. M. Souto leg., among grass; MSS-1983. Caldeira Branca, FLO; 18 September 2020. M. Souto leg., among grass; MSS-1888. As Furnas, SMG; 2 November 2020. M. Souto leg.; MSS-2009.

- *** *Descolea maculata* Bougher

Spec.: Mata da Serreta, TER; 2 July 2020. M. Souto leg., under *Eucalyptus globulus*; MSS-1851.

-

Family: Clavariaceae Chevall

- *Clavaria acuta* Sowerby
Dist. & Ref.: TER [34].
- *Clavaria fragilis* Holmsk.
Dist. & Ref.: TER [34].
- * *Clavaria fumosa* Pers.
Spec.: Lagoa do Congro, SMG; 16 December 2020. M. Souto leg., on *Cryptomeria* remains; MSS-2046. As Furnas, SMG; 2 November 2020. M. Souto leg.; MSS-2019. STM; 27 January 2023; A. Balibrea leg.; mixed forest. Dist. & Ref.: TER [34].
- *Clavaria incarnata* Weinm.
Dist. & Ref.: TER [34].
- *** *Clavaria sphagnicola* Boud.
Spec.: Planalto dos Graminhais, As Furnas, SMG; 6 December 2019. M. Souto leg., on *Sphagnum* sp.; MSS-1738.
- *Clavulinopsis corniculata* (Schwein.: Fr.) Corner
Dist. & Ref.: TER [34].
- *Clavulinopsis helvola* (Pers.) Corner
Dist. & Ref.: TER [34].
- ** *Clavulinopsis laeticolor* (Berk. & M.A. Curtis) R.H. Petersen
Spec.: Miradoiro da Tronqueira, SMG; 23 November 2013; Y. Lopez leg.; AZB-F-0015.
- ** *Clavulinopsis luteoalba* (Rea) Corner
Spec.: Planalto dos Graminhais, As Furnas, SMG; 6 December 2019. M. Souto leg.; MSS-1744. Reserva Forestal do Pinhal da Paz, Ponta Delgada, SMG; 21 January 2020. M. Souto leg.; MSS-1762. Lagoa do Congro, SMG, 16 December 2020; M. Souto leg.; MSS-2051.
- *Clavulinopsis luteo-ochracea* (Cavara) Corner
Dist. & Ref.: TER [34].
- *Clavulinopsis umbrinella* (Sacc.) Corner
Dist. & Ref.: TER [34].
- * *Ramariopsis kunzei* (Fr.) Corner
Spec.: Ponta Delgada, SMG; 15 May 2020. P. Raposeiro leg., mixed forest. Dist. & Ref.: TER [34].
- *Ramariopsis subtilis* (Pers.) R.H. Petersen
Dist. & Ref.: as *Clavulinopsis dichotoma* (God.) Corner, TER [8].
-
- Family: Cortinariaceae R. Heim
- *Cortinarius incisus* (Pers.) Fr.
Dist. & Ref.: TER [8].
- *** *Cortinarius crassus* Fr.
Spec.: As Furnas, SMG; 3 November 2019; 30 September 2020; 3 October 2021 M; Souto leg.; under *Quercus palustris*; MSS-1696, MSS-1961, MSS-2272.
- *Cortinarius vernus* H. Lindstr. & Melot
Dist. & Ref.: TER [34].
-
- Family: Crassisporiaceae Vizzini, Consiglio & M. Marchetti
- *Romagnesiella clavus* (Romagn.) Contu, Matheny, P.-A. Moreau, Vizzini & A. de Haan
Dist. & Ref.: TER [34].
-
- Family: Crepidotaceae Singer
- ** *Crepidotus calolepis* (Fr.) P. Karst.
Spec.: Ponta Delgada, SMG, 30 Ago 2021; P. Raposeiro leg.; on *Cryptomeria japonica* wood; MSS-2021.
- * *Crepidotus variabilis* (Pers.) P. Kumm.
Spec.: Lagoa da Prata, SMG; 23 October 2020. M. Souto leg., on *Cryptomeria japonica* wood MSS-1987. Lagoa da Lomba, FLO; 14 September 2021; P. Raposeiro leg., on *Rubus*

ulmifolius; MSS-2204. Barreiro, STM; 13 October 2021; A. Balibrea leg.; MSS-2297. São Lorenzo, STM; 3 May 2022. M. Souto leg.; MSS-2359. Dist. & Ref.: GRA [33].

- * *Pleuroflammula ragazziana* (Bres.) E. Horak

Spec.: Mata da Serreta, TER; 2 July 2020; M. Souto leg., on branches of *Eucalyptus globulus*; MSS-1873. Sete Cidades, SMG; 29 September 2020. M. Souto leg., on branches of *Quercus* sp.; MSS-1942. Lagoa Verde, SMG; 30 January 2021. M. Souto leg.; MSS-2125. Planalto dos Graminhais, SMG; 1 April 2022; M. Souto leg.; MSS-2375.

Dist. & Ref.: TER [8,34].

-

Family: Cyphellaceae Burnett

- *Cyphella ferruginea* P. Crouan & H. Crouan

Dist. & Ref.: TER [34].

-

Family: Entolomataceae Kotl. & Pouzar

- *** *Entoloma asprellum* (Fr.) Fayod

Spec.: Lagoa do Areeiro, SMG; 4 November 2019. M. Souto leg., under *Cryptomeria japonica*; MSS-1705.

- *Entoloma byssisedum* (Pers.) Donk

Dist. & Ref.: as *Claudopus byssisedus* (Pers. ex Fr.) Gill., TER [8,34].

- ** *Entoloma chalybeum* (Pers.) Noordel.

Spec.: Mirodoiro da Tronqueira, SMG; 27 November 2013. Y. Lopez leg.; AZB-0018. Parque Terra Nostra, As Furnas, SMG; 29 October 2019. M. Souto leg.; MSS-1657.

- * *Entoloma conferendum* (Britzelm.) Noordel.

Spec.: Pico da Vara, SMG; 23 November 2013. Y. Lopez leg.; AZB-F-0013. Misterios Negros, TER; 4 July 2020. M. Souto leg., laurissilva; MSS-1857. Ponta Delgada, SMG; 28 October 2021. M. Souto leg.; MSS-2332. Dist. & Ref.: as *Nolanea staurospora* Bres., TER [8,34].

- ** *Entoloma hebes* (Romagn.) Trimbach

Spec.: Lagoa da Prata, SMG; 23 October 2020. M. Souto leg., under *Cryptomeria japonica*; MSS-1988.

- *Entoloma queletii* (Boud.) Noordel.

Dist. & Ref.: TER [34].

- * *Entoloma sericellum* (Fr.) P. Kumm.

Spec.: Mata da Serreta, TER; 2 July 2020. M. Souto leg., under *Eucalyptus globulus*; MSS-1853, MSS-1866. Lagoa de Santiago, SMG; 8 July 2020; A. Balibrea leg.; MSS-1880. As Furnas, SMG; 30 September 2021. M. Souto leg.; MSS-1973. Ponta Delgada, SMG; 25 September 2020; P. Raposeiro leg.; among grass; MSS-1936. Dist. & Ref.: TER [34].

- *Entoloma sericeum* Quéf.

Dist. & Ref.: SMG [33].

- ** *Entoloma serrulatum* (Fr.) Hesler

Spec.: Lombadas, SMG; 13 June 2021; P. Raposeiro leg.; mixed forest; MSS-2175.

-

Family: Hydnangiaceae Gäum. & C.W. Dodge

- ** *Laccaria laccata* (Scop.) Cooke

Spec.: Ponta Delgada, SMG; 5 June 2020. M. Souto leg.; MSS-1816. Lagoa do Congro, SMG, 16 December 2020, M. Souto leg.; MSS-2142. Dist. & Ref.: as *Laccaria affinis* (Singer) Bon TER [34].

- *Laccaria lateritia* Malençon

Dist. & Ref.: TER [8,34].

-

Family: Hygrophoraceae Lotsy

- * *Cuphophyllus flavipes* (Britzelm.) Bon

Spec.: Mata dos Bispos, SMG; 11 December 2013. Y. Lopez, leg., AZB-F-0026. Dist. & Ref.: TER [34].

- * *Cuphophyllus virgineus* (Wulfen) Kovalenko
Spec.: Lagoa do Fogo, SMG; 22 November 2020. M. Souto leg., mixed forest; MSS-2031.
Dist. & Ref.: TER [34].
- *Cuphophyllus pratensis* (Pers.) Bom
Dist. & Ref.: TER [34].
- * *Dictyonema coppinsii* Lücking, Barrie & Genney
Spec.: Planalto dos Graminhais, As Furnas, SMG; 6 December 2019. M. Souto leg., on *Sphagnum* sp.; MSS-1867. Lagoa do Caldeirao Sur, SMG; 10 March 2021. M. Souto leg., on *Calluna vulgaris*; MSS-2134. Lagoa da Serreta, TER; 2 July 2020. M. Souto leg., on *Thuidium tamariscinum*. Dist. & Ref.: as *Dictyonema interruptum* (Carmich. ex Hook.) Parmasto, TER, FAI, PIC, FLO [52].
- ** *Gliophorus laetus* (Pers.) Herink
Spec.: Mata dos Bispos; 11 December 2013. Y. Lopez leg., in large groups under *Cryptomeria japonica* forest; AZB-F-0027. Lagoa do Fogo, SMG; 22 November 2020. M. Souto leg., under *C. japonica*; MSS-2030. Misterios Negros, TER; 2 July 2020. M. Souto leg., under *C. japonica*; MSS-2081.
- * *Hygrocybe cantharellus* (Schwein.) Murrill
Spec.: Planalto dos Graminhais, SMG; 10 July 2020. M. Souto leg.; MSS-1822. Misterios Negros, TER; 2 July 2020. M. Souto leg., among *Sphagnum* spp.; MSS-1876. Lagoa da Lomba, FLO; 14 September 2021. M. Souto leg., under *Cryptomeria japonica*; MSS-2199. Dist. & Ref.: TER [34].
- ** *Hygrocybe chlorophana* (Fr.) Wünsche
Spec.: Planalto dos Graminhais, As Furnas, SMG; 5 October 2019. M. Souto leg., under *Cryptomeria japonica*; MSS-1664. Lagoa do Areeiro, SMG; 4 November 2019. M. Souto leg.; MSS-1701. Lagoa do Fogo, SMG; 22 November 2020. M. Souto leg.; MSS-2026.
- * *Hygrocybe conica* (Schaeff.) P. Kumm.
Spec.: Bardinho, SMG; 6 November 2013. Y. Lopez leg., AZB-F-0023, among grass. University Garden, SMG; 16 September 2020. M. Souto leg.; MSS-2039. Dist. & Ref.: TER [34].
- *Hygrocybe helobia* (Arnolds) Bon
Dist. & Ref.: TER [34].
- *Hygrocybe quieta* (Kühner) Singer
Dist. & Ref.: TER [34].
- ** *Hygrocybe miniata* (Fr.) P. Kumm.
Spec.: Santo Espirito, STM; 13 October 2021. A. Balibrea leg.; MSS-2299.
- *Hygrocybe reidii* Kühner
Dist. & Ref.: TER [34].
- *Hygrophorus cavipes* Dennis & D.A. Reid
Dist. & Ref.: TER [8].
- * *Lichenomphalia pararustica* (Cléménçon) Elborne
Spec.: Lagoa do Peixinho, PIC; 21 July 2021. M. Souto leg., on mosses; MSS-2183. Dist. & Ref.: as *Omphalina pararustica* Cléménçon, FAI [128]. *Lichenomphalia velutina* (Qué.) Redhead cited in Melo et al. [5] for Faial appears to be a synonymy error.
- Family: Hymenogastraceae Vittad.
- ** *Deconica coprophila* (Bull.) P. Karst.
Spec.: Lagoa de Sao Bras, SMG; 28 February 2020. M. Souto leg., on cow dung; MSS-1796. Faja Grande, FLO; 18 September 2020. M. Souto leg., on rabbit dung; MSS-1928. Barreiro, STM; 13 October 2021. A. Balibrea leg., on cow dung; MSS-2286. Lagoa do Peixinho, PIC; 24 April 2023. M. Souto leg., on cow dung; MSS-2462.
- ** *Deconica horizontalis* (Bull.) Noordel.
Spec.: Lagoa do Congro, SMG; 16 December 2020. M. Souto leg., on *Ocotea foetens* (Aiton) Baill.; MSS-2060.
- *Galerina atkinsoniana* A.H. Sm.

- Dist. & Ref.: TER [34].
- *Galerina caulocystidiata* Arnolds
 - Dist. & Ref.: TER [34].
 - *Galerina cerina* A.H. Sm. & Singer
 - Dist. & Ref.: TER [34].
 - *** *Galerina paludosa* (Fr.) Kühner
 - Spec.: Lagoa do Caldeirao Sur, SMG; 15 May 2020. M. Souto leg.; on *Sphagnum* sp.; MSS-1800. Lagoa da Prata, SMG; 23 October 2020. M. Souto leg.; MSS-1991. Serra Devasa, SMG; 28 March 2021. M. Souto leg., on *Sphagnum* sp.; MSS-2137.
 - *Galerina pseudomniophila* Kühner
 - Dist. & Ref.: TER [34].
 - *Galerina sphagnum* (Pers.) Kühner
 - Dist. & Ref.: TER [34].
 - * *Galerina vittiformis* (Fr.) Singer
 - Spec.: Lombadas, SMG; 5 November 2019. M. Souto leg., on *Sphagnum* sp.; MSS-1713. Planalto dos Graminhais, SMG; 5 October 2019. M. Souto leg.; MSS-1666. Dist. & Ref.: TER [8].
 - * *Gymnopilus junonius* (Fr.) P.D. Orton
 - Spec.: Xardin da Lagoa das Furnas, SMG; 3 November 2019. M. Souto leg., on *Eucalyptus globulus* wood; MSS-1694. Reserva Forestal do Pinhal da Paz, SMG. M. Souto leg., on *Pittosporum undulatum*; MSS-2071. Barreiros, STM; 3 May 2022. M. Souto leg.; MSS-2358. Dist. & Ref.: TER [8,34], SMG [8,33].
 - * *Gymnopilus penetrans* (Fr.) Murrill
 - Spec.: Reserva Forestal do Pinhal da Paz, SMG; 22 December 2020. M. Souto leg.; MSS-2072. Dist. & Ref.: TER [34].
 - *Gymnopilus purpuratus* (Cooke & Masee) Singer
 - Dist. & Ref.: TER [34].
 - *Hebeloma birrus* (Fr.) Gillet
 - Dist. & Ref.: TER [34].
 - *Hebeloma cavipes* Huijsman
 - Dist. & Ref.: TER [34].
 - *** *Hebeloma incarnatum* A.H. Sm.
 - Spec.: Planalto dos Graminhais, As Furnas SMG; 6 December 2019. M. Souto leg., on *Sphagnum* sp. MSS-1740.
 - ** *Hebeloma crustuliniforme* (Bull.) Quél.
 - Spec.: As Furnas, SMG; 2 November 2020. M. Souto leg., on grass; MSS-2011, MSS-2023.
 - *Hymenogaster maurus* Maire
 - Dist. & Ref.: TER [8].
 -
 - Family: Inocybaceae Jülich
 - ** *Inocybe curvipes* P. Karst.
 - Spec.: Parque Urbano, Ponta Delgada, SMG; 30 October 2020. M. Souto leg.; MSS-1993.
 - ** *Inocybe petiginosa* (Fr.) Gillet
 - Spec.: Lagoa do Congro, 22 November 2023; P. Iglesias leg.; MSS-2491.
 - ** *Inocybe sindonia* (Fr.) P. Karst.
 - Spec.: Lagoa do Congro, 22 November 2023; P. Iglesias leg.; MSS-2493.
 - *** *Inocybe umbratica* Quél.
 - Spec.: Universidade, Ponta Delgada, SMG; 13 September 2021. M. Souto leg., under *Platanus x hispanica*; MSS-2197.
 - ** *Pseudosperma rimosum* (Bull.) Matheny & Esteve-Rav.
 - Spec.: As Furnas, SMG; 16 November 2019. M. Souto leg., mixed forest; MSS-2024. Jardim Antonio Borges, SMG; 25 September 2020; P. Raposeiro leg.; MSS-1939. Lagoa do Congro, SMG; 26 October 2021. B. Lorente leg.; MSS-2326. Sete Cidades, SMG; 20 October 2022. M. Souto leg., under *Pinus sylvestris*; MSS-2435.

- ** *Fistulina hepatica* (Schaeff.) With.
Spec.: Faja dos Cubres, SJG; 30 November 2023. M. Souto leg., on fallen trunk; MSS-2520. Dist. & Ref.: PIC (<https://www.inaturalist.org/observations/142455764>, accessed on 18 February 2024).
- Family: Lycoperdaceae F. Berchtold & J. Presl
- * *Bovista plumbea* Pers.
Spec.: Ponta Delgada, SMG; 2 November 2019. M. Souto leg., on grass; MSS-1685; Parque Urbano, Ponta Delgada, SMG; 21 December 2020. M. Souto leg., on grass; MSS-2067. Barreiro, STM; 13 October 2021. A. Balibrea leg., on grass; MSS-2306. Dist. & Ref.: SMG [7]; this is the first fungi record for the Azores; TER [34]; FAI (<https://www.inaturalist.org/observations/150286898>, accessed on 18 February 2024).
- ** *Lycoperdon excipuliforme* (Scop.) Pers.
Spec.: Xardin da Lagoa das Furnas, SMG; 3 November 2019, 16 November 2019. M. Souto leg., under *Alnus glutinosa*; MSS-1697, MSS-1735.
- ** *Lycoperdon perlatum* Pers.
Spec.: Xardin da Lagoa das Furnas, SMG; 3 November 2019, 16 November 2019. M. Souto leg., under *Acacia melanoxylon*; MSS-1693, MSS-1727.
- * *Lycoperdon pratense* Pers.
Spec.: Macela, STM, 16 September 2020; P. Madeira, leg., on grass; MSS-1934. Sete Cidades, SMG; 29 September 2020. M. Souto leg.; MSS-1949. Barreiro, STM; 13 October 2021; A. Balibrea leg., among grass; MSS-2304. Dist. & Ref.: as *Vascellum pratense* (Pers.) Kreisel, SMG [33]; as *Lycoperdon hiemale* Vent., SMG, BPI 735034 [9]; TER [8].
- ** *Lycoperdon umbrinum* Pers.
Spec.: Xardin da Lagoa das Furnas, SMG; 2 November 2020. M. Souto leg.; MSS-2004. Dist. & Ref.: FAI (<https://www.inaturalist.org/observations/192923778>, accessed on 18 February 2024).
- Family: Macrocystidiaceae Kühner
- ** *Macrocystidia cucumis* (Pers.) Joss.
Spec.: Salto do Cavalo forest, SMG; 10 November 2013. Y. Lopez leg., on *Cryptomeria* forest; AZB-F-0005.
- Family: Marasmiaceae Roze ex Kühner
- * *Chaetocalathus craterellus* (Durieu & Lév.) Singer
Spec.: Lagoa das Pratas, SMG; 12 June 2020. M. Souto leg., on *Cryptomeria japonica* sticks; MSS-1825. Dist. & Ref.: TER, FAI [8].
- ** *Marasmius epiphyllodes* (Rea) Sacc. & Trotter
Spec.: Miradoiro da Tronqueira, SMG; 27 November 2013. Y. Lopez, leg.; AZB-F-0021.
- ** *Marasmius epiphyllus* (Pers.) Fr.
Spec.: Planalto dos Graminhais, As Furnas, SMG; 10 June 2020. M. Souto leg., on *Ilex* leaf debris; MSS-1823.
- Family: Mycenaceae Overeem
- *** *Hemimycena hirsuta* (Tode) Singer
Spec.: Lagoa Rasa, SMG; 4 February 2020. M. Souto leg., on *Cryptomeria japonica* needles; MSS-1768. Planalto dos Graminhais, SMG; 10 June 2020. M. Souto leg.; MSS-1819.
- *Mycena alphitophora* (Berk.) Sacc.
Dist. & Ref.: as *Mycena osmundicola* Lange, TER [8].
- *** *Mycena bulbosa* (Cejp) Kühner
Spec.: Gorreana, SMG; 10 January 2021. M. Souto leg., on dead leaves of *Acacia melanoxylon*; MSS-2094.
- *Mycena chlorophos* (Berk. & M.A. Curtis) Sacc.
Dist. & Ref.: TER [34].

- *Mycena erubescens* Höhn.
Dist. & Ref.: TER [34].
- * *Mycena galericulata* (Scop.) Gray
Spec.: As Furnas, SMG; 29 September 2019. M. Souto leg.; MSS-2324. Dist. & Ref.: TER [34].
- * *Mycena galopus* (Pers.) P. Kumm.
Spec.: Salto do Cavalo, SMG; 6 November 2013. Y. Lopez leg., *Cryptomeria japonica* forest; AZB-F-0003. As Furnas, SMG; 2 November 2020. M. Souto leg.; MSS-2002. Lagoa do Fogo, SMG; 22 November 2020. Dist. & Ref.: TER [34].
- *Mycena filopes* (Bull.) P. Kumm.
Dist. & Ref.: TER [34].
- *Mycena leptcephala* (Pers.) Gillet
Dist. & Ref.: TER [8,34].
- ** *Mycena mirata* (Peck) Sacc.
Spec.: Lagoa do Areeiro, SMG; 4 November 2019. M. Souto leg., on moss-covered fallen twigs and litter of *Calluna vulgaris* and *Juniperus brevifolia*; MSS-1739.
- *** *Mycena polyadelpa* (Lasch) Kühner
Spec.: Planalto dos Graminhais, SMG; 16 December 2019. M. Souto leg., on *Calluna vulgaris* steems. Sao Lourenço, STM; 13 October 2021. A. Balibrea leg., on grass; MSS-2317.
- *Mycena polygramma* (Bull.) Gray
Dist. & Ref.: TER [34].
- ** *Mycena purpureofusca* (Peck) Sacc.
Spec.: Mirodouro da Tronqueira, SMG; 27 November 2013. Y. Lopez, leg.; AZB-F-0016.
- * *Mycena sanguinolenta* (Alb. & Schwein.) P. Kumm.
Spec.: Lagoa de Serreta, TER; 2 July 2020. M. Souto leg. Dist. & Ref.: TER [34].
- * *Mycena tenerrima* (Berk.) Quél.
Spec.: Planalto dos Graminhais, As Furnas, SMG; 10 June 2020. M. Souto leg., on rotten wood; MSS-1819. Dist. & Ref.: as *Mycena adscendens* Maas Geest., TER [8,34].
- ** *Roridomyces roridus* (Fr.) Rexer
Spec.: Lagoa do Areeiro, SMG; 4 November 2019. P. Raposeiro leg., on rotten wood, M. Souto leg.; MSS-1704. Lagoa da Serreta TER; 2 July 2020. M. Souto leg., on *Vaccinium cylindraceum* leaves debris; MSS-1871.
- * *Xeromphalina campanella* (Batsch) Kühner & Maire
Spec.: Jardim da Lagoa das Furnas, SMG; 3 November 2019. M. Souto leg., on rotten wood; MSS-1732. Lagoa do Congro, SMG; 16 December 2020. M. Souto leg.; MSS-2064. Dist. & Ref.: TER [8,34].
-
- Family: Niaceae Jülich
- *Flagelloscypha minutissima* (Burt) Donk
Dist. & Ref.: as *Flagelloscypha* cf. *citrispora* (Pildt) Reid, TER [8].
- *Merismodes bresadolae* (Grelet) Singer
Dist. & Ref.: as *Cyphellopsis monacha* (Speg.) Reid, TER [8].
-
- Family: Omphalotaceae Bresinsky
- ** *Collybiopsis luxurians* (Peck) R.H. Petersen
Spec.: University garden, Ponta Delgada, SMG; 27 October 2023. M. Souto leg.; MSS-2498.
- ** *Collybiopsis vaillantii* (Pers.) R.H. Petersen
Spec.: Jardim Botânico Jose do Canto, Ponta Delgada, SMG; 27 October 2019. M. Souto leg., on fallen branch in decomposition of *Ocotea foetens*; MSS-1680. Jardim da Lagoa das Furnas, SMG; 3 October 2021. M. Souto leg.; MSS-2263. Sao Lourenço, STM; 13 October 2021. A. Balibrea leg., on grass; MSS-2302. *C. vaillantii* should be considered the first record for the Azores since the record of *Marasmiellus vaillantii* (Pers.) Singer that appears in Melo

et al. [5] corresponds to an erratum when synonymizing *Marasmius candidus* [Bolt.] Fr. collected by Dennis et al. [8]. Dist. & Ref.: TER [34].

- *Hydropus omphaliiformis* (Kühner) Honrubia

Dist. & Ref.: TER [34].

- ** *Gymnopus androsaceus* (L.) Della Magg. & Trassin.

Spec.: Planalto dos Graminhais, SMG; 5 October 2019; 10 June 2020. M. Souto leg., on *Cryptomeria japonica* needles; MSS-1665, MSS-1820.

- ** *Gymnopus dryophilus* (Bull.) Murrill

Spec.: Lagoa Verde, SMG; 30 January 2021. M. Souto leg., on branch of *Fagus sylvatica* L.; MSS-2122. Ponta Delgada, SMG; 8 October 2021. P. Raposeiro leg., under *Pinus* sp.; MSS-2275.

- * *Marasmiellus candidus* (Fr.) Singer

Spec.: Miradoiro da Tronqueira, SMG; 27 November 2013. Y. Lopez leg., on *Rubus* sp.; AZB-F-0022. Reserva Forestal do Pinhal da Paz, SMG; 19 October 2019. M. Souto leg., indeterminate branch; MSS-1673. Parque Urbano, SMG; 12 October 2020. M. Souto leg., indeterminate branch; MSS-1814. Lagoa das Pratas, SMG; 12 June 2020. M. Souto leg., on *Cryptomeria japonica* stump; MSS-1824. Caldeira Branca, FLO; 18 September 2020. M. Souto leg.; MSS-1900. Lajes das Flores, FLO; 15 September 2021. P. Raposeiro leg.; MSS-2218. Caldeira Branca, FLO; 18 September 2020. M. Souto leg.; MSS-1838. Sao Lourenço, STM; 13 October 2021. A. Balibrea leg., on grass; MSS-2300. Morro alto, FLO; 26 September 2022. M. Souto leg.; MSS-2402. Misterios Negros, Ter; 22 June 2023. M. Souto leg., on *Calluna vulgaris* branch; MSS-2473. Dist. & Ref.: as *Marasmius candidus* TER [8,34].

- * *Marasmiellus virgatoctus* Robich, Esteve-Rav. & G. Moreno

Spec.: Miradoiro da Tronqueira, SMG; 27 November 2013. Y. Lopez leg.; AZB-F-0019. Ponta Delgada, SMG; 25 September 2020. P. Raposeiro leg.; MSS-1937. As Furnas, SMG; 30 September 2020. M. Souto leg.; MSS-1970. Lagoa Verde, SMG; 30 January 2021. M. Souto leg., on *Fagus sylvatica* branch; MSS-2121. Sao Lourenço, STM; 13 October 2021. A. Balibrea leg., on grass; MSS-2301. Dist. & Ref.: TER [34].

- *Mycetinis scorodonius* (Fr.) A.W. Wilson & Desjardin

Dist. & Ref.: TER [34].

- ** *Omphalotus olearius* (DC.) Singer

Spec.: Lajes das Flores, FLO; 2 July 2021. M. Souto leg., on indet. wood.

- *Rhodocollybia butyracea* (Bull.) Lennox

Dist. & Ref.: TER [34].

-

Family: Physalacriaceae Corner

- * *Armillaria mellea* (Vahl) P. Kumm.

Spec.: Miradoiro da Tronqueira, SMG; 27 November 2013. Y. Lopez leg., on *Laurus azorica*; AZB-F-0020. As Furnas, SMG; 16 November 2019. M. Souto leg.; MSS-1730. Faja da Caldeira de Sto Cristo, SJG; 16 August 2021; M. Souto leg., on wood debris. Reserva Forestal do Pinhal da Paz, SMG; 22 December 2020. M. Souto leg.; MSS-2073. Universidade, Ponta Delgada, SMG; 29 December 2020. M. Souto leg.; MSS-1956. Dist. & Ref.: PIC [127]; TER [34].

- *Cylindrobasidium eucalypti* (M. Dueñas & Tellería) Tellería & Melo

Dist. & Ref.: SMG, FLO [25].

- *Cylindrobasidium torrendii* (Bres.) Hjortstam

Dist. & Ref.: SMG [25].

- *Gloiocephala epiphylla* Massee

Spec.: Sete Cidades, SMG; 11 November 2023. M. Souto leg., on graminea debris; MSS-2481.

-

Family: Pleurotaceae Kühner

- ** *Hohenbuehelia mastrucata* (Fr.) Singer

Spec.: Faixao Grande, FLO; 26 September 2022. M. Souto leg., on *Artemisia* sp.; MSS-2403.

- *** *Hohenbuehelia petaloides* (Bull.) Schulzer
Spec.: University, Ponta Delgada, SMG; 7 September 2021. M. Souto leg., on grass; MSS-2196. Reserva florestal do Pico, PIC; 20 October 2021. B. Lorente leg., on *Pinus* sp. forest; MSS-2325.
- ** *Pleurotus opuntiae* (Durieu & Lév.) Sacc.
Spec.: Mata da Serreta, TER; 2 June 2020. P. Raposeiro, leg., on *Platanus xhispanica*; MSS-1852. Lagoa Funda, FLO; 18 September 2020. M. Souto leg., indet. wood; MSS-1895. Universidade, Ponta Delgada, SMG; 16 December 2020. M. Souto leg., on *Yucca elephantipes* Baker in Regel.; MSS-1979.
- ** *Pleurotus ostreatus* (Jacq.: Fr.) P. Kumm.
Spec.: In cultivation, Ponta Delgada, SMG; 1 October 2020. M. Souto leg.
- ** *Resupinatus applicatus* (Batsch) Gray
Spec.: Fenais da Luz, SMG; 31 May 2020. M. Souto leg., on *Acacia melanoxylon*; MSS-1810.
- *Resupinatus alboniger* (Pat.) Singer
Dist. & Ref.: TER [34].
- *Stigmatolemma porioides* (Alb. & Schwein.) W.B. Cooke
Dist. & Ref.: as *Solenia porioides* (Alb. & Schw. ex Fr.) Sacc., SMG [8]
- Family: Pluteaceae Kotl. & Pouzar
- *Pluteus cervinus* (Schaeff.) P. Kumm.
Spec.: Lagoa Rasa, SMG; 4 February 2020. M. Souto leg., indet. wood; MSS-1770. Lomba da Maia, SMG, 16 January 2021. M. Souto leg., indet. wood; MSS-2109. Dist. & Ref.: SMG [33].
- ** *Pluteus atromarginatus* (Konrad) Kühner
Spec.: Lagoa do Congro, SMG; 16 December 2020. M. Souto leg., indet. wood; MSS-2053.
- ** *Pluteus thomsonii* (Berk. & Br.) Dennis
Spec.: Sete Cidades, SMG; 4 November 2023. M. Souto leg., indet. wood; MSS-2480.
- *Volvopluteus gloiocephalus* (DC.) Vizzini, Contu & Justo
Dist. & Ref.: TER [34].
- Family: Porothelaeaceae Murrill
- *Phloeomana speirea* (Fr.) Redhead
Dist. & Ref.: as *Mycena alcalina* (Fr. ex Fr.) Kummer, TER [8].
- Family: Psathyrellaceae Vilgalys, Moncalvo & Redhead
- ** *Coprinellus disseminatus* (Pers.) J.E. Lange
Spec.: Povoação, SMG; 7 November 2013. Y. Lopez, leg.; AZB-F-0004. Ponta Delgada, SMG; 7 November 2019. M. Souto leg., on grass; MSS-1719. Lomba da Maia, SMG; 16 January 2021. M. Souto leg., Universidade, SMG; 15 June 2023. M. Souto leg.; MSS-1737. Biscoitos, TER; 2 June 2020. P. Raposeiro leg., under *Pittosporum undulatum* forest; MSS-1845. Dist. & Ref.: TER [34].
- *Coprinellus heterosetulosus* (Locq. ex Watling) Vilgalys, Hopple & Jacq. Johnson
Dist. & Ref.: as *Coprinus heterosetulosus* Locq., TER [8].
- *Coprinellus micaceus* (Bull.) Vilgalys, Hopple & Jacq. Johnson
Spec.: Salto do cavalo, SMG; 6 November 2013. Y. Lopez; AZB-F-0002. Reserva Florestal do Pinhal da Paz, SMG; 19 October 2019. M. Souto leg., on wood remains; MSS-1674. Universidade, SMG; 7 November 2019, 16 December 2020. M. Souto leg., on roots; MSS-1717, MSS-1977. Lagoa do Congro, SMG; 14 May 2020, 16 December 2020, 12 October 2022; M. Souto leg.; MSS-2143, MSS-2056, MSS-2423. Lagoa Verde, SMG; 30 January 2021. M. Souto leg.; MSS-2130. Dist. & Ref.: FAI [8]; SMG [33]; TER [34].
- *** *Coprinopsis atramentaria* (Bull.) Redhead, Vilgalys & Moncalvo
Spec.: Povoação, SMG; 23 November 2013. Y. Lopez, leg.; AZB-F-0014.
- *** *Coprinopsis ephemeroideis* (DC.) G. Moreno
Spec.: Biscoitos, TER; 10 June 2021. M. Souto leg., in potting compost; MSS-2159.

- *** *Coprinopsis foetidella* (P.D. Orton) A. Ruiz & G. Muñoz
Spec.: Caldeira Branca, FLO; 18 September 2020. M. Souto leg., on sheep dung.
- ** *Coprinopsis lagopus* (Fr.) Redhead, Vilgalys & Moncalvo
Spec.: Misterios Negros, TER; 4 June 2020. P. Raposeiro leg., among grass; MSS-1862.
As Furnas, SMG; 2 November 2020. M. Souto leg.; MSS-2003.
- *Coprinopsis lotinae* (Picón) Picón
Dist. & Ref.: TER [34].
- ** *Lacrymaria lacrymabunda* (Bull.) Pat.
Spec.: As Furnas, SMG; 2 October 2020. M. Souto leg.
- *Parasola auricoma* (Pat.) Redhead, Vilgalys & Hopple
Dist. & Ref.: TER [8].
- * *Parasola conopila* (Fr.) Örstadius & E. Larss.
Spec.: Lagoa do Areeiro, SMG; 4 November 2019. M. Souto leg., FLO; 26 September 2022.
M. Souto leg., among grass; MSS-2394. Dist. & Ref.: TER [34].
- * *Parasola plicatilis* (Curtis) Redhead, Vilgalys & Hopple
Spec.: Ponta Delgada, SMG; 10 May 2020. P. Madeira leg., on grass; MSS-1801.
Universidade, SMG; 16 December 2020. M. Souto leg.; MSS-1980. Lagoa do Congro, SMG;
14 May 2020. M. Souto leg.; MSS-2148. Nordeste, SMG; 30 September 2021. M. Souto
leg.; MSS-2255. Faja da Caldeira de Sto Cristo, SJG; 16 Ago 2021. M. Souto leg., on grass;
MSS-2194. Dist. & Ref.: TER [8].
- * *Psathyrella candolleana* (Fr.) Maire
Spec.: Ponta Delgada, SMG; 28 October 2019. M. Souto leg., greenhouse, growing on
remains of *Ananas comosus*; MSS-1653. Misterios Negros, TER; 4 July 2020. M. Souto leg.;
MSS-1856. Praia, GRA; 12 June 2021. M. Souto leg.; MSS-2162. Faja da Caldeira de Sto
Cristo, SJG; 16 August 2021. M. Souto leg., on wood debris; MSS-2189. Barreiros, STM;
13 October 2021. A. Balibrea leg.; MSS-2292. Dist. & Ref.: TER [8,34]; SMG [33].
- ** *Psathyrella laevisissima* (Romagn.) Singer
Spec.: Xardin da Lagoa das Furnas, SMG; 3 November 2019. M. Souto leg., on
Pittosporum undulatum.
- ** *Psathyrella piluliformis* (Bull.) P.D. Orton
Spec.: Lagoa do Congro, SMG; 16 December 2020. M. Souto leg.
- Family: Pterulaceae Corner
- *Aphanobasidium filicinum* (Bourdot) Jülich
Dist. & Ref.: as *Xenasma filicinum* (Bourdot) Christiansen, TER [8]; as *Phlebiella filicina*
(Bourdot) K.H. Larss. & Hjortstam, SMG, FAI, PIC, FLO [25].
- *Aphanobasidium sphaerosporum* Boidin & Gilles
Dist. & Ref.: as *Phlebiella boidinii* Telleria, M. Dueñas & Melo, TER, FAI, PIC, FLO [25].
- *** *Pterulicium gracile* (Desm. & Berk.) Leal-Dutra, Dentinger & G.W. Griff.
Specimen examined Lagoa Verde, SMG; 9 May 2023. M. Souto leg., on decaying indet.
branches, mixed forest; MSS-2464.
- Family: Schizophyllaceae Quél.
- *Schizophyllum commune* Fr.
Spec.: Mata dos Bispos, SMG; 11 September 2013. Y. Lopez leg., on *Acacia melanoxylon*;
AZB-F-0007. Lagoa Rasa, SMG; 4 February 2020. M. Souto leg., on indet. wood; MSS-1769.
Sete Cidades, SMG; 29 September 2020. M. Souto leg., indet. wood; MSS-1885. Povoação,
SMG; 29 September 2021. M. Souto leg, *Cryptomeria* wood; MSS-2250. Lagoa da Serreta, TER;
2 July 2020. P. Raposeiro leg.; MSS-1874. Sao Lourenço, STM; 13 October 2021. A. Balibrea
leg.; MSS-2290. Dist. & Ref.: SMG [33]; TER [33,34]; GRA (<https://www.inaturalist.org/observations/144864780>, accessed on 18 February 2024).
- Family: Strophariaceae Singer & A.H. Sm.
- *Agrocybe pediades* (Fr.) Fayod

- Dist. & Ref.: as *Naucoria semiorbicularis* (Bull.) Quél., FLO [8,9]; TER [34].
- *** *Hypholoma elongatum* (Pers.) Ricken
 - Spec.: Mata da Serreta, TER; 2 July 2020. M. Souto leg., on *Sphagnum*; MSS-1918. Caldeira Branca, FLO; 7 February 2022. M. Souto leg., on *Sphagnum* peat; MSS-2346.
 - * *Hypholoma fasciculare* (Huds.) P. Kumm.
 - Spec.: Lagoa Rasa, SMG; 21 October 2019. M. Souto leg., on fallen trunk in decomposition of *Cryptomeria japonica*; MSS-1676. Lagoa da Prata, SMG; 23 November 2020. M. Souto leg.; MSS-1989. Nordeste, SMG; 30 September 2021. M. Souto leg.; MSS-2256. Sete Cidades, SMG; 15 October 2022. M. Souto leg.; MSS-2427. Reserva Forestal do Pinhal da Paz, SMG; 22 December 2020. M. Souto leg.; MSS-2070. Santo Espírito, STM; 13 October 2021; A. Balibrea leg., among grass; MSS-2305. Lagoa do Congro, SMG; 26 October 2021, B. Lorente leg. MSS-2325. Dist. & Ref.: TER [8,34]; SMG [33].
 - ** *Leratiomyces ceres* (Cooke & Masee) Spooner & Bridge
 - Spec.: As Furnas, SMG; 2 November 2020. M. Souto leg., on decomposing woody debris; MSS-2013. Ponta Delgada, SMG; 29 January 2023. M. Souto leg.; MSS-2446. Sete Cidades, SMG; 23 November 2020. M. Souto leg.; MSS-2035.
 - * *Pholiota henningsii* (Bres.) P.D. Orton
 - Dist. & Ref.: TER [34].
 - *Pholiota highlandensis* (Peck) Quadr.
 - Dist. & Ref.: TER [34].
 - ** *Pholiota gummosa* (Lasch) Singer
 - Spec.: Mata dos Bispos, SMG; 8 November 2013. Y. Lopez leg.; AZB-F-0010. Ponta Delgada, SMG; 29 January 2023. M. Souto leg.; MSS-2445.
 - * *Protostropharia semiglobata* (Batsch) Redhead, Moncalvo & Vilgalys
 - Spec.: As furnas, SMG; 2 November 2020. M. Souto leg.; MSS-2006. Lagoa do Peixinho, PIC; 21 July 2021. M. Souto leg., on cow dung; MSS-2182. Dist. & Ref.: SMG [33].

-

Family: Tricholomataceae R. Heim ex Pouzar

 - *Callistosporium luteo-olivaceum* (Berk. & M.A. Curtis) Singer
 - Dist. & Ref.: TER [34].
 - *Lepista ricekii* Bon
 - Dist. & Ref.: TER [34].
 - *Lepista sordida* (Schumach.) Singer
 - Dist. & Ref.: TER [34].
 - *Paralepista flaccida* (Sowerby) Vizzini
 - Dist. & Ref.: TER [34].
 - *Pseudotracheloma azoricum* P. Iglesias, S. Arauzo, J. Fernández-Vicente, M. Oyarzabal & J. Undagoitia
 - Dist. & Ref.: TER [34].

-

Family: Tubariaceae Vizzini

 - * *Cyclocybe aegerita* (V. Brig.) Vizzini
 - Spec.: University garden, SMG; 8 November 2019. M. Souto leg., on *Ulmus procera* Salisb. MSS-1720. Parque Urbano, SMG; 30 November 2020. M. Souto leg.; MSS-1997. Ponta Delgada, SMG; 12-X-2020. M. Souto leg., on *Solanum mauritanicum* Scop.; MSS-2393. Lajes das Flores, FLO; 14 September 2021. M. Souto leg., on *Acer* sp. Santo Espírito, STM; 13 October 2021. A. Balibrea leg., among grass; MSS-2303. Dist. & Ref.: SMG [33]; TER [34].

-

Family: Typhulaceae Jülich

 - *** *Typhula capitata* (Pat.) Berthier
 - Spec.: Lagoa Funda, FLO; 7 February 2022. M. Souto leg., on remains of *Cryptomeria japonica*; MSS-2351.
 - *** *Typhula uncialis* (Grev.) Berthier

Spec.: Lagoa de Sao Bras, SMG; 5 November 2019. M. Souto leg., on remains of *Hedychium gardneranum*; MSS-1715. Planalto dos Graminhais, SMG; 1 January 2022; M. Souto leg., on remains of *H. gardneranum*; MSS-2335.

- *Typhula variabilis* Riess

Dist. & Ref.: SMG [10].

-

Agaricales incertae sedis

- *** *Calyprella capula* (Holmsk.) Quél.

Spec.: Lagoa Verde, SMG; 9 May 2023. M. Souto leg., on decaying indet. branches, mixed forest; MSS-2467.

- *** *Clitocybe subspadicea* (J.E. Lange) Bon & Chevassut

Spec.: Mata dos Bispos, SMG; 14-I-2014; Y. Lopez leg., on decaying indet. branches; AZB-F-0028. Barreiro, STM; 13 October 2021. A. Balibrea leg.; MSS-2293.

- *** *Clitocybe odora* (Bull.) P. Kumm.

Spec.: As Furnas, SMG; 2 November 2020. M. Souto leg., mixed forest; MSS-2014.

- ** *Clitocybe metachroa* (Fr.) P. Kumm.

Spec.: Lagoa Verde, SMG, 30 January 2021. A. Balibrea leg., mixed forest; MSS-2124.

- ** *Cyathus striatus* (Huds.) Willd.

Spec.: As Furnas, SMG; 2 November 2020. M. Souto leg., on rotten wood; MSS-2005.

- *Henningsomyces candidus* (Pers.) Kuntze

Dist. & Ref.: TER [8,34].

- *** *Panaeolina castaneifolia* (Murrill) Bon

Spec.: Ponta Delgada, SMG; 5 May 2020; P. Raposeiro leg., among grass; MSS-1815.

- *Panaeolina foenicicii* (Pers.) Maire

Spec.: Parque Urbano, SMG; 12 October 2020, 30 October 2020. M. Souto leg., among grass; MSS-1982, MSS-1994. Dist. & Ref.: TER [8]; SMG [33].

- ** *Panaeolus papilionaceus* (Bull.) Quél.

Spec.: Ponta Delgada, SMG; 12 February 2021. M. Souto leg., among grass. Macela, STM; 16 September 2020. P. Madeira leg., among grass; MSS-1933. Lagoa do Caldeirão, COR, 28 September 2022. M. Souto leg.; MSS-2413. Lagoa do Peixinho, PIC; 24 April 2023. M. Souto leg.; MSS-2461. Dist. & Ref.: GRA (<https://www.inaturalist.org/observations/164506020>, accessed on 18 February 2024).

- * *Tricholomopsis rutilans* (Schaeff.) Singer

Spec.: Mata dos Bispos, SMG; 11 December 2013. Y. Lopez leg., on *Cupressus* sp.; AZB-F-0025. Lagoa de Sao Bras, SMG; 5 November 2019. M. Souto leg., on *Cryptomeria japonica*; MSS-1712. Lagoa da Prata, SMG; 23 October 2020. M. Souto leg.; MSS-1986. Lagoa da Lomba, FLO; 14 September 2021. P. Raposeiro leg., on *Cryptomeria japonica*; MSS-2200. Dist. & Ref.: TER [34].

-

Order Atheliales.

Family: Atheliaceae Jülich

- *Amphinema byssoides* (Pers.) J. Erikss.

Dist. & Ref.: as *Amphinema tomentellum* (Bres.) M.P. Christ., TER [8]; FAI [24].

- *Athelia rolfsii* (Curzi) C.C. Tu & Kimbr.

Dist. & Ref.: Azores; 18 July 1924, Smith R. I. (BPI 456774)

- *Athelopsis galzinii* (Bres.) Hjortstam

Dist. & Ref.: as *Athelopsis bananispora* (Boidin & Gilles) Hjortstam, TER, FLO [24].

- *Athelopsis lembospora* (Bourdot) Oberw.

Dist. & Ref.: SMG, FAI, PIC [24].

- *Leptosporomyces raunkiaeri* (M.P. Christ.) Jülich

Dist. & Ref.: FAI [24].

-

Order Amylocorticiales.

Family: Amylocorticiaceae Jülich

- *Amylocorticiellum subillaqueatum* (Litsch.) Spirin & Zmitr.

Dist. & Ref.: as *Hypochniciellum subillaqueatum* (Litsch.) Hjortstam, TER [24].

- *Amyloxenasma allantosporum* (Oberw.) Hjortstam & Ryvarden

Dist. & Ref.: SMG, FLO [24].

-

Order Auriculariales.

Family: Auriculariaceae Fr.

- * *Auricularia auricula-judae* (Bull.) Quéf.

Spec.: Ponta Delgada, SMG; 4 May 2020. M. Souto leg., on trunk of *Nerium oleander* L.; MSS-1955. Jardim Botânico Jose do Canto, Ponta Delgada, SMG; 27 October 2019. M. Souto leg., on fallen trunk in decomposition of *Ocotea foetens*; MSS-1682. Faja da Caldeira de Sto Cristo, SJG; 16 August 2021. M. Souto leg., on fallen trunk of *Pittosporum undulatum*; MSS-2190. University, Ponta Delgada, SMG; 7 September 2021. M. Souto leg., on fallen trunk in decomposition of *Carya illinoensis* (Wangenh.) K. Koch; MSS-2195. Lagoa de Lomba, FLO; 14 September 2021. M. Souto leg., indet wood; MSS-2201. Vitoria, GRA; 25 July 2023; B. Lorente leg., mixed forest. Faja dos Cubres, SJG, 30 November 2023, M. Souto leg., on *Griselinia littoralis* Raoul wood; MSS-2509. Faja dos Cubres, SJG; 30 November 2023. M. Souto leg., on fallen trunk in decomposition of *Pittosporum undulatum*; MSS-2511. Dist. & Ref.: SMG [33].

- *Eichleriella shearii* (Burt) Spirin & Malysheva

Dist. & Ref.: as *Heterochaete shearii* (Burt) Burt, FLO, PIC, JSG [19].

- *Exidiopsis calcea* (Pers.) K. Wells

Dist. & Ref.: as *Sebacina calcea* (Pers. ex St. Amans) Bres., TER [8].

- *Heterochaete sanctae-martae* Bodman

Dist. & Ref.: TER [19].

-

Family: Hyaloriaceae Lindau

- * *Myxarium nucleatum* Wallr.

Spec.: Lomba da Maia, SMG; 16 January 2021. M. Souto leg., wood indet.; MSS-2102. Povoação, SMG; 29 September 2021. M. Souto leg., *Cryptomeria* wood; MSS-2254. Faja dos Cubres, SJG; 30 November 2023, M. Souto leg., on wood indet.; MSS-2503. Dist. & Ref.: as *Exidia nucleata* (Schwein.) Burt, TER, SJG [8,19].

-

Auriculariales genera incertae sedis

- *Basiodendron cinereum* (Bres.) Luck-Allen

Dist. & Ref.: TER [19].

- *Basiodendron spinosum* (L.S. Olive) Wojewoda

Dist. & Ref.: SMG, FLO [19].

- *Mycostilla vermiformis* (Berk. & Broome) Spirin & Malysheva

Dist. & Ref.: as *Stypella vermiformis* (Berk. & Broome) D.A. Reid, SMG [19].

-

Order Boletales.

Family: Boletaceae Chevall.

- ** *Boletus reticulatus* Schaeff.

Spec.: Xardin da Lagoa das Furnas, SMG; 3 November 2019, 3 October 2021. M. Souto leg., under *Quercus palustris*; MSS-1690, MSS-2262. Lagoa do Congro, SMG; 12 October 2022. M. Souto leg.; MSS-2421. Sete Cidades, SMG; 15 October 2022. M. Souto leg.; MSS-2424.

- * *Chalciporus piperatus* (Bull.) Bataille

Spec.: Xardin da Lagoa das Furnas, SMG; 3 October 2021. M. Souto leg., under *Quercus palustris*; MSS-2160. Dist. & Ref.: TER [34].

- * *Cyanoboletus pulverulentus* (Opat.) Gelardi, Vizzini & Simonini

Spec.: Xardin da Lagoa das Furnas, SMG; 3 November 2019, 3 October 2021. M. Souto leg., under *Quercus palustris*; MSS-1967, MSS-2261. Sete Cidades, SMG; 29 September 2020. M. Souto leg., mixed forest; MSS-1948. Reserva Florestal do Pinhal de Paz, SMG; 22 December 2020. M.

- Souto leg., mixed forest; MSS-2278. Faixao Grande, FLO; 15 September 2021; P. Raposeiro leg., under *Ocotea foetens*. Dist. & Ref.: TER [34].
- *Hortiboletus bubalinus* (Oolbekk. & Duin) L. Albert & Dima
Dist. & Ref.: TER [34].
 - ** *Leccinum scabrum* (Bull.) Gray
Spec.: Under *Betula pendula* Roth. FLO, 14 September 2021. P. Raposeiro leg.; MSS-2213.
 - ** *Phylloporus rhodoxanthus* (Schwein.) Bres.
Spec.: Parque Terra Nostra, As Furnas, SMG; 29 October 2019. M. Souto leg.
 - *** *Tylophilus felleus* (Bull.) P. Karst.
Spec.: As Furnas, SMG; 23 October 2020. M. Souto leg.
 - ** *Xerocomellus chrysenteron* (Bull.) Šutara
Spec.: Universidade, SMG; 25 September 2020. P. Raposeiro, leg.; MSS-1938.
 - *** *Xerocomus ferrugineus* (Schaeff.) Alessio
Spec.: Universidade, SMG; 22 November 2023. M. Souto, leg.; MSS-2499.
 - ** *Xerocomus subtomentosus* (L.) Quél.
Spec.: Parque Urbano, Ponta Delgada, SMG; 12 October 2020, 30 October 2020; P. Raposeiro leg.; MSS-1981, 1999.
-
- Family: Coniophoraceae Ulbr.
- *Coniophora puteana* (Schumach.) P. Karst.
Dist. & Ref.: TER, FAI, PIC [24], TER [34].
- Family: Diplocystaceae Kreisel
- ** *Astraeus hygrometricus* (Pers.) Morgan
Spec.: Xardin da Lagoa das Furnas, SMG; 3 November 2019. M. Souto leg.; MSS-1954.
-
- Family: Gyroporaceae Locq.
- * *Gyroporus castaneus* (Bull.) Quél.
Spec.: Parque Terra Nostra, As Furnas, SMG; 29 October 2019. M. Souto leg., under *Platanus x hispanica*; MSS-1654. Sete Cidades, SMG; 29 September 2020. M. Souto leg., mixed forest; MSS-1947. Lagoa das Furnas, SMG; 3 November 2019, 2 November 2020. M. Souto leg.; MSS-1707, MSS-2015. Santo Espirito, STM; 13 October 2021. A. Balibrea leg.; MSS-2298. Reserva florestal do Pico, PIC; 20 October 2021. B. Lorente leg., mixed forest; MSS-2321. Lagoa do Congro, SMG; 12 October 2022. M. Souto leg., mixed forest; MSS-2420. Lagoa do Peixinho, PIC; 15 October 2022. M. Souto leg.; MSS-2430. Dist. & Ref.: TER [34].
-
- Family: Paxillaceae Lotsy
- ** *Paxillus involutus* (Batsch) Fr.
Spec.: Parque Terra Nostra, SMG; 29 September 2019. M. Souto leg., mixed forest; MSS-1656. Parque Terra Nostra, As Furnas, SMG; 29 October 2019, 12 February 2021. M. Souto leg., mixed forest; MSS-1964, MSS-2131. Lagoa do Congro, SMG; 12 October 2022. M. Souto leg., mixed forest; MSS-2428.
-
- Family: Sclerodermataceae Corda
- ** *Pisolithus arhizus* (Scop.) Rauschert
Spec.: University, Ponta Delgada, SMG; 19 September 2022. M. Souto leg., under *Grevillea robusta* A. Cunn. ex R.Br.; MSS-2392.
 - * *Scleroderma areolatum* Ehrenb.
Spec.: Reserva Forestal do Pinhal da Paz, SMG; 19 October 2019. M. Souto leg.; MSS-1675. Reserva florestal do Pico, PIC; 20 October 2021. B. Lorente leg.; MSS-2323. Dist. & Ref.: SMG [33]; TER [34].
 - *Scleroderma bovista* Fr.
Dist. & Ref.: SMG, (BPI 735561) TER [34].
 - *Scleroderma cepa* Pers.
Dist. & Ref.: SMG, GRA [33], TER [34].

- * *Scleroderma citrinum* Pers.
Spec.: Lagoa das Furnas, SMG; 2 February 2014. Y. Lopez leg.; AZB-F-0030. Dist. & Ref.: TER [34].
- * *Scleroderma verrucosum* (Bull.) Pers.
Spec.: Lajes das Flores, FLO; 14 September 2021. P. Raposeiro leg., under *Betula pendula* Roth; MSS-2212. Dist. & Ref.: SMG [9].
- Family: Suillaceae Besl & Bresinsky
- * *Suillus granulatus* (L.) Roussel
Spec.: Sete Cidades, SMG; 29 September 2020, 15 October 2022. M. Souto leg., under *Pinus* sp.; MSS-1945, MSS-2425. Dist. & Ref.: TER [34].
- * *Suillus luteus* (L.) Roussel
Spec.: Sete Cidades, SMG; 20 November 2022. M. Souto leg., under *Pinus sylvestris*. Dist. & Ref.: TER [8].
- Order: Cantharellales.
- Family: Botryobasidiaceae Jülich
- *Botryobasidium asperulum* (D.P. Rogers) Boidin
Dist. & Ref.: TER [24].
- *Botryobasidium aureum* Parmasto
Dist. & Ref.: FAI [24].
- *Botryobasidium candicans* J. Erikss.
Dist. & Ref.: FAI [24].
- *Botryobasidium conspersum* J. Erikss.
Dist. & Ref.: SMG, FLO [25]; PIC [24].
- *Botryobasidium danicum* J. Erikss. & Hjortstam
Dist. & Ref.: SMG, FLO [25]; PIC, TER [24].
- *Botryobasidium obtusisporum* J. Erikss.
Dist. & Ref.: FLO [25].
- *Botryobasidium pruinatum* (Bres.) J. Erikss.
Dist. & Ref.: as *Botryobasidium botryoideum* (Overh.) Parmasto, FLO [25].
- *Botryobasidium vagum* (Berk. & M.A. Curtis) D.P. Rogers
Dist. & Ref.: TER [24].
- Family: Ceratobasidiaceae G.W. Martin
- *Ceratobasidium cornigerum* (Bourdot) D.P. Rogers
Dist. & Ref.: TER [8].
- *Rhizoctonia fusispora* (J. Schröt.) Oberw., R. Bauer, Garnica & R. Kirschner
Dist. & Ref.: as *Thanatephorus fusisporus* (J. Schröt.) Hauerslev & P. Roberts, GRA [18,19].
- *Scotomyces subviolaceus* (Peck) Jülich
Dist. & Ref.: as *Hydrabasidium subviolaceum* (Peck) J. Erikss. & Ryvarden, TER [24].
- Family: Hydnaceae Chevall.
- *** *Clavulina cinerea* (Bull.) J. Schröt.
Spec.: Lagoa do Congro, SMG, 16 December 2020. M. Souto leg.; *Ocotea* forest; MSS-2045.
- * *Clavulina rugosa* (Bull.) J. Schröt.
Spec.: As Furnas, SMG; 2 November 2020. M. Souto leg., mixed forest; MSS-2010.
Lagoa do Congro, SMG; 16 December 2020. M. Souto leg., *Ocotea* forest; MSS-2054. Dist. & Ref.: TER [8].
- *Multiclavula pogonati* (Coker) R.H. Petersen
Dist. & Ref.: SMG [8].
- *Repetobasidium azoricum* Melo, M. Dueñas & Tellería
Dist. & Ref.: TER [24].
- *Sistotrema brinkmannii* (Bres.) J. Erikss.

- Dist. & Ref.: SMG [25].
- *Sistotrema hispanicum* M. Dueñas, Ryvarden & Tellería
- Dist. & Ref.: SMG, FLO [25]; PIC [24].
- *Sistotrema octosporum* (J. Schröt. ex Höhn. & Litsch.) Hallenb.
- Dist. & Ref.: FAI [24].
- *Sistotremella perpusilla* Hjortstam
- Dist. & Ref.: TER [24].
-
- Order: Corticiales.
- Family: Corticiaceae Herter
- *Corticium confine* Bourdot & Galzin
- Dist. & Ref.: as *Cristella confinis* (Bourd. & Galz.) Donk, TER [8].
- *Dendrothele griseocana* (Bres.) Bourdot & Galzin
- Dist. & Ref.: SMG [25].
- *Erythricium aurantiacum* (Lasch) D. Hawksw. & A. Henrici
- Dist. & Ref.: as *Marchandiomyces aurantiacus* (Lasch) Diederich & Etayo (Boom), SMG [52].
- *Lyomyces crustosus* (Pers.) P. Karst.
- Dist. & Ref.: as *Hyphodontia crustosa* (Pers.: Fr.) J. Erikss., TER, PIC [24]; SMG, FLO [25].
- *Lyomyces juniperi* (Bourdot & Galzin) Riebesehl & Langer
- Dist. & Ref.: as *Hyphodontia juniperi* (Bourdot & Galzin) J. Erikss. & Hjortstam, TER, PIC [24]; SMG, FLO [25].
- *Lyomyces pruni* (Lasch) Riebesehl & Langer
- Dist. & Ref.: as *Hyphodontia pruni* (Lasch) Svrček, FAI [24].
-
- Corticiales incertae sedis
- *Leptocorticium sasae* (Boidin, Cand. & Gilles) Nakasone
- Dist. & Ref.: as *Dentocorticium sasae* (Boidin, Cand. & Gilles) Boidin, Lanq. & Duhem, SMG, FLO [25]; TER [24].
-
- Order: Geastrales.
- Family: Geastraceae Corda
- * *Geastrum triplex* Jungh.
- Spec.: Botanic garden Jose do Canto, Ponta Delgada, SMG; 27 October 2019. M. Souto leg.; MSS-1683. Dist. & Ref.: TER [34]; GRA (<https://www.inaturalist.org/observations/98482500>, accessed on 18 February 2024).
-
- Order: Gloeophyllales.
- Family: Gloeophyllaceae Jülich
- * *Gloeophyllum sepiarium* (Wulfen) P. Karst.
- Spec.: Furnas do enxofre, TER; 3 July 2020. M. Souto leg., on fallen conifer trunk; MSS-1879. Barreiro, STM; 13 October 2021. A. Balibrea leg., on *Pinus* sp.; MSS-2307. Dist. & Ref.: SMG [19].
-
- Order: Gomphales.
- Family: Gomphaceae Donk
- * *Phaeoclavulina myceliosa* (Peck) Franchi & M. Marchetti
- Dist. & Ref.: TER [34].
- * *Ramaria stricta* (Pers.) Quél.
- Spec.: Ponta Delgada, SMG; 10 October 2020. P. Raposeiro leg. Dist. & Ref.: TER [34].
-
- Order: Hymenochaetales.
- Family: Hymenochaetaceae Imazeki & Toki
- *** *Coltricia cinnamomea* (Jacq.) Murrill

Spec.: Parque Terra Nostra, As Furnas, SMG; 29 October 2019. M. Souto leg., mixed forest; MSS-1661. Xardin da Lagoa das Furnas, SMG; 3 November 2019. M. Souto leg., under *Quercus palustris*; MSS-1695.

- *Fuscoporia ferruginosa* (Schrad.) Murrill

Dist. & Ref.: as *Phellinus ferruginosus* (Schrad.) Pat., PIC [19].

- * *Fuscoporia torulosa* (Pers.) T. Wagner & M. Fisch.

Spec.: Praia, GRA; 12-VI-2021. M. Souto leg., on indet wood; MSS-2163. Praia Formosa, STM; 18 June 2021. A. Balibrea leg., among grass; MSS-2178. Sao Lourenço, STM; 13 October 2021. A. Balibrea leg., indet. wood; MSS-2314. Dist. & Ref.: as *Phellinus torulosus* (Pers.) Bourd. & Galz. SMG [13]; PIC, FLO, GRA, JSG [19]; TER [34].

- *Hydnoporia corrugata* (Fr.) K.H. Larss. & Spirin

Spec.: Nordeste, SMG; 9 March 2020. M. Souto leg., sclerotized mycelial pads on indet. wood; MSS-1897. Mata da Serreta, TER; 2 July 2020. M. Souto leg., indet. wood. Faixao grande, FLO; 18 September 2020. M. Souto leg., indet. wood. Dist. & Ref.: as *Hymenochaete corrugata* (Fr.: Fr.) Lév., Azores (TAAM091412) TER [8]; TER, FAI, PIC [24]; SMG, FLO [25].

- * *Hymenochaete cinnamomea* (Pers.) Bres.

Spec.: Sete Cidades, SMG; 29 September 2020. M. Souto leg., indet. wood; MSS-1884. Lagoa Funda, FLO; 18 September 2020. M. Souto leg.; MSS-1913. Lagoa da Serreta, TER; 2 July 2020. M. Souto leg., indet. wood; MSS-1840. Praia, GRA; 12 July 2021. M. Souto leg.; MSS-2165. Lagoa da Lomba, FLO; 14 September 2021. M. Souto leg., under *Acacia melanoxylon*; MSS-2214. Dist. & Ref.: Azores (TAAM183727); TER, PIC [24]; SMG, FLO [25].

- *Hymenochaete rubiginosa* (Dicks.) Lév.

Dist. & Ref.: FLO [25].

- *Hymenochaete fuliginosa* (Fr.) Lév.

Dist. & Ref.: FLO [25].

- *Hymenochaete legeri* Parmasto

Dist. & Ref.: Azores, (TAAM183809).

- *Phellinopsis conchata* (Pers.) Y.C. Dai

Dist. & Ref.: as *Phellinus conchatus* (Pers. ex Fr.) Quél. SMG [8].

- *Phellinus rimosus* (Berk.) Pilát

Dist. & Ref.: FAI [19].

- *Phellinus viticola* (Schwein.) Donk

Dist. & Ref.: GRA 33].

- *Tubulicrinis accedens* (Bourdot & Galzin) Donk

Dist. & Ref.: TER [8,24]; FLO [25].

- *Tubulicrinis glebulosus* (Fr.) Donk

Dist. & Ref.: PIC [24].

- *Tubulicrinis regificus* (H.S. Jacks. & Dearden) Donk

Dist. & Ref.: SMG, FLO [25].

- *Tubulicrinis subulatus* (Bourdot & Galzin) Donk

Dist. & Ref.: TER, FAI, PIC [24]; FLO [25].

-

Family: Rickenellaceae Vizzini

- *Peniophorella praetermissa* (P. Karst.) K.H. Larss.

Dist. & Ref.: as *Hyphoderma praetermissum* (P. Karst.) J. Erikss. & Strid, SMG, FLO [25]; TER, FAI, PIC [24].

- *Peniophorella pubera* (Fr.) P. Karst.

Dist. & Ref.: as *Phlebia pubera* (Fr.) Christiansen, TER [8].

- *Peniophorella tsugae* (Burt) K.H. Larss.

Dist. & Ref.: SMG [25].

- *Resinicium friabile* Hjortstam & Melo

Dist. & Ref.: TER [24].

-** *Rickenella fibula* (Bull.) Raitelh.

Spec.: Lagoa do Congro, SMG; 14 May 2020. M. Souto leg., on mosses; MSS-2147. Jardim da Lagoa das Furnas, SMG; 3 October 2021. M. Souto leg., on mosses; MSS-2267. Lagoa do Fogo, SMG; 5 February 2023. M. Souto leg.; MSS-2458.

-
Family: Schizoporaceae Jülich

- *Fasciodontia bugellensis* (Ces.) Yurchenko, Riebesehl & Langer

Dist. & Ref.: as *Hyphodontia bugellensis* (Ces.) J. Erikss., SMG, FLO [25].

- *Hyphodontia arguta* (Fr.) J. Erikss.

Dist. & Ref.: FLO [25].

- *Hyphodontia alutaria* (Burt) J. Erikss.

Dist. & Ref.: TER, FAI, PIC [24].

- *Hyphodontia spathulata* (Schrad.) Parmasto

Dist. & Ref.: FAI [24].

- *Kneiffiella abieticola* (Bourdot & Galzin) Jülich & Stalpers

Dist. & Ref.: as *Hyphodontia abieticola* (Bourdot & Galzin) J. Erikss., SMG [25].

- *Lagarobasidium calongei* M. Dueñas, Tellería, Melo & M.P. Martín

Dist. & Ref.: PIC [22].

- *Schizopora paradoxa* (Schrad.) Donk

Dist. & Ref.: SMG [8]; FLO, JSG (Ryvarden & Spooner, 2004).

- *Xylodon asper* (Fr.) Hjortstam & Ryvarden

Dist. & Ref.: as *Hyphodontia aspera* (Fr.) J. Erikss., FAI [24]; FLO [25].

- *Xylodon flaviporus* (Berk. & M.A. Curtis ex Cooke) Riebesehl & Langer

Dist. & Ref.: as *Schizopora flavipora* (Berk. & M.A. Curtis ex Cooke) Ryvarden SMG, TER, FAI [19].

- *Xylodon nesporii* (Bres.) Hjortstam & Ryvarden

Dist. & Ref.: as *Hyphodontia nesporii* (Bres.) J. Erikss. & Hjortstam, SMG, FLO [25]; FAI, PIC [24].

- *Xylodon rimosissimus* (Peck) Hjortstam & Ryvarden

Dist. & Ref.: as *Hyphodontia rimosissima* (Peck) Gilb., FAI [24].

- *Xylodon sambuci* (Pers.) Tura, Zmitr., Wasser & Spirin

Dist. & Ref.: as *Hyphodontia sambuci* (Pers. ex Pers.) Erikss., TER [8]; as *Lyomyces sambuci* (Pers.) P. Karst., SMG, FLO [25]; TER, FAI, PIC [24].

-

Hymenochetales incertae sedis

- *Kurtia argillacea* (Bres.) Karasiński

Dist. & Ref.: as *Hyphoderma argillaceum* (Bres.) Don, TER, FAI, PIC [24].

- *Sidera vulgaris* (Fr.) Miettinen

Dist. & Ref.: as *Amyloporia lenis* (Karst.) Bond. & Sing., TER [8]; as *Skeletocutis vulgaris* (Fr.) Niemelä & Y.C. Dai, FAI, PIC, FLO [19].

-

Order Jaapiales.

Family Jaapiaceae Manfr. Binder, K.H. Larss. & Hibbett

- *Jaapia ochroleuca* (Bres.) Nannf. & J. Erikss.

Dist. & Ref.: TER [24].

-

Order: Phallales.

Family: Phallaceae Corda

- *Clathrus ruber* P. Micheli ex Pers.

Spec.: Xardin Botanico Jose do Canto, Ponta Delgada, SMG; 27 October 2019. M. Souto leg., *Agathis* sp. leaf remains; MSS-1946. Dist. & Ref.: as *Clathrus cancellatus* Tourn. ex Fr., SMG [9]; TER [8,34]; GRA (<https://www.inaturalist.org/observations/102187835>, accessed on 18 February 2024).

- ** *Mutinus ravenelii* (Berk.) E. Fisch.

- Spec.: Ponta Delgada, SMG; 28 October 2019. M. Souto leg., greenhouse, on remains of *Ananas comosus*.
- ** *Mutinus elegans* (Mont.) E. Fisch.
- Spec.: Povoação, SMG; 10 November 2013. Y. Lopez, leg.; AZB-F-0006.
- Dist. & Ref.: (FLO (<https://www.inaturalist.org/observations/99996705>, accessed on 18 February 2024).
- * *Phallus hadriani* Vent.
- Spec.: Universidade, SMG; 19 September 2022. M. Souto leg. Dist. & Ref.: TER [34].
-
- Order: Polyporales.
- Family: Cystostereaceae Jülich
- *Parvobasidium cretatum* (Bourdot & Galzin) Jülich
- Dist. & Ref.: SMG [25]; FAI [24].
-
- Family: Dacryobolaceae Jülich
- * *Postia tephroleuca* (Fr.) Jülich
- Spec.: Mata da Serreta, TER; 2 July 2020. M. Souto leg., on indet. wood; MSS-2086. Praia Formosa, STM; 13 October 2021. A. Balibrea leg., on indet wood; MSS-2312. Dist. & Ref.: as *Oligoporus tephroleucus* (Fr.) Gilb. & Ryvarden, PIC, GRA [19].
-
- Family: Fomitopsidaceae Jülich
- *Brunneoporus malicola* (Berk. & M.A. Curtis) Audet
- Dist. & Ref.: as *AnTRODIA malicola* (Berk. & M.A. Curtis) Donk SMG, PIC, JSG [19].
- * *Fuscopostia leucomallella* (Murrill) B.K. Cui, L.L. Shen & Y.C. Dai
- Spec.: Fenais da Luz, SMG; 20 September 2021. A. Balibrea leg., on indet. wood; MSS-2231. Dist. & Ref.: as *Oligoporus leucomallellus* (Murrill) Gilb. & Ryvarden, FAI [19].
- *Niveoporofomes spraguei* (Berk. & M.A. Curtis) B.K. Cui, M.L. Han & Y.C. Dai
- Dist. & Ref.: as *Fomitopsis spraguei* (Berk. & M.A. Curtis) Gilb. & Ryvarden, TER, FLO, GRA [19].
- *** *Neoantrodia serialis* (Fr.) Audet
- Spec.: Lagoa da Serreta, TER; 2-VII-2020. M. Souto leg., on *Ilex perado*; MSS-1865.
- *Spongiporus floriformis* (Quél.) Zmitr.
- Dist. & Ref.: TER [34].
-
- Family: Hyphodermataceae Jülich
- *Hyphoderma macaronesticum* Telleria, M. Dueñas, Beltrán-Tej., Rodríguez-Armas & M.P. Martín
- Dist. & Ref.: FAI [27].
- *Hyphoderma obtusifforme* J. Erikss. & Å. Strid
- Dist. & Ref.: TER [24].
- *Hyphoderma orphanellum* (Bourdot & Galzin) Donk
- Dist. & Ref.: SMG, FLO [25]; PIC [24].
- *Hyphoderma roseocremeum* (Bres.) Donk
- Dist. & Ref.: PIC [24].
- *Hyphoderma setigerum* (Fr.) Donk
- Dist. & Ref.: SMG [25]; FAI [24]; TER (CUP-MM-002029).
- *Hyphoderma transiens* (Bres.) Parmasto
- Dist. & Ref.: SMG, FLO [25]; TER, FAI, PIC [24].
-
- Family: Incrustoporiaceae Jülich
- *Skeletocutis azorica* (D.A. Reid) Jülich
- Dist. & Ref.: as *Ceriporiopsis azorica* (D.A. Reid) Ryvarden & Gilb., SMG, TER [8]; FAI [20].
- *Skeletocutis semipileata* (Peck) Miettinen & A. Korhonen

- Dist. & Ref.: as *Leptotrimitus semipileatus* (Peck) Pouzar, TER [8].
 - *Skeletocutis percandida* (Malençon & Bertault) Jean Keller
 Dist. & Ref.: SMG [19].
 - * *Tyromyces galactinus* (Berk.) J. Lowe
 Spec.: Barreiro, STM; 13 October 2021. A. Balibrea leg., on *Pinus*; MSS-2312. Dist. & Ref.: FAI [19].
 -
 Family: Irpicaceae Spirin & Zmitr.
 - *Emmia latemarginata* (Durieu et Mont.) Zmitr., Spirin et V. Malysheva
 Dist. & Ref.: as *Oxyporus latemarginatus* (Durieu & Mont.) Donk, PIC [19].
 - *Gloeoporus pannocinctus* (Romell) J. Erikss.
 Dist. & Ref.: as *Ceriporiopsis pannocincta* (Romell) Gilb. & Ryvarden, FAI [19].
 -
 Family: Laetiporaceae Jülich
 - * *Laetiporus sulphureus* (Bull.) Murrill
 Spec.: Ponta Delgada, SMG; 20 September 2020. M. Souto leg., indet. wood. Dist. & Ref.: TER [34]; GRA (<https://www.inaturalist.org/observations/182525569>, accessed on 18 February 2024); FAI (<https://www.inaturalist.org/observations/184721983>, accessed on 18 February 2024).
 - ** *Phaeolus schweinitzii* (Fr.) Pat.
 Spec.: Jardim da Lagoa das Furnas, SMG; 3 November 2019. M. Souto leg., on *Fraxinus* sp. MSS-1686. As Furnas, SMG; 30 September 2020. M. Souto leg.; MSS-1966.
 -
 Family: Meripilaceae Jülich
 - *Rigidoporus ulmarius* (Sowerby) Imazeki
 Dist. & Ref.: SMG [8,33].
 -
 Family: Meruliaceae P. Karst.
 - *Ceriporiopsis mucida* (Pers.) Gilb. & Ryvarden
 Dist. & Ref.: as *Fibuloporia donkii* Domanski, TER [8]
 - *Mycoacia aurea* (Fr.) J. Erikss. & Ryvarden
 Dist. & Ref.: FAI [24].
 - *Mycoacia fuscoatra* (Fr.) Donk
 Dist. & Ref.: FAI [24].
 - *Mycoacia livida* (Pers.) Zmitr.
 Dist. & Ref.: as *Phlebia livida* (Pers. ex Fr.) Bres., TER [8]; SMG, FLO [25]; TER, FAI, PIC [24].
 - *Mycoacia uda* (Fr.) Donk
 Dist. & Ref.: FAI [24].
 - *Pappia fissilis* (Berk. & M.A. Curtis) Zmitr.
 Dist. & Ref.: as *Tyromyces fissilis* (Berk. & M.A. Curtis) Donk, FAI, FLO [19].
 - *Phlebia lilascens* (Bourdot) J. Erikss. & Hjortstam
 Dist. & Ref.: SMG, FLO [25]; PIC [24].
 - *Phlebia rufa* (Pers.) M.P. Christ.
 Spec.: Lagoa do Congro, SMG; 27 November 2013. Y. Lopez, leg.; AZB-F-0031. Dist. & Ref.: SMG [8]; SMG, FLO [25]; PIC [24].
 - *Scopuloides hydnooides* (Cooke & Masee) Hjortstam & Ryvarden
 Dist. & Ref.: as *Phlebia hydnooides* (Cke. & Mass.) Christiansen, SMG, FLO [25].
 -
 Family: Phanerochaetaceae Jülich
 - * *Bjerkandera adusta* (Willd.) P. Karst.
 Spec.: Jardim Botânico Jose do Canto, Ponta Delgada, SMG; 27 October 2019. M. Souto leg., on fallen trunk in decomposition of *Ocotea foetens*; MSS-1663. Botanic Garden Jose do Canto, As Furnas, SMG; 16 November 2019. M. Souto leg., on fallen trunk of *Acacia*

melanoxylo R. Br.; MSS-1724. Lagoa Verde, SMG; 30 January 2121. M. Souto leg., on *Fagus sylvatica* trunk; MSS-2119. Lagoa do Congro, SMG; 16 December 2020. M. Souto leg., on *Ocotea foetens*; MSS-2057. Barreiro, STM; 13 October 2021. M. Souto leg., mixed forest; MSS-2294. Dist. & Ref.: SMG [13,33]; FAI, FLO [19]; TER [34].

- *Bjerkandera fumosa* (Pers.) P. Karst.

Dist. & Ref.: SMG [13]; TER [8].

- *Phanerochaete sordida* (P. Karst.) J. Erikss. & Ryvarden

Dist. & Ref.: SMG [25].

- *Phanerochaete velutina* (DC.) P. Karst.

Dist. & Ref.: TER [8].

- *Terana coerulea* (Lam.) Kuntze

Dist. & Ref.: SMG [25]; TER [24].

-

Family: Polyporaceae Fr. ex Corda.

- *Ganoderma applanatum* (Pers.) Pat

Spec.: SMG; 11 December 2013. Y. Lopez leg., on *Laurus azorica*; AZB-F0013. Fenais da Luz, SMG; 23 May 2020. M. Souto leg., on *Eucalyptus globulus*; MSS-1802. Central das Caldeiras de Ribeira Grande, SMG; 27 May 2020. M. Souto leg., on *Pittosporum undulatum*; MSS-1807. Dist. & Ref.: SMG [8,13,33]; TER [34].

- * *Ganoderma australe* (Fr.) Pat.

Spec.: Caldeira Branca, FLO; 18 September 2020. M. Souto leg.; MSS-1905. Praia Formosa, STM; 13 October 2021. A. Balibrea leg.; MSS-22 95. Dist. & Ref.: SMG, TER, PIC, FLO [19].

- *Ganoderma lucidum* (Curtis) P. Karst.

Dist. & Ref.: SMG [13].

- * *Ganoderma resinaceum* Boud.

Spec.: Universidade, SMG; 12 June 2022. M. Souto leg., on *Jacaranda mimosifolia* D. Don; MSS-1826. Jardim da Lagoa das Furnas, SMG; 3 October 2021. M. Souto leg., on *Acacia melanoxylo*; MSS-2268. Barreiros, STM; 13 October 2021. A. Balibrea leg.; MSS-2289. Dist. & Ref.: SMG [13]; PIC [19].

- *** *Picipes badius* (Pers.) Zmitr. & Kovalenko

Spec.: Mata dos Bispos, SMG; 11 November 2013. Y. Lopez leg.; AZB-F- 0011.

- *** *Trametes coccinea* (Fr.) Hai J. Li & S.H. He

Spec.: Praia Formosa, STM; 18 June 2021. A. Balibrea leg., indet. wood; MSS-2178.

- *Trametes gibbosa* (Pers.) Fr.

Dist. & Ref.: SMG [33].

- * *Trametes hirsuta* (Wulfen) Lloyd

Spec.: Praia Formosa, STM; 18 June 2021. A. Balibrea leg., indet. wood; MSS-2179. Dist. & Ref.: SMG [33]; FLO, SJG [19].

- *Trametes pubescens* (Schumach.) Pilát

Dist. & Ref.: SMG ([33])

- *Trametes versicolor* (L.) Lloyd

Spec.: As Furnas, SMG; 30 September 2020. M. Souto leg.; MSS-1963. Lagoa da Lomba, Mata da Serreta, TER; 2 July 2020. M. Souto leg., indet. wood; MSS-2085. FLO; 14 September 2021. P. Raposeiro, leg.; MSS-2211. Dist. & Ref.: SMG [33]; SMG, TER, FAI, PIC [19].

- *Truncospora ochroleuca* (Berk.) Pilát

Dist. & Ref.: as *Perenniporia ochroleuca* (Berk.) Ryvarden, SMG [13]; PIC, FLO, GRA [19].

-

Family: Podoscyphaceae D.A. Reid

- ** *Abortiporus biennis* (Bull.) Singer

Spec.: Barreiro, STM; 4 November 2022. P. Raposeiro leg., indet. wood; MSS-2436.

-

Family: Steccherinaceae Parmasto

- *Cabalodontia subcretacea* (Litsch.) Piątek

- Dist. & Ref.: FLO [25].
- **Flaviporus brownii* (Humb.) Donk
Spec.: Lagoa do Congro, SMG; 16 December 2020. M. Souto leg., on *Ocotea foetens* trunk; MSS-2040. Dist. & Ref.: PIC [19].
 - *Steccherinum ochraceum* (Pers. ex J.F. Gmel.) Gray
Dist. & Ref.: SMG [8,25]; FLO [25]; TER, FAI, PIC [24].
 -
 - Polyporales incertae sedis
 - *Hypochnicium punctulatum* (Cooke) J. Erikss.
Dist. & Ref.: FAI, PIC [24].
 - *Cyanosporus caesius* (Schrad.) McGinty
Dist. & Ref.: as *Tyromyces caesius* (Schrad. ex Fr.) Murrill, SMG, TER [8]; as *Oligoporus caesius* (Schrad.) Gilb. & Ryvarden, PIC, FLO, GRA, JSG [20].
 -
 - Order: Russulales.
 - Family: Echinodontiaceae Donk
 - *Amylostereum laevigatum* (Fr.) Boidin
Dist. & Ref.: TER [8,24]; SMG, FLO [25].
 -
 - Family: Peniophoraceae Lotsy
 - *Baltazaria galactina* (Fr.) Leal-Dutra, Dentinger & G.W. Griff.
Dist. & Ref.: as *Scytinostroma galactinum* (Fr.) Donk, TER [8]; (SMG [24].
 - *Peniophora bicornis* Hjortstam & Ryvarden
Dist. & Ref.: SMG [24].
 - *Peniophora boidinii* D.A. Reid
Dist. & Ref.: TER [8]; FAI, PIC [24].
 - *Peniophora borbonica* Boidin & Gilles
Dist. & Ref.: FAI [24].
 - *Peniophora cinerea* (Pers.) Cooke
Dist. & Ref.: SMG, FLO [24].
 - *Peniophora incarnata* (Pers.) P. Karst.
Dist. & Ref.: TER [8,24]; SMG, PIC [24].
 - *Peniophora limitata* (Chaillet ex Fr.) Cooke
Dist. & Ref.: FAI, PIC [24].
 - *Peniophora lycii* (Pers.) Höhn. & Litsch.
Spec.: Caldeiras da Ribeira Grande, SMG; 27 May 2020. M. Souto leg., on *Pittosporum undulatum* MSS-1808. Dist. & Ref.: SMG [8,24]; TER [8]; FAI, PIC, FLO [24].
 - *Peniophora pilatiana* Pouzar & Svrček
Dist. & Ref.: FAI, FLO [24].
 - *Peniophora pithya* (Pers.) J. Erikss.
Dist. & Ref.: TER [8]; SMG, FAI, PIC, FLO [24].
 - *Peniophora versicolor* (Bres.) Sacc. & P. Syd.
Dist. & Ref.: FAI [24].
 - *Scytinostroma lusitanicum* (Trotter) P.M. Kirk
Dist. & Ref.: as *Scytinostroma ochroleucum* (Bres. & Torrend) Donk, TER [8,24]; SMG, FLO [25]; FAI, PIC [24].
 - *Scytinostroma portentosum* (Berk. & M.A. Curtis) Donk
Dist. & Ref.: TER [8].
 - *Scytinostroma praestans* (H.S. Jacks.) Donk
Dist. & Ref.: FAI [24].
 - *Vararia hauerslevii* Boidin
Dist. & Ref.: FAI [24].
 -
 - Family: Russulaceae Lotsy

- *Boidinia furfuracea* (Bres.) Stalpers & Hjortstam
Dist. & Ref.: SMG [25]; TER [24].
- ** *Lactarius blennius* (Fr.) Fr.
Spec.: Lagoa do Congro, SMG; 21 November 2023. M. Souto leg., under *Fagus sylvatica*; MSS-2494.
- ** *Lactarius quieticolor* Romagn.
Spec.: Sete Cidades, SMG; 23 November 2020, 20 October 2022. M. Souto leg., under *Pinus* sp.; MSS-2034, MSS-2426. Santo Espirito, STM; 13 October 2021. P. Raposeiro leg., under *Cryptomeria japonica*; MSS-2288.
- *Lactarius semisanguifluus* R. Heim & Leclair
Dist. & Ref.: TER [34].
- * *Russula caerulea* Fr.
Spec.: Xardin da Lagoa das Furnas, SMG; 3 November 2019. M. Souto leg., under *Pinus sylvestris*; MSS-1688. Dist. & Ref.: TER [34].
- ** *Russula cyanoxantha* (Schaeff.) Fr.
Spec.: Lagoa do Congro, SMG; 26 October 2021, 12 October 2022. B. Lorente leg.; MSS-2324, MSS-2422. Sete Cidades, SMG; 20 October 2022. M. Souto leg., Universidade Ponta Delgada, SMG; 15 June 2023. M. Souto leg., under *Quercus palustris*; MSS-2475.
- ** *Russula praetervisa* Sarnari
Spec.: Xardin da Lagoa das Furnas, SMG; 3 November 2019, 30 October 2020. M. Souto leg., under *Quercus palustris*; MSS-1687, MSS-1976. Ponta Delgada, SMG; 7 November 2019. M. Souto leg.; MSS-1718. Jardim florestal do Pinhal da Paz, SMG; 10 October 2021. M. Souto leg.; MSS-2279. Barreiros, STM; 4 November 2022. P. Raposeiro leg. Dist. & Ref.: TER [34].
- * *Russula sardonica* Fr.
Spec.: Sete Cidades, SMG; 20 October 2022. M. Souto leg. Barreiros, STM; 4 November 2022. P. Raposeiro leg. Dist. & Ref.: TER [8,34].
-
- Family: Stereaceae Pilát
- *Aleurodiscus aurantius* (Pers.) J. Schröt.
Dist. & Ref.: PIC [24].
- *Aleurodiscus botryosus* Burt
Dist. & Ref.: SMG [8]; SMG, FLO, TER, FAI, PIC [25].
- *Gloeocystidiellum clavuligerum* (Höhn. & Litsch.) Nakasone
Dist. & Ref.: SMG [25].
- *Gloeocystidiellum kenyense* Hjortstam
Dist. & Ref.: PIC [25].
- *Gloeocystidiellum porosum* (Berk. & M.A. Curtis) Donk
Dist. & Ref.: PIC [24]; FLO [25].
- ** *Stereum gausapatum* (Fr.) Fr.
Spec.: Mata da Serreta, TER; 2 July 2020. M. Souto leg., indet. wood.
- * *Stereum hirsutum* (Willd.) Pers.
Spec.: Lagoa Funda, FLO, 18 March 2121. M. Souto leg.; MSS-2136. Dist. & Ref.: TER [8,34]; SMG [33].
- ** *Stereum ostrea* (Blume & T. Nees) Fr.
Spec.: Malhada; 18 November 2013. Y. Lopez leg., AZB-F- 0012. Planalto dos Gramiñais, As Furnas; 10 June 2020. M. Souto leg., on trunk of *Pittosporum undulatum*; MSS-1817. Lagoa Verde, SMG; 30 January 2121. M. Souto leg.; MSS-2113. Lagoa do Congro, SMG; 16 December 2020. M. Souto leg., on *Ocotea foetens*; MSS-2059.
- *Stereum rugosum* Pers.
Dist. & Ref.: SMG, TER [8]; GRA [33].
- *Stereum sanguinolentum* (Alb. & Schwein.) Fr.
Dist. & Ref.: TER [8].
- *Stereum subtomentosum* Pouzar

Spec.: Caldeiras de Ribeira Grande; 27 May 2020. M. Souto leg., on *Pittosporum undulatum*; MSS-1804. Lagoa de Santiago, SMG; 8 June 2020. A. Balibrea leg.; MSS-1882. Dist. & Ref.: as *Stereum insignitum* Quél., SMG [33].

-

Family: Septobasidiaceae Racib.

- *Septobasidium rameale* (Berk.) Bres.

Dist. & Ref.: as *Stereum rameale* (Pers.) Fr., TER [8].

-

Family: Xenasmataceae Oberw.

- *Xenasmatella alnicola* (Bourdot & Galzin) K.H. Larss. & Ryvarden

Dist. & Ref.: as *Trechispora alnicola* (Bourdot & Galzin) Libert, SMG, FLO, FAI, PIC [25].

- *Xenasmatella ardosiacae* (Bourdot & Galzin) Stalpers

Dist. & Ref.: as *Phlebiella ardosiacae* (Bourdot & Galzin) K.H. Larss. & Hjortstam, SMG [25].

- *Xenasmatella fibrillosa* (Hallenb.) Stalpers

Dist. & Ref.: as *Phlebiella fibrillosa* (Hallenb.) K.H. Larss. & Hjortstam, SMG [25].

- *Xenasma pulverulentum* (H.S. Jacks.) Donk

SMG, FLO [25]; TER, FAI, PIC [24].

- *Xenasma pruinosum* (Pat.) Donk

Dist. & Ref.: FLO [25].

- *Xenasma rimicola* (P. Karst.) Donk

Dist. & Ref.: SMG [25]; FAI [24].

-

Russulales Incertae sedis

- *Scytinostromella olivaceoalba* (Bourdot & Galzin) Ginns & M.N.L. Lefebvre

Dist. & Ref.: as *Confertobasidium olivaceo-album* (Bourd. & Galz.) Jülich, TER [8].

- *Scytinostromella nannfeldtii* (J. Erikss.) G.W. Freeman & R.H. Petersen

Dist. & Ref.: SMG [25].

-

Order: Thelephorales.

Family: Thelephoraceae Chevall.

- *Odontia fibrosa* (Berk. & M.A. Curtis) Kõljalg

Dist. & Ref.: as *Tomentella fibrosa* (Berk. & M.A. Curtis) Kõljalg, FAI [24].

-

Orden: Trechisporales

Family: Hydnodontaceae Jülich

- *Brevicellicium exile* (H.S. Jacks.) K.H. Larss. & Hjortstam

Dist. & Ref.: TER, FAI, PIC [24]; FLO [25].

- *Brevicellicium olivascens* (Bres.) K.H. Larss. & Hjortstam

Dist. & Ref.: SMG, FLO [25]; PIC [24].

- *Litschauerella abietis* (Bourdot & Galzin) Oberw. ex Jülich

Dist. & Ref.: FLO [25].

- *Luellia recondita* (H.S. Jacks.) K.H. Larss. & Hjortstam

Dist. & Ref.: PIC [24].

- *Sistotremastrum niveocremeum* (Höhn. & Litsch.) J. Erikss.

Dist. & Ref.: SMG, FLO [25]; TER [24].

- *Sistotremastrum suecicum* Litsch. ex J. Erikss.

Dist. & Ref.: PIC [24]; TER [8].

- *Sistotremastrum guttuliferum* Melo, M. Dueñas, Telleria & M.P. Martín

Dist. & Ref.: SMG, FLO; TER, FAI, PIC [29].

- *Subulicystidium longisporum* (Pat.) Parmasto

Dist. & Ref.: FLO [25].

- *Subulicystidium nikau* (G. Cunn.) Jülich

Dist. & Ref.: SMG [25].

- *Trechispora caucasica* (Parmasto) Liberta
Dist. & Ref.: FLO [25].
- *Trechispora antipus* Trichiès & Schultheis
Dist. & Ref.: TER [24].
- *Trechispora cohaerens* (Schwein.) Jülich & Stalpers
Dist. & Ref.: as *Cristella confinis* (Bourdot & Galzin) Donk, FAI [24]; FLO [25]; TER [8].
- *Trechispora farinacea* (Pers.) Liberta
Dist. & Ref.: as *Cristella farinacea* (Pers. ex Fr.) Donk, SMG, FLO [24]; FAI, PIC [24];
TER [8,34].
- *Trechispora microspora* (P. Karst.) Liberta
Dist. & Ref.: TER, PIC [24].
- *Trechispora minima* K.H. Larss.
Dist. & Ref.: SMG [25].
- *Trechispora minuta* K.H. Larss.
Dist. & Ref.: SMG [25].
- *Trechispora nivea* (Pers.) K.H. Larss.
Dist. & Ref.: TER, FAI, PIC [24]; SMG, FLO [25].
- *Trechispora praefocata* (Bourdot & Galzin) Liberta
Dist. & Ref.: FAI [24].
- *Trechispora stellulata* (Bourdot & Galzin) Liberta
Dist. & Ref.: TER [24]; SMG, FLO [25].
- *Trechispora subsphaerospora* (Litsch.) Liberta
Dist. & Ref.: FLO [25].
- *Tubulicium dussii* (Pat.) Oberw. ex Jülich
Dist. & Ref.: as *Tubulicium vermiculare* (Wakef.) Boidin & Gilles, TER, PIC [24]; SMG,
FLO [25].
- *Tubulicium filicicola* (G. Cunn.) Oberw.
Dist. & Ref.: SMG [25].
- *Tubulicium vermiculare* (Wakef.) Boidin & Gilles
Dist. & Ref.: SMG [25].
- *Tubulicium vermiferum* (Bourdot) Oberw. ex Jülich
Dist. & Ref.: as *Tubulicium raphidosporum* (Boidin & Gilles) Oberw., Kisim. Hor. & L.D.
Gómez TER, FAI [24]; FLO [25].
-
- Order: Tremellodendropsidales
Family: Tremellodendropsidaceae Jülich
- * *Tremellodendropsis tuberosa* (Grev.) D.A. Crawford
Spec.: Miradoiro da Tronqueira, SMG; 27 November 2013. Y. Lopez, leg.; Y. 0017.
Cryptomeria forest, Lagoa do Areeiro, SMG; 4 November 2019. M. Souto leg.; MSS-1703.
Lagoa do Fogo, SMG; 22 November 2020. M. Souto leg., *Cryptomeria* forest; MSS-2029. Lagoa
do Congro, SMG; 16 December 2020. M. Souto leg., *Ocotea foetens* forest; MSS-2044. Planalto
dos Graminhais, SMG; 1 February 2022. M. Souto leg.; MSS-2341. Dist. & Ref.: TER [34].
-
- Agaricomycetes genera incertae sedis
- *Odonticium septocystidia* (Burt) Zmitr. & Spirin
Dist. & Ref.: as *Candelabrochaete septocystidia* (Burt) Burdsall, FAI [24].

Supplementary Materials: The following supporting information can be downloaded at: <https://www.mdpi.com/article/10.3390/d16030170/s1>, Table S1: Geographical coordinates (degrees and decimal minutes) and altitude of the studied localities.

Author Contributions: M.S.: Conceptualisation, fieldwork, writing the manuscript, reviewing, and editing the manuscript. P.M.R.: data analysis, reviewing, and editing the manuscript. A.B.: fieldwork, data analysis. V.G.: Conceptualisation, writing the manuscript, reviewing, and editing the manuscript. All authors have read and agreed to the published version of the manuscript.

Funding: This work was supported by the Regional Government of the Azores through the project M1.1.A/INFRAEST CIENT/A/001/2021—Base de Dados da PaleoBiodiversidade da Macaronésia. PMR was funded by Fundação para a Ciência e a Tecnologia (FCT) (DL57/2016/ICETA/EEC2018/25) and through the Portuguese National Funds, FCT, the European Union, QREN, FEDER, and COMPETE, through funding from the CIBIO/InBIO (project UIDB/50027/2020 and UIDP/50027/2020).

Institutional Review Board Statement: Not applicable.

Data Availability Statement: The original contributions presented in the study are included in the article/Supplementary Material, further inquiries can be directed to the corresponding author/s.

Conflicts of Interest: The authors declare no conflict of interest.

References

1. He, M.Q.; Zhao, R.L.; Hyde, K.D.; Begerow, D.; Kemler, M.; Yurkov, A.; McKenzie, E.H.C.; Raspé, O.; Kakishima, M.; Sánchez-Ramírez, S.; et al. Notes; outline and divergence times of Basidiomycota. *Fungal Divers.* **2019**, *99*, 105–367. [CrossRef]
2. Hawksworth, D.L. The magnitude of fungal diversity: The 1.5 million species estimate revisited. *Mycol. Res.* **2001**, *105*, 1422–1432. [CrossRef]
3. Beltrán-Tejera, E. Fungi. In *Lista de Especies Silvestres de Canarias (Hongos; Plantas y Animales Terrestres)*; Izquierdo, I., Martín, J.L., Zurita, N., Arechavaleta, M., Eds.; Consejería de Medio Ambiente y Ordenación Territorial, Gobierno de Canarias: Santa Cruz de Tenerife, Canary Islands, 2004; pp. 21–84.
4. Melo, I.; Cardoso, J. Os fungos (fungi) dos arquipélagos da Madeira e das selvagens. In *A List of the Terrestrial Fungi, Flora and Fauna of Madeira and Selvagens Archipelagos*; Borges, P.A.V., Abreu, C., Aguiar, A.M.F., Carvalho, P., Jardim, R., Melo, I., Oliveira, P., Sérgio, C., Serrano, A.R.M., Vieira, P., Eds.; Direcção Regional do Ambiente da Madeira: Funchal, Portugal; Universidade dos Açores: Angra do Heroísmo, Portugal, 2008; pp. 57–93.
5. Melo, I.; Cardoso, J.; Dueñas, M.; Salcedo, I.; Telleria, M.T. List of fungi. In *A List of the Terrestrial and Marine Biota from the Azores*; Borges, P.A.V., Costa, A., Cunha, R., Gabriel, R., Gonçalves, V., Martins, A.F., Melo, I., Parente, M., Raposeiro, P., Rodrigues, P., et al., Eds.; Princípa: Cascais, Portugal, 2010; pp. 219–221.
6. Drouet, H. *Catalogue de la Flore des Iles Azores*; Mémoires de la Société Académique du Département de l’Aube; Société Académique du Département de l’Aube: Troyes, France, 1866; pp. 81–233.
7. Berkeley, M.J. VIII. Enumeration of the Fungi collected during the Expedition of H.M.S. ‘Challenger’; Feb.–Aug. 1873. *Bot. J. Linn. Soc.* **1874**, *14*, 350–354. [CrossRef]
8. Dennis, R.W.G.; Reid, D.A.; Spooner, B. The Fungi of the Azores. *Kew Bull.* **1977**, *32*, 85–136. [CrossRef]
9. Trelease, W. *Botanical Observation on the Azores*; Missouri Botanical Garden Annual Report; Missouri Botanical Garden Press: St. Louis, MO, USA, 1897; pp. 77–220.
10. Bensaude, M. Diseases of Economic Plants in the Azores. *Bull. Misc. Inf.* **1926**, *1926*, 381–389. [CrossRef]
11. Tutin, T.G.; Warburg, E.F. Notes on the flora of the Azores. *J. Bot.* **1932**, *70*, 38–46.
12. Arwidsson, T.A. Short note on parasitic fungi from the Azores. *Bot. Not.* **1940**, *2*, 237–239.
13. Viveiros, A. Contribuição para o estudo das poliporáceas da ilha de S. Miguel, Açores. *Bol. Soc. Portug. Ci. Nat. B* **1949**, *17*, 92–93.
14. Gjaerum, H.B.; Dennis, R.W.G. Additions to the rust flora (Uredinales) of the Azores. *Vieraea* **1976**, *6*, 103–120.
15. Gjaerum, H.B.; Hansen, A. Additional Azorian rust species (Uredinales). *Sér. Bot.* **1984**, *6*, 73–78.
16. Gjaerum, H.B.; Sunding, P. Flora of Macaronesia. Checklist of rust fungi (Uredinales). *Sommerfeltia* **1986**, *4*, 1–42. Available online: <https://www.nhm.uio.no/forskning/publikasjoner/sommerfeltia/previous/vol-004> (accessed on 20 July 2023). [CrossRef]
17. Spooner, B.M.; Butterfill, G.B. Bibliography of Azores Mycology. *Arquipel. Life Mar. Sci.* **1998**, *16A*, 49–52.
18. Spooner, B.; Butterfill, G. Additions to the Uredinales and Ustilaginales of the Azores. *Vieraea* **1999**, *27*, 173–182.
19. Roberts, P.J.; Spooner, M.B. Heterobasidiomycetes from the Azores. *Kew Bull.* **2004**, *59*, 95–101. [CrossRef]
20. Ryvarden, L.; Spooner, B. Poroid Fungi from the Azores. *Kew Bull.* **2004**, *59*, 269–275. [CrossRef]
21. Dueñas, M.; Telleria, M.T.; Melo, I.; Rodríguez-Armas, J.L.; Beltrán-Tejera, E. A new species of Candelabrochaete (Polyporales; Basidiomycota). *Mycotaxon* **2008**, *103*, 299–305.
22. Dueñas, M.; Telleria, M.T.; Melo, I. The Aphyllophorales (Basidiomycota) of a Mediterranean biodiversity “hotspot Cazorla; Segura & Las Villas” Natural Park (Spain). *Mycotaxon* **2009**, *109*, 465–468.
23. Melo, I.; Dueñas, M.; Telleria, M.T. *Repetobasidium azoricum* (Basidiomycotina; Sistotremaceae); A new species from Azores Islands. *Synop. Fungorum* **2008**, *25*, 6–10.
24. Telleria, M.T.; Melo, I.; Dueñas, M.; Salcedo, I.; Cardoso, J.; Rodríguez-Armas, J.L.; Beltrán-Tejera, E. Corticioid fungi (Basidiomycota) from the Azores Islands: Flores and São Miguel. *Mycotaxon* **2009**, *109*, 141–144. [CrossRef]
25. Telleria, M.T.; Melo, I.; Dueñas, M.; Rodríguez-Armas, J.L.; Beltrán-Tejera, E.; Cardoso, J.; Salcedo, I. Diversity and richness of corticioid fungi (Basidiomycota) on Azores Islands: A preliminary survey. *Nova Hedwig.* **2009**, *88*, 285–308. [CrossRef]
26. Telleria, M.T.; Melo, I.; Dueñas, M.; Salcedo, I.; Cardoso, J.; Rodríguez-Armas, J.L.; Beltrán-Tejera, E. Corticioid fungi (Basidiomycota) from Madeira Island. *Mycotaxon* **2009**, *106*, 419–422.

27. Telleria, M.T.; Dueñas, M.; Beltrán-Tejera, E.; Rodríguez-Armas, J.L.; Martín, M.P. A new species of Hyphoderma (Meruliaceae; Polyporales) and its discrimination from closely related taxa. *Mycologia* **2012**, *104*, 1121–1132. [[CrossRef](#)] [[PubMed](#)]
28. Telleria, M.T.; Dueñas, M.; Melo, I.; Salcedo, I.; Martín, M.P. Une nouvelle espece de Peniophorella (Basidiomycota) de l'archipel des Açores. *Bull. Soc. Mycol. Fr.* **2012**, *128*, 105–119.
29. Telleria, M.T.; Melo, I.; Dueñas, M.; Salcedo, I.; Beltrán-Tejera, E.; Rodríguez-Armas, J.L.; Martín, M.P. Sistotremastrum guttiferum: A new species from the Macaronesian islands. *Mycol. Prog.* **2013**, *12*, 687–692. [[CrossRef](#)]
30. Telleria, M.T.; Dueñas, M.; Melo, I.; Salcedo, I.; Martín, M.P. Spelling out Jaapia species. *Mycol. Prog.* **2015**, *14*, 1–9. [[CrossRef](#)]
31. Telleria, M.T.; Dueñas, M.; Martín, M.P. Three new species of hydnothelia (polyporales; basidiomycota) from the Macaronesian Islands. *MycKeys* **2017**, *27*, 39–64. [[CrossRef](#)]
32. Borges, P.A.V.; Costa, A.; Cunha, R.; Gabriel, R.; Gonçalves, V.; Martins, A.F.; Melo, I.; Parente, M.; Raposeiro, P.; Rodrigues, P.; et al. *A List of the Terrestrial and Marine Biota from the Azores*; Príncipe: Cascais, Portugal, 2010; 432p.
33. Calonge, F.D.; Mir-Pegueroles, C. Contribución al estudio de los hongos de las islas Azores (Portugal). *Bol. Soc. Micol. Madr.* **2015**, *39*, 231–242.
34. Iglesias, P.; Fernández, J.; Oyarzabal, M.; Undagoitia, J. Aportaciones al catálogo micológico de la isla de Terceira (Islas Azores; Portugal) (Macaronesia). *Mikol. Errotari* **2021**, *18*, 159–276.
35. Marques, R.; Zêzere, J.; Trigo, R.; Gaspar, J.; Trigo, I. Rainfall patterns and critical values associated with landslides in Povoação Country (São Miguel Island; Azores): Relationships with the North Atlantic Oscillation. *Hydrol. Process.* **2008**, *22*, 478–494. [[CrossRef](#)]
36. Hernández, A.; Kutiél, H.; Trigo, R.M.; Valente, M.A.; Sigró, J.; Cropper, T.; Santo, F.E. New Azores archipelago daily precipitation dataset and its links with large-scale modes of climate variability. *Int. J. Climatol.* **2016**, *36*, 4439–4454. [[CrossRef](#)]
37. Azevedo, E.B.; Pereira, L.S.; Itier, B. Modelling the local climate in island environments: Water balance applications. *Agric. Water Manag.* **1999**, *40*, 393–403. [[CrossRef](#)]
38. DRRF *Direção Regional dos Recursos Florestais Estratégia Florestal dos Açores*; Regional Secretariat for Agriculture and Environment: Ponta Delgada, Azores, Portugal, 2014.
39. Raposeiro, P.M.; Hernández, A.; Pla-Rabes, S.; Gonçalves, V.; Bao, R.; Sáez, A.; Shanahan, T.; Benavente, M.; de Boer, E.J.; Richter, N.; et al. Climate change facilitated the early colonization of the Azores Archipelago during medieval times. *Proc. Natl. Acad. Sci. USA* **2021**, *118*, 1–7. [[CrossRef](#)] [[PubMed](#)]
40. Connor, S.E.; van Leeuwen, J.F.N.; Rittenour, T.M.; van der Knaap, W.O.; Ammann, B.; Björck, S. The ecological impact of oceanic island colonization—A palaeoecological perspective from the Azores. *J. Biogeogr.* **2012**, *39*, 1007–1023. [[CrossRef](#)]
41. Rull, V.; Lara, A.; Rubio-Inglés, M.J.; Giral, S.; Gonçalves, V.; Raposeiro, P.; Hernández, A.; Sánchez-López, G.; Vázquez-Loureiro, D.; Bao, R.; et al. Vegetation and landscape dynamics under natural and anthropogenic forcing on the Azores Islands: A 700-year pollen record from the São Miguel Island. *Quat. Sci. Rev.* **2017**, *159*, 155–168. [[CrossRef](#)]
42. Moreira, J.M. *Alguns Aspectos de Intervenção Humana na Evolução da Paisagem da Ilha de S. Miguel (Açores)*; Serviço Nacional de Parques, Reservas e Conservação da Natureza: Ponta Delgada, Azores, Portugal, 1987; p. 83.
43. Triantis, K.A.; Hortal, J.; Amorim, I.R.; Cardoso, P.; Santos, A.M.; Gabriel, R.; Borges, P.A. Resolving the Azorean knot: A response to Carine & Schaefer (2010). *J. Biogeogr.* **2012**, *39*, 1179–1187.
44. Bon, M. *Guía de Campo de los Hongos de Europa*; Omega: Barcelona, Spain, 1987; 368p.
45. Courtecuisse, R.; Duhem, B. *Guía de los Hongos de la Península Ibérica; Europa y Norte de África*; Omega: Barcelona, Spain, 2005; 486 p.
46. Martínez, I. Lichenicolous fungi from the Iberian Peninsula and the Macaronesian area. *Nova Hedwignia* **2002**, *74*, 51–67. [[CrossRef](#)]
47. Berger, F.; Aptroot, A. Further contributions to the flora of lichens and lichenicolous fungi from the Azores. *Arquipél. Life Mar. Sci.* **2002**, *19A*, 1–12.
48. Aptroot, A.; Rodrigues, A.; Schumm, F.; Camara, S.; Gabriel, R. List of lichens and lichenological fungi. In *A List of the Terrestrial and Marine Biota from the Azores*; Borges, P.A.V., Costa, A., Cunha, R., Gabriel, R., Gonçalves, V., Martins, A.F., Melo, I., Parente, M., Raposeiro, P., Rodrigues, P., et al., Eds.; Príncipe: Cascais, Portugal, 2010; pp. 59–79.
49. Hafellner, J. Lichenicolous Biota (Nos 121–150). *Fritschiana* **2012**, *74*, 19–41.
50. Hafellner, J. Lichenicolous Biota (Nos 151–180). *Fritschiana* **2013**, *76*, 47–68.
51. van den Boom, P.P. Additions and notes to the checklist of lichens and lichenicolous fungi of Cape Verde. *Österr. Z. Pilzk* **2012**, *21*, 5–16.
52. van den Boom, P.P. Lichens and lichenicolous fungi of the Azores (Portugal); collected on São Miguel and Terceira with the descriptions of seven new species. *Acta Bot. Hung.* **2016**, *58*, 199–222. [[CrossRef](#)]
53. Millanes, A.M.; Diederich, P.; Wedin, M. *Cyphobasidium* gen. nov.; A new lichen-inhabiting lineage in the Cystobasidiomycetes (Pucciniomycotina; Basidiomycota; Fungi). *Fungal Biol.* **2016**, *120*, 1468–1477. [[CrossRef](#)]
54. Millanes, A.M.; Diederich, P.; Westberg, M.; Wedin, M. Three New Species in the *Biatoropsis usnearum* Complex. *Herzogia* **2016**, *29*, 337–354. [[CrossRef](#)]
55. Diederich, P.; Millanes, A.M.; Etayo, J.; van den Boom, P.P.G.; Wedin, M. Finding the needle in the haystack: A revision of *Crittendenia*; a surprisingly diverse lichenicolous genus of *Agaricostilbomycetes*, *Pucciniomycotina*. *Bryologist* **2022**, *125*, 248–293. [[CrossRef](#)]
56. Matheny, P.; Curtis, J.; Hofstetter, V.; Aime, M.; Moncalvo, J.; Slot, J.; Ammirati, J.; Baroni, T.; Bougher, N.; Hughes, K.; et al. Major clades of Agaricales: A multilocus phylogenetic overview. *Mycologia* **2006**, *98*, 982–995. [[CrossRef](#)] [[PubMed](#)]

57. Justo, A.; Miettinen, O.; Floudas, D.; Ortiz-Santana, B.; Sjökvist, E.; Lindner, D.; Nakasone, K.; Niemelä, T.; Larsson, K.H.; Ryvarde, L.; et al. A revised family-level classification of the Polyporales (Basidiomycota). *Fungal Biol.* **2017**, *121*, 798–824. [[CrossRef](#)] [[PubMed](#)]
58. Talhinhos, P.; Silva, E.; Nunes, N.; Ramos, A.P. First Report of *Puccinia thaliae* Causing Rust on *Canna* spp. in Europe. *Plant Dis.* **2016**, *100*, 1242. [[CrossRef](#)]
59. Mohr, P.; Ludwig, E. Four new species of *Leucoagaricus* and *Leucocoprinus* with brownish to fuliginous hues of the pileus. *Feddes Reper.* **2004**, *115*, 20–34. [[CrossRef](#)]
60. Escobio García, V.J.; Bailón Casanova, A.; De Saá Rodríguez, L.; Rodrigo Pérez, J.D. Algunas nuevas citas para el Catálogo fúngico de las islas de Gran Canaria y Lanzarote; (Islas Canarias) y la confirmación de *Suillus luteus* (L.) S.F. Gray; nueva especie para las Islas Canarias. *Cantarela Bol. Soc. Micol. Gran Canar.* **2005**, *27*, 1–5.
61. Escobio García, V.J.; Dossena, M.; Chávez barreto, D.; Rodríguez Cabrera, C.C.; Pérez Ramírez, M. Additions to the fungi check list from the Canary Islands. *Cantarela Bol. Soc. Micol. Gran Canar.* **2016**, *74*, 1–4.
62. Escobio García, V.J.; Innocenti, M.; Hernández, Y.T.; Castillo, J.S.; Jimeno, C.L.; Llaguna, R.Z. Hongos hipógeos en las Islas Canarias. Novedades y últimas notas. *Bot. Macarone.* **2023**, *32*, 133–144.
63. Barrasa, J.M.; Esteve-Raventós, F.; Dähncke, R.M. *Clitocybula canariensis* (Tricholomataceae); a new brown-rot fungus from the Canary Islands (Spain). *Fungal Divers.* **2006**, *22*, 1–11.
64. Bañares-Boudet, A.; Beltrán-Tejera, E.; Bon, M. *Gerronema wildpretii* sp. nov. (Agaricales; Basidiomycetes) a new species from the Canary Islands. *Mycologia* **2006**, *98*, 455–459. [[CrossRef](#)] [[PubMed](#)]
65. Bañares-Boudet, A.; Antonín, V.; Moreno, G. *Gymnopus beltraniae*; a new species of section *vestipedes* (Agaricales) from the Canary Islands (Spain). *Persoonia—Mol. Phylogeny Evol. Fungi* **2007**, *19*, 255–259.
66. Bañares-Boudet, A.; Beltrán-Tejera, E. Estudio micológico del Parque Nacional de Garajonay (La Gomera; Islas Canarias). Agaricales s.l. *An. Jard. Bot. Madr.* **2009**, *66*, 47–61. [[CrossRef](#)]
67. Bañares-Boudet, A.; Beltrán-Tejera, E. Some rare or interesting Agaricales (Basidiomycota) of Caldera de Taburiente National Park (La Palma, Canary Islands). *Cryptogam. Mycol.* **2009**, *30*, 21–38.
68. Bañares-Boudet, A.; Beltrán, E. High altitude Agaricales from the Teide National Park (Canary Islands; Spain). *Nova Hedwig.* **2014**, *99*, 49–63. [[CrossRef](#)]
69. Ribes, M.A. *Stereum illudens* and *Psilocybe hepatochrous*; two new species for the mycobiota of the Canary Islands. *Bol. Soc. Micol. Madr.* **2007**, *31*, 111–116.
70. Iglesias, P.; Hidalgo, F.; Fernández, V.; Undagoitia, J. Aportaciones al conocimiento micológico de la isla de La Palma. *Mikol. Errotari* **2009**, *6*, 91–117.
71. Beltrán-Tejera, E.; Rodríguez-Armas, J.L.; Quijada, L.; Gutiérrez Peraza, J.; Díaz, J.; Bañares-Boudet, A. Contribución al estudio de la micobiota de los castaños del Norte de Tenerife (Islas Canarias. España). II. In *Homenaje al Profesor Wolfredo Wildpret de la Torre*; Beltrán-Tejera, E., Afonso-Carrillo, J., García Gallo, A., Rodríguez Delgado, O., Eds.; Instituto de Estudios Canarios: La Laguna, Spain, 2009; pp. 453–458.
72. Beltrán-Tejera, E.; Quijada, L.; Díaz, J.; Rodríguez-Armas, J.L.; Bañares, A.; Leal, J. Estudio micológico de El Canal y Los Tiles (La Palma; Islas Canarias). V. Datos adicionales. *An. Jard. Bot. Madr.* **2009**, *66*, 93–107. [[CrossRef](#)]
73. Beltrán-Tejera, E.; Rodríguez-Armas, J.L.; Telleria, M.T.; Dueñas, M.; Melo, I.; Díaz-Armas, M.J.; Salcedo, I.; Cardoso, J. Corticioid fungi from arid and semiarid zones of the Canary Islands (Spain). Additional data. 2. *Mycotaxon* **2013**, *123*, 492.
74. Beltrán-Tejera, E.; Rodríguez-Armas, J.L.; Díaz-Armas, M.J.; Quijada, L. Aphyllorphoroid fungi in Teide National Park (Tenerife; Canary Islands). *Mycotaxon* **2019**, *143*, 1–24. [[CrossRef](#)]
75. Ribes, M.A. Contribution to the mycobiota knowledge from Canary Islands (Spain) I. *Bol. Soc. Micol. Madr.* **2009**, *33*, 201–223.
76. Ribes, M.A.; Pancorbo, F. Contribution to the mycobiota knowledge from Canary Islands (Spain) II. *Bol. Soc. Micol. Madr.* **2010**, *34*, 235–256.
77. Ribes, M.A.; Pancorbo, F.; Luque, M. Contribución al conocimiento de la micobiota de las Islas Canarias (España) III. *Bol. Soc. Micol. Madr.* **2011**, *35*, 135–153.
78. Ribes, M.A.; Vila, J. *Entoloma luteoohraceum* y *E. luteoviolaceum*; dos nuevas especies de las islas Canarias. *Fungi Delin.* **2013**, *66*, 86–149.
79. Dähncke, R.M.; Contu, M.; Vizzini, A. New taxa in the genus *Lyophyllum* s.l. from La Palma (Canary Islands; Spain). *Mycotaxon* **2010**, *111*, 323–330. [[CrossRef](#)]
80. Dähncke, R.M.; Contu, M.; Vizzini, A. *Clitocybula striata* sp. nov. (Basidiomycota; Agaricomycetes; Agaricales): Una nuova specie delle isole Canarie (Spagna); con note sulla diffusione del genere *Clitocybula* nell'isola di La Palma. *Rev. Catalana Micol.* **2010**, *32*, 7–12.
81. Dähncke, R.M.; Contu, M.; Vizzini, A. Two new species of *Lyophyllum* s.l. (Basidiomycota; Agaricomycetes) from La Palma (Canary Islands; Spain). *Mycotaxon* **2011**, *115*, 65–71. [[CrossRef](#)]
82. Chavez, D.; Negrin, R.; Escobio, V.J. Nuevas citas para el Catálogo fúngico de la isla de Tenerife (Islas Canarias). *Cantarela Bol. Soc. Micol. Gran Canar.* **2011**, *52*, 1–4.
83. Velaz, J.I.; López, J.F.; Chavez, D.; Escobio, V.J. Nuevas citas para el Catálogo fúngico de la isla de Gran Canaria (Islas Canarias) (II). *Cantarela Bol. Soc. Micol. Gran Canar.* **2012**, *55*, 1–4.

84. Velaz, J.I.; López, J.F.; Chavez, D.; Toledo, Y.; Santiago, J.; Escobio, V.J. Nuevas citas para el Catálogo fúngico de la isla de Gran Canaria (Islas Canarias) (III). *Cantarela Bol. Soc. Micol. Gran Canar.* **2012**, *87*, 1–4.
85. Velaz, J.I.; López, J.F.; Negrín, R.; Chávez, D.; Escobio, V.J. Nuevas citas para el Catálogo fúngico de la isla de Gran Canaria (Islas Canarias). *Cantarela Bol. Soc. Micol. Gran Canar.* **2011**, *53*, 1–4.
86. Moreno, G.; Ribes, M.A.; Escobio, V.; Khalid, A.N. *Queletia mirabilis*, a rare gasteroid species in Gran Canaria; Spain. *Mycotaxon* **2012**, *119*, 89–94. [[CrossRef](#)]
87. Vizzini, A.; Contu, M. *Lyophyllum rosae-mariae*. *Mycosphere* **2010**, *1*, 83–86.
88. Vizzini, A.; Dähncke, R.M.; Contu, M. *Clitopilus canariensis* (Basidiomycota; Entolomataceae); a new species in the *C. nitellinus*-complex (*Clitopilus* subg. *Rhodophana*) from the Canary Islands (Spain). *Brittonia* **2011**, *63*, 486–488.
89. Vizzini, A.; Dähncke, R.M.; Contu, M. *Clitopilus rubroparvulus* (Basidiomycota; Agaricomycetes); a new species from the Canary Islands (Spain). *Mycosphere* **2011**, *2*, 291–295.
90. Daniëls, P.P.; Ripoll, M.; Christan, J. Notas en Gomphales V: Primeros Registros de *Ramaria cokeri* R.H. Petersen; para Macaronesia y África. *Cryptogam. Mycol.* **2012**, *33*, 481–488. [[CrossRef](#)]
91. López, J.F.; Velaz, J.I.; Luque, M.; Escobio, V.J. Contribución al conocimiento de los hongos del jardín botánico Viera y Clavijo (Gran Canaria; islas Canarias). (I). *Bot. Macaronés.* **2013**, *28*, 51–62.
92. Kout, J.; Quijada, L.; Beltrán-Tejera, E. A new species of *Tremella* from Macaronesia. *Phytotaxa* **2015**, *226*, 75–82. [[CrossRef](#)]
93. García, F.S.; Lantigua, J.L.; Benguría, E.; Cabeza, R.; Calcines, L.; García, B.; Jiménez, L.; Jiménez, M.A.; López, C.; Francisco, J.; et al. Nuevas citas para el Catálogo fúngico de la isla de Gran Canaria; Islas Canarias. (VII). *Cantarela Bol. Soc. Micol. Gran Canar.* **2016**, *70*, 1–4.
94. Lantigua, J.L.; López, J.F.; Marrero, A.; Naranjo, R.; Santiago, J.; Suárez-gil, A.; Toledo, Y.; Velaz, J.I.; Escobio, V.J. Nuevas citas para el Catálogo fúngico de la isla de Gran Canaria; Islas Canarias. (VIII). *Cantarela Bol. Soc. Micol. Gran Canar.* **2017**, *76*, 1–4.
95. Zamora, J.; Diederich, P.; Millanes, A.; Wedin, M. An old familiar face: *Tremella anaptychia* sp. nov. (Tremellales; Basidiomycota). *Phytotaxa* **2017**, *307*, 254–262. [[CrossRef](#)]
96. Etayo, J.; van den Boom, P.P. Contribution to the lichen flora of the Canary Islands. VIII. Some lichenicolous fungi. *Nova Hedwig.* **2005**, *81*, 157–162. [[CrossRef](#)]
97. Perez Ramirez, M.; Chávez Barreto, D.; López Quintanilla, J.F.; Negrín Piñero, R.; Caridad Pulido, J.; Ledesma Lucas, L.; Fernández Fernández, C.; Toledo Hernández, Y.; Santiago Castillo, J.; Velaz, J.I.; et al. Los hongos en la isla de El Hierro (Islas Canarias): Nuevas aportaciones al catálogo insular (X). *Cantarela Bol. Soc. Micol. Gran Canar.* **2018**, *82*, 1–4.
98. Perez Ramirez, M.; Toledo Hernández, Y.; Rodríguez Cabrera, C.C.; Santiago Castillo, J.; Velaz, J.I.; Escobio García, V.J. Los hongos en la isla de El Hierro (Islas Canarias): Nuevas aportaciones al catálogo insular (XII). *Cantarela Bol. Soc. Micol. Gran Canar.* **2021**, *92*, 1–4.
99. Díaz-Armas, M.J.; Beltrán-Tejera, E.; Rodríguez-Armas, J.L.; Quijada, L. The genus *Peniophora* (Russulales; Basidiomycota) in the high mountain of Tenerife (Teide National Park; Canary Islands). *Nova Hedwig.* **2019**, *108*, 379–404. [[CrossRef](#)]
100. Milán, S.; Torres, J.M.; Velaz, J.I.; Escobio, V.J. Nuevas especies para la biota fúngica de la isla de Fuerteventura. (Islas Canarias). (II). *Cantarela Bol. Soc. Micol. Gran Canar.* **2020**, *85*, 1–4.
101. Toledo, Y.; Wolfmeier, B.; Suárez-Gil, A.; Cabeza, R.; Lopez, C.; Santiago, J.; López-quintanilla, J.F.; Velaz, J.I.; García-morales, F.S.; Suárez-Hernández, F.; et al. Nuevas citas para el Catálogo de los hongos de la Finca de Osorio; (Gran Canaria) (V). *Cantarela Bol. Soc. Micol. Gran Canar.* **2019**, *86*, 1–4.
102. Toledo, Y.; Santiago, J.; Toledo, D.M.; Toledo, L.D.; Rodríguez, C.C.; Escobio, V.J. Nuevas adiciones para el Catálogo fúngico de la isla de Tenerife (Islas Canarias). (III). *Cantarela Bol. Soc. Micol. Gran Canar.* **2020**, *90*, 1–4.
103. Toledo, Y.; Wolfmeier, B.; Suárez-Gil, A.; Ribera, P.; Morales, E.; Cabeza, R.; Jiménez, L.; Jiménez, M.; Lantigua, J.L.; López-quintanilla, J.F.; et al. Nuevas citas para el Catálogo fúngico de la isla de Gran Canaria; Islas Canarias. (X). *Cantarela Bol. Soc. Micol. Gran Canar.* **2020**, *87*, 1–4.
104. Wolfmeier, B.; Ribera Fernández, P.; Escobio, V.J. *Dictyocephalos attenuatus* (Peck) Long & Plunkettria; new appointment for the Canary Islands. *Cantarela Bol. Soc. Micol. Gran Canar.* **2020**, *91*, 1–4.
105. Calonge, F.D.; Menezes de Sequeira, M. Adiciones al Catálogo Micológico de Madeira (Portugal). IV. Registro de 13 especies nuevas. *Bol. Soc. Micol. Madr.* **2011**, *35*, 127–133.
106. Calonge, F.D.; Menezes de Sequeira, M. Adiciones al catálogo micológico de Madeira (Portugal). VII. Registro de 3 táxones nuevos. *Bol. Soc. Micol. Madr.* **2014**, *38*, 159–161.
107. Calonge, F.D.; Menezes de Sequeira, M. *Hongos del Archipiélago de Madeira*; Raíces: Funchal, Madeira, Portugal, 2017; 264p.
108. Calonge, F.D.; Menezes de Sequeira, M.; Aguiar, G.; Rocha, E. Adiciones al catálogo micológico de Madeira (Portugal). II. Registro de 23 especies nuevas. *Bol. Soc. Micol. Madr.* **2008**, *32*, 249–259.
109. Calonge, F.D.; Menezes de Sequeira, M.; Freitas, T.; Rocha, E.; Franquinho, L. *Phallus maderensis* sp. nov., found in Madeira. Portugal. *Bol. Soc. Micol. Madr.* **2008**, *32*, 101–104.
110. Calonge, F.D.; Menezes de Sequeira, M.; Aguiar, G.; Hernández Crespo, J.C. Additions to the mycological catalogue of Madeira (Portugal) III 15 new records. *Bol. Soc. Micol.* **2009**, *33*, 255–261.
111. Calonge, F.D.; Menezes de Sequeira, M.; Rocha, E.; Hernández Crespo, J.C. Algunos hongos interesantes de Madeira (Portugal). *Bull. Semest. Féd. Assoc. Mycol. Méditerran.* **2010**, *37*, 29–34.

112. Calonge, F.D.; Menezes de Sequeira, M.; Silva, J.J.; Rocha, E.; Franquinho, L. Adiciones al catálogo micológico de Madeira (Portugal). V. Registro de seis especies nuevas. *Bol. Soc. Micol. Madr.* **2012**, *36*, 93–98.
113. Calonge, F.D.; Menezes de Sequeira, M.; Daniells, P.P.; Paolinelli, R. Additions to the mycological catalogue of Madeira (Portugal). VI. 22 new records. *Bol. Soc. Micol. Madr.* **2013**, *37*, 125–133.
114. Melo, I.; Cardoso, J.; Dueñas, M.; Salcedo, I.; Telleria, M.T. *Peniophora aluticolor* (Fungi; Basidiomycota); An orphaned species restudied. *Nova Hedwig.* **2012**, *94*, 437–440. [CrossRef]
115. Iglesias, P.; Fernández-Vicente, J.; Oyarzabal, M. Aportaciones al catálogo micológico de la isla de Madeira (Portugal). *Mikol. Errotari* **2014**, *11*, 99–165.
116. Fernández-Vicente, J.; Iglesias, P.; Oyarzabal, M. Aportaciones al catálogo micológico de la isla de Madeira (Portugal) II. *Mikol. Errotari* **2016**, *13*, 155–209.
117. Silva, J.J.; Koschatzky, M.; Melo, I.; Dueñas, M. First record of *Perenniporia ochroleuca* (Berk.) Ryvarden (polyporaceae; basidiomycota); in Madeira Island (Portugal). *Bol. Mus. Mun. Funchal* **2012**, *62*, 19–24.
118. Silva, J.J.; Ševčíková, H. *Agaricus bitorquis* (Quél.) Sacc. (Agaricaceae); a new record for the island of Porto Santo (Madeira; Portugal). *Bol. Mus. Mun. Funchal* **2022**, *72*, 21–25.
119. Bañares-Baudet, A. Hongos/Fungos (protozoa; chromista; fungi). In *Lista Preliminar de Especies Silvestres de Cabo Verde. (Hongos; Plantas y Animales Terrestres)*; Arechavaleta, M., Zurita, N., Marrero, M.C., Martín, J.M., Eds.; Gobierno de Canarias, Consejería de Medio Ambiente y Ordenación Territorial: Santa Cruz de Tenerife, Spain, 2005; pp. 23–26.
120. Gjaerum, H.B. Rust fungi (Uredinales) from Cape Verde Islands. *Bot. Macaronés.* **1984**, *12–13*, 123–138.
121. Martín, M.P.; Dueñas, M.; Telleria, T. *Rhizopogon granuloflavus* M.P. Martín; M. Dueñas & Telleria; sp. nov. *Persoonia* **2015**, *34*, 248–249.
122. Martín, M.P.; Rhudson, H.S.; Cruz, F.; Dueñas, M.; Baseia, M.; Telleria, T. *Cyathus lignilantanae* sp. nov.; a new species of bird's nest fungi (Basidiomycota) from Cape Verde Archipelago. *Phytotaxa* **2015**, *236*, 161–172. [CrossRef]
123. Martín, M.P.; Dueñas, M.; Telleria, T. *Scloderma capeverdeanum* M.P. Martín; M. Dueñas & Telleria; sp. nov. *Persoonia* **2016**, *36*, 412–413.
124. Bretzel, J.; Endriß, T.; Halbinger, F.; Hanusch, M.; Hege, R.; Krömmüller, I.; Reith, S.; Rupprecht, V.; Sach, M.; Schwaiger, S.; et al. Additions to the checklist of terrestrial biodiversity of Cabo Verde. *Zool. Caboverdiana* **2018**, *7*, 28–38.
125. Dueñas, M.; Martín, M.P.; Telleria, M.T. First records from Cape Verde and range extension of *Coniophora eremophila* Lindsey & Gilb. (Basidiomycota; Boletales): A morphological and molecular identification. *Check List* **2023**, *19*, 399–408.
126. Clark, M.R. USDA United States National Fungus Collections (BPI). 1955. Available online: <https://nt.ars-grin.gov/fungaldatabases> (accessed on 1 June 2023).
127. Hunt, J. *List of Intercepted Plant Pests, 1958*; United States Department of Agriculture: Beltsville, MD, USA, 1959.
128. Gardner, D.E.; Hodges, J.C.S. Diseases of *Myrica faya* (firetree; Myricaceae) in the Azores; Madeira; and the Canary Islands. *Plant Pathol.* **1990**, *39*, 326–330. [CrossRef]
129. Costa, C. *Contributo Para o Conhecimento dos Problemas Fitossanitários em Diferentes Espécies de Cameleiras (Caméllia L.) na Ilha de São Miguel*; Universidade dos Açores: Ponta Delgada, Azores, Portugal, 2013; 166p.
130. Mueller, R.C.; Paula, F.S.; Mirza, B.S.; Rodrigues, J.L.; Nüsslein, K.; Bohannan, B.J. Links between plant and fungal communities across a deforestation chronosequence in the Amazon rainforest. *ISME J.* **2014**, *8*, 1548–1550. [CrossRef] [PubMed]
131. Shi, L.; Dossa, G.G.O.; Paudel, E.; Zang, H.; Xu, J.; Harrison, R.D. Changes in fungal communities across a forest disturbance gradient. *Appl. Environ. Microbiol.* **2019**, *85*, e00080-19. [CrossRef] [PubMed]
132. López-Quintero, C.A.; Straatsma, G.; Franco-Molano, A.E.; Boekhout, T. Macrofungal diversity in Colombian Amazon forests varies with regions and regimes of disturbance. *Biodivers. Conserv.* **2012**, *21*, 2221–2243. [CrossRef]
133. Navarro-Noya, Y.E.; Montoya-Ciriaco, N.; Muñoz-Arenas, L.C.; Hereira-Pacheco, S.; Estrada-Torres, A.; Dendooven, L. Conversion of a High-Altitude Temperate Forest for Agriculture Reduced Alpha and Beta Diversity of the Soil Fungal Communities as Revealed by a Metabarcoding Analysis. *Front. Microbiol.* **2021**, *12*, 667566. [CrossRef] [PubMed]
134. Nogué, A.S.; Santos, A.M.; Birks, H.J.B.; Björck, S.; Castilla-Beltrán, A.; Connor, S.; De Boer, E.J.; De Nascimento, L.; Felde, V.A.; Fernández-Palacios, J.M.; et al. The human dimension of biodiversity changes on islands. *Science* **2021**, *372*, 488–491. [CrossRef]
135. Hjortstam, K.; Larsson, K.H. Corticioid fungi growing on ferns in northern Europe. *Windahlia* **1997**, *22*, 49–55.
136. Martin, G.W. On the genus *Hobsonia*. *Brittonia* **1959**, *11*, 98–101. [CrossRef]
137. Goos, R.D. Some helicosporous fungi from Hawaii. *Mycologia* **1980**, *72*, 595–610. [CrossRef]
138. Udagawa, S.; Uchiyama, S. Materials for the fungus flora of Japan (57). *Mycoscience* **2000**, *41*, 515–518. [CrossRef]
139. Boudjelas, S.; Browne, M.; De Poorter, M.; Lowe, S. *100 de las Especies Exóticas Invasoras más Dañinas del Mundo: Una Selección del Global Invasive Species Database*; IUCN: Gland, Switzerland, 2000.
140. Aime, M.C.; Bell, C.D.; Wilson, A.W. Deconstructing the evolutionary complexity between rust fungi (Pucciniales) and their plant hosts. *Stud. Mycol.* **2018**, *89*, 143–152. [CrossRef] [PubMed]
141. Helfer, S. *Coleosporium* in Europe. *Mycotaxon* **2013**, *124*, 87–99. [CrossRef]
142. Sandoval, P.; Henríquez, J.L.; Fagúndez, L.; Larraín, J. First records of *Eocronartium muscicola* (Basidiomycota; Eocronartiaceae) in Chile on two new hosts. *Gayana Bot.* **2012**, *69*, 100–104. [CrossRef]
143. Vellinga, E.C.; Wolfe, B.E.; Pringle, A. Global patterns of ectomycorrhizal introductions. *New Phytologist* **2009**, *181*, 960–973. [CrossRef]

144. Dickie, I.; Johnston, P. *Invasive Fungi Research Priorities, with a Focus on Amanita muscaria*; Landcare Research: Lincoln, New Zealand, 2008; p. 34.
145. Hall, I.R.; Lyon, A.J.E.; Wang, Y.; Sinclair, L. Ectomycorrhizal fungi with edible fruiting bodies 2. *Boletus edulis*. *Econ. Bot.* **1998**, *52*, 44–56. [[CrossRef](#)]
146. Costa, A.C.; Balibrea, A.; Raposeiro, P.M.; Santos, S.; Souto, M.; Gonçalves, V. Non-indigenous and Invasive Freshwater Species on the Atlantic Islands of the Azores Archipelago. *Front. Ecol. Evol.* **2021**, *9*, 631214. [[CrossRef](#)]
147. Otto, R.; Garzón-Machado, V.; del Arco, M.; Fernández-Lugo, S.; de Nascimento, L.; Oromí, P.; Báez, M.; Ibáñez, M.; Alonso, M.R.; Fernández-Palacios, J.M. Unpaid extinction debts for endemic plants and invertebrates as a legacy of habitat loss on oceanic islands. *Divers. Distrib.* **2017**, *23*, 1031–1041. [[CrossRef](#)]
148. Silva, L.; Smith, C.W. A Characterization of the Non-indigenous Flora of the Azores Archipelago. *Biol. Invasions* **2004**, *6*, 193–204. [[CrossRef](#)]
149. Schwartz, M.W.; Hoeksema, J.D.; Gehring, C.A.; Johnson, N.C.; Klironomos, J.N.; Abbott, L.K.; Pringle, A. The promise and the potential consequences of the global transport of mycorrhizal fungal inoculum. *Ecol. Lett.* **2006**, *9*, 501–515. [[CrossRef](#)]
150. Wojewoda, W.; Karasinski, D. Invasive macrofungi (ascomycota and basidiomycota) in Poland. *Biol. Invasions Pol.* **2010**, *1*, 7–21.
151. Vizzini, A.; Zotti, M.; Mello, A. Alien fungal species distribution: The study case of *Favolaschia calocera*. *Biol. Invasions* **2009**, *11*, 417–429. [[CrossRef](#)]
152. Parent, G.H.; Thoen, D.; Calonge, F.D. Nouvelles données sur la repartition de *Clathrus archeri*; En particulier dans l'ouest et le sud-ouest de l'Europe. *Bull. Soc. Trimest. Mycol. Fr.* **2000**, *116*, 241–266.
153. Coetzee, M.P.; Wingfield, B.D.; Harrington, T.C.; Steimel, J.; Coutinho, T.A.; Wingfield, M.J. The root rot fungus *Armillaria mellea* introduced into South Africa by early Dutch settlers. *Mol. Ecol.* **2001**, *10*, 387–396. [[CrossRef](#)] [[PubMed](#)]
154. Sheridan, W.L. Note on the ecology of *Lepiota lutea*. *Ecology* **1956**, *37*, 602–603. [[CrossRef](#)]
155. Birkebak, J.M. The genus *Leucocoprinus* in western Washington. *Mycotaxon* **2010**, *112*, 83–102. [[CrossRef](#)]
156. Reyes-Betancort, J.A.; Santos-Guerra, A. SW Morocco: An obvious step for understanding the Canary Islands Flora. In *Proceedings of the Amurga International Conferences on Island Biodiversity 2011*; Caujapé-Castells, J., Nieto Feliner, G., Fernández Palacios, J.M., Eds.; Fundación Canaria Amurga Maspalomas: Las Palmas, Spain, 2013; pp. 206–215.
157. Reyes-Betancort, J.A.; Santos Guerra, A.; Guma, I.R.; Humphries, C.J.; Carine, M.A. Diversity; rarity and the evolution and conservation of the Canary Islands endemic flora. *An. Jard. Bot. Madr.* **2008**, *65*, 25–45. [[CrossRef](#)]
158. Jardim, R.; Menezes de Sequeira, M. As plantas vasculares (Pteridophyta e Spermatophyta) dos arquipélagos. In *A List of the Terrestrial Fungi, Flora and Fauna of Madeira and Selvagens Archipelagos*; Borges, P.A., Abreu, C., Aguiar, A.M.F., Carvalho, P., Jardim, R., Melo, I., Oliveira, P., Sérgio, C., Serrano, A.R.M., Vieira, P., Eds.; Direcção Regional do Ambiente da Madeira: Funchal, Portugal; Universidade dos Açores: Angra do Heroísmo, Portugal, 2008; pp. 157–178.
159. Torrend, C. Première contribution pour l'étude des champignons de l'île de Madère. *Brotéria Sér. Bot.* **1909**, *8*, 128–144.
160. Torrend, C. Deuxième contribution pour l'étude des champignons de l'île de Madère. *Brotéria Sér. Bot.* **1912**, *10*, 29–49.
161. Torrend, C. Troisième contribution pour l'étude des champignons de l'île de Madère. *Brotéria Sér. Bot.* **1913**, *11*, 165–181.
162. Silva, L.; Moura, M.; Schaefer, H.; Rumsay, F.; Dias, E.F. Lista das plantas vasculares (Tracheobionta). In *A List of the Terrestrial and Marine Biota from the Azores*; Borges, P.A.V., Costa, A., Cunha, R., Gabriel, R., Gonçalves, V., Martins, A.F., Melo, I., Parente, M., Raposeiro, P., Rodrigues, P., et al., Eds.; Princípiã: Cascais, Portugal, 2010; pp. 117–146. 432p.
163. Desjardin, D.E.; Perry, B.A. Fungi of São Tomé and Príncipe Islands: Basidiomycete Mushrooms and Allies. In *Biodiversity of the Gulf of Guinea Oceanic Islands: Science and Conservation*; Ceriaco, L.M.P., de Lima, R.F., Melo, M., Bell, R.C., Eds.; Springer International Publishing: Cham, Switzerland, 2022; pp. 189–216. [[CrossRef](#)]
164. Mumford, B. *List of Intercepted Plant Pests, 1964*; United States Department of Agriculture: Beltsville, MD, USA, 1965.
165. Etayo, J. Hongos liquenícolas de las islas Azores. I. Terceira. *Ascomycete* **2018**, *10*, 107–116.
166. Purvis, Q.W.; James, P.W. Estudo dos líquenes dos Açores. Parte I Caldeira do Faial. *Arquipel. Ciênc. Biol. Mar.* **1993**, *11A*, 1–15.

Disclaimer/Publisher's Note: The statements, opinions and data contained in all publications are solely those of the individual author(s) and contributor(s) and not of MDPI and/or the editor(s). MDPI and/or the editor(s) disclaim responsibility for any injury to people or property resulting from any ideas, methods, instructions or products referred to in the content.