

**Merlin Trust – Alpine Garden Society Tour Scheme 2012**  
**South Africa – Tour to the Eastern Cape 6<sup>th</sup> – 21<sup>st</sup> February**  
**2012**

**By: Merlin recipient, Carol Hart**



The author photographing *Crassula vaginata*, Aurora Peak, Maclear

For Granny Grace

## Contents

Acknowledgements	iv
Introduction	1
The Merlin Award	1
Our Guides	1
The Tour Area	2
Map	3
The Biomes	4
The Pictures	5
Highlights of the Tour	6
Itinerary	7
A Few More Highlights	8
Conclusion	9
References	10
Ode to the Flowers of the Eastern Cape	11-12
The Tour in Pictures	13-93

## **Acknowledgements**

With great thanks to the Merlin Trust for enabling me to be a part of this tour to the Eastern Cape. What an eye-opening first ever botanical trip to such a diverse rich country! Huge, huge thanks to Cameron McMaster, for his passionate wealth of natural history knowledge which he so keenly and positively shares. His experience, interest and expertise at flora identification are a real inspiration and have helped to protect threatened species. His website; his photos are an amazing resource to reference (<http://www.africanbulbs.com>). Huge big thanks also go to Dawie Human, our other guide, whose added experience and knowledge of natural history complemented our whole tour experience of the Eastern Cape. I'd like to thank all the hosts for their hospitality and care and all the other group members who made the trip an even more memorable and enjoyable event and shared and cared for each other. Thank you to my employers, The Royal Botanic Gardens Kew, and colleagues, for being supportive and encouraging; Peter Colbourne, and Sarah Bell for helping with my IT deficiencies and lastly a loving thank you to my parents for all your invaluable support, especially for getting me to the train station in the snow!

I'd like to dedicate this work in loving memory of my Gran, Grace Hart (1914-2011), whose interest in horticulture, gardens and travel was an inspiration.

## **Introduction**

I consider myself extremely fortunate to have been awarded a place on this Alpine Garden Society Tour of the Eastern Cape. I had an amazing experience taking in the landscapes and discovering the vast riches of such a diverse plant range. Cameron McMaster and Dawie Human were brilliant tour guides and the tour group was composed of friendly, encouraging and educational individuals who I will certainly be keeping in touch with.

I gained a mountainous amount from this trip including a huge number of photographs and so I hope that I can share this wealth with others including those who read this document.

## **The Merlin award**

The late Valerie Finnis founded the Merlin Trust in 1990 in memory of her husband and his son. She was a great plants woman and had a passion for alpine plants. The Merlin Trust awards grants to young horticulturists to enable travel and opportunities in furthering horticultural education.

## **Our Guides**

Cameron has spent the best part of his working life in the sheep industry and particularly in the development of the Merino and Dohne Merino breeds of sheep. He is retired now though still does some free-lance work as a sheep and wool consultant. He has long had an interest in wild flowers, butterflies and birds, in part from travels between farms and taking notice of the areas in which stock are grazed, and he and his wife run their nursery called African Bulbs from their home, now, in the Western Cape. The places we visited are home territory to Cameron whose brother still farms in the Eastern Cape, and some of us stayed in accommodation designed and built by Cameron at his previous home, The Croft, in Stutterheim.

Dawie Human is a horticulturist and works in the Department of Environmental Affairs in Bloemfontein, Free State Province, and is owner of Lifestyle Seeds.

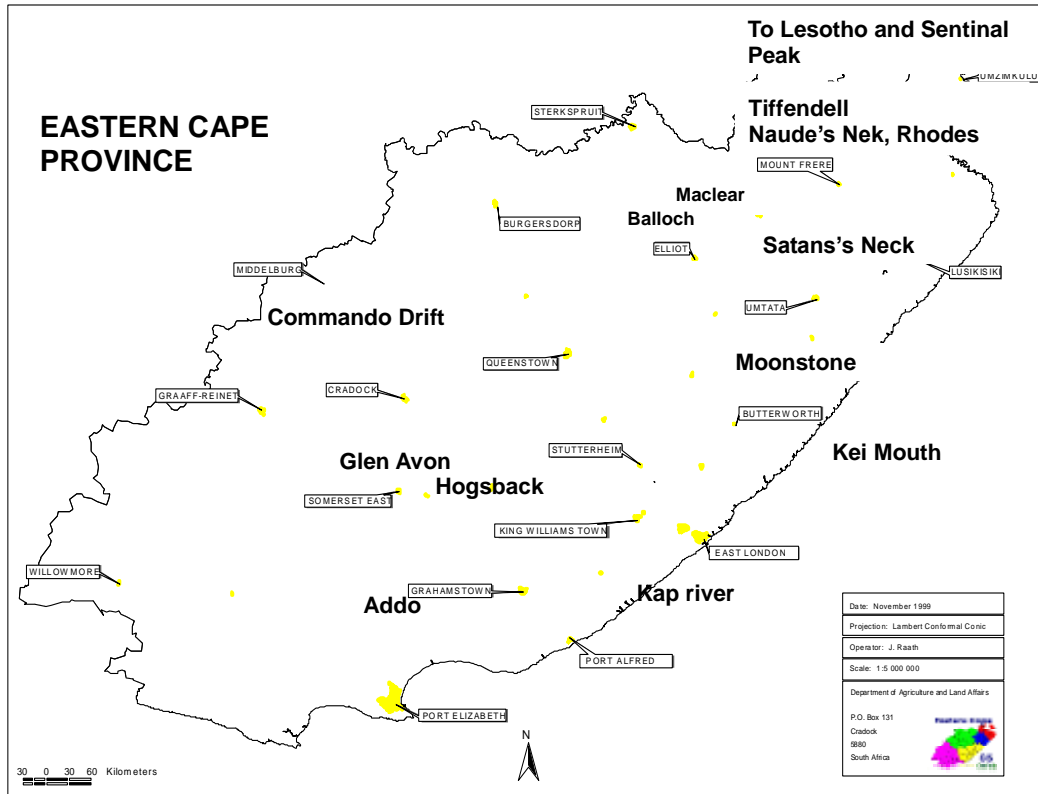
## **The Tour Area**

The tour started in Port Elizabeth and proceeded to the Somerset East district, taking in visits to Kaboega Private Game Reserve, to the North of the Zuurberg Mountains and next to the Greater Addo Elephant National Park; Glen Avon Falls and Waainek Wildflower Reserve on the Bosberg. During our trip we were to cover all the major vegetation types and this included the Nama Karoo in our journey through the Cradock area. We took in the flora of the Amatola Mountains around Hogsback and later on near Stutterheim as well as the spectacular scenery and many orchid species of the Maclear district. We explored the coastal dunes and cliff tops of Kei Mouth and Morgan Bay before returning back for our departure from Port Elizabeth.

Our tour of the Eastern Cape covered something like 2,500 km (approximately 1,553 miles) and took in the flora of this, the summer rainfall, region. We were told that in weeks preceding our visit there had been good rains and the landscape we encountered was fantastically greened up. The topography varied from low level floodplains to hilly and mountainous regions with the Drakensberg mountain range being the most prominent feature. The highest altitude for us would be about 3,000 metres. Inland regions are generally dry with sunny days in winter with cold nights and regular frost occurrences down to -10°C in some higher parts and occasional quick melting snow falls. Summer temperatures of 28-30°C are usual but can rise to 40°C in some areas.

# Map

I have used the Department of Agriculture and Land Affairs' map, which Cameron had adapted, as an outline to the area we covered.



## The Biomes

Biomes are distinct sets of environmental conditions and vegetation types and we would be learning about the species found in some of the following South African biomes: Nama Karoo, Succulent Karoo, Fynbos, Forest, Thicket, Savanna, Grassland, and Desert.

In brief:

**Nama Karoo:** mostly dry central plains with low summer rainfall increasing eastwards.

**Succulent Karoo:** Very low rainfall, fertile shale, granite based soils. Plants have adopted survival strategies such as: laying dormant outside of the rainy season, as in bulbs which act as underground storage organs; succulent leaves/stems; rapid maturity and copious seed set after the rains.

**Fynbos** (pronounced fane-bos): Evergreen, hard leaved shrubs on nutrient poor soils. Found along slopes of mountain ranges and sand plains, limestone derived soil of coastal regions. Most fynbos plants depend on occasional fires for their seed to germinate. The fires burn accumulated dead and decaying vegetation, recycling nutrients and creating spaces for new plants to grow.

**Forest:** An area with a high density of trees.

**Thicket:** Dense, woody, semi-succulent and thorny vegetation with an average height of 2-3 metres. Typical in lower lying, warmer regions and deep river valleys.

**Savannah:** Mixed trees and grassland with fewer bulbous plants.

**Grassland:** Moderate to high summer rainfall. Numerous types exist and are influenced by altitude, rainfall and incidence of frost.

**Desert:** An area receiving less than enough rain to support the growth of most plants.



## **The pictures**

I took so many more photographs than I ever imagined and memory space soon began to disappear, fortunately I had enough batteries to last me. I wanted to try and capture as many elements of my trip as possible and took many hundreds of pictures. I nearly lost my small compact camera one day but was hugely relieved when someone in the group spotted where I had left it by a beautiful flower I had been taking a close up of. I was not practiced at taking photographs of flowers to this scale before but I take comfort from the fact that even experienced photographers with greater knowledge and equipment end up with a good number of blurred and unsatisfactory pictures. Small flowers, particularly if they are white or yellow, actually any colour, are the most difficult thing to photograph especially if there is a breeze or poor weather to contend with. I have tried to name as many of my pictures in this report as possible but have included some pictures of those whose identity I am unsure of; any mistakes are my own.

## **Highlights of the Tour**

It was a turbulent touch down on our arrival into Port Elizabeth, appropriately nicknamed “The Windy City”, after a long journey which had begun apprehensively from the snowy landscape of home. Eight of us of the tour group had gradually merged together en route and we met the remaining travellers, all but one, at the evening briefing. Our tour leaders Cameron McMaster and Dawie Human introduced and prepared us for our ventures ahead, and then we satiated our appetites with the first South African feast of our tour.

The food was to be a total delight on the whole tour with hotels usually providing a selection of foods which was good for a meal consisting of a number of small courses or a large plateful of mixtures, depending on preference. Home cooked sumptuous meals at the guest farms and cottages were an absolute delight! The culinary surprises at Glen Avon Guest Farm, Somerset East, were among the best, including cheese and squash quiche, bush pig, and colourful prickly pear fruits with breakfast, which also included the delicious mealy meal porridge. Sometimes our lunches were packed but I was glad to partake in some most hospitable luncheon dining experiences either back at the beautiful main house in Glen Avon or for example at Eagles Ridge where the beautifully presented salads consisted of about twenty or so different, colourful ingredients.

We generally breakfasted early in order to make the most of the day. Some days there was a lot of travelling involved. Our two minibuses took us and our luggage over most of the distances covered but we also had rides in four by four vehicles to cover the most challenging of unmade roads.

The list of plants we saw over the 14 day trip reached approximately 650 with a few repeats. Most of these, including the genera, were new to me and I did struggle to keep up with the names. However, Cameron could not have been more encouraging. In the evenings we had slide shows of the plants we had seen which Cameron had photographed and labelled en route. Discs of his photographs can be purchased from his website; a most useful resource.

## Itinerary

Our itinerary included the following as well as some stops along the way:

**Mon:** Arrive Port Elizabeth, overnight Humewood Hotel

**Tue:** Travel from Port Elizabeth, stop at Perseverance, Kaboega Private Game Reserve, overnight at Glen Avon Guest Farm, Somerset East. First taste of African thicket and fynbos.

**Wed:** Four wheel drive and hike through riverine forest to Glen Avon Falls, visit Waainek Wild Flower Reserve; elements of valley thicket, Afromontane forest and mountain grassland.

**Thur:** Travel via Cradock, Bedford and Adelaide to stay at Hogsback Arminel Forest Resort. View Nama Karoo, Karoo-Namib, and valley thicket flora.

**Fri:** Explore the Amatola Mountains and forests, including Tor Doone and Gaika's Kop.

**Sat:** Travel through Cathcart area and Satansnek Pass to Maclear. Amazing *Brunsvigia radulosa*! Overnight Woodcliffe, Maclear.

**Sun:** Orchid trail with Adele Moore, Aurora Peak, Maclear.

**Mon:** Travel from Maclear, taking in Naude's Nek alpine flora, to Schoolhouse accommodation, Rhodes.

**Tue:** Visit Tiffindell ski resort area before travelling to Balloch Guest Farm for stay.

**Wed:** Explore Balloch and the Witteberg Mountains, taking in some Bushman rock art.

**Thur:** Travel via Barkly East and Cala Pass to Stutterheim, taking in Thomas River Historical Village. Overnight at the The Croft, Stutterheim.

**Fri:** Breakfast at Neil and Carmen Potter's Farm and excursion following the Quanti River, tributary of the Great Kei River, and up Moonstone mountain.

**Sat:** Hike through Afromontane forest near Stutterheim and view the Amatola Mountain grassland. Travel on to Morgan Bay Hotel for our stay.

**Sun:** Explore the flora at Morgan Bay and Kei Mouth, meet local wild flower expert Joan Bursey for lunch.

**Mon:** Travel all the way back to Port Elizabeth via Grahamstown. Farewell dinner and overnight stay at Humewood Hotel.

**Tue:** Spare time in Port Elizabeth before afternoon flight home.

## A few more highlights

Port Elizabeth is one of South Africa's major seaports and we drove past the new port facilities at Coega which have caused concern to environmentalists due to their close proximity to colonies of African penguins and other breeding seabirds.

We did see a good amount of African wildlife, including some interesting birds and I learnt a little about the Merino and Dohne Merino sheep breeds which Cameron had been heavily involved with. His book entitled 'Sheep in my Blood' is an interesting short read.

We past vast tracts of land supporting large numbers of alien species; the Mexican Blue Agave and the Prickly Pear - grown as fodder for cattle. The pink fruits of the prickly pear looked quite attractive from this perspective as did the spectacular forest like flower stems of the Agaves. These foreign communities of plants, however, interfere with the natural balance of species populations as do the interferences with the water courses. We passed fields of Durum wheat, a cash crop, being irrigated by water from a system developed in the 1970s. A major project to bring water from the Orange River via the Fish River, to keep up its flow in dry periods for agricultural use, has been environmentally damaging to the Fish River ecosystem which has been largely taken over by Orange River flora and fauna.

Glen Avon has an interesting history. The current owners are descendents of Robert Hart a military Scotsman who farmed and settled here and is described as "father of the 1820 settlers". I was lucky enough to be one of the group to stay in Hart Cottage, one of the farms original buildings (circa 1817). With sheep and goats in the fields nearby it was actually the resident population of frogs which led to a noisy choral lullaby to send us to sleep.

One of our best finds, on the way to Glen Avon Falls and on the Waainek Wild Flower Reserve, were the *Haemanthus carneus* which, along with some other rare species in this area, are what inspired Cameron and land owner Philip Erasmus to create a protective reserve to help safeguard these precious populations for future generations to enjoy.

The Glen Avon Falls are very impressive. Water from the falls was used by Robert Hart for a watermill constructed on the farm between 1822 and 1825 with materials and equipment from Leeds, UK. The mill still stands today and was in use as recently as 1991 but is now in need of repair.

There were a number of finds, in some of the areas we visited, of ancient San Bushman rock art. Some of the depictions of hunting scenes and animals, aspects of their lives, were in good condition.

## Conclusion

I was overwhelmed by the number of different plant species I was seeing but I was determined to do my best to learn as much as I could. Perseverance was the name of the first place we stopped and the motto I was to adopt for the learning curve that I was to embark on.

I really wanted to share the best of my many hundreds of photographs I took, including the many flowers, and beautiful views which stretched like I have never seen before. I did not fully realise how time consuming and technically challenging this was personally going to prove but I hope readers will enjoy the delights as much as I can now enjoy the end result.

I am sincerely grateful for the opportunity provided to tour the Eastern Cape and the tour leaders' professionalism and encouragement. The terrain and wildlife of the area can be dangerous and help often hours away but we were prepared right at the start. Our introductory briefing explained the biomes and vegetation types we would see and how we would need to be careful and vigilant on uneven and often steep ground and to watch for wildlife like poisonous snakes. The Puff Adder (*Bitis arietans*) and Cape Cobra (*Naja nivea*) can be easily stepped on if not looking! Ticks are common in long grass and we had to check ourselves daily. They are not usually a problem but can cause the tick bite fever infection which does require antibiotic treatment and leave a small scar which I can vouch for. We were also warned to take care in the sun and recommended to wear long sleeves in addition to putting on high factor sun cream. The day temperatures could and would reach over 30° C but the nights could be cool. We were prepared for but luckily did not experience too much wet weather during our trip. Spare boots are recommended, wet footwear tends to fall apart, and wet grassland can be just as saturating as running streams. There would not be too many mosquitoes and we were not in a malarial area.

Overall this was an amazing and inspiring trip to learn from; looking at the amazing diversity of flora and realizing the threats which endanger so many of these endemic species. Although I have been challenged by the overwhelming amount of learning i.e. new plants, botanical names and habitat types, as well as the digital technology to cope with the mountainous number of photographs I took and to include illustrations in this report, I have gained hugely from this experience and continue to learn from it.

**References:**

Pooley, E. (2005), 'A Field Guide to Wild Flowers Kwazulu-Natal and the Eastern Region

Google – many and various searches

<http://www.africanbulbs.com/index.html>

## *Ode to the Flowers of the Eastern Cape*

*To find the flowers of the Eastern Cape excitedly travelled we;  
I wasn't sure exactly just what I was going to see.*

*By car and train, coach and plane to Port Elizabeth we were bound.  
And we said goodbye to family and friends and to the snow laying on the ground.*

*Just who was who, no one knew, till we met per chance at the airport,  
Then cases flung into taxis found, "To the hotel called Humewood".*

*By Mr Cameron McMaster we were greeted to the tour,  
And to each, each other we formally met as we took turns on the floor.*

*If we weren't prepared before we came, Cameron to us did warn,  
The terrain would be hard going and the sun on skin quite warm.*

*So, well creamed up and bags a packed, set we off a pace,  
In minibuses which were prepped and driven simply ace.*

*Cameron and Dawie Human, our expert touring guides,  
Always on the look out every day on our drives.*

*Stopping on the road sides and in our hosts domains,  
Covered we, substantially, a fair amount of grounds.*

*Bundling from the vehicle every time we stopped,  
Cameras clicking, from plant to plant, like insects we did hop.*

*Bottoms in the air was common and queuing came naturally,  
As each time something splendid we did rival to see.*

*Animals, birds, flowers and trees, we could not help but see,  
Amazing landscapes and all around such biodiversity.*

*Accommodation and food were great, at home we were made to feel,  
But occasionally along the road our eyes were set to peel.*

*Such wonders of the botanical realm we were set to find,  
But carefully we must tread for no snake/rock wound should we like to bind!*

*Energy abounding, up mountainous climbs,  
our tour leaders cared for us  
like shepherds of a flock,  
“Look at the ancient art, there upon the rock!”*

*Usually at end of day we could all be found around,  
The screen projecting Cameron’s pics of long-named plants we’d found.*

*A most special trip I won’t forget, for all its sights/sounds in array,  
And young Nigel expressing whole-heartedly, “Orr, that’s my plant of the day!”*

*Drawing to an end of our South African journey,  
I still can’t quite believe it’s the end of February.*

*To our homes we’ll go, with pictures a plenty,  
Personally, to my great relief, with my own camera found by Lizzie!*

*With perhaps a few less items than we brought, either broken, dropped, left or lost;  
We go home richer than before with gains in knowledge, friends, experience.*

*To our leaders Cameron and Dawie our thanks must be expressed,  
For your great knowledge, care, driving, energy and patience appreciated by all of  
us.*

Carol Hart  
Merlin recipient  
Alpine Garden Society Tour to the Eastern Cape 6-21 February 2012.





a.



b.



c.



d.

Port Elizabeth - a. Humewood Hotel, Port Elizabeth b. Swartkops Sea Salt (Pty) Ltd, mass producing salt which has been extracted here since 1790 c. Driving through the salt pan area of Port Elizabeth, Cameron McMaster at the wheel. d. Perseverance, degraded by litter and grazing

Tip: It is best to make the most of all stopping time by vacating the minibus swiftly and embarking promptly when it is time to go onwards (or when there is a swarm of bees approaching, luckily they buzzed off over our heads)! 13





a.



b. 6



c.



d.



e.



f.

Perseverance near Port Elizabeth - a. *Hypoxis stellipilis* b. Identity unknown c/d. *Acacia karroo* – notice the paired thorns; it is a food source and protective environment for other plant and wildlife species, it has several medicinal and practical uses, it is able to establish without shade and can recover after fires, its roots fix nitrogen e. *Blepharis capensis* f. *Commelina africana* – used in traditional medicine to treat a wide variety of ailments.





a.



b.



c.

Perseverance near Port Elizabeth - a. The landscape b/c. *Aloe africana*



a.



b.



c.

Perseverance near Port Elizabeth -

a. Even in this degraded area there were real beauties to behold    b. *Cyrtanthus spiralis*    c. *Cyrtanthus speciosus*





a.



b.



c.

En route to Kaboega - a. Habitat of *Crinum macowanii* b/c. *Crinum macowanii*



a.



b.

En route to Kaboega -

a. Members of the Amaryllidaceae family live in this habitat    b. *Haemanthus coccineus* – the leaves appear well after the flower





a.



b.



c.



d.

On route to Kaboega

a. Identity unknown    b. Wider view of *Euphorbia pulvinata*    c. *Euphorbia pulvinata*    d. *Aloe striata*





a.



b.



c.



d.

a. Impala   b. Giraffe   c/d. Kaboega Private Game Reserve





a.

b.



c.

d.



e.

a/b. *Aptosimum procumbens* c. *Polygala asbestina* d. *Faucaria felina* e. Our means of transportation in Kaboega Private Game Reserve included a modified 1985 ex-United Nations Landcruiser (front)





a.



b.



c.



d.



e.



f.

Fynbos vegetation in Kaboega

a. *Erica glandulosa*    b. *Encephalartos longifolius*    c/d. *Protea repens*    e/f. *Leucospermum cuneiforme*





a.



b.



c.



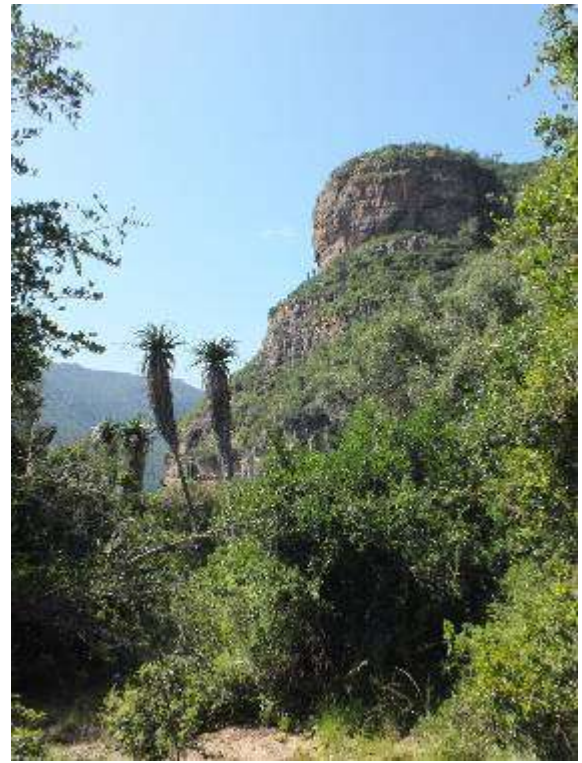
d.

Somerset East - a. On our way to Glen Avon Falls with Bill Brown – what has Cameron spotted? b. The view and second minibus behind us c. *Haemanthus carneus* d. *Nephila senegalensis annulata* - Banded legged Nephila Spider





a.



b.



c.



d.



e.

a. *Grewia occidentalis*   b. View with *Aloe pluridens*   c. View with  
*Euphorbia triangularis*   d/e. Glen Avon Falls





a.



b.

c.



d.

e.

Waainek, Bosberg - a. View from Waainek Private Wild Flower Reserve b. Grassland vegetation  
 c. *Haemanthus carneus* d/e. *Helichrysum auriceps*





a.



b.



c.



d.



e.



f.

Waainek Private Wild Flower Reserve - a. *Nemesia denticulata* b. *Diascia capsularis* c. *Scabiosa columbaria*  
d. *Helichrysum* sp. in view e. *Wahlenbergia* sp. f. *Pelargonium* sp.





a.



b.



c.



d.



e.

Waainek Private Wild Flower Reserve -  
a/b. *Bulbine abyssinica*. c. Nigel Hopes photographing d d. *Kniphofia triangularis* e. View





a.



b.



c.



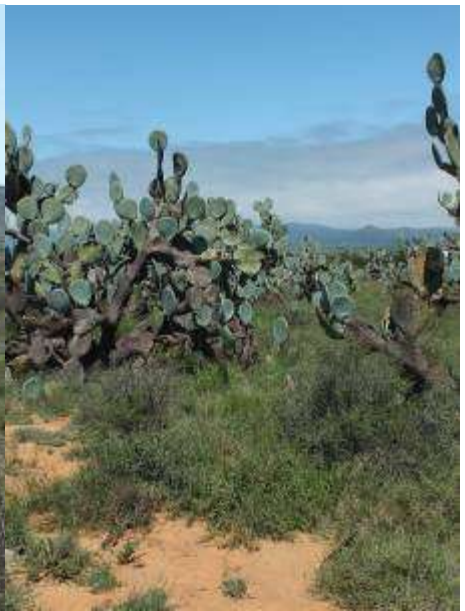
d.

a/b. *Dierama robustum* on Waainek Private Wild Flower Reserve  
c. Merino sheep on Glen Avon Farm    d. Our hosts Alison and Bill Brown





a.



b.



c.



d.



e.

Cradock - a. Karoo vegetation with Ostriches looking on in the background  
 b. *Opuntia* - Prickly pear invader and signs of erosion/over-grazing  
 c/d. *Jamesbrittenia* sp.  
 e. *Cyanotis speciosus*





a.



b.



c.



d.



e.

Cradock - a. *Ipomoea oenotheroides*  
b. *Bulbine abyssinica* c/d/e. *Gasteria bicolor*





a.



b.



c.

Cradock - a. Queuing in line to take photos of b/c. b/c. *Nerine huttoniae*





a.



b.

a. Unidentified South African deer    b. Blesbok





a.



b.



c.



d.

Bedford - a. A diverse rich roadside b. *Eucomis autumnalis* c. *Spiloxene trifurcillata*  
d. *Nerine undulata*





a.



b.



c.



d.

Bedford - a. *Pelargonium* sp. b. *Berkheya umbelata* c. Butterfly d. *Gomphocarpus physocarpus*





a.



b.



c.

Adelaide - a. *Monsonia vanderrietii* b. *Sutera* sp. c. Succulent flowers and stems of *Huernia thurettii* under the woody, thorny stems of *Monsonia vanderrietii*





a.



b.



c.

Adelaide - a. View of *Aloe ferox* with train line in the background b/c. *Polygala asbestina*





a.



b.



c.



d.



e.

Adelaide - a. *Aizoon glinoides* b. Flowers and fruit of *Cucumis zeyheri*  
c. *Argiope australis* - Black and Yellow Garden Spider d/e. Eland





a.



b.



c.



d.

Amatola Mountains around Hogsback, Tor Doone - a/b. *Disperis wealii* c. *Monopsis decipiens* d. *Wahlenbergia* sp.





a.



b.



c.



d.



e.

Amatola Mountains around Hogsback, Tor Doone - a/b. *Gladiolus ecklonii*  
c/d. *Kniphofia linearifolia* e. *Kniphofia parviflora*



a.



b.

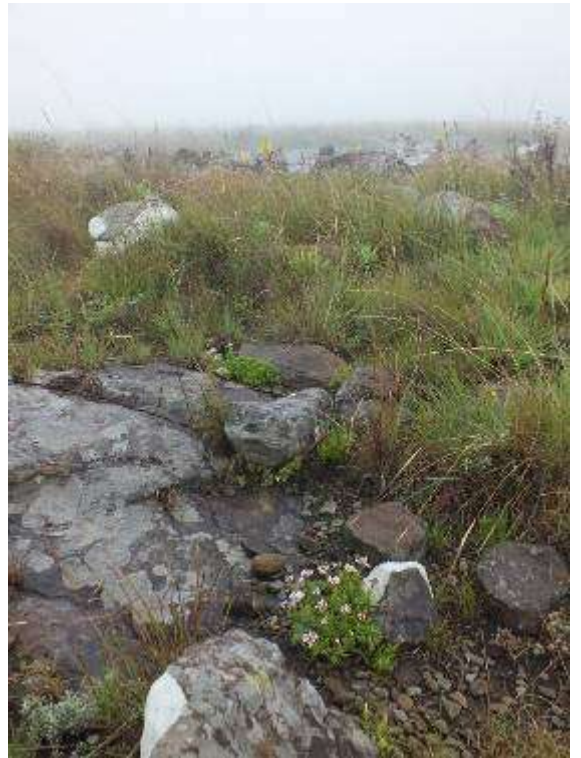
Amatola Mountains around Hogsback, Tor Doone - a. *Helichrysum foetidum*

Gaika's Kop- b. *Schizocarpus nervosus*





a.



b.



c.

Amatola Mountains around Hogsback, Gaika's Kop- a/b/c. Nature's rock gardens, including *Aloe*, *Bulbine*, *Crassula* and *Helichrysum* species



a.



b.

Gaika's Kop - a/b. *Satyrium parviflorum*





a.



b.



c.



d.



e.

Gaika's Kop - a. *Cynium racemosum* b. *Geranium* sp.  
c/d. *Berkehya purpurea* e. *Aristea schizolaena*





a.



b.



c.



d.



e.

Gaika's Kop, Hogsback - a/b. *Habenstretia dura*  
c/d. *Lepidostephium denticulum* e. *Alectra capensis*





a.



b.



c.



d.

Gaika's Kop, Hogsback - a/b. *Satyrium neglectum* c. Fred Bundy & author in the mist  
d. *Habenaria lithophila*





a.



b.



c.



d.

Cathcart - a/b. Rockford Bridge c/d. *Brunsvigia radulosa*





a.



b.



c.

Cathcart - a. *Gladiolus mortonius*

Satan's Nek - b/c. *Satyrium neglectum*





a.



b.



c.



d.



e.

Satan's Nek - a. View b. Grassland vegetation c. *Helichrysum herbaceum* d. *Helichrysum adenocarpum*  
e. *Helichrysum ecklonis*





a.



b.



c.

Satan's Nek - a. Rocks can be slippery when wet! b. *Protea* sp. c. View





a.



b.



c.



d.

Satan's Nek - a/b/c/d. *Protea roupelliae*





a.



b.



c.



d.

Satan's Nek - a. View with *Alepidea* sp. in foreground b. *Disa brevicornis* c. *Kniphofia parviflora*  
d. *Geranium* sp.



a.



b.



c.

Maclear - a. View b. *Helichrysum* sp. c. *Gazania krebsiana*





a.



b.



c.

Aurora Peak, Maclear - a. View b. *Crassula vaginata* in foreground c. *Erica cooperi*





a.



b.



c.



d.

Aurora Peak, Maclear - a/b. *Disperis cardiophora* c. *Disperis oxyglossa* d. *Disperis stenoplectron*





a.



b.



c.



d.

Aurora Peak, Maclear - a. *Argyrolobium harveyanum* b. *Pterygodium magnum* c. *Huttonaea grandiflora*  
d. *Schizochilus flexuosus*



a.



b.



c.



d.

Aurora Peak, Maclear - a. *Disa crassicornis* b. *Schizochilus zeyheri* c/d. *Disa fragrans*





a.



b.



c.



d.



e.

Aurora Peak, Maclear - a. Nigel with some *Helichrysum* leaves to help clear his sinuses b. *Kniphofia linearifolia* c. *Helichrysum elegantissimum* d. Cameron in photographers pose e. *Cephalaria* sp.





a.



b.

Aurora Peak, Maclear - a. *Author on Aurora Peak* b. Our hosts Michael & Adele Moore, grandchild and friend





a.



b.



c.



d.

Maclear - a. Protea site b. *Protea* sp. c. *Protea simplex*  
d. *Protea* sp.





a.



b.



c.



d.

Maclear - a. *Satyrium longicauda* b. *Dierama reynoldsii* c. *Satyrium sphaerocarpum*  
d. *Gladiolus dalenii*





a.



b.



c.



d.

Naude's Nek- a. View with *Berkheya purpurea* in foreground b. Biodiversity rich habitat  
 c. *Kniphofia stricta* d. *Kniphofia caulescens*





a.



b.



c.



d.

Naude's Nek- a. *Berkheya cirsiifolia* b. *Delosperma lavisiae* c. *Crassula setulosa*  
 d. *Wurmbea elatior*





a.



b.



c.



d.

Naude's Nek - a. *Disa fragrans* b *Disa fragrans* in habitat c/d. *Hirpicium armerioides*



a.



b.



c.

Naude's Nek - a. *Helichrysum marginatum* b. *Glumicalyx nutans* c. Reaching a high point; after we had driven most of the way up and around the mountain we had some time to explore





a.



b.



c.



d.



e.



f.

Naude's Nek - a/b. Some moisture loving plants like the tiny flowered *Utricularia* were found in this wetter area c. *Cordylus cordylus* – Cape Girdled Lizard d/e. *Gladiolus saundersii* f. *Kniphofia caulescens*





a.



b.



c.

Southern Drakensberg - a/b. Route from Rhodes c. Tiffindell ski resort





a.



b.



c.



d.

Tiffindell - a. *Nemesia denticulata* b. *Senecio macrocephalus* c. *Polygala rhinostigma*  
d. *Berkheya purpurea*





a.



b.

Tiffindell - a. *Berkheya* sp. b. *Helichrysum aureum*





a.



b.



c.



d.



e.

Tiffindell - a. *Eumorphia sericia* b. *Euphorbia claveroides*  
 c. View from the summit of Ben Macdhui, approx. 3,000m d. On the border; South Africa one side, Lesotho the other  
 e. *Massonia wittebergensis*





a.



b.



c.



d.



e.

Tiffindell - a. *Kniphofia triangularis* b/c. *Satyrium neglectum* d. Ski resort chalet, *Kniphofia caulescens* in foreground e. Roger and Gemma at the wheel





a.



b.



c.

Witteberg Mountains - a. *Disa porrecta* b. *Dierama robustum* c. *Kniphofia stricta*



a.



b.

Witteberg Mountains - a. View b. Bushman paintings





a.



b.



c.



d.

Cala Pass - a. *Nerine angustifolia* b. *Balearica regulorum* - Grey Crowned Crane c. Unknown identity  
d. *Nerine gibsonii*, disappearing in numbers on this cattle grazed land





a.



b.



c.



d.



e.

Thomas River - a. Rock Art Museum b. The Old Thomas River Station Master's and Station Foreman's houses now converted to holiday cottages  
 On route to Stutterheim - c. View d/e. *Dierama pulcherrimum*





a.



b.



c.

a. *Boophone disticha*   b. *Brunsvigia grandiflora*   c. View from our accommodation at The Croft, Stutterheim





a.



b.



c.



d.



e.



f.

Quanti - a. Diverse grassland b. *Aloe ecklonis* c. *Pachycarpus grandiflorus* d. *Monospsis unidentata*  
e/f. *Chamaecrista comosa*





a.



b.



c.

Quanti - a. *Habenaria laevigata* b. *Polygala* sp. c. *Danaus chrysippus aegyptius* – African Monarch butterfly



a.



b.



c.

Quanti - a. *Bulbine abyssinica* b. *Polygala* sp. c. Exquisite, *Nerine filamentosa*





a.



b.



c.

Quanti - a. An example of San bushman rock art in the area b. Following the Great Kei River  
c. View with *Encephalartos princeps*



a.



b.



c.

Quanti - a. Author on Moonstone Mountain, overlooking the Great River Kei Valley  
b. *Encephalartos caffer* (foreground) c. Our hosts, Carmen and Neil Potter





a.



b.



c.

Stutterheim - a. Protea Hill b. *Syncolostemon densiflorus* c. *Pterygodium magnum* in the shelter of a bush



a.



b.



c.



d.

Stutterheim - a. *Streptocarpus rexi* b. Roadside habitat towards c. including species like a. c. Leopard Falls  
d. Cameron explaining the forest habitat to the group





a.



b.

c.

Stutterheim forest - a. *Habenaria malocophylla* b/c. *Crocosmia aurea*



a.



b.



c.

Morgan Bay - a. *Strelitzia reginae*, native to South Africa, but in this case thought to be a garden escapee  
 b. *Aloe* sp. probably another garden escapee c. *Senecio macrocephalus*





a.



b.

Morgan Bay - a. *Gladiolus ochroleucus* b. *Bulbine* sp.



a.



b.



c.



d.

Morgan Bay - a. View with lily pond front right b. *Commelina* sp. c. *Eriosema squarrosum* d. *Nymphaea capensis*





a.



b.



c.



d.

Morgan Bay - a. *Lobelia coronopifolium* b. *Erythrina humeana* c/d. *Disa polygonoides*



a.



b.



c.



d.

Kei Mouth - a/b. View looking down from the sand dunes and over the wooded/fynbos vegetation  
c/d. *Ipomoea pes-caprae*





a.



b.



c.

Kei Mouth Country Club Golf Course - a/b. *Scadoxus membranaceus* c. The group with local wild flower expert Joan Bursey (third from left)





a.



b.



c.



d.

a. Morgan Bay at sunrise    b. *Haemanthus humilis*, King William's Town    c. *Cyrtanthus parviflorus*, Grahamstown  
d. Grahamstown from Gunfire Hill, Rhodes University





a.



b.



c.



d.

Port Elizabeth - a/b. Street view b/c. *Tecoma capensis* – Cape Honeysuckle, a popular garden and hedging plant and likely escapee on this piece of rough communal land



a.



b.



c.

Port Elizabeth, St George's Park - a/b. Pearson Conservatory, originally opened in 1882 having been constructed from components made in Britain, completely renovated 2010-2011 c. View of cricket ground





From left to right: Tour Leader: Cameron McMaster; Merlin recipients: Nigel Hopes and Carol Hart (author); Tour Leader: Dawie Human.



From left to right standing: Ian & Sandra Ricky (hosts), Jim & Ann Stark, Lizzie & George Knowles, Beth Smith, Una Fenton, Nigel Birch, Nigel Hopes, Fred & Pat Bundy. From left to right sitting: Cameron McMaster, Dawie Human, Carol Hart (author).