

Phellinus gilvus (Schwein) Pat.

Syn: *Boletus gilvus* Schw.

Profile Group: Basidiomycota, Hymenochaetales

Polyporus gilvus (Schw.) Fr.

Macroscopic characters	shape	Dimidiate
	size	Up to 7 x 12 x 3 cm
	texture	Tough-fibrous when young; brittle with age
	pileus	Solitary or imbricate; dark yellowish brown; tomentose to glabrous; often rugose
	stipe	N/A
	context	Bright yellowish brown; zonate
	pore surface	Dark purplish brown
	pores	Circular; 6-8 per mm
	tube layer(s)	White stuffed; up to 1 cm thick
Microscopic characters	hyphal system	Dimitic
	clamp connections	N/A
	sterile elements	Setae abundant; subulate; sharp; thick-walled; dark brown in KOH
	basidiospores	Ellipsoid to ovoid; hyaline, smooth; 4-5 x 3-3.5 um
Habitat characters	substrate/host	Living and dead hardwoods in many genera; generally common on oaks; rarely on conifers
	seasonality	Annual or perennial
	type of decay	Uniform white rot of dead woods of hardwoods and a heart rot of living trees
	range	Throughout the eastern United States and into southeastern Canada; in the Southwest and Pacific Coast regions; rare in the central rocky mountains
Notes	Purplish color of pore surface is very characteristic	
References	Overholts, 1953; Gilbertson & Ryvarden, 1986. Grand & Vernia; 2000, 2004	



Species distribution in North Carolina

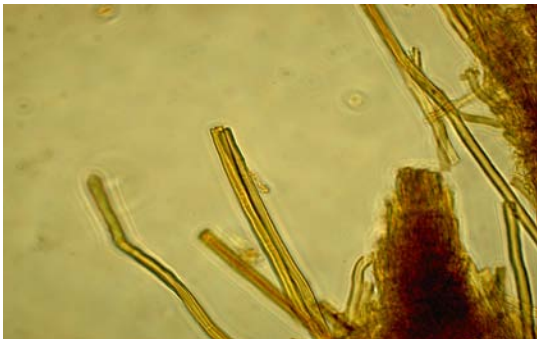
***Phellinus gilvus* (Schwein) Pat.**



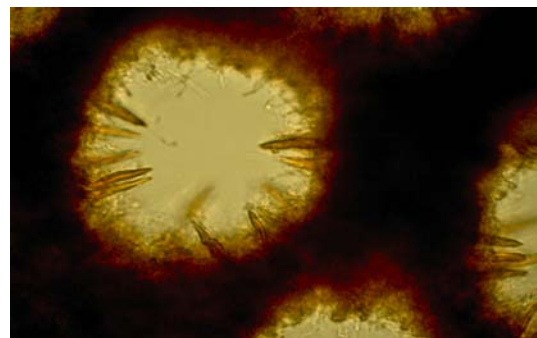
Top view of basidiocarp



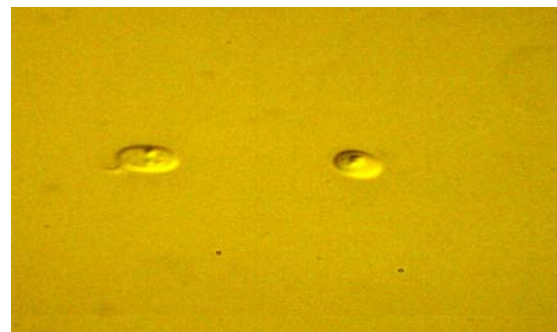
Basidiocarps on host



Skeletal hyphae at 200x



View of setae at 200x



Spores at 1000x