



**Haritarium**

Family Code: 579

Species code: 31 - 1A

**Naoroji Godrej Centre for Plant Research**

**Bulbophyllum fimbriatum (Lindl.) Rchb.f.**

**Botanical name:** *Bulbophyllum fimbriatum* (Lindl.) Rchb.f.  
(= *Cirrhopetalum fimbriatum* Lindl.)

**Family :** Orchidaceae

**Threatened category:** Not evaluated (Gaikwad & Yadav, 2004).

**Key characters:** Epiphyte with distinct elongated ovoid-conical pseudobulbs, leaves membranous, fall during flowering; flowers umbellate zygomorphic, pollinia free, waxy; anther cells parallel & distinct.

**Description:** Rhizomatous epiphytic herbs. Rhizomes woody, brownish. Pseudobulbs greenish or greenish yellow, clustered, conical- ovoid size 1.0 – 2.5 X 0.8 – 2.0 cm upto 2 cm apart and irregularly and longitudinally grooved. Leaves 2-3, 4 – 12 X 1.1-2 cm, oblong – lanceolate or elliptic, acute margins whitish, minutely papillate. Sca[e 8-20 X 0.1 – 0.2 cm. Flowers greenish or greenish-purple, 2 cm long, bracteate, pedicellate. Petals fringed with brick red cilia. Lip reddish brown. Capsules, obpyriform, green, 1.0-1.2 X 0.6 cm.

**Flowering and fruiting:** June – April.

**Distribution:** India – Endemic to Western Ghats.

**Reported localities:** Pune, Satara, Sindhudurg districts.

**Ecology:** Grows on main branches of medium sized deciduous and evergreen trees with crooked barks preferably at 5-7 meters height.

**Association:** Grows on *Terminalia*, *Erythrina*, *Memecylon* spp. No specific plant association is observed.



**Haritarium**

Family Code: 579

Species code: 31 - 1B

**Naoroji Godrej Centre for Plant Research**

***Bulbophyllum fimbriatum* (Lindl.) Rchb.f.**



1.Habit, 2.Flower, 3.Dissected Flower, 4. Inflorescence, 5. Bulb, 6. Pollinia, 7. Lower Lip.



**Haritarium**

Family Code: 579

Species code: 31 - 1C

**Naoroji Godrej Centre for Plant Research**

***Bulbophyllum fimbriatum* (Lindl.) Rchb.f.**





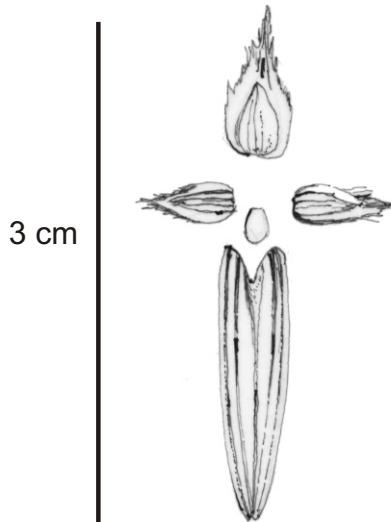
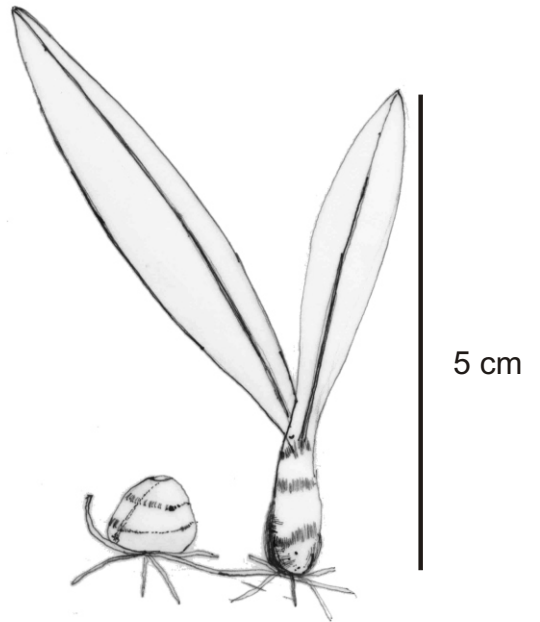
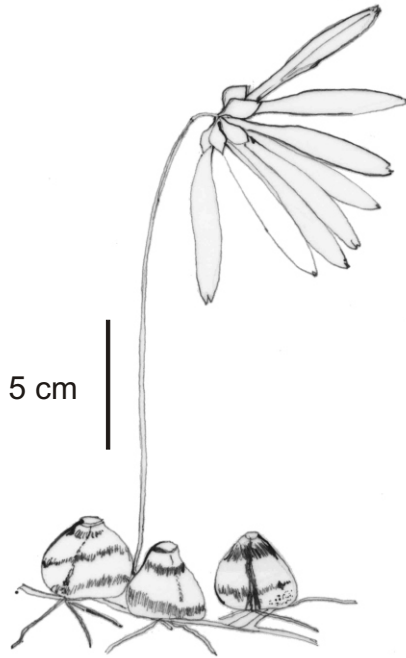
**Haritarium**

Family Code: 579

Species code: 31 - 1D

**Naoroji Godrej Centre for Plant Research**

***Bulbophyllum fimbriatum* (Lindl.) Rchb.f.**



1. & 2. Habit, 3. Dissected Flower 4. Flower.



**Haritarium**

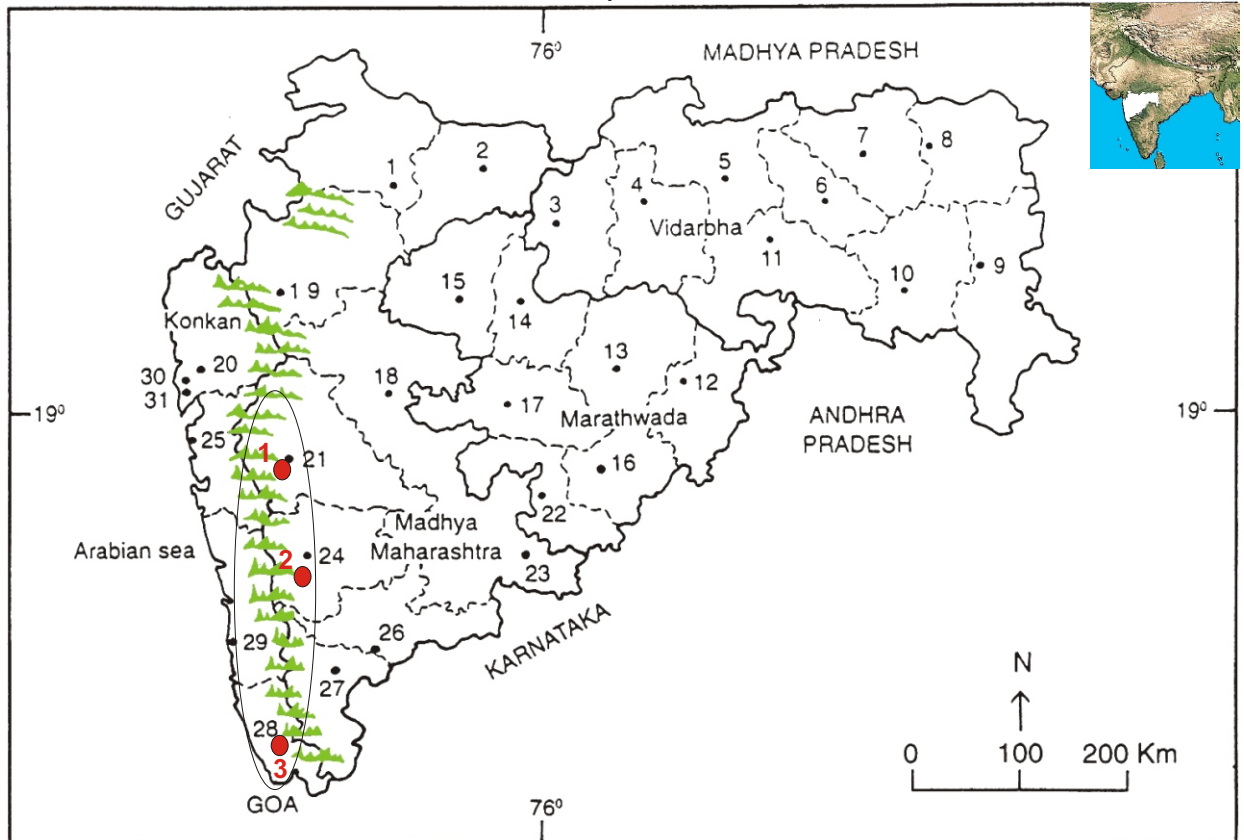
Family Code: 579

Species code: 31 - 1E

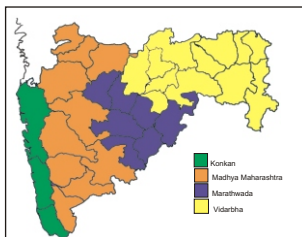
**Naoroji Godrej Centre for Plant Research**

**Bulbophyllum fimbriatum (Lindl.) Rchb.f.**

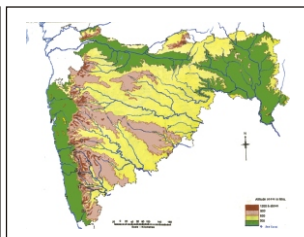
Location map



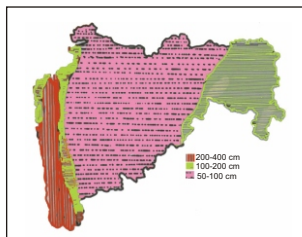
1.Dhule 2.Jalgaon 3. Buldhana 4.Akola 5.Amaravati 6.Wardha 7.Nagpur 8. Bhandara 9. Gadchiroli  
10. Chandrapur 11. Yavatmal 12. Nanded 13. Parbhani 14. Jalna 15. Aurangabad 16.Latur  
17. Beed 18. Ahmadnagar 19 Nashik 20. Thane 21. Pune 22. Osmanabad 23. Solapur 24.Satara  
25. Raigad 26. Sangli 27. Kolhapur 28. Sindhudurg 29. Ratnagiri 30.Mumbai 31.Greater Mumbai.



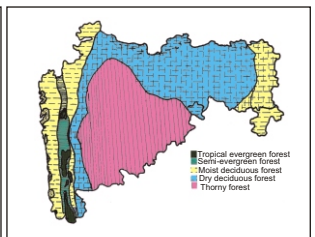
Geographical regions 1



Physical map 2



Rain fall map 3



Forest types 4

Reported Localities in districts- ●  
1.Pune, 2. Satara, 3. Sindhudurg.

Geographical distribution:

Latitude (DMS): Between 18 ° 31' - 15 ° 90' N & Longitude (DMS): 73 ° -74 ° 5' E;



**Haritarium**

Family Code: 579

Species code: 31 - 1F

**Naoroji Godrej Centre for Plant Research**

**Bulbophyllum fimbriatum (Lindl.) Rchb.f.**

**References:**

Ahmedullah, M & M.P. Nayar (1987): **Endemic Plants of the Indian Region**  
B.S.I. Calcutta, vol.1:244.

Cooke, T. (1904): **The Flora of Presidency of Bombay**. Vol.3: 188. (rep.  
Ed.1958).

Hooker, J.D. *et al.*(1890):**The flora of British India**. London. Vol.5: 774.

Karthikeyan, S., S.K. Jain, M.P. Nair & M. Sanjappa(1989): **Florae Indicae**  
**Enueratio – Monocotyledonae**, B.S.I., Calcutta:112.

Laxminarasimhan, P.(1996): in B.D. Sharma, S. Karthikeyan & N.P.Singh (eds),  
**Flora of Maharashtra state, Monocot**. B.S.I., Calcutta:14.

Saldhana and Nicols (1976): **Flora of Hassan District**.:814.

Santapau, H. & Kapadia Z.(1966): **The Orchids of Bombay**: Manager of  
Publications, Delhi:14.

Tetali, *et al.* (2000): **Endemic Plants of India ( A Status Report of**  
**Maharashtra State)**. Naoroji Godrej Centre for Plant Research, Shirwal:  
79.