



PLATE I. Land unit A1 - Low open woodland on Komolgie sandstone hillslopes.



PLATE II. Land Unit B1 - Mid-high open woodland & Tall sparse shrubland on hillslopes & footslopes of Mullaman sediments.

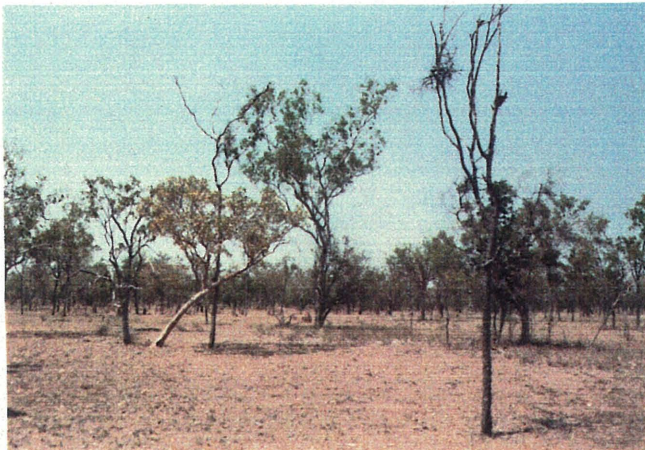


PLATE III. Land Unit C1 - Mid-high open woodland on gently undulating colluvial plain.



PLATE IV. Land unit D1 - Mid-high open woodland on sandy red earth.



PLATE V. Land unit E5 - Mid-high open woodland on limestone outcrop.



PLATE VI. Land unit F3 - Extremely tall open shrubland of *Excoecaria parvifolia* and *Melaleuca stenostachya* on gilgaid clay soil.