

**POISON**  
**KEEP OUT OF REACH OF CHILDREN**  
**READ SAFETY DIRECTIONS BEFORE OPENING OR USING**

▲ PEEL HERE ▲



# Chloronil Pro

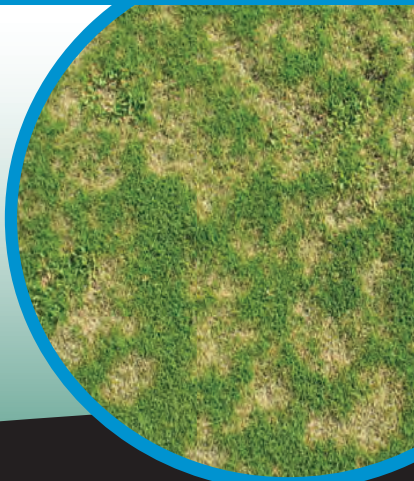
Fungicide

**ACTIVE CONSTITUENT:**  
**720 g/L CHLOROTHALONIL**

**GROUP M5 FUNGICIDE**

For the control of fungal diseases on almonds, apricots, bananas, carrots, celery, cherries, faba beans, grapes, onions, peaches, peanuts, peas, plums, potatoes, tomatoes, turf and vegetables as per the Directions for Use Table.

**IMPORTANT: READ THIS LEAFLET BEFORE OPENING OR USING**



**Distributed by:** Amgrow Pty Ltd ABN 81 100 684 786  
Unit B2A, 3-29 Birnie Avenue, Lidcombe NSW 2141 • TELEPHONE: 1800 631 008

CONTENTS

**10 Litres**

**DIRECTIONS FOR USE:**

**RESTRAINTS:** DO NOT mix spraying oils or wetting agents with this product.

**For all stone fruit except Cherries, the following additional restraints apply:**

DO NOT use oils after bud-swell and during the season if Chloronil Pro Fungicide is to be used after shuck fall.

DO NOT tank mix Chloronil Pro Fungicide with EC formulations when spraying after shuck fall.

DO NOT exceed 3.2 L of Chloronil Pro Fungicide per hectare of crop.

**1. TREE AND VINE CROPS**

<p style="text-align: center;"><b>RATE</b></p> <p style="text-align: center;">This table shows rates for dilute spraying. For concentrate spraying refer to the Mixing/Application Section.</p>					<p style="text-align: center;"><b>CRITICAL COMMENTS</b></p> <p><b>For uses in the table:</b> Apply by dilute or concentrate spraying equipment. Apply the same total amount of product to the target crop whether applying this product by dilute or concentrate spraying methods. DO NOT use at rates greater than 5 times the dilute spraying rate.</p>	
SITUATION & CROP	DISEASE	STATE	RATE	WHP (days)		
Almonds	Shot-hole ( <i>Stigmia carpophila</i> ), Stone Fruit Rust ( <i>Tranzschelia discolor</i> )	NSW, Vic, Tas, SA, WA only	160 mL/ 100 L Apply 2000 L/ ha	–	Apply at bud-swell, bud-burst, pink bud, shuck fall, cap fall. Apply every 10-14 days. Apply 1 week pre-harvest.	
Apricots	Brown Rot – Fruit ( <i>Monilinia fructicola</i> ), Blossom Blight ( <i>Monilinia laxa</i> )				7	Apply at bud-swell, bud-burst, pink bud, full bloom. Apply no later than 35 days pre-harvest. See also Additional Restraints for stone fruits.
	Shot-hole ( <i>Stigmia carpophila</i> ), Stone Fruit Rust ( <i>Tranzschelia discolor</i> ), Freckle ( <i>Venturia carpophila</i> )				Apply at bud-swell, bud-burst, pink bud, shuck fall, cap fall, then every 10-14 days.	

## 1. TREE AND VINE CROPS – continued

SITUATION & CROP	DISEASE	STATE	RATE	WHP (days)	CRITICAL COMMENTS
Cherries	Brown Rot – Fruit ( <i>Monilinia fructicola</i> ), Blossom Blight ( <i>Monilinia laxa</i> )	Qld, NSW, Vic, Tas, SA, WA only	160 mL/100 L Apply 2000 L/ha	7	Apply at bud-swell, bud burst, pink bud, early blossom, and full bloom. Apply 3 weeks pre-harvest and 1 week preharvest.
	Shot-hole ( <i>Stigmina carpophila</i> ), Stone Fruit Rust ( <i>Tranzschelia discolor</i> )	All States			Apply at bud-swell, bud burst, pink bud, shuck fall, cap fall, then every 10-14 days. Apply 1 week pre-harvest.
	Transit Rot ( <i>Rhizopus stolonifer</i> )				Apply 1 week pre-harvest.
Nectarines	Shot-hole ( <i>Stigmina carpophila</i> )	All States except Qld	160 mL/100 L Apply 2000 L/ha	7	Apply at bud-swell, pink bud, shuck fall and then repeat each 14 days if weather conditions favour disease. Apply no later than 35 days preharvest as unacceptable fruit skin damage may occur. See also Additional Restraints for stone fruits.
	Brown Rot – Fruit ( <i>Monilinia fructicola</i> ), Blossom Blight ( <i>Monilinia laxa</i> )				Apply at bud-swell, bud burst, pink bud, early blossom and full bloom. Apply no later than 35 days pre-harvest as unacceptable fruit skin damage may occur. See also Additional Restraints for stone fruits.

## 1. TREE AND VINE CROPS – continued

SITUATION & CROP	DISEASE	STATE	RATE	WHP (days)	CRITICAL COMMENTS
Peaches	Brown Rot – Fruit ( <i>Monilinia fructicola</i> ), Blossom Blight ( <i>Monilinia laxa</i> )	All States	160 mL/100 L Apply 2000 L/ha	7	Apply at bud-swell, pink bud, early blossom and full bloom. Apply no later than 35 days pre-harvest as unacceptable fruit skin damage may occur. See also Additional Restraints for stone fruits.
	Shot-hole ( <i>Stigmina carpophila</i> ), Stone Fruit Rust ( <i>Tranzschelia discolor</i> )				Apply at bud-swell and continue at 7-14 day intervals. Apply no later than 35 days pre-harvest as unacceptable fruit skin damage may occur. See also Additional Restraints for stone fruits.
	Leaf Curl ( <i>Taphrina deformans</i> )				Apply at bud-swell and continue at 7-14 day intervals. In Qld spray only at bud-swell. Apply no later than 35 days pre-harvest as unacceptable fruit skin damage may occur. See also Additional Restraints for stone fruits.
Grapes <b>Note:</b> russeting of some table grape varieties may occur	Downy Mildew ( <i>Plasmopara viticola</i> ), Bunch Rot ( <i>Botrytis cinerea</i> )		160-210 mL/100 L	Dessert 7 Wine 14	Spray at first appearance of the foliage disease. Apply at 7-14 day intervals particularly during wet weather and periods of rapid growth. For Bunch Rot, applications at early full bloom, two weeks later, at veraisson and two weeks prior to harvest. <b>Table grapes:</b> russetting of some varieties may occur. DO NOT apply after cap fall on these varieties.

## 1. TREE AND VINE CROPS – continued

SITUATION & CROP	DISEASE	STATE	RATE	WHP (days)	CRITICAL COMMENTS
Grapes <b>Note:</b> russeting of some table grape varieties may occur – continued	Black Spot (Anthracnose) ( <i>Elsinoe ampelina</i> )	All States	210 mL/100 L	Dessert 7 Wine 14	If Black Spot has occurred in the vineyard in any of the last three years, apply at budburst and 14 days later when shoots are 10-15 cm long. If wet/humid conditions persist spray again when shoots are 20-30 cm long to protect new growth. Some initial minimal leaf damage on the new shoots of sensitive varieties can occur if spray treatments are applied at budburst and in the first 14 days after budburst. In vineyards with no history of Black Spot, make the first application as soon as conditions favour the development of the disease on the foliage and then at 7-14 day intervals if wet/humid conditions persist. Applications up to cap-fall will not cause russeting in table grape and dried fruit varieties.
Plums	Brown Rot – Fruit ( <i>Monilinia fructicola</i> ), Blossom Blight ( <i>Monilinia laxa</i> ) (NOT WA)	Qld, NSW, Vic, Tas, SA, WA only	160 mL/100 L Apply 2000 L/ha	1	Apply at bud-swell, bud-burst, early blossom, pink bud and full bloom.
	Shot-hole ( <i>Stigmina carpophila</i> ), Stone Fruit Rust ( <i>Tranzschelia discolor</i> )	All States			Apply at bud-swell, bud burst, shuck fall and cap fall.

## 2. LEGUMES

SITUATION & CROP	DISEASE	STATE	RATE	WHP (days)	CRITICAL COMMENTS
Beans – Broad (Faba)	Chocolate Spot ( <i>Botrytis fabae</i> ), Rust ( <i>Uromyces viciae-fabae</i> )	All States	1.4-2.3 L/ha	7	Apply at first sign of disease on the leaves or if weather conditions indicate likely incidence of disease. Repeat at 7-14 day intervals. Use the higher rate if the crop is dense and disease pressure is high.
Peanuts	Early Leaf Spot ( <i>Cercospora arachidicola</i> ), Late Leaf Spot ( <i>Cercosporidium personatum</i> ), Peppery Leaf Spot ( <i>Leptosphaerulina trifolii</i> ), Peanut Rust ( <i>Puccinia arachidis</i> ), Net Blotch ( <i>Didymosphaeria arachidicola</i> )	Qld, NSW, WA, NT only	1.1-1.8 L/ha	–	Use higher rate when conditions favour leaf spot or when rust appears. DO NOT feed peanut vines to livestock. NSW, WA only: Commence application when disease first appears and repeat as necessary to maintain control. Qld only: North and South Burnett – Commence spraying when disease appears and repeat when rain and warm moist nights are expected. Atherton Tablelands – Commence application 4-6 weeks after planting and repeat 7-14 day intervals depending on conditions.
Peas	Downy Mildew ( <i>Peronospora viciae</i> )	Qld, Tas, WA only	1.1-1.8 L/ha	7	Apply at first sign of disease on the leaves or if weather conditions indicate likely incidence of disease. Repeat at 7-14 day intervals. Use the higher rate if the crop is dense and disease pressure is high.

### 3. VEGETABLES AND FRUIT

SITUATION & CROP	DISEASE	STATE	RATE	WHP (days)	CRITICAL COMMENTS
Bananas DO NOT apply to bananas within 14 days of applying an oil based spray or crop damage will occur	Leaf Spot ( <i>Mycosphaerella musicola</i> )	Qld, NSW, NT only	1.8 L/ha	1	<p><b>For North Qld:</b> Spray every 14 days late January to end of March. Extend to 21 days after March and then 28-35 days in the drier months of the year.</p> <p><b>For South Qld:</b> Spray every 21 days from start of December to end of April.</p> <p><b>For NSW:</b> Spray every 21 days from end of November to end of May.</p> <p><b>For WA:</b> Spray every 10-14 days from November to end of May and extend to 14-21 days from May to November.</p>
		WA only	1.5 L/ha		
	Leaf Speckle ( <i>Mycosphaerella musae</i> )	Qld, NSW, WA, NT only	3.0 L/ha		
Broccoli, Brussel sprouts, Cabbages, Cauliflowers	Ring Spot ( <i>Mycosphaerella brassicicola</i> )	All States	1.8-3.5 L/ha	7	Apply at first sign of disease on the leaves or if weather conditions indicate likely incidence of disease. Repeat at 14 day intervals. Use the higher rate if the crop is dense and disease pressure is high.
Artichoke Globe	Grey Mould ( <i>Botrytis cinerea</i> )		1.8-2.3 L/ha	1	Apply at 7-10 day intervals as required. Use the higher rate if disease pressure is high.
Capsicums Peppers	Grey Mould ( <i>Botrytis cinerea</i> ), Anthracnose ( <i>Colletotrichum acutatum</i> )		1.8-2.3 L/ha	1	Apply at 7-10 day intervals as required. Use the higher rate if disease pressure is high.
Carrots	Leaf Blight ( <i>Alternaria dauci</i> )		1.8 L/ha	7	Commence application as soon as symptoms favour the development of the disease and then spray every 7-14 days.

### 3. VEGETABLES AND FRUIT – continued

SITUATION & CROP	DISEASE	STATE	RATE	WHP (days)	CRITICAL COMMENTS
Celery	Septoria Leaf Spot ( <i>Septoria apiicola</i> )	All States	1.8 L/ha	1	Apply every 7-14 days. Apply also to seedbeds.
	Cercospora Early Blight ( <i>Cercospora apii</i> )	NSW, WA only	1.2 L/ha		Apply every 10-14 days.
Cucurbits (including Cantaloupe, Cucumber, Honeydew, Muskmelon, Pumpkin, Squash, Rockmelon, Watermelon, Zucchini)	Downy Mildew ( <i>Pseudoperonospora cubensis</i> ), Gummy Stem Blight ( <i>Didymella bryoniae</i> ), Anthracnose ( <i>Colletotrichum orbiculare</i> ), Leaf Blight ( <i>Alternaria cucumerina</i> ), Target Leaf Spot ( <i>Cercospora citrullina</i> )	All States	1.6-2.5 L/ha	1	Apply on a 7 to 14 day schedule. Apply rates towards the higher end of the recommended range at 7 day intervals when disease pressure is high. Commence spray program early, at first true leaf and before vining or flowering. When used at these rates, Chloronil Pro Fungicide will suppress Powdery Mildew.
	Belly Rot ( <i>Rhizoctonia solani</i> )				Suppression of Belly Rot will be obtained where fruit form on soil when sprayed using the above foliar spray programme.
Endive	Grey Mould ( <i>Botrytis cinerea</i> )	Qld, WA only	1.8-2.3 L/ha		Apply at 7-10 day intervals as required. Use the higher rate if disease pressure is high.
Leeks Shallots	Purple Blotch ( <i>Alternaria porri</i> )				Apply at first appearance of disease. Repeat at 7-10 day intervals, particularly during wet weather.
Okra	Leaf Disease/Spot				Apply at first appearance of disease. Repeat at 7-10 day intervals.
Onions (excluding spring onions)	Downy Mildew ( <i>Peronospora destructor</i> )	All States	2.3 L/ha	14	Apply at first sign of disease on the leaves or of if weather conditions indicate likely incidence disease. Repeat at 14 day intervals.



### 3. VEGETABLES AND FRUIT – continued

SITUATION & CROP	DISEASE	STATE	RATE	WHP (days)	CRITICAL COMMENTS
Potato	Early Blight or Target Spot ( <i>Alternaria solani</i> ), Late Blight or Irish Blight ( <i>Phytophthora infestans</i> )	All States	1.1-1.8 L/ha	–	Spray at first sign of foliage disease or at flowering time, whichever is earlier. Spray every 7-14 days until within 14 days of desiccation or harvest.
Rhubarb	Ascochyta Leaf Spot ( <i>Ascochyta rhei</i> )	All States	140 mL/100 L Apply 2000 L/ha	7	Apply every 10-14 days.
Radish	Grey Mould ( <i>Botrytis cinerea</i> )		1.8-2.3 L/ha	1	Apply every 7-10 day intervals as required. Use the higher rate if disease pressure is high.
Sweet Corn	Turcicum Leaf Blight ( <i>Exserohilum turcicum</i> )				Apply at first appearance of disease. Repeat at 7-10 day intervals.
Tomato	Early Blight or Target Spot ( <i>Alternaria solani</i> ), Leaf Mould ( <i>Fulvia fulva</i> ), Grey Leaf Spot ( <i>Stemphylium solani</i> ), Botrytis Rot or Grey Mould ( <i>Botrytis cinerea</i> )				Spray at first appearance of the foliage disease. Spray at 7-14 day intervals. Continue into the picking season to obtain best results against Leaf Mould and Botrytis Rot.
Water Cress	Cercospora Leaf Spot	Qld, WA only			Apply every 7-10 day intervals as required. Use the higher rate if disease pressure is high.

#### 4. MISCELLANEOUS

SITUATION & CROP	DISEASE	STATE	RATE	WHP (days)	CRITICAL COMMENTS
Ornamentals Chrysanthemums, Geraniums, Iris & other ornamentals	Botrytis, Grey Mould, Rust diseases, Septoria and Alternaria Leaf Spot diseases	All States	100 mL/ 100 L	–	Apply at 7-14 day intervals. Use 7 day interval under severe conditions. Avoid application to blooms in Azalea, Hydrangea and Petunia.
Tobacco	Tobacco Leaf Spot ( <i>Ascochyta arida</i> )	Qld, WA only	220 mL/ 100 L	–	Apply every 7 days in seedbed application only.
Turf and Lawns, Bowling greens, Golf greens	Dollar Spot ( <i>Sclerotinia homeocarpa</i> )	Qld, NSW, ACT, Vic, SA, WA only	130-200 mL/100 m <sup>2</sup> in 20-60 L of water	–	If disease is already established use higher rate. Apply at 7-14 day intervals. Under severe conditions spray at 7 day intervals. DO NOT mow or water treated area until turf or lawn is thoroughly dry.
	Brown Patch ( <i>Rhizoctonia</i> sp)	All States			
	Grey Leaf Spot ( <i>Stemphylium solani</i> )	NSW, WA only	24 L/ha		Apply to leaf as a curative application. DO NOT irrigate for 24 hours after application.

**NOT TO BE USED FOR ANY PURPOSE, OR IN ANY MANNER, CONTRARY TO THIS LABEL UNLESS AUTHORISED UNDER APPROPRIATE LEGISLATION.**

#### WITHHOLDING PERIODS:

**ARTICHOKES, BANANAS, CAPSICUMS, CELERY, CUCURBITS, ENDIVE, LEEK, OKRA, PEPPERS, PLUMS, RADISH, SHALLOTS, SWEET CORN, TOMATOES, WATERCRESS:**

**DO NOT HARVEST FOR 1 DAY AFTER APPLICATION.**

**APRICOTS, BEANS, BROCCOLI, BRUSSELS SPROUTS, CABBAGES, CARROTS, CAULIFLOWERS, CHERRIES, NECTARINES, PEACHES, PEAS, RHUBARB, TABLE GRAPES:**

**DO NOT HARVEST FOR 7 DAYS AFTER APPLICATION.**

**ONIONS, WINE GRAPES: DO NOT HARVEST FOR 14 DAYS AFTER APPLICATION.**

**BEANS, PEANUTS, PEAS: DO NOT GRAZE LIVESTOCK ON TREATED CROPS.**

**POTATOES, PEANUTS (HARVEST): NOT REQUIRED WHEN USED AS DIRECTED.**

## GENERAL INSTRUCTIONS

Chloronil Pro Fungicide is a protectant fungicide for the control of a range of diseases in fruit and vegetables. For effective disease control a good leaf cover must be achieved before a widespread disease outbreak occurs.

## MIXING

Thoroughly shake and invert the pack several times before opening. Half fill spray vat and with agitation system running, add the required amount of product.

## APPLICATION RATES PER HECTARE:

**Low Volume:** 200 or more litres per hectare.

**High Volume:** 500 or more litres per hectare.

**Aerial Application:** 20 litres or more per hectare.

**Mister:** 75-255 litres per hectare.

The volume of water applied should increase as the plants grow in size to maintain adequate cover.

## COMPATIBILITY

This product is compatible with wettable powder and flowable formulations of most commonly used fungicides, insecticides and miticides. Unless experience in your area has shown other combinations to be physically compatible and non-injurious to your crop do not combine with other chemicals, especially oil based emulsifiable or flowable pesticides. This product should not be mixed with spraying oils or sprayed onto crops that have been sprayed with oil for at least 10 days after the last spray.

Wetting Agents: The addition of surfactants does not improve this product's efficiency and under some conditions may cause plant injury.

## FUNGICIDE RESISTANCE WARNING

Chloronil Pro Fungicide is a member of the multi-site activity group of fungicides. For fungicide resistance management the product is a Group M5 fungicide. Some naturally occurring individual fungi resistant to the product and other Group M5 fungicides may exist through normal genetic variability in any fungal population. The resistant individuals can eventually dominate the fungal population if these fungicides are used repeatedly. These resistant fungi will not be controlled by this product or other Group M5 fungicides, thus resulting in a reduction in efficacy and possible yield loss.

GROUP	<b>M5</b>	FUNGICIDE
-------	-----------	-----------

Since the occurrence of resistant fungi is difficult to detect prior to use, Amgrow Pty Ltd accepts no liability for any losses that may result from the failure of this product to control resistant fungi.

## PROTECTION OF LIVESTOCK

DO NOT contaminate feed or foodstuffs with this product or empty containers.

## PROTECTION OF WILDLIFE, FISH, CRUSTACEANS AND ENVIRONMENT

Dangerous to fish. DO NOT contaminate streams, rivers or waterways with chemical or used containers.

## **STORAGE AND DISPOSAL**

Store in the closed, original container in a cool, well-ventilated area.

DO NOT store for prolonged periods in direct sunlight.

Triple or preferably pressure rinse containers before disposal. Add rinsings to spray tank. DO NOT dispose of undiluted chemicals on site. If recycling, replace cap and return clean containers to recycler or a designated collection point. If not recycling, break, crush, or puncture and deliver empty packaging to an approved waste management facility. If an approved waste management facility is not available bury the empty packaging 500 mm below the surface in a disposal pit specifically marked and set up for this purpose clear of waterways, desirable vegetation and tree roots, in compliance with relevant Local, State or Territory government regulations. DO NOT burn empty containers or product.

## **SAFETY DIRECTIONS**

Attacks eyes and skin. Avoid contact with eyes and skin. DO NOT inhale spray mist. Repeated exposure may cause allergic disorders. Sensitive workers should wear protective clothing. When preparing spray and using prepared spray wear cotton overalls buttoned to the neck and wrist, washable hat, elbow-length PVC gloves and goggles and disposable mist mask. If clothing becomes contaminated with product or wet with spray remove clothing immediately. If product on skin immediately wash area with soap and water. If product in eyes, wash out immediately with water. After use and before eating, drinking or smoking, wash hands, arms and face thoroughly with soap and water. After each day's use, wash gloves, goggles and contaminated clothing.

## **FIRST AID**

If poisoning occurs contact a doctor or Poisons Information Centre. Phone Australia 13 11 26.

If swallowed, do NOT induce vomiting. Give a glass of water.

## **MATERIAL SAFETY DATA SHEET**

Additional information is listed in the Material Safety Data Sheet (MSDS) which can be obtained from the supplier.

**CONDITIONS OF SALE:** Amgrow Pty Ltd shall not be liable for any loss injury damage or death whether consequential or otherwise whatsoever or howsoever arising whether through negligence or otherwise in connection with the sale supply use or application of this product. The supply of this product is on the express condition that the purchaser does not rely on Amgrow's skill or judgement in purchasing or using the same and every person dealing with this product does so at his own risk absolutely. No representative of Amgrow has any authority to add to or alter these conditions.

APVMA Approval Number: 66606/53986

# POISON

KEEP OUT OF REACH OF CHILDREN  
READ SAFETY DIRECTIONS BEFORE OPENING OR USING



# Chloronil Pro

Fungicide

**ACTIVE CONSTITUENT:**  
720 g/L CHLOROTHALONIL

**GROUP M5 FUNGICIDE**

For the control of fungal diseases on almonds, apricots, bananas, carrots, celery, cherries, faba beans, grapes, onions, peaches, peanuts, peas, plums, potatoes, tomatoes, turf and vegetables as per the Directions for Use Table.

**IMPORTANT: READ THE ATTACHED LEAFLET BEFORE  
OPENING OR USING**

The Amgrow logo, featuring a stylized plant icon above the word "Amgrow" in a bold, sans-serif font.

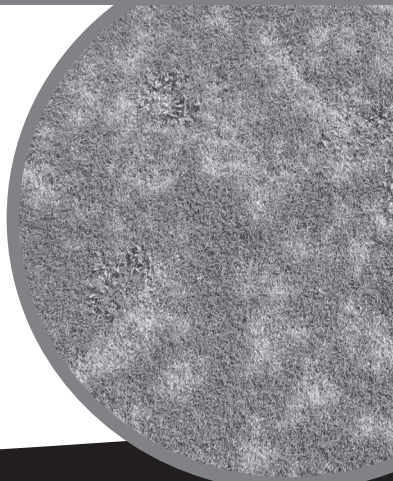
Distributed by: Amgrow Pty Ltd. ABN 81 100 684 786  
Unit B2A, 3-29 Birnie Avenue, Lidcombe NSW 2141 • TELEPHONE: 1800 631 008

CONTENTS

## 10 Litres

GLUE AREA

GLUE AREA





# Chloronil Pro

Fungicide

## STORAGE AND DISPOSAL

Store in the closed, original container in a cool, well-ventilated area. DO NOT store for prolonged periods in direct sunlight. Triple rinse containers before disposal. Add rinsings to spray tank. DO NOT dispose of undiluted chemicals on site. If recycling, replace cap and return clean containers to recycler or a designated collection point. If not recycling, break, crush, or puncture and deliver empty packaging to an approved waste management facility. If an approved waste management facility is not available bury the empty packaging 500 mm below the surface in a disposal pit specifically marked and set up for this purpose clear of waterways, desirable vegetation and tree roots, in compliance with relevant Local, State or Territory government regulations. DO NOT burn empty containers or product.

## SAFETY DIRECTIONS

Attacks eyes and skin. Avoid contact with eyes and skin. DO NOT inhale spray mist. Repeated exposure may cause allergic disorders. Sensitive workers should wear protective clothing. When preparing spray and using prepared spray wear cotton overalls buttoned to the neck and wrist, washable hat, elbow-length PVC gloves and goggles and disposable mist mask. If clothing becomes contaminated with product or wet with spray remove clothing immediately. If product on skin immediately wash area with soap and water. If product in eyes, wash out immediately with water. After use and before eating, drinking or smoking, wash hands, arms and face thoroughly with soap and water. After each day's use, wash gloves, goggles and contaminated clothing.

## FIRST AID

If poisoning occurs contact a doctor or Poisons Information

Centre. Phone Australia 13 11 26. If swallowed, do NOT induce vomiting. Give a glass of water.

## MATERIAL SAFETY DATA SHEET

Additional information is listed in the Material Safety Data Sheet (MSDS) which can be obtained from the supplier.

**CONDITIONS OF SALE:** Amgrow Pty Ltd shall not be liable for any loss injury damage or death whether consequential or otherwise whatsoever or howsoever arising whether through negligence or otherwise in connection with the sale supply use or application of this product. The supply of this product is on the express condition that the purchaser does not rely on Amgrow's skill or judgement in purchasing or using the same and every person dealing with this product does so at his own risk absolutely. No representative of Amgrow has any authority to add to or alter these conditions.

APVMA Approval No.: 66606/53986

**IN A TRANSPORT EMERGENCY DIAL 000  
• POLICE OR FIRE BRIGADE •**



Batch Number

Date of Manufacture