

154

**N.C. STATE**

vs.

**FURMAN**

October 30, 1954

8:00 P.M.

Riddick Stadium

Price 50 Cents

# Why Your Dollar Buys More in SYLVANIA TV



MORE PICTURE CLARITY...MORE GENUINE ECONOMIES...MORE CABINET BEAUTY...  
MORE EYE COMFORT, TOO, WITH—



## HALOLIGHT

*The Frame of Light  
That's Kinder to Your Eyes*

● 1955 Sylvania TV brings you the world's finest television—with savings that will delight your pocketbook!

Brilliant new Super PHOTOPOWER Chassis assures clearer pictures, easier operation—saves tube wear, service and electricity.

And only Sylvania brings you HALOLIGHT—TV's greatest eye comfort feature. In every way, you get more for your money in Sylvania TV!



The **LOMBARD**—Super Deluxe 21" Console with HALOLIGHT, Front Dual Speakers, Super PHOTOPOWER Chassis, Silver Screen 85 Aluminized Picture Tube. In Mahogany Veneer and Blonde Korina.



The **FAIRFAX**—Super Deluxe 21" Table Model with HALOLIGHT, Front Speaker, Super PHOTOPOWER Chassis, Silver Screen 85 Aluminized Picture Tube. In Mahogany Veneer or Blonde Korina.

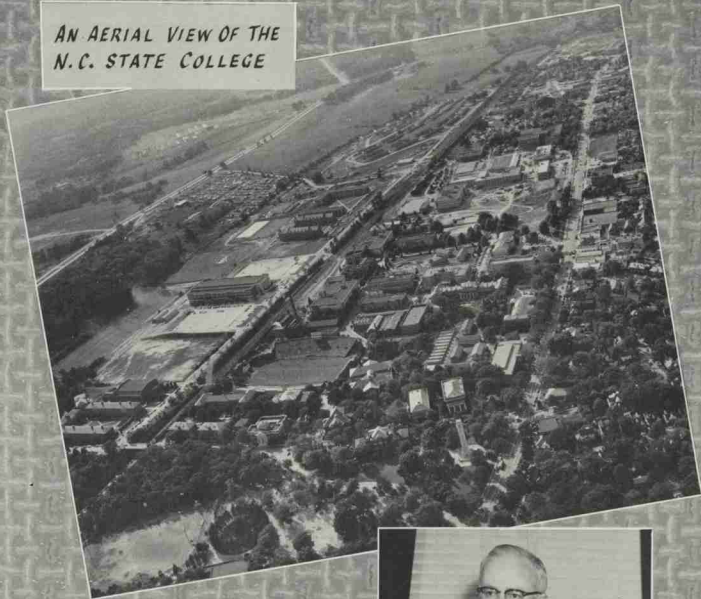
21" Models **\$169<sup>95</sup>**  
priced as low as

Slightly Higher West and South

HALOLIGHT and Super PHOTOPOWER are Sylvania Trademarks

# SYLVANIA TELEVISION

AN AERIAL VIEW OF THE  
N. C. STATE COLLEGE

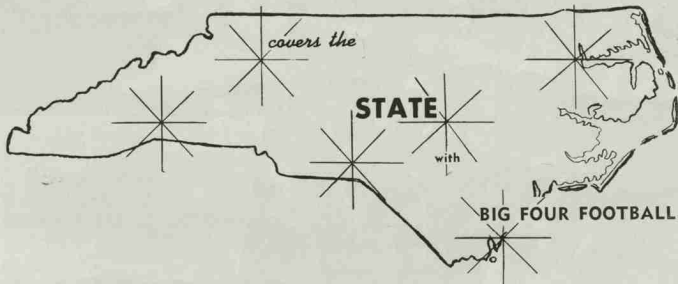


DR. C. H. BOSTIAN, *Chancellor*  
N. C. STATE COLLEGE



Every Saturday

## THE TOBACCO SPORTS NETWORK



hear **RAY REEVE**

and

**Bill Currie**

on your **NEARBY TSN Station**

# NC STATE



EARLE EDWARDS - *Head Football Coach*



ROY B. CLOGSTON - *Athletic Director*



# RALEIGH SEA FOOD COMPANY

**The Finest Seafood in Season – Fresh Daily**

★ ★ ★

**PROMPT DELIVERY SERVICE**

★ ★ ★

**CORNER DAVIE and EAST STREETS**

★ ★ ★

**Phones 7748-7749-7740**



AL MICHAELS  
Backfield Coach

CAREY BREWBAKER  
Line Coach

EARLE EDWARDS  
Head Coach

PAT PEPPLER  
Asst. Coach

BILL SMALTZ  
Freshman Coach

## N. C. STATE FOOTBALL STAFF



MERLE MCINTOSH - Trainer

# State's New Head Coach . . . EARLE EDWARDS

The choice of Earle Edwards, former end coach at Michigan State and for 15 years line coach at Penn State, as North Carolina State's new head football coach has been hailed in all quarters as an outstanding selection. Edwards' appointment was announced on Feb. 9 by Chancellor Carey Bostian under a three-year contract.

Edwards, 46-year-old native of Greensburg, Pa., has an extensive background both as player and coach. After three outstanding years at Greensburg High, Edwards enrolled at Penn State where he starred at end for three seasons, 1929-30 and 1931. After his graduation in Industrial Engineering, Edwards worked at his profession for two years at Lambertville, N. J., then entered the coaching field at Princeton (N.J.) High as an assistant for one year. In 1934 after a season as head coach at Edensburg, Pa. high school, Edwards returned to Penn State as an assistant coach under Bob Higgins.

For the next 14 years through 1948, Edwards tutored the Penn State line, working particularly with the ends. He was hailed as one of the finest end coaches in the country and in 1949 was appointed end coach under Biggie Munn at Michigan State, from 1949 through 1953 Edwards was end coach and chief scout for the Michigan State Spartans, who were twice undefeated during the period and last year were Rose Bowl champions.

Edwards came to his new position at State highly recommended by everyone, including such men as Ralph Young, Michigan State Athletic Director, Benny Ooster-

baan, head coach at the University of Michigan, Biggie Munn, Michigan State football coach, Dr. John Hannah, president of Michigan State and dozens of other well known personalities who were all high in their praise of Edwards' ability.

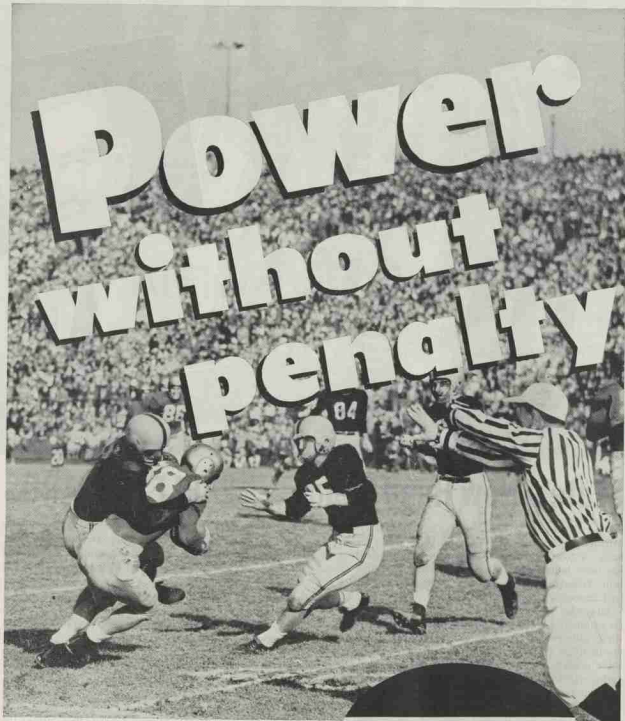
Besides his degree in Industrial Engineering, Edwards holds a Master's degree in Education. He has served on the physical education staffs at both Penn State and Michigan State.

At N. C. State Edwards began the job of rebuilding the Wolfpack football fortunes with the off-season practice period from April 5 to May 5. A brand new system of play, termed a "multiple-offense," which was utilized at Michigan State, is being taught the State team. The system operates from an unbalanced line using the basic T-formation with both single and double-wing variations.

Already Edwards has made innumerable friends at State and his personality and winning smile have won him many rabid supporters despite his short time on the campus. He has gone about the task of getting ready for the 1954 season with a grim determination to give his best to get the job done successfully.

The new State coach is a family man with three children, Jack, 21, a senior at Michigan State, Mary Ann, a sophomore at Michigan State and Bob a junior in high school.

# Power without penalty



In a football game, the power of the whole team can be wasted by penalties.

So, too, in motor fuels. An additive in a premium gasoline can cause a harmful metallic deposit—can make your car pay a penalty in lost power.

Amoco-Gas has no additive because it needs none. It's pure petroleum. It delivers power without penalty. Just test it!



AMERICAN OIL COMPANY



# N C STATE



*MONTÉ SEEHORN - H.B.*



*DARRELL DESS - G.*



*AL D'ANGELO - G.*



*BILLY FRANKLIN - Q.B.*



*HENRY SPIVEY - T.*



*TED KILYK - H.B.*



*ARCHIE FAIRES - Q.B.*

the label that distinguishes the finest  
Apparel and Accessories wherever  
Carolínians gather

*Jvey Taylor Co.*

*The Show Place  
of the Carolinas*



# **PINE STATE**


**MILK ★ ICE CREAM**

## **DAIRY PRODUCTS**

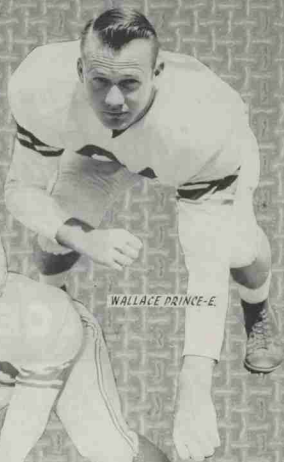
**PINE STATE CREAMERY**  
RALEIGH ★ OXFORD  
**SOUTHERN ICE CREAM CO.**  
HENDERSON

**SERVED IN NORTH CAROLINA SINCE 1919**

# N C STATE




KEN URGOVITCH-T.



WALLACE PRINCE-E.




EDDIE WEST-Q.B.




FRED BATTAGLIA-C.



PERCY RIDEN-T.



DON LANGSTON-F.B.



ED GELSDORF-H.B.

**Get The Best - Get Sealtest**

*Southern Dairies*

*Sealtest*  
**ICE CREAM**

**NORTH CAROLINA PLANTS**

ALBEMARLE  
ASHEVILLE  
BREVARD

BURLINGTON  
BRYSON CITY  
CHARLOTTE

DURHAM  
ELIZABETH CITY  
FAYETTEVILLE

GREENSBORO  
RALEIGH  
ROCKY MOUNT

SALISBURY  
WILSON  
WINSTON-SALEM

BEST WISHES TO THE WOLFPACK



**SANDERS**  
**MOTOR COMPANY**

CARS  
TRUCKS  
TRACTORS  
IMPLEMENTS  
GENUINE PARTS  
USED CARS AND TRUCKS  
BAKED ENAMEL PAINT SHOP  
AUTHORIZED FACTORY SERVICE  
MODERN BODY AND TRIM SHOP

YOUR FRIENDLY FORD DEALER AT

329 S. Blount St.

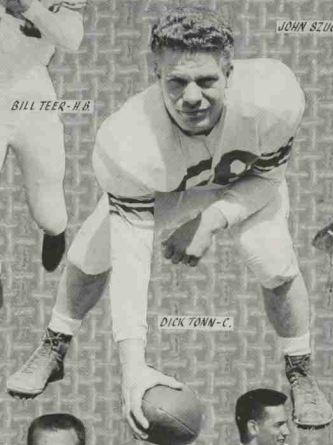
HAROLD PITSER  
General Manager

RALEIGH, N. C.

# N C STATE



*BILL TEER - H.B.*



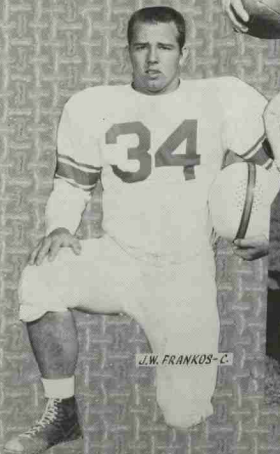
*DICK TOWN - C.*



*JOHN SZUCJAN - T.*



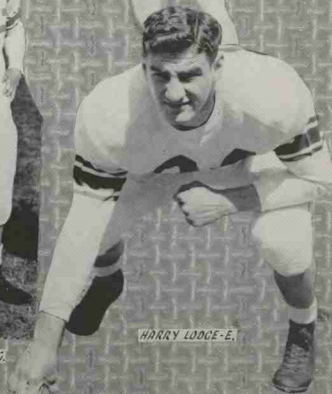
*JIM MEADLOCK - H.B.*



*J.W. FRANKOS - C.*



*JOHN BAGONIS - G.*



*HARRY LODGE - E.*

# N. C. STATE



**GEORGE MARINKOV**  
L.H.



**HENRY BROWN**  
R.E.



**JOHN BARCHESI**  
R.G.



**MIKE NARDONE**  
L.G.



**JOHN ZUBATY**  
R.H.



**HARRISON MAKEEVER**  
F.B.

# Carolina Builders Corporation

B. B. BENSON, PRES.—C. L. BENSON, TREAS.

J. Y. HORNBUCKLE

※ ※ ※

COAL — WATERPROOFING — BUILDING MATERIALS — LUMBER

MILLWORK — ATHEYS PAINTS — RUSSWIN HARDWARE

※ ※ ※

217 N. Dawson Street, Phone 7563, Raleigh, N. C.

## TRAILWAYS ALWAYS

# "Going Your Way"

The favorite of college students for 29 years. Trailways provides more travel pleasure at less cost per mile. Trailways connects leading campuses with over 80% of North Carolina's cities and towns, with connection to the rest.

Trailways now provides direct no-change service from North Carolina points to New York, Chicago, Memphis, Miami, Dallas, and Atlanta. It serves the nation with 78,000 miles of scenic highway.

FREQUENT DEPARTURES · CHARTERS  
PLEASURE-PLANNED TOURS



# Carolina TRAILWAYS

Again this year . . .

96.1 MC  
ON  
FM  
DIAL

# WNAO

850 KC  
ON  
AM  
DIAL



JIMMY SIMPSON  
brings you  
play by play on  
Football and Basketball

Is Following the  
Wolfpack at home  
and away in sports

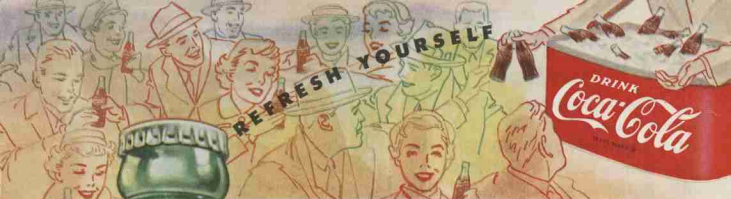
VIEW "SPORTS REPORT" ON CHANNEL 28

7:15-7:30 P.M. MONDAY THROUGH FRIDAY

## We're a "Fresh Up" family!







ENJOY THE GAME... PAUSE AND



**REFEREES' SIGNALS**

1. Offside
2. Illegal procedure or position
3. Illegal motion
4. Illegal shift
5. Illegal substitution
6. Delay of game
7. Personal foul
8. Roughness and piling on
9. Clipping
10. Roughing the kicker
11. Unsportsmanlike conduct
12. Defensive holding
13. Illegal use of hands and arms
14. Intentional grounding
15. Illegally passing or handing ball forward
16. Forward pass or kick catching interference
17. Ineligible receiver down field on pass
18. Ball illegally touched, kicked or batted
19. Incomplete forward pass, penalty declined, no play or no score
20. Crawling, helping the runner or interlocked interference
21. Ball dead; if hand is moved from side to side: touchback
22. Touchdown or field goal
23. Safety
24. Time-out
25. First down
26. Ball ready-for-play
27. Start the clock or no more time-outs allowed

COPYRIGHT 1964, THE COCA-COLA COMPANY

CAPITAL COCA COLA BOTTLING CO. RALEIGH, N. C.

## FURMAN

### PROBABLE STARTING LINEUP

NO.	NAME	POSITION
60	Hightower	LE
65	Harris	LT
49	Bolick	LG
46	Socha	C
47	Williams	RG
59	Young	RT
63	Barefoot	RE
37	Boyle	QB
16	Yakimowicz	LH
28	Popson	RH
24	Dellinger	FB

### THE HURRICANE SQUAD

12	Carter, QB	47	Williams, RG
13	Penland, HB	48	Hall, G
14	Biggerstaff, T	49	Bolick, LG
15	Jennings, C	51	Beck, T
16	Yakimowicz, LHB	52	Seay, T
17	Albert, FB	53	Freeman, T
20	Weir, HB	54	Reugner, C
22	Coker, FB	55	Lyle, T
24	Dellinger, FB	56	Craven, T
26	Petty, HB	57	Mincey, T
27	Edwards, FB	58	Halford, T
28	Popson, RHB	59	Young, RT
30	Stewart, HB	60	Hightower, LE
31	Kolans, QB	61	Maddox, E
32	Grant, HB	62	Medlin, E
34	Pringels, QB	63	Barefoot, RE
36	Ward, HB	64	Pfeifer, E
37	Boyle, QB	65	Harris, LT
41	Anderson, G	66	Johnson, G
42	Hamel, G	67	Dacus, T
43	Tzouvelekas, G	69	Cubbage, T
44	Bielecki, G	71	Stokes, G
45	Lindler, G	74	Garrison, C
46	Socha, C	75	Clardy, G

## CHESTERFIELD

AMERICA'S MOST POPULAR  
2-WAY CIGARETTE

*Either Way-* **THE QUALITY YOU WANT!**



JEAN AND JOAN  
THE CORBETT TWINS

**CHESTERFIELD**  
*BEST FOR YOU*

## N. C. STATE

### PROBABLE STARTING LINEUP

NO.	NAME	POSITION
88	Harry Lodge	LE
73	Ben Kapp	LT
64	Mike Nardone	LG
50	Dick Tonn	C
68	Al D'Angelo	RG
75	C. M. Price	RT
85	Henry Brown	RE
17	Eddie West	QB
20	George Marinkov	LH
43	John Zubaty	RH
33	Don Langston	FB

### THE WOLFPACK SQUAD

12	Billy Franklin	62	Charles Davis
16	Joe Barringer	63	John Barchiesi
17	Eddie West	64	Mike Nardone
20	George Marinkov	65	Darrell Dess
22	Ted Kilyk	66	John Bagonis
23	Alan Henry	67	John Szuchan
24	Bill Teer	68	Al D'Angelo
30	H. MacKeever	70	Percy Riden
31	David Meloni	71	Tony Leone
32	James Meadlock	72	Ken Urvogitch
33	Don Langston	73	Ben Kapp
40	Ed Gelsdorf	74	Henry Spivey
41	Jack Reed	75	C. M. Price
42	Monte Seehorn	76	Bob Dunnigan
43	John Zubaty	80	Ed Armit
50	Dick Tonn	81	John Lowe
51	Wallace Prince	84	John Daskal
52	J. W. Franks	85	Henry Brown
53	David Vivino	86	Ronnie Gall
60	Dickie Lewis	87	Bob Becker
61	Jim Frazier	88	Harry Lodge
			David McGuire

**CHESTERFIELD**  
LARGEST SELLING CIGARETTE  
IN AMERICA'S COLLEGES

**FOR TASTE AND MILDNESS... THEY SATISFY MILLIONS!**



## PENALTIES

### LOSS OF FIVE YARDS

1. Taking more than five times out during either half (except for replacement of injured player).
2. Illegal delay of game.
3. Failure to complete substitution before play starts.
4. Violation of kickoff formation.
5. Player out of bounds when scrimmage begins.
6. Putting ball in play before Referee signals "Ready-for-play".
7. Failure to maintain proper alignment of offensive team when ball is

snapped. Also, backfield man illegally in motion.

8. Offside by either team or encroachment on neutral zone.

9. Attempt to draw opponents offside.

10. Crawling by runner.

11. Illegal forward pass (includes intentional grounding of forward pass). Also loss of down.

12. Taking more than two steps after Fair Catch is made.

13. Player on line receiving snap.

14. Any violation of the scrimmage formation.

### LOSS OF FIFTEEN YARDS

15. Team not ready to play at scheduled time.
16. Violation of rules during intermission.
17. Illegal return of suspended player.
18. Interference by member of offensive team with defensive player making pass interception. (Also loss of down.)
19. Interference with opportunity of player of receiving team to catch a kick.
20. Illegal use of hands or arms by offensive player.

21. Tackling or blocking defensive player who has made fair catch.

22. Roughing the kicker.

23. Piling up, hurdling, clipping.

24. Tackling player out of bounds, or running into player obviously out of play.

25. Coaching from sidelines.

26. Failure to stop one full second following shift.

27. Defensive holding.

28. Invalid Signal for Fair Catch.

### OTHER PENALTIES

29. Striking an opponent with fist, forearm, elbow or locked hands, kicking or kneeling — Mandatory disqualification of offending player plus loss of fifteen yards.
30. Foul within the one yard line—half the distance to the goal.
31. Interference by defensive team on forward pass—passing team's ball at spot of foul.
32. Forward pass being touched by ineligible receiver beyond the line of

scrimmage—loss of fifteen yards from spot of preceding down and loss of a down.

33. Illegal touching of kicked ball within opponent's ten yard line — touchback.

34. Flagrantly rough play or unsportsmanlike conduct — Mandatory disqualification plus loss of fifteen yards.

35. Eligible pass receiver who goes out of bounds and later touches a forward pass — loss of down.



**William A. (Bill) Young**  
**Head Coach**  
**Furman University**  
**Greenville, S. C.**



Many of the major corrections in Furman's football play were born at 11 p.m. or later, on any given night. While the players slept soundly in their dorm next door, wide awake Bill Young used movies, memory and mental experiment in visualizing improvements in his Purple Hurricane.

That he has been increasingly successful is supported by three 'best-yet' years. In 1950, two victories. In 1951, three victories. In 1952, six victories and in 1953, seven victories.

And many of them have taken shape in the small office of William A. Young, former Alabama and Washington Redskin tackle, and now in his fifth year as head football coach at Furman. From 9 a.m. until practice time, with a period out for lunch, and from practice time until he has answered the questions of his own mind, Young is between projector, blackboard and consultations with his staff in that office.

Except for his golf game, he is all football, the year around. And he has been for quite a long time.

Young was born in North Little Rock, Arkansas in 1914. He began his varsity play at Alabama in 1933 and was a starter on 'Bama's Rose Bowl champions of 1935. His seven years as regular tackle for the professional Washington Redskins were interrupted by three years in the Navy during World War II.

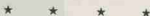
The Furman athletic director has always been the big, fast man. He is 6-2, weighs 260 pounds. He has opened the eyes of his football pupils with the way he moves around in on-the-field demonstrations.

He came to Furman in 1948 from Alabama's athletic front office. He built defiant defensive lines as line coach in 1948 and 1949 and became head coach in 1950 and athletic director in December 1952.

One of the South's finest amateur golfers, Young is invited to play in many top tournaments and accepts where his schedule will permit. He has been Greenville Optimist Tournament champion for the past two years. He coaches the Furman golf team in the spring.

# JOB P. WYATT & SONS COMPANY

RALEIGH, N. C.



**HARDWARE  
PAINT**

**IMPLEMENTS  
SEEDS**



*Compliments*

**TIRE SALES & SERVICE  
COMPANY**



*Your*

**Goodyear and General Electric  
Dealer in Raleigh**



*Flowers By—*

# FALLON'S

*—Are Distinctive*



Phone 8347

205 FAYETTEVILLE STREET

## N. C. State Football Squad

12	Billy Franklin	QB 185	Soph.	Farmville, Va.
16	Joe Barringer	QB 183 Jr.		Jacksonville, N. C.
17	*Eddie West	QB 190 Jr.		Alexandria, Va.
20	George Marinkov	LH 165	Soph.	Lebanon, Pa.
22	*Ted Kilyk	LH 175 Jr.		Phoenixville, Pa.
23	Alan Henry	C 175	Soph.	Long Island, N. Y.
24	*Bill Teer	LH 176 Sr.		Hillsboro, N. C.
30	Harrison Makeever	FB 195	Soph.	Sanford, N. C.
31	David Meloni	FB 175	Soph.	Oakmont, Pa.
32	James Meadlock	FB 170 Jr.		Taylorsville, N. C.
33	*Dan Langston	FB 188 Sr.		Lexington, Ky.
40	Ed Gelsdorf	RH 180	Soph.	Derry, Pa.
41	Jack Reed	RH 175	Soph.	Sylva, N. C.
42	*Monte Seehorn	RH 176 Jr.		Marion, N. C.
43	John Zubaty	RH 182 Jr.		Blairsville, Pa.
50	*Dick Tonn	C 200 Jr.		Cleveland, Ohio
51	Wallace Prince	C 188	Soph.	Cairo, Ga.
52	J. W. Frankos	C 198 Jr.		Portsmouth, Va.
53	David Vivino	C 180 Sr.		Paterson, N. J.
60	Dickie Lewis	G 190	Soph.	Wilmington, N. C.
61	*Jim Frazier	G 190 Sr.		Goldsboro, N. C.
62	*Charles Davis	G 190 Sr.		Goldsboro, N. C.
63	John Barchiesi	G 185	Soph.	Greensburg, Pa.
64	*Mike Nardone	G 175 Jr.		Peekskill, N. Y.
65	Darrell Dess	G 189	Soph.	New Castle, Pa.
66	*John Bagonis	T 195 Jr.		Luzerne, Pa.
67	John Szuchan	G 200	Soph.	Phoenixville, Pa.
68	*Al D'Angelo	G 186 Jr.		Greensburg, Pa.
70	Percy Riden	T 195 Sr.		Lewistown, Pa.
71	Tony Leone	T 200 Jr.		Bronx, N. Y.
72	Ken Urvogitch	T 195 Sr.		Garfield, N. J.
73	*Ben Kapp	T 200 Sr.		Paterson, N. J.
74	*Henry Spivey	T 200	Soph.	Weldon, N. C.
75	*C. M. Price	T 200 Jr.		Prospect, Va.
76	*Bob Dunnigan	T 198	Soph.	Burgaw, N. C.
80	Ed Armit	E 185	Soph.	Turtle Creek, Pa.
81	John Lowe	E 183	Soph.	Delmar, Dela.
84	John Daskal	T 195	Soph.	Fayetteville, N. C.
85	Henry Brown	E 180 Jr.		Lexington, N. C.
86	Ronnie Gall	E 185	Soph.	New Castle, Pa.
87	Bob Becker	E 186 Jr.		Newark, N. J.
88	*Harry Lodge	E 175 Sr.		Blaunox, Pa.

\* Denotes 1953 lettermen.

## Furman University Roster

12	Carter, Charles	QB 181	2	Greenville, S. C.
13	Penland, Jarry	RH 170	1	Greer, S. C.
15	*Jennings, Bobby	C 176	2	Columbia, S. C.
16	*Yakimowicz, (Cap)	LH 180	4	Wallington, N. J.
17	Albert, John	FB 225	1	New Brunswick, N. J.
20	Weir, Bill	LH 165	1	Columbia, S. C.
22	Coker, Jimmie	FB 200	1	Holly Hill, S. C.
24	*Dellinger, Bob	FB 180	3	Hickory, N. C.
26	Petty, Bill	LH 177	1	Gaffney, S. C.
27	Edwards, Vernon	FB 190	1	Hartwell, Ga.
28	*Popson, John	RH 195	3	Sawyer, Pa.
30	Stewart, Jack	HB 176	1	Winnboro, S. C.
31	Kolans, Dick	QB 171	1	Raritan, N. J.
32	Grant, Jimmy	RH 196	1	Rock Hill, S. C.
33	Appello, Joe	LH 165	1	Roselle Park, N. J.
34	*Pringels, Gus	QB 166	3	Sumter, S. C.
36	Ward, Pete	RH 165	1	Centerville, Va.
37	*Boyle, Jim	QB 171	3	Lancaster, S. C.
41	Anderson, Jack	RG 195	1	Hartwell, Ga.
42	Hamel, Dale	LG 192	2	Masillon, Ohio
43	Tzouvelekas, Nick	LG 190	1	Greenville, S. C.
44	*Bielecki, Andy	RT 220	3	Rutherford, N. J.
45	Linder, Francis	RT 193	2	Savannah, Ga.
46	*John Socha	C-RG 191	4	Wallington, N. J.
47	*Williams, W.	RG 205	4	Florence, S. C.
48	Hall, Roger	RG 180	1	Greenville, S. C.
49	Bolick, Harold	LG 190	1	Clark Township, N. J.
52	Seay, Larry	RT 200	2	Boiling Surings, S. C.
53	Freeman, Julian	LT 197	2	Lanett, Ala.
54	Reugner, Emil	C 200	1	Union, N. J.
55	Lyle, Grady	LT 214	1	Rock Hill, S. C.
56	Craven, Paul	RT 194	2	Charleston, S. C.
57	Mincey, Ronnie	LT 218	1	Citra, Fla.
58	Halford, Bob	LT 205	2	Columbia, S. C.
59	*Young, Dave	RT 210	3	Asheville, N. C.
60	*Hightower, L. G.	LE 195	3	Bamberg, S. C.
61	Maddox, Sidney	RE 180	2	LaGrange, Ga.
62	Medlin, Bob	LE 185	2	Florence, S. C.
63	*Barefoot, (A.Capt.)	RE 185	4	Lancaster, S. C.
64	Pfeifer, Dick	RE 205	1	Harbrouck Hgts, N. J.
65	*Harris, Jackie	LT 200	4	Sulligent, Ala.
71	Stokes, Bobby	LG 185	1	Bishopville, S. C.
74	Garrison, Donnie	C 192	2	Liberty, S. C.
75	*Clardy, Cecil	G 220	3	Liberty, S. C.

\*(Lettermen)

## BARNETTE'S ESSO SERVICE

"Happy Motoring"

434 Fayetteville St.



Raleigh, N. C.

THE LIGHT REFRESHMENT

**PEPSI-COLA**<sup>®</sup>

PEPSI-COLA BOTTLING CO. OF RALEIGH  
3705 HILLSBORO STREET, RALEIGH, NORTH CAROLINA

**WE'RE FOR N. C. STATE  
WIN OR LOSE**

Insure with us and  
**YOU** can't Lose

**ASSOCIATED INSURERS**

HUGH H. MURRAY, N.C.S. '32, President

BOB KING, Duke '35, Exec. V-Pres.

BILL ALDRIDGE, Carolina '51, V-Pres.

CHARLIE WASON, Wisconsin '34, V. Pres.

331 Fayetteville Street Phone 2-4426

**RALEIGH**

RECAPPING

VULCANIZING

**H & H TIRE CO.**

**FISS Tires and Tubes**

T. V. FERGUSON, '26—Owner

**119 East Davie Street**

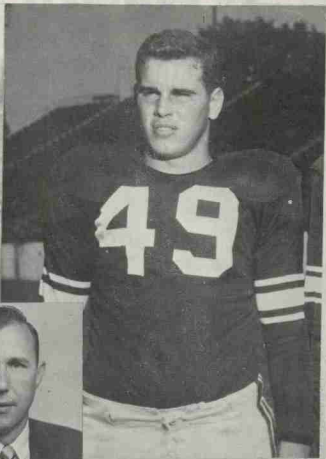
Phone 2-0492

Raleigh, N. C.

# FURMAN UNIVERSITY

JOHN SOCHR - CENTER

HAROLD BOLICK - L.B.



YARKIMOWICZ - LH.

DAVE YOUNG - RT.

JIM McQUEEN



# At Raleigh Theaters

**AMBASSADOR**  
*Theatre*

Sun. Mon. Tues. Wed.

ROBERT TAYLOR  
JANET LEIGH  
GEORGE RAFT

IN

"ROGUE  
COP"

**VAR-SITY**

Starts Sunday  
"BROKEN LANCE"  
Technicolor & Cinemascope

WITH  
SPENCER TRACY  
JEAN PETERS  
RICHARD WIDMARK

Starts Wednesday  
Academy Award Winning  
DOUBLE FEATURES  
AUDREY HEPBURN  
"ROMAN HOLIDAY"  
ALSO  
WILLIAM HOLDEN  
"STALAG 17"

## Big Hits Coming Soon To The Ambassador . . . .

"A STAR IS BORN" Cinemascope with Judy Garland & James Mason

"TRACK OF THE CAT" Cinemascope with Robert Mitchum & Teresa Wright

"DRUM BEATS" Cinemascope with Allan Ladd and Audrey Dalton

"ADVENTURES OF HAJJI BABA" Cinemascope with John Derek  
& Elaine Stewart

**CAPITOL**

Sunday and Monday  
RANDOLPH SCOTT

IN

"BOUNTY HUNTER"

Tuesday & Wednesday  
REX ALLEN

in

"DOWN LAREDO WAY"

Plus

"CARTOON FESTIVAL"

Thursday-Friday-Saturday  
BILL ELLIOTT  
TEX RITTER

IN

"BULLETS FOR BANDITS"

**TOWER**

DRIVE IN THEATRE

Sun.-Mon.-Tues.

"THE STUDENT  
PRINCE"

Cinemascope-Technicolor

STARRING

ANN BLYTH  
EDMUND PURDON

and the Singing Voice of  
MARIO LANZA

Movies Are Your Best Entertainment

PROF. FURMAN UNIVERSITY VICTS

**BOB DELLINGER - F.B.    JOHN POPSON - R.H.    W. WILLIAMS - R.G.**



**L. NIGHTOWER - L.E.    JACKIE HARRIS - L.T.    JIM. BOYLE - Q.B.**

1912

1912

# WILSON UZZLE

CADILLAC--OLDSMOBILE

*Sales and Service*



WHEN IN RALEIGH . . . .

WILSON UZZLE, Inc.

421 Fayetteville St.

Phone 2-4474



WHEN IN DURHAM . . . .

UZZLE MOTOR COMPANY

Corner Foster and Geer Streets

Phone 5191



# W. H. KING DRUG CO.

WHOLESALE DRUGGIST

Raleigh, N. C.

For Courteous, Dependable Service  
Shop at your Neighborhood Drug Store



The House of Friendly and Dependable Service

SERVING TWO GREAT  
NORTH CAROLINA CITIES

## HOTEL WASHINGTON DUKE

DURHAM, N. C.  
William Stubbs, Mgr.

## HOTEL SIR WALTER

RALEIGH, N. C.  
Arthur Buddenhagen, Mgr.

"FAMOUS FOR PRIME RIBS OF BEEF"

TWO FINE MEYER HOTELS

---

SHOP

## Hudson-Belk

*Eastern Carolina's Largest Store*

CONVENIENT CUSTOMER PARKING

CHARGE ACCOUNT PLANS

LAY-AWAY DEPARTMENT

---

**THE WOLFPACK CONTINUES TO WEAR**

*"The Finest In The Field"*

**ATHLETIC EQUIPMENT**

*By*

**RAWLINGS**

*Sold Exclusively In This Territory By*

**JOHNSON-LAMBE CO.**

116-118 S. Salisbury St., Raleigh, N. C.

Phone 8848



Red Johnson of Johnson-Lambe shows off brand new Rawlings pads to North Carolina State coaches, Al Michaels, left and Carey Brewbaker, right.

If you like Beer

You'll **Love** SCHLITZ

One of the finer things of life



The **BEER** That  
Made Milwaukee Famous

Wake Wholesale Company

Raleigh, N. C.

- STEEL -  
FABRICATED  
or  
WAREHOUSED  
from  
RALEIGH STOCKS



## ORNAMENTAL IRON

**PEDEN**

**STEEL CO.**



OFFICE — PLANT  
AND WAREHOUSE  
RALEIGH

Peanut Butter Sandwiches Sweet Fill Sandwiches

**TAYLOR**  
BISCUIT COMPANY

MAKERS OF  
TAYLORED TO TASTE  
FOOD PRODUCTS

Potato Chips

Peanut Butter

Your Money Buys More

At

**LAND'S, Inc.**



*Raleigh's Leading*

**Credit Jewelers**



137 Fayetteville Street

Tel. 2-3751



FOLLOW THE  
**Washington Redskins**  
 AND NORTH CAROLINA'S OWN

**Charlie Justice**

OVER THESE

**TOBACCO RADIO NETWORK STATIONS**

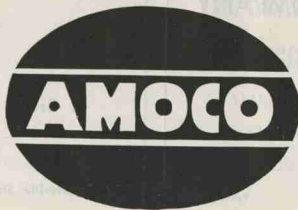
WFNC Fayetteville	1390 KC	WJNC Jacksonville	1240 KC
WFNC FM Fayetteville	98.1 MG	WRAL Raleigh	1240 KC
WGBR Goldsboro	1150 KC	WRAL FM Raleigh	101.5 MG
WEQR Goldsboro	96.9 MG	WCEC Rocky Mount	810 KC
WGTC Greenville	1590 KC	WFMA Rocky Mount	100.7 MG

**Washington Redskins 1954 Schedule**

San Francisco	September 26	San Francisco 49'ers	5:00 P.M. EST
	Sunday afternoon		
Pittsburgh	October 2	Pittsburgh Steelers	8:00 P.M. EST
	Saturday night		
Washington	October 10	New York Giants	2:00 P.M. EST
Washington	October 17	Philadelphia Eagles	2:00 P.M. EST
New York	October 24	New York Giants	2:00 P.M. EST
Washington	October 31	Baltimore Colts	2:00 P.M. EST
Cleveland	November 7	Cleveland Browns	2:00 P.M. EST
Washington	November 14	Pittsburgh Steelers	2:00 P.M. EST
Chicago	November 21	Chicago Cardinals	2:00 P.M. EST
Philadelphia	November 28	Philadelphia Eagles	2:00 P.M. EST
Washington	December 5	Cleveland Browns	2:00 P.M. EST
Washington	December 12	Chicago Cardinals	2:00 P.M. EST

PRESENTED BY YOUR

LOCAL



DEALER

# North Carolina Equipment Company



This All-American team—the INTERNATIONAL TD-24 crawler and bulldozer—gains extra yardage on every pass. We're headquarters for the complete line of INTERNATIONAL industrial equipment—

tractors, tractor equipment, high-speed earthmovers and power units—that will reduce your earthmoving or logging costs sharply. Call for your demonstration whenever and wherever you choose.



**Construction, Industrial, Logging  
and Material-Handling Equipment**

What makes  
a Lucky  
taste better?

**"IT'S TOASTED"**  
to taste better!

**LUCKIES TASTE BETTER** CLEANER,  
FRESHER,  
SMOOTHER!  
COFR., THE AMERICAN TOBACCO COMPANY

