

# 2024 OPRA CONFERENCE & TRADE

Sandusky, Ohio • February 4-7, 2024



Presented by



# 2024 OPRA CONFERENCE WELCOME



## Welcome to the 2024 OPRA Annual Conference & Trade Show.

You are attending one of the largest annual celebrations of parks and recreation in the United States, with well in excess of 1,000 people on site here at Kalahari this week!

For us, and I hope for you, this week really is a celebration—a celebration of all the work that you have done over the past year to change the lives of the people that you serve. Whatever you do this week, I hope that you celebrate! Celebrate the work that you are doing, celebrate those who have helped along the way, and celebrate the opportunities we have every day to make a difference in people's lives.



There are so many ways to do that here! From catching up with old friends (and making new ones) to participating in general sessions, networking events, and the Awards Dinner - the opportunities to celebrate are endless. And so are the opportunities to grow as professionals and leaders. We have more than 70 educational opportunities planned again this year. Each has been carefully selected by our Conference Education Team to provide you with tools that will help you as you continue to serve your community.

We are also celebrating the unprecedented support of our Conference Partners and Exhibitors. The Trade Show has sold out again this year, and our Conference Partnership Team has raised a record amount of funding for our event this year. Many of these great companies have been long-time supporters of OPRA, and this event would not be what it is without them. I hope that you will spend some time on Monday and Tuesday visiting with them and thanking them for their support.

Each day, I celebrate our wonderful OPRA team! Mindy and Tammy have done their usual masterful job making this event all that it is. I—and you—are blessed by their work! We are here to serve you in any way that we can this week.

Celebrate this week, and learn and grow! See this week as an opportunity to step away from the day-to-day work that you do and gain some new perspective, some new insight, and perhaps be rejuvenated to continue the incredible work that you do.

Have a great Conference!

A handwritten signature in cursive that reads "Woody Woodward".

Woody Woodward  
OPRA Executive Director



Columbus and Franklin County Metro Parks



City of Dublin



Erie MetroParks

## OPRA Board/Staff

Addie Weaver, Washington Township RecPlex - Board Liaison  
 Woody Woodward, OPRA  
 Tammy Kellogg, OPRA  
 Mindy McInturf, OPRA

## Awards

Darcy Baxter, Hilliard Recreation and Parks  
 Amanda Gehres, Reynoldsburg Parks & Recreation  
 Kevin Swanson, Miami County Park District

## Communications

Julie Sergent, Worthington Parks and Recreation - Committee Chair  
 Adria Bergeron, Muskingum Watershed Conservancy District  
 Kim Farrell, City of Beavercreek  
 Robin Gregory, Greene County Parks & Trails  
 Ashlee Schmidt, Greene County Parks & Trails

## Education

Heidi Hetzel-Evans, Ohio State Parks and Watercraft - Committee Co-Chair  
 Matt Leber, Upper Arlington Parks and Recreation - Committee Co-Chair  
 Bryana Ross, Columbus Recreation and Parks - Committee Co-Chair  
 Donna Bauman, Reynoldsburg Parks & Recreation  
 Tony Carpenter, MetroParks of Butler County  
 Ginger Clark, Centerville-Washington Park District  
 Jeremy Dean, Worthington Parks and Recreation  
 Jon Dobney, Ohio State Parks and Watercraft  
 Katie Girts, Whitehall Parks & Recreation  
 Molly Gross, Fairborn Parks & Recreation  
 Mike Hensley, Erie MetroParks  
 Matthew Kaderly, Columbus and Franklin County Metro Parks  
 Danielle Marino, The 577 Foundation  
 Shane McAviney, Mayfield Village Parks & Recreation  
 Patrick Monaghan, Upper Arlington Parks and Recreation  
 Arianna Powell, Columbus Recreation and Parks  
 Melissa Price, Erie MetroParks  
 Kristen Schweitzer, Bexley Recreation & Parks  
 Caleb Smith, Great Parks of Hamilton County  
 Ken Stray, Cleveland Metroparks  
 Andy Wildman, Granville Recreation District

## Exhibit Hall

Sue Daniel, Erie MetroParks - Committee Chair  
 Penny Bomba, City of Akron  
 Robb Clifford, Darke County Park District  
 Mark Hesse, Evendale Recreation  
 Paul Hollon, Prairie Township  
 Sheila Russell, Washington Township RecPlex

## Networking

Kara Musser, Muskingum Watershed Conservancy District  
 - Committee Co-Chair  
 Amanda Perry, Stark County Park District - Committee Co-Chair  
 Marissa Angellatta, Columbus Recreation and Parks  
 Andy Collins, Great Parks of Hamilton County  
 Nancy Haynes, Worthington Parks and Recreation  
 Michael Lentz, Hilliard Recreation and Parks  
 Adam Miller, Muskingum Watershed Conservancy District  
 Douglas Perry, Retired  
 Cassie Pruy, City of Marysville  
 Brian Schupbach, Muskingum Watershed Conservancy District  
 Morgan Simonski, New Albany Plain Local Joint Parks District  
 Mindy Weaver, Miami County Park District  
 Troy Westerhof, Great Parks of Hamilton County  
 Kim Whitehead, Cincinnati Recreation Commission  
 Vic Woodward, Prairie Township

## Partnership

Celia Thornton, Worthington Parks and Recreation - Committee Chair  
 Sarah Buell, Stark County Park District  
 Zac Guthrie, Gahanna Parks and Recreation  
 Amanda Morris, City of Marysville  
 Cory Ollie, Whitehall Parks & Recreation  
 Jeremy Peppard, Cleveland Metroparks  
 Michael Pollack, Prairie Township  
 Craig Sanders, O.O. McIntyre Park District  
 Brian Smith, New Albany Plain Local Joint Parks District

## Partnership *continued*

Shelby Watkins, Columbus and Franklin County Metro Parks  
 Addie Weaver, Washington Township RecPlex  
 Paul Williams, Five Rivers MetroParks

## Student Conference

Darcy Baxter, Hilliard Recreation and Parks - Committee Co-Chair  
 Eliese Kendrick, Upper Arlington Parks and Recreation - Committee Co-Chair  
 Allison Bush, Five Rivers MetroParks  
 Kerri Doddroe, City of Obetz  
 Shunnye Dunlap, Gahanna Parks and Recreation  
 Amanda Gehres, Reynoldsburg Parks and Recreation  
 Tim Hales, Bellefontaine Joint Recreation District  
 Josh Hester, Bexley Recreation and Parks  
 Kristen Riggins, Cincinnati Recreation Commission  
 Kody Rubright, Gahanna Parks and Recreation  
 Kevin Smith, Bexley Recreation and Parks  
 Theo Spsychalski, New Albany Plain Local Joint Parks District  
 Kari Truax, Centerville-Washington Park District  
 Chelsea VanAssche, Westerville Parks & Recreation  
 Christian Williams, Prairie Township

## Welcome Desk

Sunday	February 4	4:30pm – 7:00pm
Monday and Tuesday	February 5 & 6	7:30am – 4:00pm
Wednesday	February 7	7:30am – 11:00am

## CEUs

Continuing Education Units are offered for all sessions. Each 75-minute training session earns 0.1 CEU. If you require proof of attendance, see your room host for validation and signature.

## Communication

Daily updates will be available in the following locations:

- Welcome Desk
- Facebook, Instagram and Twitter: @OPRAOhio, #OPRA2024
- Download the OPRA 2024 App. Go to your app store and download the Eventsentral App. Once you have downloaded the App search for OPRA2024.

## Wear your Badge!

Your Conference Badge serves as your admission to all Conference functions. If you lose your badge, please obtain a replacement at the Welcome Desk. Only properly identified attendees will be permitted access to events and sessions. Tickets to the Awards Celebration will be included inside the name badge holder.

## Kalahari Restaurants Breakfast Buffet

The breakfast buffet will open at 7:00am each morning.

## Exhibit Hall

Monday, February 5, 11:30am – 2:30pm (includes lunch)  
 Tuesday, February 6, 9:45am – 12:45pm (includes lunch)

## Silent Auction and Raffle

This year's silent auction is online! While at Conference be on the lookout for QR Codes to access the digital silent auction and raffles. Stop by during the Exhibit Hall hours in the OPRA Booth #414 to see the items in real life. Proceeds benefit the OPRA Foundation which funds student and professional scholarships and research projects. The Silent Auction and raffles will close at 11:45am on Tuesday.

## OPRA Fitness Camps

Monday Fitness | 6:30am – 7:30am | Crown Palm | Bryana Ross, Columbus Recreation and Parks  
 Tuesday Fitness | 6:30am – 7:30am | Crown Palm | Clemate Franklin, Youngstown Parks and Recreation

## Coffee

Free coffee and tea are available in the Convention Center compliments of **Stantec and MSA Sport, a division of MSA Design.**

# 2024 OPRA CONFERENCE PARTNERS

## PRESENTING



A PLAYCORE Company

## DIAMOND



EQUITABLE  
ADVISORS



Design. Build. Play.



## PLATINUM



## GOLD



## SILVER



## BRONZE



# 2024 OPRA CONFERENCE SCHEDULE AT A GLANCE

## Sunday, February 4

- 4:30pm - 7:00pm Registration Open
- 5:00pm - 6:00pm Student Attendee Meeting
- 6:00pm - 10:00pm Networking Event

## Monday, February 5

- 6:30am - 7:30am Fitness Class
- 7:30am - 4:00pm Registration Open
- 8:30am - 9:45am Education Sessions
- 10:00am - 11:30am Keynote Speaker, Shawn Harper
- 11:30am - 2:30pm Exhibit Hall, includes Lunch
- 1:30pm - 2:15pm Student Attendee Meeting
- 2:30pm - 3:45pm Education Sessions
- 4:00pm - 5:15pm Education Sessions
- 5:30pm - 8:00pm Dinner on your Own
- 6:00pm - 7:00pm Alumni Hour
- 8:00pm - 12:00am Hut Hop Networking Event

## Tuesday, February 6

- 6:30am - 7:30am Fitness Class
- 7:30am - 4:00pm Registration Open
- 8:30am - 9:45am Education Sessions
- 9:00am - 9:30am Exhibitor Roundtable
- 9:45am - 12:45pm Exhibit Hall, includes Lunch
- 10:00am - 11:00am Student Attendee Meeting
- 12:00pm - 12:45pm Informal Events Planner Meet Up
- 1:00pm - 2:30pm Leadership Series
- 2:45pm - 4:15pm Leadership Series
- 4:45pm - 6:00pm Professional Headshots
- 5:30pm - 6:30pm Informal Networking
- 6:30pm - 8:30pm Awards Celebration, includes Dinner
- 8:30pm - 12:00am Post-Awards Networking

## Wednesday, February 7

- 7:30am - 11:00am Registration Open
- 8:30am - 9:45am Education Sessions
- 9:45am - 10:15am Break to Check out of Hotel
- 10:15am - 11:30am Education Sessions
- 11:30am - 1:00pm Keynote Lunch, Connor Fields



Monday	Aquatics	Diversity & Inclusion	Facilities & Operations	Fiscal Administration	Fundamentals	Human Resources
LOCATION	BANYAN	NILE	ORANGE	LEOPARDWOOD	CYPRESS	ALOESWOOD
8:30am-9:45am	A Conversation About Aquatic Facilities – One Community’s Story -Chrissy Avery	DEI: Creating a Positive Workplace -Sherry Winn	<b>CANCELED</b>	Cracking the Code: The Not-So-Secret Fundamentals of Grant Funding -Matt Latham	Professionalism and Why It Matters -Lori Hoffner	Feedback for Unpaid: Improving Volunteer Experience -Betsy Kohl
10:00am-11:30am	Keynote: Creating a Winning Culture					
2:30pm-3:45pm	Learning Before We Teach: Effective Aquatic Programming Built on Action Research -Dr. Knolan Rawlins	LGBTQ+ Inclusion and Awareness -Jenna Jacobs	Everything You were too Afraid to Ask about Park Operations -Gary Schussler, Karen Hesser	Beginner’s Guide to Understanding Ballot Initiatives -Erika Buri, Bill Tschirhart, Jason Swann	Emergency Action Planning: Are You Ready? -Eric Bortmas	Success with Multi-Generational Staff -Lori Hoffner
4:00pm-5:15pm	Welcoming Everyone into the Pool: Creating a Lane for People with Disabilities into The United States National Water Safety Action Plan -Dr. Knolan Rawlins	Recreational Therapy in Community Based Programming for People with Disabilities -Jennifer Knott	Parks Revitalized: Leveraging Visitor Data for Effective Operations -Michelle Johnson, Nate Ramsey	Using Smartsheets to Streamline Operations and Communications -Michael Duplay, Derek Gordon	Communication Competence: Essential Skills for Workplace Success -Andrea Peck	Staff Communication Control, Feedback and Perception -Lori Hoffner

Tuesday	Management					
8:30am-9:45am	Reinventing the Manager -John Broer, Lori Miller <b>GUAVA/TAMARIND</b>	Hiring G.R.E.A.T. Employees -Brandon Eichholz <b>SAGEWOOD/ZEBRAWOOD</b>	Curiosity as Your Superpower -Annie Frisoli <b>ZAMBEZI</b>	It’s the End of the World as We Know It -Mark Hess, Kate Trangenstein <b>ORANGE</b>		
1:00pm-2:30pm	Culture by Design -Annie Frisoli <b>NILE</b>		Implicit Bias: Becoming Aware of Your Inner Storyteller -Kenston Henderson <b>INDIGO BAY</b>			
2:45pm-4:15pm	Culture by Design -Annie Frisoli <b>NILE</b>		Implicit Bias: Becoming Aware of Your Inner Storyteller -Kenston Henderson <b>INDIGO BAY</b>			

Wednesday	Diversity & Inclusion	Facilities & Operations	Human Resources	Marketing	Natural Resources
LOCATION	NILE	ORANGE	ALOESWOOD	SAGEWOOD	INDIGO BAY
8:30am-9:45am	Building a Stronger Future: The DEI Advantage -Krystal Paisley, Kari Mackenbach	Park Maintenance: More than Cutting Grass -Lori Fetherolf	Reframing Our Career Opportunities to Attract Amazing People -Jo Burns	Moving Your Public from Print to Digital Communications -Shelli DiFranco, Kristen Wicker	Let’s Plant Native! -Janean Curfman, Claire Merrick, Jason Whittle
10:15am-11:30am	Innovation is Invitation -Ingrid Kanics	Building the Nation’s First System of Trauma-Informed Recreation Centers -Megan Holmes	OPRA Retirement Academy -Alex Solove	Marketing 101 - What?? -Addie Weaver, Kate Trangenstein	Conservation Forestry in a Public Park System -Matt Bartzi, Mike Johnson
11:30am-1:00pm	Keynote: G.O.L.D. (Goals, Overcome, Learn, Determination) -				

Human Resources	Natural Resources	OPRA	Parks	Planning	Programming	Trends
<b>IRONWOOD</b>	<b>INDIGO BAY</b>	<b>MANGROVE</b>	<b>ROSEWOOD</b>	<b>IRONWOOD</b>	<b>ZAMBEZI</b>	<b>ZEBRAWOOD</b>
Improving Relationships	Invasive Pest Update -Amy Stone, Erik Draper, Kathy Smith	Youth Sports Roundtable -Andy Wildman	When Bad Things Happen to Good Agencies -Tom Speaks	Designing to Meet Community Needs - Jeff Anderson, Katie Freeland	Award Winning Programs: A Playbook for Success -Shannon Hughes	<b>CANCELED</b>

Building Culture – Shawn Harper **Kalahari Ballroom**

With a Generation	Ohio Forest Pests: Intro to a Field Guide -Amy Stone, Erik Draper, Kathy Smith	Diversity Listening Session -Woody Woodward	H2Ohio Success: Grant to Implementation in Action -Matthew Kestner, Rachel DeNoewer, Kevin Kasnyik	Data Driven Redesign of an Aging Facility -Debbie McLaughlin, Jeff Anderson	Will Your New Program Be a Fit, Fad, or Flop? -Bobbi Nance	Changing the name of the game: Trails to Transportation -Dan Moeglin
Education: Waters, Recreation	Understanding Wildlife and Human Use of Trails -Jon Cepek	Park District Meeting and Advocacy Update -Woody Woodward	Multimodal Transportation Project Success Guide for Parks -Joshua O'Neil, Jennifer Van Horn	Cures for the Common Survey -Bobbi Nance	Summer Camp Roundtable -Gina Kolp, Cory Ollie	Managing Public Art - Plan, Policy, and Practice -Jeff Anderson, Jodi Hatfield

**Management & Leadership**

Keeping Your Fire Lit Without Burning Out -Bobbi Nance <b>CYPRESS</b>	Out of Control: De-escalating Workplace Conflict -Andrea Peck <b>ALOESWOOD/LEOPARDWOOD</b>	Utilizing Partnerships to Program with Purpose -Shannon Sorrell, Shannon Brady <b>NILE</b>	Appreciology: The Art and Science of Appreciation -Tom Speaks <b>INDIGO BAY</b>
Manage the Best Way - Your Way -Darren Hurley <b>ORANGE</b>	Good Trouble: Keep Your Foot on the Gas -Addie Weaver, Bryana Ross, Shannon Sorrell <b>ZAMBEZI</b>	Manage the Best Way - Your Way -Darren Hurley <b>ORANGE</b>	Good Trouble: Keep Your Foot on the Gas -Addie Weaver, Bryana Ross, Shannon Sorrell <b>ZAMBEZI</b>

Parks	Programming	Senior Programming	Trends
<b>ROSEWOOD</b>	<b>ZAMBEZI</b>	<b>CYPRESS</b>	<b>ZEBRAWOOD</b>
Dogs are a Park's Best Friend -Jake Hensel	Pack for Adventures in Nature Programming -Alice Chambers	For Mature Audiences Only: 55+ Programming Roundtable -Uriah Anderson, Jennifer Giessler	Sustainability Goals: Building Eco-Friendly Athletic Fields -Sally Gladwell, Joe Fausnaugh, Liz Lopez
Great Stone Viaduct Historic Bridge Rail-to-Trail -Jonathan Hren, Karel Cubick, Ed Mowrer	Camp - Where Fun is Our Middle Name -Ashlee Schmitt, Robin Gregory	Chasing the Elusive Tweenior -Jennifer Giessler, Brittany Kilburn	Taking Off with Drones - A Team Approach -Laura Schuch
Connor Fields <b>Kalahari Ballroom</b>			





# THE ULTIMATE PLAYGROUND EXPERIENCE



- Playgrounds
- Shelters & Shade
- Fitness Equipment
- Splash Pads
- Benches & Tables
- Bike Racks
- Bleachers
- Drinking Fountains
- Trash & Recycling
- And More!

513-788-1824

[dwarec.com](http://dwarec.com)





# 2024 OPRA CONFERENCE KALAHARI MAP & FLOOR PLAN



**CONVENTION CENTER**  
SANDUSKY, OHIO

TO ROOM, SUITES & RESORT AMENITIES



In Partnership with



**EQUITABLE**  
ADVISORS

**Equitable Financial is now the statewide provider of the OPRA 457 Deferred Compensation plan. Park districts can opt into this plan and offer it to employees as another retirement savings option. Through this plan we hope to close the retirement funding gap for OPRA members.**

- ✓ **Retirees:** Help implement strategies to continue current lifestyle and help minimize taxes, RMDs
- ✓ **Individuals 5-10 Years from Retirement:** Create goal-oriented plan to protect nest egg
- ✓ **Social Security:** Know when to start collecting
- ✓ **Job Changes:** Understand options for old 401(k) & help understand benefits offered by new employer
- ✓ **Newly Married:** Planning for financial goals together and protecting household
- ✓ **Growing Family:** Life insurance and college planning needs
- ✓ **Pension Planning:** Understand how to maximize the benefits you are eligible to receive
- ✓ **Young Professionals:** Help enroll in work benefits



**Alex Solove**  
**Vice President, CRES**  
**216-615-7453**

[Alexander.Solove@equitable.com](mailto:Alexander.Solove@equitable.com)

**Equitable Advisors**  
1001 Lakeside Ave., Suite 1650  
Cleveland, OH 44114  
[equitable.com](http://equitable.com)

# 2024 OPRA CONFERENCE SUNDAY, FEBRUARY 4

## Student Attendee Meeting 5:00pm - 6:00pm Indigo Bay

Students are encouraged to attend the Student Attendee Meeting where they will learn best practices on how to get the most out of their Conference experience.

## OPRA Arcade Game Night Networking Event Presented by Playground Equipment Services & Games sponsored by SuperGames 6:00pm – 10:00pm Kalahari Ballroom

*Games sponsored by Ares Sportswear, Baker Vehicle Systems, Brandstetter Carroll, Inc., Diamond Waterfronts, Kimley-Horn, ms consultants, Schorr Architects, Inc., and TinyMobileRobots.*

Join us Sunday evening in the Kalahari Ballroom to enjoy the Arcade Game Night Networking Event! Catch up with colleagues as you enjoy some delicious appetizers.

Geauga Park District



City of Dublin



Five Rivers MetroParks



### INTRODUCING REVI PRODUCTS!

Each Revi product is designed with inclusion in mind, including transfer height, different handgrip options, and plenty of room for kids to lay down, sit, kneel, or stand as they experiment with the motion!



ReviRock



ReviWheel



ReviWhirl



landscape structures



Penchura

www.Penchura.com  
Phone: (810) 229-6245

## Education Sessions 8:30am – 9:45am

### **Award Winning Programs: A Playbook for Success**

Metroparks Toledo has a proven track record of winning local, state, and national awards for programming; but this wasn't always the case. High turn-over, low revenue generation, and an inconsistent approach to program objectives created a department with more losses than victories. What changed? A lot! In this session Dr. Shannon Hughes, will lead you through the strategic changes Metroparks' programming team underwent to become recognized as a community asset with more waitlists than cancellations!

*Shannon Hughes, Metroparks Toledo*

**Room: Zambezi | Track: Programming**

### **A Conversation About Aquatic Facilities – One Community's Story**

The Mason Municipal Aquatic Center is the City of Mason's newest recreational amenity and features a splash pad, 50 m indoor pool, and an outdoor pool with water slides. This session will expand upon the process the City followed to design, build, and operate the new facility. The session will also include a discussion about opportunities and challenges associated with aquatic facility operations. Attendees will be encouraged to share their experiences and questions related to aquatics to help identify solutions.

*Chrissy Avery, Mason Parks and Recreation*

**Room: Banyan | Track: Aquatics**

### **Cracking the Code: The Not-So-Secret Fundamentals of Grant Funding**

In this session we will demystify the process of obtaining grant funding for your agency's projects and initiatives. Participants will learn the fundamental elements and techniques for success in researching, applying for, and executing grant-funded projects. Attendees will discover how their attitude and approach to grants can enhance their chances of success.

*Matt Latham, Warren County Park District*

**Room: Leopardwood | Track: Fiscal Administration**

### **SESSION CANCELED**

**Room: Orange | Track: Facilities & Operations**

### **DEI: Creating a Positive Workplace**

When we don't know what we don't know, it is easy to offend others. In the workplace, the most essential key to creating a positive culture is to understand and listen to one another. When we possess unconscious biases, we create separation and disconnection. When we cannot work together as a unit, we see the evidence in our lack of productivity, engagement, and retainment. It is simple: people want to be valued for who they are.

*Sherry Winn, The Winning Leadership Company*

**Room: Nile | Track: Diversity & Inclusion**

### **Designing to Meet Community Needs**

Designing to meet the community's needs is challenging enough on a wide open site, but is even more difficult when trying to fit a 155,000 SF building on 1.4 acres. Using the Upper Arlington Community Center as a case study, this session will focus on the unique challenges of designing a multi-story community center on an infill

site, from conceptual design to construction. The session will focus on challenges with community engagement, budget, and logistics.

*Jeff Anderson, Upper Arlington Parks and Recreation; Katie Freeland, MSA Design*

**Room: Ironwood | Track: Planning**

### **Feedback for the Unpaid: Improving Volunteer Relations**

The relationship between volunteer coordinator and volunteer is often that of "boss" to "worker." This relationship can strain the flow of positive and negative feedback and prevent program growth. Borrowing concepts from businesses leading the field in feedback, this presentation covers key components to a volunteer program that will retain and prepare volunteers for a culture of feedback. Learn about creating a culture that promotes listening, feedback, and dynamic placement/re-placement in the volunteer experience.

*Betsy Kohls, Washington Township RecPlex*

**Room: Aloeswood | Track: Human Resources**

### **Invasive Pest Update**

Invasive species are on the radar. Come learn about the latest information about the invasive species that are here in the buckeye state and those that are on the radar, too. We will cover a few highlighted insects, diseases, and plants - something for everyone! We will cover what to look for and what you need to do if you suspect that you are seeing an invasive pest.

*Amy Stone, Ohio State University; Kathy Smith, Ohio State University; Erik Draper, Ohio State University*

**Room: Indigo Bay | Track: Natural Resources**

### **Professionalism and Why It Matters**

When you have the reputation as a true professional, you will always be in demand. As a valued and respected professional, you will not only be popular with others, but you will also develop a high sense of purpose and self-worth. Achieving and maintaining that kind of professionalism takes intentional effort and dedication. In this session, we will discuss the steps you can take using successful staff communication, strong organizational skills, and mindful leadership.

*Lori Hoffner, Supporting CommUnity, Inc.*

**Room: Cypress | Track: Fundamentals**

### **When Badd Things Happen to Good Agencies**

It's not a matter of if, it's a matter of when. Are you ready? Any threat to your trust or reputation is a crisis. This session is paramount for those wishing to understand the intricate facets and critical components of managing a crisis while maintaining clarity and composure. This session will allow your park district or department to work toward a culture of transparency and trust before, during, and after a crisis event.

*Tom Speaks, The Impact Group*

**Room: Rosewood | Track: Parks**

# 2024 OPRA CONFERENCE MONDAY, FEBRUARY 5

## Session Canceled

Room: Zebrawood | Track: Trends

## Youth Sports Roundtable

Join others to discuss all things youth sports.

Andy Wildman, Granville Recreation District

Room: Mangrove | Track: OPRA

Five Rivers MetroParks



Columbus and Franklin County Metro Parks

## Monday Education Sessions Presented by Equitable Advisors

## Keynote Speaker 10:00am - 11:30am | Kalahari Ballroom

### Presented by DWA Recreation and GameTime

### Shawn Harper | Creating a Winning Culture

With 25 years of experience, Shawn Harper has earned an excellent reputation as one of the nation's leading motivational speakers! He is a seven-year former NFL offensive lineman who played with the Rams, the Oilers, the Colts, and NFL Europe and now owns and operates American Services and Protection, a multi-million-dollar security services firm headquartered in Columbus, Ohio. His journey from the grit and grime of the NFL locker room to the corporate culture of the boardroom proved that both worlds can be won by using the same principles and strategies!

Shawn shares that some leaders tend to only focus on what their team members may bring in terms of skills and talents (seeds), but they don't focus on the environment (soil) needed to cultivate growth, capacity, and strength to withstand adversity. Shawn will share how to create an agency ecosystem that encourages everyone to flourish!



## Exhibit Hall 11:30am – 2:30pm

Take some time to meet and greet all of our awesome exhibitors while enjoying a delicious lunch in the Exhibit Hall. The OPRA Foundation will be holding their Silent Auction during Exhibit Hall hours - be sure to place your bids early ... and often!

## Student Attendee Meeting 1:30pm – 2:15pm | Indigo Bay

Student Attendees will meet for a quick touch base.

## Education Sessions 2:30pm – 3:45pm

### Beginner's Guide to Understanding Ballot Initiatives

What's a levy? What's the difference between a replacement and a renewal levy? What's a mill? What can or can't I do when I talk about a ballot issue to my community? We'll answer those questions and more in this intro to levies session and send you home with resources to help you successfully navigate the process of getting an issue on the ballot.

*Erika Buri, Outdoor Sylvania Community Parks; Bill Tschirhart, Five Rivers MetroParks; Jason Swann, Trust for Public Land Action Fund*

**Room: Leopardwood | Track: Fiscal Administration**

### Data Driven Redesign of an Aging Facility

One of the hardest challenges many communities face is how to renovate a beloved recreational facility to meet modern realities. How do you balance residents' passion for tradition and nostalgia with current demands, standards, and level of use? This session will illustrate an empirical approach to redesigning an aging facility including examples of how to determine relevant data and future needs. We will also discuss how to navigate conflicting resident expectations in an objective way.

*Debbie McLaughlin, Upper Arlington Parks and Recreation; Jeff Anderson, Upper Arlington Parks and Recreation*

**Room: Ironwood | Track: Planning**

### Changing the name of the game: Trails to Transportation

In 1997 Stark Parks developed its first Trail and Greenway Master Plan and has built an outstanding system of over 125 miles of trails. Over the last 26 years of progress, a lot has changed in the county, the industry, and terminology. This presentation will review these changing conditions and explore the next incarnation of trails in Stark County.

*Dan Moeglin, Stark County Park District*

**Room: Zebrawood | Track: Trends**

### Emergency Action Planning: Are You Ready?

This session will assist parks and recreation professionals in establishing, reviewing, and updating emergency action plans (EAPs) for the youth and adult athletic programming they offer their community. Discussion will include an overview of specific items to include in an EAP, including, but not limited to, AED location and accessibility as well as best practice responses to heat illness, concussion, and sudden cardiac events.

*Eric Bortmas*

**Room: Cypress | Track: Fundamentals**

### Everything You were too Afraid to Ask about Park Operations

Whether you are new to parks, if you're in programming, planning, or just want to know more about how the magic happens, join us for an in-depth session about park operations. We will discuss the skills, abilities, and personal characteristics it takes to be successful within park operations. We will explore industry specific topics, knowledge, and responsibilities within park operations management, supervisory roles, and how to develop them even if you have had no previous contact or experience. Specific examples and real-life career development situations will be shared by two

experienced professionals who serve in park operation management and who will provide perspective for staff who wish to transition to park operations. This will be an interactive session so bring your questions!

*Gary Schussler, Kettering Parks, Recreation & Cultural Arts; Karen Hesser, Five Rivers MetroParks*

**Room: Orange | Track: Facilities & Operations**

### H2Ohio Success: Grant to Implementation in Action

ODNR H2Ohio, Columbus and Franklin County Metro Parks, and Burgess & Niple break down the H2Ohio process from grant application and requirements to implementation and strategic planning, through construction at Walnut Woods Metro Park which averages more than 250,000 visitors a year. This presentation will highlight key steps taken for a successful grant application, the process to highlight and implement the project within Metro Parks' strategic plan, and the engineering approach to exceed H2Ohio's objectives.

*Matthew Kestner, Burgess & Niple Inc.; Kevin Kasnyik, Columbus and Franklin County Metro Parks; Rachel DeNoewer, Ohio Department of Natural Resources*

**Room: Rosewood | Track: Parks**

### Learning Before We Teach: Effective Aquatic Programming Built on Action Research

Effective programming begins with developing an understanding of the communities in which we serve. This session will bridge the gap between academic and clinical activities. Attendees will understand how they can build inclusive programming in their community.

*Knolan Rawlins, PhD, Delaware State University*

**Room: Banyan | Track: Aquatics**

### LGBTQ+ Inclusion and Awareness

Despite recent strides toward equality and recognition for people who are lesbian, gay, bisexual, transgender, or queer (LGBTQ+), aquatic programs, facilities, and resources for them remain inadequate nationally. In this session, learn basic inclusionary practices that you can implement in your programs and facilities as well as discover partnership opportunities with local LGBTQ+ organizations and outreach groups.

*Jenna Jacobs, City of Baytown*

**Room: Nile | Track: Diversity & Inclusion**

### Ohio Forest Pests: Intro to a Field Guide

Ohio's forests face numerous challenges to their health, ecological benefits, and future existence. Come learn more about the common and not so common pests that you may encounter on trees in the forest, woods, or landscaped areas, and leave with your own copy of the OSU field guide that will be a resource that you can use in the future.

*Amy Stone, Ohio State University; Kathy Smith, Ohio State University; Erik Draper, Ohio State University*

**Room: Indigo Bay | Track: Natural Resources**

### Diversity Listening Session

Join Executive Director Woody Woodward and members of the OPRA Board of Directors for a frank discussion on issues of diversity and how OPRA can best respond to challenges faced by racial and ethnic minorities within the parks and recreation profession. We will also consider how the association might work to attract more racial and ethnic minorities to the field of parks and recreation.

*Woody Woodward, Ohio Parks and Recreation Association*

**Room: Mangrove | Track: OPRA**

# 2024 OPRA CONFERENCE MONDAY, FEBRUARY 5

## **Success with a Multi-Generation Staff**

This session will help participants understand generational differences and guide staff in supporting each other while also gaining insight on behavior. Blend the different generations into a cohesive and positive team as well as creating an environment of cooperation that meets the needs of your staff regardless of their age.

*Lori Hoffner, Supporting CommUnity, Inc.*

**Room: Aloeswood | Track: Human Resources**

## **Will Your New Program Be a Fit, Fad, or Flop?**

When it's time to add new recreation programs to your offerings each season, how confident are you that they will be successful? Instead of launching new programs and waiting to see what sticks, we'll explore a set of exercises and techniques you can use to brainstorm, test, and evaluate new program ideas before you even start writing that brochure description. In this workshop, you'll have the opportunity to take a more thoughtful approach to expanding your program offerings with the goal of increasing your new program's potential for success.

*Bobbi Nance, Recreation Results*

**Room: Zambezi | Track: Programming**

## **Education Sessions 4:00pm – 5:15pm**

### **Communication Competence: Essential Skills for Workplace Success**

Job success is much more than the knowledge, skills, or experience we bring into the workplace. It's also about the quality of our relationships. Learn what effective communication means, how it can transform professional relationships, and how it can support job productivity, satisfaction, and morale.

*Andrea Peck, Andrea Peck Communications*

**Room: Cypress | Track: Fundamentals**

### **Cures for the Common Survey**

We all know that customer feedback is essential in understanding the needs of our communities, but our surveys are often an afterthought. Without completely recreating the wheel, learn how to strategically tweak what, when, and how you are asking for customer feedback to produce better data you can actually act upon. Watch as we showcase examples of underutilized survey software features that you can easily implement to increase your response rates, make the experience less repetitive, and even help promote better customer service and marketing efforts. Get inspired and learn how—with a little bit of effort on the front-end—you can build better surveys that really get results.

*Bobbi Nance, Recreation Results*

**Room: Ironwood | Track: Planning**

### **Park District Meeting and Advocacy Update**

Networking and discussion on issues of interest for Ohio park districts. Explore solutions to challenges that park districts face as it relates to actions taken by state legislators.

*Woody Woodward, Ohio Parks and Recreation Association*

**Room: Mangrove | Track: OPRA**

## **Managing Public Art – Plan, Policy, and Practice**

What do you do with that sculpture that was once a point of pride, but has seen better days? How do you respond to the volunteer that wants to donate a mural on your building? Whether large or small, many communities own works of art, but few think about how they manage their collection. This session will focus on how to develop the policies and practices that allow for the effective management of public art.

*Jeff Anderson, Upper Arlington Parks and Recreation Department; Jodi Hatfield, Upper Arlington Parks and Recreation Department*

**Room: ZebraWood | Track: Trends**

## **Multimodal Transportation Project Success Guide for Parks**

Networks of multimodal trails through and around our parks are growing exponentially. Metropark systems have specific visions for each park that will attract visitors with a wide range of needs/wants and continue to draw them back for unique experiences. Alongside Metroparks Toledo, DGL's job was to help bring this vision to reality. We will highlight projects that support varying modes of transportation; demonstrating how project obstacles common to park systems were planned for and overcome.

*Joshua O'Neil, PE, CPESC, DGL Consulting Engineers, LLC; Jennifer Van Horn, Metroparks Toledo*

**Room: Rosewood | Track: Parks**

## **Parks Revitalized: Leveraging Visitor Data for Effective Operations**

What if we could accurately determine the number of park visitors, what they do, where they come from, and how long they stay? Envision a world where the data we gather becomes a powerful tool in shaping our public spaces. We will explore how real-world visitor data can revolutionize decision-making, from optimizing ranger staffing to effective design alterations. This session will dive into how these insights can enhance park planning, safety, maintenance, and fundraising for those seeking to innovate in the era of data-rich park management.

*Michelle Johnson, SmithGroup; Nate Ramsey, Metroparks Toledo*

**Room: Orange | Track: Facilities & Operations**

## **Recreational Therapy in Community Based Programming for People with Disabilities**

Providing access and inclusion for people with disabilities in community recreation is achievable through a multi-faceted approach. Recreation therapy programs are designed to address the needs of individuals with disabilities, assess barriers to recreation involvement, and provide adaptations and access. Recreation therapists work hand in hand with parks and recreation departments to provide inclusive and adapted recreation programming. This session will address how to integrate recreation therapy programming into recreation centers, parks, and municipalities.

*Jennifer Knott, Rec2Connect*

**Room: Nile | Track: Diversity & Inclusion**

## **Staff Communication: Control, Filters, and Perception**

Our communication is continually influenced by individual filters. Those filters are established by different factors; one of the most prevalent is the generational filter, developed during socialization and experiences. These filters crucially affect communication and interaction. We will discuss communication models, helping determine the most successful approach for your organization.

*Lori Hoffner, Supporting CommUnity, Inc.*

**Room: Aloeswood | Track: Human Resources**

# 2024 OPRA CONFERENCE MONDAY, FEBRUARY 5

## Summer Camp Roundtable

Engage in discussions regarding trends and current issues faced in summer camp programs. We will break into small groups to discuss topics like programming ideas, behavior management methods, staff motivation, and training techniques. Small groups will then share with the large group details of their subject. Come prepared to actively participate with ideas and questions for the group.

*Gina Kolp, City of Powell; Cory Ollie, Whitehall Parks & Recreation*

**Room: Zambezi | Track: Programming**

## Understanding Wildlife and Human Use of Trails

Balancing conservation and recreation in parks can be challenging. Modern humans spend more time indoors and we should encourage park use. However, park users may not understand encounters with wildlife and the influence they have on wildlife behavior. To prevent conflict, it is important to understand human-wildlife relationships while providing outdoor recreational opportunities. This presentation will share information from wildlife studies and trail monitoring and provide an example of using this to update park policy.

*Jon Cepek, Cleveland Metroparks*

**Room: Indigo Bay | Track: Natural Resources**

## Using Smartsheets to Streamline Operations and Communications

Improving internal systems is often avoided since it requires time, money, and short term disruptions to fix. However, Stark Parks has invested in a low cost, customizable system called Smartsheets to optimize many of their internal operations and communications. Learn how a little work up front can improve your agency's efficiency, automatically generate reports, and save your team time in the long run.

*Michael Duplay, Stark Parks; Derek Gordon, Stark Parks*

**Room: Leopardwood | Track: Fiscal Administration**

## Welcoming Everyone into the Pool: Creating a Lane for People with Disabilities into The United States National Water Safety Action Plan

Nothing about us without us. You can't represent the needs of a community without lived experience. If you are asked to occupy a seat at the table, bring two chairs or give up your seat. Attendees of this session will walk away with a method to include historically excluded communities and grow their aquatics programming.

*Knolan Rawlins, PhD, Delaware State University*

**Room: Banyan | Track: Aquatics**

Muskingum Watershed Conservancy District



## Alumni Hour Networking Event 6:00pm - 7:00pm

**Presented by The Ohio State University Environmental Resources Alumni Society (ENRAS) and Ohio University**

Attention all OSU ENRAS and Ohio University Alumni! Join your peers for an Alumni Hour hosted by your Universities in the Grand Hall.

## Hut Hop Networking Event 8:00pm - 12:00am

**Presented by Midstates Recreation, Bluegrass Recreation Sales and Installation, The Davey Tree Expert Company, Design2Wellness, and Snider Recreation, Inc.!**

Enjoy a relaxing evening with colleagues visiting Marrakesh and Kalahari's Jaamati Huts where OPRA partners will offer food, drinks, games, and other surprises!

## Thanks to the following companies for their contributions at Conference:

**Central Parks** - Registration Area

**Century Equipment, A Jerry Pate Company** - Welcome Bags

**COSI** - Conference Gift

**Environmental Design Group, Inc.** - Name Badges

**Midstates Recreation** - Lanyards

**MSA Sport, a Division of MSA Design** - Tuesday Coffee

**OPRA Foundation** - Conference Pens

**Playground Equipment Services** - Conference Cups

**Rock the House Entertainment Group, Inc.** - Awards Dinner Production

**Stantec** - Monday Coffee



## Education Sessions 8:30am - 9:45am

### **Appreciology: The Art and Science of Appreciation**

Appreciology is the intentional and systematic use of sincere appreciation to motivate others. With this session, you will understand the vital importance of a positive workplace culture and the tremendous benefit it can have on performance, recruitment, and retention of leaders and staff. All too often, the culture of an organization focuses on the negative aspects of daily interactions and outcomes. But what if our focus on negativity is actually caused by negativity itself? This powerful session will provide the antidote – methods and strategies to drive positivity throughout your organization. A must for those leaders wishing to create a dynamic team and culture of appreciation.

*Tom Speaks, The Impact Group*

**Room: Indigo Bay | Track: Management & Leadership**

### **Curiosity as Your Superpower**

This interactive session will inspire session participants to cultivate curiosity in their work. Session will provide valuable insights on the impact curiosity can have on an agency and provide practical strategies to help activate a more creative, fun, inspiring, and well-connected work community!

*Annie Frisoli, Creating Community, LLC*

**Room: Zambezi | Track: Management & Leadership**

### **Hiring G.R.E.A.T. Employees**

Hiring is much more than a candidate's qualifications, experiences, and resume. A candidate's character is crucial to the success of an agency. This session will examine what character traits to look for in a candidate, your role as a leader, and establishing a successful culture so your agency thrives.

*Brandon Eichholz, Mentor Community Recreation Center*

**Room: Sagewood/ZebraWood | Track: Management & Leadership**

### **It's the End of the World as We Know It**

When a crisis strikes your agency, do you have a plan for who, what, when, and how to respond? Having a crisis communications plan—and knowing how to use it—can save your agency's reputation. In this session, we will focus on the core elements of what should be included in a crisis communications plan and how to implement those elements into a tangible operations plan.

*Mark Hess, Five Rivers MetroParks; Kate Trangenstein, Washington Township*

**Room: Orange | Track: Management & Leadership**

### **Keeping Your Fire Lit Without Burning Out**

We all have moments where life gets overwhelming, but over time this continued stress can feel like a permanent state of being where everything is a bit too much, where work that was fun and fueled your passion is suddenly heavy, and you notice that you are less effective and less inspired. Learn how mindful reflection can play a role in rekindling your flame and intentional activities can help refuel your motivation. In this session, we will cover common causes of burnout to help you realize all that may be contributing to you or your staff's sense of burnout. Then we will walk through techniques and tools that can be used to either help combat it or be more proactive in fighting it before you reach that point. Although there is no simple or one-size-fits-all cure, this session will help you dig into your situation so that you can begin the process of digging out.

*Bobbi Nance, Recreation Results*

**Room: Cypress | Track: Management & Leadership**



# BAKER



**HUSTLER**  
TURF EQUIPMENT



**JACOBSEN**  
A Spillman Company



**STEINER**

[www.bakervehicle.com](http://www.bakervehicle.com)



**2 Ohio locations to serve you:**

9035 Freeway Drive  
Macedonia, Ohio 44056

6316 Seeds Road  
Grove City, Ohio 43123

**800.843.2250**



Great Parks



## Out of Control: De-escalating Workplace Conflict

Conflict offers opportunities for growth, connection, and positive change. But when emotions escalate, it can result in a stressful, dysfunctional work environment. Learn about conflict escalation, and how to navigate and de-escalate our own and others' emotions. Identify strategies that support healthy self-expression even when conversations are challenging.

*Andrea Peck, Andrea Peck Communications*

**Room: Aloeswood/Leopardwood | Track: Management & Leadership**

## Reinventing the Manager

A transformation within the management ranks is long overdue. Elevating people into supervisory and management positions without sufficient preparation and development is a hypersonic bullet train to poor performance, disengagement, and excessive turnover. We continue to create legions of Bossholes® who don't understand how to optimize their people and we have allowed these substandard practices to exist far too long. Now is the time to Reinvent the Manager role that will be guiding and developing our people from this point forward. This presentation will address the elements necessary for this transformation and help organizations rethink and reinvent the way they advance individuals into a people-development role.

*John Broer, Real Good Ventures; Lori Miller, Metroparks Toledo*

**Room: Guava/Tamarind | Track: Management & Leadership**

## Utilizing Partnerships to Program with Purpose

How can we approach partnerships to add value to programming and increase outreach? Who holds the reins when working with multiple partners? How do you handle inexperienced partners? How do you know what partnerships to embrace and when to pass? Using personal examples, we will discuss how to establish a vision, take risks with partners, when to let go and support, and when to create boundaries to build long term balanced goals.

*Shannon Sorrell, Ohio State Parks and Watercraft; Shannon Brady, Whitehall Parks & Recreation*

**Room: Nile | Track: Management & Leadership**

## Exhibitor Roundtable 9:00am – 9:30am

Exhibitors meet to discuss suggestions, comments, concerns, and how we can improve the Exhibit Hall experience.

OPRA Booth 414 in the Exhibit Hall

## Silent Auction 9:45am – 12:00pm

Keep an eye on the Silent Auction website or stop by the Silent Auction Booth #414 to make your last minute bids! Bidding will close at 12:00pm. Winners will be pulled after the bidding closes. Items may be picked up any time after the winners have been chosen. Items will be held at the Welcome Desk for pick up if not claimed by 12:45pm.

## Exhibit Hall Lunch 9:45am – 12:45pm

Stop by the Exhibit Hall one last time to say thank you to your favorite exhibitors and enjoy a delicious lunch. Lunch will be served at 11:00am.

**Central Parks**  
MOBILE APPS FOR PARKS AND REC

Custom, branded and beautiful iOS & Android apps for your organization with amazing support every step of the way.

Central Parks is a powerful mobile app that connects your community.

- Updates, News and Events
- Parks and Facilities Mapping
- Scan-In Membership ID
- Scan-In Membership ID
- Scan Below for More Features

POWERED BY LINKS  
LinksTechnology.com

Five Rivers MetroParks



## Student Attendee Meeting 10:00am – 11:00am

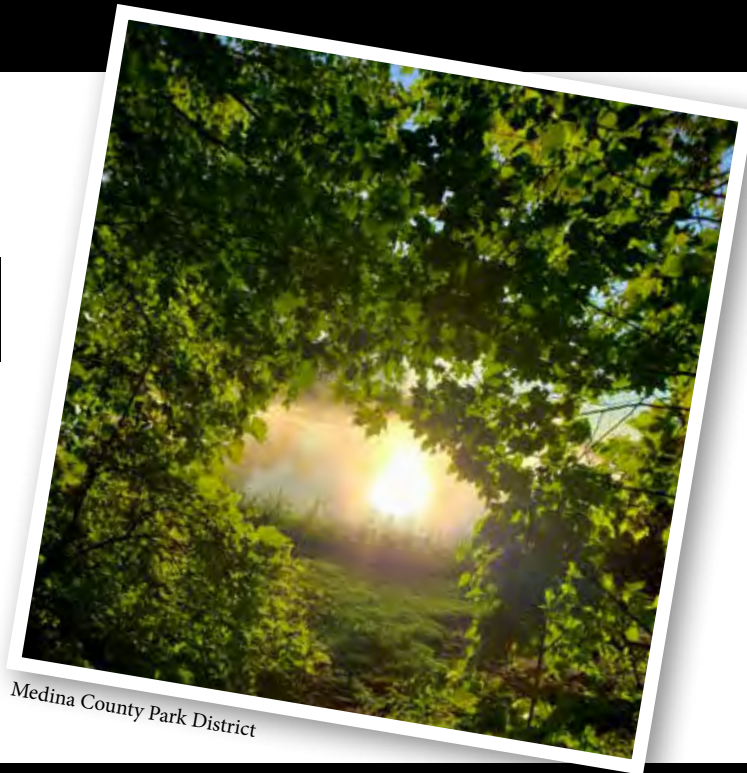
This session is designed for students to learn more about going beyond the degree. Strategies for success in the job search, as well as best practices in networking will be discussed.

**Room: Indigo Bay**

## Informal Event Planner Gathering 12:00pm – 12:45pm

Do you help plan events for your agency? If so, grab your lunch in the Exhibit Hall and head on over to Indigo Bay where you will join other Event Planners at this informal gathering where you can relax, enjoy your lunch, share ideas, and discuss best practices.

**Room: Indigo Bay**



## Leadership Series 1:00pm – 2:30pm | 2:45pm – 4:15pm

### *Presented by Vortex Aquatic Structures International*

The Leadership Series is packed with dynamic speakers and inspiring information that you will not want to miss! The Leadership Series speakers will share the same message in two sessions so that you can arrange your schedule to be able to hear two of the four speakers. There is so much great information being shared we don't want you to miss a thing!

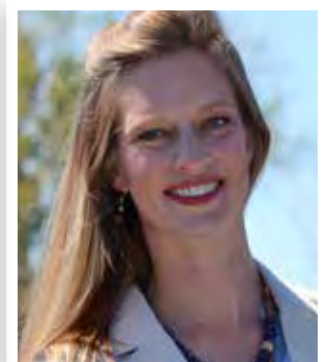
#### **Good Trouble: Keep Your Foot on the Gas - Addie Weaver, Bryana Ross, and Shannon Sorrell | Zambezi**

We all want to tell our story - this session will help find ways to make your voice heard and learn ways to stand up for yourself and others. Direct is not rude and quiet is not polite - but how do we find the balance? Learn from professionals who are making good trouble in their organizations and careers. This is where passion meets purpose and we will inspire you to be more for yourself and others.

Addie Weaver | Sr. Recreation Supervisor | Washington Township RecPlex

Bryana Ross | Recreation Administrative Coordinator | Columbus Recreation and Parks

Shannon Sorrell | Chief Operating Officer | Ohio State Parks & Watercraft



# 2024 OPRA CONFERENCE TUESDAY, FEBRUARY 6

## **Culture by Design - Annie Frisoli | Nile**

This interactive session will discuss how intentional strategies to build culture within your organization will make positive impacts on your team members and ultimately the services you deliver to your community. The development of a healthy team does not happen without intention and this session will provide professionals with practical strategies to build or maintain their current team culture.

Annie Frisoli, Founder & CEO of Creating Community LLC hosts creative training experiences on topics related to leadership, communication, culture, and innovation to positively impact individuals and organizations. Annie earned her bachelor's degree in Therapeutic Recreation and her master's degree in Recreation Management. Annie has worked with numerous recreation agencies in a variety of capacities including staff development, individual and small group assessment and coaching, along with strategic planning. Annie loves spending time with her family, being in the outdoors, and making people smile.



## **Implicit Bias: Becoming Aware of Your Inner Storyteller - Kenston Henderson | Indigo Bay**

Did you know workplace bias loss cost is projected at \$64 billion annually? When it comes to biases, we must understand that in the absence of details, our unconscious minds will fill in the gaps with information based on our lived experiences and that of others. In this session, participants will learn that we all have inner storytellers-or biases-that should not be exclusively viewed as good or bad. Instead, we need to become more conscious of whether the story being told is still relevant, helpful, and positive.

Kenston Henderson Sr. is a passionate and dynamic leader who has dedicated his life to helping others achieve their full potential. He is known as "The Bias Disrupter," "The Game Changer," and "The Winning Conversations Enthusiast." As the founder and CEO of Live With Lyfe, LLC, a talent development company, Kenston has 18+ years of experience in Human Resources and has delivered hundreds of presentations across the United States.



## **Manage the Best Way - Your Way - Darren Hurley | Orange**

Ever sit in seminars or read professional literature to the point you start questioning your management style? Do you sometimes doubt your leadership abilities or skillset? Don't overthink it! This session looks at varying leadership styles and examples of effective leaders who successfully did it their way. Learn how to capitalize on your strengths and manage around your weaknesses. Darren will also discuss how to identify team members that complement your leadership style well.

Darren Hurley has served as the Parks and Recreation Director for the City of Worthington for 13 years. His department includes the 71,000 square foot Worthington Community Center, the Griswold Center, and 16 parks. Prior to Worthington, Darren served as Parks and Recreation Director in Delaware, helping with the design of the Delaware Community Center/ YMCA, a partnership between the City, YMCA, and Ohio National Guard. He also spent 10 years working for the City of Dublin. Darren has a bachelor's degree in Leisure Studies from the University of Illinois and a master's degree in Parks and Recreation Administration from Indiana University. He has served on the Board of Directors for OPRA and presented at various OPRA and NRPA Conferences. His wife, Kori, works for the Washington Township Fire Department and they have two sons, Drew (21 and attending Ohio Northern University) and Nate (18 and attending and playing baseball at Ohio Wesleyan University).



## **Professional Headshots 4:45pm – 6:00pm | Executive Center**

Stop in the Executive Center for a free professional head shot. Images will be emailed to you post Conference.

## **Awards Networking Reception 5:30pm – 6:30pm | South Foyer**

**Presented by Ohio Liquor (OHLQ)**  
Celebrate the award winners with old and new colleagues.

## **Awards Celebration 6:30pm – 8:30pm | Kalahari Ballroom**

**Presented by DWA Recreation  
and GameTime**

Celebrate the award winners and be inspired for your next program, event, or project while enjoying a delicious dinner with friends.

## **Post-Awards Get Together 8:30pm – 12:00am | Kilimanjaro Ballroom and Orange**

**Game Room presented by A & S Party Rental!**  
Celebrate the award winners as you dance, play games, or just relax and enjoy conversation with old and new friends.

## Education Sessions 8:30am - 9:45am

### **Building a Stronger Future: The DEI Advantage**

Focusing on diversity, equity, and inclusion is beyond just the right thing to do. It's critical in becoming more innovative, filling talent gaps, and preparing ourselves for the future. In this session, the speakers will discuss the foundations of DEI, why it's important, and the steps we can all take. Attendees will leave with actionable steps to make small and big changes in their organizations today that will prepare them for the future.

*Krystal Paisley, ms consultants; Kari Mackenbach, ms consultants*

**Room: Nile | Track: Diversity & Inclusion**

### **Dogs are a Park's Best Friend**

Did you know 45% of U.S. households own dogs? Dogs—and their people—are one of the largest demographic groups using parks! Community pups want special events, too! From celebrating National Dog Day to creating a scent trail, this session reviews dos and don'ts of special events for dogs. It will help you prepare a cost-friendly event for all the dog people in your community—whether or not your agency has a dog park.

*Jake Hensel, Centerville-Washington Park District*

**Room: Rosewood | Track: Parks**

### **For Mature Audiences Only; 55+ Programming Roundtable**

Hundreds of cities in Ohio have seen an increase in their senior populations. With a greater need for programming geared toward active agers, let's learn together what works for this challenging demographic. Join fellow programmers in brainstorming ideas to inspire new programs, boost attendance, and enrich the lives of our seniors. Come prepared to share your best ideas and biggest wins in developing programs, events, and classes.

*Uriah Anderson, Washington Township RecPlex; Jennifer Giessler, Kettering Parks, Recreation, & Cultural Arts*

**Room: Cypress | Track: Senior Programming**

### **Let's Plant Native!**

Are invasive plants a problem in your area? Learn how Summit Metro Parks is leveraging the "plant native" gardening trend to encourage residents to help wildlife and earn rewards from the comfort of their own homes! Hear from a cross-departmental team of conservation, community engagement, and marketing staff to learn how a program like Wild Back Yards can help you achieve your biodiversity goals. We'll share lessons learned and where the program is headed next.

*Claire Merrick, Summit Metro Parks; Janean Curfman, Summit Metro Parks; Jason Whittle, Summit Metro Parks*

**Room: Indigo Bay | Track: Natural Resources**

### **Moving Your Public from Print to Digital Communications**

The pandemic changed supply chains and increased prices, including the costs of paper, printing, and shipping. These cost increases meant Five Rivers MetroParks had to strategize a way to continue a mailer to all homes in its service area while transitioning readers to more digital content. Learn how MetroParks coupled a new, smaller print publication with an aggressive email newsletter support and on-the-ground outreach that helped fill programs.

*Shelli DiFranco, Five Rivers MetroParks; Kristen Wicker, Five Rivers MetroParks*

**Room: Sagewood | Track: Marketing**

### **Pack for Adventures in Nature Programming**

If you are new to nature programming or a seasoned pro, there are must haves for an interpreter's toolkit. Once we define interpreter, prepare for a journey into the nature programming universe. Whether it's stuff in a staff backpack used on a hike or a loaner pack for families, each pack should be brimming with "tools" for discovery and exploration. Find out what to pack in a staff backpack, how those items can be used in a wide variety of nature programs, and brainstorm where in your park system nature programming can work. Pack your bags and start exploring!

*Alice Chambers, Mecklenburg County Park and Recreation*

**Room: Zambezi | Track: Programming**

### **Park Maintenance: More than Cutting Grass**

From keeping the athletic fields in usable condition during the grind of baseball season to keeping the parks from transforming into one giant pile of leaves in autumn, the park maintenance team starts out each day, rain or shine, the same way: checking the parks, trash, and public bathrooms. This session will discuss the daily challenges that park maintenance departments face and the benefits of technology to help get the job done.

*Lori Fetherolf, Steubenville Parks and Recreation*

**Room: Orange | Track: Facilities & Operations**

### **Reframing Our Career Opportunities to Attract Amazing People**

The challenge is widespread—finding amazing people to work, contribute, and stay at your organization. Time to take a look in the organizational mirror to examine what we're putting out there and who we're attracting. Is there a disconnect? We're going to examine our mindset, culture, and communication then discuss how to tweak them to attract who we desire.

*Jo Burns, Jo Burns Connects LLC*

**Room: Aloeswood | Track: Human Resources**

### **Sustainability Goals: Building Eco-Friendly Athletic Fields**

Introducing the expansion and revitalization of Toledo's 33-acre Schneider Park Soccer Complex – the city's home for the world's favorite sport. This project transforms the park into a premier home for soccer and demonstrates environmental sustainability in an underserved neighborhood and surrounding community. The project revitalizes usable urban greenspace, creates pollinator habitat, and builds wetlands for sustainable stormwater management. Part Two of our presentation features an interactive version of our own "Soccer & Sustainability Jeopardy" game.

*Sally Gladwell, The Mannik & Smith Group, Inc.; Joe Fausnaugh, City of Toledo; Liz Lopez, The Mannik & Smith Group, Inc.*

**Room: ZebraWood | Track: Trends**



## Education Sessions 10:15am - 11:30am

### **Building the Nation's First System of Trauma-Informed Recreation Centers**

Exposure to violence, adversity, and traumatic events affects well-being across important domains of functioning. Situated as a focal point throughout neighborhoods, recreation centers are a prime opportunity to cultivate spaces of safety and healing. This presentation describes the efforts over the past five years to transform Cleveland's 22 recreation centers into trauma-informed Neighborhood Resource and Recreation Centers. We will discuss essential areas of future work for other cities that may be considering transforming their recreation centers.

*Megan Holmes, Center on Trauma and Adversity, Case Western Reserve University*

**Room: Orange | Track: Facilities & Operations**

### **Camp - Where Fun is Our Middle Name**

Are you struggling to fill your summer camps? Do you feel you are lacking in the fun of summer camp? Do you find it hard to be creative year after year with the same camp themes? Let us help! This session will help you devise a summer camp agenda that will leave you with endless waiting lists. Through creativity and exploration, we can show you how we have developed our summer camp curriculum to gradually introduce kids to camp and prepare them for all-day and overnight camps, starting at the age of 2. All of this by just being aware of current trends of kids and listening to what the public wants.

*Ashlee Schmitt, Greene County Parks & Trails; Robin Gregory, Greene County Parks & Trails*

**Room: Zambezi | Track: Programming**

### **Chasing the Elusive Tweenior**

Let's talk "Tweeniors." How can we connect with senior adults between empty nest and retirement who would rather break a hip than enter a dedicated Senior Center? This program will introduce best practices in reaching active adults ages 55 – 70. Learn all about new models of program development and community connection, plus we'll provide plenty of time for discussion of what's working for you. Bring your ideas, successes, and failures to share.

*Jennifer Giessler, Kettering Parks, Recreation & Cultural Arts; Brittany Kilburn, Kettering Parks, Recreation, & Cultural Arts*

**Room: Cypress | Track: Senior Programming**

### **Conservation Forestry in a Public Park System**

Conservation park districts have multiple, sometimes conflicting, goals and objectives. Internal practices which support public recreation can actually damage the very resources and habitats we are tasked with protecting. Forestry work related to public safety concerns in natural spaces is one such practice. Summit Metro Parks' operations and conservation staff have worked cooperatively to develop a forestry program to address safety while minimizing and mitigating impacts to the forest ecosystem. This presentation will discuss the implementation of SMP's forestry program, as well as the results of this multi-departmental effort. The methods outlined include a spatial database that uses precision mapping and annual monitoring forms that meet project goals. Most importantly, this session will show how multiple departments with different end goals came together to develop tools to support both conservation and public safety.

*Matt Bartzi, Summit Metro Parks; Mike Johnson, Summit Metro Parks*

**Room: Indigo Bay | Track: Natural Resources**

### **Great Stone Viaduct Historic Bridge Rail-to-Trail**

The Great Stone Viaduct, located in Bellaire, Ohio, is a National Register-listed bridge that was acquired by the GSV Historical Education Society with the goal of preserving and repurposing the 43-span stone arch bridge into a recreational resource. GSVHES worked with ODOT District 11 to obtain funding. ms consultants was retained to obtain environmental approval and prepare plans for converting 750' of the bridge and 2000' of a former railroad into a shared-used facility.

*Jonathan Hren, ms consultants; Karel Cubick, ms consultants; Ed Mowrer, Great Stone Viaduct Historical Education Society*

**Room: Rosewood | Track: Parks**

### **Innovation is Invitation**

The conversation surrounding inclusive play space design has grown tremendously since its beginnings. As foundational knowledge around inclusive design and disability has grown, so has the conversation around intentional design choices. This session takes an in-depth look at designing more intentionally for mobility devices, creating experiences for ADHD and other common motor coordination disabilities, and improving wayfinding for blind/low vision users. Participants will receive an introduction to DeafScape design, as well as how we can support medically complex individuals who come to play. We understand that innovation is driven by those who are invited to participate, and the next step in play is to truly invite everyone to make our spaces that much more meaningful.

*Ingrid Kanics, Kanics Design Services LLC*

**Room: Nile | Track: Diversity & Inclusion**

### **Marketing 101-WHAT!?**

Not all departments have a dedicated marketing team or have the resources to do it all. Let's come together to learn some essentials, share some tips and tricks, and learn efficient ways to make marketing matter. From sponsorship to storytelling, branding to content creation – learn best practices while sharing your successes! Bring your cards and be prepared to learn and share together as we create a network of small marketing teams!

*Addie Weaver, Washington Township RecPlex; Kate Trangenstein, Washington Township*

**Room: Sagewood | Track: Marketing**

### **OPRA Retirement Academy**

In our OPRA Retirement Academy session, we will do a deep dive into everything retirement for a public employee in the state of Ohio. This includes an in-depth review of OPERS, options for taking your OPERS at retirement, beneficiary rights, healthcare in retirement, PLOP, and supplementing your pension.

*Alex Solove, Equitable Advisors*

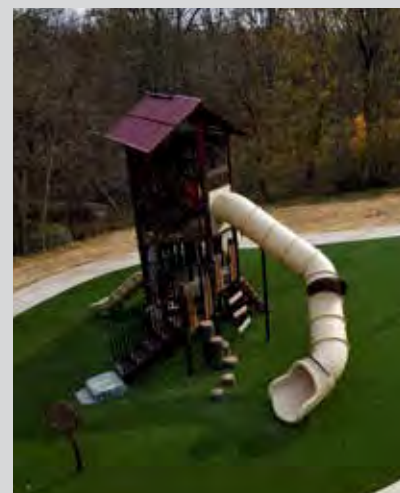
**Room: Aloeswood | Track: Human Resources**

### **Taking Off with Drones - A Team Approach**

The use of small unmanned aerial systems (sUAS), or drones, supports the work of park districts in many sectors – conservation, project planning and monitoring, marketing, and STEAM education, among others. This session details how Cleveland Metroparks operates an interdepartmental Drone Team to increase capacity in the number of flights and types of flights, and the usefulness of deliverables. We describe steps to leverage existing resources to create a safe, sustainable program and share lessons learned.

*Laura Schuch, Cleveland Metroparks*

**Room: ZebraWood | Track: Trends**



# MIDSTATES RECREATION

Design. Build. Play.

- Playground Equipment
- Safety Surfacing
- Site Amenities
- Outdoor Fitness Equipment
- Outdoor Musical Instruments
- Shade, Shelters, & Pavilions
- Installation & Inspections
- In-House CAD Design







# Playground Equipment Services

We put research into practice

Our multiple award-winning inclusive projects based on the Principles of Universal Design provide fun for all ages and abilities.



We are a one-stop, turnkey (in-house) company offering commercial playground and field turf: Design, Site Development, Installation, Maintenance, and Site Amenities.

## WHERE INCLUSION MATTERS!



**CONTACT YOUR LOCAL SALES REPRESENTATIVE FOR  
HELP WITH YOUR NEW OUTDOOR RECREATION PROJECT!**

Tiffany Polzin, CPSI | (765) 702-5435 | [tiffany@bluegrassrec.com](mailto:tiffany@bluegrassrec.com)

YOUR EXCLUSIVE DEALER FOR:



**HAGS**



**Shade  
systems**

**First Team**



**PREMIER POLYSTEEL**  
The Best Commercial Outdoor Furniture Available, Period.



**BLUEGRASS**  
RECREATION SALES AND INSTALLATION

Bluegrass Recreation

424 Quirks Run Rd.

Danville, KY 40422

[www.bluegrassrec.com](http://www.bluegrassrec.com)

(800) 257-5993

- ✓ Playgrounds
- ✓ Splash Pads
- ✓ Playground Safety Surfacing
- ✓ Site Furnishings
- ✓ Shade Structures
- ✓ Commercial Sports Equipment
- ✓ Certified Installation
- ✓ Playground Safety Inspections
- ✓ Playground Design

**Your One Stop Shop For All  
Things Outdoor Recreation!**



## COSI Science Live!

COSI's high energy and interactive COSI Science Live is full of over-the-top large scale science demonstrations & hands-on activities sure to entertain and educate audiences of all ages.

Bring COSI Science Live to your fair, festival or special event!

Live Show Only—\$750 (30 min show)

Hands-On Only—\$800 (2-4 hours)

Live Show & Hands-On—\$1,000 (2-4 hours)

**Booking Inquiries**

[curbsidecosi@cosi.org](mailto:curbsidecosi@cosi.org) or

614.228.2674



**COSI**  
Center of Science and Industry

MSA

SPORT



**WE DESIGN  
INSPIRED  
EXPERIENCES**

ARCHITECTURE | INTERIOR DESIGN  
GRAPHIC DESIGN | HISTORIC PRESERVATION

[msaarch.com](http://msaarch.com)

**OHIO LIQUOR  
IS PROUD  
TO SUPPORT  
OPRA *and*  
RESPONSIBILITY.**



TO LEARN MORE, VISIT [OHLQ.COM](http://OHLQ.COM)



*Raise a glass.* RESPONSIBLY.™

TinyMobileRobots®

# Save Time, Labor & Paint

Get Perfect Lines...  
Every Time.



**Robot  
+ 1 person**

Football Field w/hash marks  
**2 hrs.**

Women's Lacrosse Field  
**29 min.**

11v11 Soccer Field  
**22 min.**

Fast, Easy, Accurate...  
**Field Painting**

Contact Us for a  
**FREE Demo on One  
of Your Fields Today!**

[tinymobilerobots.us](http://tinymobilerobots.us)



Proud of Our Past,  
Passionate About Our Future



Celebrating 60 years of business, ms is proud to support the Ohio Parks and Recreation Association in their efforts to provide quality park and recreational facilities and opportunities for all Ohioans

Stop by and see us at Booth #324 or catch our presentation on the Great Stone Viaduct Historic Bridge Rail-to-Trail, February 7 at 10:15 a.m.

[msconsultants.com](http://msconsultants.com) | [in](#) [t](#) [f](#)

# 2024 OPRA CONFERENCE EXHIBITOR DIRECTORY

## **A&S Party Rental | Partner | Location: 710 & 811**

Lindsey Cornett, Sales Manager  
300 Conover Dr., Franklin, OH 45005  
(937) 885-5454  
lcomett@aspartyrental.com | www.aspartyrental.com  
Ohio's largest event rental company providing extreme attractions, inflatables, and entertainment for parks and recreation departments across the Midwest.

## **Ag-Pro | Location: 620, 622, 624, 721, 723, & 725**

Jenna Watson, Marketing Manager  
1660 US 42 NE, London, OH 43140  
www.agproco.com/ohio  
Ag-Pro is a John Deere dealership with 35 locations in Ohio offering parts, services, and sales support.

## **American Fireworks Company | Location: 423**

Roberto Sorgi, Owner  
PO Box 1447, Hudson, OH 44236  
(330) 650-1776  
roberto@americanfireworks.com | www.americanfireworks.com  
The best full service fireworks company!!!

## **American Ramp Company | Location: 202**

Asa Beckham, Action Sports Development Specialist  
601 S. McKinley Ave., Joplin, MO 64801  
(417) 206-6816  
abeckham@americanrampcompany.com  
www.americanrampcompany.com  
Action sports design-build firm specializing in skateparks, pump tracks, bicycle playgrounds, and full scale bike parks.

## **AQUA DOC Lake & Pond Management | Location: 403**

John Wilson, President and Owner  
10779 Mayfield Rd, Chardon, OH 44024  
(800) 689-5253  
info@aquadocinc.com | http://aquadocinc.com  
Celebrating over 40 years on the waters, AQUA DOC is a lake and pond management company dedicated to keeping waterbodies beautiful and open.

## **Ares Sportswear | Partner | Location: 409**

Dan Girard, Account Manager  
3700 Lacon Road, Suite A, Hilliard, OH 43026  
(614) 710-1682  
girard@areswear.org | www.areswear.com  
Custom decorated apparel

## **Autmow | Location: 404 & 406**

Seth Rozan, Inside Sales Manager  
108 E. College Ave., Westerville, OH 43081  
(614) 568-3096  
seth.rozan@autmow.com | www.autmow.com  
Automation and outdoor robotic solutions

## **Baker Vehicle Systems | Partner**

**Location: 218, 220, 222, 224, 319, 321, 323, & 325**  
Dave Varkett, Operations Manager  
9035 Freeway Dr., Macedonia, OH 44056  
(330) 467-2250  
d.varkett@bakervehicle.com | www.bakervehicle.com  
We provide sales and service for turf and industrial equipment.

## **Bally Sports Group LLC | Location: 303**

Aaron Bally, Owner  
8228 Spruce Needle Court, Columbus, OH 43235  
(614) 505-6532  
abally@ballysportsgroup.com | www.ballysportsgroup.com  
Bally Sports Group specializes in providing quality youth sports programs and camps by partnering with community organizations and schools to fulfill the youths sports needs within a community.

## **Berlin Gardens LLC | Location: 806 & 808**

Frank Stewart, Structure Sales  
6255 Township Road 351, Millersburg, OH 44654  
(800) 593-3411  
tyler.y@berlingardensllc.com | www.berlingardensllc.com  
Outdoor living structures including pergolas and pavilions constructed with high quality materials by Amish craftsmen, available in kits and built-on-site in Ohio.

## **Bluegrass Recreation Sales and Installation | Partner**

**Location: 210 & 311**  
Tiffany Polzin, Recreation Consultant  
434 Quirks Run Rd., Danville, KY 40422  
(765) 702-5435  
tiffany@bluegrassrec.com | www.bluegrassrec.com  
Playground equipment, splash pads, safety surfacing, site amenities, shade, and shelters

## **Brandstetter Carroll, Inc. | Partner | Location: 208**

Debbie Winn, Director of Business Development  
2360 Chauvin Dr., Lexington, KY 40517  
(859) 327-9889  
dwinn@bciaep.com | www.brandstettercarroll.com  
Brandstetter Carroll Inc. is a firm of architects, engineers, landscape architects, and planners providing professional design and planning services to public and private sector clients.

## **Brentwood Builders, Inc. | Location: 207**

Chad Coe, Vice President  
100 Parkview Lane, Cedarville, OH 45314  
(937) 766-5585  
chad@brentwoodbldrs.com | www.brentwoodbldrs.com  
Turn key commercial construction via Sourcewell contract.

## **Bright Idea Shops, LLC | Location: 201**

Alan Robbins, President  
1500 Firestone Pkwy., Suite D, Akron, OH 44301  
(330) 701-7879  
akronal@brightideashops.com | www.brightideashops.com  
Manufacture commercial park furnishings, picnic tables, park benches, waste receptacles, architectural signs, trail signs, and interpretive signs

## **Burnham & Flower Insurance Group | Location: 205**

Thomas Welsh, Director  
6500 Taylor Road, Blacklick, OH 43004  
(614) 353-1077  
twelsh@bfgroup.com | www.bfgroup.com  
Property and casualty insurance, representing Public Entities Pool of Ohio (PEP) - endorsed by OPRA.

## **BWC - Public Employment Risk Reduction Program**

**Location: T-7**  
30 W. Spring St., 25th Floor, Columbus, OH 43215  
(800) 671-6858  
perrprequest@ohio.gov | https://info.bwc.ohio.gov/perrp  
PERRP provides free safety and health compliance assistance visits. PERRP assists public employers with compliance with OSHA and PERRP standards.

## **CAP-STONE & Associates, Inc. | Location: 804**

Mary Sharrett, President  
3700 Corporate Drive #125, Columbus, OH 43231  
(614) 865-1874  
marysharrett@stoneenvironmental.com  
https://stoneenvironmental.com/  
CAP-STONE & Associates, Inc. is a woman-owned firm with two divisions: Columbus Asphalt Paving (CAP) and Stone Environmental Engineering & Science (STONE). CAP specializes in asphalt and concrete services. STONE specializes in civil engineering design, environmental and ecological consulting, and permitting.

## **Central Parks | Partner | Location: 709**

Cameron VanValkenburg, Business Development Specialist  
440 E State Pkwy, Schaumburg, IL 60173  
(847) 252-7600  
parksapp@centralparks.net | www.centralparks.net  
Central Parks is a platform that condenses your website and all communication with residents to one place on their mobile device.



**TED LEWIS PARK**  
CIRCLEVILLE, OHIO

Enhancing Community & Quality of Life

**BRANDSTETTER CARROLL INC.**  
ARCHITECTS • ENGINEERS • PLANNERS

# 2024 OPRA CONFERENCE EXHIBITOR DIRECTORY

## **Century Equipment, A Jerry Pate Company | Partner**

**Location: 418, 420, 422, 424, 519, 521, 523, & 525**

Tim Hughes, CIG Field Manager

2266 East Aurora Rd., Twinsburg, OH 44087

(330) 354-9641

thughes@jerry pate.com | www.centuryequip.com

Century Equipment, A Jerry Pate Company provides outdoor product solutions for the maintenance of park grounds including mowing equipment, utility and personnel vehicle sales and rental, irrigation, drainage, landscape and holiday lighting.

## **CESO, Inc. | Location: 718**

Amy Elsea, Business Development Director

2800 Corporate Exchange Drive, Suite 400, Columbus, OH 43231

(740) 412-0554

amy.elsea@cesoinc.com | www.cesoinc.com

CESO is a comprehensive firm offering start-to-finish capabilities through our ability to provide surveying, civil engineering, environmental, land planning, and landscape architecture services for our clients.

## **Chris Shane Company | Location: 102**

Chris Shane, President

PO Box 752224, Dayton, OH 45475

(937) 885-5133

chris@chrisshane.com | www.chrisshane.com

We sell a full line of supplies for sports fields and playgrounds. Our products include: playground and landscape mulch, baseball and softball field materials, top dressing sands for turf, and volleyball sand.

## **Cincinnati Floor Company, Inc. | Location: 604**

Randy Maricle, Regional Sales Manager

3500 Millikin Court, Suite E, Columbus, OH 43228

(614) 679-6251

randy@cincifloor.com | www.cincinnati floor.com

Installation, repair, and maintenance of indoor sport surfaces and performing arts

## **Cintas Corporation | Location: 801**

Chris Sherman, Major Account Manager-Government

6800 Cintas Blvd, Mason, Ohio 45040

(513) 476-6762

shermanc@cintas.com | cintas.com

Uniforms, facility services, mats, hygiene, cleaning chemicals and products, first aid and safety, AED's, CPR training, fire protection services; catalog direct sales - branded apparel; cooperative and state contract buying options

## **Class Acts Entertainment | Location: 103**

Tammy Walkup, Agent/Programming Specialist

PO Box 694, Columbus, OH 43216

(614) 329-4450

tammy@class-acts.com | www.class-acts.com

Full service booking agency providing entertainment services and assistance in programming fundraisers, concert series, festivals, and community celebrations with music and non-music entertainment.

## **Common Ground | Location: T-3**

Curtis Davies, Challenge Course Manager

14240 Baird Road, Oberlin, OH 44074

(440) 965-5551

cdavies@commongroundcenter.org | www.commongroundcenter.org

Common Ground is home to Common Ground Canopy Tours, a zipline adventure through the treetops, tree climbing adventure, high ropes course, and more.

## **COSI | Partner | Location: 812 & 814**

Kevin Seymour, Director of Offsite Education

333 W Broad Street, Columbus, OH 43215

(614) 965-0310

kseymour@cosi.org | www.cosi.org

COSI science outreach programming span 1 day live science shows to multi-day programming opportunities for 100+ campers.

## **Creative Composites Group | Location: 605**

Brandon Weyant, Outside Sales Representative

214 Industrial Lane, Alum Bank, PA 15521

(814) 839-4186 x265

bweyant@pultrude.com | www.creativecompositesgroup.com

Providing lightweight, bolt-together, fiberglass bridges and boardwalks that are reliable, sustainable, corrosion-resistant, and low maintenance. Utilized by national parks, forest services, municipalities, and home owners associations.

## **Cyclone/Holophane Lighting | Location: 707**

Jerry Whitten, Regional Sales Manager

967 St. Andrews Circle, Geneva, IL 60134

(630) 659-6540

jwhitten@cyclonelight.com | www.cyclonelight.com

Outdoor decorative LED lighting

## **Davey Resource Group | Location: 110**

Christina Znidarsic, Senior Associate Consultant

333 Martinel Dr.; PO Box 5193, Kent, OH 44240

(440) 488-0438

christina.znidarsic@davey.com

www.daveyresourcegroup.com/northern-ohio

Davey Resource Group (DRG) has been providing stormwater management, ecological restoration design, and regulatory permitting services to private and public sector clients since 1992.

## **The Davey Tree Expert Company | Partner | Location: 114 & 116**

Rebecca Kirk, Project Specialist, Events

1500 N Mantua St., Kent, OH 44240

(813) 629-3499

regionalbusinessdevelopmentteam@davey.com

www.davey.com/commercial

The Davey Tree Expert Company provides tree care, grounds maintenance, and environmental consulting services for the residential, utility, commercial, and government markets throughout the United States.

## **Deaton's Waterfront Services | Location: 107 & 109**

Mike Deaton, Sales

3253 W. 1000 N., Fortville, IN 46040

(317) 747-4933

sales@deatonsdocks.com | www.deatonsdocks.com

We sell, design, and supply floating docks, ADA fishing piers, ADA trails, and ADA kayak launches.

## **Design2Wellness | Partner | Location: 214 & 315**

Kelly Naylor, Owner

459 Orange Point Dr., Suite D, Lewis Center, OH 43035

(740) 816-1884

knaylor@design2wellness.com | www.design2wellness.com

Fitness equipment sales and service

## **DGL Consulting Engineers | Location: 821**

Logan Segard, Marketing Specialist

3455 Briarfield Blvd., Suite E, Maumee, OH 43537

(419) 535-1015

email@dgl-ltd.com | www.dgl-ltd.com

DGL is a full-service civil engineering firm with the expertise to plan, survey, design, and perform construction services for your parks and recreation projects.

## **Domokur + Architects | Location: 708**

Brad Ferguson, Director of Parks

4651 Medina Road, Akron, OH 44321

(330) 666-7878

bferguson@domokur.com | www.domokur.com

Domokur Architects is a full-service architectural practice. Our services seamlessly integrate, from the initial planning stages right through to construction.

## **DWA Recreation | Partner**

**Location: 314, 316, 318, 320, 415, 417, 419, & 421**

Bob Greiwe, President

PO Box 208, Harrison, OH 45030

(513) 788-1824

bobg@dwarec.com | www.dwarec.com

GameTime playground equipment, site furnishings, bleachers, outdoor sports equipment, playground surfacing, and fitness equipment

## **Dynaflex Sports Resurfacing | Location: 705**

Luc Lessard, National Sales Manager

10700 Evendale Drive, Cincinnati, OH 45241

(513) 805-5706

llessard@neyra.com | www.dynaflexsports.com

Dynaflex Sports Resurfacing manufactures certified, durable, long-lasting, and custom-colored athletic surfaces and sports surfacing systems for tennis, pickleball, and basketball courts, tracks, playgrounds, and recreational surfaces.

## **Environmental Design Group | Partner | Location: 510 & 611**

Laura Hengle, Marketing Manager

450 Grant Street, Akron, OH 44311

(330) 375-1390

lhengle@envdesigngroup.com | www.envdesigngroup.com

Environmental Design Group is a civil engineering, planning, and design firm. Supporting five offices in Ohio, our portfolio of more than 250 park projects is one of the largest in the Midwest.

## **EnviroSigns | Location: 803**

John Peters, President

2370 E Stringham Ave, Salt Lake City, UT 84109

(801) 942-5812

john@envirosigns.com | www.envirosigns.com

Interpretive, historical, identification, wayfinding, and commemorative signs

## **Equitable Advisors | Partner | Location: 310 & 411**

Alex Solove, Vice President

1001 Lakeside Ave., Suite 1650, Cleveland, OH 44114

(614) 425-2104

alexander.solove@equitable.com | www.equitable.com

Our Retirement Benefits Group focuses on financial planning for public sector employees and provides 457 deferred comp plans nationally.

## **FieldTurf | Location: 506**

J.C. Field, Regional Sales Manager

175 N Industrial Blvd NE, Calhoun, GA 30701

(520) 241-4118

jc.field@fieldturf.com | www.fieldturf.com

FieldTurf is the inventor and world leader of infilled artificial turf with over 6,500 installations in North America and over 25,000 worldwide.

## **FINN All Seasons | Location: 105**

Dave Besoiu, Regional Sales Manager

8540 St. Rt. 14, Suite A, Streetsboro, OH 44241

(330) 931-3535

dbesoiu@finnallseasons.com | www.finnallseasons.com

Erosion control products, athletic field supplies, Finn Equipment sales, service, and rental

## **ForeverLawn | Location: 400, 402, 501, & 503**

Conrad Troyer, Owner

PO Box 212, Winesburg, OH 44690

(614) 682-2728

conrad@foreverlawnohio.com | www.foreverlawnohio.com

Artificial turf and installation of turf

## **G&G Fitness Equipment Inc. | Partner | Location: 704**

Tony Giordano, Director of Commercial Sales

7350 Transit Rd, Williamsville, NY 14221

(800) 537-0516

commercial@livefit.com | www.livefit.com

G&G Fitness Equipment is not only the largest and most knowledgeable commercial fitness equipment distributor in all of Ohio, we are also the most trusted. We sell top brands like Life Fitness and Hammer Strength.

## **Geese Chasers LLC | Location: 500 & 601**

Jason Helfer, Lead Dog

2800 Wakefield Ln, Westlake, OH 44145

(440) 664-6673

jason@geesechasersneohio.com | www.geesechasers.com

We use highly trained border collies to encourage Canada geese to use their wings...and fly elsewhere. No goose = no goose droppings.

## **GEI Consultants, Inc. | Location: 504**

Eric Scott, Restoration Ecologist

5225 Edgewater Drive, Allendale, MI 49401

(616) 384-2644

escott@geiconsultants.com | www.geiconsultants.com

GEI specializes in extensive multidisciplinary ecological and environmental services which are often integrated with our other services. This integration enables innovative and effective solutions that reduce project costs.

## **GEOACE | Location: 807**

Aaron Laver, CTO, Founder

7090 Blacklick-Eastern Road, Pickerington, OH 43147

(419) 262-2193

aaron@geoace.net | https://geoace.net

We specialize in geospatial (GIS) services. We specialize in program implementation, landscape-level machine learning, field data collection forms, open source solutions, and Esri products.

# CENTURY Equipment

A Jerry Pate Company

Ohio's Premier Supplier of Turf Maintenance Equipment Supplies and Light Utility Vehicles.

Toro Workman UTX

PROUD SUPPORTER OF



**TORO**

SALES • SERVICE • ACCESSORIES • PARTS • PRE-OWNED

For more information, call your Account Executive today at

**Toll Free: 800-346-0066**

**Professional Grounds.  
Count on it.**



PRODUCTS ARE AVAILABLE THROUGH SOURCEWELL AND OMNIA PARTNERS



Visit our website at [www.centuryequip.com](http://www.centuryequip.com)

# SuperGames.org



## City Festivals



## SUPER MOVIES



## WinterFest



## FALL FEST

THE BEST ATTRACTIONS ♦ EXCEPTIONAL STAFF  
[SUPERGAMES.ORG](http://SUPERGAMES.ORG) | 614.846.8946

# 2024 OPRA CONFERENCE EXHIBITOR DIRECTORY

## **Hammontree & Associates, Limited | Location: 700**

Karl Oprisch, Vice President  
2533 Stoneham Road, North Canton, OH 44720  
(330) 499-8817  
koprisch@hammontree-engineers.com  
www.hammontree-engineers.com  
Planning, surveying, and design for site work, parks, trails, roads, and pedestrian and vehicular bridges for local and regional agencies.

## **Harrell's | Location: 607**

Scott Parker, Sales Director - Turf Midwest  
5105 New Tampa Hwy, Lakeland, FL 33815  
(863) 687-2774  
sparker@harrells.com | www.harrells.com  
Harrell's produces top-quality, custom blended fertilizers, specialty liquids, and wetting agents. Harrell's is also a distributor of branded fungicides, herbicides, and insecticides.

## **Health & Fitness Equipment Centers | Partner | Location: T-12**

Steve Sova, Owner  
25665 Curtis Blvd., Eastlake, OH 44095  
(440) 946-0839 x4  
ssova@healthandfitnessohio.com | www.healthandfitnessohio.com  
Sale and service of specialty fitness equipment

## **Inspired Access Foundation | Location: T-5**

Jennifer Corcoran, Founding Member  
6441 Spinnaker Dr., Lewis Center, OH 43035  
(614) 636-0197  
jennifer@inspiredaccessfoundation.com  
www.inspiredaccessfoundation.com  
Inspired Access Foundation, through the advocacy of Changing Spaces Ohio, provides funds to support accessible, inclusive communities, starting with height adjustable adult changing tables.

## **iStrike by Anythingweather | Location: 118**

Gregg Potter, President  
77806 Flora Rd., Suite B, Palm Desert, CA 92211  
(760) 459-2079  
gregg@anythingweather.com | www.istrikealerts.com  
iStrike delivers life-saving alerts to sirens and text when lightning is moving into your location. Clear the field, park, pool, and golf course before the storm arrives.

## **iZone Imaging | Partner | Location: T-13**

Cody Gotcher, Sales Representative  
2526 Charter Oak Dr. Suite 100, Temple, TX 76502  
(254) 314-8208  
cgotcher@izoneimaging.com | www.izoneimaging.com  
Custom high pressure laminate (CHPL) sign solutions for indoor and outdoor

## **Jump Start Sports | Location: 706**

Rick Hart, Founder/CEO  
129 Elm Street, Hudson, OH 44236  
(330) 571-3424  
rhart@jumpstartsports.com | www.jumpstartsports.com  
Youth sports programs and camps

## **Kiefer USA | Location: 802**

Aaron Goebel, Regional Manager  
1225 Tri State Parkway, Suite 510, Gurnee, IL 60031  
(740) 417-7400  
aaron@kieferusa.com | www.kieferusa.com  
Kiefer USA offers a complete range of products for fieldhouse, track and field, artificial turf, gymnasium, weight room, health club, and locker room applications.

## **Kimley-Horn | Partner | Location: 505 & 507**

Chris Hice, Vice President  
7965 N High St., Columbus, OH 43235  
(720) 285-5000  
chris.hice@kimley-horn.com | www.kimley-horn.com  
Systemwide master planning, planning, civil engineering, and landscape architecture

## **The Kleingers Group | Location: 217**

Lynne Nischwitz, Director of Landscape Architecture  
6219 Centre Park Drive, West Chester, OH 45069  
(513) 779-7851  
lynne.nischwitz@kleingers.com | www.kleingers.com  
The Kleingers Group provides civil engineering, landscape architecture, design, and master planning for parks and sports complexes across the state of Ohio.

## **KS Associates, Inc. | Location: 204**

Mark Cencer, Director of Coastal Engineering Services  
2630 Burns Road, Suite 100, Elyria, OH 44035  
(440) 365-4730  
cencerm@ksassociates.com | www.ksassociates.com  
KS Associates, Inc. is an engineering and land surveying firm with specialized expertise in coastal engineering. From piers, docks, and boat ramps to marinas and shore protection, we can assist with planning, designing, and permitting your next project.

## **KTS Equipment | Location: 722, 724, 823, & 825**

Jim McLaughlin, VP  
47117 State Route 18, Wellington, OH 44090  
(440) 420-2989  
bandit@ktssequipment.com | www.ktsequipment.com  
We are a Kubota (UTV, mower, tractor, skid steer, excavator), Avant Loader, Bandit Chipper and Stumper dealer.

## **The Lake Doctors | Location: 603**

Matt Zehringer, Sales Manager  
65 Westpark Road, Centerville, OH 45459  
(937) 433-2942  
centerville@lakedoctors.com | www.lakedoctors.com  
Aquatic management services, aquatic weed management, algae control, pond aerators and fountains, mitigation and wetland monitoring, control of invasive and exotic species, and lake mapping, services for sedimentation studies, shoreline restoration, dredging and removal of muck and sediment, water quality improvement, and many other services that aim to protect the overall well-being of your water.

## **Legat Architects | Location: 703**

Anna McDonough, Business Development Director  
22 E Gay Street, Suite 500, Columbus, OH 43215  
(614) 228-7758  
amcdonough@legat.com | www.legat.com  
Legat Architects is a sustainable design practice specializing in planning, architecture, and interior design for Learning, Community, and Wellness projects.

## **Liftoff Entertainment | Location: 820**

Jay Nigro, Chief Fun Officer  
21 N Beckel St., Dayton, OH 45403  
(937) 949-7551  
info@liftoffentertainment.com | www.liftoffentertainment.com  
Event entertainment and production company specializing in outdoor movie screens, DJ, and photo booth services.

## **LSI Industries | Location: 818**

Bob Heaton, Regional Sales Director  
10000 Alliance Road, Cincinnati, OH 45242  
(216) 312-3767  
bob.heaton@lsicorp.com | www.lsicorp.com  
Performance based exterior and interior lighting fixture products focusing on parking area/structures, tennis courts, pickleball courts, basketball courts, and baseball/softball fields. Wide range of products for interior applications.

## **MAD Scientist Associates | Location: 101**

Jenny Adkins, Project Scientist  
253 North State Street, Suite 101, Westerville, OH 43081  
(614) 818-9156  
jennya@madscientistassociates.net | www.madscientistassociates.net  
Ecological and wetland consulting services

## **McGill Smith Punshon | Location: 104**

Jose Castrejon, President  
3700 Park 42 Drive, Suite 190B, Cincinnati, OH 45241  
(513) 759-3224  
jcastrejon@mspdesign.com | www.mspdesign.com  
McGill Smith Punshon provides architecture, civil engineering, landscape architecture, planning, and surveying services.

## **Meredith Brothers Inc. | Location: 306**

Jerry Frantz, Technical Sales Manager  
61 Klema Dr. North, Reynoldsburg, OH 43068  
(937) 751-4575  
jfrantz@meredithbrothersinc.com | www.meredithbrothersinc.com  
Meredith Brothers Inc. is the premier civil engineered solution company in the Midwest. Since 1982 we have provided the best solutions for your site specific issues.

## **Midstates Recreation | Partner**

**Location: 408, 410, 509, & 511**  
James Hobson, Director

1279 Hazelton-Etna Rd SW, Pataskala, OH 43062  
(614) 855-3790  
mesh@midstatesrecreation.com | www.midstatesrecreation.com  
Midstates Recreation is a supplier, designer, and installer of commercial playground products, safety surfacing, shade, shelters, and site furnishings. Our emphasis is providing turn-key inclusive recreation spaces.

## **ms consultants, inc. | Partner | Location: 324 & 425**

Anthony Urankar, VP  
2221 Schrock Rd., Columbus, OH 43229  
(614) 898-7100  
aurankar@msconsultants.com | www.msconsultants.com  
As an award-winning engineering, architecture, planning, and environmental consulting firm, we offer comprehensive and innovative solutions for public and private clients.

## **MSA Sport | Partner | Location: 714**

Katie Freeland, Director of Columbus Studio  
15 West Cherry Street, Suite 300, Columbus, OH 43215  
(614) 300-3357  
kfreeland@msaarch.com | www.msaarch.com  
We create spaces to connect people to your vision and to enhance civic and cultural experiences. We believe design has the power to make the world a better place.

## **Musco Sports Lighting | Location: 221**

John Kaufman, Sales Representative  
8720 Orion Pl, Suite 332, Columbus, OH 43240  
(614) 937-9584  
john.kaufman@musco.com | www.musco.com  
Musco's TLC for LED™ technology delivers unmatched light quality and control for sports venues around the world, and is backed by a long-term warranty covering parts and labor.

## **MyRec.com Recreation Software | Location: 108**

Colin Drury, Chief Commercial Officer  
PO Box 302, Killington, VT 05751  
(802) 465-9732  
colin@myrec.com | www.myrec.com  
Industry leader providing robust, web-based software featuring program management, facility reservation, POS, membership, online registration, and in-depth reporting. MyRec.com backs you up with a support team of parks and recreation professionals.

## **Norwalk Concrete Industries | Location: 609**

Dalton Vaughan, Sales  
80 Commerce Dr., Norwalk, OH 44857  
(419) 668-8167  
dvaughan@nciprecast.com | www.nciprecast.com  
NCI manufactures prefabricated, modular restrooms, buildings, dugouts, and concession stands.

## **O.E. Meyer Co. | Location: 206**

Jason Wierzbza, Co2 Operations Manager  
3303 Tiffin Ave, Sandusky, OH 44870  
(419) 625-3054  
jwierzbza@oemeyer.com | www.oemeyer.com  
We provide compressed and bulk gases to many markets. Carbon dioxide supply for food and beverage and water pH control.

## **O.P. Aquatics | Location: 302**

Eric Stoyanoff, Business Development Manager  
22350 Royalton Road, Strongsville, OH 44149  
(440) 238-2800  
eric.stoyanoff@opaquatics.com | www.opaquatics.com  
Commercial distributor of swimming pool and spa chemicals, equipment, and supplies to make your water sparkle!

## **Ohio Division of Wildlife | Location: 322**

Jen Dennison, Education and Outreach Manager  
2045 Morse Rd., Bldg G, Columbus, OH 43229  
(800) WILDLIFE  
jen.dennison@dnr.ohio.gov | http://wildohio.gov  
We provide educational resources, professional development, grants, and partnerships for education and management.

## **Ohio Geese Control | Location: 200**

Jeff Hower, Co-Owner  
3250 Nelson Park Drive, Rocky River, OH 44116  
(877) 914-3373  
jeff@ohiogeesecontrol.com | www.ohiogeesecontrol.com  
We humanely and effectively manage migratory bird populations, including geese and gulls delivering dramatic and timely results.

# 2024 OPRA CONFERENCE EXHIBITOR DIRECTORY

## **Ohio Liquor | Partner | Location: T-15**

Brian Hoyt, Director of Corporate Social Responsibility  
41 S. High Street, Columbus, OH 43215  
(614) 350-0378  
hoyt@jobsohio.com | www.ohlq.com

Ohio Liquor (OHLQ) is the public/private partnership between the JobsOhio Beverage System and the Ohio Division of Liquor Control.

## **Ohio Optometric Association - Realeyes Program | Location: T-8**

Britt Dahlstrom, Program Director  
250 E. Wilson Bridge Road, Suite 240, Worthington, OH 43085  
(614) 781-0708  
bdahlstrom@ooa.org | www.ooa.org/realeyes  
Realeyes provides free eye health and safety programs for PreK to High School students in Ohio.

## **Ohio Plan | Location: 219**

Jason Chapman, State Sales Manager  
811 Madison Avenue, 11th Floor, Toledo, OH 43604  
(855) 762-3139  
info@ohioplan.org | www.ohioplan.org  
From playground safety to the programs and services you provide and beyond, Ohio Plan takes the time to understand your park district to determine your unique exposures' best coverage options.

## **Ohio University | Location: T-4**

Bruce Martin, Professor  
1 Ohio University, Patton Hall 202, Athens, OH 45701  
(804) 310-5041  
bruce.martin@ohio.edu  
https://www.ohio.edu/education/recreation-sport-pedagogy-consumer-sciences  
The Parks, Recreation, and Leisure Studies program at Ohio University is a nationally accredited program that prepares students for professional positions in the field of parks and recreation.

## **OHM Advisors | Location: 407**

Tony Slanec, Principal  
580 N. Fourth Street, Suite 610, Columbus, OH 43215  
(614) 474-1109  
tony.slanec@ohm-advisors.com | ohm-advisors.com  
OHM Advisors is an award winning, multidisciplinary firm with planning, urban design, landscape architecture, architecture, engineering, surveying, and construction engineering services.

## **Pannier Graphics | Location: 716**

Emily Altmyer, Sales & Marketing Manager  
345 Oak Road, Gibsonsia, PA 15044  
(724) 265-4900  
marketing@pannier.com | www.panniergraphics.com  
Pannier Graphics is the leading manufacturer of outdoor signs, panels, exhibit bases, and frames used in a full range of applications.

## **Paragon Integrated Services Group | Location: 300 & 401**

Dan Mount, Environmental Account Manager  
200 Enterprise Dr, Newcomerstown, OH 43832  
(740) 818-5052  
dmount@paragonisg.com | www.paragonisg.com  
Dredging, dewatering, aquatic weed harvesting

## **ParkVision/American Athletix | Location: 822 & 824**

Eric Jones, Sales  
PO Box 1881, Muskegon, MI 49443  
(888) 399-4999  
office@americanathletix.com | www.americanathletix.com  
We represent Kompan Playgrounds and Outdoor Fitness and Cedar Forest Products Shelters and Park Buildings

## **Penchura, LLC | Partner | Location: 122, 124, 223, & 225**

Jennifer VanDokkumburg, Marketing Manager  
889 S. Old US 23, Brighton, MI 48114  
(810) 229-6245  
jenniferk@penchura.com | www.penchura.com  
We represent leading manufacturers in the recreation industry who have established a premier reputation for quality products and services. By providing safe, exciting, innovative, and fun places for our children, we are improving our communities, fighting childhood obesity, encouraging environmental responsibility, and bringing back the value to play!

## **Pennsylvania Recreation and Park Society | Location: T-6**

BK Koehler, Director, The Maintenance Institute  
2131 Sandy Dr., State College, PA 16803  
(814) 441-4189

bk@prps.org | www.prps.org

The Maintenance Institute is the hub of knowledge for sustainable facilities and grounds operations, land management techniques, and maintenance administration!

## **Pizzuti Solutions | Partner | Location: T-14**

James Russell, Executive Vice-President  
629 N. High Street, Suite 500, Columbus, OH 43215  
(614) 280-4038  
jrussell@pizzuti.com | www.pizzuti.com  
Professional project management to assist in the planning, design, and completion of community and recreational facilities.

## **Playground Equipment Services (PES) | Partner**

**Location: 518, 520, 522, 524, 619, 621, 623, & 625**  
Andy Barlow, General Manager & SVP  
3460 Oakmeadow Lane, Cincinnati, OH 45239  
(513) 703-5992  
andy@playgroundequipmentservices.com | www.playgroundequipmentservices.com  
PES is a complete, turnkey (in-house) commercial playground firm - design, sales, site development, installation, and maintenance - providing play structures, fitness equipment, shade shelters, safety surfacing, and site amenities.

## **Prevention Action Alliance | Location: T-16**

Alyce Jennings, Resource Development Manager  
6171 Huntley Road, Suite G, Columbus, OH 43229  
(614) 540-9985 x12  
ajennings@preventionactionalliance.org  
https://preventionactionalliance.org  
Prevention Action Alliance works to prevent substance misuse and promote mental health wellness to all Ohioans through prevention education, resources, and advocacy.

## **PumpTrax USA | Partner | Location: 301**

Jason Schiefelbein, Sales  
17820 Woodbury Ave., Cleveland, OH 44135  
(614) 302-3725  
jason@pumptraxusa.com | www.pumptraxusa.com  
PumpTrax USA will design and install your bicycle playground, bike park, pump track, ADA wheel chair track, flow trail, mountain bike trail, jump park, and BMX race track.

## **Rain Drop Products | Location: 701**

Jodi Holt, Regional Sales Director  
2121 Cottage St., Ashland, OH 44805  
(419) 207-1229  
jholt@rain-drop.com | www.rain-drop.com  
Manufacturer of interactive water play features, water slides, water structures, and water fountains

## **RecDesk, LLC | Location: 405**

Tim Bracken, Regional Account Manager  
300 Plaza Middlesex, Middletown, CT 06457  
(800) 325-7391  
tim.bracken@recdesk.com | www.recdesk.com  
RecDesk is #1 in ease of use for recreation management software. If you're in pursuit of happiness with your software; if you're looking for an exceptional company, solution, and complete experience, then RecDesk is a great place to start (and finish) your search.

## **Redi Rock | Location: 817**

Bryan Martin, Operations Manager  
2121 Tracy Road, Northwood, OH 43619  
(419) 662-9000  
bmartin@turnerconcreteproducts.com | www.redi-rock.com  
Redi Rock is the leader in big block retaining wall systems. We have extensive applications in parks and water applications.

## **Resources at Lakeshore Speech, LLC | Location: 702**

Verna Ann Kotansky, President  
815 Crocker Road, Suite B3, Westlake, OH 44145  
(216) 244-4569  
rinfo@lakeshorespeech.com | www.lakeshorespeech.com  
Resources at Lakeshore Speech provides affordable resources for individuals with communication differences. Our outdoor communication boards for playgrounds, parks, pools, and waterparks ensure that all individuals have a voice.

## **River Rangers International, Inc. | Location: T-10**

Rando Morgan, President/CEO  
1650 Schwilk Rd. SE, Lancaster, OH 43130  
(877) 647-4837 x700

rando@riverrangers.org | riverrangers.org  
Debris removal/repurpose, bank stabilization, waterway management, permit acquisition

## **Rock The House Entertainment Group, Inc. | Partner**

**Location: 800**  
Marissa Diaz, Director, Revenue Operations  
7809 First Place, Oakwood Village, OH 44146  
(440) 232-7625  
info@rthgroup.com | www.rthgroup.com  
Full service audio visual production; lighting, audio, and staging rentals; and entertainment and activation services.

## **Romtec, Inc. | Location: 106**

Travis Olson, Sales  
18240 N. Bank Rd., Roseburg, OR 97470  
(541) 496-3541  
travis.olson@romtec.com | www.romtec.com  
Pre-engineered park restrooms and structures

## **Rookie Sports Club | Location: 606**

Amanda Riningar, Owner  
2242 Yerrick Circle, Akron, OH 44312  
(330) 203-8929  
coachamanda@rookiesportsclub.com | www.rookiesportsclub.com  
Rookie Sports Club offers youth sports classes and camps in partnership with the cities, schools, and organizations in Northeast Ohio.

## **Rozzi Inc dba Rozzi's Famous Fireworks | Location: 304**

Joe Rozzi, Vice President of Sales  
10059 Loveland Maderia Rd, Loveland, OH 45140  
(513) 683-0620  
joe@rozzifireworks.com | www.rozzifireworks.com  
Rozzi's Famous Fireworks is a full service fireworks and pyrotechnic company.

## **Rusty Oak Nursery LTD | Location: 100**

Kirk Cekada, Field Production Manager  
PO Box 436, Valley City, OH 44280  
(330) 225-7704  
kirk@rustyoak.com | www.rustyoak.com  
Grower/rewholesaler of trees, shrubs, perennials, and ornamental grasses

## **Schorr Architects, Inc. | Partner | Location: 608**

Larry Rancour, Vice President, Senior Project Manager  
230 Bradenton Avenue, Dublin, OH 43017  
(614) 798-2096  
lrancour@schorrrarchitects.com | www.schorrrarchitects.com  
99% of all work is for public entities. Over 85% of projects are for repeat clients. We are proud to be actively involved with projects that directly benefit area communities.

## **SCORE Sports | Location: 819**

20701 Manhattan Place, Torrance, CA 90501  
(310) 830-6161  
sales@scoresports.com | www.scoresports.com  
Sports apparel, uniforms, and sports equipment

## **Snider Recreation, Inc. | Partner | Location: 610 & 711**

James Snider, President  
10139 Royalton Rd, Suite K, North Royalton, OH 44133  
(440) 877-9151  
info@cvsnyder.com | www.cvsnyder.com  
Snider Recreation is a provider and installer of playgrounds and park amenities, including outdoor exercise equipment, splash pads, and shelters.

## **Sol Harris/Day Architecture | Location: 120**

Melinda Scalfaro, Partner  
6677 Frank Ave NW, North Canton, OH 44720  
(330) 493-3722  
mscalfaro@solharrisday.com | www.solharrisday.com  
We are a 25 person architecture and design firm specializing in recreational design and planning with a focus on sustainability.

## **SOLitude Lake Management | Location: 305**

Ethan Hendren, Business Development Consultant  
2844 Crusader Circle #450, Virginia Beach, VA 23453  
(888) 480-5253  
info@solitudelake.com | www.solitudelakemanagement.com  
SOLitude Lake Management is a nationwide environmental firm committed to providing sustainable solutions that improve water quality, enhance beauty, preserve natural resources, and reduce our environmental footprint.



# 2024 OPRA CONFERENCE EXHIBITOR DIRECTORY

## Sourcewell | Location: 209

Jake Denning, Client Relations Administrator  
202 12th Street NE, Staples, MN 56479  
(218) 895-4141  
jake.denning@sourcewell-mn.gov | www.sourcewell-mn.gov  
Buy equipment you want using Sourcewell cooperative purchasing. Join 50,000 agencies saving time/money using 400+ contracts through local dealers to ease procurement and support communities.

## Spartan Sports Lighting | Location: 600

Jordan Baker, Director of Sales  
840 Walkers Line, Burlington, ON L7R 3X9 Canada  
(905) 632-9301  
jbarker@scgrp.com | www.spartansl.com  
Manufactured in the United States and easy to install, Spartan Sports Lighting is the high-performance solution you will be proud to put on the field.

## Spear Corporation | Location: 720

Sam Blake, Vice President of Business Development  
12966 North CR 50 West, Roachdale, IN 46172  
(765) 522-1126  
sblake@spearcorp.com | www.spearcorp.com  
A leader in onsite service and maintenance, our professional certified technicians specialize in the precise installation of filtration and chemical treatment systems.

## Stageline | Location: 309

Roxanne David, Project Manager  
827 L'Ange Gardien, L'Assomption, QC J5W 1T3 Canada  
(450) 589-1063  
roanne.david@stageline.com | www.stageline.com  
Leading designer and manufacturer of hydraulic mobile stages

## Stantec | Partner | Location: 508

Joel Thrash, Sr. Consultant/Sr. Principal  
10200 Alliance Road, Suite 300, Cincinnati, OH 45242  
(513) 489-2402  
joel.thrash@stantec.com | www.stantec.com  
Full-service ecological consulting, wetland and stream restoration services, water resource management, cultural resource management, and award winning native plant nursery.

## SuperGames | Partner | Location: 514, 516, 615, & 617

Zach Wells, Director of Sales & Marketing  
6580 Huntley Rd., Columbus, OH 43224  
(614) 846-8946  
zwells@supergames.org | www.supergames.org  
We bring people together to share fun, positive experiences. With a focus on special events, SuperGames offers the best activities, staffing, and service in the industry! Our skilled event planning team will ensure every part of the event goes smoothly.

## TerraTread | Location: 815

Bryan Martin, Operations Manager  
2121 Tracy Road, Northwood, OH 43619  
(419) 662-9000  
bmartin@terratread.com | www.terratread.com  
TerraTread Boardwalk System is an innovative product saving your client both time and money. TerraTread has numerous benefits over wooden alternatives, including reducing maintenance, improving safety, and increasing lifespan.

## TinyMobileRobots | Partner | Location: 211

Nick Graham, Territory Manager  
41 S 4th St, Zanesville, OH 43830  
(614) 400-2862  
ng@tinymobilerobots.com | www.tinymobilerobots.us  
TinyMobileRobots athletic field painting robots are fully autonomous and will provide perfectly straight and accurately painted lines while reducing time and paint expense.

## Trust for Public Land | Location: T-11

Sean Terry, State Director (Ohio)  
1250 Old River Road - Suite 202, Cleveland, OH 44118  
(216) 928-7518  
sean.terry@tpl.org | www.tpl.org  
Trust for Public Land is a national non-profit organization that creates parks and protects public land where they're needed most so that everyone will have access to the benefits and joys of the outdoors for generations to come.

## United Rentals | Location: 614, 616, 618, 715, 717, & 719

Jessica Berns, District Sales Manager  
1050 Killian Road, Akron, OH 44312  
(330) 958-0301  
jberns@ur.com | www.unitedrentals.com  
Portable sanitation, temporary fencing, storage and office solutions, and equipment rentals

Kettering Parks, Recreation & Cultural Arts



35  
YEARS

schorr architects  
inc.  
STRUCTURING YOUR IDEA® SINCE 1988



www.schorrarchitects.com



# The Davey Difference

**Strong brands, engaged employees, exceptional service.**

Always striving to meet our clients expectations, we create and deliver sustainable solutions.

**VISIT US AT  
OPRA 2024**

**BOOTHS:  
#110, #114 & #116**

Scan to view  
Davey's park >  
projects



**DAVEY**   
*Proven Solutions for a Growing World*

## Wellness Your Way!

DESIGN2WELLNESS BRINGING YOUR BUSINESS THE  
BEST EQUIPMENT, SERVICE, AND EXPERIENCE ACROSS  
THE SOUTHEASTERN & GREAT LAKES REGIONS.

**YOUR TRUSTED PARTNER  
FOR A STRESS FREE  
EXPERIENCE,**

**FROM**   
**Design2Wellness**

# 2024 OPRA CONFERENCE EXHIBITOR DIRECTORY

## USTA/Midwest Section | Location: T-2

Jim Amick, Director of Sales  
1310 E. 96th St. #100, Indianapolis, IN 46240  
(317) 333-3560  
jim@midwest.usta.com | www.usta.com

The USTA/Midwest Section mission is to promote, develop, and service the game of tennis focusing on competitive and recreational programs for individuals of all ages and skill levels.

## V3 Companies | Location: 809

Katie LaSalle, Communications Specialist  
7325 Janes Ave, Woodridge, IL 60517  
(574) 265-3603  
klsalle@v3co.com | www.v3co.com

A multidisciplinary firm offering civil engineering, contracting, environmental, planning, landscape architecture, and surveying services.

## Vermont Systems | Location: 307

Dave Wirtz, Director of Sales  
12 Market Place, Essex Junction, VT 05452  
(877) 883-8757

davew@vermontsystems.com | www.vermontsystems.com  
Vermont Systems platforms provide full operational management, payment management, and experience management to create consistent community experiences, enhance loyalty, and connect all key activities, employees, and customers in one place.

## View Ability: Cincinnati Association for the Blind | Location: T-1

Jennifer Alvis, Business Development  
2045 Gilbert Ave., Cincinnati, OH 45202  
(513) 802-4060

jennifer.alvis@cincyblind.org | www.cincyblind.org  
We are a state contract holder providing office supplies, furniture, signage, door hardware, Jan San and breakroom supplies.

## Vortex Aquatic Structures International | Partner

**Location: 215**  
Barb Lapiere, Regional Sales Manager  
3500 South Dupont Highway, Suite EP-101, Dover, DE 19901  
(438) 998-4614

blapiere@vortex-intl.com | www.vortex-intl.com  
With more than 9,000 installations in 50 countries, in public, commercial, and innovative settings, Vortex is the world leader in aquatic play landscapes and entertainment.

## Water Technology, Inc. | Location: 502

Jen Gerber, Vice President Strategic Partnerships & Operations  
100 Park Ave, Beaver Dam, WI 53916  
(920) 887-7375  
info@wtworld.com | www.wtworld.com  
Aquatic planning, design, and engineering

## Watermen Brand Inc. | Location: 805

German Luna, Sales Representative  
1198 Joshua Way, Vista, CA 92081  
(760) 599-0990  
german@watermenbrand.com | www.originalwatermen.com  
Watermen Brand manufactures and distributes lifeguard uniforms, equipment, and aquatic gear to over 3,000 agencies around the U.S.

## Wickcraft Boardwalks | Location: 203

Patrick Walters, President/CEO  
2317 Daniels Street, Madison, WI 53718  
(608) 244-9177  
patrick@wickcraft.com | www.wickcraft.com  
Wickcraft is a manufacturer of prefabricated modular boardwalk solutions. It's what's underneath that matters!

## The Wilds | Location: T-9

Mary Beth Sills, Volunteer and Community Outreach Coordinator  
14000 International Drive, Cumberland, OH 43732  
(740) 638-5030

msills@thewilds.org | https://www.thewilds.org  
The Wilds is a non-profit conservation park that breeds endangered species, educates the public about nature, and restores habitat in Ohio.

## Williams Architects | Location: 317

Karen Lellios, Director of Marketing  
1335 Dublin Road, Columbus, OH 43215  
(614) 705-1531  
ktlellios@williams-architects.com | www.williams-architects.com  
Architects/planners specializing in the design of recreational and aquatic facilities.

## Willoughby Stainless Fountains - WSF | Location: 216

Joe Wede, Sales Representative  
5105 W. 78th Street, Indianapolis, IN 46268  
(317) 875-0830  
quotes@wsf-usa.com | www.wsf-usa.com  
World-wide manufacturer of stainless steel outdoor drinking fountains, bottle fillers, and showers. In addition to stainless steel toilets and urinals for the park and play industry.

## Wilson Bohannan Lock Co. | Location: 602

Aaron Russell, Marketing Director  
621 Buckeye St., Marion, OH 43302  
(800) 382-3639  
wbco@padlocks.com | www.padlocks.com  
Wilson Bohannan Lock Company has been providing security products around the world for 164 years.

## Woolpert | Partner | Location: 308

Andrew Pack, Program Director  
4454 Idea Center Blvd., Dayton, OH 45430  
(704) 526-3102  
andrew.pack@woolpert.com | www.woolpert.com  
Woolpert is the premier architecture, engineering, geospatial (AEG), and strategic consulting firm, with a vision to become one of the best companies in the world.

# Let Us Be Your Partner

Meet the team at booth 510/611!

CELEBRATING



**Environmental  
Design Group**

*The community impact people.*

- Construction Management
- Campgrounds & Camps
- Economic Development
- EDG Creative
- Environmental & Ecological Services
- GIS Services
- Grants & Funding
- Green & Blue Infrastructure
- Parks & Trails
- Site Development
- Surveying
- Transportation Engineering
- Water Resources



envdesigngroup.com

1-800-835-1390

Akron/Cleveland/Columbus/Marietta/Newark

**\$4.49 TEES!**



**CONTACT:  
DAN GIRARD  
GIRARD@ARESWEAR.COM | 614-710-1682  
WWW.ARESWEAR.COM**



**Water moves us**

Orr Park | Orrville OH



ReviRock

**INTRODUCING REVI PRODUCTS!**

Each Revi product is designed with inclusion in mind, including transfer height, different handgrip options, and plenty of room for kids to lay down, sit, kneel, or stand as they experiment with the motion!



ReviWheel



ReviWhirl



**WE LOVE NATURE**



A trusted advisor for ecological consulting and restoration management services—we provide nature-based solutions and guidance to local parks, natural areas, and recreational resources.

To learn more, contact: **Joel Thrash** | Senior Project Ecologist/Team Lead  
joel.thrash@stantec.com



www.Penchura.com  
Phone: (810) 229-8245

Furnace Run Stream Restoration—Furnace Run Metro Park  
Summit County, Ohio



## PLAY IS THE BEGINNING

Of something wonderful, vibrant and unique. It teaches us and challenges us to be better. It connects us – to ourselves, each other and to our communities. With play as the beginning, anything is possible.

[cvsnider.com](http://cvsnider.com) • 800.888.2889

Exclusive Representative of  
**Burke**  
 PLAY THAT MOVES YOU.



© BCI Burke Company 2023. All rights reserved.

**DIAMOND WATERFRONTS**  
 Sea Walls • Docks • Decks • Marine Construction

**RESIDENTIAL - COMMERCIAL  
 PARKS & RECREATION  
 LAW ENFORCEMENT  
 MILITARY**

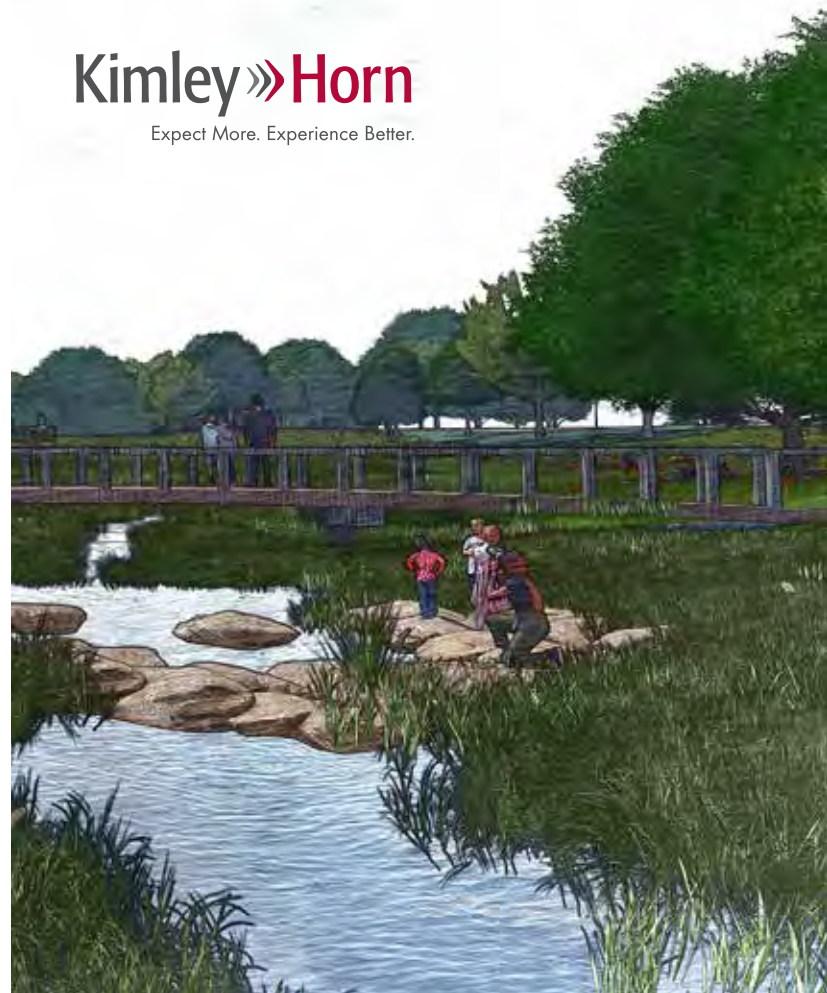
**330-882-5296**



[www.diamondwaterfronts.com](http://www.diamondwaterfronts.com)

## Kimley»Horn

Expect More. Experience Better.



In only the last five years,  
the OPRA Foundation invested nearly

# \$105,000

in the form of scholarships, grants,  
and continuing education to **INSPIRE**  
students and professionals, **IMPACT**  
communities by creating recreation  
opportunities for everyone, and  
**INFLUENCE** member agencies,  
partnerships, and citizen advocates.



## HOW DO WE DO IT?

The OPRA Foundation hosts an annual golf outing and an annual silent auction and raffles in conjunction with the OPRA Conference & Trade Show. The money we raise will fund academic and continuing education scholarships and grants.

Visit <https://oprafoundation.org> for more information.



The OPRA Foundation is a philanthropic partner of OPRA. You can make a difference any time in the lives of people we serve.

Scan the QR to make a donation or visit <https://tinyurl.com/2p8yyvsy>. Your transaction is secure through the Columbus Foundation portal.



Ohio Parks & Recreation Association  
**FOUNDATION**  
♦ Changing Lives ♦

## YOU NEED A PARTNER, NOT A VENDOR

CORPORATE | NON-PROFIT | RENTALS  
SOCIAL | MEETINGS | CONVENTIONS

*Mention This Ad  
& Receive 10% Off  
Your Next Order*



# RTHAV



SCAN ME

440.232.7625 • [ROCKTHEHOUSE.COM](http://ROCKTHEHOUSE.COM) • [f](https://www.facebook.com/IGOTROCKED) [i](https://www.instagram.com/IGOTROCKED) [y](https://www.youtube.com/IGOTROCKED) /IGOTROCKED

AUDIO | VIDEO | LIGHTING | STAGING | ENTERTAINMENT

# SAVE THE DATE

## 2025 OPRA Conference & Trade Show

Kalahari Convention Center, Sandusky, Ohio

February 2 - 5, 2025

*with:*



### **Marc Mero**

Marc Mero, Former WCW & WWE Wrestling Champion reached the pinnacle of sports-entertainment success – then lost it all — but in the process discovered what’s most important in life. Everyone faces adversity. “It’s not how many times you get knocked down, it’s how many times you get back up. You can do anything you set your mind to!”

### **Want to be part of the 2025 OPRA Conference Committee?**

Join us on Friday, March 8th from 1:00pm - 3:00pm at Dublin Recreation Center for an information session regarding different areas to serve on Committee.

Email Tammy Kellogg by the end of March if you would like to serve on the 2025 Conference Committee but are unable to make the meeting at [tammy@opraonline.org](mailto:tammy@opraonline.org).

**Ohio Parks and Recreation Association**

1069-A West Main Street • Westerville, Ohio • 43081

For more information call (614) 895-2222 or visit: [opraonline.org](http://opraonline.org)

