

Celebrating  
60 Years

# Palms

Journal of the International Palm Society

Vol. 60(2) Jun. 2016





# THE INTERNATIONAL PALM SOCIETY, INC.

## The International Palm Society

**Founder:** Dent Smith

The International Palm Society is a nonprofit corporation engaged in the study of palms. The society is international in scope with worldwide membership, and the formation of regional or local chapters affiliated with the international society is encouraged. Please address all inquiries regarding membership or information about the society to The International Palm Society Inc., 9300 Sandstone St., Austin, TX 78737-1135 USA, or by e-mail to [info@palms.org](mailto:info@palms.org), fax 512-607-6468.

### OFFICERS:

**President:** Leland Lai, 21480 Colina Drive, Topanga, California 90290 USA, e-mail [lelandlai@aquafauna.com](mailto:lelandlai@aquafauna.com), tel. 1-310-383-2607.

**Vice-Presidents:** David Tanswell, P.O. Box 2007, Ashgrove West, Brisbane, Queensland 4060 Australia, e-mail [david.tanswell@hotmail.com](mailto:david.tanswell@hotmail.com), tel. 61-7-3369-5944. Ray Hernandez, 4315 W. San Juan Street, Tampa, Florida 33629 USA, e-mail [subtropicofcancer@hotmail.com](mailto:subtropicofcancer@hotmail.com), tel. 1-813-832-3561.

**Corresponding Secretary:** Susan Hubbell, 690 Calle César González, Apt. 2402, San Juan, Puerto Rico 00918 USA, e-mail [sushubbell@aol.com](mailto:sushubbell@aol.com), tel. 1-787-765-5711.

**Administrative Secretary:** Larry Noblick, Montgomery Botanical Center, 11901 Old Cutler Road, Miami, Florida 33156 USA, e-mail [lnob@montgomerybotanical.org](mailto:lnob@montgomerybotanical.org), tel. 1-305-667-3800 ex 104.

**Treasurer:** Tom Jackson, P.O. Box 1102, Ross, California 94957, USA, e-mail [jacksot@sutterhealth.org](mailto:jacksot@sutterhealth.org), tel. 1-415-923-3299.

**Directors: 2012–2016:** David Bleistein, California; Tim Brian, Hawaii; Jeff Brusseau, California; Paul Craft, Florida; John DeMott, Florida; Haresh, India; Susan Hubbell, Puerto Rico; Tom Jackson, California; Ken Johnson, Florida; Leland Lai, California; Michael Merritt, Hawaii; Kathryn Morgan, Louisiana; Carlo Morici, Spain; Larry Noblick, Florida; Jack Sayers, California; Grant Stephenson, Texas; Scott Zona, Florida. **2014–2018:** Cindy Adair, Virginia; Faith Bishock, Florida; Kimberley Cyr, California; Walter Donovan, Australia; John Dransfield, United Kingdom; Len Geiger, California; Ray Hernandez, Florida; Horace Hobbs, Texas; Julie Cleaver Malzoni, Brazil; Paco Martí, Spain; Don Martin, California; Jill Menzel, Brazil; Fernando Roca, Peru; Tobias Spanner, Germany; David Tanswell, Australia; Lee Tracy, Hawaii.

**Bookstore:** [www.palms.org](http://www.palms.org)

**Chapters:** See [www.palms.org](http://www.palms.org)

**Website:** [www.palms.org](http://www.palms.org)

## Palms (formerly PRINCIPES)

Journal of The International Palm Society

An illustrated, peer-reviewed quarterly devoted to information about palms and published in March, June, September and December by The International Palm Society Inc., 9300 Sandstone St., Austin, TX 78737-1135 USA.

**Editors:** John Dransfield, Herbarium, Royal Botanic Gardens, Kew, Richmond, Surrey, TW9 3AE, United Kingdom, e-mail [j.dransfield@kew.org](mailto:j.dransfield@kew.org), tel. 44-20-8332-5225, Fax 44-20-8332-5278. Scott Zona, Dept. of Biological Sciences (OE 167), Florida International University, 11200 SW 8 Street, Miami, Florida 33199 USA, e-mail [zonas@fiu.edu](mailto:zonas@fiu.edu), tel. 1-305-348-1247, Fax 1-305-348-1986.

**Associate Editor:** Natalie Uhl.

Guidelines for authors are available on request from the Editors, or on-line at: [www.palms.org/palms\\_author\\_guidelines.cfm](http://www.palms.org/palms_author_guidelines.cfm)

Annual membership dues are US\$45.00 for Individuals (or US\$120 for three years) and include a subscription to the Journal. Donor memberships are US\$500 per year. Individual Lifetime memberships are available for a one-time fee of US\$1000. Benefactor memberships require a one-time payment of US\$2500. Subscription price is US\$45.00 per year for libraries and institutions. Dues include mailing of the Journal by airlift service to addresses outside the USA. Dues may be paid on-line at [www.palms.org](http://www.palms.org).

**Change of Address:** Send change of address, phone number or e-mail to The International Palm Society Inc., 9300 Sandstone St., Austin, TX 78737-1135 USA, or by e-mail to [info@palms.org](mailto:info@palms.org).

**Claims for Missing Issues:** Claims for issues not received in the USA should be made within three months of the mailing date; claims for issues outside the USA should be made within six months of the mailing date.

Periodical postage paid at Austin, TX, USA and additional mailing offices. Postmaster: Send address changes to The International Palm Society Inc., 9300 Sandstone St., Austin, TX 78737-1135 USA.

PALMS (ISSN 1523-4495)

Mailed at Lawrence, Kansas 15 June 2016  
© 2016 The International Palm Society

The full text of PALMS is available on EBSCO Publishing's database.

**This publication is printed on acid-free paper.**

## CONTENTS

### 57 Towards a Revision of *Attalea* in Western Amazonia

J.-C. PINTAUD, A.M. RODRIGUEZ DEL CASTILLO,  
E.J.L. FERREIRA, M. MORAES R. & K. MEJÍA

### 79 Gender and Expression of Magnesium Deficiency in Canary Island Date Palms

D.R. HODEL, J. KOMEN, R.M. HODEL & M.A. HODEL

### 85 *Copernicia* × *dahlgreniana*, a New Natural Hybrid in the Savannas of Camagüey, Cuba

R. VERDECIA P.

### 93 A University Palmetum

R.W. VOGEL

### Features

Palm News	56
Palm Literature	84, 102
Photo Feature	99



Conserve. Learn. Grow.

#### FRONT COVER

Its solitary, tall, robust trunks topped with a huge canopies of long, drooping to arching, dark green, pinnate leaves make Canary Island date palms a majestic and common sight (Newport Center, Newport Beach, CA). See article by D.R. Hodel et al., p. 79. Photo by D.R. Hodel.

#### BACK COVERS

*Copernicia* × *dahlgreniana* (and one of its putative parents, *C. cowellii*, in the background), south of Lesca, Camagüey, Cuba. See article by R. Verdecia, p. 85. Photo by R. Verdecia.



# PALM NEWS

The palm world lost a brilliant botanist in March of this year when **Dr. Gloria Galeano, of Bogotá, Colombia, succumbed to cancer after a long battle**. She co-hosted the World Palm Symposium in 2015, and all who attended will treasure memories of their interactions with her. Gloria was a mentor to many young botanists in her native Colombia and further afield and was known to palm enthusiasts the world over as one of the co-authors of the *Field Guide to the Palms of the Americas*. Most recently, she was a co-author of the spectacular new discovery, *Sabinaria magnifica*, named after Sabina Bernal Galeano, her daughter with palm botanist Rodrigo Bernal. Gloria was a warm and generous colleague, whose contributions to the world of palms, particularly to the taxonomy of South American palms and their conservation, have permanent value.

We were **saddened to learn of the death of DeArmand (De) Hull** earlier this year after a long bout with myasthenia gravis. For many years, De was a grower and vendor of palms in South Florida, regularly offering interesting palms at the South Florida Palm Society's sales. He played a crucial role in the early days of the Palm Society's Seed Bank, helping to distribute seeds of what were then almost unknown species but which are now, thanks to De, widespread in cultivation. He also worked with the University of Miami in the creation of its palmetum. He is fondly remembered for organizing a tour of the Seychelles in 1999 and shipping viable seeds of *Lodoicea maldivica* back to the USA. A few years ago, he and his husband, David Hertzberg, moved to the Big Island of Hawaii, where they began creating a palm garden at their home and were active in the local society. De and his enthusiasm for palms will be sorely missed.

The Botanical Journal of the Linnean Society is publishing **papers from the World Palm Symposium 2015**, held in Quindío, Colombia. Currently in "early view" on the journal's website, the articles include:

Bacon, C.D. et al. "Phylogenetics of Iriarteeae (Arecaceae), cross-Andean disjunctions and convergence of clustered infructescence morphology in *Wettinia*"

Baker, W.J. & J. Dransfield "Beyond *Genera Palmarum*: progress and prospects in palm systematics"

Sanín, M.J. et al. "The Neogene rise of the tropical Andes facilitated diversification of wax palms (*Ceroxylon*: Arecaceae) through geographical colonization and climatic niche separation"

Gödel, B. et al. "Impacts of large herbivores on spinescence and abundance of palms in the Pantanal, Brazil"

and

Gardiner, L.M. & S.P. Bachman "The role of citizen science in a global assessment of extinction risk in palms (Arecaceae)"

These articles will be included in a future print version of the journal, but they are currently available to subscribers on the journal's website: [http://onlinelibrary.wiley.com/journal/10.1111/\(ISSN\)1095-8339/earlyview](http://onlinelibrary.wiley.com/journal/10.1111/(ISSN)1095-8339/earlyview).



# Towards a Revision of *Attalea* in Western Amazonia

JEAN-CHRISTOPHE PINTAUD<sup>†</sup>  
*IRD, UMR DIADE/DYNADIV,  
Calle 17 No. 455, Lima 27, Peru*

ANGEL MARTIN RODRIGUEZ DEL  
CASTILLO  
*Instituto de Investigaciones de la  
Amazonía Peruana, Programa de  
Investigación en Biodiversidad  
Amazónica PIBA, Jr. Belen Torres 135  
Morales, Tarapoto, Peru*

EVANDRO J. L. FERREIRA  
*Instituto Nacional de Pesquisas da  
Amazônia-INPA, Estrada Dias  
Martins, 3868, Rio Branco, Acre,  
CEP 69917-560, Brazil*

MONICA MORAES R.  
*Herbario Nacional de Bolivia,  
Universidad Mayor de San Andrés,  
Casilla 10077 – Correo Central,  
La Paz, Bolivia,  
Corresponding author,  
mmoraes@fcpn.edu.bo,  
monicamoraes45@gmail.com*

KEMBER MEJÍA  
*Instituto de Investigaciones de la  
Amazonía Peruana, Programa de  
Investigación en Biodiversidad  
Amazónica PIBA,  
Av. Abelardo Quiñones Km 2.5,  
San Juan Bautista, Iquitos, Peru*

Despite steady progress in the taxonomy of South American palms over the last two decades, the genus *Attalea* remains incompletely understood (Henderson 1995, Pintaud 2008, Noblick et al. 2013). This situation creates serious difficulties in the correct identification of species, in particular in the western Amazon.

Knowledge of western Amazonian *Attalea* species progressed considerably with the taxonomic treatment of Glassman (1999). This author, however, was the last to consider the separate genera *Attalea* (*sensu stricto*), *Scheelea*, *Orbignya*, *Ynesa* and *Maximiliana*. Zona (2002) made the nomenclatural changes needed to align Glassman's monograph with the more widely accepted concept of a single, broad genus *Attalea* (Henderson 1995, Henderson et al. 1995, Dransfield et al. 2008). Glassman described three new species in the genus *Scheelea* for western Amazonia, later transferred

to *Attalea*, as *Attalea moorei*, *A. plowmanii* and *A. salazarii*. Although still incomplete, Glassman's monograph facilitated enormously the understanding of this complex genus and set the stage for a complete taxonomic assessment of *Attalea* in the region, now in progress.

#### Searching for *Attalea* in Western Amazonia

Western Amazonia, as defined by Montúfar and Pintaud (2006), is the region comprising the eastern Andean foothills below 500 m elevation in southern Colombia, Ecuador, Peru

1. *Attalea tessmannii* in its type locality near Soledad village, lower Itaya river valley, Loreto, Peru, now survives in secondary forest around agricultural plots.





and northern Bolivia, along with the adjacent Amazon lowlands of south-eastern Colombia, eastern Ecuador, eastern Peru, north-western Bolivia and the western part of the Brazilian Amazon, including most of the state of Acre except the easternmost part, and the state of Amazonas west of Tefé. In addition, many Amazon elements enter the eastern inter-Andean valleys and grow over a relatively extended altitudinal range, exemplified by *Attalea*, in particular by *A. princeps* (150–1000 m), *A. moorei* (150–1100 m) and *A. weberbaueri* (250–1400 m) from northern Bolivia to Central Peru.

*Attalea* is diverse and omnipresent in the region, abundant in most forest types and with a diversity of life forms ranging from relatively small acaulescent species to gigantic emergent ones. It would be, however, obvious to any student of palms that there are far more names for *Attalea* in Western Amazonia and adjacent Andes than actual species and that the taxonomic work consists in making the link between existing species names and particular palms and deciphering synonymy, more often than describing new species.

#### *Visit to type localities and herbaria*

In this palm genus, often poorly represented by herbarium specimens, with many types lost and old descriptions scarcely informative, visiting type localities is the necessary complement to literature and herbaria studies in order to determine the correct application of a species name (Stauffer & Fariñas 2006, Noblick et al. 2013).

In consideration of this fact, we began to set up a series of journeys in the footsteps of illustrious predecessors, including A.D. d'Orbigny, A. Weberbauer, G. Tessmann, H.E. Moore Jr. and F. Kahn, in parallel with physical and virtual herbarium studies in South America, Europe and USA, along with extensive literature compilation.

Our first aim was to determine the actual diversity of the former genus *Scheelea* in the Peruvian Amazon, by far the most diverse component of *Attalea* s.l. in this sector, and updated by S. Glassman in 1999, with the description of three new species.

In December 2009, the IAP and IRD authors organized a first trip by motor-boat to visit various type localities or areas close by, corresponding to several species names associated with specimens collected in the Iquitos region. We wanted to clarify the

taxonomic questions, as well as obtain DNA material for the phylogenetic analysis we reported (Rodriguez et al., in press).

We first visited Soledad village in the lower Itaya river valley, near Iquitos in Peru, a classical area for botanical collection in general, but especially for palms, having given its name to the genus *Itaya* (Moore 1972). Soledad in particular is a hotspot for *Attalea* names, because Burret described three species in 1929 (*Attalea tessmannii*, *Scheelea brachyclada* and *S. stenorrhyncha*) using as type material the collections made by G. Tessmann during his trip to Soledad in June–July 1925. Arriving there, we were immediately disappointed by the highly disturbed state of the vegetation and the absence of old growth forest remnants. The surroundings of the village are intensively used for shifting cultivation with relatively short rotation times, allowing the growth of only secondary forest. However, *Attalea* species are in general resilient to this practice, and we soon spotted one of the species described by Burret, *A. tessmannii*, represented by scattered, gigantic old trees in secondary forest, at the edge of a cultivated plot (Fig. 1). This species is well characterized, very distinctive, with the holotype and three isotypes still conserved in herbaria and displaying the key characters for species identification. Although there is no problem with this species, it was a great excitement for us to see maybe the same palms that Tessmann collected almost a century ago, which are left each time the surrounding vegetation is cut for the shifting-cultivation cycle. While there is good regeneration of *A. tessmannii* in the secondary forest, the rotation time is too short to allow the establishment of trunked individuals that could be spared in the process of shifting agriculture, and consequently there are no intermediate age classes between the old adults and the trunkless juveniles, which means that the population is not viable in these conditions. We found this situation very sad, in light of the botanical and historical significance of the place.

We nevertheless continued to explore the forests in the area, but we found only one additional species, the common *A. maripa*. We did not see any palm that would allow us to clarify the status of *Scheelea brachyclada* and *S. stenorrhyncha*, which were reduced in synonymy of *S. bassleriana* by Glassman (1999), the latter transferred to *Attalea* by Zona (2002). Tessmann's field notes indicated that these palms were found in tall, old-growth



2. A palm, locally known as *shebón*, and that would appear to be *A. bassleriana*, has a very distinctive waxy-glaucous indumentum on the under surface of pinnae, nicely contrasting with the ferruginous scaly indumentum of the rachis.

*terra firme* forest on hills, a habitat that no longer exists in the type locality. Sadly again, the present state of the vegetation in Soledad does not allow the persistence of these palms at their type locality. The fate of *Scheelea brachyclada* and *S. stenorhyncha* has not been much better in herbaria, since the holotypes associated with both species names were part of the 140 palm types destroyed in Germany during WWII (Henderson 1995). Fortunately, both collections are still represented by isotypes, and one for each species is kept in the

herbarium of Conservatory and Botanical Garden of Geneva (G), Switzerland. Study of these precious specimens, with the help of Fred Stauffer, palm specialist at G, allowed us to confirm the conclusion of Glassman (1999) that both names correspond to the same species, and even the same population, *S. brachyclada* being based on an androgynous inflorescence and *S. stenorhyncha* on a staminate one. Glassman reduced both names in synonymy of *S. bassleriana*, the type of which is from another locality.



Returning to the village of Soledad, we were, however, rewarded by the sight in the distance of an immense *A. salazarii*, a species described by Glassman (1999) from a collection made by

H.E. Moore Jr. in May 1960, precisely during his famous trip to the lower Itaya river valley, below the nearby village of Munich. Approaching the palm, we found it in the same

3. A palm locally known as *shapaja*, and that would appear to be *A. huebneri*, has a surprising intra-individual polymorphism, with some androgynous inflorescences having elongate rachillae, and other having extremely short ones, giving the inflorescence an almost spicate appearance. Length of rachis strikingly differs in the two co-occurring inflorescences types.



disturbed surroundings as the towering *A. tessmannii* individuals previously seen, as spectacular remnants of the vanished forests that attracted botanists so much at the beginning of the 20<sup>th</sup> century. This specimen of *A. salazarii* was over 30 m tall, but we could distinctly see the long petioles, which are characteristic of the species and give the crown a distinctive and gracious shape. But again, study of herbarium material, in particular photographs of type specimens at NY kindly sent by Andrew Henderson, palm specialist at the New York Botanical Garden, allowed us to match without ambiguity this species with an older name from Burret's 1929 monograph, *Scheelea tessmannii*. This name is not applicable in the genus *Attalea*, since there is already *A. tessmannii*, and therefore Zona (2002) established the new name *Attalea peruviana* for this species. This is, therefore, the correct name for *A. salazarii*. *Attalea peruviana* is extremely close to *A. butyracea* and has been generally considered as conspecific (Henderson 1995). *Attalea butyracea sensu stricto* has sessile leaves and occurs in Colombia, Venezuela and north-eastern Ecuador. In Peru, we have no evidence of the existence of this species despite countless reports of it in herbaria and publications.

Another aim of the trip was to observe a second species described by Glassman (1999) from material of the Iquitos region, *A. plowmanii*. We observed it in detail in the lower Tamshiyacu river valley. This species has also been previously confused with *A. butyracea* from which, however, it differs markedly, and was already suspected to be a distinct species by Henderson (1995). It is a subcaulescent species with a small inflorescence but large fruits (10–6 cm long) that remain brown at maturity (in contrast to the fruits of *A. butyracea* and *A. peruviana* that are small and orange at maturity), and are borne on very short rachillae (elongate in *A. butyracea* and *A. peruviana*). *Attalea plowmanii* is common in northeastern Loreto, Peru, and reaches Colombia (Galeano & Bernal 2002) and the western margin of the Amazonas state in Brazil (Lorenzi et al. 2010). In the Allpahuayo forest reserve near Iquitos, it dominates the understory along with *A. racemosa* (Vargas et al. 2012), the two species being virtually indistinguishable in the vegetative state but conspicuously different in reproductive morphology (see key to species).

Finally, we visited the swamp forest of Bagazan, along a tributary of the lower Ucayali river,

4. Traditional indigenous houses in Lamas village, San Martín, Peru. The rooftop line is made of long segments of *Attalea moorei* leaves and the sides are thatched with *Phytelphas macrocarpa* leaves.







5. The characteristic broken geomorphology of Cordillera Escalera denotes the magnitude of tectonic forces acting at the eastern Andean deformation front.

downstream from Jenaro Herrera, where two very large *Attalea* species were reported, locally known as *shapaja* and *shebón*. Penetrating the swamp was not easy, not only because of the muddy soil but also for the countless aggressive mosquitoes. Then, differentiating *shapaja* from *shebón* did not appear obvious at all to us, contrary to our local guide, who, amazingly, could distinguish them within a fraction of second at any stage of development, from young juveniles to adults. The guide could not clearly explain his criteria, but we eventually found two reproductive characters to distinguish the species. *Shapaja* has an almost spicate infructescence and fruits compressed and angled by mutual pressure, with few large clusters of fibers detaching from the endocarp while *shebón* has an infructescence with elongate rachillae bearing several broad ellipsoid fruits, which have numerous small fiber clusters in the endocarp. However, we could not readily put a name on either of these palms. The *shapaja* somewhat resembled *A. moorei*, the third new species of western Amazon *Attalea* described by Glassman (1999), but had unusually large fruits to 12 cm long and with a thick juicy orange mesocarp, while

those of *A. moorei* do not exceed 10 cm long and have a white and dry mesocarp. In addition, *shapaja* is a much taller palm (to 45 m) than *A. moorei* (15 m) and has the basal pinnae arranged in two planes instead of one in *A. moorei*. The two species did share a thick woody endocarp with large fiber clusters and a unilateral arrangement of staminate flowers on the rachillae, which allowed us to assign them to the *Attalea phalerata* complex (Pintaud 2008, Rodriguez et al., in press). The *shebón* was more puzzling because it had fruits structurally identical to those of *A. plowmanii*, with a thick fibrous exocarp, a moderately developed parenchymatous mesocarp with some isolated longitudinal fibers included, a thick endocarp with several circles of small fiber bundles progressively increasing in size centripetally and thin, closely arranged seed cavities. There are some differences in details, however; *A. plowmanii* fruit have some large fibers in the inner mesocarp and a characteristic pale and irregularly grooved endocarp. Moreover, *A. plowmanii* is a small subcaulescent species, while *shebón* is a massive palm exceeding 35 m tall with a trunk of easily 40 cm in diameter and a unique waxy-



6. In the seasonally dry forest of the Central Huallaga River Valley, an association of local people works hard to conserve the forest and a spectacular grove of *Attalea moorei*.

glaucous cover on the underneath of leaflets, contrasting beautifully with the dark reddish-brown lepidote leaf rachis (Fig. 2). We did not find floral material of *shebon* that could have helped identification.

At that point we had to come back to Iquitos, glad to have made thorough observations of three species, *A. tessmannii*, *A. peruviana* and *A. plowmanii* in or close to their type localities but somewhat dissatisfied about the two still unnamed species of Bagazan.

It was not until five years later, however, that we tackled these questions again from the very point we had dropped them in 2009, due to other research priorities at IIAP and IRD in the intervening time.

In June 2014, we were heading to Jenaro Herrera to revisit the Copal site, where Kahn and Mejía (1991) set the highest record ever of local palm diversity in the whole Amazon region, with 34 species in 19 genera within only 0.5 ha. We were particularly intrigued by the report of *Attalea bassleriana* in this study, a species that we could not positively identify to date. The name of the place comes from Quebrada Copal, a small tributary of the

Ucayali River, accessible from the Jenaro Herrera-Angamos road project, which aimed to connect Iquitos with Brazil. The road track was initially cleared in the late 1970s for over 100 km, connecting the Ucayali and Javari rivers, but the project was soon abandoned and only the first 15 km remained passable by four-wheel drive vehicles.

Guided by Leonardo Macedo, the very field assistant who helped Francis Kahn and Kember Mejía 25 years before, we reached km 12 of the old road and from there, the exact location where the 0.5 ha plot was set, along the Quebrada Copal. We could see two sympatric species of *Attalea*, an acaulescent one and a tall arborescent one. The acaulescent one was not flowering at that time, so it was not possible to identify it with certainty, but according to the Kahn and Mejía (1991) listing, it had to be *A. polysticha*, a species common in that area. The tall one was flowering, and we could readily identify it as *A. peruviana*. At the time the Copal study was made, the status of this species was totally unclear, so it was indeed impossible to Francis Kahn and KM to identify it correctly, and they attributed it to *A. bassleriana*. We were also puzzled by the





7. Between Tingo Maria and Aguaytia, our expedition stops in one of the surrealistic places featured on the 5N road.

similarity of the acaulescent juveniles of *A. peruviana* and sterile adults of *A. polysticha*, growing together in the forest understory. In order to clarify the determination of these palms vegetatively, we asked our guide to cut leaves of both species for direct comparison, in an open area along the road. Both species have regularly arranged leaflets spreading in one plane, so that leaflet insertion did not appear to be a good distinguishing character, neither was the similar scaly reddish-brown indumentum of petioles and rachis. Finally, after scrutinizing these leaves, we discovered that the definitive character was the shape of the asymmetrical tip of the leaflets. We found that the shape of this peculiar leaflet region was strikingly different in *A. peruviana*, in which the leaflets have a narrowly subulate unilateral terminal projection, and in *A. polysticha* in which the projection is broadly lanceolate.

These new observations expanded the known geographic distribution of *A. peruviana* to the south and pointed out new, poorly explored diagnostic characters, but the elusive *A. bassleriana* still remained unclear to us. The next step should have been to visit its type

locality in Yarinacocha, near the city of Pucallpa, higher up on the Ucayali river, but at that time we had instead planned to go downstream back to the Bagazan swamp forest, to see if with the time elapsed since the first visit in 2009, we would be more inspired in the determination of *shapaja* and *shebón*.

This time, the access to the swamp was very complicated because it was flooded in many parts. We tried to access the swamp forest directly with a canoe, but the vegetation was impenetrable. Finally, we found unflooded access and could walk into the forest. There, with the criteria we had defined on the last visit, we searched on the ground for old infructescences: spicate ones with compressed-angled fruits in *shapaja* versus elongate rachillae and widely ellipsoid fruits in *shebón*. We did find both kinds easily and arranged them on the ground for comparison. We were contemplating the straightforward result when our guide objected: "Well, YOU are the palm specialists, but in MY opinion, there is no *shebón* in that swamp and everything you are looking at are variations of the *shapaja*." He said that he could show us one plant of *shebón* right away in his backyard. Unfortunately, we



8. The adventure continues as the 5N road reduces to a hazardous trail on the way to Puerto Bermudez.

had no time for this additional activity, but we took very seriously his objections and came back to our observations in this and another nearby swamp. We finally reached the disturbing conclusion that, indeed, all the material that we had collected corresponded to the *shapaja* form, with an extraordinary polymorphism in infructescence architecture (Fig. 3). In fact, local people are well aware of the difference between *shapaja* and *shebón* because the two species are used for roof thatching but have different mechanical properties. Upon drying, the soft leaflets *shapaja* become inrolled and loose waterproofing efficiency, while the stiff ones of *shebón* remain perfectly flat when dry and give a better result. A few decades ago, the *colonos* of the lower Ucayali river were little aware of *shebón* and used to thatch with the more common *shapaja*, but thereafter, a nomadic indigenous community (Matsés) arrived from Brazil and settled there for some time, beginning with the construction of a large common house or *maloca*. For roofing the house, they searched specifically for *shebón* and had no interest in *shapaja*, and then the *colonos* learned from the Amerindians about the superior properties of *shebón* over *shapaja*. All this was fascinating, but meanwhile we had lost our distinguishing characters between the

two species and did not find any *shebón* to look at in detail during that trip. Back to Iquitos, we could only look again and again at our 2009 photographs to convince ourselves that the *shebón* of Bagazan was real and not just the product of confusion in our minds.

The following month, however, we had the opportunity to clarify this horrible mystery. In July 2014, we set up a terrestrial trip aiming primarily at documenting *Attalea moorei*, *A. cephalotus* and *A. weberbaueri*, the three species reported in the inter-Andean valleys of central-eastern Peru. This trip would also be the occasion to make a short visit near Yurimaguas, where there had been reports of *shapaja* and *shebón*.

Our trip aimed at driving a four-wheel drive vehicle all along the Mayo and Huallaga inter-Andean valleys, from Moyobamba and Yurimaguas in the north to Tocache (purportedly type locality of *A. cephalotus*), Tingo Maria (type locality of *A. moorei*) in the south, then crossing the Cordillera Azul in direction of Pucallpa and coming back to the Andes crossing the Cadena Cerro de la Sal to enter the Chanchamayo valley (type locality of *A. weberbaueri*). This makes an itinerary of nearly 2000 km, that we aimed at completing in just eight days, as part of a Lima to Lima round trip that we had begun a week earlier, and set to cover 3500 km in 15 days. We were prepared for an adventurous trip in central-eastern Peru, along the emblematic 5N road ("Carretera Marginal de la Selva"), a little worried altogether about some recent bad security reports along that route, but the draw of the *Attalea* quest was stronger than any fear. We had, anyway, light relief by beginning our travel in Tarapoto, with a visit to the quiet, enchanting and touristic Mayo valley. We first headed to Ciudad del Triunfo de la Santísima Cruz de los Motilones de Lamas, or more simply known now just as Lamas, a small city with a rich and unusual history. Lamas can be reached after driving a steep, narrow, zigzagging mountain road coming from the bottom of the Mayo valley. The place is the traditional territory of the Lamas indigenous people, and the city is one of the first settlements of the Spanish colony in the region, founded on 10<sup>th</sup> of October 1656, strategically situated on a peak offering a view embracing the whole Mayo river valley. Interestingly, the coexistence of the two cultures was fairly successful, and a large part of the city is actually composed of the Lamas indigenous settlement itself, mixing traditional





9. *Attalea weberbaueri* dominates the deforested landscape of valleys and hills near Villa Rica, Pasco, Peru.

housing with European-style village design. The Lamas people, with their rich traditions and openness, are now actively involved in tourist development in the region. Adding to the cachet of Lamas City, is a bizarre medieval-style castle, constructed by an eccentric owner of the place. More interesting for us was the construction methods of the Lamas indigenous houses, which are based on the use of palm materials and in particular the leaves of *A. moorei*, along with those of *Phytelephas macrocarpa* for roofing (Fig. 4). We found the persistence of these practices in the heavily modified, agricultural environment of the lower Rio Mayo River valley very interesting, especially in close proximity to the rapidly developing urban centers of Moyobamba and Tarapoto, and altogether very smart the way Lamas indigenous people conserve and value their culture in this modern context. The Lamas mountain also interested us for the high elevation (1100 m) that *Attalea moorei* reaches there, the highest record for this species. After a sumptuous lunch in the panoramic restaurant of Lamas city, featuring regional gastronomy, we continued our trip to the north of the valley, in order to determine the

northern limit of occurrence of *A. moorei*. En route, we noticed that the whole landscape of the region was clearly anthropogenic, without any remnants of primary forest, but a mosaic of secondary forest patches and cultivated plots of maize and plantain banana, and pastures maintained by the frequent use of fire. However, *A. moorei* was clearly thriving very well in this environment and was even invasive, with many juveniles deeply anchored in the ground thanks to their “saxophone” type growth (Tomlinson 1990), resistant to any kind of land treatment. Along the lower Rio Mayo valley it also appeared clear to us that *A. moorei* was typically associated with seasonally dry tropical forest and with other classic palms of this ecosystem including *Syagrus sancona* and *Aiphanes horrida* (IAP 2014). Indeed the northernmost population of *Attalea moorei* found in the Mayo valley, near the village of Jepelacio, south of Moyobamba, corresponded to the uppermost patch of seasonally dry tropical forest. Higher up in the valley, the climate becomes more humid in the direction of the famous cloud forests of the protected area of Alto Mayo. Coming back to the south and to our base in



10. Two closely related but neatly distinct species of the *Attalea phalerata* complex growing together on alluvial terrace of the Rio Madre de Dios. On the first plane in the center, *Attalea* sp. "Acre" with straight leaves and clustered pinnae; on the second plane and in the right, the larger *Attalea moorei* with twisted leaves and regularly arranged pinnae.

Tarapoto, we could see that many *Attalea moorei* individuals in the Cumbaza valley had their infructescences cut, indicating a significant activity of seed harvest, these being very oily and edible, and sold toasted in local markets. The growth demography of *A. moorei* in the anthropogenic landscapes of the lower Mayo valley, together with the important use of its products (leaves and seeds) led us to the conclusion that this species has a great potential as a non-wood forest product (NWFP) in the area, and we are raising awareness of this fact in the regional government of San Martín in order to implement appropriate development policies.

After a deserved rest in the city of Tarapoto, we began our long trip along the Huallaga river valley. Huallaga is one of the main tributaries of the upper Amazon River (called Marañón). This river has a long course in an inter-Andean valley, delimited to the west by the Cordillera Oriental, and to the east by the Cordillera Escalera and the Cordillera Azul, the last mountain chains before the Amazon lowlands.

The Huallaga valley expands to vast plains along its middle inter-Andean course, where the first African oil palm plantations in Peru where established. The river finally finds a narrow and tumultuous escape from the mountains, in the form of a spectacular canyon in the Cordillera Escalera, to reach the Amazon lowlands where it peacefully terminates its course, meandering into the plains of Yurimaguas and along the last hills to the west of the immense Pacaya-Samiria swamps, until reaching the Marañón river.

For our part, we first went downstream from Tarapoto, crossing the spectacular Cordillera Escalera in direction of Yurimaguas (Fig. 5). Seen from within the Mayo valley, Cordillera Escalera is such a continuous and massive geological barrier that a tunnel had to be carved through it for the road to pass. On the outer side, it descends so abruptly to the Amazon plain that the road changes from very steep to perfectly flat within meters at the boundary of the sub-Andean deformation front. On the way to Yurimaguas, we could



see *Socratea salazarii*, described by Moore on this same itinerary, also the endemic *Astrocaryum huicungo* and a curious distichous mutant specimen of *Mauritia flexuosa*. After another spectacular lunch featuring Amazon gastronomy in a panoramic restaurant over the Huallaga river in Yurimaguas, we took a dry and hot dust road to reach the lower Rio Parapapura, where we had a contact in an indigenous village, to make a brief canoe exploration of alluvial forests on the banks. Our guide brought us directly to a stand of *Attalea* comprising again *shapaja* and *shebón*. Although we were extremely excited about this after our recent deception in Bagazan, we could not readily see the difference between them from a distance, all palms on sight having large leaves with regularly arranged pinnae. Just as in Bagazan on the past two occasions, the difference was obvious to our guide, pointing out the stiffer aspect of the leaves of *shebón*, with wider pinnae than those of *shapaja*, and much more appropriate for roof thatching, as we already knew. Accessing directly the palms shortly after, we could see that here *shapaja* was *A. moorei*, and not the *shapaja* of Bagazan, so that we urgently needed a scientific name for the latter species. The most important characteristic of *A. moorei* is that it has extremely regularly arranged pinnae all along the rachis, while the *shebón* and the *shapaja* of Bagazan have clustered basal pinnae, not readily visible from a distance because middle and upper series of pinnae are regularly arranged. In fruit, *Attalea moorei* is also unique because of the dry, white, spongy mesocarp not found in any other species. Our guide also told us that while the two species are sympatric in this particular spot, *A. moorei* rapidly disappears downstream and is replaced by large stands of pure *shebón* in more inundated places, a statement consistent with our observations of the affinity of *A. moorei* for dryer places and of *shebón* for swamp forest. This time we could observe without doubt the peculiarities of *shebón* in leaf, inflorescence architecture and fruit morphology, but we still lacked flowers and altogether this did not help us in assigning a name to it. However, we thought that at this point we had sufficient knowledge to identify these palms, comparing our field observations with herbarium and literature information. Indeed, the illuminating visit made by JCP to Fred Stauffer at Geneva a few months later, in January 2015, did allow clarification of these questions. Examination of the precious isotype of *Scheelea brachyclada* immediately reminded JCP of a



11. Mesocarp of a still undescribed species, segregated from *Attalea phalerata*, has curious amber-like inclusions

collection made much earlier by him with Betty Millán in Pantoja, Peru, on the upper Rio Napo river, in August 2006, identified at that time as *A. butyracea*. Large populations of these palms in alluvial terraces of Rio Napo were reported and illustrated under that name by Pintaud (2008). Now, it was clear that this palm is the *shebón* and that its correct name is *A. bassleriana*. An illustration of a cross-section of fruit from the type of *A. bassleriana* in Glassman (1999) confirms that this material belongs to the same species known as *S. brachyclada* from androgynous rachillae and *S. stenorrhyncha* from staminate rachillae. Altogether, the three types give an unusually complete representation of the species, considering the scarcity of information often associated with Burret's palm names. Nevertheless, reading a copy of Burret's 1929 monograph of *Attalea* at Geneva easily allowed JCP to find the name of the *shapaja* of Bagazan. It is *A. huebneri* (= *Scheelea huebneri*), a species unambiguously characterized by the combination of very tall habit, short androgynous rachillae, and large fleshy fruits with fiber clusters in the endocarp. The type locality on Rio Purus, in Acre, Brazil, is not far from populations in Peru. This species was also documented and illustrated by Galeano and Bernal (2010) under the name of *A. phalerata*, from the vicinity of Leticia in Colombia.

After the enjoyable and rewarding trip on the Rio Paranapura, we came back very late at night to Tarapoto. After a rest in the city, we headed this time towards the upper Huallaga, having planned first a stop in the central Huallaga seasonally dry forest. It is a tall forest dominated by legume trees, deciduous during the dry season, with a curious mixture of cacti and palms in the understory. This forest is of high biological and biogeographical interest, and at the same time highly threatened by deforestation, so we are engaged, with various collaborating institutions, in its study and conservation. Although we were supposed to visit the forest during the dry season, we experienced heavy rain, rendering the small dust road leading to the village of Mamonaquihua muddy, slippery and hardly passable. So we visited a dry forest in the dry season in heavy rain, a rather odd situation (effect of the global climate change?) but very interesting for palms. In the driest parts of the forest, the canopy is dominated by *Syagrus sancona* and the midstory by *Aiphanes horrida*, while the more humid valley bottoms and small alluvial terraces are colonized by *Attalea moorei*, *Phytelephas macrocarpa* and *Astrocaryum faranae*, forming dense palm groves. To the south of this locality, we are working with an association of local inhabitants that run an Area of Concession for Conservation, Ojos de Agua, for the conservation of the forest and of a spectacular grove of *Attalea moorei* (Fig. 6).

After passing through the dry forests, we stopped at the city of Juanjui, which is famous as a gate to access the Rio Abiseo National Park, with its vast extension of largely unexplored Andean forest and hidden archaeological remnants of the enigmatic Gran Pajaten lost city of the Chachapoyas civilization. This extraordinary and little known region had been visited on several occasions in the first half of the 20<sup>th</sup> century by August Weberbauer, who collected a number of unusual plant species (León 2002). After enjoying again the regional gastronomy, we continued our way in direction of Tingo Maria, passing through the vast and flat often swampy alluvial plain of the middle Huallaga valley, with its stands of *Astrocaryum carnosum*, a species endemic to that area, while *Attalea moorei* was a constant sight in the dryer parts of the landscape. This section of the itinerary was long and included portions of difficult unpaved road, and as we decided not to drive at night for security reasons in this troubled area, we had to stop in a not-so-highly

recommended village. However, we had no problem at all there, and after smoothly passing through a police checkpoint, we rapidly arrived at the town of Tocache and found good road again. On the way, we were looking, without great hope, to see if we could locate something that could match *Attalea cephalotus*, which is supposed to occur in that area. *Attalea cephalotus* is a complete mystery. It was named and described in great detail by Poeppig in "*Palmetum Orbignyianum*" (Martius 1844) but no type specimen was designated and no illustration provided. The type locality was described as "upper Maynas," which is not very clear, Maynas now being the province of Iquitos and upper Maynas supposed to correspond to the Huallaga valley. Glassman considered that the type of *A. cephalotus* was probably the collection Poeppig 2000. From the purported holotype, there is nothing left but a photograph in Dahlgren's Index of American palms (1959), which consists of a handful of *Scheelea*-type flowers associated with a leaf fragment that looks to belong to *Oenocarpus bataua*. An isotype in Belgium (BR) is similarly mixed, but with an Iriarteae leaf fragment. This scarce and doubtful information suggested that there was little probability of finding this palm that was probably a mere artefact of palm taxonomy, and indeed we did not see anything more than the common *A. moorei*.

Finally we reached Tingo Maria, with its spectacular karstic outcrops, with large caves inhabited by oil-birds and bats, resurgences of turquoise and thermal waters, and the famous line of crest against the sky resembling a silhouette of the Sleeping Beauty. However, our interest again was defined; we wanted to visit the seemingly unimportant village of Naranjal, a small rural settlement a few kilometers away from Tingo Maria. Here, in May 1960, H.E. Moore on flat alluvial terrace, collected the specimen that would later constitute the type of *Attalea moorei*. In 1960–1970, this area was the main place of production of oranges for Lima, but thereafter, an outbreak of disease eradicated the cultivation of orange trees, and the market shifted to the Chanchamayo valley, closer to Lima. Now there is not a single orange tree left, this former activity being only remembered in the name of the village of Naranjal (orange orchard in Spanish). *Attalea moorei* is still there, however, in great abundance, incorporated in an agroforestry system, associated with crops such as banana,





12. An adult palm of *Attalea princeps* close to cattle ranches in northwestern Bolivia. Near the leaf crown grows a young plant of *Ficus* sp., which develops into a tree and strangles the palm; this is a frequent relationship found in natural stands.

cacao and breadfruit trees, and it was with great emotion that we collected it again at the very place where H.E. Moore made the type collection. The palm population is managed

and used as a source of leaf material for roof thatching. The gigantic leaves (12 m long) are much appreciated to cover large roofs, and up to 18 of them can be harvested from a single

palm without affecting its survival, according to local harvesters. As far as we could see, *Attalea moorei* showed little variation in morphology, ecology and use, all along the Huallaga-Mayo valley.

After a rest in a tourist hotel in Tingo Maria, enjoying again the regional cuisine (and the swimming pool), we had to cross the Cordillera Azul, the last barrier before the Amazon lowlands towards the Atlantic. Ascending from Tingo Maria, the road surprisingly rapidly reaches the cloud forest at 1650 m elevation, with its distinctive Andean palms, in particular *Ceroxylon echinulatum*, *Wettinia maynensis* and *Geonoma undata* but also *Astrocaryum faranae*, which is more usually associated with lower elevation forest, and beautiful and often rare and shy understory species such as *Prestoea carderi*, *Aiphanes weberbaueri*, *Hyospathe peruviana* and *Geonoma peruviana*. After passing La Divisoria pass, one of the most famous botanizing spots in Peru and the type locality of many plant species, the 5N road almost disappears in the descent of the cordillera Azul towards Pucallpa, destroyed in many points by landslides running through the precipitous slopes dangerously overlooking the Rio Aguaytia, and nevertheless unceasingly transited by heavy trucks going back and forth along the Pucallpa-Lima route, carrying Amazon wood. The road finally gets out of the Cordillera through the grandiose Boquerón del Padre Abad, a narrow canyon bordered by huge vertical rocky walls harboring many cascades that looked like the threshold to another world, as shown by the strange indications on the roadside such as "UFO Snack Bar" or "end of the acceleration strip" (Fig. 7). As a matter of fact, the 5N road soon after shrinks into a narrow trail in the middle of nowhere, with temporary wooden bridges and improvised toll points made by the local inhabitant themselves on hazardous paths (Fig. 8), not to mention the extremely hot weather.

Fortunately we were still entertained by *Attalea*, sighting now *A. maripa* along with *A. moorei*, and unexpectedly, *A. weberbaueri*, all three species very different in habit and readily distinguishable while growing together at about 250 m elevation. This place was also close to a collection point of *A. Weberbauer* (#6762 in Puerto Mayo) of a palm tentatively assigned to *A. cephalotus* by Glassman (1999). However, it is extremely unlikely that there is still another *Attalea* species beside the three we were looking at in that place, letting *A. cephalotus* as a name of doubtful application,

until maybe the staminate flowers of the isotypes can be identified. *Attalea maripa* is tall-trunked and has very long-petiolate leaves arranged in five ranks, while the two other species are relatively short-trunked with sessile and spirally arranged leaves. *Attalea moorei* is further distinguished by the regularly arranged leaflets spreading in one plane while *A. weberbaueri* has clustered leaflets giving the crown a plumose aspect (see key to species). In addition, we found hybrids between *A. moorei* and *A. weberbaueri*, with intermediate and somewhat unstable morphologies.

Soon after along the 5N road, all the *Attaleas* suddenly disappeared without any obvious reason, in the middle of a vast and seemingly homogeneous plain. However, this sudden change coincided also with the replacement of *Astrocaryum faranae* by *A. perangustatum*, so that there looks to exist a biogeographic pattern yet to be unraveled in this place. Higher up on the way we could contemplate the magnificent and untouched montane forests of the protected Cadena de los Cerros de la Sal and record an unusual diversity of palms from the Iriarteeae tribe, including *Socratea salazarii*, *S. exorrhiza*, *Iriartella stenocarpa*, *Iriartea deltoidea*, *Wettinia maynensis* and *Dictyocaryum lamarckianum*. Immediately after crossing this mountain range, we entered a vast valley dominated by *Attalea weberbaueri*, very visible as standing individuals left in deforested areas converted into pastures (Fig. 9), and shortly after we reached the capital of coffee in Peru, Villa Rica. After a night and some coffee in Villa Rica, we ended our *Attalea* trip on the 8<sup>th</sup> day as initially planned, with a visit to the type locality of *Attalea weberbaueri*, just outside the city of La Merced, in the Chanchamayo valley. In that place, we recorded its occurrence up to 1422 m elevation, which is the second highest record for the genus, after *A. amygdalina* that reaches 1600 m elevation in Colombia (Galeano & Bernal 2010). Interestingly, we found that *A. weberbaueri*, which was described as acaulescent (Glassman 1999), does flower and set fruit at the acaulescent stage but continues its growth and eventually develops an aerial trunk that can exceed 10 m tall.

This last day was the longest of the trip, and we did not know when leaving *Attalea weberbaueri* behind us early in the morning, that we still had 18 hours of exhausting driving ahead through rivers in flood, a snow storm at the Ticlio pass (4818 m elevation) and a trailer traffic jam below, eventually to reach Lima



Table 1. Distinguishing characters among allied species of the *Attalea phalerata* complex with diagnostic features in bold.

	<i>A. phalerata</i>	<i>A. princeps</i>	<i>A. weberbaueri</i>	<i>A. moorei</i>	<i>A. anisitsiana</i>	<i>A. sp. "Acre"</i>	<i>A. huebneri</i>
Trunk maximum height	10 m	15 m	12 m	15 m	4 m	12 m	30 m
Upper leaf rachis orientation	Twisted	Twisted	Twisted	Twisted	Twisted	<b>Straight</b>	Twisted
Basal series of pinnae orientation	3 or 4 planes	3 or 4 planes	3 or 4 planes	<b>1 plane</b>	3 or 4 planes	3 or 4 planes	<b>2 planes</b>
Median series of pinnae arrangement	Clustered	Clustered	Clustered	Regularly spaced	Clustered	Clustered	Regularly spaced
Median pinnae length	80–90 cm	ca. 100 cm	110–120 cm	70–150 cm	50–60 cm	80–100 cm	100–120 cm
Median pinnae width	2.5–3.0 cm	3.0–4.0 cm	5.0–5.7 cm	4.0–7.5 cm	2.8–3.0 cm	2.5–3.0 cm	3.5–5.0 cm
Pinnae transverse veinlets (fresh state)	?	?	Prominent	Prominent	?	Obscure	?
Peduncular bract	Thick	Thick	Thick	Thick	<b>Thin</b>	Thick	Thick
Staminate flowers insertion on rachillae	Unilateral	<b>spiral throughout</b>	Unilateral	Unilateral	Unilateral	Unilateral	Unilateral
No. of pistillate flowers on middle rachillae	2–7	2–5	2–5	1 or 2	2–4	?	1–5
Fruit length	5.0–6.5 cm	6.0–8.0 cm	6.0–8.0 cm	7.5–10.0 cm	4.0–6.0 cm	6.0–7.0 cm	<b>10.5–12.0 cm</b>
Mesocarp texture and color on mature fruits	Orange, fleshy	Orange, fleshy	?	<b>White, dry</b>	Yellow, fleshy	<b>Cream, ± fleshy</b>	Orange very fleshy
Fiber cluster pattern in endocarp	Loosely clustered	Strongly clustered	Loosely clustered	Strongly clustered	?	?	Loosely clustered
Fiber cluster adnation in endocarp	Adnate	Free	Adnate	Free	?	?	?
Seeds per fruit	2–4	2–5	1–3	1–5	2–4	2 or 3	4–6

after having completed exactly 3500 km in 15 days, without any alteration from the initial plans.

*An encounter in the triple boundary of Peru, Bolivia and Brazil*

Following this fruitful fieldwork in Peru, we thought it necessary to share and exchange knowledge with the neighboring countries in order to understand better the challenges of the genus *Attalea* in the western Amazon. With this objective in mind, we decided to meet for a field workshop at Iñapari and Assis Brasil, on the triple boundary between Peru, Brazil and Bolivia in August 2014. We all arrived there, in this small and remote place, from our respective countries, under the hardly bearable heat of the dry season in the southwestern Amazon edges. Although we met almost at sunset, we could not wait to look at *Attalea* and share our experiences about them, so that we immediately headed to a backyard near our hotel where we had sighted an *Attalea*. With the experience gained in Peru, it could immediately be identified as *A. moorei*, but also appeared to exist in Acre, Brazil, where it had not been recorded, and in Bolivia where it had been known as *A. butyracea* (Moraes 2004) or recently as *A. phalerata* var. *concinna*, showing the need to coordinate information among countries. The following day, we explored the seasonally dry, semi-deciduous forest of this Amazon edge, recording *Attalea moorei*, *Astrocaryum ulei*, *Aiphanes horrida* and *Phytelephas macrocarpa*, an association of palm species very similar to that previously seen in the semi-deciduous forest of the central Huallaga valley. Following the road to Puerto Maldonado, the regional capital of Madre de Dios, Peru, we crossed an abrupt climatic change from the hot and dry weather we had experienced in Iñapari, with temperatures close to 40°C, to cool, windy and rainy weather farther in the west. This sudden change was not just a circumstantial climatic condition but coincided with the replacement of the seasonally dry forest by rain forest, with a totally different palm assemblage including *Oenocarpus bataua*, *Iriarteia deltoidea*, *Geonoma deversa*, *G. occidentalis* and *Bactris hirta*, among other species, under the shade of gigantic Brazil nut trees. Farther away along the road, we could see large stands of *Attalea moorei* in pastures, with the same invading behavior as noted in the lower Mayo valley.

On the third day, we were invited by the NGO Inkatererra to visit two of their lodges on the

Madre de Dios river, close to Puerto Maldonado. There we found an interesting situation of sympatry of two palms of the *Attalea phalerata* complex on the alluvial terraces, namely *Attalea moorei*, and another species that had been well known in Acre as *A. phalerata*, but which now appears to be a distinct, as yet unidentified species.

*Attalea phalerata*, as circumscribed by Glassman (1999), is a species of the western-central *cerrados* of Brazil, absent from western Amazonia. The name *A. phalerata* has been extensively used in a wider sense, including the western Amazonian populations, since Henderson (1995). This *Attalea phalerata* complex (Pintaud, 2008), which is resolved as a well supported clade in existing phylogenies (Rodríguez et al. in press) is primarily distinguished by the presence of large fibrous clusters in the endocarp. In western Amazonia, this complex includes five taxa, and outside the area, this complex also includes several species, such as *A. anisitsiana* (almost endemic from Paraguay) and *A. phalerata sensu stricto* from the *cerrados*, possibly *Scheelea corumbaensis* from the Pantanal and *A. excelsa* from the north-eastern Amazonian periphery. Table 1 gives the most evident distinguishing characters among sufficiently known species of the *Attalea phalerata* complex.

In our context of sympatry in Madre de Dios, *Attalea moorei* could be recognized by the twisted leaf rachis with regularly arranged pinnae held vertically, while *Attalea* sp. "Acre" had a straight rachis with clustered pinnae (Fig. 10). *Attalea moorei* could also be distinguished vegetatively by the prominent transverse veinlets of the pinnae, which were obscure in *A. sp. "Acre."* This last species had also a very distinctive mesocarp in mature fruits, creamy-yellow, semi-fleshy and with unusual amber-like inclusions (Fig. 11), different from both *A. moorei* with fruits having a white, dry mesocarp and true *Attalea phalerata* and also *A. huebneri*, both with fruits having a fleshy orange mesocarp.

While leaving the alluvial terraces of the banks of Rio Madre de Dios to enter the hilly *terra firme* forest inland, we found two more familiar *Attalea* species, *A. maripa* and *A. bassleriana*. The latter, a virtually unknown species a few years ago, appears to have a vast distribution in Western Amazonia. In Madre de Dios, it is also known under the common local name *shebón* (Paniagua et al. 2012, as *A. butyracea*). This species also occurs in most of the





13. JCP holding pistillate and staminate inflorescences of *Attalea blepharopus*, next to the road from Chapare to Isinota.

Ecuadorian Amazon, where it has been misidentified as *A. butyracea* (Bergman 60481, 62131, QCA, AAU) or *A. phalerata* (Camara-

Leret 1816, QCA, AAU), in the Colombian Amazon (Bernal 1404 COL) and most probably in western Brazil and northern Bolivia.

On the fourth and last day of our trip we visited localities further west, in the Andean foothills and located yet another species of the *A. phalerata* complex, namely *Attalea princeps* (Fig. 12), near the village of Mazuco. This species was long known from Bolivia (where it is commonly named *motacu*), more recently found in western Brazil, and now new to Peru. This species is readily distinguished by its petiolate leaves with prominently clustered pinnae inserted on a twisted rachis, and spreading in many different planes.

Having documented these species of western Amazonia, we remained to confirm another *Attalea* species of Bolivia, *A. blepharopus*. Therefore, we organized a field trip to the Chapare region, in central Bolivia, to find the town cited by Alcides d'Orbigny in the territory of the village Yuracaré and regionally corresponding to the Chapare river basin. The closest town to Villa Tunari in the Chapare region population is Isinota. While traveling by car, we looked on both sides of the road at the appearance of the palm known locally as *palla* (Fig. 13, *Moraes R. & Pintaud 2518*). This species is common in the forest and is occasionally accompanied by other palms, such as *Astrocaryum gratum* (dominant), *Attalea princeps*, *Oenocarpus bataua*, *Iriartea deltoidea*, *Socratea exorrhiza*, as well as with other species of *Inga*, *Triplaris*, *Virola* and *Theobroma*. We recorded the characteristics of *A. blepharopus* that we consider definitely as a species distinct from the others but very close to *A. bassleriana* by virtue of its sessile leaves. Therefore, Moraes and Pintaud submitted a manuscript for the neotypification of the species. After this journey, we reviewed several *Attalea* herbarium material in Cochabamba, Santa Cruz and La Paz. Records of this species were collected both in Cochabamba and La Paz departments, although with very little material has been collected.

Now we can consider that the western Amazon *Attalea* species are reasonably delimited. Meanwhile, the full description of species is in progress and will appear in a later monograph. Below we present a preliminary dichotomous key of *Attalea*, based on our findings made in this region:

**Key to the species of *Attalea* in the western Amazon**

1a. Habit acaulescent or subacaulescent (inflorescences born below to slightly above ground) . . . . . 2

- 1b. Habit arborescent . . . . . 5
- 2a. Middle series of pinnae clustered . . . . . *A. insignis*
- 2b. Middle series of pinnae regularly arranged . . . . . 3
- 3a. Staminate rachillae and staminate flowers unilaterally arranged . . . . . *A. racemosa*
- 3b. Staminate rachillae and staminate flowers spirally arranged . . . . . 4
- 4a. Flowers densely packed and anthers coiled and enrolled . . . . . *A. polysticha*
- 4b. Flowers loosely arranged and anthers straight . . . . . *A. plowmanii*
- 5a. Leaves distinctly arranged in 5 vertical ranks . . . . . *A. maripa*
- 5b. Leaves spirally arranged (in fact obscurely arranged in 8 oblique ranks) . . . . . 6
- 6a. Petiole densely woolly-floccose and bright reddish ferruginous . . . . . *A. septuagenata*
- 6b. Petiole with an appressed, minutely scally, gray-brown or reddish-brown indument . . . 7
- 7a. Pinnae covered with an appressed gray scally indument abaxially . . . . . *A. tessmannii*
- 7b. Pinnae without scales outside midrib abaxially . . . . . 8
- 8a. Staminate flowers unilaterally arranged at least on proximal part of staminate rachillae . . . . . 9
- 8b. Staminate flowers spirally arranged throughout the staminate rachillae, these covered with minute, silvery-white stellate scales (*A. butyracea* complex) . . . . . 14
- 9a. Staminate rachillae thick, recurved, flower pit sunken . . . . . *A. speciosa*
- 9b. Staminate rachillae slender, straight, flower pit superficial (*A. phalerata* complex) . . . . 10
- 10a. Pinnae regularly arranged all along the rachis, mesocarp white, dry . . . . . *A. moorei*
- 10b. Pinnae clustered at least basally, mesocarp cream to orange, ± fleshy . . . . . 11
- 11a. Leaf rachis ascending, straight throughout . . . . . *A. sp. "Acre"*
- 11b. Leaf rachis twisted laterally, upper (distal) portion of the leaf held vertically . . . . . 12
- 12a. Pinnae from middle series not clustered, in one plane . . . . . *A. huebneri*



- 12b. Pinnae from middle series clustered, in several planes . . . . . 13
- 13a. Middle series of pinnae <5 cm wide . . . . . *A. princeps*
- 13b. Middle series of pinnae >5 cm wide . . . . . *A. weberbaueri*
- 14a. Pistillate flowers 1–6 per rachillae, fruits >8 cm long . . . . . *A. bassleriana*
- 14b. Pistillate flowers 8–16 per rachillae, fruits <8 cm long . . . . . 15
- 15a. Staminate rachillae slender, old staminate inflorescence broom like, peduncular bracts narrow, nearly flat . . . . . *A. peruviana*
- 15b. Staminate rachillae robust, old inflorescence not broom-like, peduncular bracts markedly widened, boat-shaped . . . . . *A. blepharopus*

#### Acknowledgments

This work benefited from a wide collaborative effort, in particular within the EU-funded project FP7-PALMS ([www.fp7-palms.org](http://www.fp7-palms.org)), and Programa Nacional de Innovación para la Competitividad y Productividad PNICP/Innovate Peru “Biología, ecología y prospección química de palmeras promisorias del género *Attalea* en la Amazonía peruana” 185-FINCYT-IB-2013. Funding was also provided by the French Embassy in Peru to A.M. Rodríguez del Castillo. The 2014 *Attalea* workshop in Madre de Dios, Peru was funded by IRD-PPR AMAZ, PNICP/Innovate Peru 185-FINCYT-IB-2013 and IIAP-PIBA and IIAP-PIBA. We thank the following persons who took part in fieldwork: Tamshiyacu-Bagazan-Soledad expedition members (Pedro Vásquez-Ocmín, Martha Maco, Ericka Dávila, Claudia Merino-Zegarra). Tingo Maria: (Asociación Pukka Shungo). PIBA-IIAP students (Nandy Macedo-Vásquez, María de Fátima Sánchez, Sandro de la Roca, Julián del Águila). Jenaro Herrera: Leonardo Macedo. We are especially grateful to the following persons for their help in various stages of this research: Henrik Balslev (Aarhus University), Rodrigo Bernal (COL), Rodrigo Camara-Leret (AAU) Marie Couderc (IRD), Cíntia Gomes de Freitas (University of Goiania), Gloria Galeano (COL), Marc Jeanson (P), Francis Kahn (IRD), Larry Noblick (MBC), Betty Millán (USM), Fred Stauffer (G), Andrew Henderson (NY). Blanca León (USM). Note of the co-authors: while we were preparing this manuscript, J.-C. Pintaud passed away; we consider it an honor to participate in this

manuscript highlighting a facet of our friend who promoted the exchange of experiences on cooperation and the intensive fieldwork for learning more about these impressive *Attalea* palms.

#### LITERATURE CITED

- BURRET, M. 1929. Die Palmengattungen *Orbignya*, *Attalea*, *Scheelea* and *Maximiliana*. Notizbl. Bot. Gart. Berlin-Dahlem 10: 651–701.
- DAHLGREN, B.E. 1959. Index of American palms. Plates. Field Mus. Nat. Hist. Bot. 14: pls 1–412.
- DRANSFIELD, J., N. UHL, C. ASSMUSEN-LANGE, W. BAKER, M. HARLEY AND C. LEWIS. 2008. Genera Palmarum: the Evolution and Classification of Palms. Royal Botanical Gardens Kew, International Palm Society and the L.H. Bailey Hortorium, Cornell University, Kew.
- GALEANO, G. AND R. BERNAL. 2002. New species and new records of Colombian palms. *Caldasia* 24: 277–292.
- GALEANO, G. AND R. BERNAL. 2010. Palmas de Colombia. Guía de Campo. Instituto de Ciencias Naturales, Universidad Nacional de Colombia, Bogotá. 688 p.
- GLASSMAN, S.F. 1999. A taxonomic treatment of the palm subtribe Attaleinae (Tribe Cocoeae). *Illinois Biol. Monogr.* 59: 1–414.
- HENDERSON, A. 1995. The Palms of the Amazon. Oxford University Press, Nueva York.
- HENDERSON, A., G. GALEANO AND R. BERNAL. 1995. Field Guide to the Palms of the Americas. Princeton University Press, New Jersey.
- IIAP (Instituto de Investigaciones de la Amazonía Peruana). 2014. Informe de Inventario Biológico de la Propuesta ACR Bosques de Shunté y Mishollo, Tocache, San Martín.
- KAHN F. AND K. MEJÍA. 1991. The palm communities of two terra firme forests in Peruvian Amazonia. *Principes* 35: 22–26.
- LEÓN, B. 2002. Significance of August Weberbauer's plant collecting for today's Río Abiseo National Park, northern Peru. *Taxon* 51: 167–170.
- LORENZI, H., L.R. NOBLICK, F. KAHN AND E. FERREIRA. 2010. Brazilian Flora Lorenzi: Arecaceae (Palms). Instituto Plantarum, Nova Odessa.

- MARTIUS C.F.P. VON, 1844. *Palmetum Orbignianum* in A.D. d'Orbigny, *Voyage dans l'Amérique méridionale* 7 (3): 1–140.
- MONTÚFAR R. AND J.-C. PINTAUD. 2006. Variation in species composition, abundance and microhabitat preferences among Western Amazonian terra firme palm communities. *Botanical Journal of the Linnean Society*, 151: 127–140.
- MOORE, H.E., JR. 1972. *Chelyocarpus* and its allies *Cryosophila* and *Itaya* (Palmae). *Principes* 16: 67–88.
- MORAES R., M. 2004. Flora de Palmeras de Bolivia. Herbario Nacional de Bolivia, Instituto de Ecología, Carrera de Biología, Universidad Mayor de San Andrés, Plural editores, La Paz. 262 p.
- NOBLICK, L.R., W. HAHN AND M.P. GRIFFITH. 2013. Structural cladistic study of Cocoseae, subtribe Attaleinae (Arecaceae): Evaluating taxonomic limits in Attaleinae and the neotropical genus *Syagrus*. *Brittonia* 65: 232–261.
- PANIAGUA, N., R.W. BUSSMANN AND M.J. MACÍA. 2012. El Conocimiento de Nuestros Ancestros – Los Ese Eja y su Uso de las Palmeras, Madre de Dios, Peru. Graficart, Trujillo.
- PINTAUD, J.-C. 2008. An overview of the taxonomy of *Attalea* (Arecaceae). *Revista Peruana de Biología* 15, supl. 1: 55–63.
- RODRÍGUEZ DEL CASTILLO, A.M., C. GARCÍA-DAVILA, K. MEJÍA AND J.-C. PINTAUD. in press. *Attalea*: insights into the diversity & phylogeny of an intriguing genus. *Palms*
- STAUFFER, F.W. AND J.G. FARIÑAS. 2006. The identity of *Attalea macrolepis* (Burret) Wess. Boer (Arecaceae). *Candollea* 61: 83–88.
- TOMLINSON, P.B. 1990. *The Structural Biology of Palms*. Clarendon Press, Oxford.
- VARGAS, V., J.-C. PINTAUD AND F.W. STAUFFER. 2012. Diversidad, usos y conservación de las palmas (Arecaceae) de la Reserva Natural Allpahuayo-Mishana (Peru). *Acta Bot. Venez.* 3: 53–70.
- ZONA, S. 2002. Name changes in *Attalea*. *Palms* 46: 132–133.



# Gender and Expression of Magnesium Deficiency in Canary Island Date Palms

DONALD R. HODEL  
*University of California  
Cooperative Extension  
700 W. Main St.  
Alhambra, CA 91801 USA  
drhodel@ucanr.edu*

JAMES KOMEN  
*Class One Arboriculture  
Inc.  
2832 Manhattan Ave  
Glendale, CA 91214 USA  
classonearboriculture  
@gmail.com*

ROBERT M. HODEL  
AND  
MARIANNE A. HODEL

The Canary Island date palm (CIDP), *Phoenix canariensis*, is one of the most iconic ornamental landscape palms of southern California (Hodel 2012). A dioecious species, its solitary, tall, robust trunk topped with a huge canopy of long, drooping to arching, dark green, pinnate leaves is a majestic and common sight (Front Cover). With few peers for size, grandeur, and stateliness, it is especially common in coastal areas but is also used with some frequency in interior valleys and even desert locales. A much sought-after palm for landscaping, plants sell for between US\$300 and 500 per foot-trunk (30 cm of trunk height).

Because of their grandeur and elegance, CIDPs make unsurpassed specimens for repetitive, uniform plantings, such as lining boulevards or other wide thoroughfares in a *grande allée* fashion or defining large open spaces (Fig. 1). Unfortunately, CIDPs are not without their problems, and several diseases and disorders, including Fusarium Wilt, Sudden Crown Drop, and nutritional disorders, sometimes afflict them, causing death or detracting significantly from their esthetic quality.

One such nutritional disorder is magnesium deficiency. Magnesium is a mobile element and is moved from the older leaves to where it is needed most in the plant, typically into the apical meristem area where new leaves and inflorescences develop; thus, deficiency symptoms show up first in the older or lower leaves in the palm canopy. Magnesium deficiency appears on older leaves as a distinct yellowing pattern where affected leaves typically have an outer band of light green to



1. The Canary Island date palm is one of the most iconic ornamental landscape palms of southern California (Newport Center, Newport Beach, CA).

greenish yellow to yellow around the outside of the leaf blade while the area in the middle of the blade along the rachis remains green (Broschat 2004, Broschat & Meerow 2000) (Fig. 2).

Through numerous casual observations we noticed an apparent correlation between gender and expression of magnesium deficiency symptoms; pistillate (female, fruit-bearing) plants tended to show older leaves

2. When viewed up close, magnesium deficient leaves in CIDPs are yellow around the outside of the leaf blade while the area in the middle of the blade along the rachis remains green (Seal Beach, CA).





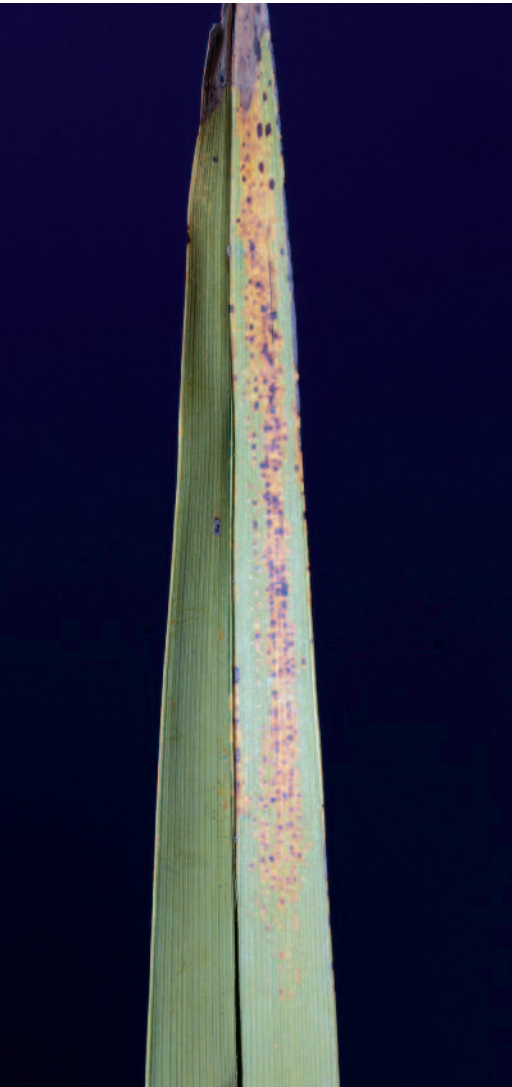


3. This staminate CIDP was given a "0" rating for no symptoms of magnesium deficiency. 4. A pistillate CIDP given a "1" rating or little symptoms of magnesium deficiency. 5. A pistillate CIDP given a "2" rating or moderate symptoms of magnesium deficiency. 6. A pistillate CIDP given a "3" rating or severe symptoms of magnesium deficiency. (All photographed at Las Palmas, Hope Ranch, Santa Barbara, CA.)

**Table 1. Effect of gender on expression of magnesium deficiency symptoms, Canary Island Date Palms, Hope Ranch, Santa Barbara, California, May 2015.**

Symptoms	Staminate	Pistillate	Total	P Value
None	128	20	148	1.7E <sup>-20</sup>
Little	34	51	85	0.1
Moderate	1	63	64	6.7E <sup>-14</sup>
Severe	0	40	40	9.3E <sup>-10</sup>
Total	163	174	337	

7. Close visual inspection of retrieved magnesium-deficient leaves of a CIDP also revealed the presence of orange, yellow, and dark flecking and leaflet tip necrosis, which are symptoms of potassium deficiency (Las Palmas, Hope Ranch, Santa Barbara, CA).



with yellow margins more often and had more severe symptoms than did their staminate (male, pollen-bearing) counterparts. These symptomatic leaves are easily visible from the ground and in many cases detract esthetically from the palm's ornamental value. Thus, we wanted to determine if a correlation existed between gender and magnesium deficiency and, if so, how it could impact landscape management of this species.

#### Materials and Methods

We selected two, long, fairly uniform street plantings of 1.8 and 1.4 km each, comprising 337 mature specimens of CIDPs on Las Palmas in the Hope Ranch area near Santa Barbara, California, north of Los Angeles. Planted about 1905 (Chase 1993), the palms are 15 to 20 m tall and generally unpruned and unmaintained, which enabled us to determine gender rather easily because gender-dimorphic inflorescences were present and old leaves were present that would show magnesium deficiency symptoms. In a visual inspection, we recorded gender and severity of magnesium deficiency symptoms for each palm on a scale of 0 to 3, where 0 = no symptoms (Fig. 3), and 1, 2, and 3 = little (Fig. 4), moderate (Fig. 5), and severe (Fig. 6) symptoms, respectively. We entered the data in a Microsoft Excel spreadsheet and performed a chi-square test to determine correlations, if any, between gender and presence of symptoms and gender and severity of symptoms and their statistical validity.

Although we later retrieved symptomatic leaves for a closer inspection, we determined magnesium deficiency symptoms visually, not by tissue analysis. It is difficult to confirm simply by leaf analysis that magnesium deficiency causes the characteristic yellow leaf margins (T. Broschat, pers. comm.). Inducing magnesium deficiency symptoms in sand



culture can prove causation of the symptoms and that has been done on a number of occasions, so the symptoms themselves, which are quite distinctive, are sufficient to diagnose the cause. The symptoms we describe and illustrate are a perfect match for those established and illustrated for magnesium deficiency (Broschat 2004); thus, we felt it was unnecessary to include leaf analyses.

Close visual inspection of retrieved magnesium-deficient leaves also revealed the presence of orange, yellow and dark flecking and leaflet tip necrosis, symptoms of potassium deficiency (Fig. 7). Because these symptoms are not readily discernible on tall trees when viewed from the ground, we did not rate potassium deficiency symptoms.

### Results and Discussion

The data clearly show that pistillate individuals were much more likely to show magnesium deficiency symptoms and to have more severe symptoms than their staminate counterparts (Table 1).

Pistillate individuals typically develop annually numerous (15 to 20), large infructescences that if allowed to remain on the palm become heavily laden with fruits, acting as an element "sink," drawing magnesium and other mobile elements like potassium from older leaves to meet their developmental needs. Thus, landscape managers can anticipate higher demands for magnesium and (and likely potassium) from pistillate individuals, especially those that are allowed to carry infructescences to maturity, and can adjust fertilizer rates and frequency upward accordingly to meet this increased demand and avoid unattractive, yellow, magnesium-deficient leaves. Perhaps fertilizer rates 50 percent higher than the recommended rate would be appropriate for pistillate, fruit-bearing palms. Alternatively, pruning out inflorescences once they have elongated fully but have yet to develop fruits would likely also

help to preclude development of unattractive, magnesium-deficient leaves.

Because magnesium-deficient (and potassium-deficient) leaves will never become green and attractive again, even after fertilizer applications, it is important to prevent these nutritional disorders through appropriate cultivation and a regular fertilizer program.

Future research on this subject might look at how much additional fertilizer would be required to maintain appropriate magnesium and potassium levels in fruit-bearing Canary Island date palms.

### Acknowledgments

We sincerely thank Jim Trebbin of Hope Ranch for allowing us to conduct this study at their site, Tim Broschat of the University of Florida for helpful comments on this study and Pat Mahoney, owner of West Coast Arborists, Inc., and his employees, Lorenzo Perez and Lupe Tamayo, for providing a bucket lift to retrieve symptomatic leaves.

### LITERATURE CITED

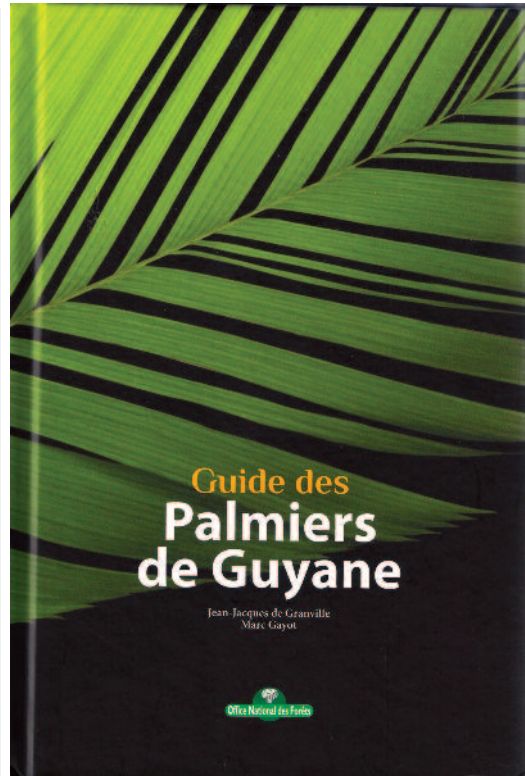
- BROSCHAT, T.K. 2004. Magnesium deficiency and potassium deficiency, pp. 53–56 & Fig. 15, *in*, ELLIOTT, M.L., T.K. BROSCHAT, J.Y. UCHIDA, AND G.W. SIMONE (eds.), *Compendium of Ornamental Palm Diseases and Disorders*. The American Phytopathological Society, St. Paul, MN.
- BROSCHAT, T.K. AND A.W. MEEROW. 2000. *Ornamental Palm Horticulture*. University of Florida Press, Gainesville, FL.
- CHASE, H.S. 1993. *Hope Ranch: A Rambling Record*. Mission Creek Studios and the Santa Barbara Historical Society, Santa Barbara, CA.
- HODEL, D.R. 2012. *The Biology and Management of Landscape Palms*. The Britton Fund, Inc., Western Chapter International Society of Arboriculture, Porterville, CA.

## PALM LITERATURE

**GUIDE DES PALMIERS DE GUYANE – Jean-Jacques de Granville and Marc Gayot. Office National des Forêts, Guyane. 2014. ISBN: 978-2-84207-374-9. Price: €29. Pp. 273, profusely illustrated. (Contact [dr.guyane@onf.fr](mailto:dr.guyane@onf.fr))**

Guyane, or French Guiana, is an overseas department of France, bordered by Suriname to the west and Brazil to the south and east. There has been an active presence of palm botanists in Guyane for several decades with a consequent substantial legacy of published research on many aspects of palms, ranging from taxonomy and ecology to population dynamics. From an identification perspective, fieldworkers in Guyane have had the *Field Guide to the Palms of the Americas* by Henderson, Galeano and Bernal at their disposal, but this field guide is now out of date, and as it covers two whole continents, Guyane is somewhat lost in the book. Now comes a fantastically good field guide, perhaps the best palm field guide I have so far come across and one that will no doubt inspire other guides in the future. Field botanists, palm lovers, ecologists and conservationists now have at their fingertips a source of information on the palms of this country. No doubt, the guide will also serve those in Suriname and perhaps Guyana (old British Guiana) too.

What is abundantly clear is that the authors know the palms of Guyane inside and out. This extraordinary knowledge underpins the wealth of illustrative material in the book. Every palm species is illustrated in amazing detail, with illustrated keys, silhouettes of whole palms and leaves, inflorescences and fruit, and this intimate knowledge of the palms has allowed the construction of wonderful comparative tables of, e.g. fruit, with every species in the book organized in one big composite plate allowing easy comparison. There are similar plates of illustrations – diagrams, colored photographs or silhouettes – allowing instant comparison. Such tables could only be developed with the authors' detailed knowledge of Guyanese palms.



The book begins with introductory material covering the country, its climate and vegetation, palm morphology and evolutionary history, Guyanese palms in a global context, ethnobotany, followed by how to identify Guyanese palms, with keys to genera and species and one of the best illustrated glossaries I know. Each species receives a generous two-page spread. Finally there is a bibliography and a list of contributors, besides the principal authors, eight more.

The whole book is beautifully designed, well printed on paper that will probably survive well in field conditions and at 23.5 × 16 cm will easily fit into a day sack.

Enthusiasts interested in all aspects of palms, whether francophone or not, will enjoy this superb book. At a cost of a mere €29, it is a steal!

JOHN DRANSFIELD



# ***Copernicia* × *dahlgreniana*, a New Natural Hybrid in the Savannas of Camagüey, Cuba**

RAÚL VERDECIA PÉREZ  
*Jardín Botánico Cupaynicú  
Municipio Guisa,  
Carretera a Bayamo,  
Granma, Cuba  
verdecopernicia@gmail.com*



1. *Copernicia* ×  
*dahlgreniana*  
growing in a  
serpentine  
savanna north  
of Camagüey in  
Central Cuba.

*Copernicia* × *dahlgreniana* is a new natural hybrid in Cuba described with intermediate morphological characteristics of *C. cowellii* and *C. macroglossa*.





2. *Copernicia cowellii*, one of the parent plants of *C.* × *dahlgreniana*.

Brother León (1931) was the first to describe hybrids between species of Cuban palms by naming three putative hybrids: *Copernicia* × *escarzana* León (a natural hybrid between *C. hospita* Mart. and *C. macroglossa* Becc.), *Copernicia* × *vespertilium* León (a natural

hybrid between *C. gigas* Ekman ex Burret and *C. rigida* Britton & P. Wilson) and *Copernicia* × *sueroana* León (a natural hybrid of *C. rigida* and *C. hospita*). In 1958, Dahlgren and Glassman described *Copernicia* × *shaferei* Dahlgren & Glassman, a natural hybrid





3. *Copernicia macroglossa*, the other parent of *C.* × *dahlgreniana*.

between *C. hospita* and *C. cowellii* Britton & P. Wilson. Dahlgren and Glassman (1963) changed the status of *Copernicia textilis* León to *C.* × *textilis* and postulated based on morphological data that it is a natural hybrid between *C. hospita* and *C. baileyana* León. They

also restored the hybrid status of *C.* × *vespertilionum*, which León (1936) had decided was a species not of hybrid origin. Though they postulated the probable hybrid origins of *C. burretiana*, *C. occidentalis* León and *C. sueroana*, they did not make nomenclatural



changes and maintained these three as species, citing the need for more evidence. In addition, *C. × escarzana*, published by Leon in 1931, was considered a synonym of *C. hospita*.

In 1982, Muñiz and Borhidi proposed the hybrid status of *C. × burretiana* and *C. × occidentalis*, thus increasing the number of recognized natural hybrids of *Copernicia* in Cuba to six. Subsequent authors, such as Henderson et al. (1995) and Moya and Leiva (2000), also recognized the existence of these natural hybrids.

As part of the revision of *Copernicia* for publication in the Flora of the Republic of Cuba, I conducted field explorations and made collections in the savannas of serpentinites located north-northeast of the city of Camagüey, for which the *Copernicia* species reported are *C. cowellii*, *C. hospita* and *C. macroglossa* Becc. (Moya & Verdecia, unpublished), as well as the natural hybrid between the first two, *C. × shaferi*. The existence of individuals whose characteristics do not match those of the taxa described for this area led me to suspect the existence of a new hybrid.

Both qualitative and quantitative morphological characters were selected and comparisons made between the newly found

individuals and the two species, *C. macroglossa* and *C. cowellii*, that are likely candidates for the progenitors of a new natural hybrid. The flowering period of these putative parents is included to verify the possibility of coincidence in flowering, as well as their habitat range. The ranges of the parental species' characters were taken from Dahlgren and Glassman (1963) and supplemented with the author's collected samples deposited in the HMC (Herbarium Maximiliano Curbelo) at Las Tunas Botanic Garden. The dimensions of the largest floral pieces were taken with a caliper of 0.05 mm precision and the smaller pieces were measured using a stereoscopic microscope.

***Copernicia* × *dahlgreniana* R. Verdecia, nothosp. nov. (*C. cowellii* *C. macroglossa*)**

Putative hybrid between *Copernicia cowellii* and *Copernicia macroglossa* with intermediate morphological characteristics, closely resembling *C. macroglossa*, but with petiole leaves and moderate wax evident on their lower surfaces, rather than an absent petiole and no evident wax as in *C. macroglossa*. Rachillae are thinner in the hybrid being 2–2.8 mm diam. rather than 15–20 mm in that species. The new hybrid differs from *C. cowellii* in being more robust, having less waxy leaves and shorter rachillae, 2–2.8 cm long. *Copernicia*

4. The lower surface of *Copernicia* × *dahlgreniana* leaf (left) showing typical light waxy colorization compared to the heavy wax on *C. cowellii* leaf (right).







5 (top). The short rachillae of *Copernicia* × *dahlgreniana*. 6 (bottom). *Copernicia* × *dahlgreniana*. Rachillae showing flowers.

*cowellii* is a smaller palm, has heavy wax on the lower surface of the leaves and longer rachillae that are 3–4 cm long. *Copernicia* × *shaferi* is a natural hybrid from the same area, but the new taxon has a more compact crown with petioles only 16–21 cm in length rather than the more open crown and petioles up to 48 cm long in *C.* × *shaferi*. In *C.* × *dahlgreniana*, leaves are waxy only on the lower surface while in *C.* × *shaferi* both surfaces are waxy and grayish in color. The new hybrid has flowers of 5.4–5.6

mm long while *C.* × *shaferi* has flowers 4–5 mm long. The new hybrid has similarities in general appearance to the natural hybrid, *C.* × *burretiana*, from which it differs in having floriferous rachillae longer and thinner with flowers in groups that are spaced apart. Type: CUBA. Camagüey: Municipio Camagüey, savannas near Camagüey city, on the road to Lesca, 21°28'30"N, 77°49'50"W, fl., 10 Jan. 2014. *R. Verdecia* RV14/01 (Holotype HMC, Isotypes HAC, HAJB).

**Table 1. Comparison between *Copernicia* × *dahlgreniana* and its parents.**

Characters	<i>C. macroglossa</i>	<i>C. × dahlgreniana</i>	<i>C. cowellii</i>
Plant height (m)	2–7	2.5–3.0	1.2–2.5
Trunk diameter (cm)	17–20	17–20	12–17
Sheath base (cm)	29 × 22	20 × 12–15	20 × 8–10
Petiole length (cm)	0–2	16–21	10–20
Petiole width (cm)	8–11	3.5–4	3.0–3.5
Hastula length (cm)	10–35	2.5–4	2–3
Blade shape	Broadly cuneiform	Semi-orbicular	Orbicular to semiorbicular
Blade segments number	50–64	56–58	40–48
Center segment length (cm)	90–145	80–97	60–70
Teeth on palman ribs	Abundant	Moderate	None
Wax abaxial	Absent	Moderate	Abundant
Punctiform scales, adaxial	Yes	No	No
Inflorescence length (m)	2–2.5	2–2.2	1.5–2
Rachilla length (cm)	2–2.6	2–2.8	3–4
Rachilla diameter (mm)	15–20	2–2.8	1.0–1.5
Flower length (mm)	5–8	5.4–5.6	4–6
Bracteole exterior (mm)	7 × 5	2.5–3 × 2.5	1.5 × 2.0
Bracteole interior (mm)	4 × 1.5–2	1.5 × 1.0	0.7 × 1.0
Calyx, length (mm)	4–4.5	3.1–3.6	2.5–3
Calyx lobes length (mm)	2–2.5	1.35–1.65	0.8–1.3
Corolla length (mm)	5–6	4.8–5.1	3.5–4
Corolla tube length (mm)	2.5	1.95–2.4	1.5
Corolla lobes length (mm)	3.5–4	2.6–3	2.5–3
Flower arrangement	Solitary, very crowded	Solitary or groups of 2, distant	Groups of 2, distant
Flowering	December to August	December to January	August to January
Distribution	Havana to Camagüey	Camagüey	Camagüey

Palm moderate, solitary, 2.5–3 m tall. Stem cylindrical about 17–20 cm diam., covered with persistent basal sheaths and a persistent skirt of dead leaves under the crown of living ones. Leaves palmate; leaf sheath base 17 cm long and about 12 cm wide at base; petiole 17–25 cm long and 3.5–4 cm wide at apex, armed with blackish, spiny teeth along the margins; adaxial hastula 2.5–4 cm long, eroded and fragile at apex. Blade semi-orbicular, rachis absent, segments 56–58, with the central one 80–97 cm long and 6–6.5 cm wide; basal segments 55–65 cm long with teeth along the

external margin; palman irregular, 57–74 cm and moderate teeth along segment junctions; adaxial green, not waxy, without very small reddish or orangey glandular dots; abaxial surface with a light coat of wax, and numerous and large glandular dots visible with very slight magnification. Inflorescences 2–2.2 m long, with an empty peduncular bract and about 10 partial inflorescences; rachillae tomentose, 2–2.8 cm long and 2–2.8 mm diam. at the base where always present an acuminate and pilose tubular bracteole. Flowers 5.4–5.6 mm long, solitary or in clusters of two, spaced; each





7. The petiole length of *Copernicia* × *dahlgreniana* is approximately the same length as *C. cowellii* rather than the nonexistent petiole of *C. macrogloussa*.

flower subtended by an acuminate bracteole 2.5–3 × 2.5 mm and inner one 1.5 × 1–1.5 mm, both persistent after the falling of the flower. Calyx densely pilose, 3.1–3.6 mm long, lobes broadly acute; corolla densely pilose on exterior, farinose on interior; corolla tube 1.95–2.4 mm; lobes acute 2.6–3 mm long. Fruit not seen.

ETYMOLOGY: The epithet, *dahlgreniana*, honors the Swedish-born botanist Dr. Bror Eric Dahlgren (1877–1961) for his important contribution to the knowledge of the genus *Copernicia*.

DISTRIBUTION: Savannas of northern Camagüey.

HABITAT: Anthropogenic savannas on serpentine soils.

CONSERVATION STATUS: Not assessed, but it is not common.

#### Acknowledgments

I am grateful to Paul Craft for the English translation, to Celio E. Moya for suggestions and to the reviewers of this paper.

#### LITERATURE CITED

- DAHLGREN, B. AND S. GLASSMAN. 1959. A new *Copernicia* hybrid from Cuba. *Principes* 3: 87–90.
- DAHLGREN, B. AND S. GLASSMAN. 1963. A revision of the genus *Copernicia* 2. West Indian species. *Gentes Hebarum* 9: 43–232.
- HENDERSON, A., G. GALEANO AND R. BERNAL. 1995. *Field Guide to the Palms of the Americas*. Princeton University Press. Princeton. New Jersey.
- LEÓN, HNO. 1931. Contribución al estudio de las palmas de Cuba (1). *Rev. de la Soc. Geogr. de Cuba* 4: 33–59.
- LEÓN, HNO. 1936. Contribución al estudio de las palmas de Cuba II, Género *Copernicia*. *Mem. Soc. Cub. Hist. Nat. "Felipe Poey"* 10: 203–226.
- MOYA, C. AND A. LEIVA. 2000. Lista taxonómica actualizada de las palmas de Cuba. *Rev. Jardín Botánico Nacional*. 21: 3–7.
- MOYA, C. AND R. VERDECIA. 2015. El holotipo de *Copernicia macroglossa* está en HAC, Cuba. unpublished.
- MUÑIZ, O. AND A. BORHIDI. 1982. Catálogo de las palmas de Cuba. *Acta Bot. Acad. Sci. Hungarica* 28: 309–345.



# A University Palmetum

RYAN W. VOGEL

*Office of University  
Sustainability*

*Florida International University*

*11200 SW 8th Street*

*Miami, Florida, 33199, USA*

*(Current address:*

*700 Cuyahoga Court*

*Columbus, Ohio, 43210, USA*

*RangerRyanVogel@gmail.com)*



1. An FIU student appreciating *Carpoxylon macrospermum*.

With most palm species being native to the tropics and Miami being arguably the most tropical city in the contiguous United States, it makes sense that Miami would be home to many palms. This paper describes the establishment of a surprisingly diverse palm collection in an academic setting.



2. 1992/2012 photos showing effect of hurricane Andrew on FIU campus (not Palmetum).

Florida International University (FIU) is an urban, public research institution. The university has one main campus in west Miami, the Modesto Maidique Campus, and several satellite campuses throughout south Florida. The rapidly developing Modesto Maidique Campus is where approximately 86% of the 54,000-student population attends classes and where the majority of employees are located. In the heart of this campus there is a two acre (0.8 ha) palm arboretum, the FIU Palmetum. This tropical urban oasis contains palm species from around the world meant to inspire the university population to slow down and enjoy the wonderfully fascinating diversity of Arecaceae (Fig. 1). One could safely say that the FIU Palmetum is one of the most diverse palm collections on a university campus in the United States.

The FIU Palmetum was originally founded about 23 years ago by Gregory Burdine-Coakley, currently assistant director of the department of Life Safety and Utility Systems. In 1992, Hurricane Andrew struck south Florida and destroyed many of FIU's trees (Fig. 2), essentially clearing the way for a new urban forest to be developed throughout the university landscape.

At the time, Burdine-Coakley was the grounds superintendent and was able to initiate the palm arboretum with Federal Emergency

Management Agency funds meant to restore the university's urban forest. He began the project with the idea to group palm plantings based on their geographic origins, but as time went on that original design scheme was forgotten.

Burdine-Coakley left the department in 2001, handing responsibility of the palm arboretum over to Mark Salemi, the current senior superintendent of landscape and grounds. Being a horticultural scientist, certified arborist, and lifetime member of the South Florida Palm Society, Salemi was up to the task. With great personal interest in developing the collection but limited resources for doing so, Salemi used his local network of nursery growers to find great deals on interesting specimens to add to the collection. As time went on, he continued to develop the area, selectively removing and transplanting broadleaf trees from the site and replacing them with palms. His hope was that others in the university community would notice the palms and enjoy their beauty as much as he did.

The Palmetum, being overshadowed, literally and figuratively, on several sides by academic buildings, including the main university library, is not where one might think would be the best place to cultivate a palm garden. Although, many people walk through the collection every day, few of them are aware of



what is surrounding them. Naturally, the Earth & Environment department and the Biological Sciences department faculty and students are the ones most commonly using the palm collection for research and teaching, but they are not the only ones using this urban palm forest. Every spring the School of Architecture hosts a competition to see who can get to the Palmetum the fastest. The only catch is that participants are not allowed to walk on land to the Palmetum, instead they must “walk on water” (Fig. 3). Attracting hundreds of spectators each year, the audience anxiously watches from the Palmetum as brave architecture students attempt to cross a 53-m (175-ft) wide lake to get there.

Although, this annual event inadvertently brings a lot of people to the site at one time, this is quite insignificant when compared to the number of routine passers-by the area receives on any regular school day. With this palm collection being located in one of the highest pedestrian traffic areas on campus, we estimate that approximately 500–1,000 students, faculty, staff and visitors walk through it each day (Fig. 4). However, with no interpretive signage, no formal landscape design, no publicity, no documentation of species within the collection, no documented educational purpose, no history of prior investments and no management plan, the

Palmetum was at risk of possible future destruction. It has been there for all this time, and still very few people on campus knew anything about the project. If this project was to be sustainable (protected with continual funding) it needed to have a larger university presence. For this reason we chose to focus our efforts on this particular planting of palms rather than other small groupings elsewhere around campus.

Jump-starting the recent renovations was a grant from the International Palm Society in December 2013, meant to provide tree tags and interpretive signs. During the first year our team: counted, identified and labeled/re-labeled all the palms, removed several remaining broadleaf trees and planted an additional 14 palms on site. In our second year, we designed and installed 15 interpretive signs (Fig. 5), which immediately upon their installation began to draw peoples’ attention, replaced an old dilapidated gazebo with new outdoor seating, and added another 15 individual palms to the collection. In this process, we discovered several issues that needed to be addressed. For example, some name tags, which had been installed some years earlier, had rusted, broken, been vandalized or had shifted such that they hung too low on the trunk, too high or facing directions where people would not likely see

3. A student “walking” across the lake to reach the Palmetum, in the annual competition.







4. A snapshot portraying the constant usage of this area.

them. Additionally, palms were never allowed to flower or fruit since the landscape maintenance crew routinely trimmed their inflorescences prematurely, and lawnmowers broke several ground tags we placed next to short, young, or cespitose palms. To alleviate these issues in the long run we created a tag installation protocol and began an ongoing discussion for proper training of the landscape maintenance crew. The internal funds used to accomplish much of this work may not have materialized were it not for the catalyst provided by the International Palm Society grant. And, with the area now having an introductory sign at each entrance, more people than ever are now aware of the palms.

In order to commemorate all these much-appreciated improvements to the area, we decided to have a celebration on Earth Day (Davis 2014, Piccardo 2014). The event was well attended by biology and environmental studies students and faculty as well as local community organizations. A local art museum showcased their exhibition “Earth and Water” at our event. Rescue Earth, a non-profit that focuses on creating awareness and protecting the environment, was present, and the South Florida Palm Society was present with past-president/board member Ken Johnson saying a few words at the podium. The local media coverage surrounding this event was quite helpful in getting the word out about our recent renovations.

What started with just a few individuals has grown to become one of the largest university palm collections in the country. Its strength lies in its unique location and breadth. Today,

5. An interpretive sign about Caribbean palms adjacent to a *Coccothrinax crinita*.







6. Conference group touring the Palmetum.

it contains 262 individual palms, representing 72 species from 40 genera. With representation from every major palm hotspot in the world and spanning six continents, this collection is able to showcase the *Arecaceae* to the FIU community. There is strong representation from the southeastern United States, with all seven genera of the region being represented: *Thrinax*, *Coccothrinax*, *Rhapidophyllum*, *Acoelorrhaphe*, *Sabal*, *Pseudophoenix* and *Roystonea* (Zona 1997). Caribbean palms, such as the taxonomically difficult *Copernicia*, are represented, with six species present. Several individuals of *Dypsis*, *Hyophorbe* and *Latania*, as well as *Raphia farinifera* and *Elaeis guineensis*, are good examples from Madagascar/Africa. Central and South American palms like *Acoelorrhaphe wrightii*, *Copernicia prunifera*, *Syagrus romanzoffiana* and *Thrinax radiata* can be seen. Additionally, *Arenga pinnata*, *A. undulatifolia*, *Adonidia merrillii* and *Caryota mitis* provide excellent examples of Indian and Southeast Asian palms. *Livistona decora*, *Howea forsteriana*, *Veitchia arecina* and several *Ptychosperma* species round out Australia and the Pacific Islands. There are also six species of *Phoenix* representing Europe, Africa and Asia. Showcasing palms from around the world works well to connect with the very diverse and international student body.

The Palmetum demonstrates palm family diversity as well as general plant diversity and *ex situ* species conservation. We have palms of all shapes and sizes: those with long thin leaflets (*Acrocomia crispa*), with wide fan-

shaped fronds (*Bismarckia nobilis*), short and stout (*Coccothrinax crinita*), large and lofty (*Phoenix dactylifera*), bottle-shaped (*Pseudophoenix vinifera*), triangular (*Dypsis decaryi*), with recognizable fruits (*Cocos nucifera*), with recognizable stature (*Roystonea regia*), multi-stemmed (*Acoelorrhaphe wrightii*) and solitary trunked (*Ravenea rivularis*). There is also one broadleaf tree present in the center of the collection (Fig. 4) that is of particular interest. Being originally marked for removal, it was later discovered to be the largest living *Citharexylum spinosum*, Fiddlewood, in the United States – making it the reigning National Champion Tree. The Palmetum is surrounded with landscaping of *Ptychosperma*, *Veitchia* and *Dypsis lutescens*, and there are plans eventually to integrate *Serenoa repens* into adjacent building landscape design to show how beautiful, low-maintenance designs can be created using native palms. The collection does contain several West Indian endemic and critically endangered species like *Attalea crassispata*, *Coccothrinax borhidiana*, *C. crinita* and *Copernicia fallaensis* (Zona et al. 2007). We also have several individuals of the regionally widespread *Pseudophoenix sargentii*, which is endangered in Florida (Weaver & Anderson 2010), and a juvenile *Jubaeopsis caffra*, which is critically endangered with an estimated population <100 wild individuals (Hurter 2007).

Standing amid a sea of turf, this palm collection was never historically a place for people to visit. Yet now, Biological Sciences



7. Science students taking a closer look at *Jubaeopsis caffra*.

and Earth & Environment faculty and students (Figs. 6 & 7) have begun to use the area more than ever. Campus tours for visiting prospective students stop to highlight the lush tropical vegetation, which awaits incoming freshmen. It is a place for students to soak in nature and refresh their minds from the harsh life of homework and exams. Located on prime real estate for a growing university that is already stretched for space, this project has developed into something with great potential to change people's lives. Now, the FIU Palmetum can continue to grow and inspire the next generation of plant biologists.

#### Acknowledgments

The International Palm Society endowment fund grant, The FIU Office of University Sustainability, FIU Facilities Management and FIU Biological Sciences are gratefully acknowledged.

#### LITERATURE CITED

- DAVIS, S. 2014. University opens renewed palmetum for Earth Day. FIU Beacon 22 April 2014. Available online at <http://fiusm.com/2014/04/22/fiu-opens-one-of-the-largest-university-palmetums/>. Accessed 26 October 2015.
- HURTER, P.J.H., L. VON STADEN, J.E. VICTOR AND A.E. VAN WYK. 2007. *Jubaeopsis caffra* Becc.
- National Assessment: Red List of South African Plants version 2015.1. Available online at <http://redlist.sanbi.org/species.php?species=3416-1>. Accessed on 26 October 2015.
- PICCARDO, R. 2014. Floating art, ribbon cutting to celebrate Earth Day. FIU Beacon 22 April 2014. Available online at <http://fiusm.com/2014/04/22/floating-art-ribbon-cutting-to-celebrate-earth-day/>. Accessed 26 October 2015.
- WEAVER, R.E. AND P.J. ANDERSON. 2010. Notes on Florida's Endangered and Threatened Plants, 5<sup>th</sup> ed. Contrib. No. 38, Bureau of Entomology, Nematology and Plant Pathology – Botany Section, Florida Division of Plant Industry.
- ZONA, S. 1997. The genera of Palmae (Arecaceae) in the southeastern United States. Harvard Papers in Botany 2: 77–107.
- ZONA, S. 2002. A revision of *Pseudophoenix*. Palms 46: 19–38.
- ZONA, S., R. VERDECIA, A. LEIVA SANCHEZ, C.E. LEWIS AND M. MAUNDER. 2007. The conservation status of West Indian palms (Arecaceae). Oryx 41: 300–305.



# Photo Feature



## *Dypsis pumila*

Marojejy, a 2132-m tall mountain in north-eastern Madagascar, supports the largest remaining tract of montane scrub vegetation on the island. The scrub is composed of a diversity of low shrubs, bamboos, grasses, terrestrial herbs and mosses, but scattered throughout is a beautiful miniature palm, *Dypsis pumila*, which is known from no other site in Madagascar. It occurs in large numbers throughout the scrub as far as the summit itself. The stems of the palm rarely exceed 1 m and are often buried in the deep shrubbery so that only the upper crown is visible. *Dypsis pumila* is rated as Critically Endangered on the IUCN Red List on account of its extremely narrow distribution. The entire population of the species falls within the Marojejy National Park and is therefore protected. However, the montane scrub vegetation is exceedingly vulnerable to damage; a wildfire, for example, would be catastrophic for the scrub and its endemic species.

WILLIAM J. BAKER<sup>1</sup>, WOLF L.T. EISERHARDT<sup>1</sup> & MIJORO RAKOTOARINIVO<sup>2</sup>  
<sup>1</sup>Royal Botanic Gardens, Kew  
<sup>2</sup>University of Antananarivo









## PALM LITERATURE

**PRINCEPS.** Journal de la Société Palmophile Francophone. ISSN2428-6583. Contact – Société Palmophile Francophone, U Giardinu di l'Isuli, Costa-Baca, 20144 Sainte Lucie de Porto Vecchio, Corse, France. Website: [www.societepalmophilefrancophone.org](http://www.societepalmophilefrancophone.org)

The first issue of the new journal PRINCEPS (not to be confused with Principes, the former name of our PALMS journal) was published in December 2015. This beautifully produced issue is the first publication of Société Palmophile Francophone, founded in Paris by Wilfried Couvet, Jacques Deleuze, Alain Jamet and Victor Martinengo on 15 February 2014. The journal is a substantial volume, some 180 pages long, printed on glossy paper throughout. Almost entirely in French, the journal will appeal greatly to francophone palm enthusiasts. The contents of this first issue are as follows:

Pintaud, J.-C. L'énigme du palmier

Soares, K.P. Le genre *Butia*

Bour, A. *Saribus jeanneneyi* (Becc.) Bacon & W.J. Baker au jardin botanique de Nancy

Razafitsalama, J., M. Rakotoarinivo & S. Andrianbololonera. Les palmiers du complexe forestier Makirovana Tsihomanaomby

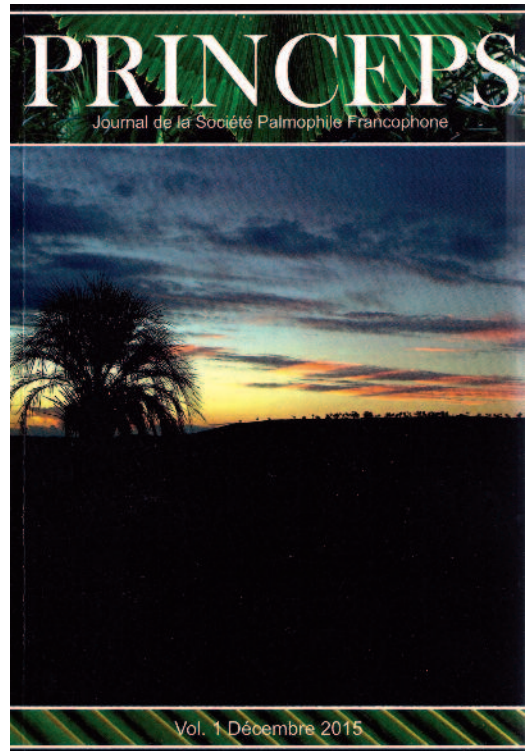
Dowe, J.L., R. Lovatt & N. Snajder. *Carpoxyllum macrospermum* dans le Townsville Palmetum, Queensland, Australie

Dupuyoo, J.-M. Les Palmiers des Keys

Littardi, C. & M. Ballardini. Les Palmiers de la Ligurie Occidentale

Soarez, K.P. & L. Coelho de Assis. *Syagrus cipoensis*, un nouvel hybride du Minas Gerais, Brésil

Ferry, M. & S. Gomez. La stratégie de la dernière chance pour sauver les palmiers



Clochard, P. Perediniya, reflets de 200 ans d'histoire de la botanique

Hodel, D.R. Forever young, je te souhaite un éternel ciel bleu, in memoriam Jean-Christophe Pintaud

Mera, L.A. Les palmiers, 30 années de passion

There is also a brief notice of significant palm papers that have been published elsewhere.

There is much to admire in this inaugural issue. How frequently the journal will appear is not certain to me. I wish every success to the society and hope that it will have no problem in filling the journal with great papers on palms, with wide appeal, not just to the francophone world.

JOHN DRANSFIELD





