

Multiple gene genealogies and phenotypic characters differentiate several novel species of *Mycosphaerella* and related anamorphs on banana

M. Arzanlou^{1,2}, J.Z. Groenewald¹, R.A. Fullerton³, E.C.A. Abeln⁴, J. Carlier⁵, M.-F. Zapater⁵, I.W. Buddenhagen⁶, A. Viljoen⁷, P.W. Crous^{1,2}

Key words

Mycosphaerella
phylogeny
Sigatoka disease complex
taxonomy

Abstract Three species of *Mycosphaerella*, namely *M. eumusae*, *M. fijiensis*, and *M. musicola* are involved in the Sigatoka disease complex of bananas. Besides these three primary pathogens, several additional species of *Mycosphaerella* or their anamorphs have been described from *Musa*. However, very little is known about these taxa, and for the majority of these species no culture or DNA is available for study. In the present study, we collected a global set of *Mycosphaerella* strains from banana, and compared them by means of morphology and a multi-gene nucleotide sequence data set. The phylogeny inferred from the ITS region and the combined data set containing partial gene sequences of the actin gene, the small subunit mitochondrial ribosomal DNA and the histone H3 gene revealed a rich diversity of *Mycosphaerella* species on *Musa*. Integration of morphological and molecular data sets confirmed more than 20 species of *Mycosphaerella* (incl. anamorphs) to occur on banana. This study reconfirmed the previously described presence of *Cercospora apii*, *M. citri* and *M. thailandica*, and also identified *Mycosphaerella communis*, *M. lateralis* and *Passalora loranthi* on this host. Moreover, eight new species identified from *Musa* are described, namely *Dissoconium musae*, *Mycosphaerella mozambica*, *Pseudocercospora assamensis*, *P. indonesiana*, *P. longispora*, *Stenella musae*, *S. musicola*, and *S. queenslandica*.

Article info Received: 8 January 2008; Accepted: 5 March 2008; Published: 21 March 2008.

INTRODUCTION

The genus *Mycosphaerella* is phylogenetically heterogeneous (Crous et al. 2007a), contains more than 3000 names (Aptroot 2006), and has been linked to more than 30 well-known anamorphic genera (Crous et al. 2006a, b, 2007a, b, Arzanlou et al. 2007a). Species of *Mycosphaerella* inhabit different ecological niches as saprobes, plant pathogens or endophytes (Farr et al. 1995, Verkley & Starink-Willemse 2004, Crous et al. 2004b, 2006a, 2007a, b), and have a worldwide distribution from tropical and subtropical to warm and cool regions (Crous 1998, Crous et al. 2000, 2001). Plant-pathogenic species of *Mycosphaerella* are among the most common and destructive plant pathogens occurring on a wide range of hosts including trees, herbaceous plants, and plantation crops. The invasion of leaf and stem tissue and concomitant distortion of the host plant physiology cause considerable economic losses (Park

et al. 2000, Goodwin et al. 2001, Maxwell et al. 2005, Cortinas et al. 2006, Crous et al. 2006a, b, Hunter et al. 2006).

The Sigatoka disease complex, which is the most serious and economically important leaf spot disease of banana, is attributed to species of *Mycosphaerella*. *Mycosphaerella musicola* (anamorph *Pseudocercospora musae*) which causes (yellow) Sigatoka disease, *M. fijiensis* (anamorph *P. fijiensis*) which causes the black Sigatoka disease, and *M. eumusae* (anamorph *P. eumusae*), which causes eumusae leaf spot disease (reviewed in Jones 2000, 2003, Crous & Mourichon 2002) are the major constituents of the Sigatoka disease complex. The disease reduces the photosynthetic capacity of the plant as a consequence of necrotic leaf lesions, and induces physiological alterations of the plant, resulting in reduced crop yield and fruit quality. All three species emerged on bananas during the last century and became major constraints to commercial production worldwide. The chronology of disease records around the world and genetic structure of pathogen population suggests that South-East Asia, where the host genus *Musa* is indigenous, is the centre of origin for all three fungal species (Mourichon & Fullerton 1990, Carlier et al. 1996, Hayden et al. 2003, Rivas et al. 2004).

Yellow Sigatoka disease was first reported on banana in Java in 1902. The disease spread rapidly to all banana-growing regions during the following 20 years, and has since reached the limits of its distribution worldwide (reviewed in Jones 2000, 2003). The fungus responsible for the disease was described as *Cercospora musae*. In 1941 Leach established the connection between *C. musae* and its teleomorph, *Mycosphaerella*

¹ CBS Fungal Biodiversity Centre, Uppsalalaan 8, 3584 CT Utrecht, The Netherlands; corresponding author email: crous@cbs.knaw.nl.

² Laboratory of Phytopathology, Wageningen University, Binnenhaven 5, 6709 PD Wageningen, The Netherlands.

³ The Horticulture and Food Research Institute of New Zealand, Private Bag 92169, Auckland, New Zealand.

⁴ TNO Quality of Life, Utrechtseweg 48, 3700 AJ Zeist, The Netherlands.

⁵ Centre de coopération internationale en recherche agronomique pour le développement (CIRAD), UMR BGPI, Montpellier, France.

⁶ College of Agricultural and Environmental Sciences, University of California, Davis, USA.

⁷ Department of Plant Pathology, University of Stellenbosch, P. Bag X1, Matieland 7602, South Africa.

Table 1 Isolates of *Mycosphaerella* or its anamorphs used for DNA analysis and morphological studies.

Species	Accession number ¹	Source	Origin	GenBank numbers (ITS, ACT, HIS, mtSSU)
<i>Cercospora apii</i>	CPC 12682; CBS 119395	<i>Musa</i> cv. Cavendish	Western Bangladesh	EU514222, —, —, —
	CPC 12683	<i>Musa</i> cv. Cavendish	Western Bangladesh	EU514223, —, —, —
	CPC 12684	<i>Musa</i> cv. Cavendish	Western Bangladesh	EU514224, —, —, —
<i>Dissocoonium musae</i>	X1021; CBS 122453	<i>Musa</i> cv. Nendran (Plantain) AAB	India	EU514225, EU514296, EU514349, EU514402
	X1022; CBS 122454	<i>Musa</i> cv. Nendran (Plantain) AAB	India	EU514226, EU514297, EU514350, EU514403
<i>Mycosphaerella citri</i>	X126; CBS 122455	<i>Citrus</i> sp.	USA, Florida	EU514227, —, —, —
	X742; CBS 122456	<i>Musa</i> cv. SH 3436 AAAA	Tonga	EU514228, —, —, —
	X743	<i>Musa</i> cv. SH 3362 AA	Tonga	EU514229, —, —, —
<i>Mycosphaerella colombiensis</i>	X24	<i>Musa</i> cultivar	Mozambique	EU514230, —, —, —
	X215	—	South Africa	EU514231, EU514298, EU514351, EU514404
<i>Mycosphaerella communis</i>	X1023	<i>Musa</i> cv. Valery: Cavaendish	Trinidad	EU514232, EU514299, EU514352, EU514405
<i>Mycosphaerella eumusae</i>	S1030B	<i>Musa</i> cultivar	Mauritius	EU514233, EU514300, EU514353, EU514406
	S1037B	<i>Musa</i> cultivar	Mauritius	EU514234, EU514301, EU514354, EU514407
<i>Mycosphaerella fijiensis</i>	S1037C	<i>Musa</i> cultivar	Mauritius	EU514235, EU514302, EU514355, EU514408
	S1037G	<i>Musa</i> cultivar	Mauritius	EU514236, —, —, —
	S1037H	<i>Musa</i> cultivar	Mauritius	EU514237, —, —, —
	X208; CIRAD 1156; CPC 4579	<i>Musa</i> cultivar	Mauritius	EU514238, —, —, —
	X209; CBS 114825; CIRAD 1157; CPC 4580	<i>Musa</i> cultivar	Mauritius	EU514239, —, —, —
	X865; CIRAD 535	<i>Musa</i> cultivar	India	EU514240, EU514303, EU514356, EU514409
	X866; CBS 121377; CIRAD 458	<i>Musa</i> cultivar	Malaysia	EU514241, EU514304, EU514357, EU514410
	X867; CBS 121378; CIRAD 459	<i>Musa</i> cultivar	Malaysia	EU514242, EU514305, EU514358, EU514411
	X869; CBS 121380; CIRAD 563	<i>Musa</i> cultivar	Sri Lanka	EU514243, EU514306, EU514359, EU514412
	X870; CBS 121381; CIRAD 485	<i>Musa</i> cultivar	Thailand	EU514244, EU514307, EU514360, EU514413
	X873; CBS 121382; CIRAD 487	<i>Musa</i> cultivar	Thailand	EU514245, EU514308, EU514361, EU514414
	X875; CIRAD 671	<i>Musa</i> cultivar	Vietnam	EU514246, EU514309, EU514362, EU514415
	X876; CBS 121383; CIRAD 744	<i>Musa</i> cultivar	Mauritius	EU514247, EU514310, EU514363, EU514416
	CIRAD 86; CBS 120258; C86a	<i>Musa</i> cultivar	Cameroon	EU514248, —, —, —
	X84	<i>Musa</i> cultivar	Colombia	EU514249, EU514311, EU514364, EU514417
	X92	<i>Musa</i> cultivar	Colombia	EU514250, EU514312, EU514365, EU514418
	X104	<i>Musa</i> cultivar	Colombia	EU514251, EU514313, EU514366, EU514419
	X110	<i>Musa</i> cultivar	Colombia	EU514252, EU514314, EU514367, EU514420
	X843; CIRAD 11	<i>Musa</i> cultivar	Honduras	EU514253, EU514315, EU514368, EU514421
	X847; CBS 121362; CIRAD 364	<i>Musa</i> cultivar	Taiwan	EU514254, EU514316, EU514369, EU514422
X850; CIRAD 355	<i>Musa</i> cultivar	Ivory Coast	EU514255, EU514317, EU514370, EU514423	
<i>Mycosphaerella lateralis</i>	S1024	<i>Musa</i> cultivar	Mauritius	EU514256, —, —, —
<i>Mycosphaerella mozambica</i>	X34; CBS 122464	<i>Musa</i> cultivar	Mozambique	EU514257, EU514318, EU514371, EU514424
	X884; CBS 121391; UQ438	<i>Musa</i> cultivar	Australia	EU514258, EU514319, EU514372, EU514425
<i>Mycosphaerella musae</i>	X398; CBS 122458	<i>Musa</i> cv. Cavendish AAA	Tonga	EU514259, EU514320, EU514373, EU514426
	X813	<i>Musa</i> cultivar	Malawi	EU514260, EU514321, EU514374, EU514427
	X814; CBS 122459	<i>Musa</i> cultivar	Malawi	EU514261, EU514322, EU514375, EU514428
	X818; CBS 122460	<i>Musa</i> cultivar	Malawi	EU514262, —, —, —
	X819; CBS 122461	<i>Musa</i> cultivar	Malawi	EU514263, —, —, —
	X879; CBS 121386; CIRAD 64	<i>Musa</i> cultivar	Malawi	EU514264, EU514323, EU514376, EU514429
<i>Mycosphaerella musicola</i>	X42; CBS 116634; IMI 123823	<i>Musa</i> cultivar	Cuba	EU514265, —, —, —
	X63	<i>Musa</i> cultivar	Windward Islands	EU514266, EU514324, EU514377, EU514430
	X67	<i>Musa</i> cultivar	Windward Islands	EU514267, EU514325, EU514378, EU514431
	X588	<i>Musa</i> cv. Williams	Australia	EU514268, EU514326, EU514379, EU514432
	X589	<i>Musa</i> cv. Williams	Australia	EU514269, EU514327, EU514380, EU514433
	X596	<i>Musa</i> cv. SH-3362 AA	Australia	EU514270, EU514328, EU514381, EU514434
	X602	<i>Musa</i> cv. Lakatan	Australia	EU514271, EU514329, EU514382, EU514435
	X857; CBS 121371; UQ430	<i>Musa</i> cultivar	Australia	EU514272, EU514330, EU514383, EU514436

	X858; CBS 121372; UQ433	<i>Musa</i> cultivar	Australia	EU514273, EU514331, EU514384, EU514437
	X860; CBS 121374; UQ2003	<i>Musa</i> cultivar	Australia	EU514274, EU514332, EU514385, EU514438
<i>Mycosphaerella thailandica</i>	X22	<i>Musa</i> cultivar	Windward Islands	EU514275, EU514333, EU514386, EU514439
	X53	<i>Musa</i> cultivar	Australia	EU514276, EU514334, EU514387, EU514440
	X882; CBS 121389; CIRAD 81	<i>Musa</i> cultivar	Mozambique	EU514277, EU514335, EU514388, EU514441
	X883; CBS 121390; CIRAD 1165	<i>Musa</i> cultivar	Brazil	EU514278, EU514336, EU514389, EU514442
	X28; CBS 122465	<i>Musa</i> cultivar	Cameroon	EU514279, EU514337, EU514390, EU514443
<i>Passalora loranthi</i>	X138; CBS 122466	<i>Citrus</i> sp.	Mozambique	EU514280, EU514338, EU514391, EU514444
<i>Pseudocercospora assamensis</i>	X988; #9; CBS 122467	<i>Musa</i> cultivar	India, Assam	EU514281, EU514339, EU514392, EU514445
<i>Pseudocercospora indonesiana</i>	X991; #11-5; CBS 122473	<i>Musa</i> cultivar	Indonesia, Western Sumatra	EU514282, EU514340, EU514393, EU514446
<i>Pseudocercospora longispora</i>	X992; #11-6; CBS 122474	<i>Musa</i> cultivar	Indonesia, Western Sumatra	EU514283, —, —, —
	X474; CBS 122469	<i>Musa</i> cv. Pisang Mas AA	Malaysia	EU514284, EU514341, EU514394, EU514447
<i>Pseudocercospora</i> sp.	X475; CBS 122470	<i>Musa</i> cv. Pisang Mas AA	Malaysia	EU514285, EU514342, EU514395, EU514448
<i>Stenella musae</i>	X1083; CBS 122468	<i>Ravenala madagascariensis</i>	India	EU514286, —, —, —
	X45	<i>Musa</i> cultivar	Windward Islands	EU514287, EU514343, EU514396, EU514449
	X47; CBS 122476	<i>Musa</i> cultivar	Windward Islands	EU514288, EU514344, EU514397, EU514450
	X55	<i>Musa</i> cultivar	Windward Islands	EU514289, —, —, —
	X70; CBS 122478	<i>Musa</i> cultivar	Windward Islands	EU514290, EU514345, EU514398, EU514451
	X745; CBS 122477	<i>Musa</i> cv. T8 AAAAA	Tonga	EU514291, EU514346, EU514399, EU514452
	X877; CBS 121384; CIRAD 41	<i>Musa</i> cultivar	Martinique	EU514292, EU514347, EU514400, EU514453
	X878; CBS 121385; CIRAD 56	<i>Musa</i> cultivar	Martinique	EU514293, EU514348, EU514401, EU514454
<i>Stenella musicola</i>	X1019; CBS 122479	<i>Musa</i> cv. Grand Nain AAA (Cav.)	India	EU514294, —, —, —
<i>Stenella queenslandica</i>	X1084; CBS 122475	<i>Musa benkisi</i>	Australia	EU514295, —, —, —

¹ CBS: Centraalbureau voor Schimmelcultures, Utrecht, The Netherlands; CIRAD: Centre de coopération internationale en recherche agronomique pour le développement, Montpellier, France; CPC: Culture collection of Pedro Crous, housed at CBS; IMI: International Mycological Institute, CAB International, Egham, Basingstoke, UK; UQ: University of Queensland, Australia; X: S: Culture collection of Mahdi Arzanlou, housed at CBS.

musicola. Mulder (in Mulder & Stover 1976) validated the species descriptions, while the anamorph was transferred to *Pseudocercospora* as *P. musae* (Deighton 1976). In the early 1960s, another, even more severe leaf spot disease on banana appeared in the Fiji Islands, which Rhodes (1964) described as black leaf streak disease and later became known as the black Sigatoka disease. Morelet (1969) validated the species name as *M. fijiensis*, while Deighton (1976) placed its anamorph in *Pseudocercospora* as *P. fijiensis*. In 1974 a new variety of *M. fijiensis* was described from Honduras and named as *M. fijiensis* var. *difformis*. Deighton (1979) placed both varieties in the genus *Paracercospora*, based on the slight thickening observed on the rims of scars and conidial hila. However, this feature was not supported by DNA phylogeny, and as there were many intermediate morphological forms, the genus *Paracercospora* was again reduced to synonymy under *Pseudocercospora* by Crous et al. (2001). *Mycosphaerella eumusae* (*Pseudocercospora eumusae*), was recognised as a new constituent of the Sigatoka complex of banana in the mid-1990s (Carlier et al. 2000, Crous & Mourichon 2002, Jones 2003). Presently, *M. eumusae* is known from parts of South-East Asia, Indian Ocean Islands and Nigeria, where it could co-exist with the other two species. Besides the three primary agents of the Sigatoka disease complex, several additional species of *Mycosphaerella* (or their anamorphs) have been described from *Musa*, but for the majority of these species no culture or herbarium specimen is available, and the pathological relevance of those species remains unclear (reviewed in Jones 2000, Crous et al. 2003, Aptroot 2006).

The identity and distribution of the various *Mycosphaerella* species associated with leaf spots of banana are not yet fully understood, which is mainly due to the difficulties experienced by scientists who have to identify them by conventional methods and without specialist taxonomic support. Furthermore, because these species are morphologically highly similar and frequently co-occur on the same lesion, pathogen recognition and subsequent disease management have proven to be rather difficult. To enable the development of specific molecular-based diagnostic tools for pathogen recognition, all related species present on the same host have to be considered. Recently, Arzanlou et al. (2007a) developed a highly sensitive set of Taqman probes to distinguish *M. fijiensis* from *M. musicola* and *M. eumusae* in leaf material. Little attention has been given to date, however, to other species of *Mycosphaerella* that occur on *Musa* spp. Because several *Mycosphaerella* species can co-occur in the same lesion (Crous 1998), it is quite possible that there may be other species of *Mycosphaerella* associated with the Sigatoka disease complex. The aim of the present study was, therefore, to employ a multi-gene DNA sequence typing approach on a global set of *Mycosphaerella* isolates to distinguish the various species occurring on banana. To this end morphological and cultural growth data were integrated with DNA sequence data from the internal transcribed spacer region of the rDNA operon, and partial actin, histone H3, and small subunit mitochondrial ribosomal DNA gene sequences.

MATERIALS AND METHODS

Isolates

Isolates (Table 1) were obtained by isolation from infected symptomatic banana leaves, or supplied as pure cultures by the following departments and institutes: The Horticulture and Food Research Institute of New Zealand, Auckland, New Zealand; Centre de coopération internationale en recherche agronomique pour le développement (CIRAD, Montpellier, France); University of Florida, Tropical Research & Education Centre (USA); Forestry and Agricultural Biotechnology Institute (FABI, Pretoria, South Africa). Isolates were recovered from infected banana leaves as single ascospores or conidia. Germinating spores were examined 24 h after germination on 2 % malt extract agar (MEA; Sigma-Aldrich Chemie, Zwijndrecht, The Netherlands) plates under a stereomicroscope, and single-spore cultures were established on fresh MEA plates following the protocol of Crous (1998).

DNA phylogeny

Genomic DNA was isolated from fungal mycelia grown on MEA, using the FastDNA kit (BIO101, Carlsbad, CA, USA) according to the manufacturer's protocol. The primers ITS1 and ITS4 (White et al. 1990) were used to amplify part of the internal transcribed spacer region (ITS) of the nuclear ribosomal RNA operon, including the 3' end of the 18S rRNA gene, the first ITS region, the 5.8S rRNA gene, the second ITS region, and the 5' end of the 28S rRNA gene. A part of the actin gene (ACT) was amplified with primers ACT-512F and ACT-783R (Carbone & Kohn 1999), a part of the small subunit mitochondrial ribosomal DNA (mtSSU) with primers MNS1 and MNS2 (Li et al. 1994), and a part of the histone H3 (HIS) gene with primers CYLH3F and CYLH3R (Crous et al. 2004b). Amplification reactions were performed with each primer set in a total reaction volume of 25 μ l, which was composed of 1 \times PCR Buffer (Applied Biosystems, Foster City, USA), variable $MgCl_2$ concentrations, 60 μ M dNTPs, 0.2 μ M of each forward and reverse primer, 1.5 U of *Taq* DNA polymerase (Roche Diagnostics, Indianapolis, USA) and 1–10 ng of genomic DNA. PCR cycle conditions were 5 min of 95 °C, followed by 36 cycles of 94 °C for 30 s, 55 °C for 30 s, 72 °C for 60 s, and a final elongation at 72 °C for 7 min. Amplicons were sequenced using both PCR primers with a DYEnamic ET Terminator Cycle Sequencing kit (Amersham Biosciences, Roosendaal, the Netherlands) according to the manufacturer's recommendations, and sequences were analysed on an ABI Prism 3700 DNA Sequencer (Perkin-Elmer, Norwalk, Foster City, CA).

The resulting nucleotide sequences were analysed and automatically aligned using BioNumerics v. 4.5 (Applied Maths, Kortrijk, Belgium) followed by manual improvement by eye where necessary. Phylogenetic analyses were performed with PAUP (Phylogenetic Analysis Using Parsimony) v. 4.0b10 (Swofford 2003), using the neighbour-joining algorithm with the uncorrected ("p"), the Kimura 2-parameter and the HKY85 substitution models. Alignment gaps longer than 10 bases were coded as single events for the phylogenetic analyses; the remaining gaps were treated as missing data. Any encountered ties were randomly broken. Phylogenetic relationships were also inferred

with the parsimony algorithm using the heuristic search option with simple (ITS alignment) or 100 random taxa additions (combined alignment) and tree bisection and reconstruction (TBR) as the branch-swapping algorithm; alignment gaps were treated as missing (combined alignment) or as a fifth character state (ITS alignment) and all characters were unordered and of equal weight. Branches of zero length were collapsed and all multiple, equally parsimonious trees were saved. Other measures calculated included tree length, consistency index, retention index and rescaled consistency index (TL, CI, RI and RC, respectively). The robustness of the obtained trees was evaluated by 10 000 000 fast stepwise (ITS alignment) or 1000 bootstrap heuristic bootstrap replications (combined alignment). Sequences were deposited in GenBank (Table 1) and the alignments in TreeBASE (www.treebase.org).

Morphology

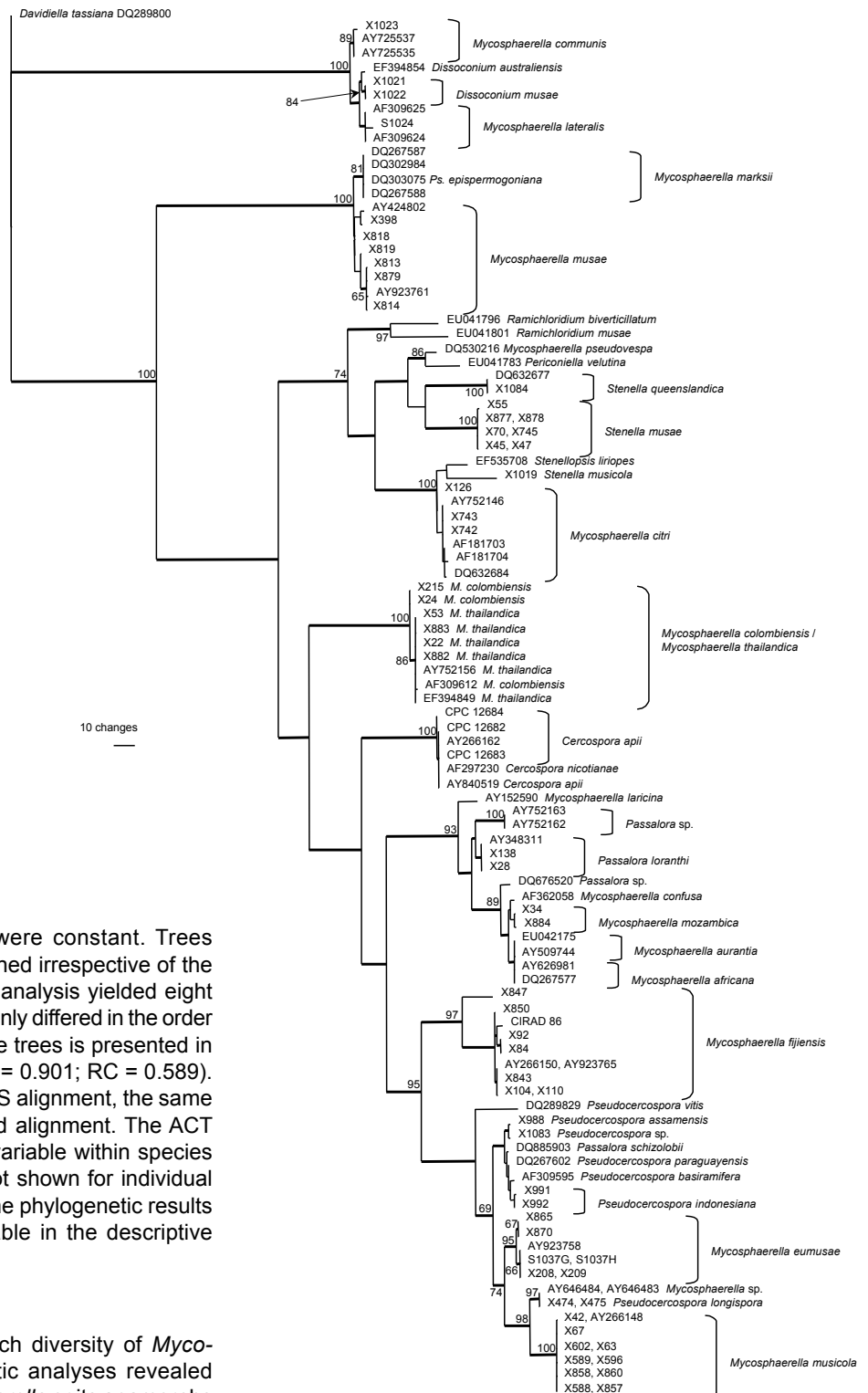
Growth rates and colony morphology were recorded from colonies grown on MEA plates after 30 d incubation in darkness at 24 °C. Colony colours (surface and reverse) were assessed after growth on MEA and oatmeal agar (OA, Gams et al. 2007) using the colour charts of Rayner (1970). Microscopic observations were made from colonies cultivated on MEA and OA. Preparations were mounted in lactic acid and studied under a light microscope (\times 1000 magnification). The 95 % confidence intervals were derived from 30 observations of spores formed on MEA or OA, with extremes given in parentheses. All cultures obtained in this study are maintained in the culture collection of the Centraalbureau voor Schimmelcultures (CBS) in Utrecht, the Netherlands or the working collections of Pedro Crous (CPC) or Mahdi Arzanlou (X, S numbers) at CBS (Table 1). Nomenclatural novelties and descriptions were deposited in MycoBank (www.MycoBank.org) (Crous et al. 2004a).

RESULTS

DNA phylogeny

Two alignments of DNA sequences were subjected to phylogenetic analyses. The first alignment consisted of ITS sequences generated in this study as well as sequences obtained from the NCBI GenBank nucleotide sequence database. The ITS alignment consisted of a total number of 113 sequences (including one outgroup); 508 characters including alignment gaps were subjected to the analyses. Of these characters, 224 were parsimony-informative, 42 variable and parsimony-uninformative, and 242 were constant. Trees supporting the same clades were obtained irrespective of the analysis method used. The parsimony analysis yielded 11 780 equally most parsimonious trees that mainly differed in the order of taxa at the terminal nodes; one of the trees is presented in Fig. 1 (TL = 861 steps; CI = 0.569; RI = 0.934; RC = 0.532).

The sequence data in the second alignment were analysed as one combined set consisting of 1648 characters (incl. alignment gaps) (number of included characters: ITS: 509, ACT: 188, HIS: 375, mtSSU: 576). This second alignment included 54 sequences (including the outgroup) and of the 1648 characters, 517 were parsimony-informative, 93 were variable and

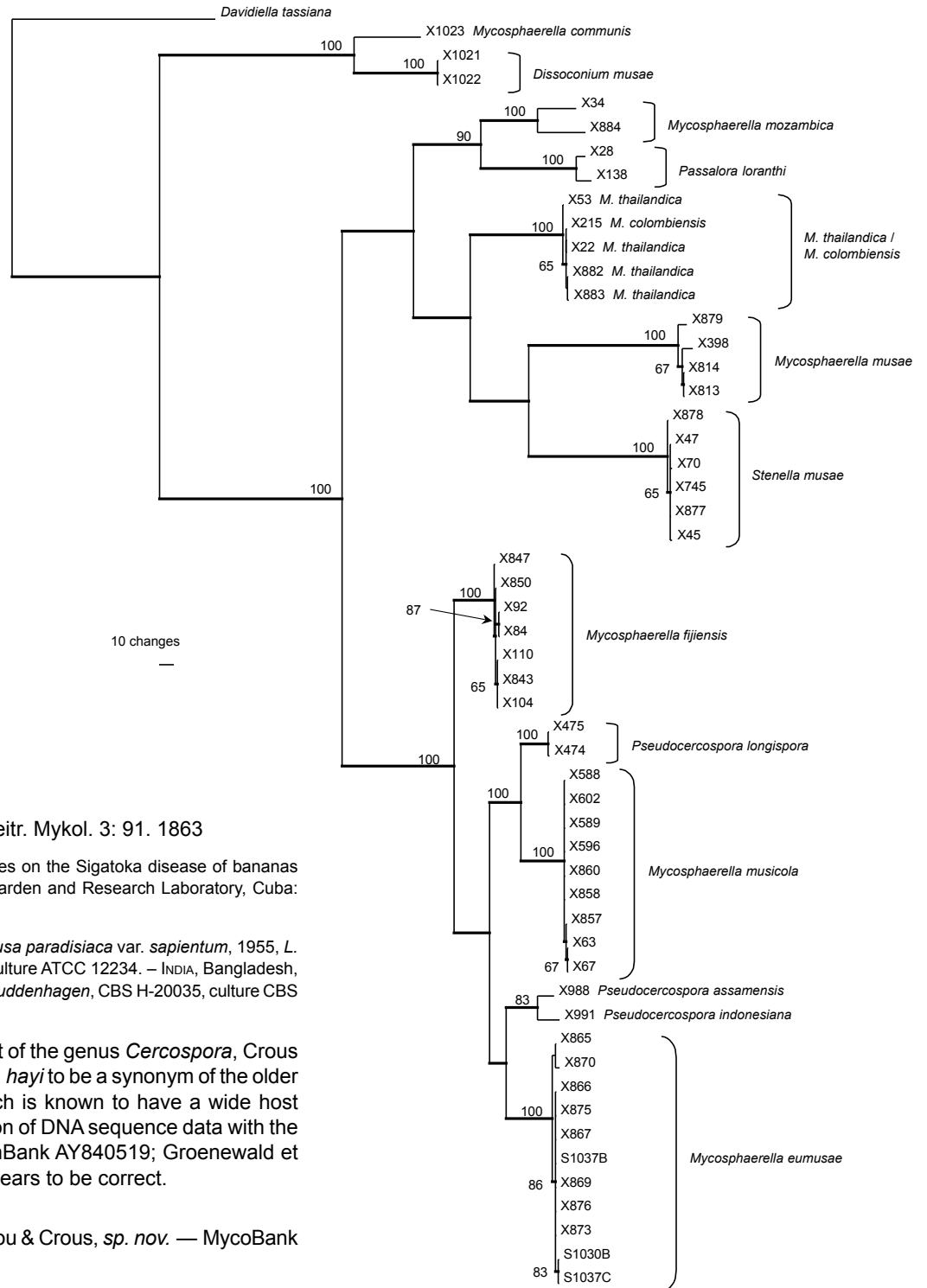


parsimony-uninformative, and 1038 were constant. Trees supporting the same clades were obtained irrespective of the analysis method used. The parsimony analysis yielded eight equally most parsimonious trees that mainly differed in the order of taxa at the terminal nodes; one of the trees is presented in Fig. 2 (TL = 1513 steps; CI = 0.654; RI = 0.901; RC = 0.589). Similar to the results obtained for the ITS alignment, the same lineages were found with the combined alignment. The ACT and HIS data were found to be more variable within species than the ITS and mtSSU data (data not shown for individual loci, variation within clades in Fig. 2). The phylogenetic results obtained are discussed where applicable in the descriptive notes below.

Taxonomy

The results of this study showed a rich diversity of *Mycosphaerella* spp. on *Musa*. Phylogenetic analyses revealed that more than 20 species of *Mycosphaerella* or its anamorphs occur on banana, including species known from hosts other than banana, namely *Cercospora apii*, *Mycosphaerella citri*, *M. communis*, *M. lateralis*, *M. thailandica*, and *Passalora loranthi* (Fig. 1). Furthermore, eight species proved to be morphologically and phylogenetically distinct from the species presently known from banana. These new species are described below.

Fig. 1 One of 11 780 equally most parsimonious trees obtained from a heuristic search with simple taxon additions of the ITS sequence alignment. The scale bar shows 10 changes, and bootstrap support values (65 % and higher) from 10 000 000 fast stepwise replicates are shown at the nodes. Thickened lines indicate the strict consensus branches. The tree was rooted to sequences of *Davidiella tassiana* strain CPC 11600 (GenBank accession number DQ289800). *M.* = *Mycosphaerella* and *Ps.* = *Pseudocercospora*.



***Cercospora apii* Fresen., Beitr. Mykol. 3: 91. 1863**

= *Cercospora hayi* Calp., Studies on the Sigatoka disease of bananas and its fungus pathogen, Atkins Garden and Research Laboratory, Cuba: 63. 1955.

Specimens examined. CUBA, *Musa paradisiaca* var. *sapientum*, 1955, L. Calpouzos, holotype FH, ex-type culture ATCC 12234. – INDIA, Bangladesh, *Musa* cv. Cavendish, Oct. 2005, I. Buddenhagen, CBS H-20035, culture CBS 119395.

Notes — In their treatment of the genus *Cercospora*, Crous & Braun (2003) considered *C. hayi* to be a synonym of the older name, *Cercospora apii*, which is known to have a wide host range. Based on a comparison of DNA sequence data with the ex-type strain of *C. apii* (GenBank AY840519; Groenewald et al. 2006), this synonymy appears to be correct.

***Dissoconium musae* Arzanlou & Crous, sp. nov. — MycoBank MB505972; Fig. 3, 4**

Dissoconio communi simile, sed coloniis in vitro tarde crescentibus (usque ad 10 mm diam post 30 dies ad 24 °C in agar maltoso).

Etymology. Named after its host plant, *Musa*.

In vitro on MEA: *Mycelium* submerged and superficial; submerged hyphae hyaline to subhyaline, thin-walled, smooth, forming a dense network with numerous anastomoses, 2–3 µm wide; aerial hyphae subhyaline, smooth, 2–3 µm wide.

Fig. 2 One of eight equally most parsimonious trees obtained from a heuristic search with 100 random taxon additions of the combined (ITS, ACT, HIS, mtSSU) sequence alignment. The scale bar shows 10 changes, and bootstrap support values (65 % and higher) from 1000 replicates are shown at the nodes. Thickened lines indicate the strict consensus branches. The tree was rooted to sequences of *Davidiella tassiana* strain CPC 11600 (GenBank accession number DQ289800, DQ289867, EF679665, EU514455, respectively). *M.* = *Mycosphaerella*.

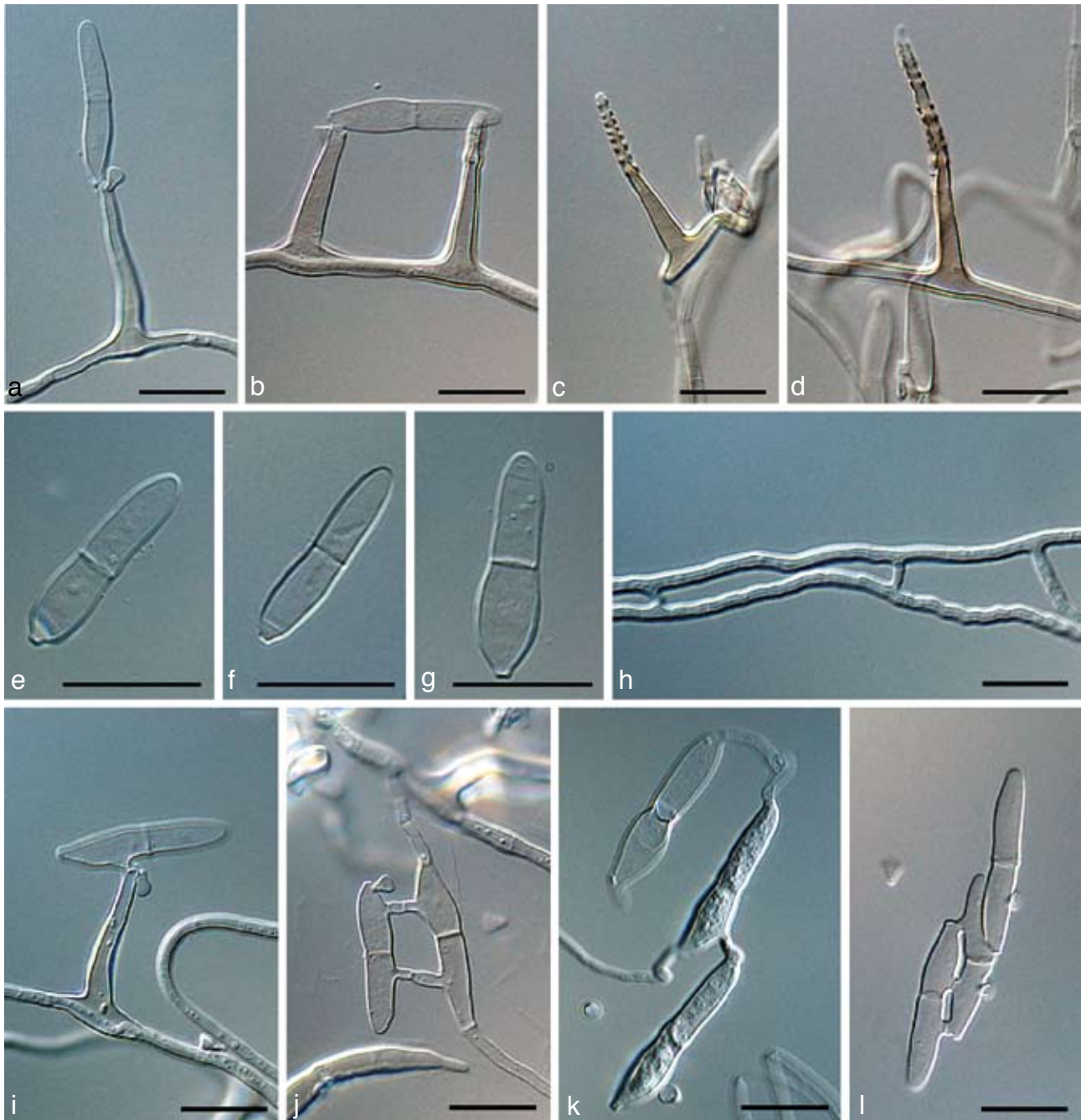


Fig. 3 *Dissoconium musae* (CBS 122453). a–d. Conidiophores with sympodially proliferating conidiogenous cells, which produce primary and secondary conidia in pairs; e–g. primary conidia with truncate base; h–l. anastomoses between hyphae, primary and secondary conidia and primary conidia. — Scale bar = 10 μ m.

Conidiophores arising orthotropically from vegetative hyphae, often reduced to conidiogenous cells and continuous with supporting hyphae, thin-walled, smooth, pale brown, unbranched, straight, subulate to lageniform, tapering towards the apex, (10–)19–25(–53) \times (2.5–)3–5 μ m. *Conidiogenous cells* terminal, proliferating sympodially (but appearing as annellides under the light microscope), giving rise to a short conidium-bearing rachis, loci somewhat darkened and thickened. *Conidia* form-

ing in sympodial order in pairs on a conidiogenous cell; the primary conidium is 2-celled, while the secondary conidium is aseptate; primary conidia pale olivaceous-brown, thin-walled, smooth, ellipsoidal to obclavate, 1-septate, apex obtuse, base obconically-truncate, (11–)22–26(–35) \times (3–)4–5 μ m, hilum unthickened; about 1 μ m diam. Secondary conidia 1-celled, pale olivaceous-brown, pyriform to turbinate, 4–5 \times 3–4 μ m, base truncate, flat, unthickened, about 0.5 μ m diam. Both conidial

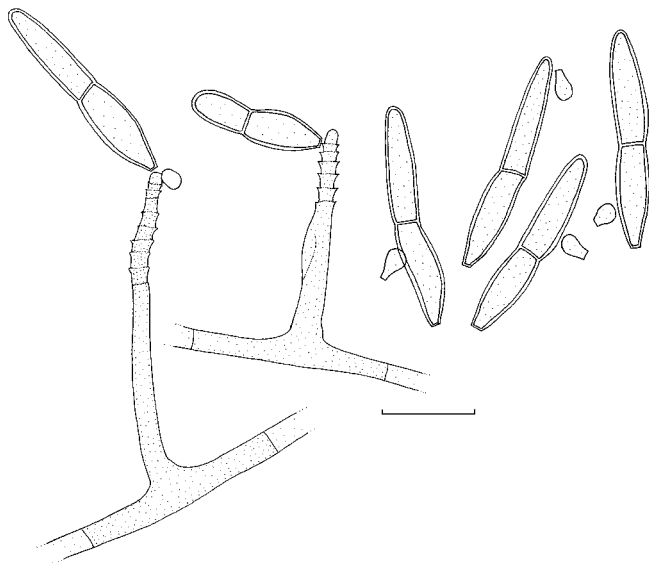


Fig. 4 *Dissoconium musae* (CBS 122453). — Scale bar = 10 µm.

types are discharged forcibly in pairs and then anastomose on the agar surface. Anastomosis between primary conidia occurs as well and primary conidia may show multiple anastomoses. Primary conidia germinate from both ends and produce several conidiogenous cells and conidia (microcyclic conidiation). Germination of secondary conidia was not observed.

Cultural characteristics — Colonies on MEA slow-growing, reaching 10 mm diam after 30 d at 24 °C, erumpent, unevenly folded, with sparse aerial mycelium, colonies with granulate margin; surface hazel to isabelline in centre, and vinaceous-buff in outer region; brown-vinaceous in reverse. Colonies on OA reaching 25 mm diam after 30 d at 24 °C, effuse, with moderate aerial mycelium, later become powdery in centre, surface hazel; olivaceous in reverse.

Specimen examined. INDIA, Tamil Nadu, Tiruchirapally, *Musa* cv. Nendran (Plantain) AAB, 2005, I. Buddenhagen, holotype CBS H-20036, culture ex-type X1021 = CBS 122453.

Notes — The genus *Dissoconium* is characterised by producing pairs of forcibly discharged primary and secondary conidia on sympodially proliferating conidiogenous cells. Sympodial proliferation of the conidiogenous cells gives rise to a conidium-bearing rachis, which resembles that encountered in the genus *Ramichloridium*. The recent revision of the genus *Ramichloridium* and allied genera (Arzanlou et al. 2007b) revealed that *R. apiculatum*, the type species of the genus, is phylogenetically close to the species in the genus *Dissoconium*. However, *Dissoconium* is morphologically distinct from *Ramichloridium* by producing two types of forcibly discharged conidia. So far, seven species of *Dissoconium* have been described from different substrates (de Hoog et al. 1991, Jackson et al. 2004). *Dissoconium musae* is phylogenetically distinct from the other species of this genus, but morphologically similar to *D. commune* and *D. dekkeri* (teleomorph: *Mycosphaerella lateralis*), from which it differs based on its slower growth rate in culture.

***Mycosphaerella eumusae* Crous & Mour., Sydowia 54: 36. 2002**

Anamorph. *Pseudocercospora eumusae* Crous & Mour., Sydowia 54: 36. 2002.

Specimen examined. REUNION, on leaves of *Musa* sp., 2001, J. Carlier, PREM 57314 (holotype of teleomorph), PREM 57315 (holotype of anamorph), cultures ex-type (CIRAD 1156, 1157 = CPC 4579, 4580 = CBS 114824, CBS 114825).

Notes — Based on the DNA sequence data obtained in this study (Fig. 2), it appears that *M. eumusae* is heterogeneous as presently circumscribed. Further studies would be required to determine if the phylogenetic variation also correlates with differences in morphology.

***Mycosphaerella fijiensis* M. Morelet, Ann. Soc. Sci. Nat. Archéol. Toulon Var 21: 105. 1969**

= *Mycosphaerella fijiensis* var. *difformis* J.L. Mulder & R.H. Stover, Trans. Brit. Mycol. Soc. 67: 82. 1976.

Anamorph. *Pseudocercospora fijiensis* (M. Morelet) Deighton, Mycol. Pap. 140: 144. 1976.

Basionym. *Cercospora fijiensis* M. Morelet, Ann. Soc. Sci. Nat. Archéol. Toulon Var 21: 105. 1969.

= *Paracercospora fijiensis* (M. Morelet) Deighton, Mycol. Pap. 144: 51. 1979.

= *Cercospora fijiensis* var. *difformis* J.L. Mulder & R.H. Stover, Trans. Brit. Mycol. Soc. 67: 82. 1976.

= *Paracercospora fijiensis* var. *difformis* (J.L. Mulder & R.H. Stover) Deighton, Mycol. Pap. 144: 52. 1979.

Specimens examined. HAWAII, on leaves of *Musa* sp., D.S. Meredith & J.S. Lawrence, holotype IMI 136696. — CAMEROON, date and collector unknown, epitype designated here CBS H-20037, culture ex-epitype CIRAD 86 = CBS 120258.

Note — The specimen and associated strain designated here as epitype, represent the strain that was selected by the *Mycosphaerella* consortium to obtain the full genome sequence of *M. fijiensis* (www.jgi.doe.gov/sequencing/why/CSP2006/mycosphaerella.html).

***Mycosphaerella mozambica* Arzanlou & Crous, sp. nov. — MycoBank MB505973; Fig. 5, 6**

Anamorph. *Ramichloridium*-like.

Ascosporae rectae vel curvatae, fusoideo-ellipsoideae utrinque obtusae, ad septum medianum vix constrictae, (9–)10–11(–12) × 3–3.5(–4) µm.

Etymology. Named after the country of origin, Mozambique.

In vivo: *Leaf spots* amphigenous, irregular to subcircular, 1–7 mm diam, grey to pale brown on adaxial surface, grey on abaxial surface, with dark brown margins. *Ascomata* amphigenous, intermingled among those of *M. musicola*, dark brown, subepidermal, becoming erumpent, globose, 70–90 µm diam; wall consisting of 2–3 layers of medium brown textura angularis. *Asci* paraphysate, fasciculate, bitunicate, subsessile, obovoid to broadly ellipsoid, straight to slightly curved, 8-spored, 28–35 × 7–9 µm. *Ascospores* bi- to tri-seriate, overlapping, hyaline, non-guttulate, thin-walled, straight to curved, fusoid-ellipsoidal with obtuse ends, widest in middle of apical cell, medianly 1-septate, not to slightly constricted at the septum, tapering

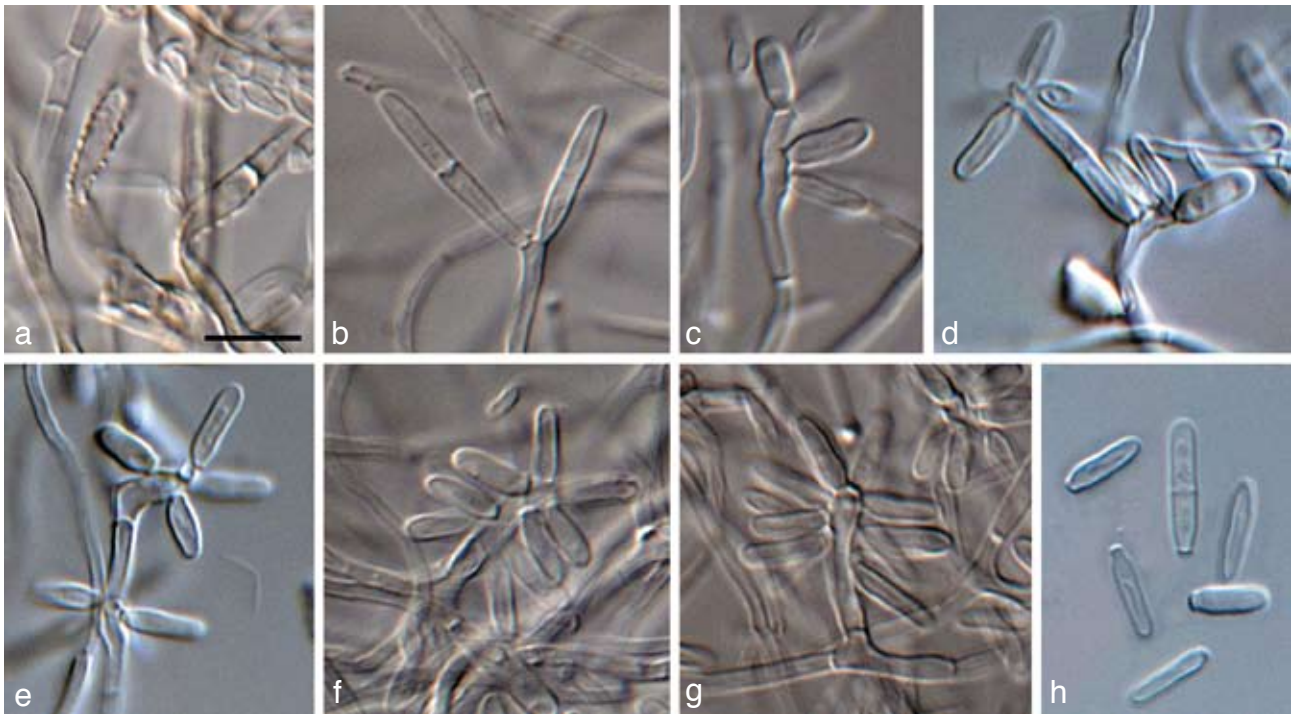


Fig. 5 *Mycosphaerella mozambica* (CBS 122464). a. Verruculose hyphae; b–e. unbranched or loosely branched conidiophores with sympodially proliferating conidiogenous cells; f–g. sympodially proliferating conidiogenous cells give rise to short conidium-bearing rachis; h. conidia with truncate base. — Scale bars = 10 µm.

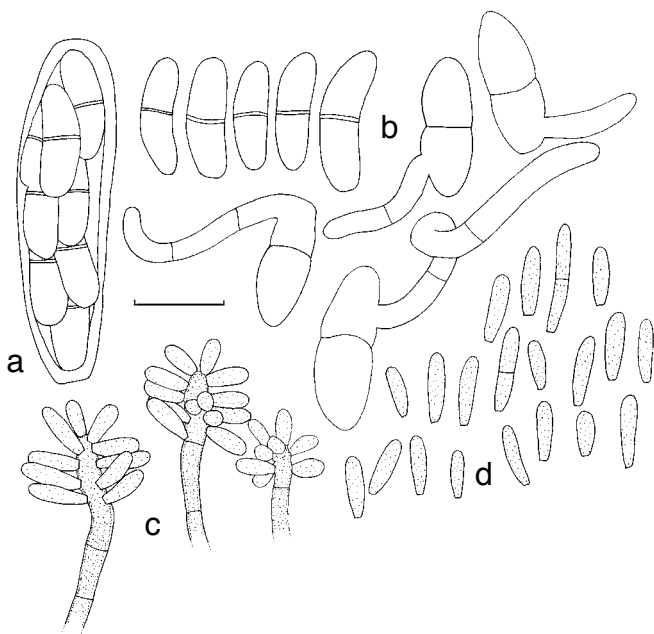


Fig. 6 *Mycosphaerella mozambica* (CBS 122464). a. Ascus with biseriolate ascospores; b. ascospore germination pattern; c. conidiophores with sympodially proliferating conidiogenous cells, which give rise to short conidium-bearing rachis; d. conidia. — Scale bar = 10 µm.

towards both ends, but more prominently towards the lower end, (9–)10–11(–12) × 3–3.5(–4) µm; ascospores becoming distorted upon germination after 24 h on MEA, becoming constricted at the septum, 6–7 µm wide with irregular, wavy germ tubes, growing 90° to the long axis, and not arising from the polar ends of the spore.

In vitro on MEA: *Mycelium* submerged and superficial; submerged hyphae hyaline to subhyaline, thin-walled, smooth or slightly rough, 2–4 µm wide; aerial hyphae pale olivaceous, smooth or finely verruculose. *Conidiophores* arising from unbranched or loosely branched hyphae, occasionally reduced to conidiogenous cells or integrated, hyaline, subcylindrical, 2–2.5 µm wide and up to 35 µm long. *Conidiogenous cells* integrated, terminal, polyblastic, sympodial, loci aggregated, flat, not protuberant (not denticle-like), unthickened, but somewhat darkened. *Conidia* solitary, obovoid, ellipsoidal, obclavate 0(–1)-septate, hyaline, thin-walled, smooth, (5–)9–12(–22) × 2–2.5(–3) µm; hilum truncate, flat, broad, unthickened, slightly darkened, about 1 µm diam. Although rarely observed, older conidia can become elongated, obclavate, and up to 4-septate.

Cultural characteristics — Colonies on MEA reaching 45 mm diam after 30 d at 24 °C; erumpent, folded, with moderate velvety to hairy aerial mycelium, with smooth, entire margins; surface pale vinaceous to mouse-grey; brown-vinaceous in reverse. Colonies on OA reaching 51 mm diam after 30 d at 24 °C; effuse, with sparse aerial mycelium and entire edge; surface vinaceous-buff to vinaceous, and pale vinaceous in reverse.

Specimens examined. MOZAMBIQUE, Chimoio, Bairro, on leaf of *Musa* cv. 2003, A. Viljoen, holotype CBS H-20039, culture ex-type X34 = CBS 122464; CBS H-20040, CBS H-20041, CBS H-20042.

Notes — Sympodially proliferating conidiogenous cells are somewhat confusing with other morphologically similar genera such as *Ramichloridium* and *Veronaea*. The type species and most of the taxa referred to these genera are dematiaceous. The scars in *Ramichloridium* are subhyaline and slightly prominent. *Veronaea* has pigmented, truncate, flat loci and conidia with truncate bases. A recent revision of *Ramichloridium* and allied genera (Arzanlou et al. 2007b) revealed the type species of *Ramichloridium*, *R. apiculatum*, to be allied to the *Dissoconium* clade in Capnodiales, while the type species of *Veronaea*, *V. botryosa*, resides in Chaetothiales. *Mycosphaerella mozambica* appeared to occur quite commonly on the banana samples investigated from Mozambique. Based on DNA sequence data, the ex-type strain appears similar to an isolate collected in Australia (CBS 121391 = X884). Unfortunately, however, the latter strain was sterile, so this could not be confirmed based on morphology.

Mycosphaerella musae (Speg.) Syd. & P. Syd., Philipp. J. Sci., C 8: 482. 1913

Basionym. *Sphaerella musae* Speg., Anales Mus. Nac. Hist. Nat. Buenos Aires 19: 354. 1909.

= *Sphaerella musae* Sacc., Atti Accad. Sci. Veneto-Trentino-Istriana, Ser. 3, 10: 67. 1917, homonym.

Specimen examined. ARGENTINA, Jujuy, Orán, on leaves of *Musa sapientum*, Mar. 1905, holotype LPS, slide ex-type IMI 91165.

Notes — *Mycosphaerella musae* is reported to be the causal organism of *Mycosphaerella* speckle disease. However, as shown in the present study (Fig. 1), several distinct species appear to be able to induce these symptoms. Further collections would thus be required to recollect this species. All cultures examined in the present study were sterile.

Mycosphaerella musicola R. Leach ex J.L. Mulder, Trans. Brit. Mycol. Soc. 67: 77. 1976

Basionym. *Mycosphaerella musicola* R. Leach, Trop. Agric. (Trinidad) 18: 92. 1941 (nom. nud.).

Anamorph. *Pseudocercospora musae* (Zimm.) Deighton, Mycol. Pap. 140: 148. 1976.

Basionym. *Cercospora musae* Zimm., Centralbl. Bakteriol. Parasitenk. 2. Abt. 8: 219. 1902.

= *Cercospora musae* Massee, Bull. Misc. Inform. Kew 28: 159. 1914.

Specimens examined. JAMAICA, on leaves of *Musa sapientum*, Jan. 1959, R. Leach, holotype IMI 75804a. — CUBA, on leaves of *Musa* sp., epitype designated here CBS H-20038, culture ex-epitype IMI 123823 = CBS 116634.

Pseudocercospora assamensis Arzanlou & Crous, *sp. nov.*
— MycoBank MB505974; Fig. 7, 8

Pseudocercosporae musae similis, sed conidiis longioribus et angustioribus, (30–)59–70(–83) × 2–3 µm.

Etymology. Named after the locality of origin, India, Assam.

In vitro on MEA: *Mycelium* submerged and superficial; submerged hyphae smooth, branched, septate, medium brown, 2.5–4 µm wide; aerial hyphae thin-walled, smooth, medium brown. *Conidiophores* solitary, arising from superficial hyphae, medium brown, thin-walled, smooth, unbranched or branched above, 0–1-septate, subcylindrical, straight, up to 20 µm long, 2–3 µm wide. *Conidiogenous cells* integrated, terminal, or conidiophores reduced to conidiogenous cells, subcylindrical, tapering to truncate or bluntly rounded apices, medium brown, smooth, proliferating sympodially; conidial scars inconspicuous. *Conidia* solitary, pale brown, smooth, subcylindrical, with truncate bases and bluntly rounded apices, thin-walled with irregular swellings in older conidia, straight or curved, pluri-septate, (30–)59–70(–83) × 2–3 µm; hila about 1 µm wide, neither thickened nor darkened-refractive; microcyclic conidiation observed.

Cultural characteristics — Colonies on MEA reaching 47 mm diam after 30 d at 24 °C. Colonies elevated at the centre, with

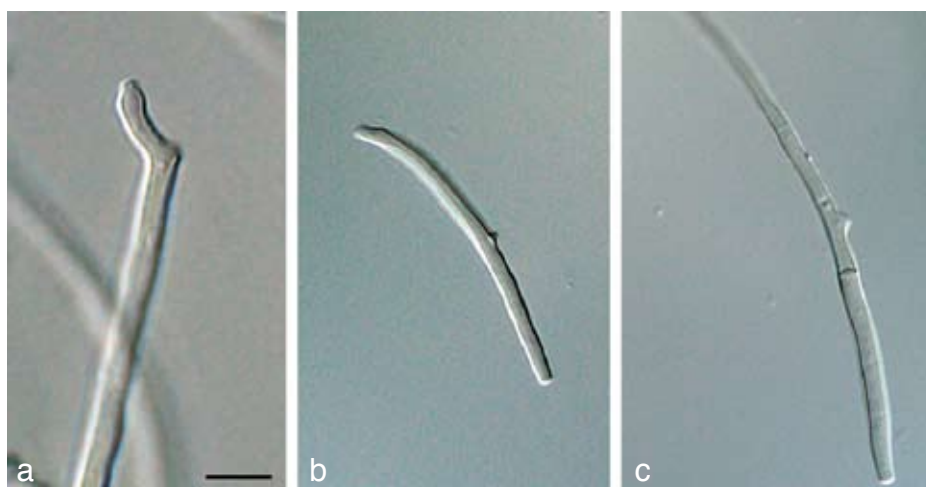


Fig. 7 *Pseudocercospora assamensis* (CBS 122467). a. Conidiophore with sympodial and percurrent growth of conidiogenous cell; b–c. conidia. — Scale bar = 10 µm.

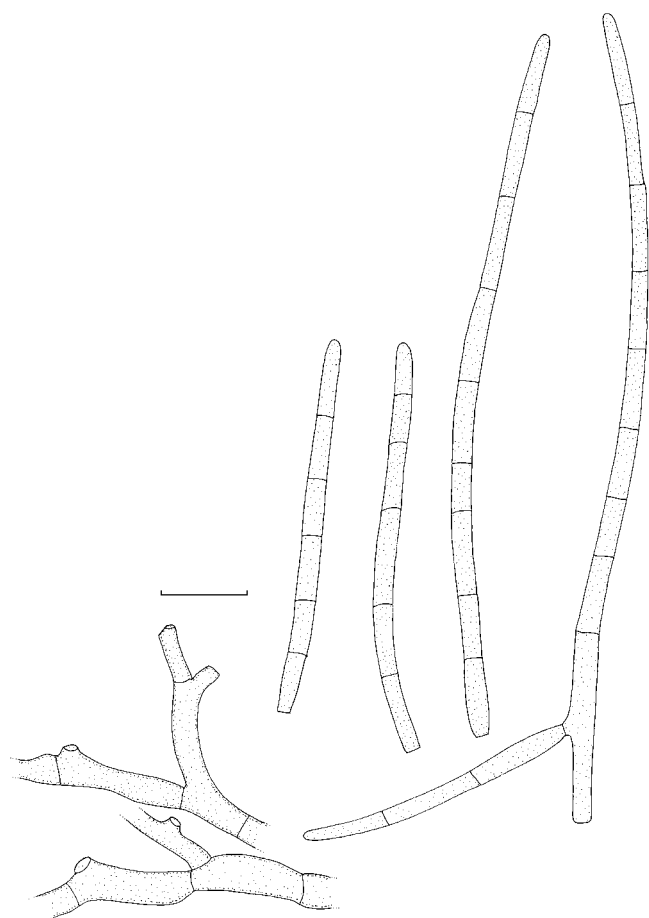


Fig. 8 *Pseudocercospora assamensis* (CBS 122467). — Scale bar = 10 μm .

abundant aerial mycelium, and entire, smooth margin; surface pale mouse-grey to mouse-grey, olivaceous in reverse. Colonies on OA reaching 35 mm diam after 30 d at 24 °C; effuse, with moderate, velvety aerial mycelium, and entire, smooth margins; surface pale mouse-grey, and iron-grey in reverse.

Specimen examined. INDIA, Assam, Naojan, on leaf of *Musa* cv. Nanderan (Plantain), 2005, I. Buddenhagen, holotype CBS H-20044, culture ex-type X988 = CBS 122467.

Notes — Based on its characteristic conidial shape and dimensions, *P. assamensis* appears distinct from those species presently known from this host. *Pseudocercospora musae* conidia are shorter and above all wider (10–80 \times 2–6 μm ; Carlier et al. 2000) than in *P. longispora*. *Pseudocercospora longispora* has much longer and somewhat wider conidia.

Pseudocercospora indonesiana Arzanlou & Crous, *sp. nov.*
— MycoBank MB505975; Fig. 9, 10

Pseudocercosporae longisporae similis, sed conidiis modice brunneis, hyphis tenuitunicatis, modice brunneis, non inflatis et non monilioidibus-muriformibus, coloniis in vitro celeriter crescentibus (usque ad 27 mm diam post 30 dies ad 24 °C in agar maltoso).

Etymology. Named after its country of origin, Indonesia.

In vitro on MEA: *Mycelium* submerged and superficial; submerged hyphae thin-walled, smooth, branched, septate, medium brown, 2.5–4 μm wide; aerial hyphae, thin-walled, smooth, medium brown. *Conidiophores* solitary, arising from superficial hyphae, medium brown, smooth, unbranched, 0–2-septate, subcylindrical, straight, up to 30 μm long, 2–2.5 μm wide. *Conidiogenous cells* integrated, terminal, subcylindrical, tapering to truncate or bluntly rounded apices, medium brown, smooth, proliferating sympodially, frequently reduced to conidiogenous loci; conidial scars inconspicuous. *Conidia* solitary, pale brown, smooth, subcylindrical, bases truncate, apices bluntly rounded, thin-walled, straight or curved, guttulate, 3–7-septate,

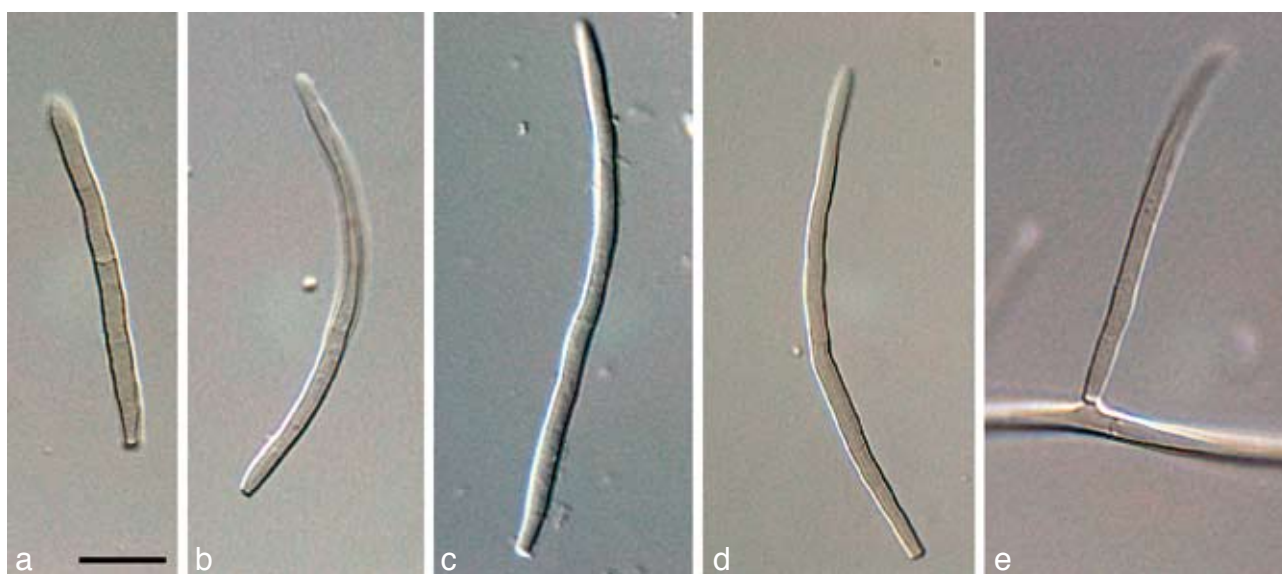


Fig. 9 *Pseudocercospora indonesiana* (CBS 122473). a–d. Conidia; e. intercalary conidiogenous cell. — Scale bar = 10 μm .

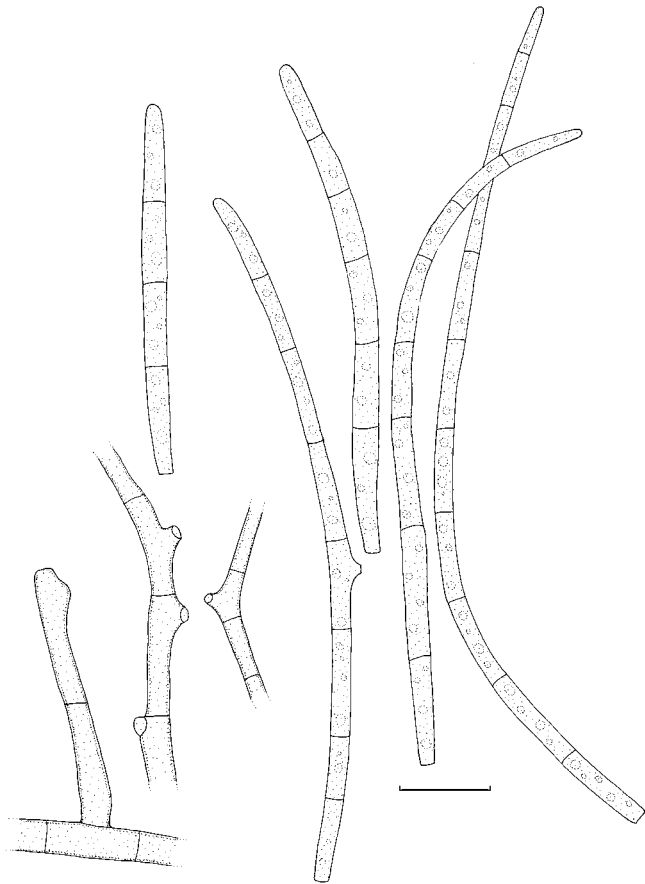


Fig. 10 *Pseudocercospora indonesiana* (CBS 122473). — Scale bar = 10 μ m.

(40–)78–95(–120) \times 2–3 μ m; hila unthickened, neither darkened nor refractive.

Cultural characteristics — Colonies on MEA reaching 27 mm diam after 30 d at 24 °C. Colonies low convex, with abundant aerial mycelium, and entire, smooth margin; surface pale mouse-grey to mouse-grey; in reverse dark mouse-grey. Colonies on OA reaching 35 mm diam after 47 d at 24 °C; effuse, with moderate aerial mycelium, and entire, smooth margins; surface pale mouse-grey; in reverse olivaceous-black.

Specimen examined. INDONESIA, Western Sumatra, Kumango, on leaf of *Musa* cv. Buai, 2004, I. Buddenhagen, holotype CBS H-20045, culture ex-type X992 = CBS 122473.

Notes — *Pseudocercospora indonesiana* is phylogenetically distinct from the other species of *Pseudocercospora* occurring on *Musa*. Morphologically it has longer conidia than *P. musae* (teleomorph *M. musicola*) and *P. assamensis*, though they are very similar to those of *P. longispora*; it can, however, be distinguished from the latter by having medium brown conidia (those of *P. longispora* being pale brown), and its faster growth rate on MEA and OA.

Pseudocercospora longispora Arzanlou & Crous, sp. nov.
— MycoBank MB505976; Fig. 11, 12

Pseudocercosporae musae similis, sed conidiis longioribus, 82–120 \times 2.5–4 μ m.

Etymology. Named after its characteristically long conidia.

In vitro on OA: *Mycelium* submerged and superficial; submerged hyphae smooth, branched, septate, medium brown, thin-walled, 2–3 μ m wide; aerial hyphae smooth, medium brown; hyphal cells become thick-walled, swollen, forming dark-brown moniloid, muriform cells, 5–17 \times 7–12 μ m. *Conidiophores* solitary, arising from superficial hyphae; conidiophores medium brown, smooth, unbranched or branched above, 0–2-septate, subcylindrical, straight, up to 30 μ m long, 2–3 μ m wide. *Conidiogenous cells* integrated, terminal, subcylindrical, tapering to truncate or

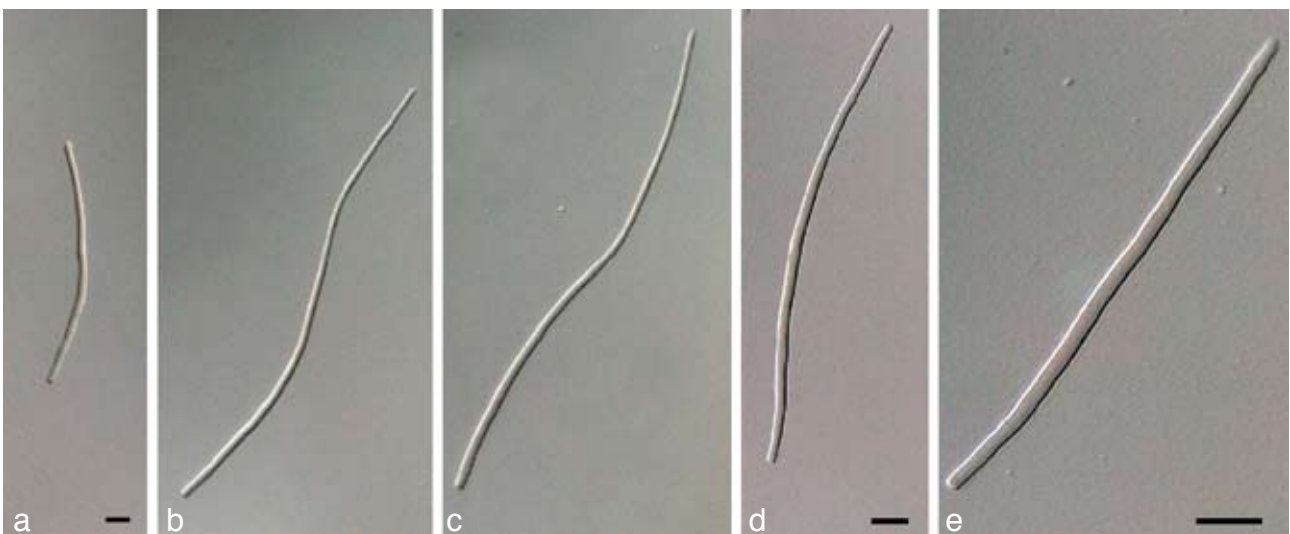


Fig. 11 *Pseudocercospora longispora* (CBS 122469). a–e. Conidia. — Scale bar = 10 μ m.

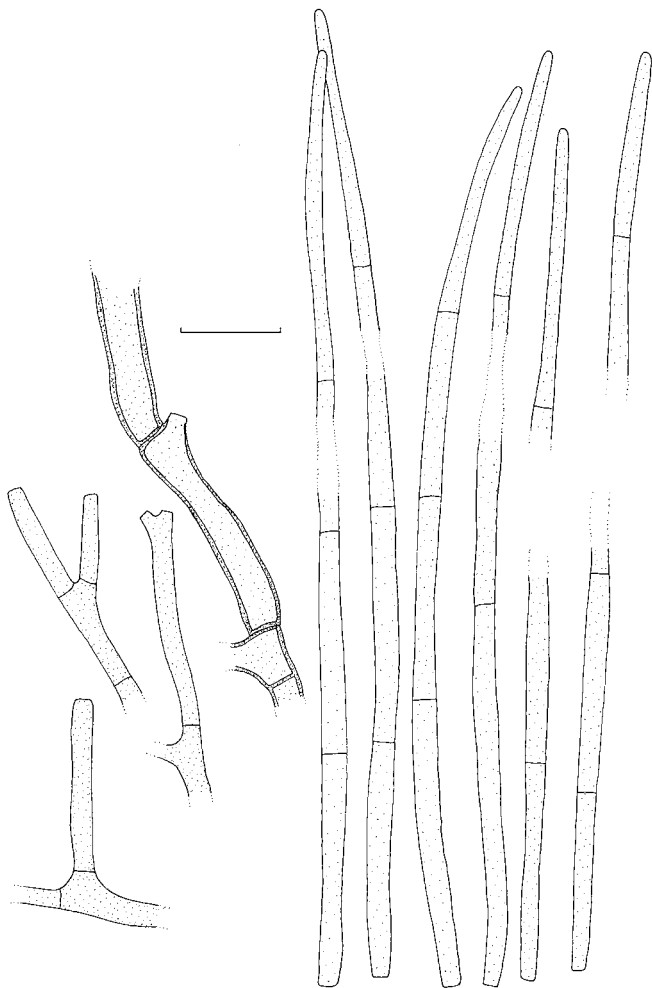


Fig. 12 *Pseudocercospora longispora* (CBS 122469). — Scale bar = 10 μ m.

bluntly rounded apices, medium brown, smooth, forming conidia by sympodial proliferation, rarely by means of percurrent proliferation; conidial scars inconspicuous. *Conidia* solitary, pale brown, thin-walled, smooth, cylindrical to subcylindrical, widest in the middle of conidium, tapering towards the apex, bases truncate, straight, multi-septate, $82\text{--}120 \times 2.5\text{--}4 \mu\text{m}$; hila about $1 \mu\text{m}$ diam, neither thickened nor darkened-refractive.

Cultural characteristics — Colonies reaching 15 mm diam after 30 d at 24°C . Colonies erumpent, with moderate aerial mycelium, and entire, smooth edges; surface buff to rosy-buff, mouse-grey to dark grey; in reverse dark mouse-grey. Colonies on OA reaching 15 mm diam after 30 d at 24°C , effuse, with abundant aerial mycelium, and entire, smooth margins; surface pale mouse-grey; in reverse dark mouse-grey.

Specimen examined. MALAYSIA, Felcra Plantation, Melaka, *Musa* cv. Pisang Byok AAA/AAB, July 1988, D.R. Jones, holotype CBS H-20043, culture ex-type X475 = CBS 122470.

Notes — *Pseudocercospora longispora* resembles *P. musae* (teleomorph *Mycosphaerella musicola*) in its colony morphology on MEA and OA. However, in *P. musae* conidia are much shorter ($10\text{--}80 \times 2\text{--}6 \mu\text{m}$; Carlier et al. 2000) than in *P. longispora*.

***Stenella musae* Arzanlou & Crous, sp. nov.** — MycoBank MB505977; Fig. 13, 14a

Conidiophora ex hyphis superficialibus oriunda, modice brunnea, tenuitunicata, verruculosa vel verrucosa, 0–3-septata, subcylindrica, recta vel geniculata-sinuosa, non ramosa, ad $30 \mu\text{m}$ longa et $2\text{--}2.5 \mu\text{m}$ lata. Cellulae conidiogenae integratae, terminales, interdum intercalares, modice brunneae, verruculosae, subcylindricae, apicem versus attenuatae, sympodiales, locis truncatis, subdenticulatis, $1\text{--}1.5 \mu\text{m}$ diam, inspissatis et fuscatis-refringentibus praeditae. Conidia solitaria, dilute brunnea, verruculosa, tenuitunicata, subcylindrica vel obclavata, recta vel curvata, 0–7-septata, $(7\text{--})27\text{--}40\text{--}(70) \times 1.5\text{--}3 \mu\text{m}$, hilo inspissato obscuriore refringente, $1\text{--}1.5 \mu\text{m}$ diam praedita.

Etymology. Named after its host, *Musa*.

In vitro on MEA: *Mycelium* submerged and superficial; submerged hyphae smooth to verrucose, thin-walled, subhyaline to medium brown, $2\text{--}3 \mu\text{m}$ wide, with thin septa; aerial hyphae coarsely verrucose, olivaceous-brown to medium brown, rather

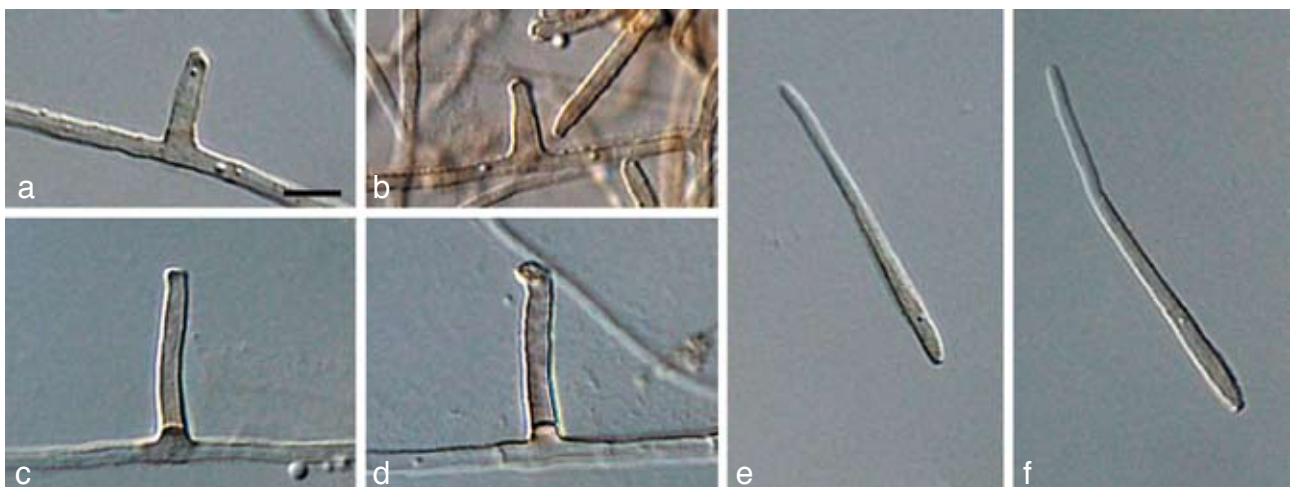


Fig. 13 *Stenella musae* (CBS 122477). a–d. Conidiophores with sympodially proliferating conidiogenous cells; e–f. conidia. — Scale bar = 10 μ m.

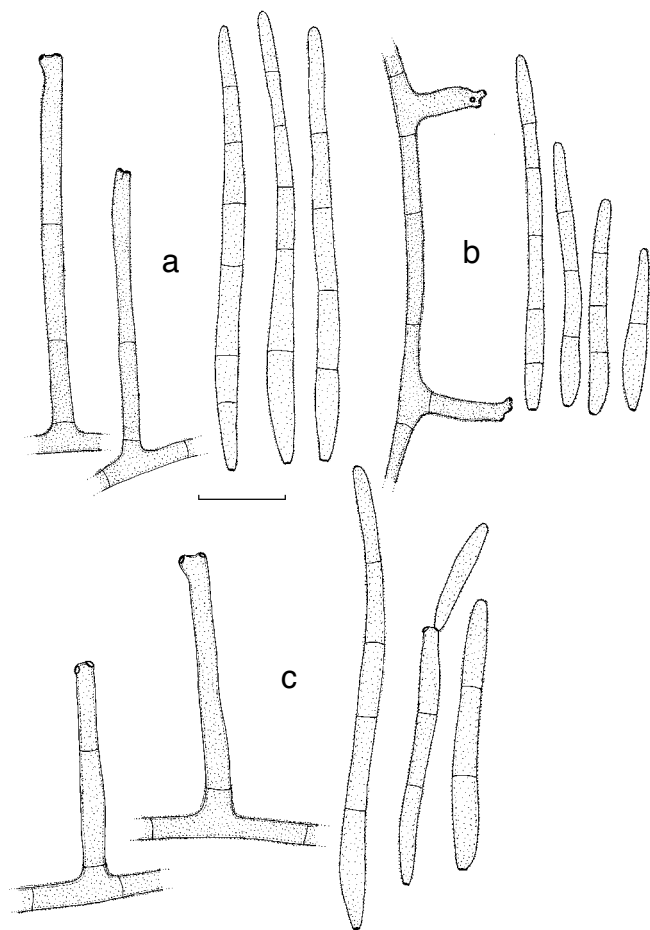


Fig. 14 a. *Stenella musae* (CBS 122477); b. *Stenella queenslandica* (CBS 122475); c. *Stenella musicola* (CBS 122479). — Scale bar = 10 µm.

thick-walled, 2–2.5 µm wide, with thin septa. *Conidiophores* arising from superficial hyphae, medium brown, rather thick-walled, finely verrucose to verruculose, 0–3-septate, subcylindrical, straight to geniculate-sinuous, unbranched, up to 30 µm long, 2–2.5 µm wide. *Conidiogenous cells* integrated, terminal, sometimes intercalary, unbranched, medium brown, finely verruculose, subcylindrical, tapering towards flat-tipped, subdentate apical loci, 1–1.5 µm diam, proliferating sympodially; loci thickened, darkened, refractive. *Conidia* solitary, thin-walled, pale brown, finely verrucose, subcylindrical to obclavate, with subobtuse apex, and long obconically subtruncate

to obconically subtruncate base, straight to curved, 0–7-septate, (7–)27–40(–70) × 1.5–3 µm; hilum thickened, darkened, refractive, 1–1.5 µm diam.

Cultural characteristics — Colonies on MEA reaching 30 mm diam after 30 d at 24 °C. Colonies erumpent, unevenly folded, with moderate aerial mycelium, and entire, smooth margin; surface pale mouse-grey to mouse-grey; in reverse dark mouse-grey. Colonies on OA reaching 48 mm diam after 30 d at 24 °C; effuse, with moderate aerial mycelium, and entire margins; surface pale mouse-grey to mouse-grey, and dark mouse-grey in reverse.

Specimens examined. TONGA, ACIAR Plot, Tongatapu, *Musa* cv. TU8 AAAA, Mar. 1990, R.A. Fullerton, holotype CBS H-20047, culture ex-type X745 = CBS 122477. — WINDWARD ISLANDS, St Lucia, on *Musa* cv., 2003, E. Reid, culture X47 = CBS 122476.

Notes — Stover (1994) discussed and illustrated a *Stenella* sp. from banana, and named it '*Cercospora non-virulentum*', which was considered as a prevalent co-inhabitant with Black Leaf Streak and Sigatoka. *Mycosphaerella musae* is the causal agent of Mycosphaerella Speckle disease of banana (Carrier et al. 2000). A comparison made between strains isolated from Mycosphaerella Speckle disease symptoms (presumed *M. musae*), and '*Cercospora non-virulentum*' isolates in culture, suggested that the two species are identical, both producing brown, verruculose conidia with thickened scars on agar medium (Stover 1994). An inoculation assay carried out by using a mixture of conidia and mycelium of '*Cercospora non-virulentum*' on banana 'Cavendish Valery' leaves resulted in leaf spot symptoms after 70 d incubation, resembling those obtained using ascospores derived from '*M. musae*' strains.

Because '*Cercospora non-virulentum*' was never validly published, it is difficult to make a comparison with *Stenella musae*. However, based on the description provided by Stover (1994), *S. musae* has shorter conidia (7–70 × 1.5–3 µm) than '*Cercospora non-virulentum*' (55–200 × 2.6–3.2 µm).

A further complication lies in the fact that several phylogenetically distinct species of *Mycosphaerella* have in the past been isolated from Mycosphaerella Speckle disease symptoms of banana. All the '*M. musae*' isolates examined in this study were sterile, and thus could not be used for morphological comparison. *Mycosphaerella musae* was originally described from *Musa sapientum* leaves collected in Argentina. An examination of the type (IMI 91165) shows ascospores to be straight to slightly curved, fusoid-ellipsoidal with narrowly obtuse ends, being widest at the median septum (Fig. 15). Further collections would thus be required to clarify the identity of this species.

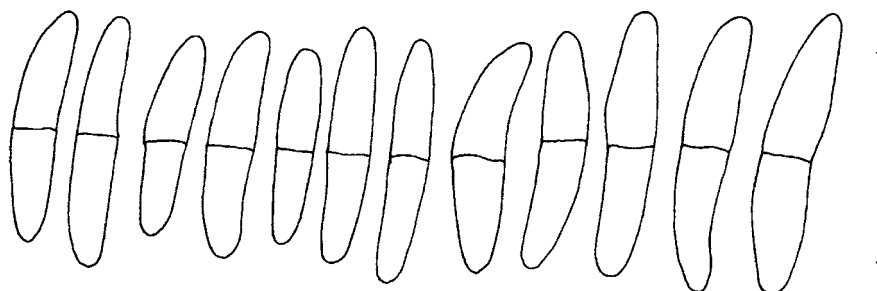


Fig. 15 Ascospores of *Mycosphaerella musae* (IMI 91165). — Scale bar = 10 µm.

Stenella musicola Arzanlou & Crous, *sp. nov.* — MycoBank MB505978; Fig. 14c, 16

Stenellae musae similis, sed conidiophoris leviter longioribus et latioribus, (18–)30–36(–45) × (2–)2.5–3(–4) μm, conidiis saepe longioribus, (7–)37–57(–120) × 2–4 μm. A *Stenellae queenslandica* conidiophoris 0–2-septatis et conidiis 2–4 μm latis differt.

Etymology. Named after its host, *Musa*.

In vitro on MEA: *Mycelium* submerged and superficial; submerged hyphae smooth to verrucose, thin-walled, subhyaline to olivaceous brown, 2–3 μm wide, with thin septa; aerial hyphae coarsely verrucose, olivaceous-brown, rather thick-



Fig. 16 *Stenella musicola* (CBS 122479). a–e. Conidiophores with sympodially proliferating conidiogenous cells and darkened, thickened loci; f–g. hyphal anastomoses; h–i. conidia. — Scale bar = 10 μm.

walled, 2–2.5 µm wide, with thin septa. *Conidiophores* arising from superficial hyphae, pale brown, rather thick-walled, finely verruculous, 0–2-septate, occasionally continuous with supporting hyphae, subcylindrical, straight to geniculate-sinuous, unbranched, (18–)30–36(–45) × (2–)2.5–3(–4) µm. *Conidiogenous cells* integrated, terminal, sometimes intercalary, unbranched, pale brown, smooth or finely verruculous, cylindrical to subcylindrical, sometimes swollen at the apex, with flat-tipped apical loci, proliferating sympodially; 1–1.5 µm diam, loci thickened, darkened, refractive. *Conidia* solitary, rarely in unbranched chains, medium brown, thin-walled, finely verruculous subcylindrical to obclavate, with subobtuse apex, and long obconically subtruncate to obconically subtruncate base, straight to curved, 0–pluri-septate, (7–)37–57(–120) × 2–4 µm; hilum thickened, darkened, refractive, 1–1.5 µm wide.

Cultural characteristics — Colonies on MEA reaching 28 mm diam after 30 d at 24 °C; effuse, slightly raised at the centre, with moderate, velvety to hairy aerial mycelium; folded, with entire smooth margin; surface pale mouse-grey to mouse-grey; in reverse dark mouse-grey. Colonies on OA reaching 39 mm diam after 30 d at 24 °C; effuse, with moderate velvety to hairy aerial mycelium, and entire, smooth margins; surface pale mouse-grey to mouse-grey, and olivaceous in reverse.

Specimen examined. INDIA, Tamil Nadu, Tiruchirapally, on leaf of *Musa* cv. Grand Nain AAA (Cav.), 2005, *I. Buddenhagen*, holotype CBS H-20046, culture ex-type X1019 = CBS 122479.

Notes — *Stenella musicola* morphologically also resembles *S. citri-grisea* (teleomorph *Mycosphaerella citri*), which is known from *Citrus* (Pretorius et al. 2003). It differs from the later species, however, based on its conidial dimensions. In *S. musicola* conidia range from (7–)37–57(–120) × 2–4 µm, while in *S. citri-grisea* conidia are longer and narrower, namely 25–200 × 1.5–3 µm. The three new *Stenella* species on *Musa* spp. are morphologically very similar and only gradually differentiated in the size and septation of the conidiophores and conidia.

***Stenella queenslandica* Arzanlou & Crous, sp. nov.** — MycoBank MB505979; Fig. 14b, 17

Stenellae musae similis, sed conidiis longioribus, 51–83 × 2–2.5 µm. A *Stenella musicola* conidiophoris 1–4-septatis et conidiis saepe longioribus et angustioribus, 51–83 × 2–2.5 µm, differt.

Etymology. Named after Queensland, the state in Australia where this fungus was collected.

In vitro on MEA: *Mycelium* submerged and superficial; submerged hyphae smooth, thin-walled, subhyaline to olivaceous-brown, 2–3 µm wide, with thin septa; aerial hyphae coarsely verrucous, olivaceous-brown, rather thick-walled, 2–2.5 µm wide, with thin septa. *Conidiophores* arising from superficial hyphae, pale brown, thin-walled, finely verrucous, 1–4-septate, occasionally reduced to conidiogenous cells, subcylindrical, straight to geniculate-sinuous, unbranched, up to 40 µm long and 2–3 µm wide. *Conidiogenous cells* integrated, terminal, sometimes intercalary, unbranched, pale brown, smooth or finely verrucous, cylindrical, tapering to a bluntly rounded apex with flat-tipped apical loci that proliferate sympodially; loci thickened, darkened, refractive about 1 µm diam. *Conidia* solitary, medium brown, thin-walled, verrucous, subcylindrical to obclavate, with subobtuse to obtuse apex and long obconically subtruncate to obconically subtruncate base, straight to curved, 0–multi-septate, 51–83 × 2–2.5 µm; hilum thickened, darkened, refractive, 0.5–1 µm wide.

Cultural characteristics — Colonies on MEA reaching 24 mm diam after 30 d at 24 °C. Colonies effuse, slightly elevated at the centre with abundant aerial mycelium, and entire, smooth margins; surface mouse-grey to dark mouse-grey; dark mouse-grey in reverse. Colonies on OA reaching 41 mm diam after 30 d at 24 °C, colonies effuse, with moderate aerial mycelium, and entire, smooth margin; surface olivaceous-grey; iron-grey in reverse.

Specimen examined. AUSTRALIA, Queensland, Mount Lewis, Mount Lewis Road, 16° 34' 47.2" S, 145° 19' 7" E, 538 m alt., on *Musa banksii* leaf, Aug. 2006, *P.W. Crous, W. Gams & B. Summerell*, holotype CBS H-20050, culture ex-type CBS 122475.

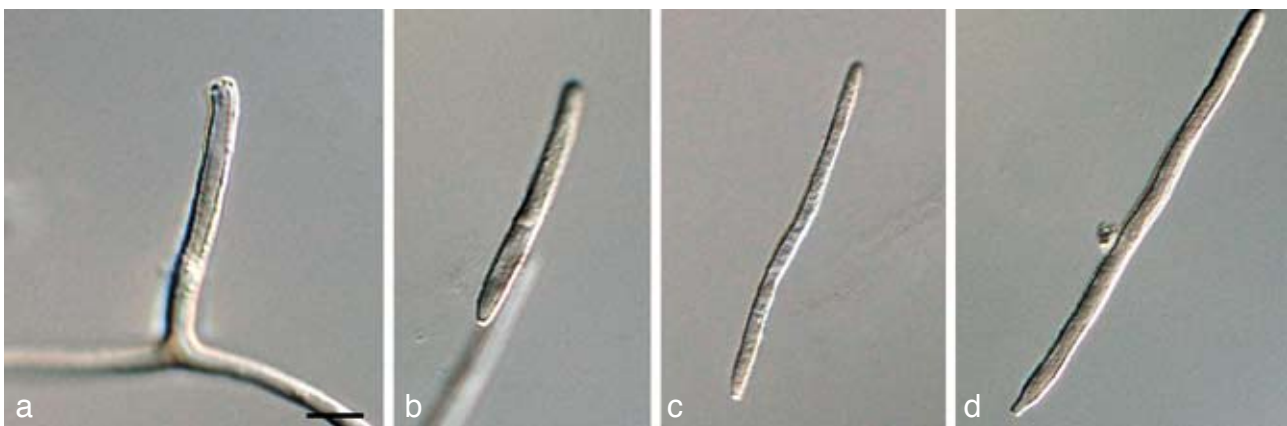


Fig. 17 *Stenella queenslandica* (CBS 122475). a. Conidiophore with terminal conidiogenous cell; b–d. conidia. — Scale bar = 10 µm.

Notes — The ITS sequence of *Stenella queenslandica* is identical to that of *Mycosphaerella obscuris* (Burgess et al. 2007), a pathogen of *Eucalyptus* known from Vietnam and Indonesia. However, the latter fungus is a species of *Teratosphaeria* with a *Readeriella* anamorph (CBS 119973), which appears to be a synonym of *T. suttonii* (Crous & Wingfield 1997, Crous et al. 2007a, b), and the deposited sequences (DQ632676, DQ632677) belong to another species.

DISCUSSION

The present study is the first multi-gene DNA phylogenetic study of a global set of *Mycosphaerella* isolates associated with the Sigatoka disease complex of banana. Considering that Sigatoka diseases are the economically most important diseases of banana and the main constraint for banana production worldwide (reviewed in Jones 2000), there was a huge paucity of knowledge relating to the identity of other *Mycosphaerella* species occurring on banana. Even though several species of *Mycosphaerella* have in the past been described from *Musa*, the majority has never been known from culture (Pont 1960, Stover 1963, 1969, 1977, 1980, 1994, Mulder & Stover 1976, Pons 1987, Crous et al. 2003, Aptroot 2006, Arzanlou et al. 2007a). The integration of DNA analyses and morphology in the present study revealed more than 20 species of *Mycosphaerella* to occur on banana. Five of these species were shown to have wider host ranges than banana only, and we described a further eight new species of *Mycosphaerella* from various *Musa* collections.

The three primary agents of the Sigatoka disease complex, *M. eumusae*, *M. fijiensis*, and *M. musicola* can be distinguished based on their conidial morphology and ascospore germination patterns (reviewed in Jones 2000, Crous & Mourichon 2002). Conidia of *M. fijiensis* are medium brown, and have a characteristic thickening along the basal rim of the hilum, which is absent in *M. musicola* and *M. eumusae*. These two species have medium and pale brown conidia, respectively. Ascospores of *M. fijiensis* and *M. musicola* germinate from both polar ends, do not become distorted (4–5 µm wide), with a germ tube parallel to the long axis of the spore. However, in *M. musicola* a mucoid sheath surrounds the germinating ascospores, and the germ tubes are more irregular in width than in *M. fijiensis*. Ascospores of *M. eumusae* show some distortion upon germination (5–6 µm wide), and frequently germinate by means of 3–4 germ tubes, which grow parallel or lateral to the long axis of the spore (Fig. 18, 19). Thus, all of these species can be identified based on a combination of morphology and cultural characteristics, but proper identification remains problematic to the non-specialist. Hence the DNA barcodes generated in this study, along with the Taqman probes (Arzanlou et al. 2007a) is an alternative method of identification.

Besides the three primary agents of the Sigatoka complex disease, which have *Pseudocercospora* anamorphs, three additional *Pseudocercospora* species were described from *Musa* in the present study. One of these, *Pseudocercospora longispora*, has in the past been confused with *P. musae* (teleomorph *M. musicola*) and has been isolated from similar Sigatoka disease lesions. Although these species can be distinguished

based on differences in conidial size and shape, these characters overlap among the various *Pseudocercospora* species, making explicit identification solely possible by means of additional markers such as DNA sequence data (Fig. 2).

Much confusion still surrounds the identity of *M. musae*. According to Stover (1994), *M. musae* is identical to a *Stenella* species called '*Cercospora non-virulentum*'. This species was considered as a prevalent co-inhabitant with black Sigatoka and yellow Sigatoka. A comparison made between isolates isolated from *Mycosphaerella* Speckle disease symptoms, revealed several phylogenetically distinct species to be associated with this disease. In the present study we treated four *Stenella* species, three of which proved to be new on banana. None of these three new species fit with the description provided for '*Cercospora non-virulentum*' by Stover (1994), which appears to represent yet another undescribed species of *Stenella*. Further collections would thus be required to resolve the status of '*Cercospora non-virulentum*' and *M. musae*.

Data obtained in the present study revealed three species of *Dissoconium* on *Musa*, of which one is described as new. The recent revision of the genus *Ramichloridium* and allied genera (Arzanlou et al. 2007b) revealed that *R. apiculatum*, type spe-

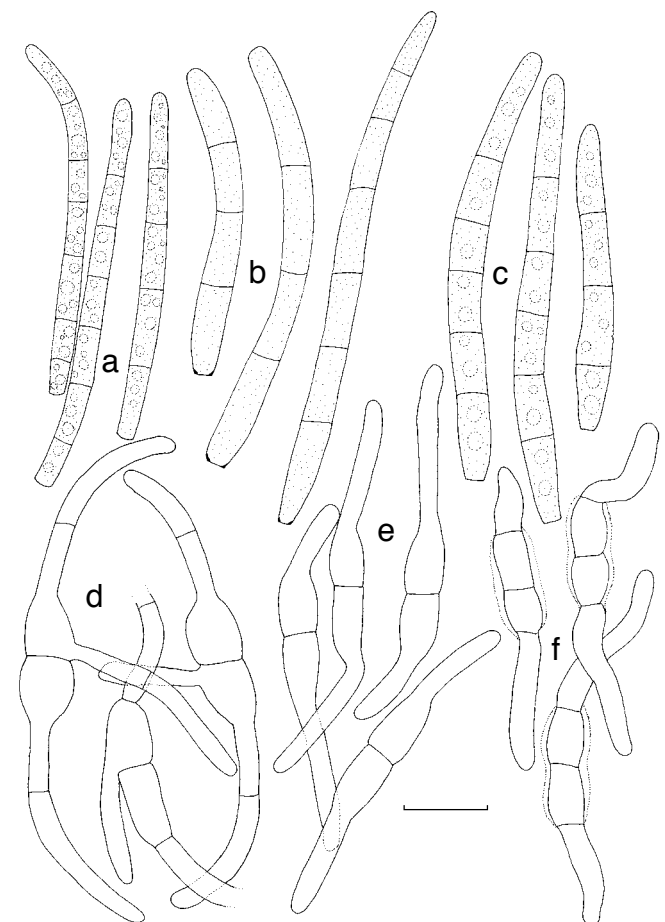


Fig. 18 a–c. Conidia in *Pseudocercospora eumusae*, *P. fijiensis*, and *P. musae*, respectively; d–f. ascospore germination pattern in *M. eumusae*, *M. fijiensis* and *M. musicola*, respectively. — Scale bar = 10 µm.

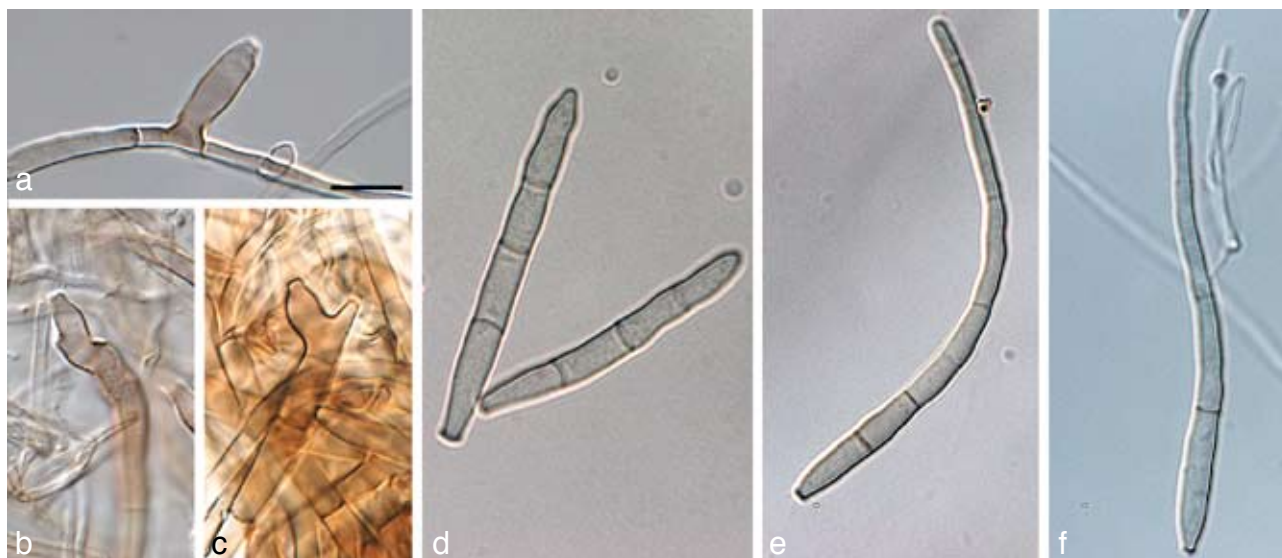


Fig. 19 *Pseudocercospora fijiensis*. a–c. Conidiophores with sympodially proliferating conidiogenous cells; d–f. obclavate conidia with darkened hilum. — Scale bar = 10 µm.

cies of *Ramichloridium*, has phylogenetic affinity with the genus *Dissoconium*. However, the latter genus is morphologically distinct from *Ramichloridium* by producing forcibly discharged pairs of primary and secondary conidia. Thus far seven species of *Dissoconium* have been described from different substrates, and as in the *Pseudocercospora* species occurring on *Musa*, identification is best achieved by means of molecular sequence data.

It is interesting to note that up to six species have been reported during the course of the present study as occurring on hosts other than *Musa*. Although our present data suggest the causal agents of Sigatoka to be highly specific to banana, no information is presently available to elucidate the ecology and possible pathology of the wide host range species, and inoculation studies would now be required to fully resolve their status as foliar pathogens of banana. The possibility exists that some of the species described here as new have been described previously on hosts other than banana. However, none of the sequences presently in GenBank, or in the MycoBank database, match any known comparable species.

From the data presented in this study, it is clear that the Sigatoka disease complex is caused by a multitude of *Mycosphaerella* species. However, the exact contribution of each of these species to the disease complex remains unclear. The multi-locus DNA sequence data set established in this study can be used to develop species-specific molecular detection tools, which is a good alternative for traditional diagnostics. These tools can subsequently be implemented in disease management programmes.

Acknowledgements The work of Mahdi Arzanlou was funded by the Ministry of Science, Research and Technology of Iran, which we gratefully acknowledge. Several colleagues from different countries provided material without which this work would not have been possible. Errol Reid from the Windward Islands, Yasmina Jauferally-Fakim from Mauritius, Gert Kema

from the Netherlands and Randy Christopher Ploetz from Florida, USA. We thank Marjan Vermaas for preparing the photographic plates, and Arien van Iperen for taking care of the cultures. Dr Lute-Harm Zwieters and Prof. dr P.J.G.M. de Wit are thanked for their critical review of this article, and Prof. dr Walter Gams for providing the Latin diagnoses.

REFERENCES

- Aptroot A. 2006. *Mycosphaerella* and its anamorphs: 2. Conspectus of *Mycosphaerella*. CBS Biodiversity Series 5: 1–231.
- Arzanlou M, Abeln ECA, Kema GHJ, Waalwijk C, Carlier J, Vries I de, Guzmán M, Crous PW. 2007a. Molecular diagnostics for the Sigatoka disease complex of banana. *Phytopathology* 97: 1112–1118.
- Arzanlou M, Groenewald JZ, Gams W, Braun U, Shin H-D, Crous PW. 2007b. Phylogenetic and morphotaxonomic revision of *Ramichloridium* and allied genera. *Studies in Mycology* 58: 57–93.
- Burgess TI, Barber PA, Sufaati S, Xu D, Hardy GESTJ, Dell B. 2007. *Mycosphaerella* spp. on Eucalyptus in Asia; new species; new hosts and new records. *Fungal Diversity* 24: 135–157.
- Carbone I, Kohn LM. 1999. A method for designing primer sets for speciation studies in filamentous ascomycetes. *Mycologia* 91: 553–556.
- Carlier J, Lebrun MH, Zapater MF, Dubois C, Mourichon X. 1996. Genetic structure of the global population of bananas black leaf streak fungus *Mycosphaerella fijiensis*. *Molecular Ecology* 5: 499–510.
- Carlier J, Zapater MF, Lapeyre F, Jones DR, Mourichon X. 2000. Septoria leaf spot of banana: a newly discovered disease caused by *Mycosphaerella eumusae* (anamorph *Septoria eumusae*). *Phytopathology* 90: 884–890.
- Cortinas MN, Crous PW, Wingfield BD, Wingfield MJ. 2006. Multi-gene phylogenies and phenotypic characters distinguish two species within the *Colletogloeopsis zuluensis* complex associated with Eucalyptus stem cankers. *Studies in Mycology* 55: 133–146.
- Crous PW. 1998. *Mycosphaerella* spp. and their anamorphs associated with leaf spot diseases of Eucalyptus. *Mycologia Memoirs* 21: 1–170.
- Crous PW, Aptroot A, Kang JC, Braun U, Wingfield MJ. 2000. The genus *Mycosphaerella* and its anamorphs. *Studies in Mycology* 45: 107–121.
- Crous PW, Braun U. 2003. *Mycosphaerella* and its anamorphs. 1. Names published in *Cercospora* and *Passalora*. CBS Biodiversity Series 1: 1–571.
- Crous PW, Braun U, Groenewald JZ. 2007a. *Mycosphaerella* is polyphyletic. *Studies in Mycology* 58: 1–32.

- Crous PW, Gams W, Stalpers JA, Robert V, Stegehuis G. 2004a. MycoBank: an online initiative to launch mycology into the 21st century. *Studies in Mycology* 50: 19–22.
- Crous PW, Groenewald JZ, Aptroot A, Braun U, Xavier M, Carlier J. 2003. Integrating morphological and molecular data sets in *Mycosphaerella*, with specific reference to species occurring on *Musa*. In: Jacome L, Lepoivre P, Marin D, Ortiz R, Romero R, Escalant JV (eds), *Mycosphaerella* leaf spot diseases of bananas: present status and outlook. Proceedings of the Second International Workshop on *Mycosphaerella* leaf spot diseases of bananas, San José, Costa Rica: 43–57. INIBAP, France.
- Crous PW, Groenewald JZ, Pongpanich K, Himaman W, Arzanlou M, Wingfield MJ. 2004b. Cryptic speciation and host specificity among *Mycosphaerella* spp. occurring on Australian *Acacia* species grown as exotics in the tropics. *Studies in Mycology* 50: 457–469.
- Crous PW, Kang JC, Braun U. 2001. A phylogenetic redefinition of anamorph genera in *Mycosphaerella* based on ITS rDNA sequence and morphology. *Mycologia* 93: 1081–1101.
- Crous PW, Mourichon X. 2002. *Mycosphaerella eumusae* and its anamorph *Pseudocercospora eumusae* spp. nov.: causal agent of eumusae leaf spot disease of banana. *Sydowia* 54: 35–43.
- Crous PW, Summerell BA, Carnegie AJ, Mohammed C, Himaman W, Groenewald JZ. 2007b. Follicolous *Mycosphaerella* spp. and their anamorphs on *Corymbia* and *Eucalyptus*. *Fungal Diversity* 26: 143–185.
- Crous PW, Verkley GJM, Groenewald JZ. 2006a. *Eucalyptus* microfungi known from culture. 1. *Cladiorhiza* and *Fulvoflamma* genera nova, with notes on some other poorly known taxa. *Studies in Mycology* 55: 53–63.
- Crous PW, Wingfield MJ. 1997. *Colletogloeopsis*, a new coelomycete genus to accommodate anamorphs of *Mycosphaerella* occurring on *Eucalyptus*. *Canadian Journal of Botany* 75: 667–674.
- Crous PW, Wingfield MJ, Mansilla JP, Alfenas AC, Groenewald JZ. 2006b. Phylogenetic reassessment of *Mycosphaerella* spp. and their anamorphs occurring on *Eucalyptus*. II. *Studies in Mycology* 55: 99–131.
- Deighton FC. 1976. Studies on *Cercospora* and allied genera. VI. *Pseudocercospora* Speg., *Pantospora* Cif. and *Cercoseptoria* Petr. *Mycological Papers* 140: 1–168.
- Deighton FC. 1979. Studies on *Cercospora* and allied genera. VII. New species and redispositions. *Mycological Papers* 144: 1–56.
- Farr DF, Bills GF, Chamuris GP, Rossman AY. 1995. *Fungi on plants and plant products in the United States*. APS Press, St Paul, MN, USA.
- Gams W, Verkley GJM, Crous PW. 2007. *CBS course of mycology*, 5th ed. Centraalbureau voor Schimmelcultures, Utrecht, Netherlands.
- Goodwin SB, Dunkle DL, Zismann VL. 2001. Phylogenetic analysis of *Cercospora* and *Mycosphaerella* based on the internal transcribed spacer region of ribosomal DNA. *Phytopathology* 91: 648–658.
- Groenewald M, Groenewald JZ, Braun U, Crous PW. 2006. Host range of *Cercospora apii* and *C. beticola* and description of *C. apiicola*, a novel species from celery. *Mycologia* 98: 275–285.
- Hayden HL, Carlier J, Aitken EAB. 2003. Population differentiation in the banana leaf spot pathogen *Mycosphaerella musicola*, examined at a global scale. *Plant Pathology* 52: 713–719.
- Hoog GS de, Hijwegen T, Batenburg van der Vegte WH. 1991. A new species of *Dissoconium*. *Mycological Research* 95: 679–682.
- Hunter GC, Wingfield BD, Crous PW, Wingfield MJ. 2006. A multi-gene phylogeny for species of *Mycosphaerella* occurring on *Eucalyptus* leaves. *Studies in Mycology* 55: 147–161.
- Jackson SL, Maxwell A, Neumeister-Kemp HG, Dell B, Hardy GESTJ. 2004. Infection, hyperparasitism and conidiogenesis of *Mycosphaerella lateralis* on *Eucalyptus globulus* in Western Australia. *Australasian Plant Pathology* 33: 49–53.
- Jones DR. 2000. Diseases of banana, abaca and enset. CAB International, Wallingford, Oxon, UK.
- Jones DR. 2003. The distribution and importance of the *Mycosphaerella* leaf spot diseases of banana. In: Jacome L, Lepoivre P, Marin D, Ortiz R, Romero R, Escalant JV (eds), *Mycosphaerella* leaf spot diseases of bananas: present status and outlook. Proceedings of the Second International Workshop on *Mycosphaerella* leaf spot diseases of bananas, San José, Costa Rica: 25–42. INIBAP, France.
- Leach R. 1941. Banana leaf spot *Mycosphaerella musicola*, the perfect stage of *Cercospora musae* Zimm. *Tropical Agriculture (Trinidad)* 18: 91–95.
- Li KN, Rouse DI, German TL. 1994. PCR primers that allow intergeneric differentiation of ascomycetes and their application to *Verticillium* spp. *Applied and Environmental Microbiology* 60: 4324–4331.
- Maxwell A, Jackson SL, Dell B, Hardy GESTJ. 2005. PCR-identification of *Mycosphaerella* species associated with leaf diseases of *Eucalyptus*. *Mycological Research* 109: 992–1004.
- Morelet M. 1969. Micromycetes du var et d'ailleurs (2ème Note). *Annales de la Societe des Sciences Naturelles et d'Archéologie de Toulon et du Var* 21:104–106.
- Mourichon X, Fullerton RA. 1990. Geographical distribution of the two species *Mycosphaerella musicola* Leach (*Cercospora musae*) and *M. fijiensis* Morelet (*C. fijiensis*), respectively agents of Sigatoka disease and black leaf streak disease in bananas and plantains. *Fruits* 45: 213–218.
- Mulder JL, Stover RH. 1976. *Mycosphaerella* species causing banana leaf spot. *Transactions of the British Mycological Society* 67: 77–82.
- Park RF, Keane PJ, Wingfield MJ, Crous PW. 2000. Fungal diseases of eucalypt foliage. In: Keane PJ, Kile GA, Podger FD, Brown BN (eds), *Diseases and pathogens of eucalypts*: 153–259. CSIRO Publishing, Collingwood, Australia.
- Pons, N. 1987. Notes on *Mycosphaerella fijiensis* var. *difformis*. *Transactions of the British Mycological Society* 89: 120–124.
- Pont W. 1960. Three leaf speckle diseases of the banana in Queensland. *Queensland Journal of Agricultural Science* 17: 271–309.
- Pretorius MC, Crous PW, Groenewald JZ, Braun U. 2003. Phylogeny of some cercosporoid fungi from *Citrus*. *Sydowia* 55: 286–305.
- Rayner RW. 1970. A mycological colour chart. CMI and British Mycological Society, Kew, UK.
- Rhodes PL. 1964. A new banana disease in Fiji. *Commonwealth Phytopathological News* 10: 38–41.
- Rivas GG, Zapater MF, Abadie C, Carlier J. 2004. Founder effects and stochastic dispersal at the continental scale of the fungal pathogen of bananas *Mycosphaerella fijiensis*. *Molecular Ecology* 13: 471–482.
- Stover RH. 1963. Leaf spot of bananas caused by *Mycosphaerella musicola*: associated ascomycetous fungi. *Canadian Journal of Botany* 41: 1481–1485.
- Stover RH. 1969. The *Mycosphaerella* species associated with banana leaf spots. *Tropical Agriculture (Trinidad)* 46: 325–331.
- Stover RH. 1977. A non-virulent benomyl tolerant *Cercospora* from leaf spots caused by *Mycosphaerella fijiensis* var. *difformis* and *M. musicola*. *Transactions of the British Mycological Society* 69: 500–502.
- Stover RH. 1980. Sigatoka leaf spots of banana and plantain. *Plant Disease* 64: 750–755.
- Stover RH. 1994. *Mycosphaerella musae* and *Cercospora non-virulentum* from Sigatoka leaf spots are identical. *Fruits* 49: 187–190.
- Swofford DL. 2003. PAUP*. *Phylogenetic Analysis Using Parsimony (*and other Methods)*. Version 4. Sinauer Associates, Sunderland, Massachusetts.
- Verkley GJM, Starink-Willems M. 2004. A phylogenetic study of some *Septoria* species pathogenic to Asteraceae based on ITS ribosomal DNA sequences. *Mycological Progress* 3: 315–322.
- White TJ, Bruns T, Lee S, Taylor J. 1990. Amplification and direct sequencing of fungal ribosomal RNA genes for phylogenetics. In: Innis MA, Gelfand DH, Sninsky JJ, White TJ (eds), *PCR Protocols: a guide to methods and applications*: 315–322. Academic Press, San Diego, California, USA.