

# <https://botryosphaerales.org/>, an online platform for up-to-date classification and account of taxa of Botryosphaerales

Na Wu<sup>1,2,3</sup>, Asha J. Dissanayake<sup>3</sup>, Ishara S. Manawasinghe<sup>4</sup>, Achala R. Rathnayaka<sup>2</sup>, Jian-Kui Liu<sup>3</sup>, Alan J.L. Phillips<sup>5</sup>, Itthayakorn Promputtha<sup>6</sup> and Kevin D. Hyde<sup>1,2,4,6,\*</sup>

<sup>1</sup>CAS, Key Laboratory for Plant Diversity and Biogeography of East Asia, Kunming Institute of Botany, Chinese Academy of Sciences, Kunming 650201, P.R. China

<sup>2</sup>Center of Excellence in Fungal Research, Mae Fah Luang University, Chiang Rai 57100, Thailand

<sup>3</sup>School of Life Science and Technology, Center for Informational Biology, University of Electronic Science and Technology of China, Chengdu 611731, P.R. China

<sup>4</sup>Innovative Institute for Plant Health, Zhongkai University of Agriculture and Engineering, Guangzhou 510225, P.R. China

<sup>5</sup>Biosystems and Integrative Sciences Institute (BioISI), Universidade de Lisboa, Lisbon, 1749-016, Portugal

<sup>6</sup>Department of Biology, Chiang Mai University, Chiang Mai 50200, Thailand

\*Corresponding author: Tel: +66 53916961; Email: [kdhyde3@gmail.com](mailto:kdhyde3@gmail.com)

Citation details: Wu, N., Dissanayake, A. J., Manawasinghe, I. S. *et al.* <https://botryosphaerales.org/>, an online platform for up-to-date classification and account of taxa of Botryosphaerales. *Database* (2021) Vol. 2021: article ID baab061; DOI: <https://doi.org/10.1093/database/baab061>

## Abstract

Fungi are eukaryotes that inhabit various ecosystems worldwide and have a decomposing effect that other organisms cannot replace. Fungi are divided into two main groups depending on how their sexual spores are formed, viz. Ascomycota and Basidiomycota. The members of Botryosphaerales (Dothideomycetes, Ascomycota) are ubiquitous. They are pathogenic on a wide range of hosts, causing diverse diseases including dieback, canker, leaf spots and root rots and are also reported as saprobes and endophytes worldwide. As an important fungal group, of which most are plant pathogens, it is necessary to organize data and information on Botryosphaerales so that scientific literature can be used effectively. For this purpose, a new website, <https://botryosphaerales.org> is established to gather all published data together with updates on the present taxonomy of Botryosphaerales. The website consists of an easy-to-operate searching system and provides an up-to-date classification together with accounts of Botryosphaerales taxa, including colour illustrations, descriptions, notes and numbers of species in each genus, as well as their classification. Thus, readers will be able to obtain information on botryosphaeralean taxa through this platform.

Database URL: <https://botryosphaerales.org/>

## Introduction

Botryosphaerales (Dothideomycetes) was established in 2006, to accommodate a single family, Botryosphaeriaceae (1). Nine families—Aplosporellaceae, Botryosphaeriaceae, Endomelanconiopsisaceae, Melanopsaceae, Phyllostictaceae, Planistromellaceae, Pseudofusicoccumaceae, Saccharataceae and Septorioideaceae—were accepted in Botryosphaerales by Wijayawardene *et al.* (2). However, based on morphological analyses and evolutionary divergence times, the number of families accepted in Botryosphaerales was reduced to six, namely Aplosporellaceae, Botryosphaeriaceae, Melanopsaceae, Phyllostictaceae, Planistromellaceae and Saccharataceae (3, 4). Endomelanconiopsisaceae and Pseudofusicoccumaceae were synonymized under Botryosphaeriaceae and Phyllostictaceae, respectively, while Septorioideaceae was synonymized under Saccharataceae (3). Members of Botryosphaerales are found worldwide, on many different host plants (5–17). They are endophytes, pathogens and saprobes and as opportunistic pathogens, they are of

considerable importance to agriculture, horticulture and forestry (18, 19). They cause severe diseases of economically important crops and plants leading to huge economic losses (20, 21). *Botryosphaeria*, *Diplodia*, *Dothiorella*, *Lasiodiplodia*, *Neofusicoccum* and *Phyllosticta* are the major pathogenic genera in Botryosphaerales. *Botryosphaeria dothidea*, *Diplodia seriata*, *Lasiodiplodia theobromae* and *Neofusicoccum parvum* are associated with grapevine dieback worldwide (27). *Diplodia seriata* has been reported as a pathogen on a wide range of hosts including eucalyptus, pine and stone fruits (22–26). *Phyllosticta citricarpa* and *P. citriasiana* cause freckle on banana and brown spots on pomelo, respectively (6, 9). One species can occur on several hosts in the same country, and pathogenicity of a species can vary from one region to another (19). This reflects the importance of gathering data on these fungal taxa to understand disease epidemiology.

Aplosporellaceae, Melanopsaceae and Planistromellaceae have immersed or semi-immersed multiloculate ascostromata,

Received 4 June 2021; Revised 10 August 2021; Accepted 7 October 2021

© The Author(s) 2021. Published by Oxford University Press.

This is an Open Access article distributed under the terms of the Creative Commons Attribution License (<https://creativecommons.org/licenses/by/4.0/>), which permits unrestricted reuse, distribution, and reproduction in any medium, provided the original work is properly cited.

while those of Botryosphaeriaceae, Phyllostictaceae and Saccharataceae are uniloculate (3, 8, 28, 29). Asci are bitunicate, with a thick endotunica (3, 8, 28, 29). Ascospores are hyaline or pigmented, septate or aseptate, ellipsoid to ovoid.

Conidiomata are pycnidial, uni- to multilocular, frequently embedded in stromatic tissue. Conidiogenous cells are hyaline. Conidia are hyaline or pigmented, septate or aseptate, thin- or thick-walled (3, 8, 28–32).

**Table 1.** List of curators for *Botryosphaerales* webpage

Position	Name	Affiliation	Contact details
Head Curator	Alan J.L. Phillips	Microbiology and Biotechnology Laboratory Biosystems and Integrative Sciences Institute Faculty of Science, University of Lisbon Campo Grande, 1749-016 Lisbon, Portugal	alan.jl.phillips@gmail.com
Managing Curator	Na Wu	Center of Excellence in Fungal Research, School of Science, Mae Fah Luang University, 333 Moo 1 Muang District, Chiang Rai 57100, Thailand	wuna220@gmail.com
Senior Curator	Asha J. Dissanayake	School of Life Science and Technology, University of Electronic Science and Technology of China, Chengdu 611731, P.R. China	asha.janadaree@yahoo.com
Curators	Kevin D. Hyde	Center of Excellence in Fungal Research, School of Science, Mae Fah Luang University, 333 Moo 1 Muang District, Chiang Rai 57100, Thailand	kdhyde3@gmail.com
	Ishara S. Manawasinghe	Innovative Institute for Plant Health, Zhongkai University of Agriculture and Engineering, Guangzhou 510225, P.R. China	ishara.ishara@yahoo.com
	Achala R. Rathnayaka	Center of Excellence in Fungal Research, School of Science, Mae Fah Luang University, 333 Moo 1 Muang District, Chiang Rai 57100, Thailand	rathnayakaachala@gmail.com

## BOTRYOSPHAERIALES

[Home](#)
[Taxa](#)
[Archives](#)
[Curators](#)
[History](#)
[References](#)
[Notes](#)
[Contact](#)

ISSN \*\*\*\*\*

**botryosphaerales.org** is a website dedicated to Botryosphaerales. The website focuses on providing an up-to-date account of Botryosphaerales with notes on orders, families and genera and species, keeping abreast of the current literature.

### When using this website please cite:

Wu N, Dissanayake AJ, Manawasinghe IS, Rathnayaka AR, Liu JK, Phillips AJL, Promputtha I, Hyde KD (2021) <https://botryosphaerales.org/>, an up-to-date classification and account of taxa of Botryosphaerales. Database (in press).



### Recent Notes

[Economic and ecological significance of the families in Botryosphaerales](#)  
[botryosphaerales.org Note 1](#)

### Recent Genus

[Pileospora](#)  
[Septorioides](#)  
[Pileospora](#)

### Recent Species

[Lasiodiplodia tropica](#)  
[Lasiodiplodia microconidia](#)  
[Lasiodiplodia brasiliensis](#)



### Highlights of Information

- Up-to-date account of Botryosphaerales
- Provide illustrations and plates of Botryosphaerales.

The website **botryosphaerales.org** is updated periodically

**Figure 1.** The homepage of Botryosphaerales webpage.

All newly published data, which usually provide detailed descriptions and illustrations of new records, new species, new genera or new families, will be used to update the database. None of the papers generally link data from all

members of the order Botryosphaerales. Up until now, some websites involving specific groups of fungi have been established, such as <http://www.facesoffungi.org> (33), <https://onestopshopfungi.org> (34), <http://www.marinespecies.org>

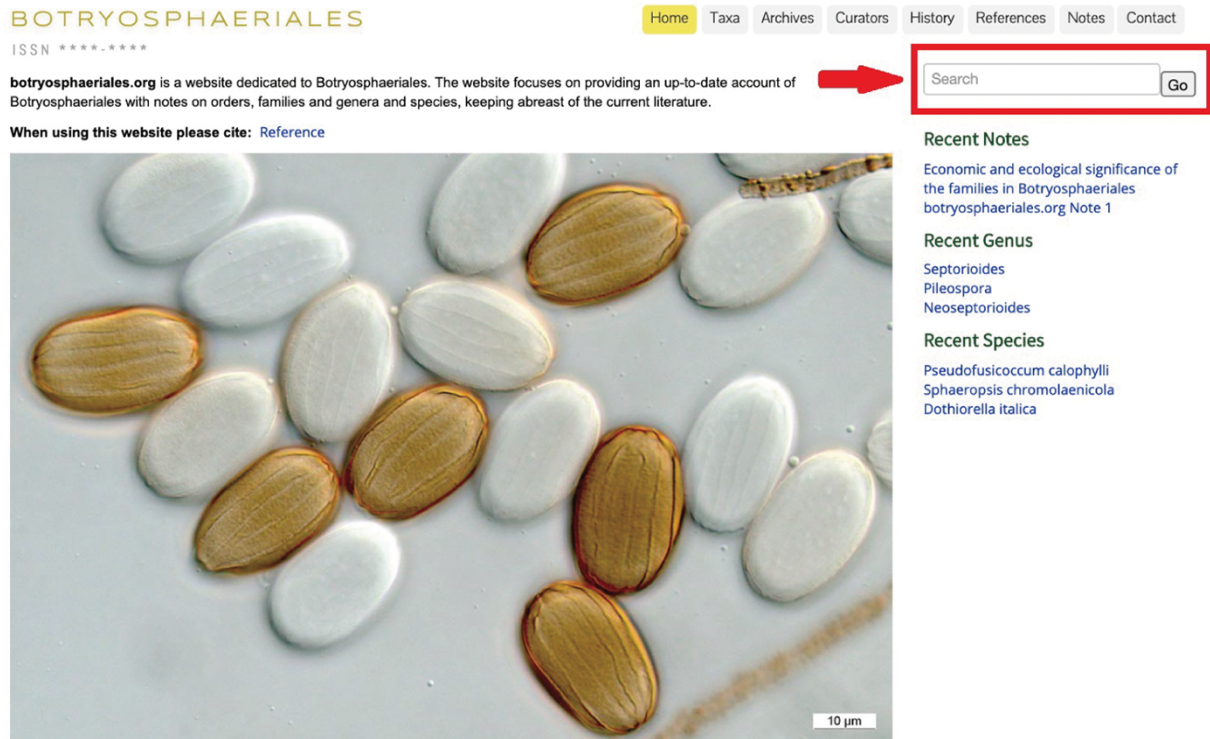


Figure 2. Red arrow indicates search tool to enter the taxon name.

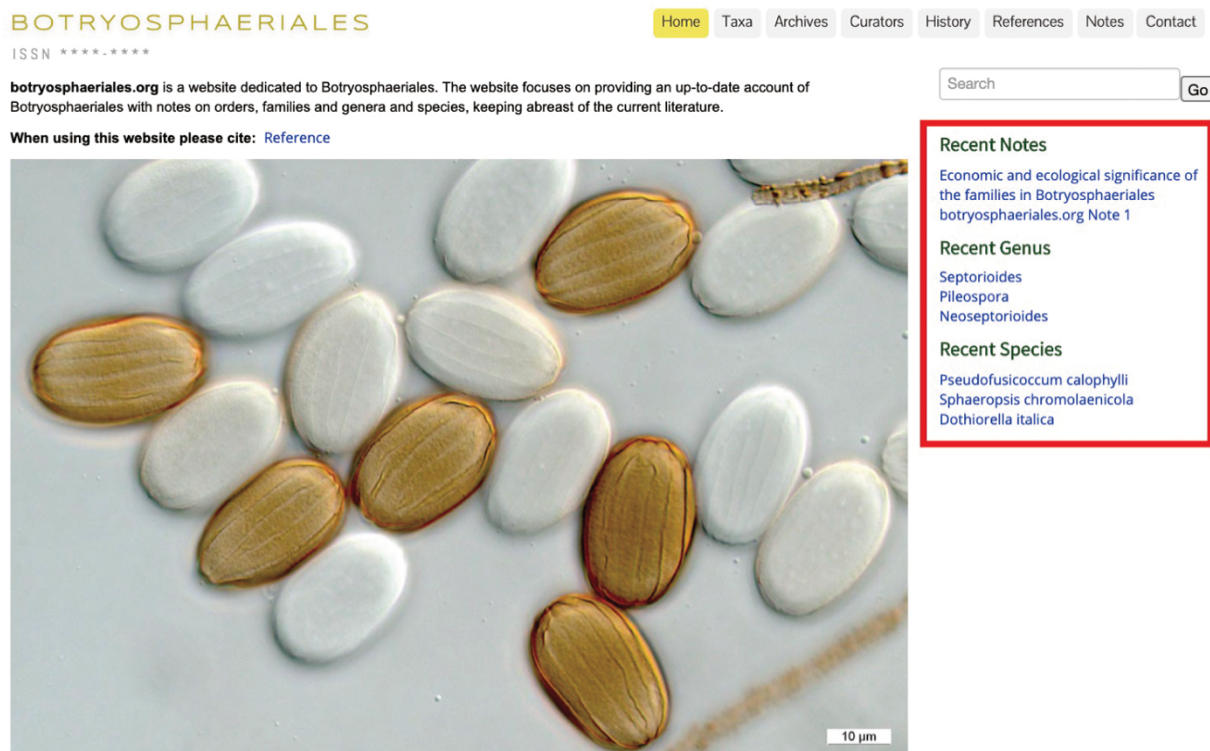


Figure 3. The recent notes, genus and species to enable easy access.

org (35), <https://fungalgenera.org> (36), <https://www.dothiomyces.org> (37) and <https://sordariomyces.org> (38). However, there is no database on Botryosphaerales. Therefore, in this paper, we provide a search method, designed to gather all the information about Botryosphaerales into one website.

## The need for a Botryosphaerales database

Many Botryosphaerales species are associated with diseases in branches, leaves, fruits and seeds of aquatic and terrestrial plants (20, 31, 32, 39–43). In recent years, in-depth studies on Botryosphaerales have resulted in changes in the genus/family-level classification (2–4). Moreover, the number of publications and research works related to Botryosphaerales species are increasing all over the world (18, 20, 21, 44–48). With the increased number of studies on morphology, ecology and especially DNA-based phylogenetics, more and more new species are constantly being discovered. However, there are still many aspects needing clarification, such as naming new species from environmental samples, resolving the opportunistic pathogenic nature and how to define species boundaries in Botryosphaerales.

Currently over 2300 species have been described in Botryosphaerales in MycoBank based on morpho-molecular evidence (4). Most of the members of this order have

been scientifically documented. These publications on *Botryosphaerales* comprise various aspects such as taxonomy, morphology, pathogenicity or evolutionary studies. Information on Botryosphaerales taxa are scattered in over 1000 publications mainly as books and research papers. Hence, the intention of this website is to gather all data regarding taxa accepted in Botryosphaerales into a single entity that can be updated as new information becomes available.

The present website, <https://botryosphaerales.org/>, focuses on the Botryosphaerales with the following objectives: (i) gather all scattered data of accepted Botryosphaerales taxa into a single platform, (ii) provide notes on the recent changes in genera and species of Botryosphaerales with updated taxonomy and phylogeny and (iii) provide a list of all literature related to Botryosphaerales. Hence, this website will be the best platform to access information on the botryosphaeralean taxa easily with simple searches, thus reducing the time spent on searching for information.

## The Botryosphaerales website

[Botryosphaerales.org](https://botryosphaerales.org/) is a website dedicated to Botryosphaerales taxa by providing an up-to-date account with descriptions, colour illustrations, culture characteristics, associated hosts, distribution and notes for order, families, genera

### BOTRYOSPHAERIALES

ISSN \*\*\*\*\*

Taxa






Botryosphaerales (accepted species) – click on the species to go to the entry

#### Aplosporellaceae

Alanomyces  
*Alanomyces indica*

#### Aplosporella

*Aplosporella africana*  
*Aplosporella artocarp*  
*Aplosporella hesperidica*  
*Aplosporella javeedii*  
*Aplosporella longipes*  
*Aplosporella ginkgonis*  
*Aplosporella macropycnidia*  
*Aplosporella papillata*  
*Aplosporella prunicola*  
*Aplosporella sophorae*  
*Aplosporella thailandica*  
*Aplosporella yalgorensis*

#### Botryosphaeriaceae

Alanphillipsia  
*Alanphillipsia aloes*  
*Alanphillipsia aloicola*  
*Alanphillipsia aloeigena*  
*Alanphillipsia aloetica*  
*Alanphillipsia euphorbiae*

#### Barriopsis

*Barriopsis archontophoenicis*  
*Barriopsis iraniana*  
*Barriopsis stevensiana*  
*Barriopsis tectonae*

#### Botryobambusa

*Botryobambusa fuscococcum*

Home Taxa Archives Curators History References Notes Contact

Search

#### Recent Notes

Economic and ecological significance of the families in Botryosphaerales  
[botryosphaerales.org Note 1](#)

#### Recent Genus

[Septorioides](#)  
[Pileospora](#)  
[Neoseptorioides](#)

#### Recent Species

[Pseudofusicoccum calophylli](#)  
[Sphaeropsis chromolaenicola](#)  
[Dothiorella italica](#)

Figure 4. The 'Taxa' view of the Botryosphaerales webpage.

and species. The website, <https://botryosphaerales.org> will be updated periodically, keeping abreast of current literature. It is convenient for all mycologists and pathologists who need information about the history and current classification status of botryosphaerial taxa. The home page of the website has a mailbox so that mycologists, pathologists or anyone else who use this website can suggest ideas to improve it.

### Construction

All fungi in the [Botryosphaerales.org](https://botryosphaerales.org) are listed according to the latest classification (3, 4, 49). Each entry includes the accepted binominal name, Index Fungorum number, Faces of Fungi number, MycoBank number, ex-type culture collection number, dry culture collection and herbarium number and GenBank accession numbers of available DNA sequences.

**BOTRYOSPHAERIALES**  
ISSN \*\*\*\*\*  
Home Taxa

Taxa

Botryosphaerales (accepted species) – click on the species to go to the entry

- Aplosporellaceae
- Alanomyces
  - Alanomyces indica*
- Aplosporella
  - Aplosporella africana*
  - Aplosporella artocarpii*
  - Aplosporella chromolaenae*
  - Aplosporella hesperiae*
  - Aplosporella javedii*
  - Aplosporella longipes*
  - Aplosporella gisignis*
  - Aplosporella macrosporydia*
  - Aplosporella papillata*
  - Aplosporella prunicola*
  - Aplosporella sphaerata*
  - Aplosporella thailandica*
  - Aplosporella yalopensis*
- Botryosphaeriaceae**
  - Alanphillipsia*
    - Alanphillipsia atoes*
    - Alanphillipsia albicola*
    - Alanphillipsia alboginea*
    - Alanphillipsia alotaica*
    - Alanphillipsia euphorbiae*
  - Barriopsis*
    - Barriopsis archontophoenicis*
    - Barriopsis iraniana*
    - Barriopsis stevensiana*
    - Barriopsis tectoriae*
    - Barriopsis thailandica*
  - Botryobambusa**
    - Botryobambusa fusiccocum*

**Botryosphaeriaceae**  
Index Fungorum number: IF 80530; Facesoffungi number: FoF 00116, 279 species

*Endophytic, pathogenic and saprobic on a wide range of hosts worldwide. Sexual morph: Ascomata uniloculate, solitary or clustered, becoming fully or partially erumpent with maturity, wall multi-layered, dark brown, infrequently embedded in stromatic tissues. Asci 8-spored, bitunicate, fissionulate, with well-developed ocular chamber; thick endostoma, short pedicellate, clavate. Pseudoparaphyses intermixed with asci, hyaline, septate, frequently constricted at septa, hyphae-like, branched or not, deliquescent with maturity. Ascospores 2–3-seriate, ellipsoid to ovoid, hyaline or pigmented, smooth to verruculose, septate or not, mucoid sheath mostly absent (phialoconidia of sexual characters can be seen in Phillips et al. 2013, 2019). Asexual morph: Coelomycetous. Conidiomata uni or rarely multiloculate, pyrenoid, infrequently embedded in stromatic tissue. Conidiophores mostly reduced to conidiogenous cells. Conidiogenous cells hyaline, phialidic, proliferating percurrently or internally giving rise to pericalthickening, or proliferating percurrently forming annulations, without collarettes. Conidia hyaline or pigmented, aseptate or one or multi-septate, sometimes muriform, smooth or striate, thin- or thick-walled, without mucoid sheaths or appendages. Spermatogonia similar to conidiomata in anatomy. Spermatogenous cells anampliform to lageniform or subcylindrical, hyaline smooth, phialidic. Spermatia developing in conidiomata or spermatogonia, hyaline, smooth, granular, subcylindrical or dumbbell-shaped, with rounded ends. (Liu et al. 2012; Slippers et al. 2013; Phillips et al. 2013).*

Type: *Botryosphaeria* Ces. & De Not.

Notes: *Botryosphaeriaceae* was introduced by Theissen and Sydow (1918b) for three genera, *Botryosphaeria*, *Phaeobotryon* and *Dibotryon*. Over decades of taxonomic revisions and updates based on morphology, the family has become increasingly complex. However, based on LSU sequence data Crusz et al. (2006a) revealed 10 lineages within *Botryosphaeriaceae*, which they considered to represent individual genera. Phillips et al. (2008) defined, introduced and reinstated a further five genera in *Botryosphaeriaceae*. *Aplosporella* was shown to reside in *Botryosphaeriaceae* by Dunn et al. (2007). *Endomelanconiopsis* was assigned to this family by Rojas et al. (2008) while Phillips and Alves (2009) considered that *Melanopsis* is another genus in *Botryosphaeriaceae*. Two new genera (*Botryobambusa* Phook. et al. and *Copliniforma* Doilom et al.) were introduced by Liu et al. (2012). Phillips et al. (2013) resolved *Botryosphaeriaceae* into 17 genera and 110 species known from culture. Thereafter six new genera and 85 new species/species combinations have been introduced (Dissanayake et al. 2017). According to a recent study by Phillips et al. (2019) currently 22 genera are accepted in *Botryosphaeriaceae*. In earlier studies *Dothiorella* and *Spenceriaria* were regarded as two separate genera in the family (Phillips et al. 2008, 2013). However, Yang et al. (2016) synonymized *Spenceriaria* under *Dothiorella* Sacc. These two genera are morphologically distinguishable only in sexual morph by the hyaline apiculi in *Spenceriaria*. So far, these characters are reported only in *S. viticola* but no other species in this genus have been observed with asexual morph. Furthermore, phylogenetic distance is also small between these two genera. Therefore, it is accepted that *Spenceriaria* is a synonym of *Dothiorella*. *Phyllostictaceae* was re-instated for *Phyllosticta* (Wikee et al. 2013a). Another three families were introduced in *Botryosphaerales* by Slippers et al. (2013), namely *Saccharataceae* for *Saccharata*, *Aplosporellaceae* for *Aplosporella* and *Melanopsaceae* for *Melanops*. Nitschke ex Fiedt. Wyka and Brodes (2016) introduced *Septorioidaceae* for *Septorioides* Quaeqvl. et al. while Yang et al. (2017) raised *Endomelanconiopsidae* and *Pseudofusicoccaceae* to familial status as *Endomelanconiopsidae* and *Pseudofusicoccaceae* respectively. Taking into account morphology, phylogeny and evolutionary divergence times, Phillips et al. (2019) synonymised *Endomelanconiopsidae* with *Botryosphaeriaceae*, *Pseudofusicoccaceae* with *Phyllostictaceae*, and *Septorioidaceae* with *Saccharataceae*. In addition to that, genus *Pilgeriella* which fit within *Botryosphaeriaceae*, but do not have cultures or DNA (Wijayawardene et al. 2017a). Therefore, this genus was kept in incertae sedis in *Botryosphaerales*.

**BOTRYOSPHAERIALES**  
ISSN \*\*\*\*\*  
Home Taxa Archives Curators

Botryosphaerales » Botryosphaeriaceae » Botryobambusa  
**Botryobambusa fusiccocum**  
MycoBank: MB 807314

*Etymology:* Referring the asexual stage "fusiccocum-like". Saprobi on dead bamboo. Ascostomata 103.5–152 µm high (including neck), 95–152 µm diam, dark brown to black, erumped under epidermis to erumpent, gregarious, visible as minute black dots or papilla on host tissue, multi-loculate; locules individual globose to subglobose or latest corticoseous, vertical to the host surface, with a central ostiole. Neck 42–59 µm diam, 31–54 µm high, central papillate, periphysate. Peridium 12–20 µm wide, comprising several layers of cells, with relatively thick brown to black walls, arranged in layers angulate, broader at the base. Pseudoparaphyses and observed. Ascii (40–95–86–82) × (14–17)–18 µm × 60 × 15.5 µm, n = 25, 8-spored, bitunicate, fissionulate, clavate to cylindrical-clavate, pedicellate, apically rounded with well-developed ocular chamber (2.3 µm wide, n = 9). Ascospores (9–11)–(12–14) × 5–7 µm (n = 11.5 × 6 µm, n = 30), uniseriate at the base or imp. Uniseriate, ellipsoid to subglobose, apically rounded, usually wider in the apex, thick-walled, surrounded by distinctive structured multilayered sheath. Pyrenia (formed on 16h in sterilized glass mediae within 10 days) superficial on host surface, clustered in a stroma, multiloculate, globose to subglobose. Peridium comprising several layers of cells laevia angulate, broader at the base, outer layers dark to dark brown and thick-walled, inner layers hyaline and thin-walled. Conidiogenous cells (9–10)–(14)–18) × 3–5 µm holoblastic, hyaline, cylindrical to ellipsoidal, smooth-walled. Conidia (21–22)–(25)–(28) × 5–7 µm (n = 23.5 × 6 µm, n = 30), hyaline, aseptate, cylindrical to cylindrical-clavate, thin-walled, with rough wall.

Culture characteristics: Colonies on PDA reaching 50 mm diam after 4 d at 25–30 °C, fast growing; circular, whitened in a few days, after one week becoming grey to green-black; flattened, fairly dense, surface smooth with crestrate edge. Illuminated, reverse grey to black, pigmented produced in media.

Material examined: THAILAND, Lampang Province, Jai Hom District, Mae Yang Forestry Plantation, on dead culms of *Bambusa* sp., 19 August 2016, B. Phookamkam, RP0209 (MFU11–0178, holotype), ex-type living culture MFUCC11–0183, host, living culture MFUCC11–0657.

Fig1. *Botryobambusa fusiccocum* (MFU11–0179, holotype) on dead culm of *Bambusa* sp. a) Ascostromata on host substrate. b) Section through multiloculate ascostomata. c) Section through ascostomata showing emergence of cells. d) Block with paraphyses. e–i) Asci. j–m) Ascospores. Scale bars: a) 500µm, b) 200µm, c) 20µm, d–e) 50µm, f–i) 10µm, j–m) 5µm.

Figure 5. Details of the genus *Botryobambusa*.

**BOTRYOSPHAERIALES**  
ISSN \*\*\*\*\*  
Home Taxa Archives Curators History References Notes Contact

Botryosphaerales Heirarchy

Botryosphaerales

Read more about Botryosphaerales orders »

- Aplosporellaceae
- Botryosphaeriaceae
- Melanopsaceae
- Phyllostictaceae
- Planistromellaceae
- Saccharataceae

Search [ ] Go

Recent Notes

Economic and ecological significance of the families in Botryosphaerales  
botryosphaerales.org Note 1

Recent Genus

Septorioides  
Pileospora  
Neoseptorioides

Recent Species

Pseudofusicoccum calophylli  
Sphaeropsis chromolaenicola  
Dothiorella italica

Figure 6. Appearance of the 'Archives' section in Botryosphaerales webpage.

Figure 7. User-friendly interface of the ‘Archives’ section in Botryosphaerales webpage.

This website is handled and inspected regularly by the head curator, managing curator, senior curator and three other curators with expertise in botryosphaeralean taxonomy and phylogeny (Table 1).

**Database interface and visualization**

The website can be accessed at URL <https://botryosphaerales.org> and comprises eight main headings, i.e. Home, Taxa, Archives, Curators, History, References, Notes and Contact. The interface is user-friendly, and each section comprises the following information.

**Home**

The homepage briefly introduces the objectives of the website and has links to highlights of information. Colour photos of Botryosphaerales are displayed representing the key morphological features of this order (Figure 1). The relevant information can be accessed easily using the search box located at the right top corner (Figure 2). Beneath the search box, there is quick access to recent notes, recent genera and recent species. Clicking on these options opens the link in a new window (Figure 3).

**Taxa**

Under the ‘Taxa’ heading, the recent taxonomic classification as families, genera and species of Botryosphaerales is

provided (Figure 4). In addition, an updated phylogenetic tree for the order is given at the bottom. The search box at the top left corner will facilitate quick access to each entry on the website. Clicking a listed species name will direct to the full description and details in the archives section (Figure 5).

**Archives**

The ‘Archives’ is the main section containing all information on every entry in the website (Figure 6). It consists of six tabs representing each family in Botryosphaerales. Clicking on a particular family will automatically generate a dropdown list including all the genera belonging to the particular family (Figure 7). This can be further expanded into genus and species levels (Figure 7). By clicking the link for each species will open a new window containing all information on that species (Figure 8).

**Curators**

This section provides information about the curators who handle and update the website (Table 1; Figure 9).

**History**

This section provides a brief account of the classification of Botryosphaerales.

## BOTRYOSPHAERIALES

ISSN \*\*\*\*\*

[Home](#)
[Taxa](#)
[Archives](#)
[Curators](#)
[History](#)
[References](#)
[Notes](#)
[Contact](#)
[Botryosphaeriales](#) » [Phyllostictaceae](#) » [Pseudofusicoccum](#)
**Pseudofusicoccum calophylli**

*Pseudofusicoccum calophylli* Jayasiri, E.B.G. Jones & K.D. Hyde, in Jayasiri, Hyde, Jones, McKenzie, Jeewon, Phillips, Bhat, Wanasinghe, Liu, Lu, Kang, Xu & Karunarathna, *Mycosphere* 10(1): 151 (2019)

**Index Fungorum number:** IF555584

**Facesoffungi number:** FoF05299

**Holotype:** MFLU 18–2153

**Etymology:** Referring to the host genus on which the fungus was collected, Calophyllum (Calophyllaceae)

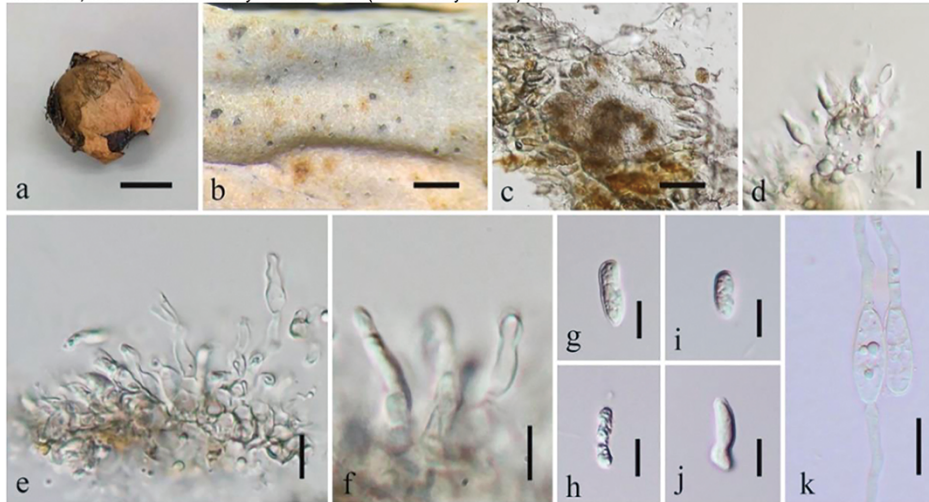
Saprobic on Calophyllum inophyllum. **Asexual morph:** Undetermined. **Asexual morph:** Coelomycetous. *Conidiomata* 140–160 µm high × 133–197 µm diam. ( $x = 144 \times 160 \mu\text{m}$ ;  $n = 10$ ), semi-immersed, solitary, globose to subglobose, papillate, covered by host epidermal tissues, lack of ostiole. *Conidiomata wall* 30–50 µm wide ( $x = 47 \mu\text{m}$ ;  $n = 20$ ), outer pale brown textura angularis cell layers, inner hyaline textura angularis cell layer, embedded within plant tissues. *Conidiogenous cells* 10–14 × 3–5 µm ( $x = 13 \times 4 \mu\text{m}$ ;  $n = 20$ ), phialidic, ovate to cylindrical, smooth, hyaline. *Conidia* 14–17 × 4–5 µm ( $x = 16 \times 4.5 \mu\text{m}$ ;  $n = 30$ ), hyaline, ellipsoid, occasionally slightly bent or irregularly shaped, apices rounded, smooth with fine granular content, unicellular, thin-walled.

**Culture characters:** Conidia germinated on MEA within 24 hr. Germ tubes produced at one end or both ends of conidia. Colonies growing on MEA, reaching 35–40 mm diam. after 2 weeks at 18°C. Colonies fluffy, initially white to amber at the centre, olivaceous at the edges, becoming white to olivaceous with age.

**Material examined:** THAILAND, Krabi Province, Mueang Krabi District (8°2'27" N, 98°49'5" E), decaying fruit pericarp of Calophyllum inophyllum (Calophyllaceae), 31 August 2018, S.C. Jayasiri, C 346 (MFLU 18–2153, holotype; KUN-HKAS102429, isotype), ex-type living culture MFLUCC 17–2533, KUMCC 18–0282.

**GenBank numbers:** ITS: MK347764, tef1: MK340877, rpb2: MK434879, tub2: MK412885

**Notes:** *Pseudofusicoccum calophylli* clusters with two strains of *P. violaceum*. *Pseudofusicoccum violaceum* is characterized by bacilliform conidia with a mucilaginous sheath and larger spores compared to *P. calophylli* (33 × 9.5 vs. 16 × 4.5 µm) (Mehl et al. 2011). However, *Pseudofusicoccum calophylli* has bacilliform conidia in the immature stage but these later become irregular in shape, without a mucilaginous sheath (Fig. 129). A comparison of the ITS and tef1 nucleotides of these two strains reveals 5 (0.8%) and 5 (1.6%) nucleotide differences, which indicates that they are distinct taxa (Jeewon & Hyde 2016).



**Figure 1.** *Pseudofusicoccum calophylli* (MFLU 18–2153, holotype). a Host fruit. b Conidiomata on host surface. c Section through conidioma. d–f Conidiogenous cells. g–j Conidia. k Germinated conidia. Scale bars: a = 1 cm, b = 500 µm, c = 50 µm, d–k = 10 µm.

**Recent Notes**

Economic and ecological significance of the families in Botryosphaeriales  
[botryosphaeriales.org Note 1](#)

**Recent Genus**

[Septorioidea](#)  
[Pileospora](#)  
[Neoseptorioidea](#)

**Recent Species**

[Pseudofusicoccum calophylli](#)  
[Sphaeropsis chromolaenicola](#)  
[Dothiorella italica](#)

**Figure 8.** An entry with description, notes and plate (15).

**References**

A list of the citations used in the entries and history as well as other related information are provided under this heading.

**Notes**

Economic and ecological significance of families in Botryosphaeriales are given in this section. In addition, trends and current applications of the species of Botryosphaeriales will be added regularly to this section.

**Contact**

This section provides the contact details of the website and allows users to communicate any comments and suggestions.

**Acknowledgements**

Kevin D. Hyde thanks Chiang Mai University for the award of Visiting Professor. Alan J.L. Phillips acknowledges the support from UIDB/04046/2020 and UIDP/04046/2020 Centre grants from FCT, Portugal (to BioISI). Na Wu acknowledges the Mae Fah Luang University for financial support and the Mushroom Research Foundation for a grant for living costs.

**Funding**

This work was supported by the National Natural Science Foundation of China “Characterization of roots and their associated rhizosphere microbes in agroforestry systems:

## BOTRYOSPHAERIALES

ISSN \*\*\*\*\*

[Home](#)
[Taxa](#)
[Archives](#)
[Curators](#)
[History](#)
[References](#)
[Notes](#)
[Contact](#)

## Curators



**Head Curator:** Dr. Alan J.L. Phillips  
Microbiology and Biotechnology Laboratory  
Biosystems and Integrative Sciences Institute  
Faculty of Science, University of Lisbon Campo  
Grande, 1749-016 Lisbon Portugal.  
**Email:** [alan.jl.phillips@gmail.com](mailto:alan.jl.phillips@gmail.com)



**Senior Curator:** Dr. Asha J. Dissanayake  
School of Life Science and Technology,  
University of Electronic Science and  
Technology of China (UESTC).  
**Email:** [asha.janadaree@yahoo.com](mailto:asha.janadaree@yahoo.com)



**Curator:** Dr. Ishara S Manawasinghe  
Center of Excellence in Fungal Research,  
School of Science, Mae Fah Luang University,  
333 Moo 1 Muang District, Chiang Rai,  
Thailand 57100.  
**Email:** [ishara.ishara@yahoo.com](mailto:ishara.ishara@yahoo.com)



**Managing Curator:** Miss Na Wu  
Center of Excellence in Fungal Research,  
School of Science, Mae Fah Luang University,  
333 Moo 1 Muang District, Chiang Rai,  
Thailand 57100.  
**Email:** [wuna220@gmail.com](mailto:wuna220@gmail.com)



**Curator:** Emeritus Prof. Kevin D. Hyde  
Center of Excellence in Fungal Research,  
School of Science, Mae Fah Luang University,  
333 Moo 1 Muang District, Chiang Rai,  
Thailand 57100.  
**Email:** [kdhhyde3@gmail.com](mailto:kdhhyde3@gmail.com)



**Curator:** Miss Achala R Rathnayaka  
Center of Excellence in Fungal Research,  
School of Science, Mae Fah Luang University,  
333 Moo 1 Muang District, Chiang Rai,  
Thailand 57100.  
**Email:** [rathnayakaachala@gmail.com](mailto:rathnayakaachala@gmail.com)

## Recent Notes

Economic and ecological significance of the families in Botryosphaeriales  
[botryosphaeriales.org](http://botryosphaeriales.org) Note 1

## Recent Genus

[Septorioides](#)  
[Pileospora](#)  
[Neoseptorioides](#)

## Recent Species

[Pseudofusicoccum calophylli](#)  
[Sphaeropsis chromolaenicola](#)  
[Dothiorella italica](#)

**Figure 9.** Curators of the Botryosphaeriales webpage.

ecological restoration in high-phosphorus environment”  
(Grant No: 31861143002).

## Conflict of interest

None declared.

## References

- Schoch,C.L., Shoemaker,R.A., Seifert,K.A. *et al.* (2006) A multi-gene phylogeny of the Dothideomycetes using four nuclear loci. *Mycologia*, **98**, 1041–1052.
- Wijayawardene,N.N., Hyde,K.D., Lumbsch,H.T. *et al.* (2018) Outline of ascomycota: 2017. *Fungal Divers.*, **88**, 167–263.
- Phillips,A.J.L., Hyde,K.D., Alves,A. *et al.* (2019) Families in Botryosphaeriales: a phylogenetic, morphological and evolutionary perspective. *Fungal Divers.*, **94**, 1–22.
- Wijayawardene,N.N., Hyde,K.D., Al-Ani,L.K.T. *et al.* (2020) Outline of *Fungi* and fungus-like taxa. *Mycosphere*, **11**, 1060–1456.
- Phillips,A.J.L., Alves,A., Pennycook,S.R. *et al.* (2008) Resolving the phylogenetic and taxonomic status of dark-spored teleomorph genera in the Botryosphaeriaceae. *Persoonia*, **21**, 29–55.
- Wulandari,N., To-Anun,C., Hyde,K.D. *et al.* (2009) *Phyllosticta citriasiana* sp. nov., the cause of Citrus tan spot of Citrus maxima in Asia. *Fungal Divers.*, **34**, 23–39.
- Liu,J.K., Chomnunti,P., Cai,L. *et al.* (2010) Phylogeny and morphology of *Neodeightonia palmicola* sp. nov. from palms. *Sydowia*, **62**, 261–276.
- Liu,J.K., Phookamsak,R., Doilom,M. *et al.* (2012) Towards a natural classification of Botryosphaeriales. *Fungal Divers.*, **57**, 149–210.
- Wong,M.H., Crous,P.W., Henderson,J. *et al.* (2012) *Phyllosticta* species associated with freckle disease of banana. *Fungal Divers.*, **56**, 173–187.



10. Alves,A., Linaldeddu,B.T., Deidda,A. *et al.* (2014) The complex of *Diplodia* species associated with *Fraxinus* and some other woody hosts in Italy and Portugal. *Fungal Divers.*, **67**, 143–156.
11. Trakunyingcharoen,T., Cheewangkoon,R., To-anun,C. *et al.* (2014) Botryosphaeriaceae associated with diseases of mango (*Mangifera indica*). *Australas. Plant Pathol.*, **43**, 425–438.
12. Dissanayake,A.J., Phillips,A.J.L., Li,X.H. *et al.* (2016) Botryosphaeriaceae: current status of genera and species. *Mycosphere*, **7**, 1001–1073.
13. Dou,Z.P., Lu,M., Wu,J.R. *et al.* (2017) A new species and interesting records of *Aplosporella* from China. *Sydowia*, **69**, 1–7.
14. Tibpromma,S., Hyde,K.D., McKenzie,E.H.C. *et al.* (2018) Fungal diversity notes 840–928: micro-fungi associated with Pandanaceae. *Fungal Divers.*, **93**, 1–160.
15. Jayasiri,S.C., Hyde,K.D., Jones,E.B.G. *et al.* (2019) Diversity, morphology and molecular phylogeny of Dothideomycetes on decaying wild seed pods and fruits. *Mycosphere*, **10**, 1–186.
16. Wang,Y., Lin,S., Zhao,L. *et al.* (2019) *Lasiodiplodia* spp. associated with *Aquilaria crassna* in Laos. *Mycol. Prog.*, **18**, 683–701.
17. Berraf-Tebbal,A., Mahamedi,A.E., Aigoun-Mouhous,W. *et al.* (2020) *Lasiodiplodia mitidjana* sp. nov. and other Botryosphaeriaceae species causing branch canker and dieback of *Citrus sinensis* in Algeria. *PLoS One*, **15**, e0232448.
18. Chethana,K.W.T., Li,X., Zhang,W. *et al.* (2016) Trail of decryption of molecular research on Botryosphaeriaceae in woody plants. *Phytopathol. Mediterr.*, **55**, 147–171.
19. Manawasinghe,I.S., Phillips,A.J.L., Hyde,K.D. *et al.* (2016) Mycosphere essays 14: assessing the aggressiveness of plant pathogenic Botryosphaeriaceae. *Mycosphere*, **7**, 883–892.
20. Slippers,B. and Wingfield,M.J. (2007) Botryosphaeriaceae as endophytes and latent pathogens of woody plants: diversity, ecology and impact. *Fungal Biol. Rev.*, **21**, 90–106.
21. Mehl,J.W., Slippers,B., Roux,J. *et al.* (2017) Overlap of latent pathogens in the Botryosphaeriaceae on a native and agricultural host. *Fungal Biol.*, **121**, 405–419.
22. Kaliterna,J., Milicevic,T., Ivic,D. *et al.* (2012) First report of *Diplodia seriata* as causal agent of olive dieback in Croatia. *Plant Dis.*, **96**, 290.
23. Cáceres,M., Lolas,M., Gutierrez,M. *et al.* (2016) Severe outbreak of black rot in apple fruit cv. Fuji caused by *Diplodia seriata* during pre-harvest in Maule region, Chile. *Plant Dis.*, **100**, 2333.
24. Zhang,M., Zhang,Y.K., Geng,Y.H. *et al.* (2017) First report of *Diplodia seriata* causing twig dieback of English walnut in China. *Plant Dis.*, **101**, 1036.
25. Abbas,M.F. and Naz,F. (2018) First report of *Diplodia seriata* causing fruit rot of loquat in Pakistan. *J. Plant Pathol.*, **100**, 325.
26. Besoain,X., Guajardo,J., Larach,A. *et al.* (2019) First report of *Diplodia seriata* causing gummy canker in *Araucaria araucana* wild populations in South-Central Chile. *Plant Dis.*, **103**, 2684.
27. Yan,J.Y., Xie,Y., Zhang,W. *et al.* (2013) Species of Botryosphaeriaceae involved in grapevine dieback in China. *Fungal Divers.*, **61**, 221–236.
28. Monkai,J., Liu,J.K., Boonmee,S. *et al.* (2013) Planistromellaceae (Botryosphaeriales). *Cryptogam. Mycol.*, **34**, 45–77.
29. Ekanayaka,A.H., Dissanayake,A.J., Jayasiri,S.C. *et al.* (2016) *Aplosporella thailandica*; a novel species revealing the sexual-asexual connection in Aplosporellaceae (Botryosphaeriales). *Mycosphere*, **7**, 440–447.
30. Wikee,S., Udayanga,D., Crous,P.W. *et al.* (2011) Phyllosticta—an overview of current status of species recognition. *Fungal Divers.*, **51**, 43–61.
31. Phillips,A.J.L., Alves,A., Abdollahzadeh,J. *et al.* (2013) The Botryosphaeriaceae: genera and species known from culture. *Stud. Mycol.*, **76**, 51–167.
32. Hyde,K.D., de Silva,N., Jeewon,R. *et al.* (2020) AJOM new records and collections of fungi: 1–100. *Asian J. Mycol.*, **3**, 22–294.
33. Jayasiri,S.C., Hyde,K.D., Ariyawansa,H.A. *et al.* (2015) The Faces of Fungi database: fungal names linked with morphology, phylogeny and human impacts. *Fungal Divers.*, **74**, 3–18.
34. Jayawardena,R.S., McKenzie,E.H.C., Chen,Y.J. *et al.* (2019) <https://onestopshopfungi.org>, a database to enhance identification of phytopathogenic genera. *Asian J. Mycol.*, **2**, 281–286.
35. Jones,E.G. Pang,K.L., Abdel-Wahab,M.A. *et al.* (2019) An online resource for marine fungi. *Fungal Divers.*, **96**, 347–433.
36. Monkai,J., McKenzie,E.H.C., Phillips,A.J.L. *et al.* (2019) <https://fungalgenera.org/>: a comprehensive database providing webbased information for all fungal genera. *Asian J. Mycol.*, **2**, 298–305.
37. Pem,D., Hongsanan,S., Doilom,M. *et al.* (2019) <https://www.dothideomycetes.org>: an online taxonomic resource for the classification, identification, and nomenclature of Dothideomycetes. *Asian J. Mycol.*, **2**, 287–297.
38. Bundhun,D., Maharachchikumbura,S.S.N., Jeewon,R. *et al.* (2020) <https://sordariomycetes.org/>, a platform for the identification, ranking and classification of taxa within Sordariomycetes. *Asian J. Mycol.*, **3**, 13–21.
39. McDonald,V. and Eskalen,A. (2011) Botryosphaeriaceae species associated with avocado branch cankers in California. *Plant Dis.*, **95**, 1465–1473.
40. Ismail,A.M., Cirvilleri,G., Polizzi,G. *et al.* (2012) *Lasiodiplodia* species associated with dieback disease of mango (*Mangifera indica*) in Egypt. *Australas. Plant Pathol.*, **41**, 649–660.
41. Marques,M.W., Lima,N.B., de Moraes,M.A. *et al.* (2013) Species of *Lasiodiplodia* associated with mango in Brazil. *Fungal Divers.*, **61**, 181–193.
42. Trakunyingcharoen,T., Cheewangkoon,R. and To-anun,C. (2013) Phylogeny and pathogenicity of fungal species in the family Botryosphaeriaceae associated with mango (*Mangifera indica*) in Thailand. *J. Agric. Technol.*, **9**, 1535–1543.
43. Zhao,L., Wang,Y., He,W. *et al.* (2019) Stem blight of blueberry caused by *Lasiodiplodia vaccinii* sp. nov. in China. *Plant Dis.*, **103**, 2041–2050.
44. Desprez-Loustau,M.L., Marcais,B., Nageleisen,L.M. *et al.* (2006) Interactive effects of drought and pathogens in forest trees. *Ann. For. Sci.*, **63**, 597–612.
45. Sturrock,R.N., Frankel,S.J., Brown,A.V. *et al.* (2011) Climate change and forest diseases. *Plant Pathol.*, **60**, 133–149.
46. Sari,M.P., Ndiaye,M.B., Groenewald,J.Z. *et al.* (2014) Genetic diversity in *Macrophomina phaseolina*, the causal agent of charcoal rot. *Phytopathol. Mediterr.*, **53**, 250–268.
47. Wyka,S.A. and Broders,K.D. (2016) The new family Septorioideaceae, within the Botryosphaeriales and *Septorioidea strobi* as a new species associated with needle defoliation of *Pinus strobus* in the United States. *Fungal Biol.*, **120**, 1030–1040.
48. Zlatkovic,M., Keca,N., Wingfield,M.J. *et al.* (2016) Botryosphaeriaceae associated with the die-back of ornamental trees in the western balkans. *Antonie Van Leeuwenhoek*, **109**, 543–564.
49. Li,G., Slippers,B., Wingfield,M.J. *et al.* (2020) Variation in Botryosphaeriaceae from Eucalyptus plantations in YunNan Province in southwestern China across a climatic gradient. *IMA Fungus*, **11**, 1–49.