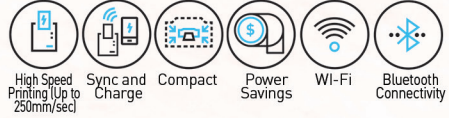


TM PRINTER



TM PRINTER

TM-M30II



NEW PRODUCT

- Print Method** Thermal Line Printing
- Print Speed** 250 mm/sec
- Interface** USB + Ethernet/ USB + Ethernet + Bluetooth/ 3.0 EDR
- Paper Dimension** Roll Paper: 57.5 ± 0.5 (w) x Ø 40.4 mm
- Operating System** Mobile IOS, Android and Windows, (security LEVELWEP, WPA, WPA2-Personal/Enterprise)
- Power Consumption** 32.4 W
- Overall Dimension** 127 x 127 x 135 mm
- Weight** 1.3 Kg

EU-M30



- Print Method** Thermal Line Printing
- Print Speed** 250 mm/sec
- Interface** USB 2.0 Type B, RS-232C
- Paper Size** 58 mm - 80 mm (Width)
- Paper size roll paper** 57.50 ± 0.50 (W) mm x dia 18.00 mm, 57.50 ± 0.50 (W) mm x dia 83.00 mm, 79.50 ± 0.50 (W) mm x dia 18.00 mm, 79.50 ± 0.50 (W) mm x dia 83.00 mm
- Operating System** Mobile IOS, Android and Windows, (security LEVELWEP, WPA, WPA2-Personal/Enterprise)
- Power Supply** AC adapter, C, EURO AC cable
- Overall Dimension** 127 x 131 x 127 mm
- Weight** 1.3 kg



TM PRINTER

Mobile (Portable) Receipt Printer

TM-P20II Mobile



Mobility



Print



Power Savings



Print Method
Print Speed
Character Size

Thermal Line Printing
100 mm/sec (Receipt Version)
font A: 1.5 x 3.0 mm;
font B: 1.12 x 3.0 mm;
font C: 1.12 x 2.1 mm;
font D: 1.25 x 3.0 mm;
font E: 1.0 x 2.0 mm

Paper Dimension
Operating System

Roll Paper: 57.5 ± 0.5 (w) x Ø 40.4 mm
Mobile IOS, Android and Windows, (security LEVELWEP, WPA, WPA2-Personal/Enterprise

Power Consumption

Wi-Fi: 9 hours (energy saving mode): 16 hours |
Bluetooth: 26 hours

Overall Dimension
Option

79.0 x 119.8 x 43.6 mm
Single Printer Charger/Cradle (OT-SC20),
Battery Pack (OT-BY20), Padded Case (OT-PC20),
Battery Spacer (OT-BS20)

TM-P80II



Mobility



Print



Power Savings



Print Method
Print Speed
Character Size

Thermal Line Printing
100 mm/sec (Receipt Version)
font A: 1.5 x 3.0 mm;
font B: 1.12 x 3.0 mm;
font C: 1.12 x 2.1 mm;
font D: 1.25 x 3.0 mm;
font E: 1.0 x 2.0 mm

Paper Dimension
Operating System

Roll Paper: 57.5 ± 0.5 (w) x Ø 40.4 mm
Mobile IOS, Android and Windows, (security LEVELWEP, WPA, WPA2-Personal/Enterprise

Power Consumption

Wi-Fi: 9 hours (energy saving mode): 16 hours |
Bluetooth: 26 hours

Overall Dimension
Option

79.0 x 119.8 x 43.6 mm
Single Printer Charger/Cradle (OT-SC20),
Battery Pack (OT-BY20), Padded Case (OT-PC20),
Battery Spacer (OT-BS20)

TM PRINTER

Receipt Printers

TM-M10



Mobility



Print



Power Savings



Auto Cutter

FOR PROJECT ONLY



Print Method	Thermal Line Printing
Print Speed	150 mm/sec
Character Size	Font A: 1.25 x 3.00 mm Font B: 1.13 x 3.00 mm Font C: 0.88 x 2.13 mm
Paper Dimension	Roll Paper: 79.5 ± 0.5 (W) x Ø 83; 57.5 ± 0.5 (W) x Ø 83
Operating System	Windows (APD, OPOS, epos SDK); Mac Drivers Linux Cup Drivers; iOS/Android/Web (epos SDK)
Power Consumption	Approx. 1.5 A (mean)
Overall Dimension	127 x 127 x 127 mm
Option	External Buzzer (OT-BZ20); Wall Hanging Bracket (OT-WH30)

TM-M30II-SL



Mobility



Print



Power Saving



Auto Cutter



Print Method	Thermal line printing
Print Speed	200 mm/sec (Receipt Version)
Character Size	ANK Font A: 1.25 x 3 mm (Default); ANK Font B: 1.13 x 3 mm; Kanji Font: 3 x 3 mm
Paper Dimension	Roll paper: 79.5 ± 0.5 (W) x Ø 83, 57.5 ± 0.5 (W) x Ø 83
Interface	Built-in USB + Ethernet 10/100Base-T/TX (Ethernet Model)
Power Consumption	Approx. 1.5 A (mean)
Overall Dimension	127 x 127 x 127 mm
Option	External Buzzer (OT-BZ20); Wall Hanging Bracket (OT-WH30)

TM PRINTER

Receipt Printers

TM PRINTER

TM-U220



Print



Power Saving



- Print Method** 9-pin, serial impact dot matrix
- Print Speed** Approx. 4.7 lps (at 40 columns, 16 cpi), 6.0 lps (at 30 columns, 16 cpi)
- Character Size** Font A: 1.6 mm (W) x 3.1 mm (H)
Font B: 1.2 mm (W) x 3.1 mm (H)
- Paper Dimension** Roll Paper : 57.5 ± 0.5 (W), 69.5 ± 0.5 (W), 76.0 ± 0.5 (W) x Ø 83.0 mm
- Interface** RS 232, Bi-directional Parallel, USB, Ethernet
- Power Consumption** Operating: Approx. 38 W (Mean)
Standby: Approx. 2.2 W (Mean)
- Overall Dimension** Type A: 160 (W) x 286 (D) x 157.5 (H) mm
Type B: 160 (W) x 248 (D) x 138.5 (H) mm
Type B: 160 (W) x 248 (D) x 138.5 (H) mm
- Option** Wall hanging bracket model: WH-10 (for type B, D)

TM-T70II



Mobility



Print



Power Saving



Auto Cutter



- Print Method** Thermal Line Printing
- Print Speed** Max. 170 mm/sec (80 mm model)
Max. 200 mm/sec (58 mm model)
- Dot Density** 180 dpi x 180 dpi (ANK model)
203 dpi x 203 dpi (Japanese / Multi-language model)
- Paper Dimension** Roll Paper: 79.5 mm ± 0.5 mm (W) x Ø 83.0 mm / 57.5 mm ± 0.5 mm (W) x Ø 83.0 mm
- Interface** USB + RS-232, USB + Parallel, USB + Ethernet
- Power Consumption** Approx. 1.8 A (mean)
- Overall Dimension** 125 (W) x 194 (D) x 114 (H) mm
- Option** External buzzer unit, Connector cover

TM PRINTER

TM-T82X



Mobility



Print



Power Saving



Auto Cutter



Also available for 58mm paper width

Print Method	Thermal Line Printing
Print Speed	Max. 200 mm/sec
Character Size	0.88 × 2.13 mm / 1.25 × 3 mm, Hanji font: 3 × 3 mm, Thai font: 0.88 × 3 mm / 1.25 × 3 mm
Paper Dimension	Width and Roll Diameter: 79.5 ± 0.5 mm
Operating System	Windows, Mac, Linux
Power Consumption	Operating: Approx. 27.8 W Standby: Approx. 0.96 W
Overall Dimension	192 × 149 × 140 mm
Option	External buzzer

TM-T82III



Mobility



Print



Power Saving



Auto Cutter



Print Method	Thermal Line Printing
Print Speed	Max. 250 mm/sec
Character Size	0.88 × 2.13 mm / 1.25 × 3 mm, Hanji font: 3 × 3 mm, Thai font: 0.88 × 3 mm / 1.25 × 3 mm
Paper Dimension	Width: 79.5 ± 0.5mm Roll: 57.5 ± 0.5 × Ø 83.0 mm
Interface	Built-in USB + UIB (Serial or Parallel interface), Ethernet interface
Power Consumption	Operating: Approx. 1.5A Standby: Approx. 0.1A
Overall Dimension	199 × 140 × 146 mm
Option	External Wi-Fi Dongle OT-WL06, External buzzer unit

TM PRINTER

Receipt Printers

T88VI - iHUB



Mobility



Print



Power Saving



Auto Cutter



Print Method	Thermal Line Printing
Print Speed	Max. 350 mm/sec
Character Size	0.99 × 2.4 mm / 1.41 × 3.39 mm
Paper Dimension	Width: 79.5 ± 0.5 mm × 83.0 / 57.5 ± 0.5 × 83.0 mm
Interface	Built-in USB, Built-in Ethernet + Serial, USB Charging Port
Power Consumption	Approx. 27.4 W
Overall Dimension	195 x 145 x 148 mm
Option	Wireless LAN: OT-WL02 (ELPAP10) Customer Display Unit: DM-D30, DM-D110 External Buzzer: OT-BZ20

TM-88VI



Mobility



Print



Power Saving



Auto Cutter



Print Method	Thermal Line Printing
Print Speed	Max. 350 mm/sec
Character Size	0.99 × 2.4 mm / 1.41 × 3.39 mm
Paper Dimension	79.5 ± 0.5 mm × 83.0 / 57.5 ± 0.5 × 83.0 mm
Interface	Built-in USB, Built-in Ethernet + UIB
Power Consumption	Approx. 27.6 W
Overall Dimension	195 x 145 x 148 mm
Option	Wireless LAN: OT-WL02 (ELPAP10) Customer Display Unit: DM-D30, DM-D110 Wall Hanging Unit: WH-10 External Buzzer: OT-BZ20

TM PRINTER

TM-U950



Mobility



Print



Power Saving



Auto Cutter



Print Method	9-pin serial impact dot matrix
Print Speed	Approx. 311 / 233 cps
Character Size	1.6 mm x 3.1 mm / 1.3 mm x 3.1 mm
Paper Dimension	69.50 ± 0.50 (W) mm x Ø 83.00 mm
Interface	RS-232, Drawer kick-out, Customer Display, Bidirectional parallel
Power Consumption	Standby: 0.3 A, Mean: 1.8 A
Overall Dimension	251 x 298 x 195 mm
Option	MICR device

TM-L90



Mobility



Print



Power Saving



Auto Cutter



Technology	Thermal line
Print Resolution	203 x 203 dpi
Type Width	Receipt: Max. 72 mm Label: Max. 70 mm
Max. Print Speed	Max. 150 mm/sec
Interface	Built-in USB + 25-pin serial, with optional parallel and ethernet interface modules
Operating System	Microsoft Windows 8 / 7 / Vista / XP / POS Ready / Server 2012 / Server 2008 / Server 2003
Power Consumption	Operating: Approx. 1.8 A (mean) Standby: Approx. 0.1 A
Overall Dimension	148 x 140 x 203 mm
Weight	Approx. 1.9 kg

PEELER & LFC MODEL ALSO AVAILABLE

TM PRINTER

Receipt Printer

TM PRINTER



TM-L100



Mobility



Print



Power Saving



Auto Cutter

Technology	Thermal line
Print Resolution	203 x 203 dpi
Type Width	Receipt: Max. 72 mm Label: Max. 70 mm
Max. Print Speed	Max. 150 mm/sec
Interface	Built-in USB + 25-pin serial, with optional parallel and ethernet interface modules
Operating System	Microsoft Windows 8 / 7 / Vista/ XP / POS Ready / Server 2012 / Server 2008 / Server 2003
Power Consumption	Operating: Approx. 1.8 A (mean) Standby: Approx. 0.1 A
Overall Dimension	148 x 140 x 203 mm
Weight	Approx. 1.9 kg

PEELER & LFC MODEL ALSO AVAILABLE

Receipt & Slip Printer

TM-H6000V



Mobility



Print



Power Saving



Auto Cutter



Print Method	9-pin serial impact dot matrix
Print Speed	350 mm/sec
Character Size	1.41 mm (W) x 3.39 mm (H) / 0.99 mm (W) x 2.4 mm (H)
Paper Dimension	79.50 ± 0.50 (W) mm x Ø 83.00 mm; 57.50 ± 0.50 (W) mm x Ø 83.00 mm
Interface	RS-232, USB 2.0 Type B, Drawer kick-out, Customer Display
Power Consumption	Approx. 22W
Overall Dimension	186 x 278 x 181 mm
Option	Endorsement printer (E/P), MICR device, Validation

TM PRINTER

Slip Printers

TM-U590



Mobility



Print



Power Saving



Auto Cutter



Print Method
Print Speed
Character Size
Paper Dimension

9-pin serial impact dot matrix
Approx. 233 / 311 cps
1.6 mm x 3.1 mm / 1.3 mm x 3.1 mm
Roll Paper (Receipt / Journal): 69.5 ± 0.5 (W) x Ø 83.0 mm; Slip: 70 (W) x 70 mm (L) - 210 (W) x 297 mm (L)

Interface
Power Consumption

RS-232, Drawer kick-out, Customer Display
Approx. 1.8 A (mean)
MCBF: 29,000,000 lines

Overall Dimension
Option

Autocutter: -
252 x 205 x 185 mm
USB, Ethernet

TM-U295



Mobility



Print



Power Saving



Auto Cutter



Print Method
Print Speed
Character Size

7-pin, Shuttle Impact Dot Matrix
Approx. 1.9 - 2.3 lps
1.6 (W) x 2.9 (H) / 1.3 (W) x 2.9 (H) mm
Thai Font Size: 1.6 (W) x 8.7 (H) / 1.9 (W) x 8.7 (H) mm

Paper Dimension

80(W) x 69(L) to 182 (W) x 257 (L) mm

Interface
Power Consumption
Reliability

RS-232 / Bi-directional Parallel
Approx. 600 mA (mean)
MCBF: 7,000,000 lines

Overall Dimension

Autocutter: -
180 x 290.5 x 101.5 mm

TM PRINTER

Airline (Ticketing) Printer

TM-L500A



Mobility



Print



Power Saving



Auto Cutter

FOR PROJECT ONLY



Print Method
Print Speed

Thermal Line Printing
Max 250 mm/sec with optional roll paper holder*1; Boarding Pass: 150 mm/sec (depending on media quality); Baggage Tag: 200 mm/sec (depending on media quality)

Dot Density
Paper Dimension

16.7 cpi / 12.5 cpi
Fanfold paper width: 54.0 ± 0.5 mm, 79.5 ± 0.5 mm, 82.5 ± 0.5 mm
Roll paper width & diameter: 54.0 ± 0.5 mm × Ø 184.2 mm, 79.5 ± 0.5 mm × Ø 184.2 mm, 82.5 ± 0.5 mm × Ø 184.2mm

Interface

USB + RS232 (9-Pin Serial), RS232 (25-pin Serial), Ethernet

Power Consumption

Boarding Pass: Approx. 20.3W (at 230V) / Approx. 20.5W (at 115V); Baggage Tag: Approx. 34.4W (at 230V) / Approx. 35.8W (at 115V)

Overall Dimension
Option

236 x 156 x 148 mm
Roll Paper Holder: SU-RPL500 (for roll paper with 76.2 mm inner diameter core), SU-RPL500B (for roll paper with 76.2 mm and 31.75 mm inner diameter core)

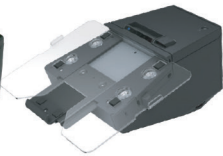
TM Printer Consumable

		POSC
Material Code	Description	Product
C43S015350	ERC-03(B) RIBBON CASSETTE	M-204 / 210V / 210V (C) / 220 Series / 240
C43S015352	ERC-05(B) RIBBON CASSETTE	M-150II
C43S015354	ERC-09(B) RIBBON CASSETTE	M-160/180/190
C43S015356	ERC-09(B) RIBBON CASSETTE	
C43S015358	ERC-18(B) RIBBON CASSETTE	M-2630 Series / 2640 Series / 2660 Series
C43S015360	ERC-22(B) RIBBON CASSETTE	M-180 / 190 / 190G
C43S015366	ERC-27(B) RIBBON CASSETTE	TM-290/U295 M-290
C43S015369	ERC-31(B) RIBBON CASSETTE	TM-H5000II / 5200 / U950 / U925 / U590 / M-930
C43S015371	ERC-32(B) RIBBON CASSETTE	TM-H6000II / U675 / RP-U420 / M-U-420 / 820 Series
C43S015374	ERC-38(B) RIBBON CASSETTE	TM-U220 / U210 / U230 / U325 / U375 / 210AR / U300
C43S015376	ERC-38(B/R) RIBBON CASSETTE	TM-U220 / U210 / U230 / U325 / U375 / 210AR / U300

NEXT-GENERATION POS SOLUTIONS FOR YOUR BUSINESS.



Thermal
Desktop Printers



Portable
Thermal Printers



Thermal
Label Printers



Dot Matrix
Printers



Hybrid
Printers



IT'S IN THE DETAILS.

EPSON