

Introduction to ramularia

Dr Neil Havis - SRUC



Ramularia collo-cygni

A brief introduction

Dr Neil Havis

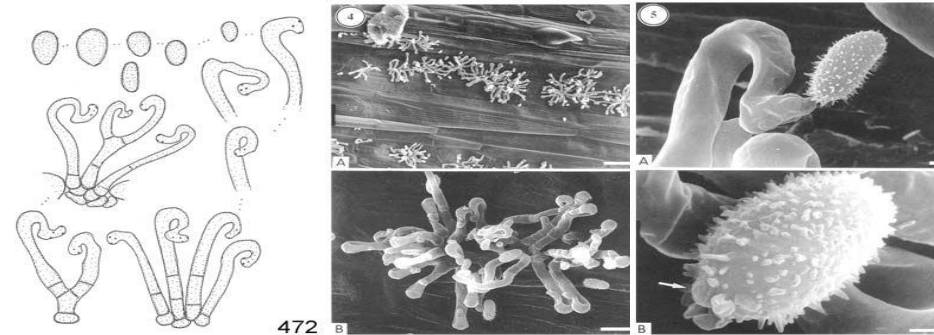
Pathogen profile:

First described by Cavara in Northern Italy
in 1893

Initially named as *Ophiocladium hordei*

Now classified as :

Kingdom - Fungi
Phylum - Ascomycota
Class - Dothideales
Order - Mycosphaerellaceae
Family - Ramularisphaerella
Genus - Ramularia
Species - collo-cygni

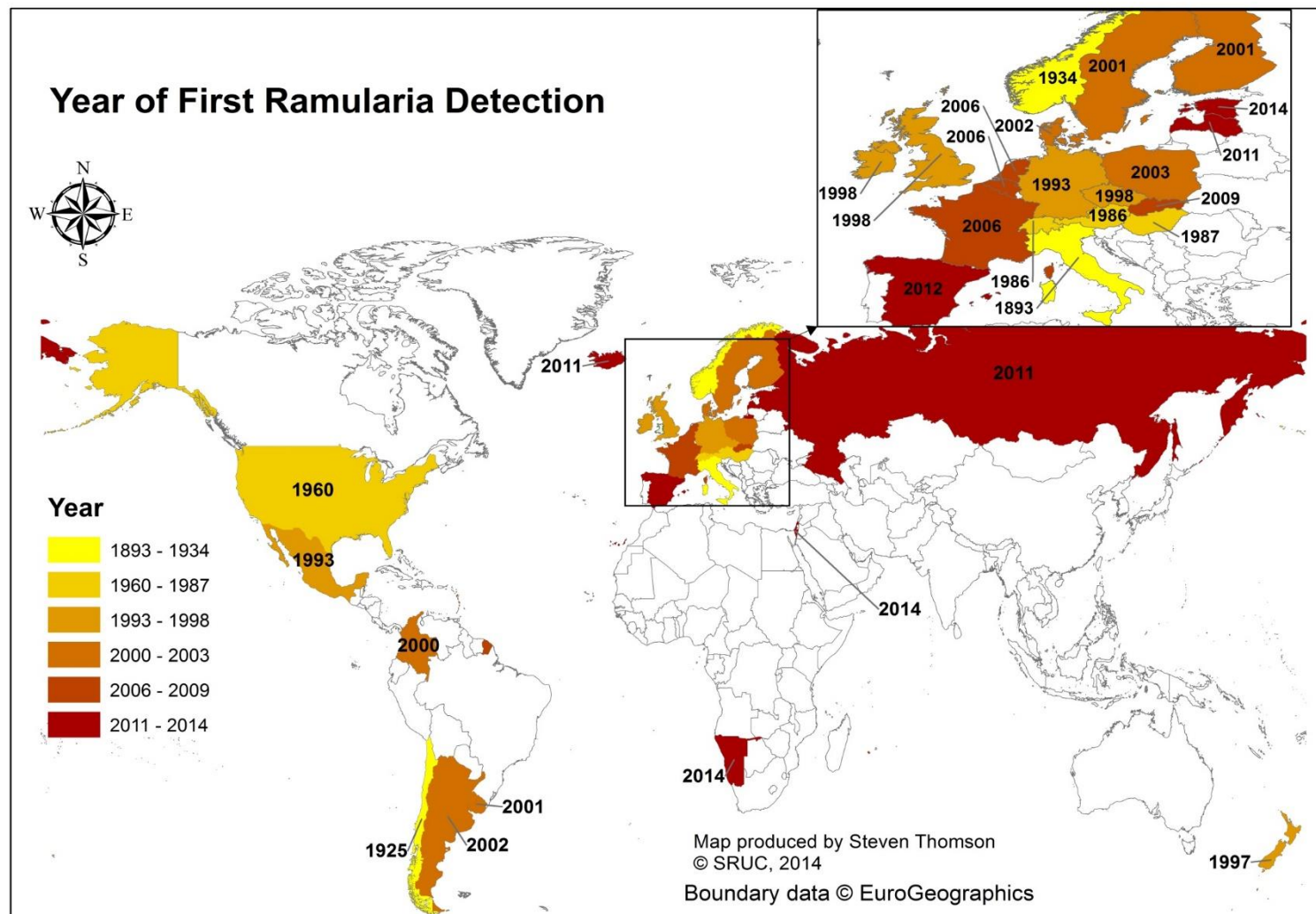


Ramularia leaf spot (RLS)

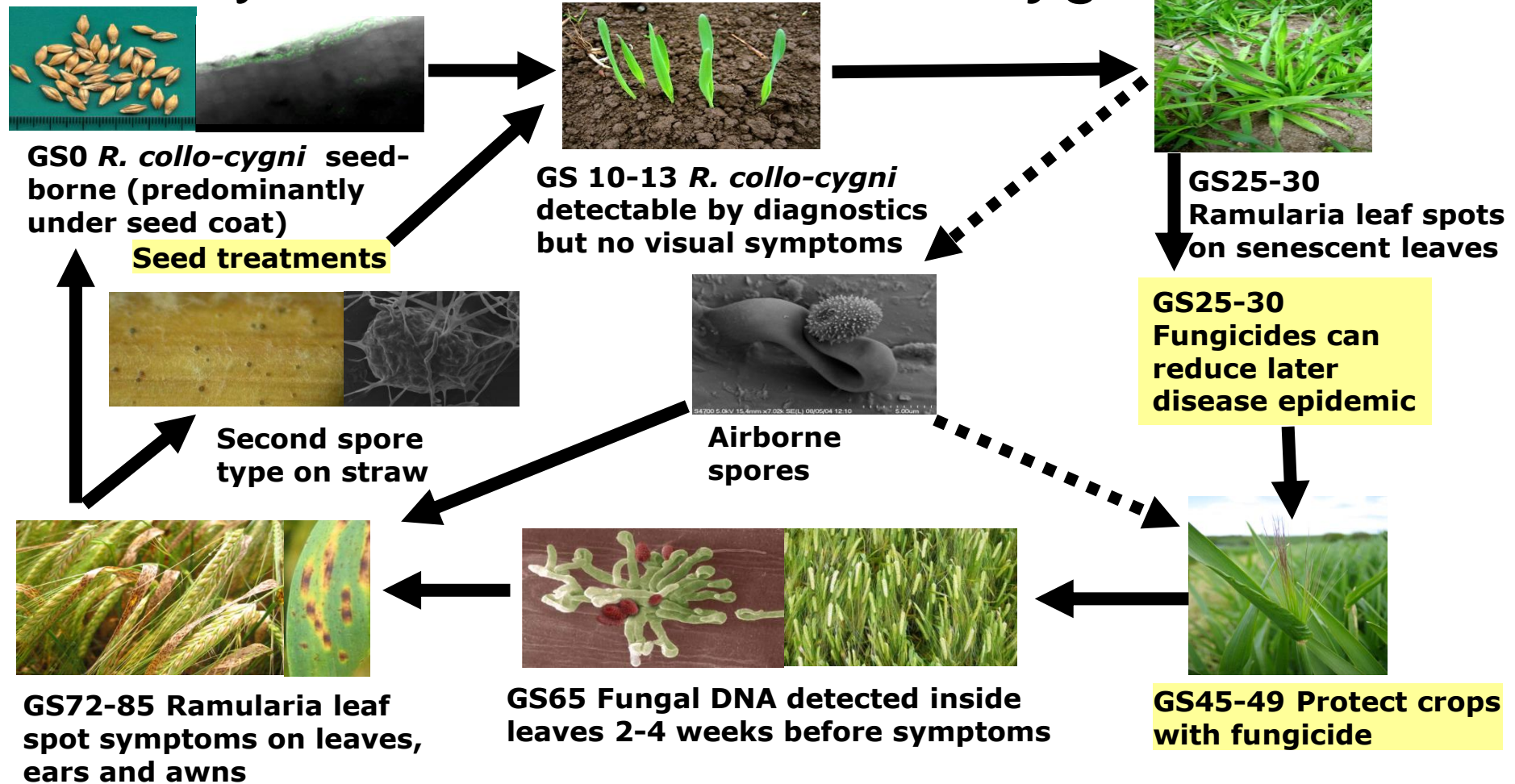
- RLS can be distinguished from other foliar symptoms by 5 rules
- Rectangular lesions
- Ring of chlorosis around the lesion
- Necrosis is Right through the leaf
- Reddish/brown colouration of lesion
- Restricted by leaf veins
- <https://cereals.ahdb.org.uk/ramularia>



- title text

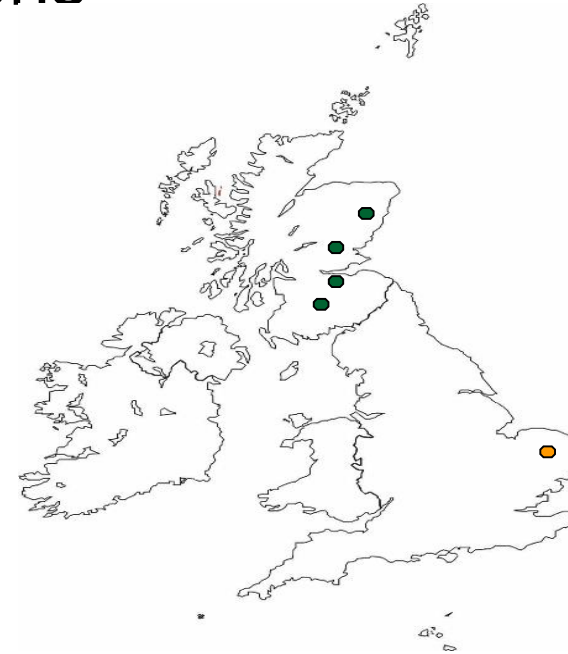


Life cycle of *Ramularia collo-cygni*

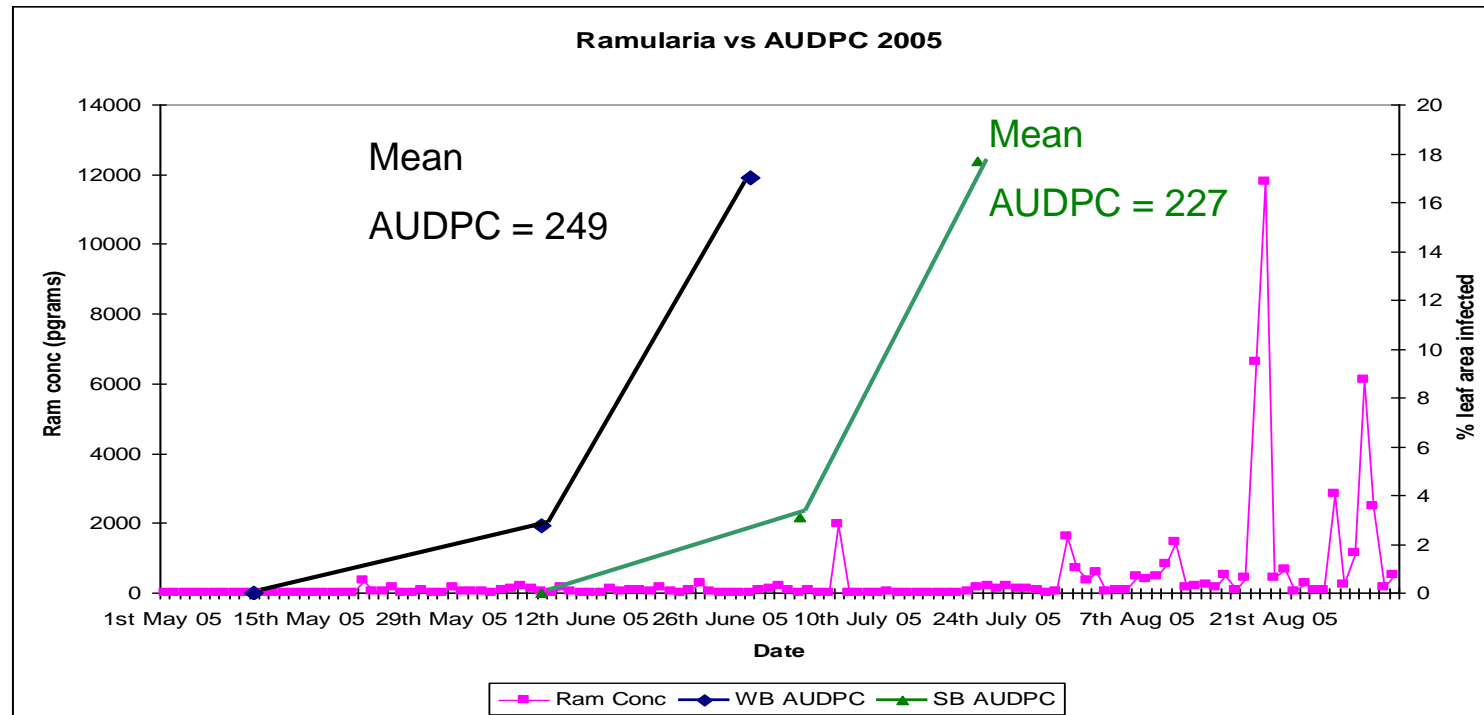


Ramularia collo-cygni- spore monitoring

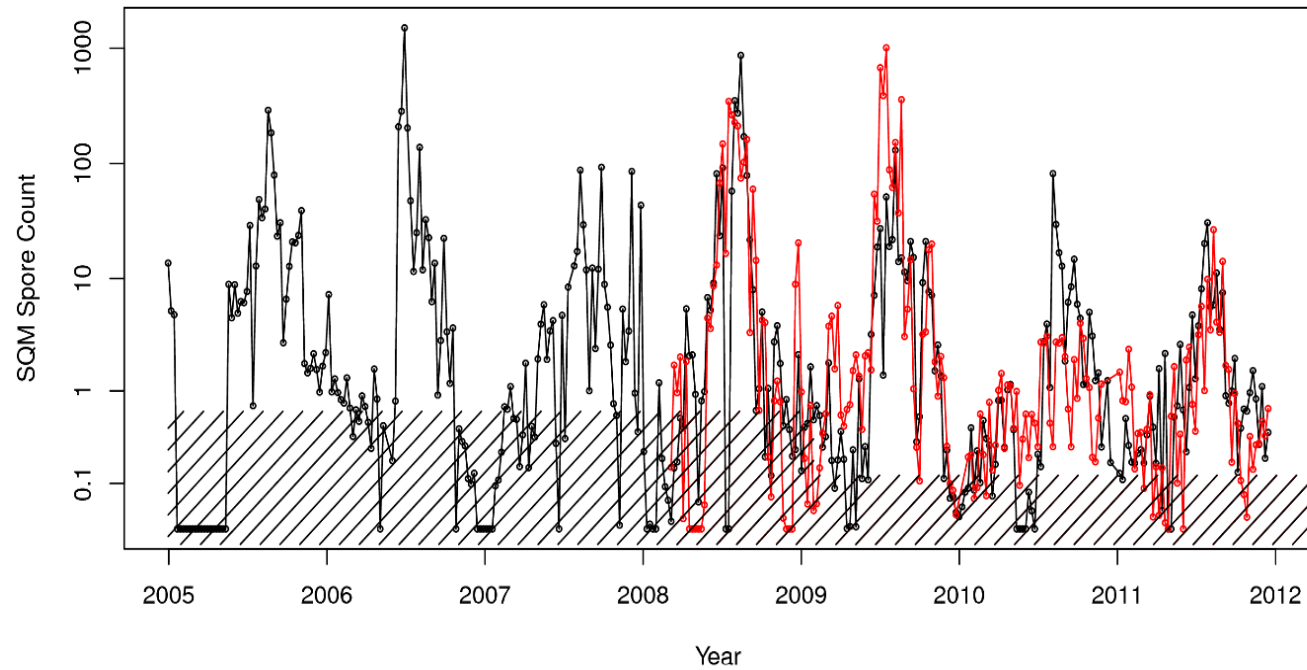
Spore samplers and weather stations



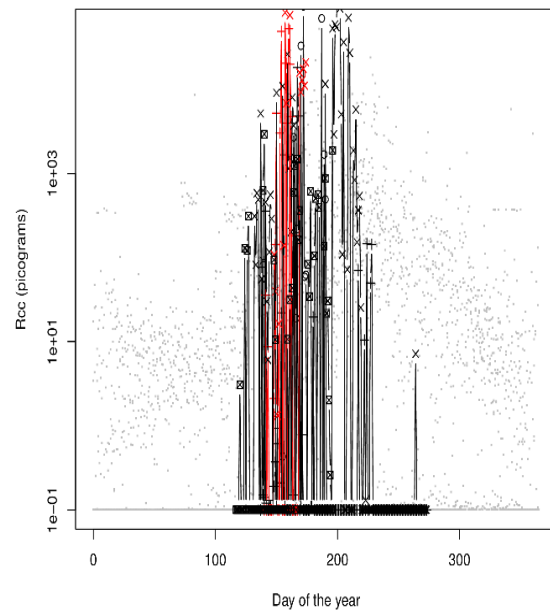
Monitoring RLS epidemic development



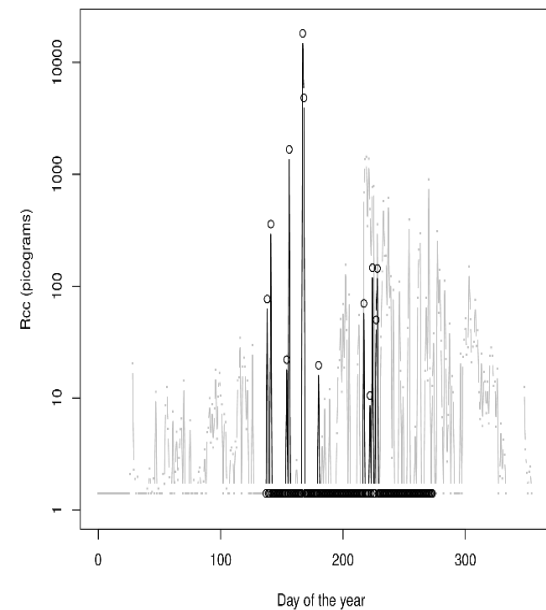
Ramularia collo-cygni- a new major pathogen of barley



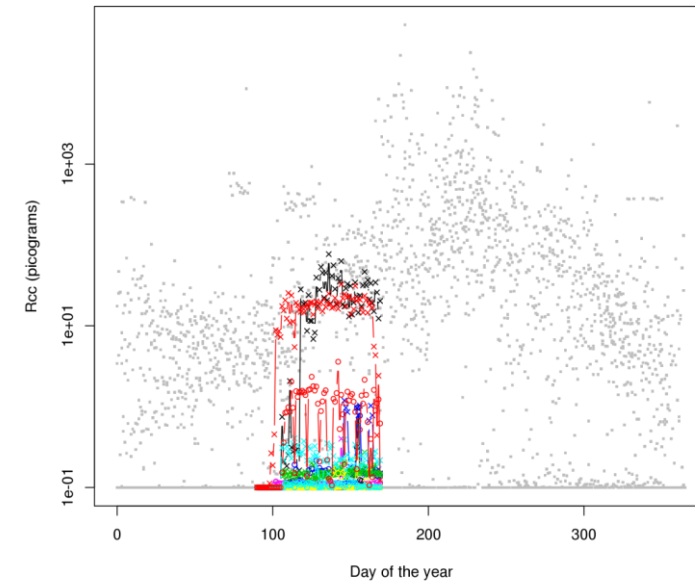
Ramularia epidemiology – spore patterns



Bavaria, all years

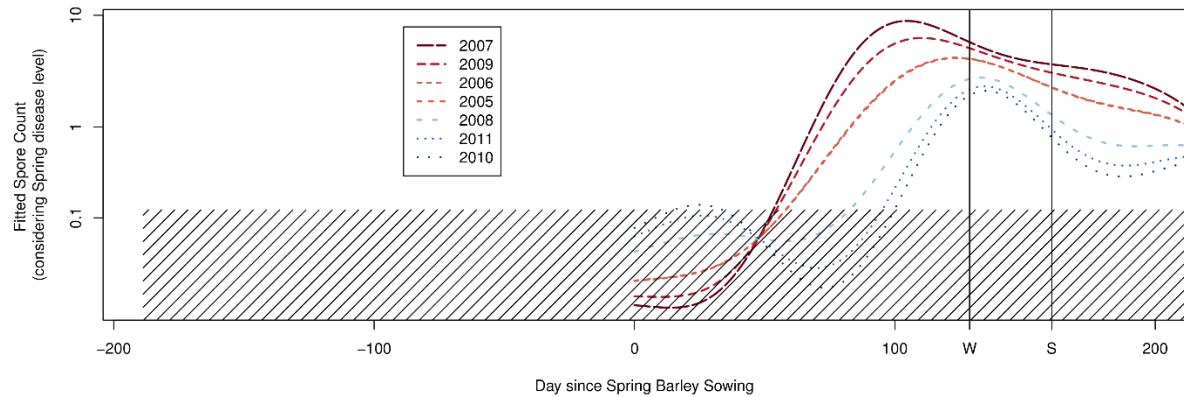
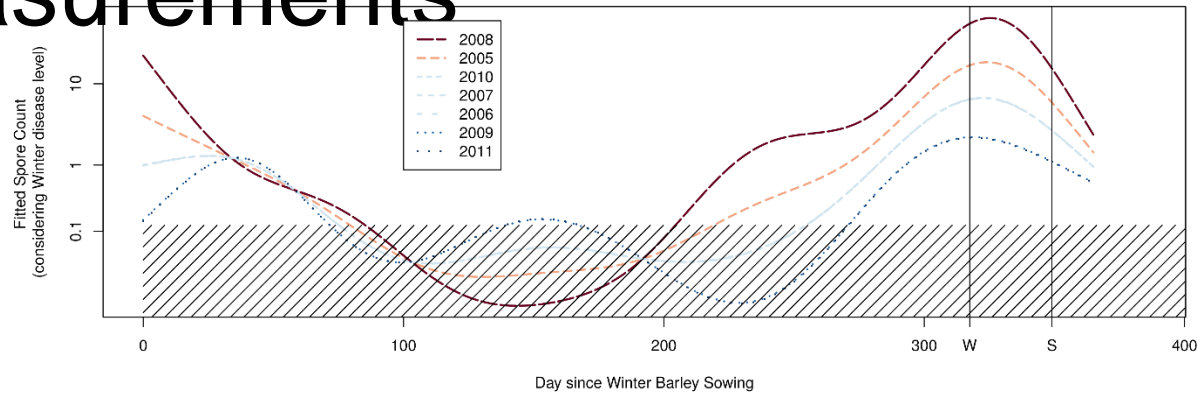


All sites 2010



Polish sites

Ramularia epidemiology-fitted curves for spore DNA measurements



Ramularia epidemiology



	BUSH	BUSH	BUSH	LANARK	LANARK	LANARK
	P-value (7 day median)	Coefficient (7 days abs max)	Maximum lag with significant effect	P-value (7 day median)	Coefficient (7 days abs max)	Maximum lag with significant effect
Wind Speed	0.000	-0.447	7	0.336	-0.224	1
Average Temperature	0.295	0.037	0	0.159	0.079	0
Solar Radiation	0.038	-0.403	5	0.167	-0.391	0
Surface Wetness	0.009	0.009	5	0.009	0.012	7
Rainfall	0.050	0.076	6	0.000	0.180	10



THE QUEEN'S
ANNIVERSARY PRIZES
FOR HIGHER AND FURTHER EDUCATION
2017



SRUC

Leading the way in Agriculture and Rural Research, Education and Consulting