



Henry Keep
1897-98



Charles O. Bemies
1899-1900



George Denman
1901-02



Chester Brewer
1903-10, 1917, 1919



John F. Macklin
1911-15



Frank Sommers
1916



George E. Gauthier
1918



George "Potsy" Clark
1920



Albert M. Barron
1921-22



Ralph Young
1923-27



Harry Kipke
1928



Jim Crowley
1929-32



Charles Bachman
1933-46



Clarence "Biggie" Munn
1947-53



Hugh Duffy Daugherty
1954-72



Dennis Stolz
1973-75



Darryl Rogers
1976-79



Frank "Muddy" Waters
1980-82



George Perles
1983-94



Nick Saban
1995-99



Bobby Williams
2000-02



Morris Watts
2002



John L. Smith
2003-06

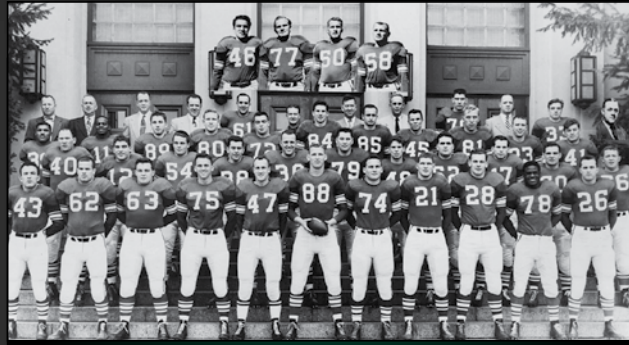


Mark Dantonio
2007-

COACH (ALMA MATER)	PERIOD	YEARS	G	W-L-T	PCT.
No established coach	1896	(1)	4	1-2-1	.375
Henry Keep	1897-98	(2)	14	8-5-1	.609
Charles O. Bemies (West Theo. Sem.)	1899-1900	(2)	11	3-7-1	.318
George E. Denman (West Theo. Sem.)	1901-02	(2)	17	7-9-1	.441
Chester L. Brewer (Wisconsin)	1903-10/1917/1919	(10)	88	58-23-7	.699
John F. Macklin (Pennsylvania)	1911-15	(5)	34	29-5	.853
Frank Sommers (Pennsylvania)	1916	(1)	7	4-2-1	.642
George E. Gauthier (Michigan State)	1918	(1)	7	4-3	.571
George "Potsy" Clark (Illinois)	1920	(1)	10	4-6	.400
Albert M. Barron (Penn State)	1921-22	(2)	18	6-10-2	.389
Ralph H. Young (Chicago-W&J)	1923-27	(5)	41	18-22-1	.451
Harry G. Kipke (Michigan 1925)	1928	(1)	8	3-4-1	.437
James H. Crowley (Notre Dame 1925)	1929-32	(4)	33	22-8-3	.712
Charles W. Bachman (Notre Dame 1917)	1933-46	(13)	114	70-34-10	.658
Clarence "Biggie" Munn (Minnesota 1932)	1947-53	(7)	65	54-9-2	.857
Hugh Duffy Daugherty (Syracuse 1940)	1954-72	(19)	183	109-69-5	.609
Dennis E. Stolz (Alma 1955)	1973-75	(3)	33	19-13-1	.591
Darryl D. Rogers (Fresno State 1957)	1976-79	(4)	44	24-18-2	.568
Frank "Muddy" Waters (Michigan State 1950)	1980-82	(3)	33	10-23	.303
George J. Perles (Michigan State 1960)	1983-94	(12)	139	68-67-4	.503
Nick Saban (Kent 1973)	1995-99	(5)	59	34-24-1	.585
Bobby Williams (Purdue 1982)	2000-02	(3)	33	16-17	.485
Morris Watts (Tulsa 1981)	2002	*	3	1-2	.333
John L. Smith (Weber State 1971)	2003-06	(4)	48	22-26	.458
Mark Dantonio (South Carolina 1979)	2007-	(5)	66	44-22	.667
TOTALS	1896-2011	(115)	1112	638-430-44	.594

* Served as interim head coach for the final three games of the 2002 season

In its 115-year football history, Michigan State has won six national championships according to the list of major selectors recognized by the NCAA, including three consensus titles (1952, 1965 and 1966).



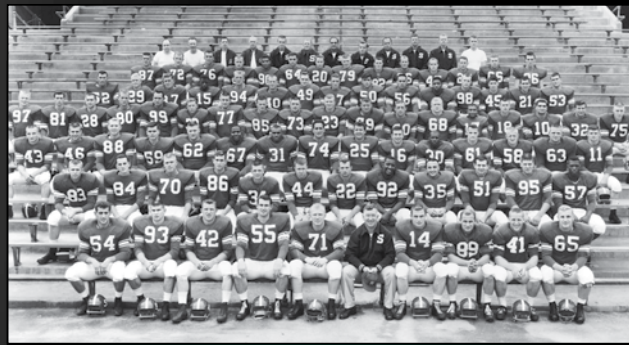
1951 NATIONAL CHAMPIONS (9-0-0)
 Selectors: Billingsley, Helms, Poling.



1952 NATIONAL CHAMPIONS (9-0-0)
 Selectors: Consensus - AP, UPI, Board, DeVold, Dunkel, Football Research, Helms, Litkenhous, National Championship Foundation, Sagarin, Williamson.



1955 NATIONAL CHAMPIONS (9-1-0)
 Selector: Board.



1957 NATIONAL CHAMPIONS (8-1-0)
 Selector: Dunkel.



1965 NATIONAL CHAMPIONS (10-1-0)
 Selectors: Consensus - UPI, NFF, FWAA, Berryman, Billingsley, DeVold, Dunkel, FB News, Helms, Litkenhous, Poling, Sagarin, Sagarin (ELO-Chess).



1966 NATIONAL CHAMPIONS (9-0-1)
 Selectors: Consensus - NFF, Football Research, Helms, Poling.

1953 (9-1, 5-1 Big Ten)

It was a year of firsts for the Michigan State football program in 1953. In its first year of Big Ten competition, the Spartans claimed their first conference championship and also won its first Rose Bowl with a 28-20 victory over UCLA, in what would be Biggie Munn's final game as head coach. Michigan State won its last five games of the season and finished ranked No. 3 in both The Associated Press and United Press International Polls. It closed out a three-year span in which Michigan State went 27-1, including a school-record 28-game winning streak.

1965 (10-1, 7-0 Big Ten)

Perhaps the most dominant team in school history, the 1965 Spartans claimed the program's second consensus National Championship and second Big Ten title. Michigan State featured eight All-Americans, including three players (Bubba Smith, Gene Washington, George Webster) in the College Football Hall of Fame. MSU crushed its competition in the regular season, leading the Big Ten in conference games in several categories, including rushing offense, total offense, scoring, total defense, rushing defense and scoring defense. The defense allowed just 5.6 points per game and 173.2 yards per game, school records that still stand today.



MSU's back-to-back first-team All-Americans (Clinton Jones, Robert Apisa, Bubba Smith, Gene Washington and George Webster) from the 1965-66 Big Ten and National Championship teams with head coach Duffy Daugherty.

1966 (9-0-1, 7-0 Big Ten)

The 1966 Spartan team picked right up where the 1965 team left off, winning the consensus National Championship and Big Ten title for the second straight year. Five players earned back-to-back first-team All-America honors (Robert Apisa, Clinton Jones, Bubba Smith, Gene Washington and George Webster) and a school-record 11 players earned first-team All-Big Ten recognition. Since Big Ten schools were not allowed to go to the Rose Bowl in consecutive years, the season ended in the famous "Game of the Century" 10-10 tie against No. 1 Notre Dame on Nov. 19 in Spartan Stadium.

1978 (8-3, 7-1)

The 1978 Big Ten Champion Spartans set numerous offensive records and still hold the conference record for most yards gained (523.1 ypg.) in league games. The team's scoring average of 37.4 points per game is also still a school record; in addition, MSU ranked first in conference games in passing offense (247.9 ypg.) and scoring (41.0 ppg.). The Spartans began their seven-game winning streak to close the season with a 24-15 win at Michigan on Oct. 14.

1987 (9-2-1, 7-0-1)

Michigan State won the 1987 Big Ten Championship outright with a 7-0-1 record and went on to defeat USC in the Rose Bowl, 20-17. The Spartans went unbeaten in their last nine games of the season and topped Indiana at Spartan Stadium on Nov. 14, 27-3, to clinch a spot in the Rose Bowl. Following the victory over USC, Michigan State closed the season ranked No. 8 in both The Associated Press and USA Today Coaches' Polls.

1990 (8-3-1, 6-2)

Coach George Perles led the Spartans to the Big Ten Championship in 1990 as Michigan State won its final five Big Ten games of the season to claim a share of the conference title. Among the Spartan victories that season was a 28-27 win at No. 1 Michigan on Oct. 13. MSU defeated USC in the John Hancock Bowl, 17-16, en route to finishing No. 15 in the USA Today Coaches' Poll and No. 16 in The Associated Press Poll.



Plaques honoring all seven of Michigan State's Big Ten Championship teams are located on the exterior southwest corner of Spartan Stadium.

2010 (11-2, 7-1)

In Mark Dantonio's fourth season as head coach at Michigan State, the 2010 Spartans won a school-record 11 games and claimed the school's first Big Ten Championship in 20 years. MSU went 7-1 in Big Ten play and clinched a share of the title with its 28-22 win at Penn State in the final game of the regular season. The Spartans earned a berth in the 2011 Capital One Bowl on New Year's Day, marking the fourth straight bowl appearance for the program. Michigan State finished the season ranked No. 14 in the final Associated Press and USA Today Coaches' Polls.



2010 Big Ten Championship ring (left) and 2011 Big Ten Legends Division Championship ring (right).

JEREL
WORTHY



SPARTAN ALL-AMERICANS

FLOZELL ADAMS - 1997

#76, OT, 6-7, 330
Bellwood, Ill.

ERIC ALLEN - 1971

#24, TB, 5-9, 161
Georgetown, S.C.

MORTEN ANDERSEN - 1981

#8, PK, 6-2, 195
Struer, Denmark

BOB APISA - 1965, 66

#45, FB, 6-1, 212
Honolulu, Hawaii

ED BAGDON - 1949

#65, G, 5-10, 200
Dearborn, Mich.

CARL BANKS - 1983

#54, OLB, 6-6, 235
Flint, Mich.

HARLON BARNETT - 1989

#36, CB, 6-0, 192
Cincinnati, Ohio

DAVE BEHRMAN - 1961, 62

#51, OT, 6-4, 247
Dowagiac, Mich.

LEROY BOLDEN - 1953

#39, HB, 5-7 1/2, 163
Flint, Mich.

MARK BRAMMER - 1978

#91, TE, 6-4, 225
Traverse City, Mich.

ART BRANDSTATTER - 1936

#31, FB, 5-11, 175
Ecorse, Mich.

ALLEN BRENNER - 1968

#86, DB, 6-1, 194
Niles, Mich.

ED BUUDE - 1962

#79, OT, 6-4, 243
Detroit, Mich.

JAMES BURROUGHS - 1981

#28, CB, 6-1, 190
Pahokee, Fla.

ROBERT CAREY - 1951

#88, E, 6-5, 215
Charlevoix, Mich.

LYNN CHANDNOIS - 1949

#14, HB, 6-2, 195
Flint, Mich.

DEANDRA COBB - 2003

#21, KR, 5-10, 186
Las Vegas, Nev.

DON COLEMAN - 1951

#78, T, 5-10, 185
Flint, Mich.

RON CURL - 1971

#94, DT, 6-1, 250
Chicago, Ill.

DAN CURRIE - 1957

#55, C, 6-3, 225
Detroit, Mich.

JERRY DAPRATO - 1915

FB, 170
Iron Mountain, Mich.

JOE DELAMIELLEURE - 1972

#59, OG, 6-3, 242
Center Line, Mich.

DON DOHONEY - 1953

#80, E, 6-1, 193
Ann Arbor, Mich.

AL DORROW - 1951

#47, QB, 6-0, 175
Imlay City, Mich.

DORNE DIBBLE - 1950

#82, E, 6-2, 198
Adrian, Mich.

ELLIS DUCKETT - 1952

#32, E, 5-10, 176
Flint, Mich.

BILLY JOE DUPREE - 1972

#89, TE, 6-4, 216
West Monroe, La.

PAUL EDINGER - 1998

#1, PK, 5-10, 175
Lakeland, Fla.

JAMES ELLIS - 1951, 52

#11, DB, 5-11, 175
Saginaw, Mich.

BRANDON FIELDS - 2004

#8, P, 6-6, 234
Toledo, Ohio

LARRY FOWLER - 1953

#70, T, 6-1, 200
Lansing, Mich.

KIRK GIBSON - 1978

#23, WR, 6-2, 210
Waterford, Mich.

RON GOOVERT - 1965

#61, LB, 5-10, 205
Ferndale, Mich.

SONNY GRANDELIUS - 1950

#24, FB, 6-0, 195
Muskegon Heights, Mich.

ROGER GROVE - 1930

QB, 6-1, 185
Sturgis, Mich.

HERB HAYGOOD - 2001

#2, KR, 6-0, 190
Sarasota, Fla.

CLINT JONES - 1965, 66

#26, HB, 6-0, 206
Cleveland, Ohio

GREG JONES - 2009, 10

#53, LB, 6-1, 228
Cincinnati, Ohio

STEVE JUDAY - 1965

#23, QB, 6-0, 178
Northville, Mich.

WALT KOWALCZYK - 1957

#14, HB, 6-0, 205
Westfield, Mass.

BOB KULA - 1989

#63, OT, 6-4, 282
West Bloomfield, Mich.

FRANK KUSH - 1952

#60, G, 5-9, 180
Windber, Pa.

EARL LATTIMER - 1963

#76, G, 5-11, 218
Dallas, Texas

SHERM LEWIS - 1963

#20, HB, 5-9, 154
Louisville, Ky.

DEAN LOOK - 1959

#24, QB, 5-10, 175
Lansing, Mich.

HAROLD LUCAS - 1965

#51, MG, 6-2, 257
Detroit, Mich.

TONY MANDARICH - 1987, 88

#79, OT, 6-6, 315
Oakville, Ontario

DON MASON - 1949

#60, G, 5-10, 195
Wayne, Mich.

NORM MASTERS - 1955

#57, T, 6-2, 225
Detroit, Mich.

DON MCAULIFFE - 1952

#40, HB, 6-1, 190
Chicago, Ill.

BLAKE MILLER - 1915

E, 160
Tonawanda, N.Y.

RALF MOJSIJEJENKO - 1983

#2, P, 6-3, 198
Bridgman, Mich.

GREG MONTGOMERY - 1986, 87

#23, P, 6-4, 210
Shrewsbury, N.J.

EARL MORRALL - 1955

#21, QB, 6-1, 180
Muskegon, Mich.

CARL NYSTROM - 1955

#68, G, 5-10, 194
Marquette, Mich.

JULIAN PETERSON - 1999

#98, LB, 6-4, 235
Hillcrest Heights, Md.

JOHN PINGEL - 1938

#37, QB, 6-0, 178
Mt. Clemens, Mich.

GERALD PLANUTIS - 1955

#45, FB, 5-11, 175
West Hazelton, Pa.

JAVON RINGER - 2008

#23, RB, 5-9, 202
Dayton, Ohio

ANDRE RISON - 1988

#1, WR, 5-11, 195
Flint, Mich.

CHARLES ROGERS - 2002

#1, WR, 6-4, 205
Saginaw, Mich.

GEORGE SAIMES - 1962

#40, FB, 5-10, 186
Canton, Ohio

RON SAUL - 1969

#70, OG, 6-2, 239
Butler, Pa.

SCOTT SHAW - 1997

#73, OG, 6-4, 297
Sterling Heights, Mich.

BILL SIMPSON - 1973

#29, DB, 6-1, 185
Royal Oak, Mich.

CHARLES "BUBBA" SMITH - 1965, 66

#95, DE, 6-7, 268
Beaumont, Texas

ROBAIRE SMITH - 1998

#91, DE, 6-5, 268
Flint, Mich.

PERCY SNOW - 1988, 89

#48, MLB, 6-3, 240
Canton, Ohio

RAY STACHOWICZ - 1979, 80

#19, P, 6-0, 190
Broadview Heights, Ohio

DICK TAMBURO - 1952

#52, C, 6-1, 200
New Kensington, Pa.

BRAD VAN PELT - 1971, 72

#10, S, 6-5, 221
Owosso, Mich.

SIDNEY WAGNER - 1935

#17, G, 5-11, 186
Lansing, Mich.

GENE WASHINGTON - 1965, 66

#84, WR, 6-3, 188
LaPorte, Texas

GEORGE WEBSTER - 1965, 66

#90, ROV, 6-4, 218
Anderson, S.C.

JERRY WEST - 1966

#77, OT, 5-11, 218
Durand, Mich.

LORENZO WHITE - 1985, 87

#34, TB, 5-11, 204
Fort Lauderdale, Fla.

SAM WILLIAMS - 1958

#88, E, 6-5, 225
Dansville, Mich.

JEREL WORTHY - 2011

#99, DT, 6-3, 310
Huber Heights, Ohio

TOM YEWICIC - 1952

#41, QB, 5-11, 180
Conemaugh, Pa.



GREG
JONES

WWW.MSUSPARTANS.COM

91

KIRK COUSINS

PASSING RECORDS

PASSING • CAREER

PASS ATTEMPTS

1. Jeff Smoker	2000-03	1,150
2. Kirk Cousins	2008-11	1,128
3. Brian Hoyer	2005-08	896
4. Drew Stanton	2003-06	846
5. Ed Smith	1976-78	789

PASS COMPLETIONS

1. Kirk Cousins	2008-11	723
2. Jeff Smoker	2000-03	685
3. Drew Stanton	2003-06	543
4. Brian Hoyer	2005-08	500
5. Jim Miller	1990-93	467

INTERCEPTIONS THROWN

1. Jeff Smoker	2000-03	99
2. John Leister	1979-82	35
3. Todd Schultz	1984-87	33
4. Dave Yarema	1982-86	33
5. Ed Smith	1976-78	32

PASS COMPLETION PERCENTAGE (Min. 100 Atts.)

1. Drew Stanton (543-846-28)	2003-06	.642
2. Kirk Cousins (723-1128-30)	2008-11	.641
3. Jim Miller (467-746-29)	1990-93	.626
4. Dan Enos (297-478-25)	1987-90	.621
5. Todd Schultz (360-593-33)	1994-97	.607

PASSING YARDS

1. Kirk Cousins	2008-11	9,131
2. Jeff Smoker	2000-03	8,932
3. Drew Stanton	2003-06	6,524
4. Brian Hoyer	2005-08	6,159
5. Dave Yarema	1982-86	5,809

PASSING TOUCHDOWNS

1. Kirk Cousins	2008-11	66
2. Jeff Smoker	2000-03	61
3. Bill Burke	1996-99	46
4. Dave Yarema	1982-86	44
5. Ed Smith	1976-78	43

PASSING EFFICIENCY (Min. 100 Atts.)

1. Kirk Cousins	2008-11	146.1
2. Gene Glick	1946-49	142.3
3. Earl Morrall	1953-55	140.5
4. Drew Stanton	2003-06	138.7
5. Jim Niowski	1955-57	136.0

PASSING • SEASON

PASS ATTEMPTS

1. Jeff Smoker	2003	488
2. Kirk Cousins	2011	419
3. Brian Hoyer	2007	376
4. Bill Burke	1998	358
5. Drew Stanton	2005	354

PASS COMPLETIONS

1. Jeff Smoker	2003	302
2. Kirk Cousins	2011	267
3. Drew Stanton	2005	236
4. Kirk Cousins	2010	226
5. Brian Hoyer	2007	223

INTERCEPTIONS THROWN

1. Bill Burke	1999	18
2. Todd Schultz	1997	17
3. Tony Banks	1995	15
4. Dave Yarema	1984	15
5. Jeff Smoker	2003	14
John Leister	1980	14
Ed Smith	1977	14

PASS COMPLETION PERCENTAGE (Min. 100 Atts.)

1. Dave Yarema (200-297-11)	1986	.673
2. Kirk Cousins (226-338-10)	2010	.669
3. Drew Stanton (236-354-12)	2005	.667
4. Drew Stanton (141-220-6)	2004	.641
5. Jim Miller (215-336-11)	1993	.640

PASSING YARDS

1. Jeff Smoker	2003	3,395
2. Kirk Cousins	2011	3,316
3. Drew Stanton	2005	3,007
4. Kirk Cousins	2010	2,825
5. Brian Hoyer	2007	2,725

PASSING TOUCHDOWNS

1. Kirk Cousins	2011	25
2. Drew Stanton	2005	22
3. Jeff Smoker	2003	21
4. Jeff Smoker	2001	21
5. Brian Hoyer	2007	20
Kirk Cousins	2010	20
Ed Smith	1978	20
Bill Burke	1999	20

PASSING EFFICIENCY (Min. 100 Atts.)

1. Jeff Smoker	2001	166.4
2. Dave Yarema	1986	154.1
3. Drew Stanton	2005	153.4
4. Jim Niowski	1957	150.8
5. Kirk Cousins	2010	150.7

PASSING • GAME

PASS ATTEMPTS

1. Brian Hoyer (30 comp.)	Penn State 2006	61
2. Jeff Smoker (35)	Ohio State 2003	55
3. Drew Stanton (29)	Iowa 2004	54
John Leister (18)	Purdue 1980	54
5. Kirk Cousins (34)	Notre Dame 2011	53

PASS COMPLETIONS

1. Jeff Smoker (55 att.)	Ohio State 2003	35
2. Kirk Cousins (53)	Notre Dame 2011	34
3. Jeff Smoker (40)	Indiana 2003	32
John Leister (46)	Michigan 1982	32
5. Jim Miller (42)	Ohio State 1993	31

PASSING YARDS

1. Bill Burke (21-36)	Michigan 1999	400
2. Jeff Smoker (22-32)	Fresno State 2001	376
3. Ed Smith (20-30)	Indiana 1978	369
4. Jim Miller (31-42)	Ohio State 1993	360
5. Jeff Smoker (29-50)	Penn State 2003	357

PASSING TOUCHDOWNS

1. Drew Stanton	Illinois 2005	5
2. Brian Hoyer	Penn State 2007	4
Brian Hoyer	Notre Dame 2007	4
Jeff Smoker	Penn State 2003	4
Damon Dowdell	Indiana 2002	4
Bill Burke	Iowa 1999	4
Bill Burke	C. Michigan 1998	4
Ed Smith	Wisconsin 1978	4
Mike Rasmussen	Indiana 1970	4
Gene Glick	Iowa State 1948	4

JAVON RINGER

RUSHING RECORDS

RUSHING • CAREER

RUSHING ATTEMPTS

1. Lorenzo White	1984-87	1,082
2. Javon Ringer	2005-08	843
3. Tico Duckett	1989-92	836
4. Blake Ezor	1986-89	800
5. Sedrick Irvin	1996-98	755

RUSHING AVERAGE (Min. 150 Atts.)

1. George Guerre	1946-48	6.75
2. Lynn Chandnois	1946-49	6.52
3. Sherman Lewis	1961-63	6.21
4. Sonny Grandelius	1948-50	6.09
5. Derek Hughes	1978-81	6.04

RUSHING YARDS

1. Lorenzo White	1984-87	4,887
2. Javon Ringer	2005-08	4,398
3. Tico Duckett	1989-92	4,212
4. Blake Ezor	1986-89	3,749
5. Sedrick Irvin	1996-98	3,504

RUSHING TOUCHDOWNS

1. Lorenzo White	1984-87	43
2. Jehu Caulcrick	2004-07	39
3. Sedrick Irvin	1996-98	35
4. Javon Ringer	2005-08	34
Blake Ezor	1986-89	34

RUSHING • SEASON

RUSHING ATTEMPTS

1. Lorenzo White	1985	419
2. Javon Ringer	2008	390
3. Lorenzo White	1987	357
4. Blake Ezor	1988	322
5. Marc Renaud	1995	312

RUSHING AVERAGE (Min. 150 Atts.)

1. DeAndra Cobb	2004	7.58
2. Lynn Chandnois	1948	7.48
3. Drew Stanton	2004	7.16
4. George Guerre	1946	7.03
5. Lynn Chandnois	1949	6.86

RUSHING YARDS

1. Lorenzo White	1985	2,066
2. Javon Ringer	2008	1,637
3. Lorenzo White	1987	1,572
4. Blake Ezor	1988	1,496
5. Eric Allen	1971	1,494

RUSHING TOUCHDOWNS

1. Javon Ringer	2008	22
2. Jehu Caulcrick	2007	21
3. Blake Ezor	1989	19
4. Eric Allen	1971	18
5. Scott Greene	1995	17
Lorenzo White	1985	17

RUSHING • GAME

RUSHING ATTEMPTS

1. Lorenzo White (292 yds.)	Indiana 1987	56
2. Lorenzo White (244)	Purdue 1985	53
3. Lorenzo White (172)	Minnesota 1985	49
4. Javon Ringer (198)	Indiana 2008	44
Blake Ezor (250)	Indiana 1988	44

RUSHING YARDS

1. Eric Allen (29 att.)	Purdue 1971	350
2. Lorenzo White (56)	Indiana 1987	292
3. Lorenzo White (25)	Indiana 1985	286
4. Javon Ringer (43)	Florida Atlantic 2008	282
5. Clinton Jones (21)	Iowa 1966	268

RUSHING TOUCHDOWNS

1. Blake Ezor	Northwestern 1989	6
2. Javon Ringer	Eastern Michigan 2008	5
3. Edwin Baker	Minnesota 2010	4
Ashton Leggett	Western Michigan 2009	4
Jehu Caulcrick	UAB 2007	4
T.J. Duckett	Penn State 1999	4
Sedrick Irvin	Indiana 1996	4
Scott Greene	Illinois 1995	4
Craig Thomas	Central Michigan 1993	4
Craig Thomas	Indiana 1992	4
Tico Duckett	Purdue 1990	4
Blake Ezor	Indiana 1989	4
Steve Smith	Northwestern 1980	4
Derek Hughes	Minnesota 1979	4
Eric Allen	Purdue 1971	4
Eric Allen	Minnesota 1971	4
Clinton Jones	Iowa 1965	4



LORENZO WHITE



B. J. CUNNINGHAM

RECEIVING RECORDS

RECEIVING • CAREER

RECEPTIONS			AVERAGE YARDS PER CATCH (min. 30 receptions)		
1. B.J. Cunningham	2008-11	218	1. Kirk Gibson	1975-78	21.0
2. Matt Trannon	2003-06	148	2. Charles Rogers	2001-02	20.9
3. Andre Rison	1985-88	146	3. Andre Rison	1985-88	20.5
4. Courtney Hawkins	1988-91	138	4. Mark Ingram	1983-86	20.5
5. Charles Rogers	2001-02	135	5. Daryl Turner	1980-83	20.2

RECEIVING YARDS			TOUCHDOWN RECEPTIONS		
1. B.J. Cunningham	2008-11	3,086	1. Charles Rogers	2001-02	27
2. Andre Rison	1985-88	2,992	2. B.J. Cunningham	2008-11	25
3. Charles Rogers	2001-02	2,821	3. Kirk Gibson	1975-78	24
4. Kirk Gibson	1975-78	2,347	4. Plaxico Burress	1998-99	20
5. Courtney Hawkins	1988-91	2,210	5. Andre Rison	1985-88	20

RECEIVING • SEASON

RECEPTIONS			AVERAGE YARDS PER CATCH (min. 20 receptions)		
1. B.J. Cunningham	2011	79	1. Gene Washington	1966	25.1
2. Devin Thomas	2007	79	2. Andre Rison	1988	24.6
3. Blair White	2009	70	3. Frank Foreman	1969	24.4
4. Charles Rogers	2002	68	4. Kirk Gibson	1977	24.1
5. Charles Rogers	2001	67	5. Octavis Long	1996	23.4

RECEIVING YARDS			TOUCHDOWN RECEPTIONS		
1. Charles Rogers	2001	1,470	1. Charles Rogers	2001	14
2. Charles Rogers	2002	1,351	2. Charles Rogers	2002	13
3. B.J. Cunningham	2011	1,306	3. B.J. Cunningham	2011	12
4. Devin Thomas	2007	1,260	4. Plaxico Burress	1999	12
5. Plaxico Burress	1999	1,142	5. B.J. Cunningham	2010	9
			Blair White	2009	9

RECEIVING • GAME

RECEPTIONS			TOUCHDOWN RECEPTIONS				
1. Matt Trannon	Eastern Michigan	2006	14	1. Devin Thomas	Penn State	2007	3
2. Devin Thomas	Indiana	2007	13	2. Plaxico Burress	Florida	2000	3
3. Plaxico Burress	Florida	2000	13	3. Plaxico Burress	Northwestern	1999	3
4. Blair White	Northwestern	2009	12	4. Plaxico Burress	Iowa	1999	3
5. Mitch Lyons	Michigan	1992	12	5. Andre Rison	Georgia	1989	3

RECEIVING YARDS			TOUCHDOWN RECEPTIONS				
1. Charles Rogers	Fresno State	2001	270	6. Mark Ingram	Iowa	1986	3
2. Plaxico Burress	Michigan	1999	255	7. Gene Washington	Indiana	1965	3
3. Andre Rison	Georgia	1989	252				
4. Charles Rogers	Wisconsin	2001	206				
5. Mark Dell	California	2008	202				

BRETT SWENSON



SCORING/TOTAL OFFENSE RECORDS

SCORING/TOTAL OFFENSE • CAREER

TOTAL POINTS SCORED			TOTAL OFFENSE ATTEMPTS (includes rushing & passing attempts)		
1. Brett Swenson (164 PAT, 71 FG)	2006-09	377	1. Jeff Smoker	2000-03	1,405
2. Dave Raymer (149 PAT, 62 FG)	2001-04	334	2. Kirk Cousins	2008-11	1,239
3. John Langeloh (137 PAT, 57 FG)	1987-90	308	3. Drew Stanton	2003-06	1,178
4. Chris Gardner (125 PAT, 52 FG)	1994-97	281	4. Lorenzo White	1984-87	1,083
5. Morten Andersen (126 PAT, 45 FG)	1978-81	261	5. Brian Hoyer	2005-08	1,001

ALL-PURPOSE YARDS (includes rushing, receiving and all returns)			TOTAL OFFENSE YARDS		
1. Javon Ringer	2005-08	5,426	1. Kirk Cousins	2008-11	9,004
2. Lorenzo White	1984-87	5,152	2. Jeff Smoker	2000-03	8,714
3. Derrick Mason	1993-96	5,114	3. Drew Stanton	2003-06	8,036
4. Sedrick Irvin	1986-98	4,833	4. Brian Hoyer	2005-08	5,930
5. Tico Duckett	1989-92	4,511	5. Ed Smith	1976-78	5,556

TOUCHDOWNS SCORED			TOTAL OFFENSE YARDS PER ATTEMPT (min. 200 attempts)		
1. Lorenzo White	1984-87	43	1. Gene Glick	1946-49	7.90
2. Sedrick Irvin	1996-98	42	2. Earl Morrall	1953-55	7.41
3. Jehuu Caulcrick	2004-07	40	3. Kirk Cousins	2008-11	7.27
4. Javon Ringer	2005-08	35	4. Drew Stanton	2003-06	6.82
5. Blake Ezor	1986-89	34	5. Tom Yewcic	1951-53	6.84

SCORING/TOTAL OFFENSE • SEASON

TOTAL POINTS SCORED			TOTAL OFFENSE ATTEMPTS		
1. Javon Ringer	2008	132	1. Jeff Smoker	2003	551
2. Jehuu Caulcrick	2007	126	2. Drew Stanton	2005	475
3. Blake Ezor	1989	114	3. Kirk Cousins	2011	456
4. Scott Greene	1995	112	4. Brian Hoyer	2007	423
5. Eric Allen	1971	110	5. Bill Burke	1998	423

ALL-PURPOSE YARDS			TOTAL OFFENSE YARDS		
1. Devin Thomas	2007	2,590	1. Drew Stanton	2005	3,415
2. Lorenzo White	1985	2,094	2. Jeff Smoker	2003	3,279
3. Javon Ringer	2008	2,051	3. Kirk Cousins	2011	3,277
4. Derrick Mason	1995	1,994	4. Kirk Cousins	2009	2,740
5. Eric Allen	1971	1,962	5. Kirk Cousins	2010	2,689

TOUCHDOWNS SCORED			TOTAL OFFENSE YARDS PER ATTEMPT (min. 200 attempts)		
1. Javon Ringer	2008	22	1. Keith Nichol	2009	7.89
2. Jehuu Caulcrick	2007	21	2. Kirk Cousins	2009	7.63
3. Blake Ezor	1989	19	3. Jeff Smoker	2001	7.35
4. Sedrick Irvin	1996	18	4. Drew Stanton	2004	7.24
5. Scott Greene	1995	18	5. Drew Stanton	2005	7.19
Eric Allen	1971	18			

SCORING/TOTAL OFFENSE • GAME

TOTAL TOUCHDOWNS			POINTS SCORED				
1. Blake Ezor	Northwestern	1989	6	1. Blake Ezor	Northwestern	1989	36
2. Javon Ringer	Eastern Michigan	2008	5	2. Javon Ringer	Eastern Michigan	2008	30
3. Edwin Baker	Minnesota	2010	4	3. Scott Greene	Illinois	1995	26
4. Ashton Leggett	Western Michigan	2009	4	4. Edwin Baker	Minnesota	2010	24
Jehuu Caulcrick	UAB	2007	4	5. 16 other times		24	
T.J. Duckett	Penn State	1999	4				
Sedrick Irvin	Penn State	1997	4				
Sedrick Irvin	Indiana	1996	4				
Sedrick Irvin	Purdue	1996	4				
Scott Greene	Illinois	1995	4				
Craig Thomas	C. Michigan	1993	4				
Craig Thomas	Indiana	1992	4				
Tico Duckett	Purdue	1990	4				
Blake Ezor	Indiana	1989	4				
Steve Smith	Northwestern	1980	4				
Derek Hughes	Minnesota	1979	4				
Eric Allen	Purdue	1971	4				
Eric Allen	Minnesota	1971	4				
Clinton Jones	Iowa	1965	4				
Bud Crane	Hawaii	1947	4				

TOTAL OFFENSE YARDS			
1. Drew Stanton	Minnesota	2004	410
2. Drew Stanton	Hawaii	2004	406
3. Jeff Smoker	Fresno State	2001	393
4. Bill Burke	Michigan	1999	363
5. Drew Stanton	Notre Dame	2005	375

(The above are modern-day records. George E. "Carp" Julian, scored seven TDs in a 75-6 win over Akron in 1914.)

DEFENSIVE RECORDS

DEFENSE • CAREER

TACKLES

1. Dan Bass	1976-79	541
2. Percy Snow	1986-89	473
3. Greg Jones	2007-10	465
4. Ike Reese	1994-97	420
5. Josh Thornhill	1998-2001	395

TACKLES FOR LOSSES

1. Julian Peterson (215 yds)	1998-99	48
2. Greg Jones (169)	2007-10	46.5
3. Larry Bethea (230)	1975-77	43
4. Travis Davis (248)	1986-89	39
5. Robaire Smith (169)	1997-99	38

QUARTERBACK SACKS

1. Larry Bethea (208 yds)	1975-77	33
2. Julian Peterson (161)	1998-99	25
3. Travis Davis (217)	1986-89	24
Kelly Quinn (183)	1982-85	24
5. Robaire Smith (140)	1997-99	22

INTERCEPTIONS

1. Lynn Chandnois	1946-49	20
2. Todd Krumm	1984-87	18
3. Phil Parker	1982-85	16
4. Kurt Larson	1985-88	14
John Miller	1985-88	14
Brad Van Pelt	1970-72	14

INTERCEPTION RETURN YARDS

1. Lynn Chandnois	1946-49	410
2. Brad Van Pelt	1970-72	268
3. Phil Parker	1982-85	267
4. Johnny Adams	2008-	219
5. Jesse Thomas	1948-50	212

FUMBLE RECOVERIES

1. Dan Bass	1976-79	12
2. Larry Savage	1976-79	8
3. Carlos Jenkins	1987-90	7
Smiley Creswell	1980-82	7
John McCormick	1977-80	7
Mel Land	1975-78	7
George Chatlos	1966-67	7

PASSES DEFENDED

1. Amp Campbell	1996-99	56
2. Cedric Henry	1998-2000, 2002	42
3. Broderick Nelson	1998, 2000-02	37
4. Renaldo Hill	1998-2000	36
5. Otis Wiley	2005-08	31



DENICOS ALLEN

DEFENSE • SEASON

TACKLES

1. Chuck Bullough	1991	175
2. Percy Snow	1989	172
3. Chuck Bullough	1990	164
Percy Snow	1988	164
5. Dan Bass	1979	160

TACKLES FOR LOSSES

1. Julian Peterson (140 yds)	1999	30
2. Denicos Allen (86)	2011	18.5
Ervin Baldwin (89)	2007	18.5
4. Julian Peterson (75)	1998	18
Larry Bethea (83)	1977	18

QUARTERBACK SACKS

1. Larry Bethea (90 yds)	1977	16
2. Julian Peterson (104)	1999	15
3. Robaire Smith (58)	1997	12
Travis Davis (105)	1987	12
Kelly Quinn (84)	1984	12

INTERCEPTIONS

1. Todd Krumm	1987	9
2. Kurt Larson	1988	8
John Miller	1987	8
Jesse Thomas	1950	8
5. Damatrice Martin	1994	7
Phil Parker	1983	7
Lynn Chandnois	1949	7

INTERCEPTION RETURN YARDS

1. Phil Parker (7 int.)	1983	203
2. Lynn Chandnois (7)	1949	183
3. Johnny Adams (3)	2011	141
4. Todd Krumm (9)	1987	129
Brad Van Pelt (4)	1971	129

FUMBLE RECOVERIES

1. George Chatlos	1966	7
2. Tom Kronner	1973	5
Tom Standal	1975	5
Matt Vanderbeek	1989	5
5. Myron Bell	1993	4
Four other players		4

PASSES DEFENDED

1. Amp Campbell	1999	26
2. Cedric Henry	2000	24
3. Broderick Nelson	2001	20
4. Broderick Nelson	2002	17
5. Roderick Maples	2004	16
Lemar Marshall	1998	16
Ray Hill	1997	16

DEFENSE • GAME

TACKLES

1. Dan Bass	Ohio State 1979	32
2. Don Law	Ohio State 1969	28
3. Dan Bass	Notre Dame 1979	24
4. Percy Snow	Illinois 1989	23
5. Ty Hallock	Minnesota 1992	21
Shane Bullough	Indiana 1985	21
Brad Van Pelt	Notre Dame 1971	21
Doug Barr	Ohio State 1969	21
Don Law	Indiana 1967	21

TACKLES FOR LOSSES

1. Julian Peterson (42 yards)	Ohio State 1998	7
2. Julian Peterson (7)	Oregon 1999	6
3. William Gholston (16)	Georgia 2012	5
Josh Shaw (14)	Wisconsin 2000	5
Julian Peterson (32)	Florida 2000	5
Travis Davis (37)	Ohio State 1987	5
Rich Saul (14)	Iowa 1968	5

QUARTERBACK SACKS

1. Travis Davis (37 yards)	Ohio State 1987	5
2. Matthias Askew (28)	Western Michigan	4
Julian Peterson (30)	Ohio State 1998	4
Kelly Quinn (26)	Northwestern 1984	4
Rich Saul (13)	Iowa 1969	4

INTERCEPTIONS

1. John Miller	Michigan 1987	4
2. Mark Anderson	Notre Dame 1977	3
Five other players		3

FUMBLE RECOVERIES

1. Matt Vanderbeek	Hawaii 1989	3
Phil Hoag	Illinois 1966	3
Ernie Clark	Illinois 1961	3
4. Several players		2

PASSES DEFENDED

1. Jeremy Ware	Northwestern 2008	5
Broderick Nelson	Indiana 2002	5
Broderick Nelson	Wisconsin 2001	5
Cedric Henry	Marshall 2000	5
Amp Campbell	Northwestern 1999	5
Renaldo Hill	Minnesota 1998	5



WILLIAM
GHOLSTON

OUTBACK
FOWL



MICHIGAN STATE

2

WILLIAM
GHOLSTON

SPARTANS IN THE



(Players on NFL rosters as of Aug. 21)

KIRK
COUSINS



KESHAWN
MARTIN



BRIAN
HOYER



CHRIS L.
RUCKER



JAVON
RINGER



D.J.
YOUNG



GREG
JONES



JEREL
WORTHY

NAME, POS.	TEAM	SEASONS IN NFL
Todd Anderson, FB	St. Louis Rams	Rookie
Edwin Baker, RB	San Diego Chargers	Rookie
Garrett Celek, TE	San Francisco 49ers	Rookie
Kirk Cousins, QB	Washington Redskins	Rookie
B.J. Cunningham, WR	Miami Dolphins	Rookie
Kellen Davis, TE	Chicago Bears	5th
Mark Dell, WR	Denver Broncos	Rookie
Brandon Fields, P	Miami Dolphins	6th
Brian Hoyer, QB	New England Patriots	4th
Greg Jones, LB	New York Giants	2nd
Keshawn Martin, WR	Houston Texans	Rookie
Brandon McKinney, DT	Indianapolis Colts	7th
Ogemdi Nwagbuo, DT	Carolina Panthers	4th
Domata Peko, DT	Cincinnati Bengals	7th
Javon Ringer, RB	Tennessee Titans	3rd
Trenton Robinson, S	San Francisco 49ers	Rookie
Chris L. Rucker, CB	Indianapolis Colts	2nd
Eric Smith, S	New York Jets	7th
Drew Stanton, QB	Indianapolis Colts	6th
Kevin Vickerson, DT	Denver Broncos	7th
Ross Weaver, DB	Detroit Lions	1st
Jerel Worthy, DT	Green Bay Packers	Rookie
D.J. Young, OT	Arizona Cardinals	2nd



TOM ANASTOS
Ice Hockey



JAKE BOSS JR.
Baseball



MARK DANTONIO
Football



WALT DRENTH
Director: Men's & Women's
Track & Field/Cross Country



CATHY GEORGE
Volleyball



MATT GIANIODIS
Men's & Women's
Swimming & Diving



TOM IZZO
Men's Basketball



JACQUIE JOSEPH
Softball



SIMONE JARDIM
Women's Tennis



KATHIE KLAGES
Women's Gymnastics



HELEN KNULL
Field Hockey



CASEY LUBAHN
Men's Golf



SUZY MERCHANT
Women's Basketball



TOM MINKEL
Wrestling



GENE ORLANDO
Men's Tennis



DAMON RENSING
Men's Soccer



TOM SAXTON
Women's Soccer



STACY SLOBODNIK-STOLL
Women's Golf



MATT WEISE
Crew

THE SPARTAN MARCHING BAND

The 300-member Spartan Marching Band, which enters its 142nd season in 2012, is one of the oldest and most respected university marching bands in the country. The Director of the Spartan Marching Band is John T. Madden, who is in his 24th season leading the group.



The Spartan Marching Band was founded in 1870 as a 10-member student group. All of the original members were Civil War veterans.

The Spartan Marching Band was a military unit connected with the college ROTC for most of its existence. Until 1952, the band members wore military khaki uniforms. When Michigan State began playing Big Ten football in 1953, the band received its first green and white uniforms. Most of the strict military uniform codes are still adhered to today with squad leaders holding routing inspections before every performance.

No flutes or clarinets are used in the Spartan Marching Band, as these instruments are difficult to hear in the large Big Ten stadiums. Instead, tiny E-flat cornets play the high "woodwind-like" parts.

The Spartan Marching Band has entertained five U.S. Presidents: Theodore Roosevelt (1907), Herbert Hoover (1930), Franklin D. Roosevelt (1936), Lyndon Johnson (1965) and Bill Clinton (1996 and 2001).

The Spartan Marching Band has performed at 17 bowl games, including four Rose Bowls (1954, '56, '66 and '88). In addition, the band has made appearances at the 1964 New York World's Fair, '84 New Orleans World's Fair, '84 World Series in Detroit and '93 Coca-Cola Bowl in Tokyo, Japan.

The Spartan Marching Band was the 1988 recipient of the Louis Sudler Trophy for collegiate marching bands, administered by the John Philip Sousa Foundation.

MSU FIGHT SONG

On the banks of the Red Cedar,
There's a school that's known to all;
Its specialty is winning,
And those Spartans play good ball;
Spartan teams are never beaten,
All through the game they'll fight;
Fight for the only colors,
Green and White.

Go right through for MSU,
Watch the points keep growing.
Spartan teams are bound to win,
They're fighting with a vim.

Rah! Rah! Rah!
See their team is weakening,
We're going to win this game.
Fight! Fight! Rah! Team, Fight!
Victory for MSU.

(Original Lyrics)

On the banks of the Red Cedar,
There's a school that's known to all;
Its specialty is farming,
And those farmers play football;
Aggie teams are never beaten,
All through the game they'll fight;
Fight for the only colors,
Green and White.

Smash right through that line of blue,
Watch the points keep growing.
Aggie teams are bound to win,
They're fighting with a vim.

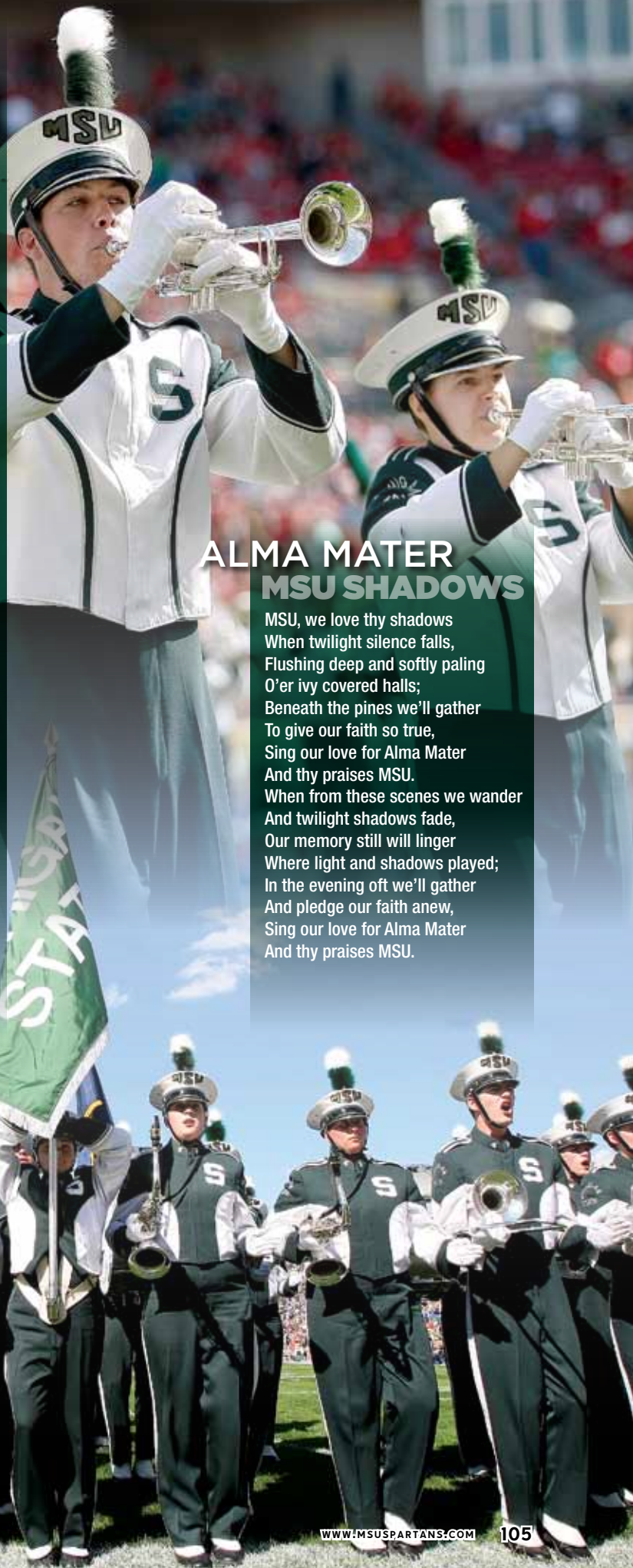
Rah! Rah! Rah!
See their team is weakening,
We're going to win this game.
Fight! Fight! Rah! Team Fight!
Victory for MAC.

HISTORY OF THE MSU FIGHT SONG

Yellmaster Francis Irving Lankey, a civil engineering major at Michigan Agricultural College, composed the school's Fight Song in the spring of 1915. His friend Arthur L. Sayles, also a MAC student, wrote most of the words to the Fight Song. The football team's back-to-back road wins over national powers Michigan and Wisconsin in 1913 inspired Lankey to compose the MAC Fight Song because he felt those two schools had great fight songs. "Lank", as his friends called him, was a very popular and talented piano player.

Following graduation, he worked for the highway department and later became an instructor for the Army Air Corps. In a volunteer air demonstration in 1919, he crashed while attempting to land. Months after his untimely death, a girlfriend published his song.

Members of the football team sold 770 copies of the song for 50 cents at the 1919 Homecoming pep assembly. When it sold out in less than 30 minutes, everyone knew the Fight Song was a winner. In 1920, the Military Band played the MAC Fight Song at home football games. With slight variations to the original words, like changing Aggie to Spartan and MAC to MSU, it has been played ever since.



ALMA MATER MSU SHADOWS

MSU, we love thy shadows
When twilight silence falls,
Flushing deep and softly paling
O'er ivy covered halls;
Beneath the pines we'll gather
To give our faith so true,
Sing our love for Alma Mater
And thy praises MSU.
When from these scenes we wander
And twilight shadows fade,
Our memory still will linger
Where light and shadows played;
In the evening oft we'll gather
And pledge our faith anew,
Sing our love for Alma Mater
And thy praises MSU.



TAKE THE SPARTANS WITH YOU.



Now Big Ten Network subscribers can get Michigan State action **WHENEVER, WHEREVER** all season long. With BTN2Go, catch the Spartans on your computer, tablet or smartphone.



Learn more about the benefits of BTN2Go from your participating cable or satellite provider.



2012-2013 MICHIGAN STATE CHEERLEADING TEAM

Head Coach: Elyse Packard • Volunteer Asst. Coach: Tracy Dean

Front row (L-R): Crystal Bruns, Alexa Brewer, Daniela Schroeck, Storm Garfield, Tracy Ng, Katelynn Andreen, Paige Pizzo, Brooke Enciso, Kalee Vannest, Kayla Rigdon, Kristine Fracassa, Hayley DiGianni, Taylor Young, Jewel Hampton, Chelsea VanHull, Shelby Timm

Back row (L-R): Ryan Priess, Jordan Giglio, Tim Covey, Brad Ivan, Nick Moritz, Brenton McClure, Brent Fifer, Davanta Beal-Greer, Jarriel Keys, Ben Lees, Thien Le, Tyler DeFrain, Ben Potter, RonJon Casanova-Smith, Brendan Carey

Not pictured: Clay Connolly and Jacob Stepp



2012-2013 MICHIGAN STATE DANCE TEAM

Head Coach: Tricia Crawford

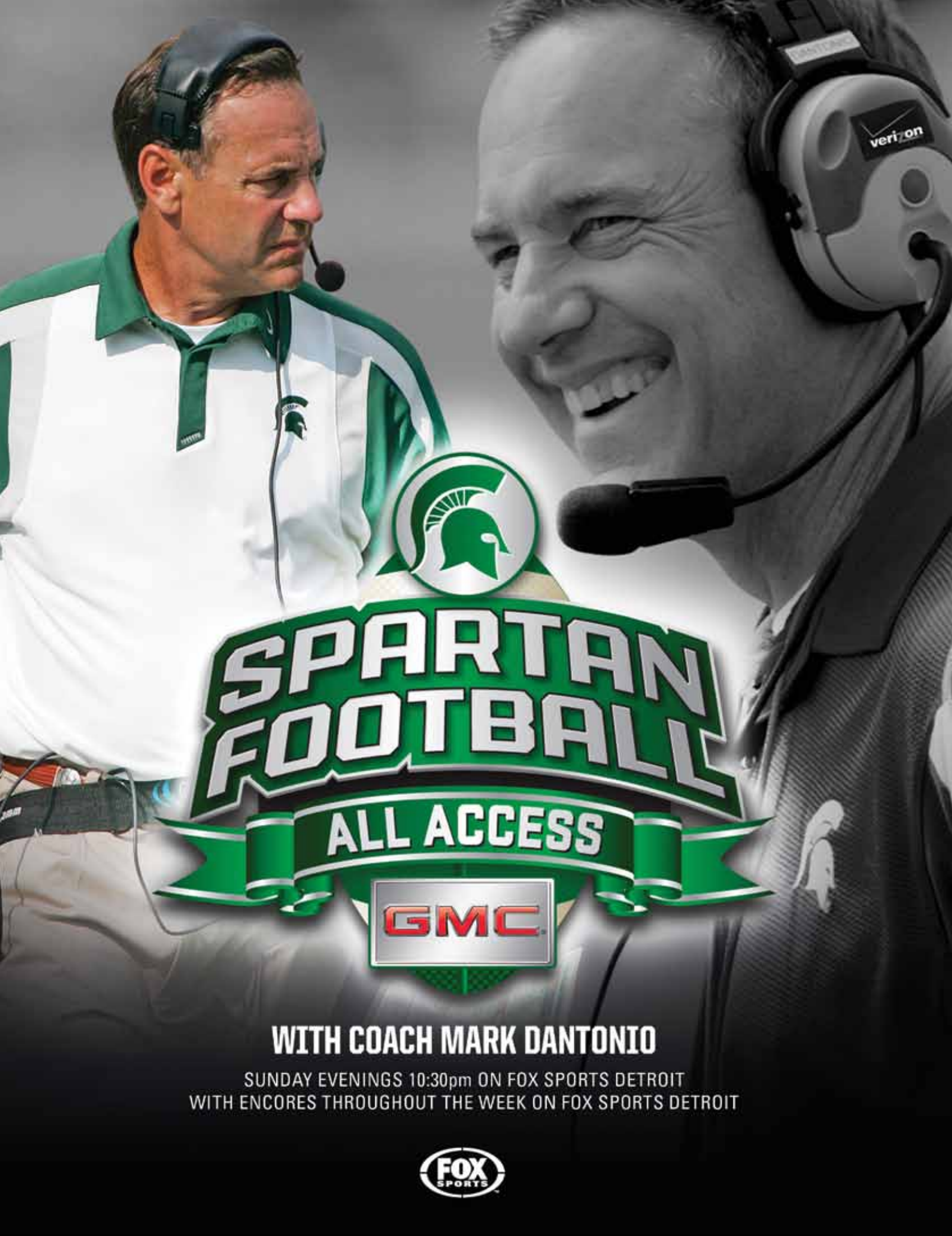
Front row (L-R): Lauren Sabatowski, Brianna Tori, Mackenzie Moffatt, Audrey Beaumarchais, Amy Kwiatkowski

Second row (L-R): Shelby Lowe, Kara Albrecht, Danielle Wallace, Bailey Barnhart, Stacey Racklyeft, Kelly McGowan, Effie Oates, Emma Cole

Third row (L-R): Eryn Schafer, Ashley Kelly, Laura Howe, Nicole Farina

Top row (L-R): Eva Schwartz, Emma Snider, Hanna Watters

Not pictured: Jamie Crudo



SPARTAN FOOTBALL

ALL ACCESS



WITH COACH MARK DANTONIO

SUNDAY EVENINGS 10:30pm ON FOX SPORTS DETROIT
WITH ENCORES THROUGHOUT THE WEEK ON FOX SPORTS DETROIT



SPARTAN ATHLETICS HALL OF FAME

On Oct. 1, 1999, Michigan State University unveiled its new Athletics Hall of Fame. Located in the Clara Bell Smith Student-Athlete Academic Center, the \$250,000 Hall of Fame displays key moments in Spartan athletic history as well as plaques of the inductees. The charter class of 30 former

Spartan athletes, coaches and administrators was inducted in 1992 and included former football players and coaches Jack Breslin, Bob Carey, Don Coleman, Duffy Daugherty, Lyman Frimodig, Earl Morrall, Bubba Smith, Gene Washington, George Webster and Ralph Young.

WELCOME CLASS OF 2012



CARL BANKS

Football 1980-83
Inducted: 2012
Flint, MI

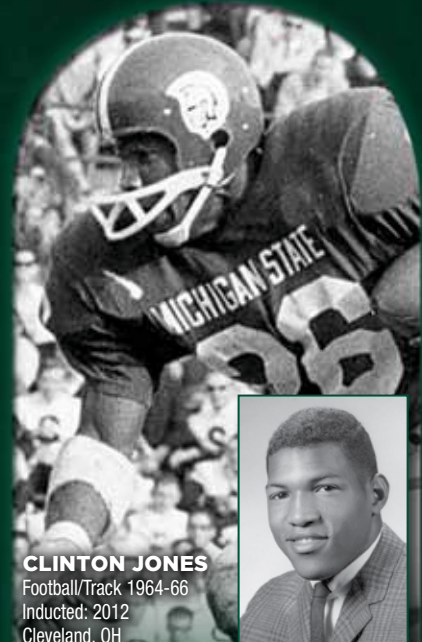
- Three-time First-Team All-Big Ten (1981-83)
- 1983 First-Team All-American
- 1983 Columbus Touchdown Club College Linebacker of the Year
- 1984 first-round NFL Draft choice by the New York Giants (No. 3 overall); named to NFL's All-Decade Team (1980s)



EMILY BASTEL

Women's Golf 1998-2002
Inducted: 2012
Upper Sandusky, OH

- First Spartan to be named Big Ten Golfer of the Year (2002)
- 2002 Second-Team All-American
- Won Big Ten individual title in 2000
- Four-time All-Big Ten (1999-2002)



CLINTON JONES

Football/Track 1964-66
Inducted: 2012
Cleveland, OH

- Two-time First-Team All-American and First-Team All-Big Ten (1965-66)
- Led Spartans in rushing on National Championship and Big Ten Championship teams in 1965 and 1966
- Big Ten's leading rusher in conference games in 1966
- 1967 first-round NFL Draft choice by the Minnesota Vikings (No. 2 overall)



SHAWN RESPERT

Basketball 1991-95
Inducted: 2012
Detroit, MI

- Michigan State's all-time leading scorer (2,531 career points)
- 1995 NABC and Sporting News National Player of the Year
- 1994 & 1995 All-American and 1995 Consensus First-Team All-American
- Two-time First-Team All-Big Ten and 1995 Big Ten Player of the Year



DIANE SPOELSTRA

Women's Basketball/
Softball/ Volleyball 1975-78
Inducted: 2012
Kentwood, MI

- One of only two women to start in three different sports at MSU
- Volleyball starter for program that produced a combined record of 82-13, including back-to-back AIAW Championship appearances
- Softball starter that earned back-to-back College World Series appearances in 1976 and 1977; batted .467 in 1976 CWS (AIAW National Champions)
- Basketball starter whom averaged nearly 10 points per game while helping team post back-to-back 20-win seasons



GEORGE SZYPULA

Men's Gymnastics Coach 1948-87
Inducted: 2012
Philadelphia, PA

- Collected 252 dual meet victories in 41 seasons as head coach
- Led Spartans to 1958 Co-National Championship and 1968 Big Ten Championship
- Coached 18 NCAA individual champions and 47 Big Ten Champions
- Named NCAA Coach of the Year in 1966

SPARTAN ATHLETICS HALL OF FAME



FRED ALDERMAN

Track and Field 1925 - 27
Hometown - East Lansing, MI
Hall of Fame Class - 1992

- First Spartan to win Olympic gold 1927
- NCAA Champion in 100 and 220
- 1927 ICAA individual champion in 440



GEORGE ALDERTON

Sports Editor 1923 - 62
Hometown - Saginaw, MI
Hall of Fame Class - 1993

- Covered Spartans for 39 years
- Nicknamed "The Spartans" in 1926
- First Michigan Sportswriter and Sportscaster Hall of Fame inductee



MORTEN ANDERSEN

Football 1978-81
Hometown - Struer, Denmark
Hall of Fame Class - 2011

- Named to Walter Camp Foundation All-Century Team (1900-2000)
- Among MSU's all-time leaders with 45 career field goals
- First-Team All-American & All-Big Ten selection in 1981



CHET AUBUCHON

Basketball 1939 - 40, 42
Hometown - Gary, IN
Hall of Fame Class - 1996

- Called the "Houdini of the Hardwood"
- Spartans' first basketball All-American



ED BAGDON

Football 1946 - 49
Hometown - Dearborn, MI
Hall of Fame Class - 1996

- 1949 All-American
- 1949 Outland Trophy winner
- Half of top guard tandem with Don Mason



GLORIA BECKSFORD

Softball 1975 - 76; Softball Coach 1981 - 93
Hometown - Holland, MI
Hall of Fame Class - 1992

- Pitched MSU to 1976 College World Series title
- First female athlete with number retired
- 1986 Big Ten Coach of the Year



RICHARD BERRY

Fencing 1952 - 53
Hometown - Highland Park, MI
Hall of Fame Class - 2000

- 1952 All-American
- 1952 NCAA runner-up in individual epee
- Two-time Big Ten Champion (1952 Epee / 1953 Foil)
- 1959 Pan American Games



AMO BESSONE

Hockey Coach 1951 - 79
Hometown - Sagamore, MA
Hall of Fame Class - 1992

- 1966 National Coach of the Year
- Five Big Ten Championships
- U.S. Hockey Hall of Fame inductee
- Led Spartans to first national title in 1966



JIM BIBBS

Men's Track & Field Coach 1968 - 88
Hometown - Ecorse, MI
Hall of Fame Class - 2010

- First African-American head coach at Michigan State
- During his tenure, Spartans earned two world records, 52 Big Ten titles and All-America honors 26 times
- Tutored Judi Brown to the 1984 Olympic silver medal in the 400-meter hurdles



ART BRANDSTATTER, SR.

Football 1934 - 36
Hometown - East Lansing, MI
Hall of Fame Class - 1994

- 1936 All-American
- 1961 Selection to Sports Illustrated's Silver Anniversary All-America Team
- 1990 Jack Breslin Lifetime Achievement Award winner



MOLLY BRENNAN

Track 1979 - 82
Hometown - Waterford, MI
Hall of Fame Class - 1993

- 1982 Rhodes Scholar
- 1981-82 All-American sprinter
- 1982 Sportswoman of the Year



JACK BRESLIN

Football/Basketball/Baseball 1944 - 46
Hometown - Battle Creek, MI
Hall of Fame Class - 1992

- 1944 "Governor's Award" football MVP
- 30-year MSU administrator
- Duffy Daugherty Award winner
- MSU's basketball arena named in his honor



CHESTER BREWER

Athletics Director/Coach 1903 - 10, 1917, 1919 - 22
Hometown - Owosso, MI
Hall of Fame Class - 2000

- MAC's first full-time athletics director
- Coached football, basketball, baseball and track teams
- Football team went undefeated in 43-straight home games (1903-10)



JUDI BROWN

Track 1980 - 83
Hometown - East Lansing, MI
Hall of Fame Class - 1995

- 1983 NCAA Champion in 400-meter hurdles
- Three-time All-American
- 12-time Big Ten Champion
- Member of world record-setting sprint medley relay



LAUREN BROWN

Cross Country/Track 1928 - 31
Hometown - Detroit, MI
Hall of Fame Class - 2003

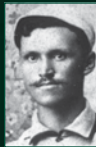
- 1928 cross country All-American
- Won the Central Collegiate Conference Championships in 1927 and 1929
- Set school records in the steeplechase and 2-mile



ED BUDDE

Football 1960 - 62
Hometown - Detroit, MI
Hall of Fame Class - 2010

- 1962 All-American
- First-round draft pick of both the AFL's Kansas City Chiefs (then Dallas Texans) and the NFL's Philadelphia Eagles
- Seven-time Pro Bowl selection and two-time first-team All-Pro



LEANDER BURNETT

Baseball/Track 1889 - 92
Hometown - Harbor Springs, MI
Hall of Fame Class - 1995

- Three-time all-around MIAA track champion
- Won 37 individual events at MIAA field days
- Earned nine varsity letters in baseball and track



BOB CAREY

Football/Basketball/Track 1949 - 52
Hometown - Charlevoix, MI
Hall of Fame Class - 1992

- 1951 shot put All-American
- 1951 football All-American
- Three-year basketball starter



LYNN CHANDNOIS

Football 1946 - 49
Hometown - Flint, MI
Hall of Fame Class - 1992

- 1948 "Governor's Award" football MVP
- 1950 Michigan Outstanding Amateur Athlete of the Year
- 1949 All-American halfback
- Three-time NFL All-Pro as Pittsburgh Steeler



MATEEN CLEAVES

Men's Basketball 1996-2000
Hometown - Flint, MI
Hall of Fame Class - 2011

- Three-time All-American (1998, 1999, 2000) and two-time Big Ten Player of the Year (1998, 1999)
- Three-time captain helped lead Michigan State to 2000 National Championship.
- Finished his career as Big Ten's all-time assists leader (816)



DON COLEMAN

Football 1949 - 51
Hometown - Flint, MI
Hall of Fame Class - 1992

- First Spartan to have his number retired
- MSU's first unanimous All-American
- 1975 College Football Hall of Fame inductee



FENDLEY COLLINS

Wrestling Coach 1930 - 62
Hometown - Headrick, OK
Hall of Fame Class - 1996

- 1961 Big Ten Championship
- Coached individuals to 13 NCAA titles
- Coached individuals to 14 Big Ten titles
- NCAA runner-up three times (1941, '43, '48)



SHIRLEY COOK

Field Hockey/Basketball/Track and Field 1955 - 58
Hometown - Port Hope, MI
Hall of Fame Class - 2007

- One of MSU's pioneer female student-athletes
- Founder of Women's Varsity Alumni Club
- Created an endowment in her name to promote women's athletics



DANA COOKE

Volleyball 1993-96
Hometown - Burlington, Ontario
Hall of Fame Class - 2011

- Co-captained her team to the 1995 Final Four and Big Ten titles in 1995 and 1996
- Two-time All-American & First Team All-Big Ten (1995, 1996)
- Set MSU single-season records for blocks (191) and block assists (163) in 1995



JERRY DAPRATO

Football 1912 - 15
Hometown - Iron Mountain, MI
Hall of Fame Class - 2001

- First Football All-American (1915)
- Led nation in scoring (1915), running for 15 touchdowns, booting 28 extra points and converting two field goals for 124 points.
- Set single-game and season scoring records



DUFFY DAUGHERTY

Football Coach 1954 - 72
Hometown - Barnesboro, PA
Hall of Fame Class - 1992

- 1956 and 1965 National Coach of the Year
- Coached 33 first-team All-Americans
- College Football Hall of Fame inductee



CHUCK DAVEY

Boxing 1943, 1947 - 49
Hometown - Dearborn, MI
Hall of Fame Class - 1992

- Only four-time NCAA boxing champion
- Undefeated collegiate record
- Member of 1948 U.S. Olympic team

SPARTAN ATHLETICS HALL OF FAME



JOE DELAMIELLEURE

Football 1970 - 72
Hometown - Center Line, MI
Hall of Fame Class - 2003

- 1972 Football All-American
- 1971 and 1972 All-Big Ten First Team
- 2003 Pro Football Hall of Fame inductee
- Six-time NFL All-Pro



MARSHALL DILL

Track and Field 1972 - 75
Hometown - Detroit, MI
Hall of Fame Class - 2007

- 11-time Big Ten Champion; 1972 and 1973 All-American
- 1973 NCAA outdoor champion in 220-yard dash
- Won four-consecutive Big Ten titles in the outdoor 220-yard dash and two straight in the outdoor 100-yard dash
- Won three-straight Big Ten titles in the indoor 300-yard dash



GARY DILLEY

Swimming 1965 - 67
Hometown - Huntington, IN
Hall of Fame Class - 1995

- 1965-66 NCAA Champion in 100-yard and 200-yard backstroke
- Eight-time Big Ten champion
- 12-time All-American



JIM ELLIS

Football 1951 - 53
Hometown - Saginaw, MI
Hall of Fame Class - 2007

- First Spartan to receive All-America honors in consecutive years (1951-52)
- Named to All-Western first team in 1952
- Captain of the 1953 Big Ten and 1954 Rose Bowl Championship team



SUE ERTL

Golf 1977 - 80
Hometown - Ionia, MI
Hall of Fame Class - 2001

- 1979 All-American
- 1977 and 1978 Big Ten Medalist
- 1978 Runner-up Midwest AIAW Championships
- 1988 National Collegiate Golf Hall of Fame



JULIE FARRELL-OVENHOUSE

Swimming & Diving 1988 - 91
Hometown - Holt, MI
Hall of Fame Class - 2005

- 1990 NCAA champion on the one-meter board
- 1991 NCAA champion on the three-meter board
- Six-time All-American
- Three-time Big Ten Diver of the Year (1989-91)



DR. JAMES FEURIG

Team Physician 1953 - 75
Hometown - Seymour, WI
Hall of Fame Class - 2000

- MSU team physician for 22 years
- Key researcher on the dangers of the crossbody block in football
- 1968 Michigan State Medical Society Distinguished Service Award



MARY FOSSUM

Golf Coach 1973 - 97
Hometown - Green Bay, WI
Hall of Fame Class - 2003

- Led the Spartans to five straight Big Ten titles from 1974-78 plus 1982 crown
- Guided team to six-consecutive AIAW National Championship appearances from 1973-78



RICHARD FREY

Cross Country/Track 1936 - 40
Hometown - Buffalo, NY
Hall of Fame Class - 2007

- Captain of 1939 cross country NCAA Championship team, the first NCAA title won by a Spartan team
- Four-time All-American (twice in cross country/twice in track)
- Member of IC4A Championship team in 1937
- Won freshman IC4A title in 1936



LYMAN FRIMODIG

Basketball/Baseball/Football 1914 - 17
Hometown - Calumet, MI
Hall of Fame Class - 1992

- MSU's only 10-time letterwinner
- 41-year career as assistant athletic director and business manager
- Co-author of *Spartan Saga: A History of Michigan State Athletics*



JOHN FUZAK

Faculty Athletics Representative 1959 - 79
Hometown - Crewe, VA
Hall of Fame Class - 2005

- Served as MSU's Faculty Representative for 20 years (1959-79)
- Twice served as chairman for the Big Ten Faculty Representatives
- MSU's Vice President of Student Affairs from 1961-66
- NCAA President (1975-76)



STEVE GARVEY

Baseball/Football 1966 - 68
Hometown - Tampa, FL
Hall of Fame Class - 2010

- 1968 All-American in baseball
- Four-time Gold Glove winner and 1974 National League MVP
- Appeared in 10 Major League All-Star games & 5 World Series
- 1,207 consecutive games played ranks fourth all time in Major League Baseball history



KIRK GIBSON

Football/Baseball 1975 - 78
Hometown - Waterford, MI
Hall of Fame Class - 1994

- 1978 baseball and football All-American
- No. 1 draft pick of Detroit Tigers in 1978
- Key MLB veteran on two World Series Championship teams



CHERYL GILLIAM

Track 1978 - 81
Hometown - Detroit, MI
Hall of Fame Class - 2003

- 1981 Indoor All-American in 60-meter dash
- Won four-straight Big Ten titles in the outdoor 200-meter dash
- Set six individual and nine relay records



EVERETT "SONNY" GRANDELIUS

Football 1948 - 50
Hometown - Muskegon Heights, MI
Hall of Fame Class - 1995

- 1950 All-American
- 1950 "Governor's Award" football MVP
- 1951 Hula Bowl MVP



JOHNNY GREEN

Basketball 1957-59
Hometown - Dayton, OH
Hall of Fame Class - 1992

- Three-time All-American
- 1959 Big Ten MVP
- Three-time All-Big Ten



ROGER GROVE

Football/Basketball 1928 - 31
Hometown - Sturgis, MI
Hall of Fame Class - 2000

- 1930 Football All-American
- 1930 Basketball All-American
- Led basketball team in scoring in 1929-30 and 1930-31
- MSU freshman pole vault record in 1928



GEORGE GUERRE

Football 1946 - 48
Hometown - Flint, MI
Hall of Fame Class - 2007

- Led the Spartans in rushing for three-straight seasons from 1946-48
- Averaged 6.75 yards per carry, the best career rushing average in school history
- 1946 team MVP



LINDA GUSTAVSON

Swimming 1969 - 72
Hometown - Santa Cruz, CA
Hall of Fame Class - 2010

- 1968 Olympic gold medalist in the 400-meter relay
- 1970 AIAW National Champion in the 50-meter freestyle
- Earned a silver medal in the 400-meter individual freestyle and bronze medal in 100-meter individual freestyle at 1968 Olympics



JOHN HANNAH

MSU President 1941 - 69
Hometown - Grand Rapids, MI
Hall of Fame Class - 1992

- Led MSU into the Big Ten Conference
- Football jersey number retired for 46 years of service
- Awarded USA Medal of Freedom for his civil rights work



GEORGE M. "JUD" HEATHCOATE

Basketball Coach 1975 - 95
Hometown - Spokane, WA
Hall of Fame Class - 2001

- 1979 NCAA Championship
- Won three Big Ten titles (1978, 1979, 1990)
- 2001 National Association of Basketball Coaches Golden Anniversary Award



JACK HEPPINSTALL

Athletic Trainer 1914 - 59
Hometown - Durham County, England
Hall of Fame Class - 1994

- MSU's first athletic trainer
- Served under five athletics directors & 12 head football coaches
- National Athletic Trainers Association Hall of Fame inductee



JOHN HORNE

Boxing 1958 - 60
Hometown - Washington, D.C.
Hall of Fame Class - 1996

- Three-time NCAA Champion in 178-pound class
- Competed without regular coach, program or sparring partner
- Two-time All-American



DR. NELL JACKSON

Assistant Director of Athletics for Women 1973 - 81
Women's Track & Field Coach 1973 - 77, 1978 - 81
Hometown - Athens, GA
Hall of Fame Class - 2010

- Coached 13 athletes to All-America honors
- Member of the Black Athletes HoF, Women's Sports Foundation HoF and National Track & Field HoF
- First African-American woman to coach Olympic track team & serve on the U.S. Olympic Committee's board of directors



BURL JENNINGS

Wrestling 1941 - 43
Hometown - Tulsa, OK
Hall of Fame Class - 1995

- Two-time NCAA Champion
- 1943 co-captain with twin brother



MERLE JENNINGS

Wrestling 1941 - 43
Hometown - Tulsa, OK
Hall of Fame Class - 1995

- Two-time NCAA Champion
- 1943 co-captain with twin brother
- 1943 National AAU Champion



FRED JOHNSON

Track 1947 - 50
Hometown - Grandville, MI
Hall of Fame Class - 1993

- 1949 NCAA Champion in broad jump
- 1949 All-American in the broad jump and low hurdles
- Shared world record in 65-yard low hurdles

SPARTAN ATHLETICS HALL OF FAME



EARVIN "MAGIC" JOHNSON

Basketball 1978 - 79
Hometown - Lansing, MI
Hall of Fame Class - 1992

- 1979 All-American
- 1979 Big Ten MVP
- MVP of 1979 NCAA Tournament
- Five NBA Championships



JOYCE KAZMIERSKI

Golf 1964 - 67
Hometown - Detroit, MI
Hall of Fame Class - 1994

- 1966 National Collegiate Golf Champion
- Formed Women's Golf Club at MSU
- Played on LPGA tour from 1968 to 1985
- 1986 inductee into National Golf Coaches Hall of Fame



KISHA (KELLEY) SIMPSON

Women's Basketball 1991-95
Hometown - Detroit, Mich.
Hall of Fame Class - 2011

- First women's basketball All-American at MSU
- Finished her career as the program's leading scorer
- Three-time All-Big Ten selection and team MVP



GREG KELSNER

Basketball 1976 - 79
Hometown - Detroit, MI
Hall of Fame Class - 1996

- 1979 All-American
- Three-time team MVP
- 1979 First-team Academic All-American
- Holds honorary doctorate from MSU



CRAWFORD "FORDDY" KENNEDY

Cross Country/Track 1957 - 59
Hometown - Glasgow, Scotland
Hall of Fame Class - 1992

- Three-time cross country All-American
- 1958 NCAA cross country champion
- 1959 Big Ten cross country and two-mile champion



HENRY KENNEDY

Cross Country/Track 1955 - 58
Hometown - Glasgow, Scotland
Hall of Fame Class - 1992

- Six-time letterwinner in cross country and track
- 1955 Big Ten cross country champion
- 1955-56 IC4A Champion



GENE KENNEY

Soccer Coach 1956 - 69
Hometown - Urbana, IL
Hall of Fame Class - 2005

- Led MSU to back-to-back National Championships in 1967-68
- Teams made eight-straight trips to the NCAA Tournament from 1962-69
- His .866 winning pct. is second in the NCAA



JOHN KOBBS

Baseball Coach 1925 - 63
Hometown - Cavalier, ND
Hall of Fame Class - 1993

- 576-377-16 record over 39 years
- MSU's baseball field named in his honor
- Michigan Sports Hall of Fame inductee



FRANK KUSH

Football 1950 - 52
Hometown - Windber, PA
Hall of Fame Class - 2000

- 1952 All-American
- Anchored defensive line for 1952 NtnI Champions
- MSU Centennial Super Squad
- 1995 National Football Foundation College Hall of Fame inductee



BONNIE LAUER

Golf 1970 - 73
Hometown - Walled Lake, MI
Hall of Fame Class - 1992

- 1973 AIAW National Champion
- First female athlete voted "Spartan of the Week" by the State News
- 1976 LPGA Rookie of the Year



SHERMAN LEWIS

Football/Track 1961 - 64
Hometown - Louisville, KY
Hall of Fame Class - 2001

- 1963 All-American
- 1963 Football Co-captain
- Finished third in Heisman Trophy balloting in 1963
- 1963-64 Track Captain



DANNY LITWHILER

Baseball Coach 1964 - 82
Hometown - Ringtown, PA
Hall of Fame Class - 1994

- Two Big Ten Championship teams
- Coached 13 future MLB players
- 1942 All-Star with Philadelphia
- Developed radar speed gun to time pitches



DEAN LOOK

Football/Baseball 1957 - 59
Hometown - Lansing, MI
Hall of Fame Class - 2007

- 1959 football All-American
- 1958 baseball team MVP and first-team All-Big Ten selection led the Spartans in runs, RBI, total bases, stolen bases, doubles and home runs
- Spent 29 years as an official in the NFL



WILLIAM MACK

Cross Country/Track 1948 - 50
Hometown - Palos Park, IL
Hall of Fame Class - 1996

- 1950 All-American in mile run
- Four-time cross country All-American (two at MSU)
- Member of world record two-mile relay team



JANE MANCHESTER-MEYERS

Swimming/Diving 1972 - 74, 1976
Hometown - Pompano Beach, FL
Hall of Fame Class - 1992

- Three-time All-American
- 1973-74 AIAW National Champion
- 1973-74 Big Ten Champion



RON MASON

Hockey Coach 1979 - 2002
Director of Athletics 2002 - 2007
Hometown - Blyth, Ontario
Hall of Fame Class - 2010

- Winningest college hockey coach in history (924 victories)
- 1986 NCAA Championship
- 17 CCHA regular-season and playoff titles



JULIUS MCCOY

Basketball 1953 - 56
Hometown - Farrell, PA
Hall of Fame Class - 2010

- 1956 All-American
- Second player in program history to surpass the 1,000-point total
- Appeared in the 1956 College All-Star game
- Drafted by the NBA's St. Louis Hawks in 1956



CHARLES MCCAFFREE JR.

Men's Swimming & Diving Coach 1941-69
Hometown - Sioux Falls, S.D.
Hall of Fame Class - 2011

- Coached the Spartans to eight-straight Central Collegiate Conference Championships, and first-ever Big Ten Championship in 1957
- Awarded National Collegiate and Scholastic Swimming Trophy in 1965



ROBERT "BUCK" MCCURRY

Football 1946 - 48
Hometown - Lewiston, PA
Hall of Fame Class - 1993

- Three-time team captain
- Duffy Daugherty Award winner
- All-American center
- MSU Assistant Football Coach 1949-50



GALE MIKLES

Wrestling 1945 - 48
Hometown - Tulsa, OK
Hall of Fame Class - 1992

- 1947 NCAA Champion at 155 pounds
- 1945 AAU National Champion in 145-pound class
- Long-time MSU coach and administrator



BLAKE MILLER

Football/Baseball/Basketball 1912 - 15
Hometown - Tonawanda, NY
Hall of Fame Class - 2005

- Named to MSU's all-time Old-Timers Football Team (pre-1940) in 1970
- 1915 football All-American
- Earned All-Western honors in football (1913-14)
- Won nine varsity letters at MSU: four in football, three in baseball and two in basketball



DEANNE MOORE

Softball 1981 - 84
Hometown - Fenton, MI
Hall of Fame Class - 1996

- 1983 All-American and GTE Academic All-American
- 1984 All-Big Ten selection
- 1984 Alderton Athlete of the Year



EARL MORRALL

Football 1953 - 56
Hometown - Muskegon, MI
Hall of Fame Class - 1992

- 1955 All-American
- 1955 All-Big Ten
- 1968 NFL MVP
- Quarterback for two Super Bowl Champions



CLARENCE "BIGGIE" MUNN

Football Coach 1947 - 53
Athletic Director 1954 - 72
Hometown - Minneapolis, MN
Hall of Fame Class - 1992

- Posted an .857 winning percentage over seven years
- 1952 National Coach of the Year
- College Football Hall of Fame inductee



GWEN NORRELL PH.D.

Faculty Athletics Representative 1979 - 87
Hometown - Eudora, AR
Hall of Fame Class - 2000

- First woman to serve as Faculty Representative in Big Ten history
- NCAA Vice-President (1983-84 and 1984-85)
- MSU Athletic Council (two terms)
- 1973 MSU Distinguished Faculty Award



HERB ODOM

Boxing 1952 - 55
Hometown - Flint, MI
Hall of Fame Class - 2005

- Back-to-back NCAA Champion at 147 pounds (1954-55)
- Led MSU to 1955 team National Championship
- Two-time All-American (1954-55)
- Compiled a 29-5-2 career record



WELDON OLSON

Hockey 1951 - 55
Hometown - Marquette, MI
Hall of Fame Class - 2001

- 1953 Hockey MVP
- 1960 Olympic Ice Hockey Gold Medalist
- 1956 Olympic Ice Hockey Silver Medalist
- Olympic Hall of Fame
- 1993 Distinguished Hockey Alumnus Award

SPARTAN ATHLETICS HALL OF FAME



GRADY PENINGER

Wrestling Coach 1963 - 1986
Hometown - Ponca City, OK
Hall of Fame Class - 2007

- First Big Ten Coach to win seven consecutive conference titles (1966-72)
- During his tenure, Spartan wrestlers earned 10 NCAA titles, 40 Big Ten titles and garnered All-American honors 54 times
- 1987 U.S. Wrestling Hall of Fame inductee



GEORGE PERLES

Football Coach 1983 - 94
Hometown - Allen Park, MI
Hall of Fame Class - 2007

- Led the Spartans to two Big Ten titles (1987 and 1990) and seven bowl appearances
- Three of his teams finished among the nation's Top 25, including the 1987 Big Ten championship team that ranked No. 8 in the final polls
- Tutored nine first-team All-Americans



JOHN PINGEL

Football 1936 - 38
Hometown - Mt. Clemens, MI
Hall of Fame Class - 1993

- 1937-38 All-American punter
- First round draft pick of Detroit Lions
- National Football Foundation Hall of Fame inductee



CARLTON RINTZ

Gymnastics 1952-55
Hometown - Quarryville, PA
Hall of Fame Class - 1992

- Nine-time Big Ten Champion
- 1954 NCAA Champion on pommel horse
- 1955 NCAA Champion on parallel bars, horizontal bars and pommel horse



ROBIN ROBERTS

Baseball/Basketball 1945-47
Hometown - Springfield, IL
Hall of Fame Class - 1992

- Selected to 100th anniversary College All-Star team in 1959
- Recorded 286 wins in 10 Major League seasons
- 1976 Baseball Hall of Fame inductee



TOM ROSS

Hockey 1973-76
Hometown - Dearborn, MI
Hall of Fame Class - 2007

- MSU career records of 324 points, 138 goals & 186 assists
- Scored at least one point in 79 consecutive games
- Second college player to reach 300-point mark; ranks second all-time with 324 career points
- NCAA record-holder with 72 power-play goals



ERNESTINE RUSSELL-WEAVER

Gymnastics 1957-60
Hometown - Windsor, Ontario
Hall of Fame Class - 1992

- 1955 AAU National Champion
- Competed without a team at MSU
- Member of 1956 and 1960 Canadian Olympic teams



GEORGE SAIMES

Football 1959-62
Hometown - Canton, OH
Hall of Fame Class - 2000

- 1962 All-American
- Finished seventh in the Heisman Trophy balloting in 1962
- Two-time All-Big Ten (consensus first team 1961-62)
- NFL All-Pro from 1964-69



KARL SCHLADEMAN

Track Coach 1941-59
Hometown - Seaford, IN
Hall of Fame Class - 1995

- Turned Michigan State Relays into a major event
- Led the Spartans to three IC4A titles
- Coached four Olympians



CLARKE SCHOLES

Swimming 1950 - 52
Hometown - Detroit, MI
Hall of Fame Class - 1992

- 1952 Olympic Gold Medal in 100m freestyle
- Five-time NCAA Champion
- International Swimming Hall of Fame inductee



SCOTT SKILES

Basketball 1983 - 86
Hometown - Plymouth, IN
Hall of Fame Class - 2007

- Led Big Ten in scoring in 1985-86 to earn All-America honors
- 1986 Big Ten MVP
- Became second Spartan to score more than 2,000 points



CHARLES "BUBBA" SMITH

Football 1964 - 66
Hometown - Beaumont, TX
Hall of Fame Class - 1992

- 1966 All-American
- 1966 UPI Lineman of the Year
- 1967 NFL No. 1 overall draft pick (Baltimore Colts)
- 1988 College Football Hall of Fame inductee



GIDEON "CHARLIE" SMITH

Football 1913 - 15
Hometown - Lansing, MI
Hall of Fame Class - 1994

- MAC's first African-American football player
- All-Star tackle on the 1913-15 MAC teams
- Played pro football with Canton Bulldogs and Jim Thorpe



STEVE SMITH

Basketball 1988-91
Hometown - Detroit, MI
Hall of Fame Class - 2001

- 1990 and 1991 All-American
- 1990 Big Ten Player of the Year
- No. 21 jersey retired in 1999
- 1991 NBA first-round draft pick (No. 5 overall)



PERCY SNOW

Football 1986 - 1989
Hometown - Canton, OH
Hall of Fame Class - 2010

- Two-time First-Team All-American (1988-89)
- First player to win Butkus & Lombardi Awards in the same year (1989)
- Three-time First-Team All-Big Ten Selection (1987-1989)
- Selected by Kansas City in first round of 1990 NFL Draft



FRED STABLEY, JR.

Sports Information Director 1948 - 80
Hometown - Dallastown, PA
Hall of Fame Class - 1992

- 1962 Arch Ward winner for his work as Sports Information Director
- Press box at Spartan Stadium named in his honor
- Charter member of CoSIDA Hall of Fame in 1969



VALERIE STERK KEMPER

Volleyball 1993 - 96
Hometown - Byron Center, MI
Hall of Fame Class - 2007

- First MSU female team sport athlete to earn First-Team All-America honors (1995 and 1996)
- Led nation with .449 hitting percentage in 1996
- Earned First-Team All-Big Ten honors three times
- 1996 Third-Team Academic All-American



BRAD VAN PELT

Football/Baseball/Basketball 1969 - 72
Hometown - Owosso, MI
Hall of Fame Class - 2000

- Three-sport athlete who won seven varsity letters
- Two-time football All-American (1971-72)
- First defensive back ever to receive Maxwell Award as nation's top collegiate player (1972)
- Played in five-straight NFL Pro Bowls from 1976-80



DOUG VOLMAR

Hockey 1965 - 67
Hometown - Cleveland Heights, OH
Hall of Fame Class - 1992

- 1966 All-American
- 1966 WCHA All-Star
- Member of 1968 U.S. Olympic hockey team



KEN WALSH

Swimming 1965 - 67
Hometown - Ponte Vedra, FL
Hall of Fame Class - 2010

- 12-time All-American
- 1967 NCAA Champion in 100m freestyle
- 1965 & 67 Big Ten Champion
- 1968 Gold & Silver Olympic medalist



GENE WASHINGTON

Football/Track 1964 - 67
Hometown - LaPorte, TX
Hall of Fame Class - 1992

- 1965-66 All-American
- College Football Hall of Fame inductee
- 1967 NFL first-round draft pick



HERB WASHINGTON

Track and Field 1969 - 72
Hometown - Flint, MI
Hall of Fame Class - 2000

- Four-time All-American
- 1970 and 1972 NCAA Indoor Champion in 60-yard dash
- Won seven Big Ten titles
- 1997 NCAA Silver Anniversary Award



GEORGE WEBSTER

Football 1964 - 66
Hometown - Anderson, SC
Hall of Fame Class - 1992

- 1965-66 All-American
- 1966 "Governor's Award" football MVP
- Nine-year NFL veteran with three teams



LORENZO WHITE

Football 1984 - 87
Hometown - Fort Lauderdale, FL
Hall of Fame Class - 2010

- Two-time First-Team All-American (1985, 1987)
- Fourth in the Heisman Trophy balloting in 1985 & 1987
- MSU's all-time leading rusher with 4,887 yards, including 23 100-yard games
- 1990 First round draft choice of NFL's Houston Oilers



JOHN D. WILSON

Football 1950 - 52
Hometown - Lapeer, MI
Hall of Fame Class - 2001

- MSU's first Rhodes Scholar
- 1952 Academic All-American
- 1952 North-South Football Game
- 1989 GTE Academic All-America Hall of Fame



TOM YEWIC

Football/Baseball 1951 - 54
Hometown - Conemaugh, PA
Hall of Fame Class - 2003

- 1952 Football All-American
- 1954 Baseball All-American
- 1954 College World Series MVP
- Led MSU to share of Big Ten title in 1953 and a win in the 1954 Rose Bowl



RALPH YOUNG

Football Coach 1923 - 27
Track and Field Coach 1924 - 40
Athletic Director 1923 - 54
Hometown - Crown Point, IN
Hall of Fame Class - 1992

- Coached 27 track All-Americans & four Olympians
- Michigan Sports Hall of Fame inductee
- Served in Michigan Legislature from 1956 to 1962
- MSU's track is named in his honor

THANK YOU MEMBERS!

Nearly 13,000 Spartan fans have made the decision to Invest in Champions by joining the Spartan Fund for the 2012-2013 athletic year.

Spartan Fund members are *vital* to the growth and success of Michigan State Athletics. The investment in student-athlete scholarships and operational expenses puts our program (25 sports and nearly 800 student-athletes) in a position to succeed in both academics and athletics.

BECOMING A SPARTAN FUND MEMBER IS EASY!

Membership begins at \$50. Your gift is tax-deductible and may be designated to the sport or area of your choice.

For more information regarding joining the Spartan Fund, please call (517) 432-4610 or go to msuspartans.com and click on Spartan Fund.



SPARTAN

FUND

INVEST IN CHAMPIONS.

"Our vision is to consistently compete for Big Ten championships and ultimately, Rose Bowl championships.

THAT IS OUR MISSION.

***With your help, SPARTANS WILL."
- Mark Dantonio***



VISIT US ONLINE!

www.msuspartans.com/spartanfund



GIVE NOW!

Scan to make a contribution:





SPARTAN FUND

The Department of Intercollegiate Athletics thanks the following Spartan Fund members for their loyal and generous support. Philanthropic support provided by Spartan Fund members allow us to build and sustain a competitive athletics program in the Big Ten Conference and the NCAA.

AMBASSADORS

Members \$50,000 and above

Herman J & Sherry Arends
Howard & Vivian Ballein
Scott & Natalie Bernecker
Dan & Sherry Bowen
Craig & Vicki Brown
David Clay
Martin Louis Clemens
Craig & Mary Helen Crooks
Dean Trailways of Michigan - Mr. Kellie Dean
Delta Dental Plan of Michigan
Doug & Valerie DeMartin
Edward & Laura Demmer
John & Marnie Demmer
Marguerite Ann Demmer
Mr. & Mrs. William A. Demmer
Downtown Coaches Club
John & Becky Duffey
John Dykema & Michele Maly Dykema
Kris & Jennifer Elliott
Mr. & Mrs. Morton M. Finkelstein
Foster, Swift, Collins & Smith P.C.
John & Sharon Garside
Robert L & Carol Gerbel
Brad & Deborah Ginsberg
Mr. & Mrs. William Guzy
Philip & Reedy Hickey
W Allan & Claire Hopkins
J.C. Huizenga
Huntington Banks
Tom & Lupe Izzo
Jackson National Life Insurance Company
Joe D. Pentecost Foundation
Earvin & Cookie Johnson
Spencer Johnson
David & Karen Jordan
Michael E & Lanae Kettlewell
Terry & Cindy Lanzen
Rick & Suzanne Lasch
Alfred Berkowitz Foundation
Barb & Ben Maibach III
Clark & Kathleen Manning
Drayton & Elizabeth McLane
David & Linda Mehney
Michigan Millers Mutual Insurance Company

Todd R. & Marcia K. Moss
MSU Club of West Michigan
George & LaWayne Napoles
Jim & Mary Nelson
Daniel J & Anna Oginsky
Trustee George J. & Sally A. Perles
James & Janice Petcoff
Trustee Emeriti Randall Pittman
Steve & Brenda Ramsby
Douglas & Carol Rearick
Peter F. Secchia & Joan P. Secchia
Mary Ellen Sheets & Tom Amiss
Bob & Julie Skandalaris
Steve & Millie Smith
Steve & Teresa St. Andre
Lyle L. Stephens
Do Good Things Foundation
Mr. & Mrs. David C. Stone
Dr. Thomas & Teresa Tarn
Mr. & Mrs. Joseph W. Thomas
Gary & Margaret Valade
Jill & Gary Witzenburg

CHAMPIONS CIRCLE

Members \$25,000 to \$49,999

Mike & Lorene Abel
Dr. Christopher Abood
Steven & Amy Almany
Tom & Ellen Antaya
Lori S Baker
Ernie & Leanne Balcueva & Family
Ed Barant
Mr. & Mrs. Robert Bauer
Dick Belding
Dennis & Cheryl Bhaskaran
Kirk & Patricia Brannock
Shane H. Bullough
Scott R. & Lynne M. Burnett
Craig R Bush
Norm & Rosemary Byrne
Sylvia Morin
Gary M. Ciampa
Bruce & Linda Cohen
Consumers Energy
Trustee Emeriti Dolores M. & Byron J. Cook
Dan Henry
David & Sheryl Livingston Family Foundation
William & Cheri Deary
Marta DiMeglio
Douglas J. Salon & Spa
Pete & Anne Eardley
Herbert & Carol Elfiring
Mohamed H Elnabhty
Mr. & Mrs. Randy Fedewa
Jeffrey M & Anna Feld
Michael Ferrantino
Fincor Solutions
Thomas S. & Mickie Fox Family
Dick & Janet Fullmer
Michael & Jill Gantos
Rick George
Charles & Marjorie Gliozzo
Don & Phoebe Griffin
Kurt & Ann Hallead
Carol Harding
Timothy Hausbeck
David E. Havrilla
Jan Holcomb
Tim Sackett
Judy Johnston
Irvin Automotive
Mr. & Mrs. William G. Janis
Richard & Tracy Johnson
Kreis Enderle
Blake & Mary Krueger
Mr. & Mrs. Brian F. Larsen
Edward K. Lee, D.O. & Gloria A. Wesley Lee
Indian Trails, Inc.
Mark & Cindy A Majeske
Mark & Vicki Matthews
Maxwell Family
Alec McAree
Mr. Michael & Dr. Anna Miller
MSU Alumni Club of Mid-MI
Thomas B. Mulder
George & Marilyn Nugent
Terry & Beverly Oetzal
Mr. & Mrs. Richard E. Otto
Mark F & Gabriela F Parcella

Roger M. & Kim L. Pitzer
Brian Posey
John S. Radtke
Randy & Marci Ralph
John & Mary Rayis
Rebounders Club - MSU
Darrel & Dawn Reece
Andrew Schade
Timothy & Judith Shank
Steve Shanker
Roger Shepard
Drs. Lou A. & Roy J. Simon
Jason & Gary Johnson
Ron E & Josephine Smith
Bill & Mary Lou Somerville
George P & Judith Spanske
Jane & Gordon Spink
Mr. & Mrs. Gordon L. Stauffer
Bret Story
Joni & John Szykiel
Mary E. Tatter
The Doctors Company
The Insurance Offices
Chuck & Nancy Theis
Universal Forest Products
Herb & Gisele Washington
Ken & Marilyn Way
Jeffrey & Christine West
Mr. & Mrs. Richard H. White
Jim & Sue Williams
Aaron Zeigler

SCHOLARSHIP

Members \$10,000 to \$24,999

Ken & Linda Adams
Dr. Beth Alexander
Darryl & Sharon Allen
Kathy & Mike Anderson
Mike & Carol Anderson
Sedric L. Audas & Nancy Mesko
Merrill Bailey
Dennis & Donna Banks
Art C. Baryames
Brian & Hope Bayer
Bob & Val Bernecker
Brian T. Bertsch
Phillip & Susan Bickel
Governor & Mrs. James J. Blanchard
William A. & Julie A. Boettcher
Mr. & Mrs. Lee A. Bowen
Patricia & David Brogan
Jeffrey G. Buday
Michael J. Burwell & Jamie K. Burwell
James F. Carr, Jr. & Diane S. Carr
Jeffrey Casey
William Brehm
The Christman Company
Joseph & Carolyn Clark
Jason Cochran
Stanford & Cynthia Compton

Andrew & Sandra Conner
Roger & Shelia Conrad
Cynthia M. Conway
Koleen M & Paul T Cook
J.F. Cordes, MD
Mr. Jay A. Craig
Mr. & Mrs. James A. Currie
Alfred & Cynthia D'Amico
Dennis & Sarah DaPra
John & Rene Darling
Jack & Susan Davis
Tim & Carol Dent
Frederick R & Jane Dibbern



SPARTAN FUND

SCHOLARSHIP cont'd

Members \$10,000 to \$24,999

John & Joan Dobben
Lynette & Tim Drumhiller
DTN Management Co.
Dan & Kim Dudley
Thomas Duncan & Leslie DeVera-Duncan
Dave & Todd Durant
Mr. & Mrs. William Ebbert
James & Deborah Epolito
Fastbreak Club
Mr. & Mrs. William Featherstone
Joel Ferguson
Fifth Third Securities
Mr. & Mrs. Charles Fisher
Herbert & Christine Fluharty
Vincent D. Foster
Edward C. Fox, Jr. & Patricia A. McKay
Kathy Bickel
Ronald & Katie Gantner
Carole Sorenson & Martin Gibbs
Patrick & Jennifer Gillespie
Alan S & Rhona Gorosh
Michael K & Merry Achors Grady
Alton & Jan Granger
Gary & Pam Granger
Dr. & Mrs. James M. Grannell
Andrew J. Greenlee
GreenStone Farm Credit Services
Mr. & Mrs. Thomas Grimes
Gunthorpe Plumbing & Heating, Inc.
Gordon Guyer
Mr. William Haupricht & Dr. Kerry Ann
Rockquemoore
Karen Bush Schneider Havrilla
HBC Contracting
James & Susan Herman
Chris & Louise Holman
Charlie & B. J. Holton
Andy & Alicia Hopping
Larry & Connie Hudas
Duane & Nancy Huffine
Arthur & Mary Irish
Rick & Penny Jackson
Dr. Thomas K. Jamieson
John Durr
Tom & Mary Johnston
Paul D. Joliat
Mike & Donna Jones
Gregory J & Holly Jozwiak
Ken & Marilyn Kaestner
Mr. & Mrs. William R. Kahl
Mark E & Lorene Kappler
Dr. & Mrs. Michael Karkkainen

Michael & Peggy Kelley
Kellogg Company
Paul & Rebecca Kennedy
Brian Kessler
David J. Kirkby
Bonnie Knutson
Kevin Korpi
Kevin & Chris Kovanda
David & Colleen Krause
Nathaniel Lake Jr. & Patricia Ann Baines-Lake
Jeff & Katy Lambert
Eric & Linda Lannes
Al & Charlene Lazette
Patrick & Sally LeBlanc
Irv Leshner
Roy H. Link
Steven J & Nancy Loveall
J. William & Wanda J. Luurtsema
Michael & Susan Maasberg
Vincent & Karen Magi
Timothy Lee Main
Gary Malhado
Thomas Mall & Cathy Mall
Michael E & Stacey Marsh
Masco Corporation
Betsy Barkwell Mathiesen
Russ Mawby
Charles & Constance McCallum
Chris & Andrea McDonagh
Lindsay A & Matthew McGrath
McKay Properties, LLC
Mark A & Sherry E McManus
Mr. & Mrs. Patrick & Victoria McPharlin
Bill & Carol Mechanic
Kirk & Marty Mercer
Jeff & G. Christine Metts
James Hallan
Mr. & Mrs. Larry A. Miller
Philip & Sandra Miller
Jeff & Cathy Monroe
Sam Monte
Moore Trosper Const Co
Electro-Matic Products Inc.
Robert L & Susan Morris
Motor City Bowl
MSU Alumni Club of Oakland County
Matt Watts
Colleen Kniffen
MSU Federal Credit Union
MSU Sideout Club
Bob Groves

Craig & Lisa Murray
William J & Sherry L Nemesi
Dr. Vinh Nguyen
Tom & Deni Nihra
Deb Cleland-Nowakowski & Scott A
Nowakowski
David & Marilyn Nussdorfer
Mr. & Mrs. Patrick M. O'Keefe
Robert Olstein
Oral Surgrey Associates of Lansing
Bill & Colleen Osantowski
Rich Ford
Patrick J & Nancy Paige
Dr. Joseph & Linda Palazeti
Lou & Cheryl Panciatici
James T & Anne Parker
Tim & Jill Parker
Robert & Nancy L. Pawelski
Joe D. & Shirley Pentecost
Jon & Diane Pepper
Mrs. Isabel H. Pingel
Richard M. Pinke
Frank Sovis
Curt Munson
Dr. E. James & Geri Potchen
Mr. & Mrs. Stephen A. Powers
Mark & Patti Prendeville
Lori L Purkey
Erik & Ana Maria Qualman
Douglas Raedy
Sandra L Raines & Ronald A Cadieux
Sharon & Dave Regan
Remus Rigg
Pat & Trisha Riley
George & Marjorie Robertson
Paul & Carol Rose
Tony Rosenthal & Ruth Ganister
Harold & Tina Rutilla
Dr. Joseph G. & Debra K. Sage
Dr. John & Gayle Sauchak
Mr. & Mrs. Gerald Schaberg
Glenn & Sue Schafer
Judith & Thomas Scheidt
Brian & Cristy Schulz
Dr. & Mrs. John S. Schuster
Steve Scofes, Chairman/CEO
Michael & Elaine Serling
Joe & Julie Serra
Matthew & Kelly Sesti
R. William & Norma J. Sheathelm, Jr.
Mrs. Arlene E. & Dr. Lawrence Sierra
Mr. Clifford Simmons & Dr. Christine West

Ronald H. & Mary E. Simon
John W Sims
Dr. & Mrs. Trevor Singh
Neil & Kimberly Sitko
Siwek Construction
Rodney & Dawn Slobodian
Scott & Cassie Smith
Courtney Sokoloski
John D & Brooke Stahle
Mr. Ralph V. Stoner, Jr.
Robin A. Storm
Mr. & Mrs. B. Thomas Stover
Craig P. Stover & Jeanne M. Stover
Mr. Michael W. Straus
The Honorable Richard F. Suhrheinrich & Mrs. Suhrheinrich
Dennis & Kathleen Swan
Sweda Family
Michael P & Christy Swords, D.O.
Charles & Joyce Taylor
Jim & Pat Teets
Michael L. Thomson
Dr. Fred C. & Janet E. Tinning
Jack Holtzer
Larry Gaynor
Michael & Darcie Uckele
Kevin VanDyke
Joseph M & Kim VanderKelen
Paul & Judy VanderVeen
Richard & Shari Wallick
Loren H. & Carol A. Wall
Mr. & Mrs. James S. Ware
Mr. & Mrs. Matthew Watts
Dr. Charles & Philippa Webb
Wells Fargo Bank, NA
Mr. & Mrs. Alton Wendzel
Kurt J & Debra Westermann
Howard & Kay Weyers
Bruce & Susan Whetter
Dr. John White
Mark & Regina Wickard & Family
Stephen M. Wickens
Sharon Wicker & Nick Popp
Robert A. & Mary Jo Willis
Dr. & Mrs. Jeffrey H. Wilner
Karen Wilson SmithBauer
David & Holli Wincllechter
Jon A. & Joyce A. Wise
Shane Woolever
Dean T Yeotis
Don & Fran Young
Kenneth & Kirsten Zisholz

DIRECTORS CLUB

Members \$5,000 to \$9,999

Mr. & Mrs. Matthew J. Abel
Charles Abraham
Alan & Debbie Abraham
Gerald & Julie Abraham
Thomas Witt
Tom & April Adado
John T & Barbara Adamo
Dr. & Mrs. Steven C. Ajluni
Dr. Janet E. Alleman-Trumbull
Roberta Myers
Andrie, Inc.
John Ruth
Dr. & Mrs. William Athens, Jr.
Michael & Beverly Austin
James D Edgett III
Nickolas & Jennifer Barris
COL Duane H. Bartrem United States Army Ret
Lawrence & Laurie Bass
John S & Rosina Beadle

John A & Maureen Beadle
Dr. Lloyd Beaudry
Ralph S & Sally Beebe
Michael & Sara Bell
David R Bergener
Dr. & Mrs. Duane Berkompas
Frank G & Linda Berris
Clark O. Berry
Mr. & Mrs. Raymond J. Biggs
John & Marie Black
Bryan M Blood
Blue Cross Blue Shield of Michigan
Foundation
Ed Bobit
Mark T. & Yvonne J. Bodley
Mr. & Mrs. Lance & Angela Boldrey
Albert Bolles
Gary L. & Mariette P. Borucki
John W & Marianne Boukamp

James & Sharon Bradow
Gregory & Marilyn Bria
Steven B Brinn
Mr. & Mrs. Richard A. Brodie
Warren C & Diane Brown
Bullpen Club
Kathleen A. Buran M.D.
LeAnn & Randy Burch
Dr. John & Janice Burchfield
Dr. Tricia & Keith Byrd
Alan & Amy Campbell
Jon M & Sabrina Campbell
John & Irene Cantlon
Pat & Julie Carey
Mr. & Mrs. Ralph W. Carmichael
David & Donna Carpenter
George R & Fran Caruso
John & Barbara Case
Mark Castellani & Lisa S. Hildorf

Eleanor L. Chapin
Dennis & Grace Cherette
William R & Joanne Church
Citizens Bank
Brian Coe
Donald H Coe
Teresa Lucido
Chuck & Lisa Conaway
Anthony J Conniff
Eric D & Wendy Cook
Robert & Mary Alice Cook
Craig P & Iris Cooley
Cooper S Jonathan
Shelly & Bob Corl
Diana E. D'Angelo & Martin C. Hawley
Mark & Becky Dantonio
James F & Margreta Dart
Mr. Kellie Dean
R. Jeff & Jill M. Dean

SPARTAN FUND



DIRECTORS CLUB

Members \$5,000 to \$9,999

Mr. Jeffrey S. deGraaf
Robert J & Deborah Dery
Mr. & Mrs. Milo R. DeVries
James & Marlene Dewling
Dr. & Mrs. Christopher D'Haem
Dr. Luciano M. DiCarlo
Dr. Douglas Dietzel
Brad & Nancy Dloughy
Mary Beth Donovan
Ron Dooley
Gary & Peggy Doty
T. Michael Doyle
Tim Driessnack
Cullen & Helena DuBose
Salvatore & Marcella Durso
Kenneth R. & Linda L. Dyer
Sue Eareckson
Wilma J Earls
Gary W & Amy Easterling
Lynda Ferguson
David & Patricia Edwards
Dennis J Erickson
Kathy Erickson
Douglas & Beverly Federau
Drs. John "Jake" & Maxine Ferris
Con Demos & Karen Demos
Larry & Jackie Fleis
Harry & Ruth Ann Brunet
Craig Fortson
Bill Yeoman & Terry Fossum
Michael D & Tricia Foster
Bill & Sally Freeman
Frank H & Janet Freund
Nicholas R Thines & Barbara Frey
Louis & Beverly Frey
Mr. & Mrs. Norman M. Gaffney, Jr.
Robert W. & Deanna M. Gast
Connie K. Gaugier
Dawn M Gee
Todd M. Gensheimer
Lori S & David C George
Raymond & Jill Ghersi
Richard J Ghersi
Mr. & Mrs. Kirk Gibson
Mr. & Mrs. Jack J. Ginsburg
Walt & Eleanor Goff
Gordon Food Service
Robert J Gordon, DO & Lori S Roberts-
Gordon
Bill & Susan Grant
Jeff Greenburg
Michael Greenslait
James & Myrna Greer
Mary B & Javada A Grey
Jessica Hall
Ronald E Hannold
D. Scott Hansen
Kristin M Sesti
Ross & Sue Hansen
Bob & Lorraine Harris
Barrett J. & Sandra S. Harrison
Jeff & Sally A Harrold
Ron & Patti Hartman
Dr. & Mrs. Greg Hazen
Thomas & Karen Healy
Edward T & Charlene Helble
Lewis R & Carol Hellman
Wally Heuser
High Acres Fruit Farm
Joseph Hildebrand
Richard E & Lori Hinkley
Steven F Hoard
Dr. Gregory A. Holzhei
Robert & Mary Hopkins
Yori J & Tanya Horan
Fred Hubacker
Jennifer & Andrew K Hubacker

David & Cheryl Hughes
Bob & Dee Hughes
Robert Hughes
Ashley S & Jeffrey Hurand
Jeffery & Kristine Hynes
Greg Clark
Dennis A. Jewett
James & Lynn Johnson
Steve Juday & Family
Robert Justich
Steven L. & Nancy E. Karas
Michael J. Kaye
Karen A Keener
Kelly Buick
Patrick J & Dawn Kelly
Jay & Trish Keranen
Jeff & Susan Kessner
Daryl H. Kiebler
Douglas B & Marjorie Kik
Raymond Knott
Walter Knysz
John H. Kobs
Gregory M. Kopacz
Marian Reason Korroch
James & Susan Kostaroff
John E. Kraefer, III
Mr. & Mrs. Pete & Stephanie Kramer
Ron & Marty Kreinbrink
Mr. & Mrs. Rick Krugh
Ron, Kathy & Nick Shaheen
Scott & Kristine Kuhnert
Andrew P. Kwyer
Mary Jane Lacks
Lansing State Journal
Dale Mayhew
Richard L. Lawrence
Don C. Laws III
LBK Productions
Joe & Teri LeBeau
Bruce Leech
Eric S & Connie Leep
A. Michael & Susan I. Leffer
Curtis Leszczynski
Mr. Bernard Levy
Carl & Margaret Liedholm
Tim M & Polly Lilleboe
Robert W & Jennifer Lincoln
Kathryn E. Lindahl
Stephen & Iris Linder
Mr. & Mrs. Gary Long
Miriam & James Longcore
Shelley Padnos
Debora Ludolph
Mr. & Mrs. Calvin 'Pete' Lutz
Christopher M Lutz
Merritt & Candy Lutz
Mick & Aileen Lutz
Mary & Kelly Lynch
Lance & Karol Lynch
Lee & Mary Maccani
Jordan Main
Fred & Barbara Malpass
Jonathan Marks
Dan Marsh
Donald & Kathleen Marshall
John Martell
David & Mary Anne Marvin
Joe & Liz Marx
Darryl R & Julie Massa
Matt Matuszak
Tom & Julie McCall
James P. McClure
Tom & Nina McCormick
D. Douglas & Beth M. McGaw
Ducan McGuffie
Warren & Jan McIntyre
Kevin McIntyre

Gene & Melissa McKay
Michael McNamara
Alec & Karen McPherson
Cara & Michael McSurely
Medical Weight Loss Clinic
Mr. & Mrs. Kenneth A. Mehall
Michel & Rita Metzner
Cynthia Williams
Charles & Kay T. Miller
Chris & JoAnne Miller
James M. & Sue O. Miller
Mr. & Mrs. Lyle W. Miller
Terrence & Caren Miller
Ron & Pat Millis
Mr. & Mrs. Matthew W. Mills
David S. Mittleman & Jill P. Mittleman
Dr. & Mrs. Robert M. Monczka
Randal & Catherine Moore
James & Annette Morin
Kristopher A & Julie Moulds
Michael J & Tamara Moutsatson
MSU Alumni Club of Metro Chicago, IL
MSU College of Law
Mr. & Mrs. John Muije
Mark Murray
Terrence C Nadeau
Thomas E & Cynthia Nadeau
Ted K. Neely & Family
Chip & Karen Nemesi
Karen & David Noe
Joseph D & Jean Ochs
Guardian Fiberglass
James & Heidi Firchau O'Neil
Dr. Logan A. Oney
Dr. & Mrs. Robert Page
Charles W & Patricia Painter
Joan M. Palinski
Roy & Diane Parrott
Mr. & Mrs. Donald A. Payne
John R. Liskey
Mr. & Mrs. John W. Perles
Roger & LaVonne Petersen
Richard W & Judith Peterson
Mr. & Mrs. Timothy Petty
Laurie J Phelps
Lance Piedmonte
Mark & Susan Piersma
First of America Bank Corporation
Jerry & Marge Pollice
Mr. & Mrs. James R. Postma
Mr. & Mrs. Brian D. Potter
Thomas Hoisington
Joyce & Jim Putnam
Wayne & Carol Pyke
R S Engineering LLC
Daniel Racey
Robert & Amy Maruca
Julie Raedy
Bruce W & Linda Rasher
Bob & Joni Reinhart
Robert A. Renton, D.V.M.
John D & Susan Rice
Jon & Amy Riekse
Mrs. Ries
Michael J. Roberts & Steven M. Abel
Robert J. & Suzanne G. Robinson
Rockford Construction Company
Carolyn L. Ross
Robert Russ
Chuck & Kay Sargent
Daniel P. Schafer
Evan Schaffer
Martha Scharchburg
Dr. & Mrs. William Schimpke
R. Judd Schnoor
Hans & Nancy Schuler
Kenneth C Schultz

Marc & Jeanne Schuphan
Barbara J. Seymour
Denise L. & Ralph M. Shaheen
Shaya Family
In Memory of Martin J. Sherman By Peggy
Sherman
Nicholas & Karen Sherman
Mr. Jeffrey Shifra
Dr. Michael & Nena Sikorsky
Mr. Eric Simmons & Dr. Carol Miskell
Simmons
Mr. & Mrs. Webb A. Smith
Mike & Mary Beth Smykowski
Mr. & Mrs. David R. Snyder
Brig & Francine Sorber
Charles T. Stanley
Thomas Starks
Michael Stechschulte
Matthew N Steele
Scott & Julie Stevenson
Jean Stock
Gary L. Stone
Dan & Joanne Strong
Noel W. Stuckman & Sandra Clarkson
Stuckman
James & Denise Marie Anderton
James & Lawren Susan
Dr. & Mrs. Edward A. Tashjian
Howard R Terebello, DO
Steve & Carol Terry
Ron Teuber
Dow Chemical Company
Laura T Tinning
Mr. & Mrs. Edward Tiscornia
John E. Tower, D.O. & Kelly A. Allen, Esq.
John Tracy
Dr. & Mrs. Mark Trail
Tom & Mary Jo Tuori
Robert A. Tyler, J.D.
Mrs. Jayne M. Rose Vallee
David L. & Shawn Vallier
Grace Vanderbeek
Michael J Vani
Eldon & Carol VanSpybrook
Dr. & Mrs. Henry M. Vaupel
Judy & Duane Vernon
Helen & Dale Waldo
Brian C & Colleen A Walker
Mr. Eric B. Walton
Glenn R & Mary Warfle
Gary & Judy Watson
George H & Peggy Wedgworth
Tawnya Rowden & Jim Weigand
Lawrence & Julie Weisler
Carol Welch
Steven W & Amy Wendt
Bessie Wheeler
William Jwhelan
Richard E. Whitmer
Mark D & Mary Whitwam
James & Melissa Wiaduck
John & Meredith Wirtz
William F Woodbury & Jody Young-Woodbury
William & Connie Woodruff
Larry J & Joann Woods
Billie V. & Mary L. Wooley
Wayne M. Wrobel
Mr. David A. Yarema
Mark A. Young
Mr. & Mrs. James (Jim) Zawacki
Dr. James & Paula Zito
In Memory of Bert David Lee

ATHLETICS STAFF



Fred Poston VP Finance/ Operations Treasurer
 Mark Hollis Athletics Director
 Greg Ianni Deputy Athletics Director
 Shelley Appelbaum Sr. Associate AD/ Sr. Women's Administrator
 Chuck Sleeper Sr. Associate AD/ Dir. of Development
 Peggy Brown Associate AD/ Business Operations
 Alan Haller Associate AD/ Administration
 John Lewandowski Associate AD/ Communications
 Jim Pignataro Associate AD/ SASS Dir.



Paul Schager Associate AD/ External Relations
 Jennifer Smith Associate AD/ Compliance
 Tim Stedman Associate AD/ Development
 Rick Atkinson Assistant AD/ Facility & Event Management
 Richard Bader Assistant AD/ Sport Administration
 Wendy Brown Assistant AD/ Ticket Manager
 Jeff Monroe Assistant AD/ Head Athletic Trainer
 Scot Schlesinger Assistant AD/ Sales & Marketing
 Michael Kasavana NCAA/Big Ten Faculty Athletics Representative



Jack Allen Business Manager
 Bob Armstrong Video Producer/ Athletic Communications
 Holly Baumgarner Compliance Coordinator
 Julee Burgess Sport Operations Assistant
 Joe Carlson Director, Spartan Nutrition & Performance Program
 Kasey Carter Facilities and Event Operations
 Erin Clark Assistant Director/ Special Gifts
 Mandy Chandler Assistant Director/SASS
 Rick Church Director of Broadcast Technology



Nate Colon Asst. Dir. of Multicultural Student-Athlete Programming
 Elliott Daniels Associate Director/SASS
 Tim Day Assistant Director/ Annual Giving
 Dr. Doug Dietzel Team Orthopedic Surgeon
 David Diffenderfer Video Producer/ Athletic Communications
 Jim Donatelli Assistant Director/ Athletic Communications
 Todd Edwards Director of Academic Services
 Dave Ellis Video Producer/ Athletic Communications
 Amy Fouty Sports Turf Manager



Matt Harper Football Video Coordinator
 Bryan Hoch Associate Ticket Manager
 Angela Howard-Montie Director/Student-Athlete Development
 Jacob Huber Video Producer/ Athletic Communications
 Seth Kester Director of Events, Championships & Summer Camps
 Bob Knickerbocker Athletic Equipment Coordinator
 Dr. Jeff Kovan Sports Medicine Director
 Matt Larson Director of New Media/ Athletic Communications
 Dylan Marinex Assistant Equipment Manager



Paulette Maris Athletic Communications, Office Assistant
 Jill Mason Coordinator of Events & Spirit Teams
 Dorn McGaw Director of Sales & Premium Seating
 Dr. Sally Nogle Associate Athletic Trainer
 Dean Olson Computer Network Services Coordinator
 Dr. Randy Pearson Football Primary Care Physician
 Ben Phlegar Assistant Director/ Athletic Communications
 Joe Rod Assistant Director/ Sales & Marketing
 Bernie Rosendahl Website Manager



Mark Schoenl Associate Director of Development, Director of Major Gifts
 Tom Shepard Football Video Coordinator
 Dr. Mike Shingles Team Orthopedic Surgeon
 Sarah Skilling Director of Donor Relations & Events
 Melissa Tallant Assistant Director/SASS
 Mike Vorkapich Associate Head Strength & Conditioning Coach
 Tim Wakeham Director of Strength & Conditioning/Olympic Sports
 Jamie (Weir) Baldwin Director Athletic Communications

Recruiting Do's And Don'ts

Only MSU coaches may be involved in the recruiting process. Boosters MAY NOT make any recruiting contacts with prospective student-athletes. Boosters are prohibited from the following:

- DO NOT telephone, write or make in-person contact with a prospect for recruiting purposes. This includes contact via e-mail, Instant Message, text message, chat rooms, blogs and social networking websites.
- DO NOT contact a prospect's coach, principal or counselor in an attempt to evaluate the prospect.
- DO NOT become involved in making arrangements for a prospect, the prospect's relatives or friends to receive money or financial aid of any kind.
- DO NOT visit a prospect's school to acquire films or transcripts in an attempt to evaluate the prospect's academic eligibility or athletics ability.
- DO NOT have contact with a prospect, their relatives or friends during any of their visits to MSU's campus.
- DO NOT contact student-athletes enrolled in other four-year institutions regarding the possibility of transferring to MSU.

Even though there are many rules prohibiting your involvement with prospects and the recruiting process, as a booster you are permitted to do the following:

- Notify MSU coaching staff about noteworthy prospects in your area.
- Attend a prospect's athletics event on your own initiative, provided no contact with the prospect, the prospect's parents or coach occurs.
- Continue existing friendships, provided solicitation of a prospect's enrollment does not occur.

The Michigan State University Office of Compliance Services is committed to a comprehensive compliance program that educates student-athletes, prospective student-athletes, institutional employees, community members and boosters about the importance of adhering to NCAA, Big Ten and institutional rules. The commitment to compliance ensures institutional control over the department of athletics. The existence of a successful compliance program depends on the willingness of coaches, administrators, staff, student-athletes and boosters to be cognizant of NCAA, Big Ten and institutional rules.

What Is Compliance?

At Michigan State University, the Office of Compliance Services works within the department of athletics and the University to ensure MSU's compliance with all applicable NCAA, Big Ten and institutional rules. In doing so, the compliance office is charged with the following tasks:

- Educating administrators, coaches, staff, prospective student-athletes, current student-athletes and boosters about NCAA, Big Ten and institutional rules;
- Developing monitoring systems to ensure compliance with NCAA, Big Ten and institutional rules (e.g., recruiting, academic eligibility, financial aid, awards and benefits, amateurism and agents).
- Investigating and reporting violations of NCAA, Big Ten and institutional rules.

Are You A Booster?

You are a booster if you are or ever have:

- Been a member of a booster organization that supports MSU athletics (e.g., Downtown Coaches Club, Rebounders Club, Fastbreak Club);
- Made any financial contributions to the athletics department (e.g., Spartan Fund);
- Been involved in promoting MSU's athletics program;
- Been a season ticket holder; or
- Provided benefits to enrolled student-athletes or their relatives or friends.

You can become a booster if you provide benefits to prospects, student-athletes, their relatives or friends and any of the following statements are true:

- The relationship between the athlete (or parents of the athlete) and the individual providing the benefits developed as a result of the athlete's participation in athletics or their reputation as an athlete;
- The relationship began only after the athlete become a prospect;
- The relationship began only after the athlete had achieved notoriety due to his or her athletic ability or reputation;
- The pattern of benefits increased after the athlete attained notoriety as a talented athlete.

Once A Booster Always A Booster.

Once an individual is identified as a booster, the person retains that identity FOREVER! This is true even if the individual no longer contributes to, or is involved with MSU's athletics program.

Who Is A Prospective Student-Athlete?

A prospective student-athlete (prospect) is a student who has started classes for the ninth grade. Student-athletes enrolled in preparatory schools and two-year colleges are also considered prospects. An individual remains a prospect even after he/she signs a National Letter of Intent.

What Is An Extra Benefit?

An extra benefit is any special arrangement by a MSU employee or booster to provide a prospect, student-athlete or their relatives or friends a benefit not expressly authorized by the NCAA. Examples of impermissible benefits include, but are not limited to, the following:

- Gifts of cash, clothing, equipment or any other tangible item;
- A special discount, payment arrangement or credit on any purchase or service;
- Loan of money or cosigning of loans;
- A vehicle, use of a vehicle, or any transportation expenses;
- Free or reduced-cost services, purchases or rentals;
- Entertainment on- or off-campus; or
- Free or reduced-cost rent or housing.

What Are The Consequences?

MSU is responsible for the actions of its boosters. If a booster provides an impermissible benefit to a prospect, student-athlete, their relatives or friends, MSU may be subject to penalties from the NCAA and Big Ten Conference. When a violation occurs, regardless of intention, it can:

- Jeopardize the eligibility of prospective and current student-athletes;
- Result in the MSU athletics program being penalized by the NCAA and/or Big Ten Conference; and
- Cause you to lose benefits or privileges associated with the athletics department (i.e., booster club membership, ticket privileges).

Questions?

The above information is a brief overview of compliance and rules pertaining to boosters and their interactions with prospective student-athletes. If you have any questions about any NCAA, Big Ten or institutional rules, please contact the Office of Compliance Services at (517) 432-5510. For more information on compliance and boosters, please visit the Office of Compliance Services' website at www.msu.edu/user/msuncaa/.

WELCOME TO SPARTAN STADIUM

Spartan Stadium is in its 89th season as home to Michigan State football. Since its opening in 1923, Michigan State has won nearly 70 percent of its games played in Spartan Stadium.

Spartan Stadium represents a tribute to Michigan State's football past and a vote of confidence in its future. A \$64 million expansion project completed prior to the start of the 2005 football season featured the addition of nearly 3,000 seats, including 24 suites and a 193-seat press box, bringing the current stadium capacity to 75,005. "The Spartan" statue was relocated to the atrium of the new structure. The 200,000-square-foot addition also houses the MSU Alumni Association, University Development and other units. The MSU Board of Trustees approved the major addition and expansion project of Spartan Stadium in September 2003.

Prior to the 2012 season, new high-def Panasonic video screens and scoreboards as well as a new sound system were installed in Spartan Stadium. The new scoreboard/video screen in the south end zone is 5,300-square feet, compared to its predecessor that measured just 567-square feet (installed in 1998). The top of the new south end zone structure will reach 130 feet. In addition, two new video boards as well as an LED ribbon board has been added to the north end zone. The LED ribbon board covers 4,500 square feet (450-feet long and 10-feet high). Combined the south and north video screens/scoreboards

total 13,300-square feet. The \$10 million project replaces a 14-year-old scoreboard, message board and audio system.

Following the June 26, 2011, U2 "360" concert, the entire playing surface in Spartan Stadium had to be replaced. The new playing surface, planted in April 2010 at Graff's Turf Farms in Fort Morgan, Colo., is comprised of a blend of four varieties of Kentucky bluegrass. The installation of the new sod, transported to Spartan Stadium in 26 refrigerator trucks, took three days (July 12-15).

Spartan Stadium, which officially opened in 1923 at its current location, featured a natural grass playing surface until artificial turf was installed in 1969. The stadium returned to natural grass for the 2002 season. In 2005, the natural grass playing surface in Spartan Stadium earned Field of the Year honors from the Sports Turf Managers Association (STMA). Prior to the 2002 season, ESPN.com's Mel Kiper Jr. ranked Spartan Stadium No. 8 on his list of the nation's most scenic venues.

Since 1957, capacity crowds have attended 157 games in Spartan Stadium, including the single-game record 80,401 fans who witnessed MSU's 20-19 loss to top-ranked Notre Dame on Sept. 22, 1990. The Spartans have ranked among the NCAA's top 25 in attendance each of the last 56 seasons, including 20th in 2011, averaging 74,078 fans per game. Season-ticket sales have topped the 60,000 mark six times in Spartan football history, with an all-time record of more than 65,000 purchased in 2012.

A series of projects paralleling the Spartans' rise to national football prominence enlarged the steel-and-concrete facility from its original 14,000 seats in 1923 to its present size in 1957. The first came in 1935, the year in which the stadium was officially named Macklin Field, boosting the capacity to 26,000. The 1948 enlargement raised the total to 51,000.

After 9,000 new seats upped the capacity to 60,000 in 1956, the upper decks were added to the east and west stands in 1957, bringing the capacity to 76,000. It also became Spartan Stadium that year. Renovations during the summer of 1994 improved sightlines and comfort for fans, while reducing the capacity to 72,027.

On Oct. 6, 2001, Spartan Stadium added another chapter to its storied history as a world-record crowd of 74,554 attended the MSU-Michigan outdoor hockey game.

Michigan State has compiled a 334-142-13 record (.696) since taking up residency in Spartan Stadium (formerly Macklin Field) in 1923.

MSU's 14-game home winning streak entering the 2012 season is the fifth longest in school history. The Spartans have gone undefeated at home 18 times since the stadium opened in 1923. Michigan State's longest home winning streak is 19 games from Oct. 14, 1950, through Nov. 21, 1953.



SPARTAN FANS...RAISE YOUR SHIELD

MICHIGAN STATE UNIVERSITY IS COMMITTED TO PROVIDING A SAFE AND ENJOYABLE GAMEDAY EXPERIENCE FOR ALL FANS INSIDE SPARTAN STADIUM AND ON CAMPUS. WE ENCOURAGE FANS TO EXHIBIT THE HIGHEST LEVEL OF SPORTSMANSHIP BY SUPPORTING THE PARTICIPANTS AND OFFICIALS IN A POSITIVE MANNER. PLEASE BE COURTEOUS TO OTHER FANS, ESPECIALLY VISITORS TO OUR CAMPUS.

SPARTAN FANS...RAISE YOUR SHIELD FOR SPORTSMANSHIP, HONOR, INTEGRITY, ENTHUSIASM, LEADERSHIP, AND DIGNITY.



STADIUM ACCESS/TICKETS

Spartan Stadium gates open 1 1/2 hours prior to kickoff. The Huntington Club Suites, Huntington Club, and the student entrance (gate B) open two hours prior to kickoff. For the easiest route to your seats, enter the stadium through the gate(s) indicated on your ticket. For security reasons, once you exit the stadium you may not re-enter. In order to ensure adequate seating, everyone must have a ticket for admission into Spartan Stadium. For tickets, call the Spartan Ticket Office at 517-355-1610 or 1-800-GO-STATE.

WILL CALL

On gameday, the Spartan Ticket Office is located on the West side of Spartan Stadium between Gates G and H. The window opens two hours before kickoff and will remain open the entire game. For your protection, proper identification is required before tickets are released.

STADIUM GUIDELINES

Fans are encouraged to bring ONLY necessary items to football games at Spartan Stadium. For the safety and enjoyment of all fans, we request that you assist us by leaving prohibited items at home or in your vehicle. We are unable to provide storage for any of these items.

PERMITTED ITEMS

- Seat cushions without backs
- Binoculars (but leave your case at home)
- Pagers and cell phones
- Small cameras and radios (but leave your case at home)
- Blankets and rain apparel
- One factory sealed 20 oz. bottled water per person

PROHIBITED ITEMS

- Bags and Purses

ALL BAGS/PURSES ARE PROHIBITED IN SPARTAN STADIUM

- Weapons
- Containers of any kind, including aerosol cans and spray cans
- Umbrellas, flags and flagpoles
- Alcoholic beverages and food of any kind
- Smoking is prohibited
- Coolers, thermoses, cups, bottles, cans, flasks and open bottled water
- Camcorders, tripods, cases
- Strollers
- Chair Backs: rent an approved chair back at spartanseatback.com
- Banners/signs
- Oversized hats
- Seat cushions with pouches or pockets

Exceptions for medical reasons will be addressed at Special Needs Gates at the north and south ends of Spartan Stadium. We appreciate your cooperation with these security measures.

STADIUM SERVICES

Fans in need of assistance may contact Guest Services located on the West concourse (between Gates G & H, behind section 26). You may also contact ushers located at the entrance to each section. The ramp in the southwest corner of the stadium is handicap accessible. No ticket holders without Huntington Club suite tickets, Huntington Club tickets or elevator passes will be allowed in the elevator. For your convenience, Spartan Stadium and our staff provide you with the following services:

- Spartan Sideline Shop (South end)
- Concessions & Restrooms (Various locations)
- Souvenir Programs (Locations within and outside of stadium)
- First Aid (Locations on the concourse near sections 8, 20 & 122)

POLICE INFORMATION BOOTH

Located on the East concourse opposite section 8.

FIRST AID

In the case of illness or accident, contact the nearest police officer or usher. Nurses are on duty during the game at units in the East concourse (opposite section 8), West concourse (opposite section 20) and Upper West concourse (opposite section 123).

LOST AND FOUND

Items should be reported to the Usher Room located inside Gate G no later than 45 minutes after the game. Later inquiries should be directed to the Lost and Found Department, Student Union Building (517-355-3497).

FIELD LEVEL EXITS AND THE PLAYING FIELD

Field level exits are for the use of authorized personnel only. Spectators must remain off the field before and after the game. Please exit through the ramp and section exits only.

