

EIA REPORT: ECOLOGY

**PROPOSED MERAPI SOLAR ENERGY  
FACILITY**

**FREE STATE**

**November 2012**

Prepared for:

**SolaireDirect Southern Africa (Pty) Ltd**

Prepared by:

*Savannah Environmental Pty Ltd*

UNIT 10, BUILDING 2  
5 WOODLANDS DRIVE OFFICE PARK  
CNR OF WOODLANDS DRIVE AND WESTERN SERVICE ROAD  
WOODMEAD  
PO BOX 148, SUNNINGHILL, 2157  
TEL: +27 (0)11 6563237  
FAX: +27 (0)86 684 0547  
E-MAIL: [INFO@SAVANNAHSA.COM](mailto:INFO@SAVANNAHSA.COM)  
[WWW.SAVANNAHSA.COM](http://WWW.SAVANNAHSA.COM)





## Executive Summary

Savannah Environmental (Pty) Ltd has been appointed by SolaireDirect Southern Africa Pty (Ltd) to initiate investigations regarding the potential impacts that may be associated with the creation of four 75 MW Solar Energy Facilities near Excelsior in the Free State.

The proposed photovoltaic (PV) solar energy facilities will be located on the farms Moedersgift RE/566, Welgegund 1623, Concordia 374, Ceylon RE/311, and De Hoop, 1/1547 south east of Excelsior. Parts of the western border of the study area are delineated by the Lengana River, whilst the R709 passes through the area.

This report discusses the approach and findings of a desktop and field survey carried out on the study area, to assess the likelihood of ecological sensitivities occurring within the project area as well as potential impacts that could arise on and beyond the project area as a result of the proposed development.

The study area is located within the Central Free State Grassland as defined by Mucina and Rutherford (2006). Within the study area is a small man-made dam, and a larger drainage line. On the dam wall, as well as the low rocky ridges and outcrops within the study area, a higher shrub layer characterised by *Searsia erosa* and a generally high species diversity can be found.

A list of plant species that has been recorded to date in the representative grid has been obtained from the POSA SANBI website, whilst a list of terrestrial vertebrate fauna that might occur in the study area has been derived from the SANBI SIBIS and ADU Databases as well as from Apps (2000). These lists have been evaluated against the IUCN Species Status database and relevant legislation to obtain a list of species that are protected and/or in any way threatened, that may occur in the study area and that could be affected by the proposed development.

Four vegetation associations could be identified:

- » Association 1: The *Themeda triandra* – *Helichrysum rugulosum* grasslands are widespread on the gently undulating plains surrounding the outcrops. Within the study area, species composition and plant density of the grasslands is very variable, influenced to a large degree by soil depth, but also grazing. Occasional bare patches do occur within the grasslands, and soils there are highly erodible, with moderate to severe sheet erosion and occasionally slight terracette erosion visible.

- » Association 2: *Acacia karroo* - *Cynodon dactylon* woodlands. This vegetation is relatively restricted within the study area, occurring in small patches on areas with surface rock or, more commonly, along depressions between plains
- » Association 3: *Asparagus laricinus* - *Heteropogon contortus* sparse shrublands are restricted to small rocky outcrops, ridges and footslopes of larger mountains. Most of these areas should be regarded as No Go Areas.
- » Association 4: The *Schoenoxiphium* - *Marsilea* species riparian areas are restricted to the edges of small drainage channels, edges of dams and small natural vleys within the study area (and beyond). Most of the species of this vegetation type, as it is adapted to higher moisture levels, were too poorly developed to identify at the time of the survey. It can also be expected that several additional species, also restricted to these higher-moisture habitats, may occur after sufficient rains, when a more accurate description of the vegetation should be possible. Ideally, such description should form part of a wetland study. The habitat of this association and immediate surrounds must be treated as a No Go area.

The proposed development, especially components that will alter the surface, should be restricted to the grasslands as far as possible. It will be important to monitor and mitigate erosion from construction to decommissioning phase. The most important part of mitigation would be the ecologically most suitable site selection, and to maintain as dense a perennial herbaceous layer below and inbetween the development as possible.

Several protected and red-data species potentially occur on the site, apart from those already recorded. At the time of the field visit, most grasses just started sprouting, a small number of geophytic species could already be observed, but the herbaceous layer was still poorly developed. Most of the species that just started emerging were too small to be identifiable at the time of the survey. It is thus imperative that a detailed site-walk be undertaken during optimal growing conditions (late November to February) to enable all potentially rare and protected plant species to be recorded and relocated.

Of the four vegetation associations identified, Association 1 is the most suitable for the development. Higher-lying portions of Association 2 could be developed, but areas within 100 m of drainage lines or dams must be avoided due to high erosion and associated degradation risks.

Development must be kept off rocky ridges and outcrops (Association 3) on the western and eastern peripheries of the Farm Moedersgift. Development of similar rocky habitats east of the Excelsior Substation and on Farm De Hoop must be

limited to a minimum, and then remaining on the sections where the slope is negligible.

Alien invasive plants within the development areas must be cleared to avoid their continued establishment and possible spread throughout the development in coming years.

The riparian and vlei areas of vegetation Association 4, as well as lower-lying drainage lines, dams and rivers that were not specifically assessed must be regarded as No Go Areas. A buffer of the legal 32 m, preferably between 50 m and 100 m, must be maintained between any development and these areas. Access roads to the development must strictly adhere to existing tracks only, the creation of new access roads crossing drainage lines or rivers must be limited to the minimum practically possible, and then with necessary mitigation measures.

Several alien invasive plants have been observed on the study site, with more species in close proximity. For all species, there is a very high risk of spread throughout the project area following disturbance. This implies that a detailed Invasive Plant Management Plan will have to be in place prior to commencement of activity and be diligently followed and updated throughout the project cycle up to the decommissioning phase.

Significant impacts on terrestrial vertebrates are not anticipated, if developments are kept within the recommended areas.

### **Impact statement**

- » The proposed photovoltaic facility development on the site may have significant impacts on the ecology of the site and lower-lying wetlands, if mitigation measures are not strictly adhered to
- » Potentially significant negative impacts on the ecological environment would be soil degradation issues (erosion, depletion of nutrients) as a result of construction activity and the operation of the facility, possible introduction of alien invasive plants and a long-term (more than 8 months) low or absent vegetation cover after construction.
- » A loss of niches and specialised habitats for flora and fauna could occur with the removal or significant degradation of large expanses of vegetation or the alteration of rocky habitats. With the ecologically justifiable placement of the different components of the proposed development, coupled with diligent implementation of mitigating measures by the developer, contractors, and operational staff, the severity of impacts can be greatly reduced.
- » The impact on fauna is expected to be negligible. Currently minimal presence of wild animals could be detected, possibly due to current land use patterns. Animals that may be present are mobile and will move away during

construction, possibly resettling after construction. No restricted or specific habitat of vertebrates will be affected by the proposed development; especially if the proposed development remains outside the more sensitive areas.

## Table of Contents

Executive Summary.....	iii
General Information .....	9
1.1. Applicant .....	9
1.2. Specialist Investigator .....	9
1.3. Declaration of Independence .....	10
1.4. Conditions of this report .....	10
1.5. Terms of reference.....	10
1.6. Legislation .....	11
1.6.1. Provincial .....	11
1.6.2. National .....	11
1.6.3. International.....	12
2. Introduction.....	13
3. Study Area .....	13
3.1. Locality.....	13
3.2. Surrounding environment .....	15
3.2.1. Climate and rainfall .....	15
3.2.2. Topography and drainage.....	15
3.2.3. Land use.....	15
3.2.4. Vegetation overview .....	16
4. Methods.....	18
4.1. Vegetation Survey.....	18
4.2. Terrestrial Vertebrate Survey .....	20
4.3. Explanations of Red Data classes .....	20
4.4. Sensitivity Analysis and Criteria .....	22
4.4.1. Sensitivity criteria relating to Conservation Value .....	22
4.4.2. Sensitivity criteria relating to ecosystem function .....	24
4.5. Assessment of Impacts.....	25
5. Results.....	28
5.1. Vegetation Survey.....	28
5.2. Description of vegetation associations and their habitats.....	29
5.2.1. <i>Themeda triandra</i> – <i>Helichrysum rugulosum</i> grasslands .....	31
5.2.2. <i>Acacia karroo</i> - <i>Cynodon dactylon</i> woodlands.....	35
5.2.3. <i>Asparagus laricinus</i> - <i>Heteropogon contortus</i> sparse shrublands..	38
5.2.4. <i>Schoenoxiphium</i> - <i>Marsilea species</i> riparian areas .....	42
5.3. Amphibians, Reptiles and Terrestrial Mammals .....	45
5.4. Sensitivity analysis.....	45
5.4.1. <i>Themeda triandra</i> – <i>Helichrysum rugulosum</i> grasslands .....	45
5.4.2. <i>Acacia karroo</i> - <i>Cynodon dactylon</i> woodlands.....	46
5.4.3. <i>Asparagus laricinus</i> - <i>Heteropogon contortus</i> sparse shrublands..	46
5.4.4. <i>Schoenoxiphium</i> - <i>Marsilea species</i> riparian areas .....	47
5.5. Plant species of conservation concern.....	49
5.6. Alien invasive species .....	50

5.7.	Assessment of impacts .....	51
5.7.1.	Assumptions.....	51
5.7.2.	Localised vs. cumulative impacts: some explanatory notes .....	51
5.7.3.	Impacts of PV array, access roads and associated infrastructure .	52
5.8.	Limitations of study.....	61
6.	Discussion and Conclusion .....	62
7.	References .....	65
8.	Appendix A1: Plant species that have been recorded in the wider area according to the SANBI POSA database.....	68
9.	Appendix A2: Vertebrate species that have been recorded in the wider area.....	81
10.	Appendix B: Ecological Environmental Management Plan: Merapi Solar Energy Facility .....	92
10.1.	Design Phase .....	92
10.2.	Construction and Operational Phase.....	94
11.	Appendix C: Declaration of Independence.....	102
12.	Appendix D: Curriculum vitae of specialist .....	104

## List of figures

Figure 1:	Map of the vegetation types on and around the study area. ....	17
Figure 2:	View of the study area on 26 November 2012. ....	18
Figure 3:	The distribution of the four vegetation associations as surveyed on the study area. ....	30
Figure 4:	Grasslands of Association 1 in a relatively good condition. ....	32
Figure 5:	Small bare patches that occur within Association 1. ....	33
Figure 6:	A narrow band of dense <i>Acacia karroo</i> trees typical of Association 2..	36
Figure 7:	Different views of Association 3: Portions of medium-high sensitivity (top) have a lower species diversity and generally less high shrubs than portions with a high sensitivity (bottom), which should be regraded as No Go Areas. ....	39
Figure 8:	<i>Euphorbia clavarioides</i> and <i>Aloe grandidentata</i> as has been found only in Association 3. ....	40
Figure 9:	Different views of the riparian areas of Association 4. Some small vleis (top right) were still very dry and distinguishable only by the plant species present, such as <i>Marsilea</i> species (bottom right). ....	43
Figure 10:	Ecological sensitivity of the study area.....	48
Figure 11:	Some of the protected species occurring on the study area: <i>Tulbaghia acutiloba</i> (left), <i>Chasmatophyllum musculinum</i> (centre) and <i>Ruschia hamata</i> (right).....	50
Figure 12:	Some of the Alien Invasive Plants within the study area.....	50
Figure 13:	Accelerated erosion off bare and hard surfaces is of major concern in the study area (and beyond).....	63



## **General Information**

### **1.1. Applicant**

SolaireDirect Southern Africa (Pty) Ltd has appointed Savannah Environmental (Pty) Ltd to manage the EIA process for the proposed development.

### **Project**

Merapi Solar Energy Facility Phases 1, 2 3 and 4

### **Proposed Activity**

The facility is proposed to include several arrays of photovoltaic (PV) solar panels and includes the following associated infrastructures:

- » Four phases of solar panel arrays, each with a generating capacity of 75 MW
- » Cabling between the project components, to be lain underground where practical;
- » An overhead power line feeding into the Eskom electricity network at Excelsior Rural Substation that is located near the site;
- » Internal access roads;
- » Guard houses at each PV array, and
- » Workshop area for maintenance and storage

At this stage the layout has not been finalised, but will be decided upon based on all identified sensitivities. A preliminary layout was provided for assessment within the EIA process.

### **1.2. Specialist Investigator**

This report has been prepared by:

Marianne Strohbach (MSc, PrSciNat.)  
Savannah Environmental (Pty) Ltd  
Unit 10, Building 2  
5 Woodlands Drive Office Park  
Cnr of Woodlands Drive and Western Service Road  
Woodmead  
PO Box 148, Sunninghill, 2157  
Tel: +27 (0)11 656 3237  
Fax: +27 (0)86 684 0547  
[www.savannahsa.com](http://www.savannahsa.com)

A *Curriculum Vitae* and summary of expertise of the compiler is attached as Appendix D of this document

### **Specialist affiliation**

South African Council for Natural Scientific Professions (SACNASP) (PrSciNat; Registration no. 400079/10, Botanical Science, Ecological Science).

South African Association of Botanists ([www.sabotany.com](http://www.sabotany.com))

Desert Net International ([www.european-desertnet.eu](http://www.european-desertnet.eu) )

### **1.3. Declaration of Independence**

A signed declaration of independence for Marianne Strohbach is attached in Appendix C.

### **1.4. Conditions of this report**

Findings, recommendations and conclusions provided in this report are based on the authors' best scientific and professional knowledge and information available at the time of compilation. The author, however, accepts no liability for any actions, claims, demands, losses, liabilities, costs, damages and expenses arising from or in connection with services rendered, and by the use of the information contained in this document. No form of this report may be amended or extended without the prior written consent of the author. Any recommendations, statements or conclusions drawn from or based on this report must clearly cite or make reference to this report. Whenever such recommendations, statements or conclusions form part of a main report relating to the current investigation, this report must be included in its entirety.

### **Scope and Purpose of Report**

To conduct an ecological desktop and field study for an impact assessment of the target area where the establishment of a Solar Energy Facility is proposed and provide a professional opinion on ecological issues listed pertaining to the target area to aid in future decisions regarding the proposed project.

### **1.5. Terms of reference**

- » A description of the environment - habitat, general ecology and vegetation of the area that may be affected by the activity
- » A description of the manner in which the environment may be affected by the proposed project
- » A description of all environmental issues that were identified, i.e. direct, indirect and cumulative impacts of the identified issues must be evaluated
- » An assessment of the significance of direct, indirect and cumulative impacts
- » Recommendations regarding practical mitigation measures for potentially significant impacts
- » An indication of the extent to which an impact can be addressed by the adoption of mitigation measures

- » An environmental impact statement
- » This report lists avifauna that have been previously observed in the study area according to nationally available databases, but does not constitute an avifaunal assessment

## **1.6. Legislation**

This study has been conducted in accordance with the following legislation:

### **1.6.1. Provincial**

- » The Nature Conservation Ordinance 19 of 1974 and subsequent amendments (**NCO**)
- » The Free State Nature Conservation Bill 23 of 2010 (**FSNCB**)
  - The following sections of the FSNCB should also be taken into consideration:
  - Chapter 10, Section 31:
    - Except on authority of a permit issued by the MEC or under environmental authorisation no person may –
      - a) Drain or mechanically disturb any wetland or portion thereof
      - b) Utilise a wetland or portion thereof in a manner that would damage the hydrological or ecological function thereof
      - c) Engage in activities outside but adjacent to the wetland which would damage the hydrological or ecological functioning of such wetland
    - Chapter 10, Section 32: No person may undertake any activity involving any species of wild animal or plant which causes or has the potential to cause a degradation in the natural state of the indigenous biodiversity of that area

### **1.6.2. National**

- » National Environmental Management Act / **NEMA** (Act No 107 of 1998), and all amendments and supplementary listings and/or regulations
- » Environment Conservation Act (**ECA**) (No 73 of 1989) and amendments
- » National Environmental Management Act: Biodiversity Act / **NEMA:BA** (Act No. 10 of 2004) and amendments
- » National list of ecosystems that are threatened and in need of protection (Government Notice 1002 of 2011)
- » National Forest Act 1998 / **NFA** (No 84 of 1998)
- » National Veld and Forest Fire Act (Act No. 101 of 1998)
- » Conservation of Agricultural Resources Act / **CARA** (Act No. 43 of 1983) and amendments

### **1.6.3. International**

- Convention on International Trade in Endangered Species of Fauna and Flora (CITES)
- Convention on Biological Diversity, 1995

## **2. Introduction**

South Africa is committed to the Convention of Biological Diversity, and has introduced several legislative mechanisms to ensure that the preservation and sustainable use of all biological diversity, including ecosystem, species, and genetic diversity, is guaranteed for the benefit of current and future generations in South Africa and beyond.

The impact of past and present conversion of natural habitat types by cultivation, grazing, urban developments, forestation, mining, dams, industries, and alien plant invasions continues to have a substantial impact on South African biodiversity, with significant portions of South Africa's flora and fauna being threatened (Wynberg 2002). Arid, semi-arid and dry sub-humid areas, covering an estimated 91% of South African land area (Hoffman and Ashwell 2001), including the study area, are particularly prone to degradation arising from human activities, leading to the acceleration of soil erosion, deterioration of the biotic, abiotic and economic properties of soil, and the long-term loss of natural vegetation (UNCCD 1995) and associated habitats for fauna. Rapid recovery of degradation is inhibited by the loss of topsoil and natural seed banks, low rainfall regimes and the unpredictability of rainfall events.

Savannah Environmental (Pty) Ltd has been appointed by SolaireDirect Southern Africa Pty (Ltd) to initiate investigations regarding the potential impacts that may be associated with the creation of four 75 MW Solar Energy Facilities near Excelsior in the Free State.

This report lists the findings of a flora and terrestrial vertebrate assessment of the site selected for the proposed Merapi Phases 1 to 4 Solar Energy Facilities, and associated infrastructure.

## **3. Study Area**

### **3.1. Locality**

The proposed photovoltaic (PV) solar energy facilities will be located on the farms Moedersgift RE/566, Welgegund 1623, Concordia 374, Ceylon RE/311, and De Hoop, 1/1547 south east of Excelsior. Parts of the western border of the study area are delineated by the Lengana River, whilst the R709 passes through the area. About half of the study area has been transformed to cultivated lands, which will be excluded from the development. There are several smaller drainage lines, rivers, dams, and associated wetlands across the farms.

The approximate corners of the areas investigated, as derived from the Google Earth are (clockwise from NW-corner):

Moedersgift, W of R709	S 28° 57' 12.7"; E 27° 04' 07.5"
	S 28° 57' 09.0"; E 27° 04' 21.5"
	S 28° 57' 10.1"; E 27° 04' 22.8"
	S 28° 56' 47.1"; E 27° 04' 53.9"
	S 28° 57' 12.8"; E 27° 05' 02.8"
	S 28° 57' 18.6"; E 27° 04' 40.9"
	S 28° 57' 27.7"; E 27° 04' 18.9"
Moedersgift, E of R709 (excludes fenced area of Excelsior substation)	S 28° 56' 19.8"; E 27° 04' 45.1"
	S 28° 55' 50.1"; E 27° 05' 18.9"
	S 28° 55' 51.0"; E 27° 05' 32.1"
	S 28° 56' 03.0"; E 27° 05' 33.4"
	S 28° 56' 03.0"; E 27° 05' 54.4"
	S 28° 56' 21.7"; E 27° 05' 54.9"
	S 28° 56' 19.1"; E 27° 05' 37.0"
	S 28° 56' 44.4"; E 27° 05' 22.1"
S 28° 56' 43.2"; E 27° 04' 53.7"	
Welgegund	S 28° 57' 13.1"; E 27° 05' 03.8"
	S 28° 57' 12.3"; E 27° 05' 10.0"
	S 28° 57' 46.1"; E 27° 05' 20.5"
	S 28° 57' 45.2"; E 27° 05' 14.2"
Concordia and De Hoop	S 28° 57' 52.8"; E 27° 04' 52.7"
	S 28° 57' 50.0"; E 27° 05' 15.0"
	S 28° 57' 45.8"; E 27° 05' 18.7"
	S 28° 57' 52.1"; E 27° 05' 59.3"
	S 28° 57' 55.7"; E 27° 06' 07.5"
	S 28° 58' 03.6"; E 27° 06' 16.8"
	S 28° 58' 28.0"; E 27° 05' 39.2"
	S 28° 58' 20.6"; E 27° 04' 56.6"
Ceylon	S 28° 58' 26.3"; E 27° 05' 27.5"
	S 28° 58' 28.1"; E 27° 05' 39.1"
	S 28° 58' 04.3"; E 27° 06' 16.1"
	S 28° 58' 38.7"; E 27° 06' 25.6"
	S 28° 58' 50.9"; E 27° 05' 36.4"

## **3.2. Surrounding environment**

### **3.2.1. Climate and rainfall**

The climate for Merapi has been derived from climatic data summarised for Excelsior (SA Explorer), located about 2 km west of Merapi. The area receives about 469 mm of rain on average per year. From May to September rainfall is minimal, with most rainfall occurring from November to March, peaking between January and March. Temperatures in summer peak during December and January at a daily average of 28.9°C, with an average of 16°C for June. During July night temperatures are on average -0.6°C, with frosts during winter common.

Plant species resprouting from storage tubers (geophytes) will take advantage of the first rains, stored reserves and low grass cover after the dry season to grow and flower during early summer (November to January) and then die back, whilst herbs/forbs and grasses first need adequate rainfall before being able to fully grow and flower between January and March. Geophytes, forbs, succulents, and grasses can only be fully identified if they are actively growing AND have either flowers or fruit. By April, most species will have produced seed and most of the herbaceous flora will die back to below-ground storage or seed reserves to survive the cold winters in a dormant state.

### **3.2.2. Topography and drainage**

The project area consists of gently undulating to flat plains, traversed by several water courses and small rocky ridges. The north-eastern corner of the study area borders on rocky outcrops, draining in a south-westerly to westerly direction. This drainage is channelled through several larger tributaries into the Lengana River west of the study area. Within these drainage lines, several small dams have been created for agricultural purposes. The shallow slope of the terrain has aided the formation of several seepage/wetland areas close to drainage lines throughout the study area. Soils throughout are highly dispersive and erosion is one of the immediate consequences of loss of vegetation cover.

### **3.2.3. Land use**

The site itself is primarily used for a mixture of livestock farming and crop cultivation. Within a radius of 10 km of the study site, land uses also include formal settlements and game farming.

#### 3.2.4. Vegetation overview

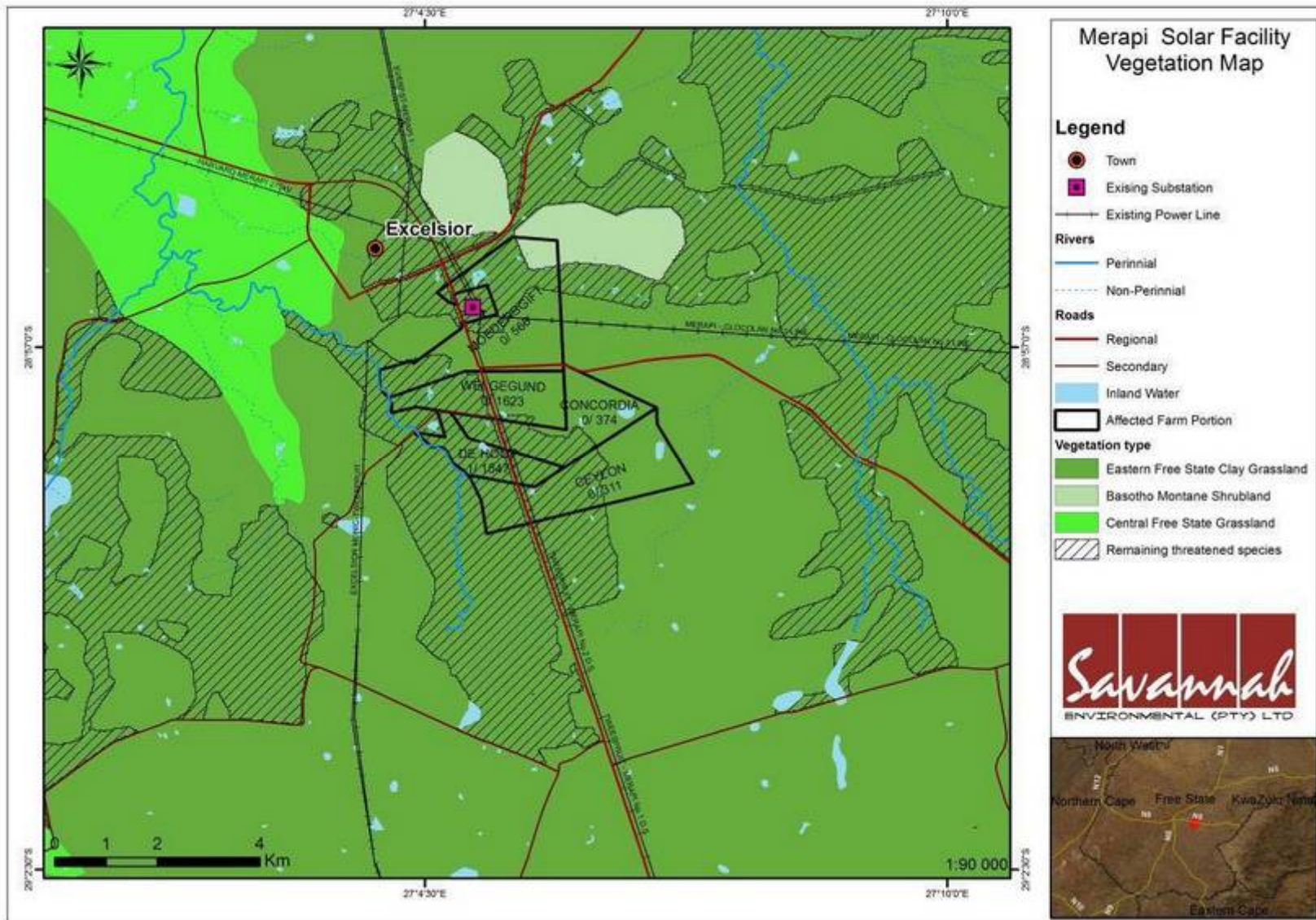
The study site falls mostly within the Eastern Free State Clay Grassland as described by Mucina and Rutherford (2006, Figure 1). The remaining extent of this vegetation type has been listed in the threatened terrestrial ecosystems for South Africa (2011) as Vulnerable, as more than half of the original extent of this vegetation type has been irreversibly transformed, and less than 1% of it is protected in the Willem Pretorius Nature Reserve.

The Eastern Free State Clay Grassland occurs on flat to gently rolling landscapes. The grassland is dominated by *Themeda triandra*, *Cymbopogon pospischilii*, *Eragrostis plana*, *Setaria sphacelata*, *Elionurus muticus* and *Aristida congesta* (Mucina and Rutherford 2006). A combination of overgrazing and selective grazing creates further fragmentation and patchiness of the natural vegetation. Large areas of the study site, including sites preferred for the proposed development, are part of the remaining extent of the Eastern Free State Clay Grasslands and should thus be regarded as vulnerable.

Isolated sandstone outcrops within the grassland, as in the north-eastern corner of the study area (Figure 1), are covered by Basotho Montane Shrubland. This vegetation occurs on steep talus slopes, kloofs, and mountain slopes support tall, in places dense shrubland dominated by broad-leaved shrubs such as *Olea europaea*, *Euclea crispa*, *Buddleja salviifolia*, and several *Searsia* species. Currently this vegetation type has not been listed as threatened terrestrial ecosystem, yet it is considered by Mucina and Rutherford (2006) as vulnerable, with only about 2% of it formally protected. One of the main threats to this vegetation type is erosion, with about 33% of the vegetation affected by severe erosion, all a result of vegetation degradation. It is thus not desirable to have any development on this vegetation type that further reduces vegetative cover and thus initiates further erosion.

Further, there is riverine vegetation along the Lengana River and the larger tributaries of it traversing the study site. Several seepage areas and smaller wetlands are scattered throughout the site.





## 4. Methods

### 4.1. Vegetation Survey

The site was visited on 25 and 26 October 2012 for a vegetation survey. At that time, only a limited amount of rain had fallen. A few bulbous species were in flower, but the herb layer was still very poorly developed (Figure 2). Thus, several species could only be identified up to genus level. Likewise, non-flowering, partially dormant perennial grasses were difficult to differentiate and identify and cover estimates recorded may thus be inaccurate. It is expected that after sufficient rain several additional geophytic and annual species will emerge.



**Figure 2:** View of the study area on 26 November 2012.

Prior to the site visit, the vegetation was delineated into homogenous units on currently available Google Earth imagery. At several sites within each homogeneous unit, a survey of total visible floristic composition and the relative cover percentage of each species was recorded, following established vegetation survey techniques (Mueller-Dombois & Ellenberg 1974; Westhoff & Van der Maarel 1978). These vegetation survey methods have been used as the basis of a national vegetation survey of South Africa (Mucina *et al.* 2000) and are considered an efficient method of describing vegetation and capturing species information. Notes were additionally made of the general habitat and any other features, biotic and abiotic, that might have an influence on the composition of landscape components and functioning of the landscape.

Surveys for Environmental Assessments are usually not exhaustive due to time and budget constraints, hence it can be expected that a number of species that may be present on site are not observed. The total number of plant species that can be expected on site can be estimated with a jack-knife statistical calculation on species-sample data. This is done with the PcOrd Program (McCune and Mefford 2006).

Vegetation analysis was carried out using the standard TurboVeg phytosociological database (Hennekens and Schaminée 2001) and TWINSpan classification techniques with JUICE (Tichý 2002). The assessment did not cover an extensive area necessary to fully describe plant communities; hence, the vegetation is described in terms of 'vegetation associations'. Extrapolation of vegetation associations from survey sites to entire sample area was done by traversing the larger area without doing additional surveys as such and mapping this on Google Earth satellite data.

A species list from POSA (<http://posa.sanbi.org>, October 2012, Grid reference: 2827) containing the species that might occur in the area is listed in Annexure A.1. POSA generated species lists also contain Red Data species with updated threatened status according to the book Red List of South African Plants 2009 published by SANBI in *Strelitzia* 25 (Raimondo *et al.* 2009) as recorded up to date for the respective grid reference investigated. These lists were then evaluated in terms of habitat available on the site, and in terms of the present development and presence of man in the area. It must be noted, however, that the POSA lists are not comprehensive as many locations within South Africa are still under-collected and a backlog with entering existing specimens onto the national species database remains a continuous challenge for SANBI.

Alien invasive species, according to the Conservation of Agricultural Resources Act (Act No.43 of 1983) as listed in Henderson (2001), are indicated.

The status of plant species recorded in each vegetation association is indicated by using the following symbols as applicable:

Protected species, indicated according to relevant legislation (see section 1.6):

- 1: FSNCB Schedule 1 or NCO Schedule 3
- 2: FSNCB Schedule 2 or NCO Schedule 4
- NFA
- NEMA: BA
- I: CITES Appendix 1
- II: CITES Appendix 2

end = endemic to South Africa (or green text)  
IP = Invasive Plant (Indigenous)  
W = Weed (ruderal species that can be potentially invasive)  
A = Alien Invasive Plant  
Red data listed species are indicated by their status (and by red text)

Plant species nomenclature follows Germishuizen and Meyer (2003). This reference has also been used to verify protected species in cases where the legislation has not yet been updated to reflect the current scientific taxonomy.

#### **4.2. Terrestrial Vertebrate Survey**

The SANBI SIBIS and ADU database was queried regarding amphibians, reptiles and mammals historically recorded in the study area and surroundings. The likelihood of such species still occurring in the area was verified according to Apps (2000). A full list of species that could occur in the study area according to the above data is listed in Appendix A2. Avifauna that have been recorded in the area according to the above databases have been included in the lists of Appendix 2, but this report does not comprise an avifaunal evaluation. Species that were sighted or of which relatively recent signs were found are listed under results.

Protected species, indicated according to relevant legislation (see section 1.6):

- 1: FSNCB Schedule 1 or NCO Schedule 1
- 2: FSNCB Schedule 2 or NCO Schedule 2
- NEMA: BA

end = endemic to South Africa (or green text)  
Red data listed species are indicated by their status (and by red text)

#### **4.3. Explanations of Red Data classes**

*Critically Endangered (CR)*: A species is Critically Endangered when the best available evidence indicates that it meets at least one of the five IUCN criteria for Critically Endangered, indicating that the species is facing an extremely high risk of extinction.

*Endangered (EN)*: A species is Endangered when the best available evidence indicates that it meets at least one of the five IUCN criteria for Endangered, indicating that the species is facing a very high risk of extinction.

*Vulnerable (VU)*: A species is Vulnerable when the best available evidence indicates that it meets at least one of the five IUCN criteria for Vulnerable, indicating that the species is facing a high risk of extinction.

*Near Threatened (NT):* A species is Near Threatened when available evidence indicates that it nearly meets any of the IUCN criteria for Vulnerable, and is therefore likely to become at risk of extinction in the near future.

*Critically Rare:* A species is Critically Rare when it is known to occur at a single site, but is not exposed to any direct or plausible potential threat and does not otherwise qualify for a category of threat according to one of the five IUCN criteria.

*Rare:* A species is Rare when it meets at least one of four South African criteria for rarity, but is not exposed to any direct or plausible potential threat and does not qualify for a category of threat according to one of the five IUCN criteria.

*Declining:* A species is Declining when it does not meet or nearly meet any of the five IUCN criteria and does not qualify for Critically Endangered, Endangered, Vulnerable or Near Threatened, but there are threatening processes causing a continuing decline of the species.

*Least Concern:* A species is Least Concern when it has been evaluated against the IUCN criteria and does not qualify for any of the above categories. Species classified as Least Concern are considered at low risk of extinction. Widespread and abundant species are typically classified in this category.

*Data Deficient - Insufficient Information (DDD):* A species is DDD when there is inadequate information to make an assessment of its risk of extinction, but the species is well defined. Listing of species in this category indicates that more information is required and that future research could show that a threatened classification is appropriate.

*Data Deficient - Taxonomically Problematic (DDT):* A species is DDT when taxonomic problems hinder the distribution range and habitat from being well defined, so that an assessment of risk of extinction is not possible.

*Not Evaluated (NE):* A species is Not Evaluated when it has not been evaluated against the criteria. The national Red List of South African plants is a comprehensive assessment of all South African indigenous plants, and therefore all species are assessed and given a national Red List status. However, some species included in Plants of southern Africa: an online checklist are species that do not qualify for national listing because they are naturalized exotics, hybrids (natural or cultivated), or synonyms. These species are given the status Not Evaluated and the reasons why they have not been assessed are included in the assessment justification.

#### **4.4. Sensitivity Analysis and Criteria**

Determining ecosystem services and sensitivity of ecosystem components, both biotic and abiotic, is rather complex and no single overarching criterion will apply to all habitats studied. The main aspects of an ecosystem that need to be incorporated in a sensitivity analysis, however, include the following:

- Describing the nature and number of species present, taking into consideration their conservation value as well as the probability of such species to survive or re-establish itself following disturbances of various magnitudes
- Identifying the species or habitat features that are 'key ecosystem providers' and characterising their functional relationships (Kremen 2005)
- Determining the aspects of community structure that influence function, especially aspects influencing stability or rapid decline of communities (Kremen 2005)
- Assessing key environmental factors that influence the provision of services (Kremen 2005)
- Gaining knowledge about the spatio-temporal scales over which these aspects operate (Kremen 2005).

Habitats and their vegetation units, which are regarded the basis of the ecological sensitivities of the study area, were classified as High (No Go Areas), Medium or Low Sensitivity. The following criteria were used in the sensitivity ratings:

##### **4.4.1. Sensitivity criteria relating to Conservation Value**

###### **Species diversity**

The number and abundance of species strongly influences key ecosystem processes such as pollination, air quality, primary production, nutrient and water cycling and soil formation and retention. All these processes provide ecosystem services such as shelter, potable water, and nutrients to higher trophic levels. The species composition, including dominant, minor and keystone species, is critical in maintaining ecosystem services (Chapin *et al.* 2000).

A higher number of species ensures a stable supply of ecosystem goods and services as spatial and temporal variability increases, which typically occurs over longer time periods. Within a community several species may have similar functions, but react differently to environmental variables, thus can buffer ecosystem function to some degree during short-term environmental fluctuations (Hooper *et al.* 2005, Chapin *et al.* 2000). Further, coexisting plants with very different but complementary resource use strategies will use available resources more effectively, and a larger species pool is more likely to contain more groups of complementary species. Overall, productivity, nutrient retention, and

resistance to invasion tend to increase with increasing species number, especially in environments where overall species cover is relatively low.

### **Expected species diversity**

Species diversity ranges enormously between habitats, thus what may seem low species diversity in one habitat, may in fact be maximal species diversity in another, hence a standardisation of number of species across large areas to rank conservation value of an area will be misleading. Added to this, most standard methods for collecting plant species data miss many species, especially species that are less common, patchily distributed or dormant – either in the form of seeds or underground storage organs – at the time of survey. To compensate for this, species-area curves are drawn from the data to estimate total species richness (Chong and Stohlgren 2007, Garrard *et al.* 2008) with PcOrd (McCune and Mefford 2006). This is considered a useful tool in conservation biology, because information from the curves allows a comparison of different communities without the absolute knowledge of all species present in unsampled areas (Chong and Stohlgren 2007). Should the area surveyed differ considerably from surrounding areas, such surrounding areas should also be surveyed to obtain a more realistic measure of expected species diversity.

### **Species that are less common or endemic**

It is often difficult to identify what exactly limits the distribution of a species. Factors that have been identified as playing a major role, either on their own or together, are habitat limitation and dispersal limitation (Münzbergová 2006), as well as minimum number of individuals required to enable a viable population. Rare taxa often have specialised habitat requirements and are thus restricted to rare environmental conditions, of which rock outcrops and narrow water channels are typical (Keith 1998). A restricted availability of a habitat may also reduce the dispersal capability of a species. Species of conservation concern are protected from provincial to international level, be it due to their restricted numbers, decreasing habitat availability and/or exploitation, and therefore their Red Data and protection status can be used as a surrogate to assess the sensitivity of an area to man-made disturbances.

Within a community, the species composition is often as or more important than the species number in affecting ecosystem processes. Changes in species compositions can occur indirectly by an altered resource supply due to anthropogenic influence e.g. change of moisture flows. Although a reduction in the number of species may initially have small effects, even minor losses may indicate that the capacity of the ecosystem to adjust to a changing environment is being lost (Chapin *et al.* 2000, Hooper *et al.* 2005). Species are allocated an official conservation status to prevent their further decline due to identified threats (Keith 1998). Protected or red-data species, as well as endemic species, apart from their conservation status, are a first indicator of the health of an

ecosystem. They will most probably be the first to show a sudden decline should their environment be changed beyond a specific threshold, e.g. by excessive erosion.

#### **4.4.2. Sensitivity criteria relating to ecosystem function**

##### **Soil water availability**

The most limiting factor in arid and semi-arid systems is moisture. Soil water availability is limited not only by timing and amount of rainfall events, but also by low infiltration rates of water into the soil. Vegetation itself, however, promotes the rate of infiltration due to increasing soil surface roughness as well as soil surface porosity, providing a further positive feedback between increased infiltration and increased plant growth. Therefore, with increasing plant density, the rate of infiltration into the soil will increase significantly, instead of most water being lost as runoff during infrequent rain showers (Dekker *et al.* 2007). Soil surface roughness can also be provided by various degrees of surface rockiness, living soil crusts and micro topography - including the fertile-island effect created by shrubs (Esler *et al.* 2006), which aid as resource traps for runoff and nutrients. Compacted, denuded soils are often prone to surface capping – even more so if the soils have a fine texture due to higher clay or loam contents. Such capped soils are prone to ever increasing erosion, creating a leaky ecosystem that rapidly loses soil, nutrients and seeds from the ecosystem (Tongway and Hindley 2004).

##### **Niches**

Relief, topography, and micro-topography are important features of the habitat, because evapotranspiration and photosynthesis correlate with the resultant solar radiation and temperatures, and the variability of in soil attributes and water flows highly depend on these features (Dirnböck *et al.* 2002). Topography has a major influence on the redistribution of rainfall, affecting moisture limitations for plant present, and the effect of this on vegetation increases significantly with aridity, but is also coupled to the geology of the terrain (Dirnböck *et al.* 2002).

##### **Habitat**

Several studies have shown that the vegetation associations contributing the most to regional species diversity cover the smallest areas because these species are concentrated on and some limited to particular habitats (Chong and Stohlgren 2007, Keith 1998). However, these communities or habitats may contain species that are of high importance to the entire ecosystem, and an extinction of such a local plant population, or their reduction to a point where they become functionally extinct, can have dramatic consequences on the regulation and support of ecosystem services. The diversity and size of a landscape unit also influences ecosystem services – species on the edges of a habitat are more vulnerable to environmental stresses, and the more a habitat is fragmented, the



higher this stressful edge effect becomes, in addition to habitat loss. Habitat loss and/or fragmentation can thus have disproportionately large effects on ecosystem services.

Overall, the properties of species, together with the species composition is often more critical in retaining the function of an ecosystem than species numbers or total cover (Chapin *et al.* 2000). Many of these species will, however, only establish if the habitat is suitable (Carrick and Krüger 2007). Added to that, rehabilitation in arid and semi-arid zones has been difficult due to either difficulties in establishment because of low, erratic and unpredictable rainfall or the lack of available seed material (Le Houérou 2000).

#### **4.5. Assessment of Impacts**

The Environmental Impact Assessment methodology assists in the evaluation of the overall effect of a proposed activity on the environment. This includes an assessment of the significant direct, indirect, and cumulative impacts. The significance of environmental impacts is to be assessed by means of the criteria of extent (scale), duration, magnitude (severity), probability (certainty) and direction (negative, neutral or positive). This methodology is utilized in the EIA phase to assess the significance of impacts associated with the proposed project.

The **nature** of the impact refers to the causes of the effect, what will be affected and how it will be affected.

##### **Extent (E) of impact**

Local (site or surroundings)

Regional (provincial)

Rating = 1 (low) to 5 (high).

**Duration (D)** rating is awarded as follows:

Whether the life-time of the impact will be:

- Very short term – up to 1 year: Rating = 1
- Short term – >1 – 5 years: Rating = 2
- Moderate term - >5 – 15 years: Rating = 3
- Long term – >15 years: Rating = 4

The impact will occur during the operational life of the activity, and recovery may occur with mitigation (restoration and rehabilitation).

- Permanent – Rating = 5

The impact will destroy the ecosystem functioning and mitigation (restoration and rehabilitation) will not contribute in such a way or in such a time span that the impact can be considered transient.

**Magnitude (M)** (severity):

A rating is awarded to each impact as follows:

- Small impact – the ecosystem pattern, process and functioning are not affected.  
Rating = 0, 1
- Minor impact - a minor impact on the environment and processes will occur.  
Rating = 2
- Low impact - slight impact on ecosystem pattern, process and functioning.  
Rating = 4
- Moderate intensity – valued, important, sensitive or vulnerable systems or communities are negatively affected, but ecosystem pattern, process and functions can continue albeit in a slightly modified way.  
Rating = 6
- High intensity – environment affected to the extent that the ecosystem pattern, process and functions are altered and may even temporarily cease. Valued, important, sensitive or vulnerable systems or communities are substantially affected.  
Rating = 8
- Very high intensity – environment affected to the extent that the ecosystem pattern, process and functions are completely destroyed and may permanently cease.  
Rating = 10

**Probability (P)** (certainty) describes the probability or likelihood of the impact actually occurring, and is rated as follows:

- Very improbable – where the impact will not occur, either because of design or because of historic experience.  
Rating = 1
- Improbable – where the impact is unlikely to occur (some possibility), either because of design or historic experience.  
Rating = 2
- Probable -there is a distinct probability that the impact will occur (<50% chance of occurring).  
Rating = 3
- Highly probable - most likely that the impact will occur (50 – 90% chance of occurring).  
Rating = 4
- Definite – the impact will occur regardless of any prevention or mitigating measures (>90% chance of occurring).  
Rating = 5

**Significance (S)** - Rating of low, medium or high. Significance is determined through a synthesis of the characteristics described above where:

$$S = (E+D+M)*P$$

The **significance weighting** should influence the development project as follows:

- Low significance (significance weighting: <30 points)  
If the negative impacts have little real effects, it should not have an influence on the decision to proceed with the project. In such circumstances, there is a significant capacity of the environmental resources in the area to respond to change and withstand stress and they will be able to return to their pre-impacted state within the short-term.
- Medium significance (significance weighting: 30 – 60 points)  
If the impact is negative, it implies that the impact is real and sufficiently important to require mitigation and management measures before the proposed project can be approved. In such circumstances, there is a reduction in the capacity of the environmental resources in the area to withstand stress and to return to their pre-impacted state within the medium to long-term.
- High significance (significance weighting: >60 points)  
The environmental resources will be destroyed in the area leading to the collapse of the ecosystem pattern, process and functioning. The impact strongly influences the decision whether or not to proceed with the project. If mitigation cannot be effectively implemented, the proposed activity should be terminated.

## 5. Results

### 5.1. Vegetation Survey

Vegetation of the study area is dominated by a dense grass layer interspersed with low woody, sometimes spiny dwarf shrubs where the grass layer is reduced. The dominant species are a combination of *Themeda triandra*, *Digitaria eriantha*, *Cymbopogon dieterlenii*, *Eragrostis* species, *Chrysocoma ciliata*, *Felicia* species, and *Asparagus* species.

On the rocky ridges, higher shrubs of the genera *Searsia* and *Diospyros* become more prominent, with occasional stands of *Acacia karroo*. The latter can also be found in occasional dense stands within the grasslands – either on small areas with surface rock or along depressions, where more moisture accumulates but where no clear drainage line has formed.

On areas where the grass layer has become sparse, soil surface capping and sheet erosion becomes prominent. The less favourable moisture regime of these areas results in a variable vegetation cover, with a mosaic of low shrubs, smaller patches of grasses dispersed over otherwise bare soil surfaces. These sparsely vegetated areas are relatively prone to rapid further degradation.

Several small drainage lines, man-made dams and natural vleys occur within the project area. For these areas, an approximate outline was mapped and the vegetation summarised according to the most common species present (Association 1). However, as several hydrophytic species were too dry to identify and more may emerge, no detailed study of these wetlands was undertaken. This ecological survey also does not constitute a formal wetland delineation.

Within the area assessed, several areas have been transformed to cultivated lands, pits and homesteads, the latter abandoned. As these areas are no longer in a natural state, they were only mapped but not surveyed. The old homesteads, however, are a source of alien invasive plants that should be cleared.

At the time of the vegetation survey, the herbaceous layer was still very poorly developed, with several more species that can be expected to emerge after sufficient rainfalls. This is confirmed by preliminary statistical analysis of the survey data:

Number of (indigenous) species observed:	126
Second-order jack-knife estimate:	219

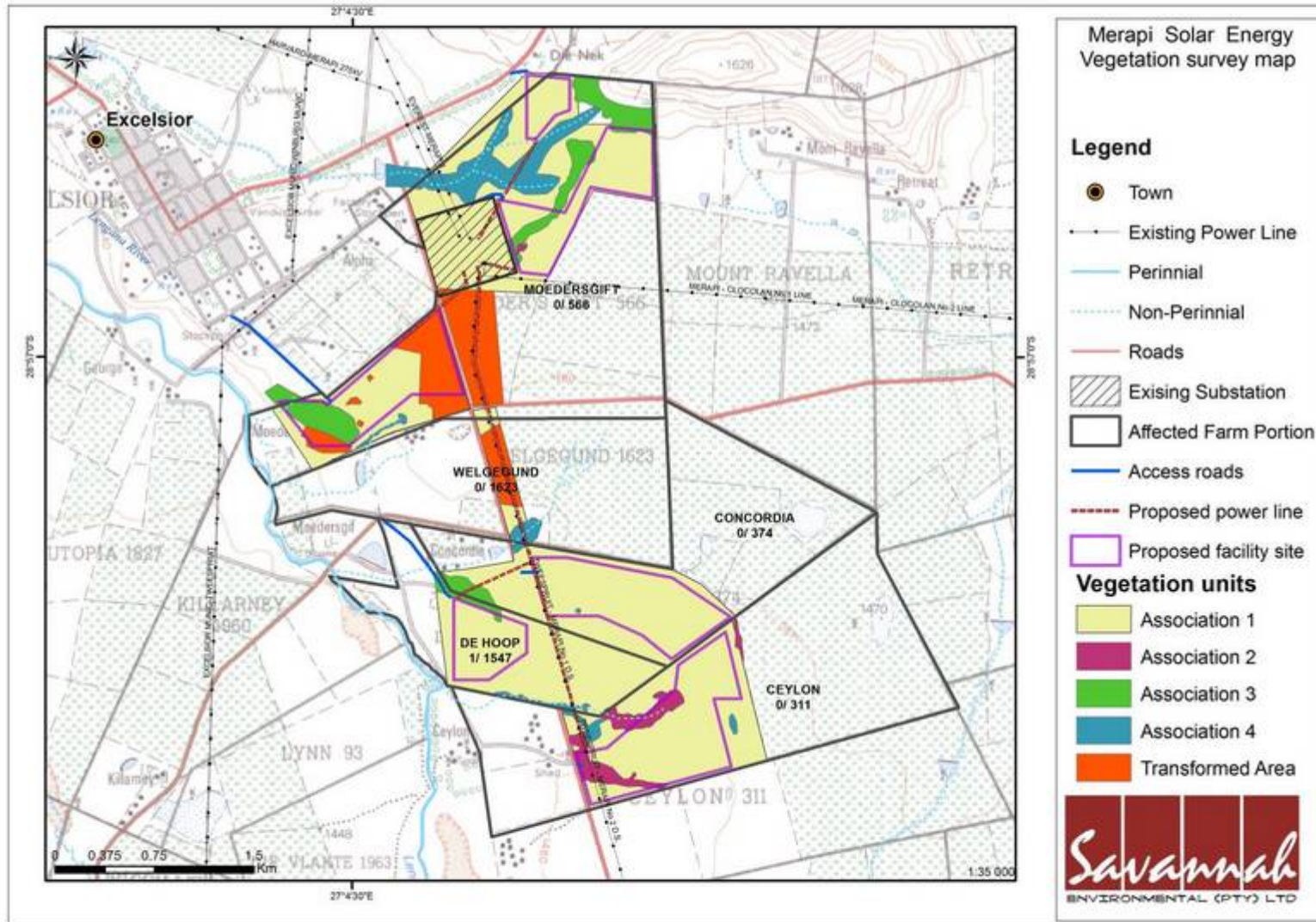
It can thus be expected that approximately 219 species can be present on the study area. However, this is a rough estimate only and has been used as a comparative tool to help assess the conservation value and sensitivities of habitats.

Vegetation associations identified during this study are based on the overall similarity in species composition, vegetation structure and biophysical attributes that are part of an ecosystem. Smaller phytosociological differences within each vegetation unit can be present, usually attributable to the relatively variable substrate.

## **5.2. Description of vegetation associations and their habitats**

Four vegetation associations could be identified (Figure 3):

- » Association 1: The *Themeda triandra* - *Helichrysum rugulosum* grasslands are widespread on the gently undulating plains surrounding the outcrops. Within the study area, species composition and plant density of the grasslands is very variable, influenced to a large degree by soil depth, but also grazing. Occasional bare patches do occur within the grasslands, and soils there are highly erodible, with moderate to severe sheet erosion and occasionally slight terracette erosion visible.
- » Association 2: *Acacia karroo* - *Cynodon dactylon* woodlands. This vegetation is relatively restricted within the study area, occurring in small patches on areas with surface rock or, more commonly, along depressions between plains
- » Association 3: *Asparagus laricinus* - *Heteropogon contortus* sparse shrublands are restricted to small rocky outcrops, ridges and footslopes of larger mountains. Most of these areas should be regarded as No Go Areas.
- » Association 4: The *Schoenoxiphium* - *Marsilea* species riparian areas are restricted to the edges of small drainage channels, edges of dams and small natural vleys within the study area (and beyond). Most of the species of this vegetation type, as it is adapted to higher moisture levels, were too poorly developed to identify at the time of the survey. It can also be expected that several additional species, also restricted to these higher-moisture habitats, may occur after sufficient rains, when a more accurate description of the vegetation should be possible. Ideally, such description should form part of a wetland study. The habitat of this association and immediate surrounds must be treated as a No Go area.



**Figure 3:** The distribution of the four vegetation associations as surveyed on the study area.

### 5.2.1. *Themeda triandra* – *Helichrysum rugulosum* grasslands

Habitat and Land use			
<b>Substrate</b>	Fine-textured soils	<b>Disturbance</b>	Occasional bare patch formation, soil capping and sheet erosion
<b>Species Richness</b>	74 species recorded of 219 expected on study area	<b>Conservation value:</b>	Medium
<b>Ecosystem function</b>	Vegetation as grazing, dense vegetation aids infiltration of water, the latter limiting runoff and associated erosion of plains and lower-lying drainage lines and rivers	<b>Sensitivity:</b>	Low  Highly erodible if degraded, then difficult to reverse
<b>Need for rehabilitation</b>	Erosion to be monitored and mitigated, Alien Invasive Plants to be cleared	<b>Agricultural potential</b>	Grazing

Vegetation structure		
Layer	Height (m)	Cover (%)
<b>High shrubs and trees</b>	0.8 - 3	0 - 2
<b>Low Shrubs</b>	0.2 – 0.5	0 - 10
<b>Grass</b>	0.05 – 0.9	25 - 90
<b>Forbs</b>	0.05 – 0.7	0.1 - 10
<b>Dominant species</b>	<i>Eragrostis chloromelas</i> , <i>Themeda triandra</i> , <i>Eragrostis curvula</i> , <i>Eragrostis lehmanniana</i> , <i>Panicum coloratum</i> , <i>Setaria sphacelata</i> , <i>Cymbopogon dieterlenii</i> , <i>Eragrostis gummiflua</i> , <i>Cynodon dactylon</i>	

This vegetation unit covers the majority of the study area and beyond – primarily on gently undulating plains (Figure 4). The vegetation structure is relatively uniform – being dense grassland – but the species composition varies significantly within the vegetation unit. This depends on degradation state, soil surface characteristics, soil depth, and slope. On rockier areas with shallow soils or areas where the grass layer is significantly reduced, there is a higher cover of dwarf shrubs. Geophytic species are relatively common on these grasslands – at the time of the study *Tulbaghia*- and *Albuca* species were relatively common and widespread. It is expected that after sufficient rains, several more geophytic species will emerge, especially species with woody rootstocks.



**Figure 4:** Grasslands of Association 1 in a relatively good condition.

The main cause of degradation of this vegetation on the study area is continued heavy grazing, and usually occurs where soils are relatively shallow or sloping. Some of the grasslands may have been disturbed previously by cultivation, indicating their potential for rehabilitation if erosion can be minimised accordingly.

Soils are dispersive and highly erodible; erosion can only be limited with a dense grass cover. As soon as that cover has been significantly reduced, soil surfaces cap, sheet erosion becomes prominent and develops into terracette and later rill erosion (Figure 5). Such bare patches are common but not extensive. Their upper surface is strongly capped and devoid of organic matter. A severe degradation of the grass layer in this association can be expected to lead to the accelerated erosion and severe degradation of lower-lying riparian areas, and erosion may cut back into higher-lying grasslands and cultivation fields as well.





**Figure 5:** Small bare patches that occur within Association 1.

Species composition and typical observed cover percentages:

Species	Status	avg %	max %	Species	Status	avg %	max %
<b>Succulents</b>				<i>Jamesbrittenia atropurpurea</i>		0.1	
<i>Bulbine abyssinica</i>		0.1		<i>Lycium cinereum</i>		0.1	
<i>Crassula capitella</i>		0.1		<i>Pentzia globosa</i>		1.6	5
				<i>Pterothrix spinescens</i>		0.5	
<b>Trees</b>				<i>Selago galpinii</i>		0.1	
<i>Acacia karroo</i>		0.1	2	<i>Selago species</i>		0.5	2
				<i>Seriphium plumosum</i>		0.1	
<b>High shrubs</b>				<i>Solanum panduriforme</i>		0.1	
<i>Asparagus laricinus</i>		0.2					
				<b>Herbs and forbs</b>			
<b>Low shrubs</b>				<i>Ajuga ophrydis</i>		0.2	
<i>Argyrobolium rupestre</i>		0.1		<i>Aptosimum procumbens</i>		0.1	
<i>Chrysocoma ciliata</i>		1.1	3	<i>Arctotis venusta</i>		0.1	
<i>Felicia filifolia</i>		0.1		<i>Asclepias meyeriana</i>	1	0.1	
<i>Felicia muricata</i>		0.8					

Species	Status	avg %	max %
<i>Berkheya onopordifolia</i>		0.4	
<i>Berkheya pinnatifida</i>		0.2	
<i>Chamaesyce inaequilatera</i>		0.1	
<i>Gazania krebsiana</i>		0.1	
<i>Gerbera species</i>		0.1	
<i>Gnaphalium filagopsis</i>		0.1	
<i>Helichrysum cerastioides</i>	1	0.1	
<i>Helichrysum dregeanum</i>	1	0.2	
<i>Helichrysum rugulosum</i>	1	0.4	
<i>Helichrysum zeyheri</i>	1	0.2	
<i>Hermannia depressa</i>		0.7	
<i>Hermannia erodioides</i>		0.1	
<i>Hibiscus pusillus</i>		0	
<i>Hibiscus trionum</i>		0.1	
<i>Indigofera species</i>		0.1	
<i>Jamesbrittenia aurantiaca</i>		0.1	
<i>Lactuca inermis</i>		0.1	
<i>Nemesia fruticans</i>		0.1	
<i>Nidorella resedifolia</i>		0.1	
<i>Rhynchosia totta</i>		0.1	
<i>Richardia brasiliensis</i>		0.1	
<i>Salvia disermas</i>		0.2	
<i>Scabiosa columbaria</i>		0.2	
<i>Senecio hieracioides</i>		0.1	
<i>Thesium species</i>		0.1	
<i>Tripteris aghillana</i>		0.1	
<i>Vernonia oligocephala</i>		0.1	
<b>Grasses</b>			
<i>Aristida congesta s. barbicollis</i>		2.0	
<i>Aristida junciformis</i>		5.3	10
<i>Brachiaria serrata</i>		2.8	

Species	Status	avg %	max %
<i>Cymbopogon dieterlenii</i>		8.3	15
<i>Cynodon dactylon</i>		5.3	15
<i>Digitaria eriantha</i>		0.5	
<i>Elionurus muticus</i>		2.8	5
<i>Eragrostis chloromelas</i>		23	40
<i>Eragrostis curvula</i>		15	25
<i>Eragrostis gummiflua</i>		6.6	10
<i>Eragrostis lehmanniana</i>		15	35
<i>Heteropogon contortus</i>		0.1	5
<i>Hyparrhenia hirta</i>		0.5	
<i>Oropetium capense</i>		0.2	
<i>Panicum coloratum</i>		0.1	15
<i>Setaria sphacelata</i>		0.1	15
<i>Sporobolus coromandelianus</i>		0.5	
<i>Themeda triandra</i>		20	30
<i>Tragus koelerioides</i>		1.6	
<b>Geophytes</b>			
<i>Albuca humilis</i>		0.1	
<i>Albuca setosa</i>		0.1	
<i>Anthericum species</i>		0.1	
<i>Drimia species</i>		0.1	
<i>Hypoxis angustifolia</i>	2	0.1	
<i>Moraea elliotii</i>	2	0.1	
<i>Moraea species</i>	2	0.1	
<i>Tulbaghia acutiloba</i>	2	0.1	
<b>Alien Invasive plants</b>			
<i>Prosopis glandulosa</i>	A	0.1	0.5
<i>Verbena bonariensis</i>	A	1.1	
<i>Argemone ochroleuca</i>	A	0.2	
<i>Cyclosporum leptophyllum</i>	A	0.1	

### General development recommendations:

It is recommended that the PV array and surrounding infrastructure be restricted as much as practically possible to this vegetation association, and that the development is kept as close as possible to existing infrastructure or transformed areas. However, as these plains are prone to severe degradation as soon as the vegetation cover becomes significantly reduced – as may happen under the PV panels, mechanisms must be in place to prevent accelerated erosion and degradation of these plains.

Around the edges of all hard-surface infrastructure, including mounted PV panels, a grass layer with a canopy cover of at least 60 – 80% must be maintained to absorb raindrop and runoff impact. Accelerated erosion and degradation of these plains will lead to the gradual degradation of the lower-lying vegetation Associations 2 and 4, as well as lower lying wetlands.

Most of the protected species can and should be transplanted to suitable habitats nearby and/or used in revegetation efforts after construction and stabilisation of soils. Continued monitoring for and eradication of alien invasive plants, as well as the detection and mitigation of erosion will be necessary.

#### 5.2.2. *Acacia karroo* - *Cynodon dactylon* woodlands

Habitat and Land use			
<b>Substrate</b>	Fine textured soils, occasional surface rocks	<b>Disturbance</b>	Slight sheet and rill erosion
<b>Species Richness</b>	20 species recorded of 219 expected	<b>Conservation value:</b>	Low
<b>Ecosystem function</b>	Lower vegetation as grazing, trees and high shrubs create niches and micro-habitats for flora and fauna (such habitats are limited in the area), dense vegetation aids infiltration of water, the latter limiting runoff and associated erosion of plains and lower-lying drainage lines and rivers	<b>Sensitivity:</b>	Medium - Low  Moderate to low depending on degree of surface modification, will require intervention and will be slow
<b>Need for rehabilitation</b>	Erosion to be monitored and mitigated, Alien Invasive Plants to be cleared	<b>Agricultural potential</b>	Grazing

Vegetation structure		
Layer	Height (m)	Cover (%)
High shrubs and trees	0.8 - 5	25 - 40
Low Shrubs	0.2 – 0.5	0.1 - 10
Grass	0.05 – 0.9	2 – 50
Forbs	0.02 – 0.5	0.1 - 25
Dominant species:	<i>Eragrostis chloromelas</i> , <i>Acacia karroo</i> , <i>Cynodon dactylon</i> , <i>Eragrostis curvula</i> , <i>Eragrostis gummiflua</i> , <i>Tragus koelerioides</i>	

This vegetation is relatively restricted within the study area, occurring in small patches on areas with surface rock or, more commonly, along depressions between plains (Figure 6). Runoff and sub-surface moisture flow collects in these depressions to support the dense layer of low *Acacia* trees. This vegetation again slows runoff and utilises the moisture to such an extent that the formation of drainage lines is prevented and resources thus kept within the ecosystem. The different vegetation structure allows for the establishment of different plant species, whilst also serving as shelter, foraging and breeding habitat for fauna.



**Figure 6:** A narrow band of dense *Acacia karroo* trees typical of Association 2.

Species composition and typical observed cover percentages:

Species	Status	avg %	max %
<b>Trees</b>			
<i>Acacia karroo</i>		30	
<b>High shrubs</b>			
<i>Asparagus laricinus</i>		0.5	
<b>Low shrubs</b>			
<i>Chrysocoma ciliata</i>		0.5	
<i>Pentzia globosa</i>		3	
<i>Selago</i> species		0.2	
<b>Herbs and forbs</b>			
<i>Berkheya pinnatifida</i>		0.2	
<i>Dichondra repens</i>		1	
<i>Gnaphalium filagopsis</i>		3	
<i>Helichrysum dregeanum</i>	1	2	
<i>Helichrysum zeyheri</i>	1	0.1	

Species	Status	avg %	max %
<i>Hermannia erodioides</i>		0.1	
<b>Grasses</b>			
<i>Cynodon dactylon</i>		15	
<i>Eragrostis chloromelas</i>		35	
<i>Eragrostis curvula</i>		15	
<i>Eragrostis gummiflua</i>		8	
<i>Heteropogon contortus</i>		0.2	
<i>Tragus koelerioides</i>		8	
<b>Geophytes</b>			
<i>Anthericum</i> species		0.1	
<i>Dipcadi gracillimum</i>		0.1	
<i>Tulbaghia acutiloba</i>	2	0.1	
<b>Alien Plant Species</b>			
<i>Verbena bonariensis</i>	A	0.1	

**General development recommendations:**

Trees occurring in these habitats are not protected, but where they are they perform an important ecosystem function. The preferred option for the proposed development would be to avoid these areas. If such areas are to be impacted on, only the higher-lying portions of this vegetation should be cleared, with lower-lying portion that are within 100 m of any dam or drainage line and water course should be left intact. During the operation phase, continued monitoring will have to be in place to detect invasion by alien invasive plants and accelerated erosion early and then mechanisms must be in place to mitigate such events immediately.

### 5.2.3. *Asparagus larycinus* - *Heteropogon contortus* sparse shrublands

Habitat and Land use			
<b>Substrate</b>	Ridges with high surface rock, size of rock varies from large fragments to boulders and plates	<b>Disturbance</b>	Occasional invasive alien species
<b>Species Richness</b>	95 species recorded of 219 expected on study area	<b>Conservation value:</b>	High Many species restricted to these habitats
<b>Ecosystem function</b>	Specialised niches that allow establishment of succulents, bulbs and shrubs. Higher structural diversity creates additional niches for fauna.	<b>Sensitivity:</b>	High – No Go Areas  Some Medium - High Avoid
<b>Need for rehabilitation</b>	Erosion control, removal of alien invasive plants	<b>Agricultural potential</b>	Limited grazing

Vegetation structure		
Layer	Height (m)	Cover (%)
High shrubs and trees	1 – 2	0 - 10
Low Shrubs	0.1 – 0.4	5 – 10
Grass	0.05 – 1.2	0.5 – 20
Forbs	0.05 – 0.6	0.5 – 35
<b>Dominant species</b>	<i>Tragus koelerioides</i> , <i>Cynodon dactylon</i> , <i>Elionurus muticus</i> , <i>Eragrostis obtusa</i> , <i>Eragrostis chloromelas</i> , <i>Eragrostis curvula</i> , <i>Aristida diffusa</i> , <i>Eragrostis lehmanniana</i> , <i>Searsia dentata</i> , <i>Chasmatophyllum musculinum</i> , <i>Heteropogon contortus</i> , <i>Acacia karroo</i>	

This vegetation unit is restricted to rocky ridges and footslopes of larger outcrops (Figure 7). The shrubland consists of mosaics of higher shrubs, low trees and an herbaceous layer, all sparsely distributed between the rocky substrate. Rockiness varies from small boulders with a steep slope (over 30°) to large rock fragments that cover 40 to 90 % of the soil surface. Several species are restricted to these habitats only, including a multitude of geophytes, phanerophytes (ferns), long-lived (slow-growing) high shrubs and several succulents – amongst the latter specimens of *Euphorbia clavarioides* and *Aloe grandidentata* (Figure 8). Crevices below rocks and large shrubs are also habitat to smaller mammals and reptiles.



**Figure 7:** Different views of Association 3: Portions of medium-high sensitivity (top) have a lower species diversity and generally less high shrubs than portions with a high sensitivity (bottom), which should be regraded as No Go Areas.



**Figure 8:** *Euphorbia clavarioides* and *Aloe grandidentata* as has been found only in Association 3.

Species composition and typical observed cover percentages:

<i>Species</i>	<i>Status</i>	<i>avg</i> %	<i>max</i> %
<b>Succulents</b>			
<i>Aloe grandidentata</i>	1	0.3	
<i>Anacampseros rufescens</i>	1	0.1	
<i>Bulbine narcissifolia</i>		0.3	
<i>Chasmatophyllum musculinum</i>	2	5	
<i>Crassula capitella</i>		0.1	
<i>Euphorbia clavarioides</i>	1, end	0.5	
<i>Ruschia hamata</i>	2	0.3	
<b>Trees</b>			
<i>Acacia karroo</i>		5	
<b>High shrubs</b>			
<i>Asparagus laricinus</i>		2	5
<i>Cassinopsis ilicifolia</i>		0.2	
<i>Diospyros austro-africana</i>		1	
<i>Diospyros lycioides</i>		0.2	
<i>Gymnosporia buxifolia</i>		0.2	
<i>Searsia dentata</i>		5	
<i>Searsia erosa</i>		1	

<i>Species</i>	<i>Status</i>	<i>avg</i> %	<i>max</i> %
<i>Searsia lancea</i>		0.5	
<b>Low shrubs</b>			
<i>Argyrobium rupestre</i>		0.1	
<i>Artemisia afra</i>		0.5	
<i>Artemisia vulgaris</i>		0.2	
<i>Chrysocoma ciliata</i>		0.7	
<i>Felicia filifolia</i>		0.3	
<i>Felicia muricata</i>		0.4	
<i>Indigofera sessilifolia</i>		0.2	
<i>Jamesbrittenia atropurpurea</i>		0.1	
<i>Lycium cinereum</i>		0.3	
<i>Melolobium microphyllum</i>		0.2	
<i>Nolletia ciliaris</i>		0.1	
<i>Osteospermum leptolobum</i>	end	0.1	
<i>Pentzia globosa</i>		1.1	
<i>Pentzia incana</i>		0.2	
<i>Selago galpinii</i>		0.1	
<i>Selago species</i>		0.1	
<i>Seriphium plumosum</i>		0.1	



Species	Status	avg %	max %
<b>Herbs and forbs</b>			
<i>Ajuga ophrydis</i>		0.4	
<i>Argyrolobium harveyanum</i>		0.2	
<i>Asclepias aurea</i>	1	0.1	
<i>Berkheya pinnatifida</i>		0.3	
<i>Chamaesyce inaequilatera</i>		0.1	
<i>Cheilanthes quadripinnata</i>		0.2	
<i>Convolvulus sagittatus</i>		0.1	
<i>Gazania krebsiana</i>		0.1	
<i>Geigeria filifolia</i>		0.1	
<i>Gnaphalium filagopsis</i>		0.6	
<i>Haplocarpha species</i>		0.1	
<i>Helichrysum dregeanum</i>	1	0.4	
<i>Helichrysum rugulosum</i>	1	1.1	2
<i>Hermannia depressa</i>		1	
<i>Hermannia erodioides</i>		0.1	
<i>Hibiscus microcarpus</i>		0.1	
<i>Hibiscus pusillus</i>		0.1	
<i>Indigofera species</i>		0.1	
<i>Lactuca inermis</i>		0.1	
<i>Linaria genistifolia s. dalmatica</i>		0.2	
<i>Lotononis calycina</i>		0.1	
<i>Pellaea calomelanos</i>		0.1	
<i>Rhynchelytrum species</i>		0.2	
<i>Richardia brasiliensis</i>		0.1	
<i>Salvia disermas</i>		0.3	
<i>Scabiosa columbaria</i>		0.3	
<i>Senecio harveianus</i>		0.3	
<i>Senecio species</i>		0.1	
<i>Sida dregei</i>		0.2	

Species	Status	avg %	max %
<i>Solanum species</i>		0.1	
<i>Tephrosia capensis</i>		0.1	
<i>Thesium imbricatum</i>		0.1	
<i>Thesium species</i>		0.3	
<i>Tripteris aghillana</i>		0.2	
<b>Grasses</b>			
<i>Aristida diffusa</i>		5	10
<i>Aristida junciformis</i>		0.5	
<i>Brachiaria serrata</i>		1	2
<i>Cymbopogon dieterlenii</i>		1	2
<i>Cynodon dactylon</i>		5	8
<i>Elionurus muticus</i>		5	10
<i>Eragrostis chloromelas</i>		5	
<i>Eragrostis curvula</i>		5	
<i>Eragrostis gummiflua</i>		0.5	
<i>Eragrostis lehmanniana</i>		5	
<i>Eragrostis obtusa</i>		5	10
<i>Heteropogon contortus</i>		3	5
<i>Lolium perenne</i>		0.1	
<i>Melinis nerviglumis</i>		0.1	
<i>Oropetium capense</i>		1	
<i>Panicum coloratum</i>		3	
<i>Setaria sphacelata</i>		1	
<i>Themeda triandra</i>		3	
<i>Tragus koelerioides</i>		17	30
<b>Geophytes</b>			
<i>Albuca humilis</i>		0.1	
<i>Albuca setosa</i>		0.1	
<i>Anthericum species</i>		0.1	
<i>Cyanotis speciosa</i>		0.1	
<i>Hypoxis angustifolia</i>	2	0.1	
<b>Hypoxis hemerocallidea</b>	<b>2, Decl.</b>	<b>0.1</b>	

<i>Species</i>	<i>Status</i>	<i>avg</i> %	<i>max</i> %
<i>Moraea elliotii</i>	2	0.1	
<i>Ornithogalum</i> species		0.1	
<b>Alien Invasives</b>			
<i>Argemone ochroleuca</i>	A	0.1	
<i>Cotoneaster pannosus</i>	A	0.5	

<i>Species</i>	<i>Status</i>	<i>avg</i> %	<i>max</i> %
<i>Cyclospermum leptophyllum</i>	A	0.1	
<i>Melia azedarach</i>	A	1	
<i>Opuntia ficus-indica</i>	A	0.2	
<i>Verbena aristigera</i>	A	0.1	
<i>Verbena bonariensis</i>	A	0.1	

### General development recommendations:

Once the habitats have been physically altered, they cannot be recreated or returned to their former diversity and functionality.

The only areas where a limited amount of development, such as overhead cabling or partial shading could take place will be on the more level sections of this Association on the Farm De Hoop and the eastern section of Farm Moedersgift, immediately adjacent to the existing substation. The only reason for this is slightly lower species diversity and the negligible slope. Protected species can and must be relocated.

All other occurrences of this association, being on the western section and eastern periphery of Farm Moedersgift must be treated as No Go Areas. During construction, any disturbance to these habitats must be totally avoided. No PV panels, roads, or underground cabling may be placed on these areas.

#### 5.2.4. *Schoenoxiphium - Marsilea* species riparian areas

Habitat and Land use			
<b>Substrate</b>	Fine-textured soils with higher organic content	<b>Disturbance</b>	Occasional alien invasive plants
<b>Species Richness</b>	8 species recorded of 219 expected on study area	<b>Conservation value:</b>	High Most species restricted to specialised habitat
<b>Ecosystem function</b>	Specialised niches for biodiversity dependent on moist environments, dense herb layer slows and filters runoff to retain sediment and nutrients in this and surrounding ecosystems, high herb productivity provides seasonal grazing, also habitat and/or shelter for fauna	<b>Sensitivity:</b>	High No-Go Area
<b>Need for rehabilitation</b>	Eradication of alien invasive species in close proximity	<b>Agricultural potential</b>	Seasonal grazing, seasonal surface water

Vegetation structure		
Layer	Height (m)	Cover (%)
High shrubs and trees		
Low Shrubs	0.2 – 0.5	0 - 5
Grass	0.02 – 1.5	60 - 95
Forbs	0.01 – 0.5	0 - 30
Dominant species	<i>Paspalum</i> species, <i>Marsilea</i> species, <i>Sporobolus fimbriatus</i>	

This vegetation unit occurs in small natural vleys, on the outer edges of man-made dams and along smaller drainage lines and rivers within and beyond the study area. Species composition varies, as does the height of the dominant herbaceous layer (Figure 9). The edges of this association usually merge into surrounding vegetation; hence, a clear delineation of vleys, rivers and drainage channels based on vegetation alone is not always possible.

At the time of the survey, the overall vegetation diversity in these drainage lines was very low and the herbaceous layer poorly developed; but this is expected to change once sufficient moisture is available. The description of the vegetation based on this field study can thus not be regarded as comprehensive, and does not constitute a wetland delineation. Important however, is that the total extent of these habitats is restricted, and a large portion of the species present here can only persist in these habitats.



**Figure 9:** Different views of the riparian areas of Association 4. Some small vleis (top right) were still very dry and distinguishable only by the plant species present, such as *Marsilea* species (bottom right).

Species composition and typical observed cover percentages:

<i>Species</i>	<i>Status</i>	<i>avg</i> %	<i>max</i> %
<i>Centella asiatica</i>		0.5	
<b>Herbs and forbs</b>			
<i>Marsilea</i> species		10	
<i>Schoenoxiphium</i> species		8	
<i>Helichrysum rugulosum</i>	1	1	
<b>Grasses</b>			
<i>Eragrostis</i> species		30	
<i>Paspalum</i> species		30	
<i>Sporobolus fimbriatus</i>		30	

**General development recommendations:**

These areas should be treated as No Go areas. The dense vegetation of the riparian areas fringing any kind of wetland or drainage channels is essential in keeping wetlands intact and protects them from erosion. The stability of this vegetation can be greatly compromised if runoff from surrounding plains is not slowed down by vegetation; hence, the intactness of the wetlands is significantly linked to the intactness of the adjacent plains, mostly Association 1 and 2. It is thus imperative that the minimum legal buffer of developments of 32 m from vlees, dams and drainage lines be extended in the study area. It is recommended that a buffer of at least 50 to 100 m be maintained around riparian areas.

These habitats are prone to invasion by ruderal, alien species, necessitating continued monitoring for and prompt eradication of invasive alien plants.

### 5.3. Amphibians, Reptiles and Terrestrial Mammals

A list of amphibian, reptile, and mammal species that could occur in the study area according to the ADU and SANBI database and Apps (2000) is presented in Appendix A2. Avifauna has been included in the list, but no avifaunal observations were made on site.

Vertebrates and signs of such sighted during the survey on and in the vicinity of the study area were:

Vertebrates sighted during the survey in the vicinity of the study area were the Scrub Hare, Ground Squirrel and the Common Duiker.

### 5.4. Sensitivity analysis

#### 5.4.1. *Themeda triandra* – *Helichrysum rugulosum* grasslands

Species summary	Indigenous	Aliens Weeds	% restricted to association	Red Data	Protected	Endemic to RSA
Trees	1	1				
High shrubs	1					
Succulents	2					
Low shrubs	12					
Forbs	31	3			5	
Grasses	19					
Geophytes	8				4	
<b>Total</b>	<b>74</b>	<b>4</b>	<b>28 %</b>	<b>0</b>	<b>9</b>	<b>0</b>

**Conservation status:** Medium – high species diversity, more species expected to be present

**Ecosystem function:** Vegetation as grazing, dense vegetation aids infiltration of water, the latter limiting runoff, and associated erosion of plains and lower-lying drainage lines and rivers

**Stability:** High if vegetation layer is kept intact, low if soils become bare

**Reversibility of degradation:** moderate, will require intervention

**Rating: Low sensitivity**

#### 5.4.2. *Acacia karroo* - *Cynodon dactylon* woodlands

Species summary	Indigenous	Aliens Weeds	% restricted to association	Red Data	Protected	Endemic to RSA
Trees	1					
High shrubs	1					
Succulents	0					
Low shrubs	3					
Forbs	6	1			2	
Grasses	6				0	
Geophytes	3				1	
<b>Total</b>	<b>20</b>	<b>1</b>	<b>10 %</b>	<b>0</b>	<b>3</b>	<b>0</b>

**Conservation status:** Low, some species restricted to this vegetation type, most prominent species long-lived and slow growing

**Ecosystem function:** Lower vegetation as grazing, trees and high shrubs create niches and micro-habitats for flora and fauna (such habitats are limited in the area), dense vegetation aids infiltration of water, the latter limiting runoff and associated erosion of plains and lower-lying drainage lines and rivers

**Stability:** High if vegetation layer is kept intact, low if soils become bare

**Reversibility of degradation:** Moderate to low depending on degree of surface modification, will require intervention and will be slow

**Rating: Medium - Low sensitivity**

#### 5.4.3. *Asparagus laricinus* - *Heteropogon contortus* sparse shrublands

Species summary	Indigenous	Aliens Weeds	% restricted to association	Red Data	Protected	Endemic to RSA
Trees	1	1				
High shrubs	8	1				
Succulents	7	1			5	
Low shrubs	17					1
Forbs	35	4			3	
Grasses	19					
Geophytes	8			1	3	
<b>Total</b>	<b>95</b>	<b>7</b>	<b>43 %</b>	<b>1</b>	<b>11</b>	<b>1</b>

**Conservation status:** Medium to high, high species diversity, many species restricted to these habitats, one red data species, higher species diversity expected, most species of conservation concern occurring here are slow growing

**Ecosystem function:** Specialised niches that allow establishment of succulents, bulbs and shrubs. Higher structural diversity creates additional niches for fauna.

**Stability:** High if vegetation layer and habitat configuration is kept intact, prone to invasion by alien plants

**Reversibility of degradation:** Low if vegetation only is removed, impossible once the substrate has been altered

**Rating: Medium-high sensitivity, some sections have High sensitivity due to high species diversity**

#### 5.4.4. *Schoenoxiphium* - Marsilea species riparian areas

Species summary	Indigenous	Aliens Weeds	Total	Red Data	Protected	Endemic to RSA
Low shrubs						
Forbs	4				1	
Grasses	4					
Geophytes						
<b>Total</b>	<b>8</b>	<b>0</b>	<b>75 %</b>	<b>0</b>	<b>1</b>	<b>0</b>

**Conservation status:** High, large portion of species restricted to these habitats, species diversity expected to be higher

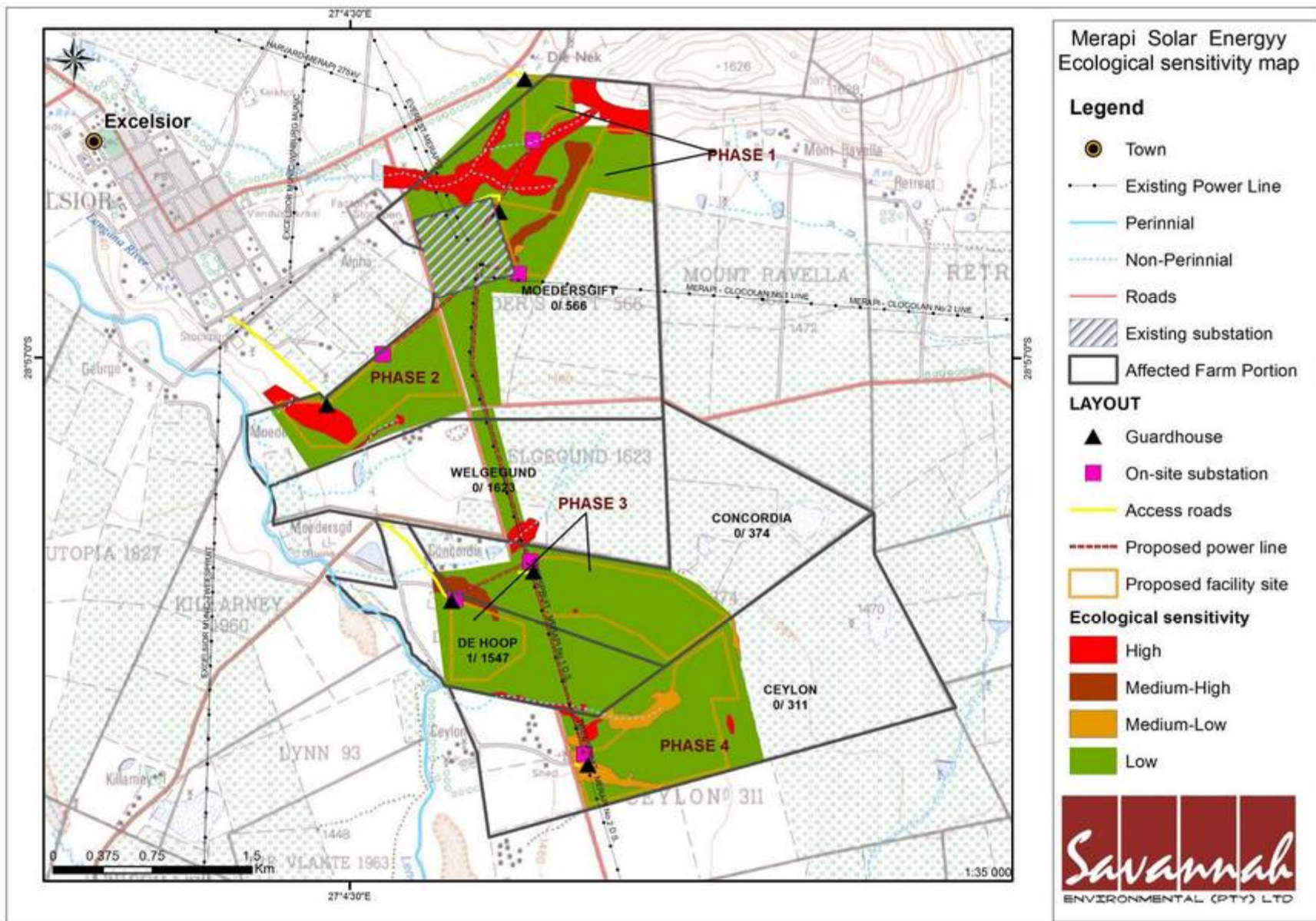
**Ecosystem function:** Specialised niches for biodiversity dependent on high-moisture environments, dense herb layer slows and filters runoff to retain moisture, sediment, and nutrients in this and surrounding ecosystems, generally higher herb productivity provides seasonal grazing, banks often habitat and/or shelter for fauna

**Stability:** High if vegetation layer is kept intact, low to dysfunctional and quickly degrading further if soils become bare or vegetation structure is changed after disturbance

**Reversibility of degradation:** Moderate to low if habitat is not altered, will require intensive intervention, very unlikely if habitat is significantly altered

**Rating: High sensitivity; No Go Areas**

According to the above, ecological sensitivities of the study area have been mapped in Figure 10.



**Figure 10:** Ecological sensitivity of the study area.



## 5.5. Plant species of conservation concern

The following red data plant species have been recorded from the area (2926) according to the new red data species list of SANBI

Species	RD Status	Suitable Habitat	Possibility of being present	Threat
<i>Isoetes transvaalensis</i>	NT	Wetlands	Slight	Habitat degradation
<i>Calpurnia reflexa</i>	Rare	Rocky footslopes	Slight	Habitat destruction
<i>Dierama dubium</i>	VU	Rocky ridges	Slight	Habitat destruction
<i>Erica maesta</i> var. <i>longistyla</i>	DDT	Rocky ridges	Slight	Habitat destruction
<i>Boophone disticha</i>	Declining	Rocky ridges, grasslands	Likely	Harvesting
<i>Hypoxis hemerocallidea</i>	Declining	Rocky ridges, grasslands	Observed	Harvesting
<i>Ilex mitis</i> var. <i>mitis</i>	Declining	Rocky footslopes	Slight	Harvesting and habitat destruction
<i>Pelargonium sidoides</i>	Declining	Grasslands	Slight	Harvesting

The following plants encountered on the study site are protected (Figure 11):

### FSNCB Schedule 1 and NCO Schedule 3: Specially Protected Species

*Aloe grandidentata*

*Anacampseros rufescens*

*Asclepias aurea*

*Asclepias meyeriana*

*Euphorbia clavarioides*

*Helichrysum cerastioides*

*Helichrysum dregeanum*

*Helichrysum rugulosum*

*Helichrysum zeyheri*

### FSNCB Schedule 2 and NCO Schedule 4: Protected Species

*Chasmatophyllum musculinum*

*Hypoxis angustifolia*

*Hypoxis hemerocallidea*

*Moraea elliotii*

*Moraea species*

*Ruschia hamata*

*Tulbaghia acutiloba*

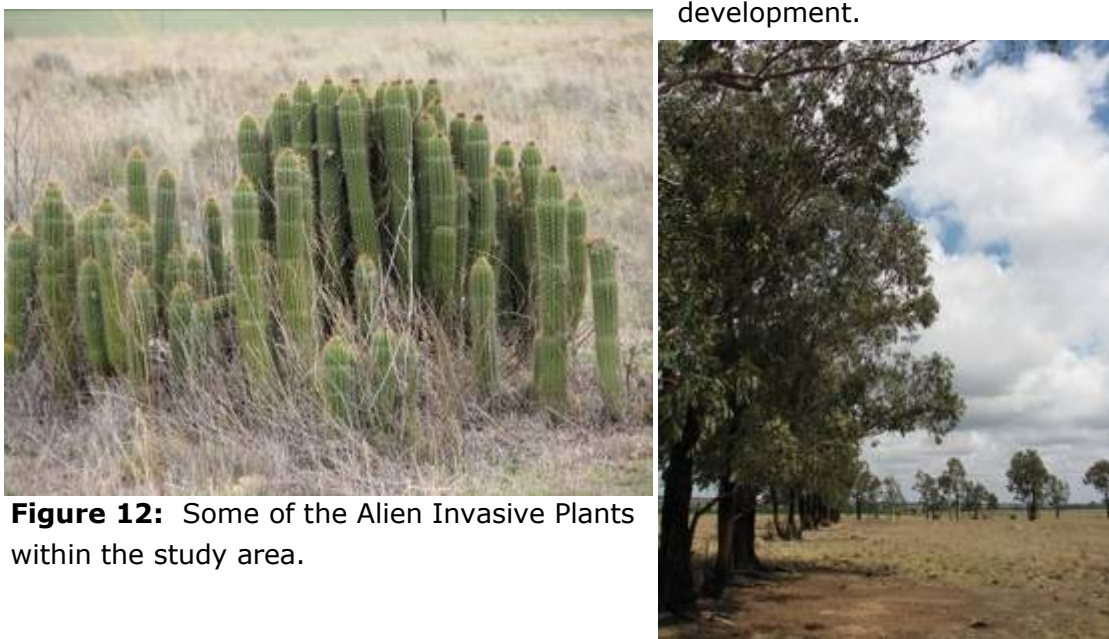


**Figure 11:** Some of the protected species occurring on the study area: *Tulbaghia acutiloba* (left), *Chasmatophyllum musculinum* (centre) and *Ruschia hamata* (right).

### 5.6. Alien invasive species

Few alien invasive species were encountered on the study area, with additional species within surrounding areas and along larger transport routes leading to the study area. Thus, a strong possibility exists that such species may be introduced to the study area during construction. The species of most concern are of the genera *Prosopis*, *Eucalyptus*, *Rubus*, *Cereus*, *Melia*, *Verbena*, *Argemone* and *Opuntia* (Figure 12). These invasives alter ecosystem functionality by displacing indigenous vegetation. Most of these invasives occur around or in the close vicinity of abandoned homesteads or watering points.

A detailed alien invasive management and monitoring program will thus have to be implemented throughout the construction and operational phase of the development.



**Figure 12:** Some of the Alien Invasive Plants within the study area.

## **5.7. Assessment of impacts**

### **5.7.1. Assumptions**

The following is assumed:

- Existing access roads and tracks will be used and upgraded, whilst new servitudes or power lines will coincide as far as possible with existing infrastructure
- The proposed development will be as close as possible to existing electricity infrastructure, thus minimising the need for additional overhead power lines to connect to the grid
- A thorough ecological investigation be conducted of all footprint areas to detect and relocate all plant species of conservation concern by a suitably qualified botanist prior to a geotechnical survey and construction
- Development of the PV-footprint area will retain a minimum 50 m, preferably 100 m buffer from all drainage lines and/or wetlands within the area assessed
- Prior to development the footprint area will be entirely cleared of all alien invasive plants

### **5.7.2. Localised vs. cumulative impacts: some explanatory notes**

Ecosystems consist of a mosaic of many different patches. The size of natural patches affects the number, type and abundance of species they contain. At the periphery of patches, influences of neighbouring patches become apparent, known as the 'edge effect'. Patch edges may be subjected to increased levels of heat, dust, desiccation, disturbance, invasion of exotic species and other factors. Edges seldom contain species that are rare, habitat specialists or that require larger tracts of undisturbed core habitat. Fragmentation due to development reduces core habitat and greatly extends edge habitat, which causes a shift in the species composition, which in turn puts great pressure on the dynamics and functionality of ecosystems (Perlman & Milder 2005).

The most severe form of ecosystem fragmentation is in the form of 'perforation' – being a multitude of smaller, isolated developments rather than one larger cluster of developments in close proximity. Research has shown that several smaller but isolated developments rapidly increase the amount of edge effect and related disturbances through access routes, greatly reduce core habitat and have a far greater detrimental effect on species diversity than clustered developments (Maestas *et al.* 2003). Species populations that become too fragmented may result in future extinction debts as sizes of fragmented populations are too small to maintain genetic diversity and will eventually die off.

From the above it is clear that cumulative impacts of developments on population viability of species can be reduced significantly if new developments are kept as

close as possible to existing developed areas or, where such is not possible, different sections of a development be kept as close together as possible. Thus new power lines should follow routes of existing servitudes if such exist, renewable energy facilities should be constructed as close as possible to existing infrastructure or substations, and if several developments are planned within close proximity, these developments should be situated as close together as possible, not scattered throughout the landscape.

### 5.7.3. Impacts of PV array, access roads and associated infrastructure

<b>Activity:</b> Upgrading of Access Roads		
<b>Environmental Aspect:</b> Removal of vegetation, compaction of soils, creation of runoff zone		
<b>Environmental impact:</b> Loss of vegetation, increase in runoff and erosion (as the road already exists, no additional impact on terrestrial fauna is expected to arise from the development)		
	<b>Without mitigation</b>	<b>With mitigation</b>
<b>Extent (E)</b>	Local (3)	Local (1)
<b>Duration (D)</b>	Long-term (4)	Long-term (4)
<b>Magnitude (M)</b>	Low (4)	Small (0)
<b>Probability (P)</b>	Definite (5)	Definite (5)
<b>Significance (S = E+D+M)*P</b>	<b>Medium (55)</b>	<b>Low (25)</b>
<b>Status (positive, neutral or negative)</b>	Negative	Neutral
<b>Reversibility</b>	Not reversible	Partially reversible
<b>Irreplaceable loss of resources?</b>	Probable	Not likely
<b>Can impacts be mitigated?</b>	Reasonably	
<b>Mitigation:</b> <ul style="list-style-type: none"> <li>▪ Make use of existing tracks as far as possible</li> <li>▪ Ensure an adequate plant search and rescue program prior to commencement of activity, especially geophytes may need to be relocated</li> <li>▪ Reinforce portions of existing access routes that are prone to erosion, create structures or low banks to drain the access road rapidly during rainfall events, yet preventing erosion of the track and surrounding areas</li> <li>▪ Ensure that runoff from compacted or sealed surfaces is slowed down and dispersed sufficiently to prevent accelerated erosion from being initiated (storm water and erosion management plan required, together with revegetation of adjacent areas)</li> <li>▪ Prevent leakage of oil or other chemicals or any other form of pollution</li> </ul>		

<ul style="list-style-type: none"> <li>▪ Monitor the establishment of alien invasive species and remove as soon as detected, whenever possible before regenerative material can be formed</li> <li>▪ After decommissioning, if access road or portion thereof will not be of further use to the landowner, remove all foreign material and rip area to facilitate the establishment of vegetation</li> </ul>
<p><b>Cumulative impacts:</b></p> <ul style="list-style-type: none"> <li>▪ Possible erosion of areas lower than the access road, possible contamination of lower-lying wetlands due to oil or other spillage,</li> <li>▪ Possible spread and establishment of alien invasive species</li> </ul>
<p><b>Residual impacts:</b></p> <ul style="list-style-type: none"> <li>▪ Altered vegetation composition and structure,</li> <li>▪ Barren areas,</li> <li>▪ Potential for erosion</li> </ul>

<b>Activity:</b> Creation of Access Roads where existing tracks are insufficient		
<b>Environmental Aspect:</b> Removal of vegetation, compaction of soils, creation of runoff zone, traversing of drainage lines		
<b>Environmental impact:</b> Loss of vegetation, increase in runoff and erosion, displacement of fauna, possible alteration of drainage patterns		
	<b>Without mitigation</b>	<b>With mitigation</b>
<b>Extent (E)</b>	Local (3)	Local (1)
<b>Duration (D)</b>	Long-term (4)	Long-term (4)
<b>Magnitude (M)</b>	Moderate (6)	Low (4)
<b>Probability (P)</b>	Definite (5)	Definite (5)
<b>Significance (S = E+D+M)*P</b>	<b>High (65)</b>	<b>Medium (45)</b>
<b>Status (positive, neutral or negative)</b>	Negative	Neutral
<b>Reversibility</b>	Not reversible	Partially reversible
<b>Irreplaceable loss of resources?</b>	Probable	Not likely
<b>Can impacts be mitigated?</b>	Reasonably	
<p><b>Mitigation:</b></p> <ul style="list-style-type: none"> <li>▪ Follow routes of existing tracks or fence lines as far as possible</li> <li>▪ Ensure adequate drainage and specific erosion control if and where access roads need to cross drainage lines</li> <li>▪ Ensure an adequate plant search and rescue program prior to commencement of activity, especially geophytes may need to be relocated</li> <li>▪ Reinforce portions of existing access routes that are prone to erosion, create structures or low banks to drain the access road rapidly during rainfall events, yet preventing erosion of the track and surrounding areas</li> </ul>		

<ul style="list-style-type: none"> <li>▪ Ensure that runoff from compacted or sealed surfaces is slowed down and dispersed sufficiently to prevent accelerated erosion from being initiated (storm water and erosion management plan required, together with revegetation of adjacent areas)</li> <li>▪ Prevent leakage of oil or other chemicals or any other form of pollution</li> <li>▪ Monitor the establishment of alien invasive species and remove as soon as detected, whenever possible before regenerative material can be formed</li> <li>▪ After decommissioning, if access road or portion thereof will not be of further use to the landowner, remove all foreign material and rip area to facilitate the establishment of vegetation</li> </ul>
<p><b>Cumulative impacts:</b></p> <ul style="list-style-type: none"> <li>▪ Possible erosion of areas lower than the access road, possible contamination of lower-lying wetlands due to oil or other spillage,</li> <li>▪ Possible spread and establishment of alien invasive species</li> <li>▪ Possible change in drainage pattern if access need to cross drainage lines</li> </ul>
<p><b>Residual impacts:</b></p> <ul style="list-style-type: none"> <li>▪ Altered vegetation composition and structure,</li> <li>▪ Barren areas,</li> <li>▪ Potential for increased erosion</li> </ul>

<b>Activity:</b> Fencing area – may also serve as access road to PV panels and fire-break		
<b>Environmental Aspect:</b> Removal of vegetation, compaction of soils, creation of runoff zone		
<b>Environmental impact:</b> Loss of vegetation, loss of micro-habitat, increase in runoff and erosion, window of opportunity for the establishment of alien invasive species, altered topsoil characteristics prone to capping, increased runoff and erosion (as fences already exist, no significant additional impact on terrestrial fauna is expected to arise from the development)		
	<b>Without mitigation</b>	<b>With mitigation</b>
<b>Extent (E)</b>	Local (2)	Local (1)
<b>Duration (D)</b>	Long-term (4)	Long term (4)
<b>Magnitude (M)</b>	Moderate (6)	Small (1)
<b>Probability (P)</b>	Definite (5)	Definite (5)
<b>Significance (S = E+D+M)*P</b>	<b>Medium (60)</b>	<b>Medium (30)</b>
<b>Status (positive, neutral or negative)</b>	Negative	Neutral
<b>Reversibility</b>	Partially reversible	Largely reversible
<b>Irreplaceable loss of resources?</b>	Probable	Not likely
<b>Can impacts be mitigated?</b>	Reasonably	

<p><b>Mitigation:</b></p> <ul style="list-style-type: none"> <li>▪ Minimise area affected, especially during construction</li> <li>▪ Avoid development and disturbance on rocky ridges and footslopes as well as plains adjacent to and drainage lines themselves</li> <li>▪ Use topsoils removed for redistribution outside the LOWEST borders of the development to stop erosion off the cleared areas, possibly to construct contour buffer strips to help limit erosion</li> <li>▪ Remove and collect all bulbous plants from cleared areas and transplant onto the newly redistributed topsoils, together with other species used for revegetation</li> <li>▪ Prevent leakage of oil or other chemicals</li> <li>▪ Monitor the establishment of alien invasive species and remove as soon as detected, whenever possible <i>before</i> regenerative material can be formed</li> <li>▪ Should the area along the fence be used for occasional access and fire breaks, regular mowing of the grass layer to reduce fire loads is recommended rather than the removal of vegetation</li> </ul>
<p><b>Cumulative impacts:</b></p> <ul style="list-style-type: none"> <li>▪ Possible erosion of cleared areas and thus also accelerated erosion from surrounding areas</li> <li>▪ Possible excessive fragmentation and thus reduction of core habitats that may negatively influence species population viability.</li> </ul>
<p><b>Residual impacts:</b></p> <ul style="list-style-type: none"> <li>▪ Altered vegetation composition,</li> <li>▪ Compacted topsoils,</li> <li>▪ Possibility for erosion.</li> </ul>

<b>Activity:</b> Construction and operation of PV panels		
<b>Environmental Aspect:</b> Removal of or excessive damage to vegetation, alteration of soil surface structure, compaction of soils, creation of runoff zone, redistribution and concentration of runoff from panel surfaces, artificial shading of vegetation		
<b>Environmental impact:</b> Loss of vegetation, loss of and alteration of microhabitats, altered vegetation cover, altered distribution of rainfall and resultant runoff patterns, increase in runoff and accelerated erosion, loss of faunal habitat and resource availability to terrestrial fauna		
	<b>Without mitigation</b>	<b>With mitigation</b>
<b>Extent (E)</b>	Local (5)	Local (2)
<b>Duration (D)</b>	Long-term (4)	Long-term (4)
<b>Magnitude (M)</b>	Very High (10)	Moderate (6)
<b>Probability (P)</b>	Definite (5)	Definite (5)
<b>Significance (S = E+D+M)*P</b>	<b>High (95)</b>	<b>Medium (60)</b>
<b>Status (positive, neutral or negative)</b>	Negative	Negative

<b>Reversibility</b>	Difficult to reverse	Partially reversible
<b>Irreplaceable loss of resources?</b>	Highly Probable	Probable
<b>Can impacts be mitigated?</b>	Reasonably	
<p><b>Mitigation:</b></p> <ul style="list-style-type: none"> <li>▪ Keep areas affected to a minimum</li> <li>▪ Utilise area as close as possible to existing infrastructure, keep buffer zone of a minimum of 50 m, preferably 100 m around drainage lines, dams and vleys</li> <li>▪ Limit and/or prevent disturbance to rocky habitats and habitats with dense trees</li> <li>▪ Keep leveling earthworks and soil disturbance to the minimum practically possible, implement a comprehensive topsoil management, soil erosion control and rehabilitation plan once layouts have been finalised</li> <li>▪ Remove as little indigenous vegetation as practically possible, revegetate areas below/between panels immediately after construction ceases</li> <li>▪ Relocate all geophytes, use as far as possible in rehabilitation efforts</li> <li>▪ No development on drainage lines or other wetlands and low rocky ridges and outcrops, limit development on lower-lying plains adjacent to drainage lines</li> <li>▪ Monitor the area below the PV panels regularly after larger rainfall events to determine where erosion may be initiated and then mitigate by modifying the soil microtopography and revegetation efforts accordingly</li> <li>▪ Aim to maintain a reasonable cover of indigenous perennial vegetation throughout the operational phase within and on the periphery of the PV array, preferably low dense perennial grasses that can be mowed as need be to reduce fuel loads</li> <li>▪ Prevent leakage of oil or other chemicals</li> <li>▪ Monitor the establishment of alien invasive species and remove as soon as detected, whenever possible before regenerative material can be formed</li> </ul>		
<p><b>Cumulative impacts:</b></p> <ul style="list-style-type: none"> <li>▪ possible erosion of areas lower than the panels</li> <li>▪ possible contamination and siltation of the drainage lines and lower-lying wetlands</li> <li>▪ possible fragmentation of plant populations</li> <li>▪ possible alteration of occupancy by terrestrial fauna, possible reduction of available habitat to terrestrial fauna</li> <li>▪ possible spread and establishment of alien invasive species</li> </ul>		
<p><b>Residual impacts:</b></p> <ul style="list-style-type: none"> <li>▪ altered topsoil characteristics</li> <li>▪ altered vegetation composition</li> <li>▪ altered habitat and resource availability to terrestrial fauna</li> </ul>		

<b>Activity:</b> Construction of power lines to substation		
<b>Environmental Aspect:</b> Removal of vegetation, compaction of soils		
<b>Environmental impact:</b> Loss of vegetation, increase in runoff and erosion, temporary displacement of terrestrial fauna		
	<b>Without mitigation</b>	<b>With mitigation</b>



<b>Extent (E)</b>	Local (2)	Local (1)
<b>Duration (D)</b>	Long-term (4)	Long-term (4)
<b>Magnitude (M)</b>	Minor (2)	Small (0)
<b>Probability (P)</b>	Definite (5)	Definite (5)
<b>Significance (S = E+D+M)*P</b>	<b>Medium (40)</b>	<b>Low (25)</b>
<b>Status (positive, neutral or negative)</b>	Negative	Neutral
<b>Reversibility</b>	Partially reversible	Partially reversible
<b>Irreplaceable loss of resources?</b>	Probable	Not likely
<b>Can impacts be mitigated?</b>	Reasonably	
<b>Mitigation:</b> <ul style="list-style-type: none"> <li>▪ Place pylons as far as possible on sites where the slope and erosion risk is minimal or negligible and where rocky habitats will not be destroyed</li> <li>▪ No pylons may be placed within drainage lines or closer than 32 m of any wetlands</li> <li>▪ Riparian areas may not be used as access points to pylon areas</li> <li>▪ Conduct a search and rescue operation for bulbous plants prior to pylon construction</li> <li>▪ Prevent spillage of construction material beyond area affected</li> <li>▪ Monitor the establishment of alien invasive species and remove as soon as detected, whenever possible before regenerative material can be formed</li> </ul>		
<b>Cumulative impacts:</b> <ul style="list-style-type: none"> <li>▪ Possible erosion of surrounding areas, no major cumulative impact on vegetation expected</li> </ul>		
<b>Residual impacts:</b> <ul style="list-style-type: none"> <li>▪ Localised alteration of soil surface characteristics</li> </ul>		

<b>Activity:</b> Construction of power line to substation		
<b>Environmental Aspect:</b> Habitat destruction and disturbance during construction of the facilities		
<b>Environmental impact:</b> Avifauna habitat destruction and disturbance		
	<b>Without mitigation</b>	<b>With mitigation</b>
<b>Extent (E)</b>	Local (1)	Local (1)
<b>Duration (D)</b>	Long-term (4)	Long-term (4)
<b>Magnitude (M)</b>	Minor (2)	Small (2)
<b>Probability (P)</b>	Definite (4)	Definite (4)
<b>Significance (S = E+D+M)*P</b>	<b>Low (28)</b>	<b>Low (28)</b>

<b>Status (positive, neutral or negative)</b>	Negative	Negative
<b>Reversibility</b>	Low	Low
<b>Irreplaceable loss of resources?</b>	Yes	Yes
<b>Can impacts be mitigated?</b>	Yes – but only partially	
<b>Mitigation:</b> <ul style="list-style-type: none"> <li>▪ Before development can continue the regions need to be checked for the presence of bird nesting sites, particularly those of ground nesting species.</li> <li>▪ Ensure bird-friendly tower designs are implemented to minimise the risk of electrocutions.</li> <li>▪ Fit overhead power lines with appropriate flappers in areas of sensitivity to increase the visibility thereof to avifauna.</li> <li>▪ Notes of electrocution and collision events must be sent to a qualified Ornithologist for the recommendation of further mitigation measures if necessary.</li> </ul>		
<b>Cumulative impacts:</b> <ul style="list-style-type: none"> <li>▪ Could be quite substantial if more projects are built in the same area. Collectively these facilities could remove quite a lot of habitat from the area. However on a landscape level this is still not believed to be significant in this area.</li> </ul>		
<b>Residual impacts:</b> <ul style="list-style-type: none"> <li>▪ None</li> </ul>		

<b>Activity:</b> Construction and operation of substation area		
<b>Environmental Aspect:</b> Removal of vegetation, compaction of soils, creation of runoff zone, possible contamination		
<b>Environmental impact:</b> loss of vegetation, loss of micro-habitats, increased runoff and erosion, possibly altered chemistry of surrounding soils, window of opportunity for the establishment of alien invasive species After decommissioning: altered topsoil characteristics with low moisture infiltration capacity, low niche diversity, and increased runoff and slow plant establishment		
	<b>Without mitigation</b>	<b>With mitigation</b>
<b>Extent (E)</b>	Local (3)	Local (2)
<b>Duration (D)</b>	Long-term (4)	Long-term (4)
<b>Magnitude (M)</b>	Moderate (6)	Low (4)
<b>Probability (P)</b>	Definite (5)	Definite (5)
<b>Significance (S = E+D+M)*P</b>	<b>High (65)</b>	<b>Medium (50)</b>

<b>Status (positive, neutral or negative)</b>	Negative	Negative
<b>Reversibility</b>	Low reversibility	Partially reversible
<b>Irreplaceable loss of resources?</b>	Highly probable	Probable
<b>Can impacts be mitigated?</b>	Reasonably	
<p><b>Mitigation:</b></p> <ul style="list-style-type: none"> <li>▪ Keep development as close as possible to existing tracks, infrastructure and other planned developments</li> <li>▪ Position in such a way that grid connections from PV arrays and to national grid have minimal crossings over drainage lines, rocky ridges or grassy depressions and can also remain as close as possible to other infrastructure</li> <li>▪ Minimise disturbance to footprint area</li> <li>▪ Align design to avoid all areas with surface rock and/or high species diversity</li> <li>▪ Conduct a thorough search and rescue operation of all footprint areas prior to construction to remove and relocate all species of conservation concern</li> <li>▪ Ensure that runoff from compacted or sealed surfaces is slowed down and dispersed sufficiently to prevent accelerated erosion from being initiated (storm water and erosion management plan required)</li> <li>▪ Remove topsoils and redistribute to mimic the microtopography of the original vegetation to stop erosion</li> <li>▪ Remove all succulent and bulbous plants and replant onto redistributed topsoil – prevent increased herbivory of such replanted species by especially duiker and porcupine</li> <li>▪ Prevent leakage of oil or other chemicals or pollutants</li> <li>▪ Monitor the establishment of alien invasive species and remove as soon as detected, whenever possible <i>before</i> regenerative material can be formed</li> <li>▪ After decommissioning, remove all foreign material, rip to loosen topsoils, aim to recreate a high surface roughness resembling the initial vegetation, undertake active revegetation</li> </ul>		
<p><b>Cumulative impacts:</b></p> <ul style="list-style-type: none"> <li>▪ possible erosion of areas lower than the access road,</li> <li>▪ possible contamination of lower-lying areas,</li> <li>▪ possible spread and establishment of alien invasive species to wider areas</li> <li>▪ Possible excessive fragmentation and thus reduction of core habitats that may negatively influence species population viability.</li> </ul>		
<p><b>Residual impacts:</b></p> <ul style="list-style-type: none"> <li>▪ altered vegetation composition,</li> <li>▪ altered topsoil characteristics,</li> </ul>		

- very slow recovery of non-herbaceous perennial vegetation

<b>Activity:</b> Construction and operation of workshop area and guard houses		
<b>Environmental Aspect:</b> Removal of vegetation, compaction of soils, introduction of pollutants		
<b>Environmental impact:</b> Loss of vegetation, increase in runoff and erosion, pollution, loss of faunal habitat and resource availability to terrestrial fauna		
	<b>Without mitigation</b>	<b>With mitigation</b>
<b>Extent (E)</b>	Local (4)	Local (2)
<b>Duration (D)</b>	Long-term (4)	Long-term (4)
<b>Magnitude (M)</b>	Moderate (6)	Low (4)
<b>Probability (P)</b>	Definite (5)	Definite (5)
<b>Significance (S = E+D+M)*P</b>	<b>High (70)</b>	<b>Medium (50)</b>
<b>Status (positive, neutral or negative)</b>	Negative	Neutral
<b>Reversibility</b>	Difficult to reverse	Partially reversible
<b>Irreplaceable loss of resources?</b>	Probable	Probable
<b>Can impacts be mitigated?</b>	Reasonably	
<b>Mitigation:</b> <ul style="list-style-type: none"> <li>▪ Avoid placing infrastructure on rocky ridges and outcrops, within 100 m of any drainage line, dam or vlei or depressions, restrict to vegetation Association 1 as far as possible</li> <li>▪ Limit disturbance to footprint area as far as practically possible – including disturbance to soil</li> <li>▪ Implement a comprehensive topsoil management plan as soon as layout plans are finalised and site preparation commences</li> <li>▪ Conduct a search and rescue operation for bulbous plants prior to construction</li> <li>▪ Prevent spillage of construction material and other pollutants beyond area affected, implement a comprehensive waste management plan for the operation of the facilities</li> <li>▪ Rehabilitate and revegetate all areas outside footprint area that have been disturbed immediately after construction</li> <li>▪ Monitor adjacent areas for accelerated erosion and mitigate as required</li> <li>▪ Monitor the establishment of alien invasive species and remove as soon as detected, whenever possible before regenerative material can be formed</li> </ul>		
<b>Cumulative impacts:</b> <ul style="list-style-type: none"> <li>▪ possible erosion of adjacent or lower-lying areas</li> <li>▪ possible contamination and siltation of drainage lines and lower-lying wetlands</li> </ul>		

<ul style="list-style-type: none"> <li>▪ possible fragmentation of plant populations</li> <li>▪ possible alteration of occupancy by terrestrial fauna, reduction of available habitat to terrestrial fauna</li> <li>▪ possible spread and establishment of alien invasive species</li> <li>▪ Possible erosion of surrounding areas</li> </ul>
<p><b>Residual impacts:</b></p> <ul style="list-style-type: none"> <li>▪ altered topsoil characteristics</li> <li>▪ altered vegetation composition</li> <li>▪ altered habitat and resource availability to terrestrial fauna</li> </ul>

**Implications of the anticipated impacts for the development:**

- » The proposed photovoltaic facility development on the site may have significant impacts on the ecology of the site and lower-lying wetlands, if mitigation measures are not strictly adhered to
- » Potentially significant negative impacts on the ecological environment would be soil degradation issues (erosion, depletion of nutrients) as a result of construction activity and the operation of the facility, possible introduction of alien invasive plants and a long-term (more than 8 months) low or absent vegetation cover after construction.
- » A loss of niches and specialised habitats for flora and fauna could occur with the removal or significant degradation of large expanses of vegetation or the alteration of rocky habitats. With the ecologically justifiable placement of the different components of the proposed development, coupled with diligent implementation of mitigating measures by the developer, contractors, and operational staff, the severity of impacts can be greatly reduced.
- » The impact on fauna is expected to be negligible. Currently minimal presence of wild animals could be detected, possibly due to current land use patterns. Animals that may be present are mobile and will move away during construction, possibly resettling after construction. No restricted or specific habitat of vertebrates will be affected by the proposed development; especially if the proposed development remains outside the more sensitive areas.

**5.8. Limitations of study**

There is a key difference between the approach of the ecological consultant and that of the ecological researcher. In consultancy, judgements have to be made and advice provided that is based on the best available evidence, combined with collective experience and professional opinion. The available evidence may not be especially good, potentially leading to over-simplification of ecological systems and responses, and do contain a considerable deal of uncertainty. This is opposed to ecological research, where evidence needs to be compelling before conclusions are reached and research is published (Hill & Arnold 2012). The best option available to the consulting industry is to push for more research to be conducted to address its questions. However, such research is often of a baseline

nature and thus attracts little interest by larger institutions that need to do innovative research to be able to publish and attract the necessary funding. Clients in need of ecological assessments are used to funding such assessments, but are seldom willing to fund further research to monitor the effects of developments. Furthermore, a review to test the accuracy of the predictions of an ecologist following completion of the development is very rarely undertaken, which means the capacity to predict the future is not tested and therefore remains unknown (Hill & Arnold 2012).

Predictions on future changes on ecosystems and populations once a development has happened are seldom straightforward, except in cases of such as the total loss of a habitat to development. However, most development impacts are indirect, subtle, and cumulative or unfold over several years following construction or commencement of the operation of the development. Whilst a possible mechanism for an impact to occur can usually be identified, the actual likelihood of occurrence and its severity are much harder to describe (Hill & Arnold 2012).

A closely related issue is that of the effectiveness of ecological mitigation which stems from ecological assessments, as well as in response to legal and planning policy requirements for development. Many recommendations may be incorporated into planning conditions or become conditions of protected species licences, but these recommendations are implemented to varying degrees, with most compliance being for the latter category, protected species, because there is a regulatory framework for implementation. What is often missing is the follow-up monitoring and assessment of the mitigation with sufficient scientific rigour or duration to determine whether the mitigation, compensation or enhancement measure has actually worked in the way intended (Hill & Arnold 2012).

## **6. Discussion and Conclusion**

The proposed development, especially components that will alter the surface, should be restricted to the grasslands as far as possible. One of the main concerns is accelerated erosion (Figure 13), thus it will be important to monitor and mitigate erosion from construction to decommissioning phase. The most important part of mitigation would be the ecologically most suitable site selection, and to maintain as dense a perennial herbaceous layer below and in-between the development as possible.



**Figure 13:** Accelerated erosion off bare and hard surfaces is of major concern in the study area (and beyond).

Several protected and red-data species potentially occur on the site, apart from those already recorded. At the time of the field visit, most grasses just started sprouting, a small number of geophytic species could already be observed, but the herbaceous layer was still poorly developed. Most of the species that just started emerging were too small to be identifiable at the time of the survey. It is thus imperative that a detailed site-walk be undertaken during optimal growing conditions (late November to February) to enable all potentially rare and protected plant species to be recorded and relocated.

Of the four vegetation associations identified, Association 1 is the most suitable for the development. Higher-lying portions of Association 2 could be developed, but areas within 100 m of drainage lines or dams must be avoided due to high erosion and associated degradation risks.

Development must be kept off rocky ridges and outcrops (Association 3) on the western and eastern peripheries of the Farm Moedersgift. Development of similar rocky habitats east of the Excelsior Substation and on Farm De Hoop must be limited to a minimum, and then remaining on the sections where the slope is negligible.

Alien invasive plants within the development areas must be cleared to avoid their continued establishment and possible spread throughout the development in coming years.

The riparian and vlei areas of vegetation Association 4, as well as lower-lying drainage lines, dams and rivers that were not specifically assessed must be regarded as No Go Areas. A buffer of the legal 32 m, preferably between 50 m and 100 m, must be maintained between any development and these areas. Access roads to the development must strictly adhere to existing tracks only, the creation of new access roads crossing drainage lines or rivers must be limited to the minimum practically possible, and then with necessary mitigation measures.

Several alien invasive plants have been observed on the study site, with more species in close proximity. For all species, there is a very high risk of spread throughout the project area following disturbance. This implies that a detailed Invasive Plant Management Plan will have to be in place prior to commencement of activity and be diligently followed and updated throughout the project cycle up to the decommissioning phase.

Significant impacts on terrestrial vertebrates are not anticipated, if developments are kept within the recommended areas.



## 7. References

- Apps, P. (ed). 2000. *Smither's Mammals of Southern Africa. A field guide.* Random House Struik, Cape Town, RSA
- Carrick, P. J. and R. Krüger. 2007. Restoring degraded landscapes in lowland Namaqualand: Lessons from the mining experience and from regional ecological dynamics. *Journal of Arid Environments* 70(4): 767-781.
- Chapin, F. S. I., E. S. Zavaleta, *et al.* 2000. Consequences of changing biodiversity. *Nature* 405: 234-242.
- Chase, J. M. 2003. Community assembly: when should history matter? *Oecologia*, 136, 489-498.
- Chong, G. W. and T. J. Stohlgren. 2007. Species-area curves indicate the importance of habitats' contributions to regional biodiversity. *Ecological Indicators* 7: 387-395.
- Dekker, S. C., M. Rietkerk, *et al.* 2007. Coupling microscale vegetation-soil water and macroscale vegetation-precipitation feedbacks in semiarid ecosystems. *Global Change Biology* 13: 671-678.
- Dirnböck, T., R. J. Hobbs, *et al.* 2002. Vegetation distribution in relation to topographically driven processes in southwestern Australia. *Applied Vegetation Science* 5: 147-158.
- Esler, K.J., Milton, S.J., Dean, W.R.J. (eds). 2006. *Karoo Veld Ecology and Management.* Briza
- Garrard, G. E., S. A. Bekessy, *et al.* 2008. When have we looked hard enough? A novel method for setting minimum survey effort protocols for flora surveys. *Austral Ecology* 33: 986-998.
- Germishuizen, G. and Meyer, N.L. (eds). 2003. *Plants of southern Africa: an annotated checklist.* Strelitzia 14. South African National Biodiversity Institute, Pretoria.
- Henderson, L. 2001. *Alien weeds and invasive plants.* ATC, Pretoria.
- Hennekens, S. T. and J. H. J. Schaminée. 2001. "TURBOVEG, a comprehensive data base management system for vegetation data." *Journal of Vegetation Science* 12: 589-591.
- Hill, D. and R. Arnold. 2012. Building the evidence base for ecological impact assessment and mitigation. *Journal of Applied Ecology* 49(1): 6-9.
- Hoffman, T. & Ashwell, A. 2001. *Nature divided: Land degradation in South Africa.* University of Cape Town Press, Cape Town.
- Hooper, D. U., F. S. Chapin III, *et al.* 2005. Effects of biodiversity on ecosystem functioning: a consensus of current knowledge. *Ecological Monographs* 75(1): 3-35.
- Keith, D. A. 1998. An evaluation and modification of World Conservation Union Red List Criteria for classification of extinction risk in vascular plants. *Conservation Biology* 12(5): 1076-1090.
- Kremen, C. 2005. Managing ecosystem services: what do we need to know about their ecology? *Ecology Letters* 8: 468-479.

- Le Hou rou, H. N. 2000. Restoration and rehabilitation of arid and semiarid Mediterranean ecosystems in north Africa and west Asia: a review. *Arid Soil Research and Rehabilitation* 14: 3-14.
- Maestas, J. D., Knight, R. L. and Gilgert, W. C. 2003. Biodiversity across a rural land-use gradient. *Conservation Biology*, 17, 1425-1434.
- McCune, B. & M. J. Mefford. 2006. PC-ORD. Multivariate Analysis of Ecological Data. Version 5.19 MjM Software, Gleneden Beach, Oregon, U.S.A.
- Motzkin, G., Wilson, P., Foster, D. R. & Allen, A. 1999. Vegetation patterns in heterogeneous landscapes: the importance of history and environment. *Journal of Vegetation Science*, 10, 903-920.
- Mucina, L. & Rutherford, M.C. (Eds.) 2006. The vegetation of South Africa, Lesotho and Swaziland. *Strelitzia* 19. South African National Biodiversity Institute, Pretoria.
- Mucina, L., Bredenkamp, G.J., Hoare, D.B. & McDonald, D.J. 2000. A National vegetation database for South Africa. *South Africa Journal of Science* 96:497-498.
- Mueller-Dombois, D. & Ellenberg, H. 1974. Aims and methods of vegetation ecology. Wiley, New York.
- M nzbervog , Z. 2006. Effect of population size on the prospect of species survival. *Folia Geobotanica* 41: 137-150.
- Perlman, D.L., and Milder, J.C. 2005. Practical ecology for planners, developers and citizens. Island Press, Washington.
- Raimondo, D., Von Staden, L., Foden, W., Victor, J.E., Helme, N.A., Turner, R.C. Kamundi, D.A. & Manyama, P.A. (Eds.). 2009. Red list of South African plants 2009. *Strelitzia* 25:1-668.
- Tongway, D.J., Hindley, N.L. 2004. LANDSCAPE FUNCTION ANALYSIS: PROCEDURES FOR MONITORING AND ASSESSING LANDSCAPES, with special reference to Mine sites and Rangelands. CSIRO Publishing, Canberra, Australia.
- UNCCD: United Nations Convention to Combat Desertification, 1995.
- Westhoff, V. & Van der Maarel, E. 1978. The Braun-Blanquet approach. In: Whittaker, R.H. (ed.) *Classification of plant communities*. W. Junk, The Hague.
- Wynberg, R. 2002. A decade of biodiversity conservation and use in South Africa: tracking progress from the Rio Earth Summit to the Johannesburg World Summit on Sustainable Development. *South African Journal of Science* 98: 233 – 243.

#### **Websites:**

- AGIS, 2007. Agricultural Geo-Referenced Information System, accessed from [www.agis.agric.za](http://www.agis.agric.za) on [29 March 2012]
- ADU, 2012. Animal Demography Unit, Department of Zoology, University of Cape Town. <http://www.adu.org.za>
- BGIS: <http://bgis.sanbi.org/website.asp>
- <http://www.saexplorer.co.za/south-africa/climate/>

<http://posa.sanbi.org/searchspp.php>

<http://SIBIS.sanbi.org>

**8. Appendix A1: Plant species that have been recorded in the wider area according to the SANBI POSA database**

Plants on open veld and around wetland areas:

Species	Status	Species	Status
<b>Succulents</b>		<i>rupicola</i>	
<i>Aeollanthus buchnerianus</i>		<i>Crassula sarcocaulis</i> subsp. <i>sarcocaulis</i>	
<i>Aloe ecklonis</i>	1	<i>Crassula setulosa</i> var. <i>rubra</i>	
<i>Aloe grandidentata</i>	1	<b><i>Crassula setulosa</i> var. <i>setulosa</i></b>	
<i>Aloe maculata</i>	1	<i>Crassula tabularis</i>	
<i>Aloe striatula</i> var. <i>striatula</i>	1	<i>Crassula tuberella</i>	
<b><i>Anacampseros filamentosa</i> subsp. <i>filamentosa</i></b>	<b>1</b>	<b><i>Drosanthemum floribundum</i></b>	<b>2</b>
<b><i>Anacampseros rufescens</i></b>	<b>1</b>	<b><i>Duvalia corderoyi</i></b>	<b>1</b>
<i>Aspidoglossum araneiferum</i>	1	<b><i>Euphorbia clava</i></b>	<b>1, II</b>
<i>Aspidoglossum biflorum</i>	1	<i>Euphorbia clavarioides</i> var. <i>clavarioides</i>	1, II
<i>Aspidoglossum interruptum</i>	1	<b><i>Euphorbia clavarioides</i> var. <i>truncata</i></b>	<b>1, II</b>
<i>Aspidoglossum lamellatum</i>	1	<i>Euphorbia pulvinata</i>	1, II
<b><i>Avonia ustulata</i></b>	<b>1</b>	<i>Euphorbia rectirama</i>	1, II
<i>Brachystelma foetidum</i>	1	<b><i>Euphorbia rhombifolia</i></b>	<b>1, II</b>
<i>Chasmatophyllum musculinum</i>	2	<i>Euphorbia striata</i>	1, II
<b><i>Cotyledon orbiculata</i> var. <i>dactyloopsis</i></b>		<i>Kalanchoe rotundifolia</i>	
<i>Cotyledon orbiculata</i> var. <i>oblonga</i>		<i>Kalanchoe thyrsoiflora</i>	
<i>Cotyledon orbiculata</i> var. <i>orbiculata</i>		<i>Mossia intervallaris</i>	2
<i>Crassula corallina</i> subsp. <i>corallina</i>		<i>Othonna natalensis</i>	
<i>Crassula dependens</i>		<i>Othonna protecta</i>	
<i>Crassula gemmifera</i>		<i>Pachycarpus rigidus</i>	
<i>Crassula inanis</i>		<b><i>Pelargonium schizopetalum</i></b>	
<b><i>Crassula lanceolata</i> subsp. <i>lanceolata</i></b>		<i>Peperomia tetraphylla</i>	
<i>Crassula lanceolata</i> subsp. <i>transvaalensis</i>		<i>Portulaca quadrifida</i>	
<i>Crassula natans</i>		<i>Pterodiscus speciosus</i>	
<i>Crassula nudicaulis</i>		<i>Sarcostemma viminale</i>	1
<i>Crassula sarcocaulis</i> subsp.		<i>Schizoglossum atropurpureum</i> subsp. <i>atropurpureum</i>	1
		<i>Schizoglossum bidens</i> subsp. <i>bidens</i>	1

Species	Status	Species	Status
<i>Schizoglossum nitidum</i>	1	<i>Eriocephalus karooicus</i>	
<i>Senecio rhomboideus</i>		<i>Eriocephalus tenuifolius</i>	
<i>Senecio ruwenzoriensis</i>		<i>Erythrina zeyheri</i>	1
<i>Stapelia asterias</i>	1	<i>Euryops empetrifolius</i>	
<i>Stoerberia utilis</i>	2	<i>Felicia fascicularis</i>	
<i>Stomatium ermininum</i>	2	<i>Felicia filifolia</i>	
<i>Xysmalobium undulatum</i>	1	<i>Felicia muricata</i>	
		<i>Felicia petiolata</i>	
<b>Low shrubs</b>		<i>Garuleum pinnatifidum</i>	
<i>Abutilon galpinii</i>		<i>Geranium robustum</i>	
<i>Anthospermum rigidum</i> subsp. <i>pumilum</i>		<i>Gnidia burchellii</i>	
<i>Anthospermum rigidum</i> subsp. <i>rigidum</i>		<i>Gnidia capitata</i>	
<i>Artemisia afra</i>		<i>Gnidia kraussiana</i>	
<i>Asparagus asparagoides</i>		<i>Gomphostigma virgatum</i>	
<i>Asparagus cooperi</i>		<i>Hebenstretia dura</i>	
<i>Asparagus denudatus</i>		<i>Helichrysum dregeanum</i>	1
<i>Asparagus laricinus</i>		<i>Helichrysum infaustum</i>	1
<i>Asparagus setaceus</i>		<i>Helichrysum melanacme</i>	1
<i>Asparagus suaveolens</i>		<i>Helichrysum montanum</i>	1
<i>Athrixia elata</i>		<i>Helichrysum paronychioides</i>	1
<i>Chaetacanthus burchellii</i>		<i>Helichrysum sutherlandii</i>	1
<i>Chaetacanthus setiger</i>		<i>Helichrysum zeyheri</i>	1
<i>Chrysanthemoides monilifera</i>		<i>Heliophila carnosa</i>	
<i>Chrysocoma ciliata</i>		<i>Heliophila suavissima</i>	
<i>Cineraria lobata</i> subsp. <i>lobata</i>		<i>Hermannia geniculata</i>	
<i>Clutia pulchella</i>		<i>Hertia ciliata</i>	
<i>Elephantorrhiza elephantina</i>		<i>Isoglossa grantii</i>	
<i>Erica alopecurus</i>	1	<i>Jamesbrittenia albiflora</i>	
<i>Erica cerinthoides</i>	1	<i>Jamesbrittenia atropurpurea</i>	
<i>Erica leucopelta</i>	1	<i>Jamesbrittenia filicaulis</i>	
<i>Erica maesta</i> Bolus var. <i>longistyla</i>	1, DDT, end	<i>Jamesbrittenia stricta</i>	
<i>Erica maesta</i>	1	<i>Lantana rugosa</i>	
<i>Eriocephalus eximius</i>		<i>Lessertia depressa</i>	
		<i>Lessertia perennans</i>	
		<i>Lessertia stricta</i>	

Species	Status	Species	Status
<i>Lotononis divaricata</i>		<i>Solanum lichtensteinii</i>	
<i>Lotononis sericophylla</i>		<i>Solanum panduriforme</i>	
<i>Lycium ferocissimum</i>		<i>Solanum rigescens</i>	
<i>Lycium horridum</i>		<i>Solanum tomentosum</i>	
<i>Melhania prostrata</i>		<b><i>Sutherlandia humilis</i></b>	
<i>Melolobium candicans</i>		<i>Sutherlandia microphylla</i>	
<i>Melolobium microphyllum</i>		<i>Tephrosia capensis</i>	
<i>Melolobium obcordatum</i>		<i>Tephrosia multijuga</i>	
<b><i>Melolobium wilmsii</i></b>		<i>Tephrosia polystachya</i>	
<i>Menodora africana</i>		<i>Tephrosia rhodesica</i>	
<i>Metalasia densa</i>		<i>Thesium imbricatum</i>	
<i>Muraltia alticola</i>		<i>Thesium impeditum</i>	
<i>Nemesia fruticans</i>		<i>Thesium macrogyne</i>	
<i>Nenax microphylla</i>		<i>Thesium resedoides</i>	
<b><i>Osteospermum leptolobum</i></b>		<i>Thesium scirpioides</i>	
<i>Otholobium polystictum</i>		<i>Wahlenbergia albens</i>	
<i>Passerina montana</i>		<i>Wahlenbergia dieterlenii</i>	
<i>Pavonia burchellii</i>		<i>Withania somnifera</i>	
<i>Pelargonium dolomiticum</i>			
<i>Pelargonium multicaule</i>		<b>High shrubs and trees</b>	
<i>Pentzia calcarea</i>		<i>Acacia karroo</i>	
<i>Pentzia cooperi</i>		<i>Anisodonteia julii</i> subsp. <i>julii</i>	
<i>Pentzia globosa</i>		<i>Anisodonteia julii</i> subsp. <i>prostrata</i>	
<i>Pentzia incana</i>		<i>Anthospermum monticola</i>	
<i>Pharnaceum dichotomum</i>		<i>Buddleja salviifolia</i>	
<i>Polygala ephedroides</i>		<b><i>Calpurnia reflexa</i></b>	<b>Rare</b>
<i>Polygala hottentotta</i>		<i>Calpurnia sericea</i>	
<i>Polygala uncinata</i>		<i>Calpurnia villosa</i>	
<i>Polygala virgata</i>		<i>Canthium ciliatum</i>	
<i>Printzia auriculata</i>		<i>Cassinopsis ilicifolia</i>	
<i>Salsola aphylla</i>		<i>Celtis africana</i>	
<i>Salsola glabrescens</i>		<i>Cliffortia linearifolia</i>	
<b><i>Selago albida</i></b>		<i>Cliffortia paucistaminea</i>	
<b><i>Selago dolosa</i></b>		<i>Clutia natalensis</i>	
<i>Sida dregei</i>		<i>Clutia pulchella</i>	

Species	Status	Species	Status
<i>Cussonia paniculata</i> subsp. <i>sinuata</i>	1	<i>Salix mucronata</i> subsp. <i>mucronata</i>	
<i>Dais cotinifolia</i>		<i>Scolopia mundii</i>	
<i>Diospyros austro-africana</i>		<i>Scolopia zeyheri</i>	
<i>Diospyros lycioides</i> subsp. <i>lycioides</i>		<i>Scutia myrtina</i>	
<i>Diospyros whyteana</i>		<i>Searsia bolusii</i>	
<b><i>Ehretia rigida</i> subsp. <i>rigida</i></b>		<i>Searsia burchellii</i>	
<i>Euclea coriacea</i>		<i>Searsia dentata</i>	
<i>Euclea crispa</i> subsp. <i>crispa</i>		<i>Searsia discolor</i>	
<i>Flueggea virosa</i> subsp. <i>virosa</i>		<i>Searsia divaricata</i>	
<i>Grewia flava</i>		<i>Searsia erosa</i>	
<i>Grewia occidentalis</i>		<i>Searsia lancea</i>	
<i>Gymnosporia buxifolia</i>		<i>Searsia leptodictya</i>	
<i>Halleria lucida</i>		<i>Searsia pyroides</i> var. <i>gracilis</i>	
<i>Helinus integrifolius</i>		<i>Searsia pyroides</i> var. <i>pyroides</i>	
<i>Heteromorpha arborescens</i>		<i>Searsia undulata</i>	
<b><i>Ilex mitis</i> var. <i>mitis</i></b>	<b>2, Declining</b>	<i>Tarchonanthus camphoratus</i>	
<i>Kiggelaria africana</i>		<i>Tarchonanthus minor</i>	
<i>Leonotis ocymifolia</i>		<i>Ziziphus mucronata</i>	
<i>Leucosidea sericea</i>			
<i>Lycium arenicola</i>		<b>Herbs and forbs</b>	
<i>Maytenus acuminata</i>		<i>Acrotome inflata</i>	
<i>Maytenus undata</i>		<i>Ajuga ophrydis</i>	
<i>Morella serrata</i>		<i>Alectra basutica</i>	
<i>Myrsine africana</i>		<i>Alectra capensis</i>	
<i>Olea europaea</i> subsp. <i>africana</i>	1	<i>Amaranthus thunbergii</i>	
<i>Osyris lanceolata</i>		<i>Amellus epaleaceus</i>	
<i>Pittosporum viridiflorum</i>	NFA	<i>Anchusa capensis</i>	
<i>Plumbago zeylanica</i>		<i>Anisotoma pedunculata</i>	
<i>Rhamnus prinoides</i>		<i>Antizoma angustifolia</i>	
<i>Rhigozum obovatum</i>		<i>Arctotis leiocarpa</i>	
<b><i>Rhoicissus tridentata</i> subsp. <i>tridentata</i></b>		<i>Arctotis venusta</i>	
<i>Rubus ludwigii</i> subsp. <i>ludwigii</i>		<i>Argyrolobium harveyanum</i>	
<i>Rubus rigidus</i>		<b><i>Argyrolobium molle</i></b>	
		<i>Argyrolobium pauciflorum</i>	
		<i>Argyrolobium rupestre</i> subsp.	

Species	Status	Species	Status
<i>rupestre</i>		<i>Commelina africana</i> var.	
<i>Argyrobolium tuberosum</i>		<i>lancispatha</i>	
<i>Asclepias aurea</i>	1	<i>Commelina livingstonii</i>	
<i>Asclepias gibba</i>	1	<i>Commelina subulata</i>	
<i>Asclepias meyeriana</i>	1	<i>Commicarpus pentandrus</i>	
<i>Asclepias multicaulis</i>	1	<i>Convolvulus boedeckerianus</i>	
<i>Asclepias stellifera</i>	1	<i>Convolvulus dregeanus</i>	
<i>Aster bakerianus</i>		<i>Convolvulus sagittatus</i>	
<i>Atriplex semibaccata</i>		<i>Convolvulus thunbergii</i>	
<i>Berkheya discolor</i>		<i>Conyza podocephala</i>	
<i>Berkheya onopordifolia</i>		<i>Conyza scabrida</i>	
<i>Berkheya pinnatifida</i>		<i>Corchorus asplenifolius</i>	
<i>Berkheya pinnatifida</i>		<i>Cotula anthemoides</i>	
<i>Berkheya stobaeoides</i>		<i>Crabbea angustifolia</i>	
<i>Berkheya setifera</i>		<i>Crabbea hirsuta</i>	
<i>Blepharis integrifolia</i>		<i>Craterocapsa tarsodes</i>	
<i>Blepharis squarrosa</i>		<i>Crotalaria distans</i> subsp.	
<i>Buchnera reducta</i>		<i>distans</i>	
<i>Bupleurum mundii</i>		<i>Crotalaria virgulata</i> subsp.	
<i>Centella asiatica</i>		<i>grantiana</i>	
<i>Cerastium capense</i>		<i>Cucumis myriocarpus</i>	
<i>Chaenostoma patrioticum</i>		<i>Cucumis zeyheri</i>	
<i>Chaenostoma polelense</i>		<i>Cullen tomentosum</i>	
<i>Chamaecrista biensis</i>		<i>Cyanotis speciosa</i>	
<i>Chamaecrista mimosoides</i>		<i>Cyathula uncinulata</i>	
<i>Chascanum pinnatifidum</i>		<i>Cycnium tubulosum</i>	
<i>Choritaenia capensis</i>		<i>Cynanchum virens</i>	
<i>Cineraria lyratifformis</i>		<i>Cyphia triphylla</i>	
<i>Clematis brachiata</i>		<i>Denekia capensis</i>	
<i>Cleome angustifolia</i> subsp.		<i>Dianthus basuticus</i> subsp.	
<i>diandra</i>		<i>basuticus</i>	
<i>Cleome rubella</i>		<i>Dianthus micropetalus</i>	
<i>Coccinia hirtella</i>		<i>Diascia capsularis</i>	
<i>Commelina africana</i> var.		<i>Dichilus lebeckioides</i>	
<i>africana</i>		<i>Dicliptera leistneri</i>	
<i>Commelina africana</i> var.		<i>Dicoma anomala</i> subsp.	
<i>krebsiana</i>			



Species	Status	Species	Status
<i>anomala</i>		<i>Gorteria diffusa</i>	
<i>Dicoma capensis</i>		<b><i>Haplocarpha lyrata</i></b>	
<i>Didymodoxa caffra</i>		<i>Haplocarpha scaposa</i>	
<i>Dimorphotheca zeyheri</i>		<i>Hebenstretia integrifolia</i>	
<i>Dolichos angustifolius</i>		<i>Helichrysum ammitophilum</i>	1
<i>Dolichos linearis</i>		<i>Helichrysum argyrosphaerum</i>	1
<i>Drosera collinsiae</i>		<i>Helichrysum aureonitens</i>	1
<i>Drosera madagascariensis</i>		<i>Helichrysum aureum</i>	1
<i>Epilobium salignum</i>		<i>Helichrysum caespitium</i>	1
<i>Eriosema salignum</i>		<i>Helichrysum callicomum</i>	1
<i>Erucastrum strigosum</i>		<i>Helichrysum cephaloideum</i>	1
<i>Euphorbia inaequilatera</i>		<i>Helichrysum cerastioides</i>	1
<i>Falkia oblonga</i>		<i>Helichrysum chionosphaerum</i>	1
<i>Foveolina dichotoma</i>		<i>Helichrysum cooperi</i>	1
<i>Galium capense</i> subsp. <i>capense</i>		<i>Helichrysum dasycephalum</i>	1
<i>Galium capense</i> subsp. <i>garipense</i>		<b><i>Helichrysum fulvum</i></b>	<b>1</b>
<i>Galium tomentosum</i>		<i>Helichrysum nudifolium</i> var. <i>nudifolium</i>	1
<i>Gazania krebsiana</i> subsp. <i>arctotoides</i>		<i>Helichrysum nudifolium</i> var. <i>pilosellum</i>	1
<i>Gazania krebsiana</i> subsp. <i>serrulata</i>		<i>Helichrysum odoratissimum</i>	1
<i>Geigeria aspera</i> var. <i>aspera</i>		<i>Helichrysum psilolepis</i>	1
<b><i>Geigeria aspera</i> var. <i>rivularis</i></b>		<b><i>Helichrysum pumilio</i> subsp. <i>pumilio</i></b>	<b>1</b>
<i>Geigeria burkei</i> subsp. <i>burkei</i>		<i>Helichrysum rugulosum</i>	1
<i>Geigeria burkei</i> subsp. <i>diffusa</i>		<i>Helichrysum spiralepis</i>	1
<i>Geigeria filifolia</i>		<i>Helichrysum subglomeratum</i>	1
<b><i>Geranium incanum</i> var. <i>multifidum</i></b>		<i>Hermannia cernua</i>	
<i>Gerbera ambigua</i>		<i>Hermannia coccocarpa</i>	
<i>Gerbera piloselloides</i>		<b><i>Hermannia cordata</i></b>	
<i>Gleichenia polypodioides</i>		<i>Hermannia depressa</i>	
<i>Gnaphalium filagopsis</i>		<i>Herniaria erckertii</i> subsp. <i>erckertii</i>	
<i>Gomphocarpus fruticosus</i> subsp. <i>decipiens</i>		<i>Hibiscus aethiopicus</i>	
<i>Gomphocarpus fruticosus</i> subsp. <i>fruticosus</i>		<i>Hibiscus microcarpus</i>	
		<i>Hibiscus pusillus</i>	

Species	Status	Species	Status
<i>Hypericum aethiopicum</i> subsp. <i>sonderi</i>		<i>Lobelia flaccida</i>	
<i>Hypericum lalandii</i>		<i>Lobelia thermalis</i>	
<i>Ifloga glomerata</i>		<i>Lotononis adpressa</i>	
<i>Indigastrum argyraeum</i>		<i>Lotononis lanceolata</i>	
<i>Indigastrum fastigiatum</i>		<i>Lotononis laxa</i>	
<i>Indigofera comosa</i>		<i>Lotononis listii</i>	
<i>Indigofera dimidiata</i>		<i>Lotononis mucronata</i>	
<i>Indigofera dregeana</i>		<b><i>Lotononis tenella</i></b>	
<i>Indigofera filipes</i>		<i>Manulea buchneroides</i>	
<i>Indigofera nigromontana</i>		<i>Manulea crassifolia</i> subsp. <i>crassifolia</i>	
<i>Indigofera rhytidocarpa</i>		<i>Manulea paniculata</i>	
<i>Indigofera sessilifolia</i>		<i>Mentha longifolia</i> subsp. <i>capensis</i>	
<i>Hibiscus aethiopicus</i>		<i>Mentha longifolia</i> subsp. <i>polyadena</i>	
<i>Indigofera tristis</i>		<i>Merremia verecunda</i>	
<i>Indigofera zeyheri</i>		<i>Monopsis decipiens</i>	
<i>Ipomoea magnusiana</i>		<i>Monsonia angustifolia</i>	
<i>Ipomoea oblongata</i>		<i>Myxopappus acutilobus</i>	
<i>Ipomoea oenotheroides</i>		<i>Nemesia albiflora</i>	
<i>Ipomoea simplex</i>		<i>Nemesia melissifolia</i>	
<i>Jamesbrittenia aurantiaca</i>		<i>Nemesia umbonata</i>	
<i>Kedrostis africana</i>		<i>Nesaea anagalloides</i>	
<i>Kohautia amatymbica</i>		<i>Nolletia ciliaris</i>	
<i>Kyphocarpa angustifolia</i>		<i>Oleandra distenta</i>	
<i>Lactuca inermis</i>		<i>Osteospermum muricatum</i> subsp. <i>muricatum</i>	
<i>Laurembergia repens</i>		<i>Papaver aculeatum</i>	
<i>Lepidium schinzii</i>		<i>Parietaria debilis</i>	
<i>Lepisorus schraderi</i>		<i>Pelargonium minimum</i>	
<i>Limeum viscosum</i>		<b><i>Pharnaceum alpinum</i></b>	
<i>Linum thunbergii</i>		<i>Phyllanthus maderaspatensis</i>	
<i>Lippia scaberrima</i>		<i>Pimpinella transvaalensis</i>	
<i>Lithospermum cinereum</i>		<i>Platycarphella parvifolia</i>	
<b><i>Lithospermum hirsutum</i></b>		<i>Pollichia campestris</i> Aiton	
<b><i>Lithospermum scabrum</i></b>			
<i>Litogyne gariepina</i>			
<i>Lobelia erinus</i>			

Species	Status	Species	Status
<i>Polygala amatymbica</i>		<i>Senecio coronatus</i>	
<i>Polygala gracilentia</i>		<i>Senecio erubescens</i> var. <i>erubescens</i>	
<i>Polygala gymnoclada</i>		<i>Senecio glaberrimus</i>	
<i>Psammotropha myriantha</i>		<i>Senecio harveianus</i>	
<i>Pseudognaphalium undulatum</i>		<i>Senecio hastatus</i>	
<i>Rhynchosia adenodes</i>		<i>Senecio hieracioides</i>	
<i>Rhynchosia hirsuta</i>		<i>Senecio inornatus</i>	
<i>Rhynchosia nervosa</i>		<i>Senecio isatideus</i>	
<i>Rhynchosia pentheri</i>		<i>Senecio polyodon</i>	
<i>Rhynchosia totta</i>		<i>Silene undulata</i>	
<i>Riocreuxia burchellii</i>		<i>Sisymbrium capense</i>	
<i>Rorippa fluviatilis</i>		<i>Solanum retroflexum</i>	
<i>Rubia petiolaris</i>		<i>Sonchus dregeanus</i>	
<i>Ruellia cordata</i>		<i>Sopubia cana</i>	
<i>Rumex lanceolatus</i>		<i>Stachys aethiopica</i>	
<i>Rumex sagittatus</i>		<i>Stachys hyssopoides</i>	
<i>Rumex woodii</i>		<i>Striga bilabiata</i>	
<i>Salvia repens</i> var. <i>repens</i>		<i>Striga elegans</i>	
<i>Salvia repens</i> var. <i>transvaalensis</i>		<i>Tephrosia semiglabra</i>	
<i>Salvia runcinata</i>		<i>Teucrium trifidum</i>	
<i>Salvia verbenaca</i>		<i>Thalictrum minus</i>	
<i>Scabiosa columbaria</i>		<i>Thesium griseum</i>	
<i>Schistostephium crataegifolium</i>		<i>Tolpis capensis</i>	
<i>Sebaea filiformis</i>		<i>Trichodesma angustifolium</i> subsp. <i>angustifolium</i>	
<i>Sebaea grandis</i>		<i>Trifolium africanum</i>	
<i>Sebaea junodii</i>		<i>Tripteris aghillana</i>	
<i>Sebaea leiostyla</i>		<i>Ursinia montana</i> subsp. <i>montana</i>	
<i>Sebaea procumbens</i>		<i>Ursinia nana</i> subsp. <i>leptophylla</i>	
<i>Seddera capensis</i>		<i>Ursinia nana</i> subsp. <i>nana</i>	
<i>Selago densiflora</i>		<i>Urtica lobulata</i>	
<i>Selago galpinii</i>		<i>Utricularia stellaris</i>	
<i>Senecio achilleifolius</i>		<i>Vahlia capensis</i> subsp. <i>capensis</i>	
<i>Senecio affinis</i>			
<i>Senecio albanensis</i> var. <i>albanensis</i>			

Species	Status	Species	Status
<i>Wahlenbergia androsacea</i>		<i>Bulbine favosa</i>	
<i>Wahlenbergia denticulata</i> var. <i>denticulata</i>		<i>Bulbine frutescens</i>	
<i>Wahlenbergia denticulata</i> var. <i>transvaalensis</i>		<i>Bulbine narcissifolia</i>	
<i>Wahlenbergia lycopodioides</i>		<i>Cheilanthes eckloniana</i>	
<i>Wahlenbergia undulata</i>		<i>Cheilanthes hirta</i> var. <i>hirta</i>	
<i>Xerophyta viscosa</i>		<i>Cheilanthes quadripinnata</i>	
<i>Zaluzianskya schmitziae</i>		<i>Chlorophytum fasciculatum</i>	2
<i>Zehneria marlothii</i>		<i>Chlorophytum transvaalense</i>	2
<i>Zornia capensis</i>		<i>Colchicum melanthoides</i> subsp. <i>melanthoides</i>	
		<i>Crocosmia paniculata</i>	2
<b>Geophytes</b>		<i>Cyrtanthus attenuatus</i>	
<i>Adiantum capillus-veneris</i>	1	<i>Cyrtanthus contractus</i>	
<i>Adiantum poiretii</i>	1	<i>Cyrtanthus stenanthus</i>	
<i>Agapanthus campanulatus</i> subsp. <i>patens</i>	1	<i>Dierama cooperi</i>	1
<i>Albuca fastigiata</i> var. <i>fastigiata</i>		<i>Dierama dubium</i>	1, NEMA: BA, VU, end
<i>Albuca setosa</i>		<i>Dipcadi longifolium</i>	
<i>Ammocharis coranica</i>	1	<i>Dipcadi viride</i>	
<i>Aristea abyssinica</i>	2	<i>Disa porrecta</i>	
<i>Asplenium adiantum-nigrum</i>	1	<i>Disa pulchra</i>	1
<i>Asplenium aethiopicum</i>	1	<i>Drimia uniflora</i>	
<i>Asplenium capense</i>	1	<i>Dryopteris athamantica</i>	
<i>Asplenium splendens</i> subsp. <i>drakensbergense</i>	1	<i>Dryopteris inaequalis</i>	
<i>Asplenium trichomanes</i> subsp. <i>quadrivalens</i>	1	<i>Elaphoglossum acrostichoides</i>	1
<i>Babiana striata</i>	2	<i>Eriospermum ornithogaloides</i>	
<i>Blechnum australe</i> subsp. <i>australe</i>		<i>Eriospermum schinzii</i>	
<i>Bonatea polypodantha</i>	1	<i>Eulophia hians</i> var. <i>hians</i>	1
<i>Boophone disticha</i>	1, Declining	<i>Eulophia hians</i> var. <i>inaequalis</i>	1
<i>Brunsvigia natalensis</i>	1	<i>Eulophia hians</i> var. <i>nutans</i>	1
<i>Brunsvigia radulosa</i>	1	<i>Eulophia leontoglossa</i>	1
<i>Bulbine abyssinica</i>		<i>Eulophia ovalis</i> var. <i>ovalis</i>	1
		<i>Gethyllis spiralis</i>	1
		<i>Gladiolus dalenii</i> subsp. <i>dalenii</i>	1
		<i>Gladiolus ecklonii</i>	1
		<i>Gladiolus longicollis</i> subsp.	1

Species	Status	Species	Status
<i>longicollis</i>		<b><i>Pelargonium sidoides</i></b>	<b>1, Declining</b>
<i>Gladiolus papilio</i>	1	<i>Pellaea calomelanos</i>	
<i>Gladiolus permeabilis</i> subsp. <i>edulis</i>	1	<i>Satyrium hallackii</i> subsp. <i>ocellatum</i>	1
<i>Habenaria epipactidea</i>	2	<i>Schizochilus zeyheri</i>	1
<i>Haemanthus humilis</i> subsp. <i>humilis</i>	1	<i>Selaginella caffrorum</i>	
<i>Haemanthus montanus</i>	1	<i>Selaginella dregei</i>	
<i>Hesperantha leucantha</i>	2	<i>Selaginella mittenii</i>	
<i>Hesperantha radiata</i>	2	<i>Strumaria tenella</i> subsp. <i>orientalis</i>	2
<i>Huperzia saurus</i>	2	<b><i>Syringodea bifucata</i></b>	<b>1</b>
<i>Hypoxis angustifolia</i>	2	<i>Trachyandra asperata</i> var. <i>asperata</i>	2
<i>Hypoxis argentea</i>	2	<i>Trachyandra asperata</i> var. <i>basutoensis</i>	2
<i>Hypoxis filiformis</i>	2	<i>Trachyandra asperata</i> var. <i>macowanii</i>	2
<b><i>Hypoxis hemerocallidea</i></b>	<b>2, Declining</b>	<i>Trachyandra asperata</i> var. <i>saltii</i>	2
<i>Hypoxis iridifolia</i>	2	<i>Tritonia gladiolaris</i>	2
<i>Hypoxis rigidula</i>	2	<i>Tulbaghia acutiloba</i>	2
<i>Kniphofia ritualis</i>	1	<i>Tulbaghia leucantha</i>	2
<b><i>Lapeirousia jacquinii</i></b>	<b>2</b>	<i>Watsonia lepida</i>	2
<i>Ledebouria cooperi</i>		<i>Zantedeschia aethiopica</i>	1
<i>Ledebouria luteola</i>			
<i>Ledebouria marginata</i>			
<i>Ledebouria revoluta</i>			
<i>Ledebouria undulata</i>			
<i>Massonia jasminiflora</i>		<b>Cyperoids</b>	
<i>Mohria vestita</i>		<i>Bulbostylis contexta</i>	
<i>Moraea pallida</i>	2	<i>Bulbostylis densa</i> subsp. <i>afromontana</i>	
<i>Moraea simulans</i>	2	<i>Bulbostylis humilis</i>	
<b><i>Nerine filifolia</i></b>	<b>1</b>	<i>Bulbostylis oritrephes</i>	
<i>Nerine laticoma</i>	1	<b><i>Cyperus capensis</i></b>	
<i>Ophioglossum polyphyllum</i>		<i>Cyperus esculentus</i>	
<i>Ornithogalum flexuosum</i>		<i>Cyperus marlothii</i>	
<b><i>Ornithogalum juncifolium</i></b>		<i>Cyperus obtusiflorus</i> var. <i>flavissimus</i>	
<i>Ornithogalum tenuifolium</i> subsp. <i>tenuifolium</i>		<i>Cyperus parvinux</i>	
<i>Osmunda regalis</i>	1	<i>Cyperus rupestris</i>	

Species	Status	Species	Status
<i>Cyperus semitriifidus</i>		<i>Chloris gayana</i>	
<i>Cyperus squarrosus</i>		<i>Chloris virgata</i>	
<i>Cyperus usitatus</i>		<i>Cymbopogon dieterlenii</i>	
<i>Ficinia gracilis</i>		<i>Cymbopogon prolixus</i>	
<i>Ficinia stolonifera</i>		<i>Cynodon dactylon</i>	
<i>Juncus inflexus</i>		<i>Cynodon hirsutus</i>	
<i>Kyllinga alba</i>		<i>Cynodon incompletus</i>	
<i>Schoenoxiphium lehmannii</i>		<i>Cynodon transvaalensis</i>	
<i>Schoenoxiphium sparteum</i>		<i>Digitaria argyrograpta</i>	
<i>Scirpoides burkei</i>		<i>Digitaria ciliaris</i>	
		<i>Digitaria eriantha</i>	
<b>Grasses</b>		<i>Digitaria monodactyla</i>	
<i>Agrostis lachnantha</i>		<i>Digitaria ternata</i>	
<i>Andropogon appendiculatus</i>		<i>Digitaria tricholaenoides</i>	
<i>Andropogon eucomus</i>		<i>Echinochloa crus-galli</i>	
<i>Andropogon schirensis</i>		<i>Echinochloa jubata</i>	
<i>Anthephora pubescens</i>		<i>Ehrharta calycina</i>	
<i>Aristida adscensionis</i>		<i>Ehrharta erecta</i> var. <i>erecta</i>	
<i>Aristida bipartita</i>		<i>Ehrharta erecta</i> var. <i>natalensis</i>	
<i>Aristida canescens</i> subsp. <i>canescens</i>		<i>Elionurus muticus</i>	
<i>Aristida congesta</i> subsp. <i>barbicollis</i>		<i>Enneapogon desvauxii</i>	
<i>Aristida congesta</i> subsp. <i>congesta</i>		<i>Enneapogon scoparius</i>	
<i>Aristida diffusa</i> subsp. <i>burkei</i>		<i>Eragrostis biflora</i>	
<i>Aristida junciformis</i> subsp. <i>junciformis</i>		<i>Eragrostis caesia</i>	
<i>Aristida meridionalis</i>		<i>Eragrostis capensis</i>	
<i>Bothriochloa insculpta</i>		<i>Eragrostis chloromelas</i>	
<i>Bothriochloa radicans</i>		<i>Eragrostis cilianensis</i>	
<i>Brachiaria eruciformis</i>		<i>Eragrostis curvula</i>	
<i>Brachiaria nigropedata</i>		<i>Eragrostis gummiflua</i>	
<i>Brachiaria serrata</i>		<i>Eragrostis lehmanniana</i>	
<i>Bromus leptoclados</i>		<i>Eragrostis micrantha</i>	
<i>Catalepis gracilis</i>		<i>Eragrostis nindensis</i>	
		<i>Eragrostis obtusa</i>	
		<i>Eragrostis plana</i>	
		<i>Eragrostis planiculmis</i>	

Species	Status	Species	Status
<i>Eragrostis racemosa</i>		<i>Panicum deustum</i>	
<i>Eragrostis remotiflora</i>		<i>Panicum maximum</i>	
<i>Eragrostis sclerantha</i> subsp. <i>sclerantha</i>		<i>Panicum schinzii</i>	
<i>Eragrostis stapfii</i>		<i>Panicum stapfianum</i>	
<i>Eragrostis superba</i>		<i>Paspalum distichum</i>	
<i>Eragrostis trichophora</i>		<i>Pennisetum sphacelatum</i>	
<i>Eriochloa fatmensis</i>		<i>Pennisetum thunbergii</i>	
<i>Eustachys paspaloides</i>		<i>Pentaschistis airoides</i> subsp. <i>airoides</i>	
<i>Festuca longipes</i>		<i>Pogonarthria squarrosa</i>	
<i>Festuca scabra</i>		<i>Setaria incrassata</i>	
<i>Fingerhuthia africana</i>		<i>Setaria nigrirostris</i>	
<i>Fingerhuthia sesleriiformis</i>		<i>Setaria pumila</i>	
<i>Harpochloa falx</i>		<i>Setaria sphacelata</i>	
<i>Helictotrichon longifolium</i>		<i>Sorghum bicolor</i> subsp. <i>drummondii</i>	
<i>Helictotrichon turgidulum</i>		<i>Sporobolus africanus</i>	
<i>Hemarthria altissima</i>		<i>Sporobolus centrifugus</i>	
<i>Heteropogon contortus</i>		<i>Sporobolus discosporus</i>	
<i>Hordeum capense</i>		<i>Sporobolus fimbriatus</i>	
<i>Hyparrhenia anamesa</i>		<i>Sporobolus ioclados</i>	
<i>Hyparrhenia dregeana</i>		<i>Stipa dregeana</i>	
<i>Hyparrhenia hirta</i>		<i>Stipagrostis uniplumis</i> var. <i>neesii</i>	
<i>Imperata cylindrica</i>		<i>Stipagrostis zeyheri</i> subsp. <i>sericans</i>	
<i>Koeleria capensis</i>		<i>Tetrachne dregei</i>	
<i>Leersia hexandra</i>		<i>Themeda triandra</i>	
<i>Leptochloa fusca</i>		<i>Tragus koelerioides</i>	
<i>Melica decumbens</i>		<i>Tragus racemosus</i>	
<i>Melica racemosa</i>		<i>Trichoneura grandiglumis</i>	
<i>Melinis nerviglumis</i>		<i>Triraphis andropogonoides</i>	
<i>Melinis repens</i> subsp. <i>repens</i>		<i>Tristachya leucothrix</i>	
<i>Microchloa caffra</i>		<i>Urochloa panicoides</i>	
<i>Microchloa kunthii</i>			
<i>Miscanthus capensis</i>			
<i>Oropetium capense</i>			
<i>Panicum coloratum</i> var. <i>coloratum</i>			

Species confined to wetland areas:

Species	Status
<b>Sedges and rushes</b>	
<i>Abildgaardia ovata</i>	
<i>Carex glomerabilis</i>	
<i>Cyperus congestus</i>	
<i>Cyperus denudatus</i> var. <i>denudatus</i>	
<i>Cyperus difformis</i>	
<i>Cyperus fastigiatus</i>	
<i>Cyperus longus</i> var. <i>tenuiflorus</i>	
<i>Cyperus marginatus</i>	
<i>Cyperus rigidifolius</i>	
<i>Eleocharis limosa</i>	
<i>Fimbristylis dichotoma</i> subsp. <i>dichotoma</i>	
<i>Fuirena pubescens</i> var. <i>pubescens</i>	
<i>Isolepis cernua</i> var. <i>cernua</i>	
<i>Isolepis costata</i>	
<i>Juncus dregeanus</i> subsp. <i>dregeanus</i>	
<i>Juncus oxycarpus</i>	
<i>Kyllinga alata</i>	
<i>Kyllinga erecta</i> var. <i>erecta</i>	
<i>Kyllinga pulchella</i>	
<i>Lipocarpha hemisphaerica</i>	
<i>Schoenoplectus decipiens</i>	
<i>Schoenoplectus muricinux</i>	
<i>Schoenoplectus muriculatus</i>	
<i>Scirpus ficinioides</i>	

Species	Status
<b>Herbs and forbs</b>	
<i>Aponogeton junceus</i>	
<i>Berula thunbergii</i>	
<i>Equisetum ramosissimum</i> subsp. <i>ramosissimum</i>	
<i>Eriocaulon abyssinicum</i>	
<i>Isoetes transvaalensis</i>	<b>NEMA:BA, NT</b>
<i>Lagarosiphon muscoides</i>	
<i>Limosella grandiflora</i>	
<i>Limosella longiflora</i>	
<i>Limosella maior</i>	
<i>Marsilea macrocarpa</i>	
<i>Mimulus gracilis</i>	
<i>Persicaria decipiens</i>	
<i>Potamogeton nodosus</i>	
<i>Psilotum nudum</i>	
<i>Rotala capensis</i>	
<i>Typha capensis</i>	
<i>Utricularia arenaria</i>	
<i>Veronica anagallis-aquatica</i>	
<i>Xyris capensis</i>	
<b>Grasses</b>	
<i>Phragmites australis</i>	

Note: use of colours and symbols are explained under section 4.1.



## 9. Appendix A2: Vertebrate species that have been recorded in the wider area

Lists according to the ADU and SANBI database and Apps (2000)

Common Name	Species Name	Status
<b>Amphibians</b>		
Guttural toad	<i>Amietophrynus gutturalis</i>	
Ranger's Toad or Raucous Toad	<i>Amietophrynus rangeri</i>	
Karoo Toad; Gariiep Toad	<i>Vandijkophrynus gariiepensis</i>	
Senegal Running Frog	<i>Kassina senegalensis</i>	
Weale's Running Frog	<i>Semnodactylus wealii</i>	
African clawed frog, Platanna	<i>Xenopus laevis</i>	
Common or Angola River Frog	<i>Amietia angolensis</i>	
Cape River Frog	<i>Amietia fuscigula</i>	
Boettger's Dainty Frog, Common Caco	<i>Cacosternum boettgeri</i>	
African bullfrog, Giant bullfrog	<i>Pyxicephalus adspersus</i>	
Striped Stream Frog	<i>Strongylopus fasciatus</i>	
Common Sand Frog	<i>Tomopterna cryptotis</i>	
Natal Sand Frog	<i>Tomopterna natalensis</i>	
Tomopterna tandyi	<i>Tomopterna tandyi</i>	
<b>Chelonia: Tortoises and terrapins</b>		
Marsh Terrapin	<i>Pelomedusa subrufa</i>	1
Natal Hinged Tortoise	<i>Kinixys natalensis</i>	1
Leopard Tortoise	<i>Stigmochelys pardalis</i>	1
<b>Squamata: Snakes (Serpentes)</b>		
Black-headed Centipede-eater	<i>Aparallactus capensis</i>	1
Bibron's Stiletto Snake	<i>Atractaspis bibronii</i>	1
<b>Striped Harlequin Snake</b>	<b><i>Homoroselaps dorsalis</i></b>	<b>1, Near Threatened, end</b>
<b>Spotted Harlequin Snake</b>	<b><i>Homoroselaps lacteus</i></b>	<b>1, end</b>
Southern African Python	<i>Python natalensis</i>	1
Many-spotted Snake	<i>Amplorhinus multimaculatus</i>	1
Brown House Snake	<i>Boaedon capensis</i>	1
Red-lipped Snake	<i>Crotaphopeltis hotamboeia</i>	1
<b>Southern Brown Egg-eater</b>	<b><i>Dasypeltis inornata</i></b>	<b>1, end</b>

Common Name	Species Name	Status
Rhombic Egg-eater	<i>Dasypeltis scabra</i>	1
Boomslang	<i>Dispholidus typus</i> subsp <i>typus</i>	1
South African Slug-eater	<i>Duberria lutrix</i> subsp <i>lutrix</i>	1, end
Aurora House Snake	<i>Lamprophis aurora</i>	1, end
Spotted House Snake	<i>Lamprophis guttatus</i>	1
Olive House Snake	<i>Lycodonomorphus inornatus</i>	
Dusky-bellied Water Snake	<i>Lycodonomorphus laevisissimus</i>	
Brown Water Snake	<i>Lycodonomorphus rufulus</i>	1
Cape Wolf Snake	<i>Lycophidion capense</i> subsp <i>capense</i>	1
South Eastern Green Snake	<i>Philothamnus hoplogaster</i>	
Western Natal Green Snake	<i>Philothamnus natalensis</i> subsp <i>occidentalis</i>	1, end
Spotted Bush Snake	<i>Philothamnus semivariatus</i>	
Short-snouted Grass Snake	<i>Psammophis brevirostris</i>	1
Cross-marked Grass Snake	<i>Psammophis crucifer</i>	1
Spotted Grass Snake	<i>Psammophylax rhombeatus</i> subsp <i>rhombeatus</i>	1
Mole Snake	<i>Pseudaspis cana</i>	1
Black Mamba	<i>Dendroaspis polylepis</i>	
Sundevall's Garter Snake	<i>Elapsoidea sundevallii</i> subsp <i>sundevallii</i>	
Rinkhals	<i>Hemachatus haemachatus</i>	1
Mozambique Spitting Cobra	<i>Naja mossambica</i>	
Eastern Thread Snake	<i>Leptotyphlops scutifrons</i> subsp <i>conjunctus</i>	1
Peters' Thread Snake	<i>Leptotyphlops scutifrons</i> subsp <i>scutifrons</i>	1
Bibron's Blind Snake	<i>Afrotyphlops bibronii</i>	1
Puff Adder	<i>Bitis arietans</i> subsp <i>arietans</i>	1
Cape Berg Adder	<i>Bitis atropos</i>	1
Rhombic Night Adder	<i>Causus rhombeatus</i>	1
<b>Squamata: other than snakes</b>		
<b>Gekkonidae (geckos)</b>		
Drakensberg Flat Gecko	<i>Afroedura nivarica</i>	1, end
Common Dwarf Gecko	<i>Lygodactylus capensis</i> subsp <i>capensis</i>	1

Common Name	Species Name	Status
Cape Gecko	<i>Pachydactylus capensis</i>	1
Spotted Gecko	<i>Pachydactylus maculatus</i>	1
Van Son's Gecko	<i>Pachydactylus vansoni</i>	1
<b>Scincidae (skinks)</b>		
Giant Legless Skink	<i>Acontias plumbeus</i>	1
Wahlberg's Snake-eyed Skink	<i>Afroablepharus wahlbergii</i>	1
Mozambique Dwarf Burrowing Skink	<i>Scelotes mossambicus</i>	
Cape Skink	<i>Trachylepis capensis</i>	1
Speckled Rock Skink	<i>Trachylepis punctatissima</i>	1
Speckled Sand Skink	<i>Trachylepis punctulata</i>	1
Variable Skink	<i>Trachylepis varia</i>	1
<b>Cordylidae (girdled lizards)</b>		
<b>Coppery Grass Lizard</b>	<i>Chamaesaura aenea</i>	1, end
<b>Cape Grass Lizard</b>	<i>Chamaesaura anguina subsp anguina</i>	1, end
Common Girdled Lizard	<i>Cordylus vittifer</i>	1
<b>Lang's Crag Lizard</b>	<i>Pseudocordylus langi</i>	1, end
<b>Common Crag Lizard</b>	<i>Pseudocordylus melanotus subsp melanotus</i>	1, end
<b>Drakensberg Crag Lizard</b>	<i>Pseudocordylus melanotus subsp subviridis</i>	1, end
<b>Spiny Crag Lizard</b>	<i>Pseudocordylus spinosus</i>	1, end
<b>Giant Girdled Lizard</b>	<i>Smaug giganteus</i>	1, end
<b>Gerrhosauridae (plated lizards)</b>		
Yellow-throated Plated Lizard	<i>Gerrhosaurus flavigularis</i>	1
<b>Breyer's Long-tailed Seps</b>	<i>Tetradactylus breyeri</i>	1, end
<b>Short-legged Seps</b>	<i>Tetradactylus seps</i>	1, end
<b>Lacertidae (lacertids, wall lizards)</b>		
<b>Delalande's Sandveld Lizard</b>	<i>Nucras lalandii</i>	1, end
Ornate Sandveld Lizard	<i>Nucras ornata</i>	1
<b>Burchell's Sand Lizard</b>	<i>Pedioplanis burchelli</i>	1, end
<b>Essex's Mountain Lizard</b>	<i>Tropidosaura essexi</i>	1, end

Common Name	Species Name	Status
<b>Chamaeleonidae (chameleons)</b>		
<b>Drakensberg Dwarf Chameleon</b>	<i>Bradypodion dracomontanum</i>	<b>1, end</b>
Common Flap-neck Chameleon	<i>Chamaeleo dilepis</i> subsp <i>dilepis</i>	1
<b>Agamidae (agamas)</b>		
Southern Tree Agama	<i>Acanthocercus atricollis</i> subsp <i>atricollis</i>	1
<b>Distant's Ground Agama</b>	<i>Agama aculeata</i> subsp <i>distanti</i>	<b>1, end</b>
Southern Rock Agama	<i>Agama atra</i>	1
<b>Varanidae (monitors)</b>		
Rock Monitor	<i>Varanus albigularis</i> subsp <i>albigularis</i>	1
Water Monitor	<i>Varanus niloticus</i>	1
<b>Aves - Birds</b>		
Lesser Swamp-Warbler	<i>Acrocephalus gracilirostris</i>	1
Common Sandpiper	<i>Actitis hypoleucos</i>	1
Malachite Kingfisher	<i>Alcedo cristata</i>	1
Egyptian Goose	<i>Alopochen aegyptiaca</i>	2
Red-headed Finch	<i>Amadina erythrocephala</i>	1
Cape Teal	<i>Anas capensis</i>	1
Red-billed Teal	<i>Anas erythrorhyncha</i>	2
Hottentot Teal	<i>Anas hottentota</i>	1
Cape Shoveler	<i>Anas smithii</i>	1
African Black Duck	<i>Anas sparsa</i>	1
Yellow-billed Duck	<i>Anas undulata</i>	2
African Darter	<i>Anhinga rufa</i>	1
African Pipit	<i>Anthus cinnamomeus</i>	1
African Rock Pipit	<i>Anthus crenatus</i>	1
Plain-backed Pipit	<i>Anthus leucophrys</i>	1
Long-billed Pipit	<i>Anthus similis</i>	1
Buffy Pipit	<i>Anthus vaalensis</i>	1
Little Swift	<i>Apus affinis</i>	1
Common Swift	<i>Apus apus</i>	1
African Black Swift	<i>Apus barbatus</i>	1
White-rumped Swift	<i>Apus caffer</i>	1
White-rumped Swift	<i>Apus horus</i>	1
Tawny Eagle	<i>Aquila rapax</i>	1
Verreaux's Eagle	<i>Aquila verreauxii</i>	1
Grey Heron	<i>Ardea cinerea</i>	1
Goliath Heron	<i>Ardea goliath</i>	1

Common Name	Species Name	Status
Black-headed Heron	<i>Ardea melanocephala</i>	1
Squacco Heron	<i>Ardeola ralloides</i>	1
<b>Kori Bustard</b>	<b><i>Ardeotis kori</i></b>	<b>1, NEMA: BA, Vulnerable</b>
Marsh Owl	<i>Asio capensis</i>	1
Pririt Batis	<i>Batis pririt</i>	1
Hadeda Ibis	<i>Bostrychia hagedash</i>	1
Little Rush-Warbler	<i>Bradypterus baboecala</i>	1
Spotted Eagle-Owl	<i>Bubo africanus</i>	1
Cattle Egret	<i>Bubulcus ibis</i>	1
Spotted Thick-knee	<i>Burhinus capensis</i>	1
Jackal Buzzard	<i>Buteo rufofuscus</i>	1
Steppe Buzzard	<i>Buteo vulpinus</i>	1
Red-capped Lark	<i>Calandrella cinerea</i>	1
Sabota Lark	<i>Calendulauda sabota</i>	1
Curlew Sandpiper	<i>Calidris ferruginea</i>	1
Little Stint	<i>Calidris minuta</i>	1
Rufous-cheeked Nightjar	<i>Caprimulgus rufigena</i>	1
Burchell's Coucal	<i>Centropus burchellii</i>	1
Familiar Chat	<i>Cercomela familiaris</i>	1
Sickle-winged Chat	<i>Cercomela sinuata</i>	1
Karoo Scrub-Robin	<i>Cercotrichas coryphoeus</i>	1
Kalahari Scrub-Robin	<i>Cercotrichas paena</i>	1
Cape Long-billed Lark	<i>Certhilauda curvirostris</i>	1
Pied Kingfisher	<i>Ceryle rudis</i>	1
Common Ringed Plover	<i>Charadrius hiaticula</i>	1
Kittlitz's Plover	<i>Charadrius pecuarius</i>	1
Three-banded Plover	<i>Charadrius tricollaris</i>	1
Spike-heeled Lark	<i>Chersomanes albofasciata</i>	1
Whiskered Tern	<i>Chlidonias hybrida</i>	1
White-winged Tern	<i>Chlidonias leucopterus</i>	1
Diderick Cuckoo	<i>Chrysococcyx caprius</i>	1
White Stork	<i>Ciconia ciconia</i>	1
Black Stork	<i>Ciconia nigra</i>	1
White-bellied Sunbird	<i>Cinnyris talatala</i>	1
Black Harrier	<i>Circus maurus</i>	1
African Marsh-Harrier	<i>Circus ranivorus</i>	1
Desert Cisticola	<i>Cisticola aridulus</i>	1
Wing-snapping Cisticola	<i>Cisticola ayresii</i>	1
Neddicky	<i>Cisticola fulvicapilla</i>	1
Zitting Cisticola	<i>Cisticola juncidis</i>	1
Wailing Cisticola	<i>Cisticola lais</i>	1

Common Name	Species Name	Status
Cloud Cisticola	<i>Cisticola textrix</i>	1
Levaillant's Cisticola	<i>Cisticola tinniens</i>	1
Great Spotted Cuckoo	<i>Clamator glandarius</i>	1
Jacobin Cuckoo	<i>Clamator jacobinus</i>	1
African Olive-pigeon	<i>Columba arquatrix</i>	1
Speckled Pigeon	<i>Columba guinea</i>	2
Rock Dove	<i>Columba livia</i>	2
European Roller	<i>Coracias garrulus</i>	1
White-necked Raven	<i>Corvus albicollis</i>	1
Cape Robin-Chat	<i>Cossypha caffra</i>	1
Common Quail	<i>Coturnix coturnix</i>	2
Wattled Starling	<i>Creatophora cinerea</i>	1
White-throated Canary	<i>Crithagra albogularis</i>	1
Black-throated Canary	<i>Crithagra atrogularis</i>	1
Yellow Canary	<i>Crithagra flaviventris</i>	1
Red-chested Cuckoo	<i>Cuculus solitarius</i>	1
Burchell's Courser	<i>Cursorius rufus</i>	1
Temminck's Courser	<i>Cursorius temminckii</i>	1
White-faced Duck	<i>Dendrocygna viduata</i>	2
Cardinal Woodpecker	<i>Dendropicos fuscescens</i>	1
Great Egret	<i>Egretta alba</i>	1
Little Egret	<i>Egretta garzetta</i>	1
Yellow-billed Egret	<i>Egretta intermedia</i>	1
Black-shouldered Kite	<i>Elanus caeruleus</i>	1
Cape Bunting	<i>Emberiza capensis</i>	1
Golden-breasted Bunting	<i>Emberiza flaviventris</i>	1
Lark-like Bunting	<i>Emberiza impetuani</i>	1
Cinnamon-breasted Bunting	<i>Emberiza tahapisi</i>	1
Yellow-bellied Eremomela	<i>Eremomela icteropygialis</i>	1
Chestnut-backed Sparrowlark	<i>Eremopterix leucotis</i>	1
Grey-backed Sparrowlark	<i>Eremopterix verticalis</i>	1
Common Waxbill	<i>Estrilda astrild</i>	1
Yellow-crowned Bishop	<i>Euplectes afer</i>	1
Long-tailed Widowbird	<i>Euplectes progne</i>	1
Karoo Korhaan	<i>Eupodotis vigorsii</i>	1
Lanner Falcon	<i>Falco biarmicus</i>	1
<b>Lesser Kestrel</b>	<b><i>Falco naumanni</i></b>	<b>1, NEMA: BA, Vulnerable</b>
Rock Kestrel	<i>Falco rupicolis</i>	1
Greater Kestrel	<i>Falco rupicoloides</i>	1
Red-Knobbed Coot	<i>Fulica cristata</i>	2
Large-billed Lark	<i>Galerida magnirostris</i>	1

Common Name	Species Name	Status
African Snipe	<i>Gallinago nigripennis</i>	1
Common Moorhen	<i>Gallinula chloropus</i>	1
Ground Woodpecker	<i>Geocolaptes olivaceus</i>	1
<b>Bald Ibis</b>	<b><i>Geronticus calvus</i></b>	<b>1, NEMA: BA, Vulnerable</b>
<b>Cape Vulture</b>	<b><i>Gyps coprotheres</i></b>	<b>1, NEMA: BA, Endangered</b>
African Fish-Eagle	<i>Haliaeetus vocifer</i>	1
Black-winged Stilt	<i>Himantopus himantopus</i>	1
White-throated Swallow	<i>Hirundo albigularis</i>	1
Greater Striped Swallow	<i>Hirundo cucullata</i>	1
Pearl-breasted Swallow	<i>Hirundo dimidiata</i>	1
Rock Martin	<i>Hirundo fuligula</i>	1
Barn Swallow	<i>Hirundo rustica</i>	1
Red-breasted Swallow	<i>Hirundo semirufa</i>	1
South African Cliff-Swallow	<i>Hirundo spilodera</i>	1
Greater Honeyguide	<i>Indicator indicator</i>	1
Lesser Honeyguide	<i>Indicator minor</i>	1
Red-throated Wryneck	<i>Jynx ruficollis</i>	1
Cape Glossy Starling	<i>Lamprotornis nitens</i>	1
Common Fiscal	<i>Lanius collaris</i>	1
Red-backed Shrike	<i>Lanius collurio</i>	1
Cape Longclaw	<i>Macronyx capensis</i>	1
Rufous-eared Warbler	<i>Malcorus pectoralis</i>	1
Giant Kingfisher	<i>Megaceryle maximus</i>	1
Southern Black Flycatcher	<i>Melaenornis pammelaina</i>	1
Southern Pale Chanting Goshawk	<i>Melierax canorus</i>	1
European Bee-eater	<i>Merops apiaster</i>	1
White-fronted Bee-eater	<i>Merops bullockoides</i>	1
Swallow-tailed Bee-eater	<i>Merops hirundineus</i>	1
Rufous-naped Lark	<i>Mirafra africana</i>	1
Cape Clapper Lark	<i>Mirafra apiata</i>	1
Melodious Lark	<i>Mirafra cheniana</i>	1
Short-toed Rock-Thrush	<i>Monticola brevipes</i>	1
Sentinel Rock-Thrush	<i>Monticola explorator</i>	1
Cape Rock-Thrush	<i>Monticola rupestris</i>	1
African Pied Wagtail	<i>Motacilla aguimp</i>	1
Cape Wagtail	<i>Motacilla capensis</i>	1
Spotted Flycatcher	<i>Muscicapa striata</i>	1
Yellowbilled Stork	<i>Mycteria ibis</i>	1
Anteating Chat	<i>Myrmecocichla formicivora</i>	1
Malachite Sunbird	<i>Nectarinia famosa</i>	1

Common Name	Species Name	Status
<b>Ludwig's Bustard</b>	<b><i>Neotis ludwigii</i></b>	<b>1, NEMA: BA, Vulnerable</b>
Southern Pochard	<i>Netta erythrophthalma</i>	1
Helmeted guineafowl	<i>Numida meleagris</i>	2
Black-crowned Night-Heron	<i>Nycticorax nycticorax</i>	1
Namaqua Dove	<i>Oena capensis</i>	1
Mountain Wheatear	<i>Oenanthe monticola</i>	1
Capped Wheatear	<i>Oenanthe pileata</i>	1
African Quailfinch	<i>Ortygospiza atricollis</i>	1
Osprey	<i>Pandion haliaetus</i>	1
Layard's Tit-Babbler	<i>Parisoma layardi</i>	1
Chestnut-vented Tit-Babbler	<i>Parisoma subcaeruleum</i>	1
Ashy Tit	<i>Parus cinerascens</i>	1
Southern Grey-headed Sparrow	<i>Passer diffusus</i>	1
Reed Cormorant	<i>Phalacrocorax africanus</i>	1
White-breasted Cormorant	<i>Phalacrocorax lucidus</i>	1
Greater Flamingo	<i>Phoenicopterus ruber</i>	1
Green Wood-Hoopoe	<i>Phoeniculus purpureus</i>	1
Willow Warbler	<i>Phylloscopus trochilus</i>	1
African Spoonbill	<i>Platalea alba</i>	1
Spur-winged Goose	<i>Plectropterus gambensis</i>	2
Glossy Ibis	<i>Plegadis falcinellus</i>	1
White-browed Sparrow-Weaver	<i>Plocepasser mahali</i>	1
Great Crested Grebe	<i>Podiceps cristatus</i>	1
<b>Martial Eagle</b>	<b><i>Polemaetus bellicosus</i></b>	<b>1, NEMA: BA, Vulnerable</b>
Black-chested Prinia	<i>Prinia flavicans</i>	1
Drakensberg Prinia	<i>Prinia hypoxantha</i>	1
Natal Spurfowl	<i>Pternistis natalensis</i>	1
Swainson's Spurfowl	<i>Pternistis swainsonii</i>	2
Namaqua Sandgrouse	<i>Pterocles namaqua</i>	1
Green-winged Pytilia	<i>Pytilia melba</i>	1
Pied Avocet	<i>Recurvirostra avosetta</i>	1
Scimitar-bill Hoopoe	<i>Rhinopomastus cyanomelas</i>	1
Double-banded Courser	<i>Rhinoptilus africanus</i>	1
Three-banded Courser	<i>Riparia cincta</i>	1
Brown-throated Martin	<i>Riparia paludicola</i>	1
Sand Martin	<i>Riparia riparia</i>	1
Secretarybird	<i>Sagittarius serpentarius</i>	1
African Stonechat	<i>Saxicola torquatus</i>	1
Grey-wing Francolin	<i>Scleroptila africanus</i>	2
Red-wing Francolin	<i>Scleroptila levaillantii</i>	1



Common Name	Species Name	Status
Orange River Francolin	<i>Scleroptila levaillantoides</i>	2
Hamerkop	<i>Scopus umbretta</i>	1
Cape Canary	<i>Serinus canicollis</i>	1
Fiscal Flycatcher	<i>Sigelus silens</i>	1
Cape Grassbird	<i>Sphenoeacus afer</i>	1
Pink-billed Lark	<i>Spizocorys conirostris</i>	1
Scaly-feathered Finch	<i>Sporopipes squamifrons</i>	1
Pied Starling	<i>Spreo bicolor</i>	1
Fairy Flycatcher	<i>Stenostira scita</i>	1
Cape Turtle-Dove	<i>Streptopelia capicola</i>	2
Red-eyed Turtle-Dove	<i>Streptopelia semitorquata</i>	2
Laughing Dove	<i>Streptopelia senegalensis</i>	2
Ostrich	<i>Struthio camelus</i>	1
Dickson's Brown	<i>Stygionympha irrorata</i>	1
Long-billed Crombec	<i>Sylvietta rufescens</i>	1
Little Grebe	<i>Tachybaptus ruficollis</i>	1
Alpine Swift	<i>Tachymarptis melba</i>	1
South African Shelduck	<i>Tadorna cana</i>	2
Brown-crowned Tchagra	<i>Tchagra australis</i>	1
Bokmakierie	<i>Telophorus zeylonus</i>	1
Mocking Cliff-Chat	<i>Thamnolaea cinnamomeiventris</i>	1
African Sacred Ibis	<i>Threskiornis aethiopicus</i>	1
Crested Barbet	<i>Trachyphonus vaillantii</i>	1
Acacia Pied Barbet	<i>Tricholaema leucomelas</i>	1
Wood Sandpiper	<i>Tringa glareola</i>	1
Common Greenshank	<i>Tringa nebularia</i>	1
Marsh Sandpiper	<i>Tringa stagnatilis</i>	1
Olive Thrush	<i>Turdus olivaceus</i>	1
Barn Owl	<i>Tyto alba</i>	1
<b>African Grass-Owl</b>	<b><i>Tyto capensis</i></b>	<b>1, NEMA: BA, Vulnerable</b>
African Hoopoe	<i>Upupa africana</i>	1
Blue Waxbill	<i>Uraeginthus angolensis</i>	1
Blacksmith Lapwing	<i>Vanellus armatus</i>	1
Crowned Lapwing	<i>Vanellus coronatus</i>	1
Pin-tailed Whydah	<i>Vidua macroura</i>	1
Orange River White-eye	<i>Zosterops pallidus</i>	1
<b>Chiroptera - Bats</b>		
Lesueur's Wing-gland Bat	<i>Cistugo lesueuri</i>	
Geoffroy's Horseshoe Bat	<i>Rhinolophus clivosus</i>	

Common Name	Species Name	Status
<b>Insectivora - Insectivores</b>		
South African Hedgehog	<i>Atelerix frontalis</i>	1
Reddish-grey Musk Shrew	<i>Crocidura cyanea</i>	
Tiny Musk Shrew	<i>Crocidura fuscomurina</i>	
Maquassie Musk Shrew	<i>Crocidura maquassiensis</i>	
Swamp Musk Shrew	<i>Crocidura mariquensis</i>	
Lesser Grey-brown Musk Shrew	<i>Crocidura silacea</i>	
Least Dwarf Shrew	<i>Suncus infinitesimus</i>	
Lesser Dwarf Shrew	<i>Suncus varilla</i>	
<b>Macroscelidae – Elephant Shrews</b>		
Rock Elephant-shrew	<i>Elephantulus myurus</i>	
<b>Rodentia - Rodents</b>		
Red Veld Rat	<i>Aethomys chrysophilus</i>	
Tete Veld Rat	<i>Aethomys ineptus</i>	
Namaqua Rock Mouse	<i>Aethomys namaquensis</i>	
Common Molerat	<i>Cryptomys hottentotus</i>	
Grey Climbing Mouse	<i>Dendromus melanotis</i>	
Short-tailed Gerbil	<i>Desmodillus auricularis</i>	
Woodland Dormouse	<i>Graphiurus murinus</i>	
Cape Porcupine	<i>Hystrix africaeaustralis</i>	
Large-eared Mouse	<i>Malacothrix typica</i>	
Natal Multimammate Mouse	<i>Mastomys natalensis</i>	
Pygmy Mouse	<i>Mus minutoides</i>	
White-tailed Rat	<i>Mystromys albicaudatus</i>	
Vlei Rat	<i>Otomys irroratus</i>	
Saunder's Vlei Rat	<i>Otomys saundersiae</i>	
Springhare	<i>Pedetes capensis</i>	
Striped Mouse	<i>Rhabdomys pumilio</i>	
Highveld Gerbil	<i>Tatera brantsii</i>	
Bushveld Gerbil	<i>Tatera leucogaster</i>	
Cape Ground Squirrel	<i>Xerus inauris</i>	
<b>Lagomorpha – Rabbits and Hares</b>		
Desert/Cape Hare	<i>Lepus capensis</i>	2
Savannah/Scrub Hare	<i>Lepus saxatilis</i>	2
<b>Hyracoidea - Dassies</b>		
Rock Dassie	<i>Procavia capensis</i>	
<b>Artiodactyla – even-toed ungulates</b>		

<b>Common Name</b>	<b>Species Name</b>	<b>Status</b>
Springbuck	<i>Antidorcas marsupialis</i>	2
Black Wildebeest	<i>Connochaetes gnou</i>	1
Blesbuck	<i>Damaliscus pygargus phillipsi</i>	2
Klipspringer	<i>Oreotragus oreotragus</i>	
Steenbuck	<i>Raphicerus campestris</i>	2
Common Duiker	<i>Sylvicapra grimmia</i>	2
<b>Carnivora - Carnivores</b>		
African Clawless Otter	<i>Aonyx capensis</i>	1
Marsh Mongoose	<i>Atilax paludinosus</i>	1
Yellow Mongoose	<i>Cynictis penicillata</i>	1
<b>Black-footed Cat</b>	<b><i>Felis nigripes</i></b>	<b>1, NEMA: BA, Rare</b>
<b>African Wild Cat</b>	<b><i>Felis silvestris</i></b>	<b>1, NEMA: BA, Vulnerable</b>
Small Grey Mongoose	<i>Galerella pulverulenta</i>	1
Slender Mongoose	<i>Galerella sanguinea</i>	1
Small-spotted Genet	<i>Genetta genetta</i>	1
White-tailed Mongoose	<i>Ichneumia albicauda</i>	1
Striped Polecat	<i>Ictonyx striatus</i>	1
Spotted-necked Otter	<i>Lutra maculicollis</i>	1
Bat-eared Fox	<i>Otocyon megalotis</i>	1
Suricate	<i>Suricata suricatta</i>	1
Cape Fox	<i>Vulpes chama</i>	1
<b>Tubilidentata - Aardvark</b>		
<b>Antbear / Aardvark</b>	<b><i>Orycteropus afer</i></b>	<b>1, NEMA: BA, Vulnerable</b>

Note: use of colours and symbols are explained under section 4.2.

## 10. Appendix B: Ecological Environmental Management Plan: Merapi Solar Energy Facility

### 10.1. Design Phase

**OBJECTIVE: Ensure the selection of the best environmental option for the alignment of the power lines, development areas and access roads**

Soils in the study area and beyond are highly erodible, and hence erosion of fields and water courses throughout the Free State is of major concern. Erosion can mostly be prevented by an intact, high-cover grass layer. Currently it is difficult to predict how the local vegetation, adapted to high levels of irradiance, will respond to the shading of the PV arrays. The development will thus have to be designed and positioned in a way that will minimise the risk of accelerated erosion within the development, and avoid degradation of drainage lines within the project area and associated degradation of down-stream wetlands.

<b>Project Component/s</b>	<ul style="list-style-type: none"> <li>» PV Array</li> <li>» Grid connection and associated servitudes</li> <li>» Access roads</li> <li>» Workshop and guard houses</li> </ul>
<b>Potential Impact</b>	<ul style="list-style-type: none"> <li>» Placement that degrades the environment unnecessarily, particularly with respect to habitat destruction, loss of indigenous flora, drainage lines, and erosion.</li> </ul>
<b>Activities/Risk Sources</b>	<ul style="list-style-type: none"> <li>» Positioning of solar components and internal access routes</li> <li>» Positioning of workshop and guard houses</li> <li>» Alignment of power lines and servitudes</li> <li>» Alignment of access roads to development</li> </ul>
<b>Mitigation: Target/Objective</b>	<ul style="list-style-type: none"> <li>» To position and align the proposed infrastructure to be the most environmentally compatible option</li> <li>» Ecological sensitivities are taken into consideration and avoided as far as possible, thereby mitigating potential impacts</li> </ul>

<b>Mitigation: Action/Control</b>	<b>Responsibility</b>	<b>Timeframe</b>
Undertake pre-construction surveys for protected flora <ul style="list-style-type: none"> <li>» Such surveys need to be undertaken during the optimal growing season (December to February) to ensure that all species of conservation concern can be detected</li> </ul>	Specialist	Design review phase
Obtain permits for protected plant removal and relocation prior to commencement of activity in an area	Developer	Pre-construction

Mitigation: Action/Control	Responsibility	Timeframe
<p>Use design-level mitigation measures recommended in respect of habitat and ecosystem intactness and prevention of species loss as detailed within the EIA Report</p> <ul style="list-style-type: none"> <li>» This includes positioning components of the development as close as possible together and in close proximity to other existing or planned developments in the area</li> <li>» Strictly adhere to existing tracks/roads throughout, especially where drainage lines/rivers need to be crossed to gain access to the site</li> <li>» Sites for storing, mixing, and handling introduced materials, including all machinery, must be placed in an ecologically least sensitive area. Such sites must be clearly indicated in site plans and method statements and strictly adhered to.</li> <li>» Volumes of topsoil and subsoil that will have to be removed for the development must be determined in the design phase</li> <li>» Handling of topsoils and subsoils must be outlined and adequate storage areas included in the final layout plan <ul style="list-style-type: none"> <li>○ Topsoils comprise the upper 30 cm of uncultivated soils only, and may not be stored higher than 1 m</li> <li>○ Storage of topsoils must be limited to 6 months; alternatively a detailed topsoil storage management plan must be followed</li> <li>○ Management and handling of topsoil should be tailored to optimise the viability of the soil seed bank</li> </ul> </li> </ul>	Developer	Prior to submission of final construction layout plan
<p>Access roads and machinery turning points must be planned to minimise the impacted area, avoid the initiation of accelerated soil erosion and prevent unnecessary compaction and disturbance of topsoils, prevent obstruction or alteration of natural water flow</p>	Developer	Design phase
<p>Compile a comprehensive storm water management and erosion control plan for the project area as part of the final design of the project</p> <ul style="list-style-type: none"> <li>» Areas where vegetation will be kept intact or a dense grass layer will be re-established immediately after construction as part of the stormwater and erosion management plan must be indicated in the final layout plans</li> </ul>	Developer	Design phase

<b>Performance Indicator</b>	» Grid connection and road alignments meet ecological objectives.
------------------------------	---

	<ul style="list-style-type: none"> <li>» Solar components and access road alignments meet ecological objectives</li> <li>» Ecosystem fragmentation is kept to a minimum</li> <li>» No accelerated erosion as a result of the development</li> </ul>
<b>Monitoring</b>	<ul style="list-style-type: none"> <li>» Ensure that the design implemented meets the objectives and mitigation measures in the EIA Report through review of the design by the Project Manager, and the ECO prior to the commencement of construction.</li> </ul>

## 10.2. Construction and Operational Phase

### **OBJECTIVE: Environmentally sensitive location of construction equipment camps on site**

It is expected that all construction workers will be accommodated within existing accommodation in nearby townships as far as possible. No construction workers will be accommodated on site. Construction equipment may need to be stored at an appropriate location on the site for the duration of the construction period.

<b>Project Component/s</b>	Project components affecting the objective: <ul style="list-style-type: none"> <li>» Construction equipment camps</li> <li>» Facilities for storing, mixing and general handling of materials</li> <li>» Access roads</li> </ul>
<b>Potential Impact</b>	<ul style="list-style-type: none"> <li>» Damage to indigenous natural vegetation;</li> <li>» Damage to and/or loss of topsoil;</li> <li>» Initiation of accelerated erosion;</li> <li>» Compacting of ground; and</li> <li>» Pollution of the surrounding environment due to inadequate or inappropriate facilities</li> </ul>
<b>Activities/Risk Sources</b>	Vegetation clearing and levelling of equipment storage area/s; and Access to and from the equipment storage area/s.
<b>Mitigation: Target/Objective</b>	To minimise impacts on biophysical environment; and To limit equipment storage to within the demarcated site.

<b>Mitigation: Action/Control</b>	<b>Responsibility</b>	<b>Timeframe</b>
The location of the construction equipment camp will take cognisance of any ecologically sensitive areas identified. The location of this construction equipment camp shall be approved by the project ECO.	Contractor	Pre-construction
No temporary site camps will be allowed outside the	Contractor	Contract

Mitigation: Action/Control	Responsibility	Timeframe
footprint of the development area.		duration
As far as possible, minimise vegetation clearing and levelling for equipment storage areas.	Contractor	Erection: Site establishment Maintenance: contract duration
Rehabilitate and revegetate all disturbed areas at the construction equipment camp as soon as construction is complete within an area.	Contractor	Duration of Contract

<b>Performance Indicator</b>	<ul style="list-style-type: none"> <li>» No visible erosion scars once construction in an area is completed.</li> <li>» No claims regarding damage due to unauthorised removal of vegetation.</li> <li>» All damaged areas successfully rehabilitated one year after completion.</li> <li>» No damage to drainage lines and/or riverine areas.</li> <li>» Appropriate waste management.</li> </ul>
<b>Monitoring</b>	<ul style="list-style-type: none"> <li>» Regular audits of the construction camps and areas of construction on site.</li> <li>» A photographic record must be established before, during and after mitigation.</li> <li>» An incident reporting system should be used to record non-conformances to the EMP.</li> </ul>

**OBJECTIVE: Minimise loss of indigenous plants, including all plants of conservation concern**

Prior to any earthworks (including road construction or upgrading) a plant Search and Rescue program should be developed and implemented, preceded by a meticulous investigation of all footprint areas by a suitably qualified botanist, conducted during the optimal growing season (December to February) along the entire footprint area (on foot).

<b>Project Component/s</b>	Project components affecting the objective: <ul style="list-style-type: none"> <li>» PV Array</li> <li>» Grid connection and associated servitudes</li> <li>» Workshop and guard houses</li> <li>» Access roads</li> </ul>
<b>Potential Impact</b>	<ul style="list-style-type: none"> <li>» Substantially increased loss of species of conservation concern and other natural vegetation at construction phase and waste of on-site plant resources, and lack of locally sourced material for rehabilitation of disturbed areas;</li> </ul>

	<ul style="list-style-type: none"> <li>» Increased cost of having to buy in material for rehabilitation</li> <li>» Increased risk and/or occurrence of accelerated erosion</li> </ul>
<b>Activities/Risk Sources</b>	» Construction related loss and damage to remaining natural vegetation via heavy machinery, etc.
<b>Mitigation: Target/Objective</b>	» Rescue, maintenance and subsequent replanting of at least 70% of the natural vegetation in all development footprints within any areas of natural vegetation on site

<b>Mitigation: Action/Control</b>	<b>Responsibility</b>	<b>Timeframe</b>
Ecological footprint investigation and recording by GPS of localities of red data species and approximate extent of localities of all protected plant species	Ecologist	Prior to construction
<ul style="list-style-type: none"> <li>» Search and Rescue (S&amp;R) of transplantable succulents, tubers, and bulbs occurring in long term and permanent, hard surface development footprints (i.e. all buildings, new roads and tracks, and panel mount positions) should take place.</li> <li>» All development footprints must be surveyed and pegged out as soon as possible, and then a local horticulturist with Search and Rescue experience should be appointed to undertake the S&amp;R.</li> <li>» All rescued species should be bagged (and cuttings taken where appropriate) and kept in the horticulturist's or a designated on-site nursery, and should be returned to site once all construction is completed and rehabilitation of disturbed areas is required.</li> <li>» Replanting should only occur in spring or early summer (October to November), once the first rains have fallen, in order to facilitate establishment.</li> </ul>	ECO and horticultural Contractor	Prior to construction
<p>In line with the erosion management plan, it must be made clear what height of vegetation is permissible under and between the PV array</p> <ul style="list-style-type: none"> <li>» A minimum percentage cover (base cover) of vegetation set that should be permanently maintained after construction</li> <li>» A detailed rehabilitation and revegetation plan must be implemented during and after construction, aiming to achieve the desired vegetation cover within 12 months after construction of a particular area is completed</li> </ul>	Developer horticultural Contractor	Prior to and after construction, throughout operational phase

<b>Performance Indicator</b>	<ul style="list-style-type: none"> <li>» Horticulturist to submit list of target species to botanist for approval;</li> <li>» Rescue of material;</li> <li>» Replanting in rehabilitation areas to cover 70% of these</li> </ul>
------------------------------	--



	<ul style="list-style-type: none"> <li>» areas within 12 months of rehabilitation works;</li> <li>» Stable vegetation cover throughout the development area as determined desirable to curb erosion prior to construction;</li> <li>» Improvement of vegetation cover where it is currently degraded to a dominance of perennial grasses.</li> </ul>
<b>Monitoring</b>	<ul style="list-style-type: none"> <li>» ECO to monitor Search and Rescue;</li> <li>» Horticulturist to liaise with botanist;</li> <li>» Botanist to review rehabilitation success after 8 months of replanting of rehabilitation areas.</li> <li>» Continued monitoring of vegetation below and around the PV array throughout the operational phase and revegetation when ever needed</li> </ul>

**OBJECTIVE: To avoid and or minimise the potential negative impact on current and future farming activities during the construction phase.**

Construction activities of the proposed facility could lead to the loss of productive farm land.

<b>Project component/s</b>	Project components affecting the objective: <ul style="list-style-type: none"> <li>» PV Array</li> <li>» Grid connection and associated servitudes</li> <li>» Workshop and guard houses</li> <li>» Access roads</li> </ul>
<b>Potential Impact</b>	<ul style="list-style-type: none"> <li>» The footprint of the developments will result in a loss of land that will impact on farming activities on the site.</li> <li>» Change of species composition to vegetation with lower productivity and agricultural potential</li> <li>» Loss of nutrient-rich topsoil due to accelerated erosion and thus reduction of vegetation growth potential</li> <li>» Displacement of indigenous vegetation by invasive vegetation</li> </ul>
<b>Activities/risk sources</b>	<ul style="list-style-type: none"> <li>» The footprint taken up by the development</li> <li>» Introduction and/or further distribution of invasive plant species</li> <li>» Excessive fragmentation of habitats</li> <li>» Accelerated erosion</li> </ul>
<b>Mitigation: Target/Objective</b>	<ul style="list-style-type: none"> <li>» To minimise the loss of land and desirable indigenous vegetation by the construction of the development and to enable farming activities to continue where possible, specifically grazing.</li> </ul>

<b>Mitigation: Action/control</b>	<b>Responsibility</b>	<b>Timeframe</b>
Minimise the footprint of the development where possible, but not at the cost of impacting on sensitive habitats	Contractor	Before and during construction

Mitigation: Action/control	Responsibility	Timeframe
» Footprint for each development component, including temporarily accessed areas should be defined in the layout before construction phase commences.		
Rehabilitate disturbed areas on completion of the construction phase of each development component. Details of the rehabilitation programme should be contained in the EMP.	ECO and Contractors	Ongoing during construction phase

<b>Performance Indicator</b>	<ul style="list-style-type: none"> <li>» Footprint of development components included in the Construction Phase EMP.</li> <li>» Improvement of vegetation cover from current dominance of invasive shrubs to dominance of perennial grasses and dwarf shrubs</li> <li>» Meeting/s held with farmers during construction phase.</li> </ul>
<b>Monitoring</b>	<ul style="list-style-type: none"> <li>» ECO must monitor indicators listed above to ensure that they have been met for the construction phase.</li> </ul>

**OBJECTIVE: Minimisation of disturbance to topsoil**

In order to minimise impacts on flora, fauna, and ecological processes, the development footprint should be limited to the smallest area possible.

<b>Project Component/s</b>	Project components affecting the objective: <ul style="list-style-type: none"> <li>» PV Array</li> <li>» Grid connection and associated servitudes</li> <li>» Workshop and guard houses</li> <li>» Access roads</li> </ul>
<b>Potential Impact</b>	<ul style="list-style-type: none"> <li>» Impacts on natural vegetation</li> <li>» Impacts on soil</li> <li>» Loss of topsoil</li> </ul>
<b>Activity/Risk Source</b>	<ul style="list-style-type: none"> <li>» Site preparation and earthworks</li> <li>» Excavation of foundations</li> <li>» Construction of site access road</li> <li>» Construction of workshop and guard houses</li> <li>» Site preparation (e.g. compaction)</li> <li>» Power line construction activities</li> <li>» PV array construction activities</li> <li>» Stockpiling of topsoil, subsoil and spoil material</li> </ul>
<b>Mitigation: Target/Objective</b>	<ul style="list-style-type: none"> <li>» To prevent, contain and/or reduce any form of erosion</li> <li>» To retain desirable natural vegetation, where possible.</li> <li>» To minimise footprints of disturbance of vegetation/habitats.</li> <li>» Remove and store all topsoil on areas that are to be</li> </ul>

	excavated; and use this topsoil in subsequent rehabilitation of disturbed areas. » Minimise spoil material.
--	--

Mitigation: Action/Control	Responsibility	Timeframe
Areas to be cleared must be clearly marked on-site to eliminate the potential for unnecessary clearing.	Contractor in consultation with Specialist	Pre-construction
The extent of clearing and disturbance to indigenous vegetation must be kept to a minimum to restrict impact on flora and fauna and their habitats.	Contractor	Site establishment & duration of contract
Construction activities must be restricted to demarcated areas so that impact on flora and fauna is restricted.	Contractor	Site establishment & duration of contract
Any fill material required must be sourced from a commercial off-site suitable/permitted source, quarry or borrow pit. Where possible, material from foundation excavations must be used as fill on-site.	Contractor	Duration of contract
Excavated topsoil must be stockpiled in designated areas separate from subsoil and base material and protected from erosion or any form of degradation until rehabilitated. As far as possible, topsoil must not be stored for longer than 6 months. » A detailed topsoil management plan must be implemented, which must make provision for topsoil treatment if topsoil cannot be reapplied within 6 months. » The topsoil management plan must be designed to optimise the viability of soil seed banks and survival of soil organisms	Contractor	Site establishment & duration of contract
Topsoil must not be stripped or stockpiled when it is raining or when the soil is wet as compaction will occur.	Contractor	Site establishment and construction
The maximum topsoil stockpile height must not exceed 1 m in order to preserve micro-organisms and soil seed banks within the topsoil, which can be lost due to compaction and lack of oxygen.	Contractor	Duration of contract

<b>Performance Indicator</b>	<ul style="list-style-type: none"> <li>» Minimal disturbance outside of designated work areas</li> <li>» Minimise clearing of existing vegetation</li> <li>» Topsoil appropriately stored and re-applied</li> </ul>
<b>Monitoring</b>	<ul style="list-style-type: none"> <li>» Observation of vegetation clearing and soil management activities by ECO throughout construction phase</li> <li>» Supervision of all clearing and earthworks</li> </ul>

- » An incident reporting system will be used to record non-conformances to the EMP

**OBJECTIVE: Manage and reduce the impact of invasive vegetation**

Within the project area invasive species occur, which all have a potential of reproducing to such an extent that the ecosystem within and beyond the project area could be impaired. Additional alien species grow along major transport routes to the area and thus could be potentially spread there as well.

Species of concern within the project area: *Prosopis* species, *Opuntia* species, *Eucalyptus* species

Species of concern observed along access routes: *Pennisetum* species, *Argemone* species, *Agave* species, *Flaveria* species, *Alternanthera pungens*

<b>Project Component/s</b>	<ul style="list-style-type: none"> <li>» Transport of construction materials.</li> <li>» PV Array</li> <li>» Grid connection and associated servitudes</li> <li>» Workshop and guard houses</li> <li>» Access roads</li> </ul>
<b>Potential Impact</b>	<ul style="list-style-type: none"> <li>» Impacts on natural vegetation</li> <li>» Impacts on soil</li> <li>» Impact on faunal habitats</li> <li>» Loss of agricultural potential</li> </ul>
<b>Activity/Risk Source</b>	<ul style="list-style-type: none"> <li>» Transport of construction materials</li> <li>» Movement of construction machinery and personnel</li> <li>» Site preparation and earthworks causing disturbance to indigenous vegetation</li> <li>» Construction of site access road</li> <li>» Stockpiling of topsoil, subsoil and spoil material</li> </ul>
<b>Mitigation: Target/Objective</b>	<ul style="list-style-type: none"> <li>» To avoid the introduction of additional alien invasive plants to the project control area.</li> <li>» To avoid further distribution and thickening of existing alien plants on the project area.</li> <li>» To complement existing alien plant eradication programs in gradually causing a significant reduction of alien plant species throughout the project control area.</li> </ul>

<b>Mitigation: Action/Control</b>	<b>Responsibility</b>	<b>Timeframe</b>
Compile a detailed invasive plant management and monitoring programme as guideline for the entire construction, operational and decommissioning phase » This plan must contain WfW-accepted species-specific eradication methods	Specialist	Pre-construction

<b>Mitigation: Action/Control</b>	<b>Responsibility</b>	<b>Timeframe</b>
» It must provide for a continuous monitoring programme to detect new infestations		
Avoid creating conditions in which invasive plants may become established: » Keep disturbance of indigenous vegetation to a minimum » Rehabilitate disturbed areas as quickly as possible » Shred all non-seeding material from cleared invasive shrubs » Use the above material with shredded material of indigenous vegetation (latter can contain regenerative material) and use as mulch as part of the erosion control, rehabilitation and revegetation plan » Do not import soil from areas with alien plants	Contractor	Construction phase Operational phase
» Eradicate all invasive plants that occur within the development's temporary and permanent footprint areas » Ensure that material from invasive plants that can regenerate – seeds, suckers, plant parts are adequately destroyed and not further distributed	Contractor	Construction phase Operational phase
» Immediately control any alien plants that become newly established using registered control measures	Contractor	Construction phase Operational phase

<b>Performance Indicator</b>	<ul style="list-style-type: none"> <li>» Visible reduction of number and cover of alien invasive plants within the project area.</li> <li>» Improvement of vegetation cover where it is currently degraded to dominance of perennial grasses</li> <li>» No establishment of additional alien invasive species.</li> </ul>
<b>Monitoring</b>	<ul style="list-style-type: none"> <li>» Ongoing monitoring of area by ECO during construction.</li> <li>» Ongoing monitoring of area by EO during operation</li> <li>» Audit every two to three years by a suitably qualified botanist to assess the status of infestation and success of eradication measures</li> <li>» If new infestations are noted these must be recorded. A comprehensive eradication programme with the assistance of the WfW (Working for Water) Programme is advisable.</li> </ul>

## 11. Appendix C: Declaration of Independence



### environmental affairs

Department:  
Environmental Affairs  
REPUBLIC OF SOUTH AFRICA


#### DETAILS OF SPECIALIST AND DECLARATION OF INTEREST

	(For official use only)
File Reference Number:	12/12/20/
NEAS Reference Number:	DEAT/EIA/
Date Received:	

Application for authorisation in terms of the National Environmental Management Act, 1998 (Act No. 107 of 1998), as amended and the Environmental Impact Assessment Regulations, 2010

#### PROJECT TITLE

Merapi Solar Energy Facility Phases 1, 2, 3 and 4
---

Specialist:	Marianne Strohbach		
Contact person:	Marianne Strohbach		
Postal address:	PO Box 148, Sunninghill		
Postal code:	2157	Cell:	079 963 4806
Telephone:	(011) 234-6621	Fax:	086 684 0547
E-mail:	marianne@savannahsa.com		
Professional affiliation(s) (if any)	SACNASP (Reg No 400079/10) Desert Net International South African Association of Botanists		

Project Consultant:	Savannah Environmental (Pty) Ltd		
Contact person:	Jo-Anne Thomas		
Postal address:	PO Box 148, Sunninghill		
Postal code:	2157	Cell:	
Telephone:	(011) 234-6621	Fax:	086 684 0547
E-mail:	joanne@savannahsa.com		

4.2 The specialist appointed in terms of the Regulations\_

I, Marianne Strohbach, declare that --

General declaration:

- I act as the independent specialists in this application
- I will perform the work relating to the application in an objective manner, even if this results in views and findings that are not favourable to the applicant
- I declare that there are no circumstances that may compromise my objectivity in performing such work;
- I have expertise in conducting the specialist report relevant to this application, including knowledge of the Act, regulations and any guidelines that have relevance to the proposed activity;
- I will comply with the Act, regulations and all other applicable legislation;
- I have no, and will not engage in, conflicting interests in the undertaking of the activity;
- I undertake to disclose to the applicant and the competent authority all material information in my possession that reasonably has or may have the potential of influencing - any decision to be taken with respect to the application by the competent authority; and - the objectivity of any report, plan or document to be prepared by myself for submission to the competent authority;
- **all the particulars furnished by me in this form are true and correct; and**
- **I realise that a false declaration is an offence in terms of Regulation 71 and is punishable in terms of section 24F of the Act.**



Signature of the specialist:

Savannah Environmental (Pty) Ltd

Name of company (if applicable):

30 November 2012

Date:

## 12. Appendix D: Curriculum vitae of specialist

CURRICULUM VITAE	
<b>MARIANNE STROHBACH</b> <b>SAVANNAH ENVIRONMENTAL (PTY) LTD</b>	
Profession :	Specialist Scientist
Specialisation:	Plant Ecology and Botany, with special reference to vegetation mapping, vegetation state assessment, dynamics of arid and semi-arid vegetation and population dynamics of harvested plants, conservation planning
Work experience:	Twenty (20) years active in Plant Ecology
<b>SKILLS BASE AND CORE COMPETENCIES</b>	
<ul style="list-style-type: none"><li>• Four years Plant Conservation (Namibia)</li><li>• 16 years active research in vegetation mapping, vegetation state assessment, vegetation and plant population dynamics, long-term vegetation monitoring</li><li>• Advisory to International Standards for plant species that are harvested for commercial purposes</li><li>• Research Project Management</li><li>• Ecological assessments for developmental purposes (BAR, EIA)</li><li>• Working knowledge of environmental planning policies, regulatory frameworks and legislation</li><li>• Identification and assessment of potential environmental impacts and benefits</li><li>• Development of practical and achievable mitigation measures and management plans and evaluation of risk to project execution</li><li>• Experienced in environmental monitoring</li><li>• Completed projects in several Provinces of South Africa, as well as Zimbabwe and Namibia</li></ul>	
<b>EDUCATION AND PROFESSIONAL STATUS</b>	
<b>Degrees:</b>	
2003 M.Sc. in Botany, University of Pretoria, Pretoria, RSA	
1991 B.Sc. Hons in Botany, Nelson Mandela Metropolitan University, Port Elizabeth, RSA	
1990 B.Sc. in Biological Sciences, Nelson Mandela Metropolitan University, Port Elizabeth	
<b>Short Courses:</b>	
2008 Landscape Functional Analysis for vegetation condition and restoration monitoring	
2002 Satellite Image Analysis for Vegetation Mapping, German Aerospace Centre (DLR) Cologne/Würzburg, Germany	
Methods and Techniques of Environmental Management, Deutsche Stiftung für Internationale Entwicklung, Berlin, Germany	
1993 Conservation Law Enforcement, Ministry of Environment and Tourism, Namibia	
<b>Professional Society Affiliations:</b>	
South African Association for Botanists	
Association of Desert Net International	
The South African Council for Natural Scientific Professions: Pr. Sci. Nat. Reg. No. 400079/10 (Botany and Ecology)	
<b>Publications:</b>	
Articles in peer- reviewed scientific journals	
Book-chapters in scientific publications	
Popular articles	
Scientific conferences	
Contributions to TV documentaries	
Project-specific reports	



## **EMPLOYMENT**

Current: Ecologist, Savannah Environmental (Pty) Ltd

2011: Lecturer, Plant Ecology, University of Pretoria

1997 onwards: working as vegetation ecologist on a freelance basis, involved in part-time positions and contractual research as outlined below

1995 to 1996: Agricultural Researcher at the National Botanical Research Institute, Windhoek, Namibia

1992 to 1995: Vegetation ecologist at the Ministry of Environment and Tourism, Namibia, Directorate of Scientific Services

### **Past Affiliations and Research**

2001 – 2010: contractual work with BIOTA (BIODiversity Transect analysis in Africa) as affiliate to the National Botanical Research Institute, Namibia.

#### *Deliverables:*

Project management, including research proposal, financial management, and project implementation.

#### *Modelling of Savanna Dynamics:*

Collating and summarising available phytosociological data for ecological modellers to use in creating a generic savanna model for the Namibian savannas

Defining plant functional types to simplify vegetation data and to use as indicators in monitoring techniques by livestock farmers

#### *Vegetation Patterns and Processes in Namibian Savannas:*

Small scale monitoring of vegetation dynamics over a range of soil conditions and seasons

Determine ecological barriers to and best practice for rangeland restoration

#### *Vegetation classification and mapping in Central Namibia:*

Collection and analysis of phytosociological baseline data for the central Thornbush Savanna in Namibia, delineation of vegetation types with the aid of satellite imagery

2006: German Scientific Authority to CITES, Plants, Federal Agency for Nature Conservation

International Standard for the Sustainable Wild Collection of Medicinal & Aromatic Plants

Assisting in the compilation of a reference guide for minimum research standards necessary to ensure sustainable use of economically utilised plants (updated in FairWild Standard Version 2, 2010)

2004: contractual work for Desert Research Foundation of Namibia

Vegetation description and mapping of the Namibian Eastern Communal Areas and assess possible development options using indigenous plant resources

1997 to 2010: contractual work with CRIAA-SADC as ecologist.

#### *Deliverables:*

#### *The Sustainably Harvested Devil's Claw Project:*

Annual surveys of Harpagophytum populations to determine harvesting quotas for rural communities

Determine and monitor impact of harvesting frequency and techniques on survival of Harpagophytum procumbens

Educate harvester communities on issues of resource management

In collaboration with the German Federal Agency for Nature Conservation

This work was extended in 2006 to the Hwange Area, NW Zimbabwe, together with Africa Now

#### *Pilot Devil's Claw cultivation trials:*

Increase available resources of Harpagophytum procumbens

Give communities ownership and better access of their resources to improve their income

*Namibian National Devil's Claw Situation Analysis:*

Design and implement a country-wide survey of Harpagophytum species to assess resource availability compared to annual export figure

1999 to 2001: Assistant curator at the Swakopmund Museum (part-time position)

Help maintain existing collections and exhibits, design and create new exhibits for the museum in collaboration with the Museum Hannover, Germany

Specialist Scientist Vegetation Surveys and related Impact Assessments were done for following clients:

Langer Heinrich Uranium Pty (Ltd): Central Namib Desert, Namibia

University of Namibia, Hentiesbay Research Centre: West Coast, Namibia

Sasol – Limpopo Province

EcoAgent – Northern Cape, Eastern Cape, Limpopo and Mpumalanga

Namwater – Karst aquifers, north-central Namibia

ENVASS (for AfriDevo) – Northern Cape

