

Date Black Sugarloaf, Birrale (swamp)

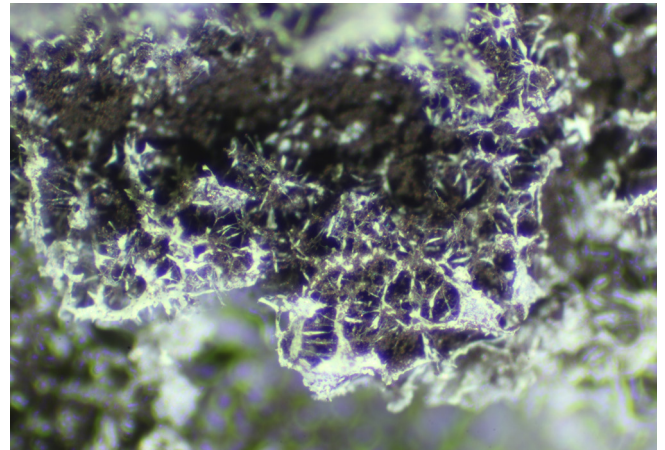
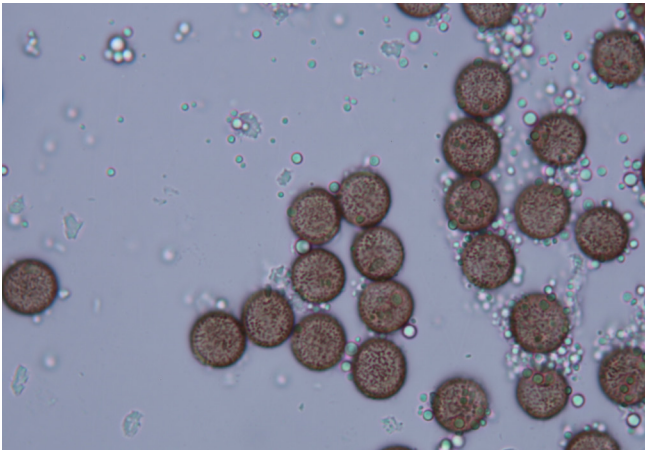
Habitat: *Melaleuca ericifolia* swamp forest.

Substrate dead wood and leaf litter.

Description small pulvinate aethalium, 3 cm long x 0.7 mm thick. (Aethalia can be much larger.) **Hypothallus** extends beyond the edge of the aethalium, yellow then white.

Cortex thick, calcareous, fragile, pale yellow. **Capillitium** pale yellow lime connected by hyaline threads. **Spores** dark brown in mass, brown by transmitted light, minutely spiny, 7.5–9 μm .

Notes Very variable species that some authors, depending on colour of capillitium, consider varieties (e.g. Neubert *et al.*) or different species (e.g. N.E. N-B.).



Date 10 Nov. 2016 *Fuligo septica* 0777 on wood and moss, big tree track.