

March 2021

Revision B



# **Waterbeach**

## **Settlement Name and Place Naming Consultation**

# Contents

Introduction	3
Place and Street Naming Strategy - Development and Consultation Process	5
<b>Section 1 Naming the Settlement</b>	<b>6</b>
Historical Overview	6
Origins and Connections	9
Naming New Communities Case Study: Milton Keynes	12
<b>Section 2 Place Naming Within the New Development</b>	<b>14</b>
References and Influences	14
References and Potential Names: Historical	18
References and Potential Names: Biodiversity	24
<b>Part 1: Naming the Settlement (QA)</b>	<b>25</b>
<b>Part 2: Local Place Naming (QB)</b>	<b>25</b>
Questionnaire A	27
Questionnaire B	29

## Introduction

With the development of Waterbeach New Town moving forward as an allocated and consented part of South Cambridgeshire District Council's Local Plan, we are now undertaking consultation on the name of the new town and seeking input to a 'repository' of useful references and potential names for places within the new town, which will be designed and built over the years ahead.

This document provides guidance and information to assist consultees and stakeholders in responding to the two separate parts of the consultation exercise.

This consultation document is also in two sections and asks for comments in two separate sections on:

1. The naming of the New Town as a whole, and in combination with the existing settlement of Waterbeach.
2. Names for streets and public spaces, walking loops and play areas within the new development. This section focusses on the Barracks and Airfield part of the development, which is more advanced than the details for Waterbeach New Town East. It proposes an approach based on the heritage and ecology of specific character areas within the development, and suggests a series of names which could be used under this framework. Views are asked to shape the approach and the specific details of names coming forward. This will also support RLW in developing the approaches they take as they move forward the Resolution to Grant outline planning permission in February 2021.

It has been prepared by the developers, with the agreement of South Cambridgeshire District Council, and will enable a final recommendation of the approach to be agreed by the District Council later this year, and a framework to then be in place by which naming can be guided as the development rolls out over the next few years.

Opportunities also exist, going forward, to explore the heritage of the place and consider naming approaches for other aspects of infrastructure which impact on the development and local area. This includes roundabouts on the A10, which support the broader place making approach. The feedback on the principles and approaches set out here, will support the approach partners take with this going forward.





# Place and Street Naming Strategy- Development and Consultation Process

## 1. Process and Timing

The process will have 2 key stages and last 14 weeks, starting 1st April and completing 7th July. Timings and details of these are set out below:

Stage of process	Dates	Detail
<b>Stage 1</b>	1 April – 12 May (6 weeks)	Consultation on name of town and on wider naming strategy for streets and places within the Barracks part of the development.
<b>Review</b>	13 May – 26 May (2 week)	Review of submissions and formulation of preferred options
<b>Stage 2</b>	27 May – 7 July (6 weeks)	Consultation on preferred options including a number of targeted workshops with 3 key stakeholder groups: <ul style="list-style-type: none"> <li>Parish, County and District Councillors</li> <li>Heritage Groups</li> <li>Youth Representatives</li> </ul>
<b>Final review &amp; submission</b>	July Cabinet Date TBC	Review of feedback and recommendations put forward to South Cambridgeshire District Council Cabinet for final decision

## 2. Promotion and engagement

There will be a number of key approaches to ensure an inclusive and proactive approach to engaging people in this consultation, over the 2 stages, as set out on the next page:

### Stage 1: Wider Community Consultation

Wider stakeholders and the communities around the development will be consulted through the following means to inform the stages set out above.

- **Door drop** of the consultation document to residents of Waterbeach and Chittering to mark the first stage of the consultation. These will include “cut off” return questionnaires with return boxes at locations in the village and a freepost return envelope.
- **An online consultation portal** will provide a digital space for feedback with the same information from the document and questions set out on web pages. This will also offer hard copies on request.

The consultation will be promoted through:

- **Newsletter / e-news:** The Urban&Civic newsletter is door dropped to Waterbeach, Chittering, Landbeach and Horningsea residents, and U&C’s e-newsletter goes to subscribers signed up for information updates through previous consultation events or through the website.
- **Social media and PR:** Press releases to local media and use of social media by both developers and South Cambridgeshire District Council will promote the consultation and opportunities to engage with and access it.
- **Face-to-face / Webinars:** Two webinars will be hosted by the developers to answer questions and promote the consultation. Comments given during these sessions will be recorded as feedback.

The review stage will include an opportunity to check if any issues occurred in Stage 1, and factor in any additional targeted work needed. This will be agreed by the developers and South Cambridgeshire District Council.

### Stage 2: Workshops

The reviewed options will be shared on the online portal and anyone who took part in Stage 1 will be contacted to comment on the preferred options being progressed.

Alongside that, workshops will be held with the themes and groups set out below. These represent 3 core strands: democratic representation of the current residents of the village and the wider area; the long view of history, which is vital in establishing places with historical integrity for the future; and the voice of young people who represent that future. The workshops will therefore include:

- **Elected and community representatives:** Waterbeach Parish Councillors, District and County Councillors, and nominated representatives from Landbeach and Horningsea;
- **Heritage representatives:** Members of the existing Waterbeach Heritage Group<sup>1</sup> and representatives from Cambridge Past, Present and Future;
- **The Youth Voice:** a workshop with Waterbeach Action for Youth, with input from local schools, which will be supported and facilitated by Form the Future.

Write-ups from each stage of the consultation, including the workshops, will be shared on the website along with the final submission recommendation report. These documents will form the submission to SCDC Cabinet.

<sup>1</sup> Members include The Waterbeach Military Heritage Museum Trust, Denny Abbey Farmland Museum, Historic England and English Heritage, National Trust (Wicken Fen team), Waterbeach Parish Council, South Cambridgeshire District Council Heritage and planning representation, County Council Heritage and Culture representation, Landbeach Parish Council and Tithe Barn Trust.

# Section 1 Naming the Settlement

## Historical Overview

### Waterbeach as a name

Waterbeach appears in the 1086 Domesday Book as Utbech and the connection and differences between Landbeach and Waterbeach have been a fundamental defining factor throughout the centuries.

The area defined by the name has been consistent due to natural and historic features: stretching to the River Cam to the east, Car Dyke and Akeman Street to the west. The northern boundary with Denny Abbey and Chittering to the north links to drainage ditch divisions with their roots in the 12th to 13th Century.

The boundaries remained consistent throughout the drainage of the fens, enclosure and the hundreds of years of farming, living and working that has occurred across this area. The only subdivision of this land came with the Second World War and the subsequent use of part of the allocated area as first an Airfield for the RAF '(as RAF Waterbeach)' and then in the 1960s the Royal Engineers, updating the name to Waterbeach Barracks.

The military legacy is important here: wartime and postwar activities leave behind barracks buildings and the airfield but more significantly more deep rooted connections in the form of the Memorial Garden by the lake, graves in the Village Cemetery, and the Waterbeach Military Heritage Museum. These bind the link between the Barracks and village. Alongside that the nature of the Barracks meant that many village residents were regular visitors and users of the facilities, notably the Swimming Pool, the Sports Hall, Golf Course and Lake. The Royal Engineers were in turn actively involved in supporting the village, with events like the Feast, and many veterans remain in touch and share memories which is helping inform recording of the heritage of the site and influencing future approaches set out in this strategy.

This interaction has been a key theme recounted in residents' stories of when the Barracks was operational.

Similarly the land to the East that makes up Waterbeach New Town East, has been farmed continuously through this period, almost exclusively by local families.



### Waterbeach New Town in the planning context

Unusually, the new town has not been subject to the same processes as the aborted "Mereham", or the delivery of Cambourne or Northstowe – where a new name and identity was established at an early stage and carried through to provide the moniker for the new community on the ground. The early promotion of Northstowe was linked to several existing places, not one - Longstanton and RAF Oakington, both abutting, and close to Oakington village and Westwick. It always had its own identity, hence a new name was adopted. Cambourne had no close association with an existing settlement

One reflection on this, is that there has always been an understanding that the roots of Waterbeach New Town are in the existing village, and the ambition from the initial stages of vision-making, was to "grow a place, from the existing village", protecting and enhancing the village's historic setting.

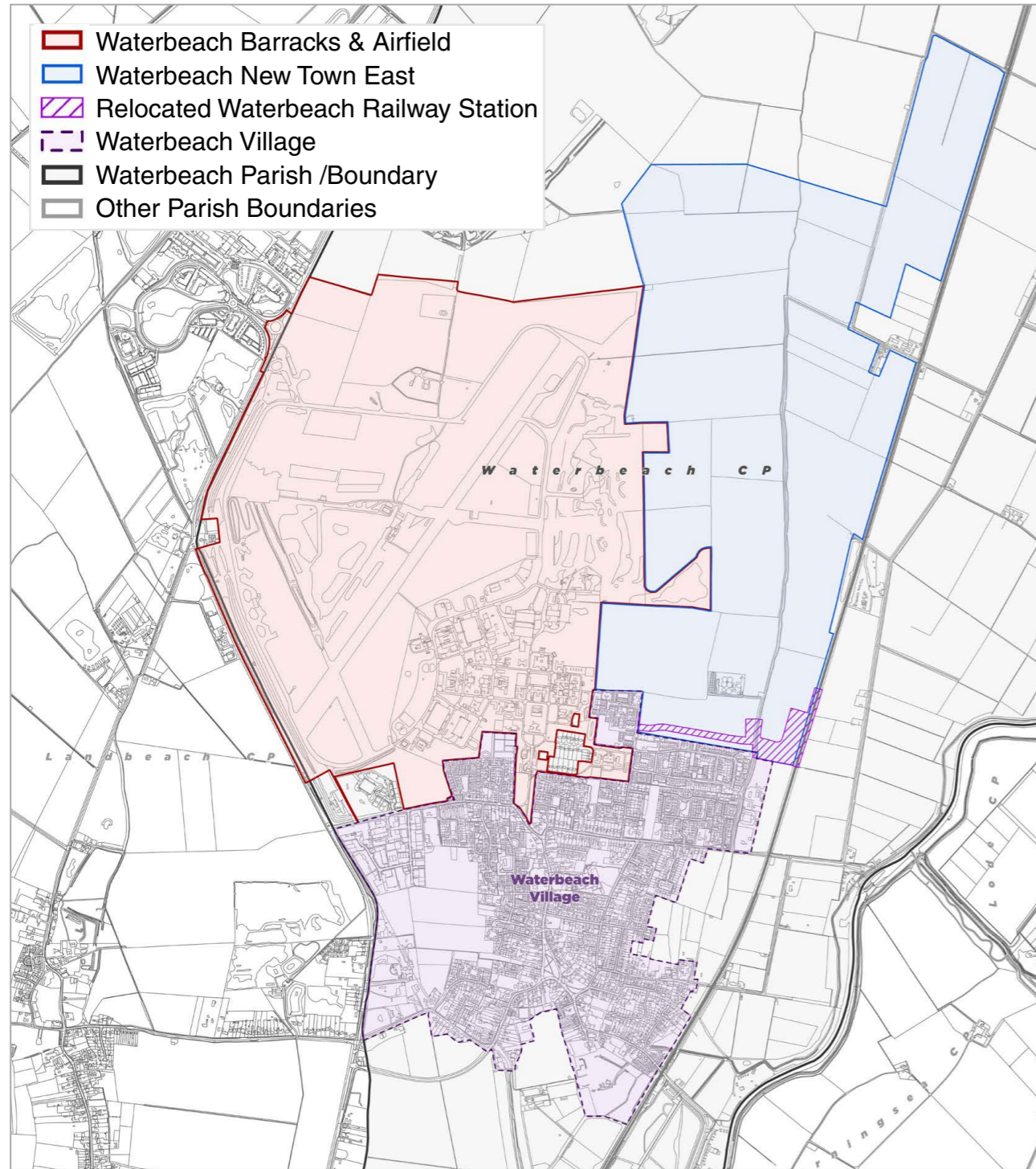
A quick summary of key planning history includes:

- The development of a new town at Waterbeach emerged over a long period as a feature of the planning strategy for accommodating growth in and around Cambridge, focused upon a series of new satellite settlements around the historic city. The nomenclature of 'new town' is important in spatial and planning policy terms, as it distinguishes the scale and type of development from other forms of planned development, such as extensions to existing settlements. Very occasionally places adopt 'new

town' as a name but the relevance to identity, rather than planning is limited – it is generic and new towns become old towns in short time as experienced by the post-War New Towns of Welwyn, Letchworth and Stevenage and indeed Milton Keynes.

- A new town at Waterbeach is allocated in South Cambridgeshire District Council's Local Plan, adopted in 2018. This allocation is supplemented by the Waterbeach New Town Supplementary Planning Document. Throughout the Local Plan preparation period (from 2011 to 2018) the proposition has been referred to as 'Waterbeach New Town' or 'a new town at Waterbeach'. In planning documentation, the allocation of the new town is consistently distinguished from Waterbeach village and identified as encompassing Waterbeach Barracks and Airfield, and agricultural land to the east, extending to the railway line.
- Through the early stages of the Local Plan preparation, promoters acting for the landowners adopted a "promotional" identity for their master plan: Denny St Francis. The name was not adopted in the Local Plan and is no longer used by either of the promoters bringing forward the proposed development – both the principal promoters now refer to the new town as Waterbeach.
- In shaping detailed planning proposals for the Waterbeach Barracks and Airfield and Waterbeach New Town East (see plan overleaf), the development promoters have maintained consistent reference to Waterbeach but also given names to features of the proposed development, primarily to assist in





description and orientation in the planning application documents. These named places mostly relate to existing and historic features which are readily identifiable. There is no commitment to these names going forward, but some may be worthy of consideration where they align with the principles of the naming strategy, now to be agreed.

- Within the local community, the active engagement and participation of villagers and Waterbeach Parish Council as well as inclusion of the new town within the Neighbourhood Plan area, at the Neighbourhood Plan Body's request, reflects the historic Parish boundary and suggests that the village strongly associates with and feels ownership of the new town area.

## Origins and Connections

The origin and evolution of place names is more often than not rooted in physical and natural features and/or strong associations with human activity; names invariably relay a sense of place and history. There is also a linguistic dimension with names being shortened/adapted to suit contemporary language and ease of reference. This tends to favour simple names that roll off the tongue, have positive connotations and are easily spelt/pronounced. The anomalies and the exceptions are of course notable and valued where they do not conform to these conventions.

Fanciful names (marketing hyperbole) rarely sit comfortably upon real places, especially in circumstances where a new community is to be created. A sense of belonging is far more readily achieved by looking to the existing nomenclature of the location.

Large settlements usually carry the names of the earliest habitation, the first kernels of the place, which might have been a crossing/meeting point, farmstead or small hamlet. Often there is a pride in a long history of organic growth and change from a modest beginning.

In naming planned settlements there is similar comfort and pride in starting with the existing. There is benefit in terms of familiarity and identity in adopting the name of an existing place that will become part of a larger whole.

This not only resonates with the growth of organic settlements, grounded in historical association, but respects the fact that it is inappropriate and difficult to impose a new identity on a place that is already known and familiar. It is important, nevertheless, to consider the identity of existing places which become enlarged or incorporated; especially where those places offer richness, diversity, and historical touchstones. It is likely that these places will remain distinct and identifiable, in their own right.

There is very good precedent for this approach in planning/naming new communities.





There are a range of other factors that influence naming which are important to consider. These are set out below:

#### a) Who should be deciding upon a name?

It is difficult for developers and promoters to seek to impose names, especially as they are often influenced by marketing priorities. The process must be taken forward with local communities and their representatives, and key stakeholders, to agree an approach which is appropriate. Where places already have a strong association with a name it is also extremely difficult to effect change; familiar, regularly used names tend to persist and attempts to impose change are resisted or cause division. Names matter beyond the notation on a map because they are the most obvious signal of identity and association.

#### b) A Shared Sense of Ownership and Shared Facilities

The linkage between the village and the Barracks is a long standing and important one. The connections between the village and the proposed development is to be further reinforced through provision of a range of new shared facilities which will be based in or serve the new development, but will also serve the wider population. These include:

- The proposed Secondary Schools and 6th Form
- The proposed Health Centre
- The proposed Rail Station, Park&Ride, Greenway, bus provision and CAM route
- The proposed sports and recreation facilities

Similarly, care is to be taken not to duplicate services and facilities available in the village so mutual benefit and patronage is maximised.

The prospective new development is very distinct in terms of character from the village, but functional connection and human interaction will inevitably be very much intertwined, and likely to become more so over time. Throughout the scheme development and consultation there was a fine balance which all were keen to maintain, indeed celebrate, between preserving the identity and character of the historic heart of the village, providing new facilities and amenities which serve the village and incoming residents. Good and early connections to new facilities and those in the village has been key. It is important to try to think ahead to how the community will in time relate to the place and each other.

The arc of development which has come to define the first phase of development on the Barracks and Airfield site north of the lake, was part of working through a challenge from a number of local stakeholders that first development should happen directly to the north of the village in the Barracks, to enable that sense of a growing village expanding to the north. There are many reasons why early development is progressing first around the lake, but connecting the two areas physically by connection and culturally with the Waterbeach community identity has been important to the village and is key to the broader shared vision.

#### c) Transport and Access

We know one of the key concerns around naming comes from traffic management and control, and therefore while this is not a clear strand of culture and identity, this is a key concern around routing people appropriately to the key locations from outside the area. This will require a signage strategy which reflects the broader naming strategy, when agreed, and avoids harmful impacts from traffic mistakenly diverting through the village.

The opportunity to sign and put in place gateway features on Denny End Road, Cambridge Road and Clayhithe Road which clearly mark the historic village can come forward as part of the public realm enhancements project, being funded by the S106 agreements.

#### Signage

New entrances being installed on the A10 have limited vehicle access to the village in the first instance. Furthermore both developments have committed to traffic control measures being in place which prioritise cycle, walking and public transport connections to the village, and inhibit vehicular access.

These new entrances will also be heavily signed as construction entrances and then with signs, branding and flags to support the first house sales as the new homes move into sales and then are occupied. At that stage the more permanent signage approach will need to be in place.

This will also relate to signing access to Waterbeach New Town East - which will be through the Barracks and Airfield site.

#### Roundabout naming

The approach to naming also provides an opportunity to review key connections to the wider infrastructure, for example looking at naming roundabouts on the A10 at key entrance points. This would not only enable clarity but also create a sense of place, which will introduce a fine grained distinction between different parts of the settlement. For example, what has become known as Cambridge Research Park Roundabout by default, could become Templars or St Clare's, and the planned Southern Roundabout connection on the A10 should come forward with a name which grounds it in its location and the places it connects.

#### d) Governance

The existing governance implies that the whole area is Waterbeach, given that this entire area is covered by Waterbeach Parish Council. This will continue in the short and medium term with a community governance review likely to come forward once the first residents are in place. The potential remains for a Community Association or Trust to be taken forward with early residents to support their active engagement in community events, activities and spaces on the new development, while discussions continue to ensure appropriate future robust governance which can support the shared facilities across the new and existing communities.

**The questionnaire for this first section of the consultation is available on p27.**



# Naming New Communities

## Case Study: Milton Keynes

Naming a planned settlement is an interesting challenge, but an important one to get right. It helps to reinforce character and ground a new community.

Experience in Milton Keynes offers some useful and direct parallels with circumstances around the new town at Waterbeach. Although it was a designated new town of significant scale (substantially bigger than the Waterbeach new town) and is now a self-proclaimed city, the approach to naming is transferable.



'Milton Keynes' existed as a village long before the new town, and became part of the greater whole. With its own signposts and gateway features, the village has maintained a sense of distinct from the larger new development, without creating a divided place. The example there has ensured the older village has developed a positive reputation as a premium location, with historic properties and character, but good access to facilities and amenities of the new town.



The designated area of Milton Keynes incorporated great swathes of countryside but also infilled between four existing towns and incorporated many characterful Buckinghamshire villages. The historic villages each became the focus of a new grid square with sensitive and varied approach to integration.

The city was named after one of these villages. Historically, the village was known as Middeltone (11th century). After the Norman invasion, the de Cahaines family held the manor within the village until the 13th century.



The village became known as Middleton de Keynes, eventually being shortened to Milton Keynes. The city grid square in which the village is now located was named Middleton, with reference back to this time.



In deciding upon the name for the new city Labour Minister Dick Crossman apparently alighted on the village when looking at the map and noted the parallel with John Milton, the poet, and John Maynard Keynes, the economist. This provided a firm connection with the existing place combined with an expression of ambition in terms of "planning with economic sense and idealism". It suited very well.

The village has retained a distinct identity within the city. It is known as Milton Keynes Village within Middleton grid square. It is a very desirable and popular place to live (reflected in elevated property values) combining a quaint village character with city amenities on the doorstep.





# Section 2 Place Naming Within the New Development

## References and Influences

Beyond naming the settlement itself, there is a great deal of further work to do to design, deliver and name places within the new development. This will be a collaborative process and an ongoing task over the years ahead. It is helpful to begin to assemble useful references, sources and think about appropriate influences.

Delivery of the Barracks and Airfield is more advanced than on Waterbeach New Town East. The Urban&Civic team (U&C) - who are bringing forward the Barracks and Airfield development on behalf of the Defence Infrastructure Organisation - is engaged in detailed design and the first parcel developers are now working on reserved matters applications. Place naming is therefore an imminent consideration.

Over the following pages the U&C team present the work undertaken so far to gather relevant references and influences.

Sharing these tangible examples should help to both test the principles and approach taken to date with wider stakeholders and communities; and enable an ongoing discussion, with stakeholders, promoters and the community contributing ideas and information.

Input and ideas for the whole new town are very welcome now or over the months ahead, and can be forwarded at any time to the following address:

[waterbeach@urbanandcivic.com](mailto:waterbeach@urbanandcivic.com)

Consultees are also to be invited now to respond to **Questionnaire B**, just in relation to the Barracks and Airfield site.

In time, RLW will undertake a similar exercise, to inform their first detailed proposals. The reference material can then be brought together into one resource.

The reference resource which is presented here will expand with consultee responses and RLW input over time and will become an important source of information to draw on as the development moves forward. The District Council and stakeholders will also now consider a protocol for proposing and approving place names. This process will be set out in an update to this document, in due course.





## Capturing the history and ecology of Waterbeach in the naming strategy

The land of Waterbeach has a rich history which straddles centuries of uses, families and stories: through Saxon and Roman, to medieval farming, the draining of the Fens, and up to twentieth century military history. All of this is present in the historic and future layout of the development, and in the uniquely rich landscape which is the legacy of those historic influences. Opposite is a map of the suggested themes and approaches which start to define the character of new areas coming forward within the plans for Waterbeach Barracks and Airfield.

The map uses the character areas defined in the Design Access Statement (of the Outline) to set out some core themes, within which we would seek to martial a list of appropriate names and test these with key stakeholders and the wider community. The potential list of names that could sit within each of these areas is attached below grouped into 4 key areas, which reflect the military, agricultural heritage and ecological connections highlighted below in more detail.

These names have the potential to cover street names, names for civic squares and areas, parks and play areas, woodland areas and glades. They also include specific options which could be applied to buildings or civic uses, but it is suggested this is explored through further consultation as detailed designs move forward.

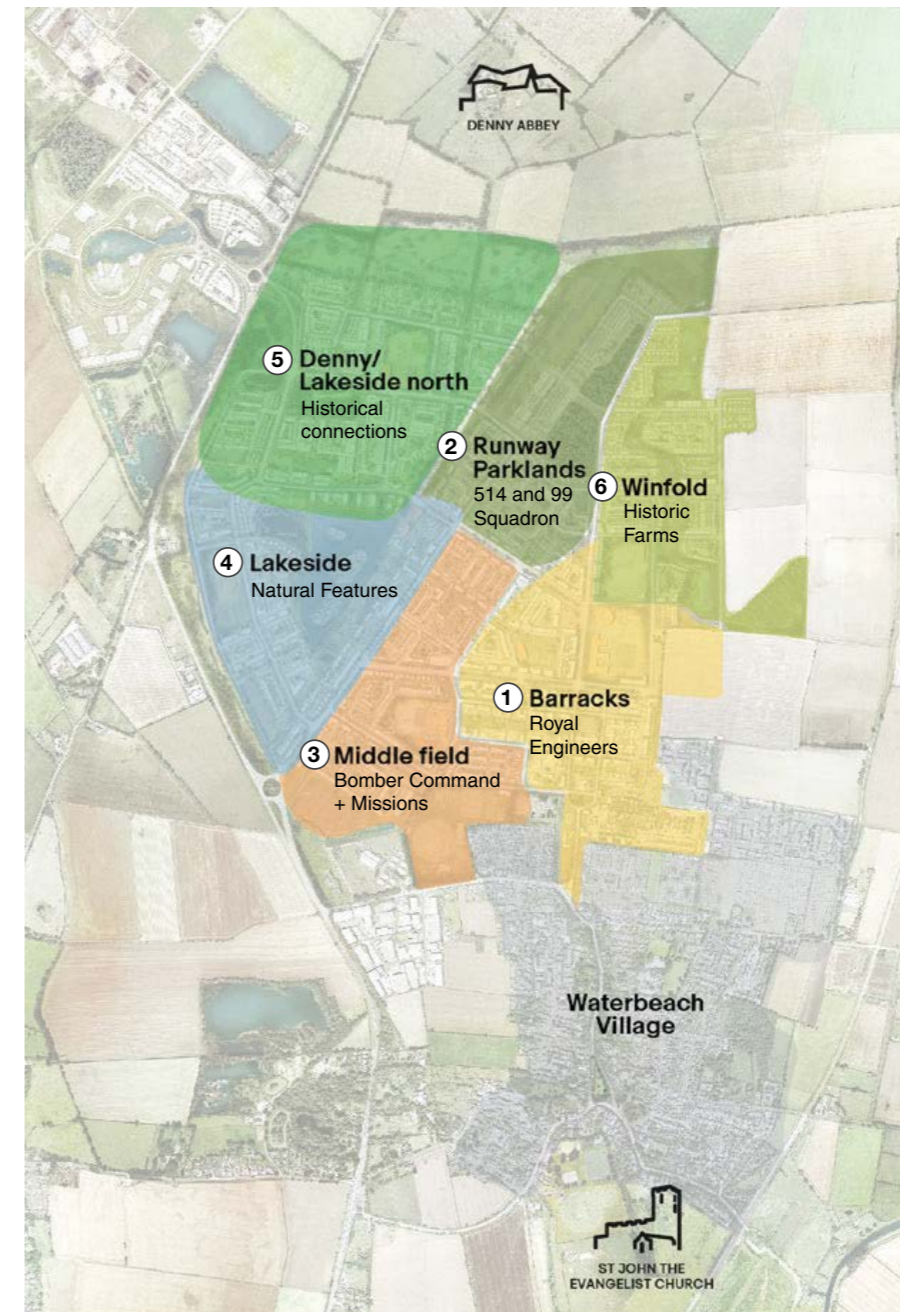
Some features have already been given “working titles” through inclusion in the Design Code, or other planning documents including:

**The Causeway** - An inherited feature that historically provided a movement route from Waterbeach Village to Denny Abbey: the current “working title” for this is Denny Causeway.

**Runway Parklands** - two large landscape elements of the site and low-density housing, which could evolve into named areas.

**“Rye Gardens”** - a proposed community open space with a vista of Denny Abbey. ‘Rye’ denotes the grass crop previously grown at Denny Abbey gardens.

**Winfold or Winfold Common**- a proposed wetland area, the name relating to the existing woodland of Winfold Green and the former Winfold Farm. Winfold Common was a former pasture in the 1800s.



\* New names for the Character Areas could also be formed from the naming lists

## Waterbeach Naming Strategy - Draft Proposals

We propose to use the Character Areas to provide a focus and framework for street and place names, which have historic or ecological integrity and relevance.

Lists of example names which reflect these areas are set out over the following pages.

### 1 Barracks: Royal Engineers

The area already has a strong character name. The streets could further be named after the high ranking officers of the regiment. The name given to the Royal Engineers - ‘Sappers’ - could further be used to rename the Parade Ground, as part of the naming strategy for the civic centre or alternatively for the water tower.

### 2 Runway Parklands: 514 and 99 Squadron

The street names of this area could pick up on the RAF based surnames from both the 514 and 99 Squadrons; the names could also incorporate the roles of Officers (e.g. ‘Thomson Signals’). The park features could also reflect the aircraft; either the primary planes flown from the runway or the designers.

### 3 Middle Field: Bomber Command + Missions

The southern runway links strongly to the RAF. This could potentially be named after Stafford-Clark who was bomber command during WWII. Alternatively the Control Tower could incorporate his surname. Street names in the area could reflect veterans linked to raids, in particular those who did not return or grouped into further areas based upon their final raid.

### 4 Lakeside: Natural Features

The lake itself could have a military based name, however the other areas could juxtapose the man-made lake with natural connections. Denny Waters and Car-Dyke are appropriate inspiration whilst the other named features could relate to species located at the lakeside or wider landscape features.

### 5 Denny/Lakeside North: Historical connections

The area’s relationship with Denny Abbey indicates that the street naming for the area should relate to the Abbey itself or make links to its monastic heritage and pilgrimage connections.

### 6 Winfold: Historic Farms

The character areas association with Winfold Farm and proposed uses as a wetland area lends itself to incorporating former historic farm names.



# References and Potential Names: Historical

Potential names set out below for:

- 1) Barracks, Runway Parklands and Middle Field
- 2) Lakeside
- 3) Lakeside North / Denny Parklands
- 4) Winfold

## 1) Naming lists for the Barracks, Runway Parklands and Middle Field: Military Associations

### RAF

Commanding officers (all Sqns): *(Sourced from military records/ dedicated web page to 514 Sqn)*

- Park
- Bell
- Saye
- Sharpe
- Heard
- Lea-Cox
- Stringer
- Hyde
- Jones
- Mount
- Donaldson
- Chacksfield
- Dutton
- Topham
- Clerke
- Earnshaw

- Stafford-Clark – Bomber Command at Waterbeach during WWII
- Dixon-Wright DFC (Sqn 99)
- Heath (Sqn 99)
- Samson (Sqn 514) – Battle of Berlin and build up to D-Day; Samson survived the war itself, only to be killed on 8th September 1945 when flying a Dakota carrying sick POWs recently released from Japanese captivity. The aircraft exploded just off the coast of Burma with the loss of all 4 crew and 24 passengers.
- Best (Sqn 59)
- Cochrane (Sqn 220)

### Other Senior Officers and their speciality (November 1943, 514 Sqn)

- Croston (Electrical Officer)
- Angus (Bombing Leader)
- Wand (Engineer)
- Hall (Engineering Leader)
- Thomson (Signals Leader)
- Trick (Specialist/ Instruments)

- Bowen (Specialist/ Instruments)
- Beckett (Navigation Officer)
- Stevens (Adjutant)
- Reid (A Flight Commander)
- Roberts (B Flight Commander)
- Lemerle (Medical Officer)
- Pollock (Gunnery Officer)

### Aircraft

- Vickers Wellington (Primary plane for 99 Sqn; made by Vickers-Armstrongs; designed by Barnes Wallis)
- Short S29 Stirling
- Avro Lancaster (Primary plane for 514 Sqn; made by Avro, formerly Handley Page Halifax; designed by Roy Chadwick)
- Consolidated Liberator B24 (59 Sqn post-war)
- Avro 685 York (post-war)
- Douglas Dakota C47 (220 Sqn post-war)
- Avro 691 Lancastrian
- Gloster Meteor
- Vickers Supermarine Swift
- Hawker Hunter
- De Havilland DH112 Venom
- Gloster Javelin

### Mottos

- RAF station - In courage I aim the highest – flores virtute capesso
- 514 Squadron - Nothing can withstand -Nil Obstare Potest
- 99 Squadron - Each tenacious - Quisque tenax

### Army (Royal Engineers – 25 & 39 Regiment)

RE's are widely known as 'Sappers' or 'Miners'; Sappers or Miners Barracks is potential character area name.

### High ranking Officers

*Commanders, 39 Regt and 52 Field Squadron:*

- Clifford
- Drake
- Carlier
- Noble
- Brent
- Adamson
- Bowen
- Daly
- Day
- Greenall
- Elgood
- Cowtan MBE
- Hart
- Berry
- Noble – opened the Memorial Gardens in 2009
- Phillips
- Adamson
- McGill
- Girling
- McKay
- Macdonald-Smith
- Homan
- Lee
- Palmer
- Boyne
- Shaw
- Heath
- Corp
- Besgrove
- Croucher
- Tetlow
- Williams
- McCall
- Boswell

*Operations (39 Regiment):*

- Resonite – South Oman
- Telic – Iraq
- Herrick – Afghanistan
- Gritrock – West Africa (post 2012)
- Trenton – West Africa (post 2012)
- Newcombe – Mali (post 2012)



<p><b>Military deaths, sourced from Waterbeach Roll of Honour</b></p> <p>Surnames from 99 Squadron and final raid location (from WW2; did not return home and no known graves):</p> <ul style="list-style-type: none"> <li>• Allport – Antwerp</li> <li>• Bennett – Rotterdam</li> <li>• Bennetts – Berlin</li> <li>• Colpitts – Portland</li> <li>• Dance – Antwerp</li> <li>• Harding - Berlin</li> <li>• Hewitson – Rotterdam</li> <li>• Holt – Rotterdam</li> <li>• Jackson – Berlin</li> <li>• James -Rotterdam</li> <li>• Kay – Mannheim</li> <li>• Kay – Antwerp</li> <li>• Lewis – Mannheim</li> <li>• Mahon – Mannheim</li> <li>• Mc Donough – Antwerp</li> <li>• Mercer – Berlin</li> <li>• Parry – Genoa</li> <li>• Partridge – Mannheim</li> <li>• Pinkerton – Antwerp</li> <li>• Shattock – Portland</li> <li>• Smith – Portland</li> <li>• Smith – Berlin</li> <li>• Soden – Mannheim</li> <li>• Stevens – Rotterdam</li> <li>• Talbot – Berlin</li> <li>• Thomas – Portland</li> <li>• Thomas – Rotterdam</li> <li>• Westbrook – Mannheim</li> </ul>	<p><b>RAF personnel buried at Waterbeach (Surnames)</b></p> <ul style="list-style-type: none"> <li>• Adams</li> <li>• Baldwin</li> <li>• Benfield</li> <li>• Benigan</li> <li>• Caris</li> <li>• Darbyshire</li> <li>• Eccles</li> <li>• Eva</li> <li>• Fordham</li> <li>• Hewitt</li> <li>• Jones</li> <li>• Kerr</li> <li>• Kyte</li> <li>• O'Brien</li> <li>• O'Hare</li> <li>• Pavey</li> <li>• Prior</li> <li>• Rumbo</li> <li>• Savoy</li> <li>• Street</li> <li>• Svehla</li> <li>• Yeats – 56 Squadron Leader (most senior officer buried in Waterbeach Cemetery)</li> </ul>	<p><b>Surnames of victims of Waterbeach explosion 1944</b></p> <ul style="list-style-type: none"> <li>• Bichard</li> <li>• Bolton</li> <li>• Brewer</li> <li>• Davies</li> <li>• Haydn</li> <li>• Leach</li> <li>• Smales</li> <li>• Watson</li> <li>• Westgarth</li> </ul>
---	--	---

**2. Naming list for the Lakeside: landscape heritage**

<p><b>Surnames of losses from 514 squadron</b></p> <p><i>*sourced RAAF archives/514 web page</i></p> <ul style="list-style-type: none"> <li>• Lucas - MU Gunner Evaded – Mannheim raid (remained hidden in Brussels till Liberation)</li> <li>• Fontaine - Bomb Aimer KIA - Mannheim raid</li> <li>• Brent - Navigator KIA - Mannheim raid</li> <li>• Stagg - Flight Engineer KIA - Mannheim raid</li> <li>• Haines RAAF - Rear Gunner POW - Mannheim raid</li> <li>• Cantin, RCAF, Pilot KIA - Berlin raid</li> <li>• Saddler, Navigator KIA - Berlin raid</li> <li>• Eyre, MU Gunner KIA - Berlin raid</li> <li>• Walne, Rear Gunner KIA - Berlin raid</li> <li>• King, Flight Engineer KIA - Berlin raid</li> <li>• /O PJK Hood (Pilot) POW – Nuremburg raid</li> <li>• Cosgrove (Navigator) POW - Nuremburg raid</li> <li>• Wilton (Air Bomber) POW – Nuremburg raid</li> <li>• Rollings (WOP/Air) POW - Nuremburg raid</li> <li>• Lanthier USAAF (Rear Gunner) POW - Nuremburg raid</li> <li>• Wickson (Flight Engineer) POW – Nuremburg raid</li> </ul>	<p><b>Landscape features/ names from surrounding area</b></p> <p><i>*where the name denotes a pre-existing place, the name could be split or varied to make reference to the feature.</i></p> <ul style="list-style-type: none"> <li>• Elmney Closes (c.1810)</li> <li>• Challis Frith (c.1810)</li> <li>• Oxpen Meadow (c.1810)</li> <li>• Stone Hills (c.1810)</li> <li>• High Meadow (c.1810)</li> <li>• Bannold – Little, Great (c.1810)</li> <li>• Sheep Ley (c.1810)</li> <li>• Wulfholes (Winfold Field) (c.1810)</li> <li>• Haverstock (c.1810)</li> <li>• Great Hollow (c.1810)</li> <li>• Joist Fen (c.1810)</li> <li>• Fear Fen (c.1810)</li> <li>• Chittering Fen (c.1810)</li> <li>• Wicken Fen</li> <li>• Peat Fen</li> <li>• Western Claylands</li> <li>• Tythe (Barn) – Medieval feature</li> <li>• Cam Washes – ('The Washes' could form an area name)</li> <li>• Woburn Sands – geological formation</li> <li>• Gault – geological formation</li> <li>• Alder – tree</li> <li>• Ouse Valley</li> </ul>
---	--



### 3. Naming list for Denny/ Lakeside North

#### Priors of Ely – the Benedictines who moved to Denny Abbey from Ely in the 1100s

- Vincent
- Henry
- William
- Tombert
- Alexander
- Salomon

\* Beyond were post 1169 when the Transferred to the Knights Templar\*

- Richard
- Longchmap
- de Stateshete
- Hugh
- De Brigham
- Ralph
- Walter
- Leverington
- de Bancis
- de Hemmington
- de Shepreth
- de Orford
- de Clare
- de Fresingfield
- de Crauden
- de Walsingham
- Hathfield
- Bucton
- Walpole
- Powcher
- Walsingham
- Ely
- Wells
- Peterborough
- Westminster
- Colvyle
- Wittlesey
- Foliott
- Cottenham

#### Abbesses of Denny – surnames of the women at the head of the Abbey of Nuns (1300s)

- de Bolewyk (1st)
- Colcestre
- Kendale
- Massingham
- Bernard
- Milley
- Sybyle
- Keteryche
- Assheby
- Throckmorton

Monastic Houses of Cambridgeshire (selection of):

- Anglesey Priory
- Barham Friary
- Barnwell Priory
- Austin Friars
- Blackfriars
- Greyfriars
- Pied Friars
- White Friars
- Friars of the Sack
- Chatteris Abbey
- Chesterton Whitefriars
- Duxford Preceptory
- Eltisley Priory
- Fordham Priory
- Great Wilbraham Preceptory
- Honringsea Monastery
- Ickleton Priory

### 4. Naming List for Winfold

#### Historic Farm names, from families who owned and/worked the land

- Blacwine
- Picot
- Osmund
- Aubrey
- Glanville
- Amice\*
- Munchensy
- Aymer\*
- Elmney
- Bohun
- Hasell
- Spurling
- Yaxley
- Downing
- Robson
- Chester
- Cokenach
- Hobson
- Knight
- Sclater
- Standley
- Persis\*
- Peach
- Foster
- Toller
- Angier
- Holbeach
- Frohocks
- Yorke

\*these relate to women's first names, where they were left land which passed to their husbands.

### Biodiversity

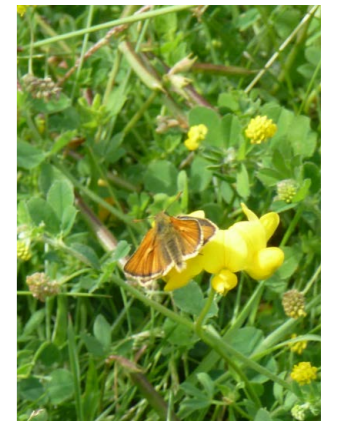
Alongside the heritage uses and names, a critical element of the development is the biodiversity approaches and priorities. Part of the approach here will be to engage residents and visitors in the landscape around them and in understanding, supporting and exploring it, to benefit nature and their own health and wellbeing.

We are agreeing a number of hero species within our wider place making and community strategy which we will feature in walks, wayfinding and welcome packs which help define the role of nature in this nature-led development. We would like to use these names to engage people with the play spaces and walking/running routes around the development, for example:

Kingfisher Walk - the route around the lake will enable glimpses of the kingfishers which live on the island but also keep people away from the more sensitive habitats there. They may include observation points to see them safely.

The play strategy has a number of natural and heritage themes which would explore the woodland glades and paths they sit within to reflect willow, poplar, cherry and birch, acer and alder, with grassland areas celebrating the species of stonecrops, bedstraws and orchids.

The lists overleaf include details of the key species, which we are continuing to refine, but we intrinsically feel these relate best to walks and play areas, rather than street names.





# References and Potential Names: Biodiversity

## Planting species (sourced from biodiversity strategy)

- Bergamot
- California lilac
- Catmint
- Escallonia
- Firethorn
- Oxeye daisy
- Yarrow
- Lord Lambourne
- Arrowhead
- Brooklime

## Wintering Birds

- Short-eared owl (*Asio flammeus*)
- Pochard (*Aythya farina*)
- Lesser redpoll (*Carduelis cabaret*)
- Peregrine (*Falco peregrinus*)
- Snipe (*Gallinago gallinago*)
- Black-headed gull (*Larus ridibundus*)
- Grey wagtail (*Motacilla cinerea*)
- Woodcock (*Scolopax rusticola*)
- Green sandpiper (*Tringa ochropus*)
- Redwing (*Turdus iliacus*)
- Mistle thrush (*Turdus viscivorus*)
- Fieldfare (*Turdus pilaris*)

## Breeding Birds

- Skylark (*Alauda arvensis*),
- Kingfisher (*Alcedo atthis*),
- Teal (*Anas crecca*),
- Meadow pipit (*Anthus pratensis*),
- Swift (*Apus apus*),
- Linnet (*Carduelis cannabina*),
- Cuckoo (*Cuculus canorus*),
- Yellowhammer (*Emberiza citronella*),
- Hobby (*Falco Subbuteo*),
- Kestrel (*Falco tinnunculus*),
- Herring gull (*Larus argentatus*),
- Willow tit (*Parus montanus*),
- Marsh tit (*Parus palustris*),
- House sparrow (*Passer domesticus*),
- Willow warbler (*Phylloscopus trochilus*),
- Bullfinch (*Pyrrhula pyrrhula*),
- Common tern (*Sterna hirundo*),
- Starling (*Sturnus vulgaris*),
- Song thrush (*Turdus philomelos*)
- Barn owl (*Tyto alba*)

# Part 1: Naming the Settlement (Questionnaire A)

The first part of this consultation considers the name of the new town.

There is a need to resolve whether the new development coming forward at Waterbeach, is part of and named Waterbeach, reflecting the common position and understanding at present, or becomes something different. The corollary is how the village is distinguished as a place from which a larger settlement will grow, but with its own distinct character. This priority for naming arises as construction is now underway and signage/identity will reinforce identity as marketing begins and prospective residents come to site.

The promoters are seeking to respect and manage impacts on existing residents and signage is a vital part of the commitment (for example, deterring unnecessary vehicular movement through the village). Naming needs to be confirmed for a signage strategy to be brought forward.

Please now consider the questions set out in **Questionnaire A** at the back of the document and tell us what you think.

# Part 2: Local Place Naming (Questionnaire B)

We would welcome your ideas and input to a repository of references for local place naming. Please use **Questionnaire B** to give us your thoughts now.

You can continue to offer ideas beyond this consultation exercise by sending them to

[waterbeach@urbanandcivic.com](mailto:waterbeach@urbanandcivic.com)

Thank you for your time reading this, and sharing your views with us.



# Questionnaire A

Please help us to settle the all-important question of what the expanded settlement at Waterbeach should be called

Think carefully and think ahead. This is a decision for the long term and for all the future residents of the village and the new development. It is not just about a name but what that name signifies. When the new development is finished and new facilities are open, how will residents, new and long standing, identify and relate to each other. Are they likely to want to stand together or apart?

Also think practically, will a new name or names stick? What is familiar and popular is difficult to change. There will need to be good reason and a consensus to achieve change.

## 1. The Whole Settlement – is it one or two places?

1a. Do you agree that Waterbeach (the existing village) and incoming community (to be brought forward on the Waterbeach Barracks, Airfield and New Town East) should be identified together as one place (as a single settlement and destination)?

Yes

No

1b. If you answered yes to Question 1a above, should that settlement be called Waterbeach?

Yes

No

1c. If you answered 'No' to questions 1a or 1b above, please indicate what name or names you would prefer and give your reasons:

## 2. Waterbeach 'village'

2a. If the settlement, as a whole, is identified as one place, do you agree that it is important to distinguish the existing Waterbeach Village as a defined part of the settlement (i.e. an identifiable area within the settlement).

Yes

No

2b. If you answered 'Yes' to questions 2a, is adopting 'Waterbeach Village' as the name the best approach?

Yes

No

2c. If you answered 'No' to questions 2a please indicate or can you offer a better alternative:





# Questionnaire B

## Waterbeach Barracks and Airfield - Local Place Naming

1. Do you agree that introducing themes to help character areas is the right approach?

Yes

No

2. Are there any themes you can suggest?  
Please list suggestions below:

3. Are there names you would add to the lists for consideration?  
Please list.

4. Any other additional ideas or approaches you would like to share?

5. Do you have any issues or concerns with the approach set out, for example are there names you would rather not see used?









