

# cryptogamie

## *Algologie*

2023 • 44 • 4

### Phylogeography of *Amansia glomerata* C.Agardh (Ceramiales, Rhodomelaceae) in Hawai'i: A single species with high divergence

James T. FUMO & Alison R. SHERWOOD

art. 44 (4) — Published on 19 July 2023!  
[www.cryptogamie.com/algologie](http://www.cryptogamie.com/algologie)

PUBLICATIONS  
SCIENTIFIQUES



DIRECTEUR DE LA PUBLICATION / PUBLICATION DIRECTOR: Bruno DAVID  
Président du Muséum national d'Histoire naturelle

RÉDACTRICE EN CHEF / EDITOR-IN-CHIEF: Line LE GALL  
Muséum national d'Histoire naturelle

ASSISTANT DE RÉDACTION / ASSISTANT EDITOR: Chris LE COQUET-LE ROUX ([algo@cryptogamie.com](mailto:algo@cryptogamie.com))

MISE EN PAGE / PAGE LAYOUT: Chris LE COQUET-LE ROUX

RÉDACTEURS ASSOCIÉS / ASSOCIATE EDITORS

**Ecoevolutionary dynamics of algae in a changing world**

**Stacy KRUEGER-HADFIELD**

Department of Biology, University of Alabama, 1300 University Blvd, Birmingham, AL 35294 (United States)

**Jana KULICHOVA**

Department of Botany, Charles University, Prague (Czech Republic)

**Cecilia TOTTI**

Dipartimento di Scienze della Vita e dell'Ambiente, Università Politecnica delle Marche, Via Brecce Bianche, 60131 Ancona (Italy)

**Phylogenetic systematics, species delimitation & genetics of speciation**

**Sylvain FAUGERON**

UMI3614 Evolutionary Biology and Ecology of Algae, Departamento de Ecología, Facultad de Ciencias Biológicas, Pontificia Universidad Católica de Chile, Av. Bernardo O'Higgins 340, Santiago (Chile)

**Marie-Laure GUILLEMIN**

Instituto de Ciencias Ambientales y Evolutivas, Universidad Austral de Chile, Valdivia (Chile)

**Diana SARNO**

Department of Integrative Marine Ecology, Stazione Zoologica Anton Dohrn, Villa Comunale, 80121 Napoli (Italy)

**Comparative evolutionary genomics of algae**

**Nicolas BLOUIN**

Department of Molecular Biology, University of Wyoming, Dept. 3944, 1000 E University Ave, Laramie, WY 82071 (United States)

**Heroen VERBRUGGEN**

School of BioSciences, University of Melbourne, Victoria, 3010 (Australia)

**Algal physiology & photosynthesis**

**Janet KÜBLER**

California State University Northridge, Department of Biology, California State University, Northridge, CA 91330-8303 (United States)

**Prokaryotic algae**

**Nico SALMASO**

IASMA Research and Innovation Centre, Fondazione Mach-Istituto Agrario di S. Michele all'Adige, Limnology and River Ecology, Via E. Mach, 1, 38010 San Michele all'Adige, Trento (Italy)

**Vitor VASCONCELOS**

Faculdade de Ciências da Universidade do Porto and CIIMAR, Rua do Campo Alegre, s/n, 4169-007 Porto (Portugal)

COUVERTURE / COVER:

Photographie d'*Amansia glomerata* C.Agardh sur Ka'alawai Beach, O'ahu, Hawai'i prise par Bert Weeks / Photograph of *Amansia glomerata* C.Agardh on Ka'alawai Beach, O'ahu, Hawai'i taken by Bert Weeks

*Cryptogamie, Algologie* est indexé dans / *Cryptogamie, Algologie is indexed in:*

- Aquatic Sciences & Fisheries Abstracts Part I.
- Biological Abstracts
- Chemical Abstracts
- Current Contents
- Marine Science Contents Tables (FAO)
- Science Citation Index
- Publications bibliographiques du CNRS (Pascal)

*Cryptogamie, Algologie* est distribué en version électronique par / *Cryptogamie, Algologie is distributed electronically by:*

- BioOne® (<http://www.bioone.org/loi/crya>)

*Cryptogamie, Algologie* est une revue en flux continu publiée par les Publications scientifiques du Muséum, Paris  
*Cryptogamie, Algologie* is a fast track journal published by the Museum Science Press, Paris

Les Publications scientifiques du Muséum publient aussi / The Museum Science Press also publish: *Adansonia*, *Geodiversitas*, *Zoosystema*, *Anthropozoologica*, *European Journal of Taxonomy*, *Naturae*, *Comptes Rendus Palévol*, *Cryptogamie* sous-sections *Bryologie*, *Mycologie*.

Diffusion – Publications scientifiques Muséum national d'Histoire naturelle

CP 41 – 57 rue Cuvier F-75231 Paris cedex 05 (France)

Tél. : 33 (0)1 40 79 48 05 / Fax : 33 (0)1 40 79 38 40

[diff.pub@mnhn.fr](mailto:diff.pub@mnhn.fr) / <http://sciencepress.mnhn.fr>

© Publications scientifiques du Muséum national d'Histoire naturelle, Paris, 2023

ISSN (imprimé / print) : 0181-1568 / ISSN (électronique / electronic) : 1776-0984

# Phylogeography of *Amansia glomerata* C.Agardh (Ceramiales, Rhodomelaceae) in Hawai'i: A single species with high divergence

James T. FUMO  
Alison R. SHERWOOD

School of Life Sciences, University of Hawai'i, Honolulu, Hawai'i 96822 (United States)  
[jfumo@hawaii.edu](mailto:jfumo@hawaii.edu) (corresponding author)  
[asherwoo@hawaii.edu](mailto:asherwoo@hawaii.edu)

Submitted on 10 January 2023 | Accepted on 24 March 2023 | Published on 19 July 2023

Fumo J. T. & Sherwood A. R. 2023. — Phylogeography of *Amansia glomerata* C.Agardh (Ceramiales, Rhodomelaceae) in Hawai'i: A single species with high divergence. *Cryptogamie, Algologie* 44 (4): 85-100. <https://doi.org/10.5252/cryptogamie-algologie2023v44a4>. <http://cryptogamie.com/algologie/44/4>

## ABSTRACT

Algal biogeography in Hawai'i has not been studied in detail for many species. The islands are home to swift-current deep-water channels separating suitable habitats. The ability of these channels to act as barriers to dispersal has been studied in several animal lineages and is assessed here using the widespread red alga *Amansia glomerata* C.Agardh. A variety of analytical techniques based on 129 mitochondrial COI barcoding sequences collected across *c.* 2500 km were used to assess the genetic diversity of *A. glomerata* in Hawai'i. Haplotype network analyses demonstrated that the species is split into four main lineages which overlap in large parts of their range, yet there is insufficient support to recognize the lineages as separate species. Measures of haplotype diversity, nucleotide diversity, and neutrality tests suggest that at least three of these lineages have undergone recent population expansion. Biogeographic barriers were found to largely match those of marine animal groups in the archipelago. No evidence was found for distinct haplotypes or lineages between shallow and mesophotic reefs. A number of potential collection locations are suggested for the 1822 lectotype of the species, which was included in the molecular analyses. Potential scenarios leading to observed diversity patterns in the archipelago are presented. *Amansia glomerata* exhibits a high degree of haplotypic variation in Hawai'i, suggesting it may exhibit vast molecular divergences across its broader range, which extends from Hawai'i to southeastern Africa.

**KEY WORDS**  
Tropical Pacific,  
haplotypes,  
lineages,  
lectotype,  
mesophotic.

## RÉSUMÉ

*Phylogéographie d'Amansia glomerata C.Agardh (Ceramiales, Rhodomelaceae) à Hawai'i: une seule espèce à forte divergence.*

La biogéographie des algues à Hawai'i n'a pas été étudiée en détail pour de nombreuses espèces. Les files abritent des chenaux rapides d'eau profonde séparant les habitats appropriés. La capacité de ces chenaux à agir comme des barrières à la dispersion a été étudiée dans plusieurs lignées animales et est évaluée ici à l'aide de l'algue très répandue *Amansia glomerata* C.Agardh. Une variété de techniques analytiques basées sur 129 séquences de code-barres COI mitochondriales collectées sur environ 2500 km ont été utilisées pour évaluer la diversité génétique d'*A. glomerata* à Hawai'i. Les analyses du réseau d'haplotypes ont démontré que l'espèce est divisée en quatre lignées principales qui se chevauchent dans de grandes parties de leur aire de répartition, mais il n'y a pas suffisamment de soutien pour reconnaître les lignées comme plusieurs espèces. Les mesures de la diversité des haplotypes, de la diversité des nucléotides et des tests de neutralité suggèrent qu'au moins trois de ces lignées ont subi des expansions démographiques récentes. Les barrières biogéographiques correspondent largement à celles des groupes d'animaux marins de l'archipel. Aucune preuve n'a été trouvée pour des haplotypes ou des lignées distincts entre les récifs peu profonds et mésophotiques. Un certain nombre de lieux de collecte potentiels sont suggérés pour le lectotype de l'espèce de 1822, qui a été inclus dans les analyses moléculaires. Des scénarios potentiels conduisant à des modèles de diversité observés dans l'archipel sont présentés. *Amansia glomerata* présente un degré élevé de variation haplotypique à Hawai'i, ce qui suggère qu'il peut présenter de vastes divergences moléculaires sur son aire de répartition plus large, qui s'étend d'Hawai'i au sud-est de l'Afrique.

**MOTS CLÉS**  
Pacifique tropical,  
haplotypes,  
lignées,  
lectotype,  
mésophotique.

## INTRODUCTION

Biogeographic patterns inform our understanding of dispersal and natural history (Assis *et al.* 2022), explain the observed diversity of life (Bowen *et al.* 2016), and have implications for ecosystem management (Channell & Lomolino 2000). Assessment of the strength of barriers to dispersal that shape biogeographic patterns is essential for policy makers and stock managers who must define the appropriate spatial scales for management of marine ecosystems (Toonen *et al.* 2011). As the boundaries of marine ecosystems are typically not clear, management must consider the processes underlying dispersal and connectivity in order to adequately protect marine resources.

In the Hawaiian Archipelago, there is evidence that strong currents and winds in certain channels act as geographic barriers for various marine animal groups (Toonen *et al.* 2011). Namely, the 'Alenuihāhā channel between the islands of Hawai'i and the Maui Nui island complex, the Ka'ie'ie Waho Channel channel between the islands of O'ahu and Kaua'i, the separation between the Main Hawaiian Islands (MHI) and the Papahānaumokuākea Marine National Monument (PMNM), and the barrier between the far islands of the PMNM and the remainder of the group constitute significant barriers to dispersal (Toonen *et al.* 2011; Wren *et al.* 2016; Friedlander *et al.* 2020). Largely excluded thus far from studies on taxonomic breaks between inter-island intraspecific populations are the algae. Algae are essential components of benthic systems, contributing to primary production and sustaining reef food webs (Hilting *et al.* 2013). There is potential for geographic barriers to differ in red algae from those of the animal groups as they have different life histories and are non-flagellated in all

life stages (Norris 1988; Santelices 1990). Marine fauna and flora in the Hawaiian Archipelago must have either arrived from elsewhere or diversified locally (Bowen *et al.* 2013). One of the major introduction pathways of marine introductions to Hawai'i is suggested to be from island-hopping across the Pacific Ocean, eventually making their way north to the Line Islands and from there into Hawai'i (Craig *et al.* 2010). Johnston Atoll has also been suggested as a source of material into Hawai'i, focusing on the island of Lalo (French Frigate Shoals) in PMNM (Grigg 1981; Kobayashi 2006).

The red alga *Amansia glomerata* C.Agardh is an ideal model taxon for the study of Hawaiian marine phylogeography. It is widespread in tropical to warm-temperate waters, found from the coasts of Eastern Africa, Southeast Asia, Asia, Australia, New Zealand, Japan, and throughout the Pacific Islands (Guiry & Guiry 2022). In Hawai'i it is typically abundant (Doty 1971), perennial (Abbott 1999), provides food for herbivores including turtles (Miyal & Balazs 1993), forms expansive monospecific stands, and hosts diverse invertebrate populations (Russo 1989). Furthermore, the species was described from the "Sandwich Islands" (Hawai'i) and a mitochondrial cytochrome c oxidase subunit I (COI) sequence of the lectotype is available (Sherwood *et al.* 2011). Preliminary research into the molecular and morphological diversity of *A. glomerata* has raised a number of questions that remain unresolved. Sherwood *et al.* (2011) investigated the molecular signatures of the tribe Amansieae in the Hawaiian Islands and suggested the taxon may warrant splitting after more extensive molecular work. Of the markers used by Sherwood *et al.* (2011), COI was the most informative. Estimates of genetic divergence based on COI by Sherwood *et al.* (2011) demonstrated a divergence of up to 3.6% (22 out of 603 bp) between

lineages of *A. glomerata*, falling roughly between those values typical of intraspecific variation and interspecific variation. Typical intraspecific thresholds for COI in Rhodophyta are 0.0–0.7% while interspecific variation can be very broad from 2.6–10.5% (Saunders 2005; Robba *et al.* 2006; Clarkston & Saunders 2013; Savoie 2017).

Mesophotic coral ecosystems (MCEs) are located between 30 and 150 m depths in the tropics and subtropics, and represent areas where sampling has historically been minimal (Hinderstein *et al.* 2010). Given that *A. glomerata* is observed in the Hawaiian Archipelago from intertidal to mesophotic depths, patterns of distribution for haplotypes may inform connectivity dynamics across this potential threshold. Recent evidence suggested that MCEs may not act as a refugia for shallow water species under a warming climate as in order to act as a refugia the species must be distributed in both shallow and MCE habitats (Pyle *et al.* 2016; Smith *et al.* 2016). Further, several algal species unique to Hawaiian MCEs lacking shallow water representation have been described in recent years (Alvarado *et al.* 2022; Cabrera *et al.* 2022; Paiano *et al.* 2022; Sherwood *et al.* 2022). Conversely, a number of algal species do straddle this range, including *A. glomerata*, yet connectivity between these habitats remains unknown.

This study aims to: 1) investigate the phylogeography of *A. glomerata* in Hawai'i; 2) assess whether recognizing *A. glomerata* as multiple species in the Hawaiian Archipelago is warranted; and 3) investigate connectivity between shallow reefs and MCEs.

## MATERIAL AND METHODS

In total 85 samples were collected and sequenced from 30 unique locations (Appendix 1). An additional 10 were subsampled from the Bishop Museum's Herbarium Pacificum (BISH). Fragments of vegetative plants were cleaned of epiphytes and then stored in silica gel. Genomic DNA was extracted following a modified cetyltrimethylammonium bromide (CTAB) protocol (Doyle & Doyle 1989) with a CTAB buffer and  $\beta$ -mercaptoethanol as a grinding solution. Samples were kept at 65°C overnight and purified using a 24:1 chloroform-isoamyl alcohol solution, then stored at -20°C overnight with 95% ethanol to precipitate DNA before extractions were completed using Qiagen (Valencia, California, United States) QIAquick spin columns, wash buffers AW1 and AW2, and elution buffer AE.

The mitochondrial COI region was amplified following Saunders (2005) with the GazF1 and GazR1 primers. Primers were designed for samples failing amplification: *Amanzia\_GazF* (5'-GGTTCAAATCCCGCCTCTCT-3') and *Amanzia\_GazR* (5'-TGCAAATACAGCACCCATTGA-3'), amplifying a larger segment surrounding the COI gene than GazF1, *c.* 790 bp. Amplification followed that of Saunders (2005) with the annealing temperature adjusted to 57°C. Successful PCR amplifications were confirmed using gel electrophoresis and were purified with ExoSAP-IT (Affymetrix, Santa Clara, California, United States) before submission

to GENEWIZ (Azenta Corporation South Plainfield, New Jersey, United States) for Sanger sequencing. Forward and reverse sequencing reads were assembled in Geneious Prime 2021.1 (<https://www.geneious.com>) and consensus sequences were BLAST searched on the National Center for Biotechnology Information (NCBI) database to ensure there was no contamination. Consensus sequences were aligned using the MUSCLE 3.8.425 plugin (Edgar 2004) in Geneious Prime. An additional 34 samples, including the *A. glomerata* lectotype, were downloaded from GenBank to create a final alignment of 129 sequences of 597 bp. Sequences generated in this study were uploaded to GenBank and assigned accession numbers OQ079250–OQ079366 (Appendix 1).

Lineage designation was conducted in R (R Core Team 2021) using the rmaverick library (Verity 2018). Rmaverick is a generalized thermodynamic integration algorithm for generating population structure and numbers of sub-populations (K), and is considered more accurate than STRUCTURE (Pritchard *et al.* 2000) when dealing with relatively small data sets. FASTA files were converted to the necessary .str file format using xmfconvertor and xmf2struct. Markov Chain Monte Carlo (MCMC) runs were conducted for K = 1–6 with 10 000 samples and 1000 discarded as burn-in on 50 rungs with a convergence test every 100 generations. FASTA files were imported to R using the adegenet library (Jombart 2008; Jombart & Ahmed 2011) and haplotypes were assigned and plotted using the HaploNet function in the pegas library (Paradis 2010). Designations from the rmaverick analysis informed the boundaries between each lineage. Differences between lineages were calculated using an alignment file in Geneious. The best fit model for tree estimation was assessed using jModelTest2 on XSEDE via the CIPRES gateway (Miller *et al.* 2011). The best fit model for the alignment, GTRGAM-MAI, was used in a Bayesian phylogenetic reconstruction on four threads on the University of Hawai'i High Performance Computing cluster (HPC) (<https://datascience.hawaii.edu/hpc/>). Bayesian analyses were conducted using MrBayes 3.2.7 (Ronquist *et al.* 2012) using 1 500 000 generations and four chains of Metropolis-coupled MCMC with sampling every 1000 generations. The alignment included three sequences of *Amanzia fimbrifolia* (R.E.Norris) L.E.Phillips, two sequences of *A. multifida* J.V.Lamouroux, and one sequence of *A. pinatifida* Harvey as outgroups, together with all COI sequences available for the genus.

A Generalized Yule Mixed Coalescent (GMYC) species delimitation model was run through the R library splits (Ezard *et al.* 2021) on an ultrametric tree containing only unique sequences and without outgroups. Bayesian Poisson Tree Process (bPTP) species delimitation was carried out through the online server (Zhang *et al.* 2013; <https://species.h-its.org/>) on a newick tree containing no outgroups with 100 000 MCMC generations and 10 000 discarded as burn-in. Bayesian Phylogenetics and Phylogeography (BPP; Yang 2015) delimitation was carried out using all 129 sequences on both available species delimitation algorithms (Yang & Rannala 2010) following a tutorial from Flouri *et al.* (2020) without priors under 100 000 MCMC generations with 8000 discarded as burn-in.

Calculations of  $\Phi_{ST}$  were conducted in R using the StrataG library (Archer *et al.* 2016) using pairwise tests with 10 000 iterations. Samples were split into their respective island groups to test the strength of inter-island channels as barriers to dispersal. Due to variable sampling, and to test only the strength of major barriers, several groupings were necessary. Samples from the islands of Maui, Kaho'olawe, Lāna'i, and Moloka'i were grouped together as Maui Nui while Kaua'i and Ni'ihau samples were combined into a single group and those from PMNM were treated similarly. Genetic structure differences were calculated using the pegas and strataG libraries in R. Comparisons within and between lineages were reliant on Nei & Tajima's (1981) model. Tajima's D (Tajima 1989) and Fu's  $F_s$  (Fu 1997) were calculated to test for population expansion.

#### ABBREVIATIONS

BISH	Bishop Museum's Herbarium Pacificum;
BPP	Bayesian Phylogenetics and Phylogeography;
bPTP	Bayesian Poisson Tree Process;
COI	Cytochrome C Oxidase Subunit I;
CTAB	Cetyltrimethylammonium bromide;
GMYC	Generalized Yule Mixed Coalescent;
HPC	University of Hawai'i High Performance Computing cluster;
MCE	Mesophotic Coral Ecosystem;
MCMC	Markov Chain Monte Carlo;
MHI	Main Hawaiian Islands;
NCBI	National Center for Biotechnology Information;
PMNM	Papahānaumokuākea Marine National Monument.

#### RESULTS

In total, 129 sequences were assigned to 35 unique haplotypes (Fig. 1; Appendix 1). These were grouped into four subgroups by selecting the most probable value ( $K=4$ ) from the rmaverick analysis. Each subgroup forms a continuous line of descent in the bayesian phylogeny and thus each subgroup is termed a lineage (Fig. 2). Of the four lineages presented here, three were described by Sherwood *et al.* (2011) and we separate Lineage 4 from Lineage 1 based on its assignment by rmaverick as a distinct group. Lineages 2 and 3 were equidistant from the central lineage, 4, while Lineage 1 was closer to Lineage 4 (Fig. 1). The divergence between lineages was reduced from the 2.3–3.6% reported by Sherwood *et al.* (2011) to 1.3–2.3% through inclusion of several intermediate haplotypes.

The COI haplotype network revealed 35 distinct haplotypes corresponding to 16 singletons and four haplotypes with greater than 10 observations (Fig. 1). The genetic distance of haplotypes within a single lineage ranged from 1–9 bp (0.17–1.51%). Lineages 1, 2, and 4 exhibited high haplotypic diversity ( $h=0.6732$ – $0.8609$ ) and low nucleotide diversity ( $\pi=0.0022$ – $0.0054$ ) while Lineage 3 displayed low values for both parameters ( $h=0.4837$ ;  $\pi=0.0043$ ). Tajima's D and Fu's  $F_s$  were negative for Lineages 1, 2, and 4 while in Lineage 3 Tajima's D was negative and Fu's  $F_s$  positive (Table 1).

Mapping the four lineages of *A. glomerata* in Hawai'i revealed that some lineages were separated geographically as Lineage 3 was unique to PMNM and Lineage 4 was unique

to the southeastern coastline of the island of Hawai'i (Fig. 3). The remaining Lineages, 1 and 2, were distributed throughout the MHI showing no clear pattern. Hawai'i Island and O'ahu exhibited the highest genetic diversity ( $h=0.8266$ – $0.9012$ ) followed by Maui Nui ( $h=0.6157$ ), PMNM ( $h=0.4191$ ), and Kaua'i ( $h=0.3333$ ). All regions exhibited low nucleotide diversity ( $\pi<0.0164$ ) and the number of collected samples varied by location (Table 2). Three of these haplotypes occurred on multiple island groupings, H6 (L1), H10 (L1), and H29 (L2). Haplotype six (H6) in Lineage 1 was the best represented in the archipelago, with 23 sequences, and was found on the Kona and Wa'ianae coasts on the western sides of the islands of Hawai'i and O'ahu. It was not the only haplotype on these coasts, however. In Kona, several other haplotypes in Lineage 1 were present, while the Wa'ianae coast not only presented other haplotypes in Lineage 1 but several haplotypes in Lineage 2. Other coastlines with representation from both Lineages 1 and 2 include the north, south, and east sides of O'ahu, and the western end of Moloka'i. The haplotype with the highest representation in Lineage 2 was H29, found on the northern half of the MHI on the islands of Moloka'i, O'ahu, Kaua'i, and Ni'ihau. The most common haplotype in Lineage 3 was H16, found on Manawai (Pearl and Hermes Atoll), Kapou (Lisianski), and Kamole (Laysan).

Pairwise  $\Phi_{ST}$  values were significant across all boundaries tested with one exception (Table 3). From south to north these boundaries were: the 'Alenuihāhā channel between the islands of Hawai'i and the Maui Nui island complex ( $\Phi_{ST}=0.59$ ;  $p<0.01$ ), the Ka'iwi channel between the Maui Nui island complex and O'ahu ( $\Phi_{ST}=0.29$ ;  $p<0.01$ ), the Ka'ie'ie Waho Channel between the islands of O'ahu and Kaua'i ( $\Phi_{ST}=0.16$ ;  $p=0.07$ ), and the separation between the MHI and PMNM ( $\Phi_{ST}=0.87$ ;  $p<0.01$ ).

Phylogenies including all available sequences of COI for the genus *Amansia* showed full support for each species and confirmed that the species *A. glomerata* as well as all of the lineages within the species form monophyletic groupings (Fig. 2). GMYC species delimitation analysis revealed three entities, grouping Lineages 1 and 4 together while designating the others as their own entities. Species delimitation with bPTP yielded 13 entities, delimiting all four lineages as distinct with several entities delimited within lineages while BPP revealed one entity for all sequences (Fig. 2).

Sequences were generated from 11 mesophotic specimens which were not unique to this zone. Mesophotic specimens in Lineage 1 were collected from south O'ahu (H10, H11) and west Moloka'i (H10) and these two haplotypes are also represented by shallow water representatives from south O'ahu. Lineage 2 contained two mesophotic representatives both in the same haplotype (H29) that were collected from Honolulu and Ni'ihau, *c.* 250 km apart. The haplotype is well represented in shallow water with 12 sequences from Kaua'i, O'ahu, and Maui Nui. Lineage 3 contained one mesophotic haplotype, H16, which was collected from the islands of Manawai (Pearl and Hermes Atoll), Kapou (Lisianski), and Kamole (Laysan) in PMNM and was also found in shallow water on Manawai.

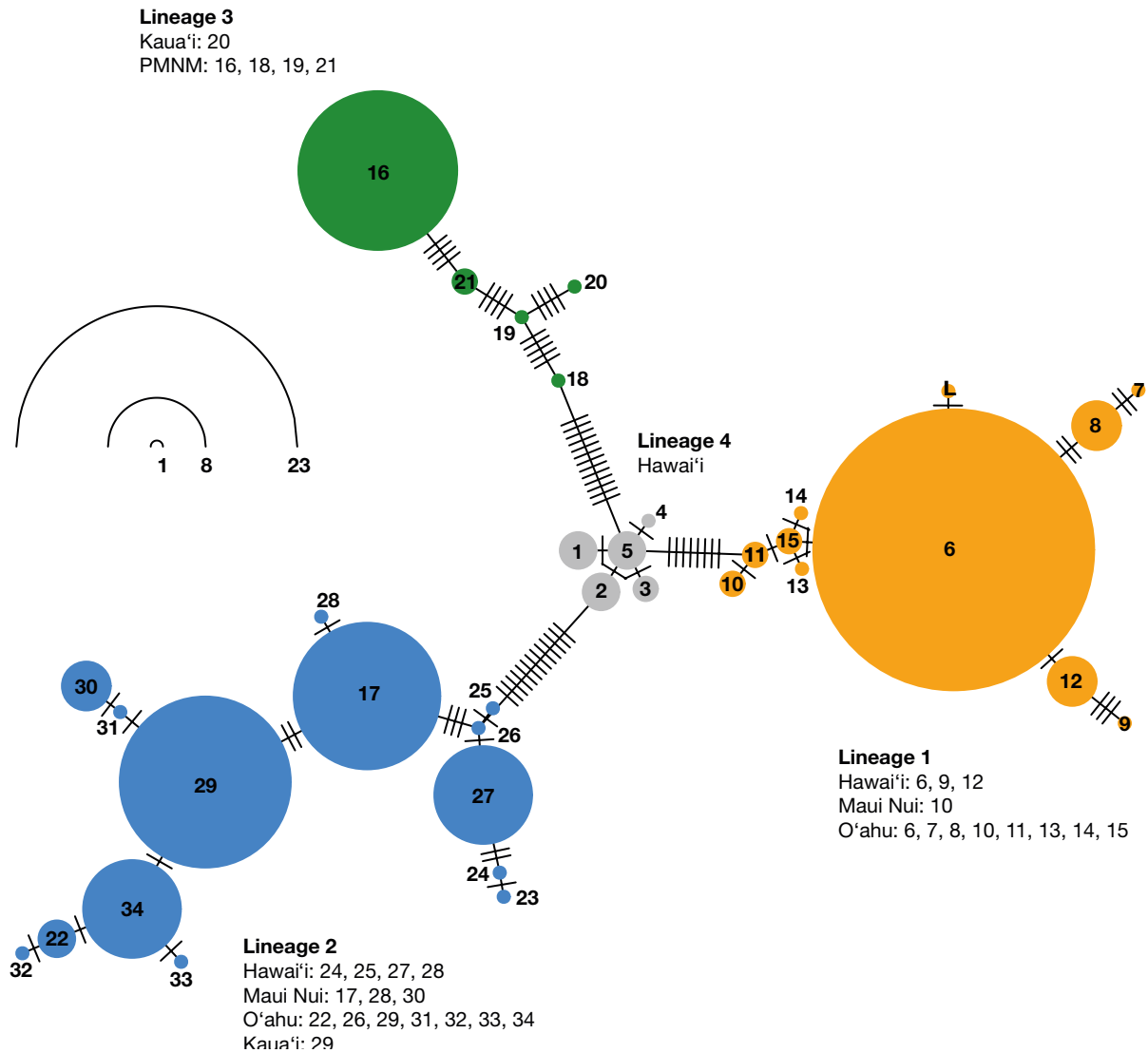


FIG. 1. — Haplotype network of *Amansia glomerata* C.Agardh from the Hawaiian Islands based on the mitochondrial COI region, including 129 samples. Each circle represents a unique haplotype and is scaled to size based on the number of sequences assigned to it. Colors are indicative of thermodynamically assigned subgroups and phylogenetically supported lineage designations: orange, Lineage 1; blue, Lineage 2; green, Lineage 3; and gray, Lineage 4. Haplotypes and lineages are arbitrarily numbered. Collection locations for each haplotype are listed alongside each lineage. The lectotype for *A. glomerata* is labeled L. Each perpendicular line bisecting the connecting lines between adjacent haplotypes represents one nucleotide difference. Haplotype numbers correspond to those in Appendix 1.

The lectotype for *A. glomerata* did not match any of the sequences from this analysis. It was, however, one bp divergent from the largest haplotype in Lineage 1 (H6) and this divergence was due to an ambiguous base code in the lectotype sequence. This haplotype includes collections from the west of Hawai'i island as well as the west and north shores of O'ahu.

DISCUSSION

Specimens of *A. glomerata* from Hawai'i exhibit a wide range of haplotypic variability, splitting into four lineages (Figs 1; 2). The divergence between each lineage was reduced from the 2.6-3.6% reported by Sherwood *et al.* (2011) to 1.3-2.3% through the inclusion of several intermediate haplotypes. As more samples are collected, missing haplotypes are filled

in, a process yielding results similar to those of other species (e.g. Dijoux *et al.* 2014). *Amansia glomerata* appears to follow a similar pattern, where increased numbers of specimens sequenced yields more lineages and closes the gaps between those lineages.

Measurements of genetic connectivity assessing the strength of barriers to dispersal are largely congruent with those observed in animal groups (Toonen *et al.* 2011). The 'Alenuihāhā channel between the islands of Hawai'i and the Maui Nui island complex, the Ka'iwi channel between the Maui Nui island complex and O'ahu, and the channel between the MHI and PMNM all are significant barriers to dispersal (Table 3). The Ka'ie'ie Waho Channel channel between the islands of O'ahu and Kaua'i is here not a significant barrier despite being the largest of the channels in the MHI and shown to be a barrier to dispersal for animal groups (Toonen *et al.* 2011). Mixing

TABLE 1. — Summary of molecular diversity and demographic analyses for the four lineages of *A. glomerata* C.Agardh from Hawai'i where **h** represents haplotypic diversity, **π** represents nucleotide diversity and **SD** refers to standard deviation.

Lineage	N	Nh	h ± SD	π ± SD	Tajima's D	Fu's Fs
1	41	10	0.6732 ± 0.0780	0.0027 ± 0.0018	-1.4728	-3.3959
2	57	14	0.8609 ± 0.0222	0.0054 ± 0.0031	-0.0378	-2.4312
3	18	5	0.4837 ± 0.1392	0.0043 ± 0.0027	-0.9878	1.2002
4	12	5	0.8485 ± 0.0470	0.0022 ± 0.0016	-0.0974	-1.2702

TABLE 2. — Genetic diversity of populations of *A. glomerata* C.Agardh from Hawai'i. **N** represents the number of individuals assigned to that group, **Nh** is the number of haplotypes observed on that island. **Lineages** lists the lineage numbers observed on that island. Haplotype diversity and standard deviation are given under **h ± SD**; and nucleotide diversity is displayed under **π ± SD**.

Location	N	Nh	Lineages	h ± SD	π ± SD
Hawai'i	44	12	1, 2, 4	0.8266 ± 0.0426	0.0153 ± 0.0080
Maui Nui	20	5	1, 2	0.6157 ± 0.1060	0.00436 ± 0.0027
O'ahu	41	15	1, 2	0.9012 ± 0.0224	0.0164 ± 0.0085
Kaua'i	6	2	2, 3	0.3333 ± 0.2187	0.0112 ± 0.0071
PMNM	17	4	3	0.4191 ± 0.1425	0.0036 ± 0.0024

TABLE 3. — *F*<sub>st</sub> values for *Amansia glomerata* C.Agardh across channels of the Hawaiian Archipelago. Numbers **below** the diagonal are *F*<sub>st</sub> values and those **above**, in **italics**, are p-values. Maui Nui includes samples collected from the islands of Maui, Kaho'olawe, Lāna'i, and Moloka'i. Kaua'i includes samples from Ni'ihau. All samples from Papahānaumokuākea Marine National Monument (PMNM) are included as one group.

Location	Hawai'i	Maui Nui	O'ahu	Kaua'i	PMNM
Hawai'i	—	<0.001	<0.001	<0.001	<0.001
Maui Nui	0.59	—	<0.001	1.00	<0.001
O'ahu	0.18	0.29	—	0.079	<0.001
Kaua'i	0.46	0	0.16	—	<0.001
PMNM	0.68	0.94	0.69	0.88	—

across this channel may be facilitated by the North Hawai'i Ridge Current which runs from Southeast to Northwest through most of the year (Qiu *et al.* 1997; Firing *et al.* 1999). The dispersal of organisms across this channel based on oceanographic currents has been demonstrated for fish species with longer pelagic larval durations (Vaz 2012) but may be more complex for the non-motile and negatively buoyant (Norris 1988; Santelices 1990). Toonen *et al.* (2011) suggested the Ka'iwi channel as only a potential barrier as it is a significant barrier to spread for approximately half of the animal species assessed in that study. We found the Ka'iwi channel to be a significant barrier to dispersal for *A. glomerata* yet testing additional species of Rhodophyta across these boundaries is essential for assessing the channels of the Hawaiian Islands as barriers to dispersal for this phylum. The phylogeography of *A. glomerata* across its entire range will additionally inform whether certain lineages are introduced to the archipelago and allow evaluation of potential routes of introduction to Hawai'i.

BPP, GMYC, and bPTP suggest one, three, and 13 entities exist in Hawai'i, respectively (Fig. 2). Consensus among these methods would provide sufficient support for species delimitation as each method must contain simplifications or assumptions of evolutionary parameters and their results must be reconciled (Carstens *et al.* 2013; Dellicour & Flot 2018). Markers from the nucleus and chloroplast are notably less divergent for *A. glomerata* than the mitochondrial COI marker (Sherwood *et al.* 2011). A comparison of these delimitation

tools suggests that GMYC and bPTP are prone to false positive entity designation when only one entity exists (Luo *et al.* 2018). Further, species splits should be made conservatively when dealing with cryptic lineages as failing to split species is preferable to false delimitation in most contexts (Carstens *et al.* 2013). As *A. glomerata* is widespread across the Pacific and Indian Oceans it is possible that future sequencing across the range of this species will support splitting yet with currently available sequences there is insufficient evidence to support splitting the species into multiple entities.

*Amansia glomerata* exhibits shared haplotypes across the mesophotic-shallow threshold and exceptional diversity in the archipelago, following several of the hypotheses suggested by Copus *et al.* (2022) as the habitat persistence hypothesis. The presence of *A. glomerata* in its current diversity of habitats suggests the possibility of being a persistent species with a long diversification period in Hawai'i, using certain parts of its range during periods of climactic variability. Specifically, the species exhibits strong population structure and further mesophotic sampling should be undertaken to assess whether population expansion has also occurred in this more stable habitat (Copus *et al.* 2022). Haplotypes containing samples collected from mesophotic depths in Hawai'i are almost always shared with identical shallow water samples, an indication the mesophotic may act as a refugia for the species (Bongaerts *et al.* 2010; Hinderstein *et al.* 2010; Bongaerts & Smith 2019; Pyle & Copus 2019). Some haplotypes occur at mesophotic



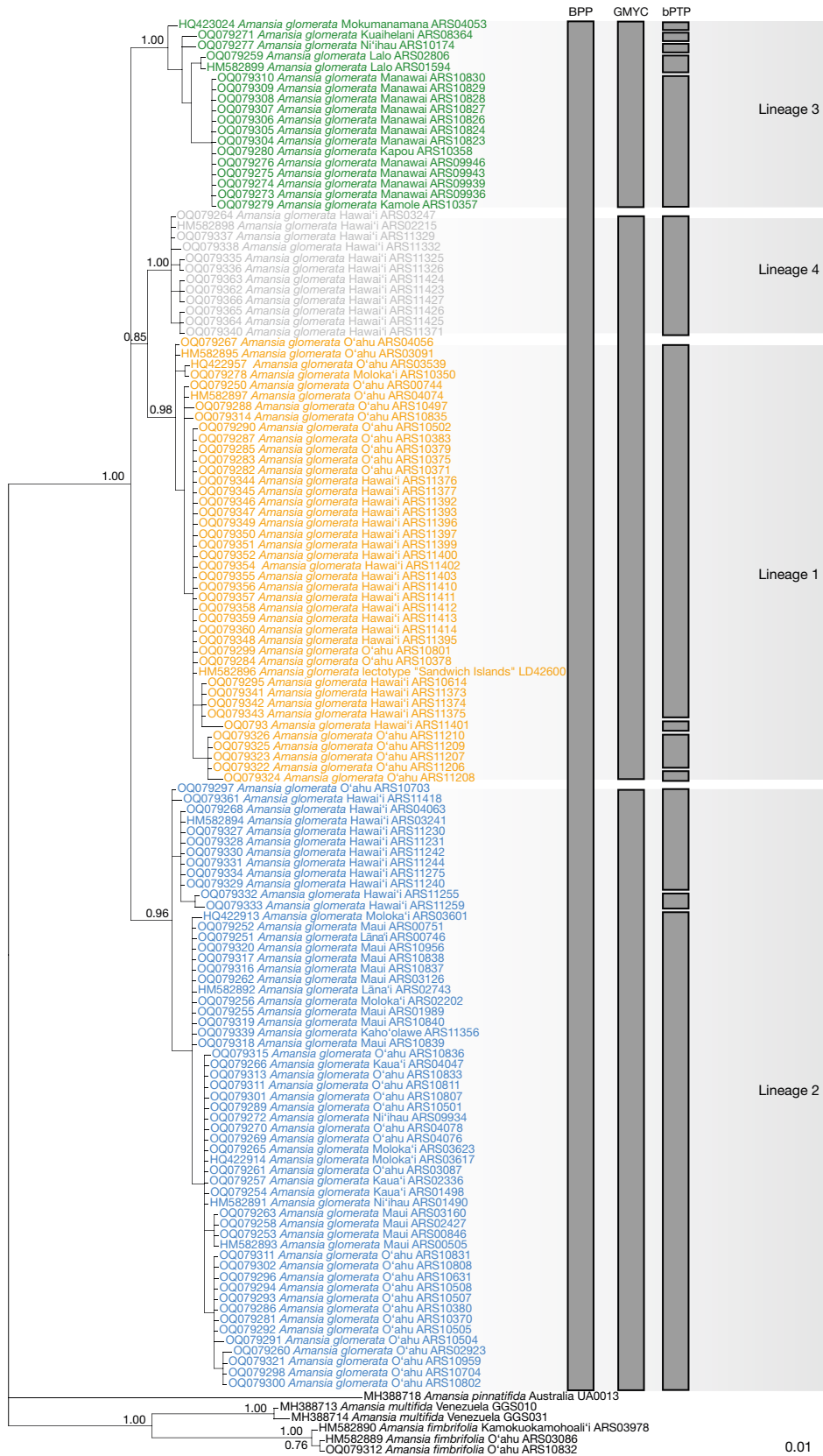


Fig. 2. — Bayesian phylogeny of the genus *Amsania* J.V.Lamouroux based on the mitochondrial COI marker. *Amsania glomerata* C.Gardh makes up a majority of the sequences available for the genus. Lineages of *A. glomerata* are colored orange, blue, green, and gray to represent Lineages 1, 2, 3, and 4, respectively (as per Fig. 1). Bars represent the results from species delimitation models derived from Bayesian Phylogenetics and Phylogeography (BPP), Generalized Mixed Yule Coalescent (GMYC), and bayesian Poisson Tree Process (bPTP).

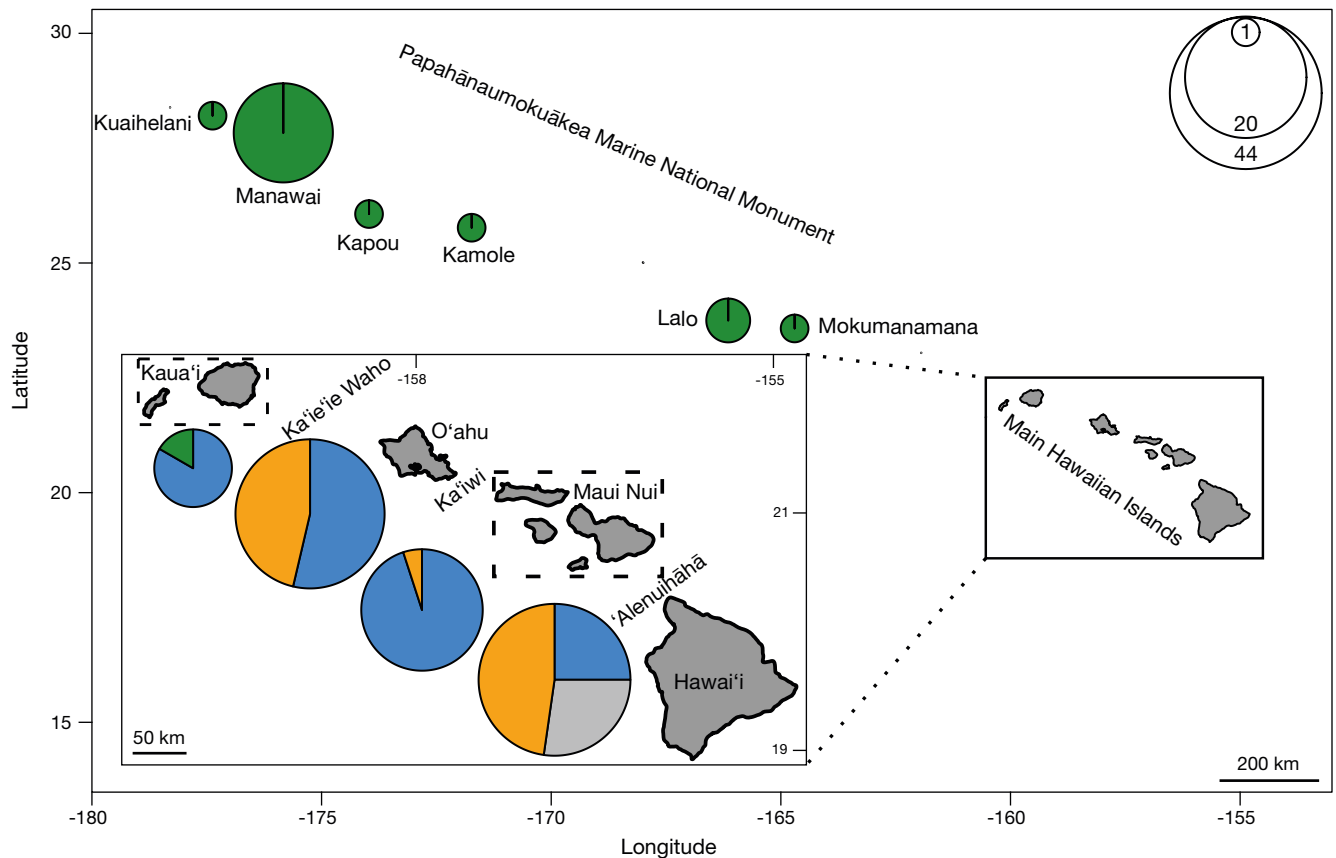


FIG. 3. — *Amansia glomerata* C.Agardh specimen sampling locations across the Hawaiian Archipelago. Each pie graph is scaled in size to the number of samples from each island or island group. An inset of the Main Hawaiian Islands is included and at a separate scale from the main map. The islands of Maui, Moloka'i, Lāna'i, and Kaho'olawe are grouped together, as are the islands of Kaua'i and Ni'ihau. Channels and Islands of interest are labeled. Colors are representative of lineage designations (as per Figs 1; 2). Pie chart scaling does not change in inset map.

depths on several islands separated by great distances. However, the number of mesophotic sequences included in this study ( $n = 11$ ) implies that mesophotic-shallow comparisons can only be made in a preliminary manner.

The lectotype of *A. glomerata* sampled from the “Sandwich Islands” in 1822 is a member of Lineage 1 (Fig. 1). The sequence falls 1 bp away from the most common haplotype of the lineage, haplotype six, which is broadly distributed on the west and north sides of O’ahu as well as the west side of the island of Hawai’i. As the sequence was generated recently (Sherwood *et al.* 2011) but the lectotype was collected in the early 19<sup>th</sup> century, it is possible that DNA degradation occurred in this sample (Staats *et al.* 2011; Hughey & Gabrielson 2012; Saunders & McDevit 2012) and led to the ambiguous nucleotide. Samples from H6 exhibited the largest geographic spread of any single haplotype in the MHI. It is therefore possible that the lectotype is a member of haplotype six, and was collected from the islands of Hawai’i or O’ahu.

*Amansia glomerata* lineages yielded low nucleotide diversity, high haplotypic diversity, and negative values for both Tajima’s  $D$  and Fu’s  $F_s$  with the exception of Lineage 3’s low haplotypic diversity and positive Fu’s  $F_s$  (Table 1). For Lineages 1, 2, and 4, the lineages that occur in the MHI, this suggests recent population expansion in Hawai’i, where land

use change and increased nutrient runoff have been recorded over the last several hundred years (Bishop *et al.* 2017). It is unclear whether the abundance of *A. glomerata* in nutrient rich areas of the MHI is dependent on increased nutrient exposure as there is a lack of information on fine scale algal distributions in Hawai’i. Several waves of natural introduction from the Line Islands (Craig *et al.* 2010) or Johnston Atoll (Grigg 1981; Kobayashi 2006) may explain this diversity as well. Non-linear patterns of colonization may be underway, however, as the genetic differentiation from the MHI towards the northwest is not linear with distance. Introduced lineages may be a source of diversity as this scenario was observed in other algal taxa in Hawai’i (e.g. *Asparagopsis taxiformis*, Sherwood 2008). Additionally, the MHI are composed of many more microhabitats than PMNM (Parrish & Boland 2004). Cryptic diversity may be created through lineage-specific selection and subsequent adaptation to microhabitats as has been observed in marine fishes (Herler 2007; Tornabene *et al.* 2015). Samples anchored to the top and sides of a single rock contained individuals belonging to Lineages 1 and 2, respectively. Microhabitat selection could be indicative of cryptic diversity in *A. glomerata* similar to *Bostrychia intricata* (Bory) Montagne in southeastern Australia (Muangmai *et al.* 2022) and further work should focus on reproductive crosses

(Zuccarello & West 2003). Regardless of the mechanism of dispersal it is apparent that interisland mixing, though rare, does occur in the Hawaiian Islands. This is evidenced not only by  $\Phi_{ST}$  values suggesting occasional mixing, but also by shared haplotypes across channels. Indeed, studies suggesting low divergences in species of Rhodophyta tend to be in regions of recent glaciation and may be artifacts of recent range expansion while considerable genetic variability exists in closely separated tropical regions where habitat persistence is higher (Assis *et al.* 2014; Francisco *et al.* 2014; Guillemin *et al.* 2018; Ferrer *et al.* 2019, 2020; Zhong *et al.* 2020; Nielsen *et al.* 2021).

This study is one of the few focused on patterns of algal phylogeography in the Hawaiian Archipelago and confirms a complex pattern of introduction and diversification amongst the lineages. With 129 sequences of *A. glomerata* we confirmed a wide molecular diversity across the archipelago but insufficient evidence to recognize multiple species. Sequencing many specimens from neighboring islands allowed us to make direct comparisons with animal groups and highlights the need for further algal phylogeographic studies in Hawai'i.

### Acknowledgements

This work was supported by the U.S. National Science Foundation (DEB-1754117), the U.S. National Fish and Wildlife Foundation (NFWF 0810.18.059023) and the University of Hawai'i Graduate Student Organization (GSO 22-03-07). We wish to thank two anonymous reviewers, Celia M. Smith, Brian W. Bowen, associate editor Stacy A. Krueger-Hadfield, and the handling editor Chris Le Coquet for their constructive comments leading to substantive improvements to the manuscript. We thank all collectors who assisted with field work, especially Bert Weeks. Monica Paiano, Feresa Cabrera, Kazumi Allsopp, Ashley Edwards, Bailey Spry, Eve Cooke, and Rosalie Michot provided valuable guidance and assistance with lab work. Field work and specimen collections in the Papahānaumokuākea Marine National Monument were authorized under Papahānaumokuākea Marine National Monument research permit PMNM-2019-001 issued to R. Kosaki. We thank Barbara Kennedy of the Bernice P. Bishop Museum for permission and assistance with sampling specimens from the Herbarium Pacificum. The scientific views and conclusions, as well as any views or opinions expressed herein, are those of the authors and do not necessarily reflect the views of the above organizations.

### REFERENCES

- ABBOTT I. A. 1999. — *Marine Red Algae of the Hawaiian Islands*. Bishop Museum Press, Honolulu, 477 p.
- ALVARADO E. A., CABRERA F. P., PAIANO M. O., FUMO J. T., SPALDING H. L., SMITH C. M., LEONARD J. C., LOPES JR. K. H., KOSAKI R. K. & SHERWOOD A. R. 2022. — Unveiling mesophotic diversity in Hawai'i: two new species in the genera *Halopeltis* and *Leptofuachea* (Rhodymeniales, Rhodophyta). *Algae* 37 (4): 249-264. <https://doi.org/10.4490/algae.2022.37.10.31>
- ARCHER F. I., ADAMS P. E. & SCHNEIDERS B. B. 2016. — strataG: An R package for manipulating, summarizing and analysing population genetic data. *Molecular Ecology Resources* 17 (1): 5-11. <https://doi.org/10.1111/1755-0998.12559>
- ASSIS J., SERRAO E. A., CLARO B., PERRIN C. & PEARSON G. A. 2014. — Climate-driven range shifts explain the distribution of extant gene pools and predict future loss of unique lineages in a marine brown alga. *Molecular Ecology* 23 (11): 2797-2810. <https://doi.org/10.1111/mec.12772>
- ASSIS J., NEIVA J., BOLTON J. J., ROTHMAN M. D., GOUVEIA L., PAULINO C., MOHDNASIR H., ANDERSON R. J., REDDY M. M., KANDJENGO L., KREINER A., PEARSON G. A. & SERRÃO E. A. 2022. — Ocean currents shape the genetic structure of a kelp in southwestern Africa. *Journal of Biogeography* 49 (5): 822-835. <https://doi.org/10.1111/jbi.14338>
- BISHOP J. M., GLENN C. R., AMATO D. W. & DULAI H. 2017. — Effect of land use and groundwater flow path on submarine groundwater discharge nutrient flux. *Journal of Hydrology: Regional Studies* 11: 194-218. <https://doi.org/10.1016/j.ejrh.2015.10.008>
- BONGAERTS P., RIDGWAY T., SAMPAYO E. M. & HOEGH-GULDBERG O. 2010. — Assessing the 'deep reef refugia' hypothesis: focus on Caribbean reefs. *Coral Reefs* 29: 309-327. <https://doi.org/10.1007/s00338-009-0581-x>
- BONGAERTS P. & SMITH T. B. 2019. — Beyond the "Deep Reef Refuge" hypothesis: a conceptual framework to characterize persistence at depth. *Mesophotic Coral Ecosystems* 1: 881-895. [https://doi.org/10.1007/978-3-319-92735-0\\_45](https://doi.org/10.1007/978-3-319-92735-0_45)
- BOWEN B. W., ROCHA L. A., TOONEN R. J. & KARL S. A. 2013. — The origins of tropical marine biodiversity. *Trends in Ecology & Evolution* 28 (6): 359-366. <https://doi.org/10.1016/j.tree.2013.01.018>
- BOWEN B. W., GAITHER M. R., DIBATTISTA J. D., IACCHEI M., ANDREWS K. R., GRANT W. S., TOONEN R. J. & BRIGGS J. C. 2016. — Comparative phylogeography of the ocean planet. *Proceedings of the National Academy of Sciences* 113 (29): 7962-7969. <https://doi.org/10.1073/pnas.1602404113>
- CABRERA F. P., HUISMAN J. M., SPALDING H. L., KOSAKI R. K., SMITH C. M. & SHERWOOD A. R. 2022. — Cryptic diversity in the genus *Croissetea* (Kallymeniaceae, Rhodophyta) from Hawaiian mesophotic reefs. *Phycologia* 61 (6): 572-583. <https://doi.org/10.1080/00318884.2022.2096823>
- CARSTENS B. C., PELLETIER T. A., REID N. M. & SATLER J. D. 2013. — How to fail at species delimitation. *Molecular Ecology* 22 (17): 4369-4383. <https://doi.org/10.1111/mec.12413>
- CHANNELL R. & LOMOLINO M. V. 2000. — Dynamic biogeography and conservation of endangered species. *Nature* 403 (6765): 84-86. <https://doi.org/10.1038/47487>
- CLARKSTON B. E. & SAUNDERS G. W. 2013. — Resolving species diversity in the red algal genus *Callophyllis* (Kallymeniaceae, Gigartinales) in Canada using molecular assisted alpha taxonomy. *European Journal of Phycology* 48 (1): 27-46. <https://doi.org/10.1080/09670262.2013.767943>
- CRAIG M. T., EBLE J. A. & BOWEN B. W. 2010. — Origins, ages and population histories: comparative phylogeography of endemic Hawaiian butterflyfishes (genus *Chaetodon*). *Journal of Biogeography* 37 (11): 2125-2136. <https://doi.org/10.1111/j.1365-2699.2010.02358.x>
- COPUS J. M., PYLE R. L., BOWEN B. W., KOSAKI R. K. & WEBSTER J. M. 2022. — The Habitat Persistence Hypothesis: a new perspective on the distribution of coral-reef organisms. *Frontiers of Biogeography* 14 (4): e57427. <https://doi.org/10.21425/F5FBG57427>
- DELLICOUR S. & FLOT J. F. 2018. — The hitchhiker's guide to single-locus species delimitation. *Molecular Ecology Resources* 18 (6): 1234-1246. <https://doi.org/10.1111/1755-0998.12908>
- DIJOUX L., VIARD F. & PAYRI C. 2014. — The more we search, the more we find: discovery of a new lineage and a new species complex in the genus *Asparagopsis*. *PloS One* 9 (7): e103826. <https://doi.org/10.1371/journal.pone.0103826>

- DOTY M. S. 1971. — The productivity of benthic frondose algae at Waikiki Beach, 1967–1968. *Hawaii Botanical Science* 22: 1-238.
- DOYLE J. J. & DOYLE J. L. 1989. — CTAB mini-DNA purification procedure. *Proceedings of the National Academy Sciences* 81: 8014-8018.
- EDGAR R. C. 2004. — MUSCLE: multiple sequence alignment with high accuracy and high throughput. *Nucleic Acids Research* 32 (5): 1792-1797.
- EZARD T., FUJISAWA T. & BARRACLOUGH T. 2021. — Splits: Species' Limits by Threshold Statistics. R package version 1.0-20/r56. Available at: <https://R-Forge.R-project.org/projects/splits/>.
- FERRER M., SALVACION R., GOMEZ R. N., NACIDO C. B., MOISES M. T. & DUMILAG R. V. 2019. — Genetic diversity of Philippine *Gracilaria salicornia* (Gracilariaceae, Rhodophyta) based on mitochondrial COI-5P sequences. *Biologia* 74 (6): 599-607. <https://doi.org/10.2478/s11756-018-00179-7>
- FERRER M., GOMEZ R. N. & DUMILAG R. V. 2020. — COI-5P Gene Sequence Variation in Philippine *Hydropuntia edulis* (Gracilariaceae, Rhodophyta). *Philippine Journal of Science* 149 (4): 1135-1140. <https://doi.org/10.56899/149.04.12>
- FIRING E., QIU B. & MIAO W. 1999. — Time-dependent island rule and its application to the time-varying North Hawaiian Ridge Current. *Journal of Physical Oceanography* 29 (10): 2671-2688. <https://doi.org/10.1175/1520>
- FLOURI T., RANNALA B. & YANG Z. 2020. — A tutorial on the use of bpp for species tree estimation and species delimitation. *Phylogenetics in the Genomic Era* 5 (6):1-16.
- FRANCISCO S. M., ALMADA V. C., FARIA C., VELASCO E. M. & ROBALO J. I. 2014. — Phylogeographic pattern and glacial refugia of a rocky shore species with limited dispersal capability: the case of Montagu's blenny (*Coryphoblennius galerita*, Blenniidae). *Marine Biology* 161 (11): 2509-2520. <https://doi.org/10.1007/s00227-014-2523-6>
- FRIEDLANDER A. M., DONOVAN M. K., DEMARTINI E. E. & BOWEN B. W. 2020. — Dominance of endemics in the reef fish assemblages of the Hawaiian Archipelago. *Journal of Biogeography* 47: 2584-2596. <https://doi.org/10.1111/jbi.13966>
- FU Y. X. 1997. — Statistical tests of neutrality of mutations against population growth, hitchhiking and background selection. *Genetics* 47 (2): 915-925. <https://doi.org/10.1093/genetics/147.2.915>
- GARCIA-SOTO G. & LOPEZ-BAUTISTA J. 2018. — Taxonomic notes on the genus *Alsidium* C.Agardh, including the merging of *Bryothamnion* Kuetzing (Rhodomelaceae). *Algae* 33 (3): 215-229. <https://doi.org/10.4490/algae.2018.33.6.25>
- GRIGG R. W. 1981. — *Acropora* in Hawaii. Part 2. Zoogeography. *Pacific Science* 35 (1): 15-24.
- GUILLEMIN M. L., DUBRASQUET H., REYES J. & VALERO M. 2018. — Comparative phylogeography of six red algae along the Antarctic Peninsula: extreme genetic depletion linked to historical bottlenecks and recent expansion. *Polar Biology* 41 (5): 827-837. <https://doi.org/10.1007/s00300-017-2244-7>
- GUIRY M. D. & GUIRY G. M. 2022. — AlgaeBase. World-wide electronic publication, National University of Ireland, Galway. Available at: <https://www.algaebase.org/>.
- HERLER J. 2007. — Microhabitats and ecomorphology of coral and coral rock associated gobiid fish (Teleostei: Gobiidae) in the northern Red Sea. *Marine Ecology* 28: 82-94. <https://doi.org/eres.library.manoa.hawaii.edu/10.1111/j.1439-0485.2007.00165.x>
- HILTING A. K., CURRIN C. A. & KOSAKI R. K. 2013. — Evidence for benthic primary production support of an apex predator-dominated coral reef food web. *Marine Biology* 160 (7): 1681-1695. <https://doi.org/10.1007/s00227-013-2220-x>
- HINDERSTEIN L. M., MARR J. C. A., MARTINEZ F. A., DOWGIHALLO M. J., PUGLISE K. A., PYLE R. L., ZAWADA D. G. & APPELDOORN R. 2010. — Mesophotic coral ecosystems: characterization, ecology, and management. *Coral Reefs* 29 (2): 247-251. <https://doi.org/10.1007/s00338-010-0614-5>
- HUGHEY J. R. & GABRIELSON P. W. 2012. — Comment on “Acquiring DNA sequence data from dried archival red algae (Florideophyceae) for the purpose of applying available names to contemporary genetic species: a critical assessment”. *Botany* 90 (12): 1191-1194. <https://doi.org/10.1139/b2012-102>
- JOMBART T. 2008. — adegenet: R package for the multivariate analysis of genetic markers. *Bioinformatics* 24: 1403-1405. <https://doi.org/10.1093/bioinformatics/btn129>
- JOMBART T. & AHMED I. 2011. — adegenet 1.3-1: new tools for the analysis of genome-wide SNP data. *Bioinformatics* 27 (21): 3070-3071. <https://doi.org/10.1093/bioinformatics/btr521>
- KOBAYASHI D. R. 2006. — Colonization of the Hawaiian Archipelago via Johnston Atoll: a characterization of oceanographic transport corridors for pelagic larvae using computer simulation. *Coral Reefs* 25 (3): 407-417. <https://doi.org/10.1007/s00338-006-0118-5>
- LUO A., LING C., HO S. Y. & ZHU C. D. 2018. — Comparison of methods for molecular species delimitation across a range of speciation scenarios. *Systematic Biology* 67 (5): 830-846. <https://doi.org/10.1093/sysbio/syy011>
- MILLER M. A., PFEIFFER W. & SCHWARTZ T. 2011. — The CIPRES science gateway: a community resource for phylogenetic analyses. *Proceedings of the 2011 TeraGrid Conference: extreme digital discovery* 1: 1-8. <https://doi.org/10.1145/2016741.2016785>
- MİYAL R. K. & BALAZS H. 1993. — Ecology and conservation of green turtles in the nearshore waters of Waikiki Beach. *Journal of the Hawaii Audubon Society* 25 (2): 9-12.
- MUANGMAI N., PREUSS M., WEST J. A. & ZUCCARELLO G. C. 2022. — Cryptic diversity and phylogeographic patterns of the *Bostrychia intricata* species complex (Rhodomelaceae, Rhodophyta) along the coast of southeastern Australia. *Phycologia* 61 (1): 27-36. <https://doi.org/10.1080/00318884.2021.1994768>
- NEI M. & TAJIMA F. 1981. — Genetic drift and estimation of effective population size. *Genetics* 98 (3): 625-640. <https://doi.org/10.1093/genetics/98.3.625>
- NIELSEN E. S., BEGER M., HENRIQUES R. & VON DER HEYDEN S. 2021. — Neither historical climate nor contemporary range fully explain the extant patterns of molecular diversity in marine species. *Journal of Biogeography* 48 (10): 2629-2644. <https://doi.org/10.1111/jbi.14229>
- NORRIS R. E. 1988. — Structure and reproduction of *Amansia* and *Melanamansia* gen. nov. (Rhodophyta, Rhodomelaceae) on the Southeastern African Coast. *Journal of Phycology* 24 (2): 209-223. <https://doi.org/10.1111/j.1529-8817.1988.tb04236.x>
- PAIANO M. O., FUMO J. T., CABRERA F. P., KOSAKI R. K., SPALDING H. L. & SHERWOOD A. R. 2022. — *Calliblepharis yasutakei* sp. nov. and *Hypnea tsudae* sp. nov. (Cystocloniaceae, Rhodophyta): novel diversity from the Hawaiian Islands. *Phytotaxa* 572 (1): 74-86. <https://doi.org/10.11646/phytotaxa.572.1.5>
- PARADIS E. 2010. — pegas: an R package for population genetics with an integrated-modular approach. *Bioinformatics* 26: 419-420. <https://doi.org/10.1093/bioinformatics/btp696>
- PARRISH F. A. & BOLAND R. C. 2004. — Habitat and reef-fish assemblages of banks in the Northwestern Hawaiian Islands. *Marine Biology* 144 (6): 1065-1073. <https://doi.org/10.1007/s00227-003-1288-0>
- PRITCHARD J. K., STEPHENS M. & DONNELLY P. J. 2000. — Inference of population structure using multilocus genotype data. *Genetics* 155: 945-959. <https://doi.org/10.1093/genetics/155.2.945>
- PYLE R. L., BOLAND R., BOLICK H., BOWEN B. W., BRADLEY C. J., KANE C., KOSAKI R. K., LANGSTON R., LONGENECKER K., MONTGOMERY A. & PARRISH F. A. 2016. — A comprehensive investigation of mesophotic coral ecosystems in the Hawaiian Archipelago. *PeerJ* 4: p.e2475. <https://doi.org/10.7717/peerj.2475>
- PYLE R. L. & COPUS J. M. 2019. — Mesophotic coral ecosystems: introduction and overview. *Mesophotic Coral Ecosystems* 1: 3-27. [https://doi.org/10.1007/978-3-319-92735-0\\_1](https://doi.org/10.1007/978-3-319-92735-0_1)
- QIU B., KOH D. A., LUMPKIN C. & FLAMENT P. 1997. — Existence and formation mechanism of the North Hawaiian Ridge Current. *Journal of Physical Oceanography* 27 (3): 431-444. <https://doi.org/10.1175/1520-0485>

- R CORE TEAM. 2021. — R: A language and environment for statistical computing. R Foundation for Statistical Computing, Vienna. Available at: <https://www.R-project.org/>.
- ROBBA L., RUSSELL S. J., BARKER G. L. & BRODIE J. 2006. — Assessing the use of the mitochondrial cox1 marker for use in DNA barcoding of red algae (Rhodophyta). *American Journal of Botany* 93 (8): 1101-1108. <https://doi.org/10.3732/ajb.93.8.1101>
- RONQUIST F., TESLENKO M., VAN DER MARK P., AYRES D. L., DARLING A., HÖHNA S., LARGET B., LIU L., SUCHARD M. A. & HUELSENBECK J. P. 2012. — MrBayes 3.2: efficient Bayesian phylogenetic inference and model choice across a large model space. *Systematic Biology* 61 (3): 539-542. <https://doi.org/10.1093/sysbio/sys029>
- RUSSO A. R. 1989. — Fluctuations of epiphytal gammaridean amphipods and their seaweed hosts on a Hawaiian algal reef. *Crustaceana* 57 (1): 25-37. <https://doi.org/10.1163/156854089X00329>
- SANTELICES B. 1990. — Patterns of reproduction, dispersal and recruitment in seaweeds. *Oceanographic Marine Bulletin Annual Review* 28: 177-276.
- SAUNDERS G. W. 2005. — Applying DNA barcoding to red macroalgae: a preliminary appraisal holds promise for future applications. *Philosophical Transactions of the Royal Society B: Biological Sciences* 360 (1462): 1879-1888. <https://doi.org/10.1098/rstb.2005.1719>
- SAUNDERS G. W. & MCDEVIT D. C. 2012. — Acquiring DNA sequence data from dried archival red algae (Florideophyceae) for the purpose of applying available names to contemporary genetic species: a critical assessment. *Botany* 90 (3): 191-203. <https://doi.org/10.1139/b11-079>
- SAVOIE A. M. 2017. — Species diversity and phylogenetic relationships within the family Rhodomelaceae (Ceramiiales, Rhodophyta) in Canada. Doctoral dissertation, University of New Brunswick, 309 p.
- SHERWOOD A. R. 2008. — Phylogeography of *Asparagopsis taxiformis* (Bonnemaisoniales, Rhodophyta) in the Hawaiian Islands: two mtDNA markers support three separate introductions. *Phycologia* 47 (1): 79-88. <https://doi.org/10.2216/07-39.1>
- SHERWOOD A. R., KURIHARA A. & CONKLIN K. Y. 2011. — Molecular diversity of Amanziesae (Ceramiiales, Rhodophyta) from the Hawaiian Islands: a multi-marker assessment reveals high diversity within *Amanzia glomerata*. *Phycological Research* 59 (1): 16-23. <https://doi.org/10.1111/j.1440-1835.2010.00591.x>
- SHERWOOD A. R., CABRERA F. C., KALAIWAA G. V., FUMO J. T., SPALDING H. L., KOSAKI R. K., WAGNER D. & PALANO M. O. 2022. — A new species of *Gibsmithia* (Dumontiaceae, Rhodophyta) from mesophotic depths of the Papahānaumokuākea Marine National Monument, Hawai'i, USA. *Phycologia* 61 (5): 558-569. <https://doi.org/10.1080/00318884.2022.2093540>
- SMITH T. B., GYORY J., BRANDT M. E., MILLER W. J., JOSSART J. & NEMETH R. S. 2016. — Caribbean mesophotic coral ecosystems are unlikely climate change refugia. *Global Change Biology* 22 (8): 2756-2765. <https://doi.org/10.1111/gcb.13175>
- STAATS M., CUENCA A., RICHARDSON J. E., VRIELINK-VAN GINKEL R., PETERSEN G., SEBERG O. & BAKKER F. T. 2011. — DNA damage in plant herbarium tissue. *PLoS ONE* 6 (12): e28448. <https://doi.org/10.1371/journal.pone.0028448>
- TAJIMA F. 1989. — Statistical method for testing the neutral mutation hypothesis by DNA polymorphism. *Genetics* 123 (3): 585-595. <https://doi.org/10.1093/genetics/123.3.585>
- TOONEN R. J., ANDREWS K. R., BAUMS I. B., BIRD C. E., CONCEPCION G. T., DALY-ENGEL T. S., EBLE J. A., FAUCCI A., GAITHER M. R., IACCHEI M., PURITZ J. B., SCHULTZ J. K., SKILLINGS D. J., TIMMERS M. A. & BOWEN B. W. 2011. — Defining boundaries for ecosystem-based management: a multispecies case study of marine connectivity across the Hawaiian Archipelago. *Journal of Marine Biology* 2011: 1-13. <https://doi.org/10.1155/2011/460173>
- TORNABENE L., VALDEZ S., ERDMANN M. & PEZOLD F. 2015. — Support for a 'Center of Origin' in the Coral Triangle: Cryptic diversity, recent speciation, and local endemism in a diverse lineage of reef fishes (Gobiidae: Eviota). *Molecular Phylogenetics and Evolution* 82: 200-210. <http://dx.doi.org/10.1016/j.ympev.2014.09.012>
- VAZ A. C. 2012. — Here today, gone tomorrow: flow variability, larval dispersal and fisheries management in Hawai'i. Doctoral dissertation, University of Hawai'i at Manoa, 122 p.
- VERITY B. 2018. — rmaverick: Analysis of population structure. R package version 1.1.0. Available at: <https://bobverity.github.io/rmaverick/>.
- WREN J. L. K., KOBAYASHI D. R., JIA Y. & TONNEN R. J. 2016. — Modeled population connectivity across the Hawaiian Archipelago. *PLoS ONE* 11: e0167626. <https://doi.org/10.1371/journal.pone.0167626>
- YANG Z. 2015. — The BPP program for species tree estimation and species delimitation. *Current Zoology* 61 (5): 854-865. <https://doi.org/10.1093/czoolo/61.5.854>
- YANG Z. & RANNALA B. 2010. — Bayesian species delimitation using multilocus sequence data. *Proceedings of the National Academy of Sciences* 107 (20): 9264-9269. <https://doi.org/10.1073/pnas.0913022107>
- ZHANG J., KAPLI P., PAVLIDIS P. & STAMATAKIS A. 2013. — A general species delimitation method with applications to phylogenetic placements. *Bioinformatics* 29 (22): 2869-2876. <https://doi.org/10.1093/bioinformatics/btt499>
- ZHONG K. L., SONG X. H., CHOI H. G., SATOSHI S., WEINBERGER F., DRAISMA S. G., DUAN D. L. & HU Z. M. 2020. — MtDNA-based phylogeography of the red alga *Agarophyton vermiculophyllum* (Gigartinales, Rhodophyta) in the native northwest Pacific. *Frontiers in Marine Science* 7: 366. <https://doi.org/10.3389/fmars.2020.00366>
- ZUCCARELLO G. C. & WEST J. A. 2003. — Multiple cryptic species: molecular diversity and reproductive isolation in the *Bostrychia radicans*/*B. moritziana* complex (Rhodomelaceae, Rhodophyta) with focus on North American isolates. *Journal of Phycology* 39 (5): 948-959. <https://doi.org/10.1046/j.1529-8817.2003.02171.x>

Submitted on 10 January 2023;  
accepted on 24 March 2023;  
published on 19 July 2023.

## APPENDIX

APPENDIX 1. — Collection information for specimens of *Amansia* J.V.Lamouroux used in this study sorted by accession number.

Species name	Sherwood Lab accession number	GenBank accession	Collection Details	Lineage (Haplotype)	Source
<i>Amansia glomerata</i> C.Agardh	ARS00505	<a href="#">HM582893</a>	D.T. Fleming Beach Park, Maui, 21.V.2005, coll. A. Sherwood & G. Presting, Intertidal	2 (30)	Sherwood <i>et al.</i> 2011
<i>A. glomerata</i>	ARS00744	<a href="#">OQ079250</a>	Kahe Point, O'ahu, 18.V.2001, coll. R. Okano, Intertidal	1 (15)	Sherwood <i>et al.</i> 2011
<i>A. glomerata</i>	ARS00746	<a href="#">OQ079251</a>	Kaiolohia Bay, Lāna'i, 06.II.2003, coll. J. Fisher, B. Kennedy & S. James, Intertidal	2 (17)	Sherwood <i>et al.</i> 2011
<i>A. glomerata</i>	ARS00751	<a href="#">OQ079252</a>	Hana Boat Harbor, Maui, 07.II.2001, coll. C. Puttock, Intertidal	2 (17)	Sherwood <i>et al.</i> 2011
<i>A. glomerata</i>	ARS00846	<a href="#">OQ079253</a>	Honokeana Bay, Maui, 04.IV.2006, coll. A. Carlile, Intertidal	2 (30)	Sherwood <i>et al.</i> 2011
<i>A. glomerata</i>	ARS01490	<a href="#">HM582891</a>	Nanina Beach, Ni'ihau, 25.X.2006, coll. J. Matthews, Intertidal	2 (29)	Sherwood <i>et al.</i> 2011
<i>A. glomerata</i>	ARS01498	<a href="#">OQ079254</a>	Salt Pond Park, Kaua'i, 24.X.2006, coll. J. Matthews, Intertidal	2 (29)	Sherwood <i>et al.</i> 2011
<i>A. glomerata</i>	ARS01594	<a href="#">HM582899</a>	Census of Marine Life CReefs cruise to Lalo (French Frigate Shoals) sample ID 159, Papahānaumokuākea Marine National Monument, 17.X.2006, coll. K. Coontz, from bait trap	3 (21)	Sherwood <i>et al.</i> 2011
<i>A. glomerata</i>	ARS01989	<a href="#">OQ079255</a>	Lipoa St. (beach wash), Maui, 27.I.2007, coll. T. Chandrasekharan, Intertidal	2 (17)	Sherwood <i>et al.</i> 2011
<i>A. glomerata</i>	ARS02202	<a href="#">OQ079256</a>	Honolui Malo'o Bay Beach, Moloka'i, 11.II.2007, coll. T. Chandrasekharan, Intertidal	2 (17)	Sherwood <i>et al.</i> 2011
<i>A. glomerata</i>	ARS02215	<a href="#">HM582898</a>	South Point (Green Sand Beach), Hawai'i, 25.II.2007, coll. K. Conklin, Intertidal	4 (5)	Sherwood <i>et al.</i> 2011
<i>A. glomerata</i>	ARS02336	<a href="#">OQ079257</a>	Ke'e Beach, Kaua'i, 17.III.2007, coll. K. Conklin, Intertidal	2 (29)	Sherwood <i>et al.</i> 2011
<i>A. glomerata</i>	ARS02427	<a href="#">OQ079258</a>	Outside of Honolua, Maui, 28.I.2007, coll. T. Chandrasekharan, Intertidal	2 (30)	Sherwood <i>et al.</i> 2011
<i>A. glomerata</i>	ARS02743	<a href="#">HM582892</a>	North end of Keomoku Rd., Lāna'i, 03.III.2007, coll. T. Sauvage & A. Kurihara, Intertidal	2 (17)	Sherwood <i>et al.</i> 2011
<i>A. glomerata</i>	ARS02806	<a href="#">OQ079259</a>	Census of Marine Life CReefs cruise to Lalo (French Frigate Shoals) sample ID 314, Papahānaumokuākea Marine National Monument, 23.X.2006, coll. K. Coontz, from bait trap	3 (21)	Sherwood <i>et al.</i> 2011
<i>A. glomerata</i>	ARS02923	<a href="#">OQ079260</a>	Hau'ula Beach Park, O'ahu, 18.IX.2007, A. Kurihara, Intertidal	2 (32)	Sherwood <i>et al.</i> 2011
<i>A. fimbriifolia</i>	ARS03086	<a href="#">HM582889</a>	Kewalo Basin, O'ahu, 09.X.2007, coll. D. Pence	NA	Sherwood <i>et al.</i> 2011
<i>A. glomerata</i>	ARS03087	<a href="#">OQ079261</a>	Kewalo Basin, O'ahu, 09.X.2007, coll. D. Pence, 60 m	2 (29)	Sherwood <i>et al.</i> 2011
<i>A. glomerata</i>	ARS03091	<a href="#">HM582895</a>	Kewalo Basin, O'ahu, 09.X.2007, coll. D. Pence, 60 m	1 (11)	Sherwood <i>et al.</i> 2011
<i>A. glomerata</i>	ARS03126	<a href="#">OQ079262</a>	Hamoā Beach, Maui, 11.XII.2007, coll. K. Conklin, Intertidal	2 (17)	Sherwood <i>et al.</i> 2011
<i>A. glomerata</i>	ARS03160	<a href="#">OQ079263</a>	Honokowai, Maui, 17.XI.2007, coll. S. Hau, Intertidal	2 (30)	Sherwood <i>et al.</i> 2011
<i>A. glomerata</i>	ARS03241	<a href="#">HM582894</a>	Laupahoehoe, Hawai'i, 23.I.2008, coll. K. Conklin, Intertidal	2 (27)	Sherwood <i>et al.</i> 2011
<i>A. glomerata</i>	ARS03247	<a href="#">OQ079264</a>	Richardson Beach Park, Hawai'i, 23.I.2008, coll. K. Conklin, Intertidal	4 (5)	Sherwood <i>et al.</i> 2011
<i>A. glomerata</i>	ARS03539	<a href="#">HQ422957</a>	South O'ahu, 27.XI.2006, coll. H. Spalding, 70 m	1 (10)	Sherwood <i>et al.</i> 2011

## Appendix 1. — Continuation.

Species name	Sherwood Lab accession number	GenBank accession	Collection Details	Lineage (Haplotype)	Source
<i>A. glomerata</i>	ARS03601	<a href="#">HQ422913</a>	Honouli, Moloka'i, 22.III.2008, coll. E. Conklin, Intertidal	2 (28)	Sherwood <i>et al.</i> 2011
<i>A. glomerata</i>	ARS03617	<a href="#">HQ422914</a>	Kanalukaha, Moloka'i, 23.III.2008, coll. E. Conklin, Intertidal	2 (29)	Sherwood <i>et al.</i> 2011
<i>A. glomerata</i>	ARS03623	<a href="#">OQ079265</a>	Hale O Lono Harbor, Moloka'i, 23.III.2008, coll. K. Conklin, Intertidal	2 (29)	Sherwood <i>et al.</i> 2011
<i>A. fimbriifolia</i>	ARS03978	<a href="#">HM582890</a>	Kamokuokamohoali'i (Maro Reef), Papahānaumokuākea Marine National Monument, 16.IX.2002, coll. K. McDermid	NA	Sherwood <i>et al.</i> 2011
<i>A. glomerata</i>	ARS04047	<a href="#">OQ079266</a>	Kipukai, Kaua'i, 09.IX.1979, coll. W. Magruder, Intertidal	2 (29)	Sherwood <i>et al.</i> 2011
<i>A. glomerata</i>	ARS04053	<a href="#">HQ423024</a>	Mokumanamana (Necker) lobster trap sample, Papahānaumokuākea Marine National Monument, coll. R. Moffitt	3 (18)	Sherwood <i>et al.</i> 2011
<i>A. glomerata</i>	ARS04056	<a href="#">OQ079267</a>	Honolulu, O'ahu, 04.XI.1981, coll. Hunt, 15-27 m	1 (11)	Sherwood <i>et al.</i> 2011
<i>A. glomerata</i>	ARS04063	<a href="#">OQ079268</a>	Leleiwi, Hawai'i, 14 & 16.VI.2000, coll. R. Okano, Intertidal	2 (27)	Sherwood <i>et al.</i> 2011
<i>A. glomerata</i>	ARS04074	<a href="#">HM582897</a>	Ala Moana Beach Park, O'ahu, 10.II.2009, coll. A. Kurihara, Intertidal	1 (15)	Sherwood <i>et al.</i> 2011
<i>A. glomerata</i>	ARS04076	<a href="#">OQ079269</a>	Kewalo Basin Beach Park, O'ahu, 10.II.2009, coll. A. Kurihara, Intertidal	2 (29)	Sherwood <i>et al.</i> 2011
<i>A. glomerata</i>	ARS04078	<a href="#">OQ079270</a>	Kewalo Basin Beach Park, O'ahu, 10.II.2009, coll. A. Kurihara, Intertidal	2 (29)	Sherwood <i>et al.</i> 2011
<i>A. glomerata</i>	ARS08364	<a href="#">OQ079271</a>	Kuaihelani (Midway Atoll), Papahānaumokuākea Marine National Monument, 16.IX.2012, coll. C. Clark, 55 m	3 (19)	This study
<i>A. glomerata</i>	ARS09934	<a href="#">OQ079272</a>	Keyhole, Lehua islet, Ni'hau, 24.VII.2019, coll. H. Spalding, 17 m	2 (29)	This study
<i>A. glomerata</i>	ARS09936	<a href="#">OQ079273</a>	Manawai (Pearl & Hermes Atoll), Papahānaumokuākea Marine National Monument, 03.VIII.2019, coll. J. Leonard, 92 m	3 (16)	This study
<i>A. glomerata</i>	ARS09939	<a href="#">OQ079274</a>	Manawai (Pearl & Hermes Atoll), Papahānaumokuākea Marine National Monument, 05.VIII.2019, coll. R. Kosaki, 85 m	3 (16)	This study
<i>A. glomerata</i>	ARS09943	<a href="#">OQ079275</a>	Manawai (Pearl & Hermes Atoll), Papahānaumokuākea Marine National Monument, 06.VIII.2019, coll. R. Kosaki, 94 m	3 (16)	This study
<i>A. glomerata</i>	ARS09946	<a href="#">OQ079276</a>	Manawai (Pearl & Hermes Atoll), Papahānaumokuākea Marine National Monument, 06.VIII.2019, coll. B. Hauk, 75 m	3 (16)	This study
<i>A. glomerata</i>	ARS10174	<a href="#">OQ079277</a>	Ni'hau, 24.VII.2019, coll. R. Kosaki, 62 m	3 (20)	This study
<i>A. glomerata</i>	ARS10350	<a href="#">OQ079278</a>	West Moloka'i, 02.XI.2015, coll. R. Kosaki, 61 m	1 (10)	This study
<i>A. glomerata</i>	ARS10357	<a href="#">OQ079279</a>	Kamole (Laysan), Papahānaumokuākea Marine National Monument, 25.V.2013, coll. K. Gleason, 62 m	3 (16)	This study
<i>A. glomerata</i>	ARS10358	<a href="#">OQ079280</a>	Kapou (Lisianski), Papahānaumokuākea Marine National Monument, 14.IX.2014, coll. J. Leonard, 59 m	3 (16)	This study
<i>A. glomerata</i>	ARS10370	<a href="#">OQ079281</a>	Makua Beach, O'ahu, 11.XI.2020, coll. C. Walsh, Intertidal	2 (34)	This study
<i>A. glomerata</i>	ARS10371	<a href="#">OQ079282</a>	Makua Beach, O'ahu, 11.XI.2020, coll. C. Walsh, Intertidal	1 (6)	This study
<i>A. glomerata</i>	ARS10375	<a href="#">OQ079283</a>	Makua Beach, O'ahu, 01.XI.2021, coll. J. Fumo, Intertidal	1 (6)	This study
<i>A. glomerata</i>	ARS10378	<a href="#">OQ079284</a>	Makua Beach, O'ahu, 01.XI.2021, coll. J. Fumo, Intertidal	1 (6)	This study
<i>A. glomerata</i>	ARS10379	<a href="#">OQ079285</a>	Makua Beach, O'ahu, 01.XI.2021, coll. J. Fumo, Intertidal	1 (6)	This study
<i>A. glomerata</i>	ARS10380	<a href="#">OQ079286</a>	Makua Beach, O'ahu, 01.XI.2021, coll. J. Fumo, Intertidal	2 (34)	This study
<i>A. glomerata</i>	ARS10383	<a href="#">OQ079287</a>	Makua Beach, O'ahu, 01.XI.2021, coll. J. Fumo, Intertidal	1 (6)	This study
<i>A. glomerata</i>	ARS10497	<a href="#">OQ079288</a>	Magic Island, Honolulu, O'ahu, 15.II.2021, coll. B. Weeks, Intertidal	1 (13)	This study
<i>A. glomerata</i>	ARS10501	<a href="#">OQ079289</a>	Kahe Beach Park, O'ahu, 03.V.2021, coll. A. Innes-Gold, Intertidal	2 (29)	This study
<i>A. glomerata</i>	ARS10502	<a href="#">OQ079290</a>	Kahe Beach Park, O'ahu, 03.V.2021, coll. C. Stephenson, Intertidal	1 (6)	This study
<i>A. glomerata</i>	ARS10504	<a href="#">OQ079291</a>	Laniakea, O'ahu, 08.V.2021, coll. J. Fumo, Intertidal	2 (33)	This study

Appendix 1. — Continuation.

Species name	Sherwood Lab accession number	GenBank accession	Collection Details	Lineage (Haplotype)	Source
<i>A. glomerata</i>	ARS10505	<a href="#">OQ079292</a>	Laniakea, O'ahu, 08.V.2021, coll. J. Fumo, Intertidal	2 (34)	This study
<i>A. glomerata</i>	ARS10507	<a href="#">OQ079293</a>	Laniakea, O'ahu, 08.V.2021, coll. J. Fumo, 19 m	2 (34)	This study
<i>A. glomerata</i>	ARS10508	<a href="#">OQ079294</a>	Waialua, O'ahu, 13.V.2021, coll. J. Fumo, Intertidal	2 (34)	This study
<i>A. glomerata</i>	ARS10614	<a href="#">OQ079295</a>	Holualoa, Hawai'i, 25.IV.2021, coll. J. Smith, Intertidal	1 (12)	This study
<i>A. glomerata</i>	ARS10631	<a href="#">OQ079296</a>	Waialua, O'ahu, 13.V.2021, coll. J. Fumo, Intertidal	2 (34)	This study
<i>A. glomerata</i>	ARS10703	<a href="#">OQ079297</a>	Lā'ie, O'ahu, 22.VII.2021, coll. F. Cabrera, Intertidal	2 (26)	This study
<i>A. glomerata</i>	ARS10704	<a href="#">OQ079298</a>	Kahana Bay, O'ahu, 22.VII.2021, coll. A. Edwards, Intertidal	2 (22)	This study
<i>A. glomerata</i>	ARS10801	<a href="#">OQ079299</a>	Kawailoa, O'ahu, 23.V.2021, coll. M. Schelvis, Intertidal	1 (6)	This study
<i>A. glomerata</i>	ARS10802	<a href="#">OQ079300</a>	Kahana Bay, O'ahu, 22.V.2021, coll. J. Fumo, Intertidal	2 (22)	This study
<i>A. glomerata</i>	ARS10807	<a href="#">OQ079301</a>	Wawamalu, O'ahu, 10.VI.2021, coll. O. Presting, Intertidal	2 (29)	This study
<i>A. glomerata</i>	ARS10808	<a href="#">OQ079302</a>	Kawela Bay, O'ahu, 25.VI.2021, coll. B. Spry, Intertidal	2 (34)	This study
<i>A. glomerata</i>	ARS10811	<a href="#">OQ079303</a>	Ka'alawai (Cromwell's Beach), O'ahu, 02.IX.2021, coll. S. Whitner, Intertidal	2 (29)	This study
<i>A. glomerata</i>	ARS10823	<a href="#">OQ079304</a>	Manawai (Pearl & Hermes Atoll), Papahānaumokuākea Marine National Monument, 15.VII.2021, coll. J. Fumo, 12 m	3 (16)	This study
<i>A. glomerata</i>	ARS10824	<a href="#">OQ079305</a>	Manawai (Pearl & Hermes Atoll), Papahānaumokuākea Marine National Monument, 15.VII.2021, coll. J. Fumo, 12 m	3 (16)	This study
<i>A. glomerata</i>	ARS10826	<a href="#">OQ079306</a>	Manawai (Pearl & Hermes Atoll), Papahānaumokuākea Marine National Monument, 15.VII.2021, coll. J. Fumo, 12 m	3 (16)	This study
<i>A. glomerata</i>	ARS10827	<a href="#">OQ079307</a>	Manawai (Pearl & Hermes Atoll), Papahānaumokuākea Marine National Monument, 15.VII.2021, coll. J. Fumo, 12 m	3 (16)	This study
<i>A. glomerata</i>	ARS10828	<a href="#">OQ079308</a>	Manawai (Pearl & Hermes Atoll), Papahānaumokuākea Marine National Monument, 15.VII.2021, coll. J. Fumo, 12 m	3 (16)	This study
<i>A. glomerata</i>	ARS10829	<a href="#">OQ079309</a>	Manawai (Pearl & Hermes Atoll), Papahānaumokuākea Marine National Monument, 15.VII.2021, coll. J. Fumo, 12 m	3 (16)	This study
<i>A. glomerata</i>	ARS10830	<a href="#">OQ079310</a>	Manawai (Pearl & Hermes Atoll), Papahānaumokuākea Marine National Monument, 15.VII.2021, coll. J. Fumo, 12 m	3 (16)	This study
<i>A. glomerata</i>	ARS10831	<a href="#">OQ079311</a>	'Ehukai, O'ahu, 30.VII.2021, coll. A. Meier, Intertidal	2 (34)	This study
<i>A. fimbrifolia</i>	ARS10832	<a href="#">OQ079312</a>	Maunaloa Bay (Turtle Canyons), O'ahu, 07.VIII.2021, coll. J. Fumo, 10 m	NA	This Study
<i>A. glomerata</i>	ARS10833	<a href="#">OQ079313</a>	Maunaloa Bay (Turtle Canyons), O'ahu, 07.VIII.2021, coll. L. Maki, 6 m	2 (29)	This study
<i>A. glomerata</i>	ARS10835	<a href="#">OQ079314</a>	Maunaloa Bay (China Walls), O'ahu, 07.VIII.2021, coll. J. Fumo, Intertidal	1 (14)	This study
<i>A. glomerata</i>	ARS10836	<a href="#">OQ079315</a>	Maunaloa Bay (China Walls), O'ahu, 07.VIII.2021, coll. J. Fumo, Intertidal	2 (31)	This study
<i>A. glomerata</i>	ARS10837	<a href="#">OQ079316</a>	Hamoā, Maui, 15.VIII.2021, coll. B. Spry, Intertidal	2 (17)	This study
<i>A. glomerata</i>	ARS10838	<a href="#">OQ079317</a>	Hamoā, Maui, 15.VIII.2021, coll. B. Spry, Intertidal	2 (17)	This study
<i>A. glomerata</i>	ARS10839	<a href="#">OQ079318</a>	Hamoā, Maui, 15.VIII.2021, coll. B. Spry, Intertidal	2 (17)	This study
<i>A. glomerata</i>	ARS10840	<a href="#">OQ079319</a>	Hamoā, Maui, 15.VIII.2021, coll. B. Spry, Intertidal	2 (17)	This study
<i>A. glomerata</i>	ARS10956	<a href="#">OQ079320</a>	Mala Wharf, Maui, 31.X.2021, coll. J. Fumo, 7 m	2 (17)	This study
<i>A. glomerata</i>	ARS10959	<a href="#">OQ079321</a>	Mokoli'i, O'ahu, 09.I.2022, coll. L. McPherson, Intertidal	2 (22)	This study
<i>A. glomerata</i>	ARS11206	<a href="#">OQ079322</a>	Popoia, O'ahu, 18.V.2022, coll. J. Fumo, Intertidal	1 (8)	This study
<i>A. glomerata</i>	ARS11207	<a href="#">OQ079323</a>	Popoia, O'ahu, 18.V.2022, coll. J. Fumo, Intertidal	1 (8)	This study
<i>A. glomerata</i>	ARS11208	<a href="#">OQ079324</a>	Popoia, O'ahu, 18.V.2022, coll. J. Fumo, Intertidal	1 (7)	This study
<i>A. glomerata</i>	ARS11209	<a href="#">OQ079325</a>	Popoia, O'ahu, 18.V.2022, coll. J. Fumo, Intertidal	1 (8)	This study
<i>A. glomerata</i>	ARS11210	<a href="#">OQ079326</a>	Popoia, O'ahu, 18.V.2022, coll. J. Fumo, Intertidal	1 (8)	This study
<i>A. glomerata</i>	ARS11230	<a href="#">OQ079327</a>	Laupahoehoe Point, Hawai'i, 30.V.2022, coll. J. Fumo, Intertidal	2 (27)	This study
<i>A. glomerata</i>	ARS11231	<a href="#">OQ079328</a>	Laupahoehoe Point, Hawai'i, 30.V.2022, coll. J. Fumo, Intertidal	2 (27)	This study
<i>A. glomerata</i>	ARS11240	<a href="#">OQ079329</a>	Laupahoehoe Point, Hawai'i, 30.V.2022, coll. J. Fumo, Intertidal	2 (27)	This study
<i>A. glomerata</i>	ARS11242	<a href="#">OQ079330</a>	Laupahoehoe Point, Hawai'i, 30.V.2022, coll. J. Fumo, Intertidal	2 (27)	This study
<i>A. glomerata</i>	ARS11244	<a href="#">OQ079331</a>	Laupahoehoe Point, Hawai'i, 30.V.2022, coll. J. Fumo, Intertidal	2 (27)	This study



## Appendix 1. — Continuation.

Species name	Sherwood Lab accession number	GenBank accession	Collection Details	Lineage (Haplotype)	Source
<i>A. glomerata</i>	ARS11255	<a href="#">OQ079332</a>	Onomea Bay, Hawai'i, 31.V.2022, coll. J. Fumo, Intertidal	2 (24)	This study
<i>A. glomerata</i>	ARS11259	<a href="#">OQ079333</a>	Onomea Bay, Hawai'i, 31.V.2022, coll. J. Fumo, Intertidal	2 (23)	This study
<i>A. glomerata</i>	ARS11275	<a href="#">OQ079334</a>	Onomea Bay, Hawai'i, 31.V.2022, coll. J. Fumo, Intertidal	2 (27)	This study
<i>A. glomerata</i>	ARS11325	<a href="#">OQ079335</a>	Richardson Ocean Park, Hawai'i, 01.VI.2022, coll. S. Champion, Intertidal	4 (3)	This study
<i>A. glomerata</i>	ARS11326	<a href="#">OQ079336</a>	Richardson Ocean Park, Hawai'i, 01.VI.2022, coll. T. Marsh, Intertidal	4 (3)	This study
<i>A. glomerata</i>	ARS11329	<a href="#">OQ079337</a>	Richardson Ocean Park, Hawai'i, 01.VI.2022, coll. A. Kelly, Intertidal	4 (5)	This study
<i>A. glomerata</i>	ARS11332	<a href="#">OQ079338</a>	Richardson Ocean Park, Hawai'i, 01.VI.2022, coll. J. Fumo, Intertidal	4 (4)	This study
<i>A. glomerata</i>	ARS11356	<a href="#">OQ079339</a>	Hakioawa Iki, Kaho'olawe, 02.VI.2022, coll. N. Goo, Intertidal	2 (17)	This study
<i>A. glomerata</i>	ARS11371	<a href="#">OQ079340</a>	South Point (Green Sand Beach), Hawai'i, 02.VI.2022, coll. J. Fumo, Intertidal	4 (2)	This study
<i>A. glomerata</i>	ARS11373	<a href="#">OQ079341</a>	Manukā Bay, Hawai'i, 05.VI.2022, coll. J. Fumo, Intertidal	1 (12)	This study
<i>A. glomerata</i>	ARS11374	<a href="#">OQ079342</a>	Manukā Bay, Hawai'i, 05.VI.2022, coll. J. Fumo, Intertidal	1 (12)	This study
<i>A. glomerata</i>	ARS11375	<a href="#">OQ079343</a>	Manukā Bay, Hawai'i, 05.VI.2022, coll. J. Fumo, Intertidal	1 (12)	This study
<i>A. glomerata</i>	ARS11376	<a href="#">OQ079344</a>	Manukā Bay, Hawai'i, 05.VI.2022, coll. J. Fumo, Intertidal	1 (6)	This study
<i>A. glomerata</i>	ARS11377	<a href="#">OQ079345</a>	Manukā Bay, Hawai'i, 05.VI.2022, coll. J. Fumo, Intertidal	1 (6)	This study
<i>A. glomerata</i>	ARS11392	<a href="#">OQ079346</a>	Manukā Bay, Hawai'i, 05.VI.2022, coll. J. Fumo, Intertidal	1 (6)	This study
<i>A. glomerata</i>	ARS11393	<a href="#">OQ079347</a>	Miloli'i, Hawai'i, 06.VI.2022, coll. J. Fumo, Intertidal	1 (6)	This study
<i>A. glomerata</i>	ARS11395	<a href="#">OQ079348</a>	Manini Beach, Hawai'i, 06.VI.2022, coll. J. Fumo, Intertidal	1 (6)	This study
<i>A. glomerata</i>	ARS11396	<a href="#">OQ079349</a>	Manini Beach, Hawai'i, 06.VI.2022, coll. J. Fumo, Intertidal	1 (6)	This study
<i>A. glomerata</i>	ARS11397	<a href="#">OQ079350</a>	Manini Beach, Hawai'i, 06.VI.2022, coll. J. Fumo, Intertidal	1 (6)	This study
<i>A. glomerata</i>	ARS11399	<a href="#">OQ079351</a>	Lyman's Point, Hawai'i, 04.VI.2022, coll. J. Fumo, Intertidal	1 (6)	This study
<i>A. glomerata</i>	ARS11400	<a href="#">OQ079352</a>	Lyman's Point, Hawai'i, 04.VI.2022, coll. J. Fumo, Intertidal	1 (6)	This study
<i>A. glomerata</i>	ARS11401	<a href="#">OQ079353</a>	Lyman's Point, Hawai'i, 04.VI.2022, coll. J. Fumo, Intertidal	1 (9)	This study
<i>A. glomerata</i>	ARS11402	<a href="#">OQ079354</a>	Lyman's Point, Hawai'i, 04.VI.2022, coll. J. Fumo, Intertidal	1 (6)	This study
<i>A. glomerata</i>	ARS11403	<a href="#">OQ079355</a>	Lyman's Point, Hawai'i, 04.VI.2022, coll. J. Fumo, Intertidal	1 (6)	This study
<i>A. glomerata</i>	ARS11410	<a href="#">OQ079356</a>	Wawaionū Bay, Hawai'i, 11.VI.2022, coll. J. Fumo, Intertidal	1 (6)	This study
<i>A. glomerata</i>	ARS11411	<a href="#">OQ079357</a>	Wawaionū Bay, Hawai'i, 11.VI.2022, coll. J. Fumo, Intertidal	1 (6)	This study
<i>A. glomerata</i>	ARS11412	<a href="#">OQ079358</a>	Wawaionū Bay, Hawai'i, 11.VI.2022, coll. J. Fumo, Intertidal	1 (6)	This study
<i>A. glomerata</i>	ARS11413	<a href="#">OQ079359</a>	Wawaionū Bay, Hawai'i, 11.VI.2022, coll. J. Fumo, Intertidal	1 (6)	This study
<i>A. glomerata</i>	ARS11414	<a href="#">OQ079360</a>	Wawaionū Bay, Hawai'i, 11.VI.2022, coll. J. Fumo, Intertidal	1 (6)	This study
<i>A. glomerata</i>	ARS11418	<a href="#">OQ079361</a>	Keokea Beach Park, Hawai'i, 10.VI.2022, coll. J. Glazner, Intertidal	2 (25)	This study
<i>A. glomerata</i>	ARS11423	<a href="#">OQ079362</a>	South Point (Green Sand Beach), Hawai'i, 02.VI.2022, coll. J. Fumo, Intertidal	4 (1)	This study
<i>A. glomerata</i>	ARS11424	<a href="#">OQ079363</a>	South Point (Green Sand Beach), Hawai'i, 02.VI.2022, coll. J. Fumo, Intertidal	4 (1)	This study
<i>A. glomerata</i>	ARS11425	<a href="#">OQ079364</a>	South Point (Green Sand Beach), Hawai'i, 02.VI.2022, coll. J. Fumo, Intertidal	4 (2)	This study
<i>A. glomerata</i>	ARS11426	<a href="#">OQ079365</a>	South Point (Green Sand Beach), Hawai'i, 02.VI.2022, coll. J. Fumo, Intertidal	4 (2)	This study
<i>A. glomerata</i>	ARS11427	<a href="#">OQ079366</a>	South Point (Green Sand Beach), Hawai'i, 02.VI.2022, coll. J. Fumo, Intertidal	4 (1)	This study
<i>A. multifida</i> J.V.Lamouroux	GG5010	<a href="#">MH388713</a>	Cabo San Ramon, Venezuela, 06.X.2012, coll. G. Garcia-Soto	NA	Garcia-Soto & Lopez-Bautista 2018

Appendix 1. — Continuation.

<b>Species name</b>	<b>Sherwood Lab accession number</b>	<b>GenBank accession</b>	<b>Collection Details</b>	<b>Lineage (Haplotype)</b>	<b>Source</b>
<i>A. multifida</i>	GGS031	<a href="#">MH388714</a>	Cabo San Ramon, Venezuela, 06.X.2012, coll. G. Garcia-Soto	NA	Garcia-Soto & Lopez-Bautista 2018
<i>A. glomerata</i>	LD42600	<a href="#">HM582896</a>	Sandwich Islands, 1822, Lectotype	1 (L)	This study
<i>A. pinnatifida</i> Harvey	UA0013	<a href="#">MH388718</a>	Kangaroo Island, South Australia, Australia, 07.XI.1995, coll. M.H. & F.C. Hommersand	NA	Garcia-Soto & Lopez-Bautista 2018