

# A molecular, morphological and ecological re-appraisal of *Venturiales*—a new order of *Dothideomycetes*

Ying Zhang · Pedro W. Crous · Conrad L. Schoch · Ali H. Bahkali · Liang Dong Guo · Kevin D. Hyde

Received: 5 October 2011 / Accepted: 6 October 2011 / Published online: 2 November 2011  
© Kevin D. Hyde (outside the USA) 2011

**Abstract** The *Venturiaceae* was traditionally assigned to *Pleosporales* although its diagnostic characters readily distinguish it from other pleosporalean families. These include a parasitic or saprobic lifestyle, occurring on leaves or stems of dicotyledons; small to medium-sized ascomata, often with setae; deliquescing pseudoparaphyses; 8-spored, broadly cylindrical to obclavate asci; 1-septate, yellowish, greenish or pale brown to brown ascospores; and hyphomycetous anamorphs. Phylogenetically, core genera of *Venturiaceae* form a monophyletic clade within *Dothideomycetes*, and represent a separate sister lineage from current orders, thus a new order—*Venturiales* is introduced. A new family, *Symptoventuriaceae*, is introduced to accommodate taxa of a well-supported subclade within *Venturiales*, which

contains *Symptoventuria*, *Veronaeopsis simplex* and *Fusicladium*-like species. Based on morphology and DNA sequence analysis, eight genera are included in *Venturiaceae*, viz. *Acantharia*, *Apiosporina* (including *Dibotryon*), *Caproventuria*, *Coleroa*, *Pseudoparodiella*, *Metacoleroa*, *Tyrannosorus* and *Venturia*. Molecular phylogenetic information is lacking for seven genera previously included in *Venturiales*, namely *Arkoola*, *Atopospora*, *Botryostroma*, *Lasiobotrys*, *Trichodothella*, *Trichodothis* and *Rhizogonea* and these are discussed, but their inclusion in *Venturiaceae* is doubtful. *Crotone*, *Gibbera*, *Lineostroma*, *Phaeocryptopus*, *Phragmogibbera*, *Platychora*, *Polyrhizon*, *Rosenscheldiella*, *Uleodothis* and *Xenomeris* are excluded from *Venturiales*, and their ordinal placement needs further

---

Y. Zhang  
Mushroom Research Foundation,  
128 Moo3, Bahn Pa Dheng, T. Pa Pae, A. Mae Taeng Chiang Mai  
50150, Thailand

P. W. Crous  
CBS-KNAW Fungal Biodiversity Centre,  
P.O. Box 85167, 3508 AD Utrecht, The Netherlands

C. L. Schoch  
National Center for Biotechnology Information,  
National Library of Medicine, National Institutes of Health,  
45 Center Drive, MSC 6510,  
Bethesda, MD 20892-6510, USA

A. H. Bahkali · K. D. Hyde  
Botany and Microbiology Department, College of Science,  
King Saud University,  
Riyadh 11442, Saudi Arabia

L. D. Guo  
State Key Laboratory of Mycology, Institute of Microbiology,  
Chinese Academy of Sciences,  
Beijing 100101, People's Republic of China

K. D. Hyde  
International Fungal Research & Development Centre,  
The Research Institute of Resource Insects,  
Chinese Academy of Forestry, Kunming,  
Yunnan, People's Republic of China 650034

Y. Zhang · K. D. Hyde (✉)  
Institute of Excellence in Fungal Research, School of Science,  
Mae Fah Luang University,  
Tasud, Muang, Chiang Rai 57100, Thailand  
e-mail: kdhyde3@gmail.com

P. W. Crous  
Microbiology, Department of Biology, Utrecht University,  
Padualaan 8,  
3584 CH Utrecht, The Netherlands

P. W. Crous  
Wageningen University and Research Centre (WUR),  
Laboratory of Phytopathology,  
Droevendaalsesteeg 1,  
6708 PB Wageningen, The Netherlands

investigation. *Zeuctomorpha* is treated as a synonym of *Acantharia*.

**Keywords** *Fusicladium* · Generic type · *Symptoventuriaceae* · Taxonomy · *Venturiaceae*

## Introduction

The name *Venturiaceae* was first introduced by Müller and von Arx (1950), and a systematic generic key given by von Arx (1952) includes 12 genera, i.e. *Atopospora*, *Coleroa*, *Gibbera*, *Lasiobotrys*, *Neogibbera*, *Parodiella*, *Phaeocryptopus*, *Pseudoparodia*, *Stigmatea*, *Trichodothella*, *Trichodothis* and *Venturia*. Further detailed studies and additions to the family have been made (von Arx 1954; Menon 1956; Müller 1958; Müller and Menon 1955; Müller and von Arx 1962; Nüesch 1960; Petrak 1950, 1953, 1954; Shoemaker 1963). The first valid description of *Venturiaceae* was provided by Barr (1979) who considered setose ascomata and hyaline, olive to greenish brown, obovate to oblong, generally 1-septate ascospores as the most important diagnostic characters. Based on these morphological characters, 12 genera were included, i.e. *Acantharia*, *Apiosporina*, *Coleroa*, *Gibbera*, *Metacoleroa*, *Phaeocryptopus*, *Platychora*, *Protoventuria*, *Pyrenobotrys*, *Trichodothis*, *Venturia* and *Xenomeris*. Species of *Venturiaceae sensu* Barr (1968) have a parasitic or saprobic habit, and they usually grow in living or dead leaves, stalks, or twigs of various higher plants, rarely on *Sphagnum* or dung. Many species of *Venturiaceae* parasitize perennial plants, and some of them are notable cosmopolitan plant pathogens, causing diseases such as apple scab (*Venturia inaequalis*), pear scab (*V. pyrina*), poplar shoot blight (*V. populina*), soybean black leaf blight (*Arkooola nigra*), and the widespread black knot disease of cherry (*Dibotryon morbosum*) (von Arx and Müller 1975; Talbot 1971). Currently, 27 genera are included in *Venturiaceae* (Lumbsch and Huhndorf 2010).

*Venturiaceae* was assigned to *Pleosporales* based on its “*Pleospora* type of centrum and bitunicate asci” (Barr 1968, 1979). However, this placement is not supported by recent phylogenetic studies (Kodsueb et al. 2006; Kruys et al. 2006; Winton et al. 2007). Results obtained by Kruys et al. (2006) based on combined *nuSSU*, *nuLSU* and *mtSSU* DNA sequences indicated that *Venturiaceae* forms a clade outside *Pleosporales*, a well-supported monophyletic group with members of *Phaeotrichaceae*. Kodsueb et al. (2006) noted a close relationship with *Tubeufiaceae* based on 28S *nurDNA* sequences, but their affinity with *Pleosporales* lacked clear statistical support. The polyphyletic nature of *Venturiaceae* was indicated by Winton et al. (2007) based on the analysis of combined *nuSSU* and *nuLSU* rDNA

sequences. Although core members of *Venturiaceae* form a monophyletic group, their ordinal placement remains unsettled in all these papers.

It is now possible to gain a better understanding of *Venturiaceae* by combining recently obtained DNA sequences from a broader sampling of taxa. The aim of present investigation is therefore to re-examine the taxonomic status of *Venturiaceae* based on morphological, ecological, molecular phylogenetic data and anamorphic states and to evaluate its ordinal placement and relationships within *Dothideomycetes*.

## Materials and methods

### Morphological studies

The type specimens of 15 representative genera as well as collections of an additional four genera of *Venturiaceae sensu* Lumbsch and Huhndorf (2010) were loaned from NY, K, L, PH and S. Some type specimens or collections are in poor condition, while others could not be located during the course of this study and therefore, only 12 generic type species are described here. Measurements and descriptions of sections of the ascomata, hamathecium, asci and ascospores were carried out by immersing ascomata in water or in 10% lactic acid. Microphotography was taken with material mounted in water or 10–100% lactic acid. Slides were rendered semi-permanent by the addition of 90% lactic acid. Photographs were taken on an Olympus BX50 microscope using an Olympus CA 35 AD-4 camera. The generic descriptions are based on the type species of each genus. In this study, the terms “ascoma” (pl. ascomata) refers to a unilocular fruiting body, and “ascostroma” (pl. ascostromata) to a multilocular fruiting body. Other morphological criteria follow to Zhang et al. (2009, 2012).

### DNA amplification and sequencing

Cultures used in this study were obtained from the Centraalbureau voor Schimmelcultures in the Netherlands (CBS). Fungal isolates and DNA extraction isolates were on PDA and MEA, and total genomic DNA extracted from mycelia following the protocols as outlined by Shenoy et al. (2007, 2010). DNA amplification and sequencing were performed following the protocol of Zhang et al. (2009).

### Sequence alignment and phylogenetic analyses

The phylogeny was performed with four markers: partial sequence from the small and large subunits of the nuclear ribosomal RNA genes (*nuSSU*, *nuLSU*) and three protein coding genes, translation elongation factor-1 alpha (*TEF1*)

and the largest and second largest subunits of RNA polymerase (*RPB1*, *RPB2*) and. Sequences were downloaded from GenBank according to Table 1. Each of the individual ribosomal genes was aligned in SATé under default settings with at least 20 iterations (Liu et al. 2009). The protein coding genes were aligned in BioEdit (Hall 2004) and completed with manual adjustment. Introns and variable columns were removed and all genes were concatenated in a single nucleotide alignment with 54.77% missing and gap characters out of a total set of 5,496. The final data matrix had 94 taxa including outgroups (Table 1). Previous results indicated no clear conflict amongst the majority of the data used (Schoch et al. 2009) and a phylogenetic analysis of the concatenated alignment was performed at the CIPRES webportal (Miller et al. 2010) using RAxML v. 7.2.8 as part of the “RAxML-HPC2 on TG” tool (Stamatakis 2006; Stamatakis et al. 2008) applying unique model parameters for each gene and codon (11 partitions). A general time reversible model (GTR) was applied with a discrete gamma distribution and four rate classes. One hundred thorough maximum likelihood (ML) tree searches were done in RAxML v. 7.2.7 under the same model, each one starting from a separate randomised tree and the best scoring tree selected with a final ln value of -62920.113547. Two isolates of *Arthoniomycetes* (*Schismatomma decolorans* and *Opegrapha dolomitica*), the sister class to *Dothideomycetes*, were used as outgroup. One thousand non parametric bootstrap iterations were run with the GTR model and a discrete gamma distribution. The resulting replicates were plotted on to the best scoring tree obtained previously. The phylogram with bootstrap values above the branches is presented in Fig. 1 by using graphical options available in TreeDyn v. 198.3 (Chevenet et al. 2006).

We also analyzed the same data set mentioned previously using the Bayesian method of Huelsenbeck et al. (2001) by implementing Markov Chain Monte Carlo (MCMC) sampling using the software MrBayes v.3.1.2 (Huelsenbeck and Ronquist 2001) at the CIPRES webportal. Data was partitioned as in the RAxML run and the same likelihood models were applied with four discrete gamma categories. The Bayesian prior distributions treated all trees as equally likely. Two parallel runs were performed with four chains each and this was continued for 2000 000 generations. Every 100th tree was saved and the two runs were examined for convergence. The first 50% of each run was discarded as burn in and the remaining two sets of 10 000 trees combined. The best scoring RAxML tree was used as a template and the percentage presence of all nodes within the combined set of 20 000 trees plotted on its nodes as Bayesian posterior probabilities. These are indicated as values below nodes in Fig. 1.

In order to see if missing data had any influence on our previous phylogeny we trimmed all taxa which did not have LSU present and removed all other genes, resulting in a matrix

with 1,200 characters and 90 taxa. This data set had only 20.42% missing characters. *Schismatomma decolorans* was used as a outgroup. Using the CIPRES webportal as before, we ran a combined ML tree search with bootstrap resampling and a bootstopping criterion in effect (Pattengale et al. 2010). Likelihood of the final tree was estimated using the same model parameters as for the previous RAxML run but the rapid bootstrap option was used in this case. The run was stopped after 450 bootstraps and combined with an optimized tree with a final likelihood value of -10697.749925. The tree was plotted as described but all ordinal level clades were collapsed in MEGA 5 (Tamura et al. 2011). This is shown in Fig. 2.

## Taxonomy

**Venturiales** Yin, Zhang, C.L. Schoch & K.D. Hyde, **ord. nov.** MycoBank: MB 513386

*Ascomata immersa, erumpentia vel superficialia, vel in stroma vel infra adusta clypei, aliquando coalitus subiculum, globosi vel subglobosi vel conicus, integer vel apices setosi, ostiolati. Pseudoparaphyses vulgo dissolvilis, asci bitunicati, fissitunicati; ascosporae hyalinae viridae olivaceae vel brunneae, obovoidae, oblongae, uniseptatae, symmetricae vel asymmetricae.*

Familia typica: *Venturiaceae*.

*Habitat* saprobic or parasitic on leave or stems of dicotyledons, rarely on monocotyledons. *Ascomata* immersed, erumpent to superficial, scattered or gregarious, or as locules in a stroma or below a blackened clypeus, globose, subglobose, or dome-shaped or flat-conical, with or without seta around papilla or covering whole ascomata, ostiolate, sometimes ascomata sitting on a well-developed subiculum. *Hamathecium* of narrowly cellular pseudoparaphyses, mostly evanescent and rarely persistent. *Asci* 8-spored, bitunicate, fissitunicate, broadly or usually obclavate, usually lacking a pedicel. *Ascospores* hyaline, light greenish olivaceous to brown, 1-septate, symmetrical, asymmetrical or apiosporous.

**Anamorphs:** *Fusicladium sensu stricto*, *Pollaccia*, *Spilocaea*, *Sympodiella*-like, *Pseudocladosporium*, *?Didymochora*, *Veronaeopsis* and *Zeloasperisporium*.

**Type family:** *Venturiaceae*.

**Note:** The phylogenetic comparison of selected species from *Dothideomycetes* is shown in Figs. 1 and 2. This includes representatives of all major orders in the class, and unambiguously supports *Venturiales* as a separate entity. In spite of our complete sampling the placement of a sister lineage to *Venturiales* remains uncertain. We also find weak to moderate support for a relationship to *Microthyriales* (based on relationship to a single isolate) and *Phaeotrichaceae*. Within *Venturiales* two lineages can be defined, i.e. the main group containing *Venturia* and allies (*Venturiaceae*) and a separate lineage containing *Veronaeopsis*, *Symptoventuria*

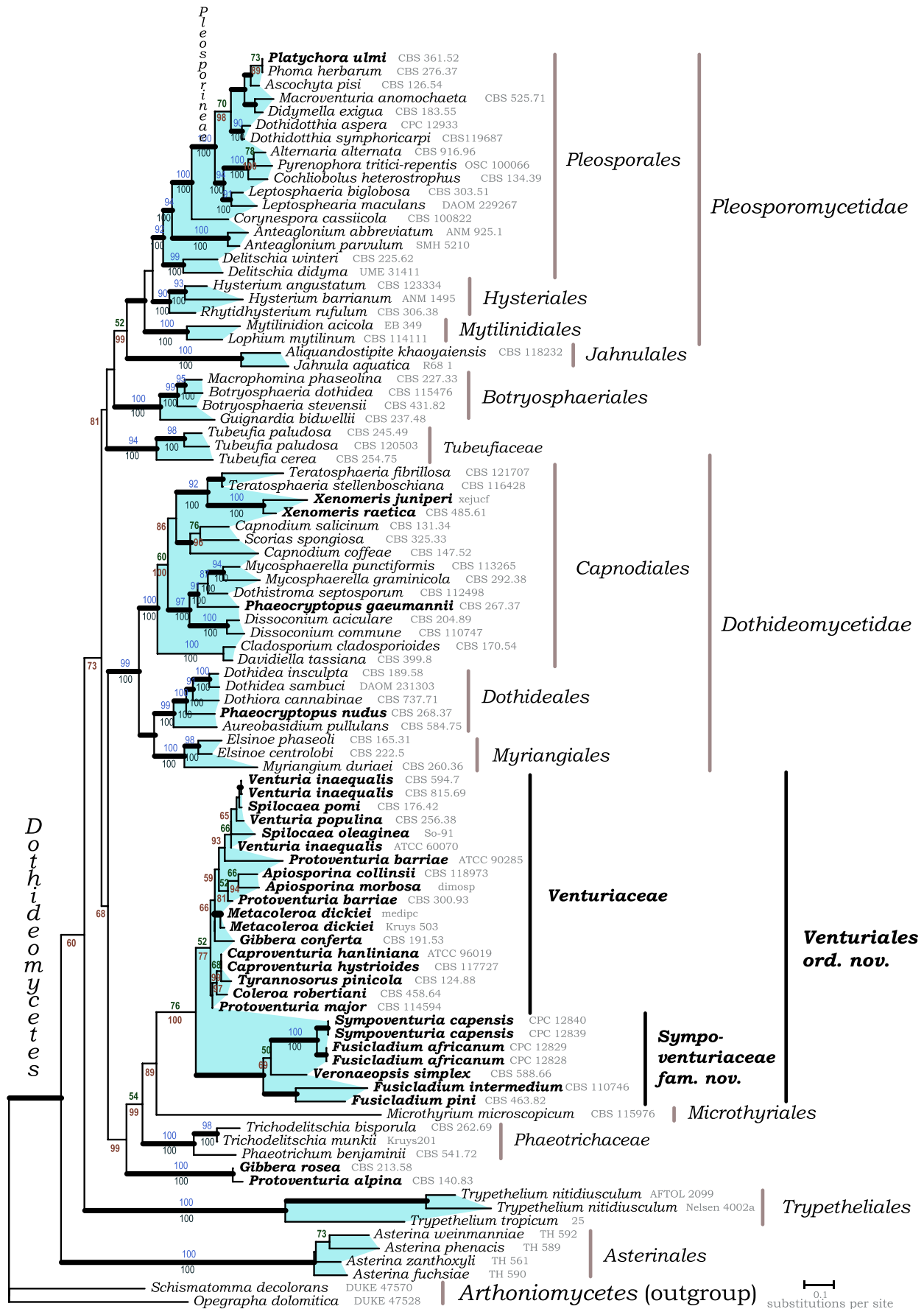
**Table 1** Taxa used in the phylogenetic analysis and their corresponding GenBank accession numbers

Species	voucher/culture	SSU	LSU	<i>TEF1</i>	<i>RPB1</i>	<i>RPB2</i>
<i>Aliquandostipite khaoyaiensis</i>	CBS 118232	AF201453	GU301796	GU349048		FJ238360
<i>Alternaria alternata</i>	CBS 916.96	DQ678031	DQ678082	DQ677927		DQ677980
<i>Anteaglonium abbreviatum</i>	ANM 925.1		GQ221877	GQ221924		
<i>Anteaglonium parvulum</i>	SMH 5210		GQ221907	GQ221917		
<i>Apiosporina collinsii</i>	CBS 118973	GU296135	GU301798	GU349057	GU357778	
<i>Apiosporina morbosa</i>	dimosp		EF114694			
<i>Ascochyta pisi</i>	CBS 126.54	DQ678018	DQ678070	DQ677913		DQ677967
<i>Asterina fuchsiae</i>	TH 590	GU586210	GU586216			
<i>Asterina phenacis</i>	TH 589	GU586211	GU586217			
<i>Asterina weinmanniae</i>	TH 592	GU586212	GU586218			
<i>Asterina zanthoxyli</i>	TH 561	GU586213	GU586219			
<i>Aureobasidium pullulans</i>	CBS 584.75	DQ471004	DQ470956	DQ471075	DQ471148	DQ470906
<i>Botryosphaeria dothidea</i>	CBS 115476	DQ677998	DQ678051	DQ767637	GU357802	DQ677944
<i>Botryosphaeria stevensii</i>	CBS 431.82	DQ678012	DQ678064	DQ677907		DQ677960
<i>Capnodium coffeae</i>	CBS 147.52	DQ247808	DQ247800	DQ471089	DQ471162	DQ247788
<i>Capnodium salicinum</i>	CBS 131.34	DQ677997	DQ678050	DQ677889		
<i>Caproventuria hanliniana</i>	ATCC 96019		AF050290			
<i>Caproventuria hystrioides</i>	CBS 117727		EU035459			
<i>Cladosporium cladosporioides</i>	CBS 170.54	DQ678004	DQ678057	DQ677898	GU357790	DQ677952
<i>Cochliobolus heterostrophus</i>	CBS 134.39	AY544727	AY544645	DQ497603		DQ247790
<i>Coleroa robertiani</i>	CBS 458.64		xxx			
<i>Corynespora cassiicola</i>	CBS 100822	GU296144	GU301808	GU349052	GU357772	GU371742
<i>Davidiella tassiana</i>	CBS 399.80	DQ678022	DQ678074	DQ677918	GU357793	DQ677971
<i>Delitschia didyma</i>	UME 31411	AF242264	DQ384090			
<i>Delitschia winteri</i>	CBS 225.62	DQ678026	DQ678077	DQ677922		DQ677975
<i>Didymella exigua</i>	CBS 183.55	GU296147			GU357800	GU371764
<i>Dissoconium aciculare</i>	CBS 204.89	GU214523	GQ852587			
<i>Dissoconium commune</i>	CBS 110747	GU214525	GQ852589			
<i>Dothidea insculpta</i>	CBS 189.58	DQ247810	DQ247802	DQ471081	DQ471154	AF107800
<i>Dothidea sambuci</i>	DAOM 231303	AY544722	AY544681	DQ497606		DQ522854
<i>Dothidotthia aspera</i>	CPC 12933	EU673228	EU673276			
<i>Dothidotthia symphoricarpi</i>	CBS119687	EU673224	EU673273			
<i>Dothiora cannabinae</i>	CBS 737.71	DQ479933	DQ470984	DQ471107	DQ471182	DQ470936
<i>Dothiostroma septosporum</i>	CBS 112498	GU214533	GQ852597			
<i>Elsinoë centrolobi</i>	CBS 222.50	DQ678041	DQ678094	DQ677934	GU357798	
<i>Elsinoë phaseoli</i>	CBS 165.31	DQ678042	DQ678095	DQ677935	GU357799	
<i>Fusicladium africanum</i>	CPC 12829		EU035424			
<i>Fusicladium africanum</i>	CPC 12828		EU035423			
<i>Fusicladium intermedium</i>	CBS 110746		EU035432			
<i>Fusicladium pini</i>	CBS 463.82		EU035436			
<i>Gibbera conferta</i>	CBS 191.53	GU296150	GU301814	GU349041	GU357758	
<i>Gibbera rosea</i>	CBS 213.58		xxx			
<i>Guignardia bidwellii</i>	CBS 237.48	DQ678034	DQ678085		GU357794	DQ677983
<i>Hysterium angustatum</i>	CBS 123334	FJ161167	FJ161207	FJ161111		FJ161129
<i>Hysterium barrianum</i>	ANM 1495	GU323182	GQ221885			
<i>Jahnula aquatica</i>	R68-1	EF175633	EF175655			
<i>Leptosphaeria biglobosa</i>	CBS 303.51		GU301826	GU349010		
<i>Leptosphaeria maculans</i>	DAOM 229267	DQ470993	DQ470946	DQ471062	DQ471136	DQ470894
<i>Lophium mytilinum</i>	CBS 114111	EF596819	EF596819			

**Table 1** (continued)

Species	voucher/culture	SSU	LSU	<i>TEF1</i>	<i>RPB1</i>	<i>RPB2</i>
<i>Macrophomina phaseolina</i>	CBS 227.33	DQ678037	DQ678088	DQ677929		DQ677986
<i>Macroventuria anomochaeta</i>	CBS 525.71		GU456315	GU456262		GU456346
<i>Metacoleroa dickiei</i>	medipc	EF114719	EF114695			
<i>Metacoleroa dickiei</i>	Kruys 503	DQ384100	DQ384100			
<i>Microthyrium microscopicum</i>	CBS 115976	GU296175	GU301846	GU349042		GU371734
<i>Mycosphaerella graminicola</i>	CBS 292.38	DQ678033	DQ678084			DQ677982
<i>Mycosphaerella punctiformis</i>	CBS 113265	DQ471017	DQ470968	DQ471092	DQ471165	DQ470920
<i>Myriangium duriaei</i>	CBS 260.36	AY016347	DQ678059	DQ677900		DQ677954
<i>Mytilinidion acicola</i>	EB 0349	GU323185	GU323209			GU371757
<i>Opographa dolomitica</i>	DUKE 0047528	DQ883706		DQ883732	DQ883717	DQ883714
<i>Phaeocryptopus gaeumannii</i>	CBS 267.37	EF114722	EF114698		GU357770	
<i>Phaeocryptopus nudus</i>	CBS 268.37	GU296182	GU301856	GU349034	GU357745	
<i>Phaeotrichum benjaminii</i>	CBS 541.72	AY016348	AY004340	DQ677892	GU357788	DQ677946
<i>Phoma herbarum</i>	CBS 276.37	DQ678014	DQ678066	DQ677909	GU357792	DQ677962
<i>Platychora ulmi</i>	CBS 361.52	EF114726	EF114702			
<i>Protoventuria alpina</i>	CBS 140.83	EU035444				
<i>Protoventuria barriae</i>	ATCC 90285		EF114728			
<i>Protoventuriabarriae</i>	CBS 300.93		xxx			
<i>Protoventuria major</i>	CBS 114594		xxx			
<i>Pyrenophora tritici</i>	OSC 100066		AY544672	DQ677882		
<i>Rhynchostroma rufulum</i>	CBS 306.38	GU296191	FJ469672	GU349031	FJ238444	
<i>Schismatomma decolorans</i>	DUKE 0047570	AY548809	AY548815	DQ883725		DQ883715
<i>Scorias spongiosa</i>	CBS 325.33	DQ678024	DQ678075	DQ677920		DQ677973
<i>Spilocaea oleaginea</i>	So-91	AF338393	AF338397			
<i>Spilocaea pomi</i>	CBS 176.42		GU348998	GU349089		
<i>Symptoventuria capensis</i>	CPC 12839		DQ885905			
<i>Symptoventuria capensis</i>	CPC 12840		DQ885904			
<i>Teratosphaeria fibrillosa</i>	CBS 121707	GU296199	GU323213		GU357767	
<i>Teratosphaeria stellenboschiana</i>	CBS 116428	GU214583	EU019295			
<i>Trichodelitschia bisporula</i>	CBS 262.69	GU349000	GU348996	GU349020	GU371812	GU371802
<i>Trichodelitschia munkii</i>	Kruys201	DQ384070	DQ384096			
<i>Trypethelium nitidiusculum</i>	Nelsen 4002a		GU327728			
<i>Trypethelium nitidiusculum</i>	AFTOL 2099		FJ267701	GU327732		
<i>Trypethelium tropicum</i>	25		GU327730			
<i>Tubeufia cerea</i>	CBS 254.75	DQ471034	DQ470982	DQ471105	DQ471180	DQ470934
<i>Tubeufia paludosa</i>	CBS 120503	GU296203	GU301877	GU349024	GU357754	GU371731
<i>Tubeufia paludosa</i>	CBS 245.49	DQ767649	DQ767654	DQ767638		DQ767643
<i>Tyrannosoru spinicola</i>	CBS 124.88	DQ471025	DQ470974	DQ471098	DQ471171	DQ470928
<i>Venturia inaequalis</i>	ATCC 60070	EF114737	EF114712			
<i>Venturia inaequalis</i>	CBS 815.69	GU296204	GU301878	GU349023	GU357756	
<i>Venturia inaequalis</i>	CBS 594.70	GU296205	GU301879	GU349022	GU357757	
<i>Venturia populina</i>	CBS 256.38	GU296206	GU323212		GU357769	
<i>Veronaeopsis simplex</i>	CBS 588.66		EU041877			
<i>Xenomeris juniperi</i>	xejucf	EF114734	EF114709			
<i>Xenomeris raetica</i>	CBS 485.61	EF114741	EF114716			





**Fig. 1** A RAxML maximum likelihood tree obtained from a data set of 94 taxa and five genes (SSU, LSU, *TEF1*, *RPB1*, *RPB2*) with *Arthoniomycetes* species as outgroup. Numbers above the nodes are bootstrap from 1000 repetitions. Only values above 50% are shown and branches recovered in more than 90% of bootstrap trees are thickened. Culture and voucher numbers are indicated after species names and relevant taxa are bolded

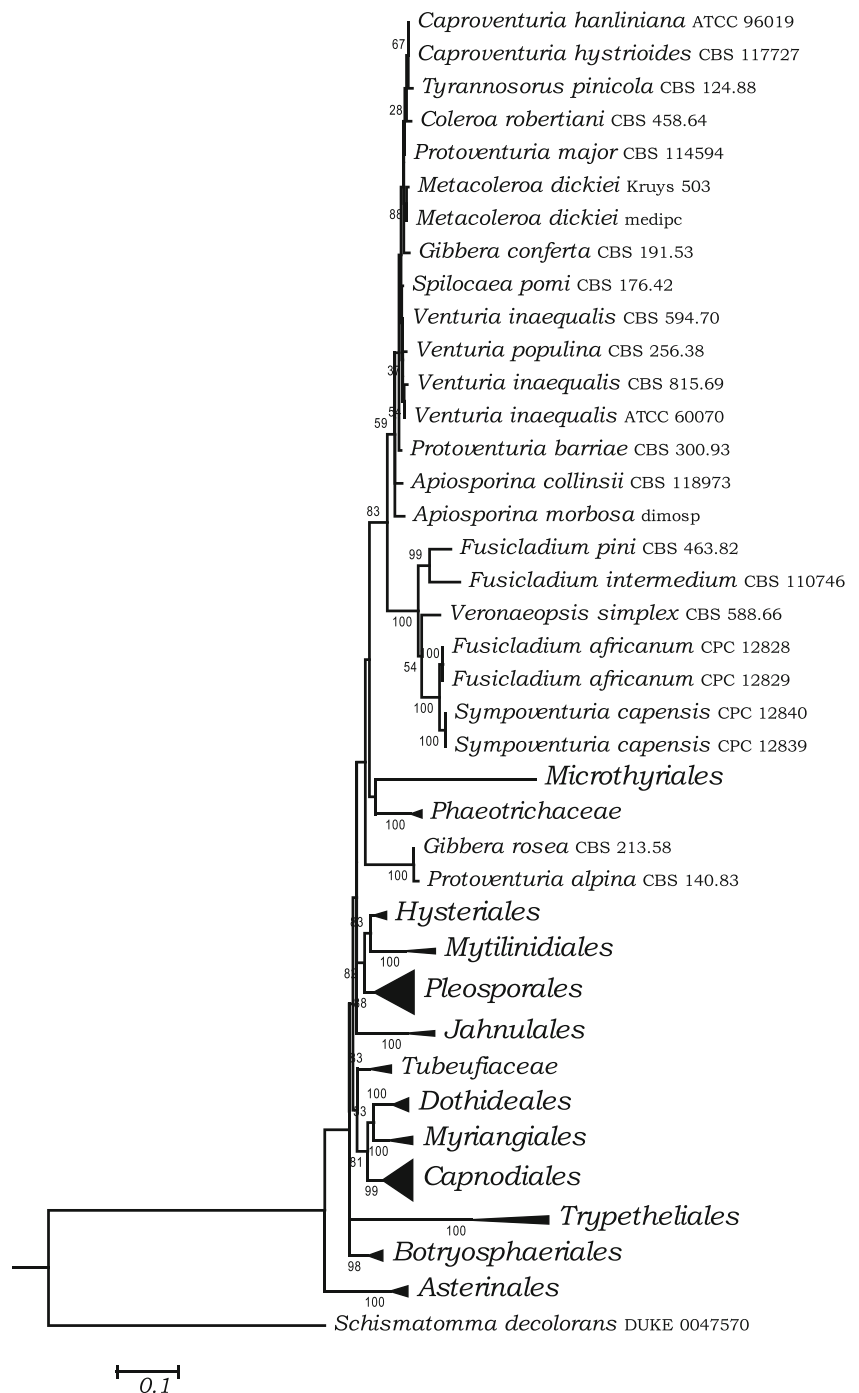
and several *Fusicladium*-like or *Sympodiella*-like anamorph species. Herein a new family, *Sympoventuriaceae*, is introduced to accommodate the second lineage.

**Fig. 2** A simplified RAXML maximum likelihood tree from obtained from 90 taxa and LSU data only. All ordinal level clades were collapsed ad bootstrap numbers from 450 repetitions are shown above the nodes

***Sympoventuriaceae*** Yin. Zhang, C.L. Schoch & K.D. Hyde, **fam. nov.** MycoBank: MB 563117

*Ascomata immersi, subglobosi, papillati, ostiolati. Pseudoparaphyses hyalinis, septatis. Asci bitunicati, fissitunicati. Ascospores hyalinae, obovoidae, oblongae, uniseptatae.*

*Habitat* saprobic. *Ascomata* subglobose, immersed, black, papillate, ostiolate. *Pseudoparaphyses* hyaline, septate, constricted at septa, anastomosing, extending above the asci.



*Asci* 8-spored, bitunicate, fissitunicate, subcylindrical, pedicellate. *Ascospores* hyaline, fusoid-ellipsoidal, constricted at median septum.

**Anamorphs:** *Sympodiella*-like, *Fusicladium*-like, *Veronaeopsis*.

**Type genus:** *Sympoventuria* Crous & Seifert.

### Genus included in *Sympoventuriaceae*

Multigene phylogenetic analysis in this study indicated that species of *Venturiales* are subdivided into two groups which represent two familial clades, i.e. *Sympoventuriaceae* and *Venturiaceae*. *Sympoventuriaceae* is represented by *Sympoventuria*, and can be distinguished from species of *Venturiales* by its saprobic life style, presence of pseudoparaphyses, and hyaline, symmetrical ascospores.

*Sympoventuria* Crous & Seifert, Fungal Divers 25: 31 (2007).

#### Generic description:

*Habitat* saprobic on leaf litter. *Ascomata* subglobose, immersed, black, inconspicuous, papillate, ostiolate. *Pseudoparaphyses* hyaline, septate, constricted at septa, anastomosing, extending above the asci. *Asci* hyaline, subcylindrical, stipitate, 8-spored. *Ascospores* hyaline, fusoid-ellipsoidal, constricted at median septum (from Crous et al. 2007b).

**Anamorph reported for genus:** *Sympodiella*-like.

#### Type species:

*Sympoventuria capensis* Crous & Seifert, Fungal Divers 25: 32 (2007).

**Anamorph:** *Sympodiella*-like.

**Note:** The small-sized immersed ascomata agree with *Venturia sensu stricto*, but the persistent pseudoparaphyses, saprobic life style, hyaline, 1-septate, symmetric ascospores and subcylindrical asci of *Sympoventuria capensis* differ from those of *Venturia sensu stricto* (Crous et al. 2007b; Sivanesan 1977). DNA based phylogenies support the placement of *Sympoventuria* within *Venturiales*, but not *Venturiaceae* (Crous et al. 2007b, Fig. 1). Currently, only one monotypic ascomycetous genus, *Sympoventuria*, is included in *Sympoventuriaceae*, while the anamorphic genus *Veronaeopsis* and a clade containing “*Fusicladium pini*” and “*F. intermedium*” may represent distinct genera.

*Venturiaceae* E. Müll. & Arx ex M.E. Barr, Mycologia 71: 947 (1979). **emend.**

*Habitat* saprobic or parasitic on leaves or stems of dicotyledons, rarely on monocotyledons. With or without ascostroma. *Ascomata* immersed, erumpent to superficial, scattered or gregarious, sometimes composed of a well-developed subiculum, globose, subglobose, with or without setae around papilla, ostiolate. *Hamathecium* of narrowly cellular pseudoparaphyses, mostly evanescent and rarely persistent. *Asci* 8-spored, bitunicate, fissitunicate, usually obclavate to obpyriform, rarely cylindrical, usually apedicel-

late. *Ascospores* hyaline, yellowish, light greenish olivaceous to brown, 1-septate, symmetrical, asymmetrical or apiosporous.

**Anamorphs:** *Fusicladium*, *Pollaccia*, *Spilocaea* and ? *Pseudocladosporium*-like.

**Type genus:** *Venturia* Sacc.

### Genera included in *Venturiaceae*

Based on both morphological, ecological comparisons and limited molecular phylogenetic analysis, eight genera are included within *Venturiaceae*, viz. *Acantharia*, *Apiosporina*, *Dibotryon*, *Caproventuria*, *Coleroa*, *Pseudoparodiella*, *Venturia* and *Metacoleroa*. However further molecular analysis is necessary to confirm the inclusion of some genera, such as *Acantharia*, *Coleroa* and *Pseudoparodiella*.

#### Key to the genera of *Venturiaceae*

- 1a. Ascospores apiosporous *Apiosporina* (incl. *Dibotryon*)
- 1b. Ascospore septum median or submedian, but not apiosporous. . . . . 2
- 2a. Hyphae grow inside of the substrate . . . . . 3
- 2b. Hyphae superficial, ascomata superficial . . . . . 4
- 3a. Ascomata superficial, produced on thin subcuticular stroma . . . . . *Coleroa*
- 3b. Ascomata immersed to erumpent, without subcuticular stroma . . . . . 5
- 4a. Ascomata without subiculum, not cupulate when dry, ascospores pale brown when mature . . . *Pseudoparodiella*
- 4b. Ascomata without subiculum, cupulate when dry, ascospores dark brown when mature . . . . *Acantharia*
- 4c. Ascomata produced on well defined subiculum, not cupulate when dry, ascospores olivaceous brown when mature . . . . . *Metacoleroa*
- 5a. Parasitic, having *Pollaccia* or *Spilocaea* anamorphs, ascospores smooth without germ slits . . . . . *Venturia sensu stricto*
- 5b. Saprobic, having *Pseudocladosporium* anamorphs, ascospores smooth without germ slits *Caproventuria*
- 5c. Saprobic, having *Helicodendron* anamorphs, ascospores smooth or longitudinally ridged ascospores with or without germ slits . . . . . *Tyrannosorus*

*Acantharia* Theiss. & Syd., Anns mycol. 16: 15 (1918).

= *Zeuctomorpha* Sivan., P.M. Kirk & Govindu, Bitunicate Ascomycetes and their Anamorphs (Vaduz): 572 (1984).

#### Generic description:

*Habitat* parasitic or saprobic. *Ascomata* small-sized, gregarious, superficial, globose, subglobose to ovate, usually cupulate when dry, thickly clothed with opaque, black setae. *Peridium* comprising two-strata of cell types. *Hamathecium* of cellular pseudoparaphyses, evanescent in mature ascomata. *Asci* 8-spored, bitunicate, fissitunicate, obclavate, apedicellate. *Ascospores* obliquely uniseriate and partially overlapping at the apex and biseriate at the base,



subcylindrical to ellipsoidal, with broadly to narrowly rounded or tapered ends, brown to dark brown with a greenish tint, 1-septate, constricted at the septum, the upper cell often shorter and broader than the lower one, smooth-walled.

**Anamorph reported for genus:** *Fusicladium*-like, *Stigmina* (Sivanesan 1984b).

**Type species:**

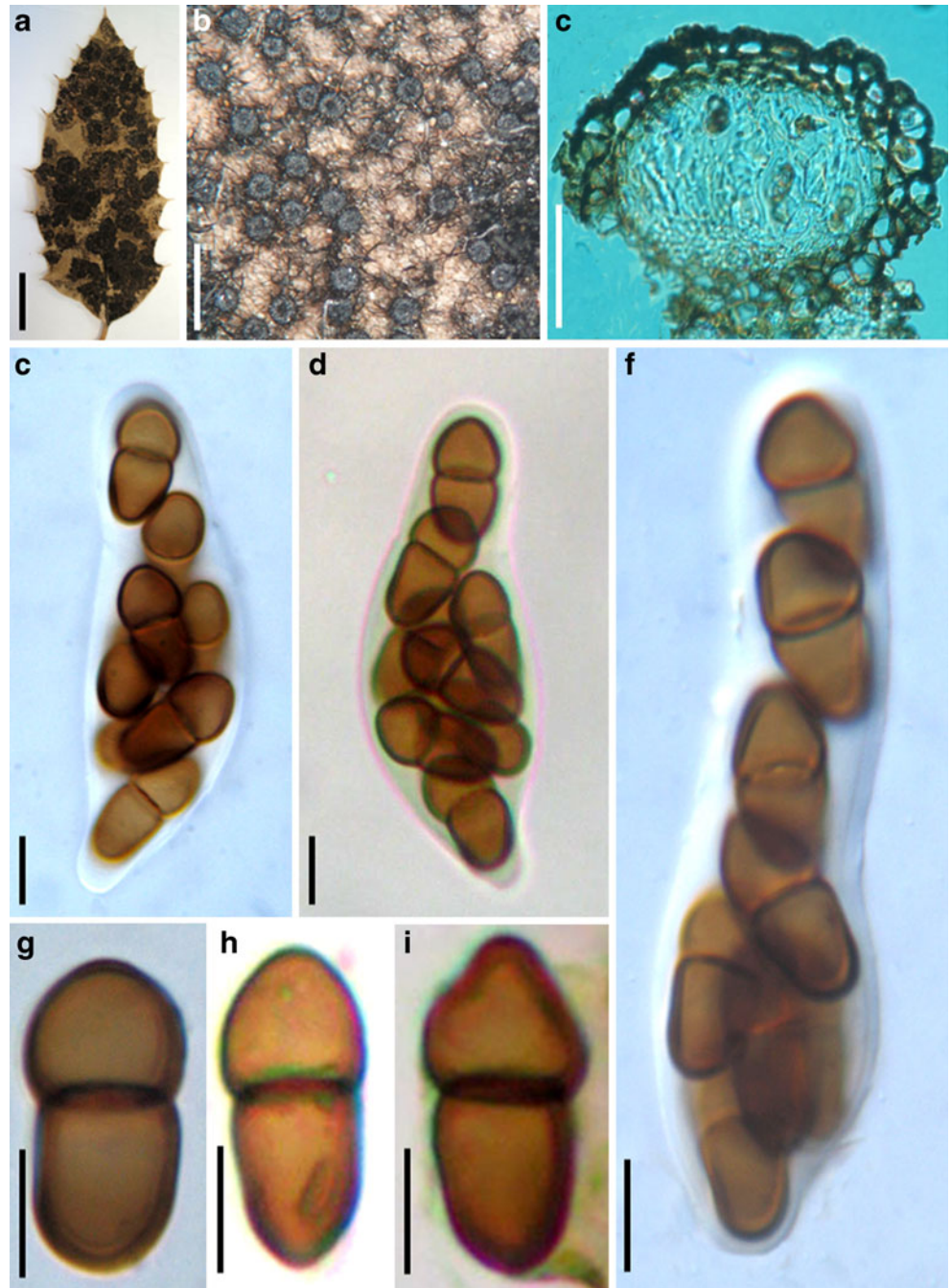
*Acantharia echinata* (Ellis & Everh.) Theiss. & Syd., *Annls mycol.* 16: 15 (1918).

≡ *Dimerosporium echinatum* Ellis & Everh., *Erythea* 1: 145 (1893).

*Ascomata* 70–157  $\mu\text{m}$  high  $\times$  115–186  $\mu\text{m}$  diam., gregarious, forming densely crowded, orbicular patches of 3–5 mm diam., superficial, globose, subglobose to ovate, cupulate when dry, thickly clothed with opaque, black setae, 70–110  $\mu\text{m}$  long, 5–7  $\mu\text{m}$  thick at the base (Fig. 3a, b). *Peridium* 20–27.5  $\mu\text{m}$  wide, up to 40  $\mu\text{m}$  thick near the base, comprising two-strata of cell types, outer layer composed of 1–3 layers of large heavily pigmented thick-walled cells of *textura angularis*, cells 8–13  $\mu\text{m}$  diam., cell

(Fig. 3)

**Fig. 3** *Acantharia echinata* (from NY, holotype). **a, b.** Superficial ascoma gregarious on the substrate surface. **c.** Section of an ascoma. Note large heavily pigmented thick-walled cells. **d–f.** Obclavate asci. **g–i.** Released ascospores. Scale bars: a=5 mm, b=0.5 mm, c=50  $\mu\text{m}$ , d–i=10  $\mu\text{m}$



wall 1–4  $\mu\text{m}$  thick, basal cells smaller and walls thicker; inner layer composed of lightly pigmented cells of *textura angularis*, up to  $3 \times 12 \mu\text{m}$  diam. (Fig. 3c). *Hamathecium* of cellular pseudoparaphyses, 2–4  $\mu\text{m}$  broad, embedded in mucilage, evanescent in mature ascomata. *Asci* 65–100  $\times$  14–25  $\mu\text{m}$  ( $\bar{x}$ =80.8  $\times$  19.6  $\mu\text{m}$ ,  $n$ =10), 8-spored, bitunicate, fissitunicate, obclavate, without pedicel (Fig. 3d–f). *Ascospores* 17.5–22.5  $\times$  9–12.5  $\mu\text{m}$  ( $\bar{x}$ =20.3  $\times$  9.8  $\mu\text{m}$ ,  $n$ =10), obliquely uniseriate and partially overlapping at the apex and biseriate at centre or sometimes at the base, broadly cylindrical to ellipsoidal with broadly to narrowly rounded or tapered ends, brown to dark brown with greenish tint, 1-septate, constricted at the septum, the upper cell often shorter and broader than the lower one, smooth-walled (Fig. 3g–i).

**Material examined:** USA: California, Amador County, Jackson, on living leaves of *Quercus chrysolepis*, leg. Geo. Hansen, com. Marshall A. Howe (NY, **holotype**).

**Anamorph:** *Fusicladium*-like sp. (Sivanesan 1984b).

**Note:** The foliicolous habitat, superficial, setose ascomata, evanescent pseudoparaphyses, obclavate asci, and 1-septate, brown and constricted ascospores are typical of *Venturiaceae*.

*Acantharia arecae* (Sivan., P.M. Kirk & Govindu) Yin, Zhang & K.D. Hyde, **comb. nov.**

$\equiv$  *Zeuctomorpha arecae* Sivan., P.M. Kirk & Govindu, in Sivanesan, Bitunicate Ascomycetes and their Anamorphs (Vaduz): 572 (1984).

**Material examined:** INDIA: Shimogee, on *Areca catechu* L. leaf, 1 Nov. 1979, H.C. Govindu (IMI 246067, holotype of *Zeuctomorpha arecae*).

**Anamorph:** *Acroconidiellina arecae* (Sivanesan 1984a).

**Note:** The small-sized setose ascomata, obclavate to obpyriform asci, asymmetrical pigmented ascospores of *Zeuctomorpha* point to *Acantharia* (Sivanesan 1984b). The anamorphic state of *Zeuctomorpha* (*Acroconidiellina arecae*) is also comparable with that of *Acantharia* (*Fusicladium*-like). Thus we treat *Zeuctomorpha arecae* here as a synonym of *Acantharia arecae*. Similarly, *Zeuctomorpha* is treated as a synonym of *Acantharia*. *Zeuctomorpha arecae* however, differs in having a thickened ascus apex with a distinct ocular chamber while its occurrence on palms is also contradictory to the understanding of the *Venturiaceae* (Zhang et al. 2012). Fresh collections and molecular study are needed to confirm whether these genera are synonymous and whether *Acantharia* should be included in *Venturiaceae*.

*Apiosporina* Höhn., Sber. Akad. Wiss. Wien, Math.-naturw. Kl., Abt. I 119: 439 (1910).

$\equiv$  *Dibotryon* Theiss. & Syd., Anns mycol. 13: 663 (1915).

**Generic description:**

*Habitat* parasitic (or saprobic?) on leaves or stems of dicotyledons. *Ascomata* small-sized, gregarious, superficial,

globose to subglobose, developing on a hyphal mass, easily removable from the substrate, small papillate and ostiolate. *Peridium* thin, composed of several layers of heavily pigmented thick-walled cells of *textura angularis*. *Hamathecium* of rare, septate, pseudoparaphyses. *Asci* 8-spored, bitunicate to narrowly obclavate, cylindrical, with a short, thick, furcate or knob-like pedicel or pedicel lacking. *Ascospores* biseriate and partially overlapping, ovoid to narrowly ovoid, hyaline to pale brown, apiosporous, 1-septate near the lower end, barely constricted at the septum, smooth-walled.

**Anamorph reported for genus:** *Cladosporium* sp. or *Fusicladium* sp. (Sivanesan 1984a).

**Type species:**

*Apiosporina collinsii* (Schwein.) Höhn., Sber. Akad. Wiss. Wien, Math.-naturw. Kl., Abt. I 119: 439 [47 repr.] (1910). (Fig. 4)

$\equiv$  *Sphaeria collinsii* Schwein., Trans. Am. phil. Soc. 4: 211 (1832).

*Ascomata* 140–172  $\mu\text{m}$  diam., gregarious, superficial, globose to subglobose, developing on a hyphal mass, easily removable from the substrate, black with rough and shiny surface, papillate small and ostiolate (Fig. 4a). *Peridium* 20–33  $\mu\text{m}$  wide, composed of 3–4 layers of heavily pigmented thick-walled cells of *textura angularis*, cells 5–10  $\mu\text{m}$  diam., cell wall up to 2.5  $\mu\text{m}$  thick, the innermost layer cell-wall thinner. *Hamathecium* of rare, septate, 4–6  $\mu\text{m}$  broad pseudoparaphyses. *Asci* 63–77  $\times$  8–10  $\mu\text{m}$  ( $\bar{x}$ =70.9  $\times$  9.3  $\mu\text{m}$ ,  $n$ =10), 8-spored, bitunicate, fissitunicate dehiscence not observed, cylindrical to narrowly obclavate, with a short, thick, knob-like pedicel or pedicel lacking (Fig. 4b, c). *Ascospores* 12.5–15  $\times$  5–6  $\mu\text{m}$  ( $\bar{x}$ =13.4  $\times$  5.3  $\mu\text{m}$ ,  $n$ =10), biseriate and partially overlapping, ovoid to narrowly ovoid, hyaline, 1-septate, apiosporous, slightly constricted at the septum, the upper cell often 4–5 times longer and much broader than the lower one, smooth-walled (Fig. 4d).

**Material examined:** CANADA: Saskatchewan, on leaves of *Cotoneaster* sp. (K(M):158702, ex herb. Broome).

**Anamorph:** *Cladosporium* sp. (Sivanesan 1984a).

*Apiosporina morbosa* (Schwein.) Arx, Acta bot. neerl. 3: 86 (1954). (Fig. 5)

$\equiv$  *Dibotryon morbosum* (Schwein.) Theiss. & Syd., Anns mycol. 13(5/6): 663 (1915).

$\equiv$  *Sphaeria morbosa* Schwein., Schr. naturf. Ges. Leipzig 1: 40 (1822).

*Ascomata* densely developing in branches, erumpent and form a swelling up to 1 cm thick, black, hard. *Ascomata* 160–230  $\mu\text{m}$  high  $\times$  170–250  $\mu\text{m}$  diam., densely gregarious on the surface of ascostromata, subglobose, triangular or oblong, often flattened on the top, wall black (Fig. 5a, b). *Peridium* 30–45  $\mu\text{m}$  wide, 1-layered, composed of small heavily pigmented thick-walled cells of *textura angularis*,



**Fig. 4** *Apiosporina collinsii* ((K(M):158702, ex herb. Broome). **a.** Ascomata gregarious on the substrate surface. **b.** Squash mounts with a large number of asci. **c.** Cylindrical 8-spored asci. **d.** Released ascospores. Scale bars: a=0.5 mm, b, c=10  $\mu$ m, d=5  $\mu$ m



cells 3–7  $\mu$ m diam., cell wall 2–4  $\mu$ m thick, cells at the base of the ascomata larger, up to 10  $\mu$ m diam. (Fig. 5b). *Hamathecium* of dense, 1.5–2(–3)  $\mu$ m broad, septate, branched pseudoparaphyses (Fig. 5d). *Asci* 68–90 $\times$ 12.5–15  $\mu$ m ( $\bar{x}$ =73 $\times$ 13  $\mu$ m,  $n$ =10), 8-spored, bitunicate, fissitunicate dehiscence not seen, subcylindrical or broadly clavate, with a short, furcate pedicel which is 8–15  $\mu$ m long, with an inconspicuous ocular chamber (Fig. 5c). *Ascospores* 15–18(–19) $\times$ (5–)6–7.5  $\mu$ m ( $\bar{x}$ =17.4 $\times$ 6.8  $\mu$ m,  $n$ =10), biseri-ate, clavate, apiosporous, tapered towards the base, apex obtusely rounded, one septate near the lower end, barely constricted at the septum, hyaline to pale brown, smooth-walled (Fig. 5e).

**Material examined:** USA: Pennsylvania, Bethlehem, in *Prunus cultis*, Syn. #1416. leg. L.D. von Schweinitz s.n. Det. L.D. von Schweinitz (PH-01048831, 01048832, 01048838, 01048839, 01048840, as *Sphaeria morbosa* Schw., **syntype**; PH-01048834).

**Anamorph:** ?*Fusicladium* sp. (Sivanesan 1984a).

**Note:** The anamorphic state of *A. collinsii* was reported as *Cladosporium* sp. (Sivanesan 1984a), which was assigned to *Fusicladium sensu lato* by Braun et al. (2003).

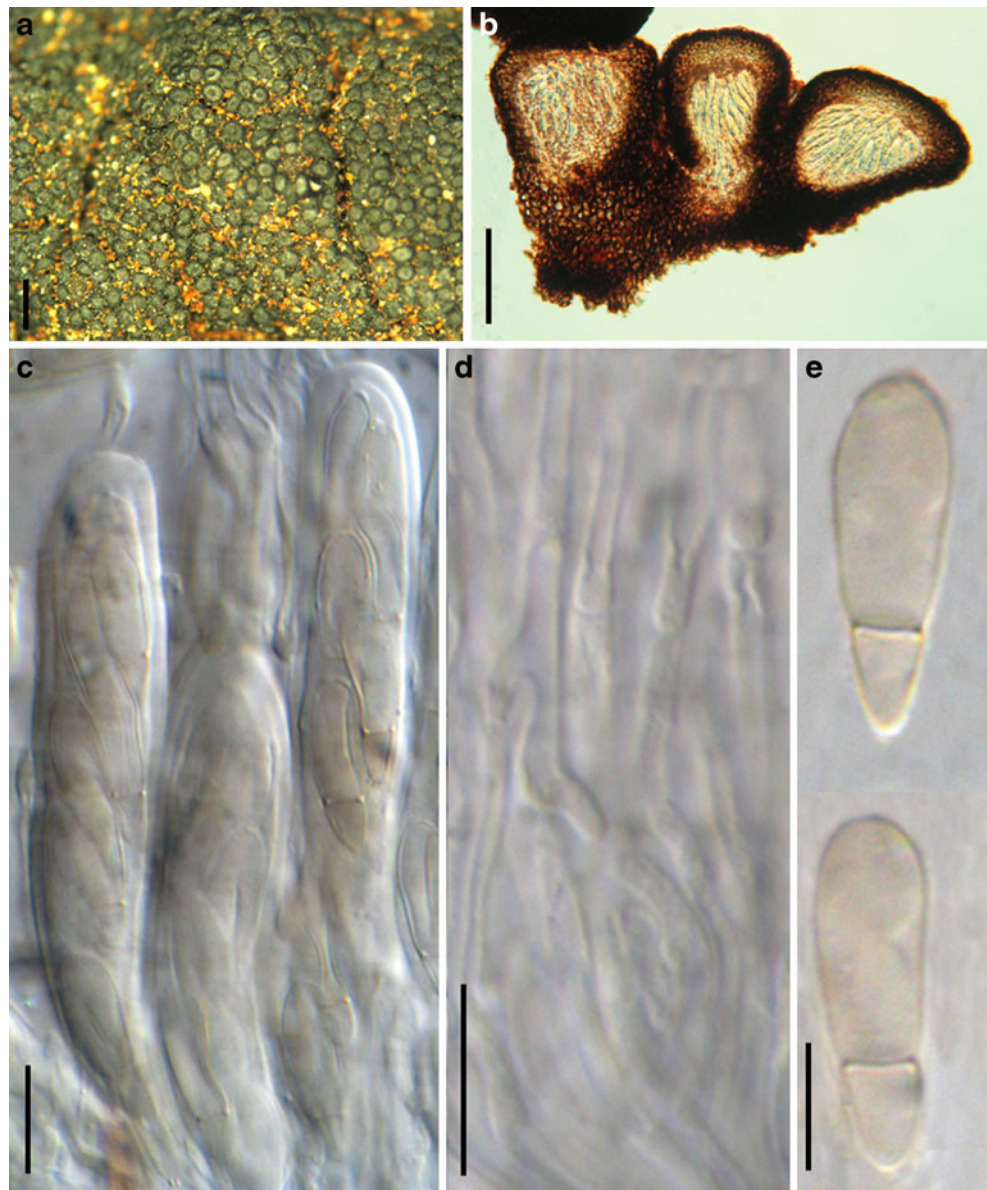
A narrow concept of *Fusicladium*, however, is accepted in this study. *Dibotryon* had been treated as a synonym of *Apiosporina* (von Arx and Müller 1975; Barr 1968; Crous et al. 2007a). Although the black knots on branches of *Prunus cultis* formed by *Dibotryon morbosum* can be readily distinguished from the black spots on leaves formed by *Apiosporina*, their congeneric relationship was confirmed by molecular data (Winton et al. 2007, Figs. 1 and 2).

***Caproventuria*** U. Braun, Monogr. *Cercospora*, *Ramularia* Allied Genera (Phytopath. Hyphom.) 2: 396 (1998).

**Generic description:**

**Habitat** saprobic. **Ascomata** non-stromatic, subglobose, ampulliform, obpyriform, urceolate, papillate, ostiolate, pseudoparaphysate, membranaceous, dark, setose throughout. **Setae** dark brown, aseptate, simple or occasionally forked, apex acute, smooth, wall thickened below, but thin-walled towards the apex. **Peridium** pseudoparenchymatous, composed of angular to rounded, dark brown cells. **Asci** 8-spored, bitunicate, numerous, subclavate to cylindrical. **Ascospores** monostichous or distichous, ellipsoid-ovoid,

**Fig. 5** *Dibotryon morbosum* (PH-01048831, **syntype**). **a.** Ascomata densely gregarious on the substrate surface. **b.** Section of ascomata. **c.** Asci in pseudo-paraphyses. **d.** Septate pseudo-paraphyses. **e.** Released ariosporous ascospores. Scale bars: a=0.5 mm, b=100  $\mu$ m, c, d=10  $\mu$ m



with a single submedian septum, mostly somewhat constricted at the septum, smooth, yellowish olivaceous (from Braun 1998).

**Anamorph reported for genus:** *Pseudocladosporium* (Braun et al. 2003).

**Type species:**

*Caproventuria hanliniana* (U. Braun & Feiler) U. Braun, Monogr. *Cercosporiella*, *Ramularia* Allied Genera (Phytopath. Hyphom.) 2: 396 (1998).

≡ *Capronia hanliniana* U. Braun & Feiler, Microbiol. Res. 150: 90 (1995).

**Anamorph:** *Pseudocladosporium brevicatenatum* (U. Braun & Feiler) U. Braun 1998.

**Note:** Braun (1998) treated *Caproventuria* as separate genus from *Venturia* based on its saprobic life style and

*Pseudocladosporium* anamorphic state, compared to the parasitic life style and *Pollaccia* or *Spilocaea* anamorphic state possessed by *Venturia sensu stricto*. Crous et al. (2007b), however, treated *Pseudocladosporium* as a synonym of *Fusicladium sensu lato* based on the combined LSU and ITS *nur*DNA sequences comparison, and considered the arrangement of the conidiophores (solitary, fasciculate, sporodochial), the proliferation of conidiogenous cells (sympodial, percurrent) and shape, size as well as formation of conidia (solitary, catenate) to be of little taxonomic value at generic level. This proposal, however, is not supported in this study, as narrow generic concepts of *Venturia* and *Fusicladium* are accepted here. In addition, according to our multigene phylogenetic analysis, species of *Caproventuria* and *Tyrannosorus* form a unambiguously supported clade



separating from the clade *Venturia sensu stricto*. Based on both the anamorph and molecular phylogeny, *Caproventuria* is a well defined genus of *Venturiaceae*.

***Coleroa*** Rabenh., Herb. myc., ed. 1no. 1456 (1850).

**Generic description:**

*Habitat* parasitic and saprobic on dicotyledons. *Ascomata* small-sized, scattered, or in small groups, superficial, globose, subglobose, setae few to numerous, papillate, ostiolate. *Peridium* thin, composed of lightly pigmented thin-

walled cells of *textura angularis*. *Hamathecium* ca. 2  $\mu\text{m}$  broad, evanescent. *Asci* 8-spored, bitunicate, fissitunicate, fusiform to obclavate, with or without pedicel. *Ascospores* ellipsoidal with broadly to narrowly rounded ends, pale brown with greenish tint, 1-septate, constricted at the septum.

**Anamorph reported for genus:** none.

**Type species:**

*Coleroa chaetomium* (Kunze ex Fr.) Rabenh., Rabenh. Krypt.-Fl., Edn 2 (Leipzig) 1:198 (1850). (Fig. 6)

**Fig. 6** *Coleroa chaetomium* (L11558.38). **a.** Ascomata scattered on the substrate surface. **b.** Section of an ascoma. **c, d.** Somewhat obclavate, 8-spored asci without pedicel. **e.** Released ascospores. Scale bars: a= 0.5 mm, b=50  $\mu\text{m}$ , c, d=10  $\mu\text{m}$ , e=5  $\mu\text{m}$





≡ *Dothidea chaetomium* Kunze ex Fr., Syst. mycol. (Lundae) 2: 563 (1823).

*Ascomata* 130–170 µm high×80–130(–160) µm diam., scattered, or in small groups of 2–4 with confluent peridium, superficial, produced on thin subcuticular stroma, globose, subglobose, wall black, setae few to numerous, septate or non-septate, variable in length, up to 130 µm, 5–7 µm thick near the base, reddish-brown, paler at the apex, ostiole short (Fig. 6a). *Peridium* 15–25 µm wide, composed of lightly pigmented thin-walled cells of *textura angularis*, cells 5–12 µm diam., cell wall <1 µm thick (Fig. 6b). *Hamathecium* ca. 2 µm broad, cellular, septate, usually evanescent in mature ascomata. *Asci* 45–58×12–16 µm ( $\bar{x}$ =53.3×13.5 µm,  $n$ =10), 8-spored, bitunicate, fissitunicate, fusiform to obclavate, with or without pedicel, with an inconspicuous ocular chamber (Fig. 6c, d). *Ascospores* 11–14(–17)×5.5–6 µm ( $\bar{x}$ =13.2×5.9 µm,  $n$ =10), obliquely uniseriate and partially overlapping to biseriate in centre, ellipsoidal with broadly to narrowly rounded ends, pale brown with greenish tint, 1-septate, constricted at the septum, the upper cell often longer and broader than the lower one, verrucose (Fig. 6e).

**Material examined:** ITALY: Treviso, Bosco Montello, on the leaf surface of *Rubus caesius*, Sept. 1876. P.A. Saccardo (L11558.30 as *Venturia kunzei* Sacc.); ROMANIA: Plopeni, on *Rubus caesius* L., Aug. 1971, leg. & det. G. Negrean (L11558.4); on *Rubus idaeus*, leg. J. Smarods, 18 Oct. 1942 (L11558.16); L11558.39, as *Dothidea chaetomium*; on leaves of *Rubus* sp., leg. Kretzschmar (L11558.38, as *Phacidium rubi* Fries); 9 Oct. 1903, leg. G. Oertel. (L11558.3).

**Anamorph:** none reported.

**Note:** The scattered, setose ascomata, deliquescent pseudoparaphyses, fusoid to obclavate asci and the 1-septate, constricted ascospores of *Coleroa chaetomium* suggest an affinity to *Venturiaceae*.

***Pseudoparodiella*** F. Stevens, Illinois Biol. Monogr. (Urbana) 11: 166 (1927).

**Generic description:**

*Habitat* parasitic on leaf surface of dicotyledonous plants. *Ascomata* small-sized, scattered or gregarious, superficial, globose. *Peridium* thin, composed of a few layers of lightly pigmented thin-walled cells of *textura angularis*. *Hamathecium* of rare, 2–3 µm broad pseudoparaphyses. *Asci* 8-spored, bitunicate, fissitunicate dehiscence not observed, obclavate, with a short, thick, knob-like pedicel, with an ocular chamber. *Ascospores* biseriate and partially overlapping, broadly fusoid to ellipsoidal with broadly to narrowly rounded ends, olivaceous to pale brown, 1-septate, constricted at the septum, the upper cell slightly longer and broader than the lower one.

**Anamorph reported for genus:** none.

**Type species:**

***Pseudoparodiella vernoniae*** F. Stevens, Illinois Biol. Monogr. (Urbana) 11: 166 (1927). (Fig. 7)

*Ascomata* 80–130 µm diam., scattered or gregarious, superficial, globose, easily removed from the substrate, wall black, apex opening not observed (too small to see clearly) (Fig. 7a). *Peridium* 10–15 µm wide, composed of 2–3 layers of lightly pigmented thin-walled cells of *textura angularis*, cells 4–6 µm diam., cell wall 0.5–1 µm thick, up to 2 µm thick at the outer layer (Fig. 7b). *Hamathecium* of rare, 2–3 µm broad pseudoparaphyses. *Asci* 55–72×17–22 µm ( $\bar{x}$ =62.5×20.3 µm,  $n$ =10), 8-spored, bitunicate, fissitunicate dehiscence not observed, obclavate, with a short, thick, knob-like pedicel which is usually less than 10 µm long, with an ocular chamber (Fig. 7c). *Ascospores* 16–19×6–8 µm ( $\bar{x}$ =17×7 µm,  $n$ =10), biseriate and partially overlapping, broadly fusoid to ellipsoidal with broadly to narrowly rounded ends, olive pale brown, 1-septate, constricted at the septum, the upper cell slightly longer and broader than the lower one, smooth-walled (Fig. 7d).

**Material examined:** SPAIN: Peralta, on leaves of *Vernonia canescens*, 7 Dec. 1923, leg. & det. F.L. Stevens (K(M):154549, **holotype**).

**Anamorph:** none reported.

**Note:** The small-sized ascomata produced on leaves of dicotyledons, rare pseudoparaphyses, obclavate asci, 1-septate olivaceous brown ascospores agree with *Venturiaceae*.

***Metacoleroa*** Petr., Annl. mycol. 25: 332 (1927).

**Anamorph reported for genus:** none.

**Type species:**

***Metacoleroa dickiei*** (Berk. & Broome) Petr. [as ‘dieckiei’], Annl. mycol. 25: 332 (1927).

≡ *Sphaeria dickiei* Berk. & Broome, Ann. Mag. nat. Hist., Ser. 2 9: 317 (1852).

**Material examined:** UK: Carlton House, on leaves of *Linnaea borealis*, 1827, Richardson (K(M): 143928; **syntype**).

**Anamorph:** none reported.

**Note:** No mature ascoma were found on the specimen examined. Based on DNA sequence analysis, *Metacoleroa* clustered with *Venturia sensu lato*, thus was treated as synonym (Crous et al. 2007a). However the phylogeny presented in Crous et al. (2007a) was not well resolved and our analysis did not resolve this either (Fig. 1). This proposal needs further study.

***Tyrannosorus*** Unter. & Malloch, Mycol. Res. 99(8): 910 (1995).

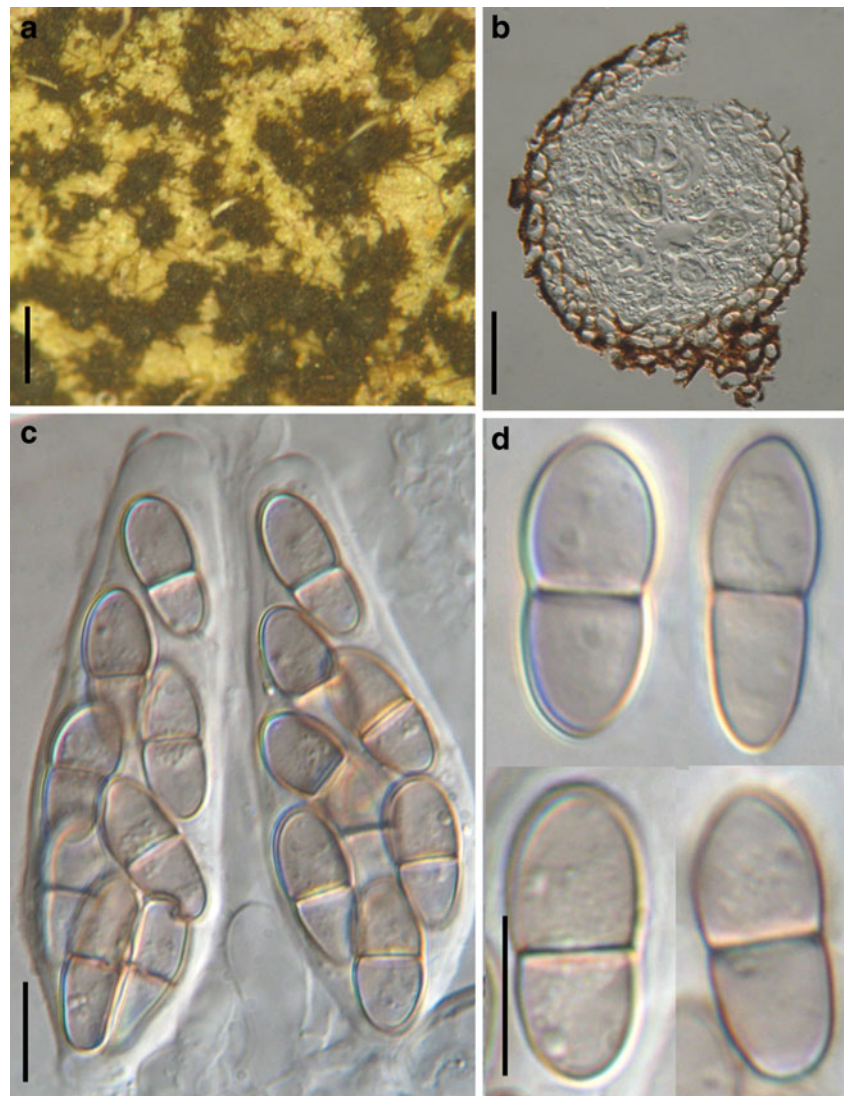
**Generic description:**

*Habitat* saprobic. *Ascomata* solitary, dark brown to black, ovate to pyriform, ostiolate, covered with brown setae. *Peridium* pseudoparenchymatous. *Hamathecium* trabeculate pseudoparaphyses. *Asci* bitunicate, saccate to

**Fig. 7** *Pseudoparodiella vernoniae* (K(M):154549, holotype).

**a.** Setose ascomata scattered on the substrate surface. **b.** Section of an ascoma. **c.** Squash mounts with two asci. **d.** Released, 1-septate ascospores. Scale bars:

a=200  $\mu$ m, b=20  $\mu$ m, c, d=10  $\mu$ m



clavate with a thickened endotunica. *Ascospores* brown, fusoid, 1-septate, indistinctly striate, each cell with 3–5 elongate germ slits (from Untereiner et al. 1995).

**Anamorph reported for genus:** *Helicodendron* (Untereiner et al. 1995).

**Type species:**

*Tyrannosorus pinicola* (Petrini & P.J. Fisher) Unter. & Malloch, Mycol. Res. 99(8): 910 (1995).

≡ *Capronia pinicola* Petrini & P.J. Fisher, Trans. Br. mycol. Soc. 88(1): 68 (1987).

**Anamorph:** *Helicodendron pinicola* E. Müll., Petrini, P. J. Fisher, Samuels & Rossman ex Voglmayr & P.J. Fisher, Mycol. Res. 101(9): 1124 (1997).

**Note:** *Tyrannosorus* was separated from *Capronia* and was introduced as a monotypic genus represented by *T. pinicola* based on its helicosporous anamorph and longitudinally ridged ascospores with multiple germ slits (Untereiner et al. 1995). According to our molecular phylogenetic analysis based on five genes, i.e. *nuLSU*, *nuSSU*, *RPB1*, 2 and *TEF1*,

*Caproventuria hanliniana* and *C. hystrioides* together with *Tyrannosorus pinicola* form a unambiguously supported clade separating from *Venturia sensu stricto*. Both *Tyrannosorus* and *Caproventuria* share setose ascomata, 1-septate, brown or yellowish olivaceous ascospores, which are typical of *Venturiaceae*. The helicosporous anamorph of *Tyrannosorus pinicola* (*Helicodendron pinicola*) is quite different from the *Pseudocladosporum* anamorph of *Caproventuria* species. In addition, the indistinctly striate ascospores with germ slits of *Tyrannosorus pinicola* are also quite different from species of *Caproventuria* (Braun 1998; Untereiner et al. 1995). Thus here we treat *Caproventuria* and *Tyrannosorus* as separate genera of *Venturiaceae*.

***Venturia*** Sacc., Syll. fung. (Abellini) 1: 586 (1882).

**Generic description:**

**Habitat** parasitic on dicotyledonous leaves. *Ascomata* small-sized, solitary, scattered, or gregarious, initially immersed, becoming erumpent, globose, subglobose, wall black,



papillate, ostiolate. *Peridium* thin, composed of a few layers of pigmented cells of *textura angularis*. *Hamathecium* rare, evanescent in mature ascomata. *Asci* 8-spored (rarely 4-spored), bitunicate, fissitunicate dehiscence unknown, oblong to obclavate, with a short, thick pedicel or pedicel lacking, with an inconspicuous ocular chamber. *Ascospores* obliquely uniseriate and partially overlapping to biseriate, especially at the base, ellipsoidal, with broadly rounded ends, pale brown, 1-septate, slightly constricted at the septum, the upper cell shorter than the lower one, smooth-walled.

**Anamorph reported for genus:** *Spilocaea*, *Pollaccia* (Barr 1968; Crous et al. 2007a; Sivanesan 1984a).

**Type species:**

*Venturia inaequalis* (Cooke) G. Winter, Hedwigia 36: 81 (1897) (Fig. 8)

≡ *Sphaerella inaequalis* Cooke, J. Bot. 4: 248 (1866).

*Ascomata* 90–180  $\mu\text{m}$  high  $\times$  90–200(–240)  $\mu\text{m}$  diam., solitary, scattered, or gregarious, initially immersed, becoming erumpent, globose, subglobose, wall black, ostiolate with a distinct papilla (Fig. 8a). *Peridium* 20–28  $\mu\text{m}$  wide, 1-layered, composed of (2-)3–4 layers of pigmented cells of *textura angularis*, cells 5–10  $\mu\text{m}$  diam., cell wall 0.8–1.5  $\mu\text{m}$  thick (Fig. 8d). *Hamathecium* rare, ca. 2  $\mu\text{m}$  broad, evanescent in mature ascomata (Fig. 8e). *Asci* (53-)



**Fig. 8** *Venturia inaequalis* (L 0054534, isotype of *Didymosphaeria inaequalis* (Cooke) Nissl.). **a.** Ascostroma on the surface of substrate. **b, c.** Ascus. **d.** Section of the peridium comprising a few layers of

texture of *angularis* cells. **e.** Decomposing pseudoparaphyses. **f, g.** Ascospores with one septum. Scale bars: **a**=0.5 mm, **b, c, e - g**=10  $\mu\text{m}$ , **d**=20  $\mu\text{m}$

70–90×9.5–14 μm ( $\bar{x}$ =73.5×10.8 μm,  $n$ =10), 8-spored (rarely 4-spored), bitunicate, fissitunicate dehiscence not observed, oblong to obclavate, with a short, thick pedicel or pedicel lacking, with an inconspicuous ocular chamber (Fig. 8b, c). *Ascospores* 13–17×6–8 μm ( $\bar{x}$ =14.8×7.2 μm,  $n$ =10), obliquely uniseriate and partially overlapping to biseriata, especially at the base, ellipsoidal, with broadly rounded ends, pale brown, 1-septate, slightly constricted at the septum, the upper cell shorter than the lower one (4:5-) 2:3(–1:2), smooth-walled (Fig. 8f, g).

**Material examined:** CZECH REPUBLIC: Brno (‘Brünn’), on leaves of *Sorbus torminalis* (Rosaceae). Niessl s.n., Mar. 1913, distributed in Rabenhorst, Fungi Europaei 2663, leg. de Niessl (L 0054534, **isotype** of *Didymosphaeria inaequalis* (Cooke) Nissl.).

**Anamorph:** *Spilocaea pomi* (Schubert et al. 2003).

**Note:** A relatively broad concept for *Venturia* was adopted by Sivanesan (1977), who considered the genus to comprise species having separate or aggregated ascomata with or without stroma, or forming below a blackened clypeus, symmetrical or asymmetrical, olive green, pale brown or dark brown ascospores and being parasitic on leaves or stems of dicotyledons. DNA sequence analysis had indicated that species of *Venturia* clustered together with *Apiosporina collinsii*, *Caproventuria hanliniana* and *Metacoleroa dickiei*, and thus *Caproventuria* and *Metacoleroa* were treated as synonyms of *Venturia* (Crous et al. 2007a), although their ecological, morphological or anamorphic states are distinct from each other (see the key of genera). This proposal, however, needs further consideration and study. Herein we apply a narrower generic concept for *Venturia*, which comprises parasitic species closely related to the generic type of *Venturia* (*V. inaequalis*).

#### Other genera included in *Venturiales*

Based on morphology, the genera *Arkoola*, *Atopospora*, *Botryostroma*, *Lasiobotrys*, *Rhizogene*, *Trichodothella* and *Trichodothis* may be related to *Venturiaceae*. Thus we provisionally include them in *Venturiaceae*, but their ordinal and/or familial status needs confirmation based on DNA sequence data.

*Arkoola* J. Walker & Stovold, Trans. Br. mycol. Soc. 87: 28 (1986).

**Anamorph reported for genus:** none.

**Type species:**

*Arkoola nigra* J. Walker & Stovold, Trans. Br. mycol. Soc. 87: 29 (1986).

**Anamorph:** none reported.

**Note:** The superficial, setose ascomata produced on mycelium and greenish-brown, asymmetrical, thin-walled ascospores fit *Venturiaceae* well. The large-sized ascomata, cylindrical asci and short pedicels of *Arkoola* however, differ from other genera of *Venturiaceae* (Walker and Stovold 1986).

*Atopospora* Petr., Anns mycol. 23: 100 (1925).

**Anamorph reported for genus:** ?*Didymochora* (Sivanesan 1984a).

**Type species:**

*Atopospora betulina* (Fr.) Petr., Anns mycol. 23: 101 (1925).  
≡ *Xyloma betulinum* Fr., Observ. mycol. (Havniae) 1: 198 (1815).

**Anamorph:** ?*Didymochora betulina* (Sivanesan 1984a).

**Note:** The multiloculate ascostromata, fusoid asci and lightly pigmented, biseriata, apiosporous ascospores suggest an affinity to *Venturiales* (Müller and von Arx 1962).

*Botryostroma* Höhn., Sber. Akad. Wiss. Wien, Math.-naturw. Kl., Abt. 1 120: 424 [46 repr.] (1911).

**Anamorph reported for genus:** none.

**Type species:**

*Botryostroma inaequale* (G. Winter) Höhn. [as ‘inaequalis’], Sber. Akad. Wiss. Wien, Math.-naturw. Kl., Abt. 1 120: 425 [47 repr.] (1911).

≡ *Lizonia inaequalis* G. Winter, Hedwigia 22: 261 (1883).

**Anamorph:** none reported.

**Note:** The ascomata of *Botryostroma inaequale* are produced under a clypeus, with numerous persistent pseudoparaphyses among asci. All these characters do not fit *Venturiales*. However, the obclavate or fusiform asci, lightly pigmented, apiosporous ascospores suggest an affinity to *Venturiales* (Müller and von Arx 1962).

*Lasiobotrys* Kunze, in Kunze & Schmidt, Mykologische Hefte (Leipzig) 2: 88 (1823).

**Anamorph reported for genus:** none.

**Type species:**

*Lasiobotrys lonicerae* Kunze, in Fries, Syst. mycol. (Lundae) 2: 88 (1823).

**Anamorph:** none reported.

**Note:** The most striking morphological character of *Lasiobotrys* is its ascomata produced among hyphae under a stromatal disc (forming a “roof-like” structure) (see Müller and von Arx 1962). The apiosporous, lightly pigmented ascospores, subclavate to obclavate asci are comparable with taxa of *Venturiales*.

*Rhizogene* Syd. & P. Syd., Anns mycol. 18: 181 (1921) [1920].

**Anamorph reported for genus:** none.

**Type species**

*Rhizogene symphoricarpi* (Syd. & P. Syd.) Syd. & P. Syd., Anns mycol. 18: 181 (1921) [1920].

≡ *Lasiobotrys symphoricarpi* Syd. & P. Syd., Anns mycol. 16: 244 (1918).

**Anamorph:** none reported.

**Note:** Ascomata of *Rhizogene symphoricarpi* are produced radially around the circumference of the stromatal

disc, which is covered with short setae. The subclavate to somewhat obclavate asci and lightly pigmented, submedianly 1-septate ascospores are comparable with *Venturiales* (Müller and von Arx 1962).

***Trichodothella*** Petr., in Blumer, *Ergebn. wiss. Unters. Schweiz. Natn Parks, N.S. 14: 37* (1946).

**Anamorph reported for genus:** none.

**Type species:**

***Trichodothella blumeri*** Petr. ex S. Blumer, *Ergebn. Wiss. Unters. Schweiz. Natn Parks, N.S. 14: 37* (1946).

**Anamorph:** none reported.

**Note:** Considering the position of ascomata on the ascostromata, *Trichodothella* is a “transition” genus—the ascomata of which are produced radially around the circumference of the stromatal disc, but under the hyphae around the ascostromata (Müller and von Arx 1962).

***Trichodothis*** Theiss. & Syd., *Annl. mycol. 12: 176* (1914).

**Generic description:**

*Habitat* saprobic or parasitic? on leaf surface of dicotyledonous. *Ascostromata* medium-sized, solitary, scattered, or in small groups, superficial, multilocular, discoid, with straight or flexuous aggregations of hairs sticking together and forming stellate projections around the ascostroma. *Locules* small-sized, globose to subglobose, forming one layer within the ascostroma. *Peridium* one layered, lower peridium composed of light pigmented cells of *textura angularis*, upper peridium composed of more heavily pigmented thick-walled cells of *textura angularis*. *Hamathecium* of dense, cellular pseudoparaphyses, septate, hyaline. *Asci* 8-spored, bitunicate, fissitunicate dehiscence not observed, saccate, without pedicel. *Ascospores* 3–4-seriate, broadly ellipsoidal with broadly rounded ends, hyaline and becoming pale brown when old, 1-septate, slightly constricted at the septum.

**Anamorphs reported for genus:** none.

**Type species:**

***Trichodothis comata*** (Berk. & Ravenel) Theiss. & Syd., *Annl. mycol. 12: 176* (1914). (Fig. 9)

≡ *Asterina comata* Berk. & Ravenel, *Grevillea 4* (no. 29): 10 (1875).

*Ascostromata* 72–157  $\mu\text{m}$  high  $\times$  243–529  $\mu\text{m}$  diam. (excluding the stellate aggregations), solitary, scattered, or in small groups, superficial, multilocular, discoid, with straight or flexuous, septate, dark brown aggregations of hairs sticking together and forming stellate projections around the ascostromata, projections black, cylindrical, 6–8  $\mu\text{m}$  broad. *Locules* 60–95  $\mu\text{m}$  high  $\times$  75–115  $\mu\text{m}$  diam., globose to subglobose, forming a single layer within ascostromata, and extending as far as 100–214  $\mu\text{m}$  out of the edge of ascostromata (Fig. 9a, c). *Peridium* 28–42  $\mu\text{m}$  wide, one layered, lower peridium composed of light pigmented cells of *textura angularis*, cells 5–9  $\mu\text{m}$  diam., cell wall 1.5–2.5  $\mu\text{m}$  thick, apex cells smaller and walls

thicker, upper peridium composed of more heavily pigmented thick-walled cells of *textura angularis* (Fig. 9b, d, e). *Hamathecium* of dense, cellular pseudoparaphyses, ca. 2.5–4  $\mu\text{m}$  diam., septate, hyaline (Fig. 9e, f). *Asci* 55–70  $\times$  15–22  $\mu\text{m}$ , 8-spored, bitunicate, fissitunicate dehiscence not observed, saccate, without pedicel, ocular chamber not observed (Fig. 9g). *Ascospores* 14–23  $\times$  6.5–10.5  $\mu\text{m}$ , 3–4 seriate, broadly ellipsoidal with obtusely rounded ends, hyaline and becoming pale brown when old, 1-septate, slightly constricted at the septum, smooth-walled (Fig. 9h).

**Material examined:** USA: South Carolina, Santee Canal, on *Magnolia grandiflora* leaf, 1819; leg. H.W. Ravenel (K(M): 143933, ex herb. Berkeley, **syntype**).

**Anamorph:** none reported.

**Note:** *Trichodothis comata* is characterized by its ascostromata covered by dark brown hairs, broad pseudoparaphyses, saccate asci and hyaline, 1-septate ascospores (Müller and von Arx 1962, Fig. 9). *Trichodothis* is most comparable with *Lasiobotrys*, *Rhizogene* and *Trichodothella*, which have ascomata beneath or radially around the circumference of the stromatal disc (Müller and von Arx 1962). All these characters make it difficult to be assigned *Trichodothis* in a family or even order. Because the morphology of asci and ascospores are most comparable with *Venturiales*, we questionably accept it in *Venturiales*, until further molecular phylogenetic result is available.

**Genera excluded from *Venturiales***

*Crotone*, *Polyrhizon*, *Lineostroma*, *Phragmogibbera*, *Platychora*, *Phaeocryptopus*, *Rosenscheldiella*, *Uleodothis* and *Xenomeris* do not share common ancestry with *Venturiales* based either on recent DNA sequence analyses or on morphological characters. Thus they are excluded from this order.

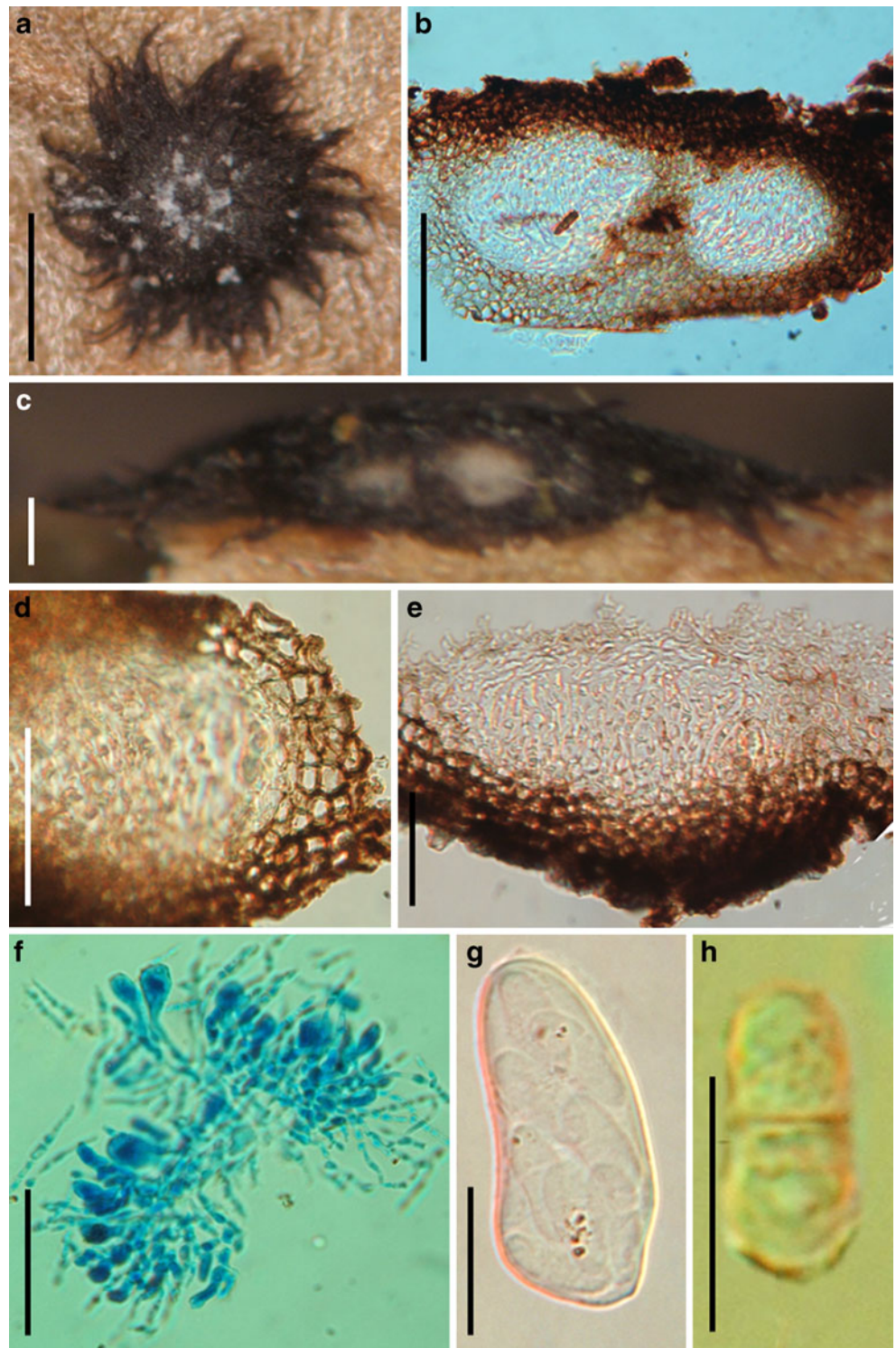
***Crotone*** Theiss. & Syd., *Annl. mycol. 13: 629* (1915).

**Generic description:**

*Habitat* saprobic on lower surface of leaves of dicotyledons. *Ascostromata* large-sized, solitary, scattered, or in small groups, erumpent to nearly superficial, with basal wall remaining immersed in host tissue, flat globose to subglobose. *Locules* small-sized, globose to subglobose, forming one layer near the surface of ascostromata, area between locules of ascostromata filled with heavily pigmented, thick-walled cells of *textura angularis*. *Peridium* composed of heavily pigmented, thick-walled cells of *textura angularis*, cells of ascostromata larger, hyaline and walls thinner. *Hamathecium* appears to lack pseudoparaphyses. *Asci* 8-spored, bitunicate, broadly subclavate to obclavate, without pedicel. *Ascospores* uniseriate, biseriate to 4-seriate, broadly clavate, narrowly fusoid to fusoid with broadly to narrowly rounded ends, brown, 1-septate, constricted at the septum, the upper cell often longer and broader than the lower one, rough-walled.



**Fig. 9** *Trichodothis comata* (K (M): 143933, **syntype**). **a**. An flattened ascostroma on the substrate surface. **b, c**. Section of a partial ascostroma. **d, e**. Section of a partial peridium comprising a few layers of texture of angularis cells. **f**. Pseudoparaphyses with immature asci. **g**. Ascus. **h**. Released 1-septate ascospore. Scale bars: a=0.5 mm, b, c=100  $\mu$ m, d-f=50  $\mu$ m, g, h=20  $\mu$ m



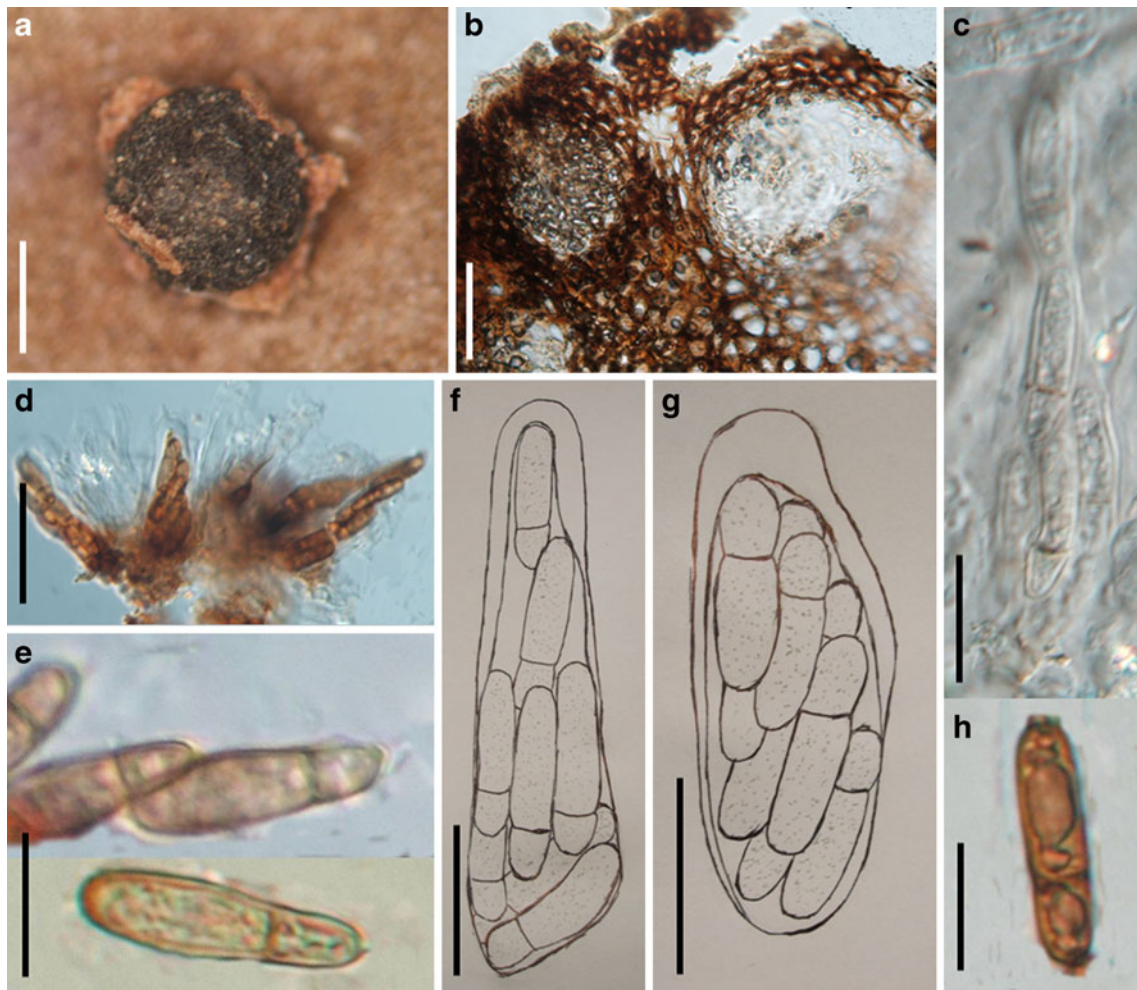
**Anamorph reported for genus:** none.

**Type species:**

*Crotone drimydis* (Lév.) Theiss. & Syd., Annl. mycol. 13: 629 (1915). (Fig. 10)

≡ *Dothidea drimydis* Lév. [as 'drymidis'], Annl. Sci. Nat., Bot., sér. 3 3: 55 (1845).

*Ascostromata* 230–570  $\mu$ m high  $\times$  615–915  $\mu$ m diam., solitary, scattered, or in small groups of 2–4, erumpent to nearly superficial, with basal wall remaining immersed in host tissue, flat globose to subglobose, wall black, roughened, usually ornamented with some white collared ornaments (Fig. 10a). *Locules* 75–90  $\mu$ m diam., globose to



**Fig. 10** *Crotone drimidis* (K(M): 143929, **syntype**). **a.** Ascostroma on the host surface. **b.** Section of a partial ascostroma. **c.** Dehiscent ascus. **d.** Squash mounts with several asci. **e, h.** Released ascospores. **f, g.** Ascus. Scale bars: a=0.5 mm, b, d=100  $\mu$ m, c, f, g=20  $\mu$ m, e, h=10  $\mu$ m

subglobose, forming one layer near the surface of ascostromata, area between locules of ascostromata filled with heavily pigmented thick-walled cells of *textura angularis*, up to 10  $\mu$ m diam., cell wall 3–5  $\mu$ m thick (Fig. 10b). *Peridium* 35–80  $\mu$ m wide on the surface part of ascostromata, composed of heavily pigmented thick-walled cells of *textura angularis*, cells up to 10  $\times$  3.8  $\mu$ m diam., cell wall 2–5  $\mu$ m thick, cells of ascostromata larger, hyaline and walls thinner (Fig. 10b). *Hamathecium* appears to lack pseudoparaphyses. *Asci* 55–105  $\times$  10–17.5  $\mu$ m ( $\bar{x}$ =79.2  $\times$  13.5  $\mu$ m,  $n$ =10), 8-spored, bitunicate, broadly subclavate to obclavate, without pedicel, ocular chamber not seen (Fig. 10c, d, f, g). *Ascospores* 17.5–25  $\mu$ m  $\times$  4.5–7.5  $\mu$ m ( $\bar{x}$ =20.4  $\times$  5.5  $\mu$ m,  $n$ =10), uniseriate, biseriata to 4-seriate, narrowly clavate, narrowly fusoid to fusoid with broadly to narrowly rounded ends, brown, 1-septate, constricted at the septum, the upper cell often longer (ca. 2-times) and broader than the lower one, rough-walled (Fig. 10e, h).

**Material examined:** CHILE: on the lower side of the leaves of *Drymidis chilensis*, 1841 (K(M): 143929, ex herb. Berkeley, **syntype**).

**Anamorph:** none reported.

**Note:** Locules of *Crotone drimidis* are arranged in a layer in the hemispherical ascostromata, which forms on the lower surface of *Drymidis chilensis* leaves. The genus may belong in *Dothideaceae*, *Elsinoaceae* or *Myrangiaceae*, families in which taxa form in ascostromata with ascomata as a single layer. The saccate asci in the *Elsinoaceae* or *Myrangiaceae* are somewhat comparable with those of *Crotone drimidis*.

*Gibbera* Fr., Syst. orb. veg. (Lundae) 1: 110 (1825).

**Anamorphs reported for genus:** *Dictyodochium*, *Stigmmina*-like and *Virgariella* (Sivanesan 1984a, b).

**Type species:**

*Gibbera vaccinii* (Sowerby) Fr., Summa veg. Scand., Section Post. (Stockholm): 412 (1849).



≡ *Sphaeria vaccinii* Sowerby, Col. fig. Engl. Fung. Mushr. 3: 156, tab. 373:1 (1803).

**Anamorph:** none reported.

**Note:** The narrowly fusoid ascospores, asci with furcate pedicel as well as its *Dictyodochium*, *Stigmina*-like and *Virgariella* anamorphic states (Sivanesan 1984a, b) all refute its placement within *Venturiales*. Barr (1968) has considered *Gibbera* comparable with *Phaeocryptopus* and *Xenomeris*, as they all have “erumpent basal stroma bearing the ascostromata which do not form superficial mycelium”. Both *Phaeocryptopus* and *Xenomeris* have been assigned to *Capnodiales* (Schoch et al. 2009; Winton et al. 2007), thus *Gibbera* may also be closely related to *Capnodiales*. Based on the multigene phylogenetic analysis, *G. conferta* nested within the clade of *Venturiales*, while *G. rosea* clustered within *Helotiales* (class *Leotiomycetes*) (Crous et al. 2007a). No firm conclusion can be reached, however, until it is possible to analyse DNA sequences of the type species, *G. vaccinii*.

***Platychora*** Petr., Annl. mycol. 23(1/2): 102 (1925)

**Anamorph reported for genus:** ? *Piggotia* (Hyde et al. 2011).

**Type species:**

***Platychora ulmi*** Duval, Bot. Taschenbuch 6: 105 (1795).

**Anamorph:** unknown.

**Note:** The fusoid hyaline apiosporous ascospores of *Platychora ulmi* are comparable with *Dibotryon* and *Apiosporina*, but its gregarious ascostromata, which are immersed at first, then becomes erumpent to superficial, are quite different from other genera in *Venturiaceae*. Based on molecular phylogenetic data, *Platychora ulmi* should reside within the family of *Didymellaceae*, *Pleosporales* (Zhang et al. 2009, Fig. 1).

***Polyrhizon*** Theiss. & Syd., Annl. mycol. 12: 281 (1914).

**Generic description:**

**Habitat** saprobic on leaves of dicotyledons. *Ascostromata* producing round, black spots in leaves. *Ascomata* gregarious in the ascostromata, immersed to erumpent, globose, subglobose, or broadly conical. *Peridium* 1-layered, composed of small, lightly pigmented, thick-walled cells of *textura prismatica*. *Hamathecium* of dense, long cellular pseudoparaphyses, anastomosing and branching between and above the asci. *Asci* 8-spored, bitunicate, fissionate, cylindrical to fusoid, with a short furcate pedicel, which is less than 10 µm long, with a small ocular chamber. *Ascospores* biserial, broadly fusoid to subclavate with broadly to narrowly rounded ends, reddish brown, 1-septate, constricted at the septum, the upper cell often broader and shorter than the lower one, baculate.

**Anamorph reported for genus:** none.

**Type species:**

***Polyrhizon terminaliae*** (Syd.) Syd., Annl. mycol. 12: 281 (1914). (Fig. 11)

≡ *Dothidea terminaliae* Syd., in Sydow & Butler, Annl. mycol. 9: 401 (1911).

*Ascostromata* producing round, black spots in leaves, spots up to 2.5–3 mm. *Ascomata* 150–260 µm high × (90–) 150–280 µm diam., gregarious in ascostromata, immersed to erumpent, globose, subglobose, or broadly conical (Fig. 11a). *Peridium* 10–20 µm wide laterally, up to 45 µm thick at the apex, thinner at the base, single layered, composed of small lightly pigmented thick-walled cells of *textura prismatica*, ca. 2 × 5 µm diam., cells more heavily pigmented near apex and hyaline in the base. *Hamathecium* of dense, long cellular pseudoparaphyses, 2–3 µm broad, anastomosing and branching between and above the asci. *Asci* (39–)50–67 × 10–16 µm ( $\bar{x}$  = 52.1 × 11.7 µm,  $n$  = 10 µm), 8-spored, bitunicate, fissionate cylindrical to fusoid, with a short furcate pedicel which is less than 10 µm long, with a small ocular chamber (to 3 µm wide × 2 µm high) (Fig. 11c, d). *Ascospores* 24–28 × 7.5–10 µm ( $\bar{x}$  = 25.1 × 8.5 µm,  $n$  = 10 µm), biserial, broadly fusoid to subclavate with broadly to narrowly rounded ends, reddish brown, 1-septate, constricted at the septum, the upper cell often broader and shorter than the lower one, baculate (Fig. 11b).

**Material examined:** INDIA: Wynaad, Cataffa, on the upper surface of leaves of *Terminalia catappa*, 14 Nov. 1909, leg. W. Mc Rae (S reg. nr F8238, as *Dothidea terminaliae*, **holotype**).

**Anamorph:** none reported.

**Note:** The persistent cellular pseudoparaphyses, broadly clavate asci with short furcate pedicels, and the almost median septate, baculate ascospores of *Polyrhizon terminaliae* refute those of *Venturiales*, but fit *Pleosporineae* (*Pleosporales*). Further study is needed for confirmation of its ordinal or familial status.

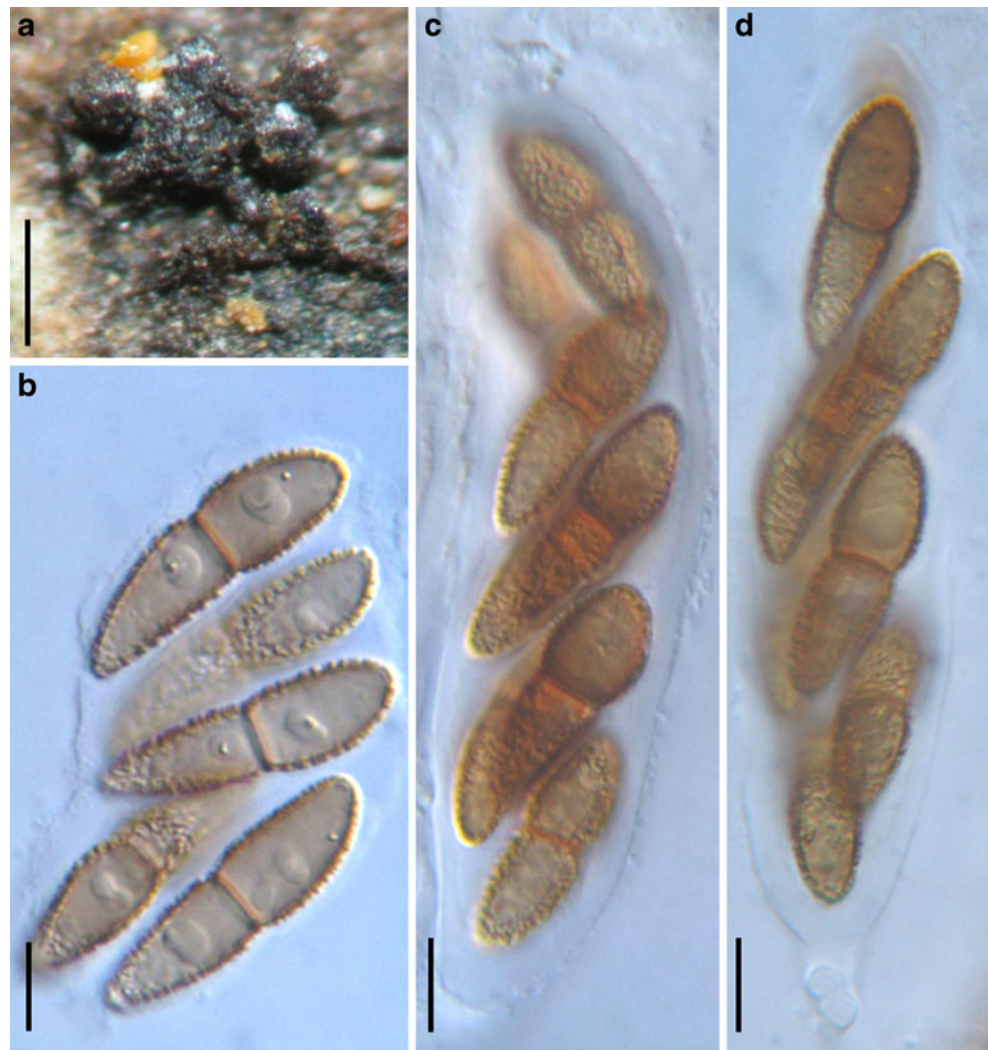
***Lineostroma*** H.J. Swart, Trans. Br. mycol. Soc. 91: 464 (1988).

**Generic description:**

**Habitat** necrotrophic parasitic on *Banksia*. *Ascostromata* linear, solitary, scattered, initially immersed, becoming erumpent. *Ascomata* linearly arranged in ascostromata, wall black, roughened, globose, subglobose to triangular. *Peridium* thickness uneven, usually thinner at the base, 1-layered, composed of brown-walled cells of *textura angularis*. *Hamathecium* of long trabeculate pseudoparaphyses. *Asci* 8-spored, bitunicate, fissionate, subcylindrical to obclavate, with a short pedicel. *Ascospores* broadly fusoid to oblong, with broadly to narrowly rounded ends, dark brown, 1-septate, constricted at the septum.

**Anamorph reported for genus:** none.

**Fig. 11** *Polyrhizon terminaliae* (S reg. nr F8238, **holotype**). **a.** A cluster of ascomata on the substrate surface. **b.** Released ascospores. **c, d.** Asci with short furcate pedicels. Scale bars: a=0.5 mm, b-d=10  $\mu$ m



**Type species:**

*Lineostroma banksiae* (Cooke) H.J. Swart, Trans. Br. mycol. Soc. 91: 464 (1988). (Fig. 12)

≡ *Didymosphaeria banksiae* Cooke, Grevillea 19: 90 (1890).

*Ascstromata* linear, 600–860  $\mu$ m long, 140–240  $\mu$ m broad, 55–115  $\mu$ m high, solitary, scattered, initially immersed, becoming erumpent, with up to 15 locules (Fig. 12a). *Ascomata* 110–165  $\mu$ m high  $\times$  90–215  $\mu$ m diam., linearly arranged in ascostromata, wall black, roughened, globose, subglobose to triangular (Fig. 12a, b, c). *Peridium* 13–40  $\mu$ m wide, thickness uneven, usually thinner at the base, 1-layered, composed of brown-walled cells of *textura angularis*, sides and apex cells 2.5–5  $\times$  2.5–9  $\mu$ m diam., cell wall 1–2  $\mu$ m thick, base cells smaller and walls thicker (Fig. 12b). *Hamathecium* of <1  $\mu$ m broad, dense, long trabeculate pseudoparaphyses. *Asci* 50–65  $\times$  7–8.5  $\mu$ m, 8-spored, bitunicate, fissionitic, subcylindrical to obclavate, with a short pedicel, 6.5–9  $\mu$ m long. *Ascospores* (10-)14–17.5  $\times$  5–7.5  $\mu$ m, uniseriate and partially overlapping to biseriata near the base, broad fusoid

to oblong, with broadly to narrowly rounded ends, dark brown, 1-septate, constricted at the septum (Fig. 12d-g).

**Material examined:** AUSTRALIA: Victoria, on leaves *Banksia* sp. leg. Martin (K(M): 143926, **syntype**).

**Anamorph:** none reported.

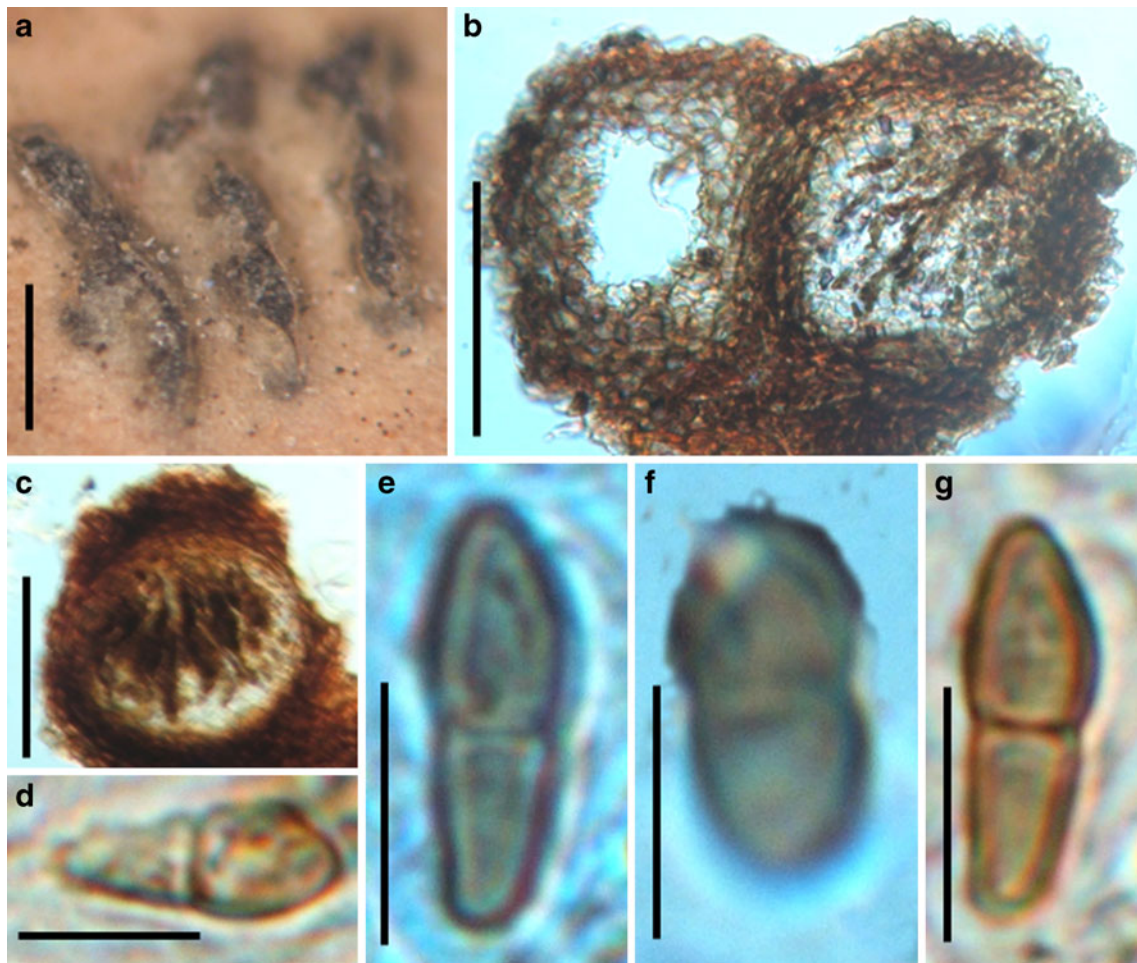
**Note:** The linearly arranged ascostromata, persistent pseudoparaphyses as well as the nearly symmetrical, 1-septate ascospores indicated that it should be a species of *Pleosporineae* (*Pleosporales*). *Lineostroma banksiae* is one of the most common ascomycetes found on leaves of *Banksia* in Australia (Swart 1988).

*Phragmogibbera* Samuels & Rogerson, Mem. N. Y. bot. Gdn 64: 178 (1990).

**Generic description:**

*Habitat* fungicolous on *Xylariaceae*. *Ascstromata* erumpent from ostioles of host *Xylaria*, turbinata. *Ascomata* globose, wall black, carbonaceous, non papillate, ostiolate not sure. *Peridium* tissue continuous with the stroma, 2-layered. *Hamathecium* of rare, septate pseudoparaphyses.





**Fig. 12** *Lineostroma banksiae* (K(M): 143926, syntype). **a.** Linear ascostroma on the host surface. **b, c.** Section of ascomata. **d-g.** Released ascospores. Scale bars: a=0.5 mm, b, c=100  $\mu\text{m}$ , d-g=10  $\mu\text{m}$

*Asci* 8-spored, bitunicate, fissitunicate dehiscence not observed, broadly cylindrical to narrowly clavate, with a conspicuous ocular chamber. *Ascospores* partially to completely biseriata, narrowly curved, fusoid, end cells colourless and central cells brown, multi-septate, constricted at each septum.

**Anamorph reported for genus:** *Stigmina*-like (Samuels and Rogerson 1990).

**Type species:**

*Phragmogibbera xylariicola* Samuels & Rogerson, Mem. N. Y. bot. Gdn 64: 178 (1990). (Fig. 13)

*Ascstromata* erumpent from ostioles of host *Xylaria*, turbinate, ca. 300  $\mu\text{m}$  high  $\times$  400  $\mu\text{m}$  wide, comprising at first a hemispherical, brown head of conidia on a short, black stipe; ascomata ultimately forming in groups of 5–7 around the periphery of the stipe below the conidial hymenium after the cessation of conidial production. *Medulla* of stroma consisting of a central, obpyramidal core of colourless hyphal elements surrounded by colourless to pale yellow, pseudoparenchymatous cells measuring ca. 7.5  $\mu\text{m}$  across, and an outer layer ca. 25  $\mu\text{m}$  thick of dark brown to

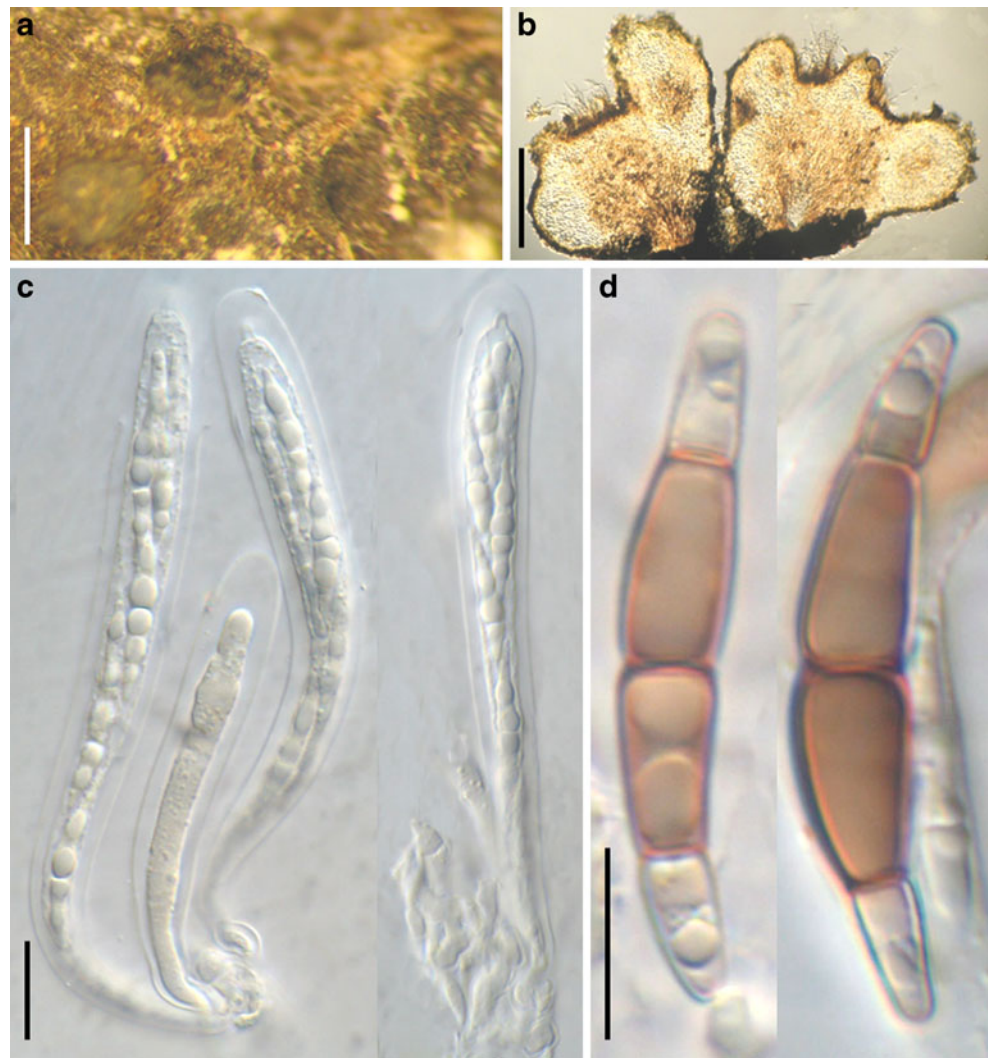
black, KOH blue-green pseudoparenchyma (Fig. 13a). *Ascomata* globose, wall black, roughened to nearly smooth, carbonaceous, non papillate, becoming slightly umbilicate or not collapsed when dry, method of opening of mature ascomata not observed, arising as outgrowths of the stromatal tissue, ascomatal wall ca. 75 wide, tissues continuous with the stroma. *Peridium* tissue continuous with the stroma, ca. 75  $\mu\text{m}$  wide, 2-layered (Fig. 13b). *Hamathecium* of rare, 1–1.5  $\mu\text{m}$  broad, septate pseudoparaphyses. *Asci* 125–175  $\times$  12–22  $\mu\text{m}$ , 8-spored, bitunicate, fissitunicate dehiscence not observed, broadly cylindrical to narrowly clavate, with a conspicuous ocular chamber (Fig. 13c). *Ascospores* 32–39  $\times$  5–7.5(–10)  $\mu\text{m}$  ( $\bar{x}$ =35  $\times$  6  $\mu\text{m}$ ,  $n$ =10), partially to completely biseriata, narrowly curved fusoid, end cells colourless and central cells brown, 3-septate, constricted at each septum, smooth-walled (Fig. 13d).

**Anamorph:** *Stigmina*-like (Samuels and Rogerson 1990).

*Cells* at upper surface of stroma producing conidiophores. *Conidiophores* pale brown, septate, sparingly branched, each branch terminating in a single conidium



**Fig. 13** *Phragmogibbera xylariicola* (NY Gary J. Samuels 1238, **isotype**). **a.** Ascostromata erumpent from ostiole of *Xylaria*. **b.** Section of a partial ascostroma. **c.** Clavate immature asci. **d.** Narrowly fusoid ascospores. Note the hyaline end cells. Scale bars: a=0.5 mm, b=100  $\mu$ m, c, d=10  $\mu$ m



and proliferating percurrently, eventually *ca.* 100  $\mu$ m long, 3–5  $\mu$ m wide. *Conidia* cylindrical to narrowly clavate, 25–42  $\times$  7.5–11.2  $\mu$ m, (1–)2–3 distoseptate, dark brown, smooth, with a torn, circular basal abscission scar.

**Material examined:** VENEZUELA: Cerro de la Nelina, summit camp #5, valley at north base of Pico Phelps, 1000–1,250 m, 00°49'N, 66°00'W, cloud forest, on *Xylaria schweinitzii*?, 12–13 Apr. 1984 (NY Gary J. Samuels 1238, **isotype**).

**Note:** The narrowly fusoid, 3-septate ascospores, clavate asci with a furcate pedicel all refute its placement within *Venturiales*. We assign it to *Dothideomycetes incertae sedis*.

*Phaeocryptopus* Naumov, Bull. Soc. mycol. Fr. 30: 424 (1915).

**Anamorph reported for genus:** none.

**Type species:**

*Phaeocryptopus abietis* Naumov, Bull. Soc. mycol. Fr. 30: 424 (1914).

**Anamorph:** none reported.

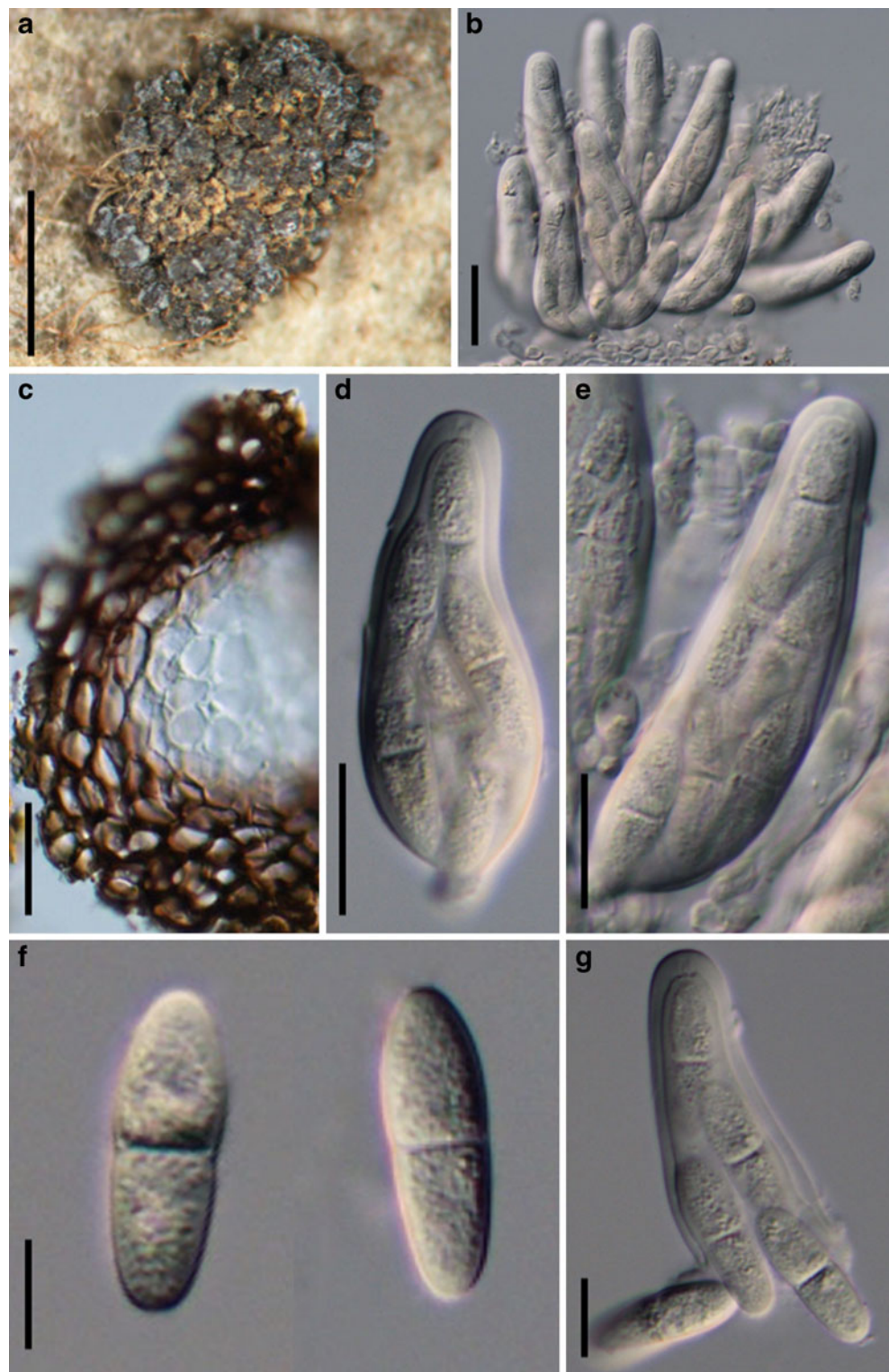
**Note:** Phylogenetic analysis indicates that *Phaeocryptopus nudus* nested within *Dothideales* and *P. gaeumannii* within *Mycosphaerellaceae* (Winton et al. 2007). Both of taxa however, are not the generic types. Thus the ordinal or familial status of *Phaeocryptopus* awaits molecular phylogenetic studies on *P. abietis*.

*Rosenscheldiella* Theiss. & Syd., Anns mycol. 13: 645 (1915).

**Generic description:**

*Habitat* parasitic? on leaves of dicotyledons. *Ascomata* tightly clustered on the surface of substrate, small-sized, superficial, globose, subglobose, wall black, roughened, ostiolate. *Peridium* 1-layered, composed of heavily pigmented thick-walled cells of *textura angularis*. *Hamathecium* composed of evanescent pseudoparaphyses. *Asci* 8-spored, bitunicate, fissitunicate obclavate, with a short, thick pedicel. *Ascospores* tri-seriate near the base, ellipsoidal to fusoid with broadly rounded ends, hyaline, 1-septate, septum median to submedian, constricted at the septum.

**Fig. 14** *Rosenscheldiella styracis* (S reg. nr F7328, **lectotype**). **a**. Ascomata clustered on the host surface. **b, e**. Squash mounts with a large number of asci. **c**. Section of partial peridium. **d**. Obclavate ascus. **f**. Released ascospores. **g**. Broken ascus with spores releasing. Scale bars: a=1 mm, b-e=20  $\mu$ m, f, g=10  $\mu$ m



**Anamorph reported for genus:** none.

**Type species:**

*Rosenscheldiella styracis* (Henn.) Theiss. & Syd., Annl. mycol. 13: 645 (1915).

≡ *Naemacyclus styracis* Henn., Hedwigia 48: 8 (1908). (Fig. 14)

*Ascomata* tightly clustered on the surface of substrate, cluster 0.8–1.6 mm diam., single ascoma 155–200  $\mu$ m high  $\times$  120–150  $\mu$ m diam., superficial, globose, subglobose, wall black, roughened, ostiolate (Fig. 14a). *Peridium* 25–30  $\mu$ m wide laterally, single layered, composed of heavily pigmented thick-walled cells of *textura angularis*, cells 5–



6×5–9 µm diam., cell wall 1.5–3.5 µm thick (Fig. 14c). *Hamathecium* of evanescent pseudoparaphyses. *Asci* 75–90 (–105)×17.5–22.5 µm, 8-spored, bitunicate, fissitunicate, obclavate, with a short, thick pedicel which is ca. 5 µm long, with a small ocular chamber and an small apical apparatus (to 0.5 µm wide×2 µm high) (Fig. 14b, d, e). *Ascospores* 25–33×7.5–10 µm, tri-seriate near the base, ellipsoidal to fusoid with broadly rounded ends, hyaline, 1-septate, constricted at the septum, the upper cell often broader and shorter than the lower one, verrucose (Fig. 14f).

**Material examined:** BRAZIL: S. Paulo, Morro Pellado, on leaves of *Styrax* sp., July 1904, Puttemans (S reg. nr F7328, **lectotype**).

**Anamorph:** none reported.

**Note:** Based on the DNA sequence analysis *R. brachyglottidis* and *R. korthalsellae* are members of the *Mycosphaerellaceae sensu* Crous et al. (2007a) (Sultan et al. 2011).

*Uleodothis* Theiss. & Syd., *Annl. mycol.* 13: 305 (1915).

**Anamorph reported for genus:** none.

**Type species:**

*Uleodothis balansiana* (Sacc., Roum. & Berl.) Theiss. & Syd., *Annl. mycol.* 13: 305 (1915).

≡ *Plowrightia balansiana* Sacc., Roum. & Berl., *Revue mycol.*, Toulouse 7: 157 (1885).

**Anamorph:** none reported.

**Note:** *Uleodothis* had been assigned to *Mycosphaerellaceae* (*Pseudosphaeriales*) by Müller and von Arx (1962). Luttrell (1973) assigned it to *Venturiaceae*. Its ascomata immersed in ascostromata, persistent pseudoparaphyses, cylindrical asci and hyaline ascospores are atypical of genera in *Venturiales*.

*Xenomeris* Syd., in Sydow & Werdermann, *Annl. mycol.* 22: 185 (1924).

**Anamorphs reported for genus:** ?*Sclerophoma* and *Hormonema* (Sivanesan 1984a).

**Type species:**

*Xenomeris pruni* Syd., *Annl. mycol.* 22: 185 (1924).

**Anamorphs:** ?*Sclerophoma* sp. and *Hormonema* sp. (Sivanesan 1984a).

**Note:** Molecular phylogenetic analysis indicated that *Xenomeris raetica* and *X. juniperi* (*Sthughesia juniperi*?) belong to *Capnodiales* (Winton et al. 2007). However, neither of these species are the generic type.

## Discussion

### Phylogeny

The phylogenetic analysis of the present study affirmed the polyphyletic nature of *Venturiaceae sensu* Barr (1979).

*Phaeocryptopus gaeumannii*, *P. nudus*, *Xenomeris juniperi* and *X. raetica* resided in *Capnodiales* (Schoch et al. 2009; Winton et al. 2007). According to the present molecular phylogeny (Fig. 1), core taxa of *Venturiaceae*, i.e. *Apiosporina*, *Caproventuria*, *Dibotryon*, *Metacoleroa* and *Venturia*, form a well-supported monophyletic group, and placed as a distinct lineage, separate from *Botryosphaeriales*, *Jahnulales*, *Dothideomycetidae* and *Pleosporomycetidae*. Our second, more limited phylogenetic analysis using only LSU data corroborates the combined 5-gene data set (Fig. 2). Similar results were obtained by some recent phylogenetic studies (Crous et al. 2007a; Kodsueb et al. 2006; Krays et al. 2006; Winton et al. 2007). Thus a new order of *Dothideomycetes*—*Venturiales* is introduced in this study to accommodate *Venturia s. str.* and its aggregates.

*Venturia sensu* Sivanesan (1977) accommodates a large number of species (250, <http://www.mycobank.org/MycoTaxo.aspx>, June/2011). The generic types of *Caproventuria* (*C. hanliniana*) and *Metacoleroa* (*M. dickiei*) clustered in the *Venturia* clade, which was subsequently treated as synonyms of *Venturia* by Crous et al. (2007a). *Caproventuria* was primarily distinguished from *Venturia* based on its distinct *Pseudocladosporium* anamorphs as well as its saprobic life style (Braun et al. 2003). The well-developed subiculum of *Metacoleroa* and the apiosporous ascospores of *Apiosporina* (incl. *Dibotryon*) readily distinguish them from *Venturia*. We thus choose to retain them as separate genera from *Venturia*, and to apply a narrower generic concept for *Venturia* than used in the past.

*Phaeocryptopus nudus* clustered in the *Dothideales*, and *P. gaeumannii* and *Xenomeris raetica* in the *Capnodiales* as reported previously (Crous et al. 2007a; Schoch et al. 2009; Winton et al. 2007). However, these assignments are not based on the study of generic types. Some of the previous phylogenetic studies based on *nuSSU* rDNA sequence showed inconsistent placement of *Venturia liriodendri*, such as grouping with *Curreya pityophila* (Silva-Hanlin and Hanlin 1999; Olivier et al. 2000) or with *Phaeodothis winteri* (Eriksson and Hawksworth 2003). When mature, *Venturia liriodendri* has abundant pseudoparaphyses and pale-brown ascospores, instead of the deliquescent pseudoparaphyses and greenish ascospores of typical *Venturia* spp. (Hanlin 1987). It appears, therefore, that *Venturia liriodendri* would be better placed in *Pleosporineae* (*Pleosporales*).

Wu et al. (2011a) epitypified the generic type of *Tothia* Bat. (*T. fuscella* (Sacc.) Bat.), and found it nesting within the clade of *Venturiales* based on analysis of LSU and ITS or LSU and SSU *nur*DNA sequences Wu et al. (2011a, b). The dilute brown ascospores of *T. fuscella* differ from the representatives of *Microthyriaceae* (Wu et al. 2011a, b), and agree with those of *Venturiales*. But the flat-conical and thyriothecial ascomata of *T. fuscella* are unusual within

*Venturiales*. The dendrogram obtained by Wu et al. (2011b) indicated that *T. fuscella* is basal to the clade of *Venturiaceae*, but the support is inconsistent. Thus the familial status of *Tothia* cannot be determined yet.

Previous phylogenetic analysis indicated that *Venturiales* may be closely related to species of *Microthyriales* and *Phaeotrichaceae* (Schoch et al. 2009). This is corroborated here, although a relationship between *Microthyriales* and *Venturiales* is not well resolved. The 1-septate usually pigmented ascospores and deliquescent pseudoparaphyses of *Venturiales* are mostly comparable with species of *Botryosphaeriales* and *Capnodiales* as has been noticed by Crous et al. (2007a). In particular, venturialean genera such as *Phaeocryptopus*, *Xenomeris* and *Rosenscheldiella* have been assigned to *Capnodiales* (Sultan et al. 2011; Winton et al. 2007). Ecological habitats, ascospore shape and colour may help to distinguish these three orders, but DNA sequences are determinative. The poor resolution for interspecific relationships within *Venturiaceae* seen in this study and others (e.g. Crous et al. 2007a) suggests that the currently applied DNA markers will need to be expanded drastically in order to determine radiation events more precisely. This also means that generic and/or familial classification will likely remain unstable for the foreseeable future.

#### Morphology and ecology

Most of the venturialean genera have deliquescent or rare pseudoparaphyses. Pseudoparaphyses usually persist and are numerous in saprobic fungi, viz. freshwater (*Amniculicolaceae*) or marine taxa (*Aigialaceae*), while they are usually evanescent in parasitic fungi, i.e. in taxa of *Botryosphaeriales* (Schoch et al. 2006) and *Didymellaceae* (de Gruyter et al. 2009). Studies of the hamathecium have mainly focused on the presence, morphology or ontogeny, while the function of it is unclear (Eriksson 1981; Singer and Gamundi 1963). *Venturiaceae* had been placed in *Pleosporales* according to its “*Pleospora*-type centrum and bitunicate asci” (Barr 1968, 1979; Cannon and Kirk 2007). Although the “*Pleospora*-type” centrum developmental type was recorded for several species of *Venturia* (Kerr 1961; Walker and Stovold 1986), hamathecial types (*Pleospora*-type or *Sporormia*-type) has been shown to have little phylogenetic significance, at least at family level classification (Liew et al. 2000; Reynolds 1991). In particular, comparing with the centrum developmental type, the presence (or absence) of hamathecium seems be more significant in classification of *Dothideomycetes* (Schoch et al. 2006).

The shape of ascus and length of ascus pedicels might have taxonomic significance in *Dothideomycetes*. These characters have shown significance in distinguish-

ing *Lophiostoma* and *Lophiotrema*, two morphologically comparable genera within *Pleosporales* (Hirayama and Tanaka 2011). The generic types of venturialean genera mostly have obclavate or obpyriform asci, i.e. *Pseudoparodiella vernoniae* and *Venturia inaequalis* (see Figs. 7 and 8). Compared with the cylindrical to cylindro-clavate asci with short or long furcate pedicels possessed by saprobic fungi, some dothideomycetous plant pathogens have obclavate or obpyriform asci with or without small knob-like pedicels, for instance in *Mycosphaerella* (*Mycosphaerellaceae*), *Macroventuria* (*Pleosporaceae*) and *Bricookea* (*Phaeosphaeriaceae*).

Thin-walled, mostly asymmetrical and olivaceous ascospores is another striking character of *Venturiales*. Anamorphic states are reported from some genera of *Venturiales*, especially on those plant pathogens, such as *Venturia* and *Apiospora*. The anamorphic states mostly infect and reproduce during the growing season, and the teleomorphic state helps to overwinter, which matures by the following spring when the host initiates growth. The parasitic species of *Venturiales* lacking anamorphs infect their hosts by means of ascospores, and produce ascomata on the substrates during the growing season (Kerr 1961). In this case, the ascospores as well as other reproductive structures of *Venturiaceae* play important roles to overwinter on fallen host leaves. Thus the relatively small, thin-walled and asymmetrical ascospores have an important role in this life cycle.

#### Summary

Based on the ITS *nurDNA* sequences analysis results, Beck et al. (2005) accepted *Fusicladium sensu lato*, which included *Pollaccia* and *Spilocaea*. Based on 28S *nurDNA* sequences analysis, a broader generic concept of *Fusicladium* was accepted, which included *Pseudocladosporium* as another synonym of *Fusicladium sensu lato* (incl. *Pollaccia* and *Spilocaea*) (Crous et al. 2007a). In this study, five genes are used for phylogenetic analysis, i.e. 18S, 28S *nurDNA* sequences as well as the protein genes *RPB1*, 2 and *TEF1*, and a narrow concept of *Venturia* is accepted, which includes only some parasitic species closely related to the generic type of *Venturia* (*V. inaequalis*). Concurrently, a narrower concept of *Fusicladium* is accepted, and *Pollaccia*, *Pseudocladosporium* and *Spilocaea* are treated as separate genera herein.

The majority of economic interest in *Venturiales* is closely tied to members of the type genus *Venturia*, containing several species with host specific associations. The type species of *Venturia*, *V. inaequalis*, is the causal agent of apple scab, the most important disease on apples worldwide (Carisse and Bernier 2002). This species has



been studied intensively for over 100 years with extensive genetic and epidemiological data available (MacHardy 1996). More recently it has been the focus of studies on molecular agents of host infection with whole genome sequences underway (Bowen et al. 2011). In spite of this pending increase in genetic data and long historical record, much of the phylogenetic relationships with *Venturia* as well as its relationships to other members of the newly described order remain poorly understood. A polyphasic approach by integrating morphological, ecological, biological methods and DNA and protein based sequence comparisons is critical to access a modern taxonomy that reflects evolutionary theories of *Venturiales* as well as other orders of *Dothideomycetes* (Zhang et al. 2012).

**Acknowledgements** Ying Zhang would like to thank the Mushroom Research Foundation, Chiang Mai, Thailand for providing her with a post doctoral fellowship for this study. We are grateful to the Directors and Curators of NY, K, L, PH, S for the loan of specimens in their keeping. E.H.C. McKenzie is thanked for his comments on an earlier version of the script. This work was supported by Thailand Research Fund BRG528002. The Global Research Network for Fungal Biology and King Saud University are also thanked for support. Conrad L. Schoch acknowledges support by the Intramural Research Program of the NIH, National Library of Medicine.

## References

- Barr ME (1968) The *Venturiaceae* in North America. *Can J Bot* 46:799–864
- Barr ME (1979) A classification of Loculoascomycetes. *Mycologia* 71:935–957
- Beck A, Ritschel A, Schubert K, Braun U, Triebel D (2005) Phylogenetic relationships of the anamorphic genus *Fusicladium* s. lat. as inferred by ITS nrDNA data. *Mycol Progress* 4:111–116
- Bowen JK, Mesarich CH, Bus VGM, Beresford RM, Plummer KM, Templeton MD (2011) *Venturia inaequalis*: the causal agent of apple scab. *Mol Plant Pathol* 12:105–122
- Braun U (1998) A monograph of *Cercospora*, *Ramularia* and allied genera (phytopathogenic *Hyphomycetes*), vol 2. IHW-Verlag, Eching
- Braun U, Crous PW, Dugan FM, Groenewald JZ, de Hoog GS (2003) Phylogeny and taxonomy of cladosporium-like hyphomycetes, including *Davidiella* gen. nov., the teleomorph of *Cladosporium* s. str. *Mycol Progress* 2:3–18
- Cannon PF, Kirk PM (2007) *Fungal families of the world*. CABI, Wallingford
- Carrisso O, Bernier J (2002) Effect of environmental factors on growth, pycnidial production and spore germination of *Microsphaeropsis* isolates with biocontrol potential against apple scab. *Mycol Res* 106:1455–1462
- Chevenet F, Brun C, Banuls AL, Jacq B, Christen R (2006) TreeDyn: towards dynamic graphics and annotations for analyses of trees. *BMC Bioinforma* 7:439
- Crous PW, Mohammed C, Glen M, Verkley GJM, Groenewald JZ (2007a) *Eucalyptus* microfungi known from culture. 3. *Eucasphaeria* and *Sympoventuria* genera nova, and new species of *Furcasporea*, *Harknessia*, *Heteroconium* and *Phacidiella*. *Fungal Divers* 25:19–36
- Crous PW, Schubert K, Braun U, de Hoog GS, Hocking AD, Shin H-D, Groenewald JZ (2007b) Opportunistic, human-pathogenic species in the *Herpotrichiellaceae* are phenotypically similar to saprobic or phytopathogenic species in the *Venturiaceae*. *Stud Mycol* 58:185–217
- de Gruyter JD, Aveskamp MM, Woudenberg JHC, Verkley GJM, Groenewald JZ, Crous PW (2009) Molecular phylogeny of *Phoma* and allied anamorph genera: towards a reclassification of the *Phoma* complex. *Mycol Res* 113:508–519
- Eriksson OE (1981) The families of bitunicate ascomycetes. *Opera Bot* 60:1–220
- Eriksson OE, Hawksworth DL (2003) *Saccharicola*, a new genus for two *Leptosphaeria* species on sugar cane. *Mycologia* 95:426–433
- Hall T (2004) Bioedit v7.0.1. Isis Pharmaceuticals
- Hanlin RT (1987) *Venturia liriiodendri* sp. nov., associated with a leafspot disease of *Liriodendron*. *Mycologia* 79:464–467
- Hirayama K, Tanaka K (2011) Taxonomic revision of *Lophiostoma* and *Lophiotrema* based on reevaluation of morphological characters and molecular analyses. *Mycoscience*. doi:10.1007/s10267-011-0126-3
- Huelsenbeck JP, Ronquist F (2001) MRBAYES: Bayesian inference of phylogenetic trees. *Bioinformatics* 17:754–755
- Huelsenbeck JP, Ronquist F, Nielsen R, Bollback JP (2001) Bayesian inference of phylogeny and its impact on evolutionary biology. *Science* 294:2310–2314
- Hyde KD, McKenzie EHC, KoKo TW (2011) Towards incorporating anamorphic fungi in a natural classification—checklist and notes for 2010. *Mycosphere* 2:1–88
- Kerr JE (1961) The life history and taxonomic position of *Venturia rumicis* (Desm.) Wint. *Trans Br Mycol Soc* 44:465–486
- Kodsueb R, Jeewon R, Vijaykrishna D, McKenzie EHC, Lumyong P, Lumyong S, Hyde KD (2006) Systematic revision of *Tubeufiaceae* based on morphological and molecular data. *Fungal Divers* 21:105–130
- Kruys Å, Eriksson OE, Wedin M (2006) Phylogenetic relationships of coprophilous *Pleosporales* (*Dothideomycetes*, *Ascomycota*), and the classification of some bitunicate taxa of unknown position. *Mycol Res* 110:527–536
- Liew ECY, Aptroot A, Hyde KD (2000) Phylogenetic significance of the pseudoparaphyses in Loculoascomycete taxonomy. *Mol Phylogenet Evol* 16:392–402
- Liu K, Raghavan S, Nelesen S, Linder CR, Warnow T (2009) Rapid and accurate large-scale coestimation of sequence alignments and phylogenetic trees. *Science* 324:1561–1564
- Lumbsch HT, Huhndorf SM (2010) Outline of *Ascomycota*—2009. *Fieldiana Life Earth Sci* 1:1–60
- Luttrell ES (1973) Loculoascomycetes. In: Ainsworth GC, Sparrow FK, Sussman AS (eds) *The fungi, an advanced treatise*, vol. 4 A. A taxonomic review with keys: ascomycetes and fungi imperfecti. Academic, New York & London
- MacHardy WE (1996) *Apple scab: biology, epidemiology, and management*. The American Phytopathological Society Press, St. Paul
- Menon R (1956) Studies on *Venturiaceae* on rosaceous plants. *Phytopathol Z* 27:117–146
- Miller MA, Pfeiffer W, Schwartz T (2010) Creating the CIPRES Science Gateway for inference of large phylogenetic trees. In: *Proceedings of the Gateway Computing Environments Workshop (GCE)*, 14 Nov. 2010, New Orleans, LA pp 1–8
- Müller E (1958) Systematische Bemerkungen über einige *Venturia*-Arten. *Sydowia* 11:79–92
- Müller E, Menon R (1955) Über *Venturia rosae* de Not. und die Nomenklatur der Gattung *Venturia* de not. *Phytopathol Z* 25:190–195
- Müller E, von Arx JA (1950) Einige Aspekte zur Systematik pseudosphäraler Ascomyceten. *Ber Schweiz Bot Gesell* 60:329–397

- Müller E, von Arx JA (1962) Die Gattungen der didymosporen pyrenomyceten. Beitr Krypt Fl Schweiz 11:1–922
- Nüesch J (1960) Beitrag zur Kenntnis der weidenbewohnenden *Venturiaceae*. Phytopathol Z 39:329–360
- Olivier C, Berbee ML, Shoemaker RA, Loria R (2000) Molecular phylogenetic support from ribosomal DNA sequences for origin of *Helminthosporium* from *Leptosphaeria*-like loculoascomycete ancestors. Mycologia 92:736–746
- Pattengale ND, Alipour M, Bininda-Emonds OR, Moret BM, Stamatakis A (2010) How many bootstrap replicates are necessary? J Comput Biol 17:337–354
- Petrak F (1950) Beiträge zur Pilzflora von Ekuador. Sydowia 1:169–201
- Petrak F (1953) *Melanostromella* n. gen., eine neue Gattung der Gibberaceen. Sydowia 7:361–363
- Petrak F (1954) Ergebnisse einer Revision der Grundtypen verschiedener Gattungen der Ascomyzeten und Fungi imperfecti. V Sydowia 8:287–303
- Reynolds DR (1991) A phylogeny of fissitunicate ascostromatic fungi. Mycotaxon 42:99–123
- Samuels GJ, Rogerson CT (1990) New ascomycetes from the Guayana Highland. Mem N Y Bot Gdn 64:165–183
- Schoch CL, Shoemaker RA, Seifert KA, Hambleton S, Spatafora JW, Crous PW (2006) A multigene phylogeny of the *Dothideomycetes* using four nuclear loci. Mycologia 98:1041–1052
- Schoch CL, Crous PW, Groenewald JZ et al (2009) A class-wide phylogenetic assessment of *Dothideomycetes*. Stud Mycol 64:1–15
- Schubert K, Ritschel A, Braun U (2003) A monograph of *Fusicladium* s. lat. (hyphomycetes). Schlechtendalia 9:1–132
- Shenoy BD, Jeewon R, Hyde KD (2007) Impact of DNA sequence–data on the taxonomy of anamorphic fungi. Fungal Divers 26:1–54
- Shenoy BD, Jeewon R, Wang H, Amandeep K, Ho WH, Bhat DJ, Crous PW, Hyde KD (2010) Sequence data reveals phylogenetic affinities of fungal anamorphs *Bahusutrabejia*, *Diplococcium*, *Natarajania*, *Paliphora*, *Polyschema*, *Rattania* and *Spadicoides*. Fungal Divers 44:161–169
- Shoemaker RA (1963) Generic correlations and concepts: *Griphosphaerioma* and *Labridella*. Can J Bot 41:1419–1423
- Silva-Hanlin DMW, Hanlin RT (1999) Small subunit ribosomal RNA gene phylogeny of several loculoascomycetes and its taxonomic implications. Mycol Res 103:153–160
- Singer R, Gamundi IJ (1963) Paraphyses. Taxon 12:147–150
- Sivanesan A (1977) The taxonomy and pathology of *Venturia* species. Lubrecht & Cramer Ltd, Vaduz
- Sivanesan A (1984a) The bitunicate ascomycetes and their anamorphs. J. Cramer, Vaduz
- Sivanesan A (1984b) *Acantharia*, *Gibbera* and their anamorphs. Trans Br Mycol Soc 82:507–529
- Stamatakis A (2006) RAxML-VI-HPC: maximum likelihood-based phylogenetic analyses with thousands of taxa and mixed models. Bioinformatics 22:2688–2690
- Stamatakis A, Hoover P, Rougemont J (2008) A rapid bootstrap algorithm for the RAxML web servers. Sys Bio 57:758–771
- Sultan A, Johnston PR, Park D, Robertson AW (2011) Two new pathogenic ascomycetes in *Guignardia* and *Rosenscheldiella* on New Zealand's pygmy mistletoes (*Korthalsella: Viscaceae*). Stud Mycol 68:237–247
- Swart HJ (1988) Australian leaf-inhabiting fungi. XXIX. Some ascomycetes on *Banksia*. Trans Br Mycol Soc 91:453–465
- Talbot PHB (1971) Principles of fungal taxonomy. St. Martin's, New York
- Tamura K, Peterson D, Peterson N, Stecher G, Nei M, Kumar S (2011) MEGA5: Molecular Evolutionary Genetics Analysis using maximum likelihood, evolutionary distance, and maximum parsimony methods. Mol Biol Evol. doi:10.1093/molbev/msr121
- Untereiner WA, Straus NA, Malloch D (1995) A molecular-morphotaxonomic approach to the systematics of the *Herpotrichiellaceae* and allied black yeasts. Mycol Res 99:897–913
- von Arx JA (1952) Studies on *Venturia* and related genera. Tijdschr Plantenz 58:260–266
- von Arx JA (1954) Revision einiger Gattungen der Ascomyceten. Acta Botan Neerl 3:83–93
- von Arx JA, Müller E (1975) A re-evaluation of the bitunicate ascomycetes with keys to families and genera. Stud Mycol 9:1–159
- Walker J, Stovold GE (1986) *Arkoala nigra* gen. et sp. nov. (*Venturiaceae*) causing black leaf blight of soybean in Australia. Trans Br Mycol Soc 87:23–44
- Winton LM, Stone JK, Hansen EM, Shoemaker RA (2007) The systematic position of *Phaeocryptopus gaeumannii*. Mycologia 99:240–252
- Wu HX, Jaklitsch WM, Voglmayr H, Hyde KD (2011a) Epitypification, morphology and phylogeny of *Tothia fuscella*. Mycotaxon 118: in press
- Wu HX, Schoch CL, Boonmee S, Bahkali AH, Chomnunti P, Hyde KD (2011b) A reappraisal of *Microthyriaceae*. Fungal Divers 52: in press
- Zhang Y, Wang HK, Fournier J, Crous PW, Jeewon R, Pointing SB, Hyde KD (2009) Towards a phylogenetic clarification of *Lophiostoma/Massarina* and morphologically similar genera in the *Pleosporales*. Fungal Divers 38:225–251
- Zhang Y, Crous PW, Schoch CL, Hyde KD (2012) *Pleosporales*. Fungal Divers 1–221. doi:10.1007/s13225-011-0117-x