



# WESTERN PENNSYLVANIA MUSHROOM CLUB NEWSLETTER

VOLUME 20, ISSUE 3

JULY / AUGUST 2020



## President's Message

**CECILY FRANKLIN**

"AIN'T NOTHING LIKE THE Real Thing, Baby!" That's the first line of a popular song from

the 60's. (OK Boomer.) But it applies to WPMC this year. Who would have thought we would all be overusing words like "zoom" and "virtual"?

I've been encouraged, as Western Pennsylvania has moved from the red phase of the coronavirus shutdown to yellow, then the green phase. But even the green phase requires social distancing, wearing masks, restricting traffic flow, and keeping people six feet apart. We haven't figured out how to accomplish that at Beechwood Farms, which is why all of our monthly meetings have been virtual.

We have also decided to postpone **Mushroom Education Day** ("Dye Day") and to reschedule the full-day **Gary Lincoff Foray** until 2021. However, we have been working on ways to provide both virtual and in-person events. Just read the rest of this newsletter to see all of the activities we've come up with so far and are working on for the rest of the year.

I would personally like to thank all of our renewing members for staying with us, as well as 148 new members who just joined this year. We can't wait to be together again, but we need to do it safely. When it comes to Covid-19, don't get it and don't spread it!

**Have a story, photo, or news item you want to share?  
Send it to Cecily Franklin, Editor:  
cs4wpmc@gmail.com**

**IMPORTANT: All meetings and other events in this newsletter are subject to postponement or cancellation, due to Covid-19. Please check our website often for updates.**

## 2020 Meeting Schedule

IN ORDER TO keep our members safe, monthly meetings will be "virtual" until further notice. Gatherings will be limited to mushroom walks with Allegheny Land Trust and "secret" walks, which are outdoors and restricted.

**July 21 La Monte Yarroll & Judy Mackenroth  
Slime Molds, Crusts & Polypores**

**PLUS:** New WPMC member **Daniel Gillies** will discuss his research into the cracked-cap polypore, *Phellinus robiniae*. See article on page 3.

**August 18 Scott Pavelle  
Boletes**

**Sept. 15 Leon Shernoff, Editor  
Mushroom, The Journal of Wild Mushrooming  
Fall Mushrooms**

**Oct. 20 Photo Contest Winners  
Election of Officers**

**Nov. 17 Pot Luck Dinner & Member Photos**

Until further notice, virtual meetings are held at 7:00 p.m. on the third Tuesday of each month.

## WPMC Offers "Secret" Mushroom Walks as Safe Outdoor Activity

WPMC'S MYCOLOGISTS AND IDENTIFIERS have come up with a way to increase our outdoor activities, while adhering to CDC guidelines for social distancing: the "secret" mushroom walk.

WPMC's next secret walk will take place at 10:00 a.m. on Sunday, July 19 near Lawrence and Butler Counties with Club identifier **Jerry Sapp**. The walks are limited to 20 participants, who will be selected randomly (not first-come first-served). Those who are selected to participate will be notified of the location 24 hours in advance and will **not** be eligible to participate in the following walk.

**To register for the July 19 walk:  
wpamushroomclub.org/events/ or: → [CLICK HERE](#)**

WPMC Identifier **Cara Coulter** is working to schedule additional secret walks. If you would like to lead a secret walk, email Cara at cab399@yahoo.com.

See page 8 for a list of currently scheduled walks.



## WPMC in the News

THE MAY-JUNE 2020 issue of *The Mycophile*, newsletter of the North American Mycological Association, features an article by WPMC President **Cecily Franklin** about WPMC's assistance with Allegheny General Hospital's research into using social media for emergency mushroom identification.



To read the full article visit [namyco.org](http://namyco.org) or → [CLICK HERE](#)

DURING MAY, Reporter **Dave Sutor** from the *Johnstown Tribune-Review* interviewed WPMC President **Cecily Franklin**, WPMC Secretary and Identifier **Adam Haritan**, and others for an article on foraging. The article is entitled "CNHI Outdoors: Searching for wild food a 'treasure hunt' for foraging enthusiasts" and will run in a variety of local newspapers.

To read the full article visit [www.sharonherald.com](http://www.sharonherald.com) or → [CLICK HERE](#)

WATCH FOR AN article by WPMC President **Cecily Franklin** in the Summer 2020 issue of *FUNGI Magazine*. WPMC is the first installment in a series called "Mycological Societies Forum."



## Help Wanted

by **Cecily Franklin**

WPMC IS LOOKING for new Committee Chairs for four Club committees. Here are the job descriptions from the Bylaws:

**ID Button** – Currently Vacant. The ID Button Committee shall evaluate lists of known mushrooms submitted by WPMC members and may approve ID Buttons up to the 150 level. Any new designations of WPMC Identifier or Mycologist will require Board approval.

**Membership** – Current Chair **Jim Wasik**. The Membership Committee shall respond to inquiries about WPMC, sending information packets to such inquirers. The Membership Committee should promote Club membership through public outreach such as guest-speaking and participation in online discussion groups. The chair of the Membership Committee will maintain the official records of membership to include addresses, telephone numbers, email addresses, dues records, and other relevant information of each current member. This list shall be furnished to the President, the Executive Committee and the Newsletter Editor whenever directed.

**Scholarship** – Current Chair **John Stuart**. The Scholarship Committee shall recommend to the Board of Directors, Scholarship awards for academic endeavors and Grants for projects which encourage the recipients in the expansion of mycological knowledge. The goal of the Scholarship Committee is to provide support to projects, individuals, institutions, or events that promote the Club's mission of education, research, training, teaching, and increasing the awareness of wild mushrooming.

## Out & About (Virtually) with WPMC



DURING EARTH WEEK in April, WPMC Past President **Richard Jacob** presented a Facebook livestream on mushrooms for the Carnegie Science Center.

To see presentation: → [CLICK HERE](#)

## Allegheny Nature Pilgrimage

ON MAY 31, WPMC Mycologist **Garrett Taylor** led a virtual mushroom walk at the Allegheny Nature Pilgrimage in New York's Allegheny State Park.

To see presentation: → [CLICK HERE](#)

IN EARLY JUNE, WPMC Identifier **Fluff Berger** and Past President **Richard Jacob** recorded a mushroom walk in Schenley Park, which was shown at the Phipps Conservatory Virtual BioBlitz Family Fun Festival on June 7.



To see presentation: → [CLICK HERE](#)

## WPMC Membership Report

by **Jim Wasik**

THANK YOU TO EVERYONE who has joined or renewed your 2020 WPMC membership. Membership dues are important to keep the Club vital, as they contribute over 40% of WPMC's annual income. Benefits of WPMC membership include:

**Bi-Monthly WPMC Newsletter • Monthly Meeting Notices**  
• Updates on Mushroom Walks & WPMC Events • Free 'Grow-Your-Own' Mushroom Kit • Mushroom Identification at Meetings • Mushroom Walks • Mushroom Education Day • Annual Photo Contest • WPMC Gary Lincoff Foray Discount • Access to WPMC Facebook Group Page

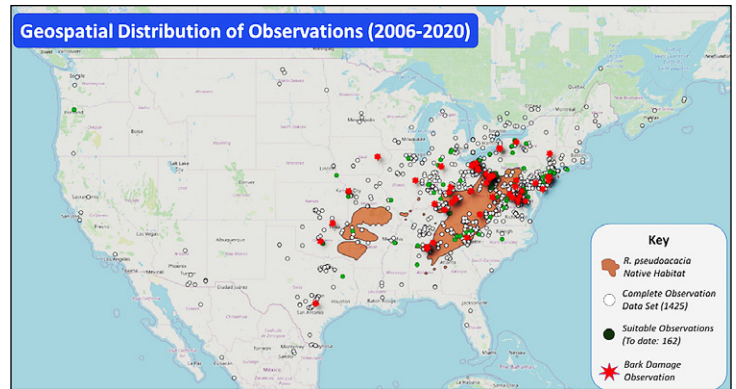
Currently the WPMC Membership is at 750 members from 420 households. This includes 148 new members who have joined the Club in 2020. Although we are slightly behind the year-to-date 2019, our current membership shows the great interest in mushrooming even through the shutdowns, physical distancing, masks, etc. *Thank you again for your support.*

**Hospitality** – Currently Vacant. The Hospitality Committee shall be responsible for planning and conducting social functions the Club may hold. A Hospitality Chair shall plan for refreshments at Club meetings by requesting members to contribute specific items. The Hospitality Committee shall also greet people at meetings and welcome new and potential members.

**If you would like more information about any of these committees, please contact me at [cs4wpmc@gmail.com](mailto:cs4wpmc@gmail.com) or the current Chair.**

# A Study of Ecological Interaction with the Cracked Cap Polypore Using iNaturalist

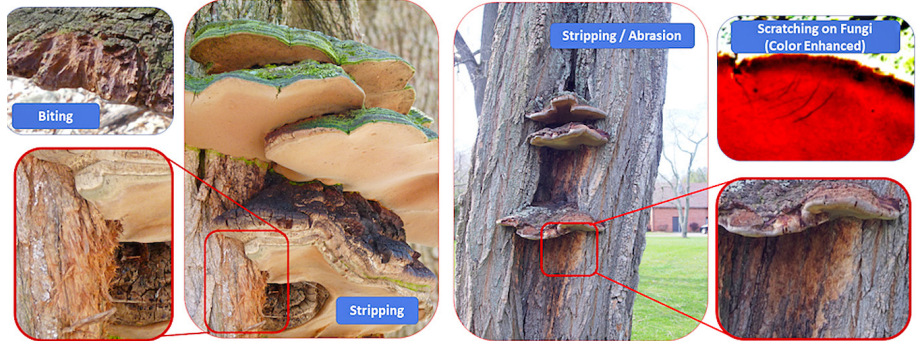
by Daniel Gillies



(above) *Phellinus Robiniae* (Cracked Cap Polypore)

(right) Bark & Fungi Evidence from iNaturalist Data

Photos from iNaturalist



NEXT TIME YOU'RE out on a foray, don't forget to look up. You may be able to catch a glimpse of an ecological interaction between one of our local forest faunal friends and a rather common shelf fungus, *Phellinus robiniae* – the Cracked Cap Polypore. As part of undergraduate research which I'm conducting through the University of Oregon's Department of Fisheries and Wildlife, I've been studying the unusual occurrence of a particular type of bark damage, *stripping*, specifically below instances of *P. robiniae*. This polypore is almost exclusively resident on *Robinia pseudoacacia* trees, or as we know them locally, the Black Locust.

Take a walk through Schenley Park and I guarantee that, within a few minutes, you'll come across this fungi-forest pairing, which is so common in Western Pennsylvania that you've probably stopped noticing it altogether. I became aware of this phenomenon after reading a blog post by the nature author David Haskell, who had observed repeated occurrences of damaged bark on Black Locust trees, but only directly under the Cracked Cap Polypore. While he hypothesized that a woodpecker might be the culprit, other commenters on his blog reported they had seen the same damage, although at close inspection, it appeared as if the bark had been stripped back in almost shredding like manner. This caught my interest and thus I embarked on a journey to characterize the breadth of the occurrence and try to identify who the potential culprit(s) might be.

Literature reviews revealed no obvious answers. There were zero reports of bark damage associated with the Cracked Cap Polypore or, for that matter, any similar shelf fungi. Interestingly, there are multiple reports of other mammal interactions with tree bark (including multiple reports of stripping of bark by grey squirrels in the United Kingdom), a potential clue but not a smoking gun as to what special role *P. robiniae* might play. Even more

interestingly, the bark of the Black Locust is known to be toxic. These points all raised more questions than answers but set me off on a path to studying a potential ecological role of the Cracked Cap Polypore in forest settings.

To start my research, I utilized iNaturalist to review a dataset of over 1400 observations of Cracked Cap Polypore, to determine if the observed damage was an isolated occurrence or widespread. To date, I have reviewed 236 user observations, of which 162 have been suitable (green dots in map) – meaning the area under the polypore was clearly visible. Of those, I have found 61 signs of bark damage (red stars) below the polypore, 38 of which are clearly a bark stripping behavior. The distribution of bark damage shows this observed behavior is not isolated.

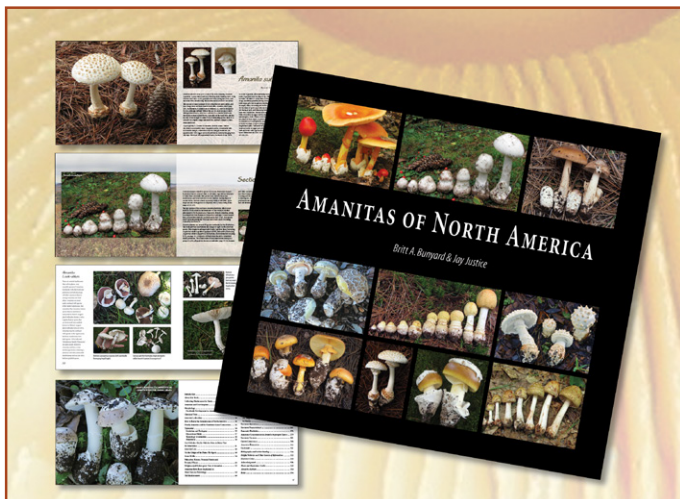
Review of the photo observations not only provided evidence of bark stripping, but also other interactions directly with the fungi. Scratching is clearly visible on the underside of the polypore fruiting body and, in some cases, bite marks are visible on its outer rim. While these likely are from squirrel or other forest mammals, I don't think it's a foregone conclusion that only a single species is interacting with the tree and fungi. That being said, clearly the Cracked Cap Polypore plays a role in forest ecology, the extent and purpose of which are still an open question.

As I continue my research, I highly encourage WPMC members to post observations of Cracked Cap Polypore to iNaturalist. In addition to adding to the dataset, repeat observations of the same site over time may provide further clues of damage progression, types, and evidence of other interactions between our forest faunal friends and shelf fungi.



# New Mushroom Book: Amanitas of North America

by Britt A. Bunyard and Jay Justice

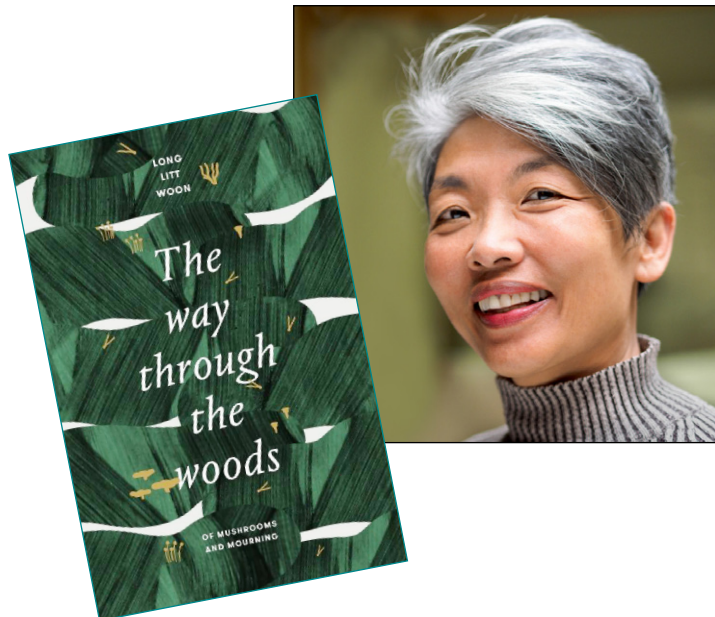


- **Descriptions and photos of 120 species**
- **All regions of Canada, USA, and Mexico covered**
- **Overview of science, history, and lore**
- **Easy to understand biology, physiology, and morphology**
- **Toxicology discussed in depth**
- **More than 350 beautiful color photographs and illustrations**
- **340 pages including keys, bibliography, and index**

Online discount price only \$50 S/H Included.

To order: <http://www.fungimag.com/store.htm>

# Live (Almost) from Norway



THE 20TH ANNUAL GARY LINCOFF Foray will feature one “virtual” presentation in the afternoon. WPMC President **Cecily Franklin** will do a livestream interview with **Long Litt Woon**, author of *The Way through the Woods: On Mushrooms and Mourning*. Woon was a friend Gary Lincoff, having gone on his walks in Central Park and the Telluride Festival.

To see a one-minute introduction to Woon’s book, in her own words: → [CLICK HERE](#)

Funding for this presentation is made possible by a grant from Norwegian Literature Abroad (NORLA)



## WPMC Member Finds ‘Silver Lining’ in Spring Quarantine



WPMC MEMBER **CARSON GROSS**, shown here with his son **Dean**, took advantage of the Covid-19 lockdown period by increasing his knowledge of mushrooms and recently earned a 50 ID Button. Dean helps to find a lot of mushrooms and is working on his own pin, too.

Photo by Laura Gross

To learn more about the ID Button program and how to submit your list of known mushrooms: → [CLICK HERE](#)

# City Nature Challenge 2020 Results

By Stephen Bucklin, WPMC Identifier and Naturalist Educator for Pittsburgh Parks Conservancy

## Pittsburgh City Nature Challenge 2020 Results



Total Observations

8281



Total Species

1225



Total Observers

487



City Nature Challenge 2020

BY THE NUMBERS...

244 CITIES TOOK PART



815,258 OBSERVATIONS MADE



32,600+ SPECIES DOCUMENTED



41,165 PEOPLE PARTICIPATED

Including 1300+ Rare/Endangered Species

AS “STAY AT HOME” ORDERS remained in place through most of spring here in Western Pennsylvania, many people took to digital means for engaging in the study of fungi. Whether that involved sharing photographs online, watching videos on YouTube, or attending live streams of lectures or walks, many people found ways to practice fungal distance learning. One of spring’s largest digital nature events, the **City Nature Challenge**, saw a noticeable uptick in participation.

The City Nature Challenge is an annual event that encourages people who live in or near 244 cities around the world to get outside and document what’s living around them, using the iNaturalist app or website. This year it took place over the week-end of April 24-27. In Pittsburgh, there were significant increases in every metric compared to years past, ending up with: at least 487 observers (iNaturalist user accounts), 419 identifiers, 8281 unique observations, and 1225 species recorded.

Looking specifically at Kingdom Fungi, 136 different accounts contributed observations. From the over 500 observations, there were 85 species confirmed, with potentially over 100 species observed. Although the event as a whole saw increases in the diversity of species documented, similar numbers of diversity were recorded for fungi in 2019 and 2018. It may be interesting to further explore the data and compare species lists to see how much overlap we see in diversity from year to year. I suspect the total diversity of early to mid-spring fungi in Pennsylvania is significantly higher than 100 species, especially when we take lichens into consideration.

Of the 85 species, the most common were *Galerina marginata*, *Phellinus robiniae*, and *Cerioporus squamosus*. Most of the fungal species that were found are saprotrophs which decompose woody debris, but several pathogenic and potentially mycorrhizal species were observed as well. Some of the less common observations that I found interesting were:

- *Gyromitra ancillis* (a cup shaped “false morel” that is typically found growing on or near decaying wood)
- *Sporisorium ellisii* (a smut that grows on broomsedge, *Andropogon virginicus*)
- *Physisporinus crocatus* (a resupinate polypore with amazing color)
- *Septoria viriditingens* (a pycnidia producing ascomycete that causes leaf spots on ramps, *Allium tricoccum*)
- *Arrhenia epichysium* (a gilled mushroom thought to associate with mosses on decaying logs, possibly mycorrhizal)
- *Lachnum virgineum* (a tiny ascomycete that is common but rarely noticed)

Although the City Nature Challenge has come and gone for this year, there is no better time to consider joining the digital community of citizen scientists, naturalists, and professional scientists on iNaturalist. As spring gives way to summer, a whole new cast of fungal species reveal themselves to observant hikers, gardeners, and others who are finding themselves spending more time outside.

continued on page 6



## Nature Challenge... continued

*Sporisorium ellisii* by Benjamin Coulter



*Physisporinus crocatus* by WPMC Identifier Fluff Berger



*Arrhinia epichysium* by WPMC Past President Richard Jacob



*Septoria viriditingens* by WPMC Identifier Stephen Bucklin



*Gyromitra ancilis* by WPMC Identifier Cara Coulter



## Mushroom BINGO 2020!

ATTENTION ALL YOU hyper-competitive mushroom hunters out there! WPMC Identifier **Cara Coulter** has created the "WPMC Summer Mushroom BINGO 2020" Project on iNaturalist. It runs from July 1 through 31, but you have to join the project to play.

Each time you spot a mushroom that is listed on the BINGO card, submit it as an Observation and add it to the Project. The first person to get five in a row--either horizontally, vertically, or diagonally--is the winner! The first three to get BINGO will win a personalized painting by Cara herself. Good luck!

To participate visit [www.inaturalist.org](http://www.inaturalist.org) or → [CLICK HERE](#)

SEE PAGE 7 FOR BINGO CARD



# Western Pennsylvania Mushroom Club

# B

# I

# N

# G

# O

**Frost's Bolete**



*Exsudoporus frostii*

**Ceramic Parchment**



*Xylobolus frustulatus*

**Berkeley's Polypore**



*Bondarzewia berkeleyi*

**Old Man of the Woods**



*Strobilomyces sp.*

**Yellow Patches**



*Amanita flavoconia*

**Golden Spindles**



*Clavulinopsis fusiformis*

**Birch Polypore**



*Fomitopsis betulina*

**Eastern American jack-o'-lantern**



*Omphalotus illudens*

**Dryad's Saddle**



*Cerioporus squamosus*

**Bleeding Fairy Helmet**



*Mycena haematopus*

**Eastern Destroying Angel**



*Amanita bisporigera*

**Violet Coral Fungus**



*Clavaria zollingeri*

**Turkey Tail**



*Trametes versicolor*

**Chicken of the Woods**



*Laetiporus sulphureus*

**Ochre Jelly Club**



*Leotia lubrica*

**Chanterelle**



*Cantherellus sp.*

**Orange Mycena**



*Mycena leaiana*

**Split-gill Fungus**



*Schizophyllum commune*

**Oyster Mushroom**



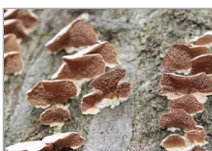
*Pleurotus ostreatus*

**Platterful Mushroom**



*Megacollybia rodmani*

**Purple-tooth Polypore**



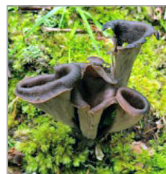
*Trichaptum biforme*

**Blusher**



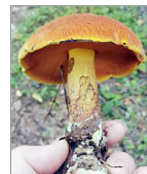
*Amanita rubescens*

**Black Trumpet**



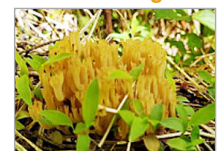
*Graterellus fallax*

**Red-mouth Bolete**



*Boletus subvelutipes*

**Crown-tipped Coral Fungus**



*Artomyces pyxidatus*



ALL WALKS ARE ON SATURDAYS, beginning at 10 a.m., unless noted otherwise. Please read carefully for any registration requirements or fees. We're always adding new walks to the website at [www.wpamushroomclub.org/events](http://www.wpamushroomclub.org/events) so check back often for updates, directions, and much more!



## WPMC Walks

**July 12 Frick Park - CANCELLED**

**July 19 Sunday, 10:00 a.m. Near Lawrence & Butler Counties**

Meet Identifier **Jerry Sapp** at a secret location for a socially distanced walk near Lawrence and Butler Counties. Limited to 20 participants selected randomly (not first-come first-served). Participants will be notified of the location 24 hours in advance.

**To register:** → [CLICK HERE](#)

**July 25 Linbrook Woodlands (Sewickley) with ALT**



Meet WPMC Identifier **Cara Coulter** and WPMC member **Julie Travaglino**, ALT's Education Program Director, at the trailhead on Hopkins Church Road. **Attendance is limited and registration is required.** Fees: \$5 for non-WPMC members; free for WPMC members (use code 20WPMC20).

**To register:** → [CLICK HERE](#)

**August 1 North Park - CANCELLED**

**August 15 9:00 a.m. – ALT Presentation / 10:00 a.m. – Mushroom Walk / Devil's Hollow**



Meet WPMC Identifier **Fluff Berger** and ALT naturalists at the trailhead on Sevin Road. Due to limited parking space, participants should park at Walker Park on Little Sewickley Creek Road and walk (about .25 miles). **Registration is required.** Fees: \$5 for non-WPMC members; free for WPMC members (use code 20WPMC20).

**To register:** [www.wpamushroomclub.org](http://www.wpamushroomclub.org) or → [CLICK HERE](#)

**Sept 11 Friday, 10:00 a.m. / Cook Forest (Clarion County)**

Under current Park rules, all programming is limited to 25 people. Participants must bring a mask and social distancing will be observed. WPMC will schedule one or two "secret" walks in Clarion County. Attendance is limited and registration required. More information will be provided.

**Sept 12 20th Annual WPMC Gary Lincoff Foray**

WPMC plans to offer one or more "secret" walks in the morning. More information will be provided in the next newsletter and on our website.

**Sept 13 Science Sunday with WPMC - Postponed**

**Sept 26 Wingfield Pines (Upper St. Clair) with ALT**



Meet WPMC Mycologist **La Monte Yarroll** and WPMC member **Julie Travaglino**, ALT's Education Program Director, in the parking lot of Wingfield Pines. Attendance is limited and registration is required. Fees: \$5 for non-WPMC members; free for WPMC members (use code 20WPMC20).

**To register:** → [CLICK HERE](#)

**NOTE:** After careful consideration we have decided to postpone *Dye Day* (August 1) until next year. Refunds will be issued to those who have already registered.

## Other Walks, Forays, & Events

NOTE: Many of the other mushroom clubs have also cancelled or postponed events this year. Check their websites to determine the latest status of events.

### Ohio Mycological Society:

All events cancelled until further notice due to COVID-19. <https://ohiomushroomsociety.wordpress.com/events/>

### Central Pennsylvania Mushroom Club:

All events cancelled until further notice due to COVID-19. <http://www.centralpamushroomclub.com/>

### July 10-12 Rainforest Hideaway Mycology Convergence

Quark Adventure Club in association with Mushroomlife Appletree Group Campground, Nantahala, North Carolina

**To register:** → [CLICK HERE](#)

### July 31-Aug 2 Eastern Penn Mushroomers Helen Miknis Foray

Penn State Mont Alto, PA <http://www.epennmushroomers.org/>

### July 31-Aug 2 Mycofest – PA Mushroom & Mycology Festival

Airville, Pennsylvania. <https://www.mycofest.net/>

### August 21-22 West Virginia Mushroom Club

2020 Mushroom Foray, Blackwater Falls State Park <https://www.wvmushroomclub.net/>

### September 10-13 7th Annual Northwoods Foray

Lakewoods Resort near Cable, Wisconsin <https://www.mycoguide.com/northwoods/>

### September 11-14 - CANCELLED

Northeast Mycological Federation (NEMF) Samuel Ristich Foray, Joliette, Quebec

### September 24-27 – Registration Closed

Midwest Mushroom Camp, Circle Pines Summer Camp & Retreat Center, Delton, Michigan <https://www.circlepinescenter.org>

### October 8-11 - CANCELLED

North American Mycological Association (NAMA) Annual Foray Trout Lodge, Potosi, Missouri, [www.namyc.org](http://www.namyc.org)

## Lincoff Foray Goes "Virtual"

THE 2020 GARY LINCOFF FORAY as originally advertised has been postponed to 2021. Guest Mycologist **Michael Kuo** ([mushroomexpert.com](http://mushroomexpert.com)) has already committed to appearing next year. **Leon Shernoff** (*Mushroom the Journal*) will still present Fall Mushrooms (virtually) at our monthly WPMC meeting on September 15. This year's virtual speaker will be **Long Litt Woon**, author of *The Way through the Woods: On Mushrooms and Mourning*. See page 4 for more information.



# Important Walk & Foray Information

- Try to dig up three of the same species at different stages of development.
- Don't pick old mushrooms; leave them to drop spores.
- You are responsible for not getting lost. If you have a tendency to wander off, stick like glue to the others. We won't wait for you, and we won't come to look for you.
- Don't take the identification of the person standing next to you; they might not know as much as you do. Only Club Mycologists and Identifiers should be used for advice.
- The Walk Leader will tell you when to be back at the walk starting place, where the mushrooms will be put on paper plates and the Walk Identifier or Club Mycologist will put names on only the mushrooms they know well.
- Take notes and pictures to help you remember the mushrooms. You should go home and check books yourself.
- Whether you decide to eat a mushroom is ultimately your responsibility alone.
- **Help Keep Our Parks Clean!** When mushrooming, it's easy to bring a plastic grocery bag to collect cans, bottles or other trash you find. Trash cans are generally found nearby. If not, take it home for disposal.

## Walks & Forays Check List:

- Bring a buddy or two. **Do not forage alone!**
- Dress for the weather, carry a rain poncho
- Bring drinking water and lunch
- Insect repellent
- Basket for collecting
- Knife for cutting mushrooms
- Wax or paper bags (no plastic) to keep mushrooms separated
- Whistle
- Compass
- Hand lens
- Cell phone & camera
- Notebook & pencil
- Field guide for identification
- Band-aids
- Garden hand-clippers



**NOTE: The Western Pennsylvania Mushroom Club does not endorse or support the commercial harvesting of wild mushrooms from any state, county or city park. WPMC does promote the gathering of mushrooms—where permitted—for recreational, educational and scientific purposes.**

## CLUB MYCOLOGISTS

Kim Plischke	724-832-0271 ladiebugzpk@aol.com
John Plischke III	724-832-0271 fungi01@aol.com
Garrett Taylor	716-307-0758 taygamu@gmail.com
Jim Tunney	412-441-3958 aminitam@hotmail.com
La Monte Yarroll	412-854-5684 piggy@wpamushroomclub.org

## IDENTIFIERS

Jack Baker	412-367-7696 jabaker2@hotmail.com
Sarah Banach	747-333-8644 sarahbanach@gmail.com
Fluff Berger	724-601-8382 wfberger@comcast.net
Stephen Bucklin	814-823-1049 sbucklin@pittsburghparks.org
Cara Coulter	412-445-1078 cab399@yahoo.com
Josh Doty	412-913-8026 jcdoty@gmail.com
Joyce Gross	724-339-8547 jagart58@comcast.net
Adam Haritan	412-480-1423 adamharitan@gmail.com
Richard Jacob	215-888-5503 richard@lostculture.net
Blaine Sanner	724-217-3168 brsanner@hotmail.com
Jerry Sapp	724-713-1212 surffisher_89@yahoo.com
Jared White	814-460-4265 white.jaredd@gmail.com

## BOLETE SPECIALIST

Scott Pavelle	412-325-2535 scottp@pavellelaw.com
---------------	---------------------------------------



# WPMC's 2020 Photo Contest

**NOTE:** Due to advances in camera technology and computer storage, we have decided to eliminate the size limit on photos submitted for the Photo Contest. Instead, we are requesting a **minimum of 1 MB**.

WPMC Identifier **Josh Doty** will continue to judge members' photos for this year's Photo Contest and will announce the winners online. Entries are already coming in, so join the fun.

**Deadline for Submissions: September 30, 2020**

**Maximum of 5 Entries per WPMC member**

**Submit high resolution JPEG files minimum 1 MB**

**Email to Josh Doty: [wpmcphotocontest@gmail.com](mailto:wpmcphotocontest@gmail.com)**

You must be a member of the Western Pennsylvania Mushroom Club in good standing to enter. Club dues must be up to date.

**Use and copyright:** WPMC may use your photographs on the website, newsletter and Mushroom Catalog and when we do, they will always be accompanied by your name as photographer (mentioned on the same page or caption of the image). WPMC will not allow the use of your photographs on other websites, although realistically we cannot prevent this. We will not sell or provide the images to others without your permission and the images remain the property and under the copyright of you the photographer and are used under license by the Western Pennsylvania Mushroom Club.

## ENTRY DIVISIONS

**Pictorial:** This division is for single photos that illustrate the beauty and variety of fungi in form and color. The objective is a photo suitable for display or illustration in a fine book. Judging criteria include consideration of both technical (focus, depth of field, exposure, lighting, color, absence of distracting elements) and artistic (composition, color, background, lighting) aspects.

**Documentary:** For single photographs especially suited as illustrations in a field guide or monograph, or for use in a lecture. Emphasis is placed on portrayal of key morphological characteristics such that the usefulness of the image as an identification aid is maximized. Subjects may be shot in the field, laboratory or studio and the photographer has complete freedom to process, manipulate, or orient the specimen in any desired manner to achieve the goal. Close-ups of single features and photomicrographs are acceptable. Judging criteria will be the same as in the Pictorial category but they will be of secondary importance to the overall mycological utility of the photo. Accurate identification of the subject will be a consideration.

**Judge's Option:** For photos which do not fit into the Pictorial or Documentary divisions. Examples include fungi in an interesting situation, fungi with animals, people enjoying fungi.

**SUBJECT MATERIAL:** For *Pictorial & Documentary*: organisms from the Myxomycota (slime molds) and the classes Basidiomycetes and Ascomycetes of the Eumycota ("true fungi") are eligible. For *Judge's Option*: nearly anything goes, so long as the theme relates to fungi, and fungi are a key element of the photograph.



Our apologies to the Club members whose photos were used in the March/April Newsletter, but were not identified:

*Top row left: photo by Erin Gaughan*

*Top row right: photo by Erin Nihiser*

*Middle row left: photo by Jennifer Bechak*

*Middle row right: photo by Judy Mackenroth*

*Bottom row left: photo by Lynn Gill*

*Bottom row right: photo by Cara Coulter*

## WPMC Newsletter

THE NEWSLETTER OF THE Western Pennsylvania Mushroom Club is published five times a year: March/April, May/June, July/August, September/October, and November/December. Articles, photos, news items and other submissions should be sent to the Editor at least 6-8 weeks prior to targeted distribution. The Editor cannot guarantee that submissions will be included in the next newsletter. The Editor reserves the right to make spelling or grammatical corrections and may suggest content changes to the author. Material published in the newsletters may only be used in other non-profit publications with expressed permission and with appropriate acknowledgements.

**Cecily Franklin, Editor**

**Martha Wasik Graphic Arts Inc.**

**Send submissions to: [cs4wpmc@gmail.com](mailto:cs4wpmc@gmail.com)**

# WPMC Board Approves Changes to Bylaws

IN MAY, THE WPMC Board of Directors unanimously approved of two revisions to the Club's Bylaws.

The first change was the addition of the ID Button Committee to the list of Appointed Committees, with the stipulation that becoming a WPMC Identifier or Mycologist will require Board Approval:

*Article III, Section 14(b)(19):*

*ID Button Committee. The ID Button Committee shall evaluate lists of known mushrooms submitted by WPMC members and may approve ID Buttons up to the 150 level. Any new designations of WPMC Identifier or Mycologist will require Board approval.*

The second change will make it possible for the full membership to vote remotely in the four situations which require membership approval: Honorary Membership, Election of Officers, Changes in the number of Officers, and Changes in Membership Dues.

*Article III, Section 18: Membership Voting*

*A majority vote of the membership at a regular or special meeting is required for approval or election. Under special conditions, voting by postal service or electronic means may be held. Under these special conditions, the Secretary or designate will issue ballots, voting instructions and deadlines for voting. A majority vote of those voting by postal or electronic means is required for approval or election.*

To read the Bylaws visit [www.wpamushroomclub.org](http://www.wpamushroomclub.org) or: → [CLICK HERE](#)

## WPMC Scholarships & Grants

WPMC ADMINISTERS an annual Scholarship/Grant program to promote wild mushrooming by providing monetary support for educational events, projects, research, or mycological studies by individuals or institutions. Application forms are available on the website and must be sponsored by a WPMC member. For more information or to register, go to:

For more information visit [www.wpamushroomclub.org](http://www.wpamushroomclub.org) or: → [CLICK HERE](#)

## Extra Donations Help Fund WPMC Projects

LOOKING FOR A WAY to support WPMC beyond paying your annual dues? Make a donation anytime; it's tax-deductible (if you itemize deductions) because WPMC is a 501(c)(3) non-profit organization. Donations may be made in honor or in memory of a loved one. Your employer may even match your contribution. Make checks payable to Western Pa. Mushroom Club and submit them to the Treasurer, **Jared Delaney**.

## BOARD OF DIRECTORS

PRESIDENT 216 Farmington Road 412-781-6581	Cecily Franklin Pittsburgh, PA 15215 cs4wpmc@gmail.com
VICE-PRESIDENT 137 Hickory Drive 724-601-8382	Fluff Berger Sewickley PA 15143-8212 wfburger@comcast.net
SECRETARY 3952 Mt. Royal Blvd. 412-480-1423	Adam Haritan Allison Park, PA 15101 adamharitan@gmail.com
TREASURER 1912 Chislett Street 412-860-3522	Jared Delaney Pittsburgh PA 15206 small.attic@gmail.com
NAMA TRUSTEE 5770 Clark Avenue 412-854-5684	La Monte Yarroll Bethel Park, PA 15102 piggy@wpamushroomclub.org

## COMMITTEES

CLUB E-MAIL CONTACT 412-367-7696	Valerie Baker vbbaker8@hotmail.com
CULTIVATION 412-441-3958	Jim Tunney aminitam@hotmail.com
DNA BARCODING 215-888-5503	Richard Jacob dna-barcoding@wpamushroomclub.org
EDUCATION 724-601-8382	Fluff Berger wfburger@comcast.net
HISTORIAN 724-339-8547	Joyce Gross jagart58@comcast.net
HOSPITALITY	VACANT
ID BUTTON PROGRAM	VACANT
LINCOFF FORAY 724-601-8382	Fluff Berger wfburger@comcast.net
MEMBERSHIP CHAIR 412-967-9359	James Wasik membership@wpamushroomclub.org
MUSHROOM DISPLAY 412-854-5684	La Monte Yarroll piggy@wpamushroomclub.org
NEMF FORAY 724-832-0271	John Plischke III fungi01@aol.com
PHOTOGRAPHY 412-913-8026	Josh Doty jcdoty@gmail.com
PUBLICITY 412-781-6581	Cecily Franklin cs4wpmc@gmail.com
SALES 814-823-1049	Stephen Bucklin sbucklin@pittsburghparks.org
SALES 412-719-3955	Erin Gaughan eringaughan11@gmail.com
SCHOLARSHIP	VACANT
TOXICOLOGY 724-832-0271	John Plischke III fungi01@aol.com
WALKS & FORAYS 412-445-1078	Cara Coulter cab399@yahoo.com
WALKS & FORAYS 724-832-0271	John Plischke III fungi01@aol.com
WEBMASTER 215-888-5503	Richard Jacob site-admin@wpamushroomclub.org

**NEVER EAT AN UNIDENTIFIED MUSHROOM!**





# WPMC MEMBERSHIP FORM

Anyone who has an interest in wild mushrooms is welcome to become a WPMC member.

COMPLETE THIS FORM **PRINT CLEARLY**, SIGN AND MAIL

**Members are entitled to:**

The WPMC newsletter • Nine monthly WPMC meetings • Free participation in WPMC walks • Discount for WPMC forays

Name (s) \_\_\_\_\_ Date \_\_\_\_\_

Address \_\_\_\_\_

City \_\_\_\_\_ State \_\_\_\_\_ Zip \_\_\_\_\_

Phone 1 \_\_\_\_\_ Phone 2 \_\_\_\_\_

E-mail (PLEASE PRINT CLEARLY) \_\_\_\_\_

Interests (e.g.: foraging, identification, cooking, etc.) \_\_\_\_\_

**PLEASE PRINT IN PLAIN BLOCK LETTERING. TAKE SPECIAL CARE WITH EMAIL ADDRESSES:  
numeral "1," uppercase "i" and lowercase "L" look the same.**

**Please return completed, signed and dated form (with check payable to Western PA Mushroom Club) to:**

WPMC, c/o Jim Wasik, 70 Woodland Farms Road, Pittsburgh, PA 15238 e-mail contact: membership@wpamushroomclub.org  
or visit <http://wpamushroomclub.org/about/join/> to pay using a credit card.

Please indicate your newsletter/event announcement preference:  Electronic via e-mail  Hardcopy via US mail (\$5 additional)

\$15 Individual  \$20 Family  \$10 Full-time Student  \$5 Newsletter Hardcopy Amount enclosed: \$ \_\_\_\_\_

## Western Pennsylvania Mushroom Club Release and Indemnification Agreement

This Release and Indemnification Agreement (the "Agreement") is entered into by and between the Western Pennsylvania Mushroom Club, as it is presently organized and may be later structured ("WPMC") and the undersigned Member (the "Member") on this \_\_\_\_\_ day of \_\_\_\_\_, 20\_\_\_\_\_.

WHEREAS, WPMC is a non-profit educational organization that has as its principal purpose the sharing of mushroom-related information among its members; and

WHEREAS, all officers, directors, identifiers and members serve WPMC in a voluntary capacity and receive no remuneration for their services; and

WHEREAS, in cases where WPMC charges a fee for its forays, walks, lectures and other events (collectively "WPMC Events"), it is doing so only to cover its direct costs and does not operate in a for-profit capacity; and WHEREAS, the Member understands that there is inherent and unavoidable risk in outdoor activities relating to hunting and consuming wild mushrooms. These risks include but are not limited to the dangers of hiking in difficult terrain, the possibility of misidentifying a wild mushroom, and the possible allergic or toxic reaction that some individuals may have to otherwise edible mushrooms.

NOW THEREFORE, the Member hereby agrees to the following:

1. The Member assumes all risks associated with WPMC Events. The Member expressly acknowledges that it is the Member's sole responsibility to hike safely and to determine whether a wild mushroom may be consumed.
2. The Member releases, holds harmless, and indemnifies the WPMC, its officers, directors, identifiers, and representatives from any and all liability relating to any injury or illness incurred by the Member or the Member's family members as a result of participation in a WPMC Event.

This Agreement shall be governed by the laws of the Commonwealth of Pennsylvania. If any portion of the Agreement is declared for any reason to be invalid or unenforceable, such invalidity shall not affect any other provision of the Agreement. This Agreement shall apply to all current and future WPMC events.

MEMBERS:

**SIGNATURE (IF PARTICIPANT IS UNDER AGE 21, SIGNATURE OF PARENT OR GUARDIAN). PLEASE PRINT NAME:**

1 \_\_\_\_\_ 1 \_\_\_\_\_

2 \_\_\_\_\_ 2 \_\_\_\_\_

3 \_\_\_\_\_ 3 \_\_\_\_\_

4 \_\_\_\_\_ 4 \_\_\_\_\_