



Host Railroad Report

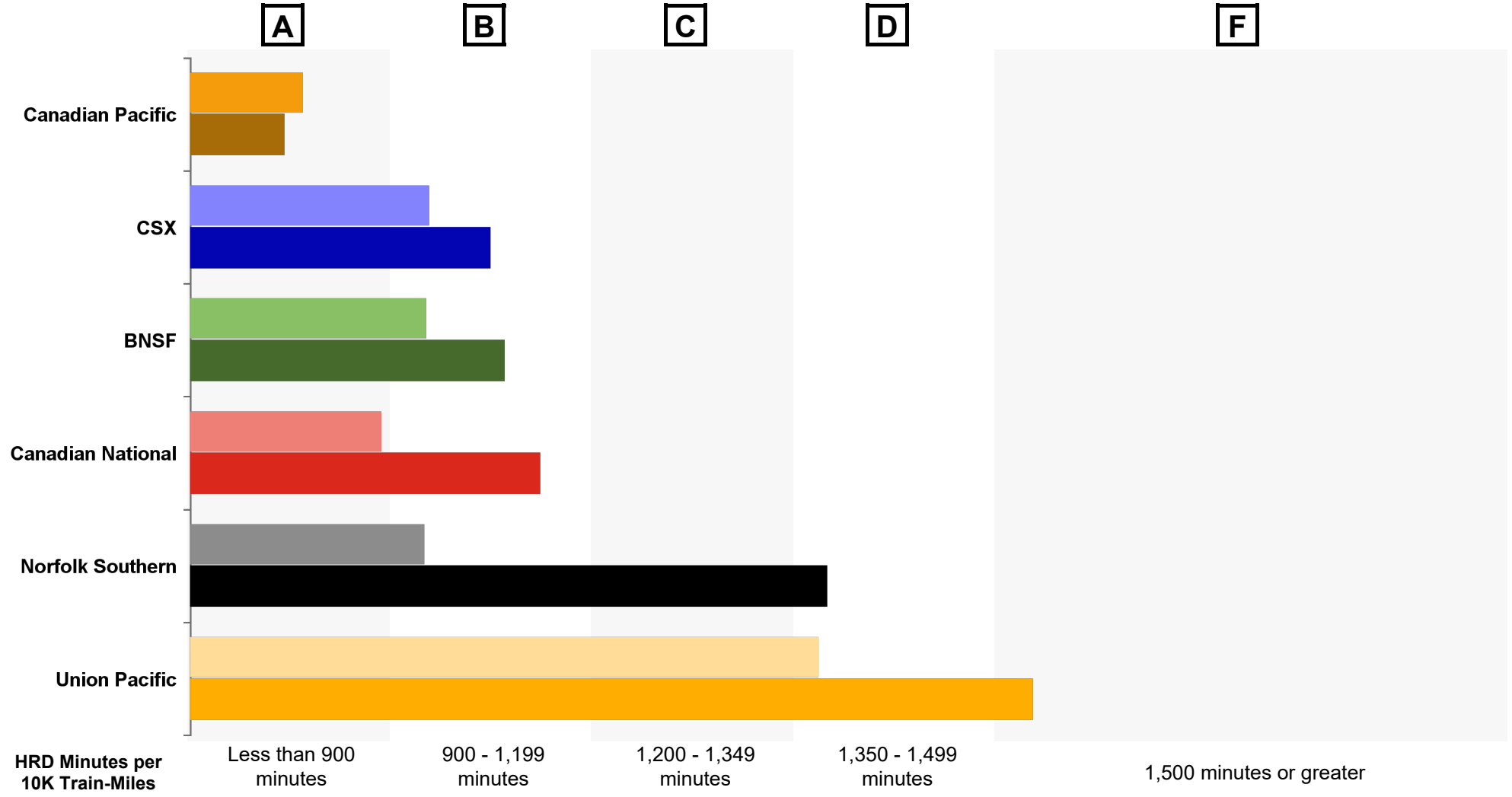
Amtrak Train Performance on Host Railroads

Data through January 2023

Host Railroad Report Card Update

Current Month and 1 Year Snapshot

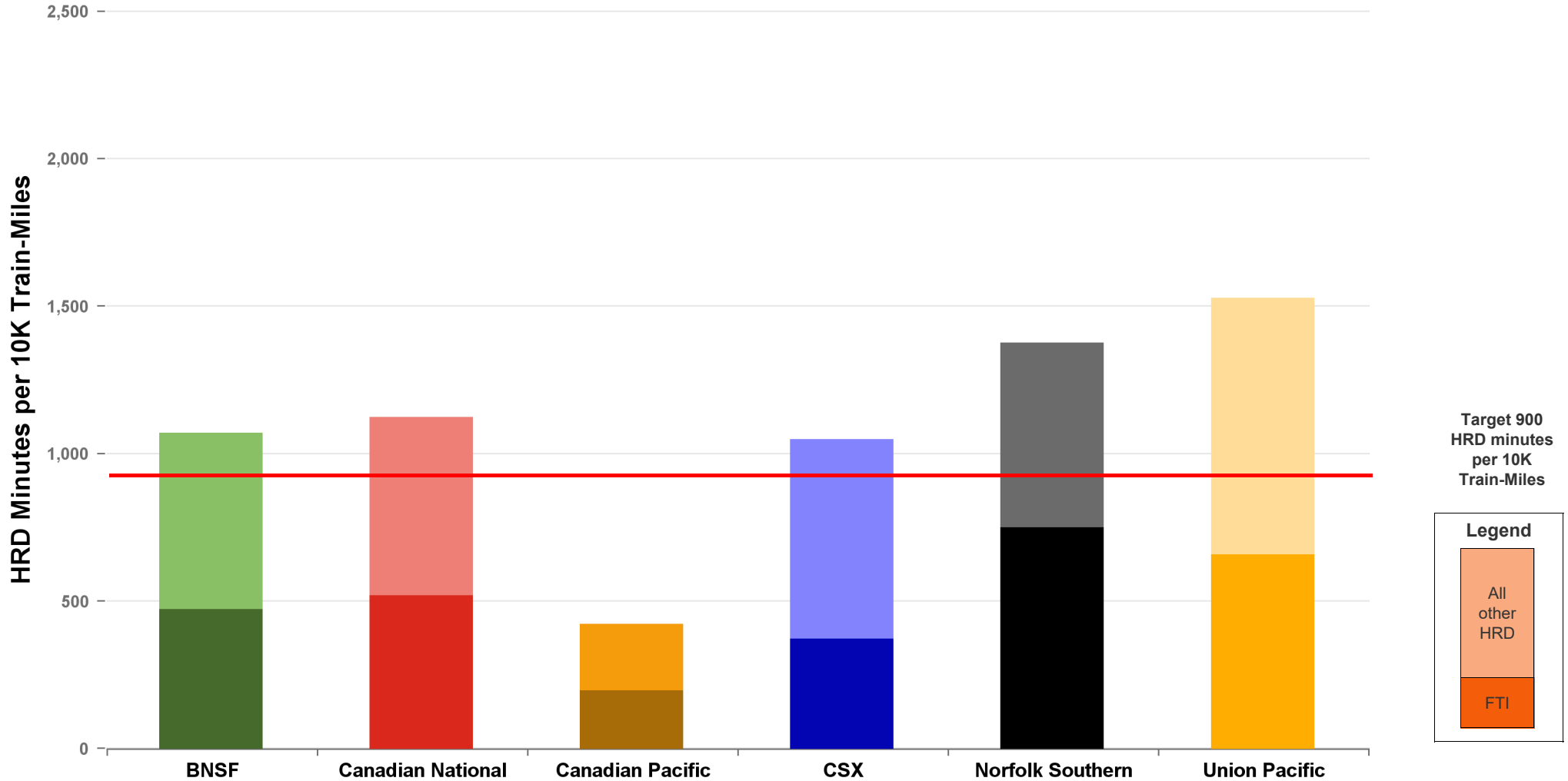
A monthly update of the Host Railroad Report Card, which grades the six major host railroads based on host responsible delay (HRD) minutes per 10,000 train-miles for the current month (lighter shade) and the most recent 12 months.



Total Host-Responsible Delays

1 Year Snapshot

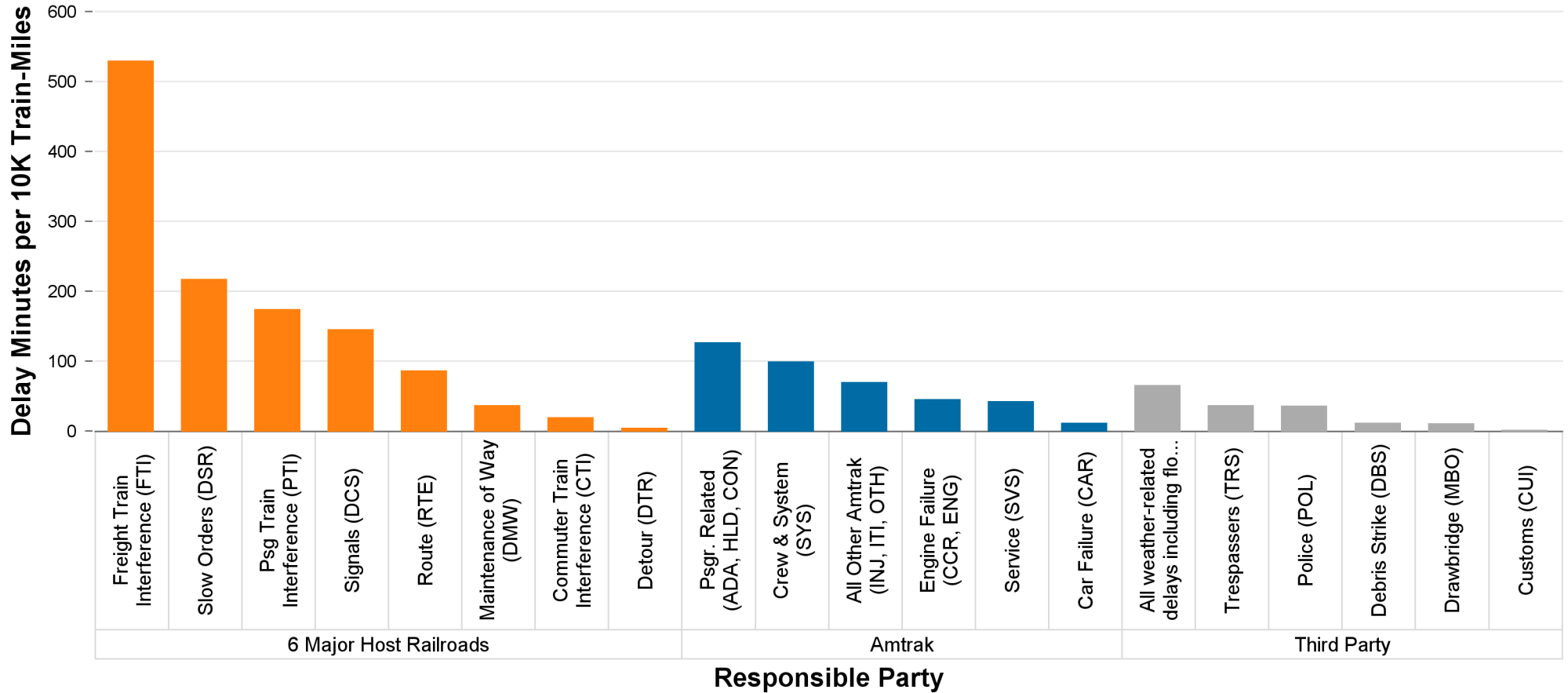
Total host-responsible delay (HRD) minutes per 10,000 train-miles incurred by Amtrak trains on the six major host railroads, with delays attributable to freight train interference (FTI) shaded.



Delays to Amtrak Trains by Responsible Party

1 Year Snapshot

Delay minutes per 10,000 train-miles on the six major host railroads categorized by delay type and responsible party.

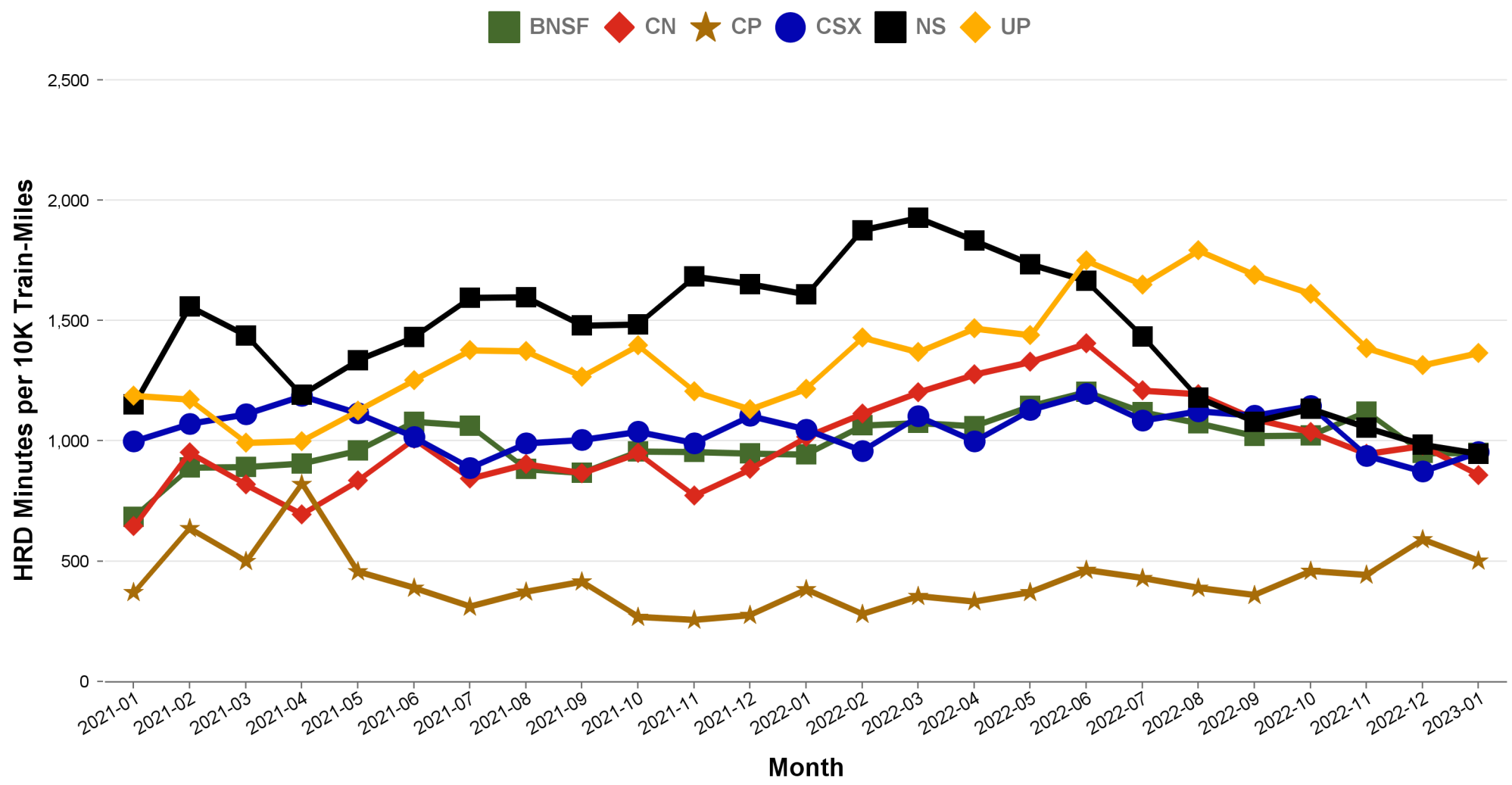


Responsible Party	6 Major Host Railroads	Amtrak	Third Party
Delay Minutes per 10K Train-Miles	1214	393	157
Percentage of Total Delays	68.8%	22.3%	8.9%

Total Host-Responsible Delays

2 Year Snapshot

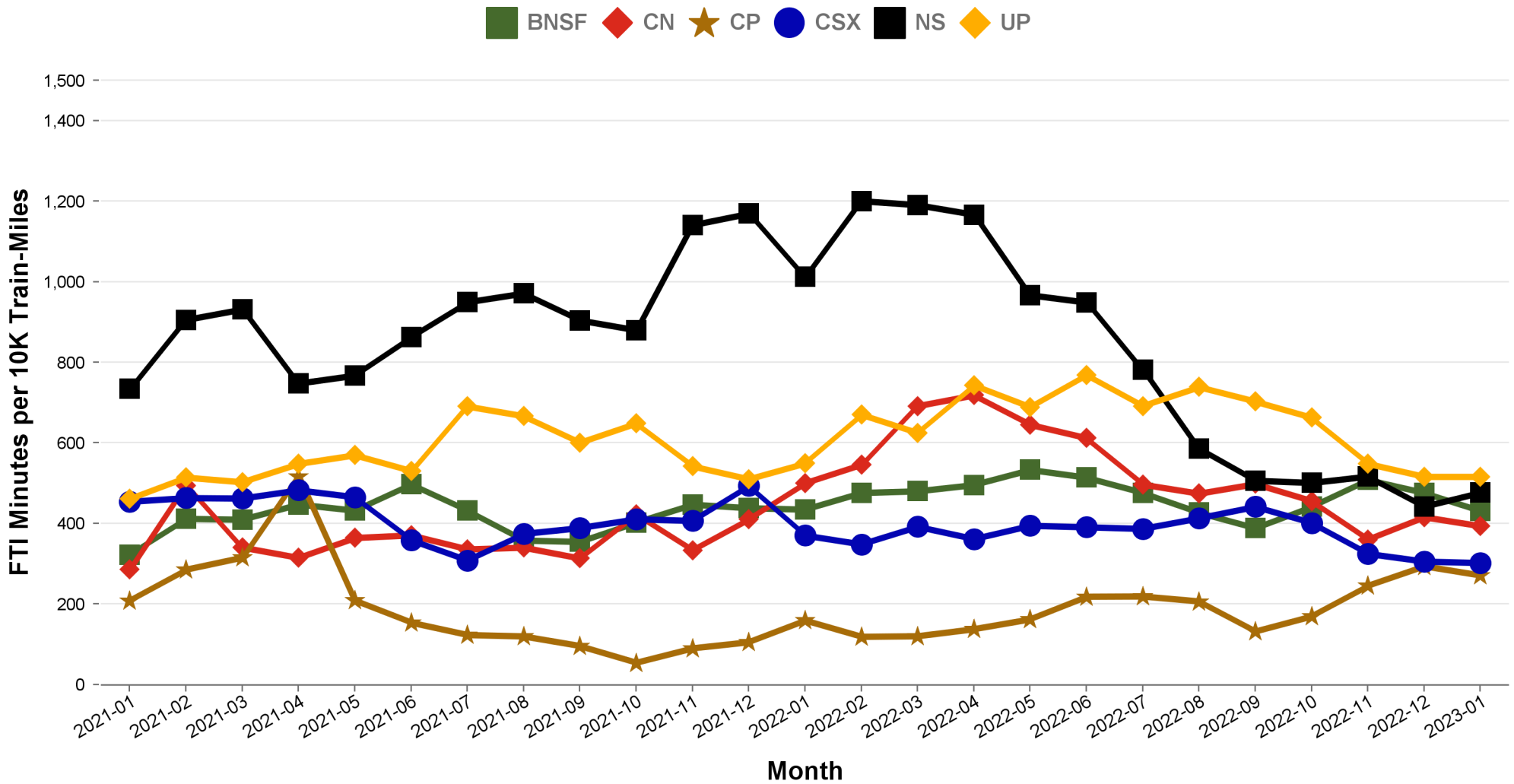
Total host-responsible delay (HRD) minutes per 10,000 train-miles incurred by Amtrak trains on each of the six major host railroads for the most recent two years.



Freight Train Interference Delays

2 Year Snapshot

Total delay minutes per 10,000 train-miles attributable to freight train interference (FTI) incurred by Amtrak trains on each of the six major host railroads for the most recent two years.



Minutes of Delay per 10K Train Miles by Host for January 2023

Host	Service	Total Host Responsible Delays		Largest Two Delay Categories - Current Month				Route Miles
		Current Month	Most Recent 12 Months	#1		#2		
Target		900	900					
BNSF	California Zephyr	819	1007	FTI	281	DSR	204	1027
	Carl Sandburg / Illinois Zephyr	574	835	FTI	252	CTI	99	257
	Cascades	1420	1384	FTI	518	DSR	365	317
	Coast Starlight	1134	1257	DSR	289	FTI	244	158
	Empire Builder	1096	929	FTI	692	DSR	171	2147
	Heartland Flyer	2013	2119	DSR	953	FTI	781	236
	Pacific Surfliner	829	1224	DCS	252	FTI	154	22
	San Joaquins	934	1149	PTI	382	FTI	356	284
	Southwest Chief	698	940	FTI	307	DCS	121	2206
	Sunset Ltd	1257	1737	FTI	580	DSR	267	190
Texas Eagle	1005	1444	FTI	423	DSR	326	116	
CN	Blue Water	482	649	FTI	334	DMW	62	159
	City Of New Orleans	816	1055	FTI	321	DSR	155	930
	Illini / Saluki	647	797	FTI	231	PTI	211	304
	Lincoln Service	1659	1992	FTI	1293	DCS	213	35
	Lincoln / Missouri	2313	2498	FTI	1627	RTE	324	35
	Texas Eagle	1200	2120	FTI	691	RTE	273	35
	Wolverine	1549	1794	FTI	651	DSR	490	27
CP	Empire Builder	795	642	FTI	518	DCS	96	384
	Ethan Allen Express	252	578	DCS	80	FTI	70	60
	Hiawatha	242	179	DCS	106	FTI	50	53
CSX	Auto Train	1359	1386	DSR	378	FTI	332	898
	Capitol Ltd	513	740	FTI	243	RTE	152	307
	Cardinal	701	1030	FTI	262	DSR	229	703
	Carolinian	1436	1268	PTI	349	RTE	322	295
	Lake Shore Ltd	574	807	FTI	242	RTE	116	741
	Maple Leaf	565	919	RTE	192	FTI	177	298
	New York - Niagara Falls	487	816	FTI	207	RTE	136	296
	Palmetto	1162	1127	FTI	498	PTI	214	659
	Pere Marquette	302	195	DCS	169	FTI	50	135
	Richmond / Newport News / Norfolk	1173	1259	FTI	352	DSR	217	189
	Silver Meteor	978	870	FTI	337	PTI	215	1152
Silver Star	1014	996	FTI	299	PTI	249	1209	
NS	Blue Water	2626	3725	FTI	1671	DMW	278	39
	Capitol Ltd	1120	1972	FTI	596	DCS	181	481
	Cardinal	1717	2084	PTI	615	FTI	556	79
	Carolinian	543	796	PTI	239	FTI	121	202
	Crescent	1130	1428	FTI	682	DCS	148	1141
	Lake Shore Ltd	1200	1758	FTI	680	PTI	190	339
	Pennsylvanian	563	1111	FTI	331	RTE	158	249
	Pere Marquette	1037	2684	FTI	506	DCS	133	39
	Piedmont	435	713	FTI	131	DCS	113	173
	Richmond / Newport News / Norfolk	1018	838	DSR	296	DCS	273	81
	Roanoke	703	732	FTI	302	PTI	211	216
	Silver Star	524	1197	FTI	199	DCS	125	28
	Wolverine	2035	3609	FTI	1055	DCS	358	39
UP	California Zephyr	1695	1649	FTI	694	DCS	389	1381
	Capitol Corridor	1144	792	DSR	375	PTI	269	171
	Cascades	1549	1784	DSR	614	FTI	522	125
	Coast Starlight	1622	1517	FTI	674	PTI	315	1162
	Lincoln Service	989	1094	FTI	455	PTI	327	231
	Lincoln / Missouri	1035	1469	FTI	478	PTI	251	502
	Missouri	894	1347	FTI	587	PTI	138	271
	Pacific Surfliner	2717	2101	DCS	1881	PTI	372	174
	San Joaquins	1318	1345	PTI	455	FTI	373	88
	Sunset Ltd	1414	2075	FTI	752	DSR	273	1784
	Texas Eagle	1204	1951	FTI	732	DSR	204	1073
Amtrak	Adirondack	273	298	PTI	120	DCS	81	100
	Blue Water	187	278	PTI	91	DSR	47	99
	Ethan Allen Express	177	357	PTI	71	DCS	37	100
	Maple Leaf	214	362	DCS	77	RTE	49	109
	New York - Albany	152	213	DCS	56	PTI	49	81
	New York - Niagara Falls	239	398	PTI	89	RTE	53	109
	Wolverine	304	397	PTI	146	DSR	62	99

Minutes of Delay per 10K Train Miles by Host for January 2023

Host	Service	Total Host Responsible Delays		Largest Two Delay Categories - Current Month				Route Miles
		Current Month	Most Recent 12 Months	#1		#2		
Target		900	900					
BBrRR	Cardinal	1286	1331	PTI	471	FTI	428	132
Fla DOT	Silver Meteor	758	725	CTI	556	PTI	75	68
	Silver Star	1017	793	CTI	834	DCS	74	68
FR	Auto Train	8144	5150	DSR	5889	CTI	1433	16
	Silver Meteor	3195	4111	DSR	1820	CTI	789	61
	Silver Star	2503	2416	DSR	1703	CTI	411	61
MADOT	Springfield Shuttles	123	667	DCS	77	DSR	18	36
	Vermonters	354	500	DSR	162	DCS	104	50
MBTA	Downeaster	1101	1247	DCS	441	CTI	433	38
Metra	Empire Builder	2607	1691	CTI	1962	DSR	459	29
	Hiawatha	2131	1550	CTI	1060	DSR	646	29
MIDOT	Blue Water	182	449	PTI	144	RTE	38	22
	Wolverine	477	965	PTI	340	RTE	89	134
MNRR	Acela Express	1469	1586	DSR	989	CTI	316	56
	Adirondack	747	803	CTI	513	RTE	149	64
	Ethan Allen Express	210	974	CTI	122	RTE	61	64
	Lake Shore Ltd	729	1085	CTI	448	RTE	132	64
	Maple Leaf	398	769	CTI	160	RTE	160	64
	New York - Albany	636	963	CTI	472	RTE	97	64
	New York - Niagara Falls	1071	1490	CTI	820	RTE	87	64
	Richmond / Newport News / Norfolk	1526	1889	DSR	834	CTI	524	56
	Vermonters	2615	2664	DSR	1852	CTI	671	56
NECR	Vermonters	738	1555	DSR	670	DCS	45	192
NMDOT	Southwest Chief	2041	2116	CTI	926	DCS	661	80
PanAm	Downeaster	604	797	PTI	303	DCS	170	107
SCRRA	Coast Starlight	1158	1149	PTI	803	DCS	289	48
	Pacific Surfliner	769	1139	CTI	343	PTI	172	95
SDNRR	Pacific Surfliner	1162	975	CTI	544	PTI	279	60
Sunder	Cascades	1003	888	PTI	481	CTI	183	20
	Coast Starlight	2217	2005	PTI	1380	CTI	522	20
TRE	Texas Eagle	643	607	CTI	508	PTI	60	33
VTR	Ethan Allen Express	136	660	FTI	48	DCS	44	24

The numbers included in this document are preliminary and are for informational purposes only.

Excludes hosts with fewer than 15 route miles.

Delays on the Amtrak-owned portion of the Northeast Corridor are shown in a separate report, with tighter delay standards.

Northeast Regional: Roanoke includes all trains between Roanoke and points on the NEC; Richmond / Newport News / Norfolk includes all trains between these locations and points on the NEC.

Minutes of Delay per 10K Train Miles by Service for January 2023

Service	Host	Total Host Responsible Delays		Largest Two Delay Categories - Current Month				Route Miles	
		Current Month	Most Recent 12 Months	#1		#2			
Target		900	900						
Acela Express									
Acela Express	MNRR	1469	1586	DSR	989	CTI	316	56	
All Other NEC Corridor Routes									
Northeast Regional	Richmond / Newport News / Norfolk	CSX	1173	1259	FTI	352	DSR	217	189
		NS	1018	838	DSR	296	DCS	273	81
		MNRR	1526	1889	DSR	834	CTI	524	56
	Roanoke	NS	703	732	FTI	302	PTI	211	216
	Springfield Shuttles	MADOT	123	667	DCS	77	DSR	18	36
Non-NEC Corridor Routes									
Capitol Corridor		UP	1144	792	DSR	375	PTI	269	171
Carolinian		CSX	1436	1268	PTI	349	RTE	322	295
		NS	543	796	PTI	239	FTI	121	202
Cascades		BNSF	1420	1384	FTI	518	DSR	365	317
		UP	1549	1784	DSR	614	FTI	522	125
		Sounder	1003	888	PTI	481	CTI	183	20
Downeaster		MBTA	1101	1247	DCS	441	CTI	433	38
		PanAm	604	797	PTI	303	DCS	170	107
Empire	Adirondack	Amtrak	273	298	PTI	120	DCS	81	100
		MNRR	747	803	CTI	513	RTE	149	64
	Ethan Allen Express	CP	252	578	DCS	80	FTI	70	60
		Amtrak	177	357	PTI	71	DCS	37	100
		MNRR	210	974	CTI	122	RTE	61	64
		VTR	136	660	FTI	48	DCS	44	24
	Maple Leaf	CSX	565	919	RTE	192	FTI	177	298
		Amtrak	214	362	DCS	77	RTE	49	109
		MNRR	398	769	CTI	160	RTE	160	64
	New York - Albany	Amtrak	152	213	DCS	56	PTI	49	81
		MNRR	636	963	CTI	472	RTE	97	64
	New York - Niagara Falls	CSX	487	816	FTI	207	RTE	136	296
		Amtrak	239	398	PTI	89	RTE	53	109
		MNRR	1071	1490	CTI	820	RTE	87	64
Heartland Flyer		BNSF	2013	2119	DSR	953	FTI	781	236
Hiawatha		CP	242	179	DCS	106	FTI	50	53
		Metra	2131	1550	CTI	1060	DSR	646	29
Illinois	Carl Sandburg / Illinois Zephyr	BNSF	574	835	FTI	252	CTI	99	257
	Illini / Saluki	CN	647	797	FTI	231	PTI	211	304
	Lincoln Service	CN	1659	1992	FTI	1293	DCS	213	35
		UP	989	1094	FTI	455	PTI	327	231
Lincoln / Missouri		CN	2313	2498	FTI	1627	RTE	324	35
		UP	1035	1469	FTI	478	PTI	251	502
Michigan	Blue Water	CN	482	649	FTI	334	DMW	62	159
		NS	2626	3725	FTI	1671	DMW	278	39
		Amtrak	187	278	PTI	91	DSR	47	99
		MIDOT	182	449	PTI	144	RTE	38	22
	Pere Marquette	CSX	302	195	DCS	169	FTI	50	135
		NS	1037	2684	FTI	506	DCS	133	39
	Wolverine	CN	1549	1794	FTI	651	DSR	490	27
		NS	2035	3609	FTI	1055	DCS	358	39
		Amtrak	304	397	PTI	146	DSR	62	99
		MIDOT	477	965	PTI	340	RTE	89	134
Missouri		UP	894	1347	FTI	587	PTI	138	271
Pacific Surfliner		BNSF	829	1224	DCS	252	FTI	154	22
		UP	2717	2101	DCS	1881	PTI	372	174
		SCRRA	769	1139	CTI	343	PTI	172	95
		SDNRR	1162	975	CTI	544	PTI	279	60
Pennsylvanian		NS	563	1111	FTI	331	RTE	158	249
Piedmont		NS	435	713	FTI	131	DCS	113	173
San Joaquins		BNSF	934	1149	PTI	382	FTI	356	284
		UP	1318	1345	PTI	455	FTI	373	88
Vermont		MADOT	354	500	DSR	162	DCS	104	50
		MNRR	2615	2664	DSR	1852	CTI	671	56
		NECR	738	1555	DSR	670	DCS	45	192

Minutes of Delay per 10K Train Miles by Service for January 2023

Service	Host	Total Host Responsible Delays		Largest Two Delay Categories - Current Month				Route Miles
		Current Month	Most Recent 12 Months	#1		#2		
Target		900	900					
Long-Distance Routes								
Auto Train	CSX FR	1359 8144	1386 5150	DSR DSR	378 5889	FTI CTI	332 1433	898 16
California Zephyr	BNSF UP	819 1695	1007 1649	FTI FTI	281 694	DSR DCS	204 389	1027 1381
Capitol Ltd	CSX NS	513 1120	740 1972	FTI FTI	243 596	RTE DCS	152 181	307 481
Cardinal	CSX NS BBrRR	701 1717 1286	1030 2084 1331	FTI PTI PTI	262 615 471	DSR FTI FTI	229 556 428	703 79 132
City Of New Orleans	CN	816	1055	FTI	321	DSR	155	930
Coast Starlight	BNSF UP SCRRA Sounder	1134 1622 1158 2217	1257 1517 1149 2005	DSR FTI PTI PTI	289 674 803 1380	FTI PTI DCS CTI	244 315 289 522	158 1162 48 20
Crescent	NS	1130	1428	FTI	682	DCS	148	1141
Empire Builder	BNSF CP Metra	1096 795 2607	929 642 1691	FTI FTI CTI	692 518 1962	DSR DCS DSR	171 96 459	2147 384 29
Lake Shore Ltd	CSX NS MNRR	574 1200 729	807 1758 1085	FTI FTI CTI	242 680 448	RTE PTI RTE	116 190 132	741 339 64
Palmetto	CSX	1162	1127	FTI	498	PTI	214	659
Silver Meteor	CSX Fla DOT FR	978 758 3195	870 725 4111	FTI CTI DSR	337 556 1820	PTI PTI CTI	215 75 789	1152 68 61
Silver Star	CSX NS Fla DOT FR	1014 524 1017 2503	996 1197 793 2416	FTI FTI CTI DSR	299 199 834 1703	PTI DCS DCS CTI	249 125 74 411	1209 28 68 61
Southwest Chief	BNSF NMDOT	698 2041	940 2116	FTI CTI	307 926	DCS DCS	121 661	2206 80
Sunset Ltd	BNSF UP	1257 1414	1737 2075	FTI FTI	580 752	DSR DSR	267 273	190 1784
Texas Eagle	BNSF CN UP TRE	1005 1200 1204 643	1444 2120 1951 607	FTI FTI FTI CTI	423 691 732 508	DSR RTE DSR PTI	326 273 204 60	116 35 1073 33

The numbers included in this document are preliminary and are for informational purposes only.
 Excludes hosts with fewer than 15 route miles.
 Delays on the Amtrak-owned portion of the Northeast Corridor are shown in a separate report, with tighter delay standards.
 Northeast Regional: Roanoke includes all trains between Roanoke and points on the NEC; Richmond / Newport News / Norfolk includes all trains between these locations and points on the NEC.



Host Railroad Report - All-Stations and Customer OTP for January 2023

Service	All-Stations OTP		Customer OTP		Avg Mins Late per Late Rider**	
	Current Month	Most Recent 12 Months	Current Month	Most Recent 12 Months	Current Month	Most Recent 12 Months
Amtrak System	80.2%	75.0%	83.1%	74.2%	67	63
NEC Corridor Routes	92.1%	86.3%	90.4%	81.4%	36	42
Minimum Standard			80.0%	80.0%		
Acela Express*	92.8%	87.1%	91.1%	83.5%	22	31
Keystone	98.5%	96.0%	98.1%	95.1%	26	39
Northeast Regional	89.5%	82.3%	88.4%	77.6%	40	44
On Spine Northeast Regional	93.4%	86.8%	91.3%	83.2%	37	42
Richmond / Newport News / Norfolk	87.6%	78.1%	86.8%	73.8%	42	45
Roanoke	84.1%	71.7%	81.5%	65.8%	41	48
Springfield Shuttles	89.6%	89.3%	93.1%	88.0%	34	34
Non-NEC Corridor Routes	81.9%	79.3%	82.4%	75.8%	41	46
Minimum Standard			80.0%	80.0%		
Capitol Corridor	82.5%	87.8%	73.0%	83.4%	33	38
Carolinian	75.9%	65.8%	79.6%	63.3%	42	50
Cascades	71.5%	65.2%	63.1%	56.7%	39	46
Downeaster	83.9%	88.4%	83.1%	81.7%	33	35
Empire	93.2%	84.3%	93.6%	83.3%	33	46
Adirondack	90.2%	88.5%	92.1%	85.6%	48	108
Berkshire Flyer	0.0%	57.8%	0.0%	50.6%	0	41
Ethan Allen Express	95.5%	83.7%	96.0%	79.3%	24	46
Maple Leaf	89.0%	78.3%	92.3%	79.3%	33	49
New York - Albany	97.1%	92.1%	95.9%	89.2%	36	43
New York - Niagara Falls	90.3%	80.2%	89.0%	77.5%	31	46
Heartland Flyer	65.7%	63.3%	66.9%	56.3%	45	45
Hiawatha	91.2%	93.6%	86.6%	91.5%	35	36
Illinois	80.5%	70.3%	77.6%	67.4%	34	46
Carl Sandburg / Illinois Zephyr	88.8%	77.4%	89.6%	77.3%	28	40
Illini / Saluki	76.9%	57.2%	78.1%	59.2%	34	43
Lincoln Service	78.7%	71.4%	74.2%	68.8%	35	49
Lincoln / Missouri	74.3%	47.2%	68.8%	42.2%	48	64
Michigan	81.8%	68.1%	79.4%	66.3%	50	59
Blue Water	74.2%	70.7%	69.9%	67.0%	40	62
Pere Marquette	88.7%	83.5%	84.8%	77.8%	26	44
Wolverine	83.0%	65.3%	81.7%	63.3%	60	60
Missouri	84.7%	61.8%	87.5%	59.3%	59	59
Pacific Surfliner	71.5%	81.7%	85.2%	80.5%	51	39
Pennsylvanian	92.6%	72.7%	92.6%	73.3%	35	39
Piedmont	92.4%	81.4%	90.2%	73.4%	27	40
San Joaquins	77.8%	77.1%	76.3%	72.8%	53	43
Vermonteer	89.1%	75.5%	87.0%	78.1%	24	44
Long-Distance Routes	56.3%	44.7%	59.4%	45.6%	119	108
Minimum Standard			80.0%	80.0%		
Auto Train	57.3%	57.7%	38.5%	40.3%	175	115
California Zephyr	24.9%	24.7%	28.6%	24.2%	189	162
Capitol Ltd	79.9%	48.5%	84.1%	42.3%	99	88
Cardinal	64.4%	48.3%	62.5%	46.8%	63	71
City Of New Orleans	73.6%	53.5%	79.8%	62.5%	74	82
Coast Starlight	35.2%	51.6%	59.0%	53.0%	101	86
Crescent	71.3%	56.5%	74.6%	58.8%	63	85
Empire Builder	39.3%	43.8%	40.7%	46.8%	157	142
Lake Shore Ltd	84.5%	64.1%	85.6%	63.8%	53	68
Palmetto	77.7%	66.8%	81.8%	70.0%	49	53
Silver Meteor	64.5%	50.5%	65.6%	56.8%	62	56
Silver Star	51.6%	34.0%	50.8%	28.4%	50	98
Southwest Chief	43.7%	31.6%	45.2%	26.6%	107	135
Sunset Ltd	39.2%	16.5%	58.7%	20.7%	92	158
Texas Eagle	72.4%	43.6%	78.5%	46.2%	72	101

The numbers included in this document are preliminary and are for informational purposes only.

Northeast Regional: Roanoke includes all trains between Roanoke and points on the NEC; Richmond/Newport News/Norfolk includes all trains between these locations and points on the NEC.

* Acela Express on-time performance target is 90.0%

** Excludes on-time Customers

Host Railroad Responsible Delays

Code	Code Description	Explanation
CTI	Commuter Train Interference	Delays for meeting or following commuter trains
DCS	Signal Delays	Signal failure or All Other signal delays, wayside defect-detector false-alarms, defective road crossing protection, efficiency tests, drawbridge stuck open
DMW	Maintenance of Way	Maintenance of Way delays including holds for track repairs or MW foreman to clear
DSR	Slow Order Delays	Temporary slow orders, except heat or cold orders
DTR	Detour	Delays from detours
FTI	Freight Train Interference	Delays from freight trains
PTI	Passenger Train Interference	Delays for meeting or following All Other passenger trains
RTE	Routing	Routing-dispatching delays including diversions, late track bulletins, etc.

Amtrak Responsible Delays

Code	Code Description	Explanation
ADA	Passenger Related	All delays related to disabled passengers, wheel chair lifts, guide dogs, etc.
CAR	Car Failure	Mechanical failure on all types of cars
CCR	Cab Car Failure	Mechanical failure on Cab Cars
CON	Hold for Connection	Holding for connections from All Other trains or buses.
ENG	Locomotive Failure	Mechanical failure on engines.
HLD	Passenger Related	All delays related to passengers, checked-baggage, large groups, etc.
INJ	Injury Delay	Delay due to injured passengers or employees.
ITI	Initial Terminal Delay	Delay at initial terminal due to late arriving inbound trains causing late release of equipment.
OTH	Miscellaneous Delays	Lost-on-run, heavy trains, unable to make normal speed, etc.
SVS	Servicing	All switching and servicing delays
SYS	Crew & System	Delays related to crews including lateness, lone-engineer delays

Third-Party Delays

Code	Code Description	Explanation
CUI	Customs	U.S. and Canadian customs delays; Immigration-related delays
DBS	Debris	Debris strikes
MBO	Drawbridge Openings	Movable bridge openings for marine traffic where no bridge failure is involved
NOD	Unused Recovery Time	Wait for departure time
POL	Police-Related	Police/fire department holds on right-of-way or on-board trains
TRS	Trespassers	Trespasser incidents including road crossing accidents, trespasser / animal strikes, vehicle stuck on track ahead, bridge strikes
WTR	Weather-Related	All weather-related delays including floods/washouts, earthquake-related delays, heat or cold orders, slippery rail due to leaves

*These delay codes are applicable to Off-NEC routes only.