



Host Railroad Report

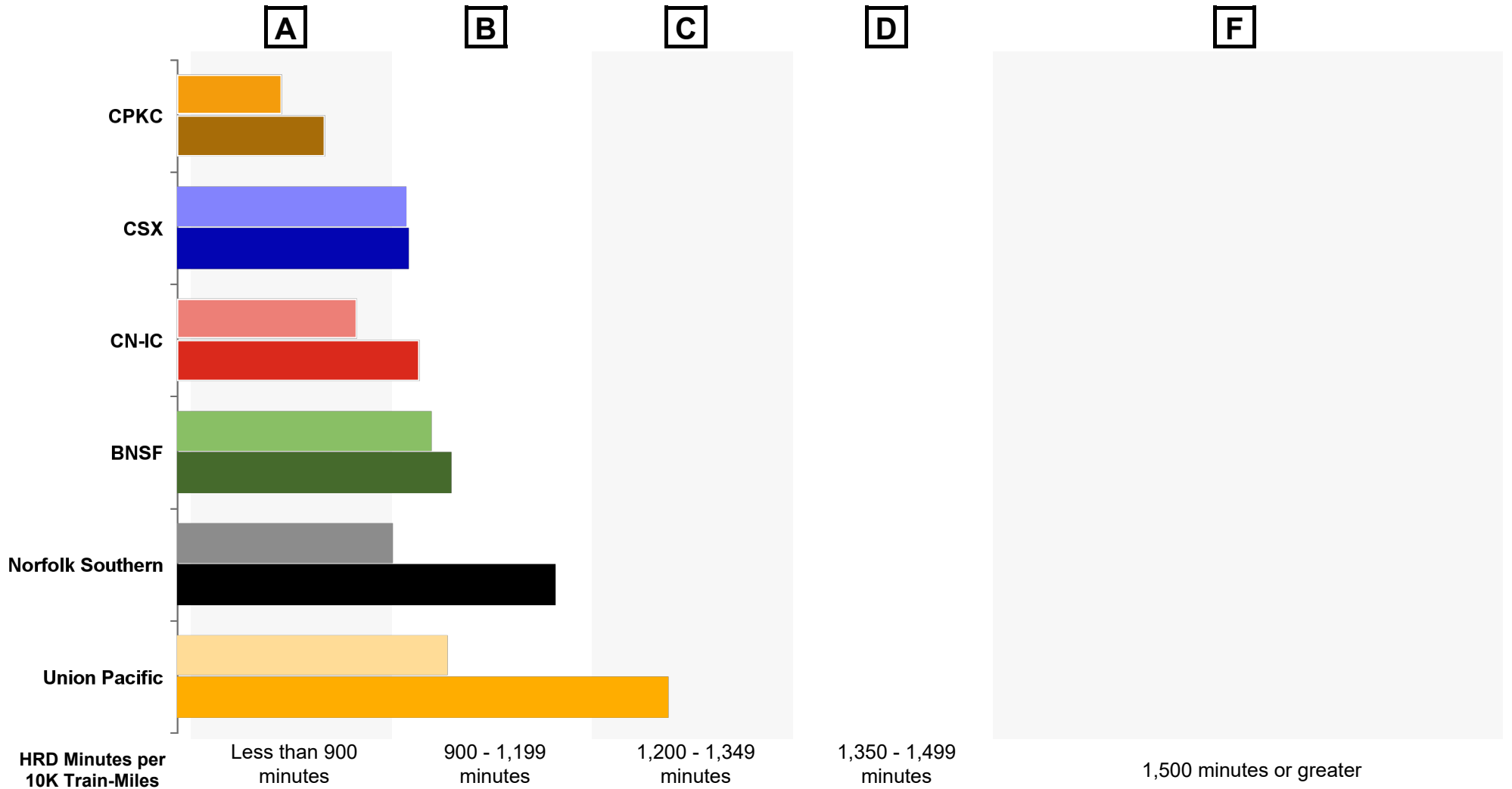
Amtrak Train Performance on Host Railroads

Data through January 2024

Host Railroad Report Card Update

Current Month and 1 Year Snapshot

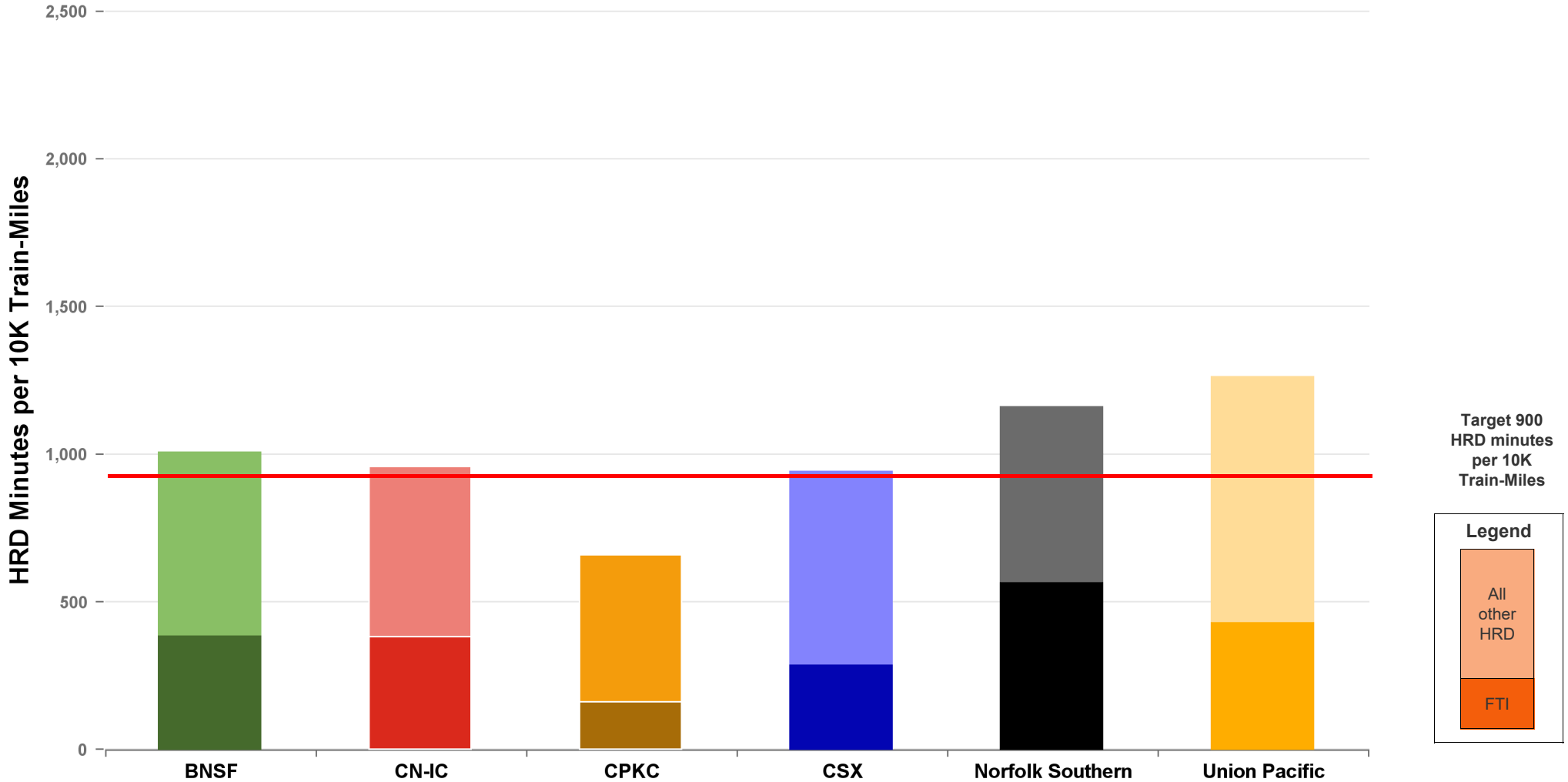
A monthly update of the Host Railroad Report Card, which grades the six major host railroads based on host responsible delay (HRD) minutes per 10,000 train-miles for the current month (lighter shade) and the most recent 12 months.



Total Host-Responsible Delays

1 Year Snapshot

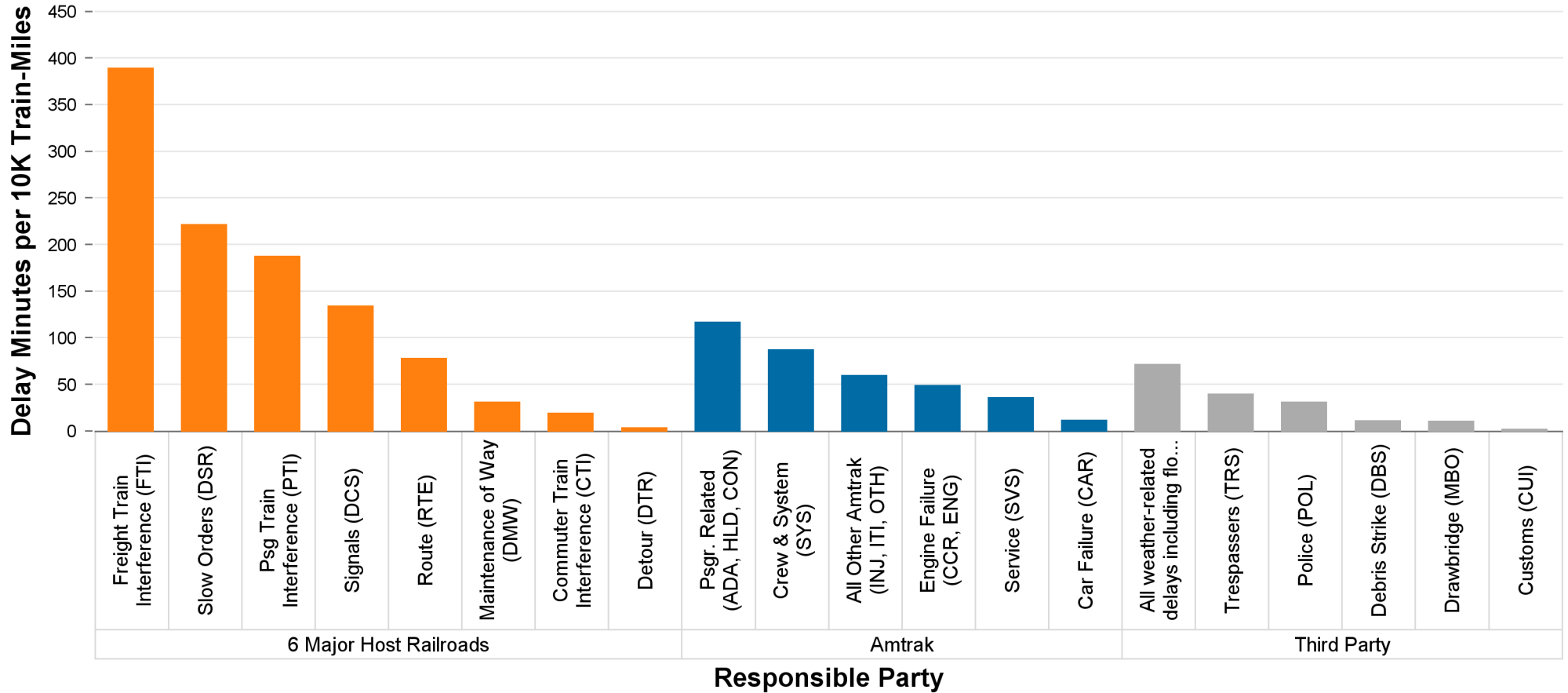
Total host-responsible delay (HRD) minutes per 10,000 train-miles incurred by Amtrak trains on the six major host railroads, with delays attributable to freight train interference (FTI) shaded.



Delays to Amtrak Trains by Responsible Party

1 Year Snapshot

Delay minutes per 10,000 train-miles on the six major host railroads categorized by delay type and responsible party.

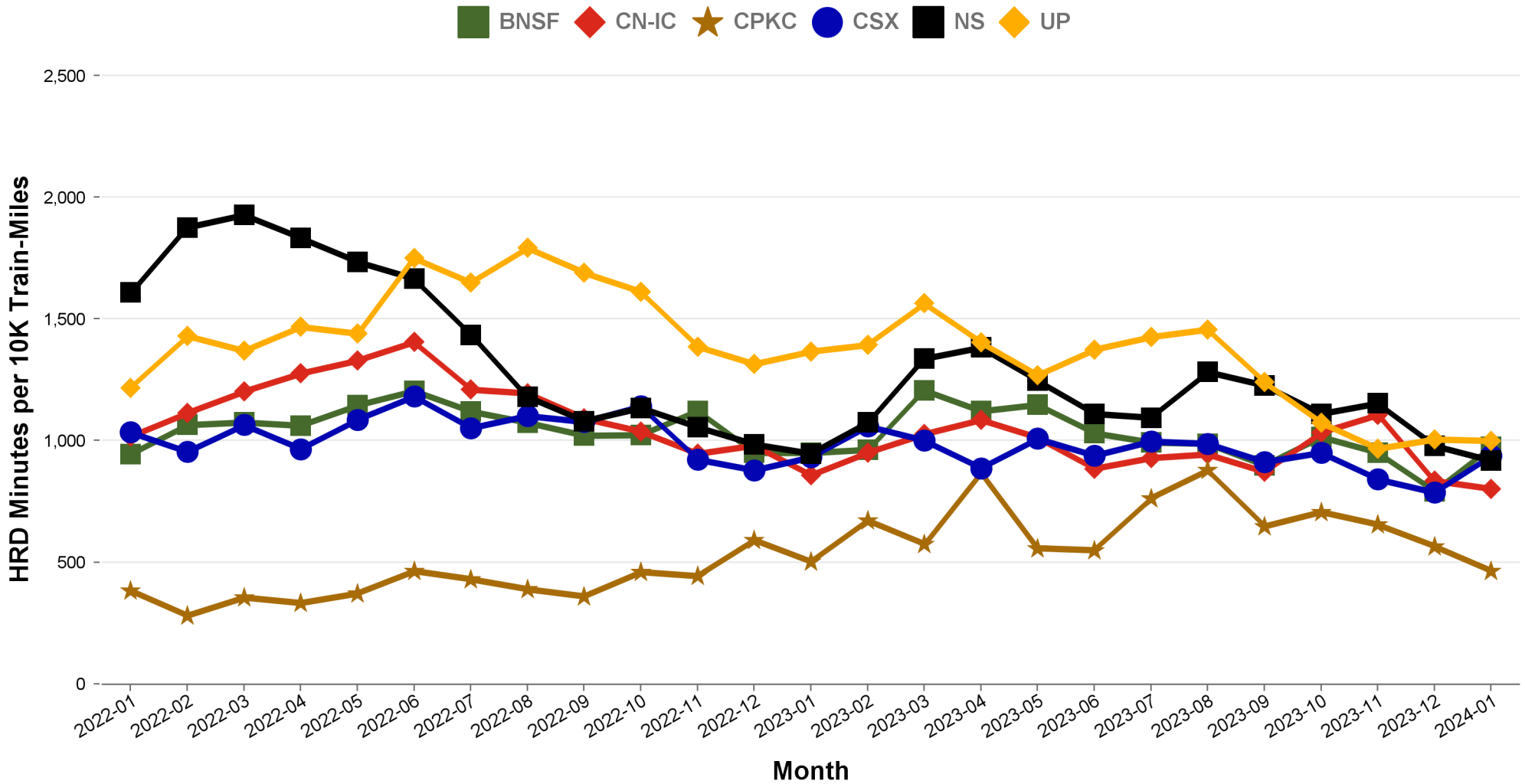


Responsible Party	6 Major Host Railroads	Amtrak	Third Party
Delay Minutes per 10K Train-Miles	1063	358	167
Percentage of Total Delays	67.0%	22.5%	10.5%

Total Host-Responsible Delays

2 Year Snapshot

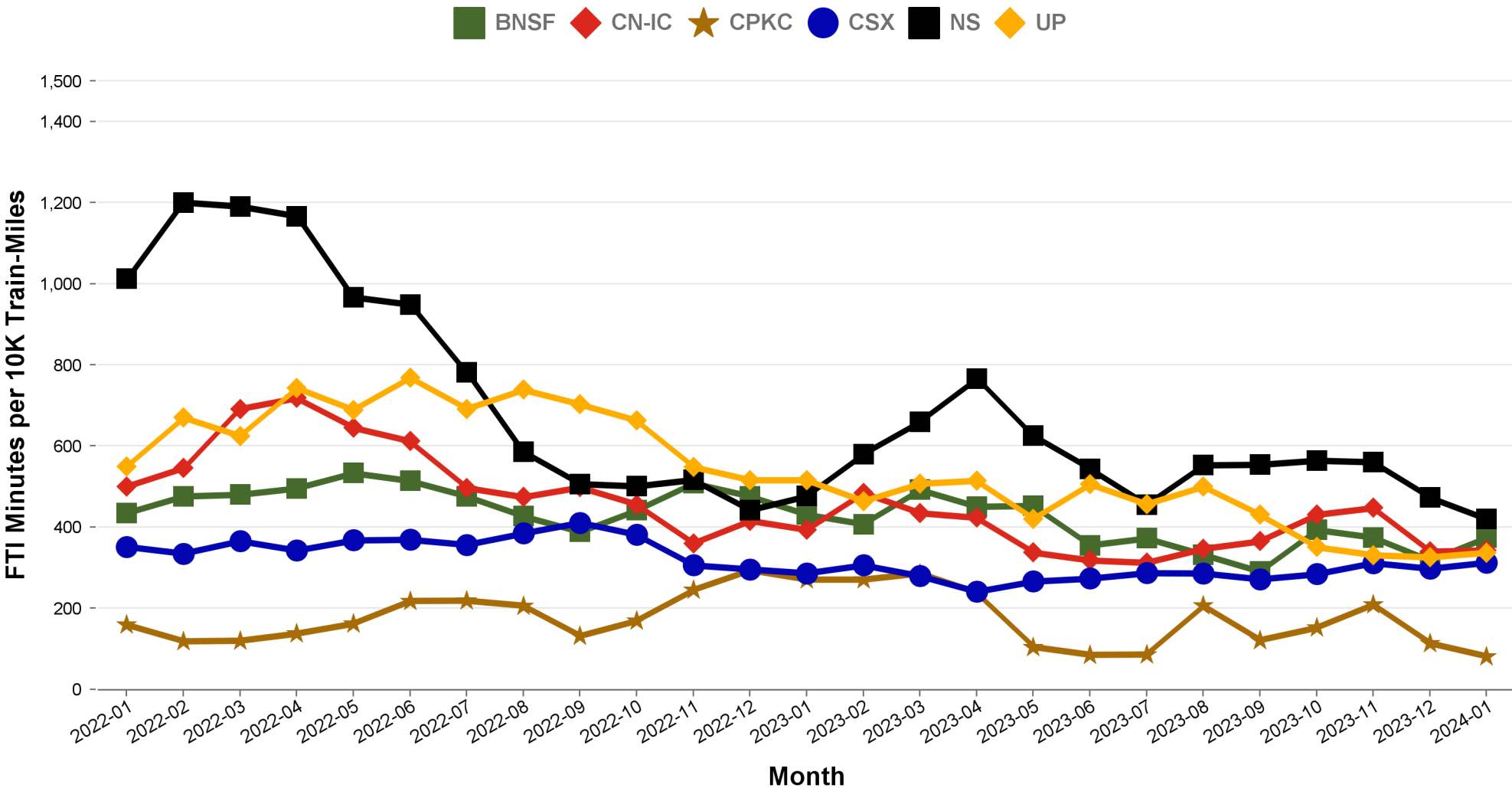
Total host-responsible delay (HRD) minutes per 10,000 train-miles incurred by Amtrak trains on each of the six major host railroads for the most recent two years.



Freight Train Interference Delays

2 Year Snapshot

Total delay minutes per 10,000 train-miles attributable to freight train interference (FTI) incurred by Amtrak trains on each of the six major host railroads for the most recent two years.



Minutes of Delay per 10K Train Miles by Host for January 2024

Host	Service	Total Host Responsible Delays		Largest Two Delay Categories - Current Month				Route Miles
		Current Month	Most Recent 12 Months	#1		#2		
Target		900	900					
BNSF	California Zephyr	931	921	FTI	404	DSR	227	1027
	Carl Sandburg / Illinois Zephyr	872	783	FTI	358	DSR	222	257
	Cascades	1576	1263	DSR	441	FTI	398	317
	Coast Starlight	1788	998	FTI	455	PTI	432	158
	Empire Builder	984	860	FTI	647	DSR	137	2147
	Heartland Flyer	1454	1708	DSR	929	FTI	466	236
	Pacific Surfliner	1071	1139	DCS	339	FTI	269	22
	San Joaquins	898	1322	PTI	387	FTI	293	284
	Southwest Chief	676	779	FTI	220	DSR	199	2206
	Sunset Ltd	1199	1220	DSR	525	FTI	403	190
	Texas Eagle	1130	1349	DSR	739	FTI	330	116
CN-IC	Blue Water	576	653	FTI	418	RTE	68	159
	City Of New Orleans	723	868	FTI	277	PTI	158	930
	Illini / Saluki	626	793	FTI	247	DSR	151	304
	Lincoln Service	2038	1763	FTI	1007	DCS	626	35
	Lincoln / Missouri	2915	2497	FTI	1531	DCS	544	35
	Texas Eagle	1418	1990	FTI	1096	DSR	121	35
	Wolverine	863	1462	DSR	456	DMW	151	27
CPKC	Adirondack	730	883	PTI	567	FTI	54	178
	Empire Builder	369	783	FTI	153	DSR	143	384
	Ethan Allen Express	1795	1657	PTI	1583	DCS	126	60
	Hiawatha	112	290	FTI	44	RTE	28	53
CSX	Auto Train	1281	1169	FTI	424	DSR	345	898
	Capitol Ltd	604	722	FTI	284	RTE	154	307
	Cardinal	747	782	FTI	345	DCS	197	703
	Carolinian	1734	1459	FTI	507	PTI	386	295
	Downeaster	659	661	PTI	308	DCS	248	107
	Lake Shore Ltd	717	719	FTI	344	RTE	146	741
	Maple Leaf	648	687	FTI	382	RTE	95	298
	New York - Niagara Falls	585	589	FTI	358	RTE	123	296
	Palmetto	1007	1029	FTI	367	PTI	241	659
	Pere Marquette	177	216	DCS	124	FTI	33	135
	Richmond / Newport News / Norfolk	1336	1334	FTI	369	PTI	269	189
	Silver Meteor	802	869	FTI	272	PTI	205	1152
	Silver Star	921	961	FTI	259	DSR	220	1209
NS	Blue Water	2080	2235	FTI	1308	DCS	454	39
	Capitol Ltd	1247	1277	FTI	749	RTE	179	481
	Cardinal	1603	1418	PTI	620	DMW	487	79
	Carolinian	640	772	PTI	375	DCS	89	202
	Crescent	873	1455	FTI	402	PTI	137	1141
	Lake Shore Ltd	1217	1242	FTI	745	RTE	175	339
	Pennsylvanian	782	877	FTI	367	RTE	261	249
	Pere Marquette	2430	1643	FTI	1580	DCS	337	39
	Piedmont	723	871	PTI	259	FTI	162	173
	Richmond / Newport News / Norfolk	753	885	FTI	317	DCS	203	81
	Roanoke	607	767	FTI	241	PTI	179	216
	Silver Star	393	508	DCS	188	DSR	120	28
		Wolverine	1746	2144	FTI	993	DCS	268
UP	California Zephyr	1046	1377	FTI	491	PTI	179	1381
	Capitol Corridor	562	679	PTI	228	DCS	110	171
	Cascades	1602	1536	FTI	650	PTI	396	125
	Coast Starlight	1253	1473	DCS	378	FTI	319	1162
	Lincoln Service	830	898	FTI	284	PTI	271	231
	Lincoln / Missouri	587	996	PTI	176	FTI	159	502
	Missouri	586	968	FTI	228	PTI	152	271
	Pacific Surfliner	1479	1965	DCS	646	PTI	625	174
	San Joaquins	1044	1308	PTI	410	FTI	282	88
	Sunset Ltd	1069	1484	FTI	487	DSR	201	1784
		Texas Eagle	1178	1497	FTI	696	DSR	177

Minutes of Delay per 10K Train Miles by Host for January 2024

Host	Service	Total Host Responsible Delays		Largest Two Delay Categories - Current Month				Route Miles
		Current Month	Most Recent 12 Months	#1		#2		
Target		900	900					
Amtrak	Adirondack	368	456	PTI	152	DCS	123	100
	Blue Water	171	482	DCS	61	PTI	59	99
	Ethan Allen Express	250	277	DCS	113	PTI	62	100
	Maple Leaf	343	343	DCS	143	RTE	68	109
	New York - Albany	212	240	PTI	80	DCS	58	81
	New York - Niagara Falls	323	391	PTI	143	DCS	71	109
	Wolverine	388	704	PTI	236	DCS	95	99
BBrRR	Cardinal	1478	1480	FTI	719	PTI	419	132
N-Canada	Adirondack	7288	7101	DSR	5176	RTE	871	49
Fla DOT	Silver Meteor	1119	883	CTI	635	DSR	245	68
	Silver Star	1043	947	CTI	725	DSR	185	68
FR	Auto Train	7570	4779	DSR	5670	CTI	1197	16
	Silver Meteor	3644	3396	DSR	1358	DCS	900	61
	Silver Star	2765	2465	DCS	1216	DSR	1097	61
MADOT	Springfield Shuttles	757	873	DSR	591	FTI	97	36
	Vermonter	771	1230	DSR	737	DCS	24	50
MBTA	Downeaster	885	1204	DCS	312	CTI	296	38
Metra	Empire Builder	2388	2579	CTI	1846	DSR	264	29
	Hiawatha	2392	2315	DSR	1133	CTI	920	29
MIDOT	Blue Water	771	539	PTI	528	DCS	162	22
	Wolverine	788	658	PTI	415	DCS	248	134
MNRR	Acela	1637	1779	DSR	1050	CTI	446	56
	Adirondack	929	1656	CTI	636	RTE	116	64
	Ethan Allen Express	552	1280	CTI	347	DSR	94	64
	Lake Shore Ltd	625	1414	CTI	455	DSR	57	64
	Maple Leaf	548	1170	CTI	360	RTE	149	64
	New York - Albany	755	1437	CTI	468	RTE	141	64
	New York - Niagara Falls	1310	1915	CTI	953	RTE	153	64
	Richmond / Newport News / Norfolk	1705	2023	DSR	932	CTI	548	56
Vermonter	2503	2939	DSR	1800	CTI	386	56	
NECR	Vermonter	863	1830	DSR	794	DCS	43	192
NMDOT	Southwest Chief	2704	2395	CTI	1639	DCS	492	80
SCRRA	Coast Starlight	1612	1612	PTI	853	DCS	331	48
	Pacific Surfliner	831	1136	PTI	312	CTI	249	95
SDNRR	Pacific Surfliner	733	963	CTI	316	PTI	216	60
Sunder	Cascades	1110	749	PTI	612	CTI	399	20
	Coast Starlight	2313	1869	PTI	1625	CTI	641	20
TRE	Texas Eagle	891	1099	CTI	362	RTE	215	33
VTR	Ethan Allen Express	276	424	DMW	170	DSR	76	24

The numbers included in this document are preliminary and are for informational purposes only.

Excludes hosts with fewer than 15 route miles.

Delays on the Amtrak-owned portion of the Northeast Corridor are shown in a separate report, with tighter delay standards.

Northeast Regional: Roanoke includes all trains between Roanoke and points on the NEC; Richmond / Newport News / Norfolk includes all trains between these locations and points on the NEC.

Minutes of Delay per 10K Train Miles by Service for January 2024

Service		Host	Total Host Responsible Delays		Largest Two Delay Categories - Current Month				Route Miles
			Current	Most	#1	#2			
Target			900	900					
Acela									
Acela		MNRR	1637	1779	DSR	1050	CTI	446	56
All Other NEC Corridor Routes									
Northeast Regional	Richmond / Newport News / Norfolk	CSX	1336	1334	FTI	369	PTI	269	189
		NS	753	885	FTI	317	DCS	203	81
		MNRR	1705	2023	DSR	932	CTI	548	56
	Roanoke	NS	607	767	FTI	241	PTI	179	216
	Springfield Shuttles	MADOT	757	873	DSR	591	FTI	97	36
Non-NEC Corridor Routes									
Capitol Corridor		UP	562	679	PTI	228	DCS	110	171
Carolinian		CSX	1734	1459	FTI	507	PTI	386	295
		NS	640	772	PTI	375	DCS	89	202
Cascades		BNSF	1576	1263	DSR	441	FTI	398	317
		UP	1602	1536	FTI	650	PTI	396	125
		Sounder	1110	749	PTI	612	CTI	399	20
Downeaster		CSX	659	661	PTI	308	DCS	248	107
		MBTA	885	1204	DCS	312	CTI	296	38
Empire	Adirondack	CPKC	730	883	PTI	567	FTI	54	178
		Amtrak	368	456	PTI	152	DCS	123	100
		CN-Canada	7288	7101	DSR	5176	RTE	871	49
		MNRR	929	1656	CTI	636	RTE	116	64
	Ethan Allen Express	CPKC	1795	1657	PTI	1583	DCS	126	60
		Amtrak	250	277	DCS	113	PTI	62	100
		MNRR	552	1280	CTI	347	DSR	94	64
		VTR	276	424	DMW	170	DSR	76	24
	Maple Leaf	CSX	648	687	FTI	382	RTE	95	298
		Amtrak	343	343	DCS	143	RTE	68	109
		MNRR	548	1170	CTI	360	RTE	149	64
	New York - Albany	Amtrak	212	240	PTI	80	DCS	58	81
		MNRR	755	1437	CTI	468	RTE	141	64
	New York - Niagara Falls	CSX	585	589	FTI	358	RTE	123	296
		Amtrak	323	391	PTI	143	DCS	71	109
		MNRR	1310	1915	CTI	953	RTE	153	64
Heartland Flyer		BNSF	1454	1708	DSR	929	FTI	466	236
Hiawatha		CPKC	112	290	FTI	44	RTE	28	53
		Metra	2392	2315	DSR	1133	CTI	920	29
Illinois	Carl Sandburg / Illinois Zephyr	BNSF	872	783	FTI	358	DSR	222	257
	Illini / Saluki	CN-IC	626	793	FTI	247	DSR	151	304
	Lincoln Service	CN-IC	2038	1763	FTI	1007	DCS	626	35
		UP	830	898	FTI	284	PTI	271	231
Lincoln / Missouri		CN-IC	2915	2497	FTI	1531	DCS	544	35
		UP	587	996	PTI	176	FTI	159	502
Michigan	Blue Water	CN-IC	576	653	FTI	418	RTE	68	159
		NS	2080	2235	FTI	1308	DCS	454	39
		Amtrak	171	482	DCS	61	PTI	59	99
		MIDOT	771	539	PTI	528	DCS	162	22
	Pere Marquette	CSX	177	216	DCS	124	FTI	33	135
		NS	2430	1643	FTI	1580	DCS	337	39
	Wolverine	CN-IC	863	1462	DSR	456	DMW	151	27
		NS	1746	2144	FTI	993	DCS	268	39
		Amtrak	388	704	PTI	236	DCS	95	99
		MIDOT	788	658	PTI	415	DCS	248	134
Missouri		UP	586	968	FTI	228	PTI	152	271
Pacific Surfliner		BNSF	1071	1139	DCS	339	FTI	269	22
		UP	1479	1965	DCS	646	PTI	625	174
		SCRRA	831	1136	PTI	312	CTI	249	95
		SDNRR	733	963	CTI	316	PTI	216	60
Pennsylvanian		NS	782	877	FTI	367	RTE	261	249
Piedmont		NS	723	871	PTI	259	FTI	162	173
San Joaquins		BNSF	898	1322	PTI	387	FTI	293	284
		UP	1044	1308	PTI	410	FTI	282	88
Vermont		MADOT	771	1230	DSR	737	DCS	24	50
		MNRR	2503	2939	DSR	1800	CTI	386	56
		NECR	863	1830	DSR	794	DCS	43	192

Minutes of Delay per 10K Train Miles by Service for January 2024

Service	Host	Total Host Responsible Delays		Largest Two Delay Categories - Current Month				Route Miles
		Current	Most	#1		#2		
Target		900	900					
Long-Distance Routes								
Auto Train	CSX	1281	1169	FTI	424	DSR	345	898
	FR	7570	4779	DSR	5670	CTI	1197	16
California Zephyr	BNSF	931	921	FTI	404	DSR	227	1027
	UP	1046	1377	FTI	491	PTI	179	1381
Capitol Ltd	CSX	604	722	FTI	284	RTE	154	307
	NS	1247	1277	FTI	749	RTE	179	481
Cardinal	CSX	747	782	FTI	345	DCS	197	703
	NS	1603	1418	PTI	620	DMW	487	79
	BBrRR	1478	1480	FTI	719	PTI	419	132
City Of New Orleans	CN-IC	723	868	FTI	277	PTI	158	930
Coast Starlight	BNSF	1788	998	FTI	455	PTI	432	158
	UP	1253	1473	DCS	378	FTI	319	1162
	SCRRA	1612	1612	PTI	853	DCS	331	48
	Sounder	2313	1869	PTI	1625	CTI	641	20
Crescent	NS	873	1455	FTI	402	PTI	137	1141
Empire Builder	BNSF	984	860	FTI	647	DSR	137	2147
	CPKC	369	783	FTI	153	DSR	143	384
	Metra	2388	2579	CTI	1846	DSR	264	29
Lake Shore Ltd	CSX	717	719	FTI	344	RTE	146	741
	NS	1217	1242	FTI	745	RTE	175	339
	MNRR	625	1414	CTI	455	DSR	57	64
Palmetto	CSX	1007	1029	FTI	367	PTI	241	659
Silver Meteor	CSX	802	869	FTI	272	PTI	205	1152
	Fla DOT	1119	883	CTI	635	DSR	245	68
	FR	3644	3396	DSR	1358	DCS	900	61
Silver Star	CSX	921	961	FTI	259	DSR	220	1209
	NS	393	508	DCS	188	DSR	120	28
	Fla DOT	1043	947	CTI	725	DSR	185	68
	FR	2765	2465	DCS	1216	DSR	1097	61
Southwest Chief	BNSF	676	779	FTI	220	DSR	199	2206
	NMDOT	2704	2395	CTI	1639	DCS	492	80
Sunset Ltd	BNSF	1199	1220	DSR	525	FTI	403	190
	UP	1069	1484	FTI	487	DSR	201	1784
Texas Eagle	BNSF	1130	1349	DSR	739	FTI	330	116
	CN-IC	1418	1990	FTI	1096	DSR	121	35
	UP	1178	1497	FTI	696	DSR	177	1073
	TRE	891	1099	CTI	362	RTE	215	33

The numbers included in this document are preliminary and are for informational purposes only.

Excludes hosts with fewer than 15 route miles.

Delays on the Amtrak-owned portion of the Northeast Corridor are shown in a separate report, with tighter delay standards.

Northeast Regional: Roanoke includes all trains between Roanoke and points on the NEC; Richmond / Newport News /

Norfolk includes all trains between these locations and points on the NEC.

Host Railroad Report - All-Stations and Customer OTP for January 2024

Service	All-Stations OTP		Customer OTP		Avg Mins Late per Late Rider**	
	Current Month	Most Recent 12 Months	Current Month	Most Recent 12 Months	Current Month	Most Recent 12 Months
Amtrak System	74.3%	75.3%	77.0%	75.0%	58	55
NEC Corridor Routes	81.3%	83.6%	79.7%	79.7%	45	43
Minimum Standard			80.0%	80.0%		
Acela*	75.6%	83.2%	75.1%	80.1%	46	34
Keystone	86.9%	94.3%	85.1%	93.3%	37	39
Northeast Regional	80.9%	79.8%	79.9%	76.5%	47	46
On Spine Northeast Regional	84.0%	84.8%	82.3%	81.6%	43	43
Richmond / Newport News / Norfolk	78.5%	73.6%	77.4%	71.2%	50	46
Roanoke	75.6%	73.9%	74.3%	69.5%	53	54
Springfield Shuttles	83.3%	86.2%	86.3%	85.1%	31	40
Non-NEC Corridor Routes	77.0%	78.8%	78.9%	75.2%	54	45
Minimum Standard			80.0%	80.0%		
Capitol Corridor	92.2%	90.2%	88.6%	86.3%	31	37
Carolinian	66.9%	61.4%	68.9%	60.7%	50	57
Cascades	45.7%	67.1%	44.8%	62.4%	63	43
Downeaster	90.3%	88.4%	85.7%	80.9%	38	38
Empire	81.3%	77.4%	82.5%	77.5%	60	42
Adirondack	76.1%	63.7%	75.1%	69.1%	40	42
Berkshire Flyer	-	51.5%	-	52.9%	-	62
Ethan Allen Express	78.9%	76.1%	77.4%	72.3%	46	42
Maple Leaf	76.7%	72.2%	75.2%	71.7%	38	49
New York - Albany	91.4%	86.7%	91.4%	84.3%	65	37
New York - Niagara Falls	76.2%	77.6%	75.1%	73.4%	79	43
Heartland Flyer	82.3%	68.8%	84.0%	65.4%	55	45
Hiawatha	73.0%	89.0%	80.9%	86.1%	49	35
Illinois	59.0%	79.6%	74.9%	78.7%	73	53
Carl Sandburg / Illinois Zephyr	56.0%	80.2%	67.6%	79.2%	77	45
Illini / Saluki	71.2%	79.6%	80.5%	79.9%	105	62
Lincoln Service	51.5%	79.1%	72.4%	77.7%	50	49
Lincoln / Missouri	66.0%	63.2%	67.4%	63.0%	73	55
Michigan	61.8%	74.1%	69.6%	70.0%	63	47
Blue Water	67.6%	75.0%	66.5%	65.4%	84	45
Pere Marquette	77.0%	89.9%	81.7%	86.8%	33	46
Wolverine	58.1%	71.7%	68.3%	68.4%	58	49
Missouri	66.3%	75.8%	97.1%	74.7%	21	54
Pacific Surfliner	79.5%	80.5%	85.7%	79.7%	43	45
Pennsylvanian	69.3%	76.7%	61.8%	76.5%	42	42
Piedmont	85.9%	78.5%	80.7%	67.8%	46	42
San Joaquins	83.0%	72.0%	82.9%	66.9%	44	43
Vermonteer	85.7%	66.1%	84.8%	70.3%	55	51
Long-Distance Routes	54.5%	52.2%	60.9%	56.2%	89	91
Minimum Standard			80.0%	80.0%		
Auto Train	74.2%	80.8%	49.7%	67.5%	41	67
California Zephyr	38.9%	31.6%	48.7%	34.4%	129	138
Capitol Ltd	63.9%	63.2%	63.9%	68.4%	78	61
Cardinal	59.1%	56.3%	55.4%	57.3%	63	74
City Of New Orleans	58.8%	63.4%	67.9%	74.5%	92	85
Coast Starlight	40.2%	53.1%	46.0%	57.2%	85	84
Crescent	66.5%	53.7%	80.7%	57.0%	50	80
Empire Builder	33.7%	48.3%	51.7%	51.7%	163	119
Lake Shore Ltd	65.1%	68.8%	69.4%	67.6%	118	67
Palmetto	73.8%	66.1%	74.8%	67.2%	47	55
Silver Meteor	64.8%	56.9%	68.3%	53.6%	56	72
Silver Star	58.2%	50.6%	56.7%	49.5%	56	74
Southwest Chief	45.4%	36.8%	46.7%	34.5%	115	116
Sunset Ltd	59.8%	39.8%	70.2%	45.3%	75	103
Texas Eagle	61.6%	55.0%	70.6%	59.9%	94	91

The numbers included in this document are preliminary and are for informational purposes only.

Northeast Regional: Roanoke includes all trains between Roanoke and points on the NEC; Richmond/Newport News/Norfolk includes all trains between these locations and points on the NEC.

* Acela on-time performance target is 90.0%

** Excludes on-time Customers



Host Railroad Responsible Delays

Code	Code Description	Explanation
CTI	Commuter Train Interference	Delays for meeting or following commuter trains
DCS	Signal Delays	Signal failure or All Other signal delays, wayside defect-detector false-alarms, defective road crossing protection, efficiency tests, drawbridge stuck open
DMW	Maintenance of Way	Maintenance of Way delays including holds for track repairs or MW foreman to clear
DSR	Slow Order Delays	Temporary slow orders, except heat or cold orders
DTR	Detour	Delays from detours
FTI	Freight Train Interference	Delays from freight trains
PTI	Passenger Train Interference	Delays for meeting or following All Other passenger trains
RTE	Routing	Routing-dispatching delays including diversions, late track bulletins, etc.

Amtrak Responsible Delays

Code	Code Description	Explanation
ADA	Passenger Related	All delays related to disabled passengers, wheel chair lifts, guide dogs, etc.
CAR	Car Failure	Mechanical failure on all types of cars
CCR	Cab Car Failure	Mechanical failure on Cab Cars
CON	Hold for Connection	Holding for connections from All Other trains or buses.
ENG	Locomotive Failure	Mechanical failure on engines.
HLD	Passenger Related	All delays related to passengers, checked-baggage, large groups, etc.
INJ	Injury Delay	Delay due to injured passengers or employees.
ITI	Initial Terminal Delay	Delay at initial terminal due to late arriving inbound trains causing late release of equipment.
OTH	Miscellaneous Delays	Lost-on-run, heavy trains, unable to make normal speed, etc.
SVS	Servicing	All switching and servicing delays
SYS	Crew & System	Delays related to crews including lateness, lone-engineer delays

Third-Party Delays

Code	Code Description	Explanation
CUI	Customs	U.S. and Canadian customs delays; Immigration-related delays
DBS	Debris	Debris strikes
MBO	Drawbridge Openings	Movable bridge openings for marine traffic where no bridge failure is involved
NOD	Unused Recovery Time	Wait for departure time
POL	Police-Related	Police/fire department holds on right-of-way or on-board trains
TRS	Trespassers	Trespasser incidents including road crossing accidents, trespasser / animal strikes, vehicle stuck on track ahead, bridge strikes
WTR	Weather-Related	All weather-related delays including floods/washouts, earthquake-related delays, heat or cold orders, slippery rail due to leaves

*These delay codes are applicable to Off-NEC routes only.