



Host Railroad Report

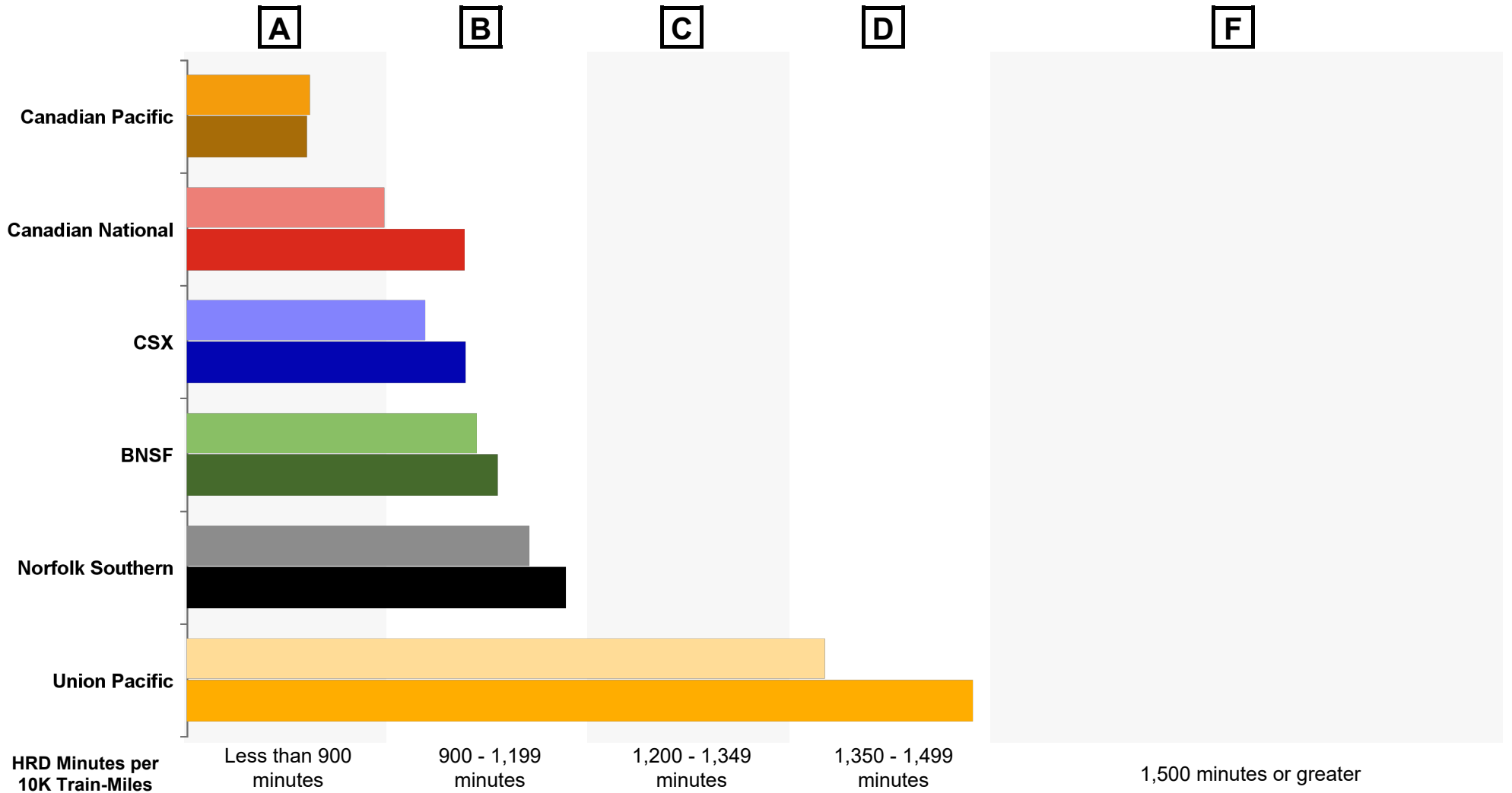
Amtrak Train Performance on Host Railroads

Data through June 2023

Host Railroad Report Card Update

Current Month and 1 Year Snapshot

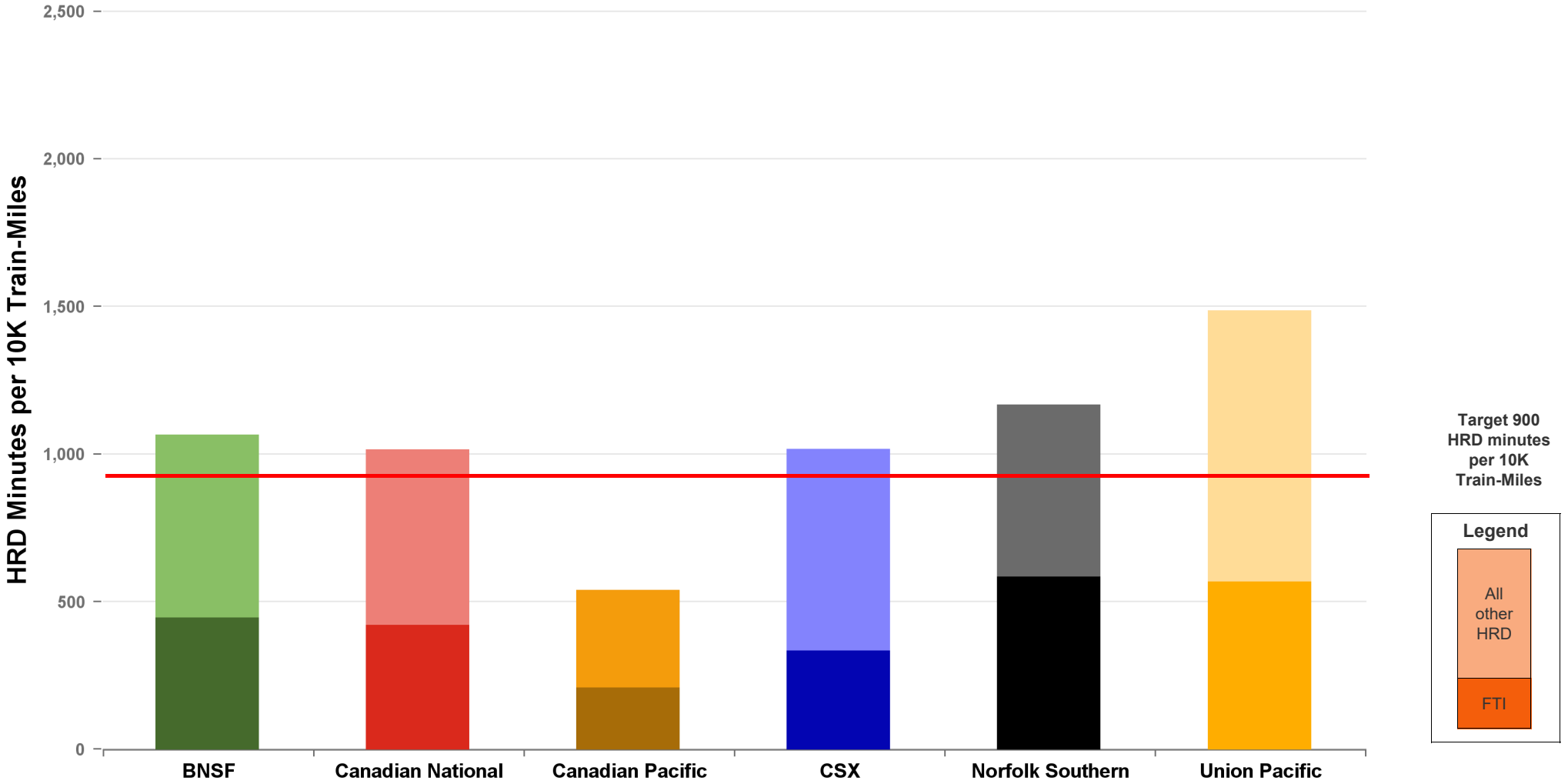
A monthly update of the Host Railroad Report Card, which grades the six major host railroads based on host responsible delay (HRD) minutes per 10,000 train-miles for the current month (lighter shade) and the most recent 12 months.



Total Host-Responsible Delays

1 Year Snapshot

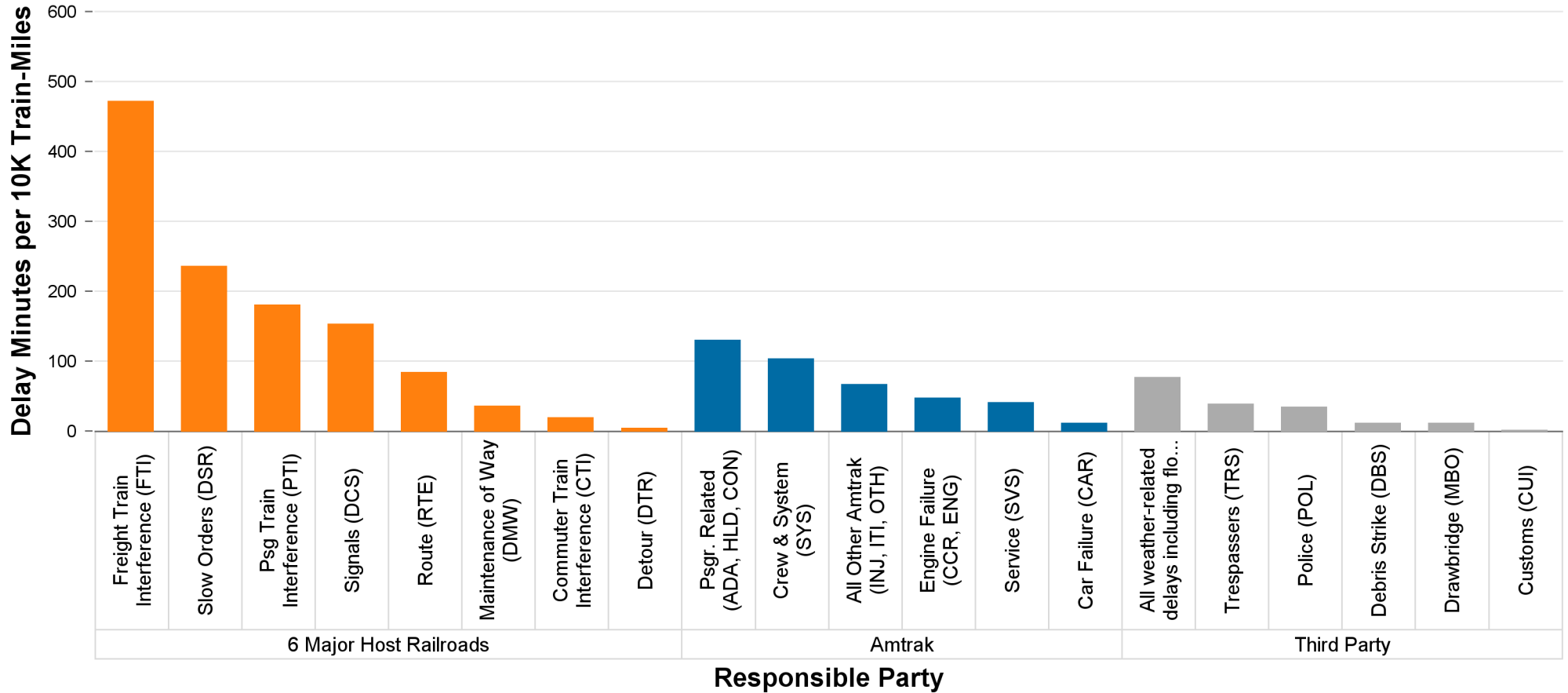
Total host-responsible delay (HRD) minutes per 10,000 train-miles incurred by Amtrak trains on the six major host railroads, with delays attributable to freight train interference (FTI) shaded.



Delays to Amtrak Trains by Responsible Party

1 Year Snapshot

Delay minutes per 10,000 train-miles on the six major host railroads categorized by delay type and responsible party.

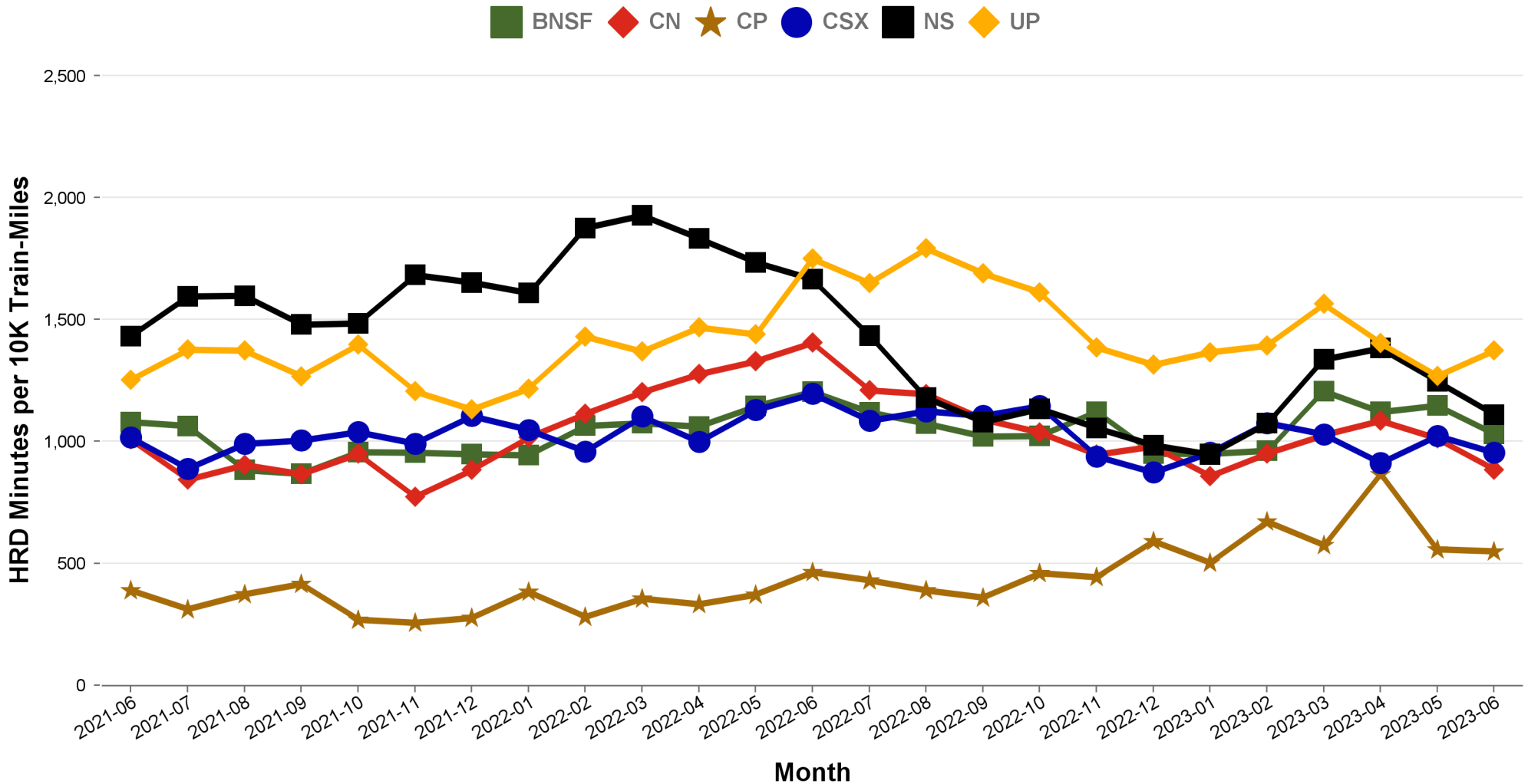


Responsible Party	6 Major Host Railroads	Amtrak	Third Party
Delay Minutes per 10K Train-Miles	1161	394	165
Percentage of Total Delays	67.5%	22.9%	9.6%

Total Host-Responsible Delays

2 Year Snapshot

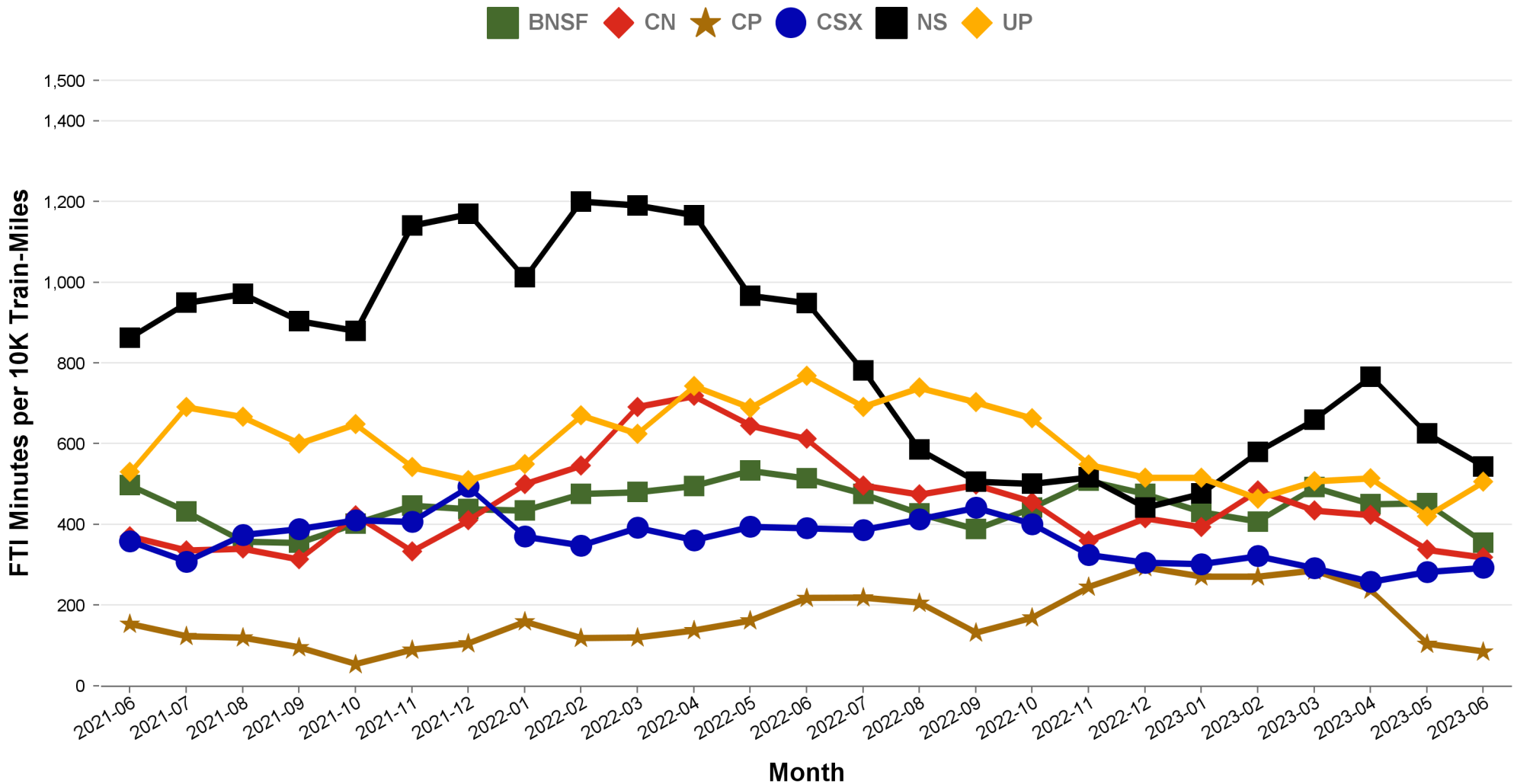
Total host-responsible delay (HRD) minutes per 10,000 train-miles incurred by Amtrak trains on each of the six major host railroads for the most recent two years.



Freight Train Interference Delays

2 Year Snapshot

Total delay minutes per 10,000 train-miles attributable to freight train interference (FTI) incurred by Amtrak trains on each of the six major host railroads for the most recent two years.



Minutes of Delay per 10K Train Miles by Host for June 2023

Host	Service	Total Host Responsible Delays		Largest Two Delay Categories - Current Month				Route Miles
		Current Month	Most Recent 12 Months	#1		#2		
Target		900	900					
BNSF	California Zephyr	1098	1033	DSR	426	FTI	359	1027
	Carl Sandburg / Illinois Zephyr	768	823	FTI	323	CTI	99	257
	Cascades	924	1337	FTI	244	DSR	238	317
	Coast Starlight	893	1197	FTI	260	RTE	232	158
	Empire Builder	828	924	FTI	374	DSR	285	2147
	Heartland Flyer	1232	2092	DSR	978	DCS	94	236
	Pacific Surfliner	1752	1246	DSR	497	DCS	401	22
	San Joaquins	1620	1296	FTI	531	PTI	506	284
	Southwest Chief	790	834	FTI	296	DSR	194	2206
	Sunset Ltd	1014	1337	DSR	450	FTI	187	190
Texas Eagle	889	1442	DSR	535	FTI	334	116	
CN	Adirondack	6230	6751	DSR	3811	FTI	1152	49
	Blue Water	754	591	FTI	397	DSR	298	159
	City Of New Orleans	687	943	DSR	228	FTI	188	930
	Illini / Saluki	819	785	DSR	306	FTI	244	304
	Lincoln Service	1817	1800	FTI	1102	DSR	390	35
	Lincoln / Missouri	2577	2579	FTI	1456	DSR	632	35
	Texas Eagle	2087	1926	FTI	1260	DSR	237	35
	Wolverine	1218	1650	DCS	412	FTI	298	27
CP	Adirondack	597	827	PTI	364	DSR	154	178
	Empire Builder	602	747	FTI	175	DSR	157	384
	Ethan Allen Express	2040	948	PTI	1503	DSR	313	60
	Hiawatha	234	227	DCS	48	DSR	46	53
CSX	Auto Train	1151	1272	DSR	416	FTI	297	898
	Capitol Ltd	867	699	FTI	309	RTE	257	307
	Cardinal	716	908	FTI	253	DSR	242	703
	Carolinian	1105	1324	DSR	270	PTI	232	295
	Lake Shore Ltd	788	765	FTI	347	DSR	147	741
	Maple Leaf	837	791	FTI	556	RTE	109	298
	New York - Niagara Falls	553	699	FTI	286	RTE	107	296
	Palmetto	1078	1084	FTI	403	PTI	254	659
	Pere Marquette	87	188	DSR	33	FTI	33	135
	Richmond / Newport News / Norfolk	1211	1318	DSR	247	FTI	225	189
	Silver Meteor	966	925	PTI	276	FTI	268	1152
	Silver Star	923	1006	DSR	280	FTI	258	1209
NS	Blue Water	1939	2594	FTI	1236	RTE	216	39
	Capitol Ltd	1013	1421	FTI	664	RTE	139	481
	Cardinal	1623	1793	PTI	930	FTI	275	79
	Carolinian	968	766	DSR	351	DCS	230	202
	Crescent	1526	1440	FTI	815	DCS	225	1141
	Lake Shore Ltd	1083	1203	FTI	655	PTI	186	339
	Pennsylvanian	673	870	FTI	306	RTE	215	249
	Pere Marquette	1375	1642	FTI	458	DSR	261	39
	Piedmont	1012	771	FTI	382	DSR	285	173
	Richmond / Newport News / Norfolk	635	758	FTI	165	DCS	164	81
	Roanoke	590	736	FTI	257	PTI	176	216
	Silver Star	459	730	DCS	324	DMW	47	28
	Wolverine	1706	2389	FTI	760	DCS	287	39
UP	California Zephyr	1419	1591	DSR	462	FTI	433	1381
	Capitol Corridor	650	751	PTI	278	DCS	106	171
	Cascades	1598	1732	DSR	635	FTI	434	125
	Coast Starlight	1576	1593	DSR	445	FTI	397	1162
	Lincoln Service	753	987	FTI	302	PTI	232	231
	Lincoln / Missouri	1134	1379	FTI	440	PTI	291	502
	Missouri	1332	1369	FTI	769	PTI	229	271
	Pacific Surfliner	2020	2401	DCS	1005	PTI	607	174
	San Joaquins	1678	1368	PTI	565	FTI	451	88
	Sunset Ltd	1703	1832	FTI	1086	DSR	275	1784
	Texas Eagle	1918	1826	FTI	1292	DSR	238	1073

Minutes of Delay per 10K Train Miles by Host for June 2023

Host	Service	Total Host Responsible Delays		Largest Two Delay Categories - Current Month				Route Miles
		Current Month	Most Recent 12 Months	#1		#2		
Target		900	900					
Amtrak	Adirondack	453	384	PTI	163	DCS	104	100
	Blue Water	890	357	DSR	767	DCS	67	99
	Ethan Allen Express	387	360	PTI	188	DSR	72	100
	Maple Leaf	460	417	DCS	159	PTI	112	109
	New York - Albany	353	213	PTI	119	RTE	81	81
	New York - Niagara Falls	473	400	PTI	163	DCS	121	109
	Wolverine	1315	543	DSR	872	PTI	254	99
BBrRR	Cardinal	1292	1409	FTI	463	PTI	439	132
Fla DOT	Silver Meteor	591	769	CTI	225	DCS	199	68
	Silver Star	654	807	CTI	402	DCS	127	68
FR	Auto Train	2778	5790	DSR	2244	CTI	533	16
	Silver Meteor	3790	3843	DSR	1710	CTI	1013	61
	Silver Star	2181	2675	DSR	1415	CTI	457	61
MADOT	Springfield Shuttles	1667	806	DCS	1069	FTI	368	36
	Vermonter	584	440	DCS	320	DSR	151	50
MBTA	Downeaster	1128	1160	DCS	520	CTI	423	38
Metra	Empire Builder	2854	2242	CTI	1866	PTI	311	29
	Hiawatha	2599	1979	CTI	1311	DSR	679	29
MIDOT	Blue Water	885	469	DCS	455	PTI	311	22
	Wolverine	491	812	PTI	383	DCS	35	134
MNRR	Adirondack	2624	1560	CTI	1340	RTE	542	64
	Ethan Allen Express	1554	1119	CTI	754	DSR	400	64
	Lake Shore Ltd	2033	1351	CTI	1177	DSR	356	64
	Maple Leaf	1646	1032	CTI	869	DSR	317	64
	New York - Albany	1837	1232	CTI	1057	RTE	379	64
	New York - Niagara Falls	1876	1722	CTI	1082	RTE	338	64
	Richmond / Newport News / Norfolk	2306	1920	DSR	1311	CTI	690	56
	Vermonter	3563	2897	DSR	2122	CTI	899	56
NECR	Vermonter	1441	1358	DSR	1416	DCS	26	192
NMDOT	Southwest Chief	2652	2179	CTI	1420	DCS	421	80
PanAm	Downeaster	734	767	PTI	351	DCS	289	107
SCRRA	Coast Starlight	1836	1359	PTI	963	CTI	409	48
	Pacific Surfliner	1016	1141	CTI	302	PTI	281	95
SDNRR	Pacific Surfliner	1448	1043	CTI	463	FTI	454	60
Sunder	Cascades	614	851	PTI	380	CTI	91	20
	Coast Starlight	1431	2124	PTI	879	CTI	250	20
TRE	Texas Eagle	1562	1004	RTE	485	PTI	469	33
VTR	Ethan Allen Express	163	661	DSR	66	DTR	38	24

The numbers included in this document are preliminary and are for informational purposes only.

Excludes hosts with fewer than 15 route miles.

Delays on the Amtrak-owned portion of the Northeast Corridor are shown in a separate report, with tighter delay standards.

Northeast Regional: Roanoke includes all trains between Roanoke and points on the NEC; Richmond / Newport News / Norfolk includes all trains between these locations and points on the NEC.

Minutes of Delay per 10K Train Miles by Service for June 2023

Service	Host	Total Host Responsible Delays		Largest Two Delay Categories - Current Month				Route Miles	
		Current Month	Most Recent 12 Months	#1		#2			
Target		900	900						
All Other NEC Corridor Routes									
Northeast Regional	Richmond / Newport News / Norfolk	CSX	1211	1318	DSR	247	FTI	225	189
		NS	635	758	FTI	165	DCS	164	81
		MNRR	2306	1920	DSR	1311	CTI	690	56
	Roanoke	NS	590	736	FTI	257	PTI	176	216
	Springfield Shuttles	MADOT	1667	806	DCS	1069	FTI	368	36
Non-NEC Corridor Routes									
Capitol Corridor		UP	650	751	PTI	278	DCS	106	171
Carolinian		CSX	1105	1324	DSR	270	PTI	232	295
		NS	968	766	DSR	351	DCS	230	202
Cascades		BNSF	924	1337	FTI	244	DSR	238	317
		UP	1598	1732	DSR	635	FTI	434	125
		Sounder	614	851	PTI	380	CTI	91	20
Downeaster		MBTA	1128	1160	DCS	520	CTI	423	38
		PanAm	734	767	PTI	351	DCS	289	107
Empire	Adirondack	CN	6230	6751	DSR	3811	FTI	1152	49
		CP	597	827	PTI	364	DSR	154	178
		Amtrak	453	384	PTI	163	DCS	104	100
		MNRR	2624	1560	CTI	1340	RTE	542	64
	Ethan Allen Express	CP	2040	948	PTI	1503	DSR	313	60
		Amtrak	387	360	PTI	188	DSR	72	100
		MNRR	1554	1119	CTI	754	DSR	400	64
		VTR	163	661	DSR	66	DTR	38	24
	Maple Leaf	CSX	837	791	FTI	556	RTE	109	298
		Amtrak	460	417	DCS	159	PTI	112	109
		MNRR	1646	1032	CTI	869	DSR	317	64
	New York - Albany	Amtrak	353	213	PTI	119	RTE	81	81
		MNRR	1837	1232	CTI	1057	RTE	379	64
	New York - Niagara Falls	CSX	553	699	FTI	286	RTE	107	296
		Amtrak	473	400	PTI	163	DCS	121	109
		MNRR	1876	1722	CTI	1082	RTE	338	64
Heartland Flyer		BNSF	1232	2092	DSR	978	DCS	94	236
Hiawatha		CP	234	227	DCS	48	DSR	46	53
		Metra	2599	1979	CTI	1311	DSR	679	29
Illinois	Carl Sandburg / Illinois Zephyr	BNSF	768	823	FTI	323	CTI	99	257
	Illini / Saluki	CN	819	785	DSR	306	FTI	244	304
	Lincoln Service	CN	1817	1800	FTI	1102	DSR	390	35
		UP	753	987	FTI	302	PTI	232	231
Lincoln / Missouri		CN	2577	2579	FTI	1456	DSR	632	35
		UP	1134	1379	FTI	440	PTI	291	502
Michigan	Blue Water	CN	754	591	FTI	397	DSR	298	159
		NS	1939	2594	FTI	1236	RTE	216	39
		Amtrak	890	357	DSR	767	DCS	67	99
		MIDOT	885	469	DCS	455	PTI	311	22
	Pere Marquette	CSX	87	188	DSR	33	FTI	33	135
		NS	1375	1642	FTI	458	DSR	261	39
	Wolverine	CN	1218	1650	DCS	412	FTI	298	27
		NS	1706	2389	FTI	760	DCS	287	39
		Amtrak	1315	543	DSR	872	PTI	254	99
		MIDOT	491	812	PTI	383	DCS	35	134
Missouri		UP	1332	1369	FTI	769	PTI	229	271
Pacific Surfliner		BNSF	1752	1246	DSR	497	DCS	401	22
		UP	2020	2401	DCS	1005	PTI	607	174
		SCRRA	1016	1141	CTI	302	PTI	281	95
		SDNRR	1448	1043	CTI	463	FTI	454	60
Pennsylvanian		NS	673	870	FTI	306	RTE	215	249
Piedmont		NS	1012	771	FTI	382	DSR	285	173
San Joaquins		BNSF	1620	1296	FTI	531	PTI	506	284
		UP	1678	1368	PTI	565	FTI	451	88
Vermont		MADOT	584	440	DCS	320	DSR	151	50
		MNRR	3563	2897	DSR	2122	CTI	899	56
		NECR	1441	1358	DSR	1416	DCS	26	192

Minutes of Delay per 10K Train Miles by Service for June 2023

Service	Host	Total Host Responsible Delays		Largest Two Delay Categories - Current Month				Route Miles
		Current Month	Most Recent 12 Months	#1		#2		
Target		900	900					
Long-Distance Routes								
Auto Train	CSX	1151	1272	DSR	416	FTI	297	898
	FR	2778	5790	DSR	2244	CTI	533	16
California Zephyr	BNSF	1098	1033	DSR	426	FTI	359	1027
	UP	1419	1591	DSR	462	FTI	433	1381
Capitol Ltd	CSX	867	699	FTI	309	RTE	257	307
	NS	1013	1421	FTI	664	RTE	139	481
Cardinal	CSX	716	908	FTI	253	DSR	242	703
	NS	1623	1793	PTI	930	FTI	275	79
	BBrRR	1292	1409	FTI	463	PTI	439	132
City Of New Orleans	CN	687	943	DSR	228	FTI	188	930
Coast Starlight	BNSF	893	1197	FTI	260	RTE	232	158
	UP	1576	1593	DSR	445	FTI	397	1162
	SCRRA	1836	1359	PTI	963	CTI	409	48
	Sounder	1431	2124	PTI	879	CTI	250	20
Crescent	NS	1526	1440	FTI	815	DCS	225	1141
Empire Builder	BNSF	828	924	FTI	374	DSR	285	2147
	CP	602	747	FTI	175	DSR	157	384
	Metra	2854	2242	CTI	1866	PTI	311	29
Lake Shore Ltd	CSX	788	765	FTI	347	DSR	147	741
	NS	1083	1203	FTI	655	PTI	186	339
	MNRR	2033	1351	CTI	1177	DSR	356	64
Palmetto	CSX	1078	1084	FTI	403	PTI	254	659
Silver Meteor	CSX	966	925	PTI	276	FTI	268	1152
	Fla DOT	591	769	CTI	225	DCS	199	68
	FR	3790	3843	DSR	1710	CTI	1013	61
Silver Star	CSX	923	1006	DSR	280	FTI	258	1209
	NS	459	730	DCS	324	DMW	47	28
	Fla DOT	654	807	CTI	402	DCS	127	68
	FR	2181	2675	DSR	1415	CTI	457	61
Southwest Chief	BNSF	790	834	FTI	296	DSR	194	2206
	NMDOT	2652	2179	CTI	1420	DCS	421	80
Sunset Ltd	BNSF	1014	1337	DSR	450	FTI	187	190
	UP	1703	1832	FTI	1086	DSR	275	1784
Texas Eagle	BNSF	889	1442	DSR	535	FTI	334	116
	CN	2087	1926	FTI	1260	DSR	237	35
	UP	1918	1826	FTI	1292	DSR	238	1073
	TRE	1562	1004	RTE	485	PTI	469	33

The numbers included in this document are preliminary and are for informational purposes only.
 Excludes hosts with fewer than 15 route miles.
 Delays on the Amtrak-owned portion of the Northeast Corridor are shown in a separate report, with tighter delay standards.
 Northeast Regional: Roanoke includes all trains between Roanoke and points on the NEC; Richmond / Newport News / Norfolk includes all trains between these locations and points on the NEC.



Host Railroad Report - All-Stations and Customer OTP for June 2023

Service	All-Stations OTP		Customer OTP		Avg Mins Late per Late Rider**	
	Current Month	Most Recent 12 Months	Current Month	Most Recent 12 Months	Current Month	Most Recent 12 Months
Amtrak System	74.2%	74.6%	73.5%	74.4%	54	60
NEC Corridor Routes	84.2%	85.6%	79.9%	81.0%	39	42
Minimum Standard			80.0%	80.0%		
Acela*	83.9%	86.3%	79.5%	82.7%	30	32
Keystone	95.3%	95.4%	93.2%	94.5%	32	41
Northeast Regional	80.1%	81.6%	77.2%	77.5%	42	44
On Spine Northeast Regional	86.0%	85.7%	82.1%	82.3%	36	42
Richmond / Newport News / Norfolk	70.0%	76.3%	69.6%	72.8%	42	44
Roanoke	80.6%	76.9%	76.8%	72.1%	60	50
Springfield Shuttles	87.8%	88.9%	87.0%	87.9%	38	38
Non-NEC Corridor Routes	77.8%	78.1%	74.2%	74.8%	42	45
Minimum Standard			80.0%	80.0%		
Capitol Corridor	91.3%	88.4%	87.5%	83.9%	37	38
Carolinian	48.3%	63.6%	45.7%	62.1%	66	52
Cascades	74.9%	65.7%	68.4%	57.6%	32	44
Downeaster	88.2%	87.8%	78.1%	82.0%	28	35
Empire	75.1%	82.0%	74.3%	80.7%	37	43
Adirondack	58.4%	73.7%	59.5%	73.8%	40	48
Berkshire Flyer	61.1%	58.3%	69.9%	56.2%	28	38
Ethan Allen Express	72.4%	79.8%	67.7%	74.6%	33	42
Maple Leaf	69.2%	75.2%	68.3%	76.8%	60	50
New York - Albany	85.8%	90.6%	81.1%	86.7%	30	38
New York - Niagara Falls	77.7%	79.2%	72.6%	75.8%	32	43
Heartland Flyer	78.1%	61.6%	83.2%	53.6%	56	46
Hiawatha	92.7%	91.8%	89.0%	89.4%	37	38
Illinois	83.7%	73.9%	83.7%	71.8%	52	47
Carl Sandburg / Illinois Zephyr	81.2%	77.3%	79.1%	77.5%	61	40
Illini / Saluki	78.7%	68.6%	83.5%	68.4%	63	45
Lincoln Service	89.4%	74.8%	85.3%	72.4%	40	51
Lincoln / Missouri	61.4%	53.4%	62.5%	49.9%	59	61
Michigan	77.3%	72.1%	69.0%	70.4%	42	56
Blue Water	68.7%	73.9%	47.6%	68.5%	40	55
Pere Marquette	97.3%	89.6%	96.1%	86.2%	32	51
Wolverine	77.1%	69.2%	71.8%	67.7%	43	57
Missouri	70.2%	62.2%	63.0%	56.2%	58	51
Pacific Surfliner	74.4%	78.4%	82.0%	78.9%	44	41
Pennsylvanian	76.9%	76.0%	77.4%	77.2%	36	40
Piedmont	70.9%	77.5%	59.0%	67.1%	40	42
San Joaquins	63.6%	71.9%	55.3%	66.1%	41	43
Vermonteer	76.5%	74.3%	78.9%	76.2%	32	45
Long-Distance Routes	47.7%	47.6%	48.8%	50.1%	90	104
Minimum Standard			80.0%	80.0%		
Auto Train	82.5%	66.6%	67.5%	53.1%	56	112
California Zephyr	24.9%	23.6%	21.1%	23.6%	121	159
Capitol Ltd	72.5%	59.5%	73.2%	57.9%	43	73
Cardinal	69.0%	51.9%	66.9%	51.1%	47	72
City Of New Orleans	73.9%	61.4%	83.0%	71.8%	81	84
Coast Starlight	52.1%	48.5%	56.5%	51.0%	79	94
Crescent	46.6%	55.9%	46.2%	57.4%	76	77
Empire Builder	52.1%	43.1%	53.4%	46.5%	105	144
Lake Shore Ltd	61.8%	69.9%	61.6%	70.1%	47	60
Palmetto	48.7%	67.9%	48.0%	68.3%	57	53
Silver Meteor	44.7%	51.8%	40.4%	50.9%	71	66
Silver Star	44.2%	41.6%	39.3%	38.4%	59	89
Southwest Chief	26.3%	34.8%	20.2%	30.7%	138	124
Sunset Ltd	32.7%	22.7%	33.8%	28.4%	129	128
Texas Eagle	44.5%	46.7%	47.9%	49.8%	137	105

The numbers included in this document are preliminary and are for informational purposes only.

Northeast Regional: Roanoke includes all trains between Roanoke and points on the NEC; Richmond/Newport News/Norfolk includes all trains between these locations and points on the NEC.

* Acela on-time performance target is 90.0%

** Excludes on-time Customers



Host Railroad Responsible Delays

Code	Code Description	Explanation
CTI	Commuter Train Interference	Delays for meeting or following commuter trains
DCS	Signal Delays	Signal failure or All Other signal delays, wayside defect-detector false-alarms, defective road crossing protection, efficiency tests, drawbridge stuck open
DMW	Maintenance of Way	Maintenance of Way delays including holds for track repairs or MW foreman to clear
DSR	Slow Order Delays	Temporary slow orders, except heat or cold orders
DTR	Detour	Delays from detours
FTI	Freight Train Interference	Delays from freight trains
PTI	Passenger Train Interference	Delays for meeting or following All Other passenger trains
RTE	Routing	Routing-dispatching delays including diversions, late track bulletins, etc.

Amtrak Responsible Delays

Code	Code Description	Explanation
ADA	Passenger Related	All delays related to disabled passengers, wheel chair lifts, guide dogs, etc.
CAR	Car Failure	Mechanical failure on all types of cars
CCR	Cab Car Failure	Mechanical failure on Cab Cars
CON	Hold for Connection	Holding for connections from All Other trains or buses.
ENG	Locomotive Failure	Mechanical failure on engines.
HLD	Passenger Related	All delays related to passengers, checked-baggage, large groups, etc.
INJ	Injury Delay	Delay due to injured passengers or employees.
ITI	Initial Terminal Delay	Delay at initial terminal due to late arriving inbound trains causing late release of equipment.
OTH	Miscellaneous Delays	Lost-on-run, heavy trains, unable to make normal speed, etc.
SVS	Servicing	All switching and servicing delays
SYS	Crew & System	Delays related to crews including lateness, lone-engineer delays

Third-Party Delays

Code	Code Description	Explanation
CUI	Customs	U.S. and Canadian customs delays; Immigration-related delays
DBS	Debris	Debris strikes
MBO	Drawbridge Openings	Movable bridge openings for marine traffic where no bridge failure is involved
NOD	Unused Recovery Time	Wait for departure time
POL	Police-Related	Police/fire department holds on right-of-way or on-board trains
TRS	Trespassers	Trespasser incidents including road crossing accidents, trespasser / animal strikes, vehicle stuck on track ahead, bridge strikes
WTR	Weather-Related	All weather-related delays including floods/washouts, earthquake-related delays, heat or cold orders, slippery rail due to leaves

*These delay codes are applicable to Off-NEC routes only.