



Host Railroad Report

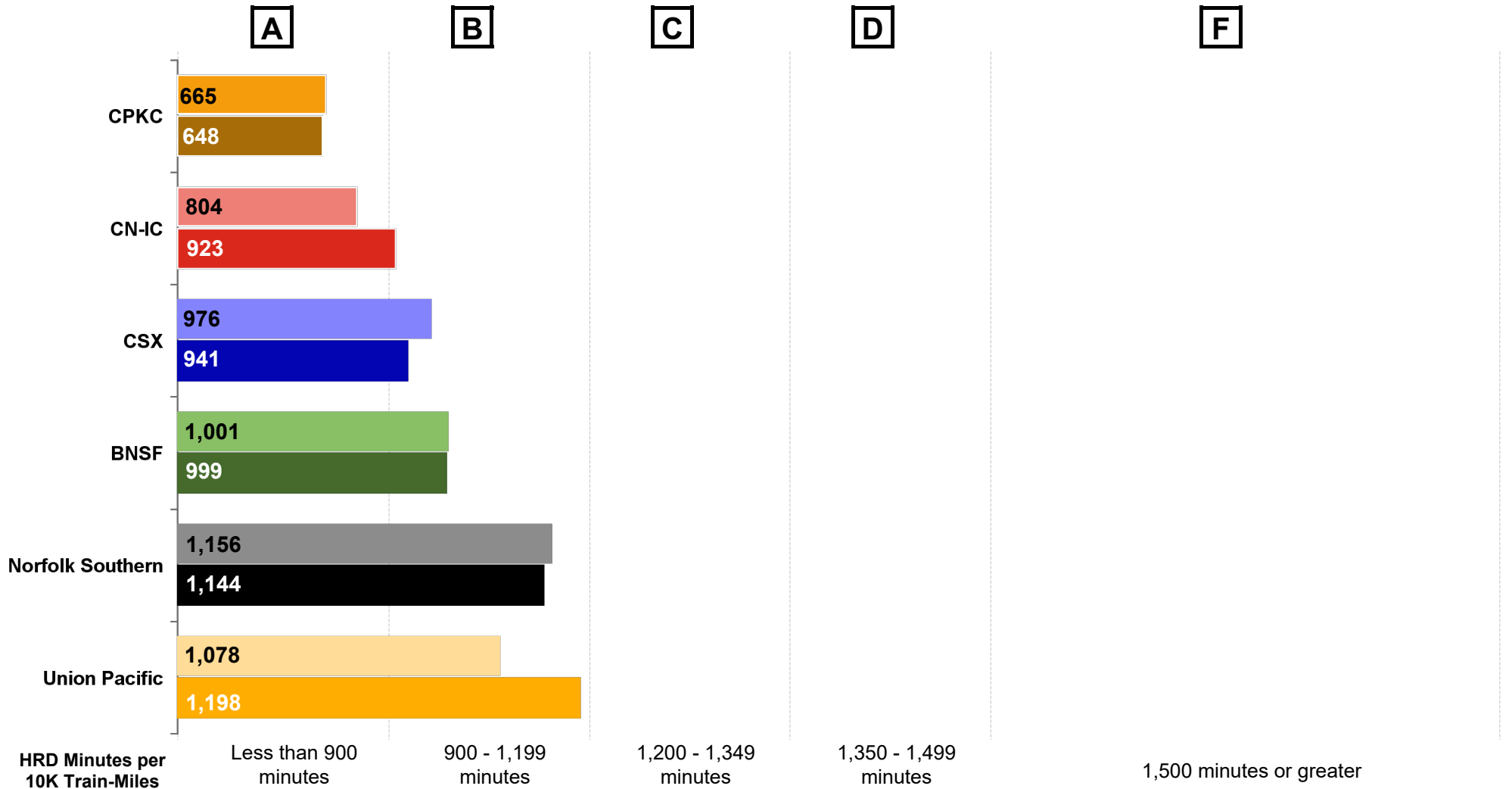
Amtrak Train Performance on Host Railroads

Data through March 2024

Host Railroad Report Card Update

Current Month and 1 Year Snapshot

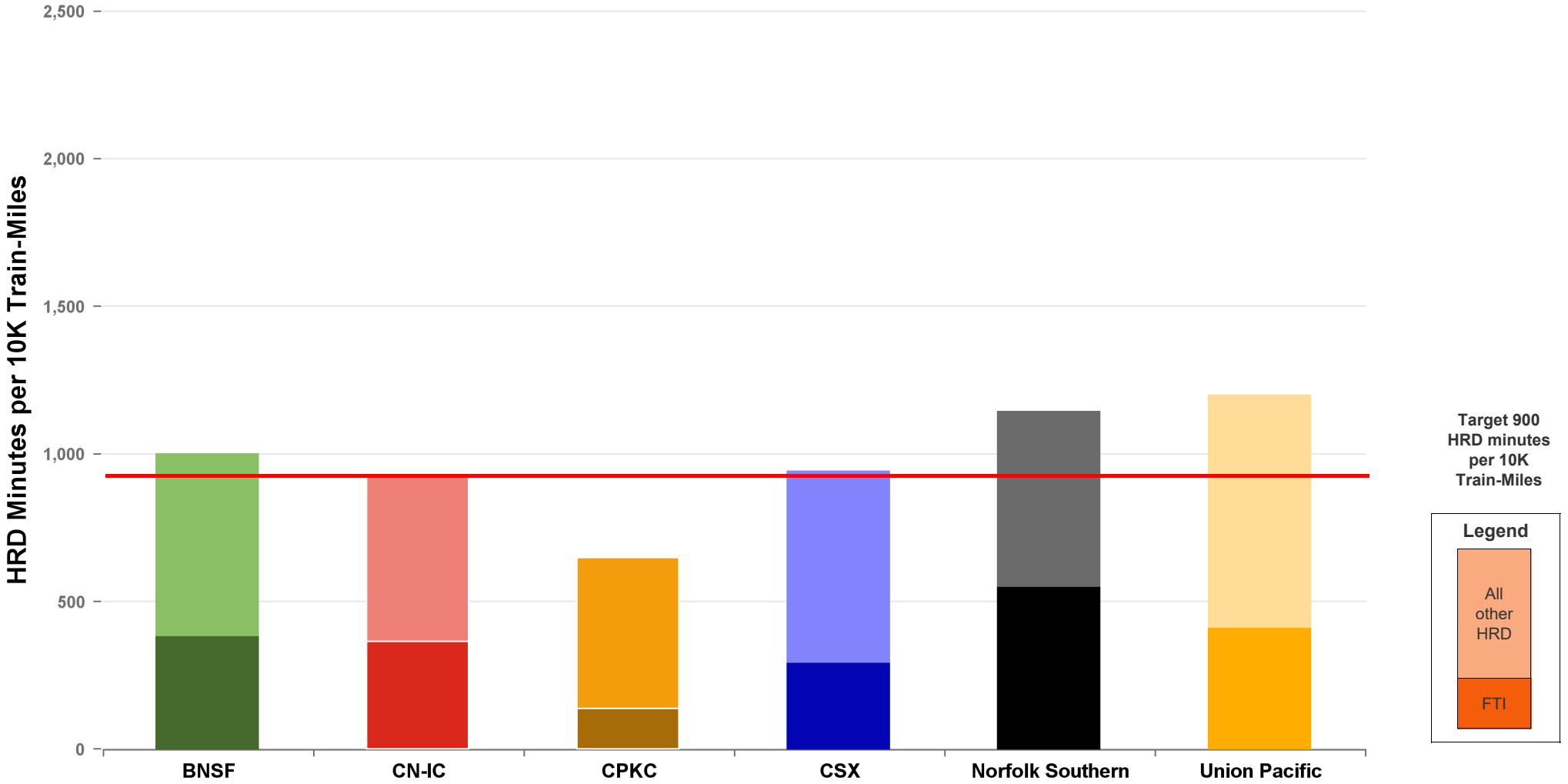
A monthly update of the Host Railroad Report Card, which grades the six major host railroads based on host responsible delay (HRD) minutes per 10,000 train-miles for the current month (lighter shade) and the most recent 12 months.



Total Host-Responsible Delays

1 Year Snapshot

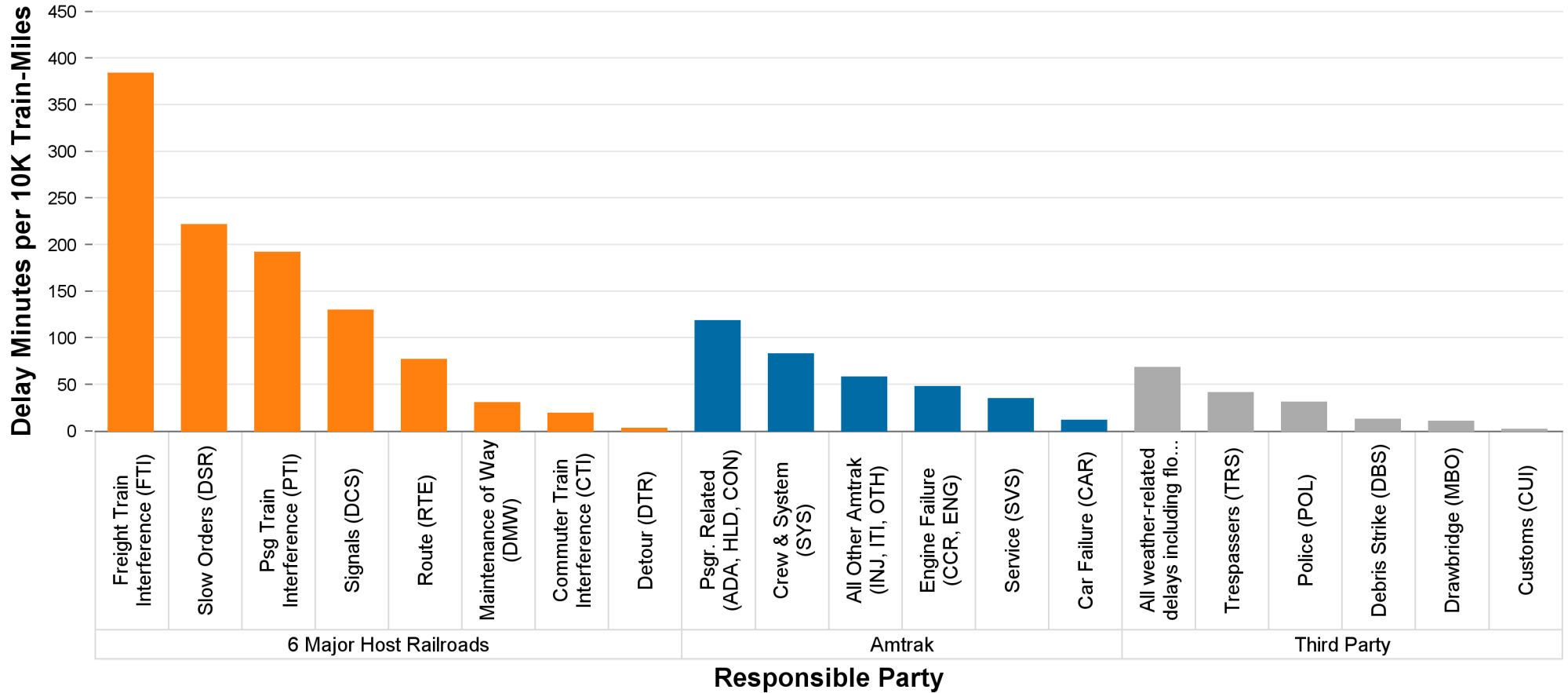
Total host-responsible delay (HRD) minutes per 10,000 train-miles incurred by Amtrak trains on the six major host railroads, with delays attributable to freight train interference (FTI) shaded.



Delays to Amtrak Trains by Responsible Party

1 Year Snapshot

Delay minutes per 10,000 train-miles on the six major host railroads categorized by delay type and responsible party.

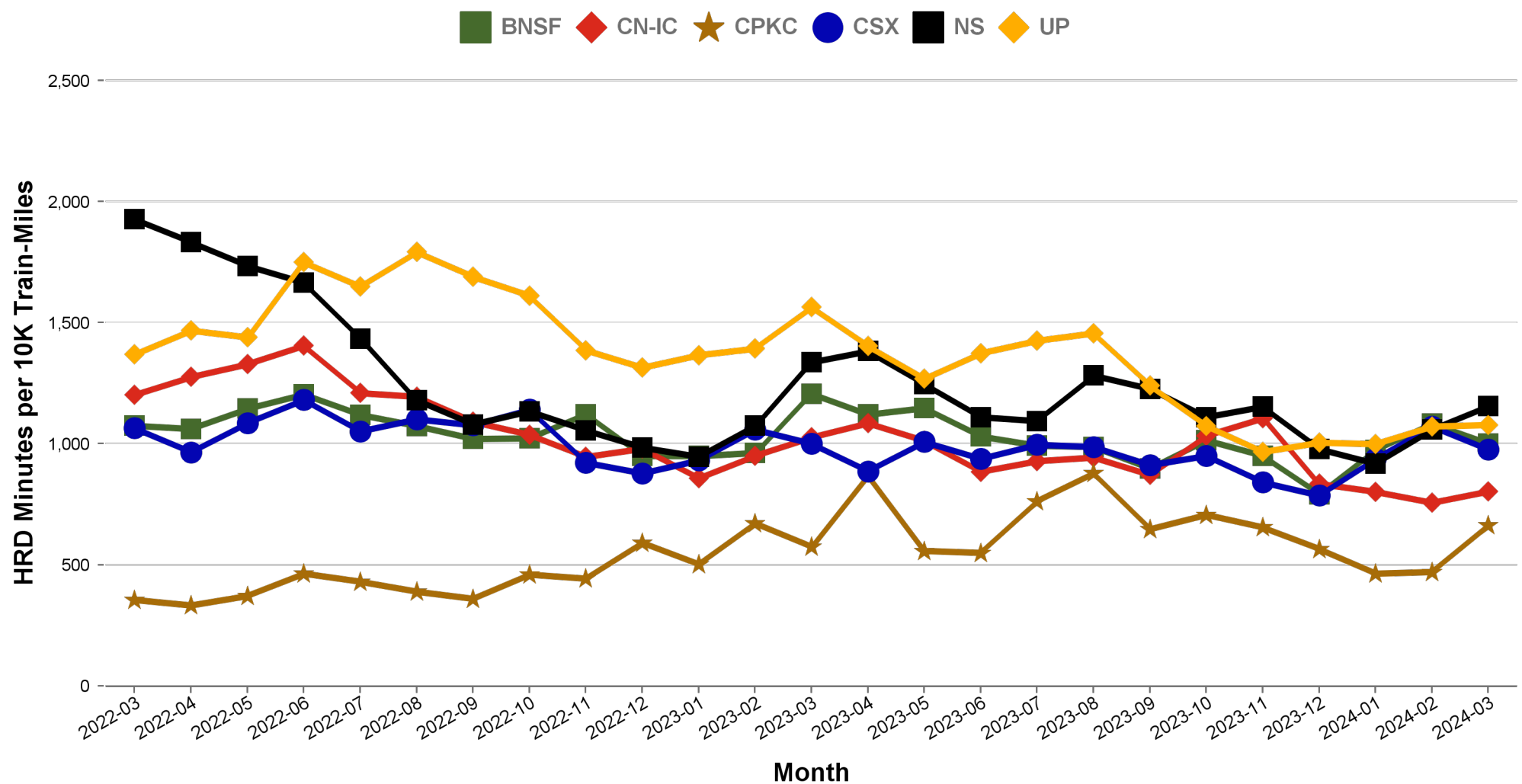


Responsible Party	6 Major Host Railroads	Amtrak	Third Party
Delay Minutes per 10K Train-Miles	1039	345	161
Percentage of Total Delays	67.3%	22.3%	10.4%

Total Host-Responsible Delays

2 Year Snapshot

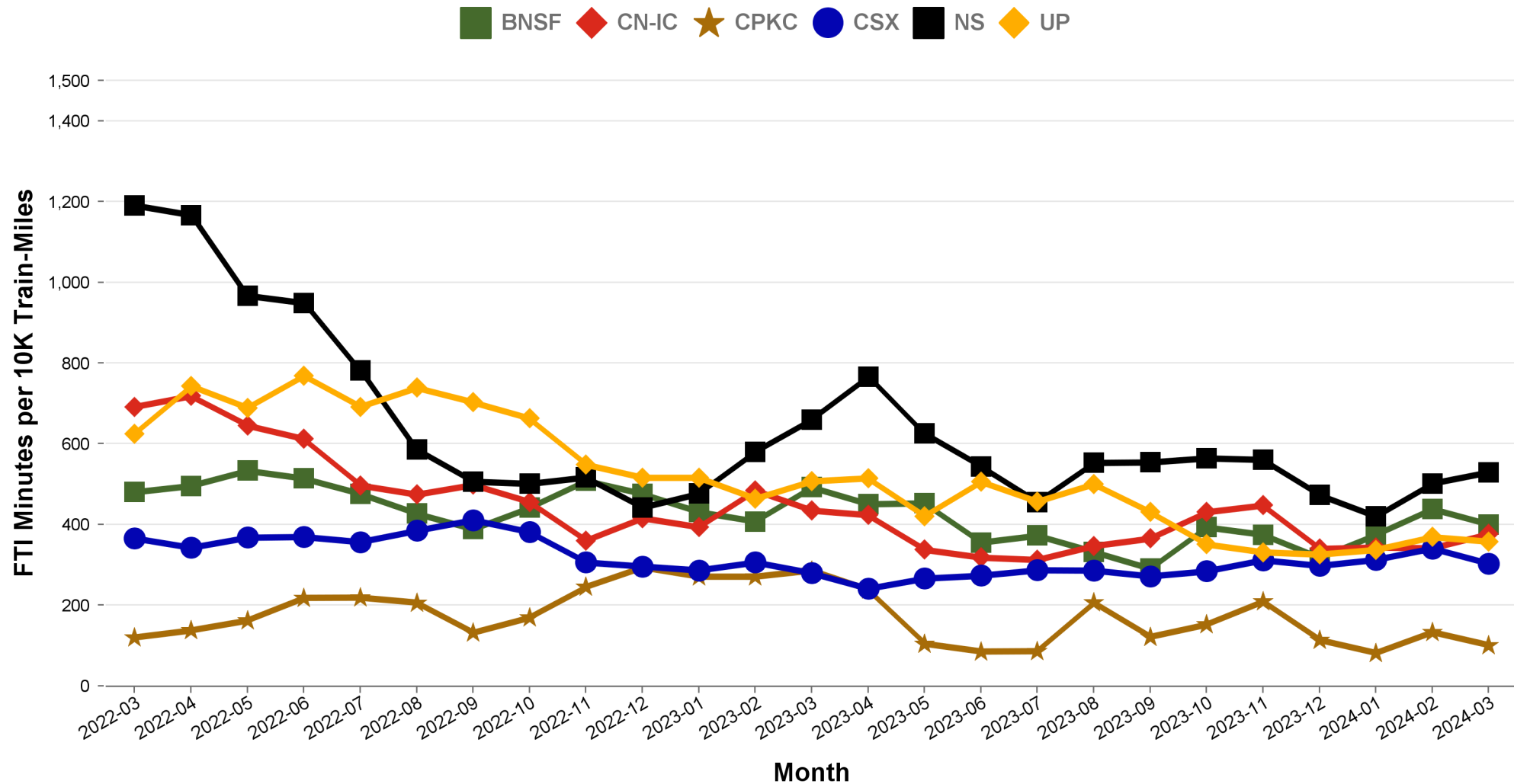
Total host-responsible delay (HRD) minutes per 10,000 train-miles incurred by Amtrak trains on each of the six major host railroads for the most recent two years.



Freight Train Interference Delays

2 Year Snapshot

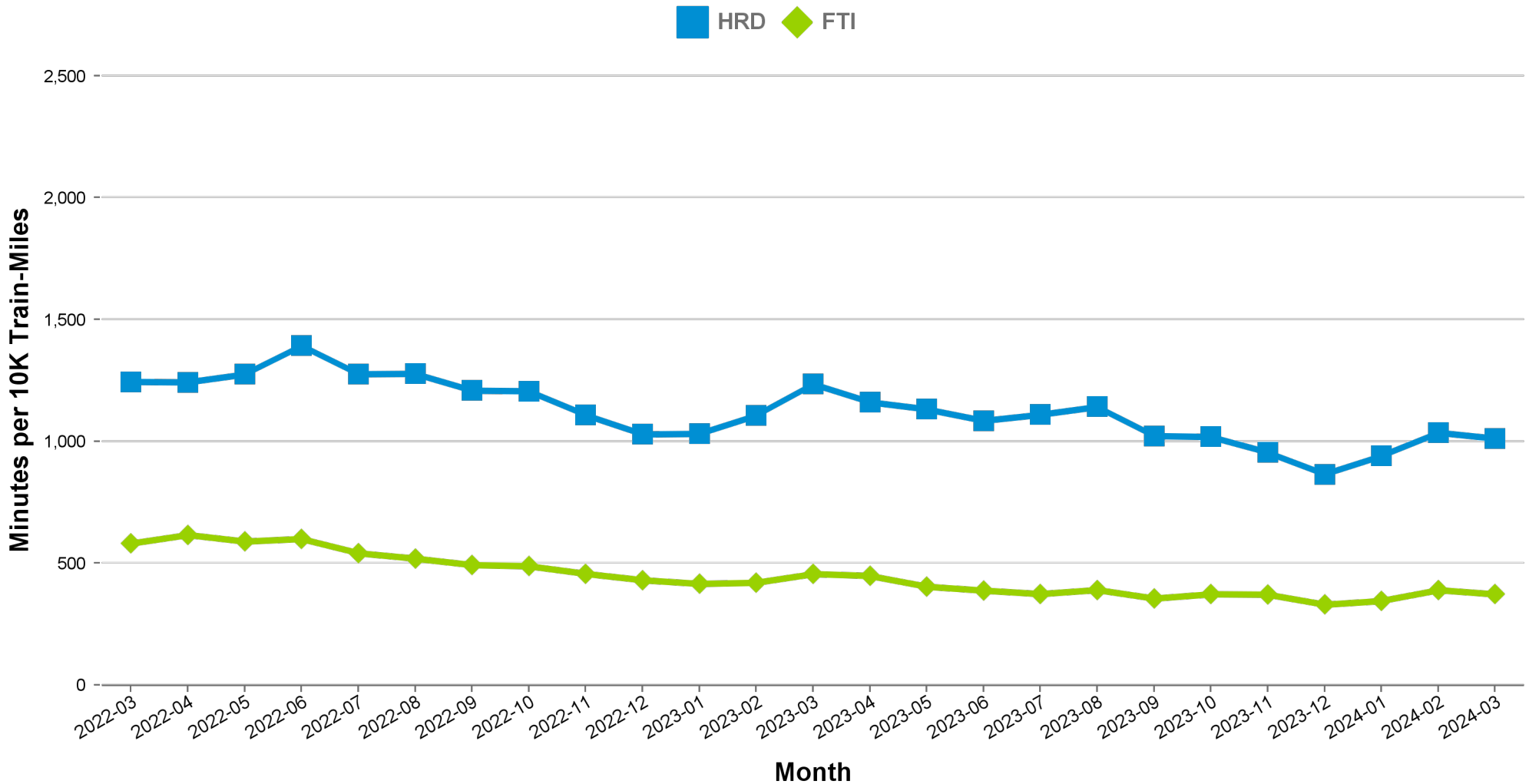
Total delay minutes per 10,000 train-miles attributable to freight train interference (FTI) incurred by Amtrak trains on each of the six major host railroads for the most recent two years.



Aggregated Host Railroad Performance Trend

2 Year Snapshot

Total host-responsible delay (HRD) and freight interference (FTI) minutes per 10,000 train-miles incurred by Amtrak trains, aggregated for the six major host railroads for the most recent two years.



Minutes of Delay per 10K Train Miles by Host for March 2024

Host	Service	Total Host Responsible Delays		Largest Two Delay Categories - Current Month				Route Miles
		Current Month	Most Recent 12 Months	#1		#2		
Target		900	900					
BNSF	California Zephyr	647	863	DSR	215	FTI	200	1027
	Carl Sandburg / Illinois Zephyr	954	800	DSR	411	FTI	299	257
	Cascades	1472	1286	FTI	429	PTI	300	317
	Coast Starlight	1298	1037	RTE	281	FTI	263	158
	Empire Builder	910	857	FTI	555	DSR	180	2147
	Heartland Flyer	1339	1510	DSR	920	FTI	270	236
	Pacific Surfliner	1219	1169	DCS	327	FTI	268	22
	San Joaquins	1168	1293	PTI	518	FTI	435	284
	Southwest Chief	825	800	FTI	378	DSR	191	2206
	Sunset Ltd	776	1254	DSR	389	FTI	189	190
	Texas Eagle	1122	1288	DSR	787	FTI	161	116
CN-IC	Blue Water	525	675	FTI	489	DCS	25	159
	City Of New Orleans	731	811	FTI	259	DSR	159	930
	Illini / Saluki	606	772	FTI	234	DSR	176	304
	Lincoln Service	1533	1788	FTI	1174	DSR	177	35
	Lincoln / Missouri	2544	2449	FTI	2041	DCS	226	35
	Texas Eagle	1284	1930	FTI	969	DCS	277	35
	Wolverine	1443	1393	DSR	524	FTI	408	27
CPKC	Adirondack	1001	849	PTI	556	DSR	294	178
	Empire Builder	588	725	FTI	202	DSR	182	384
	Ethan Allen Express	2148	1923	PTI	1620	DCS	158	60
	Hiawatha	342	275	DSR	145	RTE	50	53
CSX	Auto Train	1298	1196	FTI	382	DSR	361	898
	Capitol Ltd	567	712	DSR	168	FTI	165	307
	Cardinal	588	767	FTI	252	DSR	136	703
	Carolinian	1894	1523	FTI	486	PTI	483	295
	Downeaster	583	636	PTI	279	DCS	228	107
	Lake Shore Ltd	694	726	FTI	290	RTE	152	741
	Maple Leaf	910	729	FTI	592	RTE	100	298
	New York - Niagara Falls	579	617	FTI	310	RTE	97	296
	Palmetto	1038	1016	FTI	373	PTI	261	659
	Pere Marquette	139	200	DCS	81	DMW	30	135
	Richmond / Newport News / Norfolk	1339	1313	FTI	323	PTI	240	189
	Silver Meteor	879	854	FTI	256	DSR	209	1152
	Silver Star	1093	955	FTI	322	DSR	279	1209
NS	Blue Water	1551	2244	FTI	1057	DSR	141	39
	Capitol Ltd	1095	1220	FTI	625	RTE	178	481
	Cardinal	1066	1311	PTI	559	FTI	246	79
	Carolinian	834	782	PTI	411	FTI	141	202
	Crescent	1617	1436	FTI	838	DSR	262	1141
	Lake Shore Ltd	1086	1239	FTI	700	RTE	145	339
	Pennsylvanian	654	843	FTI	257	RTE	231	249
	Pere Marquette	1696	1727	FTI	1028	DSR	182	39
	Piedmont	847	855	PTI	291	FTI	218	173
	Richmond / Newport News / Norfolk	1327	997	DCS	413	FTI	354	81
	Roanoke	715	746	FTI	243	PTI	230	216
	Silver Star	752	515	FTI	427	DCS	165	28
	Wolverine	1733	2108	FTI	826	DCS	416	39
	UP	California Zephyr	1013	1322	FTI	373	DSR	266
Capitol Corridor		517	616	PTI	231	DCS	141	171
Cascades		1487	1450	PTI	465	DSR	371	125
Coast Starlight		1372	1410	DCS	354	PTI	324	1162
Lincoln Service		1101	897	PTI	373	FTI	372	231
Lincoln / Missouri		726	883	FTI	195	PTI	174	502
Missouri		504	878	PTI	158	FTI	141	271
Pacific Surfliner		1172	1736	PTI	509	DCS	475	174
San Joaquins		1419	1293	PTI	473	DSR	415	88
Sunset Ltd		1414	1466	FTI	774	DSR	260	1784
Texas Eagle		1360	1436	FTI	833	DSR	297	1073

Minutes of Delay per 10K Train Miles by Host for March 2024

Host	Service	Total Host Responsible Delays		Largest Two Delay Categories - Current Month				Route Miles
		Current Month	Most Recent 12 Months	#1		#2		
Target		900	900					
Amtrak	Adirondack	405	472	PTI	123	DCS	86	100
	Blue Water	96	466	DCS	39	PTI	24	99
	Ethan Allen Express	276	282	DCS	83	RTE	80	100
	Maple Leaf	248	350	DSR	59	PTI	52	109
	New York - Albany	247	255	PTI	74	RTE	54	81
	New York - Niagara Falls	378	400	PTI	142	DCS	69	109
	Wolverine	311	679	PTI	185	DCS	55	99
BBrRR	Cardinal	1345	1475	PTI	501	FTI	384	132
N-Canada	Adirondack	6907	7109	DSR	5193	RTE	786	49
Fla DOT	Silver Meteor	1560	931	CTI	787	DSR	309	68
	Silver Star	1560	1013	CTI	1133	DCS	180	68
FR	Auto Train	6145	4605	DSR	3998	DCS	1346	16
	Silver Meteor	3434	3407	DSR	1544	CTI	871	61
	Silver Star	2300	2443	DSR	1502	CTI	442	61
MADOT	Springfield Shuttles	607	934	DSR	464	FTI	102	36
	Vermonters	968	1355	DSR	734	DCS	106	50
MBTA	Downeaster	909	1107	CTI	375	DCS	265	38
Metra	Empire Builder	1454	2406	CTI	695	DSR	476	29
	Hiawatha	2286	2362	DSR	1097	CTI	734	29
MIDOT	Blue Water	491	566	PTI	367	RTE	125	22
	Wolverine	370	633	PTI	310	DSR	17	134
MNRR	Acela	1548	1757	DSR	1076	CTI	347	56
	Adirondack	1276	1658	CTI	803	RTE	225	64
	Ethan Allen Express	965	1259	CTI	511	DSR	324	64
	Lake Shore Ltd	871	1293	CTI	463	DSR	281	64
	Maple Leaf	836	1170	CTI	365	DSR	243	64
	New York - Albany	1023	1371	CTI	612	DSR	199	64
	New York - Niagara Falls	1634	1880	CTI	1114	DSR	211	64
	Richmond / Newport News / Norfolk	1795	1994	DSR	1085	CTI	517	56
Vermonters	2828	2925	DSR	1737	CTI	714	56	
NECR	Vermonters	736	1837	DSR	719	DCS	16	192
NMDOT	Southwest Chief	4841	2630	CTI	2089	DCS	1478	80
SCRRA	Coast Starlight	1453	1593	PTI	903	CTI	333	48
	Pacific Surfliner	1126	1100	PTI	362	DCS	282	95
SDNRR	Pacific Surfliner	930	965	CTI	473	PTI	168	60
Sunder	Cascades	1146	817	PTI	677	CTI	314	20
	Coast Starlight	1853	1905	PTI	931	CTI	716	20
TRE	Texas Eagle	505	912	PTI	181	DCS	167	33
VTR	Ethan Allen Express	194	414	DSR	157	DCS	24	24

The numbers included in this document are preliminary and are for informational purposes only.

Excludes hosts with fewer than 15 route miles.

Delays on the Amtrak-owned portion of the Northeast Corridor are shown in a separate report, with tighter delay standards.

Northeast Regional: Roanoke includes all trains between Roanoke and points on the NEC; Richmond / Newport News / Norfolk includes all trains between these locations and points on the NEC.

Minutes of Delay per 10K Train Miles by Service for March 2024

Service		Host	Total Host Responsible Delays		Largest Two Delay Categories - Current Month				Route Miles
			Current	Most	#1	#2			
Target			900	900					
Acela									
Acela		MNRR	1548	1757	DSR	1076	CTI	347	56
All Other NEC Corridor Routes									
Northeast Regional	Richmond / Newport News / Norfolk	CSX	1339	1313	FTI	323	PTI	240	189
		NS	1327	997	DCS	413	FTI	354	81
		MNRR	1795	1994	DSR	1085	CTI	517	56
	Roanoke	NS	715	746	FTI	243	PTI	230	216
	Springfield Shuttles	MADOT	607	934	DSR	464	FTI	102	36
Non-NEC Corridor Routes									
Capitol Corridor		UP	517	616	PTI	231	DCS	141	171
Carolinian		CSX	1894	1523	FTI	486	PTI	483	295
		NS	834	782	PTI	411	FTI	141	202
Cascades		BNSF	1472	1286	FTI	429	PTI	300	317
		UP	1487	1450	PTI	465	DSR	371	125
		Sounder	1146	817	PTI	677	CTI	314	20
Downeaster		CSX	583	636	PTI	279	DCS	228	107
		MBTA	909	1107	CTI	375	DCS	265	38
Empire	Adirondack	CPKC	1001	849	PTI	556	DSR	294	178
		Amtrak	405	472	PTI	123	DCS	86	100
		CN-Canada	6907	7109	DSR	5193	RTE	786	49
		MNRR	1276	1658	CTI	803	RTE	225	64
	Ethan Allen Express	CPKC	2148	1923	PTI	1620	DCS	158	60
		Amtrak	276	282	DCS	83	RTE	80	100
		MNRR	965	1259	CTI	511	DSR	324	64
		VTR	194	414	DSR	157	DCS	24	24
	Maple Leaf	CSX	910	729	FTI	592	RTE	100	298
		Amtrak	248	350	DSR	59	PTI	52	109
		MNRR	836	1170	CTI	365	DSR	243	64
	New York - Albany	Amtrak	247	255	PTI	74	RTE	54	81
		MNRR	1023	1371	CTI	612	DSR	199	64
	New York - Niagara Falls	CSX	579	617	FTI	310	RTE	97	296
		Amtrak	378	400	PTI	142	DCS	69	109
		MNRR	1634	1880	CTI	1114	DSR	211	64
Heartland Flyer		BNSF	1339	1510	DSR	920	FTI	270	236
Hiawatha		CPKC	342	275	DSR	145	RTE	50	53
		Metra	2286	2362	DSR	1097	CTI	734	29
Illinois	Carl Sandburg / Illinois Zephyr	BNSF	954	800	DSR	411	FTI	299	257
	Illini / Saluki	CN-IC	606	772	FTI	234	DSR	176	304
	Lincoln Service	CN-IC	1533	1788	FTI	1174	DSR	177	35
		UP	1101	897	PTI	373	FTI	372	231
Lincoln / Missouri		CN-IC	2544	2449	FTI	2041	DCS	226	35
		UP	726	883	FTI	195	PTI	174	502
Michigan	Blue Water	CN-IC	525	675	FTI	489	DCS	25	159
		NS	1551	2244	FTI	1057	DSR	141	39
		Amtrak	96	466	DCS	39	PTI	24	99
		MIDOT	491	566	PTI	367	RTE	125	22
	Pere Marquette	CSX	139	200	DCS	81	DMW	30	135
		NS	1696	1727	FTI	1028	DSR	182	39
	Wolverine	CN-IC	1443	1393	DSR	524	FTI	408	27
		NS	1733	2108	FTI	826	DCS	416	39
		Amtrak	311	679	PTI	185	DCS	55	99
		MIDOT	370	633	PTI	310	DSR	17	134
Missouri		UP	504	878	PTI	158	FTI	141	271
Pacific Surfliner		BNSF	1219	1169	DCS	327	FTI	268	22
		UP	1172	1736	PTI	509	DCS	475	174
		SCRRA	1126	1100	PTI	362	DCS	282	95
		SDNRR	930	965	CTI	473	PTI	168	60
Pennsylvanian		NS	654	843	FTI	257	RTE	231	249
Piedmont		NS	847	855	PTI	291	FTI	218	173
San Joaquins		BNSF	1168	1293	PTI	518	FTI	435	284
		UP	1419	1293	PTI	473	DSR	415	88
Vermont		MADOT	968	1355	DSR	734	DCS	106	50
		MNRR	2828	2925	DSR	1737	CTI	714	56
		NECR	736	1837	DSR	719	DCS	16	192

Minutes of Delay per 10K Train Miles by Service for March 2024

Service	Host	Total Host Responsible Delays		Largest Two Delay Categories - Current Month				Route Miles
		Current	Most	#1		#2		
Target		900	900					
Long-Distance Routes								
Auto Train	CSX	1298	1196	FTI	382	DSR	361	898
	FR	6145	4605	DSR	3998	DCS	1346	16
California Zephyr	BNSF	647	863	DSR	215	FTI	200	1027
	UP	1013	1322	FTI	373	DSR	266	1381
Capitol Ltd	CSX	567	712	DSR	168	FTI	165	307
	NS	1095	1220	FTI	625	RTE	178	481
Cardinal	CSX	588	767	FTI	252	DSR	136	703
	NS	1066	1311	PTI	559	FTI	246	79
	BBrRR	1345	1475	PTI	501	FTI	384	132
City Of New Orleans	CN-IC	731	811	FTI	259	DSR	159	930
Coast Starlight	BNSF	1298	1037	RTE	281	FTI	263	158
	UP	1372	1410	DCS	354	PTI	324	1162
	SCRRA	1453	1593	PTI	903	CTI	333	48
	Sounder	1853	1905	PTI	931	CTI	716	20
Crescent	NS	1617	1436	FTI	838	DSR	262	1141
Empire Builder	BNSF	910	857	FTI	555	DSR	180	2147
	CPKC	588	725	FTI	202	DSR	182	384
	Metra	1454	2406	CTI	695	DSR	476	29
Lake Shore Ltd	CSX	694	726	FTI	290	RTE	152	741
	NS	1086	1239	FTI	700	RTE	145	339
	MNRR	871	1293	CTI	463	DSR	281	64
Palmetto	CSX	1038	1016	FTI	373	PTI	261	659
Silver Meteor	CSX	879	854	FTI	256	DSR	209	1152
	Fla DOT	1560	931	CTI	787	DSR	309	68
	FR	3434	3407	DSR	1544	CTI	871	61
Silver Star	CSX	1093	955	FTI	322	DSR	279	1209
	NS	752	515	FTI	427	DCS	165	28
	Fla DOT	1560	1013	CTI	1133	DCS	180	68
	FR	2300	2443	DSR	1502	CTI	442	61
Southwest Chief	BNSF	825	800	FTI	378	DSR	191	2206
	NMDOT	4841	2630	CTI	2089	DCS	1478	80
Sunset Ltd	BNSF	776	1254	DSR	389	FTI	189	190
	UP	1414	1466	FTI	774	DSR	260	1784
Texas Eagle	BNSF	1122	1288	DSR	787	FTI	161	116
	CN-IC	1284	1930	FTI	969	DCS	277	35
	UP	1360	1436	FTI	833	DSR	297	1073
	TRE	505	912	PTI	181	DCS	167	33

The numbers included in this document are preliminary and are for informational purposes only.

Excludes hosts with fewer than 15 route miles.

Delays on the Amtrak-owned portion of the Northeast Corridor are shown in a separate report, with tighter delay standards.

Northeast Regional: Roanoke includes all trains between Roanoke and points on the NEC; Richmond / Newport News /

Norfolk includes all trains between these locations and points on the NEC.

Host Railroad Report - All-Stations and Customer OTP for March 2024

Service	All-Stations OTP		Customer OTP		Avg Mins Late per Late Rider**	
	Current Month	Most Recent 12 Months	Current Month	Most Recent 12 Months	Current Month	Most Recent 12 Months
Amtrak System	79.9%	75.8%	79.3%	75.4%	53	54
NEC Corridor Routes	87.7%	83.5%	85.2%	79.8%	37	43
Minimum Standard			80.0%	80.0%		
Acela*	89.1%	83.2%	87.3%	80.2%	30	34
Keystone	96.7%	94.3%	94.3%	93.3%	29	37
Northeast Regional	84.4%	79.7%	82.9%	76.7%	39	46
On Spine Northeast Regional	89.5%	85.0%	88.0%	82.0%	39	42
Richmond / Newport News / Norfolk	78.3%	73.0%	76.6%	70.9%	38	46
Roanoke	79.2%	73.9%	76.1%	69.8%	41	53
Springfield Shuttles	88.2%	86.2%	87.9%	85.7%	35	40
Non-NEC Corridor Routes	83.0%	79.2%	78.3%	75.7%	42	45
Minimum Standard			80.0%	80.0%		
Capitol Corridor	93.6%	90.7%	90.7%	87.1%	40	37
Carolinian	55.8%	60.0%	52.2%	58.7%	41	55
Cascades	65.2%	67.2%	57.2%	62.7%	55	45
Downeaster	91.6%	89.3%	85.1%	81.5%	49	38
Empire	83.9%	77.2%	84.7%	77.5%	38	42
Adirondack	73.9%	65.1%	77.6%	69.9%	29	40
Berkshire Flyer	-	51.5%	-	52.9%	-	62
Ethan Allen Express	75.2%	74.5%	74.3%	71.4%	46	42
Maple Leaf	78.9%	71.9%	77.6%	71.1%	40	49
New York - Albany	92.8%	86.9%	91.1%	84.7%	35	36
New York - Niagara Falls	84.7%	77.4%	82.9%	73.4%	40	43
Heartland Flyer	75.8%	73.9%	75.5%	73.2%	28	41
Hiawatha	90.2%	89.3%	81.1%	85.5%	27	33
Illinois	82.2%	80.3%	78.6%	79.5%	42	51
Carl Sandburg / Illinois Zephyr	82.7%	80.9%	80.6%	80.2%	33	44
Illini / Saluki	91.3%	81.5%	89.7%	82.6%	55	63
Lincoln Service	74.6%	78.9%	70.9%	77.1%	41	47
Lincoln / Missouri	70.2%	65.6%	67.5%	65.6%	31	51
Michigan	89.1%	76.1%	86.9%	71.3%	34	46
Blue Water	90.9%	76.9%	93.2%	67.3%	50	43
Pere Marquette	92.6%	90.5%	89.4%	87.3%	27	39
Wolverine	88.1%	73.9%	84.1%	69.7%	32	47
Missouri	92.9%	79.3%	94.0%	79.6%	42	55
Pacific Surfliner	87.5%	80.4%	84.7%	80.8%	39	45
Pennsylvanian	81.5%	77.2%	77.9%	76.5%	33	40
Piedmont	77.0%	79.3%	67.4%	69.3%	48	42
San Joaquins	75.4%	72.7%	70.5%	67.5%	42	42
Vermonteer	72.2%	64.9%	72.4%	69.4%	46	50
Long-Distance Routes	57.8%	53.8%	59.8%	57.4%	89	88
Minimum Standard			80.0%	80.0%		
Auto Train	68.5%	80.5%	55.2%	66.0%	161	73
California Zephyr	40.3%	33.9%	43.1%	36.0%	102	128
Capitol Ltd	76.9%	66.8%	76.8%	71.2%	52	58
Cardinal	65.7%	57.1%	61.1%	57.7%	46	72
City Of New Orleans	71.0%	65.9%	83.3%	76.8%	49	80
Coast Starlight	58.6%	55.4%	60.0%	59.4%	76	77
Crescent	55.7%	54.2%	56.1%	57.9%	74	79
Empire Builder	61.9%	53.1%	63.7%	55.8%	86	112
Lake Shore Ltd	79.1%	69.6%	79.7%	68.9%	73	67
Palmetto	79.0%	66.3%	79.1%	67.6%	34	53
Silver Meteor	50.2%	56.7%	48.2%	53.7%	67	71
Silver Star	46.4%	50.7%	41.9%	49.4%	80	73
Southwest Chief	31.1%	35.3%	26.2%	32.9%	121	116
Sunset Ltd	55.9%	43.2%	64.2%	49.5%	101	103
Texas Eagle	67.8%	58.7%	70.7%	63.1%	85	86

The numbers included in this document are preliminary and are for informational purposes only.

Northeast Regional: Roanoke includes all trains between Roanoke and points on the NEC; Richmond/Newport News/Norfolk includes all trains between these locations and points on the NEC.

* Acela on-time performance target is 90.0%

** Excludes on-time Customers



Host Railroad Responsible Delays

Code	Code Description	Explanation
CTI	Commuter Train Interference	Delays for meeting or following commuter trains
DCS	Signal Delays	Signal failure or All Other signal delays, wayside defect-detector false-alarms, defective road crossing protection, efficiency tests, drawbridge stuck open
DMW	Maintenance of Way	Maintenance of Way delays including holds for track repairs or MW foreman to clear
DSR	Slow Order Delays	Temporary slow orders, except heat or cold orders
DTR	Detour	Delays from detours
FTI	Freight Train Interference	Delays from freight trains
PTI	Passenger Train Interference	Delays for meeting or following All Other passenger trains
RTE	Routing	Routing-dispatching delays including diversions, late track bulletins, etc.

Amtrak Responsible Delays

Code	Code Description	Explanation
ADA	Passenger Related	All delays related to disabled passengers, wheel chair lifts, guide dogs, etc.
CAR	Car Failure	Mechanical failure on all types of cars
CCR	Cab Car Failure	Mechanical failure on Cab Cars
CON	Hold for Connection	Holding for connections from All Other trains or buses.
ENG	Locomotive Failure	Mechanical failure on engines.
HLD	Passenger Related	All delays related to passengers, checked-baggage, large groups, etc.
INJ	Injury Delay	Delay due to injured passengers or employees.
ITI	Initial Terminal Delay	Delay at initial terminal due to late arriving inbound trains causing late release of equipment.
OTH	Miscellaneous Delays	Lost-on-run, heavy trains, unable to make normal speed, etc.
SVS	Servicing	All switching and servicing delays
SYS	Crew & System	Delays related to crews including lateness, lone-engineer delays

Third-Party Delays

Code	Code Description	Explanation
CUI	Customs	U.S. and Canadian customs delays; Immigration-related delays
DBS	Debris	Debris strikes
MBO	Drawbridge Openings	Movable bridge openings for marine traffic where no bridge failure is involved
NOD	Unused Recovery Time	Wait for departure time
POL	Police-Related	Police/fire department holds on right-of-way or on-board trains
TRS	Trespassers	Trespasser incidents including road crossing accidents, trespasser / animal strikes, vehicle stuck on track ahead, bridge strikes
WTR	Weather-Related	All weather-related delays including floods/washouts, earthquake-related delays, heat or cold orders, slippery rail due to leaves

*These delay codes are applicable to Off-NEC routes only.