



# Host Railroad Report

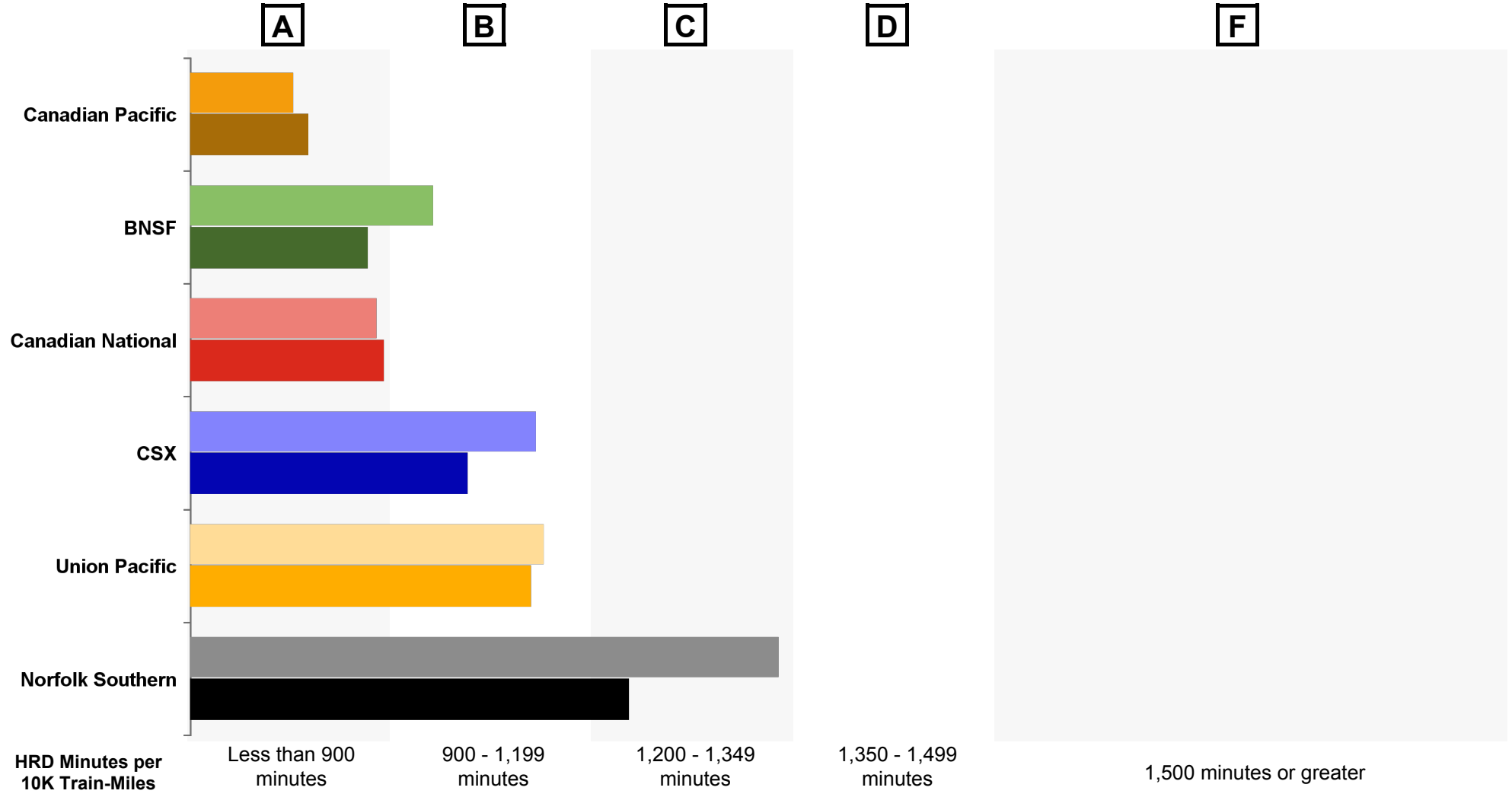
Amtrak Train Performance on Host Railroads

Data through May 2021

# Host Railroad Report Card Update

## Current Month and 1 Year Snapshot

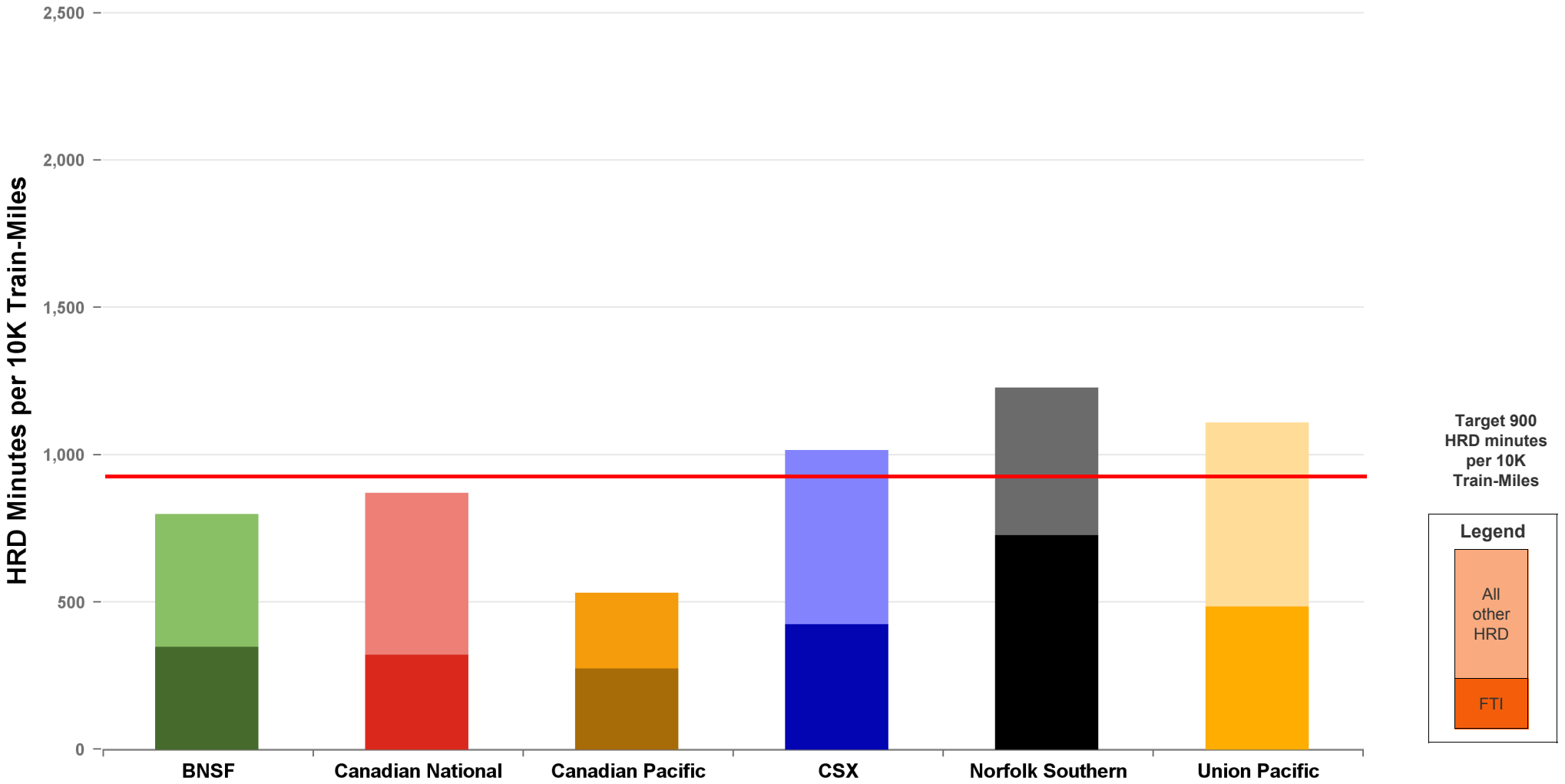
A monthly update of the Host Railroad Report Card, which grades the six major host railroads based on host responsible delay (HRD) minutes per 10,000 train-miles for the current month (lighter shade) and the most recent 12 months.



# Total Host-Responsible Delays

## 1 Year Snapshot

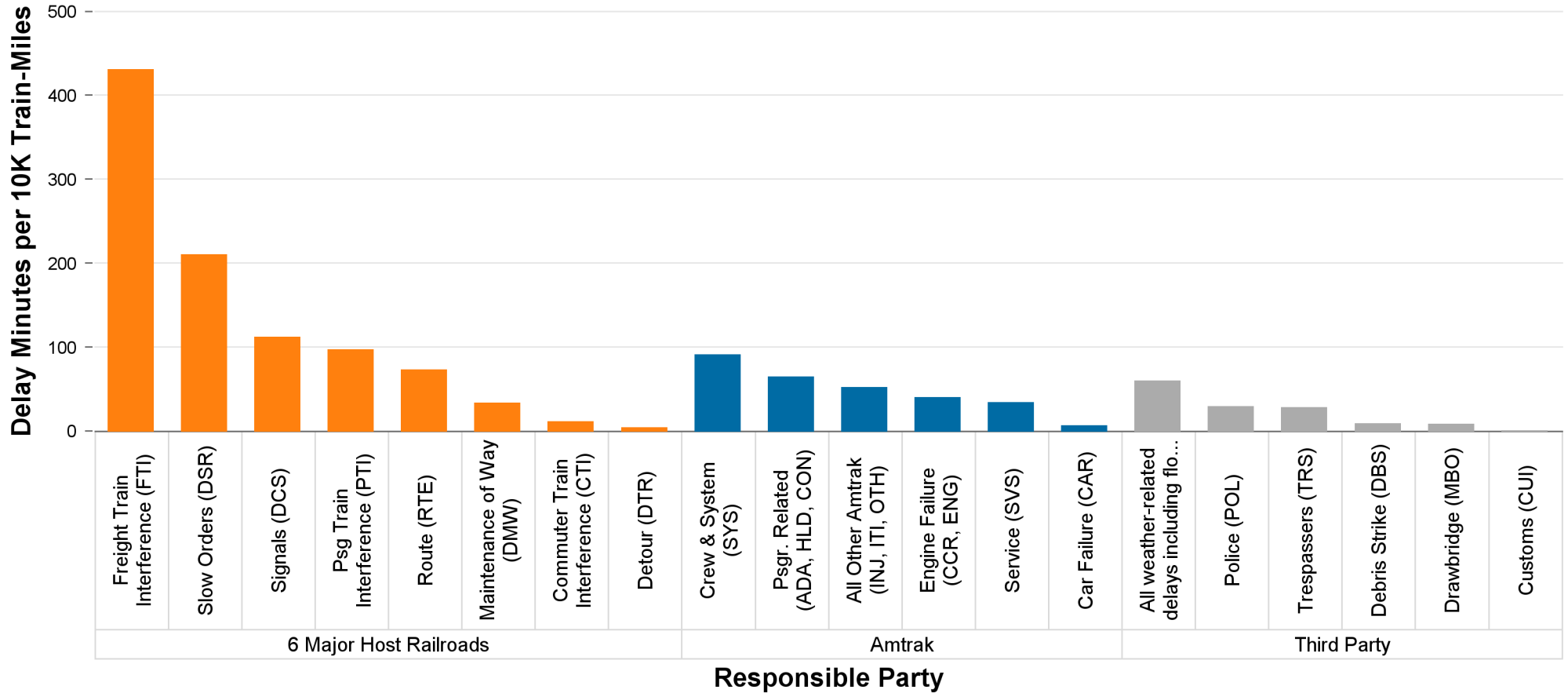
Total host-responsible delay (HRD) minutes per 10,000 train-miles incurred by Amtrak trains on the six major host railroads, with delays attributable to freight train interference (FTI) shaded.



# Delays to Amtrak Trains by Responsible Party

## 1 Year Snapshot

Delay minutes per 10,000 train-miles on the six major host railroads categorized by delay type and responsible party.

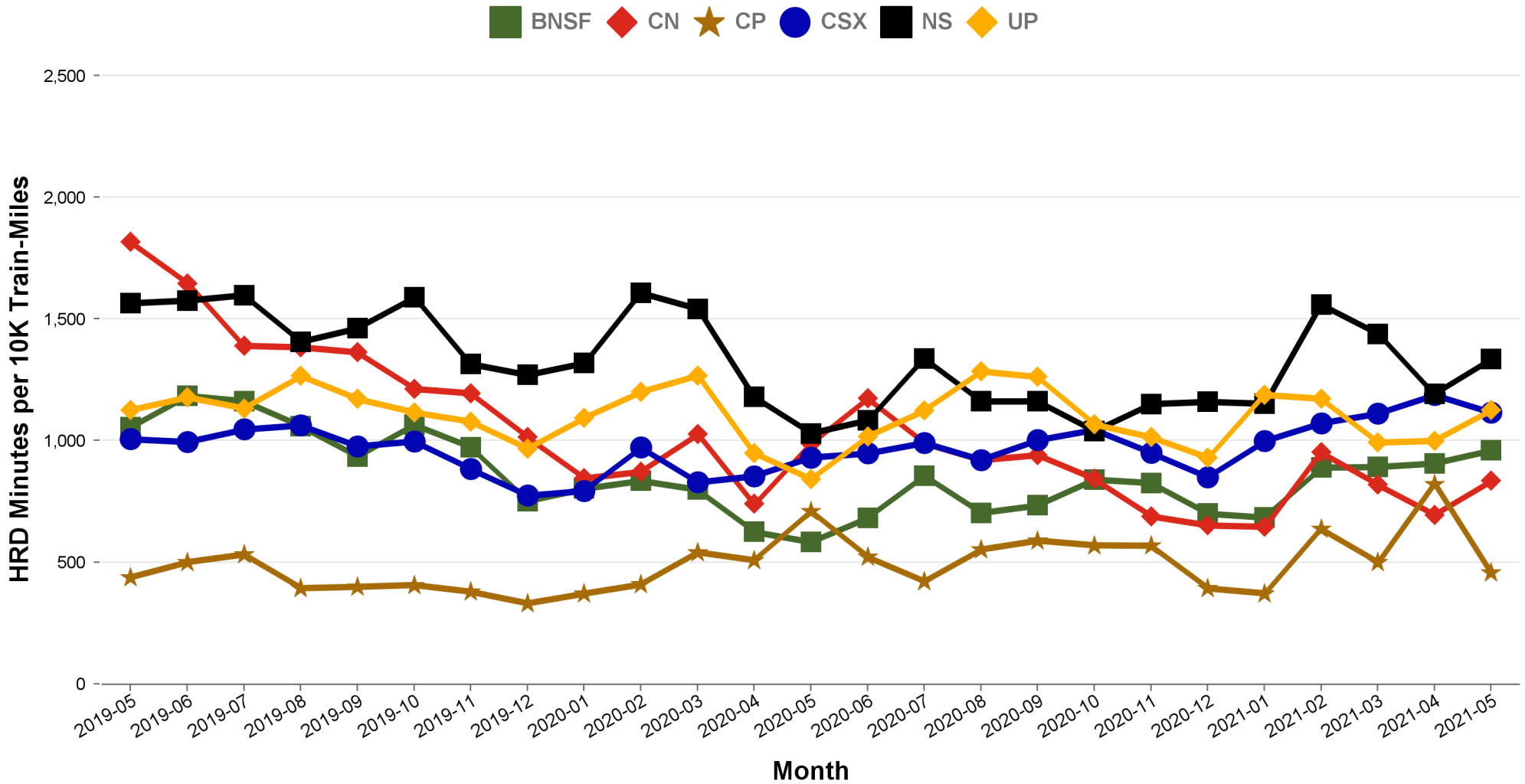


Responsible Party	6 Major Host Railroads	Amtrak	Third Party
Delay Minutes per 10K Train-Miles	983	290	133
Percentage of Total Delays	69.9%	20.6%	9.5%

# Total Host-Responsible Delays

## 2 Year Snapshot

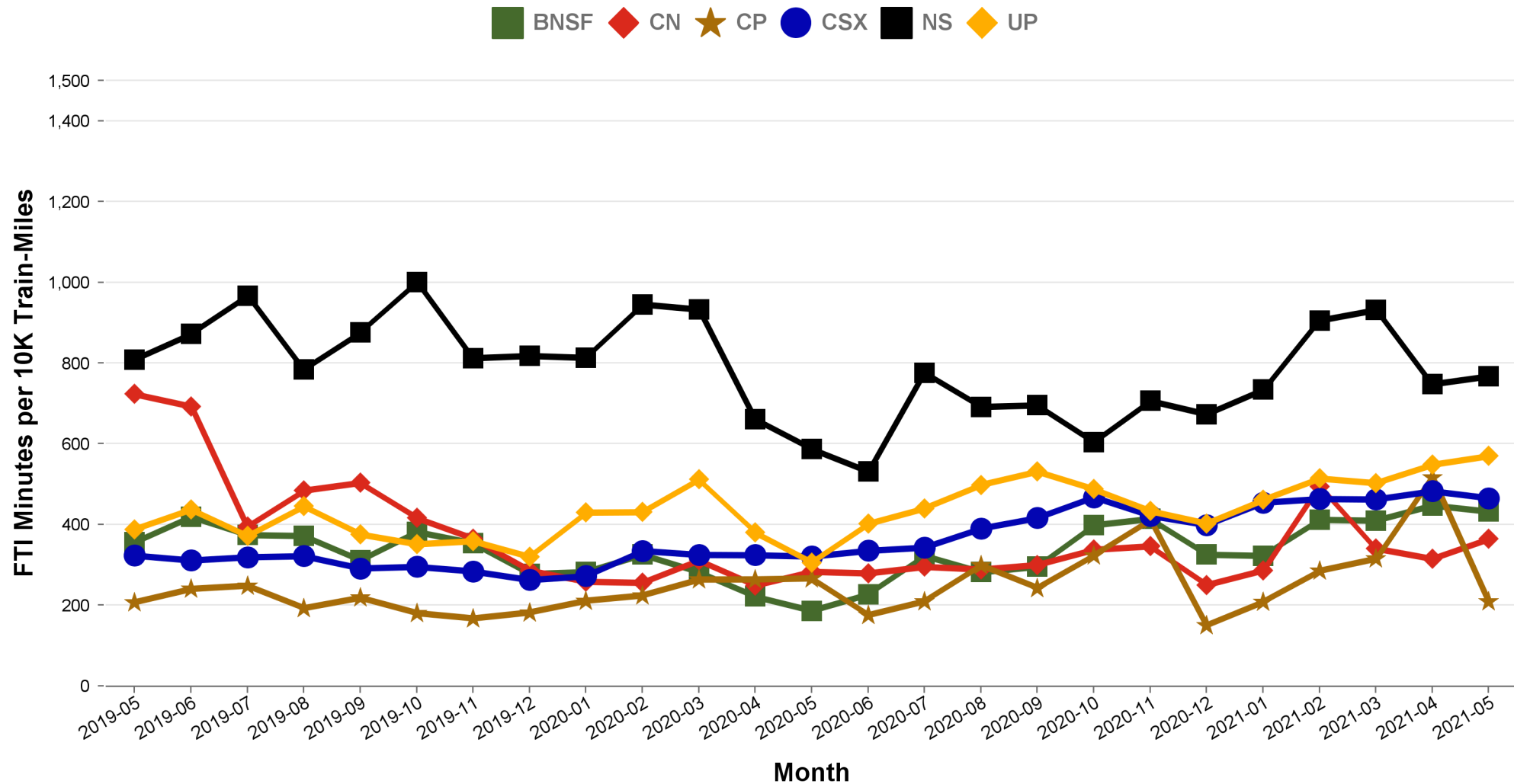
Total host-responsible delay (HRD) minutes per 10,000 train-miles incurred by Amtrak trains on each of the six major host railroads for the most recent two years.



# Freight Train Interference Delays

## 2 Year Snapshot

Total delay minutes per 10,000 train-miles attributable to freight train interference (FTI) incurred by Amtrak trains on each of the six major host railroads for the most recent two years.



# Minutes of Delay per 10K Train Miles by Host for May 2021

Host	Service	Total Host Responsible Delays		Largest Two Delay Categories - Current Month				Route Miles
		Current Month	Most Recent 12 Months	#1		#2		
<b>Target</b>		<b>900</b>	<b>900</b>					
BNSF	California Zephyr	853	716	DSR	372	FTI	313	1027
	Carl Sandburg / Illinois Zephyr	491	516	FTI	185	DSR	131	257
	Cascades	<b>1291</b>	<b>1024</b>	FTI	561	DSR	196	343
	Coast Starlight	<b>1078</b>	705	FTI	450	RTE	160	186
	Empire Builder	899	773	FTI	615	DSR	134	2147
	Heartland Flyer	<b>1981</b>	<b>1545</b>	DSR	1289	FTI	584	236
	Pacific Surfliner	<b>934</b>	<b>924</b>	DCS	254	FTI	207	22
	San Joaquins	<b>922</b>	809	FTI	359	PTI	213	284
	Southwest Chief	<b>932</b>	715	FTI	399	DCS	236	2206
	Sunset Ltd	<b>1294</b>	<b>1260</b>	DSR	521	DCS	374	190
Texas Eagle	845	<b>1063</b>	DSR	442	FTI	280	116	
CN	Blue Water	416	492	FTI	277	DMW	58	159
	City Of New Orleans	686	767	FTI	260	DSR	225	930
	Illini / Saluki	628	685	DSR	217	DCS	214	304
	Lincoln Service	<b>2350</b>	<b>1856</b>	FTI	1520	DCS	596	35
	Texas Eagle	<b>3241</b>	<b>2212</b>	FTI	2155	DCS	894	35
	Wolverine	<b>1034</b>	<b>2421</b>	DSR	677	FTI	280	27
CP	Empire Builder	638	718	FTI	330	DSR	153	384
	Hiawatha	273	258	DCS	116	FTI	85	53
CSX	Auto Train	<b>1604</b>	<b>1188</b>	FTI	739	DSR	504	898
	Capitol Ltd	691	<b>935</b>	FTI	233	RTE	195	307
	Cardinal	771	<b>1000</b>	FTI	408	DCS	106	703
	Carolinian	<b>1150</b>	<b>1335</b>	FTI	283	PTI	241	295
	Lake Shore Ltd	555	777	FTI	168	RTE	157	741
	Maple Leaf	<b>1288</b>	<b>1209</b>	FTI	770	RTE	224	298
	New York - Niagara Falls	<b>966</b>	<b>1122</b>	FTI	472	RTE	223	296
	Palmetto	<b>942</b>	<b>917</b>	FTI	384	DSR	240	659
	Pere Marquette	103	255	FTI	95	DCS	4	135
	Richmond / Newport News / Norfolk	<b>1256</b>	<b>1086</b>	FTI	396	DSR	276	189
	Silver Meteor	<b>1349</b>	<b>911</b>	FTI	675	DSR	360	1152
	Silver Star	846	858	DSR	304	FTI	257	1209
NS	Blue Water	<b>3188</b>	<b>3102</b>	FTI	2343	DCS	651	39
	Capitol Ltd	<b>2149</b>	<b>1797</b>	FTI	1482	RTE	254	481
	Cardinal	<b>1825</b>	<b>1155</b>	FTI	693	PTI	659	79
	Carolinian	844	679	PTI	387	FTI	206	202
	Crescent	<b>1579</b>	<b>1188</b>	FTI	832	DCS	281	1141
	Lake Shore Ltd	<b>1871</b>	<b>1747</b>	FTI	1492	PTI	143	339
	Pennsylvanian	<b>1539</b>	<b>1305</b>	FTI	1064	RTE	228	249
	Pere Marquette	<b>2214</b>	<b>2285</b>	FTI	1430	PTI	290	39
	Piedmont	<b>915</b>	759	FTI	348	DSR	276	173
	Richmond / Newport News / Norfolk	508	756	DCS	194	FTI	110	81
	Roanoke	775	406	FTI	504	DCS	161	216
	Silver Star	406	769	DSR	144	FTI	105	28
	Wolverine	<b>1710</b>	<b>3102</b>	FTI	1542	DCS	69	39
UP	California Zephyr	<b>1071</b>	<b>1036</b>	FTI	550	DSR	282	1381
	Capitol Corridor	433	469	PTI	141	DCS	105	171
	Cascades	<b>930</b>	<b>1125</b>	FTI	550	DCS	161	125
	Coast Starlight	<b>1377</b>	<b>1141</b>	FTI	474	DCS	462	1162
	Lincoln Service	629	633	FTI	370	PTI	95	231
	Missouri	687	764	FTI	364	DSR	164	271
	Pacific Surfliner	<b>1026</b>	<b>1316</b>	DCS	573	PTI	313	174
	San Joaquins	785	799	PTI	271	DCS	211	88
	Sunset Ltd	<b>2146</b>	<b>1847</b>	FTI	1568	RTE	219	1784
	Texas Eagle	<b>1423</b>	<b>1592</b>	FTI	878	DSR	268	1073
Amtrak	Blue Water	186	243	DSR	72	DCS	67	99
	Ethan Allen Express	139	253	DCS	67	RTE	44	100
	Maple Leaf	335	239	RTE	132	DCS	78	109
	New York - Albany	225	179	DCS	72	PTI	63	81
	New York - Niagara Falls	289	266	DCS	84	PTI	61	109
	Wolverine	508	328	DCS	286	DMW	59	99
BBrRR	Cardinal	<b>946</b>	<b>902</b>	PTI	393	DCS	358	132
Fla DOT	Silver Meteor	739	<b>953</b>	DSR	279	CTI	255	68
	Silver Star	532	762	CTI	287	DSR	186	68

## Minutes of Delay per 10K Train Miles by Host for May 2021

Host	Service	Total Host Responsible Delays		Largest Two Delay Categories - Current Month				Route Miles
		Current Month	Most Recent 12 Months	#1		#2		
<b>Target</b>		<b>900</b>	<b>900</b>					
FR	Auto Train	<b>2522</b>	<b>2556</b>	CTI	889	DSR	756	16
	Silver Meteor	<b>1924</b>	<b>1570</b>	CTI	788	DSR	732	61
	Silver Star	<b>1156</b>	<b>1307</b>	DSR	809	CTI	231	61
MADOT	Springfield Shuttles	<b>1546</b>	852	DSR	1308	DCS	181	36
MBTA	Downeaster	<b>1973</b>	<b>1553</b>	DSR	859	CTI	343	38
Metra	Empire Builder	<b>1230</b>	<b>1037</b>	CTI	628	DCS	364	29
	Hiawatha	843	<b>914</b>	CTI	557	DCS	91	29
MIDOT	Blue Water	22	113	DSR	15	RTE	7	22
	Wolverine	203	218	DSR	158	DCS	27	134
MNRR	Acela Express	<b>2353</b>	<b>1934</b>	DSR	1688	CTI	359	56
	Ethan Allen Express	808	<b>1289</b>	CTI	544	RTE	220	64
	Lake Shore Ltd	<b>1570</b>	<b>1015</b>	CTI	617	DCS	409	64
	Maple Leaf	415	550	CTI	208	RTE	144	64
	New York - Albany	693	820	CTI	383	RTE	202	64
	New York - Niagara Falls	<b>1020</b>	<b>1382</b>	CTI	649	RTE	272	64
	Richmond / Newport News / Norfolk	<b>2865</b>	<b>2303</b>	DSR	1891	CTI	682	56
	Vermonteer	-	<b>2203</b>		-		-	56
NMDOT	Southwest Chief	<b>1620</b>	<b>1528</b>	DSR	994	CTI	474	80
PanAm	Downeaster	<b>1035</b>	<b>1077</b>	PTI	403	DSR	363	107
SCRRA	Coast Starlight	<b>1522</b>	<b>1722</b>	PTI	1065	DCS	283	48
	Pacific Surfliner	675	624	CTI	191	DCS	151	95
SDNRR	Pacific Surfliner	672	895	CTI	340	PTI	153	60
TRE	Texas Eagle	93	605	CTI	68	DSR	25	33

The numbers included in this document are preliminary and are for informational purposes only.

Excludes hosts with fewer than 15 route miles.

Delays on the Amtrak-owned portion of the Northeast Corridor are shown in a separate report, with tighter delay standards.

Northeast Regional: Roanoke includes all trains between Roanoke and points on the NEC; Richmond / Newport News / Norfolk includes all trains between these locations and points on the NEC.



# Minutes of Delay per 10K Train Miles by Service for May 2021

Service	Host	Total Host Responsible Delays		Largest Two Delay Categories - Current Month				Route Miles	
		Current Month	Most Recent 12 Months	#1		#2			
<b>Target</b>		<b>900</b>	<b>900</b>						
<b>Acela Express</b>									
Acela Express	MNRR	<b>2353</b>	<b>1934</b>	DSR	1688	CTI	359	56	
<b>All Other NEC Corridor Routes</b>									
Northeast Regional	Richmond / Newport News / Norfolk	CSX	<b>1256</b>	<b>1086</b>	FTI	396	DSR	276	189
		NS	508	756	DCS	194	FTI	110	81
		MNRR	<b>2865</b>	<b>2303</b>	DSR	1891	CTI	682	56
	Roanoke	NS	775	406	FTI	504	DCS	161	216
	Springfield Shuttles	MADOT	<b>1546</b>	852	DSR	1308	DCS	181	36
<b>Non-NEC Corridor Routes</b>									
Capitol Corridor		UP	433	469	PTI	141	DCS	105	171
Carolinian		CSX	<b>1150</b>	<b>1335</b>	FTI	283	PTI	241	295
		NS	844	679	PTI	387	FTI	206	202
Cascades		BNSF	<b>1291</b>	<b>1024</b>	FTI	561	DSR	196	343
		UP	<b>930</b>	<b>1125</b>	FTI	550	DCS	161	125
Downeaster		MBTA	<b>1973</b>	<b>1553</b>	DSR	859	CTI	343	38
		PanAm	<b>1035</b>	<b>1077</b>	PTI	403	DSR	363	107
Empire	Ethan Allen Express	Amtrak	139	253	DCS	67	RTE	44	100
		MNRR	808	<b>1289</b>	CTI	544	RTE	220	64
	Maple Leaf	CSX	<b>1288</b>	<b>1209</b>	FTI	770	RTE	224	298
		Amtrak	335	239	RTE	132	DCS	78	109
		MNRR	415	550	CTI	208	RTE	144	64
	New York - Albany	Amtrak	225	179	DCS	72	PTI	63	81
		MNRR	693	820	CTI	383	RTE	202	64
	New York - Niagara Falls	CSX	<b>966</b>	<b>1122</b>	FTI	472	RTE	223	296
		Amtrak	289	266	DCS	84	PTI	61	109
		MNRR	<b>1020</b>	<b>1382</b>	CTI	649	RTE	272	64
Heartland Flyer		BNSF	<b>1981</b>	<b>1545</b>	DSR	1289	FTI	584	236
Hiawatha		CP	273	258	DCS	116	FTI	85	53
		Metra	843	<b>914</b>	CTI	557	DCS	91	29
Illinois	Carl Sandburg / Illinois Zephyr	BNSF	491	516	FTI	185	DSR	131	257
	Illini / Saluki	CN	628	685	DSR	217	DCS	214	304
	Lincoln Service	CN	<b>2350</b>	<b>1856</b>	FTI	1520	DCS	596	35
		UP	629	633	FTI	370	PTI	95	231
Michigan	Blue Water	CN	416	492	FTI	277	DMW	58	159
		NS	<b>3188</b>	<b>3102</b>	FTI	2343	DCS	651	39
		Amtrak	186	243	DSR	72	DCS	67	99
		MIDOT	22	113	DSR	15	RTE	7	22
	Pere Marquette	CSX	103	255	FTI	95	DCS	4	135
		NS	<b>2214</b>	<b>2285</b>	FTI	1430	PTI	290	39
	Wolverine	CN	<b>1034</b>	<b>2421</b>	DSR	677	FTI	280	27
		NS	<b>1710</b>	<b>3102</b>	FTI	1542	DCS	69	39
		Amtrak	508	328	DCS	286	DMW	59	99
		MIDOT	203	218	DSR	158	DCS	27	134
Missouri		UP	687	764	FTI	364	DSR	164	271
Pacific Surfliner		BNSF	<b>934</b>	<b>924</b>	DCS	254	FTI	207	22
		UP	<b>1026</b>	<b>1316</b>	DCS	573	PTI	313	174
		SCRRA	675	624	CTI	191	DCS	151	95
		SDNRR	672	895	CTI	340	PTI	153	60
Pennsylvanian		NS	<b>1539</b>	<b>1305</b>	FTI	1064	RTE	228	249
Piedmont		NS	<b>915</b>	759	FTI	348	DSR	276	173
San Joaquins		BNSF	<b>922</b>	809	FTI	359	PTI	213	284
		UP	785	799	PTI	271	DCS	211	88
Vermont		MNRR	-	<b>2203</b>		-		-	56

## Minutes of Delay per 10K Train Miles by Service for May 2021

Service	Host	Total Host Responsible Delays		Largest Two Delay Categories - Current Month				Route Miles
		Current Month	Most Recent 12 Months	#1		#2		
<b>Target</b>		<b>900</b>	<b>900</b>					
<b>Long-Distance Routes</b>								
Auto Train	CSX FR	<b>1604</b> <b>2522</b>	<b>1188</b> <b>2556</b>	FTI CTI	739 889	DSR DSR	504 756	898 16
California Zephyr	BNSF UP	853 <b>1071</b>	716 <b>1036</b>	DSR FTI	372 550	FTI DSR	313 282	1027 1381
Capitol Ltd	CSX NS	691 <b>2149</b>	<b>935</b> <b>1797</b>	FTI FTI	233 1482	RTE RTE	195 254	307 481
Cardinal	CSX NS BBrRR	771 <b>1825</b> <b>946</b>	<b>1000</b> <b>1155</b> <b>902</b>	FTI FTI PTI	408 693 393	DCS PTI DCS	106 659 358	703 79 132
City Of New Orleans	CN	686	767	FTI	260	DSR	225	930
Coast Starlight	BNSF UP SCRRA	<b>1078</b> <b>1377</b> <b>1522</b>	705 <b>1141</b> <b>1722</b>	FTI FTI PTI	450 474 1065	RTE DCS DCS	160 462 283	186 1162 48
Crescent	NS	<b>1579</b>	<b>1188</b>	FTI	832	DCS	281	1141
Empire Builder	BNSF CP Metra	899 638 <b>1230</b>	773 718 <b>1037</b>	FTI FTI CTI	615 330 628	DSR DSR DCS	134 153 364	2147 384 29
Lake Shore Ltd	CSX NS MNRR	555 <b>1871</b> <b>1570</b>	777 <b>1747</b> <b>1015</b>	FTI FTI CTI	168 1492 617	RTE PTI DCS	157 143 409	741 339 64
Palmetto	CSX	<b>942</b>	<b>917</b>	FTI	384	DSR	240	659
Silver Meteor	CSX Fla DOT FR	<b>1349</b> 739 <b>1924</b>	<b>911</b> <b>953</b> <b>1570</b>	FTI DSR CTI	675 279 788	DSR CTI DSR	360 255 732	1152 68 61
Silver Star	CSX NS Fla DOT FR	846 406 532 <b>1156</b>	858 769 762 <b>1307</b>	DSR DSR CTI DSR	304 144 287 809	FTI FTI DSR CTI	257 105 186 231	1209 28 68 61
Southwest Chief	BNSF NMDOT	<b>932</b> <b>1620</b>	715 <b>1528</b>	FTI DSR	399 994	DCS CTI	236 474	2206 80
Sunset Ltd	BNSF UP	<b>1294</b> <b>2146</b>	<b>1260</b> <b>1847</b>	DSR FTI	521 1568	DCS RTE	374 219	190 1784
Texas Eagle	BNSF CN UP TRE	845 <b>3241</b> <b>1423</b> 93	<b>1063</b> <b>2212</b> <b>1592</b> 605	DSR FTI FTI CTI	442 2155 878 68	FTI DCS DSR DSR	280 894 268 25	116 35 1073 33

The numbers included in this document are preliminary and are for informational purposes only.

Excludes hosts with fewer than 15 route miles.

Delays on the Amtrak-owned portion of the Northeast Corridor are shown in a separate report, with tighter delay standards.

Northeast Regional: Roanoke includes all trains between Roanoke and points on the NEC; Richmond / Newport News /

Norfolk includes all trains between these locations and points on the NEC.

# Host Railroad Report - All-Stations and Customer OTP for May 2021

Service	All-Stations OTP		Customer OTP		Avg Mins Late per Late Rider**	
	Current Month	Most Recent 12 Months	Current Month	Most Recent 12 Months	Current Month	Most Recent 12 Months
<b>Amtrak System</b>	<b>79.6%</b>	<b>81.9%</b>	<b>76.8%</b>	<b>80.4%</b>	<b>70</b>	<b>63</b>
<b>NEC Corridor Routes</b>	<b>89.4%</b>	<b>91.3%</b>	<b>85.9%</b>	<b>89.4%</b>	<b>42</b>	<b>42</b>
<b>Target*</b>	<b>80.0%</b>	<b>80.0%</b>				
Acela Express*	86.5%	89.0%	81.9%	86.9%	30	28
Keystone	97.1%	95.9%	97.0%	95.9%	36	45
Northeast Regional	87.9%	90.0%	85.2%	88.9%	46	45
On Spine Northeast Regional	90.1%	92.1%	87.8%	91.3%	53	48
Richmond / Newport News / Norfolk	84.6%	87.2%	83.1%	85.9%	39	42
Roanoke	83.1%	88.7%	78.4%	87.9%	48	48
Springfield Shuttles	94.5%	92.3%	94.8%	92.4%	34	39
<b>Non-NEC Corridor Routes</b>	<b>85.1%</b>	<b>86.3%</b>	<b>82.7%</b>	<b>83.8%</b>	<b>44</b>	<b>44</b>
<b>Target</b>	<b>80.0%</b>	<b>80.0%</b>				
Capitol Corridor	94.0%	92.3%	92.0%	90.7%	41	41
Carolinian	73.1%	77.7%	68.4%	76.3%	47	51
Cascades	62.5%	69.4%	59.8%	64.1%	39	40
Downeaster	83.4%	87.2%	70.4%	75.2%	32	34
Empire	88.1%	84.2%	86.3%	83.2%	43	43
Ethan Allen Express	98.8%	92.5%	98.3%	92.0%	56	35
Maple Leaf	77.7%	77.9%	77.0%	82.7%	48	54
New York - Albany	93.8%	94.0%	91.3%	93.0%	51	38
New York - Niagara Falls	83.1%	73.9%	79.5%	70.6%	37	42
Heartland Flyer	62.4%	74.4%	55.0%	74.6%	41	40
Hiawatha	97.1%	96.1%	95.3%	94.8%	28	37
Illinois	81.9%	84.2%	83.9%	83.5%	29	42
Carl Sandburg / Illinois Zephyr	92.9%	92.0%	93.8%	90.9%	20	36
Illini / Saluki	76.1%	74.9%	89.0%	82.4%	25	41
Lincoln Service	79.5%	85.0%	78.4%	82.0%	31	44
Michigan	84.0%	82.1%	77.9%	76.6%	67	50
Blue Water	84.8%	85.8%	80.6%	81.6%	38	46
Pere Marquette	94.2%	88.6%	90.6%	84.3%	36	49
Wolverine	79.1%	76.1%	70.8%	70.4%	86	52
Missouri	86.9%	85.7%	82.2%	81.4%	42	48
Pacific Surfliner	86.7%	88.2%	87.4%	89.4%	45	48
Pennsylvanian	63.7%	70.5%	69.2%	74.5%	45	44
Piedmont	80.7%	86.1%	70.5%	79.2%	36	39
San Joaquins	85.0%	87.5%	82.9%	85.0%	58	46
Vermonteer	96.3%	94.7%	94.1%	94.4%	51	47
<b>Long-Distance Routes</b>	<b>42.9%</b>	<b>56.6%</b>	<b>39.1%</b>	<b>57.6%</b>	<b>104</b>	<b>86</b>
<b>Target</b>	<b>80.0%</b>	<b>80.0%</b>				
Auto Train	53.2%	77.4%	30.7%	60.8%	179	116
California Zephyr	40.6%	53.1%	42.2%	55.1%	101	108
Capitol Ltd	35.9%	49.0%	33.7%	46.8%	84	67
Cardinal	54.6%	61.2%	53.0%	60.8%	58	70
City Of New Orleans	76.3%	69.6%	88.3%	84.2%	34	69
Coast Starlight	46.7%	68.6%	45.4%	67.3%	55	69
Crescent	37.2%	52.4%	33.3%	53.1%	98	84
Empire Builder	46.9%	60.0%	44.2%	59.6%	85	76
Lake Shore Ltd	51.1%	62.2%	54.9%	63.1%	89	62
Palmetto	59.7%	71.6%	52.9%	71.2%	58	60
Silver Meteor	35.5%	61.3%	25.3%	54.9%	100	75
Silver Star	26.0%	47.1%	18.2%	42.1%	97	86
Southwest Chief	30.7%	50.7%	27.5%	50.6%	125	108
Sunset Ltd	18.6%	22.2%	21.1%	31.4%	158	117
Texas Eagle	52.2%	53.9%	53.6%	55.1%	100	92

The numbers included in this document are preliminary and are for informational purposes only.

Northeast Regional: Roanoke includes all trains between Roanoke and points on the NEC; Richmond/Newport News/Norfolk includes all trains between these locations and points on the NEC.

\* Acela Express on-time performance target is 90.0%

\*\* Excludes on-time Customers

### Host Railroad Responsible Delays

Code	Code Description	Explanation
CTI	Commuter Train Interference	Delays for meeting or following commuter trains
DCS	Signal Delays	Signal failure or All Other signal delays, wayside defect-detector false-alarms, defective road crossing protection, efficiency tests, drawbridge stuck open
DMW	Maintenance of Way	Maintenance of Way delays including holds for track repairs or MW foreman to clear
DSR	Slow Order Delays	Temporary slow orders, except heat or cold orders
DTR	Detour	Delays from detours
FTI	Freight Train Interference	Delays from freight trains
PTI	Passenger Train Interference	Delays for meeting or following All Other passenger trains
RTE	Routing	Routing-dispatching delays including diversions, late track bulletins, etc.

### Amtrak Responsible Delays

Code	Code Description	Explanation
ADA	Passenger Related	All delays related to disabled passengers, wheel chair lifts, guide dogs, etc.
CAR	Car Failure	Mechanical failure on all types of cars
CCR	Cab Car Failure	Mechanical failure on Cab Cars
CON	Hold for Connection	Holding for connections from All Other trains or buses.
ENG	Locomotive Failure	Mechanical failure on engines.
HLD	Passenger Related	All delays related to passengers, checked-baggage, large groups, etc.
INJ	Injury Delay	Delay due to injured passengers or employees.
ITI	Initial Terminal Delay	Delay at initial terminal due to late arriving inbound trains causing late release of equipment.
OTH	Miscellaneous Delays	Lost-on-run, heavy trains, unable to make normal speed, etc.
SVS	Servicing	All switching and servicing delays
SYS	Crew & System	Delays related to crews including lateness, lone-engineer delays

### Third-Party Delays

Code	Code Description	Explanation
CUI	Customs	U.S. and Canadian customs delays; Immigration-related delays
DBS	Debris	Debris strikes
MBO	Drawbridge Openings	Movable bridge openings for marine traffic where no bridge failure is involved
NOD	Unused Recovery Time	Wait for departure time
POL	Police-Related	Police/fire department holds on right-of-way or on-board trains
TRS	Trespassers	Trespasser incidents including road crossing accidents, trespasser / animal strikes, vehicle stuck on track ahead, bridge strikes
WTR	Weather-Related	All weather-related delays including floods/washouts, earthquake-related delays, heat or cold orders, slippery rail due to leaves

\*These delay codes are applicable to Off-NEC routes only.