



Host Railroad Report

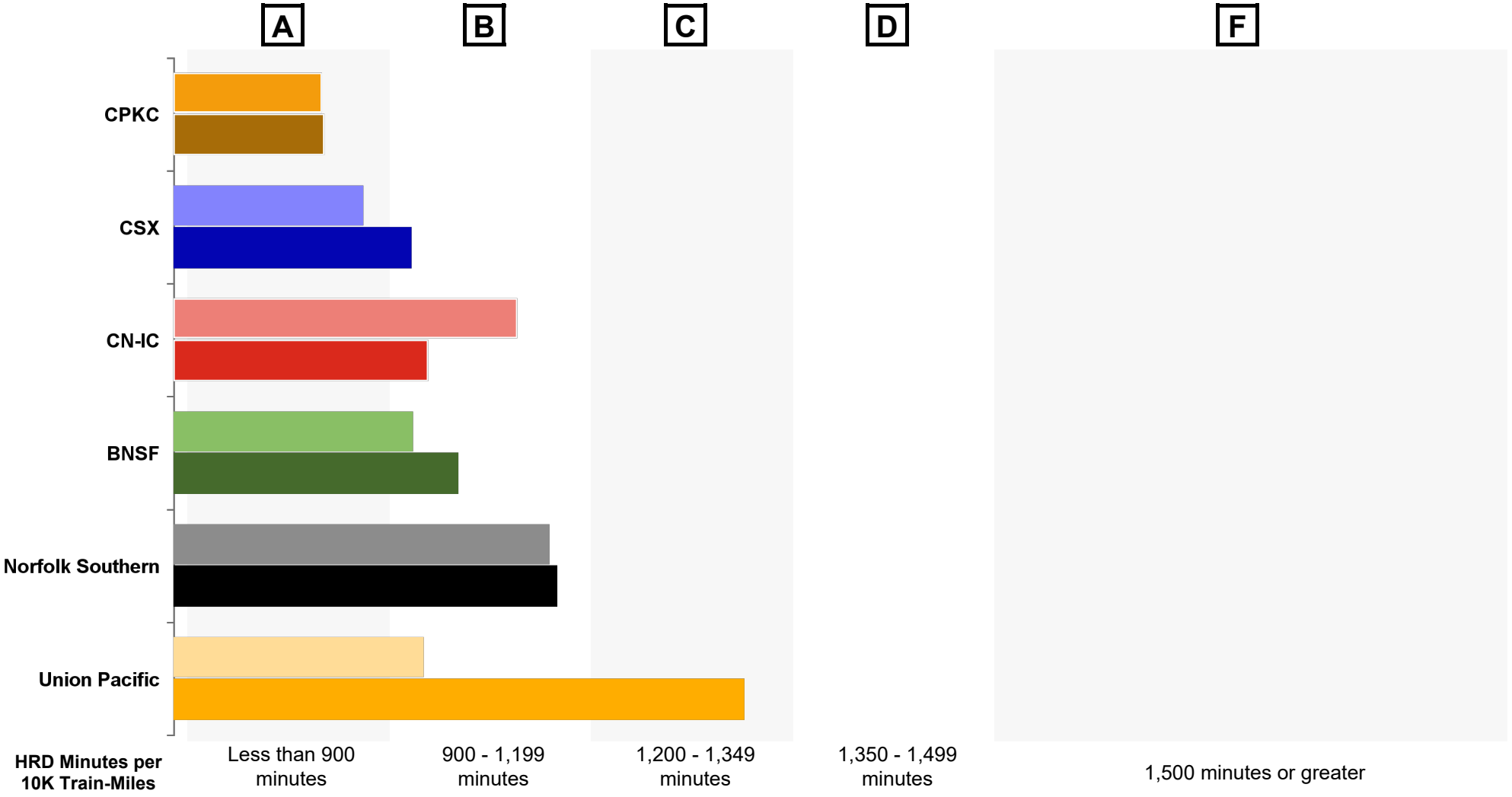
Amtrak Train Performance on Host Railroads

Data through November 2023

Host Railroad Report Card Update

Current Month and 1 Year Snapshot

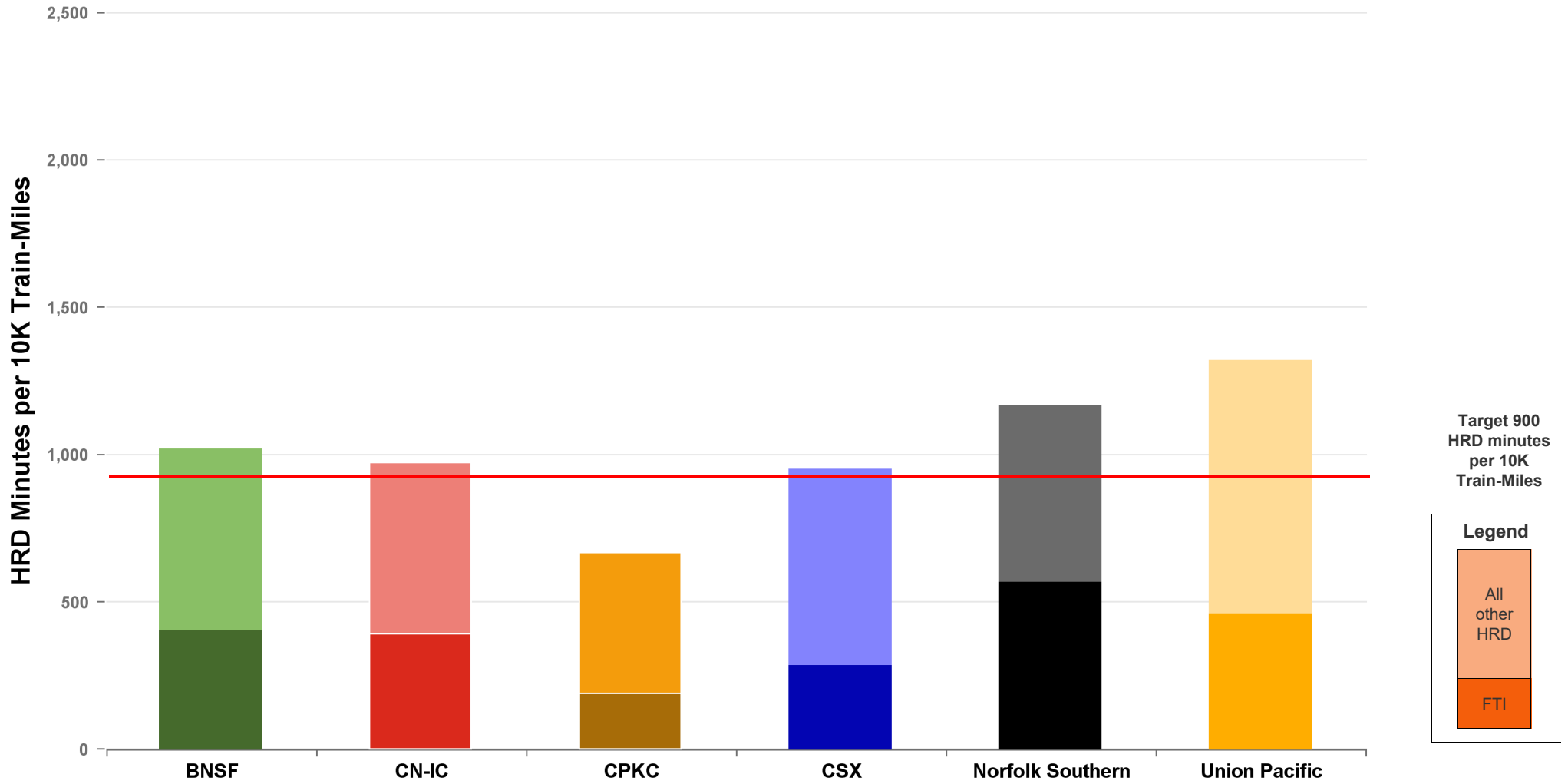
A monthly update of the Host Railroad Report Card, which grades the six major host railroads based on host responsible delay (HRD) minutes per 10,000 train-miles for the current month (lighter shade) and the most recent 12 months.



Total Host-Responsible Delays

1 Year Snapshot

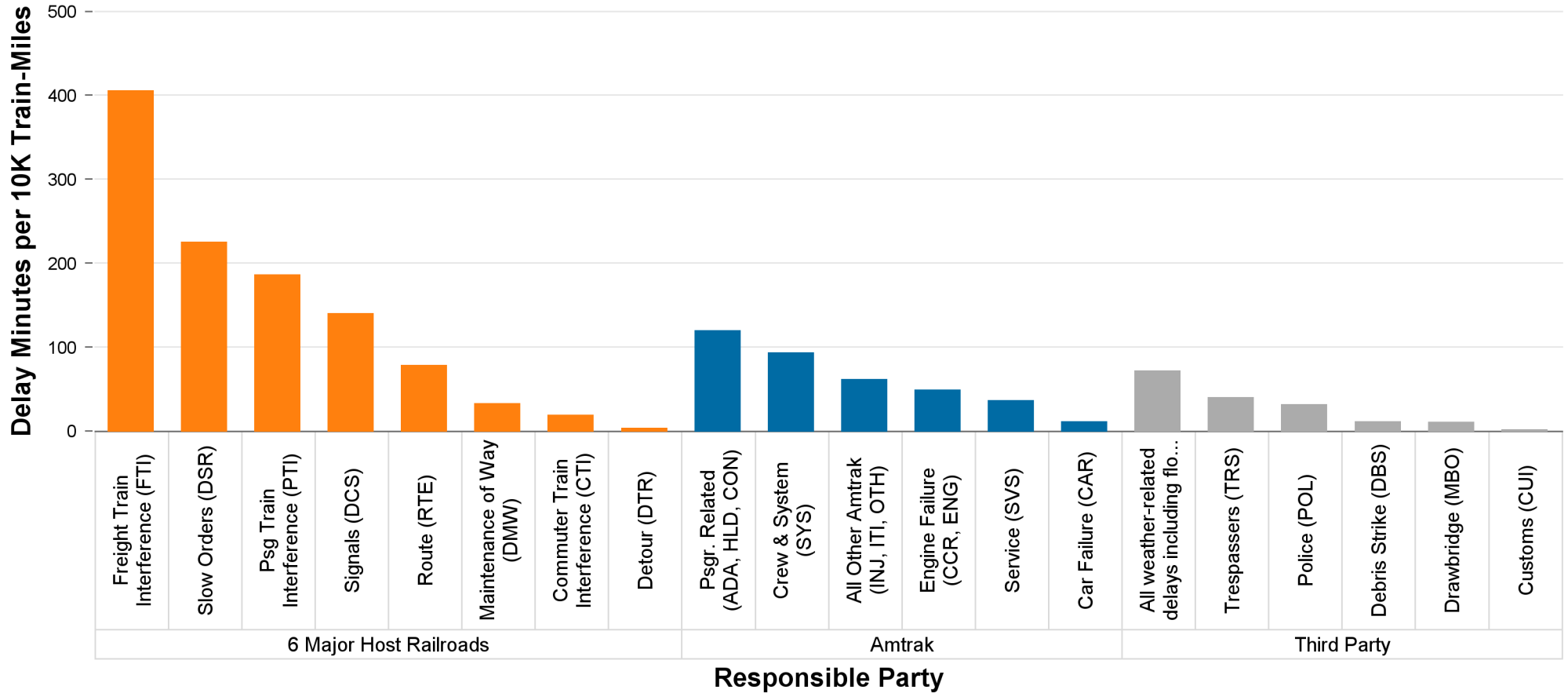
Total host-responsible delay (HRD) minutes per 10,000 train-miles incurred by Amtrak trains on the six major host railroads, with delays attributable to freight train interference (FTI) shaded.



Delays to Amtrak Trains by Responsible Party

1 Year Snapshot

Delay minutes per 10,000 train-miles on the six major host railroads categorized by delay type and responsible party.

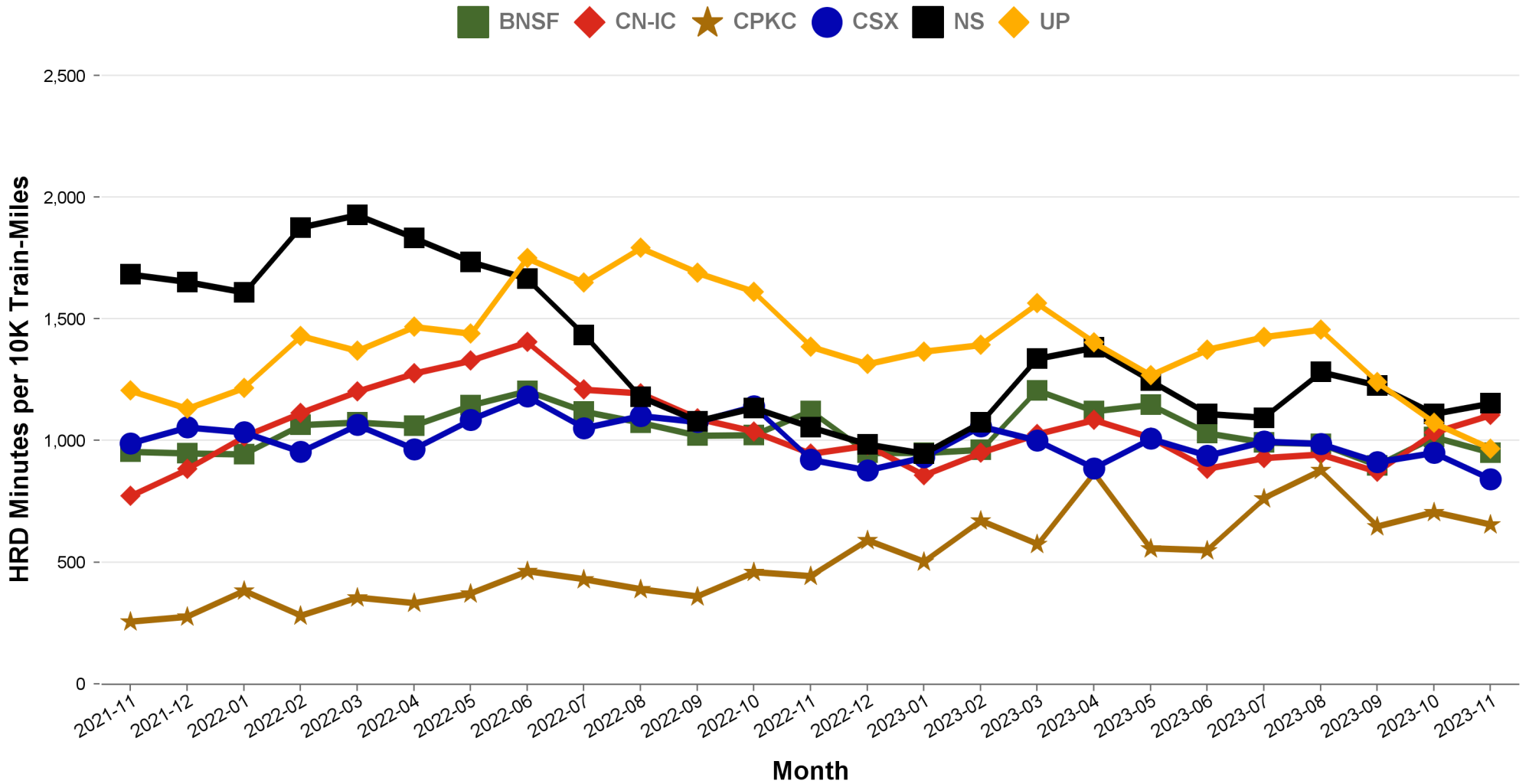


Responsible Party	6 Major Host Railroads	Amtrak	Third Party
Delay Minutes per 10K Train-Miles	1085	367	167
Percentage of Total Delays	67.0%	22.7%	10.3%

Total Host-Responsible Delays

2 Year Snapshot

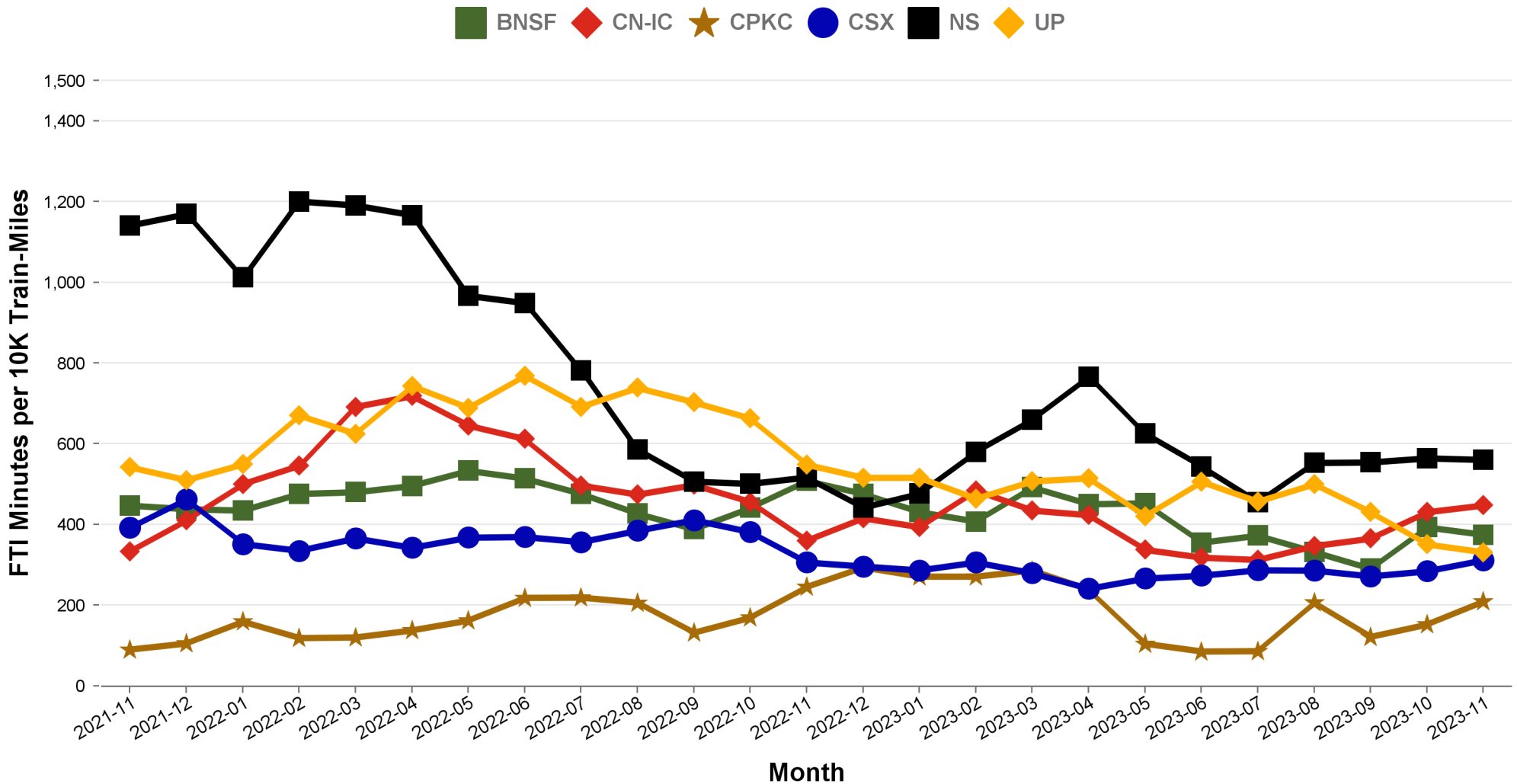
Total host-responsible delay (HRD) minutes per 10,000 train-miles incurred by Amtrak trains on each of the six major host railroads for the most recent two years.



Freight Train Interference Delays

2 Year Snapshot

Total delay minutes per 10,000 train-miles attributable to freight train interference (FTI) incurred by Amtrak trains on each of the six major host railroads for the most recent two years.



Minutes of Delay per 10K Train Miles by Host for November 2023

Host	Service	Total Host Responsible Delays		Largest Two Delay Categories - Current Month				Route Miles
		Current Month	Most Recent 12 Months	#1		#2		
Target		900	900					
BNSF	California Zephyr	765	933	FTI	275	DSR	265	1027
	Carl Sandburg / Illinois Zephyr	681	770	FTI	231	DSR	180	257
	Cascades	1394	1222	FTI	432	DSR	406	317
	Coast Starlight	866	987	FTI	246	PTI	181	158
	Empire Builder	807	918	FTI	477	DSR	157	2147
	Heartland Flyer	2008	1819	DSR	1006	FTI	833	236
	Pacific Surfliner	999	1102	DCS	313	FTI	193	22
	San Joaquins	1135	1327	PTI	449	FTI	424	284
	Southwest Chief	819	788	FTI	284	DSR	240	2206
	Sunset Ltd	738	1216	FTI	251	DSR	247	190
	Texas Eagle	1312	1308	DSR	878	FTI	361	116
CN-IC	Blue Water	705	673	FTI	346	DSR	221	159
	City Of New Orleans	1095	871	FTI	416	DSR	291	930
	Illini / Saluki	838	818	FTI	277	DSR	242	304
	Lincoln Service	2205	1760	FTI	1515	DSR	415	35
	Lincoln / Missouri	1608	2440	FTI	875	DSR	364	35
	Texas Eagle	2255	1948	FTI	1361	DSR	287	35
	Wolverine	1626	1592	DSR	819	DCS	384	27
CPKC	Adirondack	799	912	PTI	484	DSR	140	178
	Empire Builder	821	836	FTI	442	DSR	262	384
	Ethan Allen Express	2162	1453	PTI	1509	DSR	282	60
	Hiawatha	148	305	RTE	45	DCS	32	53
CSX	Auto Train	1219	1166	FTI	527	DSR	294	898
	Capitol Ltd	726	702	FTI	295	RTE	212	307
	Cardinal	908	793	FTI	593	DSR	172	703
	Carolinian	1446	1396	PTI	374	FTI	314	295
	Downeaster	379	696	PTI	234	DCS	109	107
	Lake Shore Ltd	538	709	FTI	213	RTE	122	741
	Maple Leaf	525	689	FTI	305	RTE	100	298
	New York - Niagara Falls	468	600	FTI	293	RTE	102	296
	Palmetto	853	1052	FTI	356	PTI	243	659
	Pere Marquette	285	222	DSR	141	FTI	47	135
	Richmond / Newport News / Norfolk	1253	1332	FTI	340	RTE	236	189
	Silver Meteor	756	890	FTI	336	PTI	175	1152
	Silver Star	859	976	PTI	254	FTI	239	1209
NS	Blue Water	3122	2382	FTI	2190	RTE	367	39
	Capitol Ltd	1282	1269	FTI	852	RTE	143	481
	Cardinal	1082	1525	PTI	753	DSR	167	79
	Carolinian	852	738	PTI	365	DCS	158	202
	Crescent	1288	1475	FTI	673	DCS	241	1141
	Lake Shore Ltd	1383	1253	FTI	850	PTI	165	339
	Pennsylvanian	777	841	FTI	374	RTE	204	249
	Pere Marquette	2108	1551	FTI	1097	PTI	278	39
	Piedmont	814	833	PTI	283	FTI	207	173
	Richmond / Newport News / Norfolk	1018	877	DCS	434	FTI	341	81
	Roanoke	792	795	PTI	296	FTI	277	216
	Silver Star	312	483	DSR	141	DCS	88	28
	Wolverine	3019	2185	FTI	1694	DCS	375	39
UP	California Zephyr	1038	1496	FTI	489	PTI	150	1381
	Capitol Corridor	567	705	PTI	270	DCS	125	171
	Cascades	919	1525	PTI	402	FTI	261	125
	Coast Starlight	1240	1525	FTI	323	PTI	306	1162
	Lincoln Service	762	938	PTI	259	FTI	250	231
	Lincoln / Missouri	627	1048	PTI	201	FTI	154	502
	Missouri	600	969	FTI	184	PTI	176	271
	Pacific Surfliner	1355	2102	DCS	619	PTI	543	174
	San Joaquins	1005	1335	PTI	466	FTI	254	88
	Sunset Ltd	1051	1562	FTI	619	RTE	187	1784
	Texas Eagle	1205	1537	FTI	629	DSR	286	1073

Minutes of Delay per 10K Train Miles by Host for November 2023

Host	Service	Total Host Responsible Delays		Largest Two Delay Categories - Current Month				Route Miles
		Current Month	Most Recent 12 Months	#1		#2		
Target		900	900					
Amtrak	Adirondack	346	428	DCS	139	RTE	105	100
	Blue Water	536	478	DSR	157	DCS	126	99
	Ethan Allen Express	235	274	RTE	93	PTI	73	100
	Maple Leaf	235	339	RTE	86	PTI	60	109
	New York - Albany	308	218	DCS	79	PTI	73	81
	New York - Niagara Falls	338	363	PTI	85	RTE	78	109
	Wolverine	787	668	PTI	398	DSR	242	99
BBrRR	Cardinal	1466	1505	PTI	722	FTI	346	132
CN-Canada	Adirondack	7319	7046	DSR	5408	RTE	872	49
Fla DOT	Silver Meteor	868	837	CTI	455	DCS	262	68
	Silver Star	751	911	CTI	503	DCS	160	68
FR	Auto Train	5644	5089	DSR	4059	CTI	746	16
	Silver Meteor	3045	3465	DSR	1406	CTI	663	61
	Silver Star	2553	2519	DSR	1539	CTI	503	61
MADOT	Springfield Shuttles	1514	804	DSR	784	RTE	375	36
	Vermonter	1497	1104	DSR	996	DCS	256	50
MBTA	Downeaster	1349	1260	CTI	553	DCS	428	38
Metra	Empire Builder	2328	2626	CTI	1759	PTI	246	29
	Hiawatha	2301	2274	CTI	1081	DSR	650	29
MIDOT	Blue Water	471	477	PTI	373	DCS	73	22
	Wolverine	639	653	PTI	464	RTE	66	134
MNRR	Adirondack	1217	1687	CTI	546	RTE	254	64
	Ethan Allen Express	1545	1237	CTI	959	DSR	268	64
	Lake Shore Ltd	1372	1460	CTI	765	DSR	233	64
	Maple Leaf	784	1115	CTI	376	RTE	177	64
	New York - Albany	1526	1423	CTI	975	RTE	263	64
	New York - Niagara Falls	1952	1916	CTI	1080	RTE	333	64
	Richmond / Newport News / Norfolk	2210	2034	DSR	1300	CTI	694	56
	Vermonter	2982	2966	DSR	2548	CTI	351	56
NECR	Vermonter	2186	1762	DSR	1986	DMW	127	192
NMDOT	Southwest Chief	3002	2277	CTI	1732	DCS	614	80
SCRRA	Coast Starlight	1725	1546	PTI	877	CTI	378	48
	Pacific Surfliner	1210	1115	PTI	338	CTI	291	95
SDNRR	Pacific Surfliner	758	1030	CTI	310	PTI	283	60
Sunder	Cascades	582	724	PTI	341	CTI	177	20
	Coast Starlight	1188	1775	PTI	679	CTI	473	20
TRE	Texas Eagle	284	1092	RTE	142	CTI	117	33
VTR	Ethan Allen Express	239	463	DSR	188	DCS	15	24

The numbers included in this document are preliminary and are for informational purposes only.

Excludes hosts with fewer than 15 route miles.

Delays on the Amtrak-owned portion of the Northeast Corridor are shown in a separate report, with tighter delay standards.

Northeast Regional: Roanoke includes all trains between Roanoke and points on the NEC; Richmond / Newport News / Norfolk includes all trains between these locations and points on the NEC.

Minutes of Delay per 10K Train Miles by Service for November 2023

Service		Host	Total Host Responsible Delays		Largest Two Delay Categories - Current Month				Route Miles
			Current	Most	#1	#2			
Target			900	900					
All Other NEC Corridor Routes									
Northeast Regional	Richmond / Newport News / Norfolk	CSX	1253	1332	FTI	340	RTE	236	189
		NS	1018	877	DCS	434	FTI	341	81
		MNRR	2210	2034	DSR	1300	CTI	694	56
		NS	792	795	PTI	296	FTI	277	216
	Roanoke Springfield Shuttles	MADOT	1514	804	DSR	784	RTE	375	36
Non-NEC Corridor Routes									
Capitol Corridor		UP	567	705	PTI	270	DCS	125	171
Carolinian		CSX	1446	1396	PTI	374	FTI	314	295
		NS	852	738	PTI	365	DCS	158	202
Cascades		BNSF	1394	1222	FTI	432	DSR	406	317
		UP	919	1525	PTI	402	FTI	261	125
		Sounder	582	724	PTI	341	CTI	177	20
Downeaster		CSX	379	696	PTI	234	DCS	109	107
		MBTA	1349	1260	CTI	553	DCS	428	38
Empire	Adirondack	CPKC	799	912	PTI	484	DSR	140	178
		Amtrak	346	428	DCS	139	RTE	105	100
		CN-Canada	7319	7046	DSR	5408	RTE	872	49
		MNRR	1217	1687	CTI	546	RTE	254	64
	Ethan Allen Express	CPKC	2162	1453	PTI	1509	DSR	282	60
		Amtrak	235	274	RTE	93	PTI	73	100
		MNRR	1545	1237	CTI	959	DSR	268	64
	Maple Leaf	VTR	239	463	DSR	188	DCS	15	24
		CSX	525	689	FTI	305	RTE	100	298
		Amtrak	235	339	RTE	86	PTI	60	109
	New York - Albany	MNRR	784	1115	CTI	376	RTE	177	64
		Amtrak	308	218	DCS	79	PTI	73	81
		MNRR	1526	1423	CTI	975	RTE	263	64
	New York - Niagara Falls	CSX	468	600	FTI	293	RTE	102	296
Amtrak		338	363	PTI	85	RTE	78	109	
MNRR		1952	1916	CTI	1080	RTE	333	64	
Heartland Flyer		BNSF	2008	1819	DSR	1006	FTI	833	236
Hiawatha		CPKC	148	305	RTE	45	DCS	32	53
		Metra	2301	2274	CTI	1081	DSR	650	29
Illinois	Carl Sandburg / Illinois Zephyr	BNSF	681	770	FTI	231	DSR	180	257
		CN-IC	838	818	FTI	277	DSR	242	304
	Lincoln Service	CN-IC	2205	1760	FTI	1515	DSR	415	35
		UP	762	938	PTI	259	FTI	250	231
Lincoln / Missouri		CN-IC	1608	2440	FTI	875	DSR	364	35
		UP	627	1048	PTI	201	FTI	154	502
Michigan	Blue Water	CN-IC	705	673	FTI	346	DSR	221	159
		NS	3122	2382	FTI	2190	RTE	367	39
		Amtrak	536	478	DSR	157	DCS	126	99
	Pere Marquette	MIDOT	471	477	PTI	373	DCS	73	22
		CSX	285	222	DSR	141	FTI	47	135
		NS	2108	1551	FTI	1097	PTI	278	39
	Wolverine	CN-IC	1626	1592	DSR	819	DCS	384	27
		NS	3019	2185	FTI	1694	DCS	375	39
		Amtrak	787	668	PTI	398	DSR	242	99
	MIDOT	639	653	PTI	464	RTE	66	134	
Missouri		UP	600	969	FTI	184	PTI	176	271
Pacific Surfliner		BNSF	999	1102	DCS	313	FTI	193	22
		UP	1355	2102	DCS	619	PTI	543	174
		SCRRA	1210	1115	PTI	338	CTI	291	95
		SDNRR	758	1030	CTI	310	PTI	283	60
Pennsylvanian		NS	777	841	FTI	374	RTE	204	249
Piedmont		NS	814	833	PTI	283	FTI	207	173
San Joaquins		BNSF	1135	1327	PTI	449	FTI	424	284
		UP	1005	1335	PTI	466	FTI	254	88
Vermont		MADOT	1497	1104	DSR	996	DCS	256	50
		MNRR	2982	2966	DSR	2548	CTI	351	56
		NECR	2186	1762	DSR	1986	DMW	127	192

Minutes of Delay per 10K Train Miles by Service for November 2023

Service	Host	Total Host Responsible Delays		Largest Two Delay Categories - Current Month				Route Miles
		Current	Most	#1		#2		
Target		900	900					
Long-Distance Routes								
Auto Train	CSX	1219	1166	FTI	527	DSR	294	898
	FR	5644	5089	DSR	4059	CTI	746	16
California Zephyr	BNSF	765	933	FTI	275	DSR	265	1027
	UP	1038	1496	FTI	489	PTI	150	1381
Capitol Ltd	CSX	726	702	FTI	295	RTE	212	307
	NS	1282	1269	FTI	852	RTE	143	481
Cardinal	CSX	908	793	FTI	593	DSR	172	703
	NS	1082	1525	PTI	753	DSR	167	79
	BBrRR	1466	1505	PTI	722	FTI	346	132
City Of New Orleans	CN-IC	1095	871	FTI	416	DSR	291	930
Coast Starlight	BNSF	866	987	FTI	246	PTI	181	158
	UP	1240	1525	FTI	323	PTI	306	1162
	SCRRA	1725	1546	PTI	877	CTI	378	48
	Sounder	1188	1775	PTI	679	CTI	473	20
Crescent	NS	1288	1475	FTI	673	DCS	241	1141
Empire Builder	BNSF	807	918	FTI	477	DSR	157	2147
	CPKC	821	836	FTI	442	DSR	262	384
	Metra	2328	2626	CTI	1759	PTI	246	29
Lake Shore Ltd	CSX	538	709	FTI	213	RTE	122	741
	NS	1383	1253	FTI	850	PTI	165	339
	MNRR	1372	1460	CTI	765	DSR	233	64
Palmetto	CSX	853	1052	FTI	356	PTI	243	659
Silver Meteor	CSX	756	890	FTI	336	PTI	175	1152
	Fla DOT	868	837	CTI	455	DCS	262	68
	FR	3045	3465	DSR	1406	CTI	663	61
Silver Star	CSX	859	976	PTI	254	FTI	239	1209
	NS	312	483	DSR	141	DCS	88	28
	Fla DOT	751	911	CTI	503	DCS	160	68
	FR	2553	2519	DSR	1539	CTI	503	61
Southwest Chief	BNSF	819	788	FTI	284	DSR	240	2206
	NMDOT	3002	2277	CTI	1732	DCS	614	80
Sunset Ltd	BNSF	738	1216	FTI	251	DSR	247	190
	UP	1051	1562	FTI	619	RTE	187	1784
Texas Eagle	BNSF	1312	1308	DSR	878	FTI	361	116
	CN-IC	2255	1948	FTI	1361	DSR	287	35
	UP	1205	1537	FTI	629	DSR	286	1073
	TRE	284	1092	RTE	142	CTI	117	33

The numbers included in this document are preliminary and are for informational purposes only.
 Excludes hosts with fewer than 15 route miles.
 Delays on the Amtrak-owned portion of the Northeast Corridor are shown in a separate report, with tighter delay standards.
 Northeast Regional: Roanoke includes all trains between Roanoke and points on the NEC; Richmond / Newport News / Norfolk includes all trains between these locations and points on the NEC.



Host Railroad Report - All-Stations and Customer OTP for November 2023

Service	All-Stations OTP		Customer OTP		Avg Mins Late per Late Rider**	
	Current Month	Most Recent 12 Months	Current Month	Most Recent 12 Months	Current Month	Most Recent 12 Months
Amtrak System	78.4%	75.3%	76.7%	74.9%	47	57
NEC Corridor Routes	84.7%	84.3%	79.7%	80.1%	42	43
Minimum Standard			80.0%	80.0%		
Acela*	83.0%	84.4%	80.0%	80.8%	34	33
Keystone	96.5%	95.3%	94.8%	94.4%	30	40
Northeast Regional	80.9%	80.3%	75.9%	76.6%	44	46
On Spine Northeast Regional	87.8%	85.3%	82.7%	81.8%	40	44
Richmond / Newport News / Norfolk	76.6%	74.0%	71.9%	71.2%	48	46
Roanoke	67.4%	74.6%	59.2%	69.8%	43	53
Springfield Shuttles	85.7%	87.2%	82.5%	85.3%	38	41
Non-NEC Corridor Routes	80.7%	78.9%	76.4%	75.1%	42	46
Minimum Standard			80.0%	80.0%		
Capitol Corridor	90.8%	89.5%	85.4%	85.5%	41	37
Carolinian	65.2%	62.4%	62.3%	61.6%	50	58
Cascades	69.1%	69.9%	65.1%	63.3%	40	43
Downeaster	93.2%	87.1%	85.8%	79.8%	33	39
Empire	77.0%	77.9%	78.3%	77.7%	32	43
Adirondack	76.8%	63.1%	77.4%	69.6%	32	43
Berkshire Flyer	-	51.5%	-	52.9%	-	62
Ethan Allen Express	66.9%	77.7%	61.6%	72.9%	39	45
Maple Leaf	81.6%	72.6%	85.6%	73.1%	39	51
New York - Albany	78.2%	87.1%	82.1%	84.2%	29	37
New York - Niagara Falls	77.8%	77.3%	74.7%	72.6%	30	43
Heartland Flyer	66.7%	65.7%	62.6%	62.0%	47	44
Hiawatha	90.3%	90.1%	83.9%	86.2%	27	34
Illinois	84.9%	79.4%	79.5%	76.9%	65	50
Carl Sandburg / Illinois Zephyr	87.2%	81.8%	83.7%	79.7%	50	41
Illini / Saluki	85.7%	77.3%	84.3%	77.0%	97	53
Lincoln Service	82.5%	79.3%	74.8%	75.9%	54	51
Lincoln / Missouri	75.2%	62.4%	78.0%	61.5%	50	54
Michigan	63.4%	74.3%	56.7%	69.2%	48	51
Blue Water	63.5%	73.5%	55.2%	63.5%	42	50
Pere Marquette	88.7%	89.9%	85.0%	87.2%	43	42
Wolverine	60.0%	72.4%	51.4%	67.9%	51	53
Missouri	87.7%	73.3%	88.6%	72.9%	25	50
Pacific Surfliner	85.5%	80.2%	83.1%	80.0%	41	45
Pennsylvanian	82.5%	79.1%	77.5%	79.6%	25	45
Piedmont	85.3%	79.0%	75.4%	68.5%	35	41
San Joaquins	74.2%	71.4%	66.8%	66.1%	47	44
Vermonteer	56.2%	67.5%	69.8%	70.7%	37	51
Long-Distance Routes	61.7%	51.0%	66.0%	54.9%	69	98
Minimum Standard			80.0%	80.0%		
Auto Train	88.3%	78.5%	75.7%	65.8%	53	93
California Zephyr	49.1%	28.3%	53.5%	29.5%	83	150
Capitol Ltd	67.4%	63.3%	74.3%	69.3%	44	61
Cardinal	56.5%	54.3%	57.4%	56.5%	57	75
City Of New Orleans	53.9%	64.3%	65.0%	75.1%	90	86
Coast Starlight	68.8%	53.0%	72.7%	58.1%	68	93
Crescent	64.5%	54.1%	68.9%	56.6%	61	83
Empire Builder	60.8%	44.0%	59.8%	47.0%	76	136
Lake Shore Ltd	75.8%	69.4%	76.6%	68.2%	57	64
Palmetto	79.3%	66.3%	80.7%	67.0%	49	55
Silver Meteor	75.3%	56.0%	73.6%	52.5%	50	71
Silver Star	56.6%	49.4%	53.3%	48.2%	69	73
Southwest Chief	31.2%	35.9%	31.6%	33.3%	90	117
Sunset Ltd	59.3%	35.1%	66.9%	41.7%	77	108
Texas Eagle	68.9%	54.6%	72.0%	58.5%	57	93

The numbers included in this document are preliminary and are for informational purposes only.

Northeast Regional: Roanoke includes all trains between Roanoke and points on the NEC; Richmond/Newport News/Norfolk includes all trains between these locations and points on the NEC.

* Acela on-time performance target is 90.0%

** Excludes on-time Customers



Host Railroad Responsible Delays

Code	Code Description	Explanation
CTI	Commuter Train Interference	Delays for meeting or following commuter trains
DCS	Signal Delays	Signal failure or All Other signal delays, wayside defect-detector false-alarms, defective road crossing protection, efficiency tests, drawbridge stuck open
DMW	Maintenance of Way	Maintenance of Way delays including holds for track repairs or MW foreman to clear
DSR	Slow Order Delays	Temporary slow orders, except heat or cold orders
DTR	Detour	Delays from detours
FTI	Freight Train Interference	Delays from freight trains
PTI	Passenger Train Interference	Delays for meeting or following All Other passenger trains
RTE	Routing	Routing-dispatching delays including diversions, late track bulletins, etc.

Amtrak Responsible Delays

Code	Code Description	Explanation
ADA	Passenger Related	All delays related to disabled passengers, wheel chair lifts, guide dogs, etc.
CAR	Car Failure	Mechanical failure on all types of cars
CCR	Cab Car Failure	Mechanical failure on Cab Cars
CON	Hold for Connection	Holding for connections from All Other trains or buses.
ENG	Locomotive Failure	Mechanical failure on engines.
HLD	Passenger Related	All delays related to passengers, checked-baggage, large groups, etc.
INJ	Injury Delay	Delay due to injured passengers or employees.
ITI	Initial Terminal Delay	Delay at initial terminal due to late arriving inbound trains causing late release of equipment.
OTH	Miscellaneous Delays	Lost-on-run, heavy trains, unable to make normal speed, etc.
SVS	Servicing	All switching and servicing delays
SYS	Crew & System	Delays related to crews including lateness, lone-engineer delays

Third-Party Delays

Code	Code Description	Explanation
CUI	Customs	U.S. and Canadian customs delays; Immigration-related delays
DBS	Debris	Debris strikes
MBO	Drawbridge Openings	Movable bridge openings for marine traffic where no bridge failure is involved
NOD	Unused Recovery Time	Wait for departure time
POL	Police-Related	Police/fire department holds on right-of-way or on-board trains
TRS	Trespassers	Trespasser incidents including road crossing accidents, trespasser / animal strikes, vehicle stuck on track ahead, bridge strikes
WTR	Weather-Related	All weather-related delays including floods/washouts, earthquake-related delays, heat or cold orders, slippery rail due to leaves

*These delay codes are applicable to Off-NEC routes only.