



# Host Railroad Report

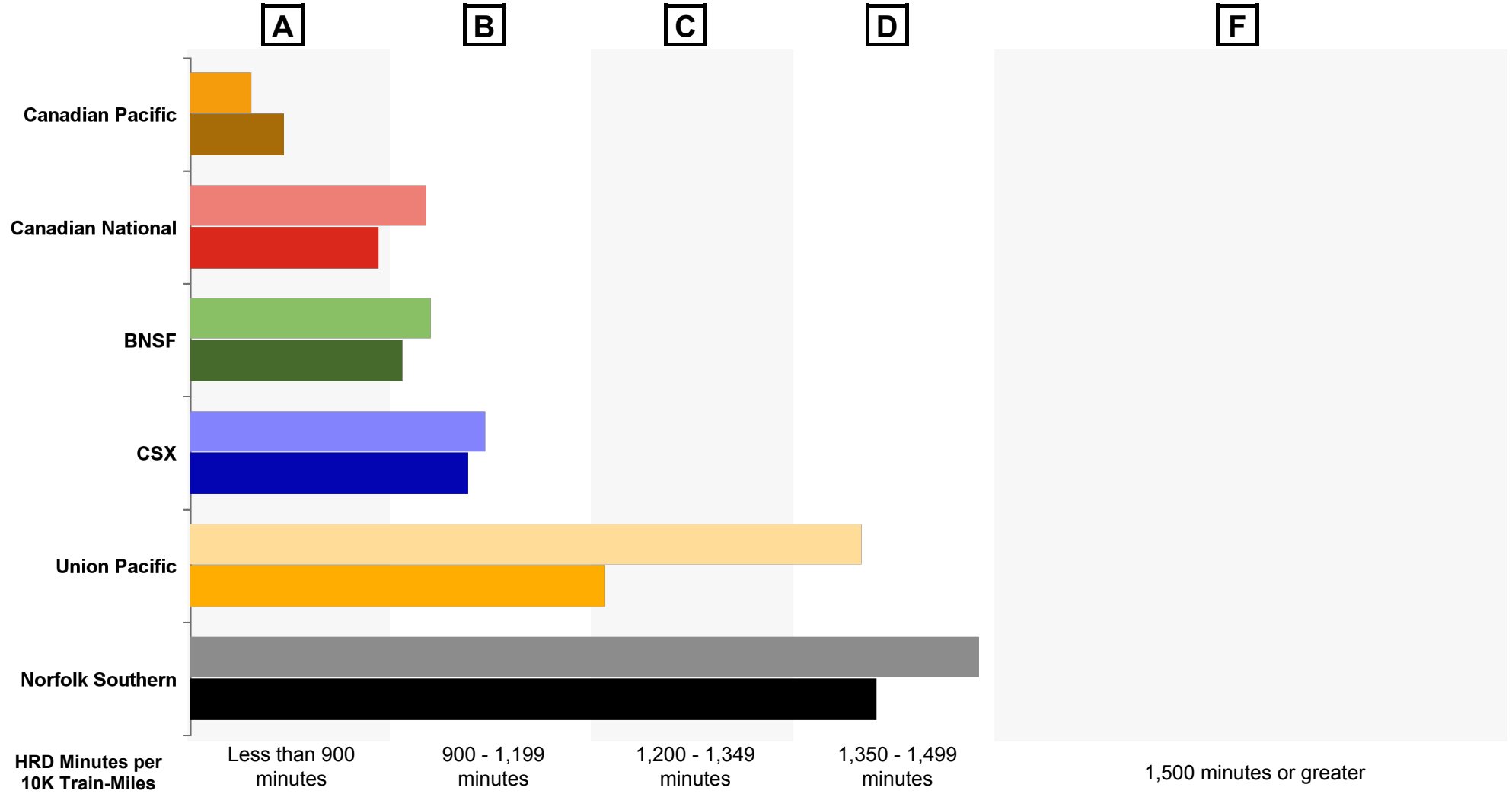
Amtrak Train Performance on Host Railroads

Data through October 2021

# Host Railroad Report Card Update

## Current Month and 1 Year Snapshot

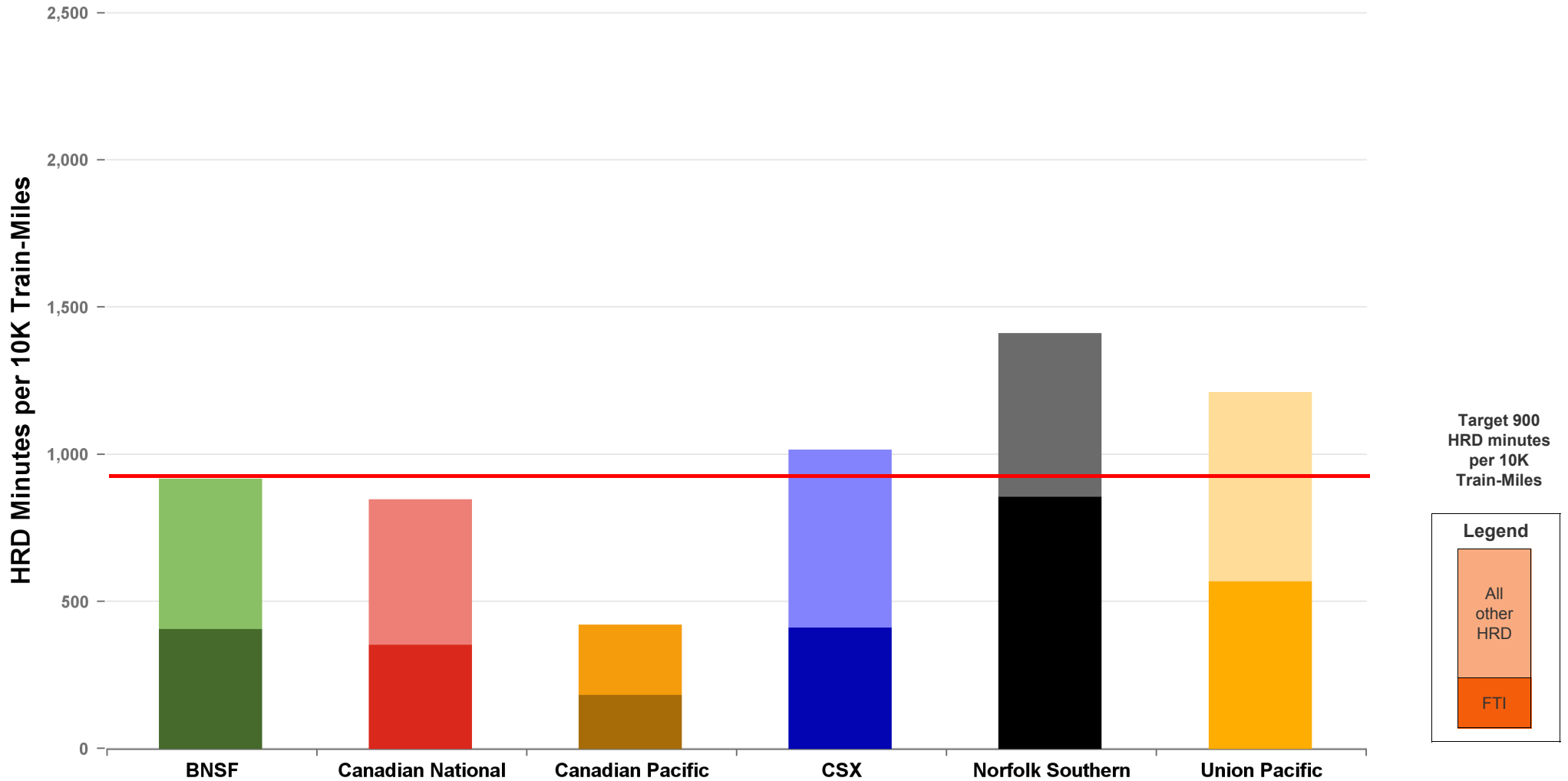
A monthly update of the Host Railroad Report Card, which grades the six major host railroads based on host responsible delay (HRD) minutes per 10,000 train-miles for the current month (lighter shade) and the most recent 12 months.



# Total Host-Responsible Delays

## 1 Year Snapshot

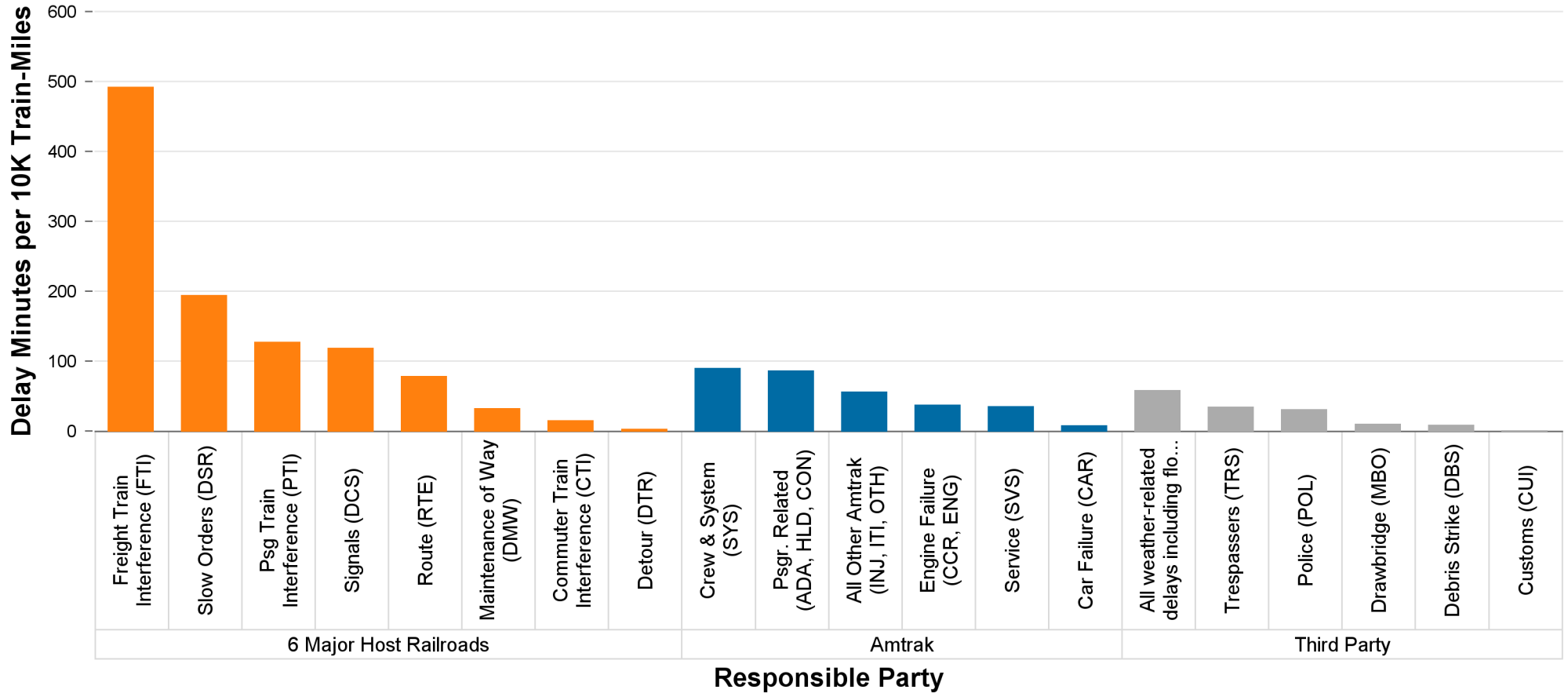
Total host-responsible delay (HRD) minutes per 10,000 train-miles incurred by Amtrak trains on the six major host railroads, with delays attributable to freight train interference (FTI) shaded.



# Delays to Amtrak Trains by Responsible Party

## 1 Year Snapshot

Delay minutes per 10,000 train-miles on the six major host railroads categorized by delay type and responsible party.

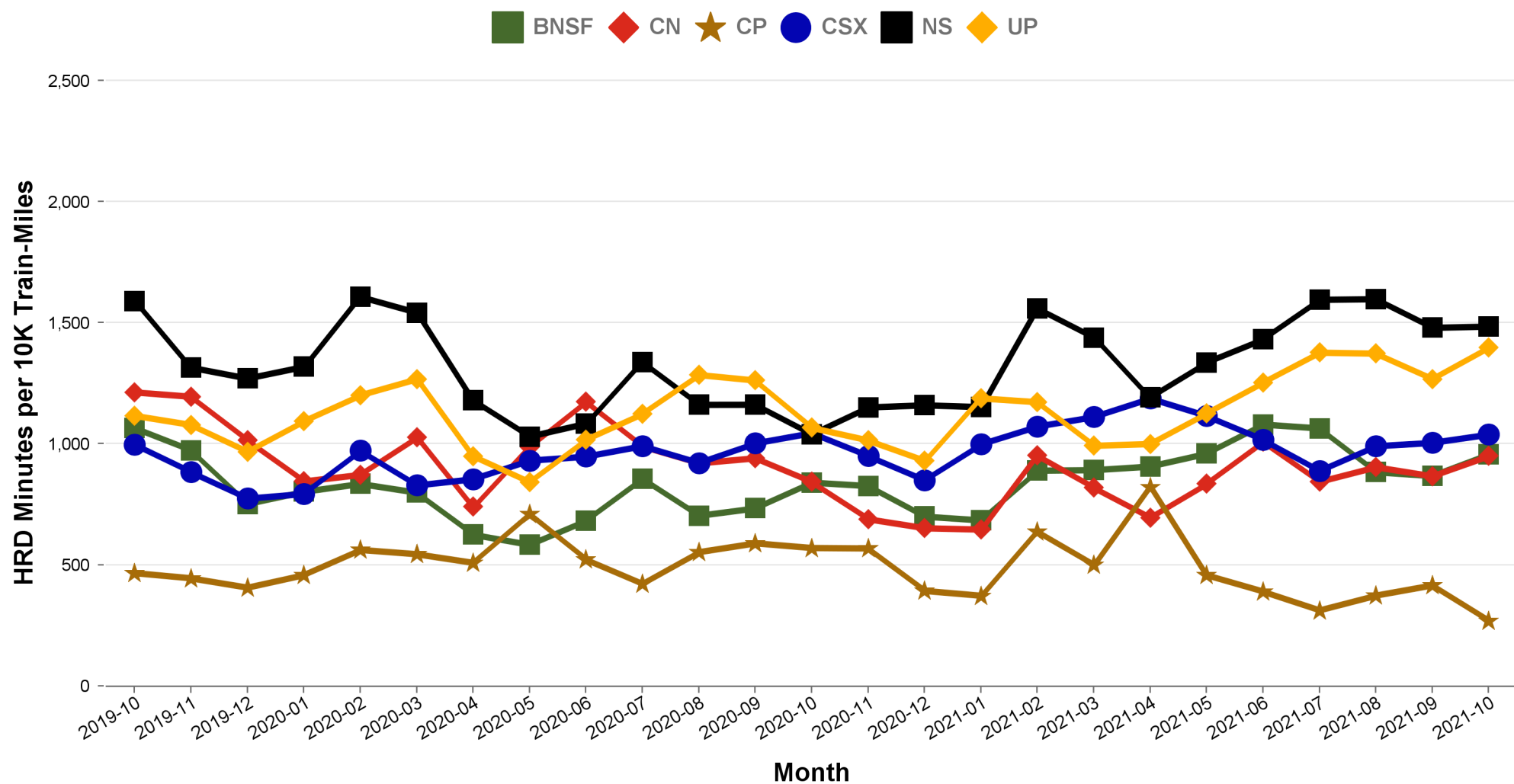


Responsible Party	6 Major Host Railroads	Amtrak	Third Party
Delay Minutes per 10K Train-Miles	1061	310	141
Percentage of Total Delays	70.1%	20.5%	9.4%

# Total Host-Responsible Delays

## 2 Year Snapshot

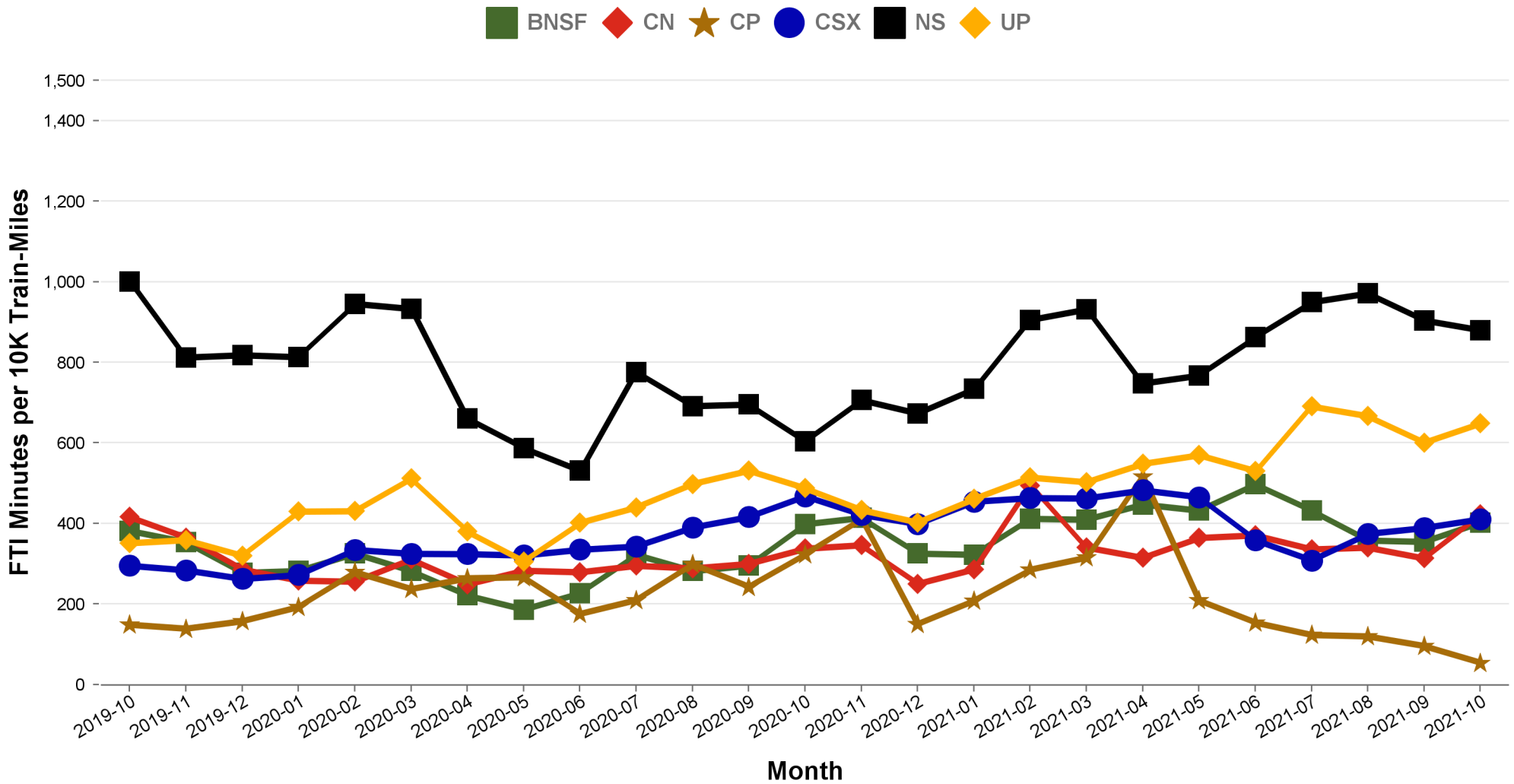
Total host-responsible delay (HRD) minutes per 10,000 train-miles incurred by Amtrak trains on each of the six major host railroads for the most recent two years.



# Freight Train Interference Delays

## 2 Year Snapshot

Total delay minutes per 10,000 train-miles attributable to freight train interference (FTI) incurred by Amtrak trains on each of the six major host railroads for the most recent two years.



# Minutes of Delay per 10K Train Miles by Host for October 2021

Host	Service	Total Host Responsible Delays		Largest Two Delay Categories - Current Month				Route Miles
		Current Month	Most Recent 12 Months	#1		#2		
<b>Target</b>		<b>900</b>	<b>900</b>					
BNSF	California Zephyr	1053	952	DSR	458	FTI	303	1027
	Carl Sandburg / Illinois Zephyr	618	611	FTI	253	DSR	106	257
	Cascades	1127	1110	FTI	383	PTI	215	343
	Coast Starlight	674	739	FTI	226	DCS	148	186
	Empire Builder	956	818	FTI	645	DSR	176	2147
	Heartland Flyer	1502	1620	DSR	923	FTI	541	236
	Pacific Surfliner	855	1060	DCS	262	FTI	229	22
	San Joaquins	1006	889	PTI	407	FTI	373	284
	Southwest Chief	879	888	FTI	303	DSR	228	2206
	Sunset Ltd	1754	1443	DSR	1039	FTI	295	190
Texas Eagle	751	1255	DSR	350	FTI	233	116	
CN	Blue Water	477	376	FTI	353	PTI	36	159
	City Of New Orleans	810	734	FTI	372	PTI	166	930
	Illini / Saluki	780	681	FTI	226	DSR	220	304
	Lincoln Service	1819	1972	FTI	1213	DCS	311	35
	Texas Eagle	2637	2401	FTI	2100	DCS	218	35
	Wolverine	2189	1732	DSR	1152	FTI	566	27
CP	Empire Builder	301	591	DSR	130	FTI	69	384
	Ethan Allen Express	648	727	DSR	327	FTI	137	60
	Hiawatha	173	223	DCS	75	DMW	28	53
CSX	Auto Train	1658	1264	FTI	847	PTI	373	898
	Capitol Ltd	698	901	RTE	270	FTI	219	307
	Cardinal	744	1074	FTI	303	DSR	210	703
	Carolinian	1543	1395	FTI	524	PTI	392	295
	Lake Shore Ltd	687	685	FTI	288	RTE	132	741
	Maple Leaf	951	1011	FTI	339	RTE	231	298
	New York - Niagara Falls	857	889	FTI	320	RTE	204	296
	Palmetto	1063	987	FTI	505	PTI	222	659
	Pere Marquette	242	327	FTI	148	DCS	53	135
	Richmond / Newport News / Norfolk	1177	1189	FTI	329	RTE	264	189
	Silver Meteor	960	930	FTI	417	PTI	251	1152
	Silver Star	946	876	FTI	303	PTI	296	1209
	NS	Blue Water	2886	3391	FTI	2309	DCS	228
Capitol Ltd		2051	2311	FTI	1489	RTE	213	481
Cardinal		2041	1596	PTI	867	FTI	512	79
Carolinian		1011	791	DSR	314	PTI	258	202
Crescent		1256	1378	FTI	716	DSR	150	1141
Lake Shore Ltd		2220	2110	FTI	1526	PTI	476	339
Pennsylvanian		1410	1326	FTI	891	RTE	241	249
Pere Marquette		3674	2720	FTI	2077	PTI	1215	39
Piedmont		831	806	FTI	278	DSR	242	173
Richmond / Newport News / Norfolk		789	763	DCS	494	FTI	125	81
Roanoke		411	458	FTI	242	DSR	65	216
Silver Star		1339	769	DSR	1094	DCS	74	28
Wolverine		4407	3877	FTI	3249	PTI	423	39
UP		California Zephyr	1353	1258	FTI	803	DCS	151
	Capitol Corridor	778	509	PTI	235	DCS	232	171
	Cascades	2298	1550	FTI	1149	PTI	481	125
	Coast Starlight	1627	1405	FTI	692	PTI	344	1162
	Lincoln Service	834	708	FTI	367	PTI	245	231
	Missouri	1576	1013	FTI	740	DSR	442	271
	Pacific Surfliner	1271	1421	DCS	666	PTI	392	174
	San Joaquins	1035	845	PTI	472	DCS	156	88
	Sunset Ltd	1787	1907	FTI	1078	RTE	258	1784
	Texas Eagle	1953	1638	FTI	1155	DSR	399	1073
	Amtrak	Blue Water	316	270	PTI	187	DCS	73
Ethan Allen Express		138	207	DCS	71	PTI	34	100
Maple Leaf		207	258	RTE	68	DSR	55	109
New York - Albany		163	192	PTI	70	RTE	40	81
New York - Niagara Falls		403	306	PTI	181	DCS	121	109
Wolverine		419	451	PTI	274	DSR	69	99
BBrRR	Cardinal	883	880	PTI	510	FTI	249	132

# Minutes of Delay per 10K Train Miles by Host for October 2021

Host	Service	Total Host Responsible Delays		Largest Two Delay Categories - Current Month				Route Miles
		Current Month	Most Recent 12 Months	#1		#2		
<b>Target</b>		<b>900</b>	<b>900</b>					
Fla DOT	Silver Meteor	<b>927</b>	818	CTI	524	DSR	204	68
	Silver Star	<b>969</b>	799	CTI	626	DSR	155	68
FR	Auto Train	<b>6256</b>	<b>2997</b>	DSR	4278	CTI	933	16
	Silver Meteor	<b>2490</b>	<b>1762</b>	DSR	800	PTI	739	61
	Silver Star	<b>1465</b>	<b>1368</b>	DSR	943	CTI	217	61
MADOT	Springfield Shuttles	<b>943</b>	<b>969</b>	DSR	529	FTI	159	36
	Vermonter	701	<b>1004</b>	DSR	433	DCS	199	50
MBTA	Downeaster	<b>2199</b>	<b>1923</b>	DSR	836	CTI	594	38
Metra	Empire Builder	<b>1840</b>	<b>1121</b>	CTI	1148	DSR	286	29
	Hiawatha	<b>1574</b>	<b>1084</b>	CTI	752	DCS	271	29
MIDOT	Blue Water	191	139	DCS	88	RTE	88	22
	Wolverine	562	409	PTI	256	DSR	236	134
MNRR	Acela Express	<b>1624</b>	<b>1852</b>	DSR	1047	CTI	201	56
	Ethan Allen Express	<b>1279</b>	<b>1236</b>	CTI	592	DSR	339	64
	Lake Shore Ltd	<b>1975</b>	<b>1321</b>	CTI	1182	DSR	357	64
	Maple Leaf	<b>1213</b>	668	DSR	430	CTI	408	64
	New York - Albany	<b>1878</b>	<b>967</b>	CTI	1133	DSR	383	64
	New York - Niagara Falls	<b>1969</b>	<b>1398</b>	CTI	1037	DSR	587	64
	Richmond / Newport News / Norfolk	<b>2336</b>	<b>2370</b>	DSR	1305	CTI	448	56
	Vermonter	<b>2938</b>	<b>2325</b>	DSR	1826	DMW	498	56
NECR	Vermonter	<b>1343</b>	<b>1583</b>	DSR	1287	FTI	52	192
NMDOT	Southwest Chief	<b>1106</b>	<b>2231</b>	CTI	443	DSR	281	80
PanAm	Downeaster	648	825	PTI	309	DCS	125	107
SCRRA	Coast Starlight	<b>1526</b>	<b>1465</b>	PTI	1105	CTI	182	48
	Pacific Surfliner	<b>1483</b>	851	DSR	371	PTI	311	95
SDNRR	Pacific Surfliner	<b>1164</b>	863	CTI	426	PTI	256	60
TRE	Texas Eagle	809	421	CTI	583	DCS	157	33
VTR	Ethan Allen Express	0	74		0		0	24

The numbers included in this document are preliminary and are for informational purposes only.

Excludes hosts with fewer than 15 route miles.

Delays on the Amtrak-owned portion of the Northeast Corridor are shown in a separate report, with tighter delay standards.

Northeast Regional: Roanoke includes all trains between Roanoke and points on the NEC; Richmond / Newport News / Norfolk includes all trains between these locations and points on the NEC.



# Minutes of Delay per 10K Train Miles by Service for October 2021

Service	Host	Total Host Responsible Delays		Largest Two Delay Categories - Current Month				Route Miles	
		Current Month	Most Recent 12 Months	#1		#2			
<b>Target</b>		<b>900</b>	<b>900</b>						
<b>Acela Express</b>									
Acela Express	MNRR	<b>1624</b>	<b>1852</b>	DSR	1047	CTI	201	56	
<b>All Other NEC Corridor Routes</b>									
Northeast Regional	Richmond / Newport News / Norfolk	CSX	<b>1177</b>	<b>1189</b>	FTI	329	RTE	264	189
		NS	789	763	DCS	494	FTI	125	81
		MNRR	<b>2336</b>	<b>2370</b>	DSR	1305	CTI	448	56
	Roanoke	NS	411	458	FTI	242	DSR	65	216
	Springfield Shuttles	MADOT	<b>943</b>	<b>969</b>	DSR	529	FTI	159	36
<b>Non-NEC Corridor Routes</b>									
Capitol Corridor		UP	778	509	PTI	235	DCS	232	171
Carolinian		CSX	<b>1543</b>	<b>1395</b>	FTI	524	PTI	392	295
		NS	<b>1011</b>	791	DSR	314	PTI	258	202
Cascades		BNSF	<b>1127</b>	<b>1110</b>	FTI	383	PTI	215	343
		UP	<b>2298</b>	<b>1550</b>	FTI	1149	PTI	481	125
Downeaster		MBTA	<b>2199</b>	<b>1923</b>	DSR	836	CTI	594	38
		PanAm	648	825	PTI	309	DCS	125	107
Empire	Ethan Allen Express	CP	648	727	DSR	327	FTI	137	60
		Amtrak	138	207	DCS	71	PTI	34	100
		MNRR	<b>1279</b>	<b>1236</b>	CTI	592	DSR	339	64
		VTR	0	74		0		0	24
	Maple Leaf	CSX	<b>951</b>	<b>1011</b>	FTI	339	RTE	231	298
		Amtrak	207	258	RTE	68	DSR	55	109
		MNRR	<b>1213</b>	668	DSR	430	CTI	408	64
	New York - Albany	Amtrak	163	192	PTI	70	RTE	40	81
		MNRR	<b>1878</b>	<b>967</b>	CTI	1133	DSR	383	64
	New York - Niagara Falls	CSX	857	889	FTI	320	RTE	204	296
		Amtrak	403	306	PTI	181	DCS	121	109
		MNRR	<b>1969</b>	<b>1398</b>	CTI	1037	DSR	587	64
Heartland Flyer		BNSF	<b>1502</b>	<b>1620</b>	DSR	923	FTI	541	236
Hiawatha		CP	173	223	DCS	75	DMW	28	53
		Metra	<b>1574</b>	<b>1084</b>	CTI	752	DCS	271	29
Illinois	Carl Sandburg / Illinois Zephyr	BNSF	618	611	FTI	253	DSR	106	257
	Illini / Saluki	CN	780	681	FTI	226	DSR	220	304
	Lincoln Service	CN	<b>1819</b>	<b>1972</b>	FTI	1213	DCS	311	35
		UP	834	708	FTI	367	PTI	245	231
Michigan	Blue Water	CN	477	376	FTI	353	PTI	36	159
		NS	<b>2886</b>	<b>3391</b>	FTI	2309	DCS	228	39
		Amtrak	316	270	PTI	187	DCS	73	99
		MIDOT	191	139	DCS	88	RTE	88	22
	Pere Marquette	CSX	242	327	FTI	148	DCS	53	135
		NS	<b>3674</b>	<b>2720</b>	FTI	2077	PTI	1215	39
	Wolverine	CN	<b>2189</b>	<b>1732</b>	DSR	1152	FTI	566	27
		NS	<b>4407</b>	<b>3877</b>	FTI	3249	PTI	423	39
		Amtrak	419	451	PTI	274	DSR	69	99
		MIDOT	562	409	PTI	256	DSR	236	134
Missouri		UP	<b>1576</b>	<b>1013</b>	FTI	740	DSR	442	271
Pacific Surfliner		BNSF	855	<b>1060</b>	DCS	262	FTI	229	22
		UP	<b>1271</b>	<b>1421</b>	DCS	666	PTI	392	174
		SCRRA	<b>1483</b>	851	DSR	371	PTI	311	95
		SDNRR	<b>1164</b>	863	CTI	426	PTI	256	60
Pennsylvanian		NS	<b>1410</b>	<b>1326</b>	FTI	891	RTE	241	249
Piedmont		NS	831	806	FTI	278	DSR	242	173
San Joaquins		BNSF	<b>1006</b>	889	PTI	407	FTI	373	284
		UP	<b>1035</b>	845	PTI	472	DCS	156	88
Vermont		MADOT	701	<b>1004</b>	DSR	433	DCS	199	50
		MNRR	<b>2938</b>	<b>2325</b>	DSR	1826	DMW	498	56
		NECR	<b>1343</b>	<b>1583</b>	DSR	1287	FTI	52	192

## Minutes of Delay per 10K Train Miles by Service for October 2021

Service	Host	Total Host Responsible Delays		Largest Two Delay Categories - Current Month				Route Miles
		Current Month	Most Recent 12 Months	#1		#2		
<b>Target</b>		<b>900</b>	<b>900</b>					
<b>Long-Distance Routes</b>								
Auto Train	CSX FR	<b>1658</b> <b>6256</b>	<b>1264</b> <b>2997</b>	FTI DSR	847 4278	PTI CTI	373 933	898 16
California Zephyr	BNSF UP	<b>1053</b> <b>1353</b>	<b>952</b> <b>1258</b>	DSR FTI	458 803	FTI DCS	303 151	1027 1381
Capitol Ltd	CSX NS	698 <b>2051</b>	<b>901</b> <b>2311</b>	RTE FTI	270 1489	FTI RTE	219 213	307 481
Cardinal	CSX NS BBrRR	744 <b>2041</b> 883	<b>1074</b> <b>1596</b> 880	FTI PTI PTI	303 867 510	DSR FTI FTI	210 512 249	703 79 132
City Of New Orleans	CN	810	734	FTI	372	PTI	166	930
Coast Starlight	BNSF UP SCRRA	674 <b>1627</b> <b>1526</b>	739 <b>1405</b> <b>1465</b>	FTI FTI PTI	226 692 1105	DCS PTI CTI	148 344 182	186 1162 48
Crescent	NS	<b>1256</b>	<b>1378</b>	FTI	716	DSR	150	1141
Empire Builder	BNSF CP Metra	<b>956</b> 301 <b>1840</b>	818 591 <b>1121</b>	FTI DSR CTI	645 130 1148	DSR FTI DSR	176 69 286	2147 384 29
Lake Shore Ltd	CSX NS MNRR	687 <b>2220</b> <b>1975</b>	685 <b>2110</b> <b>1321</b>	FTI FTI CTI	288 1526 1182	RTE PTI DSR	132 476 357	741 339 64
Palmetto	CSX	<b>1063</b>	<b>987</b>	FTI	505	PTI	222	659
Silver Meteor	CSX Fla DOT FR	<b>960</b> <b>927</b> <b>2490</b>	<b>930</b> 818 <b>1762</b>	FTI CTI DSR	417 524 800	PTI DSR PTI	251 204 739	1152 68 61
Silver Star	CSX NS Fla DOT FR	<b>946</b> <b>1339</b> <b>969</b> <b>1465</b>	876 769 799 <b>1368</b>	FTI DSR CTI DSR	303 1094 626 943	PTI DCS DSR CTI	296 74 155 217	1209 28 68 61
Southwest Chief	BNSF NMDOT	879 <b>1106</b>	888 <b>2231</b>	FTI CTI	303 443	DSR DSR	228 281	2206 80
Sunset Ltd	BNSF UP	<b>1754</b> <b>1787</b>	<b>1443</b> <b>1907</b>	DSR FTI	1039 1078	FTI RTE	295 258	190 1784
Texas Eagle	BNSF CN UP TRE	751 <b>2637</b> <b>1953</b> 809	<b>1255</b> <b>2401</b> <b>1638</b> 421	DSR FTI FTI CTI	350 2100 1155 583	FTI DCS DSR DCS	233 218 399 157	116 35 1073 33

The numbers included in this document are preliminary and are for informational purposes only.

Excludes hosts with fewer than 15 route miles.

Delays on the Amtrak-owned portion of the Northeast Corridor are shown in a separate report, with tighter delay standards.

Northeast Regional: Roanoke includes all trains between Roanoke and points on the NEC; Richmond / Newport News /

Norfolk includes all trains between these locations and points on the NEC.

# Host Railroad Report - All-Stations and Customer OTP for October 2021

Service	All-Stations OTP		Customer OTP		Avg Mins Late per Late Rider**	
	Current Month	Most Recent 12 Months	Current Month	Most Recent 12 Months	Current Month	Most Recent 12 Months
<b>Amtrak System</b>	<b>77.0%</b>	<b>79.3%</b>	<b>77.0%</b>	<b>77.2%</b>	<b>60</b>	<b>61</b>
<b>NEC Corridor Routes</b>	<b>87.1%</b>	<b>88.5%</b>	<b>83.1%</b>	<b>84.3%</b>	<b>42</b>	<b>41</b>
<b>Target*</b>	<b>80.0%</b>	<b>80.0%</b>				
Acela Express*	86.1%	86.6%	82.5%	82.4%	29	29
Keystone	93.8%	94.8%	92.4%	92.8%	39	40
Northeast Regional	85.3%	87.0%	81.3%	83.4%	45	44
On Spine Northeast Regional	89.2%	89.9%	85.8%	87.0%	45	46
Richmond / Newport News / Norfolk	78.3%	83.0%	73.6%	78.8%	47	44
Roanoke	82.3%	84.7%	82.4%	81.4%	39	42
Springfield Shuttles	91.0%	90.3%	90.4%	90.0%	43	41
<b>Non-NEC Corridor Routes</b>	<b>81.7%</b>	<b>84.4%</b>	<b>79.6%</b>	<b>80.8%</b>	<b>40</b>	<b>43</b>
<b>Target</b>	<b>80.0%</b>	<b>80.0%</b>				
Capitol Corridor	87.4%	92.4%	82.6%	89.9%	38	42
Carolinian	70.8%	73.3%	72.8%	68.7%	56	50
Cascades	62.6%	64.1%	59.7%	59.5%	38	44
Downeaster	88.9%	86.4%	79.2%	76.2%	46	37
Empire	87.2%	85.9%	87.8%	85.2%	33	38
Ethan Allen Express	96.8%	92.0%	97.8%	90.7%	21	33
Maple Leaf	85.9%	81.9%	86.9%	84.9%	37	47
New York - Albany	93.8%	92.4%	91.6%	90.6%	30	36
New York - Niagara Falls	77.5%	78.6%	79.0%	76.4%	34	37
Heartland Flyer	74.6%	72.1%	77.4%	67.5%	32	35
Hiawatha	94.2%	96.0%	90.9%	94.1%	28	37
Illinois	77.1%	81.9%	74.8%	80.4%	39	42
Carl Sandburg / Illinois Zephyr	87.5%	89.7%	85.9%	88.1%	39	38
Illini / Saluki	62.8%	73.0%	65.4%	78.0%	30	38
Lincoln Service	79.7%	82.6%	78.3%	79.5%	50	45
Michigan	77.5%	77.2%	76.4%	66.5%	43	50
Blue Water	87.8%	83.1%	82.2%	69.0%	38	46
Pere Marquette	87.4%	87.2%	74.7%	75.4%	41	49
Wolverine	73.3%	70.9%	74.4%	62.2%	45	52
Missouri	65.7%	78.7%	58.6%	74.5%	56	53
Pacific Surfliner	81.9%	84.8%	82.2%	85.4%	40	41
Pennsylvanian	58.0%	68.4%	57.8%	69.9%	39	40
Piedmont	79.2%	83.7%	73.0%	76.4%	33	37
San Joaquins	84.0%	85.3%	82.7%	82.2%	38	43
Vermonteer	81.0%	82.5%	81.7%	85.4%	47	39
<b>Long-Distance Routes</b>	<b>52.3%</b>	<b>51.0%</b>	<b>51.3%</b>	<b>50.9%</b>	<b>101</b>	<b>93</b>
<b>Target</b>	<b>80.0%</b>	<b>80.0%</b>				
Auto Train	45.2%	71.9%	18.1%	52.1%	208	121
California Zephyr	39.7%	39.1%	42.4%	36.9%	126	129
Capitol Ltd	44.1%	37.9%	36.3%	28.0%	75	84
Cardinal	59.6%	54.9%	58.7%	53.7%	58	74
City Of New Orleans	69.8%	69.5%	81.4%	84.6%	74	69
Coast Starlight	50.8%	51.8%	49.4%	54.9%	99	88
Crescent	65.7%	53.5%	70.4%	56.8%	70	83
Empire Builder	58.5%	57.5%	59.0%	59.1%	64	73
Lake Shore Ltd	61.7%	58.2%	56.2%	54.7%	63	66
Palmetto	70.6%	64.1%	73.2%	61.3%	55	60
Silver Meteor	52.8%	58.6%	49.8%	54.0%	82	69
Silver Star	49.7%	48.4%	49.4%	44.2%	97	84
Southwest Chief	38.2%	40.3%	39.0%	35.3%	86	125
Sunset Ltd	21.1%	20.2%	31.7%	26.7%	153	133
Texas Eagle	42.5%	50.8%	49.7%	51.0%	86	94

The numbers included in this document are preliminary and are for informational purposes only.

Northeast Regional: Roanoke includes all trains between Roanoke and points on the NEC; Richmond/Newport News/Norfolk includes all trains between these locations and points on the NEC.

\* Acela Express on-time performance target is 90.0%

\*\* Excludes on-time Customers

### Host Railroad Responsible Delays

Code	Code Description	Explanation
CTI	Commuter Train Interference	Delays for meeting or following commuter trains
DCS	Signal Delays	Signal failure or All Other signal delays, wayside defect-detector false-alarms, defective road crossing protection, efficiency tests, drawbridge stuck open
DMW	Maintenance of Way	Maintenance of Way delays including holds for track repairs or MW foreman to clear
DSR	Slow Order Delays	Temporary slow orders, except heat or cold orders
DTR	Detour	Delays from detours
FTI	Freight Train Interference	Delays from freight trains
PTI	Passenger Train Interference	Delays for meeting or following All Other passenger trains
RTE	Routing	Routing-dispatching delays including diversions, late track bulletins, etc.

### Amtrak Responsible Delays

Code	Code Description	Explanation
ADA	Passenger Related	All delays related to disabled passengers, wheel chair lifts, guide dogs, etc.
CAR	Car Failure	Mechanical failure on all types of cars
CCR	Cab Car Failure	Mechanical failure on Cab Cars
CON	Hold for Connection	Holding for connections from All Other trains or buses.
ENG	Locomotive Failure	Mechanical failure on engines.
HLD	Passenger Related	All delays related to passengers, checked-baggage, large groups, etc.
INJ	Injury Delay	Delay due to injured passengers or employees.
ITI	Initial Terminal Delay	Delay at initial terminal due to late arriving inbound trains causing late release of equipment.
OTH	Miscellaneous Delays	Lost-on-run, heavy trains, unable to make normal speed, etc.
SVS	Servicing	All switching and servicing delays
SYS	Crew & System	Delays related to crews including lateness, lone-engineer delays

### Third-Party Delays

Code	Code Description	Explanation
CUI	Customs	U.S. and Canadian customs delays; Immigration-related delays
DBS	Debris	Debris strikes
MBO	Drawbridge Openings	Movable bridge openings for marine traffic where no bridge failure is involved
NOD	Unused Recovery Time	Wait for departure time
POL	Police-Related	Police/fire department holds on right-of-way or on-board trains
TRS	Trespassers	Trespasser incidents including road crossing accidents, trespasser / animal strikes, vehicle stuck on track ahead, bridge strikes
WTR	Weather-Related	All weather-related delays including floods/washouts, earthquake-related delays, heat or cold orders, slippery rail due to leaves

\*These delay codes are applicable to Off-NEC routes only.