

plant disease

AN INTERNATIONAL JOURNAL OF APPLIED PLANT PATHOLOGY

An Official Journal of The American Phytopathological Society

May 1990

Volume 74, Number 5

FOCUS

- 340 The Latest in Plant Pathology and Nematology

FEATURE

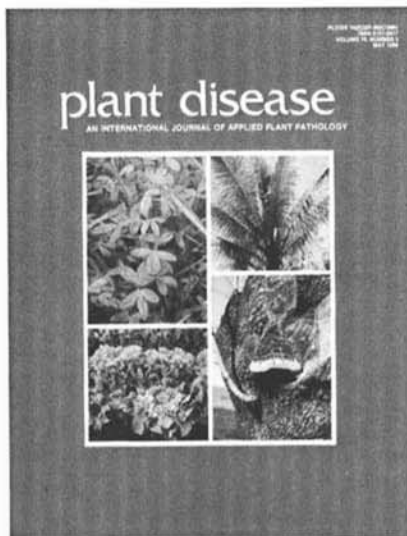
- 341 Wood Decay Pathology of Fruit and Nut Trees in California.
James E. Adaskaveg and Joseph M. Ogawa

RESEARCH

- 353 Combined Resistance in Sugar Beet to *Rhizoctonia solani*, *Phoma betae*, and *Botrytis cinerea*. *W. M. Bugbee and L. G. Campbell*
- 356 Relationship Between Development of Hard Red Winter Wheat and Expression of Resistance to Wheat Soilborne Mosaic Virus. *C. R. Armitage, R. M. Hunger, J. L. Sherwood, and D. L. Weeks*
- 359 Resistance to Maize Dwarf Mosaic Virus, Severity of Symptoms, Titer of Virus, and Yield of Sweet Corn. *J. K. Pataky, J. F. Murphy, and Cleora J. D'Arcy*
- 365 Lowering Incidence of a Virus Complex Dominated by Strawberry Mottle Virus by Reducing Numbers of the Aphid Vector with Oxydemetonmethyl. *D. A. Raworth and S. J. Clements*
- 368 Bio-priming Seed Treatment for Biological Control of *Pythium ultimum* Preemergence Damping-off in *sh2* Sweet Corn. *Nancy W. Callan, D. E. Mathre, and James B. Miller*
- 372 Studies on Epidemiology of Virus Disease of Chickpea in California. *N. A. Bosque-Perez and I. W. Buddenhagen*
- 379 Anthracnose of *Stylosanthes scabra*: Effect of Leaf Surface Wetness on Disease Severity. *S. Chakraborty, D. Ratcliff, and F. J. McKay*
- 385 Effect of Wheat Genotype, Leaf Position, Growth Stage, Fungal Isolate, and Wet Period on Tan Spot Lesions. *R. M. Hosford, Jr., J. G. Jordahl, and J. J. Hammond*

NEW DISEASES AND EPIDEMICS

- 391 A Root Rot Complex of Horseradish. *J. A. Percich and D. R. Johnson*



COVER

(Clockwise from upper right): Red ring of coconut caused by *Rhadinaphelenchus cocophilus* (courtesy C. H. Umaña); basidiocarp of *Phellinus robustus* on almond (courtesy J. E. Adaskaveg and J. M. Ogawa; see page 341); necrosis of escarole caused by a virus (courtesy R. N. Raid); anthracnose of tropical pasture legume *Stylosanthes scabra* caused by *Colletotrichum gloeosporioides* (courtesy S. Chakraborty et al; see page 379).

Publisher

RAYMOND J. TARLETON

Associate Publisher

STEVEN C. NELSON

Journals Manager

VERA BAKER

Technical Editors

LORRAINE HANNON
LINDA KADLEC

Editorial Assistant

MOIRA PALUMBO

Production Manager

STEVE KRONMILLER

Circulation Manager

LARRY HARTMAN

National Sales Manager

GLORIA G. RYNDERS



The American Phytopathological Society
3340 Pilot Knob Road
St. Paul, MN 55121
(612)454-7250

PLANT DISEASE replaces *Plant Disease Reporter*, published by the United States Department of Agriculture from 1917 through 1979. Volume numbers of PLANT DISEASE are continuous with those of *Plant Disease Reporter*.

PLANT DISEASE (ISSN 0191-2917) is published monthly by The American Phytopathological Society, 3340 Pilot Knob Road, St. Paul, MN 55121. Individual subscription per year: \$65.00 in the United States, \$95.00 elsewhere (includes surface postage; for expedited delivery add \$15.00 to the "elsewhere" price). Company, library, or institution subscription per year: \$190.00 in the United States, \$220.00 elsewhere (includes surface postage; for expedited delivery add \$15.00 to the "elsewhere" price). All payments must be made in U.S. funds, through a member bank of the U.S. Federal Reserve System. Second-class postage paid at St. Paul, MN. USPS 522-750. **POSTMASTER: Send address changes to PLANT DISEASE, 3340 Pilot Knob Road, St. Paul, MN 55121.**

Single current numbers (within 60 days of publication): \$18.00. Price of back volumes and separate numbers on request. Claims for copies lost in domestic mails must be received within 60 days of the date of issue, otherwise the replacement charge will be \$18.00. Deliveries overseas are not guaranteed; foreign mailings are made at the subscriber's risk. No endorsement of any statements or claims made in advertisements is assumed by PLANT DISEASE or by The American Phytopathological Society. **Change of address:** Provide business office with current mailing label and forwarding address 6 weeks prior to change.

Copyright© 1990 by
The American Phytopathological Society
3340 Pilot Knob Road
St. Paul, MN 55121
(612)454-7250

April 1990 PLANT DISEASE issued 15 May 1990.

DISEASE NOTES

- 394** Occurrence of Bacterial Stem Rot Caused by *Pseudomonas cichorii* in Greenhouse-grown Lettuce in Ontario. *B. N. Dhanvantari*
- 394** Isolation of *Rhizomonas suberifaciens* in Florida. *L. E. Datnoff and R. T. Nagata*
- 394** First Report of Zucchini Yellow Mosaic Virus in Ontario. *L. W. Stobbs, J. G. Van Schagen, and G. M. Shantz*
- 394** *Criconea mutabile* Associated with Bacterial Canker and Nemaguard Rootstock. *M. V. McKenry, M. Viveros, and B. Teviotdale*
- 394** Bacterial Leaf Spot and Stem Collapse of Mung Bean Caused by *Pseudomonas syringae* pv. *syringae*. *M. W. George and R. R. Tripepi*
- 394** First Report of Anthracnose Caused by *Glomerella cingulata* on White Beans in Ontario, Canada. *J. C. Tu*