

RESEARCH PAPER

Floral diversity and pollination strategies of three rheophytic Schismatoglottideae (Araceae)

S. L. Low¹, S. Y. Wong¹, I. H. Ooi¹, M. Hesse², Y. Städler², J. Schönenberger² & P. C. Boyce³

¹ Department of Plant Science and Environmental Ecology, Faculty of Resource Science and Technology, Universiti Malaysia Sarawak, Sarawak, Malaysia

² Department of Structural and Functional Botany, University of Vienna, Vienna, Austria

³ Institute of Biodiversity and Environmental Conservation, Universiti Malaysia Sarawak, Sarawak, Malaysia

Keywords

Aridarum nicolsonii; *Colocasiomyia*; flowering mechanism; *Phymatarum borneense*; *Schottarum sarikeense*.

Correspondence

S. Y. Wong, Department of Plant Science and Environmental Ecology, Faculty of Resource Science and Technology, Universiti Malaysia Sarawak, 94300 Sarawak, Malaysia.
E-mail: sywong@frst.unimas.my

Editor

N. Vereecken

Received: 11 December 2014; Accepted: 12 February 2015

doi:10.1111/plb.12320

INTRODUCTION

Homoplastic character evolution is increasingly being detected within angiosperm clades (Givnish *et al.* 1999; Scharaschkin & Doyle 2006; García *et al.* 2009; among others). Saether (1977) noted homoplasly within closely related clades as ‘underlying synapomorphies’ and described it as ‘canalized evolutionary potential repeatedly producing the same apomorphic conditions.’

On Borneo, rapid species diversification in tribe Schismatoglottideae has been shown to involve homoplastic evolution within the smaller almost exclusively rheophytic genera (Wong *et al.* 2010; Wong 2013). Among homoplastic characters investigated, horned thecae are of particular interest not only because they are a taxonomically localised characteristic in the aroids, but also because horned thecae are used for generic delimitation, and ‘pre-cladistics’ delimited ‘related taxa’. Within Araceae, horned thecae are confined to two related tribes: Cryptocoryneae (*Cryptocoryne* Fisch. ex Wydler and *Lagenandra* Dalzell) and Schismatoglottideae (*Aridarum* M.Hotta, *Bucephalandra* Schott, *Phymatarum* M.Hotta and *Schottariella* P.C.Boyce & S.Y.Wong). The prevalence of this particular homoplastic trait in these four genera of Schismatoglottideae prompted further investigation, along with attempts to understand the biological processes these mechanisms favour.

Investigation of the flowering mechanisms and pollination strategies in Schismatoglottideae is so far limited to a few recent studies (Ulrich *et al.* 2012; Wong & Boyce 2013; Low *et al.*

ABSTRACT

Homoplastic evolution of ‘unique’ morphological characteristics in the Schismatoglottideae – many previously used to define genera – prompted this study to compare morphology and function in connection with pollination biology for *Aridarum nicolsonii*, *Phymatarum borneense* and *Schottarum sarikeense*. *Aridarum nicolsonii* and *P. borneense* extrude pollen through a pair of horned thecae while *S. sarikeense* sheds pollen through a pair of pores on the thecae. Floral traits of spathe constriction, presence and movement of sterile structures on the spadix, the comparable role of horned thecae and thecae pores, the presence of stamen-associated calcium oxalate packages, and the timing of odour emission are discussed in the context of their roles in pollinator management. Pollinators for all investigated species were determined to be species of *Colocasiomyia* (Diptera: Drosophilidae).

2014). Boyce & Wong (2013) and Low *et al.* (2014) reported the pollinators for several *Aridarum* and *Schottarum* P.C.Boyce & S.Y.Wong species investigated were various *Colocasiomyia* de Meijere (Diptera: Drosophilidae), although they noted numerous incidental observations of inflorescence visitation by Sphaeridiinae and Staphylinidae (Coleoptera) to *Aridarum* (J. Bogner, personal communication; P. C. Boyce, personal observation; K. Nakamoto, personal communication) and Chrysomelidae (Coleoptera) to *Bucephalandra*, *Ooia* S.Y.Wong & P.C.Boyce and *Schismatoglottis* Zoll. & Moritz (P. C. Boyce, personal observation; I. H. Ooi, personal observation). Chrysomelids are highly predatory and usually cause extensive physical damage to parts of the spadix, notably the appendix (Low *et al.* 2014). Several mechanisms have been observed that seem to provide protection for the inflorescence during anthesis. Among microstructures in the taxa under investigation, extracellular calcium oxalate crystals have a biotic role in inhibiting herbivory (Franceschi & Horner 1980), but this is not necessarily true for all species investigated (Coté & Gibernau 2012) or in enhancing pollination (D’Arcy *et al.* 1996).

The abundance and structural diversity of calcium oxalate crystal types in the Araceae have been investigated sporadically in taxa across the family. Most of the investigations, however, have focused on the presence of crystals in vegetative tissues (Keating 2004). D’Arcy *et al.* (1996) reported the presence of calcium oxalate crystals mixed with pollen in some *Anthurium* Schott, *Calla* L. and *Zantedeschia* Spreng. Studies have also revealed that extracellular calcium oxalate crystals are visible on the surface of the apical portion of

nearly mature stamens of many species of *Philodendron* Schott (Barabé & Lacroix 2001), in *Philonotium americanum* (A.M.E.Jonker & Jonker) S.Y.Wong & P.C.Boyce and *Schismatoglottis calyptrata* (Roxb.) Zoll. & Moritz (Barabé *et al.* 2004a). The types of extracellular calcium oxalate crystal differ between the epidermal surfaces, which correspond to extended aggregate/druses or crystal sand, and the oxalate crystals mixed with pollen, which correspond to raphides or styloids. The type of crystals associated with pollen varies among genera (Barabé *et al.* 2004b).

In this study, we report on the flowering mechanisms, pollination strategies, seed germination and seedling establishment of three rheophytic aroid taxa: *Aridarum nicolsonii* Bogner (Fig. 1A and B), *Phymatarum borneense* M.Hotta (Fig. 1E and F), and *Schottarum sarikeense* (Bogner & M. Hotta) P.C.Boyce & S.Y.Wong (Fig. 1I and J). *A. nicolsonii* is endemic to and abundant in an area defined by the Sipang and Po Peninsulas, West Sarawak, Malaysian Borneo (Wong & Boyce 2007). *P. borneense* is restricted to the central and northern part of Sarawak, and to Brunei (Bogner & Hay 2000). *S. sarikeense* is endemic to the Kanowit-Song-Ai drainages, Sarawak, and very probably occurs into the Bentuang Karimum National Park in Kalimantan (Low *et al.* 2014).

While all three species are rheophytes, the last two species do not strictly adhere to the rheophytic ecological context *sensu* van Steenis (Wong 2013). In *A. nicolsonii* and *P. born-*

ense pollen is extruded through a pair of horned thecae, while in *S. sarikeense* pollen extrusion occurs *via* a pair of pores flush with the thecae. The stamens and their microstructures together with their mechanisms and roles in the taxa were also investigated. The connection between the presence of extracellular calcium oxalate crystals and pollination mechanisms was studied. Specifically, we addressed the following questions: (i) what are the pollinators for each of these three taxa; (ii) how do the horned thecae function in extruding pollen; (iii) what is the advantage of the staminate flower calcium oxalate exudates; and (iv) how successful is the reproduction rate of these three taxa in the wild?

MATERIAL AND METHODS

Study sites

Aridarum nicolsonii

Field observations were carried out at the Type locality at Bako National Park, Sarawak, Malaysian Borneo (1.43°N, 110.27°E, 250 m a.s.l.) between 22 and 27 November 2007 and 27 October to 3 November 2013, and at Santubong National Park, Sarawak (01°44' N, 110°19' E, 120 m a.s.l.) between 11 and 18 November 2012. At both localities *A. nicolsonii* grows on sandstone bedrock of partly shaded forest streams (Fig. 1A). During the rainy season most plants in the populations are

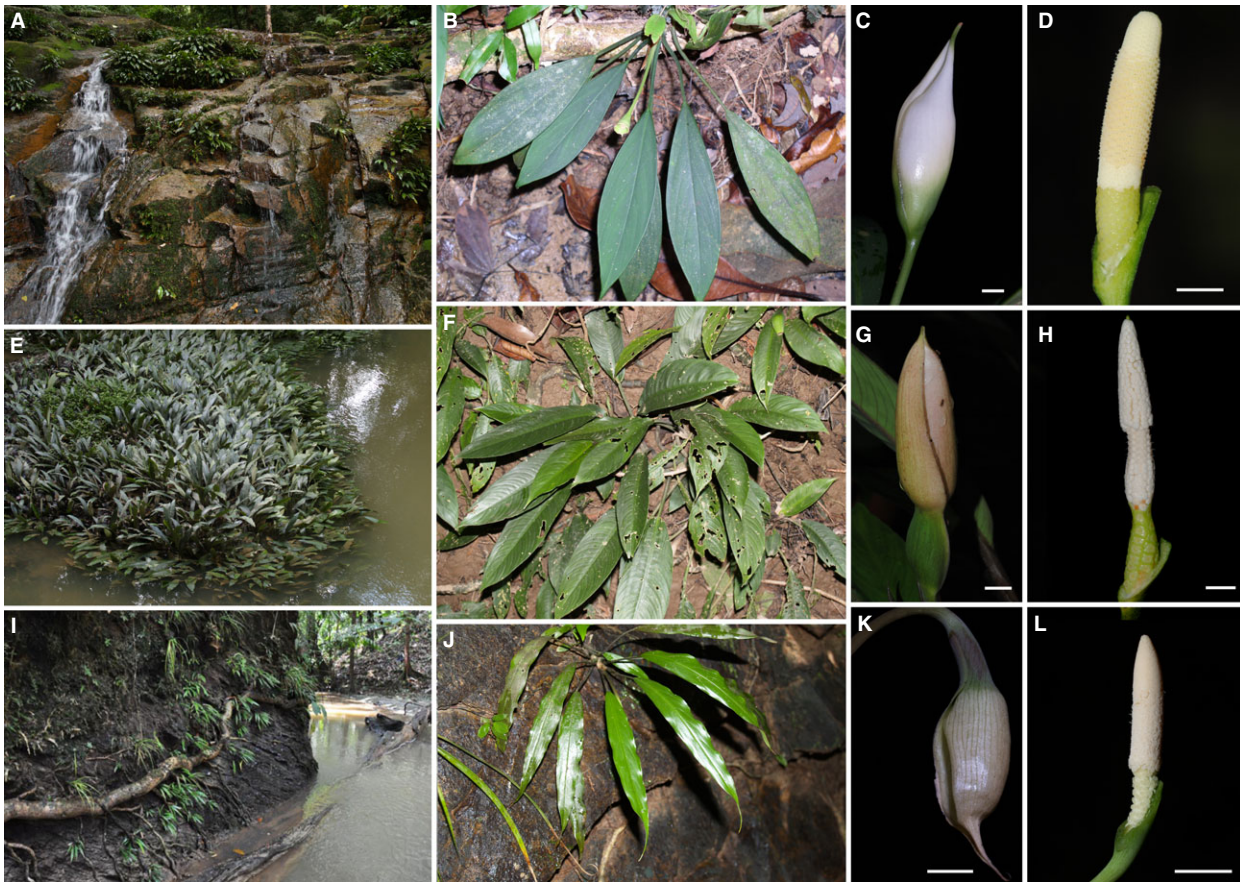


Fig. 1. Overall habitat, individual adult plants and inflorescence of *Aridarum nicolsonii* Bogner. A, E & I: Plants in the wild. B, F & J: Individual plant. C, G & K: Inflorescence in pistillate anthesis. D, H & L: Spathe artificially removed to reveal the spadix. *Aridarum nicolsonii* Bogner (A–D), *Phymatarum borneense* M.Hotta (E–H) and *Schottarum sarikeense* P.C.Boyce & S.Y.Wong (I–L).

immersed under torrential water. In the dry season the majority of plants will be subject to dry conditions, although with high night-time humidity. Observations were made on five inflorescences and ten infructescences.

Phymatarum borneense

Field observations were carried out at Mulu National Park, Sarawak, Malaysian Borneo, at five separate sites: three sites located along the trail to the Deer Cave (ca. 04°02' N, 114°49' E, 60 m a.s.l.) and two sites along the trail to Clearwater Cave (ca. 04°14' N, 114°53' E, 65 m a.s.l.). Observations were undertaken between 15 and 29 September 2009 and 2 to 10 December 2011. All sites are mostly exposed flood zones on muddy or sandy riverbanks in alluvial forest (Fig. 1E). Forty inflorescences (10 for detailed observations, 30 bagged for insect counts) and 50 infructescences were investigated.

Schottarum sarikeense

Observations were carried out between 24 January and 5 February 2010 and 5 to 10 August 2013 along the Sungai Lepong, at Sebankoi Recreational Park, Betong, Roban, Sarawak, Malaysian Borneo (01°57' N, 111°31' E, 154 m a.s.l.). *S. sarikeense* mostly grows on vertical mud banks within the flood zone. Thirty inflorescences (10 for detailed observations, 20 collected for insect counts) and 50 infructescences were investigated.

Peak flowering season for all three species is between August and February. The second half of this range coincides with the period of heaviest sustained rainfall.

Observations on flowering mechanism, pollination strategy, seed dispersal and seedling establishment

Observations of the flowering mechanism and pollination strategy of each species were carried out on a 24-h basis. The onset of pistillate anthesis, the transitional stage between pistillate and staminate anthesis, staminate anthesis and any concomitant spathe movements, the function of sterile structures on the spadix and odour emission were each observed and recorded, together with their timings. Insect visitors were identified to at least family level, and their behaviours were documented. In order to determine the attractant factor for insect visitors (odour *versus* colour), inflorescences at the pre-anthesis stage were covered with a colour-dyed tea bag but access into the inflorescence was allowed from below.

Fruit set was defined as total fruits (berries) per infructescence divided by the total of pistillate flowers per inflorescence, and was used as a measure of the effectiveness of the pollinators. All inflorescences, infructescences and insect visitors were preserved in 70% ethanol and deposited at Sarawak Forestry Herbarium (SAR). A list of all voucher specimens is provided in Appendix S1. All images were taken using an Olympus E-300 digital camera.

Microscopy and imaging work

Plant material

Inflorescences were fixed in 70% ethanol. Microscopy and imaging work was carried out at the Palynology Laboratory, Department of Structural and Functional Botany, University of Vienna, Vienna, Austria.

Scanning electron microscopy (SEM)

Staminate flowers were fixed in 70% ethanol and partially dissected under a stereomicroscope. Specimens were dehydrated in a graded ethanol series to absolute ethanol, and preserved in pure acetone. The specimens were then dried in a critical point drier (Autosamdri-815), using CO₂ as a transitional medium, mounted on metal stubs, and sputter-coated with gold. Specimens were viewed under a JEOL JSM-6390 SEM (JEOL, Peabody, MA, USA) with digital imaging capacity at 10 kV.

X-ray tomography

Staminate flowers were infiltrated in 1% phosphotungstic acid in 70% ethanol for 2 weeks in order to increase contrast (Städler *et al.* 2013). Specimens were then transferred into a 200- μ l pipette tip and topped with the same buffer. The specimens were then scanned using an XRadia XCT-200 (Pleasanton, CA, USA); scanning conditions are summarised in Table S1.

RESULTS

Aridarum nicolsonii

Reproductive stages and pollination strategies

Aridarum nicolsonii produces a single inflorescence requiring up to 6 weeks to reach maturity from the time they are determinable as inflorescences. During development the peduncle grows at 4 mm day⁻¹, reaching a maximum length of 18 cm. The spathe grows at 1.6 mm day⁻¹, to a maximum length of 7 cm. A mature inflorescence is held in an erect position relative to the arching petioles, with the spathe at pistillate anthesis more or less broadly ovate, not constricted, but clearly differentiated into a lower spathe and a spathe limb (Fig. 1C). The spathe limb is caducous about 3 days after anthesis (Fig. 2D) or exceptionally (possibly under dry conditions) remains and becomes marcescent. The spadix comprises (from base) a row of staminodes located along the spathe/spadix adnation, a cylindrical pistillate zone with crowded pistils, averaging 107 \pm 19 per spadix (Table 1), with globose ovaries and a sessile, discoid, centrally-impressed stigma, that is barely papillate at pistillate anthesis. Above the pistillate zone, a sterile interstice is present that comprises about six irregular whorls of truncate, centrally impressed, circular (plane view) staminodes. The staminate zone comprises crowded stamens arranged for the most part in longitudinally aligned pairs. The connectives are excavated with a pair of short sub-erect horned thecae on the distal and proximal sides. The spadix is terminated with an appendix, comprising irregularly polygonal to more or less circular (plane view) staminodes (Fig. 1D).

Anthesis of *A. nicolsonii* lasted 29 h. Pistillate anthesis started at 06:00 h (local time, UTC +8:00) with a gap (3-mm wide) formed at the tip of the spathe limb and extended along the spathe margin by 07:00 h (Fig. 2A). The spathe inflated, thereby allowing access into the pistillate zone containing the now receptive pistils. An acetic acid-like odour was detected and suspected to originate from the appendix and, at the same time, a second fruity odour was released from the pistillate zone. The acetic acid-like odour reduced at 11:00 h but the fruity smell persisted throughout the pistillate anthesis. The pistillate zone was covered with mucilage by 16:30 h. The previous odours were no longer detected but a third odour,

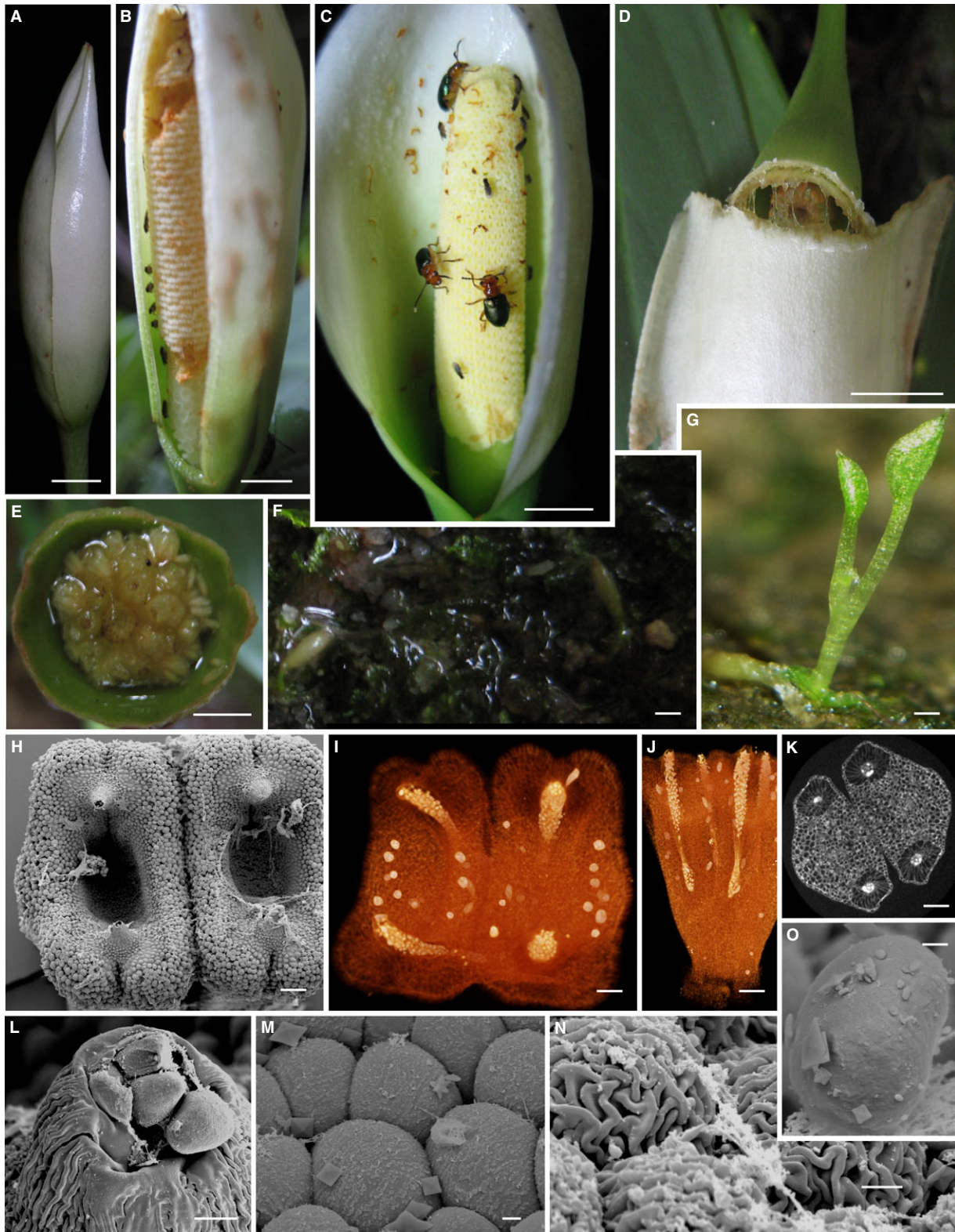


Fig. 2. Flowering mechanism, pollinators and insect visitors, seed dispersal, seedling establishment and stamen, together with its microstructures in *Aridarum nicolsonii* Bogner. A: Inflorescence at the onset of pistillate anthesis. B: Spathe artificially removed to reveal the spadix during pistillate anthesis; note the presence of *Colocasiomyia*. C: Inflorescence at the onset of staminate anthesis. Note the presence of *Chaloenus*. D: Spathe abscission at post anthesis. E: Seeds ready to be dispersed. F: Seeds on the moss surface. G: Seedling. H–K: Two stamens, each with two thecae horns and an excavated connective. I: Note the pollen and calcium oxalate packages. J: Thecae paths. K: Endothelial cells surrounding the thecae paths. L: Pollen at the tip of horned theca. M: Calcium oxalate. N: Vermiform cells at the base of horned thecae. O: Pollen. Scale bar: 1 cm (A–D), 10 mm (E–G), 100 μ m (H–I), 50 μ m (J), 100 μ m (L), 5 μ m (M–O).

Table 1. Number of pistillate flowers and of fruits, percentage fruit set and seed dispersal distance of *Aridarum nicolsonii*, *Phymatarum borneense* and *Schottarum sarikeense*. (For counting of pistillate flowers, ten inflorescences were used for each species; for fruit set, $n = 10$ for *A. nicolsonii*, $n = 50$ for *P. borneense* and *S. sarikeense*).

mean number \pm SD	<i>Aridarum nicolsonii</i>	<i>Phymatarum borneense</i>	<i>Schottarum sarikeense</i>
pistillate flowers	107 \pm 19	49 \pm 8	52 \pm 7
fruits	102 \pm 13	46 \pm 7	47 \pm 8
% fruit set	95.5	93.9	92.0
seed dispersal distance (m)	26.2 \pm 19.3	–	–

fermented fruit smell, was detected in the spathe limb chamber (probably from the interstice staminodes or the staminate zone). These changes indicated the transitional period from pistillate anthesis to staminate anthesis. The gap into the pistillate zone persisted (Fig. 2B). The spathe limb was widely expanded by the second morning, 05:00 h (Fig. 2C). The fermented fruity smell intensified and thecae horns became semi-erect. Between 05:00 and 06:00 h, liquid droplets were extruded (possibly containing pollen) and were then followed by pollen strings.

Two types of insect visitor were attracted to the inflorescences of *A. nicolsonii* (Table 2), *Colocasiomyia* and *Chaloenus*. Species of *Colocasiomyia* and *Chaloenus* accounted for 56.8% and 43.2% of total insects, and were present throughout anthesis. Four species have been collected: *Colocasiomyia* sp. 8 aff. *bogneri* (Diptera: Drosophilidae; Fig. 2B; ca. 1.5-mm long 9 0.5-mm wide) and *Colocasiomyia* sp. 30 aff. *bogneri* (only one individual found and identified), *Chaloenus* sp. 1 nr. *brooksi* (Coleoptera: Chrysomelidae) and *Chaloenus* sp. 3 nr. *brooksi* (Fig. 2C; both species are ca. 6-mm long 9 3-mm wide). *Colocasiomyia* sp. 8 aff. *bogneri* arrived through the gap formed along the spathe margin. During pistillate anthesis, this species was mostly found in but not restricted to the pistillate zone. *Chaloenus* sp. 1 nr. *brooksi* and *Chaloenus* sp. 3 nr. *brooksi* are larger than the gap between the lower spathe and the pistillate zone, and were restricted to the upper spadix. On post pistillate anthesis, all insects shifted to the upper spadix, but as the spathe opened wide, access to the pistillate zone was no longer restricted. *Colocasiomyia* sp. 8 aff. *bogneri* were observed to consume secretions from the excavated stamens. *Chaloenus* consumed the interstice and appendix staminodes, spathes and occasionally the staminate tissues as well. *Colocasiomyia* sp. 8 aff. *bogneri* left the inflorescence from 11:00 h (day 2) onwards, while several *Chaloenus* remained to consume the tissue organs. Anthesis ended at this time.

Infructescence development from the end of anthesis until seed dispersal lasted for 60 days. Fruit set of *A. nicolsonii* was high (95.5%; Table 1). Fruits deliquesced when ripe to reveal the seeds (Fig. 2E). Seeds were washed out from the fruiting spathe by raindrops or water flow from the stream, and either lodged on moss near the mother plant or sometimes dispersed further into the stream, with an average of 26.2 m dispersal distance (Table 1). The micropylar appendages of seeds split to assist anchorage (Fig. 2F). The seeds germinated within 2 days on moss (Fig. 2G) but were never seen to germinate on bare rock surfaces. Mucilage was detected at the tip of the root of young seedlings and adult plants to help provide anchorage.

Staminate flower and its microstructures

A staminate flower of *A. nicolsonii* comprises two stamens; each stamen has two horned thecae opposite each other, at distal and proximal sides (Fig. 2H), and separated by a deeply

excavated connective. The three-dimensional (3-D) images showed that the four horned thecae of *A. nicolsonii* developed independently (Fig. 2I and J). The theca is elliptic and approximately two-thirds the length of the stamen. The stamen surface from near the base of the horned thecae to the sides of the excavated connective is covered with worm-like (vermiform) cells (Fig. 2L and N), but the cells on the floor of the excavation are smooth (Fig. 2M). Transverse sections of the stamens showed that endothelial cells (micrograph not shown) were present at 120 μ m from the tip of the thecae horn but absent from the inner side (closest to excavated connective). However, the endothelial cells began to develop around and along the theca path below the excavated connective (Fig. 2K). Pollen and oxalate crystals were observed within thecae paths (Fig. 2I–K) and at the tip of the horned thecae (Fig. 2L). Pollen of *A. nicolsonii* is 20 μ m, ovoid, inaperturate and psilate (Fig. 2O). Idioblasts (containing calcium oxalate crystals) and tannin cells were also found on epidermal tissues (Fig. 2I, J and M). A video from a 3-D model generated from X-ray tomography scanning data is available (Video S1) to view the stamen in three dimensions.

Phymatarum borneense

Reproductive stages and pollination strategies

Phymatarum borneense produces up to four inflorescences in sequence per flowering module. Each inflorescence is carried on an erect peduncle and the spathe is separated by a constriction into a lower spathe and spathe limb (Fig. 1G). The spathe limb is caducous as early as the onset of staminate anthesis. The spadix comprises (from base) scattered pistillodes along the spathe/spadix adnation, a conoid to sub-cylindrical pistillate zone with crowded pistils, averaging 49 \pm 8 per spadix (Table 1), with strongly depressed-globose ovaries and a sessile discoid stigma that is papillate. Above the pistillate zone, is a sterile interstice comprising irregularly rounded–rectangular, somewhat impressed centrally, densely papillate staminodes. The latter occasionally bear vestigial horns. The staminate zone is short and slightly narrower than the interstice and comprises large, rounded–rectangular, apically densely tubercular–papillate centrally somewhat impressed stamens. The thecae are paired on the proximal (with respect to spadix axis) side of the stamen, with slender, spreading and distally sharply up-turned (lower part of staminate zone) and down-turned (upper part of staminate zone) horns. The terminal appendix is elongate–conoid and bears staminodes (Fig. 1H).

Anthesis lasted for 26 h. Pistillate anthesis began at 04:30 h with the spathe limb inflating and two gaps (each 1-mm wide) forming; one on the spathe limb, near the tip, and another at the constriction between the spathe limb and the lower spathe. These spathe movements coincided with the production of a mild esteric odour. The gaps extended along the spathe margin

Table 2. Insect visitors found in the inflorescences of *Aridarum nicolsonii*, *Phymatarum borneense* and *Schottarum sarikeense* (F = female insects; M = male insects; insect individuals per inflorescence, N = 5 for *A. nicolsonii*, N = 30 for *P. borneense*, N = 20 for *S. sarikeense*).

	<i>Aridarum nicolsonii</i>	total	<i>Phymatarum borneense</i>	total	<i>Schottarum sarikeense</i>	total
<i>Colocasiomyia</i>	1–8 individuals	21 individuals	2–54 individuals	787 individuals (only 680 individuals were identified)	1–21 individuals	149 individuals (only 39 individuals were identified)
	two species: <i>C. sp.</i> 8 aff. <i>bogneri</i> <i>C. sp.</i> 30 aff. <i>bogneri</i>	F- 8 individuals; M- 12 individuals M- 1 individual	six species: <i>C. sp.</i> 4 aff. <i>bogneri</i> <i>C. sp.</i> 6 aff. <i>bogneri</i> <i>C. sp.</i> 7 aff. <i>bogneri</i> <i>C. sp.</i> 8 aff. <i>bogneri</i> <i>C. sp.</i> 11 aff. <i>bogneri</i> <i>C. sp.</i> 29 aff. <i>bogneri</i>	F- 68 individuals; M- 63 individuals F- 4 individuals; M- 7 individuals F- 6 individuals; M- 5 individuals F- 238 individuals; M- 270 individuals M- 3 individuals F- 8 individuals; M- 8 individuals	Three species: <i>C. sp.</i> 8 aff. <i>bogneri</i> <i>C. sp.</i> 10 aff. <i>bogneri</i> <i>C. sp.</i> 30 aff. <i>bogneri</i>	F- 1 individual; M- 4 individuals F- 1 individual; M- 2 individuals F- 8 individuals; M- 23 individuals
<i>Chaloeus</i>	0–9 individuals	16 individuals (Only 5 were identified)	0–14 individuals	53 individuals	0–4 individuals	20 individuals
	two species: <i>C. schawalleri</i> <i>C. sp.</i> 1 nr. <i>brooksi</i> <i>C. sp.</i> 3 nr. <i>brooksi</i>	1 individual 2 individuals 2 individuals	three species: <i>C. dohertyi</i> <i>C. sp.</i> 1 nr. <i>brooksi</i> (Only found once) <i>Acrocrypta sp.</i>	51 individuals 1 individual 1 individual	five species: <i>C. schawalleri</i> <i>C. schawalleri</i> (pale type) <i>C. sp.</i> 3 nr. <i>brooksi</i> <i>C. sp.</i> 2 nr. <i>permai</i> <i>C. sp.</i> 5 near sp. 2.	1 individual 2 individuals 1 individual 7 individuals 9 individuals
<i>Altica cyanae</i>	–		–		0–1 individual	
<i>Cycreon</i>	–		0–7 individuals		0–2 individuals	

and coalesced within 10 min (Fig. 3A). At 05:00 h the spathe limb inflated to a maximum of 2-cm wide, with the gap widening to 1-cm, thereby enabling the spadix to be seen. By 08:00 h the spathe limb gap had reduced to 5-mm wide (Fig. 3C), a stronger esteric-like odour was released from the appendix, and the stigmas were receptive (as indicated by the presence of large stigmatic droplets; Fig. 3B). The spathe remained in this state for the next 24 h. Throughout the pistillate anthesis, a gap 1-mm wide existed between the sterile interstice of the spadix and the inner wall of the spathe constriction. At 10:00 h, the constriction zone of the spathe tightened and closed by coming in contact with the staminodes at the interstice (Fig. 3C). This marked the transitional stage from pistillate to staminate anthesis. The odour, however, persisted during this stage.

On the second day at 03:00 h, staminate anthesis began with the spathe limb opening wide within 1 h, recurving and partially abscising from its junction with the persistent lower spathe, which remained on the inflorescence (within 2 h; Fig. 3G and E). Droplets (possibly containing pollen) were extruded from the tip of the horned thecae, which were followed by pollen strings. Pollen remained visible for the next 24 h (Fig. 3H). At this stage, a mild esteric-like odour was still detected.

Three types of insect visitor were found in the inflorescences of *P. borneense*, *Colocasiomyia*, chrysomelids and *Cycreon* Orchymont (Coleoptera: Shaeridiinae: Megasternini). *Colocasiomyia* were present in all of the observed inflorescences, with the number of individuals ranging from 2 to 54 per inflo-

rescence (87.8% of total insect visitors; Fig. 3A and G, Table 2). Six species of *Colocasiomyia* have been identified: *Colocasiomyia sp.* 4 aff. *bogneri*, *C. sp.* 6 aff. *bogneri*, *C. sp.* 7 aff. *bogneri*, *C. sp.* 8 aff. *bogneri*, *C. sp.* 11 aff. *bogneri* and *C. sp.* 29 aff. *bogneri*. *Chaloeus dohertyi* (Coleoptera: Chrysomelidae; Fig. 3D), *Chaloeus sp.* 1 nr. *brooksi* and *Acrocrypta sp.* were found each in a single inflorescence. Total individuals of *Chaloeus* per inflorescence ranged from zero to 14 (6.8%; Table 2). A hydrophilid genus, *Cycreon* (Fig. 3A), was occasionally found in inflorescences, with zero to seven (5.4%) per inflorescence.

At the onset of pistillate anthesis, *Colocasiomyia* arrived and entered *via* the spathe limb gap, into the pistillate zone, interstice or/and appendix, but never alighted on the staminate zone. The gap between the sterile interstice of the spadix and the inner wall of the spathe constriction permitted only species of *Colocasiomyia* 1.5-mm long \times 0.5-mm wide access to the pistillate zone held within the lower spathe. *Chaloeus dohertyi* (6–7-mm long \times 3–4-mm wide) were present during and after anthesis. The insects entered the inflorescence *via* the gap or sometimes by chewing through the tip of the spathe. The beetles fed mainly on the appendix, sometimes on staminodes at the base and interstice, but rarely on the staminate zone and inner wall of the spathe limb. These beetles were aggressive and engaged in fights to dislodge other beetles of the same species from the inflorescence. *Cycreon* (2.0-mm long \times 1.5-mm wide) entered the inflorescences *via* gaps from the onset of pistillate anthesis until late pistillate anthesis. Although the size of *Cycreon* is small enough to enter the lower chamber, *Cycreon*

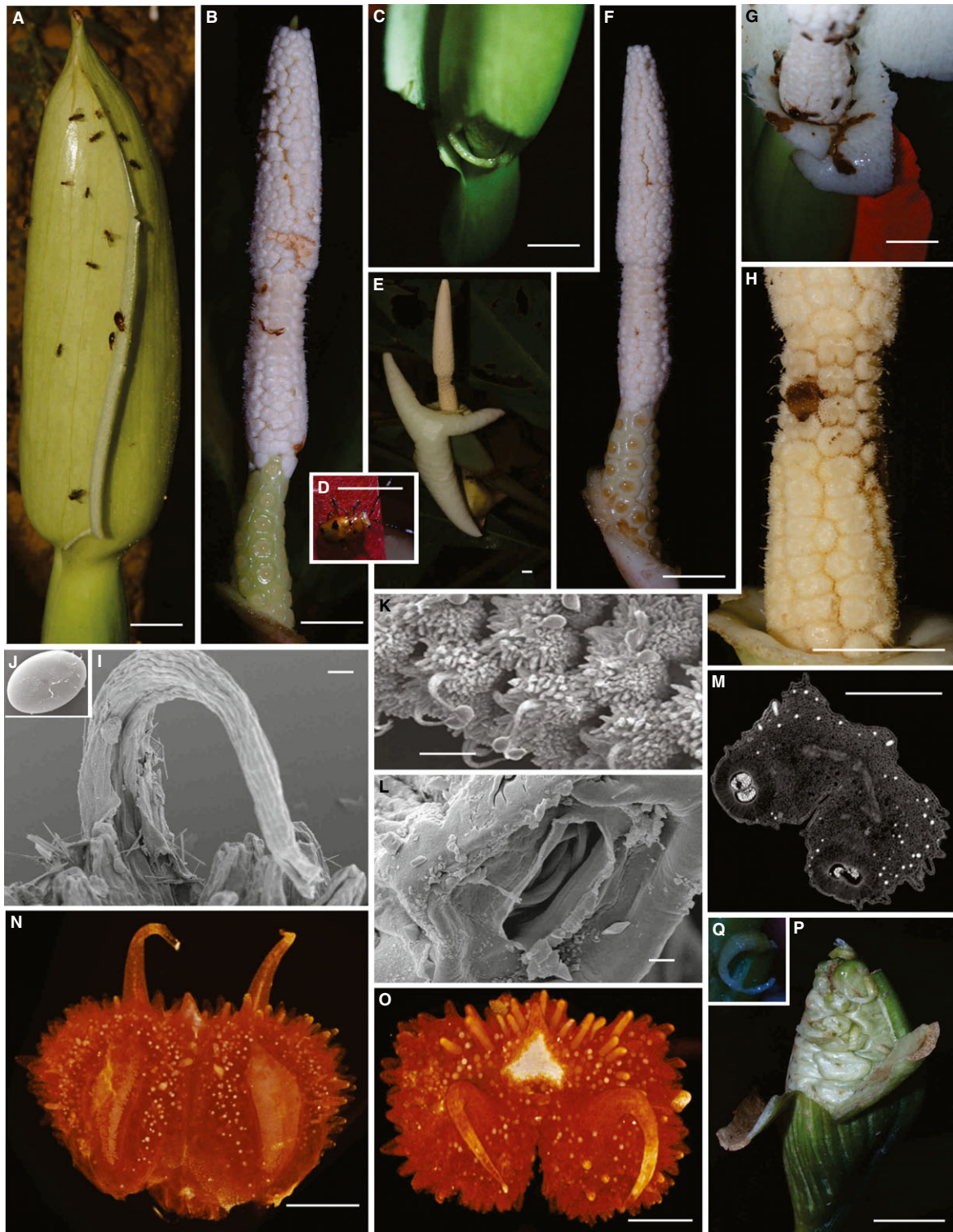


Fig. 3. Flowering mechanism, pollinators and insect visitors, seed dispersal, seedling establishment and stamen, together with its microstructures in *Phymatarrum borneense* M.Hotta. A: Inflorescence at the onset of pistillate anthesis. B: Spathe artificially removed to reveal the spadix at pistillate anthesis. C: The gap between the spathe constriction and interstice at pistillate anthesis. D: *Chaloenus dohertyi*. E: Spathe abscission at staminate anthesis. F: Spathe artificially removed to reveal the spadix at staminate anthesis. G: Access into the pistillate zone closed with the tightening of the spathe constriction. H: Staminate zone. I: Horned theca with biforines present. J: Pollen. K: Droplets accumulate at the tip of horned thecae. L: Stomata with calcium oxalate on the sides. M–O: Stamen, with pollen in the thecae paths with calcium oxalate scattered within the stamen. P: Infructescence. Q: Seed with micropylar appendage prominent. Scale bar 1 cm (A–H), 1 mm (I), 200 μ m (L), 1 mm (K), 1 mm (M–O), 1 cm (P).

remained in the upper part of the inflorescence. During the transitional stage from pistillate to staminate anthesis, all the insect visitors remained in the inflorescences, either on the interstice or on the appendix.

At the onset of staminate anthesis, *Colocasiomyia* moved to the staminate zone and left the inflorescence within 1 h after the spathe limb recurved. *Colocasiomyia* movements were free and unrestrained (see Video S2). At the same time, a few *C. dohertyi* and *Cycreon* remained on the appendix and interstice, respectively. The upper part of the spadix (excepting occasionally a row of staminodes on the interstice) degraded and abscised within 6–7 days after anthesis. The percentage fruit set was high, reaching 93.9% (Table 1). The infructescence swelled by 160% (from 15 to 25 mm in diameter). The fruits developed into a green form before fading to yellowish white when fully ripe (Fig. 3P). The lower spathe liquefied to disperse the seeds into surrounding areas. The seeds sometimes germinated in the fruiting spathe before dispersal. However, the first shoot only developed within 1 month (in lab condition). Seedlings were in 'upright' position with the micropylar appendage anchored into the ground surface.

Staminate flower and its microstructures

A staminate flower of *P. borneense* comprises a single stamen (Fig. 3M). The stamen has a pair of curved horned thecae pointing upward (lower part of the staminate zone) and downward (upper part of the staminate zone). Horned thecae are individually formed, extending throughout the length of the stamen, rounded–rectangular within the inner stamen, 2-mm across (Fig. 3N). The apical portion of thecae horns are 0.8-mm long. The surface of the stamen comprises papillate cells (clearly visible with the naked eye; Fig. 3H). At the tip of each papillate cell, stomata were present (Fig. 3L). High magnification shows that the stomata comprise two guard cells; calcium oxalate crystals in the form of octahedrons and star-like crystals were also found scattered on the guard cells (Fig. 3L). Raphides in the form of biforines were found at the base and along the horned thecae (Fig. 3I); these might be extruded together with pollen. Biforines are characteristic of genera with unisexual flowers, and generally absent in bisexual flower genera (De Bary 1884; Dalitzsch 1886; Solereder & Meyer 1928; Grayum 1984). Prior to pollen extrusion, droplets (possibly containing pollen) occurred near the tip of the completely sealed thecae horn (Fig. 3K). The pollen is ovoid, 20 µm, inaperturate and smooth (Fig. 3J). A video of a 3D model generated from X-ray tomography scanning data is available (Video S3).

Schottarum sarikeense

Reproductive stages and pollination strategies

The data presented here are a combination of results from Low *et al.* (2014) with additional observations made for this study. *S. sarikeense* has a solitary inflorescence (Fig. 1K). The inflorescence is held in a nodding position and the spathe is constricted into an ovoid and slightly down-curved lower spathe (Fig. 4A) and a spathe limb, which falls fresh into circumferential rings at the onset of staminate anthesis. The spadix comprises, from its base, a row of staminodes along the spathe/spadix adnation followed by a pistillate zone that is wholly adnate to the spathe on the dorsal side (Fig. 4B). The pistils are more or less depressed–globose, crowded, on average 52 ± 7

(Table 1), with discoid stigmas. Above the pistillate zone is a sterile interstice that is confined to about two irregular whorls of sterile stamens at the base of the staminate zone. This is followed by a staminate zone comprising stamens that are crowded, truncate, flat-topped, rather irregular in shape and size, ellipsoid to dumbbell-shaped from above, 0.5-mm across and partially to completely connate into groups of two to three. The appendix comprises staminodes (Fig. 1L).

The anthesis of *S. sarikeense* lasts for ca 26 h. Pistillate anthesis started around 15:00 h, when a mild esteric odour was emitted from the appendix, which lasted for the whole of pistillate and staminate anthesis. The spathe limb remained open throughout anthesis (Fig. 4C). At 21:00 h, pistillodes at the interstice expanded thereby blocking the entrance to the pistillate zone; this marked the end of pistillate anthesis for *S. sarikeense* (Fig. 4D). At 14:30 h on day 2, staminate anthesis started with acropic abscission of the still fresh spathe limb into several circumferential rings (Fig. 4E). Shortly after, a combination of powdery and long, stringy pollen was released (Fig. 4E and F). Infructescences took up to 2 months to mature. The percentage fruit set for *S. sarikeense* was as high as 92.0% (Table 1). The mature infructescences split and reflexed to reveal ripe fruits (Fig. 4I). On the following morning, fruits were dispersed through rainfall and rising stream levels. Seeds lack a micropylar appendage.

Four types of insect visitor were found in the inflorescences of *S. sarikeense*: *Colocasiomyia* (80% of total), *Chaloenus* (13.4% of total), *Altica cyanae* (Coleoptera: Chrysomelidae; 0.7% of total) and *Cycreon* (Coleoptera: Hydrophilidae; 6% of total; Table 2; wrongly identified as nitidulids in Low *et al.* 2014). Three *Colocasiomyia* species were identified: *Colocasiomyia* sp. 8 aff. *bogneri*, *Colocasiomyia* sp. 10 aff. *bogneri* and *Colocasiomyia* sp. 30 aff. *bogneri*. Five *Chaloenus* species were identified: *Chaloenus schawalleri*, *Chaloenus schawalleri* (pale type), *Chaloenus* sp. 3 nr. *brooksi*, *Chaloenus* sp. 2 nr. *permai* and *Chaloenus* sp. 5 near sp. 2. A gap between the spathe and interstice (1-mm diameter) allowed only *Colocasiomyia* (1.5-mm long \times 0.5-mm wide; Fig. 4E and F) to access the pistillate zone. The flies were observed to move freely up and down the spadix. *Chaloenus* (Fig. 4G), *Altica cyanae* (only found once; Fig. 4L) (both insects are of similar size, 6–7-mm long \times 3–4-mm wide) and *Cycreon* (2-mm long \times 1.5-mm wide; Fig. 4K) were occasionally present at the staminate zone and on the appendix during pistillate anthesis. Species of *Chaloenus* predated the appendix and spathe margins. Expansion of the pistillodes at the interstice blocked the entrance into the pistillate zone. *Colocasiomyia* shifted to the upper part of the spadix prior to closure of the lower chamber. On day 2, at 14:30 h, staminate anthesis started. Species of *Chaloenus* and *Cycreon* were covered with pollen (Fig. 4J). After 2 h of staminate anthesis, all insects left the inflorescence with pollen attached to their bodies.

Staminate flower and its microstructures

A staminate flower of *S. sarikeensis* comprised either two or three stamens. Each stamen consists of two thecae pores separated by a flat-topped connective. The thecae path is one-third of the length of the stamen (Fig. 4M). Each theca is connected basally to a theca of the neighbouring stamen (Fig. 4M and Q). Endothelial cells (Fig. 4P) surrounding the pores are suspected to force pollen out at the onset of staminate anthesis. Calcium

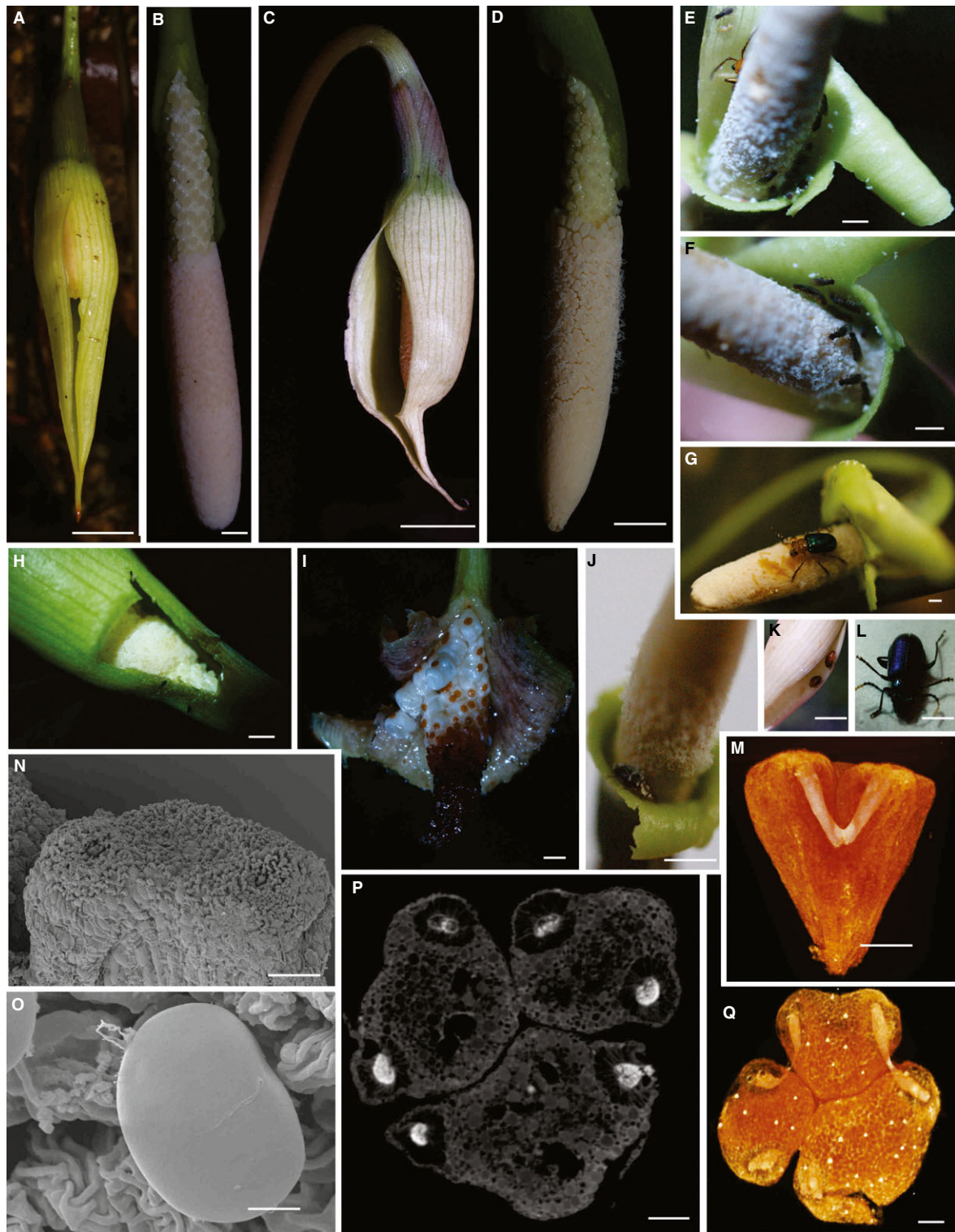


Fig. 4. Flowering mechanism, pollinators and insect visitors, seed dispersal, seedling establishment and stamen, n together with its microstructures of *Schottarum sarikeense* P.C.Boyce & S.Y.Wong. A: Inflorescence at pistillate anthesis. B: Spathe artificially removed to reveal the spadix at pistillate anthesis. C: Inflorescence at staminate anthesis. D: Spathe artificially removed to reveal the spadix at staminate anthesis. E & F: Pollen shedding. F: *Colocasiomyia* present. G: *Chaloesus*. H: A window cut to reveal the spadix at pistillate anthesis. I: Infructescence shedding fruits. J: *Cycreon* covered with pollen; note the expanded pistillodes at interstice. K: *Cycreon*. L: *Altica cynae*. M–Q. Stamen. M: Thecae paths joined together. N: Thecae pores. O: Pollen. P: Endothelial cells surrounding the thecae pore. Q: Pores within the thecae paths and calcium oxalate crystals scattered within the stamens. Scale bar: 1 cm (A–D), 1 mm (E–I), 1 cm (J–K), 2 mm (L), 100 μ m (N), 500 μ m (O), 100 μ m (P–Q).

oxalate crystals (octahedrons and 3-D star-like) and tannin cells are present on the surface of the stamens (Fig. 4P and Q). The pollen is ovoid, 15 µm, inaperturate and smooth. A video from a 3D model generated from X-ray tomography scanning data is available (Video S4) to view the stamen in three dimensions.

DISCUSSION

Flowering and main attractant

Aridarum nicolsonii and *P. borneense* bloom at dawn, while *S. sarikeense* flowers at dusk (Table 3), uniquely so for Schismatoglottideae. The shift in flowering from dawn to dusk in *S. sarikeense* could be a reproductive isolation mechanism. In other *Colocasiomyia*-pollinated Araceae a shift to flowering at dusk has been observed in *Colocasia affinis* Schott, whereas *C. esculenta* (L.) Schott, *C. fontanesii* Schott and *C. lihengiae* C. L. Long & K. M. Liu flower before dawn (Bröderbauer *et al.* 2014). However, *C. affinis* does not occur in the same clade as the other three *Colocasia* (Nauheimer *et al.* 2012). Of the several species observed in *Homalomena* (Homalomeneae: Araceae) on Borneo, these species, which are pollinated by scarab beetles, also flowered before dawn (Kumano & Yamaoka 2006; Tung *et al.* 2010; Hoe *et al.* 2011). Elsewhere in the related tribe Philodendreae, which are pollinated by scarab beetles, the major events occur at dusk (Gibernau *et al.* 1999; Maia & Schindwein 2006). It seems that Schismatoglottideae and Homalomeneae tend to flower at dawn in the Old World tropics but related taxa in the Neotropics flower at dusk. This requires further investigation.

Olfactory cues were the primary means of attraction, as the release of floral odour correlates with the arrival of most insect visitors. Odour originated from the appendix (but in *A. nicolsonii*, more than one source of origin at different times of anthesis). Osmophoric cells in the appendix are the primary source of odour for attracting insects (Vogel & Martens 2000; Hadacek & Weber 2002; Miyake & Yafuso 2003, 2005; Kakishima *et al.* 2011). Once the insects reached the inflorescences in the investigated three taxa, they were attracted into the lower floral chamber by a more concentrated odour (and possibly a different odour) within the pistillate zone. So far, the role of floral fragrance in mediating plant–insect interactions has only been investigated in a few species scattered across the Araceae (*i.e.* Patt *et al.* 1995; Hadacek & Weber 2002; Kumano-Nomura & Yamaoka 2009; Maia *et al.* 2010, 2012, 2013; Dötterl *et al.* 2012). Hadacek & Weber (2002) reported a gradient in odour

emissions in the inflorescence of *Sauromatum guttatum* Schott, ranging from foul-smelling in the appendix to a pleasant flowery odour at the interstice club-shaped sterile organs, and these odour compounds attracted a wide range of insects into the floral chamber. Kite (1995) showed that in the inflorescences of *Arum maculatum* L., the major odour-producing organ was the spadix appendix (2-heptanone, indole, p-cresol), although a different odour (germacrene B) originating from the spathe chamber was also detected.

Flower visitors

The timing of *Colocasiomyia*, *Chaloenus* and *Cycreon* visits corresponded to the flowering mechanisms. *Colocasiomyia* and *Chaloenus* (but not *Cycreon*) were attracted to the odour released, as these insects were present during the bagging test where the inflorescences were covered with netting. *Cycreon*, however, was absent; the occurrence of *Cycreon* in Araceae is reported here for the first time. It is possible that *Cycreon* larvae can co-exist with dipteran and nitidulid larvae in the decaying flower parts; such behaviour has been observed for staphylinid larvae in *Alocasia* in Australia (A. Kirejtshuk personal communication). *Colocasiomyia* were observed to consume the stigmatic secretions and pollen droplets (and pollen powder), and oviposit in the pistillate zone. Utilisation by *Colocasiomyia* of aroid inflorescences as brood sites has been reported (Miyake & Yafuso 2003, 2005; Takenaka *et al.* 2006; Takenaka-Takano *et al.* 2012; Fartyal *et al.* 2013). Further investigation is needed to determine mutualistic relationships between *Colocasiomyia* and host plants. *Colocasiomyia* currently consists of about 70 species, known only to occur with Araceae, Arecaceae and Magnoliaceae (Takenaka-Takano *et al.* 2012). In this study, eight new *Colocasiomyia* species were identified (M. J. Toda personal communication). *Chaloenus* predate pollen and staminodes, and occasionally the inner wall of the spathe. The activity of *Cycreon* is not as yet clear because these insects are very sensitive to disturbance during observation.

Our results have shown that although both *Colocasiomyia* and *Chaloenus* are attracted to the odour released, it is the 'size' of insects that matters, which resulted in confinement of the *Chaloenus* to the upper spadix. Only species of *Colocasiomyia* gained access to the pistillate zone during pistillate anthesis. The stigmatic secretions may increase pollen adherence to the *Colocasiomyia* body parts when the insects shift to the staminate zone 24 h later. *A. nicolsonii*, *P. borneense* and *S. sarikeense* are therefore suggested here to be pollinated by species of *Colocasiomyia*. Fruit set failed in our living collections at Seme-

Table 3. Summary of characters of *Aridarum nicolsonii*, *Phymatarum borneense* and *Schottarum sarikeense*.

	<i>Aridarum nicolsonii</i>	<i>Phymatarum borneense</i>	<i>Schottarum sarikeense</i>
flowering time	dawn	dawn	dusk
staminate flower	two stamens	one stamen	two–three stamens
stamen surface	smooth, with excavated connective	verrucate, with inconspicuous connective	smooth, with flat connective
pollen extrusion	thecae horns	thecae horns	thecae pores
pollen	droplet and strings	droplet and strings	powder
appendix	present	present	present
protection post pistillate anthesis	none	constriction at spathe retightened	pistillodes at interstice expanded
infructescence	splash cup	urceolate	urceolate
seed	micropylar appendage	micropylar appendage	no micropylar appendage
pollinators	<i>Colocasiomyia</i>	<i>Colocasiomyia</i>	<i>Colocasiomyia</i>

nggoh Botanical Research Centre, Kuching, surrounded by natural lowland forest. As this area lacks river systems supporting a rheophytic aroid flora, we doubt the possibility of self-pollination. Although multiple plants of several other *Aridarum* species (from different informal groups) flower contemporaneously in the nursery and attract a variety of insects, fruit set is very rare (Boyce & Wong 2013). We suspect that the pollinators of many rheophytic aroids are highly localised to specific river systems. Mori & Okada (2001) demonstrated that in populations of rheophytic *Furtadoa sumatrensis* M.Hotta (Araceae: Homalomenaceae), also pollinated by *Colocasiomyia* sp., pollen flow was restricted to single river systems.

A floral trap?

Various complex spathe movements occur in all Schismatoglottideae species so far examined (Boyce & Wong 2007; Wong & Boyce 2010; Ulrich *et al.* 2012). The intricate series of events involved movement of the spathe, the phasing of fertile events, the management of pollinators, and ultimately the development and successful maturation and dispersal of fruits and seeds in *Schismatoglottis* and other genera of the Schismatoglottideae need further investigations (Boyce & Wong 2007). Much needs to be done before we are in a position to attempt an overall presentation on the breadth of spathe/spadix and pollinator and dispersal interactions. All spathes of the inflorescences for the three species investigated here are inflated and partially closed except for a gap along the spathe margin at the onset of anthesis. This allows release of the floral odour to the surroundings, and at the same time, concentrates the floral odour within the inflorescence. No insect visitors are, however, confined or trapped within the inflorescences. The pollinators *Colocasiomyia* are not strictly restricted to the lower chamber during pistillate anthesis and are free to move within and sometimes in/out of inflorescences. The constriction at the spathe coinciding with the interstice for all three species serves as a sieve, allowing only insects of a certain size, *i.e.* *Colocasiomyia*, access to the lower chamber during pistillate anthesis. However, in *Colocasia* Schott, *Colocasiomyia* are trapped during the pistillate phase of anthesis by a narrowing of the spathe constriction, which then reopens at the end of the pistillate phase, enabling the trapped flies to access the staminate flowers (Bröderbauer *et al.* 2014). In *Arisaema* Mart. and *Pinellia* Ten., insects are freed from the trap by spathe movements resulting in the formation of a secondary opening (Vogel & Martens 2000).

The constriction of the spathe in *P. borneense* tightened to prevent access to the lower chamber post pistillate anthesis. In *S. sarikeense*, the interstice pistillodes expanded to close the lower chamber. This is also observed in *Bucephalandra* and in species of the *Aridarum* Rostratum Complex, where the interstice staminodes lower and press against the inner wall of the lower spathe to seal the lower spathe chamber post pistillate anthesis (Boyce & Wong 2013; Wong & Boyce 2013). The role of interstice staminodes in Araceae need further investigation, not least since these structures have been reported to act as osmophoric cells (Hadacek & Weber 2002) or/and to close access to insects after anthesis to protect the developing fruit (Mayo *et al.* 1997; see below for further discussion). There are other means by which the floral chamber is secluded in Araceae where, in Cryptocoryneae an extension of the spathe margin

occludes the floral chamber, while in *Areae* a twist of the spathe causes closure of the constriction between the floral chamber and the blade (Bröderbauer *et al.* 2012). However, in *A. nicolsonii*, access to the lower chamber remained and the fruits are developed in an open splash-cup (Wong 2013). The spathe limb of all three investigated species falls off during and post staminate anthesis, and insects subsequently left the inflorescence. Pollen liberation coincides with abscission of the spathe limb in *P. borneense* and *S. sarikeense*. In *A. nicolsonii*, however, the spathe limb, though wide open, remains throughout staminate anthesis and is shed post anthesis.

Stamens

Staminate flowers in the three species investigated comprise one stamen (*Phymatarum*), two stamens (*Aridarum*) and occasionally three in *Schottarum*. Aside from *Phymatarum*, unistaminate flowers occur only in *Bucephalandra* and species of *Aridarum* Burtii & Rostratum complexes (Boyce & Wong 2013).

The stamen surface may be verrucate through the existence of papillate and sculptured cell surfaces (*Phymatarum*), smooth and worm-like cell surfaces (*Aridarum*) or smooth surfaces (*Schottarum*). The existence of papillate and sculptured cell surfaces is documented for the epidermis of the spathe, staminate and pistillate flowers in species of *Amorphophallus* Blume ex Decne, *Homalomena* Schott and *Philodendron* Schott (Mayo *et al.* 1997). As literature on the roles of anthers in animal-pollinated flowers remains sparse (Bernhardt 1996), more work needs to be done to link the microstructure traits in a stamen to its pollination mode. Pollen of the studied species of Schismatoglottideae is ovoid, inaperturate and smooth, as reported as well by Grayum (1992).

Horned thecae versus thecae pores

In Schismatoglottideae, theca dehiscence occurs either through a pair of horns or more commonly through pores. Horned thecae are restricted to the species of four genera of Schismatoglottideae – *Aridarum*, *Bucephalandra*, *Phymatarum* and *Schottariella* (Bogner & Hay 2000; Wong 2013). Two of these genera, *Bucephalandra* and *Phymatarum*, are unistaminate; *Schottariella* has paired stamens. In *Aridarum*, staminate flowers comprise either one or two stamens with the thecae either on the longitudinal ends or on the inner face of each anther of the stamen pair (Wong *et al.* 2012), or in *Aridarum* Burtii and Rostratum complexes, staminate flowers are unistaminate, with thecae on the proximal side of the flower (Wong *et al.* 2012; Boyce & Wong 2013). *Schottariella* is unique in the tribe as having needle-like thecae horns emerging only at the onset of staminate anthesis (Boyce & Wong 2008, 2009).

The nature of the thecae horns differs between *A. nicolsonii* and *P. borneense*. The horned thecae are short in *A. nicolsonii* but long, narrow and curved in *P. borneense*, while the thecae paths under the stamen surface are elliptic in *A. nicolsonii*, but round to rectangular in *P. borneense*. The pressure to extrude droplets and/or pollen may originate from within the thecae paths in *A. nicolsonii*, but as the thecae paths are wider in *P. borneense*, the pressure might be transferred to near the tip of the thecae horns. In *P. borneense*, the droplets accumulated near to the tip of the thecae horn (Fig. 3K) but the narrowed

mid-part in the thecae paths of *A. nicolsonii* may produce a force to push pollen from within the thecae paths. Pollen strings of *A. nicolsonii* and *S. sarikeense* are extruded from thecae through contraction of endothelial cells along the theca. The thecae horns are possibly a floral trait adaptation to stream habitats, reducing pollen loss through water splashes and enabling 'active' pollen delivery according to the insect uptake. The release of pollen through horned thecae in these two taxa may have evolved to facilitate pollen deposition on the pollinator's body by increasing the levels of smearing of the pollinator body with pollen. Since pollinators may actually ignore the anthers, additional structural and physiological modifications to the anthers may have evolved to facilitate heavier pollen deposition on otherwise unresponsive forages (Bernhardt 1996). The structure and mechanism of the horned thecae varies between these two taxa. The results confirm that the thecae horns are independently derived among the taxa.

In *Schottarum*, pollen is released through a subapical stomial pore from a short theca path. Endothelial cells surround the thecae paths. Pollen of *S. sarikeense* is a combination of a powdery mass and threads. The staggered release of pollen covered *Colocasiomyia* when these insects seemingly consume liquid from the pollen. The mode of thecae dehiscence and stamen structure, together with the liquid droplets as reward, may manipulate *Colocasiomyia* to perform its pollination duty to its host plant.

Calcium oxalate packages

Calcium oxalate packages are present in all three species investigated. In *A. nicolsonii*, the oxalate packages comprise octahedrons, while those of *P. borneense* and *S. sarikeense* are octahedrons and 3-D star-like crystals. *A. nicolsonii* produces the oxalate packages from within the horned thecae and also from stamen surfaces, but in *P. borneense* oxalate crystals are found on guard cells of stomata. Keating (2004) reports the presence of both types of oxalate package, raphides and crystal sand, in *Aridarum borneense* (M. Hotta) Bogner & A. Hay. Barabé *et al.* (2004a) reports that in *Schismatoglottis calyptata*, the oxalate packages are produced near stomata in the centre of the top portion of the stamen when the stamen and stigma are mature.

Oxalate crystals are found mixed with pollen at dehiscence in *A. nicolsonii* (prismatic crystals) and *P. borneense* (raphides: biforines). In *P. borneense*, the entire mass of biforines and pollen is ejected from the horned thecae. The occurrence of small and large calcium oxalate raphides attached to the pollen surface has been reported for representative taxa of eight genera in Schismatoglottideae (Barabé *et al.* 2004a,b; Ulrich *et al.* 2012). Interestingly, calcium oxalate crystals are found on *Schismatoglottis* but not in the small genera, apart from *Hestia* S.Y.Wong & P.C.Boyce (Ulrich *et al.* 2012).

The role of calcium oxalate crystals has been the subject of speculation for many years, and is reviewed in Franceschi & Horner (1980). Calcium oxalate crystals may, among other roles, give protection against insects and foraging animals, contribute to the strength of tissue, store calcium, bind toxic oxalate or be involved in surrounding degrading tissue. Presence of oxalate crystals with pollen is suggested to play a defensive role against consumption by pollinators, in pollen liberation or as a visual signal to insect visitors (Chase & Peacor 1987;

D'Arcy *et al.* 1996; Coté & Gibernau 2012). We found some support for the role of oxalate crystals as protection against herbivory as in all the species observed the staminate zone (and pistillate zone) is not damaged by the chrysomelids. However, there was heavy predation in some inflorescences of *A. nicolsonii*. Often, predating activity of chrysomelids started just before the onset of pistillate anthesis, and by the time the inflorescence reached staminate anthesis the spadix had been seriously damaged.

Fruit set and protection to developing infructescences

Reproductive success was evident several days after anthesis as visible enlargement of ovaries. Fructification rate among the three taxa investigated was high, at >90%. This is significantly higher than results for *Furtadoa sumatrensis* (40–50%), a rheophytic taxon also pollinated by *Colocasiomyia* (Mori & Okada 2001). Our work with *Homalomena* shows similar high fruit set, at >80% (Y. C. Hoe, personal communication). In a related taxon in the Neotropics, *Philodendron acutatum* Schott, also showed reproductive success of >90% (Maia *et al.* 2010). Gotsberger & Amaral (1984) considered the pollinator specificity observed in upland Atlantic Forest populations of *Philodendron bipinnatifidum* Schott ex Endl. as an effective strategy to increase reproductive success. Relying on a specialised pollen vector can significantly decrease the risk of interspecific pollen flow, and improve the rate of successful visitation, since visitors very probably carry only conspecific pollen (Faegri & van der Pijl 1979).

In many unisexual-flowered aroids the role of protecting the developing infructescences is assumed either by the entire spathe or by the persistent lower spathe. Fruit exposure is variously enabled, mostly by the spathe splitting open (*e.g.* *Alocasia* (Schott) G.Don, *Dieffenbachia* Schott) or abscising from the base (*e.g.* *Homalomena*, *Philodendron*; Mayo *et al.* 1997). Infructescence development in many rheophytic Schismatoglottideae is unusual in that the developing fruits sit exposed in a cup-shaped persistent lower spathe, which later functions as a splash-cup from which seeds are ejected by the impact of water droplets. The infructescence of *A. nicolsonii* is open and fruits harden throughout the development stage. The mucilaginous layer seen post pistillate anthesis in *A. nicolsonii* is probably for protection. The layer is probably derived from breakdown of glandular stigmatic cells and of the transmitting tissue of the stylar canal and placental region, as observed for the monsterooids (Eyde *et al.* 1967). Knoll (1926) suggested that in *Arum nigrum* Schott the mucilaginous layer plays a role both in the germination of pollen and in nourishing insect pollinators while they are trapped within the spathe. The seeds of *A. nicolsonii* are embedded in a hard brittle matrix in the mature fruit, but during natural degradation of the fruit prior to ejection from the splash-cup it absorbs water and swells into a slimy or gelatinous pulp. The infructescences of *P. borneense* are protected by the lower spathe with a constricted orifice. The seeds are large and curved, with a micropylar appendage. In *S. sarikeense* the expanded pistillodes on the interstice protect the developing infructescence until decay prior to fruit maturity; seeds are small without a micropylar appendage. All the species have seeds with little or no endosperm. The cotyledonary hyperphyll functions as a storage organ and perhaps has a very limited haustorial role when endosperm is present. The

cotyledonar sheath, hypocotyl and primary root tend to be reduced or often completely absent. All three species are water dispersed. Micropylar appendages split and spread to attach the seeds to rock surfaces for *A. nicolsonii*. In *P. borneense*, the micropylar appendage hooked itself onto the surface. The micropylar appendages fix the seed to the substrate, preventing it from being swept away by torrential water.

CONCLUSIONS

In this paper, we provide the first comprehensive study of flowering mechanisms and pollination strategies in Schismatoglottideae in their natural habitat. Depending on species, anthesis starts either at dawn or dusk and lasts for 26–29 h. Insect visitors are mostly attracted to the floral odour released at the onset of pistillate anthesis. Pollinators are identified as species of *Colocasiomyia*. Important floral characteristics for *Colocasiomyia* pollinations are a chamber for concentration of floral odour and restricted access for other insect visitors to the pistillate zone during pistillate anthesis. Horned thecae force pollen extrusion but the structure and mechanisms of the horns differ in *A. nicolsonii* and *P. borneense*. Calcium oxalate packages are present on the epidermis of stamens and protrude together with pollen for protection. The mechanism of micropylar appendages in seed germination varies in *A. nicolsonii* and *P. borneense*.

ACKNOWLEDGEMENTS

This study was partially funded by the ITTO fellowship [No. 056/10A] to the first author. This is part of on-going research

funded by the Ministry of Education Malaysia through Vote No. ERGS/01(02)/808/2011(03), FRGS/STWN10(01)985/2013(26) and NRGs/1089/2013-(03). The collaboration and support of the Sarawak Forestry Department is gratefully acknowledged. Most recent fieldwork and research was under Research Permit No. NCCD.907.4.4(Jld.9)-69 and Park Permit No. 140/2013. The first author is grateful to Heidi Halbritter, Martini Weber, Maria Von Balthazar, Silvia Ulrich, Anke Bellaire, Susanne Sontag, Perica Brodaric and Andrea Frosch-Radivo for guidance and technical support. We sincerely thank Masanori J. Toda, Haruo Matsuzawa, Alexander G. Kirejtshuk and Martin Fikáček for identifying the insect specimens. We are grateful to David Bröderbauer for valuable comments on the manuscript.

SUPPORTING INFORMATION

Additional Supporting Information may be found in the online version of this article:

Table S1. Scanning conditions of X-ray tomography.

Video S1. Rotating, virtual 3-D model of the staminate flower of *Aridarum nicolsonii* Bogner.

Video S2. Pollination observations of *Phymatarum borneense* M.Hotta at Mulu National Park, Sarawak, Malaysia.

Video S3. Rotating, virtual 3-D model of the staminate flower of *Phymatarum borneense* M.Hotta.

Video S4. Rotating, virtual 3-D model of the staminate flower of *Schottarum borneense* P.C.Boyce & S.Y.Wong.

Appendix S1. Taxonomic position, herbarium voucher number and collection locality of the species used in this study.

REFERENCES

- Barabé D., Lacroix C. (2001) Aspects of floral development in *Philodendron grandifolium* and *P. megalophyllum* (Araceae). *International Journal of Plant Sciences*, **162**, 47–57.
- Barabé D., Lacroix C., Bruneau A., Archambault A., Gibernau M. (2004a) Floral development and phylogenetic position of *Schismatoglottis* (Araceae). *International Journal of Plant Sciences*, **165**, 173–189.
- Barabé D., Lacroix C., Chouteau M., Gibernau M. (2004b) On the presence of extracellular calcium oxalate crystals on the inflorescences of Araceae. *Botanical Journal of the Linnean Society*, **146**, 181–190.
- Bernhardt P. (1996) Anther adaptation in animal pollination. In: D'Arcy W.G., Keating R.C. (Eds), *The anther: form, function and phylogeny*. Cambridge University Press, Cambridge, UK, pp 192–220.
- Bogner J., Hay A. (2000) Schismatoglottideae (Araceae) in Malesia 2: *Aridarum*, *Bucephalandra*, *Phymatarum* and *Piptospatha*. *Telopea*, **9**, 179–222.
- Boyce P.C., Wong S.Y. (2007) Studies on Schismatoglottideae (Araceae) of Borneo IV: preliminary observations of spathe senescence mechanics in *Schismatoglottis* Zoll. & Moritz in Sarawak, Malaysian Borneo. *Aroideana*, **30**, 56–70.
- Boyce P.C., Wong S.Y. (2008) Studies on Schismatoglottideae (Araceae) of Borneo VII: *Schottarum* and *Bakoa*, two new genera from Sarawak, Malaysian Borneo. *Botanical Studies*, **49**, 393–404.
- Boyce P.C., Wong S.Y. (2009) *Schottariella mirifica* P.C.Boyce & S.Y.Wong: a new name for *Schottarum sarikeense* (Araceae: Schismatoglottideae) – an erratum. *Botanical Studies*, **50**, 269–271.
- Boyce P.C., Wong S.Y. (2013) Studies on Schismatoglottideae (Araceae) of Borneo XXVII – New species of *Aridarum*, and notes on the *Aridarum* Rostratum Complex. *Willdenowia*, **43**, 91–99.
- Bröderbauer D., Diaz A., Weber A. (2012) Reconstructing the origin and elaboration of insect-trapping inflorescences in the Araceae. *American Journal of Botany*, **99**, 1666–1679.
- Bröderbauer D., Ulrich S., Weber A. (2014) Adaptations for insect trapping in brood-site pollinated *Colocasia* (Araceae). *Plant Biology*, **16**, 659–668.
- Chase M.W., Peacor D.R. (1987) Crystal of calcium oxalate hydrate on perianth of *Stelis* Sw. *Lindleyana*, **2**, 91–94.
- Coté G.G., Gibernau M. (2012) Distribution of calcium oxalate crystals in floral organs of Araceae in relation to pollination strategy. *American Journal of Botany*, **99**, 1231–1242.
- Dalitzsch M. (1886) Beiträge zur Kenntnis der Blatt-anatomie der Araceen. *Botanisches Centralblatt*, **25**, 153–156, 184–187, 217–219, 249–253, 280–285, 312–318, 343–349, Taf. 3.
- D'Arcy W.G., Keating R.C., Buchmann S.L. (1996) The calcium oxalate package or so-called resorption tissue in some angiosperm anthers. In: D'Arcy W.G., Keating R.C. (Eds), *The anther: form, function and phylogeny*. Cambridge University Press, Cambridge, UK, pp 159–190.
- De Bary A. (1884) *Comparative Anatomy of Vegetative Organs of the Phanerogams and Ferns*. Clarendon Press, Oxford, UK, p 659.
- Dötterl S., David A., Boland W., Silberbauer-Gottsberger I., Gottsberger G. (2012) Evidence for behavioral attractiveness of methoxylated aromatics in a dynastid scarab beetle-pollinated Araceae. *Journal of Chemical Ecology*, **38**, 1539–1543.
- Eyde R.H., Nicolson D.H., Sherwin P. (1967) A survey of floral anatomy in Araceae. *American Journal of Botany*, **54**, 478–497.
- Faegri K., van der Pijl L. (1979) *The Principles of Pollination Ecology (3rd revised Edition)*. Pergamon Press, Oxford, UK, p 244.
- Fartaly R.S., Gao J.-J., Toda M.J., Hu Y.-G., Takenaka Takano K., Suwito A., Katoh T., Takigahira T., Yin J.-T. (2013) *Colocasiomyia* (Diptera: Dosophilidae) revised phylogenetically, with a new species group having peculiar lifecycles on monsteroideae (Araceae) host plants. *Systematic Entomology*, **38**, 763–782.
- Franceschi V.R., Horner H.T. (1980) Calcium oxalate crystals in plants. *Botanical Review*, **46**, 361–427.
- García P.E., Schönswetter P., Aguilar J.F., Feliner G.N., Schneeweiss G.M. (2009) Five molecular markers reveal extensive morphological homoplasy and reticulate evolution in the Malva alliance (Malvaceae). *Molecular Phylogenetics and Evolution*, **50**, 226–239.
- Gibernau M., Barabé D., Cerdan P., Dejean A. (1999) Beetle pollination of *Philodendron solimoense* (Araceae) in French Guiana. *International Journal of Plant Sciences*, **160**, 1135–1143.
- Givnish T.J., Evans T.M., Pires J.C., Sytsma K.J. (1999) Polyphyly and convergent morphological evolution in Commelinales and Commelinidae: evidence from *rbcl* sequence data. *Molecular Phylogenetics and Evolution*, **12**, 360–385.

- Gottsberger G., Amaral A. (1984) Pollination strategies in Brazilian *Philodendron* species. *Berichte der Deutschen botanischen Gesellschaft*, **97**, 391–410.
- Grayum M.H. (1984) Palynology and phylogeny of the Araceae. Ph.D. Thesis, University of Massachusetts, Amherst, USA: 852 pp.
- Grayum M.H. (1992) Comparative external pollen ultrastructure of the Araceae and putatively related taxa. *Monographs in Systematic Botany of the Missouri Botanical Gardens*, **43**, 1–167.
- Hadacek F., Weber M. (2002) Club-shaped organs as additional osmophores within the *Sauromatum* inflorescence: odour analysis, ultrastructural changes and pollination aspects. *Plant Biology*, **4**, 367–383.
- Hoe Y.C., Wong S.Y., Boyce P.C., Wong M.H., Chan M.K.Y. (2011) Studies on Homalomenae (Araceae) of Borneo VII: *Homalomena debilicrista*, a new species from Malaysian Borneo, and observations of its pollination mechanics. *Plant Diversity and Evolution*, **129**, 77–87.
- Kakishima S., Terajima Y., Murata J., Tsukaya H. (2011) Infrared thermography and odour composition of the *Amorphophallus gigas* (Araceae) inflorescence: the cooling effect of the odorous liquid. *Plant Biology*, **13**, 502–507.
- Keating R.C. (2004) Systematic occurrence of raphide crystals in Araceae. *Annals of the Missouri Botanical Garden*, **91**, 495–504.
- Kite G.C. (1995) The floral odour of *Arum maculatum*. *Biochemical Systematics and Ecology*, **23**, 343–354.
- Knoll F. (1926) Die Arum-Blütenstände und ihre Besucher (Insekten und Blumen IV). *Abhandlungen der Zoologisch-Botanischen Gesellschaft in Wien*, **12**, 379–481.
- Kumano Y., Yamaoka R. (2006) Synchronization between temporal variation in heat generation, floral scents and pollinator arrival in the beetle-pollinated tropical Araceae, *Homalomena propinqua*. *Plant Species Biology*, **21**, 173–183.
- Kumano-Nomura Y., Yamaoka R. (2009) Beetle visitations and associations with quantitative variation of attractants in floral odors of *Homalomena propinqua* (Araceae). *Journal of Plant Research*, **122**, 183–192.
- Low S.L., Wong S.Y., Boyce P.C. (2014) *Schottarum* (Schimatoglottideae: Araceae) substantiated based on combined nuclear and plastid DNA sequences. *Plant Systematics and Evolution*, **300**, 607–617.
- Maia A.C.D., Schlindwein C. (2006) *Caladium bicolor* (Araceae) and *Cyclocephata celata* (Coleoptera, Dynastinae): a well-established pollination system in the northern Atlantic Rainforest of Pernambuco, Brazil. *Plant Biology*, **8**, 529–534.
- Maia A.C.D., Schlindwein C., Navarro D., Gibernau M. (2010) Pollination of *Philodendron acutatum* (Araceae) in the Atlantic forest of northeastern Brazil: a single scarab beetle species guarantees high fruit set. *International Journal of Plant Sciences*, **171**, 740–748.
- Maia A.C.D., Dötterl S., Kaiser R., Silberbauer-Gottsberger I., Teichert H., Gibernau M., Navarro D.M.A.F., Schlindwein C., Gottsberger G. (2012) The key role of 4-methyl-5-vinylthiazole in the attraction of scarab beetle pollinators: a unique olfactory floral signal shared by Annonaceae and Araceae. *Journal of Chemical Ecology*, **38**, 1072–1080.
- Maia A.C.D., Gibernau M., Dötterl S., Navarro D.M.A.F., Seifert K., Müller T., Schlindwein C. (2013) The floral scent of *Taccarum ulei* (Araceae): attraction of scarab beetle pollinators to an unusual aliphatic acyloin. *Phytochemistry*, **93**, 71–78.
- Mayo S.J., Bogner J., Boyce P.C. (1997) *The Genera of Araceae*. Royal Botanic Gardens Kew, London, UK, p 370.
- Miyake T., Yafuso M. (2003) Floral scents affect reproductive success in fly-pollinated *Alocasia odora* (Araceae). *American Journal of Botany*, **90**, 370–376.
- Miyake T., Yafuso M. (2005) Pollination of *Alocasia cucullata* (Araceae) by two *Colocasiomyia* flies known to be specific pollinators for *Alocasia odora*. *Plant Species Biology*, **20**, 201–208.
- Mori Y., Okada H. (2001) Reproductive biology and pollen flow of a rheophytic aroid, *Furttadoa sumatrensis* (Araceae) in the Malesian wet tropics. *Plant Systematics and Evolution*, **227**, 37–47.
- Nauheimer L., Boyce P.C., Renner S.S. (2012) Giant taro and its relatives: a phylogeny of the large genus *Alocasia* (Araceae) sheds light on Miocene floristic exchange in the Malesian region. *Molecular Phylogenetics and Evolution*, **63**, 43–51.
- Patt J.M., French J.C., Schal C., Lech J., Hartman T.G. (1995) The pollination biology of Tuckahoe, *Peltandra virginica* (Araceae). *American Journal of Botany*, **82**, 1230–1240.
- Saether O.A. (1977) Female genitalia in Chironomidae and other Nematocera: morphology, phylogenies, keys. *Bulletin of the Fisheries Research Board of Canada*, **197**, 1–210.
- Scharaschkin T., Doyle J.A. (2006) Character evolution in *Anaxagorea* (Annonaceae). *American Journal of Botany*, **93**, 36–54.
- Solereder H., Meyer F.J. (1928) *Systematische Anatomie der Monokotyledonen, Heft 3: Principes–Synanthae–Spathiflorae*. Gebrüder Borntraeger, Berlin, Germany, pp 100–169.
- Staedler Y.M., Masson D., Schönenberger J. (2013) Plant tissues in 3D via X-ray tomography: simple contrasting methods allow high resolution imaging. *PLoS ONE*, **8**, e75295.
- Takenaka K., Yin J.T., Wen S.Y., Toda M.J. (2006) Pollination mutualism between a new species of the genus *Colocasiomyia* de Meijere (Diptera: Drosophilidae) and *Stuednera colocasiifolia* (Araceae) in Yunnan, China. *Entomological Science*, **9**, 79–91.
- Takenaka-Takano K., Repin R., Mohamed M.D., Toda M.J. (2012) Pollination mutualism between *Alocasia macrorrhizos* (Araceae) and two taxonomically undescribed *Colocasiomyia* species (Diptera: Drosophilidae) in Sabah, Borneo. *Plant Biology*, **14**, 555–564.
- Tung L.S., Wong S.Y., Boyce P.C. (2010) Studies on Homalomenae (Araceae) of Borneo VI: *Homalomena giamensis*, a new species from Sarawak, Malaysian Borneo, with notes on its pollination. *Aroidiana*, **33**, 201–211.
- Ulrich S., Hesse M., Bröderbauer D., Wong S.Y., Boyce P.C. (2012) *Schimatoglottis* and *Apoballis* (Araceae: Schimatoglottideae): a new example for the significance of pollen morphology in Araceae systematics. *Taxon*, **61**, 281–292.
- Vogel S., Martens J. (2000) A survey of the function of the lethal kettle traps of *Arisaema* (Araceae), with records of pollinating fungus gnats from Nepal. *Botanical Journal of the Linnean Society*, **133**, 61–100.
- Wong S.Y. (2013) Rheophytism in Bornean Schimatoglottideae (Araceae). *Systematic Botany*, **38**, 32–45.
- Wong S.Y., Boyce P.C. (2007) Studies on Schimatoglottideae (Araceae) of Borneo II: *Aridarum crasum*, a new species from Sarawak, Malaysian Borneo. *Gardens' Bulletin Singapore*, **58**, 279–286.
- Wong S.Y., Boyce P.C. (2010) Studies on Schimatoglottideae (Araceae) of Borneo X. *Pichinia*, a new genus from Sarawak, Malaysian Borneo. *Gardens' Bulletin Singapore*, **61**, 541–548.
- Wong S.Y., Boyce P.C. (2013) The role of the interstice staminodes of *Bucephalandra* Schott (Araceae: Schimatoglottideae). *The IAS Newsletter*, **35**, 11–12.
- Wong S.Y., Boyce P.C., Ahmad Sofiman O., Leaw C.P. (2010) Molecular phylogeny of tribe Schimatoglottideae based on two plastid markers and recognition of a new tribe, Philonotieae, from the neotropics. *Taxon*, **59**, 117–124.
- Wong S.Y., Boyce P.C., Low S.L. (2012) Studies on *Schimatoglottis* (Araceae) of Borneo XXIV – two new species of *Aridarum* from Kalimantan, and notes on the *Aridarum Burttii* Complex. *Willdenowia*, **42**, 261–268.