

Gahnia trifida seeds Deep Creek CP

SA Seed Conservation Centre

South Australian
Seed Conservation Centre



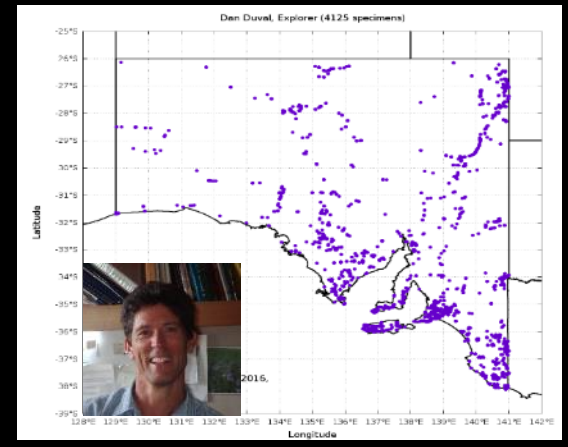
Government
of
South Australia



Botanic Gardens of
SOUTH AUSTRALIA

5 mm





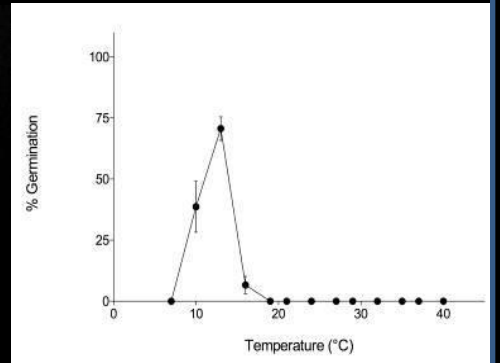
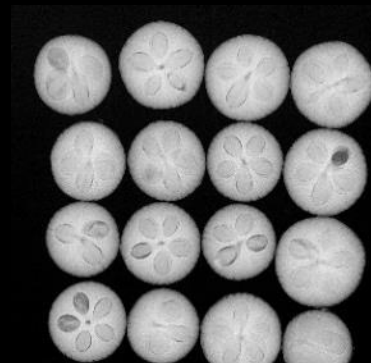
Boboschoenus caldwellii RJB71148 Seeds



2 mm



0.5 mm





Seed collections for > 50% plant taxa
More than 3000 seed collections
Seed collections for >75% of SA' s threatened flora

State Herbarium

Collections and data

Botanical expertise

Botanic Gardens

MLBG Nursery

Seed orchard

Living collections





Australian Seed Bank Partnership

Coordination of target species

Contact with seed banks

Program support

MSB field work funds –

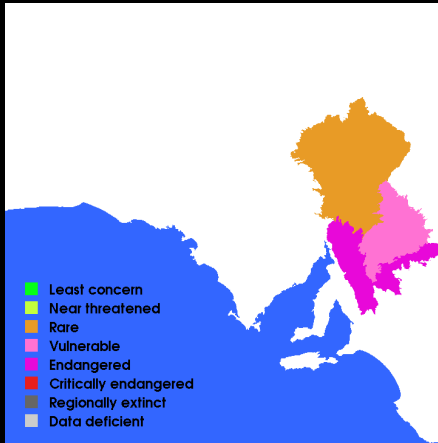
Threatened species and provenance collections

Phytophthora project –

KI provenance collections



Seeds of South Australia website



Images

Graphic display of threat status and regional distribution

Name derivation

Plant description

Fruit, seed, embryo description

Seed collecting, timing, cleaning, viability, germination

List of seed banked

Germination data

www.saseedbank.com.au

Compare Tool

Side by side image comparison

Seeds

Flowers

Plants

Fruit

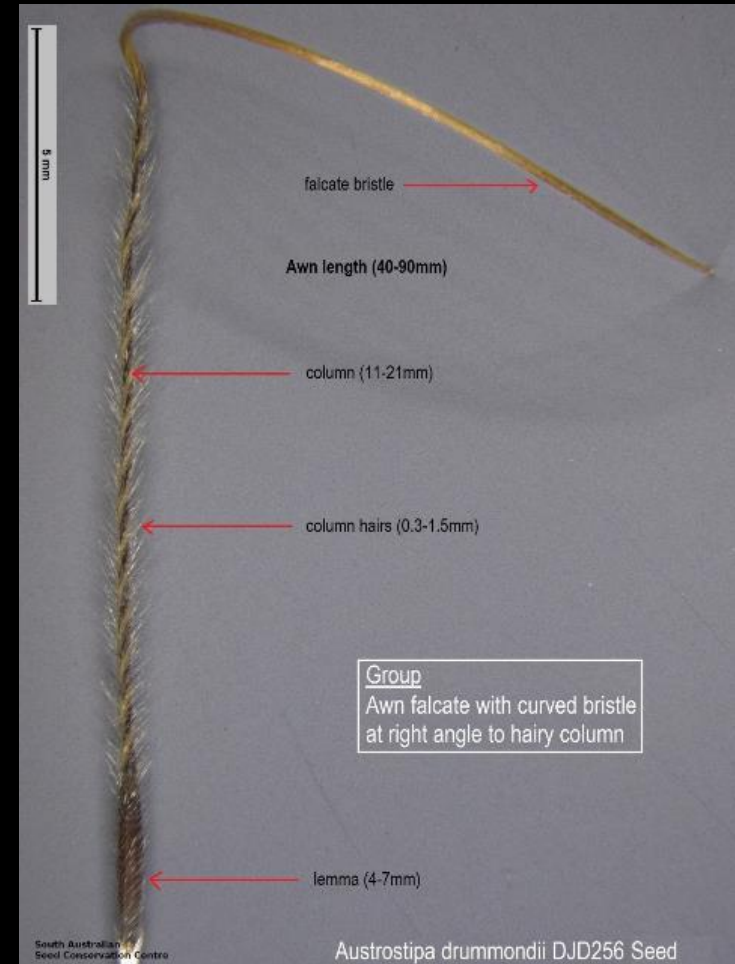
Dissected seeds

Seedlings

The screenshot displays the 'Seeds of South Australia' website interface. At the top, there is a navigation bar with the site logo and several tabs. Below the navigation bar, four large seed images are shown in a 2x2 grid, each with a title and a scale bar. The top-left image is a dark, textured seed of *Calandrinia volubilis* (DJD3548). The top-right image is a smooth, dark seed of *Calandrinia brevipedata* (DEM3902). The bottom-left image is a reddish-brown, heart-shaped seed of *Calandrinia reticulata* (RJB46961). The bottom-right image is a dark, spirally ridged seed of *Calandrinia ptycho sperma* (RJB72080). Below each large image is a row of smaller thumbnails showing different views of the seed, including dissections and seedlings. The website's header includes the text 'Seeds of South Australia' and a navigation menu with options like Home, Key, Find, Browse, Compare, Information, Permits, About, and Links.

This screenshot shows the 'Compare Images' tool on the 'Seeds of South Australia' website. The interface includes a navigation bar at the top with the site logo and a menu with options like Home, Key, Find, Browse, Compare, Information, Permits, About, and Links. Below the navigation bar, there is a section titled 'Compare Images' with a sub-section 'Compare images (with thumbnails)'. This section contains instructions for using the tool and a form for selecting species. The form has four rows, each for a different species, with dropdown menus for Genus and species. Below the form are two buttons: 'Compare' and 'Clear'. At the bottom of the page, there are three thumbnail images: a landscape photo of a dry area, a photo of a tree in a field, and a photo of three seeds.

Annotated images of grass seeds



Volunteers

Field trips

Seed Collecting

Seed Cleaning

Nursery

Lab work

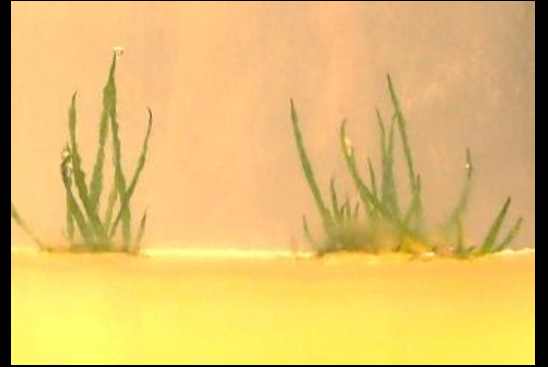
Seed imaging

Website



Schools programs: SEEDS, Kildare College





Revegetation of threatened species

Land owners, ecologists, park rangers, local action groups

Mount Lofty Botanic Gardens Nursery - Matt Coulter



Olearia suffruticosa *Cassinia tegulata* *Allitia cardiocarpa* *Podolepis jaceoides* *Brachyscome parvula* *Craspedia paludicola* on Private Property - Avenue (SE)

Education and Workshops



- Workshops
 - Horticultural students
 - Community groups
 - Mining Restoration
- Presentations
 - Plant Societies
 - U3A

Thanks to our sponsors:

ElectraNet

Thyne Reid Foundation

High Noon Trust

Anthony and Mary Lou Simpson

CMV Foundation

Santos

Beach Energy

