

**Title:** First report of the sexual stage of the flax pathogen *Mycosphaerella linicola* in France and its impact on pasmo epidemiology

**Authors:** Delphine Paumier <sup>1\*</sup>, Blandine Bammé <sup>2\*</sup>, Annette Penaud <sup>2</sup>, Romain Valade <sup>1\*\*</sup>, Frédéric Suffert <sup>3\*\*</sup>

**Addresses:**

<sup>1</sup> Laboratoire de Pathologie Végétale, ARVALIS Institut du Végétal, 78850 Thiverval-Grignon, France

<sup>2</sup> Terres Inovia, 78850 Thiverval-Grignon, France

<sup>3</sup> Université Paris-Saclay, INRAE, AgroParisTech, UMR BIOGER, 78850 Thiverval-Grignon, France

\*/\*\* equal contributions

corresponding author: frederic.suffert@inrae.fr, ORCID 0000-0001-6969-3878

**Abstract**

*Mycosphaerella linicola* is the causal agent of pasmo, a disease affecting flax (*Linum usitatissimum*) worldwide. We performed a three-year field survey in France to characterize the dynamics of sexual reproduction in this fungal pathogen on flax straw during the interepidemic period. Cohorts of *M. linicola* fruiting bodies were sampled from linseed straw during the autumn and winter and carefully observed, focusing on pseudothecia, asci and ascospores. A sequence of experimental steps corresponding to Koch's postulates confirmed, for the first time in France and continental Europe, the widespread presence of the sexual stage of *M. linicola* in plant host tissues, and its potential role in the disease cycle. The developmental dynamics of pseudothecia on straw, expressed as the change over time in the

percentage of mature pseudothecia, was similar in all three years. Pseudothecia appeared in late summer, with peak maturity reached in October. A temporal shift, thought to be due to the climatic conditions in early autumn (rainfall), was highlighted in one of the three years. These observations suggest that sexual reproduction plays a significant role in the epidemiology of pasmo in France. A resurgence of *M. linicola* infections in spring flax is thought to have occurred in recent years, due to the increase in the area under flax. The presence of the sexual stage of this pathogen probably increased the quantitative impact of residues of winter linseed (used for oil) and flax straw (left on the soil for retting and used for fibers) as an interepidemic ‘brown bridge’. This case study highlights how certain parts of a disease cycle, in this case the sexual phase, can become crucial due to changes in production conditions. Finally, we highlight the importance of further studies of the specific detrimental effects of the sexual stage of this pathogen on flax fiber quality.

## **Keywords**

Flax, fungal pathogen, linseed, primary inoculum, pseudothecia, *Septoria linicola*, sexual reproduction

## **Introduction**

*Mycosphaerella linicola* Naumov, anamorph *Septoria linicola* (Speg.) Garassini, is the causal agent of pasmo, a disease affecting both ‘flax’ and ‘linseed’ (*Linum usitatissimum* L.), crops grown for fiber and oil production, respectively. This plant-pathogenic ascomycete affects production in many flax-growing areas around the world, including Europe. PasmO was first detected in Argentina in 1909 (Spegazzini, 1911). In Europe, it was found in Yugoslavia in 1936 (Rost, 1937) and in Ireland in 1946 (Loughnane et al., 1946). More recently, this disease

has caused significant yield losses in South Dakota (Ferguson et al., 1987) and in England, on winter linseed (Perryman & Fitt, 1999).

Pasmo usually starts on the lower leaves of young plants. During the growing season of the plant, *M. linicola* is propagated clonally by splash-dispersed asexual pycnidiospores (conidia), leading to an upward progression of the disease on stem and leaves. Pasmo affects all the aboveground parts of the flax plant, causing leaf spots, a loss of flowers and capsules, and weakened pedicels (Fergusson et al., 1987). The disease also causes elongated brown lesions, which coalesce to produce mottled bands that encircle the stem (Colhoun & Muskett, 1943; Perryman et al., 2009). This ‘girdling’ effect and the premature death of the plant has an impact on yield and fiber quality, and may be mistaken for premature ripening (Sackston & Carson, 1951; Perryman et al., 2000).

*M. linicola* has been reported to be seed-borne and to survive on crop residues, like many other pathogenic ascomycetes. The sexual stage was initially reported to be absent in North Dakota (Brentzel, 1926), but several plant pathologists identified structures found on flax stubble as sexual fructifications, in Argentina (Wollenweber, 1938) and Germany (Kruger, 1941). Sackston (1949) identified structures that he believed to be ‘pseudothecia’ in Manitoba (Canada), but he was unable to complete Koch's postulates. Despite partial evidence for a sexual stage being repeatedly reported, this pathogen has long been thought to survive the interepidemic period on infected flax straw as a saprotroph (mycelium and old pycnidia; Gillis, 2009), with dispersal purely by rain splash or insects during the growing season (Christenson, 1952; Sackston, 1970), and long-distance carriage only in or on seeds. Sanderson (1963) was the first to identify and describe asci and ascospores from wild flax (*Linorum marginale*) in New Zealand, but, unfortunately, was unable to establish cultures.

Pseudothecia resemble black spherical dots, 75-120  $\mu\text{m}$  across, whereas asci are oblong, bitunicate, eight-spored and  $30\text{-}50 \times 8\text{-}9 \mu\text{m}$  in size, and ascospores are fusiform, hyaline two-celled, constricted at the septum, and  $13\text{-}17 \times 2.5\text{-}4.0 \mu\text{m}$  in size (Sivaneson & Holliday, 1981; Vakhrusheva, 1986). It was not until Perryman et al. (2009) collected air-borne ascospores thought to be those of *M. linicola* that a significant role of the sexual stage in the pasmo epidemiology could be affirmed. These authors proposed a pathogen life cycle including a sexual phase during the winter, in which the pathogen survives as pseudothecia, although these fruiting bodies were not observed in their study. An important role of the sexual stage and the recombination resulting from it is consistent with the high levels of genetic diversity demonstrated for two populations from Manitoba (Grant, 2008).

Pasmo incidence and severity have increased over the last two decades in France (no attack reported in French trials in 1988 and 1990; Fitt et al., 1991), in parallel with the increase in the area under *Linum usitatissimum* L., particularly in the form of flax for linen production (50000 ha in the 1990s vs. 120000 ha in 2020; data CIPALIN). During this period, France has become the world's largest producer of scutched flax fibers (580000 t in 2017, i.e. about 75% of the world's production; FAOSTAT). Nevertheless, the sexual stage of *M. linicola* – which probably plays a key role in the epidemiology of this disease – has never before been described in France, or elsewhere in continental Europe.

In this study, we aimed to characterize the sexual reproduction dynamics of *M. linicola* on flax straw during the interepidemic period, to assess its role in the early stages of pasmo epidemics in French production conditions.

## **Materials and methods**

***Description of the different forms of *M. linicola* during the intra- and interepidemic periods***

– Pasmal symptoms and both the asexual and sexual stages of *M. linicola* were observed on flax stems, leaves and straw collected from two fields in 2015-16 at the INRAE-Terre Inovia experimental station (Thiverval-Grignon, France). Fruiting bodies were collected with a needle, crushed and examined under a microscope, after mounting in methylene blue solution. Pycnidia and pycnidiospores (**Figure 1A-B**) were obtained from typical lesions on living flax leaves. Pseudothecia, asci and ascospores were identified on pieces of flax straw left to dry outside (**Figure 1C-G**).

***Sequence of experimental steps demonstrating the presence of the sexual form*** – A sequence of experimental steps corresponding to classical Koch's postulates was developed to confirm that the observed fruiting bodies did indeed correspond to the sexual stage of *M. linicola* and could potentially play a role in pasmo development (**Figure 2**). Flax stem residues bearing putative *M. linicola* pseudothecia were identified (①). We used a technique for ascospore collection derived from that developed by Suffert & Sache (2011) to study the sexual stage of *Zymoseptoria tritici* on wheat residues to isolate them. Dry fragments of flax straw were spread on wet paper in a moist box (24 × 36 cm). Petri dishes containing PDA medium (potato dextrose agar, 39 g L<sup>-1</sup>) were placed upside-down above the fragments (②). The box was placed at 18°C in the dark for 12 h. The Petri dishes were closed and incubated in the same conditions. Three days later, white yeast-like colonies similar to those obtained by Wollenweber (1938) from *S. linicola* pycnidiospores appeared (③). A conidial suspension was prepared by flooding the surface of a 3-day-old culture of a single-spore colonies obtained after one round of single-spore isolation with sterile water and scraping the surface of the agar with a glass rod (④). Leaves of a flax plant grown in a greenhouse were inoculated by applying this conidial suspension to the adaxial surface, with a paintbrush (⑤). The plant

was enclosed in a transparent polyethylene bag containing a small amount of water to maintain humidity levels and, thus, promote infection. Pycnidia and cirrhi, accompanied by symptoms, appeared on the inoculated leaves 10-13 days after inoculation (©). Cirrhi were collected with a needle (Ⓣ) and deposited on PDA medium in a Petri dish for reisolation of the pathogen in its yeast-like form (Ⓢ). Clusters of several hundred pycnidiospores released from other cirrhi mounted in methylene blue solution were examined under the microscope. At the same time, putative pseudothecia were observed on flax straw collected in the field and examined in a similar manner (©).

***Dynamics of M. linicola on flax straw during the interepidemic period in French conditions*** – During three growing seasons (2014-15, 2015-16, 2016-17) straw was collected from flax naturally infected with *M. linicola* in a field planted with a winter linseed varietal mixture (cv. Blizzard, Sideral, Cristalin, and Angora). The straw was collected just after harvest in July and stored outdoors, on grass, at the INRAE-Terre Inovia experimental station. In 2014-15, the straw was moistened before storage, whereas, in 2015-16 and 2016-17, it was left on the ground directly, without treatment. The straw was examined once weekly from 30 October 2014 to 26 March 2015 for the 2014-15 season, from 27 August 2015 to 6 April 2016 for the 2015-16 season, and from 21 July 2016 to 9 March 2017 for the 2016-17 season. An automatic weather station located 200 m from the pile of straw recorded hourly rainfall and air temperature at a height of 2 m. Each week, we observed a sample of 20 straws under a binocular microscope, to check for the presence of *M. linicola* pycnidia and pseudothecia. As soon as these structures appeared, a subsample of five infected straws was incubated in a moist box for 24 h. Five fruiting bodies were selected from each straw (25 in total) and dissected under a binocular microscope according to the protocol developed by Poisson (1997) for *Leptosphaeria maculans*. Fruiting bodies were placed in a drop of water on a glass slide and crushed with two needles to release their contents. A drop of methylene blue

solution was added and the slide was covered with a coverslip. The preparation was observed under a microscope (magnification  $\times 400$ ), to distinguish pycnidia from pseudothecia. The *M. linicola* pseudothecia were classified on the basis of developmental stage, taking into account the degree of maturity of asci and ascospores, as proposed by Toscano-Underwood et al. (2003) for *L. maculans* and *L. biglobosa*. Four classes were defined and used: (i) ‘immature’ pseudothecium, with no asci or ascospores; (ii) ‘maturing’ pseudothecium, with differentiated asci but no ascospores; (iii) ‘mature’ pseudothecium, with at least one ascus containing eight differentiated ascospores; (iv) ‘empty’ pseudothecium, from which all the ascospores had been discharged (**Figure 3**). A pseudothecium was considered to have reached one of the four developmental classes when the first asci/ascospores in the pseudothecium had reached the stage of development considered.

## Results

*M. linicola* pseudothecia and ascospore-containing asci were observed, and are described here for the first time in France (**Figure 1 and 4**). Koch’ postulates were completed and showed that ascospore-derived strains were able to generate typical pasmo symptoms on flax leaves after inoculation with a paintbrush and exposure to high-moisture conditions (**Figure 2**). Based on weekly counts of *M. linicola* fruiting bodies (pycnidia and pseudothecia) on samples of 20 infected straws, and the dissection of five pieces of straw under a binocular microscope, we were able to determine the dynamics of pseudothecium formation and maturation over the interepidemic period, from August to April, in three successive growing seasons (2014-15, 2015-16, 2016-17) (**Figure 5**). This epidemiological survey provides the first evidence for the widespread presence of the sexual stage of *M. linicola* in France just before the emergence of the winter flax crop. The highest proportion of mature pseudothecia, ranging from 60% to

100%, was recorded in October, regardless of the year considered. The dynamics of pseudothecium maturation were similar in 2014-15 and 2015-16, with a peak in early October, followed by a steady decrease to below 20% after December. The peak was delayed by one month (early November) in 2016-17. The 2014-15 survey did not begin until early November, and we were, therefore, unfortunately, unable to determine when peak pseudothecium maturity occurred. The first symptoms of pasmo were detected on flax seedlings (cotyledons) in the field on 25 November, 2015 (second growing season) and on 14 December, 2016 (third growing season). The identification of *M. linicola* was confirmed by qPCR (data not shown). A similar assessment was performed in the first growing season, but at a later stage, making it impossible to determine whether symptoms occurred as early in the fall as in subsequent seasons. The year in which symptoms were detected earliest on emerging plants (late November 2015 vs. mid-December 2016) was also the year in which pseudothecium levels peaked earliest (mid-September 2015 vs. late-October 2016). This suggests that early symptoms may be directly related to the early availability of ascospores to act as a primary inoculum, as demonstrated for other ascomycete pathogens of plants, including *Z. tritici* (Morais et al., 2016) and *Pyrenophora tritici-repentis* (Adee & Pfender, 1989). However, the observations reported here should be interpreted with caution, because flax seedlings emerged more than three weeks later in the 2016-17 season than in the 2014-15 and 2015-16 seasons, due to a lack of rain after sowing (**Figure Suppl. 1**). Moreover, weather conditions contrasted strongly between the three growing seasons at Thiverval-Grignon. In the period before flax crop emergence in the 2016-17 season, July and August were particularly dry, with a total rainfall of only 32 mm (**Figure Suppl. 1**). In 2014-15 and 2015-16, the period before autumn crop emergence was less dry, with total amounts of rainfall for July and August rainfall of 151 mm in 2014-2015 and 127 mm in 2015-2016. The growing



season with the driest summer was the least favorable for pseudothecium maturation, which was delayed by almost two months.

## Discussion

This epidemiological study provides basic information about the interepidemic dynamics of the flax pathogen *M. linicola*, the sexual stage of which was identified in all its forms – pseudothecia, asci, and ascospores – directly on plant host tissues, for the first time in France and in continental Europe. In England, Perryman et al. (2009) trapped airborne *M. linicola* ascospores, but did not observe pseudothecia, raising doubts about the actual presence of the sexual stage on flax residues, and concerning its quantitative significance in particular. Based on our findings and other published evidence, we can now argue that the pathogen survives on flax straw and that sexual reproduction plays a significant role in the epidemiology of the disease. Our epidemiological data suggest that *M. linicola* ascospores produced on flax straw are the major source of primary infection, at least in French conditions. The temporal dynamics of pseudothecium maturity revealed that wind-dispersed ascospores could potentially initiate pasmo epidemics as soon as flax seedlings emerge in the field, in October for winter flax and February-March for spring flax.

Perryman et al. (2009) reported that epidemics began earlier in the growing season when there was much more rainfall in the fall (1997-98) than growing seasons with drier weather (1998-99, 1999-2000). These findings are consistent with our own, which also suggest a concordance between the earliness of the ascospore peaks (early September 2015 vs. late October 2016) and the earliness of pasmo symptoms (mid-November 2015 vs. mid-December 2016) in field conditions. The dynamics of the *M. linicola* sexual stage on flax residues during

the interepidemic period and the pattern of change in pseudothecium maturity over time are consistent with the changes in the concentration of ascospores in air the air measured by Perryman et al. (2009) in England and Scotland. Ascospore peaks have been recorded in September and October, the period when the proportion of mature pseudothecia is maximal. Our data, and the few published epidemiological findings available, suggest that ascospores probably play a major role in initiating epidemics, contrary to the prevailing view that pasmo is a seed-borne pathogen (Holmes, 1976).

Our data also suggest that precipitation and humidity are important for pseudothecium maturation, consistent with published findings for other ascomycete pathogens of plants. Temperature is known to affect pseudothecium maturation in ascomycetes, as established, for example, for *Leptosphaeria maculans* and *Leptosphaeria biglobosa* (Toscano-Underwood et al., 2003; Naseri et al., 2009), but this was not demonstrated here because the mean temperatures from early July to late October were similar in the three years considered (16.6°C in 2014-15, 16.5°C in 2015-16 and 17.3 in 2016-17).

The increase in the frequency of pasmo in France in the early 2010s, may, like the increase observed in the UK in the late 1990s (Perryman & Fitt, 2000), reflect an overall increase in the area under flax (50000 ha in the 1990s vs. 120000 ha in 2020; data CIPALIN). However, it may also reflect an increase in the cultivation of different types of flax crop, resulting in an almost permanent presence of host plants, acting as both a target (living and susceptible tissues) and a source (dead tissues, source of inoculum) of the pathogen. Flax and linseed are sown in the fall (for winter crops) or the late winter (for spring crops). Winter flax is rarely grown in France (< 1 %), with spring flax the most prevalent form cultivated (85%), followed by winter linseed (12%) and spring linseed (3%) (data CIPALIN; Labalette et al., 2011). In

addition to the overall increase in the area under flax crops in France in the three last decades, we think that the diversity of this crop may account for the size of pasmo epidemics in growing seasons with favorable climatic conditions. First, a resurgence of pasmo in spring flax crops may have occurred over the last two decades in France due to the large amounts of ascospores produced on crop debris as a result of the increase in the area under winter linseed. Pasma was of little importance on spring linseed before the 1990s in the UK, and Perryman et al. (2009) suggested that the disease would not have become a problem if winter linseed had not provided a source of inoculum. Second, the increase in pasmo levels in France coincided with a strong increase in the proportion of flax relative to linseed in 1995 (**Figure 6**). It is acknowledged that ploughing crop debris which may carry *M. linicola* inoculum is important to control the disease (Paul et al., 1991), but this practice makes sense only for linseed because flax straw is left on the soil for retting (a process in which the action of microorganisms separates the fibers from the other parts of the plant) at the end of summer, sometimes until October. This process may, thus, make a significant contribution to the peak in *M. linicola* ascospore levels just before the emergence of the following crop. Finally, the ‘brown bridge effect’ during the interepidemic period (Kerdraon et al., 2019), boosting the overall amount of inoculum, may be particularly marked as flax and linseed are grown simultaneously in the same production areas, increasing the likelihood of detrimental interactions between sources of inoculum and target plant populations. This study illustrates how a particular part of the disease cycle, in this case, the sexual phase, can become crucial due to changes in agronomic practices and the processing of plant products. The epidemiological consequences of such changes to the production and processing system must be taken into account at larger spatiotemporal scales, to improve crop protection strategies.

Several fungal diseases of agronomic importance caused by ascomycetes have a direct impact during the epidemic phase (yield reduction due to effects on plant growth) and an indirect impact during the interepidemic phase (increase in inoculum production and disease pressure at early stages in the development of the following crop). In the case of flax, there may be a double direct effect on both the period of cultivation and the interepidemic period, because sexual reproduction takes place on the valuable part of the plant – the stem, from which fibers are extracted – during retting. *Verticillium* wilt, another important flax disease caused by the soilborne fungus *Verticillium dahliae*, is known to damage flax fibers and to cause significant yield losses. This fungal pathogen reaches the fiber during retting, leading to the embedding of numerous microsclerotia within the bast fiber bundle of the stem, which becomes brittle and fragile (Blum et al., 2018). Asexual infections of the stems with *M. linicola* do less damage to the fibers than *V. dahliae*, and no specific impact of sexual reproduction (i.e. the formation of pseudothecia within the fibers) has yet been established. However, the issue of possible damage to the fibers due to pasmo is of interest. In particular, it would be useful to estimate the biological, chemical and physical impacts of *M. linicola* on the retting process in the field, fiber quality and the production of inoculum for the infection of flax plants in the following cropping period.

We show here that the sexual stage of *M. linicola* is of great epidemiological importance in pasmo. This importance may have increased over the last two decades. Our findings suggest that the changes observed in flax production may have resulted in *M. linicola* injuring the plant in two ways, depending on the production conditions (Savary et al., 2000; 2012) and assessments of the yield losses caused by pasmo (Perryman & Fitt, 2000). Approaches taking this damage into account pave the way for the maintenance of scutched flax fiber quality, and,

more generally, the sustainability of the French linen/linseed sector, through the control of pasmo without the need for an increase in fungicide use.

## Funding

This work was supported by the French Ministry of Agriculture, Agrifood, and Forestry through the C-2014-03 grant ('SeptoLIN' project; 2014-2018) from the CASDAR program ('Compte d'Affectation Spéciale Développement Agricole et Rural').

## References

- Adee, E.A., Pfender, W.F. (1989). The effect of primary inoculum level of *Pyrenophora tritici-repentis* on tan spot epidemic development in wheat. *Phytopathology* 79: 873-877.
- Blum, A., Bressan, M., Zahid, A., Trinsoutrot-Gattin, I., Driouich, A., Laval, K. (2018). Verticillium wilt on fiber flax: symptoms and pathogen development *in planta*. *Plant Disease* 102: 2421-2429.
- Brentzel, W.E. (1926). The pasmo disease of flax. *Journal of Agricultural Research* 32: 25-37.
- Christenson, I.J. (1952). Dissemination of *Septoria linicola* in relation to epidemics of pasmo. Proceedings of the 33'd Flax Institute of the United States. USA.
- Colhoun, J, Muskett, A.E. (1943). "Pasmo" disease of flax. *Nature* 151: 223-224.

- Ferguson, M.W., Lay, C.L., Evenson, P.D. (1987). Effect of pasmo disease on flower production and yield components of flax. *Phytopathology* 77: 805-808.
- Fitt, B.D.L., Jouan, B., Sultana, C., Paul, V.H., Bauers, F. (1991). Occurrence and significance of fungal diseases on linseed and fibre flax in England, France, and Germany. *Aspects of Applied Biology* 28: 59-64.
- Gillis, E.O. (2009). Investigating partial resistance and host-pathogen interactions in the flax – *Septoria linicola* pathosystem. MSc thesis, University of Manitoba, Canada.
- Grant, L. (2008). Effect of pasmo on flax in Manitoba and inference of the sexual state of the fungus by molecular polymorphism. PhD thesis, University of Manitoba, Canada.
- Holmes, S.J. (1976). Pasm disease of linseed in Scotland. *Plant Pathology* 25: 61.
- Kerdraon, L., Laval, V., Suffert, F. (2019). Microbiomes and pathogen survival in crop residues, an ecotone between plant and soil. *Phytobiome Journal* 3: 246-255.
- Kruger, E. (1941). Untersuchungen über zwei der bedeutendsten Leinparasiten - *Colletotrichum lini* Manns et Bolley und *Septoria linicola* (Speg.) Gar. (*Sphaerella linicola* Wr.). *Arb. Biol. Reichsanst. Ld- u. Forstw.* 23: 163-188.
- Labalette, F., Landé, N., Wagner, D., Roux-Duparque, M., SAILLET, E. (2011). La filière lin oléagineux française : panorama et perspectives. *OCL* 18: 113-122.
- Loughnane, J.B., McKay, R., Lafferty, H.A. (1946). Observations on the pasmo disease of flax and on the causal organism *Mycosphaerella linorum* Wollenweber. *The Scientific Proceedings of the Royal Dublin Society* 24: 89-98.
- Morais, D., Sache, I., Suffert, F., Laval, V. (2016). Is onset of *Septoria tritici* blotch epidemics related to local availability of ascospores? *Plant Pathology* 65: 250-260.

- Naseri, B., Davidson, J.A., Scott, E.S. (2009). Maturation of pseudothecia and discharge of ascospores of *Leptosphaeria maculans* on oilseed rape stubble. *European Journal of Plant Pathology* 125: 523-531.
- Paul, V.H., Sultana, C., Jouan, B., Fitt, B.D.L. (1991). Strategies for control of diseases on linseed and fibre flax in Germany, France and England. *Aspects of Applied Biology* 28: 65-70.
- Perryman, S., Fitt, B.D.L. (2000). Effects of diseases on the yield of winter linseed. *Aspects of Applied Biology* 56: 211-218.
- Perryman, S., Gladders, P., Fitt, B.D.L. (2009). Autumn sowing increases severity of pasmo (*Mycosphaerella linicola*) on linseed in the UK. *Annals of Applied Biology* 154: 19-32.
- Poisson, B. (1997). Etudes relatives à la maturation des périthèces de *Leptosphaeria maculans* sur les pailles de colza d'hiver nécrosées au collet. 5ème Conférence sur les Maladies des Plantes, Tours, France. 1: 345-352.
- Rost, H. (1937). The pasmo disease of flax in Europe caused by *Septoria linicola* (Speg.) Garassini. *Review of Applied Mycology* 16: 676-677.
- Sanderson, F.R. (1963). An ecological study of pasmo disease (*Mycosphaerella linorum*) on linseed in Canterbury and Otago. *New Zealand Journal of Agricultural Research* 6: 432-439.
- Sivaneson, A., Holliday, P. (1981). *Mycosphaerella linicola*. Descriptions of fungi and bacteria. Commonwealth Mycological Institute, UK.
- Sackston, W.E. (1949). Studies on the pasmo disease of flax. PhD thesis, University of Minnesota, St. Paul, USA.

- Sackston, W.E., Carson, R.B. (1951). Effect of pasmo disease of flax on the yield and quality of linseed oil. *Canadian Journal of Botany* 29: 339-351.
- Sackston, W.E. (1970). A possible mechanism of dispersal of *Septoria* spores. *Canadian Journal of Plant Science* 50: 155-157.
- Savary, S., Ficke, A., Aubertot, J.N., Hollier, C. (2012). Crop losses due to diseases and their implications for global food production losses and food security. *Food Security* 4: 519-537.
- Savary, S., Willocquet, L., Elazegui, F.A., Castilla, N.P., Teng, P.S. (2000). Rice pest constraints in tropical Asia: quantification of yield losses due to rice pests in a range of production situations. *Plant Disease* 84: 357-369.
- Sivaneson, A., Holliday, P. (1981). *Mycosphaerella linicola*. In: Descriptions of fungi and bacteria. Commonwealth Mycological Institute, UK.
- Spegazzini, C. (1911). *Phyctena ? linicola* Speg. (n.f.). Mycetes Argentinenses. *Annales del Museo Nacional de Buenos Aires, Serie III* 13: 389-390.
- Suffert, F., Sache, I. (2011). Relative importance of different types of inoculum to the establishment of *Mycosphaerella graminicola* in wheat crops in north-west Europe. *Plant Pathology* 60: 878-889.
- Toscano-Underwood, C., Huang, Y.J., Fitt, B.D.L., Hall, A.M. (2003). Effects of temperature on maturation of pseudothecia of *Leptosphaeria maculans* and *L. biglobosa* on oilseed rape stem debris. *Plant Pathology* 52: 726-736.
- Vakhrusheva, T.A. (1986). Ascous stage of pasmo affecting flax plants (in Russian). *Zashchita rastenii* 29.



Wollenweber, H.W. (1938). "*Sphaerelle linicola*" N. sp. Die Ursache der Amerikanischer  
Leinpest. (Pasma - oder "Septoría" - Krankheit.). *Revista de Botanica del Instituto  
Miguel Lillo, Lilloa* 2: 483-495.

## Figure captions

**Figure 1** – A. Early septoria lesion on a flax leaf with pycnidia exuding *Mycosphaerella linicola* cirrhi. B. Pycnidium, showing a cluster of several hundred pycnidiospores ( $\times 10$ ). C. Flax (*Linum usitatissimum*) straws collected from a field during retting. D, E. Pseudothecia (black points) on flax stem residues. F. Mature pseudothecium (brown) and asci ( $\times 400$ ). G. Ascus containing 8 ascospores (blue).

**Figure 2** – Sequence of experimental steps (Koch's postulates) demonstrating the relationship between the presence of the sexual form of *Mycosphaerella linicola* on flax stem residues and pasmo symptoms on leaves.

**Figure 3** – Visual categories for recognition and classification of the maturation of each pseudothecium of *Mycosphaerella linicola* based on the stage of development of asci and ascospores (i.e. degree of maturity): A. Immature; B. Maturing; C. Mature; D. Empty.

**Figure 4** – *Mycosphaerella linicola* sexual fructifications. A. Pseudothecium; B Ascus; C. Ascospores.

**Figure 5** – Dynamics of the sexual stage of *Mycosphaerella linicola* on flax straw during the 2014-15, 2015-16 and 2016-17 growing seasons (from July to April), expressed as the change in the percentage of mature pseudothecia over time (see Figure 3).

**Figure 6** – Change in the area under flax/linseed (flax for fiber production and linseed for oil production) in France from 1970 to 2019 (data CIPALIN).

**Supplementary Figure 1** – Mean daily air temperature (dotted line, °C) and daily rainfall (histogram, mm) at Grignon from July to April in the 2014 (A), 2015 (B) and 2016 (C) growing seasons, relative to the change in the percentage of mature *Mycosphaerella linicola* pseudothecia on flax straws over time (black line). Cumulative rainfall in the summer, which is thought to have a strong impact on the early dynamics of the sexual stage of *M. linicola* on flax straw, is indicated.

Figure 1

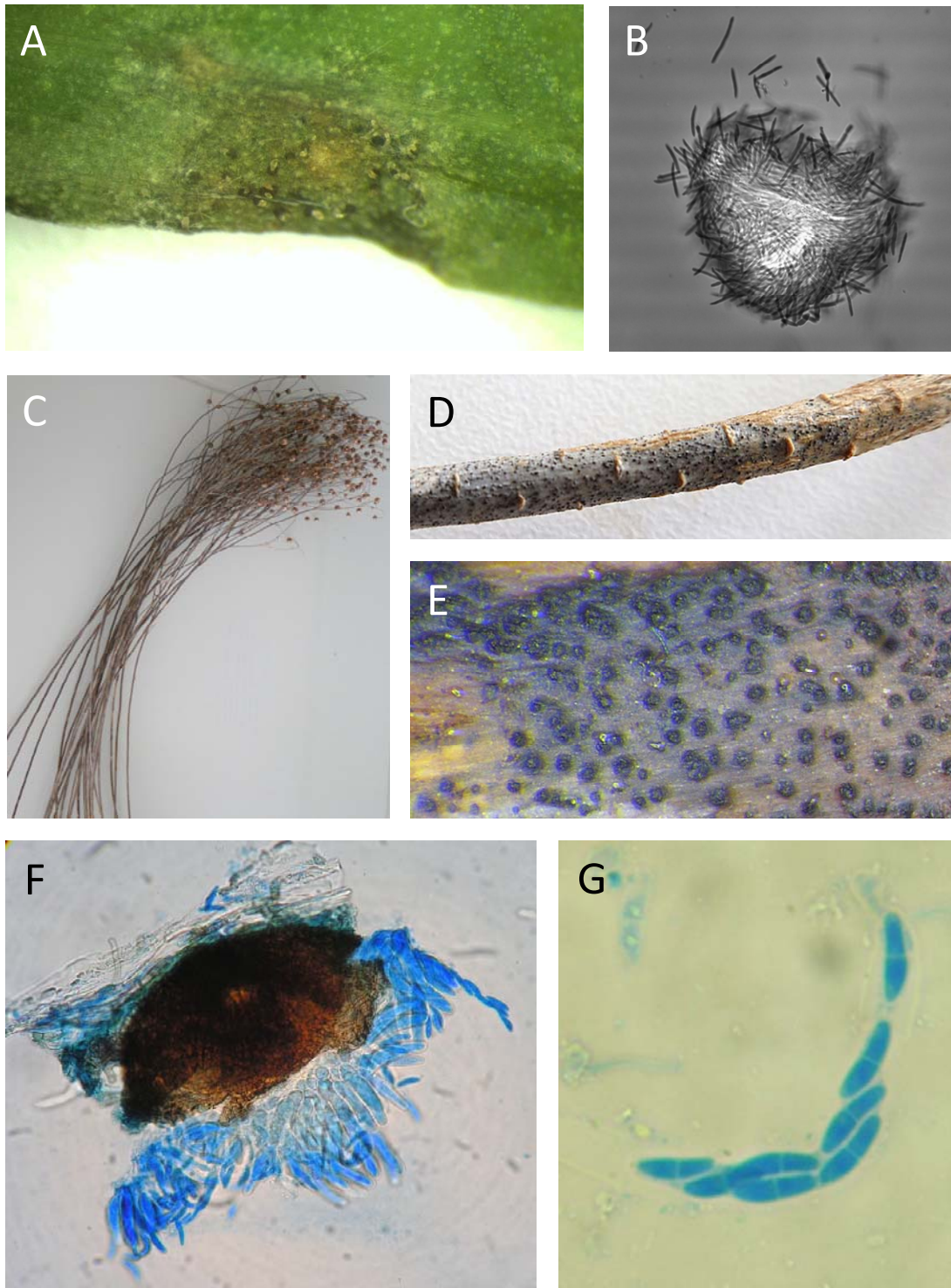


Figure 2

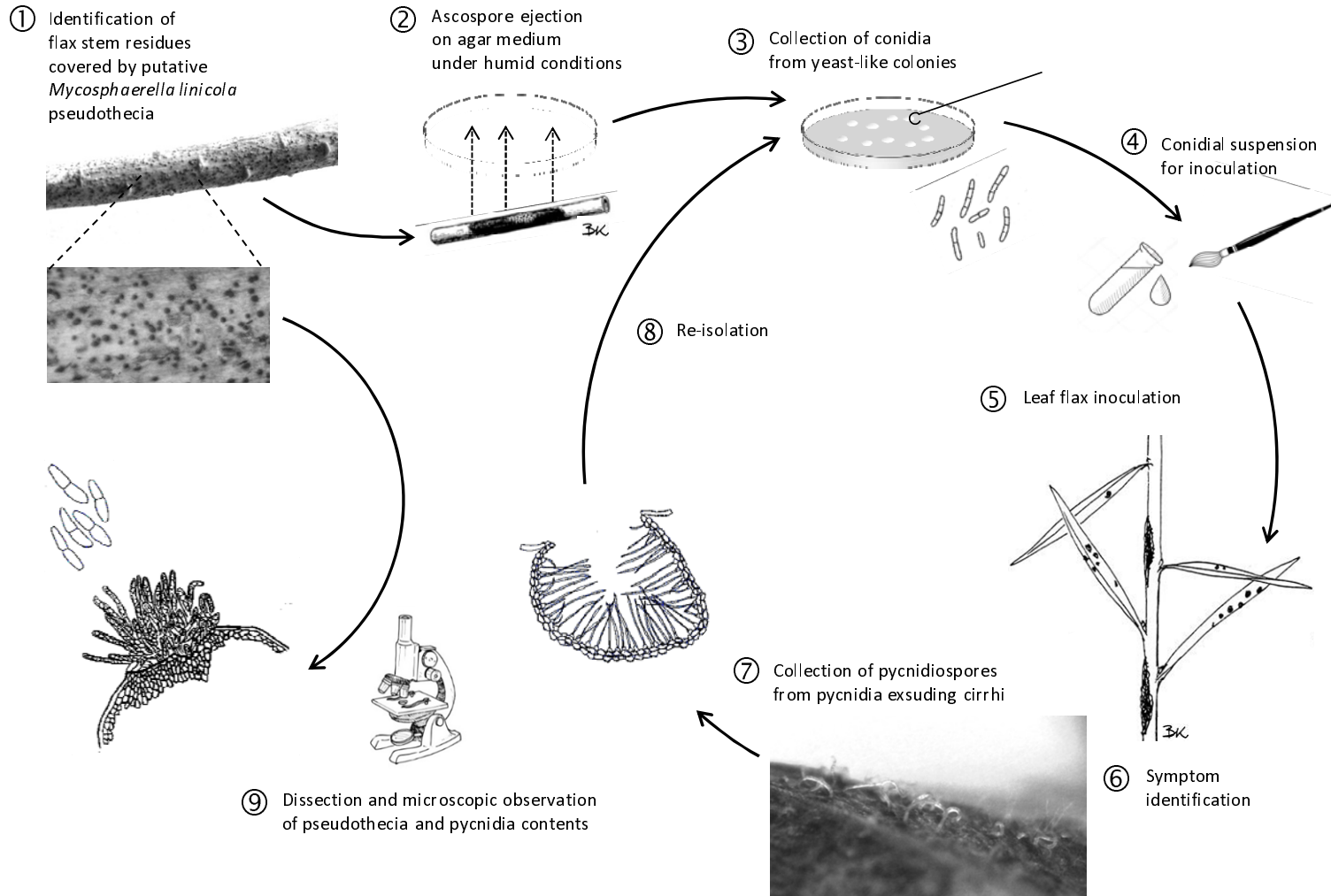


Figure 3

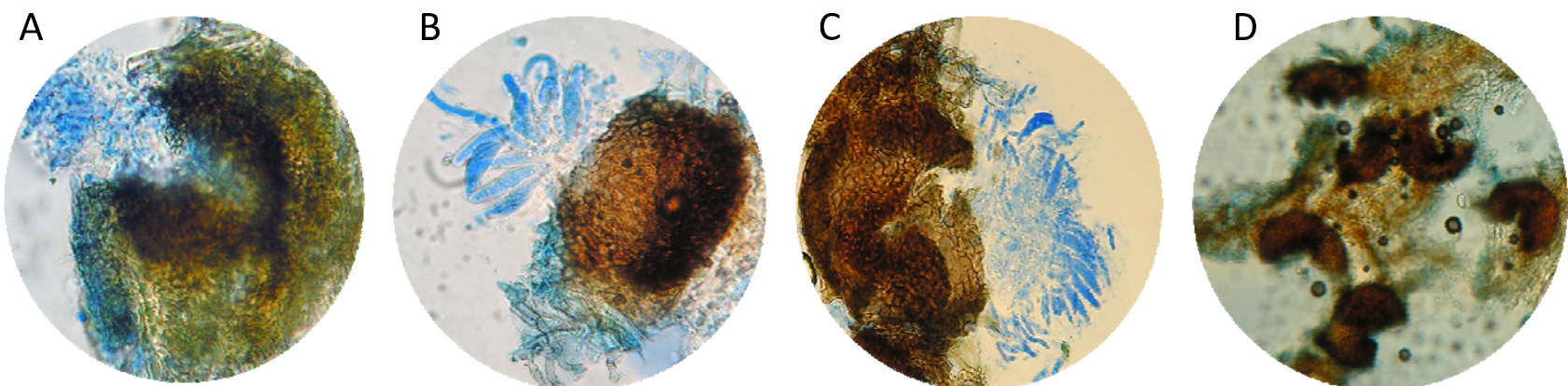


Figure 4

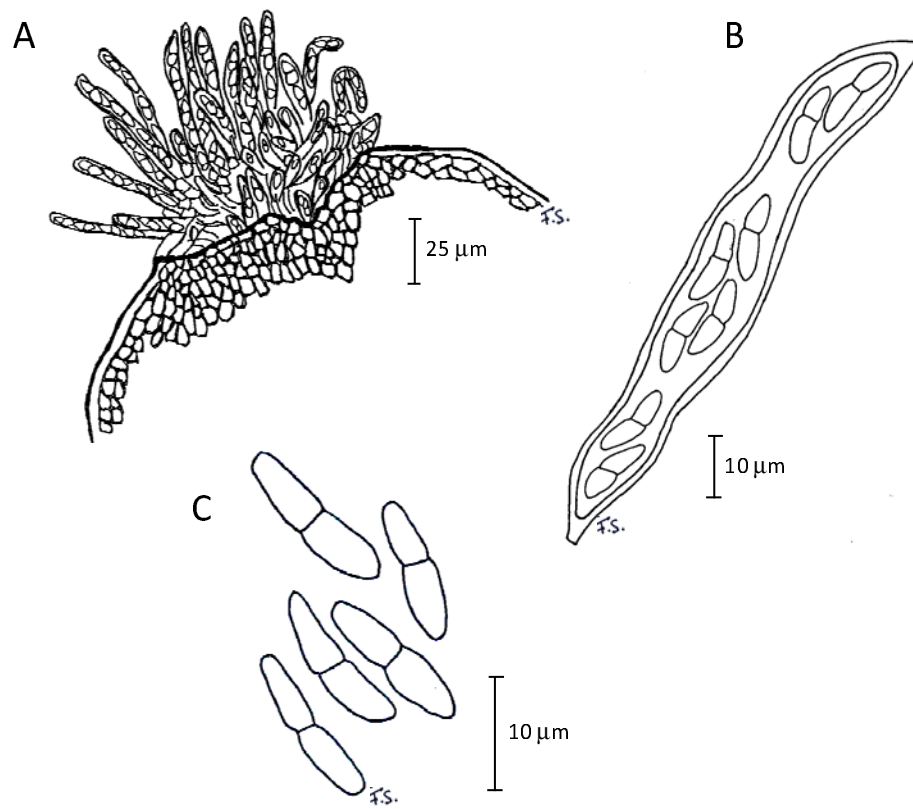


Figure 5

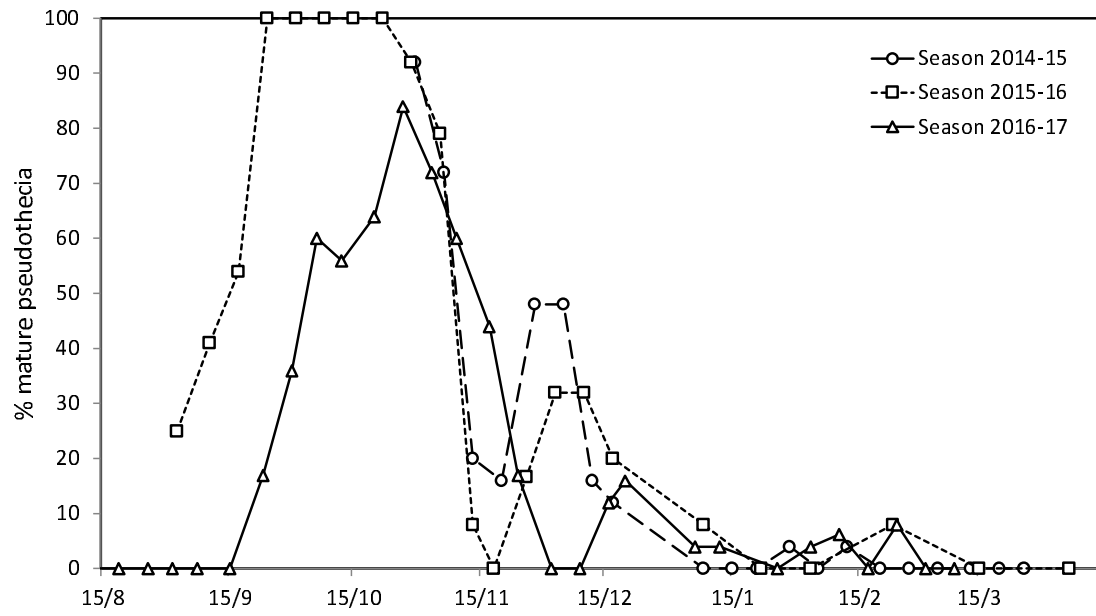




Figure 6

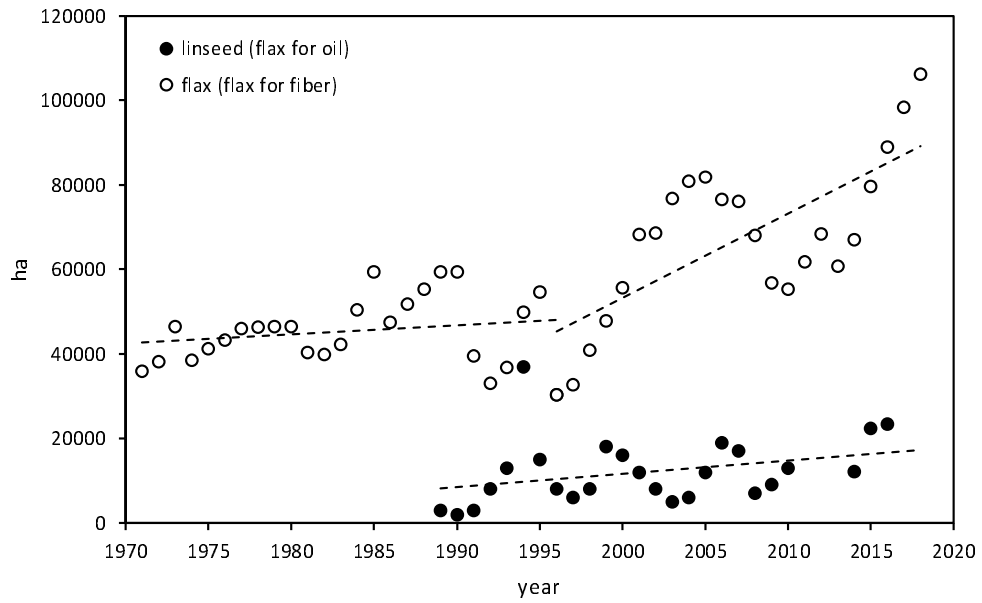


Figure Suppl. 1

