



MAGNETEK



MOBILE HYDRAULIC PRODUCT GUIDE

TABLE OF CONTENTS

CABLE REELS

| | |
|-----------------------------------|---|
| Industrial Duty Spring Reels..... | 3 |
| Mill Duty Reels..... | 3 |
| Motorized Reels..... | 3 |
| Slip Ring Assemblies..... | 3 |

RADIO REMOTE CONTROLS – TRANSMITTERS

| | |
|--|----|
| Flex EM Transmitter..... | 4 |
| Flex EX Transmitter..... | 4 |
| Flex Pro™ Transmitter..... | 5 |
| Flex Pro™ Tethered CAN-bus Controller..... | 5 |
| Flex VUE® Transmitter..... | 6 |
| Flex Mini System..... | 6 |
| XLTX Transmitter..... | 7 |
| MLTX2 Transmitter..... | 8 |
| MLTX Transmitter..... | 8 |
| Telemotive SLTX™ Transmitter..... | 9 |
| CHTX Transmitter..... | 9 |
| MBT Transmitter..... | 10 |
| Mini-MBT Transmitter..... | 10 |
| PGT Transmitter..... | 11 |
| Mini-PGT Transmitter..... | 11 |
| Railyard Remote Control Systems..... | 12 |

RADIO REMOTE CONTROLS – RECEIVERS

| | |
|---|----|
| MHR Radio Controller..... | 12 |
| Flex M Receiver..... | 13 |
| Flex 4/6 EX Receiver..... | 13 |
| Flex 8/12 EX Receiver..... | 14 |
| inteleSmart2 Receiver..... | 14 |
| Telemotive 18K Receiver..... | 14 |
| Enrange™ WIC-2402 Wireless CAN Module..... | 15 |
| CAN-2 Receiver..... | 15 |
| CAN-6 Receiver..... | 15 |
| CAN-R1 Receiver..... | 16 |
| CAN-R2 Receiver..... | 16 |
| CAN-M1 Expansion Module..... | 16 |
| CAN-M2 Expansion Module..... | 16 |
| Danfoss Plus+1™ OX024-010 Expansion Module..... | 17 |
| Radio Control Programmer (RCP)..... | 17 |

PENDANT PUSHBUTTON STATIONS

| | |
|--|----|
| SBP2® Pendant Pushbutton Stations..... | 18 |
|--|----|

INDUSTRIAL DUTY, MILL DUTY, MOTORIZED REELS AND SLIP RING ASSEMBLIES

Magnetek's cable reel product line is a superior solution to effectively and compactly manage large lengths of cable. The cable reel is fixed to a specific point, while the cable end connects to the moving part of the equipment.



IDEAL FOR
CRANE & HOIST **FLUID POWER**
 APPLICATIONS

Industrial Duty Spring Reels

- General purpose applications
- Cost-effective
- Pre-engineered
- Available in five standard sizes

Mill Duty Reels

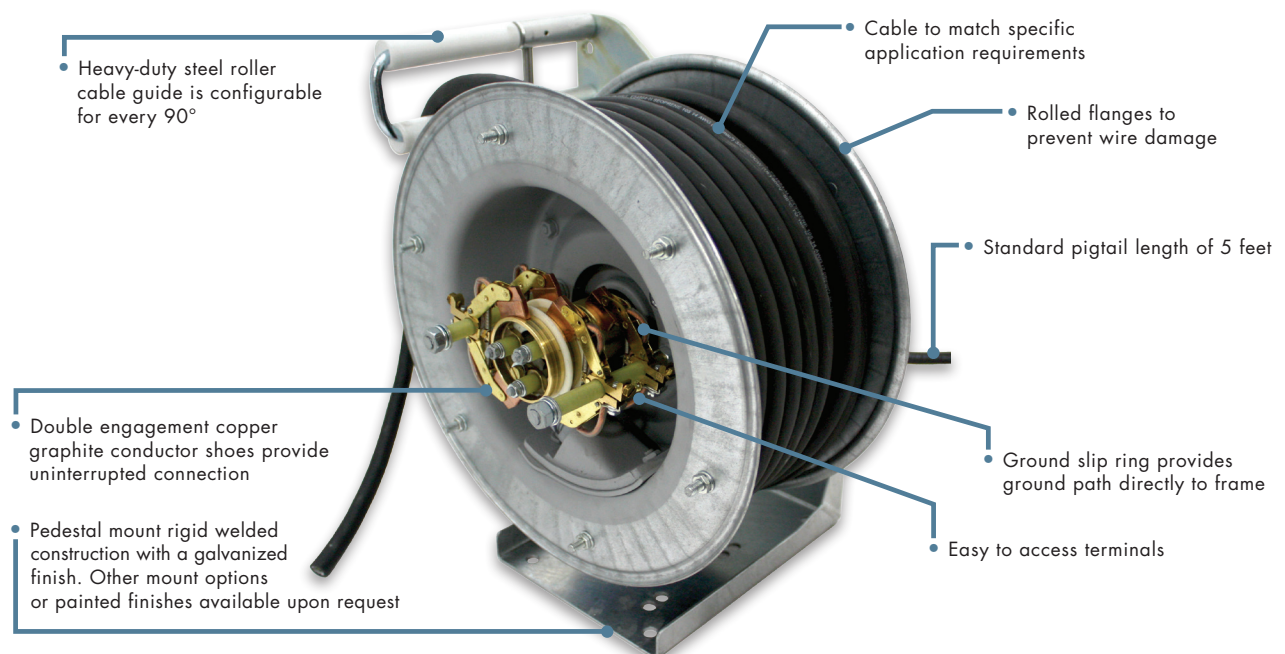
- Heavy-duty applications
- Harsh environments
- Ideal for high duty cycles and speeds
- Custom engineered
- Available in multiple sizes

Motorized Reels

- Ideal for long travel lengths and high voltage applications
- Indirectly coupled or directly couple with Variable Frequency Drive (VFD) technology
- Ideal for high-speed and heavy-duty applications
- Custom engineered
- Available in multiple sizes

Slip Ring Assemblies

- Designed to provide consistent power to rotating components, providing continuous revolution
- Custom engineered
- Available for any size or configuration
- Communication wires or fiber optic cables available



RADIO REMOTE CONTROLS — TRANSMITTERS

FLEX EM TRANSMITTER

- Available with several customizable options to meet the needs of a variety of applications and industries
- Choose from 4, 8, or 12 button options with single step control

Features and Benefits

- One of the longest lasting batteries in the industry is designed to minimize power consumption. A rechargeable NiMH battery pack is available
- Ergonomically designed contoured case makes operations more comfortable for the user
- Rugged, tough nylon housing is made to withstand shock. Protective cases and accessories are available for harsh environment applications
- The revolutionary I-CHIP module makes this a universal transmitter that can be programmed in the field

Frequencies

- Part 15 License Free: 433-434.525MHz

Battery Type

- Rechargeable: "AAA" NiMH
- Non-Rechargeable: "AA" Alkaline

Operation Range

- 300 feet



IDEAL FOR

 APPLICATIONS

FLEX EX TRANSMITTER

- Available with several options to meet the needs of a variety of applications and industries
- Choose between 4, 6, 8, and 12 button style options to with accurate and smooth operation

Features and Benefits

- Advanced synthesized RF controls with 62 user-programmable channels add flexibility to frequency management in the field
- Durable enclosures are made from industrial-strength nylon and fiberglass composite materials
- Advanced microprocessor controls with 32-bit CRC and Hamming Code provide ultra-fast, safe, precise, and error-free encoding and decoding
- Pushbuttons feature gold-plated contacts and are rated for more than one million press cycles

Frequencies

- Part 15 License Free: 433-434.525MHz

Battery Type

- Rechargeable: "AAA" NiMH
- Non-Rechargeable: "AA" Alkaline

Operating Range

- 300 feet



IDEAL FOR

 APPLICATIONS

RADIO REMOTE CONTROLS — TRANSMITTERS

FLEX PRO™ TRANSMITTER



- Available with several options to meet the needs of a variety of applications and industries
- Choose between 8 or 12 proportional button configurations with precise control for smooth operation

Features and Benefits

- Lightweight, ergonomically designed contoured case with available rubber jacket makes operations comfortable for the user
- One of the longest lasting batteries in the industry is designed to minimize power consumption. A rechargeable NiMH battery pack is available
- Adjustable speed control with four mode settings (25%, 50%, 75%, and 100% output) provides precise control of machine movement
- Buttons can be configured as proportional, on/off, or a combination of both and include a variety of standard labels

Frequencies

- Part 15 License Free: 433-434.75MHz

Battery Type

- Rechargeable: "AAA" NiMH
- Non Rechargeable: "AA" Alkaline

Operating Range

- 300 feet

IDEAL FOR



APPLICATIONS



FLEX PRO™ TETHERED CAN-BUS CONTROLLER



- Incorporates the latest in proportional control technology in a lightweight, comfortably contoured, yet durable case
- Provides "one-handed" operation, useful for applications that require operators to assist in control of the machine

Features and Benefits

- Choose 8 or 12 proportional button configurations with precise control for smooth operation
- Adjustable speed control –four mode settings (25%, 50%, 75%, and 100% output) provide precise control of machine movement
- Rugged, tough nylon housing is made to withstand shock. Protective cases and accessories are available for harsh environments
- Ideal for situations when RF cannot be used because of RF jamming restrictions, or when proportional control is needed, but RF is not required

IDEAL FOR



APPLICATIONS



RADIO REMOTE CONTROLS — TRANSMITTERS

FLEX VUE® TRANSMITTER

- Available with several options to meet the needs of a variety of applications and industries
- Choose between 4, 8, and 12 two-step or stepless button configurations with accurate and smooth operation

Features and Benefits

- Available two-way radio frequency for applications requiring feedback of machine parameters, alarms, and command confirmation
- Rugged, super tough nylon housing withstands shock, water, heat, and harsh environments
- High resolution color display keeps the operator informed of system status and diagnostics at all times
- Two-step pushbuttons feature gold-plated contacts and are rated for more than one million press cycles. The defined snap-action steps provide positive tactile feedback even while wearing gloves
- Stepless pushbuttons provide adjustable speed control with four mode settings (25, 50, 75, and 100% output) and precise control of machine movement

Frequencies

- Part 15 License Free: 433-434.55MHz, 902-928 MHz, 2.4-2.5GHz

Battery Type

- Non-Rechargeable: "AA" Alkaline

Operation Range

- 300-1,500 feet (depending on frequency band)



IDEAL FOR
CRANE & HOIST FLUID POWER
APPLICATIONS

FLEX MINI SYSTEM

- Small in size, fits comfortably in the palm of your hand, and incorporates the latest control technology in a lightweight, yet durable case
- This low cost, easy-to-install transmitter is the ideal solution for a variety of systems and industries requiring simple control operations such as grain augers, seed tenders, winches, chain hoists, dip tanks, monorails, and jib cranes.

Features and Benefits

- Designed to be compact and lightweight to prevent operator fatigue
- One-handed operation frees the operator to assist in other tasks
- Small enough to fit inside a shirt pocket
- 8 pushbuttons configured as on/off for accurate and smooth operations
- Informative LEDs provide diagnostic and system status

Frequencies

- Part 15 License Free: 433-434.55MHz

Battery Type

- Non-Rechargeable: "AA" Alkaline

Operation Range

- 300 feet



IDEAL FOR
CRANE & HOIST FLUID POWER
APPLICATIONS

RADIO REMOTE CONTROLS — TRANSMITTERS

XLTX TRANSMITTER



- Available with several customizable options to meet the needs of a variety of applications and industries
- Graphic display with system diagnostics including battery life, signal strength, and warning symbols

Features and Benefits

- Rugged, super-tough nylon housing is made to withstand shock and NEMA 4 (IP66) sealing can easily endure harsh, industrial environments
- One of the longest lasting batteries in the industry is designed to minimize power consumption. A rechargeable NiMH battery pack is available
- New detented/stepped joysticks with a variety of handle shapes to choose from allow the user to identify by feel
- Available with ATEX and IECEx approvals for Zone 0, Zone 1, and Zone 2 applications
 - ATEX Approval: II 1 G Ex ia IIC T3/T4 Ga
 - IECEx Approval: Ex ia IIC T3/T4
- Optional Radio Control Programmer (RCP) allows settings to be programmed from a Windows PC

Frequencies

- Part 15 License Free: 430-439.8MHz, 902-928MHz, 2.4GHz
- Part 90 Licensed (VHF): 72-76MHz
- Part 90 Licensed (UHF): 450-470MHz

Battery Type

- Rechargeable: 3.6V NiMH
- Non-Rechargeable: "AA" Alkaline

Operating Range

- 300-1,500 feet (depending on frequency band)

IDEAL FOR
CRANE & HOIST FLUID POWER
APPLICATIONS



RADIO REMOTE CONTROLS — TRANSMITTERS

MLTX2™ TRANSMITTER

- Several options available for a variety of applications and industries
- Offers plug-and-play control packages designed for your material handling equipment, manufactured and tested on our panel assembly line

Features and Benefits

- Rugged, super-tough nylon housing is made to withstand shock and NEMA 4 (IP66) sealing for harsh, industrial environments
- Graphic display with system diagnostics including battery life, signal strength, and warning symbols
- One of the longest lasting batteries in the industry is designed to minimize power consumption
- Easy-to-use, angled levers and an ergonomically designed contoured case enhance operator comfort
- Available with ATEX and IECEx approvals for Zone 0, Zone 1, and Zone 2 applications
 - ATEX Approval: II 1 G Ex ia IIC T3/T4 Ga
 - IECEx Approval: Ex ia IIC T3/T4 Ga

Frequencies

- Part 15 License Free: 430-439.8MHz, 902-928MHz, 2.4GHz
- Part 90 Licensed (VHF): 72-76MHz
- Part 90 Licensed (UHF): 450-470MHz

Battery Type

- Rechargeable: 4.8V NiMH
- Non-Rechargeable: "AA" Alkaline

Operating Range

- 300-1,500 feet (depending on frequency band)



IDEAL FOR
CRANE & HOIST FLUID POWER
APPLICATIONS

MLTX™ TRANSMITTER

- Available with many customizable options to meet the needs of a variety of applications and industries
- Lightweight, ergonomically designed contoured case incorporates the latest polymer technology

Features and Benefits

- Rugged, super-tough nylon housing is made to withstand shock and NEMA 4 (IP66) sealing for harsh, industrial environments
- One of the longest lasting batteries in the industry is designed to minimize power consumption
- Easy-to-use, angled lever or joystick controls enhance operator comfort
- Dual access code system provides peace-of-mind because the signal only operates the intended equipment
- Optional certification for use in hazardous locations requiring ISA 12.12.01 Class I and Class II, Division 2, Group A, B, C, D, E, F and G

Frequencies

- Part 15 License Free: 430-439.8MHz
- Part 90 Licensed (VHF): 72-76MHz
- Part 90 Licensed (UHF): 450-470MHz

Battery Type

- Rechargeable: 7.2V NiMH, 12V NiMH
- Non-Rechargeable: 9V Alkaline

Operating Range

- 300-1,000 feet



IDEAL FOR
CRANE & HOIST FLUID POWER
APPLICATIONS

RADIO REMOTE CONTROLS — TRANSMITTERS

TELEMOTIVE SLTX™ TRANSMITTER



IDEAL FOR

CRANE
& HOIST

APPLICATIONS

- Heavy-duty, super-tough housing is ideal for withstanding harsh environments such as steel mills and heavy manufacturing plants
- Available with several customizable options to meet the needs of a variety of applications and industries

Features and Benefits

- Lightweight controls have surface mount technology and synthesized modules to enhance flexibility in the field
- One of the longest lasting batteries in the industry is designed to minimize power consumption. A rechargeable NiMH battery pack is available
- Proven heavy-duty lever switch style is available with or without detents
- High-quality, smaller, more durable circuit boards mean enhanced reliability

Frequencies

- Part 15 License Free: 430-439.8MHz
- Part 90 Licensed (VHF): 72-76MHz
- Part 90 Licensed (UHF): 450-470MHz

Battery Type

- Rechargeable: 7.2V NiMH, 12V NiMH
- Non-Rechargeable: 9V Alkaline

Operating Range

- 300-1,000 feet

CHTX TRANSMITTER



IDEAL FOR

FLUID
POWER

APPLICATIONS

- Available with several customizable options to meet the needs of a variety of applications and industries
- Offers plug-and-play control packages designed specifically for your equipment, manufactured and tested on our panel assembly line

Features and Benefits

- Easy-to-use, large control area provides space for a variety of fighter pilot and larger machine-type joysticks, toggle switches, key switches, and selector switches
- One of the longest lasting batteries in the industry is designed to minimize power consumption. A rechargeable NiMH battery is available
- Rugged, super-tough nylon housing is made to withstand shock and NEMA 4 (IP65) sealing can easily endure harsh, industrial environments
- Offered a cost-effective alternative to hardwired pedestal-mount transmitters and attaches to a heavy-duty chest plate for carrying ease

Frequencies

- Part 15 License Free: 430-439.8MHz, 902-928MHz, 2.4-2.5GHz

Battery Type

- Rechargeable: 3.6V NiMH
- Non-Rechargeable: "AA" Alkaline

Operation Range

- 300-1,500 feet (depending on frequency band)

RADIO REMOTE CONTROLS — TRANSMITTERS

MBT TRANSMITTER

- Incorporates the latest electronic technology to meet the needs of a variety of applications and industries
- Offers control capability similar to larger bellybox transmitters, including proportional thumbsticks, toggle switches, potentiometers, graphic display, two-way feedback, and FHSS RF

Features and Benefits

- Optional Radio Control Programmer (RCP) connects via USB, allowing users to program settings from your Windows PC
- One of the longest lasting batteries in the industry is designed to minimize power consumption. A rechargeable NiMH battery pack is available
- Convenient metal belt clip secures to a user's waist, or use Magnetek's deluxe padded strap to carry over your shoulder
- Rugged, super-tough nylon housing is made to withstand shock, and NEMA 4 (IP66) sealing can easily endure harsh, industrial environments

Frequencies

- Part 15 Non-Licensed: 430-439.8 MHz, 902-928 MHz
- FHSS Non-Licensed: 2.4-2.5 GHz
- Government Band: 411-430 MHz

Battery Type

- Rechargeable: 4.8V NiMH
- Non-Rechargeable: "AA" Alkaline

Operating Range

- 300-1,500 feet (depending on frequency band)



IDEAL FOR
CRANE & HOIST FLUID POWER
APPLICATIONS

MINI-MBT TRANSMITTER

- One of the smallest and lightest bellybox controls available on the market today
- Offers much of the control capability found in to our larger bellybox transmitters, including proportional joysticks, toggle switches, potentiometers, graphic display, two-way feedback, and FHSS RF, yet fits easily in an operator's hands

Features and Benefits

- Ergonomic design easily fits in your hands and feels similar to gaming controllers
- Available with proportional controls
- Optional Radio Control Programmer (RCP) connects via USB, allowing you to program settings from your Windows PC
- Designed to minimize power consumption, providing one of the longest life batteries in the industry today

Frequencies

- Part 15 Non-Licensed: 430-439.8 MHz, 902-928 MHz
- FHSS Non-Licensed: 2.4-2.5 GHz
- Government Band: 411-430 MHz

Battery Type

- Rechargeable: 4.8V NiMH
- Non-Rechargeable: "AA" Alkaline

Operating Range

- 300-1,500 feet (depending on frequency band)

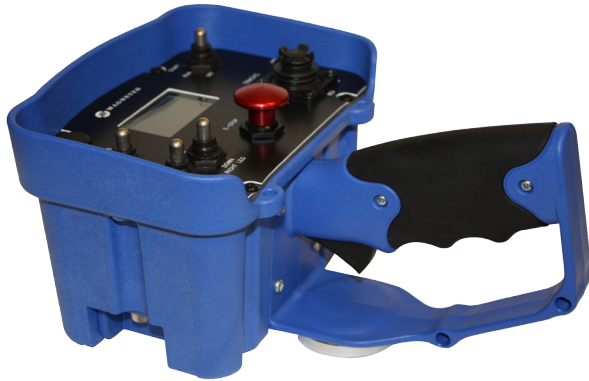


IDEAL FOR
CRANE & HOIST FLUID POWER
APPLICATIONS



RADIO REMOTE CONTROLS — TRANSMITTERS

PGT TRANSMITTER



IDEAL FOR
**FLUID
POWER**
APPLICATIONS

- Incorporates the latest electronic technology to meet the needs of a variety of applications and industries
- Offers plug-and-play control packages designed specifically for your equipment, manufactured and tested on our panel assembly line

Features and Benefits

- Single proportional trigger version is an extremely economical option for controlling multiple proportional hydraulic valves
- Ergonomically designed contoured grip with rubber over moldings make it comfortable for the user
- One of the longest lasting batteries in the industry is designed to minimize power consumption. A rechargeable NiMH battery pack is available
- Rugged, super-tough nylon housing is made to withstand shock and NEMA 4 (IP66) sealing can easily endure harsh, industrial environments

Frequencies

- Part 15 Non-Licensed: 430-439.8 MHz, 902-928 MHz
- FHSS Non-Licensed: 2.4-2.5 GHz
- Government Band: 411-430 MHz

Battery Type

- Rechargeable: 4.8V NiMH
- Non-Rechargeable: "AA" Alkaline

Operation Range

- 300-1,500 feet (depending on frequency band)

MINI-PGT TRANSMITTER



IDEAL FOR
**FLUID
POWER**
APPLICATIONS

- Incorporates the latest electronic technology in a compact and lightweight case
- Features many of the controls found on larger bellybox transmitters, including toggle switches, pushbuttons, and potentiometers, but in a size, weight and style similar to most handheld transmitters

Features and Benefits

- Optional Radio Control Programmer (RCP) allows you to program settings from your Windows PC
- Designed to minimize power consumption, providing one of the longest life batteries in the industry today
- Strong, ergonomically designed handle provides a natural feeling hand grip for the user
- Easily access of controls during single-handed operation
- Convenient single proportional trigger option offers precise control for smooth machine operation

Frequencies

- Part 15 Non-Licensed: 430-439.8 MHz, 902-928 MHz
- FHSS Non-Licensed: 2.4-2.5 GHz
- Government Band: 411-430 MHz

Battery Type

- Rechargeable: 4.8V NiMH
- Non-Rechargeable: "AA" Alkaline

Operating Range

- 300-1,500 feet (depending on frequency band)



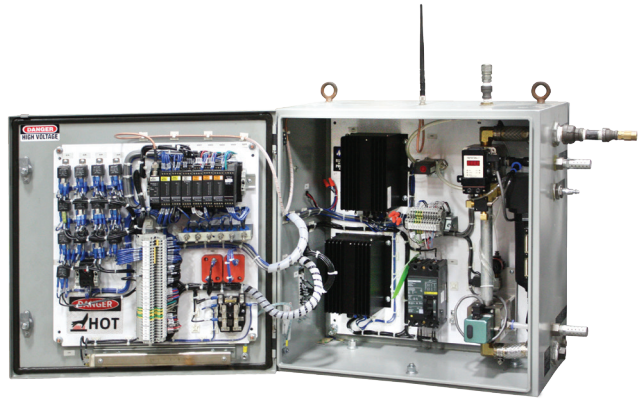
RADIO REMOTE CONTROLS — RECEIVERS

RAILYARD REMOTE CONTROL SYSTEMS

- The system combines a lightweight, comfortably contoured portable XLTX radio remote Operator Control Unit (OCU) with a Flex M fixed base receiver with all electronics and pneumatics in one cabinet

Features and Benefits

- System utilizes license-free 2.4 GHz FHSS (Frequency Hopping Spread Spectrum) technology, which provides robust communication and saves frequency licensing costs
- Ergonomically designed, intuitive XLTX OCU is easy to use and reduces operator fatigue
- OCU can operate in both portable and fixed modes
- Typical range is up to 1,500 feet in portable mode
 - Available repeater system can extend the range up to 2,500 feet
- Our Multiple Unit Connector Systems provide the safety and durability you need to control multiple locomotives under harsh industrial locomotive and railyard conditions



MHR RADIO CONTROLLER

- Patented technology combines components of a radio receiver and hydraulic controller into a convenient single unit
- Includes an informative LCD graphic display for viewing system settings and machine functions

Features and Benefits

- Rugged, waterproof design is resistant to shock and vibration, making it ideal for outdoor use and harsh environments
- User interface features fully sealed pushbuttons for menu navigation and modifying system settings in the field
- Two-way feedback provides precise information about equipment performance
- Optional Radio Control Programmer (RCP) allows settings to be programmed from a Windows PC

Frequencies

- Part 15 License Free: 430-440MHz, 2.4-2.5GHz

Operation Range

- 1,500 feet (depending on frequency band)

Compatible With

- XLTX, MLTX2, MLTX, MBT, PGT, Mini-MBT, Mini-PGT, Flex EM, Flex EX, Flex Pro, Flex VUE, Flex Mini



IDEAL FOR
**FLUID
POWER**
APPLICATIONS

RADIO REMOTE CONTROLS — RECEIVERS

FLEX M RECEIVER



| | |
|-----------------|---|
| OUTPUTS | Up to 64 relays, up to 32 0-10 VDC analog |
| INPUTS | Up to 64 digital, up to 32 0-10 VDC analog |
| COMMUNICATION | 1 CAN-bus, 1 RS-232, 1 RS-485/RS-422 |
| FREQUENCIES | Part 15 License Free 430-440MHz, 902-928MHz, 2.4-2.5GHz Part 90 Licensed Two-way 450-470MHz Available upon request |
| OPERATING RANGE | 1,500 feet |
| DIAGNOSTICS | On-board diagnostics with LED indicators for receiver status |
| INPUT VOLTAGE | 100-230 VAC, 9-36 VDC |
| COMPATIBLE WITH | XLTX, MLTX, MLTX2, SLTX, MBT, PGT, Mini-MBT, Mini-PGT, <i>telePendant</i> , <i>telePilot</i> , Flex EM, Flex EX, Flex Pro, Flex® VUE, Flex Mini |

IDEAL FOR

 APPLICATIONS



FLEX 4/6 EX/EM RECEIVER



| | |
|-----------------|--|
| OUTPUTS | 8 motion relays, 1 MLC relay, 1 horn relay |
| INPUTS | NA |
| COMMUNICATION | NA |
| FREQUENCIES | Part 15 License Free 433-440MHz Part 90 Licensed NA Two-way NA |
| OPERATING RANGE | 300 feet |
| DIAGNOSTICS | On-board diagnostics with LED indicators for receiver status |
| INPUT VOLTAGE | 105-480 VAC, 9-36 VDC |
| COMPATIBLE WITH | Flex EM, Flex EX |

IDEAL FOR

 APPLICATIONS



RADIO REMOTE CONTROLS — RECEIVERS

FLEX 8/12 EX/EM RECEIVER

| | | |
|-----------------|--|------------|
| OUTPUTS | Up to 24 motion relays, 1 MLC relay, 1 horn relay | |
| INPUTS | NA | |
| COMMUNICATION | NA | |
| FREQUENCIES | Part 15 License Free | 433-440MHz |
| | Part 90 Licensed | NA |
| | Two-way | NA |
| OPERATING RANGE | 1,500 feet | |
| DIAGNOSTICS | On-board diagnostics with LED indicators for receiver status | |
| INPUT VOLTAGE | 105-480 VAC, 9-36 VDC | |
| COMPATIBLE WITH | Flex EM, Flex EX | |



IDEAL FOR
CRANE & HOIST FLUID POWER
APPLICATIONS

INTELSMART2 RECEIVER

| | | |
|-----------------|---|-------------------------------|
| OUTPUTS | 16 outputs | |
| INPUTS | Available with 1 analog (0-5 VDC, 0-10 VDC, 4-20 mA, or 0-20 mA) and 5 digital (3-36 VDC or 24-250 VAC/VDC) integrated inputs | |
| COMMUNICATION | NA | |
| FREQUENCIES | Non-Licensed Part 15 | 430-439.8 MHz/ 902-928 MHz |
| | Non-Licensed FHSS | 2.4-2.5 GHz |
| | Government Band | 405-430 MHz |
| | Licensed UHF Part 90 | 450-470 MHz |
| | Two-way | Available upon request |
| OPERATING RANGE | 300-1,500 feet (depending on frequency band) | |
| DIAGNOSTICS | NA | |
| INPUT VOLTAGE | 3-36 VDC or 24-250 VAC/VDC | |
| COMPATIBLE WITH | XLTX, MLTX2, MLTX, SLTX, MBT, PGT, Mini-MBT, Mini-PGT, Flex EM, Flex EX, Flex Pro, Flex VUE®, telePilot, telePendant | |



IDEAL FOR
CRANE & HOIST FLUID POWER
APPLICATIONS

RADIO REMOTE CONTROLS — RECEIVERS

ENRANGE WIC-2402™ WIRELESS CAN MODULE



IDEAL FOR



APPLICATIONS



| | | |
|-----------------|--|------------|
| OUTPUTS | 2 digital on/off | |
| INPUTS | NA | |
| COMMUNICATION | 1 CAN-bus | |
| FREQUENCIES | Part 15 License Free | 2.4-2.5GHz |
| | Part 90 Licensed | NA |
| | Two-way | NA |
| OPERATING RANGE | 1,500 feet | |
| DIAGNOSTICS | On-board diagnostics with LED indicators for receiver status | |
| INPUT VOLTAGE | 12-24 VDC nominal (6-36 VDC max) | |



IDEAL FOR



APPLICATIONS



CAN-2 RECEIVER

| | | |
|-----------------|--|-----------------------------|
| OUTPUTS | 2 digital Used for machine stop | |
| COMMUNICATION | 1 CAN-bus | |
| FREQUENCIES | Part 15 License Free | 430-439.8MHz, 2.4-2.5GHz |
| | Part 90 Licensed | NA |
| | Two-way | Available upon request |
| OPERATING RANGE | 300-1,500 feet | |
| DIAGNOSTICS | LED diagnostics or back to controller display | |
| INPUT VOLTAGE | 12-24 VDC nominal (6-36 VDC max) | |
| COMPATIBLE WITH | XLTX, MLTX2, MBT, PGT, Mini-MBT, Mini-PGT, Flex VUE, Flex EM, Flex EX, Flex Pro, Flex Mini | |

IDEAL FOR
FLUID
POWER
APPLICATIONS



CAN-6 RECEIVER

| | | |
|-----------------|--|---------------------------|
| OUTPUTS | 8 digital on/off and 8 0-10 VDC analog | |
| INPUTS | NA | |
| COMMUNICATION | 1 CAN-bus | |
| FREQUENCIES | Part 15 License Free | 430-440MHz, 902-928MHz |
| | Part 90 Licensed | NA |
| | Two-way | Available upon request |
| OPERATING RANGE | 300-1500 feet | |
| DIAGNOSTICS | On-board diagnostics with LED indicators for receiver status | |
| INPUT VOLTAGE | 9-36 VDC | |
| COMPATIBLE WITH | XLTX, MLTX2, MLTX, MBT, PGT, Mini-MBT, Mini-PGT, Flex EM, Flex EX, Flex Pro, Flex VUE, Flex Mini | |

RADIO REMOTE CONTROLS — RECEIVERS

CAN-R1 RECEIVER

| | | |
|-----------------|---|--|
| OUTPUTS | 4 digital on/off | |
| INPUTS | 4 analog or digital | |
| COMMUNICATION | 1 CAN-bus | |
| FREQUENCIES | Part 15 License Free Part 90 Licensed Two-way | 2.4-2.5GHz NA Available upon request |
| OPERATING RANGE | 1,500 feet | |
| DIAGNOSTICS | On-board diagnostics with LED indicators for receiver status | |
| INPUT VOLTAGE | 9-36 VDC | |
| COMPATIBLE WITH | XLTx, MLTX2, MBT, PGT, Mini-PGT, Mini-MBT, Flex VUE, Flex EX, Flex EM, Flex Pro | |



IDEAL FOR
**FLUID
POWER**
APPLICATIONS

CAN-R2 RECEIVER

| | | |
|-----------------|---|--|
| OUTPUTS | NA | |
| INPUTS | 4 analog and 4 digital | |
| COMMUNICATION | 1 CAN-bus | |
| FREQUENCIES | Part 15 License Free Part 90 Licensed Two-way | 2.4-2.5GHz NA Available upon request |
| OPERATING RANGE | 1,500 feet | |
| DIAGNOSTICS | On-board diagnostics with LED indicators for receiver status | |
| INPUT VOLTAGE | 9-36 VDC | |
| COMPATIBLE WITH | XLTx, MLTX2, MBT, PGT, Mini-MBT, Mini-PGT, Flex VUE, Flex EX, Flex EM, Flex Pro | |



IDEAL FOR
**FLUID
POWER**
APPLICATIONS

CAN-M1 EXPANSION MODULE

| | | |
|---------------------|---|--|
| OUTPUTS | 8 Solid state digital outputs 2.5A @ 12/24 Vdc 8 Analog 0-10 VDC, 0-5 VDC outputs | |
| COMMUNICATION | 1 CAN-bus | |
| SUPPORTED PROTOCOLS | SAE J1939, Generic CAN, Parker ICP, CAN-Open | |
| COMPATIBLE WITH | XLTx, MLTX2, MLTX, MBT, PGT, Mini-MBT, Mini-PGT, Flex VUE, Flex EX, Flex EM, Flex Pro | |

IDEAL FOR
**FLUID
POWER**
APPLICATIONS

CAN-M2 EXPANSION MODULE

| | | |
|---------------------|---|--|
| OUTPUTS | 4 digital 12/24 VDC inputs 4 digital or analog 12/24 VDC inputs | |
| COMMUNICATION | 1 CAN-bus | |
| SUPPORTED PROTOCOLS | SAE J1939, Generic CAN, Parker ICP, CAN-Open | |
| COMPATIBLE WITH | XLTx, MLTX2, MLTX, MBT, PGT, Mini-MBT, Mini-PGT, Flex VUE, Flex EX, Flex EM, Flex Pro | |

IDEAL FOR
**FLUID
POWER**
APPLICATIONS

RADIO REMOTE CONTROLS — RECEIVERS

DANFOSS PLUS+1™ OX024-010 EXPANSION MODULE



| | |
|-----------------|---|
| OUTPUTS | 10 PVGOUT Typically output as 25%, 50%, or 75% Able to output 0-100% Used as reference when driving PVGOUT outputs |
| COMMUNICATION | 1 CAN-bus |
| INPUT VOLTAGE | 9-36 VDC |
| COMPATIBLE WITH | CAN-2, MHR |

RADIO CONTROL PROGRAMMER (RCP)



The Radio Control Programmer (RCP) allows you to customize your transmitter and receiver programming. Configure key parameters of the transmitter and receiver such as RF channel and access code, which are required for them to communicate. The output mapping function on the receiver allows users to determine how inputs, such as commands from the transmitter or CAN messages, affect receiver outputs to control how the system operates. Text information displayed on the transmitter can be customized to display specific receiver feedback, including parameters, command confirmation, and alarms. Crucial information is displayed at a glance, so an operator can act quickly to prevent unsafe lifts and unwanted movements. Unlimited configurations are possible, allowing you to easily program your system to meet your exact requirements.

Programming can be done on a Windows PC, and transferred easily between systems, allowing spares to be put into service in minutes, reducing equipment downtime.

The RCP package includes a USB Drive, activation code, USB cable, and User's Guide.

RCP works with the following products:

- MLTX2
- XLTX
- CHTX
- Telemotive *telePendant*
- Telemotive *telePilot*
- Flex VUE®
- PGT
- Mini-PGT
- MBT
- Mini-MBT
- MHR
- CAN-2
- WIC-2402
- Telemotive *inteleSmart2*
- Flex M

Note: Features may be limited on some radios.

PENDANT PUSHBUTTON STATIONS

SBP2® PENDANT PUSHBUTTON STATIONS

- Provide optimum control and performance for vehicle mounted machinery
- DC rating eases integration into a wide variety of mobile equipment, including mobile cranes, vacuum trucks, stacker conveyors, trenchers, grinders, concrete mixers, pumps, and pavers
- Allows the operator a wide range of movement, providing improved machine visibility and handling

Features and Benefits

- Most models weigh less than two pounds
- Slim-line pendant's lightweight design rests comfortably in the palm of your hand
- Ergonomic design – offers comfortable control and performance with less effort and fatigue than traditional pendants
- Superior durability – designed to survive even the most brutal environments, and the high-impact resistant, watertight enclosure is ideally suited for many applications
- 2, 4, 6, 8, 10 or 12 button configurations
- Suitable for AC or DC applications
- Switches are rated 2 Amp, 24 VDC, and 3 Amp, 250 VAC
- 1, 2 or 3 speed operation
- Impact resistant pendant enclosure is double insulated, chemically resistant and rated NEMA 1, 3, 4, 4X and 12
- Cable grip clamps provide a watertight sealed connection between cable and enclosure
- Switches are protected from internal/external contaminants
- Common circuit is pre-wired on all switches to simplify wiring
- Mechanical interlocks on single- and two-speed switches for enhanced safety
- Cumulative contacts on two- and three-speed switches provide precise detent feel
- Easy-to-read button functions
- Operating temperature range: -10°F to 150°F
- UL listed, CSA approved



IDEAL FOR
CRANE & HOIST FLUID POWER
APPLICATIONS



MAGNETEK

MAGNETEK HEADQUARTERS

N49 W13650 Campbell Drive
Menomonee Falls, WI 53051
Phone +1.262.783.3500
Toll-Free Phone 800.288.8178
Fax +1.262.783.3510
Toll-Free Fax +800.298.3503
sales@magnetek.com

MAGNETEK CANADA FACILITY

161 Orenda Road, Unit 1
Brampton, Ontario
L6W 1W3 CANADA
Toll-Free Phone 800.792.7253
Phone 905.828.1526
Fax 905.828.5707

MAGNETEK UK FACILITY

Unit 3, Bedford Business Center
Mile Road
Bedford MK42 9TW UK
Phone +44 (0)1234 349191
Fax +44 (0)1234 268955

WWW.MAGNETEK.COM

© Magnetek, Inc. 2017

RD1106_Radio Product Guide
MH837_Product Guide
05/17