



BRICKFORM

A Division of Solomon Colors, Inc.

Table of Contents

Introduction.....	2-5	E-Stain.....	35
Engineered Texture Products	6-27	Pro-Dye	36
NEW Seamless Texture Skins	7-9	ARTesian Stain	37
Paladiano Texture Mats.....	10-13	Resurfacing Products	38-39
NEW Contractors Choice Texture Mats	14	Stampable Overlay.....	38
Stone Texture Mats	15-17	Micro-Topping	39
Slate Texture Mats.....	18-19	SM Professional Grade	39
Step-Liners.....	20	Sealers.....	40-41
NEW Quick-Strip Joint Tool.....	21	Poly-Astic	40
NEW Ultra-Liners.....	21	Gem-Seal	40
Brick Texture Mats	22	Poly-Seal	41
Tile Texture Mats	23	Safety-Seal.....	41
Wood Texture Mats	23	Satin-Seal.....	41
Creative Images Texture Mats.....	24-26	Matte-Magic.....	41
Texturing Accessories	27	Finishing Aids.....	42
Engineered Coloring Products	28-37	Liquid Release.....	42
Liquid Color.....	29	Evaporation Retarder	42
Powdered Color	29	Maintenance Products.....	43
Color Hardener.....	30	Dura-Wax	43
Antique Release	31	Antique Release / Efflorescence Remover.....	43
FreestylePRO Solid-Color Stain.....	32	E-Etch.....	43
Cem-Coat.....	33	Seamless Texture Skin Order Form	44
Blush-Tone Acid Stain.....	34	Made-to-Order Tools.....	45-47



defining decorative concrete™

Information on Nearest Distributor

1-800-483-9628
8:00 AM to 5:00 PM
Monday-Friday

Technical Service

1-800-483-9628

More Info Online At

www.brickform.com
www.solomoncolors.com



© Copyright 2010 by Brickform, A Division of Solomon Colors, Inc.



Value and Performance You Can Count On...



Bob Freis and Rich Solomon

For over 30 years, architects and installers worldwide have recognized BRICKFORM as the leading manufacturer of texturing systems. Strict quality control standards are the cornerstone of our manufacturing philosophy and the reason BRICKFORM is a trade name that means precision and durability.

Now BRICKFORM has a new tradition to build upon. On May 30, 2008, Solomon Colors was pleased to announce the purchase of BRICKFORM. Both Solomon Colors, Inc. and BRICKFORM, Inc.

have been family owned businesses with a history of providing quality products and service. The combination of BRICKFORM and Solomon will create a new, stronger, stable, and more vibrant company to serve the iron oxide pigment and decorative concrete markets.

Both teams are dedicated to providing the best quality and value for every product that we sell. We listen to our customers and are constantly striving to update technology to develop new products that are competitive and perform better on the job.

We invite you to explore the complete line of BRICKFORM Products and to contact our Technical Representatives for more information and our Inside Sales Department to get samples or to place an order.

Sincerely,

Robert A. Freis

Rich Solomon



The Complete BRICKFORM System

Architectural concrete has become one of the most popular ways to color and texture concrete, especially since it costs approximately a third less than many natural materials. BRICKFORM offers a complete range of systems to choose from. Systems that work seamlessly together to resurface and restore aging concrete or to create new colored and textured hardscapes. Systems that include sandblast stencils, cementitious coatings, a wide variety of coloring products, imprinting tools, companion accessories, and an extensive line of sealing and maintenance products.

Great products, however, are only part of a successful project. Knowledgeable specifiers and skilled installers are key ingredients. That is why BRICKFORM is affiliated with AIA and ASLA. We have developed accredited presentations so that architects will have a better knowledge of what decorative concrete is all about. BRICKFORM supports hands-on training and demonstrations across the nation, where installers are presented with the latest in product knowledge and techniques. Professional Area Managers participate in product knowledge meetings so that distribution has a thorough understanding of how our products work as a system.

Contact your local representative or our friendly and knowledgeable Inside Sales Department to find out how BRICKFORM's products give you the concrete advantage.

Why BRICKFORM?

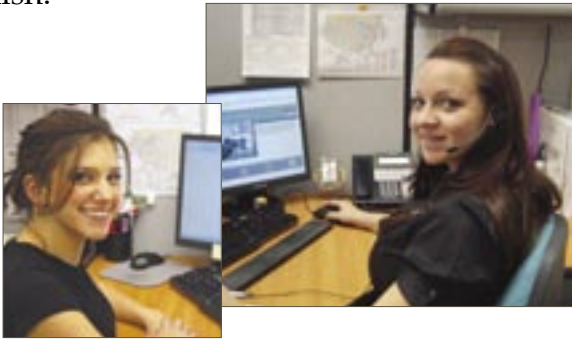
Our customers choose BRICKFORM because BRICKFORM consistently provides quality products and services at competitive prices. Top quality materials and responsive personal service are the standards by which BRICKFORM operates. We are the competitive edge.

Why Buy BRICKFORM? Fast, Friendly, Expert Service

Professional people are available to answer questions about our products and how they work as a system. Our Inside Sales Department can help you to find a distributor in your area. Our Technical Support Team can help answer questions on application and installation techniques. Call today for more information.

Inside Sales

Exceptional customer service is our goal. BRICKFORM strives to exceed expectations by resolving issues on the first call. We have dedicated, professional inside sales people to help make your project a success from start to finish.



Technical Support

Have a technical or jobsite question? Contact a BRICKFORM Technical Support Representative or Area Manager for more information at 1-800-483-9628.

At BRICKFORM, we want to make sure you have the support you need. We are devoted to providing the most comprehensive information and education to architects, distributors, contractors, and installers.

BRICKFORM works with dealers nationwide to sponsor hands-on demonstrations. Here installers are presented with the latest in product knowledge and techniques.



defining decorative concrete™

Information on Nearest Distributor

1-800-483-9628
8:00 AM to 5:00 PM
Monday-Friday

Technical Service • 1-800-483-9628

Information on everything, from tips to testimonials and technical information is available on our website. Up-to-the-minute schedules of our latest product demos are posted. We participate in many local and international trade shows where we showcase new products, instructional videos and demonstrations for attendees.

Our technical specialists are only a phone call away and are trained to answer your questions on your particular installation or project. Area Managers are also available for jobsite consultations.

Shipping & Traffic

Once you have placed your order, the BRICKFORM team of transportation specialists take over to ensure that your order is packaged and shipped. These experienced professionals ship your order in the fastest, most economical way possible. You may also choose your own trucking company or company truck for your shipment.



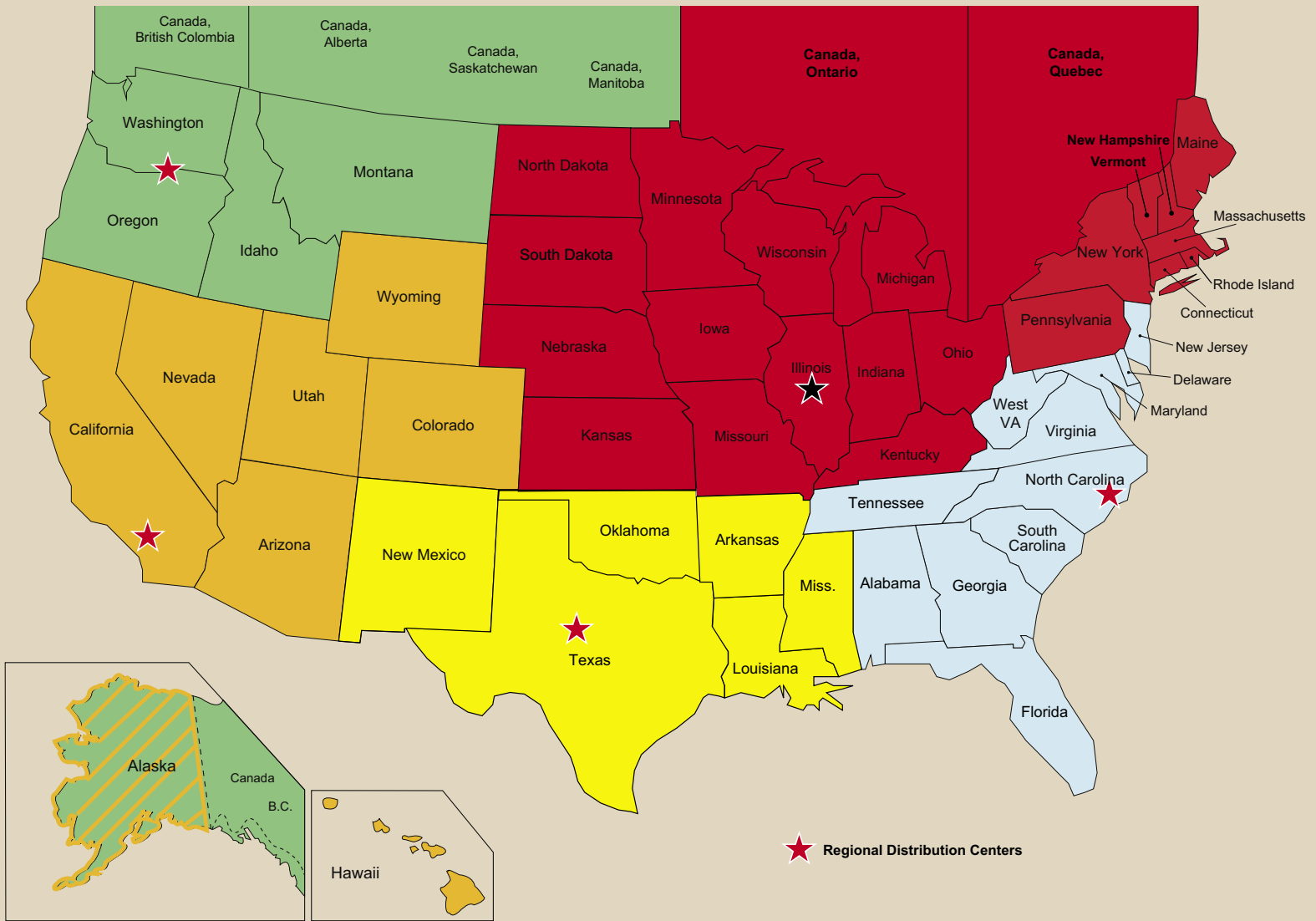
Product Knowledge

BRICKFORM understands your desire to know how our systems work. Our managers can arrange accredited architectural presentations or product knowledge meetings.

More Info Online At

www.brickform.com
www.solomoncolors.com

Nationwide Distribution



Nationwide Sales Support

The BRICKFORM Area Manager is there to provide ongoing superior service. BRICKFORM understands the meaning of quality support, so we have chosen Area Managers with the background, knowledge and expertise to answer your questions quickly and correctly. Contact Inside Sales at 1-800-483-9628 for the name and contact information of your local Area Manager.

Find a Contractor/Installer

Need help getting started on your dream project? Call 1-800-483-9628 to be referred to a BRICKFORM distributor near you. Ask your local distributor to recommend a contractor who specializes in using BRICKFORM decorative concrete products.

Demonstrations

Our Area Managers can arrange a demonstration at a distributor near you. Call to find out more about this opportunity for hands on training in a relaxed atmosphere.



Engineered Texturing Systems

The BRICKFORM system of Texture Mats has introduced a whole new level of creative expression to decorative concrete work. Precision engineered tools make possible a high degree of controlled creativity. It is now possible to mimic and even enhance the look and feel of natural stone and many other surfaces. Anything from finely tooled slate to perfectly set cobbles, BRICKFORM has the tools to make it happen, with absolute control.



Largest Selection and Best Value

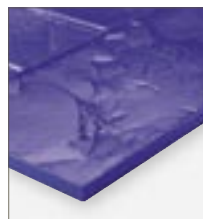
Pattern

BRICKFORM manufactures the largest selection of texturing tools worldwide. Over 175-patterns, from Rough Cut Ashlar to Random Stone, and used brick textures to wood plank, are available in various sizes, joints, grout lines, and configurations.

Texture

Over 30-textures have been designed to recreate the look and feel of natural materials. All tools, from random fieldstone to coarse wire-cut brick, heavily textured stone to the smooth look of Mexican tile are created with strict attention to detail.

Precision and Durability



The resilient material used to create each texture is designed to retain pattern "memory." Consistent, well-defined, uniform texture is transferred, in every detail, onto the concrete surface imprint after imprint.



Our company is dedicated to the precise and unsurpassed consistency of each and every texturing tool. Strict standards are exercised so that every tool is tight-fitting; reducing pattern lines and unsightly ridges.



Each tool is crafted from a high-quality polyurethane material that is flexible, yet retains high-tear strength. Sturdy handles are methodically placed according to tool- weight distribution, increasing balance and maneuverability.

Disclaimer - All measurements are nominal. Skin and texture mat measurements are based on the Brickform mold size. Urethane has a natural tendency to shrink or expand, depending on environmental factors. This does not affect how the mats fit together.

Seamless Texture Skins

Standard-Flexible

BRICKFORM Standard-Flexible Texture Skins are made from a high-quality polyurethane that is lightweight and flexible with exceptional detail. Designed to complement the BRICKFORM line of texture mats and accessories, these skins are flexible enough to texture 45° angles next to buildings and retaining walls.

Available in all 15 Textures.



Ultra-Flexible

BRICKFORM Ultra-Flexible Detail Skins are designed for tight corners or vertical facings. They are perfect for bull nose steps, pool coping or cantilevering and faux rock projects. Ultra-Flexible Skins are available in a variety of textures and sizes.

Available in all 15 Textures.



Sierra Seamless Skin Set

BRICKFORM Sierra Seamless Skins allow texture to be imprinted over large areas without bond lines, which gives the installer more creative control. The textured surface can then be scored or cut to impart pattern lines or simply left as a large textured surface according to design requirements. Sierra Seamless Texture Skins are designed to be quick and easy to use. They can be used with BRICKFORM Antique Release, BRICKFORM Color Hardener, and BRICKFORM Blush-Tone Acid Stain to achieve an infinite variety of coloring effects that will complement each individual's taste.

A natural stone texture with an ocean-worn surface that combines rough, heavy, stone appearance with water-washed ridges, veins and clefts.

Sierra skins are available individually, as a set and in various configurations.

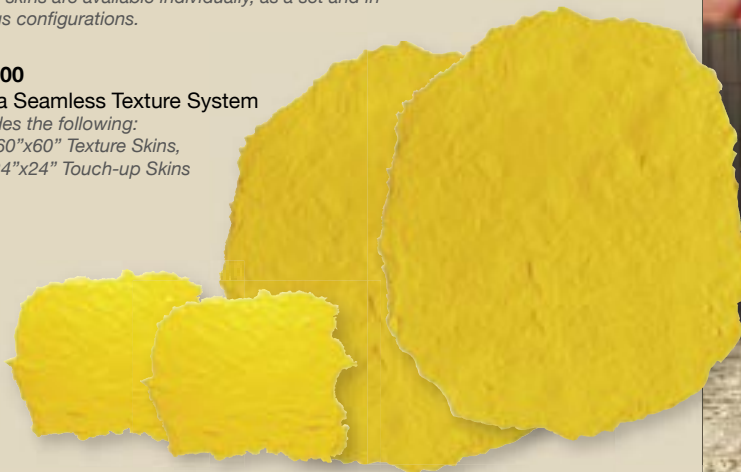
SS-100

Sierra Seamless Texture System

Includes the following:

Four 60"x60" Texture Skins,

Two 24"x24" Touch-up Skins



Seamless Skins

BRICKFORM Seamless Skins™ are feathered-edged skins that produce continuous texture with no grout or joint lines. BRICKFORM texture skins are available in standard-grade and ultra-flexible materials, all designed with unsurpassed quality. Seamless skins are compatible with BRICKFORM Stampable Overlay.



Blue Stone Texture

A natural stone surface with a sandy texture that includes clefts which leave a layered appearance.



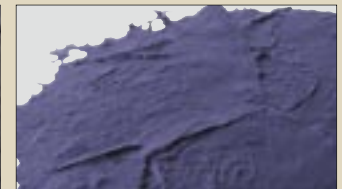
Limestone Texture

A natural stone surface, similar to Veronica Stone but with a finer texture.



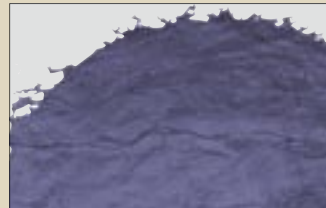
Rough Stone Texture

A natural stone texture characterized by a continuous coarse surface with several distinguishing veins.



Heavy Stone Texture

A rough, natural stone surface containing chips, fractures, pockmarks and veins.



Sanded Slate Texture

Similar to our slate texture with the addition of a lightly sanded appearance across the entire texture field.



Renaissance Slate Texture

A natural, stone surface with a slight sandstone texture that includes various veins, typically running in a similar direction.



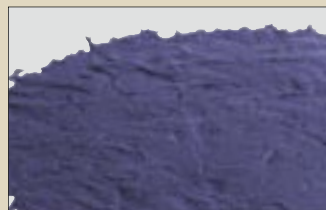
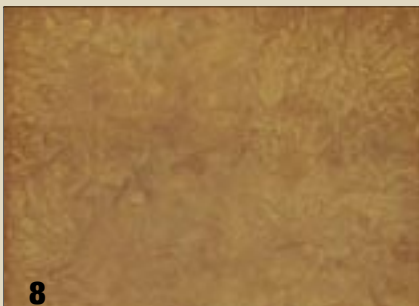
Chiseled Slate Texture

A naturally laminated stone texture, split along parallel planes, hand-tooled to create a chipped, fragmented look.



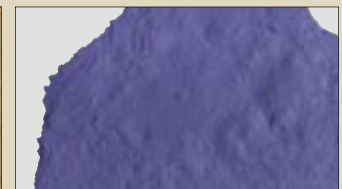
Roman Slate Texture

A slate stone surface that utilizes dips, ridges and veins to create a continuously changing texture across the entire surface.



Yucatan Texture

A stone surface consisting of deep chips, pits and fractures creating a continuously undulating texture.



Sierra Seamless Texture

A natural stone texture with an ocean-worn surface that combines rough, heavy, stone appearance with water-washed ridges, veins and clefts.

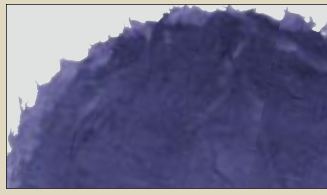
Texture skins are shown as color photographs to suggest the wide variety of finishes possible.
 See page 44 for ordering information.



Rocky Mountain Stone Texture
A natural stone surface that incorporates a rough, uneven texture with naturally etched veins and ridges.



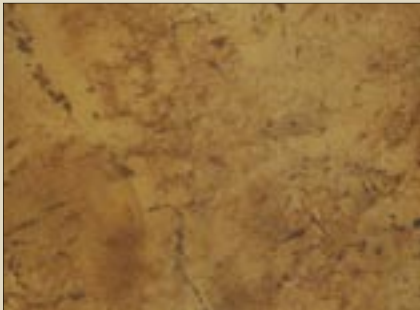
Smooth Slate Texture
A naturally laminated stone texture, split along parallel planes, creating an uneven surface that incorporates various veins and ridges.



Desert Slate Texture
A simulated slate texture that combines numerous clefts and irregular surfaces to create the ideal concrete impressions.



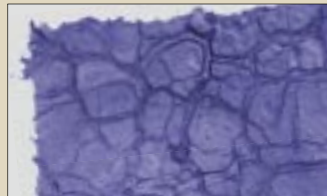
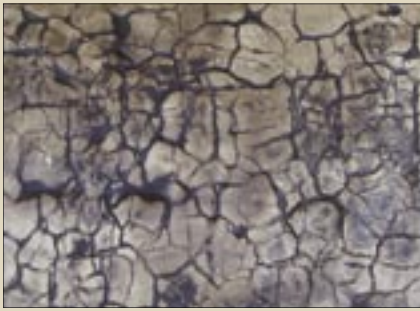
Elk Mountain Texture
A consistent light stone texture, making it appealing for indoor and outdoor applications.



Elk Mountain Texture (veined)
A light stone texture with well placed fractures, making it appealing for indoor and outdoor applications.



Regal Ashlar Slate NEW
A robust texture, with constantly changing ridges, brings a majestic and noble look to any surface.



Cracked Mud NEW
A bold and daring, natural earth texture with a surface that looks and feels real.



Lunar Rock NEW
An out of this world look that will transform any hardscape. The surface boasts a meteor shower of texture with a variety of impacted stones.



Super Slate NEW
A blended slate pattern with enhanced highlights.



Sidewalk Stone NEW
A rustic blend of soft and strong textures, giving a traditional feel to any surface.

Paladiano Texture Mats *by Bob Harris*

These speciality tools are cast from natural stones in historical regions with authentic textures and shapes that are pleasing to the eye from all angles. England, Italy, Bulgaria, Greece, Cyprus and France are the locations which inspired the "Wonders of the World" stamping tool line.



YORKSHIRE COBBLE

York was for many years the heart of England. When troubled times fell upon London Kings and Queens would retreat back to York, safe behind fortified walls. York cathedral stands in the centre of the cobbled streets that inspired Paladiano to recreate these 13th century cobble stones.



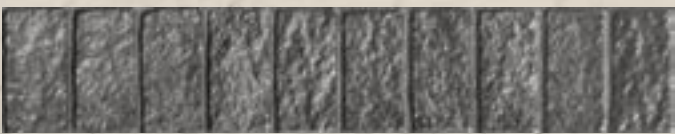
PD-105



PD-100



PD-115



PD-120



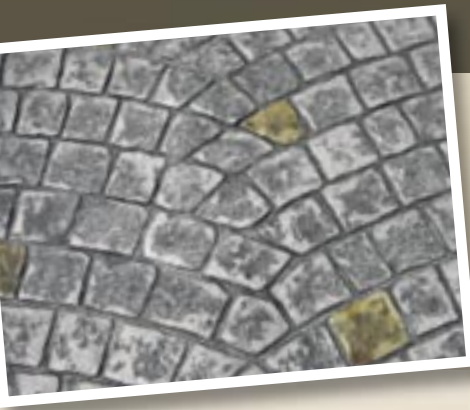
PD-110



PD-125

Part #	YORKSHIRE COBBLE	Size	Weight	# per set
PD-100	Full tools	59" x 23.5"	22 lbs	6
PD-105	Left	29.5" x 23.75"	11 lbs	2
PD-110	Single Stone	8.5" x 4.75"	1 lb	3
PD-115	Double Row Border	43.5" x 9.5"	9 lbs	1
PD-120	Soldier Course Border	41.5" x 8"	7 lbs	1
PD-125	2x2 skin	24" x 24"	4 lbs	1
PD-130	1x1 skin	12" x 12"	1 lb	1
PD-100F	Full Floppy	59" x 23.5"	16 lbs	1
FM-6570	Touch-up wheel			1

PD-100S	Full set YORKSHIRE COBBLE with Instructional DVD			17
---------	--	--	--	----



PAVIMENTO OF PARIS

Paris, France is one of the most inspirational places for architecture. The Paladiano team recognized the abundance of granite sets positioned in a repetitive fish scale design. These quarried granite sets had been dressed and hand placed by what can only be described as paving artisans. To reproduce the streetscapes of Paris was an engineering challenge.



PD-217



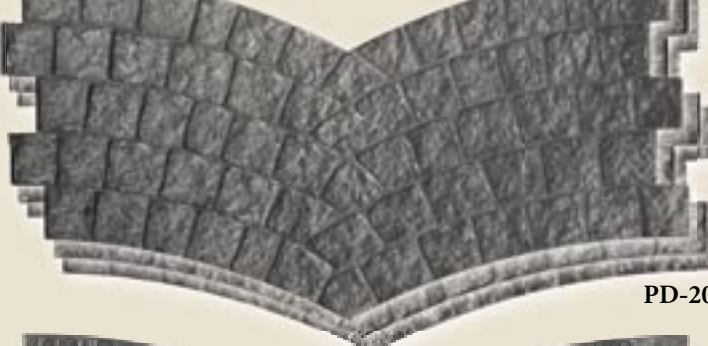
PD-215



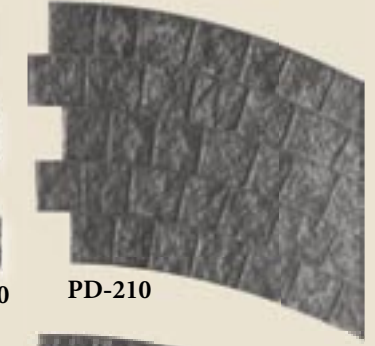
PD-216



PD-205



PD-200



PD-210



PD-222



PD-220



PD-221



PD-240



PD-225



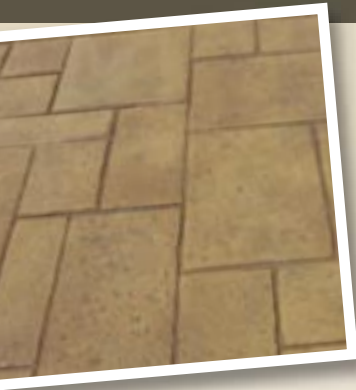
PD-235



PD-230

Part #	PAVIMENTO OF PARIS	Size	Weight	# per set
PD-200	Full tool	50.5" x 25"	20 lbs	6
PD-205	Left Hand	25.25" x 25"	10 lbs	1
PD-210	Right Hand	25.25" x 25"	10 lbs	1
PD-215	Top Half	50.25" x 12"	10 lbs	1
PD-217	Top Half Left	25.125" x 12"	5 lbs	1
PD-216	Top Half Right	25.125" x 12"	5 lbs	1
PD-220	Bottom Half	50.25" x 13.675"	10 lbs	1
PD-222	Bottom Half Left	25.125" x 13.675"	5 lbs	1
PD-221	Bottom Half Right	25.125" x 13.675"	5 lbs	1
PD-225	Single Stone	3.875" x 3.675"	1 lb	3
PD-230	Stacked Bond	42.25" x 8.5"	8 lbs	1
PD-235	Granite Cobble	43.5" x 6.25"	6 lbs	1
PD-240	2x2 skin	24" x 24"	4 lbs	1
PD-245	1x1 skin	12" x 12"	1 lb	1
PD-200F	Full Floppy	50.5" x 25"	14 lbs	1
FM-6540	Touch-up wheel			1

PD-200S	Full set PAVIMENTO OF PARIS with Instructional DVD	23
---------	--	----



ROTATING VENETIAN MARBLE

Founded more than 1,500 years ago on 117 different islands, Venice, Italy is linked by a series of over 150 canals, 400 bridges and many ancient pavements.

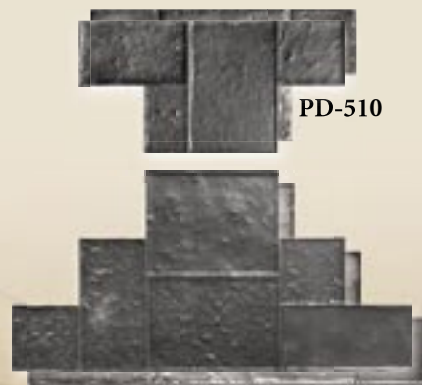
Travertine and Marble streets and sidewalks, cut with precision were then placed by skilled masons. The original stones were unfinished, now with hundreds of years of floods and use the marble and granite have naturally become honed and smooth.



PD-515



PD-500



PD-510

PD-505

Part #	ROTATING VENETIAN MARBLE	Size	Weight	# per set
PD-500	Full tool	53.75" x 53.75"	30 lbs	6
PD-505	Half Tool	53.75" x 26.875"	20 lbs	2
PD-510	1/4 Tool	35.875" x 17.75"	10 lbs	2
PD-515	2x2 skin	24" x 24"	4 lbs	2
PD-520	1x1 skin	12" x 12"	1 lb	1
PD-500F	Full Floppy	53.75" x 53.75"	25 lbs	1
FM-6540	Touch-up wheel			1
PD-500S	Full set ROTATING VENETIAN MARBLE with Instructional DVD			15



HAMMERED SOFIA STONE

For over 7000 years Sofia, Bulgaria has been a meeting place of the four directions of the world making Sofia one of the oldest settlements in Europe.

Plazas, town squares and winding streets made from granite and lime stone with a Bush Hammered texture. A bush-hammered finish is one with a rough uniformly patterned surface produced by an impact tool with a smooth border around each stone creating a prestige look.



PD-315



PD-310



PD-305



PD-300



Part #	HAMMERED SOFIA STONE	Size	Weight	# per set
PD-300	Full tool	47.875" x 23.875"	18 lbs	8
PD-305	Single Stone	23.875" x 12"	6 lbs	2
PD-310	Joint tools	assorted	1 lb	3
PD-315	2x2 skin	24" x 24"	2 lbs	1
PD-320	1x1 skin	12" x 12"	1 lb	1
PD-300F	Full Floppy	47.875" x 23.875"	12 lbs	1
PD-300S	Full set HAMMERED SOFIA STONE with Instructional DVD			16



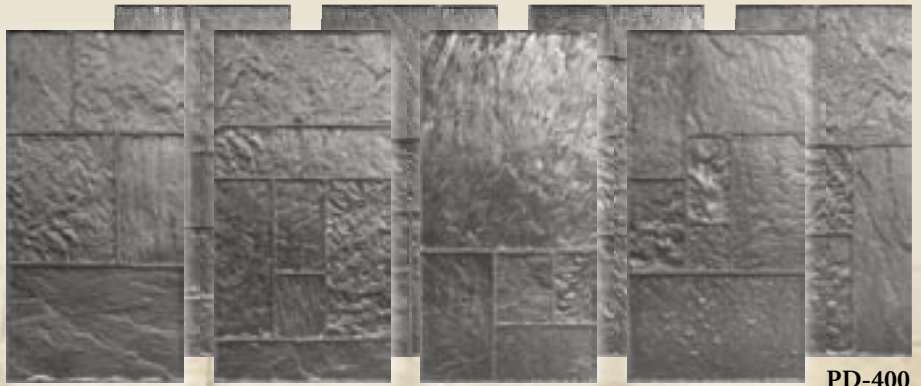
STONES OF ATHENS

The ancient city of Athens, Greece, crowned with marble temples such as the Parthenon and the Acropolis stands the test of time with millions of visitors walking the time old streets of Athens.

A variety of different stones helped the Paladiano Team create Athens Stone, one of most intricate tools using over 14 combined textures: Limestone, Marble and Granite are all used next to each other detailing the fine craftsmanship of ancient Greece.



PD-405



PD-400

Part #	STONES OF ATHENS	Size	Weight	# per set
PD-400	Full tool	47.75" x 23.875"	24 lbs	8
PD-405	2x2 skin	24" x 24"	4 lbs	3
PD-410	1x1 skin	12" x 12"	1 lb	1
PD-400F	Full Floppy	47.75" x 23.875"	17 lbs	2
FM-6570	Touch-up wheel			1
PD-400S	Full set STONES OF ATHENS with Instructional DVD			15



FRACTURED CYPRUS SLATE

Cyprus, a small island with a large history, is surrounded by the Mediterranean Sea, soft sand and heavy slate hardscapes.

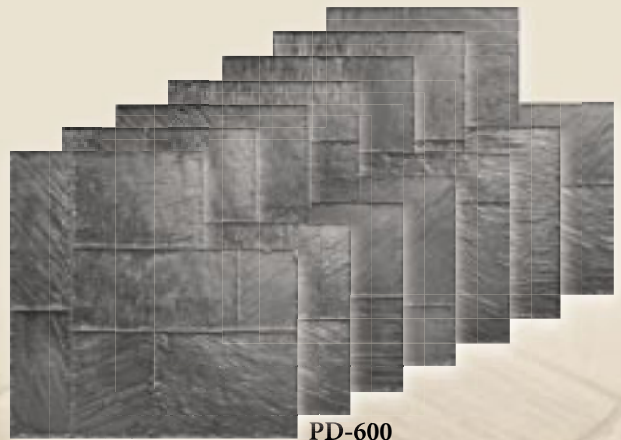
The natural paving material is a hardened slate found deep underground. Heavy in texture but difficult to shape, the joints have a fractured split edge.



PD-605



PD-600



Part #	FRACTURED CYPRUS SLATE	Size	Weight	# per set
PD-600	Full tool	41.875" x 41.875"	33 lbs	8
PD-605	2x2 skin	24" x 24"	4 lbs	2
PD-610	1x1 skin	12" x 12"	1 lb	1
PD-600F	Full Floppy	41.875" x 41.875"	20 lbs	1
FM-6520	Touch-up wheel			1
PD-600S	Full set FRACTURED CYPRUS SLATE with Instructional DVD			13

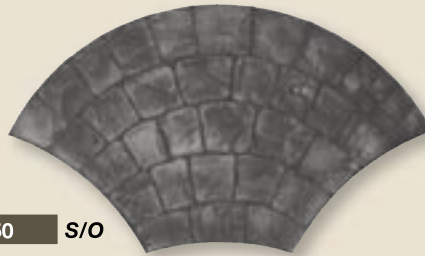
Contractors Choice Texture Mats

BRICKFORM recognizes contractor feedback with the introduction of our Contractors Choice line comprised of everyone's favorite textures. Contractors Choice is a professional line of tools that are tough, slim, sleek and firm, for a great feel on and off the slab. These new tools are both economically and ecologically friendly, emphasizing quality and dependability.



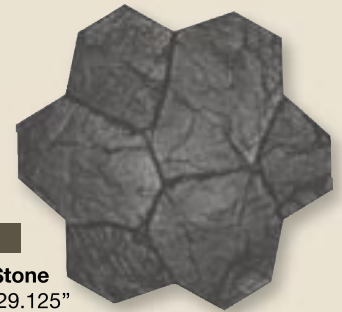
EF-540 S/O **NEW**

London Cobble
17" x 29.75" (43.18 x 75.56 cm)
Black
A traditional lightly textured cobblestone pattern



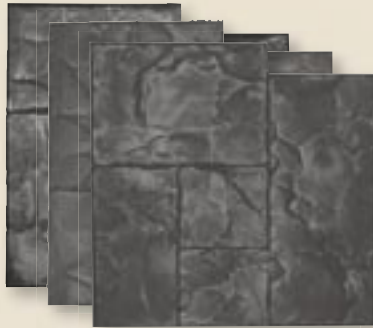
EF-650 S/O

European Fan
26" x 46" (66.04 x 116.84 cm)
Black **NEW**
An elegant European fan pattern, consisting of slightly curved rectangular slate stones



EF-700

Random Stone
29.125" x 29.125"
(73.97 x 73.97 cm) **NEW**
Heavily textured random fieldstones



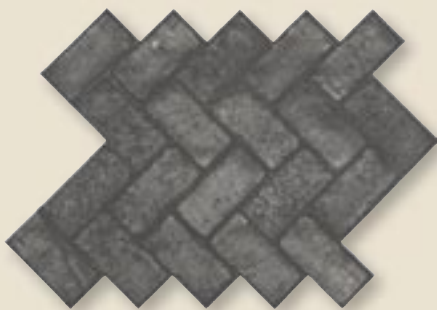
EF-3125 S/O **NEW**

Ashlar Cut Slate
23.125" x 23.125"
(58.74 x 58.74 cm)
Black A, B, C
A naturally laminated stone texture split along parallel planes, hand-tooled to create a more pronounced chipped fragmented texture with small deep joints



EF-5100 S/O **NEW**

Running Bond Used Brick
16" x 36.5" (40.64 x 92.71 cm)
Black
Used bricks laid end-to-end, with sandy joints



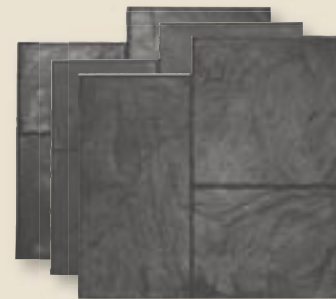
EF-5000 S/O **NEW**

Herringbone Used Brick
32" x 36" (81.28 x 91.44 cm)
Black
A weatherworn brick surface with an uneven texture and rounded broken edges



EF-5150 S/O **NEW**

Running Bond New Brick
24" x 36.5" (60.96 x 92.71 cm) Black
A running bond pattern with smooth joints



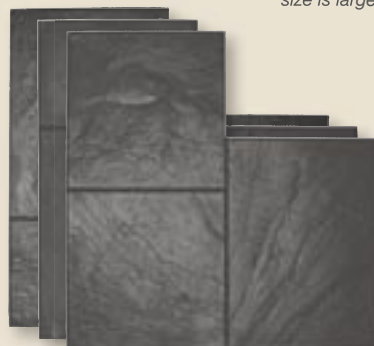
EF-3150 S/O **NEW**

Large Ashlar Cut Slate
28" x 28" (71.12 x 71.12 cm)
Black A, B, C
Similar to Ashlar Cut Slate but the overall size is larger, with a softer texture



EF-520 **NEW**

6" x 6" Edinburgh Cobble
26" x 36" (66.04 x 91.44 cm)
Black
A rugged weathered cobblestone pattern



EF-3120 S/O **NEW**

36" Ashlar Cut Slate without Insert
36" x 36" (91.44 x 91.44 cm)
Black A, B, C
Stones with a slate surface, in an Ashlar pattern

Stone Texture Mats

Whether you want the look of Granite, Blue Stone, Old English Cobblestone, Mexican Tile, or Pavers, BRICKFORM offers an array of texture mats that simulate a broad range of natural stone materials. Achieving these beautiful impressions with BRICKFORM precision tools provides an end result that is affordable and often easier to work with than natural materials. BRICKFORM has a stone texture tool ready to complement any design theme from an Italian Villa to an English Country Garden.



FM-100 S/O
Rough Cut Ashlar
 24" x 24" (60.96 x 60.96 cm)
 Red, Yellow and Blue
Rough hand-tooled stones arranged in an Ashlar pattern



FM-150 S/O
Australian Ashlar Cut Stone
 23.25" x 23.25" (59.05 x 59.05 cm)
 Red, Yellow and Blue
A coarse rugged Blue Stone set in an Ashlar pattern



FM-250 S/O
6" x 6" Granite Sets
 24" x 24" (60.96 x 60.96 cm)
 Blue
Rough Stone texture with a hand-chiseled edge



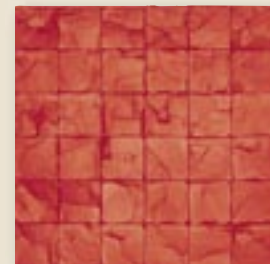
FM-300 S/O
12" x 12" Cut Stone
 24" x 24" (60.96 x 60.96 cm)
 Red
A rough natural stone, hand-tooled to create a chipped and fragmented texture



FM-500 S/O
Windsor Cobble
 22.75" x 29.75" (57.78 x 75.56 cm)
 Blue
A traditional cobblestone pattern with wider joints



FM-520
6" x 6" Edinburgh Cobble
 26" x 36" (66.04 x 91.44 cm)
 Yellow
A rugged weathered cobblestone pattern



FM-200 S/O
4" x 4" Slate Sets
 24" x 24" (60.96 x 60.96 cm)
 Red
Slate texture with a hand-chiseled edge

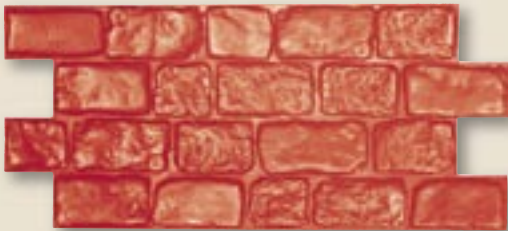
Stone Texture Mats *continued*



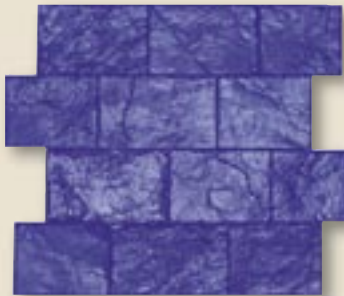
FM-540 S/O
London Cobble
 17" x 29.75" (43.18 x 75.56 cm)
 Blue
A traditional lightly textured cobblestone pattern



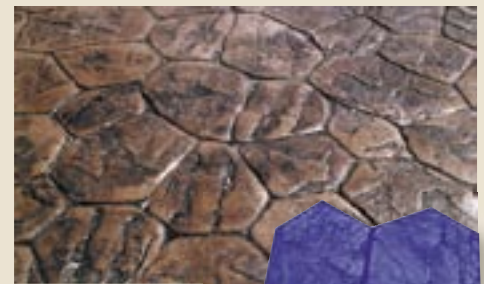
FM-560 S/O
London Cobble Strip
 5.75" x 28.625" (14.605 x 72.71 cm)
 Blue
A lightly textured cobblestone pattern in a single strip



FM-525
Cheshire Cobble (Smooth Grout)
 20.5" x 46" (52.07 x 116.84 cm) Red
A traditional cobblestone pattern with smooth, ungrouted joints



FM-580
Large Cobble
 28.125" x 33.375" (71.43 x 84.77 cm)
 Blue
Larger rough-cut cobblestones



FM-700
Random Stone
 29.125" x 29.125" (73.97 x 73.97 cm)
 Red, Yellow and Blue
Heavily textured random fieldstones



FM-750
Large Random Stone
 36" x 36" (91.44 x 91.44 cm)
 Yellow and Blue
Similar to Random Stone but 40% larger



FM-1295 S/O
Patio Stone
 36.5" x 36.5" (92.71 x 92.71 cm)
 Red
A roughly textured arrangement of random stones



FM-1100 S/O
24" x 24" Yucatan Stone
 24" x 24" (60.96 x 60.96 cm)
 Blue
A single square of rough Yucatan stone texture



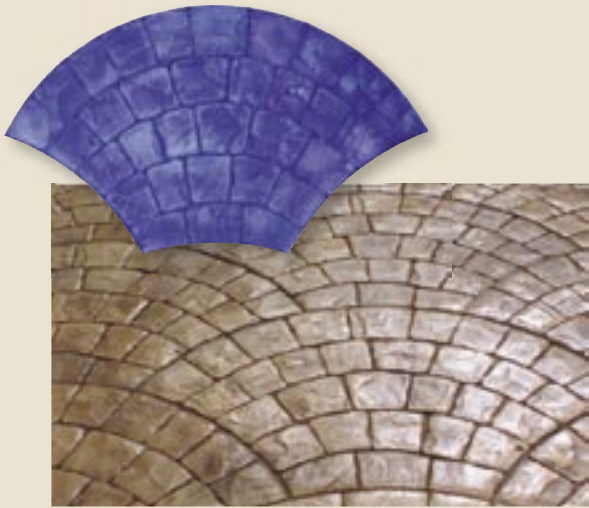
FM-1225
4" x 8" Cut Stone Border
 8.375" x 33.5" (21.27 x 85.09 cm) Red
A border of slate rectangles laid side-by-side



FM-1350

English Field Stone

18" x 39.75" (45.72 x 100.965cm) Red
A natural arrangement of river rock, emulating the look of smooth English field stones

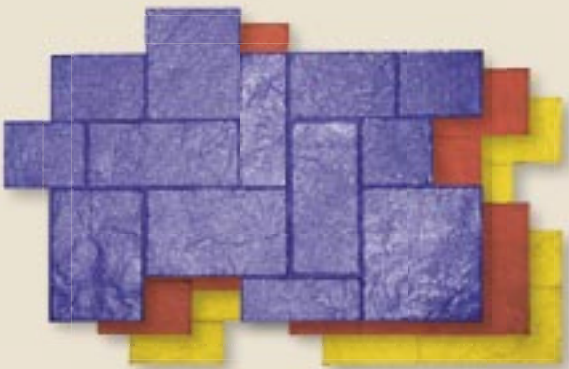


FM-650 S/O

European Fan

26" x 46" (66.04 x 116.84 cm)
 Blue

An elegant European fan pattern, consisting of slightly curved rectangular slate stones



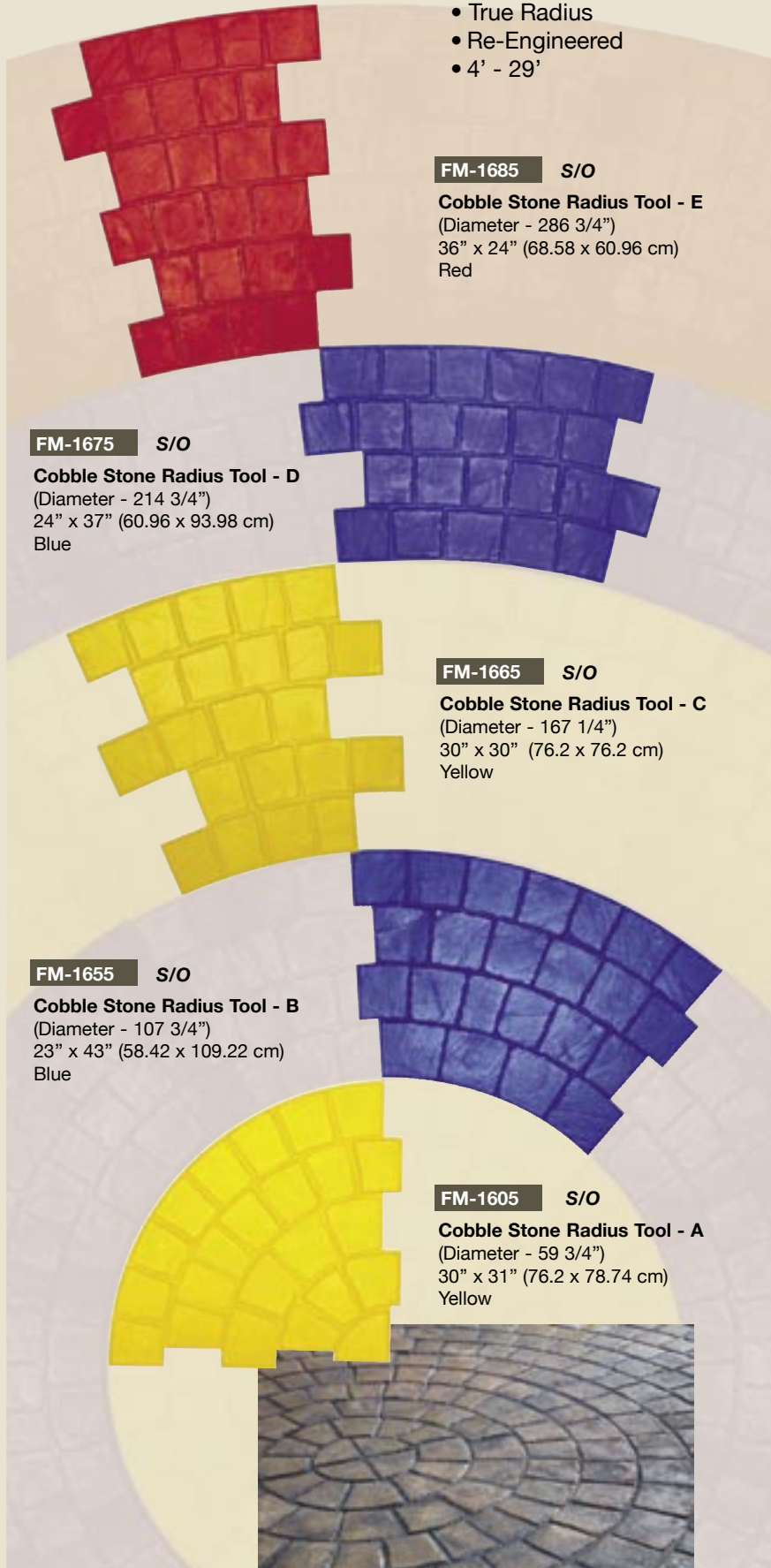
FM-1775

Tuscany Stone

28" x 40" (71.12 x 101.60 cm) Red, Yellow and Blue
A large tool with a stone texture and interlocking joints on all four sides

NEW and Improved Radius Tool

- Back by Popular Demand
- Tighter Fit
- True Radius
- Re-Engineered
- 4' - 29'



FM-1685 S/O

Cobble Stone Radius Tool - E
 (Diameter - 286 3/4")
 36" x 24" (68.58 x 60.96 cm)
 Red

FM-1675 S/O

Cobble Stone Radius Tool - D
 (Diameter - 214 3/4")
 24" x 37" (60.96 x 93.98 cm)
 Blue

FM-1665 S/O

Cobble Stone Radius Tool - C
 (Diameter - 167 1/4")
 30" x 30" (76.2 x 76.2 cm)
 Yellow

FM-1655 S/O

Cobble Stone Radius Tool - B
 (Diameter - 107 3/4")
 23" x 43" (58.42 x 109.22 cm)
 Blue

FM-1605 S/O

Cobble Stone Radius Tool - A
 (Diameter - 59 3/4")
 30" x 31" (76.2 x 78.74 cm)
 Yellow



Slate Texture Mats

Slate is a sleek, metamorphic rock with fine veining patterns. The grain pattern of slate makes it a common resource for tile flooring because it is easily split into thin sheets. BRICKFORM slate texture tools recreate the elegant, clean design of slate without the expense and hassle of installing fragile natural stones. BRICKFORM Ashlar texture mats reflect the handcrafted, intricately-fitting stones of historic Ashlar configurations.



FM-3125 S/O

Ashlar Cut Slate
23.125" x 23.125"
(58.74 x 58.74 cm)

Red, Yellow and Blue
A naturally laminated stone texture split along parallel planes, hand-tooled to create a more pronounced chipped fragmented texture with small deep joints



FM-3675

Grand Ashlar
36" x 36" (91.44 x 91.44 cm)

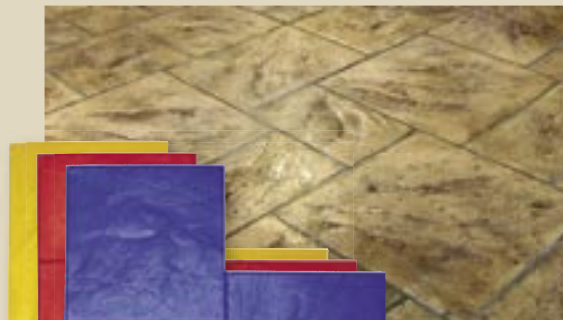
Red, Yellow and Blue
Stones of various shapes and sizes laid in an Ashlar pattern, with a slate texture



FM-3130 S/O

Aidan Ashlar
23.125" x 23.125"
(58.74 x 58.74 cm)

Red, Yellow and Blue
Similar to the Ashlar Cut Slate but with broad shallow joints



FM-3120 S/O

36" Ashlar Cut Slate without Insert
36" x 36" (91.44 x 91.44 cm)

Red, Yellow and Blue
Stones with a slate surface, in an Ashlar pattern



FM-3650 S/O

Regal Ashlar (Blue Stone)
36" x 36" (91.44 x 91.44 cm)

Red, Yellow, and Blue
Blue stone textured tiles, with worn beveled edges, arranged in an ashlar pattern



FM-3150 S/O

Large Ashlar Cut Slate
28" x 28" (71.12 x 71.12 cm)

Red, Yellow and Blue
Similar to Ashlar Cut Slate but the overall size is larger, with a softer texture



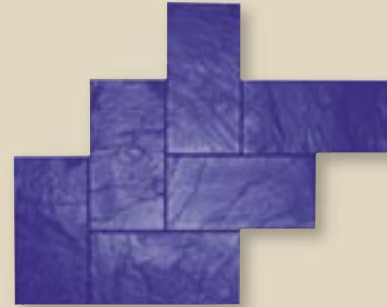
FM-3200 S/O
24" x 24" Slate Texture
 24" x 24" (60.96 x 60.96 cm)
 Red, Yellow and Blue
One complete stone with hand-tooled slate texture



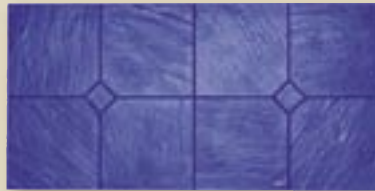
FM-3300 S/O
12" x 12" Slate Border
 12" x 48"
 (30.48 x 121.92 cm)
 Red
A border of four 12" slate squares in a row



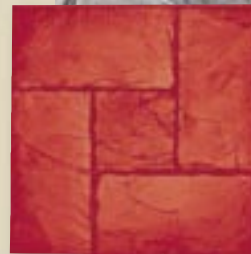
FM-3250 S/O
12" x 12" Slate
 24" x 24" (60.96 x 60.96 cm)
 Blue
Slate tiles laid in a parallel pattern



FM-3550 S/O
Herringbone Slate
 32" x 40" (81.28 x 101.6 cm)
 Blue
A classic herringbone pattern of slate stones laid at right angles to each other



FM-3350 S/O
Slate with Diamond Inset
 24" x 48"
 (60.96 x 121.92 cm)
 Blue
An elegant arrangement of Italian slate, with diamond-shaped insets for added detail



FM-3500 S/O
California Weave
 24" x 24" (60.96 x 60.96 cm)
 Red
Slate bricks form a woven pattern around a slate square.



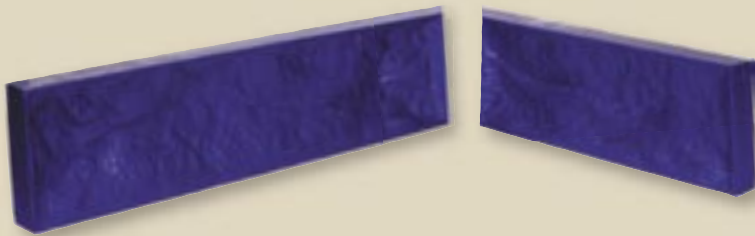
FM-3400 S/O
Walkway Slate
 18" x 36" (45.72 x 91.44 cm)
 *Red, Yellow and Blue
 *Stone sizes vary
Square and rectangular slate tiles, of various sizes, set in parallel rows.



FM-3600 S/O
New England Basket Weave
 24" x 36"
 (60.96 x 91.44 cm)
 Blue
Hand-tooled slate in a basket weave pattern

Step-Liners

BRICKFORM Step-Liners are designed to produce texture on the edges of concrete steps, risers, terracing and even concrete countertops. These Step-Liners can be reused many times. Simply attach the liners to your riser forms and impart the beauty of natural stone. They have no top or bottom and can be reversed to reduce pattern repeat. BRICKFORM Step-Liners are high-quality, flexible polyurethane, engineered to be lightweight and extremely durable.



45° Angle Step Liner (Two shown to form corner)



SL-350

45° 24" Step Liner

6" x 26.375" (15.24 x 66.99 cm)

Pattern: A or B



SL-450

45° 16" Step Liner

6" x 18.375" (15.24 x 45.72 cm)

Pattern: A or B

Hint: To reduce pattern repeat, use A and B together.

Hint: Use as a curb edge to mimic split stone.



- A Variety Of Standard Sizes
- Easy Pre-Cut 45° Joints Available
- Superb Detail
- Reusable
- Up to 1 1/2" of Texture

Also Available:

SL-100

48" Step Liner

6" x 48" (15.24 x 121.92 cm)

Pattern: A or B

SL-300

24" Step Liner

6" x 24" (15.24 x 60.96 cm)

Pattern: A or B

SL-200

72" Step Liner

6" x 72" (15.24 x 182.88 cm)

Pattern: A

SL-400

16" Step Liner

6" x 16" (15.24 x 40.64 cm)

Pattern: A or B



Quick Strip & Ultra-Liner

BRICKFORM *Quick-Strips* are perfect for creating a more decorative joint.

By placing the Brickform Quick-Strips into your control joints prior to stamping with our seamless skins, you can transform your slab form ordinary to extraordinary in no time.



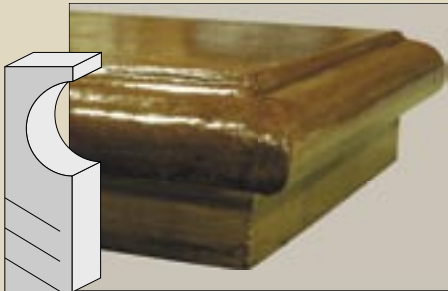
FM-6580 Chiseled V-Joint, Offered in 5 foot strips



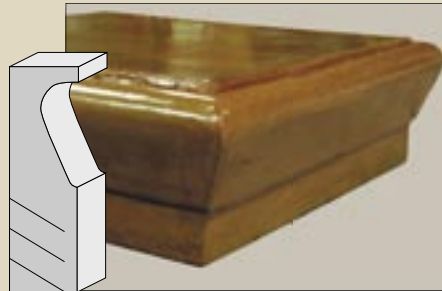
FM-6590 Sanded stone Joint, Offered in 5 foot strips

With the contractor in mind, *Ultra-Liners* take the hassle out of doing decorative step faces.

- Re-usable liner for steps, wall caps, counter-tops and pool copings
- Creates smooth and easy-to-finish surfaces
- Tight cell structure foam for long lasting liners
- Easy to bend and mold into shape
- 30° precut guides to finish horizontal surfaces under the form
- Pre-cut guides at 7.5", 6.5" and 5.5"
- Sized to dimensional lumber
- Offered in two lengths for versatility and reduced shipping cost
- Works great with Brickform Liquid Release



SL-2000 48" Sandstone Ultra-Liner
7.5" x 48" (19.1 x 121.92 cm) **NEW**



SL-2050 48" Capstone Ultra-Liner
7.5" x 48" (19.1 x 121.92 cm) **NEW**

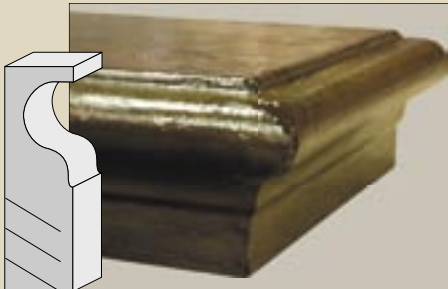


SL-2100 Intermediate 48" Ultra-Liner
7.5" x 48" (19.1 x 121.92 cm) **NEW**

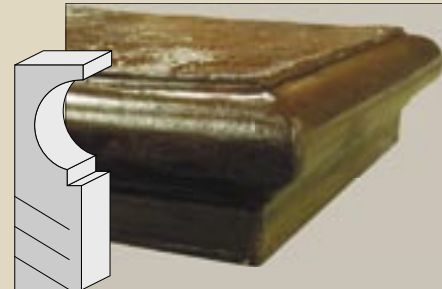
SL-2025 96" Sandstone Ultra-Liner
7.5" x 96" (19.1 x 243.8 cm)

SL-2075 96" Capstone Ultra-Liner
7.5" x 96" (19.1 x 243.8 cm)

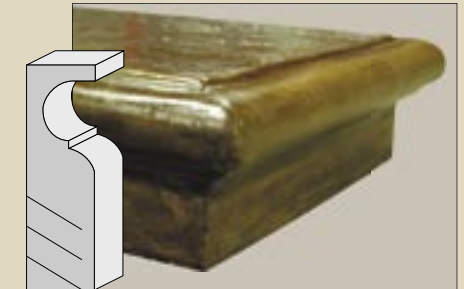
SL-2125 Intermediate 96" Ultra-Liner
7.5" x 96" (19.1 x 243.8 cm)



SL-2150 Ogee 48" Ultra-Liner
7.5" x 48" (19.1 x 121.92 cm) **NEW**



SL-2200 Classic 48" Ultra-Liner
7.5" x 48" (19.1 x 121.92 cm) **NEW**



SL-2250 Wall Cap 48" Ultra-Liner
7.5" x 48" (19.1 x 121.92 cm) **NEW**

SL-2175 Ogee 96" Ultra-Liner
7.5" x 96" (19.1 x 243.8 cm)

SL-2225 Classic 96" Ultra-Liner
7.5" x 96" (19.1 x 243.8 cm)

SL-2275 Wall Cap 96" Ultra-Liner
7.5" x 96" (19.1 x 243.8 cm)

*Also available: Extensions, twist-to-break wire kit, double-sided tape



Brick Texture Mats



FM-5000 S/O

Herringbone Used Brick

32" x 36" (81.28 x 91.44 cm)

Red

A weatherworn brick surface with an uneven texture and rounded broken edges



FM-5050 S/O

Herringbone New Brick (Fine Grout)

32" x 36" (81.28 x 91.44 cm)

Red

A wire-cut common brick texture with sharp corners and few indentations or irregularities over the surface



FM-5900 S/O

Herringbone New Brick (sanded joint)

32" x 36" (81.28 x 91.44 cm)

Red

New bricks with sandy joints



FM-5100 S/O

Running Bond Used Brick

16" x 36.5" (40.64 x 92.71 cm)

Blue

Used bricks laid end-to-end, with sandy joints



FM-5150 S/O

Running Bond New Brick

24" x 36.5" (60.96 x 92.71 cm) Red

A running bond pattern with smooth joints



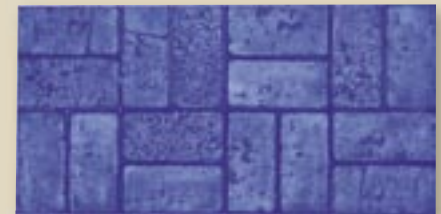
FM-5250 S/O

Basket Weave New Brick

16" x 32" (40.64 x 81.28 cm)

Blue

New bricks in a basket weave pattern with sandy joints



FM-5200 S/O

Basket Weave Used Brick

15.375" x 30.75" (39.05 x 78.10 cm)

Blue

Used bricks in a basket weave pattern with smooth un-grouted joints



FM-5325 S/O

4" x 8" New Brick Border

8.5" x 32.25" (21.59 x 81.92 cm) Red

A border of new bricks laid side-by-side

Also Available:

FM-5300 4" x 8" Used Brick Border S/O

8.5" x 32" (21.59 x 81.28 cm) Red

A border of used bricks laid side-by-side



FM-5550 S/O

Single New Brick

4" x 8" (10.16 x 20.32 cm) Red

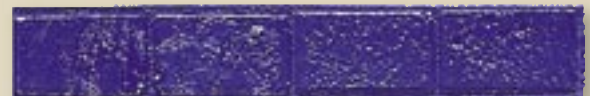
A single new brick with sharp edges

Also Available:

FM-5500 Single Used Brick S/O

4" x 8" (10.16 x 20.32 cm) Blue

A single used brick with rounded edges



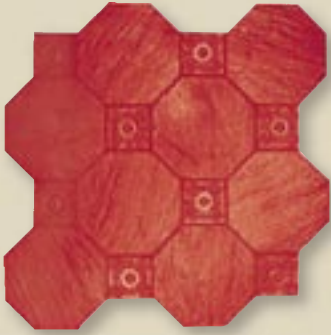
S/O **FM-5600**

Used Brick Runner

4.5" x 32.375" (11.43 x 82.23 cm) Blue

A border of used bricks laid end-to-end

Tile Texture Mats



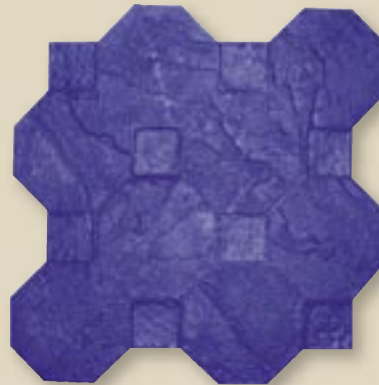
FM-7025 S/O

Santa Barbara Tile
 30.75" x 30.75" (78.1 x 78.1 cm)
 Red
 Slate textured octagons and rosette squares laid out in a unique, highly decorative pattern



FM-7450

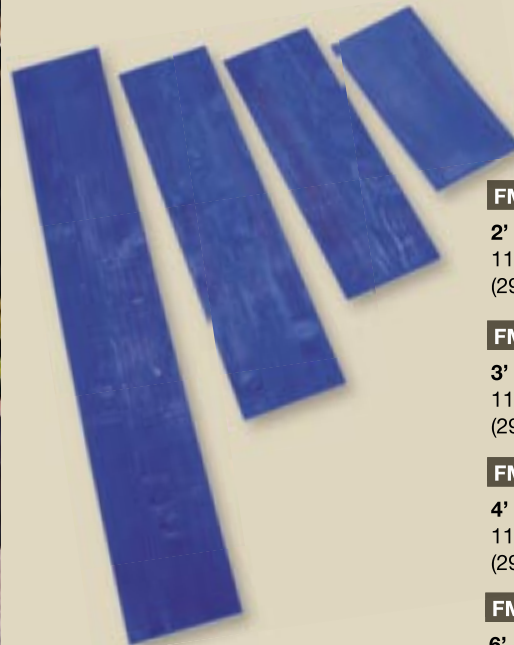
Chateau Ashlar
 36" x 36" (91.44 x 91.44 cm)
 Red, Yellow and Blue
 A smooth and elegant Ashlar pattern consisting of rounded stones with sandy joints



FM-7100 S/O

Octagon Tile
 37.5" x 37.5" (95.25 x 95.25 cm)
 Blue
 A blue stone texture laid out in a highly decorative pattern

Wood Texture Mats



FM-8110 S/O

2' Cedar Wood Plank
 11.5" x 24"
 (29.21 x 60.96 cm) Blue

FM-8210 S/O

3' Cedar Wood Plank
 11.5" x 36"
 (29.21 x 91.44 cm) Blue

FM-8310 S/O

4' Cedar Wood Plank
 11.5" x 48"
 (29.21 x 121.92 cm) Blue

FM-8410 S/O

6' Cedar Wood Plank
 11.5" x 72"
 (29.21 x 182.88 cm) Blue

A cedar wood texture with coarse, pronounced grain and a rough surface appearance that incorporates oversized nail heads at each end

Creative Images

BRICKFORM developed the Creative Images line of texture mats to incorporate the latest in textures, designs and usability. Creative Images mats are larger, an average of nine square feet, which means fewer placements and less touch-up work. Creative Images mats are made of firmer material, which allows you to begin stamping sooner. Choose Creative Images to create the best possible impression, with the least amount of effort.



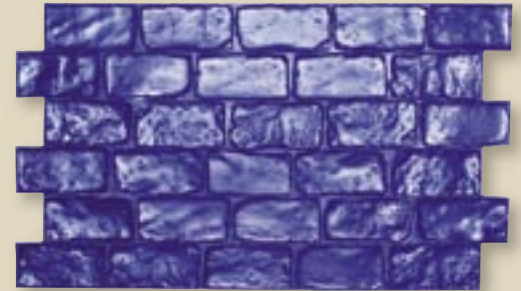
TM-820

Pennsylvania Cobble-Sanded Joint

31.5" x 47.5" (80.01 x 120.65 cm)

Pattern: A

A staggered pattern of cobblestone with sandy joints and rounded edges



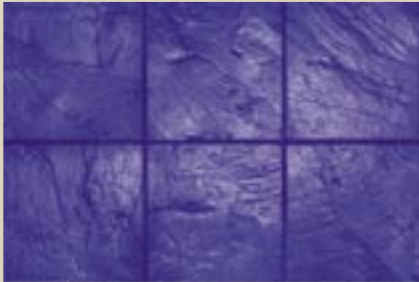
TM-840

Pennsylvania Cobble-Smooth Joint

53.5" x 30.875" (135.89 x 78.42 cm)

Pattern: A

A staggered pattern of cobblestone with smooth joints and rounded edges



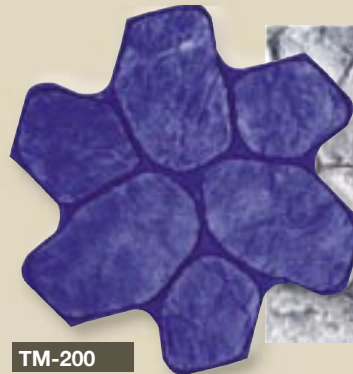
TM-300

16" x 16" Slate

32" x 48" (81.28 x 121.92 cm)

Pattern: A

Slate squares in two rows, with angled, un-grouted joints



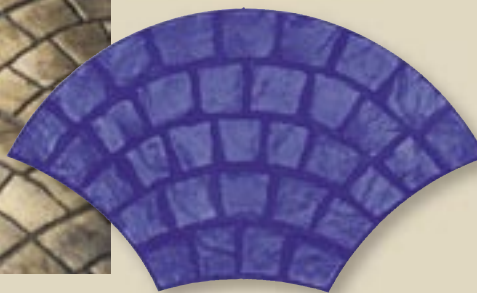
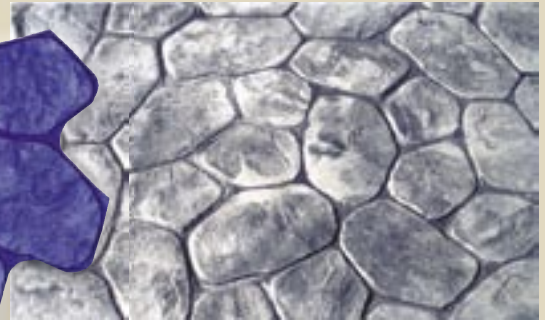
TM-200

Random Stone

36" x 36" (91.44 x 91.44 cm)

Pattern: A and B

A natural looking arrangement of slate-textured random stones



TM-400

European Fan

28" x 50" (71.12 x 127 cm)

Pattern: A

Curved slate bricks gracefully arranged in a European Fan pattern



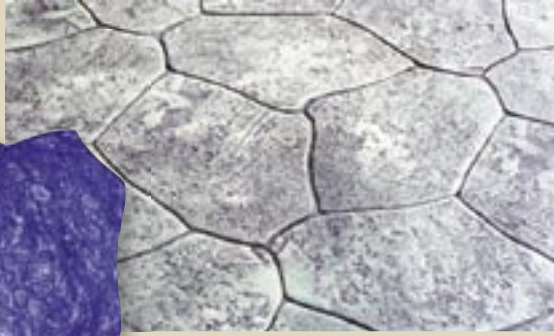
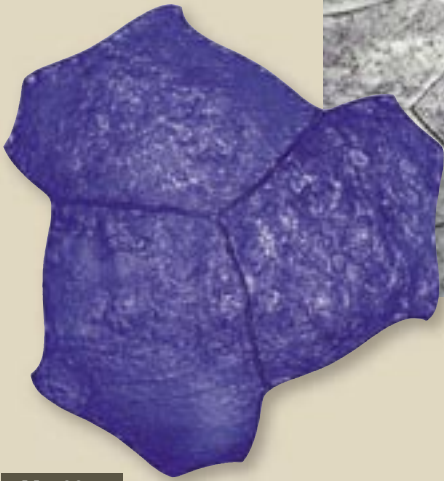
TM-600

12" x 12" Slate - 1/4" Joint

24" x 48" (60.96 x 121.92 cm)

Pattern: A

Rows of slate squares with beveled edges



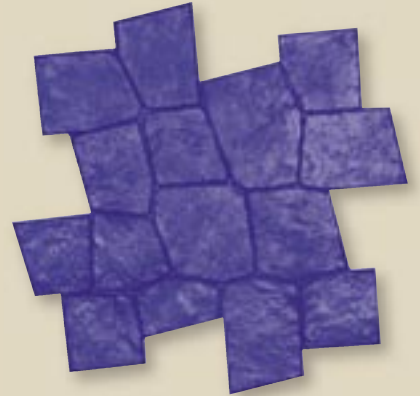
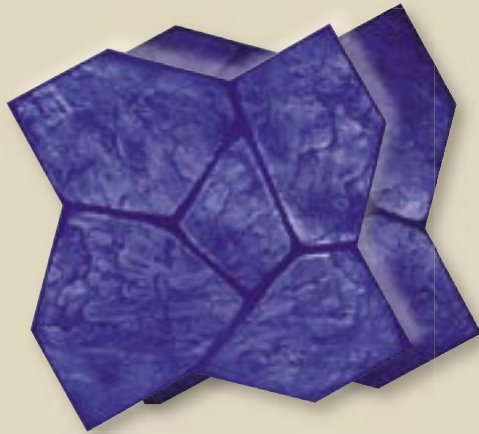
TM-500

Mesa Random Stone

61.75" x 61.75" (156.85 x 156.85 cm)

Pattern: A

Random stones sculpted to have a rough stone, irregular shape



TM-1350

Luccia Stone

44.875" x 44.875" (113.98 x 113.98 cm)

Pattern: A

Slate stones with irregular edges, in a random pattern

TM-700

Flagstone

48" x 48" (121.92 x 121.92 cm)

Pattern: A and B

Flagstones with hand chiseled edges grouped in a random formation



TM-1200

30" x 30" Bushed Stone

30" x 60" (76.2 x 152.4 cm)

Pattern: A

Two bushed stones with square corners and sharp beveled edges



TM-1400

12" x 12" Mexican Tile

24" x 48" (60.96 x 121.92 cm)

Pattern: A

Beautiful Mexican tiles with sandy joints

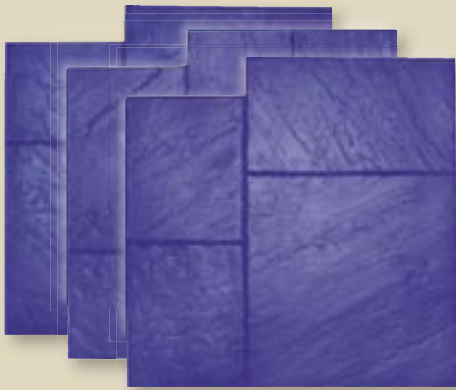
TM-1620

18" x 18" Slate

36" x 54" (91.44 x 137.16 cm)

Pattern: A

Three slates with sharp edges, laid in two rows



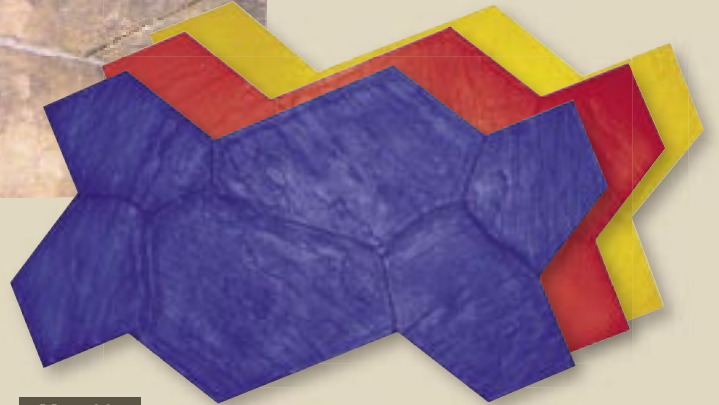
TM-100

Ashlar

36" x 36" (91.44 x 91.44 cm)

Pattern: A, B and C

An Ashlar pattern of blue stone slate



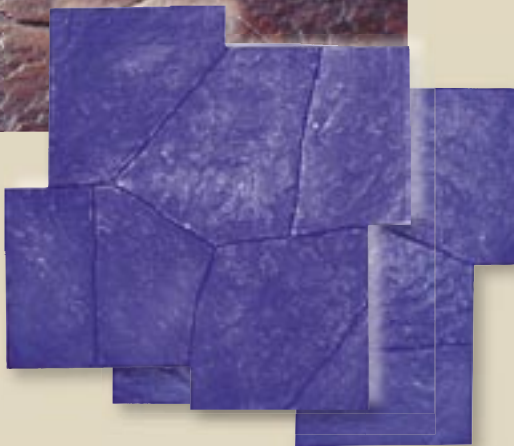
TM-1500

Verona Stone

42.75" x 68.5" (108.58 x 173.99 cm)

Red, Yellow and Blue

A unique random pattern of irregular stones



TM-1300

Castle Stone

47.5" x 47.5" (120.65 x 120.65 cm)

Pattern: A and B

Irregular shaped natural stones



TM-900

12" x 12" Slate-Butt Joint

24" x 48" (60.96 x 121.92 cm)

Pattern: A

Sharp slate squares butted up against each other in two rows



TM-1010

Slate Border

16" x 40" (40.64 x 101.6 cm)

Pattern: A

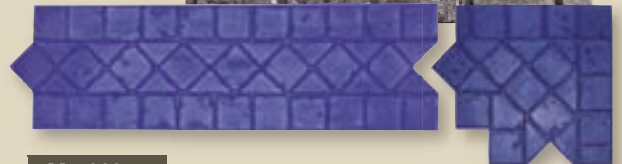


TM-1030

Bushed Border

12" x 48" (30.48 x 121.92 cm)

Pattern: A



TM-1020

Tile Border

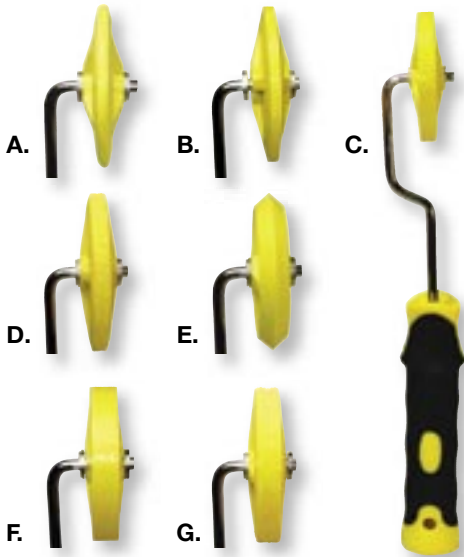
14" x 47.75" (35.56 x 121.28 cm) Pattern: A

TM-1020-1 Tile Border Corner Piece

18.25" x 20.75" (46.36 x 52.71 cm) Pattern: A

Texturing Accessories

Available for your finishing needs, BRICKFORM has all the texturing accessories to complement the full-line of texture mats.



BRICKFORM Touch-up Wheels

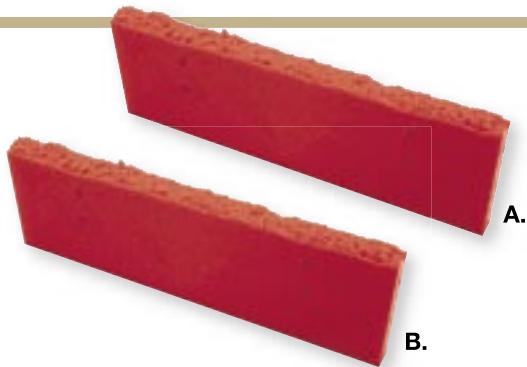
BRICKFORM Touch-up Wheels are part of the BRICKFORM Texture Mat System and are designed to help installers create clean and crisp grout lines. These wheels are very versatile and lightweight, making them easy to use; even in the tightest areas. BRICKFORM Touch-up Wheels are available in seven styles to compliment the full range of BRICKFORM Texture Mats.

A.	FM-6510	1/4" Round Joint	2" Diameter
B.	FM-6520	3/16" Flat Joint	2" Diameter
C.	FM-6530	3/8" Flat Joint	2" Diameter
D.	FM-6540	3/8" Sanded Joint	2" Diameter
E.	FM-6550	1/2" Wedge Joint	2" Diameter
F.	FM-6560	1/2" Flat Joint	2" Diameter
G.	FM-6570	1/2" Sanded Joint	2" Diameter

BRICKFORM Pounders

Find the pounder that is right for you and your job. BRICKFORM now offers a new BRICKFORM Aluminum Handle Pounder that is light with a long-handled grip. It is designed with a flexible head that reduces fatigue on the neck and shoulders. Of course, you can't forget about the popular Original BRICKFORM Pounder that has a rigid head with a fixed placed handle. Two great pounders to achieve optimum detail on the concrete surface.

A.	FP-100	Fiberglass Handle	10" x 10"	19 Lbs.
B.	FP-200	Fiberglass Handle	12" x 12"	20 Lbs.
C.	FP-300	Fiberglass Handle	15" x 15"	23 Lbs.
D.	FP-400	Aluminum Handle	12" x 12"	15 Lbs.
E.	FP-500	Aluminum Handle	15" x 15"	18 Lbs.



BRICKFORM Grouting Tools

BRICKFORM Grouting Tools create a sanded grout line. Use the rigid tool for straight lines and the flexible tool for curved or wavy grout lines.

A.	FM-6310	Rigid	3/8" x 8"
B.	FM-6300	Flexible	3/8" x 8"

BRICKFORM Aluminum Chisels

BRICKFORM Aluminum Chisels are lightweight, easy to handle and designed with the concrete finisher in mind. Cut control joints in wet concrete, create your own pattern or touch-up grout lines with ease. BRICKFORM Aluminum Chisels are available in seven different sizes to fit your needs.

A.	A-600	30" Chisel
B.	A-700	18" Chisel
C.	A-705	12" Chisel
D.	A-800	8" Chisel
E.	A-803	4" Chisel
F.	A-804	3" Chisel
G.	A-805	1 1/2" Chisel



Versatile Coloring Systems

Gray concrete can be structurally sound but visually unattractive. BRICKFORM offers a wide range of decorative answers that provide a dramatic element for any setting, from a patio to a showroom floor. On the next pages you will discover many coloring treatments to meet your needs.



Integral Color

Disclaimer - When choosing colors, use the appropriate BRICKFORM color selection guide for more accurate matching. Colors shown here display only the range of BRICKFORM options available. *To confirm an exact color, have your contractor prepare a color sample for your approval before actual construction.* BRICKFORM accepts no responsibility for color matching or misprints.



LC 24 Standard Colors 1 Cubic Yard



Premium pricing applies to green Powdered Integral Colors.

PC 19 Standard Colors 1 Bag

BRICKFORM Liquid Integral Color

BRICKFORM Liquid Color is made from the finest UV-resistant pigments available. BRICKFORM Liquid Color is produced to a one-percent tolerance to established plant standards and also complies with ASTM C979, Pigments for Integrally Colored Concrete. BRICKFORM Liquid Color is designed to suspend and disperse the iron oxide pigments evenly. BRICKFORM Liquid Color is available in standard and designer colors. Custom colors and color matching are also available.

- Dust Free
- UV-Resistant Color
- Mixes Evenly
- Meets ASTM C979



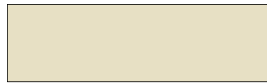
BRICKFORM Powdered Integral Color

BRICKFORM Powdered Color is a powdered-based pigment designed to color the cement paste in a concrete mixture. Powdered Color can be used for cast-in-place, pre-cast, and tilt-up, concrete block, pavers, and textured concrete. BRICKFORM Powdered Color is available in 19 standard colors. BRICKFORM Powdered Color is pre-packaged in a two-part system designed to reduce leaks and spills. * High volume orders may require bulk packaging

- Dissolvable Interior Plastic Bag
- UV-Resistant
- Mixes Evenly
- Meets ASTM C979



BRICKFORM Color Hardener & Antique Release Standard Colors



GOLDEN SANDSTONE 320



ADOBE BUFF 1080



SANDY BUFF 1070



SANDSTONE 325



DESERT TAN 350



ASH WHITE 1030



OYSTER WHITE 250



SUN BUFF 1090



SMOKEY BEIGE 1010



NUTMEG 300



DOVER BLUE 625



STONE GRAY 615



LIGHT GRAY 600



MEDIUM GRAY 200



DARK GRAY 100



FRENCH GRAY 815



WEATHERED SAGE 1040



SHADOW SLATE 1045



SLATE GREEN 825



SMOKEY BLUE 650

Disclaimer - When choosing colors, use the appropriate BRICKFORM color selection guide for more accurate matching. Colors shown here display only the range of BRICKFORM options available. To confirm an exact color, have your contractor prepare a color sample for your approval before actual construction. BRICKFORM accepts no responsibility for color matching or misprints.

BRICKFORM Color Hardener

Concrete Colorant and Hardener

BRICKFORM Color Hardener is manufactured with the finest UV-resistant pigments and premium aggregates. BRICKFORM Color Hardener is designed to work with imprinting tools to produce clear, sharp impressions that enhance the finished appearance of any hardscape. When properly applied and troweled into newly placed, fresh concrete, it forms a colored concrete surface that is resistant to weathering, wear and normal abrasion. Color Hardener is available in 42 standard colors. Custom colors and color matching are also available



- Streak-Free, Non-Fading
- Denser, More Durable Surface
- Improves Abrasion Resistance
- Can Be Antiqued and Stained
- 42 Standard Colors
- Custom Colors Available
- Compatible with Stampably Overlay OL-60

CH 42 Standard Colors 5 Gallon Bucket

- Custom Colors and Color Matching Available



(Color chart also applies to Overlay Liquid Colorant, see page 39 for companion products.)



Disclaimer - When choosing colors, use the appropriate BRICKFORM color selection guide for more accurate matching. Colors shown here display only the range of BRICKFORM options available. To confirm an exact color, have your contractor prepare a color sample for your approval before actual construction. BRICKFORM accepts no responsibility for color matching or misprints.

BRICKFORM Antique Release

Colored Bond-Breaker

BRICKFORM Antique Release imparts a second color while serving as a bond breaker for stamping. It is made from a finely ground formula that creates beautifully antiqued and textured concrete surfaces. Antique Release is available in 42 standard colors to match or contrast with BRICKFORM Color Hardener. Custom colors and color matching are also available.



- Prevents Concrete Buildup
- Prolongs Tool Life
- Streak-Free, Fade-Resistant
- Unlimited Effects and Color Combinations
- 42 Standard Colors
- Custom Colors Available

RA 42 Standard Colors 5 Gallon Bucket

- Custom Colors and Color Matching Available



BRICKFORM Color FreestylePRO & Cem-Coat Standard Colors -



GOLDEN SANDSTONE 320



ADOBE BUFF 1080



SANDY BUFF 1070



SANDSTONE 325



DESERT TAN 350



ASH WHITE 1030



OYSTER WHITE 250



SUN BUFF 1090



SMOKEY BEIGE 1010



NUTMEG 300



DOVER BLUE 625



STONE GRAY 615



LIGHT GRAY 600



MEDIUM GRAY 200



DARK GRAY 100



FRENCH GRAY 815



WEATHERED SAGE 1040



SHADOW SLATE 1045



SLATE GREEN 825



SMOKEY BLUE 650

BRICKFORM FreestylePRO Stain

Penetrating Water-Based Stain

BRICKFORM FreestylePRO is a penetrating, polymer-modified stain designed to add color and highlighting to cured concrete or overlay surfaces. BRICKFORM FreestylePRO Solid-Color™ is opaque, covering the entire surface. BRICKFORM FreestylePRO Highlighter™ is transparent and can be used for antiquing. BRICKFORM FreestylePRO does not react to chemicals in concrete making it consistent and controllable. The stain actually penetrates the surface and forms a breathable finish that requires no sealer.

BRICKFORM FreestylePRO can be used for unsealed concrete flatwork, concrete block, pavers, and textured concrete. When the application surface is properly cleaned, it will cover discolorations and stains. BRICKFORM FreestylePRO is available in 42 standard colors. A BRICKFORM FreestylePRO kit will cover approximately 200-400 square feet.



- Penetrating Solid or Transparent Color
- No Sealer Required
- Dries Quickly
- No VOC's

FF	Solid-Color Kit
FE	Highlighter Kit
FB-800	8" Applicator Brush
FB-1000	10" Applicator Brush



Before: old, discolored concrete



After: FreestylePRO Solid-Color Stain



After: FreestylePRO Highlighter is used for antiquing



(FreestylePRO and Cem-Coat are Made-to-Order coloring products.)



COCONUT 330



CAPPUCCINO 735



CREAM BEIGE 310



SUMMER BEIGE 1035



PECOS SAND 1055



ANTIQUÉ ROSE 1020



ANTIQUÉ CORK 1050



SUNBAKED CLAY 515



TERRA COTTA 700



AUTUMN BROWN 425



BLUSH BEIGE 1015



BUFF TAN 375



DUSTY ROSE 525



CHESTNUT 400



WALNUT 810



VENETIAN PINK 115



QUARRY RED 1065



TILE RED 500



VICTORIAN RED 575



BRICK RED 550

Disclaimer - When choosing colors, use the appropriate BRICKFORM color selection guide for more accurate matching. Colors shown here display only the range of BRICKFORM options available. To confirm an exact color, have your contractor prepare a color sample for your approval before actual construction. BRICKFORM accepts no responsibility for color matching or misprints.

BRICKFORM Cem-Coat

Colored Cementitious Coating

BRICKFORM Cem-Coat is a richly pigmented coating, opaque, high-strength, and perfect for coloring any unsealed, concrete surface. BRICKFORM Cem-Coat reduces the effects of fungus and is extremely UV-resistant. BRICKFORM Cem-Coat is available in all 42 standard BRICKFORM Color Hardener and BRICKFORM Antique Release colors. Custom color matching is also available.

- Richly Pigmented Colors
- UV-Resistant
- Use to Antique, Marbleize, and Faux Paint
- Suitable For All Cementitious Surfaces

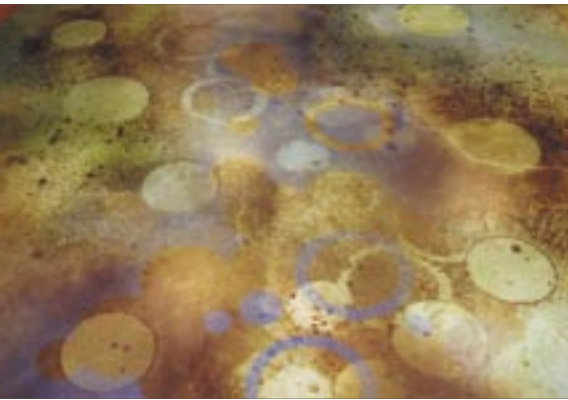


CC	42 Standard Colors	1 Gallon Kit
CC4	42 Standard Colors	4 Gallon Kit



BRICKFORM Blush-Tone Acid Stain

BRICKFORM Blush-Tone Acid Stain lets you create colors with real depth that are unique and captivating. Thousands of different looks can be achieved ranging from the understated elegance of burnished leather to the ageless beauty of natural stone. Blush-Tone Acid Stain will open the door to a whole new palette of creative expression.



JADE
CS-100



TURQUOISE
CS-200



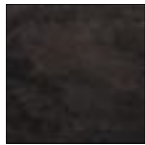
COFFEE
CS-300



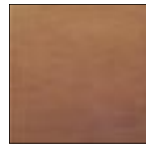
CARAMEL
CS-400



MAHOGANY
CS-500



EBONY
CS-600



MISSION BROWN
CS-700



AMBER
CS-800



OLIVE
CS-900



WALNUT
CS-1000

Disclaimer - When choosing colors, use the appropriate BRICKFORM color selection guide for more accurate matching. Colors shown here display only the range of BRICKFORM options available. To confirm an exact color, have your contractor prepare a color sample for your approval before actual construction. BRICKFORM accepts no responsibility for color matching or misprints.

BRICKFORM Blush-Tone Acid Stain

Chemical Stain For Concrete

BRICKFORM Blush-Tone Acid Stain reacts with minerals that exist in newly cured or existing concrete, penetrating the very top layer of the concrete surface with color that will not chip, crack, or peel. The colors produced in each section of concrete will be unique with captivating, multi-colored intensities that become a permanent part of the concrete. BRICKFORM Blush-Tone Acid Stain is available in 10 standard colors.



- Penetrating Chemical Stain
- Variegated Color
- Will Not Chip, Crack, Or Peel
- Use On Floors And Walls

CS 10 Standard Colors 1 Gallon Bottle



BRICKFORM E-Stain

BRICKFORM E-Stain is a water-based formulation containing reactive mineral compounds and proprietary admixtures. BRICKFORM E-Stain contains no hydrochloric acid, making it more environmentally friendly. BRICKFORM E-Stain is ideally suited for use in the Micro-Topping, SM Professional Grade, Stampable Overlay, and cast in place concrete.



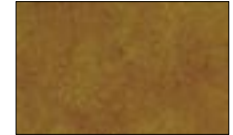
EVERGREEN
ES-100



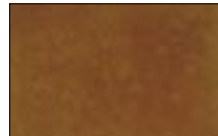
BLUE DI MARE
ES-200



MOSS
ES-300



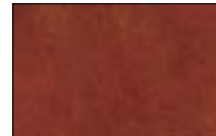
BRONZE
ES-400



SUNSET
ES-500



EBONY
ES-600



SADDLE
ES-700



RUSTY BROWN
ES-800

Disclaimer - When choosing colors, use the appropriate BRICKFORM color selection guide for more accurate matching. Colors shown here display only the range of BRICKFORM options available. To confirm an exact color, have your contractor prepare a color sample for your approval before actual construction. BRICKFORM accepts no responsibility for color matching or misprints.

BRICKFORM E-Stain

Reactive Stain For Concrete

BRICKFORM E-Stains are penetrating, reactive stains that produce unique color effects in finished cementitious surfaces that simulate the natural shadings and aged appearance of stone or masonry. The color effect produced is unique to each stained surface and cannot be duplicated with other materials. BRICKFORM E-Stain creates a chemical reaction within the concrete substrate. This reaction slightly etches the concrete surface to provide deeper and more permanent color.

The color value of the stain can be reduced by blending the stain with E-Stain Plus. Special colors can be produced by blending two or more colors together.



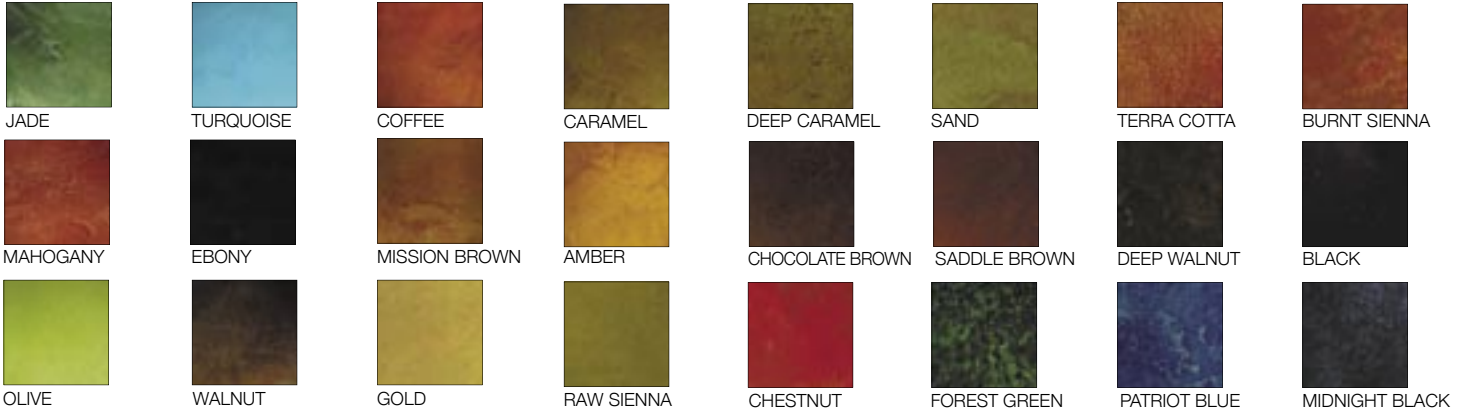
- Eco-Friendly Reactive Stain
- Acid-Like Characteristics Without the Harmful Acid Effects
- All Colors (except EBONY) Do Not Contain Sodium Dichromate a Known Carcinogen
- No Harmful Fumes
- D.O.T. Non-Hazardous Shipping Certified Stain

ES	8 Standard Colors	1 Gallon Bottle
ES-1100	E-Stain Plus	1 Gallon Bottle



BRICKFORM Pro-Dye

BRICKFORM Pro-Dye is a translucent dye, designed to penetrate and color any cementitious surface. Pro-Dye dries quickly, and can be easily sprayed on floors and vertical surfaces. In most cases, cleanup and sealing can be done in the same day. It is ideal for polished concrete and it can be used as a base-color for Blush-Tone Acid Stain to achieve dramatic results.



Disclaimer - When choosing colors, use the appropriate BRICKFORM color selection guide for more accurate matching. Colors shown here display only the range of BRICKFORM options available. To confirm an exact color, have your contractor prepare a color sample for your approval before actual construction. BRICKFORM accepts no responsibility for color matching or misprints.

BRICKFORM Pro-Dye

Interior Quick-Dry Concrete Dye

BRICKFORM Pro-Dye penetrates the surface of concrete, creating a layer of translucent color that dries quickly and will not chip, crack, or peel. Pro-Dye is packaged in powdered form to be mixed in proportion with acetone. BRICKFORM Pro-Dye is excellent in vertical applications, stencils, and logos because it dries so quickly. Pro-Dye colors are vivid with unique multi-colored intensities, similar to the mottling effect of acid stain. Colors can be combined to create an unlimited number of color variations.



- Interior Use
- Large Selection Of Colors
- Easy To Spray Apply
- Dries Quickly
- Ideal For Polished Concrete
- Use Any Spray-On Sealer

DS	24 Standard Colors	Bottle
DS-8000	Mottling and Penetrating Agent	Bottle
DS-8500	Tip Kit with Check Valve	Kit



BRICKFORM ARTesian Stain

ARTesian stains are penetrating, water-based stains that produce unique color effects in finished cementitious surfaces that simulate the natural shadings and aged appearance of stone or masonry. ARTesian Stain may be applied over smooth troweled or textured concrete, cement-based overlays, vertical or horizontal concrete and masonry surfaces, artificial rock displays, water features and themed finishes.



TIGEREYE



BUTTERNUT



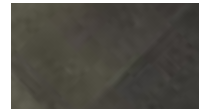
HARVEST GOLD



CAMELBACK



BURLAP



EBONY



DRIED THYME



OLYMPIC BRONZE



AGED WALNUT



SCARLET



CHESTNUT



CAJUN RED



SANDBANK



OAK BARREL



OAKMOSS



GREENBELT



CAPRI



DEEP SEA

Disclaimer - When choosing colors, use the appropriate BRICKFORM color selection guide for more accurate matching. Colors shown here display only the range of BRICKFORM options available. To confirm an exact color, have your contractor prepare a color sample for your approval before actual construction. BRICKFORM accepts no responsibility for color matching or misprints.

BRICKFORM ARTesian Stain

Penetrating, Water-Based Stain

The color effect produced is unique to each stained surface and cannot be duplicated with other materials. ARTesian Stain contains no acids or harmful chemicals and works as an alternative to typical reactive acid stains. There are no acids or harmful chemicals integrated in its design.



- Zero VOC
- Water-based
- Interior/Exterior Use
- Apply With Sprayer
- Must Be Sealed With Solvent-Based Sealer (i.e. Gem-Seal)

AS 18 Standard Colors 1 Gallon Bottle



Resurfacing Systems

BRICKFORM resurfacing products quickly rejuvenate concrete surfaces without disruption or high cost. Concrete no longer needs to be removed and repoured. You can turn old concrete into a fresh colorful look with Micro-Topping; or you can produce a sophisticated natural stone look with Stampable Overlay. Texture, color, stain – any finish of your choice is possible.

BRICKFORM Stampable Overlay Concrete Overlay

BRICKFORM Stampable Overlay is a premixed blend of special materials that, when mixed with water, forms a thin, concrete coating. BRICKFORM Stampable Overlay is easy to install and forms a tough, durable topping that will withstand years of wear. When used on properly prepared surfaces, BRICKFORM Stampable Overlay will permanently bond to concrete surfaces.

- Interior Or Exterior Use
- Creates A New 1/4"-1/2" Surface
- Can Be Textured & Colored
- Durable



OL-60 4 Gallon Bucket (Gray Mix)
For use with Color Hardener and Antique Release only

SC-60 60 lb. bag (White Mix)
For use with Overlay Liquid Colorant only

BRICKFORM Triple Seven Bond Coat Primer for Cementitious Overlays

BRICKFORM Triple Seven Bond Coat is an entirely new concept in primers for cementitious materials. It prevents the concrete from absorbing water from the overlay material making it easier to spread and achieve a smooth surface. Also, Triple Seven Bond Coat is a reactive primer, remaining active for at least two hours after it is applied. It reacts and forms a chemical link between the overlay and the substrate. Triple Seven Bond Coat increases the bond strength by creating a more efficient chemical link between the concrete and the overlay.

- "Reactive Primer"
- Easy Application
- Greatly Enhances Bonding To Concrete
- Prevents The Sub-Floor From Absorbing Moisture From Overlay
- Interior Or Exterior Use



BC-007 5 Gallon Bucket





Overlay Liquid Colorant

Specifically designed for Brickform Micro-Topping, SM Professional Grade and Stampable Overlay (SC-60, White Mix). Available in 39 standard colors.

(See color chart on pages 28-29.) Six per case, cannot break cases.

Overlay Liquid Colorant not available in Smokey Blue.

MTC- 10 Oz. Bottle

BRICKFORM Micro-Topping

Smooth Grade

BRICKFORM Micro-Topping is used on interior or exterior cured concrete to create a durable surface that can be colored or stained. It is available as a white or gray dry powder in Smooth grade, and mixed with Brickform Liquid Polymer. The Smooth Grade is applied over SM Professional Grade for a smooth finish when desired. The mixed materials form a thin concrete coating that can be used to restore or repair any concrete surface.

- Interior/Exterior
- Creates A New Surface
- Can Be Colored & Stained



MT-1500 SG	Gray Smooth	40 Lb. Bag
MT-2500 SG	White Smooth	40 Lb. Bag
MT-3000	Liquid Polymer	5 Gallon Bucket
MTC	Overlay Liquid Colorant	Colors 1 Bag

SM Professional Grade™

Rough Grade Micro-Topping Sprayable Cementitious Overlay

BRICKFORM SM Professional Grade is a sprayable cementitious overlay that is designed to be applied with a hopper gun. It can be integrally colored using BRICKFORM Overlay Liquid Colorant. BRICKFORM SM Professional Grade can be used to create the look of brick, stone, tile or other unique specialty finishes.



- Ease Of Use
- Can Be Integrally Colored
- Can Be Stained
- Spray Or Trowel
- Water Resistant

MT-4000 60 Lb. Bag



Premium Sealers

BRICKFORM sealers bring out the natural beauty of the textures and color unique to a decorative surface. At the same time, these superior, durable sealers protect the finish from sun damage, yellowing, scuffing and premature wear. Stamping, coloring and sealing make up the dependable Brickform systems approach for success.

BRICKFORM Poly-Astic

Premium, High Build, Poly-Aspartic Sealer
- Zero VOC

BRICKFORM Poly-Astic is a two-part high solids, high build sealer designed for use on concrete or masonry surfaces. Poly-Astic allows for single coat high film thickness in a water clear finish that may also be tinted to specifications. Poly-Astic provides a very smooth, mirror like finish not attainable with any other product.

- Non-Yellowing, Crystal Clear
- Zero VOC
- Prolongs Life Of Surface
- Enhances Color
- Easy To Apply

GS-1	Gem-Seal 400 VOC, 1 Gallon Bottle
GS-5	Gem-Seal 400 VOC, 5 Gallon Can
GS-1-100	Gem-Seal 100 VOC, 1 Gallon Bottle
GS-5-100	Gem-Seal 100 VOC, 5 Gallon Can
PA-1	Poly-Astic, 2 Gallon Kit

BRICKFORM Gem-Seal

High-Gloss Sealer - 400 VOC or 100 VOC

BRICKFORM Gem-Seal is a high-gloss, solvent-based, non-yellowing sealer. A light coating of this UV-resistant sealer will protect and enhance colored and textured concrete. Use BRICKFORM Gem-Seal on porous concrete and masonry to form a shield against stains and mildew.

- Non-Yellowing, Crystal Clear
- Dries To A “Wet-Look” Finish
- Interior/Exterior Use
- Enhances Color

PS-1	Poly-Seal, 1 Gallon Bottle
PS-5	Poly-Seal, 5 Gallon Can
MM-100	Matte-Magic, 8 Ounce
MS-5	Safety-Seal 400 VOC, 5 Gallon Can
MS-5-100	Safety-Seal 100 VOC, 5 Gallon Can
SS-5	Satin-Seal, 5 Gallon Bucket

TIP - Industry standards caution using tape over sealers. Applying tape over sealers may cause detachment of the sealer from the surface.



BRICKFORM Poly-Seal

High-Sheen "Wet-Look" Sealer - 650 VOC

BRICKFORM Poly-Seal is a high-gloss, solvent-based, super-tough acrylic sealer that is easy to clean and maintain. Poly-Seal protects with a UV-resistant coating that penetrates the surface to retard efflorescence and resist oil, grease and food stains.

- Non-Yellowing, Crystal Clear
- Dries To A High-Sheen Finish
- Interior/Exterior Use
- Enhances Color
- Available In Some Markets

BRICKFORM Satin-Seal

Satin-Finish "Natural-Look" Sealer - 100 VOC

BRICKFORM Satin-Seal is a non-flammable product, designed to protect concrete with a satin finish. This water-based acrylic VOC-compliant sealer reduces the effect of efflorescence on porous surfaces, while forming a non-yellowing, scuff-resistant finish that resists moisture penetration.

- Non-Yellowing
- Dries To Satin-Finish
- Interior/Exterior Use
- Scuff-Resistant



BRICKFORM Safety-Seal with Traction-Grip

Low-Sheen Sealer - 400 VOC or 100 VOC

BRICKFORM Safety-Seal is designed to be slip-resistant and is ideal around pool decks and areas where water or moisture can accumulate. Safety-Seal is a solvent-based sealer that protects concrete surfaces from stains and mildew. BRICKFORM Safety-Seal dries to a beautiful matte finish that is UV-resistant.

- Lacquer Based
- Dries To A Low-Sheen Finish
- Interior/Exterior Use
- Micronized Slip-Resistant Additives

BRICKFORM Matte-Magic

Gloss Reducing Additive

BRICKFORM Matte-Magic is a liquid, field-added, flattening agent additive for Brickform solvent based sealers. The original topcoat gloss is reduced based on the amount of additive used. The finished gloss reflectance can be varied from semi-gloss to satin. Matte-Magic comes in 8 oz units, each unit is added to a 5 gallon sealer for gloss reduction. If more reduction is desired, a second unit may be added.

- Effectively reduces gloss
- Reduced reflectance helps distinguish floor color
- Liquid Additive is easy to measure and mix
- Additive does not affect viscosity



BRICKFORM Liquid Release

Colorless Bond-Breaker For Stamping

BRICKFORM Liquid Release is a colorless bond-breaker, formulated and recommended for use with all BRICKFORM Texture Mats and with many other architectural concrete texturing systems. BRICKFORM Liquid Release forms a lubricating barrier that prolongs the life of the imprinting tools by decreasing the friction between the mats and the concrete.

- Prevents Mats Sticking To Concrete
- Easy-To-Apply Liquid
- Prolongs Tool Life
- Interior/Exterior Use
- Apply With Sprayer

LR-1	1 Gallon Bottle
LR-5	5 Gallon Can



BRICKFORM Evaporation Retarder

Extends Working Time For Coloring And Stamping

BRICKFORM Evaporation Retarder is formulated to be V.O.C. compliant. This water-based film minimizes the evaporation of water from the surface of newly placed concrete, extending both workability and finishing time. BRICKFORM Evaporation Retarder comes in an odorless concentrate that is mixed with water, making it economical and environmentally friendly. BRICKFORM Evaporation Retarder will not affect the final cure and concrete strength.

- Economical
- Easy To Apply
- Interior/Exterior Use
- Apply With Sprayer

EV-1000	1 Gallon Bottle
EV-2000	5 Gallon Bucket



E-Etch

BRICKFORM E-Etch is an environmentally friendly industrial strength floor cleaner, degreaser and light etching product. It is ideal for cleaning and preparing cementitious surfaces for acid staining, decorative overlays, water base stains, coatings application, etc. It may also be used on concrete, stucco, terrazzo and most masonry surfaces to open up the pores on the surface and clean grime, dirt, grease, scuff marks and stains.

- Biodegradable
- Rinse With Water
- Non-Hazardous
- Non-Abrasive
- Non-Carcinogenic

ES-1200 1 Gallon Bottle



BRICKFORM Dura-Wax

Premium Acrylic Floor Wax

BRICKFORM Dura-Wax is an acrylic wax that forms a long-lasting protective coating over a BRICKFORM sealer. Dura-Wax provides wear-resistant sacrificial coating. Dura-Wax stands up to the heaviest of traffic conditions. It is easily applied and can be re-coated up to 100 times without having to strip the floor. It will not powder and it can be mopped or cleaned time after time without damaging its original shine. BRICKFORM Dura-Wax is ideal for ongoing maintenance.

- Super-Tough Film
- Semi-Gloss
- Interior Use Only
- Slip-Resistant

DW-1000 1 Gallon Bottle

DW-5000 5 Gallon Bucket



BRICKFORM Antique Release/ Efflorescence Remover

Concrete Cleaner

BRICKFORM Antique Release/Efflorescence Remover is a biodegradable concrete cleaner. It is perfect for the removal of excess BRICKFORM Antique Release or for the removal of efflorescence. Antique Release/Efflorescence Remover is completely biodegradable and contains no toxins or carcinogens; however, it is corrosive and should be handled with care.

- Controlled Antique Release Removal
- Removes Cement-Scale
- Completely Biodegradable
- Applied With A Brush Or Sprayer

ER-1 1 Gallon Bottle



How To Order Texture Skins

Select the characteristics of your Texture Skin by choosing one option from each section and entering the order number or letter in sections A through E. Then build the part number.

For more information and approximate lead times on special or custom orders, please contact Inside Sales at 1-800-483-9628.

Section A. Choose the Texture (Indicates Made-to-Order, 2-week production lead time)

- | | | |
|---|---|--|
| <input type="checkbox"/> [A] Blue Stone | <input type="checkbox"/> [H] Roman Slate | <input type="checkbox"/> [R] Elk Mountain (veined) |
| <input type="checkbox"/> [B] Limestone  | <input type="checkbox"/> [J] Yucatan  | <input type="checkbox"/> [S] Regal Ashlar NEW |
| <input type="checkbox"/> [C] Rough Stone | <input type="checkbox"/> [K] Sierra Seamless | <input type="checkbox"/> [T] Cracked Mud NEW |
| <input type="checkbox"/> [D] Heavy Stone | <input type="checkbox"/> [L] Rocky Mtn. Stone  (Large size is 36"x48") | <input type="checkbox"/> [U] Lunar Rock NEW |
| <input type="checkbox"/> [E] Sanded Slate | <input type="checkbox"/> [O] Smooth Slate | <input type="checkbox"/> [V] Super Slate NEW |
| <input type="checkbox"/> [F] Renaissance Slate | <input type="checkbox"/> [P] Desert Slate | <input type="checkbox"/> [W] Sidewalk Stone NEW |
| <input type="checkbox"/> [G] Chiseled Slate  | <input type="checkbox"/> [Q] Elk Mountain | |

Section B. Choose the Size of the Texture Skin

- | | | |
|--|---|--|
| <input type="checkbox"/> [1] Extra Small (Approx. 12" x 12") | <input type="checkbox"/> [3] Medium (Approx. 36" x 36") | <input type="checkbox"/> [5]*Extra Large (Approx. 60" x 60")
<i>Limestone, Rough Stone, Heavy Stone, Sierra Seamless, and Desert Slate only</i> |
| <input type="checkbox"/> [2] Small (Approx. 24" x 24") | <input type="checkbox"/> [4] Large (Approx. 48" x 48") | |

Section C. Choose a Flex-Rating

- | | |
|--|---|
| <input type="checkbox"/> [S] Ultra Flexible (soft)  | <input type="checkbox"/> [M] Standard Flexible (medium) |
|--|---|

Section D. Choose the shape of the Texture Skin

- | | |
|--|-------------------------------------|
| <input type="checkbox"/> [1] Free Formed (rounded)
Custom order – 2 week production lead time | <input type="checkbox"/> [2] Square |
|--|-------------------------------------|

Section E. Choose with or without handles (Ultra-Flexible not available with handles)

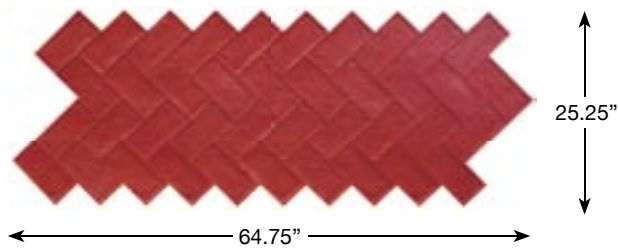
- | | |
|--|---|
| <input type="checkbox"/> [N] Without Handles
Custom order – 2 week production lead time | <input type="checkbox"/> [Y] With Handles
(Sizes medium, large, and extra large) |
|--|---|

PART NUMBER	Section A	Section B	Section C	Section D	Section E
FM- (insert numbers/letters chosen from sections)	_____	_____	_____	_____	_____

Part number Sample: A4M2Y = Blue Stone, Large, Medium-Density, Square, With Handles

Disclaimer - All measurements are nominal. Skin and texture mat measurements are based on the Brickform mold size. Urethane has a natural tendency to shrink or expand, depending on environmental factors. This does not affect how the mats fit together.

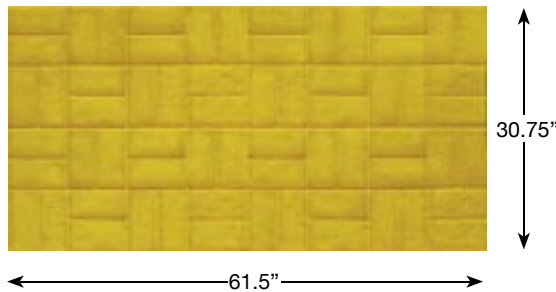
Speciality Gang Tools (Made-to-Order ^{M2O})



FM-5000GANG **NEW**

Herringbone Used Brick Red

A weatherworn brick surface with an uneven texture and rounded broken edges



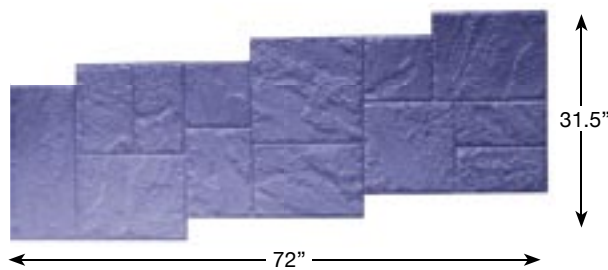
FM-5200GANG **NEW**

Basket Weave Used Brick

156.2" x 78.1" (39.05 x 78.10 cm)

Yellow

Used bricks in a basket weave pattern with smooth un-grouted joints

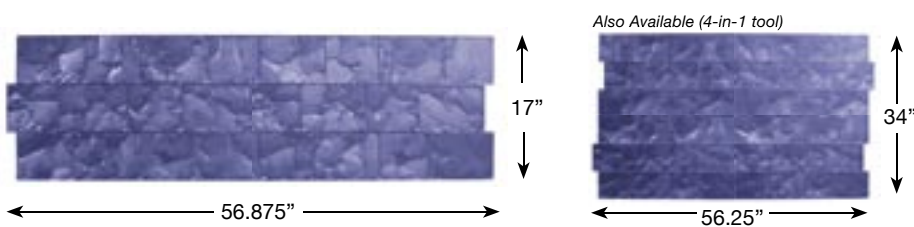


FM-100GANG **NEW**

Rough Cut Ashlar

Blue

Rough hand-tooled stones arranged in an Ashlar pattern

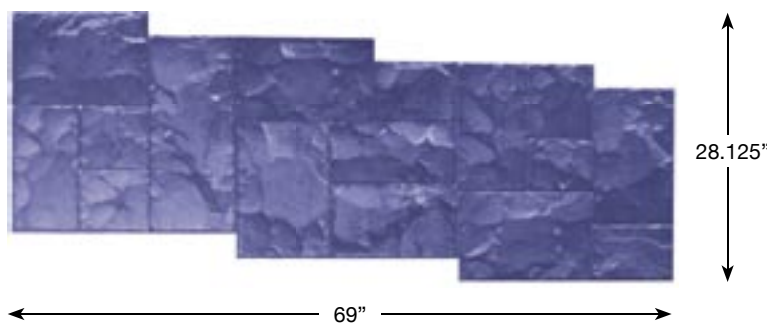


FM-540GANG **NEW**

London Cobble

Blue

A traditional lightly textured cobblestone pattern

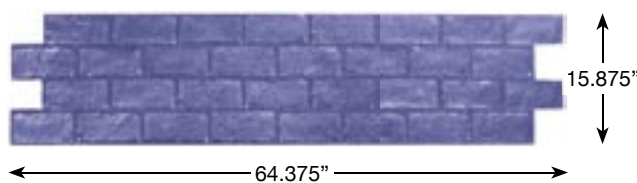


FM-3125GANG **NEW**

Ashlar Cut Slate

Blue

A naturally laminated stone texture split along parallel planes, hand-tooled to create a more pronounced chipped fragmented texture with small deep joints



FM-5100GANG **NEW**

Running Bond Used Brick

Blue

Used bricks laid end-to-end, with sandy joints

Speciality Border Tools (Made-to-Order)




FM-925 

Swirl Border

12" x 48" (30.48 x 121.92 cm) Blue


An elegant scrolling pattern with a surrounding smooth border

FM-926 

Swirl Border Corner

12" x 12" (30.48 x 30.48 cm) Blue




FM-910 

Grapevine Border

12" x 48" (30.48 x 121.92 cm) Blue

A grapevine border with textured background

FM-911 

Grapevine Border Corner

12" x 12" (30.48 x 30.48 cm) Blue




FM-930 

Spring Medallion

12" x 36" (30.48 x 121.92 cm) Yellow

A classic geometric pattern with curved shapes



FM-912 

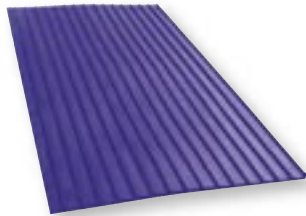
Grapevine Strand


12" x 48" (30.48 x 121.92 cm) Blue

A stand-alone grapevine border

Idea: Place Grapevine face down under texture mat, and then stamp to create an unique dual image.

Cal-Trans Series Texture Mats (Made-to-Order)



HR-100 

Caltrans 1 1/2" Straight Grooves

24.125" x 47.875" (61.27 x 121.60 cm)

Blue

Smooth 1/4" grooves spaced 1 1/2" apart

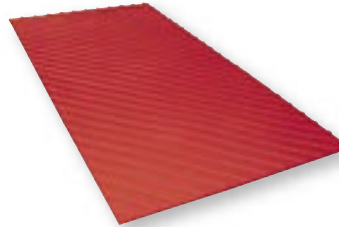
Also Available:


HR-400

Caltrans 3/4" Straight Grooves

12.25" x 48.25" (31.12 x 122.56 cm) Blue

Smooth 1/4" grooves spaced 1/2" apart



HR-200 L 

Caltrans 45° Left

24.125" x 48.125" (61.27 x 122.23 cm)

Red

Smooth grooves running the entire length of the tool at a 45° angle (Left orientation)

Also Available:

HR-200 R

Caltrans 45° Right

24.125" x 48.25" (61.27 x 122.56 cm) Yellow

Smooth grooves running the entire length of the tool at a 45° angle (Right orientation)

Graphic Warning Imprints (Made-to-Order)

BRICKFORM carries a complete line of graphic imprints. Call for available patterns **1-800-483-9628**.



FM-6110 

No Dumping Flows To River

12" x 33.937" (30.48 x 86.2 cm)

Blue



FM-6240 

High Voltage

5.5" x 12" (13.97 x 30.48 cm)

Yellow



FM-6210 

Post Tension

8" x 12" (20.32 x 30.48 cm)

Red

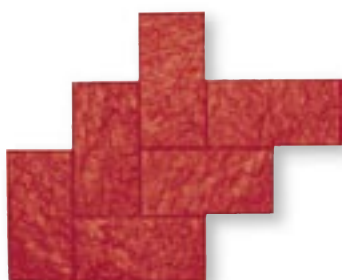
Made-to-Order Tools

Part #	Color	Description	Size
FM- 20-R	Y	20 x 20 Hand Tool-Stone Texture S/O	20 x 20
FM- 20-S	B	Hand Tool-Slate Texture S/O	20 x 20
FM- 225	Y	4 x 4 Mountain Stone Granite Sets S/O	24 x 24
FM- 275	Y	8 x 8 Granite Sets S/O	24 x 24
FM- 285	B	Old English Cobblestone (Stair Step)	20 3/4 x 43 1/2
FM- 325	B	12 x 12 Heavy Stone S/O	24 x 24
FM- 350	B	12 x 12 Utah Stone S/O	24 x 24
FM- 375	B	Stone Texture with 1/2" Joints	24 x 24
FM- 400	B	12 x 12 Yucatan Tile S/O	24 x 24
FM- 450	B	Antiqua Stone (Stairstep)	25 x 33
FM- 660	Y	24 x 24 Keystone (Coquina Stone)	23 1/2 x 23 1/2
FM- 675	R	San Juan Pavers	29 1/2 x 30
FM- 725	R Y B	Beverly Hills Random Stone	29 1/8 x 29 1/8
FM- 795	R	Santa Fe Pebble	36 x 36
FM- 800	B	36 x 36 Blue Stone S/O	36 x 36
FM- 900	B	18 x 18 Utah Stone S/O	18 x 36
FM- 915	B	Autumn Leaf Border Tool	12 x 36



FM-915
Autumn Leaf Border
 12" x 36" (30.48 x 91.44 cm)
 Yellow
A rustic pattern featuring autumn leaves and flowers

FM- 916	Y	Autumn Leaf Border Corner	12 x 12
FM- 920	R	Whale Border Tool	12 x 48
FM-1000	R B	Opa Locka Stone S/O	19 3/4 x 29 3/4
FM-1150	R	Metro Cobble - 1 S/O	24 x 28
FM-1151	B	Metro Cobble - 2 S/O	24 x 32
FM-1250	R	4 x 12 Cut Stone Border S/O	13 x 34 7/8
FM-1275	R	4 x 8 Cut Stone Double S/O	8 3/8 x 8 3/8
FM-1280	R	4 x 12 Cut Stone Double S/O	8 3/8 x 12 7/8
FM-1285	R	Garden Stone	36 x 36
FM-1400	Y B	36 x 36 Heavy Stone Texture	36 x 36
FM-1420	Y	24 x 24 Heavy Stone Texture	24 x 24
FM-1440	Y	18 x 18 Heavy Stone Texture	18 x 18
FM-1450	R B	18 x 36 Heavy Stone Texture	18 x 36
FM-1460	B	60 x 60 Heavy Stone Texture	60 x 60
FM-1500	R B	Walkway Stone S/O	18 x 35 7/8
FM-1700	R	Large Herringbone (Rough Stone)	32 x 40



FM-1700 **S/O**
Large Herringbone
 32" x 40" (81.28 x 101.6 cm)
A porous brick texture in a classic herringbone pattern

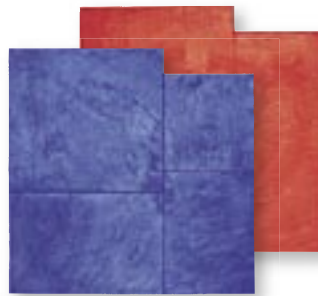
FM-2350	B	12 x 12 Blue Stone S/O	24 x 36
FM-3175A	R B	6 x 24 Yorkstone S/O	6 x 24
FM-3175B	R B	12 x 12 Yorkstone S/O	12 x 12
FM-3175C	R B	12 x 18 Yorkstone S/O	12 x 18
FM-3175D	R B	18 x 18 Yorkstone S/O	18 x 18
FM-3175E	R B	18 x 30 Yorkstone S/O	18 x 30
FM-3175G	R B	24 x 24 Yorkstone S/O	24 x 24

Part #	Color	Description	Size
FM-3175HR	B	30 x 30 Yorkstone S/O	30 x 30
FM-3175S	R B	Yorkstone Set	2 @ 6 x 24
FM-3190	R	48 x 48 Slate Texture with Joint S/O	48 x 48
FM-3575	B	12 x 24 Running Bond Slate	24 1/2 x 60 1/2
FM-3650	R Y B	Regal Ashlar S/O	36 x 36
FM-5020	R	Herringbone Used Brick (New Mold)	28 1/2 x 46
FM-5080	R	Herringbone New Brick Butt Joint	32 x 36
FM-5085	B	Herringbone Used Brick Butt Joint	32 x 36
FM-5090	R	Un-Textured Herringbone Brick with 1/2" V-Joint	32 x 36
FM-5140	B	Running Bond New Brick 1/4" Joint	23 3/4 x 35 1/2
FM-5160	B	4 x 8 Un-Textured Runningbond Brick w/ 1/2" V-Joint	19 3/8 x 34 3/4



FM-5160
Untextured Running Bond Brick with 1/2" V-Joint
 19.375" x 34.75" (49.21 x 88.26 cm)
Smooth untextured bricks with angled joints

FM-5225	R	Old English Basket Weave	16 3/4 x 33 1/2
FM-5350	R	4 x 8 Basket Weave Used Brick Border	8 1/4 x 32
FM-5375	R	4 x 8 Basket Weave New Brick Border	7 1/2 x 31 3/4
FM-5400	Y	Used Brick Corner	8 1/2 x 8 1/2
FM-5450	B	New Brick Corner	8 1/2 x 8 1/2
FM-5650	R	4 x 8 New Brick Runner	4 1/2 x 32 3/8
FM-5700	Y	Used Brick Double	8 3/8 x 8 9/16
FM-5750	B	New Brick Double	8 3/8 x 8 9/16
FM-7000	R	12 x 12 Mexican Tile-Smooth Texture	23 3/4 x 35 3/4
FM-7025	R	Santa Barbara Tile	30 3/4 x 30 3/4
FM-7125	R	Octagon Tile Flower	5 x 5
FM-7150	R Y B	Un-Textured Ashlar with 1/2" V-Joint	23 1/8 x 23 1/8
FM-8015	Y	3' Cedar Wood Flooring	18 x 82
FM-8100	B	2' Wood Plank S/O	12 x 24
FM-8200	B	3' Wood Plank S/O	12 x 36
FM-8300	B	4' Wood Plank S/O	12 x 48
FM-8400	B	6' Wood Plank S/O	12 x 72
FM-8500	B	8' Wood Plank S/O	12 x 96
FM-8600	B	Wood Block	22 1/8 x 33 1/8
OL- 100	R B	Ashlar Stone S/O	24 x 24



OL-100 **S/O**
Ashlar Stone
 24" x 24" (60.96 x 60.96 cm)
 Red and Blue
Rectangles with blue stone texture, arranged in an ashlar pattern

OL- 400	R B	Sidewalk Stone S/O	18 x 36
OL- 700	Y	24 x 24 Coquina Stone (Salt Finish) S/O	24 x 24
OL- 800	Y B	Random Stone S/O	30 x 30
TM-1000	A	4 x 12 Brick Border	12 x 48
TM-1040	A	12 x 12 Mexican Tile Border	12 x 48
TM-1100	A	Danish Fan	39 1/2 x 63 1/4
TM-1600	A	Tear Drop Fan	56 x 60
TM-1660	A	Hexagon-Smooth with 1/2" Joints	35 3/8 x 51 1/8



BRICKFORM

A Division of Solomon Colors, Inc.



Toll Free: 1-800-483-9628

Division Headquarters

11061 Jersey Blvd.
Rancho Cucamonga, CA 91730

Southwest Distribution

Dallas, Texas

Eastern Distribution

Ramsur, North Carolina

Northwest Distribution

Milton-Freewater, Oregon

Europe Distribution

Venice, Italy

Southeast Asia Distribution

Vietnam

www.brickform.com