



BRICKFORM

A Division of Solomon Colors, Inc.

*Architectural Concrete Products
and Materials Guide*

Seamless Skins

BRICKFORM Seamless Skins™ are feathered-edged skins that produce continuous texture with no grout or joint lines. BRICKFORM texture skins are available in standard-grade and ultra-flexible materials, all designed with unsurpassed quality. Seamless skins are compatible with BRICKFORM Stampable Overlay.



Blue Stone Texture (A)

A natural stone surface with a sandy texture that includes clefts which leave a layered appearance.



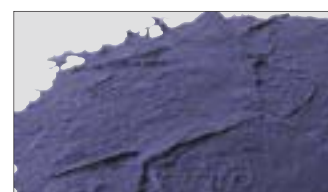
Limestone Texture (B)

A natural stone surface, similar to Veronica Stone but with a finer texture.



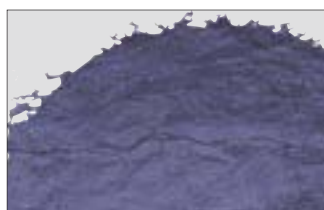
Rough Stone Texture (C)

A natural stone texture characterized by a continuous coarse surface with several distinguishing veins.



Heavy Stone Texture (D)

A rough, natural stone surface containing chips, fractures, pockmarks and veins.



Sanded Slate Texture (E)

Similar to our slate texture with the addition of a lightly sanded appearance across the entire texture field.



Renaissance Slate Texture (F)

A natural, stone surface with a slight sandstone texture that includes various veins, typically running in a similar direction.



Chiseled Slate Texture (G)

A naturally laminated stone texture, split along parallel planes, hand-tooled to create a chipped, fragmented look.



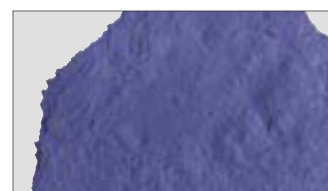
Roman Slate Texture (H)

A slate stone surface that utilizes dips, ridges and veins to create a continuously changing texture across the entire surface.



Yucatan Texture (J)

A stone surface consisting of deep chips, pits and fractures creating a continuously undulating texture.

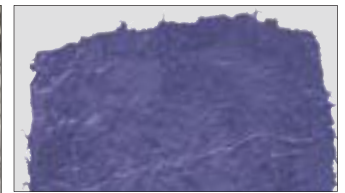


Sierra Seamless Texture (K)

A natural stone texture with an ocean-worn surface that combines rough, heavy, stone appearance with water-washed ridges, veins and clefts.

Texture skins are shown as color photographs to suggest the wide variety of finishes possible.

See page 55 for ordering information.



Smooth Slate Texture (O)

A naturally laminated stone texture, split along parallel planes, creating an uneven surface that incorporates various veins and ridges.



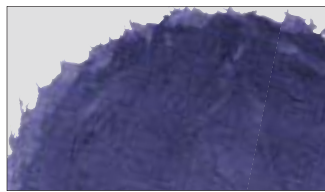
Rocky Mountain Stone Texture (L)

A natural stone surface that incorporates a rough, uneven texture with naturally etched veins and ridges.



Elk Mountain Texture (Q)

A consistent light stone texture, making it appealing for indoor and outdoor applications.



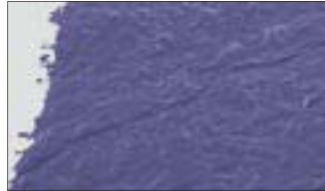
Desert Slate Texture (P)

A simulated slate texture that combines numerous clefts and irregular surfaces to create the ideal concrete impressions.



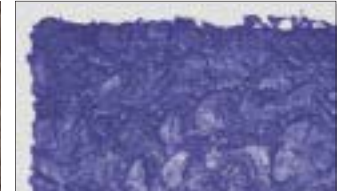
Regal Ashlar Slate (S)

A robust texture, with constantly changing ridges, brings a majestic and noble look to any surface.



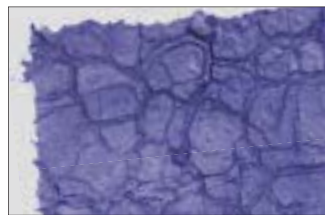
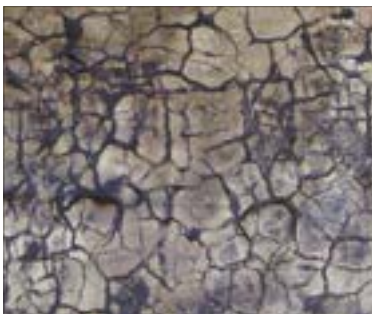
Elk Mountain Texture (veined) (R)

A light stone texture with well placed fractures, making it appealing for indoor and outdoor applications.



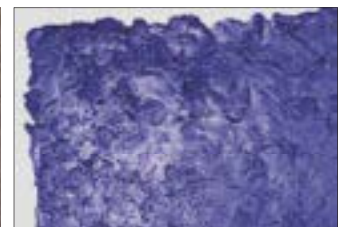
Lunar Rock (U)

An out of this world look that will transform any hardscape. The surface boasts a meteor shower of texture with a variety of impacted stones.



Cracked Mud (T)

A bold and daring, natural earth texture with a surface that looks and feels real.



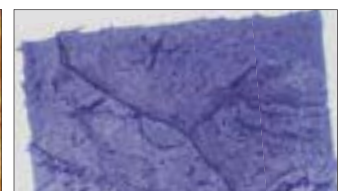
Sidewalk Stone (W)

A rustic blend of soft and strong textures, giving a traditional feel to any surface.



Super Slate (V)

A blended slate pattern with enhanced highlights.



Riviera Texture (X)

A naturally laminated stone texture, split along parallel planes, creating an uneven surface that incorporates various veins and ridges.

Paladiano Texture Mats *by Bob Harris*

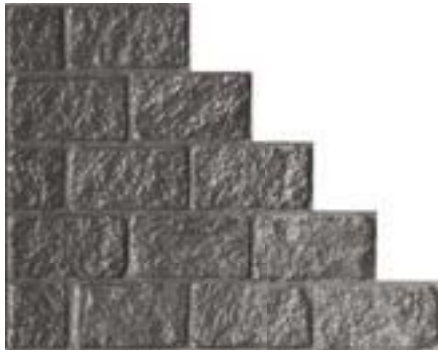
These speciality tools are cast from natural stones in historical regions with authentic textures and shapes that are pleasing to the eye from all angles. England, Italy, Bulgaria, Greece, Cyprus and France are the locations which inspired the “Wonders of the World” stamping tool line.



YORKSHIRE COBBLE



York was for many years the heart of England. When troubled times fell upon London Kings and Queens would retreat back to York, safe behind fortified walls. York cathedral stands in the centre of the cobbled streets that inspired Paladiano to recreate these 13th century cobble stones.



PD-105



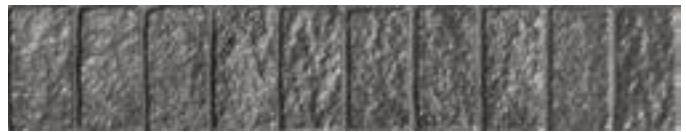
PD-100



PD-125



PD-115



PD-120

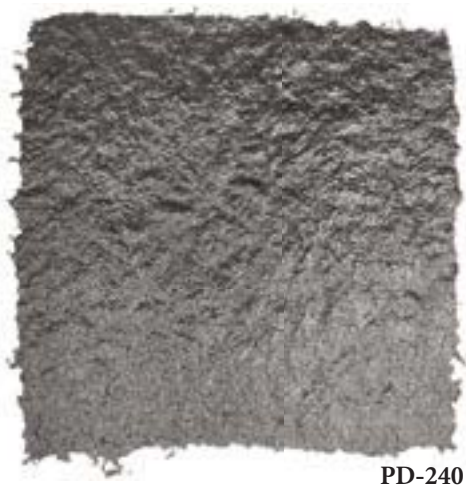
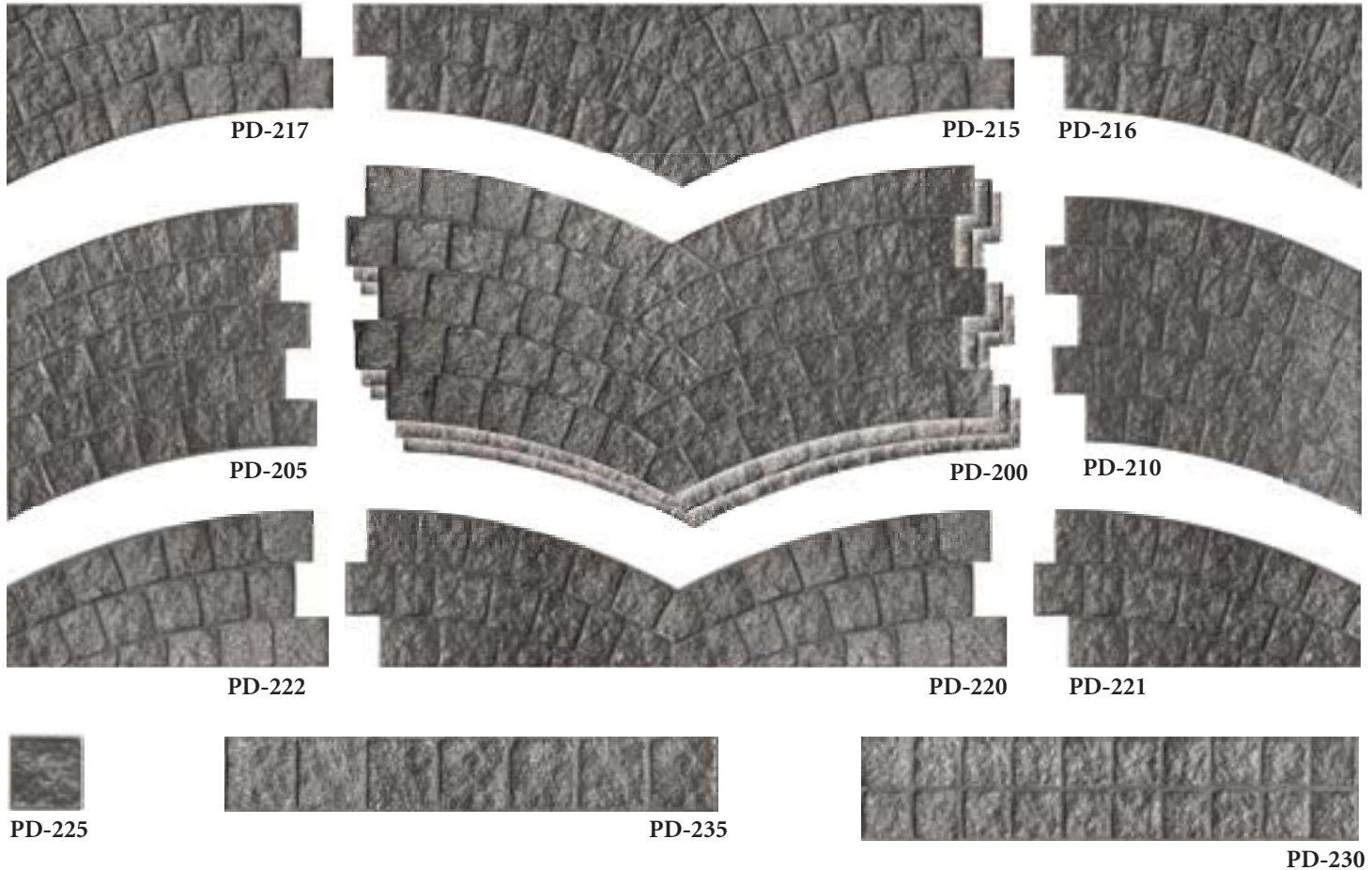


PD-110

Part #	YORKSHIRE COBBLE	Size	Weight	# per set
PD-100	Full tools	59" x 23.5"	22 lbs	6
PD-105	Left	29.5" x 23.75"	11 lbs	2
PD-110	Single Stone	8.5" x 4.75"	1 lb	3
PD-115	Double Row Border	43.5" x 9.5"	9 lbs	1
PD-120	Soldier Course Border	41.5" x 8"	7 lbs	1
PD-125	2x2 skin	24" x 24"	4 lbs	1
PD-130	1x1 skin	12" x 12"	1 lb	1
PD-100F	Full Floppy	59" x 23.5"	16 lbs	1
FM-6570	Touch-up wheel			1
PD-100S	Full set YORKSHIRE COBBLE with Instructional DVD			17

Pavimento of Paris

Paris, France is one of the most inspirational places for architecture. The Paladiano team recognized the abundance of granite sets positioned in a repetitive fish scale design. These quarried granite sets had been dressed and hand placed by what can only be described as paving artisans. To reproduce the streetscapes of Paris was an engineering challenge.



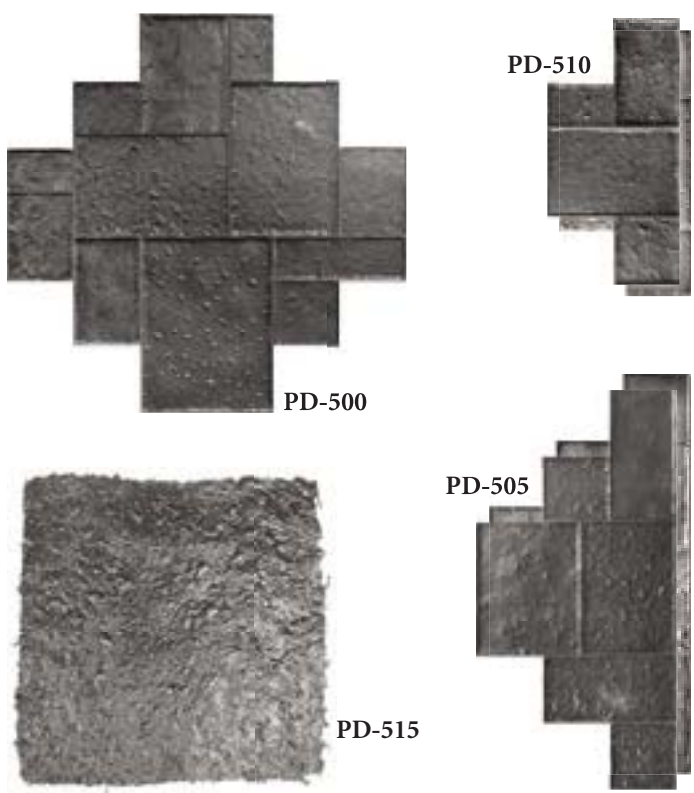
PD-240

Part #	PAVIMENTO OF PARIS	Size	Weight	# per set
PD-200	Full tool	50.5" x 25"	20 lbs	6
PD-205	Left Hand	25.25" x 25"	10 lbs	1
PD-210	Right Hand	25.25" x 25"	10 lbs	1
PD-215	Top Half	50.25" x 12"	10 lbs	1
PD-217	Top Half Left	25.125" x 12"	5 lbs	1
PD-216	Top Half Right	25.125" x 12"	5 lbs	1
PD-220	Bottom Half	50.25" x 13.675"	10 lbs	1
PD-222	Bottom Half Left	25.125" x 13.675"	5 lbs	1
PD-221	Bottom Half Right	25.125" x 13.675"	5 lbs	1
PD-225	Single Stone	3.875" x 3.675"	1 lb	3
PD-230	Stacked Bond	42.25" x 8.5"	8 lbs	1
PD-235	Granite Cobble	43.5" x 6.25"	6 lbs	1
PD-240	2x2 skin	24" x 24"	4 lbs	1
PD-245	1x1 skin	12" x 12"	1 lb	1
PD-200F	Full Floppy	50.5" x 25"	14 lbs	1
FM-6540	Touch-up wheel			1
PD-200S	Full set PAVIMENTO OF PARIS with Instructional DVD			23

Rotating Venetian Marble

Founded more than 1,500 years ago on 117 different islands, Venice, Italy is linked by a series of over 150 canals, 400 bridges and many ancient pavements.

Travertine and Marble streets and sidewalks, cut with precision were then placed by skilled masons. The original stones were unfinished, now with hundreds of years of floods and use the marble and granite have naturally become honed and smooth.



Part #	ROTATING VENETIAN MARBLE	Size	Weight	# per set
PD-500	Full tool	53.75" x 53.75"	30 lbs	6
PD-505	Half Tool	53.75" x 26.875"	20 lbs	2
PD-510	1/4 Tool	35.875" x 17.75"	10 lbs	2
PD-515	2x2 skin	24" x 24"	4 lbs	2
PD-520	1x1 skin	12" x 12"	1 lb	1
PD-500F	Full Floppy	53.75" x 53.75"	25 lbs	1
PD-500S	Full set ROTATING VENETIAN MARBLE with Instructional DVD			15

Hammered Sofia Stone

For over 7000 years Sofia, Bulgaria has been a meeting place of the four directions of the world making Sofia one of the oldest settlements in Europe.

Plazas, town squares and winding streets made from granite and lime stone with a Bush Hammered texture. A bush-hammered finish is one with a rough uniformly patterned surface produced by an impact tool with a smooth border around each stone creating a prestige look.



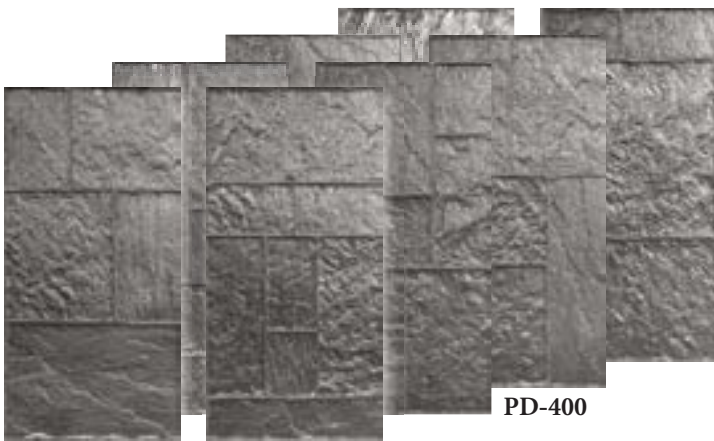
Part #	HAMMERED SOFIA STONE	Size	Weight	# per set
PD-300	Full tool	47.875" x 23.875"	18 lbs	8
PD-305	Single Stone	23.875" x 12"	6 lbs	2
PD-310	Joint tools	assorted	1 lb	3
PD-315	2x2 skin	24" x 24"	2 lbs	1
PD-320	1x1 skin	12" x 12"	1 lb	1
PD-300F	Full Floppy	47.875" x 23.875"	12 lbs	1
PD-300S	Full set HAMMERED SOFIA STONE with Instructional DVD			16



Stones of Athens

The ancient city of Athens, Greece, crowned with marble temples such as the Parthenon and the Acropolis stands the test of time with millions of visitors walking the time old streets of Athens.

A variety of different stones helped create Athens Stone, one of most intricate tools using over 14 combined textures: Limestone, Marble and Granite are all used next to each other detailing the fine craftsmanship of ancient Greece.



PD-400



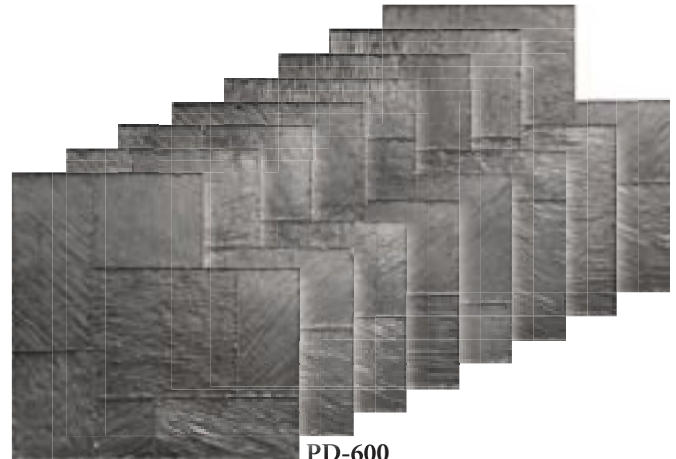
PD-405

Part #	STONES OF ATHENS	Size	Weight	# per set
PD-400	Full tool	47.75" x 23.875"	24 lbs	8
PD-405	2x2 skin	24" x 24"	4 lbs	3
PD-410	1x1 skin	12" x 12"	1 lb	1
PD-400F	Full Floppy	47.75" x 23.875"	17 lbs	2
FM-6570	Touch-up wheel			1
PD-400S	Full set STONES OF ATHENS with Instructional DVD			15

Fractured Cyprus slate

Cyprus, a small island with a large history, is surrounded by the Mediterranean Sea, soft sand and heavy slate hardscapes.

The natural paving material is a hardened slate found deep underground. Heavy in texture but difficult to shape, the joints have a fractured split edge.



PD-600



PD-605

Part #	FRACTURED CYPRUS SLATE	Size	Weight	# per set
PD-600	Full tool	41.875" x 41.875"	33 lbs	8
PD-605	2x2 skin	24" x 24"	4 lbs	2
PD-610	1x1 skin	12" x 12"	1 lb	1
PD-600F	Full Floppy	41.875" x 41.875"	20 lbs	1
FM-6520	Touch-up wheel			1
PD-600S	Full set FRACTURED CYPRUS SLATE with Instructional DVD			13



Contractors Choice Texture Mats

Brickform recognizes contractor feedback with the introduction of our Contractors Choice line comprised of everyone's favorite textures. Contractors Choice is a professional line of tools that are tough, slim, sleek and firm, for a great feel on and off the slab. These new tools are both economically and ecologically friendly, emphasizing quality and dependability.



6" x 6" Edinburgh Cobble, EF-520

26" x 36" (66.04 x 91.44 cm)

Black

A rugged weathered cobblestone pattern



Ashlar Cut Slate, EF-3125 S/O

23.125" x 23.125"

(58.74 x 58.74 cm)

Black A, B, C

A naturally laminated stone texture split along parallel planes, hand-tooled to create a more pronounced chipped fragmented texture with small deep joints



European Fan, EF-650 S/O

26" x 46" (66.04 x 116.84 cm)

Black

An elegant European fan pattern, consisting of slightly curved rectangular slate stones



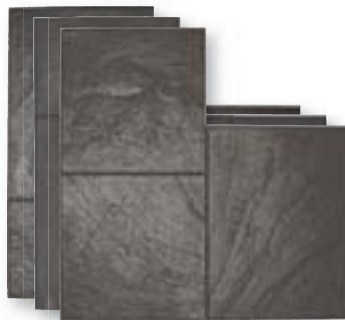
Random Stone, EF-700

29.125" x 29.125"

(73.97 x 73.97 cm)

Black A, B, C

Heavily textured random fieldstones



36" Ashlar Cut Slate, EF-3120 S/O Without Insert

36" x 36" (91.44 x 91.44 cm)

Black A, B, C

Stones with a slate surface, in an Ashlar pattern

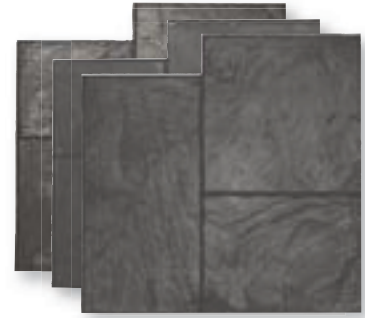


London Cobble, EF-540 S/O

17" x 29.75" (43.18 x 75.56 cm)

Black

A traditional lightly textured cobblestone pattern



Large Ashlar Cut Slate, EF-3150 S/O

28" x 28" (71.12 x 71.12 cm)

Black A, B, C

Similar to Ashlar Cut Slate but the overall size is larger, with a softer texture



Herringbone Used Brick EF-5000 S/O

32" x 36" (81.28 x 91.44 cm)

Black

A weatherworn brick surface with an uneven texture and rounded broken edges



Running Bond Used Brick EF-5100 S/O

16" x 36.5" (40.64 x 92.71 cm)

Black

Used bricks laid end-to-end, with sandy joints



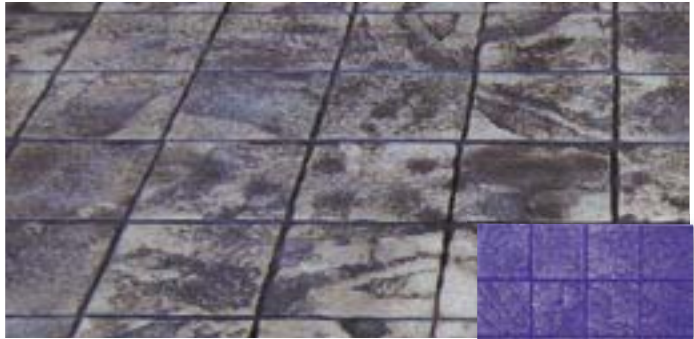
Running Bond New Brick, EF-5150 S/O

24" x 36.5" (60.96 x 92.71 cm) Black

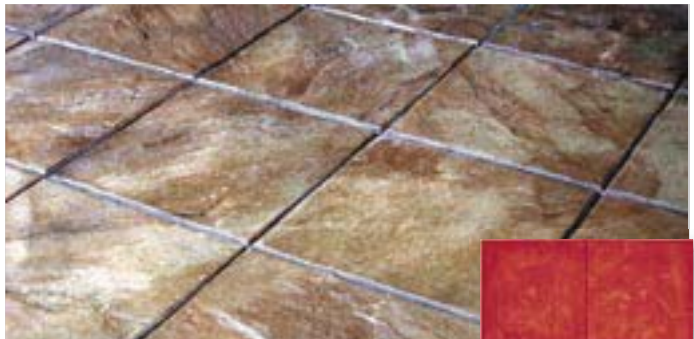
A running bond pattern with smooth joints

Stone Texture Mats

Whether you want the look of Granite, Blue Stone, Old English Cobblestone, Mexican Tile, or Pavers, BRICKFORM offers an array of texture mats that simulate a broad range of natural stone materials. Achieving these beautiful impressions with BRICKFORM precision tools provides an end result that is affordable and often easier to work with than natural materials. BRICKFORM has a stone texture tool ready to complement any design theme from an Italian Villa to an English Country Garden.



6" x 6" Granite Sets, FM-250 S/O
 24" x 24" (60.96 x 60.96 cm)
 Blue
Rough Stone texture with a hand-chiseled edge



12" x 12" Cut Stone, FM-300 S/O
 24" x 24" (60.96 x 60.96 cm) Red
A rough natural stone, hand-tooled to create a chipped and fragmented texture



Windsor Cobble, FM-500 S/O
 22.75" x 29.75" (57.78 x 75.56 cm)
 Blue
A traditional cobblestone pattern with wider joints



6" x 6" Edinburgh Cobble, FM-520
 26" x 36" (66.04 x 91.44 cm)
 Yellow
A rugged weathered cobblestone pattern



Rough Cut Ashlar, FM-100 S/O
 24" x 24" (60.96 x 60.96 cm)
 Red, Yellow and Blue
Rough hand-tooled stones arranged in an Ashlar pattern



Australian Ashlar Cut Stone FM-150 S/O
 23.25" x 23.25" (59.05 x 59.05 cm)
 Red, Yellow and Blue
A coarse rugged Blue Stone set in an Ashlar pattern



4" x 4" Slate Sets, FM-200 S/O
 24" x 24" (60.96 x 60.96 cm) Red
Slate texture with a hand-chiseled edge



London Cobble, FM-540 S/O

17" x 29.75" (43.18 x 75.56 cm) Blue
A traditional lightly textured cobblestone pattern

London Cobble Strip, FM-560 S/O

5.75" x 28.625" (14.605 x 72.71 cm) Blue
A lightly textured cobblestone pattern in a single strip



Cheshire Cobble (Smooth Grout), FM-525

20.5" x 46" (52.07 x 116.84 cm) Red
A traditional cobblestone pattern with smooth, ungrouted joints



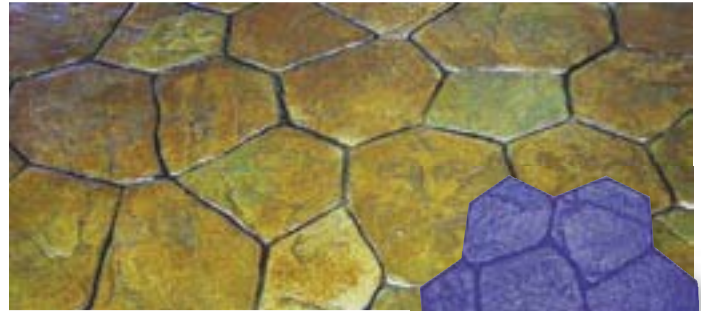
Large Cobble, FM-580

28.125" x 33.375" (71.43 x 84.77 cm)
Blue
Larger rough-cut cobblestones



Random Stone, FM-700

29.125" x 29.125"
(73.97 x 73.97 cm) Red, Yellow and Blue
Heavily textured random fieldstones



Large Random Stone, FM-750

36" x 36" (91.44 x 91.44 cm)
Yellow and Blue
Similar to Random Stone but 40% larger



Patio Stone, FM-1295 S/O

36.5" x 36.5"
(92.71 x 92.71 cm) Red
A roughly textured arrangement of random stones

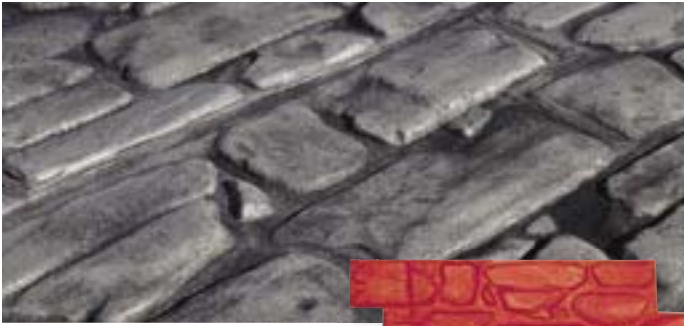


24" x 24" Yucatan Stone, FM-1100 S/O

24" x 24" (60.96 x 60.96 cm) Blue
A single square of rough Yucatan stone texture

4" x 8" Cut Stone Border, FM-1225

8.375" x 33.5" (21.27 x 85.09 cm) Red
A border of slate rectangles
laid side-by-side



English Field Stone, FM-1350

18" x 39.75"
(45.72 x 100.965 cm) Red

A natural arrangement of river rock, emulating the look of smooth English fieldstones



Roman Cobble, FM-1465

48" x 24" (121.9 x 61cm)

NEW

Blue and Yellow

A historic reproduction of cobbles that have a variety of stone shapes for old world appeal.



European Fan, FM-650 S/O

26" x 46" (66.04 x 116.84 cm) Blue

An elegant European fan pattern, consisting of slightly curved rectangular slate stones

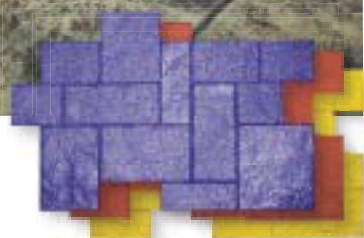


Tuscany Stone, FM-1775

28" x 40" (71.12 x 101.60 cm)

Red, Yellow and Blue

A large tool with a stone texture and interlocking joints on all four sides

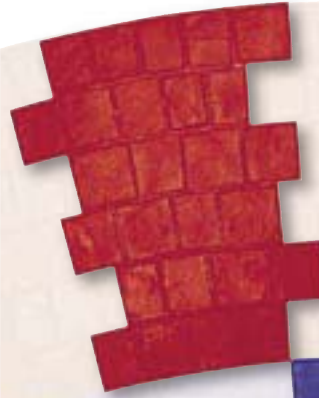


Also Available: Tuscany Border, FM-1785, 48" x 12"

Radius Tool

**Cobble Stone Radius Tool - E
FM-1685 S/O**

(Diameter - 286 3/4")
36" x 24" (68.58 x 60.96 cm)
Red



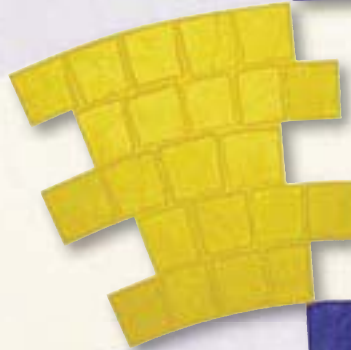
**Cobble Stone
Radius Tool - D
FM-1675 S/O**

(Diameter - 214 3/4")
24" x 37" (60.96 x 93.98 cm)
Blue



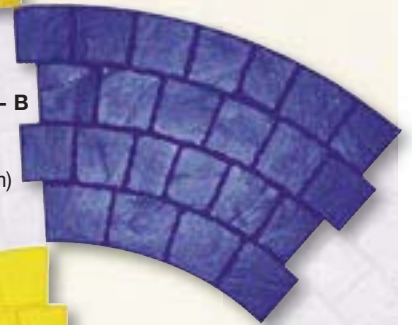
**Cobble Stone Radius Tool - C
FM-1665 S/O**

(Diameter - 167 1/4")
30" x 30" (76.2 x 76.2 cm)
Yellow



**Cobble Stone Radius Tool - B
FM-1655 S/O**

(Diameter - 107 3/4")
23" x 43" (58.42 x 109.22 cm)
Blue



**Cobble Stone Radius Tool - A
FM-1605 S/O**

(Diameter - 59 3/4")
30" x 31" (76.2 x 78.74 cm)
Yellow



Slate Texture Mats

Slate is a sleek, metamorphic rock with fine veining patterns. The grain pattern of slate makes it a common resource for tile flooring because it is easily split into thin sheets. BRICKFORM slate texture tools recreate the elegant, clean design of slate without the expense and hassle of installing fragile natural stones. BRICKFORM Ashlar texture mats reflect the handcrafted, intricately-fitting stones of historic Ashlar configurations.



36" Ashlar Cut Slate, FM-3120 S/O

36" x 36" (91.44 x 91.44 cm)

Red, Yellow and Blue

Stones with a slate surface, in an Ashlar pattern

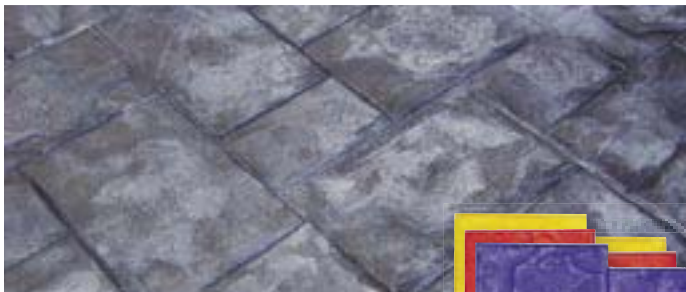


Ashlar Cut Slate, FM-3125 S/O

23.125" x 23.125" (58.74 x 58.74 cm)

Red, Yellow and Blue

A naturally laminated stone texture split along parallel planes, hand-tooled to create a more pronounced chipped fragmented texture with small deep joints



Aidan Ashlar, FM-3130 S/O

23.125" x 23.125" (58.74 x 58.74 cm)

Red, Yellow and Blue

Similar to the Ashlar Cut Slate but with broad shallow joints



Large Ashlar Cut Slate FM-3150 S/O

28" x 28" (71.12 x 71.12 cm)

Red, Yellow and Blue

Similar to Ashlar Cut Slate but the overall size is larger, with a softer texture



24" x 24" Slate Texture, FM-3200 S/O

24" x 24" (60.96 x 60.96 cm)

Red, Yellow and Blue

One complete stone with hand-tooled slate texture



12" x 12" Slate, FM-3250 S/O

24" x 24" (60.96 x 60.96 cm)

Blue

Slate tiles laid in a parallel pattern

12" x 12" Slate Border

FM-3300 S/O

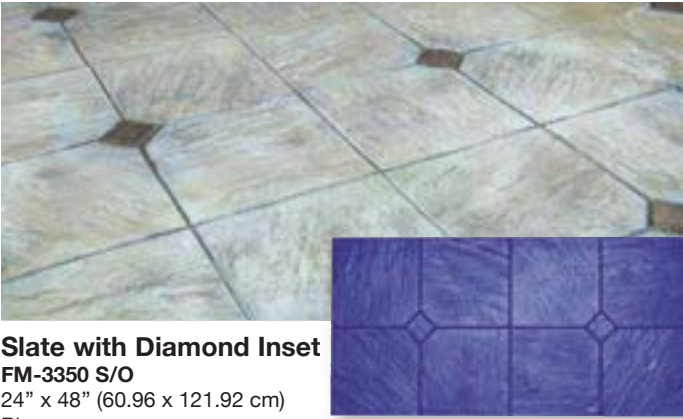
12" x 48"

(30.48 x 121.92 cm)

Red

A border of four 12" slate squares in a row





Slate with Diamond Inset
FM-3350 S/O

24" x 48" (60.96 x 121.92 cm)

Blue

An elegant arrangement of Italian slate, with diamond-shaped insets for added detail



Walkway Slate, FM-3400 S/O

18" x 36" (45.72 x 91.44 cm)

*Red, Yellow and Blue

*Stone sizes vary

Square and rectangular slate tiles, of various sizes, set in parallel rows.



California Weave, FM-3500 S/O

24" x 24" (60.96 x 60.96 cm) Red

Slate bricks form a woven pattern around a slate square.



Herringbone Slate, FM-3550 S/O

32" x 40" (81.28 x 101.6 cm) Blue

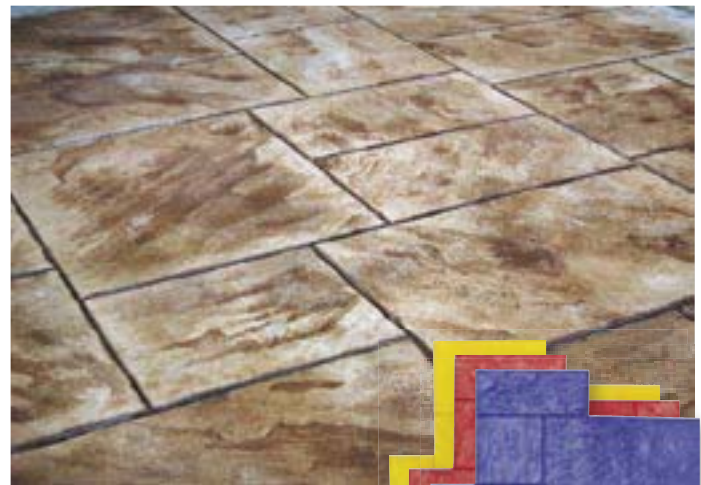
A classic herringbone pattern of slate stones laid at right angles to each other



New England Basket Weave
FM-3600 S/O

24" x 36" (60.96 x 91.44 cm) Blue

Hand-tooled slate in a basket weave pattern



Regal Ashlar (Blue Stone)

FM-3650 S/O

36" x 36" (91.44 x 91.44 cm)

Red, Yellow, and Blue

Blue stone textured tiles, with worn beveled edges, arranged in an ashlar pattern



Grand Ashlar, FM-3675

36" x 36" (91.44 x 91.44 cm)

Red, Yellow and Blue

Stones of various shapes and sizes laid in an Ashlar pattern, with a slate texture

Brick Texture Mats



Herringbone Used Brick FM-5000 S/O

32" x 36" (81.28 x 91.44 cm) Red
A weatherworn brick surface with an uneven texture and rounded broken edges



Herringbone New Brick (Fine Grout), FM-5050 S/O

32" x 36" (81.28 x 91.44 cm) Red
A wire-cut common brick texture with sharp corners and few indentations or irregularities over the surface



Running Bond Used Brick FM-5100 S/O

16" x 36.5" (40.64 x 92.71 cm) Blue
Used bricks laid end-to-end, with sandy joints



Running Bond New Brick FM-5150 S/O

24" x 36.5" (60.96 x 92.71 cm) Red
A running bond pattern with smooth joints



Basket Weave Used Brick FM-5200 S/O

15.375" x 30.75" (39.05 x 78.10 cm)
Blue

Used bricks in a basket weave pattern with smooth un-grouted joints



Basket Weave New Brick FM-5250 S/O

16" x 32" (40.64 x 81.28 cm) Blue

New bricks in a basket weave pattern with sandy joints



Herringbone New Brick (Sanded Joint) FM-5900 S/O

32" x 36" (81.28 x 91.44 cm) Red

New bricks with sandy joints



4" x 8" New Brick Border, FM-5325, S/O

8.5" x 32.25" (21.59 x 81.92 cm) Red
A border of new bricks laid side-by-side
Also Available:

4" x 8" Used Brick Border, FM-5300 S/O

8.5" x 32" (21.59 x 81.28 cm) Red
A border of used bricks laid side-by-side



Single New Brick, FM-5550 S/O

4" x 8" (10.16 x 20.32 cm) Red
A single new brick with sharp edges
Also Available:

Single Used Brick, FM-5500 S/O

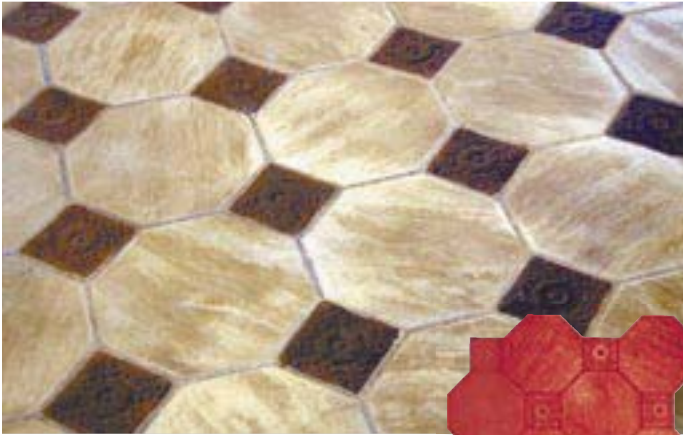
4" x 8" (10.16 x 20.32 cm) Blue
A single used brick with rounded edges



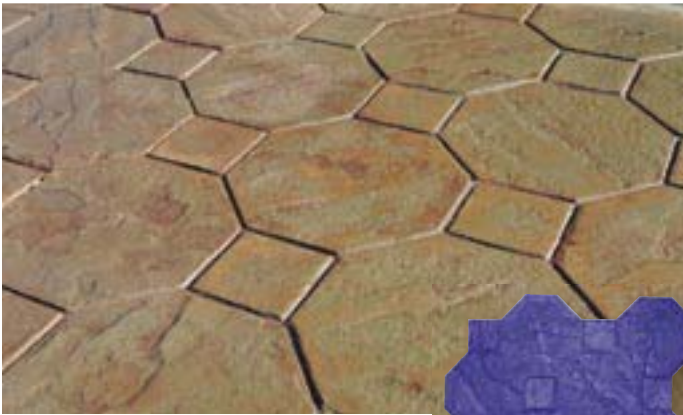
Used Brick Runner, FM-5600 S/O

4.5" x 32.375" (11.43 x 82.23 cm) Blue
A border of used bricks laid end-to-end

Tile Texture Mats



Santa Barbara Tile, FM-7025 S/O
 30.75" x 30.75" (78.1 x 78.1 cm)
 Red
 Slate textured octagons and rosette squares laid out in a unique, highly decorative pattern



Octagon Tile, FM-7100 S/O
 37.5" x 37.5" (95.25 x 95.25 cm)
 Blue
 A blue stone texture laid out in a highly decorative pattern



Chateau Ashlar, FM-7450
 36" x 36" (91.44 x 91.44 cm)
 Red, Yellow and Blue
 A smooth and elegant Ashlar pattern consisting of rounded stones with sandy joints



Wood Texture Mats



Classic Wood, FM-8700 S/O
 81.5" x 21.75" (207 x 55.2 cm)
 Blue
 Combining multiple wood grains to offer a bold, pronounced, exposed grain texture with six-inch wide planks

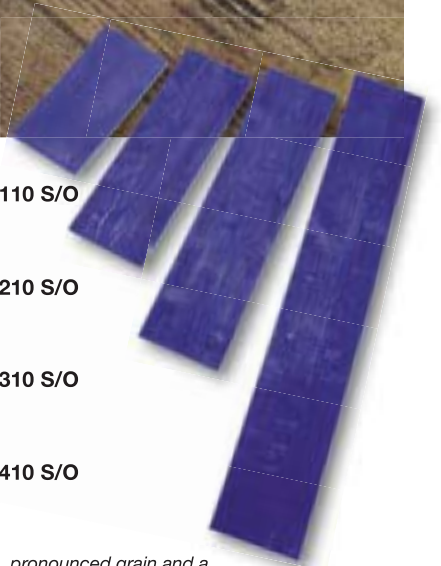


2' Cedar Wood Plank, FM-8110 S/O
 11.5" x 24"
 (29.21 x 60.96 cm) Blue

3' Cedar Wood Plank, FM-8210 S/O
 11.5" x 36"
 (29.21 x 91.44 cm) Blue

4' Cedar Wood Plank, FM-8310 S/O
 11.5" x 48"
 (29.21 x 121.92 cm) Blue

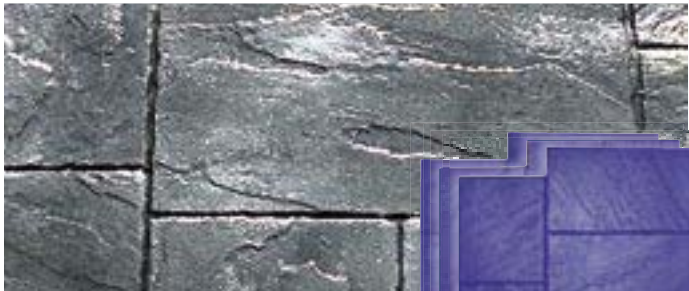
6' Cedar Wood Plank, FM-8410 S/O
 11.5" x 72"
 (29.21 x 182.88 cm) Blue



A cedar wood texture with coarse, pronounced grain and a rough surface appearance that incorporates oversized nail heads at each end

Creative Images Texture Mats

BRICKFORM developed the Creative Images line of texture mats to incorporate the latest in textures, designs and usability. Creative Images mats are larger, an average of nine square feet, which means fewer placements and less touch-up work. Creative Images mats are made of firmer material, which allows you to begin stamping sooner. Choose Creative Images to create the best possible impression, with the least amount of effort.

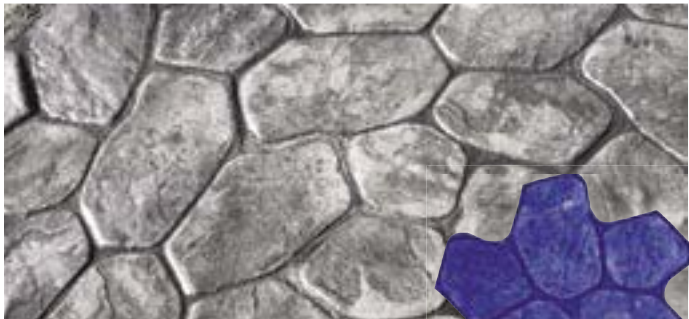


Ashlar, TM-100

36" x 36" (91.44 x 91.44 cm)

Pattern: A, B and C

An Ashlar pattern of blue stone slate



Random Stone, TM-200

36" x 36" (91.44 x 91.44 cm)

Pattern: A and B

A natural looking arrangement of slate-textured random stones



16" x 16" Slate, TM-300

32" x 48" (81.28 x 121.92 cm)

Pattern: A

Slate squares in two rows, with angled, un-grouted joints

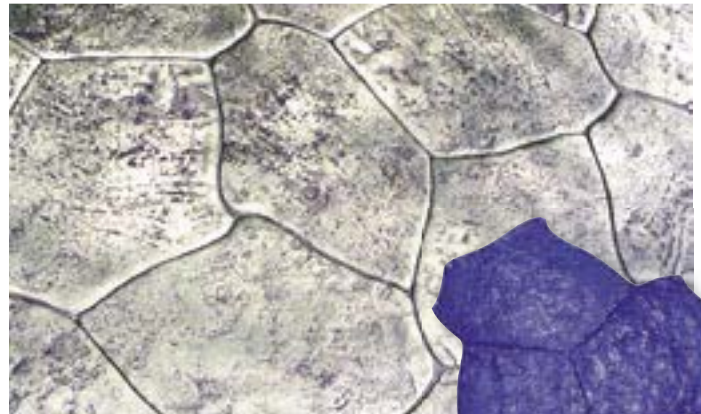


European Fan, TM-400

28" x 50" (71.12 x 127 cm)

Pattern: A

Curved slate bricks gracefully arranged in a European Fan pattern



Mesa Random Stone, TM-500

61.75" x 61.75" (156.85 x 156.85 cm)

Pattern: A

Random stones sculpted to have a rough stone, irregular shape

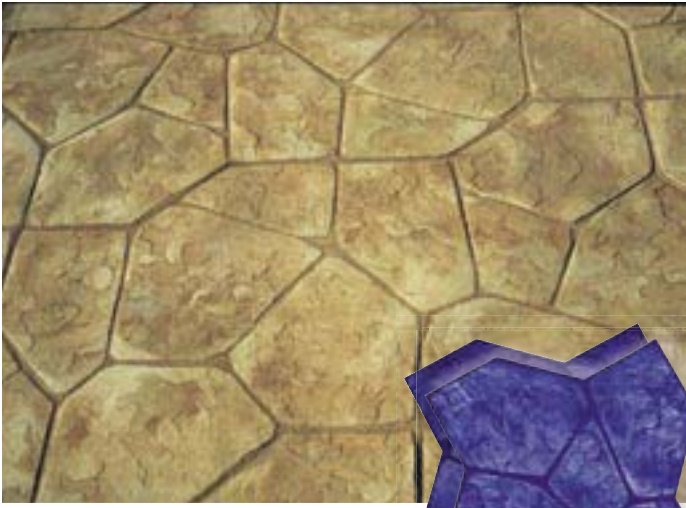


12" x 12" Slate - 1/4" Joint TM-600

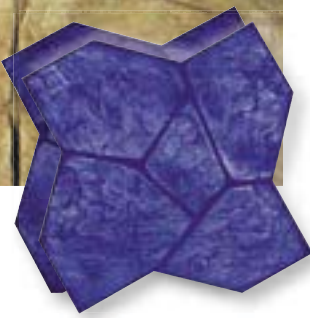
24" x 48" (60.96 x 121.92 cm)

Pattern: A

Rows of slate squares with beveled edges



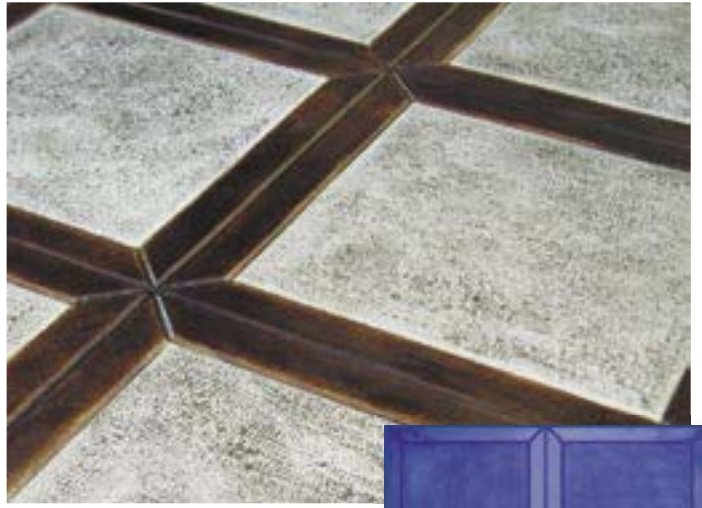
Flagstone, TM-700
48" x 48" (121.92 x 121.92 cm)
Pattern: A and B
Flagstones with hand chiseled edges grouped in a random formation



12" x 12" Slate-Butt Joint TM-900
24" x 48" (60.96 x 121.92 cm)
Pattern: A
Sharp slate squares butted up against each other in two rows



Pennsylvania Cobble (Sanded Joint) TM-820
31.5" x 47.5" (80.01 x 120.65 cm)
Pattern: A
A staggered pattern of cobblestone with sandy joints and rounded edges



30" x 30" Bushed Stone TM-1200
30" x 60" (76.2 x 152.4 cm)
Pattern: A
Two bushed stones with square corners and sharp beveled edges



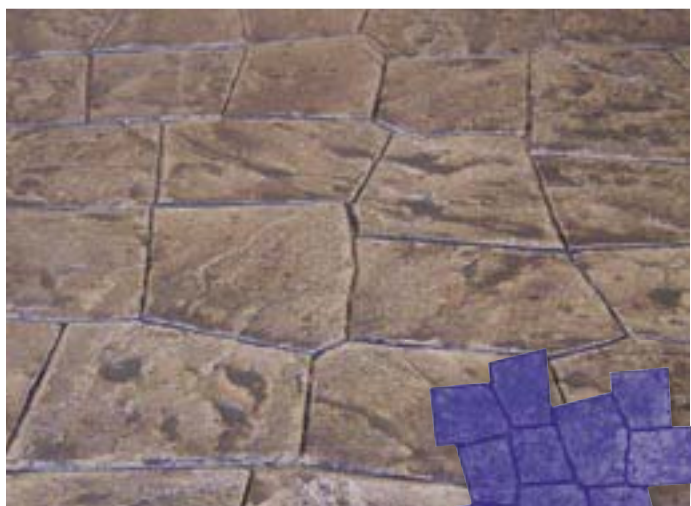
Pennsylvania Station Cobble (Smooth Joint) TM-840
53.5" x 30.875" (135.89 x 78.42 cm)
Pattern: A
A staggered pattern of cobblestone with smooth joints and rounded edges



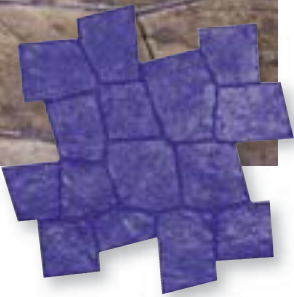
Castle Stone, TM-1300
47.5" x 47.5" (120.65 x 120.65 cm)
Pattern: A and B
Irregular shaped natural stones



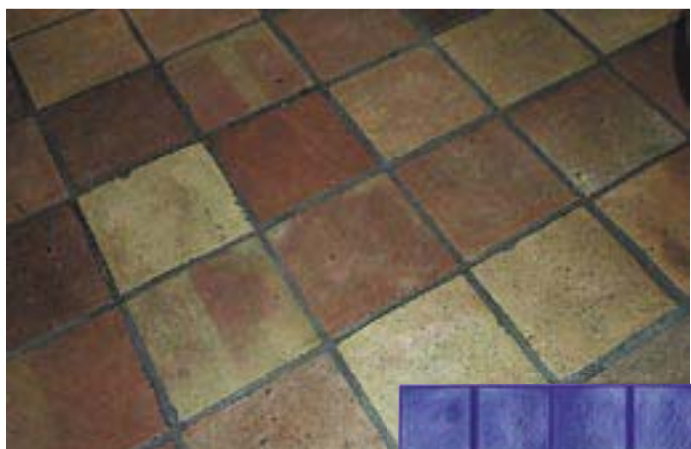
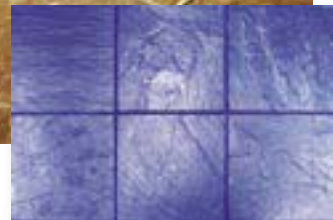
Creative Images Texture Mats *continued*



Luccia Stone, TM-1350
 44.875" x 44.875" (113.98 x 113.98 cm)
 Pattern: A
Slate stones with irregular edges, in a random pattern



18" x 18" Slate, TM-1620
 36" x 54" (91.44 x 137.16 cm)
 Pattern: A
Three slates with sharp edges, laid in two rows



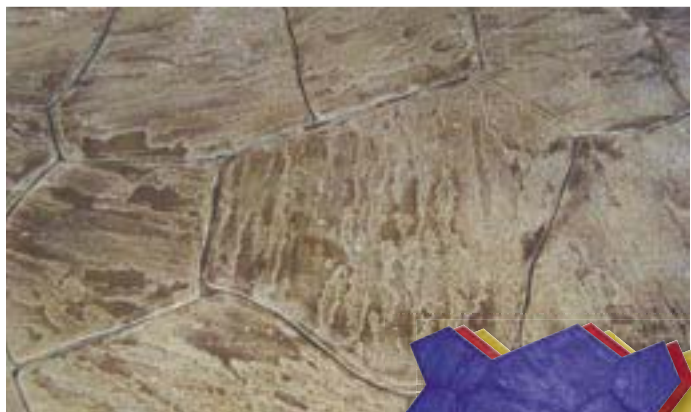
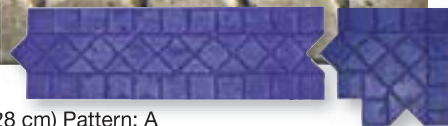
12" x 12" Mexican Tile, TM-1400
 24" x 48" (60.96 x 121.92 cm)
 Pattern: A
Beautiful Mexican tiles with sandy joints



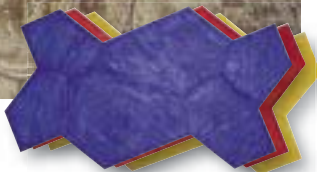
Slate Border, TM-1010
 16" x 40" (40.64 x 101.6 cm)
 Pattern: A



Tile Border, TM-1020
 14" x 47.75" (35.56 x 121.28 cm) Pattern: A
TM-1020-1 Tile Border Corner Piece
 18.25" x 20.75" (46.36 x 52.71 cm) Pattern: A



Verona Stone, TM-1500
 42.75" x 68.5" (108.58 x 173.99 cm)
 Red, Yellow and Blue
A unique random pattern of irregular stones



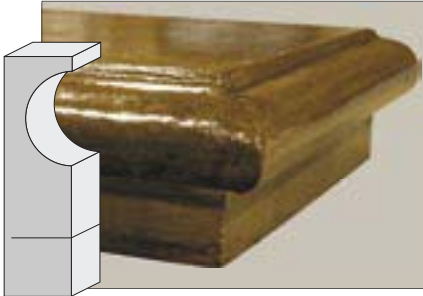
Bushed Border, TM-1030
 12" x 48" (30.48 x 121.92 cm)
 Pattern: A



Ultra-Liners

With the contractor in mind, Ultra-Liners take the hassle out of doing decorative step faces.

- Re-usable liner for steps, wall caps, counter-tops and pool copings
- Creates smooth and easy-to-finish surfaces
- Tight cell structure foam for long lasting liners
- Easy to bend and mold into shape
- Pre-cut guide at 5.5"
- Sized to dimensional lumber
- Offered in 4' and 8' lengths for versatility and reduced shipping cost
- Works great with Brickform Liquid Release



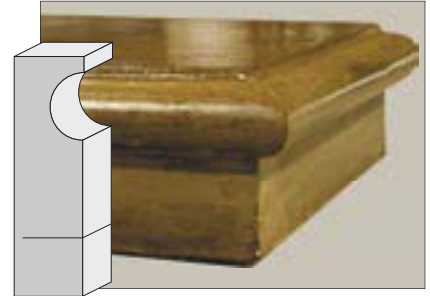
SL-2000 48" Sandstone Ultra-Liner
7.25" x 48" (19.1 x 121.92 cm)

SL-2025 96" Sandstone Ultra-Liner
7.25" x 96" (19.1 x 243.8 cm)



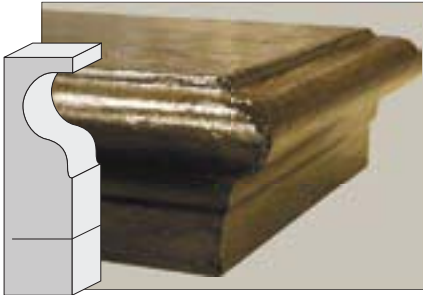
SL-2050 48" Capstone Ultra-Liner
7.25" x 48" (19.1 x 121.92 cm)

SL-2075 96" Capstone Ultra-Liner
7.25" x 96" (19.1 x 243.8 cm)



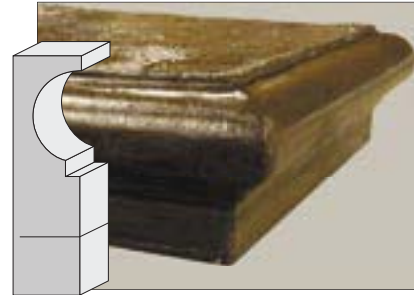
SL-2100 Intermediate 48" Ultra-Liner
7.25" x 48" (19.1 x 121.92 cm)

SL-2125 Intermediate 96" Ultra-Liner
7.25" x 96" (19.1 x 243.8 cm)



SL-2150 Ogee 48" Ultra-Liner
7.25" x 48" (19.1 x 121.92 cm)

SL-2175 Ogee 96" Ultra-Liner
7.25" x 96" (19.1 x 243.8 cm)



SL-2200 Classic 48" Ultra-Liner
7.25" x 48" (19.1 x 121.92 cm)

SL-2225 Classic 96" Ultra-Liner
7.25" x 96" (19.1 x 243.8 cm)



SL-2250 Wall Cap 48" Ultra-Liner
7.25" x 48" (19.1 x 121.92 cm)

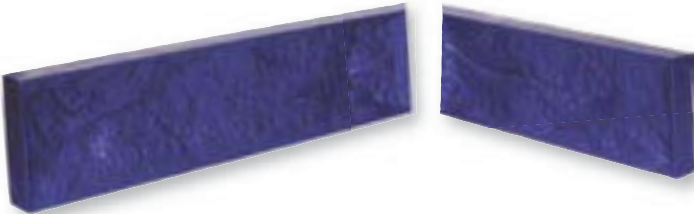
SL-2275 Wall Cap 96" Ultra-Liner
7.25" x 96" (19.1 x 243.8 cm)

*Also available: Twist-to-break wire kit, double-sided tape



Step-Liners

BRICKFORM Step-Liners are designed to produce texture on the edges of concrete steps, risers, terracing and even concrete countertops. These Step-Liners can be reused many times. Simply attach the liners to your riser forms and impart the beauty of natural stone. They have no top or bottom and can be reversed to reduce pattern repeat. BRICKFORM Step-Liners are high-quality, flexible polyurethane, engineered to be lightweight and extremely durable.



45° Angle Step Liner (Two shown to form corner)



SL-350

45° 24" Step Liner

6" x 26.375" (15.24 x 66.99 cm)

Pattern: A or B



SL-450

45° 16" Step Liner

6" x 18.375" (15.24 x 45.72 cm)

Pattern: A or B

Hint: To reduce pattern repeat, use A and B together.

Hint: Use as a curb edge to mimic split stone.



- A variety of standard sizes
- Easy pre-cut 45° joints available
- Superb detail
- Reusable
- Up to 1 1/2" of texture

Also Available:

SL-100

48" Step Liner

6" x 48" (15.24 x 121.92 cm)

Pattern: A or B

SL-300

24" Step Liner

6" x 24" (15.24 x 60.96 cm)

Pattern: A or B

SL-200

72" Step Liner

6" x 72" (15.24 x 182.88 cm)

Pattern: A

SL-400

16" Step Liner

6" x 16" (15.24 x 40.64 cm)

Pattern: A or B



Step Liners in Foam Urethane

- Lightweight
- Increased Flexibility

SL-3500

45 degree 24" Step Liner In Foam Urethane

6" x 26.375"

Pattern A or B

SL-4500

45 degree 16" Step Liner In Foam Urethane

6" x 18.375"

Pattern A or B

SL-1000

48" Step Liner In Foam Urethane

6" x 48"

Pattern A or B

SL-3000

24" Step Liner In Foam Urethane

6" x 24"

Pattern A or B

SL-4000

16" Step Liner In Foam Urethane

6" x 16"

Pattern A or B

SL-5000

72" Step Liner In Foam Urethane

6" x 72"

Pattern A



Dimensional Step Liners

- Sized to Dimensional Lumber
- Thin
- Attach To Forms
- Flexible For Creating Organic Shapes

SL-500A

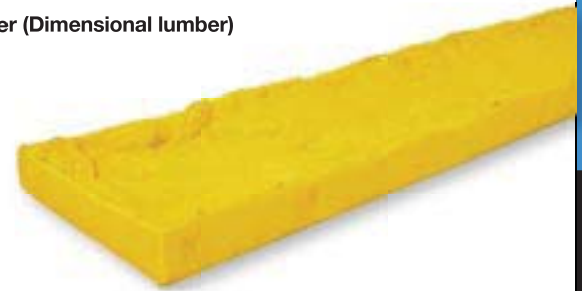
Stone Step Liner (Dimensional lumber)

8" X 6'

SL-525A

Stone Step Liner (Dimensional lumber)

6" X 6'



Slim-Strip Step Liners

- Ultra-Thin
- Super Flexible For Creating Organic Shapes
- Available In Slate And Stone Textures
- Sized To Dimensional Lumber

SL-600A

6" Stone Slim Strip

6" X 8'

SL-625A

8" Stone Slim Strip

8" X 8'

SL-650A

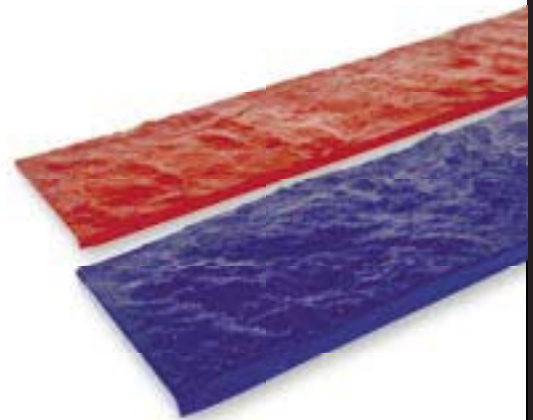
6" Slate Slim Strip

6" X 8'

SL-675A

8" Slate Slim Strip

8" X 8'



Quick Strips

BRICKFORM Quick-Strips are perfect for creating a more decorative joint. By placing the Brickform Quick-Strips into your control joints prior to stamping with our seamless skins, you can transform your slab form ordinary to extraordinary in no time.



FM-6580 Chiseled V-Joint, Offered in 5 foot strips



FM-6590 Sanded Stone Joint, Offered in 5 foot strips

Versatile Coloring Products

Gray concrete can be structurally sound but visually unattractive. BRICKFORM offers a wide range of decorative answers that provide a dramatic element for any setting, from a patio to a showroom floor. On the next pages you will discover many coloring treatments to meet your needs.



Color Hardener and Antique Release



Blush-Tone Acid Stain



Cem-Coat



Pro-Dye



FreestylePRO



Integral Color

Brickform Color Hardener, Antique Release and Antique-It Standard Colors

(Color chart also applies to Overlay Liquid Colorant, see page 39 for companion products)



BRICKFORM Color Hardener

Concrete Colorant and Hardener

BRICKFORM Color Hardener is manufactured with the finest UV-resistant pigments and premium aggregates. BRICKFORM Color Hardener is designed to work with imprinting tools to produce clear, sharp impressions that enhance the finished appearance of any hardscape. When properly applied and troweled into newly placed, fresh concrete, it forms a colored concrete surface that is resistant to weathering, wear and normal abrasion. Color Hardener HD (Heavy Duty) also available.



- Non-fading
- Denser, more durable surface
- Improves abrasion resistance
- Can be antiqued and stained
- 42 standard colors
- Custom colors available
- Compatible with Stampable Overlay OL-60

CH 42 Standard Colors 5 Gallon Bucket
 (Including black and white)

- Custom Colors and Color Matching Available



Disclaimer - When choosing colors, use the stand-alone BRICKFORM color selection guide for more accurate matching. Colors shown here display only the range of BRICKFORM options available. *To confirm an exact color, have your contractor prepare a color sample for your approval before actual construction.* BRICKFORM accepts no responsibility for color matching or misprints.

Sample Color Combinations



California Weave, FM-3500 S/O
Golden Sandstone Color Hardener, Smokey Beige Antique Release



California Weave, FM-3500 S/O
Dover Blue Color Hardener, Smokey Blue Antique Release



California Weave, FM-3500 S/O
Weathered Sage Color Hardener, French Gray Antique Release



California Weave, FM-3500 S/O
Ash White Color Hardener, Shadow Slate Antique Release



California Weave, FM-3500 S/O
Adobe Buff Color Hardener, Pecos Sand Antique Release



California Weave, FM-3500 S/O
Blush Beige Color Hardener, Autumn Brown Antique Release



Stones of Athens, Paladiano, PD-400
Sandstone Color Hardener, Nutmeg Antique Release



Stones of Athens, Paladiano, PD-400
Sun Buff Color Hardener, Chestnut Antique Release



Stones of Athens, Paladiano, PD-400
French Gray Color Hardener, Dark Gray Antique Release



Stones of Athens, Paladiano, PD-400
Oyster White Color Hardener, Nutmeg Antique Release



Stones of Athens, Paladiano, PD-400
Smokey Blue Color Hardener, Dark Gray Antique Release



Stones of Athens, Paladiano, PD-400
Cappuccino Color Hardener, Sunbaked Clay Antique Release



Slate with Diamond Inset, FM-3350 S/O
Tile Red Color Hardener, Walnut Antique Release



Slate with Diamond Inset, FM-3350 S/O
Slate Green Color Hardener, Dark Gray Antique Release



Slate with Diamond Inset, FM-3350 S/O
Cream Beige Color Hardener, Terra Cotta Antique Release



Slate with Diamond Inset, FM-3350 S/O
Sun Buff Color Hardener, Medium Gray Antique Release



Slate with Diamond Inset, FM-3350 S/O
Venetian Pink Color Hardener, Autumn Brown Antique Release



Slate with Diamond Inset, FM-3350 S/O
Brick Red Color Hardener, Dark Gray Antique Release

Disclaimer - When choosing colors, use the appropriate BRICKFORM color selection guide for more accurate matching. Colors shown here display only the range of BRICKFORM options available. *To confirm an exact color, have your contractor prepare a color sample for your approval before actual construction.* BRICKFORM accepts no responsibility for color matching or misprints.



Tuscany Stone, FM-1775
Quarry Red Color Hardener, Walnut Antique Release



Tuscany Stone, FM-1775
Desert Tan Color Hardener, Dark Gray Antique Release



Tuscany Stone, FM-1775
Terra Cotta Color Hardener, Walnut Antique Release



Tuscany Stone, FM-1775
Stone Gray Color Hardener, Medium Gray Antique Release



Tuscany Stone, FM-1775
Sandy Buff Color Hardener, Nutmeg Antique Release



Tuscany Stone, FM-1775
Ash White Color Hardener, Cappuccino Antique Release

Brickform Cem-Coat & FreestylePRO Standard Colors

Cem-Coat and FreestylePRO are Made-to-Order coloring products. (Color chart also applies to Overlay Liquid Colorant, see page 39 for companion products)



BRICKFORM Cem-Coat

Colored Cementitious Coating

BRICKFORM Cem-Coat is a richly pigmented coating, opaque, high-strength, and perfect for coloring a all 42 standard BRICKFORM Color Hardener and BRICKFORM Antique Release colors. Custom color matching is also available.

- Richly pigmented colors
- UV-resistant
- Use to antique, marbleize, and faux paint
- Suitable for all cementitious surfaces



CC	42 Standard Colors	1 Gallon Kit
CC4	42 Standard Colors (Including black and white)	4 Gallon Kit



Disclaimer - When choosing colors, use the appropriate BRICKFORM color selection guide for more accurate matching. Colors shown here display only the range of BRICKFORM options available. *To confirm an exact color, have your contractor prepare a color sample for your approval before actual construction.* BRICKFORM accepts no responsibility for color matching or misprints.

BRICKFORM FreestylePRO Stain
Penetrating Water-Based Stain

BRICKFORM FreestylePRO is a revolutionary concrete stain that penetrates and bonds with concrete surfaces in a way that no other coloring product can. This water-based, opaque stain is excellent for restoring, changing colors on previously colored surfaces, or rejuvenating old, discolored concrete. BRICKFORM FreestylePRO allows you to create totally new color styles for your decorative concrete work in an environmentally sound, versatile and user-friendly way.

- Water-based stain that is environmentally friendly
- Penetrating-bond with the concrete surface
- Excellent for changing colors, or rejuvenating old, discolored concrete
- No sealer required



FF	Solid-Color Kit
FB-800	8" Applicator Brush
FB-1000	10" Applicator Brush
FB-1800	18" Applicator Brush

BRICKFORM FreestylePRO Highlighter
Antiquing agent for Freestyle Solid Color Stain

BRICKFORM FreestylePRO Highlighter Stains are designed for use over BRICKFORM FreestylePRO Solid-Color Stain as a contrasting color to create an antiqued look on textured concrete surfaces. BRICKFORM FreestylePRO Highlighter Kits can also be used to add contrast or additional colors to areas of relief on textured concrete or to create the look of faux finishes.

- Transparent color
- Water-based stain that is environmentally friendly
- Penetrating-bond with the concrete surface
- No sealer required



FE Highlighter Kit



Before: old, discolored concrete

After: FreestylePRO Solid-Color Stain

After: FreestylePRO Highlighter is used for antiquing

Integral Color

Disclaimer - When choosing colors, use the appropriate BRICKFORM color selection guide for more accurate matching. Colors shown here display only the range of BRICKFORM options available. To confirm an exact color, have your contractor prepare a color sample for your approval before actual construction. BRICKFORM accepts no responsibility for color matching or misprints.



LC 24 Standard Colors 1 Cubic Yard



Premium pricing applies to green Powdered Integral Colors.

PC 25 Standard Colors 1 Bag

BRICKFORM Liquid Integral Color

BRICKFORM Liquid Color is made from the finest UV-resistant pigments available. BRICKFORM Liquid Color is produced to a one-percent tolerance to established plant standards and also complies with ASTM C979, Pigments for Integrally Colored Concrete. BRICKFORM Liquid Color is designed to suspend and disperse the iron oxide pigments evenly. BRICKFORM Liquid Color is available in standard and designer colors. Custom colors and color matching are also available.

- Dust-free
- UV-resistant color
- Mixes evenly
- Meets ASTM C979



BRICKFORM Color Wax

Color Wax is a wax-modified colored concrete cure and seal formulated for exterior or interior concrete surfaces. It has excellent adhesion properties and superior resistance to ultraviolet light, as well as resistance to acids, oils, mildew and alkalies while creating a non-gloss finish. Color Wax is available in all standard SOLOMON and BRICKFORM integral colors. (Color Wax is made to order, custom colors available.)

- Easy clean-up
- Water-based
- Improves color consistency
- Enrich existing color
- User-friendly



CW5-, CW1-

BRICKFORM Powdered Integral Color

BRICKFORM Powdered Color is a powdered-based pigment designed to color the cement paste in a concrete mixture. Powdered Color can be used for cast-in-place, pre-cast, and tilt-up, concrete block, pavers, and textured concrete. BRICKFORM Powdered Color is available in 19 standard colors. BRICKFORM Powdered Color is pre-packaged in a two-part system designed to reduce leaks and spills. * High volume orders may require bulk packaging

- Dissolvable interior plastic bag
- UV-resistant
- Mixes evenly
- Meets ASTM C979



Brickform Blush-Tone Acid Stain

BRICKFORM Blush-Tone Acid Stain lets you create colors with real depth that are unique and captivating. Thousands of different looks can be achieved ranging from the understated elegance of burnished leather to the ageless beauty of natural stone. Blush-Tone Acid Stain will open the door to a whole new palette of creative expression.

BRICKFORM Blush-Tone Acid Stain Chemical Stain For Concrete

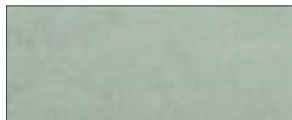
BRICKFORM Blush-Tone Acid Stain reacts with minerals that exist in newly cured or existing concrete, penetrating the very top layer of the concrete surface with color that will not chip, crack, or peel. The colors produced in each section of concrete will be unique with captivating, multi-colored intensities that become a permanent part of the concrete. BRICKFORM Blush-Tone Acid Stain is available in 10 standard colors.



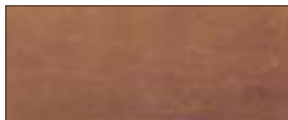
JADE
CS-100



EBONY
CS-600



TURQUOISE
CS-200



MISSION BROWN
CS-700



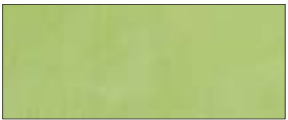
COFFEE
CS-300



AMBER
CS-800



CARAMEL
CS-400



OLIVE
CS-900



MAHOGANY
CS-500



WALNUT
CS-1000



- Penetrating chemical stain
- Variegated color
- Will not chip, crack, or peel
- Use on floors and walls

CS 10 Standard Colors 1 Gallon Bottle

Disclaimer - When choosing colors, use the appropriate BRICKFORM color selection guide for more accurate matching. Colors shown here display only the range of BRICKFORM options available. *To confirm an exact color, have your contractor prepare a color sample for your approval before actual construction.* BRICKFORM accepts no responsibility for color matching or misprints.



Brickform E-Stain

BRICKFORM E-Stain is a water-based formulation containing reactive mineral compounds and proprietary admixtures. BRICKFORM E-Stain contains no hydrochloric acid, making it more environmentally friendly. BRICKFORM E-Stain is ideally suited for use in the Micro-Topping, SM Professional Grade, Stampable Overlay, and cast in place concrete.

BRICKFORM E-Stain

Reactive Stain For Concrete

BRICKFORM E-Stains are penetrating, reactive stains that produce unique color effects in finished cementitious surfaces that simulate the natural shadings and aged appearance of stone or masonry. The color effect produced is unique to each stained surface and cannot be duplicated with other materials. BRICKFORM E-Stain creates a chemical reaction within the concrete substrate. This reaction slightly etches the concrete surface to provide deeper and more permanent color.

The color value of the stain can be reduced by blending the stain with E-Stain Plus. Special colors can be produced by blending two or more colors together.



EVERGREEN
ES-100



SUNSET
ES-500



BLUE DI MARE
ES-200



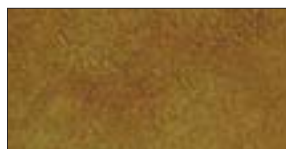
EBONY
ES-600



MOSS
ES-300



SADDLE
ES-700



BRONZE
ES-400



RUSTY BROWN
ES-800



- Eco-friendly reactive stain
- Acid-like characteristics without the harmful acid effects
- All colors (except EBONY) do not contain Sodium Dichromate a known carcinogen
- No harmful fumes
- D.O.T. non-hazardous shipping certified stain

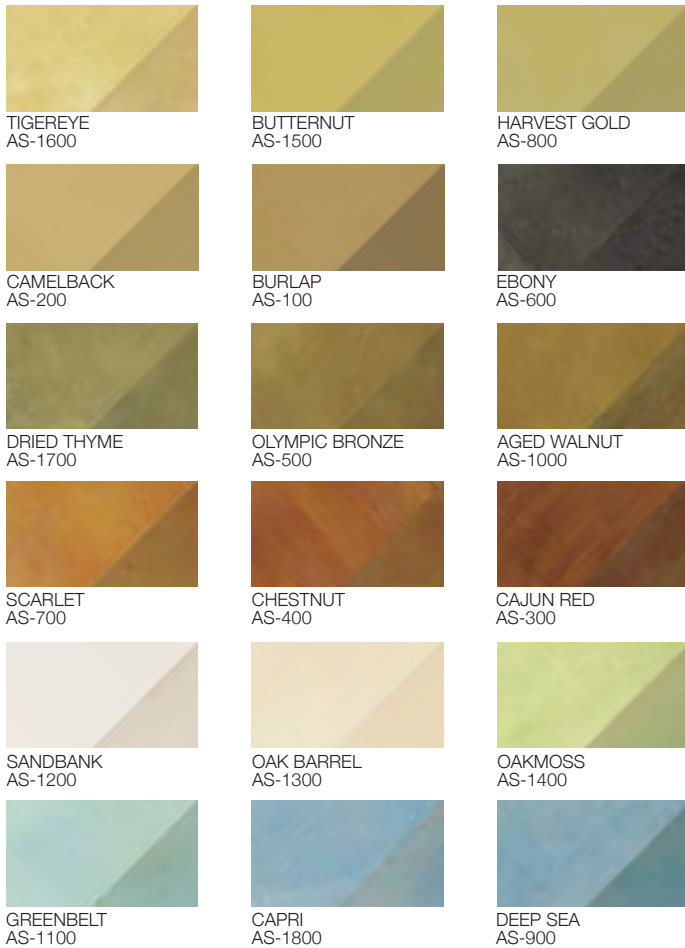
ES	8 Standard Colors	1 Gallon Bottle
ES-1100	E-Stain Plus	1 Gallon Bottle

Disclaimer - When choosing colors, use the appropriate BRICKFORM color selection guide for more accurate matching. Colors shown here display only the range of BRICKFORM options available. *To confirm an exact color, have your contractor prepare a color sample for your approval before actual construction.* BRICKFORM accepts no responsibility for color matching or misprints.



Brickform ARTesian Stain

ARTesian stains are penetrating, water-based stains that produce unique color effects in finished cementitious surfaces that simulate the natural shadings and aged appearance of stone or masonry. ARTesian Stain may be applied over smooth troweled or textured concrete, cement-based overlayers, vertical or horizontal concrete and masonry surfaces, artificial rock displays, water features and themed finishes.



BRICKFORM ARTesian Stain

Penetrating, Water-Based Stain

The color effect produced is unique to each stained surface and cannot be duplicated with other materials. ARTesian Stain contains no acids or harmful chemicals and works as an alternative to typical reactive acid stains. There are no acids or harmful chemicals integrated in its design.



- Zero VOC
- Water-based
- Interior/exterior use
- Apply with sprayer
- Must be sealed with solvent-based sealer (i.e. Gem-Seal)

AS 18 Standard Colors 1 Gallon Bottle

*Top left stain applied to white Micro-Topping, bottom right applied to gray Micro-Topping.

Disclaimer - When choosing colors, use the appropriate BRICKFORM color selection guide for more accurate matching. Colors shown here display only the range of BRICKFORM options available. *To confirm an exact color, have your contractor prepare a color sample for your approval before actual construction.* BRICKFORM accepts no responsibility for color matching or misprints.



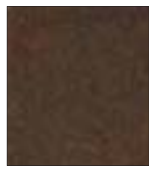
Pro-Dye
Standard Colors



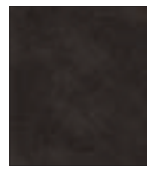
JADE
DSL-110



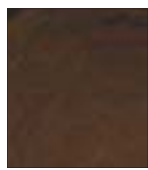
TURQUOISE
DSL-210



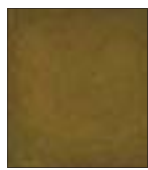
COFFEE
DSL-310



CARAMEL
DSL-410



DEEP CARAMEL
DSL-2510



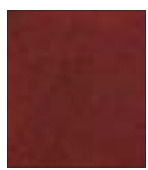
SAND
DSL-2710



TERRA COTTA
DSL-3010



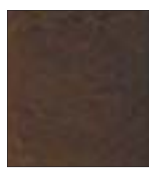
BURNT SIENNA
DSL-4210



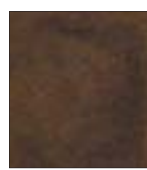
MAHOGANY
DSL-510



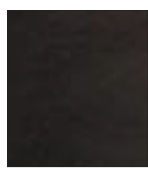
EBONY
DSL-610



MISSION BROWN
DSL-710



AMBER
DSL-810



CHOCOLATE
BROWN, DSL-3510



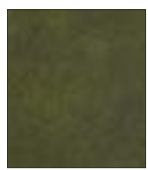
SADDLE BROWN
DSL-3710



DEEP WALNUT
DSL-4010



BLACK
DSL-7210



OLIVE
DSL-910



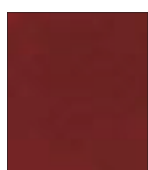
WALNUT
DSL-1010



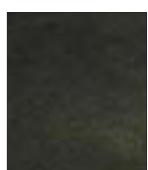
GOLD
DSL-2010



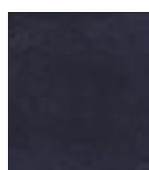
RAW SIENNA
DSL-2210



CHESTNUT
DSL-4510



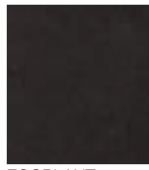
FOREST GREEN
DSL-6710



PATRIOT BLUE
DSL-5510



MIDNIGHT BLACK
DSL-7010



EGGPLANT
DSL-5210



SEPIA
DSL-5010

Polishing Systems

The Professional Concrete Polishing System is a simple, cost effective and environmentally friendly line of products designed to enhance, protect and beautify existing concrete floors with concrete polishing.

Brickform Pro-Dye

Penetrating Stain For Concrete

BRICKFORM Pro-Dye has been reformulated in liquid form and is now easier to use than before. Pro-Dye is available in the same 26 standard colors and produces the same beautiful results. Pro-Dye penetrates the surface of concrete, creating a layer of translucent color that dries quickly and will not chip, crack, or peel. Pro-Dye is packaged in liquid form to be mixed in proportion with acetone. Pro-Dye is designed to work with the *Professional Concrete Polishing System* for the coloring process in polishing floors. Pro-Dye is also excellent in vertical applications, stencils, and logos because it dries so quickly. Pro-Dye colors are vivid with unique multi-colored intensities, similar to the mottling effect of acid stain. Colors can be combined to create an unlimited number of color variations.

- Interior use only
- Easy to spray apply
- Dries quickly
- Use any spray-on sealer

