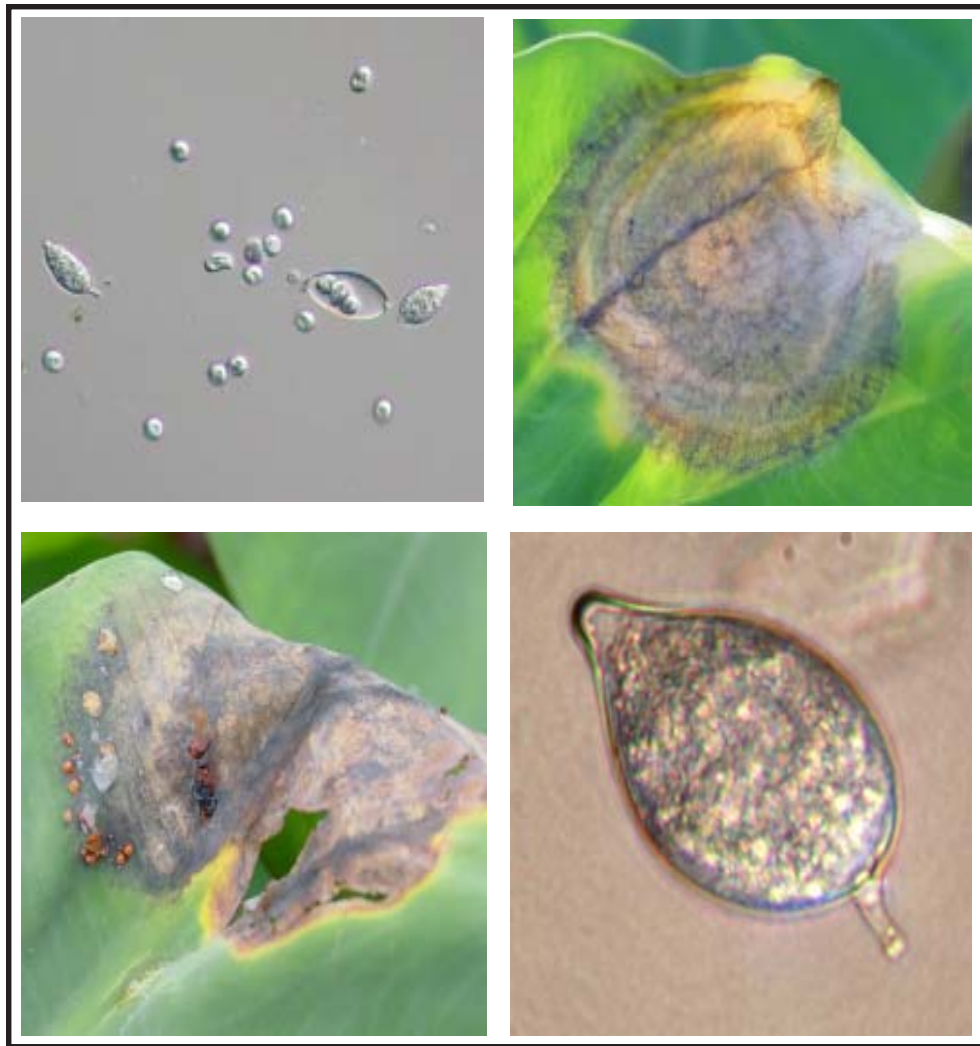


List of Plant Diseases in American Samoa 2004



Fred Brooks, Plant Pathologist

Land Grant Technical Report No. 41, American Samoa Community College Land Grant Program, September 2004. This work was partially funded by Hatch grant SAM-026, United States Department of Agriculture, Cooperative State Research, Extension, and Education Service (CSREES) and administered by American Samoa Community College. The author bears full responsibility for its content.

For more information on this publication, please contact:

Fred Brooks, Plant Pathologist
American Samoa Community College
Land Grant Program
P. O. Box 5319
Pago Pago, AS 96799
Tel. (684) 699-1394/1575
Fax (684) 699-5011
e-mail <fredbrooks@hotmail.com>, <f.brooks@ascc.as>

Title page: (clockwise from upper left) *Phytophthora colocasiae*, zoospore release; zonate lesion of taro leaf blight disease; *P. colocasiae* sporangium; taro leaf blight lesion with reddish plant exudate.

TABLE OF CONTENTS

	Page
Introduction	iv
About this text	vi
Host-pathogen index	1
Pathogen-host index	17
Wood decay fungi	30
Parasitic algae and their plant hosts	32
Fungus pathogens on insects	38
English and Samoan plant names, botanical equivalents	39
List of host plants by family	41
Comprehensive list of recorded plant pathogens	42
Authors of plant and fungus names	45
Bibliography	47

Color plates (following page 16)

INTRODUCTION

The Pacific islands of American Samoa are an unincorporated territory of the United States located between latitude 14°12' and 14°23' South and longitude 170°32' and 170°52' West. The five principal islands—Tutuila, Aunu'u, and the Manu'a Islands of Ofu, Olosega and Ta'u—have a land area of 122 km². They are volcanic, with narrow coastlines rising abruptly to tapered ridges. The ridges are comprised of primary and secondary forest, with 70% of the slopes greater than 30% (Wingert 1981). The highest elevations vary from 89 m on the small island of Aunu'u to 974 m on Ta'u; Matafao, 659 m, is the highest point on the main island of Tutuila.

Traditional subsistence farming is still concentrated along the coastal strips and lower slopes. Population pressure on the 85 km² island of Tutuila, however, is forcing development of slopes to 60%; approximately 90% of the more than 60,000 people in the Territory live on this island. Relatively level areas of importance are limited to the Tafuna (Leone) Plain on Tutuila and a few upland areas on the outer island of Ta'u. The wettest season is November-March, the driest season June-September. Yearly rainfall averages from 3,200 mm on the Tafuna Plain (airport) to 7,620 mm on Mt. Lata, Ta'u. The average temperature at Tafuna airport is about 28°C with an average high of 31°C and an average low of 25°C (Department of Commerce 1996).

Few plant disease epidemics have been recorded in American Samoa. This is partly due to traditional agroforestry practices. These practices include interplanting small areas of subsistence crops—taro, giant taro, tapioca, kava—among banana, breadfruit, coconut or forest trees. One recent exception was the 1993-1994 taro leaf blight epidemic caused by *Phytophthora colocasiae*. Taro (*Colocasia esculenta*) was a major crop in both American Samoa and independent Samoa, planted over large areas of the islands. When *P. colocasiae* arrived it rapidly spread through the susceptible Samoan cultivars. Establishment of leaf blight resistant taro from Micronesia in 1997 has revived local production. Currently, breeding lines from Southeast Asia and the Pacific are being introduced to improve eating quality and increase genetic diversity.

Banana Bunchy Top Virus, devastating in many parts of the Pacific, was introduced to American Samoa in the late 1950s (Magee 1967). A recent survey showed an average of less than 5% of banana mats on Tutuila Island were infected and no sign of the disease in the Manu'a Islands (Brooks 1999). The percentage of disease in some of the commercial plantations, however, was over 10%. The main limitations to banana production are black leaf streak disease (*Mycosphaerella fijiensis*), fruit damage by banana scab moth larvae (*Nacoleia octasema*), and plant-parasitic nematodes.

A survey of banana plantations on Tutuila in 2002-2003 revealed that every field (n = 25) was infested with root-parasitic nematodes (Brooks, 2004). The average number of these nematodes per commercial field (n = 16) was 28,500 per 100 g of roots. Spiral nematodes (*Helicotylenchus multicinctus*, *H. dihystrera*) averaged 23,000 per 100 g of roots, and the more damaging burrowing nematode (*Radopholus similis*) averaged 4,680 per 100 g of roots. Two lesion nematodes, *Pratylenchus loosi* and *P. gibbicaudatus*, were new records for American Samoa. The former is usually found on tea and coffee and the latter has never been reported on *Musa* spp. This was only the second report of *P. gibbicaudatus* outside of Japan (Grandison 1990).

Previous plant disease lists for American Samoa have been based on short, infrequent visits by consultants, including Dumbleton (1954) and Firman (1975). McKenzie's work (1996) summarized these findings and others and, along with identifications from his 1989 survey, is the most complete record available. A technical paper on plant parasitic nematodes by Grandison was also published by the Secretariat of the Pacific Community (SPC) in 1996.

The following plant disease indexes present plant-pathogenic organisms collected and identified in American Samoa between October 1998 and September 2004. Subsequent sections list wood decay fungi, plant-parasitic algae, and fungal pathogens isolated from insects. The high ratio of fungi to other parasitic organisms in the indexes reflects their abundance and diversity in the warm, humid environment of the tropics. Fungi, as opposed to most bacteria and viruses, are also more amenable to identification in a small plant pathology laboratory with limited resources. Many of the specimens collected during the past six years were causing minor damage to their host. Due to the time and cost of having them identified at a reputable off-island facility, some of these identifications are tentative. A voucher collection—herbarium sheets, microscope slides, photomicrographs, and photographs—has been established at the Tauiilili Pamerika Center for Tropical Agricultural Research, USDA Land Grant Division, American Samoa Community College.

Fred Brooks
September 2004

ABOUT THIS TEXT

Plant disease nomenclature, authorities, and modified host and pathogen index formats follow Farr et al. (1989). Plant names and authorities follow Farr (1989), Whistler (1994a), The Plant Names Project (1999), and the Index of Botanists (2001).

Host-pathogen index. Plant hosts are listed alphabetically by genus and species, followed by the author who first described them. Common and Samoan names, in brackets, follow the abbreviated author(s) names. Below each host name in alphabetical order are potential disease-causing organisms isolated from that host and the name of the disease or most common symptom. An accession number follows specimens deposited in the American Samoa Land Grant herbarium (ASLG). Most of the organisms in this list are known pathogens but may be present as saprophytes.

Color plates. Between the indexes are photographs of plant pathogens and plant disease signs or symptoms. Each plate is referred to in the indexes following the name of the pathogen or host.

Pathogen-host index. This is an alphabetical listing by genus of disease causing organisms followed by their authority and taxonomic classification. Below each pathogen are species identifications based on morphology, growth characteristics in vivo or in culture, signs and symptoms, isolation from a known host, or published presence in American Samoa (McKenzie 1996). Unidentified species are listed as “sp.” Each species name is followed by the host from which it was isolated and the host’s common name.

Wood decay fungi. A list of macro-fungi collected by the author from 2001-2004 and accessioned into the Land Grant Herbarium (ASLG). Identifications confirmed by the USDA Forest Service, Forest Products Laboratory, Center for Mycology Research, Madison, WI, are followed by an asterisk. The list includes wood decay fungi collected by McKenzie in 1989 (PDD), and other decay fungi mentioned by him in his 1996 report (no accession numbers).

Parasitic algae and their plant hosts. Five species of parasitic algae in the genus *Cephaleuros* and two in *Stomatochroom* are listed, followed by the family, genus, and species of their host(s).

Fungus pathogens on insects. Several known entomopathogenic fungi have been isolated from insects. Most American Samoans do not use chemical pesticides and enhancing the indigenous population of insect pathogens is a potential biological control option.

English and Samoan plant names, botanical equivalents. Scientific names are given for common English and Samoan plant names.

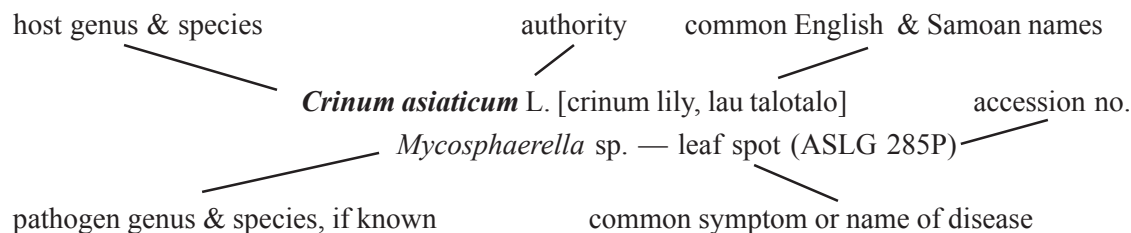
List of host plants by family. This is a useful entry for references like Farr et al. (1986) and Whistler (1994a), where it is necessary to know plant families in order to find genus and species information.

Comprehensive list of recorded plant pathogens. Most plant pathogenic fungi and bacteria recorded in American Samoa are in the publication by EHC McKenzie (1996). This list is an update of McKenzie’s publication and includes pathogenic organisms identified by the author. The latter are followed by double asterisks (**). Banana nematodes described by Grandison (1996) are followed by a single asterisk (*).

Authors of plant and fungus names. Full names of abbreviated plant and fungus authorities listed in the indexes.

Bibliography. List of sources used to identify plant pathogens, entomopathogens, nematodes, plant-parasitic algae, and local flora.

HOST-PATHOGEN INDEX



Format used in the host-pathogen index (from Farr et al. 1989)

Adenanthera pavonina L. [lopa]

Phellinus noxius — brown root rot

Alocasia cucullata (Loureiro) G. Don [Chinese taro]

Colletotrichum sp. — leaf spot (ASLG242P)

Alocasia macrorrhiza (L.) G. Don [giant taro, ta'amu]

Cercospora sp. — leaf spot

Colletotrichum gloeosporioides — leaf spot (ASLG230P)

Glomerella cingulata — anthracnose (ASLG235P)

Macrophoma sp. — from taro leaf blight lesion

Mycosphaerella alocasiae — leaf spot (ASLG007P) (**Plates 1, 2**)

Pestalotiopsis sp. — from leaf spot (ASLG033P)

Phoma sp. — from leaf spot (ASLG135P)

Phytophthora colocasiae — taro leaf blight (ASLG003,026,354,394P)

Artocarpus altilis (Park.) Fosb. [breadfruit, 'ulu]

Cercospora sp. — leaf spot (ASLG326P)

Colletotrichum sp. — from leaf spot, fruit necrosis (ASLG 344,349,358,368P) (**Plate 3**)

Glomerella sp. — angular leaf spot (ASLG150P)

Phellinus noxius — brown root rot (ASLG228P)

Phomopsis sp. — from necrotic spines on fruit (ASLG367P)

Phyllosticta artocarpi — angular leaf spot (ASLG084,225P)

Physalospora rhodina — leaf spot (ASLG 030P)

Phytophthora palmivora — fruit rot (ASLG343,347,352,356P)

Sclerotium sp. — rot of fruit on ground (ASLG369P)

Barringtonia asiatica (L.) Kurz [futu]

Cercospora sp. — leaf spot

Phellinus noxius — brown root rot

Barringtonia samoensis A. Gray [faiaga]

Phellinus noxius — brown root rot

Bidens alba (L.) DC. [beggar's-tick]

Uromyces bidenticola — rust

Bischofia javanica Blume [‘o’a]

Pestalotiopsis sp. — leaf spot (ASLG167P)

Bixa orellana L. [lipstick-tree, loa]

Cercospora bixae — leaf spot

Bougainvillea spectabilis Willd. [bougainvillea, felila]

Cercosporidium bougainvilleae — leaf spot (ASLG154P) (**Plates 4, 5**)

Brassica chinensis var. *chinensis* (L.) Prain [Chinese cabbage, pak-choi, kاپisi]

Ascochyta sp. — from leaf spots (ASLG270P)

Cercospora brassicicola — from leaf necrosis (ASLG271P)

Colletotrichum gloeosporioides — from leaf necrosis (ASLG272P)

Erwinia sp. — bacterial crown rot

Leptosphaerulina sp. — from leaf spots (ASLG 269P)

Pythium spp. — damping-off

Broussonetia papyrifera (L.) Venten. [paper-mulberry, u’a]

Cercospora broussonetiae — leaf spot

Brunfelsia americana L. [lady-of-the-night]

Colletotrichum sp. — anthracnose (ASLG296P)

Lasiodiplodia theobromae — on anthracnose lesion (ASLG297P)

Caladium Venten. x *hortulanum* [caladium]

Chaetomella sp. — from dead leaf tissue

Phyllosticta sp. — leaf spot

Calophyllum neo-ebudicum Guillaumin [tamanu]

Phellinus noxius — brown root rot

Cananga odorata (Lam.) Hook. f. & Thoms. [moso'oi]

Colletotrichum gloeosporioides — branch dieback

Phellinus noxius — brown root rot (ASLG210,249P)

Canarium harveyi Seem. [mafoa]

Colletotrichum sp. — leaf spot (ASLG181P)

Phellinus noxius — brown root rot

Canna indica L. [canna lily, fagamanu]

Mycosphaerella sp. — leaf spot

Puccinia sp. — rust (ASLG020P)

Uredo pseudocannae — rust

Capsicum annuum L. [sweet and hot peppers, polo]

Colletotrichum sp. — anthracnose (ASLG200P) (**Plate 6**)

Phytophthora parasitica — root and crown rot (ASLG190P)

Rhizopus stolonifer — fruit rot (ASLG201P)

Carica papaya L. [papaya, esi]

Colonectria sp. — from collar rot (ASLG350P)

Colletotrichum gloeosporioides — leaf spot (ASLG171P)

Corynespora cassiicola — target leaf spot (ASLG068,286P) (**Plates 7, 8**)

Phoma sp. — stem canker (ASLG355P)

Phomopsis sp. — stem canker (ASLG370P)

Phytophthora palmivora — root and crown rot (ASLG351,357P,373P)

Pythium sp. — damping off (ASLG353P)

Carissa grandiflora (E. Mey.) A. DC. [natal plum]

Lasiodiplodia theobromae — branch dieback (ASLG274P) (**Plate 9**)

Pestalotiopsis sp. — leaf spot

Cerbera manghas L. [lava]

Phellinus noxius — brown root rot

Cieba pentandra (L.) Gaertn. [kapok, vavae]

Phellinus noxius — brown root rot (ASLG208P)

Citrus aurantifolia L. Swingle [lime]

Colletotrichum sp. — anthracnose

Lasiodiplodia theobromae — branch dieback (ASLG290P)

Citrus sp. L. [citrus, moli]

Capnodium sp. — sooty mold

Chaetomella sp. — on leaves

Colletotrichum gloeosporioides — leaf anthracnose

Lasiodiplodia theobromae — on dead bark (ASLG152P)

Meloidogyne sp. — root knot nematode

Phellinus noxius — (ASLG248P)

Phomopsis citri — citrus melanose

Sphaceloma fawcettii var. *scabiosa* — citrus scab (ASLG169P)

Cocos nucifera L. [coconut palm, niu]

Colletotrichum sp. — from coalesced leaf spots (ASLG162P)

Leptosphaeria sp. — gray leaf blotch (ASLG262P)

Mycosphaerella sp. — leaf spot (ASLG283P)

Pestalotiopsis palmarum — gray leaf spot (ASLG046P)

Phoma sp. — leaf spot (ASLG263P)

Phomopsis sp. — leaf spot (ASLG264P)

Phyllosticta sp. — leaf spot

Septoria sp. — from leaf spot

causal agent unknown — American Samoa coconut yellowing (ASLG226P)

Codiaeum variegatum (L.) Blume [croton]

Colletotrichum sp. — leaf spot (ASLG237P)

Coix lacryma-jobi L. [sanasana]

Mycosphaerella sp. — leaf spot (ASLG281P)

Colocasia esculenta (L.) Schott [taro, talo]

Cladosporium colocasiae — sooty mold

Colletotrichum gloeosporioides — from leaf blight lesions (ASLG256,397P)

Colletotrichum sp. — from chlorotic leaves (ASLG233P)

Curvularia sp. — from *Leptosphaerulina* leaf spot (ASLG170P)

Dasheen Mosaic Virus — leaf chlorosis, discoloration (**Plate 10**)

Fusarium solani — root and corm rot (ASLG308P)

Glomerella cingulata — from leaf blight lesions (ASLG257P)

Gonatobotryum sp. — on leaves and petioles

Helicotylenchus dihystera — nematode root damage (ASLG379P)

Helicotylenchus sp. — nematode root damage (ASLG023P)

Leptosphaeria sp. — from *Leptosphaerulina* leaf spot (ASLG147P)
Leptosphaerulina trifolii — leaf spot (ASLG143,412P) (**Plates 11, 12**)
Marasmiellus stenophyllus — stem and corm rot (ASLG027M)
Phoma sp. — from leaf blight lesions (ASLG255P)
Phytophthora colocasiae — taro leaf blight (ASLG003,354,394P) (**Plates 13, 14**)
Pythium aphanidermatum — root and corm rot (ASLG278P)
Pythium sp. — corm rot (ASLG378P)
Septoria sp. — from *Leptosphaerulina* leaf spot

Cordia aspera Forst. f. [tou]

Phellinus noxius — brown root rot

Cordyline terminalis (L.) Kunth [ti]

Ascochyta sp. — from leaf spot
Colletotrichum sp. — from leaf spot
Pestalotiopsis sp. — from leaf spot
Phoma sp. — leaf spot (ASLG231P)
Phyllosticta sp. — from leaf spot (ASLG070P)

Crinum asiaticum L. [crinum lily, lau talotalo]

Mycosphaerella sp. — leaf spot (ASLG285P)

Crossostylis biflora Forst. [saitamu]

Phellinus noxius — brown root rot

Cucumis sativus L. [cucumber, kukama]

Cercospora citrullina — leaf spot
Corynespora cassiicola — leaf spot (ASLG184,360,366P)
Didymella bryoniae — gummy stem blight (ASLG207P)
Erysiphe sp. — powdery mildew (ASLG361P)
Meloidogyne sp. — root knot nematode (376P)
Oidium sp. — powdery mildew
Phoma cucurbitacearum — gummy stem blight, leaf spot (ASLG149)
Pythium aphanidermatum — wilt, fruit, root, crown rot (ASLG177P) (**Plates 15, 16**)
Pythium spp. — damping-off, root and crown rot (ASLG016,177P)
Rhizoctonia solani — damping-off, fruit rot (ASLG142P)
Zucchini Yellow Mosaic Virus — stunt, distortion, death (ASLG391P)

Cuphea melvilla Lindl. [firecracker plant]

Phyllosticta sp. — from necrotic leaf tip (ASLG294P)

- Cyperus rotundus*** L. [purple nut sedge, mumuta]
Puccinia canaliculata — leaf rust (ASLG059P)
- Dendrolobium umbellatum*** (L.) Benth. [lala]
Cercospora sp. — leaf spot (ASLG145P)
Pestalotiopsis sp. — from leaf spot
- Diffenbachia*** Schott [dumbcane]
Lophodermium sp. — leaf spot
- Digitaria setigera*** Roem. & F.W. Schultz [crab grass]
Puccinia oahuensis — leaf and stem rust (ASLG130P)
- Dioscorea bulbifera*** L. [bitter yam, soi]
Cercospora sp. — leaf spot (ASLG407P)
Mycosphaerella sp. — leaf spot (ASLG408P)
- Diospyros samoensis*** A. Gray [au'auli]
Glomerella sp. — from leaf spot (ASLG365P)
Phellinus noxius — brown root rot
Phyllosticta sp. — leaf spot (ASLG362P)
- Dysoxylum samoense*** A. Gray [tufaso]
Phellinus noxius — brown root rot (ASLG385P)
Pseudocercospora subsessilis — leaf spot (ASLG199P)
- Elattostachys falcata*** (A. Gray) Radlk. [taputo'i]
Phellinus noxius — brown root rot
- Erythrina subumbrans*** (Hassk.) Merr. [gatae palagi]
Phoma erythrinicola — leaf spot
- Erythrina variegata*** L. [coral tree, gatae]
Colletotrichum gloeosporioides — leaf spot (ASLG073P)
Phoma sp. — leaf spot (ASLG234, 238P)
- Euphorbia pulcherrima*** Willd. ex Klotzsch [poinsettia]
Colletotrichum sp. — leaf anthracnose (ASLG390P)
Dothiorella sp. — branch dieback
Glomerella sp. — leaf necrosis
Lasiodiplodia theobromae — branch dieback (ASLG172P)

- Phoma* sp. — branch dieback (ASLG151P)
Phomopsis sp. — branch dieback
Sphaceloma poinsettiae — leaf and stem scab (ASLG389P)
- Fagraea berteriana*** A. Gray [pualulu]
Colletotrichum sp. — leaf spot
Sphaerulina sp. — leaf spot (ASLG258P)
- Faradaya amicornum*** Seem. [mamalupe]
Pestalotiopsis sp. — leaf spot (ASLG192P)
- Ficus elastica*** Roxb. ex Horne. [rubber plant]
Mycosphaerella sp. — leaf spot (ASLG254P)
- Ficus obliqua*** Forst. f. [banyan tree, aoa]
Phellinus noxius — brown root rot
- Ficus scabra*** (mati vao)Forst. f. [mati'ata]
Phyllachora sp. — tar spot (ASLG198,280,330P)
- Ficus tinctoria*** Forst. f. [dyer's fig; mati]
Phellinus noxius — brown root rot
Phyllachora sp. — tar spot (ASLG229P)
- Flueggea flexuosa*** Muell. Arg. [poumuli]
Phellinus noxius — brown root rot (ASLG251P)
- Glochidion ramiflorum*** Forst. [masame]
Phellinus noxius — brown root rot
- Gloxinia perennis*** Druce [Canterbury bells]
Colletotrichum sp. — blossom blight (ASLG300P)
Corynespora cassiicola — on blighted blossoms (ASLG301P)
- Hedychium coronarium*** J. König ex Retz. [white ginger, teuila]
Colletotrichum sp. — leaf spot
Leptosphaeria sp. — leaf spot (ASLG260P)
Mycosphaerella hedychii — leaf spot (ASLG074P)
Pestalotiopsis sp. — leaf spot
Phoma sp. — leaf spot (ASLG261P)

Heliconia humilis L. [lobster claw]

Colletotrichum sp. — from leaf anthracnose (ASLG099P)

Curvularia sp. — from leaf anthracnose (ASLG 158P)

Mycosphaerella sp. — from leaf anthracnose

Physalospora sp. — from leaf anthracnose

Septoria sp. — from leaf anthracnose (ASLG157P)

Heliconia psittacorum L. fil [parrot flower]

Curvularia sp. — leaf spot (ASLG268P)

Dothiorella sp. — from leaf spot

Leptosphaeria sp. — from leaf spot

Heliconia sp. L. [wild heliconia]

Cercospora sp. — leaf spot (ASLG404P)

Fusarium sp. — root, rhizome rot (ASLG377P)

Hernandia nymphaeifolia (Presl.) Kub. [pu'a]

Phellinus noxius — brown root rot

Hibiscus manihot L. [edible hibiscus, pele]

Cercospora malayensis — angular leaf spot (ASLG403P)

Cercospora sp. — leaf spot (ASLG218P)

Hibiscus rosa-sinensis L. [China rose, Hawaiian hibiscus, 'aute]

Cercospora althaeina — leaf spot (ASLG166P)

Colletotrichum — leaf spot (ASLG240P)

Curvularia sp. — leaf anthracnose

Leptosphaeria sp. — from leaf spots (ASLG241P)

Phellinus noxius — root and crown rot (ASLG188P)

Phoma sp. — leaf spot (ASLG239P)

Phyllosticta sp. — from leaf spots

unidentified — sooty mold

Hibiscus tiliaceus L. [beach hibiscus, fau]

Colletotrichum gloeosporioides — (ASLG027) leaf spot

Pestalotiopsis sp. — leaf spot

Phellinus noxius — root and crown rot (ASLG250P) (**Plate 18**)

Phoma sp. — leaf spot

Phyllachora sp. — tar spot (ASLG219P)

Inocarpus fugifer (Parkinson) Fosb. [ifi]

Phellinus noxius — brown root rot

Intsia bijuga (Colebr.) Kuntze [ifilele]

Colletotrichum sp. — leaf spot (ASLG179P)

Phellinus noxius — root and crown rot (**Plate 19**)

Phyllachora afzeliae — tar spot (ASLG211P)

Phyllachora sp. — tar spot (ASLG312P)

Ipomoea alba L. [moonflower, fue sina]

Colletotrichum sp. — leaf spot

Ipomoea pes-caprae (L.) R. Br. [beach morning-glory, fue kula, fue mola]

Cercospora sp. — leaf spot

Iris L. [iris]

Dothiorella sp. — from leaf spot

Kyllinga nemoralis (Forst.) Dandy ex Hutchinson & Dalziel [sedge, kili'o'opu]

Puccinia sp. — rust (ASLG327P)

Lagerstroemia indica L. [crape-myrtle]

Oidium sp. — powdery mildew

Lansium domesticum Correa [langsat]

Fusarium solani — branch dieback (ASLG314P)

Nectria sp. — from branch dieback (ASLG259P)

Ludwigia octovalvis (Jacq.) Raven [primrose willow]

Cercospora sp. — leaf spot (ASLG175P)

Lycopersicon esculentum Miller [tomato]

Botryosphaeria dothidea — from leaf spot (ASLG095P)

Colletotrichum gloeosporioides — leaf spot

Corynespora cassiicola — leaf spot (ASLG056P)

Dothiorella sp. — from leaf spot (ASLG095P)

Erwinia carotovora subsp. *carotovora* — bacterial canker

Meloidogyne incognita — root knot nematode (ASLG164,253,393P) (**Plates 20, 21**)

Pestalotiopsis sp. — from leaf spot

Pseudomonas solanacearum race 1 — bacterial wilt

Sclerotinia sclerotiorum — stem canker

Xanthomonas campestris pv. *vesicatoria* — bacterial wilt

Macaranga harveyana (Muell. Arg.) Muell. Arg. [lau pata, pata]

Phellinus noxius — brown root rot (ASLG176P)

Macaranga stipulosa Muell. Arg. [lau fitu]

Phellinus noxius — brown root rot (ASLG176P)

Mangifera indica L. [mango, mago]

Colletotrichum gloeosporioides — anthracnose, flower blight (ASLG194,275P) (**Plate 22**)

Dendrophoma sp. — from leaf spots

Lophodermium sp. — on dead stems

Pestalotiopsis mangiferae — gray leaf spot (ASLG195P)

Phellinus noxius — brown root rot (ASLG386P,388P)

Stigmina mangiferae — leaf spot (ASLG295P,380P) (**Plate 23**)

Manihot esculenta Crantz [tapioca, manioka]

Botryosphaeria sp. — from leaf spots

Cercospora sp. — leaf spot

Cercosporidium henningsii — leaf spot (ASLG065,371P)

Mycosphaerella henningsii — leaf spot (ASLG311P)

Manilkara zapote (L.) D. Royen [sapote]

Pestalotiopsis sp. — gray leaf spot (ASLG197,236P)

Pythium sp. — root and crown rot

Merremia umbellata (L.) Hall. f. [fue lautetele]

Cercospora sp. — leaf spot

Metroxylon vitiense (H. Wendl.) Hook. f. [sago palm, niu o lotuma]

Phyllachora sp. — tar spot (ASLG273P)

Mikania micrantha Kunth [mile-a-minute vine, fue saina]

Cercospora mikaniacola — leaf spot (ASLG037P)

Cercospora sp. — leaf spot

Cladosporium sp. — from leaf spot (ASLG336P)

Marasmiellus sp. — on dead stem

Momordica charantia L. [bitter gourd]

Cercospora citrullina — leaf spot (ASLG045,323P) (**Plate 24**)

Morinda citrifolia L. [nonu]

Guignardia morindae — leaf spot (ASLG193P)

Phellinus noxius — brown root rot

Musa acuminata* x *M. balbisiana Colla [edible banana, fa'i]

Banana Bunchy Top Virus — stunting, sterility, plant death (ASLG004P) (**Plate 25**)

Colletotrichum sp. — from black leaf streak lesion (ASLG341P)

Cordana musae — leaf spot (ASLG063,284,339P) (**Plate 26**)

Curvularia sp. — leaf spot

Helicotylenchus dihystra — spiral nematode (ASLGP413P)

Helicotylenchus multicinctus — spiral nematode (ASLG372P)

Leptosphaeria sp. — from leaf blight (ASLG121P)

Marasmiellus semiustus — pseudostem rot (ASLG021M)

Meloidogyne incognita — root knot nematode (ASLG302P)

Mycosphaerella fijiensis — black leaf streak (ASLG025,337P) (**Plates 27, 28**)

Phyllachora musicola — black cross leaf streak (ASLG019P) (**Plate 29**)

Phyllosticta musarum — freckle (ASLG288P)

Pratylenchus gibbicaudatus — lesion nematode (ASLG384P)

Pratylenchus loosi — lesion nematode (ASLG022,383P)

Pseudocercospora fijiensis — black leaf streak (ASLG287,340P)

Pyrenochaeta sp. — from black leaf streak lesion (ASLG342P)

Radopholus similis — burrowing nematode (ASLG011P)

Sphaerulina sp. — leaf spot (ASLG338P)

Uredo musae — banana rust (ASLG282,291P)

Myristica fatua Houtt. [Samoan nutmeg, 'atone]

Phellinus noxius — brown root rot (ASLG174P,387P)

Neonauclea forsteri (Seem. ex Havil.) Merr. [afa]

Phellinus noxius — brown root rot

Nicolaia elatior Horan. [torch ginger]

Pestalotiopsis sp. — leaf blight

Pandanus whitmeeanus Mart. [screwpine; paogo, fasa, lau fala]

Pestalotiopsis palmarum — leaf spot (ASLG044P)

Pestaloziella sp. — from leaf spot

Paspalum conjugatum Bergius [sour paspalum, sourgrass]

Physopella sp. — rust (ASLG303P)

Persea americana Miller [avocado, 'avoka]

Botryosphaeria dothidea — from leaf spot
Discosia sp. — from leaf spot
Dothiorella sp. (*Fusicoccum*) — branch canker (ASLG136P)
Fusarium solani — root rot (ASLG196P)
Lasiodiplodia theobromae — root rot (ASLG205P)

Phaseolus vulgaris L. [French bean, green bean, etc.]
Colletotrichum lindemuthianum — anthracnose (ASLG304P)

Philodendron Schott [heart-leaf philodendron]
Physalospora sp. — leaf spot (ASLG159P)

Piper methysticum Forst. f. [kava]
Colletotrichum sp. — leaf anthracnose (ASLG334P)
Cucumber Mosaic (cucumo)Virus — kava wilt, dieback (ASLG313P) (**Plate 30**)
Phyllachora sp. — tar spot on leaves (ASLG392P)

Pipturus argenteus (Forst. f.) Wedd. [soga]
Phellinus noxius — brown root rot

Planchonella grayana St. John [‘ala’a]
Phellinus noxius — brown root rot

Planchonella samoensis H.J. Lam ex Christoph. [mamalava]
Phellinus noxius — brown root rot

Planchonella torricellensis (K. Schum.) Lam [mamalava]
Pestalotiopsis sp. — leaf spot
Rhynchosphaeria sp. — ‘shot hole’ leaf spot

***Plumeria* sp.** L. [frangipani, pua fiti]
Coleosporium plumeriae — rust on leaves (ASLG006P) (**Plate 31**)

Polyscias guilfoylei (W. Bull) L.H. Bailey [geranium-leaf aralia]
Cercospora sp. — leaf spot (ASLG032P)
Colletotrichum sp. — leaf spot
Glomerella sp. — leaf spot

***Polyscias scutellaria* ‘Tricochleata’** (W. Bull) L.H. Bailey [panax, tanitani]
Cercospora sp. — leaf spot (ASLG168P) (**Plate 32**)
Colletotrichum gloeosporioides — leaf spot

Glomerella sp. — from leaf spot

Pometia pinnata Forst. [tava]

Cladosporium sp. — sooty mold

Colletotrichum gloeosporioides — from leaf anthracnose (ASLG411P)

Pestalotiopsis sp. — from leaf anthracnose (ASLG410P)

Phellinus noxius — brown root rot

Pritchardia pacifica Seem. & H. Wendl. ex Wendl. [Fiji Island fan palm, niu piu]

Bipolaris sp. — leaf spot (ASLG316P)

Botryosphaeria sp. — on leaf spot

Colletotrichum sp. — leaf spot (ASLG213P,375P)

Curvularia sp. — from leaf spots (ASLG214P)

Leptosphaeria sp. — from leaf spots (ASLG212P)

Pestalotiopsis palmarum — leaf spot

Phomopsis sp. — leaf spot (374P)

Pseuderanthemum carruthersii* var. *reticulatum (Seemann) Guillaumin [el dorado]

Cercospora sp. — leaf spot (ASLG221,329P)

Colletotrichum sp. — leaf spot (ASLG080P)

Glomerella sp. — leaf spot (ASLG180P)

Psidium guajava L. [guava, apple guava]

Colletotrichum gloeosporioides — fruit spot

Puccinia canaliculata (Schwein.) Lagerh. [rust fungus on purple nut sedge]

Sphaerellopsis filum — mycoparasite of *P. canaliculata* (ASLG060,131,328P) (**Plate 17**)

Pueraria lobata (Willd.) Ohwi [kudzu]

Cercospora sp. — leaf spot (ASLG298P)

Colletotrichum sp. — angular leaf spot (ASLG088P)

Guignardia sp. — from leaf spot

Synchytrium minutum — ‘false rust’ (ASLG299P)

Rhus taitensis Guillemin [tavai]

Phellinus noxius — brown root rot

Phoma sp. — leaf spot (ASLG220P)

Rollinia deliciosa Saff. [rollinia]

Colletotrichum sp. — leaf anthracnose (ASLG363P)

Didymella sp. — from anthracnose lesions (ASLG364P)

Rosa chinensis Jacq. [rose]

Marssonina rosae — leaf spot (ASLG289P)

Mycosphaerella rosicola — leaf spot (ASLG209P)

Samanea saman (Jacq.) Merr. [monkeypod tree, tamaligi palagi]

Phellinus noxius — brown root rot

Sanchezia Ruiz & Pav. [not known]

Mycosphaerella sp. — leaf spot

Solanum melongena L. [eggplant, aubergine, israeli]

Cercospora egenula — leaf spot (ASLG206P)

Cercospora melongenae — leaf spot (ASLG161P)

Cercospora sp. — leaf spot (ASLG276P)

Phoma sp. — leaf spot, fruit spot (ASLG160P)

Rhizopus stolonifer — fruit rot (ASLG183P)

Solanum nigrum L. [black nightshade, magalo]

Cercospora sp. — leaf spot

Spathoglottis plicata Blume [Philippine orchid]

Colletotrichum sp. — leaf anthracnose (**Plate 33**)

Lasiodiplodia theobromae — from leaf blight (ASLG155P)

Leptosphaeria sp. — from leaf blight

Phyllosticta sp. — from leaf blight

Spondias dulcis Park. [vi apple]

Cercospora sp. — leaf spot (ASLG247,292P)

Mycosphaerella sp. — leaf spot (ASLG293P)

Phellinus noxius — brown root rot

Syngonium podophyllum Schott [nephthytis]

Cercospora sp. — leaf spot

Colletotrichum sp. — leaf anthracnose (ASLG048P)

Leptosphaeria sp. — from leaf spots (ASLG049P)

Phyllosticta sp. — from leaf anthracnose

Syzygium inophylloides (A. Gray) C. Muell. [asi]

Phellinus noxius — brown root rot

- Tarennia sambucina*** (Forst. f.) Durand [ma'anunu]
Lasiodiplodia theobromae — branch dieback (ASLG279P)
Meloidogyne sp. — root knot nematode
- Terminalia catappa*** L. [talie]
Pestalotiopsis sp. — from leaf spots (ASLG402)
- Terminalia richii*** A. Gray [malili]
Phellinus noxius — brown root rot
- Terminalia samoensis*** Rech. [talie]
Cercospora sp. — leaf spot (ASLG277P)
- Theobroma cacao*** L. [cacao, koko]
Nectria sp. — on mummified pods (ASLG345, 359P)
Physalospora sp. — from leaf anthracnose
Phytophthora palmivora — branch canker, pod rot (ASLG346,348P)
- Uromyces* spp.** (Link) Unger, nom. cons. [rust fungus on *Vigna* sp.]
Sphaerellopsis filum — mycoparasite of *Uromyces* spp. (ASLG187P)
- Veitchia merrillii*** (Becc.) H. Moore [Manila palm]
Cercospora sp. — from leaf spots (ASLG156P)
Dothiorella sp (*Fusicoccum*). — from leaf spot (ASLG138P)
Fusarium oxysporum — from rotted roots (ASLG307P)
Oidium sp. — powdery mildew
Pestalosphaeria sp. — leaf spot (ASLG178P)
Pestalotiopsis palmarum — gray leaf spot
Phyllosticta sp. — from leaf spots
- Vigna unguiculata*** (L.) Walp. **subsp. *sesquipedalis*** (L.) Verdc. [yard-long bean, bush bean]
Cercospora cruenta — leaf spot (ASLG252P)
Colletotrichum gloeosporioides — anthracnose (ASLG191P)
Colletotrichum lindemuthianum — anthracnose (ASLG245,332P)
Colletotrichum sp. — anthracnose (ASLG332P)
Fusarium solani f.sp. *phaseoli* — stem and root rot (ASLG333P)
Glomerella cingulata — anthracnose (ASLG191P)
Leptosphaerulina trifolii — leaf spot (ASLG325P)
Oidium sp. — powdery mildew (ASLG243P)
Pseudocercospora cruenta — leaf spot (ASLG185P)

Sclerotium rolfsii — southern blight (ASLG331P)

Uromyces appendiculatus — leaf rust (ASLG186,244,405,406P)

Uromyces sp. — leaf rust (ASLG186P)

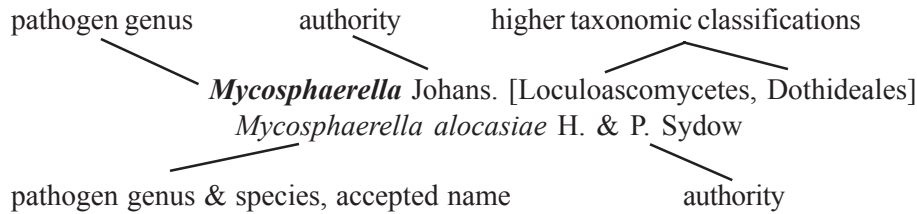
Zea mays L. [corn, sana]

Pythium aphanidermatum — root rot

Zinnia violacea Cav. [zinnia]

Cercospora zinniae — leaf spot

PATHOGEN-HOST INDEX



Format used in the pathogen-host list (from Farr et al. 1989)

Ascochyta Lib. [Coelomycetes]

Ascochyta sp.

Brassica chinensis var. *chinensis* (Chinese cabbage, pak choi)

Cordyline terminalis (ti plant)

Banana Bunchy Top Virus

Musa hybrids (bananas and plantains) (**Plate 25**)

Bipolaris Shoemaker [Hyphomycetes]

Bipolaris sp.

Pritchardia pacifica (Fiji Island fan palm)

Botryosphaeria Ces. & De Not. [Loculoascomycetes, Dothideales]

Botryosphaeria dothidea (Moug.:Fr.) Ces. & De Not.

Lycopersicon esculentum (tomato)

Persea americana (avocado)

Botryosphaeria sp.

Manihot esculenta (tapioca, manioc)

Pritchardia pacifica (Fiji Island fan palm)

Calonectria De Not. [Pyrenomycetes, Hypocreales]

Calonectria sp.

Carica papaya (papaya)

Capnodium Mont. [Loculoascomycetes, Dothideales]

Capnodium sp.

Citrus sp. (citrus)

Cercospora Fresen. [Hyphomycetes]

Cercospora althaeina Sacc.

Hibiscus rosa-chinensis (Hawaiian hibiscus)

Cercospora bixae Allesch. & F. Noack

Bixia orellana (lipstick tree, loa)

Cercospora broussonetiae Chupp & Linder

Broussonetia papyrifera (paper mulberry, u'a)
Cercospora brassicicola Henn.
Brassica chinensis var. *chinensis* (Chinese cabbage, pak choi)
Cercospora citrullina Cooke
Cucumis sativus (cucumber)
Momordica charantia (bitter gourd) (**Plate 24**)
Cercospora cruenta Latham
Vigna unguiculata (yard-long bean)
Cercospora egenula (H. Syd.) Chupp & Doidge
Solanum melongena (aubergine, eggplant)
Cercospora malayensis F.Stev. & Solh.
Hibiscus maniot (lau pele)
Cercospora mikaniacola F. Stevens
Mikania micrantha (mile-a-minute-vine)
Cercospora melongenae C. Welles
Solanum melongena (aubergine)
Cercospora zinniae Ellis & G. Martin
Zinnia violacea (zinnia)
Cercospora sp.
Alocasia macrorrhiza (giant taro, swamp taro)
Artocarpus altilis (breadfruit, ulu)
Barringtonia asiatica (fish poison tree, futu)
Dendrolobium umbellatum (lala)
Dioscorea bulbifera (bitter yam, soi)
Heliconia sp. (parrot flower)
Hibiscus manihot (edible hibiscus, pele)
Ipomoea pes-caprae (beach morning-glory)
Ludwigia octovalvis (primrose willow)
Manihot esculenta (tapioca)
Merremia umbellata (morning-glory)
Mikania micrantha (mile-a-minute vine)
Polyscias guilfoylei (geranium-leaf aralia, panax)
Polyscias scutellaria 'Tricochleata' (panax) (**Plate 32**)
Pseuderanthemum carruthersii var. *reticulatum* (none known)
Pueraria lobata (kudzu)
Solanum melongena (aubergine, eggplant)
Solanum nigrum (black nightshade)
Spondias dulcis (Otaheite apple, vi apple)
Terminalia samoensis (talie)
Veitchia merrillii (Manila palm)

Cercosporidium Earle [Hyphomycetes]

Cercosporidium bougainvilleae (Muntanola) Sobers & C.P. Seymour
Bougainvillea sp. (bougainvillea) (**Plates 4, 5**)
Cercosporidium henningsii (Allesch.) Deighton
Manihot esculenta (tapioca, manioc)

Chaetomella Fuckel [Coelomycetes]

Chaetomella sp
Citrus sp. (citrus)

Cladosporium Link:Fr. [Hyphomycetes]

Cladosporium colocasiae Sawada
Colocasia esculenta (taro, talo)

Cladosporium sp.

Pometia pinnata (tava)
Mikania micrantha (mile-a-minute vine)

Coleosporium Lev. [Basidiomycetes, Uredinales]

Coleosporium plumeriae Pat.
Plumeria obtusa (frangipani, pua hawaii) (**Plate 31**)

Colletotrichum Corda in Sturm [Coelomycetes]

Colletotrichum gloeosporioides (Penz.) Penz. & Sacc. in Penz.
Alocasia macrorrhiza (giant taro, swamp taro)
Artocarpus altilis (breadfruit, ulu) (**Plate 3**)
Brassica chinensis var. *chinensis* (Chinese cabbage, pak choi)
Caladium x hortulanum (caladium)
Cananga odorata (moso'oi)
Carica papaya (papaya)
Citrus sp. (citrus)
Colocasia esculenta (taro, talo)
Erythrina variegata (coral tree, gatae)
Hibiscus tiliaceus (beach hibiscus, fau)
Lycopersicon esculentum (tomato)
Mangifera indica (mango) (**Plate 22**)
Polyscias scutellaria 'Tricochleata' (panax)
Pometia pinnata (tava)
Pseuderanthemum caruthersii var. *reticulatum* (el dorado)
Vigna unguiculata (yard-long bean)
Colletotrichum lindemuthianum (Sacc. & Magnus) Lams.-Scrib.
Phaseolus vulgaris (French or green bean)
Vigna unguiculata (yard-long bean)
Colletotrichum sp.
Alocasia cucullata (Chinese taro)
Artocarpus altilis (breadfruit, ulu)
Brunfelsia americana (lady-of-the-night)
Canarium harveyi (mafoa)
Capsicum annuum (sweet or hot pepper) (**Plate 6**)
Citrus aurantifolia (lime)
Cocos nucifera (coconut palm, niu)
Codiaeum variegatum (croton)
Colocasia esculenta (taro, talo)
Cordyline terminalis (ti)
Euphorbia pulcherrima (poinsettia)
Fagraea berteriana (pualulu)
Gloxinia perennis (Canterbury bells)
Hedychium coronarium (white ginger)
Heliconia humilis (lobster claw)
Hibiscus rosa-sinensis (Hawaiian hibiscus)
Intsia bijuga (ifilele)
Ipomoea alba (morning-glory vine)

Musa hybrid (dessert banana)
Phaseolus vulgaris (common bean)
Piper methysticum (kava)
Pritchardia pacifica (Fiji Island fan palm)
Pseuderanthemum caruthersii var. *reticulatum* (el dorado)
Pueraria lobata (kudzu)
Rollinia deliciosa (biriba)
Spathoglottis plicata (Philippine orchid) (**Plate 33**)
Syngonium sp. (nephthytis)

Cordana G. Preuss [Hyphomycetes]
Cordana musae (A. Zimmerm.) Hohn.
Musa hybrid (dessert banana) (**Plate 26**)

Corynespora H.T. Gussow [Hyphomycetes]
Corynespora cassiicola (Berk. & M.A. Curtis) C.T. Wei
Carica papaya (papaya) (**Plates 7, 8**)
Cucumis sativus (cucumber)
Gloxinia perennis (Canterbury bells)
Lycopersicon esculentum (tomato)

Cucumber Mosaic (cucumo)Virus
Piper methysticum (kava) (**Plate 30**)

Curvularia Boedijn [Hyphomycetes]
Curvularia sp.
Colocasia esculenta (taro, talo)
Heliconia humilis (lobster claw)
Heliconia psittacorum (parrot flower)
Hibiscus rosa-sinensis (Hawaiian hibiscus)
Musa hybrid (dessert banana)
Pritchardia pacifica (Fiji Island fan palm)

Dasheen Mosaic Virus
Colocasia esculenta (taro, talo) (**Plate 10**)

Dendrophoma Sacc. [Coelomycetes]
Dendrophoma sp.
Mangifera indica (mango)

Didymella Sacc. [Loculoascomycetes, Dothideales]
Didymella bryoniae (Auersw.) Rehm
Cucumis sativus (cucumber)
Rollinia deliciosa (biriba)

Discosia Lib. [Coelomycetes]
Discosia sp.
Persea americana (avocado)

Dothiorella Sacc. [Coelomycetes]
Dothiorella berengeriana Sacc.

Euphorbia pulcherrima (poinsettia)
Heliconia psittacorum (parrot flower)
Iris sp. (iris)
Lycopersicon esculentum (tomato)
Persea americana (avocado)
Veitchia merrillii (Manila palm)

Erwinia Winslow, Broadhurst Buchanan, Krumwiede, Rogers & Smith,
1920 [Enterobacteriaceae]
Erwinia carotovora subsp. *carotovora* (Jones) Dye
Lycopersicon esculentum (tomato)
Erwinia sp.
Brassica chinensis var. *chinensis* (Chinese cabbage, pak choi)

Erysiphe R. Hedw. ex DC.:Fr. [Pyrenomycetes, Erysiphales]
Erysiphe sp.
Cucumis sativus (cucumber)

Fusarium Link: Fr. [Hyphomycetes]
Fusarium oxysporum Schlechtend.: Fr.
Veitchia merrillii (Manila palm)
Fusarium solani (Mart.) Sacc.
Colocasia esculenta (taro, talo)
Lansium domesticum (langsat)
Persea americana (avocado, 'avoka)
Vigna unguiculata (bush bean)

Glomerella Spauld. & H. Schrenk [Pyrenomycetes, Phyllachorales]
Glomerella cingulata (Stoneman) Spauld. & H. Schrenk
Alocasia macrorrhiza (giant taro, swamp taro)
Colocasia esculenta (taro, talo)
Vigna unguiculata (yard-long bean)
Glomerella sp.
Artocarpus altilis (breadfruit, ulu)
Diospyros samoensis ('au'auli)
Euphorbia pulcherrima (poinsettia)
Polyscias scutellaria 'Tricochleata' (panax)
Pseuderanthemum carruthersii var. *reticulatum* (el dorado)

Gonatobotryum Sacc. [Hyphomycetes]
Gonatobotryum sp.
Colocasia esculenta (taro, talo)

Guignardia Viala & Ravaz [Loculoascomycetes, Dothideales]
Guignardia morindae (Koorders) van der Aa
Morinda citrifolia (nonu)
Guignardia sp.
Pueraria lobata (kudzu)

Helicotylenchus Steiner, 1945 [Hoplolaimidae, Hoplolaiminae]
Helicotylenchus dihystra (Cobb, 1893) Sher, 1961

Colocasia esculenta (taro, talo)
Musa hybrids (edible bananas)
Helicotylenchus multincinctus (Cobb, 1893) Golden, 1956
Musa hybrids (edible bananas)

Lasiodiplodia Ellis & Everh. [Coelomycetes]

Lasiodiplodia theobromae (Pat.) Griffon & Maubl.
Brunfelsia americana (lady-of-the-night)
Carissa grandiflora (natal plum) (**Plate 9**)
Citrus aurantifolia (lime)
Citrus sp. (citrus)
Euphorbia pulcherrima (poinsettia)
Persea americana (avocado)
Spathoglottis plicata (Philippine orchid)
Tarenna sambucina (ma'anunu)

Leptosphaeria Ces. & De Not., nom. cons. [Loculoascomycetes, Dothideales]

Leptosphaeria sp.
Cocos nucifera (coconut palm, niu)
Colocasia esculenta (taro, talo)
Hedychium coronarium (white ginger)
Heliconia psittacorum (parrot flower)
Hibiscus rosa-sinensis (Hawaiian hibiscus)
Musa hybrid (dessert banana)
Pritchardia pacifica (Fiji Island fan palm)
Spathoglottis plicata (Philippine orchid)
Syngonium podophyllum (nephthytis, arrowhead vine)

Leptosphaerulina McAlpine [Loculoascomycetes, Dothideales]

Leptosphaerulina trifolii (Rostr.) Petr. (**Plates 11, 12**)
Colocasia esculenta (taro, talo)
Vigna unguiculata (yard-long bean)
Leptosphaerulina sp.
Brassica chinensis var. *chinensis* (Chinese cabbage, pak choi)

Lophodermium Chev. [Discomycetes, Rhytismatales]

Lophodermium sp.
Diffenbachia sp. (dumbcane)
Mangifera indica (mango)

Macrophoma (Sacc.) Berl. & Voglino [Coelomycetes]

Macrophoma sp.
Alocasia macrorrhiza (giant taro, swamp taro)

Marsonnina J.C. Fisch. [Coelomycetes]

Marsonnina rosae (Lib.) Died.
Rosa chinensis (rose)

Marasmiellus Murrill [Basidiomycetes, Agaricales]

Marasmiellus semiustus (Berk. & M.A. Curtis) Singer

Musa hybrid (dessert banana)
Marasmiellus stenophyllus (Mont.) Singer
Colocasia esculenta (taro, talo)
Marasmiellus sp.
Mikania micrantha (mile-a-minute vine)

Meloidogyne Goeldi, 1892 [Heteroderidae, Meloidogyninae]
Meloidogyne incognita (Kofoid & White, 1919) Chitwood, 1949
Lycopersicon esculentum (tomato) (**Plates 20, 21**)
Musa hybrid (dessert banana)
Meloidogyne sp.
Citrus sp. (citrus)
Cucumis sativus (cucumber)
Lycopersicon esculentum (tomato)
Tarenna sambucina (ma'anunu)

Mycosphaerella Johans. [Loculoascomycetes, Dothideales]
Mycosphaerella alocasiae H. & P. Sydow
Alocasia macrorrhiza (giant taro, swamp taro) (**Plates 1, 2**)
Mycosphaerella fijiensis Morlet
Musa hybrids (dessert banana) (**Plates 27, 28**)
Mycosphaerella henningsii Sivanesan
Manihot esculenta (tapioca, manioc)
Mycosphaerella hedychii F. Stevens & P.A. Young in F. Stevens
Hedychium coronarium (white ginger)
Mycosphaerella rosicola (B.H. Davis ex Deighton)
Rosa chinensis (rose)
Mycosphaerella sp.
Canna indica (canna lily)
Cocos nucifera (coconut palm, niu)
Coix lacryma-jobi (sanasana)
Crinum asiaticum (crinum lily)
Dioscorea bulbifera (bitter yam)
Ficus elastica (rubber plant)
Heliconia humilis (lobster claw)
Rosa chinensis (rose)
Sanchezia sp. (none known)
Spondias dulcis (vi apple)

Nectria (Fr.) Fr. [Pyrenomycetes, Hypocreales]
Nectria haematococca Berk. & Broome
Lansium domesticum (langsat)
Nectria sp.
Theobroma cacao (cocoa)

Oidium Link, nom. cons. [Hyphomycetes]
Oidium sp.
Cucumis sativus (cucumber)
Lagerstroemia indica (crape-myrtle)
Vigna unguiculata (yard-long bean)

Pestalosphaeria Barr. [Pyrenomycetes]

Pestalosphaeria sp.

Veitchia merrillii (Manila palm)

Pestalotiopsis Steyaert [Coelomycetes]

Pestalotiopsis mangiferae (Henn.) Steyaert

Mangifera indica (mango)

Pestalotiopsis palmarum (Cooke) Steyaert

Cocos nucifera (coconut palm, niu)

Pandanus whitmearianus (pandanus)

Pritchardia pacifica (Fiji Island fan palm)

Veitchia merrillii (Manila palm)

Pestalotiopsis sp.

Alocasia macrorrhiza (giant taro, swamp taro)

Bischofia javanica (o'a)

Carissa grandiflora (natal plum)

Cordyline terminalis (ti)

Dendrolobium umbellatum (lala)

Faradaya amicornum (mamalupe)

Hedychium coronarium (white ginger)

Hibiscus tiliaceus (beach hibiscus, fau)

Lycopersicon esculentum (tomato)

Manilkara zapote (sapote)

Nicolaia elatior (torch ginger)

Planchonella torricellensis (mamalava)

Pometia pinnata (tava)

Terminalia catappa (talie)

Pestaloziella Sacc. & Ellis in Sacc. [Coelomycetes]

Pestaloziella sp.

Pandanus whitmearianus (pandanus)

Phellinus Quel. [Basidiomycetes, Aphyllophorales]

Phellinus noxius (Corner) G.H. Cunningham

Adenanthera pavonina (lopa)

Artocarpus altilis (breadfruit, ulu)

Barringtonia asiatica (fish poison tree, futu)

Barringtonia samoensis (faiaga)

Calophyllum neo-ebudicum (tamanu)

Cananga odorata (moso'oi)

Canarium harveyi (mafoa)

Cerbera manghas (lava)

Cieba pentandra (kapok, vavae)

Citrus sp. (citrus)

Cordia aspera (tou)

Crossostylis biflora (saitamu)

Diospyros samoensis (au'auli)

Dysoxylum samoense (tufaso)

Elattostachys falcata (taputo'i)

Ficus obliqua (banyan, aoa)

Ficus tinctoria (dyer's fig, mati)

Flueggea flexuosa (poumuli)
Glochidion ramiflorum (masame)
Hernandia nymphaeifolia (pu'a)
Hibiscus rosa-sinensis (Hawaiian hibiscus)
Hibiscus tiliaceus (beach hibiscus, fau) (**Plate 18**)
Inocarpus fagifer (ifi)
Intsia bijuga (ifilele) (**Plate 19**)
Macaranga harveyana (lau pata)
Macaranga stipulosa (lau fatu)
Mangifera indica (mango, mago)
Morinda citrifolia (nonu)
Myristica fatua (Samoan nutmeg)
Neonauclea forsteri (afa)
Pipturus argenteus (soga)
Planchonella grayana ('ala'a)
Planchonella samoensis (mamalava)
Pometia pinnata (tava)
Rhus taitensis (tavai)
Samanea saman (monkey-pod tree)
Spondias dulcis (vi apple)
Syzygium inophylloides (asi)
Terminalia richii (malili)

Phoma Sacc., nom. cons. [Coelomycetes]

Phoma cucurbitacearum (Fr.:Fr.) Sacc.
Cucumis sativus (cucumber)
Phoma erythrinicola Tracy & Earle
Erythrina subumbrans (coral tree, gatae palagi)
Phoma sp.
Alocasia macrorrhiza (giant taro, swamp taro)
Carica papaya (papaya, pawpaw)
Cocos nucifera (coconut palm, niu)
Colocasia esculenta (taro, talo)
Cordyline terminalis (ti)
Erythrina variegata (coral tree, gatae)
Euphorbia pulcherrima (poinsettia)
Hedychium coronarium (white ginger)
Hibiscus rosa-sinensis (Hawaiian hibiscus)
Hibiscus tiliaceus (beach hibiscus, fau)
Rhus taitensis (tavai)
Solanum melongena (aubergine, eggplant)

Phomopsis (Sacc.) Bubak [Coelomycetes]

Phomopsis citri H. Fawc. non (Sacc.) Traverso & Spessa, hom. illeg.
Citrus sp. (citrus)
Phomopsis sp.
Artocarpus altilis (breadfruit, ulu)
Carica papaya (papaya, pawpaw)
Cococ nucifera (coconut palm, niu)

Euphorbia pulcherrima (poinsettia)
Pritchardia pacifica (Fiji island fan palm)

Phyllachora Nitschke ex Fuckel, nom. cons. [Pyrenomycetes, Phyllachorales]

Phyllachora afzeliae Sydow
Intsia bijuga (ifilele)
Phyllachora musicola Booth & Shaw
Musa hybrid (dessert banana) (**Plate 29**)
Phyllachora sp.
Ficus scabra (mati vao)
Ficus tinctoria (dyer's fig, mati)
Hibiscus tiliaceus (beach hibiscus, fau)
Metroxylon vitiense (sago palm)
Piper methysticum (kava)

Phyllosticta Pers., nom. cons. [Coelomycetes]

Phyllosticta artocarp Speg.
Artocarpus altilis (breadfruit, ulu)
Phyllosticta cordylines (Thuem.) Petrak & H. Sydow
Cordyline terminalis (ti)
Phyllosticta musarum (Cooke) van der Aa
Musa hybrid (dessert banana)
Phyllosticta sp.
Caladium x hortulanum (caladium)
Cocos nucifera (coconut palm, niu)
Cordyline terminalis (ti)
Cuphea melvilla (firecracker plant)
Diospyros samoensis ('au'auli)
Hibiscus rosa-chinensis (Hawaiian hibiscus)
Spathoglottis plicata (Philippine orchid)
Syngonium podophyllum (nephthytis, arrowhead vine)
Veitchia merrillii (Manila palm)

Physalospora Niessl [Pyrenomycetes, Amphisphaeriales]

Physalospora rhodina Berkley & Curtis in Cooke
Artocarpus altilis (breadfruit, ulu)
Physalospora sp.
Heliconia humilis (lobster claw)
Philodendron sp. (heart-leaf philodendron)
Theobroma cacao (cacao)

Physopella Arth. [Basidiomycetes, Uredinales]

Physopella sp.
Paspalum conjugatum (sourgrass)

Phytophthora de Bary [Oomycetes, Peronosporales]

Phytophthora colocasiae Racib.
Alocasia macrorrhiza (giant taro, swamp taro)
Colocasia esculenta (taro, talo) (**Plates 13, 14**)
Phytophthora palmivora (E.J. Butler) E.J. Butler
Artocarpus altilis (breadfruit, ulu)

Carica papaya (papaya)
Theobromae cacao (cocoa)
Phytophthora parasitica Dastur (*P. nicotianae* Breda de Haan var. *parasitica* (Dastur) G.M. Waterhouse)
Capsicum annuum (sweet or hot pepper)

Pratylenchus Filipjev, 1936

Pratylenchus gibbicaudatus Minagawa, 1982
Musa ‘Ducasse’ (dessert banana)
Pratylenchus loosi Loof, 1960
Musa ‘Paka Samoa’ (dessert banana)

Pseudocercospora Speg. [Hyphomycetes]

Pseudocercospora cruenta (Sacc.) Deighton
Vigna unguiculata subsp. *sesquipedalis* (yard-long bean)
Pseudocercospora fijiensis (Morelet) Deighton
Musa hybrid (edible banana, fa’i)
Pseudocercospora subsessilis (Syd. & P. Syd.) Deighton
Dysoxylum samoense (maota mamala)

Pseudomonas Migula, 1894 [Pseudomonadaceae]

Pseudomonas solanacearum race 1 (Smith 1896) D.F. Smith, 1914
Lycopersicon esculentum (tomato)

Puccinia Pers.:Pers. [Basidiomycetes, Uredinales]

Puccinia canaliculata (Schwein.) Lagerh.
Cyperus rotundus (purple nut sedge)
Puccinia oahuensis Ellis & Everh.
Digitaria setigera (crab grass)
Puccinia sp.
Canna indica (canna lily)
Kyllinga nemoralis (sedge)

Pyrenochaeta De Not. [Coelomycetes]

Pyrenochaeta sp.
Musa hybrid (dessert banana)

Pythium Pringsh., nom. cons. [Oomycetes, Peronosporales]

Pythium aphanidermatum (Edson) Fitzp.
Colocasia esculenta (taro, talo)
Cucumis sativus (cucumber)
Zea mays (corn, maize) (**Plate 16**)
Pythium sp.
Brassica chinensis var. *chinensis* (Chinese cabbage, pak choi)
Carica papaya (papaya)
Colocasia esculenta (taro, talo)
Cucumis sativus (cucumber) (**Plate 15**)

Radopholus Thorne, 1949 [Pratylenchidae, Pratylenchinae]

Radopholus similis (Cobb, 1893) Thorne, 1949
Musa hybrids (edible bananas)

Rhizoctonia DC. [Agonomycetes]
Rhizoctonia solani Kuhn
Cucumis sativus (cucumber)

Rhizopus Ehrenb. [Zygomycetes, Mucorales]
Rhizopus stolonifer (Ehrenb.:Fr.) Vuill.
Capsicum annuum (sweet or hot pepper)
Solanum melongena (aubergine, eggplant)

Rhynchosphaeria (Sacc.) Berl. [Pyrenomycetes, Sphaeriales]
Rhynchosphaeria sp.
Planchonella torricellensis (mamalava)

Sclerotinia Fuckel, nom. cons. [Discomycetes, Helotiales]
Sclerotinia sclerotiorum (Lib.) de Bary
Lycopersicon esculentum (tomato)

Sclerotium Tode:Fr. [Agonomycetes]
Sclerotium rolfsii Sacc.
Vigna unguiculata (bush bean)
Sclerotium sp.
Artocarpus altilis (breadfruit, ulu)

Septoria Sacc., nom. cons. [Coelomycetes]
Septoria sp.
Cocos nucifera (coconut palm, niu)
Colocasia esculenta (taro, talo)
Heliconia humilis (lobster claw)

Sphaceloma de Bary [Coelomycetes]
Sphaceloma fawcettii var. *scabiosa* (McAlp. & Tryon) Jenkins
Citrus sp. (citrus)
Sphaceloma poinsettiae Jenk. & Ruehle
Euphorbia pulcherrima (poinsettia)

Sphaerellopsis Cooke [Coelomycetes]
Sphaerellopsis filum (Biv.-Bern. ex Fr.) Sutton
Puccinia canaliculata (rust on nut sedge and canna) (**Plate 17**)
Uromyces appendiculatus (rust on yard-long bean)
Note: *Sphaerellopsis* is a mycoparasite of rust fungi.

Sphaerulina Sacc. [Loculoascomycetes, Dothideales]
Sphaerulina sp.
Fagraea berteriana (pualulu)
Heliconia psittacorum (parrot heliconia)
Musa hybrid (dessert banana)

Stigmina Sacc. [Hyphomycetes]
Stigmina mangiferae (Koorders) M.B. Ellis

Mangifera indica (mango) (**Plate 23**)

Synchytrium de Bary & Woronin. [Chytridiomycetes, Chytridiales]

Synchytrium minutum (Pat.) Gaumann

Pueraria lobata (kudzu)

Uredo Pers.:Pers. [Basidiomycetes, Uredinales]

Uredo musae Cummins

Musa hybrid

Uredo pseudocannae Cummings

Canna indica (canna lily)

Uromyces (Link) Unger, nom. cons. [Basidiomycetes, Uredinales]

Uromyces appendiculatus (Pers.:Pers.) Unger

Vigna unguiculata subsp. *sesquipedalis* (yard-long bean)

Vigna unguiculata cultivars (bush and pole beans)

Uromyces bidenticola Arth.

Bidens alba (beggar's tick)

Uromyces sp.

Vigna unguiculata (yard-long bean)

Xanthomonas Dowson, 1939 [Pseudomonadaceae]

Xanthomonas campestris pv. *vesicatoria* (Doidge) Dye

Lycopersicon esculentum (tomato)

Zucchini Yellow Mosaic Virus

Cucumis sativus (cucumber)

WOOD DECAY FUNGI

Fungi collected from the wood of living or dead plants are listed in alphabetical order, by genus, within their respective division, Ascomycota or Basidiomycota. Each fungal taxon is followed by its authority, family or order, and accession number in the American Samoa Community College Land Grant Program Herbarium (ASLG), or Landcare Research facility (PDD) in Auckland, New Zealand. The location of voucher specimens for some previously reported species are unknown (—).

ASCOMYCOTA

<i>Cookeina sulcipes</i> (Berk.) O. Kuntze [Pezizales]	—
<i>Daldinia concentrica</i> (Bolton:Fr.) Ces. & De Not. [Xylariaceae]	ASLG176M
<i>Hypoxylon deustum</i> (Hoffm.) Greville [Pyrenomycetes, Xylariales]	—
<i>Hypoxylon hypomiltum</i> Mont. [Pyrenomycetes, Xylariales]	—
<i>Hypoxylon musceum</i> J.D. Rogers [Pyrenomycetes, Xylariales]	ASLG227M
<i>Hypoxylon</i> sp. Bull.:Fr. nom. cons. [Pyrenomycetes, Xylariales]	ASLG073,253,326,338M
<i>Xylaria cubensis</i> (Mont.) Fries [Xylariaceae]	—
<i>Xylaria</i> sp. J. Hill ex Schrank, nom. cons. [Xylariaceae]	ASLG023,068,106M

BASIDIOMYCOTA

<i>Amylosporus (?) campbellii</i> (Berk.) Ryvarden [Polyporaceae]	PDD58716
<i>Antrodiella semisupina</i> (Berk. & Curt.) Ryv. comb. nov. [Polyporaceae]	ASLG268M*
<i>Antrodiella</i> sp. Ryv. & Johan. [Polyporaceae]	ASLG119M*
<i>Auricularia polytricha</i> (Mont.) Sacc. [Auriculariaceae]	PDD55947, 58709
<i>Auricularia</i> sp. Bull. [Auriculariaceae]	ASLG004,152,198M
<i>Cerenna</i> sp. S.F. Gray [Polyporaceae]	ASLG190M
<i>Ceriporia</i> sp. Donk [Polyporaceae]	ASLG199M
<i>Coriolopsis floccosa</i> (Jungh.) Ryvarden [Polyporaceae]	—
<i>Cotylidia aurantiaca</i> (Pers.) Weldon [Stereaceae]	—
<i>Daedalia</i> sp. Pers.:Fr. [Polyporaceae]	ASLG091M
<i>Earliella scabrosa</i> (Pers.) R.L. Gilbertson & Ryv. [Polyporaceae]	ASLG124,214M*
<i>Echinochaete russiceps</i> (Berk. & Broome) Reid [Polyporaceae]	—
<i>Echinochaete</i> sp. D.A. Reid [Polyporaceae]	ASLG151M
<i>Elmerina</i> sp. Bres. [Polyporaceae]	ASLG178M*
<i>Favolaschia pustulosa</i> (Jungh.) Singer [Tricholomataceae]	—
<i>Favolus spathulatus</i> (Jungh.) Bresadola [Polyporaceae]	—
<i>Flavodon flavus</i> Ryvarden [Polyporaceae]	ASLG138,195,212M*
<i>Ganoderma</i> sp. P. Karst. [Ganodermataceae]	ASLG007,029,094M
<i>Ganoderma australe</i> (Fr.) Pat. [Ganodermataceae]	ASLG061,123,185M*
<i>Ganoderma lucidum</i> (W. Curtis:Fr.) P. Karst. [Ganodermataceae]	ASLG069,131,201M
<i>Ganoderma resinaceum</i> Boud. [Ganodermataceae]	ASLG029,094,135M*
<i>Hexagonia apiaria</i> (Pers.) Fries [Polyporaceae]	—
<i>Hexagonia tenuis</i> (Hook.) Fries [Polyporaceae]	—
<i>Hyphoderma rude</i> (Bres.) Huorest. & Ryv. [Hyphodermataceae]	ASLG269M*
<i>Hypocrea incarnata</i> Pat. & Har. [Hypocreales]	—
<i>Lenzites elegans</i> (Fr.) Pat. [Polyporaceae]	ASLG117,290,345M*
<i>Lenzites vespacea</i> (Pers.) Ryv. [Polyporaceae]	ASLG117,184M
<i>Lenzites</i> sp. Fr. [Polyporaceae]	ASLG018M
<i>Microporus</i> sp. Kuntz [Polyporaceae]	ASLG150M
<i>Microporus affinis</i> (Fr.:Blume & Nees) Kunt. [Polyporaceae]	ASLG065,097M

<i>Microporus vernicipes</i> (Berk.) Kunt. [Polyporaceae]	ASLG187M*
<i>Mycorrhaphium steroides</i> (Cooke) Maas G. [Hydnaceae]	—
<i>Nigroporus durus</i> (Jungh.) Murr. [Polyporaceae]	—
<i>Phanerochaete salmonicolor</i> (Berk. & Broome) Julich [Corticaceae]	—
<i>Phellinus lamaensis</i> (Murrill) R. Heim [Hymenochaetaceae]	ASLG055,121,197M*
<i>Phellinus noxius</i> (Corner) G. Cunn. [Hymenochaetaceae]	ASLG012,082,147M*
<i>Phellinus</i> sp. Quel. [Hymenochaetaceae]	ASLG048,053M*
<i>Phillipsia domingensis</i> (Berk.) Berk. [Pezizales]	—
<i>Pleurotus</i> sp. (Fr.) P. Kumm., nom. cons. [Lentinaceae]	ASLG079,108,126M
<i>Podoscypha involuta</i> (Klotzsch) Imazeki [Stereaceae]	—
<i>Podoscypha nitidula</i> (Berk.) Pat. in Duss [Stereaceae]	—
<i>Polyporus</i> (?) <i>grammocephalus</i> Berk. [Polyporaceae]	—
<i>Polyporus philippinensis</i> Berk. [Polyporaceae]	ASLG108,111,112M*
<i>Polyporus</i> sp. P. Mich. ex Adans.:Fr., sensu Donk. [Polyporaceae]	ASLG022M
<i>Pseudohydnum</i> sp. P. Karst. [Exidiaceae]	ASLG030M
<i>Pycnoporus</i> sp. P. Karst. [Polyporaceae]	ASLG156M*
<i>Rigidoporus cystidioides</i> (Lloyd) Corner [Polyporaceae]	ASLG161M
<i>Rigidoporus defibulatus</i> (Reid) Corner [Polyporaceae]	ASLG049,158M*
<i>Rigidoporus microporus</i> (Fr.) v. Overeem [Polyporaceae]	ASLG200,203M*
<i>Schizophyllum commune</i> Fr.:Fr. [Schizophyllaceae]	ASLG015,179,180M
<i>Stereopsis radicans</i> (Berk.) Reid [Stereaceae]	—
<i>Stereum</i> sp. J. Hill ex Pers. [Stereaceae]	ASLG031,162,163M
<i>Trametes hemitephra</i> (Berk.) Corner [Polyporaceae]	—
<i>Trametes hirsuta</i> (Wulfen:Fr.) Quel. [Polyporaceae]	ASLG129,196,207M
<i>Trametes marianna</i> (Pers.) Ryv. [Polyporaceae]	ASLG160M
<i>Trametes menziesii</i> (Berk.) Ryv. [Polyporaceae]	ASLG090,192,211M
<i>Trametes modesta</i> (Fr.) Ryv. [Polyporaceae]	ASLG096,119M*
<i>Trametes versicolor</i> (L.:Fr.) Pilat [Polyporaceae]	ASLG011,139,189M
<i>Trametes</i> sp. Fr. [Polyporaceae]	ASLG009,058,145M*
<i>Tremella cinnabarina</i> (Mont.) Pat. [Tremellales]	—
<i>Tremella fuciformis</i> Berk. [Tremellaceae]	ASLG017,105M
<i>Tremella</i> sp. Pers.:Fr., nom. cons. [Tremellaceae]	ASLG003,062,093M

PARASITIC ALGAE AND THEIR PLANT HOSTS

Name of the algal parasite is followed by the plant host families and species it was collected from. Common plant names are in parentheses, followed by accession numbers for each specimen housed in the American Samoa Community College Land Grant Program Herbarium (ASLG).

Cephaleuros expansa Thompson & Wujek sp. nov. 1997

Amaryllidaceae	
<i>Crinum asiaticum</i> (crinum lily, lau talotalo)	ASLG132A
Apocynaceae	
<i>Allamanda</i> sp. (allemanda)	ASLG152A
Araceae	
<i>Epipremnum pinnatum</i> (pothos, devil's ivy)	ASLG131A
Leeaceae	
<i>Leea guineensis</i> (green, red leea)	ASLG190A
Rubiaceae	
<i>Ixora finlaysoniana</i> (white ixora)	ASLG125A

Cephaleuros henningsii Schmidle 1902

Leeaceae	
<i>Leea guineensis</i> (red, green leea)	ASLG155A
Orchidaceae	
<i>Arachnis x maingayi</i> (spider orchid)	ASLG058, 107A
<i>Arundina graminifolia</i> (bamboo orchid)	ASLG059, 151A

Cephaleuros karstenii Schmidle 1897

Begoniaceae	
<i>Begonia</i> sp. (begonia)	ASLG163A
Cupressaceae	
<i>Cupressus</i> sp. (cypress)	ASLG165A
Fabaceae	
<i>Intsia bijuga</i> (ifilele)	ASLG176A
Magnoliaceae	
<i>Michelia champak</i> (orange michelia)	ASLG019A
Meliaceae	
<i>Swietenia macrophylla</i> (none known)	ASLG074A
Zingiberaceae	
<i>Alpinia purpurata</i> (red ginger)	ASLG177A

Cephaleuros minimus Karsten 1891

Lythraceae	
<i>Lagerstroemia speciosa</i> (queen's crape myrtle)	ASLG098A
Malvaceae	
<i>Hibiscus rosa-sinensis</i> (Hawaiian hibiscus, China rose)	ASLG114A
Orchidaceae	
<i>Dendrobium lepidochilum</i> (dendrobium)	ASLG178A
Rubiaceae	
<i>Morinda citrifolia</i> (nonu)	ASLG004, 095, 100, 183A

***Cephaeleuros parasiticus* Karsten 1891**

Anacardiaceae	
<i>Mangifera indica</i> (mango)	ASLG103A
Annonaceae	
<i>Annona squamosa</i> x <i>A. cherimoya</i> 'Pink Mammoth' (atemoya)	ASLG133A
Arecaceae	
<i>Veitchia merrillii</i> (Manila palm)	ASLG162A
Bixaceae	
<i>Bixa orellana</i> (lipstick tree, loa)	ASLG052, 150A
Fabaceae	
<i>Acacia</i> sp. (acacia)	ASLG147A
Heliconiaceae	
<i>Heliconia</i> x 'Golden Torch' (golden torch heliconia)	ASLG159A
Leeaceae	
<i>Leea guineensis</i> (green, red leea)	ASLG129, 155A
Lythraceae	
<i>Cuphea melvilla</i> (cigar flower)	ASLG142A
<i>Lagerstroemia speciosa</i> (pride of India)	ASLG008, 098, 138, 189A
Marantaceae	
<i>Maranta arundinacea</i> 'Variegata' (arrowroot, obedience plant)	ASLG145, 170A
Myrtaceae	
<i>Psidium guajava</i> 'Waikea' (waikea guava)	ASLG104A
<i>Syzygium corynocarpum</i> (none known)	ASLG036, 096, 188A
<i>Syzygium inophylloides</i> (none known)	ASLG172A
Orchidaceae	
<i>Arundina graminifolia</i> (bamboo orchid)	ASLG151A
Sapotaceae	
<i>Manilkara zapota</i> 'Ponderosa' (ponderosa sapodilla)	ASLG022A
<i>Pouteria sapota</i> (canistel, egg-fruit tree)	ASLG033A
<i>Sandoricum koetjape</i> 'Bangkok' (Bangkok santol)	ASLG038A
<i>Synsepalum dulcificum</i> (miracle berry)	ASLG037A

***Cephaeleuros virescens* Kunze in Fries 1827**

Acanthaceae	
<i>Aphelandra sinclairiana</i> (coral aphelandra)	ASLG167A
<i>Odontonema tubiforme</i> (fire spike)	ASLG143, 168A
<i>Pseuderanthemum carruthersii</i> var. <i>reticulatum</i> (el dorado)	ASLG110A
Anacardiaceae	
<i>Anacardium occidentale</i> (cashew)	ASLG083A
<i>Mangifera indica</i> (mango)	ASLG001, 103A
Annonaceae	
<i>Annona muricata</i> (soursop, sasalapa)	ASLG030, 112A
<i>Annona muricata</i> 'Cuban Fiberless' (Cuban fiberless soursop)	ASLG024A
<i>Annona muricata</i> 'Dulce Cuban' (dulce soursop)	ASLG002A
<i>Annona squamosa</i> 'Seedless' (sugar apple)	ASLG007A
<i>A. squamosa</i> x <i>A. cherimoya</i> 'Pink Mammoth' (atemoya)	ASLG133A
<i>Rollinia deliciosa</i> (biriba)	ASLG073A
Apocynaceae	
<i>Allamanda cathartica</i> (golden trumpet)	ASLG109A

<i>Carissa grandiflora</i> (natal plum)	ASLG069A
Araceae	
<i>Anthurium</i> sp. (flamingo flower, anthurium)	ASLG157A
<i>Epipremnum pinnatum</i> (pothos, devil's ivy)	ASLG045A
Araliaceae	
<i>Polyscias fruticosa</i> (ming aralia, parsley panax)	ASLG087A
<i>Polyscias scutellaria</i> (panax)	ASLG017A
Arecaceae	
<i>Metroxylon vitiense</i> (sago palm, niu o lotuma)	ASLG088A
<i>Pritchardia pacifica</i> (Fiji Island fan palm, niu piu)	ASLG161A
Asclepidaceae	
<i>Hoya australis</i> (wax flower, fue seieia)	ASLG080A
Bignoniaceae	
<i>Tabebuia heterophylla</i> (pink tecoma, pink trumpet tree)	ASLG064A
Bixaceae	
<i>Bixa orellana</i> (lipstick tree, loa)	ASLG052A
Bombacaceae	
<i>Ceiba pentandra</i> (kapok tree, vavae)	ASLG065A
<i>Durio zibethinus</i> (durian)	ASLG016A
<i>Pachira aquatica</i> (water-chestnut)	ASLG057A
Burseraceae	
<i>Canarium ovatum</i> (pili nut)	ASLG025A
Clusiaceae	
<i>Calophyllum inophyllum</i> (Indian laurel, fetau)	ASLG124A
Combretaceae	
<i>Terminalia samoensis</i> (talie)	ASLG011A
Euphorbiaceae	
<i>Acalypha hispida</i> (chennile plant)	ASLG067A
<i>Acalypha wilkesiana</i> (beefsteak plant)	ASLG086A
<i>Aleurites moluccana</i> (candlenut)	ASLG013, 116, 117A
<i>Bischofia javanica</i> (o'a)	ASLG012, 136A
<i>Codiaeum variegatum</i> (croton)	ASLG089, 099, 154A
<i>Codiaeum variegatum</i> 'Acubifolium' (acubifolium croton)	ASLG039, 144A
<i>Codiaeum variegatum</i> 'Majesticum' (majesticum croton)	ASLG127A
<i>Euphorbia neriifolia</i> (Indian spurge tree)	ASLG048A
<i>Flueggea flexuosa</i> (poumuli)	ASLG108A
<i>Jatropha integerrima</i> (peregrina, rose-flowered jatropha)	ASLG043A
<i>Pedilanthus tithymaloides</i> (redbird cactus, slipper flower)	ASLG182A
Fabaceae	
<i>Acacia</i> sp. (acacia)	ASLG147A
<i>Calliandra surinamensis</i> (pink powder puff)	ASLG060A
<i>Cassia javanica</i> (pink-and-white shower tree)	ASLG113A
<i>Intsia bijuga</i> (ifilele)	ASLG009A
<i>Sophora tomentosa</i> (silverbush)	ASLG111A
Lauraceae	
<i>Persea americana</i> (avocado, alligator pear, avoka)	ASLG006A
Leeaceae	
<i>Leea guineensis</i> (green, red leea)	ASLG129A
Loganiaceae	
<i>Fagraea berteriana</i> (pualulu)	ASLG081, 094A
Lythraceae	

<i>Lagerstroemia speciosa</i> (queen's crape myrtle)	ASLG008, 098, 139A
Malpighiaceae	
<i>Malpighia glabra</i> (acerola, Barbados cherry)	ASLG018A
Malvaceae	
<i>Hibiscus rosa-sinensis</i> (Hawaiian hibiscus, aute)	ASLG114A
<i>Hibiscus tiliaceus</i> (beach hibiscus, fau)	ASLG097A
<i>Hibiscus tiliaceus</i> cultivar (none known)	ASLG062A
Marantaceae	
<i>Maranta arundinacea</i> 'Variegata' (arrowroot)	ASLG145A
Meliaceae	
<i>Lansium domesticum</i> (lansat)	ASLG092A
<i>Melia azedarach</i> (chinaberry, Indian lilac)	ASLG031A
Moraceae	
<i>Artocarpus altilis</i> (breadfruit, ulu)	ASLG050A
<i>Ficus benghalensis</i> (banyan fig, aoa)	ASLG041A
<i>Ficus benjamina</i> (Java fig, tropic laurel, mati)	ASLG185A
<i>Ficus elastica</i> (India rubber fig, mati)	ASLG128A
<i>Ficus prolixa</i> (banyan fig, aoa)	ASLG070A
<i>Ficus tinctoria</i> (dyer's fig, mati)	ASLG021A
Myrtaceae	
<i>Eugenia uniflora</i> (= <i>Syzygium uniflora</i>) (Surinam cherry)	ASLG055, 115A
<i>Psidium guajava</i> (guava, kuava)	ASLG003, 181A
<i>Psidium guajava</i> 'Waikea' (waikea guava)	ASLG104A
<i>Syzygium jambos</i> (rose apple)	ASLG046A
Nyctaginaceae	
<i>Bougainvillea spectabilis</i> (bougainvillea, felila)	ASLG063A
Oleaceae	
<i>Jasminum multiflorum</i> (= <i>J. pubescens</i>) (star jasmine)	ASLG084A
<i>Jasminum sambac</i> (Arabian jasmine)	ASLG187A
<i>Ligustrum sinense</i> (Chinese privet)	ASLG044A
Oxidalidaceae	
<i>Averrhoa carambola</i> 'Jurong' (jurong star fruit)	ASLG032A
<i>Averrhoa carambola</i> 'Kajang' (kajang star fruit)	ASLG148A
<i>Averrhoa carambola</i> 'Kembangan' (kembangan star fruit)	ASLG072A
Pandanaceae	
<i>Pandanus whitmearianus</i> (screwpine, lau fala)	ASLG130A
Piperaceae	
<i>Piper methysticum</i> (kava)	ASLG054A
Polygonaceae	
<i>Homalocladium platycladium</i> (ribbon bush, tapeworm plant)	ASLG118A
Rubiaceae	
<i>Gardenia jasminoides</i> 'Veitchii' (gardenia cape jasmine)	ASLG047A
<i>Ixora casei</i> (giant red ixora)	ASLG035, 071A
<i>Ixora finlaysoniana</i> (white ixora)	ASLG085A
<i>Mussaenda frondosa</i> (none known)	ASLG066A
<i>Mussaenda philippica</i> (white mussaenda)	ASLG042A
<i>Tarenna sambucina</i> (ma'anunu)	ASLG123A
Rutaceae	
<i>Citrus aurantifolia</i> (lime)	ASLG014A
<i>Murraya paniculata</i> (China-box, orange jessamine)	ASLG146A
Sapindaceae	

<i>Euphoria longan</i> ‘Bai Dum’ (bai dum longan)	ASLG029A
<i>Euphoria longan</i> ‘Chompoo’ (chompoo longan)	ASLG102A
<i>Litchi chinensis</i> (litchi, lychee)	ASLG093A
<i>Pometia pinnata</i> (tava)	ASLG175A
Sapotaceae	
<i>Chrysophyllum cainito</i> ‘Grimal’ (grimal star apple)	ASLG028A
<i>Chrysophyllum cainito</i> ‘Hatian’ (Hatian star apple)	ASLG015A
<i>Chrysophyllum cainito</i> ‘Philippine Gold’ (Phil. gold star apple)	ASLG061A
<i>Chrysophyllum cainito</i> ‘Seedless’ (seedless star apple)	ASLG101A
<i>Manilkara zapota</i> ‘Alano’ (alano sapote)	ASLG005A
<i>Manilkara zapota</i> ‘Bethawi’ (bethawi sapote)	ASLG027A
<i>Manilkara zapota</i> ‘Ponderosa’ (ponderosa sapote)	ASLG022A
<i>Pouteria sapota</i> (mamee sapote, sapota)	ASLG033, 186A
<i>Sandoricum koetjape</i> ‘Bangkok’ (Bangkok santol)	ASLG038A
<i>Sandoricum koetjape</i> ‘Chompoo’ (chompoo santol)	ASLG020A
<i>Synsepalum dulcificum</i> (miracle berry)	ASLG037A
Solanaceae	
<i>Brunfelsia americana</i> (lady of the night)	ASLG075A
<i>Brunfelsia pauciflora</i> (yesterday-today-and-tomorrow)	ASLG076A
<i>Cestrum diurnum</i> (day cestrum, day jessamine)	ASLG106A
Sterculiaceae	
<i>Theobroma cacao</i> (cocoa)	ASLG010, 160A
Verbenaceae	
<i>Clerodendrum wallichii</i> (none known)	ASLG166A
<i>Clerodendrum x speciosum</i> (Java glorybower)	ASLG051A
<i>Congea griffithiana</i> (shower of orchids)	ASLG105A
<i>Faradaya amicorum</i> (mamalupe)	ASLG078A
<i>Premna serratifolia</i> (aloalo)	ASLG053A
<i>Cephaluros</i> sp.	
Agavaceae	
<i>Cordyline terminalis</i> (= <i>C. fruticosa</i>) (ti plant)	ASLG091A
Convolvulaceae	
<i>Operculina turpethum</i> (none known)	ASLG079A
Euphorbiaceae	
<i>Codiaeum variegatum pictum</i> ‘Stewartii’ (croton)	ASLG040A
Fabaceae	
<i>Acacia mangium</i> (acacia)	ASLG082A
<i>Pterocarpus indicus</i> (Burmese rosewood)	ASLG049A
Lythraceae	
<i>Lagerstroemia indica</i> (crape myrtle)	ASLG058A
Malvaceae	
<i>Hibiscus rosa-sinensis</i> (Hawaiian hibiscus, China rose)	ASLG090A
Orchidaceae	
<i>Spathoglottis plicata</i> (Philippine orchid)	ASLG077A
Piperaceae	
<i>Piper graeffei</i> (fue manogi)	ASLG034A
Rubiaceae	
<i>Gardenia taitensis</i> (tahitian gardenia)	ASLG068A
<i>Mussaenda erythrophylla</i> ‘Rosea’ (mussaenda)	ASLG056A
Rutaceae	

<i>Citrus aurantifolia</i> ‘Thornless Mexican’ (Mexican lime)	ASLG026A
Sapotaceae	
<i>Lucuma nervosa</i> ‘Bruce’ (Bruce canistel, egg fruit)	ASLG023A
Unidentified hosts	ASLG134, 135, 153, 156A
<i>Stomatochroon coalitus</i> sp. nov. Thompson & Wujek 1997	
Annonaceae	
<i>Rollinia deliciosa</i> (biriba)	ASLG149A
<i>Stomatochroon consociatus</i> sp. nov. Thompson & Wujek 1997	
Anacardiaceae	
<i>Mangifera indica</i> (mango)	ASLG140A
Fabaceae	
<i>Acacia</i> sp. (acacia)	ASLG147A
Lythraceae	
<i>Cuphea melvilla</i> (firecracker plant, cigar flower)	ASLG141, 191A
<i>Lagerstroemia speciosa</i> (Hawaiian crape myrtle)	ASLG008, 098, 137A
Solanaceae	
<i>Cestrum diurnum</i> (day-blooming cestrum)	ASLG106A

FUNGUS PATHOGENS ON INSECTS

<i>Aspergillus</i> P. Mich. ex Link:Fr. [Hyphomycetes]	
<i>Aspergillus</i> sp.	
<i>Aphis gossypii</i> (green peach aphid)	ASLG108P
<i>Bactrocera</i> spp. (fruit flies)	ASLG315P
<i>Rodolia limbata</i> (lady beetle)	ASLG100P
<i>Cladosporium</i> Link:Fr. [Hyphomycetes]	
<i>Cladosporium</i> sp.	
<i>Aphis gossypii</i> (on dead aphids)	ASLG109P
<i>Fusarium</i> Link:Fr. [Hyphomycetes]	
<i>Fusarium</i> sp.	
<i>Rodolia limbata</i> (lady beetle)	ASLG117P
<i>Tarophagus proserpina</i> (taro planthopper)	
<i>Metarhizium</i> (Metchnikoff) Sorokin [Hyphomycetes]	
<i>Metarhizium anisopliae</i> var. <i>anisopliae</i> (Metsch.) Sorokin	
<i>Aphis gossypii</i> (green peach aphid)	
<i>Brontispa longissima</i> (coconut hispid beetle)	ASLG401P
<i>Cicada</i> sp. (cicada) (Plate 34)	ASLG204P
<i>Metarhizium anisopliae</i> var. <i>majus</i> (Metsch.) Sorokin	
<i>Oryctes rhinoceros</i> (rhinoceros beetle) (Plate 35)	ASLG227P
<i>Paecilomyces</i> Bainier [Hyphomycetes]	
<i>Paecilomyces fumosoroseus</i> (Wize) AHS Brown & G. Smith	
<i>Bemesia tabaci</i> biotype B (silverleaf whitefly)	ASLG112P
<i>Brontispa longissima</i> (hispid beetle)	ASLG382P
<i>Icerya seychellarum</i> (Seychelles fluted scale)	ASLG118P
<i>Trichoderma</i> Pers.:Fr. [Hyphomycetes]	
<i>Trichoderma viride</i> Pers.:Fr.	
<i>Aphis gossypii</i> (green peach aphid)	ASLG182P)
<i>Trichothecium</i> Link:Fr. [Hyphomycetes]	
<i>Trichothecium</i> sp.	
<i>Icerya seychallarum</i> (Seychelles fluted scale)	ASL 068P
<i>Verticillium</i> Nees [Hyphomycetes]	
<i>Verticillium lecanii</i> (A. Zimmerm.) Viegas	
<i>Aedes</i> sp. (mosquito)	ASLG381P
<i>Aphis gossypii</i> (green peach aphid) (Plate 36)	ASLG 182P
<i>Thrips palmi</i> (palm thrips)	

ENGLISH AND SAMOAN PLANT NAMES, BOTANICAL EQUIVALENTS

'atone	<i>Myristica fatua</i>	geranium-leaf aralia	<i>Polyscias guilfoylei</i>
aubergine	<i>Solanum melongena</i>	giant taro	<i>Alocasia macrorrhiza</i>
'aute	<i>Hibiscus rosa-sinensis</i>	green bean	<i>Phaseolus vulgaris</i>
'avoca	<i>Persea americana</i>	heart-leaf philodendron	<i>Philodendron</i> sp.
banana	<i>Musa</i> cultivars, hybrids	hibiscus	<i>Hibiscus rosa-sinensis</i>
beach hibiscus	<i>Hibiscus tiliaceus</i>	hot pepper	<i>Capsicum annuum</i>
beach morning-glory	<i>Ipomoea pes-caprae</i>	ifilele	<i>Intsia bijuga</i>
beggar's-tick	<i>Bidens alba</i>	iris	<i>Iris</i> sp.
bell pepper	<i>Capsicum annuum</i>	israeli	<i>Solanum melongena</i>
bitter gourd	<i>Momordica charantia</i>	kapisi	<i>Brassica chinensis</i>
bitter yam	<i>Dioscorea bulbifera</i>	kapok	<i>Cieba pentandra</i>
black nightshade	<i>Solanum nigrum</i>	kava	<i>Piper methysticum</i>
bougainvillea	<i>Bougainvillea spectabilis</i>	koko	<i>Theobroma cacao</i>
breadfruit	<i>Artocarpus altilis</i>	kudzu	<i>Pueraria lobata</i>
cacao	<i>Theobroma cacao</i>	kukama	<i>Cucumis sativus</i>
caladium	<i>Cladium x hortulanum</i>	lady-of-the-night	<i>Brunfelsia americana</i>
canna lily	<i>Canna indica</i>	lala	<i>Dendrolobium umbellatum</i>
Canterbury bells	<i>Gloxinia perennis</i>	langsat	<i>Lansium domesticum</i>
Chinese cabbage	<i>Brassica chinensis</i>	lau fala	<i>Pandanus whitmeeanus</i>
Chinese taro	<i>Alocasia cucullata</i>	lau pata	<i>Macaranga harveyana</i>
citrus	<i>Citrus</i> spp.	lau pele	<i>Hibiscus manihot</i>
coconut palm	<i>Cocos nucifera</i>	lau talotalo	<i>Crinum asiaticum</i>
coral tree	<i>Erythrina variegata</i>	lime	<i>Citrus aurantifolia</i>
corn	<i>Zea mays</i>	lipstick-tree	<i>Bixa orellana</i>
crab grass	<i>Digitaria setigera</i>	loa	<i>Bixa orellana</i>
crape-myrtle	<i>Lagerstroemia indica</i>	lobster claw	<i>Heliconia</i> sp.
crinum lily	<i>Crinum asiaticum</i>	ma'anunu	<i>Tarenna sambucina</i>
croton	<i>Codiaeum variegatum</i>	mafoa	<i>Canarium harveyi</i>
cucumber	<i>Cucumis sativus</i>	magalo	<i>Solanum nigrum</i>
dumbcane	<i>Diffenbachia</i> sp.	mago	<i>Mangifera indica</i>
dyer's fig	<i>Ficus tinctoria</i>	mamalava	<i>Planchonella torricellensis</i>
edible hibiscus	<i>Hibiscus manihot</i>	mamalupe	<i>Faradaya amicornum</i>
eggplant	<i>Solanum melongena</i>	mango	<i>Mangifera indica</i>
esi	<i>Carica papaya</i>	Manila palm	<i>Veitchia merrillii</i>
fagamanu	<i>Canna indica</i>	manioka	<i>Manihot esculenta</i>
fa'i	<i>Musa</i> cultivars, hybrids	mati	<i>Ficus tinctoria</i>
fasa	<i>Pandanus whitmeeanus</i>	mile-a-minute vine	<i>Mikania micrantha</i>
fau	<i>Hibiscus tiliaceus</i>	moli	<i>Citrus</i> spp.
Fiji Island fan palm	<i>Pritchardia pacifica</i>	moon flower	<i>Ipomoea alba</i>
firecracker plant	<i>Cuphea melvilla</i>	moso'oi	<i>Cananga odorata</i>
frangipani	<i>Plumeria</i> spp.	mumuta	<i>Cyperus rotundus</i>
French bean	<i>Phaseolus vulgaris</i>	natal plum	<i>Carissa grandiflora</i>
fue kula	<i>Ipomoea pes-caprae</i>	nephthytis	<i>Syngonium podophyllum</i>
fue lauteletele	<i>Merremia umbellata</i>	niu	<i>Cocos nucifera</i>
fue mola	<i>Ipomoea pes-caprae</i>	niu o lotuma	<i>Metroxylon vitiense</i>
fue saina	<i>Mikania micrantha</i>	niu piu	<i>Pritchardia pacifica</i>
fue sina	<i>Ipomoea alba</i>	nonu	<i>Morinda citrifolia</i>
gatae	<i>Erythrina variegata</i>	nutmeg, Samoan	<i>Myristica fatua</i>
gatae palagi	<i>Erythrina subumbrans</i>	'o'a	<i>Bischofia javanica</i>

pak-choi	<i>Brassica chinensis</i>
panax	<i>Polyscias scutellariapaogo</i>
pandanus	<i>Pandanus whitmeeanus</i>
papaya	<i>Carica papaya</i>
paper-mulberry	<i>Broussonetia papyrifera</i>
parrot flower	<i>Heliconia psittacorum</i>
pata	<i>Macaranga harveyana</i>
pele	<i>Hibiscus manihot</i>
Philippine orchid	<i>Spathoglottis plicata</i>
poinsettia	<i>Euphorbia pulcherrima</i>
polo	<i>Capsicum annuum</i>
poumuli	<i>Flueggea flexuosa</i>
primrose willow	<i>Ludwigia octovalvis</i>
pua fiti	<i>Plumeria</i> sp.
pualulu	<i>Fagraea berteroana</i>
purple nut sedge	<i>Cyperus rotundus</i>
rose	<i>Rosa chinensis</i>
rubber tree	<i>Ficus elastica</i>
sago palm	<i>Metroxylon vitiense</i>
Samoan nutmeg	<i>Myristica fatua</i>
sana	<i>Zea mays</i>
sanasana	<i>Coix lacryma-jobi</i>
sapote	<i>Manilkara zapote</i>
screwpine	<i>Pandanus whitmeeanus</i>
soi	<i>Dioscorea bulbifera</i>
sweet pepper	<i>Capsicum annuum</i>
ta'amu	<i>Alocasia macrorrhiza</i>
talie	<i>Terminalia</i> spp.
talo	<i>Colocasia esculenta</i>
tanitani	<i>Polyscias guilfoylei</i>
tapioca	<i>Manihot esculenta</i>
taro	<i>Colocasia esculenta</i>
tava	<i>Pometia pinnata</i>
tavai	<i>Rhus taitensis</i>
teuila	<i>Hedychium coronarium</i>
ti	<i>Cordyline terminalis</i>
tipolo	<i>Citrus aurantifolia</i>
tomato	<i>Lycopersicon esculentum</i>
torch ginger	<i>Nicolaia elatior</i>
tufaso	<i>Dysoxylum samoense</i>
u'a	<i>Broussonetia papyrifera</i>
'ulu	<i>Artocarpus altilis</i>
vavae	<i>Cieba pentandra</i>
vi apple	<i>Spondias dulcis</i>
white ginger	<i>Hedychium coronarium</i>
yard-long bean	<i>Vigna unguiculata</i>

LIST OF HOST PLANTS BY FAMILY

Acanthaceae <i>Pseuderanthemum</i> <i>Sanchezia</i>	Brassicaceae <i>Brassica</i>	<i>Phaseolus</i> <i>Pueraria</i> <i>Vigna</i>	Onagraceae <i>Ludwigia</i>	Urticaceae <i>Broussonetia</i>
Agavaceae <i>Cordyline</i>	Burseraceae <i>Canarium</i>	Gesnariaceae <i>Gloxinia</i>	Orchidaceae <i>Spathoglottis</i>	Verbenaceae <i>Faradaya</i>
Anacardiaceae <i>Mangifera</i> <i>Rhus</i> <i>Spondias</i>	Byttneriaceae <i>Theobroma</i>	Heliconiaceae <i>Heliconia</i>	Pandanaceae <i>Pandanus</i>	Zingiberaceae <i>Hedychium</i> <i>Nicolaia</i>
Annonaceae <i>Cananga</i> <i>Rollinia</i>	Cannaceae <i>Canna</i>	Iridaceae <i>Iris</i>	Piperaceae <i>Piper</i>	_____
Apocynaceae <i>Carissa</i> <i>Plumeria</i>	Caricaceae <i>Carica</i>	Lauraceae <i>Persea</i>	Poaceae <i>Coix</i> <i>Digitaria</i> <i>Paspalum</i> <i>Zea</i>	
Araceae <i>Alocasia</i> <i>Caladium</i> <i>Colocasia</i> <i>Diffenbachia</i> <i>Philodendron</i> <i>Synгонium</i>	Combretaceae <i>Terminalia</i>	Liliaceae <i>Crinum</i>	Rhizophoraceae <i>Brugiera</i>	
Araliaceae <i>Polyscias</i>	Convolvulaceae <i>Ipomoea</i> <i>Merremia</i>	Loganiaceae <i>Fagraea</i>	Rosaceae <i>Rosa</i>	
Arecaceae <i>Cocos</i> <i>Metroxylon</i> <i>Pritchardia</i> <i>Veitchia</i>	Cucurbitaceae <i>Cucumis</i> <i>Momordica</i>	Lythraceae <i>Cuphea</i> <i>Lagerstroemia</i>	Rubiaceae <i>Gardenia</i> <i>Momordica</i> <i>Morinda</i> <i>Tarenna</i>	
Asteraceae <i>Bidens</i> <i>Mikania</i> <i>Zinnia</i>	Cyperaceae <i>Cyperus</i> <i>Kyllinga</i>	Malvaceae <i>Hibiscus</i>	Rutaceae <i>Citrus</i>	
Bixaceae <i>Bixia</i>	Dioscoreaceae <i>Dioscorea</i>	Meliaceae <i>Dysoxylum</i> <i>Lansium</i>	Sapindaceae <i>Pometia</i>	
Bombacaceae <i>Cieba</i>	Ebenaceae <i>Diospyros</i>	Moraceae <i>Artocarpus</i> <i>Broussonetia</i> <i>Ficus</i>	Sapotaceae <i>Manilkara</i> <i>Planchonella</i>	
	Euphorbiaceae <i>Bischofia</i> <i>Codiaeum</i> <i>Euphorbia</i> <i>Flueggea</i> <i>Macaranga</i> <i>Manihot</i>	Musaceae <i>Musa</i>	Solanaceae <i>Brunfelsia</i> <i>Capsicum</i> <i>Lycopersicon</i> <i>Solanum</i>	
	Fabaceae <i>Dendrolobium</i> <i>Derris</i> <i>Erythrina</i> <i>Intsia</i>	Myristicaceae <i>Myristica</i>	Sterculiaceae <i>Theobroma</i>	
		Myrtaceae <i>Psidium</i>		
		Nyctaginaceae <i>Bougainvillea</i>		

COMPREHENSIVE LIST OF RECORDED PLANT PATHOGENS

Alternaria brassicicola
Ascochyta sp.**
Aspergillus sp.**
Asterina sp.
Atractilina parasitica
Banana Bunchy Top Virus**
Bipolaris micropus
Bipolaris stenospila
Botryodiplodia palmarum
Botryosphaeria dothidea**
Botryosphaeria sp.**
Capnodium sp.
Cercospora althaeina**
Cercospora bidentis
Cercospora bixae**
Cercospora broussonetiae**
Cercospora canescens
Cercospora capsici
Cercospora catappae
Cercospora citrullina
Cercospora coffeicola
Cercospora ipomoeae
Cercospora malayensis**
Cercospora melongenae
Cercospora mikaniicola
Cercospora polysciatis
Cercospora pudicae
Cercospora sorghi
Cercospora taccae
Cercospora yoshinagiana
Cercospora zinniae
Cercospora spp.
Cercosporidium bougainvilleae**
Cercosporidium henningsii**
Chaetomella sp.**
Cintractia axicola
Cladosporium colocasiae
Cladosporium sp.**
Cochliobolus heterostrophus
Cochliobolus pallescens
Cochliobolus verruculosus
Coleosporium plumeriae**
Colletotrichum capsici
Colletotrichum dematium
Colletotrichum gloeosporioides**
Colletotrichum graminicola
Colletotrichum higginsianum
Colletotrichum lindemuthianum**
Colletotrichum orbiculare
Colletotrichum spp.**
Coniothyrium perottianum
Coniothyrium sp.
Cordana musae
Corticium sp.
Corynespora cassicola
Cucumber Mosaic Cucumovirus**
Curvularia spp**
Dactylaria sp.
Dasheen Mosaic Virus**
Dendrophoma sp.**
Diaporthe citri
Didymella sp.
Diplodia fructus-pandani
Diplodia sp.
Distocercospora pachyderma
Dothiorella sp.**
Elsinoe fawcettii
Endophyllum kaernbachii
Erwinia carotovora subsp. carotovora**
Erwinia sp.**
Erysiphe cichoracearum
Eudarlucia caricis
Fulvia fulva
Fusarium oxysporum
Fusarium pandani
Fusarium proliferatum
Fusarium solani**
Fusarium sp.**
Fusicoccum sp.**
Ganoderma australe
Ganoderma chalceum
Ganoderma lucidum**
Ganoderma resinaceum**
Ganoderma sp.**
Gibberella fujikuroi
Gibberella intricans
Gloeocercospora sorghi
Glomerella cingulata
Glomerella tucumanensis
Glomerella spp.**
Gonatabotryum sp.**
Goplana dioscoreae
Guignardia dioscoreae
Guignardia morindae
Guignardia musae
Guignardia sp.**
Haplobasidium musae
Helicotylenchus dihystra*

*Helicotylenchus multicinctus**
Hemileia vastatrix
Hypoxylon deustum
Hypoxylon mediterraneum
*Lasiodiplodia theobromae***
Leptosphaeria sacchari
*Leptosphaeria sp.***
*Leptosphaerulina trifolii***
*Lophodermium sp.***
Macrophoma pandani
*Macrophoma sp.***
*Macroposthonia denoudeni**
Magnaporthe grisea
Marasmiellus inoderma
Marasmiellus semiustus
*Marasmiellus stenophyllus***
*Marasmiellus spp.***
Marasmius sp.
*Marssonina rosae***
Meliola evodiae
Meliola panici
Meliolina samoensis
*Meloidogyne incognita**
Mycosphaerella alocasiae
Mycosphaerella cruenta
Mycosphaerella fijiensis
Mycosphaerella gastonis
Mycosphaerella henningsii
Mycosphaerella horii
Mycosphaerella musicola
Mycosphaerella rosicola
*Mycosphaerella spp.***
Mycovellosiella koepkei
Myrothecium roridum
*Nectria haematacocca***
Nectria jungneri
Nectria ochroleuca
Nectria rigidiuscula
Nectria sp.
Neojohnstonia colocasiae
Oidium sp.
Paraphaeosphaeria michotii
Pellicularia koleroga
Penicillium digitatum
Periconiella perseae
Peronospora parasitica
*Pestalotiopsis mangiferae***
Pestalotiopsis palmarum
*Pestalotiopsis sp.***
*Pestalozziella sp.***
Phanerochaeta salmonicolor
Phellinus lamaensis
Phellinus noxius
*Phoma cucurbitacearum***
*Phoma erythrinicola***
Phoma fructus-pandani
Phoma martellii
*Phoma spp.***
Phomopsis palmicola
*Phomopsis sp.***
Phyllachora afzeliae
Phyllachora musicola
Phyllachora paspalicola
Phyllachora setaricola
*Phyllosticta artocarpi***
Phyllosticta cordylines
Phyllosticta musarum
*Phyllosticta spp.***
Physalospora rhodina
*Physalospora sp.***
Phytophthora colocasiae
Phytophthora infestans
Phytophthora nicotianae var. parasitica (P. parasitica)
Phytophthora palmivora
*Pratylenchus gibbicaudatus***
*Pratylenchus loosi***
Pseudocercospora ablemoschi
Pseudocercospora borrieriae
Pseudocercospora colocasiae
*Pseudocercospora cruenta***
*Pseudocercospora fijiensis***
Pseudocercospora jatrophae
Pseudocercospora sawadae
Pseudocercospora stahlia
Pseudocercospora synedrellae
Pseudocercospora timorensis
Pseudocercospora sp.
Pseudoepicoccum cocos
Pseudomonas solanacearum
*Pseudomonas solanacearum race 1***
Pseudoperonospora cubensis
*Puccinia canaliculata***
Puccinia cenchri
Puccinia cyperi
Puccinia fimbristylidis
Puccinia kuehnii
Puccinia lepturi
Puccinia melanocephala
Puccinia miscanthi

Puccinia oahuensis
Puccinia operta
Puccinia polysora
Pyrenochaeta sp.**
*Pythium aphanidermatum***
Pythium sp.**
*Radopholus similis**
Ramichloridium musae
Ravenelia sessilis
*Rhizoctonia solani***
Rhizoctonia sp.
*Rhizopus stolonifer***
Rhynchosphaeria sp.**
Rigidoporus microporus
*Rotylenchulus reniformis**
*Sclerotinia sclerotiorum***
*Sclerotium rolfsii***
Septobasidium separans
Septoria eburnea
Septoria sp.**
Setosphaeria monoceras
Sphaceloma fawcettii var. *scabiosa***
*Sphaceloma poinsettiae***
Stagonospora sp.
Stemphylium solani
Stigmina mangiferae
Synchytrium minutum
Thanatephorus cucumeris
Trametes hemitephra
Trametes menziesii
*Trametes modesta***
Trametes sp.**
*Trichoderma viride***
Trichothecium sp.**
Uredo artocarpi
Uredo dioscoreae-sativae
Uredo musae
Uredo pseudocannae
Uredo sp.
*Uromyces appendiculatus***
Uromyces bidenticola
Uromyces dactyloctenii
Uromyces setariae-italicae
Uromyces tenuicutis
Uromyces vignae
Ustilago zeae
Xanthomonas campestris pv. *campestris*
Xanthomonas campestris pv. *phaseoli*
Xanthomonas campestris pv. *vesicatoria***

*Xiphinema ensiculiferum**
 Zucchini Yellow Mosaic Virus**

* Banana nematodes from Grandison (1996)
 ** Identifications by the author, 1999-2004
 (no asterisk) Identifications from McKenzie (1996)

AUTHORS OF PLANT AND FUNGAL NAMES

- A. DC.** — Candolle, Alphonse Louis Pierre Pyramus de
A. Gray — Gray, Asa
A.H.S. Brown — Brown, Agnes H.S.
Allesch. — Allescher, Andreas
Arth. — Arthur, Joseph Charles
Auersw. — Auerswald, Bernhard
A. Zimmerm. — Zimmermann, Albrecht W. Phillip
Bainier — Bainier, Georges
Becc. — Beccari, Odoardo
Benth. — Bentham, George
Bergius — Bergius, Peter Jonas
Berk. — Berkeley, Miles Joseph
Berl. — Berlese, Augusto Napoleone
Biv.-Bern. — Bivona-Bernardi, Antonio de
Blume — Blume, Carl Ludwig von
Boedijn — Boedijn, Karl Bernard
Bolton — Bolton, James
Booth — Booth, Colin B.
Breda de Haan — Breda de Haan, Jacob van
Broome — Broome, Christopher Edmund
Bubak — Bubak, Frantisek
Cav. — Cavanilles
Ces. — Cesati, Vincenzo de
Chev. — Chevallier, Françoise Fulgis
Chupp — Chupp, Charles David
Colla — Colla, Louigi Aloysius
Cooke — Cooke, Mordecai Cubitt
Corda — Corda, August Karl Joseph
Corner — Corner, Edred John Henry
C.P. Seymour — Seymour, C.P.
Crantz — Crantz, Heinrich Johann Nepomuk von
C.T. Wei — Wei, Ching-Chao
Cummins — Cummins, George Baker
Curtis — Curtis, William
C. Welles — Welles, Colin Gilchrist
Dastur — Dastur, Jehangir Fardunji
DC. — Candolle, Agustin Pyramus de
de Bary — Bary, Heinrich Anton de
Deighton — Deighton, Charles Fredrick
De Not. — De Notaris, Giuseppe
Died. — Diedicke, Hermann
Doidge — Doidge, Ethel Mary
Don — Don, George
Druce — Druce, George Claridge
Durand — Durand, Theophile Alexis
Earle — Earle, Franklin Summer
Edson — Edson, Howard Austin
Ehrenb. — Ehrenberg, Christian Gotfried
Ellis — Ellis, Job Bicknell
E. Mey. — Meyer, Ernest Heinrich Friedrich
Everh. — Everhart, Benjamin Matlack
Fitzp. — Fitzpatrick, Harry Morton
F. Noack — Noack, Fritz
Forst. f. — Forster, Carl Friedrich
Fosb. — Fosberg, Francis Raymond
Fr. — Fries, Elias Magnus
Fresen. — Fresenius, Johann Baptiste Georg Wolfgang
F. Stevens — Stevens, Frank Lincoln
Fuckel — Fuckel, Karl Wilhelm Gottlieb Leopold
F.W. Schultz — Schultz, Friedrich Wilhelm
Gaertn. — Gaertner, Joseph
Gaumann — Gaumann, Ernest Albert
G. Cunn. — Cunningham, Gordon Herriot
G.M. Waterhouse — Waterhouse, Grace Marion
G. Preuss — Preuss, (Carl) Gotlieb Traugott
Grev. — Greville, Robert Kaye
Griffon — Griffon, Edouard
G. Sm. — Smith, George
Guillemin — Guillemin, Jean Baptiste Antoine
Hall. f. — Haller, Albrecht von
Har. — Hariot, Paul Auguste
Hassk. — Hasskarl, Justus Carl
Henn. — Hennings, Paul Christoph
H. Fawc. — Fawcett, Howard Samuel
Hoffm. — Hoffmann, Georg Franz
Hohn. — Hohnel, Franz Xaver Rudolf von
Holmsk. — Holmskjold, Theodor
Hook. — Hooker, Joseph Dalton
Horan. — Horaninow, Paulus (Paul) Fedorowitsch
Horne. — Hornemann, Jens Wilken
Houtt. — Houttuyn, Maarten (Martin)
H. & P. Syd. — Sydow, Hans & Paul
H. Schrenk — Schrenk, Hermann von
H.T. Gussow — Gussow, Hans Theodor
H. Wendl. — Wendlann, Herman
Jacq. — Jacquin, Nicolaus von
J.C. Fisch. — Fischer, Johann Carl
J.D. Hook. — Hooker, Joseph Dalton
Jenk. — Jenkins, Anna Eliza
Johans. — Johanson, Carl Johan
Jungh. — Junghuhn, Franz Wilhelm
Klotzsch — Klotzsch, Johann Friedrich
Koorders — Koorders, Sijfert Hendrick
K. Schum. — Schumann, Karl Moritz
Kuhn — Kuhn, Julius Gotthelf
Kunth — Kunth, Karl Sigisimund

Kuntze — Kuntze, Carl Ernst Otto
L. — Linnaeus, Carl von
Lagerh. — Lagerheim, Nils Gustaf
Lam — Lam, Herman Johannes
Lam. — Lamarck, Jean Baptiste Antoine Pierre de Monnet de
Lam.? — Lambert, Aylmer Bourke
Lams.-Scrib. — Lamson-Scribner, Frank
Latham — Latham, Dennis Harold
Lev. — Leveille, Joseph Henri
L.H. Bailey — Bailey, Liberty Hyde
Lib. — Libert, Marie-Anne
Linder — Linder, David Hunt
Lindl. — Lindley, John
Link — Link, Johann Heinrich Friedrich
Loureiro — Loureiro, Joao de
M.A. Curtis — Curtis, Moses Ashley
Maas G. — Maas Geesteranus, Rudolph Arnold
Magnus — Magnus, Paul Wilhelm
Mart. — Martius, Carl Friedrich Philipp von
Maubl. — Maublanc, Andre
M.B. Ellis — Ellis, Martin B.
McAlpine — McAlpine, Daniel
Merr. — Merrill, Elmer Drew
Metch. — Metchnikoff
Miller — Miller, Philip
Mont. — Montagne, Jean Pierre Francoise Camille
Morelet — Morelet, Michel
Moug. — Mougéot, Jean Baptiste
Muell. — Mueller, Ferdinand Jacob Heinrich von
Muntanola — Muntanola, Maria
Murrill — Murrill, William Alfonso
Nees — Nees von Esenbeck, Christian Gottfried Daniel
Niessl — Niessl von Mayendorf, Gustav
Nitschke — Nitschke, Theodor Rudolf Joseph
Park. — Parkinson, Charles Edward
Pat. — Patouillard, Narcisse Theophile
Pavon — Pavon, Jose Antonio
P.A. Young — Young, Paul Allen
Penz. — Penzig, Albert Julius Otto
Pers. — Persoon, Christiaan Hendrick
Petr., Petrak — Petrak, Franz
P. Mich. — Micheli, Pier^o Antonio
Prain — Prain, David
Pringsh. — Pringsheim, Nathanael
Quel. — Quelet, Lucien
Racib. — Raciborski, Marjan
Radlk. — Radlkofer, Ludwig Adolph Timotheus
Ravaz — Ravaz, Louis Etienne
Raven — Raven, Peter Hamilton
R. Br. — Brown, Robert
Rech. — Rechinger, Karl
Rehm — Rehm, Heinrich (Simon Ludwig Friedrich Felix)
Retz. — Retzius, Anders Jahan
R.L. Gilbertson — Gilbertson, Robert, L.
Roem. — Roemer, Max Joseph
Rostr. — Rostrup, (Frederick Georg) Emil
Roxb. — Roxburgh, William
Ruehle — Ruehle, George Dewey
Ruiz — Ruiz Lopez, Hipolito
Ryv. — Ryvarden, Leif
Sacc. — Saccardo, Pier Andrea
Sawada — Sawada, Kaneyoshi
Schlechtend. — Schlechtendahl, Diedrich Franz Leonhard von
Schott — Schott, Heinrich Wilhelm
Schwein.? — Schweinfurth, Georg August
Schwein. — Schweinitz, Lewis David von
Singer — Singer, Rolf
Sivanesan — Sivanesan, A.
Sobers — Sobers, Edward K.
Sorokin — Sorokin, Nikolai Vasilevich
Spauld. — Spaulding, Perley
Speg. — Spegazzini, Carlo Luigi
Spessa — Spessa, Caroline
Steyaert — Steyaert, Rene
Sturm — Sturm, Jacob
Sutton — Sutton, Brian C.
Swingle — Swingle, Walter Tennyson
Thoms. — Thomson, Thomas
Thuem. — Thumen, Felix Karl Albert Ernst Joachim von
Tracy — Tracy, Samuel Mills
Traverso — Traverso, Giovanni Battista
Unger — Unger, Franz Joseph Andreas Nicolaus
van der Aa — van der Aa, H.A.
Venten. — Ventenat, Etienne Pierre
Verdc. — Verdcourt, Bernard
Viala — Viala, Pierre
Viegas — Viegas, Ahmes Pinto
Voglino — Voglino, Pietro
Vuill. — Vuillemin, Jean Paul
Walp. — Walpers, Wilhelm Gerhard
W. Bull — Bull, William
Willd. — Willdenow, Carl Ludwig von
Woronin — Woronin, Michael, Stepanovich

BIBLIOGRAPHY

- Arauz LF. 2000. Mango anthracnose: Economic impact and current options for integrated management. *Plant Disease* 84(6): 600-611.
- Barbetti MJ. 1991. Effects of temperature and humidity on diseases caused by *Phoma medicaginis* and *Leptosphaerulina trifolii* in lucerne (*Medicago sativa*). *Plant Pathology* 40: 296-301.
- Barnett HL, Hunter BB. 1998. Illustrated genera of imperfect fungi, 4th ed. St. Paul, MN: APS Press.
- Barr ME. 1970. Some amerosporous Ascomycetes on Ericaceae and Empetraceae. *Mycologia* 62(2): 377-394.
- Barr ME. 1976. *Buergenerula* and the Physosporrellaceae. *Mycologia* 68(3): 611-621.
- Barreto RW, Evans HC. 1995. Mycobiota of the weed *Cyperus rotundus* in the state of Rio de Janeiro, with an elucidation of its associated *Puccinia* complex. *Mycological Research* 99(4): 407-419.
- Booth C, Pirozynski KA. 1967. *Leptosphaerulina trifolii*. CMI descriptions of pathogenic fungi and bacteria, No. 146. Kew, Surrey: Commonwealth Mycological Institute.
- Borah RK, Dutta D, Hazarika P. 1998. Three new *Phyllachora* leaf spots from Assam. *Indian Journal of Forestry* 21(3): 256-258.
- Brady BLK. 1979a. *Metarhizium anisopliae*. CMI descriptions of pathogenic fungi and bacteria, No. 609. Kew, Surrey: Commonwealth Mycological Institute.
- Brady BLK. 1979b. *Verticillium lecanii*. CMI descriptions of pathogenic fungi and bacteria, No. 610. Kew, Surrey: Commonwealth Mycological Institute.
- Brooks FE. 1999. Incidence and distribution of Banana Bunchy Top Virus in American Samoa. *Journal of South Pacific Agriculture* 6(1): 25-28.
- Brooks FE. 2002. Brown root rot disease in American Samoa's tropical rain forests. *Pacific Science* 56(4): 377-387.
- Brooks FE. 2004. Plant-parasitic algae (Trentepohliales, Chlorophyta) in American Samoa. *Pacific Science* 58(3): 419-428.
- Brooks FE. 2004. Plant-parasitic nematodes of banana in American Samoa. *Nematropica* (in press).
- Brown AHS, Smith G. 1957. The genus *Paecilomyces* Bainier and its perfect stage *Byssochlamys* Westling. *Transactions of the British Mycological Society* 40(1): 17-89.
- Callaway MB, Phatak SC, Wells HD. 1985. Studies on alternate hosts of the rust *Puccinia canaliculata*, a potential biological control agent for nutsedges. *Plant Disease* 69: 924-926.
- Chang TT. 1995. Decline of nine tree species associated with brown root rot caused by *Phellinus noxius* in Taiwan. *Plant Disease* 79: 962-965.

- Chang TT, Yang WW. 1997. *Phellinus noxius* in Taiwan: distribution, host plants and the pH and texture of the rhizosphere soils of infected hosts. Paper No. 92. Taipei, Taiwan: Taiwan Forestry Research Institute.
- Chase AR, Broschat TK, editors. 1991. Diseases and disorders of ornamental palms. St. Paul, MN: APS Press.
- Cummins GB, Hiratsuka Y. 1996. Illustrated genera of rust fungi. St. Paul, MN: APS Press.
- Deighton FC. 1967. Studies on *Cercospora* and allied genera. II. Mycological Papers, No. 112. Kew, Surrey: Commonwealth Mycological Institute.
- Deighton FC. 1985. Some species of *Nodulisporium*. Transactions of the British Mycological Society 85(3): 391-395.
- Department of Commerce (Statistics Division). 1996. American Samoa statistical yearbook. Pago Pago, AS: American Samoa Government.
- Dumbleton LJ. 1954. A list of plant diseases recorded in South Pacific Territories, Technical Paper 78. Noumea, New Caledonia: South Pacific Commission.
- Ellett CW. 1989. *Curvularia* blight of *Ophioglossum vulgatum*. Mycologia 81(5): 815-817.
- Ellis MB. 1971. Dematiaceous hyphomycetes. Kew, Surrey: Commonwealth Mycological Institute.
- Ellis MB. 1976. More dematiaceous hyphomycetes. Kew, Surrey: Commonwealth Mycological Institute.
- Ellis MB, Holliday P. 1972. *Cordana musae*. CMI descriptions of pathogenic fungi and bacteria, No. 350. Kew, Surrey: Commonwealth Mycological Institute.
- Erwin DC, Ribeiro OK. 1996. *Phytophthora* diseases worldwide. St. Paul, MN: APS Press.
- Farr DF, Bills GF, Chamuris GP, Rossman AY. 1989. Fungi on plants and plant products in the United States. St. Paul, MN: APS Press.
- Fidalgo O. 1968. *Phellinus pachyphloeus* and its allies. Memoirs of the New York Botanical Garden 17(2): 109-147.
- Firman ID. 1975. Plant diseases in the area of the South Pacific Commission: 2. American Samoa. Noumea, New Caledonia: South Pacific Commission.
- Gardner DE. 1994. The native rust fungi of Hawaii. Canadian Journal of Botany 72(7): 976-989.
- Graf AB. 1992. Tropica, 4th ed. East Rutherford, NJ: Roehrs Company.
- Graham JH, Luttrell ES. 1961. Species of *Leptosphaerulina* on forage plants. Phytopathology 51: 680-693.
- Grandison GS. 1990. Report on a survey of plant parasitic nematodes in the Cook Islands (Southern Group). Noumea, New Caledonia: South Pacific Commission.

- Grandison GS. 1996. Plant-parasitic nematodes of American Samoa, Technical Paper No. 205. Noumea, New Caledonia: South Pacific Commission.
- Hall R. 1991. Compendium of bean diseases. St. Paul, MN: APS Press.
- Hanlin RT. 1990. Illustrated genera of Ascomycetes, Vol. I. St. Paul, MN: APS Press.
- Hanlin RT. 1998a. Illustrated genera of Ascomycetes, Vol. II. St. Paul, MN: APS Press.
- Hanlin RT. 1998b. Combined keys to illustrated genera of Ascomycetes: Vols. I & II. St. Paul, MN: APS Press.
- Hawksworth DL, Kirk PM, Sutton BC, Pegler DN. 1995. Ainsworth & Bisby's dictionary of the fungi, 8th ed. Wallingford, UK: CAB International.
- Huang S, Liu X. 1995. Control of postharvest stem end rot of mango. Tropical Science 35: 321-326.
- Index of Botanists. 2001. Harvard University Herbaria. Published on the Internet, http://www.huh.harvard.edu/database/cms/botanists_index.html (accessed 12 August 2002).
- Irwin JAG, Davis RD. 1985. Taxonomy of some *Leptosphaerulina* spp. on legumes in Eastern Australia. Australian Journal of Botany 33: 233-237.
- Jones JB, Jones JP, Stall RE, Zitter TA, editors. 1991. Compendium of tomato diseases. St. Paul, MN: APS Press.
- Keener PD. 1934. Biological specialization in *Darluca filum*. Bulletin of the Torrey Botanical Club 61(9): 475-491.
- Khalil SK, Taborsky V. 1982. The effect of different media on the growth and sporulation of the entomopathogenic fungus *Verticillium lecanii* (Zimm.) Viegas. Agricultura Tropica et Subtropica, Universitas Agriculturae, Praga: 251-261.
- Kohler F, Pellegrin F, Jackson G, McKenzie E. 1997. Diseases of cultivated crops in Pacific island countries. Noumea, New Caledonia: South Pacific Commission.
- Lee SS, Zakaria M. 1993. Fungi associated with heart rot of *Acacia mangium* in Peninsular Malaysia. Journal of Tropical Forest Science 5(4): 479-484.
- Leung HYM, Goh TK, Hyde KD. 1997. *Cercospora mikaniacola*. IMI descriptions of fungi and bacteria No. 1311. Egham, Surrey: International Mycological Institute.
- Luc M, Sikora RA, Bridge J, editors. 1990. Plant parasitic nematodes in subtropical and tropical agriculture. Wallingford, UK: Commonwealth Agricultural Bureaux International.
- Magee CJ. 1967. The control of banana bunchy top, Technical Paper No. 150. Noumea, New Caledonia: South Pacific Commission.
- Mai WF, Mullin PG. 1996. Plant-parasitic nematodes: A pictorial key to genera, 5th ed. Ithaca, NY: Cornell University Press.

- McKenzie EHC. 1996. Fungi, bacteria and pathogenic algae on plants in American Samoa, Technical Paper No. 206. Noumea, New Caledonia: South Pacific Commission.
- McKenzie EHC, Jackson GVH. 1990. The fungi, bacteria and pathogenic algae of the Federated States of Micronesia. Noumea, New Caledonia: South Pacific Commission.
- Minagawa, N. 1982. Descriptions of *Pratylenchus gibbicaudatus* n. sp. and *P. macrostylus* Wu, 1971 (Tylenchida: Pratylenchidae) from Kyushu. Appl. Ent. Zool. 17 (3): 418-423.
- Mordue JEM. 1971. *Glomerella cingulata*. CMI descriptions of pathogenic fungi and bacteria, No. 315. Kew, Surrey: Commonwealth Mycological Institute.
- Mordue JEM. 1980. *Pestalotiopsis mangiferae*. CMI descriptions of pathogenic fungi and bacteria, No. 676. Kew, Surrey: Commonwealth Mycological Institute.
- Mordue JEM, Holliday P. 1971. *Pestalotiopsis palmarum*. CMI descriptions of pathogenic fungi and bacteria, No. 319. Kew, Surrey: Commonwealth Mycological Institute.
- Mulder JL, Holliday P. 1974a. *Mycosphaerella fijiensis*. CMI descriptions of pathogenic fungi and bacteria, No. 413. Kew, Surrey: Commonwealth Mycological Institute.
- Mulder JL, Holliday P. 1974b. *Mycosphaerella musicola*. CMI descriptions of pathogenic fungi and bacteria, No. 414. Kew, Surrey: Commonwealth Mycological Institute.
- Nandris D, Nicole M, Geiger JP. 1987. Root rot disease of rubber trees. Plant Disease 71(4): 298-306.
- Nunez, M, Ryvarden L. 2000. East Asian Polypores, Vols. I & II. Oslo, Fungiflora.
- Olanya OM, Campbell CL. 1990. Isolate characteristics and epidemic components of *Leptosphaerulina* leaf spots on alfalfa and white clover. Phytopathology 80: 1278-1282.
- Onions AHS. 1979a. *Paecilomyces farinosus*. CMI descriptions of pathogenic fungi and bacteria, No. 613. Kew, Surrey: Commonwealth Mycological Institute.
- Onions AHS. 1979b. *Paecilomyces fumosoroseus*. CMI descriptions of pathogenic fungi and bacteria, No. 614. Kew, Surrey: Commonwealth Mycological Institute.
- Onions AHS, Barron, G.L. 1967. Monophialidic species of *Paecilomyces*. Mycological Papers, No. 107. Kew, Surrey: Commonwealth Mycological Institute.
- Pegler DN, Waterston JM. 1968a. *Phellinus noxius*. CMI descriptions of pathogenic fungi and bacteria, No. 195. Kew, Surrey: Commonwealth Mycological Institute.
- Pegler DN, Waterston JM. 1968b. *Rigidoporus zonalis*. CMI descriptions of pathogenic fungi and bacteria, No. 200. Kew, Surrey: Commonwealth Mycological Institute.
- Ploetz RC, Zentmyer GA, Nishijima WT, Rohrbach,KG, Ohr HD, editors. 1994. Compendium of tropical fruit diseases. St. Paul, MN: APS Press.
- Punithalingam E, Holliday P. 1973. *Botryosphaeria ribis*. CMI descriptions of pathogenic fungi and bacteria, No. 395. Kew, Surrey: Commonwealth Mycological Institute.

- Quanten E. 1997. The polypores (Polyporaceae s.l.) of Papua New Guinea: A preliminary conspectus. Meisa, National Botanic Garden of Belgium.
- Raabe RD, Connors IL, Martinez AP (College of Tropical Agriculture and Human Resources). 1981. Checklist of plant diseases in Hawaii. Honolulu, HI: University of Hawai'i at Manoa.
- Ryvarden L, Johansen I. 1980. A preliminary polypore flora of East Africa. Oslo: Fungiflora.
- Seinhorst, JW. 1977. *Pratylenchus loosi*. CIH descriptions of plant-parasitic nematodes, Set 7, No. 98. Kew, Surrey: Commonwealth Institute of Helminthology.
- Siddiqui MR. 1972. *Helicotylenchus dihystra*. CIH descriptions of plant-parasitic nematodes, Set 1, No. 9. Kew, Surrey: Commonwealth Institute of Helminthology.
- Siddiqui MR. 1973. *Helicotylenchus multincinctus*. CIH descriptions of plant-parasitic nematodes, Set 2, No. 23. Kew, Surrey: Commonwealth Institute of Helminthology.
- Singh S, Bola I, Kumar J. 1980. Diseases of plantation trees in Fiji Islands: 1. Brown root rot of mahogany (*Swietenia macrophylla* King). Indian Forester: 526-533.
- Sivanesan A. 1984. The bitunicate Ascomycetes and their anamorphs. Vaduz, Germany: J Cramer.
- Sivanesan A, Critchett C. 1974. *Elsinoe fawcettii*. CMI descriptions of pathogenic fungi and bacteria, No. 438. Kew, Surrey: Commonwealth Mycological Institute.
- Style Manual Committee, Council of Biology Editors. 1994. Scientific style and format: The CBE manual for authors, editors, and publishers, 6th ed. Cambridge: Cambridge University Press.
- Sutton BC. 1969. Forest microfungi. III. The heterogeneity of *Pestalotia* deNot. section sexloculate Klebahn sensu Guba. Canadian Journal of Botany 47: 2083-2094.
- Sutton BC. 1980. The Coelomycetes. Kew, Surrey: Commonwealth Mycological Institute.
- Swendsrud DP, Calpouzos L. 1970. Rust uredospores increase the germination of pycnidiospores of *Darlucan filum*. Phytopathology 60: 1445-1447.
- The Plant Names Project. 1999. International plant names index. Published on the Internet, <http://www.ipni.org> (accessed 24 September 2004).
- Thompson, RH, Wujek, DE. 1997. Trentepohliales: *Cephaleuros*, *Phycopeltis*, and *Stomatochroon*: Morphology, taxonomy, and ecology. Enfield, NH: Science Publishers, Inc.
- Vidal C, Lacey LA, Fargues J. 1997. Pathogenicity of *Paecilomyces fumosoroseus* (Deuteromycotina: Hyphomycetes) against *Bemisia argentifolii* (Homoptera: Aleyrodidae) with a description of a bioassay method. Journal of Economic Entomology 90(3): 765-772.
- Waterhouse DF, Norris KR. 1987. Biological control: Pacific prospects. Melbourne: Inkata Press.
- Waterhouse GM, Waterston JM. 1964. *Pythium aphanidermatum*. CMI descriptions of pathogenic fungi and bacteria, No. 36. Kew, Surrey: Commonwealth Mycological Institute.

Whistler WA. 1984. Annotated list of Samoan plant names. *Economic Botany* 38(4): 464-489.

Whistler WA. 1992. *Flowers of the Pacific Island seashore*. Honolulu, HI: University of Hawaii Press.

Whistler WA. 1994. Botanical inventory of the proposed Tutuila and Ofu units of the National Park of American Samoa. Cooperative National Park Resources Studies Unit, Technical Report 87. Honolulu, HI: University of Hawai'i at Manoa.
