

**Site:** GP34**Location:** Map 11**Date:** 2018-04-12**MGA Zone:** 50**Habitat:** Plain**Slope:** 0-5°**Soil:** Reddish brown sandy clay loam**Rock type:** Ironstone**Rock Abundance:** >50%**Vegetation Type:** P2**Vegetation:** *Acacia tetragonophylla* tall shrubland over *Eremophila phyllopoda* subsp. *obliqua* scattered shrubs over *Aristida contorta*, *Eriachne pulchella* subsp. *dominii* very open tussock grassland with *Trigastrotheca molluginea*, *Goodenia microptera* scattered herbs**Veg Condition:** Excellent**Fire Age:** 5-10 years**Type:** Quadrat**Described by:** KM**Easting:** 562734**Northing:** 7426126**Phase 1 Species List**

| Name   | Cover (%) | Height (m) |
|--|-----------|------------|
| <i>Acacia tetragonophylla</i>                      | 12.0      | 2.5        |
| <i>Aristida contorta</i>                           | 15.0      | 0.4        |
| <i>Bulbostylis barbata</i>                         | 0.1       | 0.1        |
| <i>Enneapogon caerulescens</i>                     | 0.1       | 0.3        |
| <i>Enneapogon polyphyllus</i>                      | 0.1       | 0.3        |
| <i>Eremophila phyllopoda</i> subsp. <i>obliqua</i> | 3.0       | 1.6        |
| <i>Eriachne pulchella</i> subsp. <i>pulchella</i>  | 6.0       | 0.2        |
| <i>Gomphrena canescens</i> subsp. <i>canescens</i> | 0.5       | 0.3        |
| <i>Maireana melanocoma</i>                         | 0.1       | 0.3        |
| <i>Maireana planifolia</i>                         | 0.1       | 0.6        |

| Name   | Cover (%) | Height (m) |
|--|-----------|------------|
| <i>Polycarpaea corymbosa</i> var. <i>corymbosa</i> | 0.1       | 0.15       |
| <i>Ptilotus obovatus</i>                           | 0.1       | 0.2        |
| <i>Ptilotus schwartzii</i> var. <i>schwartzii</i>  | 0.1       | 0.6        |
| <i>Sclerolaena densiflora</i>                      | 0.1       | 0.1        |
| <i>Senna stricta</i>                               | 0.1       | 0.7        |
| <i>Solanum cleistogamum</i>                        | 0.1       | 0.2        |
| <i>Solanum lasiophyllum</i>                        | 0.1       | 0.3        |
| <i>Sporobolus australasicus</i>                    | 0.1       | 0.1        |
| <i>Tribulus suberosus</i>                          | 0.1       | 0.6        |
| <i>Trigastrotheca molluginea</i>                   | 4.0       | 0.3        |
| <i>Triodia epactia</i>                             | 0.1       | 0.4        |

**Phase 2 Species List**

| Name   | Cover (%) | Height (m) |
|--|-----------|------------|
| <i>Acacia aptaneura</i>                            | 0.1       | 3.0        |
| <i>Acacia tetragonophylla</i>                      | 12.0      | 2.5        |
| <i>Acacia wanyu</i>                                | 0.1       | 0.3        |
| <i>Aristida contorta</i>                           | 1.5       | 0.25       |
| <i>Boerhavia coccinea</i>                          | 0.1       | 0.1        |
| <i>Cheilanthes sieberi</i> subsp. <i>sieberi</i>   | 0.1       | 0.1        |
| <i>Corchorus crozophorifolius</i>                  | 0.1       | 0.4        |
| <i>Dodonaea petiolaris</i>                         | 0.1       | 0.2        |
| <i>Enneapogon caeruleus</i>                        | 0.1       | 0.2        |
| <i>Enneapogon polyphyllus</i>                      | 0.1       | 0.2        |
| <i>Eremophila phyllopoda</i> subsp. <i>obliqua</i> | 1.5       | 1.6        |
| <i>Eriachne pulchella</i> subsp. <i>dominii</i>    | 1.5       | 0.1        |
| <i>Gomphrena canescens</i> subsp. <i>canescens</i> | 0.1       | 0.2        |
| <i>Goodenia microptera</i>                         | 0.5       | 0.05       |
| <i>Maireana melanocoma</i>                         | 0.1       | 0.3        |
| <i>Maireana planifolia</i>                         | 0.1       | 0.6        |
| <i>Polycarpaea corymbosa</i> var. <i>corymbosa</i> | 0.1       | 0.1        |
| <i>Ptilotus helipteroides</i>                      | 0.1       | 0.05       |
| <i>Ptilotus obovatus</i>                           | 0.1       | 0.2        |
| <i>Ptilotus schwartzii</i> var. <i>schwartzii</i>  | 0.1       | 0.6        |
| <i>Sclerolaena densiflora</i>                      | 0.1       | 0.15       |
| <i>Senna artemisioides</i> subsp. <i>helmsii</i>   | 0.1       | 1.5        |
| <i>Senna stricta</i>                               | 0.1       | 0.6        |
| <i>Solanum cleistogamum</i>                        | 0.1       | 0.2        |
| <i>Solanum lasiophyllum</i>                        | 0.1       | 0.4        |
| <i>Solanum piceum</i>                              | 0.1       | 0.5        |
| <i>Sporobolus australasicus</i>                    | 0.1       | 0.1        |
| <i>Trianthema glossostigmum</i>                    | 0.1       | 0.02       |
| <i>Tribulus suberosus</i>                          | 0.1       | 0.6        |
| <i>Trigastrotheca molluginea</i>                   | 1.0       | 0.2        |
| <i>Triodia epactia</i>                             | 0.1       | 0.4        |
| <i>Tripogonella loliiformis</i>                    | 0.1       | 0.05       |

**Site:** GP35

**Location:** Map 8

**Date:** 2018-04-14

**MGA Zone:** 50

**Habitat:** Plain

**Slope:** 0-5°

**Soil:** Red brown clay loam

**Rock Abundance:** 2-10%

**Vegetation Type:** D14

**Vegetation:** *Acacia citrinoviridis* scattered tall shrubs over \**C. setiger* tussock grassland

**Veg Condition:** Degraded

**Fire Age:** >10 years

**Type:** Quadrat

**Described by:** KM

**Easting:** 559861

**Northing:** 7429111



**Phase1 Species List**

| Name  | Cover (%) | Height (m) |
|---|-----------|------------|
| <i>Acacia citrinoviridis</i>                          | 1.0       | 4.0        |
| <i>Acacia sclerosperma</i> subsp. <i>sclerosperma</i> | 1.0       | 2.2        |
| * <i>Aerva javanica</i>                               | 0.1       | 0.5        |
| * <i>Cenchrus ciliaris</i>                            | 35.0      | 0.35       |
| * <i>Cenchrus setiger</i>                             | 1.0       | 0.4        |
| <i>Ptilotus obovatus</i>                              | 0.5       | 1.3        |

**Phase 2 Species List**

| Name                         | Cover (%) | Height (m) |
|------------------------------|-----------|------------|
| <i>Acacia citrinoviridis</i> | 1.0       | 4.0        |
| * <i>Aerva javanica</i>      | 0.1       | 0.6        |
| * <i>Cenchrus setiger</i>    | 35.0      | 0.8        |

\* denotes weed species

**Site:** GP36

**Location:** Map 12

**Date:** 2018-04-14

**MGA Zone:** 50

**Habitat:** Plain

**Slope:** 0-5°

**Soil:** Red brown clay loam

**Rock type:** Ironstone

**Rock Abundance:** >50%

**Vegetation Type:** P2

**Vegetation:** *Acacia aptaneura*, *A. pteraneura* tall open shrubland over *A. tetragonophylla*, *Eremophila phyllopada* subsp. *obliqua* scattered shrubs over *Eriachne pulchella* subsp. *dominii* open tussock grassland

**Veg Condition:** Excellent

**Fire Age:** >10 years

**Type:** Quadrat

**Described by:** BE

**Easting:** 565990

**Northing:** 7429664



#### Phase 1 Species List

| Name   | Cover (%) | Height (m) |
|--|-----------|------------|
| <i>Acacia aptaneura</i>                            | 3.0       | 4.5        |
| <i>Acacia macraneura</i>                           | 0.1       | 3.5        |
| <i>Acacia tetragonophylla</i>                      | 1.0       | 2.0        |
| <i>Aristida contorta</i>                           | 0.1       | 0.35       |
| <i>Cymbopogon ambiguus</i>                         | 0.1       | 0.4        |
| <i>Enneapogon caerulescens</i>                     | 0.1       | 0.35       |
| <i>Eremophila latrobei</i>                         | 0.1       | 1.9        |
| <i>Eremophila phyllopada</i> subsp. <i>obliqua</i> | 0.5       | 0.5        |
| <i>Eriachne pulchella</i> subsp. <i>dominii</i>    | 40.0      | 0.2        |
| <i>Gomphrena canescens</i> subsp. <i>canescens</i> | 0.1       | 0.35       |
| <i>Goodenia tenuiloba</i>                          | 0.1       | 0.35       |

| Name   | Cover (%) | Height (m) |
|--|-----------|------------|
| <i>Grevillea saxicola</i> P3                         | 0.1       | 5.0        |
| <i>Heliotropium heteranthum</i>                      | 0.1       | 0.02       |
| <i>Maireana eriosphaera</i>                          | 0.1       | 0.3        |
| <i>Maireana thesioides</i>                           | 0.1       | 0.3        |
| <i>Portulaca oleracea</i>                            | 0.1       | 0.03       |
| <i>Psydrax suaveolens</i>                            | 0.1       | 1.8        |
| <i>Ptilotus calostachyus</i>                         | 0.1       | 0.4        |
| <i>Ptilotus exaltatus</i>                            | 0.1       | 0.2        |
| <i>Senna artemisioides</i> subsp. <i>helmsii</i>     | 0.1       | 0.5        |
| <i>Senna artemisioides</i> subsp. <i>oligophylla</i> | 0.1       | 0.4        |
| <i>Senna glutinosa</i> subsp. <i>glutinosa</i>       | 0.1       | 1.5        |
| <i>Senna stricta</i>                                 | 0.1       | 1.0        |
| <i>Sida</i> sp.                                      | 0.1       | 0.35       |
| <i>Solanum lasiophyllum</i>                          | 0.1       | 0.3        |
| <i>Tribulus suberosus</i>                            | 0.1       | 1.3        |
| <i>Triodia epactia</i>                               | 0.1       | 0.5        |

**Phase 2 Species List**

| Name   | Cover (%) | Height (m) |
|--|-----------|------------|
| <i>Acacia aptaneura</i>                                      | 3.0       | 4.5        |
| <i>Acacia pteraneura</i>                                     | 2.0       | 4.0        |
| <i>Acacia tetragonophylla</i>                                | 1.0       | 1.9        |
| <i>Aristida contorta</i>                                     | 0.1       | 0.3        |
| <i>Cymbopogon ambiguus</i>                                   | 0.1       | 0.3        |
| <i>Duperreya commixta</i>                                    | 0.1       | twiner     |
| <i>Enneapogon caeruleus</i>                                  | 0.1       | 0.3        |
| <i>Eremophila latrobei</i> subsp. <i>glabra</i>              | 0.1       | 0.6        |
| <i>Eremophila phyllopoda</i> subsp. <i>obliqua</i>           | 0.5       | 1.6        |
| <i>Eriachne pulchella</i> subsp. <i>dominii</i>              | 20.0      | 0.15       |
| <i>Gomphrena canescens</i> subsp. <i>canescens</i>           | 0.1       | 0.3        |
| <i>Goodenia microptera</i>                                   | 0.1       | 0.05       |
| <i>Grevillea saxicola</i> P3                                 | 0.1       | 4.2        |
| <i>Heliotropium heteranthum</i>                              | 0.1       | 0.02       |
| <i>Hybanthus aurantiacus</i>                                 | 0.1       | 0.4        |
| <i>Maireana georgei</i>                                      | 0.1       | 0.3        |
| <i>Maireana thesioides</i>                                   | 0.1       | 0.3        |
| <i>Pluchea dentex</i>  | 0.1       | 0.3        |
| <i>Portulaca oleracea</i>                                    | 0.1       | 0.03       |
| <i>Psydrax suaveolens</i>                                    | 0.1       | 3.0        |
| <i>Ptilotus exaltatus</i>                                    | 0.1       | 0.2        |
| <i>Ptilotus schwartzii</i> var. <i>schwartzii</i>            | 0.1       | 0.5        |
| <i>Senna artemisioides</i> subsp. <i>helmsii</i>             | 0.1       | 0.6        |
| <i>Senna artemisioides</i> subsp. <i>oligophylla</i>         | 0.1       | 0.7        |
| <i>Senna stricta</i>   | 0.1       | 0.7        |
| <i>Sida</i> sp. dark green fruits (S. van Leeuwen 2260)      | 0.1       | 0.8        |
| <i>Sida</i> sp. spiciform panicles (E. Leyland s.n. 14/8/90) | 0.1       | 0.7        |
| <i>Solanum lasiophyllum</i>                                  | 0.1       | 0.3        |

| <b>Name</b>               | <b>Cover (%)</b> | <b>Height (m)</b> |
|---------------------------|------------------|-------------------|
| <i>Tribulus suberosus</i> | 0.1              | 0.5               |
| <i>Triodia epactia</i>    | 0.1              | 0.6               |

**Site:** GP37

**Location:** Map 11

**Date:** 2018-04-12

**MGA Zone:** 50

**Habitat:** Hillslope

**Slope:** >10-20°

**Soil:** Brown sandy clay loam

**Rock type:** Basalt

**Rock Abundance:** >50%

**Vegetation Type:** P4

**Vegetation:** *Acacia tetragonophylla*, *A. xiphophylla* tall open shrubland over *Eremophila cuneifolia* open shrubland over *Triodia angusta* hummock grassland

**Veg Condition:** Very Good

**Fire Age:** >10 years

**Type:** Quadrat

**Described by:** KM

**Easting:** 563186

**Northing:** 7425938



#### Phase 1 Species List

| Name                              | Cover (%) | Height (m) |
|-----------------------------------|-----------|------------|
| <i>Acacia aptaneura</i>           | 0.1       | 4.0        |
| <i>Acacia bivenosa</i>            | 0.1       | 2.0        |
| <i>Acacia tetragonophylla</i>     | 1.0       | 3.0        |
| <i>Acacia wanyu</i>               | 0.1       | 1.2        |
| <i>Acacia xiphophylla</i>         | 0.1       | 2.3        |
| <i>Corchorus crozophorifolius</i> | 0.1       | 0.5        |
| <i>Enneapogon caerulescens</i>    | 0.1       | 0.3        |
| <i>Eremophila cuneifolia</i>      | 15.0      | 1.5        |
| <i>Eremophila latrobei</i>        | 0.1       | 0.2        |
| <i>Goodenia forrestii</i>         | 0.1       | 0.3        |
| <i>Hybanthus aurantiacus</i>      | 0.1       | 0.2        |

| Name   | Cover (%) | Height (m) |
|--|-----------|------------|
| <i>Indigofera monophylla</i>                         | 0.1       | 0.3        |
| <i>Lepidium pedicellosum</i>                         | 0.1       | 0.25       |
| <i>Maireana georgei</i>                              | 0.1       | 0.25       |
| <i>Maireana thesioides</i>                           | 0.1       | 0.4        |
| <i>Polycarpaea corymbosa</i> var. <i>corymbosa</i>   | 0.1       | 0.02       |
| <i>Ptilotus calostachyus</i>                         | 0.1       | 0.4        |
| <i>Senna artemisioides</i> subsp. <i>oligophylla</i> | 0.1       | 1.0        |
| <i>Senna glutinosa</i> subsp. <i>x luerssenii</i>    | 0.1       | 1.0        |
| <i>Solanum horridum</i>                              | 0.1       | 0.3        |
| <i>Solanum lasiophyllum</i>                          | 0.1       | 0.35       |
| <i>Streptoglossa</i> sp.                             | 0.1       | 0.15       |
| <i>Tribulus suberosus</i>                            | 0.1       | 0.2        |
| <i>Triodia angusta</i>                               | 40.0      | 0.4        |

**Phase 2 Species List**

| Name   | Cover (%) | Height (m) |
|--|-----------|------------|
| <i>Acacia aptaneura</i>                              | 0.1       | 4.0        |
| <i>Acacia bivenosa</i>                               | 0.1       | 2.0        |
| <i>Acacia synchronicia</i>                           | 0.1       | 0.3        |
| <i>Acacia tetragonophylla</i>                        | 1.0       | 3.0        |
| <i>Acacia wanyu</i>                                  | 0.1       | 1.3        |
| <i>Acacia xiphophylla</i>                            | 1.0       | 2.3        |
| * <i>Cenchrus ciliaris</i>                           | 0.1       | 0.3        |
| <i>Cymbopogon ambiguus</i>                           | 0.1       | 1.1        |
| <i>Duperreya commixta</i>                            | 0.1       | 0.4        |
| <i>Eremophila cuneifolia</i>                         | 9.0       | 1.2        |
| <i>Goodenia forrestii</i>                            | 0.1       | 0.25       |
| <i>Hibiscus sturtii</i> var. <i>campylochlamys</i>   | 0.1       | 0.2        |
| <i>Hybanthus aurantiacus</i>                         | 0.1       | 0.6        |
| <i>Indigofera monophylla</i>                         | 0.1       | 0.3        |
| <i>Lepidium pedicellosum</i>                         | 0.1       | 0.3        |
| <i>Maireana georgei</i>                              | 0.1       | 0.25       |
| <i>Maireana thesioides</i>                           | 0.1       | 0.4        |
| <i>Maireana tomentosa</i> subsp. <i>tomentosa</i>    | 0.1       | 0.2        |
| <i>Portulaca oleracea</i>                            | 0.1       | 0.1        |
| <i>Psydrax latifolia</i>                             | 0.1       | 1.3        |
| <i>Ptilotus schwartzii</i> var. <i>schwartzii</i>    | 0.1       | 0.8        |
| <i>Rhynchosia minima</i>                             | 0.1       | 0.4        |
| <i>Scaevola spinescens</i>                           | 0.1       | 1.3        |
| <i>Sclerolaena eriacantha</i>                        | 0.1       | 0.1        |
| <i>Senna artemisioides</i> subsp. <i>oligophylla</i> | 0.1       | 1.5        |
| <i>Senna glutinosa</i> subsp. <i>x luerssenii</i>    | 0.1       | 1.0        |
| <i>Senna stricta</i>                                 | 0.1       | 1.2        |
| <i>Solanum horridum</i>                              | 0.1       | 0.2        |
| <i>Solanum lasiophyllum</i>                          | 0.1       | 0.4        |
| <i>Trianthema glossostigmum</i>                      | 0.1       | 0.05       |
| <i>Tribulus suberosus</i>                            | 0.1       | 0.3        |



| <b>Name</b>            | <b>Cover (%)</b> | <b>Height (m)</b> |
|------------------------|------------------|-------------------|
| <i>Triodia angusta</i> | 31.0             | 0.5               |

\* denotes weed species

**Site:** GP38**Location:** Map 12**Type:** Quadrat**Date:** 2018-04-15**Described by:** BE**MGA Zone:** 50**Easting:** 565885**Northing:** 7429906**Habitat:** Drainage depression**Slope:** 0-5°**Soil:** Reddish brown sandy clay loam**Rock type:** Ironstone**Rock Abundance:** 20-50%**Vegetation Type:** D3

**Vegetation:** *Acacia citrinoviridis* tall shrubland over *Ptilotus obovatus*, *Corchorus crozophorifolius* open shrubland over *Dipteracanthus australasicus* subsp. *australasicus*, (*Hybanthus aurantiacus*) low open shrubland over *Triodia epactia* very open hummock grassland with *\*Cenchrus ciliaris*, *Eriachne mucronata*, *\*C. setiger* very open tussock grassland

**Veg Condition:** Poor**Fire Age:** >10 years**Phase 1 Species List**

| Name  | Cover (%) | Height (m) |
|---|-----------|------------|
| <i>Abutilon</i> sp. Dioicum (A.A. Mitchell PRP 1618)            | 0.1       | 0.6        |
| <i>Acacia citrinoviridis</i>                                    | 29.0      | 6.0        |
| <i>Acacia tetragonophylla</i>                                   | 0.1       | 1.7        |
| <i>*Aerva javanica</i>  | 0.1       | 0.4        |
| <i>Amaranthus undulatus</i>                                     | 0.1       | 0.3        |
| <i>*Cenchrus ciliaris</i>                                       | 0.5       | 0.5        |
| <i>Cleome viscosa</i>   | 0.1       | 0.4        |
| <i>Corchorus crozophorifolius</i>                               | 0.1       | 0.5        |
| <i>Cucumis variabilis</i>                                       | 0.1       | twiner     |
| <i>Dipteracanthus australasicus</i> subsp. <i>australasicus</i> | 3.0       | 0.45       |

| Name   | Cover (%) | Height (m) |
|--|-----------|------------|
| <i>Duperreya commixta</i>                                    | 0.1       | twiner     |
| <i>Enchylaena tomentosa</i> var. <i>tomentosa</i>            | 0.1       | 0.6        |
| <i>Eriachne mucronata</i>                                    | 3.0       | 0.4        |
| <i>Euphorbia biconvexa</i>                                   | 0.1       | 0.4        |
| <i>Gomphrena cunninghamii</i>                                | 0.1       | 0.2        |
| <i>Grevillea saxicola</i> P3                                 | 0.1       | 5.0        |
| <i>Hybanthus aurantiacus</i>                                 | 0.1       | 0.3        |
| <i>Indigofera monophylla</i>                                 | 0.1       | 0.4        |
| <i>Jasminum didymum</i> subsp. <i>lineare</i>                | 0.1       | 2.0        |
| <i>Phyllanthus maderaspatensis</i>                           | 0.1       | 0.3        |
| <i>Polycarpaea longiflora</i>                                | 0.1       | 0.2        |
| <i>Ptilotus obovatus</i>                                     | 0.5       | 0.55       |
| <i>Rhynchosia minima</i>                                     | 0.1       | twiner     |
| <i>Santalum lanceolatum</i>                                  | 0.1       | 2.5        |
| <i>Senna artemisioides</i> subsp. <i>oligophylla</i>         | 0.1       | 0.6        |
| <i>Sida</i> sp. spiciform panicles (E. Leyland s.n. 14/8/90) | 0.1       | 0.6        |
| <i>Abutilon lepidum</i>                                      | 0.1       | 0.3        |
| <i>Sporobolus australasicus</i>                              | 0.1       | 0.1        |
| <i>Tephrosia</i> sp. Fortescue (A.A. Mitchell 606)           | 0.1       | 0.4        |
| <i>Trichodesma zeylanicum</i> var. <i>zeylanicum</i>         | 0.1       | 0.4        |
| <i>Triodia epactia</i>                                       | 2.0       | 0.4        |

**Phase 2 Species List**

| Name  | Cover (%) | Height (m) |
|---|-----------|------------|
| <i>Abutilon fraseri</i> subsp. <i>fraseri</i>                   | 0.1       | 0.4        |
| <i>Abutilon</i> sp. Dioicum (A.A. Mitchell PRP 1618)            | 0.1       | 0.4        |
| <i>Acacia aptaneura</i>   | 0.1       | 5.5        |
| <i>Acacia citrinoviridis</i>                                    | 28.0      | 6.0        |
| <i>Acacia tetragonophylla</i>                                   | 0.1       | 1.2        |
| * <i>Aerva javanica</i>   | 0.1       | 0.6        |
| <i>Aristida contorta</i>  | 0.1       | 0.4        |
| * <i>Cenchrus ciliaris</i>                                      | 7.0       | 0.6        |
| * <i>Cenchrus setiger</i>                                       | 2.0       | 0.6        |
| <i>Cleome viscosa</i>   | 0.1       | 0.2        |
| <i>Corchorus crozophorifolius</i>                               | 1.0       | 1.3        |
| <i>Corymbia ferriticola</i>                                     | 0.1       | 5.0        |
| <i>Cucumis variabilis</i>                                       | 0.1       | twiner     |
| <i>Dipteracanthus australasicus</i> subsp. <i>australasicus</i> | 5.0       | 0.4        |
| <i>Duperreya commixta</i>                                       | 0.1       | twiner     |
| <i>Enchylaena tomentosa</i> var. <i>tomentosa</i>               | 0.1       | 0.8        |
| <i>Enneapogon caeruleus</i>                                     | 0.1       | 0.1        |
| <i>Eremophila cuneifolia</i>                                    | 0.1       | 0.6        |
| <i>Eremophila latrobei</i> subsp. <i>glabra</i>                 | 0.1       | 0.9        |
| <i>Eriachne mucronata</i>                                       | 3.0       | 0.5        |
| <i>Eriachne pulchella</i>                                       | 0.1       | 0.1        |
| <i>Glycine canescens</i>  | 0.1       | twiner     |
| <i>Grevillea saxicola</i> P3                                    | 0.1       | 5.0        |
| <i>Hybanthus aurantiacus</i>                                    | 1.0       | 0.4        |

| Name   | Cover (%) | Height (m) |
|--|-----------|------------|
| <i>Indigofera monophylla</i>                                 | 0.1       | 0.3        |
| <i>Jasminum didymum</i> subsp. <i>lineare</i>                | 0.1       | 2.0        |
| <i>Notoleptopus decaisnei</i> var. <i>decaisnei</i>          | 0.1       | 0.1        |
| <i>Phyllanthus maderaspatensis</i>                           | 0.1       | 0.05       |
| <i>Polycarpaea longiflora</i>                                | 0.1       | 0.2        |
| <i>Portulaca oleracea</i>                                    | 0.1       | 0.1        |
| <i>Psyrax latifolia</i>                                      | 0.1       | 0.6        |
| <i>Ptilotus obovatus</i>                                     | 3.0       | 1.2        |
| <i>Rhagodia eremaea</i>                                      | 0.1       | 1.2        |
| <i>Santalum lanceolatum</i>                                  | 0.1       | 1.8        |
| <i>Senna artemisioides</i> subsp. <i>helmsii</i>             | 0.1       | 0.8        |
| <i>Senna glaucifolia</i>                                     | 0.1       | 1.5        |
| <i>Senna stricta</i>   | 0.1       | 0.6        |
| <i>Sida</i> sp. spiciform panicles (E. Leyland s.n. 14/8/90) | 0.1       | 0.8        |
| <i>Solanum cleistogamum</i>                                  | 0.1       | 0.2        |
| <i>Solanum lasiophyllum</i>                                  | 0.1       | 0.3        |
| <i>Sporobolus australasicus</i>                              | 0.1       | 0.1        |
| <i>Tephrosia</i> sp. Fortescue (A.A. Mitchell 606)           | 0.1       | 0.3        |
| <i>Tribulus suberosus</i>                                    | 0.1       | 0.3        |
| <i>Triodia epactia</i>                                       | 4.0       | 0.5        |

\* denotes weed species

**Site:** GP39

**Location:** Map 14

**Date:** 2018-04-13

**MGA Zone:** 50

**Habitat:** Foothlope

**Slope:** >10-20°

**Soil:** Brown sandy clay loam

**Rock type:** Ironstone

**Rock Abundance:** >50%

**Vegetation Type:** P8

**Vegetation:** *Acacia xiphophylla* tall open shrubland over *Senna stricta* scattered shrubs over *Frankenia* aff. *hispidula*, *Tecticornia disarticulata*, *Maireana georgei* low open shrubland

**Veg Condition:** Very Good

**Fire Age:** >10 years

**Type:** Quadrat

**Described by:** BE

**Easting:** 569255

**Northing:** 7429437



#### Phase 1 Species List

| Name  | Cover (%) | Height (m) |
|---|-----------|------------|
| <i>Acacia synchronicia</i>                        | 0.1       | 0.1        |
| <i>Acacia tetragonophylla</i>                     | 0.1       | 0.6        |
| <i>Acacia xiphophylla</i>                         | 2.0       | 3.0        |
| <i>Amaranthus undulatus</i>                       | 0.1       | 0.1        |
| <i>Cynodon prostratus</i>                         | 0.1       | 0.05       |
| <i>Dodonaea pachyneura</i>                        | 0.1       | 1.0        |
| <i>Enchylaena tomentosa</i> var. <i>tomentosa</i> | 0.1       | 0.6        |
| <i>Enneapogon caerulescens</i>                    | 0.1       | 0.2        |
| <i>Eremophila cuneifolia</i>                      | 0.1       | 0.4        |
| <i>Frankenia</i> aff. <i>hispidula</i>            | 3.0       | 0.3        |
| <i>Maireana eriosphaera</i>                       | 0.1       | 0.15       |
| <i>Maireana georgei</i>                           | 0.1       | 0.2        |

| Name   | Cover (%) | Height (m) |
|--|-----------|------------|
| <i>Maireana melanocoma</i>                           | 0.1       | 0.35       |
| <i>Maireana thesioides</i>                           | 0.1       | 1.2        |
| <i>Paspalidium clementii</i>                         | 0.1       | 0.05       |
| <i>Ptilotus calostachyus</i>                         | 0.1       | 0.4        |
| <i>Ptilotus exaltatus</i>                            | 0.1       | 0.3        |
| <i>Ptilotus obovatus</i>                             | 0.1       | 0.5        |
| <i>Salsola australis</i>                             | 0.1       | 0.3        |
| <i>Scaevola spinescens</i>                           | 0.1       | 1.4        |
| <i>Senna artemisioides</i> subsp. <i>oligophylla</i> | 0.1       | 0.6        |
| <i>Senna stricta</i>                                 | 0.1       | 1.1        |
| <i>Tecticornia disarticulata</i>                     | 1.0       | 0.6        |
| <i>Trianthema glossostigmum</i>                      | 0.1       | 0.02       |
| <i>Tribulus suberosus</i>                            | 0.1       | 0.4        |

#### Phase 2 Species List

| Name  | Cover (%) | Height (m) |
|---|-----------|------------|
| <i>Abutilon</i> sp.   | 0.1       | 0.1        |
| <i>Acacia synchronicia</i>                                      | 0.1       | 1.5        |
| <i>Acacia tetragonophylla</i>                                   | 0.1       | 1.4        |
| <i>Acacia xiphophylla</i>                                       | 3.0       | 4.0        |
| * <i>Cenchrus ciliaris</i>                                      | 0.1       | 0.3        |
| <i>Cynodon prostratus</i>                                       | 0.1       | 0.03       |
| <i>Dipteracanthus australasicus</i> subsp. <i>australasicus</i> | 0.1       | 0.4        |
| <i>Dodonaea pachyneura</i>                                      | 0.1       | 0.7        |
| <i>Duperreya commixta</i>                                       | 0.1       | twiner     |
| <i>Enchylaena tomentosa</i> var. <i>tomentosa</i>               | 0.1       | 0.8        |
| <i>Eriachne pulchella</i>                                       | 0.1       | 0.1        |
| <i>Frankenia</i> aff. <i>hispidula</i>                          | 2.0       | 0.3        |
| <i>Jasminum didymum</i> subsp. <i>lineare</i>                   | 0.1       | 0.5        |
| <i>Maireana georgei</i>   | 0.5       | 0.3        |
| <i>Maireana melanocoma</i>                                      | 0.1       | 0.6        |
| <i>Maireana tomentosa</i> subsp. <i>tomentosa</i>               | 0.1       | 0.2        |
| <i>Paspalidium clementii</i>                                    | 0.1       | 0.1        |
| <i>Portulaca oleracea</i>                                       | 0.1       | 0.05       |
| <i>Ptilotus exaltatus</i>                                       | 0.1       | 0.1        |
| <i>Ptilotus obovatus</i>  | 0.1       | 0.7        |
| <i>Rhagodia eremaea</i>   | 0.1       | 0.1        |
| <i>Scaevola spinescens</i>                                      | 0.1       | 1.2        |
| <i>Senna artemisioides</i> subsp. <i>oligophylla</i>            | 0.1       | 0.8        |
| <i>Senna stricta</i>  | 0.5       | 1.1        |
| <i>Solanum horridum</i>   | 0.1       | 0.2        |
| <i>Streptoglossa bubakii</i>                                    | 0.1       | 0.3        |
| <i>Tecticornia disarticulata</i>                                | 1.0       | 0.5        |
| <i>Trianthema glossostigmum</i>                                 | 0.1       | 0.02       |
| <i>Tribulus suberosus</i>                                       | 0.1       | 0.3        |
| <i>Triodia epactia</i>  | 0.1       | 0.5        |

\* denotes weed species

**Site:** GP40

**Location:** Map 14

**Date:** 2018-04-13

**MGA Zone:** 50

**Habitat:** Hillslope

**Slope:** >10-20°

**Soil:** Reddish brown sandy loam

**Rock type:** Ironstone

**Rock Abundance:** >50%

**Vegetation Type:** H12

**Vegetation:** *Eucalyptus leucophloia* subsp. *leucophloia* low open woodland over *Grevillea berryana*, *Acacia tetragonophylla*, *A. pruinocarpa* tall open shrubland over *Eremophila jucunda* subsp. *pulcherrima* low open shrubland over *Triodia epactia* open hummock grassland with *Eriachne mucronata* scattered tussock grasses

**Veg Condition:** Excellent

**Fire Age:** 5-10 years

**Type:** Quadrat

**Described by:** BE

**Easting:** 567582

**Northing:** 7430395



#### Phase 1 Species List

|   |     |      |
|---|-----|------|
| <i>Acacia pruinocarpa</i>                           | 0.5 | 4.0  |
| <i>Acacia tetragonophylla</i>                       | 1.0 | 2.2  |
| <i>Bulbostylis barbata</i>                          | 0.1 | 0.1  |
| <i>Dysphania plantaginella</i>                      | 0.1 | 0.05 |
| <i>Eremophila cuneifolia</i>                        | 0.1 | 0.8  |
| <i>Eremophila fraseri</i> subsp. <i>fraseri</i>     | 0.1 | 0.5  |
| <i>Eremophila jucunda</i> subsp. <i>pulcherrima</i> | 8.0 | 0.9  |
| <i>Eremophila latrobei</i> subsp. <i>latrobei</i>   | 0.1 | 1.7  |
| <i>Eremophila reticulata</i>                        | 0.1 | 1.3  |
| <i>Eriachne mucronata</i>                           | 2.0 | 0.4  |
| <i>Eriachne pulchella</i> subsp. <i>pulchella</i>   | 0.1 | 0.1  |

|   |      |      |
|---|------|------|
| <i>Eucalyptus leucophloia</i> subsp. <i>leucophloia</i> | 2.0  | 8.0  |
| <i>Grevillea berryana</i>                               | 2.0  | 3.5  |
| <i>Paspalidium clementii</i>                            | 0.1  | 0.25 |
| <i>Polycarpha corymbosa</i> var. <i>corymbosa</i>       | 0.1  | 0.15 |
| <i>Psyrax suaveolens</i>                                | 0.1  | 2.1  |
| <i>Ptilotus schwartzii</i> var. <i>schwartzii</i>       | 0.1  | 0.5  |
| <i>Senna glutinosa</i> subsp. <i>glutinosa</i>          | 0.1  | 2.2  |
| <i>Senna glutinosa</i> subsp. <i>x luerssenii</i>       | 0.1  | 1.8  |
| <i>Trachymene oleracea</i> subsp. <i>oleracea</i>       | 0.1  | 0.1  |
| <i>Triodia epactia</i>                                  | 27.0 | 0.6  |

**Phase 2 Species List**

| <b>Name</b>   | <b>Cover (%)</b> | <b>Height (m)</b> |
|---|------------------|-------------------|
| <i>Acacia pruinocarpa</i>                               | 0.5              | 4.0               |
| <i>Acacia tetragonophylla</i>                           | 1.0              | 2.3               |
| <i>Cynodon prostratus</i>                               | 0.1              | 0.02              |
| <i>Eremophila cuneifolia</i>                            | 0.1              | 0.8               |
| <i>Eremophila fraseri</i> subsp. <i>fraseri</i>         | 0.1              | 0.6               |
| <i>Eremophila jucunda</i> subsp. <i>pulcherrima</i>     | 7.0              | 0.9               |
| <i>Eremophila latrobei</i> subsp. <i>latrobei</i>       | 0.1              | 1.7               |
| <i>Eremophila reticulata</i>                            | 0.1              | 1.3               |
| <i>Eriachne mucronata</i>                               | 1.5              | 0.4               |
| <i>Eriachne pulchella</i>                               | 0.1              | 0.15              |
| <i>Eucalyptus leucophloia</i> subsp. <i>leucophloia</i> | 3.0              | 9.0               |
| <i>Grevillea berryana</i>                               | 2.0              | 3.5               |
| <i>Polycarpha longiflora</i>                            | 0.1              | 0.3               |
| <i>Psyrax suaveolens</i>                                | 0.1              | 1.7               |
| <i>Ptilotus obovatus</i>                                | 0.1              | 0.4               |
| <i>Ptilotus schwartzii</i> var. <i>schwartzii</i>       | 0.1              | 0.4               |
| <i>Senna glaucifolia</i>                                | 0.1              | 0.9               |
| <i>Senna glutinosa</i> subsp. <i>glutinosa</i>          | 0.1              | 2.1               |
| <i>Senna glutinosa</i> subsp. <i>pruinosa</i>           | 0.1              | 0.8               |
| <i>Senna glutinosa</i> subsp. <i>x luerssenii</i>       | 0.1              | 1.5               |
| <i>Senna stricta</i>                                    | 0.1              | 0.4               |
| <i>Solanum horridum</i>                                 | 0.1              | 0.1               |
| <i>Triodia epactia</i>                                  | 27.0             | 0.6               |



**Site:** GP41

**Location:** Map 5

**Date:** 2018-04-14

**MGA Zone:** 50

**Habitat:** Drainage depression

**Slope:** 0-5°

**Soil:** Brown sandy clay loam

**Rock type:** Basalt, Ironstone

**Rock Abundance:** 20-50%

**Vegetation Type:** D3

**Vegetation:** *Acacia citrinoviridis*, (*A. wanyu*, *A. tetragonophylla*) tall shrubland over *Senna artemisioides* subsp. *oligophylla* scattered shrubs over *Corchorus crozophorifolius*, *Indigofera monophylla* low open shrubland over *Triodia epactia* open hummock grassland with *\*Cenchrus ciliaris*, *\*C. setiger* open tussock grassland

**Veg Condition:** Degraded

**Fire Age:** >10 years

**Type:** Quadrat

**Described by:** BE

**Easting:** 556850

**Northing:** 7432958



#### Phase 1 Species List

| Name                              | Cover (%) | Height (m) |
|-----------------------------------|-----------|------------|
| <i>Acacia citrinoviridis</i>      | 10.0      | 6.0        |
| <i>Acacia pruinocarpa</i>         | 0.1       | 4.0        |
| <i>Acacia pyrifolia</i>           | 0.1       | 1.7        |
| <i>Acacia tetragonophylla</i>     | 0.5       | 2.3        |
| <i>Acacia wanyu</i>               | 1.0       | 2.5        |
| <i>*Aerva javanica</i>            | 0.1       | 1.0        |
| <i>*Cenchrus ciliaris</i>         | 3.0       | 0.35       |
| <i>*Cenchrus setiger</i>          | 1.0       | 0.45       |
| <i>Corchorus crozophorifolius</i> | 0.5       | 0.5        |

| Name   | Cover (%) | Height (m) |
|--|-----------|------------|
| <i>Crotalaria medicaginea</i> var. <i>neglecta</i>           | 0.1       | 0.35       |
| <i>Cymbopogon ambiguus</i>                                   | 0.1       | 0.4        |
| <i>Duperreya commixta</i>                                    | 0.1       | twiner     |
| <i>Eremophila cuneifolia</i>                                 | 0.1       | 1.2        |
| <i>Eremophila exilifolia</i>                                 | 0.1       | 0.9        |
| <i>Eremophila fraseri</i> subsp. <i>fraseri</i>              | 0.1       | 0.6        |
| <i>Eremophila reticulata</i>                                 | 0.1       | 1.1        |
| <i>Heliotropium chrysocarpum</i>                             | 0.1       | 0.3        |
| <i>Hybanthus aurantiacus</i>                                 | 0.1       | 0.35       |
| <i>Indigofera monophylla</i>                                 | 0.1       | 0.4        |
| <i>Polycarpaea longiflora</i>                                | 0.1       | 0.25       |
| <i>Ptilotus obovatus</i>                                     | 0.1       | 1.2        |
| <i>Rhynchosia minima</i>                                     | 0.1       | twiner     |
| <i>Senna artemisioides</i> subsp. <i>oligophylla</i>         | 0.1       | 1.2        |
| <i>Sida</i> sp. spiciform panicles (E. Leyland s.n. 14/8/90) | 0.1       | 0.5        |
| <i>Solanum cleistogamum</i>                                  | 0.1       | 0.3        |
| <i>Triodia epactia</i>                                       | 20.0      | 4.0        |

**Phase 2 Species List**

| Name  | Cover (%) | Height (m) |
|---|-----------|------------|
| <i>Acacia aptaneura</i>                             | 0.1       | 6.0        |
| <i>Acacia citrinoviridis</i>                        | 12.0      | 6.0        |
| <i>Acacia pruinocarpa</i>                           | 0.1       | 5.0        |
| <i>Acacia tetragonophylla</i>                       | 0.5       | 2.5        |
| <i>Acacia wanyu</i>                                 | 1.0       | 3.5        |
| * <i>Aerva javanica</i>                             | 0.1       | 0.7        |
| <i>Cleome viscosa</i>                               | 0.1       | 0.3        |
| * <i>Cenchrus ciliaris</i>                          | 8.0       | 0.6        |
| * <i>Cenchrus setiger</i>                           | 7.0       | 0.8        |
| <i>Corchorus crozophorifolius</i>                   | 1.0       | 0.8        |
| <i>Cucumis variabilis</i>                           | 0.1       | twiner     |
| <i>Cymbopogon ambiguus</i>                          | 0.1       | 1.2        |
| <i>Duperreya commixta</i>                           | 0.1       | twiner     |
| <i>Enneapogon caerulescens</i>                      | 0.1       | 0.2        |
| <i>Eremophila cuneifolia</i>                        | 0.1       | 1.4        |
| <i>Eremophila fraseri</i> subsp. <i>fraseri</i>     | 0.1       | 0.5        |
| <i>Eremophila reticulata</i>                        | 0.1       | 1.1        |
| <i>Euphorbia biconvexa</i>                          | 0.1       | 0.3        |
| <i>Heliotropium chrysocarpum</i>                    | 0.1       | 0.4        |
| <i>Hibiscus sturtii</i> var. <i>platychlams</i>     | 0.1       | 1.1        |
| <i>Hybanthus aurantiacus</i>                        | 0.1       | 0.4        |
| <i>Indigofera monophylla</i>                        | 1.0       | 0.6        |
| <i>Jasminum didymum</i> subsp. <i>lineare</i>       | 0.1       | 0.5        |
| <i>Notoleptopus decaisnei</i> var. <i>decaisnei</i> | 0.1       | 0.2        |
| <i>Polycarpaea longiflora</i>                       | 0.1       | 0.2        |
| <i>Ptilotus obovatus</i>                            | 0.1       | 1.2        |
| <i>Rhynchosia minima</i>                            | 0.1       | twiner     |

| <b>Name</b>  | <b>Cover (%)</b> | <b>Height (m)</b> |
|--|------------------|-------------------|
| <i>Senna artemisioides</i> subsp. <i>oligophylla</i> | 1.0              | 1.6               |
| <i>Solanum cleistogamum</i>                          | 0.1              | 0.3               |
| <i>Solanum lasiophyllum</i>                          | 0.1              | 0.3               |
| <i>Solanum piceum</i>                                | 0.1              | 0.6               |
| <i>Sporobolus australasicus</i>                      | 0.1              | 0.1               |
| <i>Tribulus suberosus</i>                            | 0.1              | 0.3               |
| <i>Triodia epactia</i>                               | 20.0             | 0.6               |

\* denotes weed species

**Site:** GP42

**Location:** Map 13

**Date:** 2018-04-12

**MGA Zone:** 50

**Habitat:** Hillslope

**Slope:** >35-50°

**Soil:** Red brown sandy clay loam

**Rock type:** Ironstone

**Rock Abundance:** >50%

**Vegetation Type:** H2

**Vegetation:** *Acacia pruinocarpa*, *Grevillea berrimana*, *A. rhodophloia*, *A. aneura* tall open shrubland over *Eremophila exilifolia* open shrubland over *E. jucunda* subsp. *pulcherrima* low open shrubland over *Triodia epactia* open hummock grassland

**Veg Condition:** Excellent

**Fire Age:** >10 years

**Notes:** Minor wheel rut through site, *Acacia aptaneura* just outside quadrat.

**Type:** Quadrat

**Described by:** KM

**Easting:** 566448

**Northing:** 7427295



#### Phase 1 Species List

| Name  | Cover (%) | Height (m) |
|---|-----------|------------|
| <i>Acacia aneura</i>                                | 0.5       | 5.0        |
| <i>Acacia pruinocarpa</i>                           | 2.0       | 3.0        |
| <i>Acacia rhodophloia</i>                           | 1.0       | 3.0        |
| <i>Bulbostylis barbata</i>                          | 0.1       | 0.05       |
| <i>Eremophila cuneifolia</i>                        | 0.1       | 1.3        |
| <i>Eremophila exilifolia</i>                        | 6.0       | 1.3        |
| <i>Eremophila jucunda</i> subsp. <i>pulcherrima</i> | 5.0       | 0.45       |
| <i>Eremophila latrobei</i>                          | 0.1       | 1.1        |
| <i>Eremophila phyllopada</i> subsp. <i>obliqua</i>  | 0.1       | 0.4        |

| Name   | Cover (%) | Height (m) |
|--|-----------|------------|
| <i>Eriachne mucronata</i>                            | 0.1       | 0.2        |
| <i>Eriachne pulchella</i>                            | 0.1       | 0.1        |
| <i>Gomphrena canescens</i> subsp. <i>canescens</i>   | 0.1       | 0.15       |
| <i>Gomphrena cunninghamii</i>                        | 0.1       | 0.06       |
| <i>Grevillea berryana</i>                            | 1.0       | 4.0        |
| <i>Hibiscus sturtii</i> var. <i>campylochlamys</i>   | 0.1       | 0.2        |
| <i>Paspalidium clementii</i>                         | 0.1       | 0.2        |
| <i>Ptilotus calostachyus</i>                         | 0.1       | 0.3        |
| <i>Ptilotus obovatus</i>                             | 0.1       | 0.25       |
| <i>Scaevola acacioides</i>                           | 0.1       | 1.3        |
| <i>Senna artemisioides</i> subsp. <i>oligophylla</i> | 0.1       | 0.2        |
| <i>Solanum horridum</i>                              | 0.1       | 0.3        |
| <i>Solanum lasiophyllum</i>                          | 0.1       | 0.35       |
| <i>Sporobolus australasicus</i>                      | 0.1       | 0.15       |
| <i>Tribulus suberosus</i>                            | 0.1       | 0.25       |
| <i>Triodia epactia</i>                               | 25.0      | 0.4        |

#### Phase 2 Species List

| Name  | Cover (%) | Height (m) |
|---|-----------|------------|
| <i>Acacia aneura</i>                                | 0.5       | 5.0        |
| <i>Acacia pruinocarpa</i>                           | 2.0       | 3.5        |
| <i>Acacia rhodophloia</i>                           | 1.0       | 3.5        |
| <i>Acacia tetragonophylla</i>                       | 0.1       | 0.4        |
| <i>Bulbostylis barbata</i>                          | 0.1       | 0.1        |
| <i>Eremophila cuneifolia</i>                        | 0.1       | 1.2        |
| <i>Eremophila exilifolia</i>                        | 6.0       | 1.3        |
| <i>Eremophila jucunda</i> subsp. <i>pulcherrima</i> | 5.0       | 0.8        |
| <i>Eremophila latrobei</i>                          | 0.1       | 1.1        |
| <i>Eriachne mucronata</i>                           | 0.1       | 0.25       |
| <i>Eriachne pulchella</i>                           | 0.1       | 0.1        |
| <i>Gomphrena cunninghamii</i>                       | 0.1       | 0.1        |
| <i>Grevillea berryana</i>                           | 1.0       | 4.0        |
| <i>Hibiscus sturtii</i> var. <i>campylochlamys</i>  | 0.1       | 0.2        |
| <i>Hybanthus aurantiacus</i>                        | 0.1       | 0.4        |
| <i>Maireana georgei</i>                             | 0.1       | 0.2        |
| <i>Paspalidium clementii</i>                        | 0.1       | 0.15       |
| <i>Portulaca oleracea</i>                           | 0.1       | 0.05       |
| <i>Ptilotus obovatus</i>                            | 0.1       | 0.4        |
| <i>Ptilotus schwartzii</i> var. <i>schwartzii</i>   | 0.1       | 0.3        |
| <i>Solanum horridum</i>                             | 0.1       | 0.2        |
| <i>Solanum lasiophyllum</i>                         | 0.1       | 0.4        |
| <i>Tribulus suberosus</i>                           | 0.1       | 0.4        |
| <i>Triodia epactia</i>                              | 25.0      | 0.4        |

Site: GP43

Location: Map 11

Date: 2018-04-12

MGA Zone: 50

Habitat: Minor creek

Slope: 0-5°

Soil: Brown sand

Rock type: Ironstone

Rock Abundance: 20-50%

Vegetation Type: D10

**Vegetation:** *Acacia xiphophylla*, (*A. aneura*, *A. wanyu*, *A. tetragonophylla*) tall open scrub over *Senna* sp. Meekatharra (E. Bailey 1-26) scattered shrubs over *Triodia epactia* open hummock grassland with *\*Cenchrus ciliaris* scattered tussock grasses

Veg Condition: Good

Fire Age: &gt;10 years

Type: Quadrat

Described by: KM

Easting: 563860

Northing: 7425688



### Phase 1 Species List

| Name  | Cover (%) | Height (m) |
|---|-----------|------------|
| <i>Abutilon fraseri</i> subsp. <i>fraseri</i>               | 0.1       | 0.4        |
| <i>Abutilon</i> sp. <i>Dioicum</i> (A.A. Mitchell PRP 1618) | 0.1       | 0.4        |
| <i>Acacia aneura</i>  | 0.5       | 4.5        |
| <i>Acacia coriacea</i> subsp. <i>pendens</i>                | 0.1       | 1.0        |
| <i>Acacia synchronicia</i>                                  | 0.1       | 1.6        |
| <i>Acacia tetragonophylla</i>                               | 0.5       | 3.0        |
| <i>Acacia wanyu</i>   | 0.5       | 4.5        |
| <i>Acacia xiphophylla</i>                                   | 35.0      | 4.5        |
| * <i>Cenchrus ciliaris</i>                                  | 0.5       | 0.4        |
| * <i>Cenchrus setiger</i>                                   | 0.1       | 0.4        |

| Name  | Cover (%) | Height (m) |
|---|-----------|------------|
| <i>Dicladanthera forrestii</i>                                  | 0.1       | 0.4        |
| <i>Dipteracanthus australasicus</i> subsp. <i>australasicus</i> | 0.1       | 0.35       |
| <i>Duperreya commixta</i>                                       | 0.1       | twiner     |
| <i>Enchylaena tomentosa</i> var. <i>tomentosa</i>               | 0.1       | 0.4        |
| <i>Eremophila cuneifolia</i>                                    | 0.1       | 1.6        |
| <i>Eremophila latrobei</i>                                      | 0.1       | 0.4        |
| <i>Eremophila phyllopoda</i> subsp. <i>obliqua</i>              | 0.1       | 1.5        |
| <i>Eremophila platycalyx</i> subsp. <i>pardalota</i>            | 0.1       | 1.2        |
| <i>Eremophila reticulata</i>                                    | 0.1       | 1.9        |
| <i>Eriachne mucronata</i>                                       | 0.1       | 0.35       |
| <i>Frankenia</i> aff. <i>hispidula</i>                          | 0.1       | 0.3        |
| <i>Hibiscus coatesii</i>  | 0.1       | 0.4        |
| <i>Lawrenzia densiflora</i>                                     | 0.1       | 0.35       |
| <i>Lepidium platypetalum</i>                                    | 0.1       | 0.35       |
| <i>Maireana georgei</i>   | 0.1       | 0.3        |
| <i>Maireana thesioides</i>                                      | 0.1       | 1.2        |
| <i>Maireana tomentosa</i> subsp. <i>tomentosa</i>               | 0.1       | 0.3        |
| <i>Pterocaulon sphacelatum</i>                                  | 0.1       | 0.2        |
| <i>Ptilotus calostachyus</i>                                    | 0.1       | 0.8        |
| <i>Ptilotus obovatus</i>  | 0.1       | 0.5        |
| <i>Scaevola spinescens</i>                                      | 0.5       | 1.3        |
| <i>Sclerolaena eriacantha</i>                                   | 0.1       | 0.21       |
| <i>Senna artemisioides</i> subsp. <i>oligophylla</i>            | 0.1       | 1.5        |
| <i>Senna glutinosa</i> subsp. <i>x luerssenii</i>               | 0.1       | 0.4        |
| <i>Senna stricta</i>  | 0.1       | 1.0        |
| <i>Solanum cleistogamum</i>                                     | 0.1       | 0.35       |
| <i>Solanum lasiophyllum</i>                                     | 0.1       | 0.4        |
| <i>Sporobolus australasicus</i>                                 | 0.1       | 0.1        |
| <i>Streptoglossa decurrens</i>                                  | 0.1       | 0.3        |
| <i>Tecticornia disarticulata</i>                                | 0.1       | 0.4        |
| <i>Tribulus suberosus</i>                                       | 0.1       | 0.35       |
| <i>Triodia angusta</i>  | 0.1       | 0.4        |
| <i>Triodia epactia</i>  | 15.0      | 0.4        |

**Phase 2 Species List**

| Name  | Cover (%) | Height (m) |
|---|-----------|------------|
| <i>Abutilon fraseri</i> subsp. <i>fraseri</i>               | 0.1       | 0.4        |
| <i>Abutilon</i> sp. <i>Dioicum</i> (A.A. Mitchell PRP 1618) | 0.1       | 0.4        |
| <i>Acacia aneura</i>  | 0.5       | 4.5        |
| <i>Acacia cuspidifolia</i>                                  | 0.1       | 4.0        |
| <i>Acacia synchronicia</i>                                  | 0.1       | 2.2        |
| <i>Acacia tetragonophylla</i>                               | 0.5       | 3.0        |
| <i>Acacia wanyu</i>   | 0.5       | 4.5        |
| <i>Acacia xiphophylla</i>                                   | 35.0      | 4.5        |
| * <i>Aerva javanica</i>                                     | 0.1       | 0.7        |
| <i>Boerhavia coccinea</i>                                   | 0.1       | 0.05       |
| * <i>Cenchrus ciliaris</i>                                  | 0.5       | 0.5        |

| Name  | Cover (%) | Height (m) |
|---|-----------|------------|
| * <i>Cenchrus setiger</i>                               | 0.1       | 0.6        |
| <i>Duperreya commixta</i>                               | 0.1       | 1.8        |
| <i>Enchylaena tomentosa</i> var. <i>tomentosa</i>       | 0.1       | 0.8        |
| <i>Eragrostis tenellula</i>                             | 0.1       | 0.25       |
| <i>Eremophila cuneifolia</i>                            | 0.1       | 1.6        |
| <i>Eremophila forrestii</i> subsp. <i>forrestii</i>     | 0.1       | 0.6        |
| <i>Eremophila latrobei</i>                              | 0.1       | 1.4        |
| <i>Eremophila phyllopoda</i> subsp. <i>obliqua</i>      | 0.1       | 1.5        |
| <i>Eremophila platycalyx</i> subsp. <i>pardalota</i>    | 0.1       | 1.2        |
| <i>Eremophila reticulata</i>                            | 0.1       | 1.9        |
| * <i>Flaveria trinervia</i>                             | 0.1       | 0.3        |
| <i>Frankenia</i> aff. <i>hispidula</i>                  | 0.1       | 0.2        |
| <i>Grevillea berryana</i>                               | 0.1       | 1.6        |
| <i>Hibiscus coatesii</i>                                | 0.1       | 0.7        |
| <i>Lawrenzia densiflora</i>                             | 0.1       | 0.1        |
| <i>Lepidium platypetalum</i>                            | 0.1       | 0.3        |
| <i>Maireana georgei</i>                                 | 0.1       | 0.3        |
| <i>Maireana thesioides</i>                              | 0.1       | 1.2        |
| <i>Maireana tomentosa</i> subsp. <i>tomentosa</i>       | 0.1       | 0.3        |
| <i>Marsdenia australis</i>                              | 0.1       | 2.0        |
| <i>Portulaca oleracea</i>                               | 0.1       | 0.1        |
| <i>Ptilotus obovatus</i>                                | 0.1       | 0.4        |
| <i>Ptilotus schwartzii</i> var. <i>schwartzii</i>       | 0.1       | 0.3        |
| <i>Scaevola spinescens</i>                              | 0.1       | 1.3        |
| <i>Sclerolaena eriacantha</i>                           | 0.1       | 0.2        |
| <i>Senna artemisioides</i> subsp. <i>helmsii</i>        | 0.1       | 1.4        |
| <i>Senna artemisioides</i> subsp. <i>oligophylla</i>    | 0.1       | 1.5        |
| <i>Senna glutinosa</i> subsp. x <i>luerssenii</i>       | 0.1       | 1.2        |
| <i>Senna</i> sp. Meekatharra (E. Bailey 1-26)           | 0.5       | 1.5        |
| <i>Senna stricta</i>                                    | 0.1       | 0.8        |
| <i>Sida</i> sp. dark green fruits (S. van Leeuwen 2260) | 0.1       | 0.4        |
| <i>Solanum cleistogamum</i>                             | 0.1       | 0.2        |
| <i>Solanum lasiophyllum</i>                             | 0.1       | 0.4        |
| <i>Sporobolus australasicus</i>                         | 0.1       | 0.1        |
| <i>Tecticornia disarticulata</i>                        | 0.1       | 0.9        |
| <i>Trianthema triquetrum</i>                            | 0.1       | 0.05       |
| <i>Tribulus suberosus</i>                               | 0.1       | 0.4        |
| <i>Triodia angusta</i>                                  | 0.1       | 0.4        |
| <i>Triodia epactia</i>                                  | 15.0      | 0.5        |

\* denotes weed species



**Site:** GPR44

**Location:** Map 11

**Date:** 2018-04-14

**MGA Zone:** 50

**Habitat:** Minor creek

**Soil:** Reddish brown sandy clay loam

**Rock type:** Ironstone

**Rock Abundance:** >50%

**Vegetation Type:** D1

**Vegetation:** *Acacia aptaneura*, (*A. macraneura*) tall shrubland over *Eremophila latrobei* subsp. *latrobei*, *E. phyllopoda* subsp. *obliqua* open shrubland over *E. jucunda* subsp. *pulcherrima* low open shrubland over *Triodia epactia* hummock grassland

**Veg Condition:** Excellent

**Fire Age:** 5-10 years

**Type:** Relevé

**Described by:** LD

**Easting:** 564948

**Northing:** 7425763



#### Phase 1 Species List

| Name  | Cover (%) | Height (m) |
|---|-----------|------------|
| <i>Acacia aptaneura</i>                             | 12.0      | 6.0        |
| <i>Acacia macraneura</i>                            | 2.0       | 5.0        |
| <i>Acacia rhodophloia</i>                           | 0.1       | 3.0        |
| <i>Acacia tetragonophylla</i>                       | 0.1       | 2.2        |
| <i>Aristida contorta</i>                            | 0.1       | 0.2        |
| <i>Bulbostylis barbata</i>                          | 0.1       | 0.1        |
| <i>Cheilanthes sieberi</i> subsp. <i>sieberi</i>    | 0.1       | 0.2        |
| <i>Eremophila jucunda</i> subsp. <i>pulcherrima</i> | 5.0       | 0.8        |
| <i>Eremophila latrobei</i> subsp. <i>latrobei</i>   | 3.0       | 1.8        |
| <i>Eremophila phyllopoda</i> subsp. <i>obliqua</i>  | 2.0       | 1.5        |
| <i>Eriachne mucronata</i>                           | 0.1       | 0.4        |

| Name   | Cover (%) | Height (m) |
|--|-----------|------------|
| <i>Eriachne pulchella</i> subsp. <i>pulchella</i>  | 0.1       | 0.1        |
| <i>Gomphrena canescens</i> subsp. <i>canescens</i> | 0.1       | 0.3        |
| <i>Gomphrena cunninghamii</i>                      | 0.1       | 0.1        |
| <i>Hibiscus burtonii</i>                           | 0.1       | 0.3        |
| <i>Jasminum didymum</i> subsp. <i>lineare</i>      | 0.1       | 1.7        |
| <i>Paspalidium clementii</i>                       | 0.1       | 0.2        |
| <i>Psyrax suaveolens</i>                           | 0.1       | 1.8        |
| <i>Solanum cleistogamum</i>                        | 0.1       | 0.2        |
| <i>Solanum lasiophyllum</i>                        | 0.1       | 0.3        |
| <i>Solanum sturtianum</i>                          | 0.1       | 0.5        |
| <i>Tribulus suberosus</i>                          | 0.1       | 0.5        |
| <i>Triodia epactia</i>                             | 35.0      | 0.7        |

**Phase 2 Species List**

| Name  | Cover (%) | Height (m) |
|---|-----------|------------|
| <i>Acacia aptaneura</i>                                 | 12.0      | 5.5        |
| <i>Acacia macraneura</i>                                | 2.0       | 4.5        |
| <i>Acacia rhodophloia</i>                               | 0.1       | 3.0        |
| <i>Acacia tetragonophylla</i>                           | 0.1       | 2.2        |
| <i>Aristida contorta</i>                                | 0.1       | 0.2        |
| <i>Bulbostylis barbata</i>                              | 0.1       | 0.1        |
| <i>Cheilanthes sieberi</i> subsp. <i>sieberi</i>        | 0.1       | 0.2        |
| <i>Enchylaena tomentosa</i> var. <i>tomentosa</i>       | 0.1       | 0.3        |
| <i>Eremophila jucunda</i> subsp. <i>pulcherrima</i>     | 5.0       | 0.8        |
| <i>Eremophila latrobei</i> subsp. <i>latrobei</i>       | 3.0       | 1.8        |
| <i>Eremophila phyllopoda</i> subsp. <i>obliqua</i>      | 2.0       | 1.5        |
| <i>Eriachne mucronata</i>                               | 0.1       | 0.45       |
| <i>Eriachne pulchella</i> subsp. <i>dominii</i>         | 0.1       | 0.1        |
| <i>Evolvulus alsinoides</i> var. <i>decumbens</i>       | 0.1       | 0.1        |
| <i>Gomphrena canescens</i> subsp. <i>canescens</i>      | 0.1       | 0.2        |
| <i>Goodenia microptera</i>                              | 0.1       | 0.1        |
| <i>Hibiscus burtonii</i>                                | 0.1       | 0.3        |
| <i>Hibiscus sturtii</i> var. <i>campylochlamys</i>      | 0.1       | 0.2        |
| <i>Maireana</i> sp.                                     | 0.1       | 0.2        |
| <i>Paspalidium clementii</i>                            | 0.1       | 0.2        |
| <i>Phyllanthus maderaspatensis</i>                      | 0.1       | 0.1        |
| <i>Pluchea dentex</i>                                   | 0.1       | 0.3        |
| <i>Portulaca oleracea</i>                               | 0.1       | 0.1        |
| <i>Psyrax suaveolens</i>                                | 0.1       | 1.0        |
| <i>Sida</i> sp. dark green fruits (S. van Leeuwen 2260) | 0.1       | 0.3        |
| <i>Solanum lasiophyllum</i>                             | 0.1       | 0.2        |
| <i>Tribulus suberosus</i>                               | 0.1       | 0.3        |
| <i>Triodia epactia</i>                                  | 35.0      | 0.6        |

**Site:** GPR45

**Location:** Map 3

**Date:** 2018-04-14

**MGA Zone:** 50

**Habitat:** Hillcrest

**Soil:** Dark reddish brown silty clay loam

**Rock type:** Ironstone

**Rock Abundance:** >50%

**Vegetation Type:** H2

**Vegetation:** *Acacia pruinocarpa* tall open shrubland over *Triodia epactia* hummock grassland

**Veg Condition:** Very Good

**Type:** Quadrat

**Described by:** LD

**Easting:** 553251

**Northing:** 7433697



**Phase 2 Species List (no Phase 1)**

| Name  | Cover (%) | Height (m) |
|---|-----------|------------|
| <i>Acacia aptaneura</i>                             | 0.1       | 0.7        |
| <i>Acacia pruinocarpa</i>                           | 2.0       | 3.0        |
| * <i>Bidens bipinnata</i>                           | 0.1       | 0.2        |
| <i>Bulbostylis barbata</i>                          | 0.1       | 0.1        |
| <i>Cucumis variabilis</i>                           | 0.1       | twiner     |
| <i>Eremophila canaliculata</i>                      | 0.1       | 0.4        |
| <i>Eremophila cuneifolia</i>                        | 0.1       | 0.8        |
| <i>Eriachne pulchella</i> subsp. <i>dominii</i>     | 0.1       | 0.1        |
| <i>Euphorbia tannensis</i> subsp. <i>eremophila</i> | 0.1       | 0.2        |
| <i>Goodenia stobbsiana</i>                          | 0.1       | 0.4        |
| <i>Grevillea berryana</i>                           | 0.1       | 2.0        |
| <i>Paraneurachne muelleri</i>                       | 0.1       | 0.2        |
| <i>Ptilotus schwartzii</i> var. <i>schwartzii</i>   | 0.1       | 0.4        |
| <i>Senna glutinosa</i> subsp. <i>glutinosa</i>      | 0.1       | 1.4        |

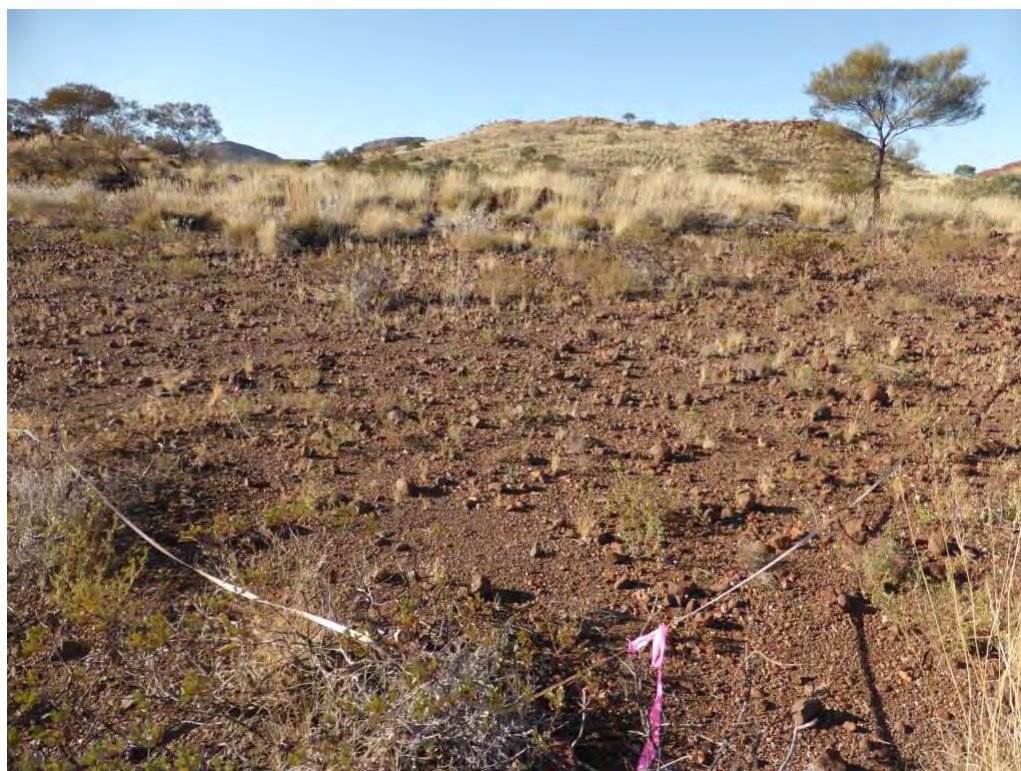
| <b>Name</b>                                       | <b>Cover (%)</b> | <b>Height (m)</b> |
|---|------------------|-------------------|
| <i>Senna glutinosa</i> subsp. <i>pruinosa</i>     | 0.1              | 1.4               |
| <i>Senna stricta</i>                              | 0.1              | 0.4               |
| <i>Sida fibulifera</i>                            | 0.1              | 0.3               |
| <i>Solanum lasiophyllum</i>                       | 0.1              | 0.4               |
| <i>Trachymene oleracea</i> subsp. <i>oleracea</i> | 0.1              | 0.1               |
| <i>Tribulus suberosus</i>                         | 0.1              | 0.2               |
| <i>Triodia epactia</i>                            | 35.0             | 0.4               |

\* denotes weed species

**Site:** e006-AR**Location:** Map 4**Type:** Relevé (rescore of ecologia 2011 quadrat)**Date:** 2017-07-25**Described by:** LV**MGA Zone:** 50**Easting:** 554785**Northing:** 7431278**Habitat:** Floodplain**Soil:** Brown sandy loam**Rock type:** Ironstone**Vegetation Type:** D9**Vegetation:** *Acacia wanyu* tall open scrub over *A. tetragonophylla* scattered shrubs over \**Cenchrus ciliaris* tussock grassland with *Trianthema oxycalyptum* var. *oxycalyptum* open herbland**Veg Condition:** Degraded**Fire Age:** >10 years**Species List**

| Name  | Cover (%) | Height (m) |
|---|-----------|------------|
| <i>Acacia aptaneura</i>   | 0.1       | 3.0        |
| <i>Acacia synchronicia</i>                                      | 0.1       | 1.6        |
| <i>Acacia tetragonophylla</i>                                   | 1.0       | 1.2        |
| <i>Acacia wanyu</i>   | 31.0      | 2.5        |
| <i>Acacia xiphophylla</i>                                       | 0.1       | 4.0        |
| * <i>Cenchrus ciliaris</i>                                      | 60.0      | 0.35       |
| <i>Chrysopogon fallax</i>                                       | 0.1       | 0.3        |
| <i>Cleome viscosa</i>   | 0.1       | 0.35       |
| <i>Cucumis variabilis</i>                                       | 0.1       | twiner     |
| <i>Dipteracanthus australasicus</i> subsp. <i>australasicus</i> | 0.1       | 0.35       |
| <i>Enchylaena tomentosa</i> var. <i>tomentosa</i>               | 0.1       | 1.3        |
| <i>Eremophila cuneifolia</i>                                    | 0.1       | 1.0        |
| <i>Eriachne mucronata</i>                                       | 0.1       | 0.09       |
| <i>Eriachne pulchella</i>                                       | 0.1       | 0.04       |
| <i>Frankenia</i> aff. <i>hispidula</i>                          | 0.1       | 0.3        |
| <i>Lepidium muelleri-ferdinandii</i>                            | 0.1       | 0.3        |
| <i>Lepidium pedicellosum</i>                                    | 0.1       | 0.35       |
| <i>Lepidium platypetalum</i>                                    | 0.1       | 0.3        |
| <i>Maireana villosa</i>   | 0.1       | 1.1        |
| <i>Pterocaulon sphacelatum</i>                                  | 0.1       | 0.5        |
| <i>Rhagodia eremaea</i>   | 0.1       | 1.2        |
| <i>Sclerolaena cuneata</i>                                      | 0.1       | 0.2        |
| <i>Senna artemisioides</i> subsp. <i>helmsii</i>                | 0.1       | 1.1        |
| <i>Senna artemisioides</i> subsp. <i>oligophylla</i>            | 0.1       | 1.5        |
| <i>Senna</i> sp. Meekatharra (E. Bailey 1-26)                   | 0.1       | 1.6        |
| <i>Sporobolus australasicus</i>                                 | 0.1       | 0.09       |
| <i>Trianthema oxycalyptum</i> var. <i>oxycalyptum</i>           | 15.0      | 0.1        |

\* denotes weed species

**Site:** e029-AR**Location:** Map 5**Date:** 2017-07-23**MGA Zone:** 50**Habitat:** Plain**Soil:** Reddish brown sandy loam**Rock type:** Ironstone**Vegetation Type:** H4**Vegetation:** *Grevillea berryana* scattered tall shrubs over *Eremophila cuneifolia* open shrubland over *Acacia tetragonophylla*, *E. forrestii* subsp. *forrestii* low open shrubland over *Triodia epactia* hummock grassland**Veg Condition:** Very Good**Fire Age:** >10 years**Type:** Quadrat (rescore of ecologia 2011 quadrat)**Described by:** LD**Easting:** 556450**Northing:** 7433736**Species List**

| Name   | Cover (%) | Height (m) |
|--|-----------|------------|
| <i>Abutilon</i> sp. Dioicum (A.A. Mitchell PRP 1618) | 0.1       | 0.2        |
| <i>Acacia synchronicia</i>                           | 0.1       | 0.4        |
| <i>Acacia tetragonophylla</i>                        | 2.0       | 0.6        |
| * <i>Aerva javanica</i>                              | 0.1       | 0.4        |
| <i>Aristida holathera</i> var. <i>holathera</i>      | 0.1       | 0.3        |
| <i>Cleome viscosa</i>                                | 0.1       | 0.4        |
| <i>Corchorus crozophorifolius</i>                    | 0.1       | 0.3        |
| <i>Enneapogon caeruleus</i>                          | 0.1       | 0.2        |
| <i>Eremophila cuneifolia</i>                         | 2.0       | 1.5        |
| <i>Eremophila forrestii</i> subsp. <i>forrestii</i>  | 1.0       | 0.3        |
| <i>Eremophila fraseri</i> subsp. <i>fraseri</i>      | 0.5       | 1.2        |
| <i>Eriachne mucronata</i>                            | 0.1       | 0.3        |
| <i>Goodenia microptera</i>                           | 0.1       | 0.3        |

| Name  | Cover (%) | Height (m) |
|---|-----------|------------|
| <i>Grevillea berryana</i>   | 1.0       | 3.5        |
| <i>Heliotropium chrysocarpum</i>                                  | 0.1       | 0.2        |
| <i>Paraneurachne muelleri</i>                                     | 0.1       | 0.4        |
| <i>Pterocaulon sphacelatum</i>                                    | 0.1       | 0.1        |
| <i>Ptilotus helipteroides</i>                                     | 0.1       | 0.3        |
| <i>Ptilotus exaltatus</i>   | 0.1       | 0.3        |
| <i>Ptilotus obovatus</i>  | 0.1       | 0.3        |
| <i>Salsola australis</i>  | 0.1       | 0.3        |
| <i>Sclerolaena eriacantha</i>                                     | 0.1       | 0.3        |
| <i>Senna artemisioides</i> subsp. <i>oligophylla</i>              | 0.1       | 0.4        |
| <i>Sida</i> sp. spiciform panicles (E. Leyland s.n. 14/8/90)      | 0.1       | 0.4        |
| <i>Solanum cleistogamum</i>                                       | 0.1       | 0.2        |
| <i>Solanum lasiophyllum</i>                                       | 0.1       | 0.3        |
| <i>Sporobolus australasicus</i>                                   | 0.1       | 0.1        |
| <i>Tephrosia</i> sp. NW Eremaean (S. van Leeuwen et al. PBS 0356) | 0.1       | 0.2        |
| <i>Tribulus suberosus</i>   | 0.1       | 0.3        |
| <i>Trichodesma zeylanicum</i> var. <i>zeylanicum</i>              | 0.1       | 1.0        |
| <i>Triodia epactia</i>  | 30.0      | 0.4        |
| <i>Triumfetta clementii</i>                                       | 0.1       | 0.3        |

\* denotes weed species

**Site:** e030-AR**Location:** Map 5**Date:** 2017-07-23**MGA Zone:** 50**Habitat:** Hillslope**Soil:** Red brown sandy loam**Rock type:** Ironstone**Vegetation Type:** H4

**Vegetation:** *Acacia pruinocarpa* scattered tall shrubs over *Eremophila fraseri* subsp. *fraseri*, *A. tetragonophylla*, *Senna artemisioides* subsp. *oligophylla* open shrubland over *E. cuneifolia* scattered low shrubs over *Triodia epactia* hummock grassland with *Themeda triandra* very open tussock grassland

**Veg Condition:** Excellent**Fire Age:** >10 years**Notes:** power poles**Type:** Quadrat (rescore of ecologia 2011 quadrat)**Described by:** LD**Easting:** 556576**Northing:** 7433439

### Species List

| Name  | Cover (%) | Height (m) |
|---|-----------|------------|
| <i>Abutilon lepidum</i>                         | 0.1       | 0.3        |
| <i>Acacia pruinocarpa</i>                       | 1.0       | 3.5        |
| <i>Acacia tetragonophylla</i>                   | 1.0       | 2.0        |
| <i>Aristida holathera</i> var. <i>holathera</i> | 0.1       | 0.4        |
| <i>Corchorus crozophorifolius</i>               | 0.1       | 0.4        |
| <i>Corchorus lasiocarpus</i>                    | 0.1       | 0.3        |
| <i>Cucumis variabilis</i>                       | 0.1       | twiner     |
| <i>Duperreya commixta</i>                       | 0.1       | twiner     |
| <i>Enneapogon caeruleus</i>                     | 0.1       | 0.2        |
| <i>Eremophila cryptothrix</i>                   | 0.1       | 1.2        |
| <i>Eremophila cuneifolia</i>                    | 1.0       | 0.8        |



| <b>Name</b>  | <b>Cover (%)</b> | <b>Height (m)</b> |
|--|------------------|-------------------|
| <i>Eremophila fraseri</i> subsp. <i>fraseri</i>      | 3.0              | 1.2               |
| <i>Eriachne mucronata</i>                            | 0.1              | 0.3               |
| <i>Indigofera monophylla</i>                         | 0.1              | 0.4               |
| <i>Ptilotus obovatus</i>                             | 0.1              | 0.5               |
| <i>Rhynchosia minima</i>                             | 0.1              | twiner            |
| <i>Scaevola acacioides</i>                           | 0.1              | 0.5               |
| <i>Senna artemisioides</i> subsp. <i>oligophylla</i> | 1.0              | 1.2               |
| <i>Sida echinocarpa</i>                              | 0.1              | 0.4               |
| <i>Solanum cleistogamum</i>                          | 0.1              | 0.3               |
| <i>Solanum lasiophyllum</i>                          | 0.1              | 0.3               |
| <i>Sporobolus australasicus</i>                      | 0.1              | 0.1               |
| <i>Themeda triandra</i>                              | 4.0              | 0.4               |
| <i>Trachymene oleracea</i> subsp. <i>oleracea</i>    | 0.1              | 0.2               |
| <i>Tribulus suberosus</i>                            | 0.1              | 0.6               |
| <i>Trichodesma zeylanicum</i> var. <i>zeylanicum</i> | 0.1              | 0.5               |
| <i>Triodia epactia</i>                               | 40.0             | 0.4               |

**Site:** e038-AR

**Location:** Map 5

**Type:** Quadrat (rescore of ecologia 2011 quadrat)

**Date:** 2017-07-30

**Described by:** LV

**MGA Zone:** 50

**Eastings:** 557020

**Northing:** 7431944

**Habitat:** Major creek

**Soil:** Sandy loam

**Vegetation Type:** D7

**Vegetation:** *Eucalyptus camaldulensis* open forest over *Melaleuca bracteata* tall open scrub over *Acacia ampliceps* scattered shrubs with *\*Passiflora foetida* var. *hispida* very open vineland over *Cyperus vaginatus* sedgeland

**Veg Condition:** Good

**Fire Age:** >10 years



#### Species List

| Name   | Cover (%) | Height (m) |
|--|-----------|------------|
| <i>Acacia ampliceps</i>                      | 1.0       | 2.0        |
| <i>Acacia coriacea</i> subsp. <i>pendens</i> | 0.1       | 2.5        |
| <i>Adriana tomentosa</i>                     | 0.1       | 0.4        |
| <i>Ammannia baccifera</i>                    | 0.1       | 0.2        |
| <i>*Cenchrus setiger</i>                     | 0.5       | 0.6        |
| <i>Centipeda minima</i>                      | 0.1       | 0.1        |
| <i>Cyperus vaginatus</i>                     | 50.0      | 0.6        |
| <i>Duperreya commixta</i>                    | 0.1       | twiner     |
| <i>Eragrostis tenellula</i>                  | 0.1       | 0.3        |
| <i>Eucalyptus camaldulensis</i>              | 60.0      | 15         |
| <i>Euphorbia biconvexa</i>                   | 0.1       | 0.35       |
| <i>Gossypium robinsonii</i>                  | 0.1       | 0.3        |
| <i>*Malvastrum americanum</i>                | 0.1       | 0.4        |

---

| <b>Name</b>                                     | <b>Cover (%)</b> | <b>Height (m)</b> |
|---|------------------|-------------------|
| <i>Melaleuca bracteata</i>                      | 32.0             | 5.5               |
| <i>Melaleuca glomerata</i>                      | 0.1              | 1.3               |
| * <i>Passiflora foetida</i> var. <i>hispida</i> | 2.0              | 4.0               |
| <i>Petalostylis labicheoides</i>                | 0.1              | 4.0               |
| <i>Phyllanthus maderaspatensis</i>              | 0.1              | 0.35              |
| <i>Pluchea rubelliflora</i>                     | 0.1              | 0.4               |
| <i>Pseudognaphalium luteoalbum</i>              | 0.1              | 0.15              |
| <i>Rhynchosia minima</i>                        | 0.1              | twiner            |
| * <i>Solanum nigrum</i>                         | 0.1              | 0.35              |
| * <i>Sonchus oleraceus</i>                      | 0.1              | 0.35              |
| <i>Stemodia grossa</i>                          | 0.1              | 0.35              |
| * <i>Vachellia farnesiana</i>                   | 0.1              | 0.45              |

\* denotes weed species

**Site:** e043-AR

**Location:** Map 6

**Date:** 2017-07-30

**MGA Zone:** 50

**Habitat:** Major creek

**Soil:** Light reddish brown sandy loam

**Vegetation Type:** D9

**Vegetation:** *Acacia citrinoviridis* tall open shrubland over \**Cenchrus ciliaris* open tussock grassland

**Veg Condition:** Degraded

**Fire Age:** >10 years

**Type:** Quadrat (rescore of ecologia 2011 quadrat)

**Described by:** LD

**Easting:** 557466

**Northing:** 7431688



#### Species List

| Name   | Cover (%) | Height (m) |
|--|-----------|------------|
| <i>Acacia citrinoviridis</i>                       | 8.0       | 8.0        |
| <i>Acacia coriacea</i> subsp. <i>pendens</i>       | 0.1       | 1.2        |
| <i>Acacia pyrifolia</i>                            | 0.1       | 0.5        |
| <i>Acacia synchronicia</i>                         | 0.1       | 2.5        |
| * <i>Aerva javanica</i>                            | 0.1       | 0.4        |
| <i>Bonamia media</i>                               | 0.1       | 0.1        |
| * <i>Cenchrus ciliaris</i>                         | 28.0      | 0.4        |
| <i>Corchorus crozophorifolius</i>                  | 0.1       | 0.6        |
| <i>Enneapogon caeruleus</i>                        | 0.1       | 0.1        |
| <i>Eremophila cuneifolia</i>                       | 0.1       | 0.5        |
| <i>Eremophila fraseri</i> subsp. <i>fraseri</i>    | 0.1       | 0.5        |
| <i>Euphorbia australis</i> var. <i>hispidula</i>   | 0.1       | 0.05       |
| <i>Gomphrena affinis</i> subsp. <i>pilbarensis</i> | 0.1       | 0.2        |
| <i>Hakea lorea</i> subsp. <i>lorea</i>             | 0.1       | 4.0        |
| <i>Heliotropium pachyphyllum</i>                   | 0.1       | 0.2        |

| <b>Name</b>                      | <b>Cover (%)</b> | <b>Height (m)</b> |
|----------------------------------|------------------|-------------------|
| <i>Indigofera monophylla</i>     | 0.1              | 0.3               |
| <i>Petalostylis labicheoides</i> | 0.1              | 1.2               |
| <i>Polycarpaea longiflora</i>    | 0.1              | 0.1               |
| <i>Ptilotus obovatus</i>         | 0.1              | 1.2               |
| <i>Sida</i> sp.                  | 0.1              | 0.3               |
| <i>Solanum horridum</i>          | 0.1              | 0.1               |
| <i>Sporobolus australasicus</i>  | 0.1              | 0.1               |
| <i>Tephrosia supina</i>          | 0.1              | 0.2               |

\* denotes weed species

**Site:** e073-AR

**Location:** Map 8

**Date:** 2017-08-22

**MGA Zone:** 50

**Habitat:** Plain

**Soil:** Red brown sandy clay loam

**Rock type:** Ironstone

**Vegetation Type:** D10

**Vegetation:** *Acacia xiphophylla* tall open shrubland

**Veg Condition:** Good

**Fire Age:** >10 years

**Type:** Quadrat (rescore of ecologia 2011 quadrat)

**Described by:** LV

**Eastings:** 560727

**Northing:** 7428844



#### Species List

| Name  | Cover (%) | Height (m) |
|---|-----------|------------|
| <i>Acacia synchronica</i>                           | 0.5       | 2.0        |
| <i>Acacia tetragonophylla</i>                       | 0.1       | 1.1        |
| <i>Acacia wanyu</i>                                 | 0.1       | 0.3        |
| <i>Acacia xiphophylla</i>                           | 3.0       | 2.5        |
| * <i>Aerva javanica</i>                             | 0.1       | 0.5        |
| <i>Atriplex codonocarpa</i>                         | 0.1       | 0.3        |
| * <i>Cenchrus setiger</i>                           | 0.1       | 0.4        |
| <i>Cynodon prostratus</i>                           | 0.1       | 0.06       |
| <i>Enneapogon caerulescens</i>                      | 0.1       | 0.3        |
| <i>Eremophila cuneifolia</i>                        | 0.1       | 1.6        |
| <i>Eremophila forrestii</i> subsp. <i>forrestii</i> | 0.1       | 1.0        |
| <i>Frankenia</i> aff. <i>hispidula</i>              | 0.1       | 0.3        |
| <i>Gomphrena canescens</i> subsp. <i>canescens</i>  | 0.1       | 0.25       |
| <i>Lawrencia glomerata</i>                          | 0.1       | 0.3        |

---

| <b>Name</b>  | <b>Cover (%)</b> | <b>Height (m)</b> |
|--|------------------|-------------------|
| <i>Lepidium pedicellosum</i>                         | 0.1              | 0.15              |
| <i>Lepidium platypetalum</i>                         | 0.1              | 0.45              |
| <i>Maireana eriosphaera</i>                          | 0.1              | 0.2               |
| <i>Maireana georgei</i>                              | 0.1              | 0.15              |
| <i>Maireana thesioides</i>                           | 0.1              | 1.0               |
| <i>Petalostylis labicheoides</i>                     | 0.1              | 0.4               |
| <i>Ptilotus exaltatus</i>                            | 0.1              | 0.1               |
| <i>Salsola australis</i>                             | 0.1              | 0.3               |
| <i>Scaevola spinescens</i>                           | 0.1              | 0.6               |
| <i>Senna artemisioides</i> subsp. <i>oligophylla</i> | 0.1              | 1.1               |
| <i>Sporobolus australasicus</i>                      | 0.1              | 0.1               |

---

\* denotes weed species

**Site:** e074-AR**Location:** Map 9**Date:** 2017-07-30**MGA Zone:** 50**Habitat:** Major creek**Vegetation Type:** D7

**Vegetation:** *Eucalyptus camaldulensis* open woodland over *Melaleuca linophylla*, (*Acacia coriacea* subsp. *pendens*, *A. ampliceps*) tall open scrub over *Vachellia farnesiana* scattered shrubs over *Cynodon prostratus*, (*\*Cenchrus setiger*, *\*C. ciliaris*) very open tussock grassland with *Typha domingensis*, *Cyperus vaginatus* very open sedgeland

**Veg Condition:** Good**Fire Age:** >10 years**Type:** Relevé (rescore of ecologia 2011 quadrat)**Described by:** LV**Easting:** 561523**Northing:** 7431915

### Species List

| Name   | Cover (%) | Height (m) |
|--|-----------|------------|
| <i>Acacia ampliceps</i>                              | 1.0       | 3.0        |
| <i>Acacia citrinoviridis</i>                         | 0.5       | 3.5        |
| <i>Acacia coriacea</i> subsp. <i>pendens</i>         | 2.0       | 7.0        |
| <i>Acacia synchronicia</i>                           | 0.1       | 0.6        |
| <i>*Aerva javanica</i>                               | 0.1       | 0.5        |
| <i>Amaranthus undulatus</i>                          | 0.1       | 0.5        |
| <i>*Argemone ochroleuca</i> subsp. <i>ochroleuca</i> | 0.1       | 0.06       |
| <i>*Cenchrus ciliaris</i>                            | 1.0       | 1.2        |
| <i>*Cenchrus setiger</i>                             | 1.0       | 1.5        |
| <i>*Chloris barbata</i>                              | 0.1       | 0.7        |
| <i>Cleome viscosa</i>                                | 0.1       | 0.3        |
| <i>Corchorus crozophorifolius</i>                    | 0.1       | 0.45       |
| <i>Cynodon prostratus</i>                            | 7.0       | 0.2        |



| Name   | Cover (%) | Height (m) |
|--|-----------|------------|
| <i>Cyperus vaginatus</i>   | 3.0       | 0.5        |
| <i>Dichromochlamys dentatifolia</i>                                | 0.1       | 0.1        |
| <i>Eriachne pulchella</i>  | 0.1       | 0.15       |
| <i>Eucalyptus camaldulensis</i>                                    | 4.0       | 22.0       |
| <i>Euphorbia australis</i> var. <i>hispidula</i>                   | 0.1       | 0.02       |
| <i>Euphorbia biconvexa</i>   | 0.1       | 0.25       |
| * <i>Euphorbia hirta</i>   | 0.1       | 0.25       |
| * <i>Flaveria trinervia</i>  | 0.1       | 0.4        |
| <i>Heliotropium ammophilum</i>                                     | 0.1       | 0.2        |
| * <i>Ruellia</i> sp. (aff. <i>simplex</i> )                        | 0.1       | 0.6        |
| <i>Ipomoea muelleri</i>  | 0.1       | twiner     |
| <i>Lepidium muelleri-ferdinandii</i>                               | 0.1       | 0.2        |
| <i>Lepidium oxytrichum</i>   | 0.1       | 0.2        |
| * <i>Malvastrum americanum</i>                                     | 0.1       | 0.35       |
| <i>Melaleuca linophylla</i>  | 45.0      | 3.0        |
| * <i>Passiflora foetida</i> var. <i>hispidula</i>                  | 0.1       | 4.0        |
| <i>Phyllanthus maderaspatensis</i>                                 | 0.1       | 0.35       |
| <i>Pterocaulon</i> sp.   | 0.1       | 0.3        |
| <i>Ptilotus obovatus</i>   | 0.1       | 0.6        |
| <i>Rhynchosia minima</i>   | 0.1       | twiner     |
| <i>Sesbania formosa</i>  | 0.1       | 4.0        |
| * <i>Sisymbrium orientale</i>                                      | 0.1       | 0.1        |
| * <i>Solanum nigrum</i>  | 0.1       | 0.6        |
| * <i>Sonchus oleraceus</i>   | 0.1       | 0.6        |
| <i>Stemodia grossa</i>   | 0.1       | 0.3        |
| <i>Tephrosia rosea</i> var. Fortescue creeks (M.I.H. Brooker 2186) | 0.1       | 0.4        |
| <i>Typha domingensis</i>   | 3.0       | 2.3        |
| * <i>Vachellia farnesiana</i>                                      | 1.0       | 1.2        |
| <i>Vigna lanceolata</i> var. <i>lanceolata</i>                     | 0.1       | twiner     |
| <i>Waltheria indica</i>  | 0.1       | 0.35       |

\* denotes weed species

**Site:** e122-AR

**Location:** Map 7

**Date:** 2017-07-23

**MGA Zone:** 50

**Habitat:** Hillslope

**Soil:** Red brown sandy loam

**Rock type:** Basalt

**Vegetation Type:** H8

**Vegetation:** *Acacia tetragonophylla* scattered tall shrubs over *Eremophila cuneifolia* scattered shrubs over *Ptilotus obovatus*, *Senna stricta* low open shrubland

**Veg Condition:** Good

**Fire Age:** >10 years

**Type:** Quadrat (rescore of ecologia 2011 quadrat)

**Described by:** LV

**Easting:** 560494

**Northing:** 7432602



#### Species List

| Name  | Cover (%) | Height (m) |
|---|-----------|------------|
| <i>Abutilon</i> sp.                                 | 0.1       | 0.3        |
| <i>Acacia aneura</i>                                | 0.1       | 2.2        |
| <i>Acacia synchronicia</i>                          | 0.1       | 2.2        |
| <i>Acacia tetragonophylla</i>                       | 1.0       | 2.1        |
| <i>Acacia xiphophylla</i>                           | 0.1       | 2.5        |
| * <i>Aerva javanica</i>                             | 0.1       | 0.6        |
| <i>Aristida contorta</i>                            | 0.1       | 0.2        |
| * <i>Cenchrus ciliaris</i>                          | 0.1       | 0.35       |
| <i>Corchorus crozophorifolius</i>                   | 0.1       | 0.45       |
| <i>Enneapogon caerulescens</i>                      | 0.1       | 0.15       |
| <i>Eremophila cuneifolia</i>                        | 1.0       | 1.1        |
| <i>Eremophila forrestii</i> subsp. <i>forrestii</i> | 0.1       | 0.5        |
| <i>Indigofera monophylla</i>                        | 0.1       | 0.35       |

| <b>Name</b>  | <b>Cover (%)</b> | <b>Height (m)</b> |
|--|------------------|-------------------|
| <i>Maireana georgei</i>                              | 0.1              | 0.15              |
| <i>Maireana melanocoma</i>                           | 0.1              | 0.3               |
| <i>Ptilotus exaltatus</i>                            | 0.1              | 0.3               |
| <i>Ptilotus obovatus</i>                             | 1.0              | 0.6               |
| <i>Salsola australis</i>                             | 0.1              | 0.2               |
| <i>Senna artemisioides</i> subsp. <i>oligophylla</i> | 0.5              | 0.6               |
| <i>Senna glutinosa</i> subsp. <i>x luerssenii</i>    | 0.1              | 1.3               |
| <i>Senna stricta</i>                                 | 1.0              | 0.45              |
| <i>Sida</i> sp.                                      | 0.1              | 0.3               |
| <i>Sporobolus australasicus</i>                      | 0.1              | 0.1               |
| <i>Tribulus suberosus</i>                            | 0.1              | 0.3               |
| <i>Triodia epactia</i>                               | 0.1              | 0.35              |

\* denotes weed species

**Site:** WRA01-AR

**Location:** Map 9

**Type:** Quadrat (rescore of Biota 2012b quadrat)

**Date:** 2017-07-3

**Described by:** LD

**MGA Zone:** 50

**Easting:** 562292

**Northing:** 7432136

**Habitat:** Major creek

**Soil:** Dark reddish brown sandy loam

**Vegetation Type:** D8

**Vegetation:** *Eucalyptus camaldulensis* open forest over *Melaleuca linophylla* tall open shrubland over *Tephrosia rosea* var. Fortescue creeks (M.I.H. Brooker 2186), \**Aerva javanica* low open shrubland over \**Cenchrus ciliaris*, (\**C. setiger*) tussock grassland

**Veg Condition:** Degraded

**Fire Age:** >10 years



#### Species List

| Name  | Cover (%) | Height (m) |
|---|-----------|------------|
| <i>Acacia ampliceps</i>                               | 0.1       | 1.0        |
| <i>Acacia coriacea</i> subsp. <i>pendens</i>          | 0.1       | 5.0        |
| <i>Acacia pyrifolia</i>                               | 0.1       | 1.2        |
| * <i>Aerva javanica</i>                               | 1.0       | 0.3        |
| <i>Alternanthera nodiflora</i>                        | 0.1       | 0.3        |
| <i>Amaranthus cuspidifolius</i>                       | 0.1       | 0.3        |
| * <i>Argemone ochroleuca</i> subsp. <i>ochroleuca</i> | 0.1       | 0.05       |
| <i>Capparis spinosa</i> subsp. <i>nummularia</i>      | 0.1       | 1.6        |
| * <i>Cenchrus ciliaris</i>                            | 35.0      | 0.5        |
| * <i>Cenchrus setiger</i>                             | 8.0       | 0.4        |
| <i>Cleome viscosa</i>                                 | 0.1       | 0.3        |
| <i>Corchorus crozophorifolius</i>                     | 0.1       | 0.5        |
| <i>Cucumis variabilis</i>                             | 0.1       | twiner     |

| Name   | Cover (%) | Height (m) |
|--|-----------|------------|
| <i>Cyperus vaginatus</i>   | 0.1       | 0.4        |
| * <i>Echinochloa colona</i>  | 0.1       | 0.1        |
| <i>Eucalyptus camaldulensis</i>                                    | 31.0      | 15.0       |
| <i>Ipomoea muelleri</i>  | 0.1       | twiner     |
| <i>Jasminum didymum</i> subsp. <i>lineare</i>                      | 0.1       | 0.5        |
| <i>Lepidium muelleri-ferdinandii</i>                               | 0.1       | 0.3        |
| <i>Melaleuca linophylla</i>  | 9.0       | 2.5        |
| * <i>Passiflora foetida</i> var. <i>hispida</i>                    | 0.1       | twiner     |
| <i>Petalostylis labicheoides</i>                                   | 0.1       | 3.0        |
| <i>Pluchea rubelliflora</i>  | 0.1       | 0.2        |
| <i>Pseudognaphalium luteoalbum</i>                                 | 0.1       | 0.2        |
| <i>Rhynchosia australis</i>  | 0.1       | twiner     |
| <i>Rhynchosia minima</i>   | 0.1       | twiner     |
| * <i>Rumex vesicarius</i>  | 0.1       | 0.3        |
| <i>Sesbania formosa</i>  | 0.1       | 0.4        |
| * <i>Sonchus oleraceus</i>   | 0.1       | 0.1        |
| <i>Stemodia grossa</i>   | 0.1       | 0.3        |
| <i>Stylobasium spathulatum</i>                                     | 0.1       | 0.3        |
| <i>Tephrosia rosea</i> var. Fortescue creeks (M.I.H. Brooker 2186) | 2.0       | 0.6        |
| <i>Trichodesma zeylanicum</i> var. <i>zeylanicum</i>               | 0.1       | 2.5        |
| <i>Typha domingensis</i>   | 0.1       | 1.5        |

\* denotes weed species

**Site:** WRA21-AR**Location:** Map 6**Type:** Quadrat (rescore of Biota 2012b quadrat)**Date:** 2017-08-22**Described by:** LV**MGA Zone:** 50**Easting:** 557341**Northing:** 7429959**Habitat:** Major creek**Vegetation Type:** D8**Vegetation:** *Eucalyptus victrix* open woodland over *Acacia citrinoviridis*, (*Meleleuca glomerata*. *A. coriacea* subsp. *pendens*) tall open scrub over *\*Cenchrus ciliaris*, (*\*C. setiger*) open tussock grassland**Veg Condition:** Degraded**Fire Age:** >10 years**Species List**

| Name  | Cover (%) | Height (m) |
|---|-----------|------------|
| <i>Acacia citrinoviridis</i>                                    | 35.0      | 3.5        |
| <i>Acacia coriacea</i> subsp. <i>pendens</i>                    | 1.0       | 7.0        |
| <i>Acacia pyrifolia</i> var. <i>pyrifolia</i>                   | 0.1       | 2.6        |
| <i>*Cenchrus ciliaris</i>                                       | 20.0      | 0.6        |
| <i>*Cenchrus setiger</i>  | 2.0       | 0.5        |
| <i>Cleome viscosa</i>   | 0.1       | 0.35       |
| <i>Corchorus crozophorifolius</i>                               | 0.1       | 0.4        |
| <i>Cucumis variabilis</i>                                       | 0.1       | twiner     |
| <i>Dipteracanthus australasicus</i> subsp. <i>australasicus</i> | 0.1       | 0.35       |
| <i>Eriachne mucronata</i>                                       | 0.1       | 0.35       |
| <i>Eucalyptus victrix</i>                                       | 3.0       | 11         |
| <i>Indigofera monophylla</i>                                    | 0.1       | 0.35       |
| <i>Jasminum didymum</i> subsp. <i>lineare</i>                   | 0.1       | 0.6        |
| <i>*Malvastrum americanum</i>                                   | 0.1       | 0.35       |
| <i>Melaleuca glomerata</i>                                      | 1.0       | 3.0        |
| <i>Petalostylis labicheoides</i>                                | 0.5       | 1.9        |

| <b>Name</b>  | <b>Cover (%)</b> | <b>Height (m)</b> |
|--|------------------|-------------------|
| <i>*Rumex vesicarius</i>   | 0.1              | 0.45              |
| <i>Sesbania cannabina</i>  | 0.1              | 1.3               |
| <i>Tephrosia rosea</i> var. Fortescue creeks (M.I.H. Brooker 2186) | 0.5              | 1.5               |

\* denotes weed species

**Site:** WRA23-AR

**Location:** Map 2

**Date:** 2017-07-25

**MGA Zone:** 50

**Habitat:** Minor creek

**Soil:** Reddish brown sandy loam

**Rock type:** Ironstone

**Vegetation Type:** D10

**Vegetation:** *Acacia xiphophylla*, (*A. tetragonophylla*) tall shrubland over *Ptilotus obovatus*, *Senna artemisioides* subsp. *helmsii* open shrubland over *Lepidium platypetalum* scattered low shrubs

**Veg Condition:** Good

**Fire Age:** >10 years

**Type:** Quadrat (rescore of Biota 2012b quadrat)

**Described by:** LD

**Easting:** 552185

**Northing:** 7432796



### Species List

| Name  | Cover (%) | Height (m) |
|---|-----------|------------|
| <i>Acacia aptaneura</i>   | 0.1       | 4.0        |
| <i>Acacia synchronicia</i>                                      | 0.1       | 2.5        |
| <i>Acacia tetragonophylla</i>                                   | 5.0       | 3.0        |
| <i>Acacia xiphophylla</i>                                       | 12.0      | 3.5        |
| <i>Boerhavia coccinea</i>                                       | 0.1       | 0.1        |
| * <i>Cenchrus ciliaris</i>                                      | 0.1       | 0.4        |
| <i>Corchorus crozophorifolius</i>                               | 0.1       | 1.6        |
| <i>Cynodon prostratus</i>                                       | 0.1       | 0.1        |
| <i>Dipteracanthus australasicus</i> subsp. <i>australasicus</i> | 0.1       | 0.4        |
| <i>Duperreya commixta</i>                                       | 0.1       | twiner     |
| <i>Enchylaena tomentosa</i> var. <i>tomentosa</i>               | 0.1       | 0.7        |
| <i>Enneapogon caerulescens</i>                                  | 0.1       | 0.2        |
| <i>Enneapogon lindleyanus</i>                                   | 0.1       | 0.2        |



| Name   | Cover (%) | Height (m) |
|--|-----------|------------|
| <i>Eremophila cuneifolia</i>                                 | 0.1       | 2.2        |
| <i>Eremophila forrestii</i> subsp. <i>forrestii</i>          | 0.1       | 1.2        |
| <i>Frankenia setosa</i>                                      | 0.1       | 0.3        |
| <i>Hibiscus</i> sp. Gardneri (A.L. Payne PRP 1435)           | 0.1       | 0.8        |
| <i>Hybanthus aurantiacus</i>                                 | 0.1       | 0.2        |
| <i>Indigofera monophylla</i>                                 | 0.1       | 0.3        |
| <i>Lepidium pedicellsum</i>                                  | 0.5       | 0.5        |
| <i>Lepidium platypetalum</i>                                 | 1.0       | 0.7        |
| <i>Maireana georgei</i>                                      | 0.1       | 0.2        |
| <i>Maireana tomentosa</i> subsp. <i>tomentosa</i>            | 0.1       | 0.5        |
| <i>Marsdenia australis</i>                                   | 0.1       | twiner     |
| <i>Paspalidium clementii</i>                                 | 0.1       | 0.2        |
| <i>Pterocaulon sphacelatum</i>                               | 0.1       | 0.3        |
| <i>Ptilotus obovatus</i>                                     | 2.0       | 2.0        |
| <i>Rhagodia eremaea</i>                                      | 0.1       | 1.3        |
| <i>Sclerolaena costata</i>                                   | 0.1       | 0.2        |
| <i>Sclerolaena eriacantha</i>                                | 0.1       | 0.2        |
| <i>Senna artemisioides</i> subsp. <i>helmsii</i>             | 1.0       | 1.2        |
| <i>Senna artemisioides</i> subsp. <i>oligophylla</i>         | 0.5       | 1.0        |
| <i>Senna glutinosa</i> subsp. <i>x luerssenii</i>            | 0.1       | 1.5        |
| <i>Senna stricta</i>   | 0.1       | 1.0        |
| <i>Sida echinocarpa</i>                                      | 0.1       | 0.2        |
| <i>Sida</i> sp. spiciform panicles (E. Leyland s.n. 14/8/90) | 0.1       | 1.8        |
| <i>Solanum horridum</i>                                      | 0.1       | 0.3        |
| <i>Sporobolus australasicus</i>                              | 0.1       | 0.1        |
| <i>Tribulus suberosus</i>                                    | 0.1       | 0.5        |
| <i>Triodia epactia</i>                                       | 0.5       | 0.4        |

\* denotes weed species

**Site:** WRA39-AR

**Location:** Map 7

**Date:** 2017-07-25

**MGA Zone:** 50

**Habitat:** Plain

**Soil:** Dark reddish brown sandy loam

**Rock type:** Ironstone

**Vegetation Type:** P1

**Vegetation:** *Acacia xiphophylla* tall open shrubland

**Veg Condition:** Good

**Fire Age:** >10 years

**Type:** Quadrat (rescore of Biota 2012b quadrat)

**Described by:** LD

**Easting:** 559921

**Northing:** 7432876



#### Species List

| Name  | Cover (%) | Height (m) |
|---|-----------|------------|
| <i>Acacia tetragonophylla</i>                             | 0.5       | 1.0        |
| <i>Acacia xiphophylla</i>                                 | 9.0       | 3.5        |
| <i>Aristida contorta</i>                                  | 0.1       | 0.4        |
| * <i>Cenchrus ciliaris</i>                                | 0.1       | 0.4        |
| <i>Enchylaena tomentosa</i> var. <i>tomentosa</i>         | 0.1       | 0.3        |
| <i>Enneapogon caerulescens</i>                            | 0.1       | 0.15       |
| <i>Eremophila cuneifolia</i>                              | 0.1       | 1.1        |
| <i>Eriachne pulchella</i> subsp. <i>pulchella</i>         | 0.1       | 0.2        |
| <i>Gomphrena affinis</i> subsp. <i>pilbarensis</i>        | 0.1       | 0.15       |
| <i>Hibiscus</i> sp. <i>Gardneri</i> (A.L. Payne PRP 1435) | 0.1       | 0.5        |
| <i>Hibiscus sturtii</i>                                   | 0.1       | 0.3        |
| <i>Maireana georgei</i>                                   | 0.1       | 0.2        |
| <i>Maireana melanocoma</i>                                | 0.1       | 0.2        |
| <i>Maireana tomentosa</i> subsp. <i>tomentosa</i>         | 0.1       | 0.3        |

---

| <b>Name</b>  | <b>Cover (%)</b> | <b>Height (m)</b> |
|--|------------------|-------------------|
| <i>Paspalidium clementii</i>                         | 0.1              | 0.15              |
| <i>Ptilotus aevoides</i>                             | 0.1              | 0.1               |
| <i>Ptilotus exaltatus</i>                            | 0.1              | 0.15              |
| <i>Ptilotus obovatus</i>                             | 0.1              | 0.6               |
| <i>Sclerolaena cuneata</i>                           | 0.1              | 0.25              |
| <i>Senna artemisioides</i> subsp. <i>oligophylla</i> | 0.1              | 0.7               |
| <i>Senna glutinosa</i> subsp. <i>x luerssenii</i>    | 0.1              | 1.1               |
| <i>Senna stricta</i>                                 | 0.5              | 0.6               |
| <i>Solanum horridum</i>                              | 0.1              | 0.5               |
| <i>Solanum lasiophyllum</i>                          | 0.1              | 0.25              |
| <i>Sporobolus australasicus</i>                      | 0.1              | 0.15              |
| <i>Trianthema glossostigmum</i>                      | 0.1              | 0.1               |
| <i>Tribulus suberosus</i>                            | 0.1              | 0.6               |

---

\* denotes weed species

**Site:** WRA44-AR**Location:** Map 7**Date:** 2017-07-25**MGA Zone:** 50**Habitat:** Minor creek**Soil:** Brown sandy loam**Vegetation Type:** D9**Vegetation:** *Acacia citrinoviridis*, (*Senna artemisioides* subsp. *oligophylla*) tall open scrub over *Ptilotus obovatus* scattered shrubs over *Corchorus crozophorifolius* scattered low shrubs over *\*Cenchrus ciliaris*, (*\*C. setiger*) tussock grassland**Veg Condition:** Degraded**Fire Age:** >10 years**Type:** Quadrat (rescore of Biota 2012b quadrat)**Described by:** LV**Easting:** 559237**Northing:** 7433242**Species List**

| Name  | Cover (%) | Height (m) |
|---|-----------|------------|
| <i>Abutilon lepidum</i>   | 0.1       | 0.35       |
| <i>Acacia aneura</i>  | 0.1       | 6.5        |
| <i>Acacia citrinoviridis</i>                                    | 65.0      | 7.5        |
| <i>Acacia coriacea</i> subsp. <i>pendens</i>                    | 0.1       | 3.5        |
| <i>Acacia tetragonophylla</i>                                   | 0.1       | 2.1        |
| <i>*Aerva javanica</i>  | 0.1       | 0.5        |
| <i>Amyema fitzgeraldii</i>                                      | 0.1       | parasite   |
| <i>*Cenchrus ciliaris</i>                                       | 45.0      | 0.4        |
| <i>*Cenchrus setiger</i>  | 1.0       | 0.4        |
| <i>Corchorus crozophorifolius</i>                               | 1.0       | 0.5        |
| <i>Cucumis variabilis</i>                                       | 0.1       | twiner     |
| <i>Cymbopogon ambiguus</i>                                      | 0.1       | 0.4        |
| <i>Dipteracanthus australasicus</i> subsp. <i>australasicus</i> | 0.1       | 0.3        |

| Name   | Cover (%) | Height (m) |
|--|-----------|------------|
| <i>Duperreya commixta</i>                                    | 0.1       | twiner     |
| <i>Enchylaena tomentosa</i> var. <i>tomentosa</i>            | 0.1       | 0.35       |
| <i>Enneapogon caerulescens</i>                               | 0.1       | 0.15       |
| <i>Eremophila cuneifolia</i>                                 | 0.1       | 1.0        |
| <i>Glycine canescens</i>                                     | 0.1       | twiner     |
| <i>Hybanthus aurantiacus</i>                                 | 0.1       | 0.3        |
| <i>Jasminum didymum</i> subsp. <i>lineare</i>                | 0.1       | 0.5        |
| <i>Maireana georgei</i>                                      | 0.1       | 0.35       |
| <i>Notoleptopus decaisnei</i>                                | 0.1       | 0.35       |
| <i>Paraneurachne muelleri</i>                                | 0.1       | 0.25       |
| <i>Polycarpaea longiflora</i>                                | 0.1       | 0.35       |
| <i>Ptilotus obovatus</i>                                     | 1.0       | 1.0        |
| <i>Rhynchosia minima</i>                                     | 0.1       | twiner     |
| <i>Senna artemisioides</i> subsp. <i>oligophylla</i>         | 4.0       | 2.1        |
| <i>Sida</i> sp. spiciform panicles (E. Leyland s.n. 14/8/90) | 0.1       | 0.6        |
| <i>Solanum lasiophyllum</i>                                  | 0.1       | 0.35       |
| <i>Solanum sturtianum</i>                                    | 0.1       | 1.2        |
| <i>Sporobolus australasicus</i>                              | 0.1       | 0.1        |
| <i>Tribulus suberosus</i>                                    | 0.1       | 1.0        |
| <i>Triodia epactia</i>                                       | 0.1       | 0.25       |

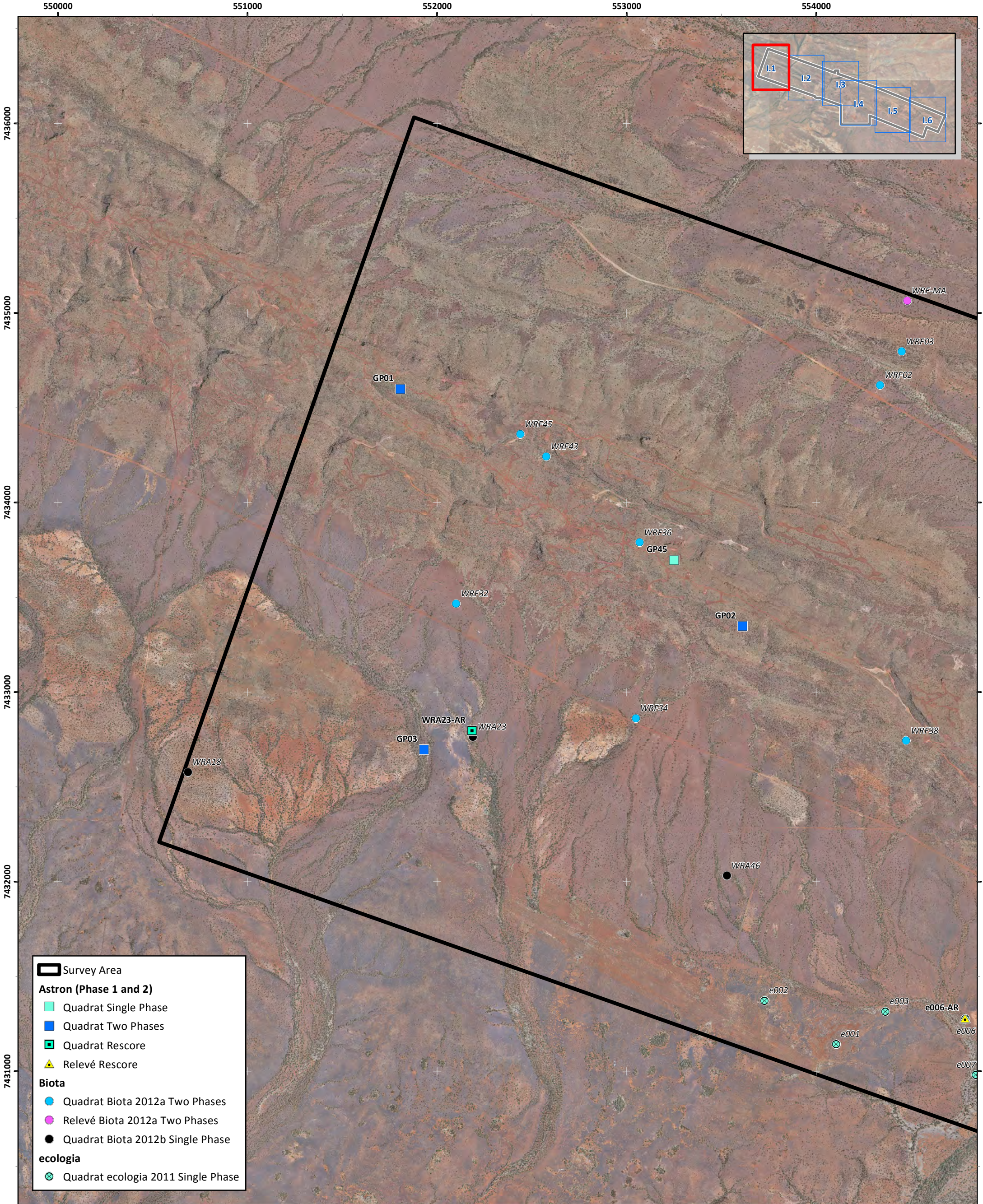
\* denotes weed species

This page has been left blank intentionally.

## **Appendix I: Previous Vegetation Sampling Site Locations**

This page has been left blank intentionally.





- Survey Area
- Astron (Phase 1 and 2)**
- Quadrat Single Phase
- Quadrat Two Phases
- Quadrat Rescore
- ▲ Relevé Rescore
- Biota**
- Quadrat Biota 2012a Two Phases
- Relevé Biota 2012a Two Phases
- Quadrat Biota 2012b Single Phase
- ecologia**
- ⊗ Quadrat ecologia 2011 Single Phase

Rio Tinto Iron Ore  
 Greater Paraburdoo - Detailed Flora and Vegetation Survey, April 2018

**Figure I.1: Current and previous vegetation sampling site locations**



Author: B. Eckermann

Date: 13-12-2018

Drawn: C. Dyde

Figure Ref: 14284-18-BIDR-1RevB\_181213\_FigI\_SamplingSite

Coordinate System: GDA 1994 MGA Zone 50



