

Species	Cover (%)	Height (cm)	Specimen	Notes
<i>Paraneurachne muelleri</i>	0.1	25		
<i>Paspalidium clementii</i>	0.1	5		
<i>Petalostylis labicheoides</i>	10	300		
<i>Polycarpaea holtzei</i>	0.1	2		
<i>Pterocaulon sphacelatum</i>	0.1	2		
<i>Ptilotus astrolasius</i>	0.1	10		
<i>Ptilotus auriculifolius</i>	0.1	10		
<i>Ptilotus calostachyus</i>	0.1	110		
<i>Ptilotus nobilis</i> subsp. <i>nobilis</i>	0.1	30		
<i>Rhynchosia minima</i>	0.1	5		
<i>Scaevola spinescens</i>	0.1	90		
<i>Senna artemisioides</i> subsp. <i>oligophylla</i>	0.1	120	MMF12-07	
<i>Senna artemisioides</i> subsp. <i>oligophylla</i>	0.1	120		
<i>Senna glutinosa</i> subsp. <i>glutinosa</i> x <i>S. stricta</i>	0.1	145		
<i>Senna glutinosa</i> subsp. x <i>luerssenii</i>	0.1	60		
<i>Sida echinocarpa</i>	0.1	130		
<i>Sida fibulifera</i>	0.1	30		
<i>Sida</i> sp. spiciform panicles (E. Leyland s.n. 14/8/90)	0.1	220		
<i>Sida</i> sp. verrucose glands (F.H. Mollemans 2423)	0.1	35	MMF12-03	
<i>Sporobolus australasicus</i>	0.1	15		
<i>Stylobasium spathulatum</i>	3	340		
<i>Tephrosia rosea</i> var. <i>Fortescue</i> creeks (M.I.H. Brooker 2186)	0.1	120		
<i>Themeda triandra</i>	0.1	70		
<i>Trachymene oleracea</i> subsp. <i>oleracea</i>	0.1	60		
<i>Trichodesma zeylanicum</i> var. <i>zeylanicum</i>	0.1	15		
<i>Triodia angusta</i>	0.1	30		
<i>Triodia epactia</i>	4	40		
<i>Vachellia farnesiana</i>	0.1	10		1 plant.
<i>Waltheria indica</i>	0.1	35		



BS4 Marra Mambas Flora

Described by PLSW

Date 05/08/2015

Site MMFR17

Type Quadrat 50 x 50 m

Location**Central Coordinate** 50 531530 mE, 7500822 mN**Habitat** Hillcrest : Hilltop, south side sloping southwards.**Soil** Dark reddish brown sandy clay.**Rock Type** Continuous ironstone (2-60mm) with outcropping rock.**Vegetation** *Acacia exigua*, (*Senna glutinosa* subsp. *pruinosa*) open shrubland over *Triodia wiseana* open hummock grassland.**Veg Condition** Excellent.**Fire Age** Burnt 3-5 years ago.

Species	Cover (%)	Height (cm)	Specimen	Notes
<i>Acacia adsurgens</i>	0.1	50		
<i>Acacia bivenosa</i>	0.1	90		
<i>Acacia exigua</i>	9	170		
<i>Acacia kempeana</i>	0.1	50		
<i>Acacia maitlandii</i>	0.1	140		
<i>Acacia monticola</i>	0.1	130		
<i>Acacia synchronicia</i>	0.1	130		
<i>Amphipogon sericeus</i>	0.1	30		
<i>Aristida holathera</i> var. <i>holathera</i>	0.1	20		
<i>Bonamia pilbarensis</i>	0.1	10	MMFR17-07	
<i>Bulbostylis barbata</i>	0.1	15		
<i>Cymbopogon ambiguus</i>	0.1	40		
<i>Dysphania kalpari</i>	0.1	8	MMFR17-05	
<i>Dysphania rhadinostachya</i> subsp. <i>rhadinostachya</i>	0.1	30	MMFR17-01	
<i>Eremophila cuneifolia</i>	0.1	40		
<i>Eriachne aristidea</i>	0.1	20		
<i>Eriachne mucronata</i> (typical form)	0.1	35		
<i>Eriachne pulchella</i>	0.1	15		
<i>Gomphrena</i> sp.	0.1	15	MMFR17-03	Insufficient material for further determination
<i>Goodenia microptera</i>	0.1	10		
<i>Goodenia stobbsiana</i>	0.1	20		
<i>Gossypium australe</i> (Burrup Peninsula form)	0.1	40		
<i>Grevillea berryana</i>	0.1	10		Seedling.
<i>Hakea chordophylla</i>	0.1	260		
<i>Hakea lorea</i> subsp. <i>lorea</i>	0.1	160		
<i>Indigofera monophylla</i>	0.1	25		
<i>Isotropis atropurpurea</i>	0.1	25	MMFR17-02	
<i>Maireana planifolia</i>	0.1	30		
<i>Oldenlandia crouchiana</i>	0.1	15		
<i>Paraneurachne muelleri</i>	0.1	40		
<i>Polycarphaea corymbosa</i> var. <i>corymbosa</i>	0.1	15		
<i>Polycarphaea holtzei</i>	0.1	3		
<i>Polygala glaucifolia</i>	0.1	5	MMFR17-08	
<i>Portulaca oleracea/intraterranea</i>	0.1	3	MMFR17-04	Seeds nipped.
<i>Ptilotus astrolasius</i>	0.1	30		
<i>Ptilotus auriculifolius</i>	0.1	20		
<i>Ptilotus calostachyus</i>	0.1	80		
<i>Ptilotus clementii</i>	0.1	40		
<i>Ptilotus fusiformis</i>	0.1	35		
<i>Ptilotus nobilis</i> subsp. <i>nobilis</i>	0.1	60		
<i>Ptilotus polystachyus</i>	0.1	60		
<i>Ptilotus rotundifolius</i>	0.1	120		
<i>Schizachyrium fragile</i>	0.1	20		
<i>Senna glaucifolia</i> x	0.1	80		

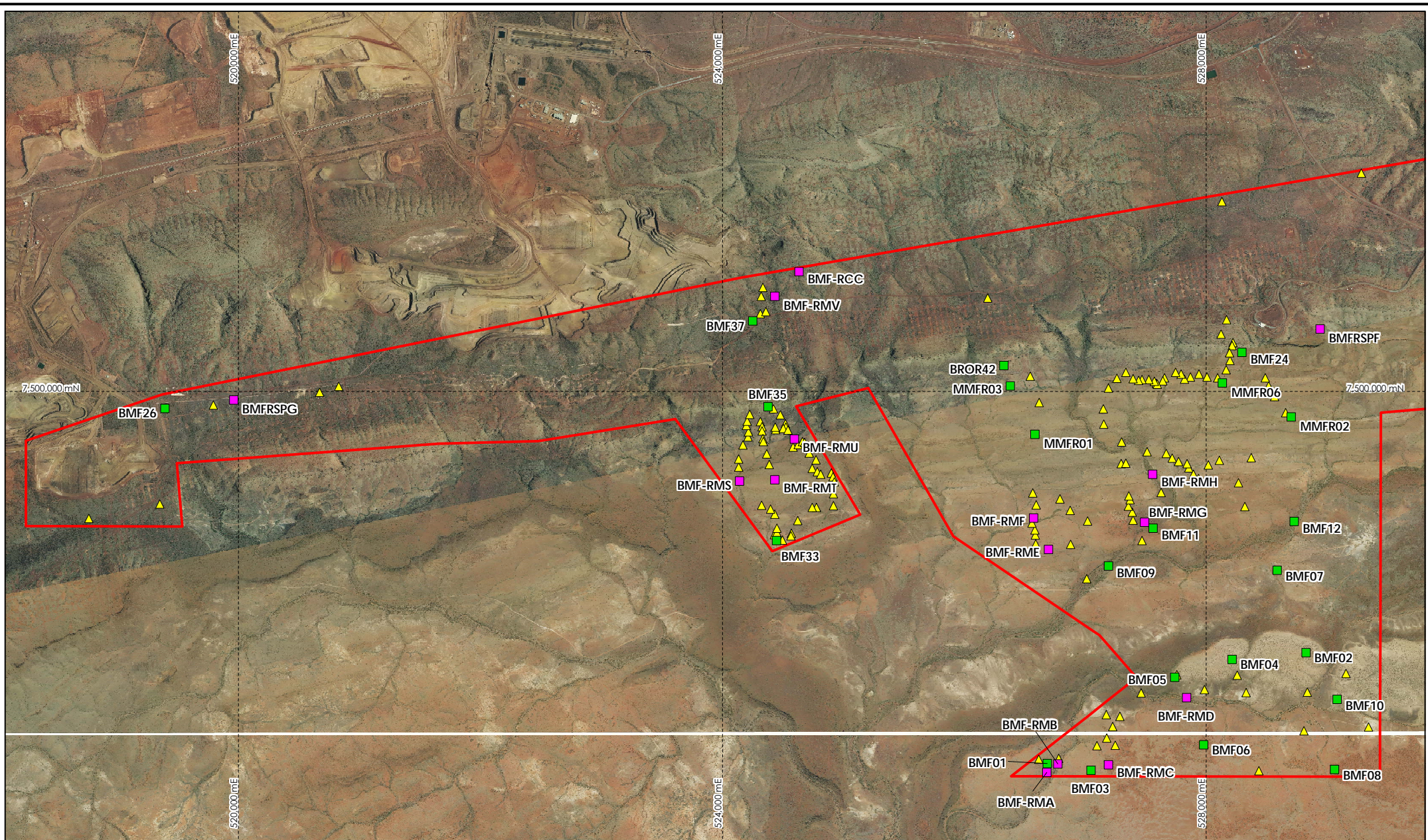
Species	Cover (%)	Height (cm)	Specimen	Notes
<i>Senna glutinosa</i> subsp. <i>glutinosa</i>	0.1	140		
<i>Senna glutinosa</i> subsp. <i>pruinosa</i>	1	190		
<i>Senna glutinosa</i> subsp. <i>pruinosa</i> x	0.1	160		
<i>Solanum lasiophyllum</i>	0.1	40		
<i>Solanum</i> sp.	0.1	5		<i>S. cleistogamum</i> / <i>horridum</i> .
<i>Sporobolus australasicus</i>	0.1	15		
<i>Trachymene oleracea</i> subsp. <i>oleracea</i>	0.1	50		
<i>Tribulus suberosus</i>	0.1	70		
<i>Triodia wiseana</i>	20	30		







Appendix 3

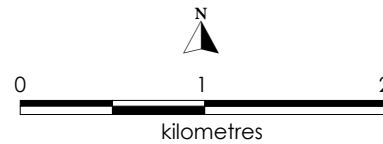
Locations of Sampling Sites and Survey Traverses from the Current Study





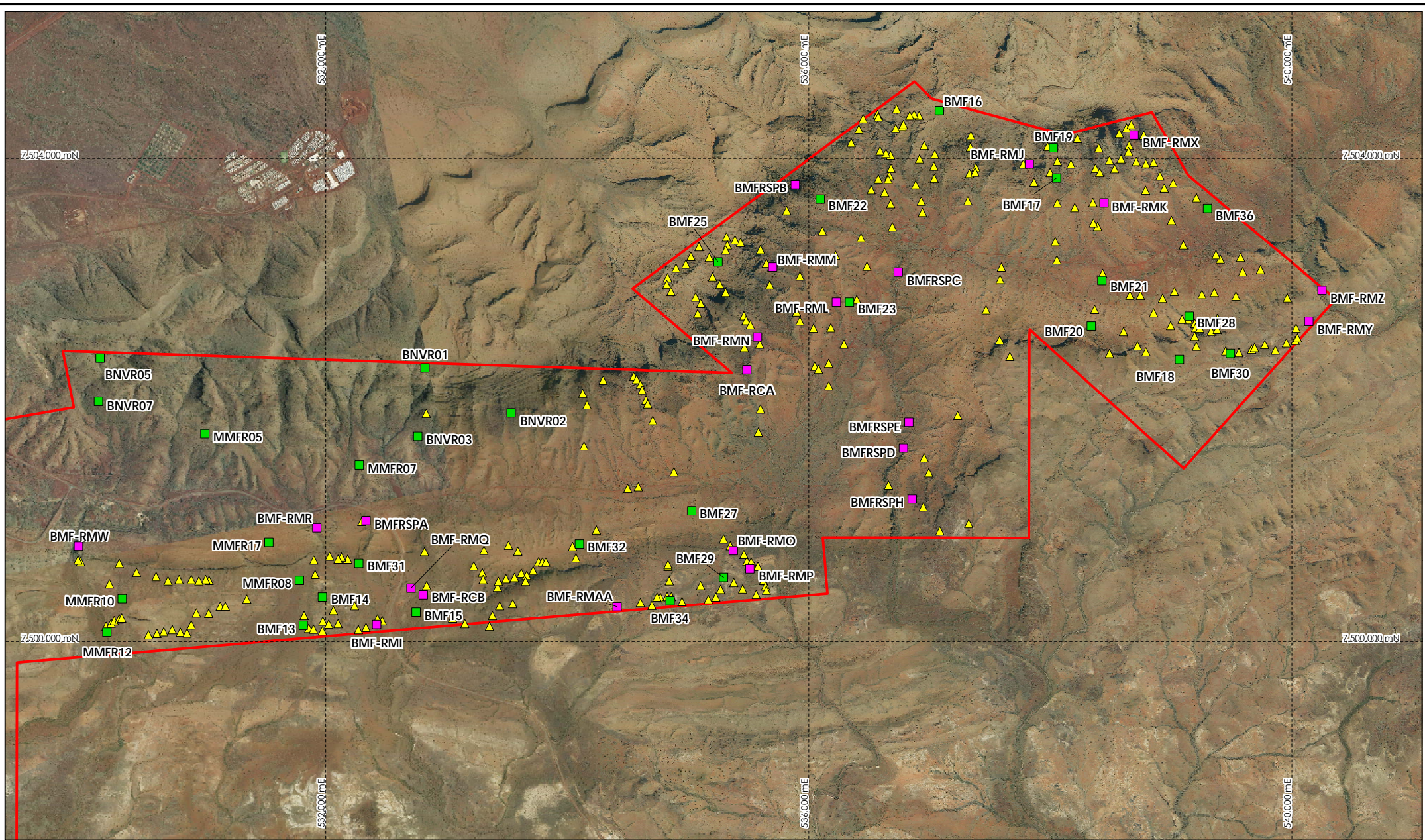
 Study area

-  Quadrat location
-  Releve location
-  Mapping note location






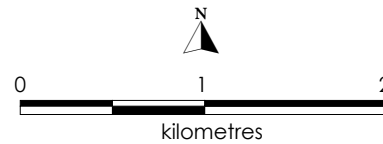
Marra Mamba Flora - Map 1 Current Survey Sampling Sites





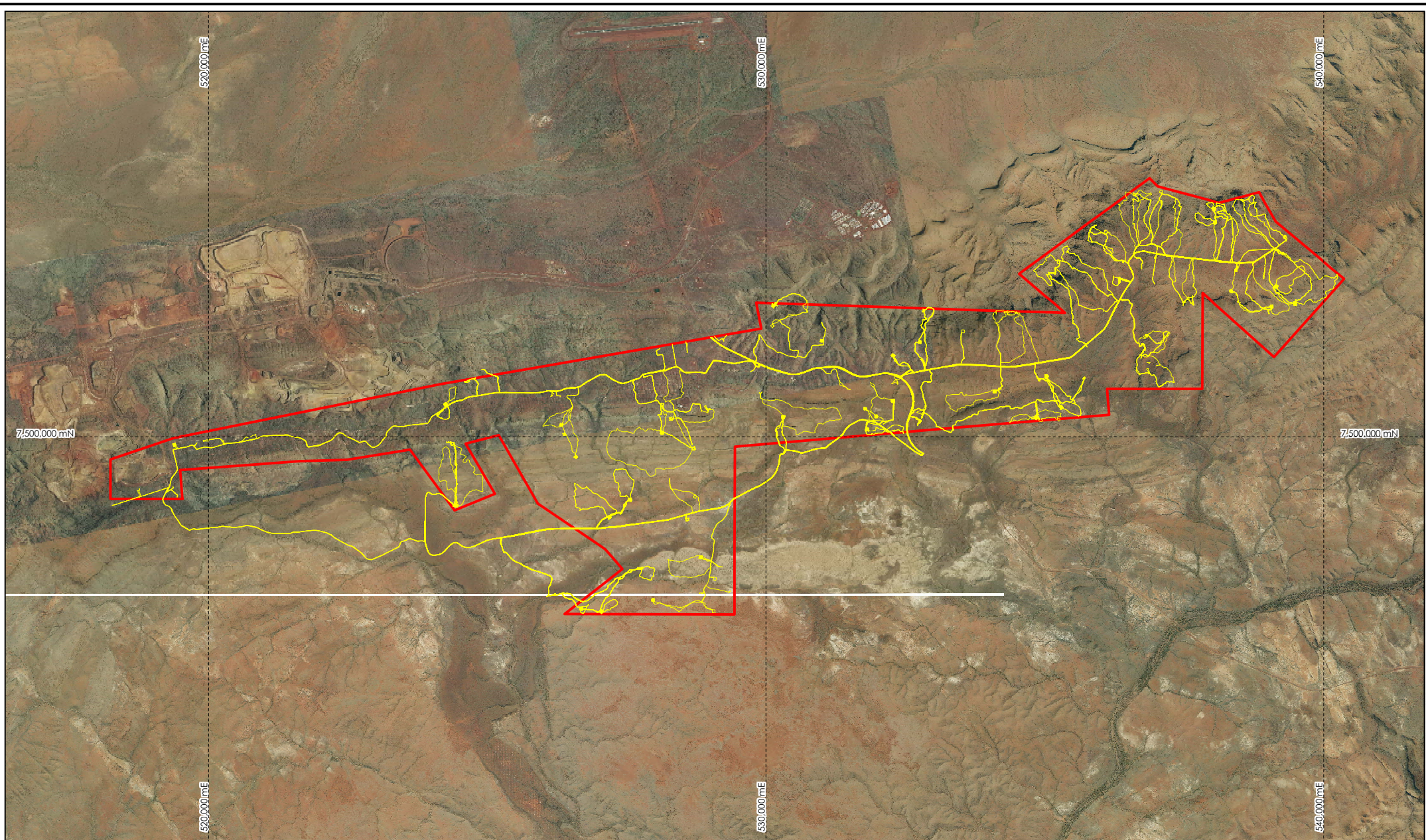
 Study area

-  Quadrat location
-  Releve location
-  Mapping note location

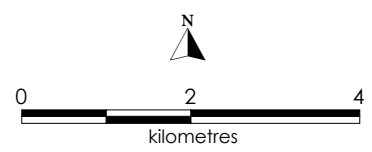


Marra Mamba Flora - Map 2 Current Survey Sampling Sites





- Study area
- GPS track log



Marra Mamba Flora Survey Effort



Appendix 4

Locations of Sampling Sites and
Systematic Rare Flora Searches from
Previous Surveys within the Study Area



