



Work Instruction

Western Cape Operating
Unit

Title: **MANAGEMENT OF PROTECTED
AND INDIGENOUS VEGETATION**

Document Identifier: **WTB003**

Alternative Reference
Number:

Area of Applicability: **WCOU DISTRIBUTION**

Functional Area: **WCOU SHEQS**

Revision: **1**

Total Pages: **43**

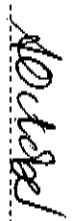
Next Review Date: **November 2016**

Disclosure
Classification: **Controlled Disclosure**

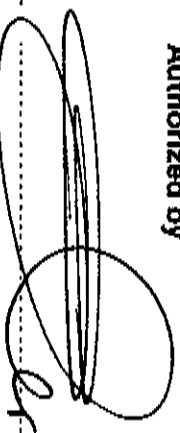
Compiled by

Functional Responsibility

Authorized by


Astrid October
Environmental
Management Manager


Siphekazi Potelwa
SHEQ Manager


Alwie Lester
General Manager

Date: **19.11.2013**

Date: **20.11.2013**

Date: **20/11/2013**

Content

1. Introduction	3
2. Key Environmental Legal Requirements Related to Vegetation Management	3
2.1 Protected Trees	3
2.2 Champion Trees	4
2.3 Natural Forest/State Forest	4
2.4 Invasive Weeds and Invader Vegetation (Alien plants)	5
3. Environmental Requirements	5
3.1 General	5
3.2 Contractors	5
3.3 Staff	7
4. Related Documents	8

Annexures

Annexure A	List of Protected Tree Species in terms of National Forests Act	10
Annexure B	Listing of Champion Trees as per Government Notice	12
Annexure C	List of Protected tree in terms of Cape Nature Ordinance	14
Annexure D	List of weeds (that can be cut within Western Cape Operating Unit without permit)	19
Annexure E	Maps have been developed by Land Development indicating the locations of the Champion Trees in relation to OU power lines	
Annexure F	Licence Application Form to Department of Agriculture, Fisheries and Forestry	26
Annexure G	Application to Cape Nature – informative	27

CONTROLLED DISCLOSURE

When downloaded from the document management system, this document is uncontrolled and the responsibility rests with the user to ensure it is in line with the authorised version on the system.

No part of this document may be reproduced without the expressed consent of the copyright holder, Eskom Holdings SOC Limited, Reg No 2002/015527/06.

Hard copy printed on: 25 November 2013

1. Introduction

This document explains the legal requirements related to bushclearing, cutting and trimming of protected and indigenous vegetation. The purpose of this document is to ensure that the staff are aware of the legal requirements related to protected vegetation, champion trees as well as indigenous vegetation in a natural / state forest to prevent undue damage to this vegetation and to make staff aware of the environmental permit requirements that must be fulfilled prior to any cutting or trimming.

This approach was discussed with the Operating Unit Sector Management and Environment Management in an effort to instil measures to prevent protected vegetation damage and potential legal contraventions related to tree cutting.

2. Key Environmental Legal Requirements Related to Vegetation Management

2.1 Protected trees

2.1.1 Protected trees in terms of National Forest Act, 1998

Section 15 (1) of National Forest Act, 1998 states that "no person may cut, disturb, damage or destroy any protected tree or possess, collect, remove, transport, export, purchase, sell, donate or in any other manner acquire or dispose of any protected tree or any forest product derived from a protected tree, except under a licenced granted by the Minister to an applicant and subject to such period and conditions as may be stipulated".

Contravention of this act may result in a person who is found guilty of being sentenced, fined or imprisoned for a period up to three years.

Refer to Annexure A attached for the list of Protected Tree Species.

To assist with awareness, staff can collect protected tree posters from Environmental Management.

2.1.2 Protected trees/plants in terms of Cape Nature Conservation Ordinance No. 15 of 1974

Cape Nature Conservation Ordinance No. 15 of 1974 is a provincial legislation for protected vegetation types – trees and plants. This legislation requires permission from Cape Nature department prior to cutting of the protected vegetation. Note in terms of this legislation plants (including Fynbos) are also protected.

Annexure C attached provides the list of Protected vegetation in terms of the Cape Nature Conservation Ordinance.

CONTROLLED DISCLOSURE

When downloaded from the document management system, this document is uncontrolled and the responsibility rests with the user to ensure it is in line with the authorised version on the system.

No part of this document may be reproduced without the expressed consent of the copyright holder, Eskom Holdings SOC Limited, Reg No 2002/015527/06.

2.2 Champion Trees

In terms of the National Forest Act 84 of 1998 Champion trees are individual trees or groups of trees of national conservation importance which are identified, nominated and declared on the basis of their outstanding size, age, cultural or historic value.

Note: Champion trees can be regarded as an additional group of protected trees. They are individual trees or groups where the **exact locations** have been gazetted in the legislation.

The effect of this government declaration is that in terms of Section 15(1) of the National Forests Act, 84 of 1998, no person may cut, disturb, damage or destroy any protected tree or possess, collect, remove, transport, export, purchase, sell, donate or in any other manner acquire or dispose of any protected tree or any forest product derived from a protected tree, except under a license granted by the Minister to an applicant and subject to such period and conditions as may be stipulated.

Contravention of this declaration is regarded as a first category offence that may result in a person who is found guilty being sentenced to a fine or imprisonment for a period of up to three years, or to both a fine and imprisonment.

Annexure B attached provides the names and locations of the Champion Trees within the Western Cape Operating Unit.

2.3 Natural Forest / State Forest

Natural forest - means a group of indigenous trees:

- a) Whose crowns are largely contiguous or
- b) Which have been declared by the Minister to be a Natural Forest.

State Forest- means State land which includes:

- (a) State plantations, State sawmills and State timber preservation plants;
- (b) Land controlled and managed by the Department for research purposes or as a tree nursery;
- (c) Areas protected in terms of sections 8(1)(a) and (b) and 9;
- (d) An area of State land which has been set aside in terms of previous forest legislation for the prevention of soil erosion or sand drift.

2.3.1 Indigenous Trees in Natural Forest

Section 7 of National Forest Act, 1998 prohibits the destruction of indigenous trees in any natural forest without a license. No person may cut, disturb, damage or destroy any indigenous, living tree in, or remove or receive any such tree from, a natural forest unless a license is issued by the Minister.

Contravention of this declaration is regarded as a first category offence that may result in a person who is found guilty being sentenced to a fine or imprisonment for a period of up to three years, or to both a fine and imprisonment.

CONTROLLED DISCLOSURE

When downloaded from the document management system, this document is uncontrolled and the responsibility rests with the user to ensure it is in line with the authorised version on the system.

No part of this document may be reproduced without the expressed consent of the copyright holder, Eskom Holdings SOC Limited, Reg No 2002/015527/06.

2.3.2 Working in a Natural Forest

Activities which may be licensed in state forests include felling of trees, use of roads, moving of electricity across a state forest, construction of any road, building or structure.

2.4 Invasive Weeds and Invader Vegetation (Alien plants)

Annexure D attached provides the list of weeds and invader plants that occur within the Western Cape Province.

In terms of Regulation 15E of the Conservation of Agricultural Resources Act, the Land user shall control such plants including "uprooting, felling or cutting". These plants in Eskom servitudes and way leave can be cut in a controlled manner (without obtaining a permit from the Department of Agriculture Forestry and Fisheries) and ensuring weeds are not spread in the way/leave area/servitude.

Alien tree posters (weeds and invaders) are available from Environmental Management to assist with awareness to staff on trees that can be cut.

3. Environmental Requirements

To ensure compliance with the above legal requirements the following must be implemented:

3.1 General

3.1.1 Under no circumstances must protected vegetation (trees and plants), champion trees, and indigenous trees in any natural forest / state forest be trimmed, cut or destructed without a license.

3.1.2 The precautionary principle applies to tree cutting. If any staff/contractor is unsure whether the plant is protected or not, they must not cut. The tree/plant must be positively identified by an expert/se before cutting.

3.1.3 Landowners permission must be requested and obtained prior to vegetation trimming/cutting.

3.2 Contractors

3.2.1 Maintenance of Servitudes / Way leave areas

- a) Currently vegetation contractors responsible for maintenance of servitudes conduct the majority of bush clearing and tree cutting in servitudes and way leave areas. Inspections must be conducted of the vegetation to check whether any protected vegetation requires environmental permits from relevant authorities, prior to any clearing taking place.
- b) Vegetation contractors must demonstrate that they have been trained and are competent in tree / plant identification as part of their evaluation as bush clearing contractors.

CONTROLLED DISCLOSURE

When downloaded from the document management system, this document is uncontrolled and the responsibility rests with the user to ensure it is in line with the authorised version on the system.

No part of this document may be reproduced without the expressed consent of the copyright holder, Eskom Holdings SOC Limited, Reg No 2002/015527/05.

- c) If protected species and activities in natural forests are identified during maintenance of these lines, permit application must be done by the vegetation contractor as per Eskom vegetation management specification.
- d) License records must be kept (preferably on site where tree cutting taking place) and made available to Eskom.
- e) A permit register must be kept and maintained by Technical Support (managing the vegetation contract) and must be made available to Environmental Management together with all the copies of permits.
- f) Reference to the legal requirements related to protected vegetation, must be included in the specification of contractors appointed to conduct bush clearing/ tree cutting.

3.2.2 Capital projects

- a) For new projects an environmental assessment may be required as per legal and or environmental requirements. If the need for permit for protected vegetation have been identified prior to construction the Eskom Environmental Officer for the project must apply for these permits. (Unless, otherwise designated to be done by the external Environmental Control Officer (ECO).
- b) If the vegetation contractor or Environmental Control Officer (ECO) appointed for the project have identified protected vegetation on site that require permit applications, the ECO must inform the relevant Eskom Environmental Officer, who will make the application for the project.
- c) The Eskom Environmental Officer in Land Development must apply for the permits by the relevant authority, make copies of the permit available for the site (to the ECO) and keep the original permit with the project documentation.
- d) Environmental Management must keep a permit register for tracking permits.

CONTROLLED DISCLOSURE

When downloaded from the document management system, this document is uncontrolled and the responsibility rests with the user to ensure it is in line with the authorised version on the system.

No part of this document may be reproduced without the expressed consent of the copyright holder, Eskom Holdings SOC Limited, Reg No 2002/015527/06.

3.3 Staff

3.3.1 Staff may be required to do adhoc tree cutting for safety clearance requirements in terms of the Occupational Health and Safety Act.

3.3.2 Staff must be trained on the tree identification course prior to doing any cutting / trimming and bushclearing.

3.3.3 Protected tree posters have been distributed to assist with awareness of protected trees.

3.3.4 Vegetation contractors identified common trees typically found per CNC (based on their historical identification done during clearing). This information must be made available to the CNC staff.

3.3.5 The list of weeds and invader trees have also been identified for staff (refer to annexure D attached). Staff within the sectors should be made aware of these trees.

3.3.6 Alien tree posters (weeds and invaders) must be distributed to assist with awareness to staff on trees. In order to reduce the risk of cutting protected vegetation, these are the only trees that can be cut.

3.3.7 All other indigenous trees must be positively identified by an expertise as not been protected and requiring a permit, before cutting.

3.3.8 If any of the staff are unsure – the instruction is not to cut.

3.3.9 If any of trees, plants, forests have been identified to be protected Environmental Management must be informed in order to apply for a license from the relevant authorities. Where permits have been applied for, a permits register must be maintained for tracking permits.

3.3.10 The power lines in the vicinity of Champion trees must be identified (where the exact location has been gazetted) within the Operation Unit (OU) and discussed with staff members in those high risk environments.

3.3.11 The instruction must be shared with all staff working in these high risk areas to create awareness.

4. Related Documents

32-247 Vegetation Clearance and Maintenance within Overhead Power Line Servitudes

5. Acceptance

This document has been seen and accepted by:

CONTROLLED DISCLOSURE

When downloaded from the document management system, this document is uncontrolled and the responsibility rests with the user to ensure it is in line with the authorised version on the system.

No part of this document may be reproduced without the expressed consent of the copyright holder, Eskom Holdings SOC Limited. Reg No 2002/015527/06.

**MANAGEMENT OF PROTECTED AND INDIGENOUS
VEGETATION**Unique Identifier: **WTB003**Revision: **1**Page: **8 of 43**

Name	Designation
Sipokazi Potelewa	SHEQS Manager
Deidre February	Standards Implementation Manager
Donald Matjuda	Land Development and Environment
Richard Mali	Helderburg Sector Manager
Keineetse Rankunyane	Khayelitsha Sector Manager
Bongani Mandla	Garden Route Sector Manager
Clayton Pillay	Overberg Sector Manager
Beryl Swano	West coast Sector Manager
Zaid Barden	Atlantic Zone Manager
Promise Ntuli	Protea Zone Manager
Nolan Ockhuis	Technical Support
Jan Van Bosch	Power Plant Maintenance
Bruce Titus	Tableview Sector Manager
Justine Wyrngaardt	Land Development and Environment

6. Revisions

Date	Rev.	Compiler	Remarks
April 2009	0	A. October.	Original Issue. (Champion Trees WTB003)
November 2013	1	A. October	This document supercedes the document Champion Trees, WTB003, Revision 0. The original document has been expanded to include requirements related to protected trees, protected vegetation, natural and state forests, invader weeds and alien plants.

CONTROLLED DISCLOSURE

When downloaded from the document management system, this document is uncontrolled and the responsibility rests with the user to ensure it is in line with the authorised version on the system.

No part of this document may be reproduced without the expressed consent of the copyright holder, Eskom Holdings SOC Limited, Reg No 2602/015527/06.

Hard copy printed on: 25 November 2013

7. Development Team

The strategy was compiled in conjunction with the Zones (Field Services Team), Technical Support and Power Plant Maintenance Team. The strategy was presented to the SHEQ committee and then formalised in this revised work instruction.

8. Acknowledgements

As stated above in 7.

CONTROLLED DISCLOSURE

When downloaded from the document management system, this document is uncontrolled and the responsibility rests with the user to ensure it is in line with the authorised version on the system.

No part of this document may be reproduced without the expressed consent of the copyright holder, Eskom Holdings SOC Limited. Reg No 2002/015527/06.

Hard copy printed on: 25 November 2013

Annexure A

LIST OF PROTECTED TREE SPECIES

Declared in terms of the National Forests Act No 84 of 1998

(GG 33566, GN 835, 23 September 2010)

Botanical Name English Other Common Names National	English Common Names	Other Common Names Afrikaans (A), Northern Sotho (NS), Southern Sotho (S), Tswana (T), Venda (V), Xhosa (X), Zulu (Z)	National Tree Number
<i>Acacia erioloba</i>	Camel thorn	Kameeldoring (A) / Mogohlo (NS) / I 168 MoQeth6 (T)	168
<i>Acacia haematoxylon</i>	Grey camel thorn	Vaalkameeldoring (A) / Mokholo (T)	169
<i>Adansonia digitata</i>	Baobab	Kremetart (A) / Seboi (NS) / Mowana (T)	467
<i>Adansonia digitata</i>	Pod mahogany	Peulmahonie (A) / Mutokota (V) / Inkehli (Z)	207
<i>Balanites subsp. Maughanii</i>	Torchwood	Groendoring (A) / Ugobandlovu (Z)	251
<i>Barringtonia Racemosa</i>	Powder - puff tree	Poeierkwasboom (A) / Ibogo (Z)	524
<i>Boscia albitrunca</i>	Shepherd's tree	Wigat (A) / Mohlopi (NS) / Mollhlopi (T) / Muvhombwe (V) / Umqomogqomo (X) / Umvithi (Z)	122
<i>Brachystegia Spiciformis</i>	Msasa	Msasa (A)	198.1
<i>Breonadia salicina</i>	Maturi	Mingerhout (A) / Imohlome (NS) / Mutu-lume (V) / Umfonto (Z)	684
<i>Bruguiera</i>	Black mangrove	Swart-wortelboom (A) / Isikhangati (X) / Isihlobane (Z)	527
<i>Cassipourea Swaziensis</i>	Swazi onionwood	Swazi-ulehout (A)	531.1
<i>Catha edulis</i>	Bushman's tea	Boesmanstee (A) / Mohlatse (NS) / Igqwaka (X) / Umhlwazi (Z)	404
<i>Cerops tagel</i>	Indian mangrove	Indiese wortelboom (A) / Isinkaha (Z)	525
<i>Cleistanthus schlechteri</i> var. <i>schlechteri</i>	False tamboti	Vals-tamboti (A) / Umzithi (Z)	320
<i>Coburnia nicholsonii</i>	Pando weeping thorn	Pondo-treurdoring (A)	453.8
<i>Combretum imberbe</i>	Leadwood	Hardekool (A) / Mchwelele-tshipi (NS) / Motswini (T) / Impondondlovu (Z)	539
<i>Curtisia dentate</i>	Assegai	Assegai (A) / Umgina (X) / Umagunda (Z)	570
<i>Elaeodendron transvaalensis</i>	Bushveld saffron	Bosveld-saffraan (A) / Monomane (T) / Ingwavuma (Z)	416
<i>Erythrophysa</i>	Bushveld red balloon	Bosveld-rooiklapperbos (A) / Mofalatsane (T)	436.2
<i>Euclea pseudobernus</i>	Ebony guarri	Ebbehout-ghwarie (A)	598
<i>Ficus trichopoda</i>	Swamp fig	Moerasv (A) / Umvubu (Z)	54

CONTROLLED DISCLOSURE

When downloaded from the document management system, this document is uncontrolled and the responsibility rests with the user to ensure it is in line with the authorised version on the system.

No part of this document may be reproduced without the expressed consent of the copyright holder, Eskom Holdings SOC

Limited, Reg No 2002/015527/06.

MANAGEMENT OF PROTECTED AND INDIGENOUS VEGETATION

Unique Identifier: **WTB003**

Revision: **1**

Page: **11 of 43**

<i>Leucadendron</i>	Silver tree	Silverboom (A)	77
<i>Argenteum</i>			
<i>Lumnitzera racemosa</i> var. <i>racemosa</i>	Tonga mangrove	Tonga-wortelboom (A) / Isikhaha- esibomvu (Z)	552
<i>Lydenburgia abbotii</i>	Pando bushman's Tea	Pondo-boesmanstee (A)	407
<i>Lydenburgia</i> <i>Cassinoides</i>	Sekukhuni bushman's tea	Sekukhuni-boesmanstee (A)	406
<i>Mimusops caffra</i>	Coastal red milkwood	Kusroimekhout (A) / Umtunzi (X) / Umkhakayi (Z)	583
<i>Newtonia</i> <i>hildebrandii</i> var. <i>hildebrandii</i>	Lebombo wattle	Lebombo-wattle (A) / Umtomoti (Z)	191
<i>Ocotea bullata</i>	Stink wood	Stinkhout (A) / Umhlungulu (X) / Umnukane (Z)	118
<i>Ozoroa namaquensis</i>	Gariep resin tree	Gariep-harpuisboom (A)	373.2
<i>Philenoptera violacea</i>	Apple-leaf	Appelblaar (A) / Mphata (NS) / Mhata (T) / Isihomothomo (Z)	238
<i>Pittosporum</i> <i>Viridiflorum</i>	Cheesewood	Kasuur (A) / Kgagalangwe (NS) / Umkhwenkwe -(X) / Umfusanvu (Z)	139
<i>Podocarpus</i> <i>Elongates</i>	Breede River yellowwood	Breederivier-geelhout (A)	15
<i>Podocarpus falcatus</i> (<i>Afrocarpus falcatus</i>)	Outeniqua yellowwood	Outniekwa-geelhout (A) / Mogobagoba (NS) / Umkhoba (X) / Umsonti (Z)	16
<i>Podocarpus henkelii</i>	Henkel's yellowwood	Henkel-se-geelhout (A) / Umsonti (X) / Umsonti (Z)	17
<i>Podocarpus latifolius</i>	Real yellowwood	Opregte-geelhout (A) / Mogobagoba (NS) / Umcheya (X) / Umkhoba (Z)	18
<i>Protea complanifolia</i>	Saddleback sugarbush	Barberton-sukkerbos (A)	88
<i>Protea curvata</i>	Serpentine sugarbush	Serpentynsukkerbos (A)	88.1
<i>Prunus Africana</i>	Red stinkwood	Rooi-stinkhout (A) / Umkhahase (X) / Umdumezulu (Z)	147
<i>Pterocarpus angolensis</i>	Wild teak	Klaat (A) / Moroti (NS) / Mokwa (T) / Mutondo (V) / Umvangazi (Z)	236
<i>Rhizophora mucronata</i>	Red mangrove	Rooi-wortelboom (A) / Isikhangathi (X) / Umhlume (Z)	526
<i>Scelerocarya birrea</i> subsp. <i>Caffra</i>	Manula	Marcela (A) / Morula (NS) / Morula (T) / Umganu (Z)	360
<i>Securidaca</i> <i>Longepedunculata</i>	Violet tree	Krinkhout (A) / Mmaba (T)	303
<i>Sideroxylon inerme</i> subsp. <i>Inerme</i>	White milkwood	Wit-melkhout (A) / Ximafana (X) / Umnukhwelafingane (Z)	579
<i>Tephrosia pondoensis</i>	Pando poison pea	Pondo-gifertjie (A)	226.1
<i>Warburgia salutaris</i>	Pepper-bark tree	Peperbasboom (A) / Mol aka (NS) / Mulianga (V) / Isibaha (Z)	488
<i>Widdingtonia</i> <i>Cedarbergensis</i>	Clanwilliam cedar	Clanwilliam-seder (A)	19
<i>Widdingtonia</i> <i>Schwarzii</i>	Willowmore cedar	Baviaanskloof-seder (A)	21

CONTROLLED DISCLOSURE

When downloaded from the document management system, this document is uncontrolled and the responsibility rests with the user to ensure it is in line with the authorised version on the system.

No part of this document may be reproduced without the expressed consent of the copyright holder, Eskom Holdings SOC Limited, Reg No 2002/015527/06.

Annexure B

Listing of Champion Trees

(as per GG 33614, GN 890, 15 October 2010)

CHAMPION TREES NOMINATION REGISTER NUMBER	Tree Species / Tree Name	Other Common Names	General Description	Location (Province/ District/ Farm /Town/ Suburb/ Street/ Property Registration names or appropriate co-ordinates where available)
10	Podocarpus falcatius (Outeniqua yellowwood) "King Edward, VII Tree"	Outeniekwa geelhout (A) 1 Mogôbagôba (Sep) / Umkhoba (X) / Umsonti (Z)	Largest accessible Ouleniqua yellowwood in SA	Diepwalle State forest, Knysna, Western Cape
31.	Sideroxylon inermis (milkwood)	Melkhout (A) / Ximifana (X) 1 Umakhwelaqingga ne (Z)	Largest milkwood in SA, estimated to be about 1000 years old	Langbos farm 8 km northwest of Stilbaai, Western Cape S 34° 22.30' E 21° 24'
32	Sideroxylon inermis (milkwood) Mossel Bay "Post office tree"	Melkhout (A) / Ximifana (X) 1 Umakhwelaqingga ne (Z)	Historic tree believed to have been the tree in which an old shoe was placed for exchange of messages by Portuguese seafarers in the 16 th century	Dias Museum, Mossel Bay, Western Cape S 34° 10.81' E 22° 8.48'
33.	Cinnamomum camphora (Camphor tree) * The Vergelegen trees"	Kanferboom (A)	Historic trees planted more than 3 centuries ago by Governor WA van der Stel -very large trees with large landscape impact	Vergelegen Estate, Somerset West, Western Cape S 34° 4.61' E 18° 53.38'
49.	Araucaria heterophylla (Norfolk Island Pine)	Norfolkkeiland den (A)	Tallest Norfolk Island Pine planted in 1826 by wife of last landrost of Stellenbosch.	Theological Seminary, Stellenbosch University, Stellenbosch, Western Cape S 33° 56.32' E 18° 51.86'
50.	Eucalyptus camaldulensis (River red gum)	Rooibloekom (A)	Planted in 1880. Prominent tree providing shade for an entire informal market.	Bergzicht market square, Stellenbosch, Western Cape S 33° 55.95' E 18° 51.51'

CONTROLLED DISCLOSURE

When downloaded from the document management system, this document is uncontrolled and the responsibility rests with the user to ensure it is in line with the authorised version on the system.

No part of this document may be reproduced without the expressed consent of the copyright holder, Eskom Holdings SOC

Limited, Reg No 2002/015527/06.

MANAGEMENT OF PROTECTED AND INDIGENOUS VEGETATION

Unique Identifier: **WTB003**

Revision: **1**

Page: **13 of 43**

51.	Quercus robur English Oak	Engelse Elk (A)	Planted in 1812. One of only 5 oak trees remaining from the previous generation of planted oak trees.	6 Ryneveld Street, Stellenbosch, Western Cape S 330 56.29' E 180 51.79'
60.	Quercus robur English Oak	Engelse Elk (A)	One of the biggest oaks in the district, located at a historic farmhouse of an old wine estate.	Zandvliet Delta Farm, Franschhoek, Western Cape S 330 51.78' E 180 59.42'
83.	Podocarpus falcatus (Outeniqua yellowwood) "Woodville Big Tree"	Outeniekwa geelhout (A)/ Mogôbagôba (Sep) / Umkhoba (X)/ Umsonti (Z)	One of the largest yellowwoods in the Knysna forests, receiving substantial numbers of visitors.	Bergplaas State forest, Collin's Hoek, Western Cape S 330 56.04' E 220 38.72'
89.	Quercus robur (English oak) "Slave tree"	Engelse Elk (A)	Very large oak tree planted in 1811 - one of the biggest in the southern hemisphere.	George Tourism Bureau, 124 York Street, George, Western Cape

CONTROLLED DISCLOSURE

When downloaded from the document management system, this document is uncontrolled and the responsibility rests with the user to ensure it is in line with the authorised version on the system.

No part of this document may be reproduced without the expressed consent of the copyright holder, Eskom Holdings SOC

Limited, Reg No 2002/015527/06.

Hard copy printed on: 25 November 2013

Annexure C
Schedule 3 of Endangered Flora
In terms of Cape Nature and Environmental Conservation Ordinance NO. 19 OF 1974

(The scientific names shown in the third column are the species of the family under which they appear)

Common name(Where known)	Scientific name
Family: APOCYNACEAE	<i>Pachypodium namaquanum</i>
Halfmens	
Family: GESNERIACEAE	<i>Charadrophila capensis</i>
Cape Gloxinia	
Family: LILIACEAE	<i>Aloe pillansii</i>
	<i>Aloe buhrii</i>
	<i>Aloe etinacea</i>
Family: PROTEACEAE	<i>Mimetes capitulatus</i>
	<i>Mimetes hottentoticus</i>
	<i>Mimetes stokoei</i>
Mountain Rose	<i>Orothamnus zeyheri</i>
	<i>Protea odorata</i>
Family: STANGERIACEAE	<i>Stangeria eriopus</i>
Bobbejaankos	
Family: ZAMIACEAE	<i>Encephalartos spp.</i>
Cycad Broodboom	

CONTROLLED DISCLOSURE

When downloaded from the document management system, this document is uncontrolled and the responsibility rests with the user to ensure it is in line with the authorised version on the system.

No part of this document may be reproduced without the expressed consent of the copyright holder, Eskom Holdings SOC

Limited, Reg No 2002/015527/06.

SCHEDULE 4 - PROTECTED FLORA

(The scientific names shown in the third column are the species of the family under *

<u>Common name (where known)</u>	<u>Scientific name</u>
Family: AMARILLIDACEAE	
All species	
Family: APOCYNACEAE	
All species except those specified in Schedule 3	<i>Pachypodium</i> spp.
Family: AQUIFOLIACEAE	
Cape Holly	<i>Ilex mitis</i>
Family: ARACEAE	
Yellow Arum Lily	<i>Zantedeschia eliioides</i>
Family: ASCLEPIADACEAE	
All species	
Family: BORAGINACEAE	
Family: BRUNIACEAE	<i>Echistachys spicata</i>
All species	
Family: COMPOSITAE	
Family: CRASSULACEAE	
Koesnaatjie	<i>Senecio coleophyllus</i>
Pointed-leaf Crassula	<i>Cithula duckiniae</i>
	<i>Crassula columnaris</i>
	<i>Crassula perforata</i>
	<i>Crassula pyramidalis</i>
	<i>Kalanchoe thyrsiflora</i>
	<i>Rochia coctinea</i>
Red Crassula	<i>Curatella capensis</i>
Family: CUNONIACEAE	<i>Platyphacus trifolatus</i>
Root-els	
Family: DIOSCOREACEAE	<i>Tesiodonaria sylvatica</i>
Elephant's Foot	<i>Tesiodonaria elephantipes</i>

CONTROLLED DISCLOSURE

When downloaded from the document management system, this document is uncontrolled and the responsibility rests with the user to ensure it is in line with the authorised version on the system.

No part of this document may be reproduced without the expressed consent of the copyright holder, Eskom Holdings SOC

Limited, Reg No 2002/015527/06.

Family: ERICACEAE

All species

Family: EUPHORBIACEAE

Euphorbia buxifoliosa

Euphorbia fasciculata

Euphorbia globosa

Euphorbia hartii

Euphorbia meliiformis

Euphorbia obesa

Euphorbia schorelandii

Euphorbia symmephica

Euphorbia valida

Kaffir Hut

Kaffir Hut

Family: GEISSOLOMACEAE

All species

Family: GESNERIACEAE

Cape Primrose, also known as Rexia, Nodding

Bell, Twin Sisters or Wild Gloxinia

All species of the genus *Streptocarpus*

Family: GRAMINEAE

Mountain Bamboo

Wild Rye Grass

Family: GRUBBIACEAE

All species

Family: IRIDACEAE

All species

Family: LEGUMINOSAE

Tamboekie Thorn

Erythrina acanthocarpa

Erythrina fumea

Liparia comartha

Liparia spheerica

Liparia splendens

Podalyria calyptrata

Prostheya vestita

Klipbom

Orange Nodding Head, also known as Mountain Dahlia

Wild Sweet Pea

CONTROLLED DISCLOSURE

When downloaded from the document management system, this document is uncontrolled and the responsibility rests with the user to ensure it is in line with the authorised version on the system.

No part of this document may be reproduced without the expressed consent of the copyright holder. Eskom Holdings SOC

Limited, Reg No 2002/015527/06.

Silver Pea Family: LILIACEAE All species of the genus ALOE except those specified in Schedule 3 and the species Aloe ferox	<i>Priestleya tomentosa</i> <i>Gasteria beckeri</i> <i>Gloriosa superba</i> All species of the genus HAWORTHIA All species of the genus KRIPSCHIA All species of the genus Lachenalia <i>Sandersonia duranharza</i> All species of the genus Veltheimia <i>Agapanthus walshii</i> <i>Dalbergia aurea</i>
Gloriosa Lily, also known as Turk's Cap, Haworthia, also known as Window Plant Red-hot Poker Climbing Bells Christmas Bells Forest Lily	<i>Nymphaea capensis</i> All species of the genus <i>Synedrella</i> <i>Nymphaea capensis</i> <i>Oxalis melanos</i> Herpogophyllum Procumbens
Family: MELIACEAE Chinese Lantern Family: MESEMBRYANTHEMACAEAE All species Family: MALSACEAE	
Family: NYMPHAEACEAE Blue Water-lily Family: ORCHIDACEAE All species Family: OXALIDACEAE Water-suring Family: PENTACEAE All species Family: PEDALIACEAE Grapple Plant	

[Grapple Plant added by Proc 25, 22 September 2003]

CONTROLLED DISCLOSURE

When downloaded from the document management system, this document is uncontrolled and the responsibility rests with the user to ensure it is in line with the authorised version on the system.

No part of this document may be reproduced without the expressed consent of the copyright holder, Eskom Holdings SOC Limited, Reg No 2002/015527/06.

**MANAGEMENT OF PROTECTED AND INDIGENOUS
VEGETATION**

Unique Identifier: **WTB003**

Revision: **1**

Page: **18 of 43**

Family: POLYGALACEAE	<i>Muraña murua</i>
Family: POLYPODIACEAE	All species of the genus <i>Adiantum</i>
Maidenhair Fern	<i>Hemitelia capensis</i>
Tree Ferns	<i>Polystichum adiantiforme</i>
Seven Weeks Fern	
Family: PORTULACACEAE	
Love-plant	
Family: PROTEACEAE	All species of the genus <i>Anacampsesos</i>
All species except those specified in Schedule 3	
Family: RANUNCULACEAE	
Anemone	<i>Anemone capensis</i>
Family: RESTIONACEAE	
	All species of the genus <i>Chondropetalum</i>
Family: RETZIACEAE	<i>Arctostaphylos</i>
	<i>Elegia fernstrata</i>
Family: RHAMNACEAE	<i>Restio arctostaphylos</i>
Family: KORIDULACEAE	<i>Restio mitchellii</i>
All species	<i>Restio subulatus</i>
Family: SCROPHULARIACEAE	
Harveya	<i>Retzia capensis</i>
Nemesia	<i>Phytolacca pubescens</i>
Family: THYMELAEACEAE	
	All species of the genus <i>Dialia</i>
	All species of the genus <i>Harveya</i>
	<i>Nemesia strumosa</i>
	All species of the genus <i>Halleria</i>
	<i>Lactuca aurea</i>

CONTROLLED DISCLOSURE

When downloaded from the document management system, this document is uncontrolled and the responsibility rests with the user to ensure it is in line with the authorised version on the system.

No part of this document may be reproduced without the expressed consent of the copyright holder, Eskom Holdings SOC Limited, Reg No 2002/015527/06.

Annexure D
DECLARED WEEDS AND INVADER PLANTS
In terms of Regulation 15 of Conservation of Agricultural Resource Act, 1983
(ACT 43 OF 1983)

Kind of plant				
Western Cape?	Botanical Name	Common Name	Type	Category
Y	Acacia baileyana F.Muell.	Bailey's wattle	Invader	3
Y	Acacia cyclops A.Cunn.ex G.Don.	Red eye	Invader	2
Y	Acacia dealbata Link	Silver wattle	Weed	Category 1 in the Western Cape, category 2 in the rest of South Africa
Y	Acacia elata A.Cunn. ex Benth. (A. Terminalis missapplied in South Africa)	Pepper tree wattle	Invader	3
Y	Acacia implexa Benth.	Screw-pod wattle	Weed	1
Y	Acacia longifolia (Andr.) Willd.	Long-leaved wattle	Weed	1
Y	Acacia meansii De Wild.	Black wattle	Invader	2
Y	Acacia melanoxylon R.Br.	Australian blackwood	Invader	2
Y	Acacia paradoxa DC. (=A. armata R.Br.)	Kangaroo wattle	Weed	1
Y	Acacia podalyrifiolia A.Cunn. ex G.Don	Pearl acacia	Invader	3
Y	Acacia pycnantha Benth.	Golden wattle	Weed	1
Y	Acacia saligna (Labill.) H.L. Wendl.	Port Jackson willow	Invader	2
Y	Achyranthes aspera L.	Burweed	Weed	1
Y	Agave sisalana Perrine	Sisal hemp, sisal	Invader	2
Y	Ageratina adenophora (Spreng.) R.M.King & H.Rob. (=Eupatorium adenophorum Spreng.)	Crofton weed	Weed	1
Y	Ageratina riparia (Regel) R.M.King & H. Rob. (=Eupatorium riparium Regel)	Mistflower	Weed	1
Y	Ageratum conyzoides L.	Invading ageratum	weed	1
Y	Ageratum houstonianum Mill Excluding cultivars	Mexican ageratum	Weed	1
Y	Alantulus altissima (Mill.) Swingle	Tree-of-heaven	Invader	3

CONTROLLED DISCLOSURE

When downloaded from the document management system, this document is uncontrolled and the responsibility rests with the user to ensure it is in line with the authorised version on the system.

No part of this document may be reproduced without the expressed consent of the copyright holder, Eskom Holdings SOC Limited, Reg No 2002/015527/06.

Y	Alhagi maurorum Medik. (=A. camelorum Fisch.)	Camel thorn bush	Weed	1
Y	Anredera cordifolia (Ten.) Steenis (A. baselloides (Kunth) Baill. misapplied in South Africa)	Madera vine, Bridal wreath	Weed	1
Y	Araya sericea Brot.	Moth catcher	Weed	1
Y	Argemone ochroleuca Sweet subsp. Ochroleuca (=A. subuliformis G.B. Ownbey)	White-flowered mexican poppy	Weed	1
Y	Arundo donax L.	Giant reed, Spanish reed	Weed	1
Y	Atriplex lindleyi Moq. Subsp. linifolia (F. Muill.) P.G. Wilson	Sponge-fruit saltbush	Invader	3
Y	Atriplex nummularia Lindl. Subsp. Nummularia	Old man saltbush	Invader	2
Y	Azolla filiculoides Lam.	Azolla, red water fern	Weed	1
Y	Canna indica L. Excluding hybrid cultivars	Indian shot	Weed	1
Y	Casuarina cunninghamiana Miq.	Beefwood	Invader	2
Y	Casuarina equisetifolia L.	Horsetail tree	Invader	2
Y	Cereus jamaican DC. (C. peruvianus misapplied in South Africa)	Queen of the night	Weed	1
Y	Cestrum aurantiacum Lindl.	Yellow or Orange cestrum	Weed	1
Y	Cestrum laevigatum Schtdl.	Inkberry	Weed	1
Y	Cestrum parqui L. Her	Chilean cestrum	Weed	1
Y	Cinnamomum camphora (L.) J. Presl	Camphor tree	Weed	Category 1 plant only in the Northern Province, KwaZulu-Natal And Mpumalanga
Y	Cirsium vulgare (Savi) Ten. (= C. lanceolatum Scop.)	Spear thistle, Scotch thistle	Weed	1
Y	Convolvulus arvensis L.	Field bindweed, wild morning-glory	Weed	1
Y	Cortaderia jubata (Lam.) Stapf	Pampas grass	Weed	1
Y	Cortaderia selloana (Schult.) Asch. & Graebn. Excluding sterile cultivars	Pampas grass	Weed	1
Y	Cotoneaster pannosus Franch.	Silver-leaf cotoneaster	Invader	3
Y	Cuscuta campestris Yunc.	Common dodder	Weed	1
Y	Cuscuta suaevoleus Ser.	Lucerne dodder	Weed	1

CONTROLLED DISCLOSURE

When downloaded from the document management system, this document is uncontrolled and the responsibility rests with the user to ensure it is in line with the authorised version on the system.

No part of this document may be reproduced without the expressed consent of the copyright holder, Eskom Holdings SOC Limited, Reg No 2002/015527/06.

Y	Cytisus monspessulanus L. (= C. candicans (L.) DC., Genista monspessulana (L.) L.Johnson)	Montpellier broom	Weed	1
Y	Datura ferox L.	Large thorn apple	Weed	1
Y	Datura innoxia Mill.	Downy thorn apple	Weed	1
Y	Datura stramonium L.	Common thorn apple	Weed	1
Y	Echinopsis spachiana (Lem.) Friedrich & Rowley (= Trichocereus spachianus (Lem.) Riccob.)	Torch cactus	Weed	1
Y	Echium platagineum L. (= E. lycopsis L.)	Patterson's curse	Weed	1
Y	Echium vulgare L.	Blue echium	Weed	1
Y	Eichhornia crassipes (C.Mart.) Solms	Water hyacinth	Weed	1
Y	Eriobotrya japonica (Thunb.) Lindl.	Loquat	Invader	3
Y	Eucalyptus camaldulensis Dehn.	Red river gum	Invader	2
Y	Eucalyptus cladocalyx F.Muell.	Sugar gum	Invader	2
Y	Eucalyptus diversicolor F.Muell.	Karr	Invader	2
Y	Eucalyptus grandis W.Hill ex Maiden (E. saligna Sm. (p.p.)	Saligna gum, Rose gum	Invader	2
Y	Eucalyptus lehmannii (Schauer) Benth.	Spider gum	Weed	Category 1 plant in the Western Cape, Category 2 plant in the rest of South Africa
Y	Grevillea robusta A.Cunn. ex R.Br.	Australian silky oak	Invader	3
Y	Hakea drupacea (C.F.Gaertn.) Roem. & Schult. (= H. suaveolens R.Br.)	Sweet hakea	Weed	1
Y	Hakea gibbosa (Sm.) Cav.	Rock hakea	Weed	1
Y	Hakea sericea Schrad. & J.C.Wendl.	Silky hakea	Weed	1
Y	Harrisia martinii (Labour.) Britton & Rose (= Eriocereus martinii (Labour.) Riccob.)	Moon cactus, Harrisia cactus	Weed	1
Y	Hedychium coronarium J. König	White ginger lily	Weed	1
Y	Hedychium flavescens Roscoe	Yellow ginger lily	Weed	1
Y	Hypericum perforatum L.	St John's Wort, Tipton Weed	Invader	2
Y	Ipomoea indica (Burm.f.) Merr. (=I. Congesta R.Br.)	Morning glory	Weed	Category 1 plant in the Northern province, K wazulu Natal and Mpumalanga, Category 3 plant in the

CONTROLLED DISCLOSURE

When downloaded from the document management system, this document is uncontrolled and the responsibility rests with the user to ensure it is in line with the authorised version on the system.

No part of this document may be reproduced without the expressed consent of the copyright holder, Eskom Holdings SOC

Limited, Reg No 2002/015527/06.

				rest of South Africa
Y	<i>Ipomoea purpurea</i> (L.) Roth	Morning glory	Invader	3
Y	All seed producing species or seed producing hybrids of <i>Lantana</i> that are non-indigenous to Africa	<i>Lantana</i> , Tickberry, Cherry pie	Weed	1
Y	<i>Lepidium draba</i> L. (= <i>Cardaria draba</i> (L.) Desv.)	Pepper-cress, Hoary <i>cardaria</i> , White top	Weed	1
Y	<i>Leptospermum laevigatum</i> (Gaertn.) F.Muell.	Australian myrtle	Weed	1
Y	<i>Lythrum salicaria</i> L.	Purple loosestrife	Weed	1
Y	<i>Melia azedarach</i> L.	"Syringa", Persian lilac	Invader	3
Y	<i>Metrosideros excelsa</i> Sol. ex Gaertn. (= <i>M. tomentosa</i> A.Rich.)	New Zealand christmas tree	Invader	3
Y	<i>Morus alba</i> L. Excluding cultivar 'Pendula'	Whitemulberry, Common mulberry	Invader	3
Y	<i>Myoporum laetifolium</i> G.Forst. subsp. <i>montanum</i> (R.Br.) Chinnock (= <i>M. montanum</i> R.Br.) (<i>M. acuminatum</i> misapplied in South Africa)	Manatoka	Invader	3
Y	<i>Myriophyllum aquaticum</i> (Vell.) Verde.	Parrot's feather	Weed	1
Y	<i>Myriophyllum spicatum</i> L.	Spiked water-milfoil	Weed	1
Y	<i>Nassella trichotoma</i> (Nees) Arech. (= <i>Stipa trichotoma</i> Nees)	<i>Nassella</i> tussock	Weed	1
Y	<i>Nephtrolepis exaltata</i> (L.) Schott (= <i>Polypodium exaltatum</i> L.) Excluding cultivars	Sword fern	Invader	3
Y	<i>Nerium oleander</i> L. Excluding sterile, double-flowered cultivars	Oleander	Weed	1
Y	<i>Nicotiana glauca</i> Graham	Wild tobacco	Weed	1
Y	<i>Opuntia exaltata</i> A.Berger (= <i>Austrocylindropuntia exaltata</i> (A.Berger) Backeb.)	Long spine cactus	Weed	1
Y	<i>Opuntia ficus-indica</i> (L.) Mill. (= <i>O. megacantha</i> Salm-Dyck) Excluding all spineless cactus pear cultivars and selections	Mission prickly pear, Sweet prickly pear	Weed	1
Y	<i>Opuntia fulgida</i> Engelm. (<i>O. rosea</i> misapplied in South Africa.)	Rosea cactus	Weed	1

CONTROLLED DISCLOSURE

When downloaded from the document management system, this document is uncontrolled and the responsibility rests with the user to ensure it is in line with the authorised version on the system.

No part of this document may be reproduced without the expressed consent of the copyright holder, Eskom Holdings SOC Limited, Reg No 2002/015527/06.

Y	<i>Opuntia humifusa</i> (Raf.) Rat. (<i>O. compressa</i> (Salisb.) J.Macbr. illegitimate)	Large flowered prickly pear, Creeping prickly pear	Weed	1
Y	<i>Opuntia imbricata</i> (Haw.) DC. (= <i>Cylindropuntia imbricata</i> (Haw.) Knuth)	Imbricate cactus, Imbricate prickly pear	Weed	1
Y	<i>Opuntia lindheimeri</i> Engelm. (= <i>O. tardospina</i> Griffiths)	Small round- leaved prickly pear	Weed	1
Y	<i>Opuntia monacantha</i> Haw. (<i>O. vulgaris</i> Mill. misapplied)	Cochineal prickly pear, Drooping prickly pear	Weed	1
Y	<i>Opuntia stricta</i> (Haw.) Haw. (= <i>O. dilemnii</i> (Ker Gawl.) Haw.)	Pest pear of Australia	Weed	1
Y	<i>Orobanche minor</i> Sm.	Lesser broomrape, Clover broomrape	Weed	1
Y	<i>Paraserianthes lophantha</i> (Willd.) Nielsen (= <i>Albizia</i> <i>lophantha</i> (Willd.) Benth.)	Australian Albizia, Stink bean	Weed	1
Y	<i>Passiflora caerulea</i> L.	Blue passion flower	Weed	1
Y	<i>Passiflora mollissima</i> (Knuth) L.H. Bailey	Banana poka, Banana dilla	Weed	1
Y	<i>Pennisetum setaceum</i> (Forssk.) Chiov. Excluding sterile cultivar 'Rubrum'	Fountain grass	Weed	1
Y	<i>Pennisetum villosum</i> R.Br. ex Fresen.	Feathertop	Weed	1
Y	<i>Pereskia aculeata</i> Mill.	Barbados gooseberry	Weed	1
Y	<i>Phytolacca dioica</i> L.	Belhambra	Invader	3
Y	<i>Pinus canariensis</i> C. Sm.	Canary den	Invader	2
Y	<i>Pinus halepensis</i> Mill.	Aleppo pine	Invader	2
Y	<i>Pinus pinaster</i> Aiton	Cluster pine	Invader	2
Y	<i>Pinus radiata</i> D. Don	Radiata pine, Monterey pine	Invader	2
Y	<i>Pistia stratiotes</i> L.	Water lettuce	Weed	1
Y	<i>Pitiosporum undulatum</i> Vent.	Australian cheesewood, Sweet pitiosporum	Weed	1
Y	<i>Plectranthus comosus</i> Sims (= <i>Coleus grandis</i> Cramer) (<i>Plectranthus barbatus</i> Andr. Misapplied in South Africa)	"Abyssinian" coleus, Woolly plectranthus	Invader	3
Y	<i>Populus alba</i> L.	White poplar	Invader	2
Y	<i>Populus x canescens</i> (Aiton) Sm.	Grey poplar, Matchwood poplar	Invader	2

CONTROLLED DISCLOSURE

When downloaded from the document management system, this document is uncontrolled and the responsibility rests with the user to ensure it is in line with the authorised version on the system.

No part of this document may be reproduced without the expressed consent of the copyright holder, Eskom Holdings SOC

Limited, Reg No 2002/015527/06.

MANAGEMENT OF PROTECTED AND INDIGENOUS VEGETATION

Unique Identifier: **WTB003**
Revision: **1**
Page: **24 of 43**

Y	<i>Prosopis glandulosa</i> Torr. Var. <i>torreyana</i> (Benson) Johnston and hybrids	Honey mesquite	Invader	2
Y	<i>Prosopis velutina</i> Wootton and hybrids	Velvet mesquite	Invader	2
Y	<i>Psidium guajava</i> L. and hybrids	Guava	Invader	2
Y	<i>Pyracantha angustifolia</i> (Franch.) C.K.Schneid. Excluding cultivars	Yellow firethorn	Invader	3
Y	<i>Ricinus communis</i> L.	Castor-oil plant	Invader	2
Y	<i>Robinia pseudoacacia</i> L.	Black locust	Invader	2
Y	<i>Rorippa nasturtium-aquaticum</i> (L.) Hayek (= <i>Nasturtium officinale</i> R.Br.)	Watercress	Invader	2
Y	<i>Rosa rubiginosa</i> L. (= <i>R. eglanteria</i> L.)	Eglantine, Sweetbriar	Invader	1
Y	<i>Rubus fruticosus</i> L. agg.	European blackberry	Invader	2
Y	<i>Salix babylonica</i> L. (not to be confused with the indigenous <i>S. mucronata</i> Thunb. (= <i>S. capensis</i> , <i>S. subserata</i> , <i>S. woodii</i>)	Weeping willow	Invader	2
Y	<i>Salix fragilis</i> L. (not to be confused with the indigenous <i>S. mucronata</i> Thunb. (= <i>S. capensis</i> , <i>S. subserata</i> , <i>S. woodii</i>)	Crack or brittle willow	Invader	2
Y	<i>Salvinia molesta</i> D.S.Mitch. and other species of the Family <i>Salvinaceae</i>	Kariba weed	Weed	1
Y	<i>Schinus terebinthifolius</i> Raddi	Brazilian pepper tree	Weed	category 1 in KwaZulu-Natal, Category 3 in the rest of South Africa
Y	<i>Senna didymobotrya</i> (Fresen.) Irwin & Barneby (= <i>Cassia didymobotrya</i> Fresen.)	Peanut butter cassia	Invader	3
Y	<i>Sesbania punicea</i> (Cav.) Benth.	Red sesbania	Weed	1
Y	<i>Solanum elaeagnifolium</i> Cav.	Silver-leaf bitter apple	Weed	1
Y	<i>Solanum mauritanium</i> Scop.	Bugweed	Weed	1
Y	<i>Solanum seafortianum</i> Andr.	Potato creeper	Weed	1
Y	<i>Sorghum halepense</i> (L.) Pers.	Johnson grass, Aleppo grass	Invader	2
Y	<i>Spartium junceum</i> L.	Spanish broom	Weed	1
Y	<i>Syzygium jambos</i> (L.) Alston	Rose apple	Invader	3
Y	<i>Tamarix chinensis</i> Lour.	Chinese tamarisk	Weed	Category 1 plant in the Northern, Western and Eastern Cape,

CONTROLLED DISCLOSURE

When downloaded from the document management system, this document is uncontrolled and the responsibility rests with the user to ensure it is in line with the authorised version on the system.

No part of this document may be reproduced without the expressed consent of the copyright holder, Eskom Holdings SOC Limited, Reg No 2002/015527/06.

			category 3 plant in the rest of South Africa
Y	Tamarix ramosissima Ledeb.	Pink tamarisk	Weed
Y	Xanthium spinosum L.	Spiny cocklebur	Weed
Y	Xanthium strumarium L.	Large cocklebur	Weed
			Category 1 plant in the Northern, Western and Eastern Cape, category 3 plant in the rest of South Africa
			1
			1

CONTROLLED DISCLOSURE

When downloaded from the document management system, this document is uncontrolled and the responsibility rests with the user to ensure it is in line with the authorised version on the system.

No part of this document may be reproduced without the expressed consent of the copyright holder, Eskom Holdings SOC

Limited, Reg No 2002/015527/06.

Hard copy printed on: 25 November 2013

ANNEXURE E

**MAPS have been developed by Land Development indicating the locations of the
Champion Trees in relation to OU power lines (ENCLOSED).**

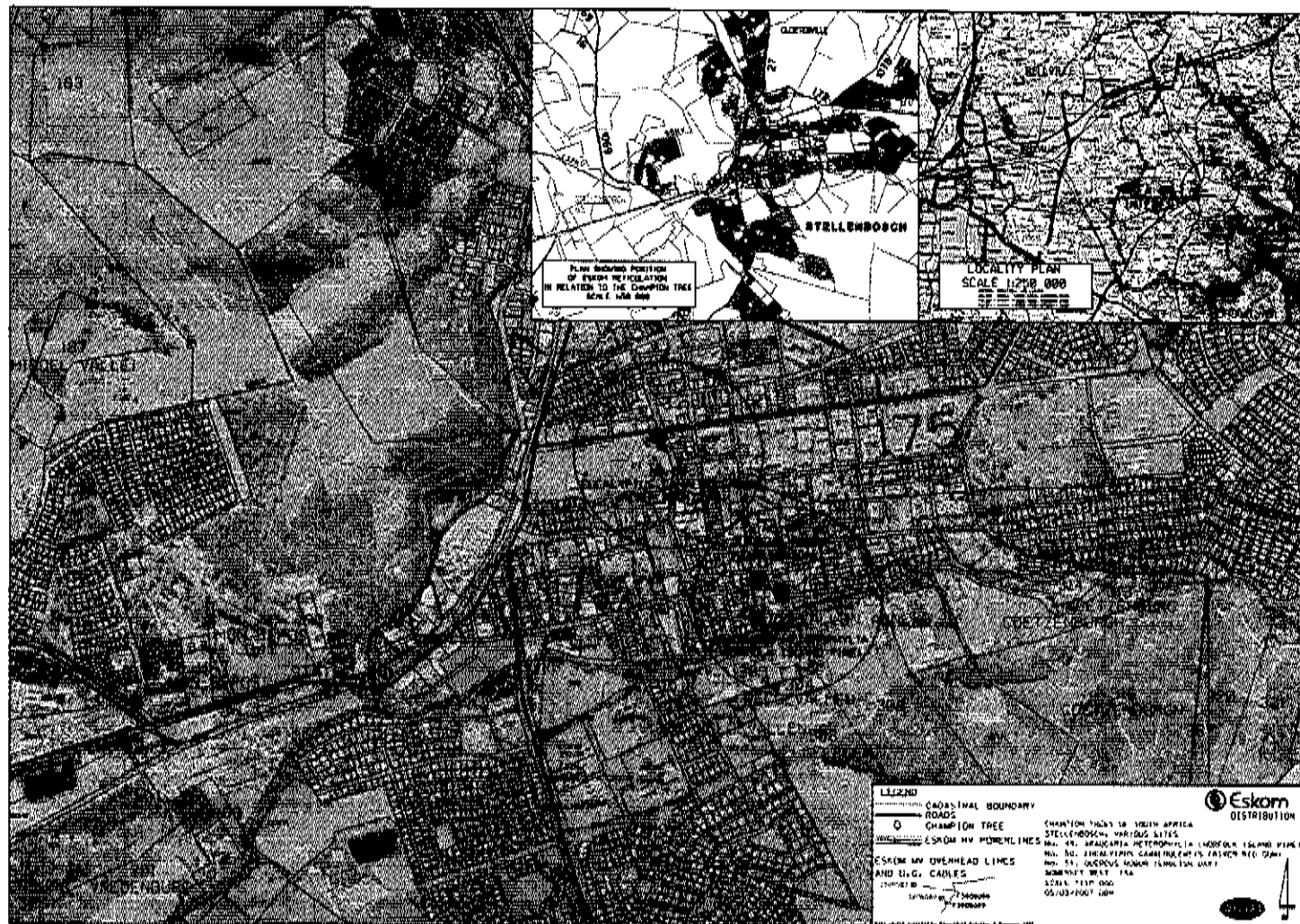
CONTROLLED DISCLOSURE

When downloaded from the document management system, this document is uncontrolled and the responsibility rests with the user to ensure it is in line with the authorised version on the system.

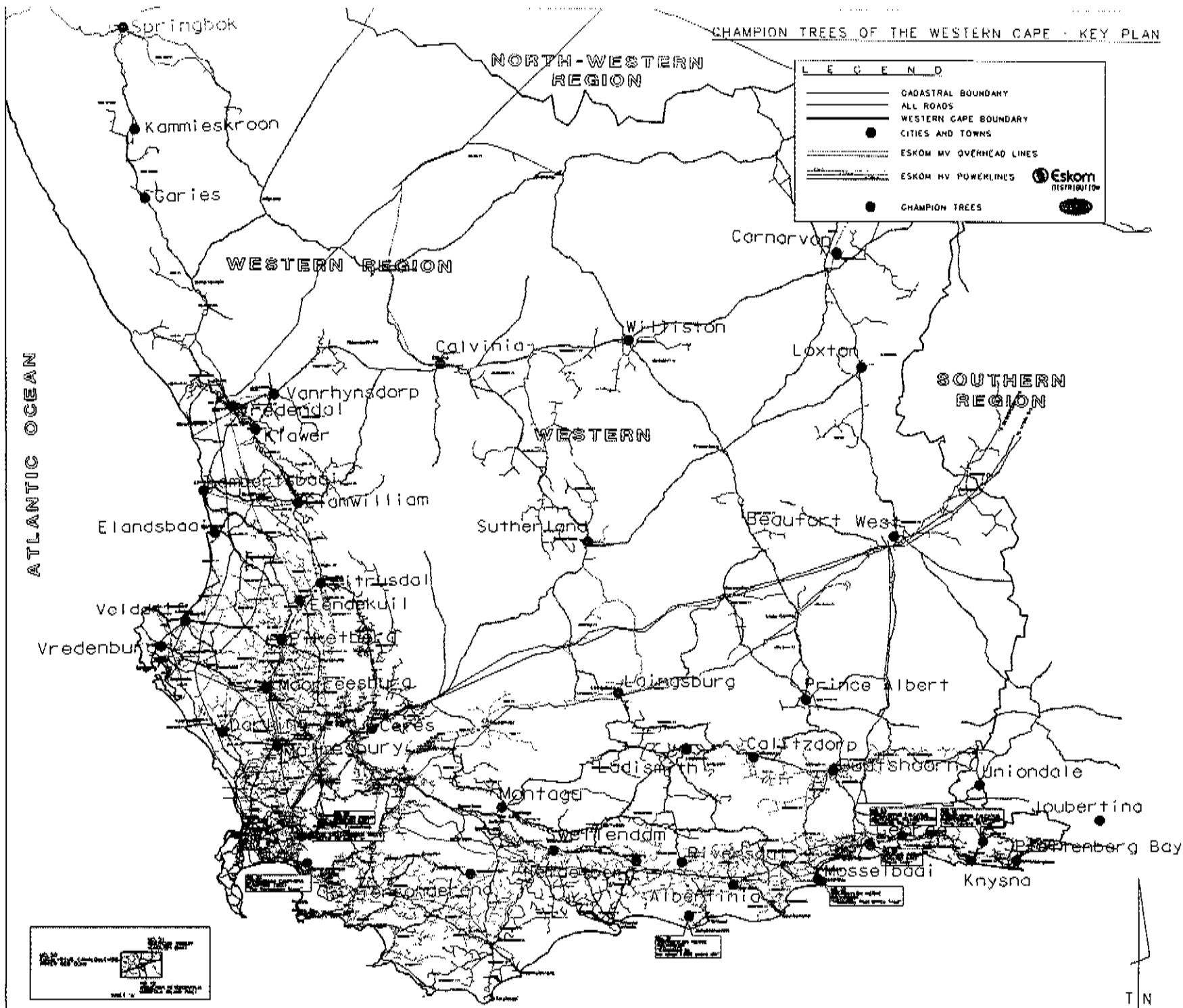
No part of this document may be reproduced without the expressed consent of the copyright holder, Eskom Holdings SOC

Limited, Reg No 2002/015527/06.








Hard copy printed on 25 November 2013



CHAMPION TREES OF THE WESTERN CAPE - KEY PLAN

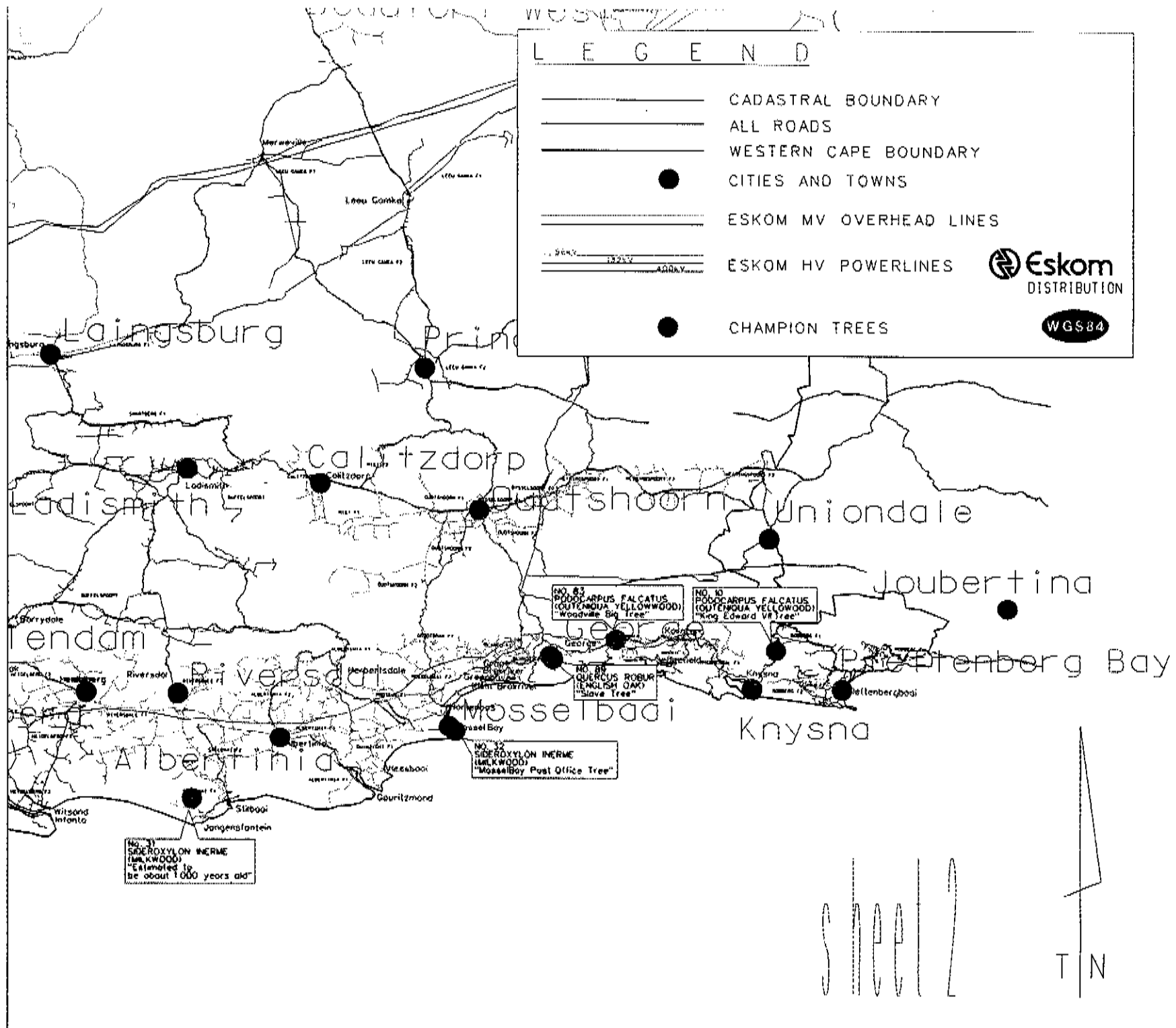


LEGEND

-  CADASTRAL BOUNDARY
-  ALL ROADS
-  WESTERN CAPE BOUNDARY
-  CITIES AND TOWNS
-  ESKOM MV OVERHEAD LINES
-  ESKOM HV POWERLINES
-  CHAMPION TREES

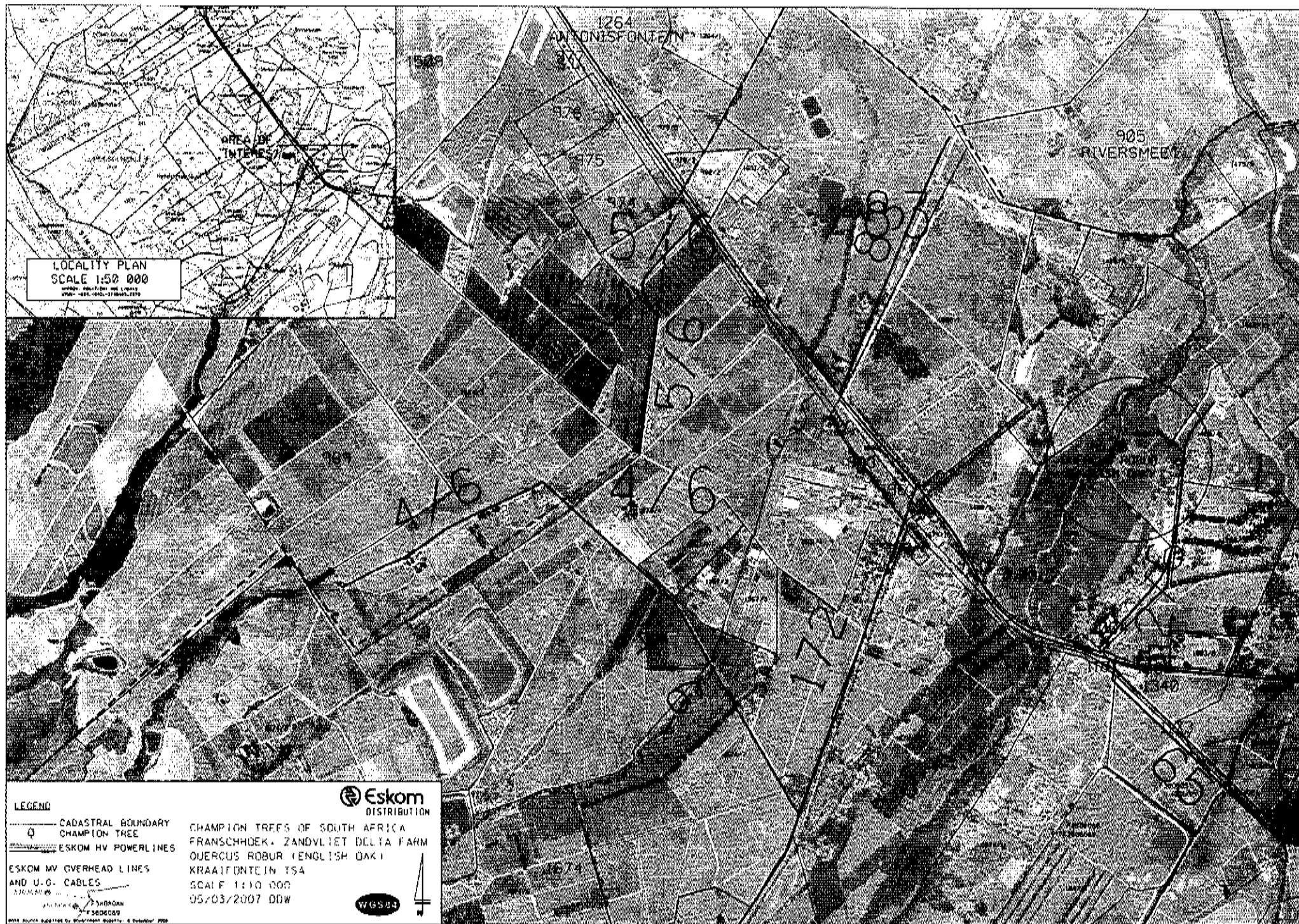
 **Eskom**
DISTRIBUTION

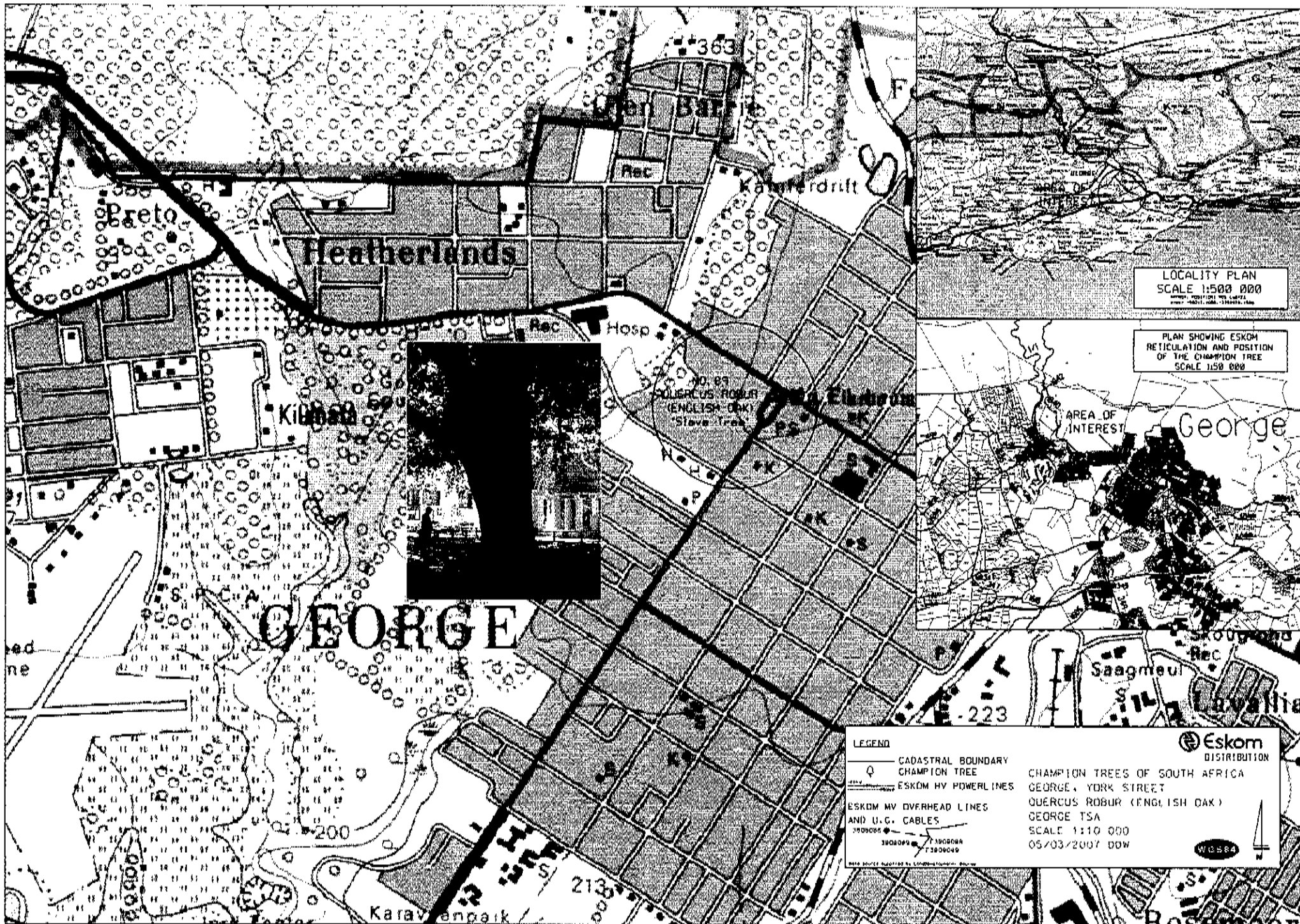
WGS84



Sheet 2







LEGEND

Q CADASTRAL BOUNDARY
CHAMPION TREE
ESKOM HV POWER LINES

ESKOM HV OVERHEAD LINES
AND U.G. CABLES

1:500 000
1:250 000
1:125 000

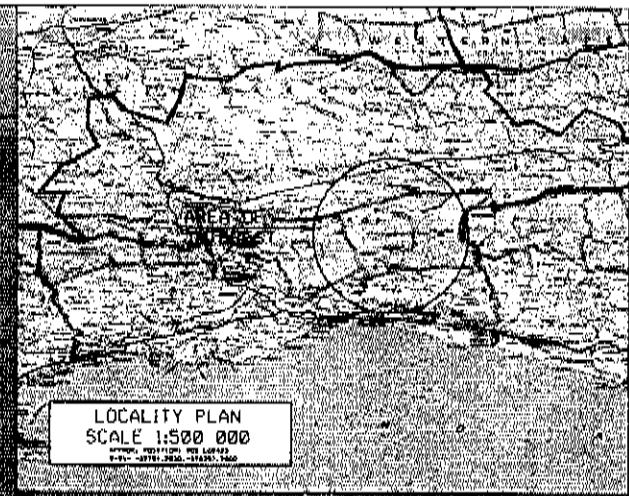
CHAMPION TREES OF SOUTH AFRICA
BERGPLAAS STATE FOREST: COLLINS HOEK
PODOCARPUS FALCATUS (OUTENIQUA YELLOWWOOD)
GEORGE TSA
SCALE 1:10 000
05/03/2007 DDM

Eskom
DISTRIBUTION

WGS 84

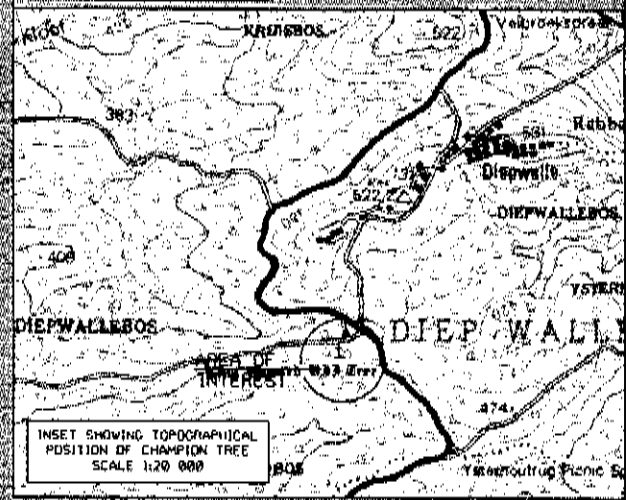


DATA SOURCES: ESKOM HV, SOUTH AFRICAN BUREAU OF SURVEY, & RECORD OF 1990

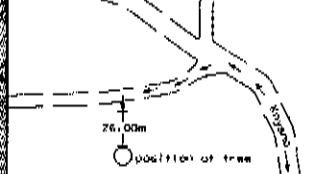




LOCALITY PLAN
SCALE 1:500,000

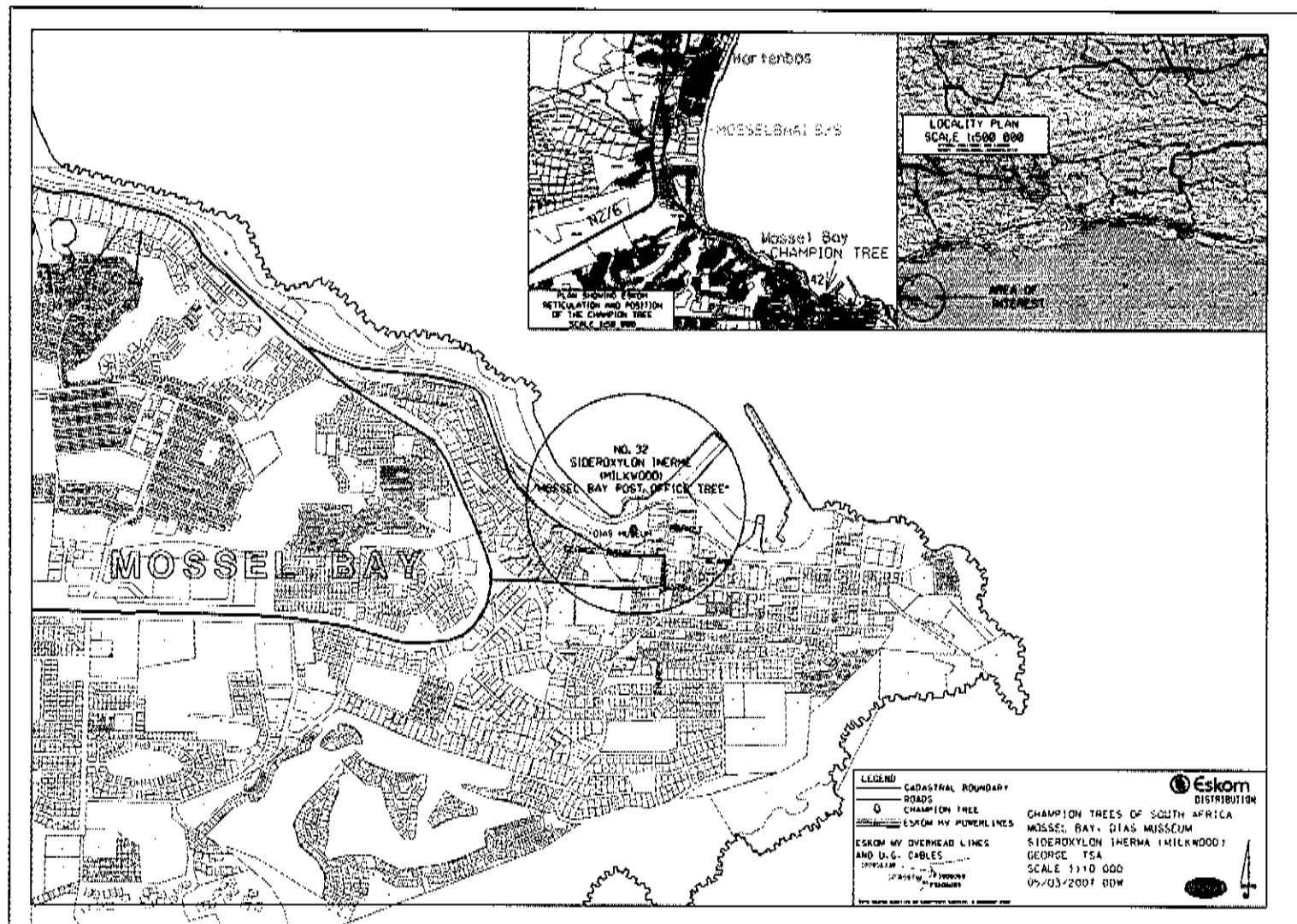


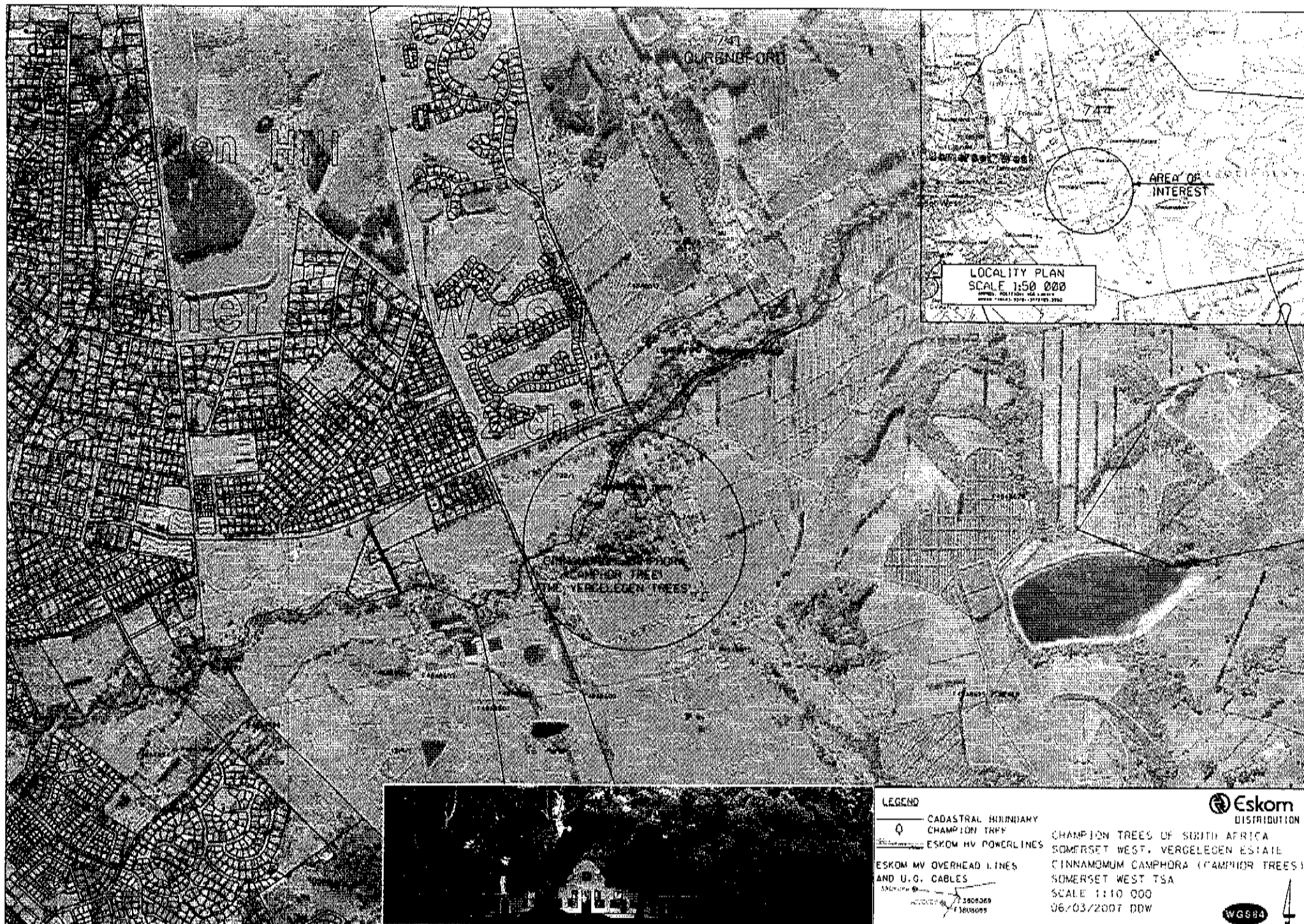
NOTE: Due to the density of this forest, the narrowest gap found is 26.00 meters away from the King Edward VII line. The surveyor physically measured the 26.00 meters. Station not to scale.

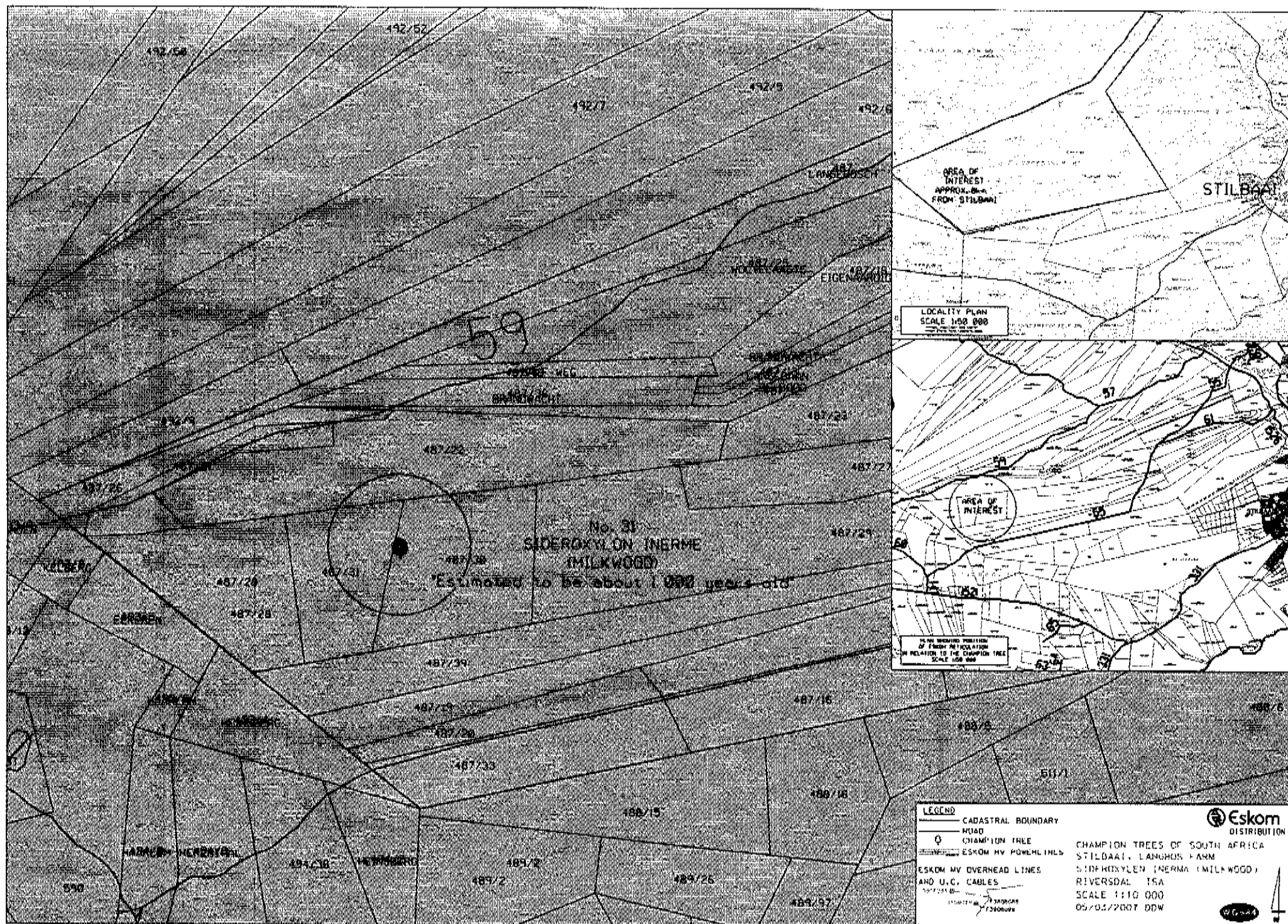


LEGEND CADASTRAL BOUNDARY CHAMPION TREE ESKOM HV POWERLINES ESKOM MV OVERHEAD LINES AND U.G. CABLES 3808080 3808085 3808090 3808095		CHAMPION TREES OF SOUTH AFRICA KNYSNA, DIEPWALLE STATE FOREST PUDOCANMUS, LAI CATHUS, LOUTENIOHA, YELLOWWOOD GEORGE TSA SCALE 1:10,000 05/03/2007 DSW	 Eskom DISTRIBUTION
--	--	---	--------------------------------------

DATA SOURCE: SUPPLIED BY KESKID Land Development, George.







ANNEXURE F
LICENCE APPLICATION FORM (INFORMATIVE)
SUBJECT TO CHANGE BY DEPT AGRICULTURE, FORESTRY & FISHERIES



**agriculture,
forestry & fisheries**

Department:
Agriculture, Forestry and Fisheries
REPUBLIC OF SOUTH AFRICA

**e) APPLICATION FOR A LICENCE REGARDING
f) PROTECTED TREES**

[SECTION 15(f) OF THE NATIONAL FORESTS ACT, 1998, AS AMENDED]

g) PLEASE READ CAREFULLY

h) This form

If you want to –

- (a) cut, disturb, damage or destroy any protected tree, or
 (b) possess, collect, remove, transport, export, purchase, sell, donate or in any other manner acquire or dispose of any protected tree, or any forest product derived from a protected tree, you must complete this form (in **PRINTED LETTERS** and **BLACK INK**) and send or deliver it to the nearest Forestry office of the Department of Agriculture, Forestry and Fisheries.

Exemptions from licensing

Certain of the abovementioned activities, or parts of a protected tree or its products, may from time to time be exempted from licensing, as published in the Government Gazette. Enquiries regarding exemptions can be made at the nearest Forestry office of the Department of Agriculture, Forestry and Fisheries.

i) Other laws

A licence issued under the National Forests Act, 1998, does not exempt you from the provisions of other laws.

If, for example –

- (a) what you want to do is identified as an activity under section 24 of the National Environmental Management Act, 1998 (Act No. 107 of 1998), or
 (b) you want to cultivate virgin soil, as covered by the Conservation of Agricultural Resources Act, 1983 (Act No. 43 of 1983), you must also get permission under those laws.

LIST OF POSSIBLE ACTIVITIES	Mark with X	Parts of form to be completed	LIST OF POSSIBLE ACTIVITIES		Mark with X	Parts of form to be completed
			Application for:			
Prune or de-limb individual trees		A, B, C	Harvest non timber produce, derived from protected trees (e.g. bark, fruit, seed)			A, B, I
Cut, destroy, and/or transplant protected trees to change the land use (e.g. convert forest to agriculture or infrastructure development)		A, B, D	Transport, move, or export non timber produce, derived from protected trees (e.g. bark, fruit, seed)			A, J
Disturb trees (e.g. by excavations for buildings or earth moving operations)		A, B, E	Transport, move, or export transplanted trees/seedlings			A, K
Selectively cut or destroy individual trees/seedlings (e.g. if you want to remove free-standing individual trees, or trees from amongst other trees)		A, B, F	Transport, move, or export timber derived from cut, damaged or destroyed protected trees			A, K
Transplant live trees/seedlings (e.g. if you want to remove free-standing		A, B, F	Purchase, receive or possess timber derived from cut,			A, L

CONTROLLED DISCLOSURE

When downloaded from the document management system, this document is uncontrolled and the responsibility rests with the user to ensure it is in line with the authorised version on the system.

No part of this document may be reproduced without the expressed consent of the copyright holder, Eskom Holdings SOC Limited, Reg No 2002/015527/06.

**MANAGEMENT OF PROTECTED AND INDIGENOUS
VEGETATION**

Unique Identifier: **WTB003**

Revision: **1**

Page: **28 of 43**

trees, or trees from amongst others)			damaged or destroyed protected trees	
Use timber derived from protected trees		A, G	Purchase, receive or possess transplanted trees/seedlings	A, L

PARTICULARS OF APPLICANT AND GENERAL INFORMATION

Indicate in the space provided below whether you are the owner of the land on which the trees occur, or of a business engaged in disposing of trees and/or their products, or whether you represent the owner of such land or business *(Mark with X)*.

Owner: ☐ Representative: ☐

If not the owner, attach proof that you are a duly authorized representative / proxy of the owner(s), and provide the following particulars of the applicant, landowner or owner(s) of a business. If applicant is also the owner, complete both applicant and land / business owner fields, but contact details need not be duplicated.

Name of applicant		
ID Number / Passport Number		
Postal address		
Residential address		
Fax number		
Telephone number		
Cellular phone number		
E-mail address		
Gender:	M	F
	Race: (Mark with X)	
	Black	White
	Coloured	Indian
ATTACH A CERTIFIED COPY OF YOUR IDENTITY DOCUMENT / PASSPORT TO THIS APPLICATION FORM		

Name of landowner		
Name of business owner		
ID Number / Passport Number		
Name of business		
Postal address		
Residential address		
Fax number		
Telephone number		
Cellular phone number		
E-mail address		
Gender:	M	F
	Race: (Mark with X)	
	Black	White
	Coloured	Indian

If relevant to the activity applying for, identify the land on which the tree or trees occur(s):

Supply detail information, e.g. province, district or town*, property names* and numbers*, name of forest, where applicable and relevant *(Marked with asterisk * is compulsory information)*

CONTROLLED DISCLOSURE

When downloaded from the document management system, this document is uncontrolled and the responsibility rests with the user to ensure it is in line with the authorised version on the system.

No part of this document may be reproduced without the expressed consent of the copyright holder, Eskom Holdings SOC Limited, Reg No 2002/015527/06.

For what period is the licence required?

B CUT, DISTURB, DAMAGE, OR DESTROY A TREE/ TREES, FROM ONE OR MORE OF THE FOLLOWING PROTECTED TREE CLASSES:

(To be completed by the owner, or his/her authorized representative, of the land on which the trees occur)

		Mark with X:	
a)	a specific individual tree	(an individually proclaimed indigenous or exotic tree)	<input type="checkbox"/>
b)	a specific group of trees	(may be indigenous or exotic)	<input type="checkbox"/>
c)	a specific woodland	(savanna or bushveld)	<input type="checkbox"/>
d)	a specific tree species	(A list of proclaimed indigenous species is gazetted annually)	<input type="checkbox"/>

[Note: Damage includes that caused by pruning or de-limbing, and bark harvesting]

[Note: Including dead trees]

[Note: Most of the applications will be for class d), where all specimens of a declared species (mostly indigenous) are protected, e.g. while milkwood or camel thorn trees]

Attach a copy of a 1: 10 000, 1:50 000 or similar suitable topo-cadastral or photographic map showing the location of the trees in the case of protected classes b) and c) above.

C PRUNE OR DE-LIMB INDIVIDUAL TREES

(To be completed by the owner, or his/her authorized representative, of the land on which the trees occur)

a) For what purpose? _____

b) Name the tree/trees: _____

c) How many trees? _____

d) Give an indication of the characteristics/size/dimensions of the tree/trees (e.g. multi-/ single-stemmed, shrub/tree, stunted, deformed or of good form; height, extent of crown):

e) Describe the condition of the tree/trees (e.g. whether sparse or dense, healthy, diseased, senile, dying or dead):

CONTROLLED DISCLOSURE

When downloaded from the document management system, this document is uncontrolled and the responsibility rests with the user to ensure it is in line with the authorised version on the system.

No part of this document may be reproduced without the expressed consent of the copyright holder, Eskom Holdings SOC Limited, Reg No 2002/015527/06.

**D CUT, DESTROY AND/OR TRANSPLANT PROTECTED TREES TO CHANGE THE
LAND USE**

(To be completed by the owner, or his/her authorized representative, of the land on which the trees occur)

a) State whether it is for agriculture, development of infrastructure, clearing of firebreaks, etc., and provide reasons:

b) Name the trees

c) How many trees/how large the area?

d) Give an indication of the characteristics/size/dimensions of the tree/trees (e.g. multi-/single stemmed, shrub/tree, stunted, deformed or of good form; height, extent of crown)

e) Describe the condition of the tree/trees (e.g. whether sparse or dense, healthy, diseased, senile, dying or dead):

f) Attach sketch plan and description to illustrate how trees will be affected by development.

Sketch plan attached? *(Mark with X)* ☐ yes ☐ no

g) Attach approved building plans and other documentary evidence of compliance with other legislation governing changes in land use

Documents attached? *(Mark with X)* ☐ yes ☐ no

E

DISTURB TREES

(To be completed by the owner, or his/her authorized representative, of the land on which the trees occur)

a) For what purpose?

CONTROLLED DISCLOSURE

When downloaded from the document management system, this document is uncontrolled and the responsibility rests with the user to ensure it is in line with the authorised version on the system.

No part of this document may be reproduced without the expressed consent of the copyright holder, Eskom Holdings SOC Limited, Reg No 2002/015527/06.

b) Name the trees _____

c) How many trees? _____

d) Give an indication of the characteristics/size/dimensions of the tree/trees (e.g. multi-/single stemmed, shrub/tree, stunted, deformed or of good form; height, extent of crown)

e) Describe the condition of the tree/trees (e.g. whether sparse or dense, healthy, diseased, senile, dying or dead): _____

F SELECTIVELY CUT, DESTROY OR TRANSPLANT INDIVIDUAL TREES/SEEDLINGS

(To be completed by the owner, or his/her authorized representative, of the land on which the trees occur)

a) For what main purpose? _____

(If it is for control of bush encroachment in woodlands, attach the recommendation of the Dept. of Agriculture, relating to bush encroachment densities, methods of control, and herbicide application rates.)

b) Name the trees _____

c) Give an indication of the characteristics/size/dimensions of the tree/trees (e.g. multi-/single stemmed, shrub/tree, stunted, deformed or of good form; height, extent of crown)

d) Describe the condition of the tree/trees (e.g. whether sparse or dense, healthy, diseased, senile, dying or dead): _____

CONTROLLED DISCLOSURE

When downloaded from the document management system, this document is uncontrolled and the responsibility rests with the user to ensure it is in line with the authorised version on the system.

No part of this document may be reproduced without the expressed consent of the copyright holder, Eskom Holdings SOC

Limited, Reg No 2002/015527/06.

Hard copy printed on: 25 November 2013

G

USE TIMBER DERIVED FROM PROTECTED TREES

(I.e. relating to trees cut, destroyed or damaged in Parts D & F above, or lying dead trees)

a) For what purpose? _____

b) Name the tree/trees _____

c) Is the timber from live or dead trees? (state): _____

d) Estimated mass/volume/number of trees/logs/bundles/loads, etc.: _____

e) Is processing involved, and if so, describe: _____

H

SELL OR DONATE TIMBER DERIVED FROM PROTECTED TREES

(I.e. relating to trees cut, destroyed or damaged in Parts D & F above, or lying dead trees)

a) Name the tree/trees _____

b) Name the source of the timber _____

c) Estimated mass/volume/number of trees/logs/bundles/loads, etc.: _____

d) Provide name and address of buyer/donee: _____

- Attach a list of buyers with their addresses, and contact particulars, if relevant, e.g. if you are reselling firewood to retailers.

List of retailers attached? (Mark with X) yes no

CONTROLLED DISCLOSURE

When downloaded from the document management system, this document is uncontrolled and the responsibility rests with the user to ensure it is in line with the authorised version on the system.

No part of this document may be reproduced without the expressed consent of the copyright holder, Eskom Holdings SOC

Limited, Reg No 2002/015527/06.

I HARVEST PRODUCE OTHER THAN TIMBER, DERIVED FROM PROTECTED TREES

(To be completed by the owner, or his/her authorized representative, of the land on which the trees occur)

- a) Describe produce _____
- b) Name the trees _____
- c) Describe the harvesting method _____
- d) How many trees are involved? _____
- e) Is it for own use or to sell to someone? _____
- f) Estimated quantity of product: _____

J TRANSPORT, MOVE, OR EXPORT PRODUCE OTHER THAN TIMBER DERIVED FROM PROTECTED TREES

- a) Name the tree/trees _____
- b) Name the produce: _____
- c) From where? (specify forest, property, owner, country, etc.) _____
- d) To where? (specify country, destination, buyer, processor, etc.) _____
- e) Estimated mass/volume/bags /loads, etc., and, if applicable, the frequency over a period of time (e.g. 2 10-ton loads once per month within a year): _____

- *Attach copy of licence issued to owner of property to harvest produce other than timber, derived from protected trees. In the case of non-wood produce of a species protected in SA, but that is imported from neighbouring countries, attach documentary evidence that such produce was/is being obtained legally, and was/is being legally imported by way of a permit issued in terms of section 3(1) of the Agricultural Pests Act, 1983.*

Copy of licence / documentary evidence attached? (Mark with X) ☐ yes ☐ no

CONTROLLED DISCLOSURE

When downloaded from the document management system, this document is uncontrolled and the responsibility rests with the user to ensure it is in line with the authorised version on the system.

No part of this document may be reproduced without the expressed consent of the copyright holder, Eskom Holdings SOC

Limited, Reg No 2002/015527/06.

**K TRANSPORT, MOVE, OR EXPORT TRANSPLANTED TREES/SEEDLINGS OR TIMBER
DERIVED FROM PROTECTED TREES**

a) Name the tree/trees _____

c) In what form? (trees/seedlings, logs, edged logs, beams, planks, poles, firewood, &c.) _____

c) From where? (specify forest, property, owner, country, etc.) _____

d) To where? (specify country, destination, buyer, sawmill, etc.) _____

e) Estimated mass/volume/number of trees/logs/bundles/loads, etc., and, if applicable, the frequency over a period of time (e.g. 2 10-ton loads once per month within a year): _____

- *Attach copy of licence issued to owner of property to cut, destroy or transplant protected trees/seedlings, or to use timber. In the case of timber of a species protected in SA, but that is imported from neighbouring countries, attach documentary evidence that timber was/is being obtained legally, and was/is being legally imported by way of a permit issued in terms of section 3(1) of the Agricultural Pests Act, 1963.*

Copy of licence / documentary evidence attached? (Mark with X) yes no

**L PURCHASE, RECEIVE OR POSSESS TRANSPLANTED TREES/SEEDLINGS OR
TIMBER DERIVED FROM PROTECTED TREES**

a) From where/whom? (specify forest, property, owner, seller, country) _____

b) Name the trees _____

c) In what form? (trees/seedlings, logs, edged logs, beams, planks, poles, firewood, etc.) _____

d) How acquired? (mention if it has been/will be bought, or has been/will be received as a donation/free of charge) _____

CONTROLLED DISCLOSURE

When downloaded from the document management system, this document is uncontrolled and the responsible party rests with the user to ensure it is in line with the authorised version on the system.

No part of this document may be reproduced without the expressed consent of the copyright holder, Eskom Holdings SOC Limited, Reg No 2002/015527/06.

e) Estimated mass/volume/number of trees/logs/bundles/loads, etc., and, if applicable, the frequency over a period of time (e.g. 2 10-ton loads once per month within a year):

- *Attach copy of licence issued to owner of property to cut, destroy or transplant protected trees/seedlings, or to use timber. In the case of timber of a species protected in SA, but that is imported from neighbouring countries, attach documentary evidence that timber was/is being obtained legally, and was/is being legally imported by way of a permit issued in terms of section 3(1) of the Agricultural Pests Act, 1983.*

Copy of licence / documentary evidence attached?	(Mark with X)	yes	no
--	---------------	-----	----

Was a licence, such as you are applying for, granted to you before? (Mark with X)	yes	no
(If yes, provide the licence number)	Licence No.:	

DECLARATION BY APPLICANT

I, the undersigned, declare that all the particulars furnished by me in this application form are true and correct.

SIGNATURE: _____ DATE: _____

For office use only

RECOMMENDATIONS:

Signature:

Date:

APPROVED/NOT APPROVED:

Signature:

Date:

CONTROLLED DISCLOSURE

When downloaded from the document management system, this document is uncontrolled and the responsibility rests with the user to ensure it is in line with the authorised version on the system.

No part of this document may be reproduced without the expressed consent of the copyright holder, Eskom Holdings SOC

Limited, Reg No 2002/015527/06.

Hard copy printed on: 25 November 2013

ANNEXURE G
PERMIT APPLICATION TO CAPE NATURE
(Informative – subject to change)

The application makes reference to research and collection of species. – However in consultation with Cape Nature the same application can be used for purposes of cutting/trimming (vegetation management). It was indicated that much of the information required on the application will be not applicable and should be marked as such.



**APPLICATION TO UNDERTAKE RESEARCH / COLLECT SPECIMENS (FAUNA AND / OR FLORA) ON
PROVINCIAL CONSERVATION AREAS UNDER CONTROL OF THE PROVINCIAL ADMINISTRATION
OF THE WESTERN CAPE OR ON PRIVATELY OWNED LAND IN THE PROVINCE OF WESTERN CAPE**

In order to operate as efficiently as possible the Western Cape Nature Conservation Board needs to have a record of all research / collection projects or inventory collections undertaken on its nature reserves, at least, but preferably those encompassing the Province as a whole (including private property) and it would therefore be appreciated if this application form could be FULLY completed.

Should any of the requested information (i.e. species to be collected, area concerned etc.) not be forthcoming, **A CLEAR REASON / MOTIVATION FOR THIS OMISSION MUST BE PROVIDED.**

If the space provided in the application form is not adequate, separate documents providing the requested information may be attached to the application form.

PLEASE NOTE

- (a) The National Forest Act, 1998 (Act 84 of 1998) and regulations, the Nature Conservation Ordinance, 1974 (Ordinance 19 of 1974) and all regulations in terms of the Ordinance must be adhered to.
- (b) The completed application form(s) must reach this office at least **ONE MONTH BEFORE** the project / collecting work commences.
- (c) Should it be envisaged to export specimens across the boundaries of the Republic or out of this province, an export permit may be required in respect of certain species (question 2.6 on the application form) and a further application form will have to be completed.

OUR CONTACT DETAILS

PHYSICAL PGWC Shared Services Center, cnr Bosduif & Volstruis Streets,
Bridgetown, 7764

POSTAL Private Bag x29, Gatesville, 7766

TELEPHONE 021-483 0118 / 0121
FAX 086 556 7734.

CONTROLLED DISCLOSURE

When downloaded from the document management system, this document is uncontrolled and the responsibility rests with the user to ensure it is in line with the authorised version on the system.

No part of this document may be reproduced without the expressed consent of the copyright holder, Eskom Holdings SOC Limited, Reg No 2002/015527/06.

E-MAIL

permits.fax@capenature.co.za

STANDARD CONDITIONS APPLICABLE TO RESEARCHERS UNDERTAKING RESEARCH OR COLLECTING WORK ON PROVINCIAL CONSERVATION AREAS OR PRIVATELY OWNED LAND IN THE PROVINCE OF WESTERN CAPE

- (i) **THE MANAGER OF THE RELEVANT CONSERVATION AREA(S) (IF ANY) MUST BE INFORMED TIMEOUSLY BEFORE ANY CONSERVATION AREA IS ENTERED FOR COLLECTING OR RESEARCH PURPOSES AND THE MANAGER'S WRITTEN PERMISSION TO ENTER SUCH RESERVE MUST BE ACQUIRED BEFOREHAND. THIS PERMIT DOES NOT GRANT THE PERMIT HOLDER AUTOMATIC ACCESS TO ANY NATURE RESERVE, CONSERVATION AREA, WILDERNESS AREA AND / OR STATE FOREST. ANY OTHER / FURTHER CONDITIONS OR RESTRICTIONS THAT THE MANAGER MAY STIPULATE AT HIS / HER DISCRETION MUST ALSO BE ADHERED TO. THIS PERMIT MUST BE AVAILABLE TO BE SHOWN ON DEMAND.**
- (ii) **The owner of any other land concerned (be it privately or publicly owned land) must give WRITTEN consent allowing the permit holder to enter said property to collect flora / fauna. This written permission must reflect the full name and address of the property owner (or of the person authorised to grant such permission), the full name and address of the person to whom the permission is granted and the number and species of the flora / fauna, the date or dates on which such flora / fauna may be picked / collected and the land in respect of which permission is granted. Copies of this written permission must be made available to The Western Cape Nature Conservation Board upon request.**
- (iii) ~~Type specimens of any newly described / discovered species or other taxon collected must be lodged with a recognised South African scientific institution / museum / herbarium (preferably within the Province of Western Cape) where such material will be available to other researchers. For every flora specimen collected on a Western Cape Nature Conservation Board nature reserve, one additional (extra) herbarium specimen must be forwarded to the Western Cape Nature Conservation Board Herbarium at Jonkershoek (c/o M.J. Simpson, Private Bag X5014, Stellenbosch 7599).~~
- (iv) **A list of all collected specimens / material including the; species name, the number collected, the collection date and the precise locality of the collection must be submitted within 14 days from the date of expiry of your permit to The Chief Executive Officer: Western Cape Nature Conservation Board, Private Bag x29, Galesville, 7766**
- (v) ~~The maximum number of specimens per species specified in the permit (if at all) may not be exceeded without the prior permission of The Chief Executive Officer: Western Cape Nature Conservation Board.~~
- (vi) **For projects of more than one year's duration a progress report must be submitted to The Chief Executive Officer: Western Cape Nature Conservation Board before 31 December of each year.**
- (vii) **One copy of all completed reports, publications, or articles (including books, videos, CDs, DVDs etc.) resulting from the project/collection must be submitted to The Chief Executive Officer: Western Cape Nature Conservation Board free of charge.**
- (viii) **Should a report, publication, article or thesis arise from this project/collection, an acknowledgement to Western Cape Nature Conservation Board must be included.**
- (ix) **The National Forests Act, 1998 (Act No. 84 of 1998) and regulations, the Nature Conservation Ordinance, 1974 (Ordinance 19 of 1974) and all regulations in terms of the Ordinance must be adhered to.**
- (x) **Should it be envisaged to export any material / specimens across the boundaries of the Western Cape Province, an export permit will be required in respect of certain species and a further application form will have to be completed. The permit holder must confirm with the Western Cape Nature Conservation Board whether an export permit is required BEFORE exporting any material / specimens from the Western Cape Province.**
- (xi) **No species that appear on the Red Data List or species listed as endangered in terms of the Nature Conservation Ordinance, 1974 (Ordinance 19 of 1974) may be collected, except for those mentioned on the permit.**

CONTROLLED DISCLOSURE

When downloaded from the document management system, this document is uncontrolled and the responsibility rests with the user to ensure it is in line with the authorised version on the system.

No part of this document may be reproduced without the expressed consent of the copyright holder, Eskom Holdings SOC

Limited, Reg No 2002/015527/06.

(xii) Unless otherwise specifically indicated in writing, no material or specimens collected with this permit or material or specimens bred or propagated, from material or specimens collected with this permit, may be donated, sold or used for any commercial purpose by any party.

(xiii) Ethics clearance must be acquired from your research institute prior to application.

7.1 Chief Executive Officer

PARTICULARS OF APPLICANT

1.1

Surname:		Postal Address:	
ID Number:			
First names:			
Citizenship:		Residential Address:	
Fax No. (w):		Fax No. (h):	
Tel No. (w):		Tel No. (h):	
URL/Website:		E-mail:	
University / Institution / Department affiliated to:			
Current occupation:			
Highest Qualification:			
Degree(s)	8. Field of Study	9. Period	

1.2 Experience to date:

Name of employee / institution	Capacity and nature of work	Period

1.3 Details of previous research / collecting in the Western Cape Province*

Area(s)
Species collected

CONTROLLED DISCLOSURE

When downloaded from the document management system, this document is uncontrolled and the responsibility rests with the user to ensure it is in line with the authorised version on the system.

No part of this document may be reproduced without the expressed consent of the copyright holder, Eskom Holdings SOC

Limited, Reg No 2002/015527/06.

Hard copy printed on: 25 November 2013

When (year/years)
Permit number(s) and date(s) of issue
<p>Annex A* Should this application be for a new permit or for the renewal of a previous permit a list of <u>ALL</u> the material collected (including; the species name, the number collected, the collection date and the locality) with any <u>previous</u> permit <u>MUST</u> be submitted with this application, unless said list has not already been submitted. Should a report or other publication any kind have arisen from a previous permit then a copy thereof must also be included. <u>ANY APPLICATION THAT IS NOT ACCOMPANIED BY A COPY OF SAID LIST OR REPORT WILL NOT BE PROCESSED.</u></p> <p>Annex B</p> <p>9.1 FOR OFFICIAL USE ONLY</p> <p>To what extent have permit conditions been complied with:</p>

2. DETAILS OF PROPOSED COLLECTING / RESEARCH PROJECTS

2.1	<p>Title of project</p> <p>(attach <u>full</u> project proposal / details):</p>
2.2	<p>Objectives and motivation (proposed results or observations to be made):</p> <p>_____</p> <p>_____</p> <p>_____</p>
2.3	<p>Institution that sponsors and controls project</p> <p>Name of institution: _____</p>

CONTROLLED DISCLOSURE

When downloaded from the document management system, this document is uncontrolled and the responsibility rests with the user to ensure it is in line with the authorised version on the system.

No part of this document may be reproduced without the expressed consent of the copyright holder, Eskom Holdings SOC Limited, Reg No 2002/015527/06.

Contact: _____ Tel: _____

2.4 **South African University or Institution that endorses your project**

Name: _____

Contact : _____ Tel : _____

2.5 Species to be collected (SEE ALSO FOLLOWING PAGE)

2.5a Species requested for **examination** only (NO permanent removal from habitat):

Species (*Fauna / Flora)	Temporarily or permanently scarred*	Marked only*	Region / Farm / Property name / Conservation Area (Nature Reserve, State Forest etc. see also paragraph 2.7)

(*Indicate with X)

2.5 Details of species (*fauna / flora) to be collected (permanent removal from habitat)

Common name	Order / Family / Species / Genus	Red Data (Rare or Endangered) / CITES appendix (especially in case of export)	Part(s) of plant / *animal to be collected	Number	Region / Farm / Property name / Conservation Area (Nature Reserve, State Forest etc. see also paragraph 2.7) MUST SPECIFY BUSINESS UNIT: see map attached

CONTROLLED DISCLOSURE

When downloaded from the document management system, this document is uncontrolled and the responsibility rests with the user to ensure it is in line with the authorised version on the system.

No part of this document may be reproduced without the expressed consent of the copyright holder, Eskom Holdings SOC Limited, Reg No 2002/015527/06.

*In the case of fauna the method of capture must be mentioned (i.e. net, trap etc.)

Method of capture:

2.6 Particulars of collection

10. Place where kept		11. Export		
Institution	Contact	Species	Number	To what country

12. 2.7 If project encompasses collection(s) from any conservation area (details of which are provided in paragraph 2.5) please provide reasons why project must be undertaken in the conservation area(s).

2.8.8 Duration of project

2.9 Number of persons engaged in the research project (names and status if possible)

(PLEASE INCLUDE THEIR IDENTITY NUMBERS)

3. Any further details

4. DECLARATION

CONTROLLED DISCLOSURE

When downloaded from the document management system, this document is uncontrolled and the responsibility rests with the user to ensure it is in line with the authorised version on the system.

No part of this document may be reproduced without the expressed consent of the copyright holder, Eskom Holdings SOC Limited, Reg No 2002/015527/06.

I declare that the information furnished in this application is correct. I undertake to comply with the standard conditions specified and / or any further conditions communicated to me in writing.

NAME SIGNATURE DATE

5. RECOMMENDATION OF HEAD OF INSTITUTION

COMMENT

OCCUPATION NAME

SIGNATURE DATE

FOR OFFICE USE ONLY

RECOMMENDATIONS:

12.1 MANAGER: SCIENTIFIC SERVICES DATE

12.2 BUSINESS UNIT MANAGER UNIT DATE

CONTROLLED DISCLOSURE

When downloaded from the document management system, this document is uncontrolled and the responsibility rests with the user to ensure it is in line with the authorised version on the system.

No part of this document may be reproduced without the expressed consent of the copyright holder, Eskom Holdings SOC Limited, Reg No 2002/015527/06.

Hard copy printed on: 26 November 2013

12.3 DIRECTOR

UNIT

DATE

APPROVED / NOT APPROVED

12.4 CHIEF EXECUTIVE OFFICER

12.5 WESTERN CAPE NATURE CONSERVATION BOARD

DATE

As at 2006
Import format for SOB data

The data should be saved in a Microsoft Excel spreadsheet. The later the version the better.

The spreadsheet should contain the following columns with the column headings in row 1:

Column	Description
Date	Enter full date e.g. 25/9/1994
LocalityName	Name of locality e.g. town name, reserve name, farm name etc.
DegreesSouth	Number of Degrees South of 0 degrees South
MinutesSouth	Number of minutes South
SecondsSouth	Number of seconds South
DegreesEast	Number of Degrees East of 0 degrees East
MinutesEast	Number of minutes East
SecondsEast	Number of seconds East
QuarterDegree	Enter if degrees, minutes, seconds are unknown
Species	Full scientific name eg. Panthera pardus or Cacaoternum nanum parvum
Record Type	Type of record: Specimen, Observation, Photograph, Audio, Literature, Scat
Collector	Name of the person that collected the record
Lodging Code	The unique number that each institution assigns each record eg. PEM-00348 (must have a dash before the number)
Contact	The name of the contact person at the Institution
Institution	The Institution where the record is lodged
Remarks	Any associated remarks or notes that you wish to include with the record

CONTROLLED DISCLOSURE

When downloaded from the document management system, this document is uncontrolled and the responsibility rests with the user to ensure it is in line with the authorised version on the system.

No part of this document may be reproduced without the expressed consent of the copyright holder, Eskom Holdings SOC Limited, Reg No 2002/015527/06.