



British Mycological  
Society promoting fungal science

journal homepage: [www.elsevier.com/locate/funbio](http://www.elsevier.com/locate/funbio)



## Review

# Diversity in the Botryosphaerales: Looking back, looking forward



Bernard SLIPPERS<sup>a,\*</sup>, Pedro Willem CROUS<sup>b,c</sup>, Fahimeh JAMI<sup>b</sup>,  
Johannes Zacharias GROENEWALD<sup>c</sup>, Michael John WINGFIELD<sup>a</sup>

<sup>a</sup>Department of Genetics, Forestry & Agricultural Biotechnology Institute, University of Pretoria, Pretoria, South Africa

<sup>b</sup>Department of Microbiology & Plant Pathology, Forestry & Agricultural Biotechnology Institute, University of Pretoria, Pretoria, South Africa

<sup>c</sup>Westerdijk Fungal Biodiversity Institute, Uppsalalaan 8, 3584 CT Utrecht, The Netherlands

### ARTICLE INFO

#### Article history:

Received 6 January 2017

Received in revised form

23 February 2017

Accepted 24 February 2017

Available online 27 February 2017

Corresponding Editor:

Pedro W. Crous

#### Keywords:

Dothideomycetes

Endophyte

Invasive pathogen

Latent pathogen

Taxonomy

### ABSTRACT

The *Botryosphaerales* are amongst the most widespread, common and important fungal pathogens of woody plants. Many are also known to exist as endophytes in healthy plant tissues. This special issue highlights a number of key themes in the study of this group of fungi. In particular, there have been dramatic taxonomic changes over the past decade; from one family to nine (including two in this special issue) and from 10 to 33 genera known from culture. It is also clear from many studies that neither morphology nor single locus sequence data are sufficient to define taxa. This problem is exacerbated by the increasing recognition of cryptic species and hybrids (as highlighted for the first time in this special issue). It is futile that management strategies, including quarantine, continue to rely on outdated taxonomic definitions and identification tools. This is especially true in light of growing evidence that many species continue to be moved globally as endophytes in plants and plant products. A well defined natural classification and an extensive collection of tools to study the *Botryosphaeriaceae*, including a growing number of genomes, now provide a springboard for a much deeper exploration of their biology, biogeography and host associations.

© 2017 British Mycological Society. Published by Elsevier Ltd. All rights reserved.

## Introduction

This special issue of *Fungal Biology* focuses on the *Botryosphaerales*; the most common and widespread pathogens of woody hosts globally. These pathogens occur in virtually all woody plants that have been investigated for their presence,

and they are commonly associated with branch, twig, leaf, fruit and seed diseases (Fig 1; Slippers & Wingfield 2007). When they occur, these diseases are closely associated with plant stress. This in turn raises the importance of the *Botryosphaerales* under a scenario of global change, including climate change and other, mostly anthropogenic changes to the

\* Corresponding author.

E-mail address: [bernard.slippers@fabi.up.ac.za](mailto:bernard.slippers@fabi.up.ac.za) (B. Slippers).

<http://dx.doi.org/10.1016/j.funbio.2017.02.002>

1878-6146/© 2017 British Mycological Society. Published by Elsevier Ltd. All rights reserved.

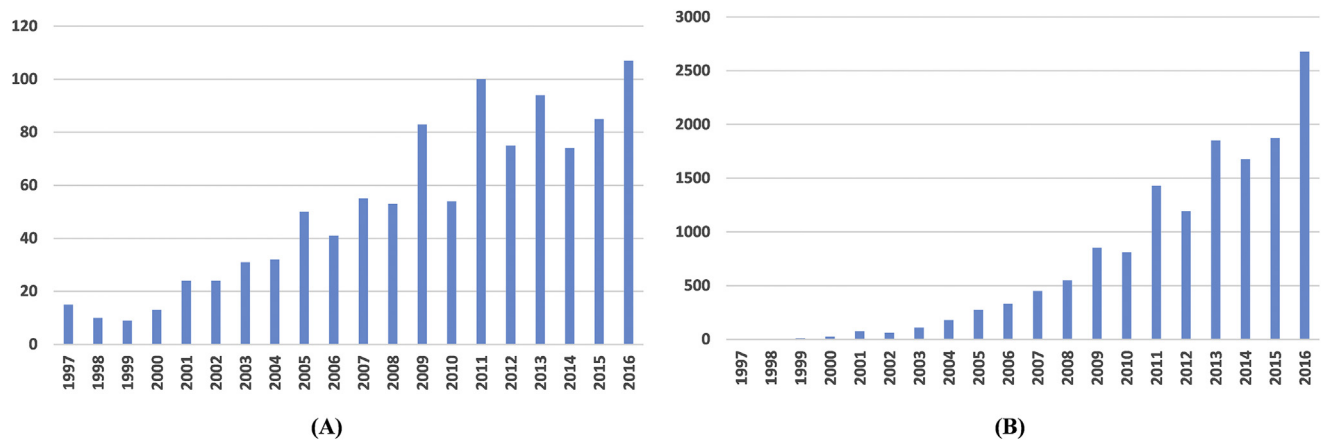


**Fig 1** – (A). *Botryosphaeriaceae* die-back on *Vachellia karroo* (F. Jami). (B). *Neoscytalidium dematium* on *Citrus* (G. Polizzi). (C). *Botryosphaeria kuwatsukai* on *Malus* sp. (G. Sun). (D). *Dothiorella acacicola* on *Acacia heterophylla* (P.W. Crous). (E). *Botryosphaeria dothidea* on *Pistacia vera* (T. Michailides). (F). *Neofusicoccum ribis* on *Eucalyptus grandis* (C.A. Rodas). (G). *Lasiodiplodia* sp. on *Mangifera indica* (M.P.S. Câmara). (H). *Macrophomina phaseoli* on *Vigna unguiculata* (M.P. Melo). (I). *Diplodia sapinea* on *Pinus patula* (B. Slippers). (J). *Alanphillipsia aloecicola* on *Aloe* sp. (P.W. Crous). (K). *Saccharata* sp. on *Banksia ashbyi* (P.W. Crous). (L). *Neofusicoccum* sp. on *Vitis vinifera* (P.W. Crous). (M). *Eutiarosporella* spp. infecting seed of *Triticum aestivum* (right) (S. Neate). (N). *Saccharata* sp. on *Banksia conferta* (P.W. Crous).

environment that place pressure on plant communities (Desprez-Loustau et al. 2007; Sturrock et al. 2011). There is also increasing evidence that these pathogens are being spread around the world with little constraint, and apparently with increasing frequency associated with globalization (Sakalidis et al. 2013; Burgess et al. 2017; Marsberg et al. 2017).

An increased and growing interest in the *Botryosphaeriales* globally is reflected in the rapid rise in publications on ‘*Botryosphaeria*’ or ‘*Botryosphaeriaceae*’; the most commonly used historical and current terms referring to these fungi in recent years. This increased frequency represents just over 13 publications in the year 2000, to an average of more than

70 over the past Six years (ISI Web of Science core collection; Fig 2). While these data are likely affected by general factors such as overall increases in the numbers of scientific publications in most fields, this level of increase is unquestionably also linked to tools that have facilitated the study of the *Botryosphaeriales* and especially DNA sequence-based data. The growing interest in these fungi is clearly also linked to their growing importance as pathogens in natural and managed (e.g. agriculture and forestry) landscapes (Slippers & Wingfield 2007; Sarr et al. 2014; Chethana et al. 2016; Wyka & Broders 2016; Zlatković et al. 2016b; Mehl et al. 2017). This requires a clear understanding of the diversity of the group, as



**Fig 2 – The publications and citation history of papers citing *Botryosphaeria* or *Botryosphaeriaceae* in their titles over the past 20 years. (A). Publications per year. (B). Citations per year. Data was obtained from the Web of Science, [www.webofknowledge.com](http://www.webofknowledge.com).**

well as of tools to accurately identify these fungi. This is necessary to ensure that they will be appropriately catered for in quarantine regulations, that we will better understand their invasion biology and that effective management strategies can be applied where disease problems are involved.

The first DNA sequence data were generated for the *Botryosphaerales* fewer than 20 years ago (Jacobs & Rehner 1998). Since that time, there has been a massive increase in the number of sequences linked to this group. GenBank lists (November 2016) more than 10 000 gene sequences for the *Botryosphaerales* (excluding genomes), covering more than 1160 sets linked to phylogenetic or population genetic studies. The phylogenetic analyses of these sequence data have significantly impacted all aspects of the systematics and taxonomy of the *Botryosphaerales*. This has often led to significant and often confusing changes in their taxonomy. For example, in 1998 all taxa were known as species of *Botryosphaeria*, or at least they were thought to be *Botryosphaeria* where the asexual states had not been observed. This is in contrast to the current situation where only a small number of species reside in this genus and 33 other genera are now recognized (see below).

The papers in this issue of *Fungal Biology* represent a sampling of the dynamic changes that reflect our understanding of the diversity of the *Botryosphaerales*. These include for example a redefinition of families and genera, identification of new species, cryptic species and (more recently) hybrids. These papers also illustrate the global distribution and importance of the *Botryosphaerales*, as well as key aspects of their biology such as their mating biology, now being revealed through the availability of whole genome sequences.

In this review, we outline major historical developments in terms of species identification and taxonomy of the *Botryosphaerales*. We also consider tools and techniques currently being used for identification and we propose best practices/standard suites of tools that can be utilized. We furthermore consider how a growing understanding of the diversity of the group is changing our understanding of global and regional patterns of diversity, host association and the epidemiology

of diseases caused by a fascinating, important and yet relatively poorly understood group of fungi.

### Understanding diversity and adapting the systematic framework

Our understanding of the diversity of the *Botryosphaerales* has changed profoundly over the past 15 years. This includes the definition of the families, genera and species, as well as their relationships with each other. It was taxonomic work on the *Botryosphaerales* that catalysed the ‘one fungus one name’ movement (Crous *et al.* 2006; Wingfield *et al.* 2012; Crous *et al.* 2015a). Arising from frustration at having to accommodate species in genera that were clearly very different to each other, Crous *et al.* (2006) took the dramatic step of defining all genera in the *Botryosphaerales* based predominantly on phylogenetic inference and characteristics of their asexual morphs, and without morphological evidence of a sexual morph. In various cases, genera were thus established in the family based on asexual names. Under the new *International Code of Nomenclature for algae, fungi and plants* (McNeill *et al.* 2012), these asexual names are accepted for the holomorph and this is now true for many other fungi.

The most significant change to the systematics of the *Botryosphaerales* in past two years has been at the family level. At the time when Schoch *et al.* (2006) described the *Botryosphaerales*, all genera were accommodated in the *Botryosphaeriaceae*. Since then many authors (Minnis *et al.* 2012; Slippers *et al.* 2013; Wikee *et al.* 2013; Wyka & Broders 2016; Yang *et al.* 2017) have delineated an additional eight families, based on phylogenetic, morphological and ecological differences. With the description of *Septorioideaceae* (Wyka & Broders 2016), *Endomelanconiopsisaceae* and *Pseudofusicoccumaceae* (Yang *et al.* 2017) there are now nine families accommodated in the order (Table 1). Six of these nine *Botryosphaerales* families are represented by only a single genus, while the *Botryosphaeriaceae* is represented by 23 genera, and *Aplosporellaceae* and *Planistromellaceae* by two genera each.

**Table 1 – Families and genera described in the Botryosphaerales.**

Family	Genus	Reference	
Aplosporellaceae Slippers et al. 2013	<i>Aplosporella</i> Speg., Anal. Soc. cient. argent. 10(5–6): 157 (1880) Typus: <i>A. chlorostroma</i> Speg., Anal. Soc. cient. argent. 10(5–6): 158 [no. 117, reprint page 35] (1880)	Slippers et al. (2013)	
	<i>Bagnisiella</i> Speg., Anal. Soc. cient. argent. 10(5–6): 146 (1880) Typus: <i>B. australis</i> Speg., Anal. Soc. cient. argent. 10(1): 22 (1880)	Slippers et al. (2013)	
Botryosphaeriaceae Theiss. & Syd., 1918	<i>Allanphillipsia</i> Crous & M.J. Wingf. Persoonia 31: 197 (2013) Typus: <i>A. aloes</i> Crous & M.J. Wingf., Persoonia 31: 197 (2013)	Crous et al. (2013)	
	<i>Bahusutrabeeya</i> Subram. & Bhat, Can. J. Bot. 55(16): 204 (1977) Typus: <i>B. dwaya</i> Subram. & Bhat, Can. J. Bot. 55(16): 2204 (1977)	Shenoy et al. (2010)	
	<i>Barriopsis</i> A.J.L. Phillips et al., Persoonia 21: 39 (2008) Typus: <i>B. fusca</i> (N.E. Stevens) A.J.L. Phillips et al., Persoonia 21: 39 (2008)	Phillips et al. (2008)	
	<i>Botryobambusa</i> Phook. et al., Fungal Diversity 57(1): 166 (2012) Typus: <i>B. fusicoccum</i> Phook. et al., Fungal Diversity 57(1): 166 (2012)	Liu et al. (2012)	
	<i>Botryosphaeria</i> Ces. & De Not., Comm. Soc. crittog. Ital. 1(fasc. 4): 211 (1863) Typus: <i>B. dothidea</i> (Moug.) Ces. & De Not., Comm. Soc. crittog. Ital. 1(fasc. 4): 212 (1863)	Phillips et al. (2013)	
	<i>Cophinforma</i> Doilom et al., Fungal Diversity 57(1): 174 (2012) Typus: <i>C. eucalypti</i> Doilom et al., Fungal Diversity 57(1): 174 (2012)	Liu et al. (2012)	
	<i>Diplodia</i> Fr., in Montagne, Annl. Sci. Nat., Bot., sér. 2 1: 302 (1834) Typus: <i>D. mutila</i> (Fr.) Mont., Annl. Sci. Nat., Bot., sér. 2 1: 302 (1834)	Phillips et al. (2008)	
	<i>Dothiorella</i> Sacc., Michelia 2(no. 6): 5 (1880) Typus: <i>D. pyrenophora</i> Berk. ex Sacc., Michelia 2(no. 6): 5 (1880)	Phillips et al. (2008), Yang et al. (2017)	
	<i>Eutiarosporella</i> Crous, Phytotaxa 202(2): 85 (2015) Typus: <i>E. tritici</i> (B. Sutton & Marasas) Crous, Phytotaxa 202(2): 85 (2015)	Crous et al. (2015a, 2015b)	
	<i>Lasiodiplodia</i> Ellis & Everh., Bot. Gaz. 21: 92 (1896) Typus: <i>L. tuberculata</i> Ellis & Everh., Bot. Gaz. 21: 92 (1896)	Phillips et al. (2008)	
	<i>Macrophomina</i> Petr., Annl. mycol. 21(3/4): 314 (1923) Typus: <i>M. philippinensis</i> Petr., Annl. mycol. 21(3/4): 314 (1923)	Phillips et al. (2013)	
	<i>Marasasiomyces</i> Crous, Phytotaxa 202(2): 86 (2015) Typus: <i>M. karoo</i> (B. Sutton & Marasas) Crous, Phytotaxa 202(2): 86 (2015)	Crous et al. (2015a, 2015b)	
	<i>Mucoharknessia</i> Crous et al., Phytotaxa 202(2): 86 (2015) Typus: <i>M. cortaderiae</i> Crous et al., Phytotaxa 202(2): 86 (2015)	Crous et al. (2015a, 2015b)	
	<i>Neodeightonia</i> C. Booth, Mycol. Pap. 119: 17 (1970) Typus: <i>N. subglobosa</i> C. Booth, Mycol. Pap. 119: 19 (1970)	Phillips et al. (2008)	
	<i>Neofusicoccum</i> Crous et al., Stud. Mycol. 55: 247 (2006) Typus: <i>N. andinum</i> (Mohali et al.) Mohali et al., Stud. Mycol. 55: 247 (2006)	Crous et al. (2006)	
	<i>Neoscytalidium</i> Crous & Slippers, Stud. Mycol. 55: 244 (2006) Typus: <i>N. dimidiatum</i> (Penz.) Crous & Slippers, Stud. Mycol. 55: 244 (2006)	Crous et al. (2006)	
	<i>Oblongocollomyces</i> Tao Yang & Crous, Fungal Biology 121: 322–346 (2017) Typus: <i>O. variabilis</i> (F.J.J. van der Walt, et al.) Tao Yang & Crous, Fungal Biology 2016	Yang et al. (2017)	
	<i>Oththia</i> Nitschke ex Fuckel, Jb. nassau. Ver. Naturk. 23–24: 169 (1870) Typus: <i>O. spiraeae</i> (Fuckel) Fuckel, Jb. nassau. Ver. Naturk. 23–24: 170 (1870)	Schoch et al. (2009) <sup>a</sup>	
	<i>Phaeobotryon</i> Theiss. & Syd., Annl. mycol. 13(5/6): 664 (1915) Typus: <i>P. cercidis</i> (Cooke) Theiss. & Syd., Annl. mycol. 13(5/6): 664 (1915)	Phillips et al. (2008)	
	<i>Sakireeta</i> Subram. & K. Ramakr., J. Indian bot. Soc. 36: 83 (1957) Typus: <i>S. madreeya</i> Subram. & K. Ramakr., J. Indian bot. Soc. 36: 84 (1957)	Crous et al. (2015a, 2015b)	
	<i>Sardiniella</i> Linaldeddu et al., Mycosphere 7 (7): 900 (2016) Typus: <i>S. urbana</i> Linaldeddu et al., Mycosphere 7 (7): 900 (2016)	Linaldeddu et al. (2016)	
	<i>Sphaeropsis</i> Sacc., Michelia 2(no. 6): 105 (1880) Typus: <i>S. visci</i> (Alb. & Schwein.) Sacc., Michelia 2(no. 6): 105 (1880)	Phillips et al. (2013)	
	<i>Tiarosporella</i> Höhn., in Weese, Ber. dt. bot. Ges. 37: 159 (1919) Typus: <i>T. paludosa</i> (Sacc. & Fiori) Höhn., in Weese, Ber. dt. bot. Ges. 37: 159 (1919)	Crous et al. (2015a, 2015b)	
	Endomelanopsisaceae Tao Yang & Crous, 2016	<i>Endomelanconiopsis</i> E.I. Rojas & Samuels, Mycologia 100(5): 770 (2008) Typus: <i>E. endophytica</i> E.I. Rojas & Samuels, Mycologia 100(5): 770 (2008)	Yang et al. (2017)
		<i>Melanops</i> Nitschke ex Fuckel, Jb. nassau. Ver. Naturk. 23–24: 225 (1870) Typus: <i>M. tulasnei</i> Fuckel, Jb. nassau. Ver. Naturk. 23–24: 225 (1870)	Slippers et al. (2013)
	Melanopsaceae Phillips et al. 2013		
	Phyllostictaceae Fr., 1849	<i>Phyllosticta</i> Pers., Traité champ. (Paris). 55: 147 (1818) Typus: <i>P. convallariae</i> Pers., nom. inval. (= <i>P. cruenta</i> (Fr.) J. Kickx f.)	Wikee et al. (2013)
Planistromellaceae M.E. Barr, 1996	<i>Kellermania</i> Ellis & Everh., J. Mycol. 1(12): 153 (1885) Typus: <i>K. yuccigena</i> Ellis & Everh., J. Mycol. 1(12): 154 (1885)	Minnis et al. (2012)	

**Table 1 – (continued)**

Family	Genus	Reference
	<i>Umthunziomyces</i> Crous & M.J. Wingf. <i>Persoonia</i> 37: 315 (2016) Typus: <i>U. haghagensis</i> Crous & M.J. Wingf. <i>Persoonia</i> 37: 315 (2016)	Crous et al. (2016a)
Pseudofusicoccumaceae Tao Yang & Crous, 2016	<i>Pseudofusicoccum</i> Mohali et al., <i>Stud. Mycol.</i> 55: 249 (2006) Typus: <i>P. stromaticum</i> (Mohali et al.) Mohali et al., <i>Stud. Mycol.</i> 55: 249 (2006)	Yang et al. (2017)
Saccharataceae Slippers et al. 2013	<i>Saccharata</i> Denman & Crous, <i>CBS Diversity Ser. (Utrecht)</i> 2: 104 (2004) Typus: <i>S. proteae</i> (Wakef.) Denman & Crous, <i>CBS Diversity Ser. (Utrecht)</i> 2: 104 (2004)	Slippers et al. (2013)
Septorioideaceae Wyka & Broders, 2016	<i>Septorioides</i> Quaedvlieg et al., <i>Stud. Mycol.</i> 75: 383 (2013) Typus: <i>S. pini-thunbergii</i> (S. Kaneko) Quaedvlieg et al., <i>Stud. Mycol.</i> 75: 383 (2013)	Wyka & Broders (2016)

a The association of *Othia* with *Botryosphaeriaceae* is uncertain. *Othia spiraeae* was redescribed by Phillips et al. (2005) as the lectotype of the genus, but no isolates are available. Isolates that have been incorrectly assigned to *O. spiraeae* group with *Dothiorella*, but does not reflect relationships of *Othia* as these isolates are not linked to the type (Phillips et al. 2005; Schoch et al. 2009). While *O. spiraeae* was separated from *Botryosphaeria* by Phillips et al. (2005), as defined at that stage, its relation to the rest of the *Botryosphaerales* remain unresolved. An epitypification and designation of an ex-type isolate are needed to resolve this matter.

For most of these families, very few species are known from culture. As with genus and species recognition, it has been the phylogenetic perspective provided by the use of multiple genes, and especially LSU and (to a lesser extent) SSU rDNA sequence data that has given support for the backbone of the *Botryosphaerales* phylogeny. This has provided confidence in the distinction of the different families as opposed to a system reliant primarily on morphological recognition. Analysis of the SSU rDNA data suggests that the split between these families ranges from 87 (40–163) – 38(16–73) million years ago (Slippers et al. 2013). The most diverse family in the *Botryosphaerales* is the *Botryosphaeriaceae* that includes 23 genera. Considering the phylogenetic and morphological evidence that has been used to distinguish the nine families in the *Botryosphaerales*, the main groups within the *Botryosphaeriaceae* should perhaps also be treated as distinct families (Slippers et al. 2013; Yang et al. 2017).

At the time when the first sequence-based phylogenies were produced for members of the *Botryosphaerales*, most species were considered part of *Botryosphaeria*, and its dominant asexual morphs in *Fusicoccum*, *Diplodia* and *Lasiodiplodia* (Jacobs & Rehner 1998; Denman et al. 2000). As mentioned earlier, Crous et al. (2006) discarded the dual nomenclature for sexual and asexual morphs and recognized ten distinct lineages or genera within the *Botryosphaeriaceae*. Since then, 33 genera have been described in the order (Table 1), mostly based on characteristics of their asexual morphs. This increase in the identification of genera has, not surprisingly, been heavily influenced by sampling and the number of species known in each genus. While in most cases providing confidence for the distinction of new genera, better representation has also led to recently described genera, such as *Dothiorella* (= *Spencermartinsia*) being reduced to synonymy (Yang et al. 2017). It is possible that similar blurring of distinctions between other closely related genera might occur as more species of recently described but still poorly sampled genera are discovered.

A large number of new species have been described in the *Botryosphaerales* in recent years. These are mostly known from culture and DNA sequence-based differences, although

morphology is still widely used in descriptions. In this special issue, eight new species are described, bringing the total number of species known from culture and sequence to 279 (Fig 3). Clearly the rate of discovery of new species over the past decade is not slowing. Recognition of further diversity is likely to be driven primarily by expanding the geographic sampling, and to a lesser extent by more intensive sampling on hosts in areas that have already been well studied (Slippers et al. 2014).

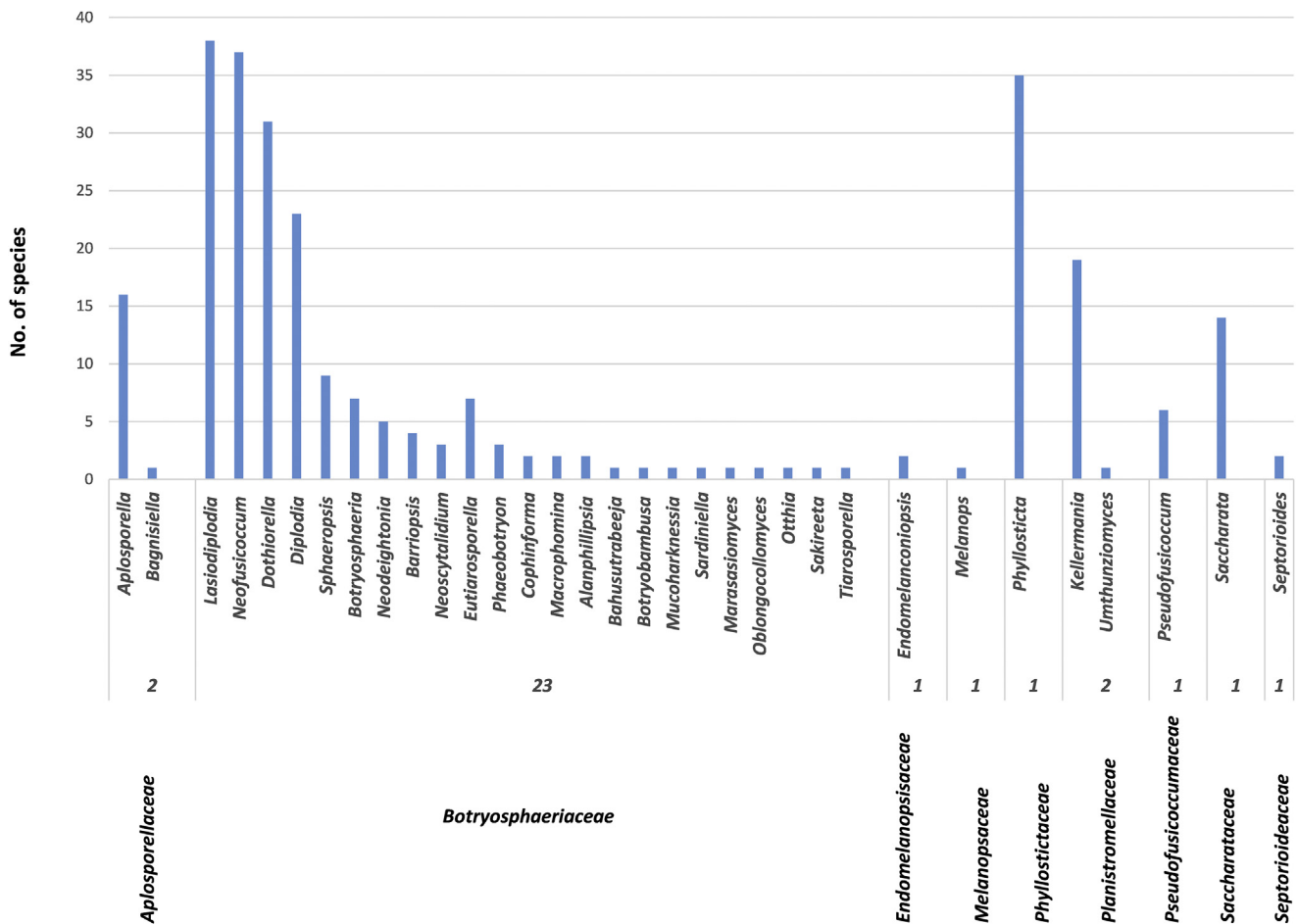
Our ability to recognize recently diverged yet morphologically similar cryptic species in the *Botryosphaeriaceae* has increased significantly by the application of Genealogical Concordance Phylogenetic Species Recognition (Taylor et al. 2000), or versions of it. Following this approach, concordance between individual gene trees is seen as evidence for a lack of recombination amongst groups and thus reflective of species barriers. The first application of this tool was for the distinction between *Neofusicoccum parvum* and *Neofusicoccum ribis*; two species that share very similar morphologies and ITS rDNA sequence data (Slippers et al. 2005). Currently, this species complex has been shown to include ten other cryptic species, many of which can be identified only through careful analyses of multiple gene sequences (Pavlic et al. 2009a; Begoude et al. 2010; Sakalidis et al. 2013). Some of these species are not consistently distinguishable using morphological data, and consequently Pavlic et al. (2009b) based the description on distinct Single Nucleotide Polymorphisms (SNP) that were fixed amongst the isolates of each species they studied. However, one limitation of this approach is that a sufficient number of isolates should be included per species for a robust identification of the truly fixed SNPs, which are not always available. It is now common to require sequence data for two or three gene regions to delineate species described from culture (see next section). Morphological characteristics have systematic and biological meaning, but they are no longer necessary for species distinction or routine identification. Thus, some of the commonly applied arguments relating to species descriptions, requiring for example examination of herbarium material, are not only superfluous but they are also meaningless (Slippers et al. 2014).

Prior to the publication of this special issue, hybrids were unknown amongst species of the *Botryosphaerales*. Cruywagen et al. (2017) describe four hybrids and Rodríguez-Gálvez et al. (2017) describe one hybrid, amongst species of *Lasiodiplodia*. Some of these were previously described species for which phylogenetic data were inadequate and possibly incorrectly interpreted. Hybrids can be extremely difficult to identify and require sequences for multiple genes, representative collections, and the exclusion of other hypotheses to describe the variation. In this regard, Cruywagen et al. (2017) have provided a useful ‘decision tree’ to illustrate the approach taken in that study. These findings raise a number of critical questions. Why have hybrids been identified only in *Lasiodiplodia*? If hybrids are restricted to this genus, what drives hybridization within the group that is different from other genera? Does the global distribution of some species, well beyond their expected original ranges, contribute to the likelihood of hybridization in the group? What are the consequences of hybridization with respect to host range, pathogenicity and other characters that could have ecological and economic consequences? These and other questions have

been studied for some other plant-associated fungi and Oomycetes, which will guide future studies in the *Botryosphaerales* (Schardl & Craven 2003).

An increasingly urgent question needing consideration for the *Botryosphaerales* (and numerous other important groups of fungi) is how best to deal with the hundreds of historical names known only from herbarium specimens. There are no cultures for the vast majority of these species and there is consequently little opportunity to verify their names based on sequence data. It is evident from changes in the taxonomy of the *Botryosphaerales* described above, and especially the recognition of cryptic species and hybrids, that such DNA-based sequence data are not only important, but also essential for accurate routine identification of *Botryosphaerales* in laboratories globally.

Epi- and neotypification of species is a valuable approach to address the problem of species known based only on herbarium specimens (e.g. see Slippers et al. 2004; Crous et al. 2015b; Dayarathne et al. 2016). However, while such typification actions can provide living cultures to be used in associated studies, it is expensive, time consuming and for most



**Fig 3** – The number of species known from culture in the 33 genera and nine families of the *Botryosphaerales*. The bulk of the diversity is represented by the *Botryosphaeriaceae*, of which *Lasiodiplodia*, *Neofusicoccum*, *Dothiorella* and *Diplodia* contain 70% of the species. There is no reason at present to believe that this skewed diversity is due to sampling or isolation bias, and rather represent genera that are more widely distributed geographically and on more hosts.

species this approach will not be practical or even possible. With advances in sequencing of very old and fragmented DNA, the sequencing of herbarium specimens provides an interesting alternative. A genomics project screening all type specimens in herbaria could be attempted (Weiss et al. 2016), although challenges of degraded DNA, mixed fungal infections, and depauperate specimens will need to be overcome. In addition, the probability is extremely low that sequences for all the commonly-used single-copy genes for species identification will be obtained from such DNA. Whatever the approach going forward, the use of older names without linked validated sequence data should be avoided, even for general identifications. In this regard, the list of names of species known from culture should be treated as the current acknowledged list of names.

### Molecular tools for identification and taxonomic characterization

For phylogenetic relationships at the generic and family levels, sequence data from the Large- and Small-Subunit of the rDNA have been important, in addition to ITS and some other loci (Yang et al. 2017). The most complete phylogenies of representative groups in the order have been based on six loci (Slippers et al. 2013). Even from these, relationships between some groups are still only weakly supported or understood.

There are a variety of approaches used for DNA sequence-based description of taxa in the Botryosphaerales. The internal transcribed spacer region of the ribosomal RNA (ITS) locus, amplified using the standard barcoding primers (ITS1 to ITS4 primers; White et al. 1990) is still the most widely used. This locus, however, does not distinguish many well-established cryptic species, or at least not with certainty (Slippers et al. 2004; Sakalidis et al. 2011). The translation elongation factor 1- $\alpha$  (*EF1- $\alpha$* ) is most often used in combination with the ITS locus, but it has limitations. For example, it has been problematic to amplify this region in some species, and lacks phylogenetic signal in some groups (e.g. *Lasiodiplodia*; see Cruywagen et al. 2017) (Fig 4). A portion of the  $\beta$ -tubulin (*TUB*) gene has been widely used, but it also lacks phylogenetic signal. The RNA polymerase II (*rpb2*) locus has shown much promise, providing phylogenetic signal between even closely related species (Pavlic et al. 2009b; Sakalidis et al. 2011; Yang et al. 2017). However, it has not been frequently used, sometimes due to failure to obtain amplicons for given genera or groups of species, and this implies that there are incomplete databases for this gene region. This is also true for numerous other loci that have been used in various studies (Table 2). Thus the ITS, *EF1- $\alpha$* , *TUB*, and *rpb2* loci remain the most represented in databases, and they provide sufficient phylogenetic signal to distinguish most cryptic species. These latter loci should ideally all be sequenced for at least some representative isolates of any species that is being described as new.

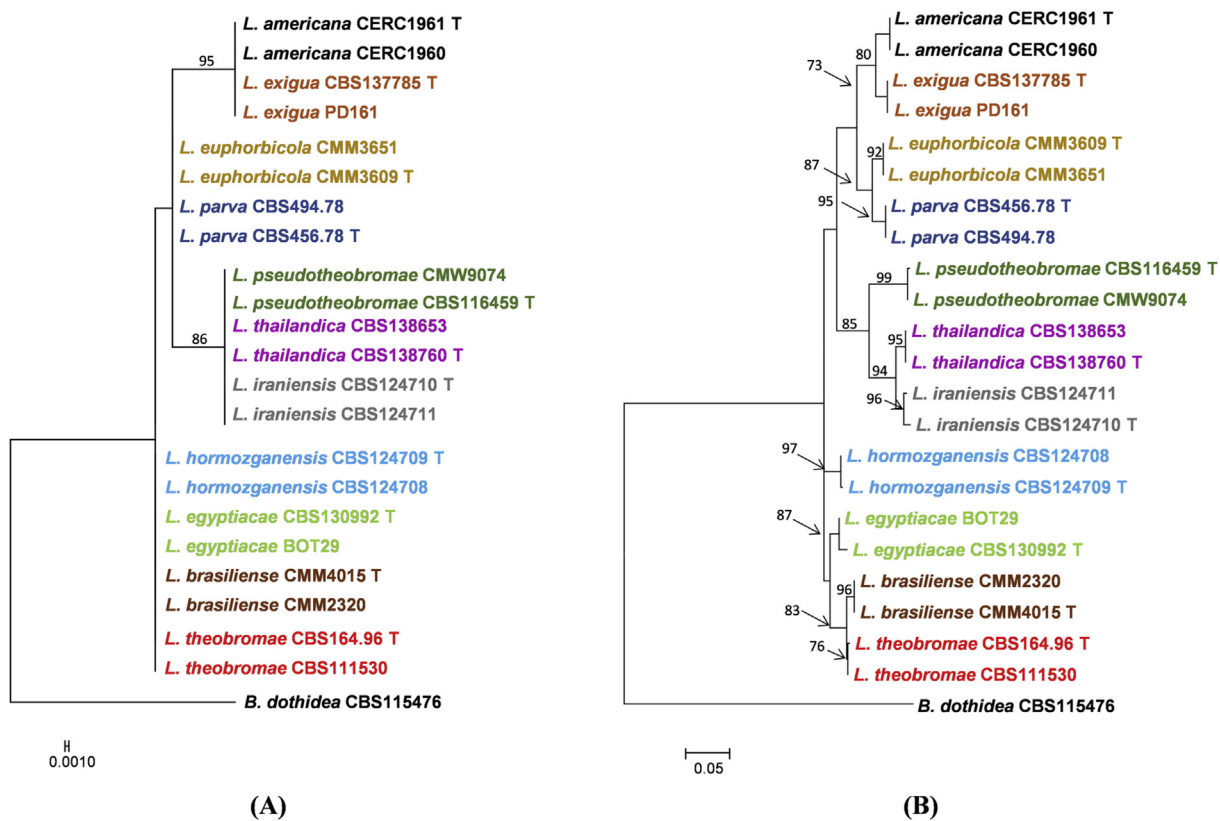


Fig 4 – Phylogenetic trees showing the difference between resolution of recognized species in *Lasiodiplodia* when using (A) ITS rDNA data compared to (B) a combined dataset of ITS rDNA, *EF1- $\alpha$* , *TUB*, *CAL* and *rpb2* loci. Trees were drawn from GenBank data linked to the isolate number listed with each name. “T” represents ex-type cultures.

**Table 2 – Primers commonly used to amplify loci for sequencing in phylogenetic studies.**

Locus	Primer	Sequence 5'-3'	Reference	
ITS rDNA	ITS1-F	CTTGGTCATTTAGAGGAAGTAA	Gardes & Bruns (1993)	
	ITS1	TCCGTAGGTGAACCTGCGG	White et al. (1990)	
	ITS4	TCCCTCGCTTATTGATATGC	White et al. (1990)	
LSU rDNA	LR5	GGAAGTAAAAGTCGTAACAAGG	Vilgalys & Hester 1990	
	LR0R	GTACCCGCTGAACTTAAGC	Rehner & Samuels (1994)	
	LSU1 Fd	GRATCAGGTAGGRATACCCG	Crous et al. (2009)	
SSU rDNA	NS1	GTAGTCATATGCTTGTCTC	White et al. (1990)	
	NS4	CTTCGGTCAATTCCTTTAAG	White et al. (1990)	
Translation Elongation factor-1 $\alpha$ (EF1- $\alpha$ )	EF1-688F	CGGTCACTTGATCTACAAGTGC	Alves et al. (2008)	
	EF1-1251R	CCTCGAACTCACCAGTACCG	Alves et al. (2008)	
	EF-AF	CATCGAGAAGTTCGAGAAGG	Sakalidis et al. (2011)	
	EF-BR	CRA TGG GTG ATA CCA RCG CTC	Sakalidis et al. (2011)	
	EF1-728F	CATCGAGAAGTTCGAGAAGG	Carbone & Kohn (1999)	
	EF1-986R	TACTTGAAGGAACCCCTTACC	Carbone & Kohn (1999)	
	EF2	GGARGTACCAGTSATCATGTT	O'Donnell et al. (1998)	
	EF1-983F	GCYCCYGGHCAYCGTGAYTTYAT	Rehner (2001)	
	EFgr	GCAATGTGGGCRGTRTGRCARTC	Rehner (2001)	
	$\beta$ -tubulin ( <i>TUB</i> )	Bt2a	GGTAACCAAATCGGTGCTGCTTTC	Glass & Donaldson (1995)
		Bt2b	ACCCTCAGTGTAGTGACCCTTGGC	Glass & Donaldson (1995)
T1		AACATGCGTGAGATTGTAAGT	O'Donnell & Cigelnik (1997)	
T10		ACGATAGGTTCCACCTCCAGAC	O'Donnell & Cigelnik (1997)	
RNA polymerase II second largest subunit ( <i>rpb2</i> )	<i>rpb2</i> -LasF	GGTAGCGACGTCACCTCT	Cruywagen et al. (2017)	
	<i>rpb2</i> -LasR	GCGCAAATACCCAGAATCAT	Cruywagen et al. (2017)	
	<i>fRBP2</i> -5F	GAYGAYMGWGATCAYTTYGG	Liu et al. (1999)	
	<i>fRBP2</i> -414R	ACMANNCCCCARTGNGWRTRTG	Quaedvlieg et al. (2011)	
Calmodulin ( <i>CAL</i> )	CAL-228F	GAGTTCAAGGAGGCCCTTCTCCC	Carbone & Kohn (1999)	
	CAL-737R	CATCTTTCTGGCCATCATGG	Carbone & Kohn (1999)	
Actin ( <i>ACT</i> )	ACT-512F	ATGTGCAAGGCCGGTTTCGC	Carbone & Kohn (1999)	
	ACT-783R	TACGAGTCCTTCTGGCCCAT	Carbone & Kohn (1999)	
Glyceraldehyde-3-phosphate dehydrogenase ( <i>GPDH</i> )	Gpd1-LM	ATTGGCCGATCGTCTTCCGCAA	Myllys et al. (2002)	
	Gpd2-LM	CCCCTCGTTGTCTGTACCA	Myllys et al. (2002)	
	GDR1	GGGTGGAGTCGTACTIONGAGCA TGT	Guerber et al. (2003)	
	GDF1	GCCGTCAAACGACCCCTTCATTGA	Guerber et al. (2003)	
	GDPHR2	CTCRGMRGRCRCCTTGATGG	Glienke et al. (2011)	
Mating type ( <i>MAT1-1-1</i> )	Neo_MAT1_b92F	TTGGCGCCACATACGCC	Lopes et al. (2017)	
	Neo_MAT1_b227F	GTCATGCAGTATCCCCAGC	Lopes et al. (2017)	
	Neo_MAT1_b470F	CTTTGCTTCTGTGCTGTGCC	Lopes et al. (2017)	
	Neo_MAT1_113Fb	CACCTCAACTGCTTTCGTGC	Lopes et al. (2017)	
	Neo_MAT1_226F	CAGAAGGACAGGTCGGGC	Lopes et al. (2017)	
	Neo_MAT1_240F	GACCTGTCTTCTGTTGATGC	Lopes et al. (2017)	
	Neo_MAT1_771F	TGCTGGGCATTCTGAGCAGC	Lopes et al. (2017)	
	Neo_MAT1_1215Rb	CGAAGGTCGGAGTANTTG	Lopes et al. (2017)	
	Neo_MAT1_1301R	CTTGATCGGACTGTCCAACC	Lopes et al. (2017)	
	Neo_MAT1_1511R	CATTGTCAAAGTGGTCGGCG	Lopes et al. (2017)	
	Neo_MAT1_-84R	GTGCAGTCCTACACGATTCC	Lopes et al. (2017)	
	Neo_MAT1_-273R	GCATAAGTACTCGCCCAAGC	Lopes et al. (2017)	
	Neo_MAT1_-283R	CGCTTGTGGGCATAAGTACTCG	Lopes et al. (2017)	
	Neo_MAT1_-1154R	GTTGATCTGCATCTGAGGATCG	Lopes et al. (2017)	
	Neo_MAT1_-1892R	TACGATGTCTGTCATTGGGA	Lopes et al. (2017)	
	Neo_MAT1_-2002R	TGGATTGGGTGGGGAATTGG	Lopes et al. (2017)	
	Mating type ( <i>MAT1-2-1</i> )	Neo_MAT2_-359F	GGAAATACATACGCTCCTGTGG	Lopes et al. (2017)
Neo_MAT2_-156Fb		TATCGTCTTGGAGCGACTCAGC	Lopes et al. (2017)	
Neo_MAT2_-77F		TCACTGCTTTGGCTGCACACC	Lopes et al. (2017)	
Neo_MAT2_119F		CTACGAGCAACAAATGCCATTGC	Lopes et al. (2017)	
Neo_MAT2_268F		CTCAGCCCTCATGAACCAG	Lopes et al. (2017)	
Neo_MAT2_1070Rb		GCATTGTCAAGGATAGTCCCG	Lopes et al. (2017)	
Neo_MAT2_1405R		CAAGCGAAGTGAAGTCGAAGC	Lopes et al. (2017)	
Neo_MAT2_b116R		AGGCAGTGGTCTTTCTGTTCC	Lopes et al. (2017)	
Neo_MAT2_b162R		CCTTGATCGAAAGACGCAGAGTG	Lopes et al. (2017)	
Neo_MAT2_b975R		TGGGTGCGTCTGTTAGAGG	Lopes et al. (2017)	



It is important to consider congruence amongst the phylogenies from the above-mentioned loci, and not only to lump these data in combined analyses (Taylor et al. 2000; Sakalidis et al. 2013). This is particularly evident in the use of the two most common loci in the *Botryosphaerales* namely the ITS and *EF1- $\alpha$* , which are often presented as combined analyses. In this regard, cryptic species can be erroneously distinguished in such combined trees when the distinction has support only from a single locus (e.g. *EF1- $\alpha$* ). Combined analyses inevitably strengthen the back-bones of the trees and often support interpretation of relationships amongst species and genera. But the distinction of cryptic species requires separate analyses of individual phylogenies, and typically for more than two informative loci. The identification of SNPs that are fixed within species and differ from other taxa, provide characters that can be used in the description of new species, as mentioned earlier (Pavlic et al. 2009b).

Microsatellite markers that are commonly used for population genetic studies have been useful to support the lack of gene flow between potential cryptic taxa that have been identified using gene sequences (Begoude et al. 2011; Sakalidis et al. 2011; Pavlic-Zupanc et al. 2015). While this approach should be applied with caution because distinction between populations and species can be confused, it is useful to test hypotheses of whether gene flow might occur between cryptic species.

Very few of the currently applied morphological characters for species descriptions of *Botryosphaerales* have emerged as having taxonomic value (Slippers et al. 2014). Size of conidiomata, size, colour and septation in conidia and ascospores, presence and size of paraphyses, and various other typically described characters all overlap between species and vary greatly within species. Perhaps the most dramatic example of this problem is the occasional presence of highly variable synsexual morphs in many taxa (Barber et al. 2005; Crous et al. 2006; Phillips et al. 2013). While we do not suggest that the use of these characters should be blindly discarded in taxonomic descriptions, some consideration should be given to understanding which characters will most likely have value as metadata for biological, ecological or systematic studies in future. For example, accurate collection data (host, location, date), information regarding pathogenicity or disease symptoms, growth rate at certain temperatures and, in future, the genome and transcriptome data might have much greater value to future users of a description than dimensions of some morphological character. In this regard, a culture linked to a herbarium specimen is much more valuable than only a herbarium specimen; allowing researchers to characterize other features in future that are not considered important or that are not feasible at present.

The dramatic changes in the taxonomy of the *Botryosphaerales* during the course of the past decade has led to high levels of uncertainty regarding previously described names in this family. As mentioned previously, this is true for names without associated sequence data, but is also a problem in the case of poorly characterized names for which sequence data are available. It is a problem that a very large proportion of the >10000 gene sequences in GenBank have questionable taxonomic labels, and it is critical that this is addressed to support accurate future research (Bidartondo et al. 2008). The curated NCBI Reference Sequence Database (RefSeq) and associated

curated databases such as MycoBank provide valuable resources to navigate through some of these data sets. It is ideal, however, to include reference sequences from ex-type cultures, as far as possible, in phylogenetic analyses and thus to avoid confusion.

---

## Diversity, geographic distribution, host association, and disease

As an increasingly accurate view of the species diversity in the *Botryosphaerales* has emerged, a fascinating but disturbing reality regarding the biogeography of the group is also emerging. For example, some species are clearly globally distributed and they have extremely wide host ranges. Examples include *Botryosphaeria dothidea* and *Lasiodiplodia theobromae* that interestingly were the most commonly used names in the order despite the taxonomic changes that have occurred. They also remain some of the most commonly occurring species globally. But there are many more species, especially in *Neofusicoccum*, *Diplodia*, and *Lasiodiplodia* that have a much wider global or near global distribution than was previously realized. These species are also those most often associated with disease in agriculture and forestry. These distributions can thus have far reaching consequences in terms of plant health in native ecosystems and commercial plant production alike. And this is especially important as plant communities come under pressure due to climate change (Desprez-Loustau et al. 2006). *B. dothidea*, for example, not only threatens apple and pistachio production in China and the USA, but it also causes disease on native *Ostrya carpinifolia* in Europe and *Acacia* in Southern Africa, amongst many other hosts around the world (Marsberg et al. 2017).

For some recently described species, the distribution appears to be limited to a single region or country. For example, the soil- and seed-borne polyphagous pathogen *Macrophomina pseudophaseolina*, which causes charcoal rot of *Abelmoschus esculentus*, *Arachis hypogaea*, *Hibiscus sabdarifa*, and *Vigna unguiculata*, is thus far only known to occur in Senegal (Sarr et al. 2014). Likewise, white grain disorder of wheat is caused by three different species of *Eutiarosporella*, but these have thus far been recorded only from Australia (Thynne et al. 2015), and not from other countries where wheat is cultivated.

Globally distributed species reflect a near total failure of quarantine systems to recognize or deal with the *Botryosphaerales*. This is especially because the intercontinental spread of these fungi can be explained only through human movement of plant material. The *Botryosphaerales* have sticky spores and are thought to be predominantly dispersed with wind and rain, and to a lesser extent via insects (Van Niekerk et al. 2010; Mehl et al. 2013; Moyo et al. 2014; Valencia et al. 2015). Consequently natural spread is expected to be relatively local. The *Botryosphaeriaceae* are, however, very common endophytes in various plant parts, including fruits, leaves, twigs and stems (Slippers & Wingfield 2007). The extensive movement of living plants and fresh plant products around the world is thus likely to have contributed substantially to the global distribution patterns of these fungi (Crous et al. 2016b; Burgess et al. 2017). Consider for example the trade in fruits such as mangoes or apples. Healthy fruits are very commonly

infected by a variety of *Botryosphaeriaceae* (Slippers et al. 2007). Once these start to rot, fruit are likely to be discarded. This would provide ample opportunity for these pathogens to spread to nearby woody plants and they would be able to successfully infect them due to their broad host ranges.

One of the best-studied cases of the global distribution of a *Botryosphaeriaceae* species is that of *Diplodia sapinea*. This pine-infecting species occurs in all areas of the world where *Pinus* spp. are planted as non-natives. In most of these populations the genetic diversity is very high (Burgess & Wingfield 2002), indicating extensive introduction from the native range. Bihon et al. (2011) have shown that this is unlikely to occur via seed, and has arisen more probably with the trade of living plants or plant tissues. This appears also to be a common pattern in other *Botryosphaeriaceae*.

One of the most dramatic surprises in terms of global distribution and impact of *Botryosphaeriaceae* species to emerge in the past decade is that concerning *Neofusicoccum parvum*. Studies have revealed an unexpectedly broad distribution and common occurrence of this pathogen on a wide range of woody plants. Interestingly, *N. parvum* was first described in the mid-1980's from New Zealand where it was found infecting kiwi fruit. But, since 2004 it has been shown to occur in many countries of the world and on at least 90 hosts (Sakalidis et al. 2013). Mehl et al. (2017) showed that *N. parvum* is one of the most common species infecting native and non-native *Anacardiaceae* in South Africa, namely *Marula* (*Sclerocarya birrea* subsp. *caffra*) and mango trees (*Mangifera indica*). It is also emerging as one of the most prominent pathogens in agriculture, including on *M. indica* (Trakunyingcharoen et al. 2014), *Prunus cerasoides* (Trakunyingcharoen et al. 2015), and *Vitis vinifera* (Van Niekerk et al. 2004; Úrbez-Torres & Gubler 2009; Massonnet et al. 2017).

The study by Mehl et al. (2017) in this issue highlights a pattern that is becoming increasingly obvious for some species of *Botryosphaeriaceae*. This is that, once introduced into a region, a *Botryosphaeriaceae* species will commonly spread between native and non-native plants and it can cause disease problems in both of these situations. This is particularly true with regards to broadly distributed and broad host range species (e.g. *N. parvum*) in disturbed environments (Pavlic-Zupanc et al. 2015; Zlatković et al. 2016a). Urban, forestry and agricultural landscapes appear to provide 'bridges' for these fungi to move to and from native ecosystems.

Not all species of the *Botryosphaeriales* have broad host and geographic distributions. Studies on a particular host across a wide geographic range, such as *Acacia* species across South Africa and Namibia (Slippers et al. 2014; Jami et al. 2015) and mangrove (Osorio et al. 2017) have shown that many species occur in rather limited areas. These findings, together with numerous other recent studies reporting new species from one or two locations, suggest that geography contributes significantly to species diversity in the order. This is not unexpected for fungi having a limited capacity to disperse over large areas.

Very few species of the *Botryosphaeriales* appear to be host specific. Where only one or two hosts are known, this commonly appears to be linked to small numbers of isolates (rare species) and possibly arises from limited sampling (Jami et al. 2014; Slippers et al. 2014). Most tree hosts appear

to harbour many species of *Botryosphaeriales*. In fact, many intensive studies have revealed 16 or more species on a single host (Slippers et al. 2014; Jami et al. 2015; Osorio et al. 2017). These findings suggest that further geographic sampling, rather than a greater number of hosts, is likely to reveal more diversity in the group.

In recent years there have been a number of disease problems reported in plant communities across large areas linked to *Botryosphaeriales*. These have commonly also been linked to climate change events or cases of human disturbance. Notable examples are those for *Agonis flexuosa* in Western Australia (Dakin et al. 2010), *O. carpinifolia* in Slovenia and Italy (Piskur et al. 2011), *Acacia* species, Mangrove species (*Avicennia marina*, *Bruguiera gymnorhiza*, *Ceriops tagal*, *Lumnitzera racemosa*, *Rhizophora mucronata*, and *Xylocarpus granatum*) and *M. indica* trees in Southern Africa (Jami et al. 2013; Slippers et al. 2014; Mehl et al. 2017; Osorio et al. 2017), *Schizobolium parahyba* in South America (Mehl et al. 2014), various ornamental trees across the Balkans (Zlatković et al. 2016b), *Anacardium occidentale* in Brazil (Netto et al. 2017), *Eriobotrya japonica* in Italy (Giambra et al. 2016), amongst others. Whether this trend is increasing is not clear. But it is certainly very prominent where such die-back and decline occurs and it will be necessary to monitor this situation carefully over time.

While patterns of host association and distribution are becoming increasingly better understood, the consequences of changes in these patterns, the spread of certain species and novel plant–fungal interactions are very poorly understood for the *Botryosphaeriales*. The pathogenicity of the vast majority of the species on most of the hosts on which they occur is unknown. How these communities change over time, and in response to various human-mediated environmental changes, is equally poorly understood (Jami et al. 2015). Given the broad distribution, common occurrence, and rapid global changes due to land use and climate change, these questions (amongst other raised here) are becoming increasingly urgent to be answered.

---

## The future with (meta-)genomes and (meta-)transcriptomes

Genomics and transcriptomics are set to completely revolutionize our understanding of the diversity of the *Botryosphaeriales*. Even the initial analyses of the first *Botryosphaeriaceae* genomes have provided unprecedented insight into the biology of the group. To date genomes of 13 species residing in four families in the *Botryosphaeriales* have been sequenced. These are *Aplosporella prunicola*, *Botryosphaeria dothidea*, *Diplodia sapinea*, *Diplodia corticola*, *Diplodia scrobiculata*, *Diplodia seriata*, *Macrophomina phaseolina*, *Neofusicoccum parvum*, *Phyllosticta citriasiana*, *Phyllosticta citribraziliensis*, *Phyllosticta citricarpa*, *Phyllosticta capitalensis*, and *Saccharata proteae* (Table 3). Not all these genomes have been analysed, but where they have been studied, they illustrate a group of fungi uniquely interacting with their hosts (Marsberg et al. 2017). Their unique biology with prolonged endophytic life cycles and in which they apparently do not damage host cells and do not trigger a host response during infection is particularly intriguing. They can apparently deceive their hosts into allowing them

**Table 3 – Available genomes of Botryosphaerales.**

Species	JGI website or GenBank ID	Associated publication	Size (Mb)	Gene count
<i>Aplosporella prunicola</i>	<a href="http://genome.jgi.doe.gov/Aplpr1/Aplpr1.home.html">http://genome.jgi.doe.gov/Aplpr1/Aplpr1.home.html</a>	Part of the 1000 Fungal Genomes Project.	32.8	12579
<i>Botryosphaeria dothidea</i>	788841	Liu et al. (2016)	23.76	
<i>Botryosphaeria dothidea</i>	<a href="http://genome.jgi.doe.gov/Botdo1_1/Botdo1_1.home.html">http://genome.jgi.doe.gov/Botdo1_1/Botdo1_1.home.html</a>	Marsberg et al. (2017)	43.5	14998
<i>Diplodia corticola</i>	50478	Fernandez et al. (2014)	34.98	10839
<i>Diplodia sapinea</i>	31839	Bihon et al. (2014), Van der Nest et al. (2014)	35.6	
<i>Diplodia scrobiculata</i>	41697	Wingfield et al. (2015)	34.9	
<i>Diplodia seriata</i>	<a href="http://genome.jgi.doe.gov/Dipse1/Dipse1.home.html">http://genome.jgi.doe.gov/Dipse1/Dipse1.home.html</a> GenBank 38175	Morales-Cruz et al. (2015)	37.1	9343
<i>Macrophomina phaseolina</i>	12172	Islam et al. (2012)	48.8	13806
<i>Neofusicoccum parvum</i>	16686	Blanco-Ulate et al. (2013)	42.6	10366
<i>Neofusicoccum parvum</i>	UCD646So	Massonnet et al. (2017)	43.7	13124
<i>Phyllosticta citriasiana</i>	<a href="http://genome.jgi.doe.gov/Phycit1/Phycit1.home.html">http://genome.jgi.doe.gov/Phycit1/Phycit1.home.html</a>	Part of the 1000 Fungal Genomes Project.	32.7	11368
<i>Phyllosticta citribraziliensis</i>	<a href="http://genome.jgi.doe.gov/Phcit1/Phcit1.home.html">http://genome.jgi.doe.gov/Phcit1/Phcit1.home.html</a>	Part of the 1000 Fungal Genomes Project.	31.67	11101
<i>Phyllosticta citricarpa</i>	713091	Wang et al. (2016)	31.13	5748
<i>Phyllosticta capitalensis</i>	<a href="http://genome.jgi.doe.gov/PhycapStandDraft_FD/PhycapStandDraft_FD.info.html">http://genome.jgi.doe.gov/PhycapStandDraft_FD/PhycapStandDraft_FD.info.html</a>	Part of the 1000 Fungal Genomes Project.	32.45	
<i>Phyllosticta capitalensis</i> strain Gm33	713081	Wang et al. (2016)		
<i>Saccharata proteae</i>	<a href="http://genome.jgi.doe.gov/Sacpr1/Sacpr1.home.html">http://genome.jgi.doe.gov/Sacpr1/Sacpr1.home.html</a>	Part of the 1000 Fungal Genomes Project.	31.4	9324

to infect, but later to become necrotrophic pathogens when the infected plants are subjected to stress, earning them the title of ‘stealth pathogens’ (Marsberg et al. 2017). Yet, the genomes of those species that have been analysed clearly show that they have a well developed arsenal of potential pathogenicity genes and virulence factors with which to overcome host defences and cause serious disease (Islam et al. 2012; Blanco-Ulate et al. 2013; Morales-Cruz et al. 2015; Marsberg et al. 2017; Massonnet et al. 2017). Studying the regulation of these genes during the infection and disease causing processes through transcriptomics and metatranscriptomics holds great potential, not only to shed light on this group of fungi, but also on the poorly understood endophytic fungal communities of plants in general.

Genomes will provide a rich source of markers for population and phylogenetic studies in the future. Earlier in this review we reflected on the rising recognition of cryptic species, hybrids and the movement of pathogens between hosts, environments and continents. Further studies on these topics are limited by available population markers. Every published genome has thousands of microsatellite markers from which to select. They also offer the opportunity to compare cryptic species and hybrids across whole genomes. Surprisingly, none of these approaches have been applied, but this situation is expected to change rapidly in coming years as more whole genomes of closely related cryptic species become available.

One of the first aspects of the biology of the *Botryosphaerales* that genomes have revealed is their mating strategies. It is well known that fungi in this order have a sexual cycle,

but this morph is seldom observed or artificially induced in the laboratory. Its influence on population diversity is largely unknown. Population genetic studies have occasionally suggested that this has a significant influence on populations, even in species such as *D. sapinea* where no sexual cycle is known (Bihon et al. 2012). And indeed the first genome analyses of this species, and subsequent population studies using markers from the genome analyses, revealed an apparently fully functional heterothallic reproductive system (Bihon et al. 2014; van der Nest et al. 2014). In contrast, *B. dothidea*, for which a sexual cycle is known, appears to be homothallic (Marsberg et al. 2017).

Lopes et al. (2017) illustrated the value of genomes for studying both phylogenetics and biology in the group. These authors characterized the mating type genes of a number of *Neofusicoccum* species, using markers designed from publicly available genomes of *N. parvum* and *D. sapinea*. They have shown that homothallism is the predominant mode of sexual reproduction in *Neofusicoccum*. Furthermore, these markers were shown to be useful to distinguish cryptic species in this genus. Similar studies on other genera, and using other markers from these genomes, are likely to proliferate in coming years.

Next generation sequencing is not only making it possible to sequence genomes, but also communities through metabarcoding approaches. Here too, our understanding of the *Botryosphaerales* is set to change dramatically. For example, Kemler et al. (2013) used a metabarcoding approach to characterize the endophytic community of a single *Eucalyptus* tree, and showed that the *Botryosphaeriaceae* make up a dominant

portion; more than 30 % of the identified taxonomic units. While much work remains to be done to understand what this diversity represents, it is clear from the study of [Kemler et al. \(2013\)](#) that metabarcoding holds the key to our understanding of the phylogeography, host association and other ecologically important questions about the *Botryosphaerales*.

## Conclusions

Advances in DNA sequencing used for phylogenetics have helped determine a more natural classification of the *Botryosphaerales* over the past decade. They have also raised serious doubts regarding past descriptions of taxa. Currently, decisions regarding new species are mostly made based on sequence data, and these can hardly be reliably linked to type material of 'old' species. The increasing recognition of cryptic species, hybrids and morphological variants of the same species make any reliance on other systems highly uncertain. Apart from requiring some molecular data to be linked to species descriptions, the use of multiple gene regions and preferably more than two genes become essential.

The time is overdue to move to a more sensible, sequence-based system to catalogue and describe new species in the *Botryosphaerales* as well as in other fungi. Reliance on morphological descriptions alone that have little meaning in terms of identification or anchoring of a name in most cases reflect an unfortunate and unnecessary waste of time. This is particularly true in light of the potential threat that these fungi pose as invaders and pathogens of growing importance. This is also important against a background of the expected rise in taxon discovery as the power and utility of metabarcoding increases. Such a system will not only speed up discovery and description, but also make it accessible to a larger number of scientists and practitioners that can contribute to the understanding of distribution, host range and pathways of spread of these pathogens. It will also provide validated information allowing quarantine systems to consider management options for the apparently regular and continued spread of these fungi internationally.

One of the important remaining questions regarding the majority of *Botryosphaerales* species concerns their biology. We are just beginning to understand fundamental issues regarding these fungi, such as whether species are homothallic or heterothallic, and whether they are undergoing sexual reproduction. Furthermore, virtually all species that have been studied in detail can exist as endophytes in healthy tissue for extended periods. Yet they have the ability to cause disease when inoculated and they are often associated with serious disease problems. How these species colonize their hosts, and in some cases hundreds of different and unrelated host species, without causing disease is unknown. It is also unknown what their roles are in broader ecosystems. Answers to these questions are important especially because they will impact strongly on issues relating to invasion biology and disease control in the future.

It is evident from a growing number of recent studies that species in the *Botryosphaerales* are being moved around the world relatively freely. This spread has most likely been in

healthy plant material, including fruits, and the pathogens would have been virtually impossible to detect in their endophytic state ([Burgess et al. 2017](#)). Even where symptoms are visible, quarantine can no longer rely on morphological identifications and old names for this group of fungi ([Crous et al. 2016b](#)). The only conceivable means to understand the magnitude and pathways of this spread will be through the use of direct sequencing, metabarcoding approaches. As our understanding of the biology of these organisms increases and as we come to understand the molecular mechanisms that underpin the many processes involved, we foresee that genomics and metagenomics (i.e. considering the whole genome, and not only barcoding regions) will become the primary basis of quarantine and other management decisions ([McTaggart et al. 2016](#)). Clearly there is much work still to be done on this group before this will be a reality. Fortunately we now have a robust natural classification system for the *Botryosphaerales* and many of the tools needed to understand and manage these fungi.

## Acknowledgements

We thank members of the Tree Protection Co-operative Programme (TPCP), the NRF-DST Centre of Excellence in Tree Health Biotechnology (CTHB), and the University of Pretoria, South Africa for financial support. We also thank the following people for photographs used in [Fig 1](#) who are not co-authors: Giancarlo Polizzi (B), Guangyu Sun (C), Themis Michailides (E), Carlos Rodas (F), Marcos P.S. Câmara (G), Maruzanete P. Melo (J) and Stephen Neate (M).

## REFERENCES

- Alves A, Crous PW, Correia A, Phillips AJL, 2008. Morphological and molecular data reveal cryptic speciation in *Lasiodiplodia theobromae*. *Fungal Diversity* 28: 1–13.
- Barber PA, Burgess TJ, Hardy GESJ, Slippers B, Keane PJ, Wingfield MJ, 2005. *Botryosphaeria* species from *Eucalyptus* in Australia are pleoanamorphic, producing *Dichomera* synanamorphs in culture. *Mycological Research* 109: 1347–1363.
- Begoude BAD, Slippers B, Wingfield MJ, Roux J, 2010. *Botryosphaeriaceae* associated with *Terminalia catappa* in Cameroon, South Africa and Madagascar. *Mycological Progress* 9: 101–123.
- Begoude BAD, Slippers B, Perez G, Wingfield MJ, Roux J, 2011. High gene flow and outcrossing within populations of two cryptic fungal pathogens on a native and non-native host in Cameroon. *Fungal Biology* 116: 343–353.
- Bidartondo MI, Bruns TD, Blackwell M, et al., 2008. Preserving accuracy in GenBank. *Science* 319: 1616.
- Bihon W, Burgess T, Slippers B, Wingfield MJ, Wingfield BD, 2012. High levels of genetic diversity and cryptic recombination is widespread in introduced *Diplodia pinea* populations. *Australian Plant Pathology* 41: 41–46.
- Bihon W, Slippers B, Burgess T, Wingfield M, Wingfield B, 2011. Sources of *Diplodia pinea* endophytic infections in *Pinus patula* and *P. radiata* seedlings in South Africa. *Forest Pathology* 41: 370–375.
- Bihon W, Wingfield MJ, Slippers B, Duong TA, Wingfield BD, 2014. *Mat* gene idiomorphs suggest a heterothallic sexual cycle in

- a predominantly asexual and important pine pathogen. *Fungal Genetics and Biology* 62: 55–61.
- Blanco-Ulate B, Rolshausen P, Cantu D, 2013. Draft genome sequence of *Neofusicoccum parvum* isolate UCR-NP2, a fungal vascular pathogen associated with grapevine cankers. *Genome announcements* 1 e00339–13.
- Burgess T, Wingfield MJ, 2002. Quarantine is important in restricting the spread of exotic seed-borne tree pathogens in the southern hemisphere. *International Forestry Review* 4: 56–65.
- Burgess TI, Crous CJ, Hantula J, Slippers B, Wingfield MJ, 2017. Tree invasions and biosecurity: eco-evolutionary dynamics of hitchhiking fungi. *AoB PLANTS*. <http://dx.doi.org/10.1093/aob-pla/plw076> (in press).
- Carbone I, Kohn LM, 1999. A method for designing primer sets for speciation studies in filamentous ascomycetes. *Mycologia* 91: 553–556.
- Chethana KT, Xinghong L, Zhang W, Jiye Y, 2016. Trail of decryption of molecular research on Botryosphaeriaceae in woody plants. *Phytopathologia Mediterranea* 55: 147–171.
- Crous P, Schoch C, Hyde K, Wood A, Gueidan C, De Hoog G, Groenewald J, 2009. Phylogenetic lineages in the Capnodiales. *Studies in Mycology* 64: 17–47.
- Crous PW, Wingfield MJ, Guarro J, Cheewangkoon R, van der Bank M, Swart WJ, Stchigel AM, Cano-Lira JF, Roux J, Madrid H, Damm U, Wood AR, Shuttleworth LA, Hodges CS, Munster M, de Jesús Yáñez-Morales M, Zúñiga-Estrada L, Cruywagen EM, de Hoog GS, Silvera C, Najafzadeh J, Davison EM, Davison PJN, Barrett MD, Barrett RL, Manamgoda DS, Minnis AM, Kleczewski NM, Flory SL, Castlebury LA, Clay K, Hyde KD, Mäusse-Sitoe SND, Chen S, Lechat C, Hairaud M, Lesage-Meessen L, Pawlowska J, Wilk M, Sliwiska-Wyrzychowska A, Metrak M, Wrzosek M, Pavlic-Zupanc D, Maleme HM, Slippers B, Mac Cormack WP, Archuby DI, Grünwald NJ, Tellería MT, Dueñas M, Martín MP, Marincowitz S, de Beer ZW, Perez CA, Gené J, Marin-Felix Y, Groenewald JZ, 2013. Fungal Planet description sheets: 154–213. *Persoonia* 31: 188–296.
- Crous PW, Wingfield M, Burgess T, Hardy GSJ, Crane C, Barrett S, Cano-Lira J, Le Roux J, Thangavel R, Guarro J, 2016a. Fungal planet description sheets: 469–557. *Persoonia-Molecular Phylogeny and Evolution of Fungi* 37: 218–403.
- Crous PW, Groenewald JZ, Slippers B, Wingfield MJ, 2016b. Global food and fibre security threatened by current inefficiencies in fungal identification. *Philosophical Transactions of the Royal Society. B* 371: 20160024.
- Crous PW, Hawksworth DL, Wingfield MJ, 2015a. Identifying and naming plant-pathogenic fungi: past, present, and future. *Annual Review of Phytopathology* 53: 246–267.
- Crous PW, Müller M, Sánchez RM, Giordano L, Bianchinotti MV, Anderson FE, Groenewald JZ, 2015b. Resolving *Tiarosporella* spp. allied to Botryosphaeriaceae and Phacidiaaceae. *Phytotaxa* 202: 073–093.
- Crous PW, Slippers B, Wingfield MJ, Rheeder J, Marasas WFO, Phillips AJL, Alves A, Burgess T, Barber P, Groenewald JZ, 2006. Phylogenetic lineages in the Botryosphaeriaceae. *Studies in Mycology* 55: 235–253.
- Cruywagen EM, Slippers B, Roux J, Wingfield MJ, 2017. Phylogenetic species recognition and hybridisation in *Lasiodiplodia*: a case study on species from baobabs. *Fungal Biology* 121: 420–436.
- Dakin N, White D, Hardy GESJ, Burgess TI, 2010. The opportunistic pathogen, *Neofusicoccum australe*, is responsible for crown dieback of peppermint (*Agonis flexuosa*) in western Australia. *Australasian Plant Pathology* 39: 202–206.
- Dayarathne MC, Boonmee S, Braun U, Crous PW, Daranagama DA, Dissanayake AJ, Ekanayaka H, Jayawardena R, Jones EBG, Maharachchikumbura SSN, Perera RH, Phillips AJL, Stadler M, Thambugala KM, Wanasinghe DN, Zhao Q, Hyde KD, Jeewon R, 2016. Taxonomic utility of old names in current fungal classification and nomenclature: conflicts, confusion & clarifications. *Mycosphere* 7: 1622–1648.
- Denman S, Crous PW, Taylor JE, Kang JC, Pascoe L, Wingfield MJ, 2000. An overview of the taxonomic history of Botryosphaeria, and a re-evaluation of its anamorphs based on morphology and its rDNA phylogeny. *Studies in Mycology* 45: 129–140.
- Desprez-Loustau M-L, Marçais B, Nageleisen L-M, Piou D, Vannini A, 2006. Interactive effects of drought and pathogens in forest trees. *Annals of Forest Science* 63: 597–612.
- Desprez-Loustau M-L, Robin C, Reynaud G, Déqué M, Badeau V, Piou D, Husson C, Marçais B, 2007. Simulating the effects of a climate-change scenario on the geographical range and activity of forest-pathogenic fungi. *Canadian Journal of Plant Pathology* 29: 101–120.
- Fernandez I, Alves A, Coreia A, Devreese B, Esteves AC, 2014. Secretome analysis identifies potential virulence factors of *Diplodia corticola*, a fungal pathogen involved in cork oak (*Quercus suber*) decline. *Fungal Biology* 118: 516–523.
- Gardes M, Bruns TD, 1993. ITS primers with enhanced specificity for basidiomycetes-application to the identification of mycorrhizae and rusts. *Molecular Ecology* 2: 113–118.
- Giambra S, Piazza G, Alves A, Mondello V, Berbegal M, Armengol J, Burrano S, 2016. Botryosphaeriaceae species associated with diseased Loquat trees in Italy and description of *Diplodia rosacearum* sp. *Mycosphere*, sp. nov. *Mycosphere* 7: 978–989.
- Glass NL, Donaldson GC, 1995. Development of primer sets designed for use with the PCR to amplify conserved genes from filamentous ascomycetes. *Applied and Environmental Microbiology* 61: 1323–1330.
- Glienke C, Pereira O, Stringari D, Fabris J, Kava-Cordeiro V, Galliterasawa L, Cunningham J, Shivas R, Groenewald J, Crous P, 2011. Endophytic and pathogenic *Phyllosticta* species, with reference to those associated with citrus black spot. *Persoonia* 26: 47–56.
- Guerber JC, Liu B, Correll JC, Johnston PR, 2003. Characterization of diversity in *Colletotrichum acutatum sensu lato* by sequence analysis of two gene introns, mtDNA and intron RFLPs, and mating compatibility. *Mycologia* 95: 872–895.
- Islam MS, Haque MS, Islam MM, Emdad EM, Halim A, Hossen QMM, Hossain MZ, Ahmed B, Rahim S, Rahman MS, 2012. Tools to kill: Genome of one of the most destructive plant pathogenic fungi *Macrophomina phaseolina*. *BMC Genomics* 13: 493.
- Jacobs KA, Rehner SA, 1998. Comparison of cultural and morphological characters and its sequences in anamorphs of Botryosphaeria and related taxa. *Mycologia* 90: 601–610.
- Jami F, Slippers B, Wingfield MJ, Gryzenhout M, 2013. Greater Botryosphaeriaceae diversity in healthy than associated diseased *Acacia karroo* tree tissues. *Australasian Plant Pathology* 42: 421–430.
- Jami F, Slippers B, Wingfield MJ, Gryzenhout M, 2014. Botryosphaeriaceae species overlap on four unrelated, native South African hosts. *Fungal Biology* 118: 168–179.
- Jami F, Slippers B, Wingfield MJ, Gryzenhout M, 2015. Temporal and spatial variation of Botryosphaeriaceae associated with *Acacia karroo* in South Africa. *Fungal Ecology* 15: 51–62.
- Kemler M, Garnas J, Wingfield MJ, Gryzenhout M, Pillay K-A, Slippers B, 2013. Ion torrent pgm as tool for fungal community analysis: a case study of endophytes in *Eucalyptus grandis* reveals high taxonomic diversity. *PLOS One* 8: e81718.
- Linaldeddu BT, Deidda A, Scanu B, Franceschini A, Alves A, Abdollahzadeh J, Phillips AJL, 2016. Phylogeny, morphology and pathogenicity of Botryosphaeriaceae, Diatrypaceae and Gnomoniaceae associated with branch diseases of hazelnut in Sardinia (Italy). *European Journal of Plant Pathology* 146: 259–279.

- Liu Z, Lian S, Li B, Lu H, Dong X, Wang C, 2016. Draft genome sequence of *Botryosphaeria dothidea*, the pathogen of apple ring rot. *Genome Announcements* 4: e01142–01116.
- Liu JK, Phookamsak R, Doilom M, Wikee S, Li YM, Ariyawansa H, Boonmee S, Chomnunti P, Dai DQ, Bhat JD, 2012. Towards a natural classification of *Botryosphaeriales*. *Fungal Diversity* 57: 149–210.
- Liu YJ, Whelen S, Hall BD, 1999. Phylogenetic relationships among ascomycetes: evidence from an RNA polymerase II subunit. *Molecular Biology and Evolution* 16: 1799–1808.
- Lopes A, Phillips AJ, Alves A, 2017. Mating type genes in the genus *Neofusicoccum*: mating strategies and usefulness in species delimitation. *Fungal Biology* 121: 394–404.
- Marsberg A, Kemler M, Jami F, Nagel JH, Postma-Smidt A, Naidoo S, Wingfield MJ, Crous PW, Spatafora J, Hesse CN, 2017. *Botryosphaeria dothidea*: a latent pathogen of global importance to woody plant health. *Molecular Plant Pathology*. <http://dx.doi.org/10.1111/mpp.12495>.
- Massonnet M, Morales-Cruz A, Figueroa-Balderas R, Lawrence DP, Baumgartner K, Cantu D, 2017. Condition-dependent co-regulation of genomic clusters of virulence factors in the grapevine trunk pathogen *Neofusicoccum parvum*. *Molecular Plant Pathology*. <http://dx.doi.org/10.1111/mpp.12491>.
- McNeill J, Barrie F, Buck W, Demoulin V, Greuter W, Hawksworth D, Herendeen P, Knapp S, Marhold K, Prado J, 2012. *International Code of Nomenclature for Algae, Fungi, and Plants (Melbourne Code) Adopted by the Eighteenth International Botanical Congress Melbourne, Australia, July 2011*. Regnum vegetabile. Koeltz Scientific Books, Germany.
- McTaggart AR, Van Der Nest MA, Steenkamp ET, Roux J, Slippers B, Shuey LS, Wingfield MJ, Drenth A, 2016. Fungal genomics challenges the dogma of name-based biosecurity. *PLOS Pathogens* 12: e1005475.
- Mehl J, Slippers B, Roux J, Wingfield M, 2014. *Botryosphaeriaceae* associated with die-back of *Schizolobium parahyba* trees in South Africa and Ecuador. *Forest Pathology* 44: 396–408.
- Mehl J, Slippers B, Roux J, Wingfield M, Gonthier P, Nicolotti G, 2013. Cankers and other diseases caused by the *Botryosphaeriaceae*. *Infectious Forest Diseases* 298–317.
- Mehl JW, Slippers B, Roux J, Wingfield MJ, 2017. Overlap of latent pathogens in the *Botryosphaeriaceae* on a native and agricultural host. *Fungal Biology* 121: 405–419.
- Minnis AM, Kennedy AH, Grenier DB, Palm ME, Rossman AY, 2012. Phylogeny and taxonomic revision of the *Planistromellaceae* including its coelomycetous anamorphs: contributions towards a monograph of the genus *Kellermania*. *Persoonia* 29: 11–28.
- Morales-Cruz A, Amrine KC, Blanco-Ulate B, Lawrence DP, Travadon R, Rolshausen PE, Baumgartner K, Cantu D, 2015. Distinctive expansion of gene families associated with plant cell wall degradation, secondary metabolism, and nutrient uptake in the genomes of grapevine trunk pathogens. *BMC Genomics* 16: 1.
- Moyo P, Allsopp E, Roets F, Mostert L, Halleen F, 2014. Arthropods vector grapevine trunk disease pathogens. *Phytopathology* 104: 1063–1069.
- Myllys L, Stenroos S, Thell A, 2002. New genes for phylogenetic studies of lichenized fungi: glyceraldehyde-3-phosphate dehydrogenase and beta-tubulin genes. *Lichenologist* 34: 237–246.
- Netto MS, Lima WG, Correia KC, Da Silva CF, Thon M, Martins RB, Miller RN, Michereff SJ, Câmara MP, 2017. Analysis of phylogeny, distribution and pathogenicity of *Botryosphaeriaceae* species associated with gummosis of *Anacardium* in Brazil, with a new species of *Lasiodiplodia*. *Fungal Biology* 121: 437–451.
- O'Donnell K, Cigelnik E, 1997. Two divergent intragenomic rDNA ITS2 types within a monophyletic lineage of the fungus *Fusarium* are nonorthologous. *Molecular Phylogenetics and Evolution* 7: 103–116.
- O'Donnell K, Cigelnik E, Nirenberg HI, 1998. Molecular systematics and phylogeography of the *Gibberella fujikuroi* species complex. *Mycologia* 90: 465–493.
- Osorio JA, Crous CJ, De Beer ZW, Wingfield MJ, Roux J, 2017. Endophytic *Botryosphaeriaceae*, including five new species, associated with mangrove trees in South Africa. *Fungal Biology* 121: 361–393.
- Pavlic-Zupanc D, Wingfield MJ, Boissin E, Slippers B, 2015. The distribution of genetic diversity in the *Neofusicoccum parvum/N. ribis* complex suggests structure correlated with level of disturbance. *Fungal Ecology* 13: 93–102.
- Pavlic D, Slippers B, Coutinho TA, Wingfield MJ, 2009a. Molecular and phenotypic characterization of three phylogenetic species discovered within the *Neofusicoccum parvum/N. ribis* complex. *Mycologia* 101: 636–647.
- Pavlic D, Slippers B, Coutinho TA, Wingfield MJ, 2009b. Multiple gene genealogies and phenotypic data reveal cryptic species of the *Botryosphaeriaceae*: A case study on the *Neofusicoccum parvum/N. ribis* complex. *Molecular Phylogenetics and Evolution* 51: 259–268.
- Phillips A, Alves A, Abdollahzadeh J, Slippers B, Wingfield M, Groenewald J, Crous P, 2013. The *Botryosphaeriaceae*: genera and species known from culture. *Studies in Mycology* 76: 51–167.
- Phillips A, Alves A, Correia A, Luque J, 2005. Two new species of *Botryosphaeria* with brown, 1-septate ascospores and *Dothiorrella* anamorphs. *Mycologia* 97: 513–529.
- Phillips AJL, Alves A, Pennycook SR, Johnston PR, Ramaley A, Akulov A, Crous PW, 2008. Resolving the phylogenetic and taxonomic status of dark-spored teleomorph genera in the *Botryosphaeriaceae*. *Persoonia* 21: 29–55.
- Piskur B, Pavlic D, Slippers B, Ogris N, Maresi G, Wingfield MJ, Jurc D, 2011. Diversity and pathogenicity of *Botryosphaeriaceae* on declining *Ostrya carpinifolia* in Slovenia and Italy following extreme weather conditions. *European Journal of Forest Research* 130: 235–249.
- Quaedvlieg W, Kema G, Groenewald J, Verkley G, Seifbarghi S, Razavi M, Gohari AM, Mehrabi R, Crous P, 2011. *Zymoseptoria* gen. nov.: a new genus to accommodate *Septoria*-like species occurring on graminicolous hosts. *Persoonia* 26: 57–69.
- Rehner SA, 2001. Primers for elongation factor 1-alpha (EF1-alpha) Available from: <http://ocid.nacse.org/research/deephyphae/EF1primer.pdf>
- Rehner SA, Samuels GJ, 1994. Taxonomy and phylogeny of *Gliocladium* analysed from nuclear large subunit ribosomal DNA sequences. *Mycological Research* 98: 625–634.
- Rodríguez-Gálvez E, Guerrero P, Barradas C, Crous PW, Alves A, 2017. Phylogeny and pathogenicity of *Lasiodiplodia* species associated with dieback of mango in Peru. *Fungal Biology* 121: 452–465.
- Sakalidis ML, Hardy GESJ, Burgess TI, 2011. Use of the Genealogical Sorting Index (GSI) to delineate species boundaries in the *Neofusicoccum parvum/Neofusicoccum ribis* species complex. *Molecular Phylogenetics and Evolution* 60: 333–344.
- Sakalidis ML, Slippers B, Wingfield BD, Hardy GESJ, Burgess TI, 2013. The challenge of understanding the origin, pathways and extent of fungal invasions: global populations of the *Neofusicoccum parvum/N. ribis* species complex. *Diversity and Distributions* 19: 873–1094.
- Sarr MP, Ndiaya M, Groenewald JZ, Crous PW, 2014. Genetic diversity in *Macrophomina phaseolina*, the causal agent of charcoal rot. *Phytopathologia Mediterranea* 53: 250–268.
- Schardl CL, Craven KD, 2003. Interspecific hybridization in plant-associated fungi and oomycetes: a review. *Molecular Ecology* 12: 2861–2873.
- Schoch CL, Crous PW, Groenewald JZ, Boehm EWA, Burgess TI, de Gruyter J, de Hoog GS, Dixon LJ, Grube M, Gueidan C, Harada Y, Hatakeyama S, Hirayama K, Hosoya T, Huhndorf SM, Hyde KD, Jones EBG, Kohlmeyer J, Krüys Å,

- Li YM, Lücking R, Lumbsch HT, Marvanová L, Mbatchou JS, McVay AH, Miller AN, Mugambi GK, Muggia L, Nelsen MP, Nelson P, Owensby CA, Phillips AJL, Phongpaichit S, Pointing SB, Pujade-Renaud V, Raja HA, Plata ER, Robbertse B, Ruibal C, Sakayaroj J, Sano T, Selbmann L, Shearer CA, Shirouzu T, Slippers B, Suetrong S, Tanaka K, Volkmann-Kohlmeyer B, Wingfield MJ, Wood AR, Woudenberg JHC, Yonezawa H, Zhang Y, Spatafora JW, 2009. A class-wide phylogenetic assessment of *Dothideomycetes*. *Studies in Mycology* **64**: 1–15.
- Schoch CL, Shoemaker RA, Seifert KA, Hambleton S, Spatafora JW, Crous PW, 2006. A multigene phylogeny of the *Dothideomycetes* using four nuclear loci. *Mycologia* **98**: 1041–1052.
- Shenoy BD, Jeewon R, Wang HK, Amandeep K, Ho WH, Bhat DJ, Crous PW, Hyde KD, 2010. Sequence data reveals phylogenetic affinities of fungal anamorphs *Bahusutrabeeya*, *Diplococcium*, *Natarajania*, *Paliphora*, *Polyschema*, *Rattania* and *Spadicoides*. *Fungal Diversity* **44**: 161–169.
- Slippers B, Boissin E, Phillips A, Groenewald J, Lombard L, Wingfield M, Postma A, Burgess T, Crous P, 2013. Phylogenetic lineages in the Botryosphaerales: a systematic and evolutionary framework. *Studies in Mycology* **76**: 31–49.
- Slippers B, Crous PW, Denman S, Coutinho TA, Wingfield BD, Wingfield MJ, 2004. Combined multiple gene genealogies and phenotypic characters differentiate several species previously identified as *Botryosphaeria dothidea*. *Mycologia* **96**: 83–101.
- Slippers B, Roux J, Wingfield MJ, Van Der Walt FJJ, Jami F, Marais GJ, 2014. Confronting the constraints of morphological taxonomy in the fungi: a Botryosphaeriaceae case study. *Persoonia* **33**: 155–168.
- Slippers B, Smit WA, Crous PW, Coutinho TA, Wingfield BD, Wingfield MJ, 2007. Taxonomy, phylogeny and identification of Botryosphaeriaceae associated with pome and stone fruit trees in South Africa and other regions of the world. *Plant Pathology* **56**: 128–139.
- Slippers B, Summerel BA, Crous PW, Coutinho TA, Wingfield BD, Wingfield MJ, 2005. Preliminary studies on Botryosphaeria species from southern hemisphere conifers in Australasia and South Africa. *Australasian Plant Pathology* **34**: 213–220.
- Slippers B, Wingfield MJ, 2007. Botryosphaeriaceae as endophytes and latent pathogens of woody plants: diversity, ecology and impact. *Fungal Biology Reviews* **21**: 90–106.
- Sturrock R, Frankel S, Brown A, Hennon P, Kliejunas J, Lewis K, Worrall J, Woods A, 2011. Climate change and forest diseases. *Plant Pathology* **60**: 133–149.
- Taylor JW, Jacobson DJ, Kroken S, Kasuga T, Geiser DM, Hibbett DS, Fisher MC, 2000. Phylogenetic species recognition and species concepts in fungi. *Fungal Genetics and Biology* **31**: 21–32.
- Thynne E, McDonald MC, Evans M, Wallwork H, Neate S, Solomon PS, 2015. Re-classification of the causal agent of white grain disorder on wheat as three separate species of *Eutiarospora*. *Australasian Journal of Plant Pathology* **44**: 527–539.
- Trakunyingcharoen T, Cheewangkoon R, To-anun C, Crous PW, van Niekerk JM, Lombard L, 2014. Botryosphaeriaceae associated with diseases of mango (*Mangifera indica*). *Australasian Plant Pathology* **43**: 425–438.
- Trakunyingcharoen T, Lombard L, Groenewald JZ, Cheewangkoon R, To-anun C, Crous PW, 2015. Caulicolous Botryosphaerales from Thailand. *Persoonia* **34**: 87–99.
- Úrbez-Torres J, Gubler W, 2009. Pathogenicity of Botryosphaeriaceae species isolated from grapevine cankers in California. *Plant Disease* **93**: 584–592.
- Valencia D, Torres C, Camps R, Lopez E, Celtis-Diez JL, Besoain X, 2015. Dissemination of Botryosphaeriaceae conidia in vineyards in the semiarid Mediterranean climate of the Valparaíso Region of Chile. *Phytopathologia Mediterranea* **54**: 394–402.
- Van Der Nest MA, Bihon W, De Vos L, Naidoo K, Roodt D, Rubagotti E, Slippers B, Steenkamp ET, Wilken PM, Wilson A, 2014. Draft genome sequences of *Diplodia sapinea*, *Ceratocystis manginecans*, and *Ceratocystis moniliformis*. *IMA Fungus* **5**: 135–140.
- Van Niekerk JM, Calitz FJ, Halleen F, Fourie PH, 2010. Temporal spore dispersal patterns of grapevine trunk pathogens in South Africa. *European Journal of Plant Pathology* **127**: 375–390.
- Van Niekerk JM, Crous PW, Groenewald JZ, Fourie PH, Halleen F, 2004. DNA phylogeny, morphology and pathogenicity of Botryosphaeria species on grapevines. *Mycologia* **96**: 781–798.
- Vilgalys R, Hester M, 1990. Rapid gene identification and mapping of enzymatically amplified ribosomal DNA from several *Cryptococcus* species. *Journal of Bacteriology* **172**: 4238–4246.
- Wang N-Y, Zhang K, Huguet-Tapia JC, Rollins JA, Dewdney MM, 2016. Mating type and simple sequence repeat markers indicate a clonal population of *Phyllosticta citricarpa* in Florida. *Phytopathology* **106**: 1300–1310.
- Weiss CL, Schuenemann VJ, Devos J, Shirsekar G, Reiter E, Gould BA, Stinchcombe JR, Krause J, Burbano HA, 2016. Temporal patterns of damage and decay kinetics of DNA retrieved from plant herbarium specimens. *Royal Society Open Science* **3**: 160239.
- White TJ, Bruns T, Lee S, Taylor J, 1990. Amplification and direct sequencing of fungal ribosomal RNA genes for phylogenetics. In: Innis MA, Gelfand DH, Sninsky JJ, White TJ (eds), *PCR Protocols: a guide to methods and applications*. Academic Press, New York, pp. 315–322.
- Wikee S, Lombard L, Nakashima C, Motohashi K, Chukeatirote E, Cheewangkoon R, Mckenzie E, Hyde K, Crous P, 2013. A phylogenetic re-evaluation of *Phyllosticta* (Botryosphaerales). *Studies in Mycology* **76**: 1–29.
- Wingfield BD, Ades PK, Al-Naemi FA, Beirn LA, Bihon W, Crouch JA, De Beer ZW, De Vos L, Duong TA, Fields CJ, Fourie G, Kanzi AM, Malapi-Wight M, Pethybridge SJ, Radwan O, Rendon G, Slippers B, Santana QC, Steenkamp ET, Taylor PWJ, Vaghefi N, Van der Merwe NA, Veltri D, Wingfield MJ, 2015. IMA Genome-F 4. Draft genome sequences of *Chrysosporthe austroafricana*, *Diplodia scrobiculata*, *Fusarium nygamai*, *Leptographium lundbergii*, *Limonomyces culmigenus*, *Stagonosporopsis tanacetii*, and *Thielaviopsis punctulata*. *IMA Fungus* **6**: 233–248.
- Wingfield MJ, De Beer ZW, Slippers B, Wingfield BD, Groenewald JZ, Lombard L, Crous PW, 2012. One fungus, one name promotes progressive plant pathology. *Molecular Plant Pathology* **13**: 604–613.
- Wyka SA, Broders KD, 2016. The new family *Septorioideaceae*, within the Botryosphaerales and *Septorioides strobis* as a new species associated with needle defoliation of *Pinus strobus* in the United States. *Fungal Biology* **8**: 1030–1040.
- Yang T, Groenewald JZ, Cheewangkoon R, Jami F, Abdollahzadeh J, Lombard L, Crous PW, 2017. Families, genera and species of Botryosphaerales. *Fungal Biology* **121**: 322–346.
- Zlatković M, Keča N, Wingfield M, Jami F, Slippers B, 2016a. Shot hole disease on *Prunus laurocerasus* caused by *Neofusicoccum parvum* in Serbia. *Forest Pathology* **46**: 666–669.
- Zlatković M, Keča N, Wingfield MJ, Jami F, Slippers B, 2016b. Botryosphaeriaceae associated with the die-back of ornamental trees in the western balkans. *Antonie van Leeuwenhoek* **109**: 543–564.