

## BOTANY SECTION

Compiled by Richard E. Weaver, Jr., Ph.D., and Patti J. Anderson, Ph.D.

For this period, 140 specimens were submitted to the Botany Section for identification, and 1,215 were received from other sections for identification/name verification for a total of 1,355. In addition, 16 specimens were added to the herbarium and 44 specimens of invasive species were prepared for the Division of Forestry's Forest Health Project. Some of the samples received for identification are discussed below:

***Acacia choriophylla*** Benth. (A genus of about 1,200 species mainly native to tropical and warm regions, especially in Australia.) Leguminosae /Fabaceae. **Tamarindillo, frijolillo, cinnecord.**



A small, multi-stemmed tree to 9 m tall, this species has alternate, 10-20 cm long, bipinnate leaves, and 8-15 mm long glandular petioles. The three to eight pairs of leaflets are 1.5-3 cm long and 8-15 mm wide, ranging from elliptic to oblong or obovate. The yellow flowers are in globose heads, 6-8 mm across. The fruits are legumes, 4-8 cm long and 1.5-2.5 cm wide, becoming woody and black with age and producing ovoid, brown seeds that mature to 8 mm in length. This is an unusual acacia for Florida, in that it is unarmed (occasionally found with minute prickles) and has rather large leaflets. The tree is also unusual in that it is rarely encountered in Florida. In 1967, a botanist at the University of Miami found a single tree on Key Largo and assumed it was a Florida native because of the remote location of the specimen, but noted that it might have been recently introduced by birds from the Bahamas. No seedlings were found at that time, although in the Bahamas, the species grows in thickets and is frequently encountered. The Floristic Inventory of South Florida notes that *A. choriophylla* has been found in nine conservation areas, but all these individuals are known to be cultivated or naturalized, except one on Key Largo that is assumed to be native. Although this species is listed as endangered by FDACS, it is possible that this acacia is not native, but a rare introduction. The tree is a good choice for coastal gardens, being extremely drought tolerant and moderately tolerant of saline soils. (Monroe County; B2008-185; Olga Garcia; 7 April 2008) (Alexander 1968; Correll and Correll 1982; Mabberley 1997; <http://prometheus.cc.emory.edu/kwbs/index.html>; <http://www.regionalconservation.org/>)

***Barnebydendron riedelii*** (Tul.) J.H. Kirkbr. (A genus of one tropical species, revised from two species formerly in the genus *Phyllocarpus*.) Leguminosae /Fabaceae.

**Guacamayo, guaribeiro, monkey fur tree.** A striking ornamental with brilliant crimson flowers borne on leafless branches, this tree grows to 30 m, but is rarely found over 10 m tall in South Florida and the Caribbean. The distichous leaves are even-pinnate, with four to eight pairs of leaflets, conspicuous stipules and no petiolar glands. The caesalpinoid flowers grow in congested racemes, with sepals and petals 2-3 cm long and filaments extending beyond the corolla. Fruits are flat legumes, with wings along the upper suture, containing one to two seeds. Native to seasonally dry tropical forests from Central America to southwestern Brazil and the eastern Atlantic forests of Brazil, as a landscape tree in Florida, it flowers more profusely during droughts. It is sometimes planted as an ornamental or shade tree in Thailand. This genus is named for Rupert C. Barneby (1911–2000), an eminent legume expert, formerly



***Barnebydendron riedelii***  
Photograph courtesy of Top Tropicals

in the New York Botanical Garden's Institute of Systematic Botany. (Miami-Dade County; B2008-130; Louis T. Lodyga; 25 March 2008) (Barneby 1996; Isely 1975;

[http://www.bma.go.th/garden/tree/phsep/phsep\\_e.html](http://www.bma.go.th/garden/tree/phsep/phsep_e.html); <http://www.toptropicals.com>)

***Feroniella oblata*** Swingle (A genus of three species in Southeast Asia.) Rutaceae. **Indo-china feroniella.** This unusual and extremely spiny native of Southeast Asia grows to 20 m tall. The



*Feroniella oblata*

Photograph courtesy of Susan E. Halbert, DPI

tree has compound leaves with seven to nine small leaflets and a narrow wing along the leaf rachis. Flowers are white to grayish white, 1.5-2.5 cm across, and produce clusters of three to four flattened, globose fruits, 5.5-6.5 cm across. The edible fruit has a fleshy red center. Although this species is rarely found in Florida, the nursery owner told DPI staff that the fruit of this citrus relative is highly prized as a food and that its flowers and leaves are also used in cooking. Our sample was obtained during a survey for citrus pests in South Florida. (Martin County; B2008-84; Ken Hibbard; 26 February 2008) (Reuther *et al.* 1967)

***Gibasis pellucida*** (Mart. & Gal.) D.R. Hunt (A genus of 11 tropical American species, primarily from Mexico.) Commelinaceae. Tahitian bridalveil; dotted bridalveil. This is a perennial, herbaceous plant with two-ranked, lanceolate-oblong leaves, as large as 7 cm x 2.3 cm. The flowers are borne in pedunculate cymes in compound inflorescences. The flowers have keeled, 2.5-3 mm sepals and white petals, about 4 mm long. The fruits are ovoid, 2.5 mm capsules with tan or light brown seeds. This species is native to Mexico, but has been reported as a weed in Florida citrus groves. (Alachua County; B2008-144; Cheryl A. Jones; 1 April 2008)

<http://www.efloras.org/>

***Macroptilium atropurpureum*** (Moc. & Sesse ex DC.) Urban (A genus of eight tropical and subtropical species.) Leguminosae. **Purple bushbean, conchito.** This legume is a perennial herbaceous climbing plant with a deep, swollen taproot. Its leaves are trifoliolate with 3-4 cm long petioles and 2-8 cm long leaflets, dark green above, gray-green and pubescent below, with ciliate margins. The inflorescence is a raceme with 6-12 flowers on a long stalk. Each papilionoid flower consists of a campanulate-tubular, hairy calyx and a conspicuous deep red to black-purple corolla. The fruits are 5-9 cm long, pubescent, linear-cylindrical legumes that contain up to 12 light brown to black speckled, flattened, ovoid seeds. This species is native to Texas, Mexico, several Caribbean islands and parts of Central and South



*Macroptilium atropurpureum*

Photograph courtesy of Forest and Kim Starr

America. It is cultivated as a forage crop or pasture cover crop throughout the tropics and subtropics, and has been found to be invasive in several Pacific Island countries. (Lee County; B2008-171; Richard L. Blaney; 1 April 2008) (Correll and Correll 1982; <http://www.hear.org>; <http://www.tropicalforages.info/key/Forages/Media/Html>)

***Milicia excelsa*** (Welw.) C.C. Berg (A genus of two tropical African species.) Moraceae. **African teak, Iroko tree.** A deciduous tree, 30-50 m tall, with a straight, cylindrical bole, this desirable timber species has become endangered through over-harvesting and habitat loss. The simple, alternate leaves are broadly elliptic to ovate, 9-20 by 5-10 cm, with numerous prominent pairs of parallel, upcurving lateral veins. The leaf base is subcordate; the apex, shortly acuminate.

This dioecious species has four-merous floral parts with white male flowers, closely crowded on pendulous, spikes 15-20 cm long. Female flower spikes are greenish, in 5-6 cm by 2 cm thick spikes. The fruits are green, even when mature, and wrinkled. This tree is native to a wide area in tropical Africa from Guinea-Bissau to Mozambique. In addition to its use for lumber and as an ornamental, the tree's bark, leaves and latex are sources of traditional medicines. (Palm Beach County; B2008-152; John Black, USDA; 27 March 2008) (<http://www.fao.org>; <http://apps.kew.org/efloras>; <http://www.worldagroforestry.org>)

***Piper auritum* Kunth** (A genus of about 2,000 pantropical species.) Piperaceae. **Ear-leafed pepper, Veracruz pepper, rootbeer plant, hoja santa.** This perennial shrubby species, growing 3-6 m tall, is native from Mexico through Central America into northern South America. The simple leaves are cordate to 30 cm long with acuminate tips and unequal lobes ("ears") at the base and slightly winged petioles. The leaves contain ethereal oils that produce a strong aroma of anise when crushed. The inflorescence is a slender, arching spike of typical reduced, white Piperaceae flowers consisting of a bract surrounding the pistil and stamens. The fruit is a drupe, dispersed by bats. In Central America and Mexico, the leaves are used in cooking or as a condiment. This is one of the hardiest members of the Piperaceae and is found as an ornamental as far north as USDA Zone 8A, where it might freeze to the roots in winter. (St. Lucie County; B2008-182; Dagne A. Vasquez; 8 April 2008) (Kunkel 1984; Llamas 2003; <http://www.fao.org>; [http://www.hear.org/starr/hiplants/images/thumbnails/html/piper\\_auritum.htm](http://www.hear.org/starr/hiplants/images/thumbnails/html/piper_auritum.htm))



*Piper auritum*  
Photograph courtesy of Forest and Kim Starr

**Note:** In the January-February 2008 issue of TRI-OLOGY, the description of *Zanthoxylum beecheyanum* K. Koch omitted references to additional samples of this species submitted during the period covered. The following samples were received, and those followed by an asterisk (\*) were prepared for as herbarium specimens for future reference and research. We in the Botany Section appreciate these contributions to the herbarium, and we are especially grateful to Ellen J. Tannehill for being the first to bring the plant to our attention in December 2007.

Miami-Dade County; B2008-39; Yondorka Aguilera; 29 January 2008  
Palm Beach County; B2008-40; Ellen J. Tannehill; 29 January 2008 \*  
Seminole County; B2008-41; Jesse M. Krok; 29 January 2008 \*  
Lee County; B2008-53; Walter W. Golden; 6 February 2008  
Charlotte County; B2008-55; Richard L. Blaney; 6 February 2008

## REFERENCES.

- Alexander, Taylor R. 1968. *Acacia choriophylla*, a tree new to Florida. Quarterly Journal of the Florida Academy of Science 31: 197-8.
- Barneby R.C. 1996 Neotropical Fabales at NY: asides and oversights. Brittonia 48: 174-187.
- Correll, D.S. and H. B. Correll. 1982. Flora of the Bahama Archipelago. J. Cramer. Hirschberg, Germany. 1,692 p.
- Isely, D. 1975. Leguminosae of the United States: II. Subfamily Caesalpinioideae. Memoirs of the New York Botanical Garden 25: 1-228.
- Kunkel, G. 1984. Plants for human consumption. Koeltz Scientific Books, Koenigstein, Germany. 393 p.
- Llamas, K.A. 2003. Tropical flowering plants: a guide to identification and cultivation. Timber Press. Portland, Oregon. 423 p.

Mabberley, D.J. 1997. The plant book, 2nd edition. Cambridge University Press. Cambridge, England. 858 p.  
Reuther, W., H. J. Webber and L. D. Batchelor. 1967. The citrus industry. Volume I: history, world distribution, botany, and varieties. University of California Press. Berkeley, California. 611 p.

Unless otherwise noted, all photographs are generously provided by the Institute for Systematic Botany, Atlas of Florida Vascular Plants: <http://www.plantatlas.usf.edu>

## Entomology Section Compiled by Susan E. Halbert

For the month of March, there were 698 samples, consisting of 26,514+ specimens. In April, there were 760 samples, consisting of 11,618+ specimens. Some of the samples are listed below:

### ORNAMENTALS, WOODY PLANTS, AND PALMS:

*Araucaria araucana* (monkeypuzzle tree) -- *Eriococcus araucariae* (Maskell), **Norfolk Island**

**pine eriococcin:** A slight infestation was found at a residence in Golden Gate (Collier County; E2008-1915; Susan E. Halbert; 30 March 2008). NEW DPI HOST RECORD.

*Carissa macrocarpa* (natal plum, amotungulu) -- *Zaprionus indianus* (Gupta), **a fruit fly:**

Specimens were reared from ripe fruit collected from a residence in Port Salerno (Martin County; E2008-1942; Kenneth L. Hibbard and Michelle Maille; 13 March 2008). NEW DPI HOST RECORD.

*Cananga odorata* (Ilang-ilang, perfumetree) -- *Pseudaulacaspis cockerelli* (Cooley), **magnolia**

**white scale:** A slight infestation was found at a nursery in St. Petersburg (Pinellas County; E2008-1903; Gabriela M. Bernard; 3 April 2008). NEW DPI HOST RECORD.

*Chaenomeles* sp. (flowering quince) -- *Coccus capparidis* (Green), **capparis soft scale** and

*Trialeurodes fernaldi* (Morrill), **a whitefly:** A slight infestation was found at a nursery in Sanford (Seminole County; E2008-1622; Charles A. 'Cal' Leggett and Jesse M. Krok; 26 March 2008). Both finds are NEW DPI HOST RECORDS.

*Erythrina* sp. (erythrina) -- *Quadrastichus erythrinae* Kim, **erythrina gall wasp:** A severe

infestation was found at Naples Botanical Garden in Naples (Collier County; E2008-2098; Scott D. Krueger; 11 April 2008). Another severe infestation was found at a church in Ft. Myers (Lee County; E2008-1181; Lyle J. Buss, University of Florida; 26 February 2008). Both finds are NEW DPI COUNTY RECORDS.

*Phoenix dactylifera* (date palm) -- *Raoiella indica* Hirst, **red palm mite:** A severe infestation was

found at a residence in Broward County; E2008-2500; Karolynne M. Griffiths, USDA/APHIS/PPQ and Michael E. Meadows; 29 April 2008). NEW DPI HOST RECORD.

*Serenoa repens* (saw palmetto) -- *Palmanychnus steganus* (Pritchard & Baker), **a spider mite:** An

infestation was found at a residence in Yulee (Nassau County; E2008-1134; Julieta Brambila, USDA/APHIS/PPQ; 5 March 2008). NEW DPI COUNTY RECORD.

*Thrinax radiata* (Florida thatch palm, Jamaica thatch) -- *Raoiella indica* Hirst, **red palm mite:** A

slight infestation was found at a residence in Fort Lauderdale (Broward County; E2008-2502; Karolynne M. Griffiths, USDA/APHIS/PPQ and Michael E. Meadows; 28 April 2008). NEW DPI HOST RECORD.

### ORNAMENTALS, FOLIAGE PLANTS:

*Bambusa* sp. (bamboo) -- *Chaetococcus bambusae* (Maskell), **bamboo mealybug:** A moderate

infestation was found on four of 285 plants at a nursery in Palm Harbor (Pinellas County; E2008-1339; Thomas S. Lastrapes; 11 March 2008). NEW DPI COUNTY RECORD. First found in Miami-Dade County in 1956, this mealybug has spread slowly to some other counties through the bamboo trade, but its distribution remains limited in Florida (Dr. Greg S. Hodges).

*Ficus benjamina* (weeping fig) -- *Paraleyrodes pseudonaranjiae* Martin, **a whitefly:** A severe

infestation was found at a residence in Miami (Miami-Dade County; E2008-1892; Ciro Milian-Padron; 3 April 2008). NEW DPI HOST RECORD.

**ORNAMENTALS, FLOWERING PLANTS:**

*Hibiscus rosa-sinensis* (hibiscus) -- *Myllocerus undecimpustulatus undatus* Marshall, **a weevil**: A slight infestation was found at a residence in Punta Gorda (Charlotte County; E2008-1234; Richard L. Blaney; 6 March 2008). NEW DPI COUNTY RECORD.

**FOREST AND SHADE TREES:**

*Ficus microcarpa* (Cuban laurel, Indian laurel, laurel fig) -- *Horidiplosis ficifolii* Harris, **a gall midge**: A severe infestation was found at a nursery in Naples (Collier County; E2008-112; Scott D. Kreuger; 4 January 2008). NEW RECORD FOR THE WESTERN HEMISPHERE. This is an invasive oriental species attacking *Ficus* spp. It was described from Europe in 2003 from galled leaves on bonsai *Ficus* from China (Dr. Gary J. Steck). A moderate infestation of the same species was found at the University of Florida Fort Lauderdale Research and Education Center (Broward County; E2008-1835; Forrest W. Howard, University of Florida; 2 April 2008). NEW DPI COUNTY RECORD.

*Myllocerus undecimpustulatus undatus* Marshall, **a weevil**: A slight infestation was found in a business landscape in Clewiston (Hendry County; E2008-2154; Jo Ann Pate; 14 April 2008). NEW DPI HOST RECORD.

*Persea palustris* (swamp bay) -- *Mesolecanium nigrofasciatum* (Pergande), **terrapiin scale**: A moderate infestation was found at the Florida Botanical Gardens in Largo (Pinellas County; E2008-1490; Mark A. Spearman and Richard A. White; 20 March 2008). NEW DPI COUNTY RECORD.

*Quercus hemisphaerica* (Darlington's oak, laurel oak) -- *Calacarus* sp., **an eriophyid mite**: A moderate infestation was found in a business landscape in Pompano Beach (Broward County; E2008-1348; William A. Thiel, USDA/APHIS/PPQ; 29 February 2008). NEW DPI HOST RECORD.

*Quercus virginiana* (live oak) -- *Cissusa spadix* (Cramer), **a noctuid moth**: A slight infestation was found at a residence in Gainesville (Alachua County; E2008-1324; Lyle J. Buss, University of Florida, Gainesville; 4 April 2008). NEW DPI HOST RECORD.

*Ulmus* sp. (elm) -- *Lopholeucaspis japonica* (Cockerell), **Japanese maple scale**: A moderate infestation was found on all 100 plants at a nursery in Sanford (Seminole County; E2008-1398; Jesse M. Krok; 13 March 2008). NEW DPI STATE RECORD.

**FOOD AND CROP PLANTS:**

*Capsicum* sp. (pepper) -- *Phenacoccus parvus* Morrison, **a mealybug**: A slight infestation was found on plants at a nursery in Apopka (Orange County; E2008-2288; Katherine A. Gonzalez; 22 April 2008). NEW DPI COUNTY RECORD. This mealybug is not very common in Florida, but it has a wide host range and can be a pest (Dr. Greg S. Hodges).

*Casimiroa edulis* (white sapote, Mexican apple, zapote) -- *Eutetranychus banksi* (McGregor), **Texas citrus mite**: A severe infestation was found on a plant at the University of Florida in Gainesville (Alachua County; E2008-1326; Lyle J. Buss, University of Florida; 9 March 2008). NEW DPI COUNTY RECORD. This mite is relatively common on a wide variety of plants in Florida. It was last reported on this host in the 1980s (W.C. 'Cal' Welbourn).

*Feroniella oblata* (Indo-China feroniella) -- *Phyllocnistis citrella* Stainton, **citrus leafminer**: Three specimens were reared from mines collected at an Asian farm near Stuart (Martin

County; E2008-2275; Kenneth L. Hibbard and Susan E. Halbert; 22 April 2008). NEW DPI HOST RECORD. Please see Botany Section for more on this interesting plant.

*Fragaria x ananassa* (garden strawberry) -- *Scirtothrips dorsalis* Hood, **chili thrips**: A slight to moderate infestation was found on all 200,000 plants (10 acres) of strawberries at a farm in Dover (Hillsborough County; E2008-424; James F. Price, University of Florida; 28 January 2008). NEW DPI HOST RECORD.

*Jatropha curcas* (Barbados nut, physic nut) -- *Myloccerus undecimpustulatus undatus* Marshall, **a weevil**: A moderate infestation was found at a residence in Miami (Miami-Dade County; E2008-1958; Olga Garcia; 4 April 2008). NEW DPI HOST RECORD.

*Manilkara zapota* (sapodilla) -- *Sophonia orientalis* (Matsumura), **two-spotted leafhopper**: A male specimen was found at a residence in Sunny Isle (Miami-Dade County; E2008-1895; Olga Garcia; 2 April 2008). The discovery of a male specimen confirms the identification of the Miami population of this new exotic invasive pest (Dr. Susan E. Halbert).

*Punica granatum* (pomegranate) -- *Scirtothrips dorsalis* Hood, **chili thrips**: A slight infestation was found at a nursery in Sanford (Seminole County; E2008-1624; Charles A. 'Cal' Leggett and Jesse M. Krok; 26 March 2008). NEW DPI HOST RECORD.

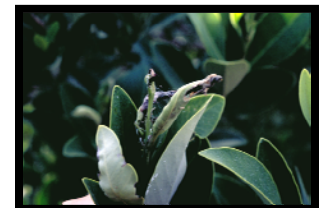
*Vaccinium* sp. (blueberry) -- *Scirtothrips dorsalis* Hood, **chili thrips**: A moderate infestation was found on all of four plants at a residence in Longwood (Seminole County; E2008-1478; Lance S. Osborne, University of Florida; 18 March 2008). NEW DPI HOST RECORD.

#### CITRUS:

*Citrus x paradisi* (grapefruit) -- *Scirtothrips dorsalis* Hood, **chili thrips**: An infestation was found in the DPI greenhouse in Gainesville (Alachua County; E2008-1524; Debra D. Jones; 24 March 2008). NEW DPI HOST RECORD.

#### NATIVE AND NATURALIZED PLANTS:

*Avicennia germinans* (black mangrove) -- *Leuronta maritima* (Tuthill) and *Telmapsylla minuta* Hodkinson, **mangrove psyllids**: A slight mixed infestation was found at Panfilo de Narvaez Park in St. Petersburg (Pinellas County; E2008-1523; Gabriela M. Bernard; 19 March 2008). Both finds are NEW DPI COUNTY RECORDS. *Leuronota maritima* is an exotic Neotropical species that causes deformed terminal growth, and *Telmapsylla minuta* is a native species that causes no visible damage to the plants (Dr. Susan E. Halbert).



Damage to *Avicennia germinans* from *Leuronota maritima*  
Photograph courtesy of Susan Halbert, DPI

*Borrchia frutescens* (sea oxeye, bushy seaside tansy) -- *Asphondylia borrichiae* Rossi & Strong, **a cecidomyiid fly**: Galls were collected at the Guana Tolomato Matanzas National Estuarine Research Reserve in St. Augustine (St. Johns County; E2008-1212; Patti J. Anderson; 9 March 2008). NEW DPI COUNTY RECORD.

*Desmodium floridanum* (Florida ticktrefoil) -- *Myloccerus undecimpustulatus undatus* Marshall, **a weevil**: A slight infestation was found on a plant at a residence in Miami (Miami-Dade County; E2008-1822; Juan F. Revuelta and Olga Garcia; 1 April 2008). NEW DPI HOST RECORD.

*Ernodea littoralis* (beach creeper) -- *Ceroplastes cirripediformis* Comstock, **barnacle scale**: A moderate infestation was found on a plant in a natural area near Palmetto (Manatee County; E2008-1491; Nancy G. West, University of Florida; 15 March 2008). NEW DPI HOST RECORD.

*Melothria pendula* (creeping cucumber, Guadeloupe cucumber) -- *Diaphania hyalinata*

(Linnaeus), **melonworm**: A specimen was reared from fruit collected in Fort Pierce (St. Lucie County; E2008-976; Kenneth L. Hibbard; 15 January 2008). NEW DPI HOST RECORD.

*Sambucus canadensis* (elderberry) -- *Epirimerus trilobus* (Nalepa), **an eriophyid mite**: A slight infestation was found along a roadside in Boca Raton (Palm Beach County; E2008-1845; Lane M. Smith; 1 April 2008). NEW DPI STATE RECORD. This species causes curling and stunting of leaflets. While this is the first DPI report of this mite, it is known from Georgia and California (Dr. W.C. 'Cal' Welbourn).

#### FEDERAL AND STATE PLANT PROTECTION AND QUARANTINE PROGRAMS:

*Lactuca sativa* (lettuce, romaine lettuce, leaf lettuce) -- *Liriomyza langei* Frick, **pea leafminer**: A dead adult fly was intercepted in a shipment of produce from California at a grocery store in Orlando (Orange County; E2008-2447; George A. Warden and Karen S. Koby; 23 April 2008).

#### ARTHROPOD DETECTION:

*Euleia fratria* (Loew), **a fruit fly**: A specimen was found in a multi-lure trap at a residence in Sanford (Seminole County; E2008-2528; Oscar Orta, USDA/APHIS/PPQ; 4 April 2008). Another specimen was found in a multi-lure trap at a residence in Acreage (Palm Beach County; E2008-2358; Rafael A. Martinez, USDA/APHIS/PPQ; 7 April 2008). A third specimen was found in a multi-lure trap in a citrus tree near a convenience store fruit stand in Dunnellon (Marion County; E2008-2364; W. Wayne Bailey; 25 April 2008). All finds are NEW DPI COUNTY RECORDS.

*Euxesta eluta* Linnaeus, **corn silk fly** and *Euxesta pechumani* Curran, **a picture-winged fly**: A specimen of each fly was found in a multi-lure trap in *Eriobotrya japonica* at a residence in Gainesville (Alachua County; E2008-2063; Cheryl A. Jones; 11 April 2008). Both finds are NEW DPI COUNTY RECORDS.

*Metaltella simoni* (Keyserling), **a spider**: A specimen was found at a residence in Sarasota (Sarasota County; E2008-1570; homeowner; 25 March 2008). NEW DPI COUNTY RECORD. This widespread introduced species is not dangerous to people (Dr. G.B. Edwards).

*Murricia uva* Foord, **two-tailed spider**: A juvenile specimen, apparently this species, was found in a Jackson trap in *Murraya paniculata* at an apartment building in Davie (Broward County; E2008-6803; John Pieper, USDA/APHIS/PPQ; 12 September 2007). NEW DPI COUNTY RECORD. This family is very rare in Florida. A male, confirming the introduction of this species, was later discovered in Miami-Dade County (Dr. G.B. Edwards).

*Pramyiolia rhino* (Steyskal), **rhino fly**: A specimen was found in a multi-lure trap in *Prunus persica* at a farm in Bayou La Batre (Mobile County, Alabama; E2008-2341; Chalin B. Street, USDA/APHIS/PPQ; 24 April 2008). NEW ALABAMA STATE RECORD.

*Sassacus vitis* (Cockerell), **a spider**: A specimen of this introduced species was found on *Sabal* sp. in a vacant lot in West Palm Beach (Palm Beach County; E2008-1288; James C. Lee; 7 March 2008). NEW DPI COUNTY RECORD.

*Schizaphis minuta* (van der Goot), **a sedge aphid**: A specimen was found in a suction trap sample in an orange grove in Arcadia (DeSoto County; E2008-1577; grove employee; 15 March 2008). NEW DPI COUNTY RECORD.



*Pramyiolia rhino*  
Photograph courtesy of Gary J. Steck



*Sobarocephala quadrimaculata* (Soos), **a clusiid fly**: A specimen was found in a multi-lure trap in a *Citrus limon* tree at a residence in Palm Beach Gardens (Palm Beach County; E2008-1663; Antonio Demien, USDA/APHIS/PPQ; 24 March 2008). NEW DPI COUNTY RECORD.

*Trachyderes mandibularis* Dupont, **a cerambycid beetle**: A specimen was found at a residence in Port Charlotte (Charlotte County; E2008-1913; Ethel C. Hatfield; 28 March 2008). NEW DPI COUNTY RECORD.

*Traginops irroratus* Coq., **an odiniid fly**: A specimen was found in a Jackson TML trap in a citrus tree at a residence in Ocala (Marion County; E2008-1919; W. Wayne Bailey; 4 April 2008). NEW DPI COUNTY RECORD.

**NEMATODOLOGY SECTION**

**Compiled by Janete A. Brito, Ph.D., and Renato N. Inserra, Ph.D.**

A total of 3,926 samples (3,314 for morphological and 612 for molecular identifications) were processed in March-April 2008. Details are shown below:

<p><b>Certification and Regulatory Samples:</b>                  Multi-state Certification for National and International Export ..... 2526                  California Certification..... 475                  Pre-movement (Citrus Nursery Certification)..... 30                  Site or Pit Approval (Citrus Nursery and Other Certifications) .... 37</p>	<p><b>Other Samples:</b>                  Identifications (invertebrate) .....7                  Plant Problems .....35                  Intrastate Survey, Random .....204    <b>Molecular Identifications*</b> .....612                    *The majority of these analyses involved root-knot nematode species</p>
---	--

**Nematodes of Special Interest**

Nematodes of special interest detected and/or identified in March-April 2008:

*Magnolia grandiflora* ‘Little Gem’ (magnolia) - *Radopholus similis* (Cobb, 1893) Thorne, 1949, a **burrowing nematode** infected the roots of this ornamental tree (Sumter County, N08-00334, Charles Spriggs, 11 March 2008). More than 365 plant species are listed as hosts of the burrowing nematode. This list includes *M. grandiflora*; however, there is little information on the suitability of this ornamental tree to support high population levels of the burrowing nematode. Nematode levels detected in the roots and surrounding soil of the infected magnolia plants in Sumter County were low (< 1 nematode / 100 grams of soil and 5-6 specimens / 30 grams of fresh feeder roots). These observations indicate that magnolia is a poor host for the nematode. The source of infection of the magnolia plants was not determined.

COLLECTORS SUBMITTING FIVE OR MORE SAMPLES THAT WERE PROCESSED FOR NEMATOLOGICAL ANALYSIS DURING MARCH-APRIL 2008

Anderson, James L. ....204	Pate, Jo Ann .....42
Bailey, Wayne W. ....9	Qiao, Ping .....239
Bentley, Michael A. ....117	Salisbury, Thomas L. ....111
Bloom, Richard T. ....12	Silagyi, Adam J. ....5
Burgos, Frank A. ....6	Smith, Larry W. ....12
Echols, M. Janie .....9	Smith, Trevor R. ....9
Edenfield, Carrie S. ....31	Spriggs, Charles L. ....314
Johnson, E. Ashley .....9	Terrell, Mark R. ....5
LeBoutillier, Karen W. ....215	Toral, Angelina M. ....62
Looker, Sol F. ....7	Vazquez, Dagne A. ....10
Ochoa, Ana L. ....197	

## PLANT PATHOLOGY

### Compiled by Robert M. Leahy

For this period, the Plant Pathology Section received and processed 1,126 specimens. These included 553 pathology, 14 bees, 428 citrus greening, eight soil samples and one water sample. No full pathogenicity tests for citrus canker were performed, but visual examinations were conducted for 40 samples from South East Florida, 28 from Central Gulf Coast Florida, 16 from South West Gulf Coast Florida, 28 from Central Florida, and 10 from North Florida.

#### ORNAMENTALS, WOODY PLANTS AND PALMS:

*Aiphanes caryotifolia* (coyure palm; ruffle palm; spine palm) – *Mycosphaerella* sp., **leaf spot**:

Collected at a dooryard in Miami-Dade County (23 April 2008, Olga Garcia, P2008-14737).

*Coryphantha chihuahuensis* (cactus) – *Fusarium* sp., **stem rot**: Collected at a nursery in Lake County (3 March 2008, Mary C. Sellers, P2008-13696).

*Leucothoe* sp. (doghobble) – *Phytophthora citrophthora*, **leaf spot**: Collected at a nursery in Leon County (6 February 2008, Michael A. Bentley, P2008-12868). NEW HOST RECORD.

#### ORNAMENTALS, FLOWERING PLANTS:

*Ernodea littoralis* (beach creeper) – *Puccinia lateritia*, **rust**: Collected at a dooryard in Miami-Dade County (14 April 2008, Olga Garcia, P2008-14561).

*Duranta erecta* (golden dewdrop; pigeonberry; skyflower) – *Xanthomonas* sp., **bacterial leaf spot**: Collected at a nursery in Volusia County (3 January 2008, Stacey S. Simmons, P2008-12193). NEW HOST RECORD.

*Philadelphus x virginalis* (mockorange) – *Xanthomonas* sp., **bacterial leaf spot**: Collected at a nursery in Alachua County (4 January 2008, nursery employee, P2008-12285). NEW HOST RECORD.

*Phlox x glutinosa* (phlox) – *Septoria phlogis*, **leaf spot**: Collected at the University of Florida in Alachua County (24 March 2008, Jessica L. Boldt/University of Florida, P2008-14081).

#### FOREST AND SHADE TREES:

*Delonix regia* (royal poinciana; flamboyant) – *Ravenelia humphreyana*, **rust**: Collected at a nursery in Collier County (11 April 2008, Scott D. Krueger, P2008-14565).

#### FOOD AND CROPS:

*Coffea arabica* (coffee) – *Cercospora coffeicola*, **leaf spot**: Collected at a discount store in Gadsden County (18 April 2008, Isabelle S. James, P2008-14550).

*Malus sylvestris* (apple) – *Spilocaea pomi*, **scab**: Collected at a nursery in Alachua County (30 April 2008, nursery employee, P2008-14745).

*Petroselinum crispum* (parsley) – *Cercosporidium* sp., **leaf spot**: Collected at a nursery in Collier County (27 February 2008, Walter W. Golden, P2008-13684).

*Saccharum officinarum* (sugarcane) – *Colletotrichum falcatum*, **red rot**: Collected at a nursery in Orange County (22 April 2008, Katherine A. Gonzalez, P2008-14617).

*Vaccinium corymbosum* (highbush blueberry) – *Tubakia dryina*, **leaf spot**: Collected at a nursery in Putnam County (26 March 2008, nursery employee, P2008-14136).

**WEEDS AND GRASSES:**

*Miscanthus sinensis* (Chinese silvergrass) – *Pyrenochaeta* sp., **leaf spot**: Collected at a nursery in Escambia County (17 January 2008, William L. Robinson, P2008-12676). NEW HOST RECORD.