

Adenanthera microsperma

海紅豆, 孔雀豆

Recommended Street Types



General Information

Native	Exotic	Evergreen	Deciduous	Partial Shade	Full Sun
--------	--------	-----------	-----------	---------------	----------

Family: MIMOSACEAE

Heat Tolerance: Moderate

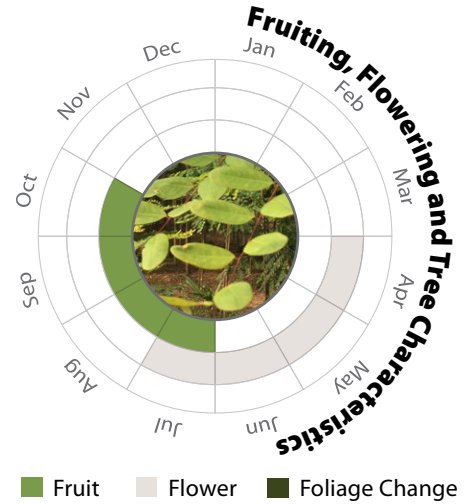
Special Properties: Attractive red fruits; Symbiotic relationship with nitrogen-fixing soil bacteria; Flower nectar attractive to wildlife



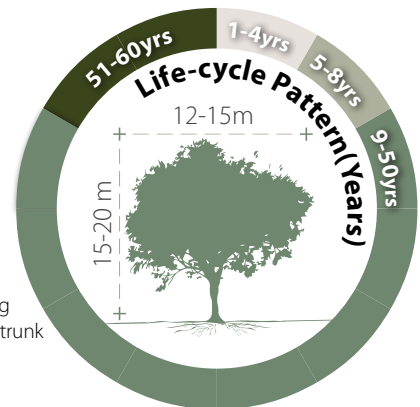
Flowers



Tree Bark



- Propagation to Seedling
- Sapling to Semi-mature
- Mature
- Senescence



Feature



Ecological Value



Ornamental



Shade Cast

Special Maintenance Requirements

- Shrubby form may require formative pruning
- Mature trees may have slightly buttressed trunk
- Entire plant is poisonous

Tolerance

Drought

Low Moderate High

Waterlogging

Low Moderate High

Wind

Low Moderate High

Roadside Pollution

Low Moderate High

Pest & Disease Resistance

Low Moderate High

Pruning

Low Moderate High

Soil Compaction

Low Moderate High

Root System

Aggressive Moderate Manageable

Soil Volume

Large Medium Small

pH of Soil

Adaptability