

Eucalyptus elata (River Peppermint)

Description

A medium to tall tree. Upper trunk & limbs smooth white with grey patches & lower trunk has rough bark, peeling off in ribbons.

Flower and Foliage

Creamy white flowers in spring. Narrow leaves & evergreen foliage. Leaves have a peppermint smell when crushed.

Maintenance

A fast growing hardy tree that requires very little maintenance. Remove any dead wood as required.

Occurs

Favours fertile flatter alluvial soils on well-drained slopes. Found along creeks & rivers, particularly the Colo River.

Uses

A nice specimen for large gardens. Revegetation for riverbank restoration work, construction, joinery, windbreaks on farms & fence lines & shade for stock. Attracts birds & nectar feeding animals.

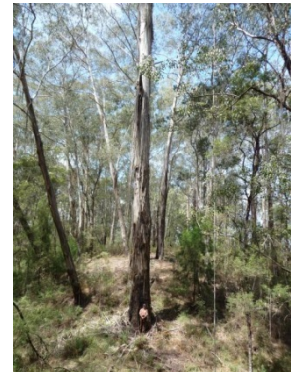


Image Source: (Left: <http://www.onlineplants.com.au/shopping-cart/eucalyptus-elata-pot-size-15cm.html>;

Middle: <http://www.onlineplants.com.au/shopping-cart/eucalyptus-elata-pot-size-15cm.html>;

Right: http://www.nationalregisterofbigtrees.com.au/listing_view.php?listing_id=281)

Plants at the Hawkesbury Community Nursery are grown by Community Nursery Volunteers at 10 Mulgrave Road, Mulgrave (next to the Companion Animal Shelter). For more information on the Hawkesbury Community Nursery please visit www.hawkesbury.nsw.gov.au or telephone (02) 4560 4651. Open Wednesdays or by appointment.

