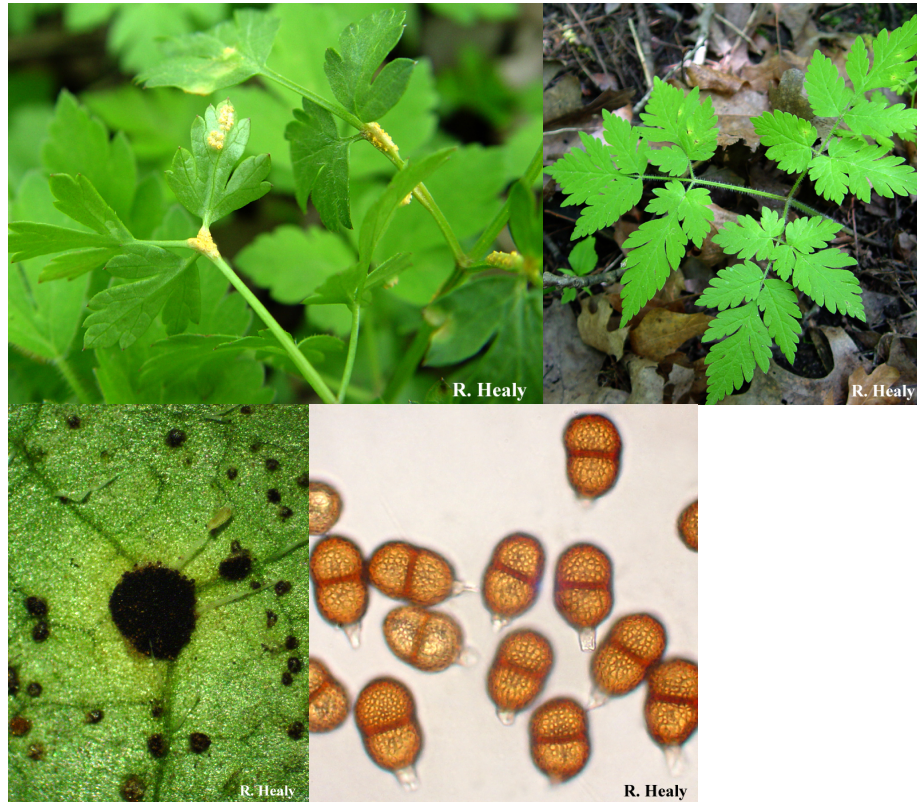


Puccinia pimpinellae (Strauss) Link



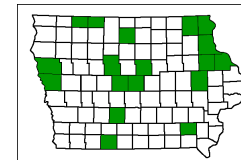
Description:

rust

Spores: teliospores 2-celled, reticulate, wall cinnamon brown, 1.5-3 μm thick evenly around the two cells; aeciospores subglobose, verrucose; urediospores subglobose, pale cinnamon brown, verrucose over upper half.

Diagnostic macroscopic feature: this is the only rust known on *Osmorhiza*

Diagnostic microscopic feature: teliospores reticulate, aeciospores only verrucose over upper part of spore



**widespread
very
common**

Nutritional Mode: obligate parasite

Substrate: uredia, telia, basidia, aecia, and spermatia on leaves of sweet cicily and other species of *Osmorhiza*

Habitat: woodland

Fruiting Season: summer

Kingdom: Fungi

Phylum: Basidiomycota

Order: Uredinales