



HERITAGE

seedlings & liners, inc. _____ Unusual Deciduous Species

WHOLESALE CATALOG 2021-2022



Acer triflorum





Acer triflorum
Three-flower Maple

Whereas *Acer griseum* has become nearly common in many areas of the country since we first introduced reliable wholesale quantities back in the 80's, *Acer triflorum* has been elusive, a greater challenge to propagate. Still today, one encounters only isolated specimens in arboreta or connoisseur gardens.

Here's your opportunity - now, don't miss it!

It's your chance to offer a premium, extremely hardy maple to accompany *Acer carpinifolium* and *Acer miyabei* ... all exceptional specimen trees, fully Zone 4 hardy into the Lake States and lower Canadian Provinces.

CONTENT

Maple.....	4
Horsechestnut	10
Birch	13
Hornbeam.....	14
Katsuratree, Redbud	16
Fringetree, Dogwood	17
Smoketree	20
Dove Tree	22
Beech	23
Fothergilla.....	24
Ginkgo	25
Witchhazel	26
Hydrangea.....	27
Sweetgum.....	28
Magnolia	29
Mahonia.....	36
Blackgum.....	36
Sourwood, Parrotia.....	38
Oak.....	40
Stewartia, Snowbell	43
Lilac	44
Baldcypress , Zelkova	45
Perennials	46
Order Form.....	49
Size Guide	50-51
The Fine Print.....	52



OREGONSM
ASSOCIATION OF
NURSERIES



HERITAGE

seedlings & liners, inc

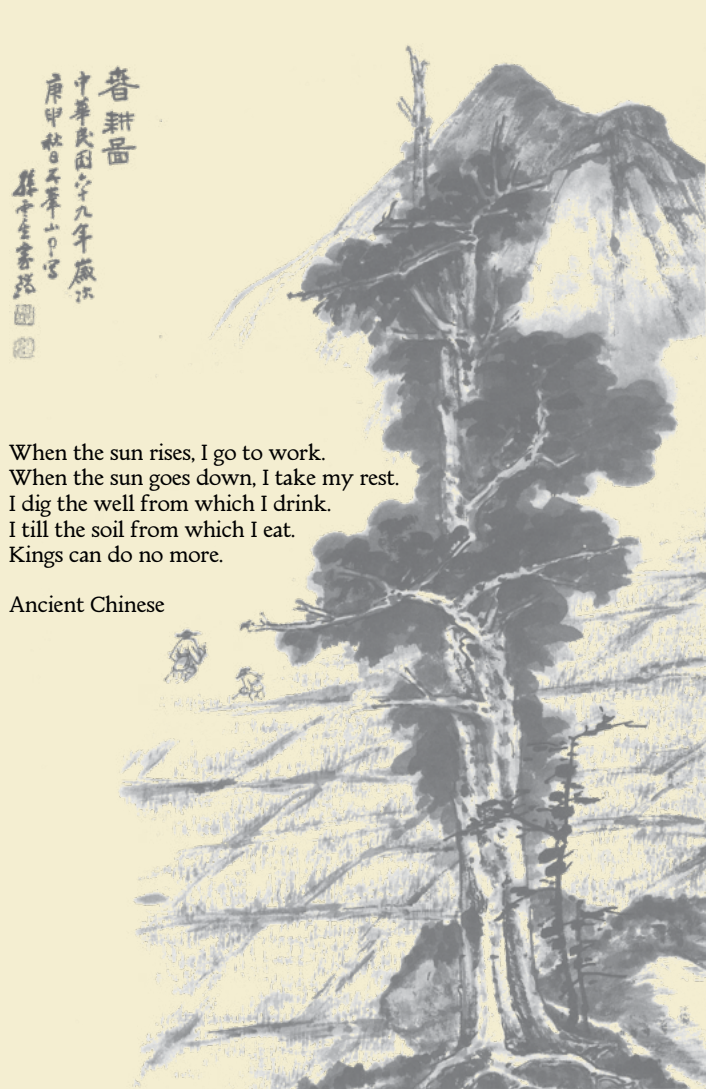
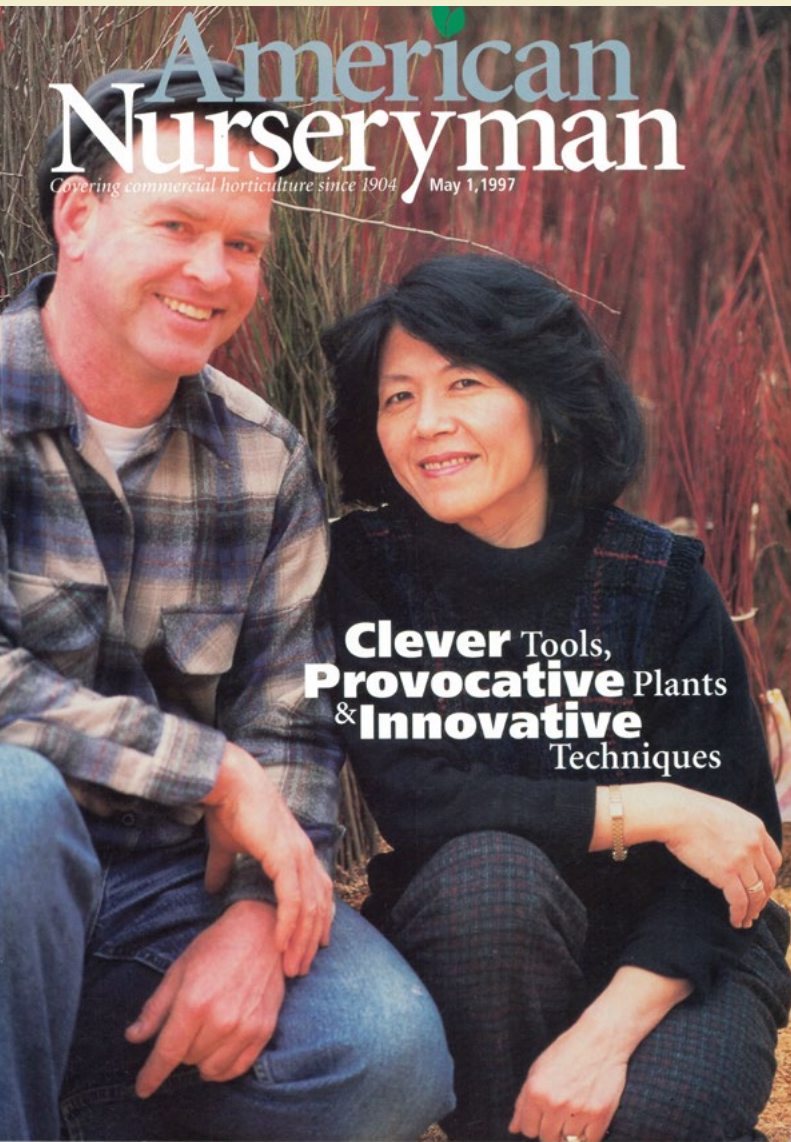
Unusual Deciduous Species



Mark & Jolly Krautmann
4194-71st Avenue SE
Salem, OR 97317 USA

phone (503) 585-9835
www.heritageseedlings.com

fax (503) 371-9688
sales@heritageseedlings.com



40 years!

How can a person capture the memories?

How can Jolly and I THANK YOU for your loyalty, friendship, wisdom, and patience over 4 decades, 40 trips around the sun? Starting and running a business is both exhilarating and disheartening, and all the emotions in between those extremes. But with a wink from the Almighty and dependable help from so many employees through the seasons, Heritage Seedlings has helped to make the world a greener place and provided jobs for thousands. The “multiplier effect” of million\$ in payroll right here in little ol’ Salem is humbling to contemplate.

So on this occasion, we salute all those whom we’ve helped and those who have helped us. We’re still at it, so let’s be sure to pause more often to savor the memories and create some more while the season is ours.

Mark & Jolly



HERITAGE

seedlings & liners, inc.

Unusual Deciduous Species

Summer 2021

Dear Friends,

Lots of reset buttons are getting pushed in our economy, especially on labor. We must review what and what **not** to grow, automate profitable endeavors, and measure results.

Most nurseries and garden centers will peel off lower profit items, rebalance product mix, and remain diversified. Most important, we must remember to **inspire** customers who want more than just well-grown plants. "Quality" isn't a selling point; that's a given. Retail customers need our plants to enable their gardening dreams. They want plant **relationships**, just as they bond with their pet or savor their favorite blues tune.

To rebalance nursery production goals, we must diversify our plant portfolio, just as we'd wisely diversify our retirement stock plan.

Our brand: inspiring, unusual deciduous tree and shrub liners. It's been that way since we started way back when Reagan became President. Few liner suppliers offer such a wide range of product. Our size options and our consistent wholesale supply in quantities is what we're known for. If you propagate grafted woodies, our maple, dogwood, beech, magnolia, hornbeam and ginkgo rootstocks make us your first-choice partner. We grow them each by the tens or hundreds of thousands.

Rare and unusual seedlings? Where can you buy wholesale numbers of classy Zone 3-9 shrubs like *Comptonia peregrina* or *Dirca palustris*? Or, our cover item, *Acer triflorum*?

We also offer the best in fine new woody varieties to intrigue you and your customers. Our nursery has dependable production, grading, packing, and delivery systems in place and our staff respond promptly when you have questions.

With robust demand in the trade, help us understand your liner needs early so that you aren't scrambling to find what you need as the days get shorter and supplies become harder to acquire. Get your order in ASAP - this summer or early fall.

THANKS for your business. We're here for you.

Kind regards,

Mark, Jolly, and Staff

4194 - 71st Avenue SE
Salem, OR 97317 USA
www.heritageseedlings.com

phone (503) 585-9835
fax (503) 371-9688



Acer circinatum

ACER

Acer buergerianum

Trident Maple

Small shade tree with a flaky, burnt orange bark. Colorful autumn leaves. Excellent patio specimen or bonsai subject. It is especially well adapted in the South, growing well even in full sun. A University of Georgia and Pennsylvania Horticultural Society Gold Medal Winner.

MP	Re-pot into	Zones 5-9
	#1	\$1.45 (50)+

Acer campestre

Hedge Maple

One of relatively few native European maple species. It has been used in hedges for centuries, but surprisingly few cultivars exist. It tolerates higher pH than many maples and is a tree with few insect pests or disease threats, adapted across a wide range of US climates.

LP21ci	Re-pot into	Zones 4-8
	#1	\$2.45 (25)+

Acer carpinifolium

Hornbeam Maple

NEW

Aptly named, only the most determined of maple enthusiasts are able to find liners of this species. Hardy to Zone 4, its potential range in cultivation is much broader than for most Asiatic maples. Brilliant yellow autumn leaves.

1-2'	Re-pot into	Zones 4-8
	#1	\$2.65 (50)+

Acer circinatum

Vine Maple



Pacific Northwest native. Vine Maple heralds the arrival of autumn as its colors light up the forest. Best grown in clump form, it lends a pleasing accent to larger trees in a border planting and requires almost no care.

1-2' 2-3' TR 3-4' TR	Re-pot into	Zones 5-9
	#1	\$2.00 (50)+
	#3	\$5.20 (10)+
	#5	\$6.35 (10)+



Acer miyabei

Acer circinatum 'Pacific Fire'



Pacific Fire Vine Maple

NEW

Durability, and small stature coupled with intensely colored twigs and stems make this a desirable shrub. Young stems are brilliant red and pink, brighter than those of Sango Kaku Japanese maple in our garden.

	Re-pot into	Zones 5-9
#1 2-3'	#5	\$14.65 (10)+
#1 3-4'	#5	\$17.10 (10)+

Acer circinatum Three Cheers™ 'HS12'

Three Cheers™ Vine Maple

Heritage Seedlings selection, much more upright, tree-like when grown as a specimen tree. Its silhouette is an attractive flame shape, twice as tall as wide with unusually tight branch angles. If you're pruning wild seedlings into tree form, save labor. Upgrade your list to offer this native selection and show your customers the benefit of predictable form, whether in a residential landscape or on a commercial site. It offers the prospect of uniformity and lower maintenance on any landscape job. Perfect hedge plant!

	Re-pot into	Zones 5-8
2-3' TR WHIP	#3-5	\$14.65 (10)+
3-4' TR WHIP	#5-7	\$17.10 (10)+

Acer davidii David's Maple

NEW

Named for the French priest/botanist Armand David, who discovered it in central China, this is among the best known of the striped-bark maples, easy to grow, and vigorous.

	Re-pot into	Zones 5-9
MP	#5	\$3.95 (50)+

Acer griseum Paperbark Maple



Among the rich variety of cultivated maples, this one is highly esteemed for its peeling tissue-thin coppery bark. Leaves turn scarlet and orange in fall. Easily grown on to larger size despite its propagation difficulty, and VERY tough and adaptable in the landscape.

	Re-pot into	Zones 5-8
LP21ci	#3	\$4.45 (25)+
2-3'	#3	\$3.95 (50)+
3-4'	#5	\$4.90 (25)+



Acer griseum

Acer miyabei Miyabe Maple

Hardier than *Acer campestre*, to which it is most often compared, but of more appealing form and therefore requiring far less pruning in cultivation. Lacks the invasive character and obtrusive size of *Acer platanoides*. Very hard to find, it is an excellent urban tree. The best example in America is at the Morton Arboretum in Chicago, a broadly upright tree at 30 ft. tall, dubbed State Street™. A handsome plant by any measure.

	Re-pot into	Zones 4-8
LP21ci	#2	\$6.40 (25)+



Great Plant Picks...

a selection of outstanding plants for the maritime Pacific Northwest.

greatplantpicks.org



Acer miyabei ssp. miaotaiense

Miaotai Maple

Maturing at 30-60', leaves 3-lobed like Amur Maple. Extremely rare in cultivation, and endangered in its native Shaanxi Province, China.

LP21ci	Re-pot into #2	Zones 5-8 \$6.40 (25)+
--------	-------------------	---------------------------

Acer palmatum

Green Japanese Maple

With its delicate foliage, small crown, and naturally artistic form, it creates an Asian effect in any garden. Fall colors are inspiring in their brilliance. Unlike grafted varieties, healthy specimen trees seem to always be in short supply. Our pot-grown seedlings have been kept totally protected from frost to ensure that your rootstocks are free of *Pseudomonas* (black stem) blight.

SP 1/8" caliper	Re-pot into #1	Zones 5-9 \$0.80 (50)+
MP 1/8" caliper	#1	\$1.05 (50)+
MP 3/16" caliper	#1	\$1.15 (50)+
3-4' TR	#5	\$8.55 (10)+
4-5' TR	#5	\$9.45 (10)+

Acer palmatum 'Bihou'

Bihou Japanese Maple

A relatively new introduction from Japan, it has bright yellow stems and shares with other bright yellow or red-stem selections susceptibility to *Pseudomonas* stem blight if it is fertilized too late in the growing season. Go easy on the nitrogen and protect young grafts indoors for the first few winters until the recent season's growth hardens off.

#1 3-4' WHIP	Re-pot into #5-7	Zones 5-9 \$22.50 (10)+
--------------	---------------------	----------------------------

Acer palmatum 'Bloodgood'

Bloodgood Japanese Maple

This is one of the hardiest and most popular of all the upright cultivars of Red Japanese Maple. Field grown plants have heavier caliper; container-grown plants have less transplant stress. Both gives rapid spring regrowth.

#1 2-3' WHIP	Re-pot into #5	Zones 5-9 \$14.65 (10)+
#1 3-4' WHIP	#5	\$17.10 (10)+
#2 3-4' WHIP	#7	\$18.95 (5)+
#2 4-5' WHIP	#7	\$21.50 (5)+
2-3' TR WHIP	#5	\$14.65 (10)+
3-4' TR WHIP	#5-7	\$17.10 (10)+

4-5' LT BRCH TR	#7-10	\$23.35 (10)+
5-6' LT BRCH TR	#10	\$24.95 (10)+

Acer palmatum 'Emperor I'

A fine cultivar distinguished by its bright red foliage. Whereas the more widely available cultivar, 'Bloodgood' has a maroon color, this one is redder, especially when the sun shines through the leaves. Leaves emerge two weeks later than 'Bloodgood'. Milwaukee, WI city arborists consider 'Emperor I' hardy within their urban area.

#1 2-3' WHIP	Re-pot into #5	Zones 5-9 \$14.65 (10)+
#1 3-4' WHIP	#5	\$17.10 (10)+
#2 3-4' WHIP	#7	\$18.95 (5)+
#2 4-5' WHIP	#7	\$21.50 (5)+
2-3' TR WHIP	#5	\$14.65 (10)+
3-4' TR WHIP	#5-7	\$17.10 (10)+

4-5' LT BRCH TR	#7-10	\$23.35 (10)+
5-6' LT BRCH TR	#10	\$24.95 (10)+

Acer palmatum 'Fireglow'

Fireglow Japanese Maple

One of the less familiar cultivars, 'Fireglow' has red leaves and looks somewhat like 'Bloodgood' but grows slower and denser. It is redder during the summer, becoming purple/red with green by fall.

#1 3-4' WHIP	Re-pot into #5	Zones 5-9 \$15.70 (10)+
--------------	-------------------	----------------------------

Acer palmatum 'Inaba shidare'

Inaba shidare Japanese Maple

Among the best of the weeping red laceleaf maples, known for its leaf color retention in summer, its scorch resistance, vigor, and hardiness. Always popular and attractive.

2-3' TR WHIP	Re-pot into #5	Zones 5-9 \$14.65 (10)+
--------------	-------------------	----------------------------



Acer palmatum 'Bihou'



Acer palmatum 'Fireglow'

Acer palmatum 'Moonfire'
Moonfire Japanese Maple

Very dark red-black bark and opalescent leaves give this maple a dramatic appearance. Its upright growth reaches 15 ft. at maturity. This variety holds its color very well in the heat and humidity of Houston, TX.

	Re-pot into	Zones 5-9
2-3' TR WHIP	#3	\$13.30 (10)+
3-4' TR WHIP	#5	\$15.70 (10)+

Acer palmatum 'Orangeola'
Orangeola Laceleaf Japanese Maple



This beautiful gem is more strongly weeping than most other selections of its kind. It goes through a kaleidoscope of reds, greens, and orange all season long.

	Re-pot into	Zones 5-9
2-3' TR WHIP	#5	\$14.65 (10)+
3-4' TR WHIP	#5-7	\$17.10 (10)+

Acer palmatum 'Red Dragon'
Red Dragon Laceleaf Japanese Maple



Unlike most "red" selections this is a more true red. Its color remains vibrant throughout the summer. Smaller than most lace leaf maples, with black bark and a slower growth habit, this maple is a good choice for bonsai or a container.

	Re-pot into	Zones 5-9
#1 2-3' WHIP	#5	\$13.30 (10)+
#1 3-4' WHIP	#7	\$15.70 (10)+

Acer palmatum 'Sango kaku'
Coral Bark Japanese Maple

This small vase shaped tree offers wintertime pink and red bark on young branches. In cool moist climates it can suffer from blight if it is fertilized too heavily. As this tree ages, its coral bark color intensity softens.

	Re-pot into	Zones 5-9
#1 2-3' WHIP	#5	\$14.65 (10)+
#1 3-4' WHIP	#7	\$17.10 (10)+

Acer palmatum 'Seiryu'
Seiryu Japanese Maple



The only upright laceleaf Japanese Maple, this one is small in stature and has delicate foliage. Light green summertime foliage; in the fall it becomes a beautiful mix of yellow, orange, and red.

	Re-pot into	Zones 5-9
#1 2-3' WHIP	#5	\$14.65 (10)+
#1 3-4' WHIP	#7	\$17.10 (10)+

Acer palmatum 'Tamuke yama'
Tamuke yama Japanese Maple



This lace leaf holds its beautiful purple-red foliage throughout the summer and turns scarlet in the fall. It is especially vigorous in hot climates.

	Re-pot into	Zones 5-9
#1 2-3' WHIP	#5	\$14.65 (10)+
#1 3-4' WHIP	#5	\$17.10 (10)+
2-3' TR WHIP	#3	\$14.65 (10)+
3-4' TR WHIP	#5-7	\$17.10 (10)+

4-5' LT BRCH TR	#7-10	\$23.35 (10)+
5-6' LT BRCH TR	#10	\$24.95 (10)+

Sold Out

Acer palmatum 'Tsukasa Silhouette'
Tsukasa Silhouette Japanese Maple

A more recent introduction from Japan, it should become popular for it's narrow upright form. Green foliage is smaller as compared to seedlings.

	Re-pot into	Zones 5-9
#1 2-3' WHIP	#5	\$16.10 (10)+
#1 3-4' WHIP	#7	\$19.00 (10)+



"Re-pot into"

What does it mean?

To help you consider your liner investment and profit opportunity, we recommend container options for you to pot up each size.

***Acer palm.* 'Twombly's Red Sentinel'**

Twombly's Red Sentinel Maple

Unique upright shape, attractive in many situations where space is limited, particularly close to a building or walkway. Plants in our landscape are more appealing with each passing season. It remains a strong maroon color all summer here in NW Oregon.

	Re-pot into	Zones 5-9
3-4' TR WHIP	#5-7	\$15.70 (10)+

***Acer palmatum* 'Ukigumo'**

Floating Cloud Japanese Maple



In our judgement, the best and most striking of white variegated upright Japanese Maples. A big plus, almost no reversion to green. From a distance the small green, white and pink leaves have an ethereal effect. This conversation item is just perfect to showcase in a shady spot in the garden. This Great Plant Picks selection will eventually reach 16 ft. tall, no surprise there.

	Re-pot into	Zones 5-9
#1 2-3' WHIP	#5	\$18.95 (10)+
#1 3-4' WHIP	#5	\$22.15 (10)+

***Acer palmatum* var. *dissectum* 'Viridis'**

Green Laceleaf Maple



This most popular weeping green laceleaf flourishes even in fairly deep shade. Yellow, gold, orange—even some red fall color.

	Re-pot into	Zones 5-9
2-3' TR WHIP	#5	\$13.30 (10)+
3-4' TR WHIP	#5	\$15.70 (10)+

Acer palmatum* var. *atropurpureum

Red Japanese Maple

One-year plants are perfect for re-potting to grow on for a season; transplants are best for prompt resale. For best branching, lightly pinch the stem tips when they're in tender new growth. An inexpensive alternative to grafted varieties, they are often sold in the garden centers in a #1 or #2 pot.

	Re-pot into	Zones 5-8
MP 1-2'	#1	\$2.00 (50)+
2-3' TR	#5	\$5.55 (10)+
3-4' TR	#7	\$8.85 (10)+

Acer pensylvanicum

Moosewood, Striped Maple

A North American native that grows as a forest understory companion to beech and maple. Also known as "Goosefoot" Maple, it has striped bark, large leaves, and bright yellow fall color. Generally small in stature, it prefers shade and may range from an extremely cold-hardy large shrub to top out at 40 ft., depending on conditions.

	Re-pot into	Zones 3-7
MP	#2	\$2.60 (50)+



Acer palmatum
'Twombly's Red Sentinel'



***Acer pseudoplatanus* 'Esk Sunset'**
Esk Sunset Sycamore Maple

"Variegated" doesn't begin to describe this extraordinary cultivar of a species that generally lacks ornamental merit. In addition to the leaves being purple beneath, they are a kaleidoscope of astonishing variegation throughout. It doesn't burn in full sun, and is exceptionally drought resistant and cold hardy. Whether placed as an accent against larger, darker trees, or as a specimen up front, it will elicit comments from all who enjoy seeing it for the first time. This goes on your 'buy list'. Make sure of it, OK? You'll be back for more.

	Re-pot into	Zones 4-8
LP21ci	#3	\$11.95 (25)+

Acer pseudosieboldianum
Korean Maple



The outstanding features of this small Asiatic maple are its extreme cold-hardiness and brilliant yellow, red and orange fall color. Not injured by wintertime lows down to -40°F. This is a full 20°F colder than the low temperature limit of other Japanese maples! Here's a fine plant to add some spice to gardens in the upper Midwest. Seed source is northeast China.

	Re-pot into	Zones 3-8
LP21ci	#1	\$2.45 (25)+

Acer rubrum
Red Maple

Among the best known of eastern North American trees because it is well adapted. We offer these seedlings as an alternative to more expensive named selections.

	Re-pot into	Zones 3-9
1-2'	#3	\$1.30 (50)+
2-3'	#3	\$1.55 (50)+

Acer pensylvanicum



***Acer palmatum* 'Ukigumo'**



Acer truncatum

Acer truncatum
Shantung Maple

Resistant to drought and polluted air, this maple is a promising ornamental. Its growth rate is relatively fast but it doesn't become as large as Norway maple, and is not invasive. Its small size, hardiness, appealing Sweetgum-like leaves and brilliant fall color make it a logical candidate for high pH soils or for areas where a tough, yet highly ornamental tree is needed.

MP Re-pot into
#1 **Zones 5-8**
\$1.60 (50)+

AESCULUS

***Aesculus ×neglecta* 'Erythroblastos'**
Sunshine Horsechestnut NEW

This plant just screams "spring time is here" with pink new growth. The leaves transition from pink to yellowish and then give way to green and yellow flowers. It's a small tree or even a large shrub so it's a good candidate for smaller gardens.

XP 1-2' Re-pot into
#3 **Zones 3-8**
\$12.85 (10)+

***Aesculus glabra* Lavaburst® 'LavaDak'**
Lavaburst® Ohio Buckeye NEW

Compact, narrowly upright in form - maturing at under 30 feet by half that in spread. Foliage does not scorch as much as seedling Ohio Buckeyes, lending it bright green summer color followed by bright orange-red in the fall. Selected in North Dakota, it is extremely hardy and tolerant of higher soil pH levels. A unique, useful selection for cold climates where a compact tree with brilliant fall color works best.

XP 1-2' Re-pot into
#3 **Zones 3-6**
\$14.35 (50)+

Price includes a \$1.50 royalty

Acer triflorum
Three-flower Maple



Bark peels in tight vertical curls. September brings a muted blend of yellow and claret-red foliage, capturing the essence of autumn. During winter, tufts of snow lodge on the peels of grey and honey-colored bark, lending contrast. Often listed as hardy to Zone 5, some growers report it hardy to -40°F - a full zone hardier than *Acer griseum*.

LP21ci Re-pot into
#1 **Zones 4-8**
\$7.45 (25)+

 **The Gold Medal Plant Award of the Pennsylvania Horticultural Society**

recognizes trees, shrubs and woody vines of outstanding merit for their superb eye-appeal, performance, and hardiness in Zones 5-7.



Acer triflorum

Aesculus hippocastanum

Horsechestnut

Dominating mature size limits this tree to large open areas. Often used as a rootstock for *Aesculus ×carnea* hybrids, which are smaller and more disease resistant.

	Re-pot into	Zones 3-8
1/4"	#2	\$1.75 (50)+
3/8"	#2	\$2.00 (50)+

Aesculus parviflora

Bottlebrush Buckeye



A large shrub that spreads from root suckers, it is usually no more than 10 ft. tall. Tolerates deep shade and still flowers reliably. Although its suckering habit and small stature might suggest a tender nature, it is remarkably hardy, tolerating winter lows to -31°F. Rarely found in quantity in the wholesale trade, this is a choice American native to reserve for your best customers.

	Re-pot into	Zones 4-8
LP40ci	#3	\$9.10 (10)+
3-4' TR	#7	\$14.30 (10)+
4-5' TR	#7	\$15.80 (10)+

Aesculus ×carnea 'Briotii'

Briotii Red Horsechestnut

A hybrid of *Aesculus hippocastanum* and *Aesculus pavia* with intermediate characteristics. Best used in a broad, open landscape so it doesn't become crowded. Flowers are an attractive pink, splashed with yellow inside. Generally no spring fruits are produced, a big maintenance plus.

	Re-pot into	Zones 4-8
XP 1-2'	#3	\$13.50 (10)+



Aesculus ×neglecta 'Erythroblastos'



Acer triflorum

Betula



Asimina triloba

AMELANCHIER *Amelanchier × grandiflora*

autumn Brilliance®

autumn Brilliance® Serviceberry

Excellent trade name recognition because it's a clearly superior clone across a wide variety of Midwest and Eastern US climates. Grows to 20-25 ft. and develops reliable red-orange autumn color. The showy multi-colored fruits are relished by birds, and it never becomes obtrusive in the landscape border. What a gem!

	Re-pot into	Zones 3-7
MP	#3	\$4.30 (50)+
3-4' TR	#7	\$10.50 (10)+
4-5' TR	#10	\$14.40 (10)+

Prices include a \$0.90 royalty

ASIMINA

Asimina triloba



Pawpaw

Widely adapted and tolerant of wet soils, our US native Pawpaw has been under-used as a landscape tree but is attracting substantial attention. This genus is the exclusive forage plant for native Zebra Swallowtail butterfly larvae in the East. Nodding purple flowers are unlike those of any other American tree - curious with their three-lobes, pollinated by flies. The perishable fruits have a memorably delicious taste, are nutritious, and resemble the tropical mango. Bold leaves turn a pleasing yellow in autumn. Our seedlings are greenhouse-grown in root-pruning containers for excellent transplant success.

	Re-pot into	Zones 5-8
3/16" caliper	#2	\$3.50 (50)+



Amelanchier × grandiflora
Autumn Brilliance®



**Betula nigra
Northern Tribute®**

Betula nigra Heritage® 'Cully'
Heritage® River Birch



Selected by Earl Cully many years ago for its outstanding peeling bark, extreme hardiness, resistance to borers, and ability to grow in waterlogged or dry conditions. Whether you clump them in a container or grow them as singles, this is among the easiest of plants to finish: even our smallest liners can grow to 5-6 ft. in a single season. Named Urban Tree of The Year by the Society of Municipal Arborists.

	Re-pot into	Zones 4-8
MP	#2-3	\$3.10 (50)+
2-3' LT TR	#7	\$5.20 (10)+
3-4' LT TR	#7-10	\$6.30 (10)+
Prices include a \$0.25 (plug) or \$0.75 (TR) royalty		

Betula nigra Northern Tribute® 'Dickinson'
Northern Tribute® River Birch

The most adaptable River Birch to dry and alkaline soil conditions, in addition to be completely hardy in Zone 3. No dieback from winter injury and no iron chlorosis or the maintenance issues that can cause. The parent tree is the largest of this species observed in the upper Northern Plains. Ivory-colored with striking coppery-bronze exfoliations, the bark is appealing year round. Resistant to birch borers.

	Re-pot into	Zones 3-7
MP	#2-3	\$3.85 (50)+
Price includes a \$1.00 royalty		



Betula nigra (seed-grown)

BETULA

**Betula nigra
River Birch**



In contrast to selections like Heritage® or DuraHeat®, seedlings typically have very dark bark, not at all showy except for its modest peeling. Use seedlings as a rootstock, or where you require inexpensive liners in an Eastern US wetland mitigation job, or a parking lot runoff swale. Fast-growing, heat tolerant, cold hardy well into Canada, and tolerant of compacted construction site soil, seedlings can offer quick shade cover at an inexpensive price.

	Re-pot into	Zones 4-9
2-3'	#5	\$2.45 (50)+
3-4'	#5	\$2.90 (50)+

Betula nigra Dura-Heat® 'BMMTF'
Dura-Heat® River Birch

Holds its yellow autumn leaves a full month longer than Heritage®. Has glossier leaves, a tighter habit, and better heat tolerance than Heritage® in Zone 9. You already know Heritage® is a money-making super tree. Try this one for comparison, especially if you're in the Gulf States.

	Re-pot into	Zones 5-9
MP	#2-3	\$3.55 (50)+
Price includes a \$0.30 royalty		

Betula tianshanica Emerald Flare®
Emerald Flare® Birch **NEW**

A distinctive birch selection, which grows in a narrowly pyramidal form. Attractive white exfoliating bark with gray and slight orange undertones. Cold hardy and tolerant of higher pH soils and drought.

	Re-pot into	Zones 5-7
LP21ci	#2-3	\$5.70 (25)+
#1 3-4'	#7	\$10.05 (10)+
Prices include a \$1.50 royalty		

Betula utilis
Himalayan Birch

Seedlings of the White-barked Jacquemontii Birch, these exhibit remarkable uniformity of bark color since the seed was collected from isolated trees. Of similar character to vegetatively-budded trees, but these are not clonal.

	Re-pot into	Zones 5-7
2-3'	#2-3	\$1.90 (50)+

Betula utilis var. *jacquemontii*

Whitebarked Himalayan Birch

This is the most prized of white barked birches. It grows in classic conical form; it doesn't often look natural in a clump, though it is often used that way. It's a fast-growing easy to use, adaptable tree.

LP40ci	Re-pot into #5	Zones 5-7 \$7.40 (10)+
--------	-------------------	---------------------------

CARPINUS

Carpinus betulus

European Hornbeam

Most often used as a rootstock for popular cultivars. Seedlings can be effectively used to create a hedge or screen and are favored in Europe for this purpose. Hardy to -38°F in Ohio during the extreme winter of '93-'94.

3/16" caliper	Re-pot into #1	Zones 5-7 \$1.60 (50)+
1/4" caliper	#1	\$1.95 (50)+
3-4' TR *HEDGE	#10	\$10.55 (10)+
4-5' TR *HEDGE	#10	\$14.85 (10)+

*Low-branched for hedges

Plant directly into landscape for max profit.

Carpinus betulus 'Columnaris Nana'

Dwarf Columnar European Hornbeam

Given no pruning, forms a dense, dwarf, upright tree. It is useful as a walkway or border focal point or as an edging feature. A diminutive hedge could be another landscape option, with the larger-than-usual buds adding to its winter interest. Rarely available in the trade still, but very easy to grow and zero maintenance required other than irrigation.

1-2' TR	Re-pot into #3	Zones 5-7 \$18.30 (10)+
2-3' TR	#5	\$21.00 (10)+

Carpinus betulus 'Fastigiata'

Pyramidal European Hornbeam

An excellent ornamental because of its clean foliage, generally, upright growth habit, and adaptability. Branches ascend, but its form is not columnar. It has a wide, round base and typically lacks a central leader.

XP 2-3'	Re-pot into #5	Zones 5-7 \$14.50 (10)+
XP 3-4'	#7	\$15.90 (10)+
#2 4-5'	#7	\$20.25 (5)+
#2 5-6'	#10	\$22.40 (5)+
4-5' TR	#7	\$23.45 (10)+
5-6' TR	#10	\$25.60 (10)+

Carpinus betulus 'Frans Fontaine'

Frans Fontaine European Hornbeam

Similar to 'Fastigiata', but with slower growth habit and a more dense foliage. Columnar form grows to 40 ft. at maturity. The attractive leaves turn to gold in the fall, a contrast to the smooth, gray bark.

XP 2-3'	Re-pot into #5	Zones 5-7 \$14.50 (10)+
XP 3-4'	#7	\$15.90 (10)+
#2 4-5'	#7	\$18.90 (5)+
#2 5-6'	#10	\$20.90 (5)+

Carpinus betulus 'Pinoccheo'

Pinoccheo European Hornbeam

Much less congested branch structure than seedlings or the varieties 'Fastigiata' & 'Frans Fontaine'. Observant nurseryman Lanny Rawdon of Arborvillage in Holt, MO reports that it's a robust grower in the Midwest, with a strongly upright form as a young tree. It's distinctly pyramidal in winter branch structure, and clonal propagation assures its predictable landscape uniformity, Lanny tells us it survived -35°F in the harsh winter of 1983. This is a really tough, handsome tree for just about any landscape in Zones 3-8.

XP 2-3'	Re-pot into #5	Zones 3-8 \$14.50 (10)+
XP 3-4'	#7	\$15.90 (10)+
#2 4-5'	#7	\$18.90 (5)+
#2 5-6'	#10	\$20.90 (5)+

Carpinus caroliniana

American Hornbeam, Musclemwood



Pest-free and widely adapted to conditions from the stream-side to the neighborhood mall. It's surprising the trade has not more widely embraced this American native. Fall color is an appealing mix of soft red, yellow and orange. Squirrels risk falling from the slenderest of branches to eat every possible fat, fertile seed in October.

MP	Re-pot into #1	Zones 4-9 \$1.95 (50)+
1-2'	#1-2	\$1.40 (50)+

Carpinus car. Fire Belle™ 'JN Select AA'

Fire Belle™ Musclemwood

Selected by Michael Yanny at Johnson's Nursery in about 2011 for its brilliant-red consistent fall color, moderate growth rate, dense branching and rounded form. The tree was first picked out of a crop of about 1000 seedlings in 2007 as having superior vigor and then later (2011-2014) showing the spectacular, red fall color. It may have the brightest fall color of any *Carpinus caroliniana*. This is useful as a specimen plant either in full sun or the shade and tolerates heavy soils well. It should not be used in droughty soils and develops its best fall colors in full sun. The original plant was measured in October of 2016 at 13' tall by 13' wide, age 15.

XP 1-2'	Re-pot into #5	Zones 3-7 \$14.55 (10)+
XP 2-3'	#5	\$17.05 (10)+

Prices include a \$1.50 royalty

Carpinus caroliniana Wisconsin Red™

Wisconsin Red™ Musclemwood Seedlings

Amazing fall color, so much so in fact, if you didn't know better you would suspect it was a different species. Raging reds, oranges and yellow autumn tones set this strain apart from ordinary seedlings.

LP21ci 1-2'	Re-pot into #3	Zones 3-7 \$3.20 (25)+
3-4' TR	#7	\$9.00 (10)+
4-5' TR	#10	\$10.25 (10)+

Prices include a \$0.20 royalty



Carpinus cordata

Heartleaf Hornbeam

A tidy & attractive small tree, too-little used. Grows to 40 ft. tall and has scaly, furrowed bark. Big green winter buds open to heart-shaped leaves. Quite slow growing when it gets older, it shoots up surprisingly fast as a young tree in the nursery.

	Re-pot into	Zones 5-8
3/16" caliper	#1	\$2.35 (50)+
LP21ci	#2	\$2.65 (25)+

Carpinus coreana

Korean Hornbeam

The best bonsai choice among hornbeams because of its tiny leaves and shrubby, short irregular stems. Rare in the wholesale nursery trade, this species also merits wider use as a small specimen tree. It develops a strong drought-resistant root system, remains small, and has excellent ornamental character.

	Re-pot into	Zones 5-8
6-12"	#1	\$2.10 (50)+
1-2'	#1-2	\$2.85 (50)+

Carpinus coreana Model Rocket™

Model Rocket™ Korean Hornbeam NEW

We've always had a fascination with the distinctive strong variation in seedlings of this species, and this is the best of many columnar forms we've observed over the past 20 years. Perfect as a street tree because of its narrow growth habit (5' x 20' after a dozen years), its strongly mycorrhizal roots give it exceptional drought tolerance and its tiny leaves mean it never makes a cleanup mess after leaf drop. Branches are tough, they don't break under an ice load like faster-growing, weaker red maples or birches. Fall color favors yellow sprinkled with a bit of orange, and gives way to a pleasing outline of narrow-angle ascending branches. Included bark in the branch crotches seems to never be a problem. A Heritage original, new to the trade this season.

	Re-pot into	Zones 5-8
XP 1-2'	#5	\$13.55 (10)+
XP 2-3'	#5-7	\$15.35 (10)+

Carpinus japonica

Japanese Hornbeam



Its narrow leaves have a remarkable, deeply impressed, 3-D character - worth growing for this one feature alone. Not bothered by disease, it grows rapidly to form a round-shaped crown 25-30 ft. tall. During summer and autumn, the long seed-bearing "hops" make the tree appear decorated. Performs best in the South if it is partially shaded.

	Re-pot into	Zones 5-7
1-2'	#1-2	\$2.95 (50)+
LP21ci	#1	\$3.65 (25)+

Size Guide pages 50-51

Carpinus coreana Model Rocket™

Carpinus × Skylark™

Skylark™ Hornbeam

Combines the hardiness of *Carpinus caroliniana* with the upright habit of *Carpinus betulus* 'Fastigiata'. Pest free, its remarkable adaptive character is enhanced by hybrid vigor and strong mycorrhizal roots that allow it to thrive even in droughty conditions. Treat them with routine nursery care and watch them make you money.

	Re-pot into	Zones 5-8
XP 2-3'	#3	\$15.70 (10)+
XP 3-4'	#5	\$17.10 (10)+
#2 4-5'	#7	\$20.10 (5)+
#2 5-6'	#10	\$22.10 (5)+

Prices include a \$1.20 royalty

CELTIS

Celtis occidentalis

Common Hackberry

Hackberry has an extensive natural range in the Eastern US indicating it's tough, drought and cold-tolerant nature. Leaves are coarse and grey/green in the summer, and become yellowish in the fall. The small yellow to purple fruit is edible but usually eaten by wildlife. Grows from 40-60+ ft. tall, almost as wide.

	Re-pot into	Zones 3-9
1-2'	#1-2	\$1.85 (50)+
2-3'	#1-2	\$2.30 (50)+

CERCIDIPHYLLUM

Cercidiphyllum japonicum

Katsuratree

This hardy, medium-sized tree is truly distinctive. Heart-shaped leaves attract interest, changing from translucent bronze in spring, to summer green, to yellow and apricot-orange in autumn. Multi-trunked specimen trees with shaggy bark have eye-catching appeal. Throughout the seasons, it is among the most appealing of any hardy landscape tree. Dr. Mike Dirr names it his personal favorite. These liners are exceptional, with a strong central leader.



	Re-pot into	Zones 5-8
MP	#2	\$2.00 (50)+

Cercidiphyllum japonicum 'Pendula'

Weeping Katsuratree

Bluish-green leaves flutter in the breeze giving it the impression of a shimmering waterfall. Native to China and Japan, the leaves turn earthy shades of orange and yellow in autumn and have a caramel-like fragrance before they fall. Mature height is 30+ ft.

	Re-pot into	Zones 5-8
#1 2-3'	#5	\$15.95 (10)+
#1 3-4'	#5	\$18.10 (10)+

Cercidiphyllum japonicum 'Rotfuchs'

Red Fox Katsuratree

Often times listed as 'Red Fox', this reddish-leaved form is more slow growing than most - dense and upright.

	Re-pot into	Zones 5-8
#1 2-3'	#5	\$15.95 (10)+
#1 3-4'	#5	\$18.10 (10)+

Cercidiphyllum jap. Claim Jumper™ 'HS11'

Claim Jumper™ Golden Katsuratree

A Distinctive Heritage Seedlings introduction, this katsura has golden summer foliage. The leaves emerge with a pink blush and unfurl to soft yellow. Throughout summer the more shaded leaves turn green, while those in sun remain yellow or turn almost white. autumn yields the characteristic sweet fragrance and buttery golden color of the species. Best for a site with some late afternoon sun protection, but it has proved remarkably resistant to sunburn in Tennessee.

	Re-pot into	Zones 5-8
#1 2-3'	#5	\$15.95 (10)+
#1 3-4'	#5	\$18.10 (10)+

CERCIS

Cercis canadensis

Eastern Redbud

Widely adapted and often associated with *Cornus florida* in its native range. Bright pink flowers appear in the first warm days of spring; a delight after a long winter. Grow them on for a fast finish in fall, or graft/bud any of the fine cultivars.

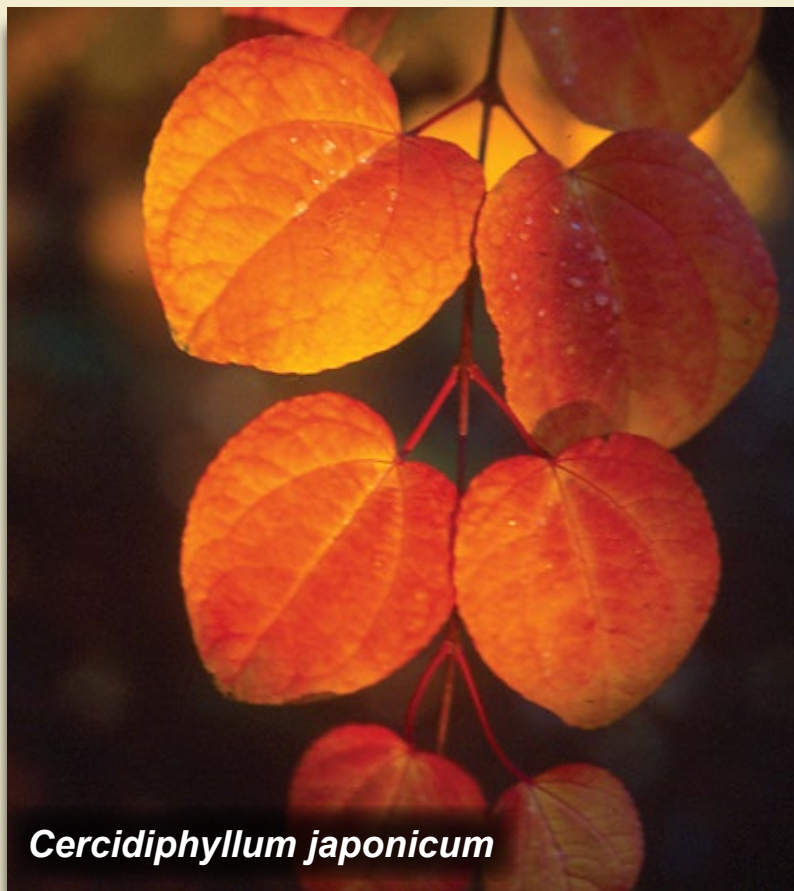
	Re-pot into	Zones 5-9
3/16" caliper	#1	\$1.60 (50)+
1/4" caliper	#1	\$1.90 (50)+
3-4' TR	#3	\$9.25 (10)+

Cercis occidentalis

Western Redbud

Heart-shaped light greenish gray leaves cover the thin brown branches in early spring, turning a darker shade of green later in the season, followed by gold and red foliage in autumn. Flower clusters of showy magenta color. Drought adapted and heat tolerant.

	Re-pot into	Zones 7-9
6-12"	#1	\$1.60 (50)+
1-2'	#1	\$2.35 (50)+



Cercidiphyllum japonicum

CHIONANTHUS

Chionanthus retusus

Chinese Fringetree

Like *Chionanthus virginicus*, Chinese Fringetree is an easily grown small to medium tree. Flowers are born at the ends of new shoots, weighing down the branches like wet snow. Few pests bother it. Always appealing across the seasons, the cinnamon-colored flaky bark is most attractive in winter when contrasted against a snowy background.

	Re-pot into	Zones 6-8
6-12"	#1	\$2.95 (50)+
1-2'	#2	\$3.35 (50)+
#1	#2	\$4.90 (10)+

Chionanthus virginicus

White Fringetree

Shiny dark green leaves and abundant white, pleasantly fragrant flowers showcase this classy American native. Much hardier than *Chionanthus retusus*, it performs best in full sun and is remarkably versatile - from moist lowlands to dry hillsides. Among the finest of ALL landscape plants, not just natives.

	Re-pot into	Zones 4-9
6-12"	#1	\$2.85 (50)+
1-2'	#1	\$3.25 (50)+
1-2' TR	#2	\$4.80 (10)+
2-3' TR	#2	\$6.05 (10)+
3-4' TR	#2	\$8.75 (10)+

CLADRASTIS

Cladrastis kentukea

American Yellowwood

Still uncommon in cultivation, this is an exceptional ornamental tree. Like wisterias, it is most noted for its large showy drooping clusters of fragrant white flowers, touched with yellow in the center. Introduced into cultivation by André Michaux in 1796. Its roots were chipped and boiled to yield a yellow dye for homespun fabrics before synthetic dyes became available. Adapted across a wide range of soil pH, it prefers a reasonably moist, yet well-drained soil with full sun and space to grow.

	Re-pot into	Zones 4-8
LP21ci	#2	\$3.00 (25)+

COMPTONIA

Comptonia peregrina

Sweetfern

With attractive lacy foliage that is sweetly scented, this makes an attractive, slowly spreading small shrub that should be planted where it can be observed and easily touched to release its fragrance. It has a long history of medicinal uses and merits much wider ornamental planting.

	Re-pot into	Zones 2-8
LP21ci	#2	\$5.05 (25)+

Our availability lists are emailed and posted on our website beginning early August. Look for them monthly after mid-November.

CORNUS

Cornus 'Eddie's White Wonder'

Eddie's White Wonder Dogwood

Large flowers, exceptionally fast hybrid growth, and tree-like form make this cultivar an attractive, under-used plant for the Pacific Northwest.

	Re-pot into	Zones 7-9
#1 3-4'	#7	\$21.10 (10)+
#1 4-5'	#10	\$22.60 (10)+

Cornus Rosy Teacups® 'F70:R11,P13' PP 26,211

Rosy Teacups® Dogwood

Very fine hybrid from Rutgers, this *Cornus kousa* × *nuttallii* hybrid has stunning pink-red blossoms. One of the top red dogwood on the market. A well branched and freely-flowering tree, it is disease resistant, hardy, and has great red fall color.

	Re-pot into	Zones 5-8
2-3' TR	#5	\$18.75 (10)+
3-4' TR	#7	\$21.85 (10)+

Prices include a \$1.75 royalty

Cornus Stellar Pink® 'Rutgan'

Stellar Pink® Dogwood

Muted shades of pink make this a highly attractive plant, even if it's not the deepest pink flower color on the market. Hybrid vigor.

	Re-pot into	Zones 5-8
2-3' TR	#5	\$17.50 (10)+
3-4' TR	#7	\$20.60 (10)+

Prices include a \$0.50 royalty



Chionanthus retusus

Dogwood



**Cornus
Venus®**

Cornus x Venus® 'KN 30-8' PP 16,309' **Venus® Dogwood**



Huge white flowers, foliage resistant to the leaf diseases that plague seedling flowering dogwoods. Here in Oregon, our stock plants flower for a month starting in early to mid-May. Its exceptional vigor can result in too-leggy growth, even with routine fertilizer use, so manage nitrogen application conservatively.

	Re-pot into	Zones 6-8
#1 3-4'	#7	\$21.60 (10)+
#1 4-5'	#10	\$24.10 (10)+

Prices include a \$1.50 royalty.

Cornus alternifolia **Pagoda Dogwood**



Shrubby tree with a prominently horizontal, tiered branch pattern, suggesting its common name. Flat clusters of fragrant May flowers add to its layered ornamental appearance. Blue-black fruits ripen in late summer, followed by bronze autumn foliage.

	Re-pot into	Zones 3-7
LP21ci	#2	\$2.55 (25)+

Cornus capitata 'Mountain Moon' **Mountain Moon Dogwood**

For the milder parts of the country this evergreen dogwood is a real show stopper. The foliage is deep green and contrasts very well with the large, rounded, overlapping white bracts which nearly obscure the foliage. Easily trained to tree form. Fine with strong winds and not bothered by pests.

	Re-pot into	Zones 7-10
LP40ci	#3	\$12.75 (10)+

Cornus controversa **Giant Dogwood**

This handsome, wide-spreading Chinese tree reaches 30-45 ft. in height. It has a layered, horizontal branch habit, and showy 5-7 in. clusters of small white flowers that precede purple-black fruits in the fall. Taller and more tree-like than its American cousin, *Cornus alternifolia*.

	Re-pot into	Zones 5-8
LP21ci	#2	\$3.05 (25)+

Cornus florida **Flowering Dogwood**

Beautiful small American native with tiered branching. Wonderful floral display of white flowers and great fall color. Despite the enormous number of named selections out there, when one sees seedling specimens in the East in cemeteries or parks, there are always plenty of these that elicit, "Someone ought to name that one."

	Re-pot into	Zones 5-9
4-5' TR	#7	\$10.55 (10)+
5-6' TR	#10	\$12.65 (10)+

Cornus florida 'Cherokee Brave' **Cherokee Brave Dogwood**

Late-flowering form, essentially disease free. Deep pink to red flowers on this dogwood that makes most growers' top ten list.

	Re-pot into	Zones 5-9
2-3' TR	#5	\$17.00 (10)+

Cornus florida Ragin' Red™ 'JN13' **Ragin' Red™ Dogwood**

While Ragin' Red has the darkest red floral bracts of any *Cornus florida* it also has very dark red leaves here in Oregon nearly all summer long. Fall color is again red. So it really is in a red rage from spring until leaf drop.

	Re-pot into	Zones 5-8
2-3' TR	#5	\$19.95 (10)+

Price includes a \$1.50 royalty.

Cornus kousa 'Greensleeves' **Greensleeves Dogwood**



Cappiello and Shadow, in their book, Dogwoods, call it one of the very best *Cornus kousa* varieties. Our own experience and that of growers across a broad range confirms their evaluation. Strong growth makes it a great nursery plant, and its handsome foliage and abundant flowers give it universal appeal. Flowers suffused with a hint of green on cream. Heavy fruit set against deep green waxy foliage that turns to autumn shades of red and purple.

	Re-pot into	Zones 5-8
2-3' TR	#5	\$17.00 (10)+
3-4' TR	#7	\$20.10 (10)+



Cornus controversa



Cornus florida
Ragin' Red™

Cornus kousa 'Satomi'
Satomi Dogwood

Best known of the pink *Cornus kousa* selections. Flowers are a rich variety of muted pinks over a period of almost a month! Leaves also tinted with a bit of maroon, adding summer-long interest. Income potential matches its ornamental promise, as its growth is upright and strong. It is not patented, and almost never develops the disease problems associated with *Cornus florida*. Flowers brightest pink in full sun.

	Re-pot into	Zones 5-8
2-3' TR	#5	\$17.00 (10)+
3-4' TR	#7	\$20.10 (10)+

Cornus kousa 'Summer Fun'
Summer Fun Dogwood

Introduced by Talon Buchholz, this brilliant, white-margin variegated clone seems perfectly sun tolerant and puts on a show to rival any of the daunting number of other white-variegated kousas. It is the most vigorous variegated clone we have grown.

	Re-pot into	Zones 5-8
2-3' TR	#5	\$17.00 (10)+
3-4' TR	#7	\$20.10 (10)+

Cornus kousa 'Summer Gold' PP 22,765
Summer Gold Dogwood

Crispin Silva of Crispin's Creations, Molalla, OR has a sharp eye for plants of superior ornamental merit. We recognized his selection had an auspicious future so we were the first to offer it in the wholesale trade. Distinctly upright in form, as opposed to the other gold-variegated dogwood, 'Gold Star'. Its uniform yellow variegation, unwrinkled leaves and strong growing habit qualify it a money-maker.

	Re-pot into	Zones 5-8
2-3' TR	#5	\$18.65 (10)+
3-4' TR	#5	\$21.75 (10)+

Prices include a \$1.65 royalty

Cornus kousa 'Wolf Eyes'
Wolf Eyes Dogwood



Originally a branch sport, this dogwood is strongly white variegated. It's fine in the sun, but should be used to brighten a shady spot in the landscape. 'Wolf Eyes' is a compact plant and has excellent pink and red fall foliage.

	Re-pot into	Zones 5-8
1-2' TR	#3	\$15.45 (10)+
2-3' TR	#3	\$18.45 (10)+

Cornus kousa Scarlet Fire™ 'Rutpink' PP28,311
Scarlet Fire™ Dogwood

This is the first kousa dogwood released from the fabled Rutgers breeding program. It was selected for its deep pink to fuchsia colored bracts. They almost glow from a distance. The bracts are pointed and do not overlap, developing an attractive starry shape.

	Re-pot into	Zones 5-8
2-3' TR	#5	\$20.80 (10)+
3-4' TR	#5	\$23.60 (10)+

Prices include a \$2.35 royalty

Cornus kousa var. chinensis
Chinese Dogwood

Mostly free of anthracnose leaf disease, and always popular in the nursery trade because seedlings are inexpensive and easy to grow in a pot. Spectacular when laden with masses of large-bracted flowers. Vase-shaped at maturity, it differs significantly from *Cornus florida* by blooming a full month later and has more attractive, strawberry-like fruits. autumn color is a showy burgundy, and fruits ripen at different stages in colors of green, yellow, orange, and red. Differs from *Cornus kousa*, Japanese Dogwood, in its more upright growth, longer internodes, and larger leaves and flowers. These characteristics make it profitable as an ornamental garden center promo item, and as a dependable rootstock.

	Re-pot into	Zones 5-8
MP 1/8" caliper	#1	\$1.25 (50)+
MP 3/16" caliper	#1-2	\$1.45 (50)+

Cornus kousa Snow Tower®
Snow Tower® Dogwood

It has all the features you've come to expect from Chinese dogwood: excellent white flowers followed by showy fruit, great fall color of orange red. This variety has a much narrower habit - to only 8 ft. wide in twenty five years. Snow Tower® could easily be utilized as a street tree.

	Re-pot into	Zones 5-8
2-3' TR	#5	\$17.85 (10)+
3-4' TR	#7	\$20.95 (10)+

Prices include a \$0.85 royalty.



Cornus kousa
'Satomi'



Corylus fargesii

CORYLUS

Corylus colurna

Turkish Filbert



Uncommon in American gardens, this medium to large tree ought to be used more for its pest-free character, corky bark, and symmetrical cone-shaped outline. Stays remarkably green through the toughest drought. Often used as rootstock for *Corylus avellana* 'Contorta' because it has less potential to produce suckers below the graft union.

	Re-pot into	Zones 4-7
LP21ci 3/16" caliper	#2	\$2.60 (25)+
LP21ci 1/4" caliper	#2	\$3.05 (25)+

Corylus fargesii

Farges' Filbert

Farges' Hazelnut has been on most plant maniacs' "want list" for the better part of a decade because of the beautiful exfoliating bark - reminiscent of paperbark maple and the best river birch varieties. Grafted plants perform poorly, and cuttings are nearly impossible. These are propagated from tissue culture to avoid both issues and get them into wholesale cultivation. It has a strongly upright growth habit, quickly reaching 30ft. in 13 years. Not bothered by pest, and partially resistant to Eastern Filbert Blight. The clean green leaves, which emerge with a pink blush, turn yellow in autumn.

	Re-pot into	Zones 6-8
LP21ci	#2	\$7.45 (25)+

COTINUS

Cotinus coggygia Golden Spirit®

'Ancot' PP 13,082

Golden Spirit® Smoketree

Unusual for its yellow to lime-green summer foliage, and tufts of soft, smoky gray flowers. A small but vigorous tree, it grows best in full sun and closes out the summer with fall colors of pink, red, and orange.

	Re-pot into	Zones 5-8
LP40ci	#3	\$6.85 (10)+

Price includes a \$0.65 royalty

Cornus kousa Blue Ray™ 'JN6'

Blue Ray™ Dogwood

The large, well-formed foliage is cast with a blue haze, very different than any other dogwood. Moderate-sized creamy white flowers are starry and the bracts overlap halfway.

	Re-pot into	Zones 5-8
2-3' TR	#5	\$19.70 (10)+
3-4' TR	#5	\$22.50 (10)+

Prices include a \$1.25 royalty.

Cornus mas

Corneliancherry Dogwood



Very hardy. Prized for its ornamental bark and fruit, small stature, and disease-free character. March flowers provide a splash of yellow to herald the first days of spring. Variability in form and flower; however, this motivates a trend toward using seedlings as rootstock for named varieties that are selected for abundant flowers and large fruit.

	Re-pot into	Zones 4-8
3/16"	#2	\$1.90 (50)+
1/4"	#2	\$2.05 (50)+



Cornus kousa var. *chinensis* plugs

A look back, with an eye toward the future ...

American horticulture lost its hero, J.C. Raulston, 25 years ago. Those who knew him felt inspired by his vision and appreciated his wisdom, always shared in his humble manner.

J.C. provoked us to think critically. Based on the '80/20 Pareto Principle', he was concerned that landscape horticulture risked becoming dominated by a "top forty" of trees and shrubs unless propagators and breeders resolutely determined that would not happen. Today we see a gratifying diversity of cultivars offered. Was J.C. wrong to worry us? It depends on your perspective. Yes, there's a top forty list, but how many stand the test of time?

He also perceived that woody plant marketing might become too focused on branded, snazzy pots instead of the plants within them. Brands are here to stay; they offer casual gardeners useful information, and if effective, a reason to buy again. But our primary endeavor is to INSPIRE plant buyers, help them develop a **relationship** with plants in their gardens. Like pets, garden plants offer this personal relationship opportunity. J.C. inspired a whole generation of new growers in North Carolina and in talks around the country by focusing on our relationship with plants. It's in our genes.

As our world warms, as our climates evolve with unpredictable extremes, we need trees and shrubs in our urban world more than ever. Heritage Seedlings propagation is one place where it starts. We're doing our part, joined with your own, to keep this world a beautiful, comforting place to live and work.

J.C. understood that woody plant diversity is essential to our future success. Let's continue to inspire others, youngsters of all ages, like he did by focusing on diverse woody plants and their merits in our lives.

Let's make J.C. smile.

Mark & Jolley

Plan - and plant for a better world
J.C. Raulston

J. C.'s signature line, "Plan - and plant for a better world," still resonates today and serves as the guiding principle for the Arboretum that serves in part as his legacy 25 years later. The plants-men and women like Mark, Jolley, and so many others he inspired as a professor, mentor, colleague, and friend have used those words to help create a better, more diverse world and continue to do so as the true measure of his lasting impact.

**Mark Weathington, Director
JC Raulston Arboretum
Raleigh, NC**



Cotinus coggygria 'Royal Purple'



Royal Purple Smoketree

Best known of several varieties, always popular and perfectly uniform genetics as compared to less expensive seed-propagated liners. Buy these for more discriminating clients; buy seedlings for a promo, for a price-conscious customer.

	Re-pot into	Zones 5-8
LP40ci	#3	\$6.20 (10)+
2 YR TR	#3	\$10.55 (10)+

Cotinus coggygria var. purpurea

Purple Smoketree

Deep purple leaves which hold color throughout the summer. Economical alternative to more expensive cultivars, these can be potted up for a popular, easy to grow promo item in the garden center. The few greenish plants which emerge in our seedling benches are pulled out early, so you're assured of receiving plants with uniform, dark purple leaves.

	Re-pot into	Zones 5-8
1-2'	#1	\$1.35 (50)+
2-3'	#1-3	\$1.75 (50)+

Cotinus obovatus



American Smoketree

Stunning autumn color. Its flaming fall foliage rivals that of Sugar Maple. Thrives in rocky, dry areas where other trees languish. Larger leaves than Cotinus coggygria and much taller in stature at maturity.

	Re-pot into	Zones 4-8
1-2'	#1-2	\$2.25 (50)+
2-3'	#3	\$2.75 (50)+

Cotinus × 'Grace'



Grace Hybrid Smoketree

Hybrid of the purple-leaved 'Velvet Cloak' and American Smoketree. Vigorous in the nursery, it flashes exceptional fall color.

	Re-pot into	Zones 5-8
LP40ci	#3	\$8.90 (10)+

DAVIDIA

Davidia involucrata

Dove Tree

The intriguing flowers of this Chinese native tree invite closer inspection. Similar to Flowering Dogwood and Chinese Dogwood, the "petals" are actually large white bracts that overshadow the inconspicuous actual flowers. Difficult to propagate and locate in the wholesale trade, Dove Tree is widely adapted and fast-growing to 40 ft. tall. Once established, it makes an strong specimen tree, seldom damaged by ice storms.

	Re-pot into	Zones 6-8
1-2'	#5	\$6.70 (25)+
2-3'	#5	\$9.40 (25)+
4-5' TR	#7-10	\$16.50 (10)+



Enkianthus campanulatus
'Showy Lantern'

photo courtesy of Wayne Mezitt
Weston Nurseries

DIOSPYROS

Diospyros virginiana

American Persimmon

Native widely distributed in the East. Heat tolerant, tough and having more ornamental character to recommend it than is widely acknowledged. The astringent fruits are most attractive, accented on top with large, persistent calyces. Fruit can be abundant, but isn't usually messy because it persists late into winter, providing a tasty treat for wildlife after the first hard frosts. The deeply furrowed, blocky bark on mature trees is especially handsome when accented by winter snow. Its unobtrusive size and ease of care make this a tree that deserves more attention by designers and landscape firms, and our propagation numbers reflect big recent up-tick in demand.

	Re-pot into	Zones 4-9
3/16" caliper	#1	\$1.20 (50)+
1/4" caliper	#1	\$1.75 (50)+

DIRCA

Dirca palustris

Leatherwood

Dirca is curious and attractive *Daphne* relative from eastern North America but never common. Most notable is how pliable the stems are, perhaps an adaptation to deep snow. RARE choice, adapted from Canada to Georgia & Florida

	Re-pot into	Zones 3-9
#1	#3	\$14.50 (50)+

ENKIANTHUS

Enkianthus campanulatus



NEW

'Showy Lantern'

Showy Lantern Redvein Enkianthus

Deciduous shrub growing over ten years to 8 feet tall by almost as wide. Most recommend a woodland or border planting, but in our experience, it appreciates full sun and shows no stress at all if it's given a modest amount of water in the dry season. Don't plant in a wet spot; handle it like any of its rhody relatives. Brilliant orange-red autumn color and lusty pink spring flower clusters that never overpower, but confidently appear and charm all who see them. Give it a prominent spot and just let it be the delicate beauty it naturally is.

	Re-pot into	Zones 7-8
LP40ci	#1	\$7.90 (10)+

Enkianthus perulatus

White Enkianthus

A choice shrub, rare in the wholesale trade because it is so very compact, no more than 3 feet in twenty years, producing almost no cuttings. Large, snow-white flowers and deep green foliage which turns brilliant red in autumn.

	Re-pot into	Zones 5-8
LP21ci	#1	\$8.20 (25)+
LP40ci	#1	\$10.20 (10)+

FAGUS

Fagus sylvatica European Beech

The grand patriarch of specimen trees. Generations of horticulturists have selected a rich assortment of beautiful cultivars that are grafted onto rootstocks such as these.

	Re-pot into	Zones 5-8
LP21ci 3/16" caliper	#1	\$2.60 (25)+
LP21ci 1/4" caliper	#1-2	\$2.90 (25)+
1-2' TR *HEDGE	#5	\$5.15 (10)+
2-3' TR *HEDGE	#5	\$7.75 (10)+
3-4' TR *HEDGE	#10	\$9.55 (10)+

*Low branched for hedges

Plant directly into landscape for max profit.

Fagus sylvatica 'Asplenifolia' Cutleaf European Beech

Deeply cut leaves are golden brown in autumn, a lovely contrast to the smooth light gray bark. A shallow root system makes this dense shade tree easy to transplant.

	Re-pot into	Zones 5-8
XP 2-3'	#3-5	\$15.95 (10)+
XP 3-4'	#3-5	\$17.90 (10)+

Fagus sylvatica 'Dawyck Gold' Dawyck Golden European Beech

Tightly upright without pruning. Its moderate growth rate makes it a useful landscape plant. Bright golden spring foliage fades to green, followed by pleasing bronze fall color. Selected in Scotland as a seedling cross of the green 'Dawyck' Columnar Beech and the golden variegated selection 'Zlatia'.

	Re-pot into	Zones 5-8
XP 2-3'	#3-5	\$15.95 (10)+
XP 3-4'	#3-5	\$17.90 (10)+

"How will my order be packed?"

To save shipping expense and prevent stem damage in UPS transit, we take our pot-grown plants out of propagation plug trays or other containers when we pack your order. All plants will be well-rooted, but we have no wish to send you (at UPS 3 Day delivery rates) more soil mix than necessary, or pots that you already have too many of.

Bare root plants are packed moist and tight in the box to arrive quickly without heating or mold in transit. Open all boxes promptly on receipt.

Fagus sylvatica 'Dawyck Green' Dawyck Green European Beech

Narrowly columnar form, its tight habit in notable contrast to green seedlings that grow to round form as wide or wider than tall. Not a dwarf, it can still reach 50+ feet tall.

	Re-pot into	Zones 5-8
XP 2-3'	#3-5	\$15.95 (10)+
XP 3-4'	#3-5	\$17.90 (10)+

Fagus sylvatica 'Dawyck Purple' Dawyck Purple European Beech

A favorite purple beech that holds a beautiful narrow, upright form. Selected in Scotland as a chance seedling cross of the green 'Dawyck' Columnar Beech and a purple-leaf form, it has become a mainstay in the landscape trade for its consistent dark purple foliage and appealing upright habit.

	Re-pot into	Zones 5-8
XP 2-3'	#3-5	\$15.95 (10)+
XP 3-4'	#3-5	\$17.90 (10)+

Fagus sylvatica 'Purple Fountain' Purple Fountain European Beech

Differs from 'Purpurea Pendula' by being a "nursery plant" it develops a loose, upright leader instead of trying to be an ugly purple mushroom that requires constant staking. The landscape effect is charming, with pendulous branches and a loosely upright leader.

	Re-pot into	Zones 5-8
XP 2-3	#3-5	\$15.95 (10)+
XP 3-4	#3-5	\$17.90 (10)+

Fagus sylvatica 'Red Obelisk' Red Obelisk European Beech

Combines the merits of dark purple foliage in 'Dawyck Purple' and 'Rohan Obelisk', with its crinkled foliage edges.

	Re-pot into	Zones 5-8
XP 2-3	#3-5	\$15.95 (10)+
XP 3-4	#3-5	\$17.90 (10)+



Hedge-grade
beech



Fagus sylvatica f. purpurea

***Fagus sylvatica* 'Riversii'
Riversii Purple European Beech**



Deep purple, shiny leaves, upright when young, spreading to form a 60 ft. globe at maturity. Long in cultivation: cemeteries in many Eastern US cities were often planted with this variety, or other purple beeches that have grown to enormous impressive specimens. Fast-growing in the nursery, they make great field plants to bump later into a #15-20 container.

	Re-pot into	Zones 5-8
XP 2-3'	#3-5	\$15.95 (10)+
XP 3-4'	#3-5	\$17.90 (10)+

***Fagus sylvatica* 'Rohan Obelisk'
Rohan Obelisk European Beech**



Columnar form with coppery purple leaves that take on green tones after mid-summer. The leaves are lobed and crinkled on this selection.

	Re-pot into	Zones 5-8
XP 2-3'	#3-5	\$15.95 (10)+
XP 3-4'	#3-5	\$17.90 (10)+

***Fagus sylvatica* 'Rohanii'
Purple Sawtooth European Beech**



Relatively tight upright form, but not as columnar as the Dawyck selections. Its incised purple leaves with their wavy edges give this popular selection its wide appeal.

	Re-pot into	Zones 5-8
XP 2-3'	#3-5	\$15.95 (10)+
XP 3-4'	#3-5	\$17.90 (10)+

***Fagus sylvatica* 'Roseomarginata'
Tricolor European Beech**



Variegated leaves in shades of green, pink, and white that turn to a copper color in fall, making this an unforgettable tree. Exceptionally popular item in a daunting list of cultivars.

	Re-pot into	Zones 5-8
XP 2-3'	#3-5	\$15.95 (10)+
XP 3-4'	#3-5	\$17.90 (10)+

***Fagus sylvatica f. purpurea*
Purple European Beech**

A relatively inexpensive alternative to more expensive grafted varieties, these beauties offer dark purple leaves in the spring to draw customer attention in the garden center. Seed is difficult to procure annually so our supply is hard to predict. Get these when you can, a few years' supply at a time.

	Re-pot into	Zones 5-8
2-3' TR *HEDGE	#7	\$9.40 (10)+
3-4' TR *HEDGE	#10	\$12.75 (10)+

*Low branched for hedges

Plant directly into landscape for max profit.

**FOTHERGILLA
Fothergilla × *intermedia* 'Mt. Airy'
Mt. Airy Fothergilla**



A select American native, 'Mt. Airy' merits wider use as compared to its close relatives, the witchhazels, which are much larger in mature stature. Exhibits excellent hardiness, attractive summer foliage and spectacular autumn color. The white bottlebrush flowers are born in showy abundance during April/May.

	Re-pot into	Zones 5-8
LP40ci	#3	\$7.40 (10)+
2YR TR	#5	\$6.75 (10)+

**FRANKLINIA
Franklinia *alata* *maha*
Franklin Tree**

Always sought after, this uncommon tree is celebrated because of its legendary origin in horticulture as well as its role as an extraordinary landscape plant. Camellia-like flowers are born from early autumn until frost. Brilliant, shiny autumn foliage—a plant for your connoisseur clients.

	Re-pot into	Zones 6-8
MP	#1	\$5.65 (50)+
LP40ci	#3	\$7.40 (10)+
2-3' TR	#5	\$8.90 (10)+

**GINKGO
Ginkgo *biloba*
Ginkgo**

Witness to the birth and extinction of countless species over a period of 250 million years, Ginkgo survives to charm us with its unique fan-shaped leaves and butter-yellow fall color. Consider that even after Hiroshima, at ground zero it was the lone surviving tree species the following spring. Merits wider use: many new grafted male cultivars are becoming very popular. These are un-sexed seedlings, used almost exclusively for grafting.

	Re-pot into	Zones 4-8
3/16" caliper	#1	\$1.60 (50)+
1/4" caliper	#1	\$1.80 (50)+

Ginkgo

Ginkgo biloba 'autumn Gold' autumn Gold Ginkgo



Among the most popular of the fruitless male selections. Not as strongly upright as the variety 'Fastigiata', Liners require staking early. With age it attains a handsome form and consistent brilliant gold color in autumn. This clone and 'Saratoga' come from the Saratoga Horticultural Foundation.

	Re-pot into	Zones 4-8
XP 1-2'	#3	\$12.85 (10)+
XP 2-3'	#3	\$14.85 (10)+
#1 2-3'	#3	\$17.50 (10)+
#1 3-4'	#5	\$19.20 (10)+
#2 3-4'	#5	\$21.90 (5)+
3-4' TR	#5	\$21.60 (10)+
4-5' TR	#5	\$24.20 (10)+

Ginkgo biloba Goldspire 'Blagon' Goldspire Ginkgo



Goldspire Ginkgo grows slowly but is dense and upright, less than ¼ as wide as tall. A male selection from Europe, it has golden foliage in autumn.

	Re-pot into	Zones 4-8
XP 1-2'	#3	\$12.85 (10)+
XP 2-3'	#3	\$14.85 (10)+
#1 2-3'	#3	\$17.50 (10)+
#1 3-4'	#5	\$19.20 (10)+

Ginkgo biloba 'Magyar' Magyar Ginkgo

Upright, fast growing male cultivar. The name means "Hungarian".

	Re-pot into	Zones 4-8
XP 1-2'	#3	\$12.85 (10)+
XP 2-3'	#3	\$14.85 (10)+
#1 2-3'	#3	\$17.50 (10)+
#1 3-4'	#5	\$19.20 (10)+
#2 3-4'	#5	\$21.90 (5)+
3-4' TR	#5	\$21.60 (10)+
4-5' TR	#5	\$24.20 (10)+

Ginkgo biloba 'Mariken' Mariken Ginkgo

It is a masterpiece, prized for its compact stature and dense foliage, this hardy dwarf tree enjoys full sun and grows with minimal attention. 'Mariken' is an excellent choice for conifer gardens, small spaces, containers, and fairy gardens. Grows 3-4 ft tall x 5-8 ft wide over a 10-year span. Very popular!

	Re-pot into	Zones 4-8
#1 1-2' LOW GRAFT	#3	\$15.90 (10)+
#1 2-3' LOW GRAFT	#3	\$17.50 (10)+
#2 2-3' LOW GRAFT	#3	\$19.25 (5)+
#2 3-4' LOW GRAFT	#3	\$21.90 (5)+
1-2' *HG HVY BRCH	#3	\$23.15 (10)+

*high graft

Ginkgo biloba Princeton Sentry® Princeton Sentry® Ginkgo



This male variety grows to 60 ft. tall but only half as wide. With its strong central leader, its form is more pyramidal than truly columnar.

	Re-pot into	Zones 4-8
XP 1-2'	#3	\$13.45 (10)+
XP 2-3'	#3	\$15.45 (10)+
#1 2-3'	#3	\$18.10 (10)+
#1 3-4'	#5	\$19.80 (10)+
#2 3-4'	#5	\$22.50 (5)+
3-4' TR	#5	\$22.25 (10)+
4-5' TR	#5	\$24.80 (10)+

Prices include a \$0.60 royalty

Ginkgo biloba 'Saratoga' Saratoga Ginkgo



One of our favorites, an attractive male selection with distinctly narrow, elongated leaves. Definitely a "top three" selection.

	Re-pot into	Zones 4-8
2-3' TR	#3-5	\$18.95 (10)+
3-4' TR	#3-5	\$21.60 (10)+



***Ginkgo* 'Mariken'
high and low grafts**

Ginkgo biloba Sky Tower™ 'JN9'

Sky Tower™ Ginkgo

Sky Tower™ is going to be popular because of its dense, upright growth. Slow growing, it will reach 20 ft. and become a great, low maintenance tree.

	Re-pot into	Zones 5-8
#1 2-3'	#2	\$18.50 (10)+
#1 3-4'	#5	\$20.20 (10)+

Prices include a \$1.00 royalty

GORDLINIA

×Gordlinia grandiflora

Mountain Gordlinia

A seemingly unlikely combination, this inter-generic hybrid from Dr. Tom Ranney at NCSU combines the hardiness of Franklinia with the cultural ease of Gordonia. White 2 in. flowers, semi-evergreen foliage, and a robust tree-like growth habit make this an exciting flowering tree option to replace the more finicky Franklinia.

LP40ci	Re-pot into	Zones 7-10
	#2-3	\$8.50 (10)+

GYMNOCLADUS

Gymnocladus dioicus

Kentucky Coffeetree

An under-used American native of the Midwest and Ohio Valley. Hardy, pH adaptable, large tree of bold branch character and rough, attractive bark. Pest-free, its obscurity in the trade is unwarranted, except that it can be difficult to transplant field-grown seedlings. Ours are exclusively container propagated to root prune them and encourage fine lateral roots from the get-go.

	Re-pot into	Zones 4-8
3/16"	#2-3	\$2.45 (25)+
1/4"	#2-3	\$2.90 (25)+



Gymnocladus dioicus



Halesia tetraptera

HALESIA

Halesia diptera var. magniflora

Large-flowered Silverbell

Enchanting white flower clusters, twice the size of Snowbell (Styrax japonicus), and born on generally small trees so they can be appreciated up close. Smaller in stature (to 20 feet or so) than Halesia tetraptera, and difficult to find in the tree trade. Book these rare beauties right away if you want them.

1-2'	Re-pot into	Zones 5-9
	#1	\$2.95 (50)+

Halesia tetraptera

Carolina Silverbell

Vigorous, 60-80 ft. tree having abundant bell-shaped flowers on previous year's wood. Flower clusters create an endearing effect, especially when viewed from below or through filtered sunlight.

	Re-pot into	Zones 4-8
3/16" caliper	#1	\$2.75 (50)+
1/4" caliper	#3	\$3.50 (50)+

HAMAMELIS

Hamamelis virginiana

Common Witchhazel

This native American shrub can grow to 20 ft. with equal spread. Prefers moist soil, but full sun in the landscape encourages more compact growth. Cut branches just before the plant blooms for indoor flower display.

	Re-pot into	Zones 3-8
3/16" caliper	#1	\$1.45 (50)+
1/4" caliper	#1	\$1.75 (50)+
LP21ci 3/16" caliper	#1	\$2.05 (25)+

Hamamelis × intermedia

'Arnold's Promise'

Arnold's Promise Witchhazel

Arnold's Promise has quite fragrant yellow flowers opening after other varieties. Fall color is a mix of yellow, orange, and red.

	Re-pot into	Zones 5-8
LP21ci	#2	\$10.30 (25)+





Heptacodium miconioides

Hamamelis × intermedia 'Diane'
Diane Witchhazel



Reddest flowers of the group, with an infusion of copper. They are faintly fragrant. The fall color ranges from non-existent through gold and red.

Re-pot into **Zones 5-8**
LP21ci #2 \$10.30 (25)+

Hamamelis × intermedia 'Jelena'
Jelena Witchhazel



Distinct coppery-orange flowers with no fragrance. Exceptional fall color of yellow, orange and red tones.

Re-pot into **Zones 5-8**
LP21ci #2 \$10.85 (25)+

HEPTACODIUM
Heptacodium miconioides
Seven-Son Flower



Due to its multi-season appeal, this multi-stemmed tree introduced from China in 1980 is finally starting to gain followers. Covered with large clusters of white flowers in mid summer, in late summer and fall it displays great masses of pink-red seeds. Finally, the winter season highlights its shaggy bark. It does require shaping to highlight its normally "stemmy" form - a central leader formed early helps to make it a highly marketable tree, but it cannot be reshaped if neglected when small.

Re-pot into **Zones 5-9**
MP #2 \$3.35 (50)+
2 YR TR #2 \$10.90 (10)+

HYDRANGEA
Hydrangea quercifolia 'Pee Wee'
Pee Wee Oakleaf Hydrangea



This is the smallest form that we offer, but it's not a dwarf. It has smaller flowers and redder fall color than the others. Some tip damage below -30°F.

Re-pot into **Zones 5-9**
MP #2 \$2.15 (25)+
XP #3 \$7.20 (10)+

Hydrangea quercifolia
'Queen of Hearts'

Queen of Hearts Oakleaf Hydrangea

Released from the U.S. National Arboretum's (USNA) shrub breeding program in McMinnville, TN. Blossoming a week later than other sections and holding its mature blooms even longer, it extends the flowering season. They are 9 inches long and age to pink. Grows to 6 ft. tall by 9 ft. wide.

Re-pot into **Zones 5-9**
MP #3 \$4.00 (25)+
XP #3 \$9.05 (10)+

Hydrangea quercifolia 'Ruby Slippers'
Ruby Slippers Oakleaf Hydrangea

Another USNA introduction - a cross of 'Snow Queen' and 'Pee Wee'. The upright, 9 in. inflorescences come out white but very quickly develop a pleasant rosy hue. To only about 3.5 ft. tall, it fits neatly into compact multi-family housing landscapes.

Re-pot into **Zones 5-9**
MP #1 \$3.45 (25)+
XP #3 \$8.50 (10)+

Hydrangea quercifolia 'Sike's Dwarf'
Sike's Dwarf Oakleaf Hydrangea

Half of normal size, spreading to 4 ft., this clone is well-suited for textural contrast in a perennial border.

Re-pot into **Zones 5-9**
MP #1-3 \$3.15 (25)+
XP #3 \$8.20 (10)+

Hydrangea quercifolia 'Snow Queen'
Snow Queen Oakleaf Hydrangea



A prolific bloomer, its stout stems ensure that the flowers don't droop. Although the coarse leaves give it an almost tropical appearance, the autumn leaf colors are a rich mix of red, burnt orange, and green. When the notably persistent foliage drops, the tan/brown exfoliating bark is a pleasing unexpected bonus.

Re-pot into **Zones 5-9**
MP #2 \$3.45 (25)+
XP #3 \$8.20 (10)+

Hydrangea quercifolia 'Snowcicle'^{PP33,072}
Snowcicle Oakleaf Hydrangea **NEW**

A new item for Heritage with very large flower panicles that bloom with a variety of color combinations from white to rosy, to olive green and cream. Its stout stems lend the 4 to 5-foot plant an upright habit and care-free character, including the flower stems. Perfect for a bold cut-branch bouquet in a large vase. autumn brings another opportunity for cut branch use, with rich colors and bold texture to accent more refined woody cut branches and seed-bearing stems or fall-flowering perennials.

Re-pot into **Zones 5-9**
MP #2 \$3.65 (25)+
LP21ci #2 \$5.85 (25)+
XP #3 \$10.10 (10)+

Prices include a \$0.50 royalty

Order early for best
 size selection.

KOELREUTERIA

Koelreuteria paniculata

Goldenraintree



Attractive as a landscape tree for its bright golden flowers that stand erect above the distinctive foliage. July flowers mature into clustered, papery "Chinese lantern" seed capsules that droop from the branches mid-summer through autumn. Goldenraintree seems to do best if it is somewhat neglected. It performs well in alkaline or dry soil, and it tolerates heat well.

MP	Re-pot into #1	Zones 5-9 \$1.75 (50)+
----	-------------------	---------------------------

LINDERA

Lindera benzoin

Spicebush

Its autumn color, early spring flowers, small habit, ease of care, and fragrant foliage make this shrub highly ornamental. It is well-adapted in wet areas, great for naturalizing, and rarely taller than head-high.

1-2' TR	Re-pot into #3	Zones 4-8 \$2.50 (10)+
2-3' TR	#5	\$3.30 (10)+

LIQUIDAMBAR

Liquidambar styraciflua

Sweetgum

Fall color is variable, but striking on some trees. Widely adapted. Eastern native. Shallow roots cause problems in turf areas or around sidewalks.

MP	Re-pot into #1	Zones 5-9 \$1.90 (50)+
LP21ci	#2	\$2.45 (25)+



Liriodendron tulipifera

Liquidambar styraciflua 'Gold Beacon' Gold Beacon Sweet Gum

We're honored to work with so many great plantsmen. Charles Allen of Green Biz Nursery asked us to bring to market this distinctive selection. Foliage emerges light green and quickly changes to golden color without fading for the remainder of the season. autumn foliage is red and orange; growth is only a little slower than typical of the species.

XP 2-3'	Re-pot into #5	Zones 5-9 \$16.10 (10)+
XP 3-4'	#5	\$17.50 (10)+

Prices include a \$1.00 royalty

Liquidambar styraciflua 'Silver King' Silver King Sweetgum

NEW

Bright green leaves with creamy-white margins that become flushed with a rosy color in late summer and autumn. Especially striking when planted against a dark background. Slow growing, hardy.

XP 1-2'	Re-pot into #5	Zones 6-9 \$12.70 (10)+
---------	-------------------	----------------------------

Liquidambar styraciflua 'Slender Silhouette'



Slender Silhouette Sweetgum

Unusual noteworthy tree that grows in a very tight, columnar form, a sort of deciduous version of Italian cypress. Like the species, it is widely adaptable. Good fall color.

XP 2-3'	Re-pot into #5	Zones 6-9 \$15.10 (10)+
XP 3-4'	#5	\$16.50 (10)+

LIRIODENDRON

Liriodendron tulipifera



Tuliptree

Among the tallest of our native American hardwoods, it shares much in common with *Magnolia acuminata*. Intriguing cup-shaped flowers of orange, yellow, and green in early summer. Grows fast if planted in deep, moist soil, but it will languish if planted in a dry or compacted area.

LP21ci 1-2'	Re-pot into #5	Zones 5-9 \$2.75 (25)+
LP21ci 2-3'	#5	\$3.50 (25)+



Koelreuteria paniculata

MACLURA

Maclura pomifera

Osage-Orange

Naturally dense and thorny, this is a brute of a tree that was widely planted on farms when the Midwest was initially settled. Fruits are grapefruit-sized, green, and messy. The wood is extremely hard and rot-resistant, so hedgerows were also frequently cut for fence posts until steel posts came into wider use 50 years ago. Rootstock for the superior thorn less variety, 'Whiteshield'.

	Re-pot into	Zones 5-9
3/16"	#5	\$1.65 (50)+
1/4"	#5	\$1.90 (50)+

MAGNOLIA

Magnolia Black Tulip® 'JURmag1'

Black Tulip® Magnolia

This tree has it all with dramatic, goblet-shaped blooms of black-purple, up to 6 in. across on quick-to-flower small trees. Larger growing, and with darker flowers than 'Genie'™. These flowers are by far the darkest colored of magnolia blooms. Their fragrance and dense presentation on small trees justifies planting Black Tulip® near doorways and paths.

	Re-pot into	Zones 5-9
#1 1-2'	#5	\$16.25 (10)+
#1 2-3'	#5	\$19.00 (10)+
#3 4-5'	#5	\$19.35 (5)+
#3 5-6'	#5	\$32.25 (5)+

Prices include a \$3.00 royalty

Magnolia 'Blushing Belle'

Blushing Belle Magnolia

Wow! A knock-out new hybrid from the late Dennis Ledvina, a result of his astutely crossing 'Yellow Bird' with 'Caerhays Belle'. The blooms are strikingly beautiful, aptly named for their soft blush-pink color.

	Re-pot into	Zones 5-9
#1 1-2'	#5	\$13.25 (10)+
#1 2-3"	#7	\$16.00 (10)+



Magnolia 'Blushing Belle'



Magnolia Burgundy Star™

Magnolia Burgundy Star™ 'JURmag4' PP20,346

Burgundy Star™ Magnolia

From New Zealand by leading magnolia breeder Mark Jury, Burgundy Star™ has large (up to 5 inch diameter) gorgeous claret red, lightly fragrant blooms which cover the tree in early spring. They seem to be exceptionally long lasting and the color is stable. The blooms cluster along the stems, leading to a very luxuriant look. As a 10 year old tree it grows up to 11 feet in height and 12 feet wide.

	Re-pot into	Zones 5-9
#1 2-3'	#5	\$20.25 (10)+
#1 3-4'	#5	\$23.25 (10)+

Prices include a \$3.00 royalty

Magnolia 'Butterflies'

Butterflies Magnolia

An upright, spreading small tree with abundant flowers of pleasing yellow color. If spring is warm, flowers tend toward a cream color.

	Re-pot into	Zones 5-9
#1 1-2'	#5	\$12.25 (10)+
#1 2-3'	#5	\$16.00 (10)+

Magnolia Cameo PP27,222 P3

Cameo Magnolia

Cameo is among the latest releases from the New Zealand Magnolia Grove breeding program of Vance Hooper. A stunning bloom with a sculpted form like a cameo brooch. Reddish purple exterior with white-flushed, red-purple interior. Cameo has exceptional flower power, second only to Genie™ for flower abundance. The high rate of flower production both in spring and summer keeps the plant small with a compact habit.

	Re-pot into	Zones 5-9
#1 1-2'	#5	\$16.30 (10)+
#1 2-3'	#7	\$19.25 (10)+

Prices include a \$2.00 royalty



Magnolia 'Elizabeth'

Magnolia × 'Coppertallica'
Coppertallica Magnolia NEW

This is a beautiful new evergreen introduction from Heritage. Its leaves are a shiny dark green on top. Underneath, is a hairy shimmering precious metal color of its namesake. You'll spend so much time looking at the leaves that you might not even notice the very pretty, fragrant creamy white flowers, that boast a hint of purple pink in the center. Hardy to below 0°F.

	Re-pot into	Zones 6-10
#1 1-2'	#5	\$14.25 (10)+
#1 2-3'	#7	\$17.00 (10)+
#1 3-4'	#7	\$19.80 (10)+

Prices include a \$1.00 royalty

Magnolia 'Daybreak'
Daybreak Magnolia



The late August Kehr of Hendersonville, NC considered this his finest magnolia hybrid, and we whole-heartedly agree. Upright in form, the blooms are delightfully fragrant. It has two significant attributes. First, it blooms much later than *M. ×soulangiana* (6 weeks) so the flowers seldom freeze. Second, the rich pink flowers have a crisp, translucent character to them that makes a dramatic contrast to the duller pink blooms of *M. ×soulangiana* selections. These plants are quite a prize.

	Re-pot into	Zones 5-8
#1 1-2'	#3	\$13.25 (10)+
#1 2-3'	#5	\$16.00 (10)+
#1 3-4'	#5	\$18.80 (10)+

Magnolia 'Elizabeth'
Elizabeth Magnolia



One of the earliest-introduced yellow-hued magnolias, flowering precociously and reliably every year. 'Elizabeth' enjoys excellent name recognition. Well-known for its fragrant, creamy yellow flowers, pyramidal habit, and vigorous juvenile growth. *Magnolia acuminata* × *Magnolia denudata*.

	Re-pot into	Zones 5-8
#1 1-2'	#5	\$13.25 (10)+
#1 2-3'	#5-7	\$16.00 (10)+
#1 3-4'	#7	\$18.80 (10)+

Magnolia Felix® 'JURmag2' PP10/335,927
Felix® Magnolia

Bred in New Zealand by leading magnolia breeders, Felix and Mark Jury, Magnolia Felix® is stunning. In early Spring the reward is a mass of magnificent, 12 inch, open-faced hot pink flowers. It is an upright smaller tree growing to a height of 16 feet, making it suitable for smaller gardens.

	Re-pot into	Zones 5-9
#1 1-2'	#3	\$17.30 (10)+
#1 2-3'	#7	\$20.25 (10)+

Prices include a \$3.00 royalty



Magnolia × 'Coppertallica'

Magnolia

Magnolia 'Frank's Masterpiece' Frank's Masterpiece Magnolia

Large flowers, 8 inches plus, exterior of deep purple-pink and a lighter pink interior. The upright blooms usually escape early spring frost. A vigorous hybrid, it maintains a central leader. Grows fast, so don't over-fertilize.

	Re-pot into	Zones 5-8
#1 1-2'	#5	\$14.30 (10)+
#1 2-3'	#5-7	\$17.25 (10)+

Magnolia Genie™ Genie™ Magnolia

The culmination of 15 years of breeding - a compact, small tree maturing at 10-13 ft. tall. Sensational black-red buds open to small, globular tulip-shaped blooms of deep rich, maroon-purple - both inner and outer surfaces. Reflexed petal tips fade to a lighter magenta-rose. 'Genie' has lightly scented blooms.

	Re-pot into	Zones 5-9
#1 1-2'	#3	\$15.05 (10)+
#1 2-3'	#5-7	\$17.80 (10)+

Prices include a \$1.80 royalty



Magnolia 'Galaxy'



Magnolia 'Gold Star'

Magnolia 'Galaxy' Galaxy Magnolia



Magnolia liliiflora 'Nigra' and *Magnolia sprengeri* 'Diva' were crossed to make this handsome early hybrid. Very dark purple buds open to medium purple 8 in. flowers on this hardy upright tree. Consistently praised by our clients as a dependable money-maker for its precocious blooming habit, ease of care, and fast growth in the nursery.

	Re-pot into	Zones 5-9
#1 1-2'	#3	\$13.25 (10)+
#1 2-3'	#5-7	\$16.00 (10)+
#1 3-4'	#7	\$18.80 (10)+

Magnolia 'Gold Star' Gold Star Magnolia

A vigorous tree of uniform, pyramidal habit, having light yellow frost-tolerant flowers. Even without its flowers, it is worth growing for its handsome bronze new foliage. A choice plant, too-little known and used.

	Re-pot into	Zones 5-9
#1 1-2'	#3	\$13.25 (10)+
#1 2-3'	#5-7	\$16.00 (10)+



Magnolia Spring Welcome®

Magnolia Honey Tulip™ TM 'JURmag5' PP 26685P3
Honey Tulip™ Magnolia

A stunning addition to magnolia options and another introduction from breeders Felix and Mark Jury. It produces magnificent, 6-inch honey gold, goblet-shaped flowers, almost tulip-like, in early spring. Honey Tulip™ is an upright smaller tree growing to a height of 12 feet, making it suitable for small gardens.

	Re-pot into	Zones 5-9
#1 1-2'	#5	\$17.30 (10)+
#1 2-3'	#5-7	\$20.25 (10)+

Prices include a \$3.00 royalty

Magnolia 'Judy Zuk'
Judy Zuk Magnolia

Honoring the former director of both Brooklyn Botanic Garden and Scott Arboretum, it is upright and has fragrant yellow and pink, tulip-shaped flowers. Always popular, so order early.

	Re-pot into	Zones 5-9
#1 1-2'	#5	\$14.30 (10)+
#1 2-3'	#5-7	\$17.25 (10)+
#3 4-5'	#10	\$28.25 (5)+
#3 5-6'	#10	\$31.00 (5)+

Magnolia 'Rose Marie'
Rose Marie Magnolia

Rose Marie has large bright pink flowers that glow wonderfully in the sunlight. It blooms fairly late but for a long time and with a good number of blooms. A cross between 'Pink Surprise' and 'Daybreak'.

	Re-pot into	Zones 5-9
#1 1-2'	#5	\$14.35 (10)+
#1 2-3'	#5	\$17.10 (10)+

Prices include an \$1.00 royalty

Magnolia Spring Welcome® 'Ruth'
Spring Welcome® Magnolia

Magnolias are rarely winter hardy in Zone 3, but this introduction was developed by North Dakota State University from a seedling that has proven to be quite winter hardy there for the past 20 years, even after winters with temperatures down to -38°F. Plants are dense, well branched, and flowers are pale pink in bud, gradually opening to pristine white with 11-13+ tepals, 3 to 5 inches in diameter.

	Re-pot into	Zones 3-8
#1 1-2'	#5	\$14.15 (10)+
#1 2-3'	#5	\$16.80 (10)+

Prices include an \$0.80 royalty

Magnolia 'Sunsation'
Sunsation Magnolia

During the 2011 Magnolia Society meeting in Rhode Island, a majority of women in the crowd raved about this abundant bloomer with its rosy-accented flowers. It's a wonderful selection due to the warm color tones, blooming later than any of the other yellows and before the emergent leaves. August Kehr, the hybridizer, would have never accepted much credit for this plant he created, but he deserves all our thanks for his exceptional work, including this plant. Interesting story: On the way to see Augie from Raleigh, NC Pat McCracken and Mark Krautmann decided to accept August's invitation to name all of his (at that time, only numbered) superior yellows. Before we got to Hendersonville where he and his wife lived, we came up with Stellar Acclaim, Sunsation, Solar Eclipse, Hot Flash, and Sunspire. Augie was too modest to name his own "children".

	Re-pot into	Zones 5-9
#1 1-2'	#3	\$14.30 (10)+
#1 2-3'	#5	\$17.25 (10)+
#1 3-4'	#5	\$20.25 (10)+



"Re-pot into"

What does it mean?

To help you consider your liner investment and profit opportunity, we recommend container options for you to pot up each size we offer.

Magnolia 'Tinkerbelle' PP31,317P2

Tinkerbelle Magnolia

Tinker Belle is a really beautiful Magnolia and we expect it to be in big demand. Fast growing it blooms well on young plants in the nursery. The buds open to numerous dark magenta, 3" upright flowers with pale pink interiors and a very sweet fragrance. Small in stature it will make an excellent specimen for smaller gardens, container culture or a shrubby boarder. The plants set buds readily in the nursery and the color and fragrance are unique attracting a lot of interest in the garden center. In Europe it is sought after for cut flower production.

	Re-pot into	Zones 5-9
#1 1-2'	#5	\$16.30 (10)+
#1 2-3'	#5	\$19.25 (10)+

Prices include an \$2.00 royalty



Magnolia denudata

Magnolia 'Vulcan'
Vulcan Magnolia



Spectacular large, ruby-red flowers and compact size characterize this trouble-free nursery plant. Even the large winter flower buds are ornamentally appealing with their distinctively thick protective covering of brownish gray "fur" to shield them from the cold. In full bloom, this short plant is unrivaled for attractiveness because the blooms are so easy to see up close.

	Re-pot into	Zones 4-9
#1 1-2'	#3	\$13.25 (10)+
#1 2-3'	#5	\$16.00 (10)+

Magnolia 'Yellow Bird'
Yellow Bird Magnolia

A pyramidal tree with dark green leaves. Yellow Bird's small flowers appear with the foliage and have a good deep yellow color. Trouble free in the nursery, a consistent seller. *Magnolia acuminata* x *Magnolia liliiflora*.

	Re-pot into	Zones 5-9
#1 1-2'	#5	\$13.25 (10)+
#1 2-3'	#5	\$16.00 (10)+
#1 3-4'	#5	\$18.80 (10)+
#1 4-5'	#7	\$21.70 (10)+
#3 4-5'	#7	\$26.35 (5)+
#3 5-6'	#7	\$29.60 (5)+

Magnolia acuminata
Cucumbertree Magnolia

Its common name is derived from the fruits that develop from green to dark red when they ripen. As the seeds are expelled, they're held by elastic threads for the birds, which devour them quickly just as they have done since the days of their fossilized ancestors. A magnificent, large, fast-growing and pH-adaptable tree, it can grow to 70 ft. Parent of the hardy yellow hybrids that are becoming so popular.

	Re-pot into	Zones 3-8
LP21ci	#2	\$3.25 (25)+

Magnolia denudata
Yulan Magnolia



Revered and cultivated by the Chinese for over a thousand years, this is the most elegant of all the white-flowered magnolias. Its simple elegance is not exceeded by new varieties, so it's no wonder that it's a parent of many exceptional hybrids. Flowers appear before the leaves, so their beauty is unobscured. Blooms abundantly, even on trees as young as 4-5 years old.

	Re-pot into	Zones 6-9
LP21ci	#2	\$7.40 (25)+



Magnolia laevifolia
(syn. *Michelia yunnanensis*)

NEW

Lovely evergreen shrub with no frost damage in our exposed stock field at just above 0°F. White flowers, very dark green foliage and with handsome rusty brown back. Profuse fragrant flowers born all along the stems last 3-4 weeks! 6 feet tall x 4 feet wide in 5 years..

LP21ci Re-pot into **Zones 6-9**
#2 **\$2.95 (25)+**

Magnolia kobus
Kobus Magnolia



Very hardy - the rootstock of choice for a rich selection of new hybrids. These liners have a robust, disease-free root system for field planting or potting up.

LP21ci 3/16" caliper Re-pot into **Zones 4-8**
#1 **\$2.90 (25)+**
LP21ci 1/4" caliper #1-2 **\$3.25 (25)+**

Magnolia sieboldii
Oyama Magnolia

This species is prized for its small stature and remarkably beautiful flowers. The fragrant, nodding white blooms are accented by red stamens. Since this is a small tree, close inspection of the flowers is easy - a true delight! Although most references list it as zones 6-8, it has proved hardy at the Minnesota Landscape Arboretum, growing successfully in a windy Zone 4.

LP21ci Re-pot into **Zones 4-8**
#3 **\$6.80 (25)+**

Magnolia biondii
Hope for Spring Magnolia

NEW

This exciting magnolia species, as far as we can tell, has seldom been used in North America as a rootstock. Yet, it offers unique advantages as contrasted to *Magnolia kobus* as a rootstock to extend the range of magnolias beyond where they are presently grown. Specifically, compared to Kobus magnolia, it has better high pH tolerance and increased drought tolerance. Native in continental North China, where the climate is more challenging to magnolias, its constitution is sturdier in cold, dry, high pH soils that may cause Kobus magnolia to languish. Kobus is Japanese, its islands surrounded by climate-moderating water.

Have long-standing North American propagation habits and supply issues limited our imaginative use of alternative rootstocks? *Magnolia kobus*, *M. salicifolia* and *M. biondii* are each in the Section Yulania, allowing their use as compatible rootstocks for the majority of magnolia cultivars in nursery propagation. Widely grown in China as the prevailing rootstock for magnolia grafting, its use as rootstock is not speculative on our part.

Try these side-by-side and offer them to clients in markets with more difficult conditions than you are used to. And grow the plant on – it's fast and can get to the same height or taller than Kobus magnolia. Cream-colored tepals are pink at their base, strongly fragrant.

Let Heritage help you ID opportunities where you might least expect them!

LP21ci 3/16" caliper Re-pot into **Zones 4-8**
#1 **\$2.90 (25)+**
LP21ci 1/4" caliper #1-2 **\$3.25 (25)+**



Magnolia kobus rootstock



Magnolia laevifolia

Magnolia macrophylla
Bigleaf Magnolia



Bigleaf Magnolia appears tropical, but is surprisingly hardy. A medium to large native tree with huge leaves, impressive white, intensely fragrant flowers and intriguing autumn fruits.

	Re-pot into	Zones 5-8
LP21ci	#3	\$8.35 (25)+
XP	#3	\$10.30 (10)+

Magnolia macrophylla ssp. ashei
Ashe Magnolia

A scaled-down version of *Magnolia macrophylla*. Precocious bloomer, it sometimes buds up to yield a flower in a pot only 3 years after germination. Fragrant flowers in June: what an up close delight! Structurally, they're so fascinating, for their delicate scent and always tempting to touch. It reminds one of the biblical verse in praise of lilies "...Solomon in all his glory was never arrayed like one of these..." A 12 ft. multi-stem shrubby form in the Krautmann landscape produces 20 dinner plate-sized blooms over a 2-week period. For such ephemeral blooms, it's a wonder to contemplate that this plant and its cousins have populated the planet since before the dinosaurs. YOU NEED this plant, whether you realize it or not. Grow a few in your home garden where you can simply relish them with no prices on them. They are in fact, a priceless experience for any thoughtful nurseryman or gardener.

	Re-pot into	Zones 6-9
LP21ci	#3	\$8.35 (25)+
XP	#3	\$10.55 (10)+

Magnolia ×soulangeana
Saucer Magnolia

Seedlings of the fertile hybrid, *M. denudata* × *M. liliiflora*. Many of the hybrids known and loved are *Magnolia soulangeana*, the saucer magnolia. Can be used as rootstock, sometimes preferred (vs. *M. kobus*) in the Southeast, given its warm and wetter summer soils.

	Re-pot into	Zones 4-9
LP21ci	#2	\$2.80 (25)+

Magnolia tripetala
Umbrella Magnolia

The common name derives from its foliage, arranged in whorls to form an attractive parasol-like appearance. Tree-like in size, this American native is sometimes confused with *Magnolia macrophylla* due to its large leaves, sometimes more than 2 feet. long. *Magnolia macrophylla* leaves are silver beneath; these are not.

	Re-pot into	Zones 5-8
LP21ci	#3	\$8.80 (25)+

Magnolia virginiana
Sweetbay Magnolia

Distinctive among magnolias for its shiny narrow leaves, dark green above and a downy white beneath. A refined small tree (best) or large multi-stemmed shrub if given a prominent place in the landscape where its wonderfully fragrant flowers can be appreciated.

	Re-pot into	Zones 5-9
LP21ci	#2	\$4.60 (25)+
LP40ci	#2	\$6.90 (10)+
#1	#2	\$8.90 (10)+

Magnolia virginiana Moonglow®
Moonglow® Sweetbay Magnolia



The extraordinary growth rate of this cultivar coupled with its precocious blooming character make it a lucrative item. Moonglow® will grow to 5 ft. and bloom within 2-3 years. Selected and named by Earl Cully, this clone is surprisingly hardy to -33°F. Lemon-fragrant creamy white blooms over a long period in late spring.

	Re-pot into	Zones 3-9
LP40ci	#3	\$11.45 (10)+

Price includes a \$0.90 royalty



Magnolia macrophylla
ssp. ashei

Magnolia virginiana var. *australis*

'Green Shadow'

Green Shadow Magnolia

Honoring the great plantsman Dor Shadow, this magnolia is evergreen to -15°F. Sweet lemon fragrance, white flowers, good tight oval form and dark foliage combine to make it an exceptional selection.

LP40ci Re-pot into #2 Zones 5-9
\$10.55 (10)+

Magnolia virginiana var. *australis*

'Northern Belle'

Northern Belle Magnolia

A super hardy selection that has withstood -35°F, although it drops its leaves at that temperature. The flowers are fragrant and the leaves are darker green than *Magnolia virginiana* Moonglow®.

LP40ci Re-pot into #2 Zones 3-9
\$10.55 (10)+

MAHONIA

Mahonia aquifolium

Oregon Grape

Upright evergreen shrub with spiny leaves. Native in the Northwest, it benefits from occasional pruning to keep foliage clean and diminish its tendency to become overgrown. Native Americans used the stems and roots to make a yellow dye.

MP Re-pot into #1 Zones 5-8
\$2.40 (50)+

Mahonia × *media* 'Arthur Menzies'

Arthur Menzies Mahonia

A hybrid of *Mahonia japonica* and *Mahonia lomariifolia*. Blooms later than 'Charity' and has bolder, broader leaves and tighter flower clusters.

#1 Re-pot into #5 Zones 6-9
\$8.85 (10)+

Mahonia × *media* 'Charity'

Charity Mahonia

Beautiful across all seasons for its architecturally bold and symmetrical form. Bright yellow late-winter flowers. Here in the wet-winter Pacific Northwest, our 'Charity' stock block is totally free of leaf spot that infects *Mahonia bealei* so severely.

#1 Re-pot into #5 Zones 6-9
\$8.85 (10)+

Mahonia × *media* 'Winter Sun'

Winter Sun Mahonia

Evergreen shrub with rich forest-green foliage to accent its bright yellow early winter flowers. Upright growth and drought/shade tolerance make this a great focal plant when winter's arrival means few possibilities to brighten the garden with fresh flowers.

#1 Re-pot into #5 Zones 6-9
\$8.85 (10)+

Mahonia nervosa

Cascade Mahonia

Short 1-2 ft. hardy Pacific Northwest native of medium texture. Attractive blue fruits accented by prickly, deep green, narrow leaves.

MP Re-pot into #1 Zones 5-8
\$2.65 (50)+

Mahonia repens

Creeping Mahonia

Hardier than its cousins and not as tall. It grows to only 1-2 ft., has satin foliage, and is more shade tolerant. An elegant low shrub for a spot where it can be left to spread without irrigation.

MP Re-pot into #1 Zones 3-7
\$2.40 (50)+

NYSSA

Nyssa sylvatica

Blackgum

With its brightly colored, shiny autumn leaves and wide range of adaptivity, especially well suited to wet sites. This is a great landscape tree. Unlike widely-planted Sweetgum, even seedlings of Blackgum are dependable for fall color. Needs pruning when young. These pot propagated plants ensure transplant success.

MP Re-pot into #2 Zones 4-9
LP21ci #2 \$2.65 (50)+
\$3.70 (25)+

Nyssa sylvatica Green Gable™

'NSUHH' PP 22,951

Green Gable™ Black Tupelo

Green Gable™ is a great addition to American horticulture, with notably glossy foliage, and beautiful fall color. With its dominant central leader, it develops an attractive pyramidal form.

XP 3-4' Re-pot into #5 Zones 4-9
XP 4-5' #5 \$17.60 (10)+
\$20.70 (10)+

Prices include a \$1.85 royalty

Nyssa sylvatica

Tupelo Tower™ 'WFH1' PP22,976

Tupelo Tower™ Black Tupelo

With all the great ornamental attributes of blackgum, including exceptional fall color and ease of care, this selection allows even more flexibility of location because of its columnar habit. Tupelo Tower™ was selected from a Zone 4 seedling population.

XP 3-4' Re-pot into #5 Zones 4-9
XP 4-5' #5 \$16.75 (10)+
\$19.85 (10)+
3-4' TR #5 \$18.50 (10)+
4-5' TR #5 \$20.85 (10)+

Prices include a \$1.00 royalty

Choice varieties and unusual species that merit your attention...

SE Heat

	page
• <i>Cercis canadensis</i>	16
• <i>Cotinus obovatus</i>	22
• × <i>Gordlinia grandiflora</i>	26
• <i>Hydrangea quercifolia</i>	27
• <i>Liriodendron tulipifera</i>	28
• <i>Magnolia macrophylla</i> ssp. <i>ashei</i>	35
• <i>Magnolia virginiana</i> var. <i>australis</i> 'Green Shadow' NEW	36
• <i>Oxydendrum arboreum</i>	38
• <i>Stewartia monadelpha</i>	43

Tough as Nails

	page
• <i>Acer campestre</i>	4
• <i>Acer griseum</i>	5
• <i>Acer pseudoplatanus</i> 'Esk Sunset'	9
• <i>Carpinus betulus</i>	14
• <i>Cotinus coggygria</i> var. <i>purpurea</i>	22
• <i>Ginkgo biloba</i> Goldspire	25
• <i>Gymnocladus dioicus</i>	26
• <i>Koelreuteria paniculata</i>	28
• <i>Osmanthus heterophyllus</i> 'Goshiki' NEW	38

Northern Cold

• <i>Acer triflorum</i>	10
• <i>Betula nigra</i> Heritage®	13
• <i>Betula nigra</i> Northern Tribute® NEW	13
• <i>Carpinus caroliniana</i>	14
• <i>Chionanthus virginicus</i>	17
• <i>Comptonia peregrina</i>	17
• <i>Ginkgo biloba</i>	25
• <i>Stewartia pseudocamellia</i>	43

Connoisseur Plants

• <i>Acer palmatum</i> 'Ukigumo'	8
• <i>Corylus fargesii</i>	20
• <i>Daphne</i> × <i>Perfume Princess</i> ® NEW	47
• <i>Dirca palustris</i>	22
• <i>Enkianthus campanulatus</i>	
'Showy Lantern' NEW	22
• <i>Enkianthus perulatus</i>	23
• <i>Magnolia</i> × ' <i>Coppertallica</i> ' NEW	30
• <i>Stewartia monadelpha</i>	43

Specimens

• <i>Acer carpinifolium</i> NEW	4	• <i>Corylus colurna</i>	20
• <i>Acer palmatum</i> 'Twombly's Red Sentinel'	8	• <i>Fagus sylvatica</i> 'Purple Fountain'	23
• <i>Aesculus glabra</i> Lavaburst® NEW	11	• <i>Ginkgo biloba</i> 'Saratoga'	25
• <i>Carpinus betulus</i> 'Pinocchio'	14	• <i>Halesia diptera</i> var. <i>magniflora</i>	26
• <i>Carpinus coreana</i> Model Rocket™ NEW	15	• <i>Magnolia</i> 'Gold Star'	31
• <i>Carpinus</i> × <i>Skylark</i> ™ NEW	16	• <i>Magnolia</i> Spring Welcome® NEW	32
• <i>Cornus kousa</i> 'Summer Fun'	19	• <i>Nyssa sylvatica</i> Green Gable™ NEW	36
• <i>Cornus kousa</i> Snow Tower®	19	• <i>Syringa reticulata</i>	44



Nyssa sylvatica 'Wildfire'

Nyssa sylvatica 'Wildfire'

Wildfire Black Tupelo



What a colorful beauty! Shiny, burnt orange-red new growth makes this one of the most exciting new Blackgum cultivars. Try some of these easy to grow trees, and save one for your own landscape!

	Re-pot into	Zones 5-9
XP 3-4'	#5	\$15.75 (10)+
XP 4-5'	#5	\$18.85 (10)+
3-4' TR	#5	\$19.55 (10)+

Nyssa sylvatica 'Zydeco Twist'

Zydeco Twist Black Tupelo

NEW

Blackgum is among our native tree prizes, adapted over a wide range and consistently appealing. This contorted stem selection has a strong central leader and will create interest in our gardens because it is so unique.

	Re-pot into	Zones 4-9
XP 3-4'	#5	\$13.00 (10)+

OSMANTHUS

Osmanthus heterophyllus 'Goshiki'

Variegated False Holly



A kaleidoscope of shrubby bronze, gold, cream and green on spiny young foliage. Delightful abundant white, small late autumn flowers with a heady, pleasant fragrance. Matures at 10 feet tall in most climates, and like people, loses its bristles with age. A tough plant, it also tolerates pruning well. A selection that belongs in every garden in moderate climates.

	Re-pot into	Zones 6-9
LP40ci	#3	\$6.45 (10)+
XP	#5	\$8.10 (10)+

OSTRYA

Ostrya virginiana

Ironwood, Eastern Hophornbeam

A handsome native tree that tolerates shade and grows to 40 ft. tall. Bark peels in vertical strips. Pleasing yellow fall color. Very easy to grow in the nursery and relatively fast to finish. Our liners have vigorous fine mycorrhizal roots.

	Re-pot into	Zones 3-7
1-2'	#3	\$2.20 (50)+
2-3'	#5	\$2.55 (50)+
LP21ci	#5	\$2.45 (25)+

OXYDENDRUM

Oxydendrum arboreum

Sourwood



Exceptional ornamental with handsome glossy summer foliage. A medium tree that grows to 45 ft., it prefers full sun and an acidic, well-drained soil. Honeybees relish the nectar of the delicate, heather-like blooms, born on the branch ends like white bouquets in mid-summer. Sourwood honey is a particular delight, so special that it's sold only regionally in the Southeast, and fetches a premium at roadside stands. *Oxydendrum* in the autumn is a sight for tired eyes, as the foliage shows off rich blends of orange, red and yellow.

	Re-pot into	Zones 5-9
MP	#1	\$3.15 (50)+
LP21ci	#2	\$3.90 (25)+
2 YR TR	#3-5	\$11.65 (10)+



***Osmanthus heterophyllus* 'Goshiki'**

PARROTIA

Parrotia persica
Persian Ironwood



Essentially the tree form of witchhazel. It naturally becomes a low-branched tree, typically two-thirds as broad as it is tall. Bark exfoliates on older branches; leaves turn brilliant red, yellow and orange in autumn. With a bit of selective pruning when it's young, but minimal care thereafter, it becomes a medium-sized tree of appealing form. Maroon spring flowers are small, easily missed but attractive.

	Re-pot into	Zones 5-8
LP21ci	#2	\$3.00 (25)+

Parrotia persica

Golden BellTower™ 'Chrishaven1' PP28,584

Golden BellTower™ Columnar Ironwood

A superior, tight form that stays columnar over the years. Clean, insect and disease resistant green leaves turn bright golden yellow and red-orange in autumn. Over time the bark handsomely exfoliates. Golden BellTower™ is a moderate grower and will reach 25 ft. tall and 10 ft. wide over 8-10 years. Makes an excellent choice for smaller yards, and is a logical choice for commercial plantings or as a street tree. The best fall color will be achieved by growing it in full sun; however, it will grow equally well in part shade. Drought resistant once established.

	Re-pot into	Zones 5-8
LP40ci	#5	\$8.90 (10)+

Price includes a \$1.00 royalty

Parrotia persica 'Vanessa'
Columnar Persian Ironwood



Upright form of a tough small tree that requires almost no care in return for its year-round appeal. Patchy bark, spring bronze-green foliage, exceptional month-after-month autumn color, and attractive winter branch structure put into a class that almost approaches the perfection of Paperbark Maple and Stewartia. What it lacks in flower appeal is balanced by its extreme drought tolerance and overall tough character.

	Re-pot into	Zones 5-8
LP21ci	#5	\$7.20 (25)+
LP40ci	#5	\$9.85 (10)+

PHYSOCARPUS

Physocarpus capitatus
Pacific Ninebark

It is an important part of our native shrub matrix and in the winter does add interest with its peeling bark while in summer the seed heads, as they mature, turn pinky-red. Now it is often used in storm-water catchments.

	Re-pot into	Zones 5-8
1-2'	#5	\$1.45 (10)+

PISTACIA

Pistacia chinensis
Chinese Pistache

Pest-free and exceptionally drought tolerant small tree (20 ft.), with excellent red, purple, and orange fall color, even in the Deep South. A logical tree for infertile soils or unirrigated urban sites along streets, in parking medians, or under power lines where its tough character will ensure its success.

	Re-pot into	Zones 6-9
MP	#1	\$1.60 (50)+

Physocarpus capitatus



Quercus

PLATANUS

Platanus occidentalis

American Sycamore

American sycamore is a common sight to many because it was once commonly used as a street tree. Now it is most regularly used for revegetation and roadside restoration projects. Native, easy to grow.

	Re-pot into	Zones 4-9
1-2'	#5	\$1.10 (50)+
2-3'	#5	\$1.45 (50)+

PRUNUS

Prunus 'Dream Catcher'

NEW

Dream Catcher Flowering Cherry

Your US National Arboretum selection with single pink flowers, unblemished foliage in summer, upright vase-shaped character, and yellow autumn foliage. A great focus tree – a specimen for prominent placement in a modest size area where it can flourish to 25 feet tall by 15 feet wide at maturity.

	Re-pot into	Zones 4-8
LP40ci	#2	\$8.90 (10)+

Prunus cerasifera 'Krauters Vesuvius'

Krauters Vesuvius Plum

Coarse and brittle, its blackish purple foliage, soft pink flowers and tough constitution still create big demand for it in commercial jobs and inexpensive landscapes across America. A favorite in the arid, hot Southwest where it tolerates blistering summer heat.

	Re-pot into	Zones 4-8
MP	#2	\$2.50 (50)+

QUERCUS

Quercus alba

White Oak



Fastidious in its cultural requirements, but worth the trouble if its needs are met in an undisturbed, well-drained soil where it can be allowed to develop its picturesque spread.

	Re-pot into	Zones 4-8
LP21ci 6-12"	#2	\$2.75 (25)+
LP21ci 1-2'	#2	\$3.85 (25)+
3-4' TR	#7	\$9.50 (10)+
4-5' TR	#7	\$11.10 (10)+
5-6' TR	#7	\$13.75 (10)+

Quercus bicolor

Swamp White Oak (MO seed source)

Flaking bark texture, even on young trees. Although its common name indicates that it prefers moist areas, it is drought tolerant. The silver undersides of the leaves lend contrast to the upper leaf surface, prompting the species name "bicolor". Among the easiest of the oaks to transplant, it is also hardy and has few insect or disease problems. Excellent rootstock for white oak varieties.

	Re-pot into	Zones 3-8
LP21ci 3/16"	#3	\$2.85 (25)+
LP21ci 1/4"	#3	\$3.35 (25)+
3-4' TR	#5	\$9.50 (10)+
4-5' TR	#5	\$11.10 (10)+
5-6' TR	#5	\$13.75 (10)+

Quercus buckleyi

Texas Red Oak

Very popular street and landscape tree throughout the Southern Great Plains into the Mountain States and CA, given its handsome ornamental character and small stature vs. red oaks of the Eastern US. Exceptional red and orange fall foliage. Tolerates heat, drought and high pH soils, in contrast to most of the Eastern oaks in nursery cultivation.

	Re-pot into	Zones 6-11
LP21ci	#3	\$2.85 (25)+

Quercus gambelii

Rocky Mountain White Oak

Native to the "Four Corners" States, this deciduous tree can be grown as a multistem shrub or small single stem tree, eventually reaching 45 ft. Tolerates high pH soil. Drought resistant once established.

	Re-pot into	Zones 5-7
LP21ci	#2	\$2.85 (25)+

Quercus garryana

Oregon White Oak



Named to honor Nicholas Garry of the Hudson Bay Company, this is the climax species of the pre-1850s Willamette Valley oak savannah. We see occasional remnants of these original trees, some of which measure more than 5 ft. through and exceed 300 years old. These are truly heritage trees, having sheltered and fed the Kalapuya Indians, who gathered acorns by the ton and processed them to make thick soup and flatbread.

	Re-pot into	Zones 6-9
LP21ci	#2	\$2.95 (25)+
1-2' TR	#2	\$5.05 (10)+
2-3' TR	#3	\$7.25 (10)+

Order early for best size selection.



Quercus macrocarpa

Quercus gravesii

Chisos Oak, Mountain Red Oak

From the Pecos mountains of west Texas, above 5,000'. In its native range it has spectacular fall color though that hasn't always been the case in cultivation. It is a Western adapted plant.

LP21ci	Re-pot into #2	Zones 7-11 \$2.95 (25)+
--------	----------------	--

Quercus hypoleucoides

Silverleaf Oak

Native to upper elevations in the Davis Mountains of West Texas, this evergreen oak is widely adapted, forming shrubs where conditions are harsh - or a 40 ft. tree where more favorable. Deep dark green leaves are backed by white. Under-utilized, this tree is adapted to grow throughout much of the mild West.

LP21ci	Re-pot into #2	Zones 7-10 \$4.95 (25)+
#1	#5	\$9.50 (10)+

Quercus macrocarpa

Bur Oak (North Dakota source)

Native across a broad range in the eastern half of the USA, this patriarch forest tree is usually best for parks or large, open landscapes. These seedlings are grown from ND seed, so they're Zone 3 hardy and somewhat smaller in ultimate stature, to 50 feet tall. Best: they tolerate high pH soils, are more drought tolerant than Eastern US seed source liners. Plus, the much smaller acorns won't dent your car or kill the cat when they fall.

3-4' TR	Re-pot into #2	Zones 4-9 \$9.50 (10)+
4-5' TR	#2	\$11.10 (10)+
5-6' TR	#2	\$14.55 (10)+

Great Plant Picks...

a selection of outstanding plants for the maritime Pacific Northwest.

greatplantpicks.org



Quercus palustris

Pin Oak

Widely planted throughout the eastern US because it tolerates wet sites and disturbed, compacted soils. Pin Oak is sometimes seen with chlorotic foliage caused by iron deficiency in high pH soils. In such areas, *Quercus ellipsoidalis* is a superior landscape choice, better adapted to limestone soils.

LP21ci 1-2'	Re-pot into #2	Zones 5-8 \$3.25 (25)+
LP21ci 2-3'	#2	\$4.30 (25)+
3-4' TR	#7	\$9.50 (10)+
4-5' TR	#7	\$11.10 (10)+
5-6' TR	#7-10	\$13.75 (10)+

Quercus palustris 'Green Pillar'^{®PP9093}
Green Pillar® Pin Oak

NEW

A Princeton Nursery clone with few apparent graft incompatibility problems. Maroon red autumn color and narrow habit, its branches don't droop like the species. Mature height 40-60 ft. with a 12-15 ft. spread.

XP 1-2'	Re-pot into #2	Zones 5-8 \$12.45 (25)+
XP 2-3'	#2	\$14.75 (25)+

Prices include a \$0.90 royalty

Quercus phellos

Willow Oak



A fine-textured tree with high branches, it makes a great specimen for a lawn or along a driveway because it doesn't develop a basal "hump" that heaves sidewalks like *Acer rubrum*. Fall color ranges from brown to yellow to russet red. Rapid growing, this is among the best of the eastern US oaks. Its narrow leaves are easily cleaned up from the lawn. The small acorns, like those of the pin oak, are relished by wildlife.

LP21ci 1-2'	Re-pot into #3	Zones 5-9 \$3.40 (25)+
3-4' TR	#7	\$9.50 (10)+
4-5' TR	#7	\$11.10 (10)+
5-6' TR	#7	\$13.75 (10)+

Quercus rubra

Northern Red Oak



Among the largest of the North American oaks, it grows fast and is easy to transplant.

LP21ci 1-2'	Re-pot into #2	Zones 3-9 \$3.25 (25)+
LP21ci 2-3'	#2	\$4.30 (25)+
3-4' TR	#7	\$9.50 (10)+
4-5' TR	#7	\$11.10 (10)+
5-6' TR	#7-10	\$13.75 (10)+

Quercus shumardii

Shumard Oak

Easier to transplant than most oaks, it also grows well in soils up to pH 8.0. In form and growth rate it is typical of Scarlet Oak, but usually grows to only 50 ft. tall.

LP21ci	Re-pot into #3	Zones 5-9 \$2.95 (25)+
--------	----------------	---



Quercus Kindred Spirit® 'Nadler' PP17,664

Kindred Spirit® Oak

Chief among its merits is strong mildew resistance, in contrast to Columnar English Oak, which often gets terribly infested with this leaf disease. Strongly columnar in outline, it's 4-5 times taller than wide in outline, significantly more columnar than the similar selection, Regal Prince®. Grafted onto vigorous *Quercus bicolor* liners with mycorrhizal roots, these have excellent survivability without significant transplant shock.

	Re-pot into	Zones 4-8
XP 2-3'	#5	\$15.80 (10)+
#2 3-4'	#5	\$18.35 (5)+
#2 4-5'	#7	\$20.40 (5)+

Prices include a \$1.50 royalty

Quercus Regal Prince® 'Long' PP12,673

Regal Prince® Oak

Handsome, glossy deep green foliage and a bold, upright, oval silhouette. Leaf undersides are white with dense, downy hairs, helping keep the leaf dry - a significant factor in its resistance to mildew, to which Columnar English Oak is so susceptible.

	Re-pot into	Zones 4-8
XP 2-3'	#5	\$15.30 (10)+
#2 3-4'	#7	\$17.85 (5)+
#2 4-5'	#7	\$19.90 (5)+
4-5' TR	#7	\$21.25 (10)+
5-6' TR	#7	\$23.40 (10)+

Prices include a \$1.00 royalty

Quercus gambellii 'Bear Tree' NEW

Bear Tree Southwest Oak™

'Bear Tree' is a *Quercus gambellii* growing on Apache Creek, Huerfano County, Colorado. It has sweet (low tannin) acorns. Called 'Bear Tree' because bears have largely destroyed the upper portions of the tree by climbing up to get the acorns.

	Re-pot into	Zones 5-7
XP 1-2'	#5	\$13.35 (10)+
XP 2-3'	#5	\$15.35 (10)+

Price includes a \$1.50 royalty

Quercus stellata 'Lady Luck' NEW

Lady Luck Southwest Oak™

This rugged, drought tolerant small oak is native to the Southwest, selected by Allan Taylor near Folsom, NM at 7,200 feet elevation. The foliage is unique among Gambel oaks - long, slender leaves and pointed lobes. Fall color is reddish orange. It displays a tall, narrow growth habit height 15-20 feet x half that in width. Lady Luck is a dependable acorn producer, benefitting wildlife. In the mesas surrounding Folsom, precipitation averages just 16 inches per year and summers are scorching hot, so it's perfectly adapted in urban areas of the West now concerned with drought and record-breaking summer heat.

	Re-pot into	Zones 5-7
XP 1-2'	#5	\$12.70 (10)+
XP 2-3'	#5	\$14.85 (10)+

Price includes a \$1.50 royalty

Quercus × 'Estelle'

Estelle Southwest Oak™

A natural Burr-Gamble hybrid which shows red fall color. The leaves of 'Estelle,' while showing the hybrid parentage, are smaller than the average for such hybrids. With deep narrow lobes giving them a lacy effect. It is very attractive. The parent tree is around 35' high, and 30' across. From Rye, Colorado.

	Re-pot into	Zones 5-7
XP 1-2'	#5	\$12.70 (10)+
XP 2-3'	#5	\$14.85 (10)+

Price includes a \$1.50 royalty

Quercus × 'Jack Maze' NEW

Jack Maze Southwest Oak™

This is as large as any normal bur oak and a beautiful tree sure to be of interest in the trade. A good grower with workable form originally from Cottonwood Canyon CO. It grows with a single trunk. Jack Maze and Westward Ho! are strikingly different in their growth habit. Jack Maze will be a much larger tree over time. 4 inch dark green leaf, with deep narrow lobes, golden butter fall color.

	Re-pot into	Zones 5-7
XP 1-2'	#5	\$14.20 (10)+
XP 2-3'	#5	\$16.35 (10)+

Price includes a \$1.50 royalty

Quercus × 'Tularosa'

Tularosa Southwest Oak™

This is deciduous and a likely hybrid between *Q. gambellii* and *Q. arizonica*, an evergreen species, that bears watching. Good fall color in Colorado, yellow in Oregon. Maybe not a hybrid. Very fast growing in the nursery. 2-3" green leaf with large lobes looks those of gambellii.

	Re-pot into	Zones 5-7
XP 1-2'	#5	\$13.35 (10)+
XP 2-3'	#5	\$15.35 (10)+

Price includes a \$1.50 royalty

ROBINIA

Robinia pseudoacacia

Black Locust

Exceptionally tough and useful for the most adverse soil or climatic conditions. For the landscape, a number of interesting cultivars have been selected including forms with golden or purple foliage, pyramidal or globe shape, and contorted branches.

	Re-pot into	Zones 4-9
LP21ci	#3	\$3.00 (25)+

ROSA

Rosa pisocarpa

Clustered Rose

With few prickles on its stems and clusters of pink flowers, this wild rose thrives in lightly shaded locations and is a good candidate for the ornamental garden. BC south to Northern CA.

	Re-pot into	Zones 7-10
1-2'	#3	\$1.05 (25)+

RUBUS

Rubus parviflorus

Thimbleberry

Heavily used in revegetation projects thimbleberry is a somewhat interesting suckering shrub, to 4', with white flowers and red berries. It prefers moist soil but is tolerant of some late summer drought. It may be considerably hardier than we give it credit.

1-2' Re-pot into #3 Zones 5-8
\$1.45(50)+

SPIRAEA

Spiraea douglasii

Western Spirea

Under appreciated for its very showy pink flowers that attract multiple pollinators. This is an integral part of our wetland habitats in the West. Willamette Valley ecotype for use in revegetation.

1-2' Re-pot into #3 Zones 5-10
\$1.00 (25)+

STEWARTIA

Stewartia monadelpha

Tall Stewartia

Delightful; a top-3 contender for the most refined, endearing small landscape tree. In the Southeast, much better adapted to heat than Japanese Stewartia, and easier to grow than Stewartia ovata, a Southeast native. Bark varies from smooth cinnamon to lightly flaky, always appealing. Flowers are more diminutive than those of the much more commonly available Japanese Stewartia, but are profusely born on slender branches. autumn foliage is always satisfying, from maroon to orange and every shade in between, lasting a long time. This is a choice connoisseur plant for your most discriminating clients, not often available in substantial quantities for wholesale production. A "to live for" small tree: Offer it to those who will treat it like a member of their family, love it more every year.

LP21ci Re-pot into #3-5 Zones 6-8
\$8.85 (25)+



Stewartia monadelpha

Stewartia pseudocamellia Japanese Stewartia



Among the most desirable of all deciduous landscape trees. Camellia-like flowers in early summer. Striking bark patches that resemble pieces of a puzzle. Diminutive mature size, ideal as a small specimen tree. Red, yellow, and orange autumn leaf colors. This taxon is the ideal landscape tree - the complete package. Our strain is originally from the vicinity of Nikko Park in Japan, and has survived the extremely harsh winter lows of the UP in Quinnesec, Michigan. We're talking 35 below zero! Check out their amazing root systems, pot up or plant them out, and make some money.

	Re-pot into	Zones 4-7
MP	#3-5	\$4.15 (50)+
LP21ci	#3-5	\$5.75 (25)+
1-2' TR	#5	\$8.75 (10)+
2-3' TR	#5	\$10.65 (10)+
3-4' TR	#7	\$15.65 (10)+
4-5' TR	#7	\$19.05 (10)+
5-6' TR	#10	\$25.45 (10)+

STYRAX

Styrax japonicus

Japanese Snowbell

Small leaves and profuse white, bell-shaped June flowers. Best planted where the masses of pendant blossoms may be seen from below, such as along a rock wall or embankment. Pest-free, hardy, and rapid-growing. Occasional pruning when it is young encourages an open branch habit so that its flowers are more easily seen.

MP Re-pot into #2 Zones 5-9
\$2.00 (50)+



Stewartia pseudocamellia

Styrax obassia
Fragrant Snowbell



Leaves with fuzzy underside, much larger than those of the far more common *Styrax japonicus*. Superb, fragrant flowers dangle in long showy clusters. Open branch habit; ultimately twice as tall as *S. japonicus*. Requires full sun and well-drained soil

LP21ci	Re-pot into #2	Zones 5-9 \$3.90 (25)+
--------	-------------------	---------------------------

SYMPHORICARPOS

Symphoricarpos albus
Snowberry

2-4 ft. shrub native across a broad swath in the upper latitudes of North America. Small pink flowers emerge in summer followed by white berries in the fall. Hummingbirds are attracted to the flowers. Its strong root system makes this shrub useful to control erosion on steep slopes of an embankment. Tolerates wet soils as well, so it is frequently used in riparian restoration. Used as an ornamental, easy to grow and gratifying with its persistent winter fruits. Occasionally head it back for best ornamental performance.

1-2'	Re-pot into #2	Zones 3-7 \$1.25 (50)+
2-3'	#2	\$1.35 (50)+

SYRINGA
Syringa reticulata
Japanese Tree Lilac

With its tree-like form and lack of pest and disease problems, it has a secure place as a specimen tree in the landscape. Hardy and adaptable, it is best planted in full sun. Weaker branches should be thinned occasionally to highlight the strongest branches of its handsome form.

1/8"	Re-pot into #1	Zones 3-7 \$1.80 (25)+
3/16"	#1	\$2.10 (25)+



Styrax obassia



Taxodium distichum

***Syringa vulgaris* Tiny Dancer™ 'Elsdancer'**
Tiny Dancer™ Common Lilac

Iconic lilacs - everybody's grandma had one, but this selection has a compact form; giving it strong modern appeal across a wide range. Memorable, pleasant fragrance. In addition to its expected cold-hardiness, Tiny Dancer™ boasts remarkable heat tolerance, growing and blooming well in the South. Even in Zone 8, violet-purple buds open into lavender flowers, joining dogwoods and azaleas as a marker of spring. Large panicles measure 4 to 5 in., the big florets making each cluster appear luxuriously full. Foliage and flowers are in perfect scale, one complementing the other. You know the feeling when everything is in balance with a plant: it exudes quality. We're inspired to bring Tiny Dancer™ to you, an updated version of an old classic for today's gardens.

MP	Re-pot into #1-2	Zones 3-8 \$4.25 (50)+
----	---------------------	---------------------------

Price includes a \$0.75 royalty



**The Gold Medal Plant
Award of the Pennsylvania
Horticultural Society**

recognizes trees, shrubs and woody vines of outstanding merit for their superb eye-appeal, performance, and hardiness in Zones 5-7.

Tilia

TAXODIUM *Taxodium distichum* Baldcypress



Durable deciduous conifer adapted to colder climates and drier soils than those in its native Southeast. Best planted where it can develop unhindered, as it is naturally a large tree. Amazingly, it thrives from upstate New York to the High Plains of Texas and south to Florida. Lumber is highly prized for its decay resistance. Despite its large stature, its landscape appeal is evident in its lacy foliage texture, which becomes a handsome, distinctive blend of green, yellow and brown in autumn. The shaggy bark and bold architecture of its branches lend striking winter interest. Trouble-free, easy to grow and transplant if root-pruned or containerized.

MP Re-pot into #1-2 Zones 5-10
\$1.80 (50)+

TILIA NEW *Tilia americana Sweet Street™* 'Kromm' Sweet Street™ Linden

An extremely uniform grower. Favored for its tight, pyramidal habit, it has lustrous dark-green leaves that persist late into the season. Sweet Street™ was selected in Wisconsin, making it very winter hardy. Due to its narrow habit, it can be used in more constricted spaces than other lindens.

Re-pot into Zones 3-80
XP 1-2 #1-2 \$13.35 (50)+
XP 2-3 #1-2 \$15.35 (50)+
Prices include a \$1.50 royalty

Tilia cordata Greenspire™ NEW Greenspire™ Linden

Extraordinary, popular shade tree due to its strong central leader and trouble-free performance in the nursery and landscape. Matures twice as tall as wide, to 50 feet, an excellent replacement for scourge Callery pears with their brittle branches and invasive character. Adapted to soils that may trouble more fussy trees, its mycorrhizal roots lend it this tough constitution. Give it space and let it go!

Re-pot into Zones 3-8
XP 1-2 #1-2 \$13.35 (50)+
XP 2-3 #1-2 \$15.35 (50)+
Prices include a \$0.50 royalty

ULMUS *Ulmus americana 'Princeton'* Princeton American Elm

Selected almost a century ago by New Jersey nurseryman William Flemer for its aesthetic merit. By stroke of good fortune, 'Princeton' has demonstrated moderate resistance to Dutch elm disease. Typical of this iconic American species in form and hardness, it is an important part of the American experience, a relic selection from America's urban forest history, still adapted to its future so many generations later.

Re-pot into Zones 3-9
XP #7 \$14.85 (10)+

ZELKOVA *Zelkova serrata* Japanese Zelkova



Member of the Elm family but resistant to Dutch Elm Disease. Older trees exhibit an especially attractive bark. Vigorous in the nursery, these seedlings have been lightly pruned to encourage straight stems.

Re-pot into Zones 5-8
MP #1 \$1.80 (50)+



Zelkova bark

Size Guide pages 50-51

Perennials

Allium ampletens

Slim-leaf Onion

Native up and down the West Coast, with pale pink to white flowers this little onion is a cinch to grow. Native pollinators love the showy long lived flowers. Freely reseeding, large bunches of flowers are colorful for over 6 weeks. 8 inches tall. Key nectar species for Fenders Blue Butterfly.

BULB

Re-pot into
#1

Zones 6-9
\$0.65 (100)+

Asarum caudatum f. album

White flowered Western Ginger

Forming dense evergreen mats, this super ground cover shines all year round in shade. Adaptable to some drought, it looks great if given a little summer irrigation. 4 inches tall.

MP

Re-pot into
#1

Zones 7-10
\$3.50 (50)+

Asclepias fascicularis

Narrow-leaf Milkweed

Narrow-leaf milkweed is smaller in stature and blooms later than showy milkweed; it also tolerates very dry conditions. It would work well in a rock garden or xeriscape. Showy milkweed tolerates wet soils better, and has large, unusual, showy flower globes of pink-tinged, star-shaped flowers. The nectar-filled flowers, opening mid-summer, exude a pleasing sweet fragrance and produce magnificent seed pods on 2-3 ft. stems.

MP

Re-pot into
#1

Zones 7-9
\$1.50 (50)



***Begonia grandis* 'Heron's Pirouette'**

Asclepias speciosa

Showy Milkweed

With the Monarch butterfly now under threat, these host plants, native to the western US, will have great retail appeal for gardeners concerned about the butterfly. They also provide key pollinator resources to other butterflies and native bees in mid-summer.

MP

Re-pot into
#1

Zones 7-9
\$1.45 (50)

Begonia grandis 'Heron's Pirouette'

Heron's Pirouette Begonia

This summer charmer was selected for its masses of brilliant pink flowers that are presented with great aplomb for many months. Excellent as a bedding plant or great candidate for containers. It is surprisingly hardy and easy to grow. Great summer and autumn appeal.

MP

Re-pot into
#1

Zones 6-10
\$2.65 (50)+

Calochortus tolmei

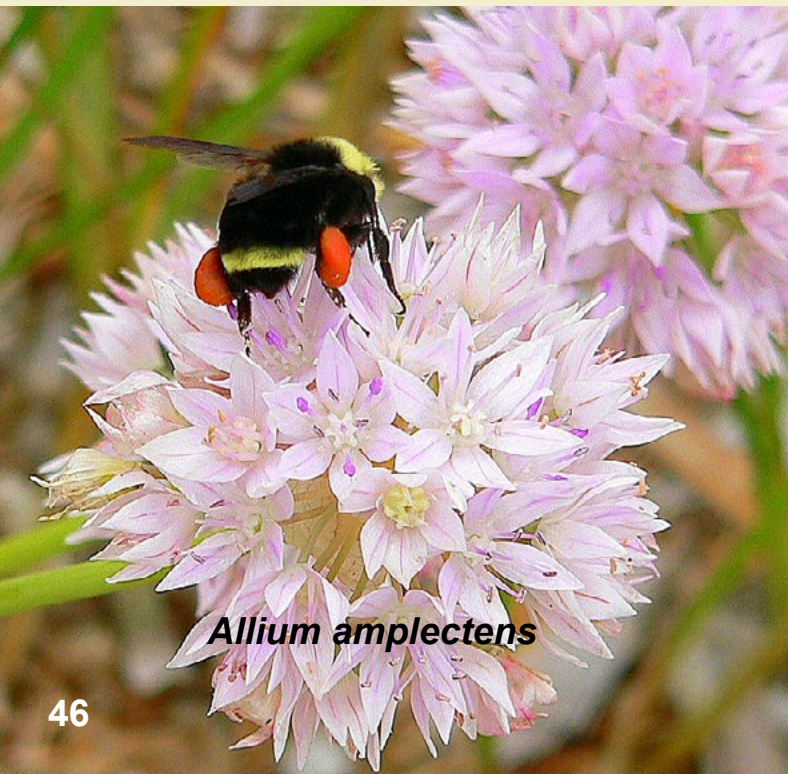
Cat's Ear

It has been very rewarding developing some of the lesser Willamette Valley forbs into commercial crops, like the Cat's ear. In late spring and early summer foliage is followed by extremely fuzzy, white or pale pink flowers. Ample winter rainfall with sparse summer irrigation is best. Low growing, to 4 inches. These are small blossoming size bulbs. Key nectar species for Fenders Blue Butterfly and Taylor's Checkerspot.

BULB

Re-pot into
#1

Zones 6-9
\$2.60 (50)+



Allium ampletens

Camassia leichtlinii or C. quamash

Great or Common Camas

A robust spring-blooming perennial with bright blue flowers, our native camas once clothed Oregon valleys in waves of striking color. Settlement and agriculture over the past 150 years have pushed it to marginal small pockets in wetlands, roadsides, and areas unsuited to cropping. Two ft. tall in blossom. Occasional nectar species for endangered Fenders Blue Butterfly.

With intense blue, starry flowers, each of our western native camas species adds early pollinator value to perennial gardens. Common camas is shorter (12-18 inches) and blooms in early April; tall camas (24-30 inches) blooms in early May. Both attract many bee species with Common camas, an important resource for reemerging Queen bumblebees. Dormancy starts in June so it is a great candidate for mixing with other, later-blooming perennials.

BULB

Re-pot into

#1

Zones 7-9

\$0.85 (100)+

Gunnera tinctoria

Chilean Rhubarb

Gunnera is one of South America's best contributions to our gardens, with leaves easily reaching 5 ft. across and 7 ft. high, sometimes more! It is easy and rapid-growing in moist soil, blossoming annually with tiny flowers on large 2 ft. club-like structures. Our liners finish fast in a #2 or #3 container. (Note: For a plant that loves water, it seems oddly averse to the high summer humidity of the East and Southeast).

MP

Re-pot into

#3

Zones 7-10

\$2.65 (50)+



Iris tenax

Daphne x Perfume Princess® 'DapJur01'

Perfume Princess® Daphne

Evergreen, highly fragrant blooming hybrid of *D. odora* and *D. bholua*. "Perfume" does not adequately describe its wonderful fragrance. Vigorous and less fussy than either of its parent species, and bearing abundant, larger flowers than either parent as well. Exceptional plant, meriting multiple plants in any Maritime Northwest garden, but do remember to put it close-by or you may miss its fragrance.

LP21ci

Re-pot into

#1

Zones 7-9

\$9.60 (100)+

Price includes a \$1.75 royalty

Iris tenax

Oregon Iris

The leaves are tough, dark, grass-like, and nearly evergreen on this showy iris. It blooms in a spectacular color range from almost white to purple and all hues of blue in between. It is clump forming, blooming April-May, it is only 14 in. tall. This is an excellent, easy, very drought tolerant garden plant that is used far too infrequently. Nectar species for Dusky Wing and, occasionally, Fenders Blue Butterfly.

DIVISION

Re-pot into

#3

Zones 6-9

\$1.50 (50)+

Disporum longistylum 'Night Heron'

Night Heron Disporum

A Heronswood Nursery selection with bamboo-like stems that emerge dark purple rather than green, sheathed at each node with golden-tan papery bracts. Makes a 4-5 ft. tall evergreen clump (hardy in Zone 6, but deciduous) with small white flowers followed by many shiny black berries. Enjoys rich, moist soil.

MP

Re-pot into

#1

Zones 6-9

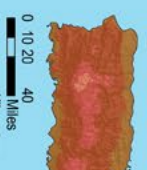
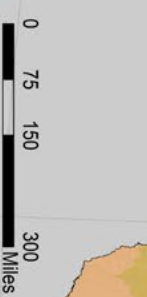
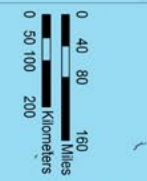
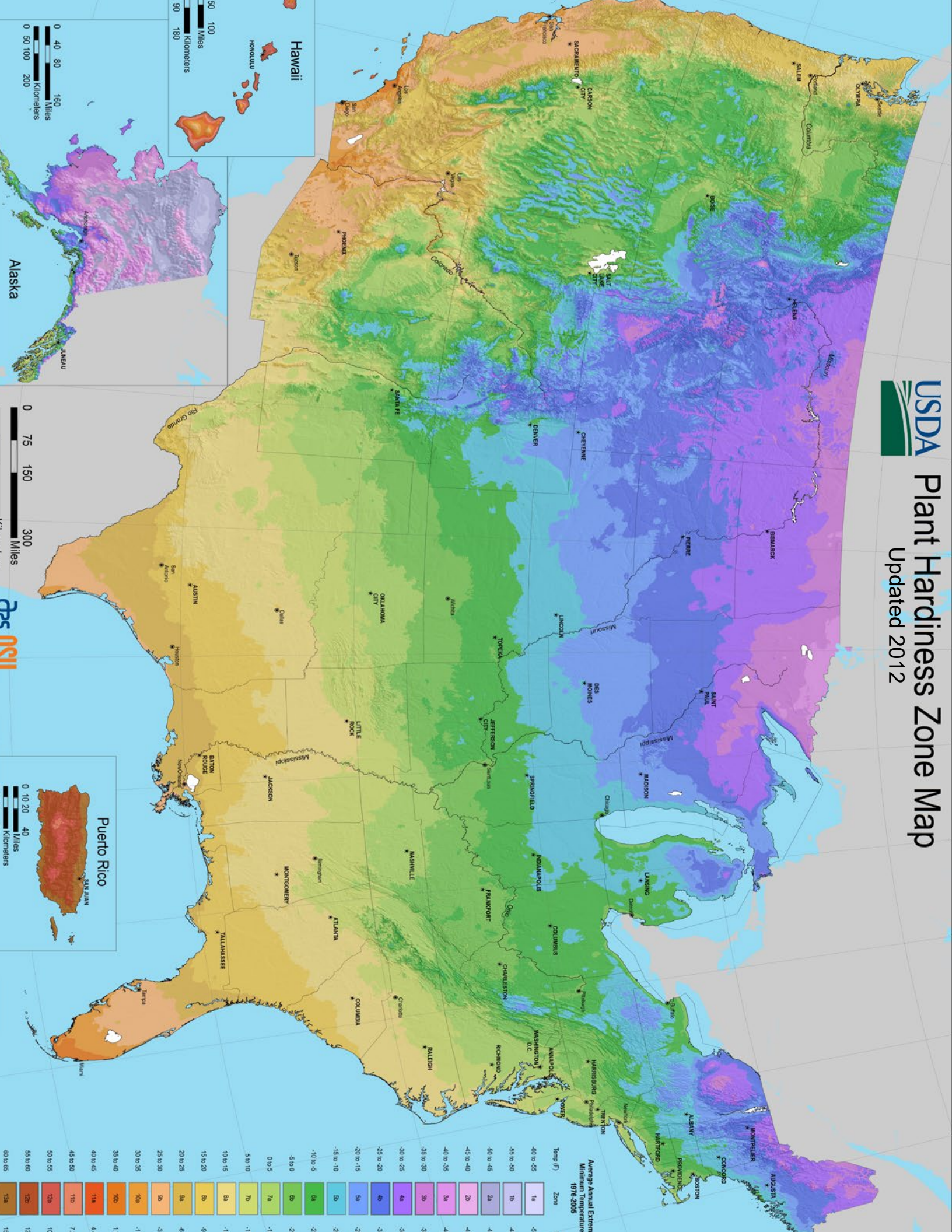
\$3.25 (50)+

Order early for best size selection.



Plant Hardiness Zone Map

Updated 2012



HERITAGE

seedlings & liners, inc. _____ Unusual Deciduous Species

4194 - 71st Avenue SE Salem, OR 97317 www.heritageseedlings.com

Phone (503) 585-9835 Fax (503) 371-9688 sales@heritageseedlings.com

Order date _____ Shipping address _____

Company _____

Ordered by _____

Ship date desired _____ Billing (if different) _____

Special instructions _____

Telephone _____

To help us do the best possible job with your order, please see pp. 50-51 for size key & terms.

Fax _____

E-mail _____



or **Note: A 3% surcharge will be added to all credit card payments.**

Credit card account number: Expiration date: /

Credit card billing address: _____

Security code:

Quantity	Plant	Preferred size	*Substitute size	Price	Amount

***Please indicate NO SUB if size substitutions are not acceptable.**

Container grown

We remove most plugs from their tray, or larger liners from the pot for UPS delivery. We net plug bundles with elastic netting to keep them organized and intact.



SP

Small Plug
104 cell tray
1.4 in. wide
2 in. deep
2.2 cu. in.



MP

Medium Plug
60 cell tray
1.9 in. wide
3.5 in. deep
9 cu. in.



LP21ci

Large Plug
25 cell tray
2.3 in. wide
5.5 in. deep
21 cu. in.



LP40ci

Large Plug
2 cell tray
3 in. wide
7.1 in. deep
40 cu. in.



XP

Extra Large Plug
6 cell tray
4.3 in. wide
7.9 in. deep
97 cu. in.



#1

1-2' #1 WHIP
1 year whips
from "gallon" pots

Guide

Bareroot

Seedling propagation

We plant almost no seed directly in the field. Rather, we seed bulb trays with artificial media, allowing root pruning in the elevated trays. Seedlings are harvested in winter and graded by height or by stem diameter.



Caliper grading - rootstock

Size	Stem diameter
1/8'	1/8 to 3/16 inch
3/16'	3/16 to 1/4 inch
1/4'	1/4 to 3/8 inch
3/8'	3/8 to 1/2 inch

Transplants



3-4' LT BRCH
2 or 3 year
field grown



TR
2 or 3 year
transplants

The Fine Print

Acknowledgments

- 🌿 We will acknowledge your order soon after you place it. As final harvest grades and counts come in, we will know more accurately what we will ship and call you if there are significant concerns.
- 🌿 We will do our best to match the sizes and quantities in your order. However, at shipping we may still need to substitute a size smaller or larger than we originally acknowledged unless you specify “no substitutions”.

Deposits and Payment

- 🌿 If you are on **Pay in Advance (PIA)** terms you must submit a 25% deposit due by December 15th. The balance is due two weeks before shipping.
If you cancel your spring order after January 15, or fail to complete full payment you may forfeit your deposit.
- 🌿 **PIA** customers prepay for plants and shipping costs based on our best estimate of total charges. Despite our experienced judgement on expected UPS charges, if there's a remaining shipping balance, we'll bill you the final charges. Overpayment will be refunded or credited to a future order.
- 🌿 Unpaid balance of the order, including freight, **must** be received at minimum 3 weeks before scheduled ship date to avoid delay and/or deposit forfeiture.
- 🌿 Orders not secured by a deposit will receive lower priority in the event of crop shortage.
- 🌿 No new order will be confirmed if your account is past due.

Credit Policy

- 🌿 Established customers with a record of timely payment, may apply for 30 terms.
To request credit terms, customers must complete the credit application available online or from our office.
- 🌿 Verifying credit can take up to 2-3 weeks. Please allow sufficient time to complete this process before your order is scheduled to ship. We will establish a reasonable limit based on your credit needs, the references you provide, and your history with us.
- 🌿 Credit card payment will incur a 3% surcharge.
- 🌿 Past due accounts are subject to a 1.5% per month service charge (18% APR). Any account which becomes substantially overdue will revert to PIA for future orders.
- 🌿 A \$25.00 fee will be charged for returned checks.
- 🌿 Accounts inactive for 2 years will revert to PIA and will need to fill out a new credit application.

UPS, Trucking & Pick-ups

- 🌿 Our primary shipping season is from February 1st - April 15th when plants are most dormant. We recommend bareroot shipments before April 10. Container grown plants can generally be picked up year-round.
- 🌿 We will ship the best way after careful review of weather, plant condition, your delivery flexibility, and freight cost. UPS 3 Day is your most secure delivery investment. If you instruct us to ship by UPS Ground, you must accept responsibility for any plant loss due to plants freezing or spoiling in transit.
- 🌿 Plants taller than 5 ft. must be shipped by truck or picked up at the nursery. **If your order needs to be shipped by your broker or your own truck, please let us know whom to contact.**
- 🌿 We charge \$150 to arrange trucking.
- 🌿 We do not deliver plants.
- 🌿 Set your pickup date carefully, please. Give us at least two weeks notice when scheduling a pickup, and **try to schedule it for Thursday or Friday. Give us a courtesy call if your plans change, please.**
- 🌿 If you do not show up on the pick up date you specify we charge a re-stocking fee of \$200 after 2 days.

Canadian Orders

- 🌿 Phytosanitary Certificate (PC) and export document fee is \$100. PC expires 14 days after issuance. If you delay or request a different ship date after we get a PC for your order, we may have to get a new PC, for which a \$100 additional fee will apply.
- 🌿 Please be certain to include on your import permit that soil/artificial soil mix is permitted; otherwise, you will incur washing fees.
- 🌿 All payments must be made in US funds. Due to lengthy bank processing times, we require wire transfer of funds unless other specific provisions are made. We will work with you to ID what best suits you, and still helps us to get paid on time.

Cancellations

- 🌿 We assemble orders 1 week before the scheduled ship week. Please give us at least one month advance courtesy notice if you need to reduce/change your order so that we can reallocate plants for other clients who may have them back-ordered.
- 🌿 A major order reduction or cancellation after an order has been staged will incur a 20% restocking fee.
- 🌿 If we don't hear from you after our final letter, your order will be cancelled and future orders will require a 50% deposit before confirmation.

Closing Comments

Contracting

Have you considered its merits? Although we no longer offer a rebate, contracting your order ahead offers benefits for those whose orders are regularly large. Call us if you need to discuss specifics.

Standing Orders

If there are items you need on an annual basis, we can create a yearly **Standing Order**. We roll them into the next season. That way your order gets priority status.

Visitors

We accept visitors by appointment. You're welcome to visit any time of year. We have several growing locations, and want to be sure you're getting the most out of your time with us, so please schedule your visit. We'll arrange a tour to suit your needs.

Minimum Order

WHOLESALE ONLY. Minimum \$750.

Please order in full bundles (shown alongside prices).

Quality Assurance

Our commitment to you is to grow the best value unusual tree and shrub liners you can find and to deliver them on time. We hope you are especially pleased with your plants' root systems. This should be your immediate impression when you open the box or pick up your order. If it isn't, we want to hear from you as soon as possible so we can address your concerns.

If you take reasonable and prompt care of your plants after delivery and they fail to grow, it's essential you let us know soon. Please contact us within 15 days after delivery. Any discrepancies in counts or shipping damage must be reported within 10 days of delivery to qualify for credit.

Claims: We want to determine the cause so we can make changes to avoid repeating costly mistakes. We'll make every reasonable effort (limited to purchase price) to ensure you are pleased with your purchase and our service. If you feel the plant loss might be on our end or simply want a second opinion, please take some photos and email them in with the quantity and size in question. Bareroot plant claims may not be honored for bare root shipments after April 10, or for Japanese maples transplanted after that. Please make every reasonable effort to take delivery before mid April.

Thank You

We so appreciate your continued orders, your trust, and the strong relationship that we've developed with you over many years. Running a nursery, landscape, or garden center enterprise can be an intense experience. Because of YOU we have bright hopes for the future.

If you have further questions or comments, we'd really like to hear from you.

Office & Mailing

4194 - 71st Ave. SE
Salem, OR 97317
(503) 585-9835

Fax: (503) 371-9688

sales@heritageseedlings.com

heritageseedlings.com

Greenhouses

11786 Kingdom Lane SE
(Milepost 19, Hwy. 22 East)
Stayton, OR 97383

Shipping/Pick up

19386 North Santiam Hwy
(Milepost 20, Hwy. 22 East)
Stayton, OR 97383



*Eventually, all things merge into one,
and a river runs through it.*

Norman Maclean
A River Runs Through it and Other Stories