



## OVERHEAD CONCEALED CLOSERS



### D200 & D200-SA Series

- I.D.C. provides **LEAK-FREE** guaranteed performance under the most demanding conditions.
  1. Steel spring cap is now on top of closer body utilizing a new high performance O-Ring and epoxy sealed threads for double protection.
  2. New automotive type heavy duty spindle seal replacing old standard O-ring technology.
  3. All three adjustment valves now with two high performance O-rings for double protection.
  4. Steel end caps incorporating new high performance O-rings and also epoxy sealed threads for double protection.
  5. Adjustable back check after 80° to prevent the door from slamming open.
- **CENTER HUNG DOORS:** Double or Single Acting (Door stop applied to frame renders unit Single Acting). Adjustable "S" type side loading or "A" type, "K" type and "PT" type end loading top arms are available for center pivoted applications.
- Built-in positive back stop and hold-open positions available:
  - 105° Back Stop with Hold-Open
  - 105° Back Stop - no Hold-Open
  - 90° Back Stop with Hold-Open
  - 90° Back Stop - no Hold-Open

### D200 Series

- ADA spring tensions available for use on center pivoted applications:
  - 5 lb. opening force (Interior door)
  - 8-1/2 lb. opening force (Exterior door)
- Standard spring tensions available:
  - **LIGHT, MEDIUM & HEAVY**

### Series D200-SA - All Glass Closer

- 3/4" Spindle length for better door support.
- Standard spring tensions available:
  - **MEDIUM & HEAVY**
- Cast Iron Body fits in aluminum header or transom bar as small as 1-3/4" x 4".
- 5-3/4" Short "A" Arm (measured from center line of spindle to end of arm).

## NEW IMPROVED FEATURES



1. Steel spring cap is now on top of closer body utilizing a new high performance O-Ring and epoxy sealed threads for double protection.
2. New automotive type heavy duty spindle seal replacing old standard O-ring technology.
3. All three adjustment valves now with two high performance O-rings for double protection.
4. Now with steel end caps incorporating new high performance O-rings and epoxy sealed threads for double protection.
5. Adjustable back check after 80° to prevent the door from slamming open.

### D300 & D500 Series

#### ADA Handicap Adjustable Spring Power • Fire Endurance Test

- I.D.C. provides **LEAK-FREE** guaranteed performance under the most demanding conditions.
  1. Steel spring cap is now on top of closer body utilizing a new high performance O-Ring and epoxy sealed threads for double protection.
  2. New automotive type heavy duty spindle seal replacing old standard O-ring technology.
  3. Adjustment valves now with two high performance O-rings for double protection.
  4. Steel end caps incorporating new high performance O-rings and also epoxy sealed threads for double protection.
- Barrier Free Operation to comply with Federal Accessibility Standards (ADA): complying with ANSI A117.1 (4.13.11) available for center pivoted applications.
- Built-in positive back stop and hold-open positions available:
  - 105° Back Stop with Hold-Open
  - 105° Back Stop - no Hold-Open
  - 90° Back Stop with Hold-Open
  - 90° Back Stop - no Hold-Open
- Optional 3/4" Spindle Available.

### D300 Series - Grade 2 D500 Series - Grade 1



- ADA closer with Adjustable Spring Power for a range of sizes from 5 lb. to 8.5 lb. **LIGHT, MEDIUM & HEAVY**. Spring Tension, fully adjustable after installation

## SURFACE CLOSERS



### 44CI Series - Grade 1

#### Handicap Adjustable Spring Power

- 10 YEAR WARRANTY
- **ANSI/BHMA A156.4 GRADE 1 CERTIFIED**
- Barrier Free operation to comply with Federal Accessibility Standards (ADA) complying with ANSI 117.1 (4.13.11)
- Application for HIGH TRAFFIC Doors
- Cast Iron Body; Forged Steel Arm
- Double Heat Treated Steel Pinion
- Non-Sized Adjustable 1 Through 6; Standard with Back Check
- Universal Application for Regular Arm, Top Jamb, or Parallel Arm Mounting
- Standard Plastic Cover - Non Handed
- Attractive baked enamel finishes:
  - AL - Aluminum
  - DU - Storefront Bronze

### 800 Series

#### 850 Standard Series & 880 Adjustable Back-Check

- 5 YEAR WARRANTY
- Series 880 has adjustable Back-Check function controlled by a separate regulating valve, adjustable after installation.
- Range of sizes:
  - **Standard:** 851, 852, 853, 854 and 855
  - **Back-Check:** 883, 884 and 885
- Two Adjustment Valves: Closing and Latching speeds controlled by separate regulating valves, adjustable after installation.
- Universal application. Non-handed for standard, top jamb or parallel arm installation.
- Available with regular, hold-open or fusible link hold open arms.
- Regular arms are equipped with a 15% (+)(-) 7½% power adjustment bracket.
- Hold-open arms are adjustable for holding from 90° to 180°.
- Rack and pinion mechanism contained in a high tensile precision cast aluminum housing assures the highest quality.
- Stable hydraulic door check fluid for any climatic operation and constant lubrication.
- Narrow design permits installation on most modern glass and aluminum doors without adapters.



### 1800 Series - Grade 1

#### Fire Rated • Handicap Fix Spring Power

- 10 YEAR WARRANTY Factory tested to meet or exceed ANSI 156.4 Grade 1
- Barrier Free operation to comply with Federal Accessibility Standards (ADA) complying with ANSI 117.1
- Narrow design permits installation on most glass and aluminum doors without adapters
- Standard application for regular arm and Top Jamb installation; parallel arm installation
- Two Adjustment Valves: Closing and Latching speeds controlled by separate regulating valves, adjustable after installation. (Three valves with optional back-check)
- Ranges of Sizes
  - Standard: 1803, 1804, and 1805
  - Back-Check: 1803-BC, 1804-BC, and 1805-BC
- Attractive baked enamel finishes:
  - AL - Aluminum
  - DU - Storefront Bronze



- Attractive baked enamel finishes:
  - AL - Aluminum
  - DU - Storefront Bronze

## SURFACE CLOSERS



### 5000-TP Series - Grade 1 Handicap Adjustable Spring Power

- 10 YEAR WARRANTY
- **ANSI/BHMA A156.4 GRADE 1 CERTIFIED**
- Barrier Free operation to comply with Federal Accessibility Standards (ADA) complying with ANSI 117.1
- **Model 5001-TP**
- ADA (Handicap) multi-sized closer with adjustable spring power for a range of sizes. 1-6 adjustable back check and delay action, adjustable after installation.
- Two Speed Control Valves: Closing and latching speeds controlled by separate regulating valves, adjustable after installation.
- Universal application. Non-handed for standard, top jamb or parallel arm installation.
- Rack and pinion mechanism contained in a high tensile precision cast aluminum housing.
- Hold-open arms are adjustable for holding from 90° to 180°
- Attractive baked enamel finishes:
  - AL - Aluminum
  - DU - Storefront Bronze



### 8000-TP Series - Grade 1 • Fire Rated Handicap Adjustable Spring Power

- 10 YEAR WARRANTY
- **ANSI/BHMA A156.4 GRADE 1 CERTIFIED**
- Barrier Free operation to comply with Federal Accessibility Standards (ADA) complying with ANSI 117.1
- **Model 8051-TP** Standard with Sweep, Latching, and Back-Check
- **Model 8052-TP** Standard with Sweep, Latching, and Delayed Action
- Adjustable Spring Power Size 1 through 6
- Tri-packed for regular arm, top jamb and parallel arm application
- Hold-open arms are adjustable for holding from 90° to 180°
- Attractive baked enamel finishes:
  - AL - Aluminum
  - DU - Storefront Bronze



### 9000-TP Series - Grade 1 ADA Handicap Adjustable Spring Power

- 10 YEAR WARRANTY
- ANSI A 156.4 Grade 1 Certified
- **Model 9001-TP:** Adjustable spring power (1-6) Opening Force with adjustable back check and delayed action controlled by a separate regulating valve.
- ADA (Handicap) multi-sized closer with adjustable Spring Power for a range of sizes adjustable after installation.
- Two Speed Control Valves: Closing and Latching speeds controlled by separate regulating valves, adjustable after installation.
- Universal Application: Non handed for standard, top jamb or parallel arm installation (parallel arm bracket included).
- Rack and pinion mechanism contained in a high tensile precision cast aluminum housing.
- Furnished with a high impact molded PVC Dress Cover (door closer body casting is finished for use without the dress cover).
- Optional hold-open arms available.
- Hold-open arms are adjustable for holding from 90° to 180°
- Attractive baked enamel finishes:
  - AL - Aluminum
  - DU - Storefront Bronze

## FLOOR CLOSER SPRINGS



### ST75 Series - Grade 1 Floor Closer Springs For Medium Doors

- Certified in compliance with EN 1154 /UL / ANSI 156.4 Grade 1
- Suitable for fire and smoke protection doors (No fire test conducted yet)

### ST80 Series - Adjustable Floor Closer Springs For Large And Heavy Doors

- Certified compliance with EN 1154 Adjustable size 3-6 or fixed 4, 5, 6 Suitable for fire and smoke protection doors (No fire test conducted yet)
- For double and single action door up to 661lbs

## ADA OPERATOR



### SW19.10 & SW10 Swinging Door Closer

- SW19.10 - Low Energy
- SW10.10 - Full Energy
- Non-Handed, Extremely Silent, Self-Tuning & Learning
- Complies with ANSI A156.19 & A156.10
- UL Certified for use as Fire Door Operator (3 hour rating)
- Complies with all US and Canadian ADA Requirements



### IDC4041 Series Chain Tensioner

- **STRONGER:** Higher tensile strength than the roller chain, tested up to 8000LBS.
- **SAFER:** No more threaded rods protruding from the chain bracket.
- **CLEANER:** Can be painted or powder coated to match gate color.
- **LONG LASTING:** Captures roller chain.
- **EASY TO USE:** Easy to install and adjust chain tension.
- **SMARTER:** Eliminates costly service calls due to master link or tension bolt failures

## GATE CLOSERS & ACCESSORIES

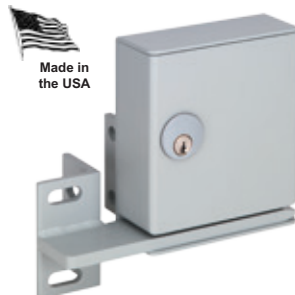


### Swinger 300 Hydraulic Gate Closer

- 5 YEAR WARRANTY
- Tough, Dependable and Vandal Resistant.
- 2" x 4" x 12" 16 gauge galvanized Steel housing.
- Gate closer manufactured for pedestrian gates.
- Two Separate Closing and Latching valves adjustable after installation without removing the closer.
- Adjustable spring power to accommodate various size gates.
- Non Handed (right or left swing).
- Opens to full 105 degrees.
- Fully adjustable top arm for proper gate alignment.
- Adjustable zinc plated Bottom Hinge with sealed ball bearings rated for 350 lbs. Slotted Yoke for Adjustability.
- Designed to close gate into its latch position without slamming.
- Smooth operation.
- Factory tested to over 1,000,000 cycles.

### GL160/GL260 Gatelock For Tubular Steel and Wrought Iron Gates

- Higher Security than Electromagnetic Locks
- Solid Stainless Steel 0.625" (15.9mm) diameter locking bolt
- Continuous duty operation
- Low current draw
- Auto re-lock switch
- Heavy gauge 0.125" (3.2mm)
- Weather sealed steel housing
- Access control compatible
- **GL160AI** - Failsafe, 12/24VDC
- **GL163AI** - Failsafe, built-in keyswitch 12/24VDC
- **GL260AH** - Failsecure 12/24VDC
- **GL263AH** - Failsecure, built-in keyswitch, 12/24VDC
- **GL260MRAH** - Failsecure, mechanical key release, 12/24VDC
- Mortise key cylinder provided by others.



### K-BXED-INT Weldable Gate Box

- **TYPE:** Panic Hardware
- **DIMENSIONS:**  
4 3/4" W x 12" H x 1 3/4" D



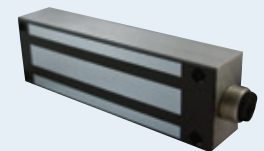
### K-BXRHO Weldable Gate Box

- **TYPE:** Cylindrical
- **DIMENSIONS:**  
4 3/4" W x 4 1/8" H x 1 3/4" D
- **NOTE:** Through Bolt Levers



### WR Maglocks Sliding • Swinging Gates • High Security Doors

- Field selectable 12 or 24 VDC
- UL and ULC Listed
- See our main catalog page 215 for features and specifications



### Matrix Single & Double Induction Loop Detector

- Compatible with most door and gate control applications
- See our main catalog page 252 for features and specifications



## MECHANICAL EXIT DEVICES

### 5000 Series

#### Light-Duty Models - Panic and Fire Rated

International Door Closers IDC 5000 Series Exit Devices meet the Life and Fire Safety Codes as prescribed by UL and ANSI / BHMA 156.3 standards. These durable devices are designed for both standard and commercial applications. The 5000 Series were tested and approved by Underwriters Laboratories (UL, USA and ULC, Canada) and listed to comply with UL 10C, and Uniform Building Code Standard 7-2, "Fire Test of Door Assemblies" (1997).

- All devices are non-handed design
- Auxiliary guarded latch deadlocks latch bolt automatically locks when the door is closed
- High shock-resistant latching mechanical design for protection from vandalism
- All inside components are made of high rust-resistant alloy or heavy electroplated steel
- Baked powder coating, electroplated or architectural base finishes are used on all exposed surfaces
- Outside trims are provided by rose and escutcheon lever or knob in a variety of styles
- All trim, features a through-bolted design to the devices that allow easy installation but not to compromise on security
- With a dogging mechanism, users have a choice of hex-key or cylinder operated design for a positive push-pull door action during peak traffic time
- The exit devices are available in the following finishes: US28(689) and US20A(690).

### 8000 Series Exit Device – Grade 1

#### Panic and Fire Rated

IDC 8000 Series Exit Devices are heavy duty and designed for heavy traffic applications. The devices are Underwriters Laboratory (UL, USA and ULC, Canada) listed for Panic Exit Hardware or Fire Exit Hardware, and are certified to ANSI A156.3-2001 Grade 1.

- All devices are non-handed design
- Slight pressure on device touch bar will retract latch(s) for immediate exit
- Auxiliary guarded latch deadlocks latch bolt automatically when door is closed
- High shock-resistant latching mechanical design for protection from vandalism
- All inside components are made of high rust-resistant alloy or heavily electroplated steel
- Anti-fading, electroplated or architectural base material finishes on all exposed surfaces are available
- With a dogging mechanism, users have a choice of hex-key or cylinder operated for positive push-pull action at peak traffic time. This dogging device will also help by increasing the life of the exit device (panic label only).
- UL/CUL Listed: Panic Exit Hardware or 3-hour Fire Exit Hardware
- The exit devices are available in the following finishes: US32D and US10B.

The IDC **8000** Series is a heavy-duty push bar exit device which has two external surface styles: Smooth Device Body and Grooved Device Body. The **8500** and **8600** Series are smooth device body. The **8700** and **8800** Series are grooved device body. These two styles provide a wide selection of style options for architects and building owners.



Rim Exit Device



Mortise Exit Device



Alarm Exit Device



Concealed Vertical Rod Exit Device



Surface Vertical Rod Exit Device



Less Bottom Rod Surface Vertical Rod Exit Devices

### IDC LR100 Series

#### Latch Retraction - For 8000 Series Exit Device

- Simultaneous Latch Retraction & Dogging
- Field Retrofit
- UL Listed When IDC Factory Installed
- 450 mA Inrush, 180 mA Continuous
- Compatible other Manufactures Exit Devices Von Duprin 98/99 Series, 33/32 Series, 22 Series and other manufacture devices



#### Available for these brands:

- |                  |             |                 |
|------------------|-------------|-----------------|
| • IDC            | • TownSteel | • Marshall Best |
| • Von Duprin     | • Arrow     | • Sargent       |
| • Yale           | • PHI       | • SDC           |
| • Corbin Russwin | • Falcon    | • Tell          |
| • Dor-O-Matic    | • Cal-Royal | • Detex         |
| • Hager          | • PDQ       | • Dorma         |
| • Adams Rite     | • Falcon IR | • Jackson       |
| • Stanley K2     |             |                 |

\* Contact our office to verify models available for electrification.

## MODERN • FLAT TOUCH BARS



### Series 7100-G1 Grade 1 Concealed Vertical Rod



- Meet the Life and Fire Safety Codes as prescribed by UL and Underwriters' Laboratories Inc. Listed - Panic Hardware
- For use with narrow, medium and wide stile Aluminum doors
- Non-handed, Field Reversible for LHRB or RHRB doors
- Outside Unlatching and Dogging by Cylinder Key or Dogging by Hex Key in Touch Bar
- Top Steel Toggle Latch and Bottom Steel Rod Latch Bolt
- Units use Standard Mortise Cylinder with MS Type Cam and MP-6182 Cylinder Mounting Pad
- Standard Units for 36" and 48" door widths (cut bar to fit) and up to 84" in height
- Can be used on 30" wide doors
- Finishes Available:
  - AL - ALUMINUM - Anodized extruded Aluminum with Baked Aluminum Painted Cover Caps
  - DU - STOREFRONT BRONZE - Bronze Anodized extruded Aluminum with Baked Storefront Bronze Painted Cover Caps



### Series 7300-G1 Grade 1 Rim Panic



- Meet the Life and Fire Safety Codes as prescribed by UL and Underwriters' Laboratories Inc. Listed - Panic Hardware
- For use with narrow, medium and wide stile Aluminum doors, Hollow Metal or Wood Doors
- Non-handed, for LHRB or RHRB doors
- Latch Bolt throw 5/8"
- Dogging by Hex Key in Touch Bar
- Outside Unlatching with standard Rim Cylinder
- Standard Units for 36" and 48" door widths (cut bar to fit)
- Can be used on 30" wide doors
  - AL - ALUMINUM - Anodized extruded Aluminum with Baked Aluminum Painted Cover Caps
  - DU - STOREFRONT BRONZE - Bronze Anodized extruded Aluminum with Baked Storefront Bronze Painted Cover Caps



## NON-LATCHING SWITCH BAR



### MSB550 Mechanical Switch Bar



MADE IN THE USA  
UL Listed  
Burglary Resistant

IDC's MSB550 is designed to release electromagnetic door locks for uninhibited egress. When slight pressure is applied a micro-switch is actuated, immediately releasing the electromagnetic door lock.

- The MSB550 has a maximum movement of only .125" (3.2 mm). Trigger activation to release the electromagnetic lock is quick and quiet.
- Standard Length for 36" Door
- PT-2U Power Transfer included
- Finishes:
  - V 628 Aluminum anodized (standard)
  - S 629 Bright stainless steel
  - U 630 Brushed stainless steel
  - C 605 Bright brass
  - Y 335 Black anodized

### Sure Exit® PSB560 REX Pressure Sense Bar



Tri-Failsafe. A third redundant micro switch is automatically activated to release the door if both sensors or the electronics fail. This automatic emergency release switch does not require prior knowledge to find or use. Door operation will continue without the inconvenience of emergency service. The IDC Sure Exit® is the only tri-failsafe exit bar providing unequalled safety and reliability.

- Human Touch Not Required. Unlike touch sensors, activation may be accomplished while wearing heavy gloves, by the hip through a coat, or using a briefcase. Superior egress safety is provided for frail, disabled or wheelchair confined persons unable to touch the bar and is easily activated by a cane or bump from a walker or wheelchair.
- Finishes:
  - V 628 Aluminum anodized (standard)
  - S 629 Bright stainless steel
  - U 630 Brushed stainless steel
  - C 605 Bright brass
  - Y 335 Black anodized







# LEVERS

## Model 55k & 53k Series

### Round Rose Levers



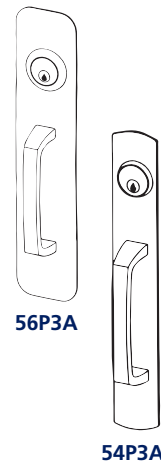
- Non-handed, easily installed with exit device.
- Easy operating lever handle allows convenient one hand operation.
- Available finishes: US28(689) and US20A(690).
- Trim has two through-bolts to the device chassis directly for more security and durability.
- The actuating shaft of this trim is made of hardened steel bar, it fits 1 3/4" (44mm) doors standard for 2" (51mm), 2 1/4" (57mm) thick door or the shim-mounted exit device, specify the door thickness when ordering.
- Clutch freewheeling design. The lever rotates when the door is locked preventing excessive force from being applied to the horizontal lever.
- Rose Trim is made of steel or stainless steel, lever handle is made of zinc alloy.
- When need to meet key requirement, the trims may receive cylinders from other manufactures.
- Cylinder is not furnished standard. Specify cylinder type (RC-Regular Cylinder, IDC - Interchangeable Core, NC - No Cylinder) when the cylinder is required.
- 55k Series trims can fit and cover cutout of 1 3/4" steel doors prep for bored locks with lever handles (per ANSI/BHMA A156.115).

Key Locks & Unlocks Lever	Key Retracts Latch Bolt	Lever Always Active (No Cylinder)	Pull when Dogged
			
Classroom	Storeroom Night Latch	Passage	Dummy

## Model 56P & 54P Series





### Standard Pull Plates

Trim Designation	Cylinder Pull Plate (with cylinder)	Dummy Pull Plate (without cylinder)	Flat Plate (without cylinder & grip)
Function	Night Latch	Dummy	N/A



## 58L Series Escutcheon Levers

### Outside Trim

Device Head Cover	Key Locks & Unlocks Lever	Lever Always Active (No Cylinder)	Key Retracts Latch Bolt	Pull when Dogged
(Dummy trim is not recommended for fire device)				
Function	Classroom	Passage	Night Latch	Dummy



## LEVERS

### Optional Lever Design



**58L01A**  
#01 Lever



**58L05A**  
#05 Lever



**58L17A**  
#17 Lever



**58L31A**  
#31 Lever



#### 531 Strike Shim

Furnished with 532 Strike together made of steel and is plated. This shim is 1/8" thick and is used to prepare doors with a 1/2" stop. This will correct the distance between the device latch and the surface. If the frame has a 5/8" stop a shim is not needed.

#### 532 Panic Rim Strike

Surface applied standard on 5000 Series panic rim exit devices. Stainless Steel with a plated roller.

#### 533 Fire Rim Strike

Surface applied. Standard on 5000 Series fire rim devices. It is 100% stainless steel including a roller.



#### 534 Top Strike

Applied to surface of stop. Hardened steel and plated.

#### 537 Bottom Strike

Applied to surface of floor. Nonferrous alloy and plated.

### Cylinder Selection

The cylinder has two types as shown below.



**Mortis Cylinder**  
526



**Rim Cylinder**  
426

### 84P & 85P Series Escutcheon Levers (Square Design)

#### For Narrow Stile Exit Device Use

- Non-handed, easily installed with exit device.
- Available finishes: US32D and US10B.
- Trim has through-bolts to the device chassis for more security and durability. This product fits 1-3/4" (44mm) doors standard. For 2" (51mm) or 2-1/4" (57mm) thick door or the shim-mounted exit device, specify the door thickness when ordering.
- The 86E Series trims, which are used for mortise lock exit devices only, are not available to be ordered individually. When ordering any one trim it must be packed together with a mortise lock exit device.

### 86P, 86E, 87P & 87E Series Escutcheon Levers

#### For Wide Stile Exit Device Use

- Non-handed, easily installed with exit device.
- Available finishes: US32D and US10B.
- Trim has through-bolts to the device chassis for more security and durability. This product fits 1-3/4" (44mm) doors standard. For 2" (51mm) or 2-1/4" (57mm) thick door or the shim-mounted exit device, specify the door thickness when ordering.
- Cylinder is not furnished standard. Specify cylinder type (RC-Regular Cylinder, IDC- Interchangeable Core, NC-No Cylinder) when a cylinder is required.

When there is a key requirement, the trims may receive cylinders from other manufacturers.

Cylinder is not furnished standard. Specify cylinder type (RC-Regular Cylinder, NC-No Cylinder) when the cylinder is required.

The 87E Series trims that are used for mortise lock exit devices, are not available to be ordered individually. When ordering any one trim, it must be packed together with a mortise lock exit device.

## LEVERS

Key Locks & Unlocks Lever	Lever Always Active (No Cylinder)	Key Retracts Latch Bolt (Rigid Lever)	Pull when Dogged (Rigid Lever)
			
			
Classroom	Passage	Night Latch	Dummy

### 86P, 86E, 87P & 87E Series Escutcheon Levers

#### For Wide Stile Exit Device Use

- Non-handed, easily installed with exit device.
- Available finishes: US32D and US10B.
- Trim has through-bolts to the device chassis for more security and durability. This product fits 1-3/4" (44mm) doors standard. For 2" (51mm) or 2-1/4" (57mm) thick door or the shim-mounted exit device, specify the door thickness when ordering.
- Cylinder is not furnished standard. Specify cylinder type (RC-Regular Cylinder, IDC- Interchangeable Core, NC-No Cylinder) when a cylinder is required.



**88L 01A**  
#01 Lever

**88L 05A**  
#05 Lever

**88L 17A**  
#17 Lever

### 88L, 88E, 89L & 89E Series Escutcheon Levers

- Non handed, easily installed with exit device.
- Available finishes: US32D and US10B
- Trim has 4 through-bolts to the device chassis directly for better security and durability. It fits 1-3/4" (44) door standard. For 2" (51mm), 2-1/4" (57mm) thick door or the shim-mounted exit device, specify the door thickness when ordering.
- 88L Series Escutcheons are forged bronze and the levers are zinc alloy castings.
- The 88L & 88E Series trim has a Anti-Vandalism design prevents the lock from being damaged when a key locks the lever.
- The 88E & 89E Series trim has a clutch freewheeling design. The lever rotates when the door is locked, preventing excessive force from being applied to the horizontal lever.
- The 88E or 89E Series trims, which are used for mortise lock exit devices only, are not available to be ordered individually. Any one trim must be packed together with a mortise lock exit device when ordered.

## 52R Series Raised-Lip Type Pull Plates

### Outside Trim

- Cylinder is not furnished standard. When need to meet key requirements, the trims may receive cylinders from other manufacturers.
- Specify cylinder type (RC - Regular Cylinder, IC - Interchangeable Core, NC - No cylinder) when the cylinder is required.
- The face plates of these trims are made of steel or stainless steel, lever handles are made of zinc alloy.
- **52R & 56P** Series trims can retrofit 1 3/4" steel doors prepped for bored locks (per ANSI A115.2).
- **54P & 56P** Series trims furnish mounting through-bolts, 52R Series trim furnishes sex nuts and bolts (SNB).
- Supply US32D and US10B.
- To Order: Specify model numbers, cylinder type, finish code and add door thickness if the door is thicker than 1 3/4". For example: 52R2A-RC-630



Trim Designation	Cylinder RL Type Pull Plate	Blank RL Type Pull Plate	Flate Plate (No Lips)
Function	Night Latch	Dummy	N/A

## 7100 Non-Fired Rated Keyed Removable Mullion

## 7200 Fired Rated Keyed Removable Mullion

### For use with Panic-Rated Rim Exit Devices on non-fire rated pairs of doors

- The IDC 7000 Series Keyed Removable Mullions are for use with the 5000 Series Rim Exit devices on non-fire or fire rated pairs of doors.

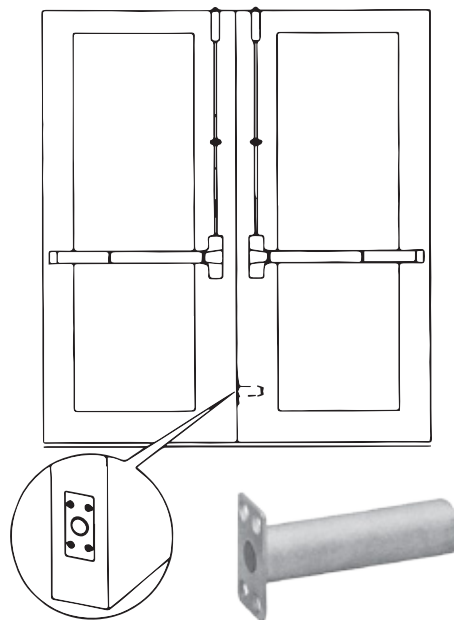
## ACCESSORIES

### Fire Latch Bolt

#### Model Floor

Fire latch bolt is used with a pair of UL listed fire rated LBR exit devices, it includes a spring and stainless steel bolt which installs in the lower door edge inside to replace the bottom vertical rods of two SVR exit devices on a double door. This UL listed fire latch bolt is a temperature-actuated bolt that is designed to release from one door leaf and engage the other door when the temperature exceeds the rating of the fusible link during a fire. When the fire latch bolt releases and connects with the opposite door leaf, it keeps the doors in alignment and closed during a fire.

- UL listed, furnished with LBR device
- Faceplate: 1-25/32" x 1" (45mm x25.6
- Bolt diameter: 27/32" (21.6mm)
- Length of Latch Bolt: 3-5/32" (80mm)
- Material: 100% stainless steel
- **Cylinders are not furnished with device or trim and must be specified when required.**



## LOCKSETS

### 3000 Series

*Five Year Warranty*

#### Grade 2 Cylindrical Lock

- Non-clutched mechanism
- 3000L (Lever)
- 3000K (Knob)
- Heavy duty lever spring return rose assembly
- Bidirectional lever operation, non-handed
- Finishes: 626 Satin Chrome and 613 Oil Rubbed Bronze

### 4000 Series

#### Grade 2 Cylindrical Lock

- Free wheeling clutch mechanism
- Heavy duty lever spring return rose assembly
- Bidirectional lever operation, non-handed
- Convertible posts
- Solid brass latch bolt, Schlage c pin keyway cylinder
- Finishes: 626 Satin Chrome and 613 Oil Rubbed Bronze

### 5000 Series

#### Grade 1 Cylindrical Lock

IDC locksets are designed for commercial, industrial and institutional use, where dependable operation and longevity is required along with high resistance to vandalism and abuse. Applications include office buildings, government centers, factories, schools and hospitals and more.

Internal clutch provides vandal resistance by permitting lever rotation without retracting latch when locked.

Independent heavy duty springs provide effective lever return and support.

- Strong stable design with anti-twisting capacity, dependable operation and longevity
- Internal clutch provides vandal resistance by permitting lever rotation without retracting latch when locked.
- All M7200 series locksets are non-handed
- 2-3/4" backset standard. 2-3/8" (60mm) backset or 5" (127mm) backset extension optional
- Brass, bronze or stainless steel faceplate. 1-1/8" x 2-1/4" (29mm x 57mm) square corner, beveled.
- Heavy gauge steel chassis, corrosion resistant zinc dichromate
- Stainless steel latch bolt and roller retractor, (13.7lbs) throw, deadlocking on keyed and exterior functions. The retractor is equipped with a roller to enhance reliability and long life.
- Finishes: 626 Satin Chrome and 613 Oil Rubbed Bronze

#### Grade 2 Cylindrical Locks

- Meets Fire Code (California State Reference Code)
- UL and CUL Listed



3000K



3000L



4000L

#### Grade 1 Cylindrical Locks



5000L

#### Lever Trim



## LOCKSETS

### M7800

#### Grade 1 Mortise Lockset

IDC Heavy Duty Mortise Locks comply with American National Standard Institute requirement ANSI/ BHMA 156.13 Grade 1. All our locks are field reversible and require only simple steps for changing the hand of lock for easy installation.

- Reversible without disassembly
- May retrofit other brand lock sets (consult factory)
- Clutch for vandal resistance
- Finishes: US26D (626) Dull Chrome and US32D (630) Dull Stainless (upon availability)



#### Grade 1 Mortise Lockset

## DEADBOLTS

### 40DB Series

#### Grade 1 Heavy-Duty Deadbolts

- 2-1/2" dia solid steel one-piece design security ring insert. exceeds ANSI Grade 1 security against hammer and crowbar prying attacks.
- 1" (25mm) deadbolt with hardened steel core exceeds ANSI Grade 1 Security against kick-in and saw attacks.
- High precision pick resistant solid brass 6 pin tumbler plug "C". Brass key Meets ANSI Grade 1 Security to prevent key cylinder from being knocked out.
- Drive in deadbolt - Designed to be installed on metal door conveniently. Only one hole is needed on door edge.
- ADA Ergonomic thumb turn.
- Extra thick steel mounting plate
- Sturdy, all steel latch case and mechanism.

### 07700 Series

#### Grade 3 Heavy-Duty Deadbolts

- Fixed backset 1" (25mm) deadbolt with hardened steel core exceeds ANSI Grade 2 Security against kick-in and saw attacks.
- 2 dia taped cylinder guard and metal insert, turns free with any removal attempt.
- High precision pick-resistant solid metal tumbler plug. 5 or 6 pin available. Brass key nickel plated. "C", Kwikset keyway available.
- Drive in deadbolt - Designed to be installed on metal door conveniently. Only one hole is needed on door edge.
- ADA Ergonomic thumb turn.
- Brass bolt nickel plated
- Zinc mounting plate.
- Sturdy, steel latch case.
- Adapter for 2-1/8" hole.

A Heavy Duty commercial quality deadbolt that provides a maximum deterrent to forced entry. The cylinder recesses into the door to resist blows attempting to move the lock.

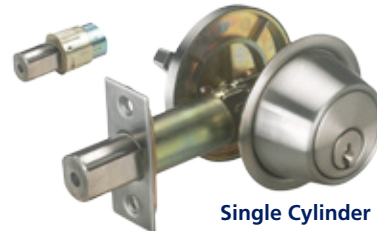


40DBKT56

Drive in Deadbolt



Inside Rose Assembly



Single Cylinder



Double Cylinder

## THUMBTURN DEADBOLTS

### 077650 Series

#### Grade 1 Thumbturn Deadbolts

- 1" (25mm) deadbolt with hardened steel core exceeds ANSI Grade 1 Security against kick-in and saw attacks. ADA Ergonomic thumb turn.
- ADA Ergonomic thumb turn.
- 2-13/16" dia SUS304 rose
- 2mm thick steel mounting plate.
- Sturdy, all steel latch case and mechanism.
- "VACANT" in its window with latchbolt retracted



Inside Rose Assembly  
Style Available

A Heavy Duty commercial quality deadbolt that provides a positive deterrent to forced entry.



## INTERCONNECTED LOCK

### LD 4400 Series

#### Grade 2 Interconnected Lock

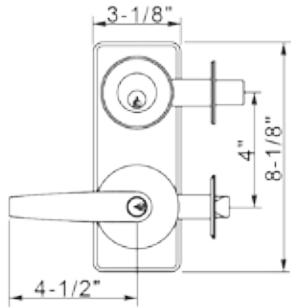
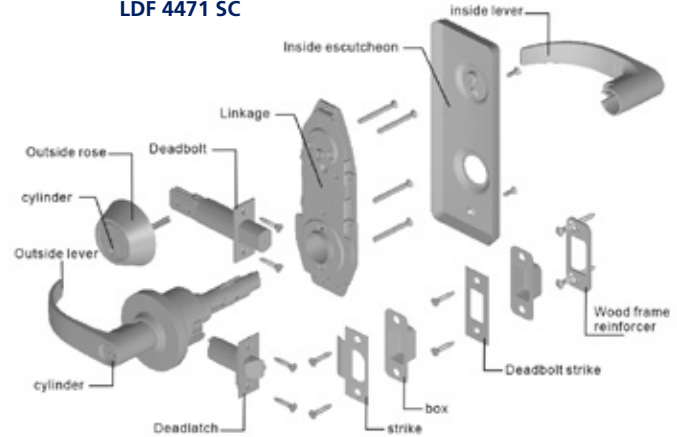
- Solid steel ring insert ANSI Grade 2 Security against hammer and crowbar prying attacks. High precision pick resistant solid brass 6 pin tumbler plug "C". Brass key
- Reinforced 7/8 dia, 1" throw brass / zinc deadbolt with hardened steel core 5/64" thick face plate ANSI Grade 2 Security against kick-in and saw attacks. Strong enough!
- Sturdy, all steel latch case and mechanism.
- 3 Dia. brass rose. Individual spring on rose plate to prevent lever sag.
- UL 3 Hour Rated 1/2" Throw deadlatch completely reversible for flat and beveled doors. Stainless steel latch bolt and faceplate.
- ADA Ergonomic thumb turn.
- Inside escutcheon Housing and linkage
- Plated stainless steel escutcheon
- Solid metal construction Full length lever For easy operation
- Multi-finishes for choice 6 style levers for choice

Meets ADA requirements. Specially designed for Barrier Free Application Conforms with ANSI A156.12 Series LD 4400, Grade 2. Exceeds 400,000 cycles..



#### Interconnected Lock

##### LDF 4471 SC



**LDF 4471**  
Entrance, Double Locking

**LDF 4473**  
Entrance, Single Locking

**LDF 4474**  
Storeroom Lock

**LDF 4475**  
Single Dummy Trim

## MORTISE LOCKSETS

### M7800

#### Grade 1 Mortise Lockset

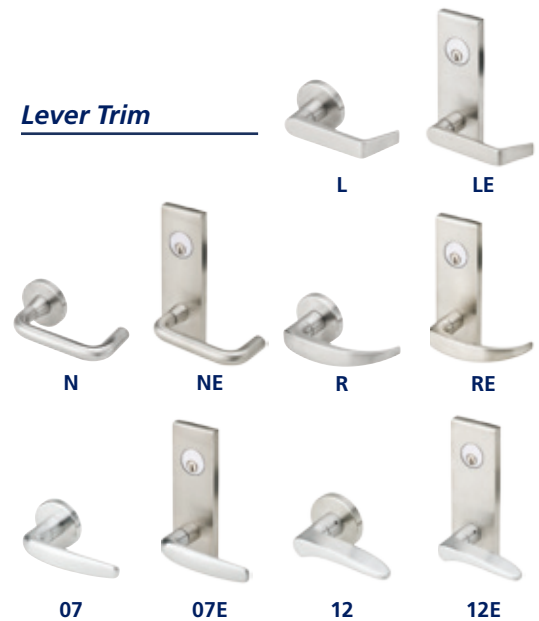
IDC Heavy Duty Mortise Locks comply with American National Standard Institute requirement ANSI/ BHMA 156.13 Grade 1. All our locks are field reversible and require only simple steps for changing the hand of lock for easy installation.

- Reversible without disassembly
- May retrofit other brand lock sets (consult factory)
- Clutch for vandal resistance
- Finishes: US26D (626) Dull Chrome and US32D (630) Dull Stainless (upon availability)



#### Grade 1 Mortise Lockset

#### Lever Trim



## STANDALONE ELECTRONIC LOCKSETS

### HL-4000 Series

#### Grade 2 Cylindrical Lock

- Keypad Programmable
- 3,000 Users, 32 Temporary Users
- 4 to 6 Digit PIN Codes
- 3 Passage Mode Option
- 32 Access Groups, Schedules
- 32 Holidays
- 4 Authority Levels
- Keypad Tamper Lockout
- Mechanical Key Override
- Battery Powered (4AA)
- Blue Backlit Cast Metal Keys
- Weather & Vandal Resistant
- Retrofit Existing Lock Door Prep
- Motorized IDC Cylindrical Lockset
- Heavy Duty ANSI Grade 1
- Vandal Resistant Lever Handles

The IDC E75 EntryCheck® is an indoor/outdoor standalone electronic battery powered solution, providing controlled access for basic and multi-level high security requirements. The E75 lockset is keypad programmable, and combines multiple Access technology with efficient motorized locksets. E75 series can be retrofitted to existing prep for cylindrical locks.



E75K



E75P

## DEADLOCKS & DEADLATCHES

### DT-1850

#### "Long Throw" Deadlock

- 1 Cylinder backset available: 31/32", 1-1/8" and 1-1/2"
- Bolt 1-3/8" throw, made of 5 ply laminated steel with a hardened roller pin in a case hardened ply for maximum security.
- Lock accepts standard 1-5/32" Mortise Key or Thumbturn
- Cylinders with AR MS-Type cam



DT-1850

### DH-1820-H "Hook Bolt" Deadlock

#### DH-1820-S "Short Throw" Deadlock

- **DH-1820-H** Deadlock Cylinder backset available: 31/32", 1-1/8" and 1-1/2"
- **DH-1820-S** Deadlock Cylinder backset available: 1-1/8"
- Bolt 13/16" throw, made of 5 ply laminated steel with a hardened roller pin in a case hardened center ply for maximum security.
- Lock accepts standard 1-5/32" Mortise Key or Thumbturn Cylinders with AR MS-Type cam



DH-1820-S

DH-1820-H

### DL-4510

#### Deadlatch Lock

- Cylinder backset available: 31/32" and 1-1/8"
- Field reversible for opposite hand
- Key controlled dogging
- Latchbolt 1/2" throw, Chrome plate with Delrin insert for smooth, quiet latching
- Lock accepts standard 1-5/32" Mortise Key or Thumbturn Cylinders with AR MS-Type cam
- SS - 4510 Strike included, US 26D



DL-4510

## FACEPLATES

### Faceplates 1"x 6-7/8"

#### Finishes Available:

- AL - Anodized Satin Aluminum
- BK - Anodized Black
- DU - Anodized Bronze





## CYLINDERS

### Finishes Available:

- AL - Baked Satin Aluminum Paint
- BK - Baked Black Paint
- DU - Anodized Bronze

### CZ-1001 (Zinc)

#### Mortise Key Cylinder

- 1" Length 5 pin Cylinder 1-5/32" diameter
- AR MS-Type cam
- Keyway available: Schlage "C", Yale "8"
- Core face and Key US 26D
- Cylinder ring 3/16" standard, 5/32" and 7/32" optional



### TZ-3001 (Zinc)

#### Mortise Thumbturn Cylinder

- 1" Length Cylinder 1-5/32" diameter
- AR MS-Type cam
- Thumbturn US 26D
- Cylinder ring 3/16" standard, 5/32" and 7/32" optional



### DC-2001 (Zinc)

#### Mortise Dummy Cylinder

- 7/8" Length Cylinder 1-5/32" diameter
- No Key or cam
- Cylinder ring 3/16" standard, 5/32" and 7/32" optional



### CG-4043

#### Cylinder Guard

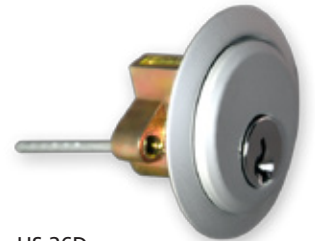
- Hardened steel security ring
- Free-spinning beveled collar
- For standard face 5 pin Mortise key cylinder
- For use on Aluminum Doors
- Furnished with retaining clip and two spacers



### RZ-1003 (Zinc)

#### Rim Cylinder

- 5 pin Cylinder
- Core face and Key US 26D
- Schlage "C" Keyway
- Low profile Cylinder ring and adapter plate standard
- 1-7/8" Break-away screws and 1-1/4" Break-away
- Spindle standard
- Finishes Available:
  - AL - Baked Satin Aluminum Paint
  - BK - Baked Black Paint
  - DU - Anodized Bronze



### LI-4089

#### Lock Indicator Set

- Hardened steel security ring
- Free-spinning beveled collar
- For standard face 5 pin Mortise key cylinder
- For use on Aluminum Doors
- Furnished with retaining clip and two spacers



## Roller Latches Stainless Steel

IDC Roller Latches are easily adjustable for roller projection for proper contact between roller and frame strike. Adjustment is made with 2 screws on the face of the roller latch body. Maximum roller projection is 5/16". The nylon roller provides durability and quiet operation. All units are stainless steel construction. Meets ANSI/BHMA A156.16, E19091. Available in most architectural finishes. Custom strikes available.

### 1890

- Cast full lip strike 1-11/16" wide x 2-1/4"
- Latch face 1" x 3-3/8"
- Fasteners
  - Body (2) #10 x 3/4" FH SMS
  - Strike (2) #8 x 3/4" FH SMS



### 1890S

- Custom Strike for double acting doors
- Latch face 1" x 3-3/8"
- Fasteners
  - Body (2) #10 x 3/4" FH SMS
  - Strike #8 x 3/4" FH SMS (Quantity determined by width)



### 1891

- ASA Strike 1-1/8" wide x 4-3/4"
- Latch face 1" x 3-3/8"
- Fasteners
  - Body (2) #10 x 3/4" FH SMS
  - Strike (2) #12-24 x 3/8" FH MS



### 1892

- T Strike 1-1/8" wide x 2-3/4"
- Latch face 1" x 3-3/8"
- Fasteners
  - Body (2) #10 x 3/4" FH SMS
  - Strike (2) #10 x 3/4" FH SMS



### 1893

- With integrated angle stop
- Mounts in header with strike at top of door
- Cast strike 1-1/8" wide x 2-1/4"
- Latch face 1-1/2" x 4-1/2"
- Fasteners
  - Body (2) #10 x 3/4" FH SMS
  - Strike (2) #10 x 3/4" FH SMS



### 1894

- Extended cast strike 2-1/8" wide x 2-1/4"
- Latch face 1" x 3-3/8"
- Fasteners
  - Body (2) #10 x 3/4" FH SMS
  - Strike (2) #10 x 3/4" FH SMS



### 1895

- Roller projection can be adjusted by turning the knurled knob at the back of the latch
- Maximum roller projection 1/2" to compensate for different door clearances
- Uses standard heavy duty cylindrical lock cut-out
- Standard strike 1-1/8" wide x 2-3/4"
- Body 1-1/8" wide x 2-1/4"
- For roller latch with ASA strike order 1896 (1-1/4" wide x 4-7/8")
- Fasteners
  - Body (2) #8 x 3/4" FH SMS
  - Strike (2) #10 x 3/4" FH SMS
  - ASA Strike #12-24 x 3/4 FH SMS



## SWINGING DOOR HARDWARE

### PH-4520

#### Paddle Handle

- For use with DL-4510 type Latch Lock
- "Push" or "Pull" Paddle Handle
- Field reversible for opposite hand with PUSH and PULL Plates included
- Cam Plug, field reversible, included
- Extruded Aluminum Handle
- Finishes Available:
  - AL - Handle anodized Satin Aluminum Housing baked Satin Aluminum paint
  - DU - Handle anodized Storefront Bronze Housing baked Storefront Bronze paint



### HL-4560

#### Lever Handle

- For use with DL-4510 type Latch Lock
- Cam Plug. Field reversible.
- Finishes Available:
  - AL - Baked Satin Aluminum
  - BK - Baked Black Paint
  - DU - Baked Storefront Bronze Paint
- Specify: Hand if per-handing required Finish



### CP-4560

#### Cam Plug

- For use with HL-4560 Lever Handle and PH-4520 Paddle Handle
- Non-handed, field reversible
- Specify: Model Number and Finish



## PIVOT SETS



IP-1901 Left

IP-1902 Right



IP-2201 Left

IP-2202 Right

### IP-1900 & 2200

#### Intermediate Pivot Set

- 3/4" Offset for use with Aluminum Doors and Frames
- Full race ball bearing backed by an oilite bronze bushing in the door portion
- Case hardened pin in jamb portion fully retractable for ease of installation
- Easy vertical adjustment
- Precision Aluminum die cast
- For doors up to 125lbs. 3/4" Offset for use with Aluminum Doors and Frames
- Full race ball bearing backed by an oilite bronze bushing in the door portion
- Case hardened pin in jamb portion fully retractable for ease of installation
- Easy vertical adjustment
- Precision Aluminum die cast
- For doors up to 125lbs.
- Finishes Available:
  - AL - Baked Satin Aluminum Paint
  - BK- Baked Black Paint
  - DU- Baked Storefront Bronze Paint

### OP-7000

#### Offset Pivot Set (Kawneer Type)

- A380 Precision die cast aluminum
- Oilite bronze bushing in top frame portion
- Full race ball bearing in bottom door portions
- Door height adjustable by bottom door portion
- Case hardened stud in floor/jamb portion
- Includes steel reinforcement plates for the door portions
- Finishes Available:
  - AL - Baked Satin Aluminum Paint
  - BK- Baked Black Paint
  - DU- Baked Storefront Bronze Paint

#### 50-321

- Top Frame Pivot Portion (includes fasteners)

#### 50-320

- Top Door Pivot Portion (includes fasteners)

#### 50-321

- Bottom Door Pivot Portion (includes fasteners)

#### 50-320

- Floor/Jamb Pivot Portion (includes fasteners)



## PIVOT SETS

### Series 2000, 3000, 4000, 5000, 6000, 7000

#### Offset Pivot Set

- 3/4" Offset for use with Aluminum Doors and Frames
- Full race ball bearing in bottom door portion
- 1/8" vertical adjustment
- For doors up to 125 lbs.
- Finishes Available:
  - AL - Baked Satin Aluminum Paint
  - BK - Baked Black Paint
  - DU - Baked Storefront Bronze Paint



Series 2000

#### Series 2000

- OP-2700: Flush Door
- OP-2700: 1/8" Recessed Door

#### Series 3000

- OP-3001: Left Flush Door
- OP-3002: Right Flush Door
- OP-3101: Left 1/8" Recessed Door
- OP-3102: Right 1/8" Recessed Door



Series 3000

#### Series 4000

- OP-4001: Left Flush Door
- OP-4002: Right Flush Door

#### Series 5000

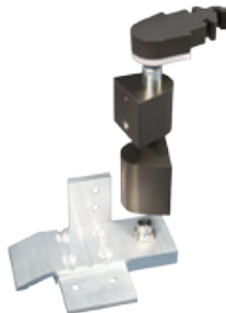
- OP-5001: Left 1/8" Recessed Door
- OP-5002: Right 1/8" Recessed Door

#### Series 6000

- OP-6001: Left 7/64" Recessed Door
- OP-6002: Right 7/64" Recessed Door

#### Series 7000

- OP-7001: Left 1/8" Recessed Door
- OP-7002: Right 1/8" Recessed Door



Series 5000



Series 6000



Series 4000



Series 7000

## CENTER HUNG PIVOTS

### Series 400

- 3/4" Offset for use with Aluminum Doors and Frames
- Finishes Available:
  - AL - Baked Satin Aluminum Paint
  - BK - Baked Black Paint
  - DU - Baked Storefront Bronze Paint

#### 400-PF

##### Top Pivot Frame Portion

- 400-PF: mounting holes drilled & tapped
- 400-PF1: mounting holes drilled & countersunk

#### 400-PC

##### Dress Plate Frame Portion

- For use with 400-PF1 only

#### 400-PD

##### Top Pivot Door Portion



400-PF



400-PC



400-PD

### Stainless Steel

#### Center Hung Pivots



Pivot sets include top and bottom pivots. All center hung pivot sets are non-handed and double acting. Intermediate pivots are not used. Center hung pivots are not allowed with labeled doors. Door must be reduced on pivot edge. All sets are available in standard architectural finishes.

#### 0127

- For interior door up to 3'6" x 8'6"
- Weight to 200 lbs.
- 0320 light duty top pivot included
- Bottom pivot mortised into side jamb
- Extended spindles available
- Can be used with IDC Rescue Stops
- BHMA/ANSI C07042



#### 0128

- For interior doors up to 3'6" x 8'6"
- Weight to 250 lbs.
- 0320 light duty top pivot included
- Bottom pivots mounted to floor
- Extended spindles available
- Can be used with IDC Rescue Stops
- BHMA/ANSI C07032/3530 (modified)



#### 307

- For interior doors or exterior doors up to 4'0" x 8'6"
- Weight to 500 lbs.
- 0340 top pivot inc included
- E0340 electrified top pivot available
- Bottom pivot mounted to floor
- Extended spindles available
- BHMA/ANSI C07032



## OFFSET PIVOTS

### Stainless Steel Offset Pivot Sets



Pivot sets include top and bottom pivots. Offset pivot sets are handed and require an intermediate pivot to accommodate the door weights listed for each set. Door edges must be beveled 1/8" in 2". All sets are available in standard architectural finishes.

- 3/4" offset
- US32D models listed for use on 3 hour fire doors
- BHMA/ANSI C07162/3530A (modified)

#### 0117

- For interior doors up to 4'0" x 8'0"
- Weight to 300 lbs.
- Bottom pivot mortised into floor
- L0180 top pivot included
- L019 intermediate pivot required
- Extended spindles available



#### 0147

- For interior doors up to 4'0" x 8'6"
- For exterior doors up to 3'6" x 7'0"
- Weight to 600 lbs.
- L0180 top pivot included
- L019 intermediate pivot required
- Bottom pivot mounted to floor
- Extended spindles available



#### L0147

- 1-3/4" lead lined doors
- For interior doors up to 4'0" x 8'0"
- Weight to 1000 lbs.
- L0180 top pivot included
- L019 intermediate pivot required
- Bottom pivot mounted to floor



#### 0147 x 1 1/2

- 1 1/2" offset
- For interior doors up to 3'6"
- For exterior doors up to 3'0"
- Weight to 350 lbs.
- 0180 x 1 1/2" top pivot included
- Bottom pivot mounted to the floor
- Doors edges must be beveled 1/8" in 2"
- Extended spindles available



#### 0195

- For interior or exterior doors up to 4'0" x 8'0"
- Weight to 450 lbs.
- 0180 top pivot included
- 019 intermediate pivot required
- Bottom pivot mortised into side jamb
- 3/16" vertical arm adjustment after installation



## INTERMEDIATE PIVOTS

### Stainless Steel Intermediate Pivots Sets



Intermediate pivots are used to keep doors in alignment. All intermediate pivots are offset hung and cannot be used on center hung doors. Per NFPA 80, fire doors are to have an intermediate pivot for additional support at 30" or fraction thereof for door heights over 6'. Available in most architectural finishes.

#### 019

- 3/4" offset, handed
- Full mortise
- Needle bearing supplied standard. Can be used on heavy duty doors
- US32D models listed for use on labeled doors
- BHMA/ANSI C07321/3525



#### 019 x 1 1/2

- 1-1/2" offset, handed
- Full mortise
- Needle bearing supplied standard can be used on heavy duty doors
- US32D models listed for use on labeled doors
- BHMA/ANSI C07321



#### L019

- For 1-3/4" lead lined doors
- 3/4" offset, handed
- Full mortise
- Needle bearing supplied standard
- US32D models listed for use on labeled doors
- BHMA/ANSI C07311



#### E019

- For Power Transfer
- 3/4" offset, handed
- Full Mortise
- Can be used on heavy duty doors
- US32D models listed for use on labeled door
- (8) 28ga. wires supplied standard\*
- Door and jamb portions are factory assembled



\*Pivot cannot be separated for installation

## TOP PIVOTS

### Stainless Steel Top Pivots

#### 0180

- 3/4" offset
- Standard Duty



#### 0180-1.5

- 1 1/2" offset
- Standard Duty



#### L0180

- 1-3/4" lead lined door
- Heavy Duty
- 3/4" offset top pivot
- Non-handed, full mortise
- Needle bearing supplied standard.
- US32D models UL listed for use on 3 hour doors.



#### L0180

- Center Hung
- Medium Duty



#### E0320

- Center Hung
- Standard Duty
- Electrified



#### 0321

- Center Hung
- Light Duty



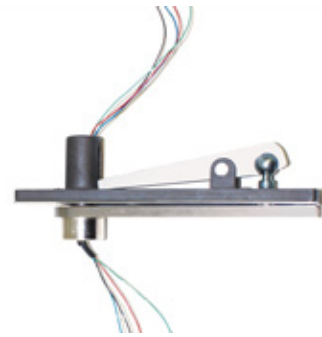
#### 0340

- Center Hung
- Heavy Duty



#### E0340

- Center Hung
- Heavy Duty
- Electrified
- Top Pivot



#### 0923

- Full Surface
- Reinforcing Pivot



## POCKET PIVOTS

### Stainless Steel Top Pivots

#### 0519

- Pocket Door Pivot



#### E0519

- Pocket Pivot
- Electrified



## CONTINUOUS STAINLESS STEEL HINGES

IDC Stainless Steel Hinges are made of 304 Stainless Steel. Continuous Stainless Steel Hinges run the entire length of the door eliminating any gaps between the door and the frame, providing high security and also distributing the weight of the door evenly through the opening. Continuous Stainless Steel Hinges are ideal for highly abusive & corrosive applications such as hospitals, water treatment plants, swimming pools, and salt spray applications are utilized.

- Heavy-Duty 14 Gauge 304 Stainless Steel.
- US32D Satin Stainless Steel
- Self drilling screws
- Supports door weights up to 600 lbs.
- 4'-0" Maximum door width
- Nominal Sizes 7', 8' & 10' are Non-handed
- 6'8" & 7'2" are handed hinges
- 1/4" diameter stainless steel pin

UL fire rated:

- Hollow Metal doors - 3 Hours
- Hollow Metal & Composite wood fire - 90 Min
- Wood doors - 20 Min



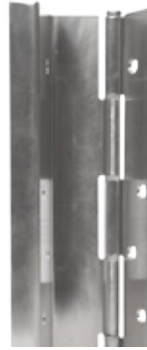
**IDCA500 Full Concealed Edge Mount**



**IDCA503 Half Surface**



**IDCA502 Full Surface Flush Mount**



**IDCA511 Full Concealed Swing Clear With Edge Guard**



**IDCA515 Full Concealed With Edge Guard**



**IDCA506 Half Surface With Edge Guard**



**IDCA504 Surface Mounted**



**IDCA505 Full Concealed Edge Guard**

## CONTINUOUS GEAR HINGES

### Aluminum Gear Hinges

#### Heavy Duty

- Any Door Material
- Heavy Duty for high frequency 1 3/4" doors or heavy medium frequency doors up to 450lbs.

#### Concealed/Mortise Leaf Hinges

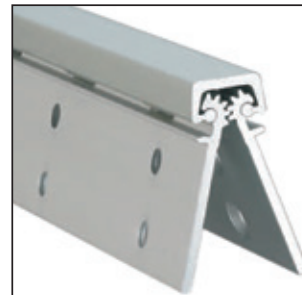
- 117FM & 217FM Heavy Duty)

#### Full Surface

- 317FS, 417FS & 517FS (Heavy Duty)

#### Half Surface

- 617HS (Heavy Duty)



**117FM**



**317FS**



**417FS**



**617HS**

## STAINLESS STEEL EDGE GUARDS

### Stainless Steel Edge Guards

- Heavy-Duty 16 Gauge 304 Stainless Steel.
- US32D Satin Stainless Steel
- No exposed Fasteners when door is closed
- Self drilling screws
- Nominal sizes 6'8", 7', 7'2", 8' & 10'



IDCA528 Edge Guard  
with 1 Lip Only



IDCA538C  
Full Edge Guard



IDCA548T Full Edge Guard  
With Astragal

## ARCHITECTURAL HINGES

### IDCAHP Series

5 Knuckle 2 Bearing

### IDCAHA Series

5 Knuckle 2 Bearing

### IDCAH SPR Series

Spring Hinge

- Size:
  - 4.0"x4.0"
  - 4.5"x4.0"
  - 4.5"x4.5"
  - 5.0"x5.0"
- Other specs are available.
- Finishes Available:
  - US3, US4, US10, US10B, US26,
  - US26D, US32, US32D, White, etc.
- Options:
  - NRP (Non-Removable Pin)



IDCAHP 4545 BB - NRP



IDCAHP 4545 PB - NRP



IDCAHA 4545 PB



IDCAH SPB 4545  
Spring Hinge

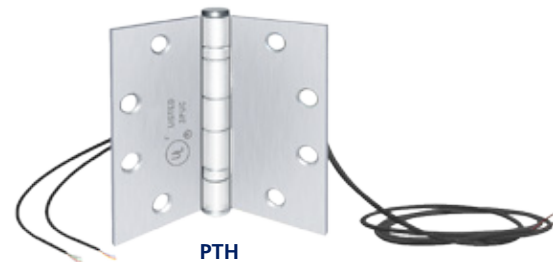
## POWER TRANSFERS

### Power Transfer Hinge

- UL 10B listed for 3 hr fire doors
- 4 foot cable (standard)
- Optional DPS
- PTH-4Q 4 wires, 1 Amp
- PTH-2-4Q 6 wires, 1 pair - 16 Amp inrush,
- 2 Amp continuous, 2 pair - 1 Amp
- PTH-10Q 10 Wires, 1 Amp
- DPS Door status contact, optional

### • Electric Power Transfer Device

- IDC's heavy duty Electric Power Transfer Device provides a concealed and secure means of transferring electric lock and exit device power and signal wires from the frame to the door.
- Completely concealed when the door is closed.
- The PTM Electric Power Transfer Device is ideal for heavy traffic and applications requiring higher security to inhibit tampering and abuse.



PTH



PTD



## DOOR PULLS & PUSH BARS

### PH-4000

Offset Door Pull

### PH-4000-2

Offset Door Pull Set

- 1" Diameter Solid Aluminum Round
- 3-1/4" Offset
- Projection 3-1/4"
- Door Clearance 2-1/4"
- CTC 9", 10" and 12"
- Mounting Hardware Included
- Finishes Available:
  - AL - Baked Satin Aluminum Paint
  - BK - Baked Black Paint
  - DU - Anodized Bronze



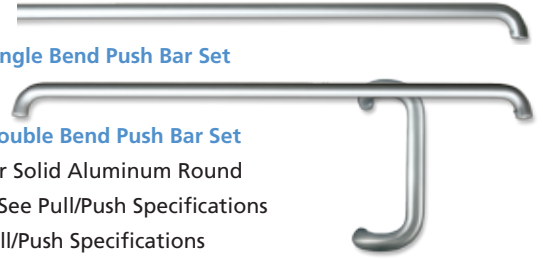
### PP-1000

Offset Pull & Single Bend Push Bar Set

### PP-2000

Offset Pull & Double Bend Push Bar Set

- 1" Diameter Solid Aluminum Round
- Projection: See Pull/Push Specifications
- CTC: See Pull/Push Specifications
- Mounting Hardware Included
- Finishes Available:
  - AL - Baked Satin Aluminum Paint
  - BK - Baked Black Paint
  - DU - Anodized Bronze



### PB-1000

Single Bend Push Bar

### PB-2000

Double Bend Push Bar Set

## HOSPITAL PUSH PULLS

### 6000 Series

Pushpull Latch • Mortise Lock



Versatility and ease of installation are the hallmarks of products in this series. 6000 Series handles can be mounted up, down, or horizontal. The 6600/6700 can be mounted in any combination without changes in the field. All models meet ADA requirements. Every unit is available with lead lining (suffix L) and engraving (suffix P), and comes in all BHMA finishes. The standard handle covers are 4-1/2" x 2-3/4". All handles have a projection of 2-3/4" from the face of the door. Most latches available with 2-3/4", 3-3/4", 5" or 7" BS & standard or ASA strike. UL Listed for use with doors rated 1-1/2 hours or less, measuring up to 4 ft. in width and 8 ft. in height. All Push/Pull models available with antimicrobial coating.



6000 Push/Pull Latch



6100 Push/Pull Latch



6200 Push/Pull Latch



6400 Push/Pull Latch



6600 Push/Pull Latch



6700 Push/Pull Latch



6600/6700 Exit Only



6800 Low Profile Push/Pull



6830 Low Profile Reverse Latch

### Round Cover Series



J Push/Pull



RC6000



RC6600/RC6700



RC6800

### Push-Pull With Hip Paddle or Handle Extension For Most 6000, 6600 and 6700 Models



EX Series



H Series



X Series



## FLUSH BOLTS & COORDINATORS

### FB-1200, FB-1201 K & FB-2200

#### Flush bolt

- 15"/16" x 4-1/4" Radius Face
- Rod length for 12" Centerline of face installation
- Square Nylon Tip with beveled corners fits in 1/2" square hole
- Finishes Available:
  - AL - Baked Satin Aluminum Paint
  - BK - Baked Black Paint
  - DU - Backed Storefront Bronze Paint

### FB-1200

#### Flush bolt

- Positive "U" joint actuator with 5/8" throw
- 1/8", 3/16" and 1/4" offset with 7/8" backset

### FB-1201-K

#### Flushbolt

- Positive "U" joint actuator with 5/8" throw
- 1/8" offset with 11/16" backset

### FB-2200

#### Flush bolt

- Positive "U" joint actuator with 7/8" throw
- 1/8", and 1/4" offset with 7/8" backset

### ER-1200

#### Flush bolt Extension Rod

- 1/4-20 x 12" Threaded rod
- Includes coupler

### FG-1200

#### Standard Flush bolt Guide

- For use with FB-1200 and FB-2200 Flush Bolts

### FG-1250

#### Extension Hole Flush bolt Guide

- For use with FB-1200 and FB-2200 Flush bolts

### 1805

#### All Stainless Steel Series Surface Bolts



1860P



1862P

### Automatic

#### Flush Bolts

When active door is closed the bolt automatically projects to lock inactive door. Bolt retracts when active door is opened.

- If strike and bolt are misaligned, override prevents damage to door, frame or flush bolt

#### 1860P PAIRS FOR METAL DOORS

- Fits ANSI prep for Metal doors
- 3/4" throw with 2" vertical adjustment. Adjustment can be made without removing door from frame
- UL listed 3 hrs on metal door up to 4' wide and 8' high

#### 1862P PAIRS FOR METAL DOORS

- 3/4" throw with 3/4" vertical adjustment. Adjustment can be made without removing door from frame
- UL listed 1-1/2 hrs on wood doors up to 4' and 8' high



1855S



1857S

### Manual

#### Flush Bolts

Used to lock and unlock an inactive door when the active door is open. When the inactive door is closed, moving the lock lever up locks it and moving the lever down unlocks it. Meets FED SPEC 1049 : BHMA L14081: ANSI 156.16. UL Listed.

#### 1855S SINGLE UNIT FOR METAL DOORS

- Non-handed
- 5/8" throw with 7/8" vertical adjustment
- Standard rod length is 12". Other lengths are available on request
- Available in most architectural finishes
- UL listed for use on metal covered doors up to 4' wide and 10' high

#### 1857S SINGLE UNIT FOR WOOD DOORS

- Same features as 1855 with the addition of a special top guide for wood doors
- UL listed 1-1/2 hrs on wood doors up to 4' and 8' high



**3780**  
**Universal Coordinator**

3780 Universal Coordinator is for pairs of doors up to 8' wide. The long arm holds the active door open until the short arm is depressed by the inactive door. When the doors are closed, the arms are hidden by the stop-mounted aluminum case.



**3760**  
**Carry Bar**

- For pair of doors, where inactive door can be opened before active door
- Mounted on inactive door
- USP standard, plated finishes available



**3790**  
**Gravity Coordinator**

- For use on pairs of doors to allow inactive door to close before active door
- UL listed for use with pairs of swinging or doors with astragal
- Non-handed, Stainless steel
- Use on pairs of doors with astragal on:
  - Active door up to 4'
  - Inactive door over 3'4"
  - Both doors over 2'10"



**180/280 Series**  
**Surface Mount Bolt Locks**

The IDC universal surface mount electric bolt locks are available in failsafe and failsecure. The addition of a card reader, digital keypad or remote control provides access control and convenience of use for a variety of applications.

**Electric Bolt Lock**

- Auto relock switch
- Bolt and door status optional
- 12/24 VDC operation
- FS23MIV Dual failsafe, CSFM Listed
- 1091AIV Failsafe
- 1291AHV Failsecure



**290 Micro**  
**Cabinet Lock**

- For swinging or sliding doors
- Failsecure continuous duty
- Field reversible solenoid for failsafe operation
- Dual 12/24VDC
- Nonhanded
- 600lbs of holding force



**HB-4085, HB-4086 & HB-4087**  
**Header Bolt Set**

- **HB-4085:** For doors 30-1/2" to 50" from Centerline of cylinder to top of door
- **HB-4086:** For doors 55-5/8" to 77-1/2" from Centerline of cylinder to top of door
- **HB-4087:** For doors 67" to 89" from Centerline of cylinder to top of door
- 5/8" throw expanding bolt
- Minor adjustments can be made after installation
- Unit complete with Rod Guide and Header Strike



**TB-4015 & TB-4016**  
**Threshold Bolt Kit**

- **TB-4015:** For doors with cylinder height up to 53-1/2". Threaded rod can be cut for cylinder heights lower than 53-1/2"
- **TB-4016:** For doors with cylinder height 34" to 37".
- Bolt 3/8" hexagon hardened steel
- 11/16" bolt throw
- Unit complete for attachment to basic Deadlock to provide two-point security



**HB-4015-N**  
**Special Header Bolt Set**

- Standard for 84" Doors with Cylinder
- Heights of not less than 33"
- **ER-4015-N** Extension Rod Kit is available for 8'-9" Door Heights



**HS-4089**  
**Header Sign**

- For use on transoms and door headers
- One piece, self-adhesive decal
- Black letters on aluminum background

THIS/THESE DOORS TO REMAIN UNLOCKED WHEN THE BUILDING IS OCCUPIED



## DOOR HOLDERS & STOPS

### DH-6000

#### Heavy Duty Kick Down Holder

- Zinc Alloy Construction
- Non-Marking Rubber Shoe
- 7" Body Height
- Comes with Mounting Screws
- Finishes Available:
  - AL - Aluminum
  - DU - Storefront Bronze



### 1801

#### Applied Stop

- For use with single or double doors without stops
- Available in all BHMA finishes
- Supplied with machine & wood screws



H1803



1803



HD1803



EHD1803

### 1803

#### Floor Stop

- Ideal for correctional facilities, schools and institutions
- No exposed fasteners
- Installed with quick set cement



### 1803 HO

#### Floor Stop & Holder

### 1804

#### Pipe Stop & Holder

- Heavy duty construction for use in schools, institutions and correctional facilities
- All stainless steel components with rubber bumper
- The rubber bumper on the door hits the portion when used as a stop
- Door is hooked to portion with stainless steel hook when used as holder
- Floor portion secured in cement
- Door portion - installed with (4) #8 x 1-1/4" screws (supplied standard), sex bolts optional
- Floor portion is solid 1" diameter x 1' long stainless steel rod



### Overhead Holders & Stops

#### Concealed / Surface Mount

All Overhead Holders/Stops meet ANSI 156.8. Available in all BHMA finishes. When ordering, indicate model number, conflicting hardware, mounting means of the door, door frame opening, thickness of door and finish. N SERIES Overhead Holders/Stops contain all stainless steel components.



Adjustable



SL Slim Line



SL ADJ Adjustable Slim Line



Holder/Stop



Parallel Arm Holder



Parallel Arm Holder



Stainless Steel components, Prefix N

## ELECTRO-MAGNETIC DOOR HOLDERS

### Electro-Magnetic Door Holders



The 2000 Series Electro-magnetic Door Holders is Tri-Voltage . Each model (except 2500) can be wired 12V DC, 24V AC/DC or 120V AC. Units can be used on fire/smoke barrier doors held open until released by a remote switching device. They can also be used to just hold a door open. The armature is thru-bolted to the door for security and can be provided with any projection required. When ordering indicate, model, total projection, finish and door thickness if other than 1-3/4".



Recessed Wall Mount



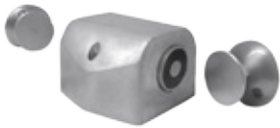
Surface Mount



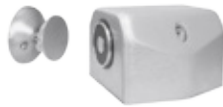
Flush Wall Mount



Surface Wall Mount



Double Floor Mount



Single Floor Mount

## JAMB BRACKETS

### Frame Reinforcements

Hollow metal frame reinforcements for most IDC concealed overhead holder/stop jamb brackets

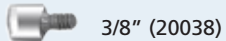


### Angle Jamb Brackets

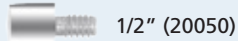
Used to change standard surface mounted overhead holders to flush transom or hinge side mounted. Attaches to standard jamb bracket.



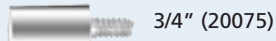
## Armature Extensions



3/8" (20038)



1/2" (20050)



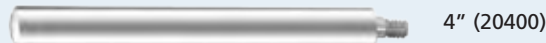
3/4" (20075)



1" (20100)



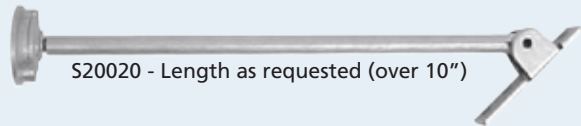
2" (20200)



4" (20400)



6" (20600)



S20020 - Length as requested (over 10")

20120  
120 O Swivel  
Extension



20020

# THRESHOLDS

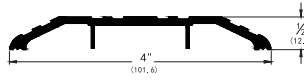


## YDT Series

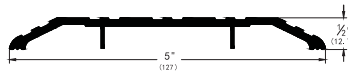
### 7/16", 1/4" & 1/2" High Saddle Thresholds

- Available in 36", 48" and 72" lengths. Bulk lengths are available on most profiles
- Custom sizes and colors available
- Finishes Available:
  - A (Mill Finish Aluminum)
  - D (Dark Bronze Aluminum)

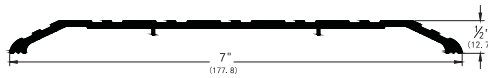
YDT308



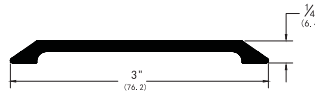
YDT309



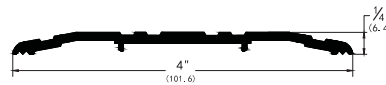
YDT307



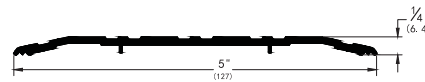
YDT301



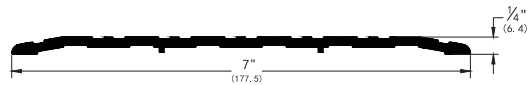
YDT305



YDT306



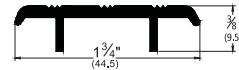
YDT311



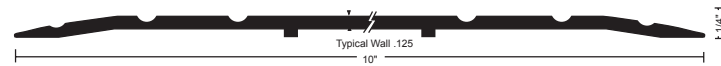
YDT312



YDT313

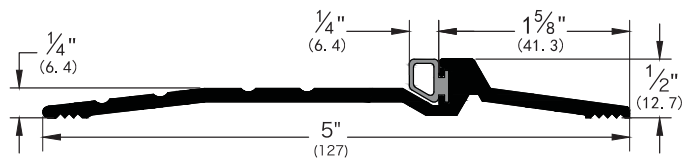


YDT1013



## Latching Panic Exit Saddles

YDT105

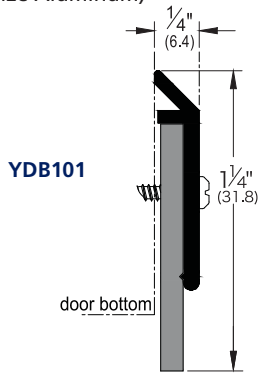


## DOOR BOTOM SWEEPS

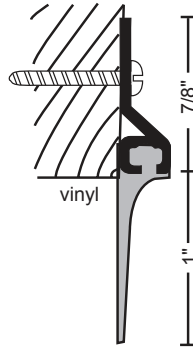
### YDB Series

#### Door Bottom Sweeps

- Finished product supplied with BLACK insert. GRAY available upon request
- Finishes Available:
  - A (Mill Finish Aluminum)
  - D (Dark Bronze Aluminum)



YDB103

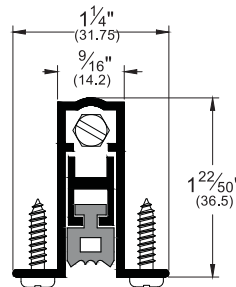


### Automatic Door Bottoms



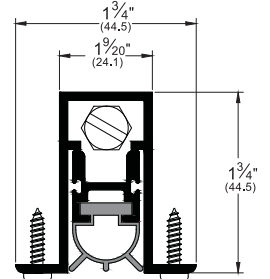
YDB301

- Finishes: A



YDB303

- Finishes: A

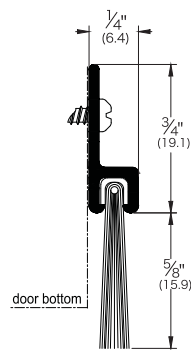


### Brush Door Sweeps

- Finishes:
  - A (Mill Finish Aluminum)
  - C (Clear Anodized Aluminum)
  - D (Dark Bronze Aluminum)

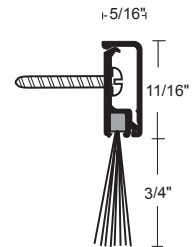
YDS601

- Finishes: C&D



YDS673A

- Finishes: A&D

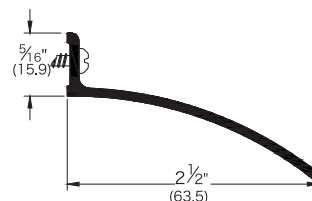


### Door Top Weatherstrip

- Finishes Available:
  - A (Mill Finish Aluminum)
  - D (Dark Bronze Aluminum)

YDB106

- 40" & 60"
- Finishes: A&D

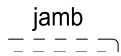
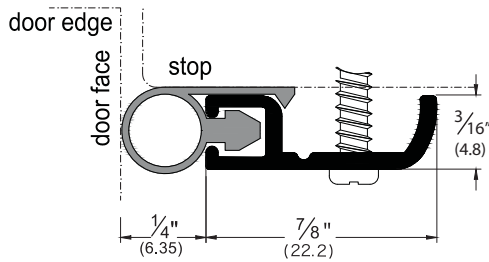


# WEATHERSTRIP

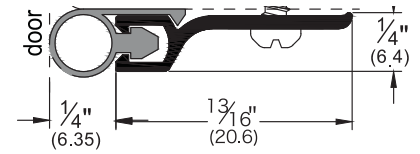
## Standard Rigid Jamb

- Rigid jamb weatherstrip shown mounted on openings with 1/16" gaps; however, each weatherstrip can seal gaps up to the depth of its seal. Seal depth provided on each illustration (example: the YDW204 has 1/4" seal; therefore, it can seal up to a 1/4" gap)
- Punched on 6" center with slotted holes for adjustment
- Finishes Available:
  - A (Mill Finish Aluminum)
  - D (Dark Bronze Aluminum)

YDW204



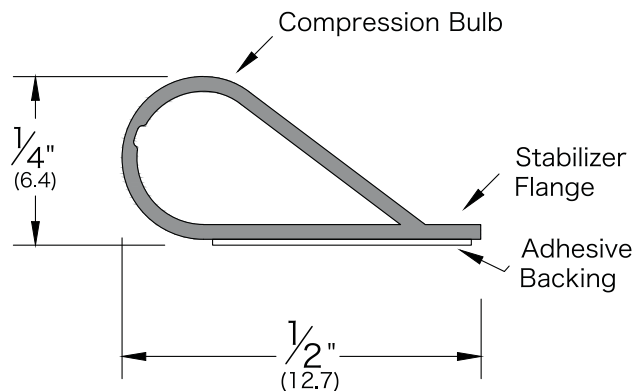
YDW201



## Adhesive Weatherstrip

- Available Lengths: 17', 21'
- Silicone Seal begins compressing at 1/4"; compresses to seal up to a 1/16" gap
- Finish: B (Black)

YDW100





## PUSH PLATE SWITCHES

### Push Plates

#### Hardwire and Wireless

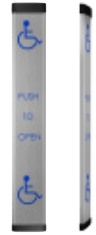
IDC has a variety of push plates for all application. Please contact us or view our catalog for our complete line.



6" Round



6" Square



36" Low Profile



4 1/2" Round



4 1/2" Square



4 3/4" Square



Dual Vestibule Push Plate



1 1/2" x 4 3/4" Jamb Style

### 614 Series

#### Extreme Door Activator Switches

The 614 Series extreme switches are designed to provide reliable activation of any automatic door in extreme environments.

- Virtually Indestructible Switch
- 1" Diameter Red Anodized Pressure Sensitive (5 lbs.) SPST Button
- Face Plate Sizes:  
Single-gang – 4 1/2" x 4 1/2"  
Jamb – 1 11/16" x 4 1/2"
- Waterproof – Completely Sealed
- No Moving Parts – Patented Solid State Piezo Technology



Panther Plate  
10EMS4751

ALL-IN-ONE PLATE, BOX AND  
TRANSMITTER SOLUTION

### Panther Plates

#### Weather Resistant and Wireless

Panther plates are an easy to mount, wireless, 4 3/4 inch and 6 inch round, or 4 3/4 inch square style push plates with an RF 433 code-encrypted security transmitter.

- Faceplate surface is made of durable stainless steel
- Tamper-resistant, recessed faceplate with beveled edges
- Slim-line profile with no visible mounting holes
- The fully-assembled unit installs easily with a mounting plate

### The Piezo Switch

#### Access Control



Piezo Switch

The Piezo Button incorporates piezoelectric technology to convert physical touch (pressure) of the push button from mechanical to electrical energy. Status illumination can be set to red, green, or no illumination

- Selectable Fail Safe and Fail Secure options
- Hold timer lasts from as little as 1 second to as much as 40 seconds
- The Piezo button provides for a NO / NC contact
- Stainless steel construction is designed for all weather use
- Designed specifically for Request to Exit / access control applications

### Panther Plates



10emr61

6" Round



10emr6

6" Round



10emr6l

6" Round



10emr4751

4.75" Round



10emr475

4.75" Round



10emr475l

4.75" Round



10ems475

4.75" Square



10ems475l

4.75" Square

# TOUCHLESS ACTIVATION SENSORS

## MS08 & MS09 Series

### Magic Switch

- Touchless technology is ideal for use in sterile environments (i.e. clean-rooms, healthcare facilities, food processing plants)
- Can be hidden from view by installing the microwave sensor behind non-metallic surfaces (i.e. mounted behind drywall)
- Variable adjustment of detection zone from 4 to 24 inches
- Water-resistant foam gasket provides increased reliability when exposed to water or cleaning products
- Low profile, beveled design reduces accidental damage



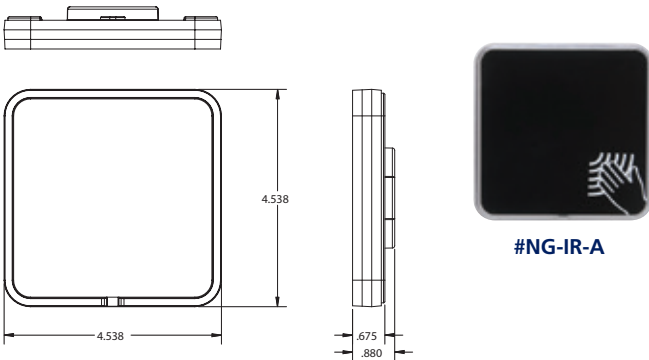
10MS08U (above) contains single and double gang, black faceplates with wave to open text  
MS08U CUSTOM offers a choice of faceplate styles

## NexGen

### Infrared "Touchless"

The NexGen Infrared Touchless actuator is the next generation of automatic door activation switch.

- ADA Compliant Operation
- Microprocessor-Controlled Infrared Touchless
- Adjustable Reaction Time (0.05-3 Sec.)
- 12 to 24V AC or DC Operation



#NG-CT-HSS

#NG-CT-P

## NexGen CapTouch Series

### Door Activator Switches

The NexGen CapTouch Series actuator is the next generation of automatic door activation switch.

- ADA Compliant Operation
- Faceplates Available in Various Finishes
- Microprocessor-Controlled Capacitive Touch
- 12 to 24V AC or DC Operation
- Form C Relay Output
- Heavy Duty 1 Amp Contact

## 216 Series

### Infrared "Touchless"

The 216 Series touchless switches are active infrared devices designed to activate full and low energy automatic doors.

- ADA Compliant Hands-Free Operation
- Microprocessor-Controlled Active Infrared



#216

#216-L

216TX-TG

#216-N



## MS21H Series

### Magic Switch

The MS21 is a state-of-the-art touchless activation plate that utilizes capacitance technology to detect and trigger activation in automatic doors. The low profile, hands-free MS21 includes a stainless steel faceplate and illuminated LED mounting ring for maximum durability and visibility. Other innovative features include adjustable detection zones, audible alerts, NEMA 4-rated enclosure and customizable faceplate text and logos.

The MS21 combines form and function into an aesthetically pleasing design that is ideal for healthcare facilities, clean rooms, washdown areas and a variety of other applications.

## KEY SWITCHES

### 10 Series

#### Key Switches

- Available in 3 styles: Single gang, Jamb, Combination Jamb Plate /Keyswitch
- Available with momentary or maintained contact
- The Combo Plate allows for independent operation of the Push Plate and Keyswitch, or allows the Keyswitch to activate and disable the Push Plate.
- Includes a cherry switch with NO/NC or COM contacts
- Aesthetically pleasing design allows for easy installation and use

*\*Note: Mortise Cylinder Not Included*

Keyswitches add an additional level of security by providing an economical and efficient way to control or restrict access in a variety of applications.



### 700/800 Series

#### Key Switches

IDC key switch assemblies provide an economical method of providing authorized control for a variety of applications. A choice of several contact configurations ensure compatibility with virtually any system.

- Access Control
- Automatic Gate Operation
- Roll Up Door Operation
- Alarm Shunt
- Alarm Reset
- Machine Operation



**Combination Heavy Duty Keyswitches and Push Plate Switches**

The 830 Series combination keyswitches and push plate switches are designed to provide reliable and secure activation of any low voltage device.

These unique devices are two switches in one. The keyswitch and the push plate switch can be set up to work independently of each other or the keyswitch can turn the push plate switch on and off, providing an economical way to secure the push plate switch after hours.



### 830 Series

#### Heavy Duty Switches

The 830 Series heavy duty keyswitches are a reliable and economical way to momentarily activate or turn on and off low voltage electrical devices.

- Operates With Standard 1" - 1 1/4" Mortised Cylinder
- Adjustable Mounting holes Help "Plumb and Square" Keyswitch
- Face Plate Sizes:  
4 1/2" x 4 1/2" – Fits Single gang or 2-gang Box (830)  
2 3/4" x 4 1/2" – Fits Single gang box (830-L)  
1 11/16" x 4 1/2" – Fits Door Jamb (830-N)
- Radio Control Versions Available
- Optional LED Indicators Available  
LED Rated for use at 12-24V AC or DC

# TRANSMITTERS & RECEIVERS



## CLEARPATH™ Transmitters

The ClearPath™ transmitters are part of the ClearPath Radio Control Push Plate Switch Activation System that provides the most reliable wireless activation of automatic doors available.

- Utilizes Proprietary High Definition Radio Control™ (HDRCTM) For Unsurpassed Signal Transmission Clarity
- Three User Selectable Frequencies Available In Single Unit: HDRCTM, 300 MHz, 390 MHz
- FCC License For All Three Frequencies
- SignalLock™ Guarantees Signal Transmission When Push Plate Switch Is Pressed
- Power Saving Circuitry Extends Battery Life
- Integrated Signal Radiating Antenna Boosts Signal Strength
- Transmitter And Battery Factory Prewired And Installed In Mounting Boxes
- Powered By Standard 9V Battery

### CP/TX Surface Mount Transmitter

The CP/TX transmitter comes prewired and installed with battery in a surface mount box making installation quick and easy. The CP/TX can also be used interchangeably with other manufacturer's products that operate on its frequencies as well.

### CP/STX (wall mount), CP/STX-J (door jamb mount) Sequencing Transmitter

The ClearPath™ sequencing radio control transmitters provide reliable activation of two automatic doors. They share the same PCB as the standard transmitter, however each sequencing version has a software upgrade that enables them to transmit two separate signals with an adjustable delay between them in order to sequence vestibule doors one after the other from either direction. Several styles are available - each comes with a sequencing transmitter PCB, antennas and battery completely assembled in a surface mounting box.

### CP/TX-J Door Jamb Transmitter

The CP/TX-J transmitter comes prewired and installed with battery in a surface mount box making installation quick and easy and the entire assembly will fit on a 1 3/4" door frame.

### CP/TX-HH Hand-Held Transmitters

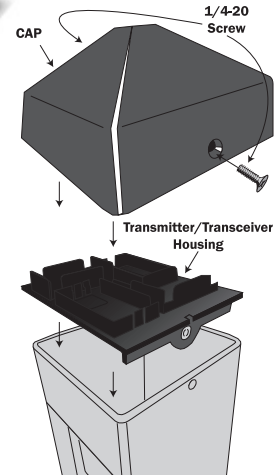
The CP/TX-HH hand-held micro-transmitters are available in either a one button (CP/TX-HH1) or two button (CP-TX-HH2) version. Small enough to wear as a necklace yet have large, easy to activate buttons



### CP/TX-P Post Mount Receiver

The ClearPath radio control transmitters provide reliable activation of any automatic door. When a 608 Series Bollard is ordered from the factory with a wireless option, the Bollard will come complete with the appropriate transmitter components installed in the integrated cap assembly that attaches to it.

The CP/TX-P can also be used interchangeably with other manufacturer's products that operate on its frequencies as well.



### CP/RX Multi-Mode Receiver

The CP/RX can be used interchangeably with other manufacturer's products that operate on its frequencies. In addition to being a receiver, the CP/RX can be easily programmed to become a timer, dual receiver or a sequencing receiver.



### S-TRX, S-TRX-J, S-TRX-V, S-TRX-P, S-TRX-HH & S-COR Transceivers & Coordinator

The S-TRX (wall mount), S-TRX-J (jamb), S-TRX-V (vestibule), S-TRX-P (post) and S-TRX-HH (hand held) Transceiver is a part of the ClearPath Spectrum Wireless System. When used in conjunction with the S-COR Coordinator, they function in similar roles as traditional wireless transmitters, but this is where the similarities end. The Spectrum Wireless System provides several industry firsts:

- Digital two-way communication allows for greater security and ensures successful signal transmission between devices.
- LCD screen (S-COR) for quick and easy programming.
- Upon switch activation, the Transceivers communicate valuable information that is displayed on the LCD screen including: device ID, signal strength and battery monitoring.
- Pairing of multiple Transceivers with Coordinators.
- Two built-in outputs (S-COR).
- 3 year battery life.



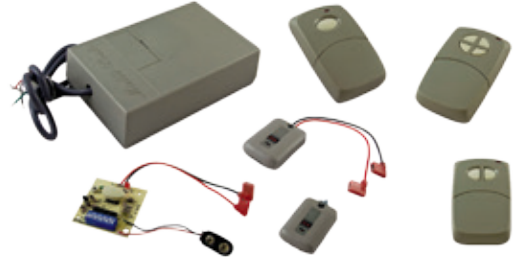
## TRANSMITTERS & RECEIVERS

### RF-300

#### 300 MHz frequency

IDC's 300 MHz frequency analog radio control transmitters and receivers are universally compatible with any type of automatic door application. With the ability to recognize 1,024 unique codes per receiver, the RF-300 offers an easy-to-install alternative and makes adding new transmitters simple.

- Hand-held transmitters outfitted with flag connectors, plug directly into most of IDC's push plate switches.
- Analog radio control for strong, short-range, transmissions
- Transmitters are programmed to the receiver through dip switch settings which offer up to 1,024 unique identifier codes.



### RF-390

#### 390 MHz frequency

IDC's 390 MHz, digital, radio control transmitters and receivers are universally compatible with any type of automatic door application.

The RF-390 bridges the gap from analog to digital. This setup offers digital transmission, narrowing the frequency band for less interference as well as limiting the number of devices that have access.

- Transmitters with pre-wired flag connectors plug directly into any push plate
- The digital transmitter and receiver are set up easily with a "Learn Code" button instead of using DIP switches



### RF-433

#### 433 MHz frequency

IDC's 433 MHz, digital, radio-control transmitters and receivers are universally compatible with any type of automatic door application.

- Individual transmitters can be programmed to an unlimited number of receivers
- Delay or no delay programming options (i.e. vestibule applications)



### RF-900

#### 900 MHz frequency

IDC's 900 MHz compact transmitters and receiver allow wireless activation of any door control. FCC Part 15 certification ensures proper compliance with federal radio frequency regulations.

- A combination of the industry's most compact 900 MHz transmitters and receiver for optimal installation convenience
- Frequency hopping allows consistent transmission in areas with other 900 MHz devices
- Delay and no-delay learn modes provide either instant or delayed activation for sequencing doors



### The Bollard

#### Low Energy Door Electronics

The Bollard is used for mounting pushplates that activate automatic doors.

It will accept IDC's 4 1/2" Square Pushplate, 4 3/4" Square Pushplate, 4 3/4" Panther Pushplate, Dual Vestibule Pushplate and 4 1/2" Round Pushplate. The post is made of durable carbon steel and the mounting bracket is made of stainless steel for strength. It can be mounted on either existing concrete or newly poured concrete.



## KEY PADS AND CARD READERS

### Entrycheck™ Series

#### Digital Keypads

The IDC EntryCheck™ series consists of stand alone digital keypads designed to control access of a single entry point for facilities with up to 500 users. Each user is assigned a personal identification number (PIN). Keypad entry of a valid one to six digit code activates one or both of the output relays which releases an electric door lock. Optional Prox Readers are available for selective models



**918 EntryCheck®**  
Vandal Resistant,  
Thick S. S. Faceplate



**920 EntryCheck®**  
Vandal Resistant,  
Surface Mount



**920P EntryCheck®**  
Vandal Resistant,  
with Prox Reader



**923 EntryCheck®**  
V Narrow,  
Surface Mount



**923P EntryCheck®**  
V Narrow,  
Surface Mount



**921P & 924P EntryCheck®**  
Vandal Resistant, with Prox Reader,  
2 piece Configuration

### E5 Access

#### Control System

Choice of Prox Card, Fingerprint or Keypad Entry

- Standalone or PC Managed
- Network up to 99 Readers
- HID Compatible Proximity reader
- Up to 4" read range
- 3000 cardholders



## ELECTRIC STRIKES

### 15 Series Electric Strike

- For up to 3/4 " latchbolts
- Choice of failsafe / failsecure
- Non handed
- 12 or 24VDC
- **15-4F12U** 4.875", Fail Safe 12VDC
- **15-4S12U** 4.875", Fail Secure 12VDC
- **15-4F24U** 4.875", Fail Secure 24VDC
- **15-4S24U** 4.875", Fail Secure 24VDC



### 25 Series Electric Strike

- For up to 5/8 " latchbolts
- Field selectable failsafe/failsecure
- Field selectable 12/24V AC/DC
- Latch status output
- Non handed reversible
- **25-4U** 4.875", 300mA @ 12/24VDC
- **25-6U** 6.875", 300mA @ 12/24VDC



## ELECTRIC STRIKES

### UniFLEX™ 45 Series Full Featured Electric Strike



- For up to ¾" latchbolts
- Field reversible failsafe/failsecure
- Field selectable 12/24V AC/DC
- 1/4" horizontal alignment adj.
- Latch position status SPDT std.
- Keeper closed & deadlocked status SPDT std.
- Low profile 1-3/16" deep
- MS-20 Mortise latch & deadbolt status



### UniFLEX™ 45-A Universal Universal Strike



- 4 7/8" square corners
- 4 7/8" radius corners
- 7 15/16" radius corners



45-A



55-ABC



55-A

55-B/C

55-DE

55-F

### UniFLEX™ 55 Series Application Specific Strike



- Up to ¾" Latchbolt and 1" Deadbolt
- Field Reversible, Failsafe/Failsecure
- 1/8" Horizontal alignment adjustment
- Dual Voltage 12/24VDC
- Exceeds 1,000,000 cycles
- Factory tested 2500 lbs static strength
- UL 1034 Burglary-Resistant
- Warnock Hersey Tested according to:
  - UL 10C, 3 Hr Fire Rated
  - NFPA-252
  - CAN4-S104 (ULC-S104)

### 30-4 Series Electric Strike

The IDC 30-4 Series electric strike is designed for use with rim mount exit devices having pullman type latchbolts or the top pullman latch of a surface vertical-rod exit device.

- All stainless steel for corrosion resistance and strength
- Tamper resistant, heavy-duty construction
- Set screws for adjustment lockdown
- Milled ramps to better accommodate deadlatches
- Integrated shim for quick customization of faceplate thickness (3/4" to 1/2")
- In-frame horizontal adjustability
- Pullman keeper
- Non-handed, reversible
- Failsecure (standard) Failsafe (optional)
- ¾" keeper depth
- Static strength 1,500 lbs.
- Dynamic strength 70 ft-lbs



### UniFLEX™ 55 Universal Universal Strike



- Up to ¾" Latchbolt and 1" Deadbolt
- 55-ABC Universal Strike for cylindrical locks, mortise locks without deadbolts and mortise exit devices, including:
  - SDC, Accurate, Arrow, Baldwin, Best, Corbin Russwin, Dorma, Falcon, Hager, Marks, Sargent, Schlage, Yale

## ELECTRIC STRIKES

### IDC-10 STRIKE

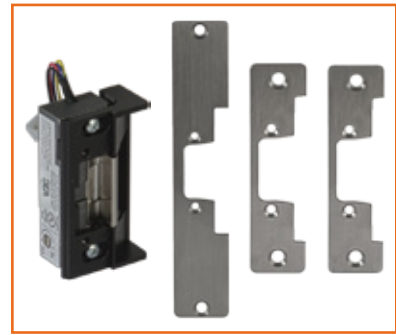
Rim Exit Strike



- UL/ULC listed for up to 1500 lbs of static strength
- Conventional keeper design promotes even-load distribution in the event of a forced entry
- Reinforced housing reduces twisting on imperfect frames
- Brushed, US32D, stainless steel provides a complementary finish to existing door hardware.



IDC-10 STRIKE RE



IDC-10 STRIKE CU

### IDC-10 STRIKE RE

Rim Exit Strike

The Rim exit strike is designed specifically for rim exit devices. This strike is completely surface mounted, which eliminates the need to cut into the door frame. The Rim Exit strike has a 3-hour fire rating and has been independently tested for over 4 million cycles of operation.

### IDC-10 STRIKE CU

Universal Cylindrical Strike

The Universal cylindrical strike provides controlled access and security for egress and ingress applications where code compliance and safety are paramount. This strike has been independently tested for 1 million + cycles of operation.

## STRIKE SETS

### Strick Sets

- Mounting holes press formed countersink
- Non-handed Stainless Steel Strike for Left or Right hand installation



SS-4510



SC-4510



SC-4520



SC-4540 & SC-4545

## STRIKES & RESCUE STOPS



CR4550/60



CR4570/80



CR4591/92



CR4594/93

### Dust Proof Strike

- 1870 for doors without Thresholds
- 1872 for doors with Thresholds
- For use with any ABH flush bolts
- Prevents dirt, dust and debris from floor clogging strikes



1870



1872

### Combo Double Lipped Strike and Rescue Stop

To be used with ABH 0127 or 0128 center hung pivot sets. Ideal for hospital or nursing home bathroom doors. Stop can be rotated into frame to allow center hung or 1/8" inset double acting doors to swing out in case of emergency.

- For 5-3/4" and 6-3/4" frame with 1-3/4" door

#### Center Hung Doors

- CR4550/CR4591 5-3/4" x 2-3/4"
- CR4560/CR4592 6-3/4" x 2-3/4"

#### 1/8" Inset Door

- CR4570/CR4594 5-3/4" x 2-3/4"
- CR4580/CR4593 6-3/4" x 2-3/4"

### 4590 Rescue Stop

For Converting a double acting center hung door to single acting

- Allows door to swing open in opposite direction if a hospital or nursing home patient falls and obstructs the normal swing of the door
- Meets ANSI Spec A1882
- Stainless steel, US32D standard
- Pushing in on the spring loaded stop allows emergency operation of the door. Stop automatically returns to normal position when release





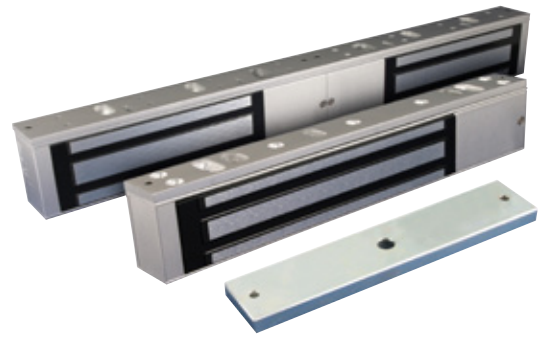
# MAGLOCKS

## Maglocks

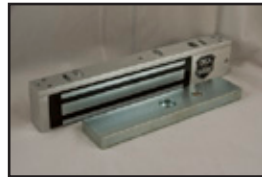
### UL Listed Electromagnetic Locks



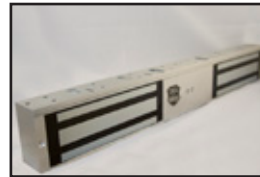
- Lock status sensor (bond sensor) and visual LED on 600 and 1200 lb models
- Includes adjustable relock time delay (0 – 90 secs)
- Field selectable 12/24V DC
- Installation hardware included for typical applications
- Convenient plug-in wire terminals
- Available for single doors and double doors without center mullion



**10MAGLOCK1UL**  
1200LB – SINGLE



**10MAGLOCK3UL**  
600LB – SINGLE



**10MAGLOCK5UL**  
1200LB – DOUBLE



**10MAGLOCK6UL**  
600LB – DOUBLE

## WR Maglock

### UL Listed Weather Resistant

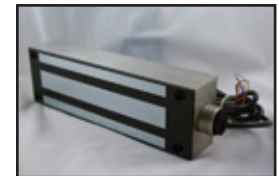


- Built-in remote lock status sensor – ideal for remote monitoring
- Available in a front mount model with a 3/4 inch male universal threaded conduit fitting and a side mount model for swinging doors and gates.
- No residual magnetism
- Field selectable 12 or 24 VDC
- Built-in surge protection
- UL and ULC Listed for use on fire rated doors for up to 1½ hours

*Designed with a rugged stainless steel housing, these electromagnetic locks are the ideal solution for sliding and swinging gates and high security doors.*



**10GL1200SR**  
1200LB – SIDE MOUNT



**10GL1200R**  
1200LB – FRONT MOUNT

## 1583 Cabinet EMLock®

### Magnetic Lock

IDC's 1583 Micro Cabinet EMLock® is a compact specialized electromagnetic lock that produces 300lbs. of holding force. Versatile mounting capability with face drilled and surface mounting holes. The 1583 operating voltage is field selectable for either 12/24 VDC. Aluminum housing is standard.



## IDC Hi/Shear®

### Magnetic Door Lock

IDC Hi/Shear® magnetic lock utilizes several of the most innovative and unique design attributes. The Hi/Shear is the magnetic lock that gives those who want a better shear lock all the latest features.

The IDC Hi/Shear® is a totally concealed, high security, failsafe locking mechanism with superior appearance. The patented Hi/Shear® electromagnetic lock design incorporates a "floating" armature assembly and special alloy steel locking "tabs" on both the lock and armature assemblies, that may be adjusted both vertically and laterally to compensate for wide door gaps and warped or misaligned doors.

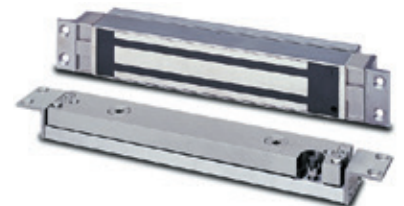
Hi/Shear® magnetic locks are ideal for use on commercial grade hollow metal and wood doors and frames and Herculite doors with top rails.



**Semi-Concealed**



**Surface Mount**



**Concealed**



## MAGLOCKS

### 101-DE Exit Check®

#### Delayed Egress Controller

#### Verbal Exit Instructions or Alarm Tone Only and Digital Countdown Display

The integral verbal message, digital countdown display and sign provide comprehensive and clear instructions of the door operation for persons without prior knowledge of the exit delay, including the sight and hearing impaired.

The digital keypad eliminates the need to carry and locate keys for reset and bypass functions.



### Exit Check®

#### Delayed Egress Lock

- Voice and digital display provides informative annunciation for people without prior knowledge, including the blind and hearing impaired
- Field selectable voice & tone or tone only
- Voice provides warning or safety message, countdown and time of door release
- Digital countdown display also indicates if door was open after lock release.
- Fixed 15 second delay or selectable 15 or 30 second exit delay

PUSH UNTIL ALARM SOUNDS. DOOR CAN BE OPENED IN 15 SECONDS.



### 1581S Mini Exit Check

#### Delayed Egress Lock

When unauthorized egress is initiated, the Mini Exit Check® delays egress through the door for 15 seconds. Meanwhile, the person exiting must wait while personnel or security respond. The door unlocks after 15 seconds have elapsed, permitting egress. A signal from the fire/life safety system will release the lock for uninhibited egress in an emergency.

- Small, Slim Design
- 650lb Holding Force

PUSH UNTIL ALARM SOUNDS. DOOR CAN BE OPENED IN 15 SECONDS.



## ANNUNCIATORS



**101-1A**  
Single Door Annunciator



**101-1AK**  
Single Door Annunciator with Key Control



**708RU**  
On/Off Bypass and Reset Key Switch



**707RU**  
Momentary Bypass and Reset Key Switch



**101-4AM**  
Four Door Annunciator



**101-PAM**  
Single Door Annunciator with Push Switch Control



**702RU**  
Lock/Alarm Reset Key Switch

## SENSORS

### Falcon

#### Motion Sensor

- Uni- and bi-directional microwave motion detection
- Multiple models and settings allow the Falcon family to cover various applications (explosion-proof housing available)
- Can reject pedestrian and parallel traffic
- Supplied mounting bracket allows multiple mounting options from 0° to 180° tilt
- A telescopic, heavy-duty mounting bracket offers extension up to 3-feet (optional)
- NEMA 4 rated enclosure provides protection against dust, cleaning agents and environmental conditions



*The Falcon is a uni- and bi-directional motion sensor optimizing the performance of automatic doors. The Falcon detects moving objects and can reject pedestrian traffic and parallel traffic. By detecting vehicles and rejecting parallel traffic, the Falcon reduces door cycling and helps save energy.*

### Sparrow

#### Motion Sensor

- Detection of both people and vehicles
- Unidirectional detection helps reduce a door's hold open time and helps improve energy conservation
- A total of 10 available detection areas offer an area from
- 3 ft (D) x 6 ft (L) – 20 ft (D) x 33 ft (L)
- Great product flexibility with a rotating angle from
- -180° to +180°

*The sparrow is aimed to detect people and vehicles approaching the door. Its unidirectional detection mode allows the sensor to optimize the door operation.*



### Fly Kit

#### Pir Sensor

The Fly is a sensor utilizing passive infrared technology, small enough to fit in the palm of your hand.

- Cost effective kits make the Fly an economical sensor perfect for many security applications.
- The microprocessor provides a highly accurate detection zone that is easily field adjustable.
- Passive infrared (PIR) technology provides a reliable signal for request to exit (REX) applications.
- DIP switches and sensing field adjustment mask allow for custom, user-defined settings.
- An Extended Relay Time (ERT) version is available for hold times of 15 or 30 seconds.



**IDC's Smallest & Most Accurate PIR Sensor**

### LZR®-i30

#### Lazer Scanner

- Cat.2/PL "C" high performance safety solution certified by TÜV for industrial doors
- High level of safety with a three-dimensional, complete presence detection area in front of the door
- Detects objects as small as 2 in.
- Alternative solution to contact edges, light beams, light curtains or any other safety solution
- Option of creating up to 2 virtual push buttons
- Reduces the possibility of collision/tampering damage due to the overhead mounting position
- Easy installation



### Focus and Focus Presence Sensor

The Focus presence sensor (PN: 10FOCUS or 10FOCUS2 - for recessed mounting) may be used for various applications, including but not limited to revolving doors, drive-up windows, sidelite protection for sliding doors, and industrial applications.

- The sensor is fully adjustable and has a relay output for easy compatibility to external devices.



## SENSORS



### IS40/IS40XL

#### Motion Sensor

Active infrared and microwave technologies work together to provide precise presence and accurate motion detection in front of the door.

- With up to 40 spots of infrared detection, the standard IS40 can be mounted from 8 ft – 16 ft.

### Matrix

#### Single & Double Induction Loop Detector

- The Matrix is available in multiple models to accommodate nearly any application.
- Available in single and double channel mode, with power supply configurations of 110 VAC or 12–24 V AC/DC.
- Compatible with most door and gate control applications
- Matrix detectors come in a compact housing with connection through an industrial 11-pin standard connector.
- Settings such as sensitivity and presence time are adjusted via potentiometers, so wide ranges and precise adjustments are made easy.

### Microcell

#### Safety For Automatic Doors

The Microcell range is designed for the safety of pedestrian doors and is featured by a flexibility and an easiness for universal installations:

- Reduced size for easy fittings in most of door profiles
- Enables a mounting very close to the floor (20 cm - 40 cm), as well as an important range (5 m - 10 m) and can be lightly out of alignment
- Protected against short time wrong connections and immune to the ambient light (sunlight or artificial lighting)
- Totally immune to interference and complies with the European standards 89/336/EEC
- Microcell Two complies with ESC standards, and with the French
- Ministerial Order on automatic doors in the workplace
- Microcell Three complies with the German directive ZH 1/494 on
- Windows and doors activated by external energy sources
- Plug supplied with a special sleeve that prevents from moisture problems

### FLEX IR

#### Flexable • Microcell Beam

- Flexible mounting bracket prevents the Microcell beam system from damage when installed in industrial applications.
- Flexible, UV-resistant material prevents damage to the beam heads, optimizing safety and reliability.

### IS40P

#### Motion Sensor

The IS40p has a maximum mounting height of 16 feet and a detection pattern up to 10' x 10'

- The IS40p is equipped with 9 pre-programmed pattern configurations for various industrial applications.
- Various learn time settings allow presence detection to either remain constant or ignore a motionless object after a pre-determined period of time.

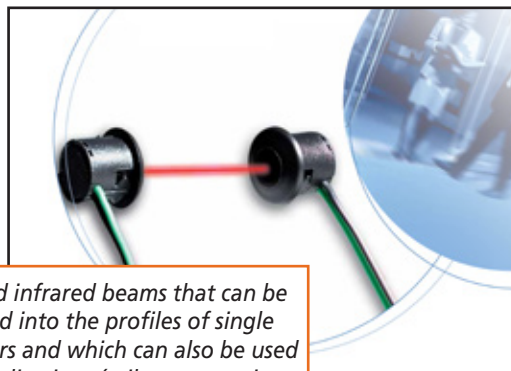
*The Matrix is a series of single or double digital inductive loop detectors for vehicle access control and safety for doors, gates, and numerous other applications. High performance features include automatic sensitivity boost, presence and pulse output selection and four frequency settings.*

### Compact Safety System



Matrix

### Infrared barrier composed by an emitter and a receiver in cylindrical heads



*The small-sized infrared beams that can be discreetly fitted into the profiles of single or double doors and which can also be used for specific applications (railways, security entrances, etc.).*

Microcell



FLEX IR

## SENSORS & CONSOLES

### R2E-100

#### Enhanced Door Security

- Adjustable defined pattern creates a safer, more secure door
- Creates a secure detection zone from door jamb to lever handle
- Low profile sensor mounts on or above the door frame
- Multiple relocking modes for timed or door position conditions
- Relay output consists of two Form "C" contacts for NO / NC wiring
- Adjustable, built-in audible alarm denotes activation – Can be deactivated
- 3 DRY auxiliary inputs: request to exit, card reader or push button

### Superscan

#### Active Infrared Sensor

- A focused pattern may be ideal for many applications where increased safety and/or functionality is needed
- Adjustable detection range from 2 to 12 feet
- Background elements, such as texture, color or reflectivity do not effect detection sensitivity
- Single unit emitter and receiver in the same module
- Adjustable to various angles for unique applications; adjustable detection angle in 5-degree increments

### Quadscan

#### Door Mounted Presence Sensor

- Quadscan I has approximately twice the coverage area of the SuperScan I and approximately the same effective coverage area as the SuperScan II.
- Installation and set up require no remote control and is accomplished by pressing the set up button provided on the Quadscan module.
- Angular tilt adjustment is accomplished by the turn of a screw without removing the module from the housing.
- Ease of installation is facilitated by use of plug-in connectors.
- Reduces inventory by stocking only one type of module.

\* External monitoring requires a monitoring capable door control

### Desktop Mini Consoles

#### Mini Consoles For Control for One or Two Doors

- The momentary switch can be used to release a single opening. The maintained (On / Off) switch is used as a bypass for keeping the door unlocked for an extended period of time. The tri-color LED displays Green, Red and Amber colors to indicate up to three lock status conditions.
- Choice of heavy duty momentary or maintained operating switches accommodate lock control functions.
- Tri-color LED indicators provide for immediate status indication of door position or lock status when used with lock monitors such as Door Position (DPS) or Bond Sensors (BAS).
- Push button switches provide an aesthetically pleasing appearance and high operational reliability.



The R2e-100 is an active infrared, request-to-exit detector specifically designed for access control applications where maximum protection is required. The active infrared pattern is focused in front of and above the door lever handle to greatly reduce unauthorized entry.



R2E-100

#### Precise Detection For Industrial Applications

The superscan is a presence sensor that uses distance measuring technology to project focused active infrared patterns which can be used for activation, safety and reactivation on industrial door, gate and RFID applications.



Superscan



Quadscan

The Quadscan is a fully monitored\*, standalone, door-mounted sensing system that can be adjusted into compliance with current ANSI standards.

### Modular Consoles

#### Modular Consoles for Manual Control and Status Monitoring

The IDC TCC and RCC Series of Control Consoles provide a flexible, economical method of centrally supervising and controlling multiple openings within a facility. Available in several configurations, the TCC and RCC Consoles allow monitoring of door and lock status, as well as control of electromagnetic **EMLocks**, **Bolt Locks**, **Electrified Mortise Locks**, **Shear Locks**, **Delayed Egress Systems**, **Electric Exit Devices** and **Electric Strikes**. The modular design of the console allows for the selection of the specific functions required by simply selecting panels with the desired status and control features.



## POWER TRANSFER



### Fire Rated Electric Power Transfer Hinges

- 4.5' Ft Cable
- UL10B Listed for 3 Hour Fire Rated Doors.
- Wire Replacement Warranty



### PTM Heavy Duty Series

#### Concealed Electric Power Transfer



- Power control input for electric locks and exit devices, locked, latched, mantrap, forced entry, open status signal wiring
- Mortise door and frame installation. The PTM is completely concealed when the door is closed.
- All metal design with stainless steel tubular wire transfer and heavy cast housing with steel back boxes provide weather and tamper resistance when door is open or closed.
- Fasteners for wood, steel and aluminum doors and frames included
- UL Listed Miscellaneous Fire Door Accessories
  - UL 10C Listed for up to 3 Hr Fire Rated doors and frames
  - Classified according to Uniform Building Code (UBC)
- Standard 7-2, "Fire Test of Door Assemblies" (1997)

### PT-5 Concealed Mortise Mount Power Transfer Loop

#### Fire Rated Concealed Mortise Power Transfer

- Frame mortised steel dust box with flexible steel loop and chrome finish. Recommended for use with hollow metal frames.
- UL10B Listed For 3 Hrs Fire Rated Doors
- Wire Replacement Warranty



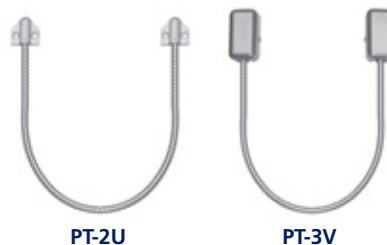
PT-5



### PT-2U & PT-3V

#### Power Transfer Loops

- 18" (447mm) stainless steel armored flex conduit with small plastic end caps or termination box. Recommended for use with hollow metal and aluminum frames.
- PT-2U with black end caps
- PT-3V with aluminum wire termination box



PT-2U

PT-3V

IDC's heavy duty Electric Power Transfer Device provides a concealed and secure means of transferring electric lock and exit device power and signal wires from the frame to the door.

Completely concealed when the door is closed the PTM Electric Power Transfer Device is ideal for heavy traffic and applications requiring higher security to inhibit tampering and abuse.



PTM

### Br3

#### Programmable 3-Relay Logic Module

- Multi-functionality offers increased value by combining legacy MC-Linx functionality with more advanced functions for a solution to a wider variety of applications.
- Contains 3 relays; two 3-AMP and one 1-AMP
- Built-in surge suppression in all 3 relays eliminates the need for external components when installing electric locking devices
- Provides the ability to select a WET voltage output up to 1-AMP on Relay 1 to power electric locking devices without the need for an external power supply (source must be capable of providing at least 1-AMP of power)
- Advanced input power circuitry for better protection, including a reset-able fuse
- 12 Different Functions



**Eliminates The Need For Multiple Modules**

The br3 is a logic module for applications including simple timing, door mounted sensor inhibiting and advanced relay sequencing. With multiple functions in one module, technicians will only need to carry one solution.

## POWER SUPPLY



- Field Selectable 12VDC or 24VDC Output - Standard
- Dual 12VDC and 24VDC Output - Optional California Compliant Manual Release Optional

### 10PS Series

These power supplies are UL-Listed control units for use with electromagnetic locking devices and systems. They may be ordered with optional battery backup systems to power devices in the case of power loss.

### 12VR Regulator Module

- With the IDC 600 Series power supply output set at 24VDC for locking devices and components, the addition of the 12VR provides a separate 12VDC, 500 mA output for 12VDC Access Controllers and readers or other devices. The need for separate power supplies for 12VDC and 24VDC requirements within the same system is eliminated.
- With the IDC 600 Series built in battery charger, the addition of batteries provides battery backup for both outputs. An auxiliary emergency release input is standard with IDC power supplies for failsafe locking systems.

### 602RF 1 AMP

To simplify installations that do not require conduit, a Class 2 output is standard and a 6-foot power cord is optional for the 115VAC input where permitted by code.

- Door control relay modules are available to meet virtually any application need. All wiring for lock hardware, access controls remote control and monitoring is terminated at one central location. Installation and troubleshooting is simplified.
- Modules may be factory installed or ordered separately for field installation as needed. All modules are individually fused for protection of multiple station systems.

### 621 Series 1 AMP

The 621 Series access control power supplies are designed to support access controls and electric locking devices. Equipped with two power limited outputs, the modular design enables versatility for installations with or without battery back-up or fire command center interface for emergency lock release.

- Two control inputs
- When latching emergency release is selected and the switched output is deactivated by emergency release or power loss, power is restored by manual means only.
- Short circuit and thermal overload protection
- Battery charger output
- Automatically switched to battery back-up when AC fails
- Board equipped with AC input, DC output and battery status LED indicator
- Enclosure equipped with AC input, DC output and battery status LED indicator



10PS



636RF 6 AMP

### 631RF 1.5 AMP

The IDC 631RF Power Supplies have been developed specifically to support electric locks and access controls. The high performance, heavy-duty circuitry is ideal for inductive loads and multi-door applications. The modular design is built around several different application control modules to meet your specific needs for virtually any electric lock system. IDC power supplies are designed to provide a well organized installation for individual or multi-door systems that may include locking devices, access controls, station controls and consoles for remote control, annunciation and fire/life safety system interface.

### 632RF 2 AMP

The IDC 631RF Power Supplies have been developed specifically to support electric locks and access controls. The high performance, heavy-duty circuitry is ideal for inductive loads and multi-door applications. The modular design is built around several different application control modules to meet your specific needs for virtually any electric lock system. IDC power supplies are designed to provide a well organized installation for individual or multi-door systems that may include locking devices, access controls, station controls and consoles for remote control, annunciation and fire/life safety system interface.

### 634RF 4 AMP

The IDC 634RF Power Supplies have been developed specifically to support electric locks and access controls. The high performance, heavy-duty 4 Amp circuitry is ideal for inductive loads and multi-door applications. The modular design is built around several different application control modules to meet your specific needs for virtually any electric lock system. Documentation is provided to ensure a well organized installation for individual or multi-door systems that may include locking devices, access controls, station controls and consoles for remote control, annunciation and auxiliary emergency release interface. IDC 600 Series power supplies are manufactured according to ISO 9001 - 2000 certified quality standards.

### 636RF 6 AMP

The IDC 636RF Power Supplies have been developed specifically to support electric locks and access controls. The high performance, heavy-duty 6 Amp circuitry is ideal for inductive loads and multi-door applications. The modular design is built around several different application control modules to meet your specific needs for virtually any electric lock system. Documentation is provided to ensure a well organized installation for individual or multi-door systems that may include locking devices, access controls, station controls and consoles for remote control, annunciation and auxiliary emergency release interface. IDC 600 Series power supplies are manufactured according to ISO 9001 - 2000 certified quality standards.



## DOOR CONTROL MODULES

Door control relay modules ensure compatibility of access hardware components and simplify system installation and troubleshooting. Different modules may be specified for one power supply.

The isolated relay design allows small gauge cable runs of 22 gauge wire up to 1000 feet from the trigger device to the module.

### FB-4

- Four 2 Amp fuse protected outputs allow for precisely calculated circuit protection. Four modules provide 16 outputs.

### TD Time Delay Relay Module

- Voltage input: 35mA @12/24VDC
- Timer Adj: 1-120 seconds

### CR-12, CR-24 Relay Module

- Voltage input: 35mA, specify 12V or 24VDC

### CR4 Four Station Relay Module

- Voltage input: 35mA, specify 12V or 24VDC

### ACM-1 Access Control Module

- Voltage input: 45mA @ 12/24VDC

### LR-12, LR-24 Latching Relay Module

- Voltage input: 45mA, specify 12V or 24VDC

### PB-8 8 Amp Power Booster

- Voltage input: 85mA @ 24VDC input

### Voltage input: 85mA @ 24VDC input

- Voltage input: 85mA @ 24VDC input

### 14-212 14-224 Seven Day Timer

- Field programmable, 7 day timer module recommended for automatic timed locking and unlocking of one door or all doors on the same circuit. Schedule up to 6 events maximum on single or multiple days, manual on-off override. Replaceable lithium battery maintains time and schedule during power outage.

## REMOTE MONITORING

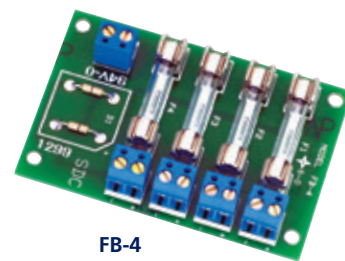
### PSM

#### PSM Power Supply Remote Monitoring Module

The PSM Power Supply Monitoring module provides 2-SPDT, 1 Amp contacts to remotely monitor power supply and battery status.

Remote annunciation conditions include:

- System OK
- AC Fail – No DC Output
- Battery Powered
- System Off – No Battery



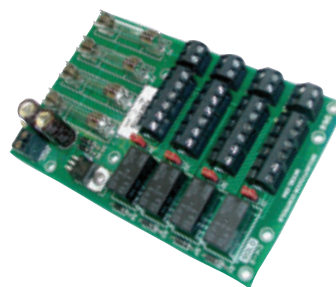
FB-4



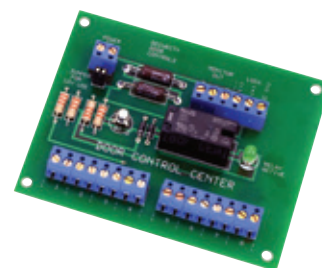
TD



CR



CR4



ACM-1



LR



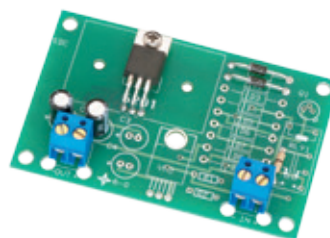
PB-8



PB-16



14-2



12VR



PSM



## TRANSFORMERS & PLUG-IN DC POWER

### TR12

Plug-in DC Power supply with 2 secondary outputs.

- Primary: 120VAC, Grounded
- 1 Fused, Unregulated Lock Output: 12VDC @ 780 mA
- 1 Regulated Access Control Output: 12VDC @ 150 mA
- Screw Terminals



### TP1220

Plug-In DC Supply

- Primary: 120VAC, grounded
- Secondary: Fused, unregulated 24VDC @ 1Amp
- 6 Ft. Cord



### TP1220

Plug-In Transformer

- Primary: 120VAC
- Secondary: fused, 12VAC @ 1.65Amps (screw terminals)
- UL Listed, Class 2



### TP2440

Plug-In Transformer

- Primary: 120VAC
- Secondary: fused, 24VAC @ 1.65Amps (screw terminals)
- UL Listed, Class 2



### TJ2440

J-Box or Base Mounted Transformer

- Primary: 120VAC (wire leads)
- Secondary: 24VAC @ 1.65Amps (screw terminals)
- UL Listed, Class 2



### TB2450

Base Mounted Transformer

- Primary: 120VAC/240VAC (screw terminals)
- Secondary: 24VAC @ 2Amps (screw terminals)
- Field replaceable fuse
- UL Listed



### TB24100

Base Mounted Transformer

- Primary: 120VAC/240VAC (screw terminals)
- Secondary: 24VAC @ 4Amps (screw terminals)
- Field replaceable fuse
- UL Listed



### BR64XL

Full Wave Bridge Rectifier

- Input: 12 or 24VAC
- Output: 12 or 24VDC
- 4 Amps Maximum Load



## UNIVERSAL DOOR CONTROL

### Programmable Door Controller

7 field selectable modes: standard relay, timer, latch, or latch plus timer and 3 mantraps modes.

#### UR-2A

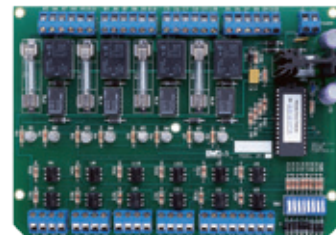
Two Station Controller

#### UR-4A

Four Station Controller - 6 Field Selectable Application Modes

The UR series is a microprocessor based controller that provides 7 different, field selectable application modes for two, three or four stations. 1 or 2 controller may be installed in IDC 600 series power supplies. Single and multiple controllers may be mounted in remote junction boxes and powered by a single power supply.

Field Programmable Access  
Hardware Controller



# HOLLOW METAL DOORS

## Door Features

### Highest Industry Standards

IDC custom steel doors are manufactured to the highest industry standards with many features exceeding the minimum requirements set forth in those standards. Fabrication is in accordance with HMMA 860, HMMA 861, HMMA 867 and ANSI A250.8. IDC steel stiffened and polystyrene doors have been tested and found to meet/exceed the requirements of ANSI A250.4.

- 7 Ga. Hinge Reinforcement Standard
- 11 Ga. Lock Tabs Standard
- Standard Edge Seam Tack Welded, Filled and Finished Smooth
- Open Seam and Continuously Welded Available

## Thermal Rated Products

### Associated Standards:

- ASTM C1363-05 Standard Test Method for Thermal Performance of Building Materials and Envelope Assemblies by Means of a Hot Box Apparatus
- ASTM E1423-06 Standard Practice for Determining Steady State Thermal Transmittance of Fenestration Systems.
- SDI 113 Standard Practice for Determining the Steady State Thermal Transmittance of Steel Door and Frame Assemblies.
- ASTM C1363 alone is not intended to determine performance of fenestration systems.
- ASTM C1199 has been established for this purpose and is used in conjunction with ASTM E1423 and ASTM C1363

## Sound Rated Products

Testing and certification in accordance with the following national test standards:

- ASTM E90-09 Standard Test Method for Laboratory Measurement of Airborne Sound Transmission Loss of Building Partitions and Element
- ASTM E413-10 Classification for Rating Sound Insulation
- ASTM E1332-10a Standard Classification for Rating Outdoor-Indoor Sound Attenuation
- ASTM E2235-04 Standard Test Method for Determination of Decay Rates for Use in Sound Insulation Test Methods
- ASTM C1199 has been established for this purpose and is used in conjunction with ASTM E1423 and ASTM C1363

## Typical Door Construction Details

### Steel Stiffened Door HMMA 861

- 22 Ga. Stiffeners Spaced 6" apart Standard
- 2.5 lb. Density Mineral Fiber Standard

## Polystyrene Door HMMA 867

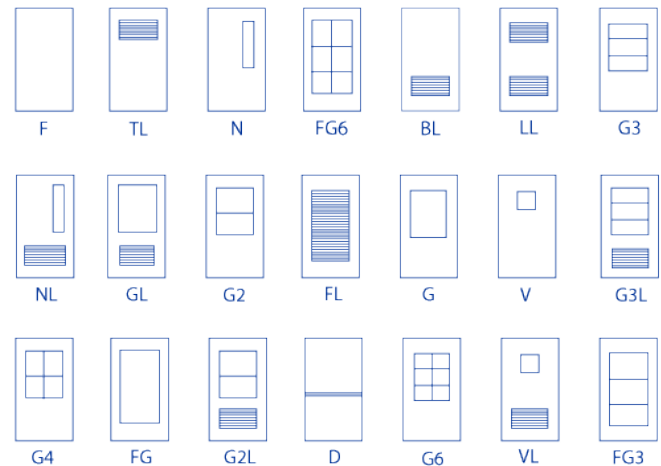
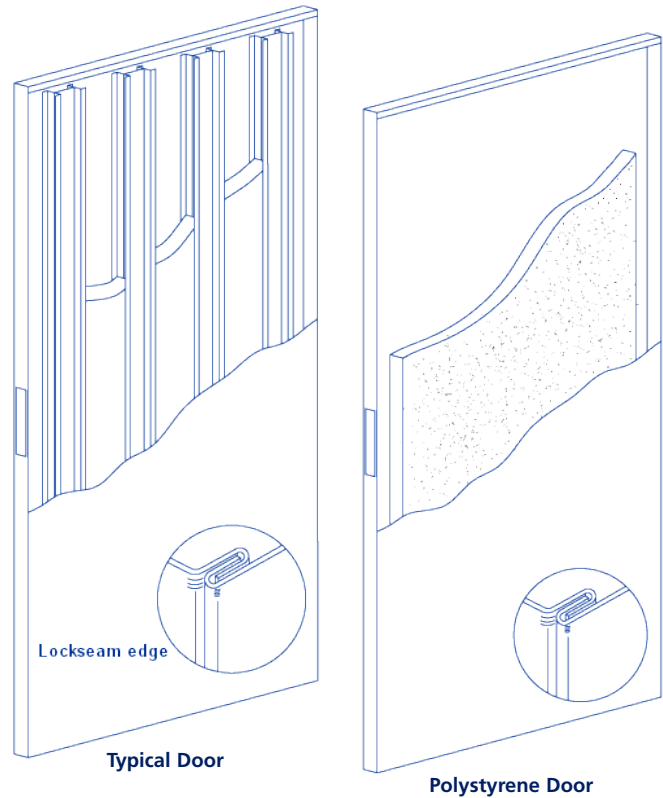
### Steel Stiffened Door HMMA 861

- Rigid Pre-formed Clos Cell Board 1 lb. Density
- Core U-Factor .156
- Conforms to ASTM C578, Type 1

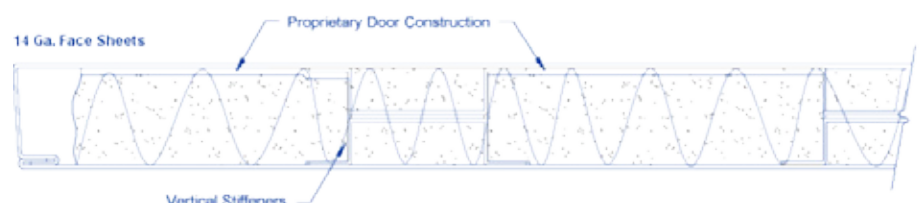
## Special Purpose Doors

### Severe Windstorm Products

- Design Pressure- 70 psf
- Wind Speed- 140 mph
- Steel stiffened door construction



Door Elevations



Various hardware and seal combinations available  
Standard heavy weight hinges may be used

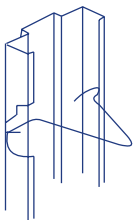
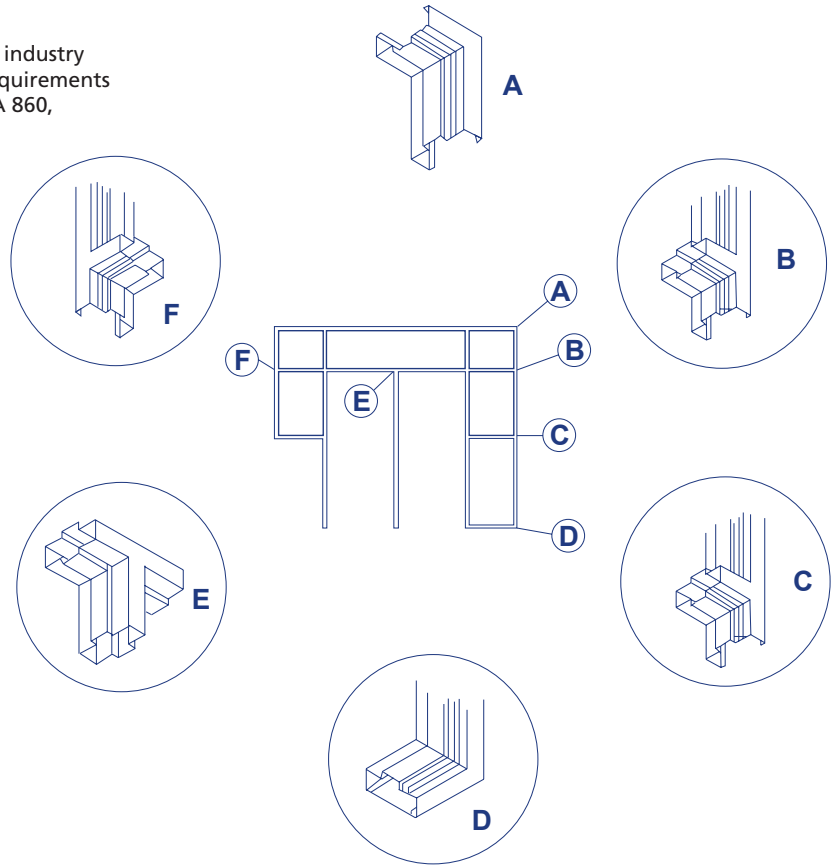
# FRAMES

## Frame Features

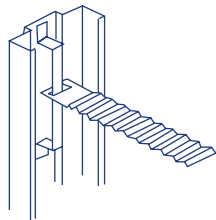
### IDC Custom Steel Frames

IDC custom steel frames are manufactured to the highest industry standards with many features exceeding the minimum requirements of the standards. Fabrication is in accordance with HMMA 860, HMMA 861 and ANSI A250.8

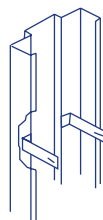
- Framed corners and butted mullion connections are continuously welded and finished smooth.
- Before being painted with a rust resistant primer, frames are thoroughly cleaned and degreased using a liquid iron phosphate process.
- Factory applied primer meets all requirements of ASTM B117 and ANSI A224.1
- **PRIMER TEST RESULTS:**
  - SALT SPRAY 120 HOURS
  - HUMIDITY 240 HOURS
  - IMPACT PASSED
  - ADHESION PASSED
- High quality primer assures a surface ready for finish paint application.



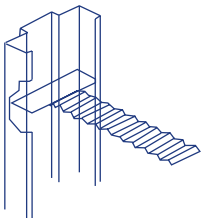
WIRE MASONRY ANCHOR (WMA)



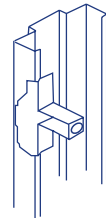
MASONRY STRAP ANCHOR (MAS)W



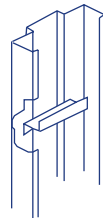
OOD STUD ANCHOR (WSA)



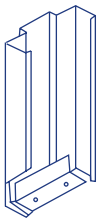
MASONRY & TI ANCHOR (MTA)



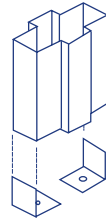
EXISTING WALL ANCHOR (EMA)



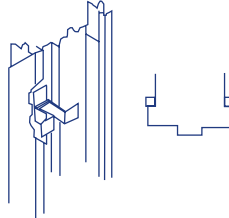
METAL STUD ANCHOR (MSA)



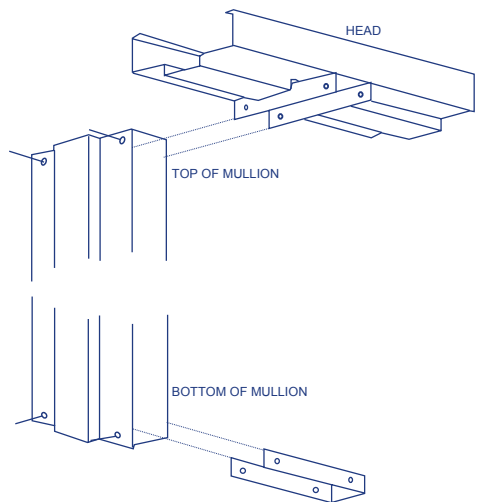
FLOOR CLIP



MULLION BASE ANCHOR



KNOCK DOWN PRESSURE-FIT



REMOVABLE MULLION



## SLIDING DOORS

**NO WHEELS NO TRACKS**  
**LINEAR BEARING MOTION BELT DRIVE**

### SL10.4L

#### Entra-Slide

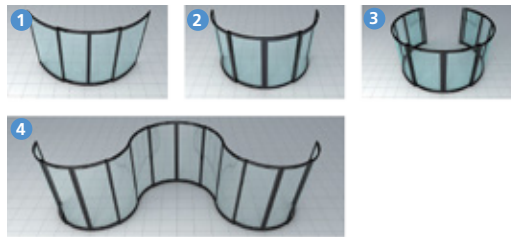
- A self-supporting structural header with full hinged covers
- A microprocessor control with self-diagnostic 13 LED light visual indicators.
- Full break-out capability
- Full vertical height interlock with double weather strip seal
- Electronic locking device



### KC1000

#### Automatic Curved Sliding Door

1. Segmental Curved Sliding Door
2. Semi-Circular Curved Sliding Door
3. Circular Curved Sliding Door
4. Combined Curved Sliding Door



#### Security Curved Portal Multiple Safety Protection

- Facial and weight recognition, strong anti-tailgating & anti-piggybacking function.
- Multiple safety protection device, voice prompt to assure the pedestrian security.

### KH1000

#### Professional Hermetic Sliding Door

KH1000 is a professional hermetic sliding door developed by IDC/KBB and applies to special locations, which demand excellent airtightness, sound isolation, and radiation protection.

KH1000 uses polyurethane high-pressure forming technology, which allows the door to be lighter, while strengthening sound and heat isolation, and energy savings. It has been highly welcomed for its dustproofing, fire-proofing, air-proofing and radiation protection.

### ATM Security Door

Based on the curved sliding door, IDC/KBB developed ATM security revolving door, to which automatic lock, intelligent open/close and panic breakout are added. Meanwhile, customization of appearance designing makes it a perfect companion to ATM.



## REVOLVING DOORS

### Two-Wing Revolving Doors

#### Automatic & Manual Revolving Door

Our two-wing revolving doors provide the highest safety assurance as they adopt IDC/KBB's exclusive "drum wall load-bearing" structure. It is the firmest two-wing door across the world and has the strongest ability to evacuate. The unique design allows the doors to bear even and run steady providing superior safety. A key feature included is the panic breakout exit function for safe and efficient evacuations.



### Three/Four-Wing Revolving Doors

#### Automatic & Manual Revolving Door

The three/ four-wing revolving doors are elegant and economical. More than just granting the entry and exit of heavy passing traffic, they mark the highest standards in wind-proofing, dustproofing, warm-keeping and energy-saving. They have three operational modes: manual, automatic, and manual/automatic activation driving; and two driving models: top and underground driving.

### Large Diameter Three/Four-Wing Revolving Doors

#### Automatic & Manual Revolving Door

Our large diameter three/four-wing revolving doors provide a wider passage, allowing easier and safer access to shopping carts in supermarkets and building material supply centers.

### Crystal All Glass Doors

#### Three/Four-Wing Revolving Doors

Our crystal door is made of a special safety glass, featuring a unique structure and an impeccable appearance. As the door is designed without a central column, clearer visibility allows it to become sparkling and more elegant. With IDC/KBB's unique music note style clamp, the door incorporates exceptional mechanics with aesthetics, increasing both safety and beauty.

## SPECIAL FINISHES

### Standard Colors

Custom Colors Available



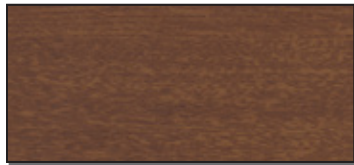
DS 716 + 2103/01



9010



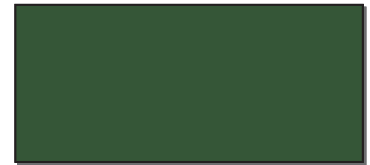
6021



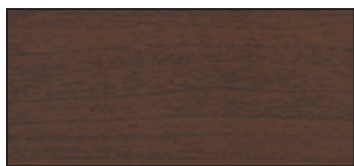
DS 733 + 2301/01



9005



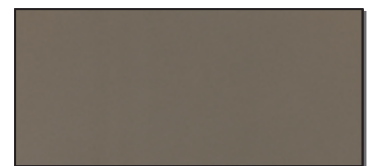
6002



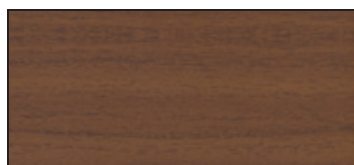
DS 733 + 1802/02



7004



1035



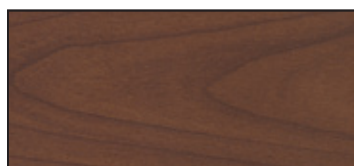
DS 733 + 1001/01



8014



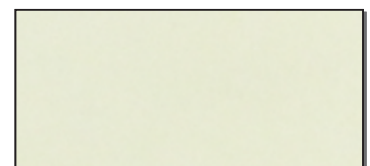
DS 708 + 5001/01



DS 733 + 1401/01



9022



Light 001  
(Glow In The Dark)



**WEST: 4431 E. La Palma, Anaheim, CA 92807**  
Tel: (714) 666-0390 (800) 544-4422  
Fax: (714) 666-2215  
Email: [west@intldoorclosers.com](mailto:west@intldoorclosers.com)

**EAST: 1920 Air Lane Drive, Nashville, TN 37210**  
Tel: (615) 885-7060 (800) 225-6737  
Fax: (615) 885-0903  
Email: [east@intldoorclosers.com](mailto:east@intldoorclosers.com)